

CookieMizer

Model CMJ

Quick Start Guide
Form #2100

The image to the right shows the base model of the CookieMizer. Read the proper mounting instructions for your application prior to operating the machine.

Wood-Mizer®



Your Wood-Mizer Account

For contact information, sales, service, parts, and additional manuals, sign into your account on <https://woodmizer.com>.

Safety

Safety Symbols

The following symbols and signal words call your attention to instructions concerning your personal safety. Be sure to observe and follow these instructions.



DANGER! indicates an imminently hazardous situation which, if not avoided, **will** result in serious injury or death.



WARNING! suggests a potentially hazardous situation which, if not avoided, **could** result in serious injury or death.



CAUTION! refers to potentially hazardous situations which, if not avoided, may result in minor or moderate injury or damage to equipment.

NOTICE indicates vital information.

Safety Instructions

OWNER/OPERATOR'S RESPONSIBILITY

NOTICE It is the owner/operator's responsibility and *not* Wood-Mizer LLC to ensure all operators are properly trained and informed of all safety protocols. Owner/Operators are responsible for following all safety procedures when operating and performing maintenance to the equipment.

OBSERVE ALL SAFETY INSTRUCTIONS

NOTICE Read the entire Operator's Manual of your mill before operating this attachment.

- Note all safety warnings throughout all manuals and those posted on the machine.
- Be able to access this manual at all times while operating this equipment.

- Only persons who have read and understood the mill's entire operator's manual should operate this equipment.
- This equipment is not intended for use by or around children.

HEAVY MATERIAL



WARNING! Use two-person lift for handling the CookieMizer



WEAR SAFETY CLOTHING



WARNING! Always wear eye, ear, and foot protection when operating or servicing the CookieMizer.

Some woods require respiration protection when operating. **It is the operator's responsibility to know which woods require respiration protection.**

KEEP WORK AREA CLEAN



WARNING! Maintain a clean and clear path for all necessary movement.

DISPOSE OF BY-PRODUCTS PROPERLY

NOTICE Always properly dispose of all by-products, including sawdust and other debris, according to local ordinances.

KEEP PERSONS AWAY



WARNING! Always be sure the cutting path is clear before starting the motor.

Keep all persons out of the path of moving equipment.

KEEP HANDS AWAY



DANGER! Keep hands, feet, and other objects away from log when operating the CookieMizer.



WARNING! Turn off the motor whenever the mill is not cutting.

KEEP SAFETY LABELS IN GOOD CONDITION



CAUTION! All safety decals must be clean and readable. Replace all damaged safety decals to prevent personal injury or damage to the equipment. Contact your Customer Service Representative to order more decals.

If replacing a component which has a safety decal affixed to it, ensure the new component also has the safety decal affixed.

WORKING WITH HEAVY LOGS



WARNING! Ensure material is clamped securely before processing.

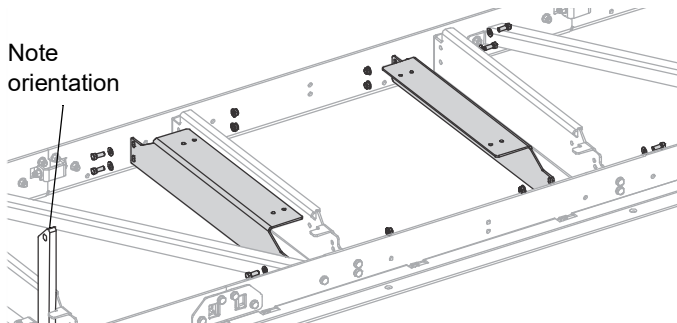
Assembly

NOTICE Ensure you are referencing the mounting instructions for your mill.

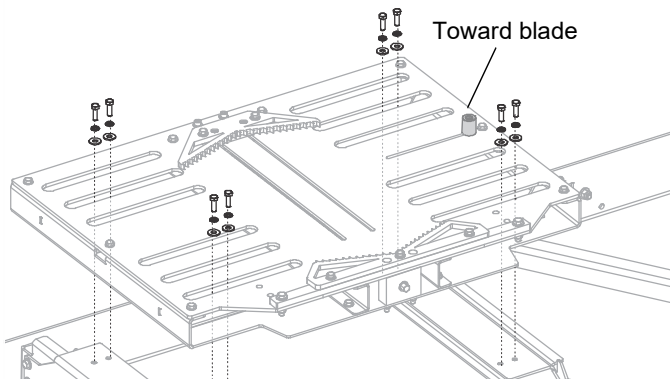
Mounting for LX25 or LX55 Wood-Mizer mills Installation Kit: 123418

STEP 1: Remove the center log clamp
Retain all parts and hardware for reinstallation after cookie cutting is finished.

STEP 2: Assemble the mounting brackets on the center bed rails with 3/8" fasteners as shown here.



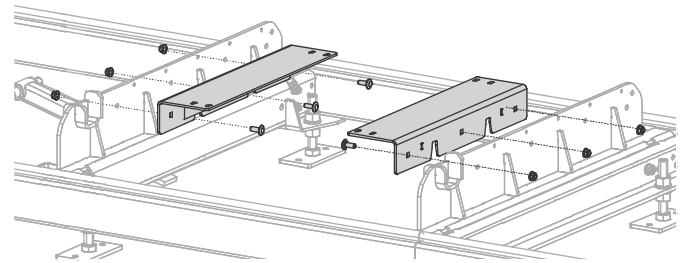
STEP 3: Mount the CookieMizer with 5/16" fasteners as shown here.
Ensure the minimum cut indicator is toward the blade.



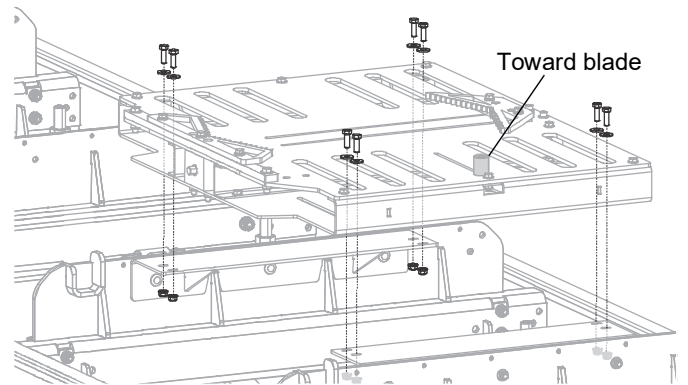
Mounting for LX150 Installation Kit: 123435

STEP 1: Lower the side supports.

STEP 2: Assemble the mounting brackets on the center bed rails with 3/8" fasteners as shown here.



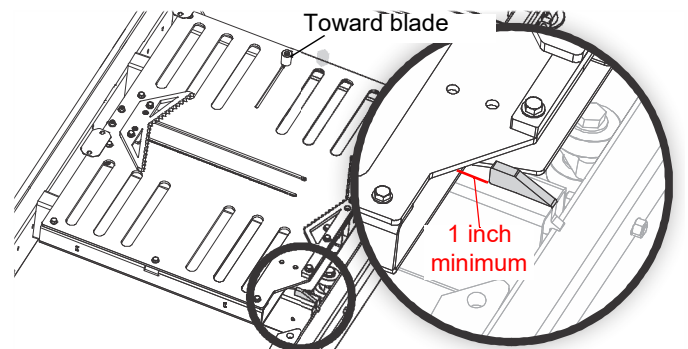
STEP 3: Mount the CookieMizer with 5/16" fasteners as shown here.
Ensure the minimum cut indicator is toward the blade.



Mounting for LT15 Installation Kit: 123437

STEP 1: Lower the side supports.

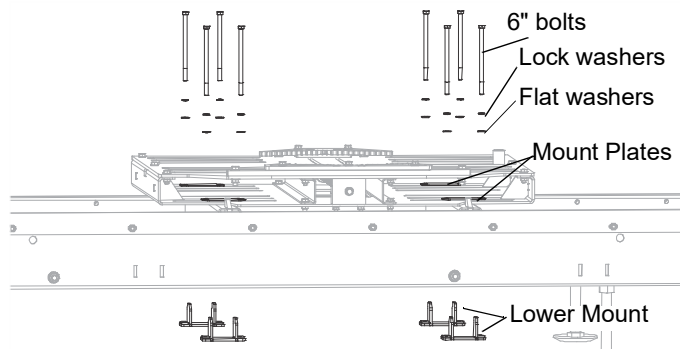
STEP 2: Set the CookieMizer on the center bed rails with the shortest span, oriented as shown here.
Ensure the minimum cut indicator is toward the blade.



STEP 3: Place the flat mounting plates on the inside of the CookieMizer at the outermost slots.

STEP 4: Align the lower mount weldment to secure the plate and the CookieMizer to the bed rail.

NOTE: Use the longer bolts that come with the mounting kit.

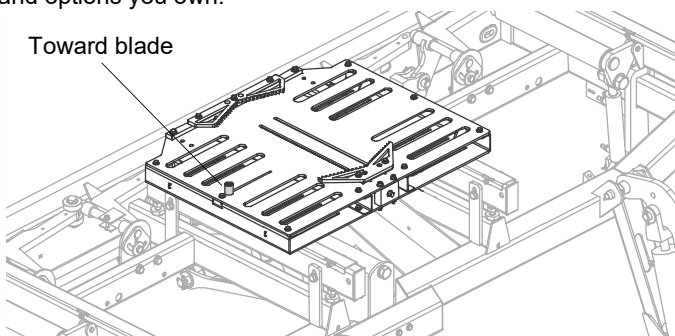


Mounting for LT28 through LT70 and LX450 Installation Kit: 123437

STEP 1: Lower the side supports and/or log clamps.

STEP 2: Set the CookieMizer on the center bed rails oriented as shown here.

Your mill may vary from this illustration according to the model and options you own.

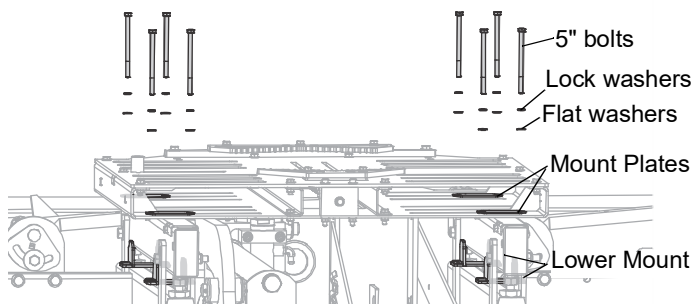


STEP 3: Place the flat mounting plates on the inside of the CookieMizer at the outermost slots.

If there is interference with the mounts, use the closest slot to the outside as possible. The CookieMizer may also be positioned closer to the center of the bed rails.

STEP 4: Align and fasten the lower mount weldment to secure the plate and the CookieMizer to the bed rail.

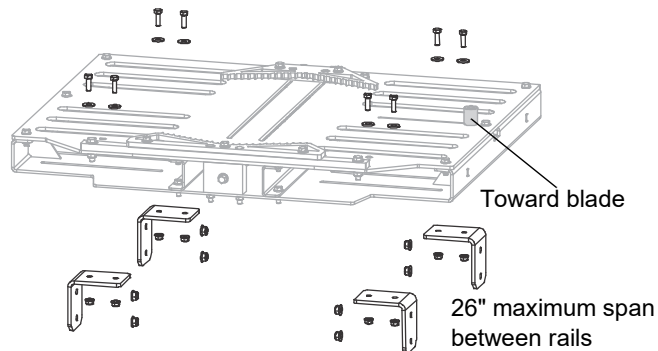
NOTE: Use the shorter bolts that come with the mounting kit.



Mounting for all other mills Installation Kit: 123441

Wood-Mizer provides generic brackets for all mills not listed here. It is up to the customer to provide 3/8" bolts for their bed rails and drill appropriate mounting holes. It is the customer's responsibility to ensure the CookieMizer is secure on the mill.

STEP 1: Ensure that the CookieMizer is level to the log bed and the minimum cut indicator is toward the blade.



STEP 2: Loosely mount the brackets to the bottom of the CookieMizer at the outermost slots. If there is interference with the mounts, use the closest slot to the outside as possible.

STEP 3: Use the mounting brackets as templates to drill holes for 3/8" bolts.

STEP 4: Tighten all mounting bolts.

Setup

- Ensure that the log is flat on the base, no wider than 20", and no smaller than 5". We *recommend* that logs smaller than 8" be sawn on a shop bandsaw.
- Fixed clamp may be moved forward by 1 1/2" or 3" for blade guide clearance, if necessary.
- The frame may be centered on the rails.
- Two additional 1/2" spacers (accessory number 123449) can be used to raise the fixed clamp for specific needs.
- Ensure that the sliding clamp can move freely. Clean debris, lubricate slide and/or platform, or loosen the 2 inside bolts holding the clamp mount to the lead nut (NOT the bolts holding the sliding clamp itself those should always remain secure)

Operation

STEP 1: Lower the blade to the minimum height indicator to ensure it does not interfere with any parts.

STEP 2: Load the log on the CookieMizer firmly against the fixed clamp.

STEP 3: Use a 1/2" ratcheting wrench or drill (from either side) to firmly seat the sliding clamp.

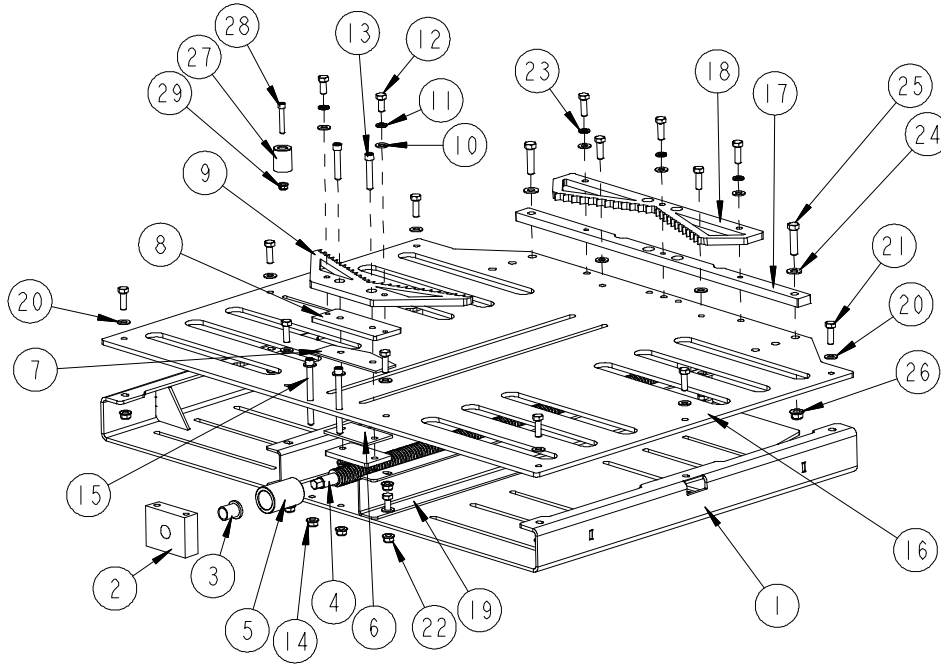
STEP 4: Ensure clamp teeth are engaged in the wood.

STEP 5: Cut the log according to your mill instructions.

Contact Us

Wood-Mizer's website and online account system are built to make your experience better. If you have comments, suggestions, or feedback on how we can improve your experience, please contact us at www.woodmizer.com

Parts



REF	DESCRIPTION	PART #	QTY.	REF	DESCRIPTION	PART #	QTY.
	COOKIEMIZER	123415	1	14	Nut, 5/16-18 Flanged Hex Nylock	F05010-221	6
1	Wldmnt, Lower Platform	123416	1	15	Bolt, 5/16-18x3 1/2 SHC BO	F05006-154	4
	Assy, Clamp	123405	1	16	Plate, Upper Platform	123420	1
	Assy, Bearing	123443	2	17	Plate, Fixed Clamp Mount	123422	1
2	Block, Sleeve Bearing	123406	1	18	Plate, Fixed Jaw	123423	1
3	Bushing, 5/8IDx3/40Dx1 Flanged, Bronze	123407	1	19	Bracket, Platform Support	123440	2
4	Screw, 1-5 Acme	123408	1	20	Washer, 5/16 SAE Flat	F05011-17	17
5	Wldmnt, 1-5 Acme Nut	123409	1	21	Bolt, 5/16-18 x 1 Gr 5 HH	F05006-27	17
6	Plate, UHMW, Bottom	123412	1	22	Nut, 5/16-18 Flanged Hex Nylock	F05010-221	14
7	Plate, UHMW, Top	123438	1	23	Washer, 5/16 Split Lock	F05011-13	3
8	Plate, Sliding Clamp Mount	123413	1	24	Washer, 3/8 Flat SAE	F05011-3	2
9	Plate, Sliding Jaw	123414	1	25	Bolt, 3/8-16 x 11/2 HH FT Znc	F05007-17	2
10	Washer, 5/16 SAE Flat	F05011-17	6	26	Nut, 3/8-16 Flanged Hex Nylock	F05010-222	2
11	Washer, 5/16 Split Lock	F05011-13	2	27	Bushing, Min Cut Indicator	123424	1
12	Bolt, 5/16-18 x 3/4 HH Gr5	F05006-102	2	28	Screw, 1/4-20x1 1/2 BO SHC	F05005-122	1
13	Bolt, 5/16-18x1 3/4 SHC	F05006-137	2	29	Nut, 1/4-20 Flanged Hex Nylock	F05010-220	1

Optional equipment

Description	Part #	Qty	Description	Part #	Qty	Description	Part #	Qty
SPACER, 1/2IN FIXED JAW	123439	1	KIT, FIXED JAW SPACER, QTY 1	123448	1	KIT, FIXED JAW SPACER, QTY 2	123449	1
			1. Spacer, 1/2in Fixed Jaw	123439	1	1. Spacer, 1/2in Fixed Jaw	123439	2
			2. Bolt, 5/16-18x1 1/2 HH Gr5	F05008-96	3	2. Bolt, 5/16-18x2 HH Gr5	F05006-79	3