

Wood-Mizer[®] Sawmill

Parts Manual

LT10

rev. B4.09



Safety is our #1 concern! Read and understand all safety information and instructions before operating, setting up or maintaining this machine.

Form #1228

© **2018**

Printed in the United States of America, all rights reserved. No part of this manual may be reproduced in any form by any photographic, electronic, mechanical or other means or used in any information storage and retrieval system without written permission from

Wood-Mizer
8180 West 10th Street
Indianapolis, Indiana 46214

Table of Contents	Section-Page
SECTION 1 GENERAL INFORMATION	1-1
1.1 How To Use The Parts List	1-1
1.2 Sample Assembly	1-1
SECTION 2 LT10 PARTS	2-1
SECTION 3 BED PARTS	3-1
3.1 Bed Assembly	3-1
3.2 Clamp Assembly	3-2
SECTION 4 MAST PARTS	4-1
4.1 Mast Assembly	4-1
4.2 Carriage Assembly	4-2
4.3 Roller Assembly	4-4
4.4 Feed Handle Assembly	4-5
4.5 Up/Down Assist Assembly	4-6
SECTION 5 FEED CABLE ASSEMBLY	5-1
5.1 Feed Cable Assembly	5-1
SECTION 6 HEAD PARTS	6-1
6.1 Head Assembly	6-1
6.2 Blade Tensioner	6-3
6.3 Idle Blade Wheel Arm Assembly	6-5
6.4 Idle Wheel Assembly	6-6
6.5 Blade Guide	6-7
6.6 Brake Assembly	6-8
6.7 Drive Blade Wheel	6-9
6.8 Blade Housing Covers	6-10
SECTION 7 MOTOR MOUNT ASSEMBLY	7-1
SECTION 8 ENGINE ASSEMBLY	8-1
8.1 G7 Engine Assembly	8-1
8.2 G10 Engine Assembly	8-2
SECTION 9 WATER LUBE	9-1

SECTION 1 GENERAL INFORMATION

1.1 How To Use The Parts List

- Use the table of contents or index to locate the assembly that contains the part you need.
- Go to the appropriate section and locate the part in the illustration.
- Use the number pointing to the part to locate the correct part number and description in the table.
- Parts shown indented under another part are included with that part.
- Parts marked with a diamond (◆) are only available in the assembly listed above the part.

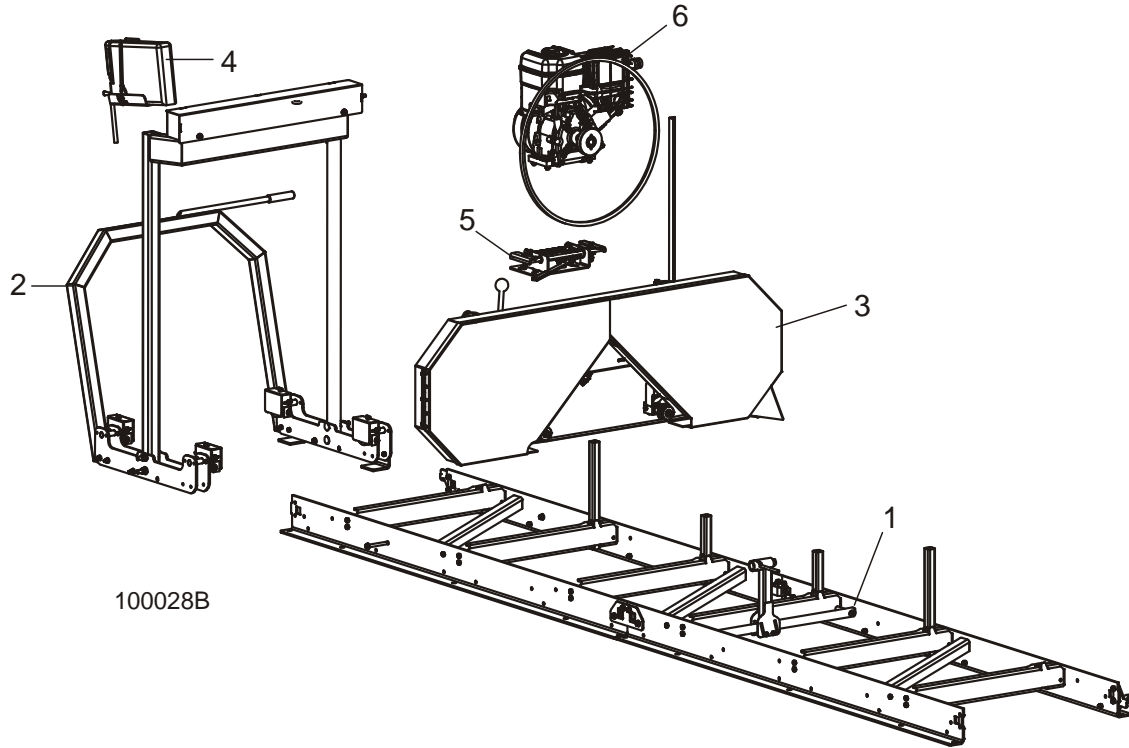
See the sample table below. Sample Part #A01111 includes part F02222-2 and subassembly A03333. Subassembly A03333 includes part S04444-4 and subassembly K05555. The diamond (◆) indicates that S04444-4 is not available except in subassembly A03333. Subassembly K05555 includes parts M06666 and F07777-77. The diamond (◆) indicates M06666 is not available except in subassembly K05555.

1.2 Sample Assembly				
REF	DESCRIPTION (◆ Indicates Parts Available In Assemblies Only)	PART #	QTY.	
	SAMPLE ASSEMBLY, COMPLETE (INCLUDES ALL INDENTED PARTS BELOW)	A01111	1	
1	Sample Part	F02222-22	1	
	Sample Subassembly (Includes All Indented Parts Below)	A03333	1	
2	Sample Part (◆ Indicates Part Is Only Available With A03333)	S04444-4	1	◆
	Sample Subassembly (Includes All Indented Parts Below)	K05555	1	
3	Sample Part (◆ Indicates Part Is Only Available With K05555)	M06666	2	◆
4	Sample Part	F07777-77	1	

To Order Parts:

- From the continental U.S., call **1-800-525-8100** to order parts. Have your customer number, vehicle identification number, and part numbers ready when you call.
- From other international locations, contact the Wood-Mizer distributor in your area for parts.

SECTION 2 LT10 PARTS

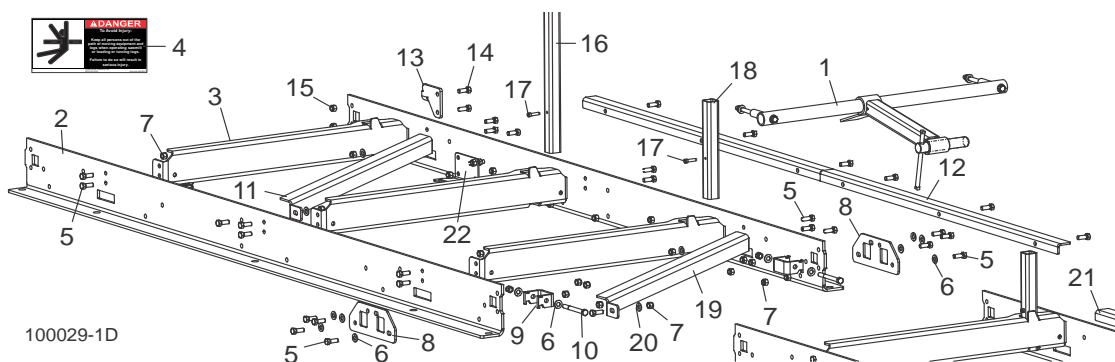


100028B

REF	DESCRIPTION (◆ Indicates Parts Available In Assemblies Only)	PART #	QTY.
	SAWMILL, LT10 WITHOUT ENGINE	LT10	1
1	Bed Assembly Parts (See Section 3)		
2	Mast Assembly Parts (See Section 4)		
3	Head Assembly Parts (See Section 6)		
4	Water Lube Parts (See Section 9)		
5	Motor Mount Parts (See Section 7)		
6	ENGINE ASSEMBLY PARTS (See Section 8)		

SECTION 3 BED PARTS

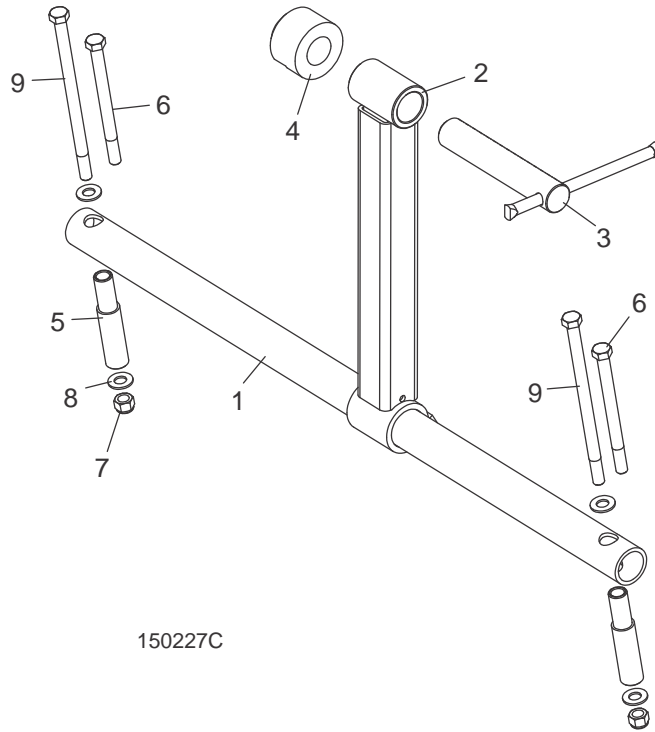
3.1 Bed Assembly



REF	DESCRIPTION (◆ Indicates Parts Available In Assemblies Only)	PART #	QTY.
	BED ASSEMBLY, 2012 LT10	071052	1
1	Clamp Parts (See Section 3.2)		
	Bed Assembly, 2012 LT10 Extension	LT10BS1 ¹	2
2	Plate, 2012 LT10 Drive/Idle Side Rail	071012	2
3	Plate, 2012 LT10 Center Bed Rail	071014	3
4	Decal, Keep Away Danger	S09851	2
5	Bolt, 3/8-16 x 1" Hex Head Grade 5	F05007-87	30
6	Washer, 3/8" SAE Flat	F05011-3	16
7	Nut, 3/8-16 Hex Nylon Lock	F05010-10	32
8	Plate, 2012 LT10 Bed Coupler	071013	2
9	Plate, 2012 LT10 Bed Rail Clamp	071015	2
10	Bolt, 3/8-16 x 3 1/2" Hex Head Grade 5	F05004-123	2
11	Plate, 2012 LT10 Cross Brace	071017	2
12	Plate, LT10 Safety Catch Rail	065826	2
13	Plate, LT10 End Stop	049025	2
14	Bolt, 3/8-16 x 1" Hex Head Grade 5	F05007-87	26
15	Nut, 3/8-16 Hex Nylon Lock	F05010-10	26
16	Tube, Side Support Long	038453	2
17	Bolt, 1/4-20 x 1" Socket Head	F05005-89	4
18	Tube, LT10 Side Support Short	065877	2
19	Plate, 2012 LT10 Cross Brace	071017	2
20	Washer, 3/8" SAE Flat	F05011-3	4
21	Plate, LT10 Safety Catch Rail	065826	2
22	Feed Cable Parts (See Section 5.1)		

¹ Cable kit required for improved head stability ([See Section 5.1](#)).

3.2 Clamp Assembly

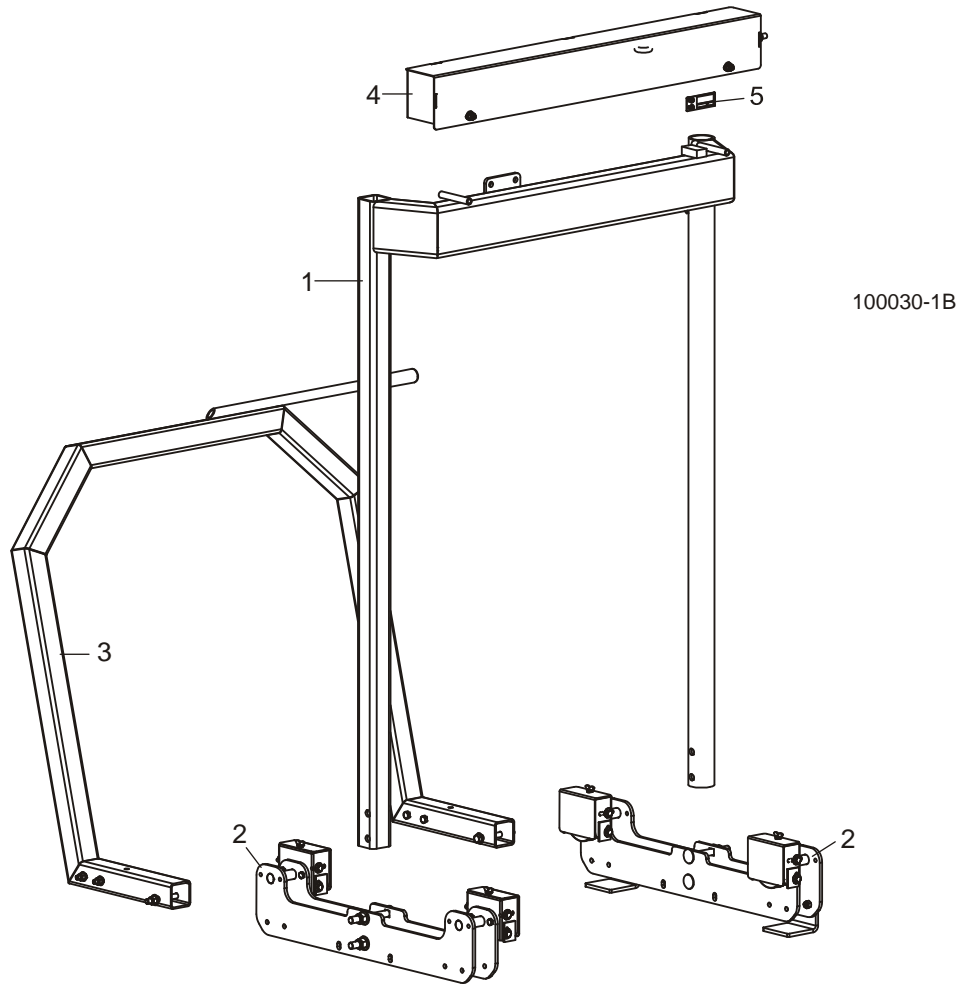


150227C

REF	DESCRIPTION (◆ Indicates Parts Available In Assemblies Only)	PART #	QTY.	
	CLAMP ASSEMBLY, LT10/15 RETRO	065661	1	
	Clamp Assembly, LT10/LT15 Log Pivoting	071347	1	◆
1	Tube, 2012 Clamp Main	071026	1	
	Clamp Kit, LT10/LT15 (Includes Item #9)	061101	1	
2	Tube Weldment, Clamp Post	071343	1	◆
3	Screw Assembly, Clamp	071350	1	
4	Block, Clamp Point	075295	1	
5	Spacer, 2012 Clamp Mount	071034	2	
6	Bolt, 3/8-16 x 4 3/4" Hex Head Grade 5 (Req'd for Bed Support Plate Installation)	F05007-109	2	
7	Nut, 3/8-16 Hex Nyloc	F05010-10	2	
8	Washer, 3/8" Flat SAE	F05011-3	4	
9	Bolt, 3/8-16 x 6 1/2" Hex Head Grade 5 (Req'd for Bed Cross Tube Installation)	F05007-205	2	
	Screw, 3/8-16 x 6" Hex Head	F05007-45	2	
	Instruction Sheet, LT10/15 Log Clamp	065661-1784	1	

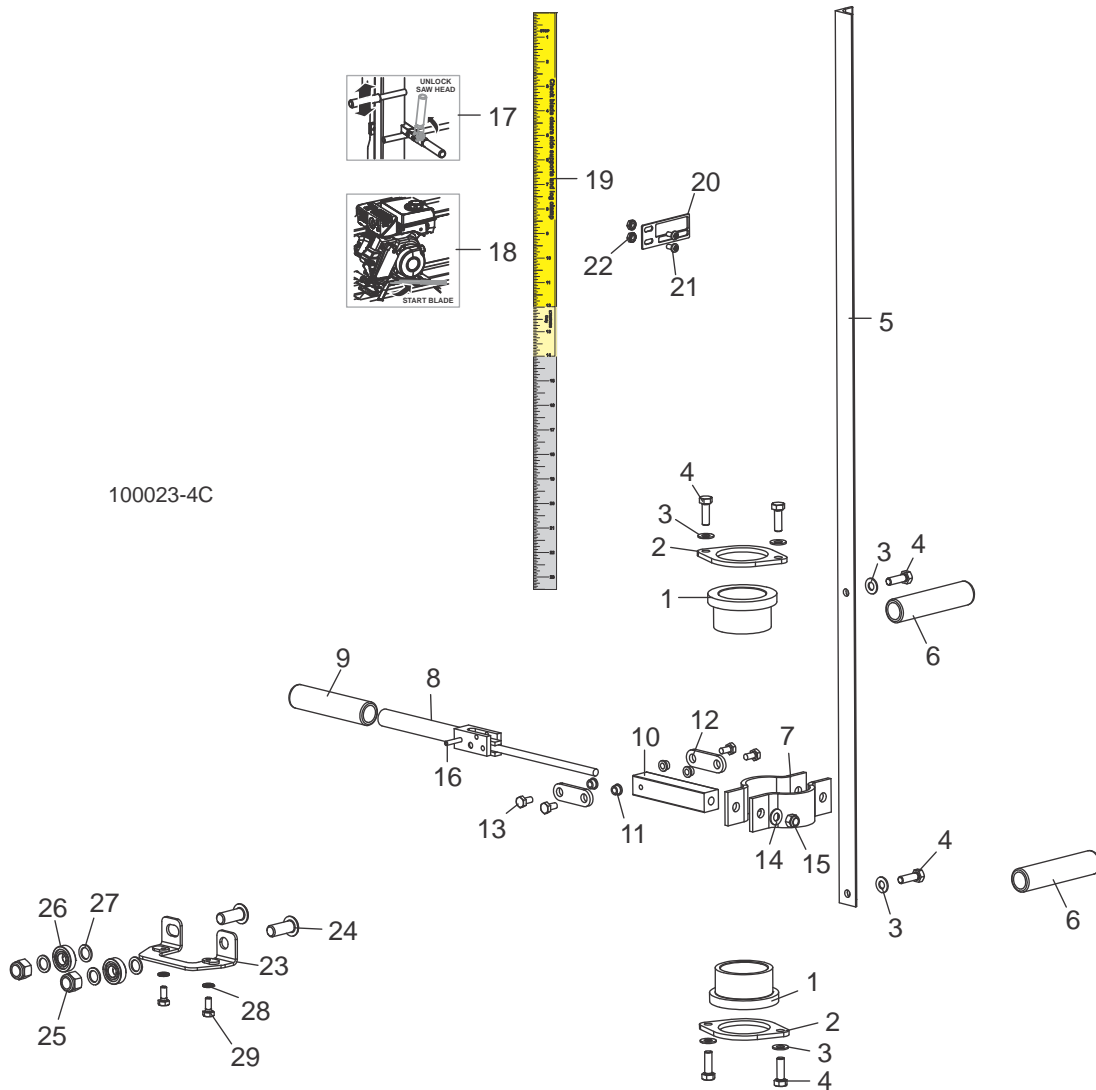
SECTION 4 MAST PARTS

4.1 Mast Assembly



REF	DESCRIPTION (◆ Indicates Parts Available In Assemblies Only)	PART #	QTY.
	MAST ASSEMBLY, LT10	048623	1
1	Mast Weldment, LT10	048846	1
2	Lower Roller Parts (See Section 4.3)		
3	Feed Handle Parts (See Section 4.4)		
4	Up/Down Assist Parts (See Section 4.5)		
5	Pointer Parts (See Section 4.2)		

4.2 Carriage Assembly



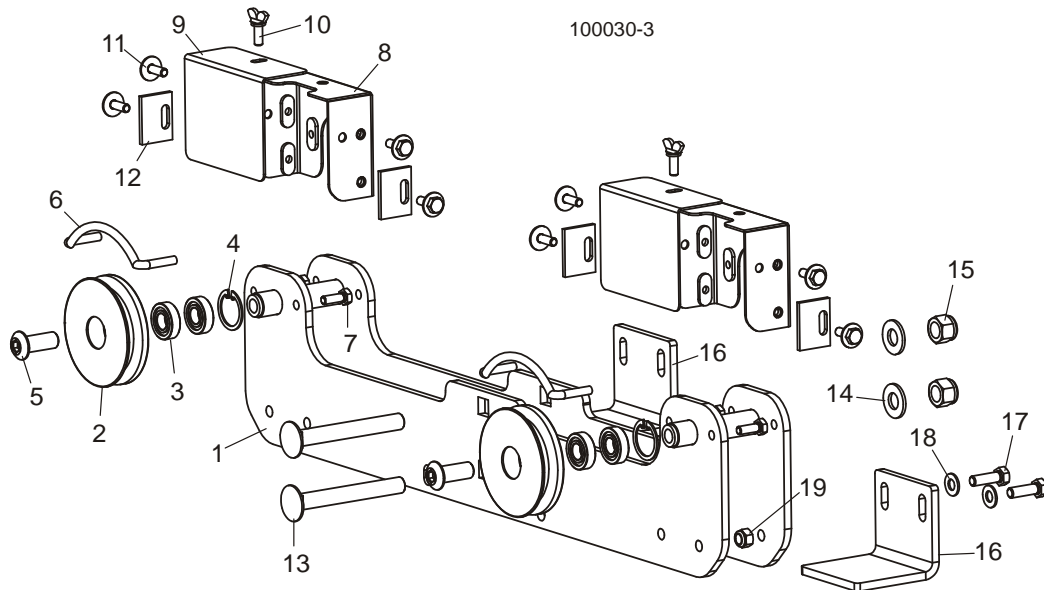
REF	DESCRIPTION (◆ Indicates Parts Available In Assemblies Only)	PART #	QTY.
1	BUSHING, UP/DOWN SLIDE	048807	2
2	PLATE, BUSHING RETAINER	048850	2
3	WASHER, 5/16" SAE FLAT	F05011-17	8
4	BOLT, 5/16-18 X 1" HEX HEAD GRADE 5	F05006-27	7
5	BRACKET, LT10 SCALE MOUNT	048853	1
6	GRIP, 3/4" DIA. X 4 1/2" HANDLE	049031	2
7	CLAMP, MOTOR MOUNT SQ.	110608	2
8	Handle Weldment, LT10 Up/Down Lock	049036	1
9	Grip, 3/4" Dia. x 4 1/2" Handle	049017	1

4

Replacement Parts*Carriage Assembly*

10	Block, LT10 Lock/Lift	049003	1	
11	Bushing, 1/4" ID x 1/4" Flanged	049018	4	
12	Plate, Lock Link	049019	2	
13	Bolt, 1/4-20 x 1/2" Hex Head	F05005-15	4	
14	Washer, 5/16" SAE Flat	F05011-17	1	
15	Nut, 5/16-18 Hex Nylon Lock	F05010-58	1	
16	Pin, 3/16" x 7/8" Roll	F05012-19	1	
17	DECAL, LT10 UP/DOWN INFO	049101	1	
18	DECAL, LT10 BLADE START INFO	049100	1	
19	DECAL, LT10 BLADE SCALE	036828	1	
20	POINTER, BLADE HEIGHT SCALE	017778	1	
21	SCREW, #10-24 X 3/8" PHILLIPS PAN HEAD	F05004-3	2	
22	NUT, #10-24 SELF-LOCKING HEX	F05010-14	2	
	BEARING ASSEMBLY, IDLE SIDE MAST	065801	1	
23	Mount Weldment, LT10 Idle Side Bearing	065838	1	
24	Bolt, 1/2-13 x 1 1/4" BHCS B/O	F05008-152	2	
25	Nut, 1/2-13 Nylon Hex Lock	F05010-8	2	
26	Bearing, R8-2RS Blade Guide	015975	2	
27	Shim, 1/2 x 3/4 x 22GA Round Steel	065800	4	
28	Washer, 1/4" Split Lock	F05011-14	2	
29	Screw, 1/4-20 x 5/8" SS 18-8 HHC	F05005-86	2	

4.3 Roller Assembly

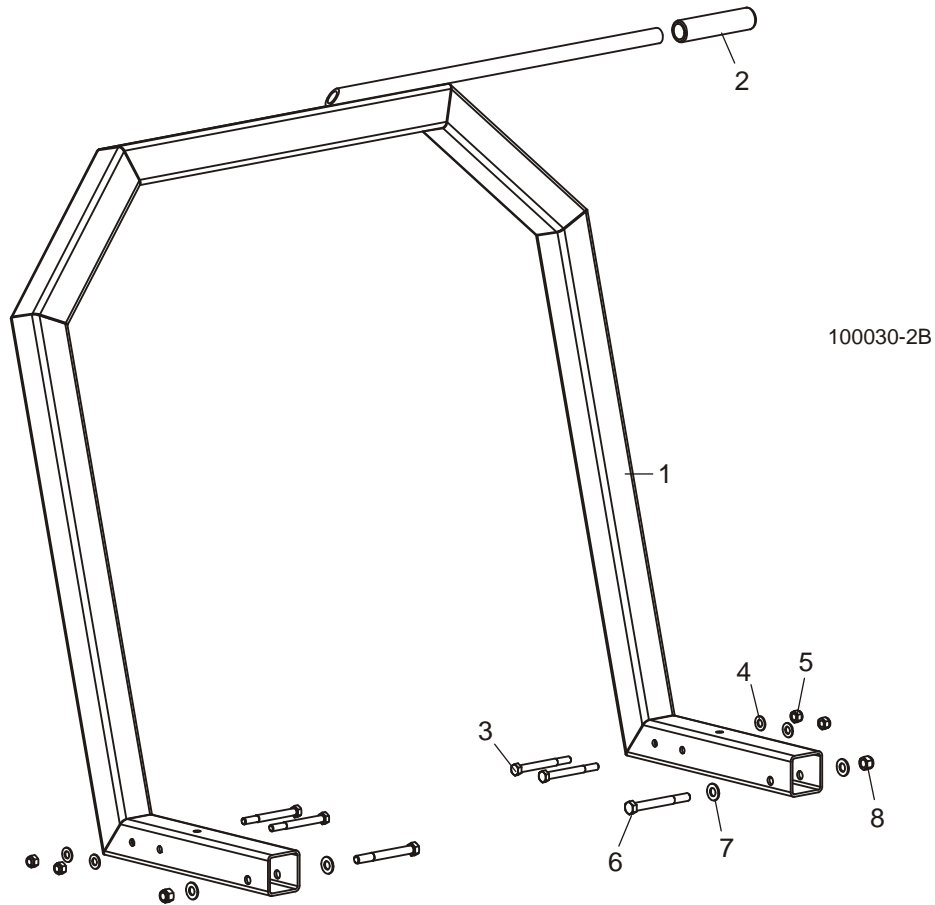


REF	DESCRIPTION (◆ Indicates Parts Available In Assemblies Only)	PART #	QTY.
	ROLLER ASSEMBLY, 2012 LT10 LOWER	065634	2
1	Roller Weldment, LT10 Lower	048624	1
	Roller Assembly, LT10 Lower	065632	2
2	Roller, 2012 LT10 Lower Track	071016	2
3	Bearing, R8-2RS	015975	4
4	Ring, 1 1/8" Inside Retaining	F04254-1	2
5	Bolt, 1/2-13 x 1 1/4" Button Socket Head	F05008-152	2
6	Cord, 1/4" Felt	065633	2
7	Bolt, 1/4-20 x 3/4" Hex Head Grade 5	F05005-123	4
8	Cover Weldment, Track Roller	049040	2
9	Cover, Track Roller	048878	2
10	Stud, 1/4-20 x 5/8" Wing	F05005-64	2
11	Bolt, 1/4-20 x 3/4" Hex Head w/Conical Washer	F05005-134	8
12	Scraper, LT10 Track	048877	4
13	Bolt, 1/2-13 x 4" Carriage Head Grade 5	F05008-89	2
14	Washer, 1/2" SAE Flat	F05011-2	2
15	Nut, 1/2-13 Hex Nylon Lock	F05010-8	2
16	PLATE, LT10 MAST LATCH	065827	2
17	BOLT, 5/16-18 X 1" HEX HEAD GRADE 5	F05006-27	2
18	WASHER, 5/16" SAE FLAT	F05011-17	2
19	NUT, 5/16-18 HEX NYLON LOCK	F05010-58	2

4 Replacement Parts

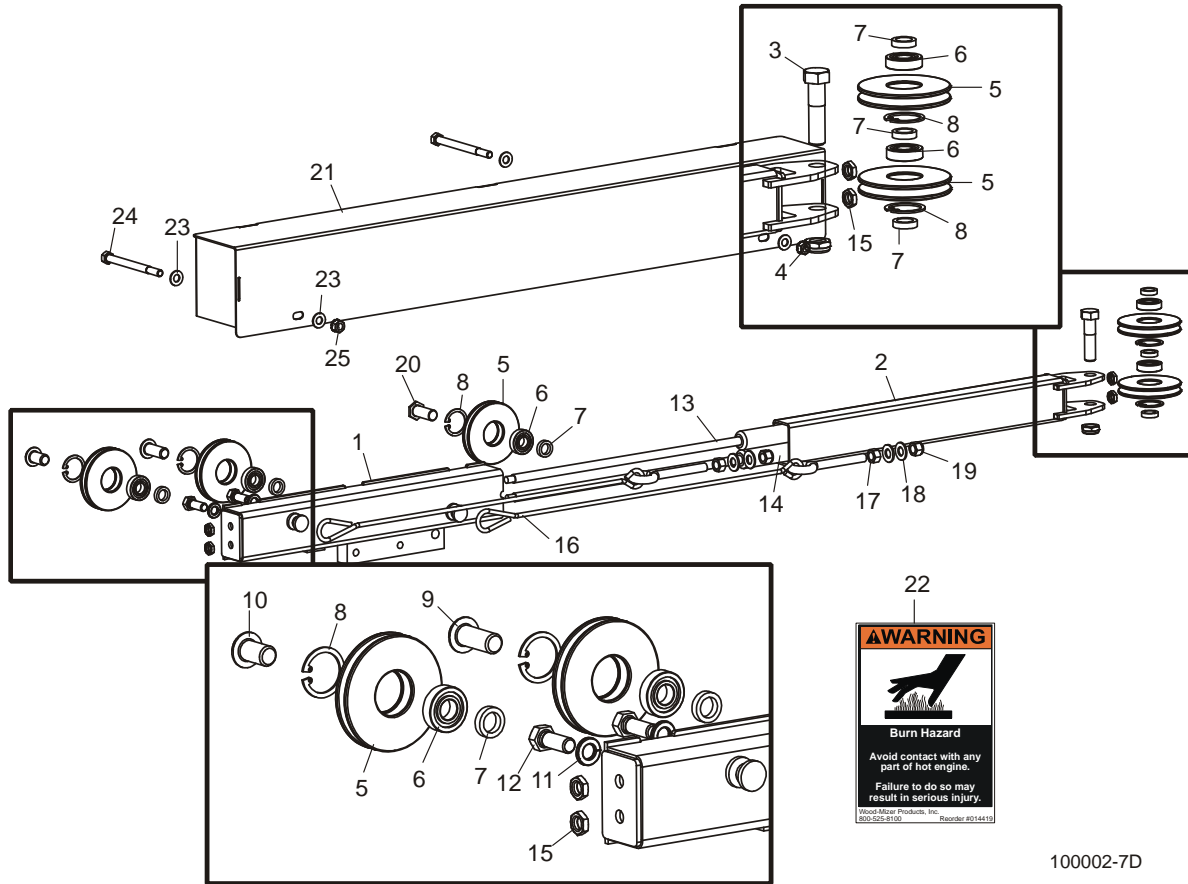
Feed Handle Assembly

4.4 Feed Handle Assembly



REF	DESCRIPTION (◆ Indicates Parts Available In Assemblies Only)	PART #	QTY.
1	HANDLE ASSEMBLY, 2012 LT10 FEED	071042	1
2	GRIP, HANDLE 3/4" DIA. ID X 4 1/2"	049031	1
3	BOLT, 5/16-18 X 3 1/4" HEX HEAD GRADE 5	F05006-133	4
4	WASHER, 5/16" SAE FLAT	F05011-17	4
5	NUT, 5/16-18 HEX NYLON LOCK	F05010-58	4
6	BOLT, 3/8-16 X 3 1/2" HEX HEAD GRADE 5	F05004-123	2
7	WASHER, 3/8" SAE FLAT	F05011-3	4
8	NUT, 3/8-16 HEX NYLON LOCK	F05010-10	2

4.5 Up/Down Assist Assembly



100002-7D

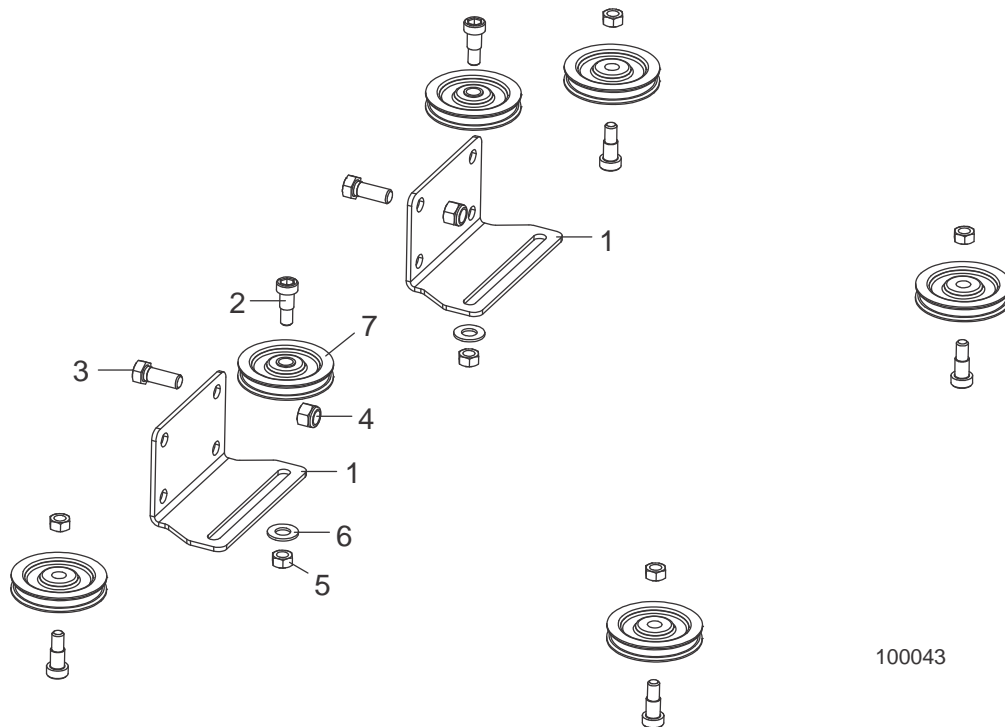
REF	DESCRIPTION (◆ Indicates Parts Available In Assemblies Only)	PART #	QTY.
	ASSIST ASSEMBLY, LT10 UP/DOWN	048835	1
1	Channel Weldment, 14-3/4" Assist Large	065222	1
2	Tube Weldment, LT10 Assist Small	065223	1
3	Bolt, 1/2-13 x 2" Hex Head Grade 5	F05008-102	1
4	Nut, 1/2-13 Half Hex Nylon Lock	F05010-127	1
5	Pulley, Cable Small	046995	5
6	Bearing, R8-2RS Roller	015975	5
7	Bushing, 3/16" Spacer	046986	6
8	Ring, 1 1/8" Inside Retaining	F04254-1	5
9	Bolt, 1/2-13 x 1 1/4" Socket Button Head	F05008-152	1
10	Bolt, 1/2-13 x 7/8" Socket Button Head	F05008-156	1
11	Washer, 3/8" Split Lock	F05011-4	2
12	Bolt, 3/8-16 x 1" Hex Head Grade 5	F05007-87	2
13	Spring, Fast Acting Gas Charged 225lbs	110173	1
14	Spring, Fast Acting Gas Charged 225lbs	110173	1

4**Replacement Parts***Up/Down Assist Assembly*

15	Nut, M8 x 1.25 Hex Jam	F05010-76	4	
16	Cable, LT10 Up/Down Lift	049042	2	
17	Nut, 3/8-16 Hex	F05010-1	2	
18	Washer, 3/8" SAE Flat	F05011-3	4	
19	Nut, 3/8-16 Hex Nylon Lock	F05010-10	2	
20	Bolt, 1/2-13 Thin Head	006812	1	
21	COVER WELDMENT, UP/DOWN ASSIST	049032	1	
22	Decal, Hot Engine Warning	014419	1	
23	WASHER, 5/16" SAE FLAT	F05011-17	4	
24	BOLT, 5/16-18 X 4" HEX HEAD GRADE 5	F05006-109	2	
25	NUT, 5/16-18 SELF-LOCKING HEX	F05010-20	2	

SECTION 5 FEED CABLE ASSEMBLY

5.1 Feed Cable Assembly



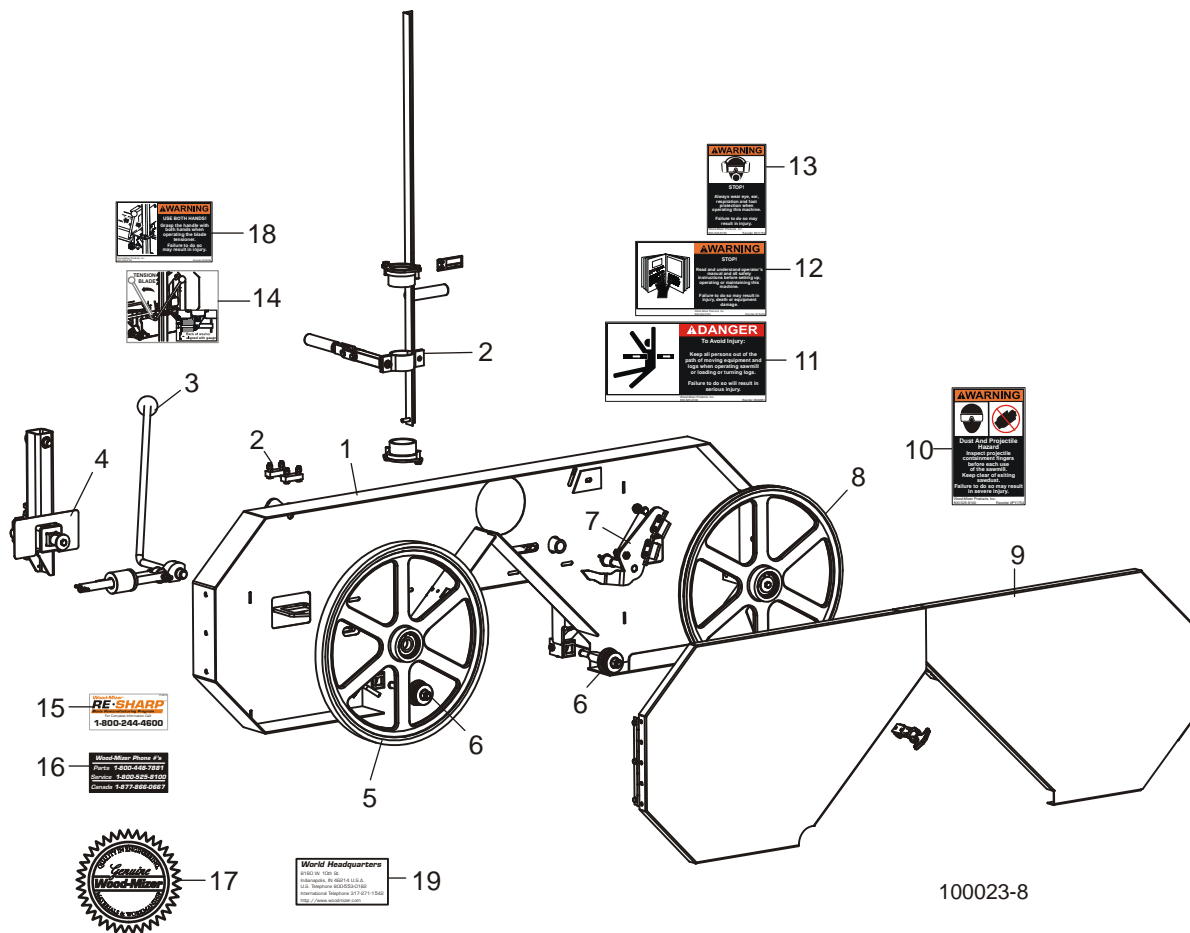
REF	DESCRIPTION (◆ Indicates Parts Available In Assemblies Only)	PART #	QTY.	
	FEED KIT, LT10 CABLE (MILLS WITH STANDARD 2 BED SECTIONS)	074565	1	
	FEED KIT, LT10 CABLE (MILLS WITH TOTAL 3 BED SECTIONS)	074565-1	1	
	FEED KIT, LT10 CABLE (MILLS WITH TOTAL 4 BED SECTIONS)	074565-2	1	
	FEED KIT, LT10 CABLE (MILLS WITH TOTAL 5 BED SECTIONS)	074565-3	1	
1	Bracket, Pulley Tensioner	075849	2	
2	Screw, 3/8" x 1/2" Socket Shoulder	F05006-56	6	
3	Bolt, 3/8-16 x 1" Hex Head Grade 5	F05007-87	2	
4	Nut, 3/8-16 Hex Nylon Lock	F05010-10	2	
5	Nut, 5/16-18 Swaged Hex	F05010-6	6	
6	Washer, 3/8" Flat SAE	F05011-3	2	
7	Pulley, 2 1/2 "Nylon	P07996	6	
	Cable, LT10 Feed (336" Long for Standard 2 Bed Sections)	074566	2	
	Cable, LT10 Feed (504" Long for Mills with 3 Total Bed Sections)	074566-1	2	
	Cable, LT10 Feed (672" Long for Mills with 4 Total Bed Sections)	074566-2	2	
	Cable, LT10 Feed (840" Long for Mills with 5 Total Bed Sections)	074566-3	2	

6 Replacement Parts

Head Assembly

SECTION 6 HEAD PARTS

6.1 Head Assembly



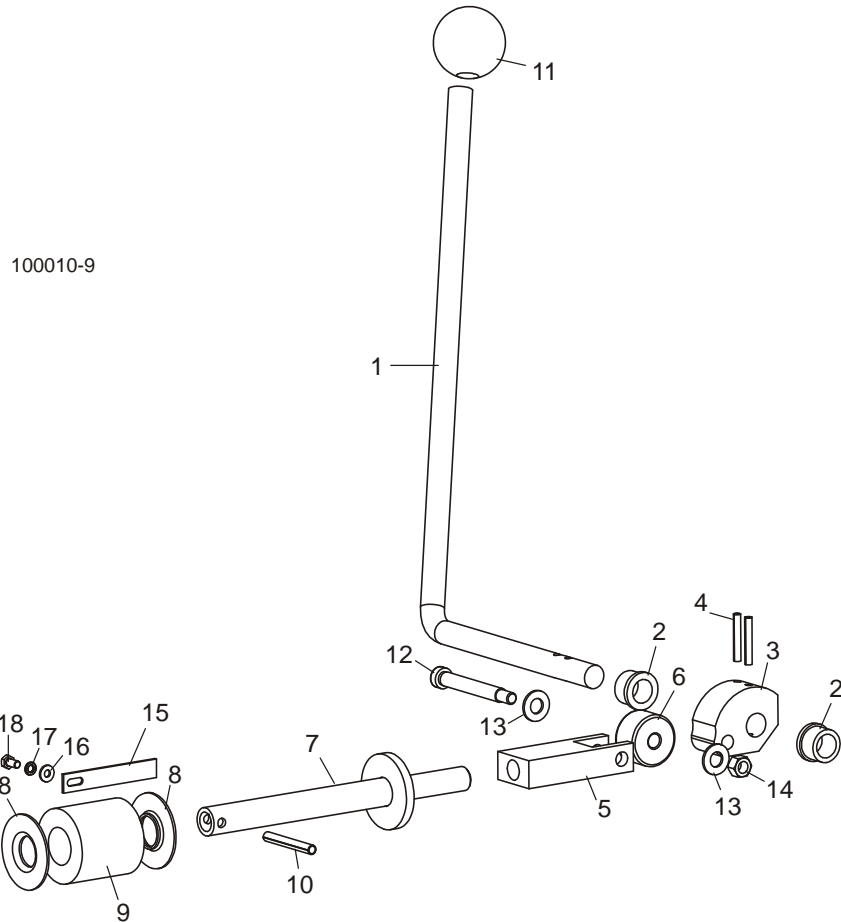
REF	DESCRIPTION (◆ Indicates Parts Available In Assemblies Only)	PART #	QTY.
	HEAD ASSEMBLY, LT10	048621	1
1	Head Weldment, LT10 Saw	048622	1
2	Carriage Parts (See Section 4.2)		
3	Blade Tensioner Parts (See Section 6.2)		
4	Idle Blade Wheel Arm Parts (See Section 6.3)		
5	Idle Blade Wheel Parts (See Section 6.4)		
6	Blade Guide Parts (See Section 6.5)		
7	Brake Assembly Parts (See Section 6.6)		
8	Drive Blade Wheel Parts (See Section 6.7)		
9	Blade Housing Cover Parts (See Section 6.8)		
10	Decal, Sawdust Chute Warning	P11754	1

11	Decal, Keep Away Danger	S09851	1	
12	Decal, Read Manual Warning	016402	1	
13	Decal, Eye/Ear Protection Warning	S11753	1	
14	Decal, LT10 Blade Tension Info	038448	1	
15	Decal, Blade Resharp	P12879	1	
16	Decal, Parts Hotline	S12117	1	
17	Decal, Wood-Mizer Quality	015930	1	
18	Decal, Tension Handle Warning	038449	1	
19	Decal, World Headquarters	015840	1	

6 Replacement Parts

Blade Tensioner

6.2 Blade Tensioner



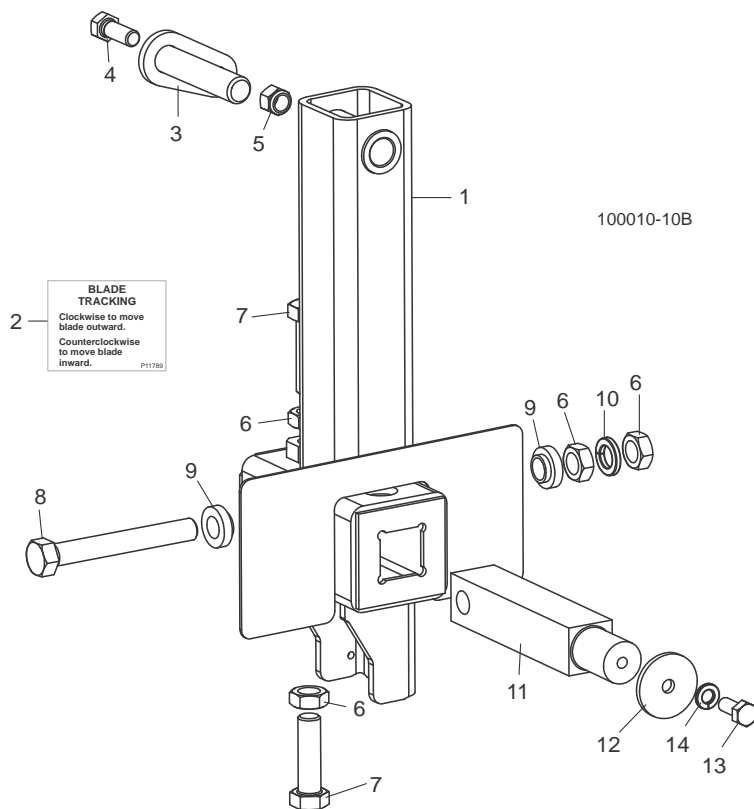
REF	DESCRIPTION (◆ Indicates Parts Available In Assemblies Only)	PART #	QTY.
	TENSIONER ASSEMBLY, LT10 BLADE	048802	1
1	Handle, LT10 Blade Tensioner	048804	1
2	Bushing, 5/8" x 7/8" x 1/2" Flanged Bronze	P05135	2
3	Cam, LT10 Blade Tensioner	049104	1
4	Pin, 3/16" x 1 1/4" Roll	F05012-16	2
5	Block, Tensioner Link	049321	1
6	Cam Roller, 3/8" x 1 3/8" x 13/16"	048219	1
7	Shaft Weldment, LT10 Blade Tensioner	038452	1
8	Guide, Tension Handle	014925	2
9	Spring, Blade Tensioner	014828	1
10	Pin, 1/4" x 2" Roll	F05012-46	1
11	Knob, 5/8-18 Ball	P04211	1
12	Screw, 3/8" x 2 1/2" Socket Head Shoulder	F05007-202	1

13	Washer, 3/8" SAE Flat	F05011-3	2	
14	Nut, 5/16-18 Hex Lock	F05010-6	1	
15	Bracket, Tensioner Gauge	014966	1	
16	Washer, #8 SAE Flat	F05011-41	1	
17	Washer, #10 Split Lock	F05011-20	1	
18	Screw, #10-32 x 1/2" Hex Head Machine	F05004-60	1	

6 Replacement Parts

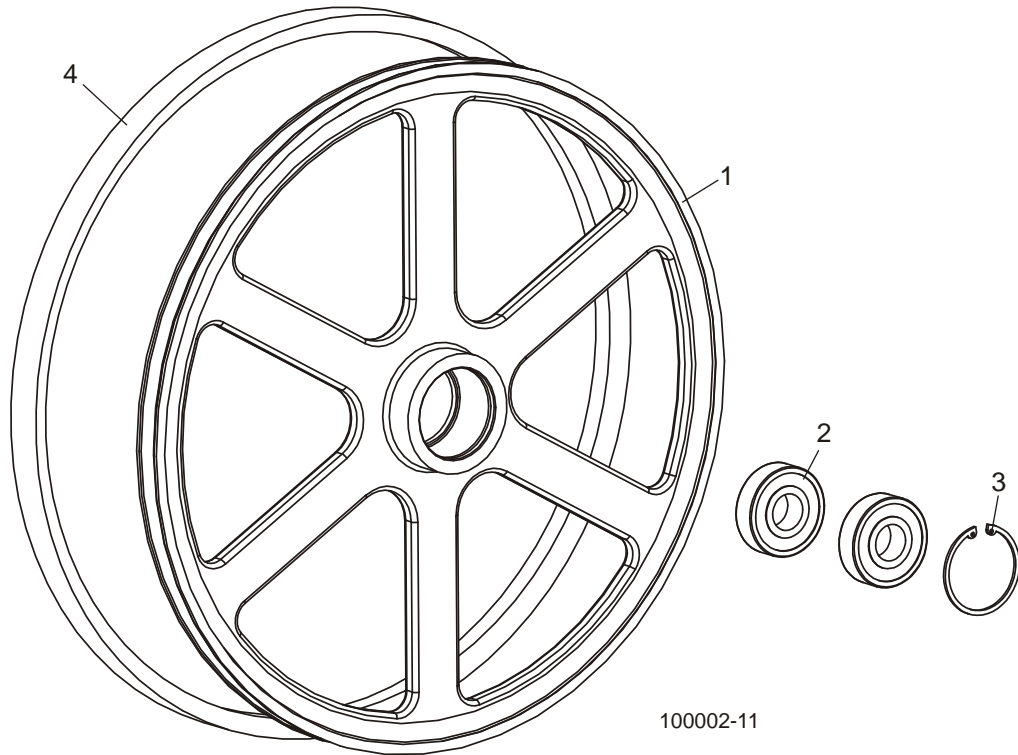
Idle Blade Wheel Arm Assembly

6.3 Idle Blade Wheel Arm Assembly



REF	DESCRIPTION (◆ Indicates Parts Available In Assemblies Only)	PART #	QTY.
	ARM ASSEMBLY, LT10 IDLE BLADE WHEEL	038451	1
1	Arm Weldment, Idler Wheel	038450	1
2	Decal, Blade Alignment Info	P11789	1
3	Pin Weldment, Idler Pivot	048829	1
4	Bolt, 3/8-16 x 1" Hex Head Grade 5	F05007-87	1
5	Nut, 3/8-16 Hex Nylon Lock	F05010-10	1
6	Nut, 1/2-20 Hex Jam	F05010-16	4
7	Bolt, 1/2-20 x 1 3/4" Hex Head Full Thread	F05008-127	2
8	Bolt, 1/2-20 x 3 3/4" Hex Head Full Thread Grade 5	F05008-111	1
9	Spacer, .510" x .937" x .34"	S04253	2
10	Washer, 1/2" Split Lock	F05011-9	1
11	Shaft, 1 1/8" Square Idler	S12565	1
12	Washer, .313" x 1.5" x .125" Retaining	S08220	1
13	Bolt, 5/16-18 x 3/4" Hex Head Grade 5	F05006-102	1
14	Washer, 5/16" Split Lock	F05011-13	1

6.4 Idle Wheel Assembly

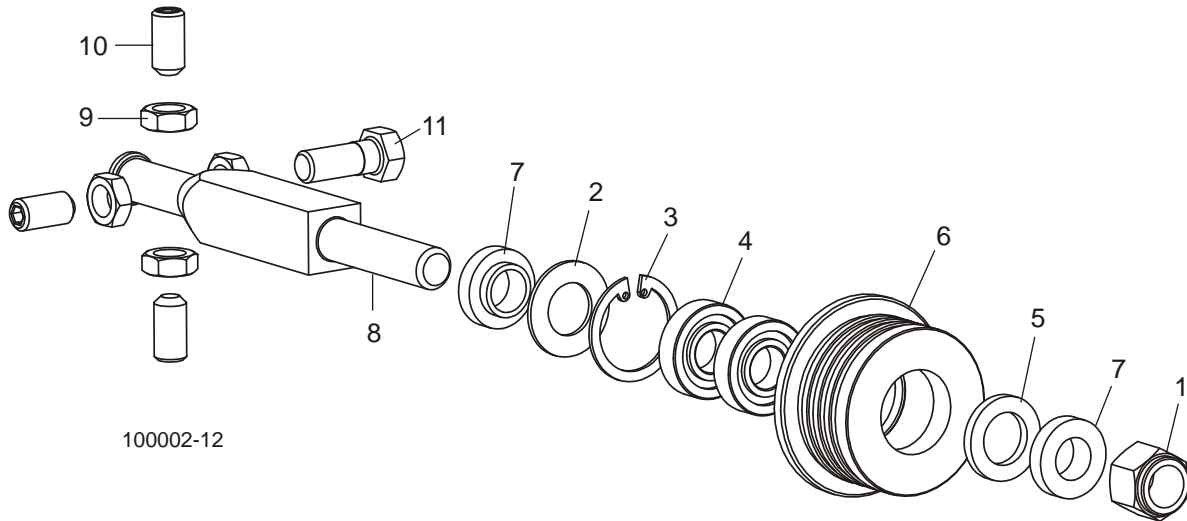


REF	DESCRIPTION (◆ Indicates Parts Available In Assemblies Only)	PART #	QTY.
1-3	WHEEL ASSEMBLY, 19" BLADE	A08218	1
1	Wheel, 19" Blade	P08125	1
2	Bearing, .9843" x 2.4409" x .6693"	P08066	2
3	Ring, 2 7/16" Inside Retaining	F04254-21	1
4	BELT, B57	P04185	1

6 Replacement Parts

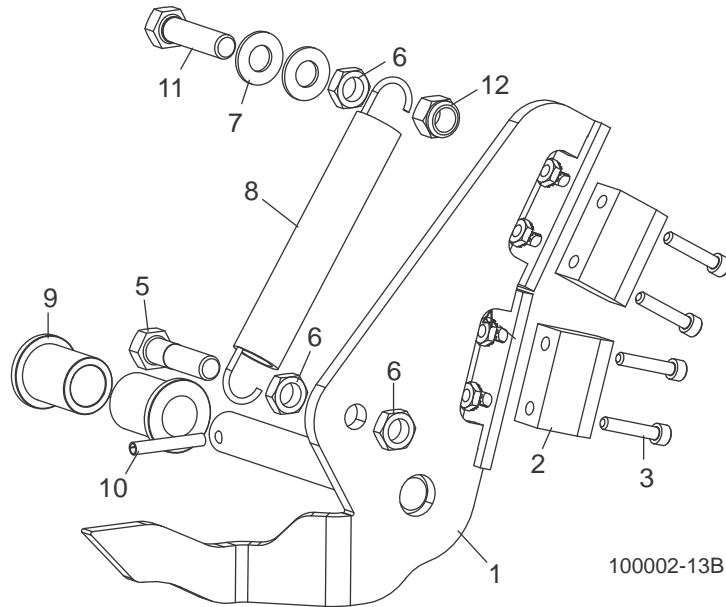
Blade Guide

6.5 Blade Guide



REF	DESCRIPTION (◆ Indicates Parts Available In Assemblies Only)	PART #	QTY.	
1	NUT, 1/2-20 HEX NYLON LOCK	F05010-15	2	
	ROLLER KIT, 1 1/4" BLADE GUIDE	A04925	2	
	Bearing Kit, Blade Guide Rebuild	K07079	1	
2	Washer, 5/8" White Felt	P04252	1	
3	Ring, 1 1/8" Interior Retaining	F04254-1	1	
4	Bearing, R8-2RS Blade Guide	015975	2	◆
5	Washer, 5/8" Gray Felt	P06455	1	
	Screw, 1/4-28 x 1/4" Socket Head Cup Point Set Black Oxide	F05005-105	1	
	Instruction Sheet, Blade Guide Rebuild/Replacement	A04925-364	1	
6	Roller, 1 1/4" Flanged Blade Guide	S04250	1	◆
7	SPACER, BLADE GUIDE	S04253	4	
8	SHAFT, BLADE GUIDE MOUNTING	048783	2	
9	NUT, 3/8-24 JAM	F05010-22	8	
10	SCREW, 3/8-24 X 3/4" STAINLESS STEEL SOCKET HEAD FLAT POINT	F05007-95	7	
11	BOLT, 3/8-24 X 1" STAINLESS STEEL HEX HEAD (INNER GUIDE ONLY)	F05007-99	1	
	BOLT, 3/8-24 X 3/4" STAINLESS STEEL SOCKET HEAD FLAT POINT (OUTER GUIDE ONLY)	F05007-95	1	

6.6 Brake Assembly

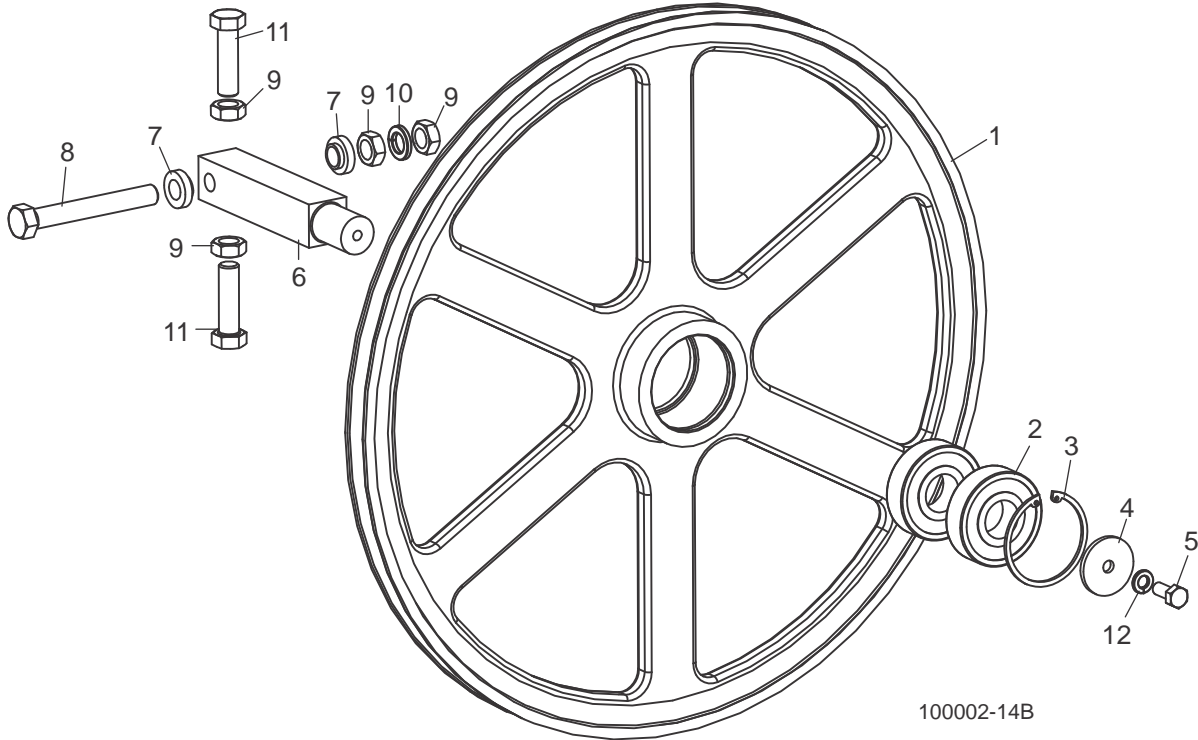


REF	DESCRIPTION (◆ Indicates Parts Available In Assemblies Only)	PART #	QTY.
	BRAKE ASSEMBLY, LT10 BLADE	048810	1
1	Arm Weldment, LT10 Brake	048813	1
2	Block, Blade Brake	016488	2
3	Bolt, #10-24 x 1" Socket Head	F05004-2	4
4	Nut, #10-24 Self-Locking Hex	F05010-14	4
5	Bolt, 3/8-16 x 1 1/2" Hex Head Grade 5	F05007-78	1
6	Nut, 3/8-16 Hex Jam	F05010-29	3
7	Washer, 3/8" SAE Flat	F05011-3	2
8	Spring, #LE-093G-8MW	P08847	1
9	Bushing, 5/8" ID x 7/8" OD x 1 1/4" Flanged	016486	2
10	Pin, 3/16" x 1 1/4" Roll	F05012-16	1
11	Bolt, 3/8-16 x 1 1/2" Full Thread Hex Head	F05007-17	1
12	Nut, 3/8-16 Hex Nylon Lock	F05010-10	1

6 Replacement Parts

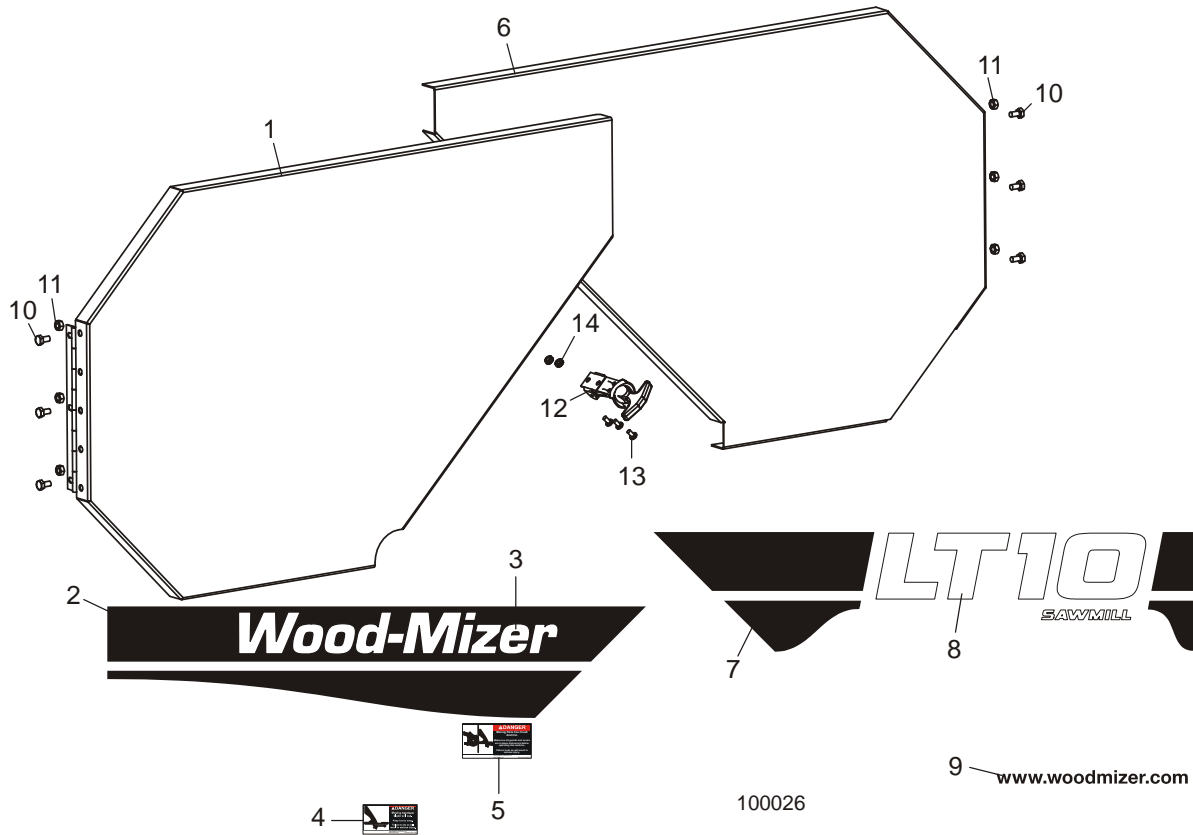
Drive Blade Wheel

6.7 Drive Blade Wheel



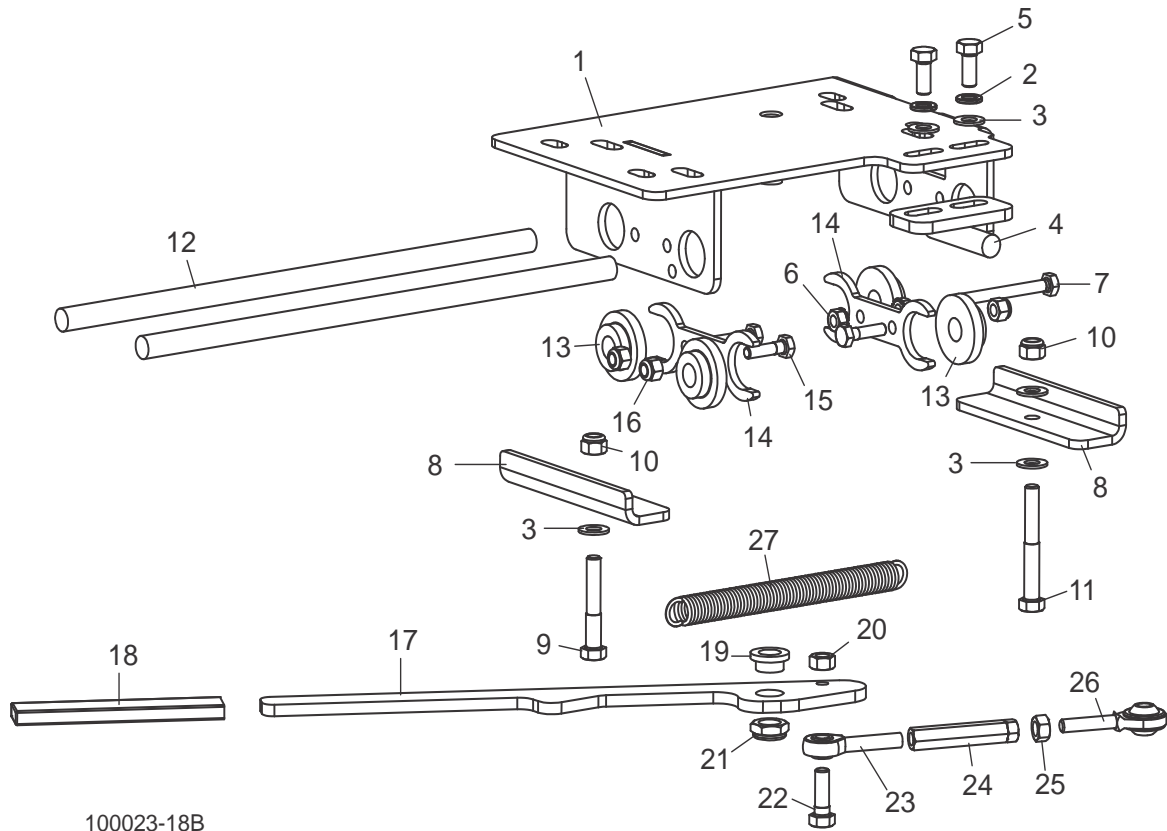
REF	DESCRIPTION (◆ Indicates Parts Available In Assemblies Only)	PART #	QTY.
	WHEEL ASSEMBLY, 19" BLADE	A08218	1
1	Wheel, 19" Blade	P08125	1
2	Bearing, .9843" x 2.4409" x .6693"	P08066	2
3	Ring, 2 7/16" Inside Retaining	F04254-21	1
4	WASHER, .313" X 1.5" X .125" RETAINING	S08220	1
5	BOLT, 5/16-18 X 3/4" HEX HEAD GRADE 5	F05006-102	1
6	SHAFT, 1 1/8" SQUARE IDLER	S12565	1
7	SPACER, .510" X .937" X .34"	S04253	2
8	BOLT, 1/2-20 X 3 3/4" HEX HEAD FULL THREAD GRADE 5	F05008-111	1
9	NUT, 1/2-20 HEX JAM	F05010-16	4
10	WASHER, 1/2" SPLIT LOCK	F05011-9	1
11	BOLT, 1/2-20 X 1 3/4" HEX HEAD FULL THREAD	F05008-127	2
12	WASHER, 5/16" SPLIT LOCK	F05011-13	1

6.8 Blade Housing Covers



REF	DESCRIPTION (◆ Indicates Parts Available In Assemblies Only)	PART #	QTY.
1	COVER WELDMENT, LT10 IDLE BLADE HOUSING	048785	1
2	Decal, Idle Side Euro-Stripe Black LT10	065004	1
3	Decal, Wood-Mizer Logo White LT10,15,28,35	065002	1
4	Decal, Blade Danger	S11752	1
5	Decal, Moving Parts Danger	033254	1
6	COVER WELDMENT, LT10 DRIVE BLADE HOUSING	049044	1
7	Decal, Drive Side Euro-Stripe Black	065010	1
8	Decal, LT10 Euro Logo White	065005	1
9	Decal, Wood-Mizer Website	003235	1
10	BOLT, 1/4-20 X 1/2" HEX HEAD	F05005-15	6
11	NUT, 1/4-20 HEX SELF-LOCKING HEX	F05010-9	6
12	LATCH, FLEXIBLE DRAW	014829	1
13	SCREW, #10-24 X 3/8" PHILLIPS PAN HEAD	F05004-3	4
14	NUT, #10-24 SELF-LOCKING HEX	F05010-14	4

SECTION 7 MOTOR MOUNT ASSEMBLY



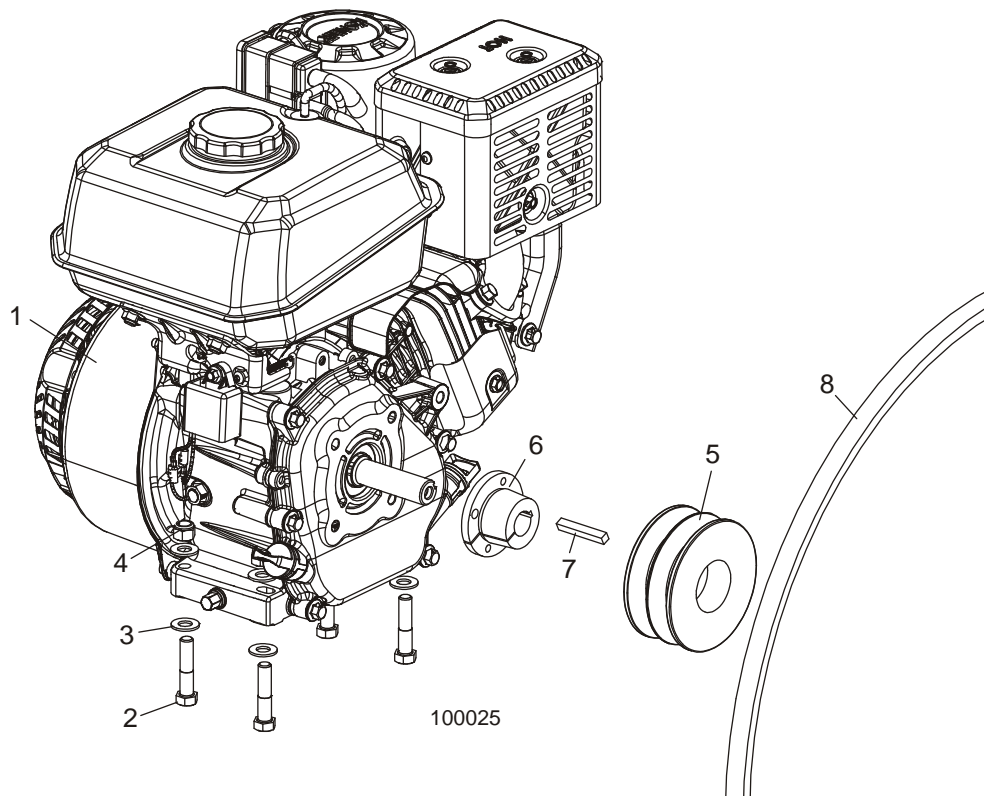
100023-18B

REF	DESCRIPTION (◆ Indicates Parts Available In Assemblies Only)	PART #	QTY.
	MOUNT ASSEMBLY, LT10 ENGINE	006783	1
1	Plate Weldment, LT10 Briggs Mount	054650	1
2	Washer, 5/16" Split Lock	F05011-13	2
3	Washer, 5/16" SAE Flat	F05011-17	5
4	Bracket Weldment, Brake Actuator	038709	1
5	Bolt, 5/16-18 x 3/4" Hex Head Grade 5	F05006-102	2
6	Nut, 1/4-20 Self-Locking Hex	F05010-9	2
7	Bolt, 1/4-20 x 2 3/4" Hex Head Full Thread	F05005-92	1
8	Bracket, Engine Mount Rod Clamp	038506	2
9	Bolt, 5/16-18 x 2" Hex Head Grade 5	F05006-79	1
10	Nut, 5/16-18 Hex Nylon Lock	F05010-58	2
11	Bolt, 5/16-18 x 2 1/2" Hex Head Grade 5	F05006-80	1
12	Rod, 1/2" Engine Mount	038505	2
13	Bushing, 1/2" ID x 1/2" Nylon Flanged	038504	4
14	Plate, Bushing Stop	048825	2
15	Bolt, 1/4-20 x 1" Hex Head Grade 5	F05005-101	3

16	Nut, 1/4-20 Hex Nylon Lock	F05010-69	3	
17	Handle, Engine Slide	048820	1	
18	Grip, 1/4" x 3/4" Foam Flat	049008	1	
19	Bushing, 1/2" ID x 5/8" OD x 3/8" Flanged	049007	1	
20	Nut, 5/16-18 Hex Lock	F05010-6	1	
21	Nut, 1/2-13 Hex Nylon Lock Jam	F05010-79	1	
22	Bolt, 5/16-18 x 1" Hex Head	F05006-1	1	
23	Rod End, 5/16-24 Male Lefthand	014815	1	
24	Turnbuckle, 5/16-24 Belt Tension	049005	1	
25	Nut, 5/16-24 Hex	F05010-28	1	
26	Rod End, 5/16-24 Male	P09814	1	
27	Spring, Engine Extension	034810	1	

SECTION 8 ENGINE ASSEMBLY

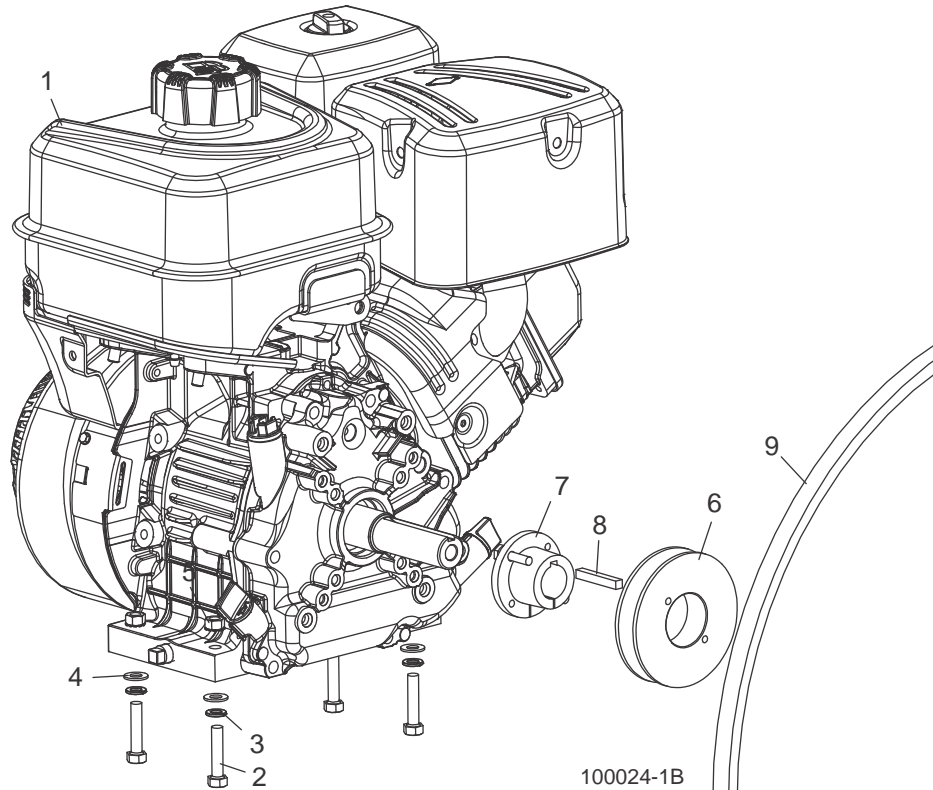
8.1 G7 Engine Assembly



REF	DESCRIPTION (◆ Indicates Parts Available In Assemblies Only)	PART #	QTY.
	COVER, ENGINE	P12393	1
1	ENGINE, 7HP KOHLER #CH270-0011	008731 ¹	1
2	BOLT, 3/8-16 X 1 3/4" HEX HEAD GRADE 5	F05007-119	4
3	WASHER, 3/8" SAE FLAT	F05011-3	8
4	NUT, 3/8-16 HEX NYLON LOCK	F05010-10	4
5	PULLEY, 2BK40H	008734	1
6	BUSHING, H-3/4"	039323	1
7	KEY, 1/4" X 1/4" X 1 11/16"	S04124	1
8	BELT, B75.5	035953-1	1

¹ Engine muffler is available through local Briggs and Stratton dealers.

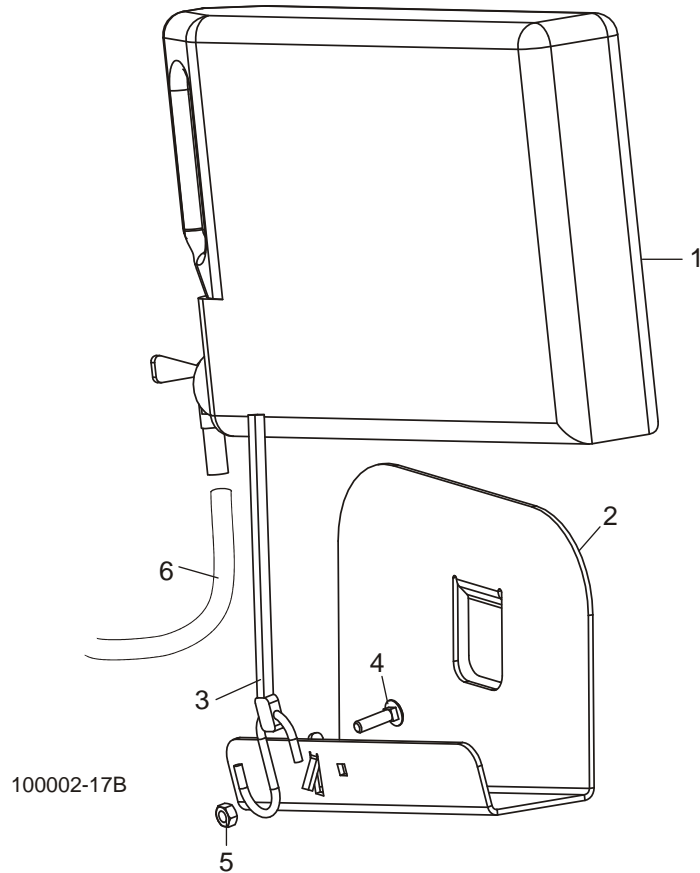
8.2 G10 Engine Assembly



REF	DESCRIPTION (◆ Indicates Parts Available In Assemblies Only)	PART #	QTY.
	COVER, ENGINE	P12393	1
1	ENGINE, 10HP BRIGGS GAS #19L2320003-F1	057862 ¹	1
	Magneto, 10HP LT10 #591459 (G10 Only)	061244	1
	Filter, Air 10HP LT10 w/Pre-Cleaner#797032 (G10 Only)	061243	1
	Plug, Spark Briggs #491055S	039423	1
2	BOLT, 5/16-18 X 1 1/2" HEX HEAD	F05008-96	4
3	WASHER, 5/16" SPLIT LOCK	F05011-13	4
4	WASHER, 5/16" SAE FLAT	F05011-17	4
5	NUT, 5/16-18 SELF-LOCKING HEX	F05010-20	4
6	PULLEY, BK40	049050	1
7	BUSHING, QT X 1"	016513	1
8	KEY, 1/4" X 1/4" X 1 11/16"	S04124	1
9	BELT, B75.5	035953-1	1

¹ Engine muffler is available through local Briggs and Stratton dealers. G10 engine with new exhaust deflector released to production (11/14); removed 006871 Spark Arrestor Insert.

SECTION 9 WATER LUBE



REF	DESCRIPTION (◆ Indicates Parts Available In Assemblies Only)	PART #	QTY.
	LUBE ASSEMBLY, LT10 WATER	036829	1
1	Bottle, 5 Qt. Water	049119	1
2	Bracket Weldment, LT10 Water Lube Mount	049120	1
3	Strap, 20" Rubber w/Hook	P11668	1
4	Bolt, 1/4-20 x 1" Carriage Head	F05005-34	1
5	Nut, 1/4-20 Hex Lock	F05010-21	1
6	Hose, Water Lube	R01885	4 ft.

INDEX

B

bed 3-1
 clamp 3-2

E

engine 8-1
 7 & 10HP (12/08) 8-1

H

head 6-1
 blade guide 6-7
 blade housing covers 6-10
 blade tensioner 6-3
 brake 6-8
 drive blade wheel 6-9
 idle blade wheel 6-6
 idle wheel arm 6-5

L

LT10 complete 2-1

M

mast 4-1
 carriage 4-2
 feed cable 5-1
 feed handle 4-5
 rollers 4-4
 up/down assist 4-6

motor mount 7-1

P

parts list
 how to use 1-1

W

water lube 9-1