

Operator Seat

Safety, Operation, Maintenance, & Parts Manual

OS

rev. H.00



Safety is our #1 concern! Read and understand all safety information and instructions before operating, setting up or maintaining this machine.

April 1997

Form #859

California
Proposition 65 Warning



WARNING: Breathing gas/diesel engine exhaust exposes you to chemicals known to the State of California to cause cancer and birth defects or other reproductive harm.

- Always start and operate the engine in a well-ventilated area.
- If in an enclosed area, vent the exhaust to the outside.
- Do not modify or tamper with the exhaust system.
- Do not idle the engine except as necessary.

For more information go to **www.P65warnings.ca.gov**.



WARNING: Drilling, sawing, sanding or machining wood products can expose you to wood dust, a substance known to the State of California to cause cancer. Avoid inhaling wood dust or use a dust mask or other safeguards for personal protection.

For more information go to **www.P65Warnings.ca.gov/wood**.

Active Patents assigned to Wood-Mizer, LLC

Wood-Mizer, LLC has received patents that protect our inventions which are a result of a dedication to research, innovation, development, and design. Learn more at: woodmizer.com/patents

©2022 Wood-Mizer LLC

Printed in the United States of America, all rights reserved. No part of this manual may be reproduced in any form by any photographic, electronic, mechanical or other means or used in any information storage and retrieval system without written permission from

Wood-Mizer, LLC
8180 West 10th Street
Indianapolis, Indiana 46214

Table of Contents


Section-Page


SECTION 1	OPERATION	1-1
1.1	Overview	1-1
1.2	Installation	1-2
1.3	Towing The Sawmill With Seat	1-7
1.4	Seat Roller Replacement	1-9
SECTION 2	REPLACEMENT PARTS	2-1
2.1	Operator Seat	2-1

SECTION 1 OPERATION

1.1 Overview

The operator seat is compatible with all '97 and later model LT30, LT40, LT30HD, LT40HD, LT60HD and LT70HD standard and super mills. The seat allows the operator to be seated while traveling with the saw head. **NOTE:** The seat reduces maximum cutting length by 25". The seat can be easily removed for full-size logs.

 **CAUTION!** Seat capacity: 300 lb (136 kg). Overloading will damage the feed system.

 **WARNING!** Remove seat when not using with sawmill. Unused seat creates possible pinch point with moving saw carriage.

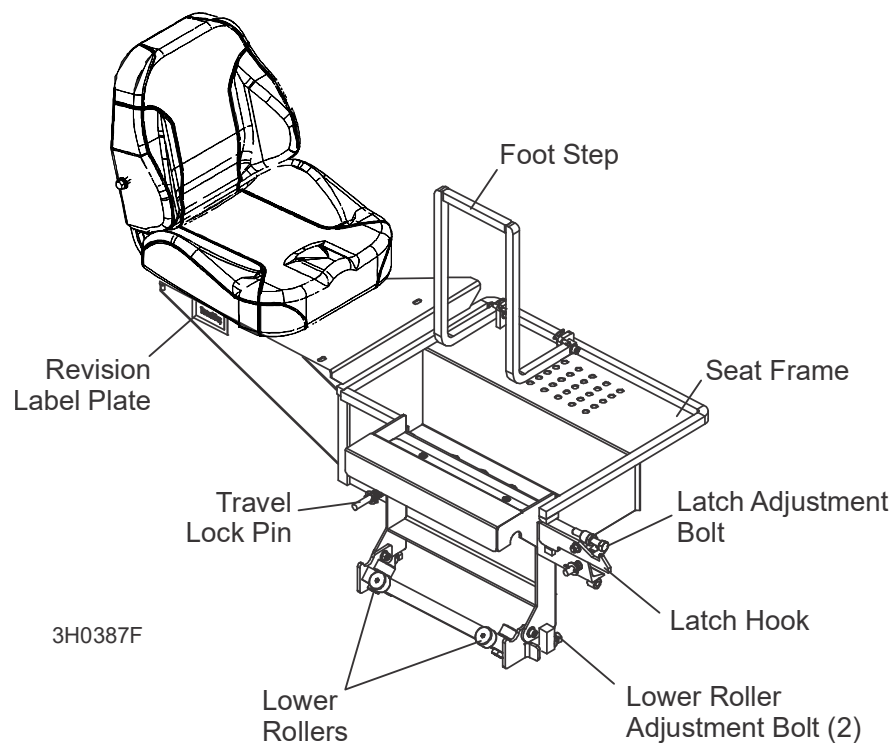


FIG. 1-1

1.2 Installation



CAUTION! (Hydraulic Models Only). Move the saw carriage forward until the power supply contact button is disengaged from the hydraulic power strip. Disconnect the negative (-) battery cable before performing service near the hydraulic power supply. Failure to disconnect the cable could cause damage to the electrical system.

1. Bolt the seat to the frame using the four flat washers and lock nuts provided. Use the rear set of holes for LT30/LT40 models and the front set of holes for LT60/LT70 models.

See Figure 1-2.

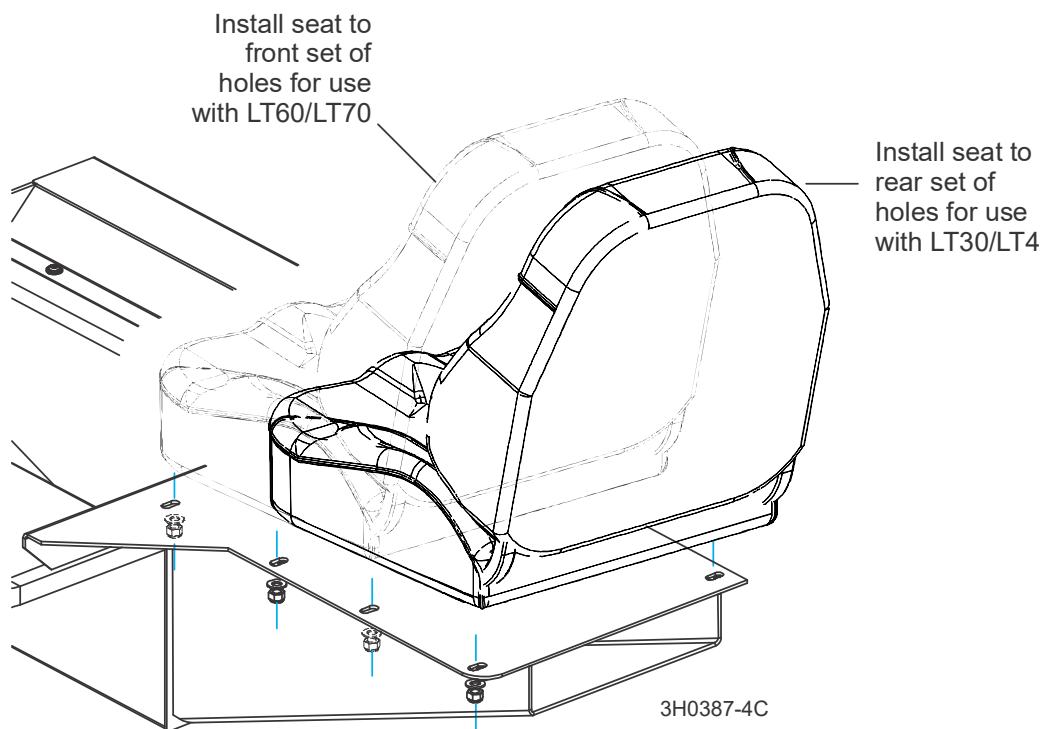


FIG. 1-2

1. Back the lower roller adjustment bolts all the way out.
2. Position the seat at the front of the mill on the operator's side, facing the saw carriage. Position the top rollers on the top bed rail. Position the lower rollers on each side of the bottom bed rail.

1 Operation

Installation

3. Remove the two step retaining pins and lower the foot step. Replace the retaining pins.

See Figure 1-3.

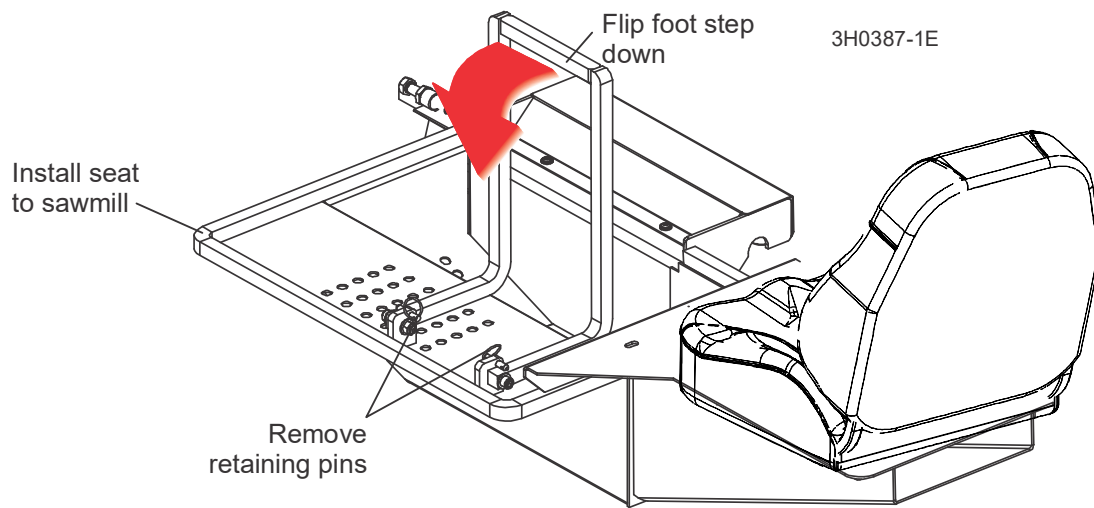


FIG. 1-3

4. Secure the seat in place by tightening the lower roller adjustment bolts until the lower rollers just touch the bottom bed rail. **DO NOT OVERTIGHTEN!** The seat should roll freely when properly installed.

See Figure 1-4.

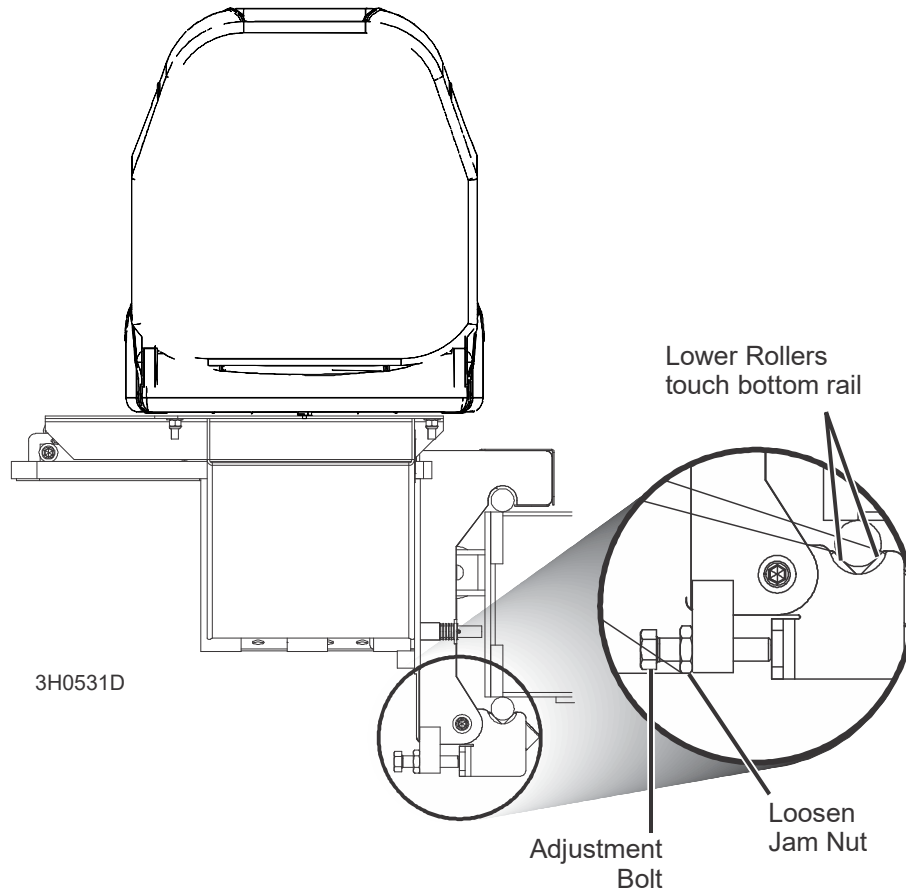


FIG. 1-4

5. Remove the fender on the operator's side of the sawmill.

1 Operation

Installation

See Figure 1-5.

6. Install the travel locking pin. A bag assembly is provided that contains two different travel pins and hardware. The long travel pin should be used if the seat is installed on an LT30/40 model sawmill. Install one of the provided cotter pins to the travel pin in the hole nearest the bend and spread the cotter pin. Insert the travel pin in the hole in the seat frame. On the other side of the frame, install the spring and flat washer. Secure with the remaining cotter pin.

If the seat is to be installed on an LT60/70 model sawmill, install the short travel pin at the location near the seat latch. Use the same assembly procedure described above. For use with LT60/70 sawmills, relocate the latch adjustment bolt and jam nut to the upper position as shown.

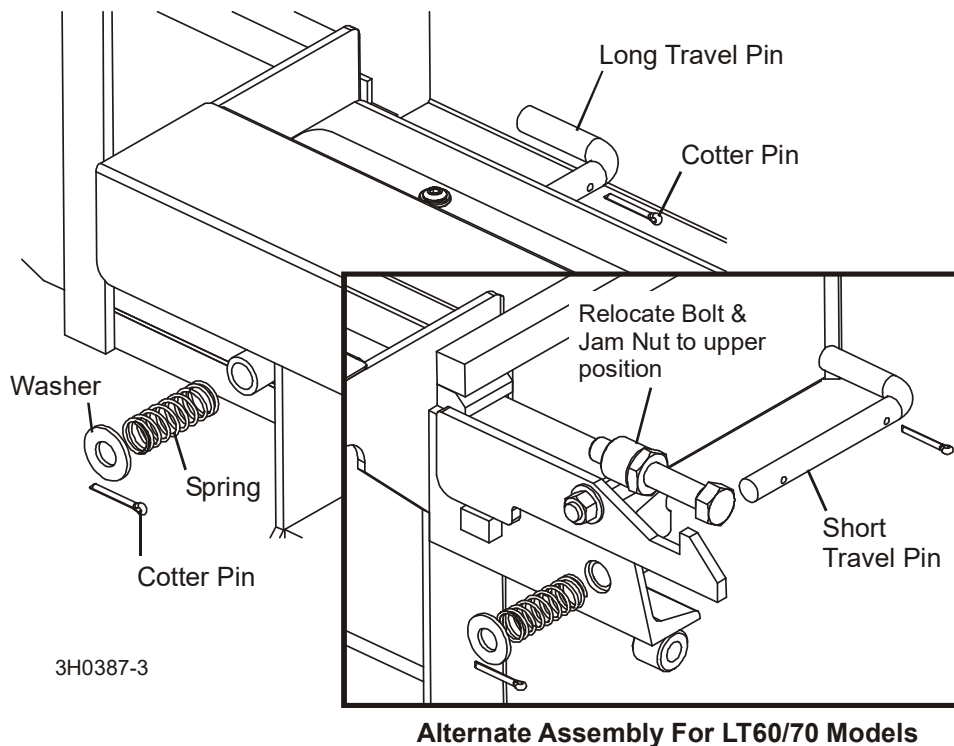


FIG. 1-5

7. Connect the seat to the sawmill carriage. Lift up on the seat latch, and move the seat in toward the carriage until the latch hook is underneath the track roller housing. Release the latch.

See Figure 1-6. Make sure the seat is securely fastened to the carriage and there is no looseness between the seat and the sawmill carriage. Use the latch adjustment bolt to adjust the latch. Loosen the jam nut on the latch adjustment bolt. Turn the adjustment bolt out as desired. Check the seat for looseness. Repeat as necessary until the seat is securely fastened to the carriage. Retighten the jam nut.

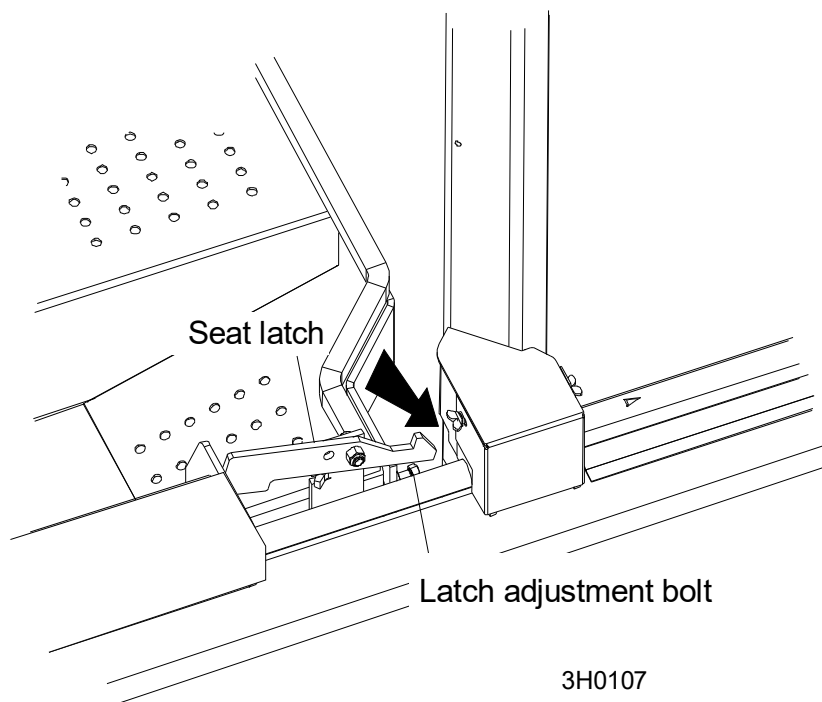


FIG. 1-6

8. An adjustment handle is provided to allow the operator to slide the seat forward or back. Pull the handle to the side and adjust the seat as desired. Release the handle.
9. Slowly move the saw carriage up and down the entire length of the sawmill and check the seat clears all obstacles. In some situations, you may need to adjust outriggers down so the seat will clear the top of the outrigger tubes.

1.3 Towing The Sawmill With Seat

1. Move the saw head to its towing position.
2. Disconnect the seat from the sawmill carriage by pulling up on the seat latch and pulling back on the seat. Move the seat back past the trailer wheel until the travel lock pin aligns with the hole in sawmill frame tube. [See Step 5](#) if your sawmill does not have a hole in the frame tube that aligns with the seat travel lock pin.
3. Pull the travel lock pin out as far as it will go, rotate 1/2 turn, and release. The spring-loaded pin should engage the hole in the sawmill frame tube.

See Figure 1-7.

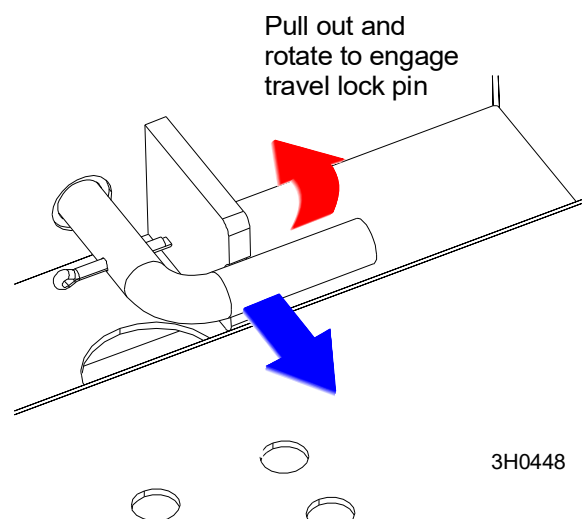


FIG. 1-7

4. Remove the step retaining pins and lift the foot step to its travel position. Replace the retaining pins.

To unlock the seat from the traveling position, pull the travel lock pin out as far as it will go. Rotate 1/2 turn and release into the pin resting bracket. The bracket will keep the pin from returning to the locking pin hole.

If you have a mill manufactured prior to March 14 1997, you will need to drill a hole in the sawmill frame tube for the travel lock pin.

5. Slide the seat back until the seat frame clears the sawmill fender by 2 to 3 inches.

6. Pull the travel lock pin out as far as it will go, rotate 1/2 turn, and release. Mark the location where the travel lock pin contacts the sawmill frame tube.
7. After you have marked the location, pull the pin out, rotate the 1/2 turn, and release into the pin resting bracket. Move the seat slightly forward to allow access to the hole location. Start a 5/8" hole at the marked location, drilling until the point of the drill bit is just about to break through the side of the tube. Use a hole punch to complete the hole.



CAUTION! DO NOT drill through to the inside of the tube. Doing so will cause damage to the hydraulic lines or trailer light wiring inside the tube.

1.4 Seat Roller Replacement

When replacing seat roller bearings, be careful not to overtighten the nuts that secure the bearings to the frame.

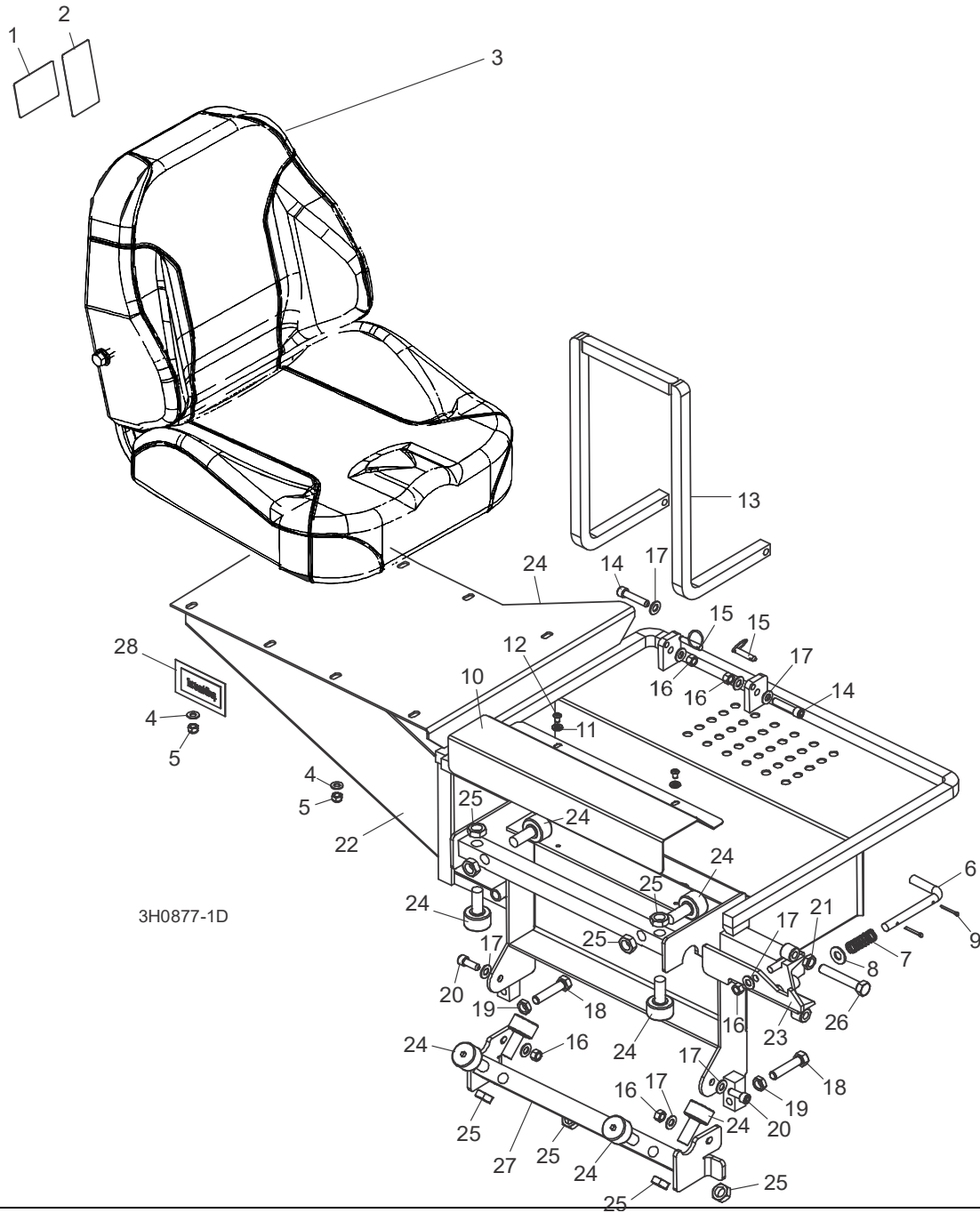


CAUTION! Overtightening the seat roller nuts may damage the threads on the bearing stud and/or the nut.

Maximum torque used to tighten the nuts is 65 ft.-lbs. (dry threads) or 32 ft.-lbs. (oiled threads).

SECTION 2 REPLACEMENT PARTS

2.1 Operator Seat



REF	DESCRIPTION (◆ Indicates Parts Available In Assemblies Only)	PART #	QTY.
	SEAT, OPERATOR, '97+, LT30-LT70	OS	1
1	Decal, Remove Operator Seat Warning	S12000	1

2

Replacement Parts

Operator Seat

2	Decal, 300 Lb. Capacity Caution	S11999	1	
3	Seat, WM Logo w/o Arm Rest	130997	1	
4	Washer, 5/16" SAE Flat	F05011-17	4	
5	Nut, 5/16-18 Nylon Lock	F05010-58	4	
	Bag Assembly, Travel Lock Pin	038406		
6	Pin, Operator Seat Travel Lock (Long LT30/40)	038403	1	
	Pin, Operator Seat Travel Lock (Short LT60/70)	038404	1	
7	Spring, Operator Seat Travel Pin	038405	1	
8	Washer, 1/2" SAE Flat	F05011-2	1	
9	Pin, 1/8" X 1" Cotter	F05012-1	2	
10	Guard, OS Bearing	015782	1	
11	Washer, 1/4" Split Lock	F05011-14	2	
12	Screw, 1/4-20 x 3/8" Socket Button Head	F05005-62	2	
13	Step Weldment, OS	014736	1	
14	Screw, 3/8-16 x 1 3/4" Socket Head Cap	F05007-53	2	
15	Pin, 5/16 x 1" Detaining	F05012-45	2	
16	Nut, 3/8-16 Hex Lock	F05010-25	5	
17	Washer, 3/8" SAE Flat	F05011-3	9	
18	Bolt, 1/2-13 x 2 1/4" Hex Head Full Thread	F05008-27	2	
19	Nut, 1/2-13 Jam	F05010-31	2	
20	Screw, 3/8-16 x 1" Socket Head	F05007-52	2	
21	Nut, 1/2-13 Jam	F05010-31	1	
22	Frame Weldment, LT30/40/60/70 97+ Operator Seat	015751	1	◆
23	Latch, Operator Seat (Short)	018010	1	
24	Bearing, Seat Roller	012797	8	
25	Nut, 5/8-18 Hex Jam	F05010-11	8	
26	Bolt, 1/2-13 x 3" Hex Head Full Thread	F05008-7	1	
27	Bar Weldment, Lower Bearing	015942	1	
28	Decal, Operator Seat Revision	016187-OS	1	
	Manual, 1997 Operator's Seat Option	M613	1	