

# **Toe Board**

## **Safety, Operation, Maintenance, & Parts Manual**

---

**TB**

**rev. D.00**

---

***Safety is our #1 concern!***

*March 1997*

*Form #627*



**WARNING! Read and understand this  
manual before using this machine.**

**California**  
**Proposition 65 Warning**



**WARNING:** Breathing gas/diesel engine exhaust exposes you to chemicals known to the State of California to cause cancer and birth defects or other reproductive harm.

- ☐ Always start and operate the engine in a well-ventilated area.
- ☐ If in an enclosed area, vent the exhaust to the outside.
- ☐ Do not modify or tamper with the exhaust system.
- ☐ Do not idle the engine except as necessary.

For more information go to **[www.P65warnings.ca.gov](http://www.P65warnings.ca.gov)**.



**WARNING:** Drilling, sawing, sanding or machining wood products can expose you to wood dust, a substance known to the State of California to cause cancer. Avoid inhaling wood dust or use a dust mask or other safeguards for personal protection.

For more information go to **[www.P65Warnings.ca.gov/wood](http://www.P65Warnings.ca.gov/wood)**.

**Active Patents assigned to Wood-Mizer, LLC**

Wood-Mizer, LLC has received patents that protect our inventions which are a result of a dedication to research, innovation, development, and design. Learn more at: [woodmizer.com/patents](http://woodmizer.com/patents)

**©2022 Wood-Mizer LLC**

Printed in the United States of America, all rights reserved. No part of this manual may be reproduced in any form by any photographic, electronic, mechanical or other means or used in any information storage and retrieval system without written permission from

**Wood-Mizer, LLC**  
**8180 West 10th Street**  
**Indianapolis, Indiana 46214**

# Table of Contents

# Section-Page

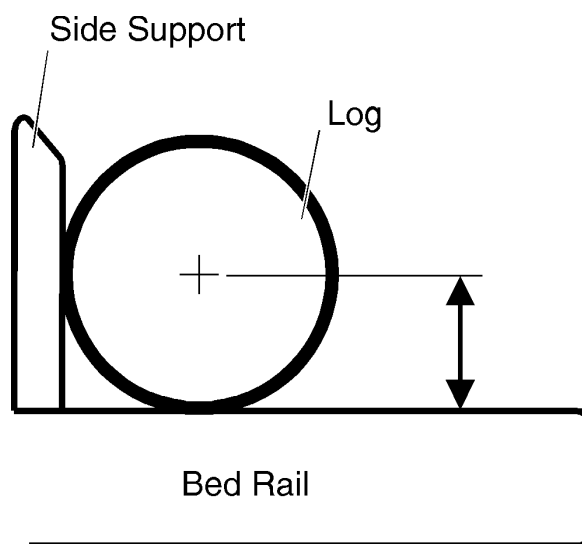
1.1	Manual Toe Board .....	1-1
2.2	Manual Toe Board .....	2-1

## 1.1 Manual Toe Board

In many cutting operations, particularly cutting for grade, it is desirable to cut tapered logs parallel to the heart of the log. The optional toe boards allow the operator to lift either end of a log to parallel the heart to the path of the blade.

1. When a log is loaded and ready for the first cut, measure from the bed rail or auxiliary support to the heart of the log.

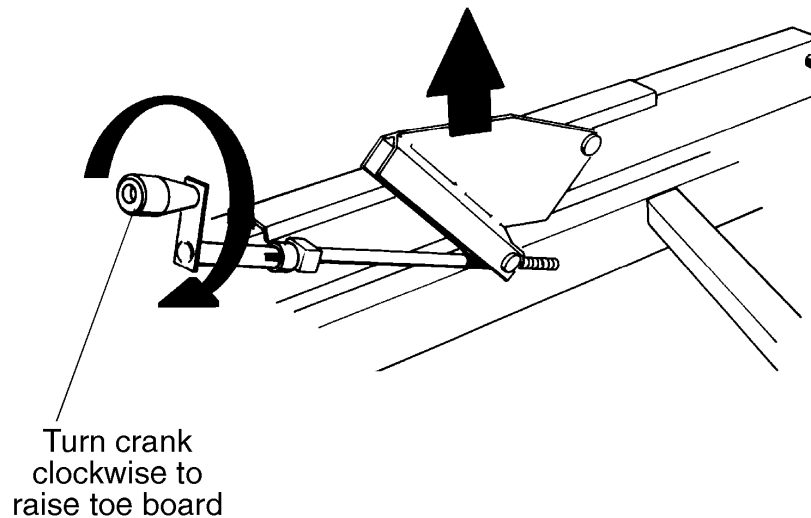
See Figure 1-1.



**FIG. 1-1**

2. Measure at the other end of the log and compare distances. The distance from the bed to the heart on one end of the log should be within 1/2" (12.5 mm) of the measurement from the bed to the heart on the other end of the log.
3. If adjustment is necessary, place the crank handle on the toe board at the end of log to be raised. Turn the handle clockwise to raise the end of the log. Raise about half the difference measured as the other end of the log will typically lower as the end being raised goes up. Remeasure both ends of the log from the bed rails and adjust toe board as necessary until both ends measure the same distance from the bed rails.

See Figure 1-2.



**FIG. 1-2**

4. Remove the toe board crank handle. Clamp the log against the side supports and make the desired number of cuts. When the log is rotated 180 degrees, lower the toe board so that the flat portion of the log now lies flat on the bed rails. This will result in the two opposite sides of the log cut parallel to the heart.



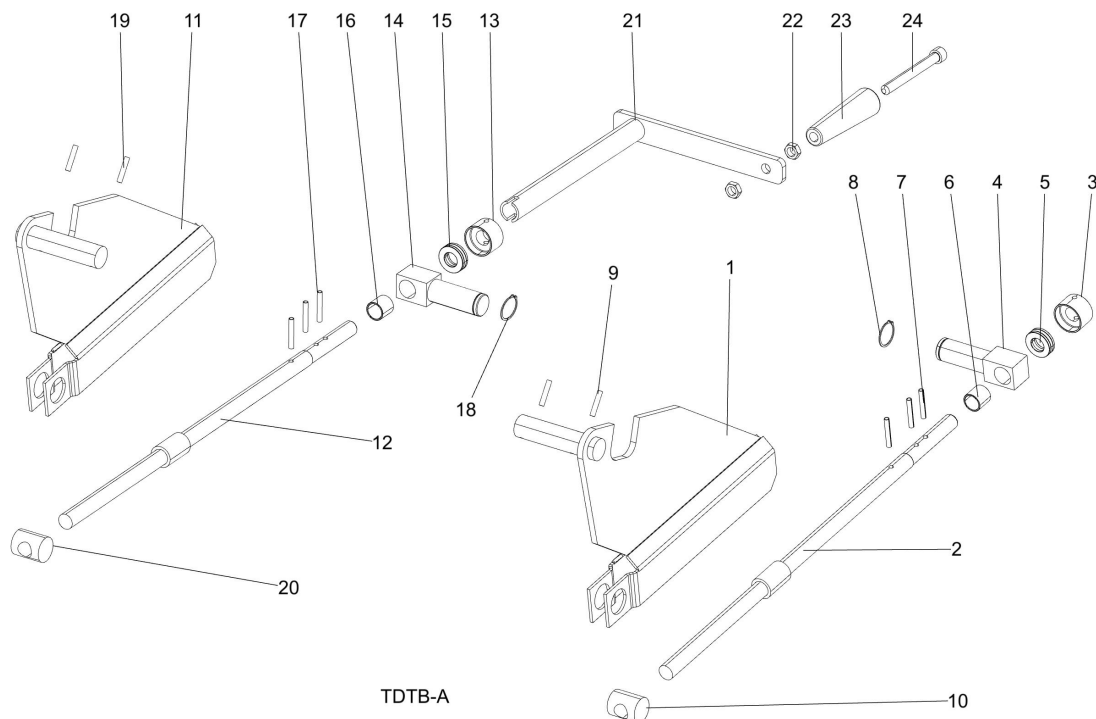
**CAUTION!** Be sure the pivot rails, turning arm, clamp, and toe boards are below bed level before loading a log onto the bed. Failure to do so may result in machine damage or cause misalignment.

5. Repeat these steps to square the remaining two sides of the log. If you do not have the toe board option, you can achieve the same results by shimming one end of the log so that the blade cuts parallel to the log's heart.

## 2 Replacement Parts

### Manual Toe Board

## 2.2 Manual Toe Board



REF	DESCRIPTION (♦ Indicates Parts Available in Assemblies Only)	PART #	QTY.	
	<b>TOE BOARD KIT, MANUAL</b>	TB-A	1	
	Toe Board, Rear Manual	A09307	1	
1	Toe Board Wldmt, Rear	W09492	1	
	Assy, Manual Toe Board Shaft	130127 <sup>1</sup>		
	Shaft Assembly, Manual Toe Board	A09490	1	
2	Wldmt, Toe Board Shaft	130130 <sup>2</sup>	1	
	Shaft Wldmt, Toe Board	W09289	1	♦
3	Collar, 5/8 ID x 1 1/4 OD 51102	130126 <sup>3</sup>	1	
	Collar, 5/8" I.D.	016267	1	
4	Pivot, Toe Board Shaft	S09168	1	
5	Bearing, Thrust .591IDx1.102ODx.354W	130128 <sup>4</sup>	1	
	Bearing, 5/8" Thrust	P04214	1	
6	Spacer, 5/8IDx3/4ODx3/4 Long Bronze	P09130	1	
7	Pin, 3/16x1 1/4 Roll	F05012-16	3	
8	Ring, 7/8 OD IR 5100-87	F04254-7 <sup>5</sup>	1	
9	Pin, 3/16x1 Zinc Roll	F05012-11	2	
10	Bearing, Tension Trunion	S04427	1	
	Toe Board, Front Manual	A09306	1	

REF	DESCRIPTION (♦ Indicates Parts Available in Assemblies Only)	PART #	QTY.	
11	Toe Board Wldmt, Front	W09491	1	
	Assy, Manual Toe Board Shaft	130127 <sup>1</sup>		
	Shaft Assembly, Manual Toe Board	A09490	1	
12	Wldmt, Toe Board Shaft	130130 <sup>2</sup>	1	
	Shaft Wldmt, Toe Board	W09289	1	♦
13	Collar, 5/8 ID x 1 1/4 OD 51102	130126 <sup>3</sup>	1	
	Collar, 5/8" I.D.	016267	1	
14	Pivot, Toe Board Shaft	S09168	1	
15	Bearing, Thrust .591IDx1.102ODx.354W	130128	1	
	Bearing, 5/8" Thrust	P04214	1	
16	Spacer, 5/8IDx3/4ODx3/4 Long Bronze	P09130	1	
17	Pin, 3/16x1 1/4 Roll	F05012-16	1	
18	Ring, 7/8 OD IR 5100-87	F04254-7 <sup>5</sup>	1	
19	Pin, 3/16x1 Zinc Roll	F05012-11	2	
20	Bearing, Tension Trunion	S04427	1	
	Handle Assy, Toe Board Crank	A09432	1	
21	Crank Weldment	W09431	1	
22	Nut, 3/8-16 Jam	F05010-29	2	
23	Knob, 3/8 Bore Tapered Plastic	060170	1	
24	Bolt, 3/8-16 X 3 1/2 SHC B/O	F05007-111	1	
	Instruction Sheet, Manual Toe Board Installation ('87 + Model Mills)	TB-237A	1	

<sup>1</sup> 130127 replaced A09490 after 2/25/2022 per ECN 38398.

<sup>2</sup> 130130 replaced W09289 after 2/25/2022 per ECN 38398.

<sup>3</sup> 130126 replaced 016267 after 2/25/2022 per ECN 38398.

<sup>4</sup> 130128 replaced P04214 after 2/25/2022 per ECN 38398.

<sup>5</sup> F04254-7 added after 2/25/2022 per ECN 38398.