

Log Turner

Safety, Operation, Maintenance, & Parts Manual

LT

rev. B.00



Safety is our #1 concern! Read and understand all safety information and instructions before operating, setting up or maintaining this machine.

March 1997

Form #620

California Proposition 65 Warning



WARNING: Breathing gas/diesel engine exhaust exposes you to chemicals known to the State of California to cause cancer and birth defects or other reproductive harm.

- Always start and operate the engine in a well-ventilated area.
- If in an enclosed area, vent the exhaust to the outside.
- Do not modify or tamper with the exhaust system.
- Do not idle the engine except as necessary.

For more information go to **www.P65warnings.ca.gov**.



WARNING: Drilling, sawing, sanding or machining wood products can expose you to wood dust, a substance known to the State of California to cause cancer. Avoid inhaling wood dust or use a dust mask or other safeguards for personal protection.

For more information go to **www.P65Warnings.ca.gov/wood**.

©2019

Printed in the United States of America, all rights reserved. No part of this manual may be reproduced in any form by any photographic, electronic, mechanical or other means or used in any information storage and retrieval system without written permission from

Wood-Mizer
8180 West 10th Street
Indianapolis, Indiana 46214

Table of Contents

Section-Page

SECTION 1	OPERATION	1-1
1.1	Manual Log Turner.....	1-1
SECTION 2	REPLACEMENT PARTS	2-1
2.1	Manual Log Turner.....	2-1
2.2	Manual Log Turner Mount & Cable Guide Pulley	2-2
2.3	Manual Log Turner Arm	2-4
2.4	Cable Anchor Assembly.....	2-6

SECTION 1 OPERATION

1.1 Manual Log Turner

The log turner assembly is designed to be used in conjunction with the manual winch to rotate logs on the mill bed.

1. Loop the winch cable around the turner elbow pulley as shown.

See Figure 1-1.

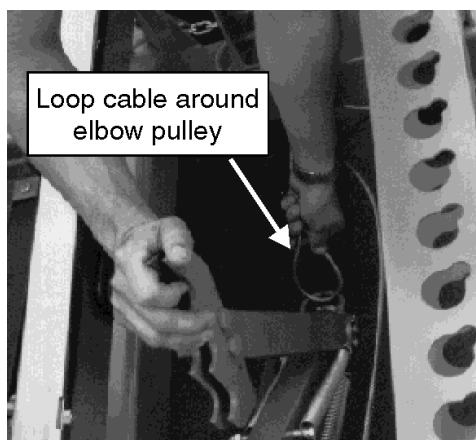


FIG. 1-1

2. Route the cable around the first anchor pulley as shown.

See Figure 1-2.

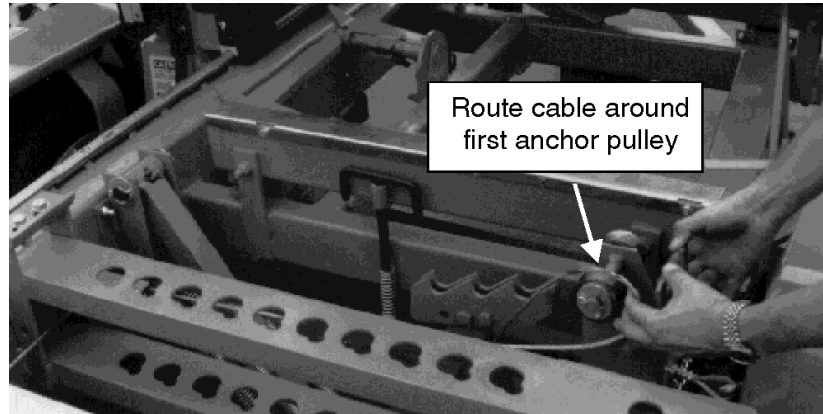


FIG. 1-2

3. Route the end of the cable around the remaining anchor pulley and attach cable hook to 'U' bracket provided.

See Figure 1-3.

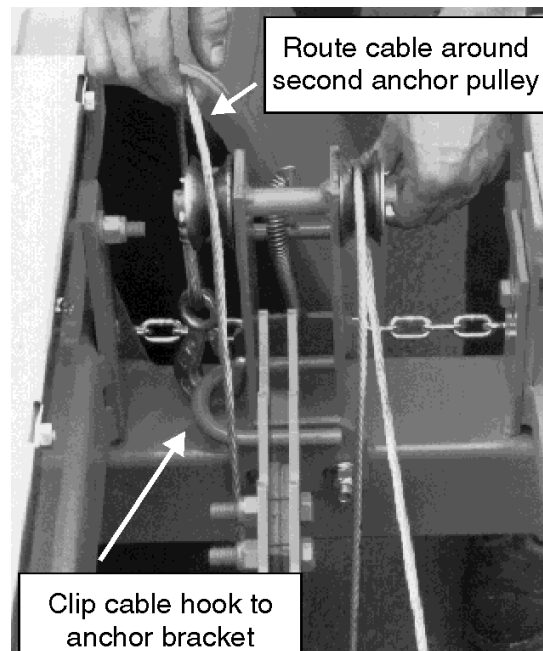


FIG. 1-3

4. Make sure the side supports are in a vertical position so the log doesn't fall off the back side of the sawmill. Reel in winch cable until the log turner contacts the log and begins to lift it. Continue tightening the winch cable to rotate the log 90 degrees, 180 degrees, or as desired. If the log is resting on a round side, use the clamping dog to clamp in place against the side supports before disengaging the turner.
5. Once the log is turned and resting solid, release the winch cable to let the turner drop below bed level. Adjust side supports to clear blade, if necessary.

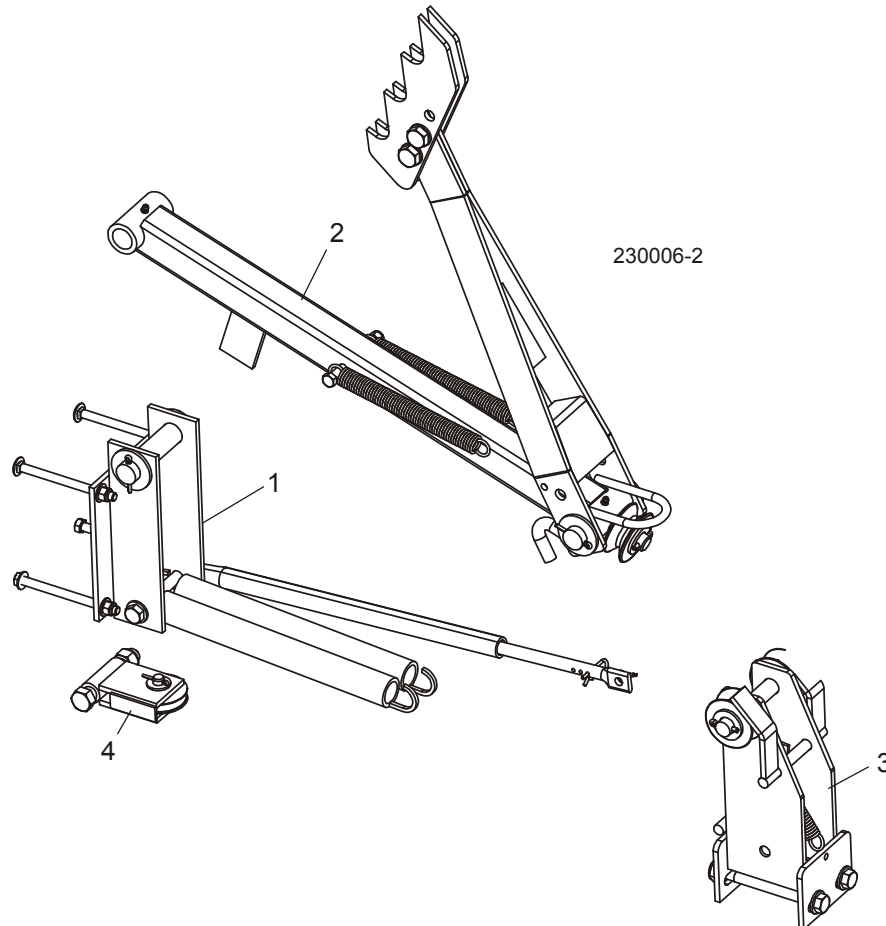


DANGER! Keep all persons out of the path of moving equipment and logs when operating sawmill or loading and turning logs. Failure to do so will result in serious injury.

6. If the log turner teeth are gripping the logs too high or too low, adjust the log turner stop.
7. The log turner stop rod has three holes. A safety clip is placed in one of the holes to stop the rod from going completely into the log turner tube when the turner is raised. Which hole the clip is in determines how far the rod will go into the tube. To adjust the stop, simply remove the safety clip from its current position and place in another hole.

SECTION 2 REPLACEMENT PARTS

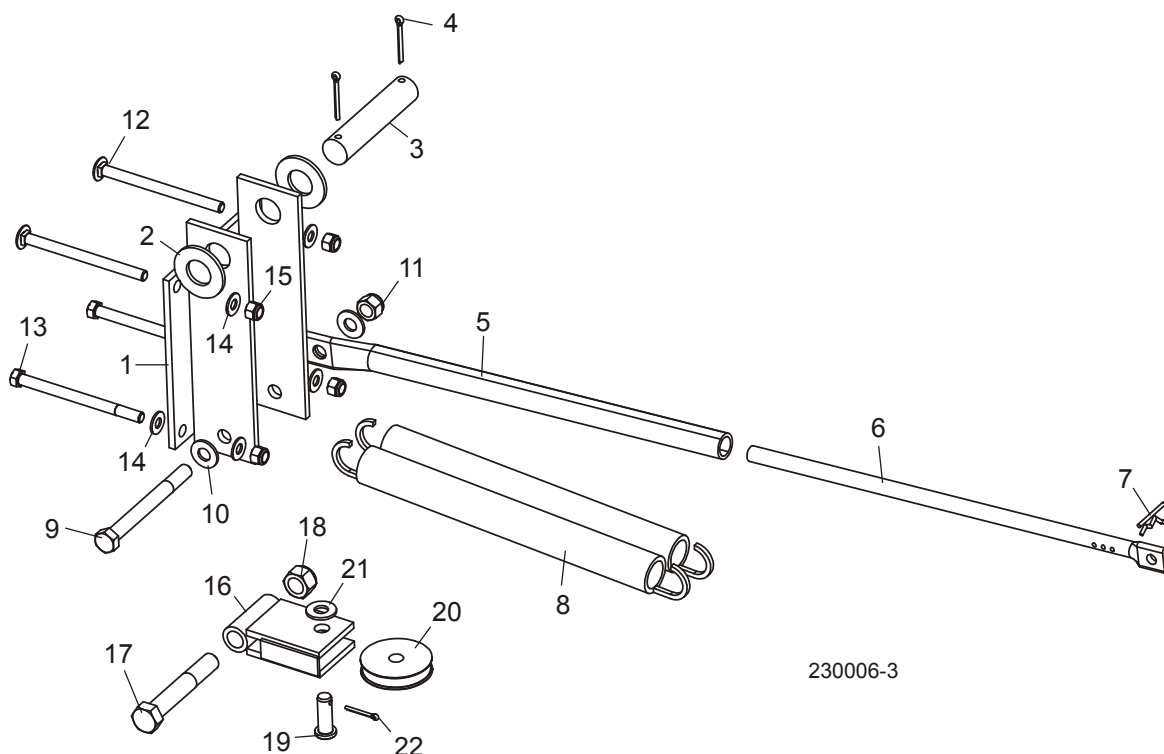
2.1 Manual Log Turner



REF	DESCRIPTION (◆ Indicates Parts Available In Assemblies Only)	PART #	QTY.	
	MANUAL LOG TURNER OPTION	LT-A	1	
	Turner Assembly, Manual Log	A09365	1	
1	Log Turner Mount Parts (See Section 2.2)			
2	Log Turner Arm Parts (See Section 2.3)			
3	Turner Cable Anchor Parts (See Section 2.4)			
	Bolt, 3/8-16 x 4" Hex Head	F05007-4 ¹	4	
	Bolt, 3/8-16 x 5" Carriage Head	F05007-113 ¹	2	
	Bolt, 3/8-16 x 5" Hex Head	F05007-5 ¹	2	
4	CABLE GUIDE PULLEY PARTS (See Section 2.2)			

¹ Additional hardware supplied for various styles of sawmill frame tubes.

2.2 Manual Log Turner Mount & Cable Guide Pulley

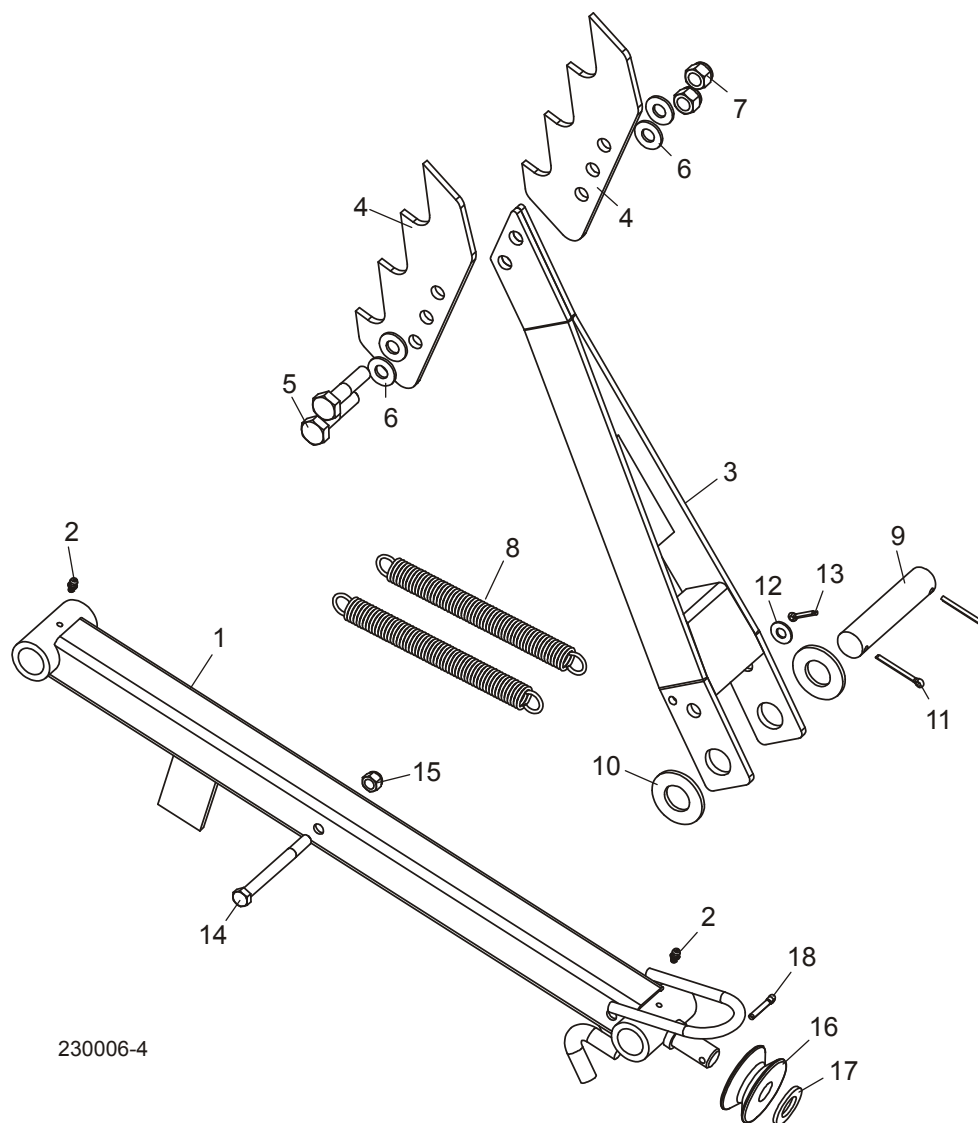


REF	DESCRIPTION (◆ Indicates Parts Available In Assemblies Only)	PART #	QTY.	
1	BRACKET WELDMENT, MANUAL LOG TURNER MOUNT	W09424	1	
2	WASHER, 1" SAE FLAT	F05011-28	2	
3	PIN, MANUAL TURNER ARM PIVOT	S09392	1	
4	PIN, 3/16" X 1 1/2" COTTER	F05012-23	2	
5	TUBE, MANUAL TURNER STOP	S09447	1	
6	ROD, MANUAL TURNER STOP	S09545	1	
7	PIN, 3/16" RETAINING	P05059	1	
8	SPRING, MANUAL TURNER ARM UPPER	P09426	2	
9	BOLT, 1/2-13 X 5" HEX HEAD GRADE 5	F05008-66	1	
10	WASHER, 1/2" SAE FLAT	F05011-2	2	
11	NUT, 1/2-13 HEX NYLON LOCK	F05010-8	1	
12	BOLT, 3/8-16 X 5" CARRIAGE HEAD	F05007-113 ¹	2	
13	BOLT, 3/8-16 X 5" HEX HEAD	F05007-5 ¹	2	
14	WASHER, 3/8" SAE FLAT	F05011-3	6	
15	NUT, 3/8-16 HEX NYLON LOCK	F05010-10	4	
16	BRACKET WELDMENT, WINCH CABLE PULLEY	W09429	1	
17	BOLT, 5/8-11 X 4" HEX HEAD FULL THREAD	F05009-8	1	
18	NUT, 5/8-11 HEX NYLON LOCK	F05010-34	1	

19	PIN, 1/2" X 1 27/64" CLEVIS	F05012-24	1	
20	PULLEY, WINCH CABLE	S09393	1	
21	WASHER, 1/2" SAE FLAT	F05011-2	1	
22	PIN, 1/8" X 1" COTTER	F05012-1	1	

¹ Alternate hardware supplied with LT-A kit for various styles of sawmill frame tubes ([See Section 2.1](#)).

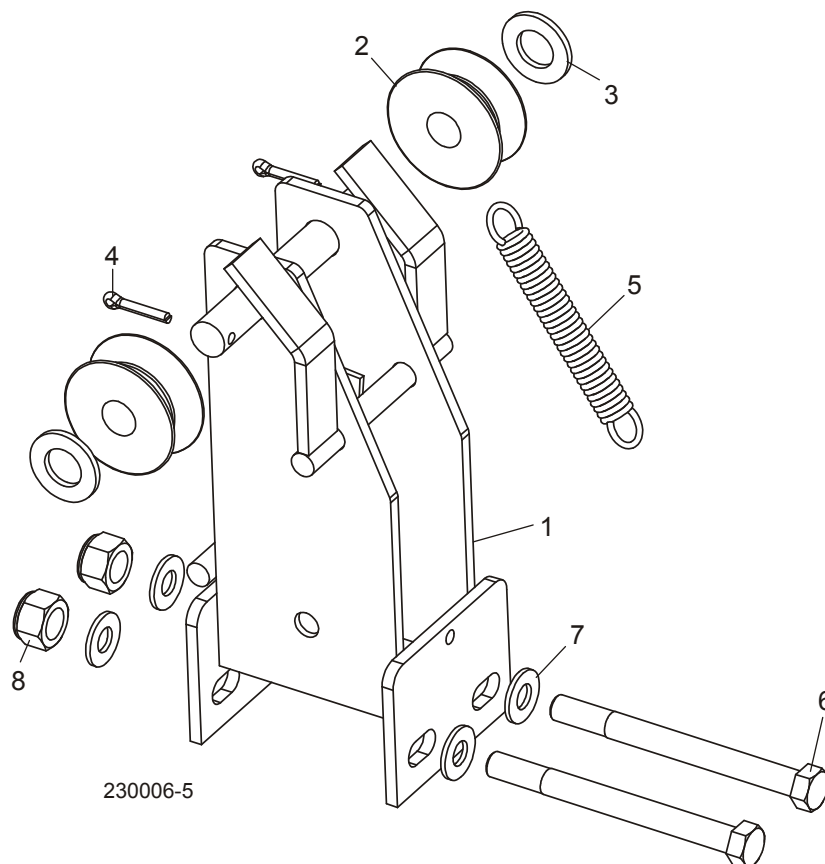
2.3 Manual Log Turner Arm



REF	DESCRIPTION (◆ Indicates Parts Available In Assemblies Only)	PART #	QTY.	
1	ARM WELDMENT, LOWER MANUAL TURNER	W09425	1	
2	Fitting, 3/16" Grease	P04107	2	
3	ARM WELDMENT, UPPER MANUAL TURNER	W09427	1	
4	CLAW, LOG TURNER	014675	2	
5	BOLT, 1/2-13 X 2 1/4" HEX HEAD GRADE 5	F05008-10	2	
6	WASHER, 1/2" SAE FLAT	F05011-2	4	
7	NUT, 1/2-13 HEX NYLON LOCK	F05010-8	2	
8	SPRING, MANUAL TURNER ARM LOWER	P09136	2	
9	PIN, MANUAL TURNER ARM PIVOT	S09392	1	

10	WASHER, 1" SAE FLAT	F05011-28	2	
11	PIN, 3/16" X 1 1/2" COTTER	F05012-23	2	
12	WASHER, 3/8" SAE FLAT	F05011-3	1	
13	PIN, 1/8" X 3/4" COTTER	F05012-3	1	
14	BOLT, 3/8-16 X 4" HEX HEAD	F05007-4	1	
15	NUT, 3/8-16 HEX NYLON LOCK	F05010-10	1	
16	PULLEY, MANUAL TURNER CABLE	S09394	1	
17	WASHER, 3/4" SAE FLAT	F05011-62	1	
18	PIN, 3/16" X 1" COTTER	F05012-21	1	

2.4 Cable Anchor Assembly



REF	DESCRIPTION (◆ Indicates Parts Available In Assemblies Only)	PART #	QTY.	
	ANCHOR ASSEMBLY, MANUAL TURNER CABLE	A09371	1	
1	Bracket, Manual Turner Cable Pulley	W09428	1	◆
2	Pulley, Manual Turner Cable	S09394	2	
3	Washer, 3/4" SAE Flat	F05011-62	2	
4	Pin, 3/16" x 1" Cotter	F05012-21	2	
5	Spring, Manual Turner Cable Pulley	P04060	1	
6	BOLT, 1/2-13 X 5 1/2" HEX HEAD GRADE 5	F05008-28	2	
7	WASHER, 1/2" SAE FLAT	F05011-2	6	
8	NUT, 1/2-13 HEX NYLON LOCK	F05010-8	2	