

# Scierie Wood-Mizer®

## Manuel de pièces

---

LT40

rev. K5.03

---

***¡La sécurité est notre préoccupation n°1!!***

*Décembre*

#606-5



**¡MISE EN GARDE!** Lisez et comprenez ce manuel avant d'utiliser cette machine.

**California**  
Proposition 65 Warning



**WARNING:** Breathing gas/diesel engine exhaust exposes you to chemicals known to the State of California to cause cancer and birth defects or other reproductive harm.

- Always start and operate the engine in a well-ventilated area.
- If in an enclosed area, vent the exhaust to the outside.
- Do not modify or tamper with the exhaust system.
- Do not idle the engine except as necessary.

For more information go to **[www.P65warnings.ca.gov](http://www.P65warnings.ca.gov)**.



**WARNING:** Drilling, sawing, sanding or machining wood products can expose you to wood dust, a substance known to the State of California to cause cancer. Avoid inhaling wood dust or use a dust mask or other safeguards for personal protection.

For more information go to **[www.P65Warnings.ca.gov/wood](http://www.P65Warnings.ca.gov/wood)**.

**Active Patents assigned to Wood-Mizer, LLC**

Wood-Mizer, LLC has received patents that protect our inventions which are a result of a dedication to research, innovation, development, and design. Learn more at: [woodmizer.com/patents](http://woodmizer.com/patents)

**©2022 Wood-Mizer LLC**

Printed in the United States of America, all rights reserved. No part of this manual may be reproduced in any form by any photographic, electronic, mechanical or other means or used in any information storage and retrieval system without written permission from

**Wood-Mizer, LLC**  
**8180 West 10th Street**  
**Indianapolis, Indiana 46214**

# Sommaire

# Partie-Page

<b>SECTION 1</b>	<b>PIÈCES DE RECHANGE</b>	<b>1-1</b>
1.1	Utilisation de la liste des pièces de rechange .....1-1 <i>Pour commander des pièces ..... 1-1</i>	
1.2	Ensemble “exemple” .....1-1	
<b>PARTIE 2</b>	<b>SYSTÈMES DE GUIDAGE DE LAME</b>	<b>1-1</b>
2.1	Guidage De Lame, Côté Poulie Folle.....1-1	
2.2	Guidage De Lame, Côté Entraînement .....1-1	
2.3	Système D'entraînement De Bras De Guidage.....1-1	
2.4	Bras de Guidage de Lame.....1-2	
<b>PARTIE 3</b>	<b>POULIES ET TENDEUR</b>	<b>1-3</b>
3.1	Système D'entraînement De Lame .....1-3 <i>LT30 D35/D36</i> <i>LT40 D35/D36 ..... 1-3</i>	
3.2	Système D'entraînement De Lame .....1-4 <i>LT40 G28 ..... 1-4</i>	
3.3	Poulie Folle.....1-5	
3.4	Tendeur Hydraulique De Lame .....1-6	
<b>PARTIE 4</b>	<b>TÊTE DE SCIE</b>	<b>1-7</b>
4.1	Vis Anti-Vibration.....1-7	
4.2	Valve Du Contrôle De Lubrification.....1-8	
4.3	Système D'embrayage (D35/D36).....1-9	
4.4	Système D'embrayage (G28).....1-10	
4.5	Fixation d'embrayage .....1-11	
4.6	Système De Freinage.....1-12	
4.7	Système De Lubrification (Gas).....1-13	
4.8	Système De Lubrification (Diesel & Electric) .....1-14	
4.9	Étiquettes D'avertissement .....1-15	
4.10	Couvercles De Carters De Courroies .....1-16	
4.11	Couvercles De Carters De Lame .....1-17	
4.12	Chute À Bran De Scie .....1-18	
4.13	Boîte De Filage De L'écorceuse Et Obturateurs.....1-19	
4.14	Éjecteur De Planches (Optionnel) .....1-20	
<b>PARTIE 5</b>	<b>SYSTÈME DE COMMANDE ET BATTERIE</b>	<b>2-1</b>
5.1	Système De Commande .....2-1	
5.2	Système De Commande (Tier4 Seulement) .....2-3	
5.3	Commutateurs.....2-5	
5.4	Disjoncteurs.....2-6	
5.5	Panneau De Commande .....2-7 <i>..... 2-7</i> <i>..... 2-7</i>	

## Sommaire

## Partie-Page

5.6	Panneau De Commande .....	2-8
	..... 2-8	
	..... 2-8	
5.7	Boîte De Batterie .....	2-9
<b>PARTIE 6</b>	<b>SYSTÈME DE MONTÉE</b>	<b>3-1</b>
6.1	Fixation De La Tête De Sciage .....	3-1
6.2	Indicateur De Hauteur Et Règles De Débitage.....	3-2
6.3	Chaînes Et Pignons De Montée.....	3-3
6.4	Système D'entraînement De Montée .....	3-4
<b>PARTIE 7</b>	<b>SYSTÈME D'ENTRAÎNEMENT ET PALIERS</b>	<b>4-1</b>
7.1	Paliers de Rail Superieur et Grattoirs .....	4-1
7.2	Système D'entraînement.....	4-2
7.3	Chaîne D'entraînement Et Butoir .....	4-3
7.4	Paliers De Rail Inférieur.....	4-4
<b>PARTIE 8</b>	<b>ENSEMBLE CHÂSSIS DE BANC</b>	<b>5-1</b>
8.1	Châssis Du Banc .....	5-1
8.2	Rails Avant Et Arrière Du Banc De Grume .....	5-1
8.3	Rail Centre-avant Du Banc De Grume .....	5-2
8.4	Rail Centre-arrière Du Banc De Grume .....	5-3
8.5	Appuis Fixes .....	5-4
8.6	Support De Grume Mobile .....	5-5
8.7	Cales À Billes (Non Hydrauliques).....	5-6
8.8	Chaîne De Sécurité .....	5-7
8.9	Goujon de repos.....	5-8
8.10	Étiquettes D'avertissement .....	5-9
8.11	Serre-bille .....	5-10
8.12	Rampes De Chargement.....	5-11
8.13	Table D'éjecteur De Planches (Optionnel) .....	5-12
8.14	Table De Planches (Optionnel) .....	5-13
8.15	Treuil manuel.....	5-14
<b>PARTIE 9</b>	<b>CHARGEUSE &amp; TOURNE-BILLE HYDRAULIQUE (OPTIONNEL)</b>	<b>6-1</b>
9.1	Boîte De Commande Des Hydrauliques.....	6-1
9.2	Plaque De Contact Hydraulique Et Bornes .....	6-2
9.3	Chargeuse Hydraulique (Optionnel).....	6-3
9.4	Tourne-bille Hydraulique (Optionnel) .....	6-4
9.5	Cales Hydrauliques (Optionnel).....	6-5
9.6	Chargeuse & tourne-bille hydraulique pièces .....	6-6

## SECTION 1 PIÈCES DE RECHANGE

### 1.1 Utilisation de la liste des pièces de rechange

- Utilisez la table des matières ou l'index pour trouver l'ensemble contenant la pièce dont vous avez besoin.
- Consultez la section correspondante et repérez la pièce sur l'illustration.
- Relevez le numéro désignant la pièce et utilisez ce numéro pour consulter le tableau descriptif.
- Les pièces illustrées en retrait sous une autre pièce font partie de cette dernière.

#### *Pour commander des pièces*

- Depuis les Etats-Unis, composez le **1-800-525-8100** pour commander des pièces. Ayez à portée de la main votre numéro de client, le numéro d'identification du véhicule et les numéros des pièces lors de votre appel.
- Pour les autres pays, prenez contact avec le concessionnaire Wood-Mizer de votre région pour obtenir des pièces.

### 1.2 Ensemble "exemple"

REF	PART #	DESCRIPTION	COMMENTS	QTY.
	012345	ENSEMBLE "EXEMPLE", COMPLET	ÉLÉMENTS INCLUS 1-6	1
1	F02222-22	Exemple de pièce		1
2	F03333-33	Exemple de pièce		2
	098765	Exemple de Sous-Ensemble	ÉLÉMENTS INCLUS 3-6	1
3	S04444-44	Sous-ensemble exemple de pièce		1
4	K55555	Sous-ensemble exemple de pièce		1
	054321	Exemple de Sous-Sous-Ensemble	ÉLÉMENTS INCLUS 5-6	2
5	022222	Sous sous-ensemble exemple de pièce		1
6	F10234-56	Sous sous-ensemble exemple de pièce		1

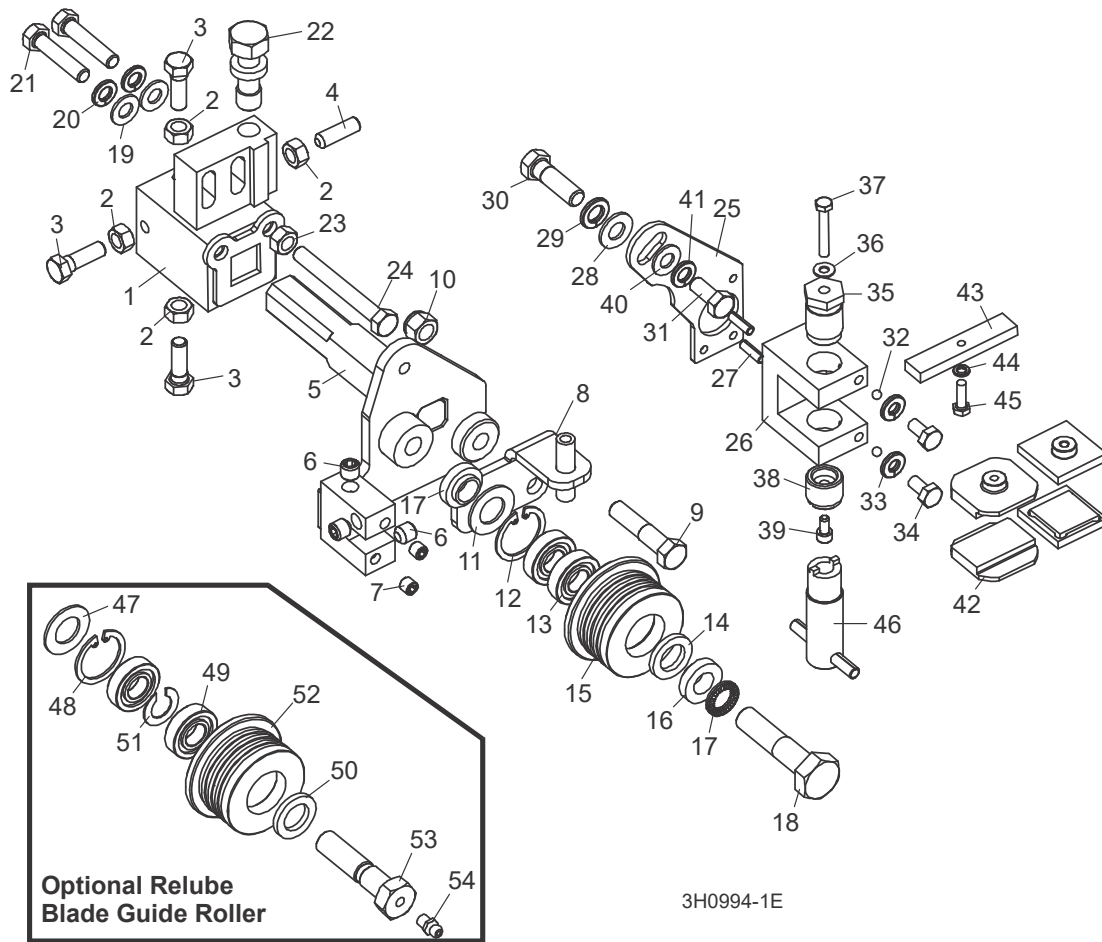
L'ensemble complet, référence 02345 (ensemble de niveau supérieur) inclut deux pièces (F0222-22 et F0333-33) et le sous-ensemble 098765.

Le sous-ensemble 098765 contient deux pièces (S04444-44 et K55555) et deux copies du sous sous-ensemble 054321.

Chaque sous sous-ensemble 054321 contient deux pièces (022222 et F10234-56).

## PARTIE 2 SYSTÈMES DE GUIDAGE DE LAME

### 2.1 Guidage De Lame, Côté Poulie Folle



REF	PART #	QTY.
1-24	003992	1
1-4	003920	1
1	-----	1
2	F05010-17	4
3	F05006-88	3
4	F05006-122	1
5	003924	1
6	P30127	3
7	007734	2
8	006322	1
9	F05007-78	1

10	F05010-10	1
11-15	A04925	1
11-14	K07079	1
11	P04252	1
12	F04254-1	1
13	-----	2
14	P06455	1
15	S04250	1
	S04253	2
16	F05011-125	1
17	F05008-10	1
18	F05011-17	2

19	F05011-13	2
20	F05006-76	2
21	035656	1
22	F05010-17	1
23	F05006-136	1
25-46	006325	1
25-41	003928 <sup>1</sup>	1
24	003915	1
25	003909	1
26	F05012-22	2
27	F05011-3	1
28	F05011-4	1

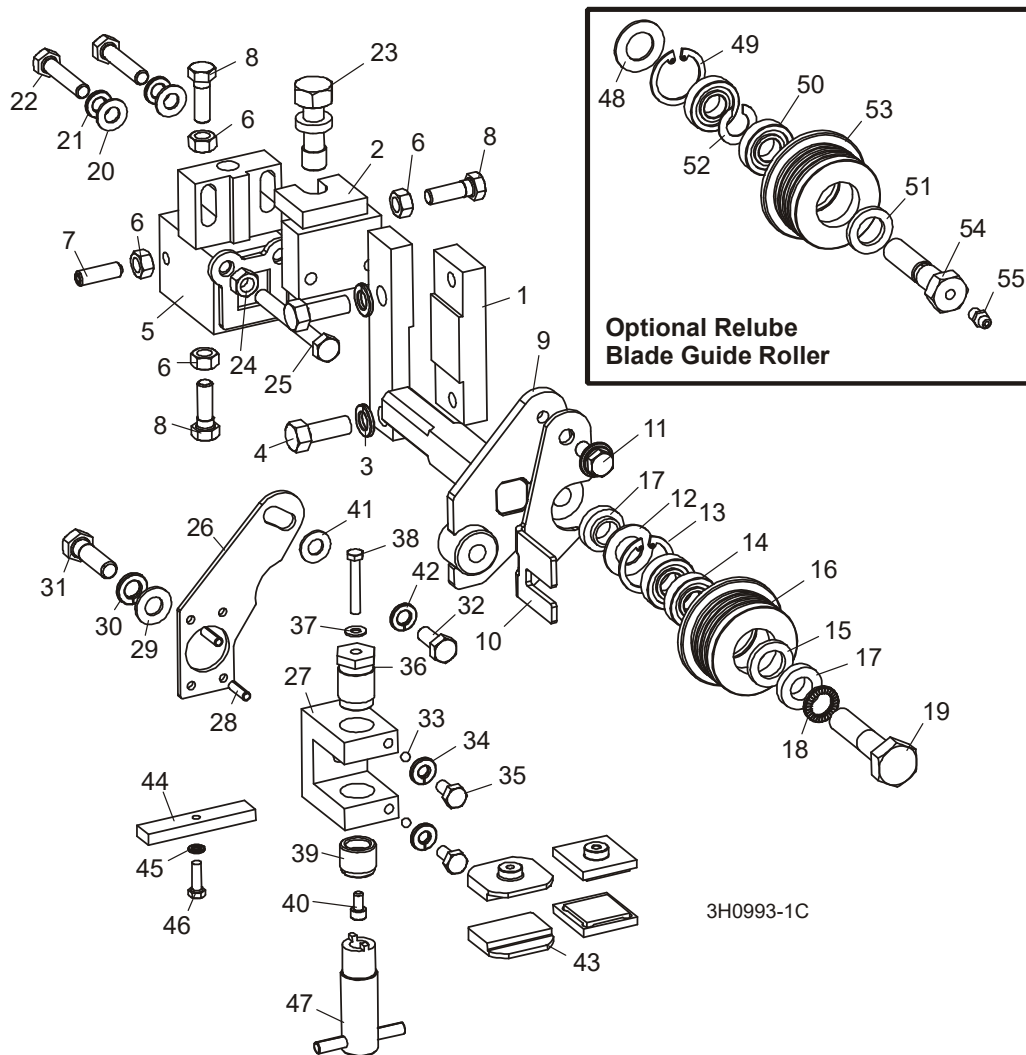
<b>29</b>	F05007-123	1
<b>30</b>	F05006-102	1
<b>31</b>	003914	2
<b>32</b>	F05011-14	2
<b>33</b>	F05005-15	2
<b>34</b>	003994	1
<b>35</b>	042867	1
<b>36</b>	F05004-240	1
<b>37</b>	044057	1
<b>38</b>	F05004-200	1
<b>39</b>	F05011-17	1
<b>40</b>	F05011-13	1
<b>41</b>	052355 <sup>2</sup>	2
	036347 <sup>3</sup>	2
	035799	1
<b>42</b>	F05011-20	1
<b>43</b>	F05004-152	1
<b>44</b>	044064	1
	035248	1
	<a href="#">(Voir Partie 2.2)</a>	
<b>47-52</b>	016568	1
<b>47-51</b>	057407	1
<b>45</b>	P04252	1
<b>46</b>	F04254-1	1
<b>47</b>	015975	2
<b>48</b>	P06455	1
<b>49</b>	035411	1
<b>50</b>	035426	1
	036161	1
<b>51</b>	P05060	1

<sup>1</sup> Optionelle.

<sup>2</sup> Std. 1 1/4" lame.

<sup>3</sup> Optionelle 1 1/4" lame.

## 2.2 Guidage De Lame, Côté Entraînement



REF	PART #	QTY.
1	016548	1
2	003964	1
3	F05011-4	2
4	F05007-7	2
1-25	003905	1
5-8	003910	1
5	003911	1
6	F05010-17	4
7	F05006-122	1
8	F05006-88	3
9	003913	1
10	003916	1

11	F05006-101	1
12-16	A04925	1
12-15	K07079	1
12	P04252	1
13	F04254-1	1
14	015975	2
15	P06455	1
16	S04250	
17	S04253	2
18	F05011-125	1
19	F05008-10	1
20	F05011-17	2
21	F05011-13	2

22	F05006-93	2
23	035656	1
24	F05010-17	1
25	F05006-136	1
26-45	006325 <sup>1</sup>	1
26-40	003927	1
26	003915	1
27	003909	1
28	F05012-22	2
29	F05011-3	1
30	F05011-4	1
31	F05007-123	1
32	F05006-102	1



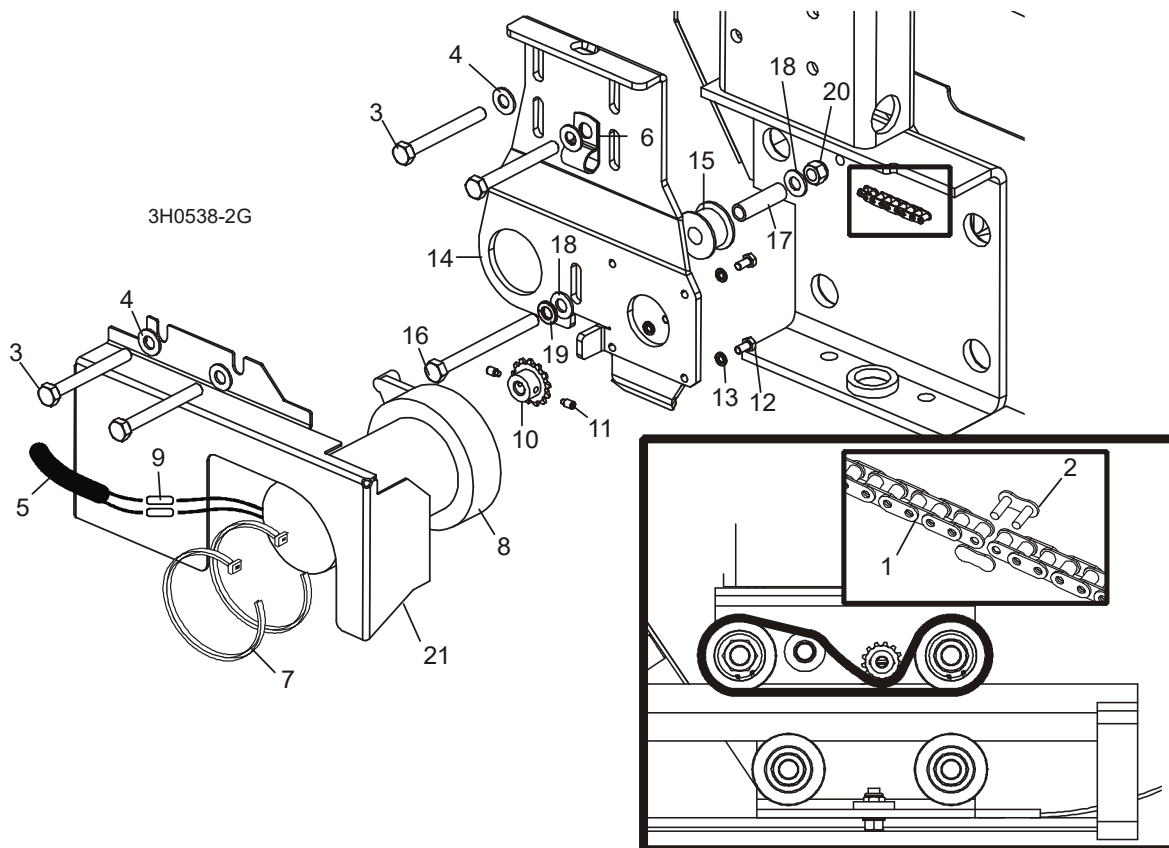
<b>33</b>	003914	2
<b>34</b>	F05011-14	2
<b>35</b>	F05005-15	2
<b>36</b>	003994	1
<b>37</b>	042867	1
<b>38</b>	F05004-240	1
<b>39</b>	044057	1
<b>40</b>	F05004-200	1
<b>41</b>	F05011-17	1
<b>42</b>	F05011-13	1
<b>43</b>	052355 <sup>2</sup>	2
	036347	2
<b>44</b>	035799	1
<b>45</b>	F05011-20	1
<b>46</b>	F05004-152	1
<b>47</b>	044064	1
	<i>(Voir Partie 2.1)</i>	
<b>48</b>	P04252	1
<b>49</b>	F04254-1	1
<b>50</b>	015975 <sup>3</sup>	2
<b>51</b>	P06455	1
<b>52</b>	035411	1
<b>53</b>	035426	1
<b>54</b>	036161	1
<b>55</b>	P05060	1

<sup>1</sup> High-Performance Blade Guide Kit requires LMS blade lube system. Use kit 006325 to upgrade both drive and idle side blade guides to High-Performance. If sawmill not already equipped with LMS, add kit

<sup>2</sup> 052355 blocks for use with 1 1/4" blade provided as standard equipment. EZ-Glide blocks 036347 are available for customers who prefer this block.

<sup>3</sup> Bearing must be modified for use with relube roller assemblies. Remove one seal from each bearing, place open sides facing each other and place spacer 035411 between bearings.

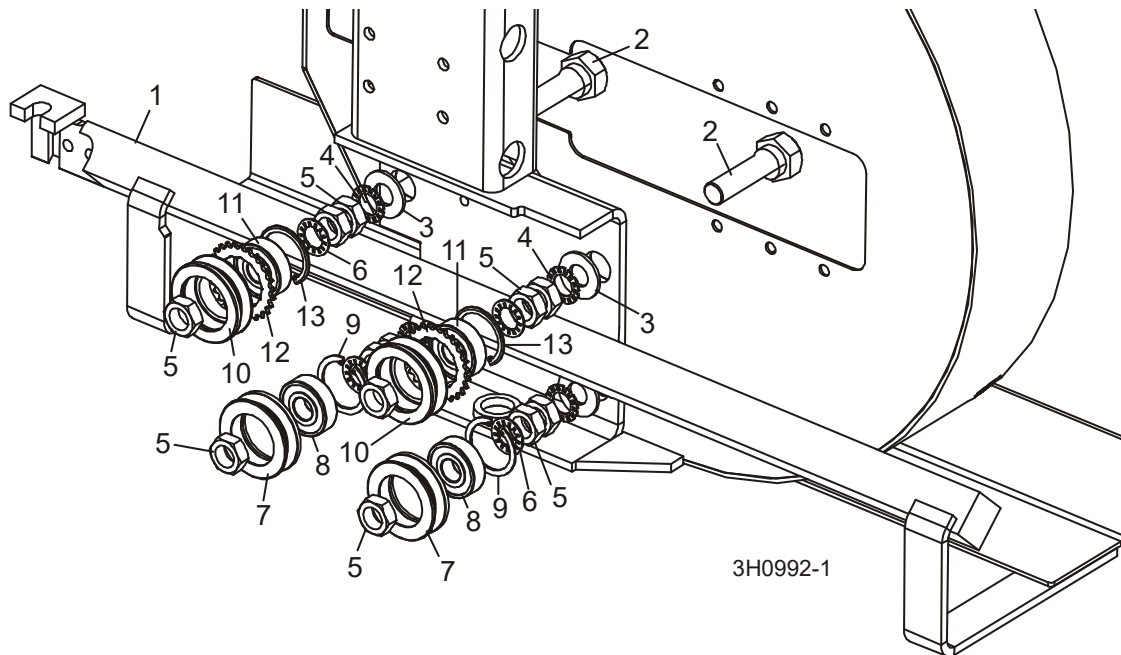
### 2.3 Système D'entraînement De Bras De Guidage



REF	PART #	QTY.
1	P09984	1
2	P09983	1
3	F05006-28	4
4	F05011-17	4
5	R01897	2.5ft
6	P07584	2
7	F05089-1	2
8-20	015989	1
8-13	079215	1
8	079214	1
	061232	1
	061234	1
	061233	1
9	F04875-1	2
10-11	P09970	1

11	F05004-274	2
12	F05004-60	4
13	F05011-20	4
14	015939	1
15	S09999	1
16	F05006-3	1
17	S09996-W	1
18	F05011-17	2
19	F05011-13	1
20	F05010-58	1
21	S11617	1

## 2.4 Bras de Guidage de Lame



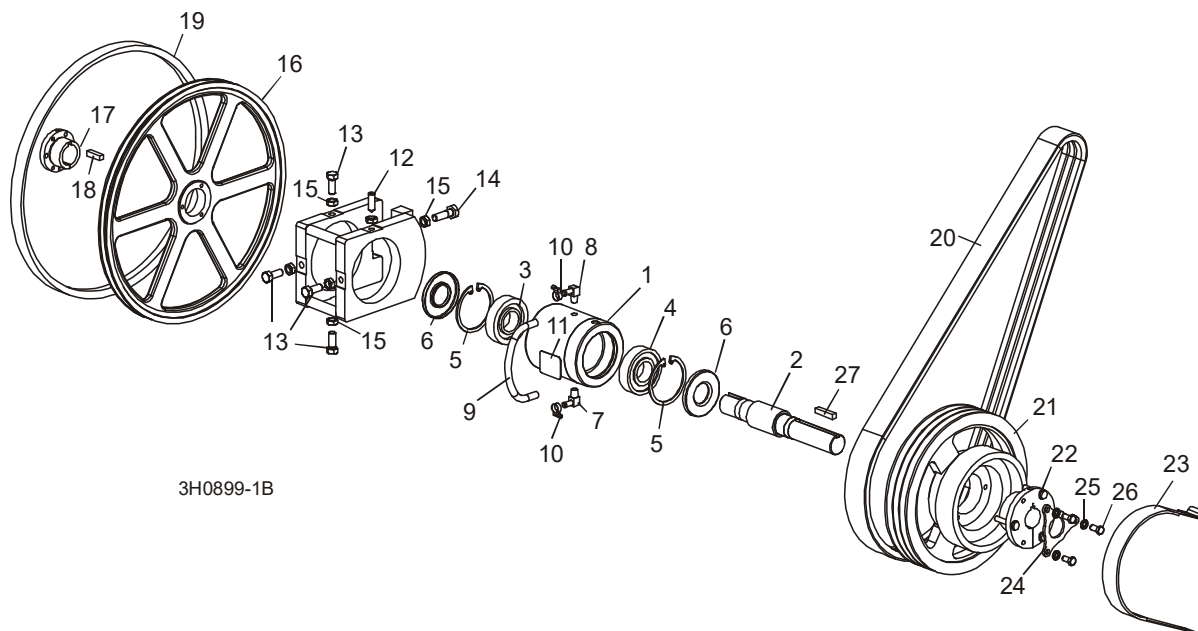
REF	PART #	QTY.
1	003972	1
1	007040 (Wide)	1
2	W09067	4
3	F05011-5	4
4	F05011-26	4
5	F05010-11	12
6	F05011-25	8
7-9	A09059	2
7	S07989	1
8	P06030-1	1
9	F04254-8	1
10-13	A09932	2
10	S09930	1
11	P06030-1	1
12	S09931	1
13	F04254-8	1

## PARTIE 3 POULIES ET TENDEUR

### 3.1 Système D'entraînement De Lame

LT30 D35/D36

LT40 D35/D36



3H0899-1B

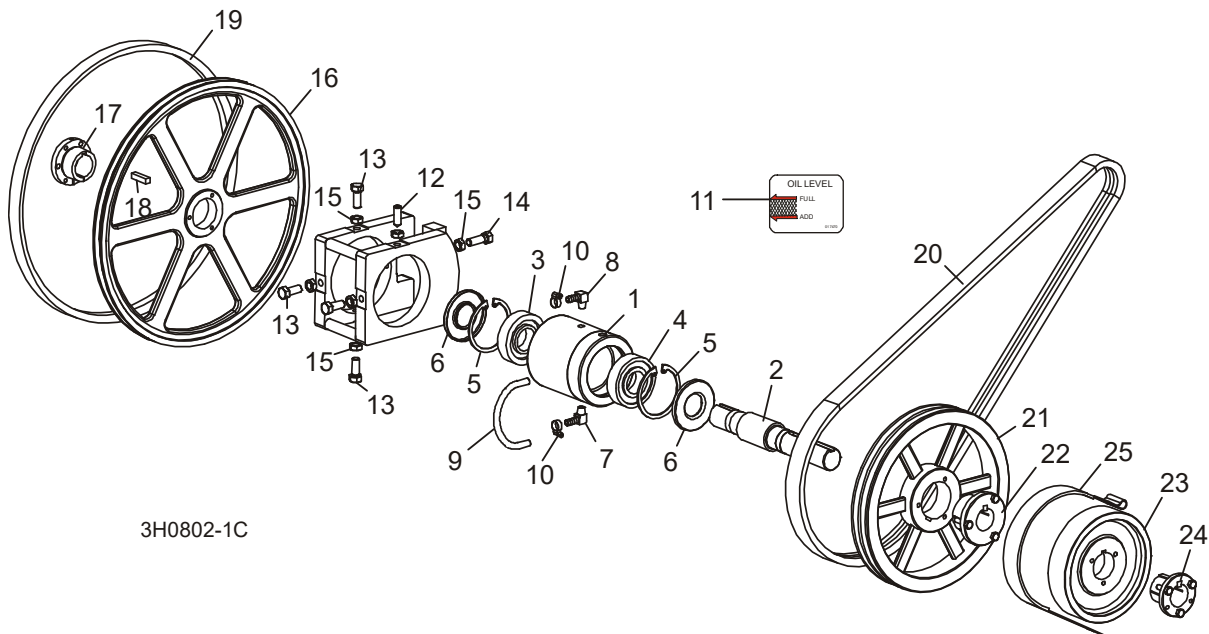
REF	PART #	QTY.
1-11	016393	1
1-6	-----	1
1	-----	1
2	-----	1
3	-----	1
4	-----	1
5	F04254-17	2
6	P10206	2
7	016330	1
8	016331	1
9	016394	1
10	P649	2
11	017470	1
12	F05004-170	1
13	F05008-108	4
14	F05008-49	1
15	F05010-16	6
16-18	014562	1

16	016284	1
17	016270	1
18	S12892	1
19	P04185	1
20	046571 <sup>1</sup>	1
21	016531	1
22	016532	1
23	014391	1
24	017953	1
25	F05011-4	3
26	F05007-27	3
27	014693	1

<sup>1</sup> D35/D36

### 3.2 Système D'entraînement De Lame

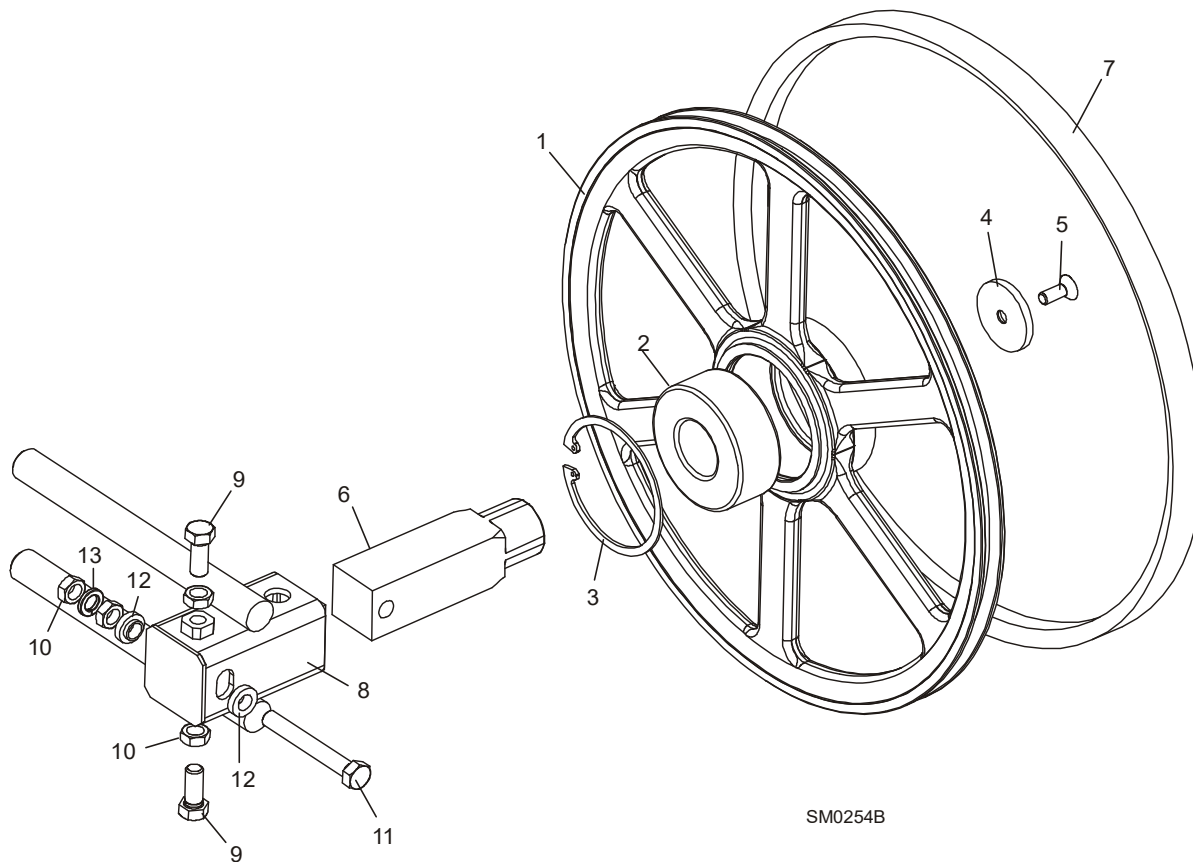
LT40 G28



REF	PART #	QTY.
1-11	016393	1
1-6	-----	1
1	-----	1
2	-----	1
3	-----	1
4	-----	1
5	F04254-17	2
6	P10206	2
7	016330	1
8	016331	1
9	016394	1
10	P649	2
11	017470	1
12	F05004-170	1
13	F05008-108	4
14	F05008-49	1
15	F05010-16	6
16-18	014562	1
16	016284	1
17	016270	1
18	S12892	1

19	P04185	1
20	036163	1
21-22	014692	1
21	-----	1
22	014690	1
23	014000	1
24	014003	1
25	014391	1

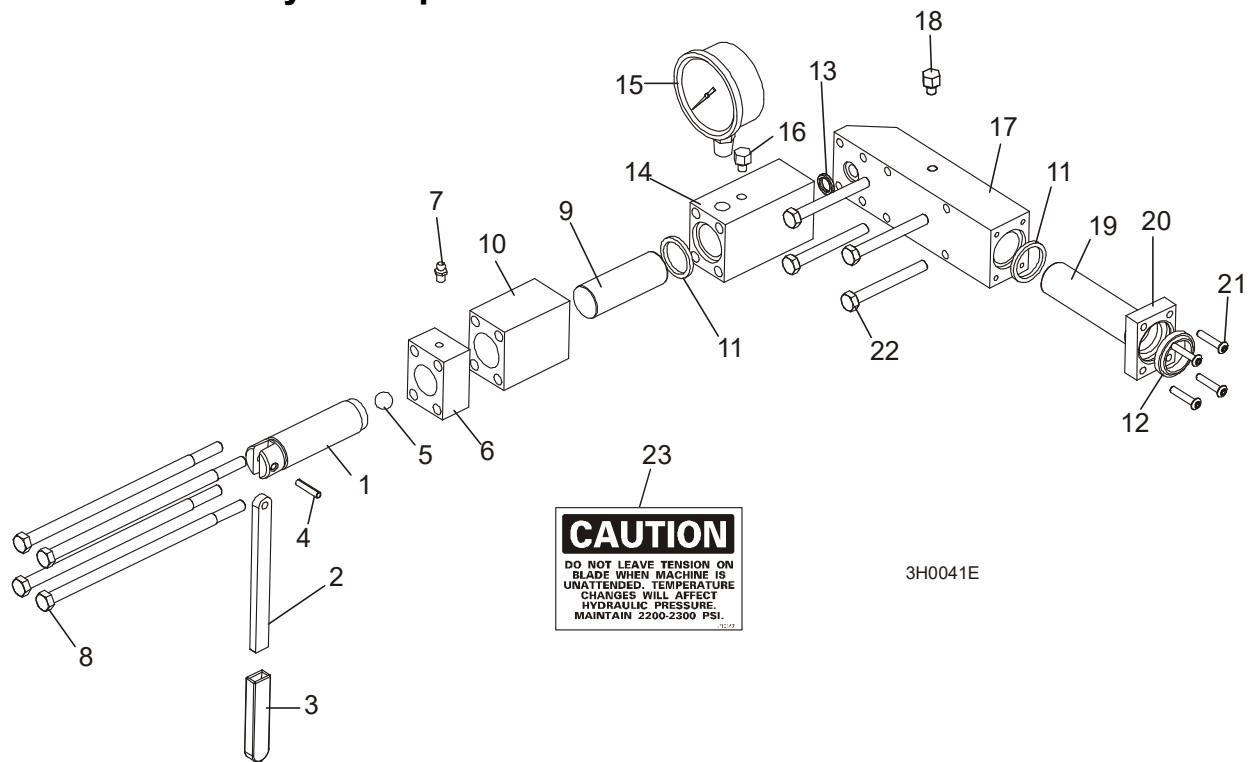
### 3.3 Poulie Folle



SM0254B

REF	PART #	QTY.
1-3	016120	1
1	----	1
2	016014	1
3	F04254-28	1
4-6	016441	1
4	016397	1
5	F05007-64	1
6	016398	1
7	P04185	1
8	016103	1
9	F05008-53	2
10	F05010-16	4
11	F05008-111	1
12	S04253	2
13	F05011-9	1

### 3.4 Tendeur Hydraulique De Lame



REF	PART #	QTY.
1-22	A10136	1
1-7	A12294	1
1	S10056	1
2	S08174	1
3	P08072	1
4	F05012-19	1
5	P02720	1
6	-----	1
7	P05060	1
8	F05006-43	4
9	S10060	1
10	S10061	1
5, 11-13	003224	1
5	P02720	1
11	P10051	2
12	P10053	1
13	P10377	1
14	S10140	1
15	P10052	1

16	P10065	1
17-18	016329	1
17	-----	1
18	P10065	1
19	S10059	1
20	S10089	1
21	F05004-43	4
22	F05006-28	4
23	P10147	1

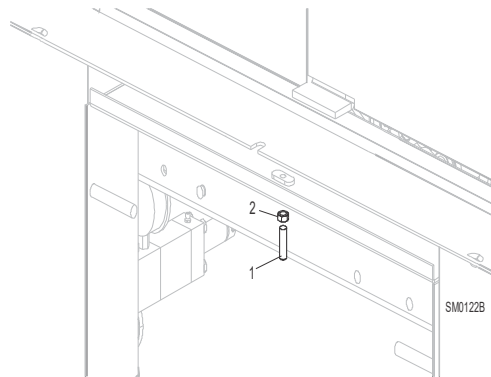
# 4 Tête De Scie

*Vis Anti-Vibration*

---

## PARTIE 4 TÊTE DE SCIE

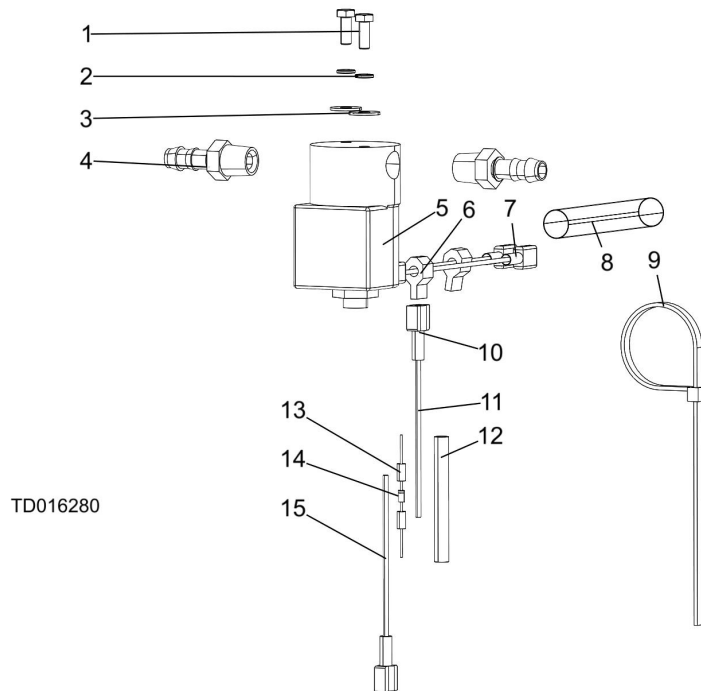
### 4.1 Vis Anti-Vibration



REF	PART #	QTY.
1	F05007-18	1
2	F05010-29	1



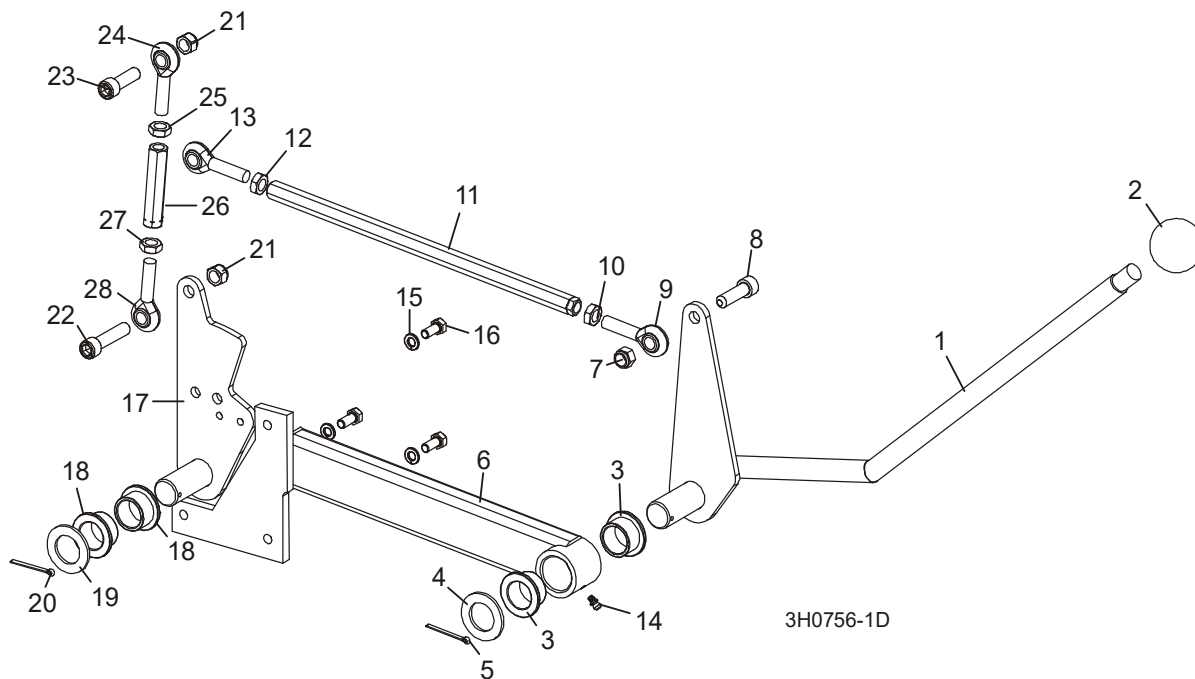
## 4.2 Valve Du Contrôle De Lubrification



REF	PART #	QTY.
	016280	
1	F05004-60	2
2	F05011-20	2
3	F05011-18	2
4	P04682	2
	133071	1
5	016140	1
6	F04875-13	2
7	F05708-21R	2
8	R02374	1
9	F05089-3	1
	024123	1
10	F05708-22R	2
11	R01915-3_3	1
12	R01950-4_2_14	1
13	024032	2
14	E05909	1

15	R01915-0_3	1
----	------------	---

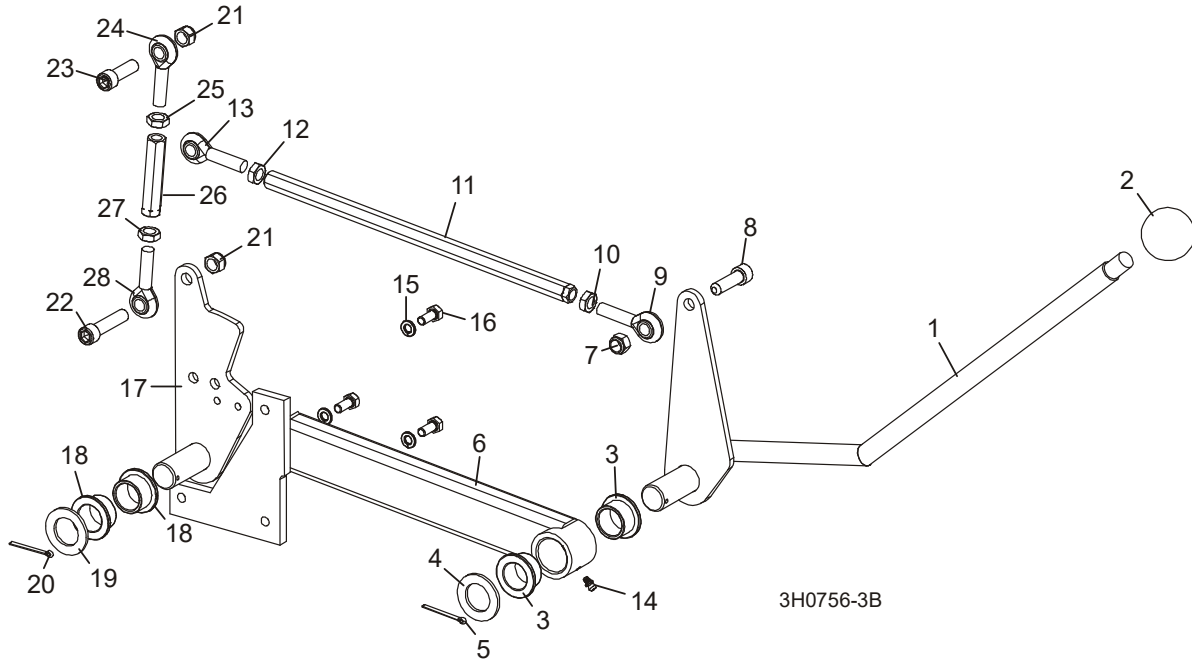
### 4.3 Système D'embrayage (D35/D36)



REF	PART #	QTY.
1-14	016317	1
1	----	1
2	P04211	1
3	P737	2
4	P116	1
5	F05012-49	1
6	015241	1
7	F05010-83	1
8	F05007-55	1
9	P11578	1
10	F05010-87	1
11	015073	1
12	F05010-38	1
13	P11579	1
14	P04107	1
15	F05011-13	3
16	F05006-5	3
17	016296	1
18	P737	2
19	P116	1
20	F05012-49	1

21	F05010-83	2
22	F05007-120	1
23	F05007-55	1
26-28	A11576	1
24	P11579	1
25	F05010-38	1
26	----	1
27	F05010-87	1
28	P11578	1

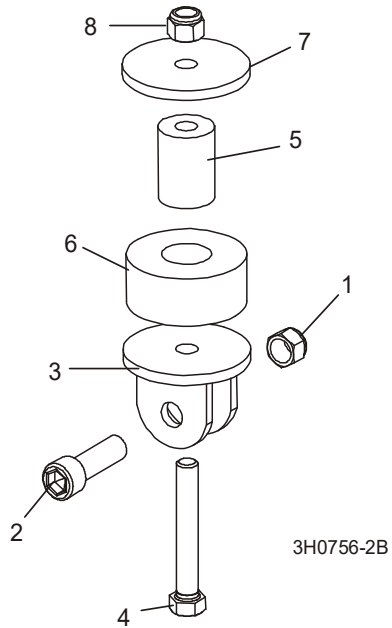
### 4.4 Système D'embrayage (G28)



REF	PART #	QTY.
1-14	016317	1
1	-----	1
2	P04211	1
3	P737	2
4	P116	1
5	F05012-49	1
6	015241	1
7	F05010-83	1
8	F05007-55	1
9	P11578	1
10	F05010-87	1
11	015073	1
12	F05010-38	1
13	P11579	1
14	P04107	1
15	F05011-13	3
16	F05006-5	3
17	016296	1
18	P737	2
19	P116	1
20	F05012-49	1

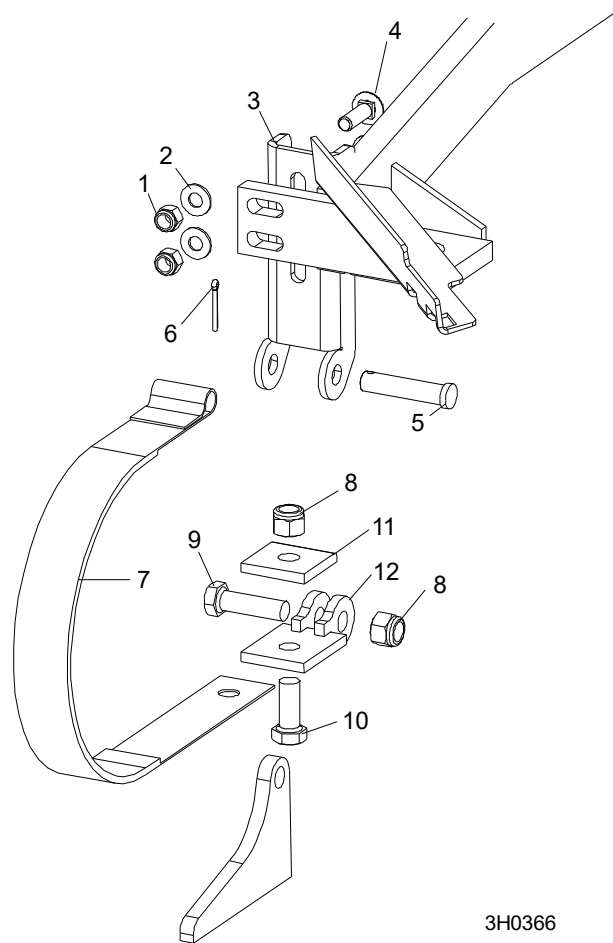
21	F05010-83	2
22	F05007-120	1
23	F05007-55	1
25-29	A12304	1
	P11579	1
24	F05010-38	1
25	-----	1
26	F05010-87	1
27	P11578	1

### 4.5 Fixation d'embrayage



REF	PART #	QTY.
1	F05010-83	1
2	F05007-55	1
3	W12411	1
4	F05007-157	1
5	016316	1
6	P05032	1
7	021276	1
8	F05010-10	1

## 4.6 Système De Freinage

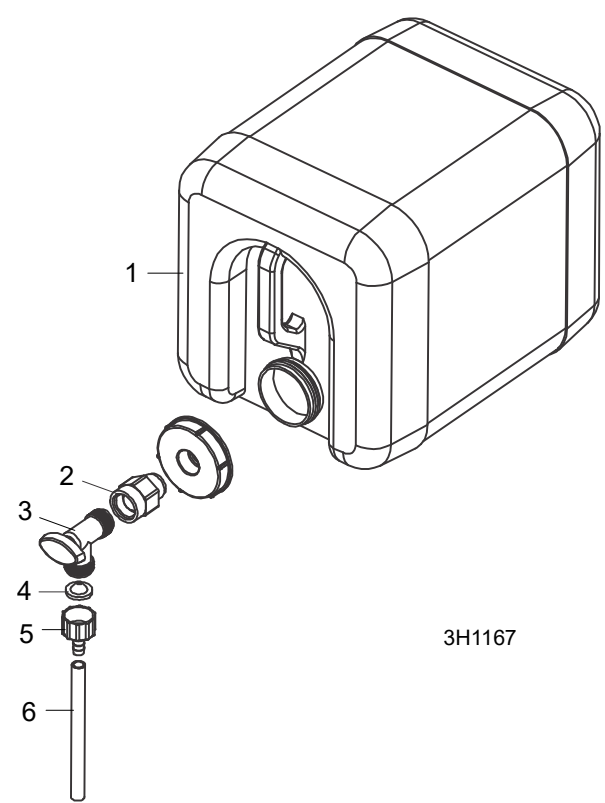


3H0366

REF	PART #	QTY.
1-12	014441	1
1	F05010-10	2
2	F05011-3	2
3	014395	1
4	F05007-127	2
5	F05012-81	1
6	F05012-1	1
7	014391	1
8	F05010-8	2
9	F05008-88	1
10	F05008-37	1
11	S04195	1
12	014392	1

**4** Tête De Scie  
*Système De Lubrification (Gas)*

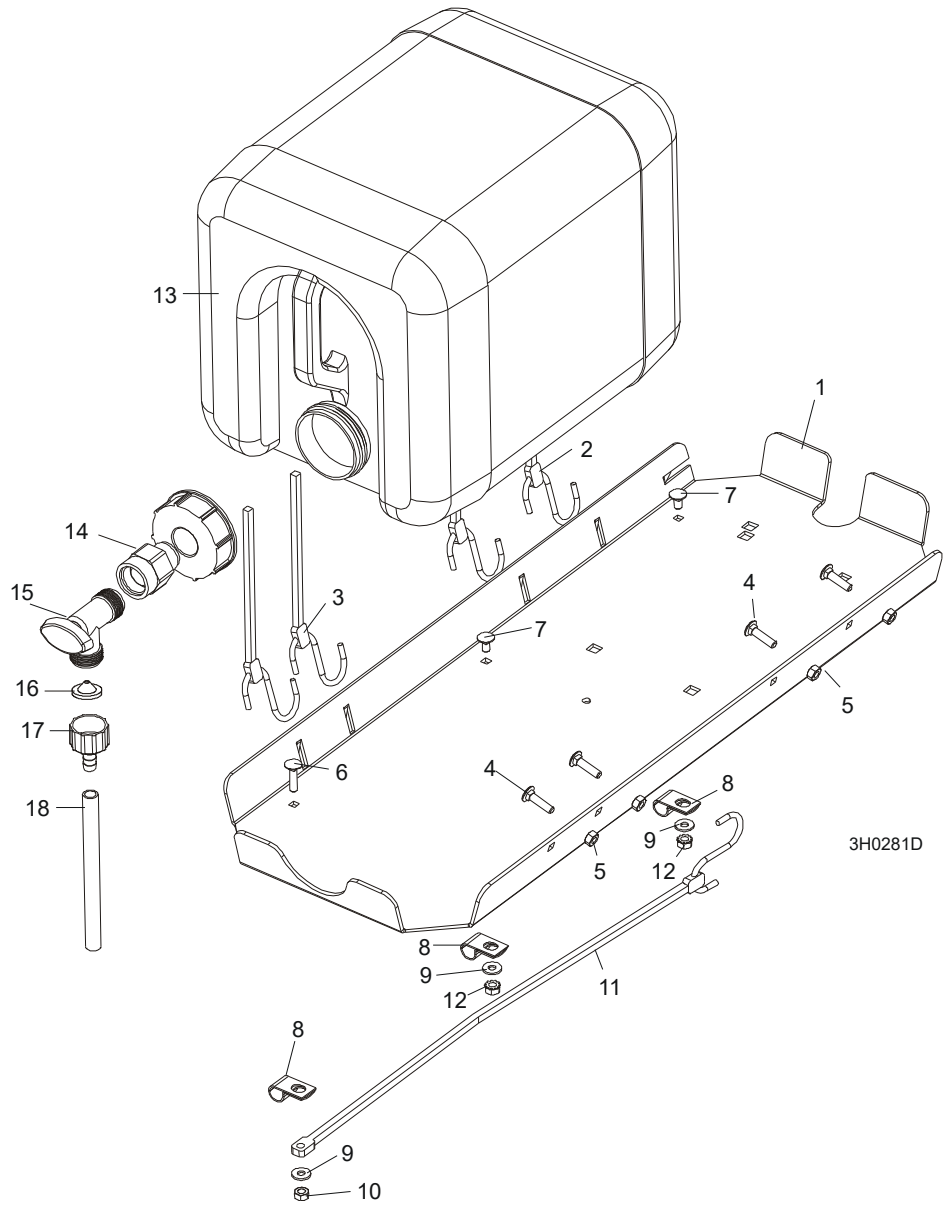
**4.7** Système De Lubrification (Gas)



REF	PART #	QTY.
1	014642	1
2	014636	1
3	014100	1

4	016086	1
5	014113	1
6	R01885	7 ft.
	CBOTTLE	1

### 4.8 Système De Lubrification (Diesel & Electric)

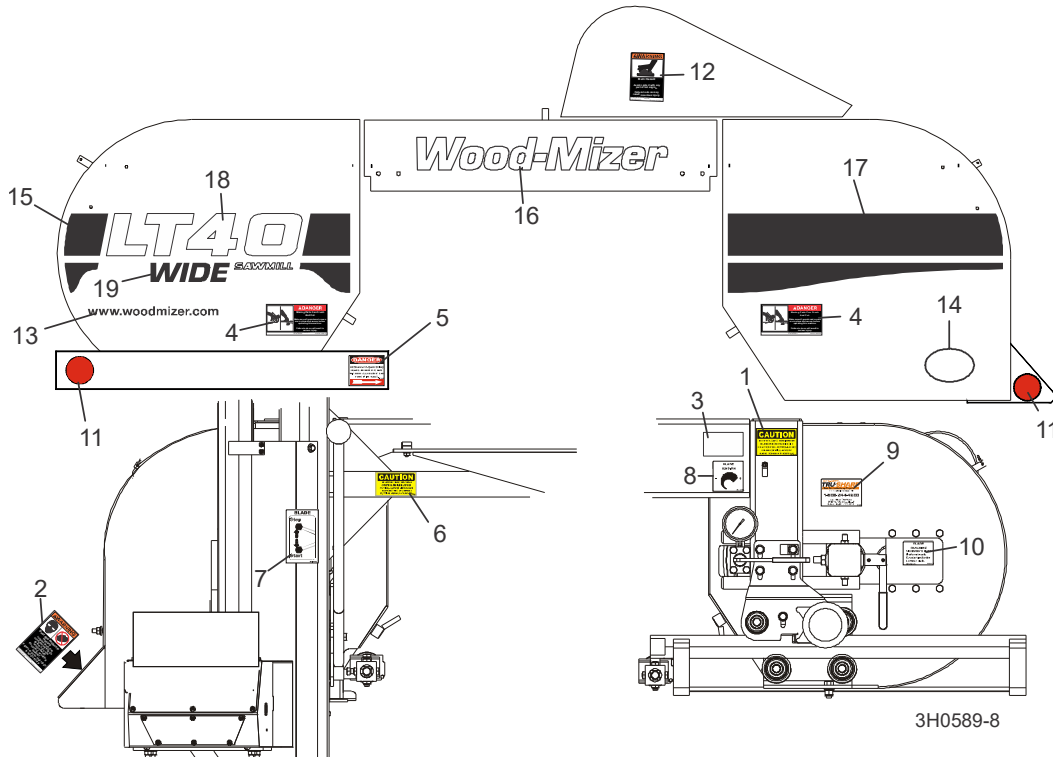


REF	PART #	QTY.
1-5	A11685	1
1	S11684	1
2	P11258	2
3	P11668	2
4	F05005-34	4
5	F05010-21	4

6	F05005-34	1
7	F05005-33	2
8	P07584	3
9	F05011-11	3
10	F05010-21	1
11	P07461	1
12	F05010-9	2
13	014642	1

14	014636	1
15	014100	1
16	016086	1
17	014113	1
18	R01885	7 ft.

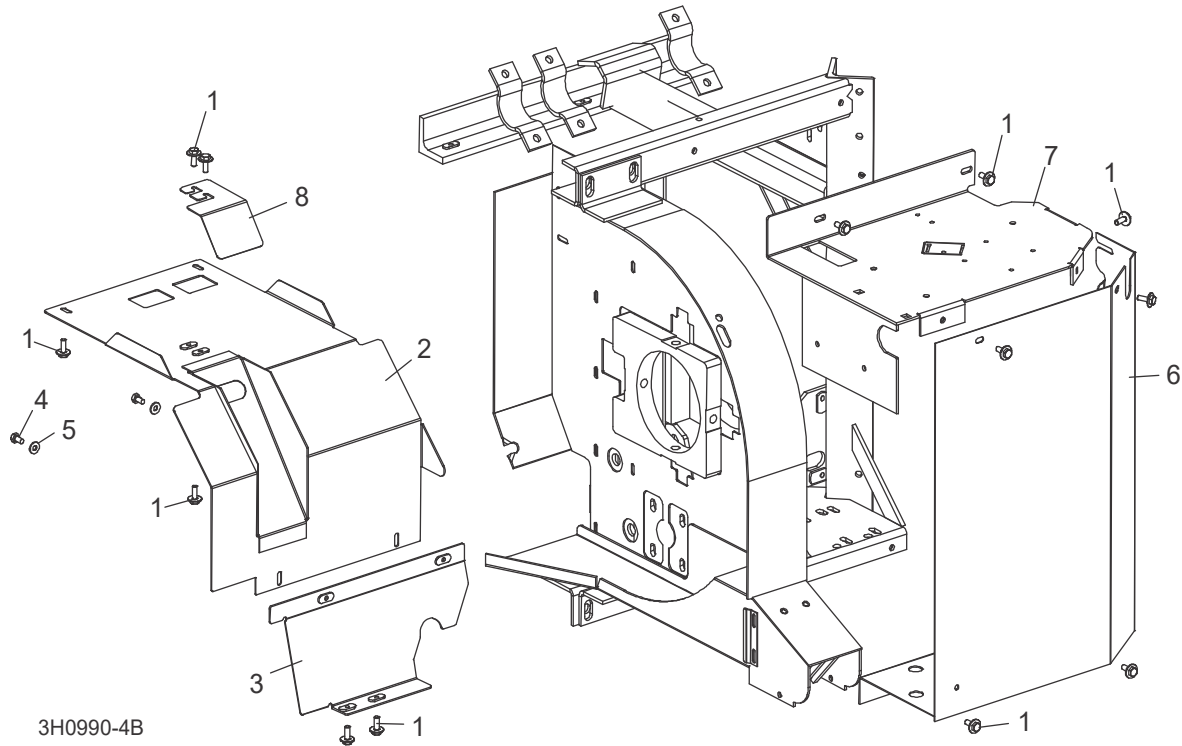
### 4.9 Étiquettes D'avertissement



REF	PART #	QTY.
1	P10147	1
2	P11754	1
3	P12373	1
4	033254	2
5	S11752	1
6	S11762	1
7	P11779	1
8	P11790	1
9	P12879	1
10	P11789	1
11	P07452	2
12	014419	1
13	003235	1
14	065582	1
15	065023	1
16	065025	1
17	065026	1
18	065024	1
19	074335	1

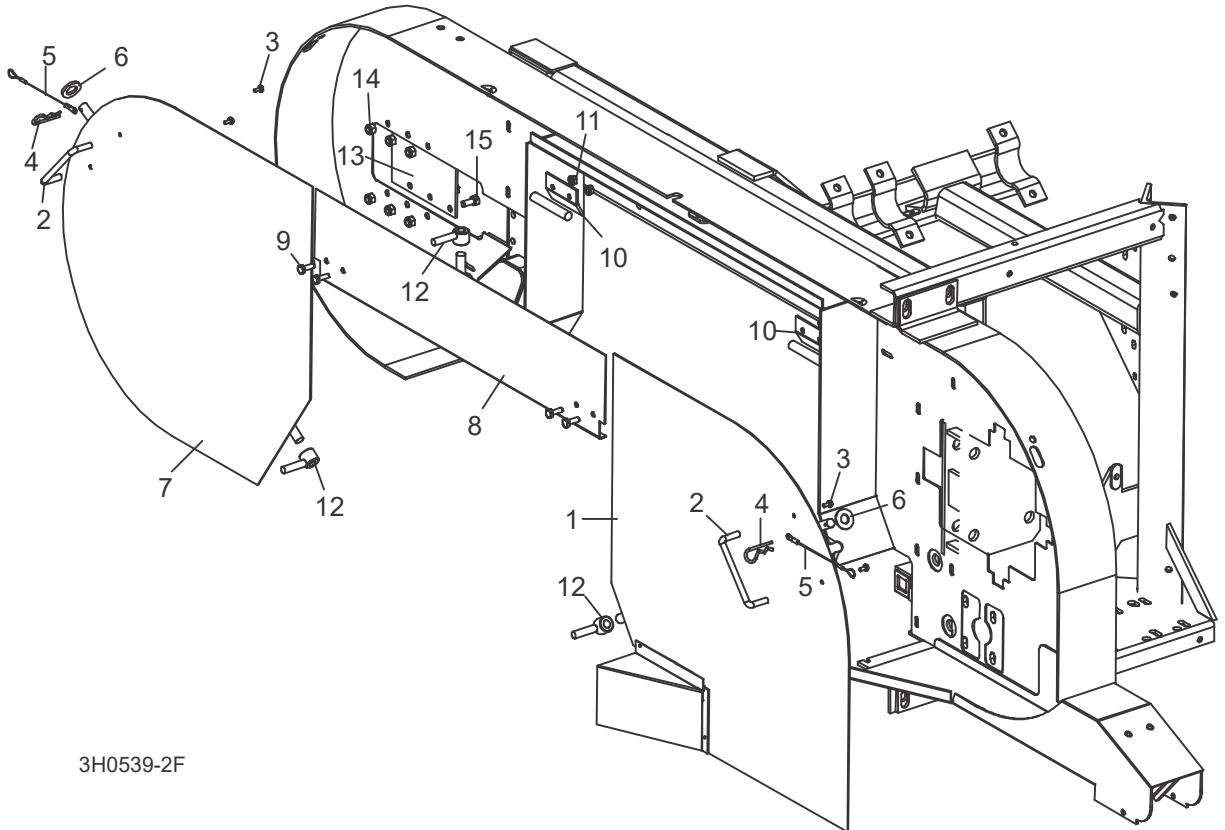


### 4.10 Couvercles De Carters De Courroies



REF	PART #	QTY.
1	F05005-134	11
2	006028	1
3	006025	1
4	F05005-15	2
5	F05011-11	2
6	059596	1
7	059599	1
8	074752	1

### 4.11 Couvercles De Carters De Lame



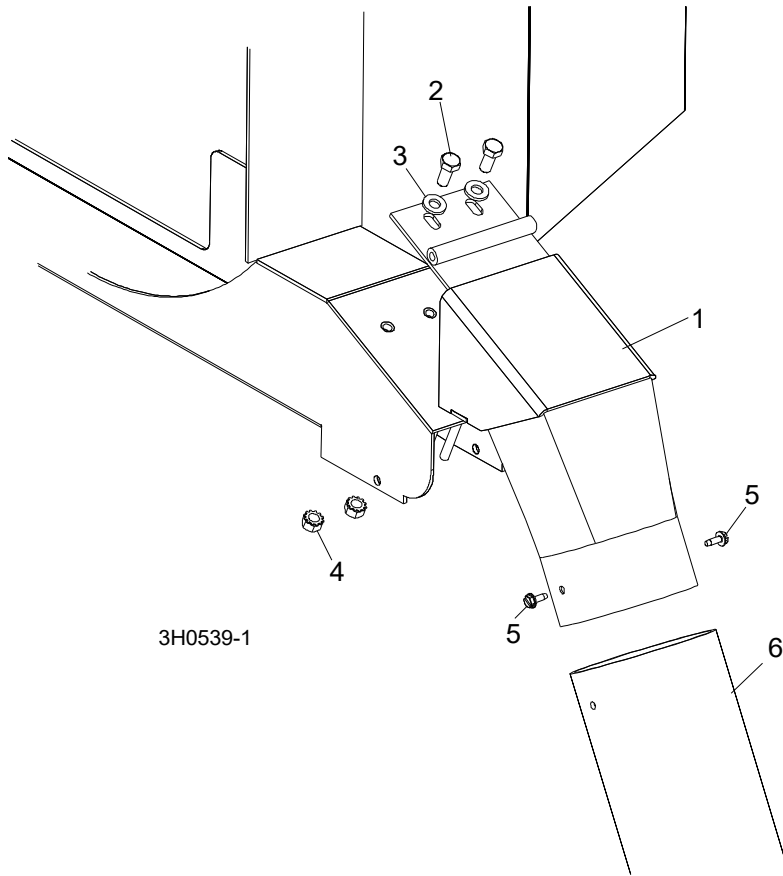
3H0539-2F

REF	PART #	QTY.
1-8	015937	1
1	----	1
2	P08065	1
3	F05015-8	2
4-5	A12812	1
4	P05059	1
5	016030	1
6	F05011-87	1

2-5, 6-7	A09419	1
7	----	1
2	P08065	1
3	F05015-8	2
	A12812	1
4	P05059	1
5	016030	1
8	F05011-87	1
8	W07409	1

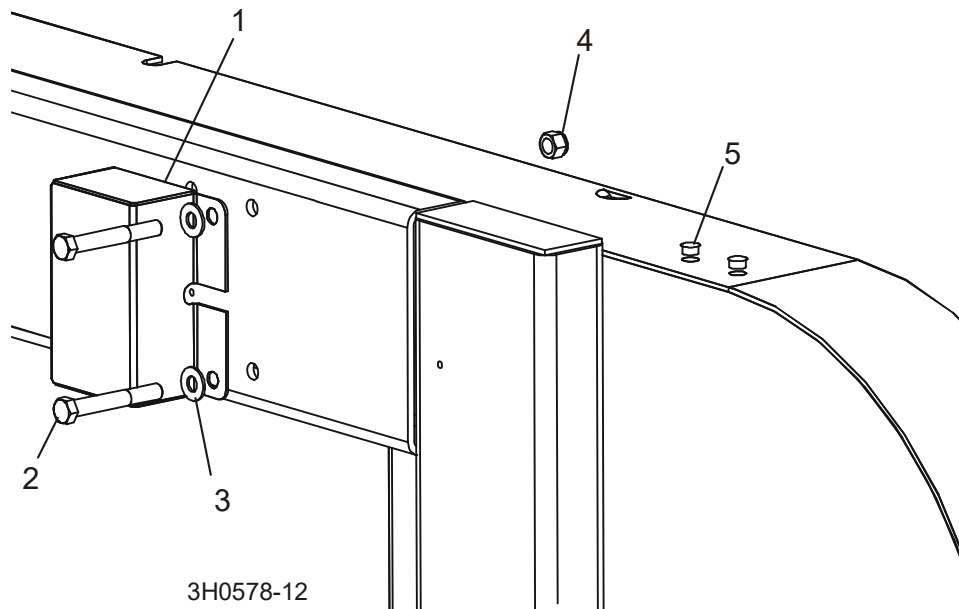
8	079509 (Wide)	1
9	F05005-1	18
10	S07522	2
11	F05010-9	4
12	021145	3
13	S04433	1
14	F05010-58	6
15	F05006-5	6

## 4.12 Chute À Bran De Scie



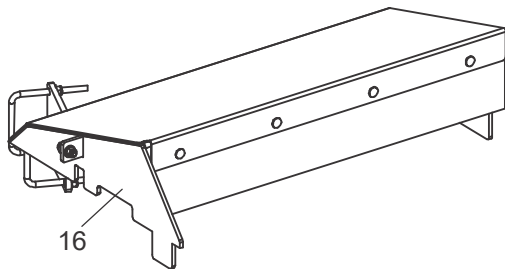
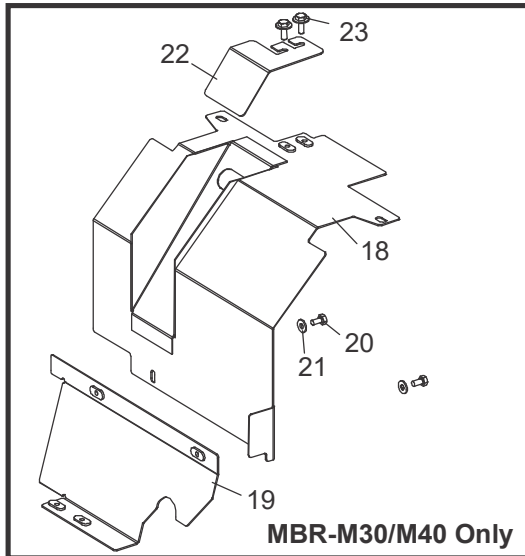
REF	PART #	QTY.
1	015466	1
2	F05006-5	2
3	F05011-17	2
4	F05010-20	2
5	F05015-7	2
6	016727	1

### 4.13 Boîte De Filage De L'écorceuse Et Obturateurs

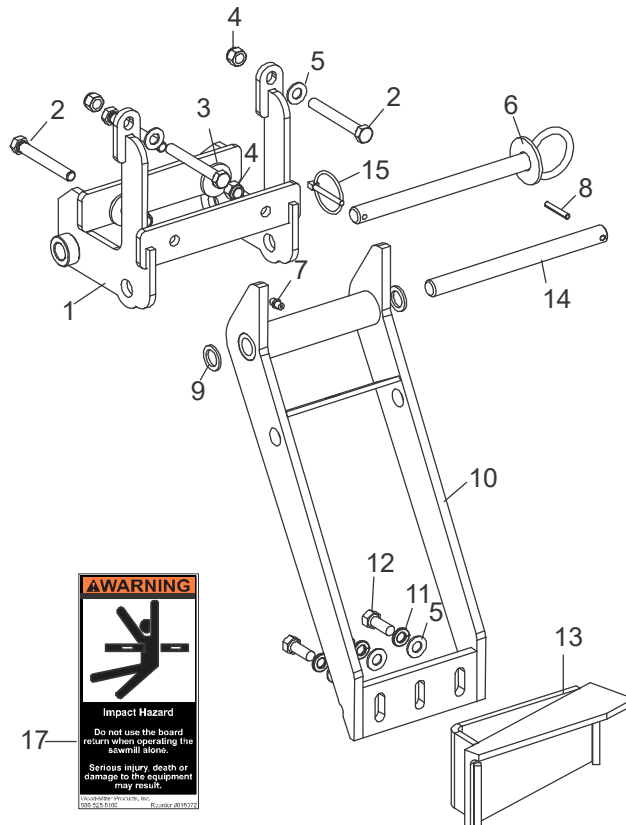


REF	PART #	QTY.
1	023616	1
2	F05007-29	2
3	F05011-3	2
4	F05010-10	2
5	014537	2

### 4.14 Éjecteur De Planches (Optionnel)



SM0331C



REF	PART #	QTY.
1-21	MBR-M30 <sup>1</sup>	1
	MBR-M40 <sup>2</sup>	1
1-21	MBR-A30 <sup>3</sup>	1
	MBR-A40 <sup>4</sup>	1
1-15	036693	1
1	036691	1
2	F05007-1	4
3	015336	2
4	F05010-10	4
5	F05011-3	5
6	036692	1
7	P05060	1
8	F05012-16	1
9	F05011-19	2

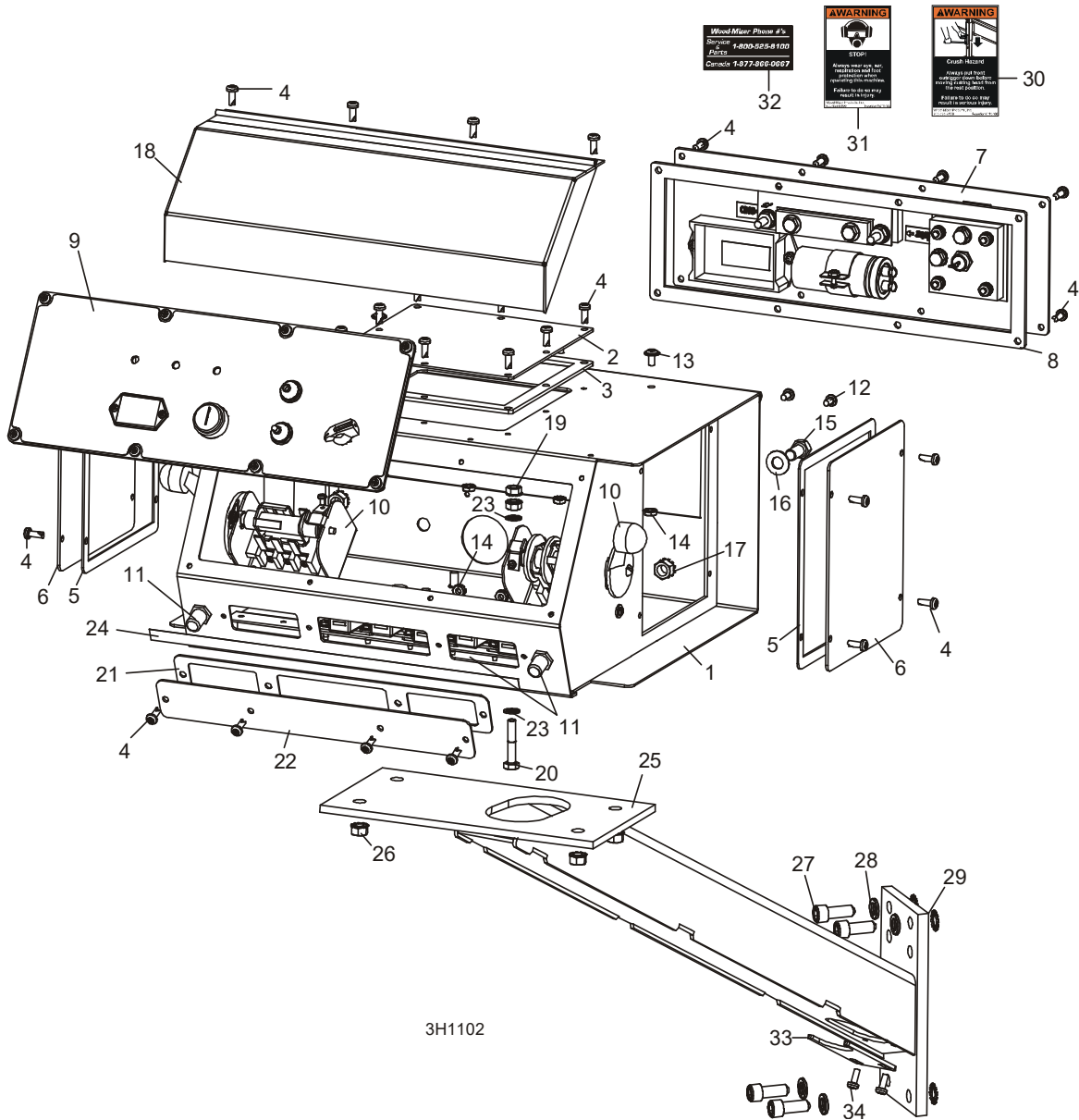
10	015210	1
11	F05011-4	3
12	F05007-7	3
13	015652	1
14	015225	1
15	017604	1
16	<a href="#">Voir Partie 8.13</a>	
17	016072-5	1
<b>Manual Seulement:</b>		
18	015657	1
19	015678	1
20	F05005-15	2
21	F05011-11	2

<sup>1</sup> LT30 Manual  
<sup>2</sup> LT40 Manual

<sup>3</sup> LT30 (L'option de l'embrayage automatique)  
<sup>4</sup> LT40 (L'option de l'embrayage automatique)

## PARTIE 5 SYSTÈME DE COMMANDE ET BATTERIE

### 5.1 Système De Commande



	015764	1
	036352	1
	069534	1
	069320	1
	069321	1
	069322	1

1	016135	1
2	065375	1
3	065376	1
4	F05015-17	32
5	015274	2
6	006473	2

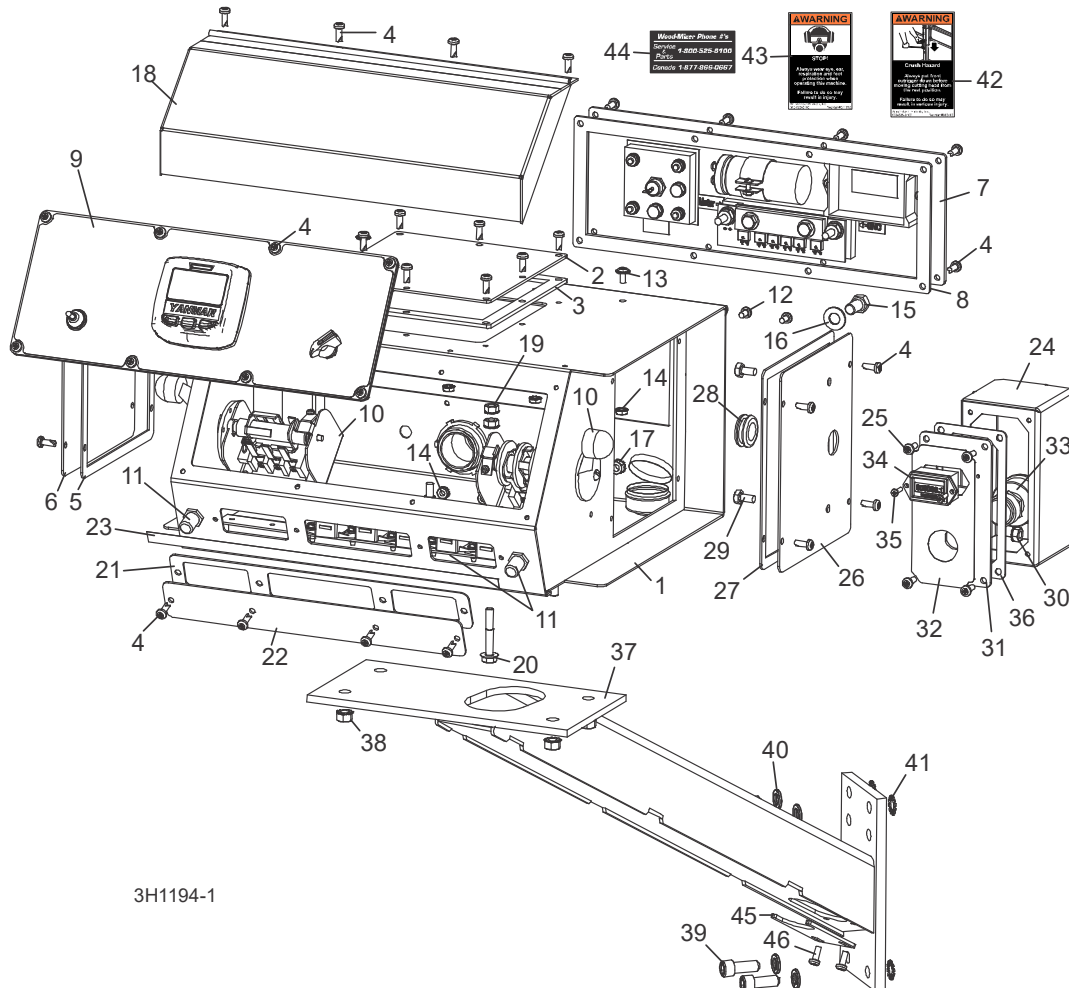
7	024458	1
	024396-1	1
	052294	1
	024387	1
	051571	1
	052363	1

<b>8</b>	015278	1
<b>9</b>	<a href="#">Voir Partie 5.5</a>	
<b>10</b>	<a href="#">Voir Partie 5.3</a>	
<b>11</b>	<a href="#">Voir Partie 5.4</a>	
<b>12</b>	F05004-3	2
<b>13</b>	F05004-148	4
<b>14</b>	F05010-14	6
<b>15</b>	F05007-27	2
<b>16</b>	F05011-3	2
<b>17</b>	F05010-19	2
<b>18</b>	015304	1
<b>19</b>	F05010-9	2
<b>20</b>	F05005-181	1
<b>21</b>	015266	1
<b>22</b>	015376	1
<b>23</b>	F05011-69	2
<b>24</b>	069349	1
<b>25</b>	015236	1
<b>26</b>	F05010-20	4
<b>27</b>	F05007-52	4
<b>28</b>	F05011-4	4
<b>29</b>	F05011-36	4
<b>30</b>	015400	1
<b>31</b>	S11753	1
<b>32</b>	S12117	1
<b>33</b>	036381	1
<b>34</b>	F05015-17	2

# 5 Système De Commande Et Batterie

## Système De Commande (Tier4 Seulement)

### 5.2 Système De Commande (Tier4 Seulement)



3H1194-1

REF	PART #	QTY.	
	015764	1	
	036352	1	
	073608	1	
1	016135	1	◆
2	065375	1	
3	065376	1	
4	F05015-17	32	
5	015274	1	
6	006473	1	
7	024458	1	
	024396-1	1	
	052294	1	
	024387	1	
	051571	1	

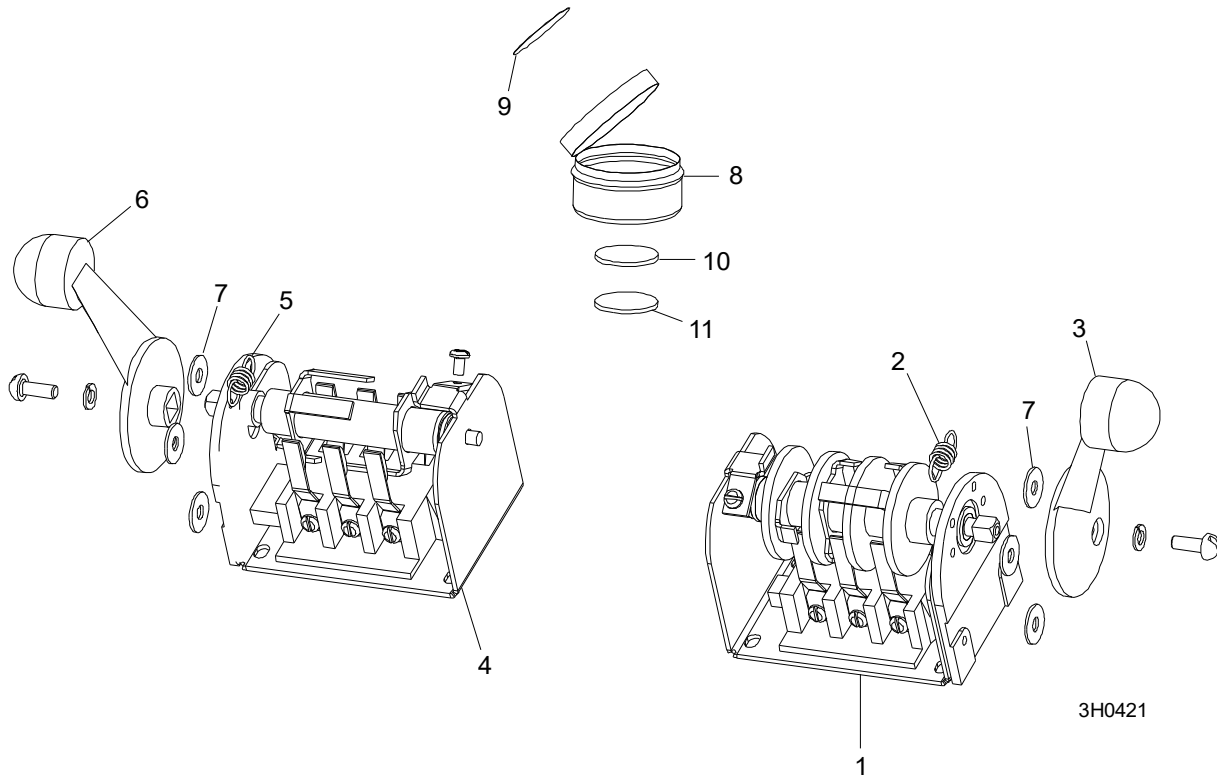
	052363	1	
8	015278	1	
9	<a href="#">Voir Partie 5.5</a>		
10	<a href="#">Voir Partie 5.3</a>		
11	<a href="#">Voir Partie 5.4</a>		
12	F05004-3	2	
13	F05004-148	4	
14	F05010-14	6	
15	F05007-27	2	
16	F05011-3	2	
17	F05010-19	1	
18	015304	1	
19	F05010-9	2	
20	F05005-181	1	
21	015266	1	
22	015376	1	

23	069349	1	
	073603	1	
24	078426	1	
25	F05015-17	4	
26	033495	1	
27	015274	1	
28	033475	1	
29	F05005-15	2	
30	F05010-9	2	
	073597	1	
31	073598	1	
32	073594	1	
33	P04350	1	
34	015401	1	
35	F05015-28	2	
36	033488	1	



<b>37</b>	015236	1	
<b>38</b>	F05010-20	4	
<b>39</b>	F05007-52	4	
<b>40</b>	F05011-4	4	
<b>41</b>	F05011-36	4	
<b>42</b>	015400	1	
<b>43</b>	S11753	1	
<b>44</b>	S12117	1	
<b>45</b>	036381	1	
<b>46</b>	F05015-17	2	

### 5.3 Commutateurs

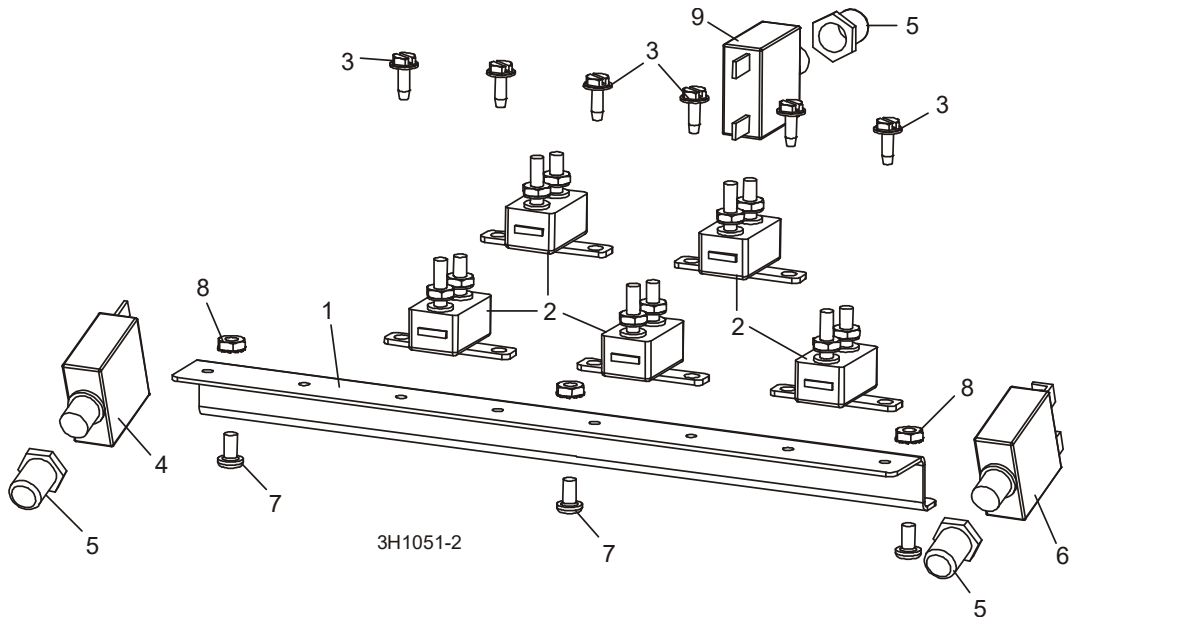


REF	PART #	QTY.
1-3	E20440	1
1	-----	1
2	P12570	1
3	P12500	1
4-6	E20439	1

4	-----	1
5	P12570	1
6	P12500	1
7	F05011-41	6
9-12	A20463	1
8	-----	1

9	P20467	1
10	-----	1
11	-----	1

## 5.4 Disjoncteurs



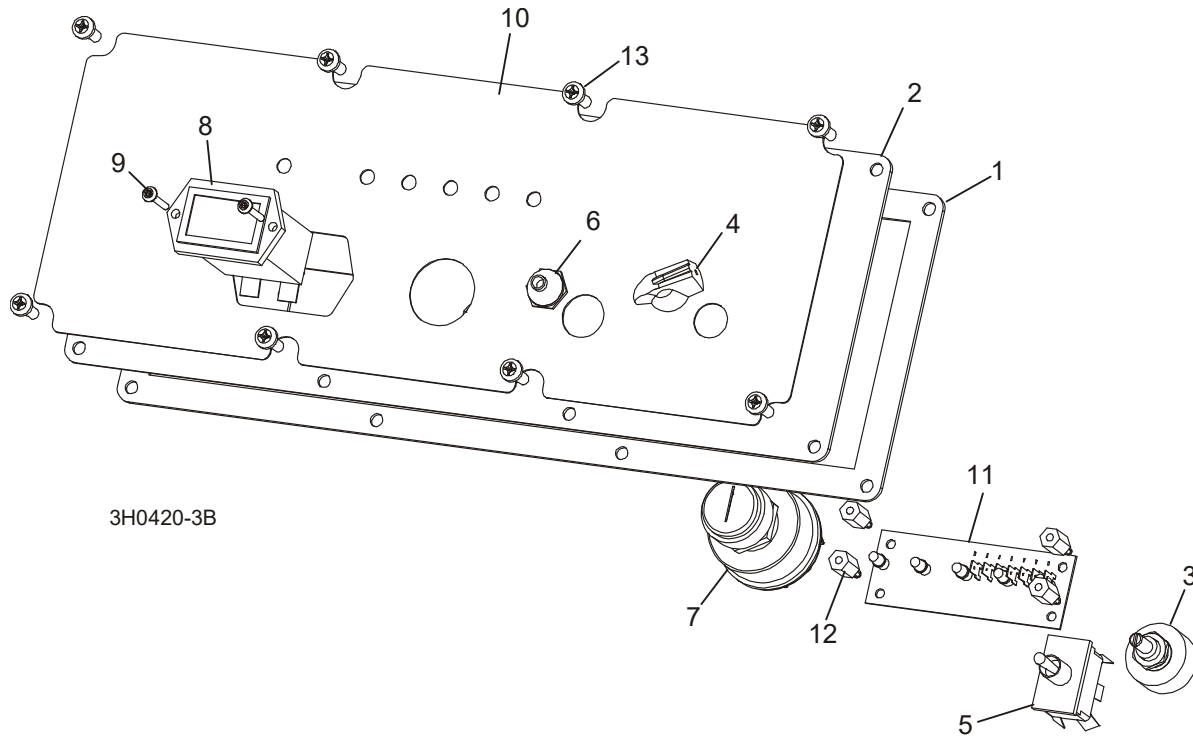
REF	PART #	QTY.
1-3	015621	1
1	052826	1
2	E20430	5
3	F05015-7	6

4	051981	1
5	021253	3
6	021256	1
7	F05004-3	3
8	F05010-14	3

9	024246 <sup>1</sup>	1
---	---------------------	---

<sup>1</sup> D35/D36

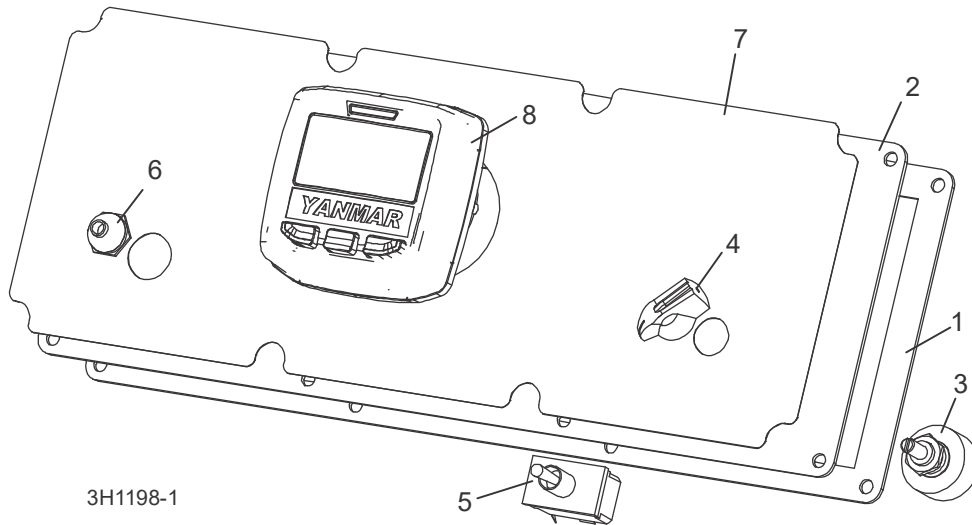
### 5.5 Panneau De Commande



REF	PART #	QTY.
	024210	1
	024211	1
<b>1</b>	015270	1
<b>2</b>	015302	1
<b>3</b>	024450-1	1
<b>4</b>	P06257	1
<b>5</b>	024200	1
<b>6</b>	P02575	1
<b>7</b>	P04350	1
<b>8</b>	015401	1
<b>9</b>	F05015-28	2
<b>10</b>	015271	1
	015269	1
<b>11</b>	015416	1
	015409	1
<b>12</b>	023147	4
<b>13</b>	F05015-17	8
	069531	1
	069303	1

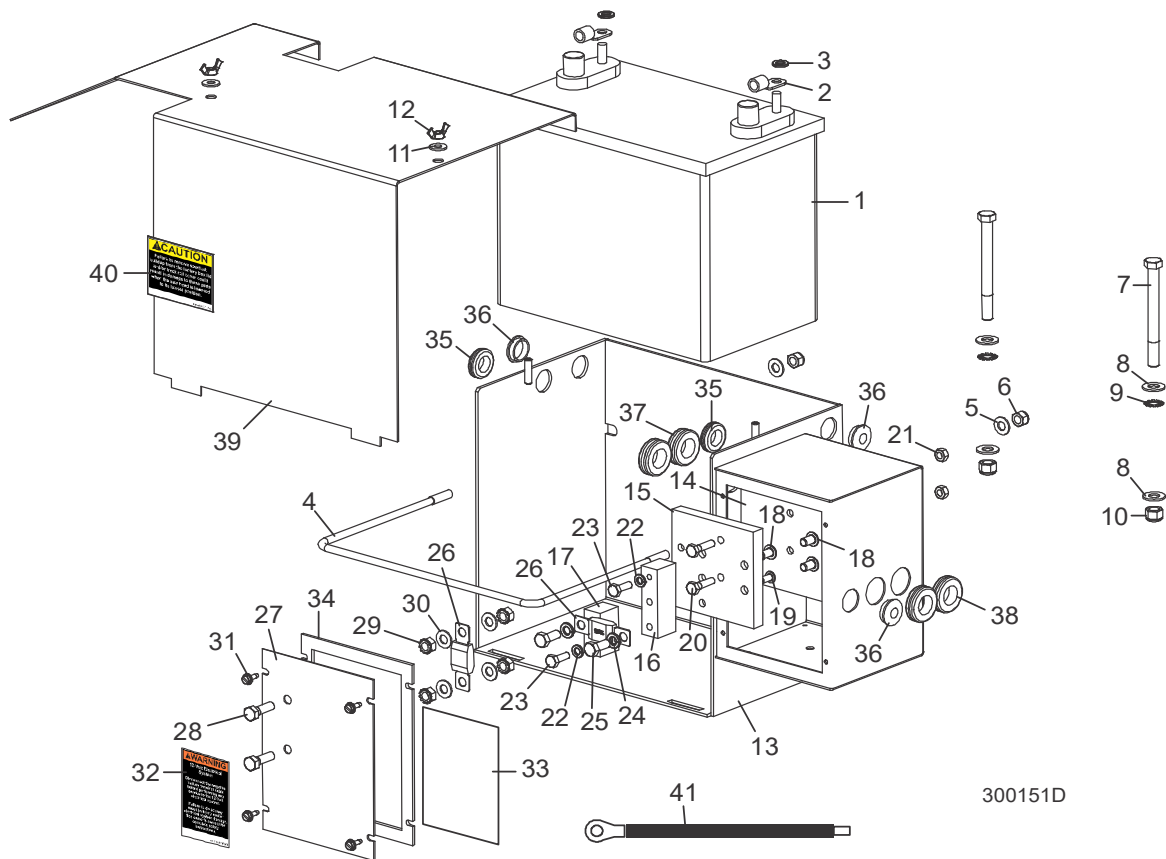
	069304	1
	050399	
	024402	
	050679	1
	050678	1
	R02374	41 in.
	R02374	42 in.

## 5.6 Panneau De Commande



REF	PART #	QTY.
	073610	1
1	015270	1
2	011298	1
3	024450	1
4	P06257	1
5	024200	1
6	P02575	1
7	073593	1
8	073601	1
	073601	1
	050399	1
	024402	1
	073619	1
	R02374	41 in.
	R02374	42 in.

**5.7 Boîte De Batterie**



REF	PART NUMBER	QTY.
1	061130 <sup>1</sup>	1
	P12315 <sup>2</sup>	1
2-38	014667	1
2	F05092-16	2
3	F05011-13	2
4	P09790	1
5	F05011-17	2
6	F05010-58	2
7	F05007-4	2
8	F05011-3	4
9	F05011-36	2
10	F05010-10	2
11	F05011-11	2
12	F05010-13	2
13	015472	1
14-25	006850	1

14	056999	1
15	056997	1
16	056996	1
17	056998	1
18	F05006-20	3
19	F05005-59	1
20	F05005-101	2
21	F05010-21	2
22	F05011-14	2
23	F05005-123	2
24	F05011-13	2
25	F05006-102	2
26	052370-150	2
27-30	006854	1
27	006851	1
28	F05006-1	2
29	F05010-20	4

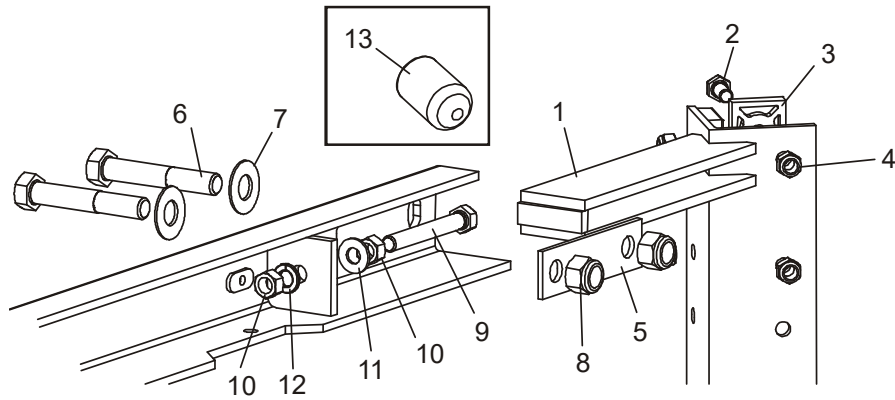
30	F05011-17	4
31	F05015-7	4
32	P10364	1
33	006865	1
34	050283	1
35	P11764	2
36	052496	3
37	074198	2
38	074199	2
39	015774	1
40	014774	1
41	036309	1

<sup>1</sup> G28

<sup>2</sup> D35/D36

## PARTIE 6 SYSTÈME DE MONTÉE

### 6.1 Fixation De La Tête De Sciage



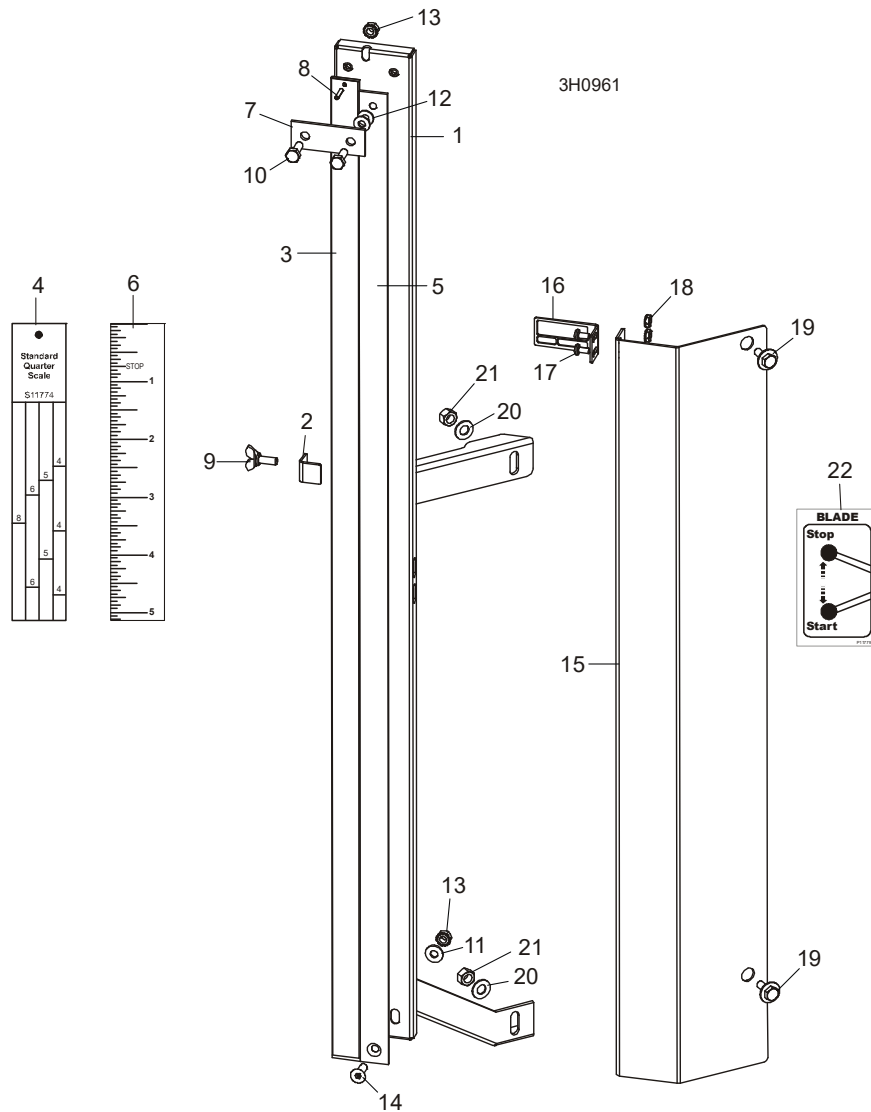
SM0080D

REF	PART #	QTY.
1	W04099	1
2	F05006-5	12
	F05006-93	4
3	M04096	6
	016241	2

4	F05010-58	16
5	S07935	2
6	F05008-61	4
7	F05011-2	4
8	F05010-8	4
9	F05007-17	2

10	F05010-1	4
11	F05011-3	2
12	F05011-4	2
13	017715	3

## 6.2 Indicateur De Hauteur Et Règles De Débitage



REF	PART #	QTY.
1-21	A12030	1
1-21	----	1
1-14	----	1
1-2	W11996	1
2	036666	1
3-4	S11989	1
4	S11774 <sup>1</sup>	1
	P12819 <sup>2</sup>	1
5-6	S11988	1

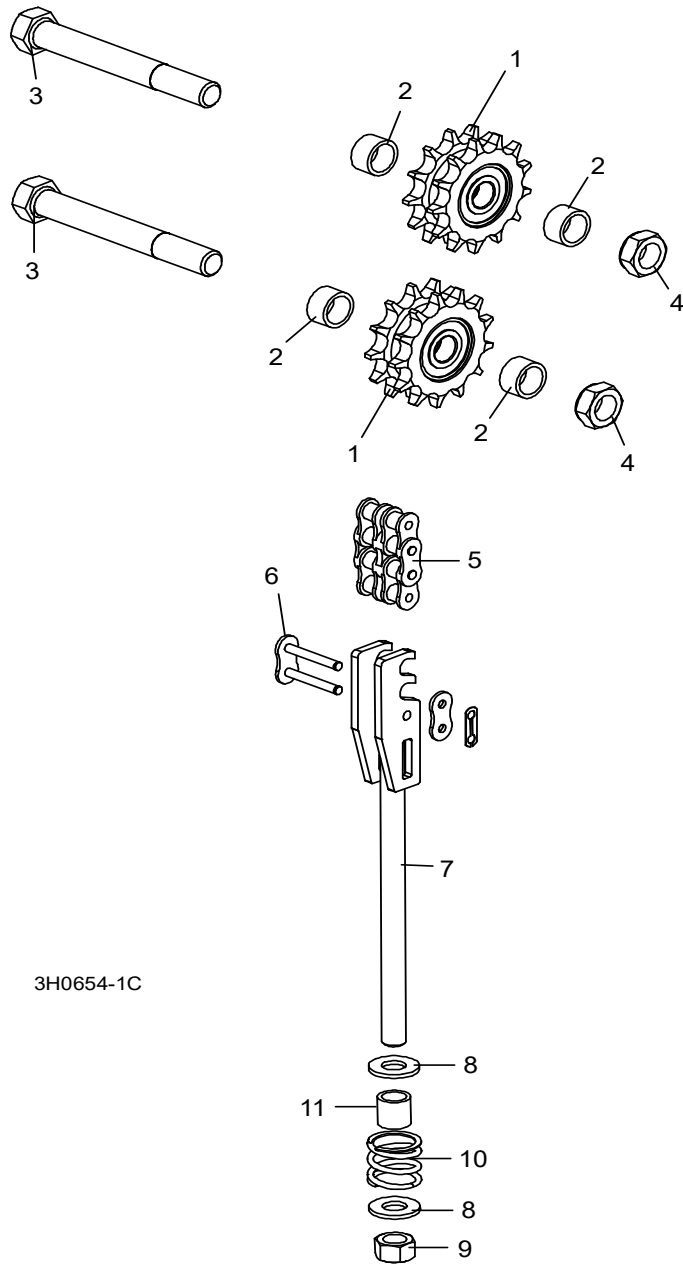
6	S11773	1
7	S04805	1
8	F05012-14	1
9	F05005-64	1
10	F05005-1	2
11	F05011-11	1
12	F05011-22	2
13	F05010-9	2
14	F05005-70	1
15-18	038591	1

15	038586	1
16	038585	1
17	F05004-3	2
18	F05010-14	2
19	F05005-134	2
20	F05011-17	2
21	F05010-6	2
22	P11779-5	1

<sup>1</sup> Standard  
<sup>2</sup> Pour Bois Dur



### 6.3 Chaines Et Pignons De Montee



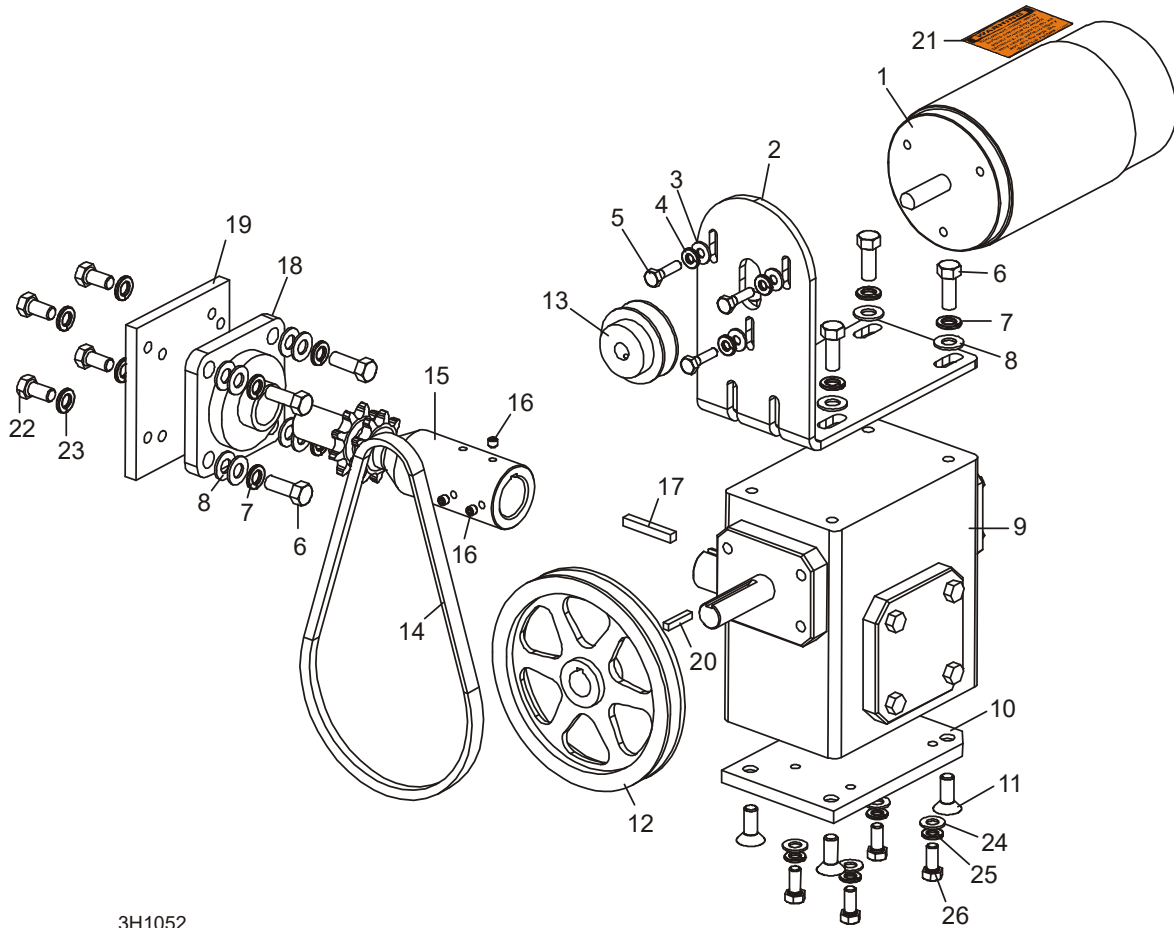
3H0654-1C

REF	PART #	QTY.
1-2	016020	1
1	016019	2
2	016018	4
3	F05009-6	2
4	F05010-96	2

5	015259	1
6	015258	2
7-11	015456	1
7	015188	1
8	F05011-2	2
9	F05010-8	1

10	016516	1
11	016515	1

### 6.4 Système D'entraînement De Montée



3H1052

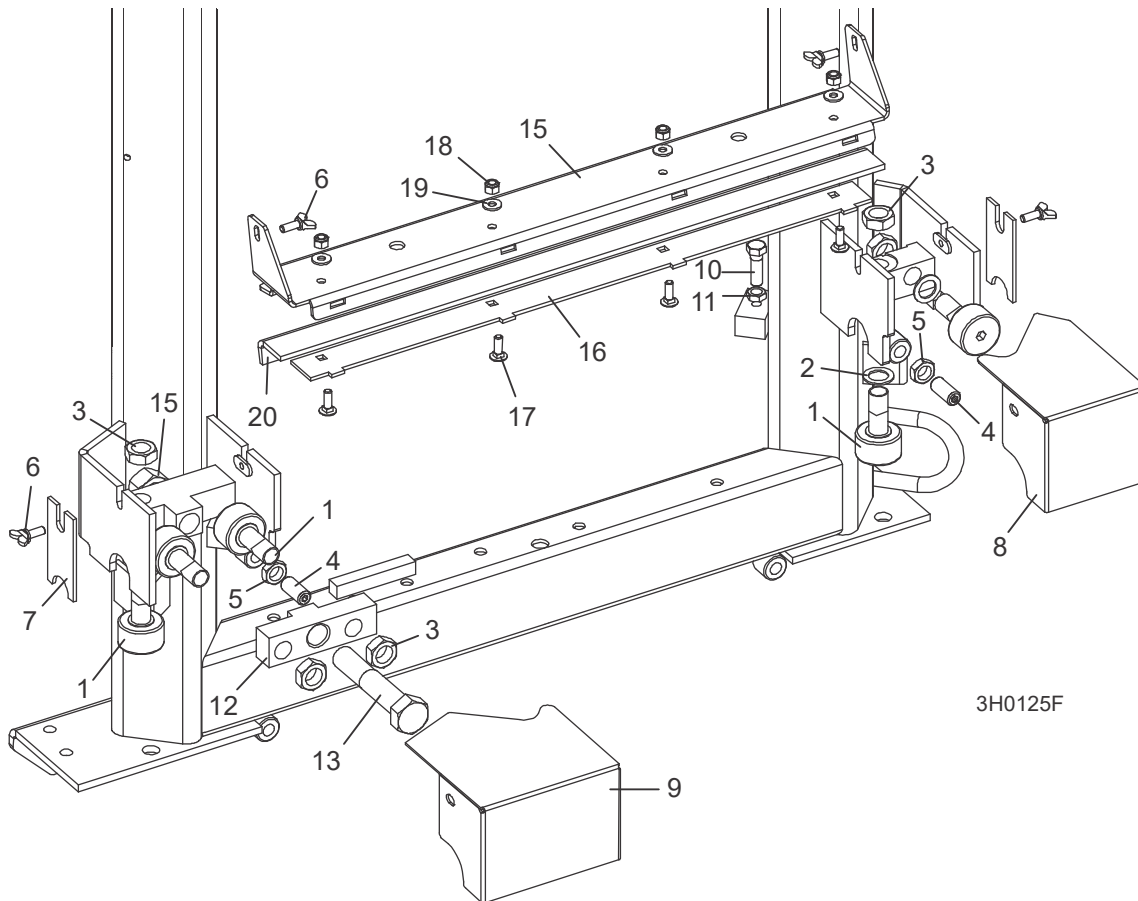
REF	PART #	QTY.
<b>1 - 21</b>	008722	1
<b>1</b>	053683	1
<b>2</b>	008721	1
<b>3</b>	F05011-11	3
<b>4</b>	F05011-14	3
<b>5</b>	F05005-101	3
<b>6</b>	F05007-7	8
<b>7</b>	F05011-4	8
<b>8</b>	F05011-3	12
<b>9</b>	074124	1
<b>10</b>	014158	1
<b>11</b>	F05007-64	4
<b>12</b>	014088	1

<b>13 - 14</b>	036213	1
<b>13</b>	036204	1
<b>14</b>	014089	1
<b>15 - 17</b>	016094	1
<b>15</b>	016031	1
<b>16</b>	F05005-105	3
<b>17</b>	S04124	1
<b>18</b>	014090	1
<b>19</b>	014108	1
<b>20</b>	S31027	1
<b>21</b>	024431-5	1
<b>22</b>	F05007-27	4
<b>23</b>	F05011-4	4
<b>24</b>	F05011-17	4

<b>25</b>	F05011-13	4
<b>26</b>	F05006-102	4

## PARTIE 7 SYSTÈME D'ENTRAÎNEMENT ET PALIERS

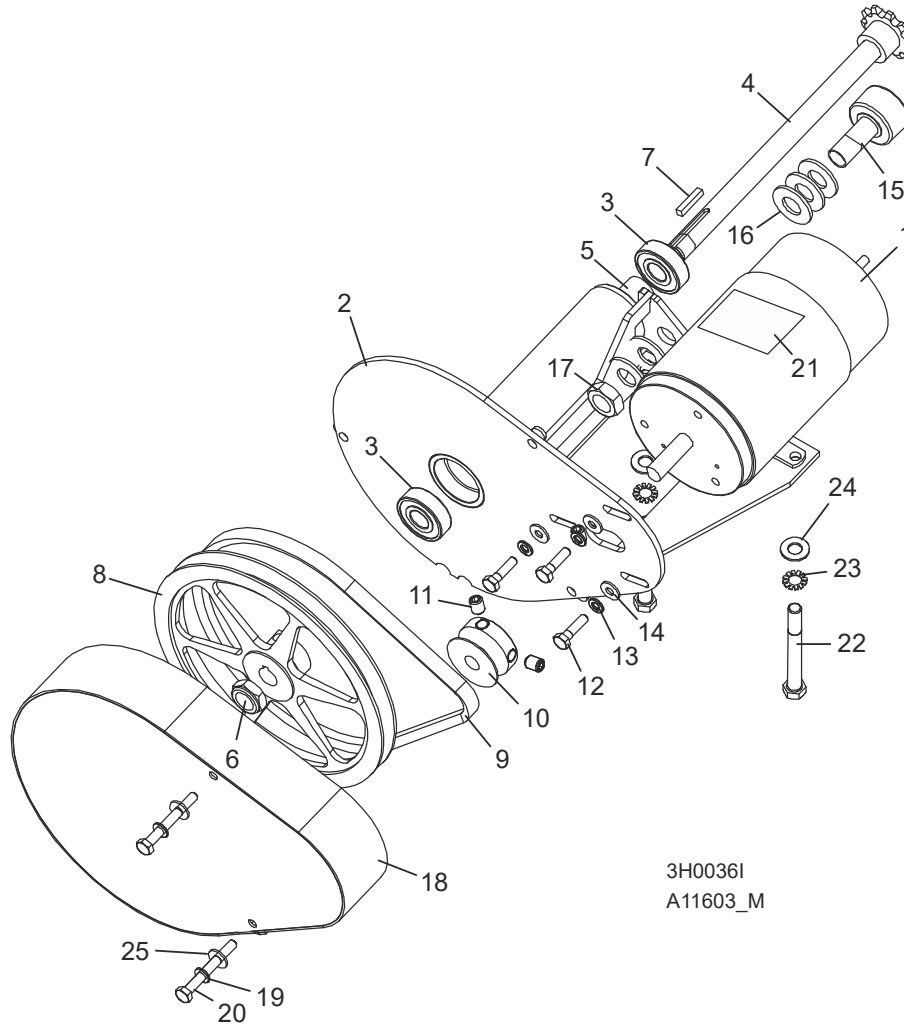
### 7.1 Paliers de Rail Superieur et Grattoirs



REF	PART #	QTY.	
1	012797	5	
2	016510	2	
3	F05010-11	5	
4	F05008-5	2	
5	F05010-31	2	
6	F05005-64	4	
7	M04113	2	
8	012999	1	
9	016285	1	
10	F05007-2	2	
11	F05010-29	2	
12	016501	1	
13	F05013-3	1	

14	F05010-80	1	
	110612	1	
15	110609	1	◆
16	110611	1	◆
17	F05005-113	4	
18	F05010-69	4	
19	F05011-11	4	
20	S09915	1	

## 7.2 Système D'entraînement

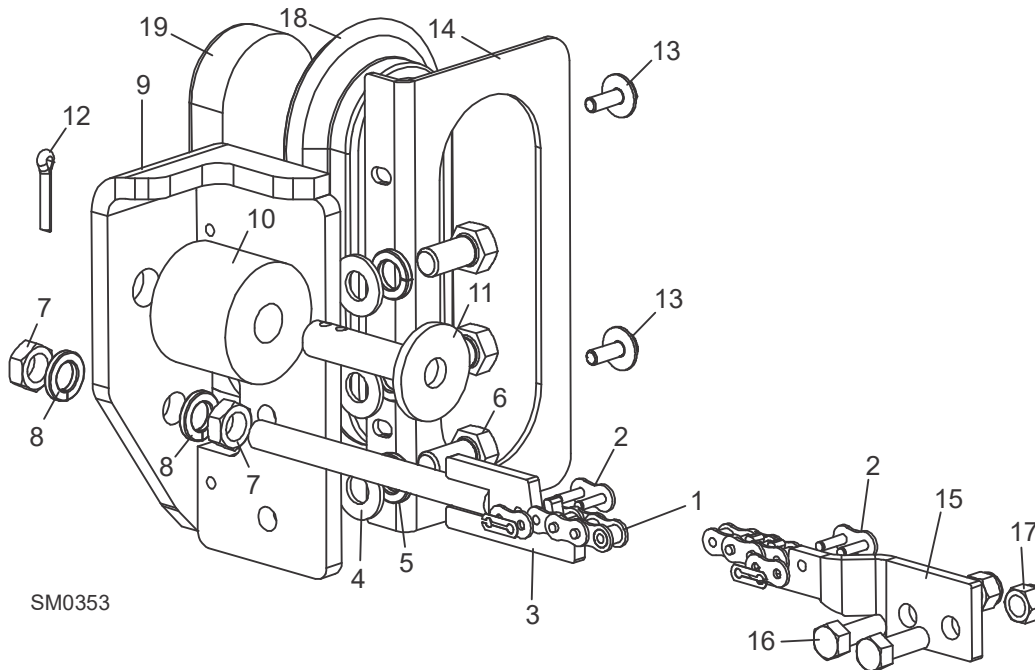


REF	PART #	QTY.
<b>1-22</b>	A11603	1
<b>1</b>	006747	1
<b>2</b>	066991	1
<b>3</b>	P06030-1	2
<b>4</b>	079798	1
<b>5</b>	079799	1
<b>6</b>	F05010-101	1
<b>7</b>	S31027	1
<b>8</b>	P04343	1
<b>9</b>	P04031	1
<b>10</b>	S09579	1

<b>11</b>	F05007-12	2
<b>12</b>	F05005-101	3
<b>13</b>	F05011-14	3
<b>14</b>	F05011-11	3
<b>15</b>	012797	1
<b>16</b>	F05011-5	6
<b>17</b>	F05010-11	1
<b>18</b>	W11613	1
<b>19</b>	F05011-14	2
<b>20</b>	F05005-7	2
<b>21</b>	024431	1
<b>22</b>	F05007-6	2
<b>23</b>	F05011-36	2

<b>24</b>	F05011-3	2
<b>25</b>	F05011-11	2

### 7.3 Chaîne D'entraînement Et Butoir

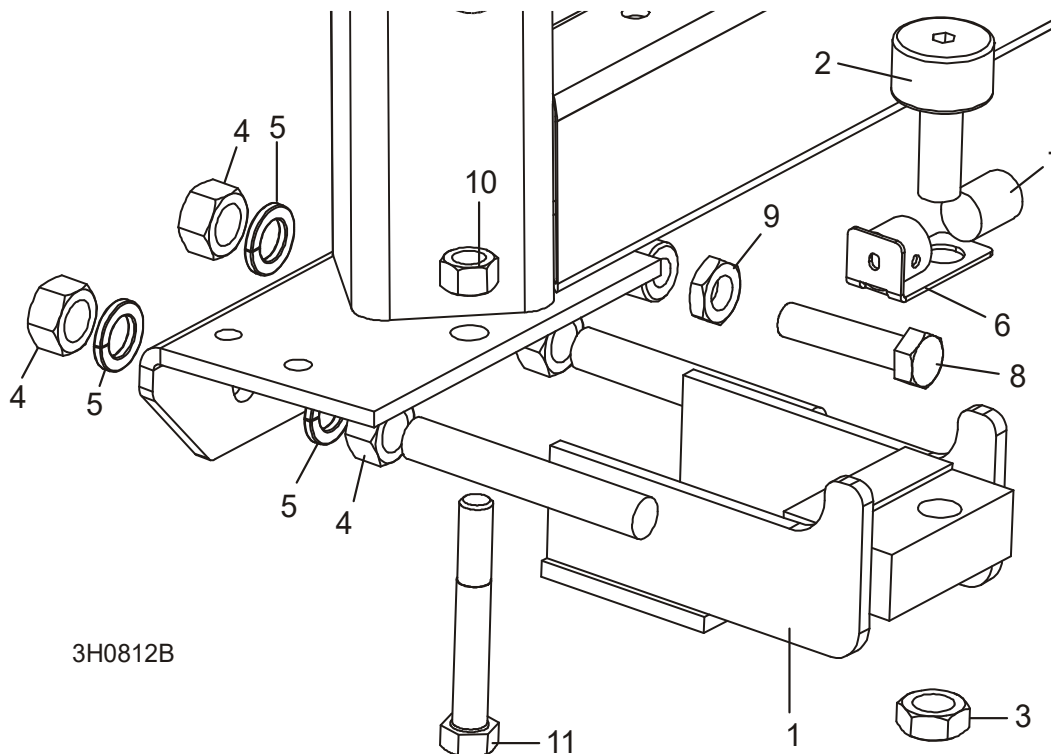


REF	PART #	QTY.
1	014744	1
	014745	1
2	P04200	2
3	015721	1
4	F05011-2	3
5	F05011-9	3
6	F05008-128	3

7	F05010-16	2
8	F05011-9	2
9	006686	1
10-12	K09630	2
10	P12165	1
11	W09293	1
12	F05012-21	1
13	F05005-134	2

14	057882	1
15	015008	1
16	F05007-7	2
17	F05010-10	2
18	006688	1
19	006391	1

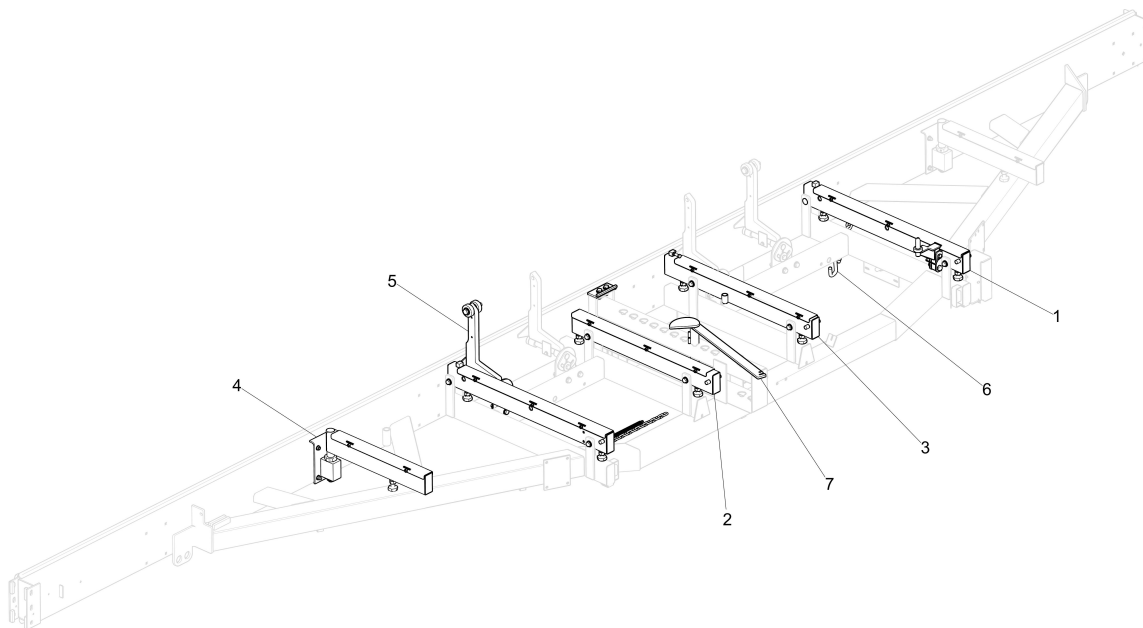
## 7.4 Paliers De Rail Inférieur



REF	PART #	QTY.
1-7	012995	2
1	----	1
2	012797	1
3	F05010-11	1
4	F05010-5	4
5	F05011-118	4
6	033374	1
7	033375	1
8	F05008-2	2
9	F05010-31	2
10	F05010-3	2
11	F05008-61	2

## PARTIE 8 ENSEMBLE CHÂSSIS DE BANC

### 8.1 Châssis Du Banc

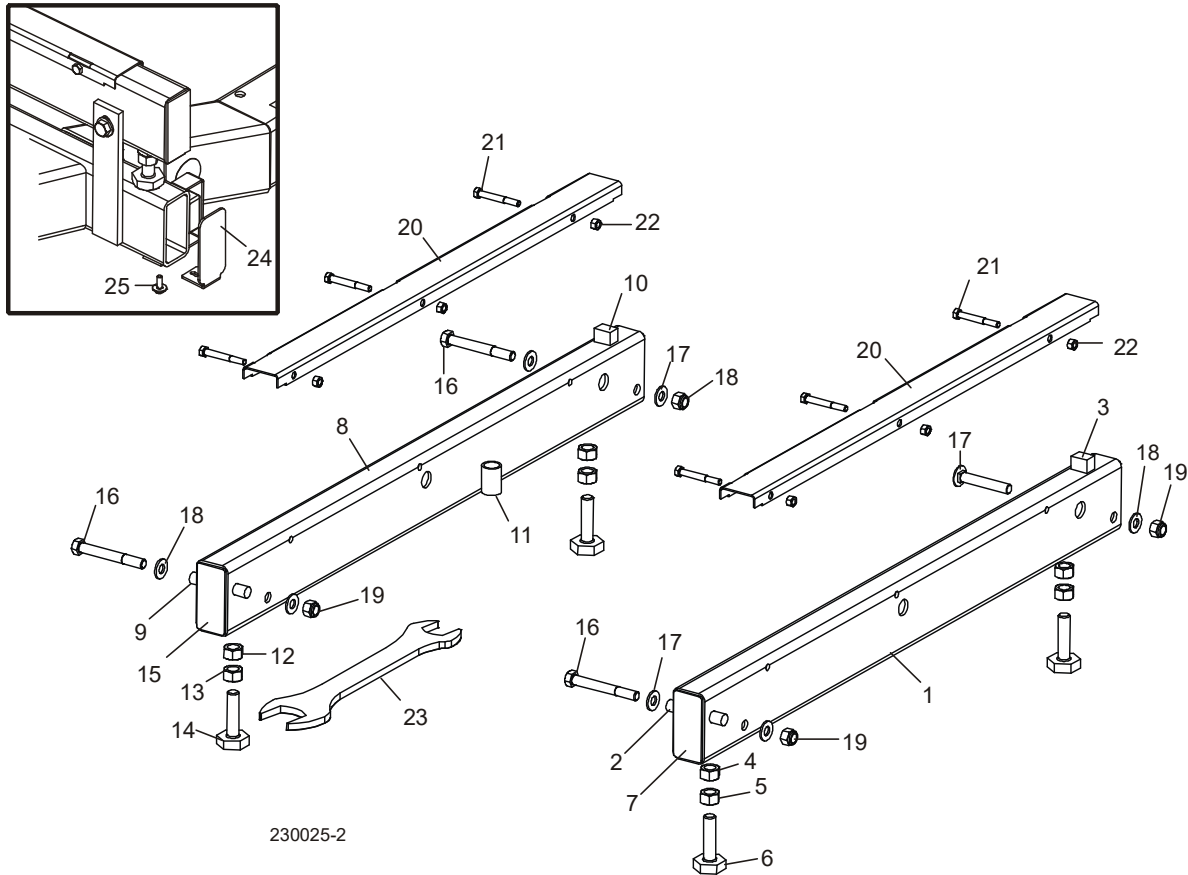


TD014666  
TD014666

REF	PART #	QTY.
	014666	1
1	Rails Avant Et Arrière Du Banc De Grume <a href="#">Voir Partie 8.2</a>	1
2	Rail Centre-avant Du Banc De Grume <a href="#">Voir Partie 8.3</a>	1
3	Rail Centre-arrière Du Banc De Grume <a href="#">Voir Partie 8.4</a>	1

4	Support De Grume Mobile <a href="#">Voir Partie 8.6</a>	11
5	Cales À Billes (Non Hydrauliques) <a href="#">Voir Partie 8.7</a>	4
6	Chaîne De Sécurité <a href="#">Voir Partie 8.8</a>	1
7	Serre-bille <a href="#">Voir Partie 8.11</a>	1

## 8.2 Rails Avant Et Arrière Du Banc De Grume



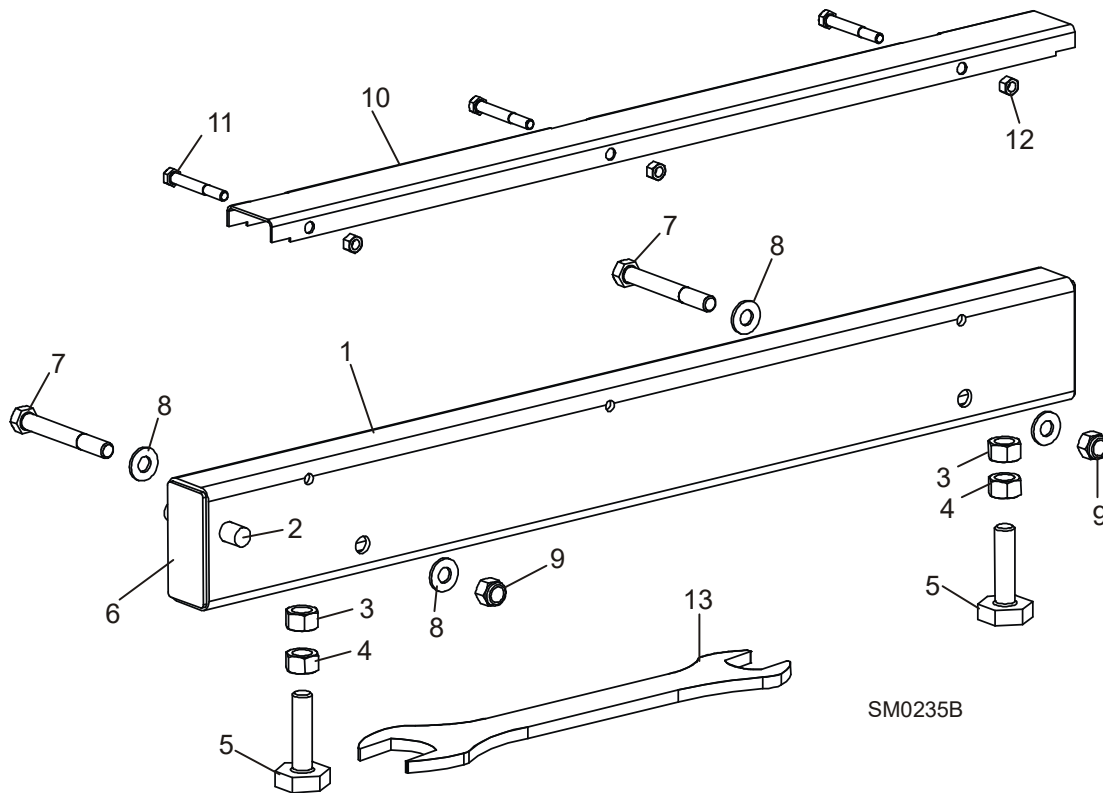
230025-2

REF	PART #	QTY.
1-7	A09774	1
1	----	1
2	S04030	1
3	S09034	1
4	F05010-84	2
5	F05010-5	2
6	S13006	2
7	----	2
1-15	A09564	1
8	----	1
9	S04030	1
10	S09034	1
11	----	1
12	F05010-84	2
13	F05010-5	2
14	S13006	2

15	----	2
16	F05008-78	3
17	F05008-94	1
18	F05011-2	7
19	F05010-8	4
20	016898	2
21	F05006-10	6
22	F05010-6	6
23	015970	1
24	038843	2
25	F05005-134	2

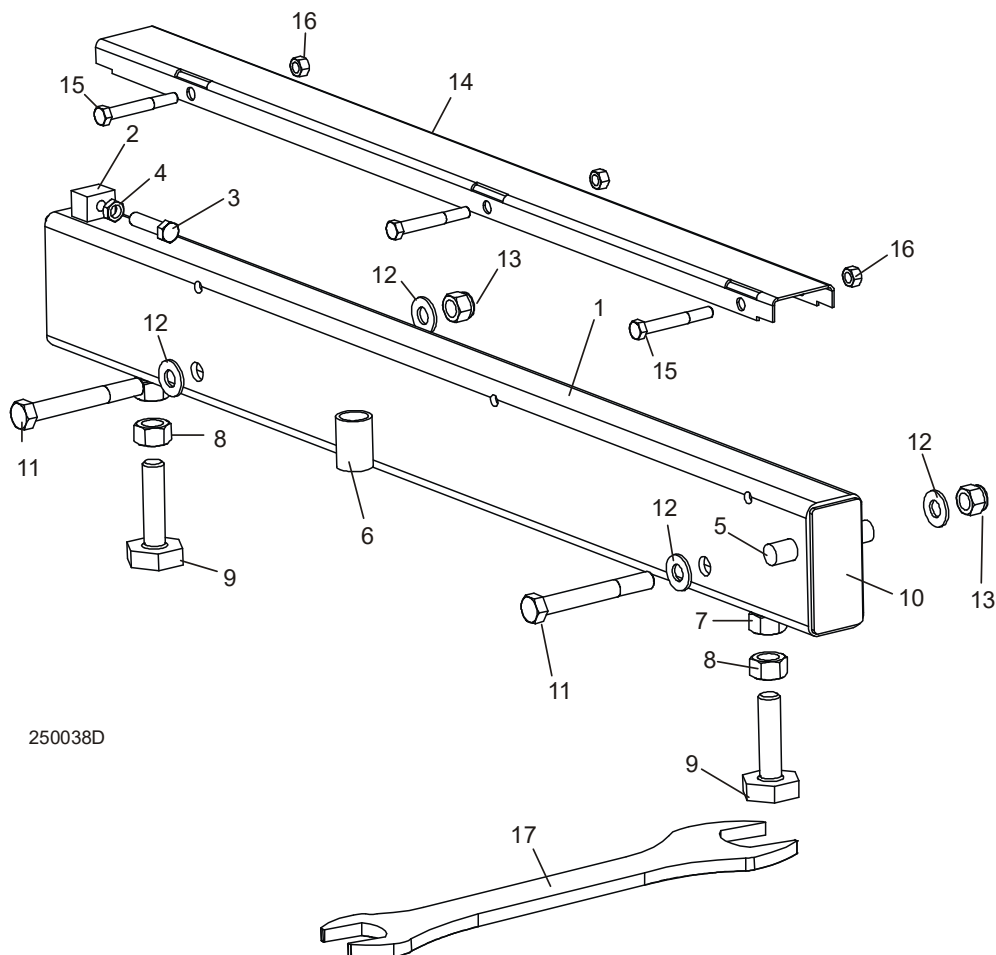


### 8.3 Rail Centre-avant Du Banc De Grume



REF	PART #	QTY.
1-6	A09566	1
1	----	1
2	S04030	1
3	F05010-84	2
4	F05010-5	2
5	S13006	2
6	----	2
7	F05008-78	2
8	F05011-2	4
9	F05010-8	2
10-12	A09956	1
10	----	1
11	F05006-10	3
12	F05010-6	3
13	015970	1

### 8.4 Rail Centre-arrière Du Banc De Grume

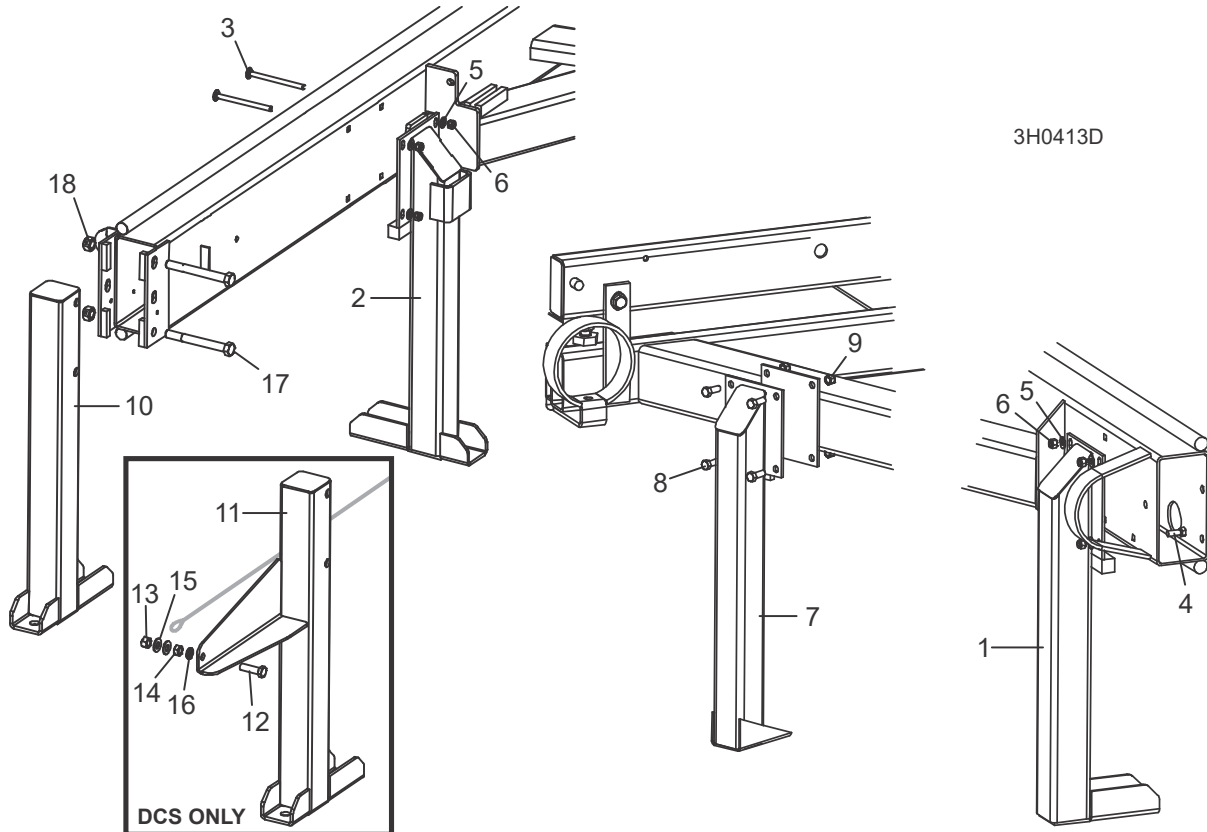


250038D

REF	PART #	QTY.
1-10	A09565	1
1	014640	1
2	014639	1
3	F05007-17	1
4	F05010-29	1
5	S04030	1
6	S09334	1
7	F05010-84	2
8	F05010-5	2
9	S13006	2
10	S04058	2
11	F05008-78	2
12	F05011-2	4

13	F05010-8	2
12-14	A09956	1
14	-----	1
15	F05006-10	3
16	F05010-6	3
17	015970	1

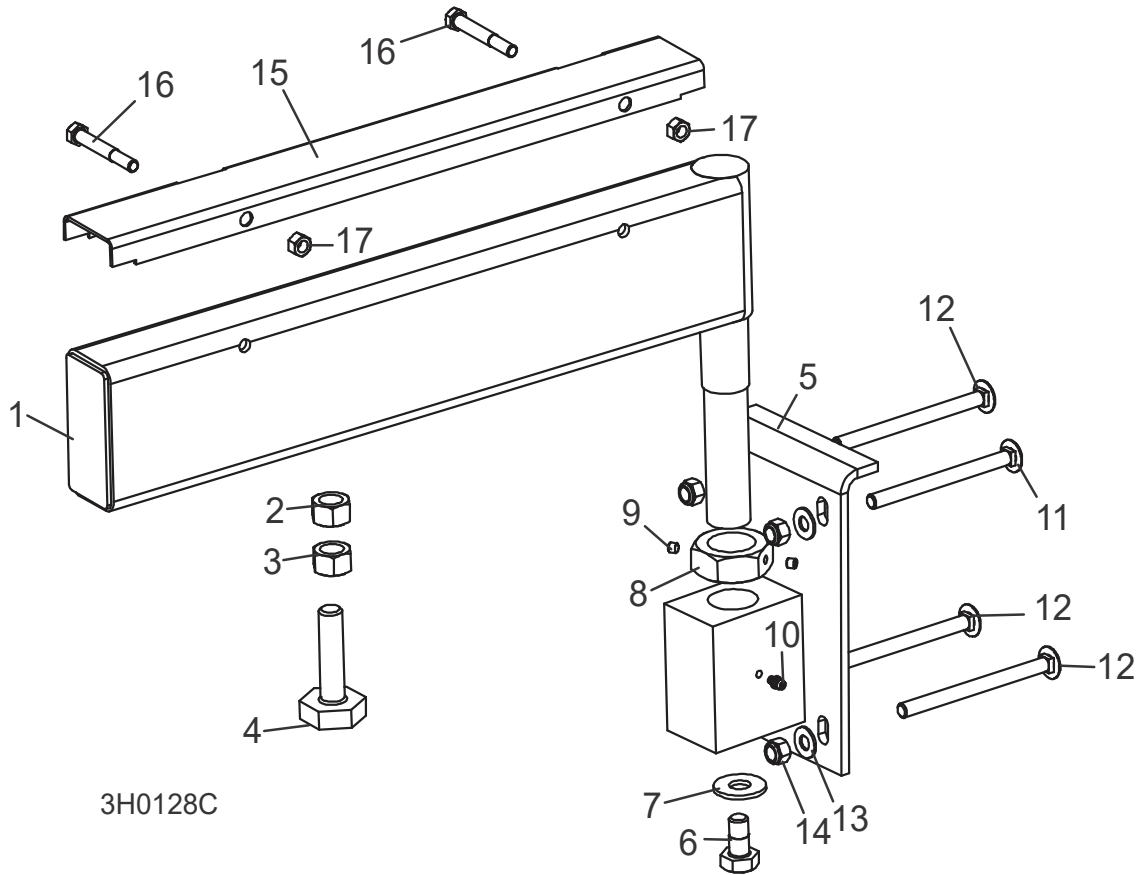
## 8.5 Appuis Fixes



REF	PART #	QTY.
1	W09513	1/3
2	015091	1
3	F05007-113	8/12
4	F05007-2	4
5	F05011-3	8/16
6	F05010-10	8/16
7	W09515	2
8	F05007-2	8
9	F05010-10	8
10	W09517	1
11	065935	1
12	F05008-88	1
13	F05010-3	1
14	F05010-35	1
15	F05011-2	2
16	F05011-9	1

17	F05009-11	2
18	F05010-4	2

### 8.6 Support De Grume Mobile



3H0128C

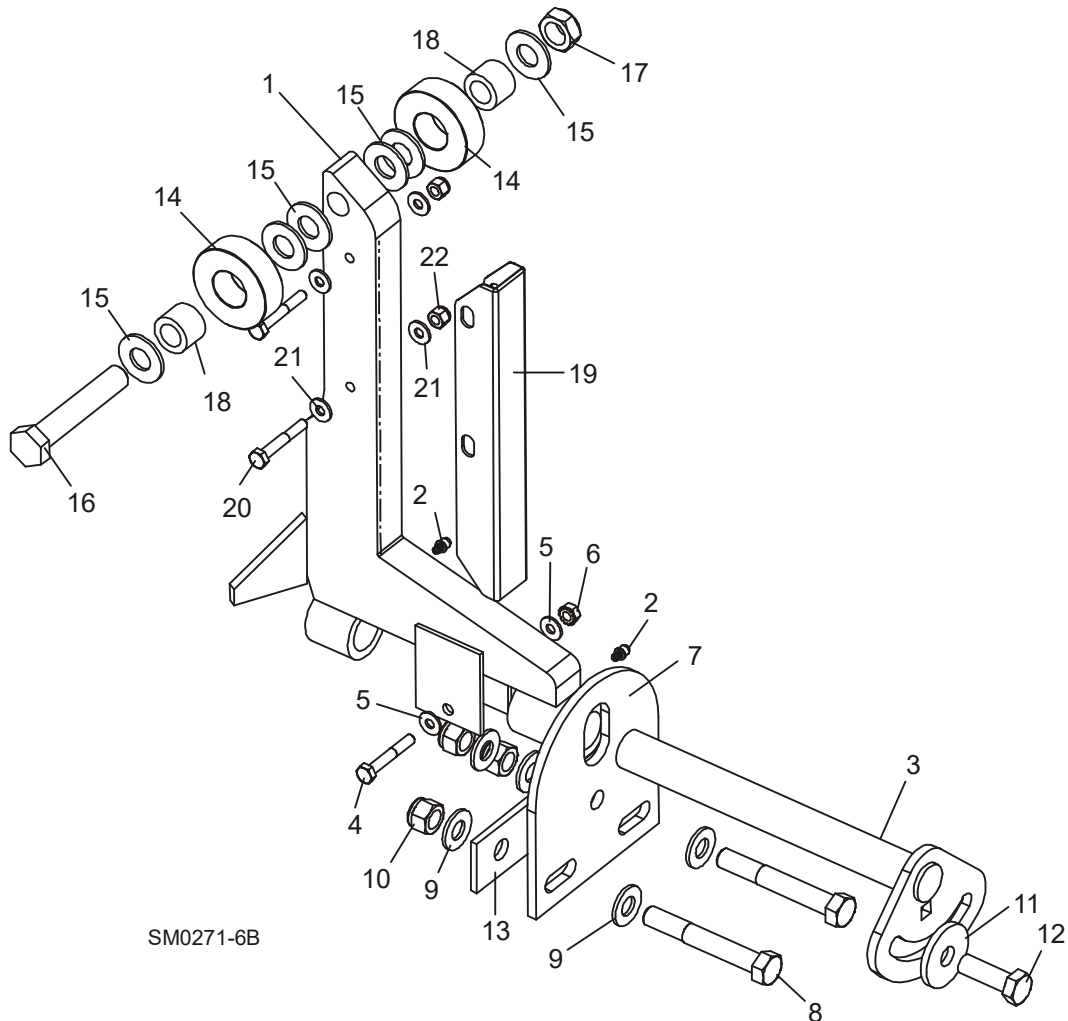
REF	PART #	QTY.
1-10	A13015 <sup>1</sup>	2
	012993 <sup>2</sup>	2
1-4	----	1
	----	1
2	F05010-84	2
3	F05010-5	2
4	S13006	2
5	W13090	1
6	F05008-50	1
7	F05011-52	1
8	S13016	1
9	F05005-42	2
10	P04107	1
11	F05007-114	2

12	F05007-113	6
13	F05011-3	8
14	F05010-10	8
15-17	017710 <sup>1</sup>	2
	015926 <sup>2</sup>	2
15	S13012 <sup>1</sup>	1
	012994 <sup>2</sup>	1
16	F05006-10	2
17	F05010-6	2

<sup>1</sup> LT40

<sup>2</sup> LT30

### 8.7 Cales À Billes (Non Hydrauliques)

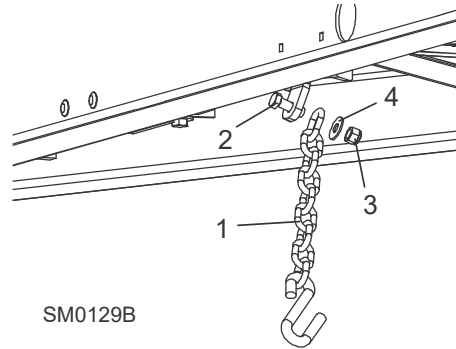


SM0271-6B

1-2	015235	4
2	P04107	2
3-13	016559	4
3	016544	1
4	F05005-4	1
5	F05011-11	2
6	F05010-9	1
7	016555	1
8	F05008-61	2
9	F05011-2	2
10	F05010-8	3
11	014632	1
12	F05008-33	1

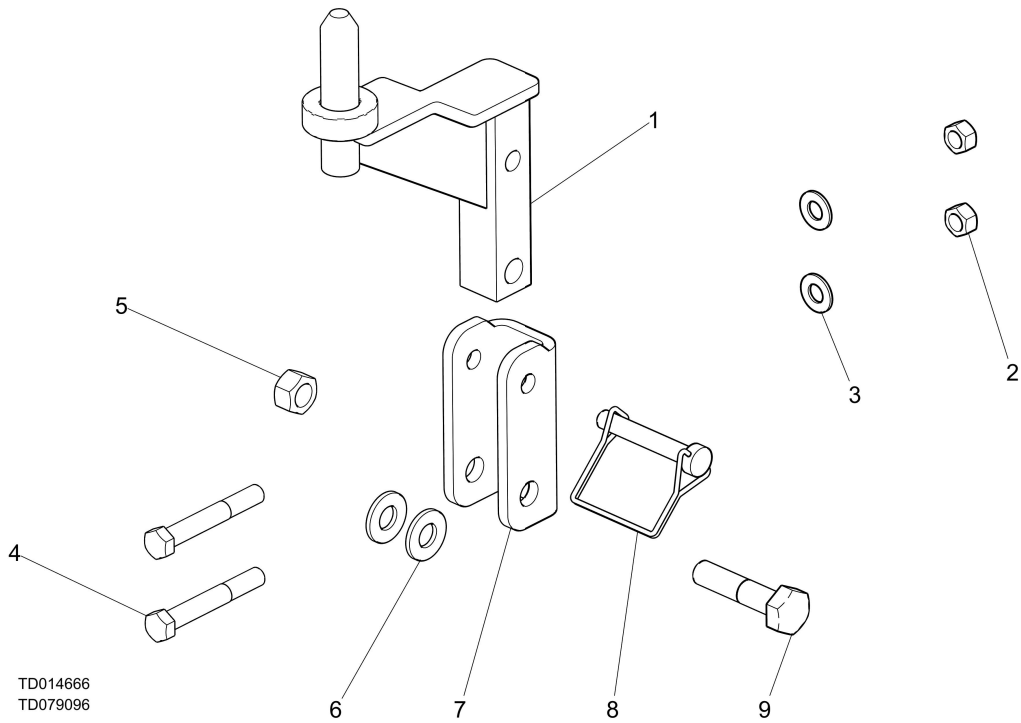
13	016558	1
14-18	016562	4
14	016561	2
15	F05011-5	6
16	F05009-118	1
17	F05010-96	1
18	016560	2
19-22	016798	1
19	016722	4
20	F05005-4	8
21	F05011-11	16
22	F05010-69	8

## 8.8 Chaîne De Sécurité



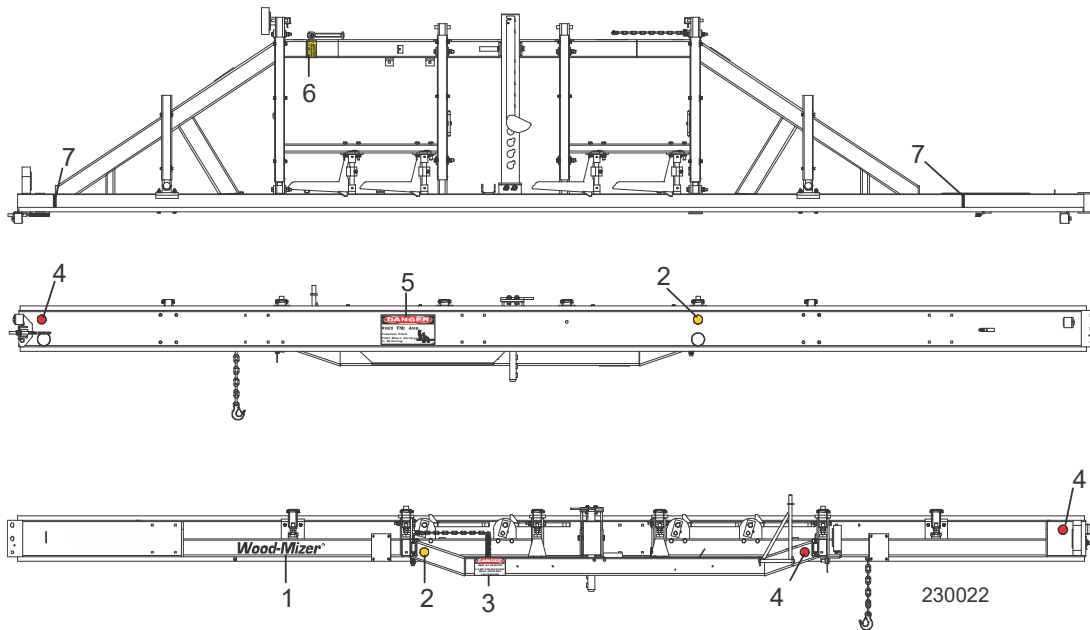
REF	PART #	QTY.
1	107972	1
2	F05008-33	1
3	F05010-8	1
4	F05011-35	1

## 8.9 Goujon de repos



REF	PART #	QTY.
	079096	1
1	074980	1
2	f05010-25	2
3	f05011-3	2
4	f05007-206	2
5	f05010-3	1
6	f05011-2	2
7	110557	1
8	014151	1
9	f05008-10	1

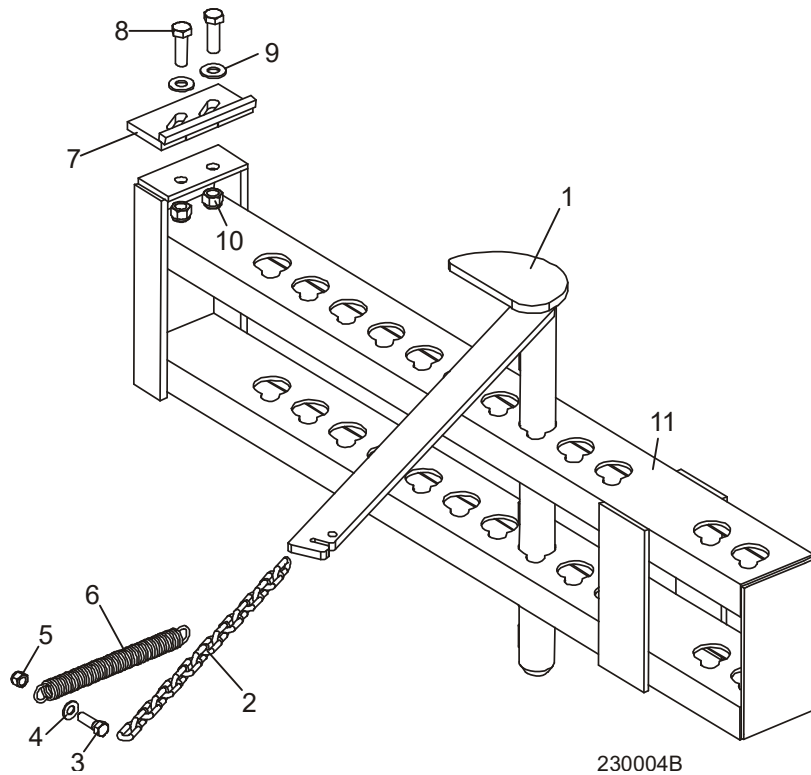
## 8.10 Étiquettes D'avertissement



REF	PART #	QTY.
1	S12281	1
2	P07453	2
3	S09851	1
4	P07452	3
5	P10287	1
6	S12581	1
7	S12051	2

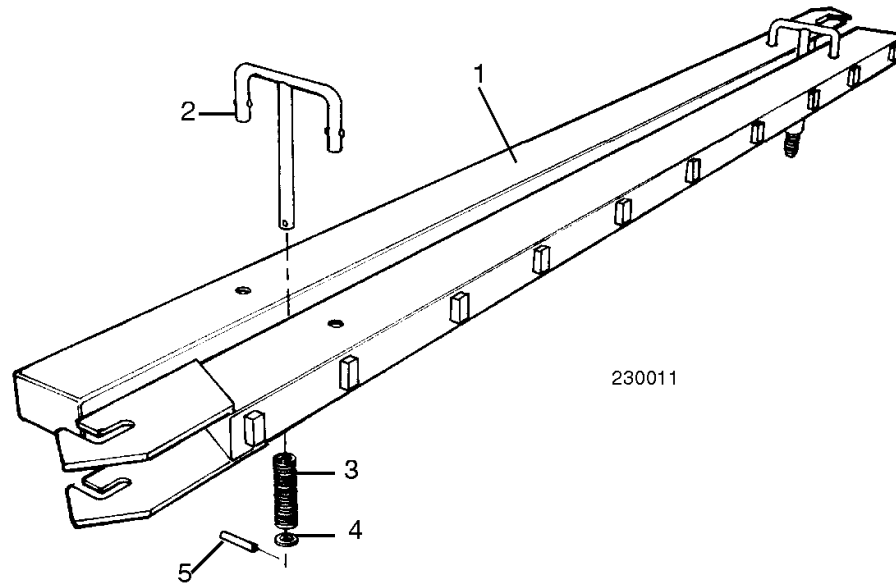


## 8.11 Serre-bille



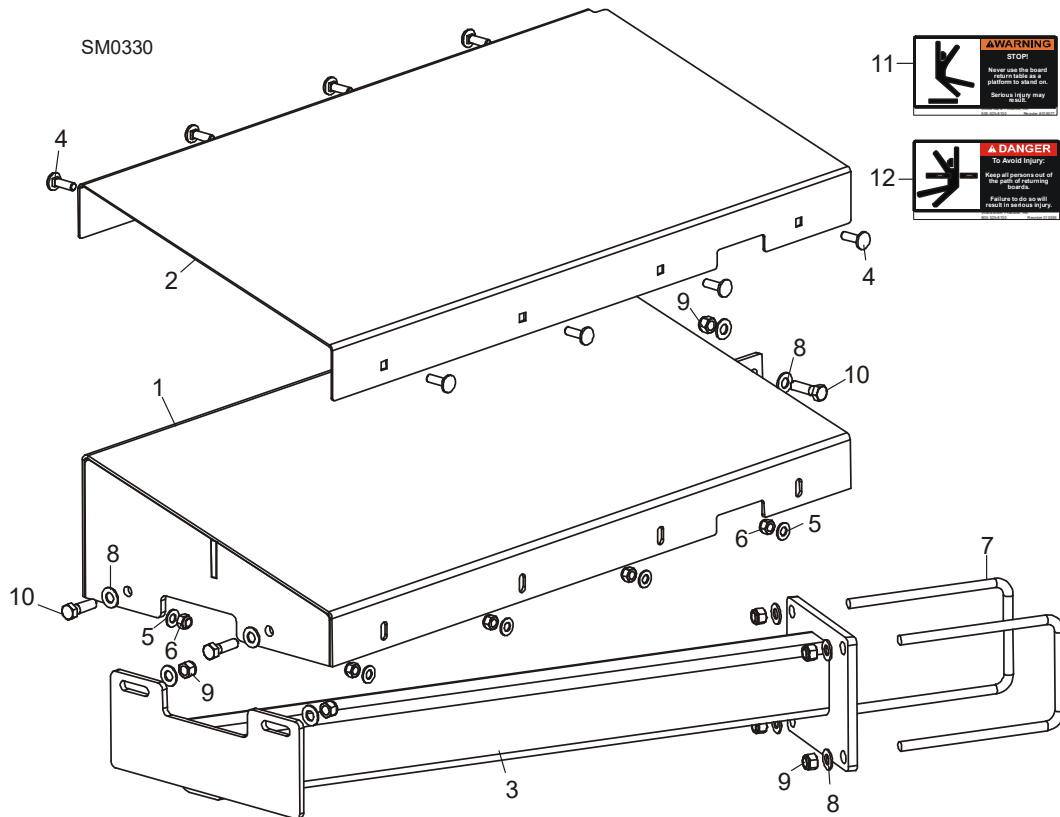
REF	PART #	QTY.
1	W09412	1
2	M04311	1
3	F05007-2	1
4	F05011-3	2
5	F05010-10	1
6	P09136	1
7	W09404	1
8	F05008-33	2
9	F05011-2	2
10	F05010-8	2
11	W09310	1

## 8.12 Rampes De Chargement



REF	PART #	QTY.
1-6	K09466	1
1	W09014	2
2-6	K09810	2
2	-----	1
3	P09335	1
4	F05011-19	1
5	F05012-11	1

### 8.13 Table D'éjecteur De Planches (Optionnel)

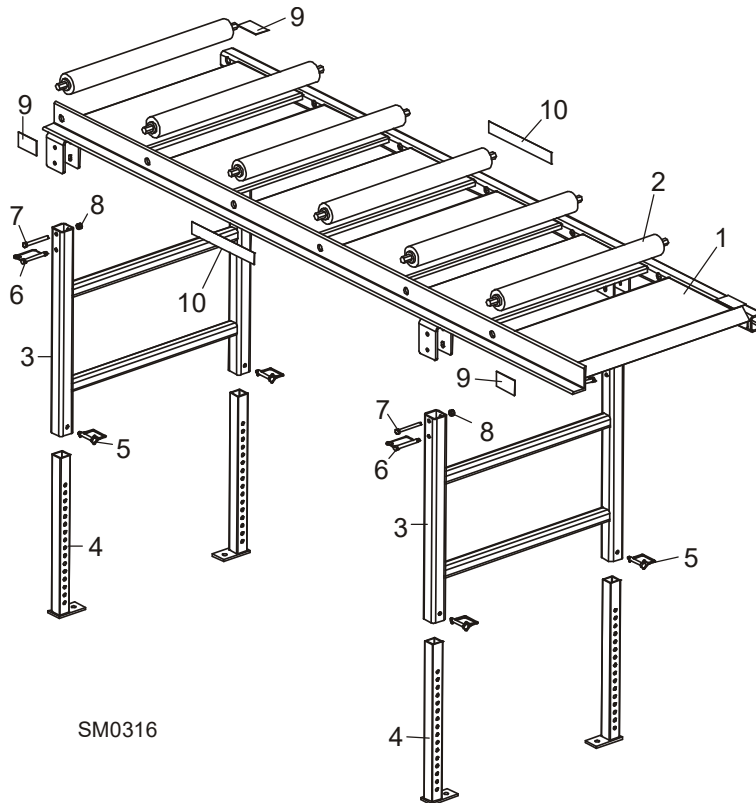


REF	PART #	QTY.
1-12	003264 <sup>1</sup>	1
	003270 <sup>2</sup>	1
1	055515	1
2	003259	1
3	055533 <sup>1</sup>	1
	038992 <sup>2</sup>	1
4	F05006-9	8
5	F05011-17	8
6	F05010-58	8
7	003207	2
8	F05011-3	10
9	F05010-10	7
10	F05007-123	3
11	016077-5	1
12	015365-5	1

<sup>1</sup> LT40

<sup>2</sup> LT30

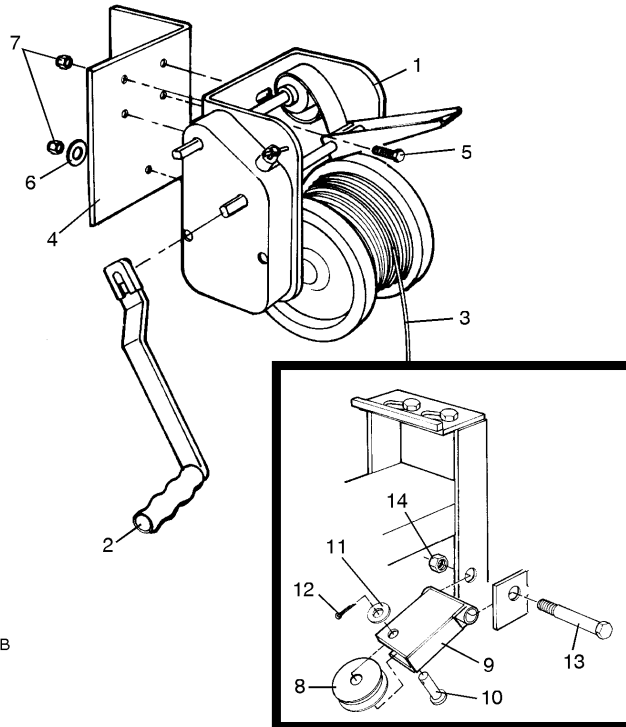
### 8.14 Table De Planches (Optionnel)



SM0316

REF	PART #	QTY.
1-10	016652	1
1	016606	1
2	038167	6
3	016609	2
4	016651	4
5	014151	4
6	016677	4
7	F05007-135	4
8	F05010-10	4
9	S12641-5	4
10	016991	2

### 8.15 Treuil manuel



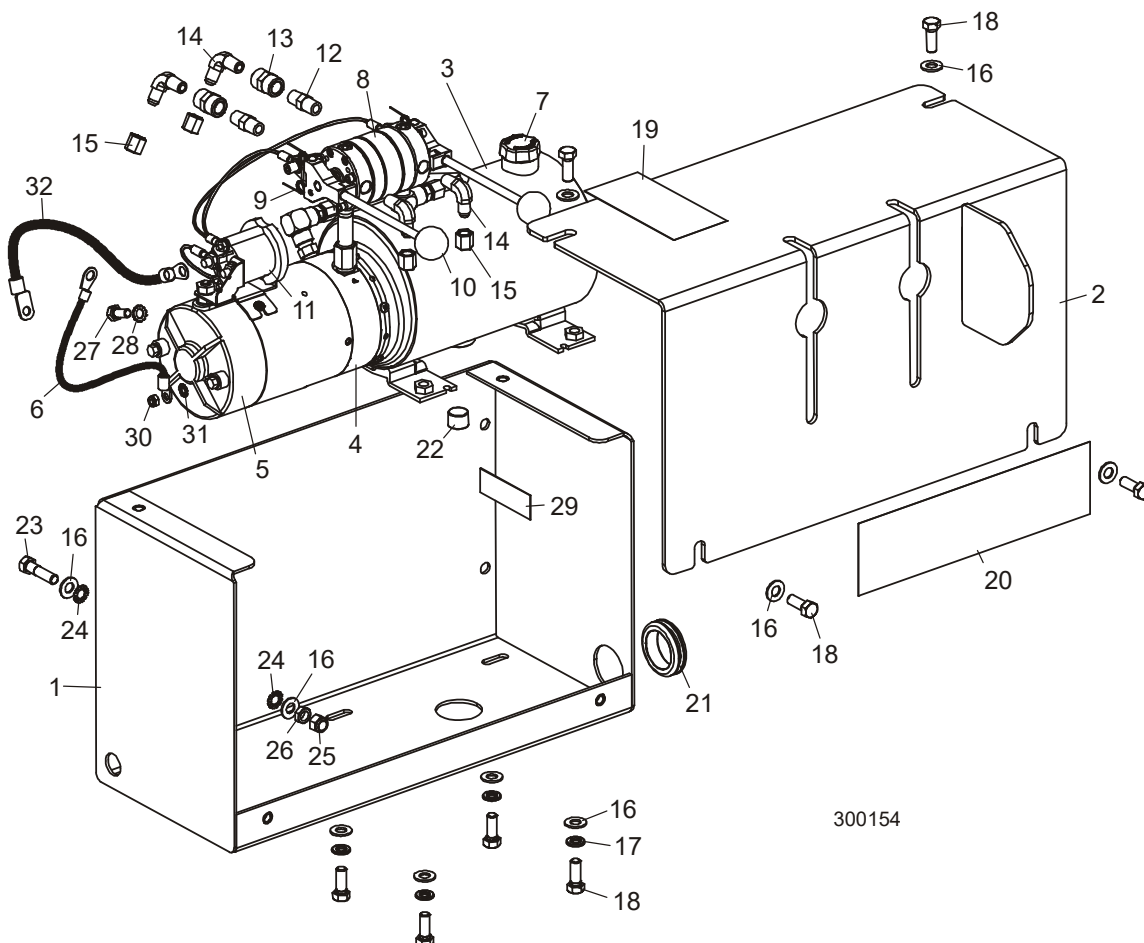
SM0005B

REF	PART #	QTY.
1 - 14	MW-A	1
1 - 2	-----	1
2	P04487	1
3	P05087	1
4	S12321	1
5	F05007-11	5
6	F05011-3	1
7	F05010-10	5
8	S09393	1
9	W09429	1
10	F05012-24	1
11	F05011-2	1
12	F05012-1	1
13	F05009-8	1
14	F05010-34	1

# 9 Hydraulique Chargeur & Tourne-bille (Optionnel)

## PARTIE 9 CHARGEUSE & TOURNE-BILLE HYDRAULIQUE (OPTIONNEL)

### 9.1 Boîte De Commande Des Hydrauliques



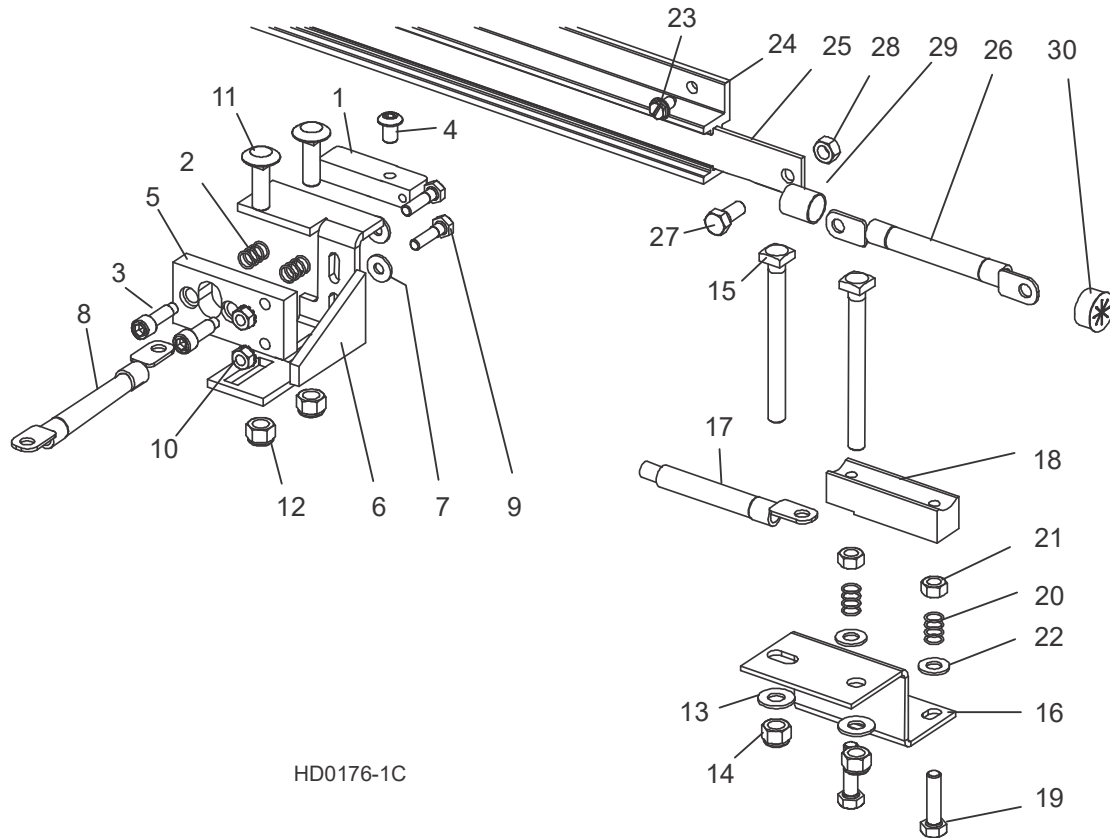
300154

REF	PART #	QTY.
1-32	025717	1
1	025716	1
2	025714	1
3-11	025713	1
4	FPK12171-250	1
5-6	052807	1
5	038683	1
6	052806	1
7	P09596	1
8-10	061111	2
9	025818	4

10	P09753	2
11	P09595	1
12	P05389	2
13	P03420	2
14	P09142	4
15	016815	4
16	F05011-3	10
17	F05011-4	4
18	F05007-87	8
19	P12961	1
20	036720	1
21	043405	1

22	P26258	1
23	F05007-78	1
24	F05011-36	2
25	F05010-10	1
26	F05010-29	1
27	F05006-5	1
28	F05011-33	1
29	S12825	1
30	F05010-200	1
31	F05011-37	1

## 9.2 Plaque De Contact Hydraulique Et Bornes



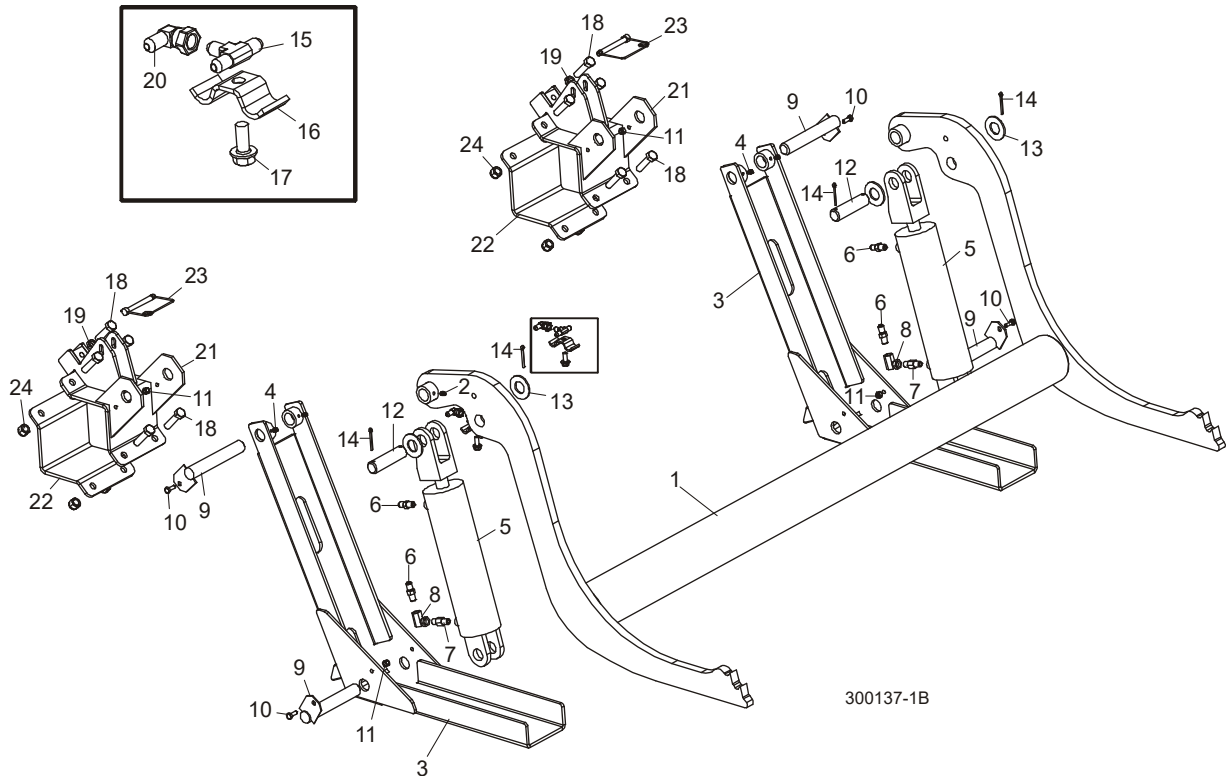
HD0176-1C

REF	PART #	QTY.
<b>1-4</b>	007716	1
<b>1</b>	015253	1
<b>2</b>	P10077	2
<b>3</b>	F05006-143	2
<b>4</b>	F05006-20	1
<b>5</b>	S10072	1
<b>6</b>	015324	1
<b>7</b>	F05011-11	2
<b>8</b>	128088	Ft
<b>9</b>	F05005-38	2
<b>10</b>	F05010-9	2
<b>11</b>	F05007-11	2
<b>12</b>	F05010-10	2
<b>13-24</b>	010104	1
<b>13</b>	F05011-3	2

<b>14</b>	F05010-10	2
<b>15</b>	F05007-175	2
<b>16</b>	016792	1
<b>17-19</b>	036306	1
<b>17</b>	017673	1
<b>18-21</b>	007717	1
<b>18</b>	015264	1
<b>19</b>	F05008-96	2
<b>20</b>	P10077	2
<b>21</b>	F05010-17	2
<b>22</b>	F05011-17	2
	A11977	1
<b>23</b>	F05015-1	8
<b>24</b>	P11976	1
	A12043-N	1
<b>25</b>	S10075	

<b>26</b>	052161	1
<b>27-29</b>	052161	
<b>27</b>	F05006-45	1
<b>28</b>	F05010-86	1
<b>29</b>	R01950-8	Ft
<b>30</b>	P04137	1

### 9.3 Chargeuse Hydraulique (Optionnel)

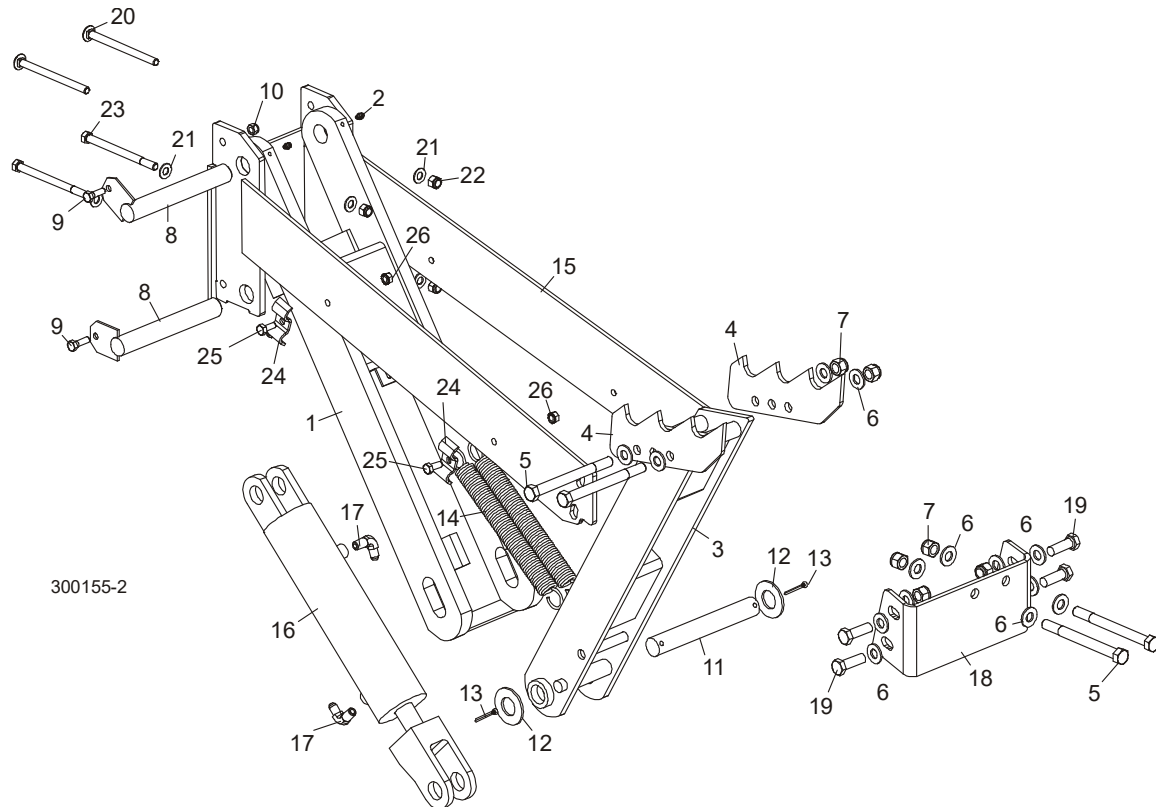


REF	PART #	QTY.	
	LTHDLA-M	1	
1	036722	1	
2	P04107	2	
3	W09444	2	
4	P04107	4	
	A09284	2	◆
5	P12847	1	
	P12956	1	
6	P09143	2	
7	P12199	1	
	015832	1	
8	015750	2	◆
	015832-255	1	
9	W09446	4	
10	F05005-1	4	
11	F05010-69	4	
12	S09251	2	

13	F05011-28	4	
14	F05012-23	4	
15	P09145	2	
16	S09245		
17	F05006-102		
18	F05008-116		
19	F05010-31	2	
20	036715	2	
21	048270	2	
22	036737	2	
23	038472	2	
24	F05010-8	8	



### 9.4 Tourne-bille Hydraulique (Optionnel)

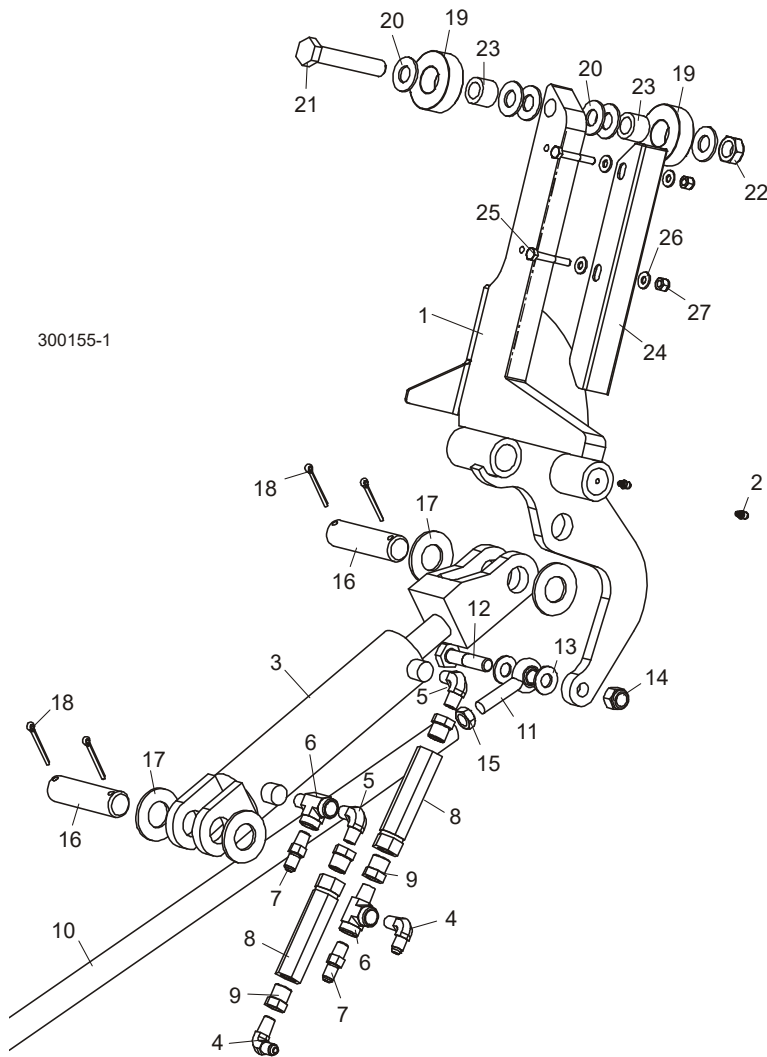


300155-2

REF	PART #	QTY.
1-26	007069	1
1-2	015231	1
2	P04107	2
3	015233	1
4	014675	2
5	F05008-28	4
6	F05011-2	16
7	F05010-8	8
8	015085	2
9	F05006-1	2
10	F05010-58	2
11	S09246	1
12	F05011-28	2
13	F05012-23	2
14	015718	2
15	006999	1
16-17	A09286	1

16	P12846	1
17	P09142	2
18	007048	1
19	F05008-33	4
20	F05007-113	2
21	F05011-3	6
22	F05010-10	4
23	F05007-5	2
24	S09245	2
25	F05006-102	2
26	F05010-20	2

**9.5 Cales Hydrauliques (Optionnel)**

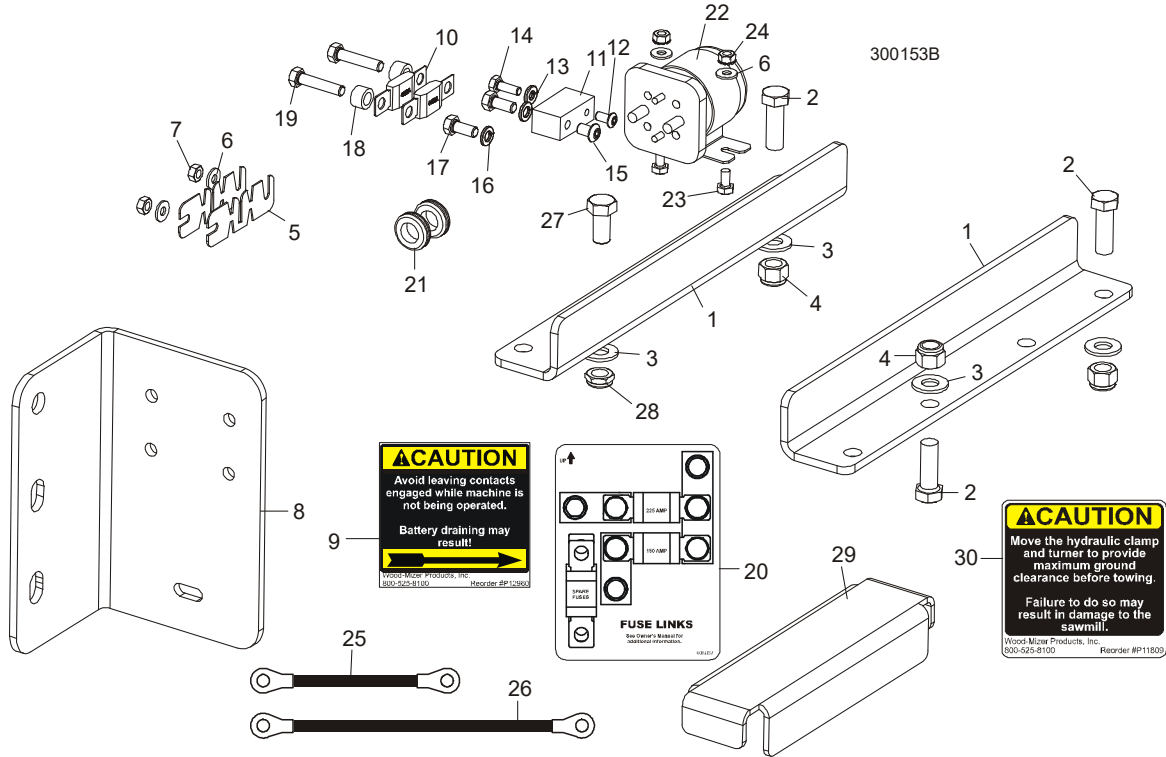


REF	PART #	QTY.
1-2	W12339	2
2	P04107	2
3-9	A09283	1
3	P12845	1
4	P09142	2
5	P09140	2
6	P09141	2
7	P09143	2
8	015484	2
9	015490	4
10	015026	1
11	P09137	2

12	F05008-10	2
13	F05011-2	4
14	F05010-8	2
15	F05010-16	1
16	S09251	2
17	F05011-28	4
18	F05012-23	4
19-23	016562	2
19	016561	2
20	F05011-5	6
21	F05009-118	1
22	F05010-96	1
23	016560	2

24-27	016798	1
24	016722	4
25	F05005-4	8
26	F05011-11	16
27	F05010-69	8
	016798-1005	1

### 9.6 Chargeuse & tourne-bille hydraulique pièces



REF	PART #	QTY.
1	048269	2
2	F05008-33	3
3	F05011-2	4
4	F05010-8	3
5	P11550	2
6	F05011-11	4
7	F05010-21	2
8	048426	1
9	P12960	1
10	053339	2
11	056998	1
12	F05005-59	1
13	F05011-14	1
14	F05005-123	1
15	F05006-20	1
16	F05011-13	2
17	F05006-102	2
18	055323	2
19	F05006-2	2

20	006867	1
21	P11764	2
22	016371	1
	015470	1
	015426	1
	024451	1
23	F05005-15	2
24	F05010-9	2
25	036305	1
26	036307	1
27	F05008-128	1
28	F05010-127	1
29	025745	1
30	P11809	1