

Scierie Wood-Mizer[®]

Manuel de pièces

LT50HD Wireless

rev. A6.01



La sûreté est notre souci principal! Lisez et comprenez toutes les informations et instructions de sûreté avant d'actionner, installer ou mettre en opération cette machine.

Form #1547-5

California
Proposition 65 Warning



WARNING: Breathing gas/diesel engine exhaust exposes you to chemicals known to the State of California to cause cancer and birth defects or other reproductive harm.

- Always start and operate the engine in a well-ventilated area.
- If in an enclosed area, vent the exhaust to the outside.
- Do not modify or tamper with the exhaust system.
- Do not idle the engine except as necessary.

For more information go to **www.P65warnings.ca.gov**.



WARNING: Drilling, sawing, sanding or machining wood products can expose you to wood dust, a substance known to the State of California to cause cancer. Avoid inhaling wood dust or use a dust mask or other safeguards for personal protection.

For more information go to **www.P65Warnings.ca.gov/wood**.

Active Patents assigned to Wood-Mizer, LLC

Wood-Mizer, LLC has received patents that protect our inventions which are a result of a dedication to research, innovation, development, and design. Learn more at: woodmizer.com/patents

©2023 Wood-Mizer LLC

Printed in the United States of America, all rights reserved. No part of this manual may be reproduced in any form by any photographic, electronic, mechanical or other means or used in any information storage and retrieval system without written permission from

Wood-Mizer, LLC
8180 West 10th Street
Indianapolis, Indiana 46214

PARTIE 1	SYSTÈMES DE GUIDAGE DE LAME	1-1
1.1	Guidage De Lame, Côté Poulie Folle.....	1-1
1.2	Ensemble guide de lame, côté entraînement	1-3
1.3	Système D'entraînement De Bras De Guidage.....	1-5
1.4	Bras de Guidage de Lame.....	1-6
PARTIE 2	POULIES ET TENDEUR	2-1
2.1	Système D'entraînement De Lame	2-1
2.2	Poulie Folle.....	2-2
2.3	Tendeur Hydraulique De Lame	2-3
PARTIE 3	TÊTE DE SCIE	3-1
3.1	Vis Anti-Vibration.....	3-1
3.2	Valve Du Contrôle De Lubrification.....	3-2
3.3	Fixation d'embrayage	3-3
3.4	Pivot de l'embrayage.....	3-4
3.5	Système De Freinage.....	3-5
3.6	Éjecteur De Planches.....	3-6
3.7	Système De Lubrification (Gas).....	3-7
3.8	Système De Lubrification (Diesel & Electric)	3-8
3.9	Étiquettes D'avertissement	3-9
3.10	Couvercles De Carters De Lame	3-10
3.11	Couvercles De Carters De Couroies.....	3-11
3.12	Chute À Bran De Scie	3-12
3.13	Boîte De Filage De L'écorceuse Et Obturateurs.....	3-13
PARTIE 4	SYSTÈME DE COMMANDE ET BATTERIE	4-1
4.1	Système De Commande	4-1
4.2	Commutateurs.....	4-3
4.3	Disjoncteurs.....	4-4
4.4	Panneau De Commande	4-5
4.5	Boîte De Batterie	4-6
4.6	Boîte De Fusibles	4-7
PARTIE 5	SYSTÈME DE MONTÉE	5-1
5.1	Fixation De La Tête De Sciage	5-1
5.2	Indicateur De Hauteur Et Règles De Débitage.....	5-2
5.3	Chaînes Et Pignons De Montée.....	5-3
5.4	Moteur De Montée	5-4
5.5	Système D'entraînement De Montée	5-5
PARTIE 6	SYSTÈME D'ENTRAÎNEMENT ET PALIERS	6-1
6.1	Paliers de Rail Superieur et Grattoirs	6-1
6.2	Système D'entraînement.....	6-2
6.3	Chaîne D'entraînement Et Butoir	6-3

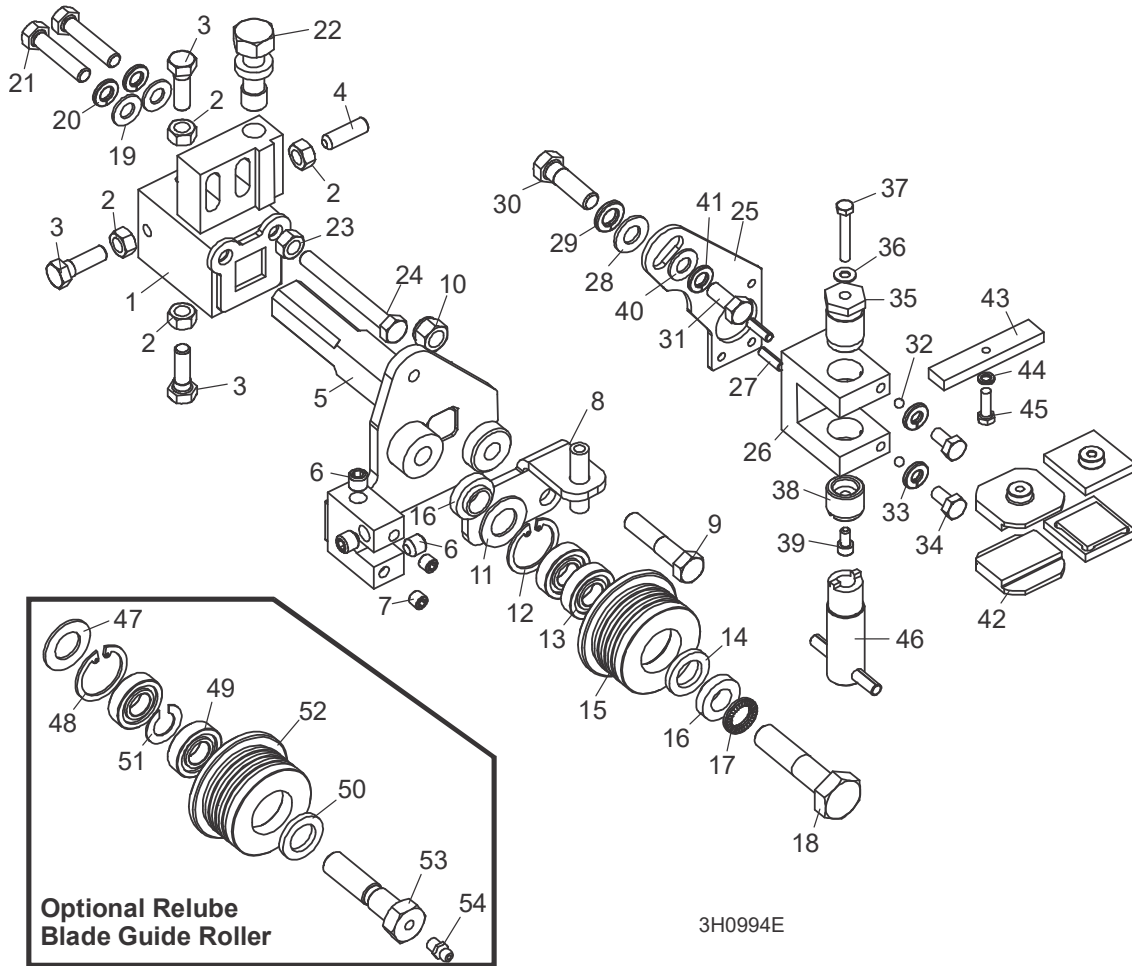
Sommaire

Partie-Page

6.4	Paliers De Rail Inférieur.....	6-4
PARTIE 7	BÂTI DE LA SCIE	7-1
7.1	Rails Avant Et Arrière Du Banc De Grume	7-1
7.2	Rail Centre-avant Du Banc De Grume	7-2
7.3	Rail Centre-arrière Du Banc De Grume	7-3
7.4	Pieds Réglable	7-4
7.5	FAO Pied Avant	7-5
7.6	FAO Pieds Côté Chargement	7-6
7.7	FAO Pied de décalage	7-7
7.8	FAO Pied Arrière	7-8
7.9	Table D'éjecteur De Planches.....	7-9
7.10	Support De Grume Mobile	7-10
7.11	Chaîne De Sécurité	7-11
7.12	Attache De La Tête De Scie	7-12
7.13	Étiquettes D'avertissement	7-13
7.14	Table De Planches (Optionnel)	7-14
PARTIE 8	SYSTÈME HYDRAULIQUE	8-15
8.1	Flexibles hydrauliques.....	8-15
8.2	Boîte De Commande Des Hydrauliques.....	8-16
8.3	Plaque De Contact Hydraulique Et Bornes	8-18
8.4	Chargeuse Hydraulique	8-19
8.5	Tourne-bille Hydraulique	8-20
8.6	Cales Hydrauliques (Avant)	8-21
8.7	Cales Hydrauliques (Arrière)	8-23
8.8	Cales Hydrauliques (Link)	8-24
8.9	Serre Hydraulique.....	8-25
8.10	Niveleur De Grume Hydraulique	8-26

PARTIE 1 SYSTÈMES DE GUIDAGE DE LAME

1.1 Guidage De Lame, Côté Poulie Folle



REF	PART #	QTY.
1-24	003992	1
1-4	003920	1
1	-----	1
2	F05010-17	4
3	F05006-88	3
4	F05006-122	1
5	003924	1
6	P30127	3
7	007734	2

8	006322	1
9	F05007-78	1
10	F05010-10	1
11-15	A04925 ¹	1
	014299 ²	1
11-14	K07079	1
11	P04252	1
12	F04254-1	1
13	-----	2
14	P06455	1

15	S04250	1
	014298	1
16	S04253	2
17	F05011-125	1
18	F05008-10	1
19	F05011-17	2
20	F05011-13	2
21	F05006-76	2
22	035656	1
23	F05010-17	1
24	F05006-136	1

1 Systèmes De Guidage De Lame

Guidage De Lame, Côté Poulie Folle

25-46	006325	1
25-41	003928 ³	1
25	003915	1
26	003909	1
27	F05012-22	2
28	F05011-3	1
29	F05011-4	1
30	F05007-123	1
31	F05006-102	1
32	003914	2
33	F05011-14	2
34	F05005-15	2
35	003994	1
36	042867	1
37	F05004-240	1
38	044057	1
39	F05004-200	1
40	F05011-17	1
41	F05011-13	1
42	052355 ⁴	2
	052309 ⁵	2
	036347 ⁶	2
43	035799	1
44	F05011-20	1
45	F05004-152	1
46	044064	1
	035248	1
	(Voir Partie 1.2)	
47-52	016568 ⁷	1
	057405 ⁸	1
47-51	057407	1
47	P04252	1
48	F04254-1	1
49	-----	2
50	P06455	1
51	035411	1
52	035426	1
	057402	1
53	036161	1
54	P05060	1

³ Optionelle.

⁴ Std. 1 1/4" lame.

⁵ Optionelle 1 1/2" lame.

⁶ Optionelle 1 1/4" lame.

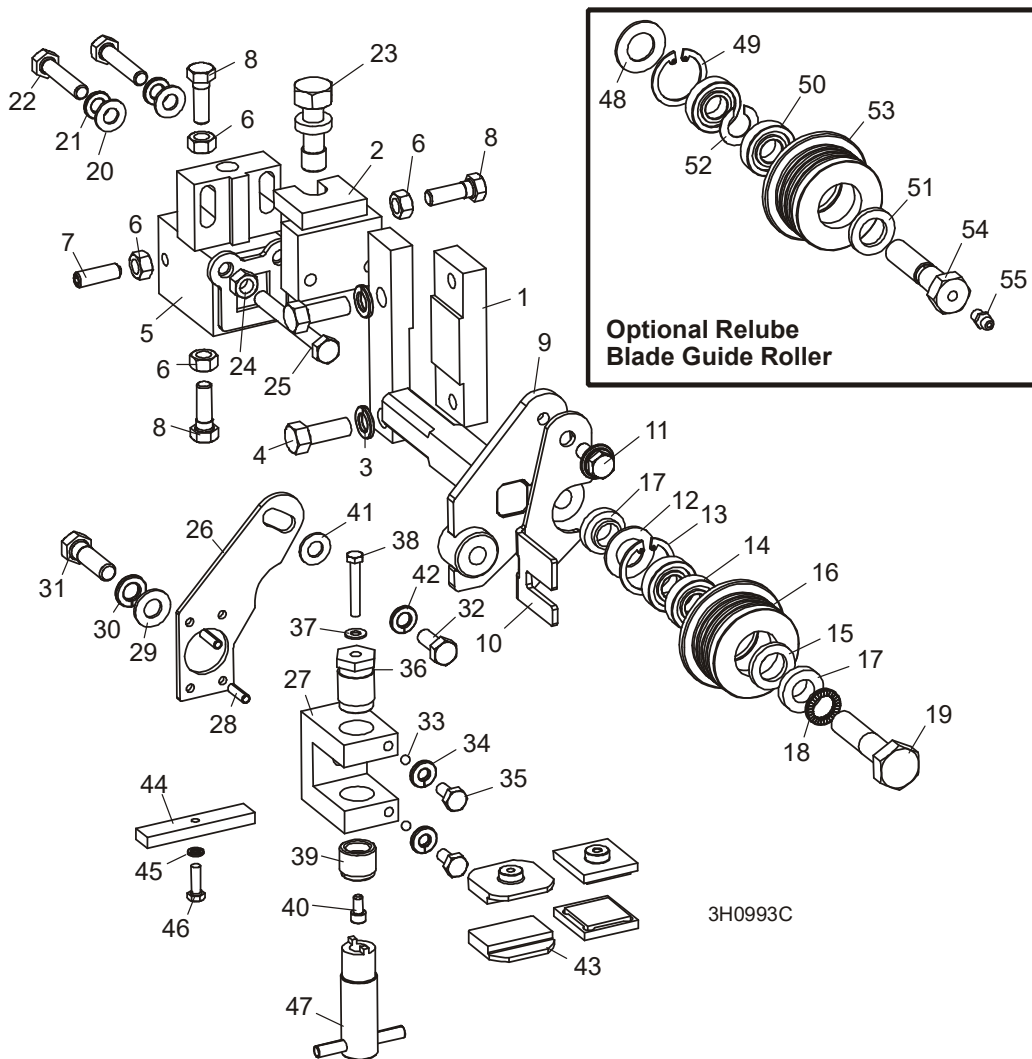
⁷ Optionelle 1 1/4" ou 1 1/2" lame.

⁸ Optionelle 1 1/2" lame.

¹ Std. 1 1/4" ou 1 1/2" lame.

² Optionelle 1 1/2" lame.

1.2 Ensemble guide de lame, côté entraînement



3H0993C

REF	PART #	QTY.
1	016548	1
2	003964	1
3	F05011-4	2
4	F05007-7	2
	003905	1
	003910	1
5	003911	1
6	F05010-17	4
7	F05006-122	1

REF	PART #	QTY.
8	F05006-88	3
9	003913	1
10	003916	1
11	F05006-101	1
	A04925	1
	014299	1
	K07079	1
12	P04252	1

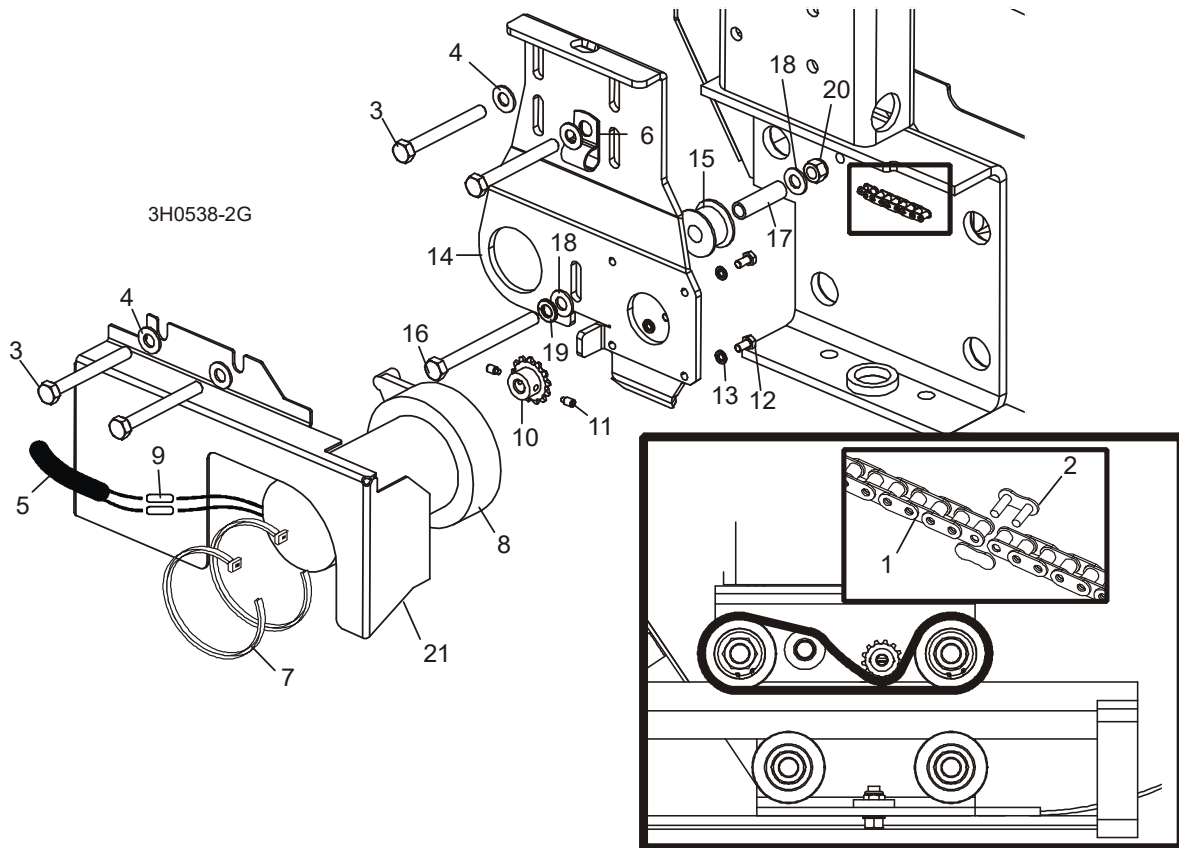
REF	PART #	QTY.
13	F04254-1	1
14	015975	2
15	P06455	1
	F05005-105	1
	057407-1507	1
16	S04250	1
	014298	1
	A04925-364	1
17	S04253	2

1 Galets & bras guide-lame
Ensemble guide de lame, côté entraînement

REF	PART #	QTY.
18	F05011-125	1
19	F05008-10	1
20	F05011-17	2
21	F05011-13	2
22	F05006-93	2
23	035656	1
24	F05010-17	1
25	F05006-136	1
	006325	1
	003927	1
26	003915	1
27	003909	1
28	F05012-22	2
29	F05011-3	1
30	F05011-4	1
31	F05007-123	1
32	F05006-102	1
33	003914	2
34	F05011-14	2
35	F05005-15	2
36	003994	1
37	042867	1
38	F05004-240	1
39	044057	1
40	F05004-200	1
41	F05011-17	1
42	F05011-13	1
43	052355	2
	052309	2
	036347	2
44	035799	1
45	F05011-20	1
46	F05004-152	1
47	044064	1
	035248	1

REF	PART #	QTY.
	016568	1
	057405	1
	057407	1
48	P04252	1
49	F04254-1	1
50	015975	2
51	P06455	1
52	035411	1
	057407-1507	1
53	035426	1
	057402	1
	A04925-364	1
54	036161	1
55	P05060	1

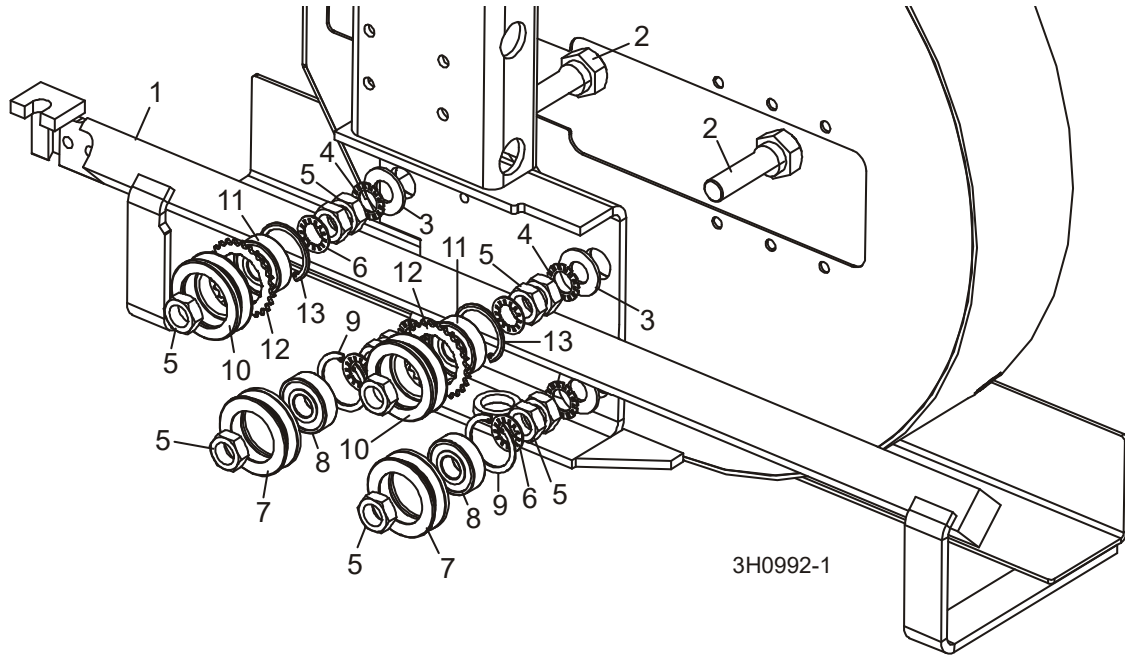
1.3 Système D'entraînement De Bras De Guidage



REF	PART #	QTY.
1	P09984	1
2	P09983	1
3	F05006-28	4
4	F05011-17	4
5	R01897	2.5ft
6	P07584	2
7	F05089-1	2
8-20	015989	1
8-13	079215	1
8	079214	1
	061232	1
	061234	1
	061233	1
9	F04875-1	2
10-11	P09970	1

11	F05004-274	2
12	F05004-60	4
13	F05011-20	4
14	015939	1
15	S09999	1
16	F05006-3	1
17	S09996-W	1
18	F05011-17	2
19	F05011-13	1
20	F05010-58	1
21	S11617	1

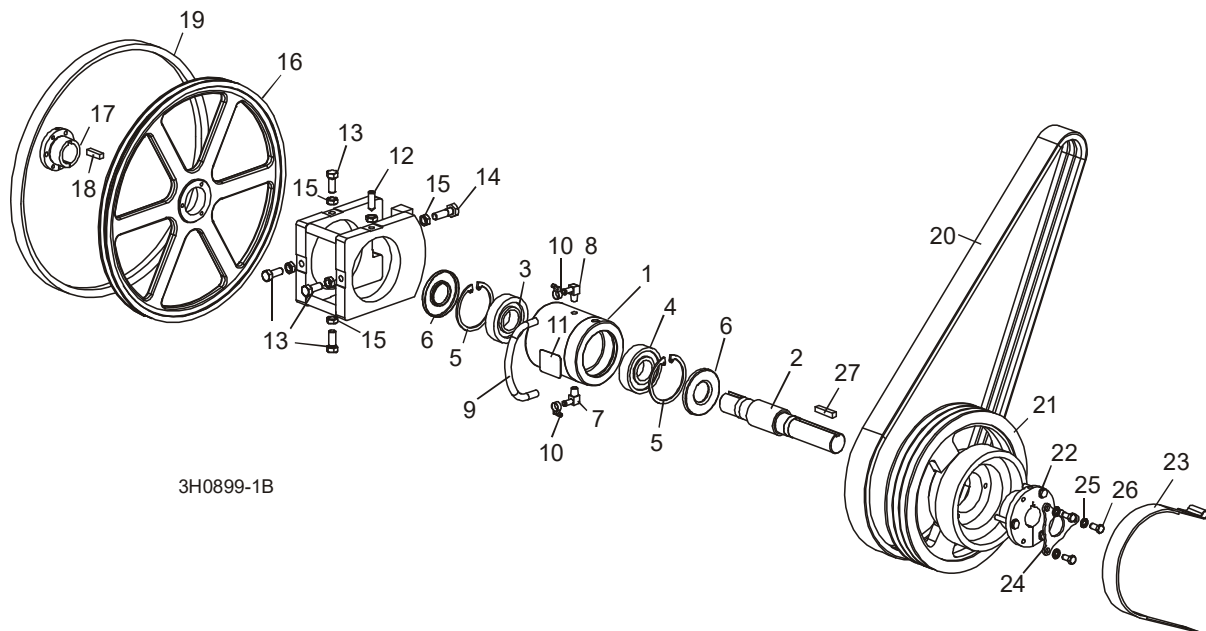
1.4 Bras de Guidage de Lame



REF	PART #	QTY.
1	003972	1
1	007040 (Wide)	1
2	W09067	4
3	F05011-5	4
4	F05011-26	4
5	F05010-11	12
6	F05011-25	8
7-9	A09059	2
7	S07989	1
8	P06030-1	1
9	F04254-8	1
10-13	A09932	2
10	S09930	1
11	P06030-1	1
12	S09931	1
13	F04254-8	1

PARTIE 2 POULIES ET TENDEUR

2.1 Système D'entraînement De Lame



3H0899-1B

REF	PART #	QTY.
1-11	016393	1
1-6	-----	1
1	-----	1
2	-----	1
3	-----	1
4	-----	1
5	F04254-17	2
6	P10206	2
7	016330	1
8	016331	1
9	016394	1
10	P649	2
11	017470	1
12	F05004-170	1
13	F05008-108	4
14	F05008-49	1
15	F05010-16	6
16-18	014562	1
16	016284	1

17	016270	1
18	S12892	1
19	P04185	1
20	065400 ¹	1
	006672 ²	1
	046571 ³	1
	016557 ⁴	1
21	016531	1
22	016532	1
23	014391	1
24	017953	1
25	F05011-4	3
26	F05007-27	3
27	014693	1

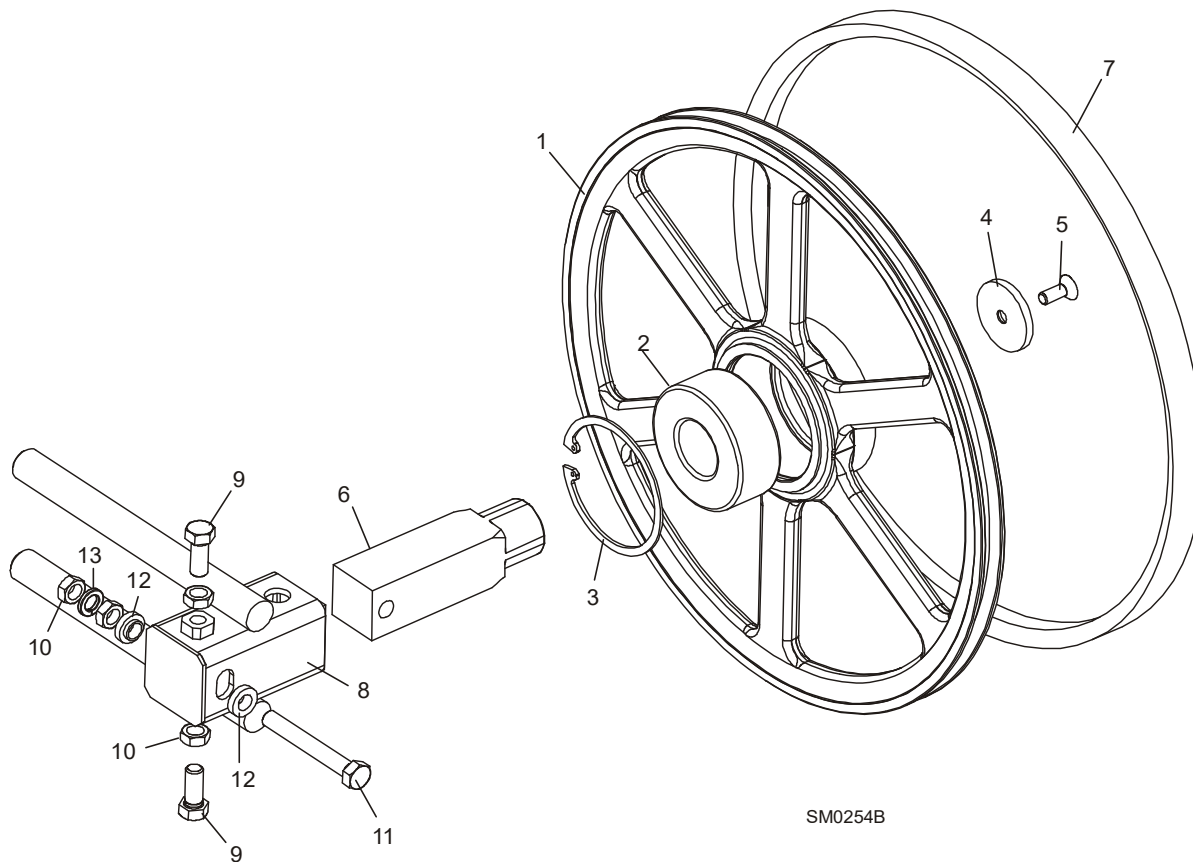
¹ E25 60Hz

² G38

³ D47/D51

⁴ E25 50Hz

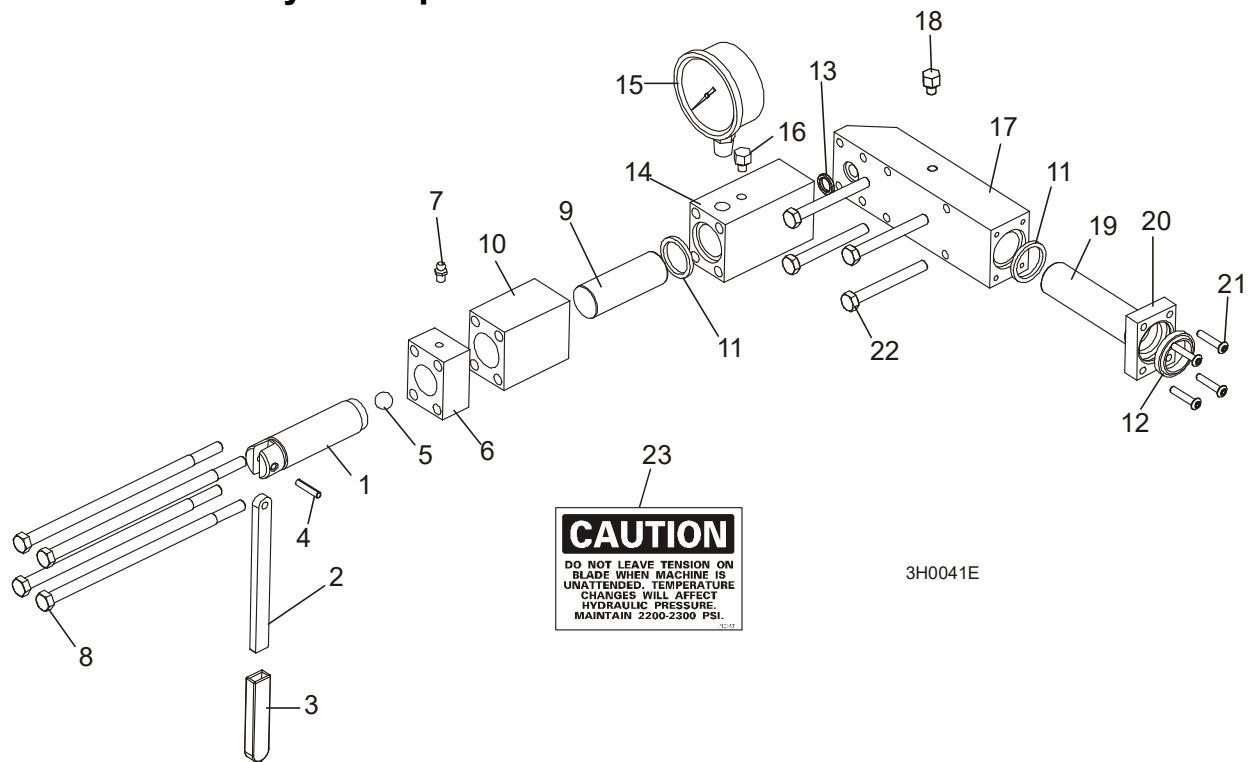
2.2 Poulie Folle



SM0254B

REF	PART #	QTY.
1-3	016120	1
1	----	1
2	016014	1
3	F04254-28	1
4-6	016441	1
4	016397	1
5	F05007-64	1
6	016398	1
7	P04185	1
8	016103	1
9	F05008-53	2
10	F05010-16	4
11	F05008-111	1
12	S04253	2
13	F05011-9	1

2.3 Tendeur Hydraulique De Lame



CAUTION
DO NOT LEAVE TENSION ON
BLADE WHEN MACHINE IS
UNATTENDED. TEMPERATURE
CHANGES WILL AFFECT
HYDRAULIC PRESSURE.
MAINTAIN 2200-2300 PSI.

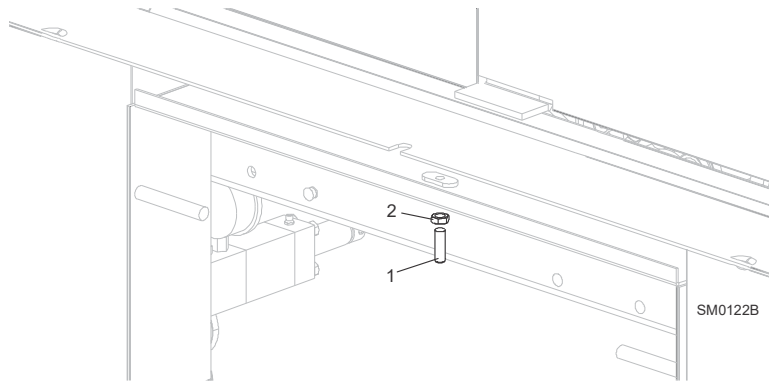
3H0041E

REF	PART #	QTY.
1-22	A10136	1
1-7	A12294	1
1	S10056	1
2	S08174	1
3	P08072	1
4	F05012-19	1
5	P02720	1
6	-----	1
7	P05060	1
8	F05006-43	4
9	S10060	1
10	S10061	1
5, 11-13	003224	1
5	P02720	1
11	P10051	2
12	P10053	1
13	P10377	1
14	S10140	1
15	P10052	1

16	P10065	1
17-18	016329	1
17	-----	1
18	P10065	1
19	S10059	1
20	S10089	1
21	F05004-43	4
22	F05006-28	4
23	P10147	1

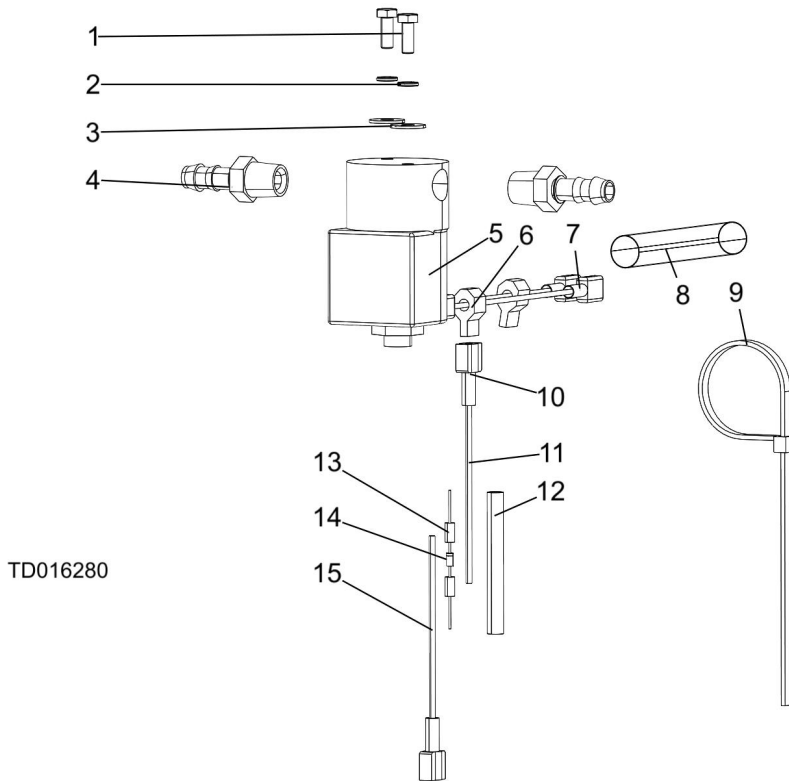
PARTIE 3 TÊTE DE SCIE

3.1 Vis Anti-Vibration



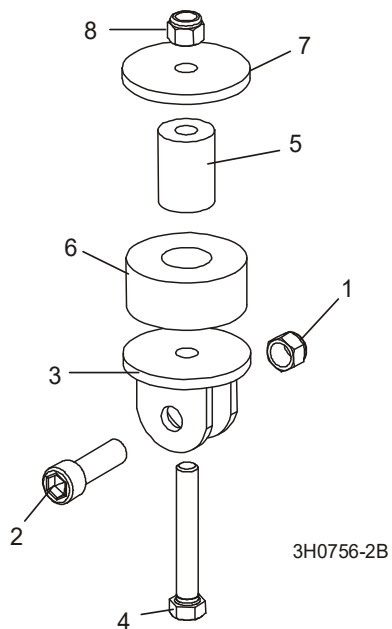
REF	PART #	QTY.
1	F05007-18	1
2	F05010-29	1

3.2 Valve Du Contrôle De Lubrification



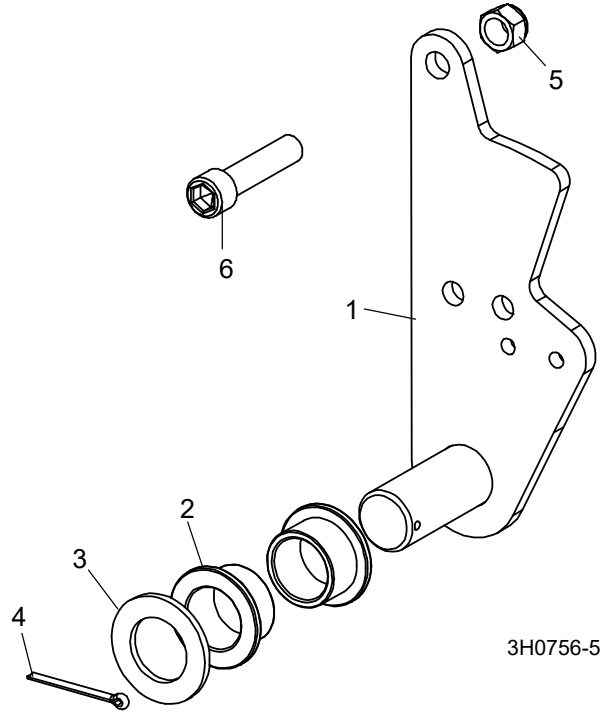
REF	PART #	QTY.
	016280	1
1	F05004-60	2
2	F05011-20	2
3	F05011-18	2
4	P04682	2
	133071	1
5	016140	1
6	F04875-13	2
7	F05708-21R	2
8	R02374	1
9	F05089-3	1
	024123	1
10	F05708-22R	2
11	R01915-3_3	1
12	R01950-4_2_14	1
13	024032	2
14	E05909	1
15	R01915-0_3	1

3.3 Fixation d'embrayage



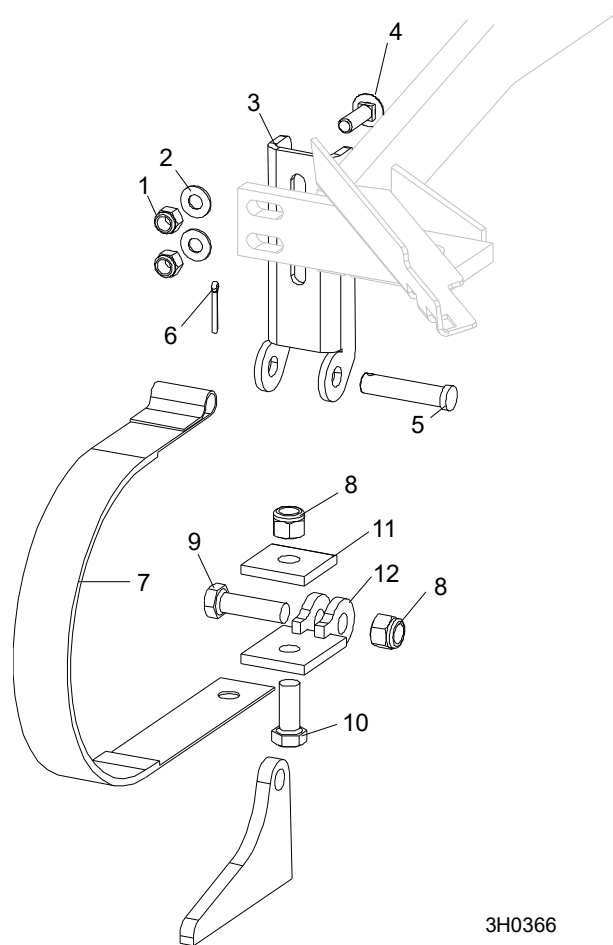
REF	PART #	QTY.
1	F05010-83	1
2	F05007-55	1
3	W12411	1
4	F05007-157	1
5	016316	1
6	P05032	1
7	021276	1
8	F05010-10	1

3.4 Pivot de l'embrayage



REF	PART #	QTY.
1	016296	1
2	P737	2
3	P116	1
4	F05012-49	1
5	F05010-83	1
6	F05007-55	1

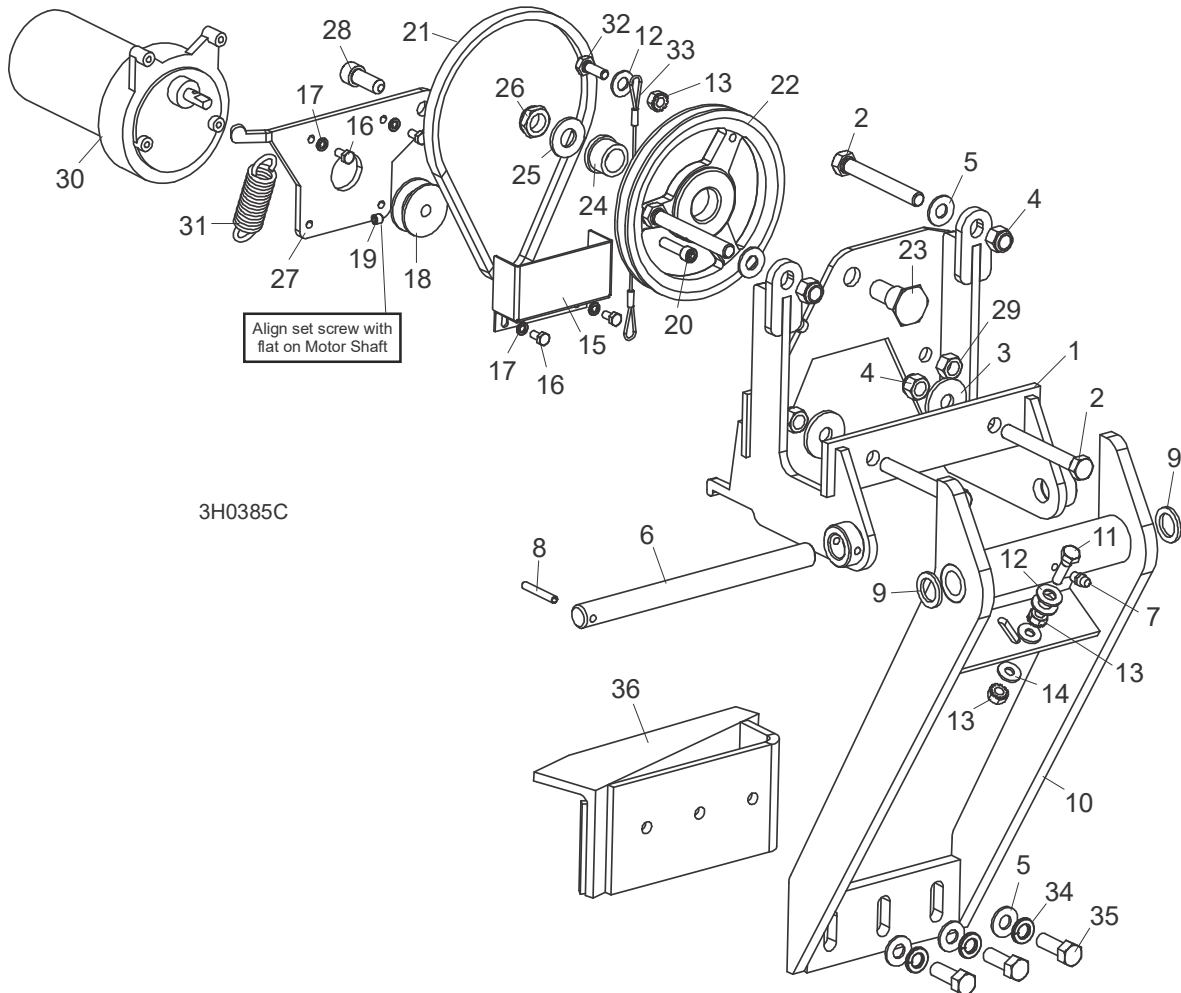
3.5 Système De Freinage



3H0366

REF	PART #	QTY.
1-12	014441	1
1	F05010-10	2
2	F05011-3	2
3	014395	1
4	F05007-127	2
5	F05012-81	1
6	F05012-1	1
7	014391	1
8	F05010-8	2
9	F05008-88	1
10	F05008-37	1
11	S04195	1
12	014392	1

3.6 Éjecteur De Planches

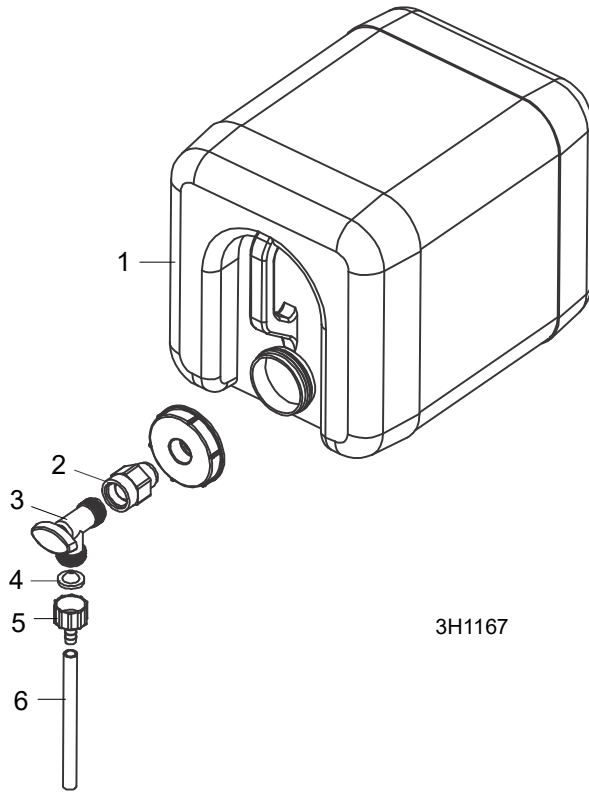


REF	PART #	QTY.
1-36	015209	1
1	015215	1
2	F05007-1	4
3	015336	2
4	F05010-10	4
5	F05011-3	5
6	016272	1
7	P05060	1
8	F05012-16	1
9	F05011-19	2
10	015210	1
11	F05005-1	1
12	F05011-17	3

13	F05010-9	3
14	F05011-11	2
15	015007	1
16	F05004-60	4
17	F05011-20	4
18	015074	1
19	F05005-105	1
20	F05005-89	1
21	015477	1
22	015224	1
23	015221	1
24	P05135	1
25	F05011-2	1
26	F05010-79	1

27	015220	1
28	F05007-52	1
29	F05010-25	1
30	079214	1
	061232	1
	061234	1
	061233	1
31	015479	1
32	F05005-101	1
33	016090	1
34	F05011-4	3
35	F05007-7	3
36	015652	1

3.7 Système De Lubrification (Gas)

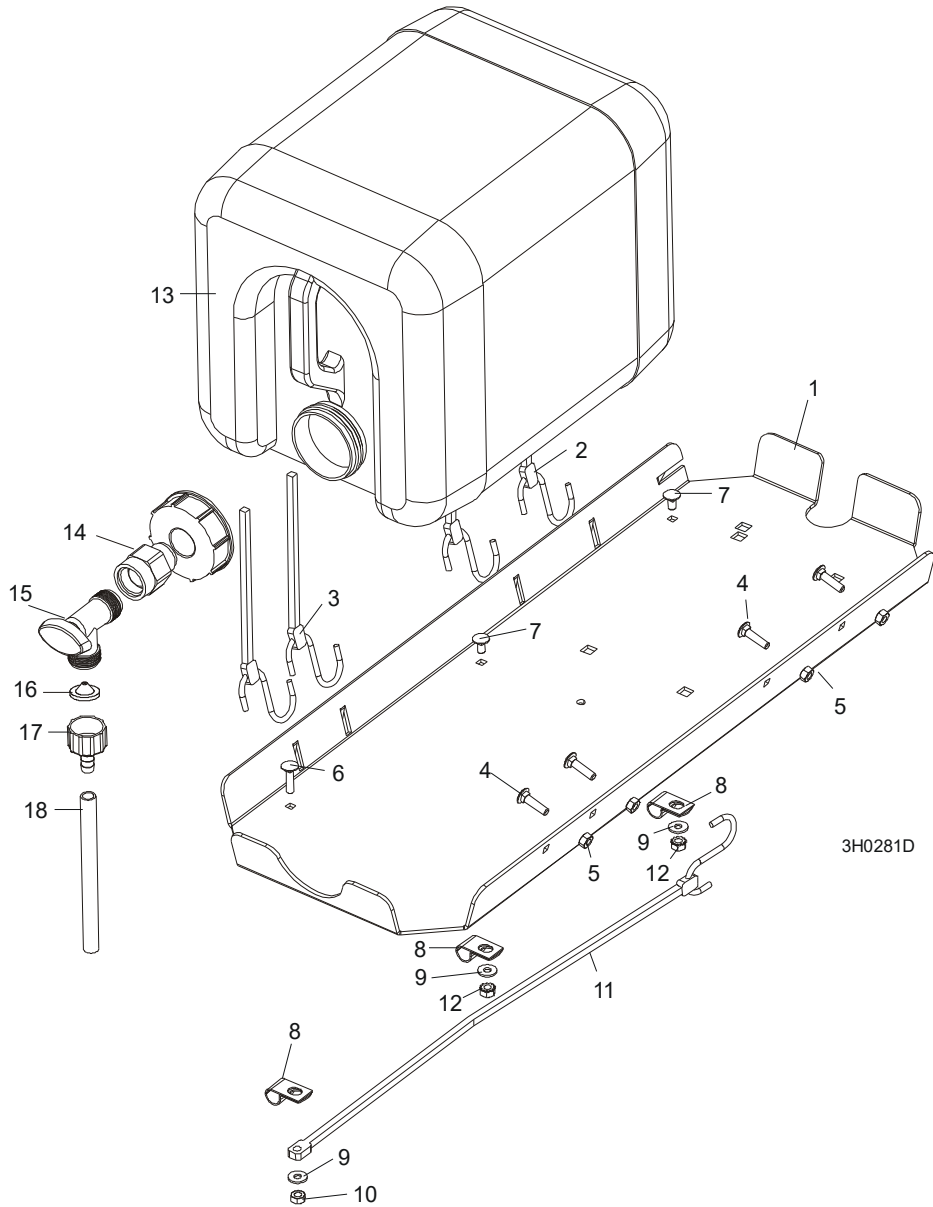


REF	PART #	QTY.
1	014642	1
2	014636	1
3	014100	1
4	016086 ¹	1

5	014113	1
6	R01885	7 ft.
	CBOTTLE	1

¹ Filter recommended for LT50 models to prevent debris from entering water lube solenoid valve.

3.8 Système De Lubrification (Diesel & Electric)

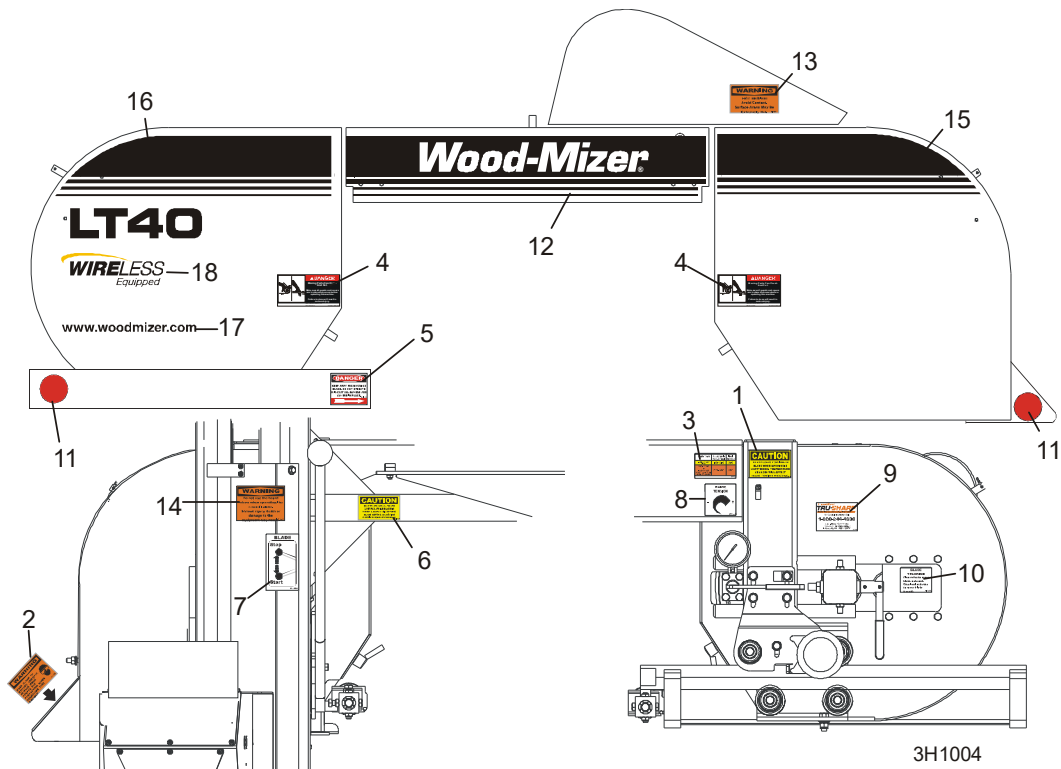


REF	PART #	QTY.
1-5	A11685	1
1	S11684	1
2	P11258	2
3	P11668	2
4	F05005-34	4
5	F05010-21	4

6	F05005-34	1
7	F05005-33	2
8	P07584	3
9	F05011-11	3
10	F05010-21	1
11	P07461	1
12	F05010-9	2
13	014642	1

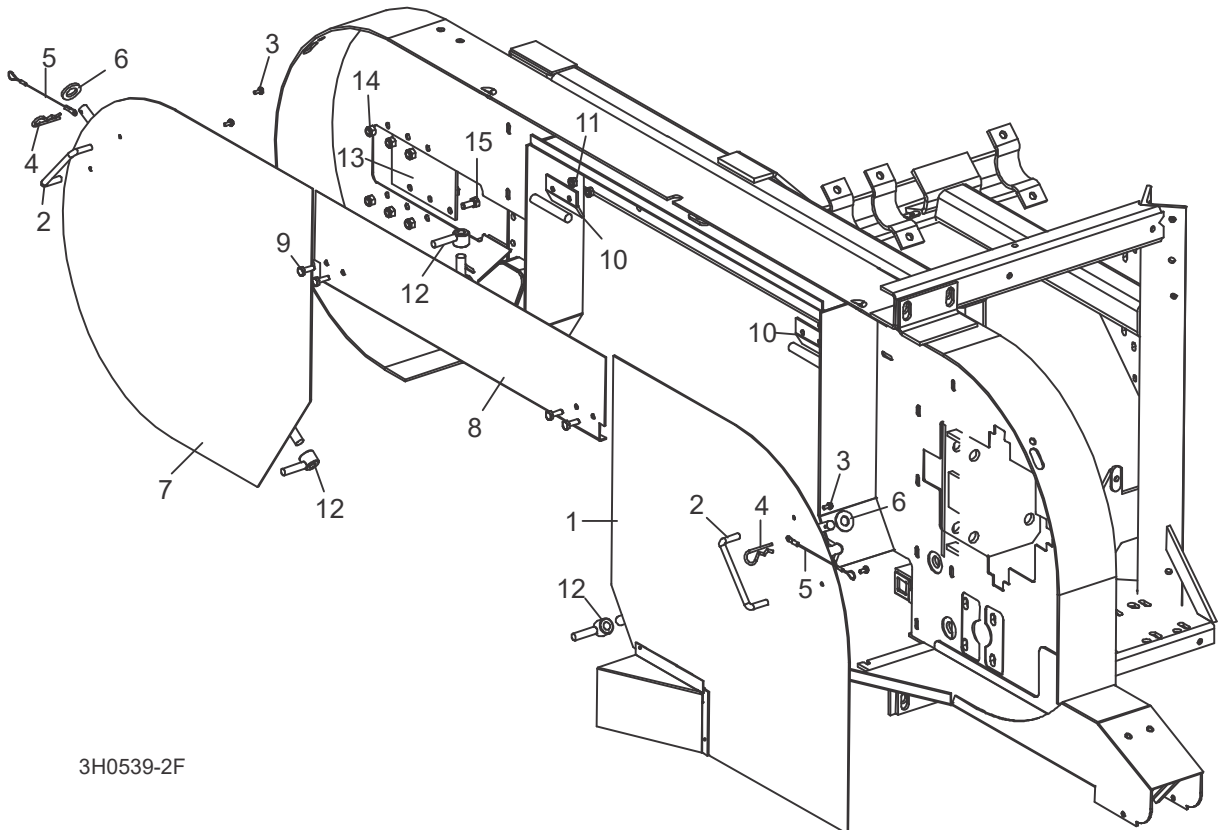
14	014636	1
15	014100	1
16	016086	1
17	014113	1
18	R01885	7 ft.

3.9 Étiquettes D'avertissement



REF	PART #	QTY.	
1	P10147	1	
2	P11754	1	
3	P12373	1	
4	033254	2	
5	S11752	1	
6	S11762	1	
7	P11779	1	
8	P11790	1	
9	P12879	1	
10	P11789	1	
11	P07452	2	
12	003244	1	
13	014419	1	
14	016072	1	
15	003243	1	
16	003247	1	
17	003235	1	
18	057782	1	

3.10 Couvercles De Carters De Lame



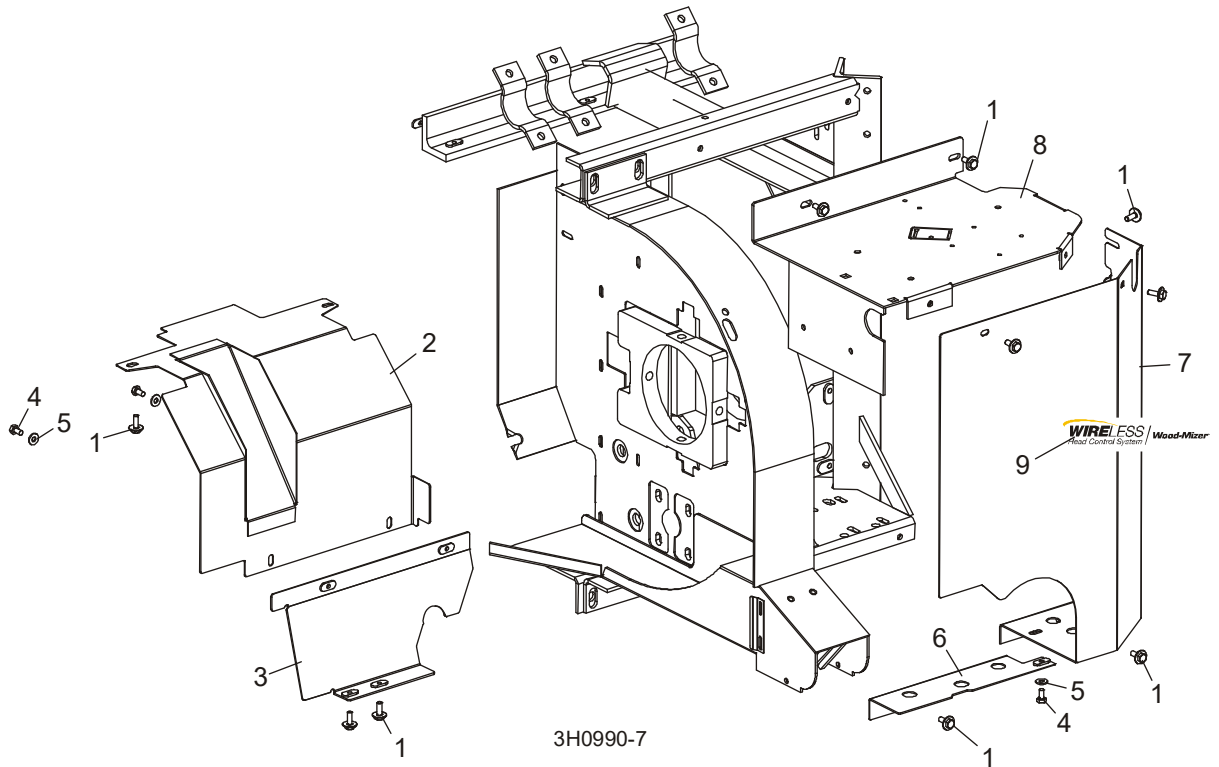
3H0539-2F

REF	PART #	QTY.
1-8	015937	1
1	----	1
2	P08065	1
3	F05015-8	2
4-5	A12812	1
4	P05059	1
5	016030	1
6	F05011-87	1

2-5, 6-7	A09419	1
7	----	1
2	P08065	1
3	F05015-8	2
	A12812	1
4	P05059	1
5	016030	1
8	F05011-87	1
8	W07409	1

8	079509 (Wide)	1
9	F05005-1	18
10	S07522	2
11	F05010-9	4
12	021145	3
13	S04433	1
14	F05010-58	6
15	F05006-5	6

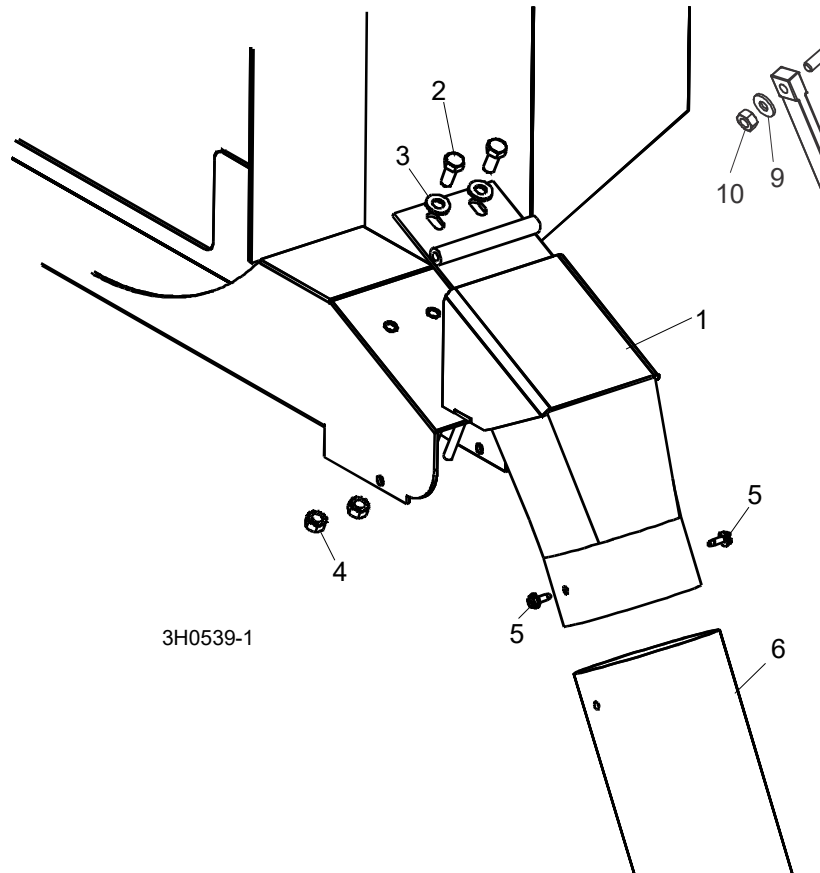
3.11 Couvercles De Carters De Courroies



REF	PART #	QTY.
1	F05005-134	13
2	006026 ¹	1
3	006025	1
4	F05005-15	3
5	F05011-11	3
6	015654	1
7	008776	1
8	059599	1
9	057781	1

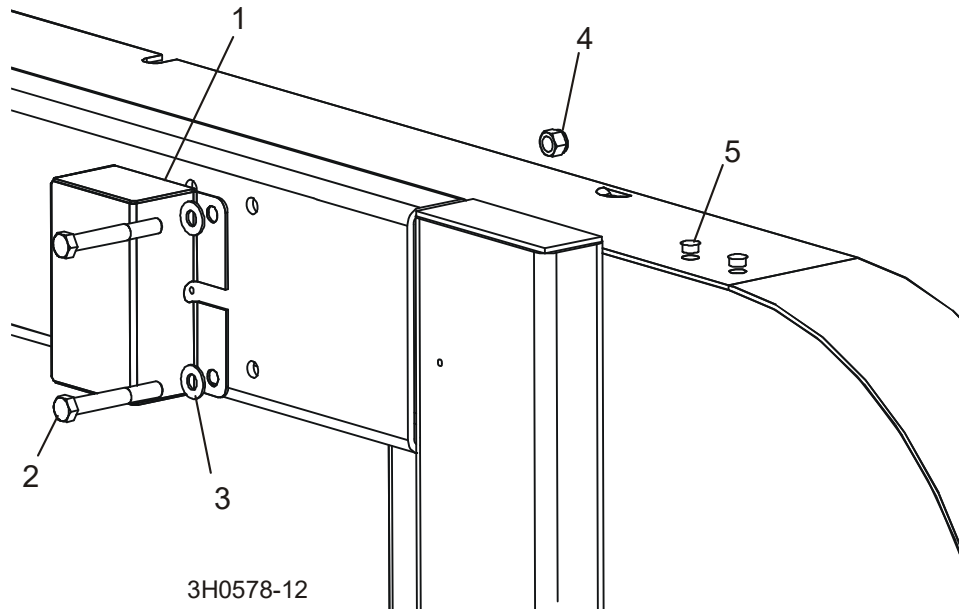
¹ For sawmills equipped with standard manual clutch handle only. See Auto-clutch Option manual for alternate guards.

3.12 Chute À Bran De Scie



REF	PART #	QTY.
1	015466	1
2	F05006-5	2
3	F05011-17	2
4	F05010-20	2
5	F05015-7	2
6	016727	1

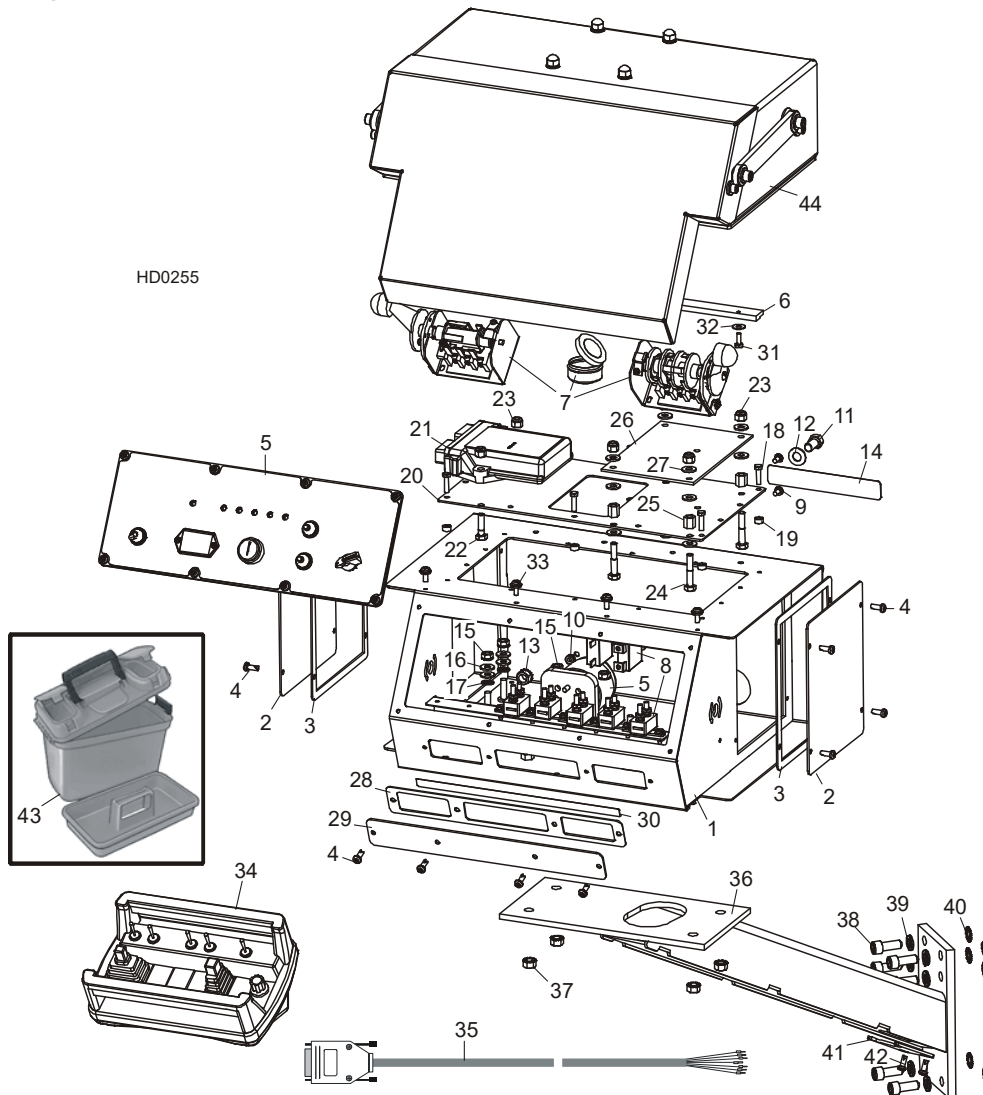
3.13 Boîte De Filage De L'écorceuse Et Obturateurs



REF	PART #	QTY.
1	023616	1
2	F05007-29	2
3	F05011-3	2
4	F05010-10	2
5	014537	2

PARTIE 4 SYSTÈME DE COMMANDE ET BATTERIE

4.1 Système De Commande



REF	PART #	QTY.	
	036352	1	
	069425	1	
	069427	1	
	069424	1	
	069423	1	
1	025823	1	◆
2	006473	2	
3	015274	2	

4	F05015-17	12	
5	Voir Partie 5.4		
6	015296	1	
7	Voir Partie 5.3		
8	Voir Partie 5.3		
9	F05004-3	2	
10	F05010-14	2	
11	F05007-27	1	

12	F05011-3	1	
13	F05010-19	1	
14	069414	1	
15	F05010-9	4	
16	F05011-11	4	
17	F05011-69	2	
18	F05004-167	6	
	069434	6	
	069418	1	
20	062475	1	

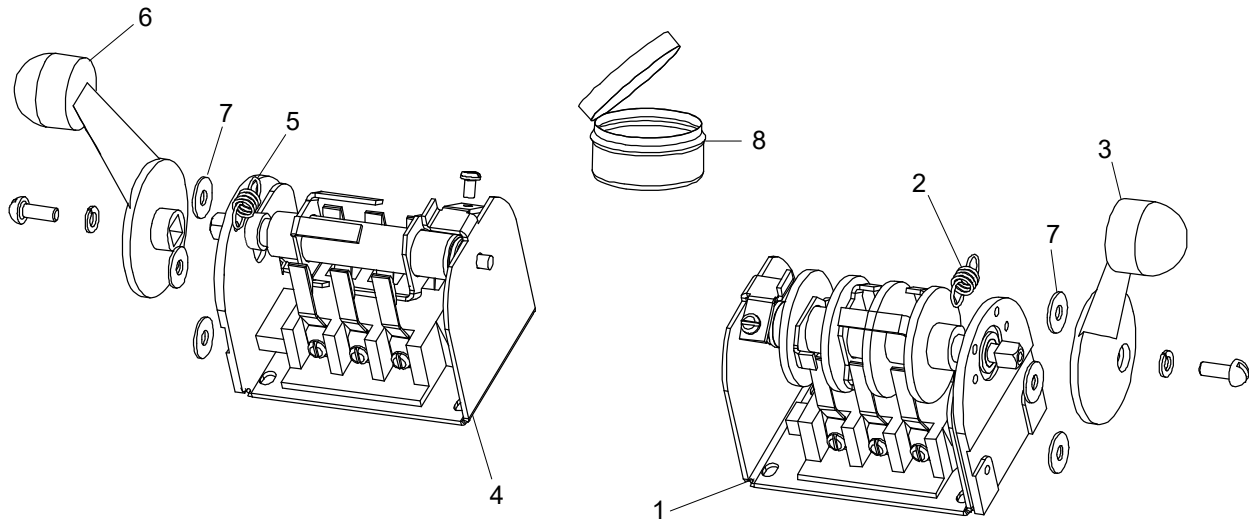
4^{ème} De Commande Et Batterie

me De Commande

21	053218	1	
22	F05005-38	2	
23	F05010-69	6	
24	F05005-31	4	
25	053149	4	
26	053148	1	
	053144	1	
27	F05011-11	12	
28	015266	1	
29	015376	1	
30	069412	1	
31	F05004-27	4	
32	F05011-18	4	
33	F05004-186	4	
34	053217	1	
	053638	1	
	053639	1	
	053640	1	
	053641	1	
	061054 ¹	1	
	053642	1	
	053643	1	
	053159	1	
35	053355	1	
36	015236	1	
37	F05010-20	4	
38	F05007-52	6	
39	F05011-4	6	
40	F05011-36	6	
41	036381	1	
42	F05015-17	2	
43	006472	1	
44	Voir AccuSet 2 Manual		

¹ 061054 potentiometer can be used to replace 053641 Omnex T300 Variable Feed Potentiometer. The potentiometer is provided with no wires. The customer needs to solder the wires on when replacing the potentiometers.

4.2 Commutateurs



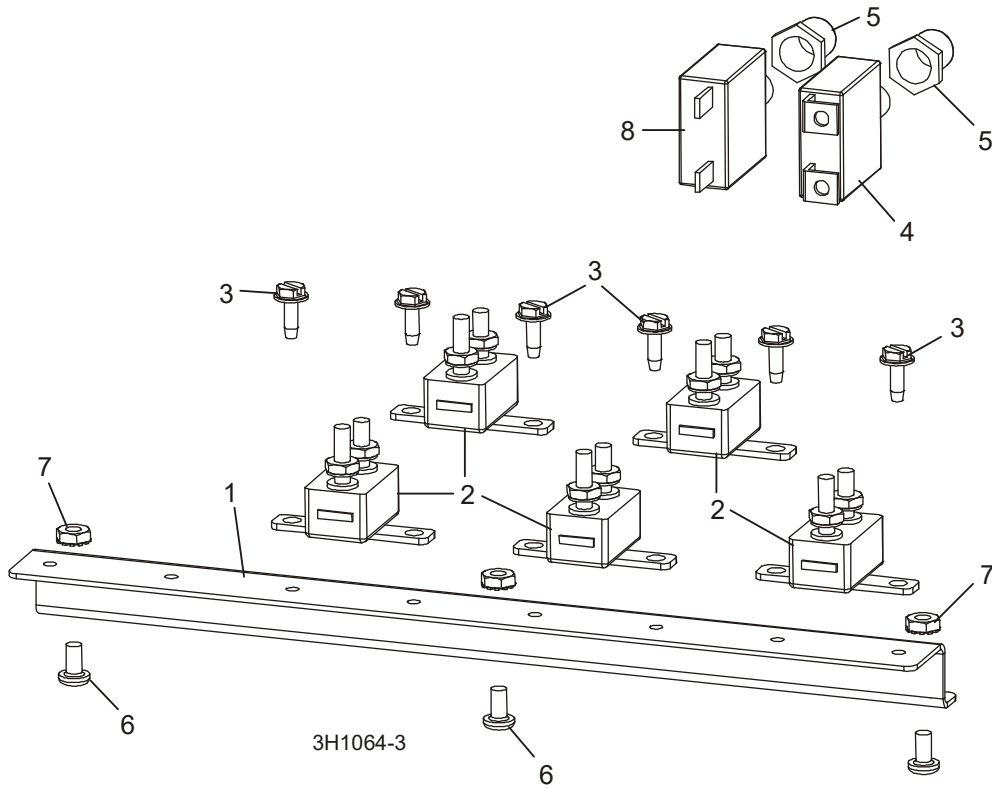
3H0421

REF	PART #	QTY.
1-3	E20440	1
1	-----	1
2	P12570	1
3	P12500	1
4-6	E20439	1

4	-----	1
5	P12570	1
6	P12500	1
7	F05011-41	6
9-12	A20463	1
8	-----	1

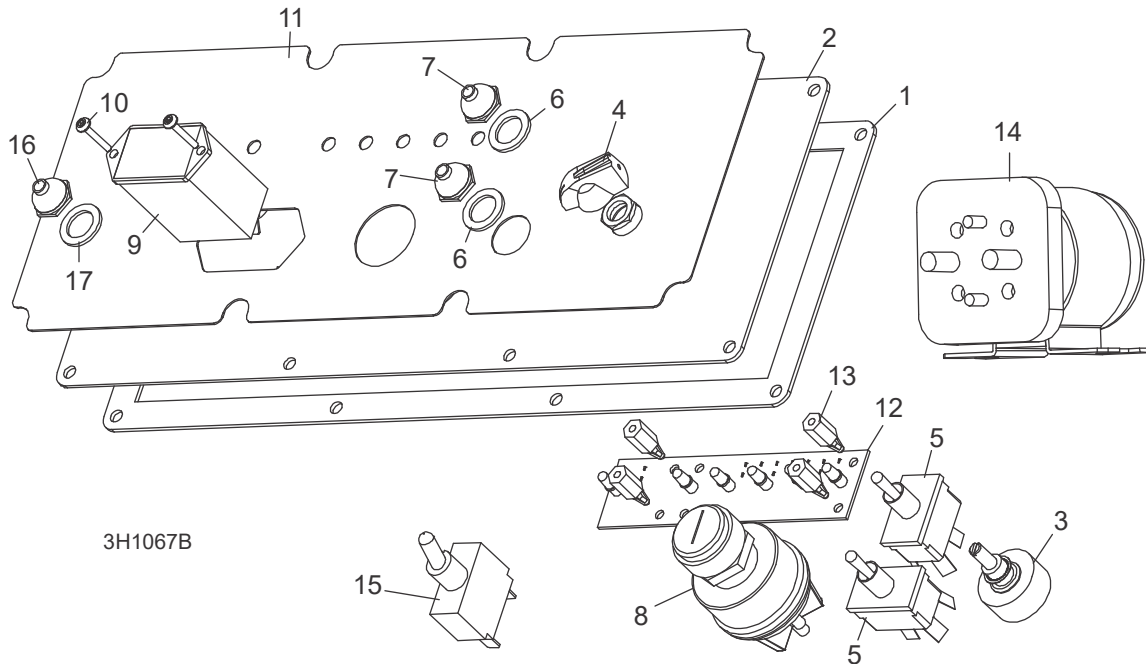
9	P20467	1
10	-----	1
11	-----	1

4.3 Disjoncteurs



REF	PART #	QTY.
1-3	015621	1
1	052826	1
2	E20430	5
3	F05015-7	6
4	015527	1
5	021253	2
6	F05004-3	3
7	F05010-14	3
8	024246	1

4.4 Panneau De Commande



3H1067B

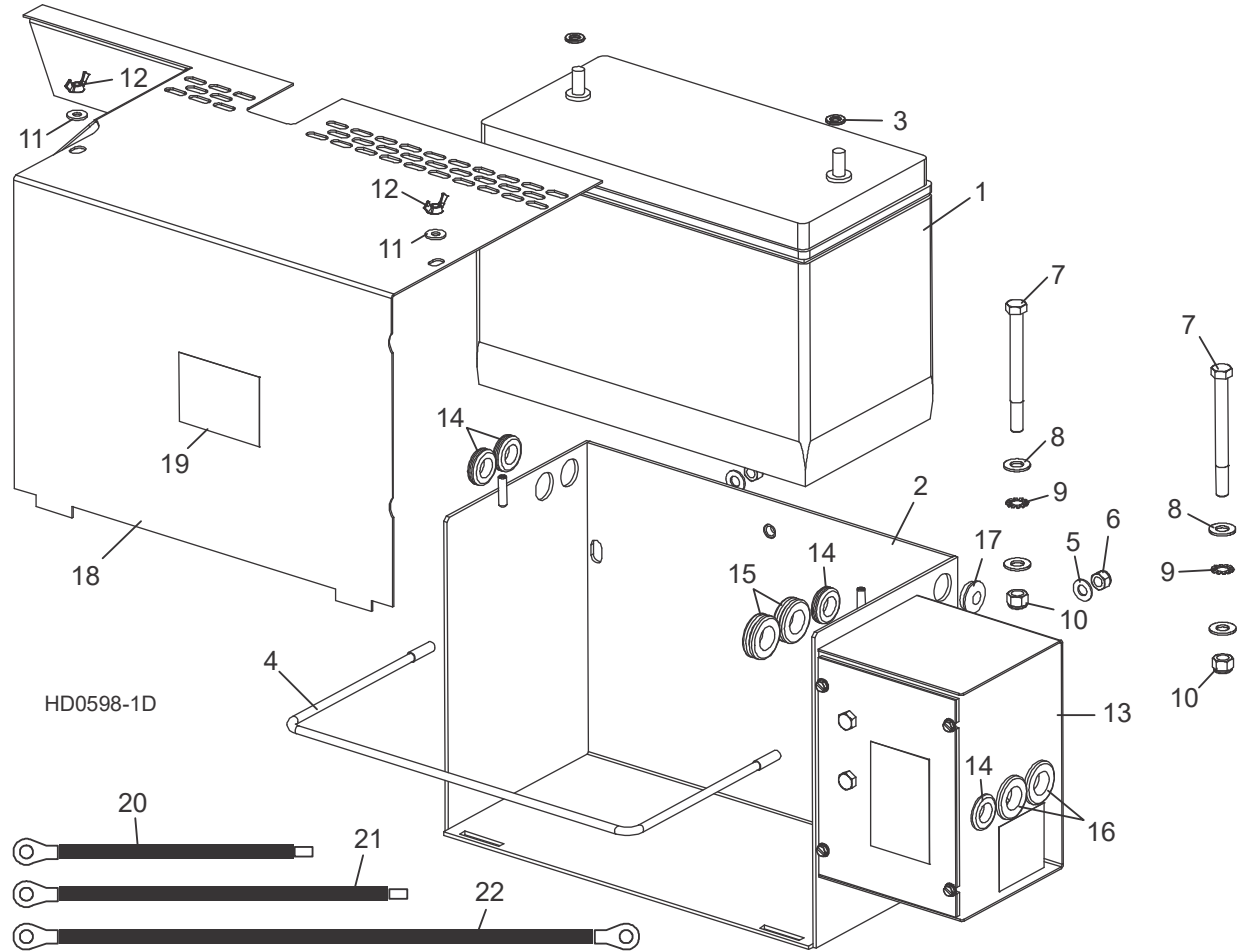
REF	PART #	QTY.	
	069417	1	
	069416	1	
1	015270	1	
2	015302	1	
3	024450-1	1	
4	P06257	1	
5	024200	2	
6	P02575	2	
7	P05251-1	2	
8	P04350	1	
9	015401	1	
10	F05015-28	2	
11	015271	1	
	015269	1	
12	015416	1	
	015409	1	
13	023147	4	
14	016371	1	
	015470	1	◆
	015426	1	

15	051346	1	
16	P02575	1	
17	P05251-1	1	
	069343	1	
	069307	1	
	052903		
	069309	1	
	069306	1	
	050399	1	
	024402	1	
	051872	1	
	R02374	41 in.	
	R02374	42 in.	

4 Système De Commande Et Batterie

Boîte De Batterie

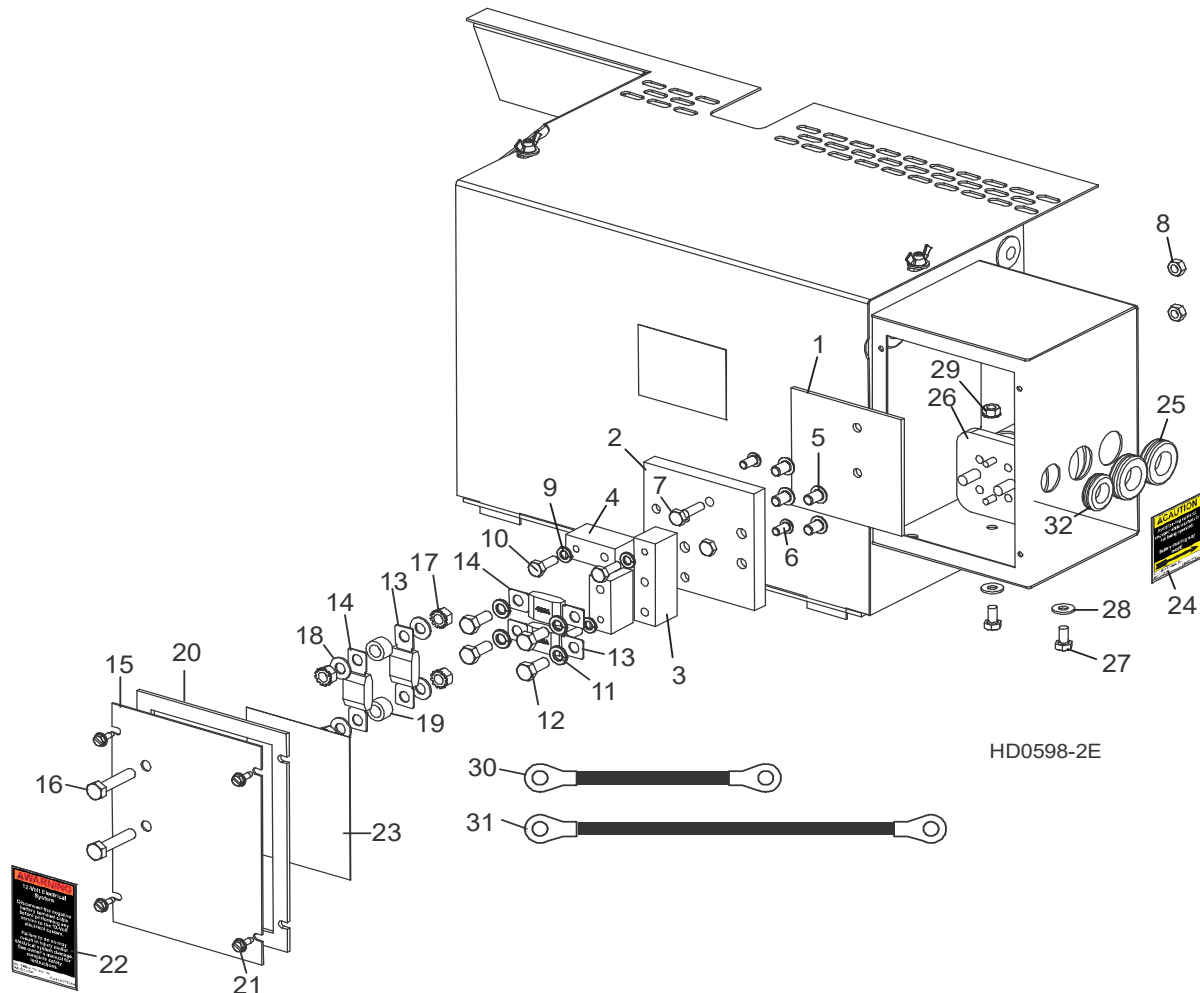
4.5 Boîte De Batterie



REF	PART #	QTY.
1	025841	1
2-17	015565	1
2	015191	1
3	F05011-13	2
4	015194	1
5	F05011-17	2
6	F05010-58	2
7	F05007-4	2
8	F05011-3	2
9	F05011-36	2
10	F05010-10	2
11	F05011-11	2
12	F05010-13	2

13	Voir Partie 4.6	
	Voir Partie 8.3	
14	P11764	4
15	074198	2
16	074199	2
17	052496	1
18	015771	1
19	014774	1
20	036308	1
21	036309	1
22	036306	1

4.6 Boîte De Fusibles



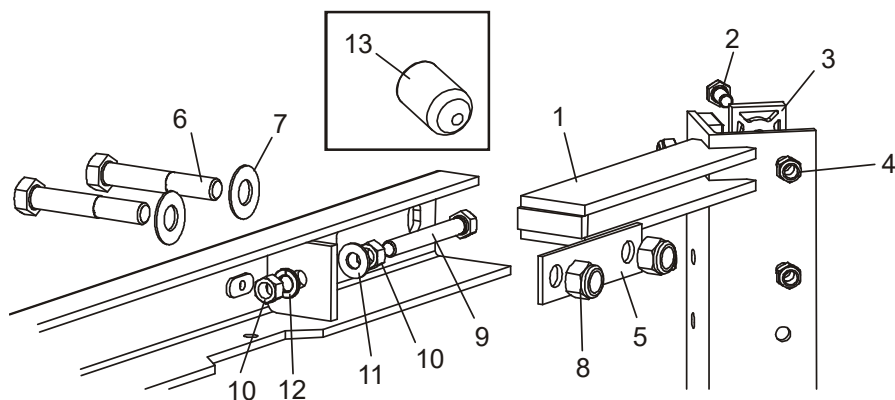
REF	PART #	QTY.
1-12	006795	1
1	056999	1
2	-----	1
3	056996	1
4	056998	2
5	F05006-20	4
6	F05005-59	2
7	F05005-101	2
8	F05010-21	2
9	F05011-14	3
10	F05005-123	3

11	F05011-13	4
12	F05006-102	4
13	053339	2
14	053340	2
16-20	006853	1
15	006851	1
16	F05006-2	2
17	F05010-20	4
18	F05011-17	4
19	055323	2
20	050283	1
21	F05015-7	4

22	P10364-5	1
23	006868-5	1
24	P12960-5	1
25	074199	2
26	016371	1
27	F05005-15	2
28	F05011-11	2
29	F05010-9	2
30	036305	1
31	036307	1
32	P11764	1

PARTIE 5 SYSTÈME DE MONTÉE

5.1 Fixation De La Tête De Sciage



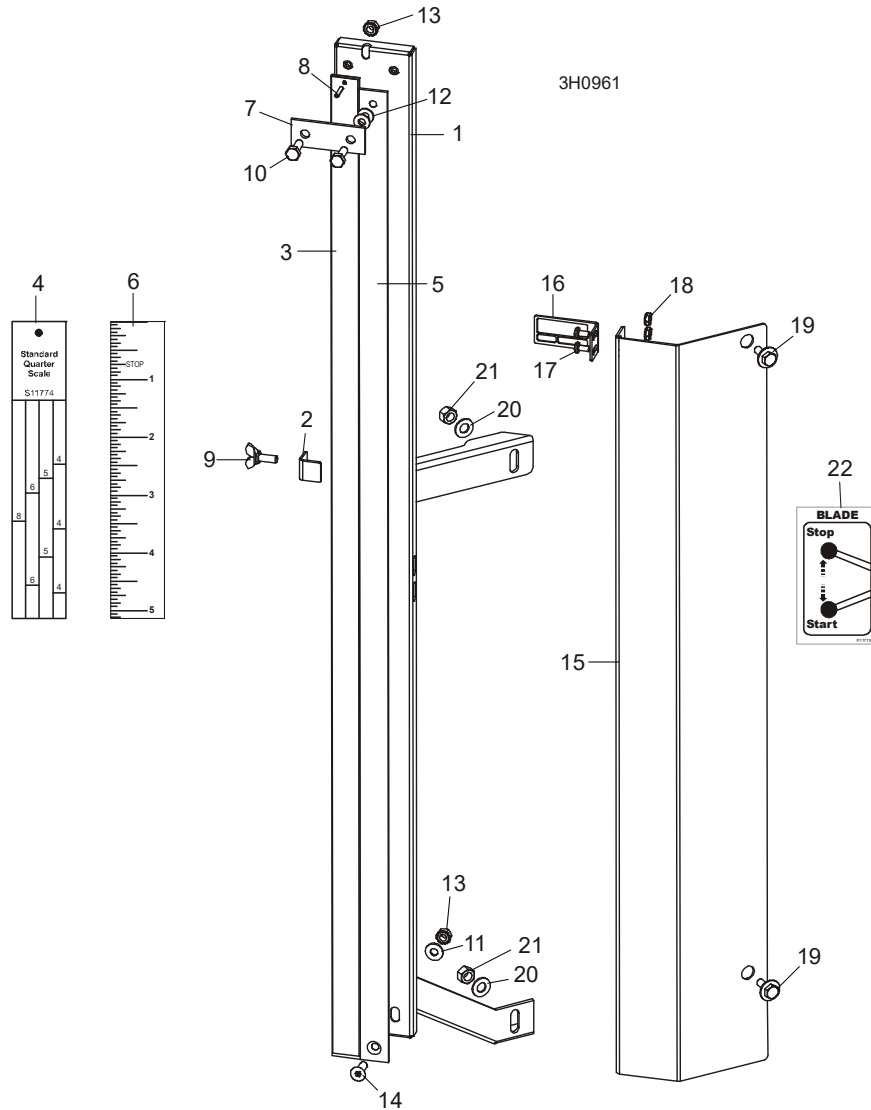
SM0080D

REF	PART #	QTY.
1	W04099	1
2	F05006-5	12
	F05006-93	4
3	M04096	6
	016241	2

4	F05010-58	16
5	S07935	2
6	F05008-61	4
7	F05011-2	4
8	F05010-8	4
9	F05007-17	2

10	F05010-1	4
11	F05011-3	2
12	F05011-4	2
13	017715	3

5.2 Indicateur De Hauteur Et Règles De Débitage



REF	PART #	QTY.
1-21	A12030	1
1-21	----	1
1-14	----	1
1-2	W11996	1
2	036666	1
3-4	S11989	1
4	S11774 ¹	1
	P12819 ²	1
5-6	S11988	1

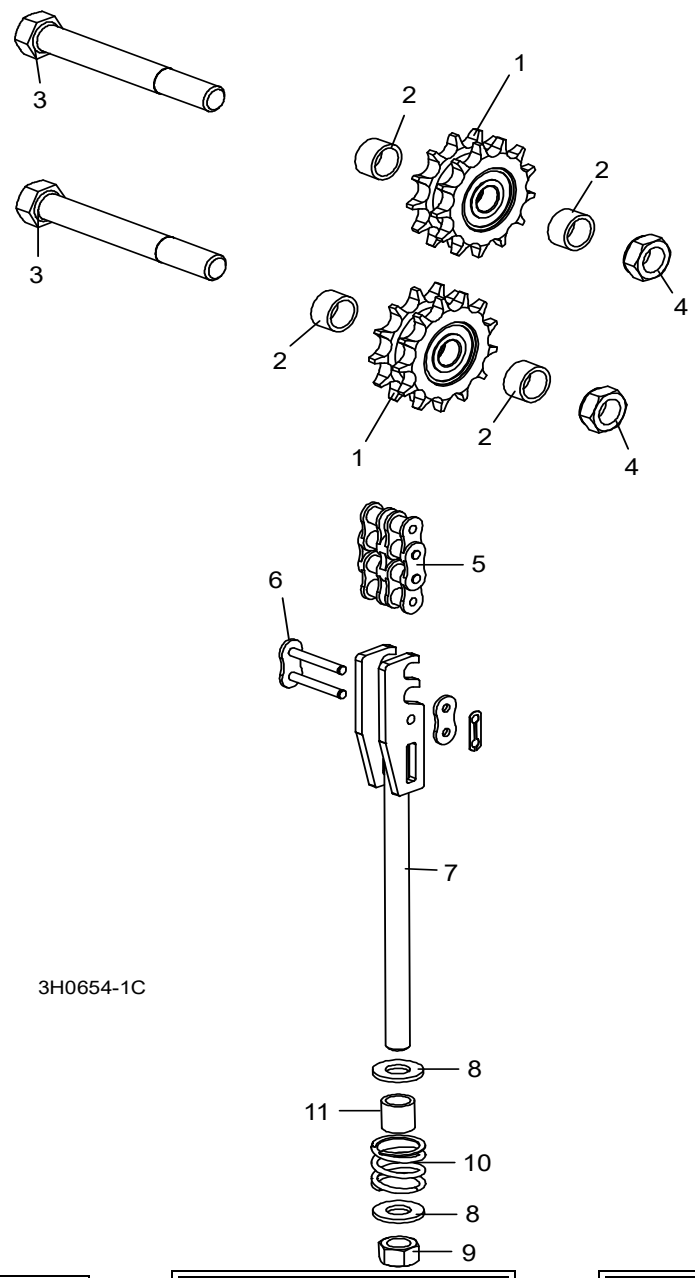
6	S11773	1
7	S04805	1
8	F05012-14	1
9	F05005-64	1
10	F05005-1	2
11	F05011-11	1
12	F05011-22	2
13	F05010-9	2
14	F05005-70	1
15-18	038591	1

15	038586	1
16	038585	1
17	F05004-3	2
18	F05010-14	2
19	F05005-134	2
20	F05011-17	2
21	F05010-6	2
22	P11779-5	1

¹ Standard

² Pour Bois Dur

5.3 Chaînes Et Pignons De Montée



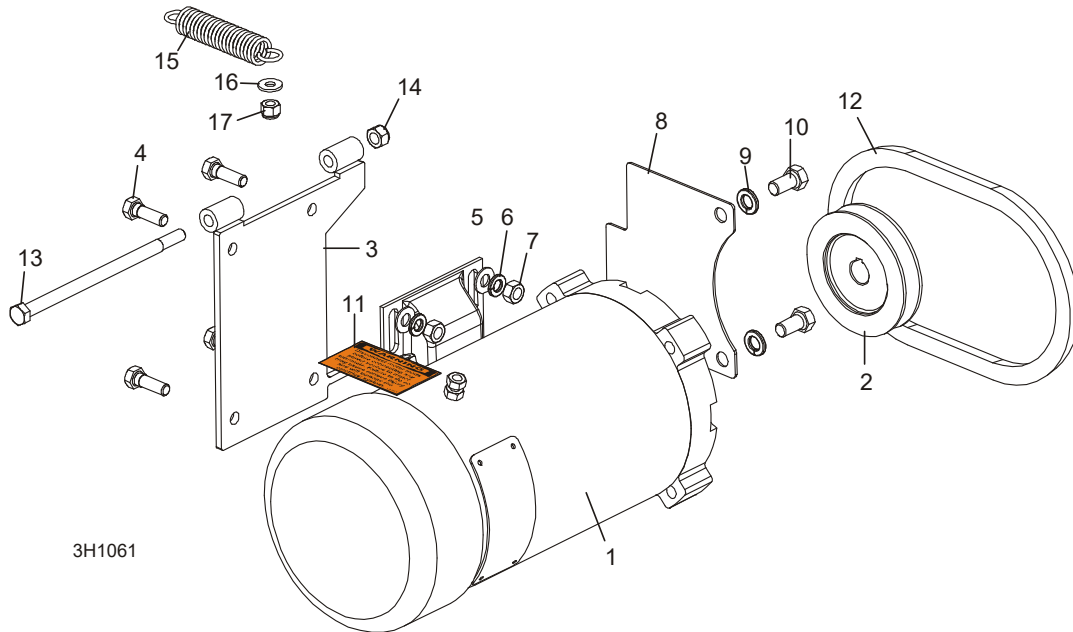
3H0654-1C

REF	PART #	QTY.
1-2	016020	1
1	016019	2
2	016018	4
3	F05009-6	2
4	F05010-96	2

5	015259	1
6	015258	2
7-11	015456	1
7	015188	1
8	F05011-2	2
9	F05010-8	1

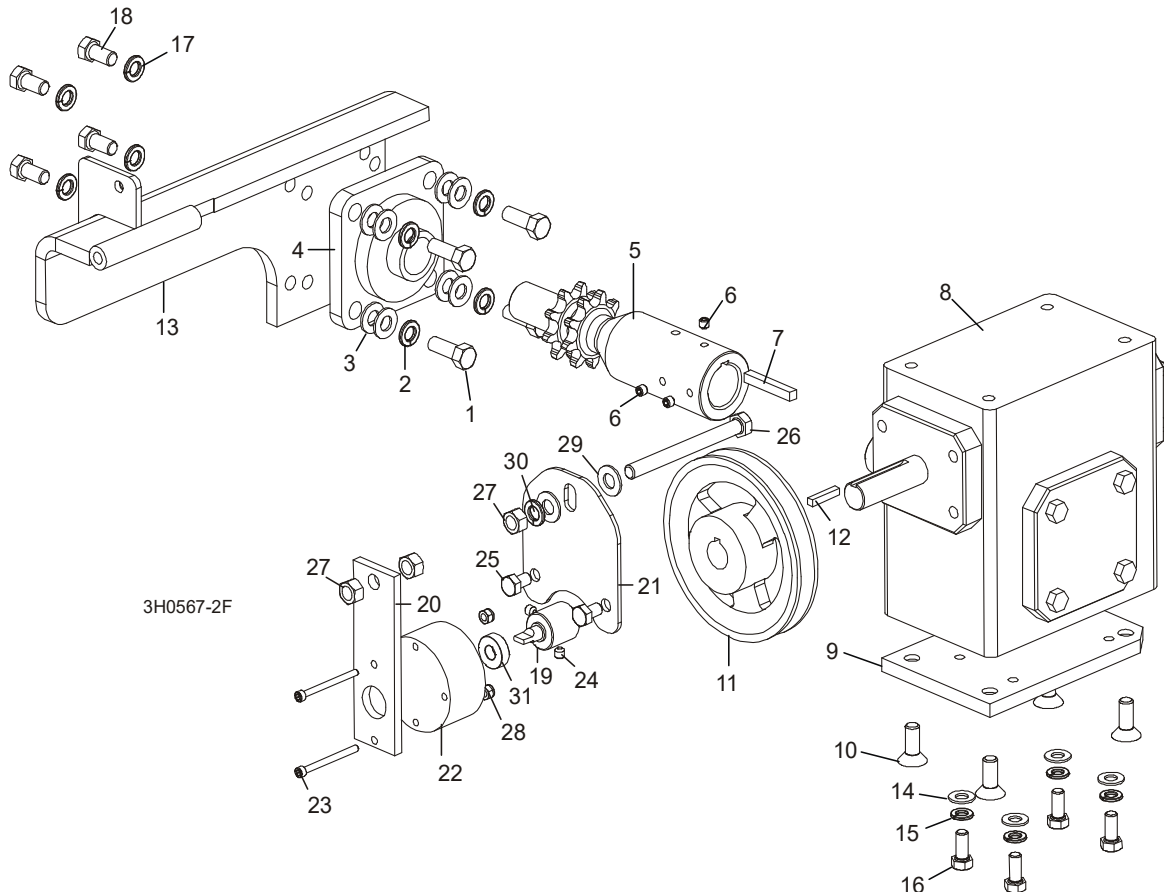
10	016516	1
11	016515	1

5.4 Moteur De Montée



REF	PART #	QTY.
1 - 11	008779	1
1	053682	1
2	008999	1
3	015198	1
4	F05006-1	4
5	F05011-17	4
6	F05011-13	4
7	F05010-17	4
8	015016	1
9	F05011-4	2
10	F05007-27	2
11	024431	1
12	038459	1
13	F05006-73	1
14	F05010-65	1
15	015569	1
16	F05011-11	1
17	F05010-69	1

5.5 Système D'entraînement De Montée



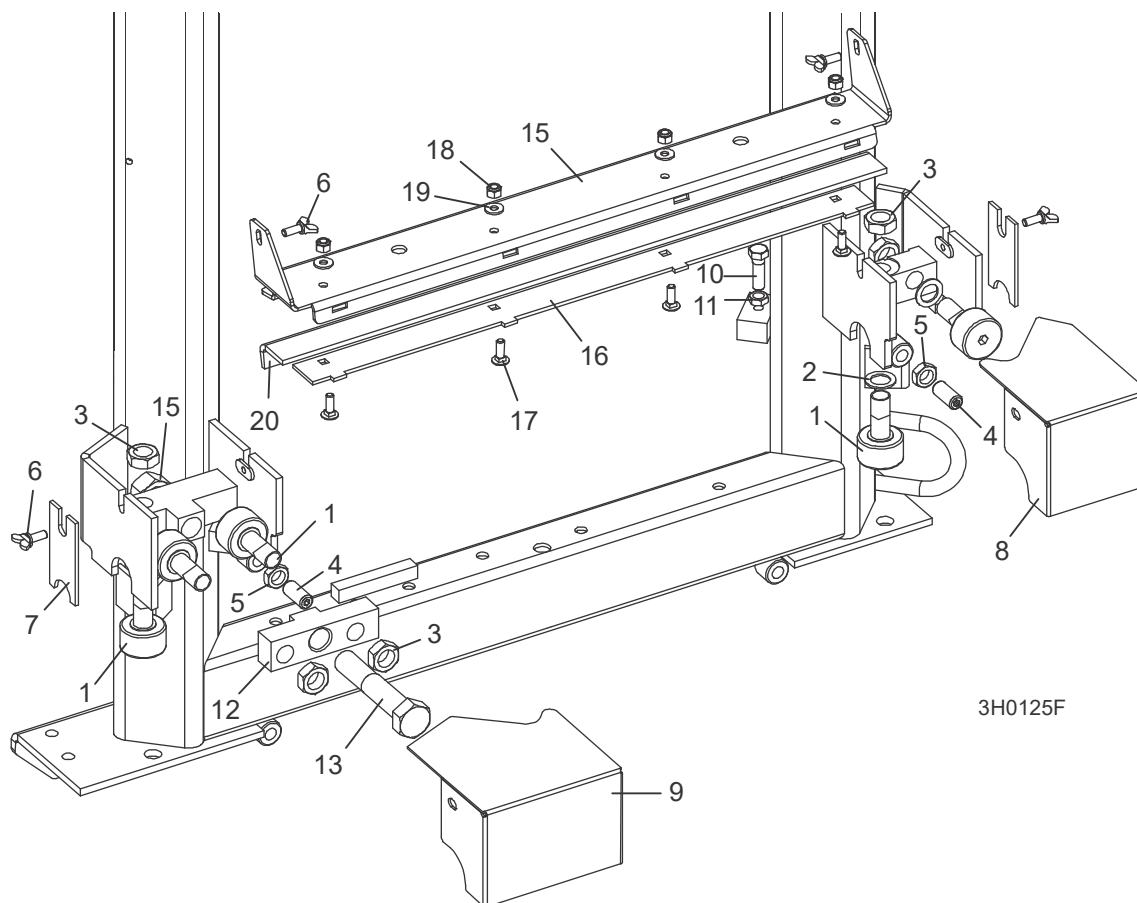
REF	PART #	QTY.
1-13	015176	1
1	F05007-7	4
2	F05011-4	4
3	F05011-3	8
4	014090	1
5-7	016094	1
5	----	1
6	F05005-105	3
7	S04124	1
8	074124	1
9	014158	1
10	F05007-64	4
11	015256	1
12	S31027	1
13	015195	1

14	F05011-17	4
15	F05011-13	4
16	F05006-102	4
17	F05011-4	4
18	F05007-27	4
19-31	065187	1
19	062511	1
20	062513	1
21	065190	1
	065907	1
22	069519	1
	F05708-26	2
23	F05004-273	2
24	F05005-131	2
25	F05006-15	2
26	F05007-92	1

27	F05010-1	3
28	F05010-169	2
29	F05011-3	2
30	F05011-4	1
31	P10688	1

PARTIE 6 SYSTÈME D'ENTRAÎNEMENT ET PALIERS

6.1 Paliers de Rail Superieur et Grattoirs



3H0125F

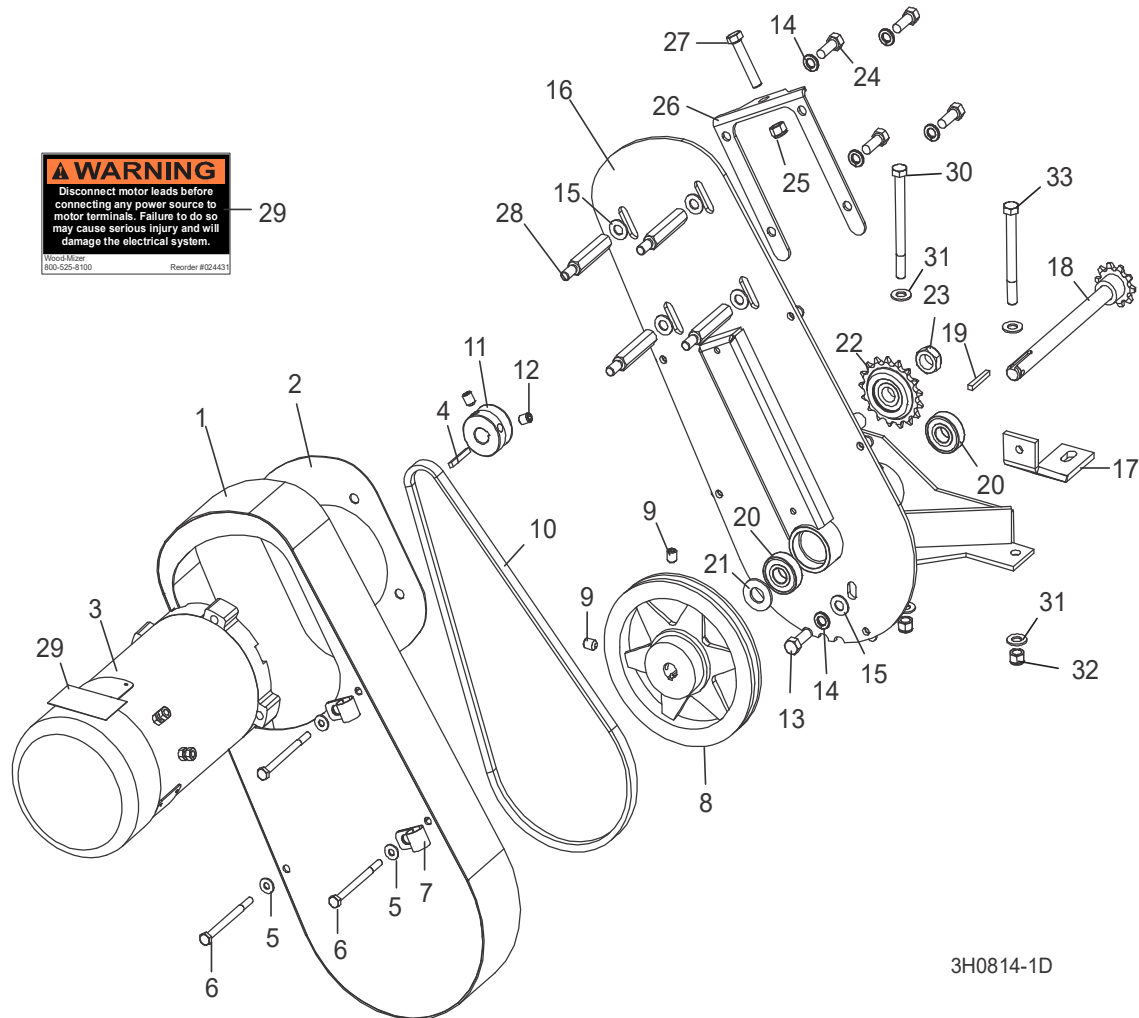
REF	PART #	QTY.	
1	012797	5	
2	016510	2	
3	F05010-11	5	
4	F05008-5	2	
5	F05010-31	2	
6	F05005-64	4	
7	M04113	2	
8	012999	1	
9	016285	1	
10	F05007-2	2	
11	F05010-29	2	
12	016501	1	
13	F05013-3	1	

14	F05010-80	1	
	110612	1	
15	110609	1	◆
16	110611	1	◆
17	F05005-113	4	
18	F05010-69	4	
19	F05011-11	4	
20	S09915	1	

6 Système D'entraînement Et Paliers

Système D'entraînement

6.2 Système D'entraînement



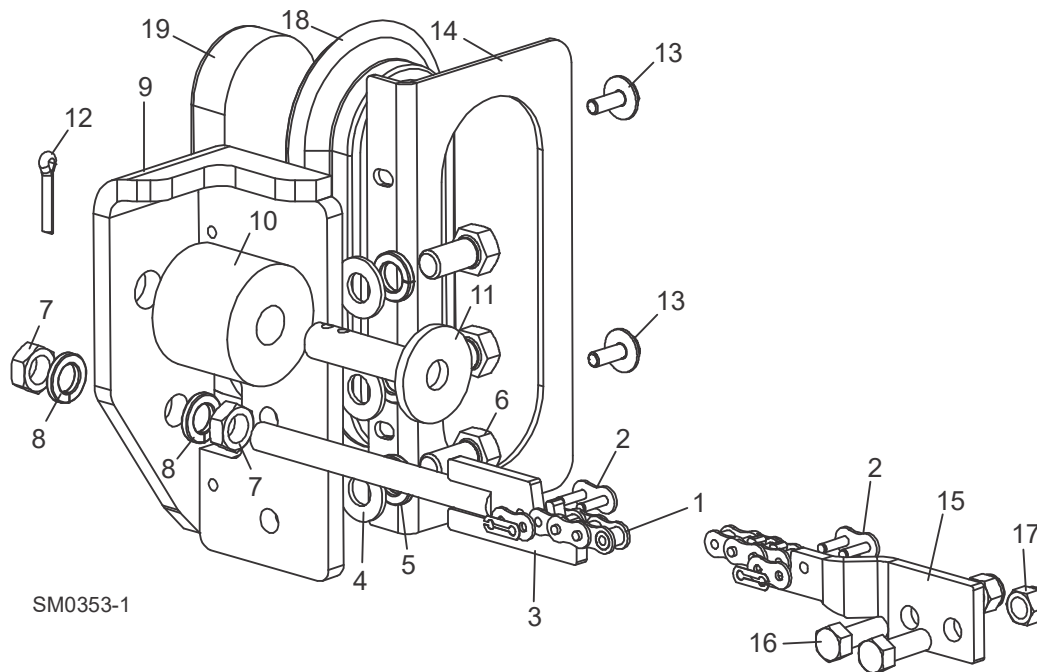
3H0814-1D

REF	PART #	QTY.
1-29	015125	1
1	015126	1
2	015133	1
3	024169	1
4	S31027	1
5	F05011-11	4
6	F05005-54	4
7	010748	2
8-9	016088	1
9	F05006-32	2
10	016083	1
11	015135	1

12	F05007-12	2
13	F05007-7	1
14	F05011-4	5
15	F05011-3	5
16	015162	1
17	015132	1
18-19	016066	1
18	----	1
19	016108	1
20	P06030-1	2
21	F05011-19	1
22	016366	1
23	F05010-96	1

24	F05007-27	4
25	F05010-10	1
26	015134	1
27	F05007-16	1
28	015136	4
29	024431-5	1
30	F05007-35	1
31	F05011-3	4
32	F05010-10	2
33	F05007-4	1

6.3 Chaîne D'entraînement Et Butoir



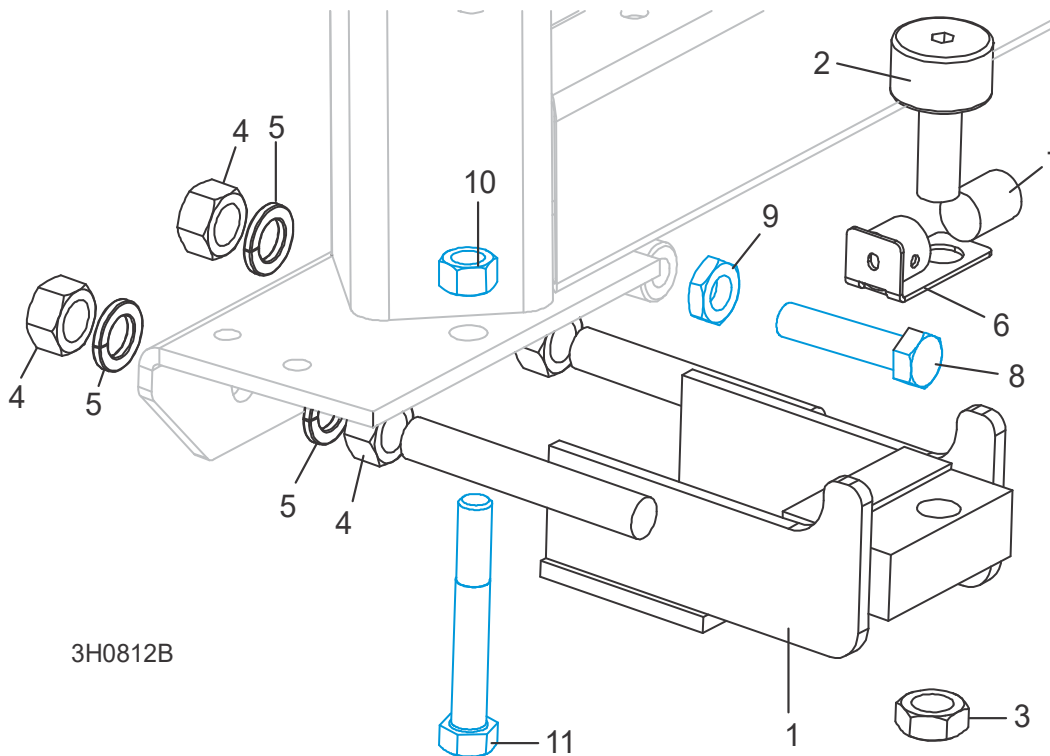
SM0353-1

REF	PART #	QTY.
1	014745	1
2	P04200	2
3	015721	1
4	F05011-2	3
5	F05011-9	3
6	F05008-128	3
7	F05010-16	2

8	F05011-9	2
9	006686	1
10-12	K09630	2
10	P12165	1
11	W09293	1
12	F05012-21	1
13	F05005-134	2
14	057882	1

15	015008	1
16	F05007-7	2
17	F05010-10	2
18	006688	1
19	006391	1

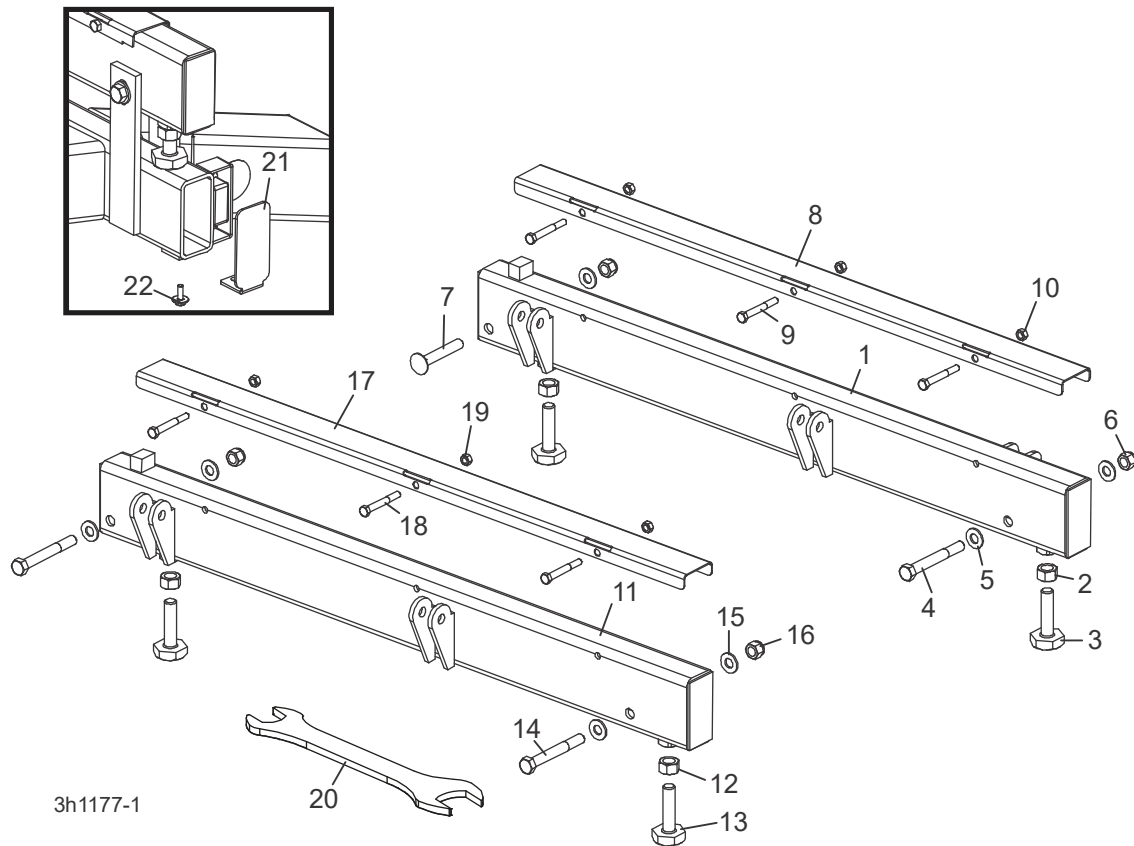
6.4 Paliers De Rail Inférieur



REF	PART #	QTY.
1-7	012995	2
1	----	1
2	012797	1
3	F05010-11	1
4	F05010-5	4
5	F05011-118	4
6	033374	1
7	033375	1
8	F05008-2	2
9	F05010-31	2
10	F05010-3	2
11	F05008-61	2

PARTIE 7 BÂTI DE LA SCIE

7.1 Rails Avant Et Arrière Du Banc De Grume

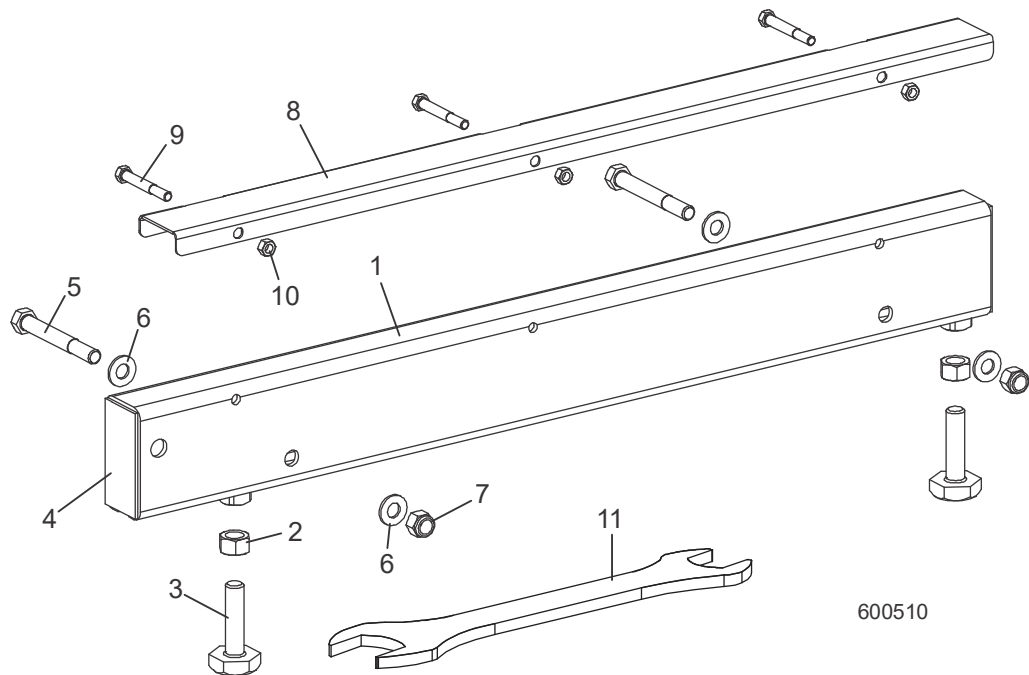


REF	PART #	QTY.
1-10	003298	1
1	034547	1
2	F05010-5	2
3	S13006	2
4	F05008-78	1
5	F05011-2	3
6	F05010-8	2
7	F05008-94	1
8-10	079144	1
8	016898	1
9	F05006-10	3
10	F05010-6	3

	Voir Partie 8.10	1
11-19	034548	1
11	034544	1
12	F05010-5	2
13	S13006	2
14	F05008-78	2
15	F05011-2	4
16	F05010-8	2
17-19	079144	1
17	016898	1
18	F05006-10	3
19	F05010-6	3
	Voir Partie 8.10	1

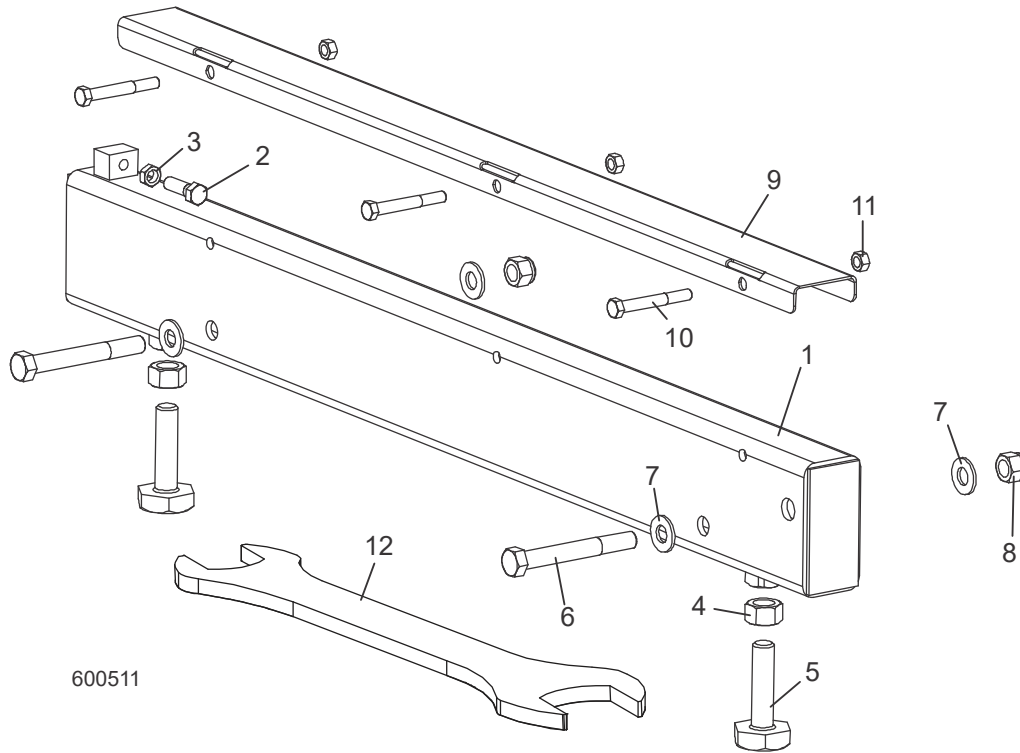
20	015970	1
21	038843	2
22	F05005-134	2

7.2 Rail Centre-avant Du Banc De Grume



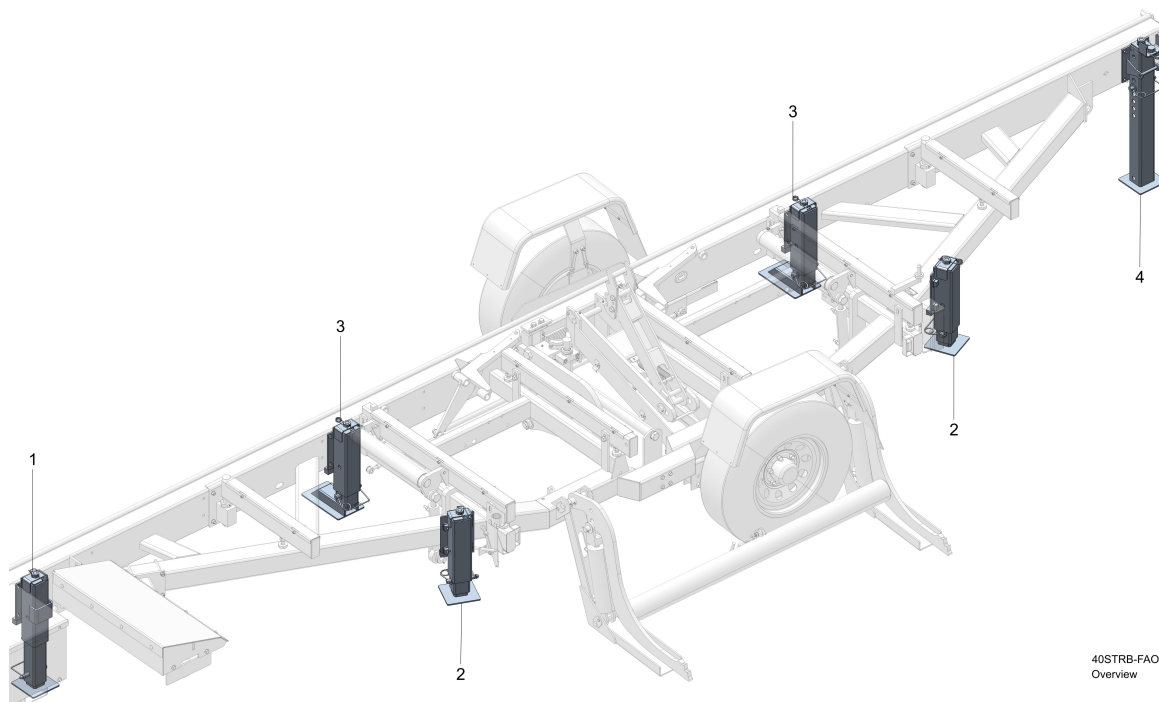
REF	PART #	QTY.
1-10	034549	1
1	034545	1
2	F05010-5	2
3	S13006	2
4	S04058	2
5	F05008-78	2
6	F05011-2	4
7	F05010-8	2
8-10	A09956	1
8	S09944	1
9	F05006-10	3
10	F05010-6	3
11	015970	1

7.3 Rail Centre-arrière Du Banc De Grume



1-11	034550	1
1	034546	1
2	F05007-2	1
3	F05010-29	1
4	F05010-5	2
5	S13006	2
6	F05008-78	2
7	F05011-2	4
8	F05010-8	2
9-11	A09956	1
9	S09944	1
10	F05006-10	3
11	F05010-6	3
12	015970	1

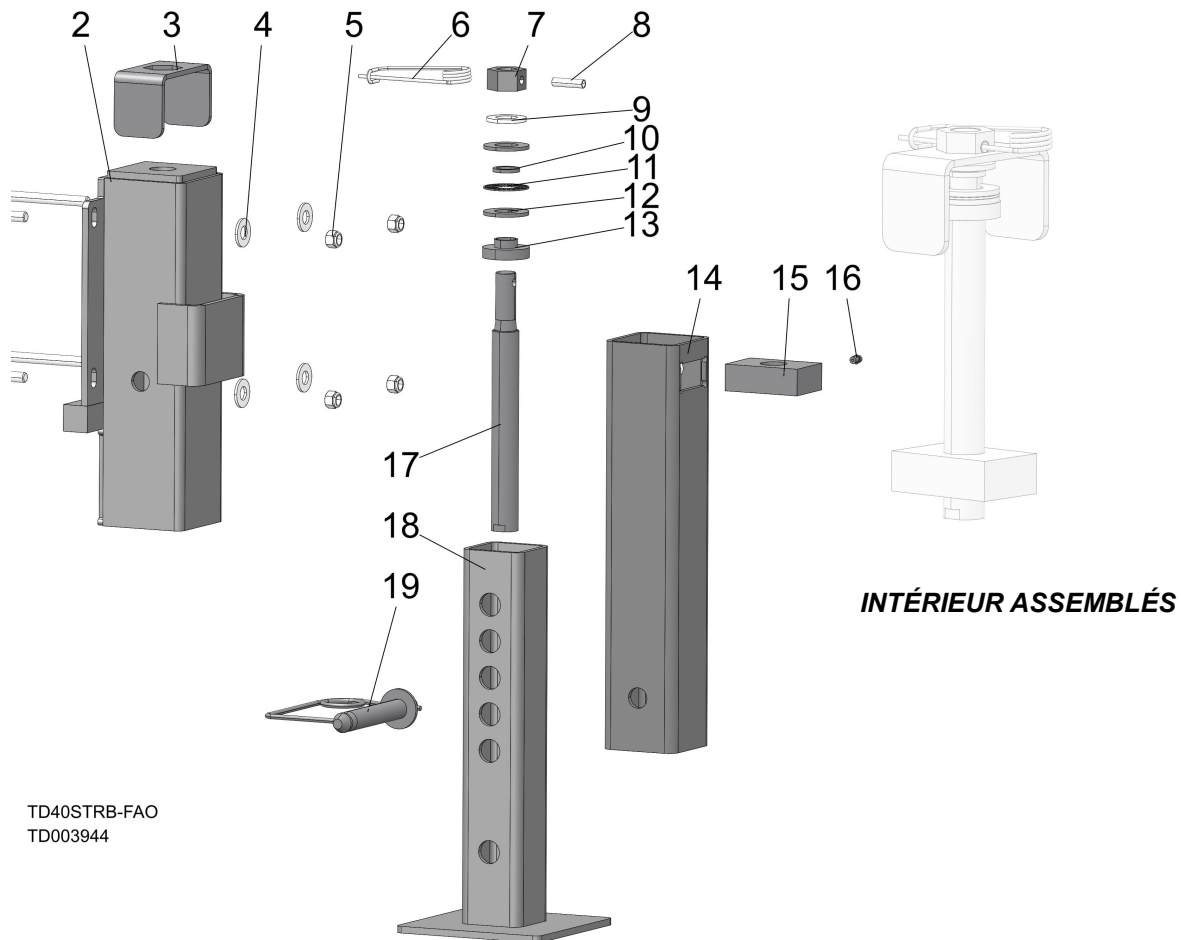
7.4 Pieds Réglable



40STRB-FAO
Overview

REF	PART #	QTY.
1	003944	1
2	056781	2
3	056787	2
4	056791	1
Voir le formulaire n°2540 pour les Pieds Stationnaires		
Voir le formulaire n°2541 pour les Pieds à réglage		

7.5 FAO Pied Avant

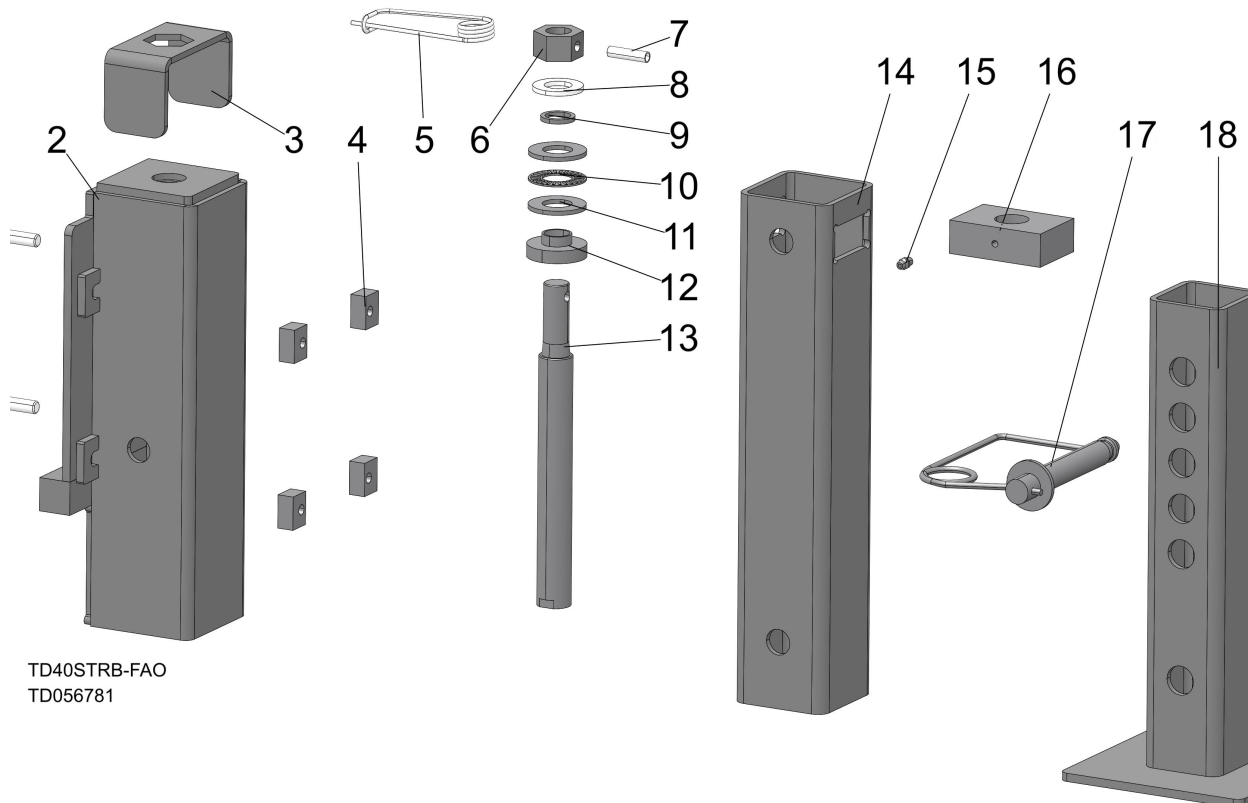


TD40STRB-FAO
TD003944

REF	PART #	QTY.
1	F05007-113	4
2	003943	1
3	059577	1
4	F05011-2	4
5	F05010-10	4
6	F05012-162	1
7	056774	1
8	F05012-127	1
9	F05011-62	1
10	039641	1
	039639	1
11	039637	1
12	039638	2

REF	PART #	QTY.
13	039645	1
14	003981	1
15	039636	1
16	P05060	1
17	039642	1
18	056783	1
19	056817	1

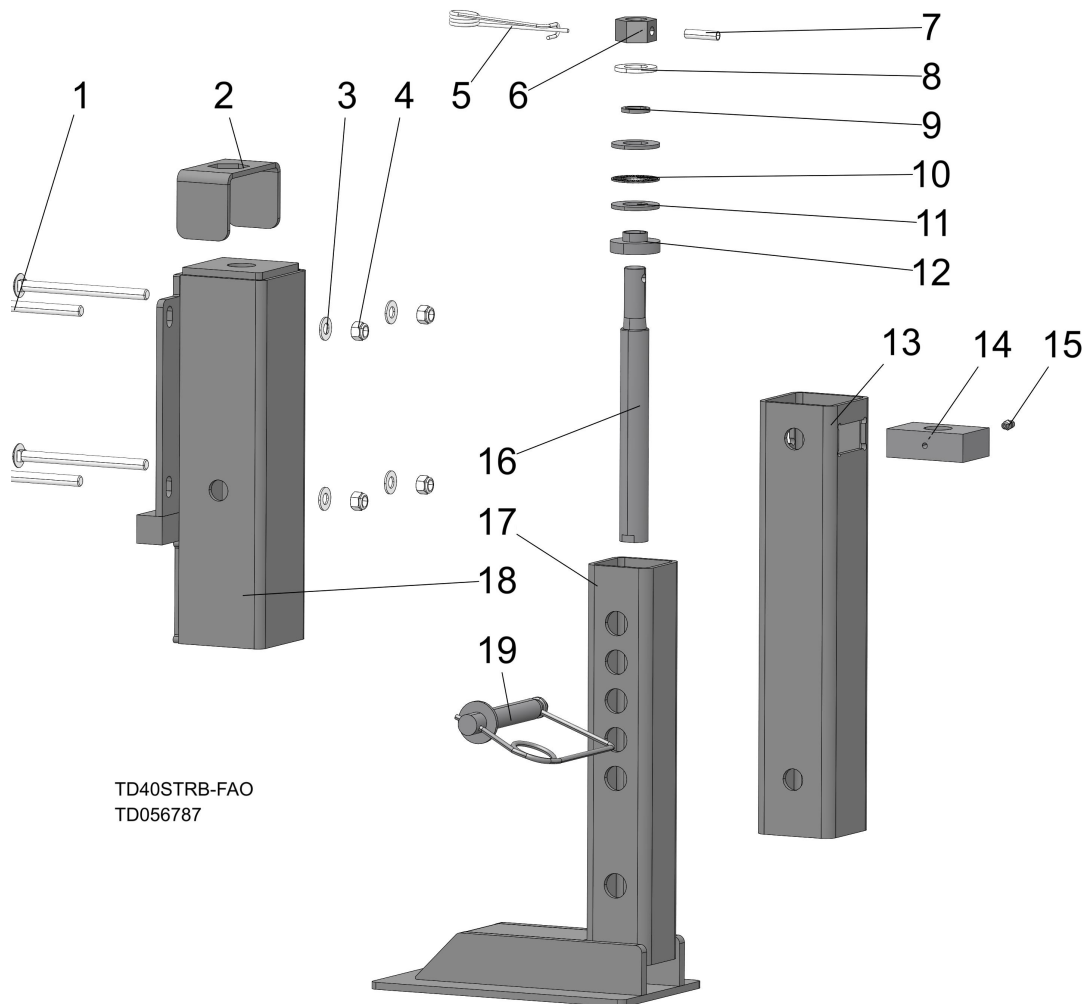
7.6 FAO Pieds Côté Chargement



REF	PART #	QTY.
1	F05007-2	4
2	056780	1
3	059577	1
4	056826	4
5	F05012-162	1
6	056774	1
7	F05012-127	1
8	F05011-62	1
9	039641	1
	039639	1
10	039637	1
11	039638	2
12	039645	1
13	039642	1
14	003981	1
15	P05060	1

REF	PART #	QTY.
16	039636	1
17	056817	1
18	056783	1

7.7 FAO Pied de décalage

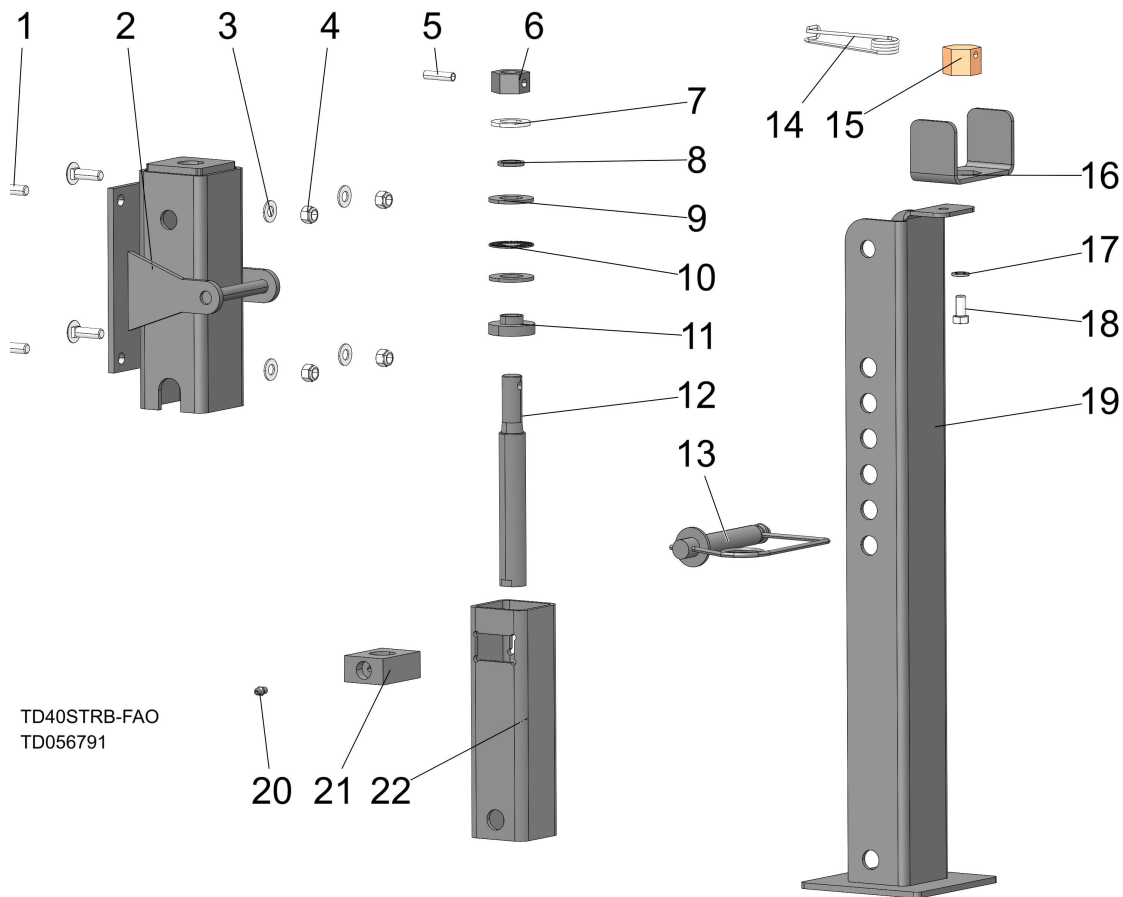


TD40STRB-FAO
TD056787

REF	PART #	QTY.
1	F05007-113	4
2	003943	1
3	059577	1
4	F05011-2	4
5	F05010-10	4
6	F05012-162	1
7	056774	1
8	F05012-127	1
9	039645	1
10	F05011-62	1
11	039641	1
	039639	1
12	039637	1

REF	PART #	QTY.
13	039638	2
14	003981	1
15	039636	1
16	P05060	1
17	039642	1
18	056783	1
19	056817	1

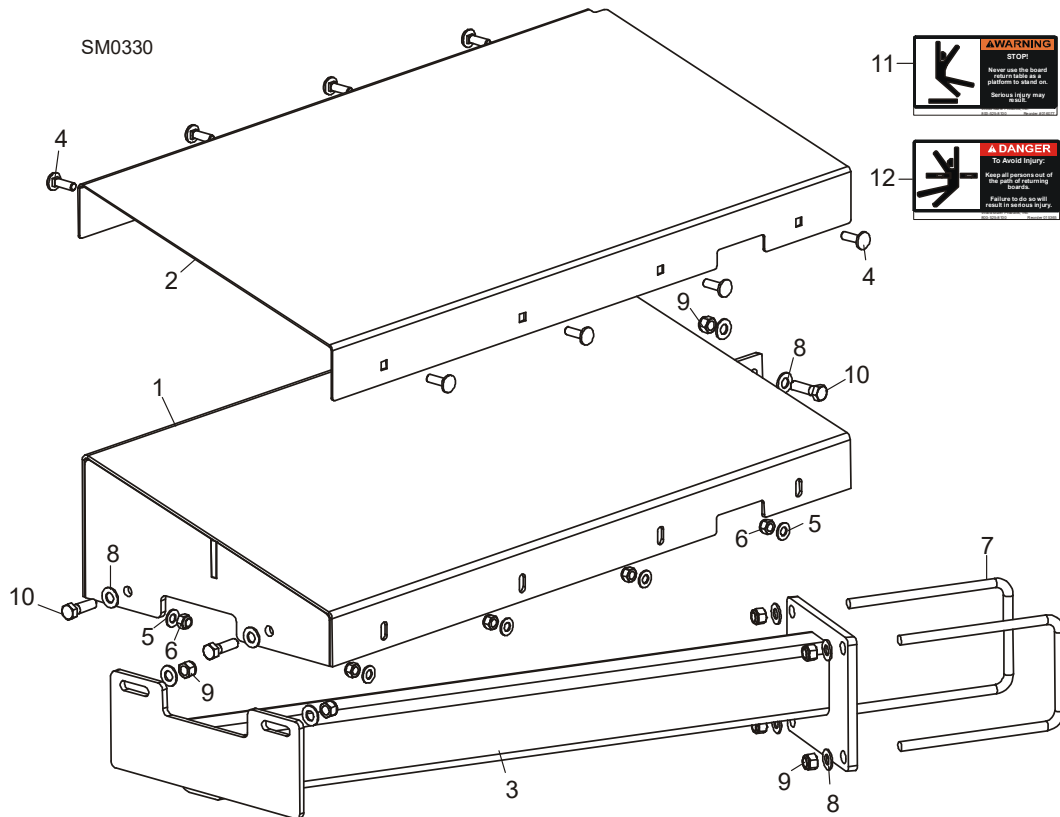
7.8 FAO Pied Arrière



REF	PART #	QTY.
1	F05007-11	4
2	056815	1
3	F05011-3	4
4	F05010-10	4
5	F05012-127	1
6	056774	1
7	F05011-62	1
8	039641	1
	039639	1
9	039638	2
10	039637	1
11	039645	1
12	056818	1
13	056817	1
14	F05012-162	1
15	110560	1

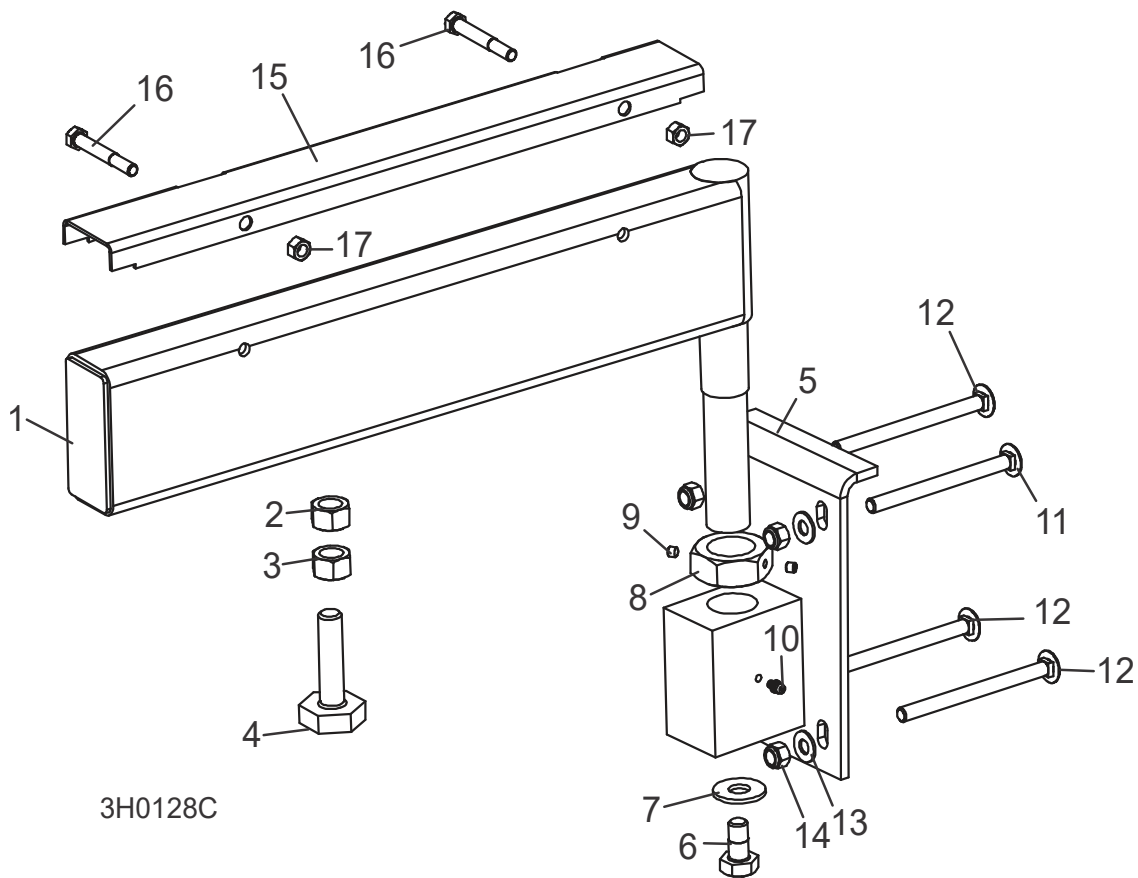
REF	PART #	QTY.
16	059577	1
17	F05011-4	1
18	F05007-118	1
19	056816	1
20	P05060	1
21	056823	1
22	056795	1

7.9 Table D'éjecteur De Planches



REF	PART #	QTY.
1-12	003264	1
1	055515	1
2	003259	1
3	055533	1
4	F05006-9	8
5	F05011-17	8
6	F05010-58	8
7	003207	2
8	F05011-3	10
9	F05010-10	7
10	F05007-123	3
11	016077-5	1
12	015365-5	1

7.10 Support De Grume Mobile

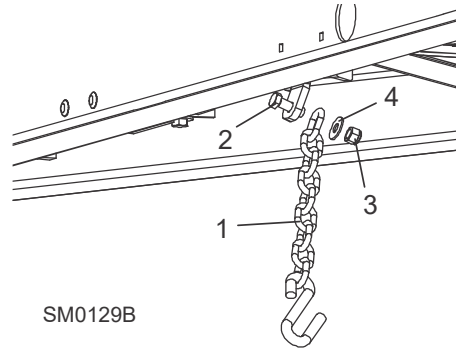


3H0128C

REF	PART #	QTY.
1-10	A13015	2
1-4	-----	1
2	F05010-84	2
3	F05010-5	2
4	S13006	2
5	W13090	1
6	F05008-50	1
7	F05011-52	1
8	S13016	1
9	F05005-42	2
10	P04107	1
11	F05007-114	2
12	F05007-113	6
13	F05011-3	8

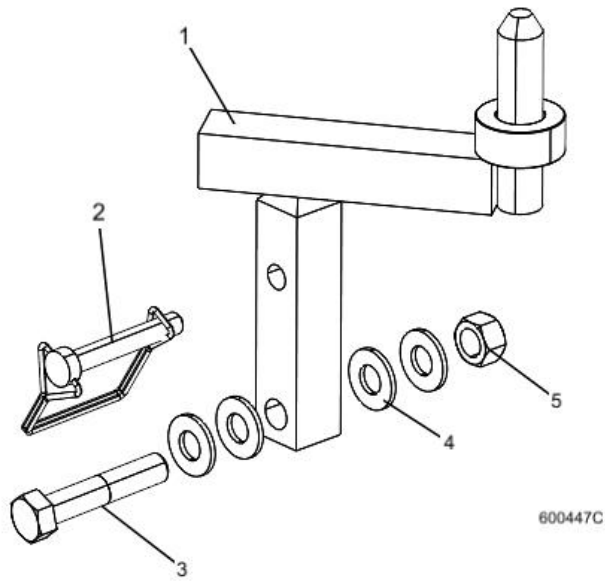
14	F05010-10	8
15-17	017710	2
15	S13012	1
16	F05006-10	2
17	F05010-6	2

7.11 Chaîne De Sécurité



REF	PART #	QTY.
1	107972	1
2	F05008-33	1
3	F05010-8	1
4	F05011-35	1

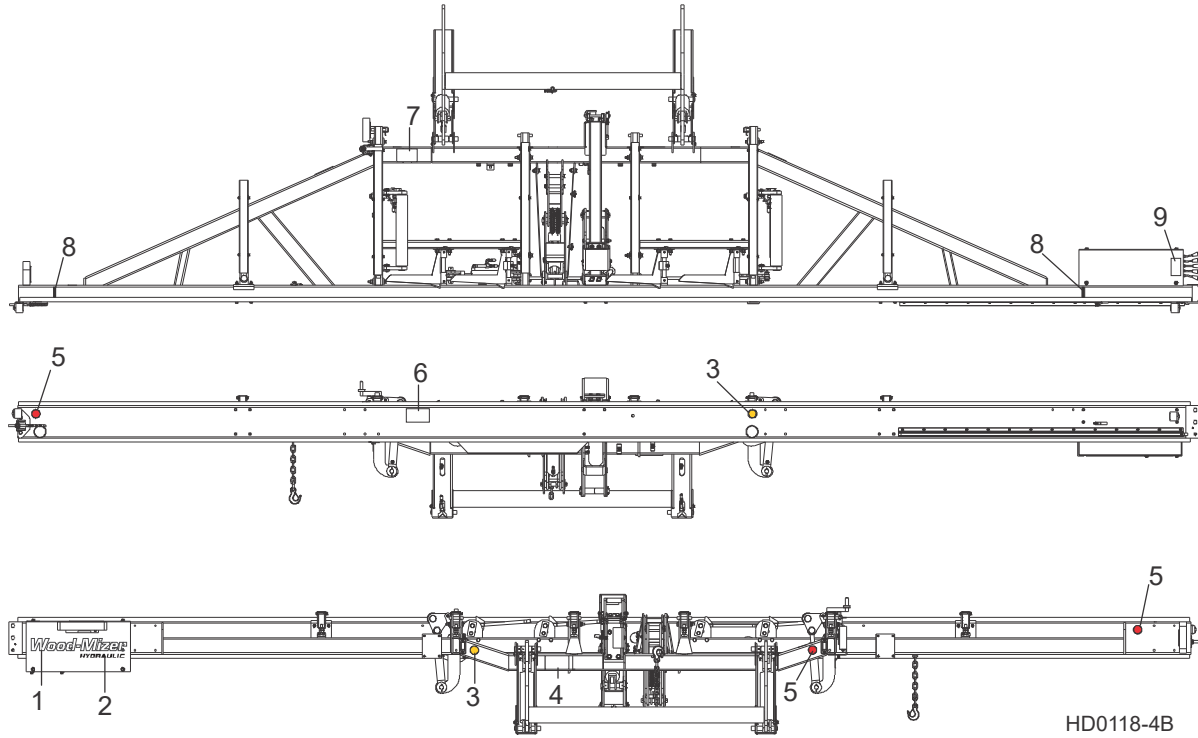
7.12 Attache De La Tête De Scie



REF	PART #	QTY.	
	079485 ¹		
	079511 ²		
1	014102 ¹	1	
	079510 ²	1	
2	014151	1	
3	F05008-74	1	
4	F05011-2	4	
5	F05010-3	1	

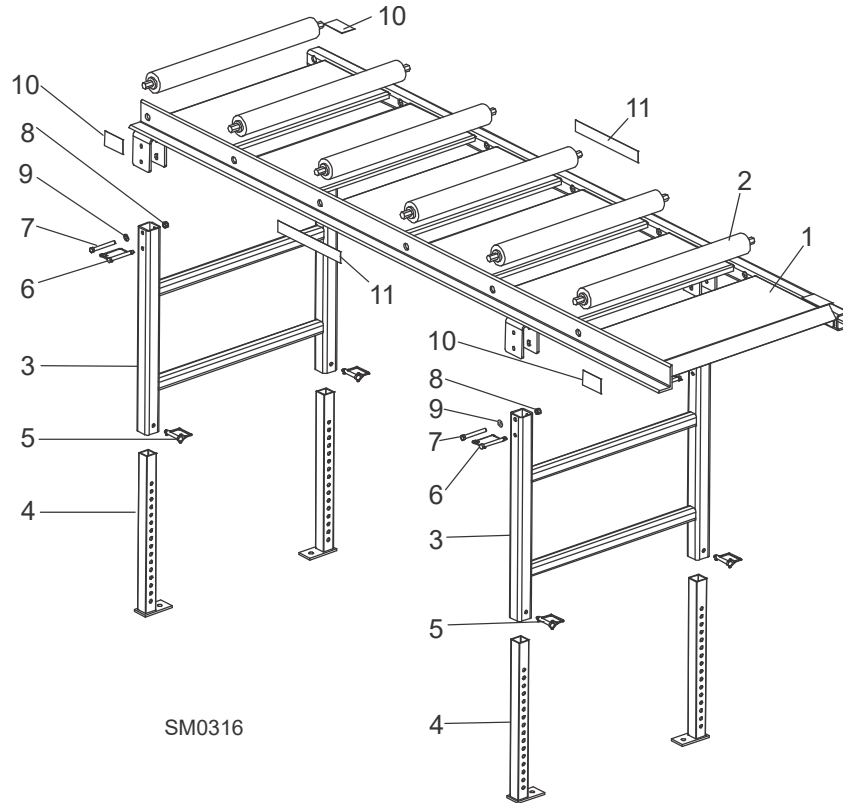
¹ Standard
² Wide

7.13 Étiquettes D'avertissement



REF	PART #	QTY.
1	065034	1
2	065035	1
3	P07453	2
4	S09851	1
5	P07452	3
6	P10287	1
7	S12581	1
8	S12051	2
9	P12961	1

7.14 Table De Planches (Optionnel)

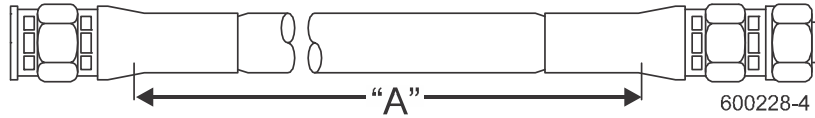


SM0316

REF	PART #	QTY.
1-10	016652	1
1	016606	1
2	038167	6
3	016609	2
4	016651	4
5	014151	4
6	016677	4
7	F05007-135	4
8	F05010-10	4
9	S12641-5	4
10	016991	2

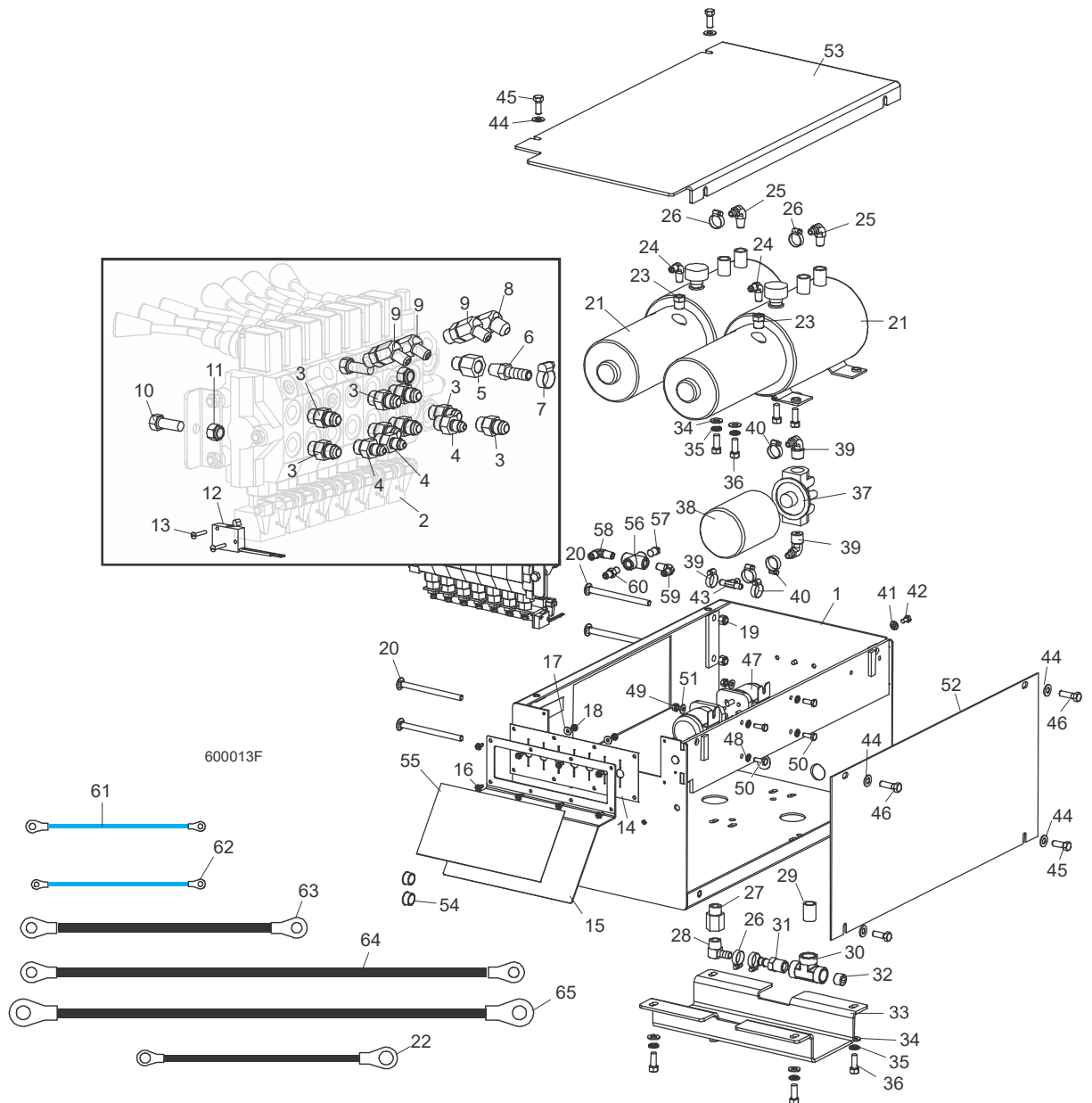
PARTIE 8 SYSTÈME HYDRAULIQUE

8.1 Flexibles hydrauliques



ID	Color Code	LENGTH "A"	Application (NOTE: See Hydraulic Information Section in Operator's Manual for Hydraulic Schematics)	PART #
H1	Purple	219"	1/4" Rear Toe Board Top	079000-219
H2	Black	219"	1/4" Rear Toe Board Base	079000-219
H3	Yellow	117"	1/4" Front Toe Board Top	079000-117
H4	Gray	117"	1/4" Front Toe Board Base	079000-117
H5	Green	204"	1/4" Clamp Up/Down Top	079000-204
H6	Yellow	193"	1/4" Clamp Up/Down Base	079000-194
H7	Red	178"	3/8" Loading Arm Base	079001-178
H8	Blue	178"	3/8" Loading Arm Top	079001-178
H9	Orange	65"	3/8" Side Support Base	079001-65
H10	Plain	73"	3/8" Side Support Top	079001-73
H11	Orange	177"	3/8" Clamp In/Out Base	079001-177
H12	White	151"	3/8" Clamp In/Out Top	079001-151
H13	Green	38"	3/8" Loading Arm Branch Top	079001-38
H14	Green	77"	3/8" Loading Arm Branch Top	079001-77
H15	Yellow	81"	3/8" Loading Arm Branch Base	079001-81
H16	Yellow	43"	3/8" Loading Arm Branch Base	079001-43
H17	Plain	181"	3/8" Log Turner Base	079001-181
H18	Pink	181"	3/8" Log Turner Top	079001-181
H19	Purple	177"	3/8" Log Turner Motor (Nearest Frame)	079001-177
H20	Black	180"	3/8" Log Turner Motor (Furthest from Frame)	079001-180
H21	Plain	15"	1/4" Pump To Valve (two hoses)	057964
H22	Plain	6 1/2"	3/8" Gauge To Valve	079001-6.5

8.2 Boîte De Commande Des Hydrauliques



REF	PART #	QTY.
1-60	017649	1
1	034383	1
2-13	034533	1
2	034451	1
3	014687	8
4	P26284	3

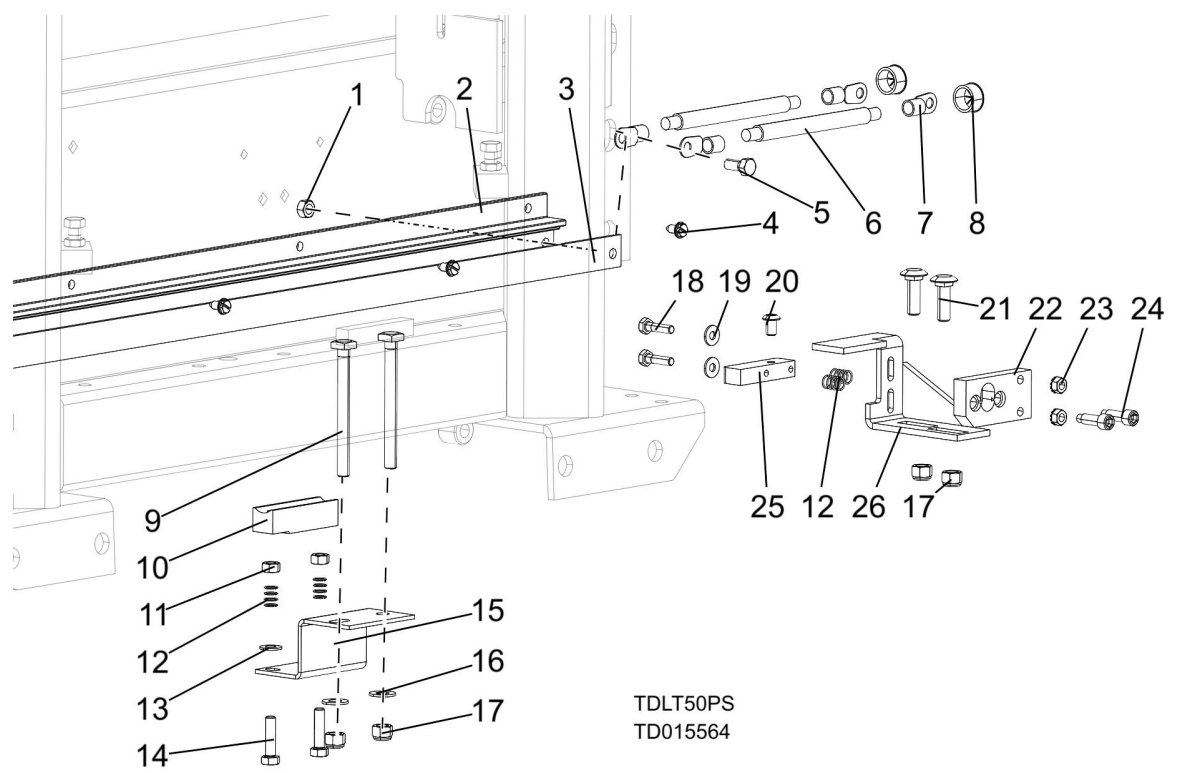
5	014686	1
6	014685	1
7	P12739	1
8	015489	1
9	015488	3
10	F05007-7	2
11	F05010-10	2

12	024198	1
13	F05004-13	2
14	034202	1
15	033999	1
16	F05015-7	8
17	F05011-18	2
18	F05010-14	2

19	F05010-10	4
20	F05007-113	4
21-36	034534	1
21-22	061764	2
22	052806	1
23	015490	2
24	P09142	2
25	P12708	2
26	P12739	4
27	015995	1
28	015997	1
29	016795	1
30	016793	1
31	016794	1
32	P26258	1
33	015992	1
34	F05011-3	8
35	F05011-4	8
36	F05007-7	8
37-38	P22683	1
38	P20301	1
39	P12707	2
40	P12739	2
41	F05011-14	2
42	F05005-15	2
43	015485	1
44	F05011-3	6
45	F05007-87	4
46	F05007-2	2
47	016371	2
48	F05011-37	4
49	F05010-9	4
50	F05005-1	4
51	F05011-11	4
52	015227	1
53	015228	1
54	P04137	2
55	017669	1
56	P22311	1
57	P05498	1
58	015490	1
59	P09142	1
60	P09143	1

61	036315	2
62	036314	1
63	036311	1
64	036310	1
65	036312	2

8.3 Plaque De Contact Hydraulique Et Bornes



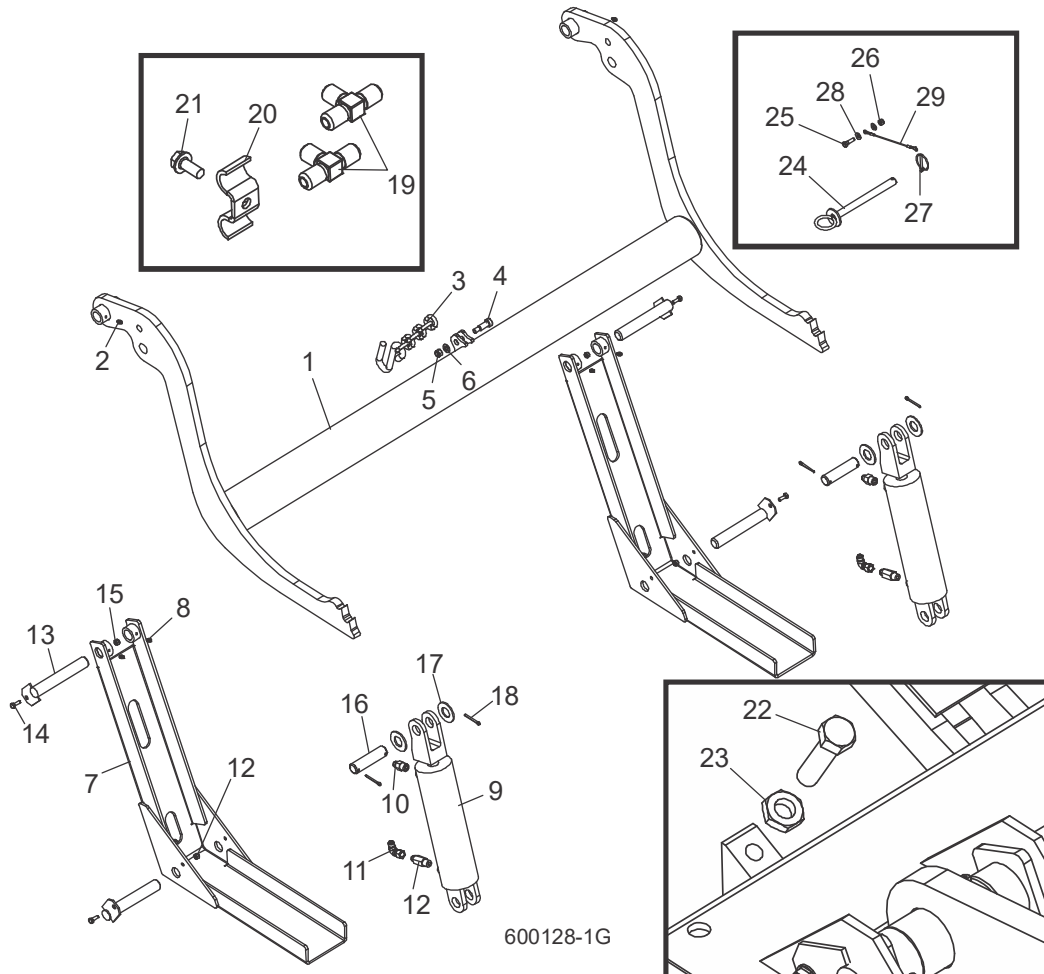
TDLT50PS
 TD015564

REF	PART #	QTY.
1-8	015564	1
1	F05010-86	1
2	P11976	1
3	S10075	1
4	F05015-1	8
	052161	2
6	R01971	1
7	F05092-16	2
8	P04137	2

	R01950-8	.33ft
9-17	016797	1
9	F05007-175	2
10	015264	1
11	F05010-17	2
12	P10077	4
13	F05011-17	2
14	F05006-93	2
15	016792	1
16	F05011-3	2
17	F05010-10	4
18-27	017671	1

18	F05005-38	2
19	F05011-11	2
20	F05006-20	1
21	F05007-11	2
22	S10072	1
23	F05010-9	2
24	F05006-143	2
25	015253	1
26	015324	1
27	015564	1

8.4 Chargeuse Hydraulique



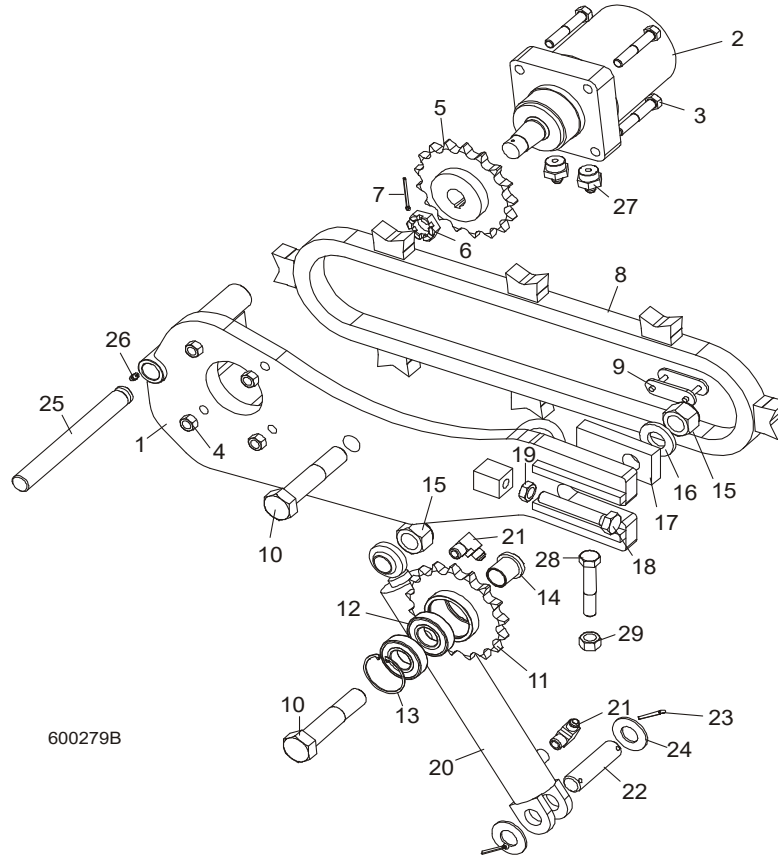
600128-1G

1-21	034539	1
1-6	036416	1
1	110372	1
2	P04107	2
3	110472	1
4	F05008-146	1
5	F05010-10	1
6	F05011-3	1
7	W09444	2
8	P04107	4
	038735	2
9	042754	1
10	016819	1
11	042756	1

12	038734	1
13	W09446	4
14	F05005-1	4
15	F05010-69	4
16	S09251	2
17	F05011-28	4
18	F05012-23	4
19	015487	1
20	016041	6
21	F05006-102	6
22	F05008-7	2
23	F05010-31	2
24	036692	1
25	F05005-101	1

26	F05010-69	1
27	017604	1
28	F05011-11	2
29	016090	1
	074207	1

8.5 Tourne-bille Hydraulique

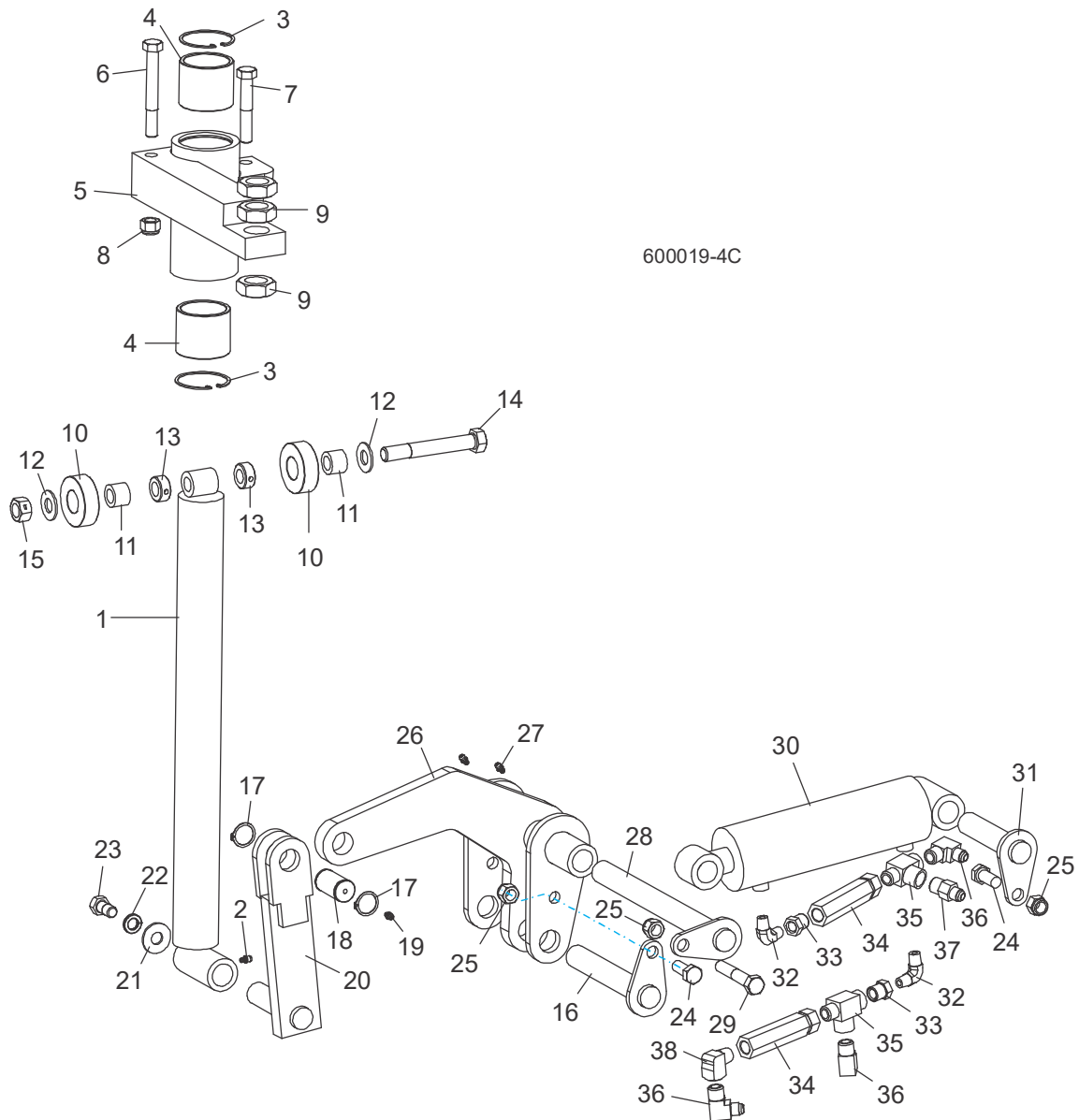


600279B

1-27	006095	1
1	006471	1
2	007331	1
3	F05008-23	4
4	F05010-3	4
5	042192	1
6	018741-2	1
7	F05012-43	1
8	006097	1
9	016796	1
10	F05004-132	2
11-13	042193	1
11	042191	1
12	P11035	2
13	F04254-12	1
14	042187	2
15	F05010-109	2

16	038749	1
17	042188	1
18	F05009-31	1
19	F05010-82	1
20	034267	1
21	016820	1
22	S09251	1
23	F05012-23	2
24	F05011-28	2
25	006722	1
26	P05060	1
27	017640	2

8.6 Cales Hydrauliques (Avant)



1-15	034732	1
1	034704	1
2	P04107	1
3	F04254-12	2
4	042262	2
5	034703	1
6	F05008-78	1
7	F05008-23	1
8	F05010-8	2

9	F05010-118	3
10-15	034733	1
10	016561	2
11	016560	2
12	F05011-5	2
13	P05035	2
14	F05009-10	1
15	F05010-4	1
16	106880	1
17-19	036053	1

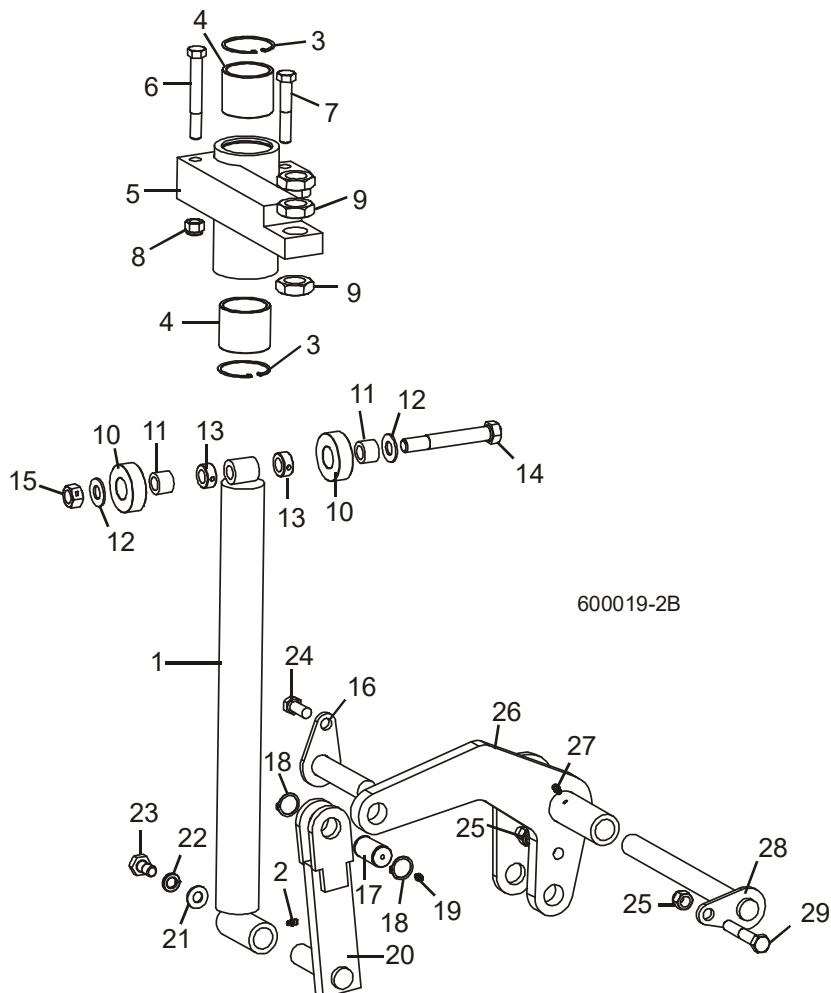
17	034718	1
18	F04254-15	2
19	P04107	1
20	034711	1
21	F05011-52	1
22	F05011-9	1
23	F05008-50	1
24	F05008-37	2
25	F05010-8	3

8 Système Hydraulique

Cales Hydrauliques (Avant)

26	106868	1
27	P04107	2
28	034728	1
29	F05008-23	1
30	034736	1
31	034726	1
32	P09140	2
33	015490	2
34	015484	2
35	016822	2
36	016820	3
37	016819	1
38	P05759	1

8.7 Cales Hydrauliques (Arrière)

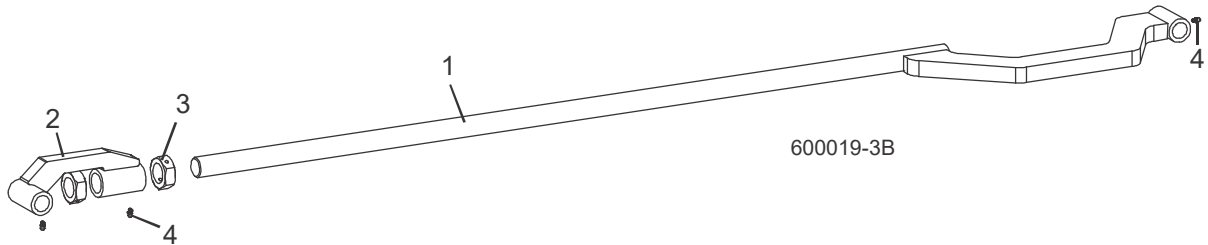


1-15	034732	1
1	034704	1
2	P04107	1
3	F04254-12	2
4	042262	2
5	034703	1
6	F05008-78	1
7	F05008-23	1
8	F05010-8	2
9	F05010-118	3
10-15	034733	1
10	016561	2
11	016560	2
12	F05011-5	2

13	P05035	2
14	F05009-10	1
15	F05010-4	1
16	034726	1
17-19	036053	1
17	034718	1
18	F04254-15	2
19	P04107	1
20	034711	1
21	F05011-52	1
22	F05011-9	1
23	F05008-50	1
24	F05008-37	2
25	F05010-8	2

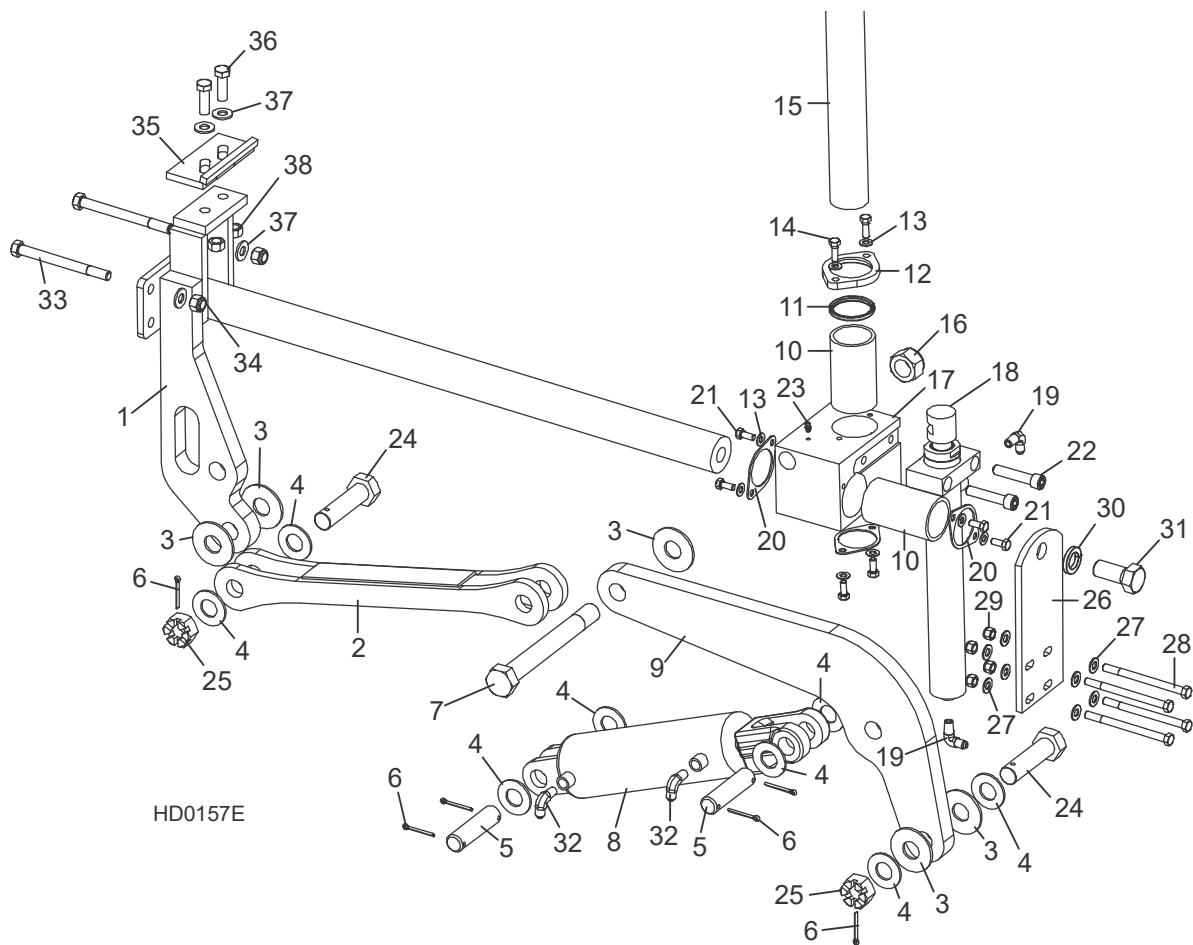
26	034716	1
27	P04107	1
28	034728	1
29	F05008-23	1

8.8 Cales Hydrauliques (Link)



REF	PART #	QTY.
1	034725	1
2	106869	1
3	F05010-100	2
4	P04107	3

8.9 Serre Hydraulique



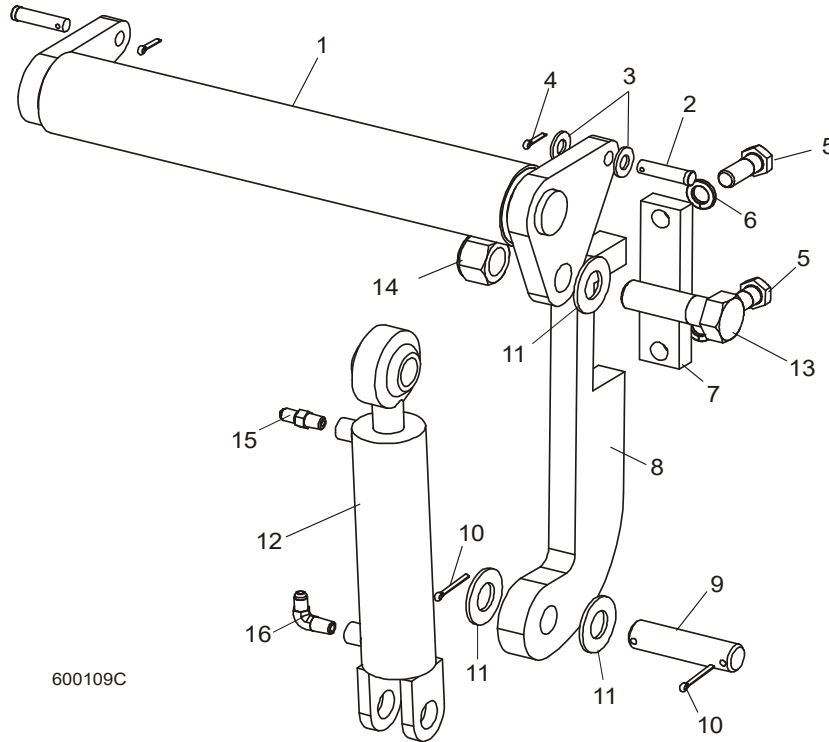
HD0157E

REF	PART #	QTY.
1-38	017264	1
1	017265	1
2	017267	1
3	015057	5
4	F05011-28	8
5	S09251	2
6	F05012-23	6
7	015049	1
8	017275	1
9	017274	1
10	015088	2
11-12	017271	1
11	017273	1
12	017272	1

13	F05011-17	8
14	F05006-1	2
15	015043	1
16	F05010-118	2
17	017270	1
18	015050	1
19	P09142	2
20	017242	3
21	F05006-5	6
22	F05008-39	2
23	P04107	1
24	015072	2
25	F05010-163	2
26	015068	1
27	F05011-3	8

28	F05007-5	4
29	F05010-10	4
30	F05011-46	1
31	F05014-2	1
32	015491	2
33	F05008-28	2
34	F05010-8	2
35-38	K09485	1
35	W09404	1
36	F05008-33	2
37	F05011-2	2
38	F05010-3	2

8.10 Niveleur De Grume Hydraulique



600109C

REF	PART #	QTY.
1	074842	2
2	F05012-82	4
3	F05011-2	4
4	F05012-3	4
5	F05009-33	4
6	F05011-27	4
7	S13023	2
8	S13022	2
9	S09251	2
10	F05012-23	4
11	F05011-28	6
12	014482	2
13	F05009-51	2
14	F05010-109	2
15	P09143	2
16	P09142	2