

Scierie Wood-Mizer®

Manuel de pièces

LT50HD

rev. A6.01



La sûreté est notre souci principal! Lisez et comprenez toutes les informations et instructions de sûreté avant d'actionner, installer ou mettre en opération cette machine.

Form #1299-5

California
Proposition 65 Warning



WARNING: Breathing gas/diesel engine exhaust exposes you to chemicals known to the State of California to cause cancer and birth defects or other reproductive harm.

- Always start and operate the engine in a well-ventilated area.
- If in an enclosed area, vent the exhaust to the outside.
- Do not modify or tamper with the exhaust system.
- Do not idle the engine except as necessary.

For more information go to **www.P65warnings.ca.gov**.



WARNING: Drilling, sawing, sanding or machining wood products can expose you to wood dust, a substance known to the State of California to cause cancer. Avoid inhaling wood dust or use a dust mask or other safeguards for personal protection.

For more information go to **www.P65Warnings.ca.gov/wood**.

Active Patents assigned to Wood-Mizer, LLC

Wood-Mizer, LLC has received patents that protect our inventions which are a result of a dedication to research, innovation, development, and design. Learn more at: woodmizer.com/patents

©2022 Wood-Mizer LLC

Printed in the United States of America, all rights reserved. No part of this manual may be reproduced in any form by any photographic, electronic, mechanical or other means or used in any information storage and retrieval system without written permission from

Wood-Mizer, LLC
8180 West 10th Street
Indianapolis, Indiana 46214

Sommaire

Partie-Page

PARTIE 1	SYSTÈMES DE GUIDAGE DE LAME	1-1
1.1	Guidage De Lame, Côté Poulie Folle.....	1-1
1.2	Ensemble guide de lame, côté entraînement	1-3
1.3	Système D'entraînement De Bras De Guidage.....	1-5
1.4	Bras de Guidage de Lame.....	1-6
PARTIE 2	POULIES ET TENDEUR	2-1
2.1	Système D'entraînement De Lame	2-1
2.2	Poulie Folle.....	2-2
2.3	Tendeur Hydraulique De Lame	2-3
PARTIE 3	TÊTE DE SCIE	3-1
3.1	Vis Anti-Vibration.....	3-1
3.2	Valve Du Contrôle De Lubrification.....	3-2
3.3	Pivot de l'embrayage.....	3-3
3.4	Fixation d'embrayage	3-4
3.5	Système De Freinage.....	3-5
3.6	Éjecteur De Planches.....	3-6
3.7	Système De Lubrification (Gas).....	3-7
3.8	Système De Lubrification (Diesel & Electric)	3-8
3.9	Étiquettes D'avertissement	3-9
3.10	Couvercles De Carters De Lame	3-10
3.11	Couvercles De Carters De Courroies	3-11
3.12	Chute À Bran De Scie	3-12
3.13	Boîte De Filage De L'écorceuse Et Obturateurs.....	3-13
SECTION 4	CONTROL & BATTERY BOXES	4-1
4.1	Control Assembly	4-1
4.2	Control Assembly (Tier4 Only)	4-4
4.3	Commutateurs.....	4-7
4.4	Disjoncteurs.....	4-8
4.5	Panneau De Commande	4-9
4.6	Panneau De Commande (Tier4 Seulement)	4-10
4.7	Boîte De Batterie	4-11
4.8	Boîte De Fusibles	4-12
PARTIE 5	SYSTÈME DE MONTÉE	5-1
5.1	Fixation De La Tête De Sciage	5-1
5.2	Chaînes Et Pignons De Montée.....	5-2
5.3	Indicateur De Hauteur Et Règles De Débitage.....	5-3
5.4	Moteur De Montée	5-4
5.5	Système D'entraînement De Montée	5-5
PARTIE 6	SYSTÈME D'ENTRAÎNEMENT ET PALIERS	6-1
6.1	Paliers de Rail Superieur et Grattoirs	6-1

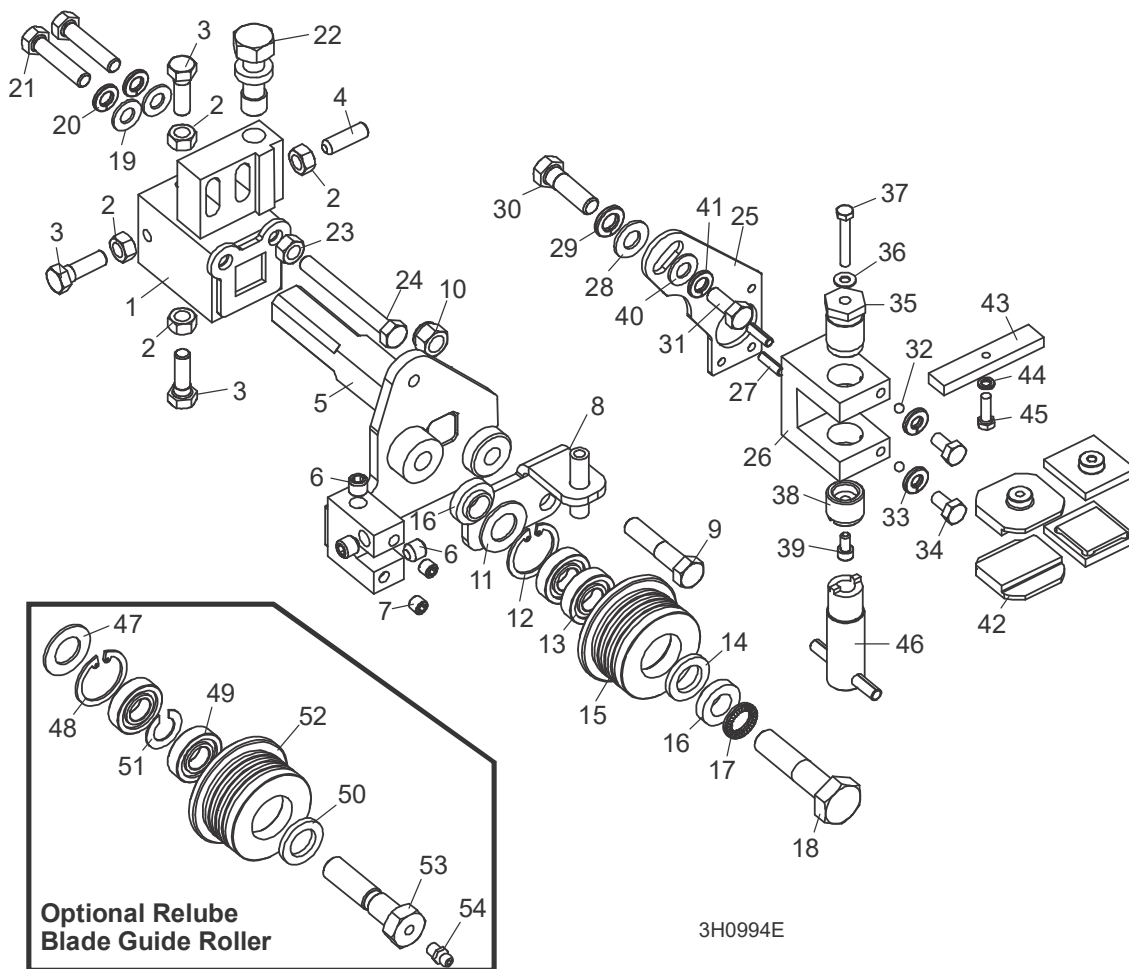
Sommaire

Partie-Page

6.2	Système D'entraînement	6-2
6.3	Chaîne D'entraînement Et Butoir	6-3
6.4	Paliers De Rail Inférieur	6-4
PARTIE 7	BÂTI DE LA SCIE	7-1
7.1	Rails Avant Et Arrière Du Banc De Grume	7-1
7.2	Rail Centre-avant Du Banc De Grume	7-2
7.3	Rail Centre-arrière Du Banc De Grume	7-3
7.4	Pieds Réglable	7-4
7.5	FAO Pied Avant	7-5
7.6	FAO Pieds Côté Chargement	7-6
7.7	FAO Pied de décalage	7-7
7.8	FAO Pied Arrière	7-8
7.9	Table D'éjecteur De Planches	7-9
7.10	Support De Grume Mobile	7-10
7.11	Chaîne De Sécurité	7-11
7.12	Attache De La Tête De Scie	7-12
7.13	Étiquettes D'avertissement	7-13
7.14	Table De Planches (Optionnel)	7-14
PARTIE 8	SYSTÈME HYDRAULIQUE SYSTÈME HYDRAULIQUE	8-1
8.1	Flexibles hydrauliques	8-1
8.2	Boîte De Commande Des Hydrauliques	8-2
8.3	Plaque De Contact Hydraulique Et Bornes	8-4
8.4	Chargeuse Hydraulique	8-5
8.5	Tourne-bille Hydraulique	8-6
8.6	Cales Hydrauliques (Avant)	8-7
8.7	Cales Hydrauliques (Arrière)	8-9
8.8	Cales Hydrauliques (Link)	8-10
8.9	Serre Hydraulique	8-11
8.10	Niveleur De Grume Hydraulique	8-12

PARTIE 1 SYSTÈMES DE GUIDAGE DE LAME

1.1 Guidage De Lame, Côté Poulie Folle



REF	PART #	QTY.
1-24	003992	1
1-4	003920	1
1	-----	1
2	F05010-17	4
3	F05006-88	3
4	F05006-122	1
5	003924	1
6	P30127	3
7	007734	2

8	006322	1
9	F05007-78	1
10	F05010-10	1
11-15	A04925 ¹	1
	014299 ²	1
11-14	K07079	1
11	P04252	1
12	F04254-1	1
13	-----	2
14	P06455	1

15	S04250	1
	014298	1
16	S04253	2
17	F05011-125	1
18	F05008-10	1
19	F05011-17	2
20	F05011-13	2
21	F05006-76	2
22	035656	1
23	F05010-17	1
24	F05006-136	1

1 Systèmes De Guidage De Lame

Guidage De Lame, Côté Poulie Folle

25-46	006325	1
25-41	003928 ³	1
25	003915	1
26	003909	1
27	F05012-22	2
28	F05011-3	1
29	F05011-4	1
30	F05007-123	1
31	F05006-102	1
32	003914	2
33	F05011-14	2
34	F05005-15	2
35	003994	1
36	042867	1
37	F05004-240	1
38	044057	1
39	F05004-200	1
40	F05011-17	1
41	F05011-13	1
42	052355 ⁴	2
	052309 ⁵	2
	036347 ⁶	2
43	035799	1
44	F05011-20	1
45	F05004-152	1
46	044064	1
	035248	1
	(Voir Partie 1.2)	
47-52	016568 ⁷	1
	057405 ⁸	1
47-51	057407	1
47	P04252	1
48	F04254-1	1
49	-----	2
50	P06455	1
51	035411	1
52	035426	1
	057402	1
53	036161	1
54	P05060	1

³ Optionelle.

⁴ Std. 1 1/4" lame.

⁵ Optionelle 1 1/2" lame.

⁶ Optionelle 1 1/4" lame.

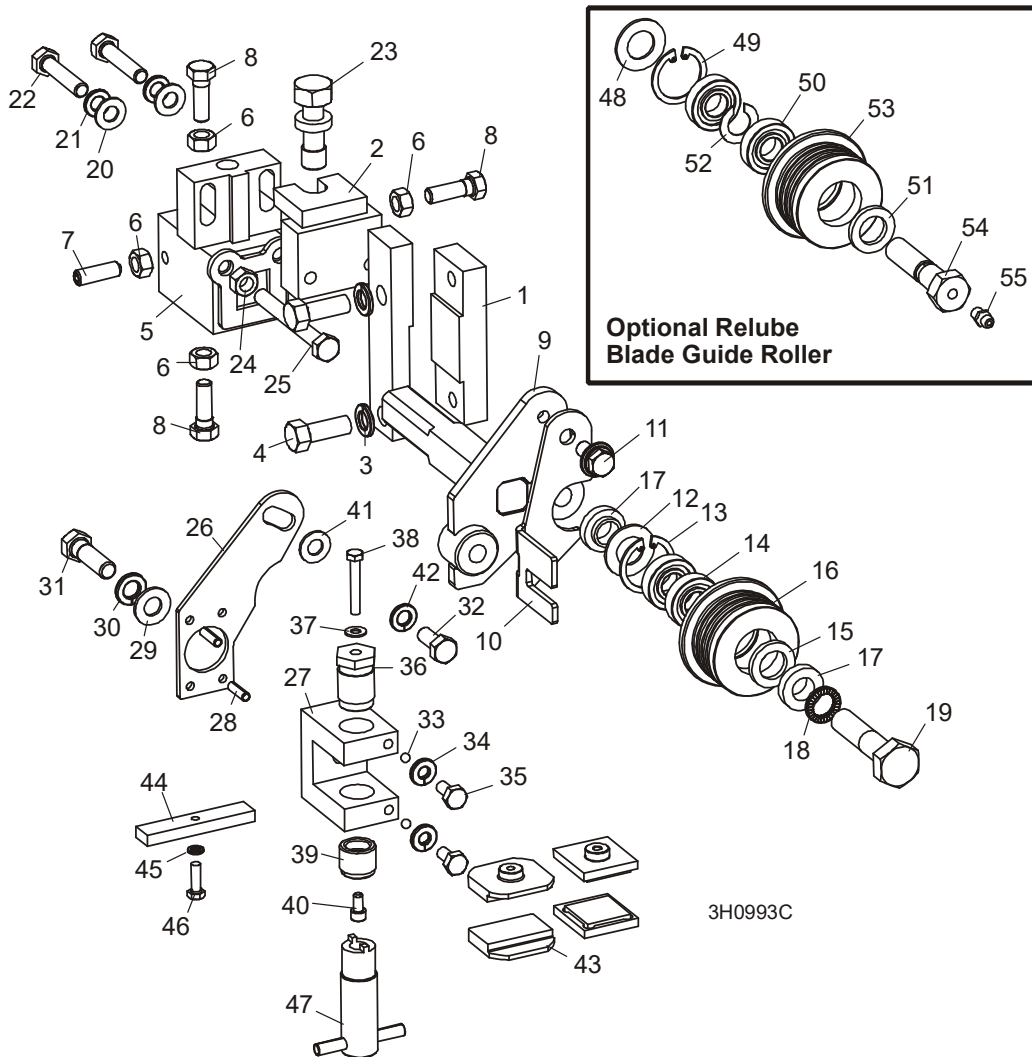
⁷ Optionelle 1 1/4" ou 1 1/2" lame.

⁸ Optionelle 1 1/2" lame.

¹ Std. 1 1/4" ou 1 1/2" lame.

² Optionelle 1 1/2" lame.

1.2 Ensemble guide de lame, côté entraînement



3H0993C

REF	PART #	QTY.
1	016548	1
2	003964	1
3	F05011-4	2
4	F05007-7	2
	003905	1
	003910	1
5	003911	1
6	F05010-17	4
7	F05006-122	1

REF	PART #	QTY.
8	F05006-88	3
9	003913	1
10	003916	1
11	F05006-101	1
	A04925	1
	014299	1
	K07079	1
12	P04252	1

REF	PART #	QTY.
13	F04254-1	1
14	015975	2
15	P06455	1
	F05005-105	1
	057407-1507	1
16	S04250	1
	014298	1
	A04925-364	1
17	S04253	2



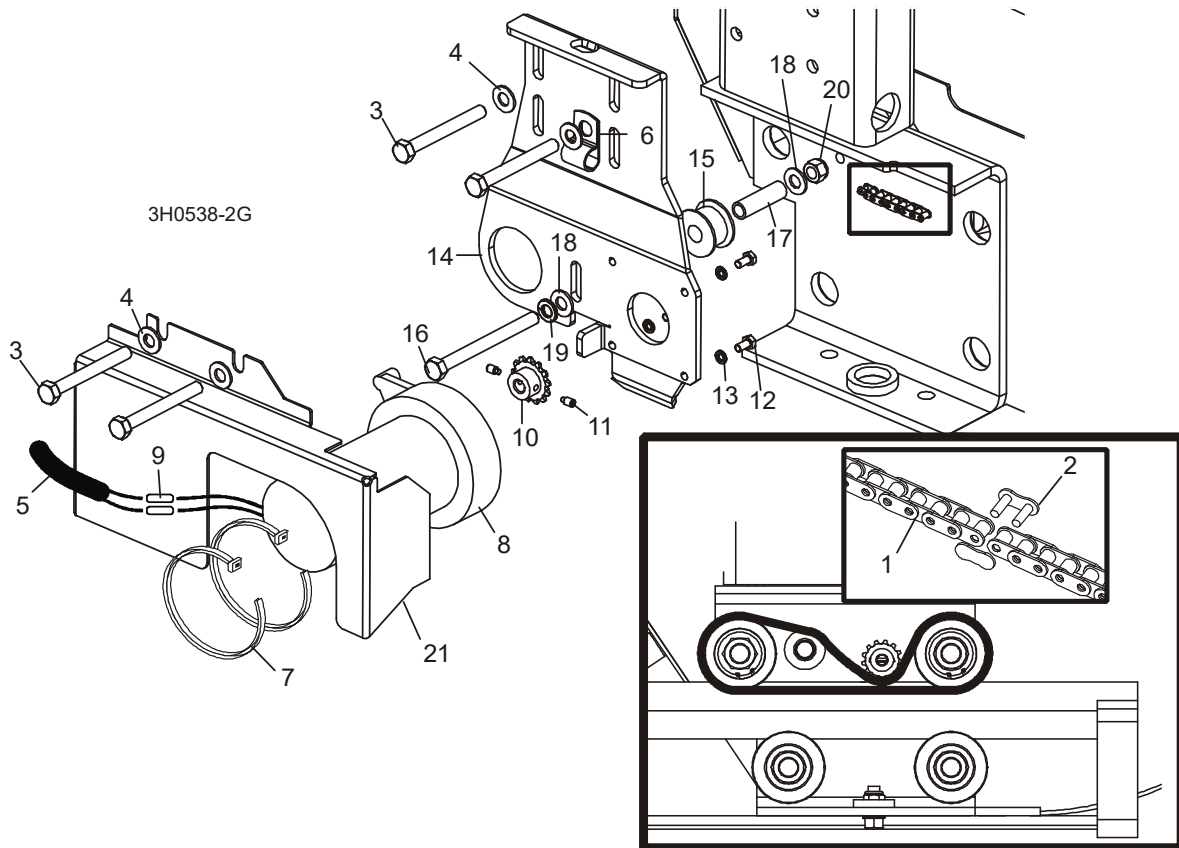
Galets & bras guide-lame

Ensemble guide de lame, côté entraînement

REF	PART #	QTY.
18	F05011-125	1
19	F05008-10	1
20	F05011-17	2
21	F05011-13	2
22	F05006-93	2
23	035656	1
24	F05010-17	1
25	F05006-136	1
	006325	1
	003927	1
26	003915	1
27	003909	1
28	F05012-22	2
29	F05011-3	1
30	F05011-4	1
31	F05007-123	1
32	F05006-102	1
33	003914	2
34	F05011-14	2
35	F05005-15	2
36	003994	1
37	042867	1
38	F05004-240	1
39	044057	1
40	F05004-200	1
41	F05011-17	1
42	F05011-13	1
43	052355	2
	052309	2
	036347	2
44	035799	1
45	F05011-20	1
46	F05004-152	1
47	044064	1
	035248	1

REF	PART #	QTY.
	016568	1
	057405	1
	057407	1
48	P04252	1
49	F04254-1	1
50	015975	2
51	P06455	1
52	035411	1
	057407-1507	1
53	035426	1
	057402	1
	A04925-364	1
54	036161	1
55	P05060	1

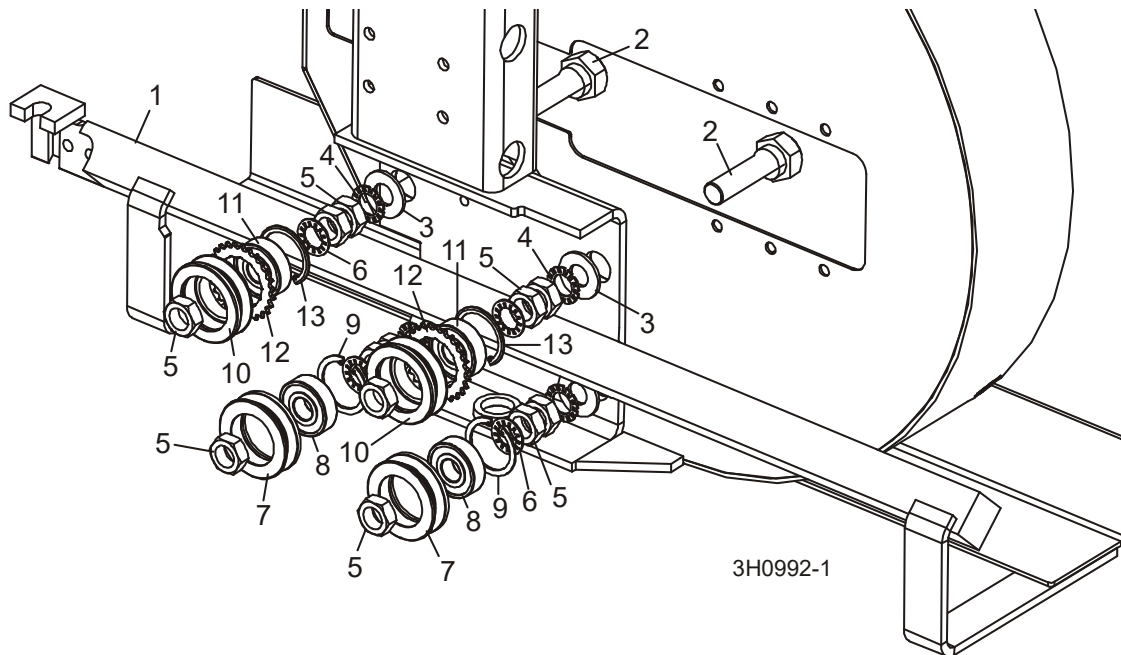
1.3 Système D'entraînement De Bras De Guidage



REF	PART #	QTY.
1	P09984	1
2	P09983	1
3	F05006-28	4
4	F05011-17	4
5	R01897	2.5ft
6	P07584	2
7	F05089-1	2
8-20	015989	1
8-13	079215	1
8	079214	1
	061232	1
	061234	1
	061233	1
9	F04875-1	2
10-11	P09970	1

11	F05004-274	2
12	F05004-60	4
13	F05011-20	4
14	015939	1
15	S09999	1
16	F05006-3	1
17	S09996-W	1
18	F05011-17	2
19	F05011-13	1
20	F05010-58	1
21	S11617	1

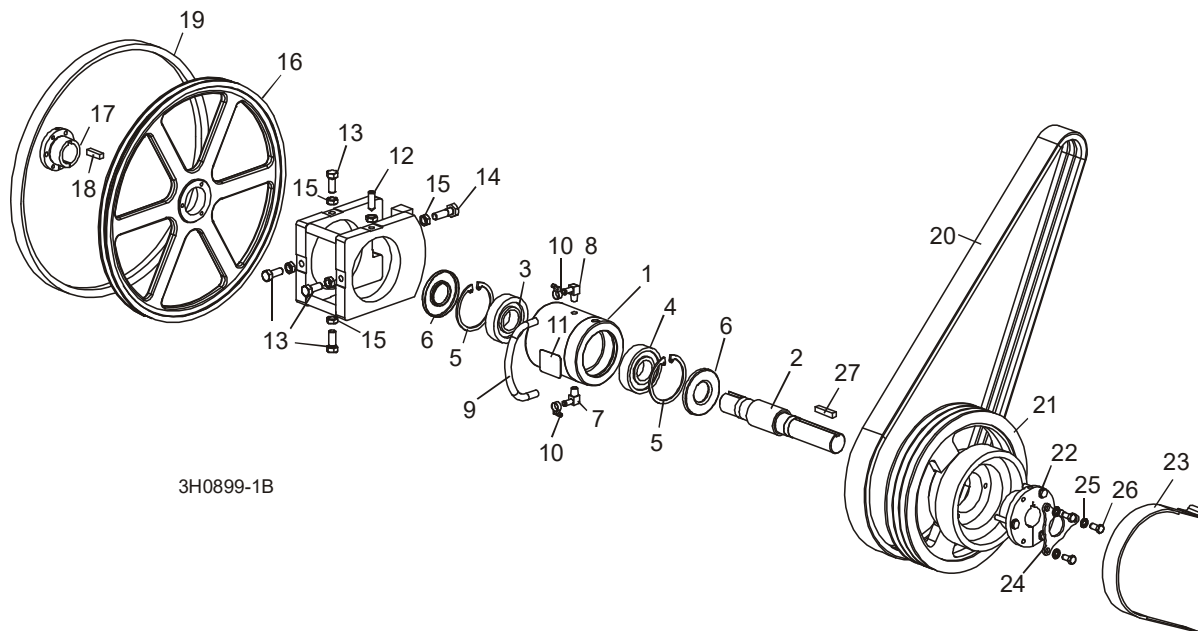
1.4 Bras de Guidage de Lame



REF	PART #	QTY.
1	003972	1
1	007040 (Wide)	1
2	W09067	4
3	F05011-5	4
4	F05011-26	4
5	F05010-11	12
6	F05011-25	8
7-9	A09059	2
7	S07989	1
8	P06030-1	1
9	F04254-8	1
10-13	A09932	2
10	S09930	1
11	P06030-1	1
12	S09931	1
13	F04254-8	1

PARTIE 2 POULIES ET TENDEUR

2.1 Système D'entraînement De Lame



REF	PART #	QTY.
1-11	016393	1
1-6	-----	1
1	-----	1
2	-----	1
3	-----	1
4	-----	1
5	F04254-17	2
6	P10206	2
7	016330	1
8	016331	1
9	016394	1
10	P649	2
11	017470	1
12	F05004-170	1
13	F05008-108	4
14	F05008-49	1
15	F05010-16	6
16-18	014562	1
16	016284	1

17	016270	1
18	S12892	1
19	P04185	1
20	065400 ¹	1
	006672 ²	1
	046571 ³	1
	016557 ⁴	1
21	016531	1
22	016532	1
23	014391	1
24	017953	1
25	F05011-4	3
26	F05007-27	3
27	014693	1

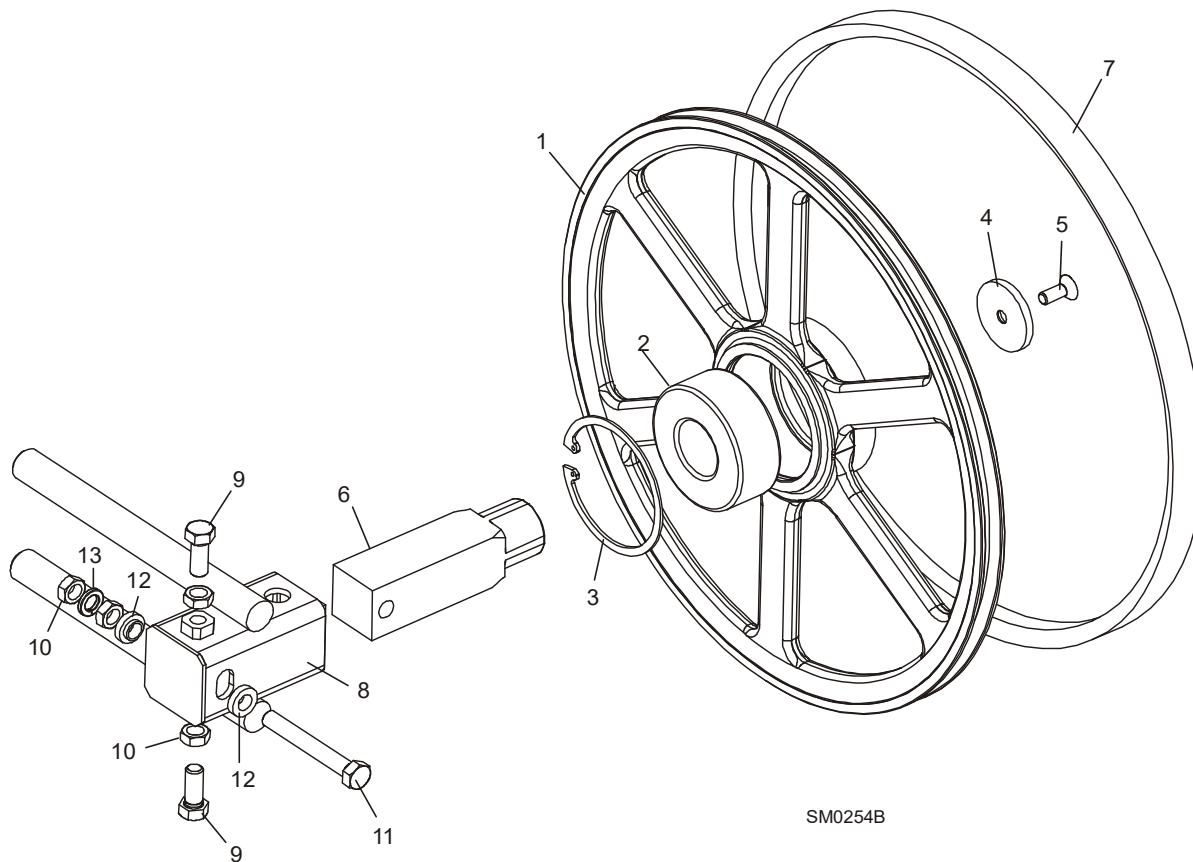
¹ E25 60Hz

² G38

³ D47/D51

⁴ E25 50Hz

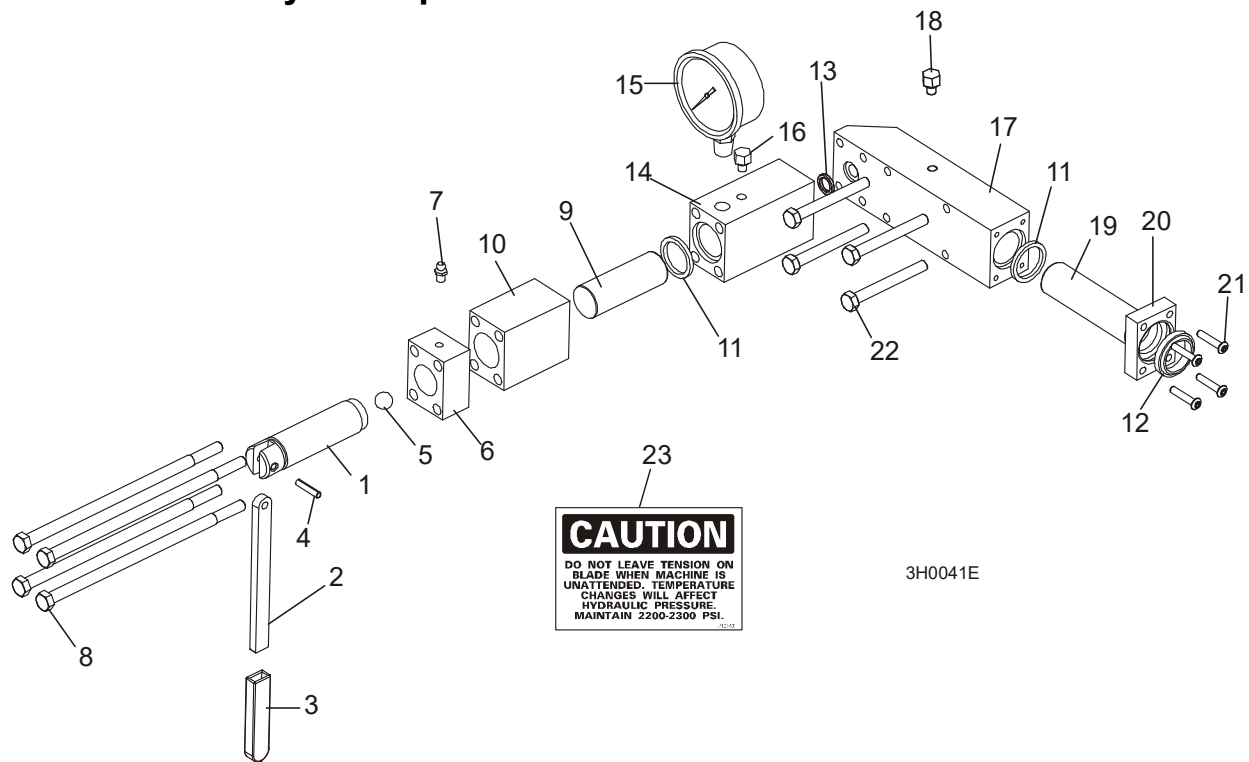
2.2 Poulie Folle



SM0254B

REF	PART #	QTY.
1-3	016120	1
1	----	1
2	016014	1
3	F04254-28	1
4-6	016441	1
4	016397	1
5	F05007-64	1
6	016398	1
7	P04185	1
8	016103	1
9	F05008-53	2
10	F05010-16	4
11	F05008-111	1
12	S04253	2
13	F05011-9	1

2.3 Tendeur Hydraulique De Lame



CAUTION
DO NOT LEAVE TENSION ON
BLADE WHEN MACHINE IS
UNATTENDED. TEMPERATURE
CHANGES WILL AFFECT
HYDRAULIC PRESSURE.
MAINTAIN 2200-2300 PSI.

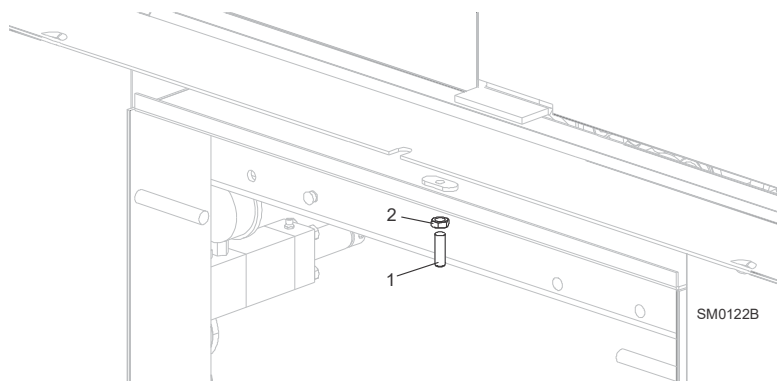
3H0041E

REF	PART #	QTY.
1-22	A10136	1
1-7	A12294	1
1	S10056	1
2	S08174	1
3	P08072	1
4	F05012-19	1
5	P02720	1
6	-----	1
7	P05060	1
8	F05006-43	4
9	S10060	1
10	S10061	1
5, 11-13	003224	1
5	P02720	1
11	P10051	2
12	P10053	1
13	P10377	1
14	S10140	1
15	P10052	1

16	P10065	1
17-18	016329	1
17	-----	1
18	P10065	1
19	S10059	1
20	S10089	1
21	F05004-43	4
22	F05006-28	4
23	P10147	1

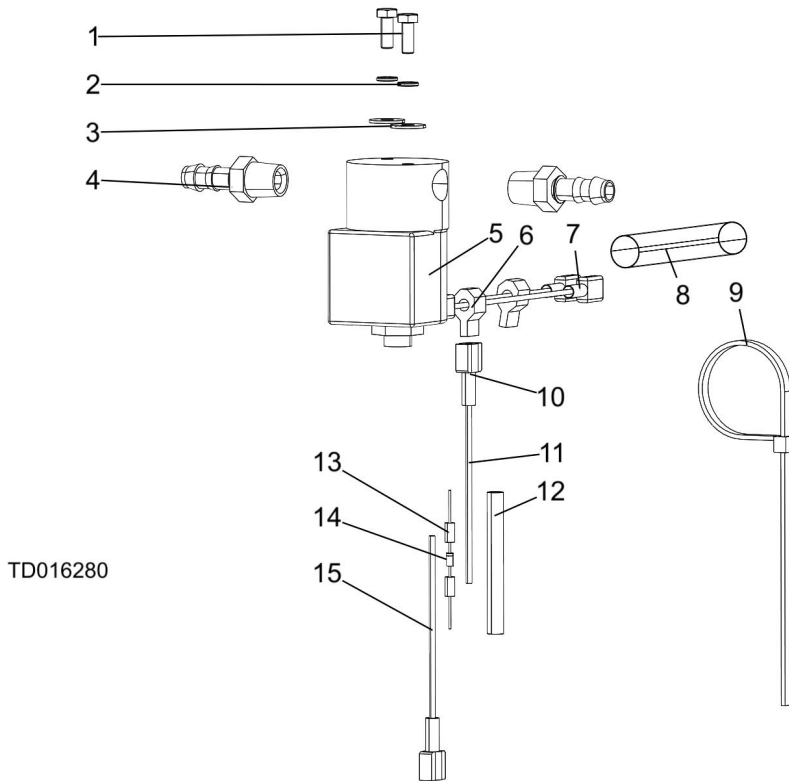
PARTIE 3 TÊTE DE SCIE

3.1 Vis Anti-Vibration



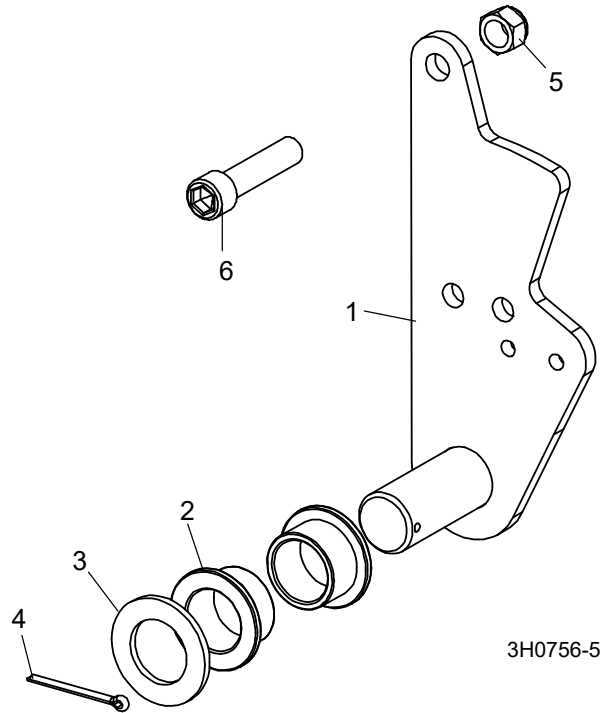
REF	PART #	QTY.
1	F05007-18	1
2	F05010-29	1

3.2 Valve Du Contrôle De Lubrification



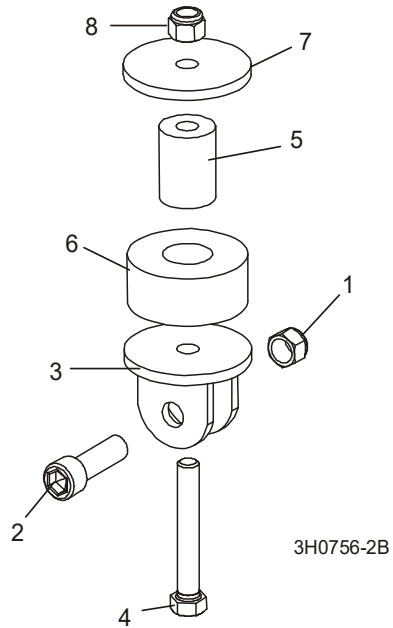
REF	PART #	QTY.
	016280	1
1	F05004-60	2
2	F05011-20	2
3	F05011-18	2
4	P04682	2
	133071	1
5	016140	1
6	F04875-13	2
7	F05708-21R	2
8	R02374	1
9	F05089-3	1
	024123	1
10	F05708-22R	2
11	R01915-3_3	1
12	R01950-4_2_14	1
13	024032	2
14	E05909	1
15	R01915-0_3	1

3.3 Pivot de l'embrayage



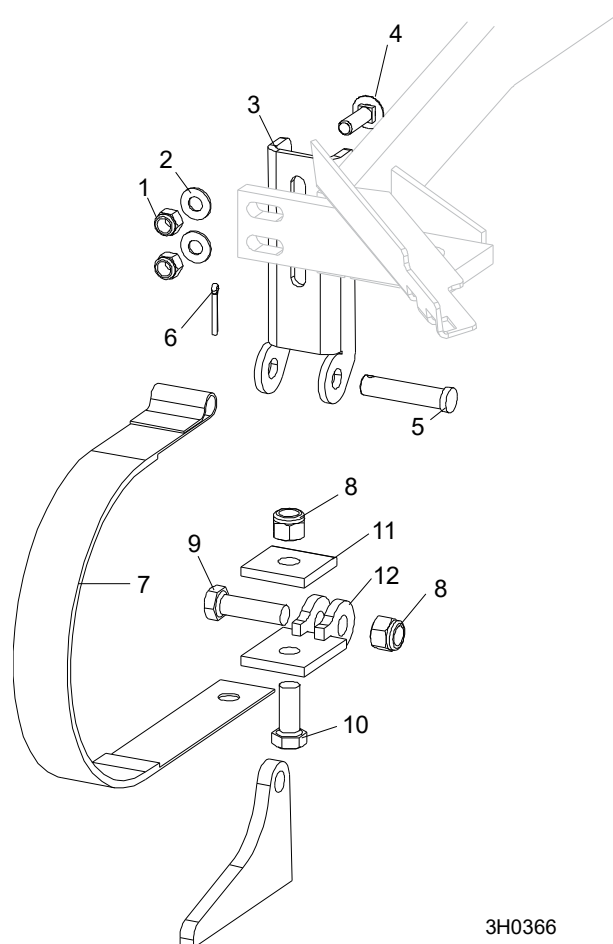
REF	PART #	QTY.
1	016296	1
2	P737	2
3	P116	1
4	F05012-49	1
5	F05010-83	1
6	F05007-55	1

3.4 Fixation d'embrayage



REF	PART #	QTY.
1	F05010-83	1
2	F05007-55	1
3	W12411	1
4	F05007-157	1
5	016316	1
6	P05032	1
7	021276	1
8	F05010-10	1

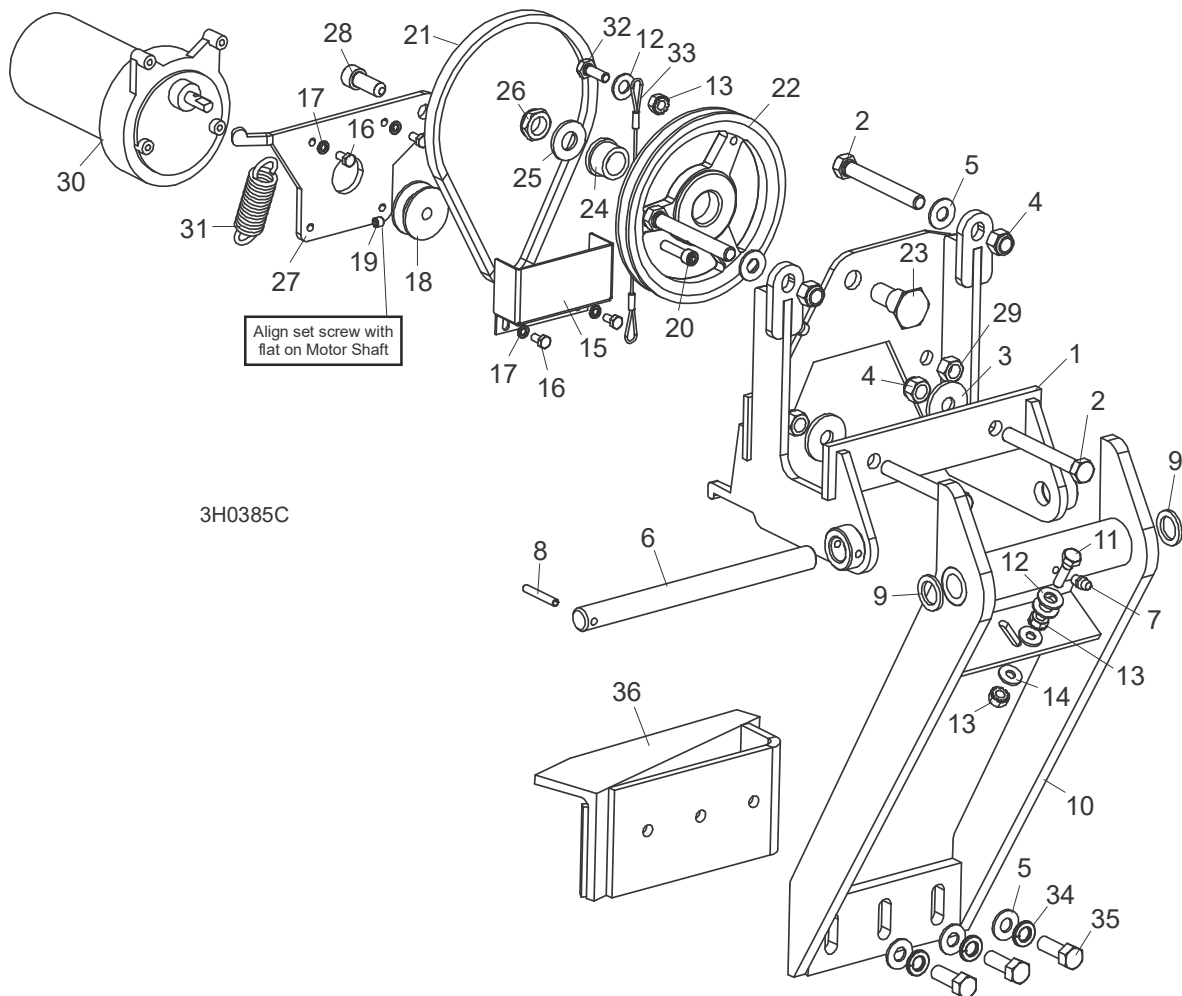
3.5 Système De Freinage



3H0366

REF	PART #	QTY.
1-12	014441	1
1	F05010-10	2
2	F05011-3	2
3	014395	1
4	F05007-127	2
5	F05012-81	1
6	F05012-1	1
7	014391	1
8	F05010-8	2
9	F05008-88	1
10	F05008-37	1
11	S04195	1
12	014392	1

3.6 Éjecteur De Planches

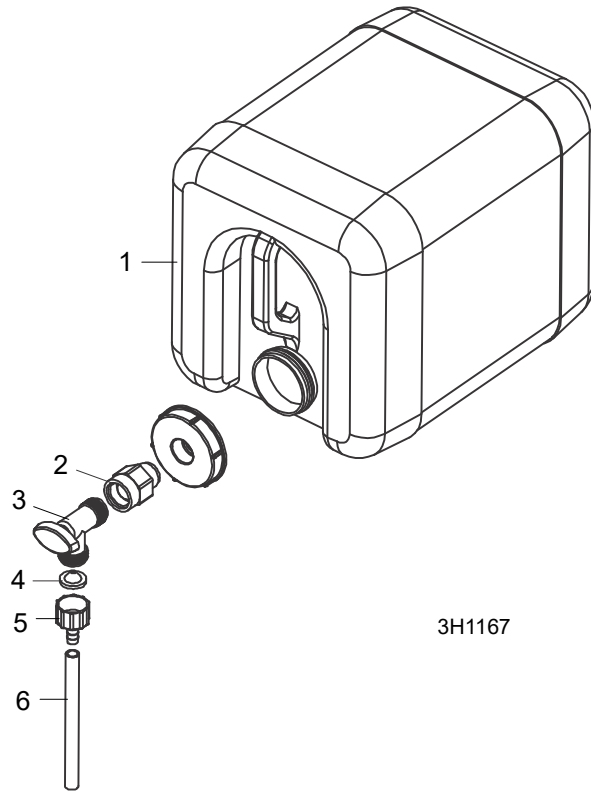


REF	PART #	QTY.
1-36	015209	1
1	015215	1
2	F05007-1	4
3	015336	2
4	F05010-10	4
5	F05011-3	5
6	016272	1
7	P05060	1
8	F05012-16	1
9	F05011-19	2
10	015210	1
11	F05005-1	1
12	F05011-17	3

13	F05010-9	3
14	F05011-11	2
15	015007	1
16	F05004-60	4
17	F05011-20	4
18	015074	1
19	F05005-105	1
20	F05005-89	1
21	015477	1
22	015224	1
23	015221	1
24	P05135	1
25	F05011-2	1
26	F05010-79	1

27	015220	1
28	F05007-52	1
29	F05010-25	1
30	079214	1
	061232	1
	061234	1
	061233	1
31	015479	1
32	F05005-101	1
33	016090	1
34	F05011-4	3
35	F05007-7	3
36	015652	1

3.7 Système De Lubrification (Gas)

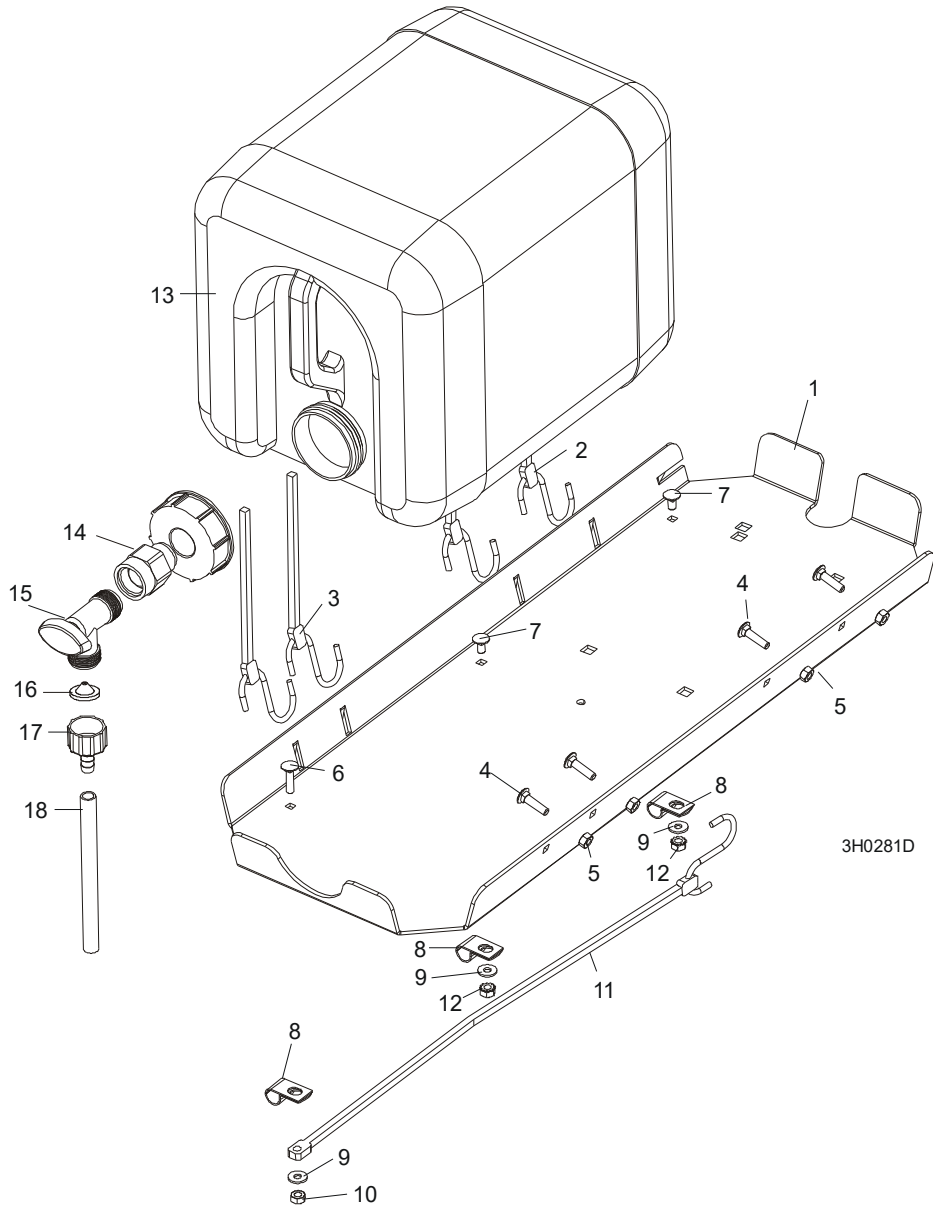


REF	PART #	QTY.
1	014642	1
2	014636	1
3	014100	1
4	016086 ¹	1

5	014113	1
6	R01885	7 ft.
	CBOTTLE	1

¹ Filter recommended for LT50 models to prevent debris from entering water lube solenoid valve.

3.8 Système De Lubrification (Diesel & Electric)

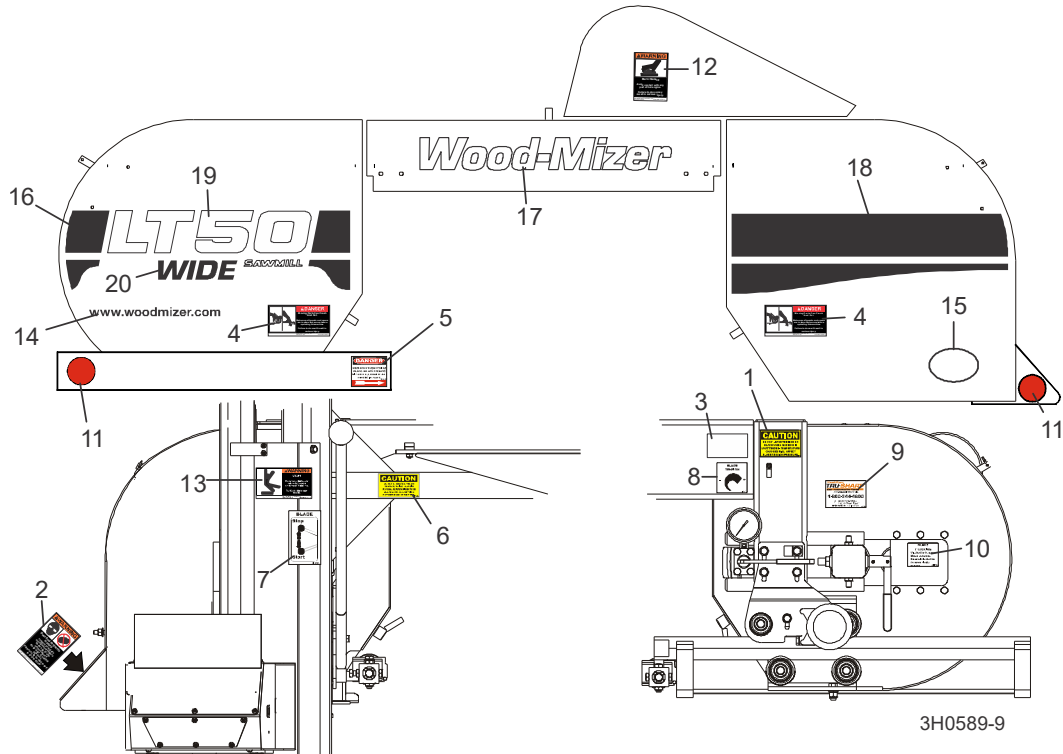


REF	PART #	QTY.
1-5	A11685	1
1	S11684	1
2	P11258	2
3	P11668	2
4	F05005-34	4
5	F05010-21	4

6	F05005-34	1
7	F05005-33	2
8	P07584	3
9	F05011-11	3
10	F05010-21	1
11	P07461	1
12	F05010-9	2
13	014642	1

14	014636	1
15	014100	1
16	016086	1
17	014113	1
18	R01885	7 ft.

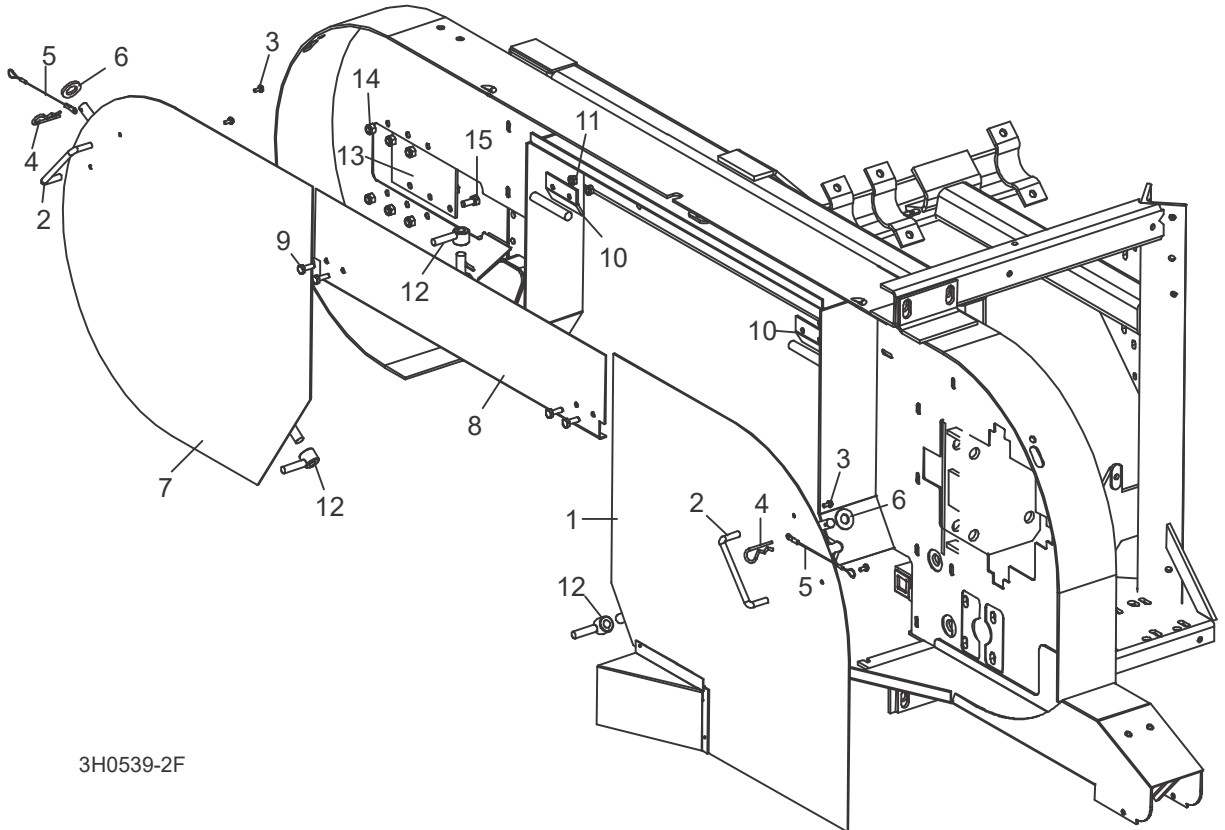
3.9 Étiquettes D'avertissement



REF	PART #	QTY.
1	P10147	1
2	P11754	1
3	P12373	1
4	033254	2
5	S11752	1
6	S11762	1
7	P11779	1
8	P11790	1
9	P12879	1
10	P11789	1
11	P07452	2
12	014419	1
13	016072	1
14	003235	1
15	065582	1
16	065027	1
17	065025	1
18	065026	1
19	065028	1

20	074335	1
----	--------	---

3.10 Couvercles De Carters De Lame



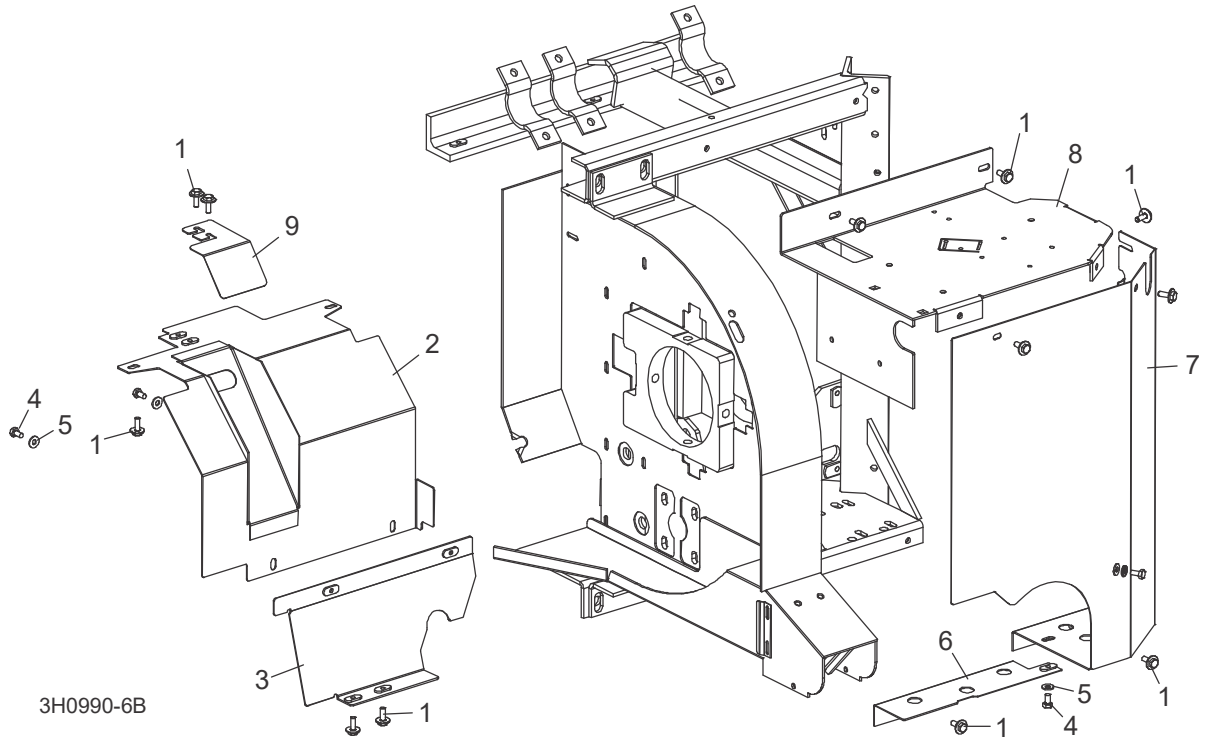
3H0539-2F

REF	PART #	QTY.
1-8	015937	1
1	----	1
2	P08065	1
3	F05015-8	2
4-5	A12812	1
4	P05059	1
5	016030	1
6	F05011-87	1

2-5, 6-7	A09419	1
7	----	1
2	P08065	1
3	F05015-8	2
	A12812	1
4	P05059	1
5	016030	1
8	F05011-87	1
8	W07409	1

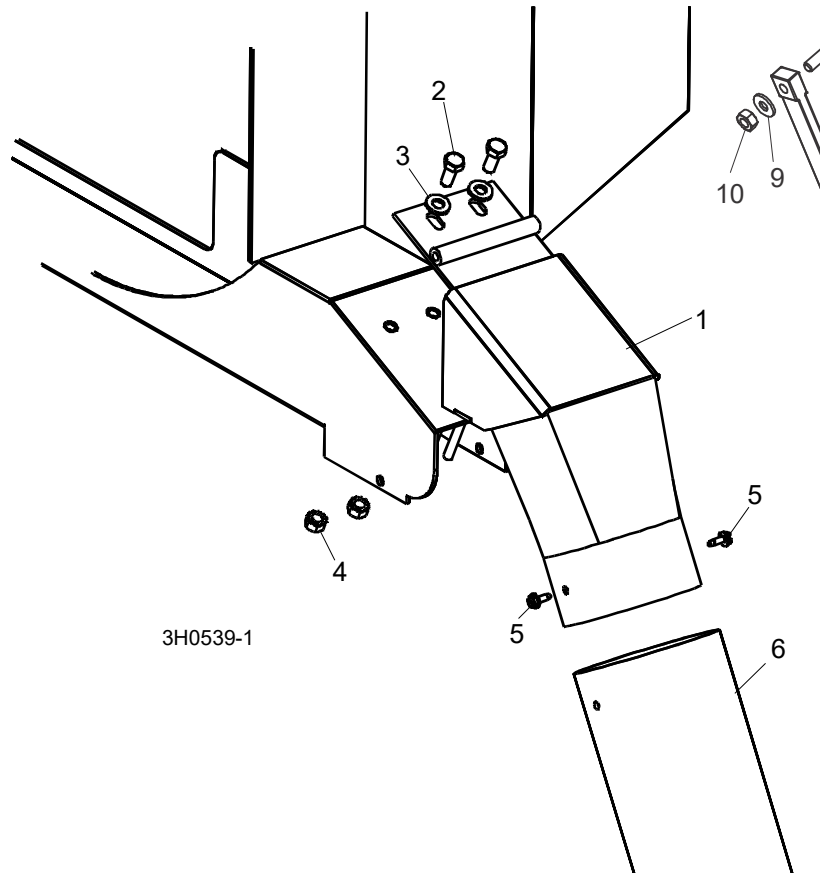
8	079509 (Wide)	1
9	F05005-1	18
10	S07522	2
11	F05010-9	4
12	021145	3
13	S04433	1
14	F05010-58	6
15	F05006-5	6

3.11 Couvercles De Carters De Courroies



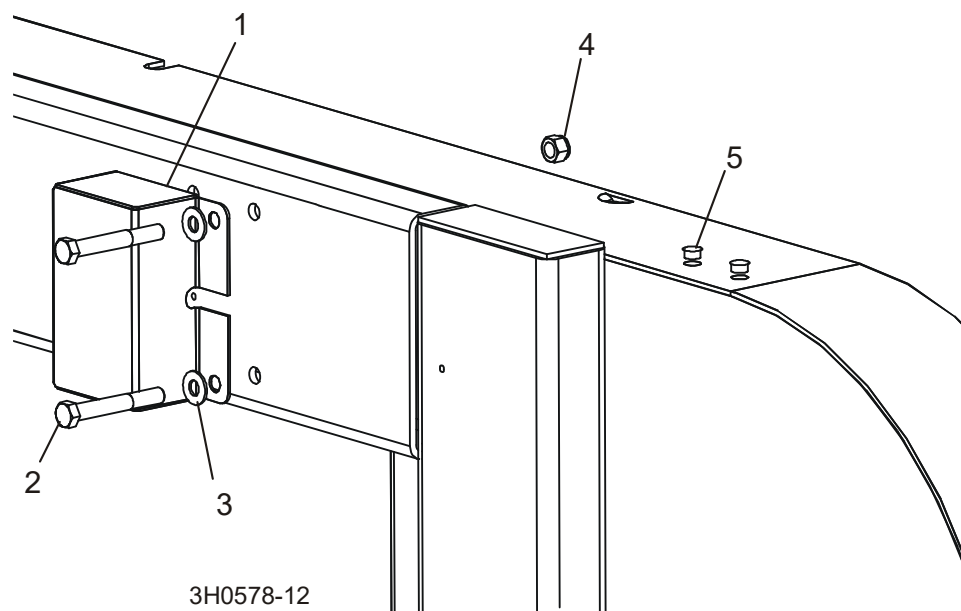
REF	PART #	QTY.
1	F05005-134	13
2	006026	1
3	006025	1
4	F05005-15	3
5	F05011-11	3
6	015654	1
7	008776	1
8	059599	1
9	074752	1

3.12 Chute À Bran De Scie



REF	PART #	QTY.
1	015466	1
2	F05006-5	2
3	F05011-17	2
4	F05010-20	2
5	F05015-7	2
6	016727	1

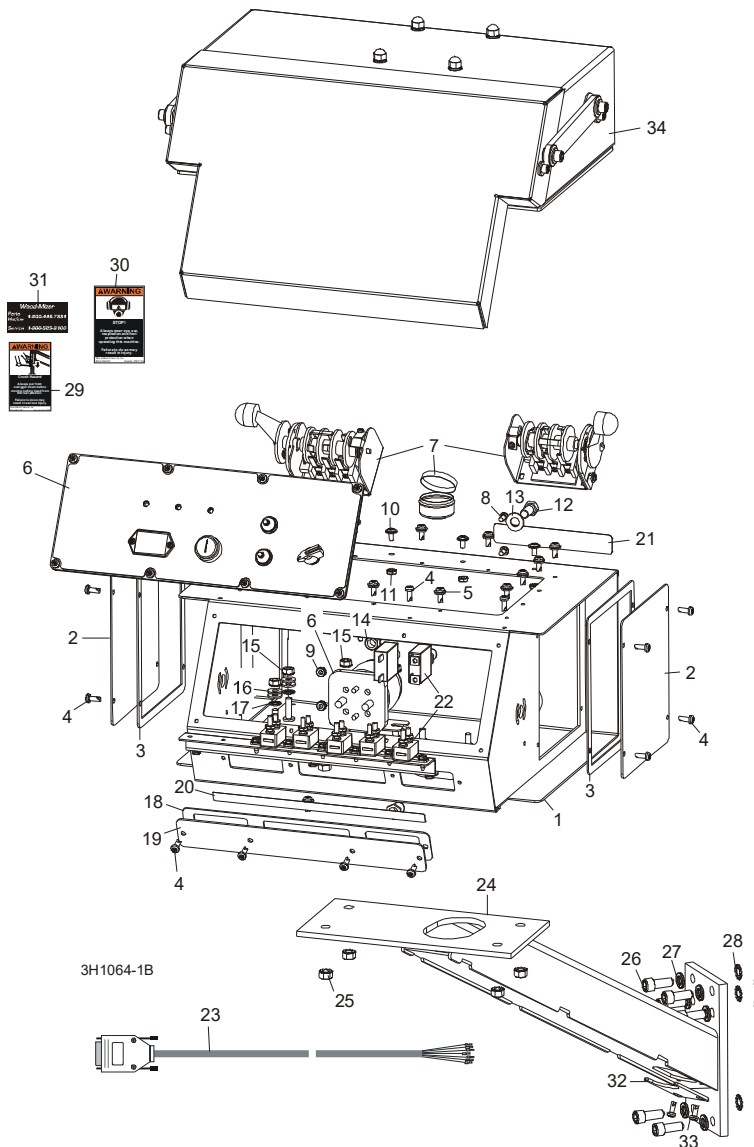
3.13 Boîte De Filage De L'écorceuse Et Obturateurs



REF	PART #	QTY.
1	023616	1
2	F05007-29	2
3	F05011-3	2
4	F05010-10	2
5	014537	2

SECTION 4 CONTROL & BATTERY BOXES

4.1 Control Assembly



REF	PART #	DESCRIPTION	COMMENTS	QTY.
	015764	COVER, SAWMILL CONTROL CONSOLE		1
	036352	COVER, SAWMILL CONTROL CONSOLE W/ACCUSET		1
	069426	CONTROL BOX ASSEMBLY, E25 DUAL-AXIS		1
	069421	CONTROL BOX ASSEMBLY, G38 DUAL-AXIS		1

4

Control & Battery Boxes

Control Assembly

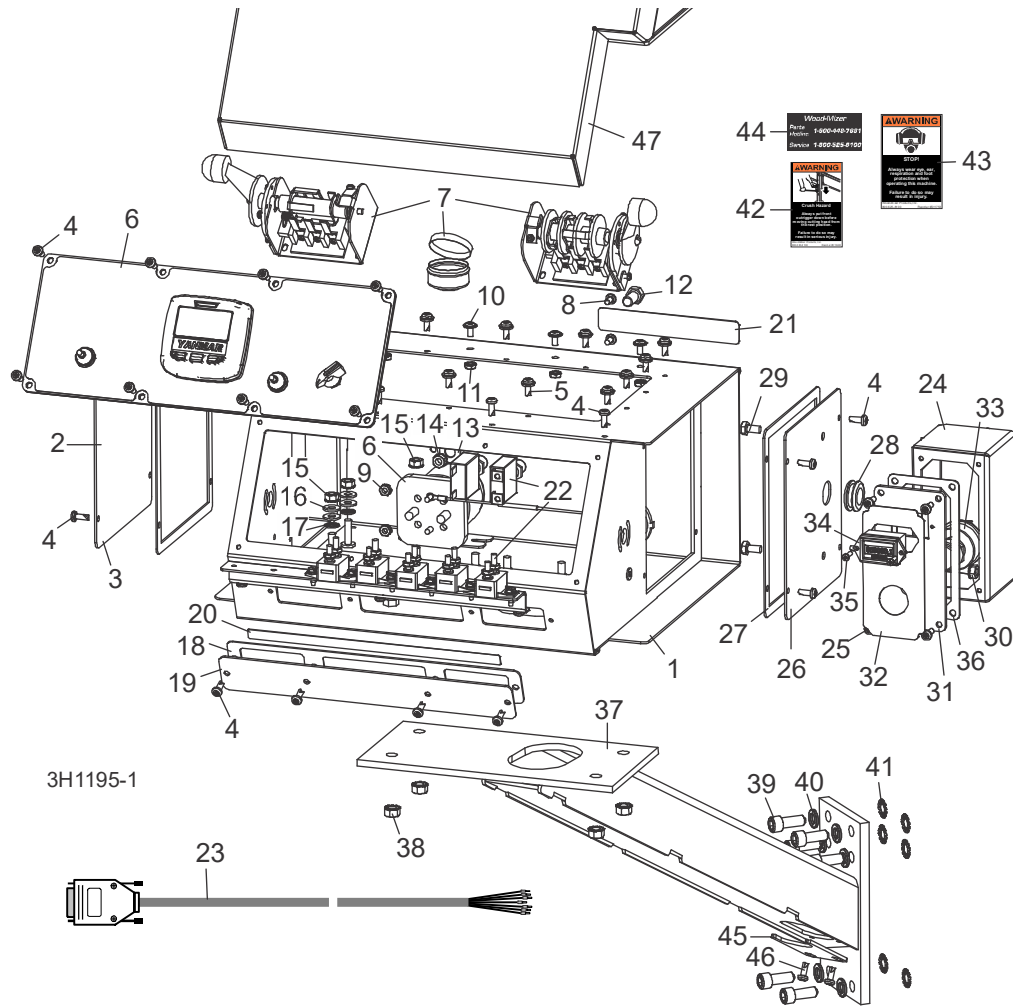
REF	PART #	DESCRIPTION	COMMENTS	QTY.
	069422	CONTROL BOX ASSEMBLY, D35 DUAL-AXIS (TIER2 ONLY)	Replaced with D35 Tier4 Control Box Assembly for the U.S. only (LT40HD Super Rev. K4.00+/LT50 Rev. A6.00+). See Section Control Assembly (D35 Tier4 Only).	1
	069422	CONTROL BOX ASSEMBLY, D47 DUAL-AXIS		1
	069420	CONTROL BOX ASSEMBLY, D51 DUAL-AXIS		1
1	025823	Box Weldment, Sawmill Control	Available in assemblies only.	1
2	006473	Panel, Control Box Side		2
3	015274	Gasket, Side Panel Control		2
4	F05015-17	Screw, #10-24 x 1/2" Pan Head		16
5	F05004-186	Screw, #10-24 x 1/2" Phillips Head		14
6	N/A	Front Control Panel & Wiring Harnesses (See Section 5.4)		1
7	N/A	Drum Switches (See Section 5.3)		1
8	F05004-3	Screw, #10-24 x 3/8" Phillips Pan Head		2
9	F05010-14	Nut, #10-24 Self Locking		2
10	F05004-148	Screw, #10-24 x 3/8" Phillips Pan Head Machine with Neo Washer		4
11	F05010-14	Nut, #10-24 Self-Locking Hex		4
12	F05007-27	Bolt, 3/8-16 x 3/4" Hex Head		1
13	F05011-3	Washer, 3/8" SAE Flat		1
14	F05010-19	Nut, 3/8" Lock Nut		1
15	F05010-9	Nut, 1/4-20 Self Locking		4
16	F05011-11	Washer, 1/4" SAE Flat		4
17	F05011-69	Washer, 1/4" Interior Star Heavy Duty Lock		2
18	015266	Gasket, Front Access Panel		1
19	015376	Panel, Control Box Front Access		1
20	069412	Decal, Front Circuit Breaker ID (Super NR Dual-Axis)		1
21	069414	Decal, Rear Circuit Breaker ID (Super NR Dual-Axis)		1
22	N/A	Circuit Breakers (See Section 5.3)		1
23	053355	Harness Assembly, Dual-Axis Motor Control Non-Remote		1
24	015236	MOUNT WELDMENT, STANDARD CONTROL BOX		1
25	F05010-20	NUT, 5/16-18 SELF-LOCKING HEX		4
26	F05007-52	BOLT, 3/8-16 X 1" SOCKET HEAD		6
27	F05011-4	WASHER, 3/8" SPLIT LOCK		6
28	F05011-36	WASHER, 3/8" EXTERIOR STAR LOCK		6
29	015400	DECAL, FRONT OUTRIGGER WARNING		1
30	S11753	DECAL, EAR/EYE PROTECTION WARNING		1
31	S12117	DECAL, 800 NUMBER		1

REF	PART #	DESCRIPTION	COMMENTS	QTY.
32	036381	PLATE, PEDESTAL COVER		1
33	F05015-17	SCREW, #10-24 X 1/2" PAN HEAD		2
34	N/A	ACCUSET PARTS (See AccuSet 2 Manual)		1

4 Control & Battery Boxes

Control Assembly (Tier4 Only)

4.2 Control Assembly (Tier4 Only)



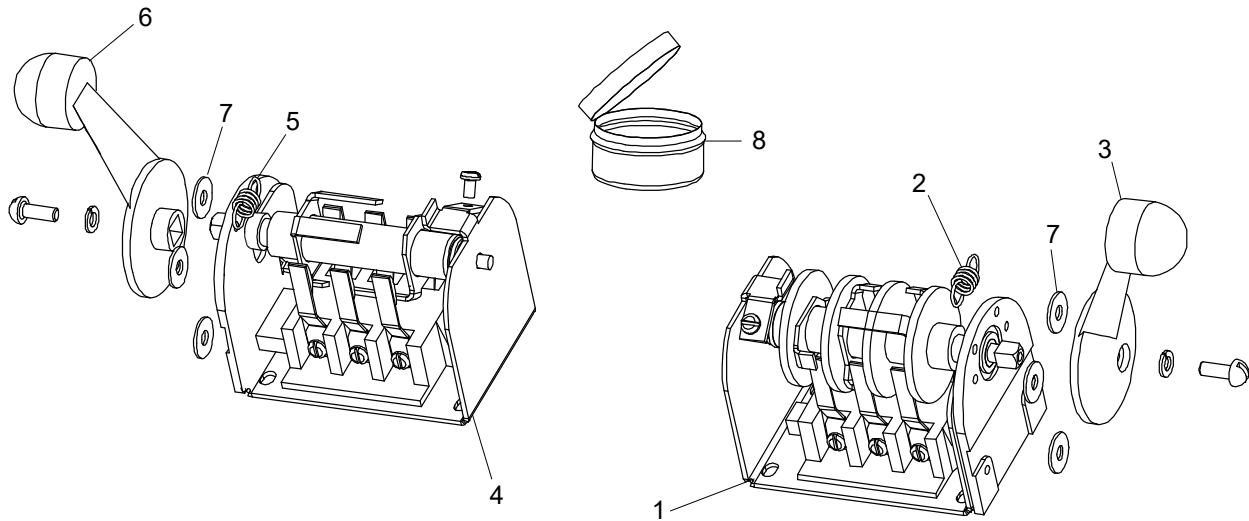
REF	PART #	DESCRIPTION	COMMENTS	QTY.
	015764	COVER, SAWMILL CONTROL CONSOLE		1
	036352	COVER, SAWMILL CONTROL CONSOLE W/ACCUSET		1
	073590	CONTROL BOX ASSEMBLY, D35 TIER4 DUAL-AXIS		1
1	025823	Box Weldment, Sawmill Control	Available in assemblies only.	1
2	006473	Panel, Control Box Side		2
3	015274	Gasket, Side Panel Control		2
4	F05015-17	Screw, #10-24 x 1/2" Pan Head		16
5	F05004-186	Screw, #10-24 x 1/2" Phillips Head		14
6	N/A	Front Control Panel & Wiring Harnesses (See Section 5.4)		1
7	N/A	Drum Switches (See Section 5.3)		1
8	F05004-3	Screw, #10-24 x 3/8" Phillips Pan Head		2

REF	PART #	DESCRIPTION	COMMENTS	QTY.
9	F05010-14	Nut, #10-24 Self Locking		2
10	F05004-148	Screw, #10-24 x 3/8" Phillips Pan Head Machine with Neo Washer		4
11	F05010-14	Nut, #10-24 Self-Locking Hex		4
12	F05007-27	Bolt, 3/8-16 x 3/4" Hex Head		1
13	F05011-3	Washer, 3/8" SAE Flat		1
14	F05010-19	Nut, 3/8" Lock Nut		1
15	F05010-9	Nut, 1/4-20 Self Locking		4
16	F05011-11	Washer, 1/4" SAE Flat		4
17	F05011-69	Washer, 1/4" Interior Star Heavy Duty Lock		2
18	015266	Gasket, Front Access Panel		1
19	015376	Panel, Control Box Front Access		1
20	069412	Decal, Front Circuit Breaker ID (Super NR Dual-Axis)		1
21	069414	Decal, Rear Circuit Breaker ID (Super NR Dual-Axis)		1
22	N/A	Circuit Breakers (See Section 5.3)		1
23	053355	Harness Assembly, Dual-Axis Motor Control Non-Remote		1
	073603	Box Assembly, Key Switch		1
24	078426	Control Box Weldment, Key/Hour		1
25	F05015-17	Bolt, #10-24x1/2 Ph Pan Hd, Type 23		4
26	033495	Panel Weldment, Side L.H.		1
27	015274	Gasket, Side Panel Control 97		1
28	033475	Grommet, 5/8 ID 3/16 GW Rubber		1
29	F05005-15	Bolt, 1/4-20x1/2 HH		2
30	F05010-9	Nut, 1/4-20 Keps		2
	073597	Panel Assembly, Key Switch Box Frt		1
31	073598	Plate, Key Switch Box Front		1
32	073594	Decal, Key Switch		1
33	P04350	Switch, Key		1
34	015401	Digital Meter, Hour Rect Mount w/ Gasket		1
35	F05015-28	Screw, #6-32x1/2 Plain PH T23		2
36	033488	Gasket, LMS Panel		1
37	015236	MOUNT WELDMENT, STANDARD CONTROL BOX		1
38	F05010-20	NUT, 5/16-18 SELF-LOCKING HEX		4
39	F05007-52	BOLT, 3/8-16 X 1" SOCKET HEAD		6
40	F05011-4	WASHER, 3/8" SPLIT LOCK		6
41	F05011-36	WASHER, 3/8" EXTERIOR STAR LOCK		6
42	015400	DECAL, FRONT OUTRIGGER WARNING		1
43	S11753	DECAL, EAR/EYE PROTECTION WARNING		1
44	S12117	DECAL, 800 NUMBER		1

4**Control & Battery Boxes***Control Assembly (Tier4 Only)*

REF	PART #	DESCRIPTION	COMMENTS	QTY.
45	036381	PLATE, PEDESTAL COVER		1
46	F05015-17	SCREW, #10-24 X 1/2" PAN HEAD		2
47	N/A	ACCUSET PARTS (See AccuSet 2 Manual)		1

4.3 Commutateurs



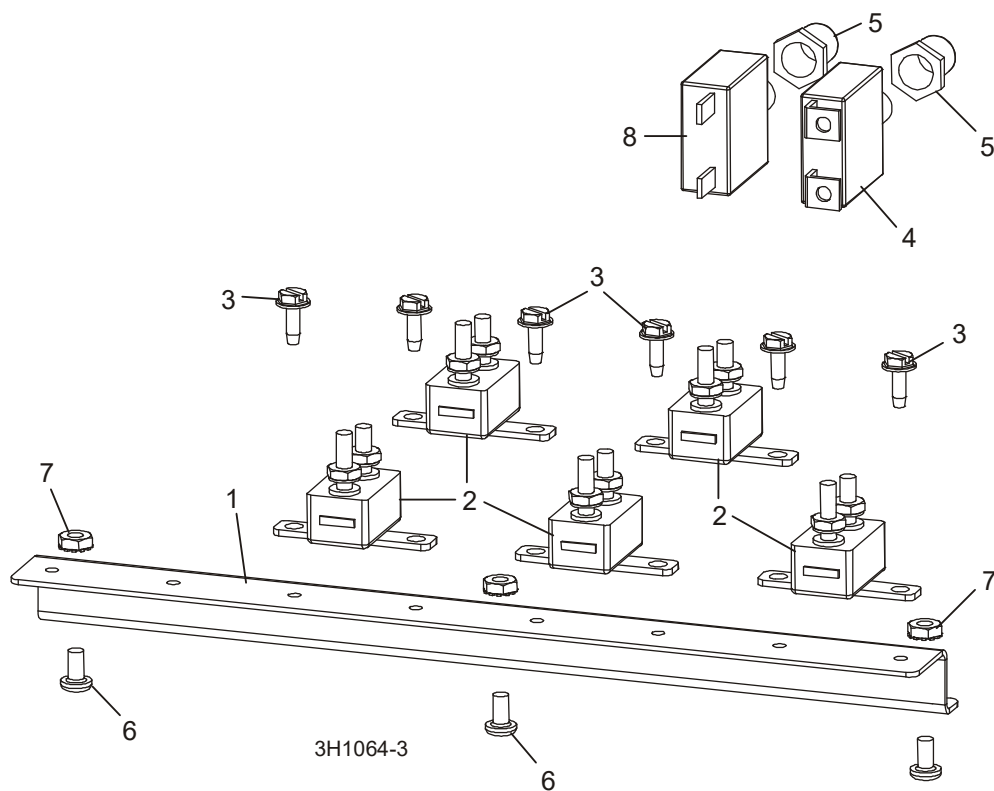
3H0421

REF	PART #	QTY.
1-3	E20440	1
1	-----	1
2	P12570	1
3	P12500	1
4-6	E20439	1

4	-----	1
5	P12570	1
6	P12500	1
7	F05011-41	6
9-12	A20463	1
8	-----	1

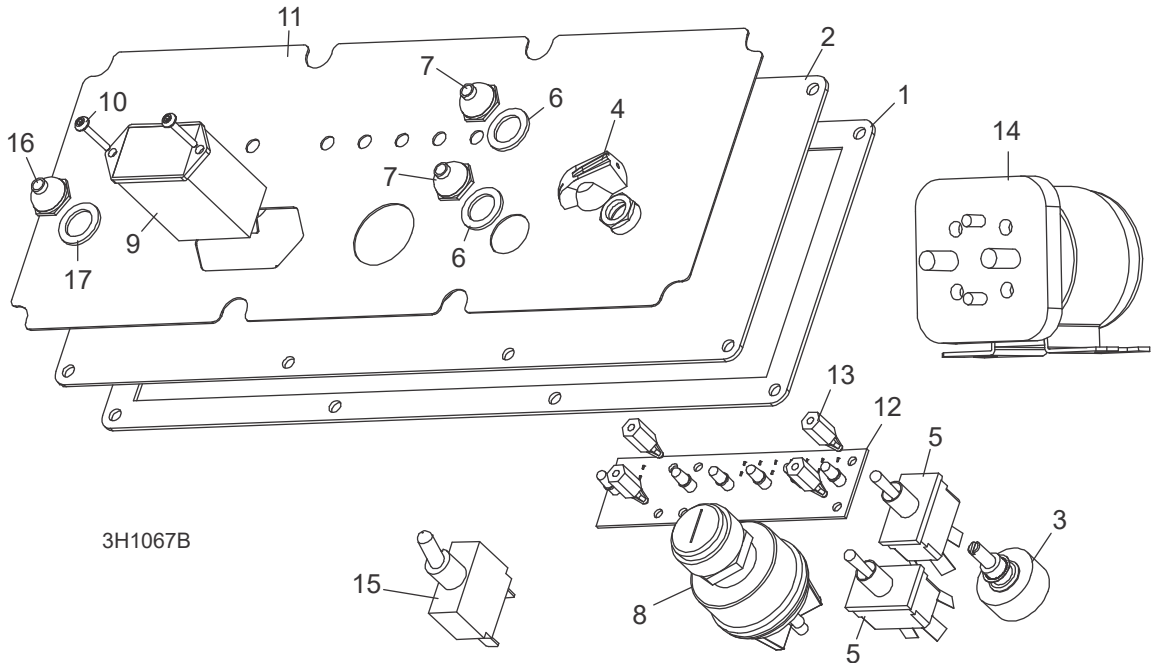
9	P20467	1
10	-----	1
11	-----	1

4.4 Disjoncteurs



REF	PART #	QTY.
1-3	015621	1
1	052826	1
2	E20430	5
3	F05015-7	6
4	015527	1
5	021253	2
6	F05004-3	3
7	F05010-14	3
8	024246	1

4.5 Panneau De Commande

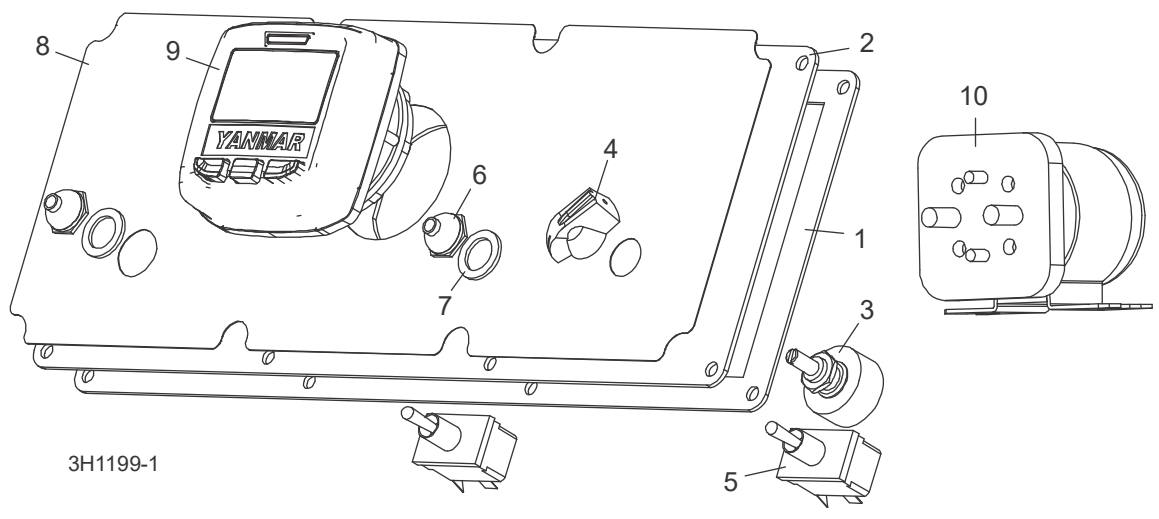


REF	PART #	QTY.	
	069417	1	
	069416	1	
1	015270	1	
2	015302	1	
3	024450-1	1	
4	P06257	1	
5	024200	2	
6	P02575	2	
7	P05251-1	2	
8	P04350	1	
9	015401	1	
10	F05015-28	2	
11	015271	1	
12	015269	1	
13	015416	1	
14	015409	1	
15	023147	4	
16	016371	1	
	015470	1	◆
	015426	1	
17	051346	1	
18	P02575	1	

19	P05251-1	1	
	069343	1	
	069307	1	
	052903	1	
	069309	1	
	069306	1	
	050399	1	
	024402	1	
	051872	1	
	R02374	41 in.	
	R02374	42 in.	

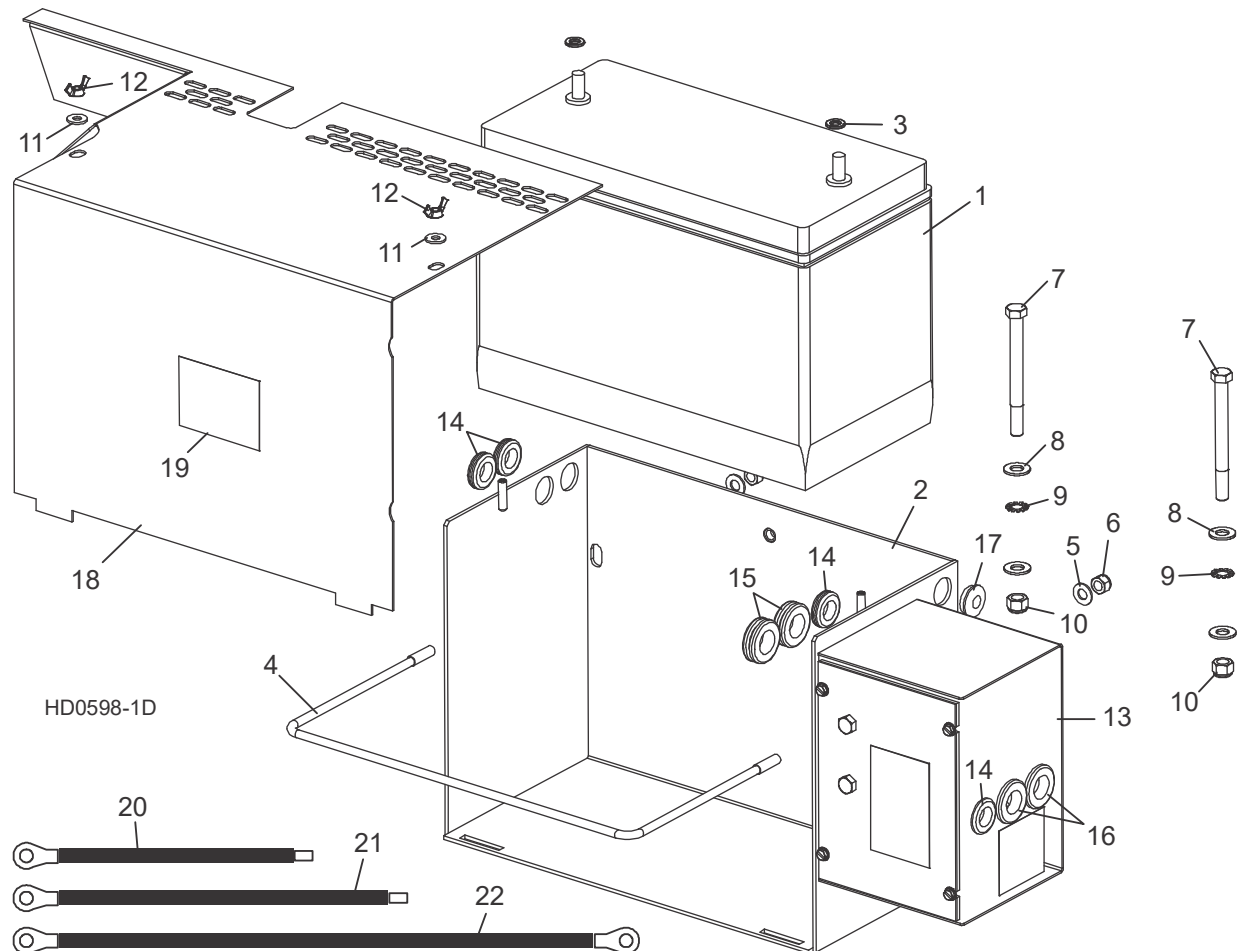
4 Control & Battery Boxes
Panneau De Commande (Tier4 Seulement)

4.6 Panneau De Commande (Tier4 Seulement)



REF	PART #	QTY.	
	073596	1	
1	015270	1	
2	011298	1	
3	024450	1	
4	P06257	1	
5	024200	2	
6	P02575	2	
7	P05251-1	2	
8	073593	1	
9	073601	1	
10	016371	1	
	015470	1	◆
	015426	1	
	073591	1	
	050399	1	
	024402	1	
	051872	1	
	R02374	41 in.	
	R02374	42 in.	

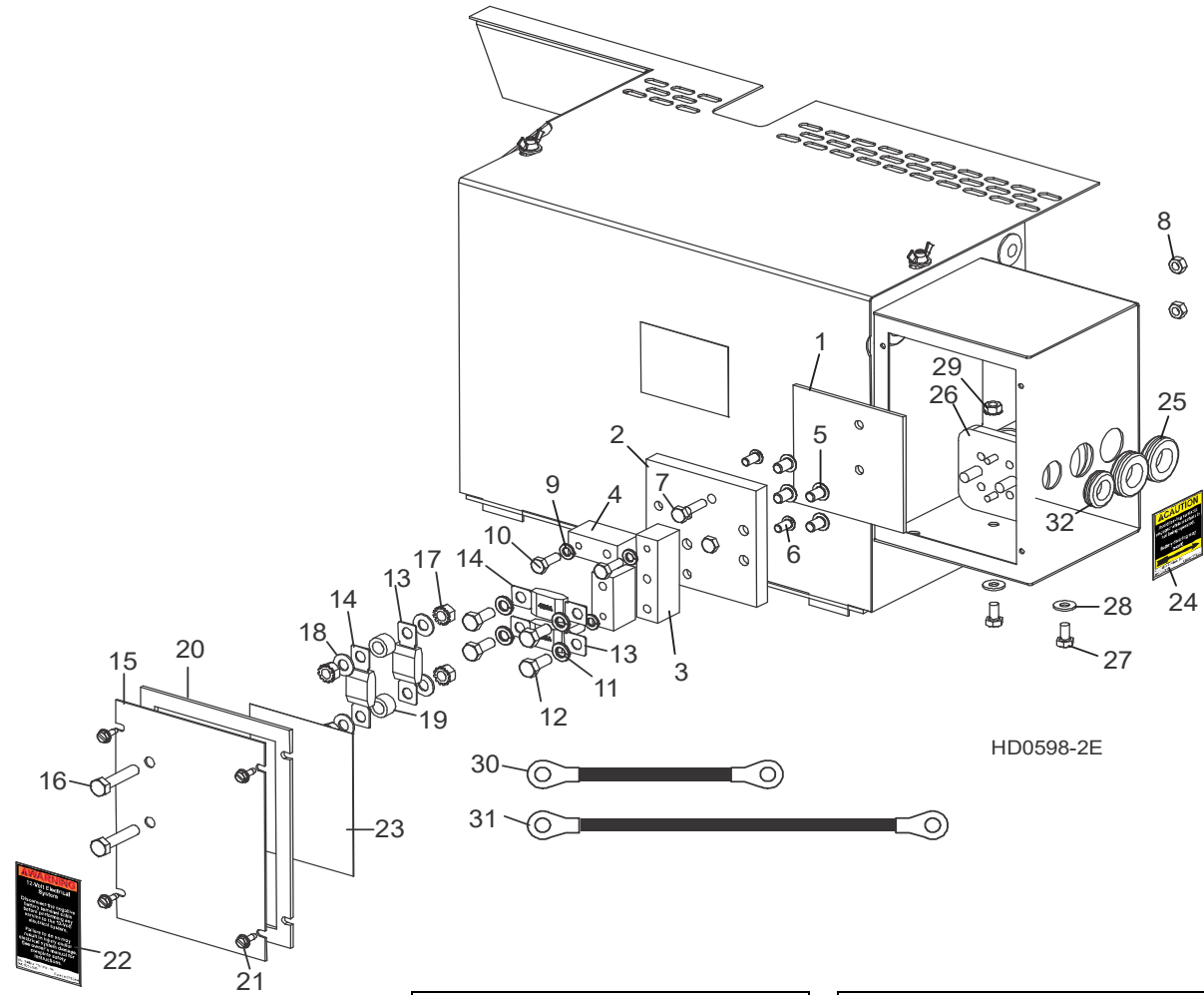
4.7 Boîte De Batterie



REF	PART #	QTY.
1	025841	1
2-17	015565	1
2	015191	1
3	F05011-13	2
4	015194	1
5	F05011-17	2
6	F05010-58	2
7	F05007-4	2
8	F05011-3	2
9	F05011-36	2
10	F05010-10	2
11	F05011-11	2
12	F05010-13	2

13	Voir Partie 4.8	
	Voir Partie 8.3	
14	P11764	4
15	074198	2
16	074199	2
17	052496	1
18	015771	1
19	014774	1
20	036308	1
21	036309	1
22	036306	1

4.8 Boîte De Fusibles



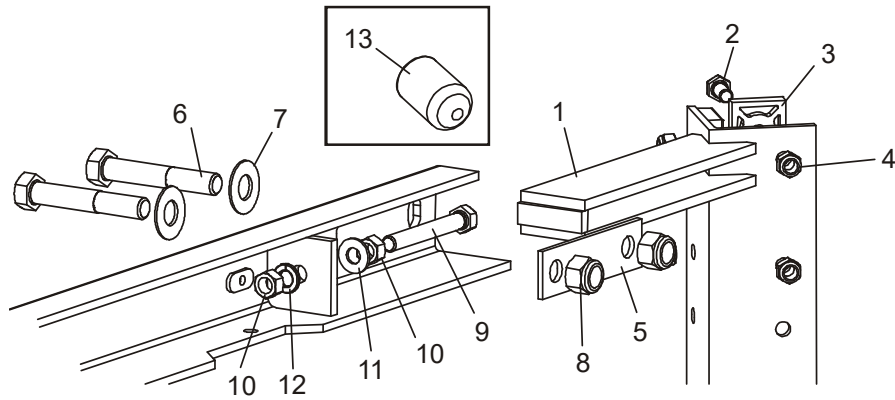
REF	PART #	QTY.
1-12	006795	1
1	056999	1
2	-----	1
3	056996	1
4	056998	2
5	F05006-20	4
6	F05005-59	2
7	F05005-101	2
8	F05010-21	2
9	F05011-14	3
10	F05005-123	3

11	F05011-13	4
12	F05006-102	4
13	053339	2
14	053340	2
16-20	006853	1
15	006851	1
16	F05006-2	2
17	F05010-20	4
18	F05011-17	4
19	055323	2
20	050283	1
21	F05015-7	4

22	P10364-5	1
23	006868-5	1
24	P12960-5	1
25	074199	2
26	016371	1
27	F05005-15	2
28	F05011-11	2
29	F05010-9	2
30	036305	1
31	036307	1
32	P11764	1

PARTIE 5 SYSTÈME DE MONTÉE

5.1 Fixation De La Tête De Sciage



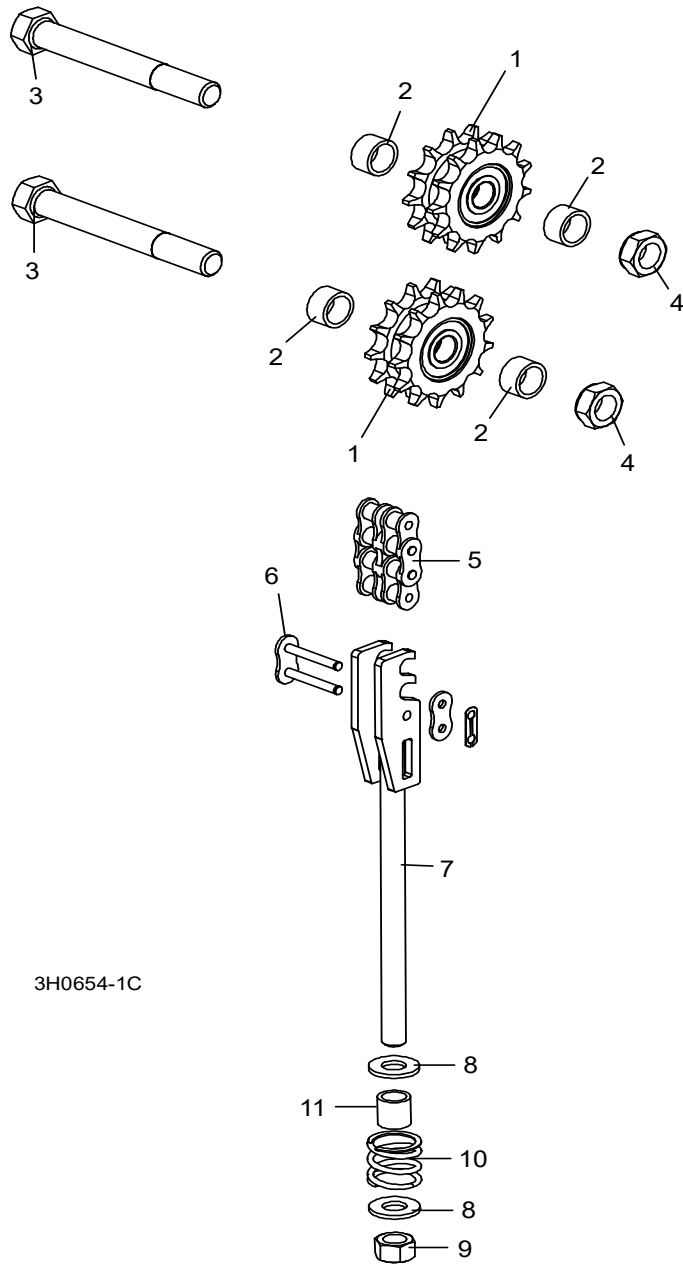
SM0080D

REF	PART #	QTY.
1	W04099	1
2	F05006-5	12
	F05006-93	4
3	M04096	6
	016241	2

4	F05010-58	16
5	S07935	2
6	F05008-61	4
7	F05011-2	4
8	F05010-8	4
9	F05007-17	2

10	F05010-1	4
11	F05011-3	2
12	F05011-4	2
13	017715	3

5.2 Chaînes Et Pignons De Montée



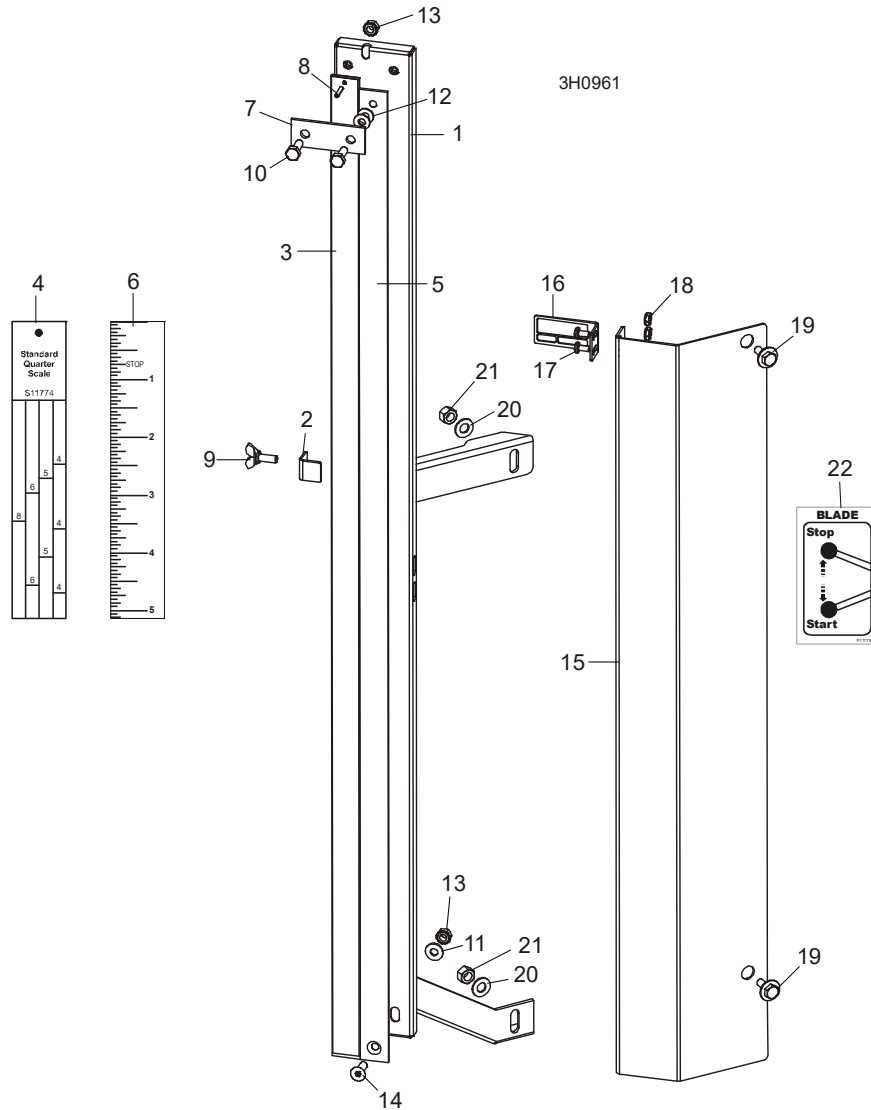
3H0654-1C

REF	PART #	QTY.
1-2	016020	1
1	016019	2
2	016018	4
3	F05009-6	2
4	F05010-96	2

5	015259	1
6	015258	2
7-11	015456	1
7	015188	1
8	F05011-2	2
9	F05010-8	1

10	016516	1
11	016515	1

5.3 Indicateur De Hauteur Et Règles De Débitage



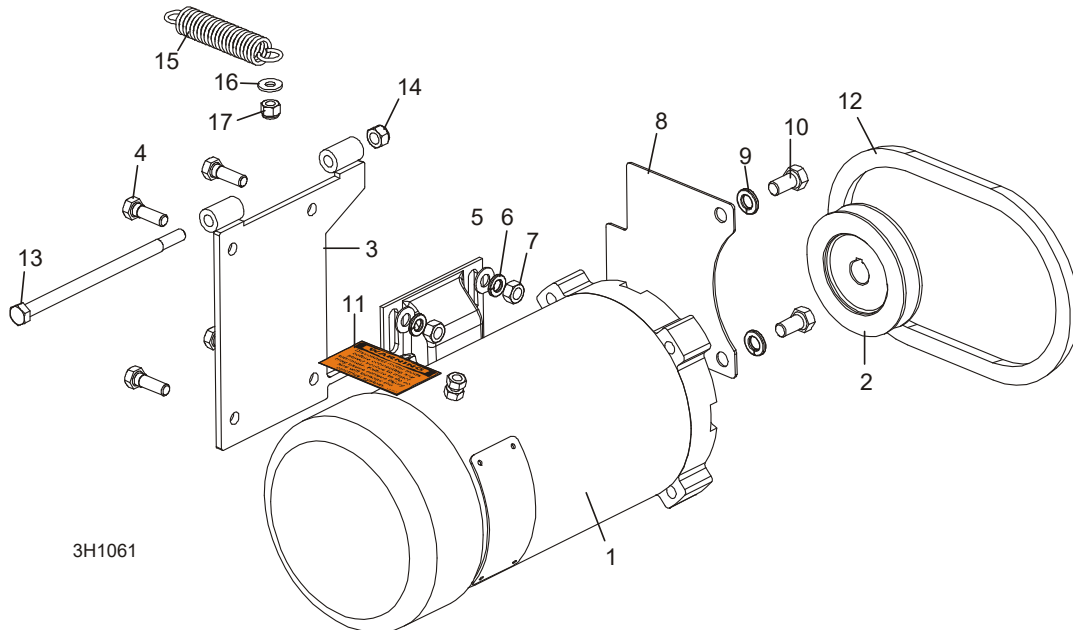
REF	PART #	QTY.
1-21	A12030	1
1-21	----	1
1-14	----	1
1-2	W11996	1
2	036666	1
3-4	S11989	1
4	S11774 ¹	1
	P12819 ²	1
5-6	S11988	1

6	S11773	1
7	S04805	1
8	F05012-14	1
9	F05005-64	1
10	F05005-1	2
11	F05011-11	1
12	F05011-22	2
13	F05010-9	2
14	F05005-70	1
15-18	038591	1

15	038586	1
16	038585	1
17	F05004-3	2
18	F05010-14	2
19	F05005-134	2
20	F05011-17	2
21	F05010-6	2
22	P11779-5	1

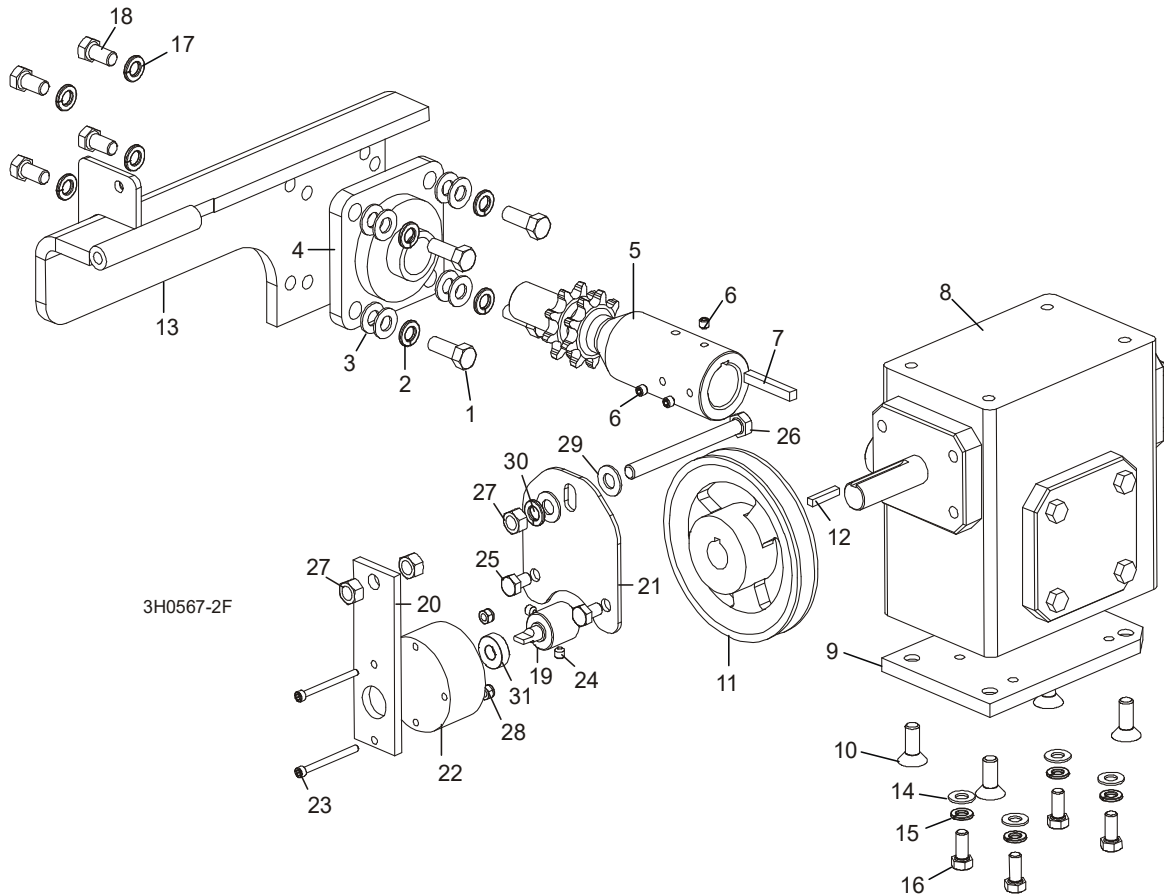
¹ Standard
² Pour Bois Dur

5.4 Moteur De Montée



REF	PART #	QTY.
1 - 11	008779	1
1	053682	1
2	008999	1
3	015198	1
4	F05006-1	4
5	F05011-17	4
6	F05011-13	4
7	F05010-17	4
8	015016	1
9	F05011-4	2
10	F05007-27	2
11	024431	1
12	038459	1
13	F05006-73	1
14	F05010-65	1
15	015569	1
16	F05011-11	1
17	F05010-69	1

5.5 Système D'entraînement De Montée



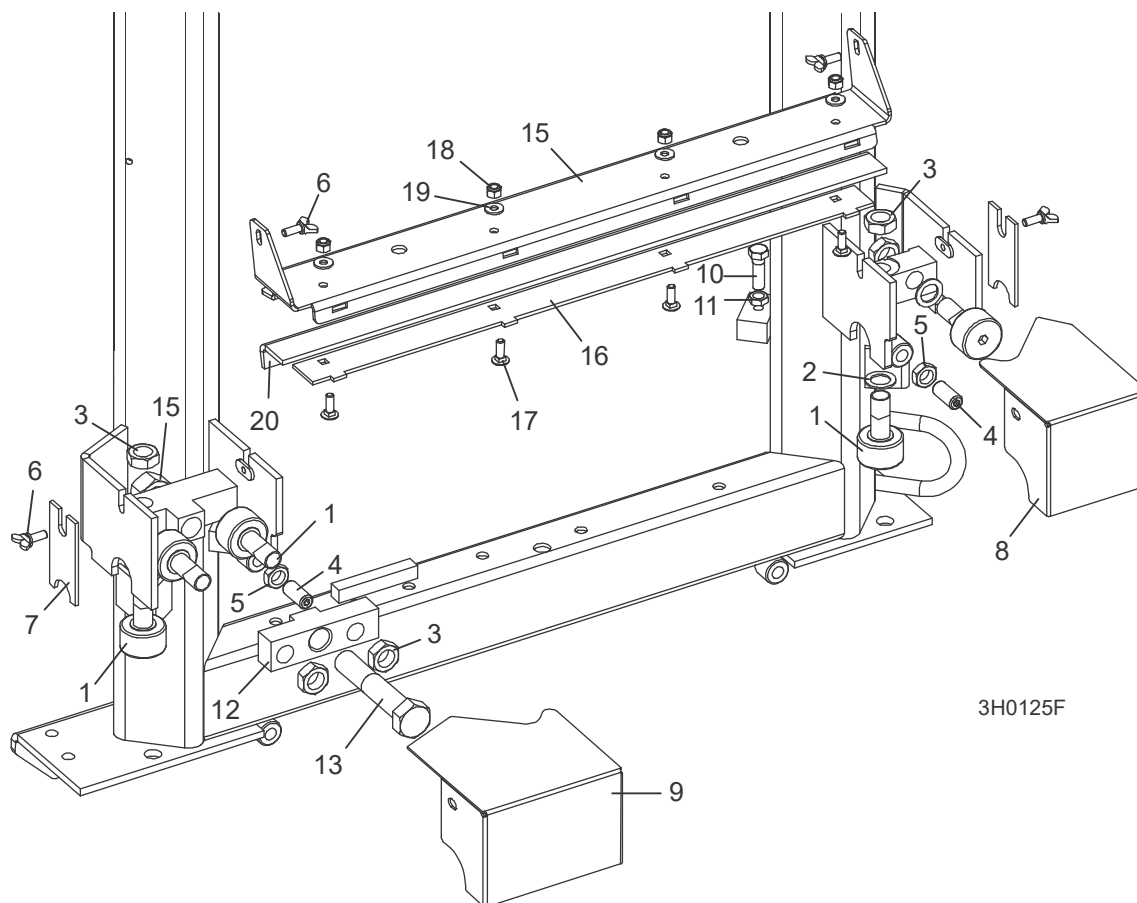
REF	PART #	QTY.
1-13	015176	1
1	F05007-7	4
2	F05011-4	4
3	F05011-3	8
4	014090	1
5-7	016094	1
5	----	1
6	F05005-105	3
7	S04124	1
8	074124	1
9	014158	1
10	F05007-64	4
11	015256	1
12	S31027	1
13	015195	1

14	F05011-17	4
15	F05011-13	4
16	F05006-102	4
17	F05011-4	4
18	F05007-27	4
19-31	065187	1
19	062511	1
20	062513	1
21	065190	1
	065907	1
22	069519	1
	F05708-26	2
23	F05004-273	2
24	F05005-131	2
25	F05006-15	2
26	F05007-92	1

27	F05010-1	3
28	F05010-169	2
29	F05011-3	2
30	F05011-4	1
31	P10688	1

PARTIE 6 SYSTÈME D'ENTRAÎNEMENT ET PALIERS

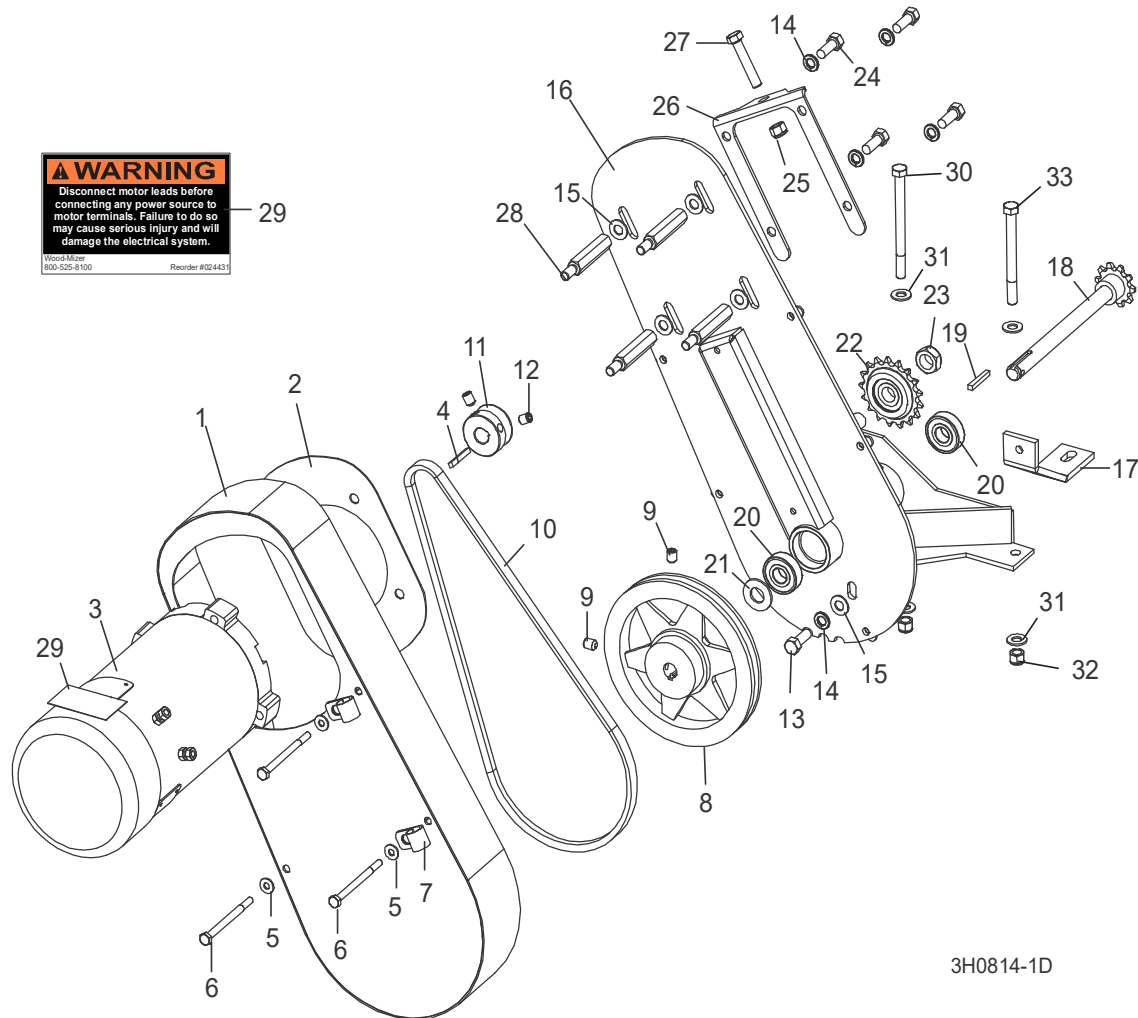
6.1 Paliers de Rail Superieur et Grattoirs



REF	PART #	QTY.	
1	012797	5	
2	016510	2	
3	F05010-11	5	
4	F05008-5	2	
5	F05010-31	2	
6	F05005-64	4	
7	M04113	2	
8	012999	1	
9	016285	1	
10	F05007-2	2	
11	F05010-29	2	
12	016501	1	
13	F05013-3	1	

14	F05010-80	1	
	110612	1	
15	110609	1	◆
16	110611	1	◆
17	F05005-113	4	
18	F05010-69	4	
19	F05011-11	4	
20	S09915	1	

6.2 Système D'entraînement



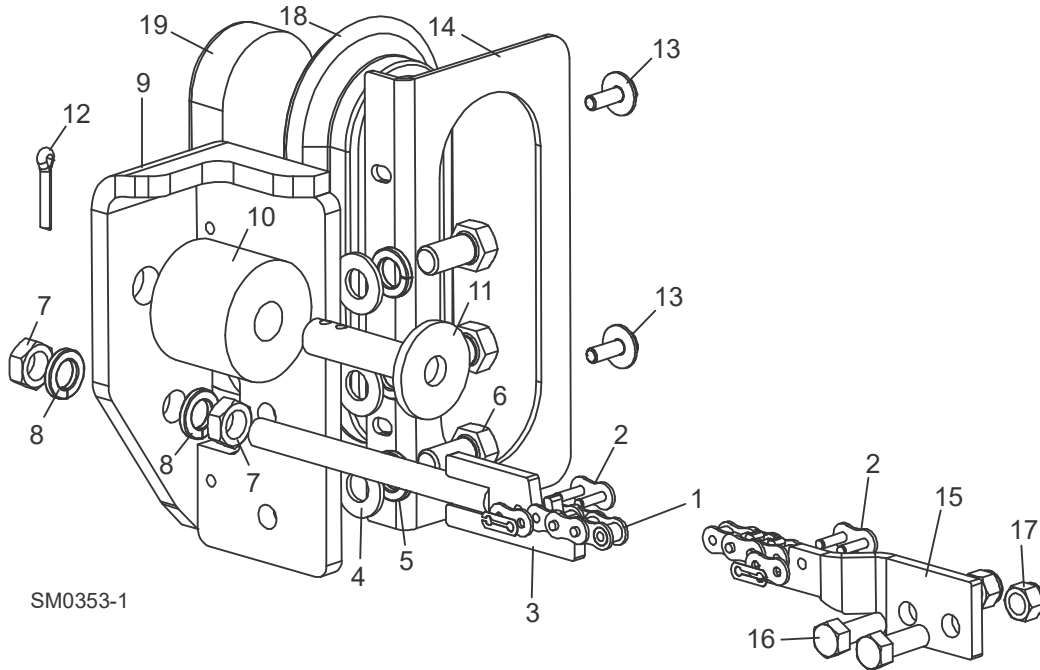
3H0814-1D

REF	PART #	QTY.
1-29	015125	1
1	015126	1
2	015133	1
3	024169	1
4	S31027	1
5	F05011-11	4
6	F05005-54	4
7	010748	2
8-9	016088	1
9	F05006-32	2
10	016083	1
11	015135	1

12	F05007-12	2
13	F05007-7	1
14	F05011-4	5
15	F05011-3	5
16	015162	1
17	015132	1
18-19	016066	1
18	----	1
19	016108	1
20	P06030-1	2
21	F05011-19	1
22	016366	1
23	F05010-96	1

24	F05007-27	4
25	F05010-10	1
26	015134	1
27	F05007-16	1
28	015136	4
29	024431-5	1
30	F05007-35	1
31	F05011-3	4
32	F05010-10	2
33	F05007-4	1

6.3 Chaîne D'entraînement Et Butoir



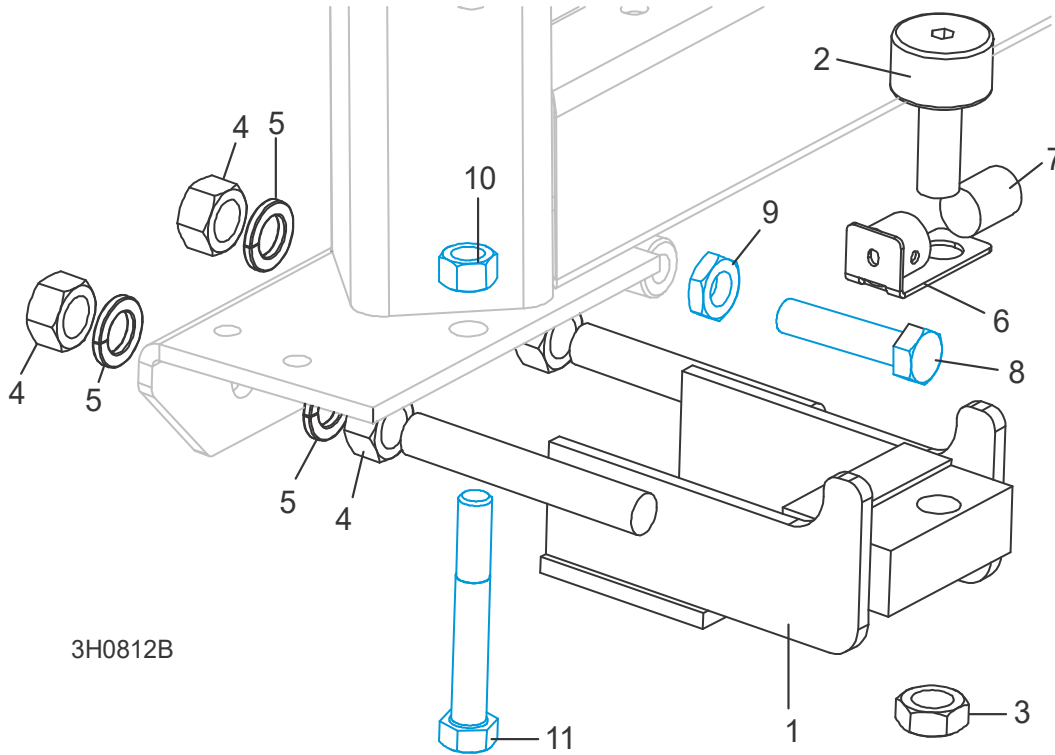
SM0353-1

REF	PART #	QTY.
1	014745	1
2	P04200	2
3	015721	1
4	F05011-2	3
5	F05011-9	3
6	F05008-128	3
7	F05010-16	2

8	F05011-9	2
9	006686	1
10-12	K09630	2
10	P12165	1
11	W09293	1
12	F05012-21	1
13	F05005-134	2
14	057882	1

15	015008	1
16	F05007-7	2
17	F05010-10	2
18	006688	1
19	006391	1

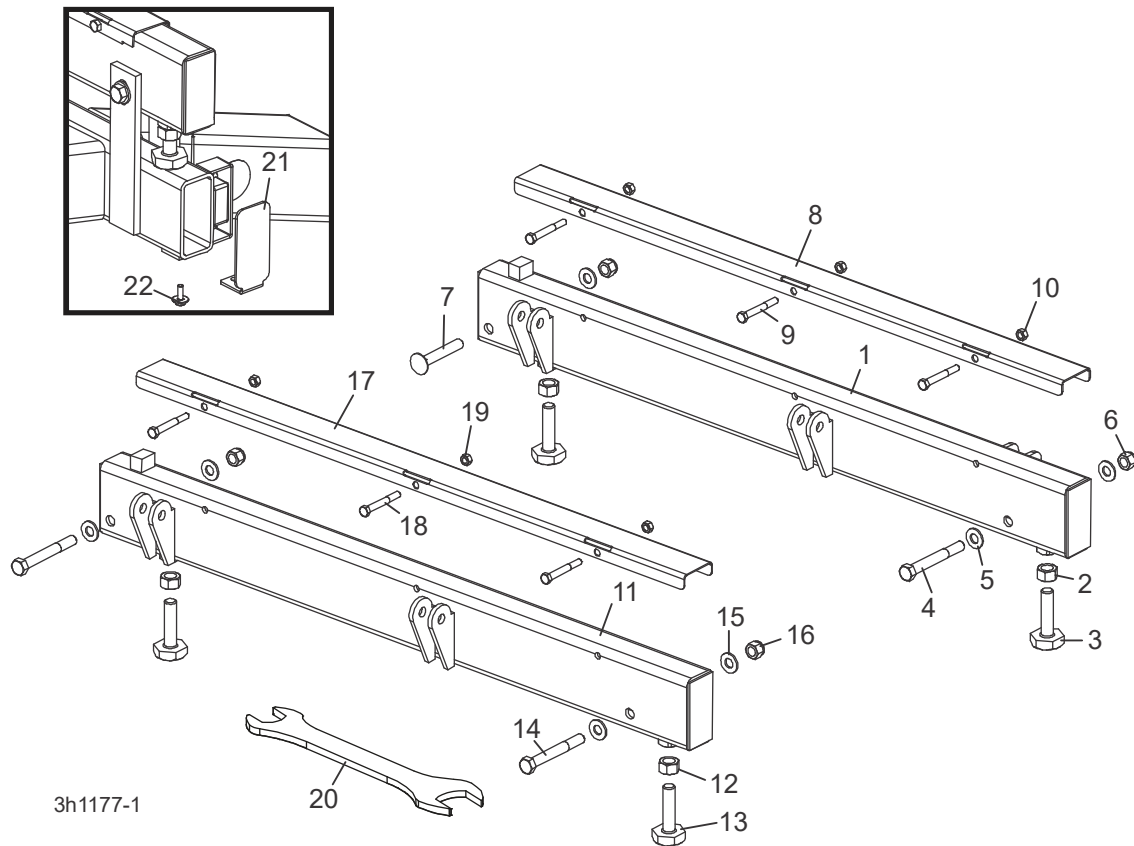
6.4 Paliers De Rail Inférieur



REF	PART #	QTY.
1-7	012995	2
1	----	1
2	012797	1
3	F05010-11	1
4	F05010-5	4
5	F05011-118	4
6	033374	1
7	033375	1
8	F05008-2	2
9	F05010-31	2
10	F05010-3	2
11	F05008-61	2

PARTIE 7 BÂTI DE LA SCIE

7.1 Rails Avant Et Arrière Du Banc De Grume



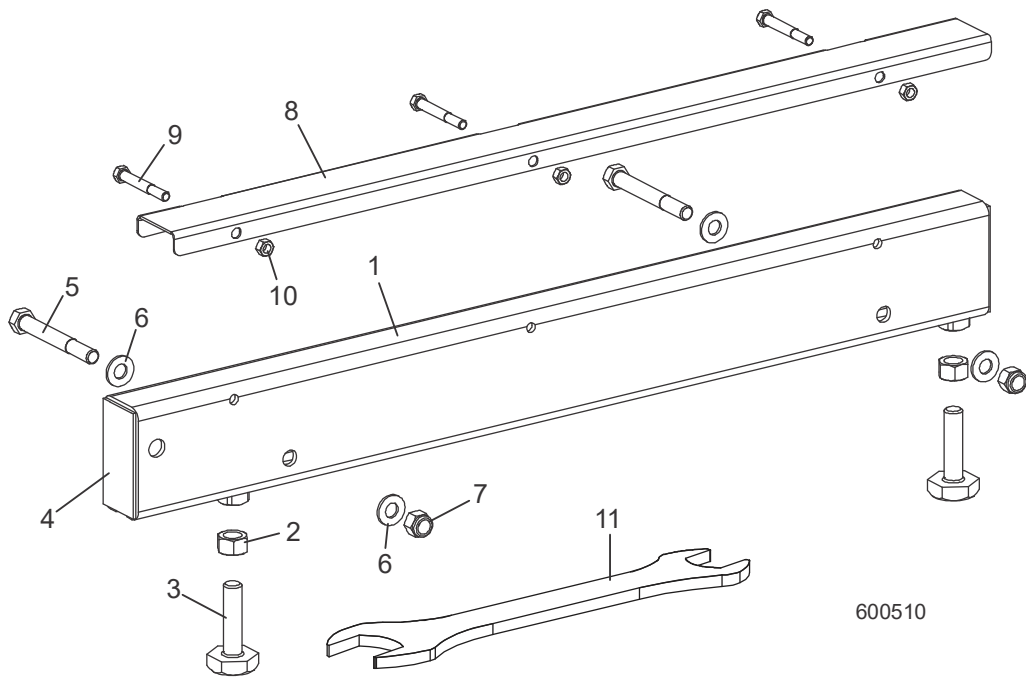
3h1177-1

REF	PART #	QTY.
1-10	003298	1
1	034547	1
2	F05010-5	2
3	S13006	2
4	F05008-78	1
5	F05011-2	3
6	F05010-8	2
7	F05008-94	1
8-10	079144	1
8	016898	1
9	F05006-10	3
10	F05010-6	3

	Voir Partie 8.10	1
11-19	034548	1
11	034544	1
12	F05010-5	2
13	S13006	2
14	F05008-78	2
15	F05011-2	4
16	F05010-8	2
17-19	079144	1
17	016898	1
18	F05006-10	3
19	F05010-6	3
	Voir Partie 8.10	1

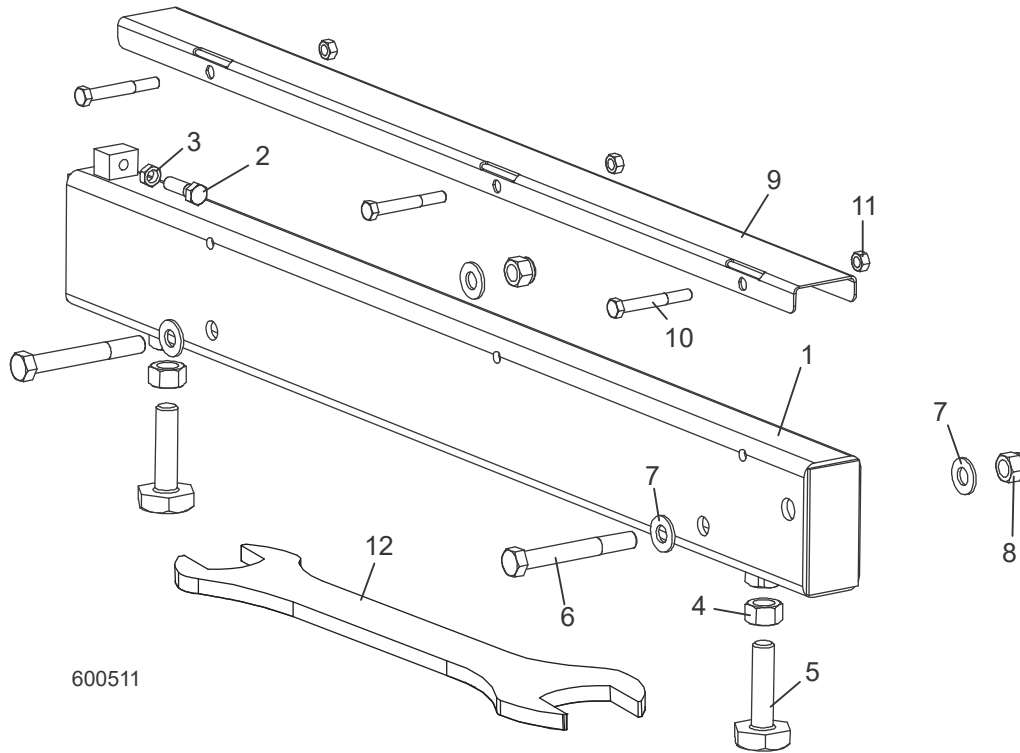
20	015970	1
21	038843	2
22	F05005-134	2

7.2 Rail Centre-avant Du Banc De Grume



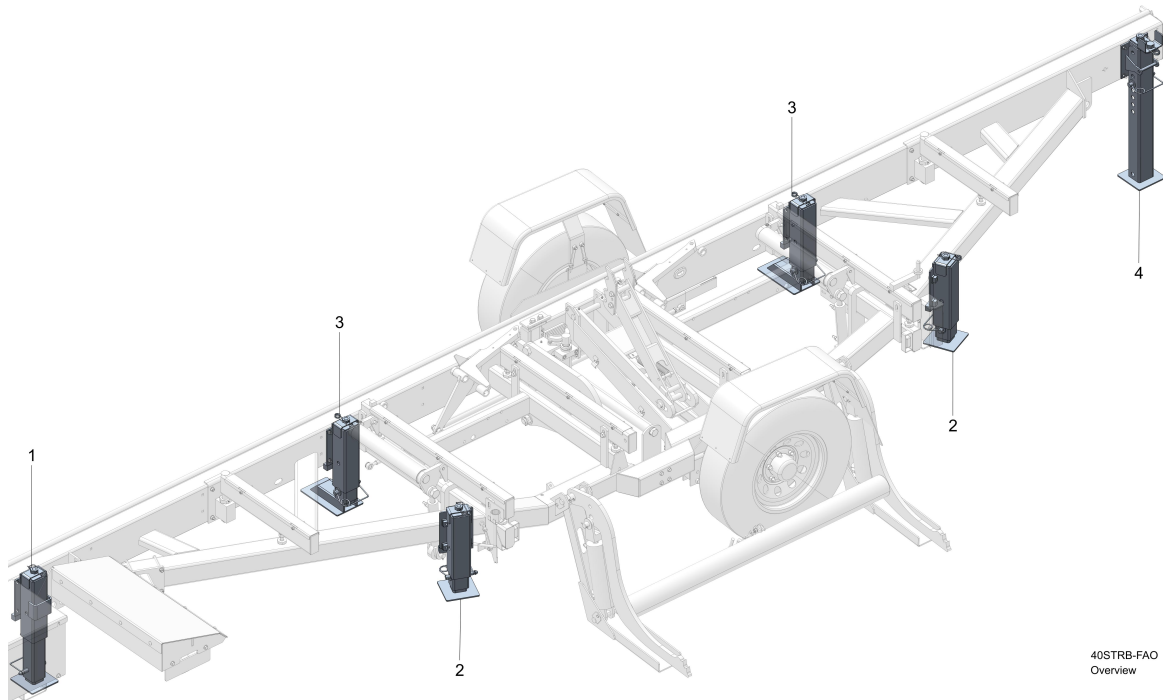
REF	PART #	QTY.
1-10	034549	1
1	034545	1
2	F05010-5	2
3	S13006	2
4	S04058	2
5	F05008-78	2
6	F05011-2	4
7	F05010-8	2
8-10	A09956	1
8	S09944	1
9	F05006-10	3
10	F05010-6	3
11	015970	1

7.3 Rail Centre-arrière Du Banc De Grume



1-11	034550	1
1	034546	1
2	F05007-2	1
3	F05010-29	1
4	F05010-5	2
5	S13006	2
6	F05008-78	2
7	F05011-2	4
8	F05010-8	2
9-11	A09956	1
9	S09944	1
10	F05006-10	3
11	F05010-6	3
12	015970	1

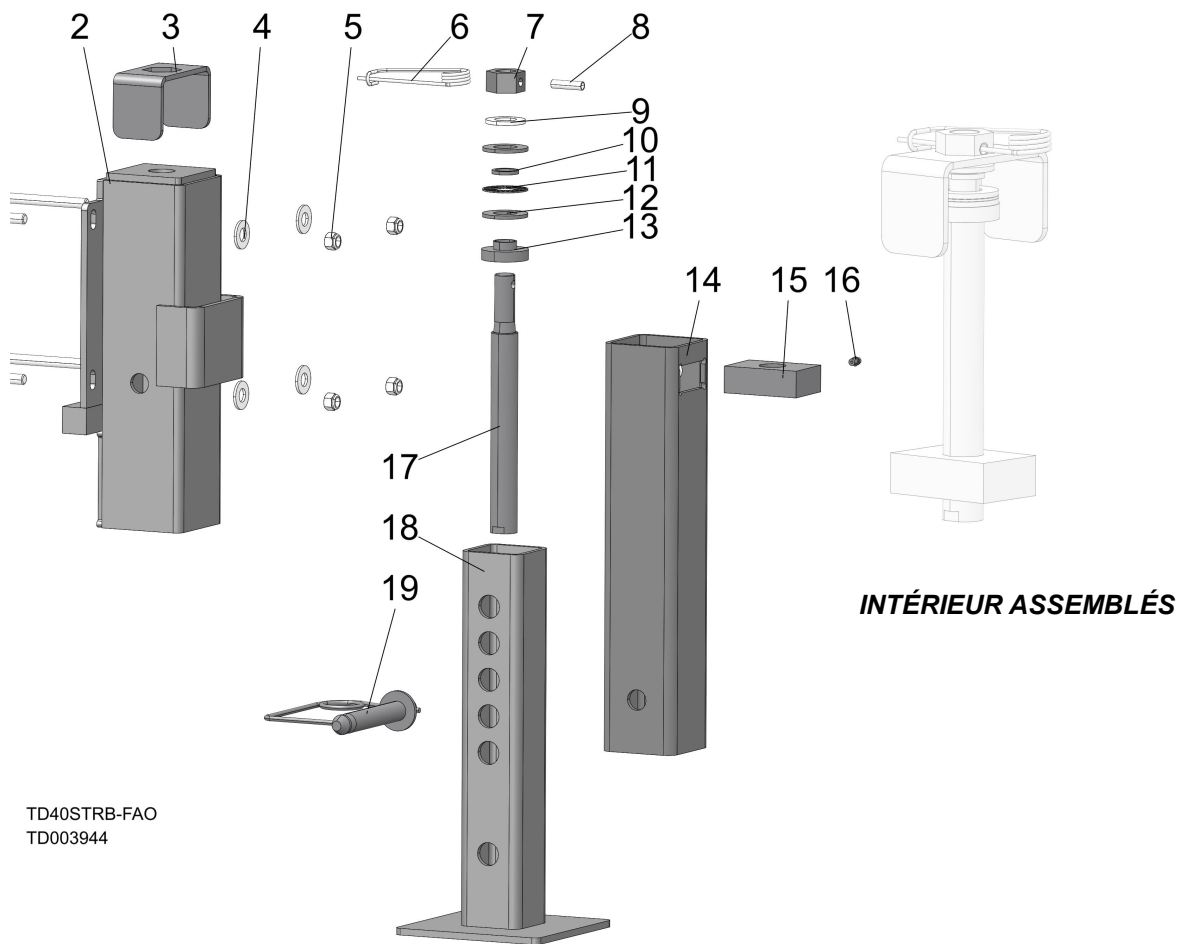
7.4 Pieds Réglable



40STRB-FAO
Overview

REF	PART #	QTY.
1	003944	1
2	056781	2
3	056787	2
4	056791	1
Voir le formulaire n°2540 pour les Pieds Stationnaires		
Voir le formulaire n°2541 pour les Pieds à réglage		

7.5 FAO Pied Avant

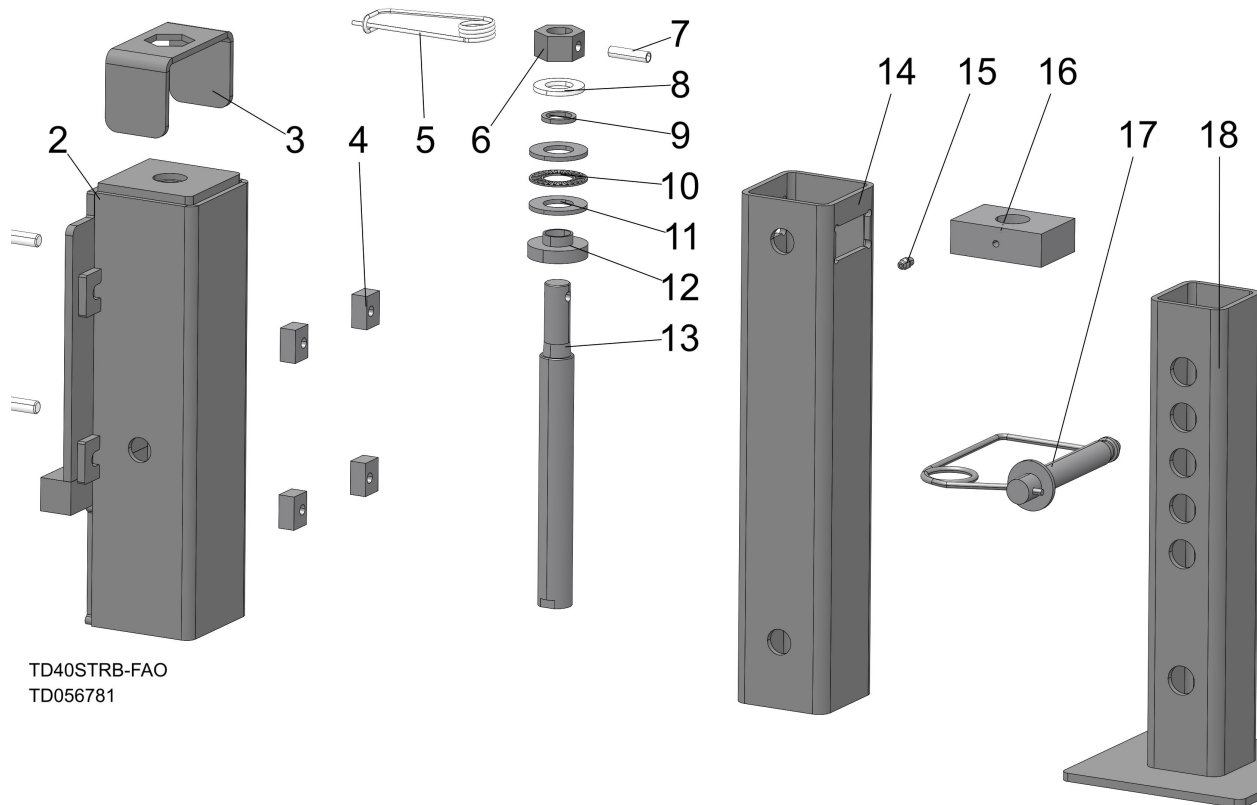


TD40STRB-FAO
TD003944

REF	PART #	QTY.
1	F05007-113	4
2	003943	1
3	059577	1
4	F05011-2	4
5	F05010-10	4
6	F05012-162	1
7	056774	1
8	F05012-127	1
9	F05011-62	1
10	039641	1
	039639	1
11	039637	1
12	039638	2

REF	PART #	QTY.
13	039645	1
14	003981	1
15	039636	1
16	P05060	1
17	039642	1
18	056783	1
19	056817	1

7.6 FAO Pieds Côté Chargement

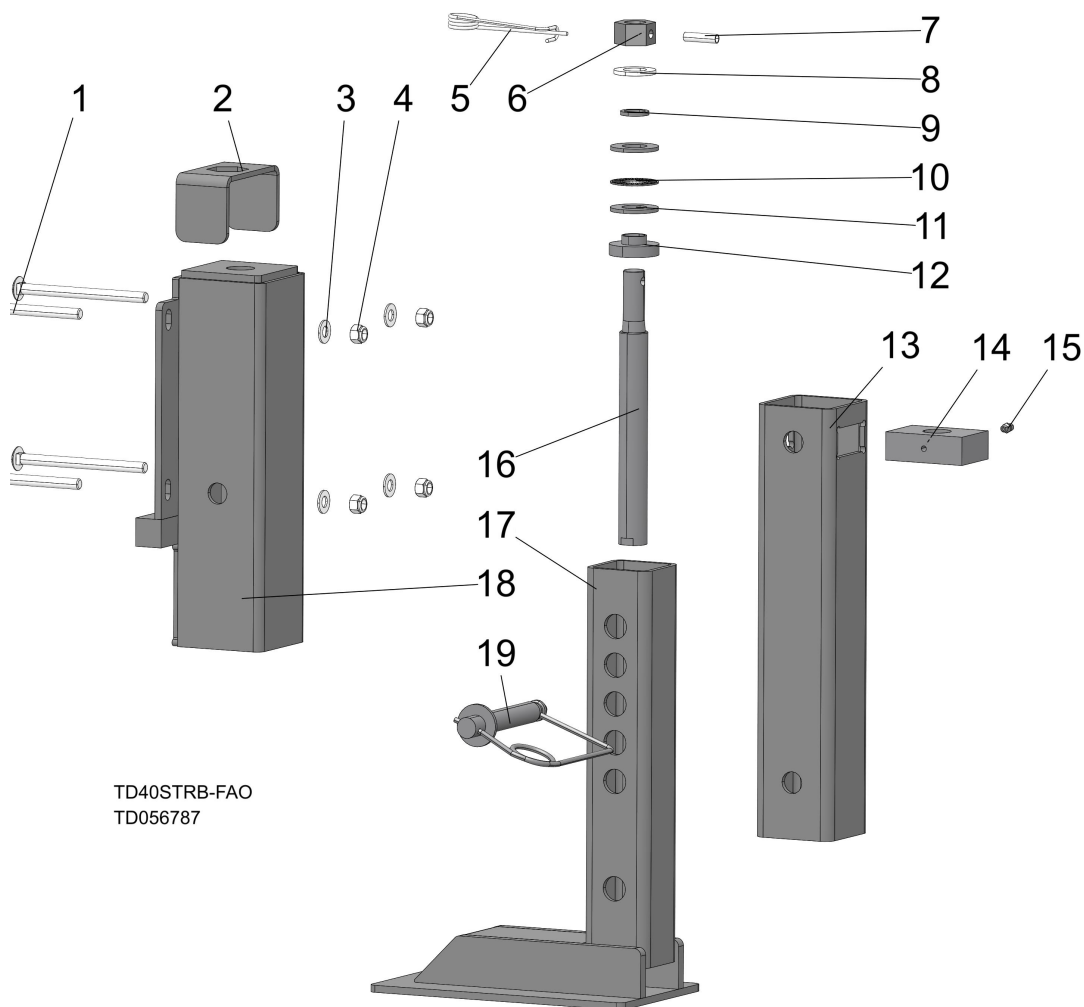


TD40STRB-FAO
TD056781

REF	PART #	QTY.
1	F05007-2	4
2	056780	1
3	059577	1
4	056826	4
5	F05012-162	1
6	056774	1
7	F05012-127	1
8	F05011-62	1
9	039641	1
	039639	1
10	039637	1
11	039638	2
12	039645	1
13	039642	1
14	003981	1
15	P05060	1

REF	PART #	QTY.
16	039636	1
17	056817	1
18	056783	1

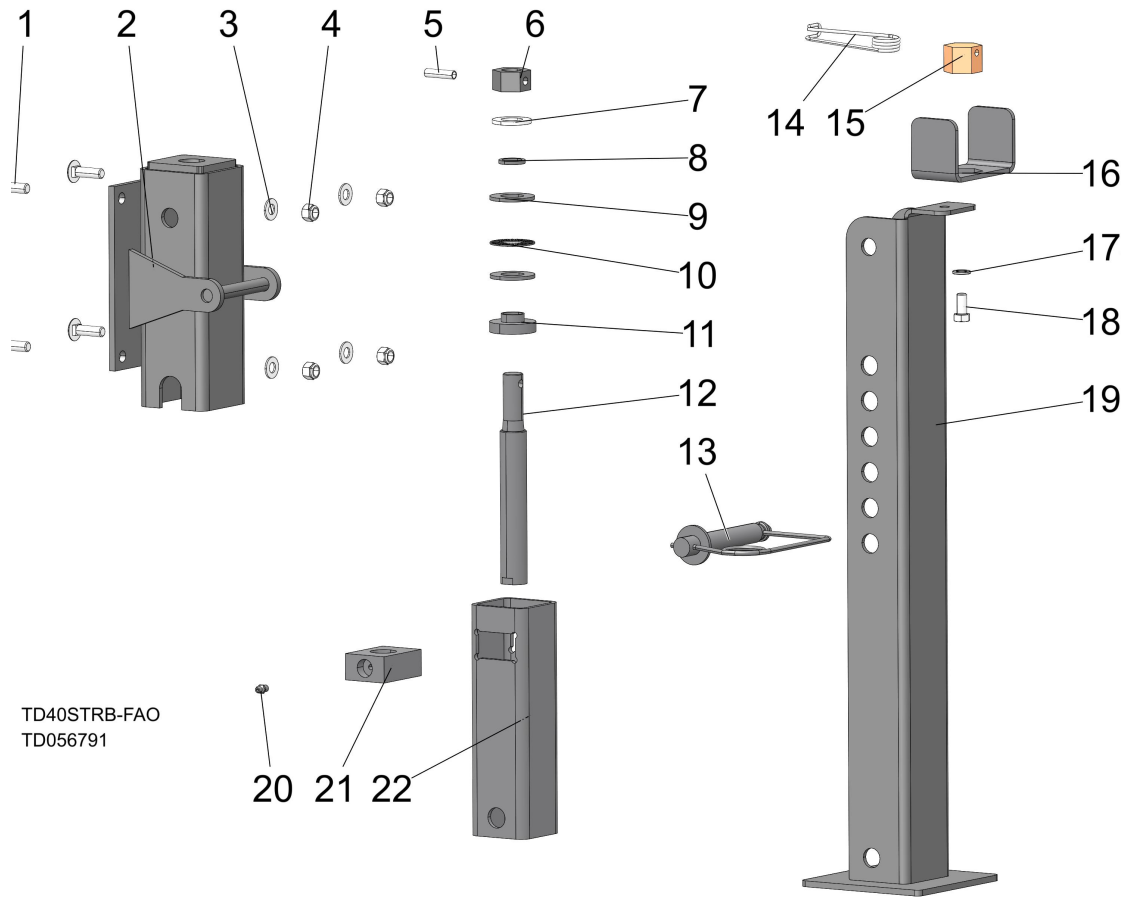
7.7 FAO Pied de décalage



REF	PART #	QTY.
1	F05007-113	4
2	003943	1
3	059577	1
4	F05011-2	4
5	F05010-10	4
6	F05012-162	1
7	056774	1
8	F05012-127	1
9	039645	1
10	F05011-62	1
11	039641	1
	039639	1
12	039637	1

REF	PART #	QTY.
13	039638	2
14	003981	1
15	039636	1
16	P05060	1
17	039642	1
18	056783	1
19	056817	1

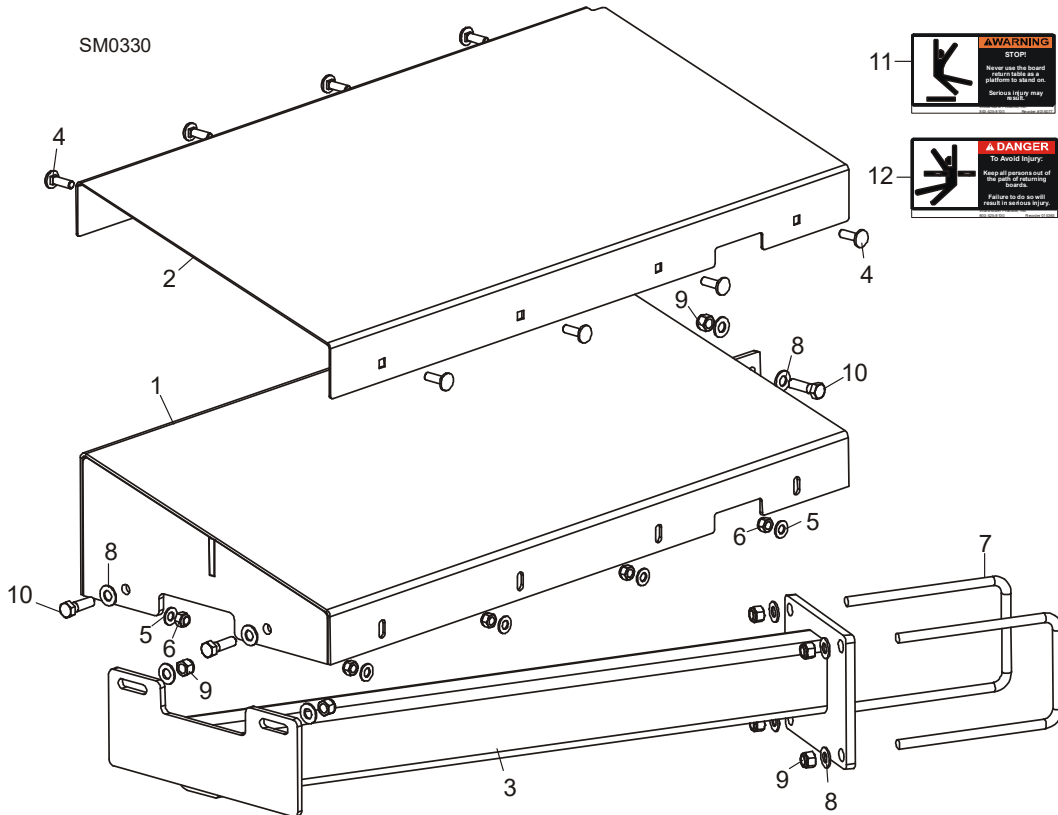
7.8 FAO Pied Arrière



REF	PART #	QTY.
1	F05007-11	4
2	056815	1
3	F05011-3	4
4	F05010-10	4
5	F05012-127	1
6	056774	1
7	F05011-62	1
8	039641	1
	039639	1
9	039638	2
10	039637	1
11	039645	1
12	056818	1
13	056817	1
14	F05012-162	1
15	110560	1

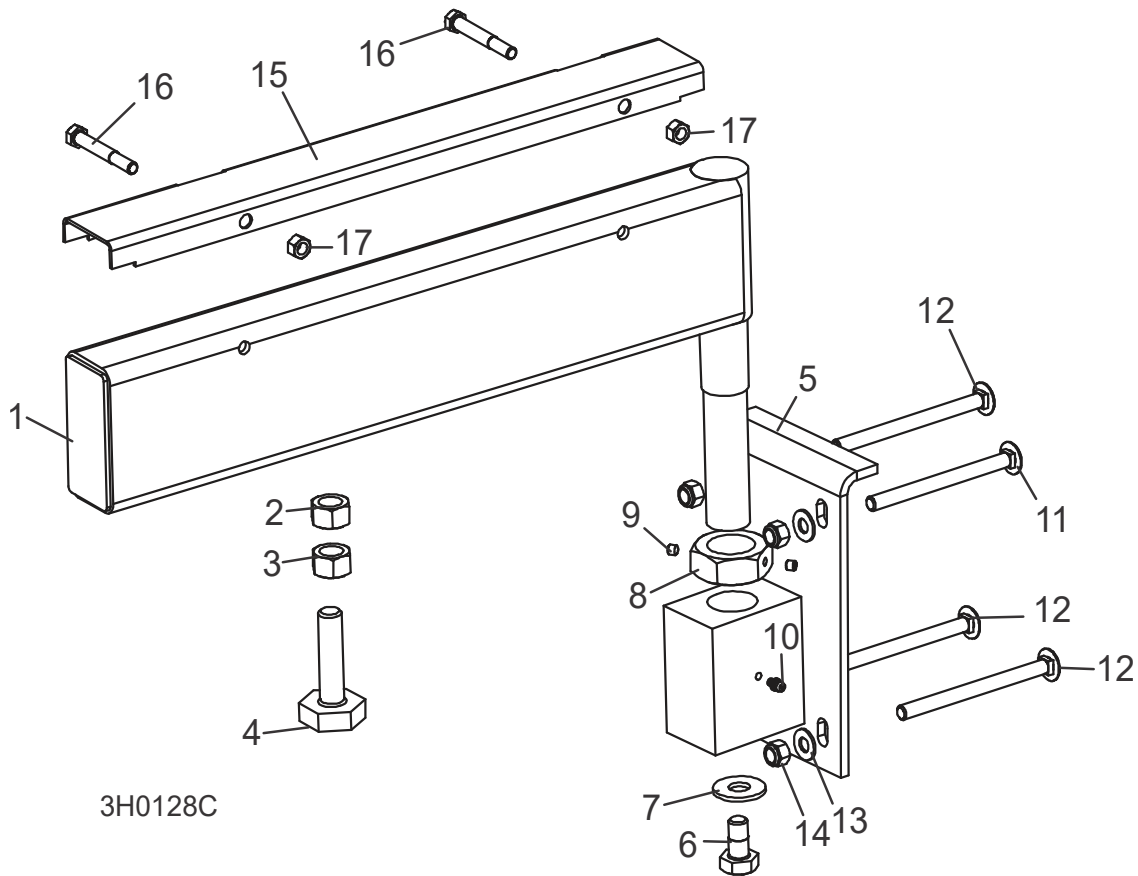
REF	PART #	QTY.
16	059577	1
17	F05011-4	1
18	F05007-118	1
19	056816	1
20	P05060	1
21	056823	1
22	056795	1

7.9 Table D'éjecteur De Planches



REF	PART #	QTY.
1-12	003264	1
1	055515	1
2	003259	1
3	055533	1
4	F05006-9	8
5	F05011-17	8
6	F05010-58	8
7	003207	2
8	F05011-3	10
9	F05010-10	7
10	F05007-123	3
11	016077-5	1
12	015365-5	1

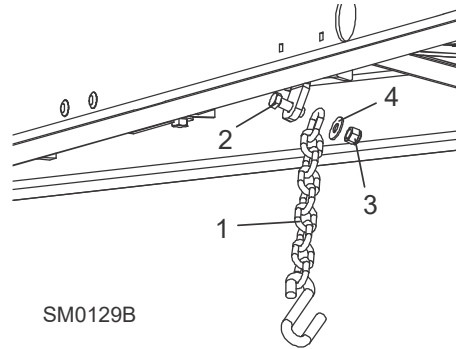
7.10 Support De Grume Mobile



REF	PART #	QTY.
1-10	A13015	2
1-4	-----	1
2	F05010-84	2
3	F05010-5	2
4	S13006	2
5	W13090	1
6	F05008-50	1
7	F05011-52	1
8	S13016	1
9	F05005-42	2
10	P04107	1
11	F05007-114	2
12	F05007-113	6
13	F05011-3	8

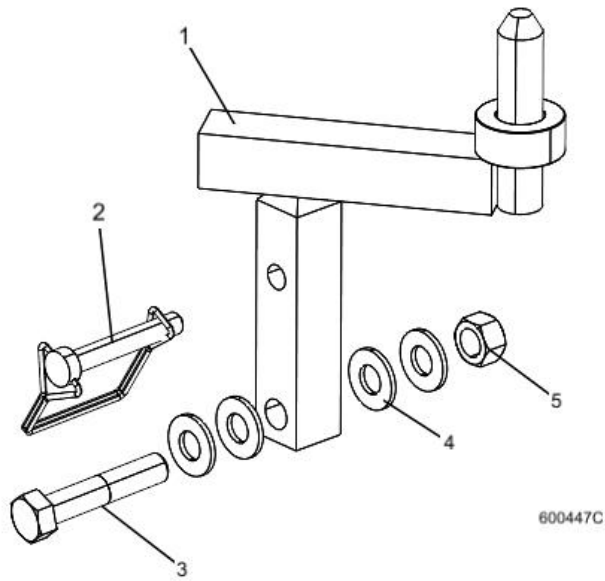
14	F05010-10	8
15-17	017710	2
15	S13012	1
16	F05006-10	2
17	F05010-6	2

7.11 Chaîne De Sécurité



REF	PART #	QTY.
1	107972	1
2	F05008-33	1
3	F05010-8	1
4	F05011-35	1

7.12 Attache De La Tête De Scie

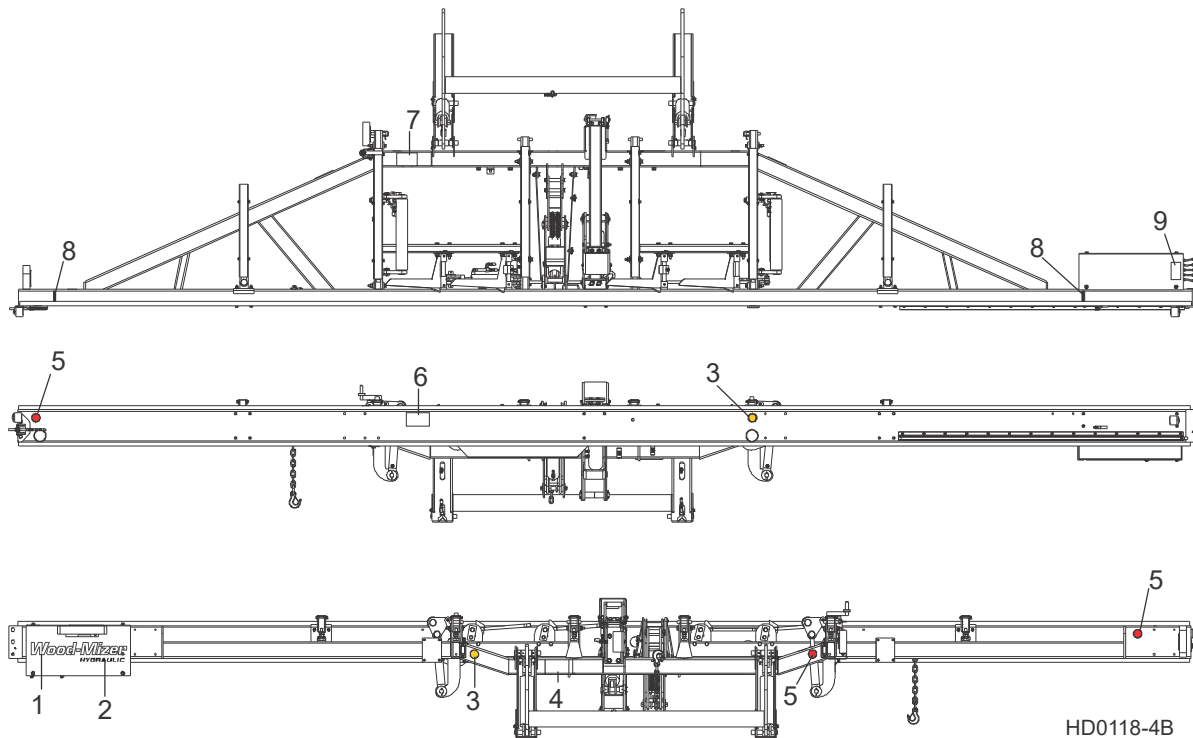


REF	PART #	QTY.	
	079485 ¹		
	079511 ²		
1	014102 ¹	1	
	079510 ²	1	
2	014151	1	
3	F05008-74	1	
4	F05011-2	4	
5	F05010-3	1	

¹ Standard

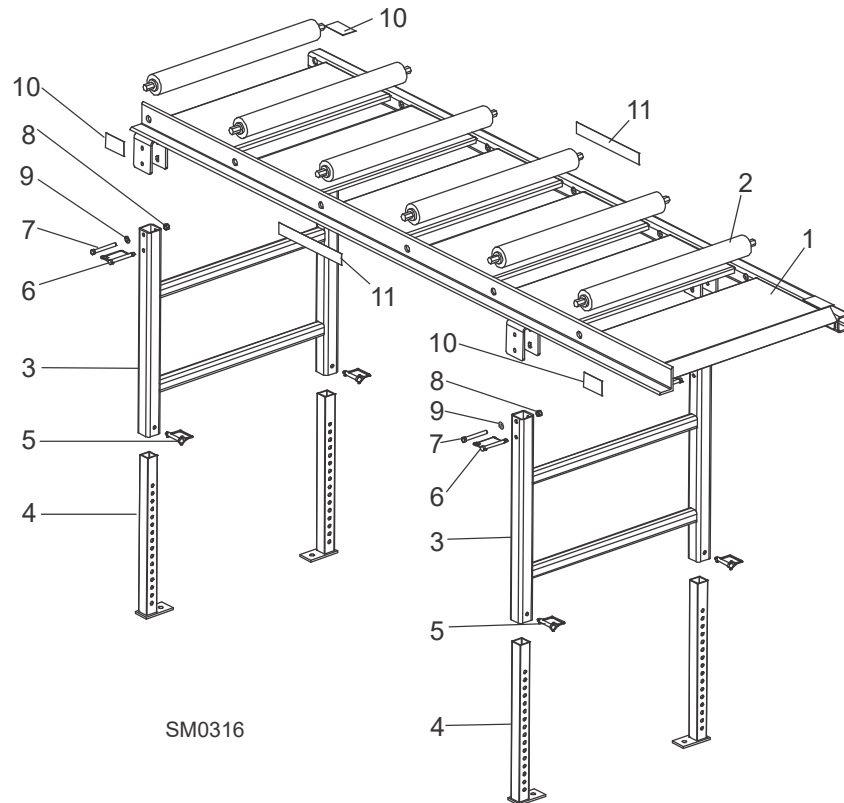
² Wide

7.13 Étiquettes D'avertissement



REF	PART #	QTY.
1	065034	1
2	065035	1
3	P07453	2
4	S09851	1
5	P07452	3
6	P10287	1
7	S12581	1
8	S12051	2
9	P12961	1

7.14 Table De Planches (Optionnel)

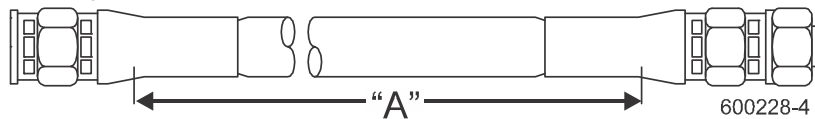


SM0316

REF	PART #	QTY.
1-10	016652	1
1	016606	1
2	038167	6
3	016609	2
4	016651	4
5	014151	4
6	016677	4
7	F05007-135	4
8	F05010-10	4
9	S12641-5	4
10	016991	2

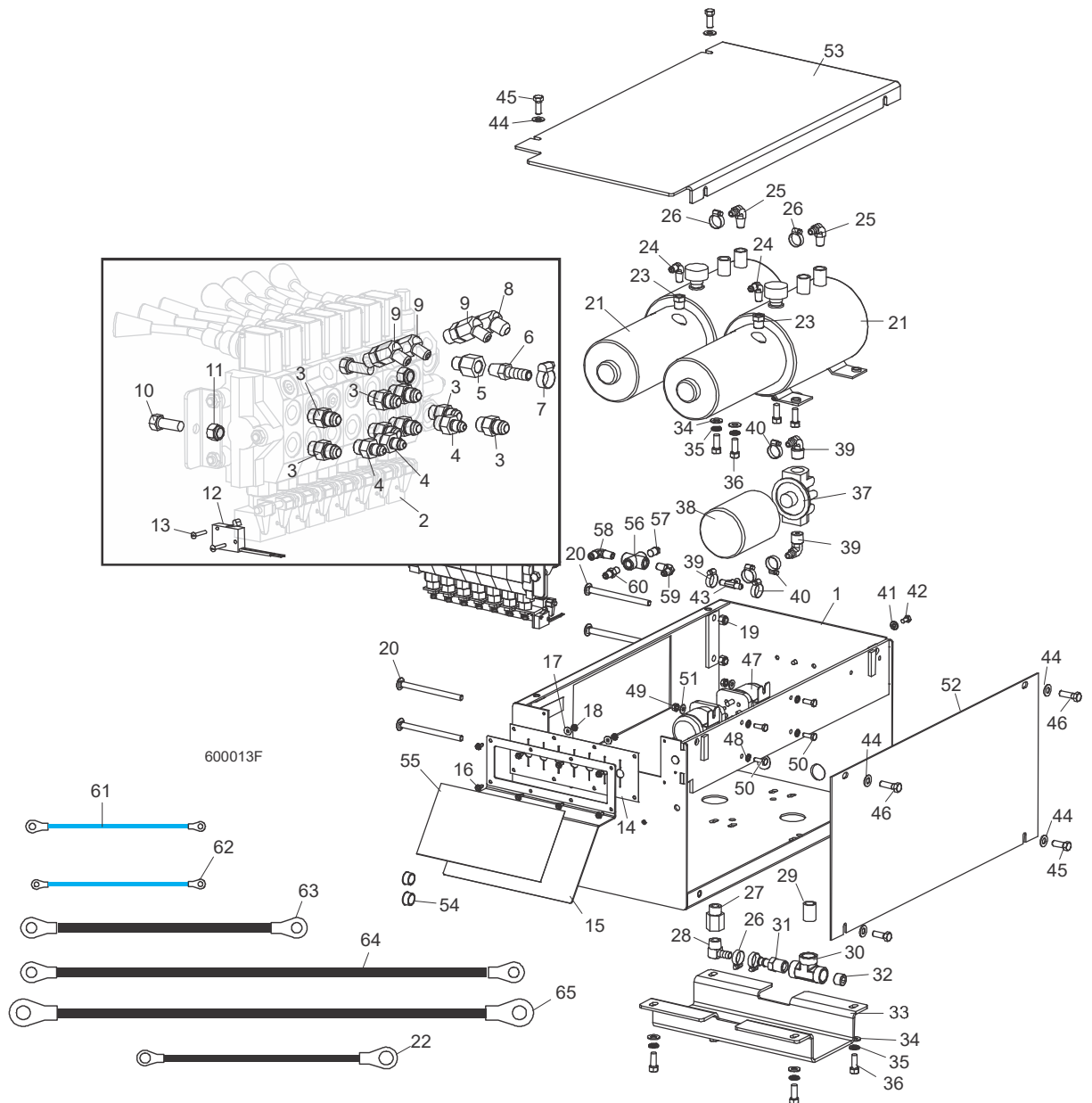
PARTIE 8 SYSTÈME HYDRAULIQUE

8.1 Flexibles hydrauliques



ID	Color Code	LENGTH "A"	Application (NOTE: See Hydraulic Information Section in Operator's Manual for Hydraulic Schematics)	PART #
H1	Purple	219"	1/4" Rear Toe Board Top	079000-219
H2	Black	219"	1/4" Rear Toe Board Base	079000-219
H3	Yellow	117"	1/4" Front Toe Board Top	079000-117
H4	Gray	117"	1/4" Front Toe Board Base	079000-117
H5	Green	204"	1/4" Clamp Up/Down Top	079000-204
H6	Yellow	193"	1/4" Clamp Up/Down Base	079000-194
H7	Red	178"	3/8" Loading Arm Base	079001-178
H8	Blue	178"	3/8" Loading Arm Top	079001-178
H9	Orange	65"	3/8" Side Support Base	079001-65
H10	Plain	73"	3/8" Side Support Top	079001-73
H11	Orange	177"	3/8" Clamp In/Out Base	079001-177
H12	White	151"	3/8" Clamp In/Out Top	079001-151
H13	Green	38"	3/8" Loading Arm Branch Top	079001-38
H14	Green	77"	3/8" Loading Arm Branch Top	079001-77
H15	Yellow	81"	3/8" Loading Arm Branch Base	079001-81
H16	Yellow	43"	3/8" Loading Arm Branch Base	079001-43
H17	Plain	181"	3/8" Log Turner Base	079001-181
H18	Pink	181"	3/8" Log Turner Top	079001-181
H19	Purple	177"	3/8" Log Turner Motor (Nearest Frame)	079001-177
H20	Black	180"	3/8" Log Turner Motor (Furthest from Frame)	079001-180
H21	Plain	15"	1/4" Pump To Valve (two hoses)	057964
H22	Plain	6 1/2"	3/8" Gauge To Valve	079001-6.5

8.2 Boîte De Commande Des Hydrauliques



REF	PART #	QTY.
1-60	017649	1
1	034383	1
2-13	034533	1
2	034451	1
3	014687	8
4	P26284	3

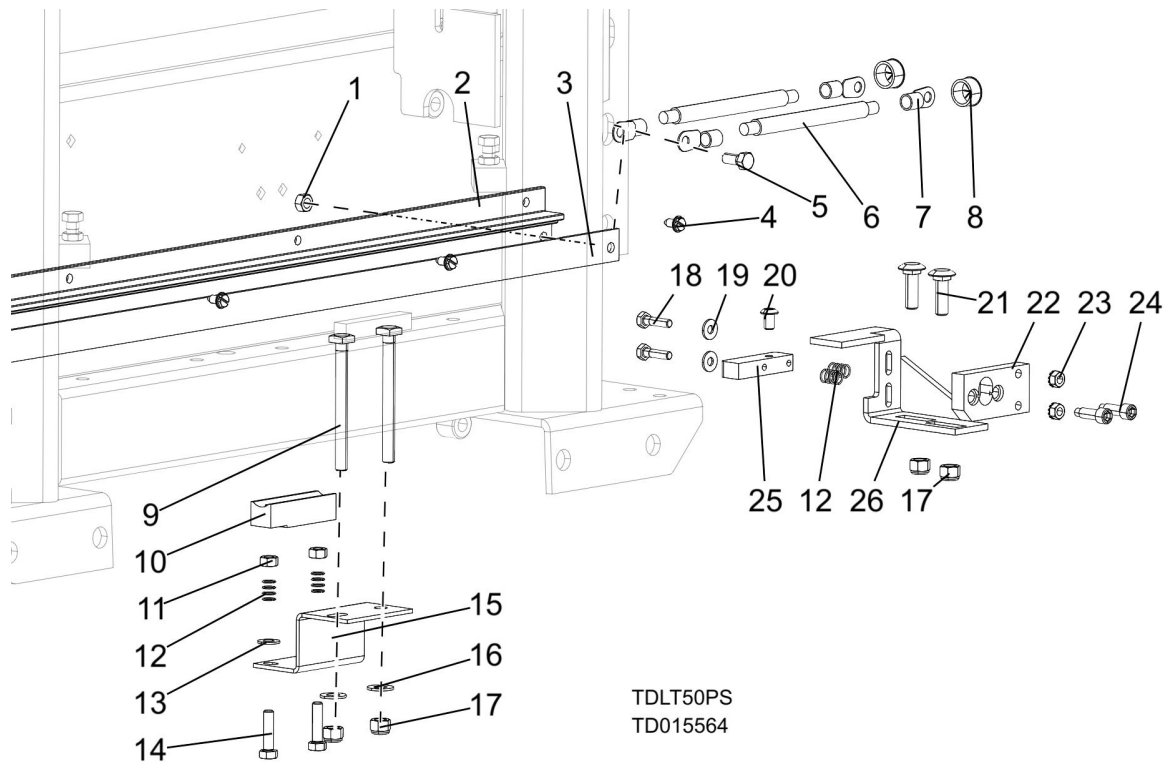
5	014686	1
6	014685	1
7	P12739	1
8	015489	1
9	015488	3
10	F05007-7	2
11	F05010-10	2

12	024198	1
13	F05004-13	2
14	034202	1
15	033999	1
16	F05015-7	8
17	F05011-18	2
18	F05010-14	2

19	F05010-10	4
20	F05007-113	4
21-36	034534	1
21-22	061764	2
22	052806	1
23	015490	2
24	P09142	2
25	P12708	2
26	P12739	4
27	015995	1
28	015997	1
29	016795	1
30	016793	1
31	016794	1
32	P26258	1
33	015992	1
34	F05011-3	8
35	F05011-4	8
36	F05007-7	8
37-38	P22683	1
38	P20301	1
39	P12707	2
40	P12739	2
41	F05011-14	2
42	F05005-15	2
43	015485	1
44	F05011-3	6
45	F05007-87	4
46	F05007-2	2
47	016371	2
48	F05011-37	4
49	F05010-9	4
50	F05005-1	4
51	F05011-11	4
52	015227	1
53	015228	1
54	P04137	2
55	017669	1
56	P22311	1
57	P05498	1
58	015490	1
59	P09142	1
60	P09143	1

61	036315	2
62	036314	1
63	036311	1
64	036310	1
65	036312	2

8.3 Plaque De Contact Hydraulique Et Bornes



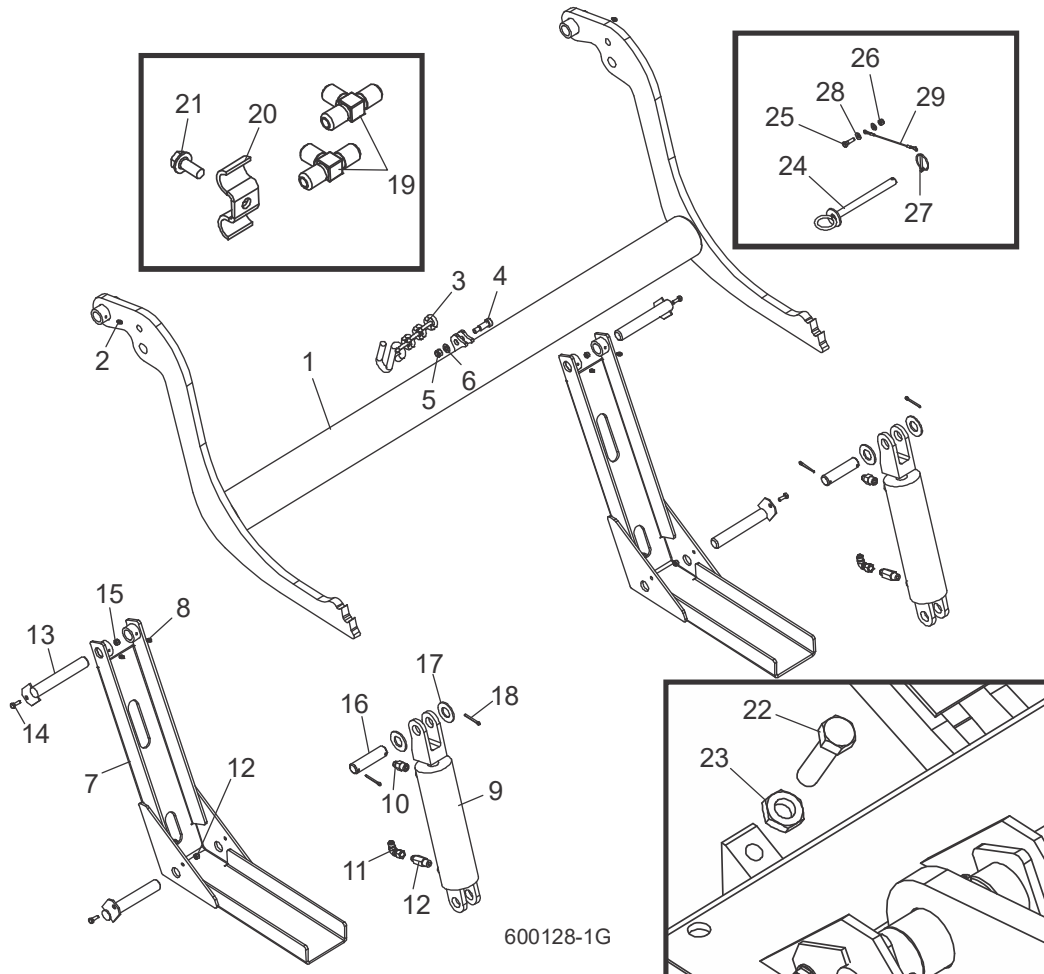
TDLT50PS
 TD015564

REF	PART #	QTY.
1-8	015564	1
1	F05010-86	1
2	P11976	1
3	S10075	1
4	F05015-1	8
	052161	2
6	R01971	1
7	F05092-16	2
8	P04137	2

	R01950-8	.33ft
9-17	016797	1
9	F05007-175	2
10	015264	1
11	F05010-17	2
12	P10077	4
13	F05011-17	2
14	F05006-93	2
15	016792	1
16	F05011-3	2
17	F05010-10	4
18-27	017671	1

18	F05005-38	2
19	F05011-11	2
20	F05006-20	1
21	F05007-11	2
22	S10072	1
23	F05010-9	2
24	F05006-143	2
25	015253	1
26	015324	1
27	015564	1

8.4 Chargeuse Hydraulique



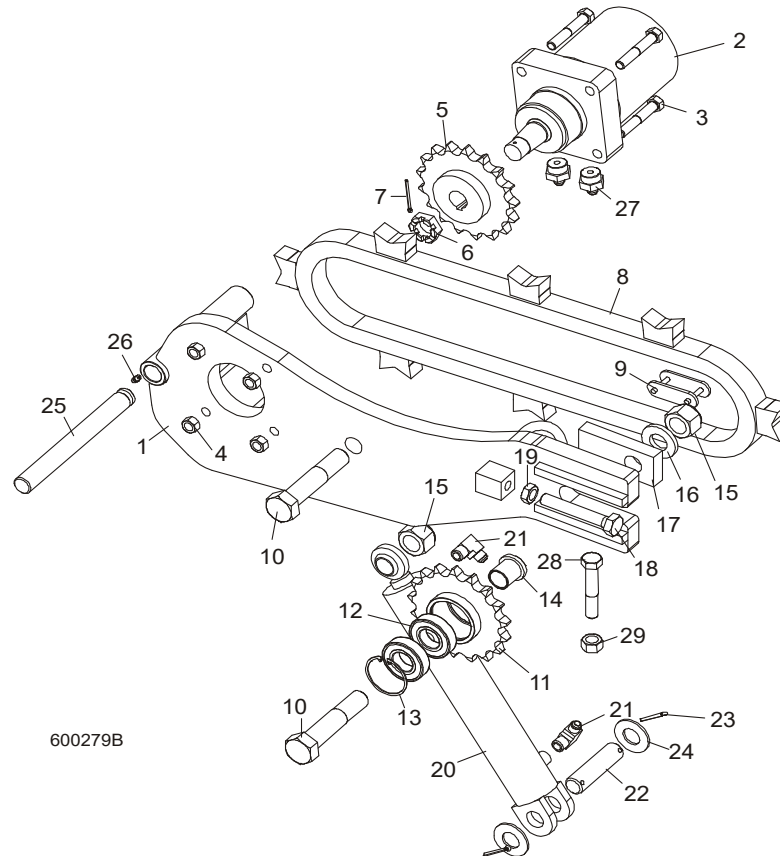
600128-1G

1-21	034539	1
1-6	036416	1
1	110372	1
2	P04107	2
3	110472	1
4	F05008-146	1
5	F05010-10	1
6	F05011-3	1
7	W09444	2
8	P04107	4
	038735	2
9	042754	1
10	016819	1
11	042756	1

12	038734	1
13	W09446	4
14	F05005-1	4
15	F05010-69	4
16	S09251	2
17	F05011-28	4
18	F05012-23	4
19	015487	1
20	016041	6
21	F05006-102	6
22	F05008-7	2
23	F05010-31	2
24	036692	1
25	F05005-101	1

26	F05010-69	1
27	017604	1
28	F05011-11	2
29	016090	1
	074207	1

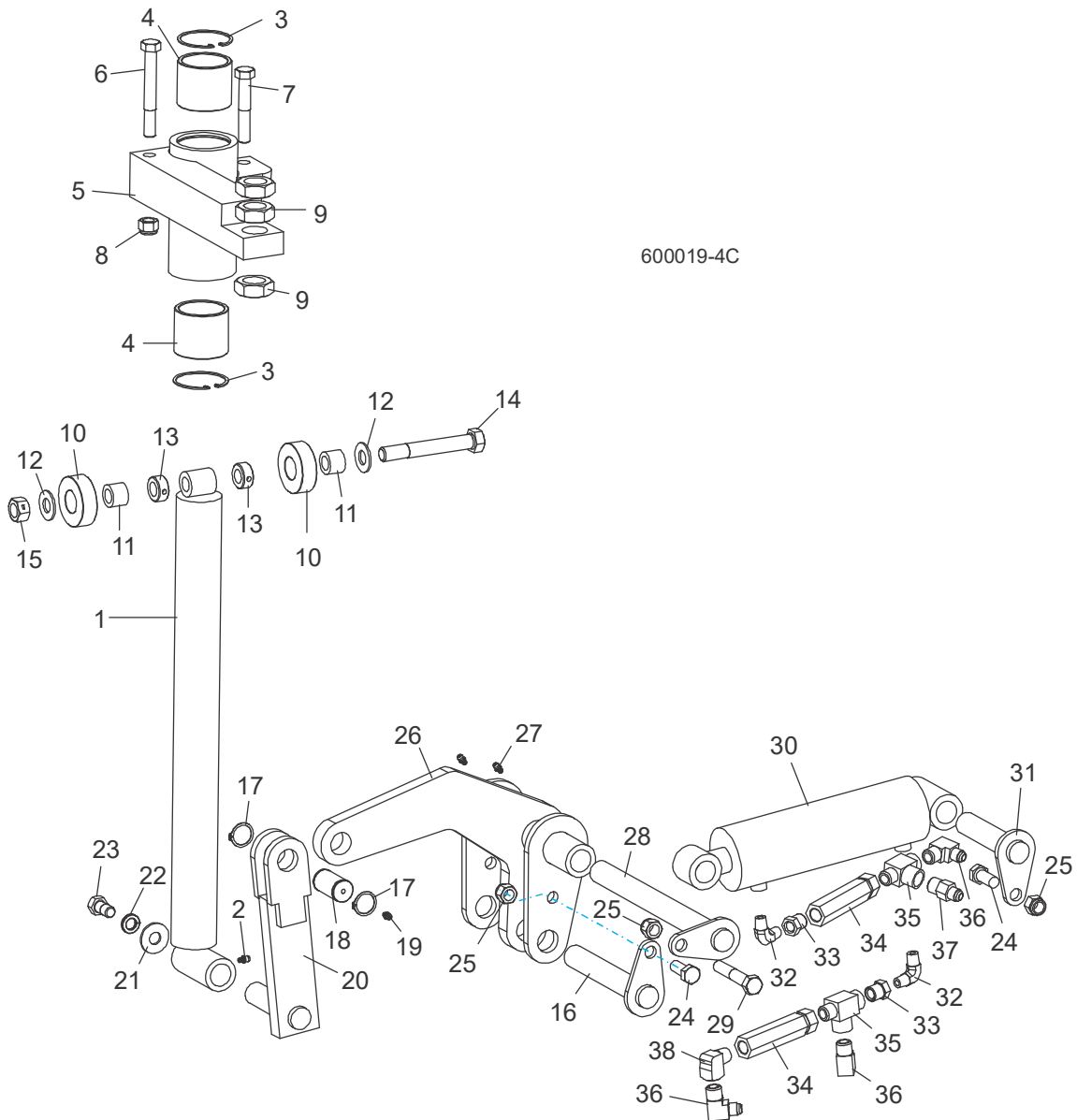
8.5 Tourne-bille Hydraulique



1-27	006095	1
1	006471	1
2	007331	1
3	F05008-23	4
4	F05010-3	4
5	042192	1
6	018741-2	1
7	F05012-43	1
8	006097	1
9	016796	1
10	F05004-132	2
11-13	042193	1
11	042191	1
12	P11035	2
13	F04254-12	1
14	042187	2
15	F05010-109	2

16	038749	1
17	042188	1
18	F05009-31	1
19	F05010-82	1
20	034267	1
21	016820	1
22	S09251	1
23	F05012-23	2
24	F05011-28	2
25	006722	1
26	P05060	1
27	017640	2

8.6 Cales Hydrauliques (Avant)



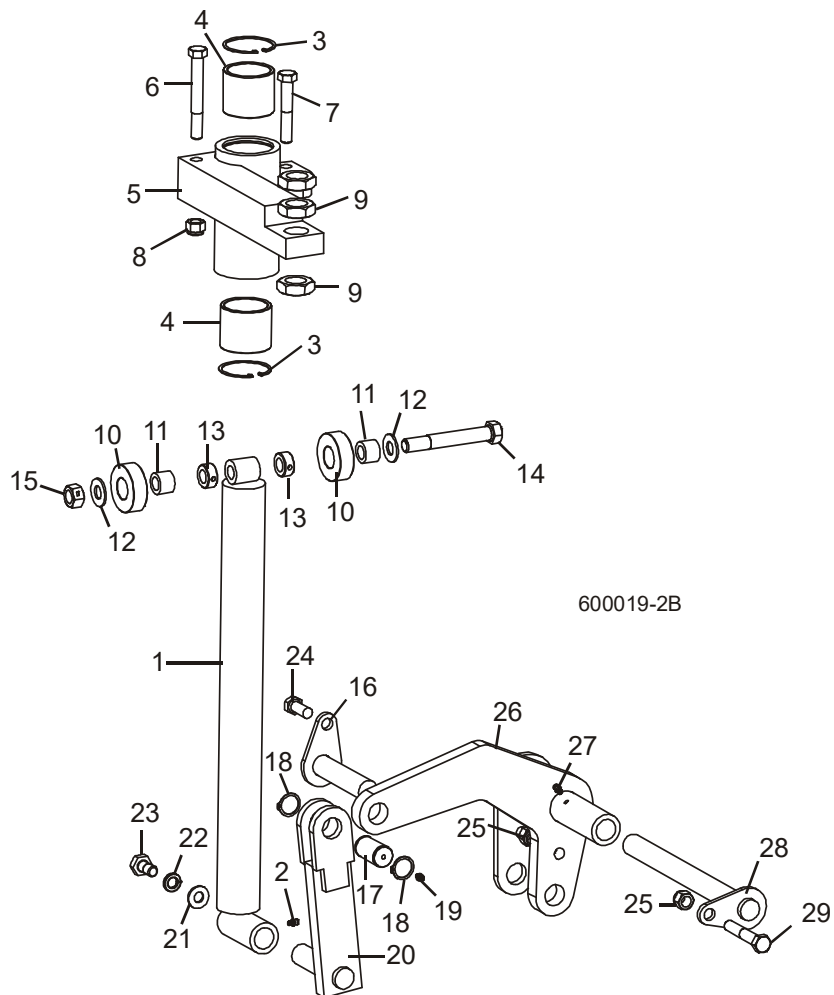
1-15	034732	1
1	034704	1
2	P04107	1
3	F04254-12	2
4	042262	2
5	034703	1
6	F05008-78	1
7	F05008-23	1
8	F05010-8	2

9	F05010-118	3
10-15	034733	1
10	016561	2
11	016560	2
12	F05011-5	2
13	P05035	2
14	F05009-10	1
15	F05010-4	1
16	106880	1
17-19	036053	1

17	034718	1
18	F04254-15	2
19	P04107	1
20	034711	1
21	F05011-52	1
22	F05011-9	1
23	F05008-50	1
24	F05008-37	2
25	F05010-8	3

26	106868	1
27	P04107	2
28	034728	1
29	F05008-23	1
30	034736	1
31	034726	1
32	P09140	2
33	015490	2
34	015484	2
35	016822	2
36	016820	3
37	016819	1
38	P05759	1

8.7 Cales Hydrauliques (Arrière)

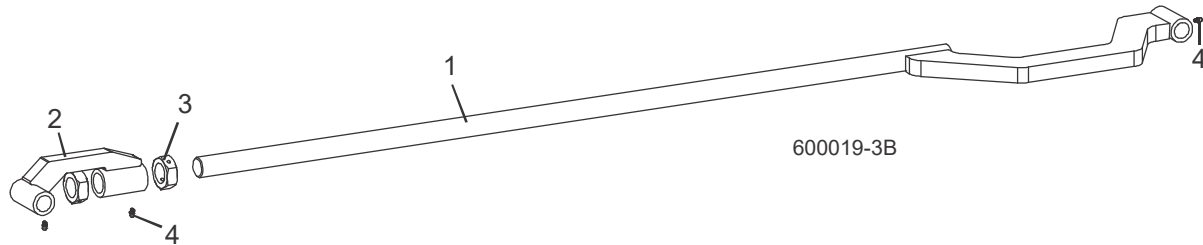


1-15	034732	1
1	034704	1
2	P04107	1
3	F04254-12	2
4	042262	2
5	034703	1
6	F05008-78	1
7	F05008-23	1
8	F05010-8	2
9	F05010-118	3
10-15	034733	1
10	016561	2
11	016560	2
12	F05011-5	2

13	P05035	2
14	F05009-10	1
15	F05010-4	1
16	034726	1
17-19	036053	1
17	034718	1
18	F04254-15	2
19	P04107	1
20	034711	1
21	F05011-52	1
22	F05011-9	1
23	F05008-50	1
24	F05008-37	2
25	F05010-8	2

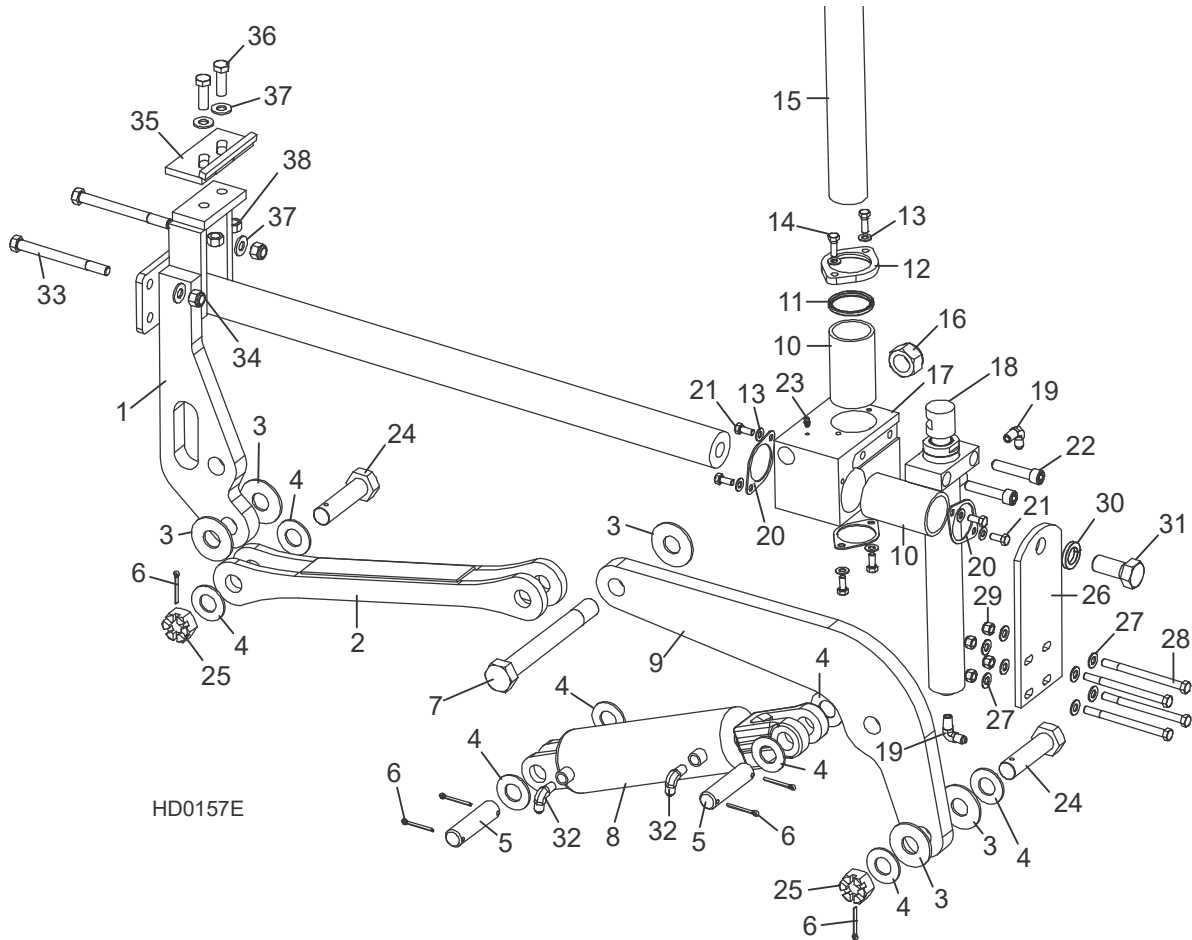
26	034716	1
27	P04107	1
28	034728	1
29	F05008-23	1

8.8 Cales Hydrauliques (Link)



REF	PART #	QTY.
1	034725	1
2	106869	1
3	F05010-100	2
4	P04107	3

8.9 Serre Hydraulique



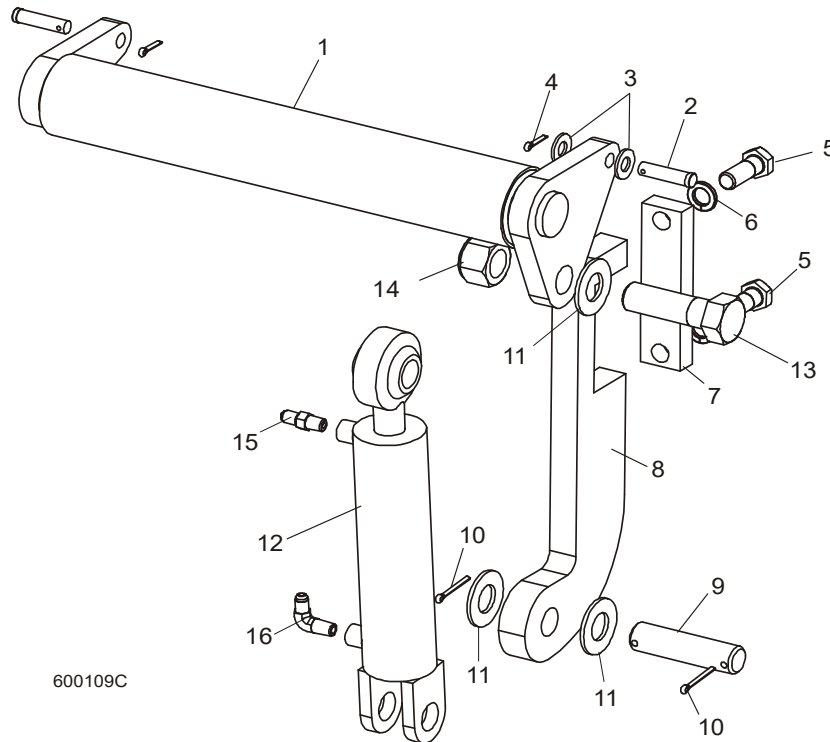
HD0157E

REF	PART #	QTY.
1-38	017264	1
1	017265	1
2	017267	1
3	015057	5
4	F05011-28	8
5	S09251	2
6	F05012-23	6
7	015049	1
8	017275	1
9	017274	1
10	015088	2
11-12	017271	1
11	017273	1
12	017272	1

13	F05011-17	8
14	F05006-1	2
15	015043	1
16	F05010-118	2
17	017270	1
18	015050	1
19	P09142	2
20	017242	3
21	F05006-5	6
22	F05008-39	2
23	P04107	1
24	015072	2
25	F05010-163	2
26	015068	1
27	F05011-3	8

28	F05007-5	4
29	F05010-10	4
30	F05011-46	1
31	F05014-2	1
32	015491	2
33	F05008-28	2
34	F05010-8	2
35-38	K09485	1
35	W09404	1
36	F05008-33	2
37	F05011-2	2
38	F05010-3	2

8.10 Niveleur De Grume Hydraulique



600109C

REF	PART #	QTY.
1	074842	2
2	F05012-82	4
3	F05011-2	4
4	F05012-3	4
5	F05009-33	4
6	F05011-27	4
7	S13023	2
8	S13022	2
9	S09251	2
10	F05012-23	4
11	F05011-28	6
12	014482	2
13	F05009-51	2
14	F05010-109	2
15	P09143	2
16	P09142	2