

Scierie Wood-Mizer®

Manuel de pièces

LT70HD avec contrôles à distance rev. B7.00



La sécurité est notre souci principal! Lisez et comprenez toutes les informations et instructions de sécurité avant d'actionner, installer ou mettre en opération cette machine.

#1055-5

California
Proposition 65 Warning



WARNING: Breathing gas/diesel engine exhaust exposes you to chemicals known to the State of California to cause cancer and birth defects or other reproductive harm.

Always start and operate the engine in a well-ventilated area.
If in an enclosed area, vent the exhaust to the outside.
Do not modify or tamper with the exhaust system.
Do not idle the engine except as necessary.

For more information go to **www.P65warnings.ca.gov**.



WARNING: Drilling, sawing, sanding or machining wood products can expose you to wood dust, a substance known to the State of California to cause cancer. Avoid inhaling wood dust or use a dust mask or other safeguards for personal protection.

For more information go to **www.P65Warnings.ca.gov/wood**.

©2019

Printed in the United States of America, all rights reserved. No part of this manual may be reproduced in any form by any photographic, electronic, mechanical or other means or used in any information storage and retrieval system without written permission from

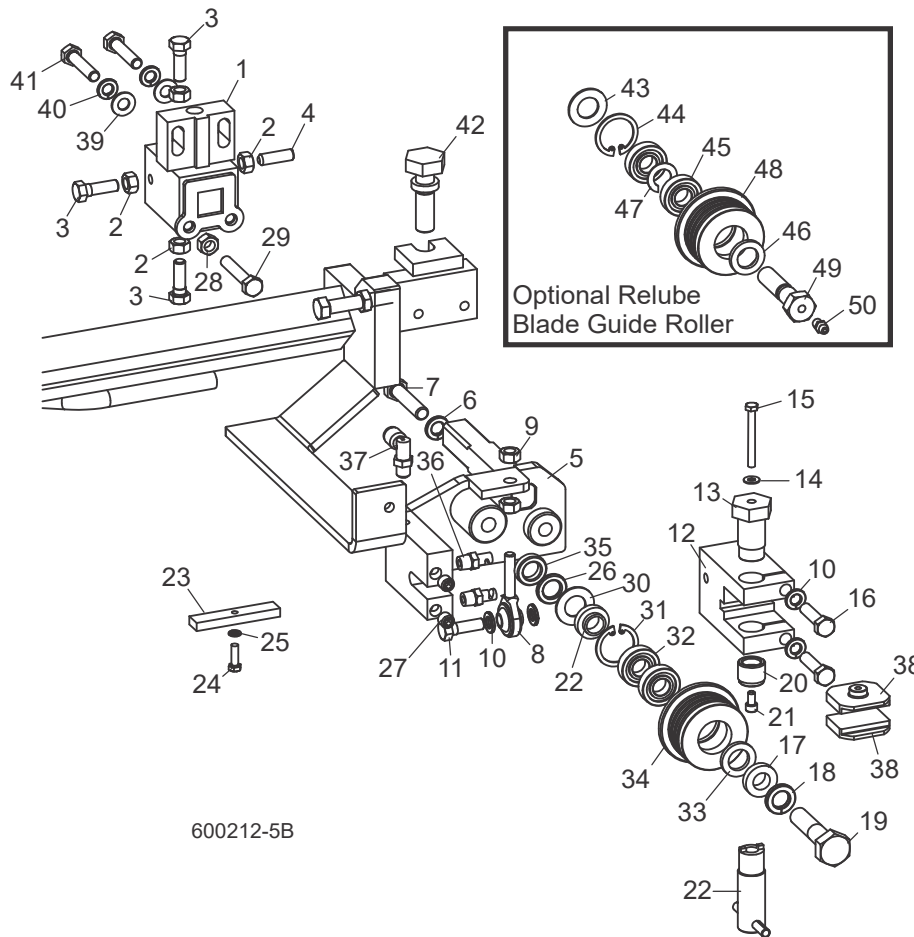
Wood-Mizer
8180 West 10th Street
Indianapolis, Indiana 46214

PARTIE 1	SYSTÈMES DE GUIDAGE DE LAME	1-1
1.1	Guidage De Lame, Côté Poulie Folle.....	1-1
1.2	Guidage De Lame, Côté Entraînement.....	1-3
1.3	Système D'entraînement De Bras De Guidage.....	1-6
PARTIE 2	POULIES ET TENDEUR	2-1
2.1	Système D'entraînement De Lame	2-1
2.2	Poulie Folle.....	2-2
2.3	Tendeur Hydraulique De Lame	2-3
PARTIE 3	TÊTE DE SCIE	3-1
3.1	Vis Anti-Vibration.....	3-1
3.2	Tendeur de Courroie.....	3-2
3.3	Système De Freinage (CC Seulement).....	3-3
3.4	Système D'embrayage Automatique (CC Seulement).....	3-4
3.5	Éjecteur De Planches.....	3-5
3.6	Ejecteur De Planches À Chaînes	3-6
3.7	Système De Lubrification.....	3-7
3.8	Étiquettes D'avertissement	3-8
3.9	Couvercles De Carters De Lame	3-9
3.10	Chute À Bran De Scie	3-10
3.11	Boîte De Filage De L'écorceuse Et Grommet	3-11
PARTIE 4	SYSTÈME DE COMMANDE ET BATTERIE	4-1
4.1	Système De Commande (CC)	4-1
4.2	Système De Commande (CA)	4-3
4.3	Commutateurs.....	4-5
4.4	Panneau De Commande	4-6
4.5	Boîte De Batterie (CC Seulement)	4-8
4.6	Boîte De Fusibles (CC Seulement).....	4-9
4.7	Boîte De Commande Des Options À Distance (CC).....	4-11
4.8	Boîte De Commande Des Options À Distance (CA)	4-12
4.9	Couvercle De La Boîte De Commande Des Options À Distance (CC Seulement).....	4-14
PARTIE 5	SYSTÈME DE MONTÉE	5-1
5.1	Rouleaux Et Carters De Montée.....	5-1
5.2	Indicateur De Hauteur Et Règles De Débitage.....	5-3
5.3	Chaînes Et Pignons De Montée.....	5-4
5.4	Système D'entraînement De Montée	5-5
5.5	Système de Montée Assistée	5-7

PARTIE 6	SYSTÈME D'ENTRAÎNEMENT ET PALIERS	6-1
6.1	Paliers de Rail Supérieur et Grattoirs	6-1
6.2	Système D'entraînement	6-3
6.3	Chaîne D'entraînement Et Butoir	6-5
6.4	Paliers De Rail Inférieur	6-6
PARTIE 7	BÂTI DE LA SCIE	7-1
7.1	Rails Avant Et Arrière Du Banc De Grume	7-1
7.2	Rail Centre-avant Du Banc De Grume	7-2
7.3	Rail Centre-arrière Du Banc De Grume	7-3
7.4	Appuis Fixes	7-4
7.5	Table D'éjecteur De Planches	7-5
7.6	Support De Grume Mobile	7-6
7.7	Taper Roller Pivot Assembly	7-7
7.8	Cales À Billes (Non Hydrauliques)	7-8
7.9	Chaîne De Sécurité	7-9
7.10	Attache De La Tête De Scie	7-10
7.11	Étiquettes D'avertissement	7-11
7.12	Câble-Chaîne	7-12
7.13	Fixation Inférieure Du Câble-chaîne	7-13
7.14	Fixation Supérieure Du Câble-Chaîne	7-14
7.15	Fixation Avant Du Plateau De Câble-chaîne	7-15
7.16	Fixation Du Support De Rail Souple	7-16
7.17	Boîte De Câble À Distance	7-17
PARTIE 8	SYSTÈME HYDRAULIQUE	8-1
8.1	Boîte De Commande Des Options Hydrauliques	8-1
8.2	Boîte De Pompe Des Hydrauliques (CC)	8-1
8.3	Boîte De Pompe Des Hydrauliques (230/460V CA)	8-3
8.4	Boîte De Commande Des Hydrauliques (230/460V CA)	8-5
8.5	Valve Hydraulique (CC)	8-6
8.6	Valve Hydraulique (CA)	8-7
8.7	Plaque De Contact Hydraulique Et Bornes (CC Seulement)	8-8
8.8	Plaque De Contact Hydraulique Et Bornes Arrière (CC Seulement)	8-9
8.9	Chargeuse Hydraulique	8-10
8.10	Tourne-bille Hydraulique	8-12
8.11	Cales Hydrauliques (Avant)	8-13
8.12	Cales Hydrauliques (Arrière)	8-15
8.13	Cales Hydrauliques (Link)	8-16
8.14	Serre Hydraulique	8-17
8.15	Niveleur De Grume Hydraulique	8-18

PARTIE 1 SYSTÈMES DE GUIDAGE DE LAME

1.1 Guidage De Lame, Côté Poulie Folle



REF	PART #	QTY.	
1-35	036818	1	
1-4	036872	1	
1	036868	1	◆
2	F05010-17	4	
3	F05006-88	3	
4	F05006-122	1	
5	036866	1	
6	F05011-4	1	
7	F05007-119	1	
8	P09814	1	
9	F05010-28	2	

10	F05011-13	4	
11	F05006-88	1	
12	036814	1	
13	035216	1	
14	042867	1	
15	F05004-178	1	
16	F05006-118	2	
	A04925 ¹	1	
	014299 ¹	1	
	K07079	1	
17	P04252	1	
18	F04254-1	1	

19	015975	2	◆
20	P06455	1	
	F05005-105	1	
	057407-1507	1	
21	S04250	1	◆
	014243	1	◆
	A04925-364	1	
22	S04253	2	
23	F05011-9 ²	1	
24	F05008-10	1	
25	041626 ³	1	
26	044057	1	

1

Systèmes De Guidage De Lame

Guidage De Lame, Côté Poulie Folle

27	F05004-200	1	
28	044064	1	
29	035799	1	
30	F05004-152	1	
31	F05011-20	1	
32	052364 ³	1	
33	P30127	2	
34	F05010-17	1	
35	F05006-81	1	
36	033479 ⁴	2	
37	P09736 ⁴	1	
38	052309 ⁵	2	
	052355	2	
	036347	2	
	035248	1	
39	F05011-17	2	
40	F05011-13	2	
41	F05006-76	2	
42	035656	1	
	016568 ¹	1	
	057405 ¹	1	
	057407	1	
43	P04252	1	
44	F04254-1	1	
45	015975 ⁶	2	◆
46	P06455	1	
47	035411	1	
	057407-1507	1	
48	035426	1	◆
	057402	1	◆
	A04925-364	1	
49	036161	1	
50	P05060	1	

¹ The sawmill is equipped standard with non-greasable blade guide rollers that can be used with the standard 1 1/2" blade. The roller can also be used with 1 1/4" blades (requires spacer 041626 & wear blocks 052355). Optional extended blade guide rollers are available for use with 1 1/2" blades. The extended rollers may provide more stability during difficult sawing, but will reduce the total amount of times the blade can be reused after sharpening. Optional relube versions of each roller configuration are also available.

² Nord-Lock Washer F05011-125 available to replace Split Lock Washer F05011-9 to prevent loosening due to vibration (12/09).

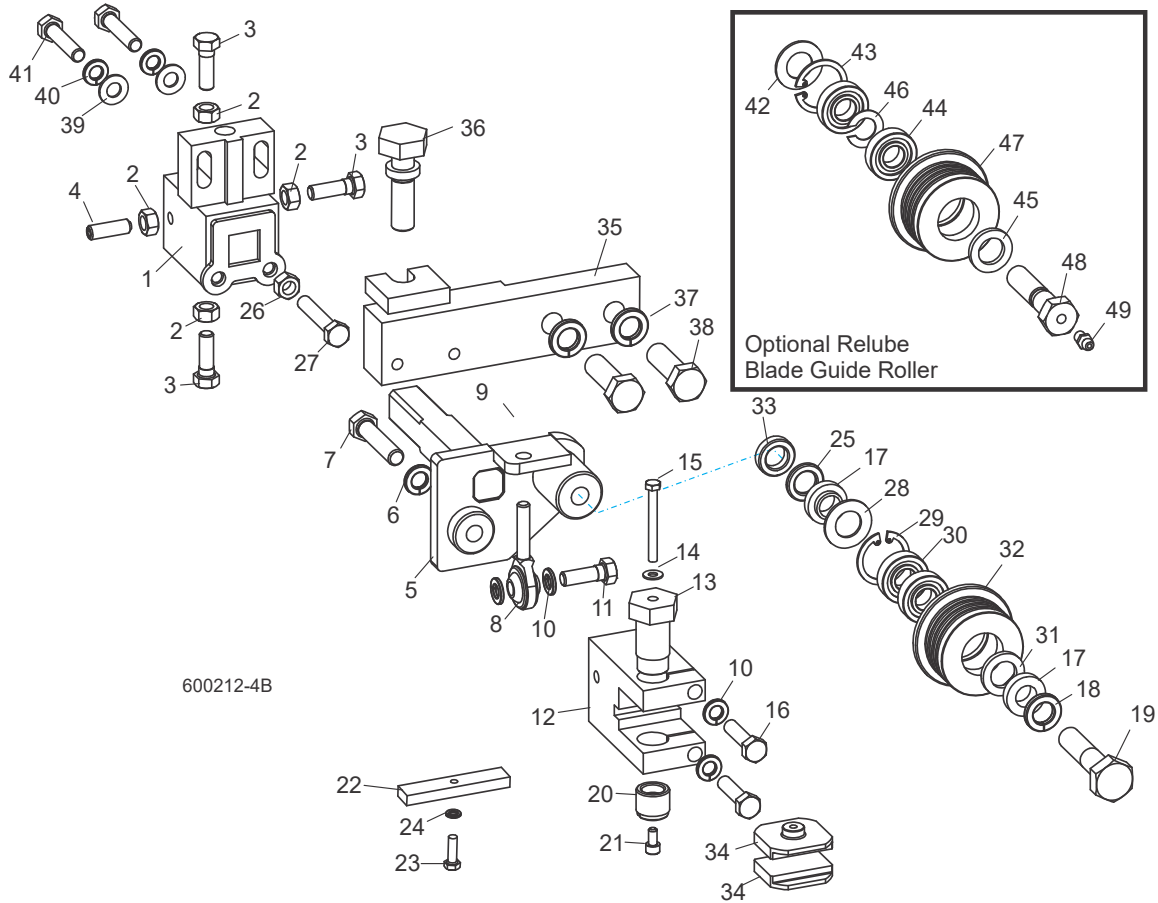
³ Use 1/8" spacer 052364 with 1 1/2" blade provided as standard equipment. Use 1/4" spacer 041626 for optional 1 1/4" blades.

⁴ Fittings removed from blade guide assembly BOM to allow structuring of blade guide assembly in various equipment (11/05).

⁵ 052309 blocks for use with 1 1/2" blade provided as standard equipment. 052355 blocks available for optional use with 1 1/4" blades. EZ-Glide blocks 036347 are available for customers who prefer this block.

⁶ Bearing must be modified for use with relube roller assemblies. Remove one seal from each bearing, place open sides facing each other and place spacer 035411 between bearings.

1.2 Guidage De Lame, Côté Entraînement



600212-4B

REF	PART #	QTY.	
	036812	1	
	036867	1	
1	036868	1	◆
2	F05010-17	4	
3	F05006-88	3	
4	F05006-122	1	
5	036865	1	
6	F05011-4	1	
7	F05007-119	1	
8	P09814	1	
9	F05010-28	2	
10	F05011-13	4	
11	F05006-88	1	
12	036814	1	
13	035216	1	

14	042867	1	
15	F05004-178	1	
16	F05006-118	2	
	A04925 ¹	1	
	014299 ¹	1	
	K07079	1	
17	P04252	1	
18	F04254-1	1	
19	015975	2	◆
20	P06455	1	
	F05005-105	1	
	057407-1507	1	
21	S04250	1	◆
	014243	1	◆
	A04925-364	1	
22	S04253	2	

23	F05011-9 ²	1	
24	F05008-10	1	
25	041626 ³	1	
26	044057	1	
27	F05004-200	1	
28	035799	1	
29	F05004-152	1	
30	F05011-20	1	
31	052364 ³	1	
32	F05010-17	1	
33	F05006-81	1	
34	052309 ⁴	2	
	052355	2	
	036347	2	
35	034292	1	

1 Systèmes De Guidage De Lame

Guidage De Lame, Côté Entraînement

36	035656	1	
37	F05011-9	2	
38	F05008-33	2	
	035248	1	
39	F05011-17	2	
40	F05011-13	2	
41	F05006-119	2	
	016568 ¹	1	
	057405 ¹	1	
	057407	1	
42	P04252	1	
43	F04254-1	1	
44	015975 ⁵	2	◆
45	P06455	1	
46	035411	1	
	057407-1507	1	
47	035426	1	◆
	057402	1	◆
	A04925-364	1	
48	036161	1	
49	P05060	1	

⁵ Bearing must be modified for use with re-lube roller assemblies. Remove one seal from each bearing, place open sides facing each other and place spacer 035411 between bearings.

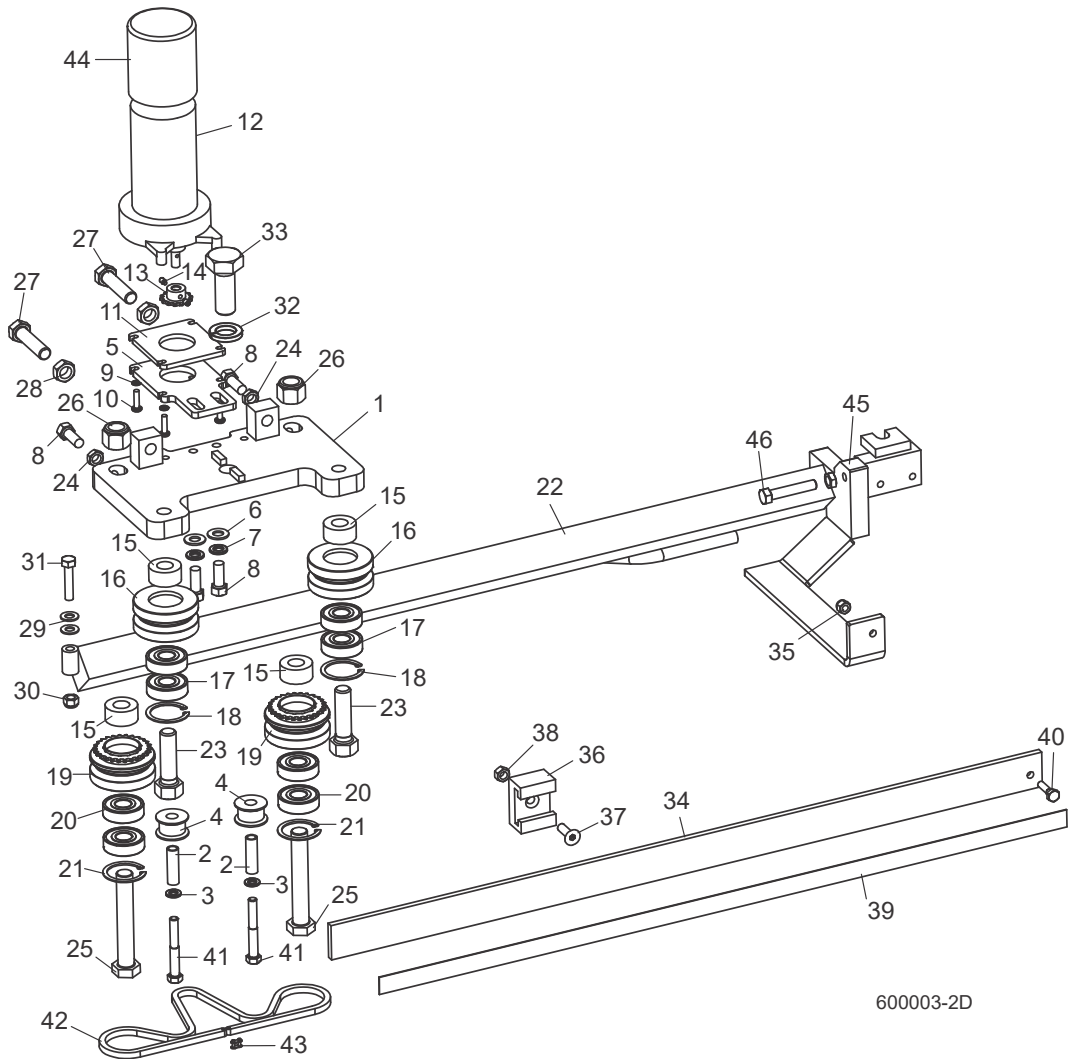
¹ The sawmill is equipped standard with non-greasable blade guide rollers that can be used with the standard 1 1/2" blade (requires spacer 052364). The roller can also be used with 1 1/4" blades (requires spacer 041626 & wear blocks 052355). Optional extended blade guide rollers are available for use with 1 1/2" blades (no spacer required). The extended rollers may provide more stability during difficult sawing, but will reduce the total amount of times the blade can be reused after sharpening. Optional re-lube versions of each roller configuration are also available.

² Nord-Lock Washer F05011-125 available to replace Split Lock Washer F05011-9 to prevent loosening due to vibration (12/09).

³ Use 1/8" spacer 052364 with 1 1/2" blade provided as standard equipment. Use 1/4" spacer 041626 for optional 1 1/4" blades.

⁴ 052309 blocks for use with 1 1/2" blade provided as standard equipment. 052355 blocks available for optional use with 1 1/4" blades. EZ-Glide blocks 036347 are available for customers who prefer this block.

1.3 Système D'entraînement De Bras De Guidage



REF	PART #	QTY.
1-46	034290	1
	006163 ¹	1
1	034286	1
2	S09996	2
3	F05011-13	2
4	S09999	2
5	033803	1
6	F05011-3	2
7	F05011-4	2
8	F05007-7	4
9	F05011-20	4

10	F05004-38	4
11	033805	1
12	079214	1
	061232	1
	061234	1
	061233	1
13-14	036664	1
14	F05004-274	2
15	033913	4
16-18	042543	2
16	042536	1
17	P06030-1	2

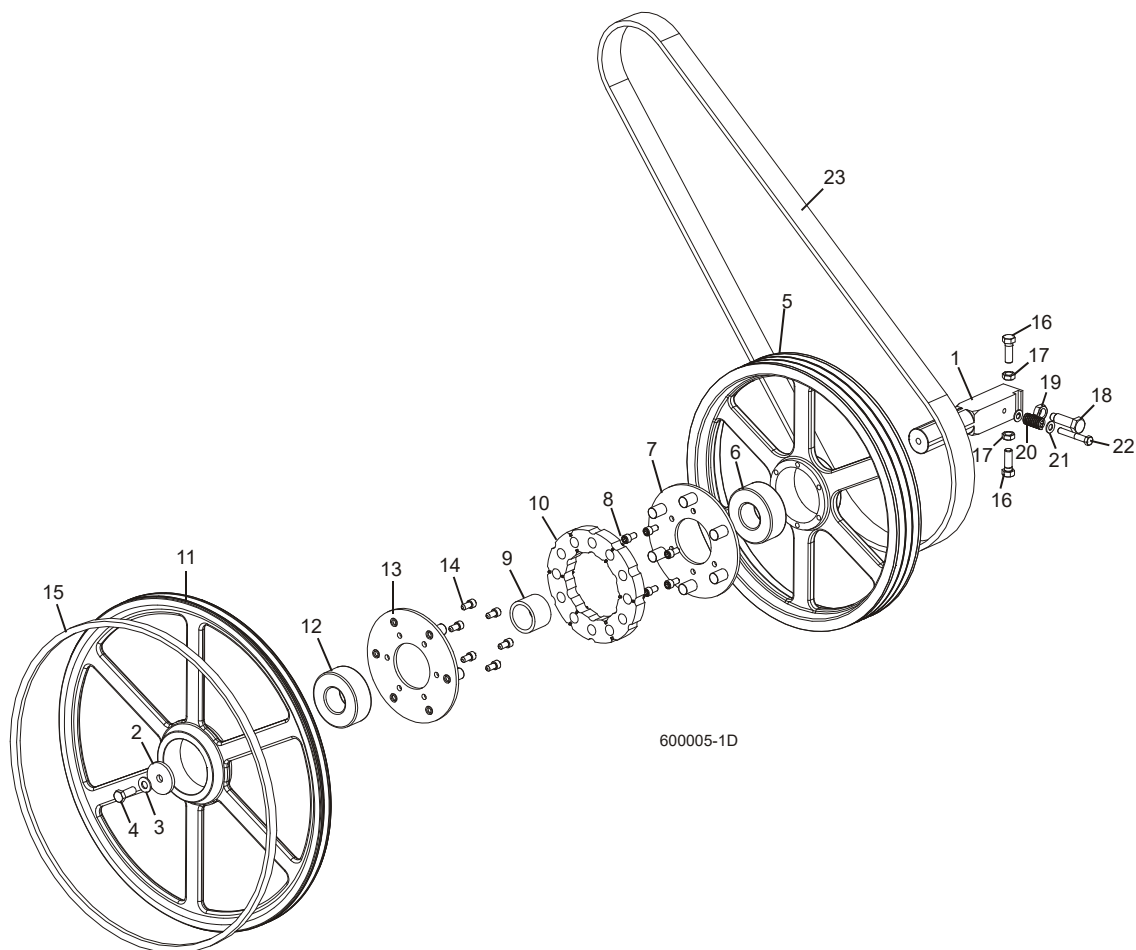
18	F04254-8	1
19-21	042542	2
19	042541	1
20	P06030-1	2
21	F04254-8	1
22	034289	1
	006158 ¹	1
23	F05009-80	2
24	F05010-29	2
25	F05009-98	2
26	F05010-71	2
27	F05008-126	2

28	F05010-16	2
29	F05011-17	2
30	F05010-58	1
31	F05008-96	1
32	F05011-6	1
33	F05013-1	1
34	014955	1
	006266 ¹	1
35	F05010-69	1
36	014882	1
37	F05006-124	1
38	F05010-6	1
39	015849	1
40	F05005-38	1
41	F05006-80	2
42	036194	1
43	P09983	2
44	023720	1
45	F05010-29	1
46	F05007-16	1

¹ LT70HDW

PARTIE 2 POULIES ET TENDEUR

2.1 Système D'entraînement De Lame



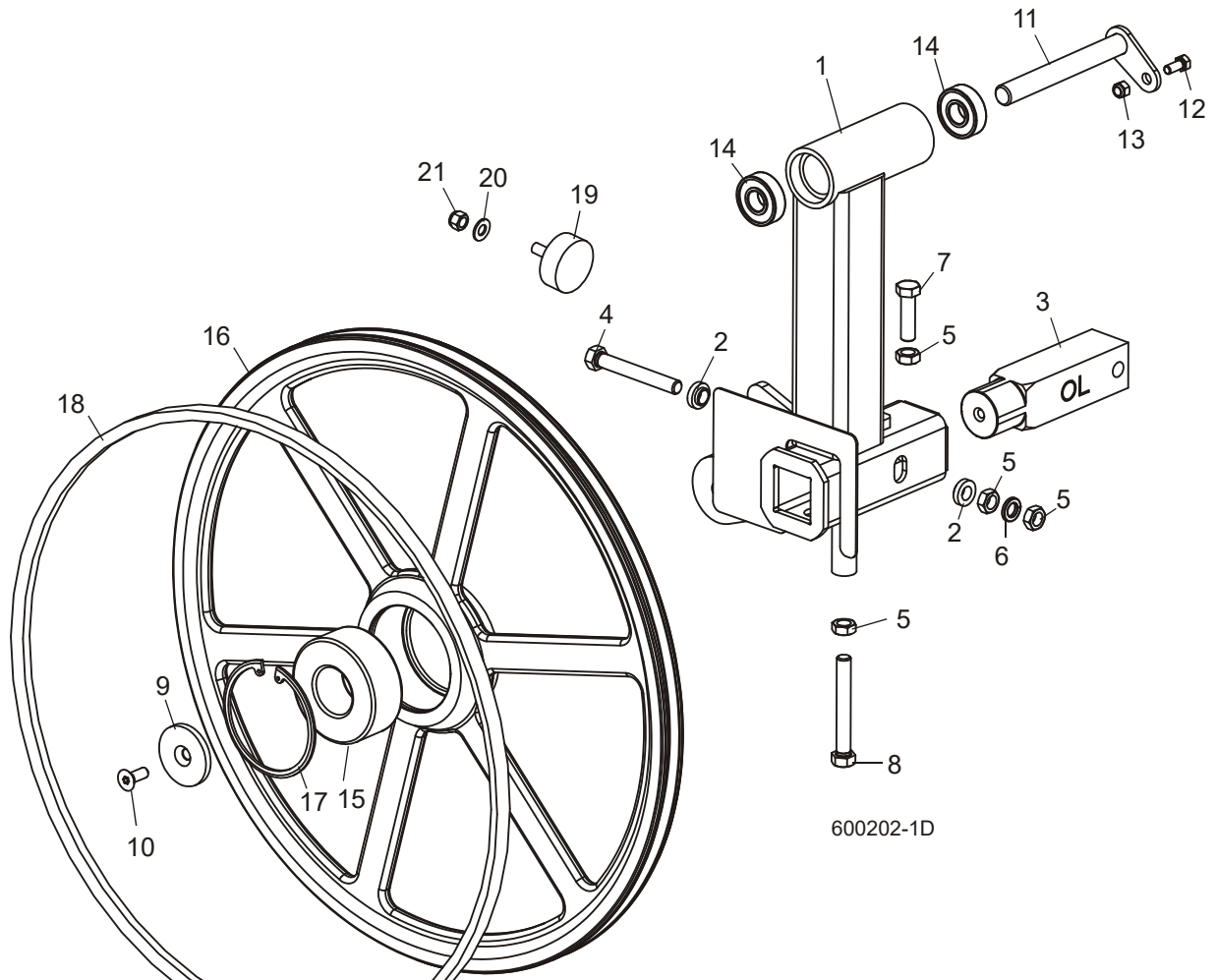
REF	PART #	QTY.
1-14	034359	1
1	033920	1
2	033909	1
3	F05011-2	1
4	F05008-37	1
5-8	034426	1
5	033809	1
6	016014	1
7	034424	1
8	F05007-154	6
9	033921	1

10	034418	1
11-14	017834	1
11	034872	1
12	016014	1
13	034424	1
14	F05007-154	6
15	017922-1	1
16	F05008-53	2
17	F05010-16	2
18	034360	1
19	F05010-11	1
20	034430	1
21	F05011-3	2

22	F05007-125	1
23	045190 ¹	1
	036109 ²	1
	036088 ³	1

¹ CC
² E25
³ E30

2.2 Poulie Folle

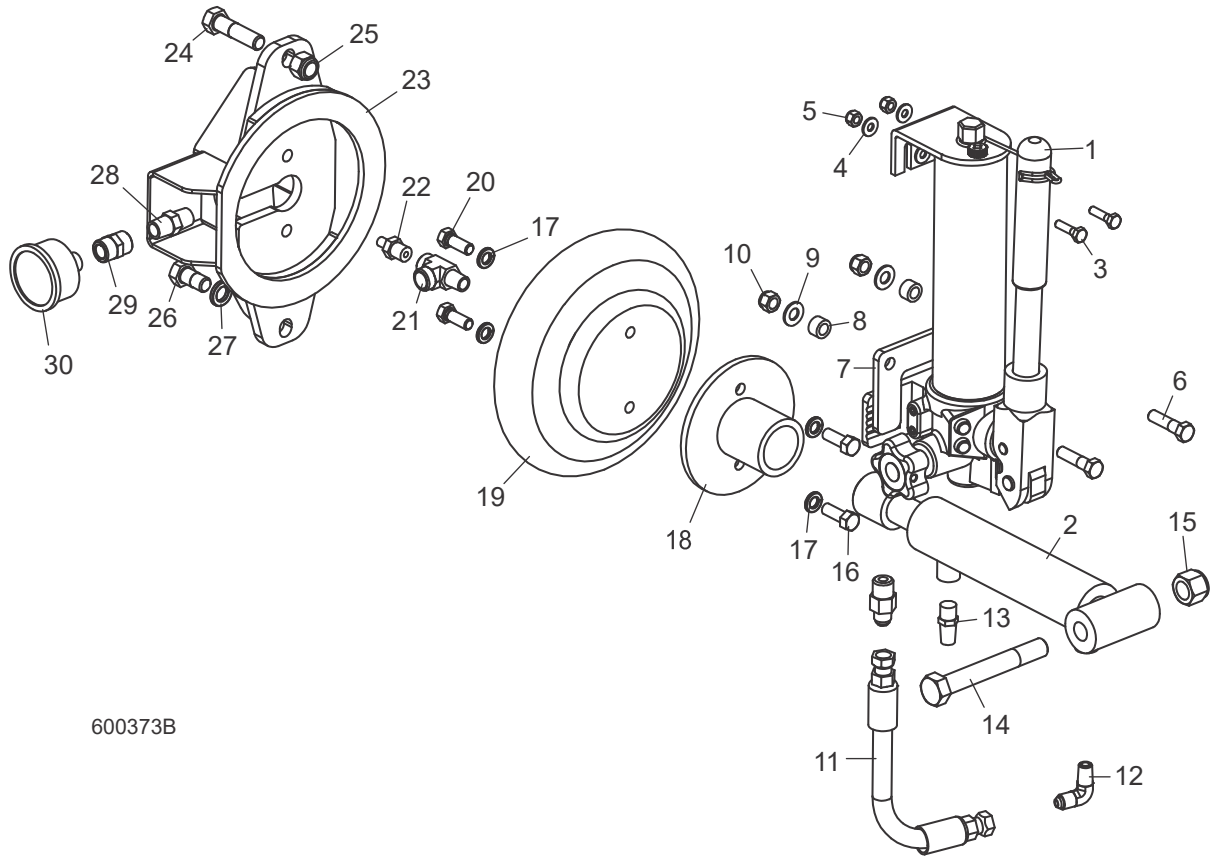


600202-1D

REF	PART #	QTY.
1-14	036729	1
1	048266	1
2	S04253	2
3	017706	1
4	F05008-111	1
5	F05010-16	4
6	F05011-9	1
7	F05008-127	1
8	F05008-111	1
9	016397	1
10	F05007-64	1
11	034358	1

12	F05006-102	1
13	F05010-58	1
14	034470	2
15-17	017835	1
15	016014	1
16	034871	1
17	F04254-28	1
18	017922-1	1
19	034175	1
20	F05011-3	1
21	F05010-10	1

2.3 Tendeur Hydraulique De Lame



600373B

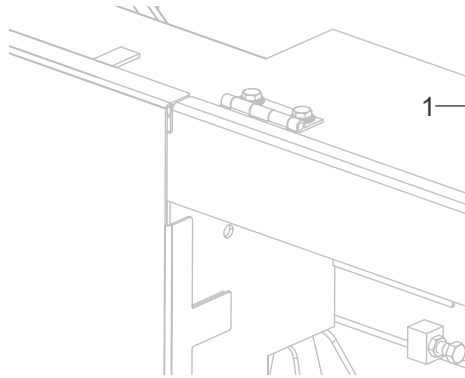
REF	PART #	QTY.
1-30	054844	1
1-13	074809	1
1	074749	1
	061287	1
	061288	1
	061289	1
2	065478	1
3	F05005-101	2
4	F05011-11	4
5	F05010-69	2
6	F05007-78	2
7	074808	1
8	055323	2
9	F05011-3	2
10	F05010-10	2

11	079001-9	1
12	015491	1
13	P20904	1
14	F05009-10	1
15	F05010-34	1
16	F05007-7	2
17	F05011-4	4
18	055317	1
19	033984	1
20	F05007-87	2
21	P09141	1
22	034285	1
23	034276	1
24	F05008-76	1
25	F05010-8	1
26	F05008-50	1

27	F05011-9	1
28	P21524	1
29	P03420	1
30	034278	1

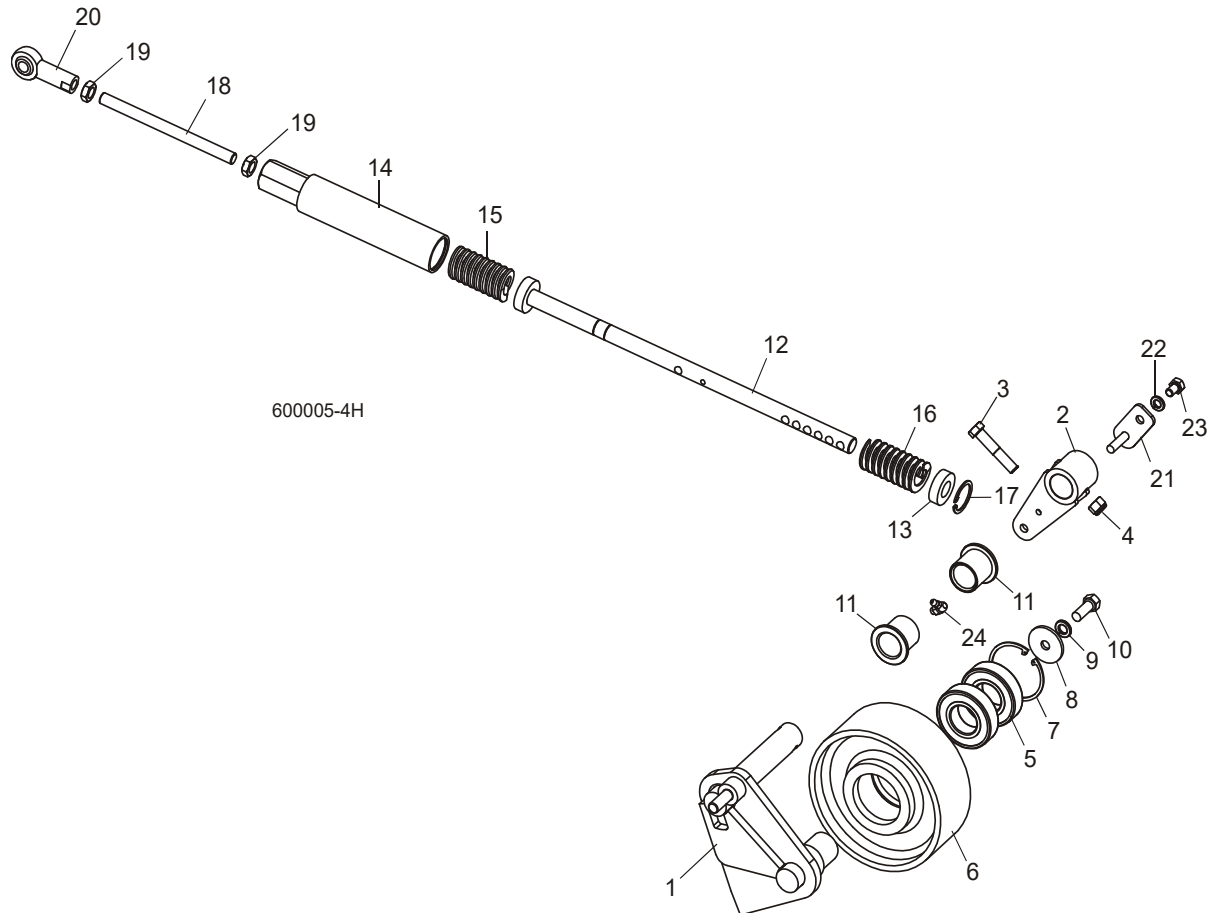
PARTIE 3 TÊTE DE SCIE

3.1 Vis Anti-Vibration



REF	PART #	QTY.
1	F05007-190	1
2	F05010-29	1

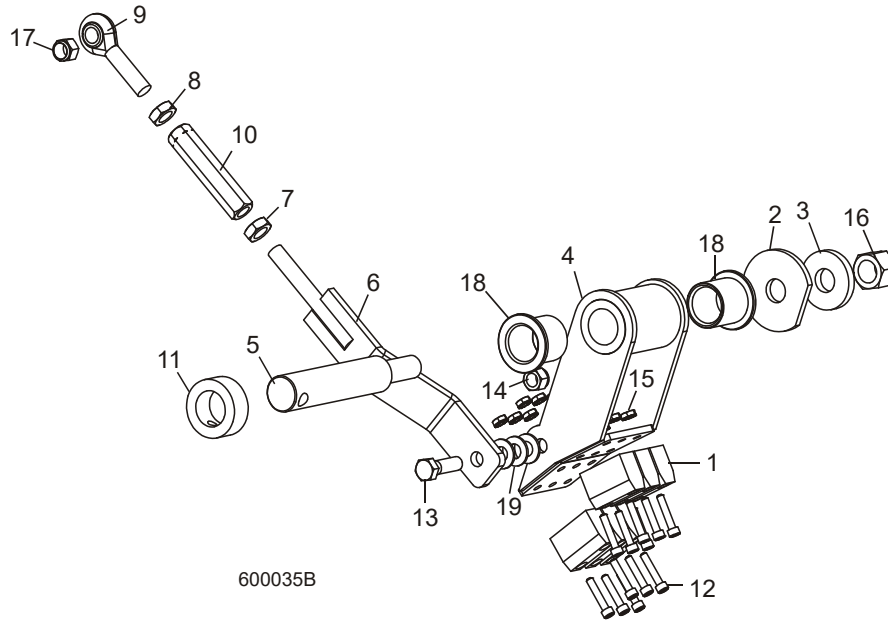
3.2 Tendeur de Courroie



REF	PART #	QTY.
1-22	034894	1
1-2	038934	1
1	034893	1
2	034593	1
3	F05007-124	1
4	F05010-10	1
5	P11035	2
6	033941	1
7	F04254-12	1
8	F05011-104	1
9	F05011-4	1
10	F05007-7	1
11	P109	2
12-19	003193	1

12	017923	1
13	034674	1
14	034689	1
15	036136	2
16	F04254-44	1
17	017924	1
18	F05010-38	2
19	017925	1
20	034673	1
21	F05011-13	1
22	F05006-15	1
23	P04108	1

3.3 Système De Freinage (CC Seulement)

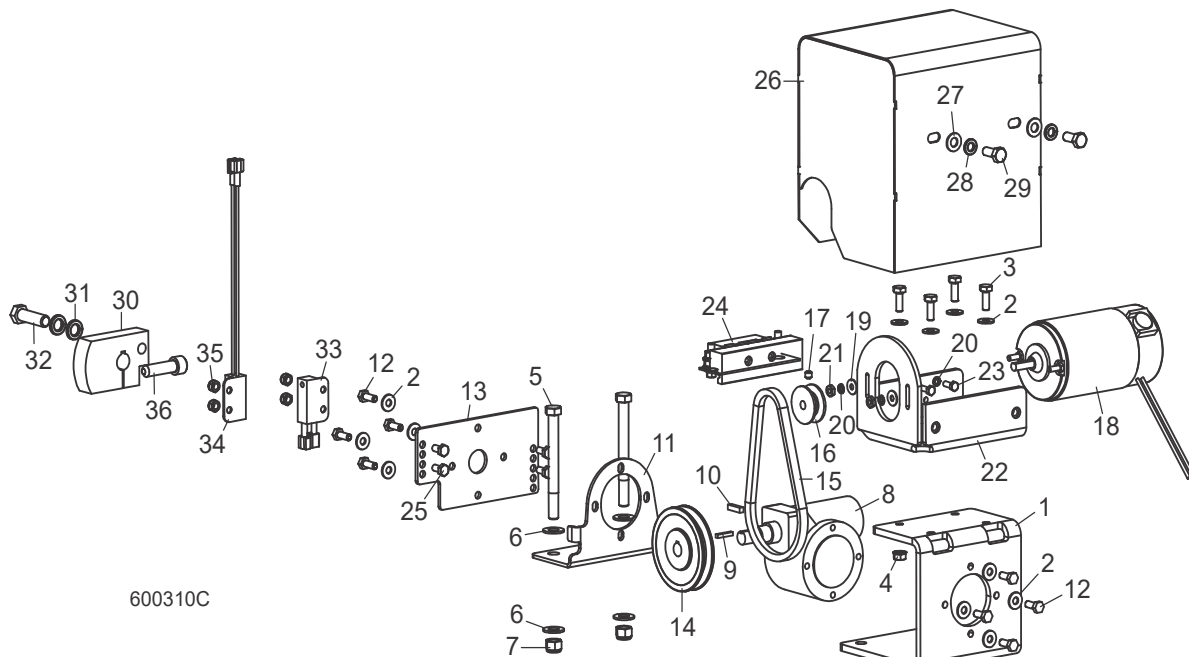


REF	PART #	QTY.
1-19	034886	1
1	016488	6
2	017838	1
3	034685	1
4	034883	1
5	034885	1
6-10	034892	1
6	034891	1
7	F05010-38	1
8	F05010-87	1
9	P11578	1
10	S11577	1
11	038090	1
12	F05004-2	12
13	F05007-123	1
14	F05010-10	1
15	F05010-14	12
16	F05010-71	1
17	F05010-83	1
18	P109	2
19	F05011-3	3

3 Tête De Scie

Système D'embrayage Automatique (CC Seulement)

3.4 Système D'embrayage Automatique (CC Seulement)

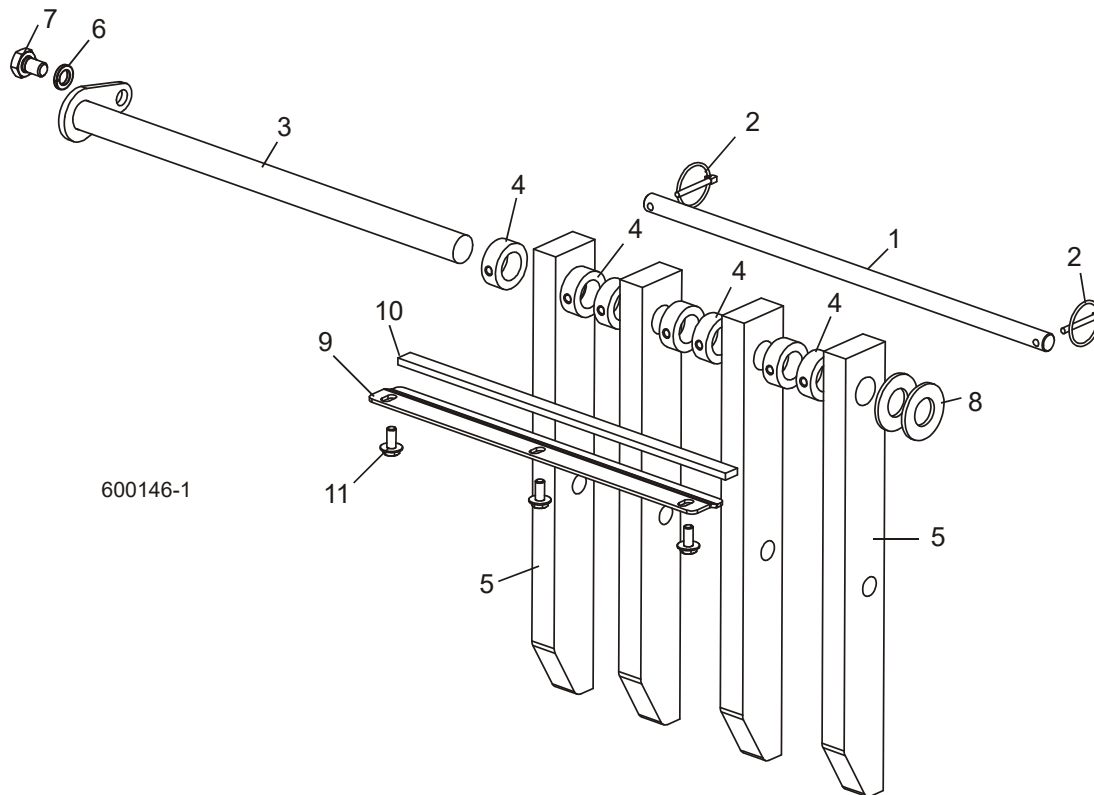


600310C

REF	PART #	QTY.
1 - 35	008953	1
1	008949	1
2	F05011-11	12
3	F05005-123	4
4	F05010-9	4
5	F05007-4	2
6	F05011-3	4
7	F05010-10	2
8	036764	1
9	036803	1
10	S03060	1
11	008952	1
12	F05004-219	8
13	013982	1
14	015075	1
15	016219	1
16	015074	1
17	F05005-105	1
18	016021	1
19	F05011-18	2
20	F05011-20	4

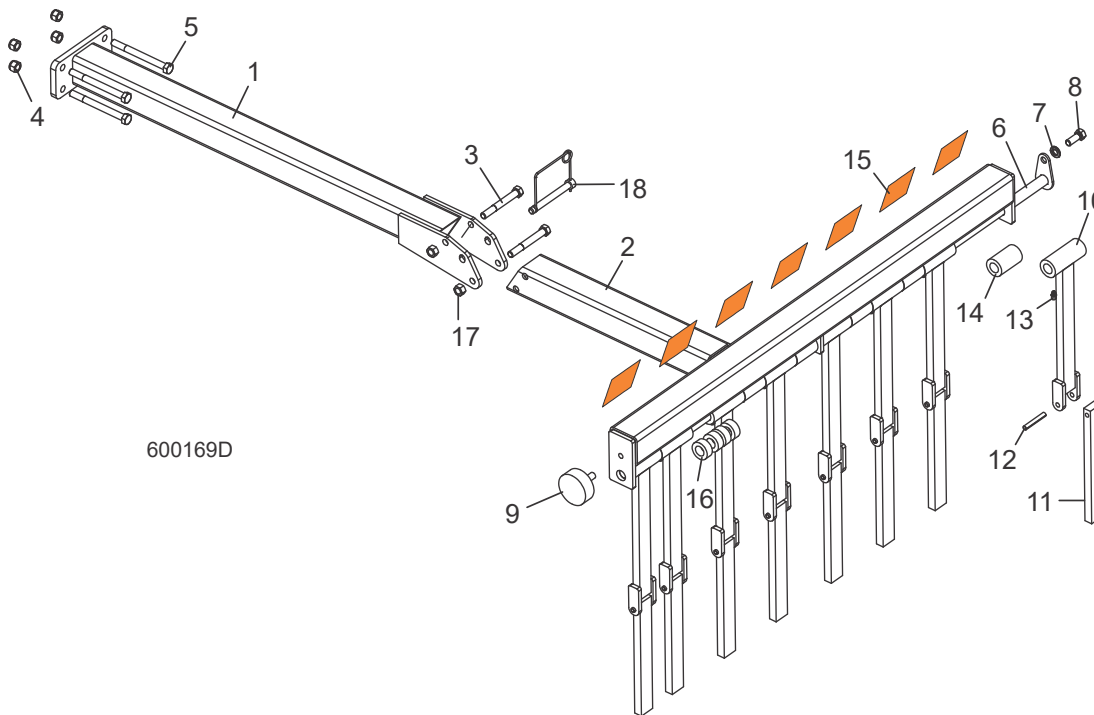
21	F05010-27	2
22	034670	1
23	F05004-27	2
24	052791	1
25	F05005-99	4
26	034667	1
27	F05011-17	2
28	F05011-13	2
29	F05006-5	2
30	034675	1
31	F05011-48	2
32	F05007-156	1
33	051337	1
34	024627	1
35	F05010-200	4
36	F05007-55	1

3.5 Éjecteur De Planches



REF	PART #	QTY.
1	034565	1
2	017604	2
3	034567	1
4	038090	7
5	034561	4
6	F05011-9	1
7	F05008-101	1
8	F05011-28	2
9	017856	1
10	017857	1
11	F05006-101	3

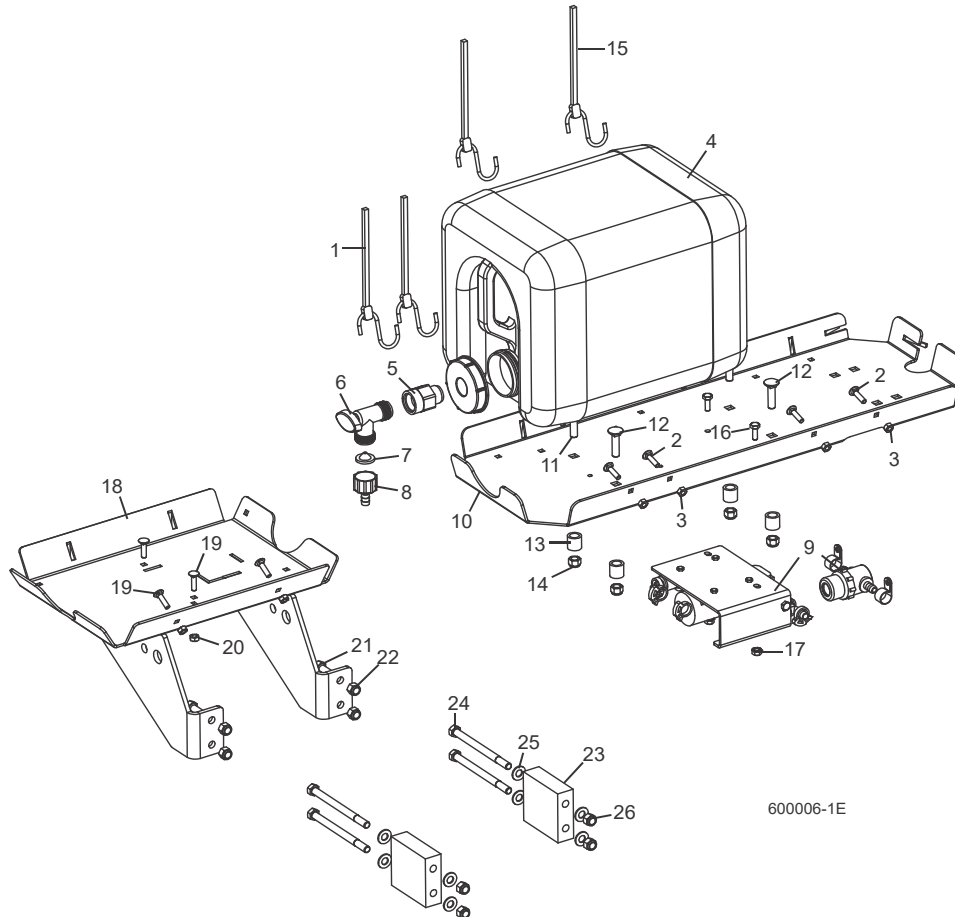
3.6 Ejecteur De Planches À Chaînes



600169D

REF	PART #	QTY.
1-17	034413	1
1	034411	1
2	034331	1
3	F05007-73	2
4	F05010-10	4
5	F05007-126	4
6	034408	1
7	F05011-4	1
8	F05007-87	1
9	034175	1
10	017823	8
11	036651	8
12	F05012-53	8
13	P05060	8
14	017820	5
15	015849	1
16	003687	4
17	F05010-25	2

3.7 Système De Lubrification



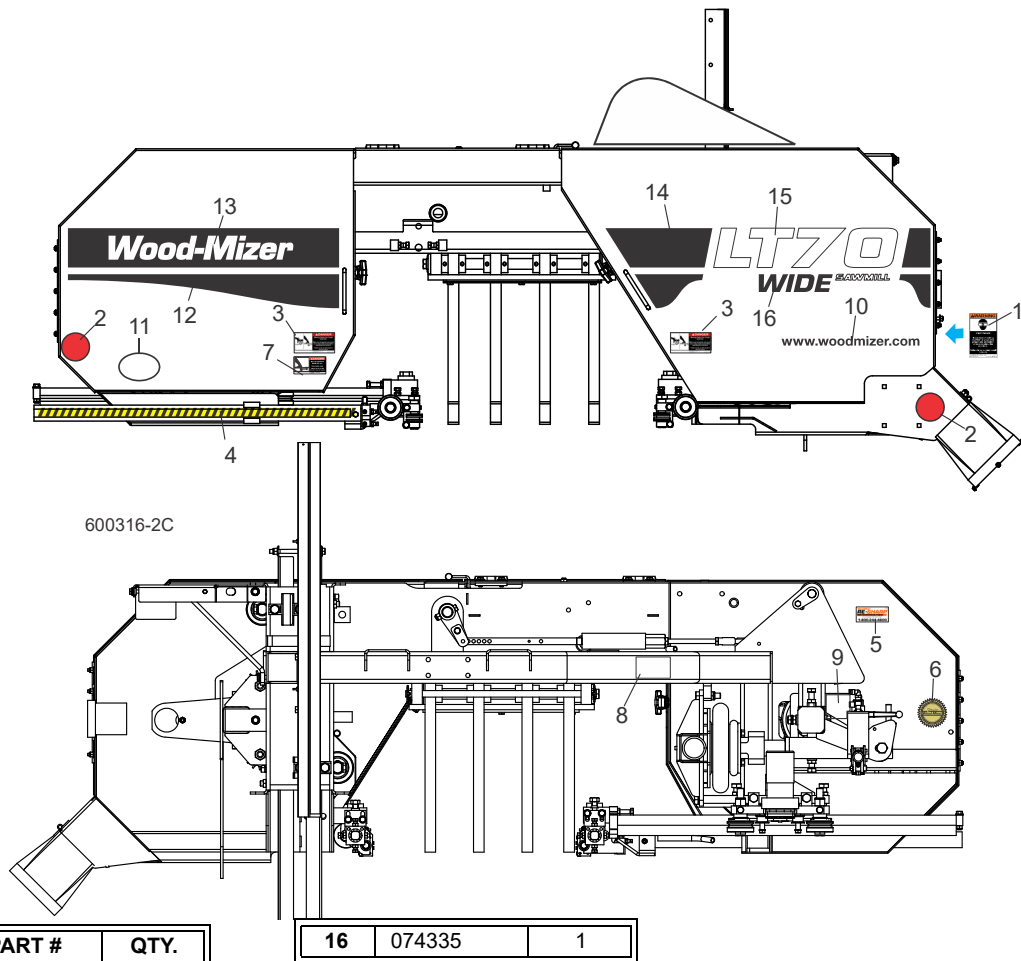
REF	PART #	QTY.
1	P11668	2
2	F05005-34	4
3	F05010-21	4
4	014642	1
5	014636	1
6	014100	1
7	016086	1
8	014113	1
9	Voir Manuel de LubeMizer	
10	S11684	1
11	F05007-22	1
12	F05007-85	3
13	033911	4
14	F05010-10	4

15	P11258	2
16	F05005-1	2
17	F05010-9	2
18	034491 ¹	1
19	F05005-34	4
20	F05010-21	4
21	F05007-7	4
22	F05010-10	4
23	007660 ²	2
24	F05007-5	4
25	F05011-3	8
26	F05010-10	4
	CBOTTLE	1

¹ E25/E30

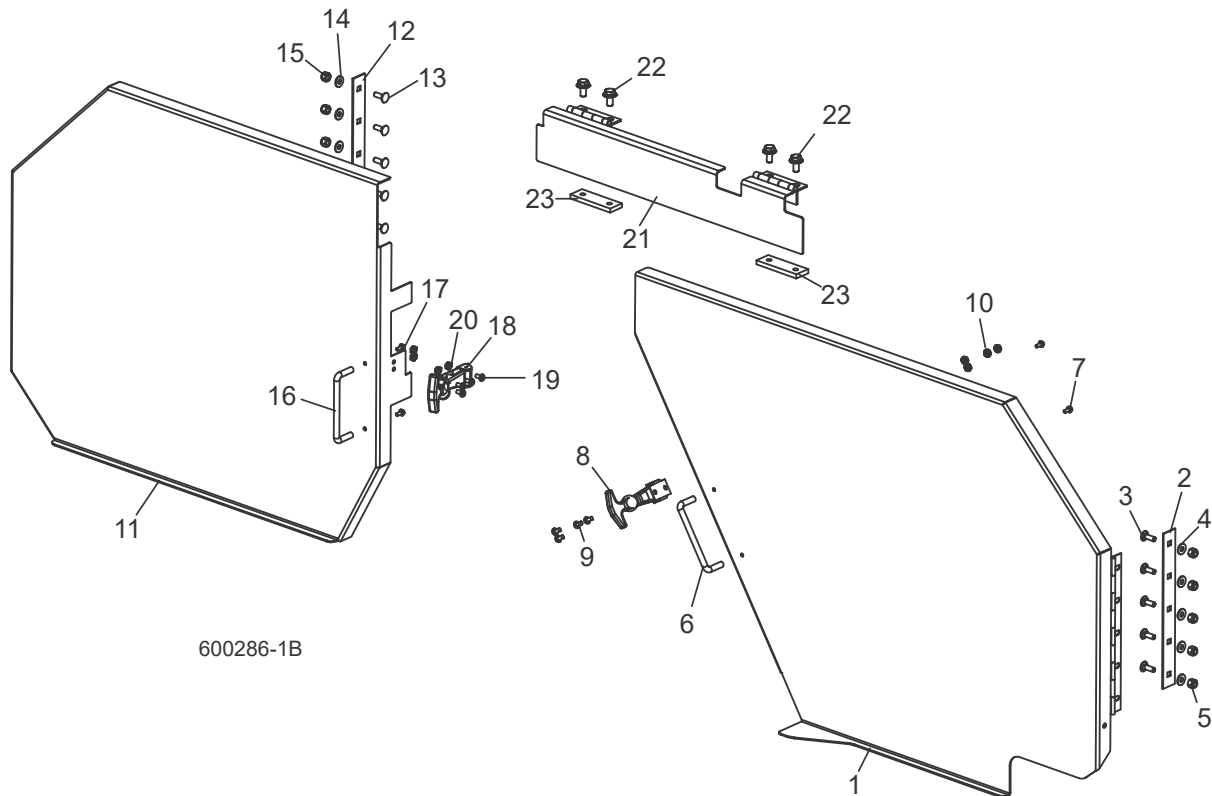
² E30

3.8 Étiquettes D'avertissement



REF	PART #	QTY.
1	P11754	1
2	P07452	2
3	033254	2
4	015849	1
5	P12879	1
6	015930	1
7	S11752	1
8	038596	1
9	P11789	1
10	003235	1
11	065582	1
12	065029	1
13	065030	1
14	065033	1
15	065031	1

3.9 Couvercles De Carters De Lame



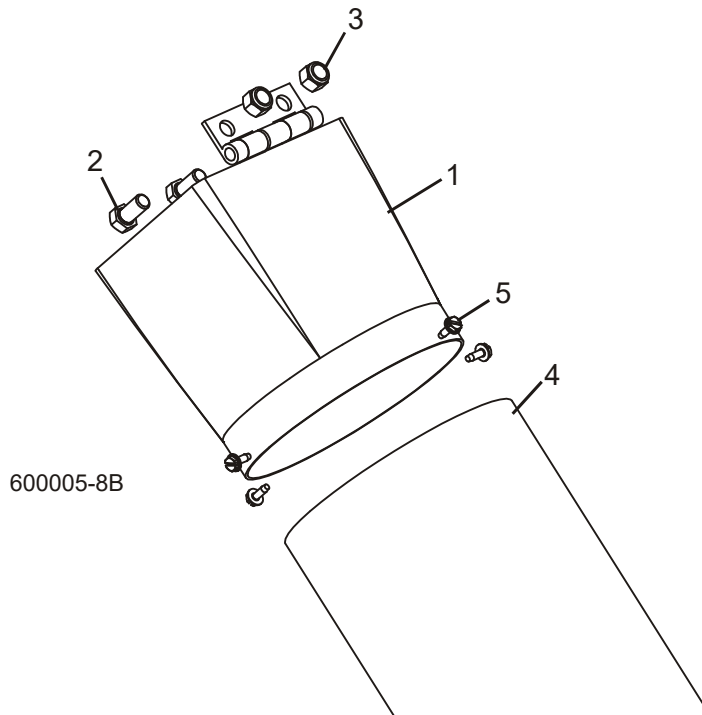
600286-1B

REF	PART #	QTY.
1-10	048409	1
1	048403	1
2	034251	1
3	F05005-113	5
4	F05011-11	5
5	F05010-69	5
6	P08065	1
7	F05015-8	2
8	014829	1
9	F05004-3	4
10	F05010-14	4
11-20	036178	1
11	036176	1
12	034251	1
13	F05005-113	5
14	F05011-11	5
15	F05010-69	5
16	P08065	1

17	F05015-8	2
18	014829	1
19	F05004-3	4
20	F05010-14	4
21	034454	1
	006189 ¹	1
22	F05006-101	4
23	006810	2

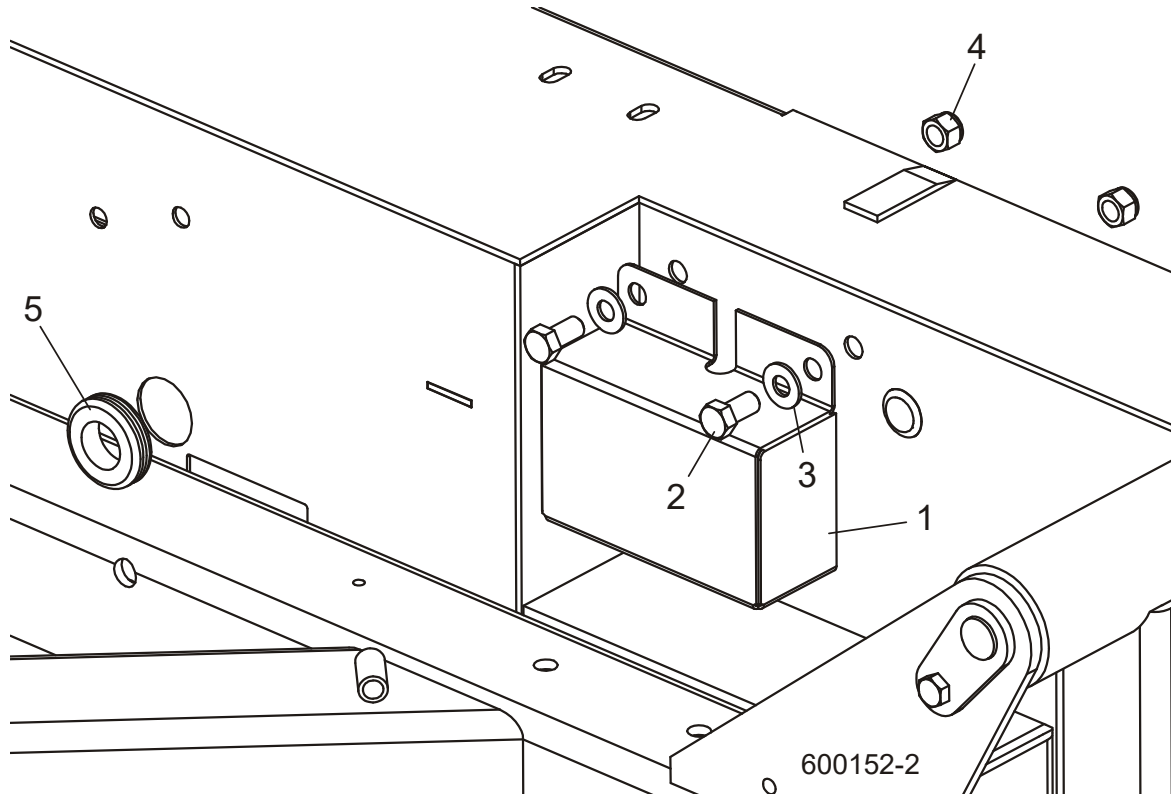
¹ LT70HDW

3.10 Chute À Bran De Scie



REF	PART #	QTY.
1	034396	1
2	F05007-118	2
3	F05010-10	2
4	017829	2
5	F05015-7	4

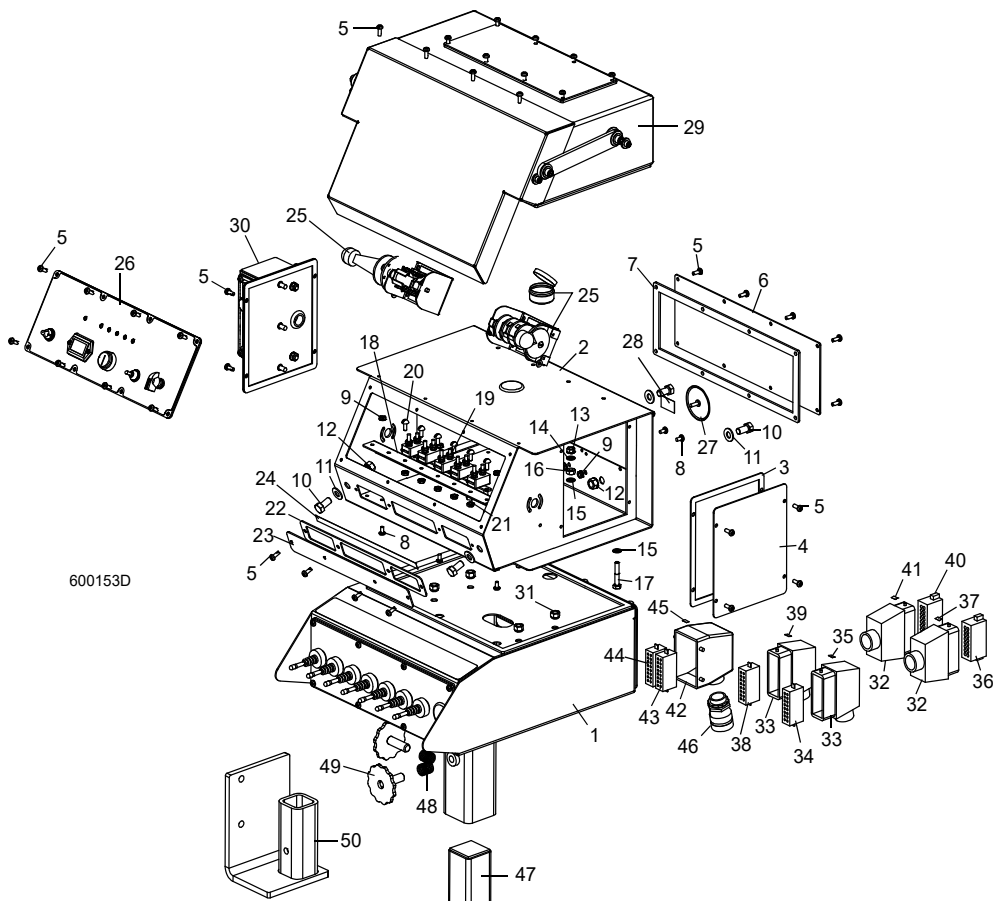
3.11 Boîte De Filage De L'écorceuse Et Grommet



REF	PART #	QTY.
1	023616	1
2	F05007-7	2
3	F05011-3	2
4	F05010-10	2
5	P702	1

PARTIE 4 SYSTÈME DE COMMANDE ET BATTERIE

4.1 Système De Commande (CC)



600153D

REF	PART #	QTY.
1-31	036352	1
	053068	1
1	See Section 8.1	
2	016135	1
3	015274	1
4	015307	1
5	F05015-17	32
6	016230	1
7	015278	1
8	F05004-3	5
9	F05010-14	5
10	F05007-27	4
11	F05011-3	4
12	F05010-19	4

13	F05010-9	1
14	F05011-11	2
15	F05011-69	2
16	F05010-129	1
17	F05005-31	1
18-21	015621	1
18	015310	1
19	E20430	5
20	F05004-12	10
21	F05010-41	10
22	015266	1
23	015376	1
24	024363	1
25	See Section 4.3	
26	See Section 4.4	

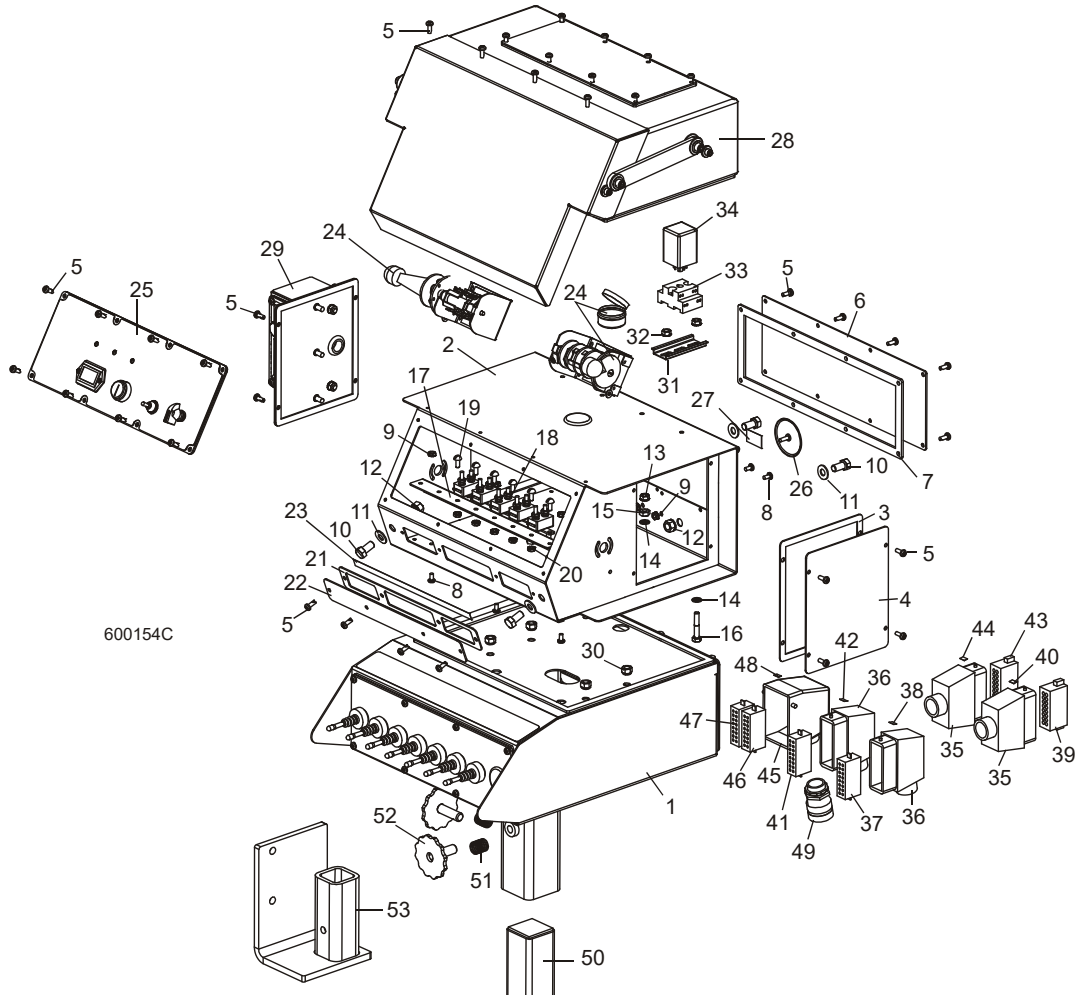
27	015673	1
28	024364-5	1
29	Voir Accuset 2 Manuel	
30	Voir Lubemizer Manuel	
31	F05010-58	4
32-41	053055	1
32	015658	2
33	051499	2
34	E23106	1
35	038412	1
36	E23105	1
37	038417	1
38	015671	1
39	038413	1
40	015670	1

41	038418	1
42-46	050965	1
42	051500	1
43	E23106	1
44	015671	1
45	038414	1
46	025186	1
47	034652	1
48	P04282	2
49	034658	2
50	046443	1

4 Système De Commande Et Batterie

Système De Commande (CA)

4.2 Système De Commande (CA)



600154C

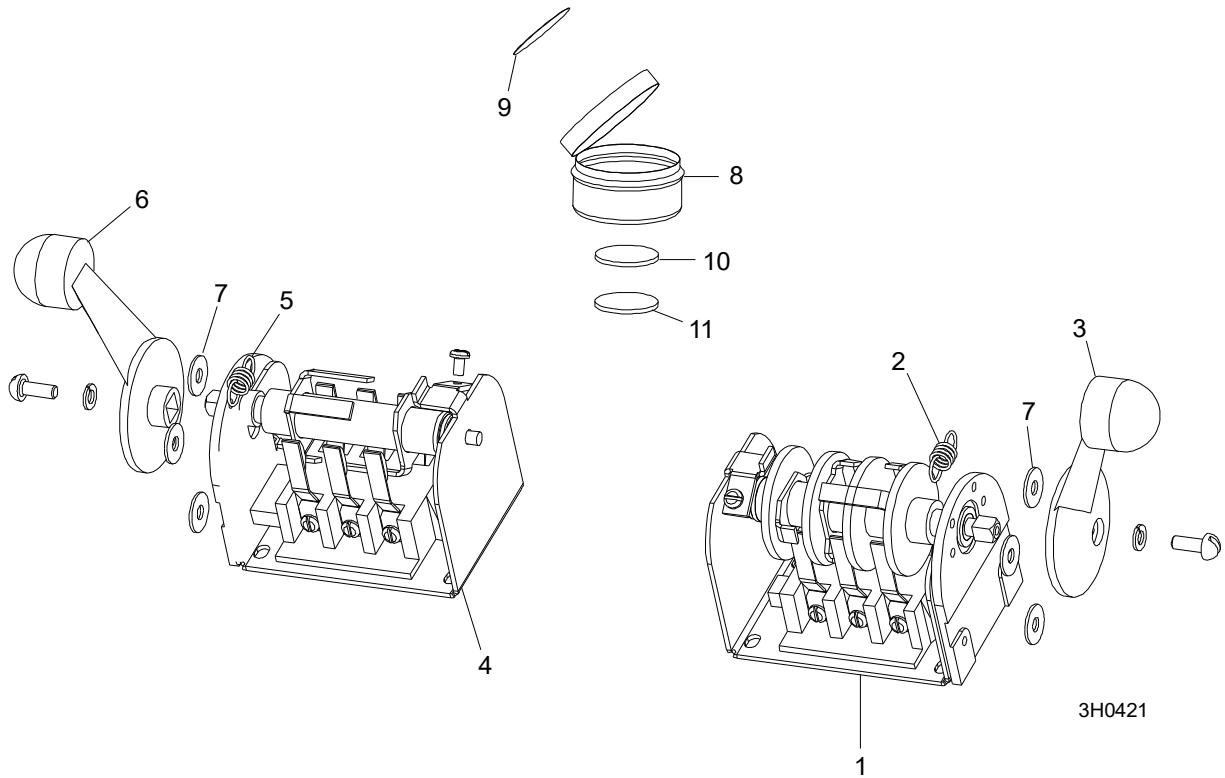
REF	PART #	QTY.
1-34	053066	1
1	See Section 8.1	
2	-----	1
3	015274	1
4	015307	1
5	F05015-17	32
6	016230	1
7	015278	1
8	F05004-3	5
9	F05010-14	5
10	F05007-27	4
11	F05011-3	4
12	F05010-19	4

13	F05010-9	1
14	F05011-69	2
15	F05010-129	1
16	F05005-31	1
17-20	050916	1
17	015310	1
18	E20430	5
19	F05004-12	6
20	F05010-41	6
21	015266	1
22	015376	1
23	050917	1
24	See Section 4.3	
25	See Section 4.4	

26	015673	1
27	050918	1
28	Voir Accuset 2 Manuel	
29	Voir Lubemizer Manuel	
30	F05010-58	4
31	024474-3	1
32	F05010-9	2
33	E10216	1
34	050300	1
35-44	053178	1
35	015658	2
36	051499	2
37	E23106	1
38	038412	1

39	E23105	1
40	038417	1
41	015671	1
42	038413	1
43	015670	1
44	038418	1
45-49	050965	1
45	051500	1
46	E23106	1
47	015671	1
48	038414	1
49	025186	1
50	034652	1
51	P04282	2
52	034658	2
53	046443	1

4.3 Commutateurs

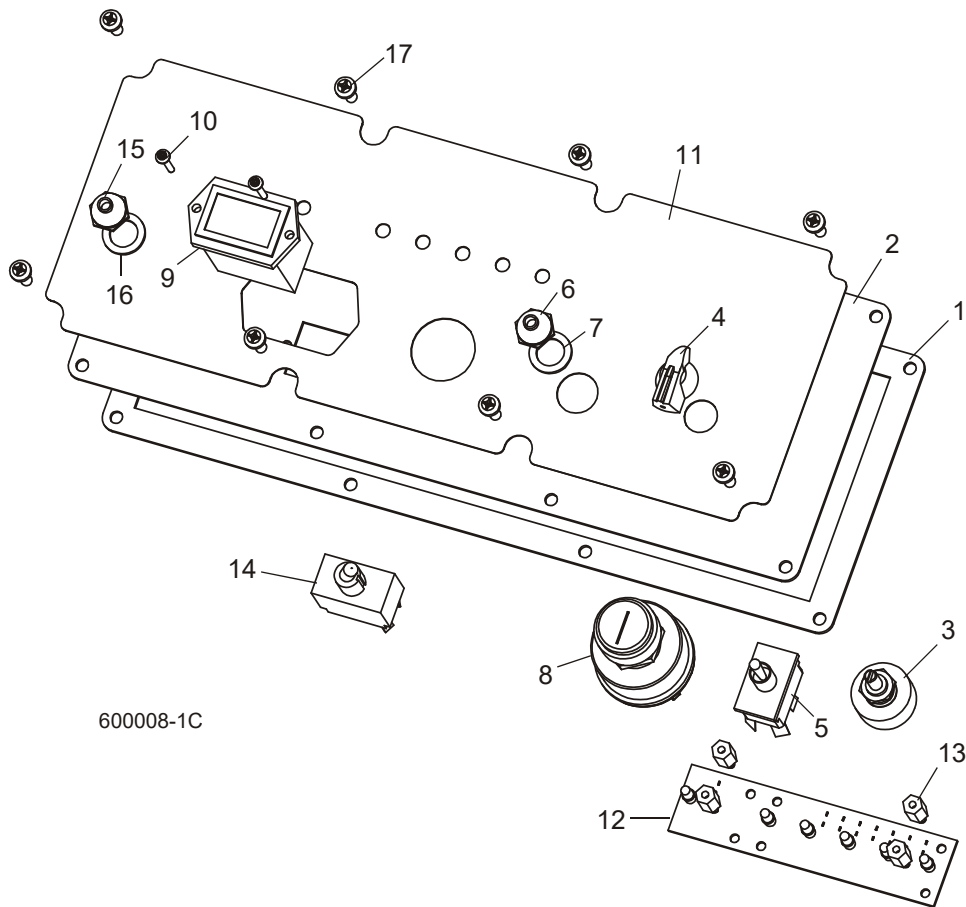


REF	PART #	QTY.
1-3	E20440	1
1	-----	1
2	P12570	1
3	P12500	1
4-6	E20439	1

4	-----	1
5	P12570	1
6	P12500	1
7	F05011-41	6
9-12	A20463	1
8	-----	1

9	P20467	1
10	-----	1
11	-----	1

4.4 Panneau De Commande



600008-1C

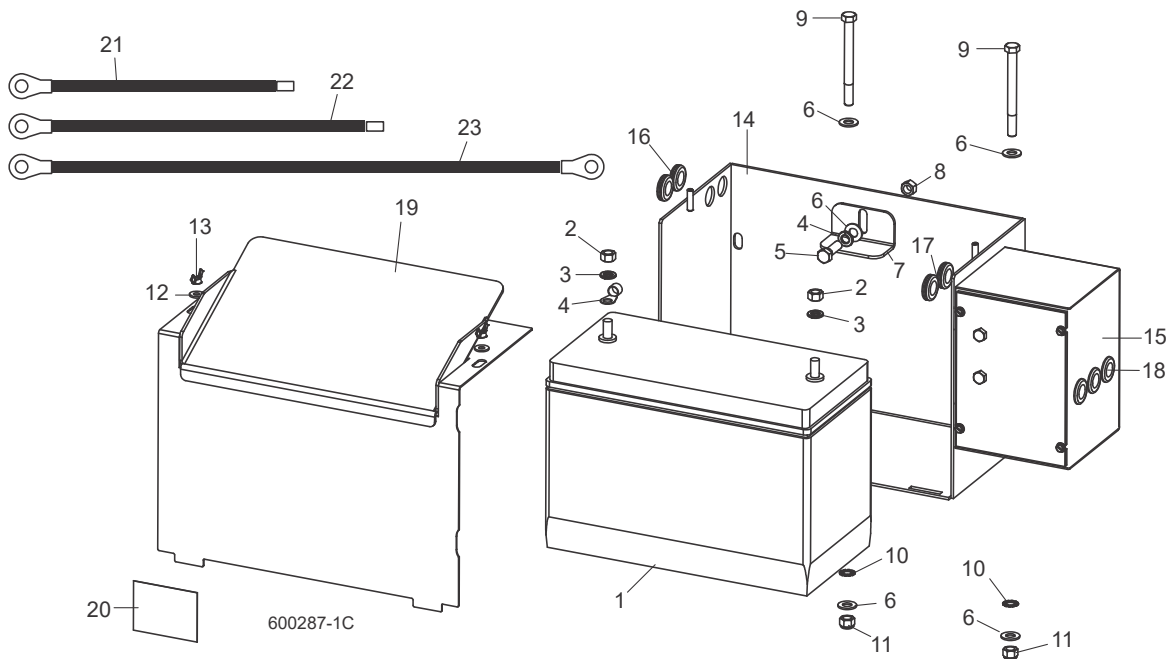
REF	PART #	QTY.	
	024671	1	
	050299	1	
1	015270	1	
2	015302	1	
3	024450-1	1	
4	P06257	1	
5	024200	1	
6	P02575	2	
7	P05251-1	2	
8	P04350	1	
9	015401	1	
10	F05015-28	2	
11	015271	1	
	015269	1	

4 Systeme De Commande Et Batterie

Panneau De Commande

12	015416	1	
	015409	1	
13	023147	4	
DC Models Only:			
14	051346	1	
15	P02575	1	
16	P05251-1	1	
17	F05015-17	8	
	050399	1	
	024402	1	
	R02374	41 in.	
	R02374	42 in.	

4.5 Boîte De Batterie (CC Seulement)



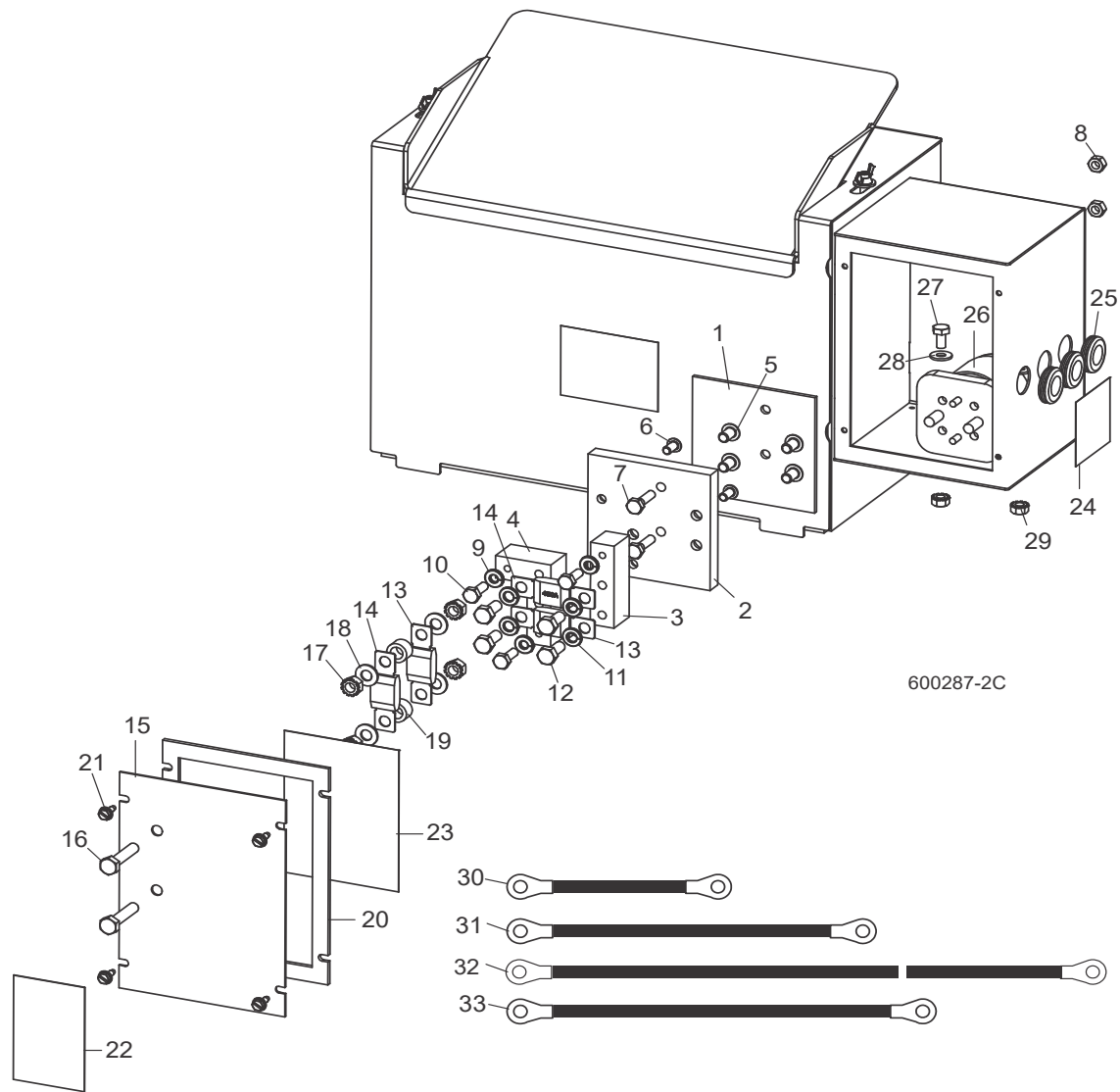
REF	PART #	QTY.
1	025841	1
2-16	017674	1
2	F05010-1	1
3	F05011-4	3
4	F05092-28	1
5	F05007-2	1
6	F05011-3	5
7	017725	1
8	F05010-25	1
9	F05007-4	2
10	F05011-36	2
11	F05010-10	2
12	F05011-11	2
13	F05010-13	2
14	015191	1
15	Voir Partie 4.6	
16	P11764	2
17	074198	2
18	074199	2
19	033976	1

20	014774	1
21	036308	1
22	036309	1
23	036306	1

4 Système De Commande Et Batterie

Boîte De Fusibles (CC Seulement)

4.6 Boîte De Fusibles (CC Seulement)



600287-2C

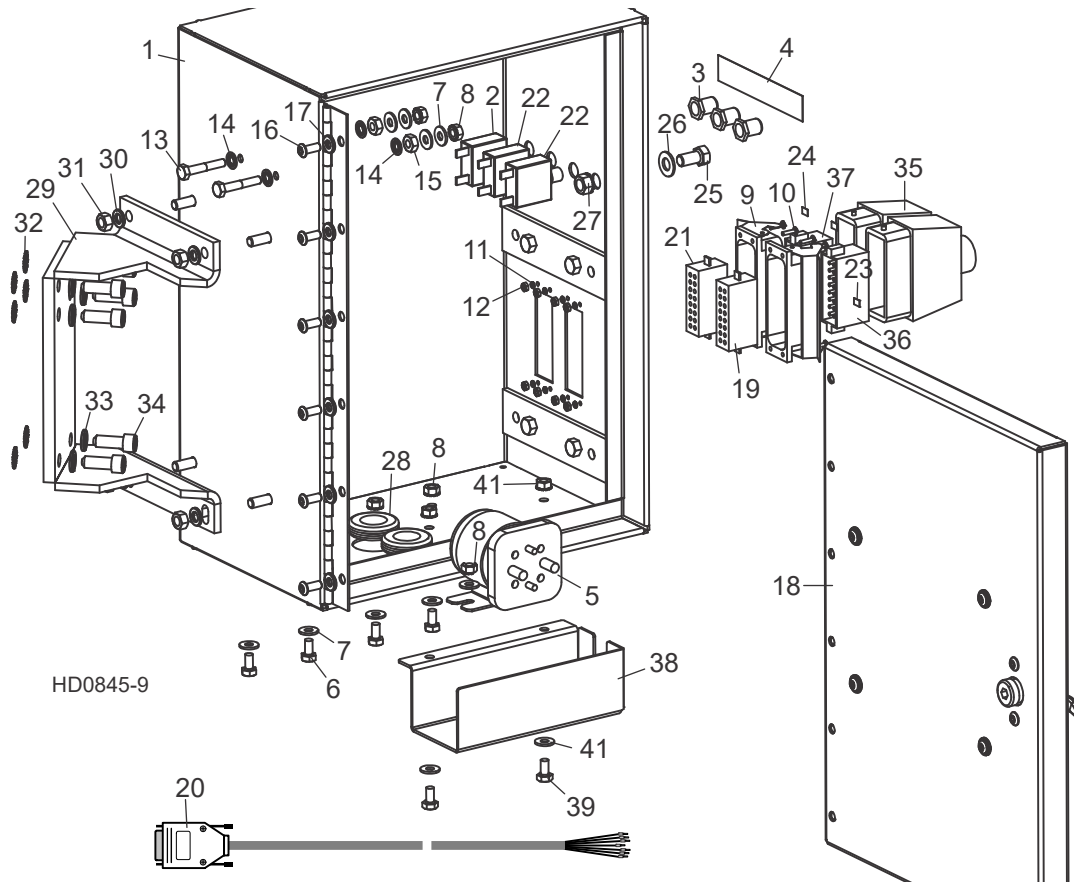
REF	PART #	QTY.
1-12	006795	1
1	056999	1
2	----	1
3	056996	1
4	056998	2
5	F05006-20	4
6	F05005-59	2
7	F05005-101	2
8	F05010-21	2

9	F05011-14	3
10	F05005-123	3
11	F05011-13	4
12	F05006-102	4
13	053339	2
14	053340	2
15-30	006853	1
15	006851	1
16	F05006-2	2
17	F05010-20	4

18	F05011-17	4
19	055323	2
20	050283	1
21	F05015-7	4
22	P10364	1
23	006868	1
24	P12960	1
25	P11764	3
26	016371	1
27	F05005-15	2

28	F05011-11	2
29	F05010-9	4
30	036305	1
31	036307	1
32	036306	1
33	036308	1
34	036309	1

4.7 Boîte De Commande Des Options À Distance (CC)



REF	PART #	QTY.
1-27	069341 ¹	1
	069388 ²	1
1	006667	1
2	015527	1
3	021253	3
4	053227	1
5	016371	2
6	F05005-15	4
7	F05011-11	10
8	F05010-9	6
9	E23103	2
10	F05004-14	8
11	F05011-21	8
12	F05010-43	8
13	F05005-31	2
14	F05011-69	4

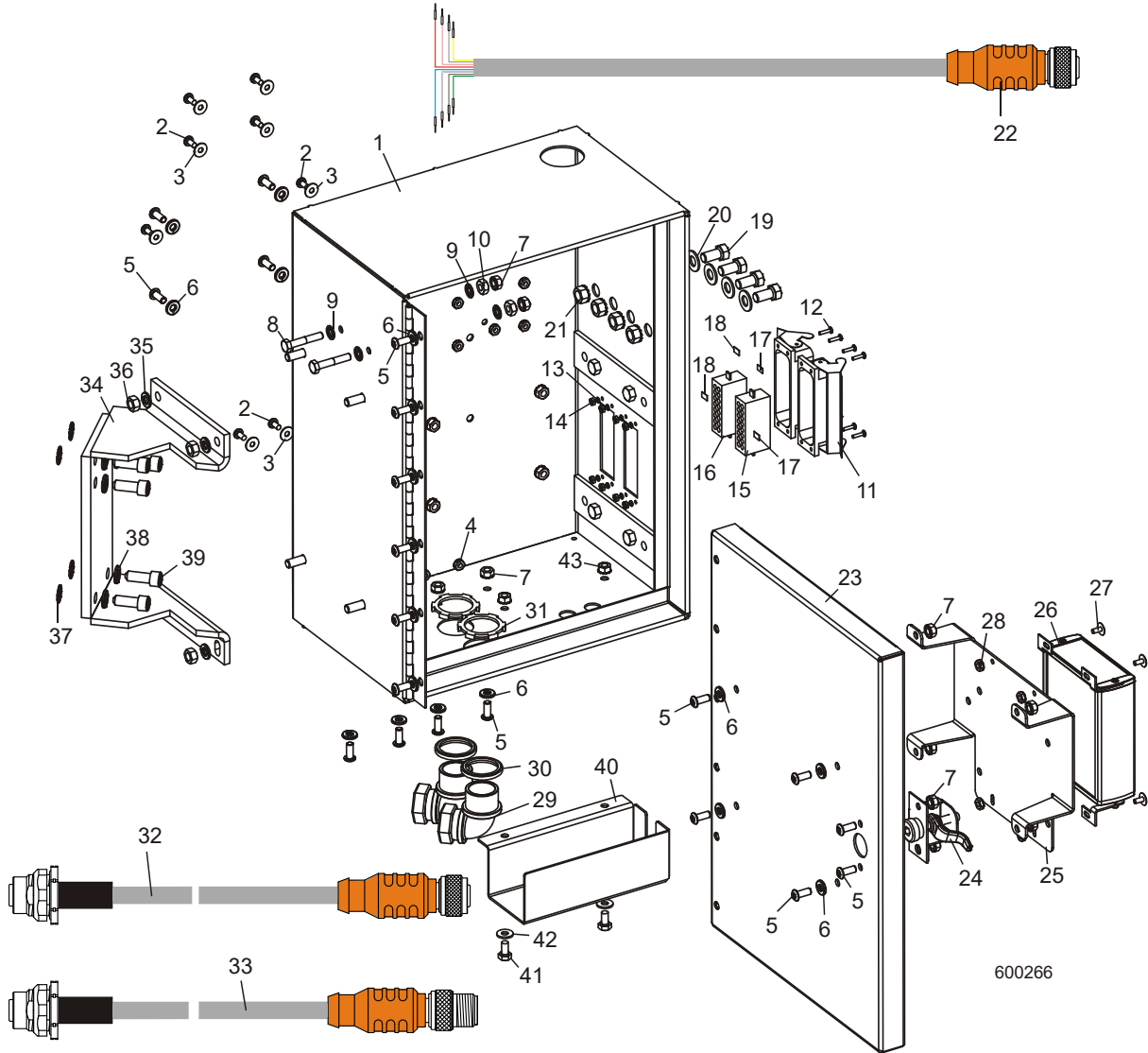
15	F05010-129	2
16	F05005-128	6
17	F05011-14	6
18	Voir Partie 4.9	
	053272	1
19	015671	1
20	053222	1
	053271	1
21	E23106	1
22	024246	2
23	024368	2
24	024369	2
25	F05007-27	1
26	F05011-3	1
27	F05010-19	1
28	P702	2
29	015184	1
30	F05011-13	4

31	F05010-17	4
32	F05011-36	6
33	F05011-4	6
34	F05007-52	6
35	015658	2
36	E23105	1
37	015670	1
38-41	006021	1
38	006014	1
39	F05005-15	2
40	F05011-11	2
41	F05010-9	2

¹ D51/D62

² D55

4.8 Boîte De Commande Des Options À Distance (CA)



REF	PART #	QTY.
1-33	053179	1
1	052121	1
2	F05004-3	8
3	F05011-18	8
4	F05010-14	8
5	F05005-128	20
6	F05011-14	18
7	F05010-9	16
8	F05005-31	2

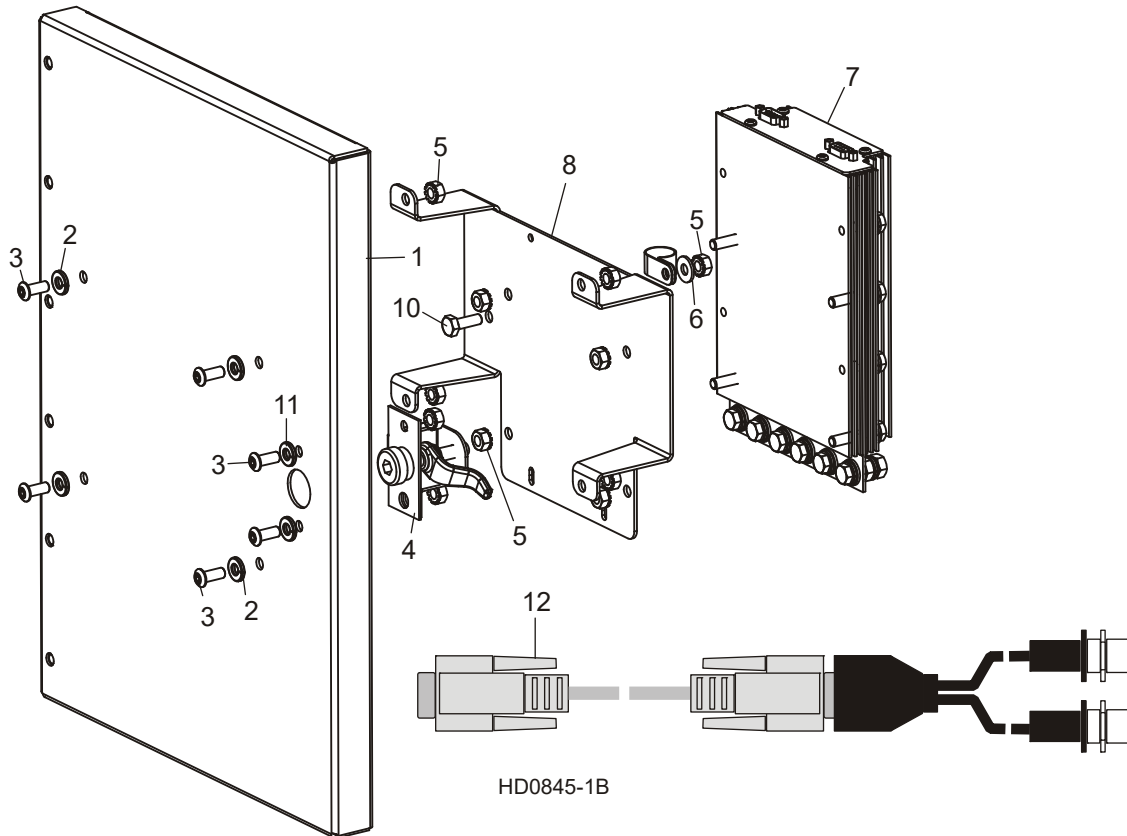
9	F05011-69	4
10	F05010-129	2
11	E23103	2
12	F05004-14	8
13	F05011-21	8
14	F05010-43	8
15	E23106	1
16	015671	1
17	038415	2
18	038416	2

19	F05007-27	4
20	F05011-3	4
21	F05010-19	4
22	053087	1
23	003938	1
24	P20048	1
25-28	053194	1
25	056763	1
26	052892	1
27	F05005-186	4

4**Système De Commande Et Batterie**
Boîte De Commande Des Options À Distance (CA)

28	F05010-41	4
29	051977	2
30	024066	2
31	024067	2
32	053086	1
33	053085	1
34	015184	1
35	F05011-13	4
36	F05010-17	4
37	F05011-36	6
38	F05011-4	6
39	F05007-52	6
40-43	006021	1
40	006014	1
41	F05005-15	2
42	F05011-11	2
43	F05010-9	2

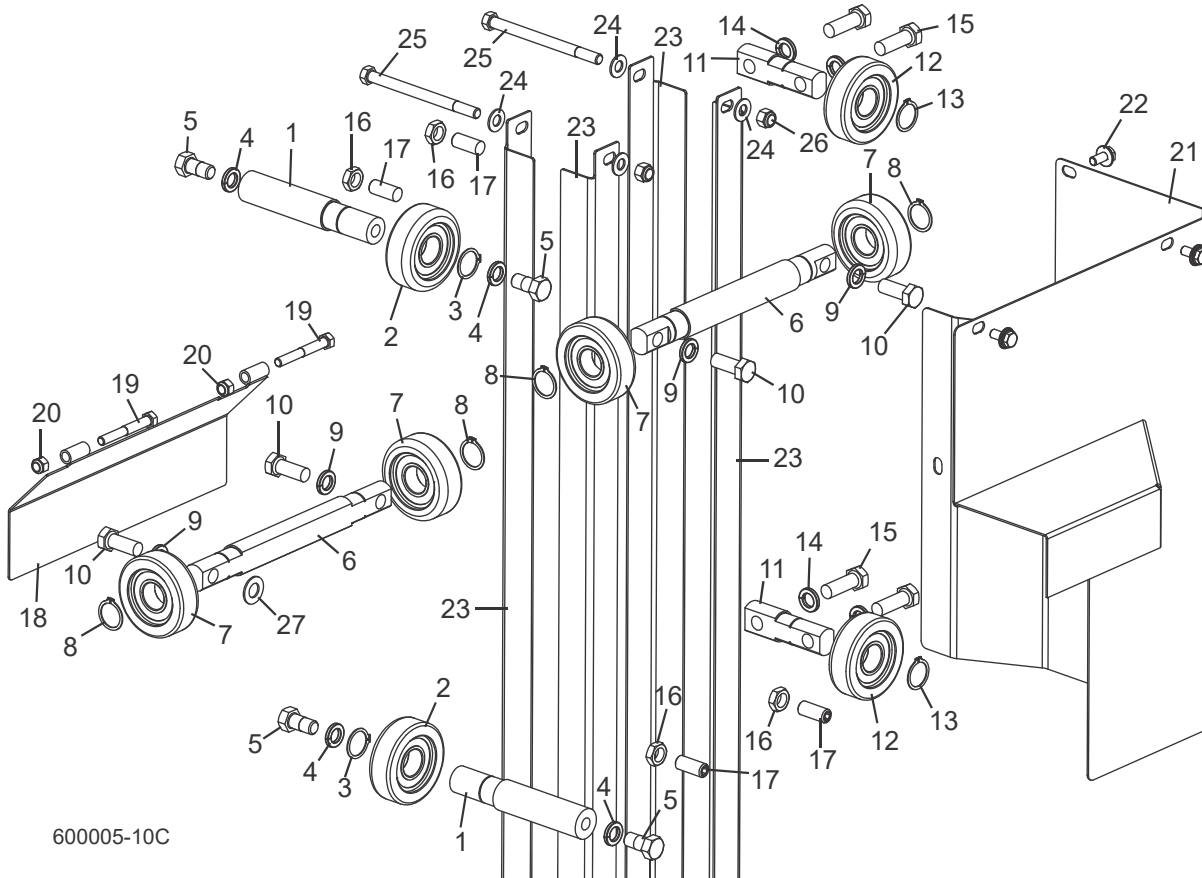
4.9 Couverture De La Boîte De Commande Des Options À Distance (CC Seulement)



REF	PART #	QTY.
1-12	053228	1
1	003998	1
2	F05011-14	4
3	F05005-128	6
4	P20048	1
5	F05010-9	11
6	F05011-11	1
7	057821LS	1
8	056763	1
9	010748	1
10	F05005-1	1
11	F05011-14	2
12	053696	1

PARTIE 5 SYSTÈME DE MONTÉE

5.1 Rouleaux Et Carters De Montée



600005-10C

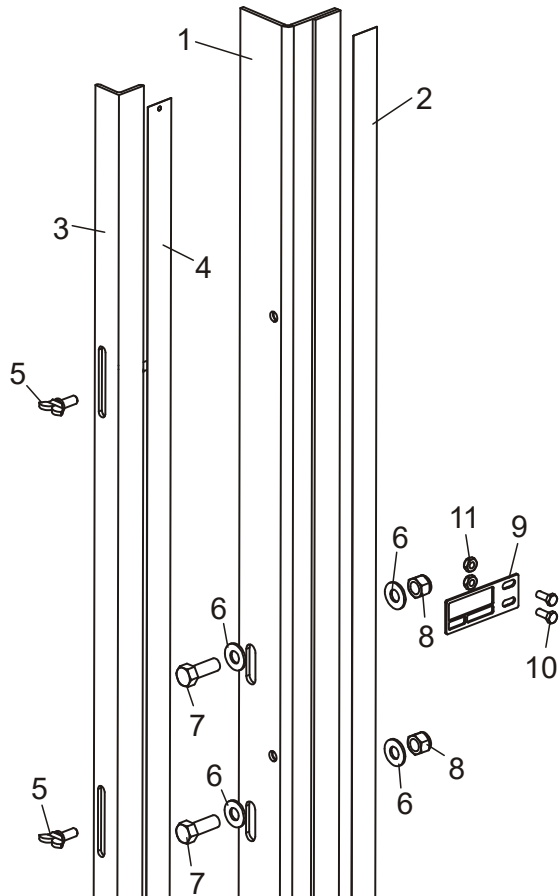
REF	PART #	QTY.
1-5	034339	2
1	033855	1
2	023857	1
3	F04254-15	1
4	F05011-9	2
5	F05008-50	2
6-10	034337	2
6	033853	1
7	023857	2
8	F04254-15	2
9	F05011-9	2

10	F05008-37	2
11-15	034338	2
11	033854	1
12	023857	1
13	F04254-15	1
14	F05011-9	2
15	F05008-33	2
16	F05010-31	4
17	F05008-18	4
18	034277	1
19	F05006-80	2
20	F05010-58	2

21	036182 ¹	1
	036184 ²	1
22	F05006-101	4
23	033827	4
24	F05011-3	8
25	F05007-5	4
26	F05010-10	4
27	074563	1

¹ CC
² CA

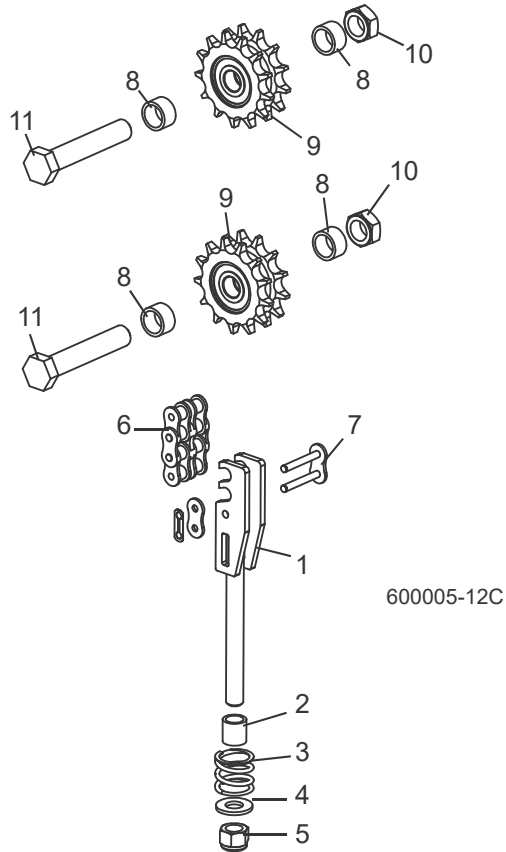
5.2 Indicateur De Hauteur Et Règles De Débitage



600123-2

REF	PART #	QTY.
1-8	034372	1
1	034370	1
2	S11773	1
3-4	034371	1
3	034369	1
4	P12819	1
5	F05005-64	2
6	F05011-3	4
7	F05007-7	2
8	F05010-10	2
9	017778	1
10	F05004-27	2
11	F05010-160	2

5.3 Chaînes Et Pignons De Montée

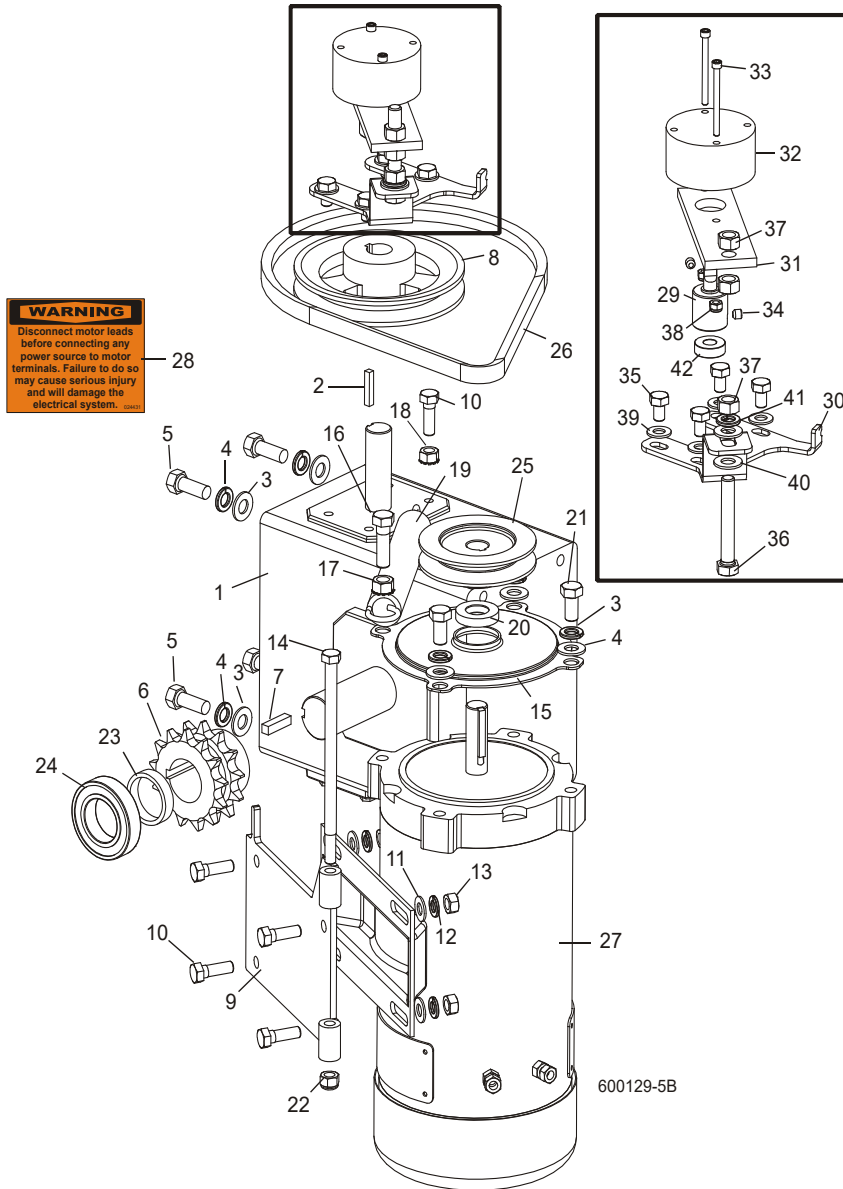


REF	PART #	QTY.
1-5	034238	1
1	034236	1
2	016515	1
3	016516	1

4	F05011-2	1
5	F05010-8	1
6	036197	1
7	015258	2
8	016018	4

9	016019	2
10	F05010-96	2
11	F05009-93	2

5.4 Système D'entraînement De Montée



REF	PART #	QTY.
1	034908	1
2	S31027	1
3	F05011-3	7
4	F05011-4	7
5	F05007-7	4
6	036008	1
7	S21486	1

8	015256	1
9	015198	1
10	F05006-1	5
11	F05011-17	4
12	F05011-13	4
13	F05010-17	4
14	F05006-73	1
15	034475	1

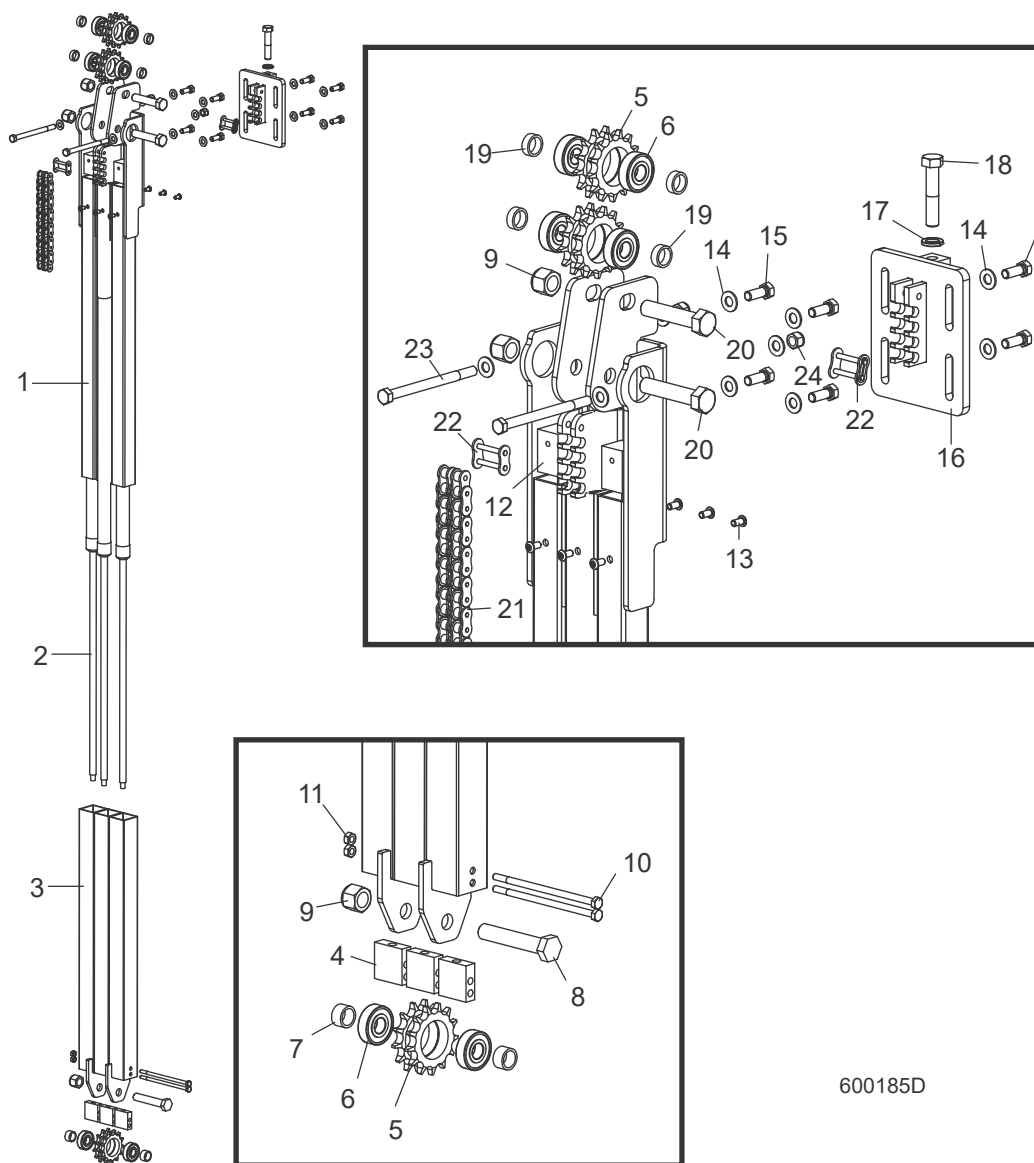
16	F05007-123	1
17	F05010-19	1
18	F05010-20	1
19	019303	1
20	034501	1
21	F05007-27	3
22	F05010-58	1
23	036016	1

24	036007	1
25	036179 ¹	1
	036675 ²	1
26	021183 ¹	1
	036682 ²	1
27	053682 ²	1
	050290 ¹	1
28	024431-5	1
29-42	062566 ²	1
29	062511	1
30	062512	1
31	062513	1
	065907	1
32	069519	1
	F05708-26	2
33	F05004-273	2
34	F05005-131	2
35	F05006-15	2
36	F05007-157	1
37	F05010-1	3
38	F05010-169	2
39	F05011-17	4
40	F05011-3	2
41	F05011-4	1
42	P10688	1
	069678-FR	1
	062566-1717	1

¹ CA

² CC

5.5 Système de Montée Assistée



600185D

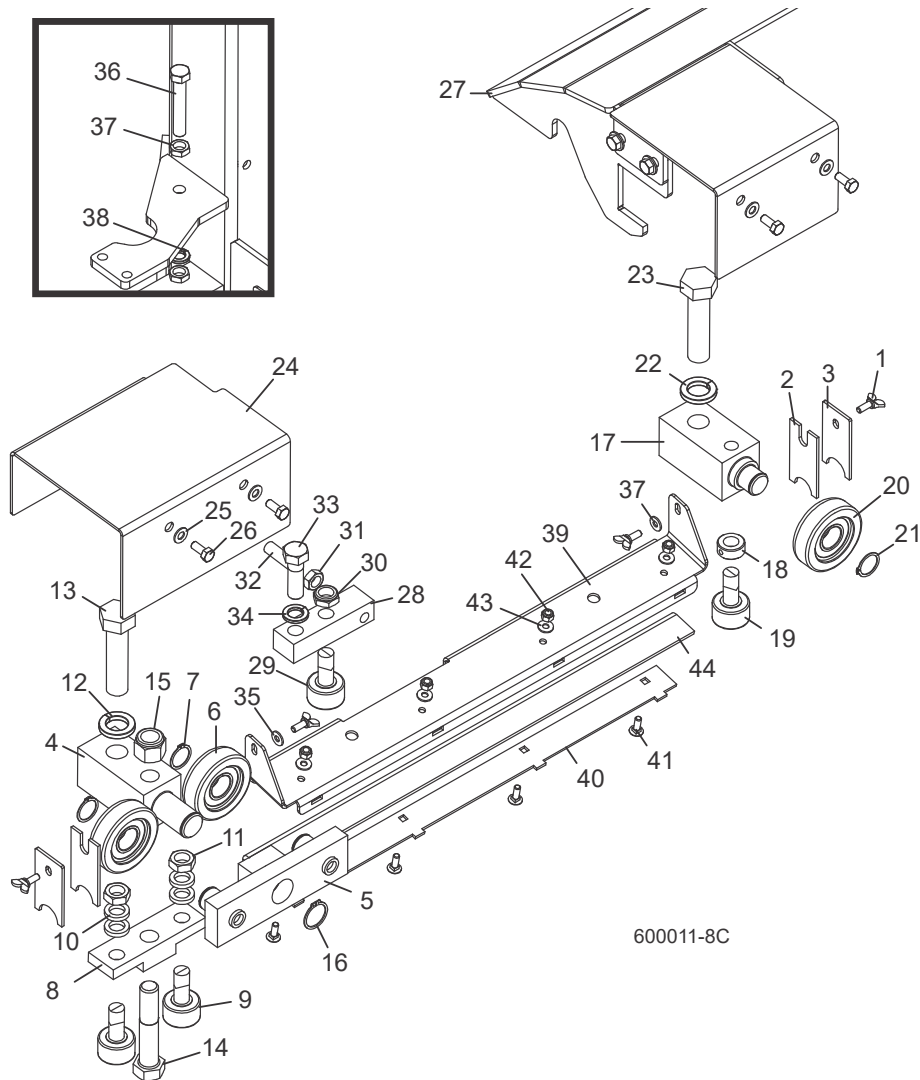
REF	PART #	QTY.
1-22	047753	1
1	047754	1
2	065410	3
	047737	1
	038628	1
3	047755	1
4	048410	3
5-6	016019	3
5	015202	1

6	P06030-1	1
7	016018	2
8	F05009-93	1
9	F05010-34	3
10	F05005-82	2
11	F05010-21	2
12	047922	3
13	F05005-59	6
14	F05011-3	8
15	F05007-87	8
16	047924	1

17	F05011-9	1
18	F05008-74	1
19	047921	4
20	F05009-37	2
21	036680	1
22	015258	2

PARTIE 6 SYSTÈME D'ENTRAÎNEMENT ET PALIERS

6.1 Paliers de Rail Superieur et Grattoirs



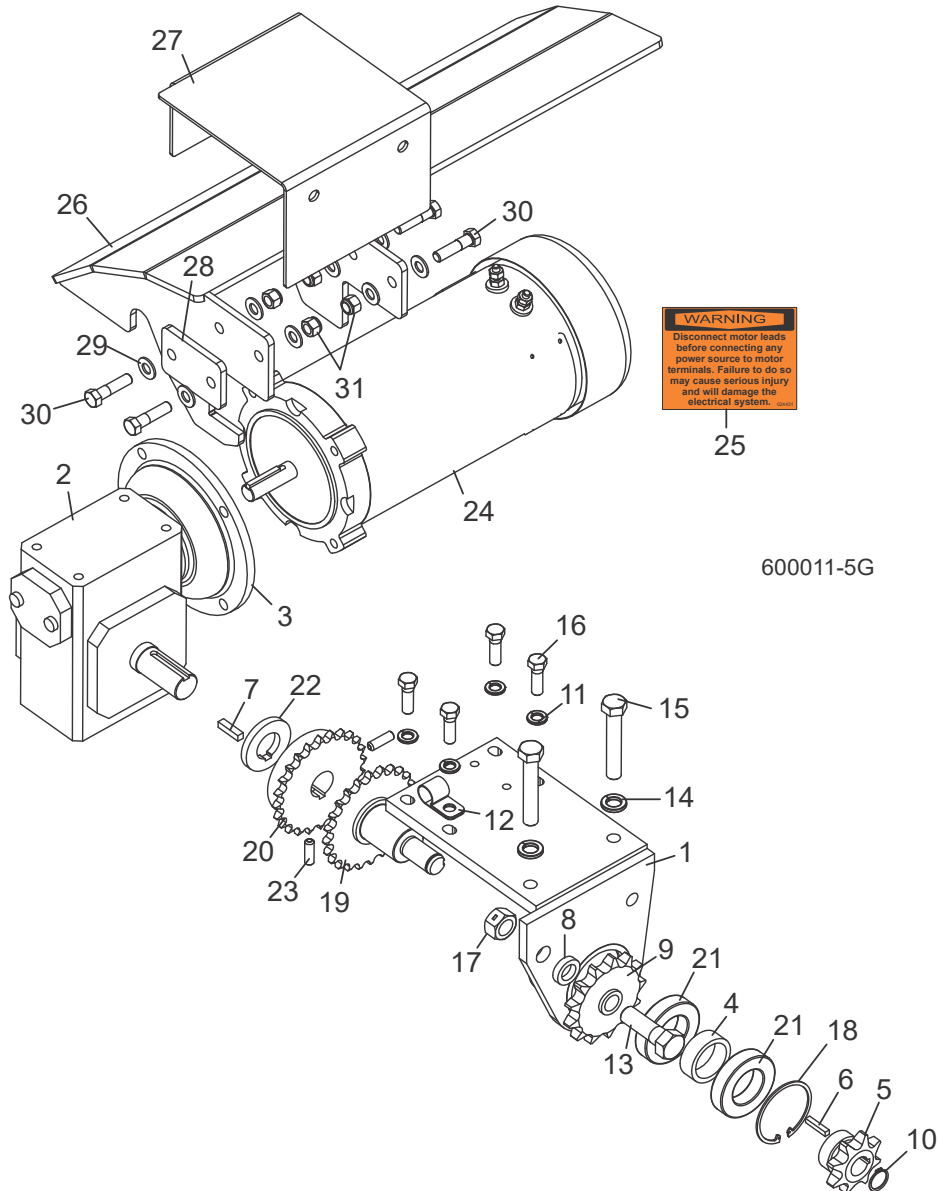
REF	PART #	QTY.	
1	F05005-64	4	
2	M04113	2	
3	034229	2	
4-16	042506	1	
4	042505	1	
5	042507	1	
6	023857	2	
7	F04254-15	2	

6 Système D'entraînement Et Paliers

Paliers de Rail Superieur et Grattoirs

8	042500	1	
9	012797	2	
10	S12480	4	
11	F05010-11	2	
12	F05011-46	1	
13	F05014-1	1	
14	F05013-3	1	
15	F05010-103	1	
16	F04254-36	1	
17-23	034231	1	
17	034230	1	
18	P05035	1	
19	012797	1	
20	023857	1	
21	F04254-15	1	
22	F05011-46	1	
23	F05014-1	1	
24	033942	1	
25	F05011-17	4	
26	F05006-102	4	
27			
28	017884	1	
29	012797	1	
30	F05010-101	1	
31	F05010-16	1	
32	F05008-112	1	
33	F05009-2	1	
34	F05011-118	1	
35	F05011-11	2	
36	F05008-7	1	
37	F05010-31	2	
38	F05011-9	1	
39-44	110614	1	
39	110610	1	
40	110611	1	
41	F05005-113	4	
42	F05010-69	4	
43	F05011-11	4	
44	S09915	1	

6.2 Système D'entraînement



REF	PART #	QTY.
1-23	034860	1
1	034850	1
2-3	034843	1
3	057444	1
4	034856	1
5	034223	1
6	S31027	1

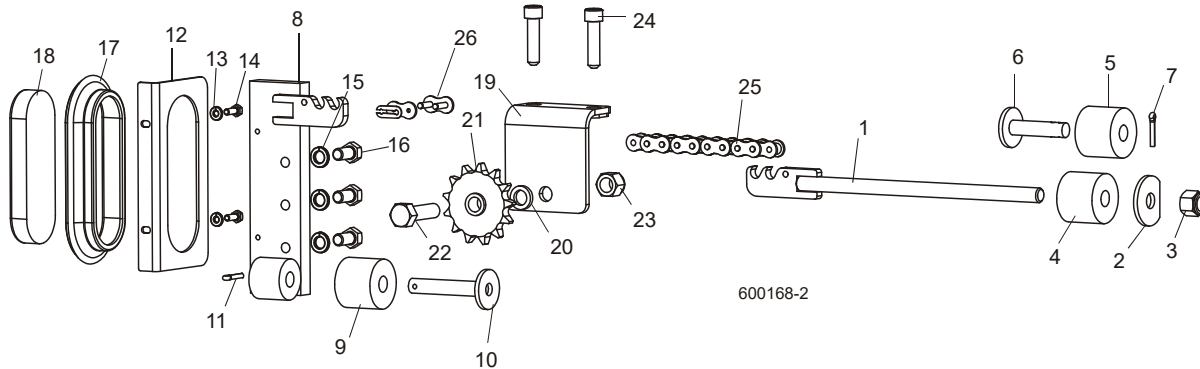
7	S21486	1
8	017719	1
9	034224	1
10	F04254-56	1
11	F05011-4	4
12	010748	1
13	F05009-2	1
14	F05011-9	2

15	F05008-62	2
16	F05007-123	4
17	F05010-4	1
18	F04254-12	1
19	074702	1
20	034851	1
21	034852	2
22	034857	1

23	F05006-165	2
24	024169 ¹	1
	050291 ²	1
25	024431-5	1
26-31	038878-A	1
26	038877	1
27	038876	1
28	038874	1
29	F05011-3	8
30	F05007-78	4
31	F05010-10	4

¹ CC² CA

6.3 Chaîne D'entraînement Et Butoir

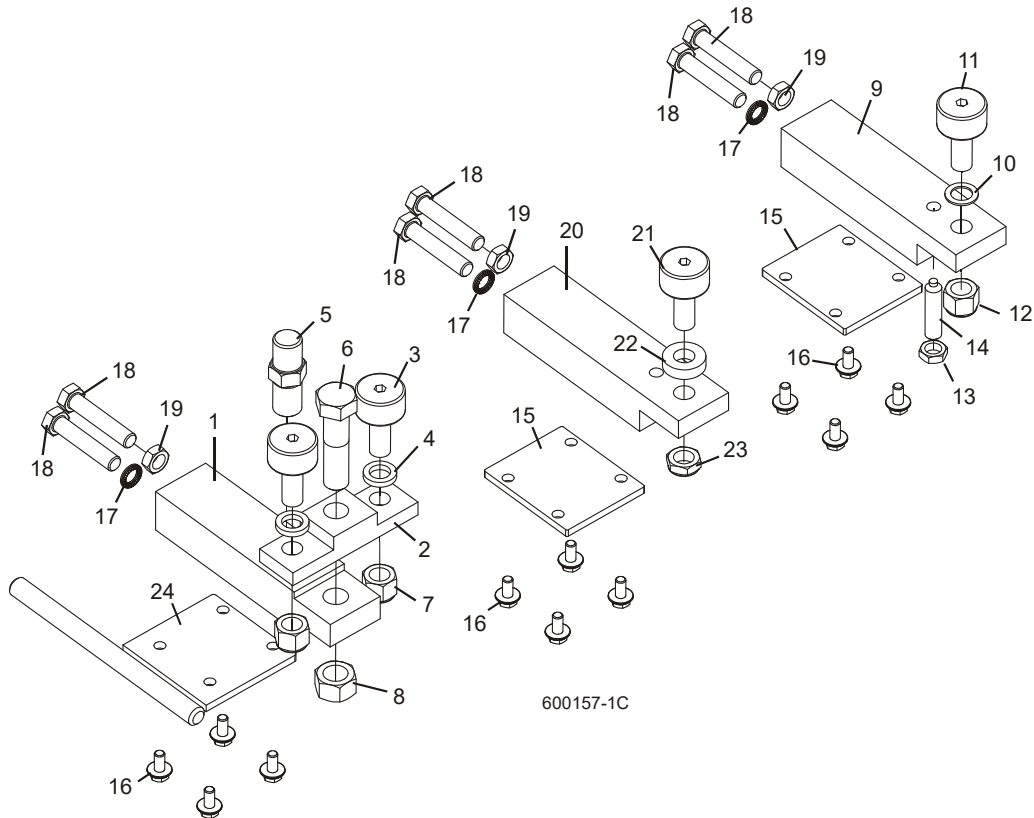


REF	PART #	QTY.
1-7	034556	1
1	034421	1
2	017838	1
3	F05010-34	1
4	P12165	1
5-7	K09630	1
5	P12165	1
6	W09293	1
7	F05012-21	1
8-18	006721	1

8	036493	1
9	P12165	1
10	034423	1
11	F05012-21	1
12	057822	1
13	F05011-14	2
14	F05005-1	2
15	F05011-9	3
16	F05008-128	3
17	006688	1
18	006391	1

19-24	034228	1
19	034227	1
20	S12480	1
21	034224	1
22	F05009-80	1
23	F05010-71	1
24	F05008-133	2
25	017842	1
26	042398	2

6.4 Paliers De Rail Inférieur

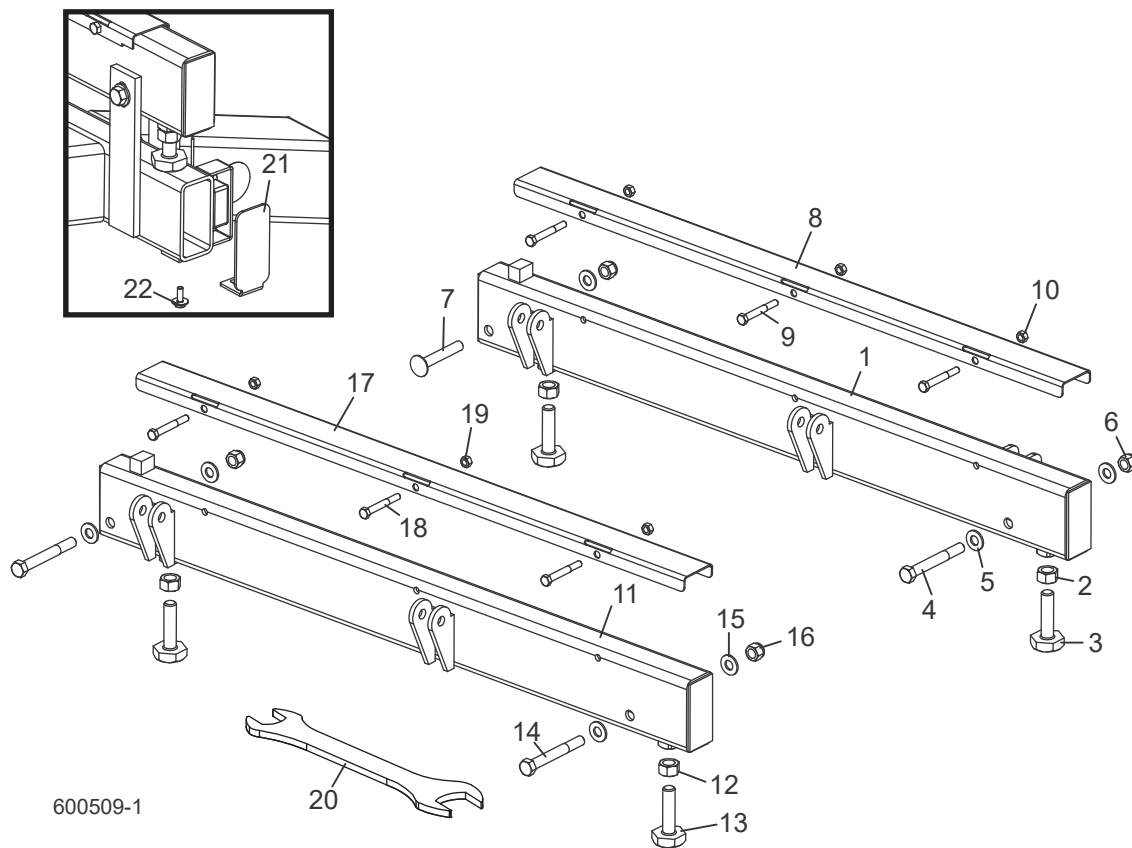


REF	PART #	QTY.
1-8	036344	1
1	036325	1
2	042500	1
3	012797	2
4	S12480	2
5	036324	1
6	F05013-5	1
7	F05010-101	2
8	F05010-80	1
9-14	034232	1
9	034234	1
10	016510	1
11	012797	1
12	F05010-11	1
13	F05010-31	1
14	F05008-137	1
15	033880	2

16	F05006-101	12
17	F05011-125	3
18	F05008-135	6
19	F05010-16	3
20-23	017887	1
20	034234	1
21	012797	1
22	034674	1
23	F05010-101	1
24	036473	1

PARTIE 7 BÂTI DE LA SCIE

7.1 Rails Avant Et Arrière Du Banc De Grume



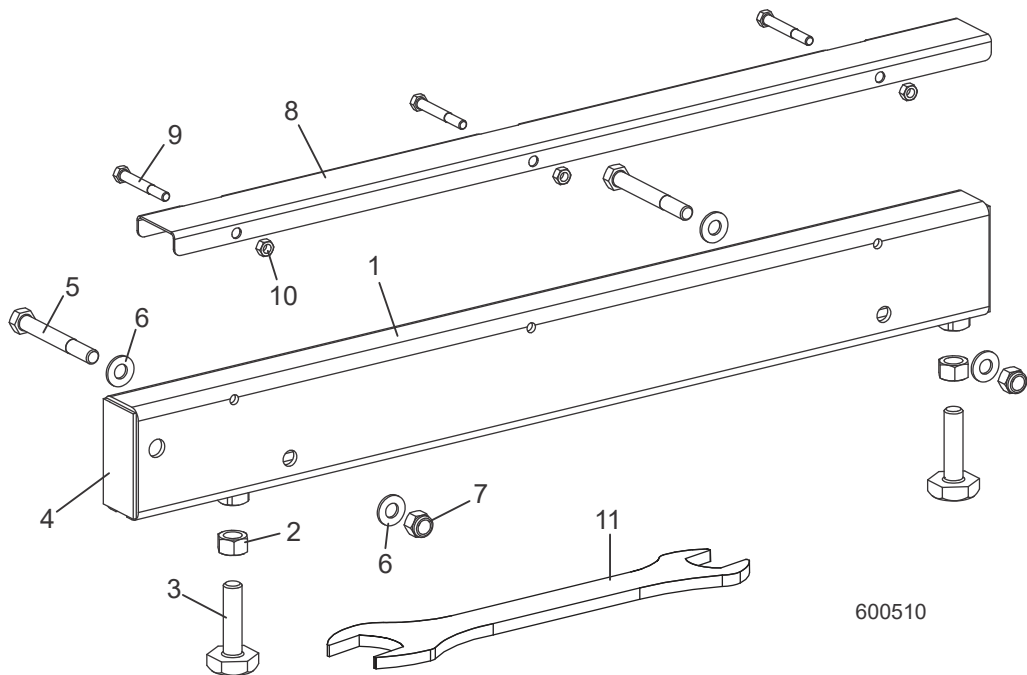
600509-1

REF	PART #	QTY.
1-10	034551	1
1	034547	1
2	F05010-5	2
3	S13006	2
4	F05008-78	1
5	F05011-2	3
6	F05010-8	2
7	F05008-94	1
8-10	079144	1
8	016898	1
9	F05006-10	3
10	F05010-6	3

	Voir Partie 8.15	1
11-19	034548	1
11	034544	1
12	F05010-5	2
13	S13006	2
14	F05008-78	2
15	F05011-2	4
16	F05010-8	2
17-19	079144	1
17	016898	1
18	F05006-10	3
19	F05010-6	3
	Voir Partie 8.15	1

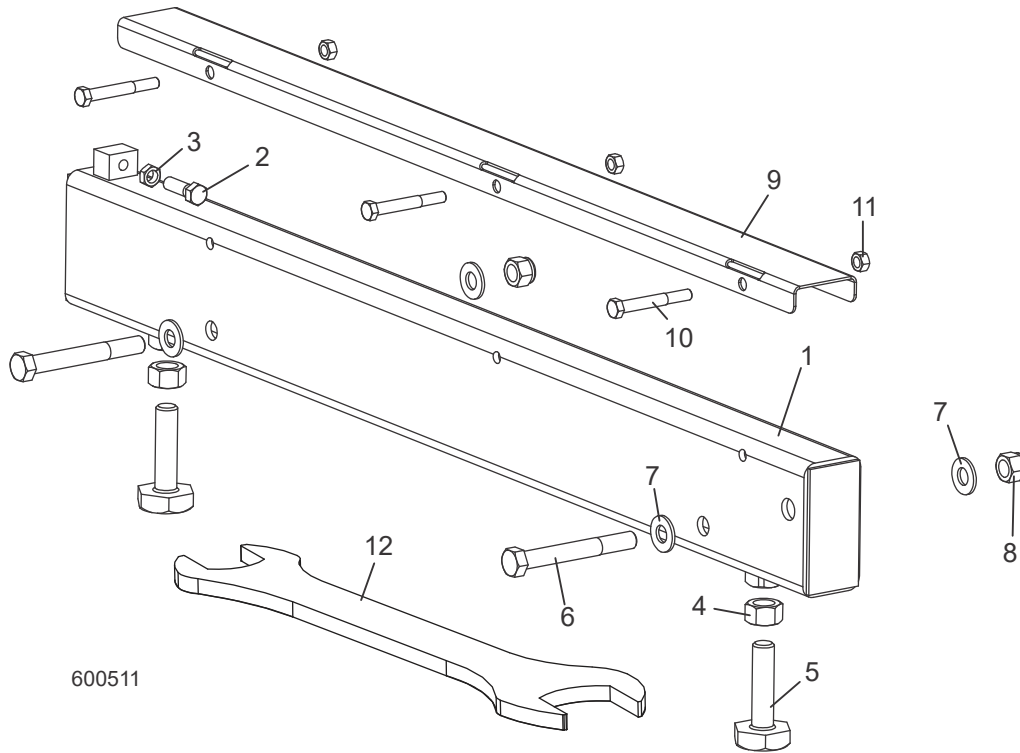
20	015970	1
21	038843	2
22	F05005-134	2

7.2 Rail Centre-avant Du Banc De Grume



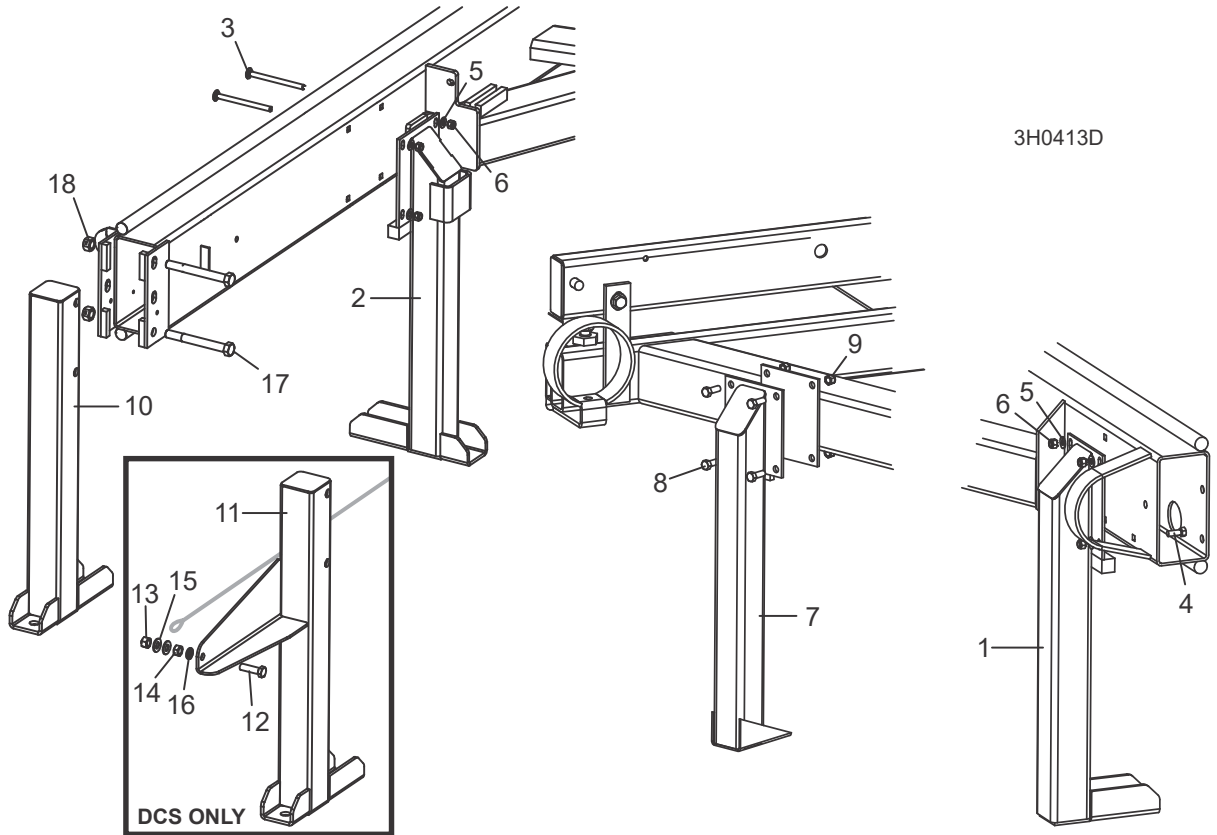
REF	PART #	QTY.
1-10	034549	1
1	034545	1
2	F05010-5	2
3	S13006	2
4	S04058	2
5	F05008-78	2
6	F05011-2	4
7	F05010-8	2
8-10	A09956	1
8	S09944	1
9	F05006-10	3
10	F05010-6	3
11	015970	1

7.3 Rail Centre-arrière Du Banc De Grume



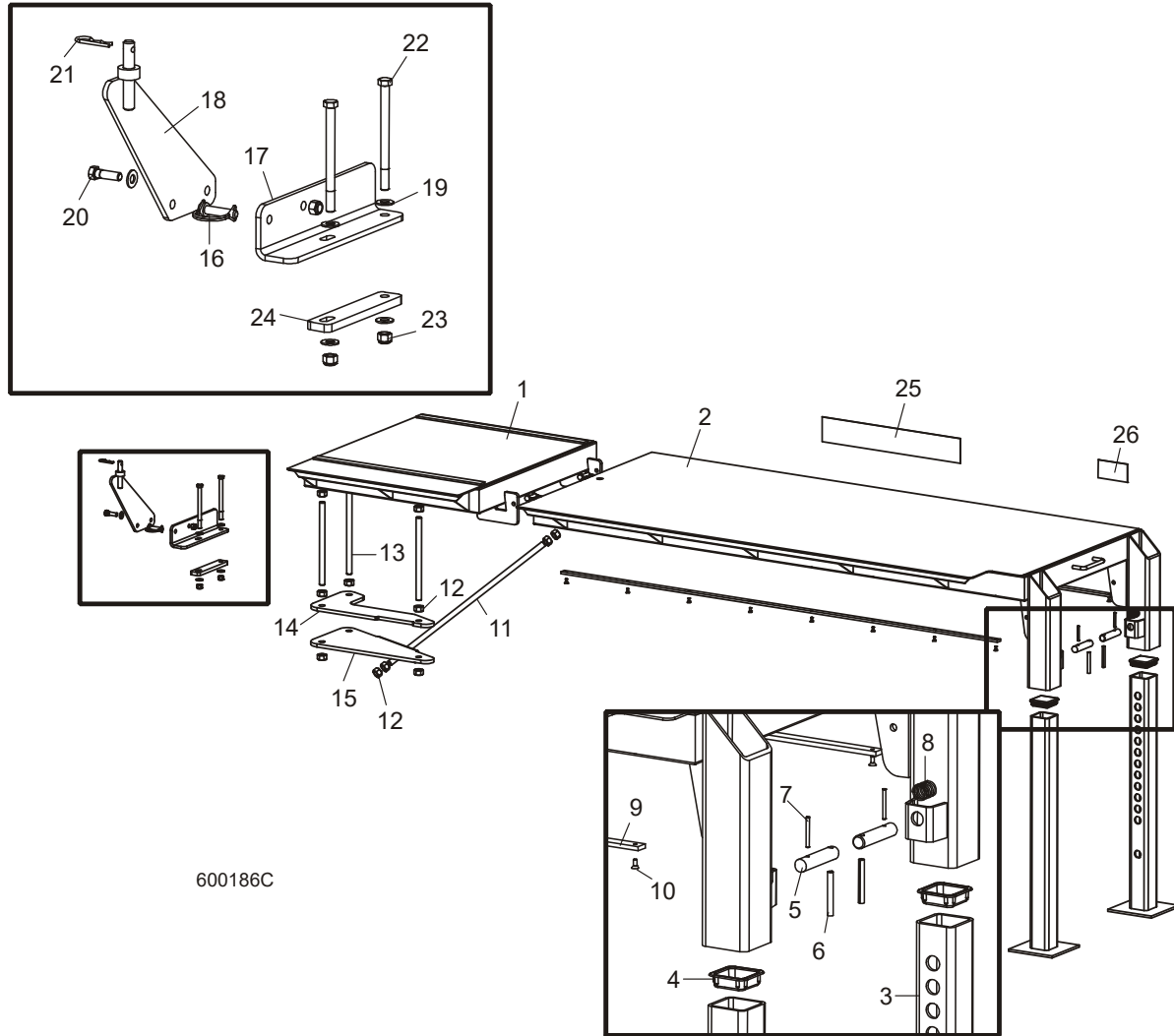
REF	PART #	QTY.
1-11	034550	1
1	034546	1
2	F05007-2	1
3	F05010-29	1
4	F05010-5	2
5	S13006	2
6	F05008-78	2
7	F05011-2	4
8	F05010-8	2
9-11	A09956	1
9	S09944	1
10	F05006-10	3
11	F05010-6	3
12	015970	1

7.4 Appuis Fixes



REF	PART #	QTY.
1	W09513	1/3
2	015091	1
3	F05007-113	8/12
4	F05007-2	4
5	F05011-3	8/16
6	F05010-10	8/16
7	W09515	2
8	F05007-2	8
9	F05010-10	8
10	W09517	1
11	F05009-11	2
12	F05010-4	2

7.5 Table D'éjecteur De Planches



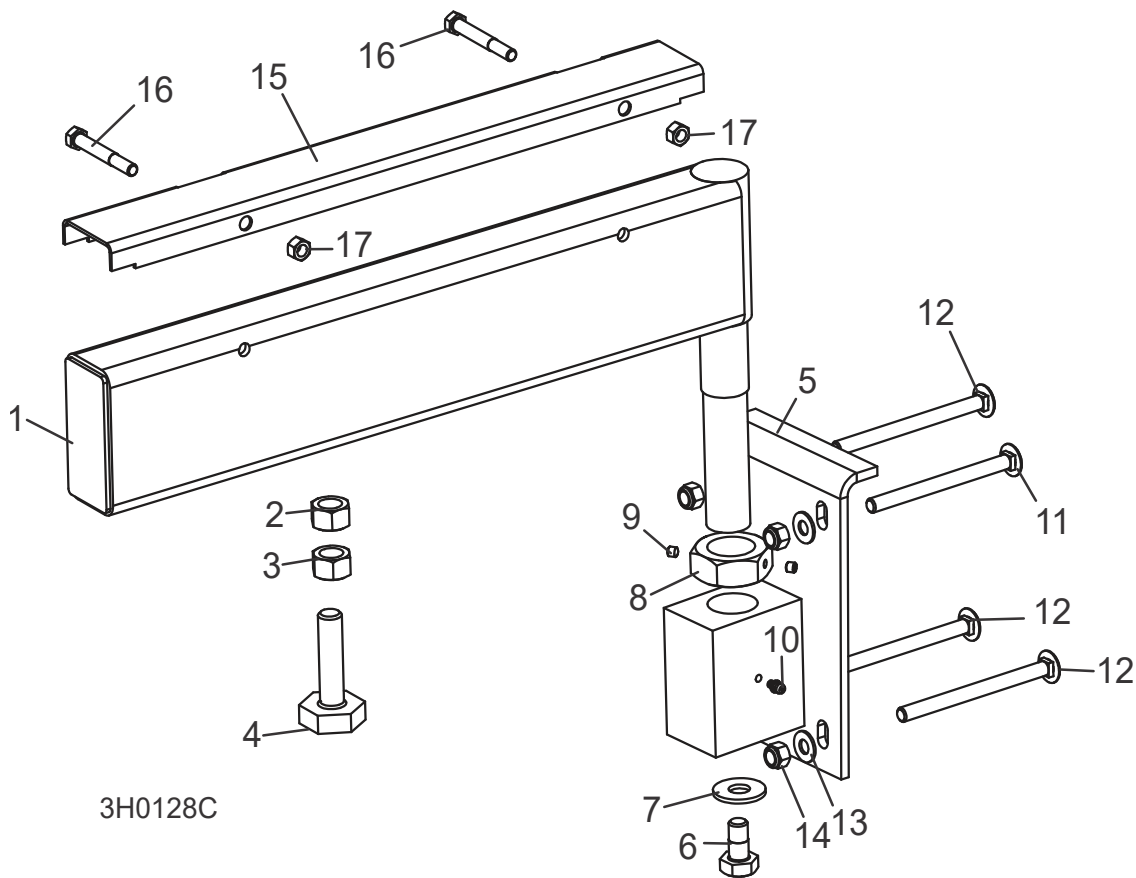
600186C

REF	PART #	QTY.
1-26	BT1	1
1	045826	1
2	036670	1
3	W07537	2
4	P09926	1
5-6	016148	2
5	-----	1
6	F05012-47	1
7	F05012-103	2
8	016145	2
9	046400	2

10	F05004-61	16
11	046061	1
12	F05010-5	13
13	045844	3
14	045832	1
15	045833	1
16	046412	3
17	046091	1
18	046095	1
19	F05011-3	5
20	F05007-123	1
21	P05059	1

22	F05007-86	2
23	F05010-10	3
24	046099	1
25	S12281	1
26	015365-5	1

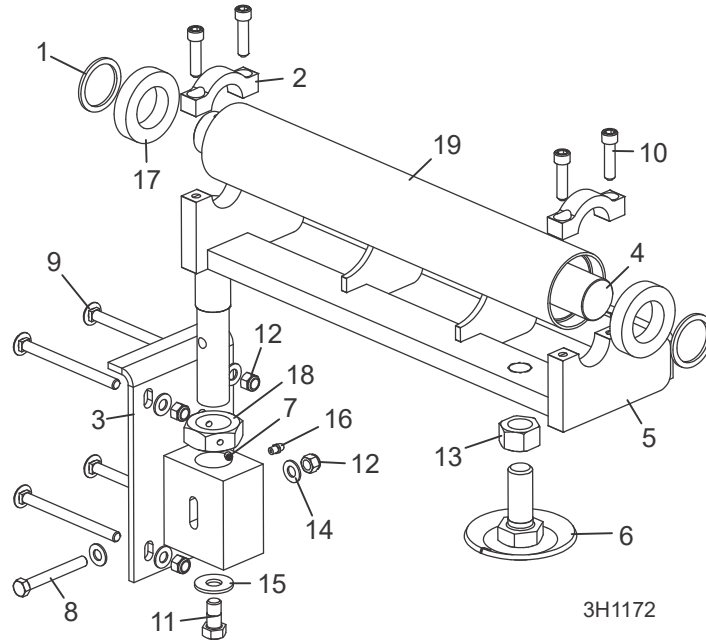
7.6 Support De Grume Mobile



REF	PART #	QTY.
1-10	A13015	2
1-4	----	1
2	F05010-84	2
3	F05010-5	2
4	S13006	2
5	W13090	1
6	F05008-50	1
7	F05011-52	1
8	S13016	1
9	F05005-42	2
10	P04107	1
11	F05007-114	2
12	F05007-113	6
13	F05011-3	8

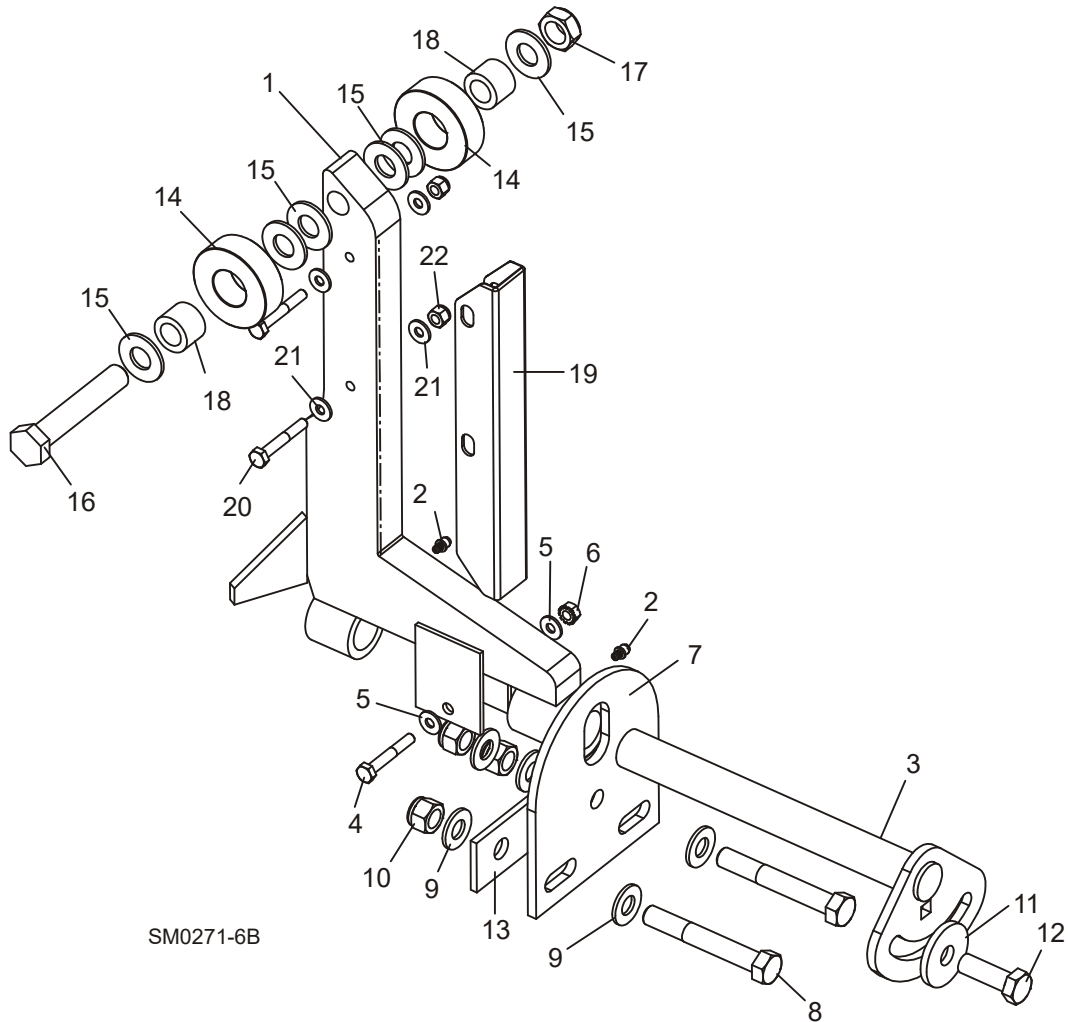
14	F05010-10	8
15-17	017710	2
15	S13012	1
16	F05006-10	2
17	F05010-6	2

7.7 Taper Roller Pivot Assembly



REF	PART #	QTY.	
	076729	1	
1	074843	2	
2	076234	2	
3	076698	1	
4	076753	1	
5	076754	1	
6	079075	1	
7	F05005-42	2	
8	F05007-1	1	
9	F05007-114	4	
10	F05007-36	4	
11	F05008-50	1	
12	F05010-10	5	
13	f05010-136	1	
14	F05011-3	6	
15	F05011-52	1	
16	P05060	1	
17	P13024	2	
18	S13016	1	
19	S13020	1	
	015970	1	

7.8 Cales À Billes (Non Hydrauliques)

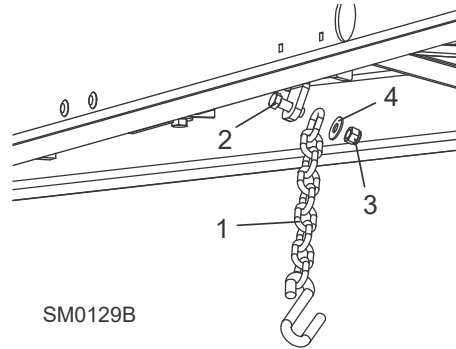


REF	PART #	QTY.
1-2	015235	2
2	P04107	2
3-13	016559	2
3	016544	1
4	F05005-4	1
5	F05011-11	2
6	F05010-9	1
7	016555	1
8	F05008-61	2
9	F05011-2	2
10	F05010-8	3

11	014632	1
12	F05008-33	1
13	016558	1
14-18	016562	4
14	016561	2
15	F05011-5	6
16	F05009-118	1
17	F05010-96	1
18	016560	2
19-22	016798	1
19	016722	4
20	F05005-4	8

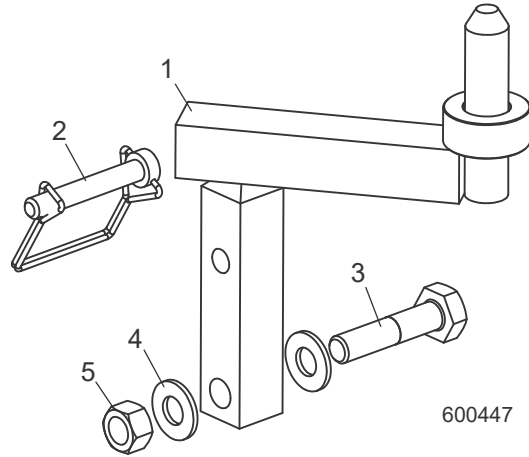
21	F05011-11	16
22	F05010-69	8

7.9 Chaîne De Sécurité



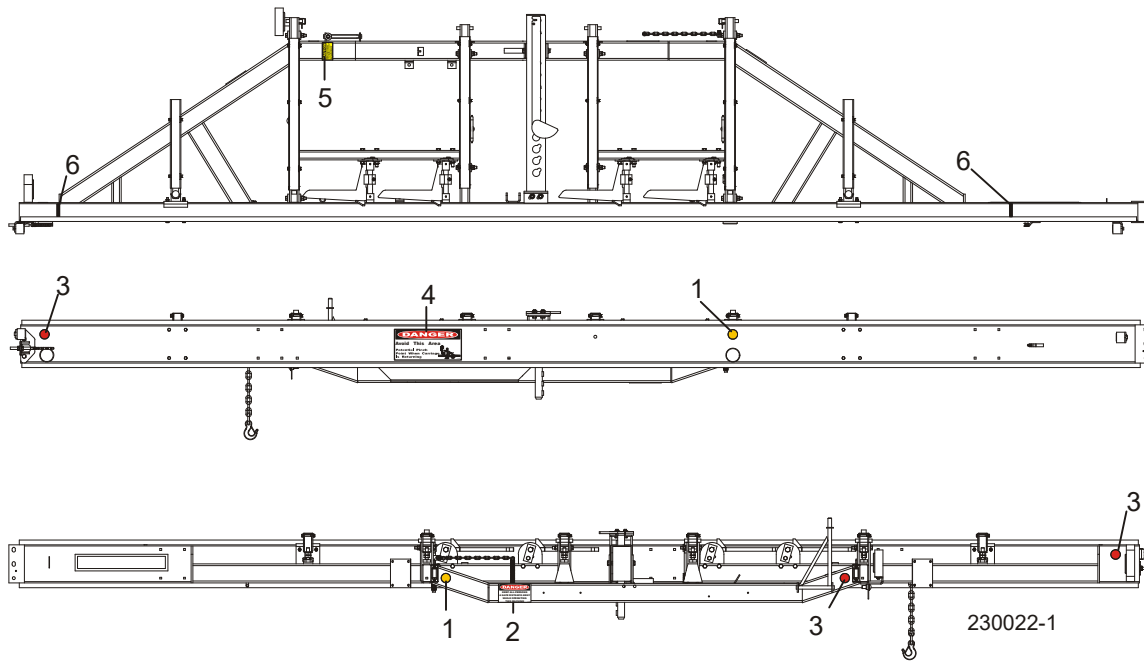
REF	PART #	QTY.
	107972	1
1	F05008-33	1
2	F05010-8	1
3	F05011-35	1

7.10 Attache De La Tête De Scie



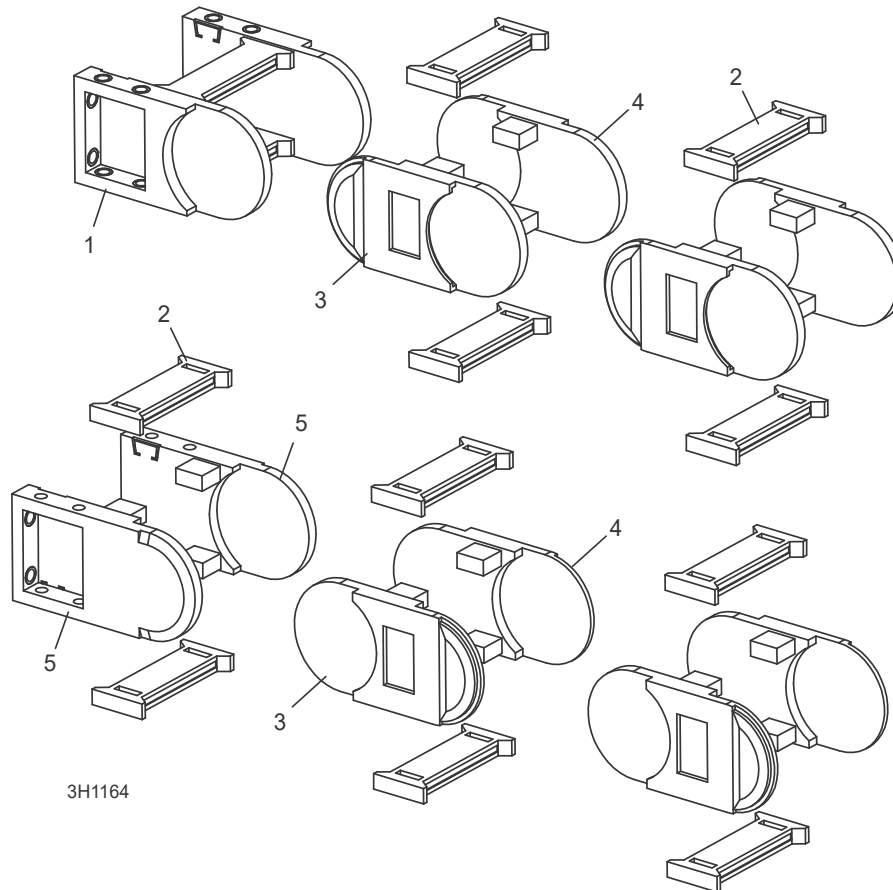
REF	PART #	QTY.
1-5	074596	1
	074597	1
1	074126	1
	074127	1
2	014151	1
3	F05008-10	1
4	F05011-2	2
5	F05010-3	1

7.11 Étiquettes D'avertissement



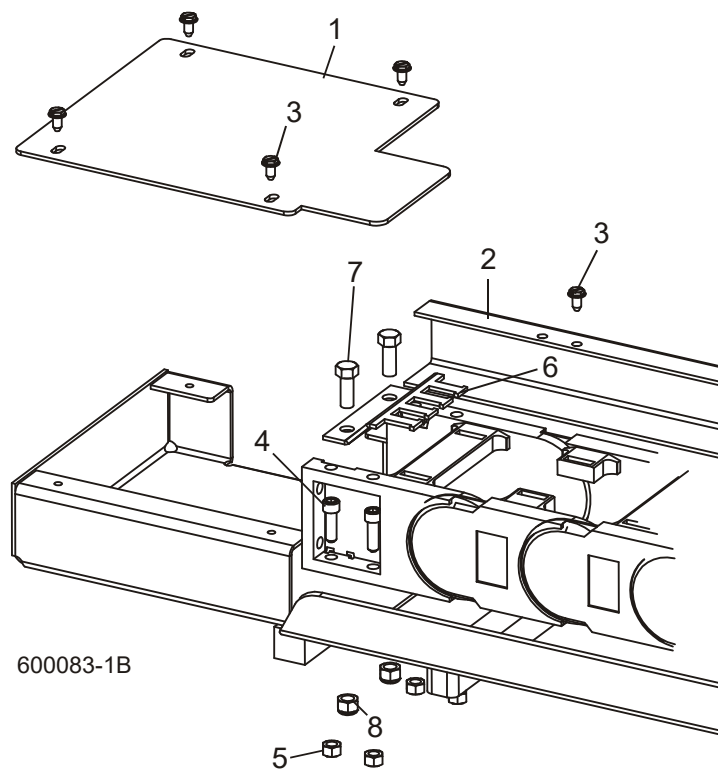
REF	PART #	QTY.
1	P07453	2
2	S09851	1
3	P07452	3
4	P10287	1
5	S12581	1
6	S12051	2

7.12 Câble-Chaîne



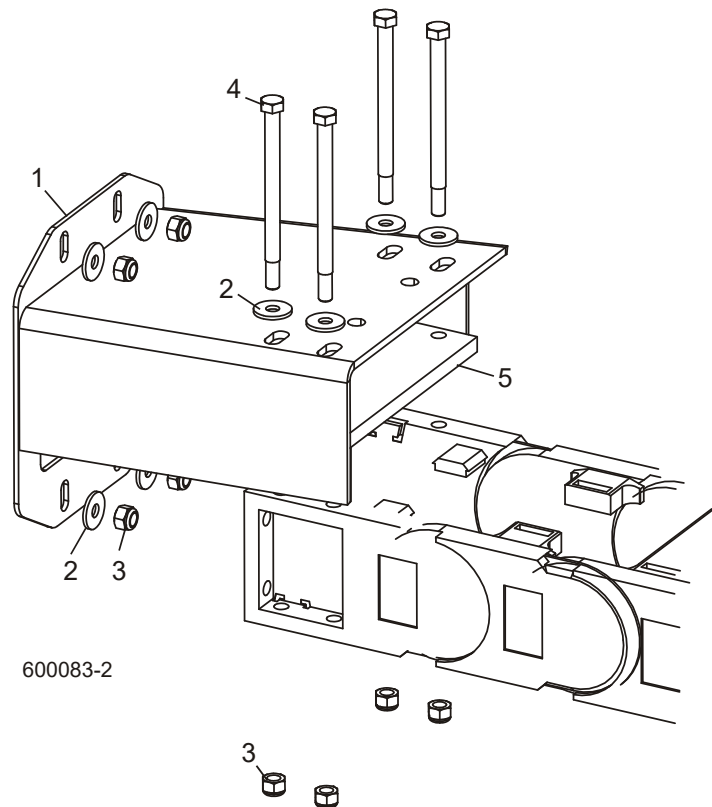
REF	PART #	QTY.
1-6	074693	1
1	023612-3	2
2	023612-4	55
3	061154	52
4	061155	52
5	023612-9	2

7.13 Fixation Inférieure Du Câble-chaîne



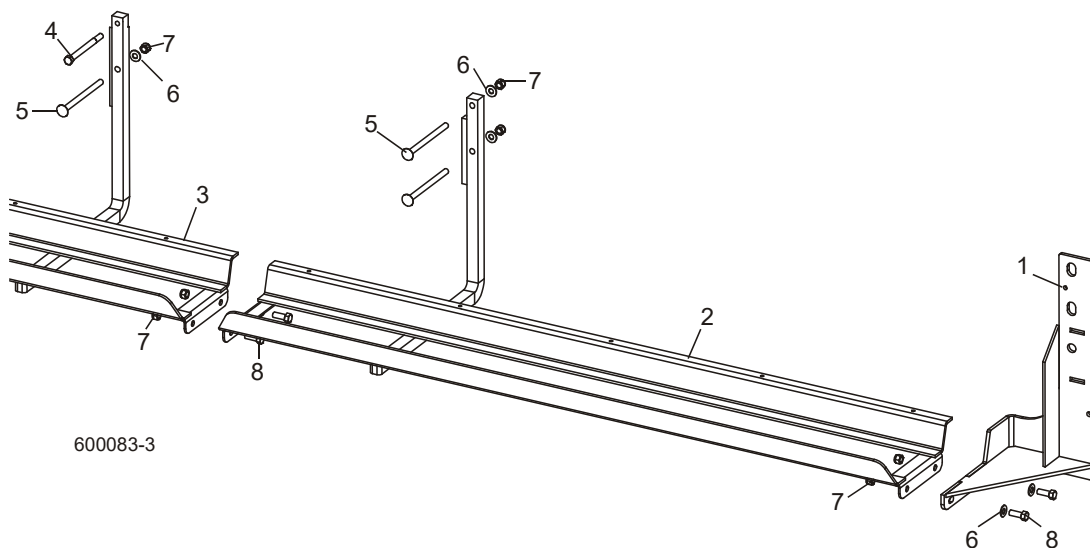
REF	PART #	QTY.
1	015578	1
2	017747	1
3	F05015-1	7
4	F05006-19	4
5	F05010-6	4
6	023604	1
7	F05007-7	2
8	F05010-10	2

7.14 Fixation Supérieure Du Câble-Chaine



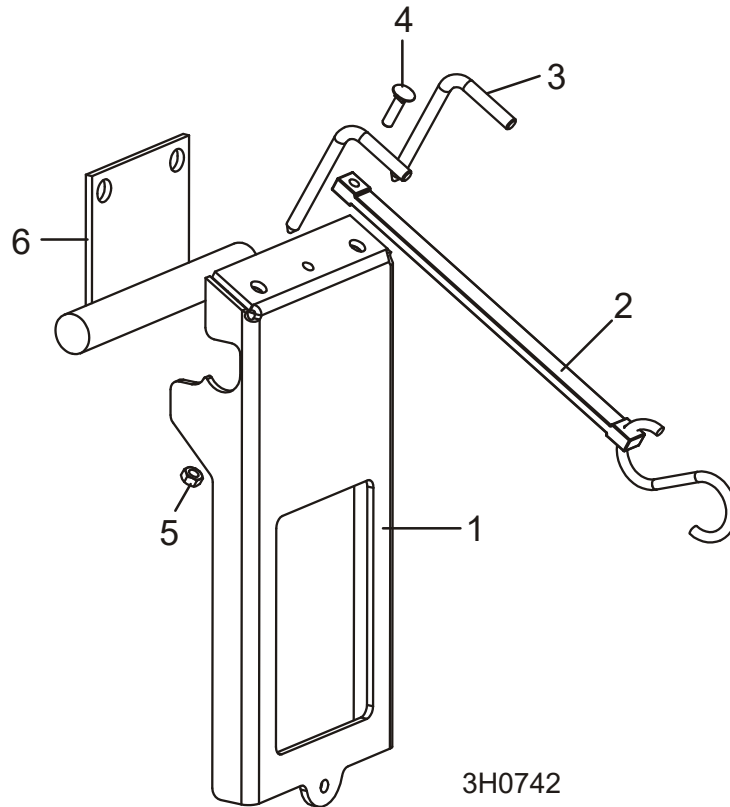
REF	PART #	QTY.
1	034387	1
2	F05011-16	8
3	F05010-58	8
4	F05006-82	4
5	023606	1

7.15 Fixation Avant Du Plateau De Câble-chaîne



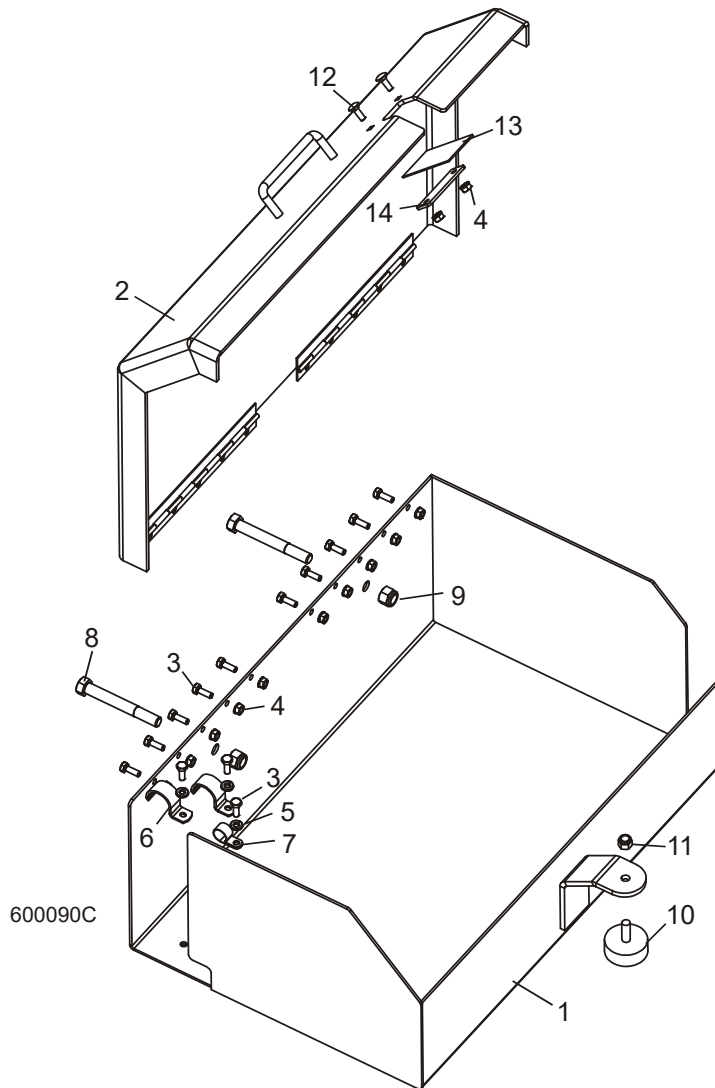
REF	PART #	QTY.
1	034875	1
2	042747	1
3	042746	1
4	F05007-35	1
5	F05007-31	9
6	F05011-3	11
7	F05010-10	13
8	F05007-7	4

7.16 Fixation Du Support De Rail Souple



REF	PART #	QTY.
1-5	023586	1
1	----	1
2	012965	1
3	023602	2
4	F05005-34	1
5	F05010-21	1
6	023589	1

7.17 Boîte De Cable À Distance

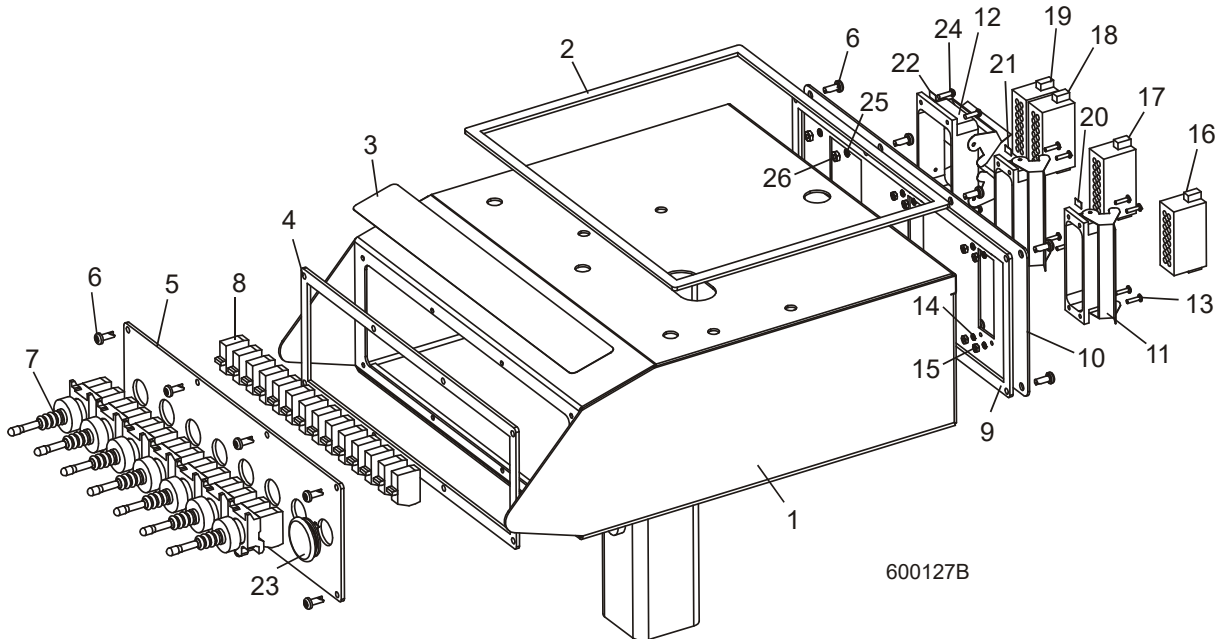


1-12	034792	1
1	-----	1
2	034791	1
3	F05005-1	13
4	F05010-9	12
5	F05011-14	2
6	P05436	2
7	010748	1
8	F05008-78	2
9	F05010-8	2
10	034175	1

11	F05010-10	1
12	F05005-113	2
13	017958	1
14	017959	1

PARTIE 8 SYSTÈME HYDRAULIQUE

8.1 Boîte De Commande Des Options Hydrauliques

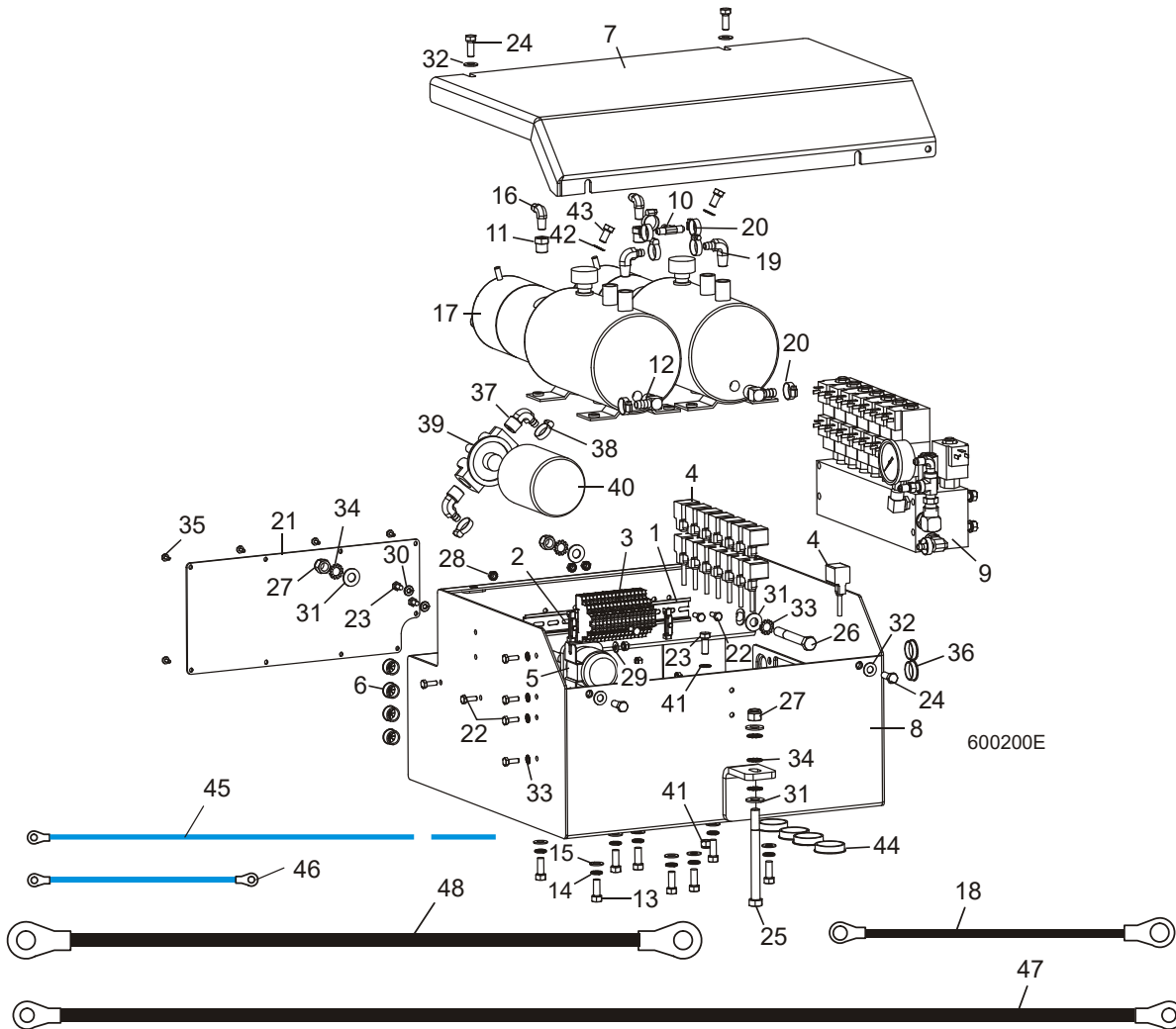


REF	PART #	QTY.
1-26	053071 ¹	1
	053077 ²	1
1	017891	1
2	045349	1
3	038407	1
4	045347	1
5	034647	1
6	F05015-17	16
7	050766	7
8	052075	14
9	045348	1
10	017927	1
11	E23103	2
12	050828	1
13	F05004-14	8
14	F05011-21	8
15	F05010-43	8
16	E23105	1
17	015670	1

18-19	050964	1
18	015670	1
19	E23105	1
20	038409	1
21	038410	1
22	038411	1
23	024250	1
24	F05015-24	4
25	F05011-78	4
26	F05010-44	4

¹ CC² CA

8.2 Boîte De Pompe Des Hydrauliques (CC)



REF	PART #	QTY.
1-4	050794	1
1	024474-11	1
2	E22707	2
3	024908	18
4	050829	15
5-44	034638	1
5	016371	2
6	036778	4
7	034636	1
8	036777	1
9	See Section 8.5	

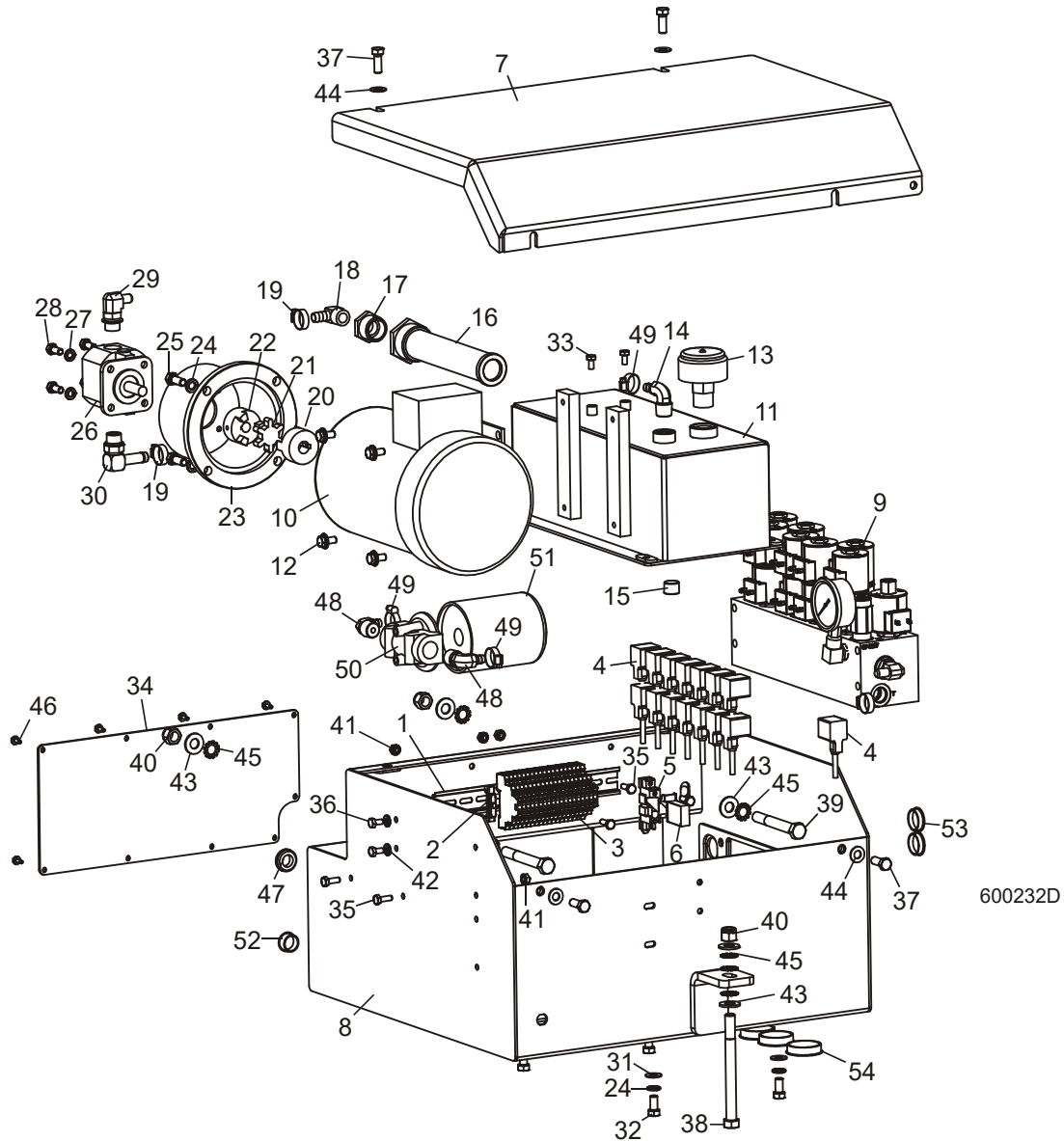
9-19	034654	1
10	015485	1
11	015490	2
12	015997	2
13	F05007-7	8
14	F05011-3	8
15	F05011-4	8
16	P09142	2
17	P12701	2
18	052806	2
19	P12708	2
20	P12739	7

21	034795	1
22	F05005-1	9
23	F05005-15	2
24	F05007-87	5
25	F05008-28	1
26	F05008-78	2
27	F05010-8	3
28	F05010-9	9
29	F05011-11	4
30	F05011-14	2
31	F05011-2	6
32	F05011-3	4

8 Système Hydraulique

33	F05011-37	4
34	F05011-39	7
35	F05015-7	9
36	036778	2
37	P12707	2
38	P12739	2
39-40	P22683	1
40	P20301	1
41	F05010-10	1
42	F05011-36	3
43	F05007-27	2
44	016419	4
45	036316	2
46	036314	1
47	036313	2
48	036312	2

8.3 Boîte De Pompe Des Hydrauliques (230/460V CA)



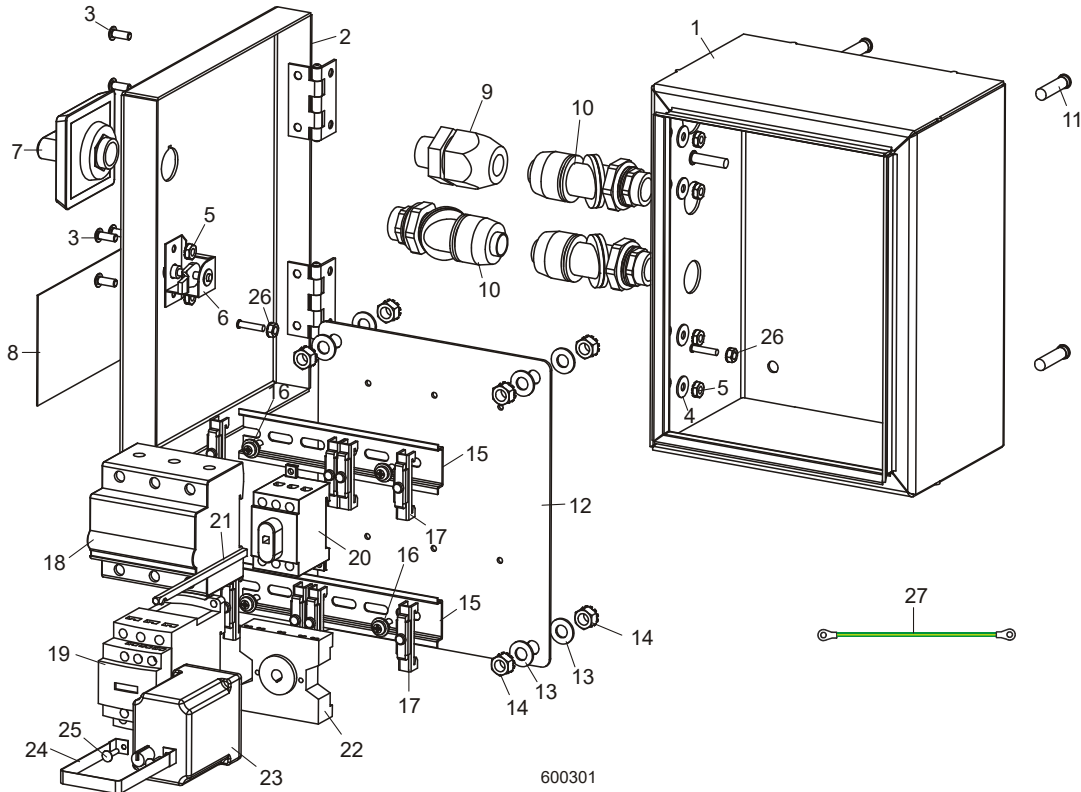
REF	PART #	QTY.
1-6	050808	1
1	024474-11	1
2	E22707	2
3	024908	19
4	050829	15
5	050897	1
6	050896	1
7-53	017880	1

7	034636	1
8	036777	1
9	See Section 8.6	
7-29	054824	1
10	055312	1
11	054825	1
12	F05006-101	4
13	P20212	1
14	P12707	1

15	P26258	1
16	P20210	1
17	P20239	1
18	015997	1
19	P12739	2
20	038951	1
21	P20218	1
22	P20217	1
23	P20215	1

24	F05011-4	8
25	F05007-87	4
26	P20213	1
27	F05011-13	4
28	F05006-102	4
29	015907	1
30	038949	1
31	F05011-3	4
32	F05007-27	4
33	034795	1
34	F05005-1	5
35	F05005-15	2
36	F05007-87	4
37	F05008-28	1
38	F05008-78	2
39	F05010-8	3
40	F05010-9	5
41	F05011-14	2
42	F05011-2	6
43	F05011-3	4
44	F05011-39	7
45	F05015-7	9
46	P11764	1
47	P12707	2
48	P12739	3
49-50	P22683	1
50	P20301	1
51	016424	1
52	036778	2
53	016419	4

8.4 Boîte De Commande Des Hydrauliques (230/460V CA)



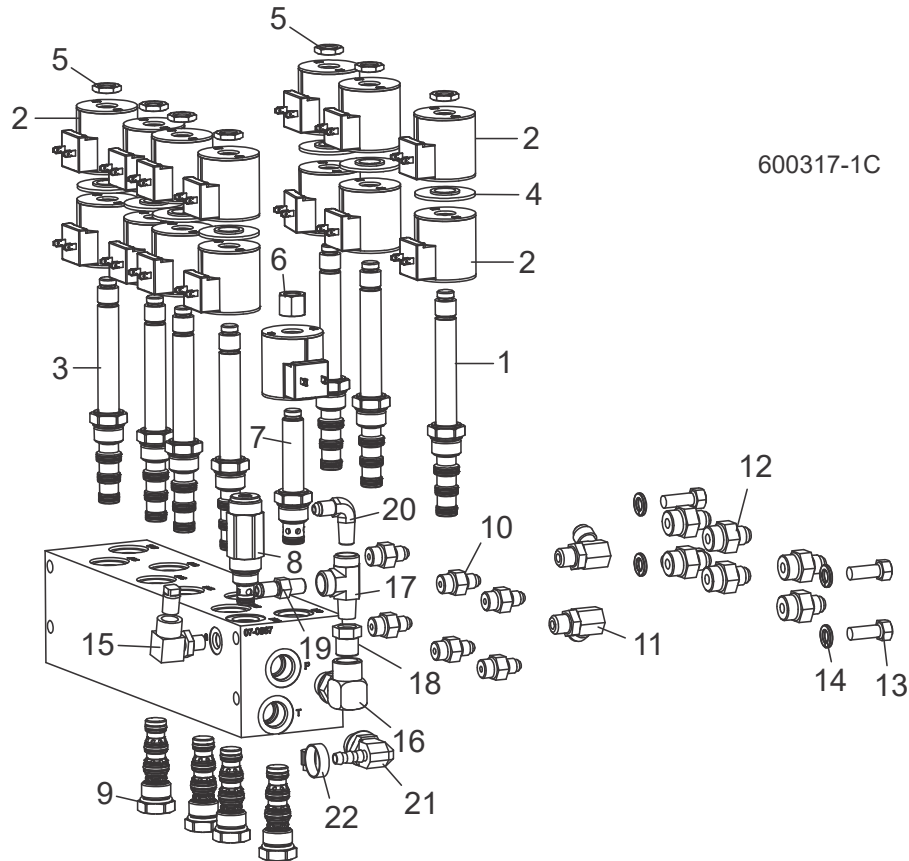
REF	PART #	QTY.
1-27	050900 ¹	1
	050899 ²	1
1	050302	1
2	050307	1
3	F05004-196	6
4	F05011-18	4
5	F05010-14	6
6	051978	1
7	050883-1	1
8	051948	1
9	E22721	1
10	051750	3
11	F05006-113	4
12	050306	1
13	F05011-17	8
14	F05010-20	8
15	024474-6	2

16	F05004-186	4
17	E22707	8
18	024904 ¹	1
	050335	1
19	050332	1
20	050903-1	1
21	050882-1	1
22	E22700	1
23	050314	1
24	050967	1
25	F04203-5	2
26	F05010-41	2
27	025187	1

¹ E25-L

² E25-H

8.5 Valve Hydraulique (CC)

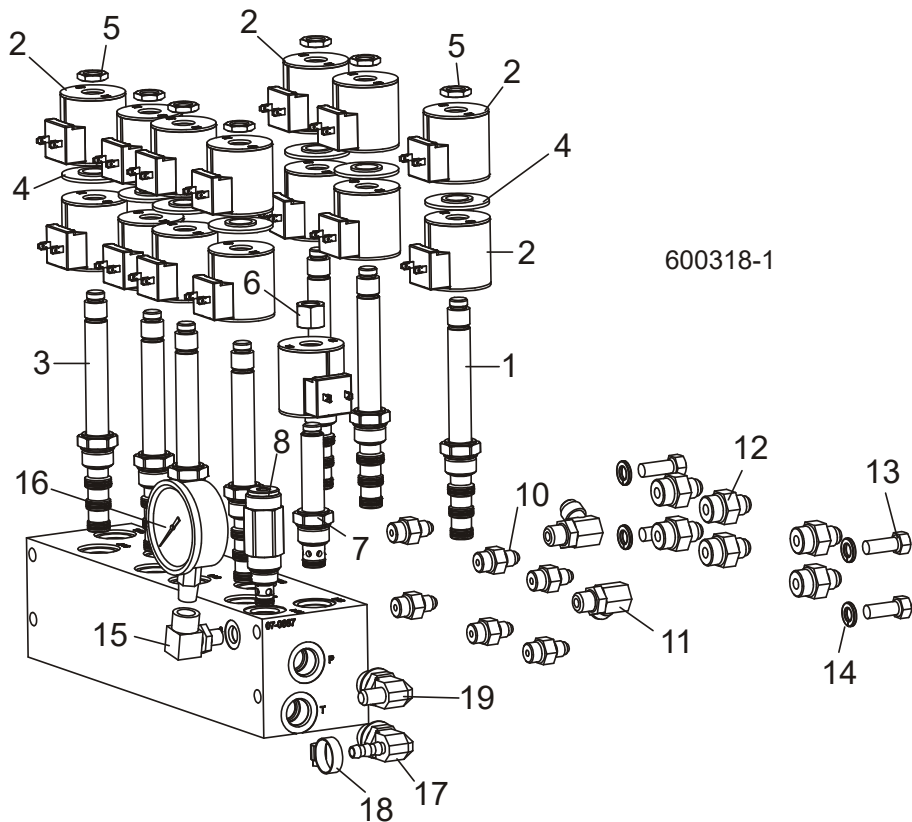


REF	PART #	QTY.
1-15	036760 ¹	1
1-9	025688	1
1	025830	3
2	025834	15
3	025829	4
4	025838	7
5	025837	7
6	025836	1
7	025831	1
8	025833	1
9	025832	4
10	P26284	6
11	P12704	2
12	P12703	6

13	F05007-7	4
14	F05011-4	4
15	017881	1
16	036164	1
17	P09141	1
18	015490	1
19	P09143	1
20	P09142	1
21	034635	1
22	P12739	1

¹ Torque cartridge spools to 24-26 ft-lbs. Torque coil nuts to 7-10 ft-lbs.

8.6 Valve Hydraulique (CA)



REF	PART #	QTY.
1-16	036760	1
1-9	025688	1
1	025830	3
2	025835	15
3	025829	4
4	025838	7
5	025837	7
6	025836	1
7	025831	1
8	025833	1
9	025832	4
10	P26284	6
11	P12704	2
12	P12703	6

13	F05007-7	4
14	F05011-4	4
15	017881	1
16	P10052	1
17	034635	1
18	P12739	1
19	015907	1

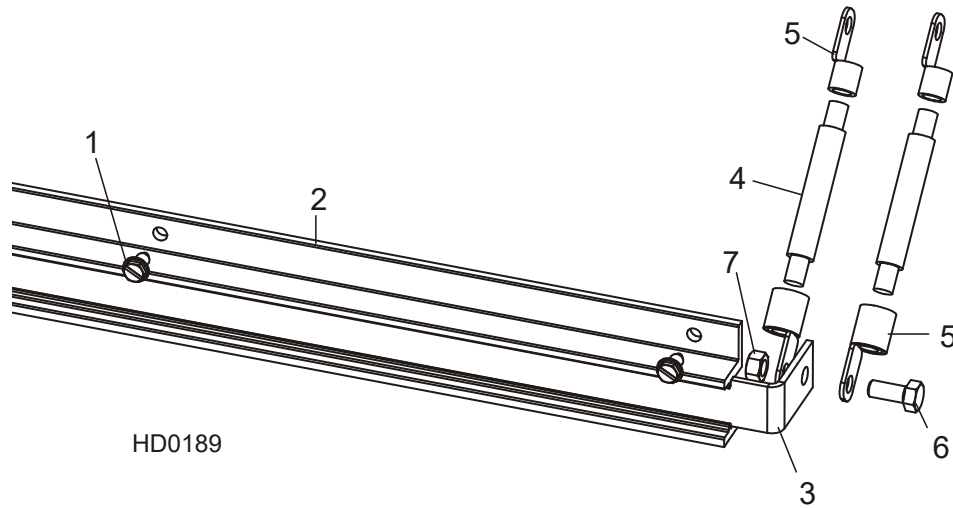


Système Hydraulique

Plaque De Contact Hydraulique Et Bornes (CC Seulement)

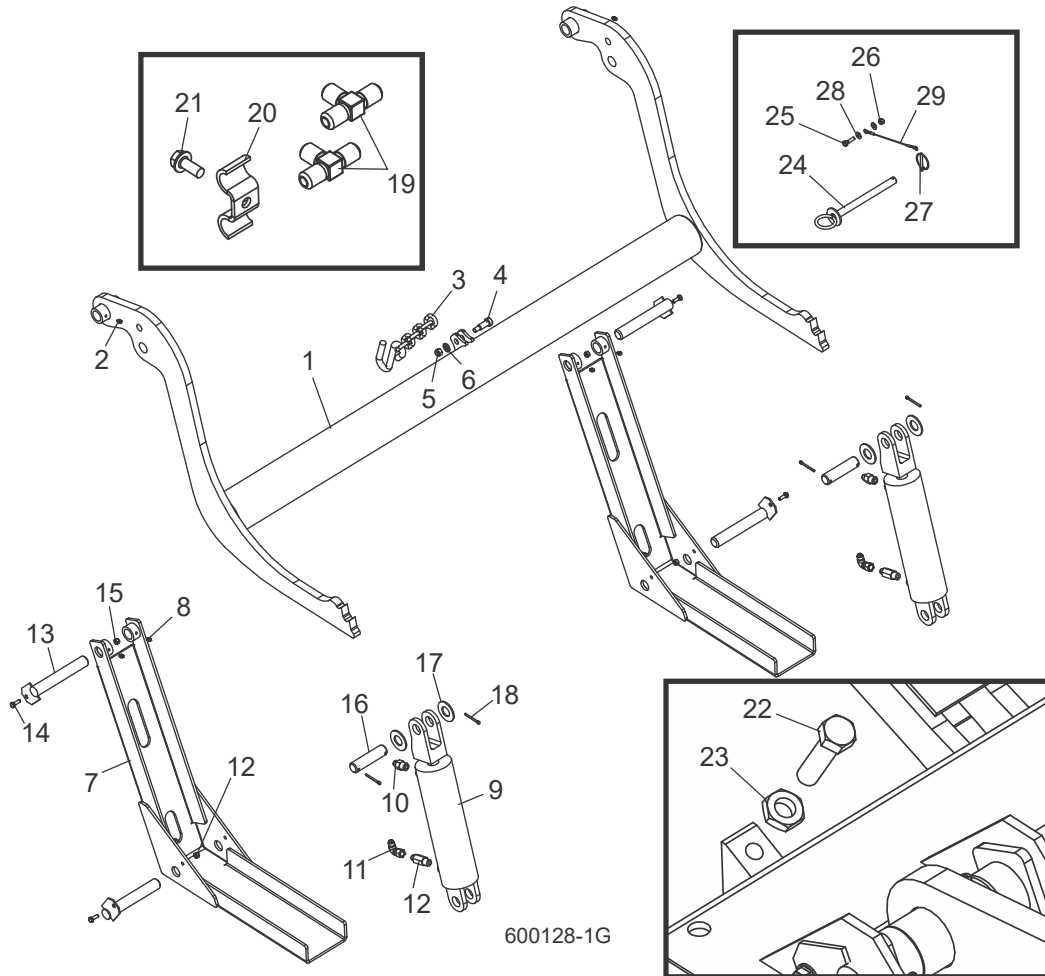
8.7 Plaque De Contact Hydraulique Et Bornes (CC Seulement)

8.8 Plaque De Contact Hydraulique Et Bornes Arrière (CC Seulement)



REF	PART #	QTY.
1-8	036686	1
1	F05015-1	7
2	036687	1
3	017859	1
4-6	052160	1
5	-----	10 Ft
6	F05092-16	2
7	F05006-5	1
8	F05010-17	1

8.9 Chargeuse Hydraulique

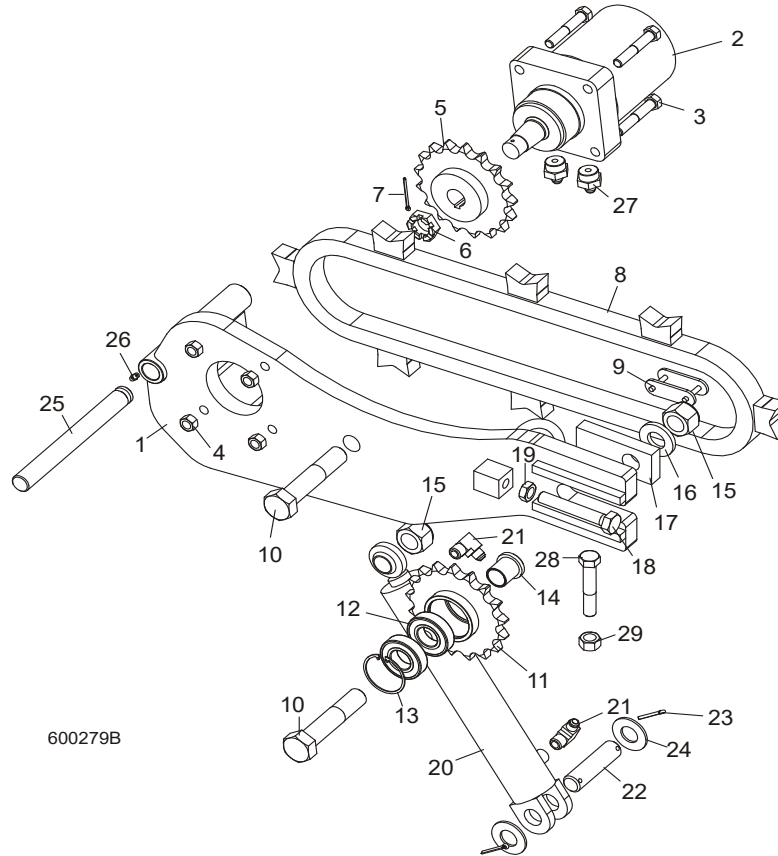


600128-1G

REF	PART #	QTY.	
	034539	1	
	036416	1	
1	110372	1	
2	P04107	2	
3	110472	1	
4	F05008-146	1	
5	F05010-10	1	
6	F05011-3	1	
7	W09444	2	
8	P04107	4	
	038735	2	
9	042754	1	
	P12956	1	

10	016819	1	
11	042756	1	
12	038734	1	
13	W09446	4	
14	F05005-1	4	
15	F05010-69	4	
16	S09251	2	
17	F05011-28	4	
18	F05012-23	4	
19	015487	1	
20	016041	6	
21	F05006-102	6	
22	F05008-7	2	
23	F05010-31	2	
	074208	1	
24	036692	1	
25	F05005-101	1	
26	F05010-69	1	
27	017604	1	
28	F05011-11	2	
29	016090	1	
	074207	1	

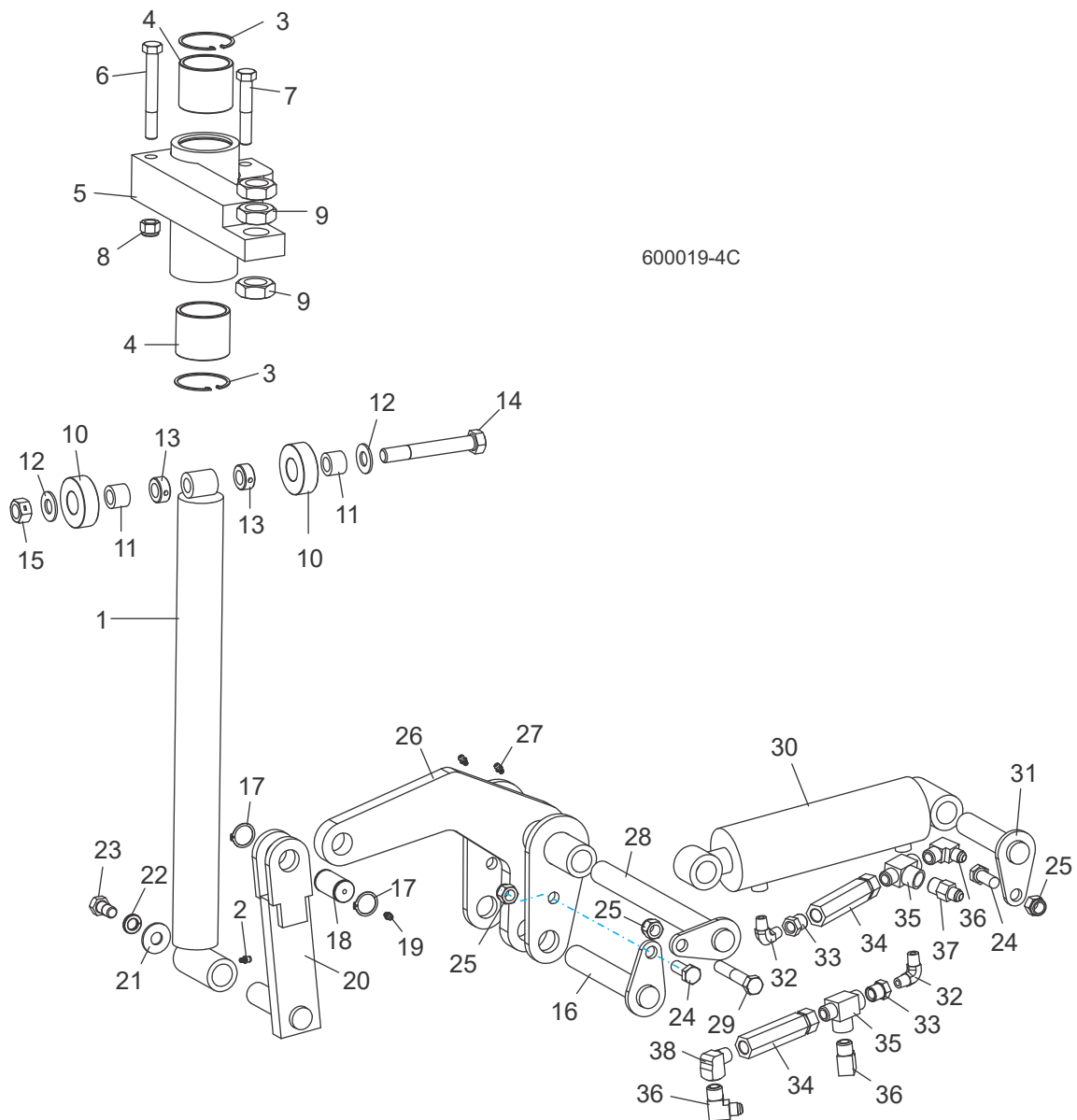
8.10 Tourne-bille Hydraulique



REF	PART #	QTY.
1-27	006095	1
1	006471	1
2	007331	1
3	F05008-23	4
4	F05010-3	4
5	042192	1
6	018741-2	1
7	F05012-43	1
8	006097	1
9	016796	1
10	F05004-132	2
11-13	042193	1
11	042191	1
12	P11035	2
13	F04254-12	1
14	042187	2

15	F05010-109	2
16	038749	1
17	042188	1
18	F05009-31	1
19	F05010-82	1
20	034267	1
21	016820	1
22	S09251	1
23	F05012-23	2
24	F05011-28	2
25	006722	1
26	P05060	1
27	017640	2

8.11 Cales Hydrauliques (Avant)



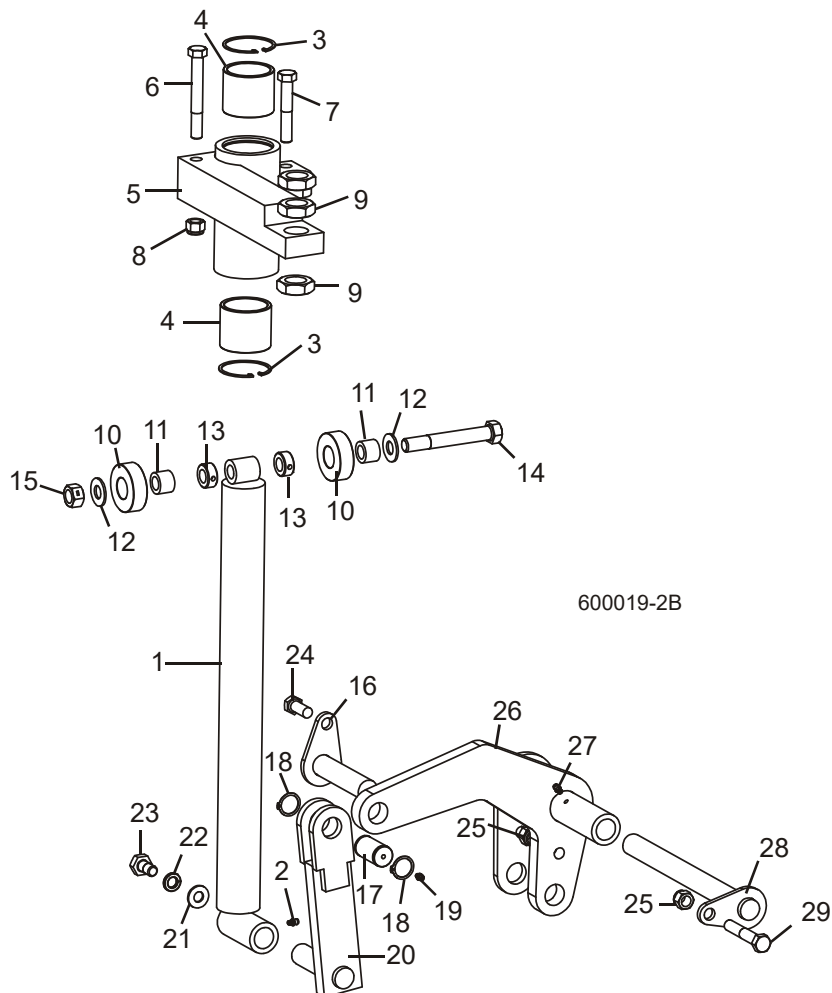
REF	PART #	QTY.
1-15	034732	1
1	034704	1
2	P04107	1
3	F04254-12	2
4	042262	2
5	034703	1
6	F05008-78	1
7	F05008-23	1

8	F05010-8	2
9	F05010-118	3
10-15	034733	1
10	016561	2
11	016560	2
12	F05011-5	2
13	P05035	2
14	F05009-10	1
15	F05010-4	1
16	106880	1

17-19	036053	1
17	034718	1
18	F04254-15	2
19	P04107	1
20	034711	1
21	F05011-52	1
22	F05011-9	1
23	F05008-50	1
24	F05008-37	2
25	F05010-8	3

26	106868	1
27	P04107	2
28	034728	1
29	F05008-23	1
30	034736	1
31	034726	1
32	P09140	2
33	015490	2
34	015484	2
35	016822	2
36	016820	3
37	016819	1
38	P05759	1

8.12 Cales Hydrauliques (Arrière)

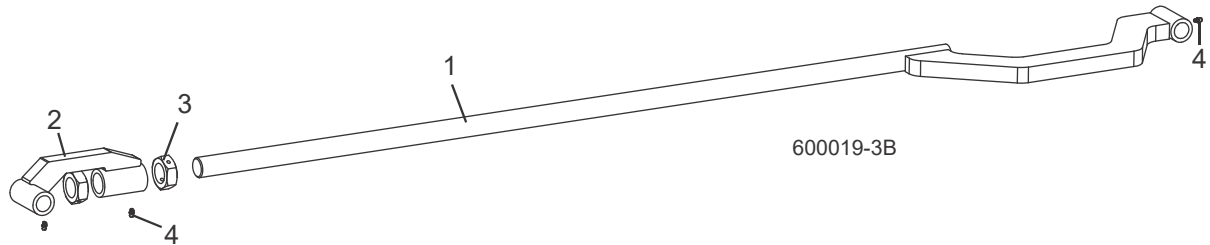


REF	PART #	QTY.
1-15	034732	1
1	034704	1
2	P04107	1
3	F04254-12	2
4	042262	2
5	034703	1
6	F05008-78	1
7	F05008-23	1
8	F05010-8	2
9	F05010-118	3
10-15	034733	1
10	016561	2
11	016560	2

12	F05011-5	2
13	P05035	2
14	F05009-10	1
15	F05010-4	1
16	034726	1
17-19	036053	1
17	034718	1
18	F04254-15	2
19	P04107	1
20	034711	1
21	F05011-52	1
22	F05011-9	1
23	F05008-50	1
24	F05008-37	2

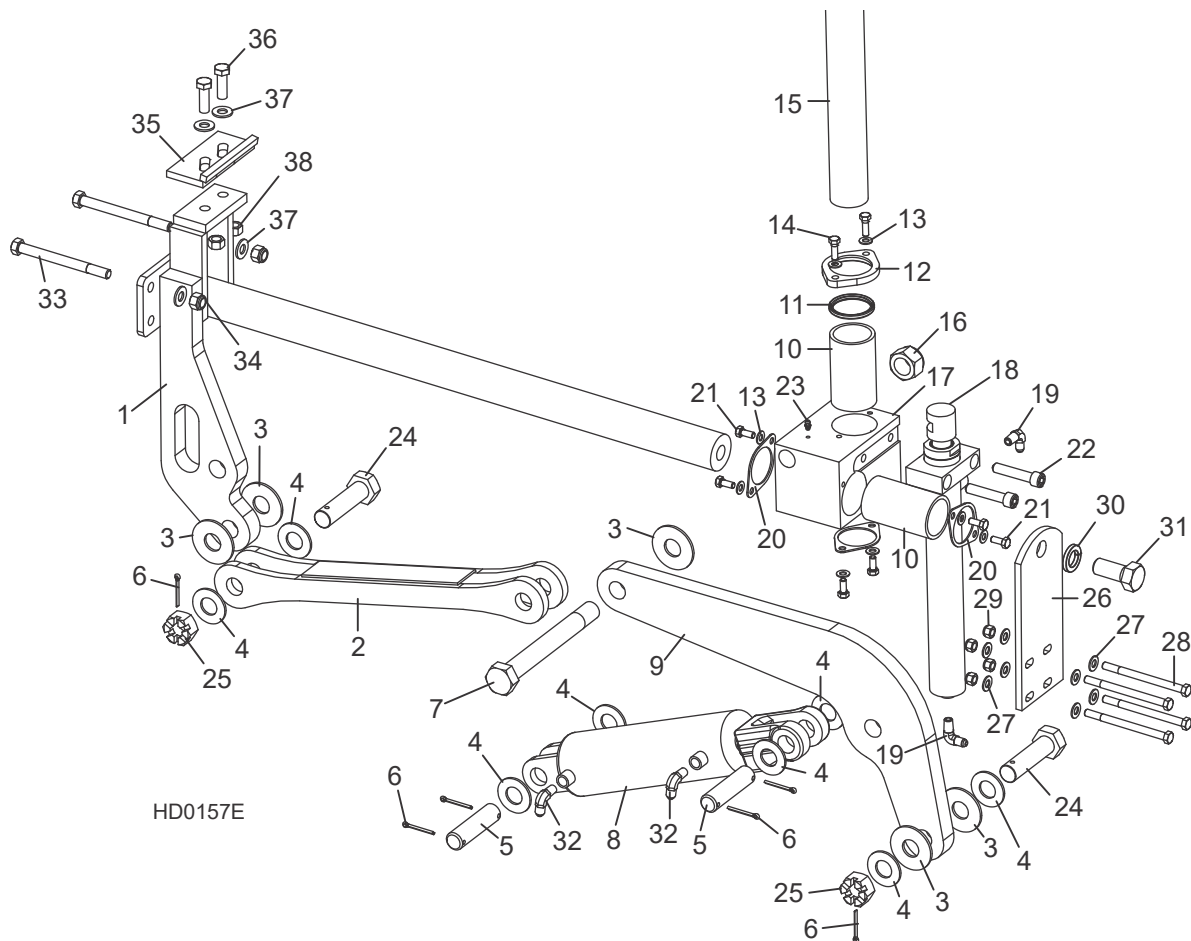
25	F05010-8	2
26	034716	1
27	P04107	1
28	034728	1
29	F05008-23	1

8.13 Cales Hydrauliques (Link)



REF	PART #	QTY.
1	034725	1
2	106869	1
3	F05010-100	2
4	P04107	3

8.14 Serre Hydraulique



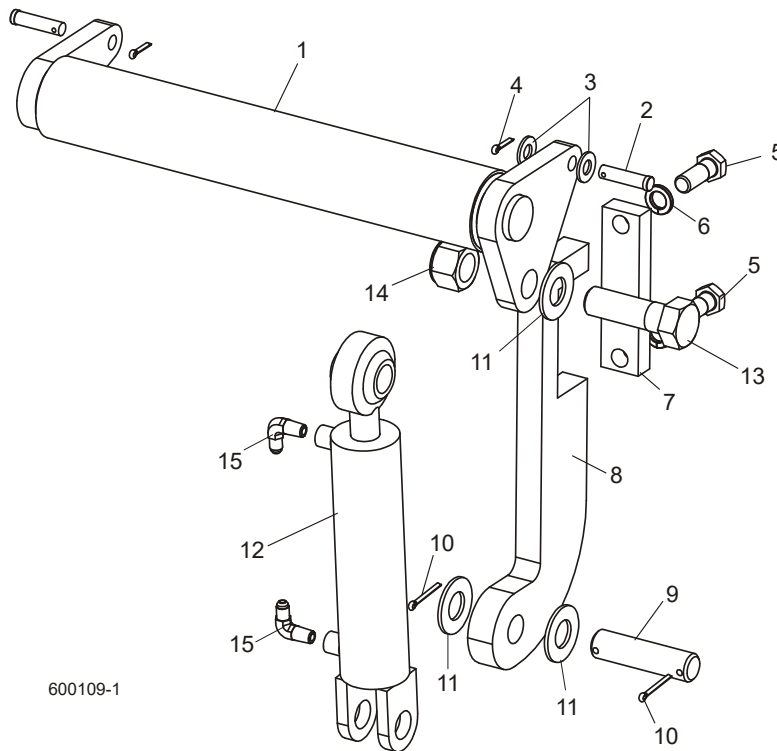
HD0157E

REF	PART #	QTY.
1-38	017264	1
1	017265	1
2	017267	1
3	015057	5
4	F05011-28	8
5	S09251	2
6	F05012-23	6
7	015049	1
8	017275	1
9	017274	1
10	015088	2
11-12	017271	1
11	017273	1
12	017272	1

13	F05011-17	8
14	F05006-1	2
15	015043	1
16	F05010-118	2
17	017270	1
18	015050	1
19	074543	2
20	017242	3
21	F05006-5	6
22	F05008-39	2
23	P04107	1
24	015072	2
25	F05010-163	2
26	015068	1
27	F05011-3	8

28	F05007-5	4
29	F05010-10	4
30	F05011-46	1
31	F05014-2	1
32	015491	2
33	F05008-28	2
34	F05010-8	2
35-38	K09485	1
35	W09404	1
36	F05008-33	2
37	F05011-2	2
38	F05010-3	2

8.15 Niveleur De Grume Hydraulique



600109-1

REF	PART #	QTY.
1	074842	2
2	F05012-82	4
3	F05011-2	4
4	F05012-3	4
5	F05009-33	4
6	F05011-27	4
7	S13023	2
8	S13022	2
9	S09251	2
10	F05012-23	4
11	F05011-28	6
12	014482	2
13	F05009-51	2
14	F05010-109	2
15	P09142	4