

Scierie Wood-Mizer®

Manuel de pièces

LT60HD
LT70HD

rev. B7.00
rev. B7.00



La sûreté est notre souci principal! Lisez et comprenez toutes les informations et instructions de sûreté avant d'actionner, installer ou mettre en opération cette machine.

Form #1043-5

California

Proposition 65 Warning



WARNING: Breathing gas/diesel engine exhaust exposes you to chemicals known to the State of California to cause cancer and birth defects or other reproductive harm.

Always start and operate the engine in a well-ventilated area.
If in an enclosed area, vent the exhaust to the outside.
Do not modify or tamper with the exhaust system.
Do not idle the engine except as necessary.

For more information go to www.P65warnings.ca.gov.



WARNING: Drilling, sawing, sanding or machining wood products can expose you to wood dust, a substance known to the State of California to cause cancer. Avoid inhaling wood dust or use a dust mask or other safeguards for personal protection.

For more information go to www.P65Warnings.ca.gov/wood.

©2019

Printed in the United States of America, all rights reserved. No part of this manual may be reproduced in any form by any photographic, electronic, mechanical or other means or used in any information storage and retrieval system without written permission from

Wood-Mizer
8180 West 10th Street
Indianapolis, Indiana 46214

PARTIE 1	SYSTÈMES DE GUIDAGE DE LAME	1-1
1.1	Guidage De Lame, Côté Poulie Folle.....	1-1
1.2	Guidage De Lame, Côté Entraînement.....	1-3
1.3	Système D'entraînement De Bras De Guidage.....	1-6
PARTIE 2	POULIES ET TENDEUR	2-1
2.1	Système D'entraînement De Lame	2-1
2.2	Poulie Folle.....	2-2
2.3	Tendeur Hydraulique De Lame	2-3
PARTIE 3	TÊTE DE SCIE	3-1
3.1	Vis Anti-Vibration.....	3-1
3.2	Tendeur de Courroie.....	3-2
3.3	Système De Freinage (CC Seulement).....	3-3
3.4	Système D'embrayage Automatique (CC Seulement).....	3-4
3.5	Éjecteur De Planches.....	3-5
3.6	Système De Lubrification.....	3-6
3.7	Étiquettes D'avertissement	3-7
3.8	Couvercles De Carters De Lame	3-8
3.9	Chute À Bran De Scie	3-9
3.10	Boîte De Filage De L'écorceuse Et Grommet	3-10
PARTIE 4	SYSTÈME DE COMMANDE ET BATTERIE	4-1
4.1	Système De Commande (CC)	4-1
4.2	Système De Commande (CA)	4-3
4.3	Commutateurs.....	4-5
4.4	Disjoncteurs.....	4-6
4.5	Panneau De Commande	4-7
4.6	Boîte De Batterie (CC Seulement)	4-9
4.7	Boîte De Fusibles (CC Seulement).....	4-10
PARTIE 5	SYSTÈME DE MONTÉE	5-1
5.1	Rouleaux Et Carters De Montée.....	5-1
5.2	Indicateur De Hauteur Et Règles De Débitage.....	5-3
5.3	Chaînes Et Pignons De Montée.....	5-4
5.4	Système D'entraînement De Montée	5-5
5.5	Système de Montée Assistée	5-7
PARTIE 6	SYSTÈME D'ENTRAÎNEMENT ET PALIERS	6-1
6.1	Paliers de Rail Superieur et Grattoirs	6-1
6.2	Système D'entraînement	6-3
6.3	Chaîne D'entraînement Et Butoir	6-5

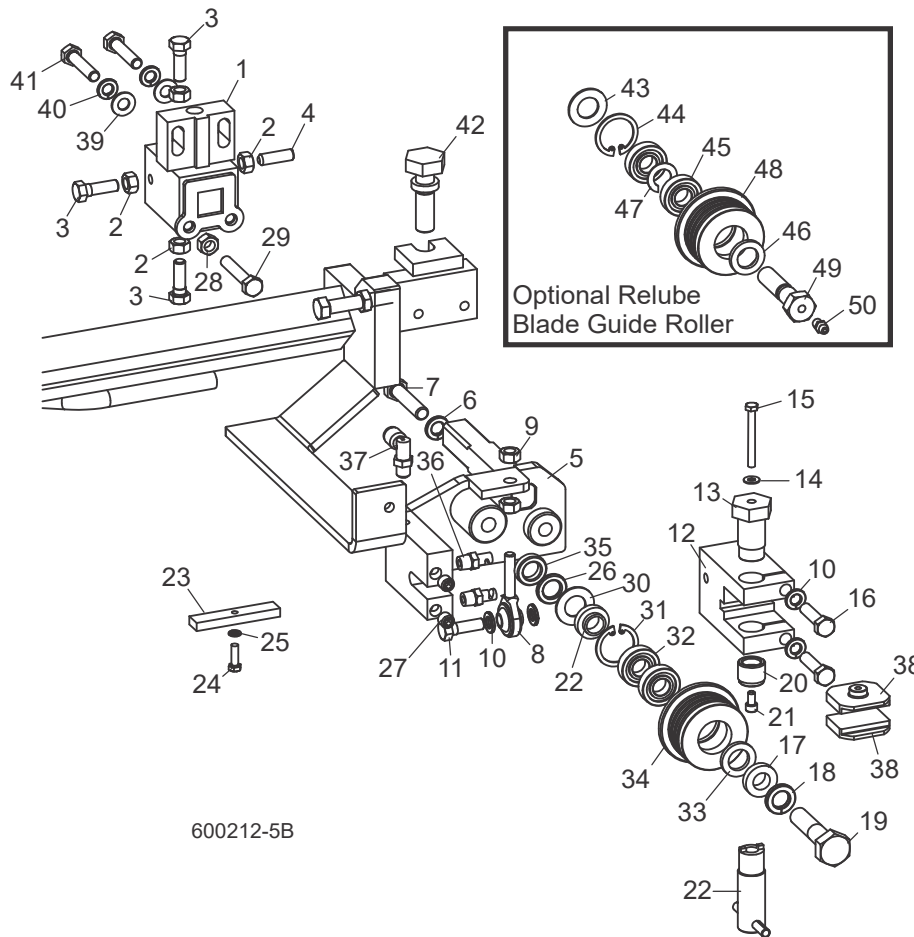
Sommaire

Partie-Page

6.4	Paliers De Rail Inférieur.....	6-6
PARTIE 7	BÂTI DE LA SCIE	7-1
7.1	Rails Avant Et Arrière Du Banc De Grume	7-1
7.2	Rail Centre-avant Du Banc De Grume	7-2
7.3	Rail Centre-arrière Du Banc De Grume	7-3
7.4	Appuis Fixes	7-4
7.5	Table D'éjecteur De Planches.....	7-5
7.6	Support De Grume Mobile	7-6
7.7	Taper Roller Pivot Assembly	7-7
7.8	Cales À Billes (Non Hydrauliques).....	7-8
7.9	Chaîne De Sécurité	7-9
7.10	Attache De La Tête De Scie	7-10
7.11	Étiquettes D'avertissement	7-11
7.12	Table De Planches (Optionnel)	7-12
PARTIE 8	SYSTÈME HYDRAULIQUE	8-1
8.1	Boîte De Pompe Des Hydrauliques (CC).....	8-1
8.2	Boîte De Pompe Des Hydrauliques (230/460V CA).....	8-3
8.3	Boîte De Commande Des Hydrauliques (230/460V CA)	8-5
8.4	Plaque De Contact Hydraulique Et Bornes (CC Seulement)	8-6
8.5	Chargeuse Hydraulique	8-8
8.6	Tourne-bille Hydraulique	8-10
8.7	Cales Hydrauliques (Avant)	8-11
8.8	Cales Hydrauliques (Arrière)	8-13
8.9	Cales Hydrauliques (Link)	8-14
8.10	Serre Hydraulique.....	8-15
8.11	Niveleur De Grume Hydraulique	8-16

PARTIE 1 SYSTÈMES DE GUIDAGE DE LAME

1.1 Guidage De Lame, Côté Poulie Folle



REF	PART #	QTY.	
1-35	036818	1	
1-4	036872	1	
1	036868	1	◆
2	F05010-17	4	
3	F05006-88	3	
4	F05006-122	1	
5	036866	1	
6	F05011-4	1	
7	F05007-119	1	
8	P09814	1	
9	F05010-28	2	

10	F05011-13	4	
11	F05006-88	1	
12	036814	1	
13	035216	1	
14	042867	1	
15	F05004-178	1	
16	F05006-118	2	
	A04925 ¹	1	
	014299 ¹	1	
	K07079	1	
17	P04252	1	
18	F04254-1	1	

19	015975	2	◆
20	P06455	1	
	F05005-105	1	
	057407-1507	1	
21	S04250	1	◆
	014243	1	◆
	A04925-364	1	
22	S04253	2	
23	F05011-9 ²	1	
24	F05008-10	1	
25	041626 ³	1	
26	044057	1	

1

Systèmes De Guidage De Lame

Guidage De Lame, Côté Poulie Folle

27	F05004-200	1	
28	044064	1	
29	035799	1	
30	F05004-152	1	
31	F05011-20	1	
32	052364 ³	1	
33	P30127	2	
34	F05010-17	1	
35	F05006-81	1	
36	033479 ⁴	2	
37	P09736 ⁴	1	
38	052309 ⁵	2	
	052355	2	
	036347	2	
	035248	1	
39	F05011-17	2	
40	F05011-13	2	
41	F05006-76	2	
42	035656	1	
	016568 ¹	1	
	057405 ¹	1	
	057407	1	
43	P04252	1	
44	F04254-1	1	
45	015975 ⁶	2	◆
46	P06455	1	
47	035411	1	
	057407-1507	1	
48	035426	1	◆
	057402	1	◆
	A04925-364	1	
49	036161	1	
50	P05060	1	

¹ The sawmill is equipped standard with non-greasable blade guide rollers that can be used with the standard 1 1/2" blade. The roller can also be used with 1 1/4" blades (requires spacer 041626 & wear blocks 052355). Optional extended blade guide rollers are available for use with 1 1/2" blades. The extended rollers may provide more stability during difficult sawing, but will reduce the total amount of times the blade can be reused after sharpening. Optional relube versions of each roller configuration are also available.

² Nord-Lock Washer F05011-125 available to replace Split Lock Washer F05011-9 to prevent loosening due to vibration (12/09).

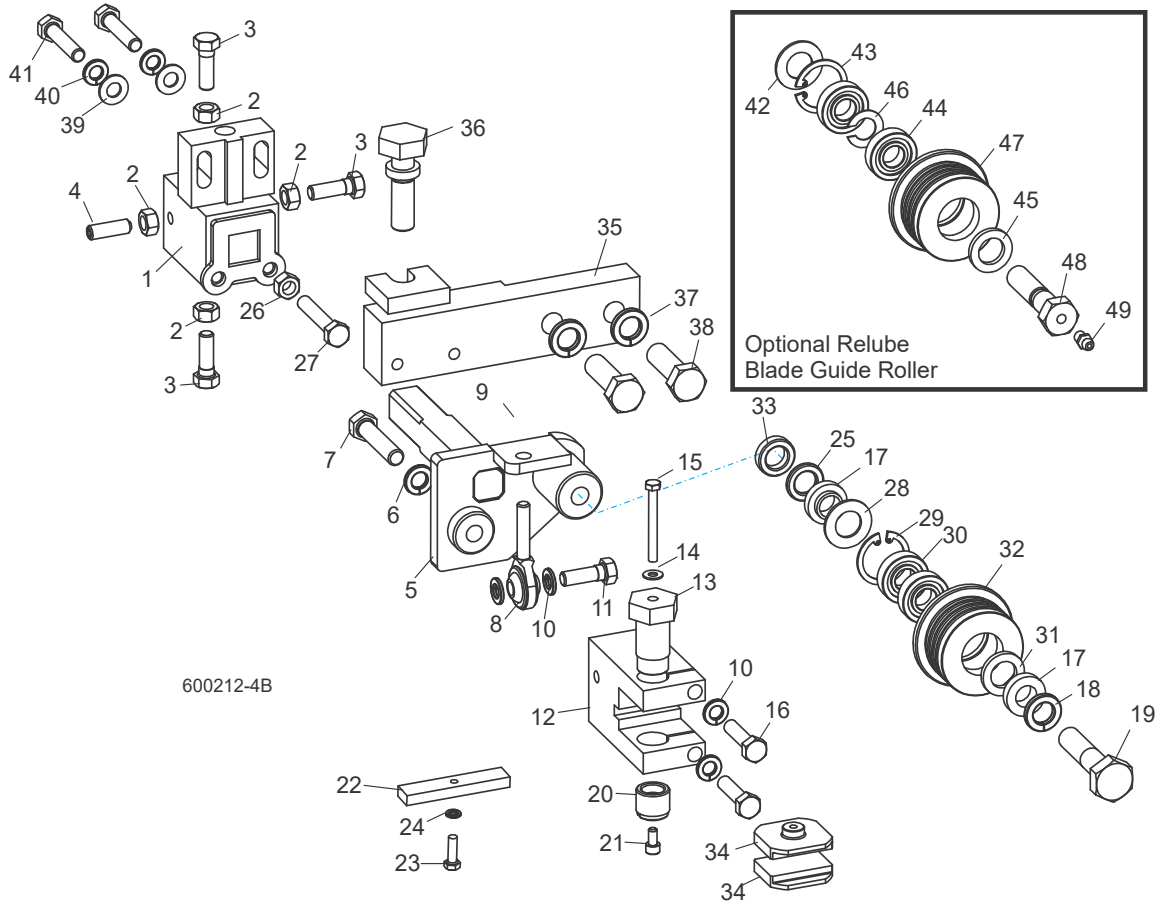
³ Use 1/8" spacer 052364 with 1 1/2" blade provided as standard equipment. Use 1/4" spacer 041626 for optional 1 1/4" blades.

⁴ Fittings removed from blade guide assembly BOM to allow structuring of blade guide assembly in various equipment (11/05).

⁵ 052309 blocks for use with 1 1/2" blade provided as standard equipment. 052355 blocks available for optional use with 1 1/4" blades. EZ-Glide blocks 036347 are available for customers who prefer this block.

⁶ Bearing must be modified for use with relube roller assemblies. Remove one seal from each bearing, place open sides facing each other and place spacer 035411 between bearings.

1.2 Guidage De Lame, Côté Entraînement



600212-4B

REF	PART #	QTY.	
	036812	1	
	036867	1	
1	036868	1	◆
2	F05010-17	4	
3	F05006-88	3	
4	F05006-122	1	
5	036865	1	
6	F05011-4	1	
7	F05007-119	1	
8	P09814	1	
9	F05010-28	2	
10	F05011-13	4	
11	F05006-88	1	
12	036814	1	
13	035216	1	

14	042867	1	
15	F05004-178	1	
16	F05006-118	2	
	A04925 ¹	1	
	014299 ¹	1	
	K07079	1	
17	P04252	1	
18	F04254-1	1	
19	015975	2	◆
20	P06455	1	
	F05005-105	1	
	057407-1507	1	
21	S04250	1	◆
	014243	1	◆
	A04925-364	1	
22	S04253	2	

23	F05011-9 ²	1	
24	F05008-10	1	
25	041626 ³	1	
26	044057	1	
27	F05004-200	1	
28	035799	1	
29	F05004-152	1	
30	F05011-20	1	
31	052364 ³	1	
32	F05010-17	1	
33	F05006-81	1	
34	052309 ⁴	2	
	052355	2	
	036347	2	
35	034292	1	

1

Systèmes De Guidage De Lame

Guidage De Lame, Côté Entraînement

36	035656	1	
37	F05011-9	2	
38	F05008-33	2	
	035248	1	
39	F05011-17	2	
40	F05011-13	2	
41	F05006-119	2	
	016568 ¹	1	
	057405 ¹	1	
	057407	1	
42	P04252	1	
43	F04254-1	1	
44	015975 ⁵	2	◆
45	P06455	1	
46	035411	1	
	057407-1507	1	
47	035426	1	◆
	057402	1	◆
	A04925-364	1	
48	036161	1	
49	P05060	1	

⁵ Bearing must be modified for use with re-lube roller assemblies. Remove one seal from each bearing, place open sides facing each other and place spacer 035411 between bearings.

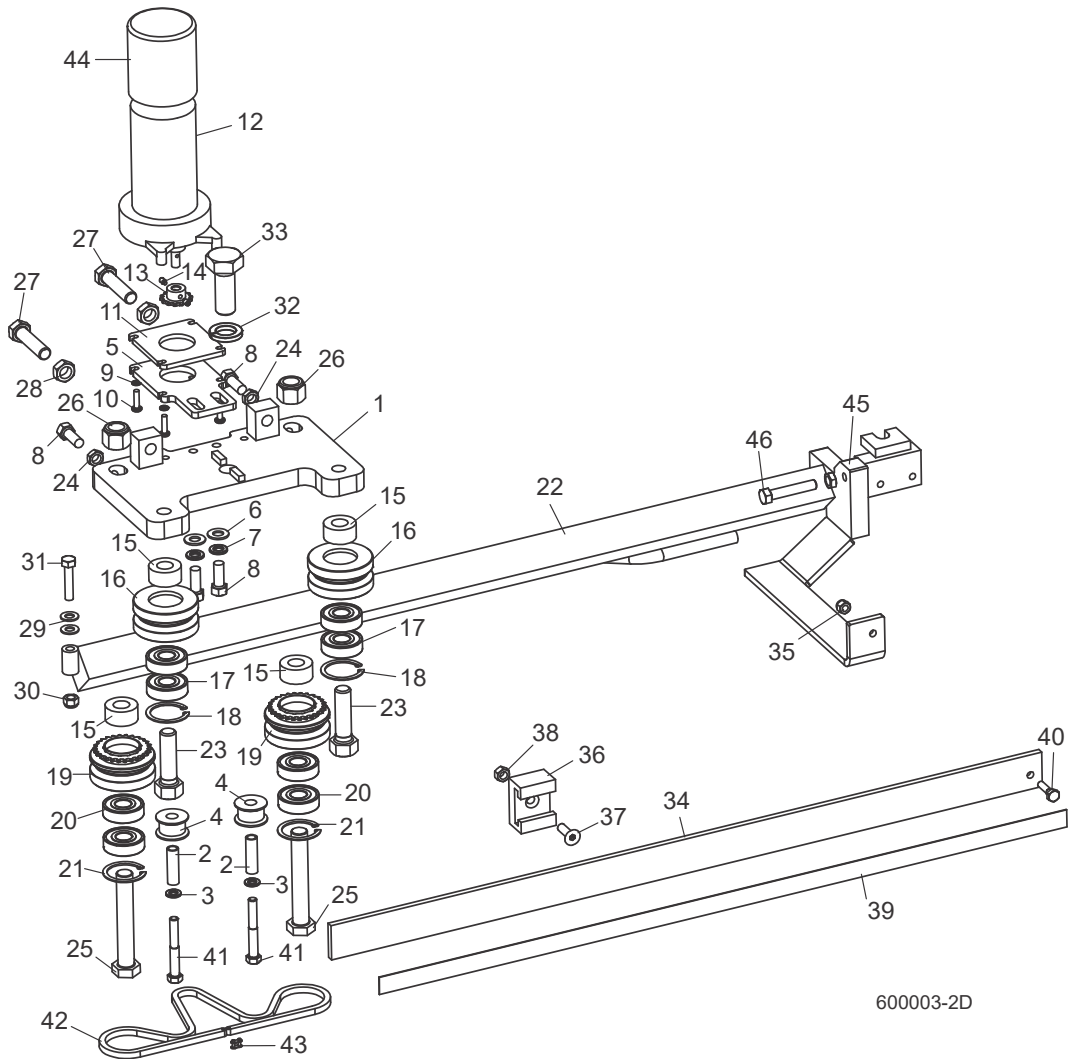
¹ The sawmill is equipped standard with non-greasable blade guide rollers that can be used with the standard 1 1/2" blade (requires spacer 052364). The roller can also be used with 1 1/4" blades (requires spacer 041626 & wear blocks 052355). Optional extended blade guide rollers are available for use with 1 1/2" blades (no spacer required). The extended rollers may provide more stability during difficult sawing, but will reduce the total amount of times the blade can be reused after sharpening. Optional re-lube versions of each roller configuration are also available.

² Nord-Lock Washer F05011-125 available to replace Split Lock Washer F05011-9 to prevent loosening due to vibration (12/09).

³ Use 1/8" spacer 052364 with 1 1/2" blade provided as standard equipment. Use 1/4" spacer 041626 for optional 1 1/4" blades.

⁴ 052309 blocks for use with 1 1/2" blade provided as standard equipment. 052355 blocks available for optional use with 1 1/4" blades. EZ-Glide blocks 036347 are available for customers who prefer this block.

1.3 Système D'entraînement De Bras De Guidage



REF	PART #	QTY.
1-46	034290	1
	006163 ¹	1
1	034286	1
2	S09996	2
3	F05011-13	2
4	S09999	2
5	033803	1
6	F05011-3	2
7	F05011-4	2
8	F05007-7	4
9	F05011-20	4

10	F05004-38	4
11	033805	1
12	079214	1
	061232	1
	061234	1
	061233	1
13-14	036664	1
14	F05004-274	2
15	033913	4
16-18	042543	2
16	042536	1
17	P06030-1	2

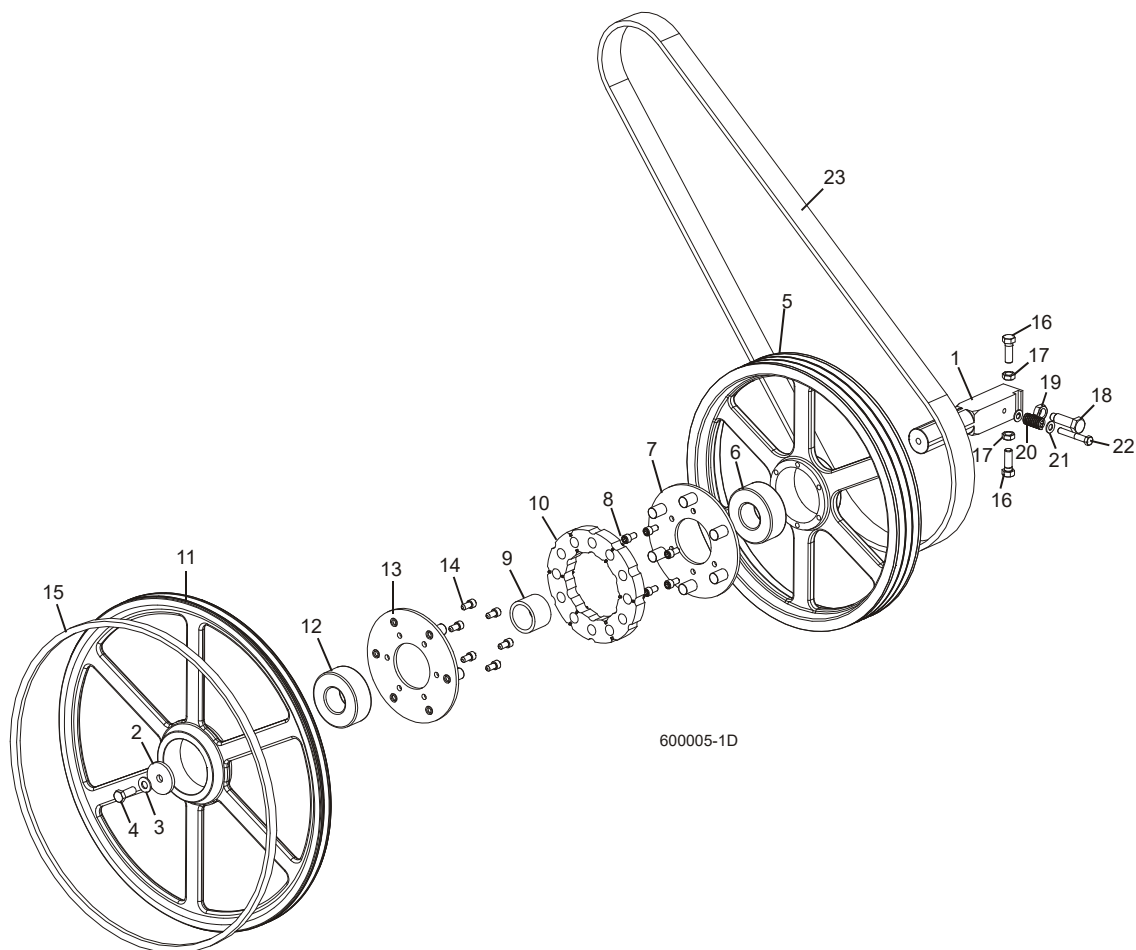
18	F04254-8	1
19-21	042542	2
19	042541	1
20	P06030-1	2
21	F04254-8	1
22	034289	1
	006158 ¹	1
23	F05009-80	2
24	F05010-29	2
25	F05009-98	2
26	F05010-71	2
27	F05008-126	2

28	F05010-16	2
29	F05011-17	2
30	F05010-58	1
31	F05008-96	1
32	F05011-6	1
33	F05013-1	1
34	014955	1
	006266 ¹	1
35	F05010-69	1
36	014882	1
37	F05006-124	1
38	F05010-6	1
39	015849	1
40	F05005-38	1
41	F05006-80	2
42	036194	1
43	P09983	2
44	023720	1
45	F05010-29	1
46	F05007-16	1

¹ LT70HDW

PARTIE 2 POULIES ET TENDEUR

2.1 Système D'entraînement De Lame



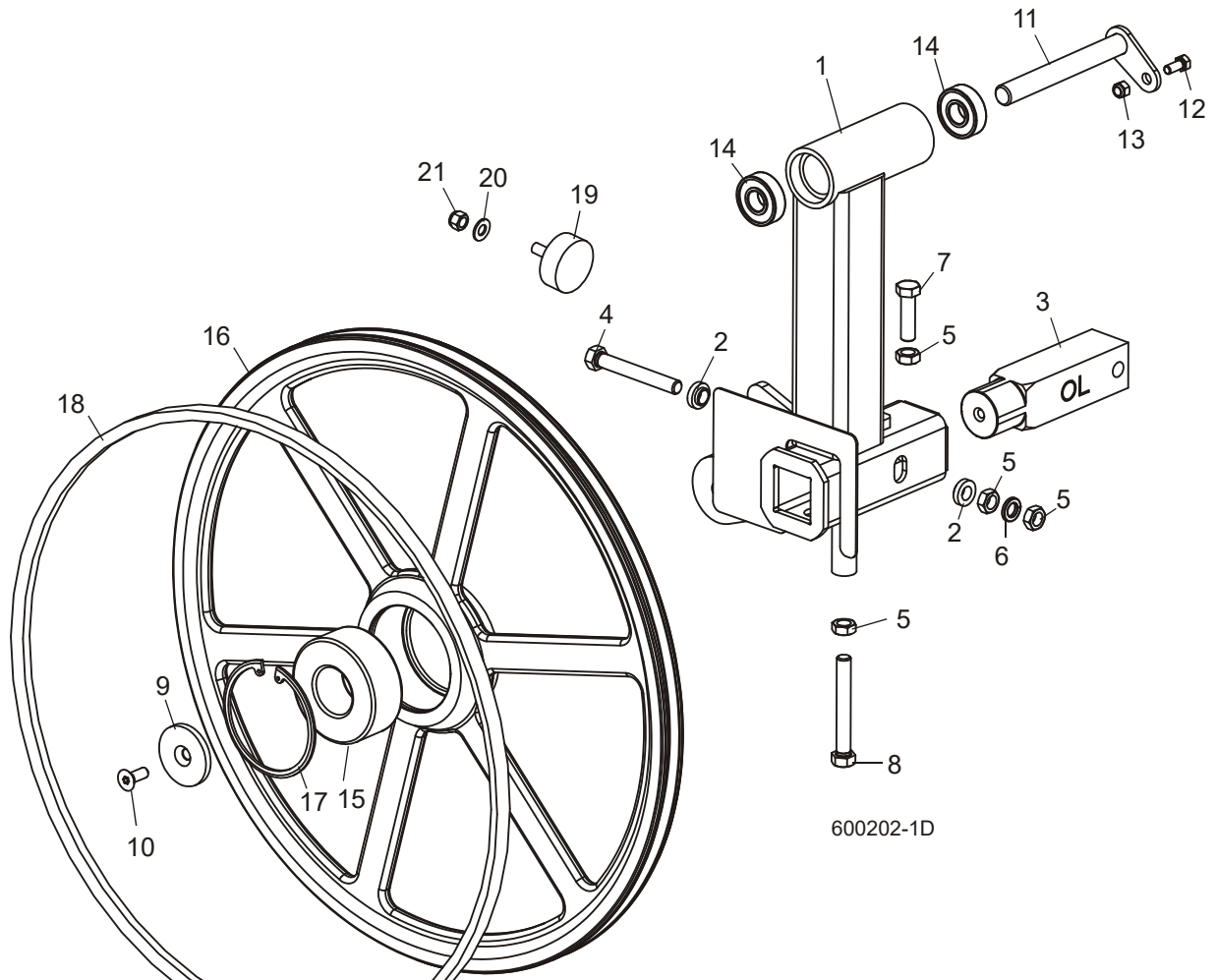
REF	PART #	QTY.
1-14	034359	1
1	033920	1
2	033909	1
3	F05011-2	1
4	F05008-37	1
5-8	034426	1
5	033809	1
6	016014	1
7	034424	1
8	F05007-154	6
9	033921	1

10	034418	1
11-14	017834	1
11	034872	1
12	016014	1
13	034424	1
14	F05007-154	6
15	017922-1	1
16	F05008-53	2
17	F05010-16	2
18	034360	1
19	F05010-11	1
20	034430	1
21	F05011-3	2

22	F05007-125	1
23	045190 ¹	1
	036109 ²	1
	036088 ³	1

¹ CC
² E25
³ E30

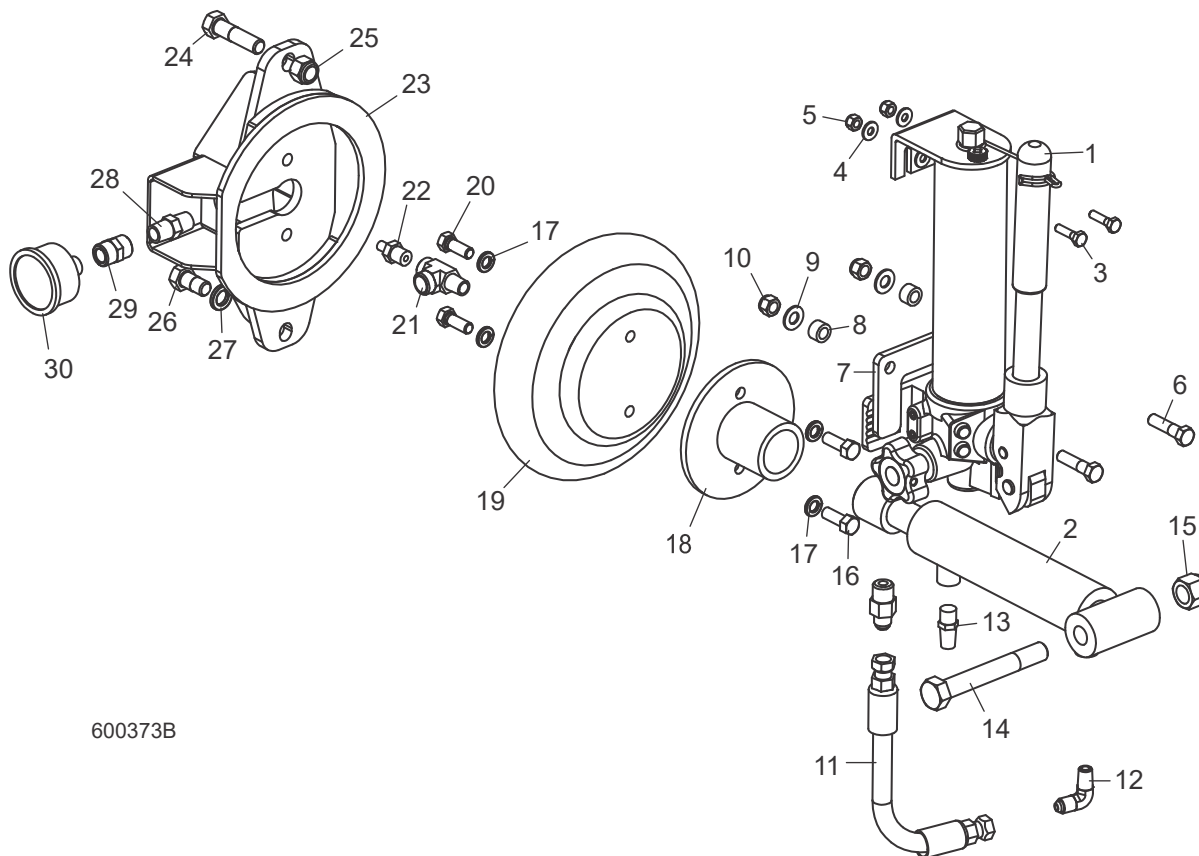
2.2 Poulie Folle



REF	PART #	QTY.
1-14	036729	1
1	048266	1
2	S04253	2
3	017706	1
4	F05008-111	1
5	F05010-16	4
6	F05011-9	1
7	F05008-127	1
8	F05008-111	1
9	016397	1
10	F05007-64	1
11	034358	1

12	F05006-102	1
13	F05010-58	1
14	034470	2
15-17	017835	1
15	016014	1
16	034871	1
17	F04254-28	1
18	017922-1	1
19	034175	1
20	F05011-3	1
21	F05010-10	1

2.3 Tendeur Hydraulique De Lame



600373B

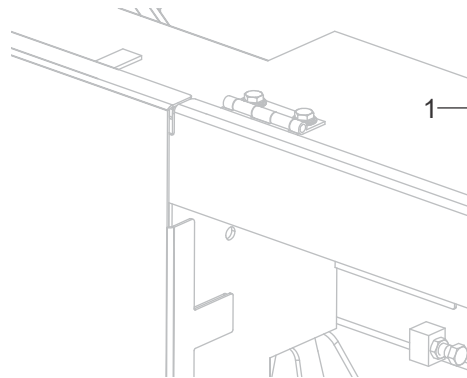
REF	PART #	QTY.
1-30	054844	1
1-13	074809	1
1	074749	1
	061287	1
	061288	1
	061289	1
2	065478	1
3	F05005-101	2
4	F05011-11	4
5	F05010-69	2
6	F05007-78	2
7	074808	1
8	055323	2
9	F05011-3	2
10	F05010-10	2

11	079001-9	1
12	015491	1
13	P20904	1
14	F05009-10	1
15	F05010-34	1
16	F05007-7	2
17	F05011-4	4
18	055317	1
19	033984	1
20	F05007-87	2
21	P09141	1
22	034285	1
23	034276	1
24	F05008-76	1
25	F05010-8	1
26	F05008-50	1

27	F05011-9	1
28	P21524	1
29	P03420	1
30	034278	1

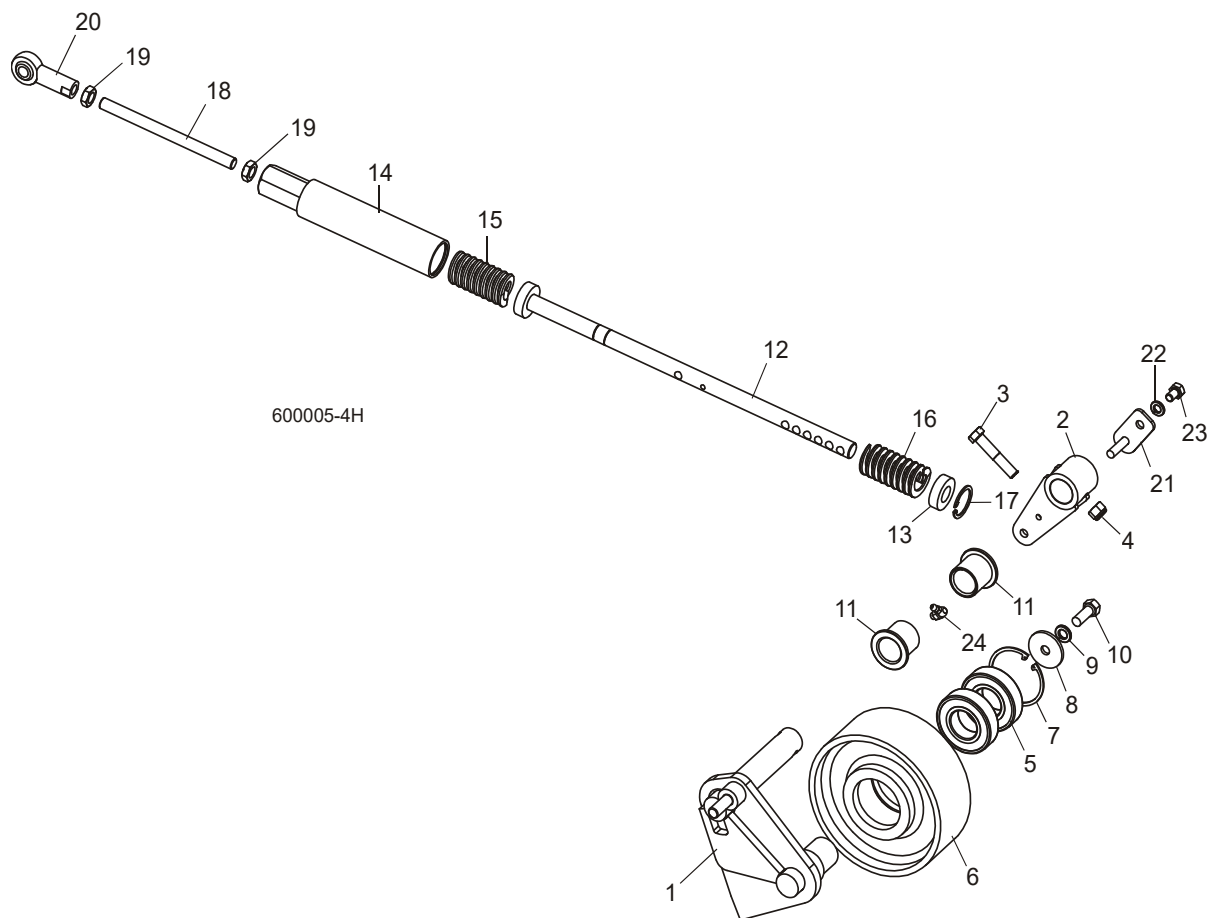
PARTIE 3 TÊTE DE SCIE

3.1 Vis Anti-Vibration



REF	PART #	QTY.
1	F05007-190	1
2	F05010-29	1

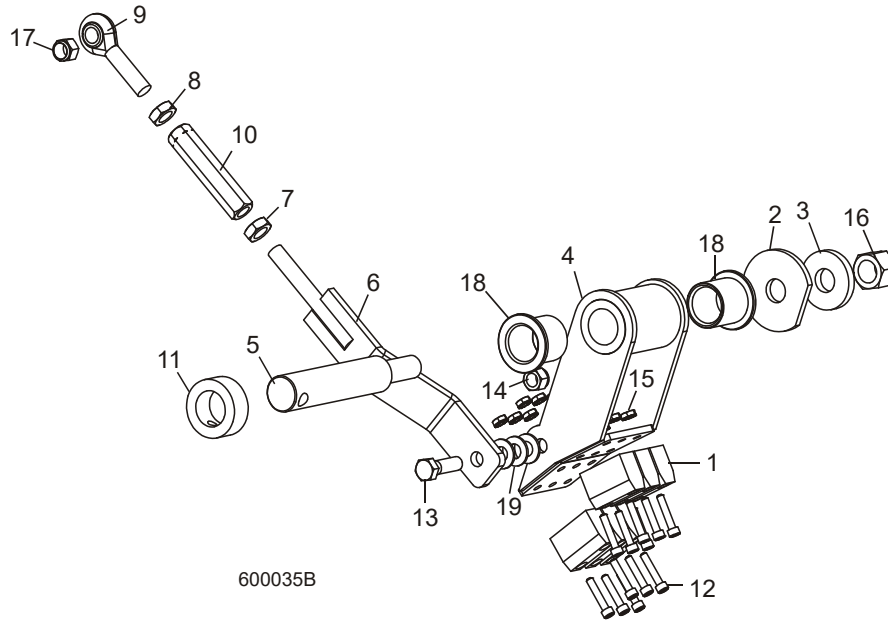
3.2 Tendeur de Courroie



REF	PART #	QTY.
1-22	034894	1
1-2	038934	1
1	034893	1
2	034593	1
3	F05007-124	1
4	F05010-10	1
5	P11035	2
6	033941	1
7	F04254-12	1
8	F05011-104	1
9	F05011-4	1
10	F05007-7	1
11	P109	2
12-19	003193	1

12	017923	1
13	034674	1
14	034689	1
15	036136	2
16	F04254-44	1
17	017924	1
18	F05010-38	2
19	017925	1
20	034673	1
21	F05011-13	1
22	F05006-15	1
23	P04108	1

3.3 Système De Freinage (CC Seulement)

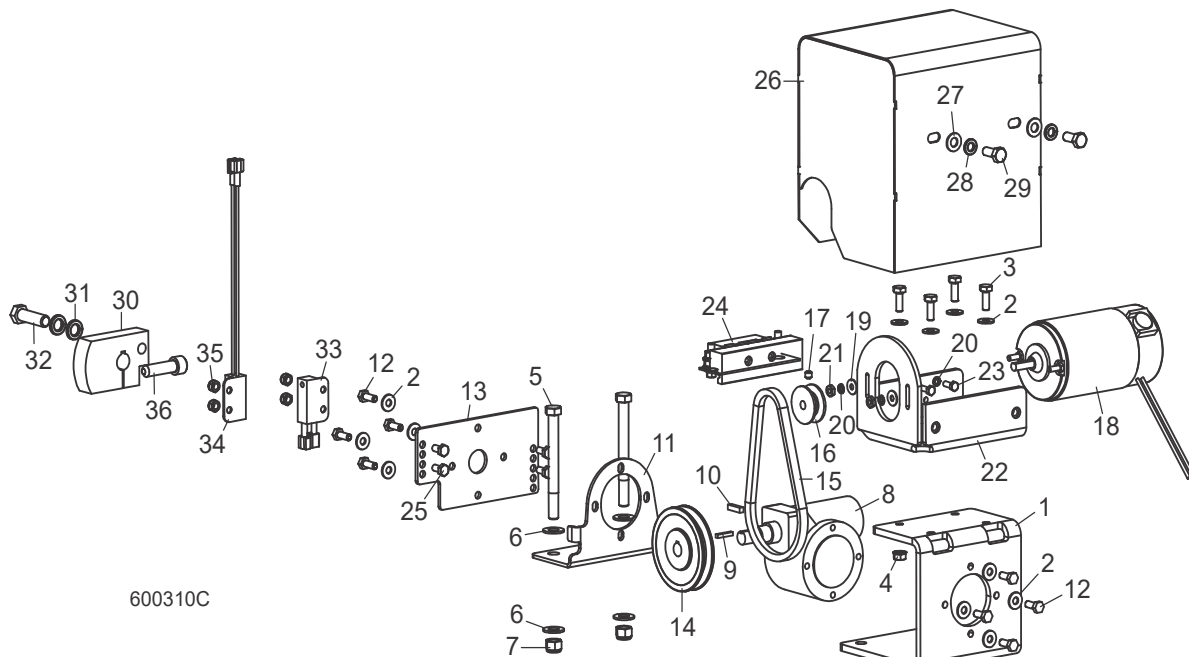


REF	PART #	QTY.
1-19	034886	1
1	016488	6
2	017838	1
3	034685	1
4	034883	1
5	034885	1
6-10	034892	1
6	034891	1
7	F05010-38	1
8	F05010-87	1
9	P11578	1
10	S11577	1
11	038090	1
12	F05004-2	12
13	F05007-123	1
14	F05010-10	1
15	F05010-14	12
16	F05010-71	1
17	F05010-83	1
18	P109	2
19	F05011-3	3

3 Tête De Scie

Système D'embrayage Automatique (CC Seulement)

3.4 Système D'embrayage Automatique (CC Seulement)

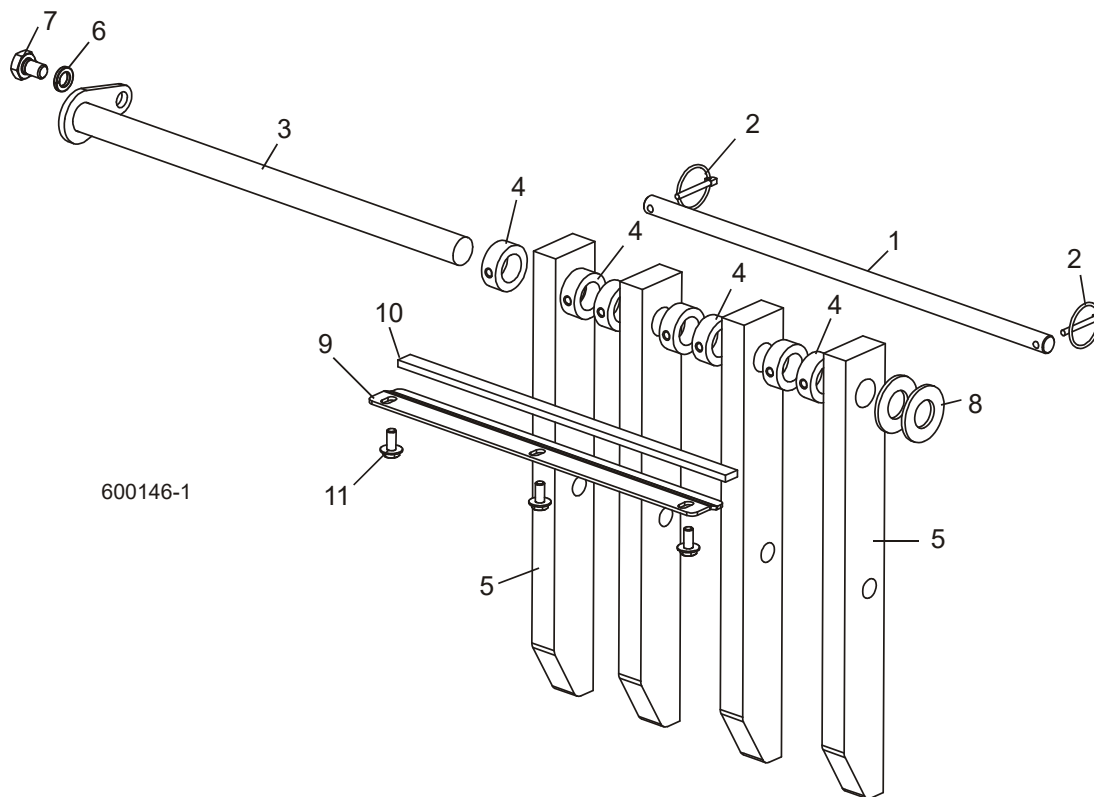


600310C

REF	PART #	QTY.
1 - 35	008953	1
1	008949	1
2	F05011-11	12
3	F05005-123	4
4	F05010-9	4
5	F05007-4	2
6	F05011-3	4
7	F05010-10	2
8	036764	1
9	036803	1
10	S03060	1
11	008952	1
12	F05004-219	8
13	013982	1
14	015075	1
15	016219	1
16	015074	1
17	F05005-105	1
18	016021	1
19	F05011-18	2
20	F05011-20	4

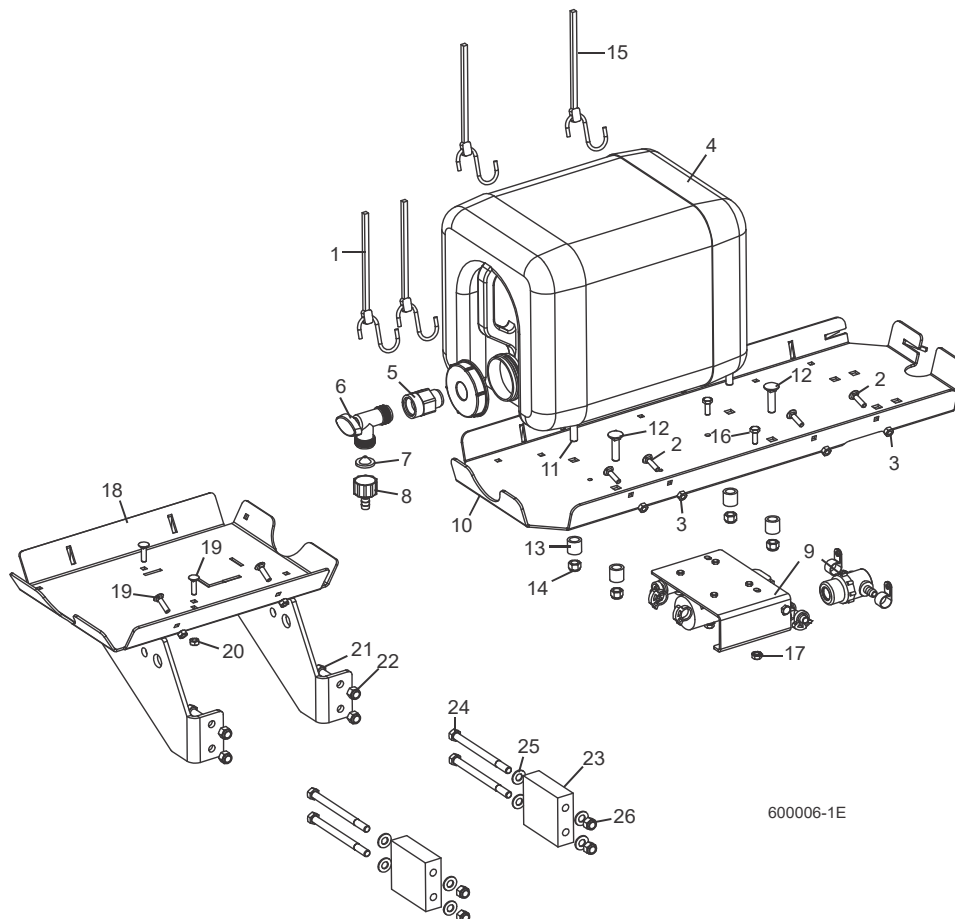
21	F05010-27	2
22	034670	1
23	F05004-27	2
24	052791	1
25	F05005-99	4
26	034667	1
27	F05011-17	2
28	F05011-13	2
29	F05006-5	2
30	034675	1
31	F05011-48	2
32	F05007-156	1
33	051337	1
34	024627	1
35	F05010-200	4
36	F05007-55	1

3.5 Éjecteur De Planches



REF	PART #	QTY.
1	034565	1
2	017604	2
3	034567	1
4	038090	7
5	034561	4
6	F05011-9	1
7	F05008-101	1
8	F05011-28	2
9	017856	1
10	017857	1
11	F05006-101	3

3.6 Système De Lubrification



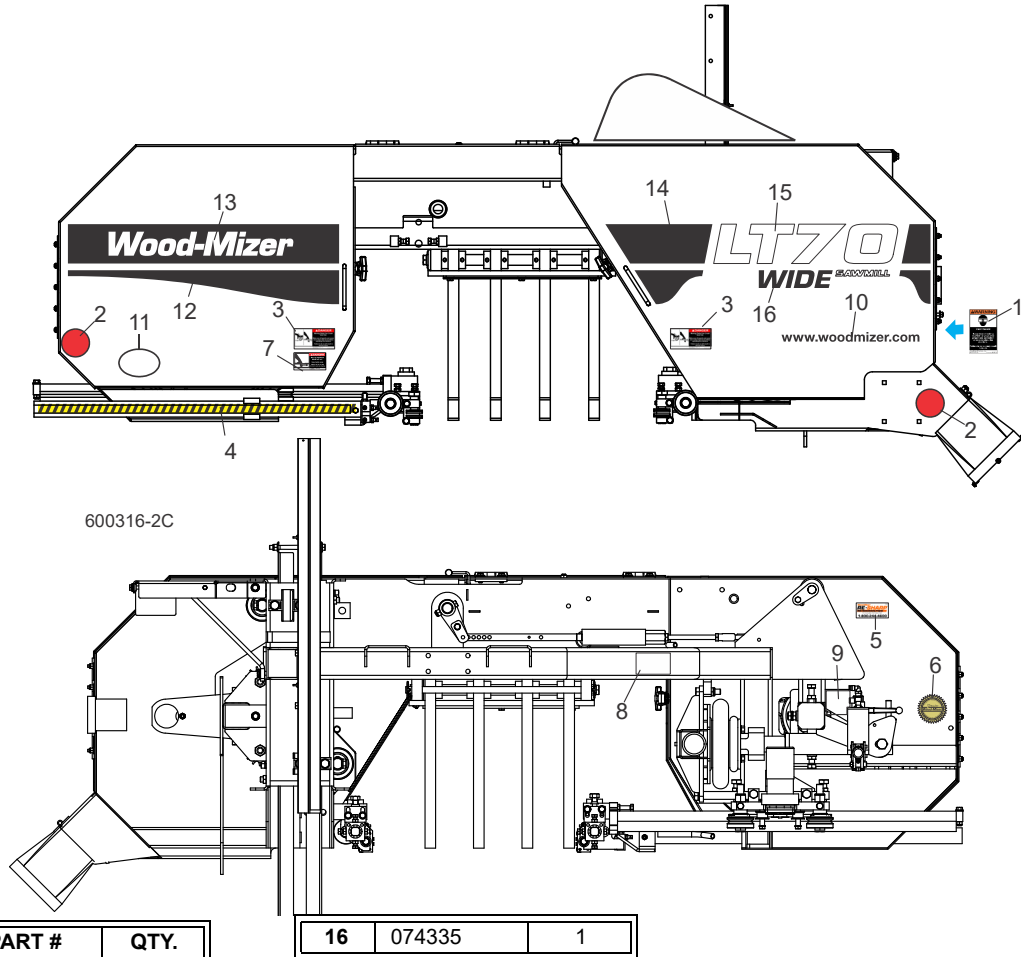
REF	PART #	QTY.
1	P11668	2
2	F05005-34	4
3	F05010-21	4
4	014642	1
5	014636	1
6	014100	1
7	016086	1
8	014113	1
9	Voir Manuel de LubeMizer	
10	S11684	1
11	F05007-22	1
12	F05007-85	3
13	033911	4
14	F05010-10	4

15	P11258	2
16	F05005-1	2
17	F05010-9	2
18	034491 ¹	1
19	F05005-34	4
20	F05010-21	4
21	F05007-7	4
22	F05010-10	4
23	007660 ²	2
24	F05007-5	4
25	F05011-3	8
26	F05010-10	4
	CBOTTLE	1

¹ E25/E30

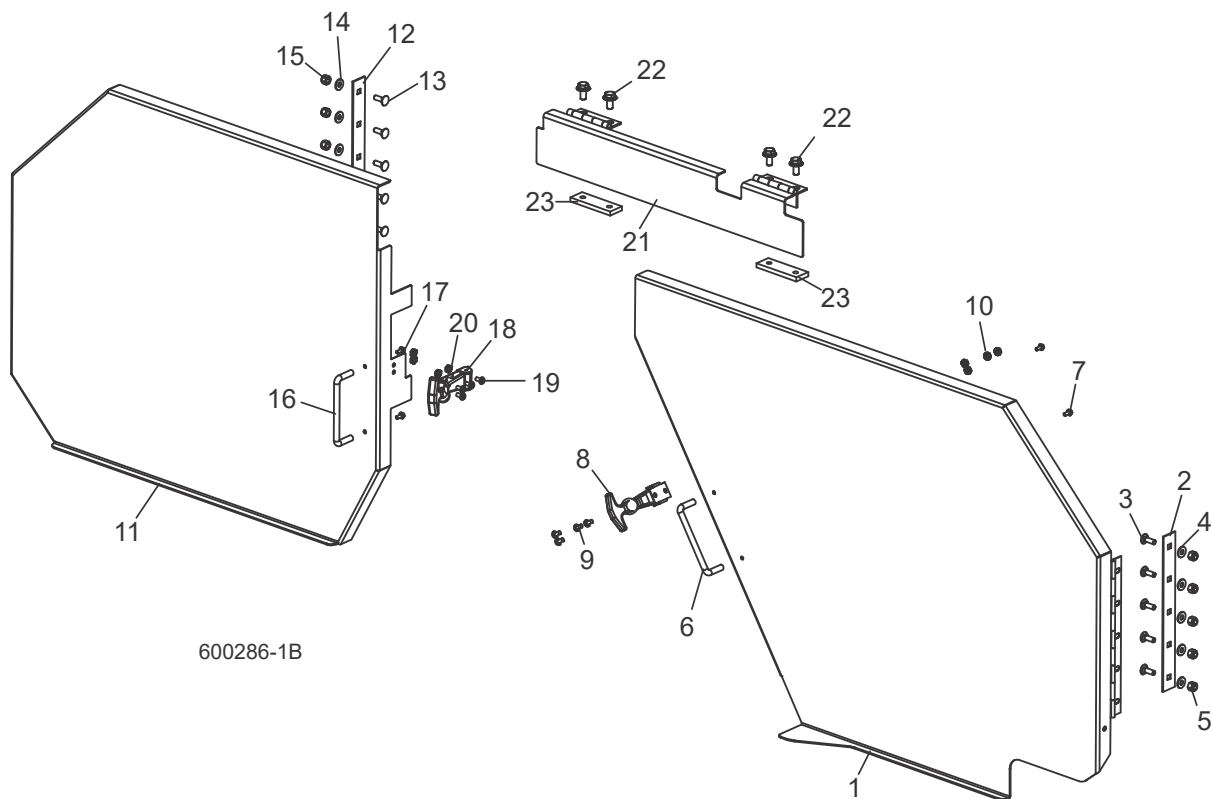
² E30

3.7 Étiquettes D'avertissement



REF	PART #	QTY.
1	P11754	1
2	P07452	2
3	033254	2
4	015849	1
5	P12879	1
6	015930	1
7	S11752	1
8	038596	1
9	P11789	1
10	003235	1
11	065582	1
12	065029	1
13	065030	1
14	065033	1
15	065031	1

3.8 Couvercles De Carters De Lame



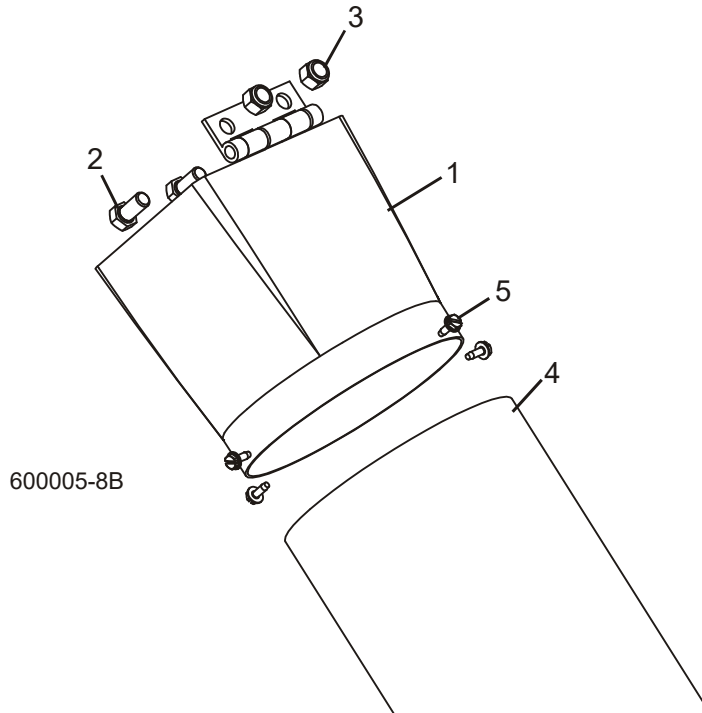
600286-1B

REF	PART #	QTY.
1-10	048409	1
1	048403	1
2	034251	1
3	F05005-113	5
4	F05011-11	5
5	F05010-69	5
6	P08065	1
7	F05015-8	2
8	014829	1
9	F05004-3	4
10	F05010-14	4
11-20	036178	1
11	036176	1
12	034251	1
13	F05005-113	5
14	F05011-11	5
15	F05010-69	5
16	P08065	1

17	F05015-8	2
18	014829	1
19	F05004-3	4
20	F05010-14	4
21	034454	1
	006189 ¹	1
22	F05006-101	4
23	006810	2

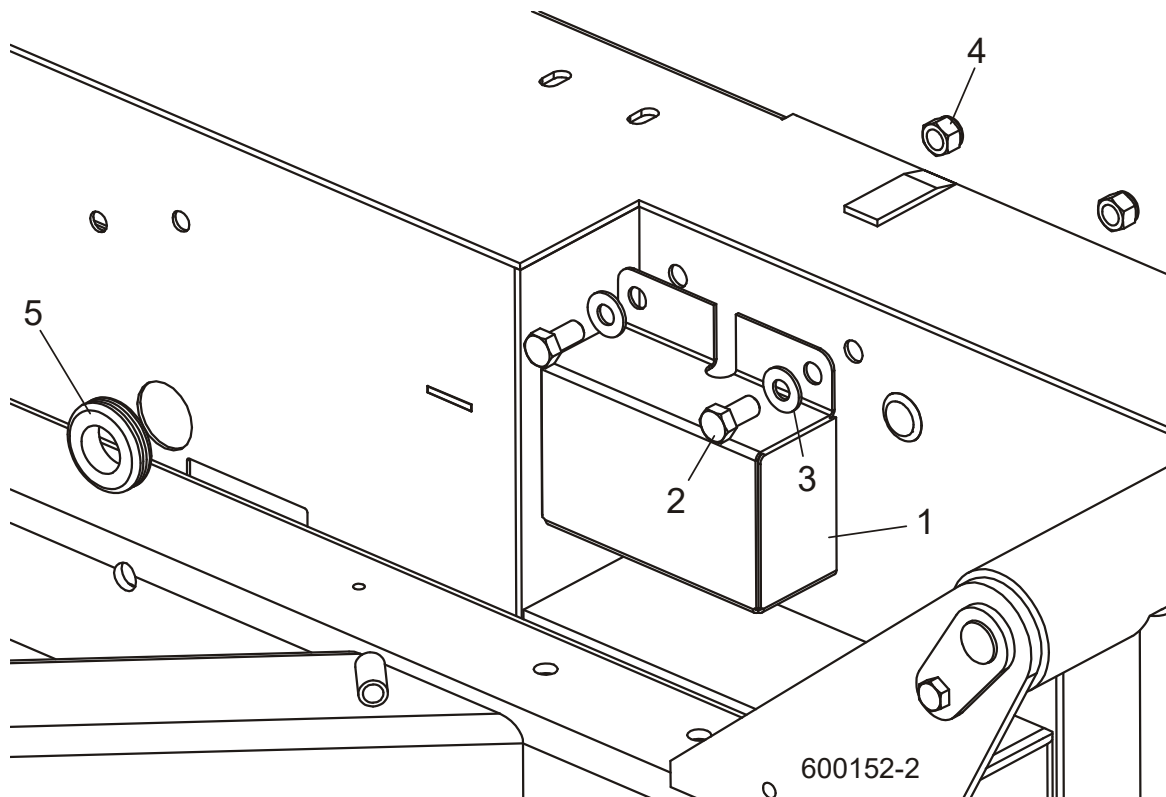
¹ LT70HDW

3.9 Chute À Bran De Scie



REF	PART #	QTY.
1	034396	1
2	F05007-118	2
3	F05010-10	2
4	017829	2
5	F05015-7	4

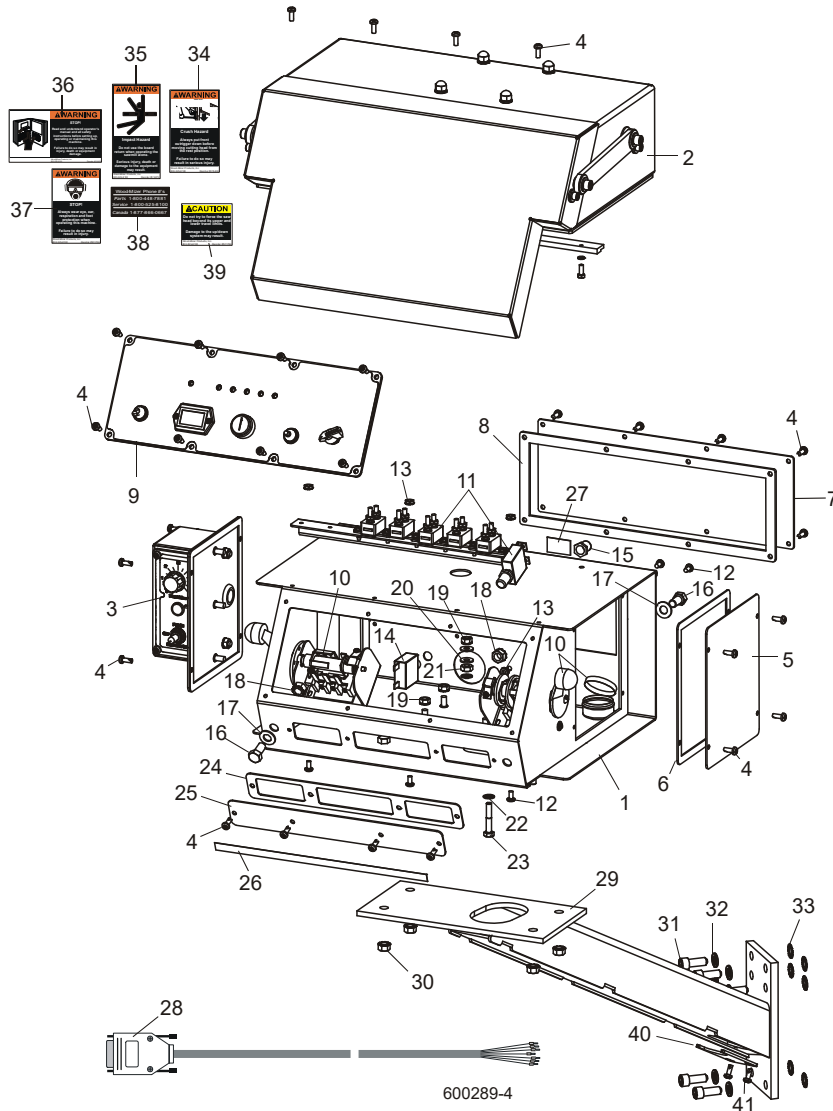
3.10 Boîte De Filage De L'écorceuse Et Grommet



REF	PART #	QTY.
1	023616	1
2	F05007-7	2
3	F05011-3	2
4	F05010-10	2
5	P702	1

PARTIE 4 SYSTÈME DE COMMANDE ET BATTERIE

4.1 Système De Commande (CC)



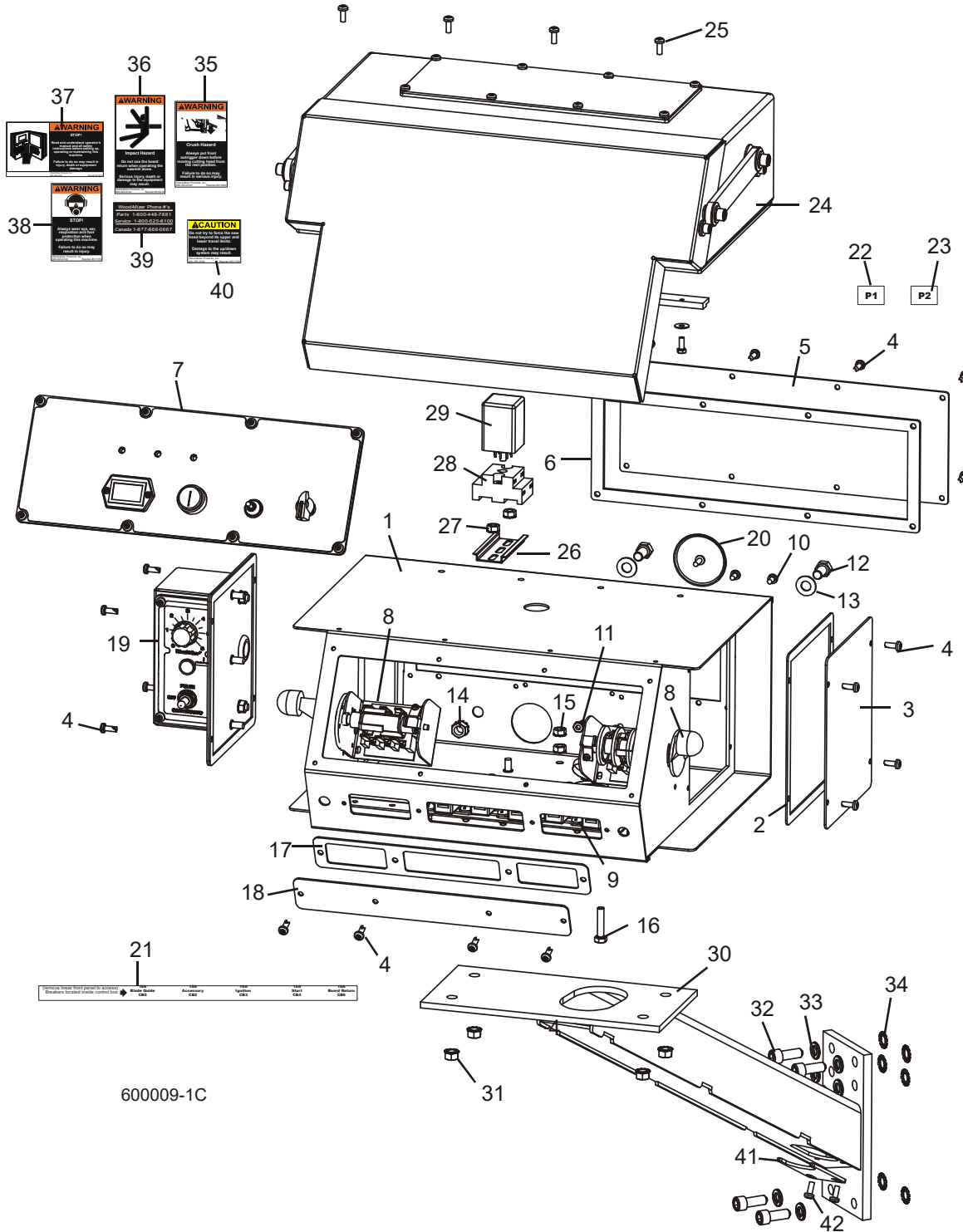
REF	PART #	QTY.
	036352	1
1-28	069389	1
	069331	1
	068317	1
1	016135	1
2	Voir Accuset 2 Manuel	
3	Voir LubeMizer Manuel	
4	F05015-17	32

5	006473	1
6	015274	1
7	016230	1
8	015278	1
9	See Section 4.5	
10	See Section 4.3	
11	See Section 4.4	
12	F05004-3	5
13	F05010-14	5

14	024246	1
15	021253	1
16	F05007-27	2
17	F05011-3	2
18	F05010-19	2
19	F05010-9	3
20	F05011-11	2
21	F05010-129	1
22	F05011-69	2

23	F05005-31	1
24	015266	1
25	015376	1
26	053354	1
27	024366	1
28	053355	1
29	015236	1
30	F05010-20	4
31	F05007-52	4
32	F05011-4	4
33	F05011-36	4
34	015400	1
35	016072	1
36	016402	1
37	S11753	1
38	S12117	1
39	S11762	1
40	036381	1
41	F05015-17	2

4.2 Système De Commande (CA)



4

Système De Commande Et Batterie

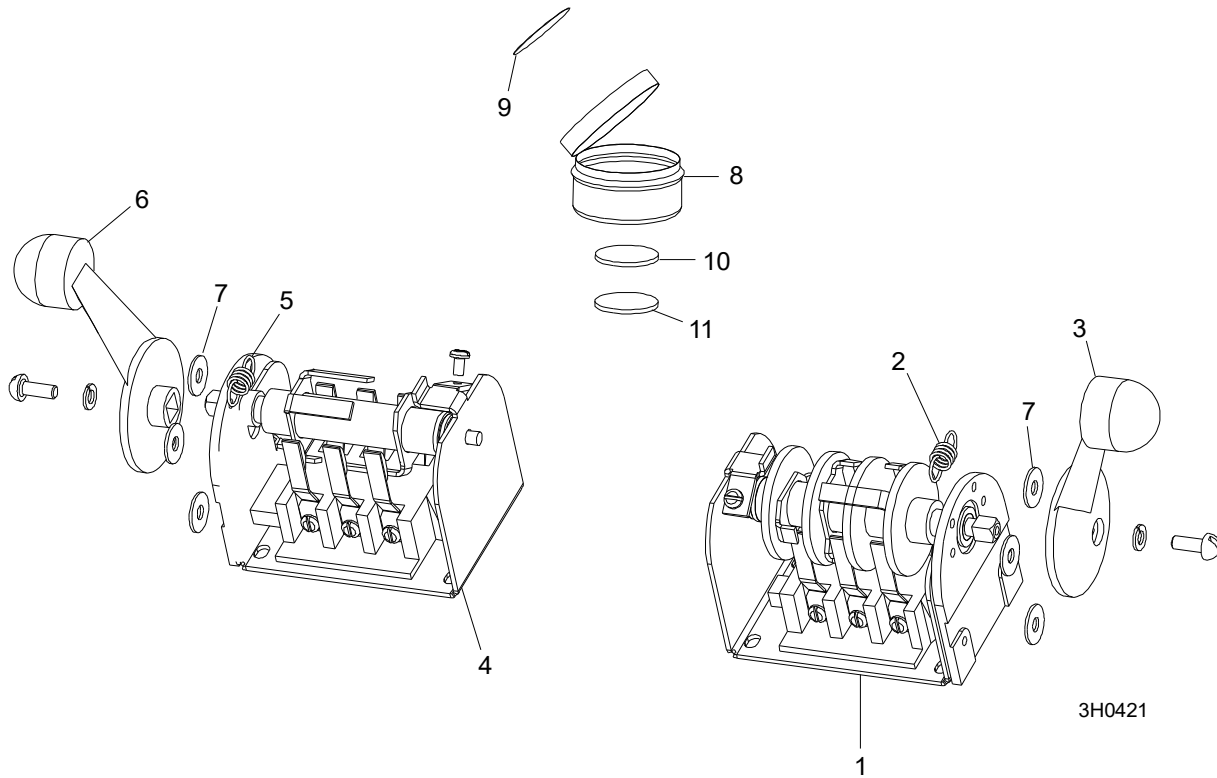
Système De Commande (CA)

REF	PART #	QTY.
1-29	036352	1
	053065	1
	069571	1
1	016135	1
2	015274	1
3	015307	1
4	F05015-17	20
5	016230	1
6	015278	1
7	See Section 4.5	
8	See Section 4.3	
9	See Section 4.4	
10	F05004-3	2
11	F05010-14	2
12	F05007-27	2

13	F05011-3	2
14	F05010-19	2
15	F05010-9	2
16	F05005-3	1
17	015266	1
18	015376	1
19	Voir LubeMizer Manuel	
20	015673	1
21	050917	1
22	024370	1
23	024371	1
	050918	1
24	Voir Accuset 2 Manuel	
25	F05015-17	4
26	024474-3	1
27	F05010-9	2

28	E10216	1
29	050300	1
30	015236	1
31	F05010-20	4
32	F05007-52	4
33	F05011-4	4
34	F05011-36	4
35	015400-5	1
36	016072-5	1
37	016402-5	1
38	S11753-5	1
39	S12117-5	1
40	S11762-5	1
41	036381	1
42	F05015-17	2

4.3 Commutateurs

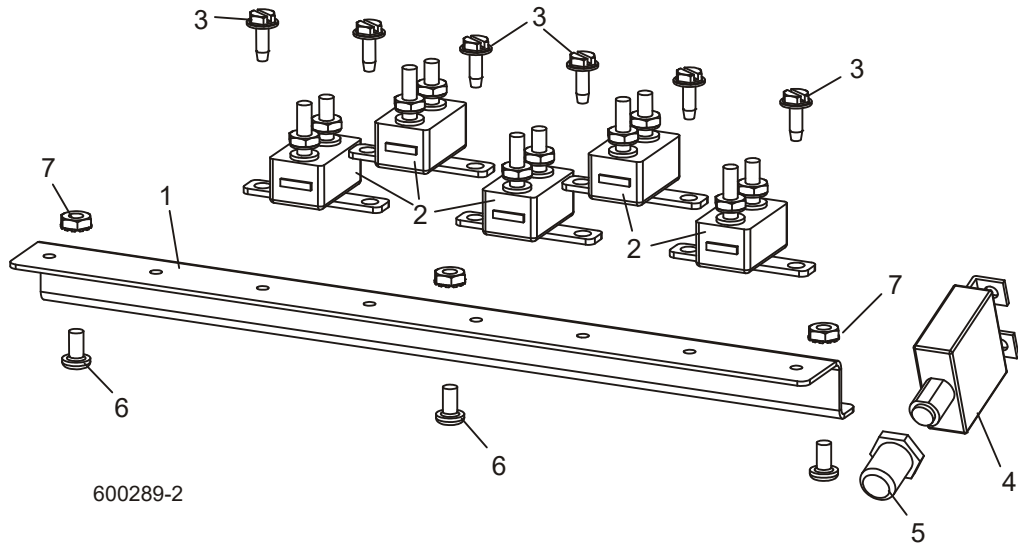


REF	PART #	QTY.
1-3	E20440	1
1	-----	1
2	P12570	1
3	P12500	1
4-6	E20439	1

4	-----	1
5	P12570	1
6	P12500	1
7	F05011-41	6
9-12	A20463	1
8	-----	1

9	P20467	1
10	-----	1
11	-----	1

4.4 Disjoncteurs



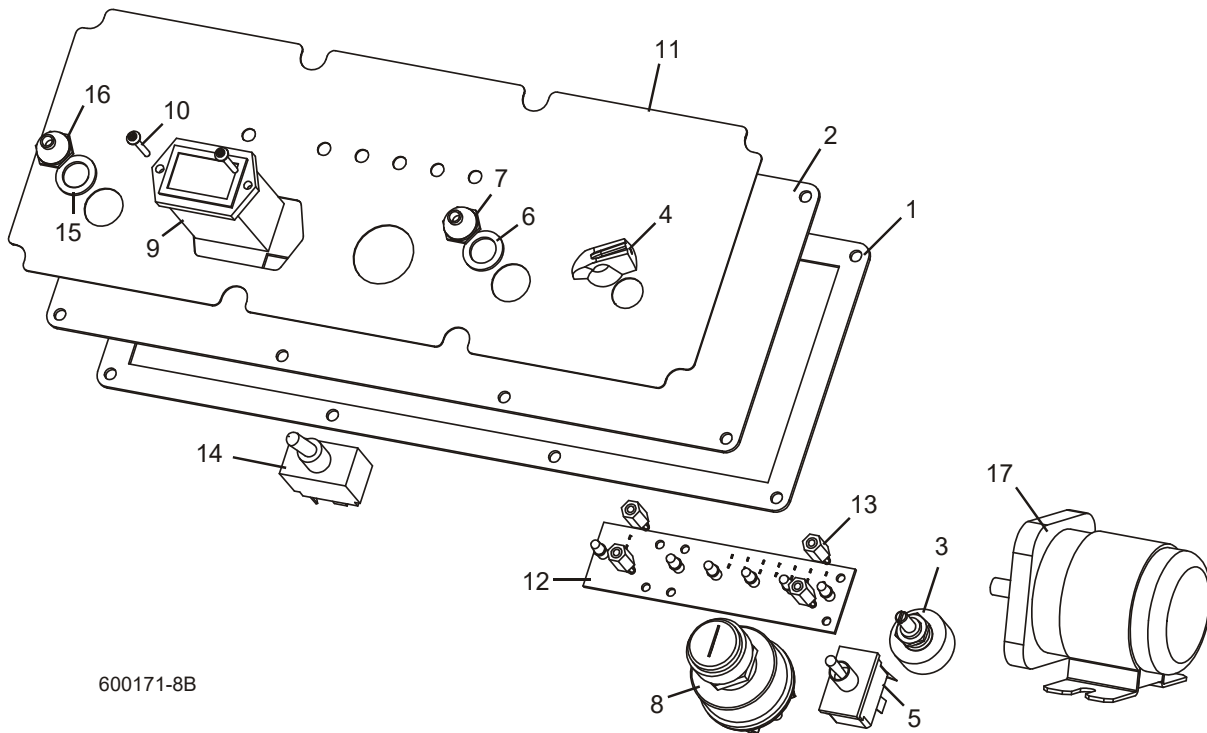
REF	PART #	QTY.
1-3	015621 ¹	1
	050916 ²	1
1	052826	1

2	E20430	5
3	F05015-7	6
4	015527 ¹	1
5	021253	1

6	F05004-3	3
7	F05010-14	3

¹ CC
² CA

4.5 Panneau De Commande



600171-8B

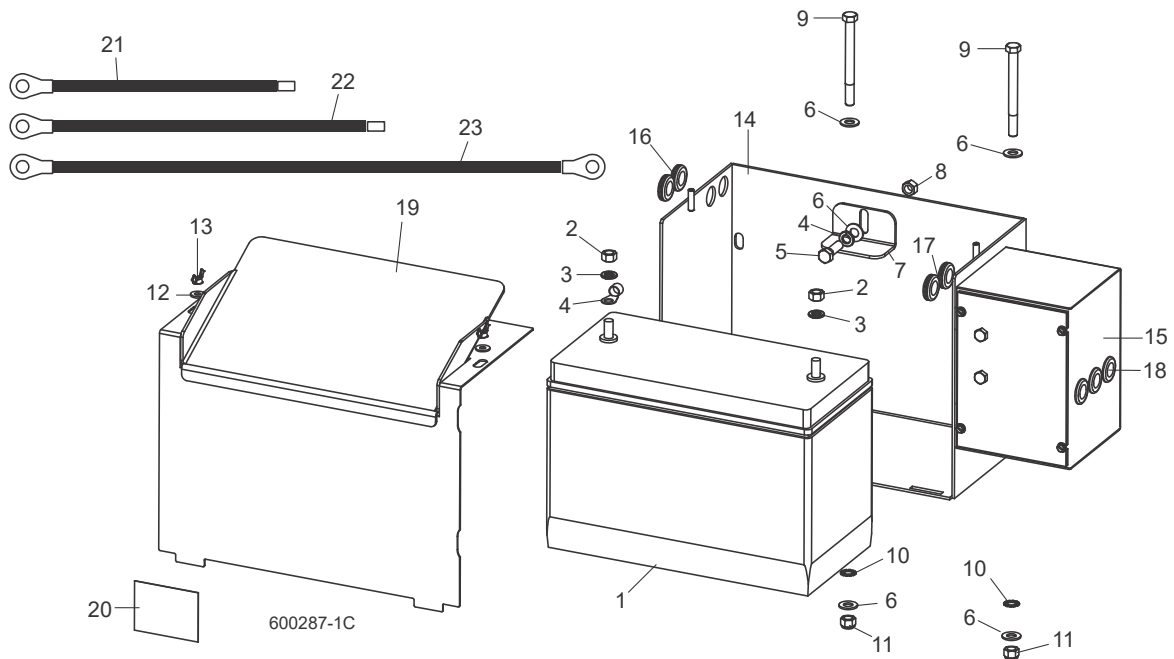
REF	PART #	QTY.	
	051877	1	
	050299	1	
1	015270	1	
2	015302	1	
3	024450-1	1	
4	P06257	1	
5	024200	1	
6	P02575	1	
7	P05251-1	1	
8	P04350	1	
9	015401	1	
10	F05015-28	2	
11	015271	1	
	015269	1	
12	015416	1	
	015409	1	
13	023147	4	
DC Models Only:			

4 Systeme De Commande Et Batterie

Panneau De Commande

14	051346	1	
15	P05251-1	1	
16	P02575	1	
17	016371	1	
	015470	1	◆
	015426	1	
	051871	1	
	024150-4	1	
	052164-D55T3	1	
	024150-10	1	
	069387	1	
	069385	1	
	069316	1	
	053176	1	
	050399	1	
	024402	1	
	052859	1	
	053192	1	
	051872	1	
	R02374	41 in.	
	R02374	42 in.	

4.6 Boîte De Batterie (CC Seulement)



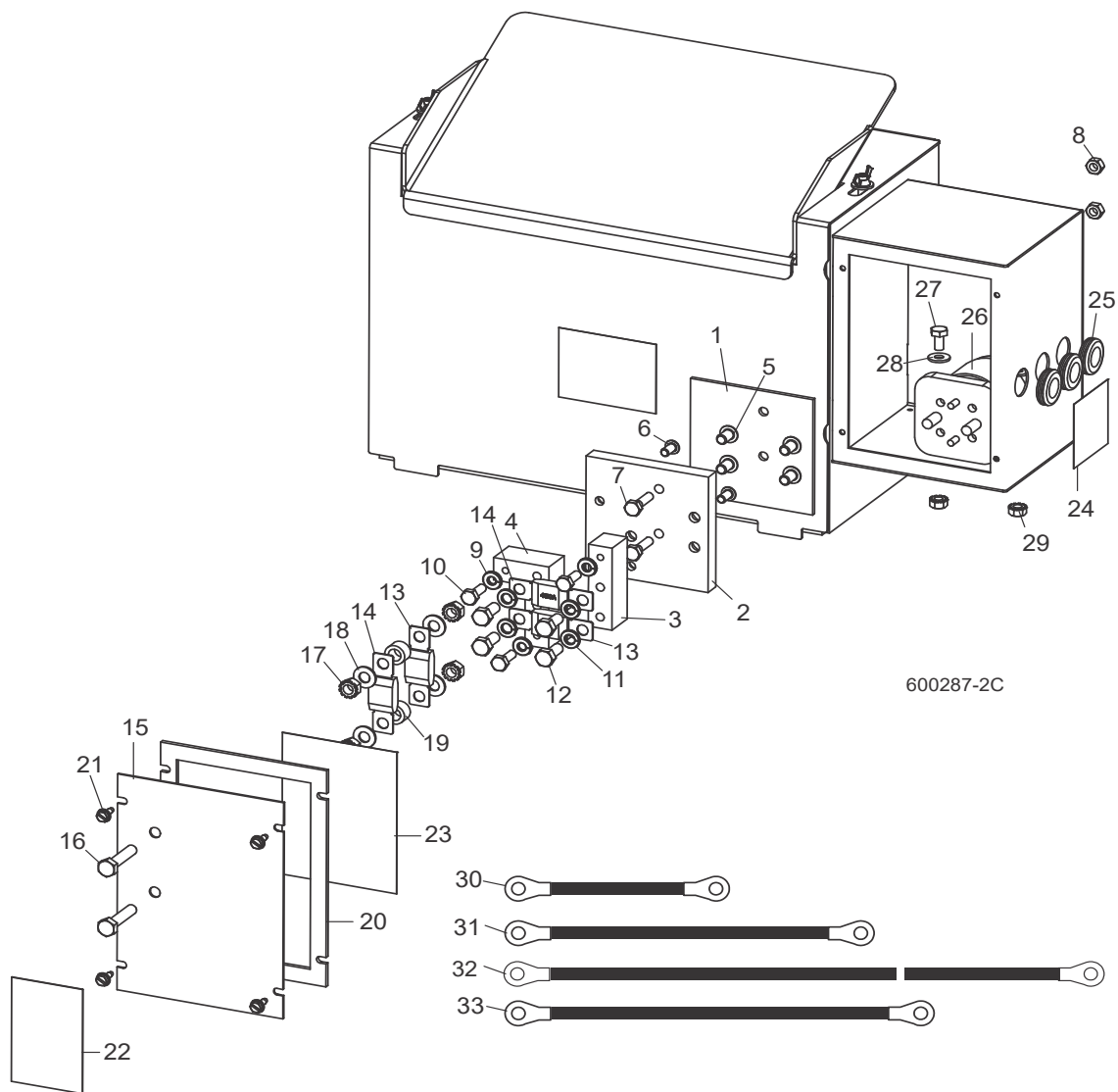
REF	PART #	QTY.
1	025841	1
2-16	017674	1
2	F05010-1	1
3	F05011-4	3
4	F05092-28	1
5	F05007-2	1
6	F05011-3	5
7	017725	1
8	F05010-25	1
9	F05007-4	2
10	F05011-36	2
11	F05010-10	2
12	F05011-11	2
13	F05010-13	2
14	015191	1
15	Voir Partie 4.7	
16	P11764	2
17	074198	2
18	074199	2
19	033976	1

20	014774	1
21	036308	1
22	036309	1
23	036306	1

4 Système De Commande Et Batterie

Boîte De Fusibles (CC Seulement)

4.7 Boîte De Fusibles (CC Seulement)



REF	PART #	QTY.
1-12	006795	1
1	056999	1
2	----	1
3	056996	1
4	056998	2
5	F05006-20	4
6	F05005-59	2
7	F05005-101	2
8	F05010-21	2

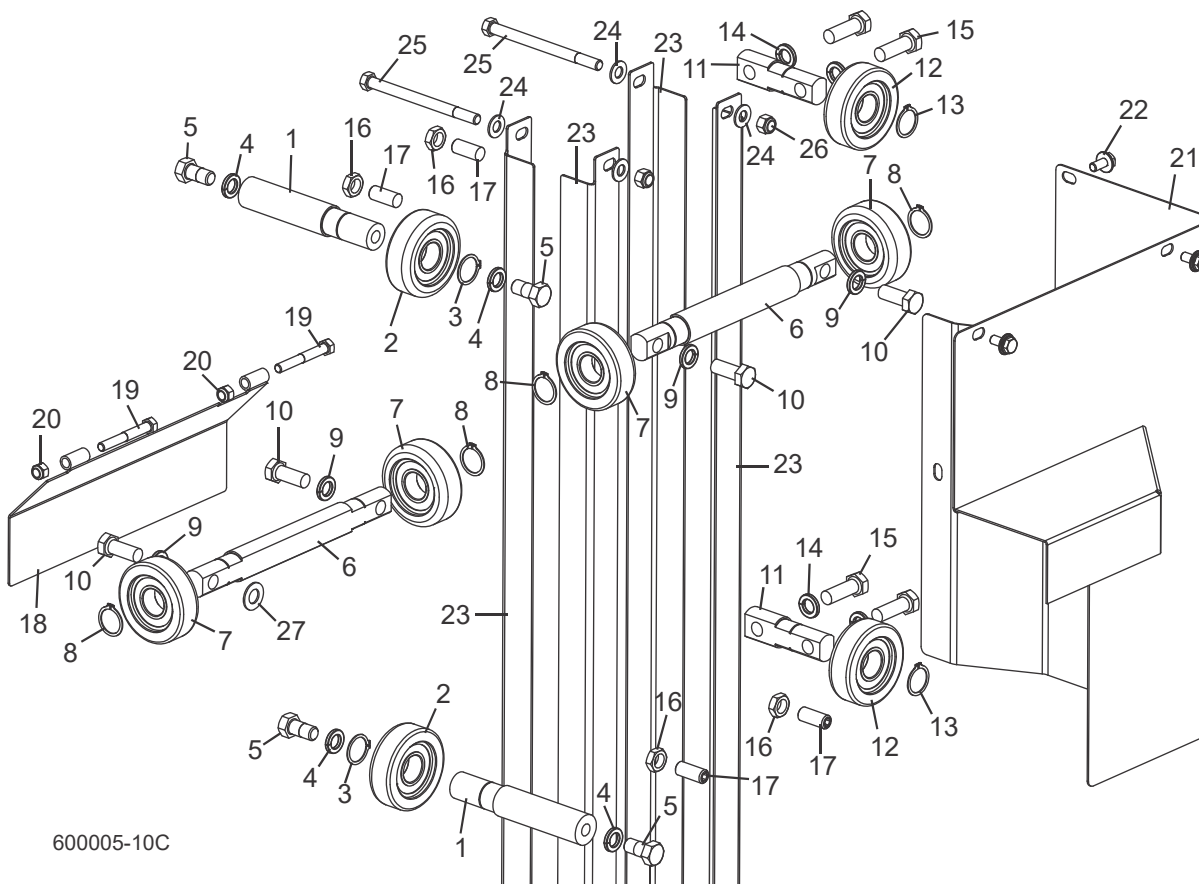
9	F05011-14	3
10	F05005-123	3
11	F05011-13	4
12	F05006-102	4
13	053339	2
14	053340	2
15-30	006853	1
15	006851	1
16	F05006-2	2
17	F05010-20	4

18	F05011-17	4
19	055323	2
20	050283	1
21	F05015-7	4
22	P10364	1
23	006868	1
24	P12960	1
25	P11764	3
26	016371	1
27	F05005-15	2

28	F05011-11	2
29	F05010-9	4
30	036305	1
31	036307	1
32	036306	1
33	036308	1
34	036309	1

PARTIE 5 SYSTÈME DE MONTÉE

5.1 Rouleaux Et Carters De Montée



600005-10C

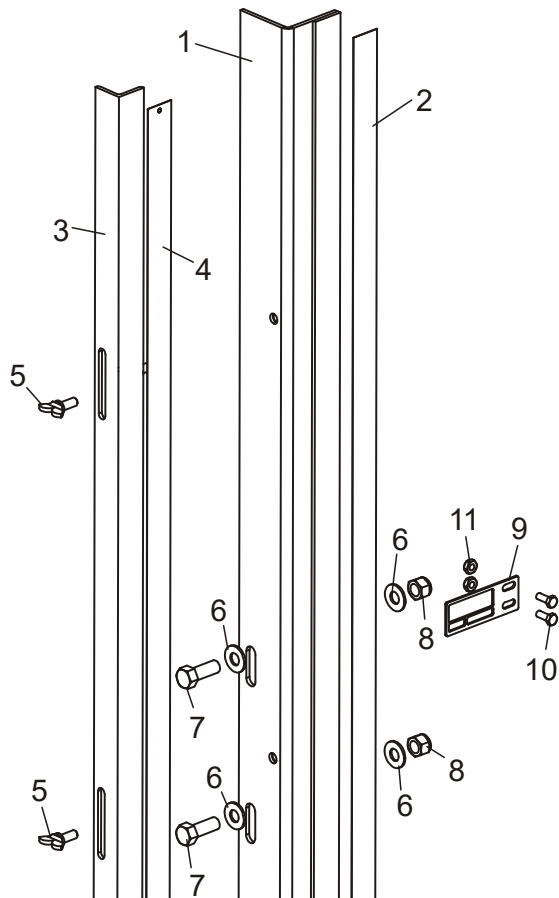
REF	PART #	QTY.
1-5	034339	2
1	033855	1
2	023857	1
3	F04254-15	1
4	F05011-9	2
5	F05008-50	2
6-10	034337	2
6	033853	1
7	023857	2
8	F04254-15	2
9	F05011-9	2

10	F05008-37	2
11-15	034338	2
11	033854	1
12	023857	1
13	F04254-15	1
14	F05011-9	2
15	F05008-33	2
16	F05010-31	4
17	F05008-18	4
18	034277	1
19	F05006-80	2
20	F05010-58	2

21	036182 ¹	1
	036184 ²	1
22	F05006-101	4
23	033827	4
24	F05011-3	8
25	F05007-5	4
26	F05010-10	4
27	074563	1

¹ CC
² CA

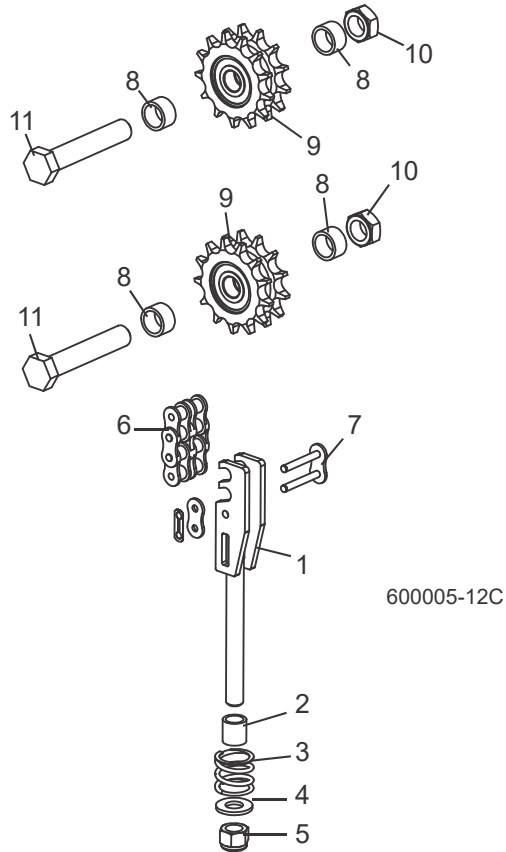
5.2 Indicateur De Hauteur Et Règles De Débitage



600123-2

REF	PART #	QTY.
1-8	034372	1
1	034370	1
2	S11773	1
3-4	034371	1
3	034369	1
4	P12819	1
5	F05005-64	2
6	F05011-3	4
7	F05007-7	2
8	F05010-10	2
9	017778	1
10	F05004-27	2
11	F05010-160	2

5.3 Chaînes Et Pignons De Montée

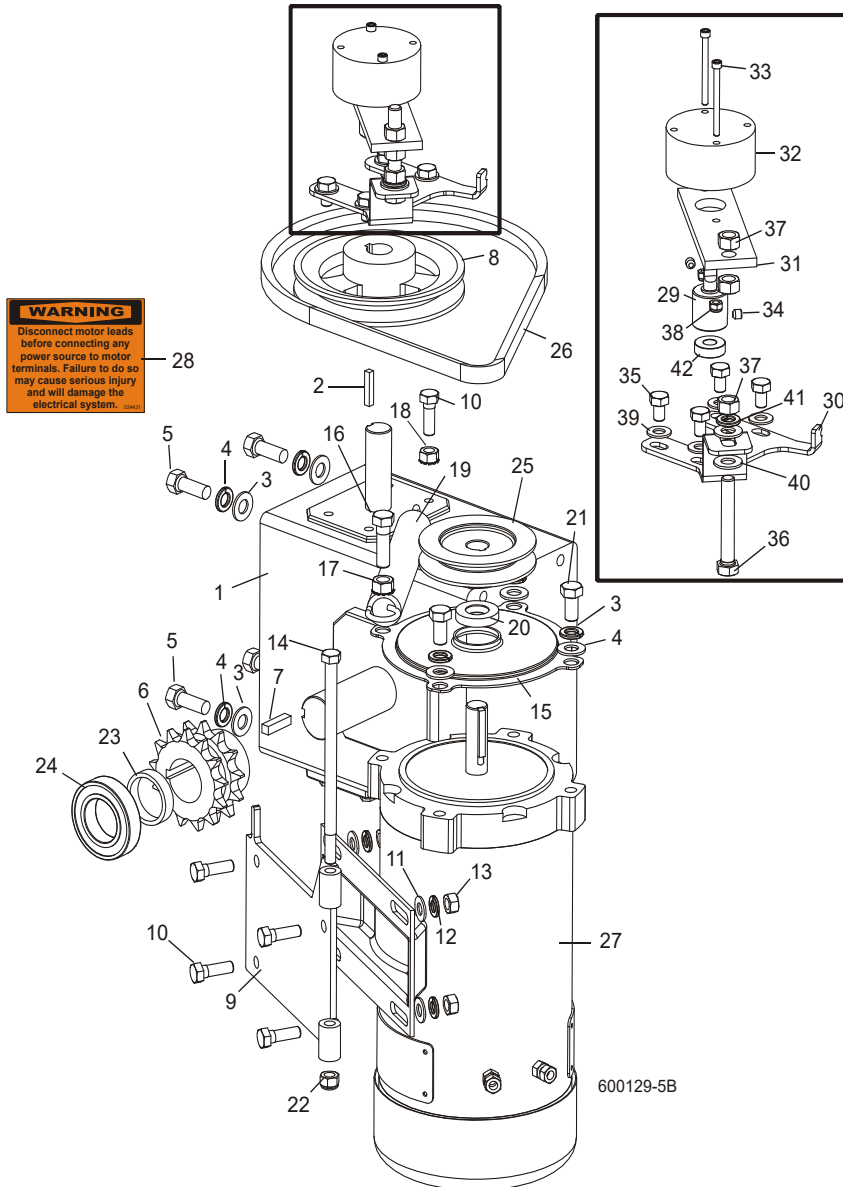


REF	PART #	QTY.
1-5	034238	1
1	034236	1
2	016515	1
3	016516	1

4	F05011-2	1
5	F05010-8	1
6	036197	1
7	015258	2
8	016018	4

9	016019	2
10	F05010-96	2
11	F05009-93	2

5.4 Système D'entraînement De Montée



REF	PART #	QTY.
1	034908	1
2	S31027	1
3	F05011-3	7
4	F05011-4	7
5	F05007-7	4
6	036008	1
7	S21486	1

8	015256	1
9	015198	1
10	F05006-1	5
11	F05011-17	4
12	F05011-13	4
13	F05010-17	4
14	F05006-73	1
15	034475	1

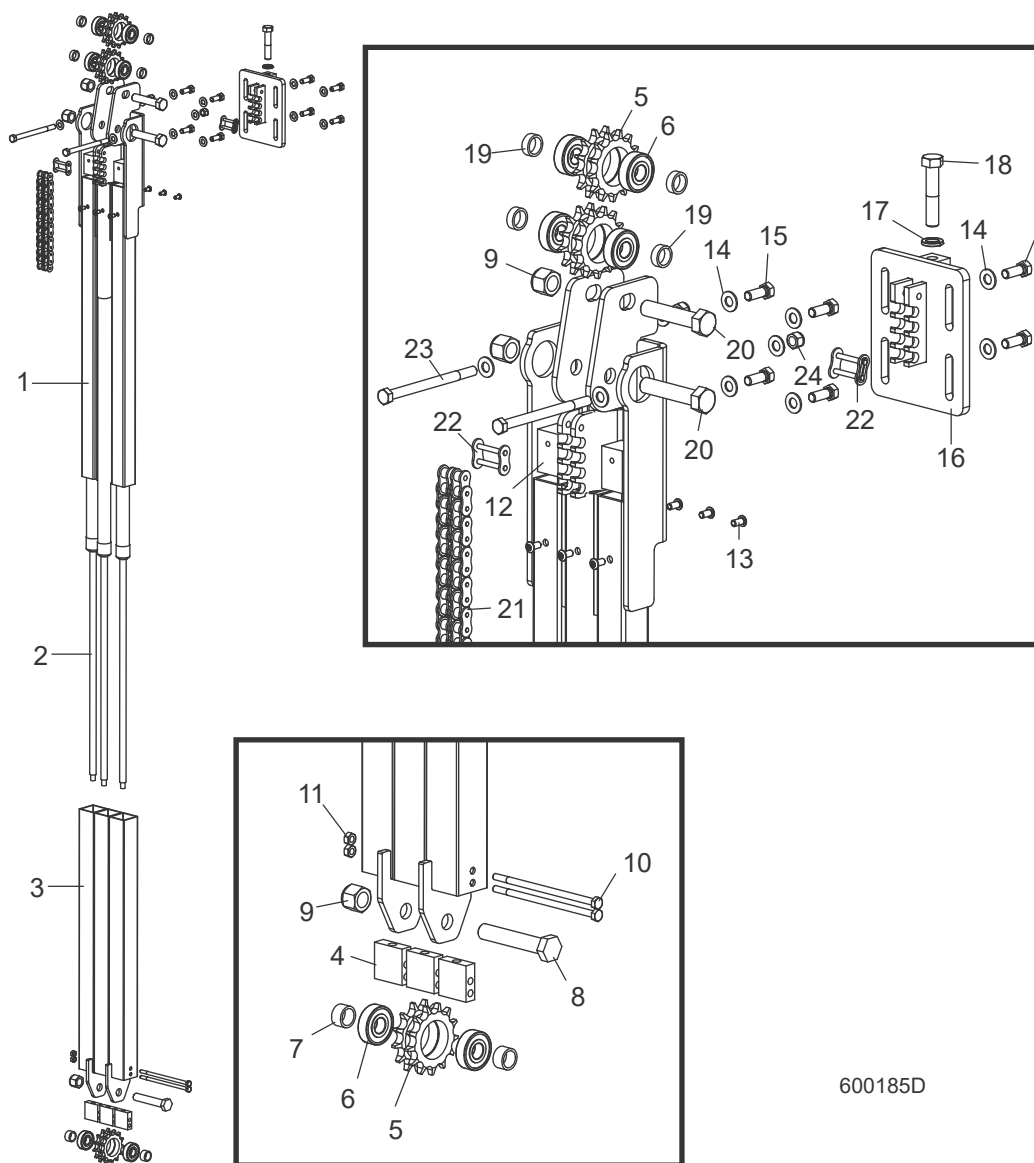
16	F05007-123	1
17	F05010-19	1
18	F05010-20	1
19	019303	1
20	034501	1
21	F05007-27	3
22	F05010-58	1
23	036016	1

24	036007	1
25	036179 ¹	1
	036675 ²	1
26	021183 ¹	1
	036682 ²	1
27	053682 ²	1
	050290 ¹	1
28	024431-5	1
29-42	062566 ²	1
29	062511	1
30	062512	1
31	062513	1
	065907	1
32	069519	1
	F05708-26	2
33	F05004-273	2
34	F05005-131	2
35	F05006-15	2
36	F05007-157	1
37	F05010-1	3
38	F05010-169	2
39	F05011-17	4
40	F05011-3	2
41	F05011-4	1
42	P10688	1
	069678-FR	1
	062566-1717	1

¹ CA

² CC

5.5 Système de Montée Assistée



600185D

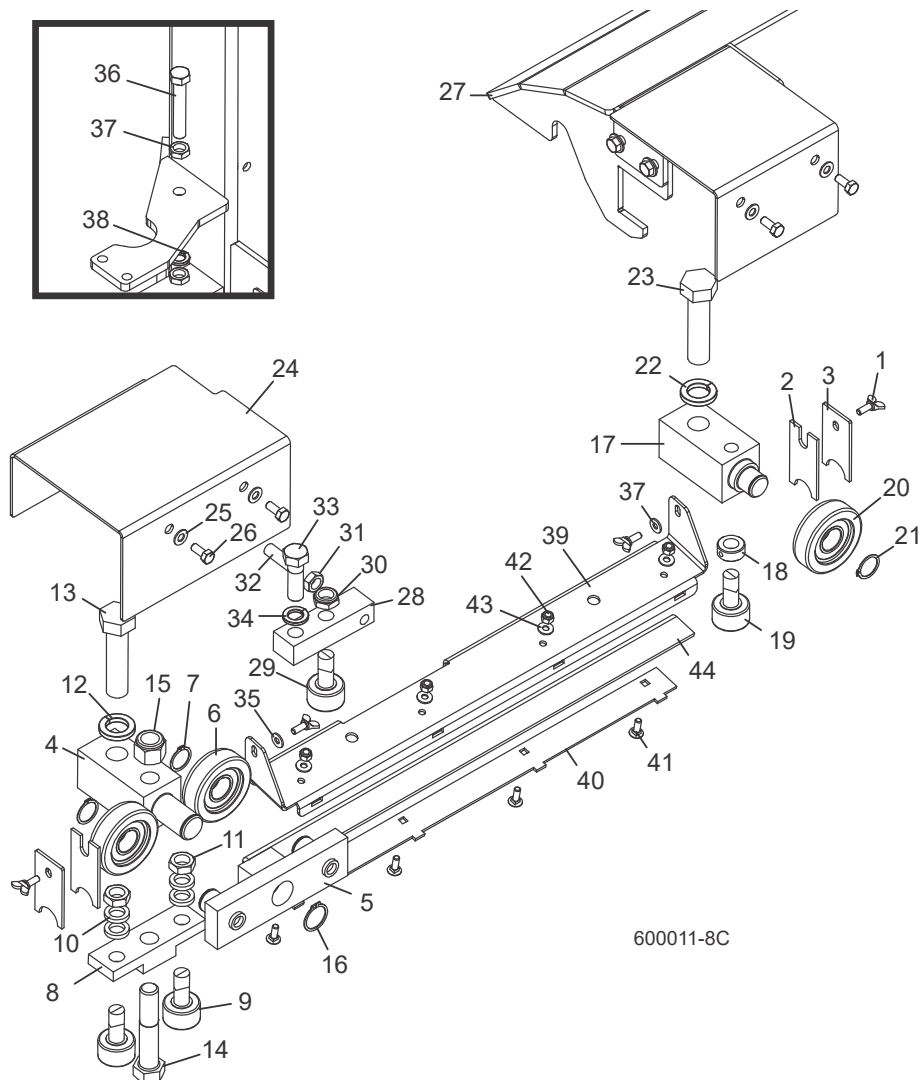
REF	PART #	QTY.
1-22	047753	1
1	047754	1
2	065410	3
	047737	1
	038628	1
3	047755	1
4	048410	3
5-6	016019	3
5	015202	1

6	P06030-1	1
7	016018	2
8	F05009-93	1
9	F05010-34	3
10	F05005-82	2
11	F05010-21	2
12	047922	3
13	F05005-59	6
14	F05011-3	8
15	F05007-87	8
16	047924	1

17	F05011-9	1
18	F05008-74	1
19	047921	4
20	F05009-37	2
21	036680	1
22	015258	2

PARTIE 6 SYSTÈME D'ENTRAÎNEMENT ET PALIERS

6.1 Paliers de Rail Superieur et Grattoirs



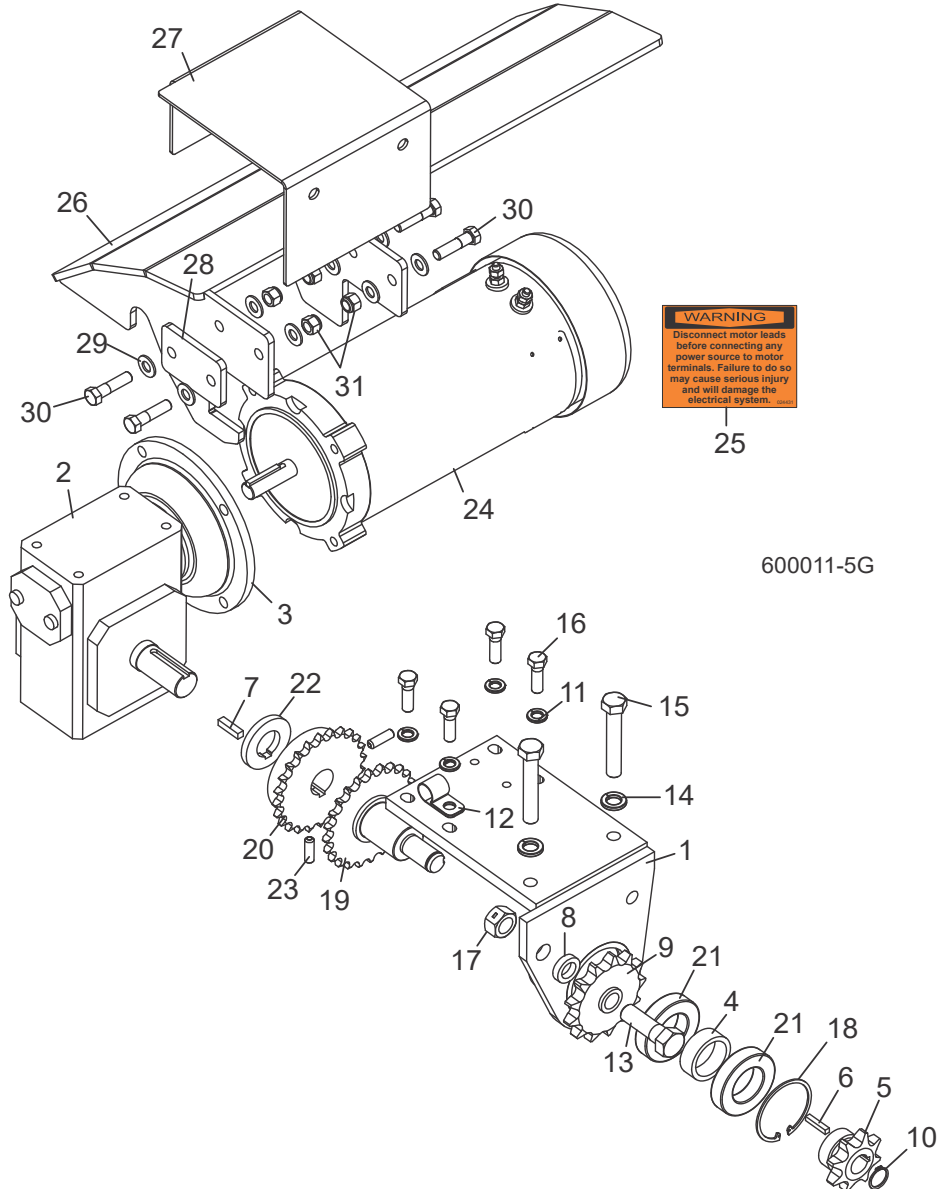
REF	PART #	QTY.	
1	F05005-64	4	
2	M04113	2	
3	034229	2	
4-16	042506	1	
4	042505	1	
5	042507	1	
6	023857	2	
7	F04254-15	2	

6 Système D'entraînement Et Paliers

Paliers de Rail Superieur et Grattoirs

8	042500	1	
9	012797	2	
10	S12480	4	
11	F05010-11	2	
12	F05011-46	1	
13	F05014-1	1	
14	F05013-3	1	
15	F05010-103	1	
16	F04254-36	1	
17-23	034231	1	
17	034230	1	
18	P05035	1	
19	012797	1	
20	023857	1	
21	F04254-15	1	
22	F05011-46	1	
23	F05014-1	1	
24	033942	1	
25	F05011-17	4	
26	F05006-102	4	
27			
28	017884	1	
29	012797	1	
30	F05010-101	1	
31	F05010-16	1	
32	F05008-112	1	
33	F05009-2	1	
34	F05011-118	1	
35	F05011-11	2	
36	F05008-7	1	
37	F05010-31	2	
38	F05011-9	1	
39-44	110614	1	
39	110610	1	
40	110611	1	
41	F05005-113	4	
42	F05010-69	4	
43	F05011-11	4	
44	S09915	1	

6.2 Système D'entraînement



REF	PART #	QTY.
1-23	034860	1
1	034850	1
2-3	034843	1
3	057444	1
4	034856	1
5	034223	1
6	S31027	1

7	S21486	1
8	017719	1
9	034224	1
10	F04254-56	1
11	F05011-4	4
12	010748	1
13	F05009-2	1
14	F05011-9	2

15	F05008-62	2
16	F05007-123	4
17	F05010-4	1
18	F04254-12	1
19	074702	1
20	034851	1
21	034852	2
22	034857	1

6 Système D'entraînement Et Paliers

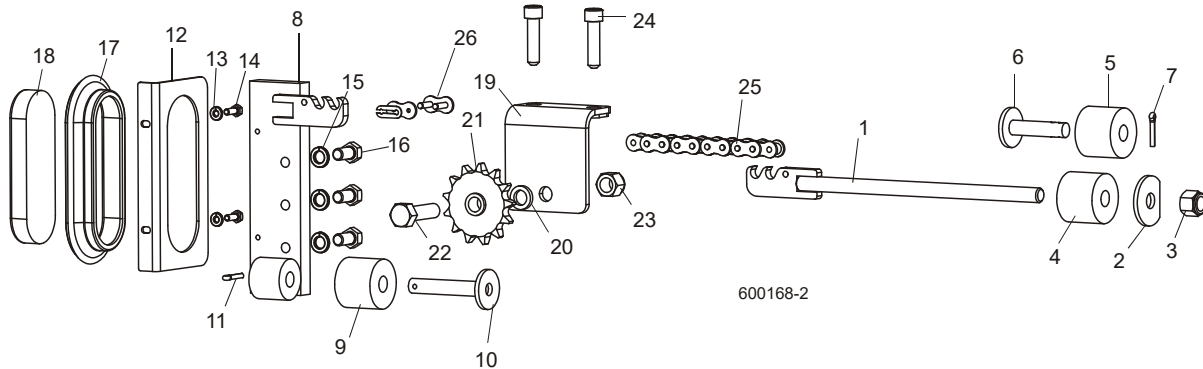
Système D'entraînement

23	F05006-165	2
24	024169 ¹	1
	050291 ²	1
25	024431-5	1
26-31	038878-A	1
26	038877	1
27	038876	1
28	038874	1
29	F05011-3	8
30	F05007-78	4
31	F05010-10	4

¹ CC

² CA

6.3 Chaîne D'entraînement Et Butoir

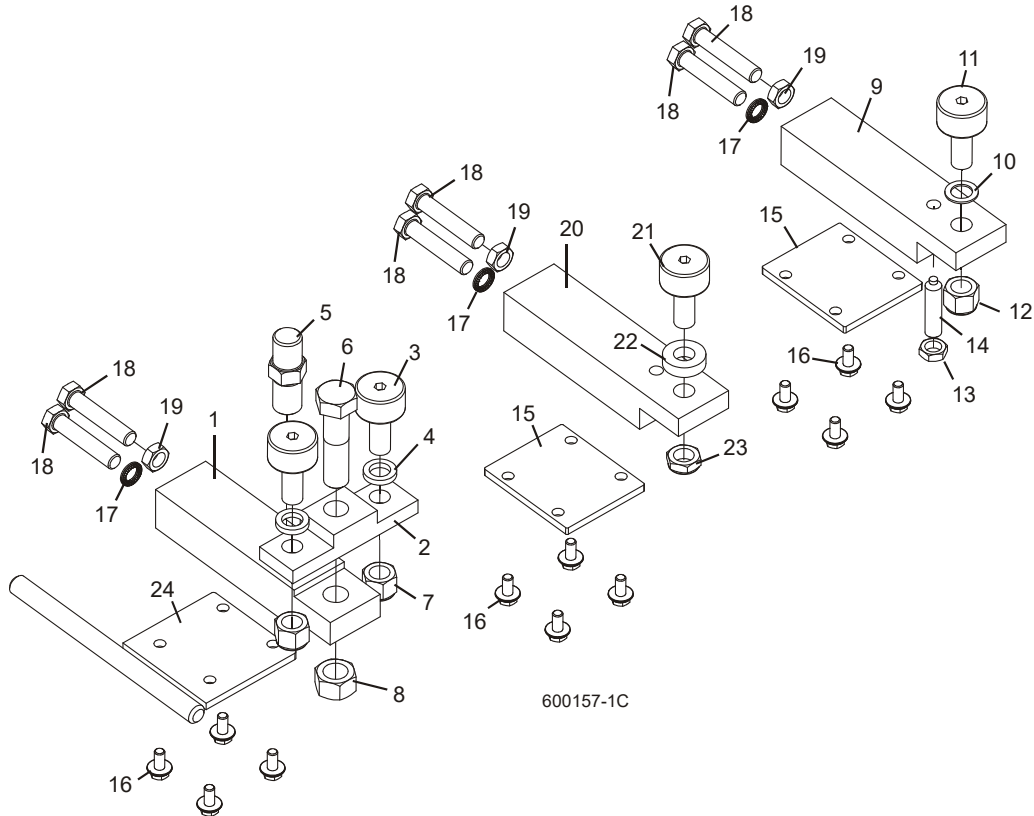


REF	PART #	QTY.
1-7	034556	1
1	034421	1
2	017838	1
3	F05010-34	1
4	P12165	1
5-7	K09630	1
5	P12165	1
6	W09293	1
7	F05012-21	1
8-18	006721	1

8	036493	1
9	P12165	1
10	034423	1
11	F05012-21	1
12	057822	1
13	F05011-14	2
14	F05005-1	2
15	F05011-9	3
16	F05008-128	3
17	006688	1
18	006391	1

19-24	034228	1
19	034227	1
20	S12480	1
21	034224	1
22	F05009-80	1
23	F05010-71	1
24	F05008-133	2
25	017842	1
26	042398	2

6.4 Paliers De Rail Inférieur

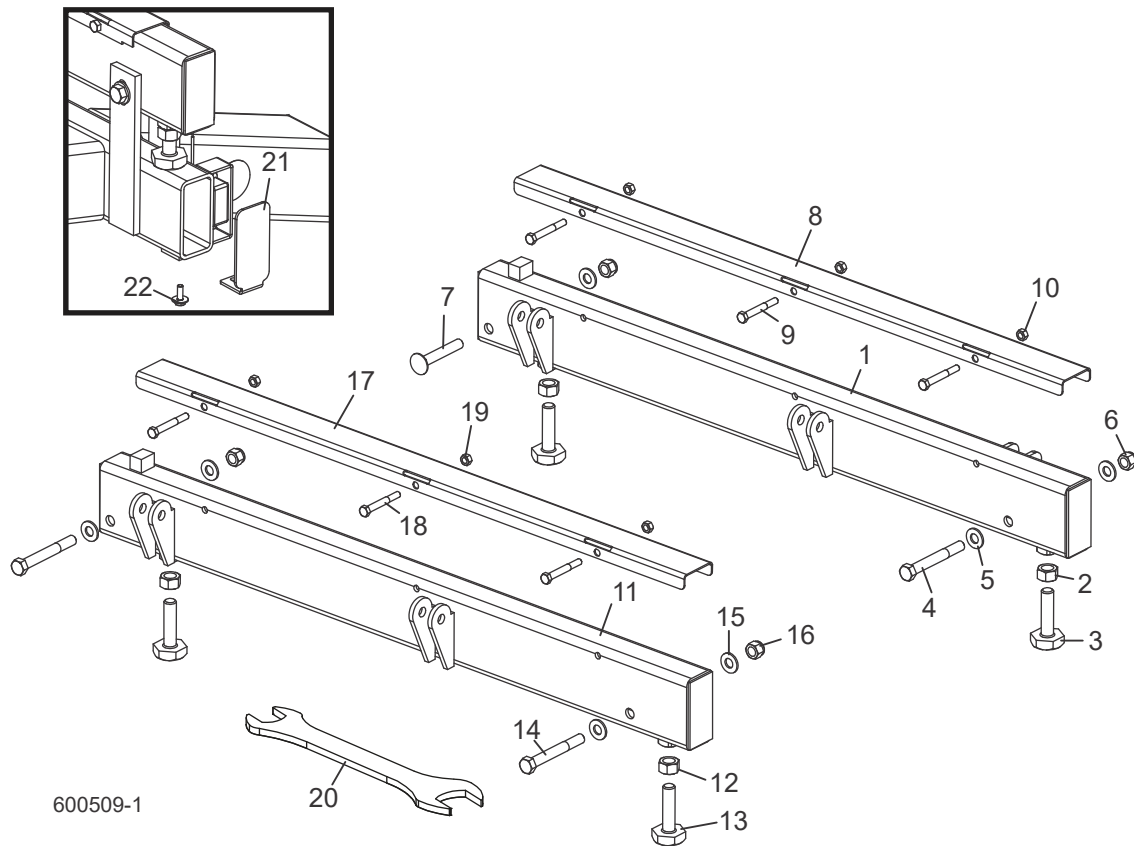


REF	PART #	QTY.
1-8	036344	1
1	036325	1
2	042500	1
3	012797	2
4	S12480	2
5	036324	1
6	F05013-5	1
7	F05010-101	2
8	F05010-80	1
9-14	034232	1
9	034234	1
10	016510	1
11	012797	1
12	F05010-11	1
13	F05010-31	1
14	F05008-137	1
15	033880	2

16	F05006-101	12
17	F05011-125	3
18	F05008-135	6
19	F05010-16	3
20-23	017887	1
20	034234	1
21	012797	1
22	034674	1
23	F05010-101	1
24	036473	1

PARTIE 7 BÂTI DE LA SCIE

7.1 Rails Avant Et Arrière Du Banc De Grume

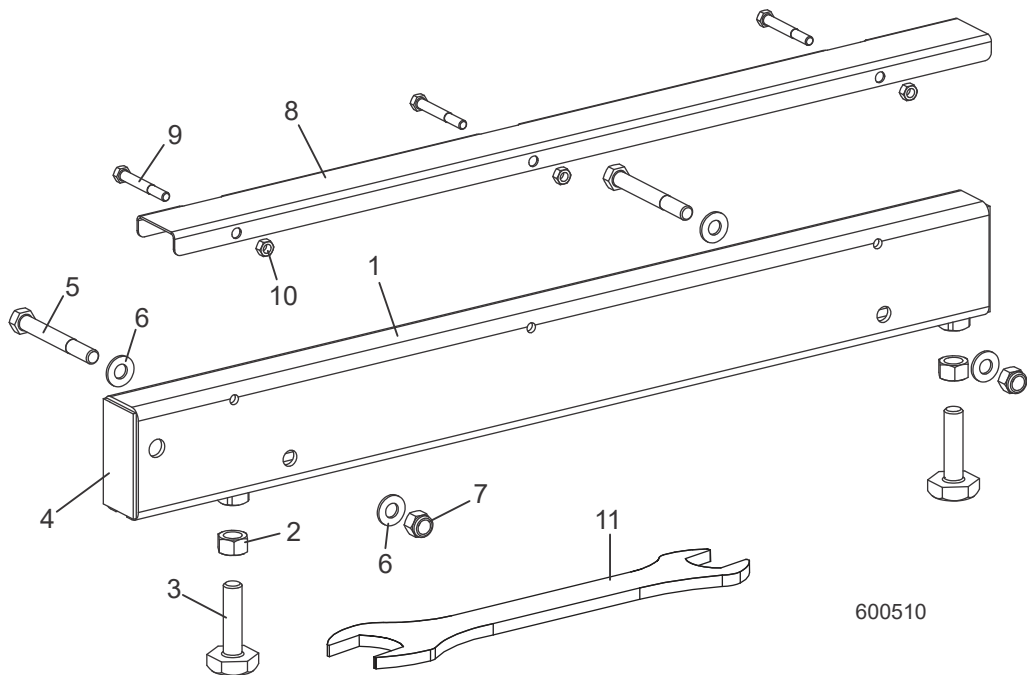


REF	PART #	QTY.
1-10	034551	1
1	034547	1
2	F05010-5	2
3	S13006	2
4	F05008-78	1
5	F05011-2	3
6	F05010-8	2
7	F05008-94	1
8-10	079144	1
8	016898	1
9	F05006-10	3
10	F05010-6	3
	Voir Partie 8.11	1

11-19	034548	1
11	034544	1
12	F05010-5	2
13	S13006	2
14	F05008-78	2
15	F05011-2	4
16	F05010-8	2
17-19	079144	1
17	016898	1
18	F05006-10	3
19	F05010-6	3
	Voir Partie 8.11	1
20	015970	1
21	038843	2

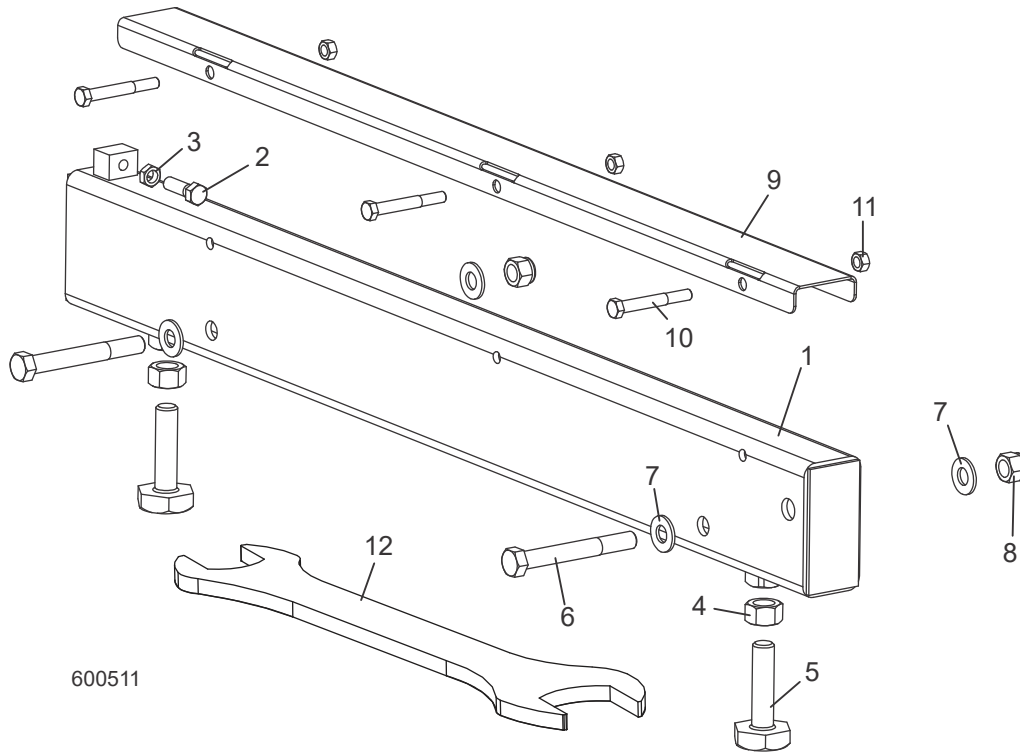
22	F05005-134	2
----	------------	---

7.2 Rail Centre-avant Du Banc De Grume



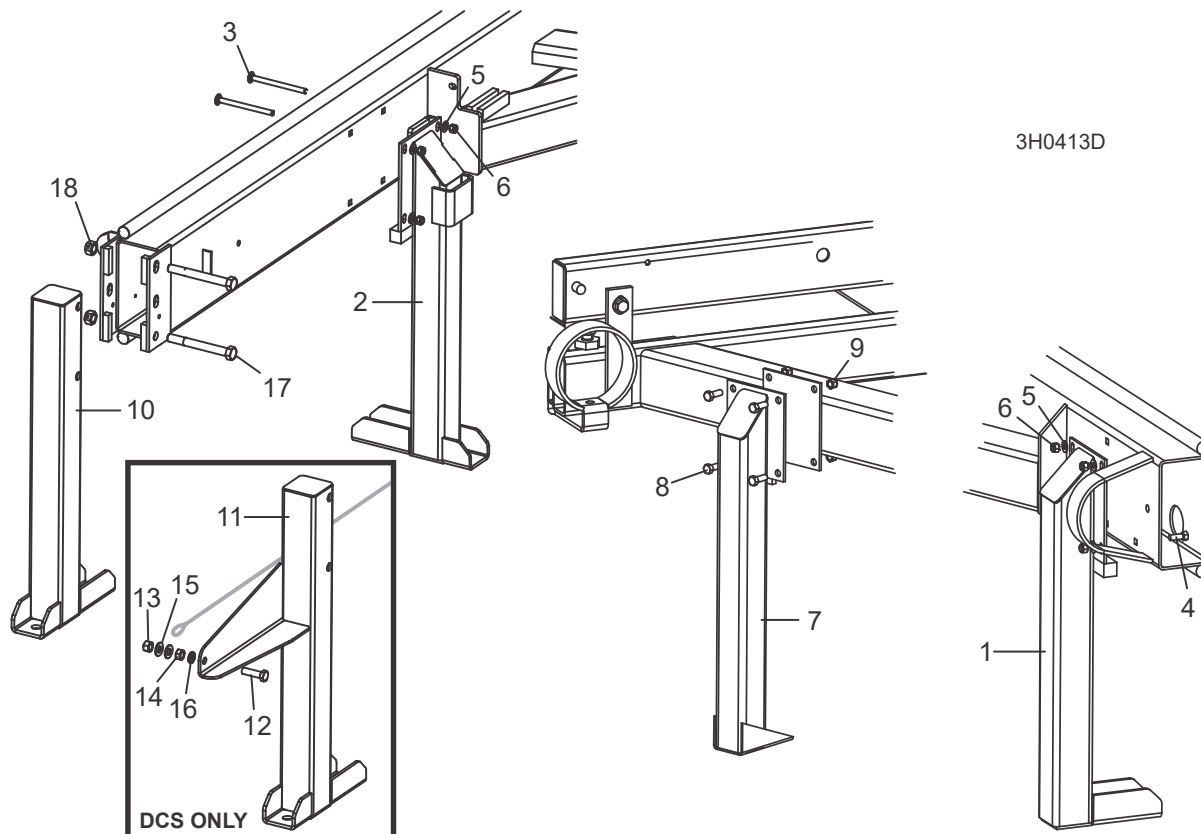
REF	PART #	QTY.
1-10	034549	1
1	034545	1
2	F05010-5	2
3	S13006	2
4	S04058	2
5	F05008-78	2
6	F05011-2	4
7	F05010-8	2
8-10	A09956	1
8	S09944	1
9	F05006-10	3
10	F05010-6	3
11	015970	1

7.3 Rail Centre-arrière Du Banc De Grume



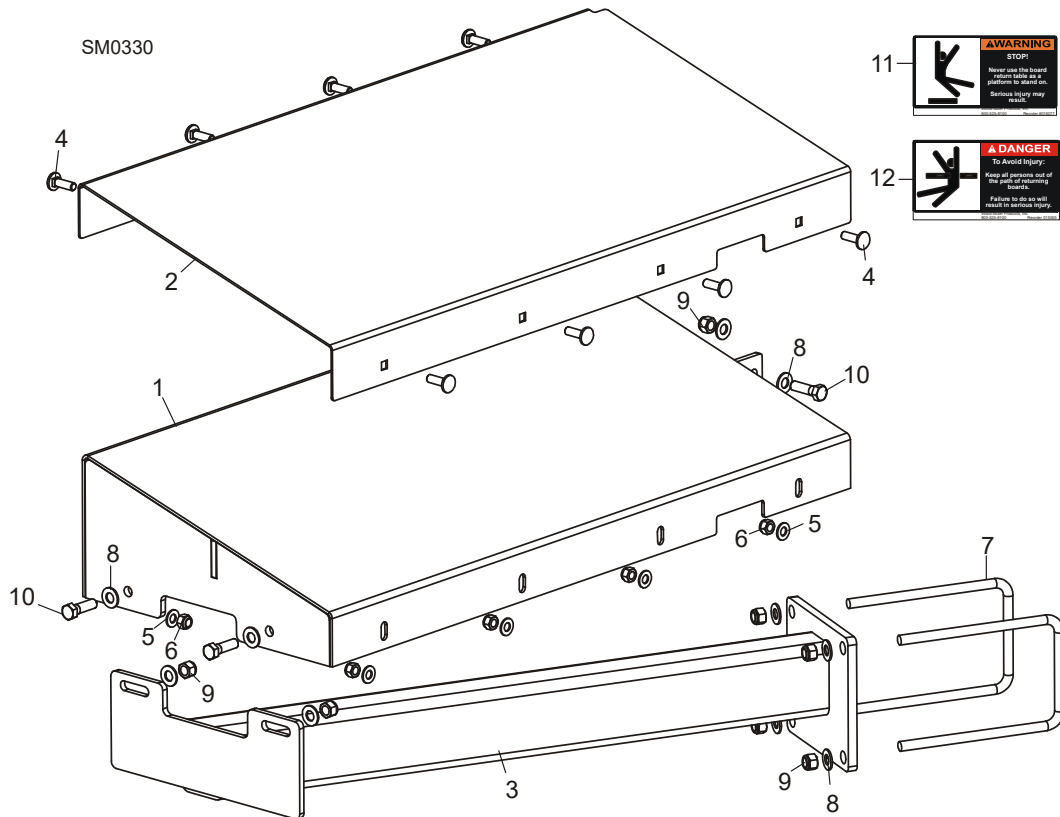
REF	PART #	QTY.
1-11	034550	1
1	034546	1
2	F05007-2	1
3	F05010-29	1
4	F05010-5	2
5	S13006	2
6	F05008-78	2
7	F05011-2	4
8	F05010-8	2
9-11	A09956	1
9	S09944	1
10	F05006-10	3
11	F05010-6	3
12	015970	1

7.4 Appuis Fixes



REF	PART #	QTY.
1	W09513	1/3
2	015091	1
3	F05007-113	8/12
4	F05007-2	4
5	F05011-3	8/16
6	F05010-10	8/16
7	W09515	2
8	F05007-2	8
9	F05010-10	8
10	W09517	1
11	F05009-11	2
12	F05010-4	2

7.5 Table D'éjecteur De Planches

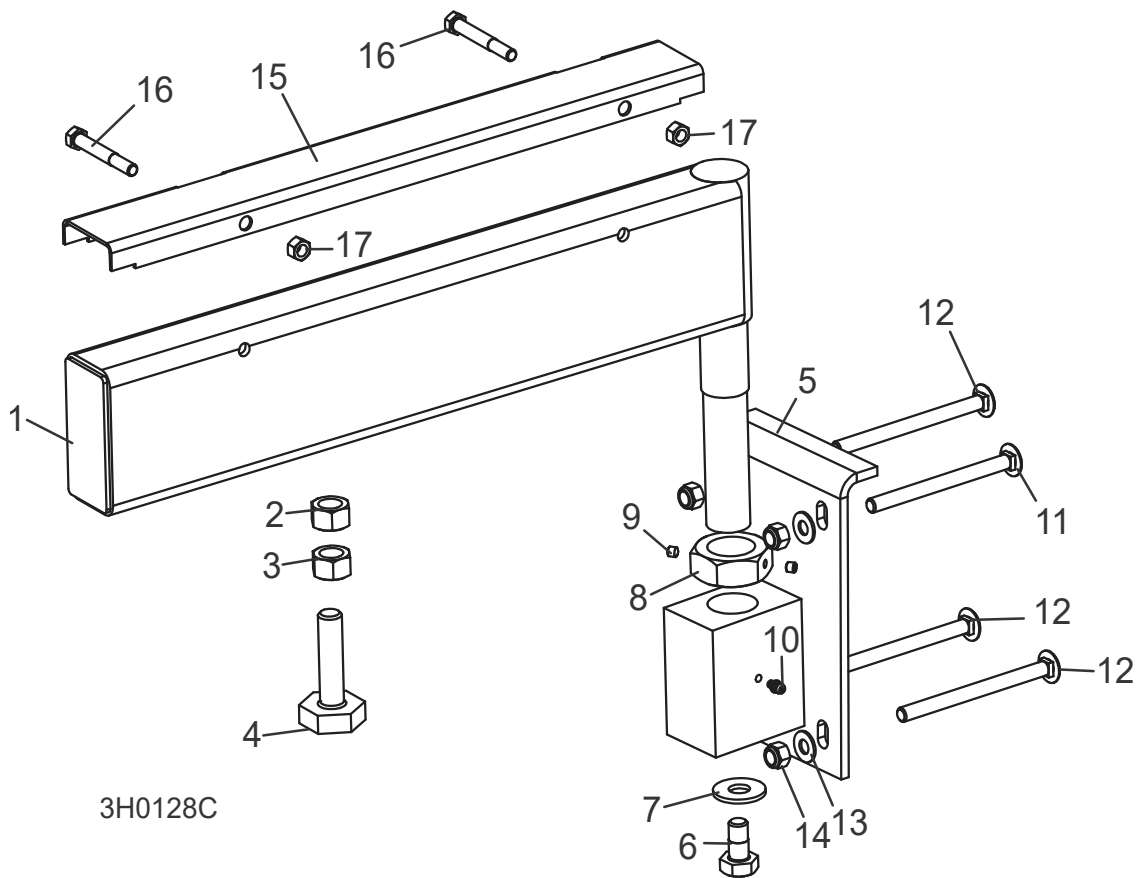


REF	PART #	QTY.
1-12	003264 ¹	1
	003270 ²	1
1	055515	1
2	003259	1
3	055533 ¹	1
	038992 ²	1
4	F05006-9	8
5	F05011-17	8
6	F05010-58	8
7	003207	2
8	F05011-3	10
9	F05010-10	7
10	F05007-123	3
11	016077-5	1
12	015365-5	1

¹ LT70

² LT60

7.6 Support De Grume Mobile



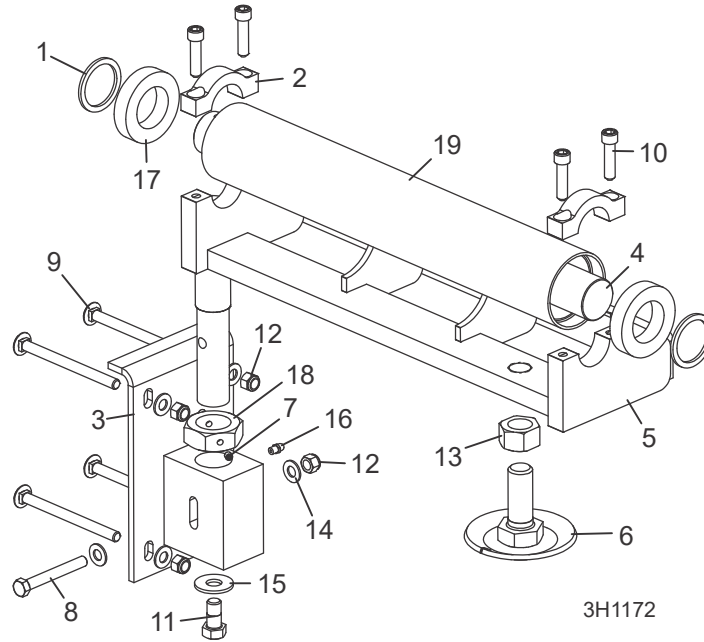
REF	PART #	QTY.
1-10	A13015 ¹	2
	012993 ²	2
1-4	-----	1
	-----	1
2	F05010-84	2
3	F05010-5	2
4	S13006	2
5	W13090	1
6	F05008-50	1
7	F05011-52	1
8	S13016	1
9	F05005-42	2
10	P04107	1

11	F05007-114	2
12	F05007-113	6
13	F05011-3	8
14	F05010-10	8
15-17	017710 ¹	2
	015926 ²	2
15	S13012 ¹	1
	012994 ²	1
16	F05006-10	2
17	F05010-6	2

¹ LT70HD

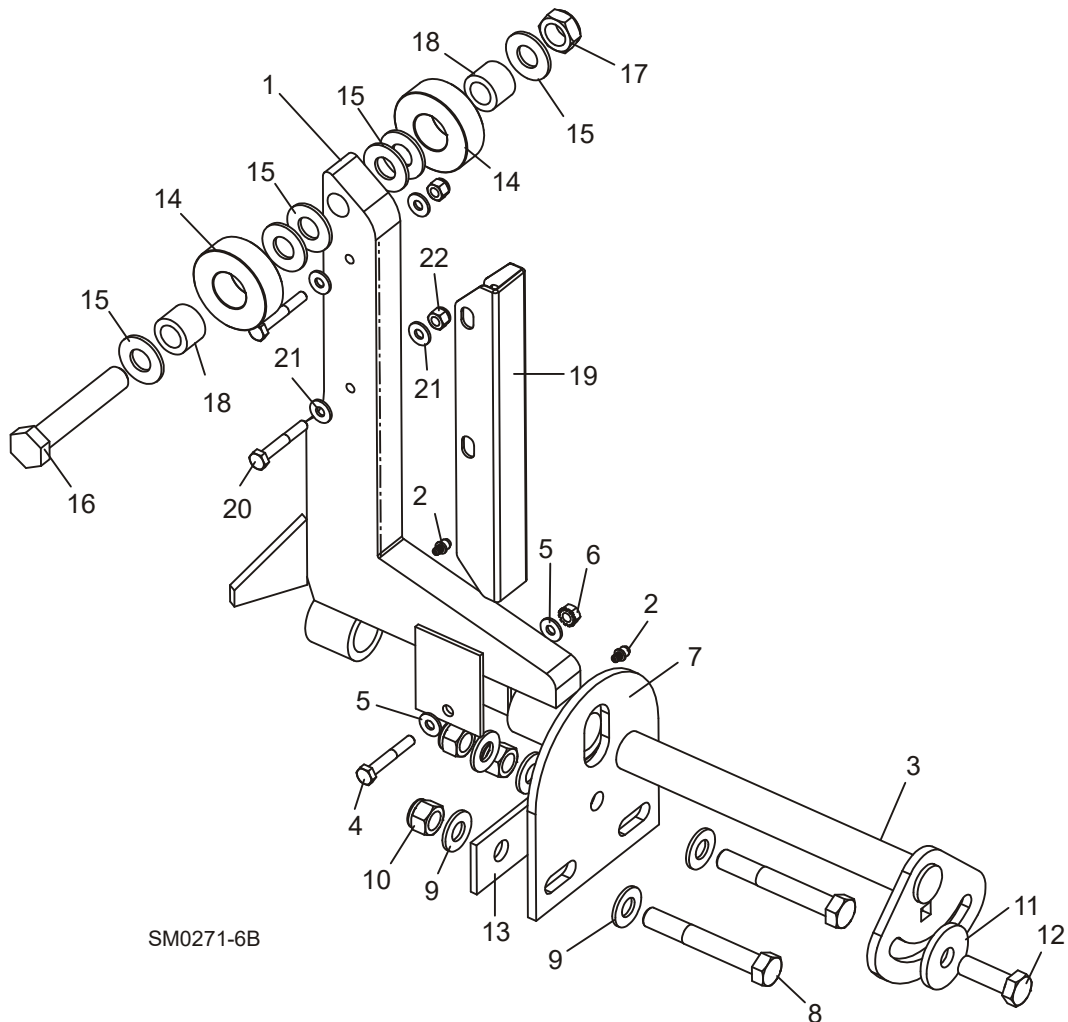
² LT60HD

7.7 Taper Roller Pivot Assembly



REF	PART #	QTY.	
	076729	1	
1	074843	2	
2	076234	2	
3	076698	1	
4	076753	1	
5	076754	1	
6	079075	1	
7	F05005-42	2	
8	F05007-1	1	
9	F05007-114	4	
10	F05007-36	4	
11	F05008-50	1	
12	F05010-10	5	
13	f05010-136	1	
14	F05011-3	6	
15	F05011-52	1	
16	P05060	1	
17	P13024	2	
18	S13016	1	
19	S13020	1	
	015970	1	

7.8 Cales À Billes (Non Hydrauliques)



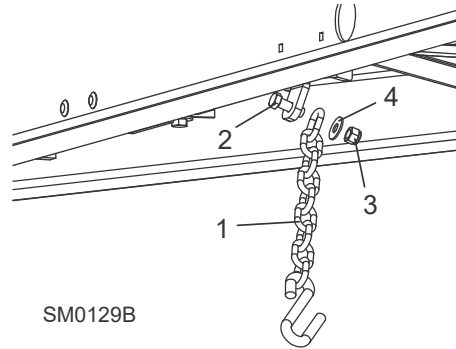
SM0271-6B

REF	PART #	QTY.
1-2	015235	2
2	P04107	2
3-13	016559	2
3	016544	1
4	F05005-4	1
5	F05011-11	2
6	F05010-9	1
7	016555	1
8	F05008-61	2
9	F05011-2	2
10	F05010-8	3

11	014632	1
12	F05008-33	1
13	016558	1
14-18	016562	4
14	016561	2
15	F05011-5	6
16	F05009-118	1
17	F05010-96	1
18	016560	2
19-22	016798	1
19	016722	4
20	F05005-4	8

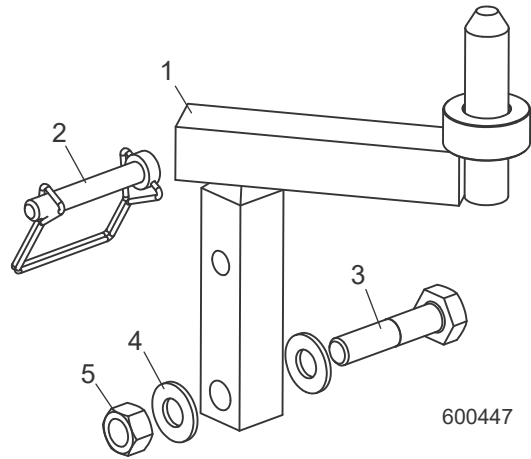
21	F05011-11	16
22	F05010-69	8

7.9 Chaîne De Sécurité



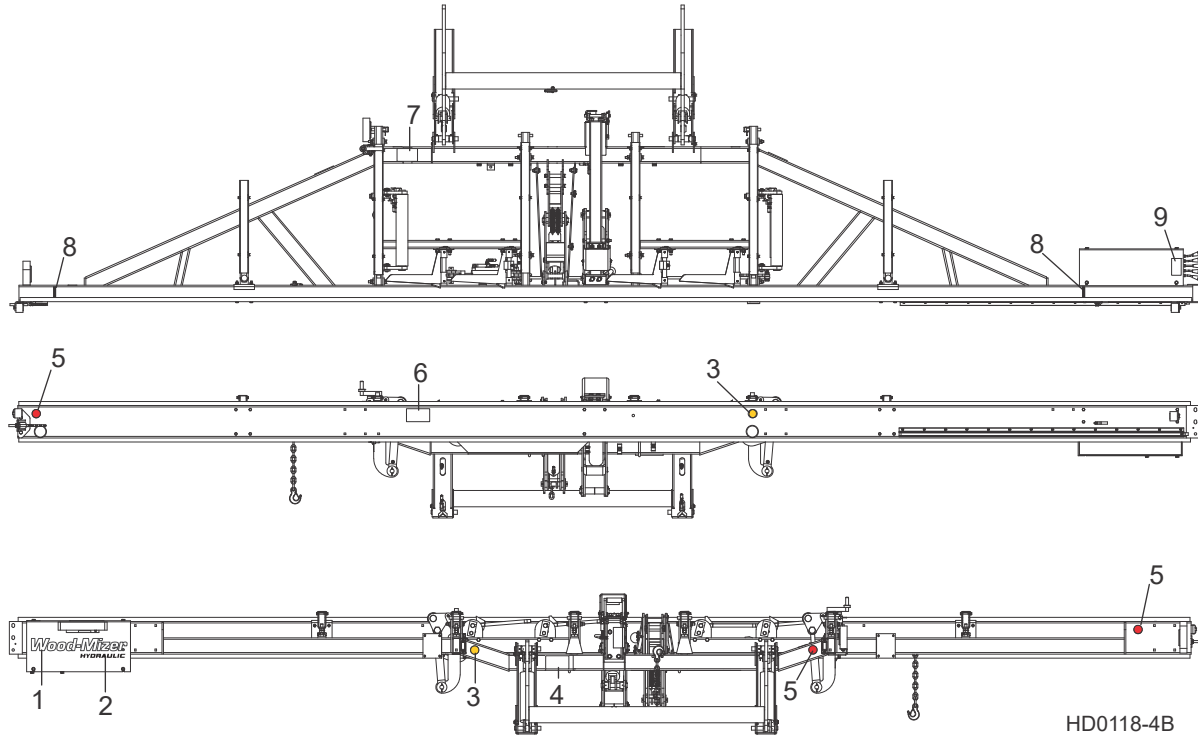
REF	PART #	QTY.
	107972	1
1	F05008-33	1
2	F05010-8	1
3	F05011-35	1

7.10 Attache De La Tête De Scie



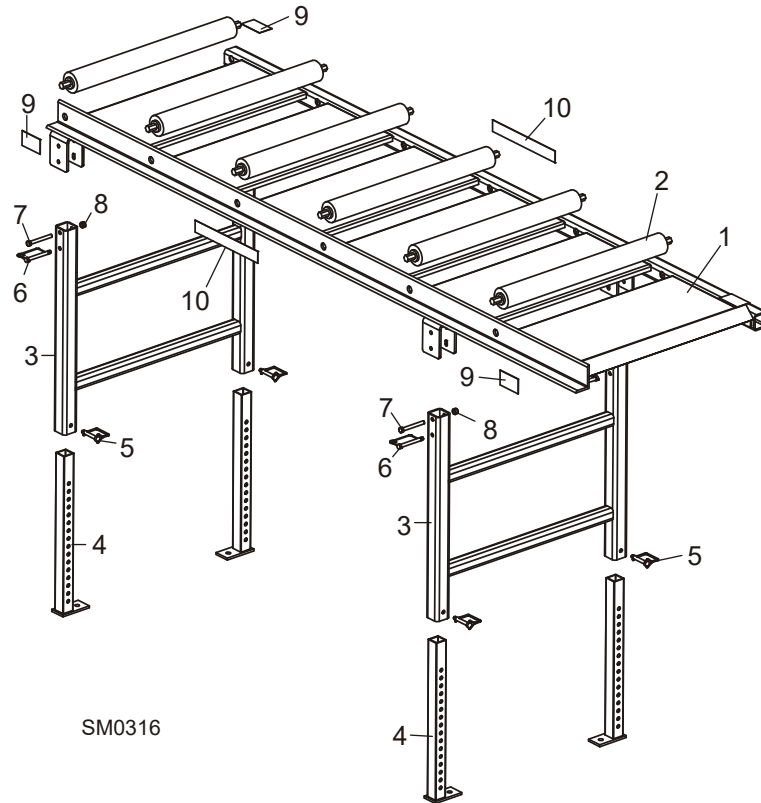
REF	PART #	QTY.
1-5	074596	1
	074597	1
1	074126	1
	074127	1
2	014151	1
3	F05008-10	1
4	F05011-2	2
5	F05010-3	1

7.11 Étiquettes D'avertissement



REF	PART #	QTY.
1	065034	1
2	065035	1
3	P07453	2
4	S09851	1
5	P07452	3
6	P10287	1
7	S12581	1
8	S12051	2
9	P12961	1

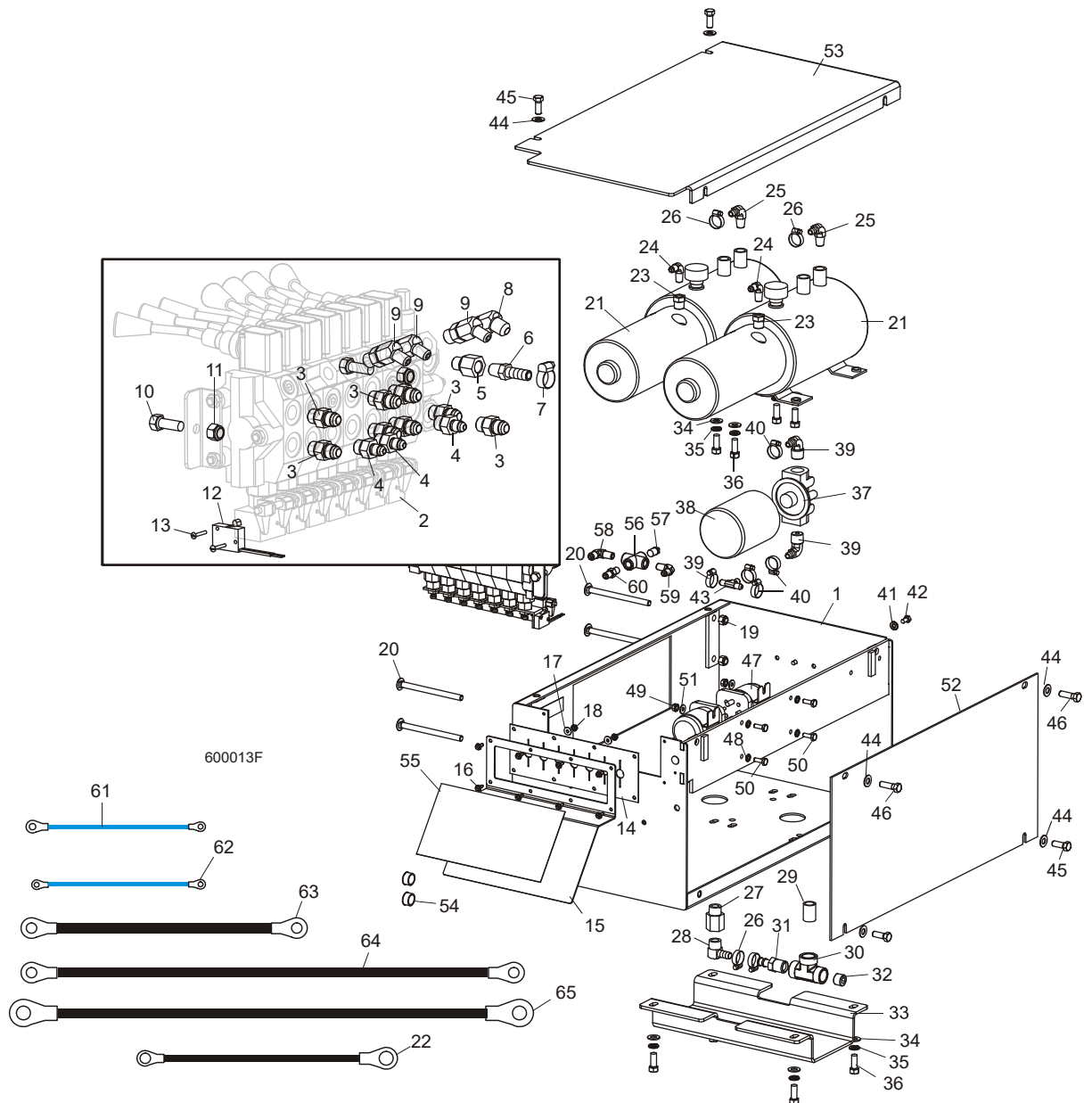
7.12 Table De Planches (Optionnel)



REF	PART #	QTY.
1-10	016652	1
1	016606	1
2	038167	6
3	016609	2
4	016651	4
5	014151	4
6	016677	4
7	F05007-135	4
8	F05010-10	4
9	S12641-5	4
10	016991	2

PARTIE 8 SYSTEME HYDRAULIQUE

8.1 Boîte De Pompe Des Hydrauliques (CC)



REF	PART #	QTY.
1-60	017649	1
1	034383	1
2-13	034533	1

2	034451	1
3	014687	8
4	P26284	3
5	014686	1
6	014685	1

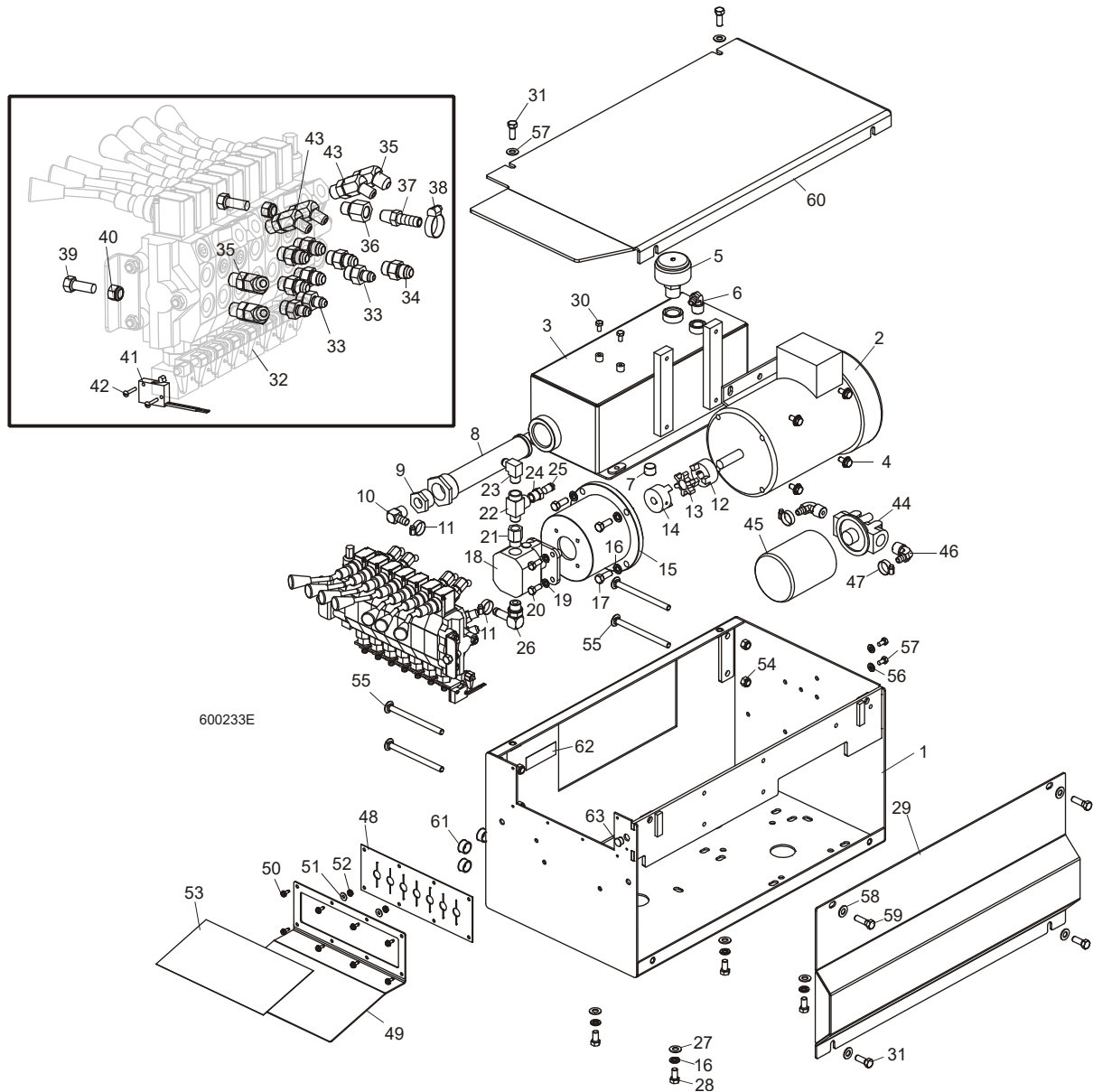
7	P12739	1
8	015489	1
9	015488	3
10	F05007-7	2
11	F05010-10	2

8 Système Hydraulique

12	024198	1
13	F05004-13	2
14	034202	1
15	033999	1
16	F05015-7	8
17	F05011-18	2
18	F05010-14	2
19	F05010-10	4
20	F05007-113	4
21-36	034534	1
21-22	061764	2
22	052806	1
23	015490	2
24	P09142	2
25	P12708	2
26	P12739	4
27	015995	1
28	015997	1
29	016795	1
30	016793	1
31	016794	1
32	P26258	1
33	015992	1
34	F05011-3	8
35	F05011-4	8
36	F05007-7	8
37-38	P22683	1
38	P20301	1
39	P12707	2
40	P12739	2
41	F05011-14	2
42	F05005-15	2
43	015485	1
44	F05011-3	6
45	F05007-87	4
46	F05007-2	2
47	016371	2
48	F05011-37	4
49	F05010-9	4
50	F05005-1	4
51	F05011-11	4
52	015227	1
53	015228	1

54	P04137	2
55	017669	1
56	P22311	1
57	P05498	1
58	015490	1
59	P09142	1
60	P09143	1
61	036315	2
62	036314	1
63	036311	1
64	036310	1
65	036312	2

8.2 Boîte De Pompe Des Hydrauliques (230/460V CA)



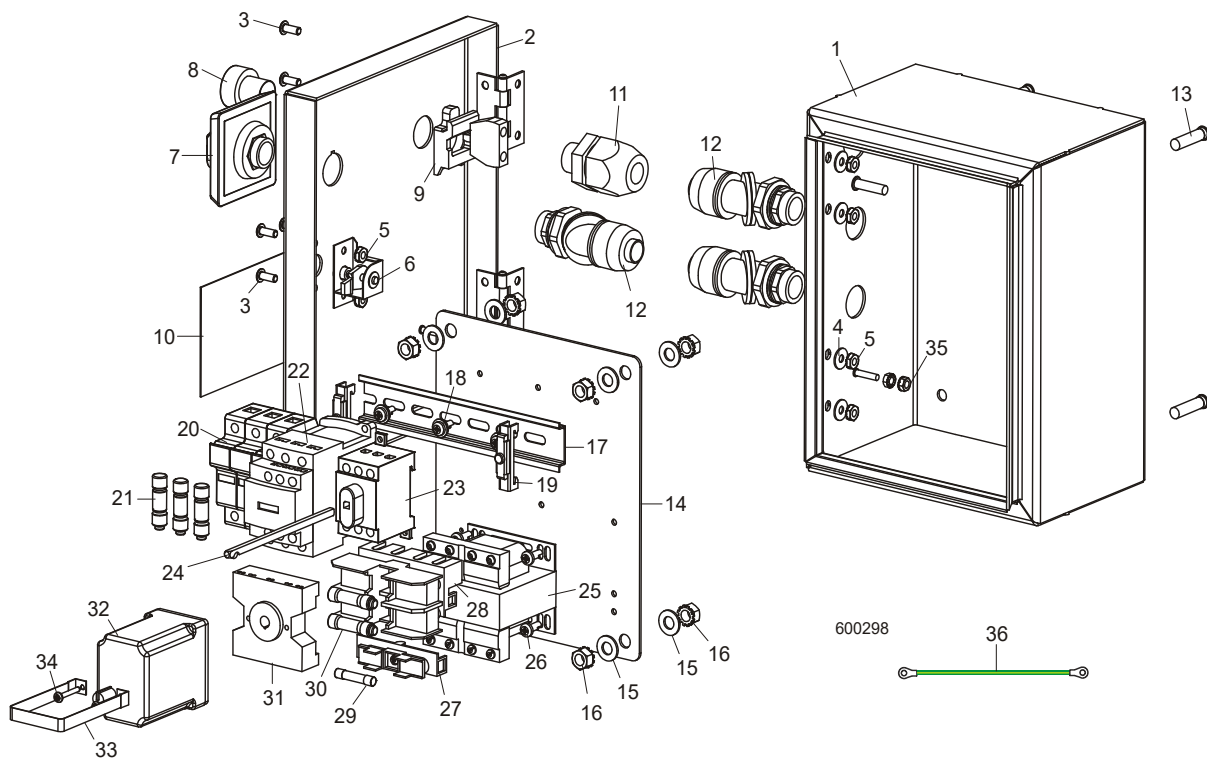
REF	PART #	QTY.
	017677	1
1	034383	1
2-29	038963	1
2	055312	1
3	054825	1
4	F05006-101	4
5	P20212	1

6	P12707	1
7	P26258	1
8	P20210	1
9	P20239	1
10	015997	1
11	P12739	2
12	038951	1
13	P20218	1

14	P20217	1
15	P20215	1
16	F05011-4	8
17	F05007-87	4
18	P20213	1
19	F05011-13	4
20	F05006-102	4
21	P12706	1

22	016822	1
23	016820	1
24	015490	1
25	P10052	1
26	038949	1
27	F05011-3	4
28	F05007-27	4
29	038966	1
30	F05007-87	4
31-42	017684	1
31	034451	1
32	P26284	3
33	014687	7
34	015489	2
35	014686	1
36	014685	1
37	P12739	1
38	F05007-7	2
39	F05010-10	2
40	024198	1
41	F05004-13	2
42	015488	3
43-44	P22683	1
44	P20301	1
45	P12707	2
46	P12739	2
47	034202	1
48	017771	1
49	F05015-7	8
50	F05011-18	2
51	F05010-14	2
52	017669	1
53	F05010-10	4
54	F05007-113	4
55	F05011-14	2
56	F05005-15	2
57	F05011-3	6
58	F05007-2	2
59	015228	1
60	P04137	3
61	S12825	1
62	036244	1

8.3 Boîte De Commande Des Hydrauliques (230/460V CA)



REF	PART #	QTY.
1-36	052384 ¹	1
	052385 ²	1
1	050302	1
2	052379	1
3	F05004-196	6
4	F05011-18	4
5	F05010-14	6
6	051978	1
7	050883-1	1
8	050152	1
9	025242	1
10	051948	1
11	E22721	1
12	051750	3
13	F05006-113	4
14	052377	1
15	F05011-17	8
16	F05010-20	8

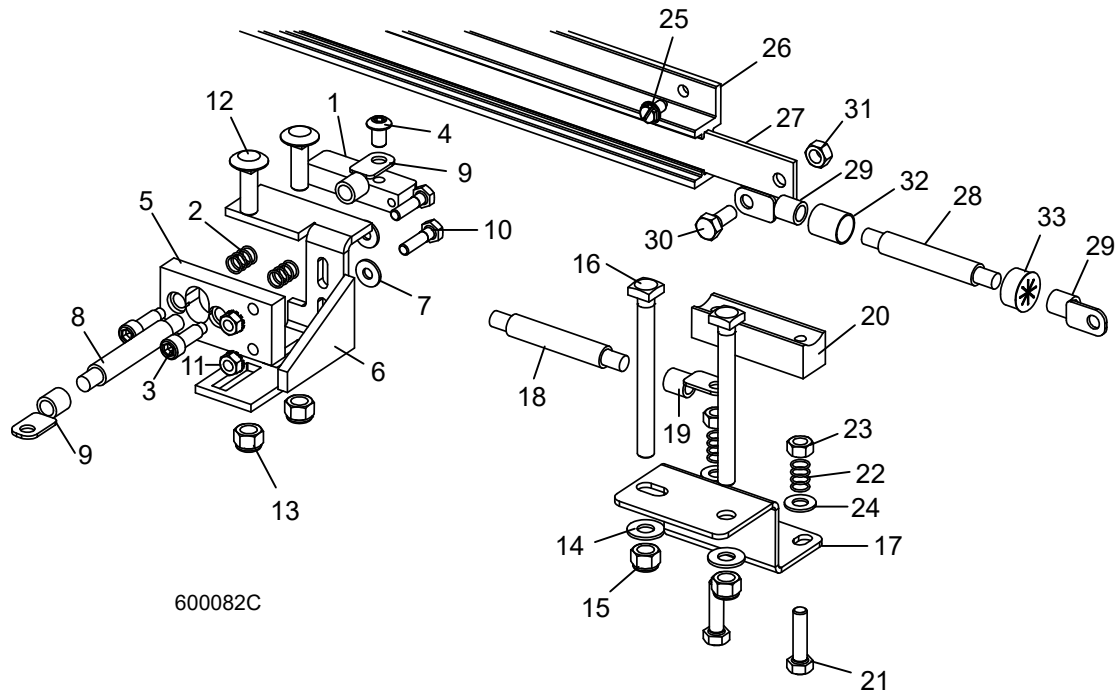
17	024474-6_875	1
18	F05004-186	3
19	E22707	2
20	052380	1
21	052513 ¹	3
	052381 ²	3
22	052689 ¹	1
	025290 ²	1
23	050903-1	1
24	050882-1	1
25	053009	1
26	F05015-17	4
27	053011	1
28	053010	1
29	025297	1
30	P03151	2
31	E22700	1
32	052383	1
33	050967	1

34	F05004-42	2
35	F05010-41	2
36	025187	1

¹ E25-L

² E25-H/E30-H

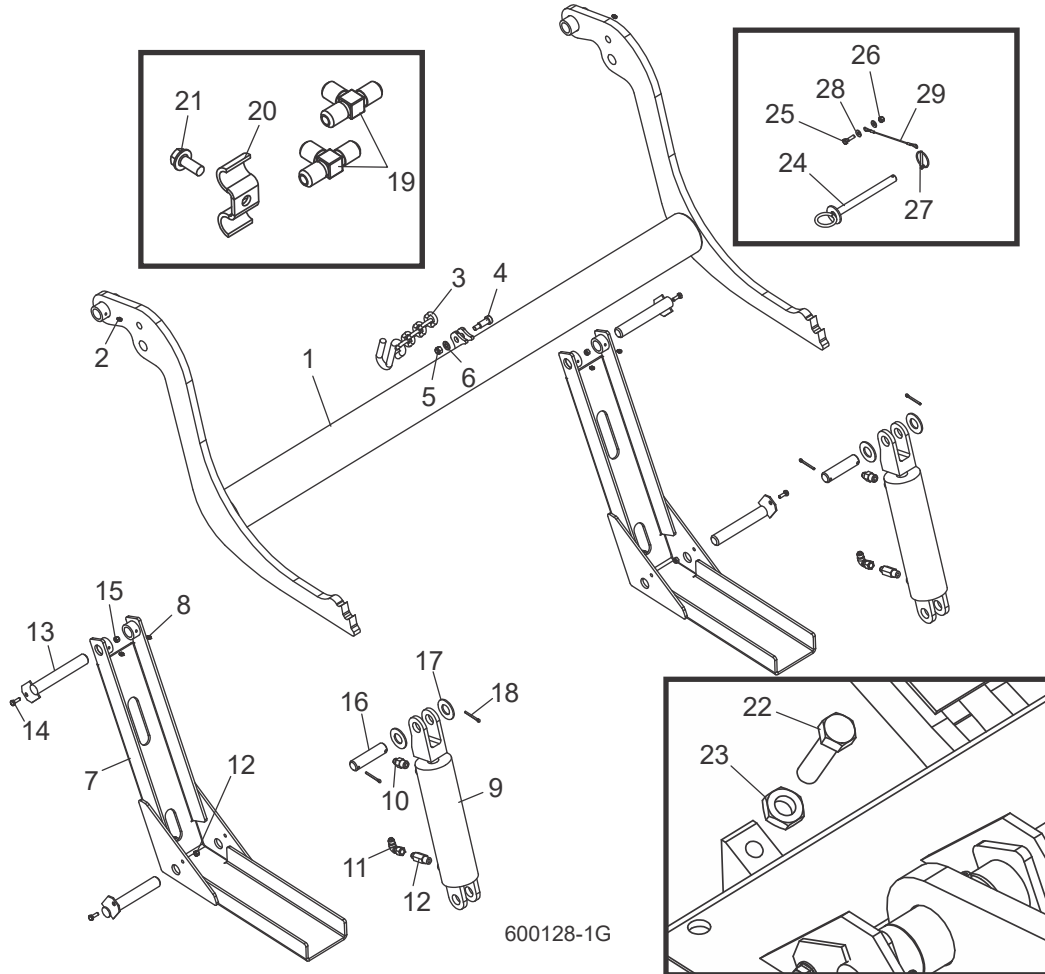
8.4 Plaque De Contact Hydraulique Et Bornes (CC Seulement)



REF	PART #	QTY.
1-13	010103	1
1-4	007716	1
1	015253	1
2	P10077	2
3	F05006-143	2
4	F05006-20	1
5	S10072	1
6	015324	1
7	F05011-11	2
8	R01971	1.17 Ft
9	F05092-16	2
10	F05005-38	2
11	F05010-9	2
12	F05007-11	2
13	F05010-10	2
14-24	017948	1
14	F05011-3	2
15	F05010-10	2
16	F05007-175	2
17	017949	1

18-19	036306	1
18	-----	2.2 Ft
19	F05092-16	2
20-23	007717	1
20	015264	1
21	F05008-96	2
22	P10077	2
23	F05010-17	2
24	F05011-17	2
25-33	015564	1
25	F05015-1	8
26	P11976	1
27-32	015886	1
27	-----	1
28-29	052161	2
28	-----	3 Ft
29	F05092-16	2
30	F05006-45	1
31	F05010-86	1
32	R01950-5	.33 Ft
33	P04137	1

8.5 Chargeuse Hydraulique

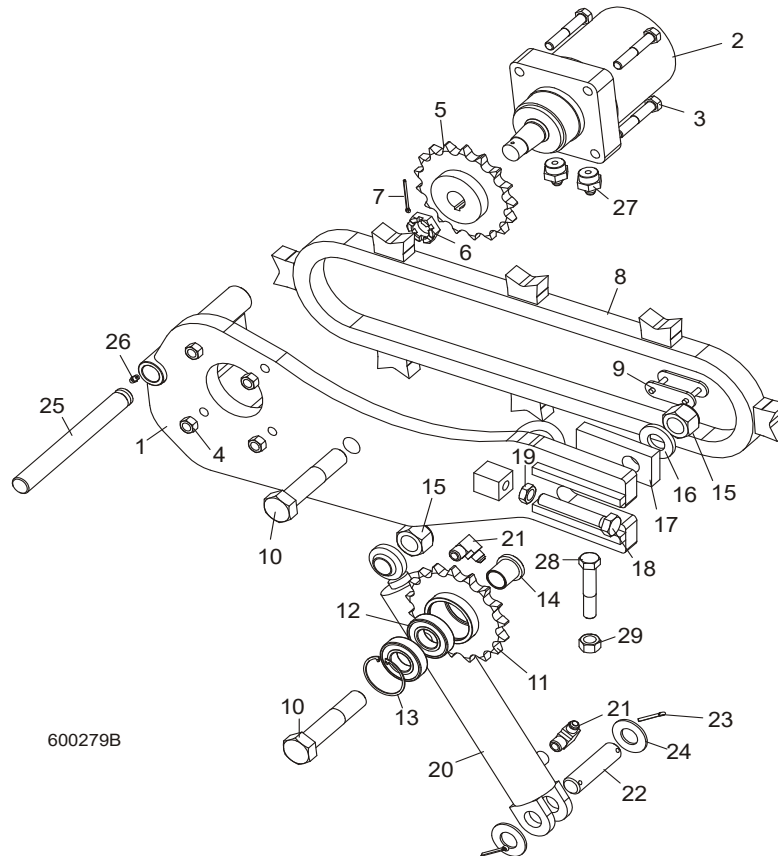


600128-1G

REF	PART #	QTY.	
	034539	1	
	036416	1	
1	110372	1	
2	P04107	2	
3	110472	1	
4	F05008-146	1	
5	F05010-10	1	
6	F05011-3	1	
7	W09444	2	
8	P04107	4	
	038735	2	
9	042754	1	
	P12956	1	

10	016819	1	
11	042756	1	
12	038734	1	
13	W09446	4	
14	F05005-1	4	
15	F05010-69	4	
16	S09251	2	
17	F05011-28	4	
18	F05012-23	4	
19	015487	1	
20	016041	6	
21	F05006-102	6	
22	F05008-7	2	
23	F05010-31	2	
	074208	1	
24	036692	1	
25	F05005-101	1	
26	F05010-69	1	
27	017604	1	
28	F05011-11	2	
29	016090	1	
	074207	1	

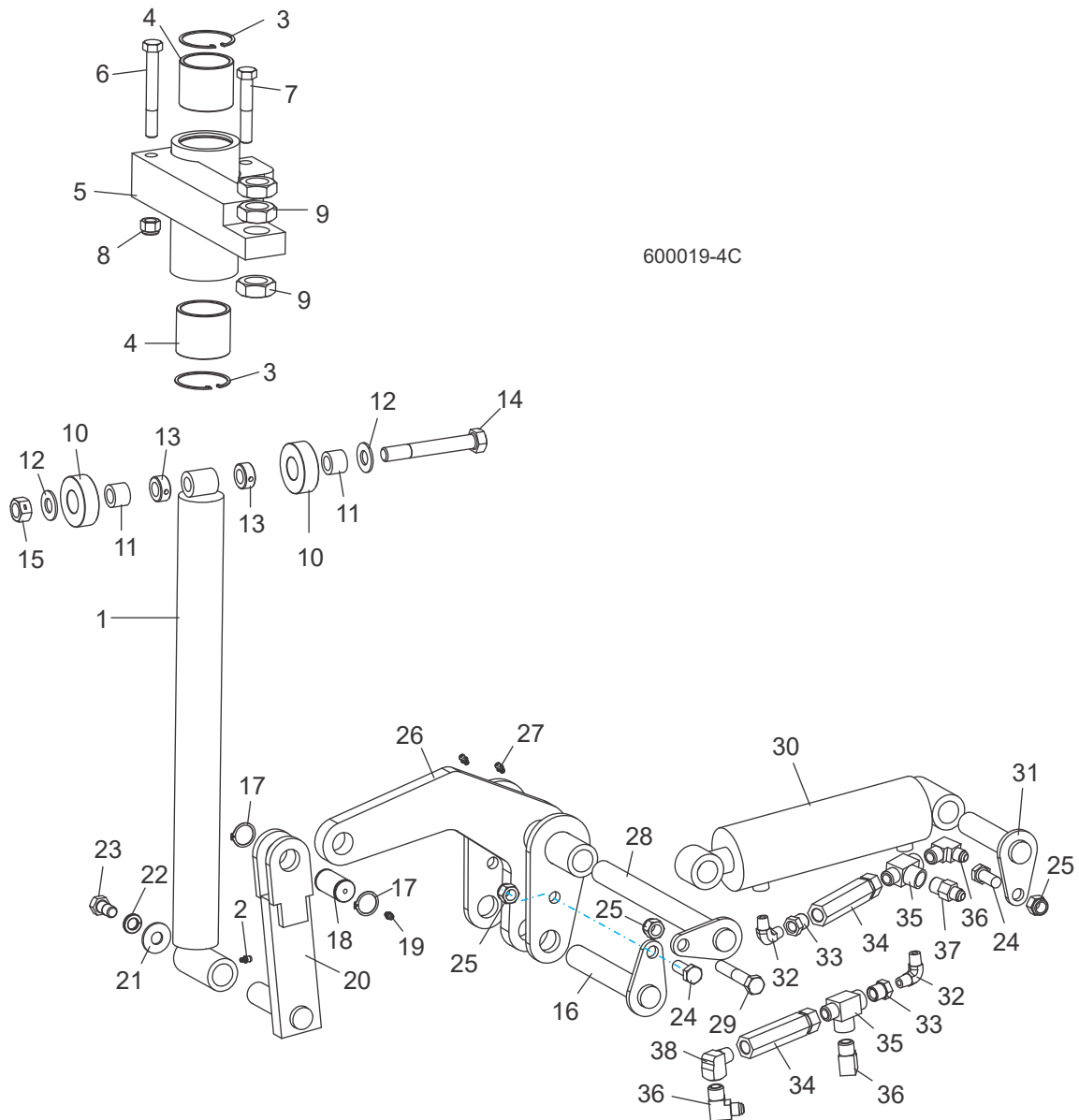
8.6 Tourne-bille Hydraulique



REF	PART #	QTY.
1-27	006095	1
1	006471	1
2	007331	1
3	F05008-23	4
4	F05010-3	4
5	042192	1
6	018741-2	1
7	F05012-43	1
8	006097	1
9	016796	1
10	F05004-132	2
11-13	042193	1
11	042191	1
12	P11035	2
13	F04254-12	1
14	042187	2

15	F05010-109	2
16	038749	1
17	042188	1
18	F05009-31	1
19	F05010-82	1
20	034267	1
21	016820	1
22	S09251	1
23	F05012-23	2
24	F05011-28	2
25	006722	1
26	P05060	1
27	017640	2

8.7 Cales Hydrauliques (Avant)



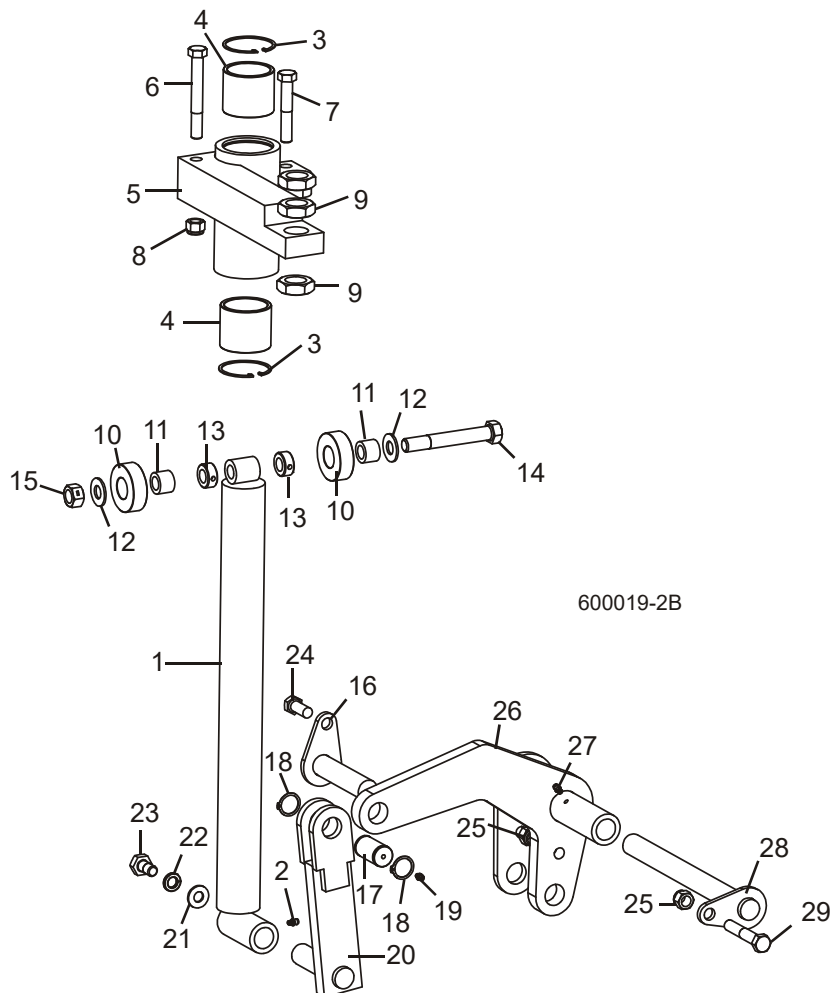
REF	PART #	QTY.
1-15	034732	1
1	034704	1
2	P04107	1
3	F04254-12	2
4	042262	2
5	034703	1
6	F05008-78	1
7	F05008-23	1

8	F05010-8	2
9	F05010-118	3
10-15	034733	1
10	016561	2
11	016560	2
12	F05011-5	2
13	P05035	2
14	F05009-10	1
15	F05010-4	1
16	106880	1

17-19	036053	1
17	034718	1
18	F04254-15	2
19	P04107	1
20	034711	1
21	F05011-52	1
22	F05011-9	1
23	F05008-50	1
24	F05008-37	2
25	F05010-8	3

26	106868	1
27	P04107	2
28	034728	1
29	F05008-23	1
30	034736	1
31	034726	1
32	P09140	2
33	015490	2
34	015484	2
35	016822	2
36	016820	3
37	016819	1
38	P05759	1

8.8 Cales Hydrauliques (Arrière)

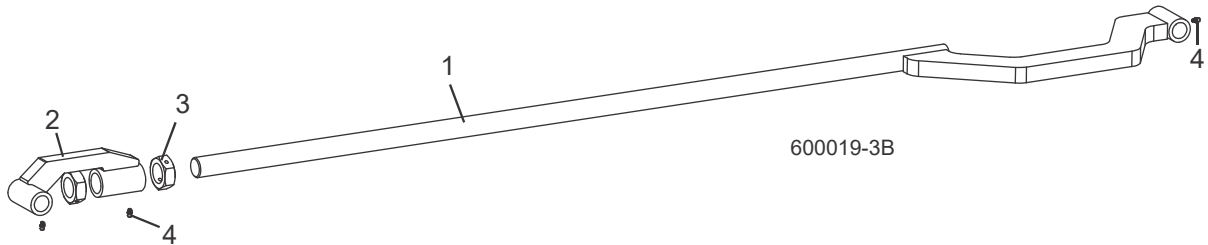


REF	PART #	QTY.
1-15	034732	1
1	034704	1
2	P04107	1
3	F04254-12	2
4	042262	2
5	034703	1
6	F05008-78	1
7	F05008-23	1
8	F05010-8	2
9	F05010-118	3
10-15	034733	1
10	016561	2
11	016560	2

12	F05011-5	2
13	P05035	2
14	F05009-10	1
15	F05010-4	1
16	034726	1
17-19	036053	1
17	034718	1
18	F04254-15	2
19	P04107	1
20	034711	1
21	F05011-52	1
22	F05011-9	1
23	F05008-50	1
24	F05008-37	2

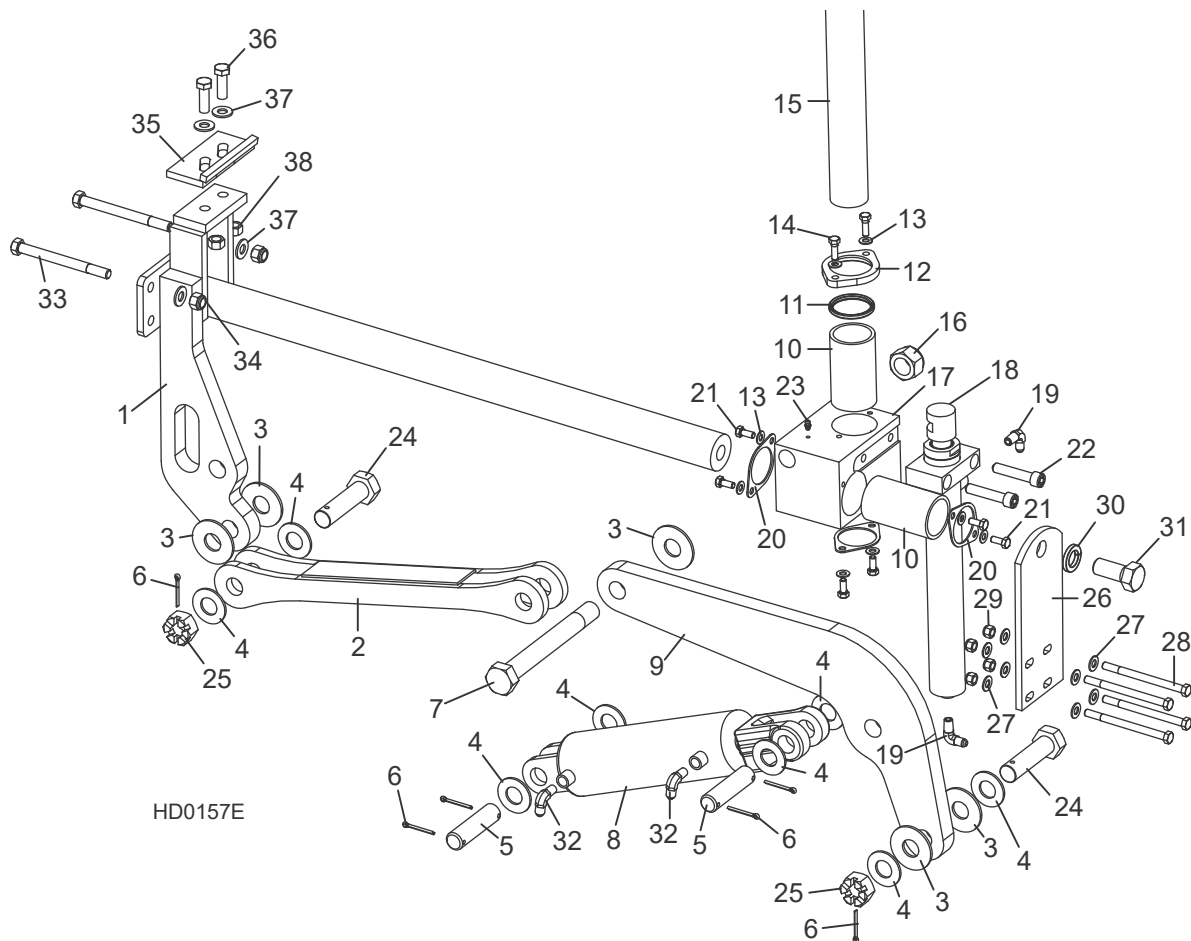
25	F05010-8	2
26	034716	1
27	P04107	1
28	034728	1
29	F05008-23	1

8.9 Cales Hydrauliques (Link)



REF	PART #	QTY.
1	034725	1
2	106869	1
3	F05010-100	2
4	P04107	3

8.10 Serre Hydraulique

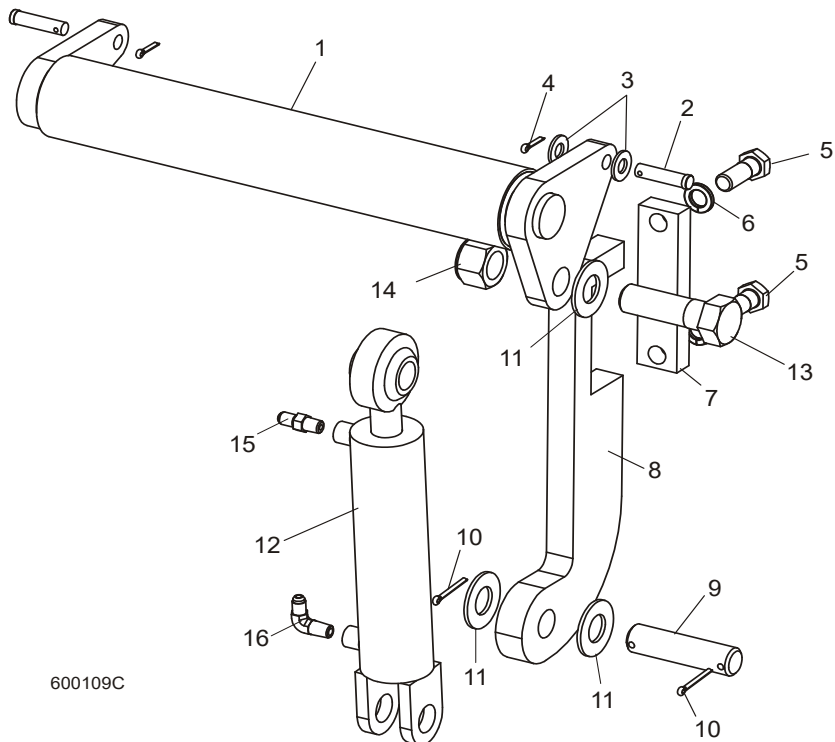


REF	PART #	QTY.
1-38	017264	1
1	017265	1
2	017267	1
3	015057	5
4	F05011-28	8
5	S09251	2
6	F05012-23	6
7	015049	1
8	017275	1
9	017274	1
10	015088	2
11-12	017271	1
11	017273	1
12	017272	1

13	F05011-17	8
14	F05006-1	2
15	015043	1
16	F05010-118	2
17	017270	1
18	015050	1
19	074543	2
20	017242	3
21	F05006-5	6
22	F05008-39	2
23	P04107	1
24	015072	2
25	F05010-163	2
26	015068	1
27	F05011-3	8

28	F05007-5	4
29	F05010-10	4
30	F05011-46	1
31	F05014-2	1
32	015491	2
33	F05008-28	2
34	F05010-8	2
35-38	K09485	1
35	W09404	1
36	F05008-33	2
37	F05011-2	2
38	F05010-3	2

8.11 Niveleur De Grume Hydraulique



600109C

REF	PART #	QTY.
1	074842	2
2	F05012-82	4
3	F05011-2	4
4	F05012-3	4
5	F05009-33	4
6	F05011-27	4
7	S13023	2
8	S13022	2
9	S09251	2
10	F05012-23	4
11	F05011-28	6
12	014482	2
13	F05009-51	2
14	F05010-109	2
15	P09143	2
16	P09142	2