

Operator Seat

Safety, Operation, Maintenance, & Parts Manual

OS

rev. A.00 - G.00



Safety is our #1 concern! Read and understand all safety information and instructions before operating, setting up or maintaining this machine.

April 1997

Form #859

Table of Contents

Section-Page

SECTION 1	OPERATION	1-1
1.1	Overview	1-1
1.2	Installation	1-2
1.3	Towing The Sawmill With Seat	1-8
1.4	Seat Roller Replacement	1-10
SECTION 2	REPLACEMENT PARTS	2-1
2.1	Operator Seat	2-1
	<i>OS</i> <i>Rev. F.00+</i>	
2.2	Operator Seat	2-3
	<i>OS</i> <i>Rev. E.00</i>	
2.3	Operator Seat	2-5
	<i>OS</i> <i>Rev. C.01 - D.05</i>	
2.4	Operator Seat	2-7
	<i>OS</i> <i>Rev. B.00 - B.03</i>	
2.5	Operator Seat	2-10
	<i>OS</i> <i>Rev. A.00¹</i>	
	INDEX	I

SECTION 1 OPERATION

1.1 Overview

The operator seat is compatible with all '97 and later model LT30, LT40, LT30HD, LT40HD, LT60HD and LT70HD standard and super mills. The seat allows the operator to be seated while traveling with the saw head. **NOTE:** The seat reduces maximum cutting length by 25" ¹. The seat can be easily removed for full-size logs.



CAUTION! Seat capacity: 300 lb (136 kg). Overloading will damage the feed system.



WARNING! Remove seat when not using with sawmill. Unused seat creates possible pinch point with moving saw carriage.

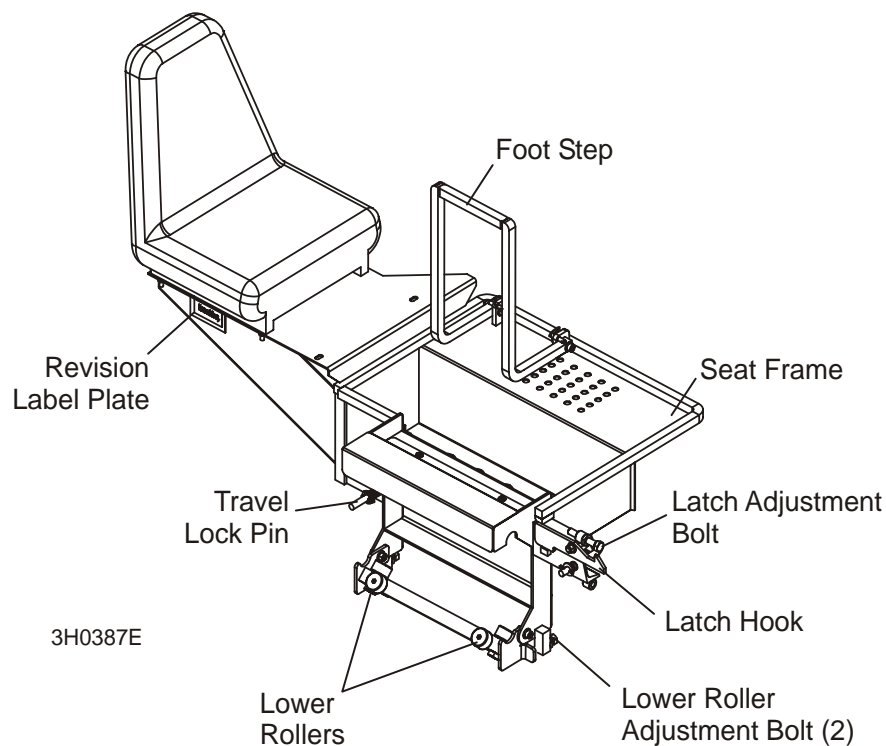


FIG. 1-1

¹ Seats after Rev. D.00 reduce cutting length capacity by 23 1/2" when used on sawmills manufactured without an additional upper track roller before 4/99.

1.2 Installation



CAUTION! (Hydraulic Models Only). Move the saw carriage forward until the power supply contact button is disengaged from the hydraulic power strip. Disconnect the negative (-) battery cable before performing service near the hydraulic power supply. Failure to disconnect the cable could cause damage to the electrical system.

1. Bolt the seat to the frame using the four flat washers and lock nuts provided. Use the rear set of holes for LT30/LT40 models and the front set of holes for LT60/LT70 models.

See Figure 1-2.

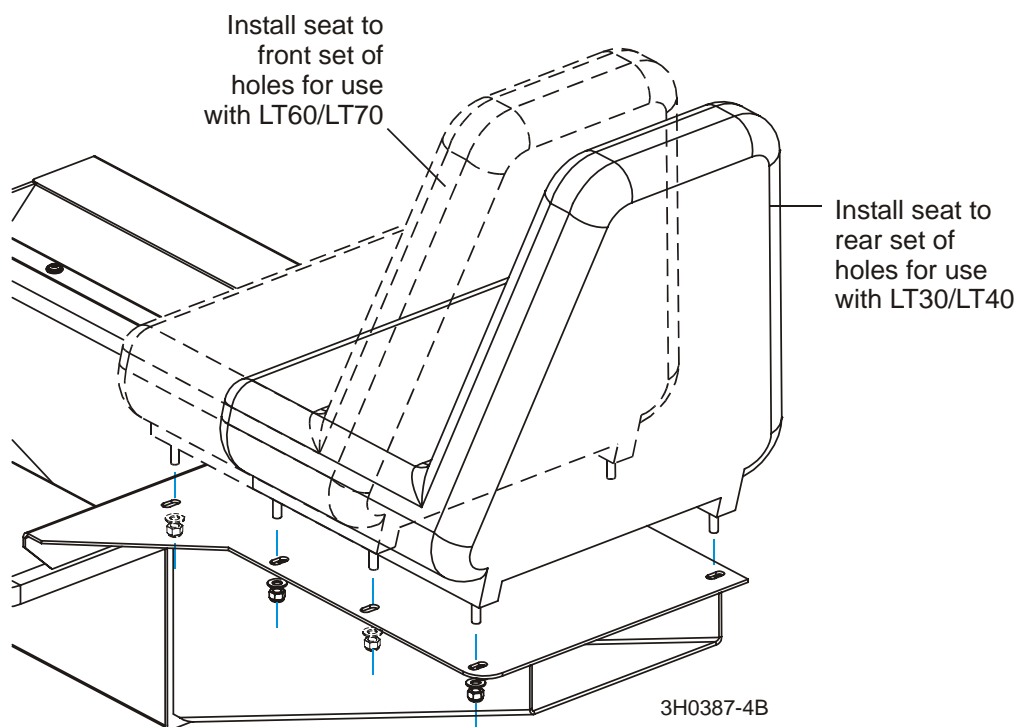


FIG. 1-2

1. Back the lower roller adjustment bolts all the way out.
2. Position the seat at the front of the mill on the operator's side, facing the saw carriage. Position the top rollers on the top bed rail. Position the lower rollers on each side of the bottom bed rail.

3. Remove the two step retaining pins and lower the foot step. Replace the retaining pins.

See Figure 1-3.

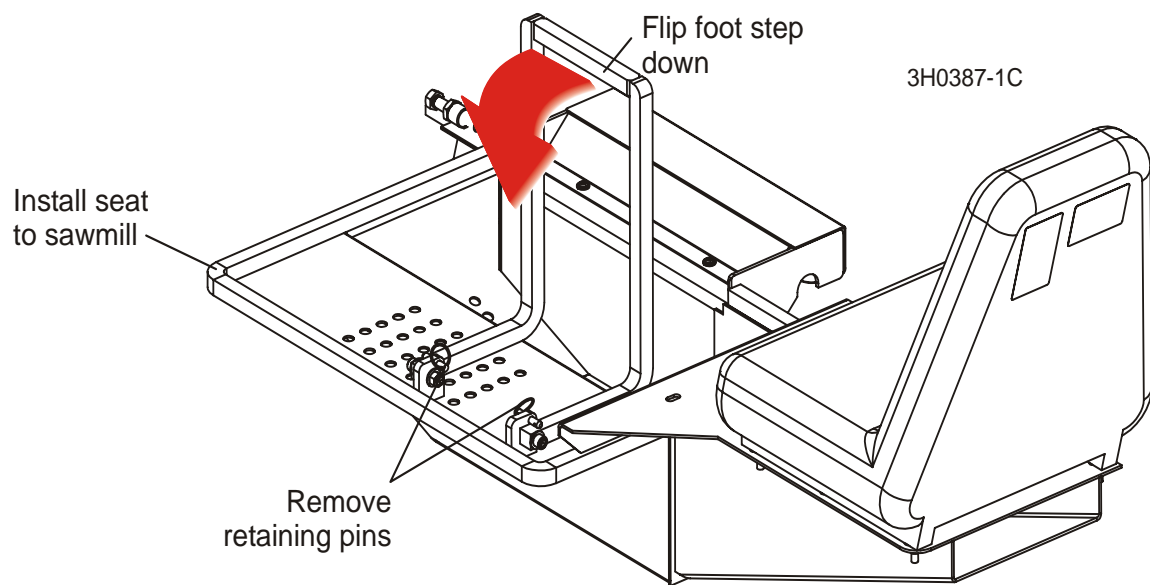


FIG. 1-3

1 Operation

Installation

4. Secure the seat in place by tightening the lower roller adjustment bolts until the lower rollers just touch the bottom bed rail. **DO NOT OVERTIGHTEN!** The seat should roll freely when properly installed.

See Figure 1-4.

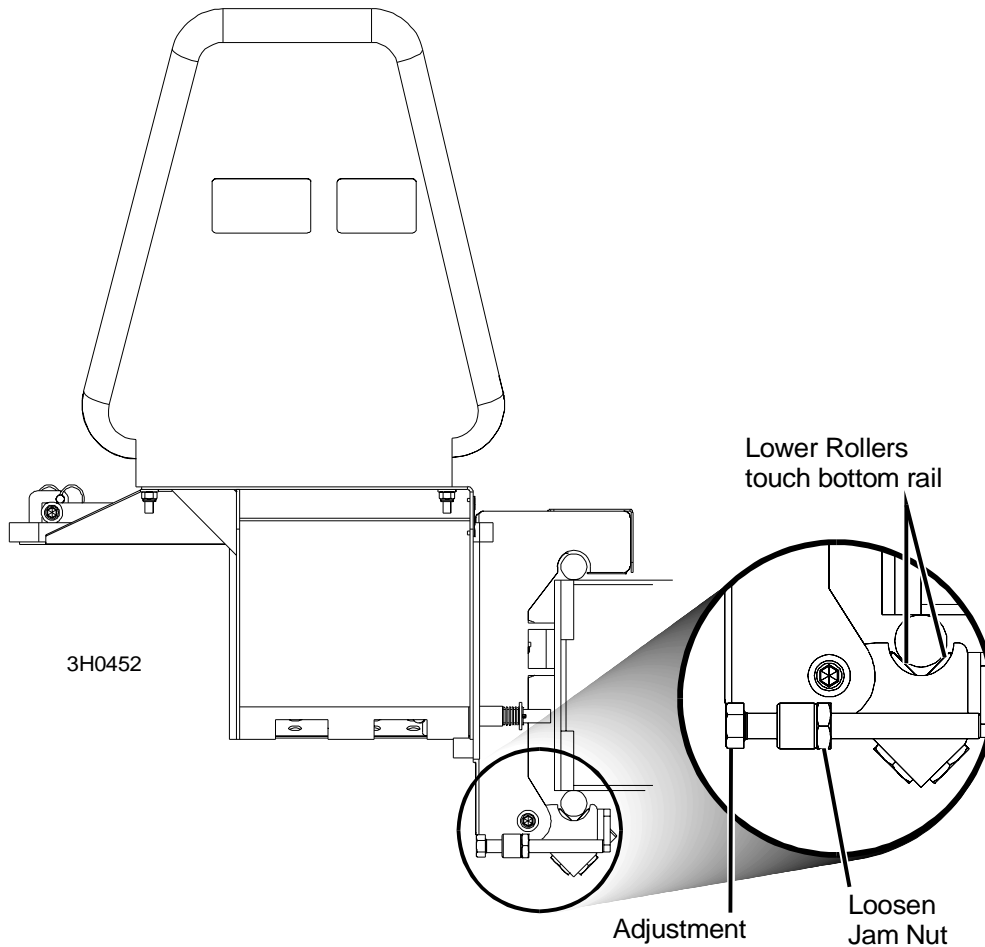


FIG. 1-4 REV. A.00 - B.03

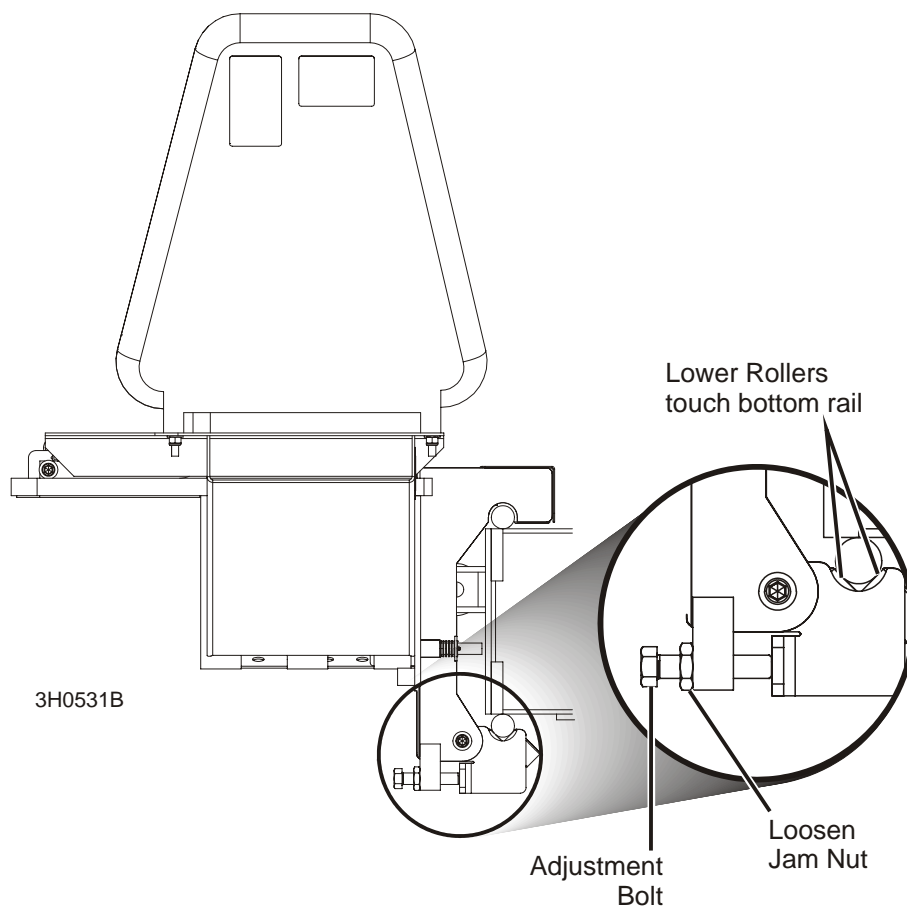


FIG. 1-4 REV. C.01+

5. Remove the fender on the operator's side of the sawmill.

1 Operation

Installation

See Figure 1-5.

6. Install the travel locking pin (**Rev. E.00+ Only**). A bag assembly is provided that contains two different travel pins and hardware. The long travel pin should be used if the seat is installed on an LT30/40 model sawmill. Install one of the provided cotter pins to the travel pin in the hole nearest the bend and spread the cotter pin. Insert the travel pin in the hole in the seat frame. On the other side of the frame, install the spring and flat washer. Secure with the remaining cotter pin.

If the seat is to be installed on an LT60/70 model sawmill, install the short travel pin at the location near the seat latch. Use the same assembly procedure described above. For use with LT60/70 sawmills, relocate the latch adjustment bolt and jam nut to the upper position as shown.

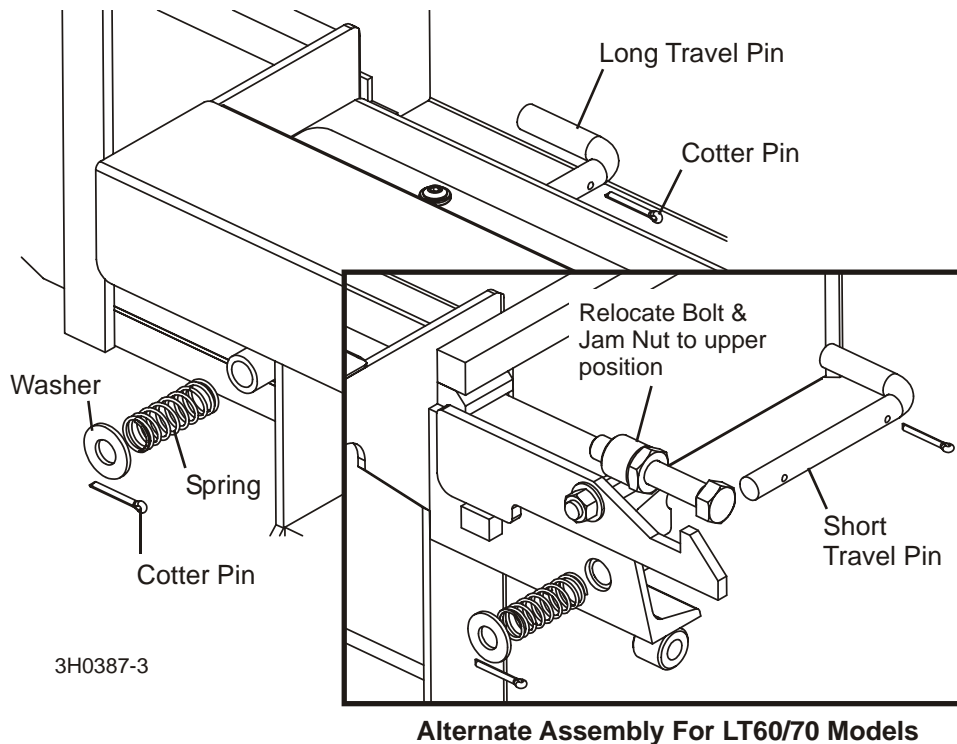


FIG. 1-5

7. Connect the seat to the sawmill carriage. Lift up on the seat latch, and move the seat in toward the carriage until the latch hook is underneath the track roller housing. Release the latch.

See Figure 1-6. Make sure the seat is securely fastened to the carriage and there is no looseness between the seat and the sawmill carriage. Use the latch adjustment bolt to adjust the latch. Loosen the jam nut on the latch adjustment bolt. Turn the adjustment bolt out as desired. Check the seat for looseness. Repeat as necessary until the seat is securely fastened to the carriage. Retighten the jam nut.

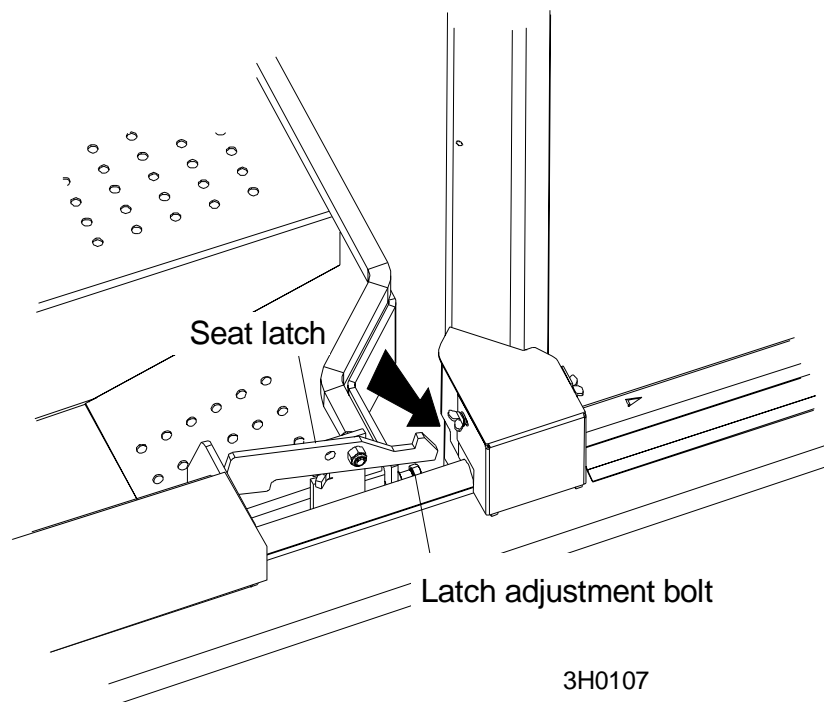


FIG. 1-6

8. An adjustment handle is provided to allow the operator to slide the seat forward or back. Pull the handle to the side and adjust the seat as desired. Release the handle.
9. Slowly move the saw carriage up and down the entire length of the sawmill and check the seat clears all obstacles. In some situations, you may need to adjust outriggers down so the seat will clear the top of the outrigger tubes.

1.3 Towing The Sawmill With Seat

1. Move the saw head to its towing position.
2. Disconnect the seat from the sawmill carriage by pulling up on the seat latch and pulling back on the seat. Move the seat back past the trailer wheel until the travel lock pin aligns with the hole in sawmill frame tube. [See Step 5](#) if your sawmill does not have a hole in the frame tube that aligns with the seat travel lock pin.
3. Pull the travel lock pin out as far as it will go, rotate 1/2 turn, and release. The spring-loaded pin should engage the hole in the sawmill frame tube.

See Figure 1-7.

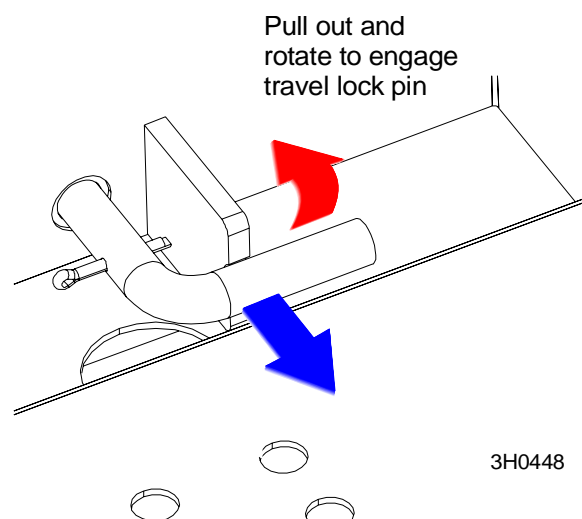


FIG. 1-7

4. Remove the step retaining pins and lift the foot step to its travel position. Replace the retaining pins.

To unlock the seat from the traveling position, pull the travel lock pin out as far as it will go. Rotate 1/2 turn and release into the pin resting bracket. The bracket will keep the pin from returning to the locking pin hole.

If you have a mill manufactured prior to March 14 1997, you will need to drill a hole in the sawmill frame tube for the travel lock pin.

5. Slide the seat back until the seat frame clears the sawmill fender by 2 to 3 inches.

6. Pull the travel lock pin out as far as it will go, rotate 1/2 turn, and release. Mark the location where the travel lock pin contacts the sawmill frame tube.
7. After you have marked the location, pull the pin out, rotate the 1/2 turn, and release into the pin resting bracket. Move the seat slightly forward to allow access to the hole location. Start a 5/8" hole at the marked location, drilling until the point of the drill bit is just about to break through the side of the tube. Use a hole punch to complete the hole.



CAUTION! DO NOT drill through to the inside of the tube. Doing so will cause damage to the hydraulic lines or trailer light wiring inside the tube.

1.4 Seat Roller Replacement

When replacing seat roller bearings, be careful not to overtighten the nuts that secure the bearings to the frame.

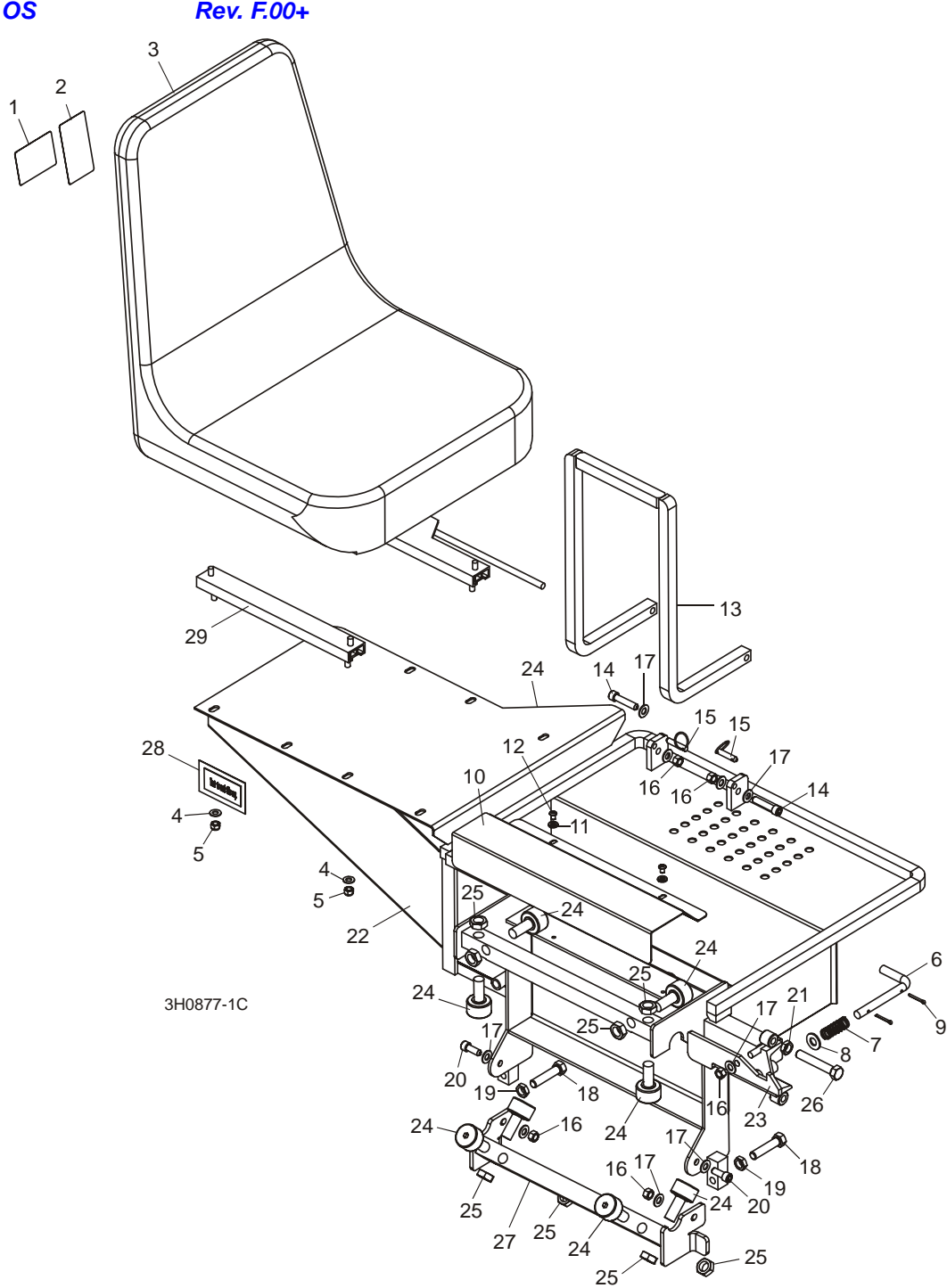


CAUTION! Overtightening the seat roller nuts may damage the threads on the bearing stud and/or the nut.

Maximum torque used to tighten the nuts is 65 ft.-lbs. (dry threads) or 32 ft.-lbs. (oiled threads).

SECTION 2 REPLACEMENT PARTS

2.1 Operator Seat



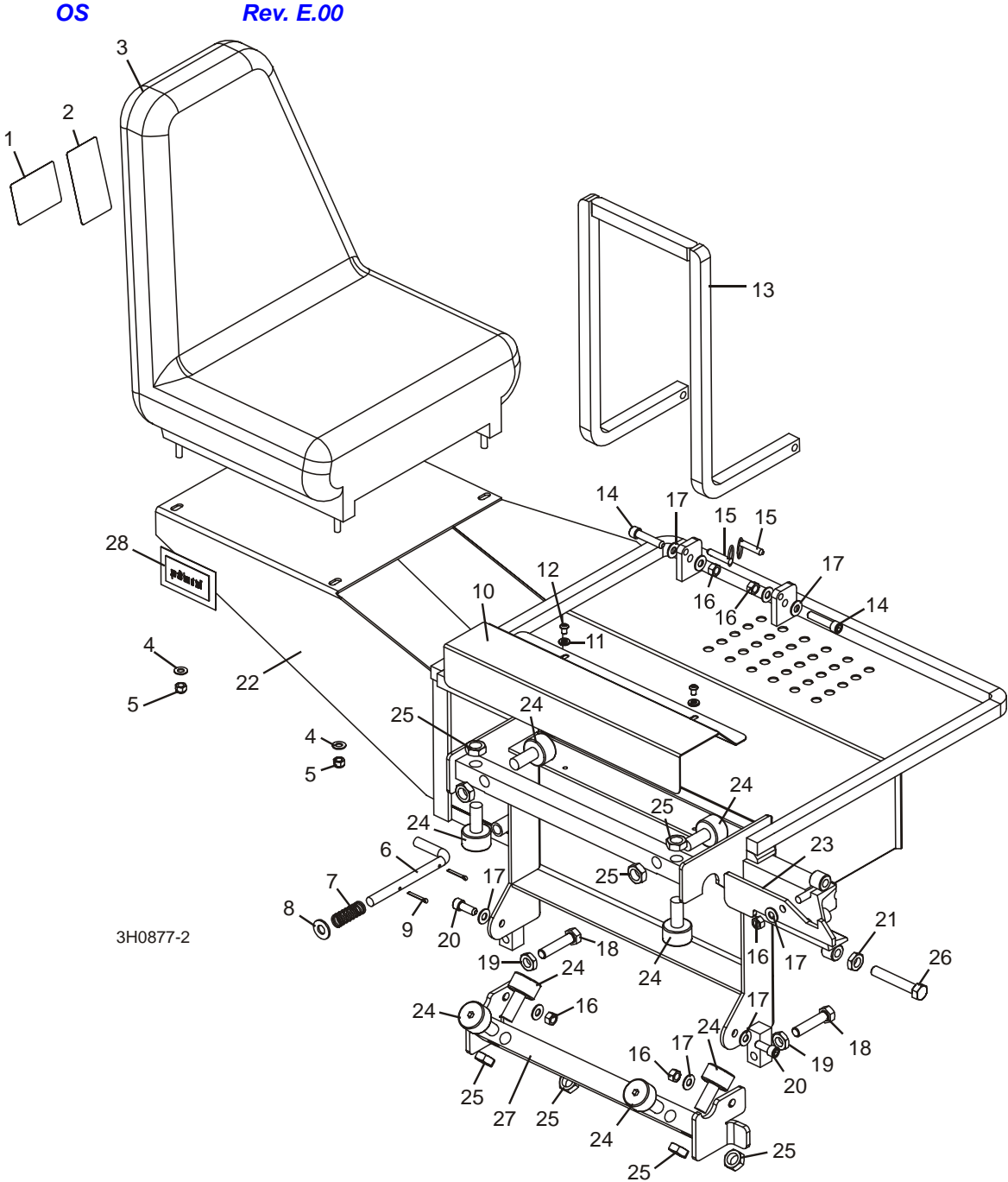
2 Replacement Parts

Operator Seat

REF	DESCRIPTION (◆ Indicates Parts Available In Assemblies Only)	PART #	QTY.	
	OPERATOR SEAT OPTION, LT30/40/60/70 COMPLETE '97	OS	1	
1	Decal, Remove Operator Seat Warning	S12000	1	
2	Decal, 300 Lb. Capacity Caution	S11999	1	
3	Seat, Operator	038719 ¹	1	
4	Washer, 5/16" SAE Flat	F05011-17	4	
5	Nut, 5/16-18 Nylon Lock	F05010-58	4	
	Bag Assembly, Travel Lock Pin	038406		
6	Pin, Operator Seat Travel Lock (Long LT30/40)	038403	1	
	Pin, Operator Seat Travel Lock (Short LT60/70)	038404	1	
7	Spring, Operator Seat Travel Pin	038405	1	
8	Washer, 1/2" SAE Flat	F05011-2	1	
9	Pin, 1/8" X 1" Cotter	F05012-1	2	
10	Guard, OS Bearing	015782	1	
11	Washer, 1/4" Split Lock	F05011-14	2	
12	Screw, 1/4-20 x 3/8" Socket Button Head	F05005-62	2	
13	Step Weldment, OS	014736	1	
14	Screw, 3/8-16 x 1 3/4" Socket Head Cap	F05007-53	2	
15	Pin, 5/16 x 1" Detaining	F05012-45	2	
16	Nut, 3/8-16 Hex Lock	F05010-25	5	
17	Washer, 3/8" SAE Flat	F05011-3	9	
18	Bolt, 1/2-13 x 2 1/4" Hex Head Full Thread	F05008-27	2	
19	Nut, 1/2-13 Jam	F05010-31	2	
20	Screw, 3/8-16 x 1" Socket Head	F05007-52	2	
21	Nut, 1/2-13 Jam	F05010-31	1	
22	Frame Weldment, LT30/40/60/70 97+ Operator Seat	015751	1	◆
23	Latch, Operator Seat (Short)	018010	1	
24	Bearing, Seat Roller	012797	8	
25	Nut, 5/8-18 Hex Jam	F05010-11	8	
26	Bolt, 1/2-13 x 3" Hex Head Full Thread	F05008-7	1	
27	Bar Weldment, Lower Bearing	015942	1	
28	Decal, Operator Seat Revision	016187-OS	1	
29	Adjuster Assembly, Operator Seat (Milsco)	038720 ¹	1	
	Manual, 1997 Operator's Seat Option	M613	1	

¹ Seat 038719 replaces P26206 originally supplied prior to Rev. G.00 (new vendor). Use new adjuster assembly 038720 to service either seat (replaces 036754 originally supplied with old seat).

2.2 Operator Seat



2 Replacement Parts

Operator Seat

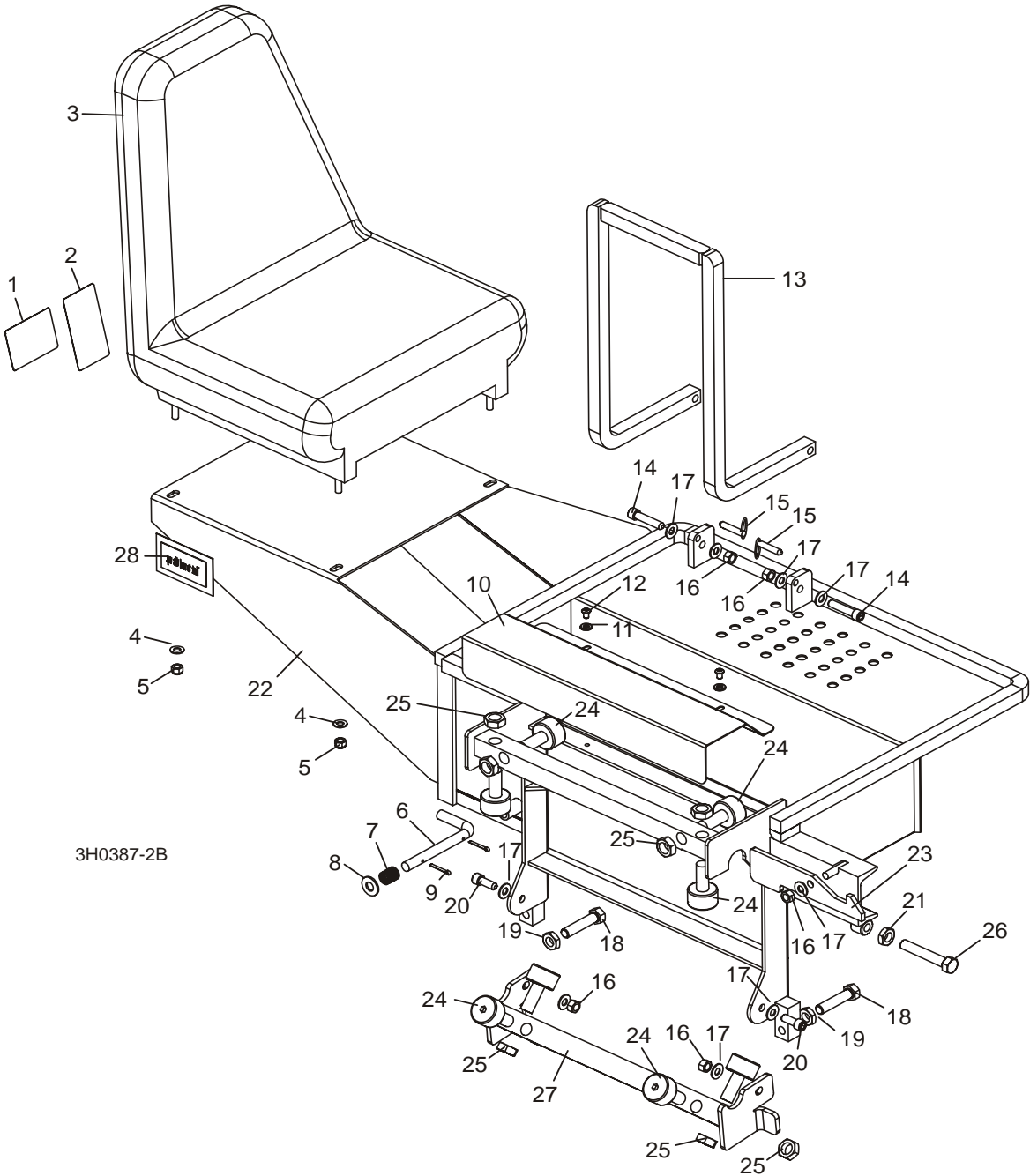
REF	DESCRIPTION (◆ Indicates Parts Available In Assemblies Only)	PART #	QTY.	
	OPERATOR SEAT OPTION, COMPLETE PRE '97	OS ¹	1	
1	Decal, Remove Operator Seat Warning	S12000	1	
2	Decal, 300 Lb. Capacity Caution	S11999	1	
3	Seat, Operator	038719 ²	1	
4	Washer, 5/16" SAE Flat	F05011-17	4	
5	Nut, 5/16-18 Nylon Lock	F05010-58	4	
	Bag Assembly, Travel Lock Pin	038406		
6	Pin, Operator Seat Travel Lock (Long LT30/40)	038403 ¹	1	
	Pin, Operator Seat Travel Lock (Short LT60/70)	038404 ¹	1	
7	Spring, Operator Seat Travel Pin	038405 ¹	1	
8	Washer, 1/2" SAE Flat	F05011-2	1	
9	Pin, 1/8" X 1" Cotter	F05012-1	2	
10	Guard, OS Bearing	015782	1	
11	Washer, 1/4" Split Lock	F05011-14	2	
12	Screw, 1/4-20 x 3/8" Socket Button Head	F05005-62	2	
13	Step Weldment, OS	014736	1	
14	Screw, 3/8-16 x 1 3/4" Socket Head Cap	F05007-53	2	
15	Pin, 5/16 x 1" Detaining	F05012-45	2	
16	Nut, 3/8-16 Hex Lock	F05010-25	5	
17	Washer, 3/8" SAE Flat	F05011-3	9	
18	Bolt, 1/2-13 x 2 1/4" Hex Head Full Thread	F05008-27	2	
19	Nut, 1/2-13 Jam	F05010-31	2	
20	Screw, 3/8-16 x 1" Socket Head	F05007-52	2	
21	Nut, 1/2-13 Jam	F05010-31	1	
22	Frame Weldment, 97+ Operator Seat	015775	1	◆
23	Latch, Operator Seat (Short)	018010	1	
24	Bearing, Seat Roller	012797	8	
25	Nut, 5/8-18 Hex Jam	F05010-11	8	
26	Bolt, 1/2-13 x 3" Hex Head Full Thread	F05008-7	1	
27	Bar Weldment, Lower Bearing	015942	1	
28	Decal, Operator Seat Revision	016187-OS	1	
	Adjuster Assembly, Operator Seat (Milsco)	038720 ²	1	
	Adjuster Assembly, Operator Seat	036754 ²	1	
	Manual, 1997 Operator's Seat Option	M613	1	

¹ Seat frame, travel pin and spring modified to accommodate LT60/70 model sawmills (Rev. E.00).

² Seat 038719 replaces P26206 originally supplied (new vendor). Use new adjuster assembly 038720 to service either seat (replaces 036754 originally supplied with old seat).

2.3 Operator Seat

OS Rev. C.01 - D.05



REF	DESCRIPTION (◆ Indicates Parts Available In Assemblies Only)	PART #	QTY.
	OPERATOR SEAT OPTION, COMPLETE PRE '97	OS 1	1
1	Decal, Remove Operator Seat Warning	S12000	1

2 Replacement Parts

Operator Seat

2	Decal, 300 Lb. Capacity Caution	S11999	1	
3	Seat, Operator	038719 ²	1	
4	Washer, 5/16" SAE Flat	F05011-17	4	
5	Nut, 5/16-18 Nylon Lock	F05010-58	4	
6	Pin, Operator Seat Travel Lock	035403	1	
7	Spring, Operator Seat Travel Pin	035405	1	
8	Washer, 1/2" SAE Flat	F05011-2	1	
9	Pin, 1/8" X 1" Cotter	F05012-1	2	
10	Guard, OS Bearing	015782	1	
11	Washer, 1/4" Split Lock	F05011-14	2	
12	Screw, 1/4-20 x 3/8" Socket Button Head	F05005-62	2	
13	Step Weldment, OS	014736 ³	1	
14	Screw, 3/8-16 x 1 3/4" Socket Head Cap	F05007-53	2	
15	Pin, 5/16 x 1" Detaining	F05012-45	2	
16	Nut, 3/8-16 Hex Lock	F05010-25	5	
17	Washer, 3/8" SAE Flat	F05011-3	9	
18	Bolt, 1/2-13 x 2 1/4" Hex Head Full Thread	F05008-27 ¹	2	
19	Nut, 1/2-13 Jam	F05010-31	2	
20	Screw, 3/8-16 x 1" Socket Head	F05007-52	2	
21	Nut, 1/2-13 Jam	F05010-31	1	
22	Frame Weldment, 97+ Operator Seat	015775 ¹	1	◆
23	Latch, Operator Seat (Short)	018010 ⁴	1	
	Latch, Operator Seat (Long)	S11337 ⁴	1	
24	Bearing, Seat Roller	012797 ⁵	8	
25	Nut, 5/8-18 Hex Jam	F05010-11	8	
26	Bolt, 1/2-13 x 3" Hex Head Full Thread	F05008-7 ⁶	1	
27	Bar Weldment, Lower Bearing	015942 ¹	1	
28	Decal, Operator Seat Revision	016187-OS ⁷	1	
	Manual, 1997 Operator's Seat Option	M613	1	
	Adjuster Assembly, Operator Seat (Milsco)	038720 ²	1	

¹ Seat Frame, Lower Roller Bar and Adjustment Bolts redesigned for easier adjustment (Rev. C.01).

² Seat 038719 replaces P26206 originally supplied (new vendor). Use new adjuster assembly 038720 to service either seat (replaces 036754 originally supplied with old seat).

³ Step relocated to front of seat frame (Rev. D.04). Step moved back to original location (Rev. D.05) to avoid interference with control box.

⁴ Use Short Latch 018010 for Rev. D.00 and later. Use Long Latch S11337 for Rev. A.00 - C.01.

⁵ McGill unit directly replaces P12843 RBC unit originally supplied prior to Rev. D.03.

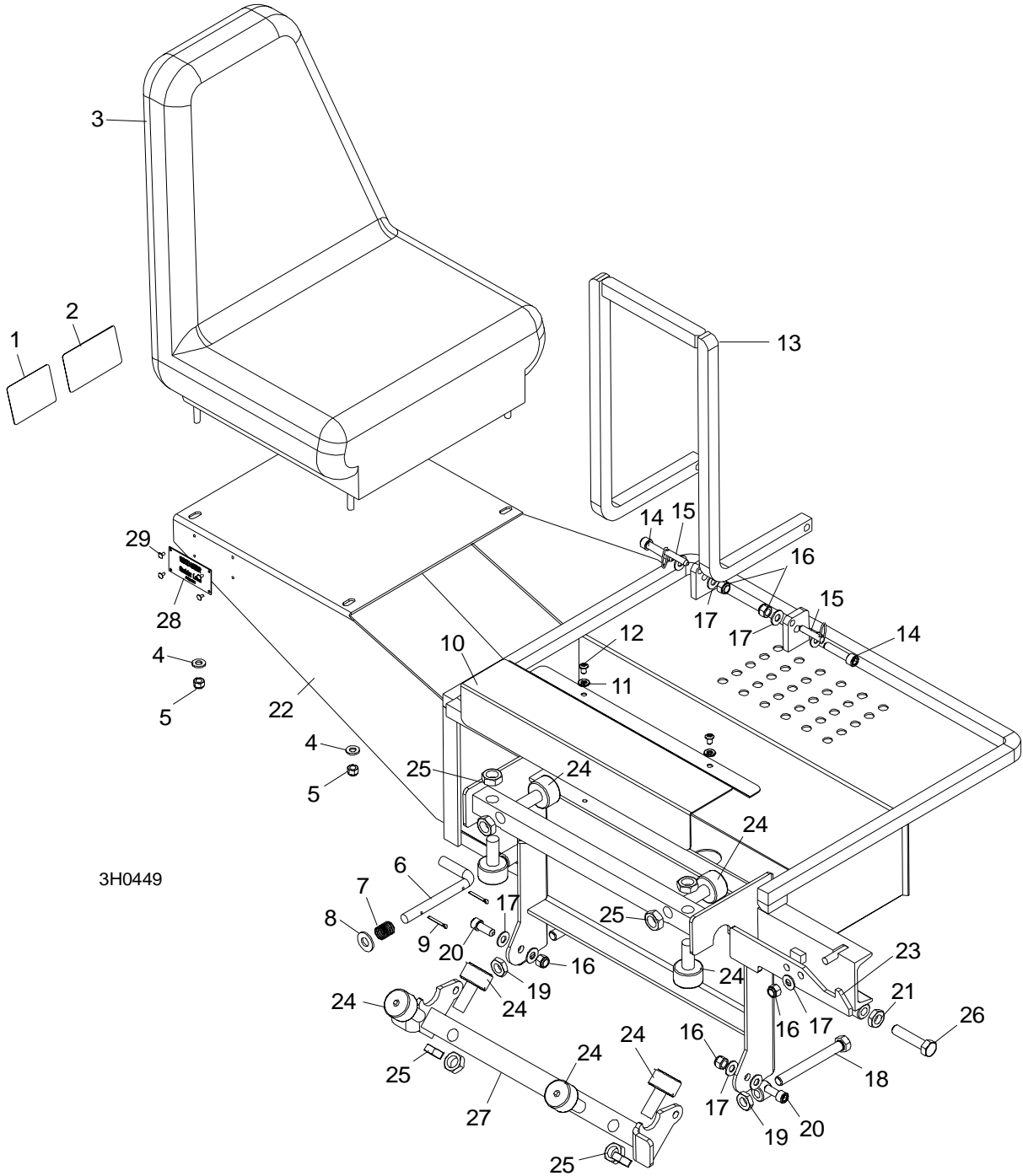
⁶ Replaces F05008-27 3/8-16 x 2 1/4" bolt originally supplied prior to Rev. C.03. Longer bolt required for sawmills built after 4/99 with new track roller configuration. 3" bolt F05008-7 will work on all OS 1997 seat options.

⁷ Revision decal 016187-OS replaces plate 005801-OS and pop rivets F04203-2 (Rev. D.01).

2.4 Operator Seat

OS

Rev. B.00 - B.03



2 Replacement Parts

Operator Seat

REF	DESCRIPTION (◆ Indicates Parts Available In Assemblies Only)	PART #	QTY.	
	OPERATOR SEAT OPTION, COMPLETE '97	OS ¹	1	
1	Decal, Remove Operator Seat Warning	S12000	1	
2	Decal, 300 Lb. Capacity Caution	S11999	1	
3	Seat, Operator	038719 ²	1	
4	Washer, 5/16" SAE Flat	F05011-17	4	
5	Nut, 5/16-18 Nylon Lock	F05010-58	4	
6	Pin, Operator Seat Travel Lock	S11335	1	
7	Spring, Operator Seat Travel Pin	P04282	1	
8	Washer, 1/2" SAE Flat	F05011-2	1	
9	Pin, 1/8" X 1" Cotter	F05012-1	2	
10	Guard, OS Bearing	015782 ³	1	
11	Washer, 1/4" Split Lock	F05011-14	2	
12	Screw, 1/4-20 x 3/8" Socket Button Head	F05005-62	2	
13	Step Weldment, OS	014736	1	
14	Screw, 3/8-16 x 1 3/4" Socket Head Cap	F05007-53	2	
15	Pin, 5/16 x 1" Detaining	F05012-45	2	
16	Nut, 3/8-16 Hex Lock	F05010-25 ⁴	5	
17	Washer, 3/8" SAE Flat	F05011-3	9	
	Bolt Kit, Lower Adjustment Bolt Retrofit	015967 ⁵	1	
18	Bolt, 1/2-13 x 4 1/2" Hex Head Full Thread	F05008-16 ³	2	
	Foot, Operator Seat Lower Adjustment Bolt Extension	015966	2	◆
19	Nut, 1/2-13 Jam	F05010-31	2	
	Instruction Sheet, Seat Bolt Retrofit	015967-245	1	
20	Screw, 3/8-16 x 1" Socket Head	F05007-52	2	
21	Nut, 1/2-13 Jam	F05010-31	1	
22	Frame Weldment, Operator Seat	015775 ¹	1	◆
23	Latch, Operator Seat	S11337	1	
24	Bearing, Seat Roller	012797 ¹	8	
25	Nut, 5/8-18 Hex Jam	F05010-11	8	
26	Bolt, 1/2-13 x 2 1/4" Hex Head Full Thread Tap	F05008-27	1	
27	Bar Weldment, Lower Bearing	015779 ¹	1	
28	Plate, Operator Seat Revision	005801-OS	1	
29	Rivet, 1/8x1/4 Alum AA44D Pop	F04203-2	4	
	Adjuster Assembly, Operator Seat (Milsco)	038720 ²	1	
	Manual, 1997 Operator's Seat Option	M613 ³	1	

¹ Seat Frame, Lower Roller Bar, and Roller Bearings revised with Rev. B.00 for better durability and rolling performance.

Also, 012797 McGill unit directly replaces P12843 RBC unit originally supplied (1/00).

² Seat 038719 replaces P26206 originally supplied (new vendor). Use new adjuster assembly 038720 to service either seat (replaces 036754 originally supplied with old seat).

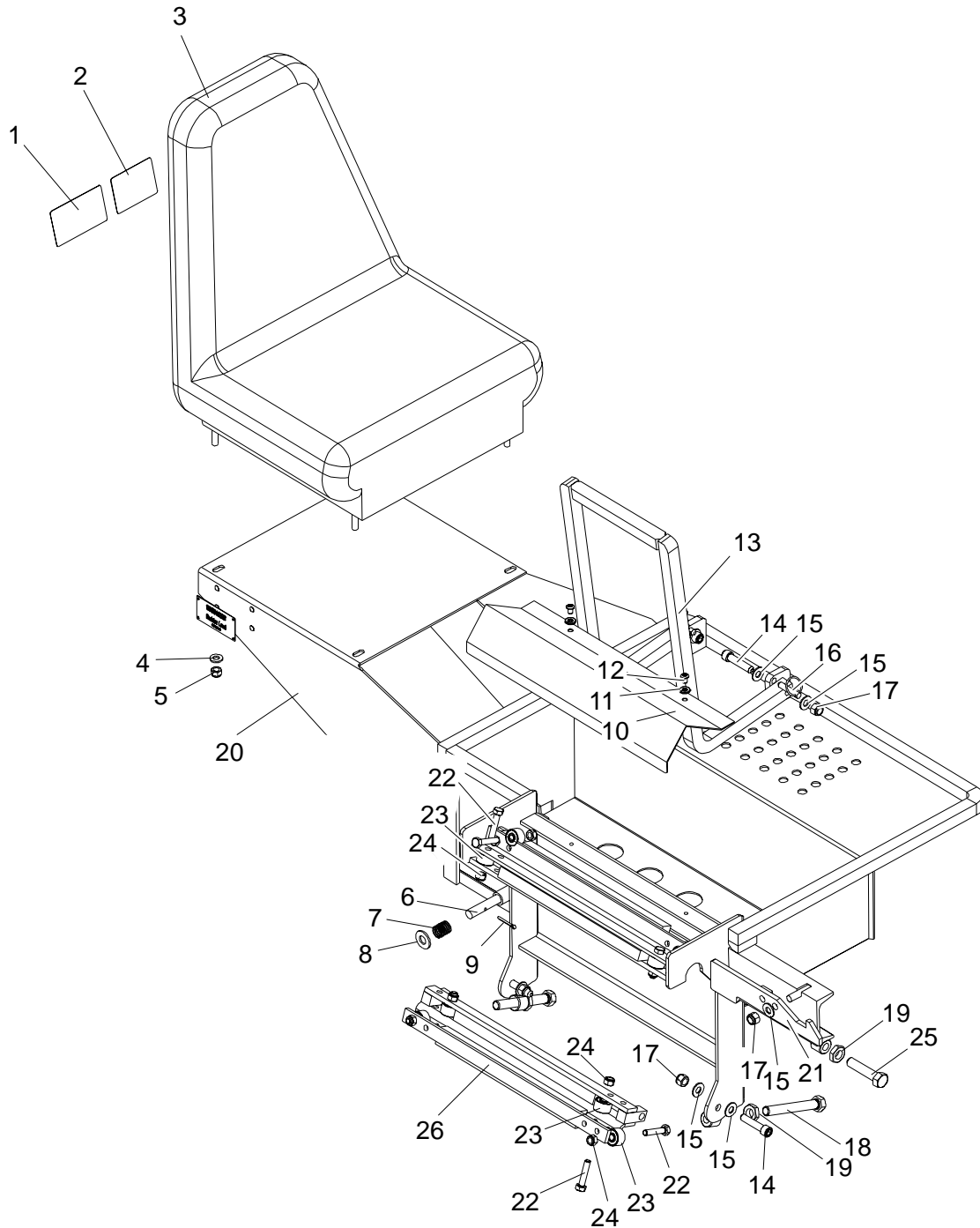
³ Guard modified to better clear roller mount nuts on Rev. B.01. 4 1/2" Bolt replaces F05008-91 4" Bolts supplied until Rev. B.01. M613 Operator's Manual replaces OS-613 (Part number format change only).

⁴ Lock nuts replace F05010-10 Nylon lock nuts supplied until Rev. B.02.

⁵ Some seats manufactured before 11/97 may require retrofit kit 015967. The extension feet improve contact of the bolts with the adjustment bracket, allowing full adjustment of the lower rollers.

2.5 Operator Seat

OS Rev. A.00¹



3H0414

REF	DESCRIPTION (◆ Indicates Parts Available In Assemblies Only)	PART #	QTY.	
	OPERATOR SEAT OPTION, COMPLETE '97	OS ¹	1	
1	Decal, Remove Operator Seat Warning	S12000	1	
2	Decal, 300 Lb. Capacity Caution	S11999	1	
3	Seat, Operator	038719 ²	1	
4	Washer, 5/16" SAE Flat	F05011-17	4	
5	Nut, 5/16-18 Nylon Lock	F05010-58	4	
6	Pin, Operator Seat Travel Lock	S11335	1	
7	Spring, Operator Seat Travel Pin	P04282	1	
8	Washer, 1/2" SAE Flat	F05011-2	1	
9	Pin, 1/8" X 1" Cotter	F05012-1	2	
10	Guard, OS Bearing	014743 ¹	1	◆
11	Washer, 1/4" Split Lock	F05011-14	2	
12	Screw, 1/4-20 x 3/8" Socket Button Head	F05005-62	2	
13	Step Weldment, OS	014736	1	
14	Screw, 3/8-16 x 1 3/4" Socket Head	F05007-53	4	
15	Washer, 3/8" Flat	F05011-3	9	
16	Pin, 5/16 x 1" Detaining	F05012-45	2	
17	Nut, 3/8-16 Hex Nylon Lock	F05010-10	5	
18	Bolt, 1/2-13 x 4" HH GR 2	F05008-91	2	
19	Nut, 1/2-13 Jam	F05010-31	3	
20	Frame Weldment, Operator Seat	014594 ¹	1	◆
21	Latch, Operator Seat	S11337	1	
22	Bolt, 5/16-18 x 1 1/2" HH GR5	F05006-76	9	
23	Bearing, Double Row	014599 ¹	9	◆
24	Nut, 5/16-18 Nylon Hex	F05010-65	9	
25	Bolt, 1/2-13 x 2 1/4" Hex Head Full Thread Tap	F05008-27	1	
26	Bar Weldment, Lower Bearing	014625 ¹	1	◆
	Plate, Operator Seat Revision	005801-OS	1	
	Rivet, 1/8x1/4 Alum AA44D Pop	F04203-2	4	
	Adjuster Assembly, Operator Seat (Milsco)	038720 ²	1	
	Manual, 1997 Operator's Seat Option	M613 ³	1	

¹ Operator Seat revised 7/97. Lower rollers and seat frame redesigned for improved durability. Upgrade kit OS-R no longer available. Customer should replace entire seat assembly ([See Section 2.4](#)).

² Seat 038719 replaces P26206 originally supplied (new vendor). Use new adjuster assembly 038720 to service either seat (replaces 036754 originally supplied with old seat).

³ M613 Operator's Manual replaces OS-613 (Part number format change only).

INDEX

I

installation 1-2

M

maintenance 1-10

R

replacement parts 2-1, 2-3, 2-5, 2-7, 2-10

T

towing sawmill with seat 1-8