

# Log Deck Package

## Safety, Operation, Maintenance, & Parts Manual

---

MW Manual Winch	rev. F1.00
LT Log Turner	rev. B1.00
TB Toe Board	rev. D1.00

***Safety is our #1 concern!***

*Form #823*



**WARNING! Read and understand this manual before using this machine.**

**California**

## Proposition 65 Warning



**WARNING:** Breathing gas/diesel engine exhaust exposes you to chemicals known to the State of California to cause cancer and birth defects or other reproductive harm.

- Always start and operate the engine in a well-ventilated area.
- If in an enclosed area, vent the exhaust to the outside.
- Do not modify or tamper with the exhaust system.
- Do not idle the engine except as necessary.

For more information go to **[www.P65warnings.ca.gov](http://www.P65warnings.ca.gov)**.



**WARNING:** Drilling, sawing, sanding or machining wood products can expose you to wood dust, a substance known to the State of California to cause cancer. Avoid inhaling wood dust or use a dust mask or other safeguards for personal protection.

For more information go to **[www.P65Warnings.ca.gov/wood](http://www.P65Warnings.ca.gov/wood)**.

**Active Patents assigned to Wood-Mizer, LLC**

Wood-Mizer, LLC has received patents that protect our inventions which are a result of a dedication to research, innovation, development, and design. Learn more at: [woodmizer.com/patents](http://woodmizer.com/patents)

**©2022 Wood-Mizer LLC**

Printed in the United States of America, all rights reserved. No part of this manual may be reproduced in any form by any photographic, electronic, mechanical or other means or used in any information storage and retrieval system without written permission from

**Wood-Mizer, LLC**  
**8180 West 10th Street**  
**Indianapolis, Indiana 46214**

# Table of Contents

# Section-Page

## SECTION 1 OPERATION

1.1	Manual Winch.....	1-1
1.2	Manual Log Turner.....	1-3
1.3	Manual Toe Board.....	1-5

## SECTION 2 REPLACEMENT PARTS

2.1	Manual Winch.....	2-1
3.2	Manual Log Turner.....	3-1
	<i>Manual Log Turner Mount &amp; Cable Guide Pulley</i> .....	3-2
	<i>Manual Log Turner Arm</i> .....	3-3
	<i>Cable Anchor Assembly</i> .....	3-4
4.3	Manual Toe Board.....	4-1

## SECTION 1 OPERATION



**IMPORTANT!** This manual is provided as a **supplement** to the equipment manufacturer's manuals. Refer to the manufacturer's manual before attempting to operate this equipment. This manual takes into account the specific use of the winch on the Wood-Mizer sawmill. Only safety, maintenance, and operating procedures that are not provided by the manufacturer are supplied in this manual.

The manual winch may be used on LT25<sup>1</sup> through LT40 sawmills to load logs onto the bed. The winch may also be used with the optional log turner to rotate logs on the sawmill bed. The winch features two-speed operation and a brake. The winch rated to handle 3500 pounds (1588 kg).



**DANGER!** Keep all persons out of the path of moving equipment and logs when operating sawmill or loading and turning logs. Failure to do so will result in serious injury.

**NOTE:** For installation, see the assembly sheet that came with your retrofit kit.

### 1.1 Manual Winch

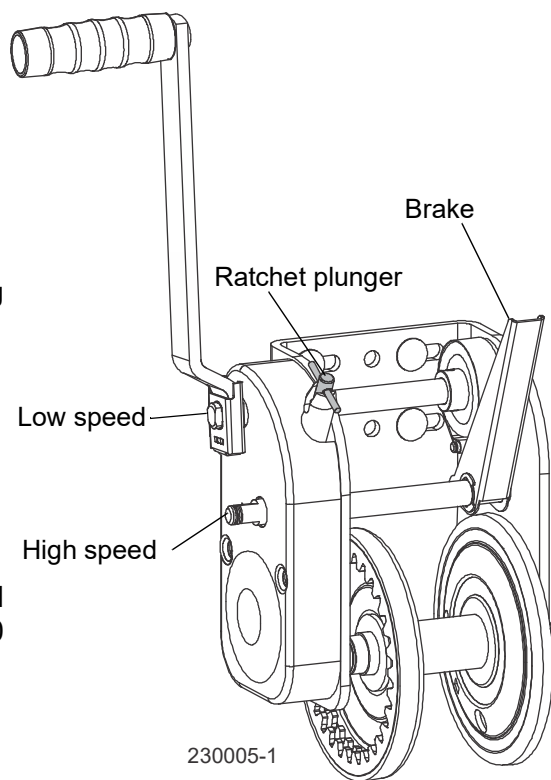
1. Inspect the winch mechanism and cable for proper operation before each use.
2. Check the cable for damage and replace, if necessary.
3. Select the winch speed by placing the crank handle on the correct winding shaft.
  - a. The top winding shaft provides a slow, but stronger, winding action for use when handling larger logs.
  - b. The lower winding shaft will provide a faster winding action for use when handling small to medium size logs.
4. Make sure the handle clip engages with groove in drive shaft.
5. Engage ratchet plunger by placing pin in the horizontal position in the deep slot.

**NOTE:** If the winch handle refuses to turn, pull the ratchet plunger pin from slot, turn 180 degrees, and reengage.

6. Wind line on winch reel by turning winch handle in counterclockwise direction.


**NOTE:** The ratchet plunger should bob up and down as line is wound onto the reel.

7. If under load, make sure that the ratchet plunger is fully engaged and holding load before winch handle is released.
8. To unwind or reel out line, securely grip the winch handle and apply force in counterclockwise direction so that ratchet plunger can be easily disengaged.
9. Pull ratchet plunger pin up and turn 90 degrees.
10. Apply force to hand brake to help hold load while carefully turning handle in clockwise direction.
11. Do not lose control.



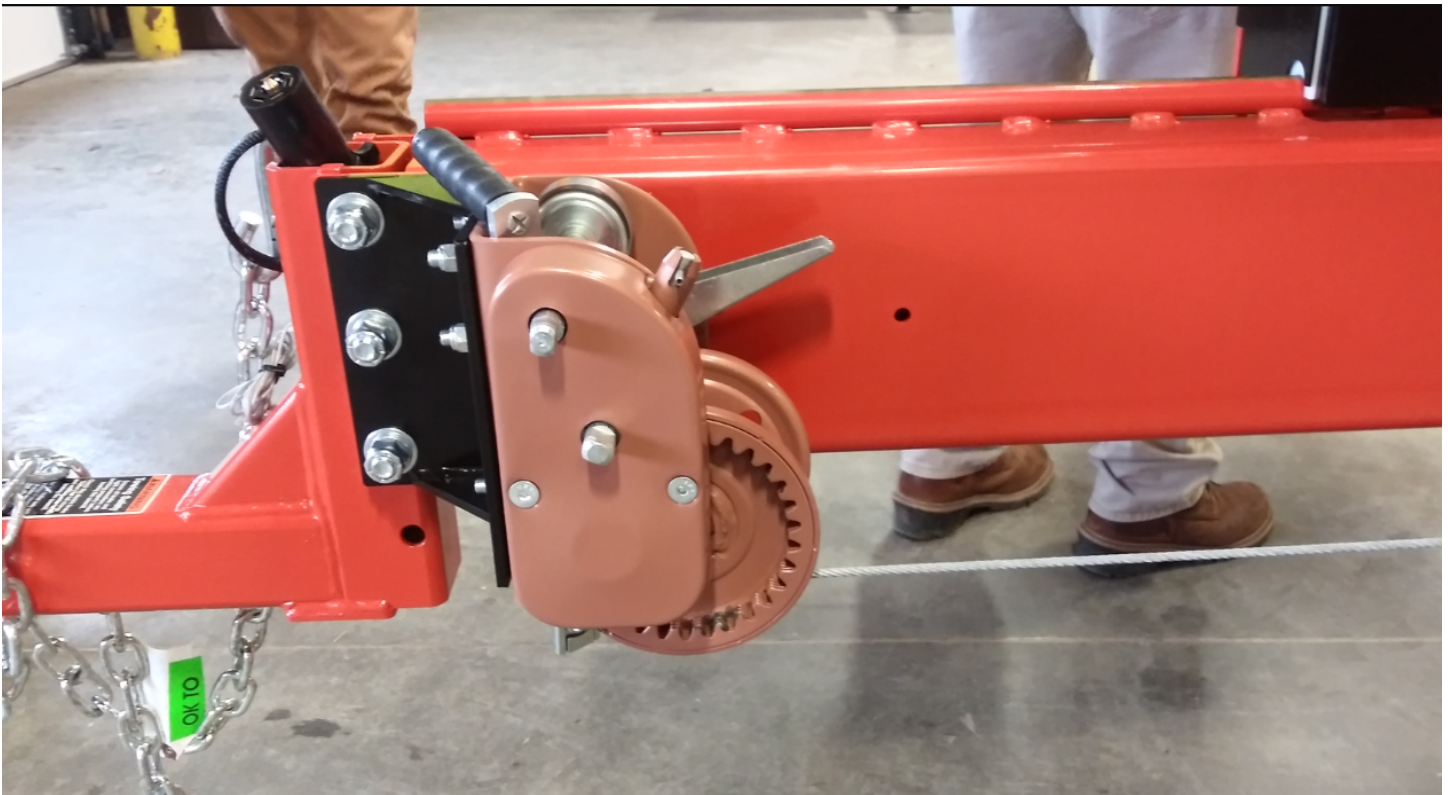
**FIG. 1-1**

<sup>1</sup>Use the supplied 6" bolts to replace the winch bracket mounting bolts. Longer bolts allow mounting of winch bracket and feed rope bracket.

 **WARNING!** Maintain a firm grip on the winch handle at all times. Do not release handle when ratchet lever is in unlocked position with a load on the winch. The handle will spin violently, which could cause personal injury.

12. After reeling out line, lock the load in position by reengaging ratchet plunger.
13. Ensure that the ratchet plunger bobs up and down when the handle is turned counterclockwise, and that it is **fully** engaged and securely holding the load before releasing handle.
14. When finished, turn the pin 90° and release. (The pin should return to its original position.)
15. If handle is attached to high speed shaft, operate winch as described above, reversing clockwise and counterclockwise.

**NOTE:** Refer to the manufacturer's manual for lubrication instructions.



**FIG. 1-2 HANDLE IN STORAGE POSITION**

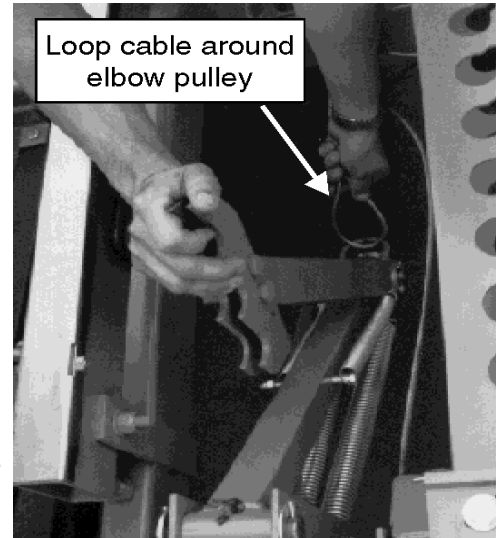
## 1.2 Manual Log Turner

The log turner assembly is designed to be used in conjunction with the manual winch to rotate logs on the mill bed.

1. Loop the winch cable around the turner elbow pulley as shown in FIG. 1-3.



FIG. 1-3



2. Route the cable around the first anchor pulley as shown in FIG. 1-4.

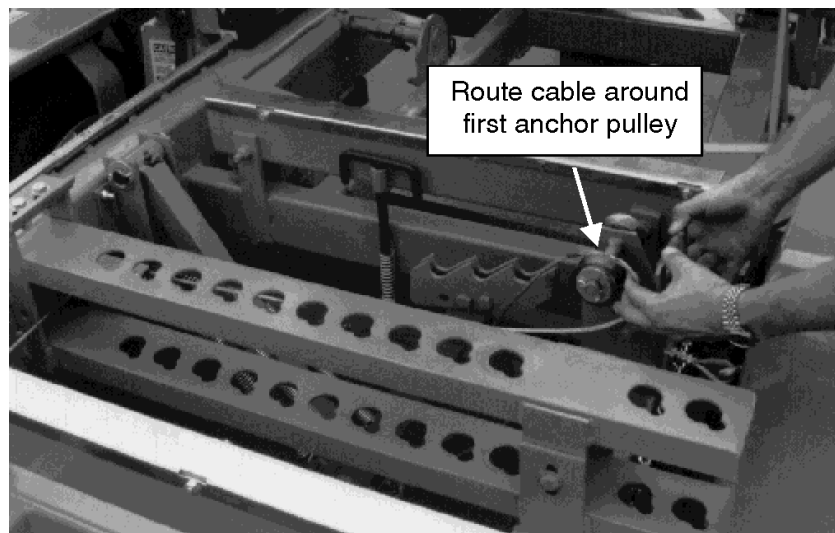


FIG. 1-4

3. Route the end of the cable around the remaining anchor pulley and attach cable hook to 'U' anchor bracket as shown in FIG. 1-5.

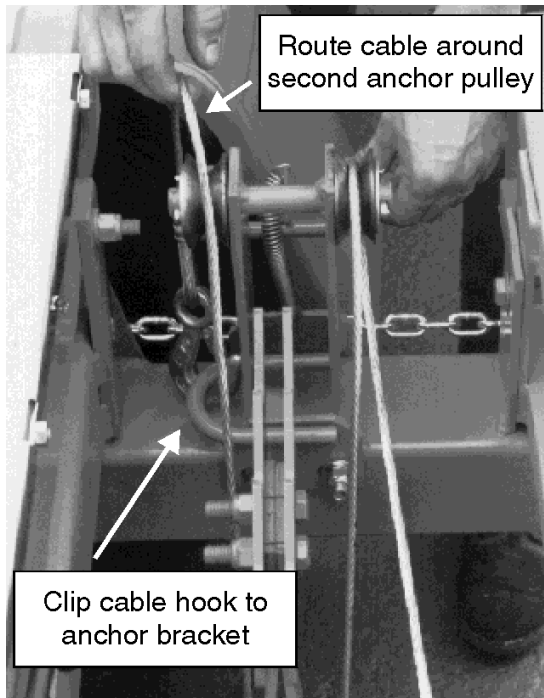


FIG. 1-5

4. Make sure the side supports are in a vertical position so the log doesn't fall off the back side of the sawmill.
5. Reel in winch cable until the log turner contacts the log and begins to lift it.
6. Continue tightening the winch cable to rotate the log 90 degrees, 180 degrees, or as desired.
7. If the log is resting on a round side, use the clamping dog to clamp in place against the side supports before disengaging the turner.
8. Once the log is turned and resting solid, release the winch cable to let the turner drop below bed level.
9. Adjust side supports to clear blade, if necessary.



**DANGER!** Keep all persons out of the path of moving equipment and logs when operating sawmill or loading and turning logs. Failure to do so will result in serious injury or death.

10. If the log turner teeth are gripping the logs too high or too low, adjust the log turner stop.

The log turner stop rod has three holes. A safety clip is placed in one of the holes to stop the rod from going completely into the log turner tube when the turner is raised. Which hole the clip is in determines how far the rod will go into the tube. To adjust the stop, remove the safety clip from its current position and place in another hole.

### 1.3 Manual Toe Board

In many cutting operations, particularly cutting for grade, it is desirable to cut tapered logs parallel to the heart of the log. The optional toe boards allow the operator to lift either end of a log to parallel the heart to the path of the blade.

**NOTE:** For installation, see the assembly sheet that came with your retrofit kit.

1. Measure from the bed rail or auxiliary support to the heart of the log.
2. Measure at the other end of the log and compare distances.

The distance from the bed to the heart on one end of the log should be within 1/2" (12.5 mm) of the measurement from the bed to the heart on the other end of the log.

3. Place the crank handle on the toe board at the end of log to be raised.
4. Turn the handle clockwise to raise the end of the log.
5. Raise about half the difference measured as the other end of the log will typically lower as the end being raised goes up.
6. Remeasure both ends of the log from the bed rails and adjust toe board as necessary until both ends measure the same distance from the bed rails.

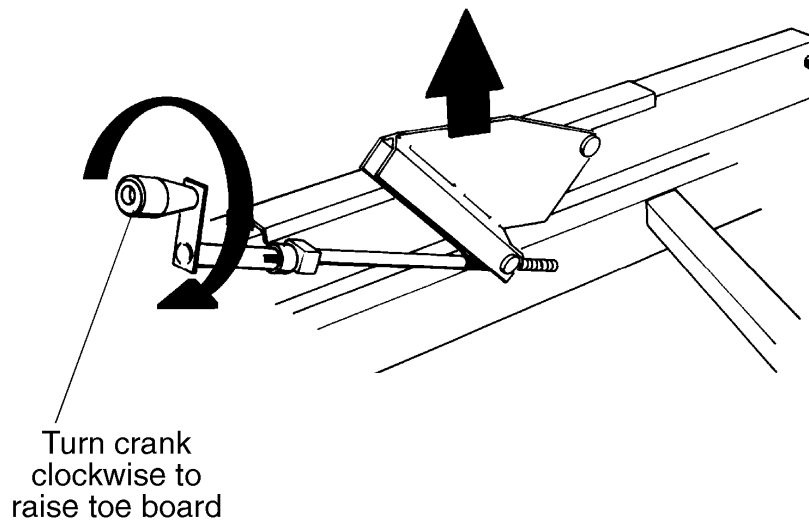
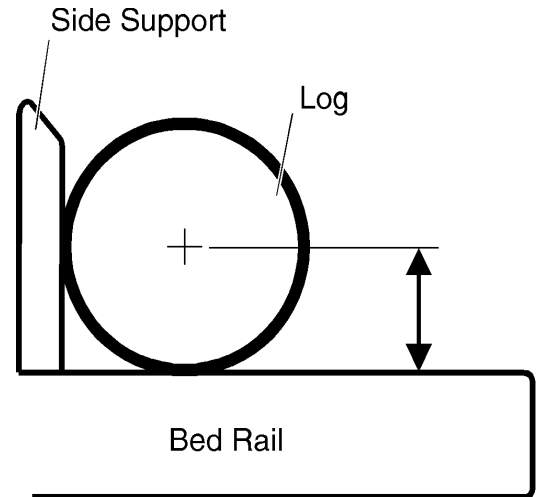


FIG. 1-6

7. Remove the toe board crank handle.
8. Clamp the log against the side supports and make the desired number of cuts.
9. When the log is rotated 180 degrees, lower the toe board so that the flat portion of the log now lies flat on the bed rails. This will result in the two opposite sides of the log cut parallel to the heart.

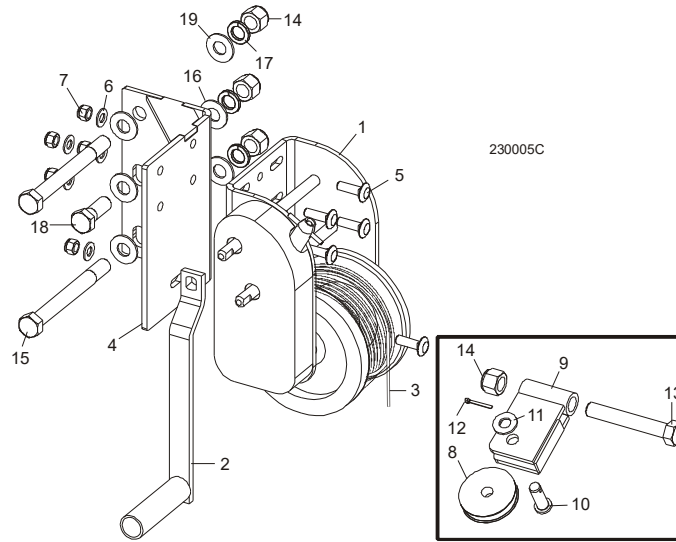
**CAUTION!** Be sure the pivot rails, turning arm, clamp, and toe boards are below bed level before loading a log onto the bed. Failure to do so may result in machine damage or cause misalignment.



10. Repeat these steps to square the remaining two sides of the log.
11. If you do not have the toe board option, you can achieve the same results by shimming one end of the log so that the blade cuts parallel to the log's heart.

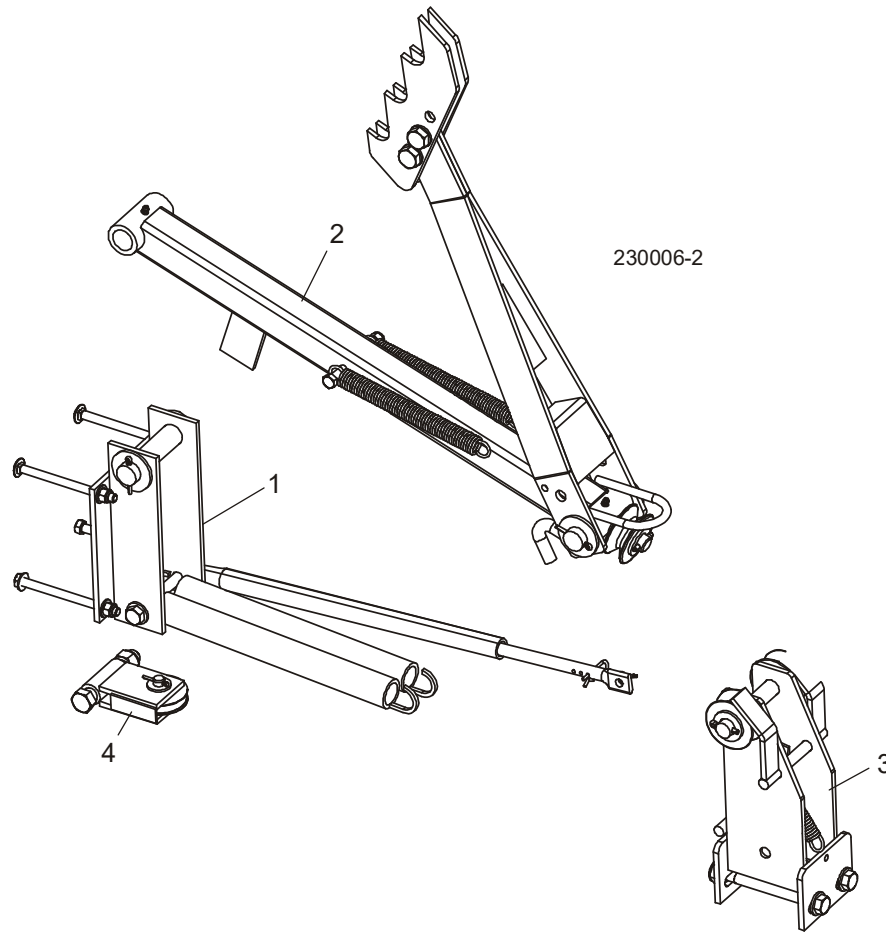
## SECTION 2 REPLACEMENT PARTS

### 2.1 Manual Winch



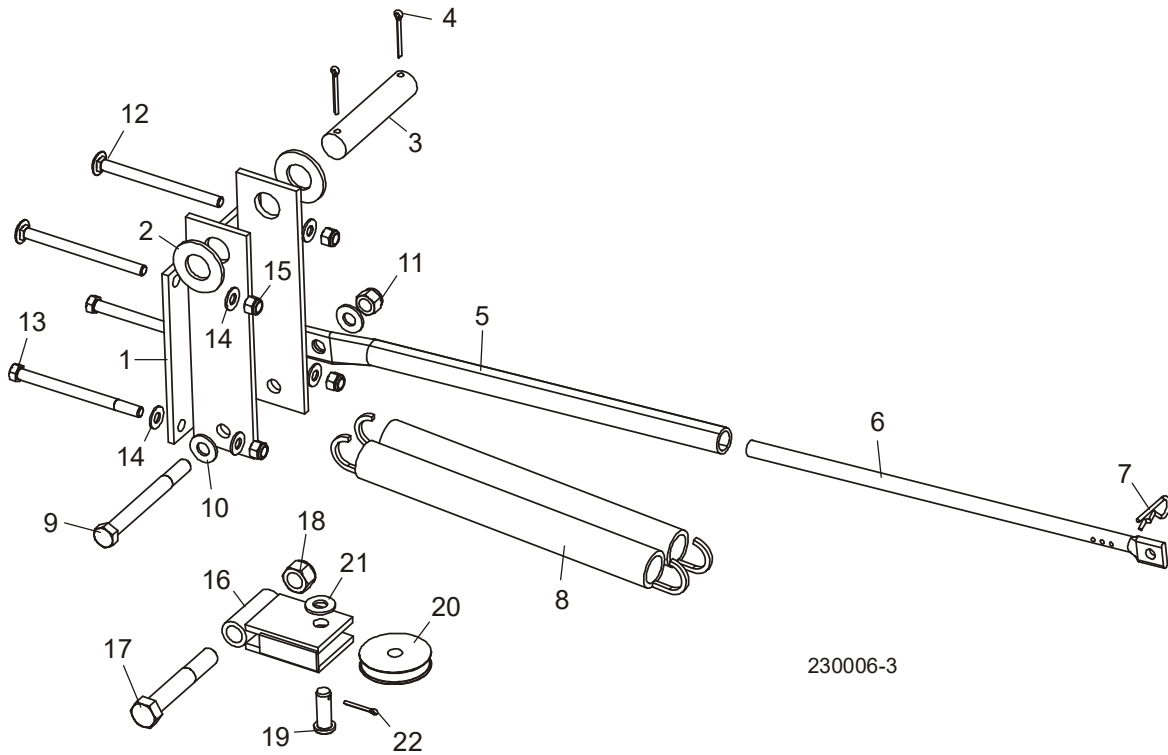
REF	PART #	DESCRIPTION	COMMENTS	QTY.
	MW-A	<b>MANUAL WINCH ASSEMBLY</b>		1
1	P12323	Winch, Manual 3500lb	Available in assemblies only.	1
2	P04487	Handle, Manual Winch		1
3	P05087	Cable, Manual Winch 7/32" Dia. X 50' Long		1
4	S12321	Bracket, Winch Mount		1
5	F05007-127	Bolt, 3/8-16 X 1 1/4" Carriage Grade 5		5
6	F05011-3	Washer, 3/8" Flat		5
7	F05010-10	Nut, 3/8-16 Hex Nylon Lock		5
8	S09393	Pulley, Winch Cable Guide		1
9	W09429	Bracket, Winch Cable Guide Pulley		1
10	F05012-24	Pin, 1/2" X 1 27/64" Clevis		1
11	F05011-2	Washer, 1/2" SAE Flat		1
12	F05012-1	Pin, 1/8" X 1" Cotter		1
13	F05009-8	Bolt, 5/8-11 X 4" Hex Head Full Thread		1
14	F05010-34	Nut, 5/8-11 Nylon Lock	Use supplied hardware to replace mounting hardware previously supplied.	4
15	F05009-22	Bolt, 5/8-11 x 6" Hex Head Grade 5		2
16	F05011-5	Washer, 5/8" SAE Flat		2
17	F05011-27	Washer, 5/8" Split Lock	Use supplied hardware to replace mounting hardware previously supplied.	3
	M619-23	Manual, Manual Winch Option		1
	MW-421	Instruction Sheet, Manual Winch		1
18	F05009-33	Bolt, 5/8-11 x 1 3/4" Hex Head		1
19	F05011-5	<b>WASHER, 5/8" SAE FLAT</b>		4

## 3.2 Manual Log Turner



REF	PART #	DESCRIPTION	COMMENTS	QTY.
	LT-A	<b>MANUAL LOG TURNER OPTION</b>		1
	A09365	Turner Assembly, Manual Log		1
<b>1</b>		Log Turner Mount Parts ( <a href="#">See Section</a> )		
<b>2</b>		Log Turner Arm Parts ( <a href="#">See Section</a> )		
<b>3</b>		Turner Cable Anchor Parts ( <a href="#">See Section</a> )		
	F05007-4	Bolt, 3/8-16 x 4" Hex Head	Additional hardware supplied for various styles of sawmill frame tubes.	4
	F05007-113	Bolt, 3/8-16 x 5" Carriage Head		2
	F05007-5	Bolt, 3/8-16 x 5" Hex Head		2
<b>4</b>		<b>CABLE GUIDE PULLEY PARTS</b> ( <a href="#">See Section</a> )		

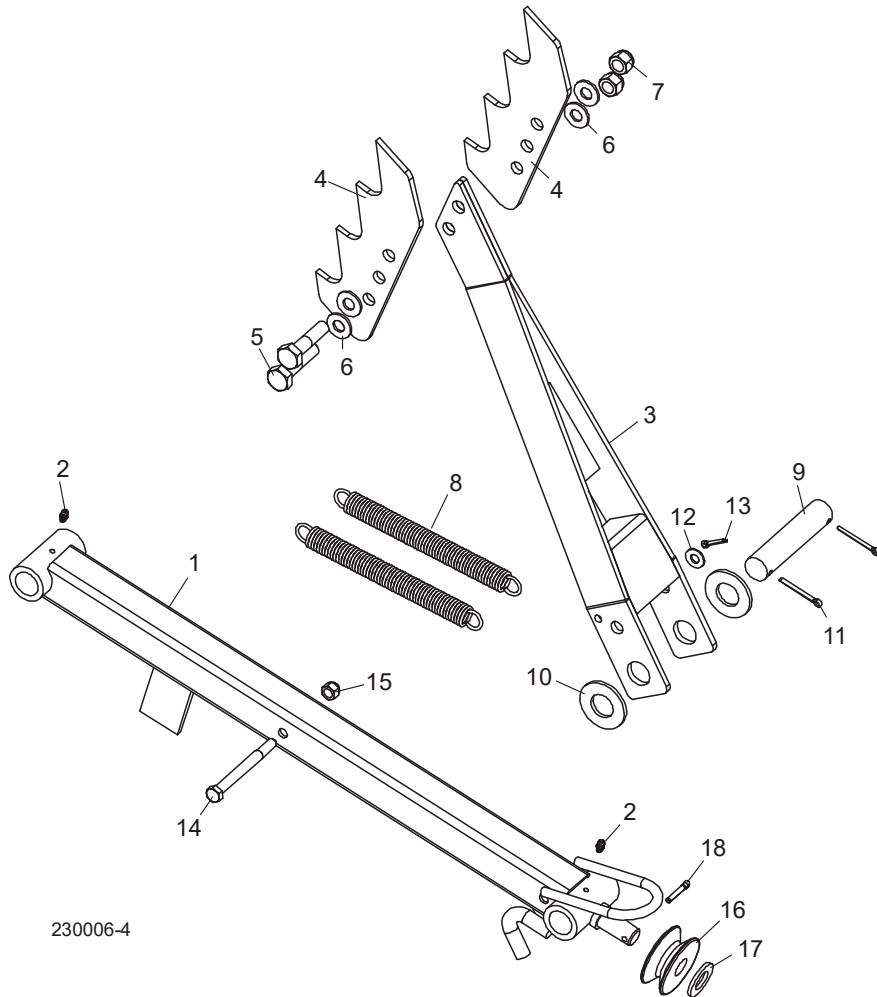
**Manual Log Turner Mount & Cable Guide Pulley**



230006-3

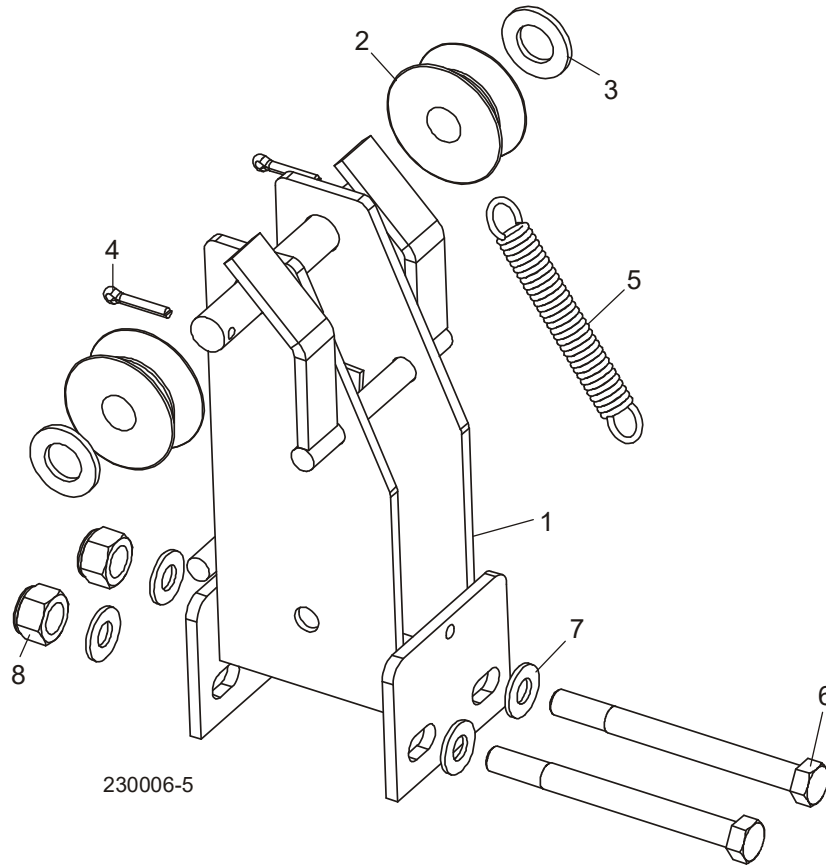
REF	PART #	DESCRIPTION	COMMENTS	QTY.
1	W09424	BRACKET WELDMENT, MANUAL LOG TURNER MOUNT		1
2	F05011-28	WASHER, 1" SAE FLAT		2
3	S09392	PIN, MANUAL TURNER ARM PIVOT		1
4	F05012-23	PIN, 3/16" X 1 1/2" COTTER		2
5	S09447	TUBE, MANUAL TURNER STOP		1
6	S09545	ROD, MANUAL TURNER STOP		1
7	P05059	PIN, 3/16" RETAINING		1
8	P09426	SPRING, MANUAL TURNER ARM UPPER		2
9	F05008-66	BOLT, 1/2-13 X 5" HEX HEAD GRADE 5		1
10	F05011-2	WASHER, 1/2" SAE FLAT		2
11	F05010-8	NUT, 1/2-13 HEX NYLON LOCK		1
12	F05007-113	BOLT, 3/8-16 X 5" CARRIAGE HEAD	Alternate hardware supplied with LT-A kit for various styles of sawmill frame tubes (See Section 2.2).	2
13	F05007-5	BOLT, 3/8-16 X 5" HEX HEAD		2
14	F05011-3	WASHER, 3/8" SAE FLAT		6
15	F05010-10	NUT, 3/8-16 HEX NYLON LOCK		4
16	W09429	BRACKET WELDMENT, WINCH CABLE PULLEY		1
17	F05009-8	BOLT, 5/8-11 X 4" HEX HEAD FULL THREAD		1
18	F05010-34	NUT, 5/8-11 HEX NYLON LOCK		1
19	F05012-24	PIN, 1/2" X 1 27/64" CLEVIS		1
20	S09393	PULLEY, WINCH CABLE		1
21	F05011-2	WASHER, 1/2" SAE FLAT		1
22	F05012-1	PIN, 1/8" X 1" COTTER		1

## Manual Log Turner Arm



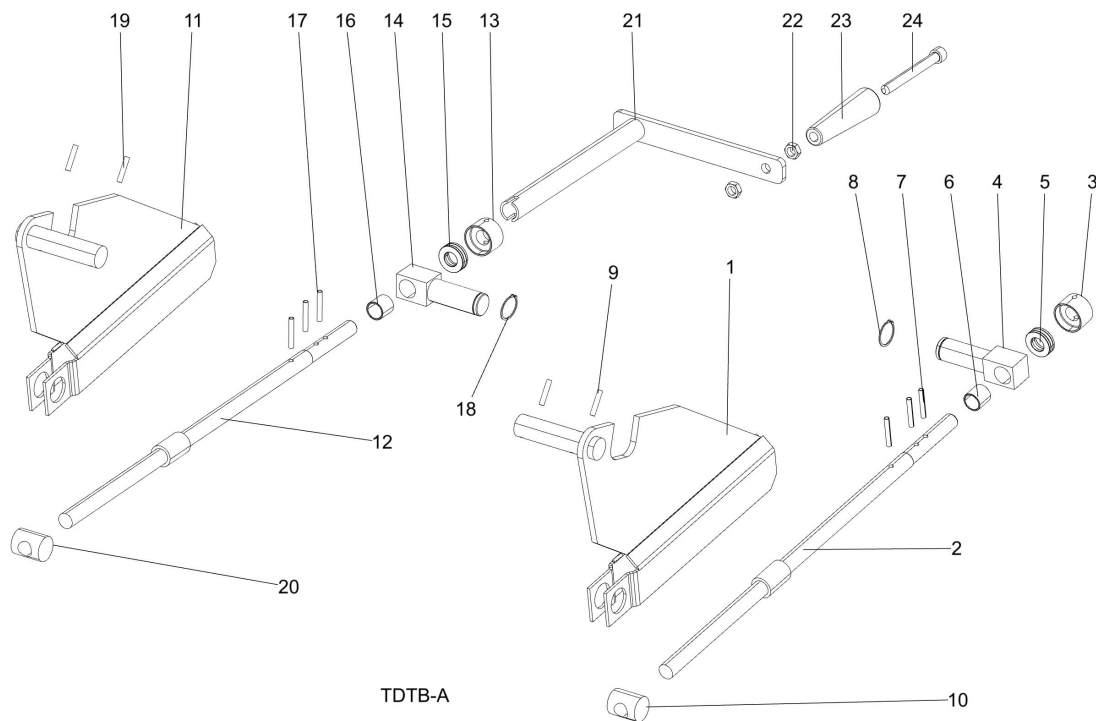
REF	PART #	DESCRIPTION	COMMENTS	QTY.
1	W09425	ARM WELDMENT, LOWER MANUAL TURNER		1
2	P04107	Fitting, 3/16" Grease		2
3	W09427	ARM WELDMENT, UPPER MANUAL TURNER		1
4	014675	CLAW, LOG TURNER		2
5	F05008-10	BOLT, 1/2-13 X 2 1/4" HEX HEAD GRADE 5		2
6	F05011-2	WASHER, 1/2" SAE FLAT		4
7	F05010-8	NUT, 1/2-13 HEX NYLON LOCK		2
8	P09136	SPRING, MANUAL TURNER ARM LOWER		2
9	S09392	PIN, MANUAL TURNER ARM PIVOT		1
10	F05011-28	WASHER, 1" SAE FLAT		2
11	F05012-23	PIN, 3/16" X 1 1/2" COTTER		2
12	F05011-3	WASHER, 3/8" SAE FLAT		1
13	F05012-3	PIN, 1/8" X 3/4" COTTER		1
14	F05007-4	BOLT, 3/8-16 X 4" HEX HEAD		1
15	F05010-10	NUT, 3/8-16 HEX NYLON LOCK		1
16	S09394	PULLEY, MANUAL TURNER CABLE		1
17	F05011-62	WASHER, 3/4" SAE FLAT		1
18	F05012-21	PIN, 3/16" X 1" COTTER		1

**Cable Anchor Assembly**



REF	PART #	DESCRIPTION	COMMENTS	QTY.
	A09371	<b>ANCHOR ASSEMBLY, MANUAL TURNER CABLE</b>		1
1	W09428	Bracket, Manual Turner Cable Pulley	Available in assemblies only.	1
2	S09394	Pulley, Manual Turner Cable		2
3	F05011-62	Washer, 3/4" SAE Flat		2
4	F05012-21	Pin, 3/16" x 1" Cotter		2
5	P04060	Spring, Manual Turner Cable Pulley		1
6	F05008-28	<b>BOLT, 1/2-13 X 5 1/2" HEX HEAD GRADE 5</b>		2
7	F05011-2	<b>WASHER, 1/2" SAE FLAT</b>		6
8	F05010-8	<b>NUT, 1/2-13 HEX NYLON LOCK</b>		2

## 4.3 Manual Toe Board



REF	PART #	DESCRIPTION	COMMENTS	QTY.
	TB-A	<b>TOE BOARD KIT, MANUAL</b>		1
	A09307	Toe Board, Rear Manual		1
<b>1</b>	W09492	Toe Board Wldmt, Rear		1
	130127	Assy, Manual Toe Board Shaft	130127 replaced A09490 after 2/25/2022 per ECN 38398.	
	A09490	Shaft Assembly, Manual Toe Board		1
<b>2</b>	130130	Wldmt, Toe Board Shaft	130130 replaced W09289 after 2/25/2022 per ECN 38398.	1
	W09289	Shaft Wldmt, Toe Board	Available in assemblies only.	1
<b>3</b>	130126	Collar, 5/8 ID x 1 1/4 OD 51102	130126 replaced 016267 after 2/25/2022 per ECN 38398.	1
	016267	Collar, 5/8" I.D.		1
<b>4</b>	S09168	Pivot, Toe Board Shaft		1
<b>5</b>	130128	Bearing, Thrust .591IDx1.102ODx.354W	130128 replaced P04214 after 2/25/2022 per ECN 38398.	1
	P04214	Bearing, 5/8" Thrust		1
<b>6</b>	P09130	Spacer, 5/8IDx3/4ODx3/4 Long Bronze		1
<b>7</b>	F05012-16	Pin, 3/16x1 1/4 Roll		3
<b>8</b>	F04254-7	RIng, 7/8 OD IR 5100-87	F04254-7 added after 2/25/2022 per ECN 38398.	1
<b>9</b>	F05012-11	Pin, 3/16x1 Zinc Roll		2
<b>10</b>	S04427	Bearing, Tension Trunion		1
	A09306	Toe Board, Front Manual		1
<b>11</b>	W09491	Toe Board Wldmt, Front		1
	130127	Assy, Manual Toe Board Shaft	130127 replaced A09490 after 2/25/2022 per ECN 38398.	

REF	PART #	DESCRIPTION	COMMENTS	QTY.
	A09490	Shaft Assembly, Manual Toe Board		1
<b>12</b>	130130	Wldmt, Toe Board Shaft	130130 replaced W09289 after 2/25/2022 per ECN 38398.	1
	W09289	Shaft Wldmt, Toe Board	Available in assemblies only.	1
<b>13</b>	130126	Collar, 5/8 ID x 1 1/4 OD 51102	130126 replaced 016267 after 2/25/2022 per ECN 38398.	1
	016267	Collar, 5/8" I.D.		1
<b>14</b>	S09168	Pivot, Toe Board Shaft		1
<b>15</b>	130128	Bearing, Thrust .591IDx1.102ODx.354W		1
	P04214	Bearing, 5/8" Thrust		1
<b>16</b>	P09130	Spacer, 5/8IDx3/4ODx3/4 Long Bronze		1
<b>17</b>	F05012-16	Pin, 3/16x1 1/4 Roll		1
<b>18</b>	F04254-7	RIng, 7/8 OD IR 5100-87	F04254-7 added after 2/25/2022 per ECN 38398.	1
<b>19</b>	F05012-11	Pin, 3/16x1 Zinc Roll		2
<b>20</b>	S04427	Bearing, Tension Trunion		1
	A09432	Handle Assy, Toe Board Crank		1
<b>21</b>	W09431	Crank Weldment		1
<b>22</b>	F05010-29	Nut, 3/8-16 Jam		2
<b>23</b>	060170	Knob, 3/8 Bore Tapered Plastic		1
<b>24</b>	F05007-111	Bolt,3/8-16 X 3 1/2 SHC B/O		1
	TB-237A	Instruction Sheet, Manual Toe Board Installation ('87 + Model Mills)		1



---

O

operation

log turner 3

winch 1

R

replacement parts

cable anchor 4

log turner 1

log turner arm 3

log turner mount/cable pulley 2

winch 1

---