

Toe Board

Safety, Operation, Maintenance, & Parts Manual

TB

rev. A.00 - D1.00

Safety is our #1 concern!

March 1997

Form #627



WARNING! Read and understand this manual before using this machine.

California

Proposition 65 Warning



WARNING: Breathing gas/diesel engine exhaust exposes you to chemicals known to the State of California to cause cancer and birth defects or other reproductive harm.

Always start and operate the engine in a well-ventilated area.
If in an enclosed area, vent the exhaust to the outside.
Do not modify or tamper with the exhaust system.
Do not idle the engine except as necessary.

For more information go to www.P65warnings.ca.gov.



WARNING: Drilling, sawing, sanding or machining wood products can expose you to wood dust, a substance known to the State of California to cause cancer. Avoid inhaling wood dust or use a dust mask or other safeguards for personal protection.

For more information go to www.P65Warnings.ca.gov/wood.

Active Patents assigned to Wood-Mizer, LLC

Wood-Mizer, LLC has received patents that protect our inventions which are a result of a dedication to research, innovation, development, and design. Learn more at: woodmizer.com/patents

©2024 Wood-Mizer LLC

Printed in the United States of America, all rights reserved. No part of this manual may be reproduced in any form by any photographic, electronic, mechanical or other means or used in any information storage and retrieval system without written permission from

Wood-Mizer, LLC
8180 West 10th Street
Indianapolis, Indiana 46214

Table of Contents

Section-Page

SECTION 1 OPERATION

1.1	Manual Toe Board	1-1
-----	------------------------	-----

SECTION 2 REPLACEMENT PARTS

2.1	Manual Toe Board	2-1
-----	------------------------	-----

SECTION 1 OPERATION

1.1 Manual Toe Board

In many cutting operations, particularly cutting for grade, it is desirable to cut tapered logs parallel to the heart of the log. The optional toe boards allow the operator to lift either end of a log to parallel the heart to the path of the blade.

NOTE: For installation, see the assembly sheet that came with your retrofit kit.

1. Measure from the bed rail or auxiliary support to the heart of the log. **See Fig. 1-1.**
2. Measure at the other end of the log and compare distances.

The distance from the bed to the heart on one end of the log should be within 1/2" (12.5 mm) of the measurement from the bed to the heart on the other end of the log.

3. Place the crank handle on the toe board at the end of log to be raised.
4. Turn the handle clockwise to raise the end of the log.
5. Raise about half the difference measured as the other end of the log will typically lower as the end being raised goes up.

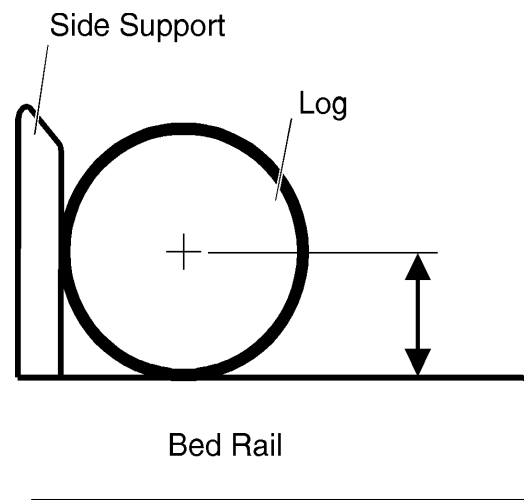


FIG. 1-1

6. Remeasure both ends of the log from the bed rails and adjust toe board as necessary until both ends measure the same distance from the bed rails. **See Fig. 1-2.**
7. Remove the toe board crank handle.
8. Clamp the log against the side supports and make the desired number of cuts.

When the log is rotated 180 degrees, lower the toe board so that the flat portion of the log now lies flat on the bed rails.

This will result in the two opposite sides of the log cut parallel to the heart.

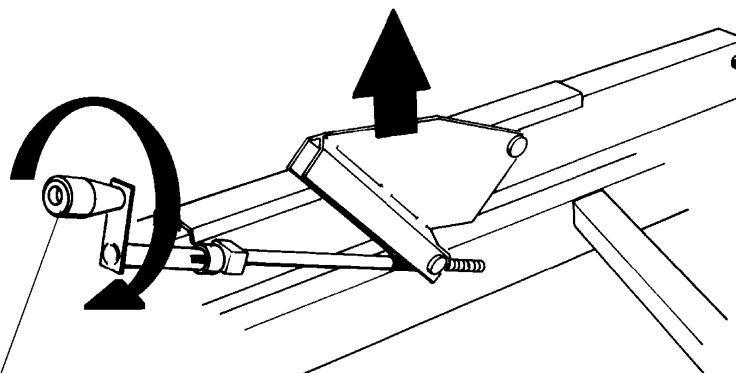


FIG. 1-2



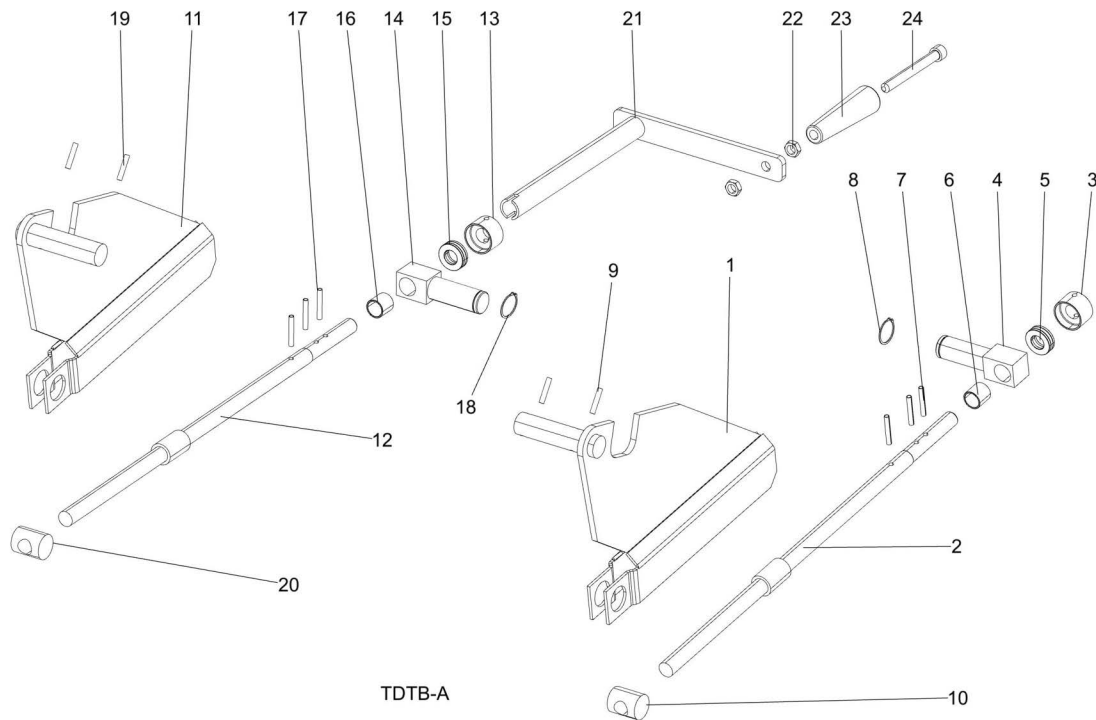
CAUTION! Be sure the pivot rails, turning arm, clamp, and toe boards are below bed level before loading a log onto the bed. Failure to do so may result in machine damage or cause misalignment.

9. Repeat these steps to square the remaining two sides of the log.

If you do not have the toe board option, you can achieve the same results by shimming one end of the log so that the blade cuts parallel to the log's heart.

SECTION 2 REPLACEMENT PARTS

2.1 Manual Toe Board



REF	PART #	DESCRIPTION	COMMENTS	QTY.
	TB-A	TOE BOARD KIT, MANUAL		1
	A09307	Toe Board, Rear Manual		1
1	W09492	Toe Board Wldmt, Rear		1
	130127	Assy, Manual Toe Board Shaft	130127 replaced A09490 after 2/25/2022 per ECN 38398.	
	A09490	Shaft Assembly, Manual Toe Board		1
2	130130	Wldmt, Toe Board Shaft	130130 replaced W09289 after 2/25/2022 per ECN 38398.	1
	W09289	Shaft Wldmt, Toe Board	Available in assemblies only.	1
3	130126	Collar, 5/8 ID x 1 1/4 OD 51102	130126 replaced 016267 after 2/25/2022 per ECN 38398.	1
	016267	Collar, 5/8" I.D.		1
4	S09168	Pivot, Toe Board Shaft		1
5	130128	Bearing, Thrust .591IDx1.102ODx.354W	130128 replaced P04214 after 2/25/2022 per ECN 38398.	1
	P04214	Bearing, 5/8" Thrust		1
6	P09130	Spacer, 5/8IDx3/4ODx3/4 Long Bronze		1
7	F05012-16	Pin, 3/16x1 1/4 Roll		3
8	F04254-7	Rlng, 7/8 OD IR 5100-87	F04254-7 added after 2/25/2022 per ECN 38398.	1
9	F05012-11	Pin, 3/16x1 Zinc Roll		2
10	S04427	Bearing, Tension Trunion		1

2 Replacement Parts

Manual Toe Board

REF	PART #	DESCRIPTION	COMMENTS	QTY.
	A09306	Toe Board, Front Manual		1
11	W09491	Toe Board Wldmt, Front		1
	130127	Assy, Manual Toe Board Shaft	130127 replaced A09490 after 2/25/2022 per ECN 38398.	
	A09490	Shaft Assembly, Manual Toe Board		1
12	130130	Wldmt, Toe Board Shaft	130130 replaced W09289 after 2/25/2022 per ECN 38398.	1
	W09289	Shaft Wldmt, Toe Board	Available in assemblies only.	1
13	130126	Collar, 5/8 ID x 1 1/4 OD 51102	130126 replaced 016267 after 2/25/2022 per ECN 38398.	1
	016267	Collar, 5/8" I.D.		1
14	S09168	Pivot, Toe Board Shaft		1
15	130128	Bearing, Thrust .591IDx1.102ODx.354W		1
	P04214	Bearing, 5/8" Thrust		1
16	P09130	Spacer, 5/8IDx3/4ODx3/4 Long Bronze		1
17	F05012-16	Pin, 3/16x1 1/4 Roll		1
18	F04254-7	RIng, 7/8 OD IR 5100-87	F04254-7 added after 2/25/2022 per ECN 38398.	1
19	F05012-11	Pin, 3/16x1 Zinc Roll		2
20	S04427	Bearing, Tension Trunion		1
	A09432	Handle Assy, Toe Board Crank		1
21	W09431	Crank Weldment		1
22	F05010-29	Nut, 3/8-16 Jam		2
23	060170	Knob, 3/8 Bore Tapered Plastic		1
24	F05007-111	Bolt, 3/8-16 X 3 1/2 SHC B/O		1
	TB-237A	Instruction Sheet, Manual Toe Board Installation ('87 + Model Mills)		1