

Manual Log Turner

Safety, Operation, Maintenance, & Parts Manual

LT

rev. B1.00

Safety is our #1 concern!

March 1997

Form #620



WARNING! Read and understand this manual before using this machine.

California

Proposition 65 Warning



WARNING: Breathing gas/diesel engine exhaust exposes you to chemicals known to the State of California to cause cancer and birth defects or other reproductive harm.

Always start and operate the engine in a well-ventilated area.
If in an enclosed area, vent the exhaust to the outside.
Do not modify or tamper with the exhaust system.
Do not idle the engine except as necessary.

For more information go to www.P65warnings.ca.gov.



WARNING: Drilling, sawing, sanding or machining wood products can expose you to wood dust, a substance known to the State of California to cause cancer. Avoid inhaling wood dust or use a dust mask or other safeguards for personal protection.

For more information go to www.P65Warnings.ca.gov/wood.

Active Patents assigned to Wood-Mizer, LLC

Wood-Mizer, LLC has received patents that protect our inventions which are a result of a dedication to research, innovation, development, and design. Learn more at: woodmizer.com/patents

©2024 Wood-Mizer LLC

Printed in the United States of America, all rights reserved. No part of this manual may be reproduced in any form by any photographic, electronic, mechanical or other means or used in any information storage and retrieval system without written permission from

Wood-Mizer, LLC
8180 West 10th Street
Indianapolis, Indiana 46214

Table of Contents

Section-Page

SECTION 1 OPERATION

| | | |
|-----|-------------------------|-----|
| 1.1 | Manual Log Turner | 1-1 |
|-----|-------------------------|-----|

SECTION 2 REPLACEMENT PARTS

| | | |
|-----|--|-----|
| 2.1 | Manual Log Turner | 2-1 |
| 2.2 | Manual Log Turner Mount & Cable Guide Pulley | 2-2 |
| 2.3 | Manual Log Turner Arm..... | 2-4 |
| 2.4 | Cable Anchor Assembly | 2-5 |

SECTION 1 OPERATION

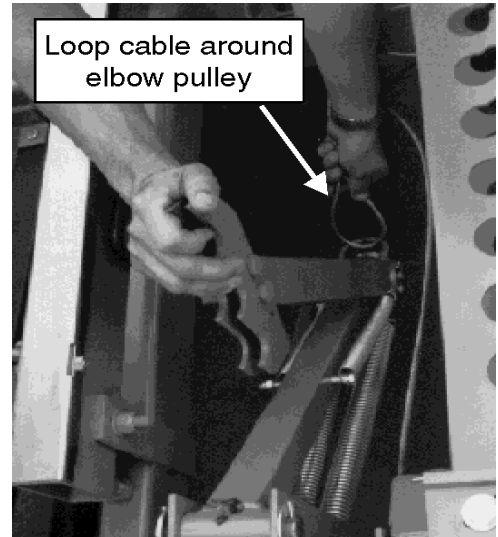
1.1 Manual Log Turner

The log turner assembly is designed to be used in conjunction with the manual winch to rotate logs on the mill bed.

1. Loop the winch cable around the turner elbow pulley as shown in FIG. 1-1.



FIG. 1-1



2. Route the cable around the first anchor pulley as shown in FIG. 1-2.

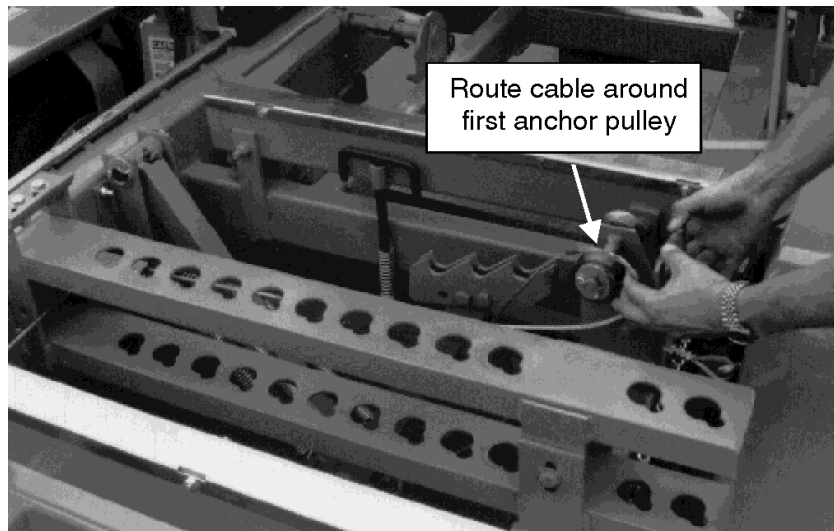


FIG. 1-2

3. Route the end of the cable around the remaining anchor pulley and attach cable hook to 'U' anchor bracket as shown in FIG. 1-3.

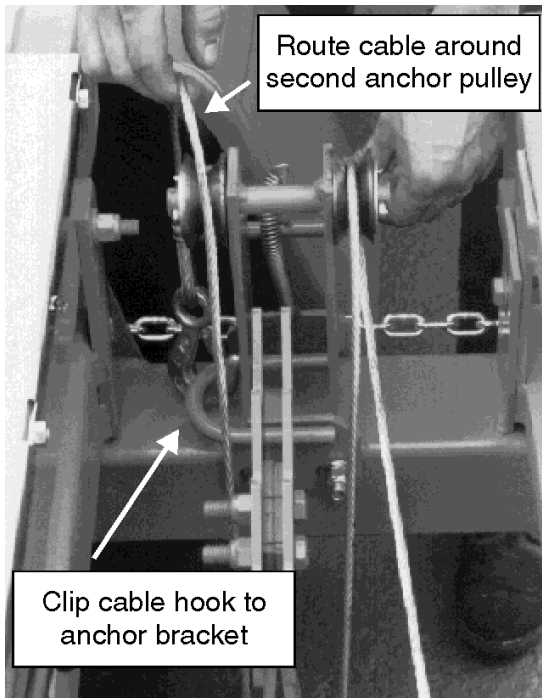


FIG. 1-3

4. Make sure the side supports are in a vertical position so the log doesn't fall off the back side of the sawmill.
5. Reel in winch cable until the log turner contacts the log and begins to lift it.
6. Continue tightening the winch cable to rotate the log 90 degrees, 180 degrees, or as desired.
7. If the log is resting on a round side, use the clamping dog to clamp in place against the side supports before disengaging the turner.
8. Once the log is turned and resting solid, release the winch cable to let the turner drop below bed level.
9. Adjust side supports to clear blade, if necessary.



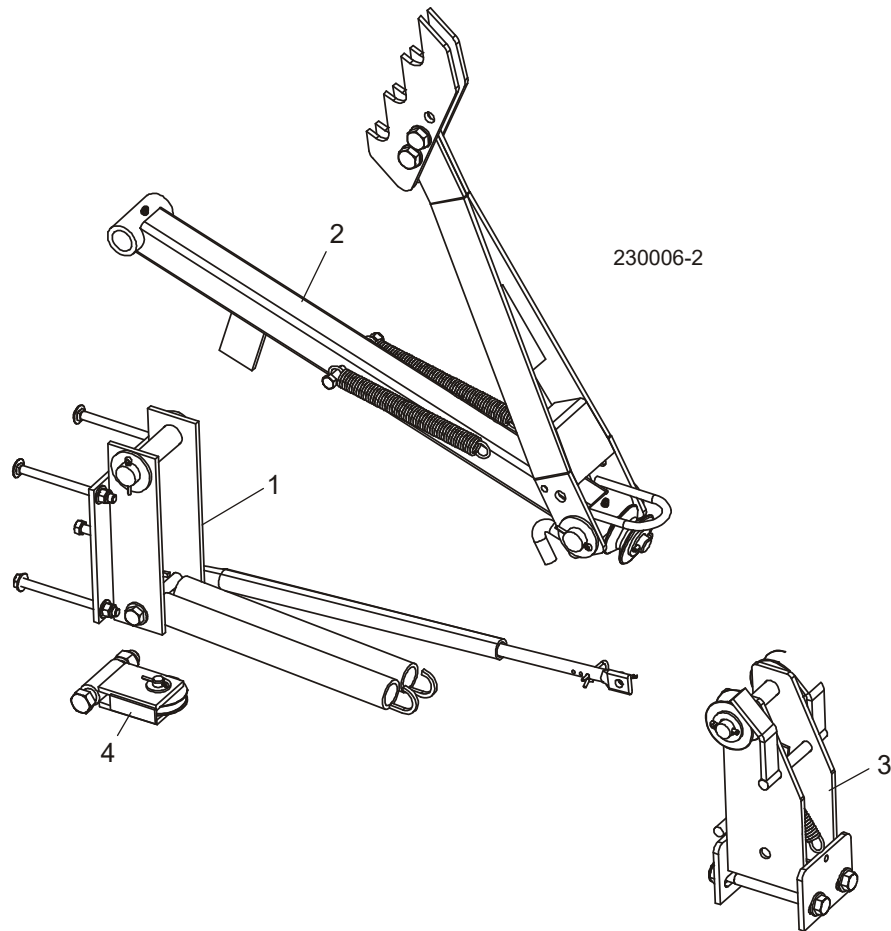
DANGER! Keep all persons out of the path of moving equipment and logs when operating sawmill or loading and turning logs. Failure to do so will result in serious injury or death.

10. If the log turner teeth are gripping the logs too high or too low, adjust the log turner stop.

The log turner stop rod has three holes. A safety clip is placed in one of the holes to stop the rod from going completely into the log turner tube when the turner is raised. Which hole the clip is in determines how far the rod will go into the tube. To adjust the stop, remove the safety clip from its current position and place in another hole.

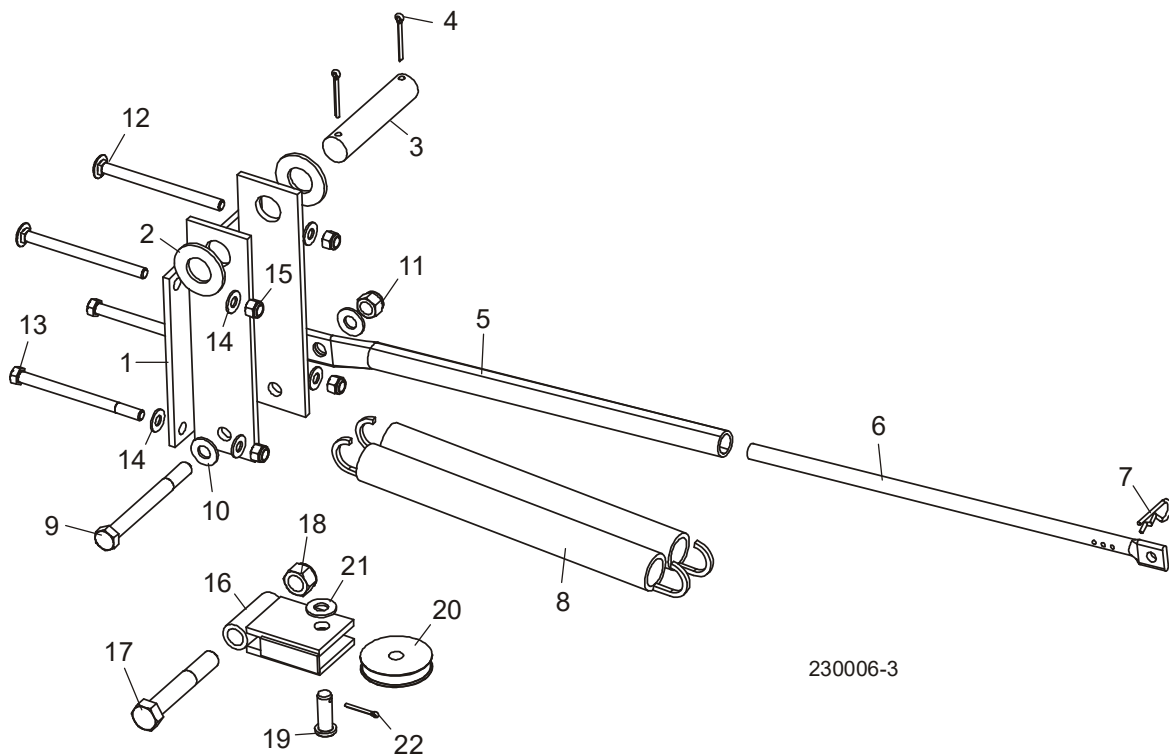
SECTION 2 REPLACEMENT PARTS

2.1 Manual Log Turner



| REF | PART # | DESCRIPTION | COMMENTS | QTY. |
|----------|------------|-------------------------------------|---|------|
| | LT-A | MANUAL LOG TURNER OPTION | | 1 |
| | A09365 | Turner Assembly, Manual Log | | 1 |
| 1 | | Log Turner Mount Parts | (See Section 2.2) | |
| 2 | | Log Turner Arm Parts | (See Section 2.3) | |
| 3 | | Turner Cable Anchor Parts | (See Section 2.4) | |
| | F05007-4 | Bolt, 3/8-16 x 4" Hex Head | Additional hardware supplied for various styles of sawmill frame tubes. | 4 |
| | F05007-113 | Bolt, 3/8-16 x 5" Carriage Head | | 2 |
| | F05007-5 | Bolt, 3/8-16 x 5" Hex Head | | 2 |
| 4 | | CABLE GUIDE PULLEY PARTS () | (See Section 2.2) | |

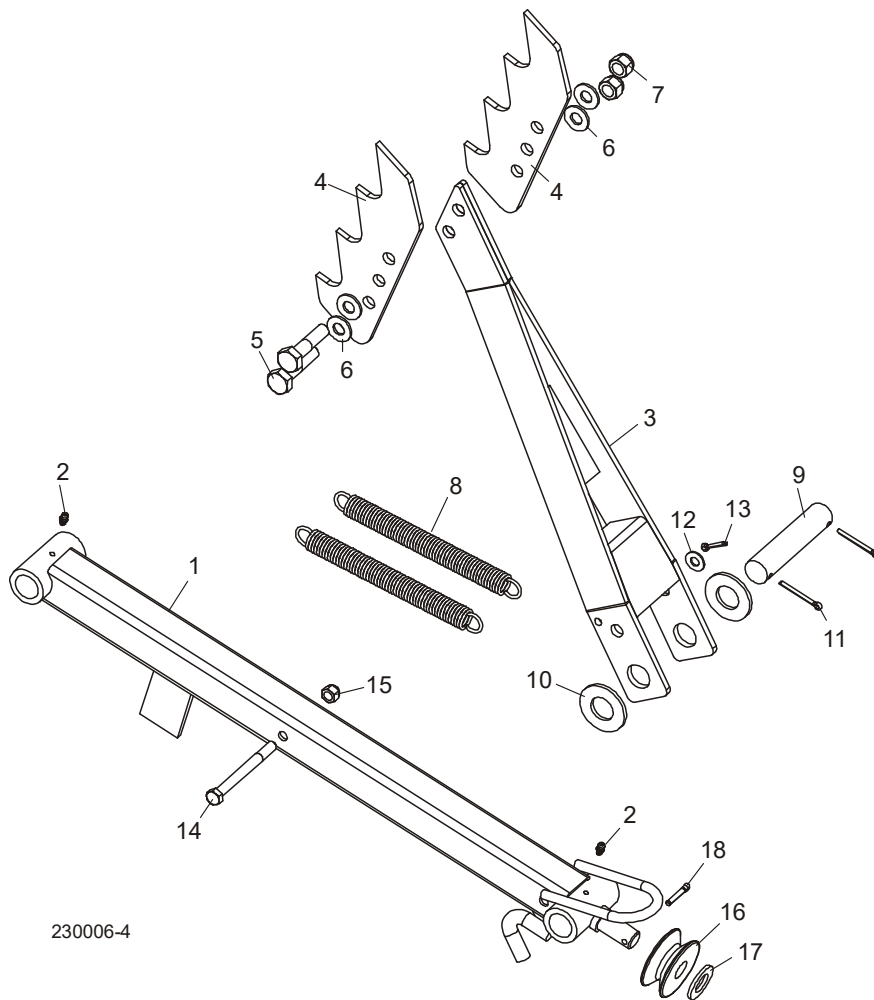
2.2 Manual Log Turner Mount & Cable Guide Pulley



| REF | PART # | DESCRIPTION | COMMENTS | QTY. |
|-----|------------|---|---|------|
| 1 | W09424 | BRACKET WELDMENT, MANUAL LOG TURNER MOUNT | | 1 |
| 2 | F05011-28 | WASHER, 1" SAE FLAT | | 2 |
| 3 | S09392 | PIN, MANUAL TURNER ARM PIVOT | | 1 |
| 4 | F05012-23 | PIN, 3/16" X 1 1/2" COTTER | | 2 |
| 5 | S09447 | TUBE, MANUAL TURNER STOP | | 1 |
| 6 | S09545 | ROD, MANUAL TURNER STOP | | 1 |
| 7 | P05059 | PIN, 3/16" RETAINING | | 1 |
| 8 | P09426 | SPRING, MANUAL TURNER ARM UPPER | | 2 |
| 9 | F05008-66 | BOLT, 1/2-13 X 5" HEX HEAD GRADE 5 | F05008-66 bolt and F05010-8 nut replace S09448 pin, (2) F05011-2 flat washers, and (2) F05012-21 cotter pins (11/97). | 1 |
| 10 | F05011-2 | WASHER, 1/2" SAE FLAT | | 2 |
| 11 | F05010-8 | NUT, 1/2-13 HEX NYLON LOCK | F05008-66 bolt and F05010-8 nut replace S09448 pin, (2) F05011-2 flat washers, and (2) F05012-21 cotter pins (11/97). | 1 |
| 12 | F05007-113 | BOLT, 3/8-16 X 5" CARRIAGE HEAD | Alternate hardware supplied with LT-A kit for various styles of sawmill frame tubes (See Section 2.2). | 2 |
| 13 | F05007-5 | BOLT, 3/8-16 X 5" HEX HEAD | F05008-66 bolt and F05010-8 nut replace S09448 pin, (2) F05011-2 flat washers, and (2) F05012-21 cotter pins (11/97). | 2 |
| 14 | F05011-3 | WASHER, 3/8" SAE FLAT | | 6 |
| 15 | F05010-10 | NUT, 3/8-16 HEX NYLON LOCK | | 4 |

| REF | PART # | DESCRIPTION | COMMENTS | QTY. |
|-----|-----------|--|----------|------|
| 16 | W09429 | BRACKET WELDMENT, WINCH CABLE PULLEY | | 1 |
| 17 | F05009-8 | BOLT, 5/8-11 X 4" HEX HEAD FULL THREAD | | 1 |
| 18 | F05010-34 | NUT, 5/8-11 HEX NYLON LOCK | | 1 |
| 19 | F05012-24 | PIN, 1/2" X 1 27/64" CLEVIS | | 1 |
| 20 | S09393 | PULLEY, WINCH CABLE | | 1 |
| 21 | F05011-2 | WASHER, 1/2" SAE FLAT | | 1 |
| 22 | F05012-1 | PIN, 1/8" X 1" COTTER | | 1 |

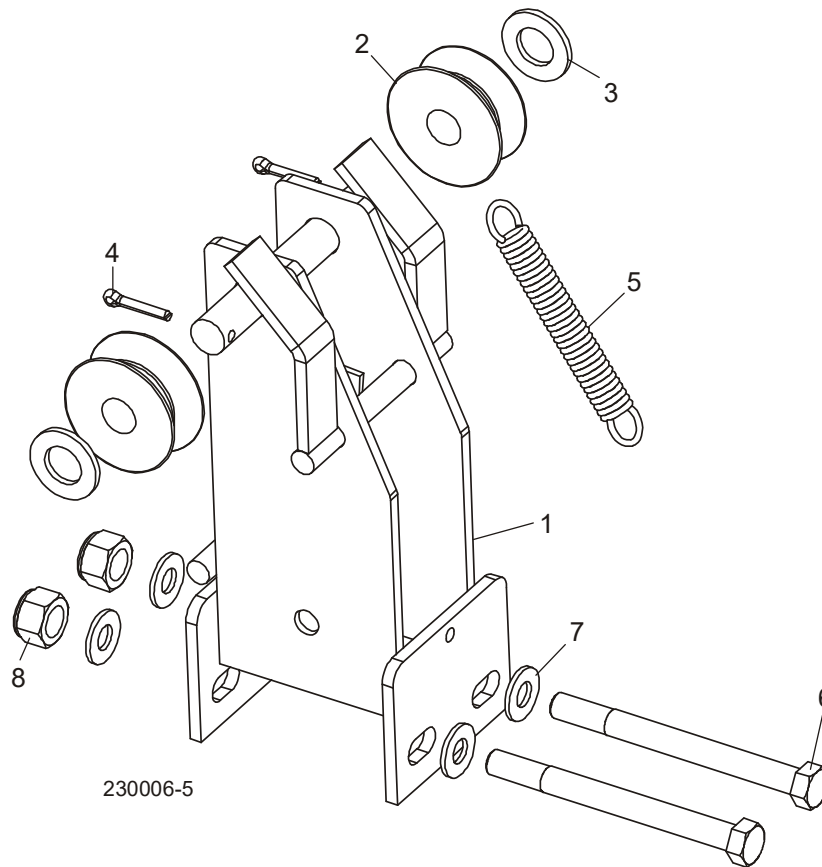
2.3 Manual Log Turner Arm



230006-4

| REF | PART # | DESCRIPTION | COMMENTS | QTY. |
|-----|-----------|--|----------|------|
| 1 | W09425 | ARM WELDMENT, LOWER MANUAL TURNER | | 1 |
| 2 | P04107 | Fitting, 3/16" Grease | | 2 |
| 3 | W09427 | ARM WELDMENT, UPPER MANUAL TURNER | | 1 |
| 4 | 014675 | CLAW, LOG TURNER | | 2 |
| 5 | F05008-10 | BOLT, 1/2-13 X 2 1/4" HEX HEAD GRADE 5 | | 2 |
| 6 | F05011-2 | WASHER, 1/2" SAE FLAT | | 4 |
| 7 | F05010-8 | NUT, 1/2-13 HEX NYLON LOCK | | 2 |
| 8 | P09136 | SPRING, MANUAL TURNER ARM LOWER | | 2 |
| 9 | S09392 | PIN, MANUAL TURNER ARM PIVOT | | 1 |
| 10 | F05011-28 | WASHER, 1" SAE FLAT | | 2 |
| 11 | F05012-23 | PIN, 3/16" X 1 1/2" COTTER | | 2 |
| 12 | F05011-3 | WASHER, 3/8" SAE FLAT | | 1 |
| 13 | F05012-3 | PIN, 1/8" X 3/4" COTTER | | 1 |
| 14 | F05007-4 | BOLT, 3/8-16 X 4" HEX HEAD | | 1 |
| 15 | F05010-10 | NUT, 3/8-16 HEX NYLON LOCK | | 1 |
| 16 | S09394 | PULLEY, MANUAL TURNER CABLE | | 1 |
| 17 | F05011-62 | WASHER, 3/4" SAE FLAT | | 1 |
| 18 | F05012-21 | PIN, 3/16" X 1" COTTER | | 1 |

2.4 Cable Anchor Assembly



| REF | PART # | DESCRIPTION | COMMENTS | QTY. |
|-----|-----------|---|-------------------------------|------|
| | A09371 | ANCHOR ASSEMBLY, MANUAL TURNER CABLE | | 1 |
| 1 | W09428 | Bracket, Manual Turner Cable Pulley | Available in assemblies only. | 1 |
| 2 | S09394 | Pulley, Manual Turner Cable | | 2 |
| 3 | F05011-62 | Washer, 3/4" SAE Flat | | 2 |
| 4 | F05012-21 | Pin, 3/16" x 1" Cotter | | 2 |
| 5 | P04060 | Spring, Manual Turner Cable Pulley | | 1 |
| 6 | F05008-28 | BOLT, 1/2-13 X 5 1/2" HEX HEAD GRADE 5 | | 2 |
| 7 | F05011-2 | WASHER, 1/2" SAE FLAT | | 6 |
| 8 | F05010-8 | NUT, 1/2-13 HEX NYLON LOCK | | 2 |