

Debarker Option

Safety, Installation, Operation, Maintenance & Parts Manual

LT35/LT35HD

rev. A.01 - A.03



Safety is our #1 concern! Read and understand all safety information and instructions before operating, setting up or maintaining this machine.

May 2012

Form #1791

California
Proposition 65 Warning



WARNING: Breathing gas/diesel engine exhaust exposes you to chemicals known to the State of California to cause cancer and birth defects or other reproductive harm.

- Always start and operate the engine in a well-ventilated area.
- If in an enclosed area, vent the exhaust to the outside.
- Do not modify or tamper with the exhaust system.
- Do not idle the engine except as necessary.

For more information go to **www.P65warnings.ca.gov**.



WARNING: Drilling, sawing, sanding or machining wood products can expose you to wood dust, a substance known to the State of California to cause cancer. Avoid inhaling wood dust or use a dust mask or other safeguards for personal protection.

For more information go to **www.P65Warnings.ca.gov/wood**.

©2019

Printed in the United States of America, all rights reserved. No part of this manual may be reproduced in any form by any photographic, electronic, mechanical or other means or used in any information storage and retrieval system without written permission from

Wood-Mizer
8180 West 10th Street
Indianapolis, Indiana 46214

Table of Contents

Section-Page

SECTION 1	SAFETY	1-1
1.1	Installation and Maintenance.....	1-1
1.2	Operation and Towing.....	1-2
SECTION 2	DEBARKER INSTALLATION	2-1
2.1	Debarker Installation.....	2-1
2.2	Harness Installation.....	2-6
2.3	Control Component Installation.....	2-9
SECTION 3	ALIGNMENT	3-1
SECTION 4	OPERATION AND MAINTENANCE	4-1
4.1	Locking Pin Operation.....	4-1
4.2	Control Overview.....	4-2
4.3	Operation.....	4-4
4.4	Maintenance.....	4-5
4.5	Troubleshooting.....	4-6
SECTION 5	ELECTRICAL INFORMATION	5-1
5.1	Electrical Symbol Diagram (D17).....	5-1
5.2	Electrical Symbol Diagram (G25).....	5-2
5.3	Electrical Component List.....	5-3
SECTION 6	DEBARKER PARTS	6-1
6.1	Debarker Assembly.....	6-1
6.2	Pivot Arm Assembly.....	6-2
6.3	In/Out Control Arm Assembly.....	6-4
6.4	Blade Motor & Horn Assembly.....	6-5
6.5	Debarker Solenoid Assembly.....	6-7
6.6	Debarker Control Assembly.....	6-8
	INDEX	I

SECTION 1 SAFETY



This symbol calls your attention to instructions concerning your personal safety. Be sure to observe and follow these instructions. This symbol accompanies a signal word. The word **DANGER** indicates an imminently hazardous situation which, if not avoided, will result in death or serious injury. **WARNING** suggests a potentially hazardous situation which, if not avoided, could result in death or serious injury. **CAUTION** refers to potentially hazardous situations which, if not avoided, may result in minor or moderate injury to persons or equipment. Read all safety instructions before operating this equipment and observe all safety warnings!

1.1 Installation and Maintenance



DANGER! Make sure all electrical installation, service and/or maintenance work is performed by a qualified electrician and is in accordance with applicable electrical codes. Failure to do so will result in serious injury or death.

DANGER! Before performing any service to this equipment, turn the power toggle switch to the OFF position and disconnect the sawmill battery ground terminal. Failure to do so will result in serious injury or death.



WARNING! Before replacing the debarker blade, move the sawmill blade guide arm in front of the sawmill blade to cover the blade teeth. Failure to do so may result in serious injury or death.

1.2 Operation and Towing



DANGER! Make sure all guards and covers are in place and secured before operating the debarker option. Failure to do so may result in serious injury.

DANGER! Keep all persons out of the path of moving equipment when operating the debarker. Failure to do so will result in serious injury.



WARNING! Debarker is ON when warning bell sounds. DO NOT disconnect the warning bell. Doing so may result in serious injury.

SECTION 2 DEBARKER INSTALLATION



IMPORTANT! The debarker option may be installed only to LT35 and LT35HD sawmills Rev. A2.00 and newer equipped with the new up/down system.



DANGER! Before performing any service to this equipment, turn the power toggle switch to the OFF position and disconnect the sawmill battery ground terminal. Failure to do so will result in serious injury or death.



CAUTION! Due to various design changes and past retrofits and options, you should very carefully look your mill over to determine Debarker compatibility before beginning Debarker installation.

2.1 Debarker Installation



DANGER! Always disengage the blade and shut off the sawmill engine before installing the debarker. Failure to do so will result in serious injury.

IMPORTANT! Sawmills are equipped with pre-drilled Debarker mounting holes. **Verify hole locations before beginning Debarker installation. Proper hole location is imperative for safe and effective Debarker operation.**

1. Assemble the debarker frame assembly to the sawmill saw head. Align the debarker mounting plate holes and the mounting holes in the saw head. Use the provided fasteners to secure in place as shown below. Make sure the debarker is square to the saw head before tightening.

See Figure 2-1.

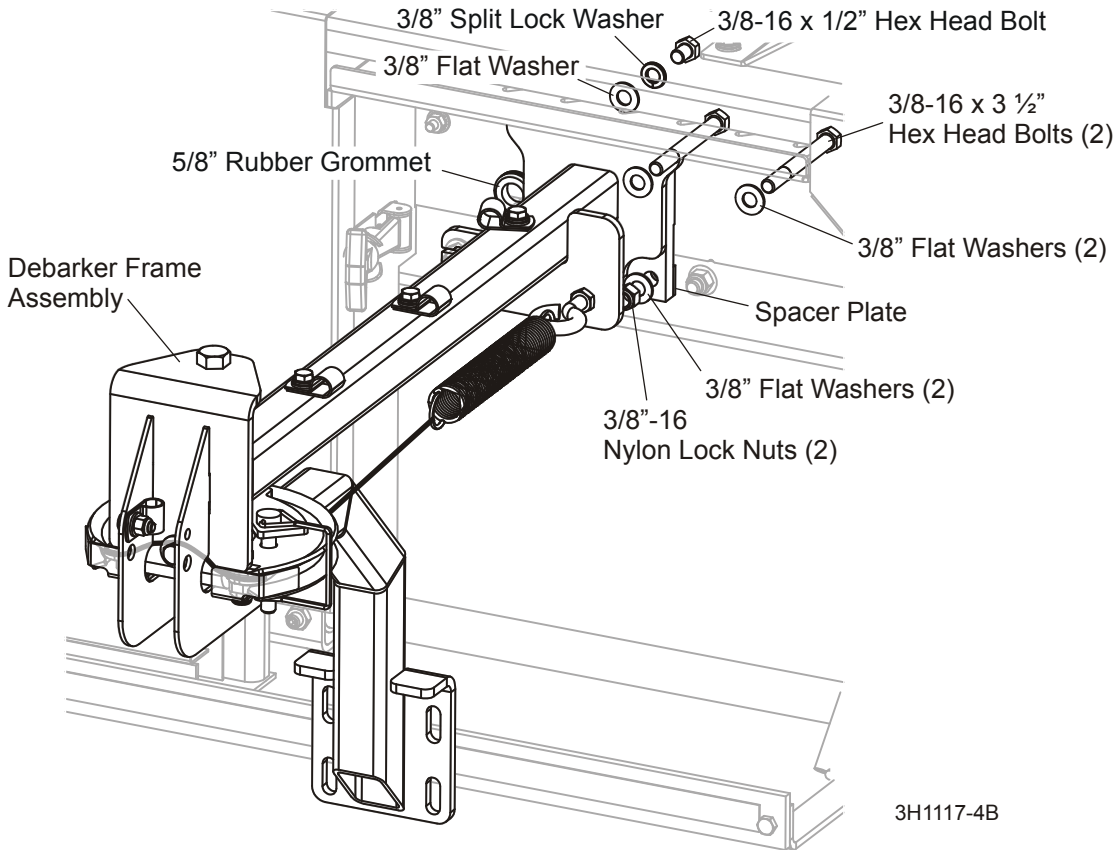


FIG. 2-1

2. Install the provided 5/8" rubber grommet as shown above. Route the pivot cable through the rubber grommet.

2

Debarker Installation

Debarker Installation

3. Assemble the debarker cutting head to the frame mount plate.

Use the provided hex head bolts, lock washers, hex nylon lock nuts and one clamp to mount the cutting head to the debarker frame as shown below.

See Figure 2-2.

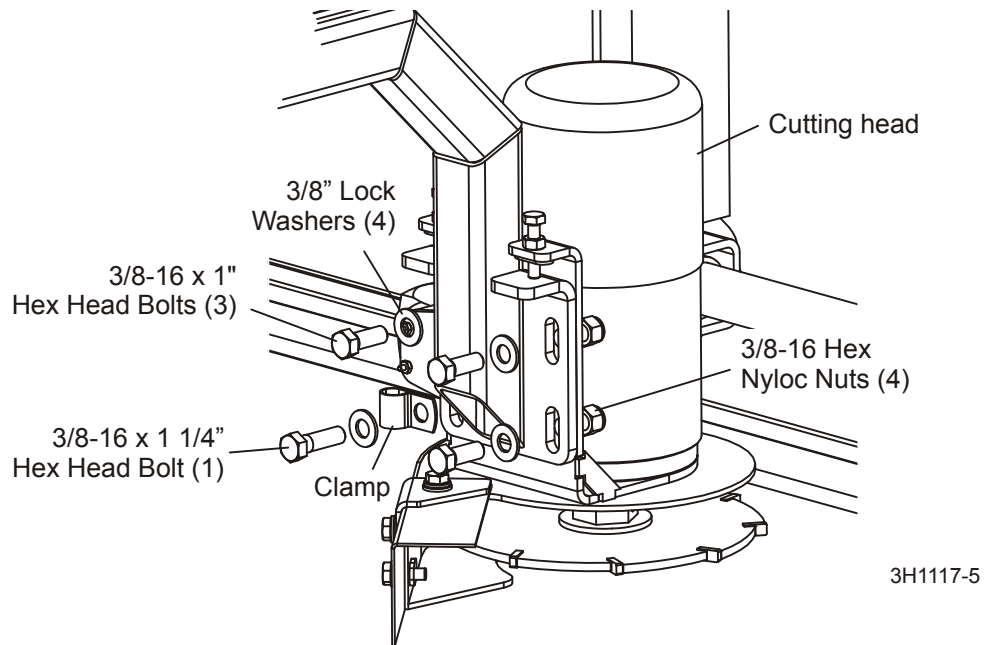


FIG. 2-2

- 4. Install the debarker in/out control arm assembly to the engine mount plate. Use the existing mount bolts to secure the arm assembly to the engine mount plate.

Connect the pivot cable to the in/out control arm and secure in place.

See Figure 2-3.

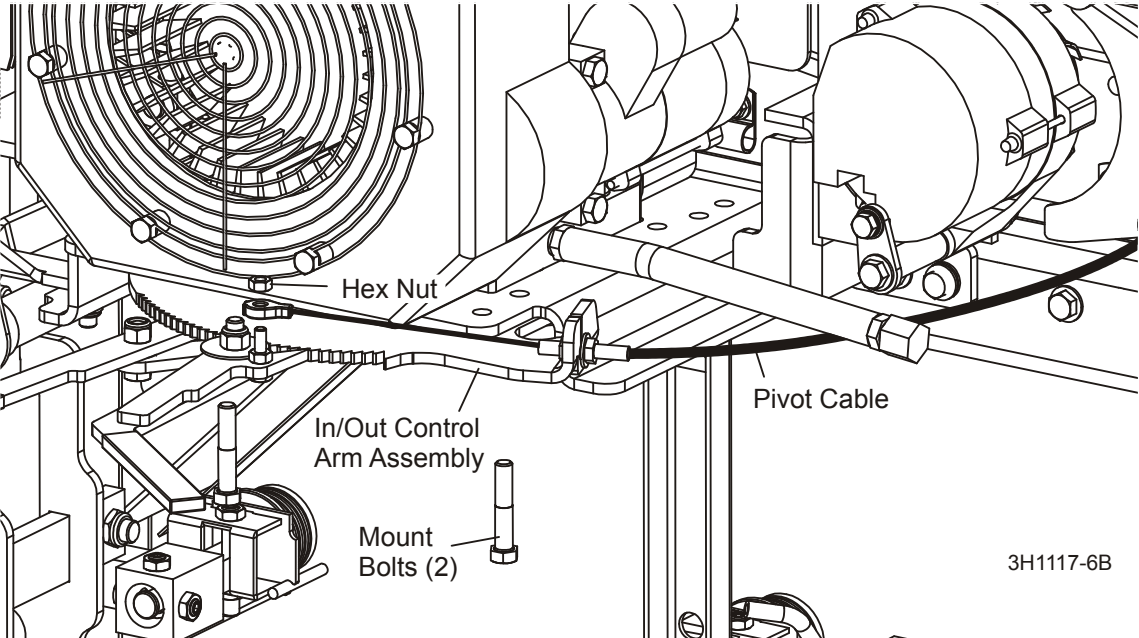


FIG. 2-3

2

Debarker Installation

Debarker Installation

5. Install the solenoid/breaker box to the saw head frame. Use the two provided 1/4-20 x 3/4" hex head bolts, 1/4" split lock washers and 1/4" flat washers to secure the solenoid/breaker box to the water bottle mount bracket.

See Figure 2-4.

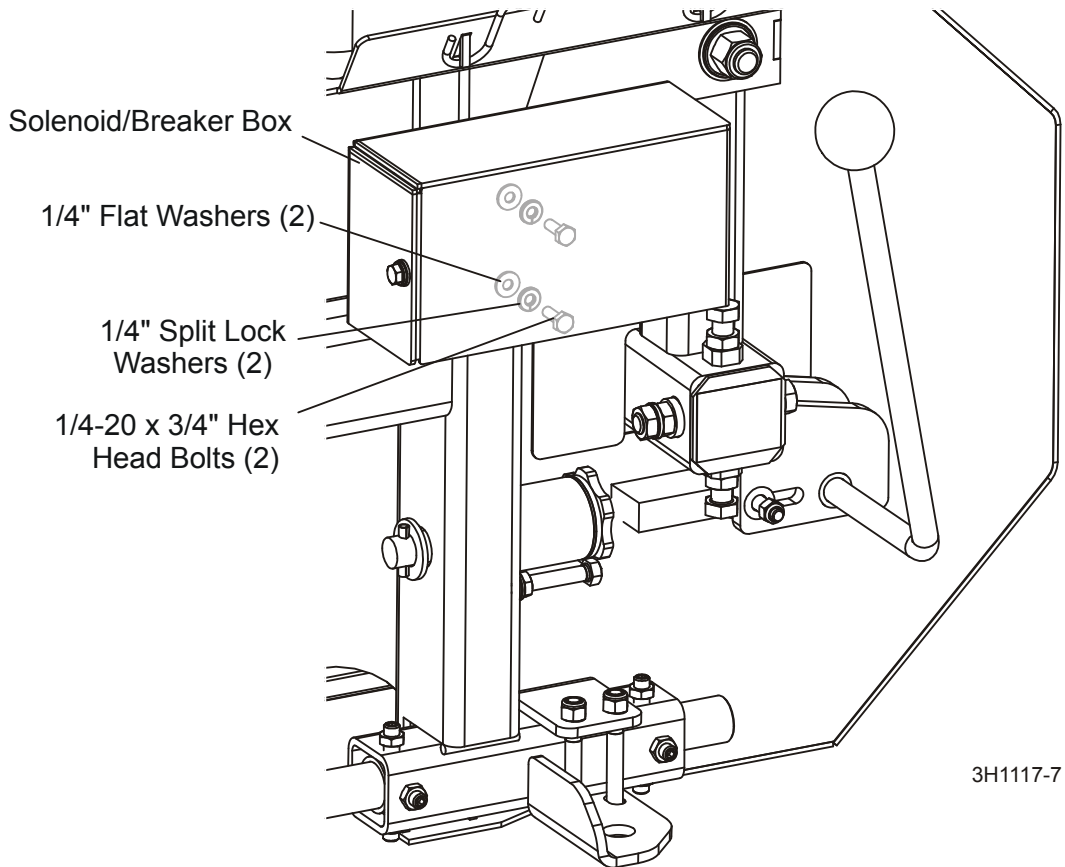


FIG. 2-4

2.2 Harness Installation



DANGER! Before performing any service to this equipment, turn the power toggle switch to the OFF position and disconnect the sawmill battery ground terminal. Failure to do so will result in serious injury or death.



IMPORTANT! Avoid pinch and pivot points, unnecessary wire bending and open spaces where the wire could get caught by a log, etc. If you have any questions, call Wood-Mizer customer service.

1. Route the debarker motor harness through the saw head frame hole. Continue routing the debarker motor harness along the debarker frame through the cable clamps and inside debarker frame as shown below.

See Figure 2-5.

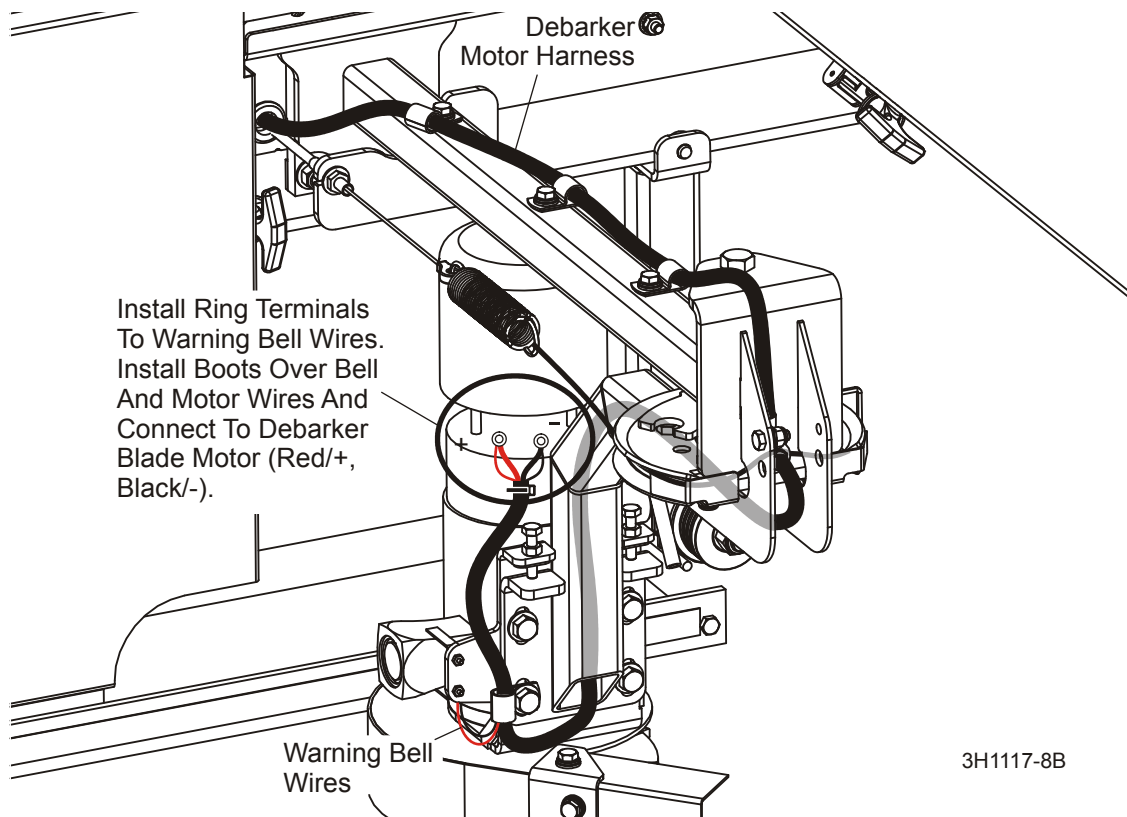


FIG. 2-5

2. Remove the top motor cover and remove the top nuts from each of the motor terminals.

2

Debarker Installation

Harness Installation

3. Route the black motor and bell wires through one of the provided rubber boots. Strip the end of the black warning bell wire and install a 1/4" 14-16 gauge ring terminal. To install the 14-16 gauge ring terminal, fold the stripped end of the wire over the insulation, install the ring terminal and crimp in place.
4. Connect the black motor and bell wires to the negative (-) motor terminal. Replace the terminal nut to secure the wires.



IMPORTANT! Make sure that the ring terminals do not touch the motor body.

5. Route the red motor and bell wires through one of the provided rubber boots. Strip the end of the red warning bell wire and install a 1/4" 14-16 gauge ring terminal. To install the 14-16 gauge ring terminal, fold the stripped end of the wire over the insulation, install the ring terminal and crimp in place.
6. Connect the red motor and bell wires to the positive (+) motor terminal. Replace the terminal nut to secure the wires.



IMPORTANT! Make sure that the ring terminals do not touch the motor body.

7. Slide the rubber boots over the motor terminal posts to protect the connections.
8. Replace the top motor cover.
9. Remove the cover from the solenoid/breaker box, if necessary.
10. Connect the debarker motor red wire to terminal #2 of the solenoid in the solenoid/breaker box. Connect the debarker motor black wire to the engine ground stud.

Locate the control box red wire with the ring terminal bundled with the existing harnesses next to the alternator. Connect the control box red wire to terminal #3 of the solenoid in the solenoid/breaker box.

Connect one end of the supplied 20" red wire to the top terminal of the breaker in the solenoid/breaker box. Connect the other end of the supplied 20" red wire to the battery terminal located on the alternator.

Connect one end of the supplied 12" black wire to terminal #4 of the solenoid in the solenoid/breaker box. Connect the other end of the supplied 12" black wire to the engine ground stud.

Connect one end of the supplied 9" red wire to terminal #1 of the solenoid in the solenoid/breaker box (if not already connected). Connect the other end of the supplied 9" red wire to the battery terminal located on the alternator.

Connect the diode assembly to the solenoid in the solenoid/breaker box. Connect the red wire of the diode assembly to terminal #3 of the solenoid. Connect the black wire of the diode assembly to terminal #4 of the solenoid.

See Figure 2-6.

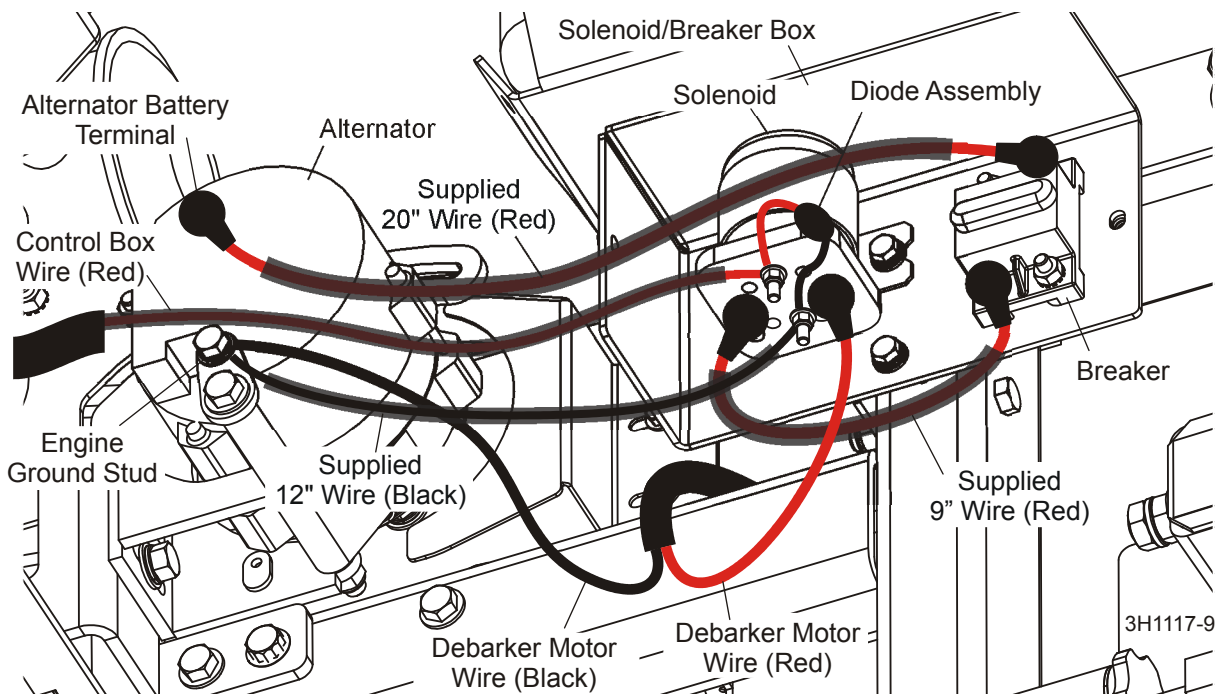


FIG. 2-6

11. Replace the solenoid/breaker box cover and use the tie wraps to secure all the wires to the existing harnesses.

2

Debarker Installation

Control Component Installation

2.3 Control Component Installation



DANGER! Before performing any service to this equipment, turn the power toggle switch to the OFF position and disconnect the sawmill battery ground terminal. Failure to do so will result in serious injury or death.

See [SECTION 4](#) for the appropriate wiring diagram to aid in installation.

1. Remove the front panel (leave wire connections) from the control box.
2. Using the back side of the front panel for a guideline, cut out holes in the front panel lexan decal for the debarker on/off switch. Install the provided debarker on/off switch, 1/16" nylon washer, and rubber boot in place as shown.

See **Figure 2-7**.

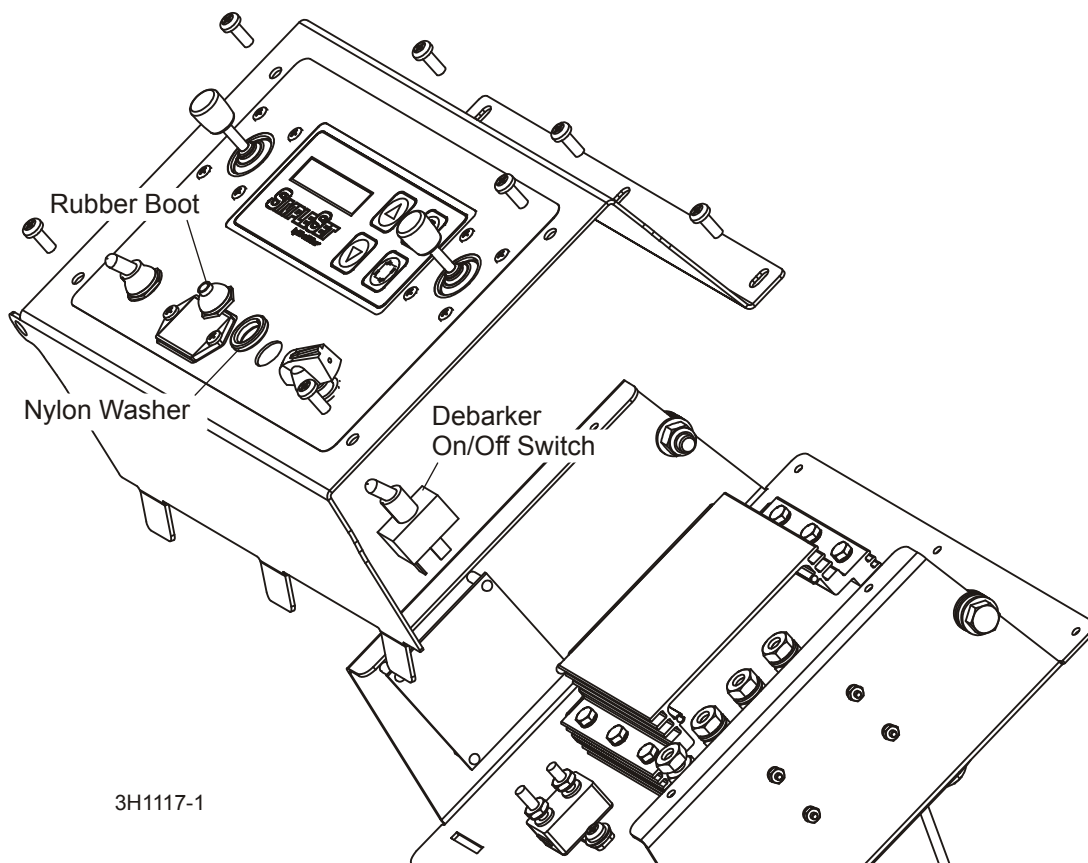


FIG. 2-7

3. Install the provided relay assembly inside the control box next to the existing relay. **NOTE:** Remove the existing relay from the socket and remove the screw securing the socket to the control box. Attach the provided debarker relay socket to the existing socket and reinstall the sockets to the control box. Plug the provided and existing relays into the sockets. **IMPORTANT!** The provided debarker relay and the existing relay are not interchangeable. Make sure the existing relay is plugged into the existing socket and the provided debarker relay is plugged into the provided socket.

See Figure 2-8.

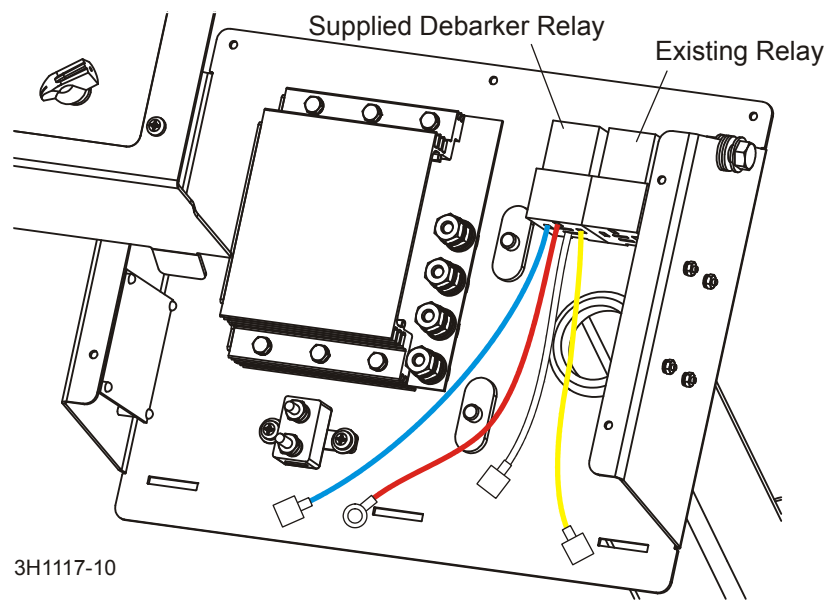


FIG. 2-8

2

Debarker Installation

Control Component Installation

4. Connect the yellow wire from the provided debarker relay to the yellow wire from the power feed driver.

Connect the white wire from the debarker relay to the red wire from the upper harness.

Connect the red wire from the debarker relay to the AUX post of the circuit breaker.

Connect the blue wire from the debarker relay to the bottom terminal on the debarker on/off switch.

Connect the blue wire from the left power feed joystick to the side terminal on the debarker on/off switch.

See Figure 2-9. Only wires referred to above are shown.

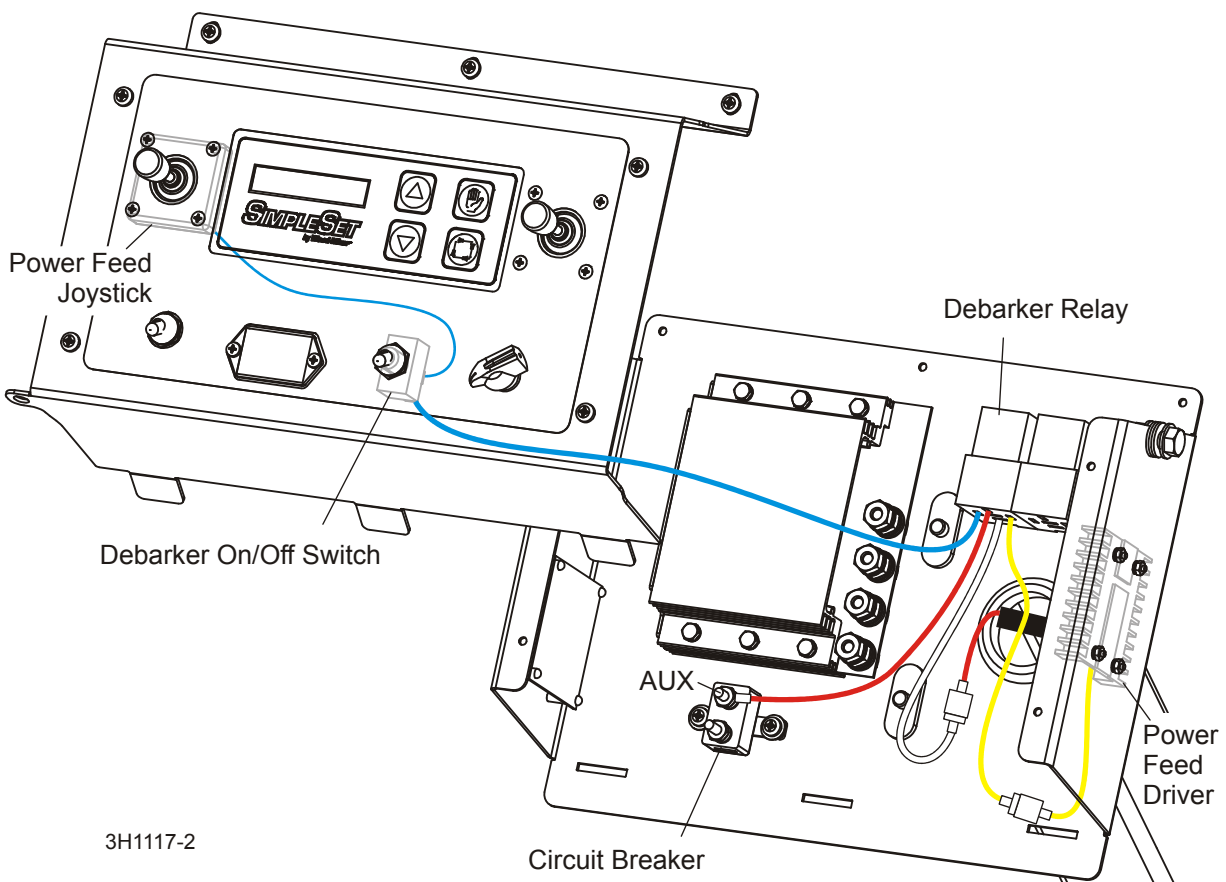


FIG. 2-9

5. Reinstall the front panel to the control box.

SECTION 3 ALIGNMENT



DANGER! Before performing any service to this equipment, turn the power toggle switch to the OFF position and disconnect the sawmill battery ground terminal. Failure to do so will result in serious injury or death.

The debarker blade should be aligned to the sawmill blade to insure proper operation. The debarker blade should be parallel with and aligned vertically with the sawmill blade.

1. Use the debarker in/out control arm handle to move the debarker all the way in. Turn the power toggle switch to OFF (0) and lock the control box. This will prevent the debarker from being turned on while performing alignment procedures.
2. Check the squareness of the debarker with the sawmill blade. Adjust the debarker mounts if necessary until the debarker is square with the sawmill blade.

Loosen the debarker mounting bolts. Tilt the debarker frame as necessary until the debarker is square with the sawmill blade. Retighten the mounting bolts.

See Figure 3-1.

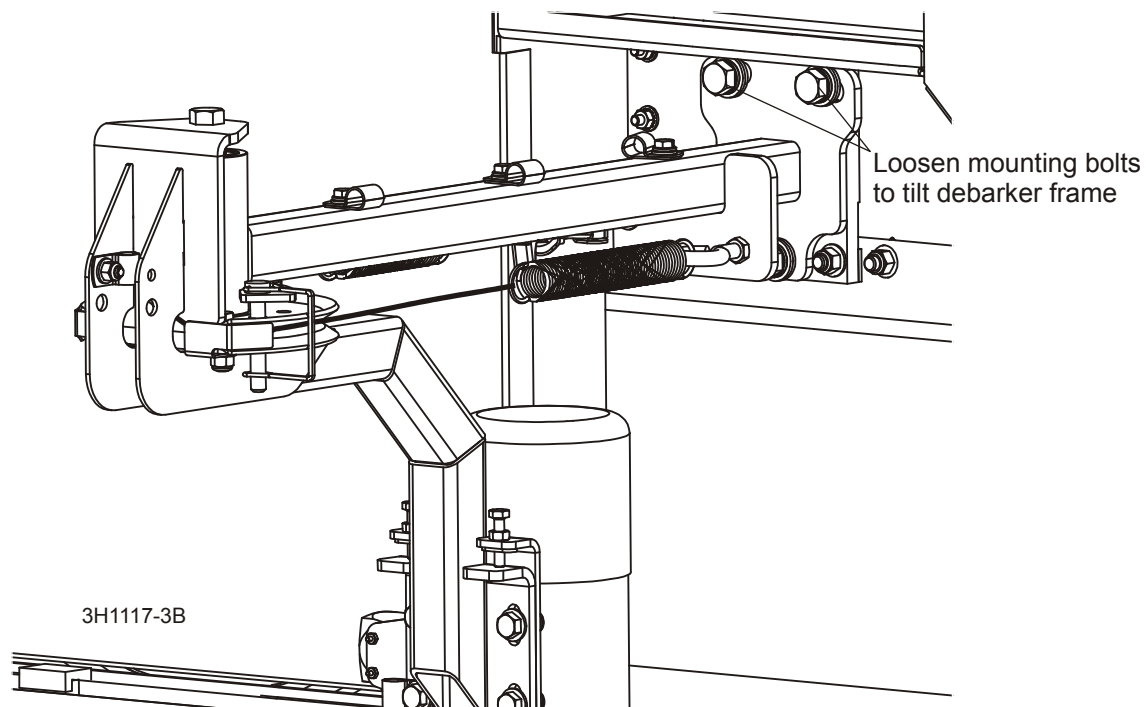


FIG. 3-1

3

Debarker Installation

3. Clip the blade guide alignment tool to the sawmill blade. Make sure the tool lies flat on the blade and does not contact a tooth that could cause it to angle.

See Figure 3-2.

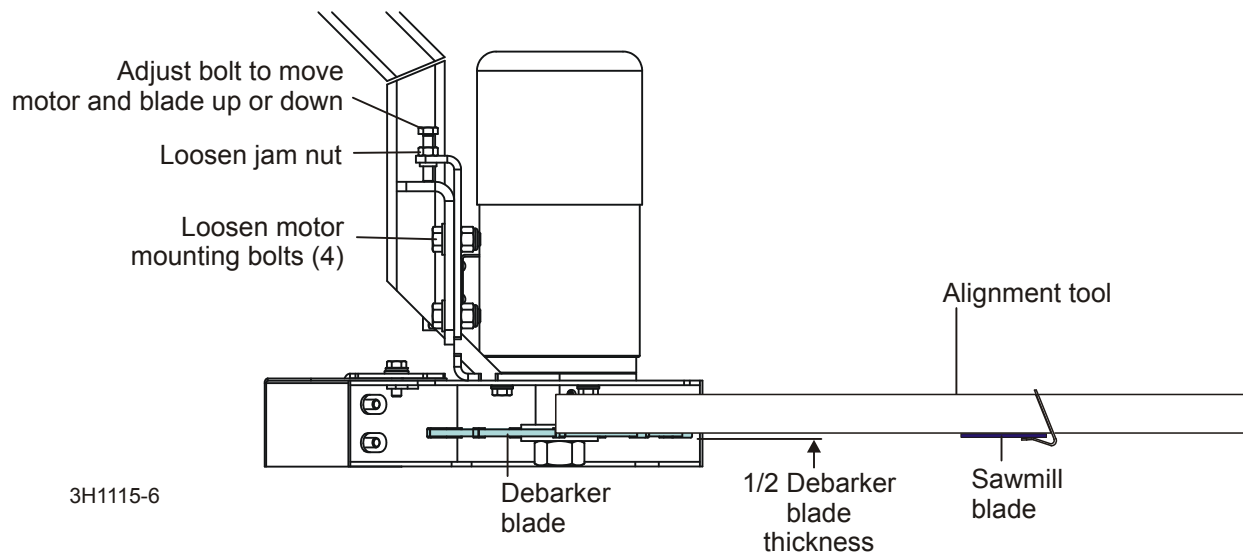


FIG. 3-2

4. Check the height of the debarker blade against the alignment tool. The bottom edge of the tool should align with the center of the debarker blade.

To adjust the blade up or down, loosen the four blade motor mount bolts. Loosen the jam nut on the adjustment bolt. Turn the adjustment bolt clockwise to push the motor and blade down. Turn the adjustment bolt counterclockwise and slide the motor up to raise the motor and blade. Retighten the adjustment bolt jam nut and four motor mount bolts.

5. Use the debarker in/out control arm handle to move the debarker all the way out.
6. Move the blade guide alignment tool on the sawmill blade and check the position of the debarker blade against the tool. If the debarker blade is not centered with the tool, readjust the debarker mounting bolts to adjust the debarker assembly parallel to the blade.

SECTION 4 OPERATION AND MAINTENANCE

4.1 Locking Pin Operation

See Figure 4-1. The debarker is equipped with a locking pin. Insert the locking pin to lock the debarker in place when towing the sawmill. Remove the locking pin to unlock the debarker while the debarking is required during sawing.

Before operating the debarker, make sure the locking pin is moved to its operating position. Turn the power toggle switch to OFF (0). Pull the debarker out to relieve pressure on the locking pin. Remove the locking pin.

Before towing the sawmill, lock the debarker in the travel position. Use the debarker in/out pivot arm handle to move the debarker all the way in. Push the debarker in until the travel position holes align. Insert the locking pin.

To move the debarker out of the way during sawing, use the debarker in/out pivot arm handle to move the debarker all the way out.

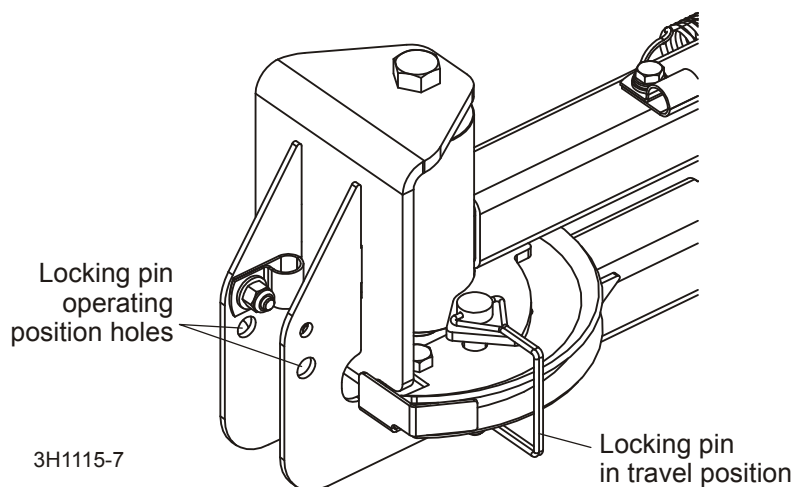


FIG. 4-1

4.2 Control Overview

The Debarker Option allows you to remove bark from logs ahead of the bandsaw blade. This prevents the bandsaw blade from contacting dirt, sand, or other debris in the bark that can dull the blade.

See **Figure 4-2**. The debarker control includes one toggle switch and one in/out control arm.

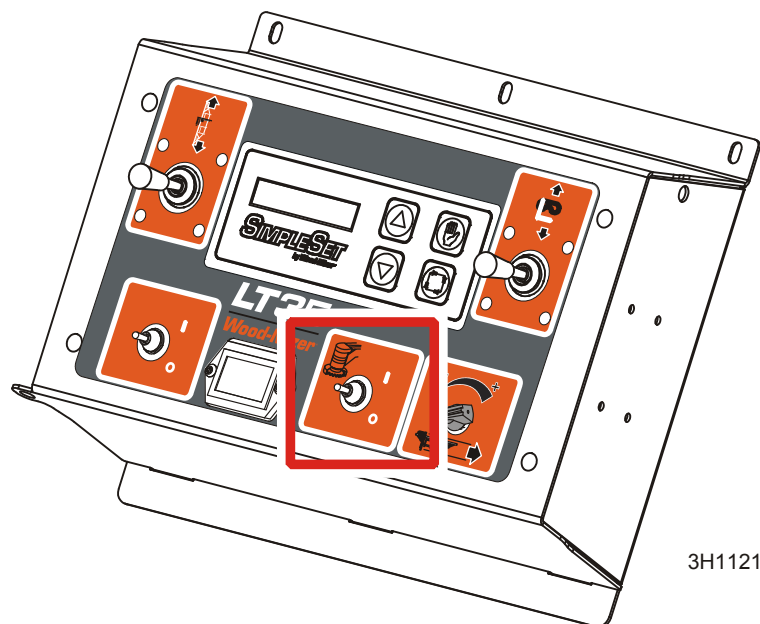


FIG. 4-2

- The Blade Motor ON/OFF toggle switch turns the blade motor on to start the debarker blade. The sawmill power toggle switch must be on and the sawmill power feed joystick must be activated in the forward direction before the blade motor can be turned on.

- The debarker IN/OUT control arm moves the debarker cutting head toward or away from the log.

See Figure 4-3.

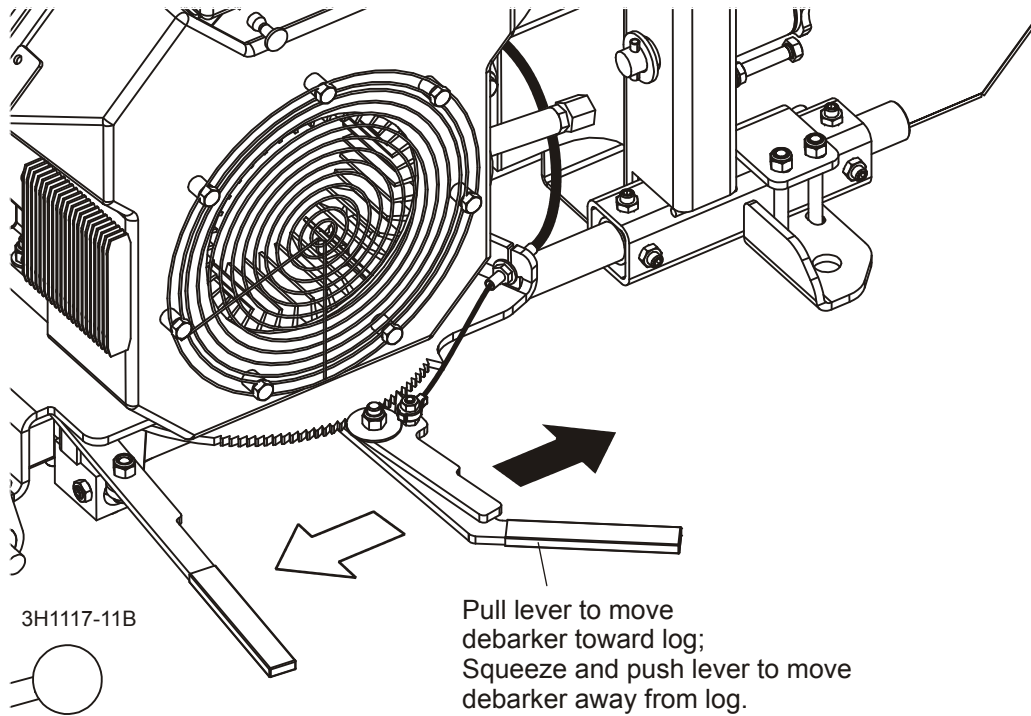


FIG. 4-3

4.3 Operation



DANGER! Make sure all guards and covers are in place and secured before operating the debarker option. Failure to do so may result in serious injury.

DANGER! Keep all persons out of the path of moving equipment when operating the debarker. Failure to do so will result in serious injury.

1. Make sure the warning bell sounds when the debarker is turned on.



WARNING! Debarker is ON when warning bell sounds. DO NOT disconnect the warning bell. Doing so may result in serious injury.

2. Use the in/out control arm to pivot the debarker all the way out.
3. Move the sawmill carriage forward and pivot the debarker in until the debarker blade engages with the end/side of the log.
4. Turn the debarker on/off switch to ON (1).
5. Proceed with cutting. The in/out control arm will keep the debarker against the side of the log. Depending on log shape, you may have to pivot the debarker in and out for smooth cutting.



NOTE: The debarker can continuously remove up to approximately 1" of material from the log; no motor cool down time is required. Slower feed rates may be required for optimal debarker operation.

6. Once the carriage is past the end of the log, pivot the debarker away from the log. Return the carriage.



IMPORTANT! Always remember to pivot the debarker out of the way of the log before returning the carriage after the cut. **DO NOT** move the carriage forward while the debarker is contacting the log without the blade spinning.

7. When done sawing and ready to store or transport the sawmill, place the debarker in its travel position before towing the sawmill ([See Section 4.1](#)).

4.4 Maintenance



DANGER! Before performing any service to this equipment, turn the power toggle switch to the OFF position and disconnect the sawmill battery ground terminal. Failure to do so will result in serious injury or death.

1. Periodically check the flexible guard. Replace the guard as needed.
2. Periodically check the debarker blade. Align or replace as needed.



WARNING! Before replacing the debarker blade, move the sawmill blade guide arm in front of the sawmill blade to cover the blade teeth. Failure to do so may result in serious injury or death.

To replace the debarker blade, place one wrench on the blade holder bushing, above the blade. Place the other wrench on the lower hex nut and remove the hex nut and washer. Remove the blade and washer.

Reinstall the washer with the new blade. Reinstall the hex nut and washer and tighten to 35 foot-pounds (± 5).



CAUTION! Tighten the blade hex nut manually. Using power-assisted tools may result in over-torquing and damage to the bolt.

4.5 Troubleshooting



DANGER! Before performing any service to this equipment, turn the power toggle switch to the OFF position and disconnect the sawmill battery ground terminal. Failure to do so will result in serious injury or death.

PROBLEM	CAUSE	SOLUTION
Circuit breaker tripping	Wood or bark jammed in blade guard Circuit breaker weak from repeated tripping.	Turn power toggle switch to OFF position. Remove wood or bark from blade guard Replace circuit breaker
Light comes on, but debarker motor and warning horn do not operate	Circuit breaker tripped	Reset circuit breaker.
Debarker shuts off, but the circuit breaker is not tripped.	Loose wiring connection	Check wiring connections inside control box.
Debarker will not shut off.	Solenoid is stuck closed.	Replace solenoid.

SECTION 5 ELECTRICAL INFORMATION

5.1 Electrical Symbol Diagram (D17)

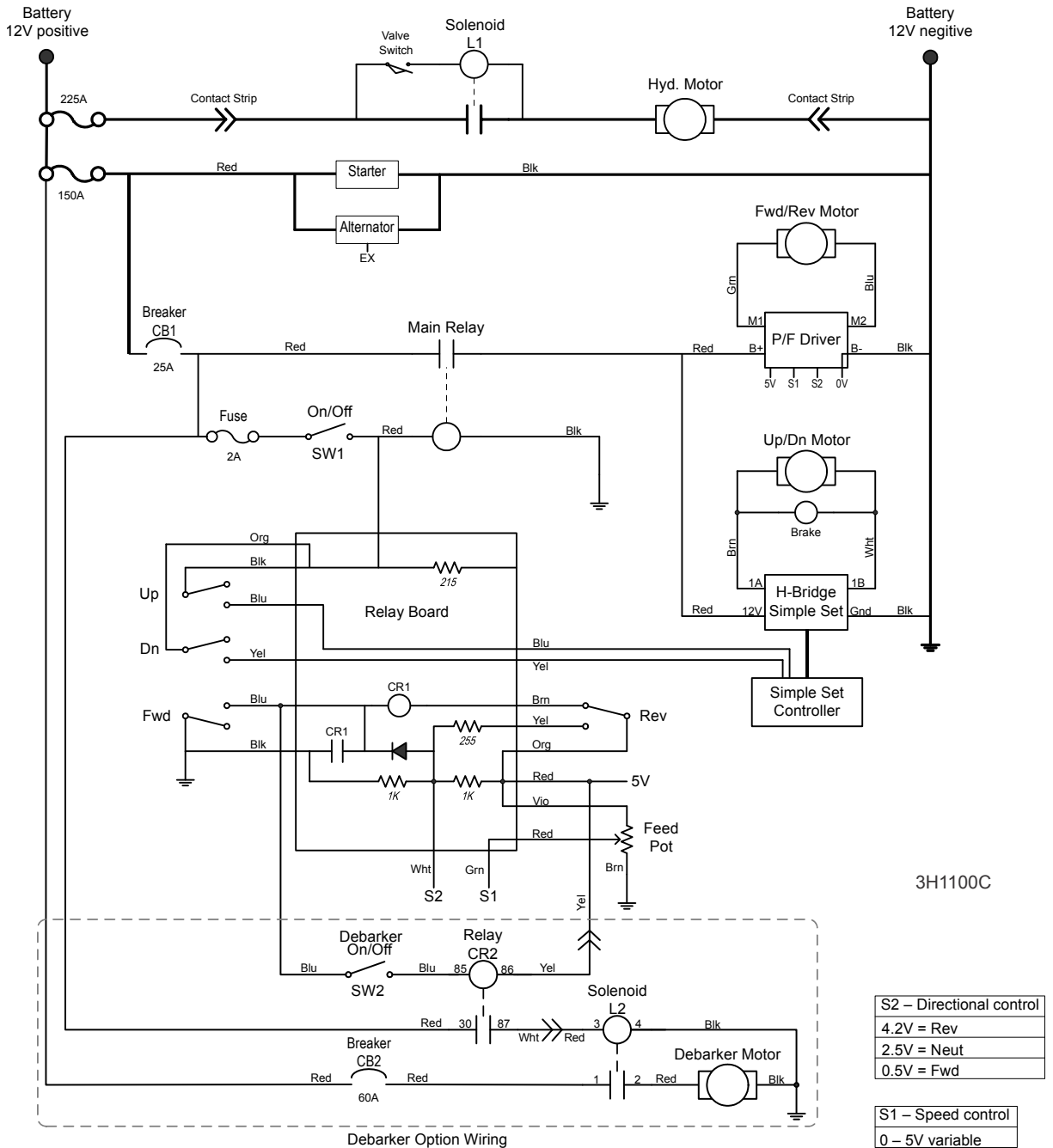
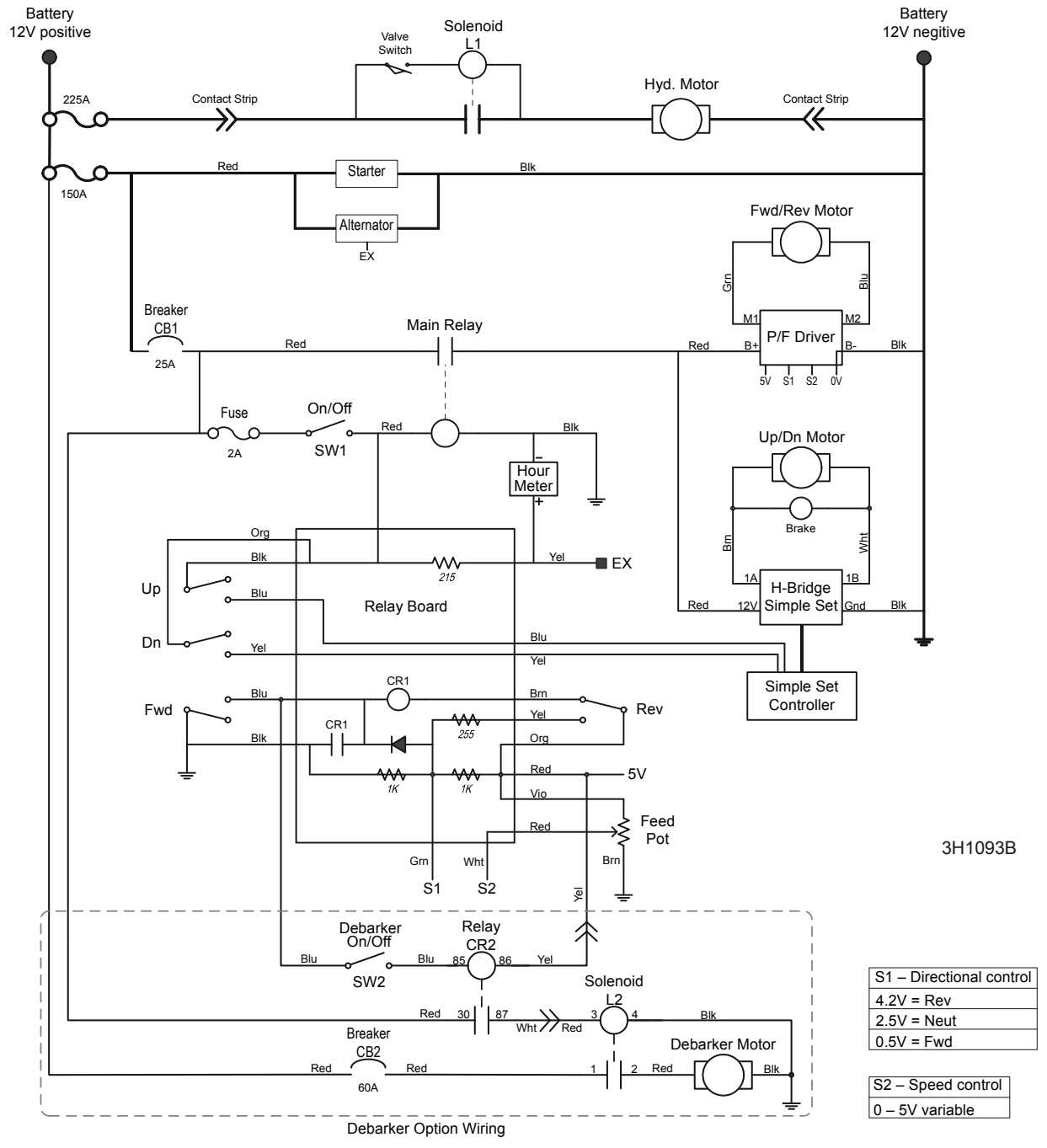


FIG. 5-1

5.2 Electrical Symbol Diagram (G25)



- | | |
|--------------------------|--------|
| S1 – Directional control | |
| 4.2V | = Rev |
| 2.5V | = Neut |
| 0.5V | = Fwd |
-
- | | |
|--------------------|----------|
| S2 – Speed control | |
| 0 – 5V | variable |

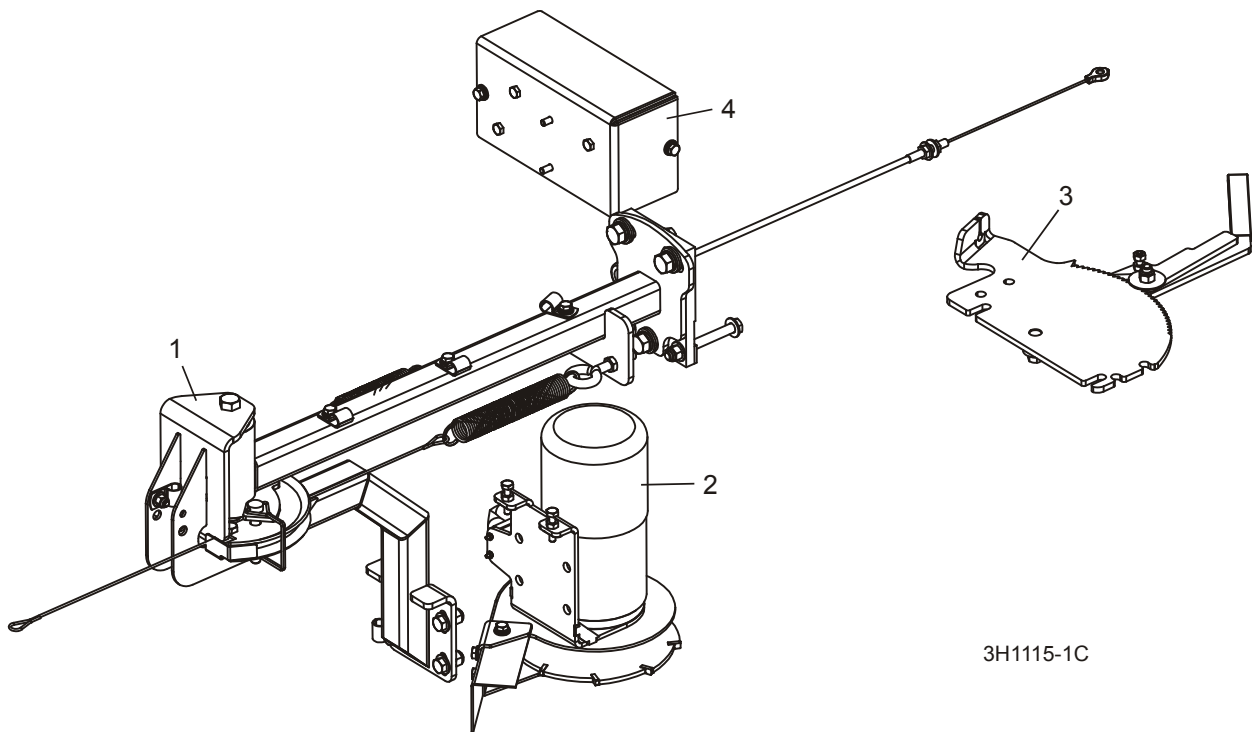
FIG. 5-2

5.3 Electrical Component List

ID	Wood-Mizer Part No.	Description
CB2	053440	Breaker, 60A Hi-Amp Panel Mount
CR2	069638	Relay, ISO 60A 6VDC SPDT
Debarker Motor	053683	Motor, 12 V DC 3/4HP Electric
HN20	021137	Horn, Debarker ON Warning
L2	015470	Solenoid, 200A 12V SPST Cont. Duty
SW2	P03027	Switch, Toggle

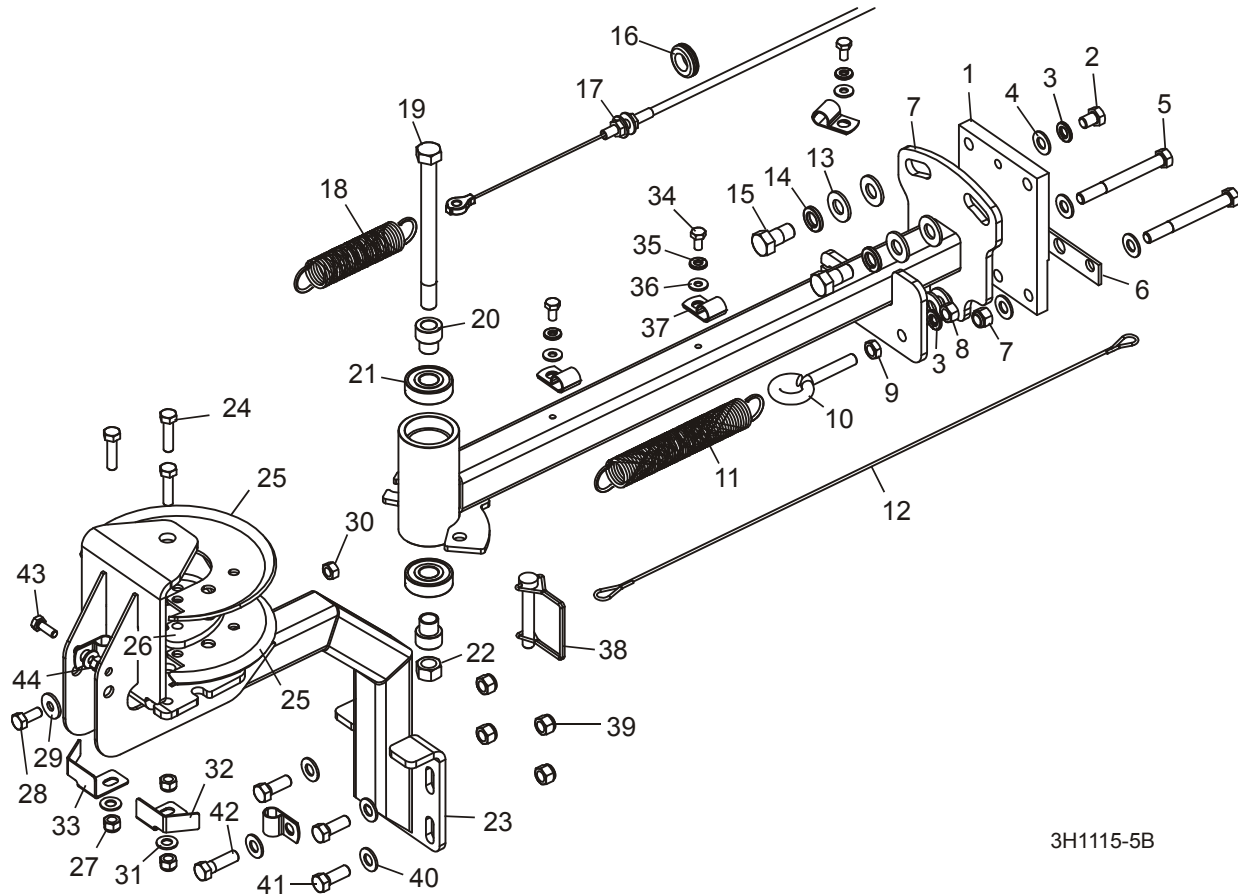
SECTION 6 DEBARKER PARTS

6.1 Debarker Assembly



REF	DESCRIPTION (◆ Indicates Parts Available In Assemblies Only)	PART #	QTY.
	DEBARKER ASSEMBLY, LT35 (BOXED)	065702	1
	DEBARKER ASSEMBLY, LT35	065701	1
1	Pivot Arm Parts (See Section 6.2)		
2	Cutter Head Parts (See Section 6.3)		
3	In/Out Control Arm Parts (See Section 6.3)		
4	Solenoid/Debarker Parts (See Section 6.4)		

6.2 Pivot Arm Assembly



3H1115-5B

REF	DESCRIPTION (◆ Indicates Parts Available In Assemblies Only)	PART #	QTY.
	PIVOT ARM WELDMENT, DEBARKER	065748	1
1	Plate, LT35 Debarker Mount	062890	1
2	Bolt, 3/8-16 x 1/2" Hex Head Grade 5	F05004-124	1
3	Washer, 3/8" Split Lock	F05011-4	2
4	Washer, 3/8" Flat SAE	F05011-3	5
5	Bolt, 3/8-16 x 3 1/2" Hex Head Grade 5	F05004-123	2
6	Plate, Debarker Mount Spacer	065769	1
7	Nut, 3/8-16 Hex Nyloc	F05010-10	2
8	Nut, 3/8-16 Hex	F05010-1	2
9	Nut, 3/8-16 Jam	F05010-29	1
10	Bolt, 3/8-16 x 2" (5/8" ID) Turned Eye	F05007-30	1
11	Spring, 1.00 x 7.00 x .105 SS Ext	065712	1
12	Cable, LT35 Debarker(23")	071072	1
13	Washer, 1/2" SAE Flat	F05011-2	6
14	Washer, 1/2" Split Lock	F05011-9	3

6

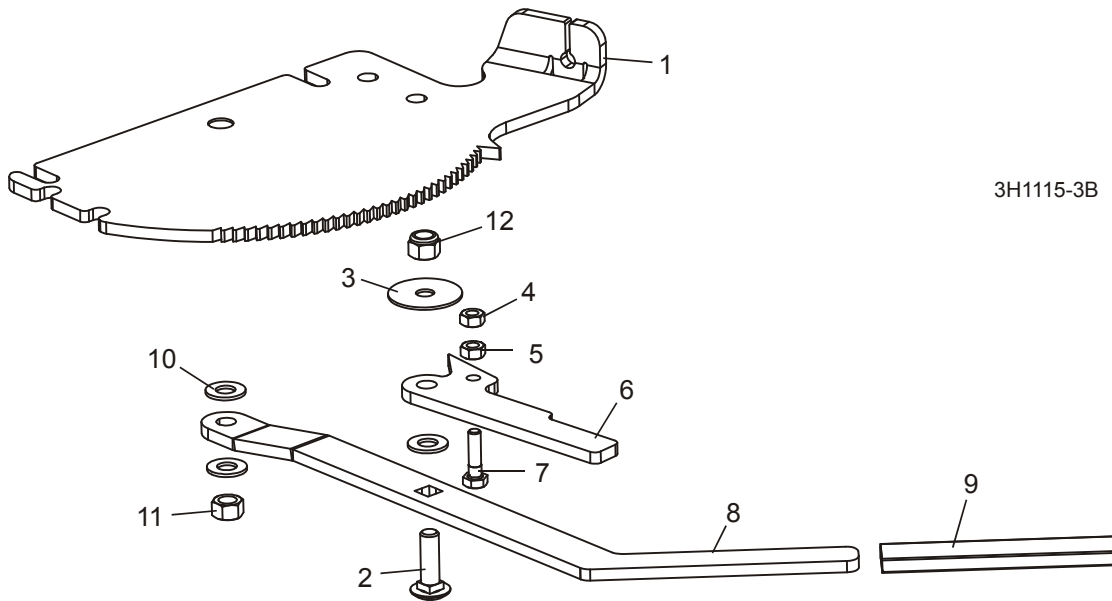
Debarker Parts

Pivot Arm Assembly

15	Bolt, 1/2-13 x 1" Hex Head	F05008-50	3	
16	Grommet, 5/8" ID Rubber	P11764	1	
17	Cable, LT35 Debarker Pivot	071071	1	
18	Spring, 1.00" x 5.00" x .105 SS Ext	065711	1	
19	Bolt, 1/2-13 x 6" Hex Head Grade 5	F05008-107	1	
20	Bushing, Debarker Pivot	062898	2	
21	Bearing, 5/8" x 1.5748 x .4724	P06030-1	2	
22	Nut, 1/2-13 Swaged Hex	F05010-3	1	
23	Weldment, Debarker Swing Arm	071019	3	
24	Bolt, 5/16-18 x 1 1/4" Hex Head Full Thread Grade 5	F05006-93	3	
25	Plate, Debarker Cable Guide	071003	2	
26	Plate, Cam Debarker	071002	1	
27	Nut, 5/16-18 Nylok Hex	F05010-58	3	
28	Bolt, 5/16-18 x 3/4" Hex Head Grade 5	F05006-102	1	
29	Washer, 5/16" Standard Flat	F05011-16	1	
30	Nut, 5/16-18 Swaged Hex	F05010-6	1	
31	Plate, Right Cable Retainer	071215 ¹	1	
32	Plate, Left Cable Retainer	071214 ¹	1	
33	Washer, 5/16" SAE Flat	F05011-17	2	
34	BOLT, 1/4-20 X 1/2" HEX HEAD	F05005-15	3	
35	WASHER, 1/4" SPLIT LOCK	F05011-14	3	
36	WASHER, 1/4" SAE FLAT	F05011-11	4	
37	CLAMP, 1/2" EMT COATED	P07584	1	
38	PIN, 3/8" X 2 1/4 SQUARE WIRE LOCK	014151	1	
39	NUT, 3/8-16" HEX NYLOC	F05010-10	4	
40	WASHER, 3/8" SAE FLAT	F05011-3	4	
41	BOLT, 3/8-16 X 1" HEX HEAD GRADE 5	F05007-87	4	
42	BOLT, 3/8-16 X 1 1/4" HEX HEAD GRADE 5	F05007-123	1	
43	BOLT, 1/4-20 X 3/4" HEX HEAD FULL THREAD	F05005-1	1	
44	NUT, 1/4-20 NYLOCK	F05010-69	1	

¹ Cable retainer plates added to improve debarker operation (Rev. A.02).

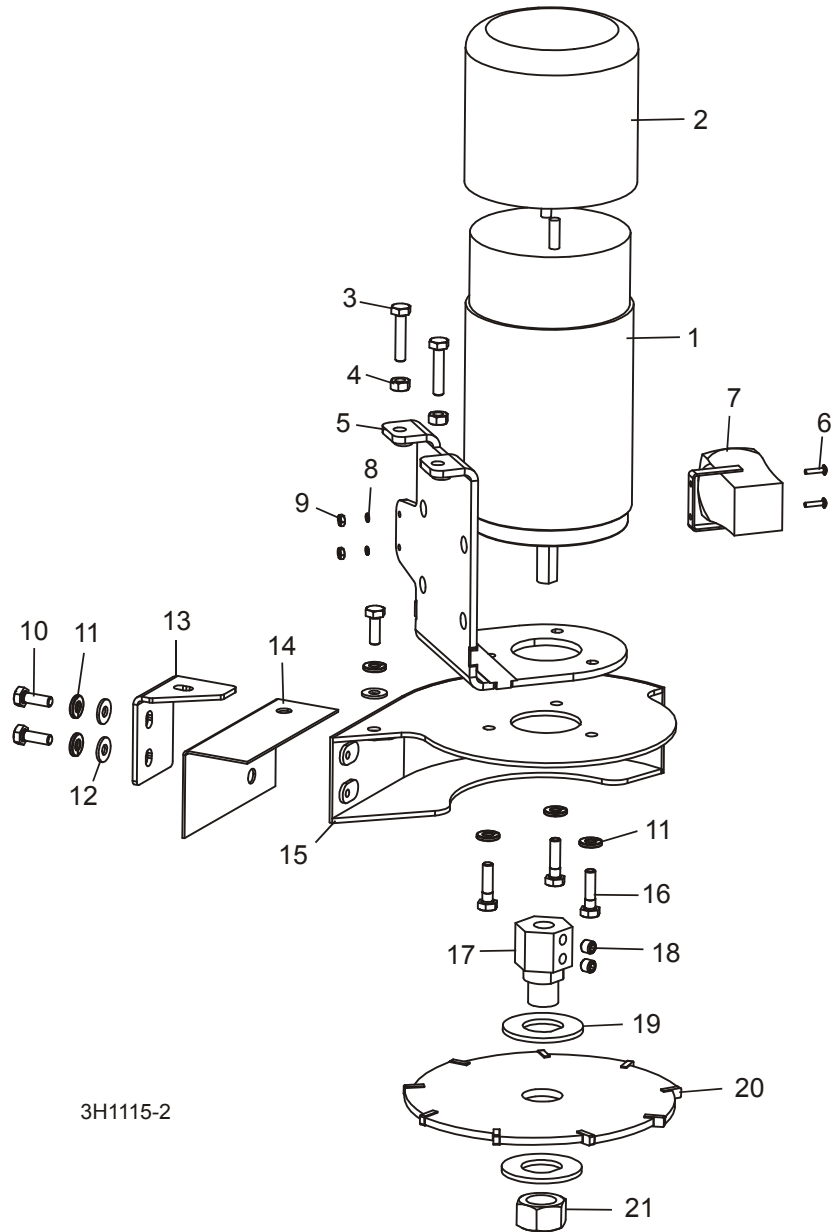
6.3 In/Out Control Arm Assembly



REF	DESCRIPTION (◆ Indicates Parts Available In Assemblies Only)	PART #	QTY.
	ARM ASSEMBLY, DEBARKER IN/OUT CONTROL	065755	1
1	Weldment, Debarker Handle Mount/Lock	071070	1
2	Bolt, 3/8-16 x 1 1/4" Carriage Grade 5	F05007-127 ¹	1
3	Washer, 3/8" Fender	F05011-44	1
4	Nut, 1/4-20 Swaged	F05010-21	1
5	Nut, 1/4-20 Free	F05010-63	1
6	Plate, Debarker In/Out Lock	071056	1
7	Bolt, 1/4-20 x 1" Hex Head Grade 5	F05005-101	1
8	Plate, Debarker In/Out Handle	071055	1
9	Grip, Foam Flat 1/4" x 3/4"	049008	1
10	Washer, 3/8" Flat SAE	F05011-3	3
11	Nut, 3/8-16 Swaged Lock	F05010-25	1
12	Nut, 3/8-16 Hex Nyloc	F05010-10	1

¹ Replaced F05007-123 3/8-16 x 1 1/4" Hex Head Bolt and changed orientation to allow for more room between blade guide in/out handle and carriage bolt (Rev. A.03).

6.4 Blade Motor & Horn Assembly



3H1115-2

REF	DESCRIPTION (◆ Indicates Parts Available In Assemblies Only)	PART #	QTY.
	HEAD ASSEMBLY, DEBARKER CUTTING	065747	1
1	Motor, 3/4 HP 12VDC Electric Std Mill	053683	1
2	Boot, LT35 Debarker Motor Rubber	065732	1
3	Bolt, 1/4-20 x 1 1/4" Hex Head Full Thread Cap	F05005-3	2
4	Nut, 1/4-20 Free	F05010-63	2
5	Weldment, Debarker Cutter Head	071020	1
6	Screw, 4-40x1/2 SI Rnd Head Machine	F05004-14	2

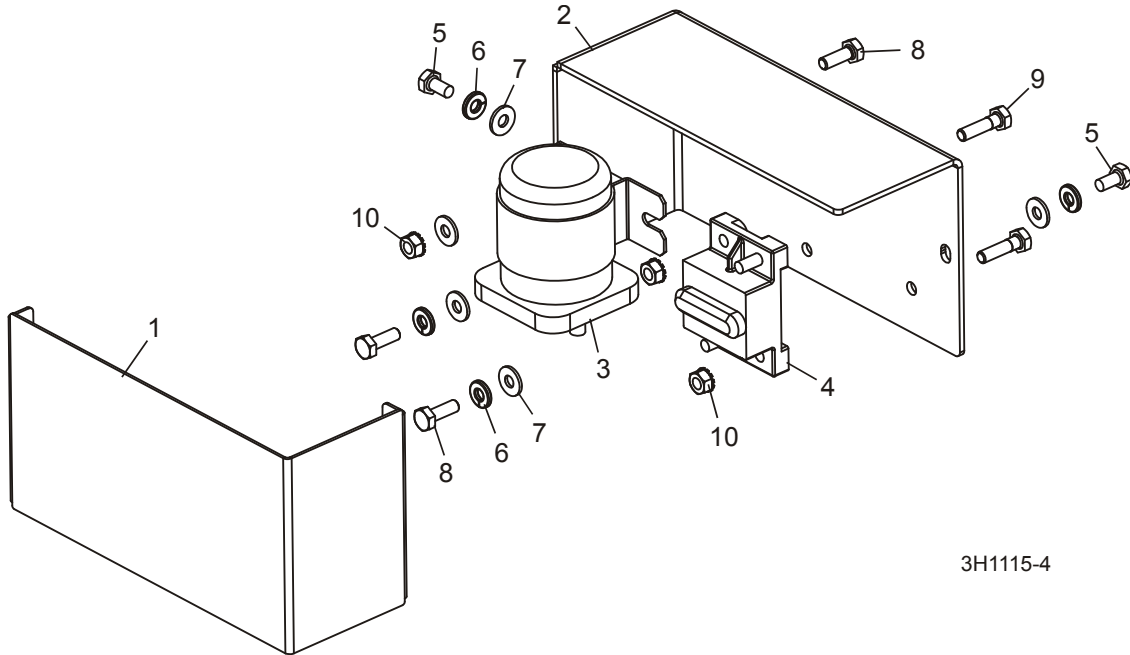
Debarker Parts 6
Blade Motor & Horn Assembly

7	Horn, 12V DC	021137	1	
8	Washer, #4 Split Lock	F05011-21	2	
9	Nut, #4-40 Hex	F05010-43	2	
10	Bolt, 1/4-20 x 3/4" Full Thread Hex Head	F05005-1	3	
11	Washer, 1/4" Split Lock	F05011-14	6	
12	Washer, 1/4" SAE Flat	F05011-11	3	
13	Plate, Trash Guard Mount	065788	1	
14	Guard, Debarker Trash	065787	1	
15	Weldment, Debarker Blade Guard	071065	1	
16	Bolt, 1/4-20 x 1" Hex Head Grade 5	F05005-101	3	
17	Bushing, Debarker Blade Holder	071000	1	
18	Screw, 5/16-18 x 5/16" SH Cup Point Set	F05006-6	2	
19	Washer, LT35 Debarker Blade	071001	2	
20	Blade, 7" Dia Debarker	021236	1	
	Blade, 7" Dia. Debarker w/1/2" Inserts (Optional -- Purchased Separately)	065852	1	
21	Nut, 3/4-10 Hex	F05010-7	1	

6 Debarker Parts

Debarker Solenoid Assembly

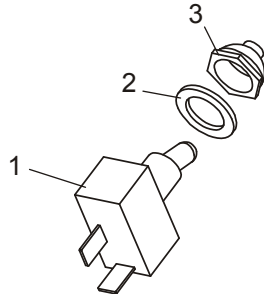
6.5 Debarker Solenoid Assembly



3H1115-4

REF	DESCRIPTION (◆ Indicates Parts Available In Assemblies Only)	PART #	QTY.	
	SOLENOID/BREAKER ASSEMBLY, DEBARKER	065749	1	
1	Weldment, Debarker Solenoid/Breaker Cover	065759	1	
2	Plate, Debarker Solenoid/Breaker Mount	065757	1	
3	Solenoid, 200A 12V SPST Cont. Duty	015470	1	
4	Breaker, 60A Hi-Amp Panel Mount	053440	1	
5	Bolt, 1/4-20 x 1/2" Hex Head	F05005-15	2	
6	Washer, 1/4" Split Lock	F05011-14	4	
7	Washer, 1/4" SAE Flat	F05011-11	5	
8	Bolt, 1/4-20 x 3/4" Full Thread Hex Head	F05005-1	3	
9	Screw, 1/4-20 x 1" Hex Head Cap	F05005-38	2	
10	Nut, 1/4-20 Keps	F05010-9	3	
	Diode Assembly, Solenoid Coil Chassis GND	015426	1	

6.6 Debarker Control Assembly



3H1118

REF	DESCRIPTION (◆ Indicates Parts Available In Assemblies Only)	PART #	QTY.	
	CONTROL KIT, LT35 DEBARKER (BOXED)	069642	1	
	CONTROL KIT, LT35 DEBARKER	069641	1	
1	Switch, SPST Toggle Quick Connect	P03027	1	
2	Washer, 1/2" x 3/4" x 1/16" Nylon	P05251-1	1	
3	Boot, Toggle Switch	P02575	1	
	Relay Assembly, LT35 Debarker Option	069639	1	
	Relay, ISO 60A 6VDC SPDT	069638	1	
	Wire Pack, LT35 Debarker Option	069640	1	
	Tie Wrap, 3/16" x 10" UV Black	F05089-8	2	

INDEX

A

alignment 3-1

E

electrical information 5-1
 component list 5-3
 symbol diagram (non-remote) 5-1, 5-2

I

installation 2-1
 control components (standard) 2-9
 debarker 2-1

M

maintenance 4-5

O

operation 4-4
 control overview 4-2
 locking pin 4-1

R

replacement parts 6-1
 blade motor & horn 6-5
 control 6-7, 6-8
 frame 6-2
 in/out motor 6-4
 mechanical assembly 6-1

S

safety 1-1
 installation & maintenance 1-1
 operation & towing 1-2

T

troubleshooting 4-6
