

# FORM 1629

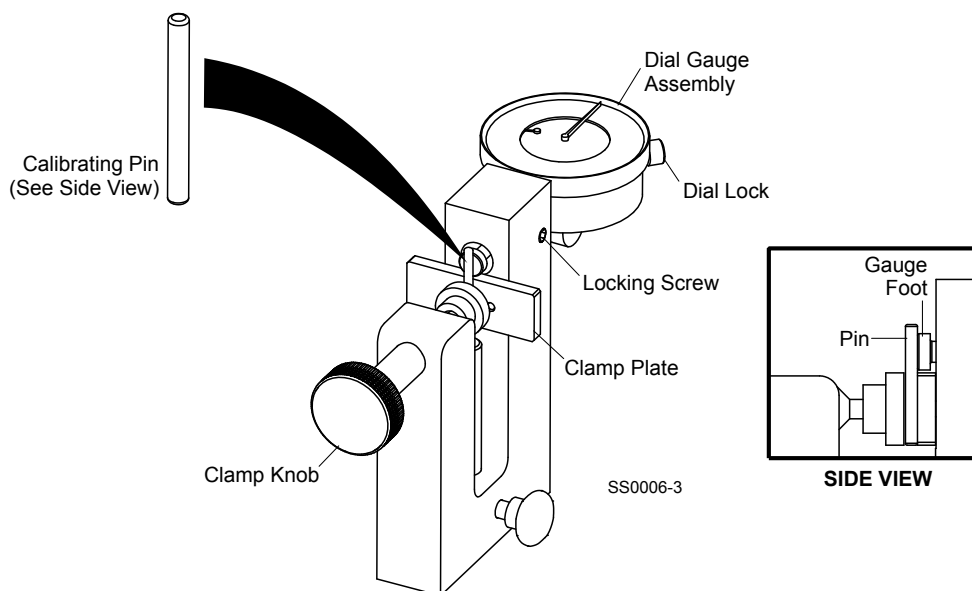
## TOOTH SET GAUGE

Part No. 060490

The tooth set gauge accurately measures the set of any blade tooth. The gauge needs to be assembled and calibrated before use.

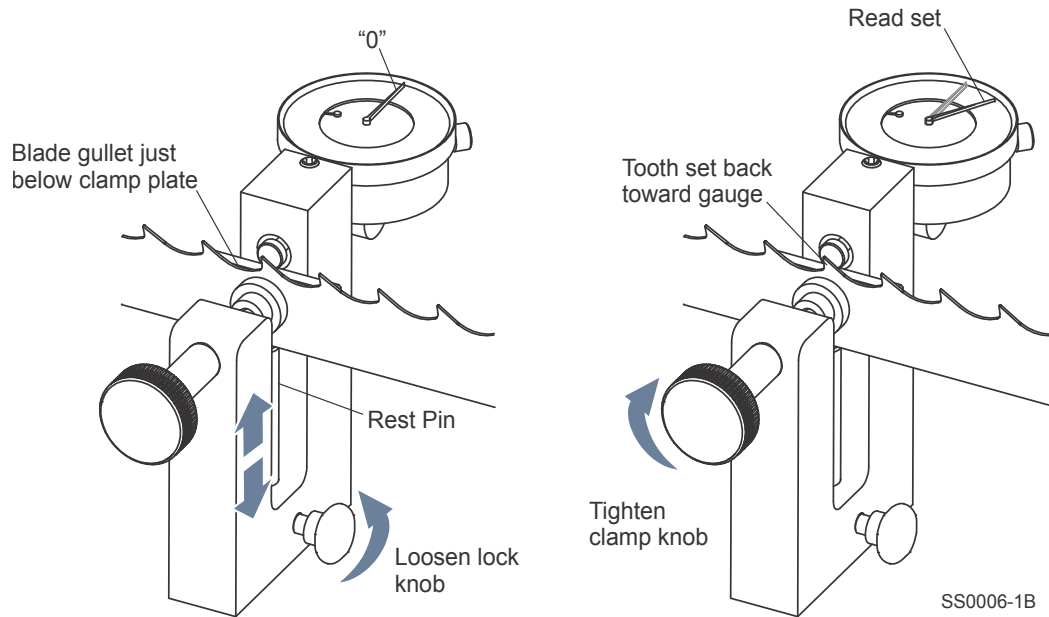
**See Figure 1.** Insert the dial gauge assembly into the hole in the block housing. Clamp the calibrating pin in position at the center of the dial gauge foot. Push the gauge assembly forward until the foot just touches the pin and dial needle moves .005 to .010. Tighten the locking screw with the provided hex wrench (do not overtighten). Loosen the dial lock on the gauge and rotate the dial face until the needle reads zero. Tighten the dial lock.

Unclamp the calibrating pin from the clamp by turning the clamp knob counterclockwise. With the pin not clamped, the gauge needle should read between -.005 and -.010. If not, reclamp the pin, loosen the locking screw and move the gauge assembly back so the foot does not contact the pin. Repeat the steps above until the dial needle reads zero with the calibrating clamped and between -.005 and -.010 without the pin clamped. This insures the dial foot extends beyond the clamp plate a slight amount and will read zero when the foot is aligned with the clamp plate.



**FIGURE 1**

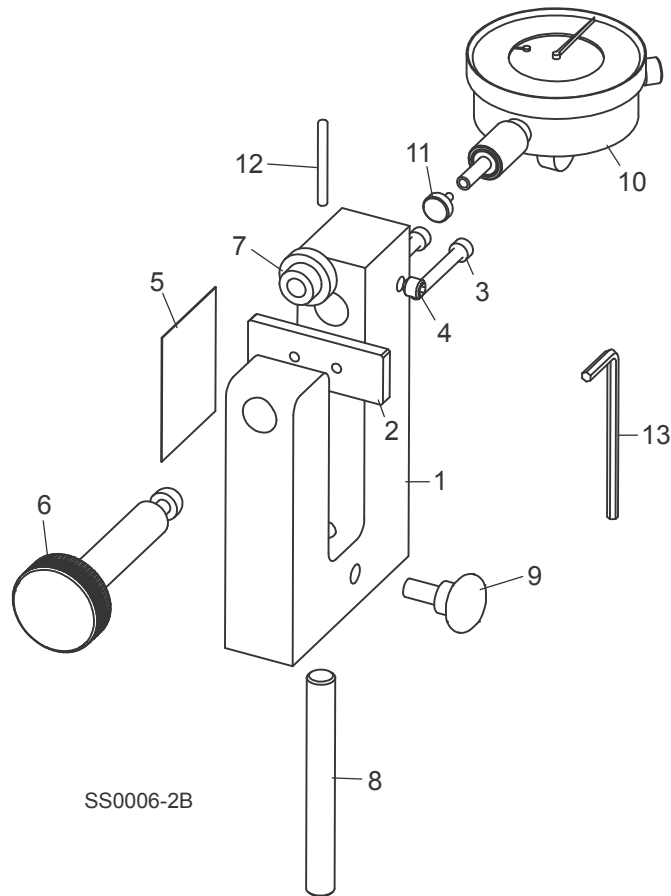
**See Figure 2.** To measure tooth set, place the gauge around the blade. Turn the lock knob counterclockwise to loosen and adjust the blade height rest pin up or down. Adjust so when the blade rests on the pin, the gullet of the blade is just below the clamp plate. Retighten the lock knob.



**FIGURE 2**

Slide the blade through the gauge assembly until a tooth set back toward the gauge is positioned in front of the dial plunger. Turn the clamp knob clockwise to securely clamp the blade and read the set measurement displayed by the gauge.

Loosen the clamp knob, remove the gauge assembly from the blade and rotate the gauge to the other side of the blade to measure teeth set in the opposite direction.



Item	Description	Part No.	Qty.
	<b>GAUGE ASSEMBLY, TOOTH SET BOXED</b>	060490	1
1	Block, Tooth Set Gauge	060495	1
2	Plate, Tooth Set Clamp	060494	1
3	Screw, #8-32 x 1 1/4" Socket Head	F05004-225	2
4	Screw, 1/4-20 x 1/4" Cup Point Socket Set	F05005-131	1
5	Decal, Blade Reorder (Small)	060479	1
6	Knob, 1/2-13 x 2 15/16" x 1 1/4" Steel	060488	1
7	Pad, 3/4" Dia. Steel Swivel	060487	1
8	Pin, 3/8" Dia. x 3 1/4" Dowel	F05012-130	1
9	Knob, 1/4-20 x 1/2" 4-Lobe Plastic	060489	1
10	Gauge Assembly, Tooth Set	060491	1
11	Foot, Tooth Set Gauge	P04716-2	1
12	Pin, 1/8" x 1 1/4" Dowel	F05012-132	1
13	Wrench, 1/8" Hex	P06187	1