

Safety, Maintenance & Parts Manual

Include Log Deck (SLPILDU) rev. A1.01
Include Log Deck (SLPILDWU) rev. A1.01



Safety is our #1 concern! Read and understand all safety information and instructions before operating, setting up or maintaining this machine.

Form #1760

Table of Contents

Section-Page

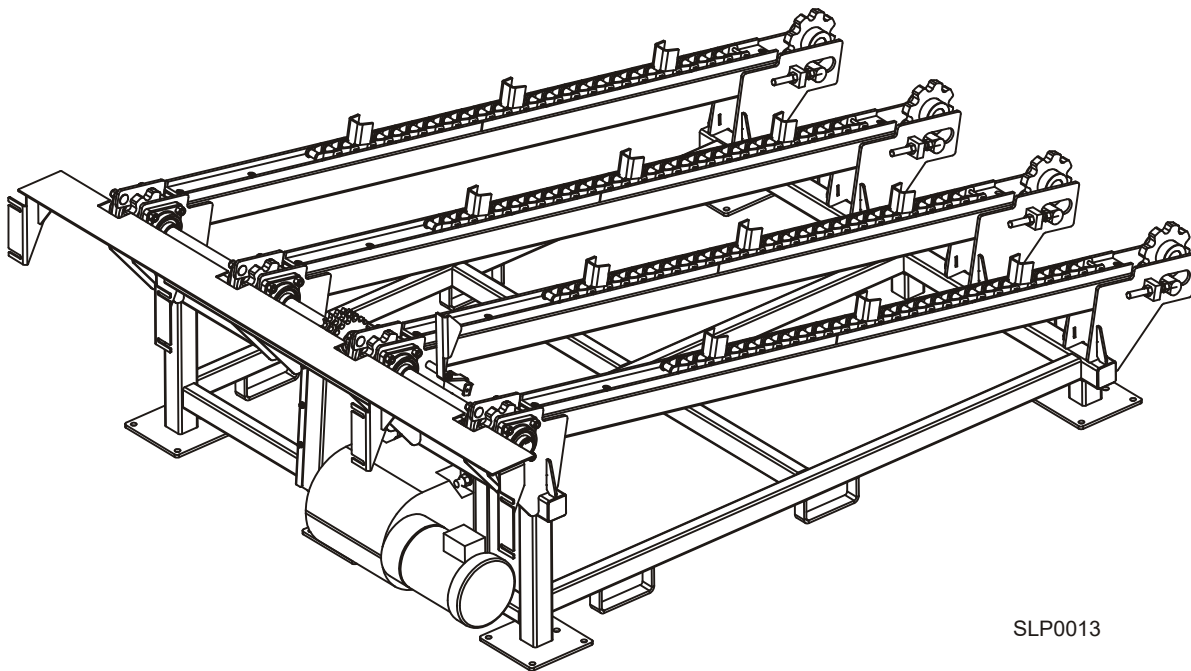
SECTION 1	INTRODUCTION	1-1
1.1	About This Manual.....	1-1
1.2	Getting Service.....	1-2
1.3	Customer and Equipment Identification.....	1-4
1.4	Dimensions.....	1-5
1.5	Specifications.....	1-7
SECTION 2	SAFETY	2-1
2.1	Safety Symbols.....	2-1
2.2	Safety Instructions.....	2-2
SECTION 3	MAINTENANCE	3-1
3.1	Sawdust Removal.....	3-1
3.2	Tensioning the Transfer Chain.....	3-2
3.3	Tensioning the Drive Chain.....	3-3
3.4	Lubrication.....	3-4
SECTION 4	REPLACEMENT PARTS	4-1
4.1	How To Use The Parts List.....	4-1
4.2	Sample Assembly.....	4-1
4.3	Incline Log Deck (SLPILDU).....	4-2
4.4	Incline Log Deck (SLPILDWU).....	4-4
	INDEX	I

SECTION 1 INTRODUCTION

1.1 About This Manual

This manual is to replace or to be used with all previous information received on the Wood-Mizer®* Incline Log Deck. All future mailings will be an addition to or a revision of individual sections of this manual as we obtain new information.

The information and instructions given in this manual do not amend or extend the limited warranties for the equipment given at the time of purchase.



SLP0013

INCLINE LOG DECK (SLPILDU) SHOWN

*Wood-Mizer® is a registered trademark of Wood-Mizer Products, Inc.

1.2 Getting Service

Wood-Mizer is committed to providing you with the latest technology, best quality and strongest customer service available on the market today. We continually evaluate our customers' needs to ensure we're meeting current wood-processing demands. Your comments and suggestions are welcome.

General Contact Information

Toll free phone numbers are listed below for the *continental* U.S. and Canada. See the next page for contact information for specific Wood-Mizer locations.

	United States	Canada
Sales	1-800-553-0182	1-877-866-0667
Service	1-800-525-8100	1-877-866-0667
Website	www.woodmizer.com	www.woodmizer.ca
E-mail	woodmizer@woodmizer.com	oninfo@woodmizer.com

Office Hours: All times are Eastern Standard Time.

Monday - Friday	Saturday (Indianapolis Office Only)	Sunday
8 a.m. to 5 p.m.	8 a.m. to 12 p.m.	Closed

Please have your serial number and your customer number ready when you call. The serial number is stamped on the identification tag on the side of the frame.

Wood-Mizer will accept these methods of payment:

- Visa, Mastercard, or Discover
- COD
- Prepayment
- Net 15 (with approved credit)

Be aware that shipping and handling charges may apply. Handling charges are based on size and quantity of order. In most cases, items will ship on the day they are ordered. Second Day and Next Day shipping are available at additional cost.

If your equipment was purchased outside the United States or Canada, contact the distributor for service.

Wood-Mizer Locations

USA World Headquarters

Serving North & South America, Oceania, East Asia

Wood-Mizer LLC
8180 West 10th Street
Indianapolis, IN 46214

Phone: 317.271.1542 or 800.553.0182
Customer Service: 800.525.8100
Fax: 317.273.1011
Email: infocenter@woodmizer.com

Canadian Headquarters

Serving Canada

Wood-Mizer Canada
396 County Road 36, Unit B
Lindsay, ON K9V 4R3

Phone: 705.878.5255 or 877.357.3373
Fax: 705.878.5355
Email: ContactCanada@woodmizer.com

Brazil Headquarters

Serving Brazil

Wood-Mizer do Brasil
Rua Dom Pedro 1, No: 205 Bairro: Sao Jose
Ivoti/RS CEP:93.900-000

Tel: +55 51 9894-6461/ +55 21 8030-3338/ +55 51
3563-4784
Email: info@woodmizer.com.br

Europe Headquarters

Serving Europe, Africa, West Asia

Wood-Mizer Industries Sp z o.o.
Nagorna 114
62-600 Kolo, Poland

Phone: +48.63.26.26.000
Fax: +48.63.27.22.327

Branches & Authorized Sales Centers

For a complete list of dealers, visit www.woodmizer.com



Introduction

Customer and Equipment Identification

1.3 Customer and Equipment Identification

An identification plate is located on the frame. The plate contains the serial number and configuration information of your machine. You will also receive a customer number when you purchase your machine.

These numbers will help expedite our service to you. Please locate them now and write them below so you have quick, easy access to them.

Identification Information (To be filled in by purchaser)

Model No. _____

Serial No. _____

Customer No. _____

1 Introduction

Dimensions

See Figure 1-2. The overall dimensions of the Incline Log Deck (SPLILDWU) are shown below.

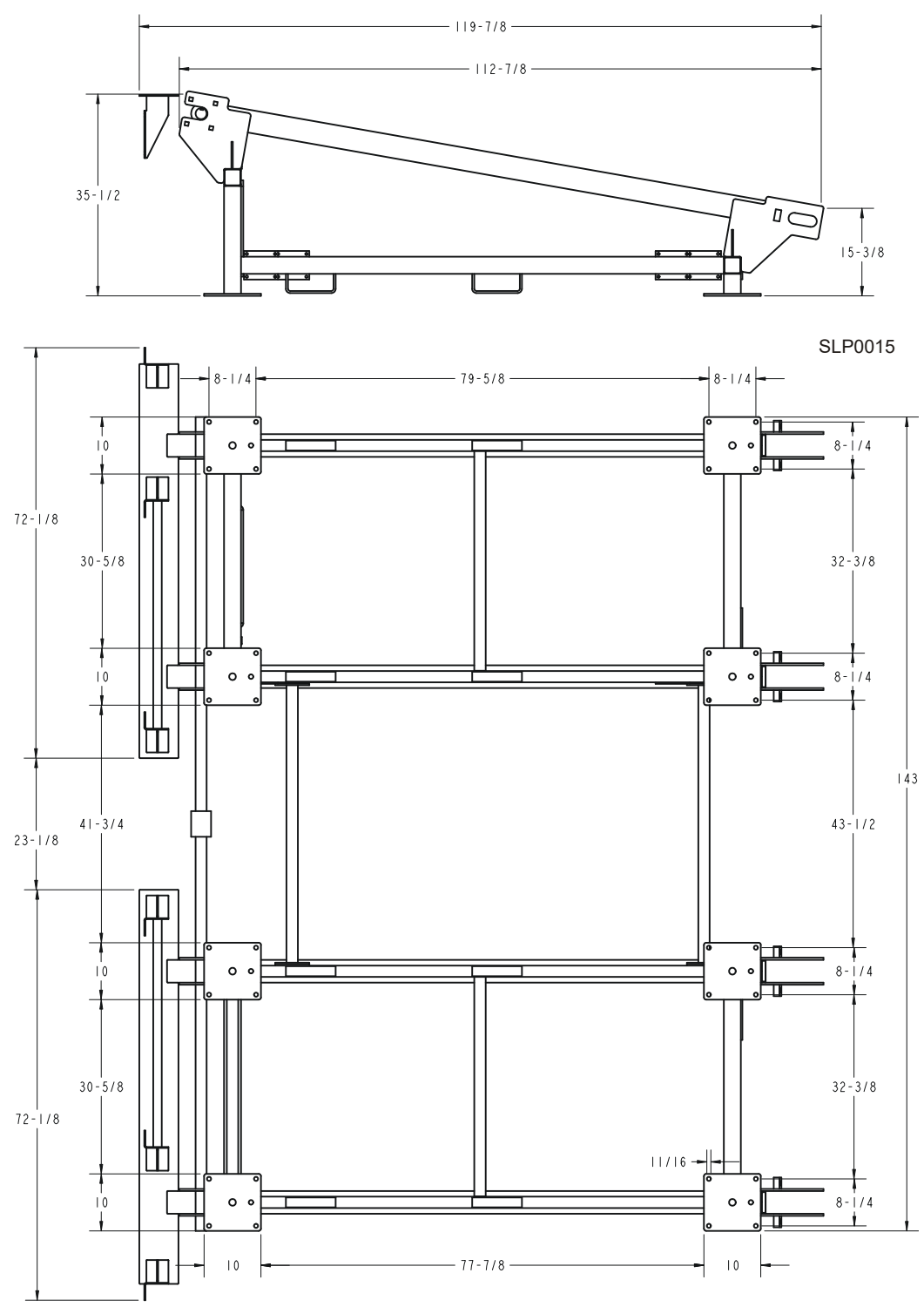


FIG. 1-2 INCLINE LOG DECK DIMENSIONS (SPLILDWU)

1.5 Specifications

Model: SLPILD Rev. A1.00+

Incline Log Deck Dimensions:

Length: 118-13/16" (SLPILDU)
119-7/8" (SLPILDWU)
Width: 76-15/16" (SLPILDU)
143" (SLPILDWU)
Height: 39-1/4" (SLPILDU)
35-1/2" (SLPILDWU)
Weight: lbs (SLPILDU)
lbs (SLPILDWU)

Electrical Installation Requirements:

230V/460V 60Hz 3Ph: Amp

Drive System:

Minimum Chain Speed: Ft/Min
Maximum Chain Speed: Ft/Min
Drive Motor Horsepower: 5 HP
Drive Motor RPM: 1740

INCLINE LOG DECK SPECIFICATIONS

SECTION 2 SAFETY

2.1 Safety Symbols

The following symbols and signal words call your attention to instructions concerning your personal safety. Be sure to observe and follow these instructions.



DANGER! indicates an imminently hazardous situation which, if not avoided, will result in death or serious injury.



WARNING! suggests a potentially hazardous situation which, if not avoided, could result in death or serious injury.



CAUTION! refers to potentially hazardous situations which, if not avoided, may result in minor or moderate injury or damage to equipment.



IMPORTANT! indicates vital information.

NOTE: gives helpful information.



Warning stripes are placed on areas where a single decal would be insufficient. To avoid serious injury, keep out of the path of any equipment marked with warning stripes.

2.2 Safety Instructions

NOTE: ONLY safety instructions regarding personal injury are listed in this section. Caution statements regarding only equipment damage appear where applicable throughout the manual.

OBSERVE SAFETY INSTRUCTIONS



IMPORTANT! Read the entire Owner's Manual before operating the unit. Take notice of all safety warnings throughout this manual and those posted on the machine. Keep this manual with this machine at all times, regardless of ownership.

Also read any additional manufacturer's manuals and observe any applicable safety instructions including dangers, warnings, and cautions.

Only persons who have read and understood the entire operator's manual should operate the unit. The unit is not intended for use by or around children.

IMPORTANT! It is always the owner's responsibility to comply with all applicable federal, state and local laws, rules and regulations regarding the ownership and operation of your Wood-Mizer Incline Log Deck. All Wood-Mizer owners are encouraged to become thoroughly familiar with these applicable laws and comply with them fully while using the deck.



WEAR SAFETY CLOTHING



WARNING! Secure all loose clothing and jewelry before operating the deck. Failure to do so may result in serious injury or death.

WARNING! Always wear eye, ear, respiration, and foot protection when operating or servicing the deck.



KEEP DECK AND AREA AROUND DECK CLEAN

DANGER! Maintain a clean and clear path for all necessary movement around the deck and lumber stacking areas. Failure to do so will result in serious injury.

DISPOSE OF SAWING BY-PRODUCTS PROPERLY

WARNING! Clean sawdust from all guards, vents, control boxes, or any area where sawdust may gather after every shift. Failure to do so may result in fire, causing death or serious injury.



IMPORTANT! Always properly dispose of all sawing by-products, including sawdust and other debris, coolant, oil, fuel, oil filters and fuel filters.

CAUTIONS FOR DECK SETUP

WARNING! Securely fasten the feet of the deck to the floor before operating the machine. Failure to do so may result in serious injury or death.

CHECK DECK BEFORE OPERATION

DANGER! Make sure all guards and covers are in place and secured before operating the deck. Failure to do so may result in serious injury.



WARNING! Do not for any reason adjust the drive chains with the machine running. Doing so may result in serious injury.



WARNING! Always check the Emergency Stop switch for proper operation prior to each use of the machine. Failure to do so may result in serious injury.

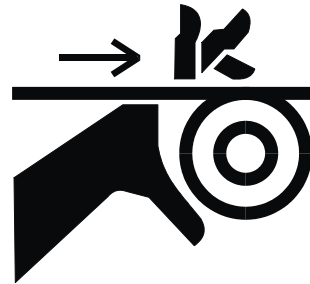
KEEP PERSONS AWAY

DANGER! Keep all persons out of the path of moving equipment and boards when operating the deck. Failure to do so will result in serious injury.

KEEP HANDS AWAY

DANGER! Moving Parts Can Crush and Cut. Keep hands clear. Make sure all guards and covers are in place and secured before operating or towing. Failure to do so may result in serious injury.

DANGER! Always be aware of and take proper protective measures against rotating shafts, pulleys, sprockets, etc. Always stay a safe distance from rotating members and make sure that loose clothing or long hair does not engage rotating members resulting in possible injury



WARNING! Coastdown Required. Always shut down the deck and allow all moving parts to come to a complete stop before removing any guards or covers. Do NOT operate with any guards or covers removed.

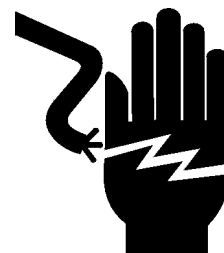
WARNING! Kickback Hazard. Stay clear of area during operation. Follow all safety rules. Failure to do so may result in serious injury.

USE PROPER PROCEDURE WHEN CONDUCTING ELECTRICAL SAFETY CHECKS AND MAINTENANCE



DANGER! Make sure all electrical installation, service and/or maintenance work is performed by a qualified electrician and is in accordance with applicable electrical codes.

DANGER! ARC FLASH AND SHOCK HAZARD! Hazardous voltage inside the electric sawmill disconnect box, starter box, and at the motor can cause shock, burns, or death. Disconnect and lock out power supply before servicing! Keep all electrical component covers closed and securely fastened during deck operation. Wear appropriate Personal Protection Equipment.



WARNING! Consider all electrical circuits energized and dangerous.

WARNING! Never assume or take the word of another person that the power is off; check it out and lock it out.

WARNING! Do not wear rings, watches, or other jewelry while

working around an open electrical circuit.

DANGER! Lockout procedures must be used during:

- Changing or adjusting blades
- Unjamming operations
- Cleaning
- Mechanical repair
- Electrical maintenance
- Retrieval of tools/parts from work area
- Activities where guards or electrical panel guard is open or removed

Maintenance hazards include:

- Blade contact
- Pinch points
- Kickbacks
- Missiles (thrown blades/wood chips)
- Electrical

Failure to lockout may result in:

- Cut
- Crush
- Blindness
- Puncture
- Serious injury and death
- Amputation
- Burn
- Shock
- Electrocution

To control maintenance dangers:

Lockout procedures must be followed (see ANSI Standard Z244.1-1982 and OSHA regulation 1910.147).

Never rely on machine stop control for maintenance safety (emergency stops, on/off buttons, interlocks).

Do not reach into moving blades or feed systems. Allow all coasting parts to come to a complete stop.

Electrical power supply and air supply must both be locked out.

Where established lockout procedures cannot be used (electrical troubleshooting or mechanical dynamic troubleshooting), alternative effective protective techniques shall be employed which may require special skills and planning.

Always follow safe operations practices in the workplace.

LOCKOUT PROCEDURE

Lockout procedures must be followed (see ANSI Standard Z244.1-1982 and OSHA regulation 1910.147).

Purpose:

This procedure establishes the minimum requirements for lockout of energy sources that could cause injury.

Responsibility:

The responsibility for seeing that this procedure is followed is binding upon all workers. All workers shall be instructed in the safety significance of the lockout procedure. It is your responsibility to ensure safe operation of the machine.

Sequence of Lockout Procedure:

1. Notify all persons that a lockout is required and the reason therefore.
2. If the deck is operating, shut it down by the normal stopping procedure.
3. Operate the switch so that the energy sources are disconnected or isolated from the deck. Stored energy such as moving blades and feed system shall be dissipated.
4. Lockout the energy isolating devices with assigned individual locks.
5. After ensuring that no persons are exposed and as a check on having disconnected the energy sources, operate the push button or other normal operating controls to make certain the deck will not operate. Caution: Return operating controls to neutral position after the test.
6. The deck is now locked out.

Restoring Equipment to Service

1. When the job is complete and the deck is ready for testing or normal service, check the deck area to see that no one is exposed.
2. When the deck is all clear, remove all locks. The energy isolating devices may be operated to restore energy to the deck.

Procedure Involving More Than One Person

In the preceding steps, if more than one individual is required to lock out the deck, each shall place his own personal lock on the energy isolating devices.

Rules for Using Lockout Procedure

The deck shall be locked out to protect against accidental or inadvertent operation when such operation could cause injury to personnel. Do not attempt to operate any switch or valve bearing a lock.

Owner's Responsibility

The procedures listed in this manual may not include all ANSI, OSHA, or locally required safety procedures. It is the owner/operator's responsibility and not Wood-Mizer Products to ensure all operators are properly trained and informed of all safety protocols. Owner/Operators are responsible for following all safety procedures when operating and performing maintenance to the deck.

KEEP SAFETY LABELS IN GOOD CONDITION



IMPORTANT! Always be sure that all safety decals are clean and readable. Replace all damaged safety decals to prevent personal injury or damage to the equipment. Contact your local distributor, or call your Customer Service Representative to order more decals.



IMPORTANT! If replacing a component which has a safety decal affixed to it, make sure the new component also has the safety decal affixed.

SECTION 3 MAINTENANCE



DANGER! Always be aware of and take proper protective measures against rotating shafts, pulleys, fans, etc. Always stay a safe distance from rotating members and make sure that loose clothing or long hair does not engage rotating members resulting in possible injury.

WARNING! Always wear proper and necessary safety equipment when performing service functions. Proper safety equipment includes eye protection, breathing protection, hand protection and foot protection.



This symbol identifies the interval (hours of operation) at which each maintenance procedure should be performed. "AR" signifies maintenance procedures which should be performed as required.

3.1 Sawdust Removal



Remove the excess sawdust from the drive and transfer chains every 50 hours of operation.



CAUTION! Never apply grease to the drive and transfer chains. It can cause sawdust buildup in chain links.

3.2 Tensioning the Transfer Chain



Periodically check the deck transfer chain tension. Adjust the transfer chain tension as needed.



DANGER! Always turn off and disconnect power supply before performing any service to the unit. Failure to do so may result in serious injury or death.

Use the adjustment nuts located at the lower end of the incline log deck to adjust the transfer chain tension as necessary. **IMPORTANT:** The transfer chains should not have more than approx. 4" of slack in the middle of the lower chain section.

See Figure 3-1.

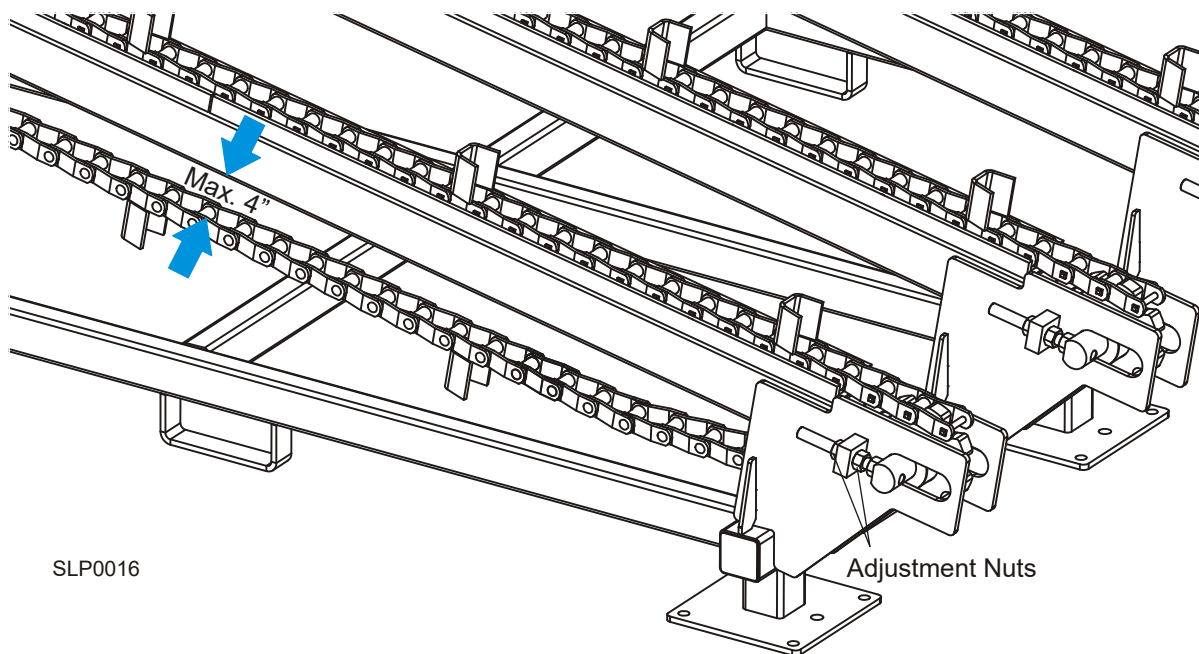


FIG. 3-1



CAUTION! Do not over-tension the transfer chains. Damage to the gear reducer and motor assembly will occur.

3.3 Tensioning the Drive Chain



Periodically check the deck drive chain tension. Adjust the drive chain tension as needed.



DANGER! Always turn off and disconnect power supply before performing any service to the unit. Failure to do so may result in serious injury or death.

To adjust the drive drive chain, follow the instructions below.

1. Loosen the four mount bolts securing the gear reducer and motor assembly to the log deck frame.
2. Move the gear reducer and motor assembly up or down to adjust the drive chain until the center of the chain can be deflected 1/2" (12.7mm).

See Figure 3-2.

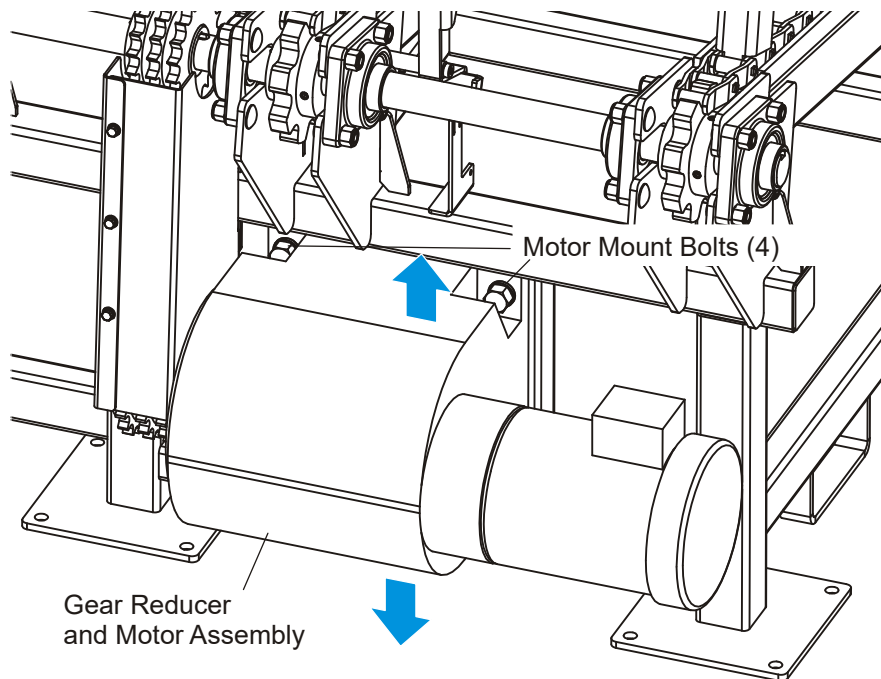


FIG. 3-2



CAUTION! Do not over-tension the drive chain. Damage to the gear reducer and motor assembly will occur.

3. After the drive chain has been adjusted, tighten the mount bolts.

3.4 Lubrication



Lubricate the incline log deck bearings every 200 hours of operation with one to two pumps of high-quality lithium-based grease such as Shell Alvania No. 3. Do not overgrease.

SECTION 4 REPLACEMENT PARTS

4.1 How To Use The Parts List

- Go to the appropriate section and locate the part in the illustration.
- Use the number pointing to the part to locate the correct part number and description in the table.
- Parts shown indented under another part are included with that part.
- Parts marked with a diamond (◆) are only available in the assembly listed above the part.

See the sample table below. Sample Part #A01111 includes part F02222-2 and subassembly A03333. Subassembly A03333 includes part S04444-4 and subassembly K05555. The diamond (◆) indicates that S04444-4 is not available except in subassembly A03333. Subassembly K05555 includes parts M06666 and F07777-77. The diamond (◆) indicates M06666 is not available except in subassembly K05555.

4.2 Sample Assembly				
REF	DESCRIPTION (◆ Indicates Parts Available In Assemblies Only)	PART #	QTY.	
	SAMPLE ASSEMBLY, COMPLETE (Includes All Indented Parts Below)	A01111	1	
1	Sample Part	F02222-22	1	
2	Sample Subassembly (Includes All Indented Parts Below)	A03333	1	
	Sample Part (Indicates Part Is Only Available With A03333)	S04444-4	1	◆
3	Sample Subassembly (Includes All Indented Parts Below)	K05555	1	
	Sample Part (Indicates Part Is Only Available With K05555)	M06666	2	◆
4	Sample Part	F07777-77	1	

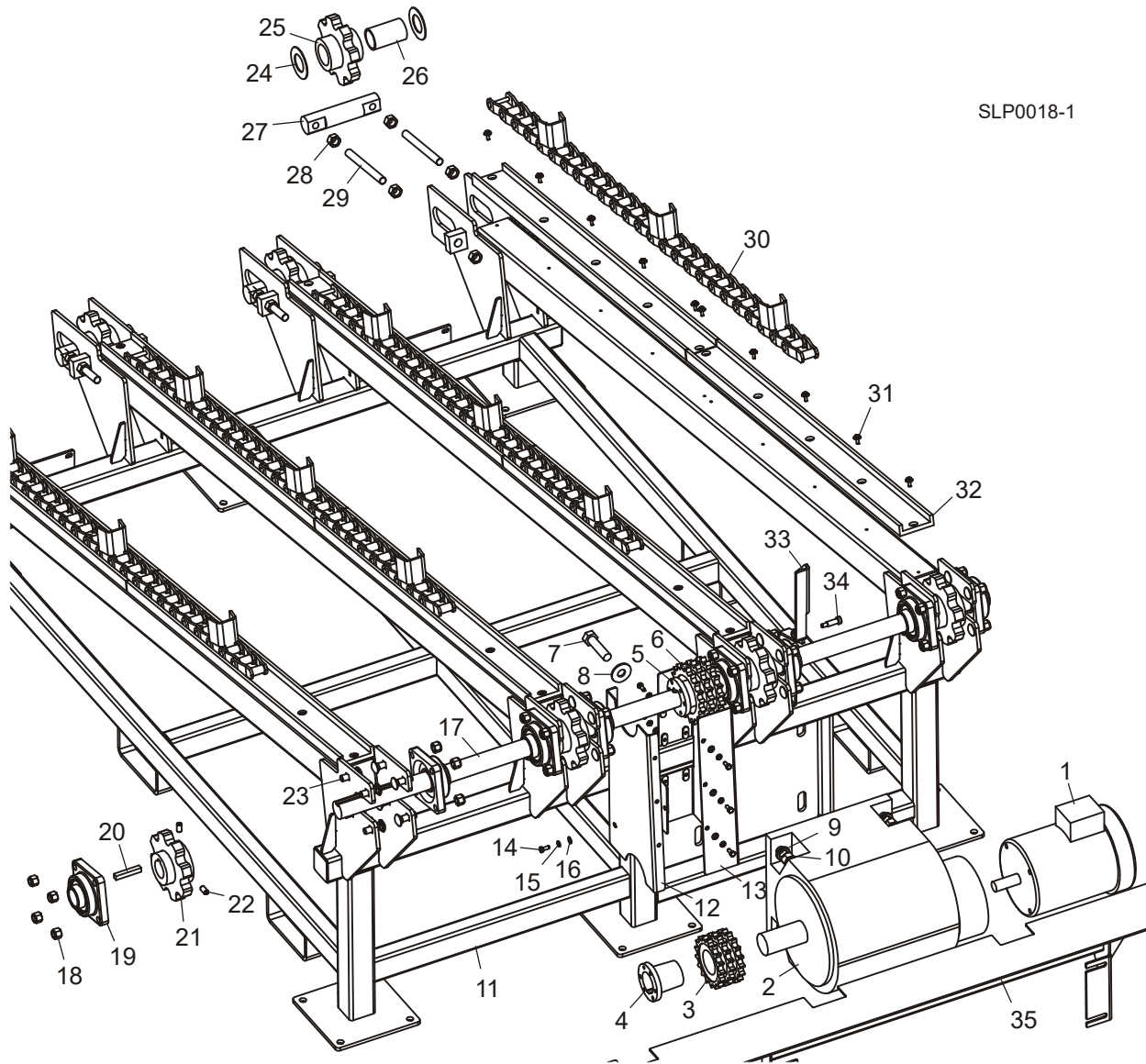
To Order Parts:

From the continental U.S., call **1-800-525-8100** to order parts. Have your customer number, VIN, and part numbers ready when you call. From other international locations, contact the Wood-Mizer distributor in your area for parts.

4 Replacement Parts

Incline Log Deck (SLPILDU)

4.3 Incline Log Deck (SLPILDU)



REF	DESCRIPTION (◆ Indicates Parts Available In Assemblies Only)	PART #	QTY.
	DECK, SLP INCLINE LOG (USA)	SLPILDU	1
1	Motor, 5HP 3PH 1740RPM	038509	1
2	Gear Reducer, 133.26:1	065416	1
3	Sprocket, Triple 80Q17	065417	1
4	Bushing, Q2 x 2 3/8	065424	1
	Chain, Triple Strand, 80-3R x 57P +C/L	065426	1
5	Sprocket, Triple 80Q19	065418	1
6	Bushing, Q2 x 1 15/16	065425	1

Replacement Parts

Incline Log Deck (SLPILDU)

4

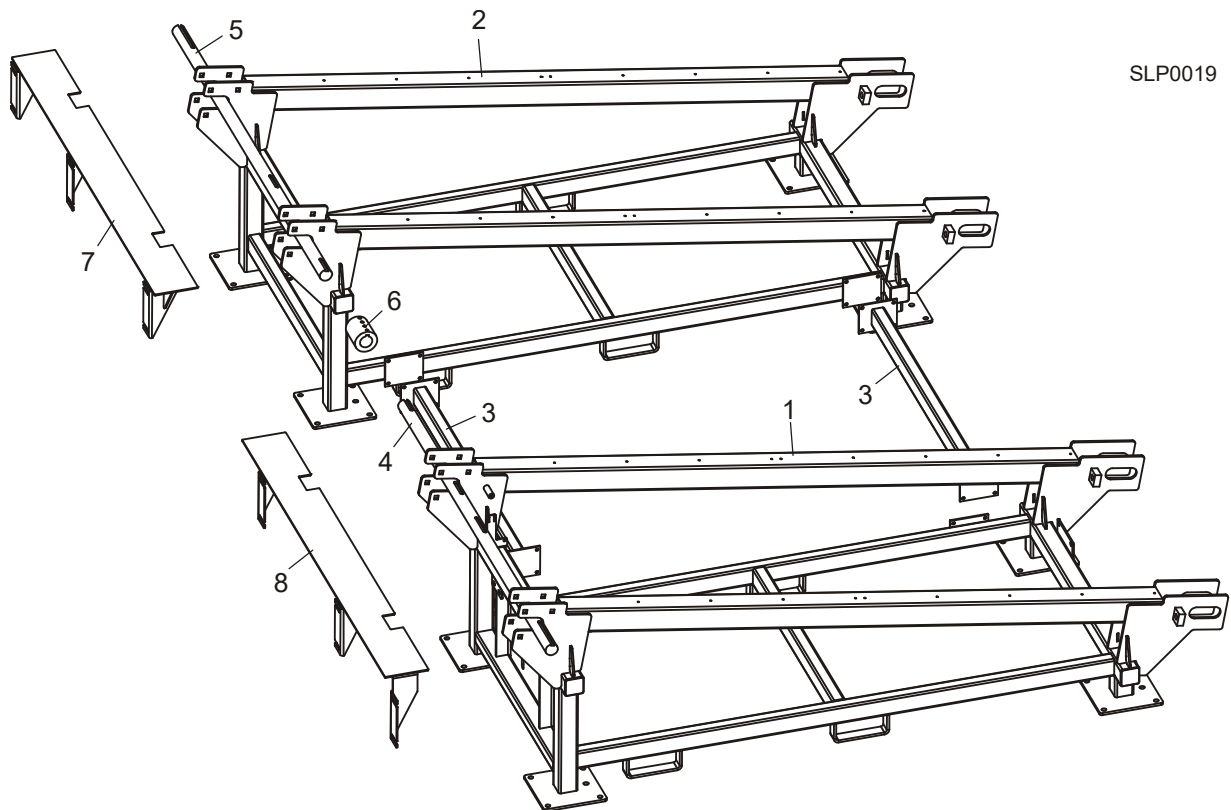
7	Bolt, 7/8-14 x 3 1/2" Hex Head Grade 5	F05014-1	4	
8	Washer, 7/8" SAE Flat	F05011-73	4	
9	Washer, 7/8" Split Lock	F05011-46	4	
10	Nut, 7/8-14 Free	F05010-139	4	
11	Deck Weldment, Incline Log	065273	1	
12	Guard, Chain, Outside	065434	1	
13	Guard Weldment, Chain, Inside	065364	1	
14	Bolt, 5/16-18 x 3/4" Hex Head Grade 5	F05006-102	9	
15	Washer, 5/16" Split Lock	F05011-13	9	
16	Washer, 5/16" SAE Flat	F05011-17	9	
17	Shaft, 1 15/16x76 15/16	065302	1	
18	Nut, 5/8-11 Nyl Lock	F05010-34	32	
19	Bearing, 1 15/16 4-Bolt Flange	033712	8	
20	Key, 1/2" x 1/2" x 3"	S12249	5	
	Sprocket Assembly, Drive WR7808	033716	4	
21	Sprocket Weldment, Drive WR7808	036718	1	
22	Screw, 1/2-13 x 1" OP Nyl Insert Socket Set	F05008-9	2	
23	Bolt, 5/8-11 x 2" Grade 5 Carriage	F05009-116	32	
	Sprocket Assembly, Idler WR7808	033715	4	
24	Sprocket Weldment, Idler WR7808	036717	1	
25	Bushing, 1 15/16 x 2 15/16 x 3 3/4 Bronze	036708	1	
26	Washer, 1.95 ID x 4 OD x .075	033735	8	
27	Shaft, Chain Idler	033718	4	
28	Nut, 3/4-16 Hex	F05010-92	24	
29	Stud, 3/4-16 x 7 3/4"	017642	8	
30	Chain Weldment, Log Incline	065297	4	
31	Bolt, 1/4-20 x 3/4" Hex Head w/Washer&Patch	F05005-207	35	
32	Channel, UHMW Conveyor	033722	8	
33	Bracket Weldment, Log Sensor	065303	1	
34	Bolt, 1/2" x 1 1/4" Socket Shoulder	F05008-167	1	
35	Plate Weldment, Infeed	065439	1	
	Screw, #10-24 x 3/8" Phillips PH Machine	F05004-3	6	
	Nut, #10-24 Keps	F05010-14	6	
	Cap, Rubber Wire	036644	6	

4

Replacement Parts

Incline Log Deck (SLPILDWU)

4.4 Incline Log Deck (SLPILDWU)



SLP0019

REF	DESCRIPTION (◆ Indicates Parts Available In Assemblies Only)	PART #	QTY.
	DECK, SLP WIDE INCLINE LOG (USA) (See Section 4.3 for replacement parts illustration showing motor assembly, chains, etc.)	SLPILDWU	1
	Motor, 5HP 3PH 1740RPM	038509	1
	Gear Reducer, 133.26:1	065416	1
	Sprocket, Triple 80Q17	065417	1
	Bushing, Q2 x 2 3/8	065424	1
	Chain, Triple Strand, 80-3R x 57P +C/L	065426	1
	Sprocket, Triple 80Q19	065418	1
	Bushing, Q2 x 1 15/16	065425	1
	Bolt, 7/8-14 x 3 1/2" Hex Head Grade 5	F05014-1	4
	Washer, 7/8" SAE Flat	F05011-73	4
	Washer, 7/8" Split Lock	F05011-46	4
	Nut, 7/8-14 Free	F05010-139	4
1	Deck Weldment, Incline Log Primary	065324	1
2	Deck Weldment, Incline Log	065309	1
3	Tube Weldment, Connecting	065310	2
	Guard, Chain, Outside	065434	1
	Guard Weldment, Chain, Inside	065364	1
	Bolt, 5/16-18 x 3/4" Hex Head Grade 5	F05006-102	9

Replacement Parts 4

Incline Log Deck (SLPILDWU)

	Washer, 5/16" Split Lock	F05011-13	9	
	Washer, 5/16" SAE Flat	F05011-17	9	
4	Shaft, Primary 1 15/16 x 71 7/16	065314	1	
5	Shaft, Secondary 1 15/16 x 71 7/16	065315	1	
	Nut, 5/8-11 Nyl Lock	F05010-34	32	
	Bearing, 1 15/16 4-Bolt Flange	033712	8	
	Key, 1/2" x 1/2" x 3"	S12249	7	
6	Coupler, 1 15/16" Shaft	065316	1	
	Sprocket Assembly, Drive WR7808	033716	4	
	Sprocket Weldment, Drive WR7808	036718	1	
	Screw, 1/2-13 x 1" OP Nyl Insert Socket Set	F05008-9	2	
	Bolt, 5/8-11 x 2" Grade 5 Carriage	F05009-116	32	
	Sprocket Assembly, Idler WR7808	033715	4	
	Sprocket Weldment, Idler WR7808	036717	1	
	Bushing, 1 15/16 x 2 15/16 x 3 3/4 Bronze	036708	1	
	Washer, 1.95 ID x 4 OD x .075	033735	8	
	Shaft, Chain Idler	033718	4	
	Nut, 3/4-16 Hex	F05010-92	24	
	Stud, 3/4-16 x 7 3/4"	017642	8	
	Chain Weldment, Log Incline	065297	4	
	Bolt, 1/4-20 x 3/4" Hex Head w/Washer&Patch	F05005-207	35	
	Channel, UHMW Conveyor	033722	8	
	Bracket Weldment, Log Sensor	065303	1	
	Bolt, 1/2" x 1 1/4" Socket Shoulder	F05008-167	1	
7	Plate Weldment, Infeed	065444	1	
8	Plate Weldment, Infeed Left	065453	1	
	Screw, #10-24 x 3/8" Phillips PH Machine	F05004-3	6	
	Nut, #10-24 Keps	F05010-14	6	
	Cap, Rubber Wire	036644	6	

INDEX

I

introduction
 dimensions 1-5
 specifications 1-7

M

maintenance
 lubrication 3-4
 tensioning drive chain 3-3
 tensioning transfer chains 3-1, 3-2

R

replacement parts
 how to use parts list 4-1
 log deck (SLPILDU) 4-2
 log deck (SLPILDWU) 4-4

S

safety
 instructions 2-2
 symbols 2-1

service information
 branch locations 1-3
 customer & equipment ID 1-4
 general contact info 1-2