

Wood-Mizer®

Replacement Parts

EG800EH40S

rev. A2.00



Safety is our #1 concern! Read and understand all safety information and instructions before operating, setting up or maintaining this machine.

Form #811

Table of Contents

Section-Page

SECTION 1	GENERAL INFORMATION	1-1
1.1	How To Use the Parts List.....	1-1
1.2	Sample Assembly	1-1
SECTION 2	INFEED & OUTFEED TABLE	2-1
2.1	Infeed & Outfeed Table	2-1
2.2	Infeed & Outfeed Table	2-2
2.3	Infeed & Outfeed Table	2-3
2.4	Roller Table Module	2-4
2.5	Table Leg Assembly	2-5
2.6	Adjustable Foot	2-6
2.7	Conveyor Support Assembly	2-7
2.8	Wire Hanger	2-8
2.9	Oslona wlotu	2-9
SECTION 3	GUARDS & COVERS	3-1
3.1	Covers	3-1
3.2	Covers	3-2
3.3	Top Cover	3-3
3.4	Top Cover	3-4
3.5	Side Cover	3-5
3.6	Back Cover	3-6
3.7	Front Cover	3-7
3.8	Belt Cover	3-8
3.9	Back Cover	3-9
3.10	Back Cover	3-10
3.11	Scale Assembly	3-11
3.12	Cable Cover	3-12
3.13	Cable Cover	3-13
3.14	Side Cover	3-14
3.15	Cable Cover	3-15
3.16	Arbor Cover	3-16
3.17	Spacer Plate	3-17
3.18	Plates, Seals	3-18
3.19	Seal Assembly	3-19
3.20	Covers	3-20
3.21	Limit Switch	3-21
3.22	Sawdust Chute	3-22
3.23	Limit Switch Assembly	3-24
SECTION 4	ROLLER DRIVE ASSEMBLY	4-1
4.1	Feed Rollers w/Drive	4-1

Table of Contents

Section-Page

4.2	Hold-Down Roller Assembly	4-3	
4.3	Top Hold-Down Roller	4-4	
4.4	Idler Sprocket	4-5	
4.5	Bottom Roller	4-6	
4.6	Blade Drive	4-7	
4.7	Arbor Assembly	4-8	
 SECTION 5 ANTI-KICKBACK SYSTEM			5-1
5.1	Anti-Kickback System	5-1	
5.2	Anti-Kickback System 1	5-2	
5.3	Bumper Rod	5-4	
5.4	Anti-Kickback System (2)	5-5	
5.5	Safety Switch Assembly	5-7	
5.6	Hold-Down Roller Lifter	5-8	
5.7	Hold-Down Roller Lifter Handle	5-9	
 SECTION 6 LASER			6-1
6.1	Laser Assembly (Option)	6-1	

SECTION 1 GENERAL INFORMATION

1.1 How To Use the Parts List

- Use the index above to locate the assembly that contains the part you need.
- Go to the appropriate section and locate the part in the illustration.
- Use the number pointing to the part to locate the correct part number and description in the table.
- Parts shown indented under another part are included with that part.
- Parts marked with a diamond (◆) are only available in the assembly listed above the part.

See the sample table below. Sample Part #A01111 includes part F02222-2 and subassembly A03333. Subassembly A03333 includes part S04444-4 and subassembly K05555. The diamond (◆) indicates that S04444-4 is not available except in subassembly A03333. Subassembly K05555 includes parts M06666 and F07777-77. The diamond (◆) indicates M06666 is not available except in subassembly K05555.

1.2 Sample Assembly				
REF.	DESCRIPTION (◆ Indicates Parts Available In Assemblies Only)	PART #	QTY	
	Sample Assembly, Complete (Includes All Indented Parts Below)	A01111	1	
1	Sample Part	F02222-22	1	
	Sample Subassembly (Includes All Indented Parts Below)	A03333	1	
2	Sample Part (◆ Indicates Part Is Only Available With A03333)	S04444-4	1	◆
	Sample Subassembly (Includes All Indented Parts Below)	K05555	1	
3	Sample Part (◆ Indicates Part Is Only Available With K05555)	M06666	2	◆
4	Sample Part	F07777-77	1	

To Order Parts:

- From Europe call our European Headquarters and Manufacturing Facility in Kolo, Poland at **+48-63-2626000**. From the continental U.S., call our toll-free Parts hotline at **1-800-525-8100**. Have your customer number, vehicle identification number, and part numbers ready when you call. From other international locations, contact the Wood-Mizer distributor in your area for parts.

Office Hours:

Country	Monday - Friday	Saturday	Sunday
Poland	7-15	Closed	Closed
US	8 a.m.- 5 p.m.	8 a.m.- 12 p.m.	Closed

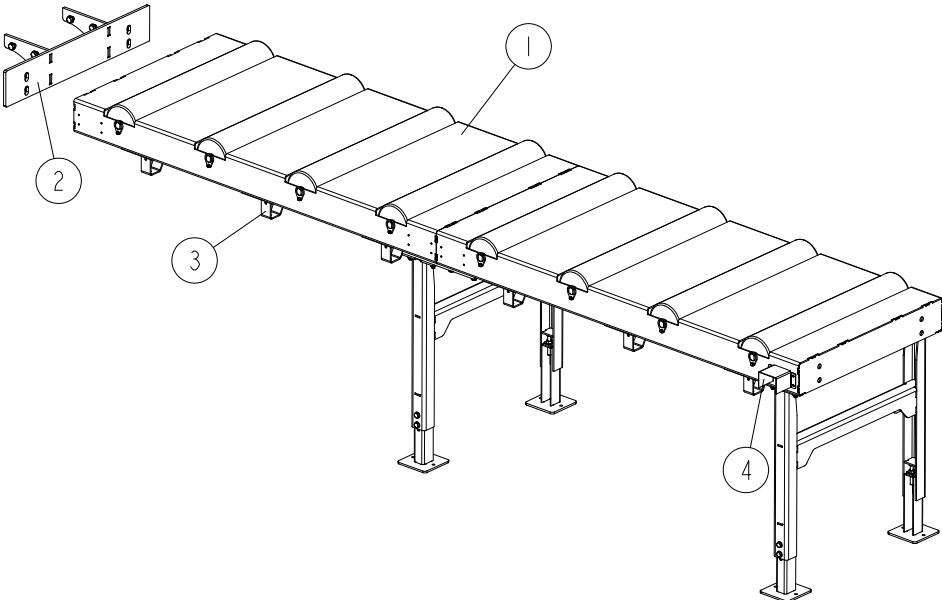


CAUTION! It is strongly recommended that only original spare parts be used.

SECTION 2 INFEEED & OUTFEED TABLE

2.1 Infeed & Outfeed Table

524980_001
524980_MANUAL

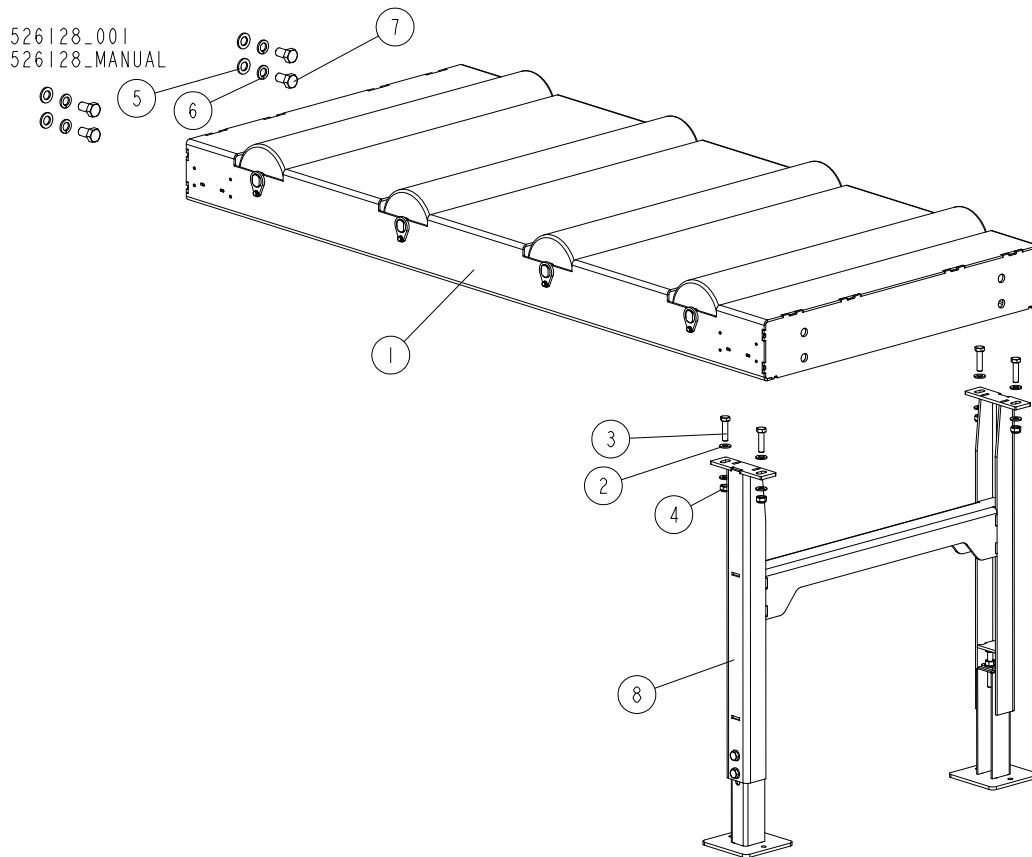


REF.	DESCRIPTION (* indicates parts available in assemblies only)	PART NO.	QTY
1	INFEEED & OUTFEED TABLE See Section 2.4	525444	1
2	CONVEYOR SUPPORT ASSEMBLY See Section 2.7	525641	1
3	WIRE HANGER See Section 2.8	525945	6
4	E-STOP SWITCH GUARD	T00211-1	1

2 INFEED & OUTFEED TABLE

Infeed & Outfeed Table

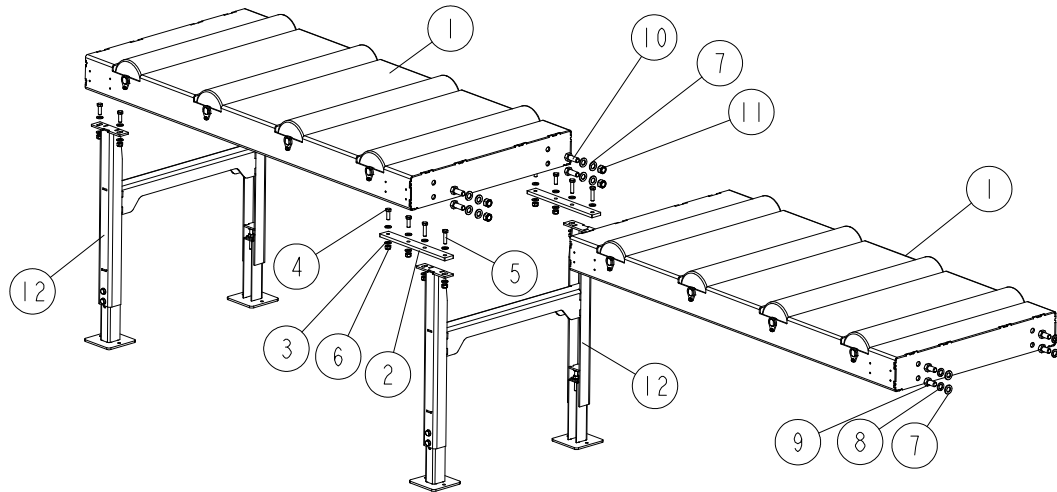
2.2 Infeed & Outfeed Table



REF	DESCRIPTION (* indicates parts available in assemblies only)	PART #	QTY
-	TABLE, INFEED & OUTFEED	526128	1
1	MODULE, ROLLER TABLE - COMPLETE See Section 2.4	522429	1
2	WASHER, 10.5 FLAT ZINC	F81055-1	8
3	BOLT, M10X40-8.8 HEX HEAD FULL THREAD ZINC	F81003-16	4
4	NUT, M10-8-B HEX NYLON ZINC LOCK	F81033-1	4
5	WASHER, 17 SPLIT LOCK ZINC	F81058-1	4
6	WASHER, 16.3 SPLIT LOCK ZINC	F81058-2	4
7	BOLT, M16X30-8.8 HEX HEAD FULL THREAD ZINC	F81006-36	4
8	LEG ASSEMBLY, INFEED & OUTFEED TABLE See Section 2.5	525443	1

2.3 Infeed & Outfeed Table

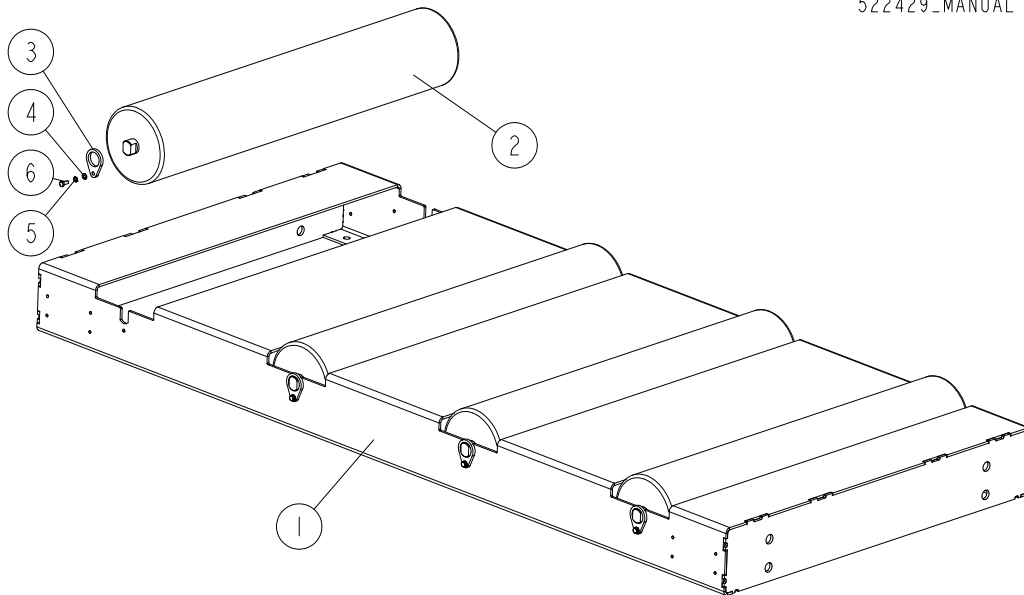
525444_001
 525444_MANUAL



REF.	DESCRIPTION (* indicates parts available in assemblies only)	PART NO.	QTY
-	TABLE, INFEED & OUTFEED	525444	1
1	MODULE, ROLLER TABLE - COMPLETE See Section 2.4	522429	2
2	PLATE, CONNECTION	522427-1	2
3	WASHER, 10.5 FLAT ZINC	F81055-1	24
4	BOLT, M10X30-8.8 HEX HEAD FULL THREAD ZINC	F81003-2	8
5	BOLT, M10X40-8.8 HEX HEAD FULL THREAD ZINC	F81003-16	4
6	NUT, M10-8-B HEX NYLON ZINC LOCK	F81033-1	12
7	WASHER, 17 SPLIT LOCK ZINC	F81058-1	12
8	WASHER, 16.3 SPLIT LOCK ZINC	F81058-2	4
9	BOLT, M16X30-8.8 HEX HEAD FULL THREAD ZINC	F81006-36	4
10	BOLT, M16X40-8.8 HEX HEAD FULL THREAD ZINC	F81006-13	4
11	NUT, M16-8 HEX NYLON ZINC LOCK	F81036-2	4
12	LEG ASSEMBLY, INFEED & OUTFEED TABLE See Section 2.5	525443	2

2.4 Roller Table Module

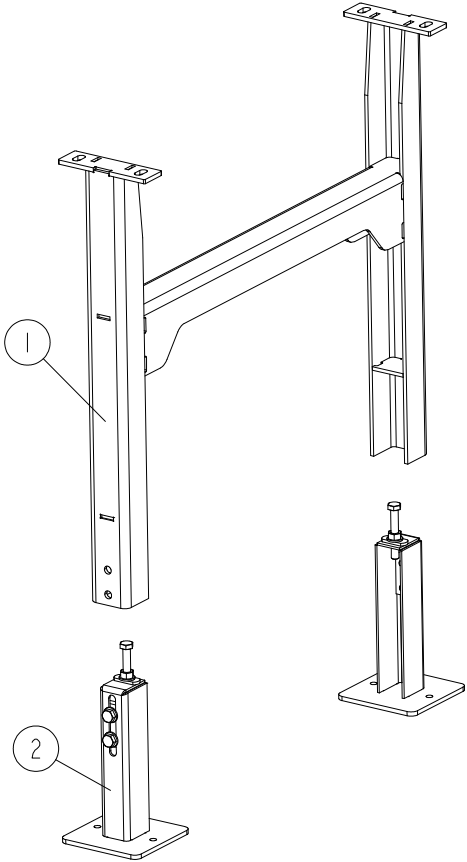
522429_001
 522429_MANUAL



REF.	DESCRIPTION (* indicates parts available in assemblies only)	PART NO.	QTY
-	MODULE, ROLLER TABLE - COMPLETE	522429	1
1	MODULE WELDMENT, ROLLER TABLE	522423-1	1
2	ROLLER, FI=133/25-700 S=18 BEARING 6305 TYPE 2	522428-1	4
3	PLATE, ROLLER LOCK	522426-1	8
4	WASHER, 5.3 FLAT ZINC	F81052-1	8
5	WASHER, 5.1 SPLIT LOCK ZINC	F81052-2	8
6	BOLT, M5X12 8.8 HEX HEAD FULL THREAD ZINC	F81000-5	8

2.5 Table Leg Assembly

525443-001
 525443-MANUAL



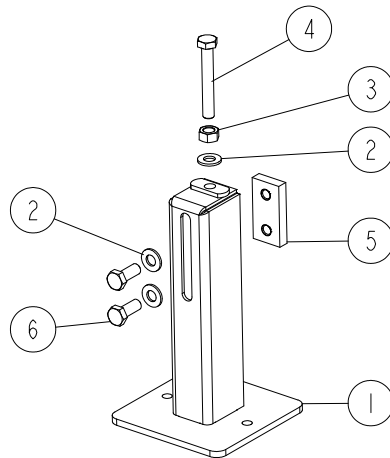
REF.	DESCRIPTION (* indicates parts available in assemblies only)	PART NO.	QTY	
-	LEG, INFEEED & OUTFEED TABLE	525443	1	
1	LEG WELDMENT	522561-1	1	
2	FOOT, ADJUSTABLE See Section 2.6	525445	2	

2 INFEED & OUTFEED TABLE

Adjustable Foot

2.6 Adjustable Foot

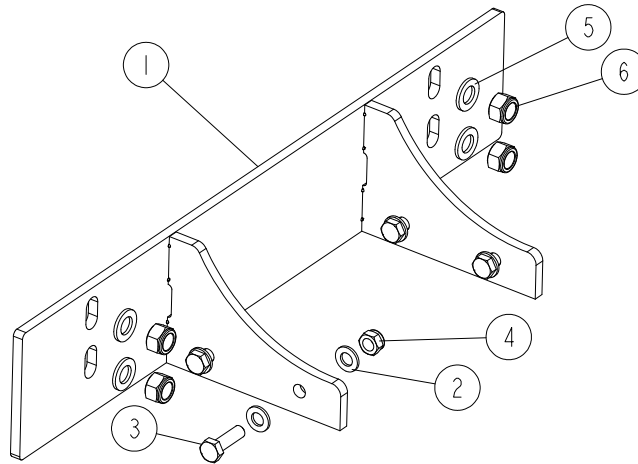
525445_001
525445_MANUAL



REF.	DESCRIPTION (* indicates parts available in assemblies only)	PART NO.	QTY	
-	FOOT, ADJUSTABLE	525445	1	
1	FOOT WELDMENT	525446-1	1	
2	WASHER, 10.5 FLAT ZINC	F81055-1	3	
3	NUT, M10 8 HEX ZINC	F81033-3	1	
4	BOLT, M10X70 8.8 HEX HEAD FULL THREAD ZINC	F81003-20	1	
5	PLATE, M10 ZINC-PLATED CLAMPING	101242-1	1	
6	BOLT, M10X25 8.8 HEX HEAD FULL THREAD ZINC	F81003-11	2	

2.7 Conveyor Support Assembly

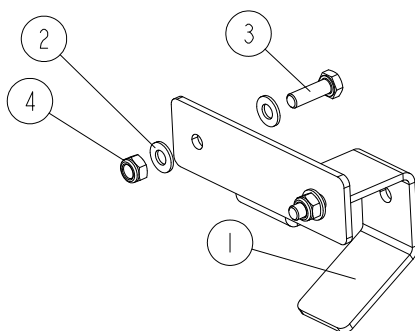
525641_001
 525641_MANUAL



REF.	DESCRIPTION (* indicates parts available in assemblies only)	PART NO.	QTY	
-	CONVEYOR SUPPORT ASSEMBLY	525641	1	
1	CONVEYOR SUPPORT WELDING ELEMENT	525640-1	1	
2	WASHER, 13 FLAT ZINC	F81056-1	8	
3	BOLT, M12X40-8.8 HEX HEAD FULL THREAD ZINC	F81004-4	4	
4	NUT, M12 8 HEX NYLON ZINC LOCK	F81034-2	4	
5	WASHER, 17 SPLIT LOCK ZINC	F81058-1	4	
6	NUT, M16-8 HEX NYLON ZINC LOCK	F81036-2	4	

2.8 Wire Hanger

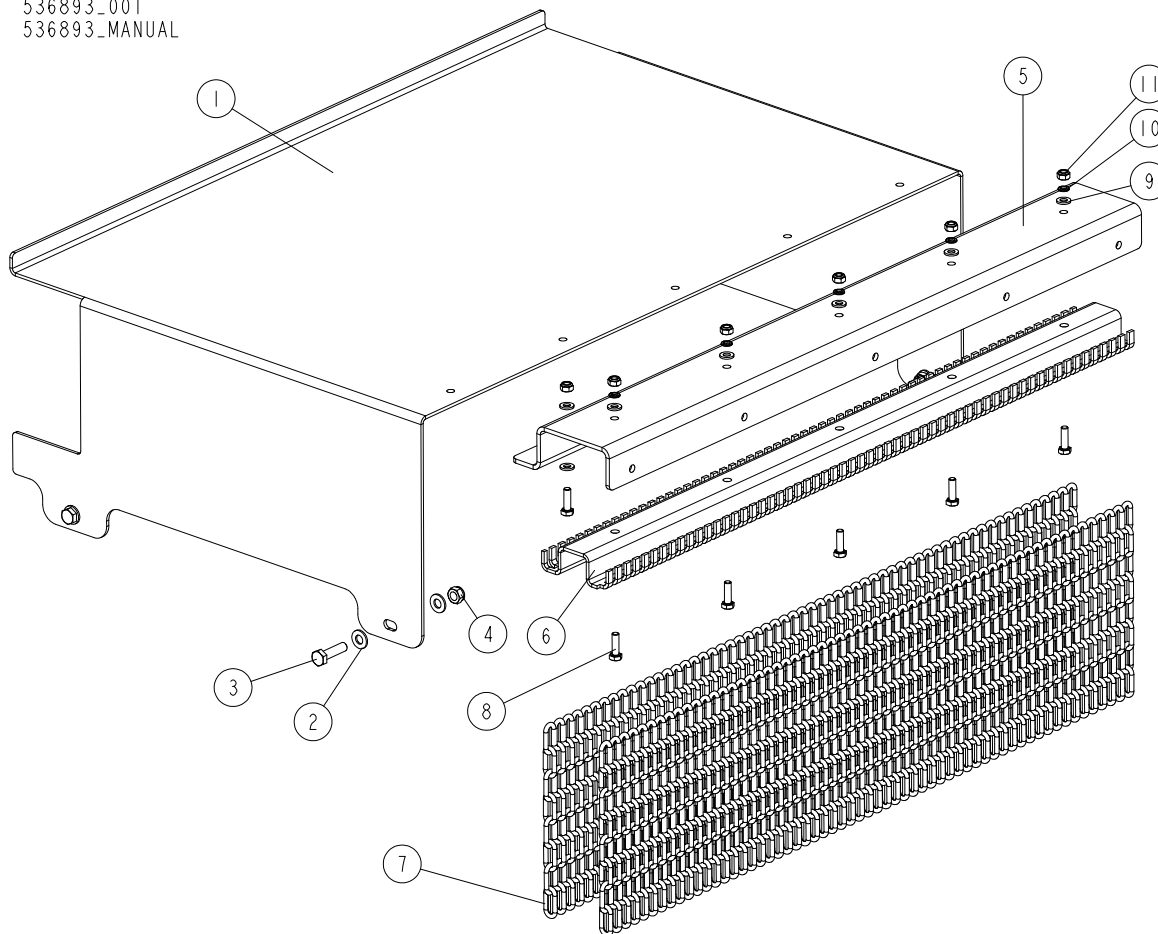
525945_001
 525945_MANUAL



REF.	DESCRIPTION (* indicates parts available in assemblies only)	PART NO.	QTY	
-	WIRE HANGER	525945	1	
1	BENT PLATE	525944-1	1	
2	WASHER, 8.4 FLAT ZINC	F81054-1	4	
3	BOLT, M8X25-8.8-B HEX HEAD FULL THREAD ZINC	F81002-5	2	
4	NUT, M8-8-B HEX NYLON ZINC LOCK	F81032-2	2	

2.9 Osłona wlotu

536893_001
536893_MANUAL

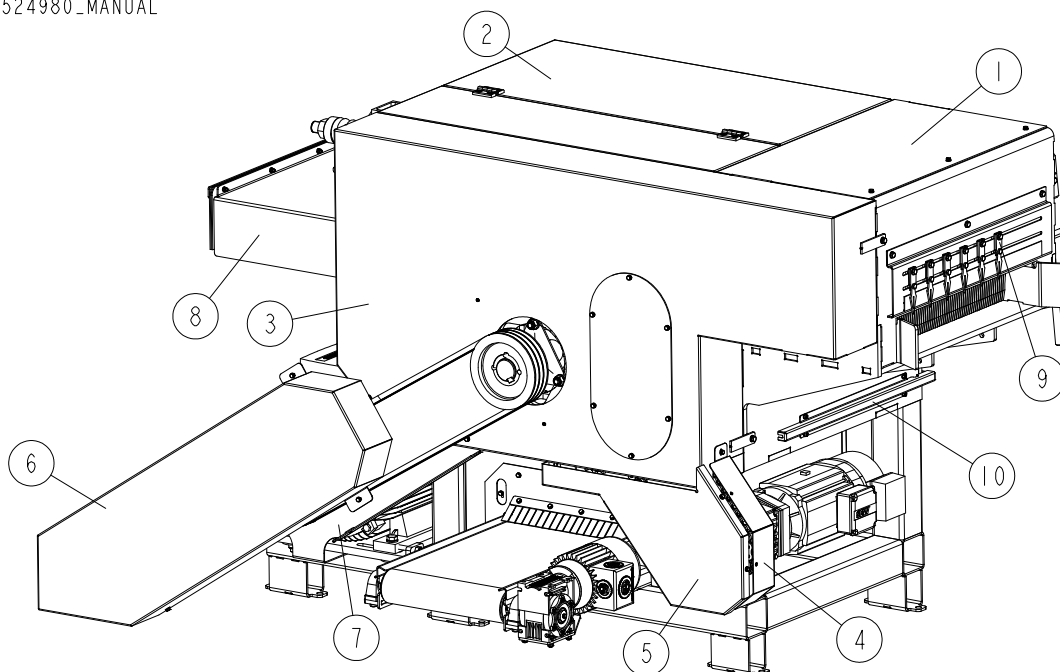


REF	DESCRIPTION (* indicates parts available in assemblies only)	PART #	QTY	
-	Osłona Wlotu Kpl.	536893	1	
1	BLACHA OSŁONY WEJŚCIOWEJ	536889-1	1	
2	PODKŁADKA 8.4 FE/ZN5 PN-78/M-82005	F81054-1	8	
3	ŚRUBA M8X30 8.8 FE/ZN5 PN-85/M-82105	F81002-7	4	
4	NAKRETKA M8-8-B-FE/ZN5 Z WKL. PN-M/82175.	F81032-2	4	
-	GŁOWICA WYCHWYTUJĄCA	539122	1	
5	CEOWNIK MOCOWANIA ŁAŃCUCHÓW	539121-1	1	
6	WIESZAK ŁAŃCUCHÓW	539123-1	1	
7	ŁAŃCUCH STUDZIENNY OCYNK FI=4 MM	536890	118	
8	SRUBA M6X20 8.8 FE/ZN5 PN-85/M-82105	F81001-2	10	
9	PODKŁADKA 6.4 FE/ZN5 PN-78/M-82005	F81053-1	15	
10	PODKŁADKA SPREZYSTA Z 6.1	F81053-3	5	
11	NAKRĘTKA M6-8-B-FE/ZN5 PN-85/M-82175.	F81031-2	10	

SECTION 3 GUARDS & COVERS

3.1 Covers

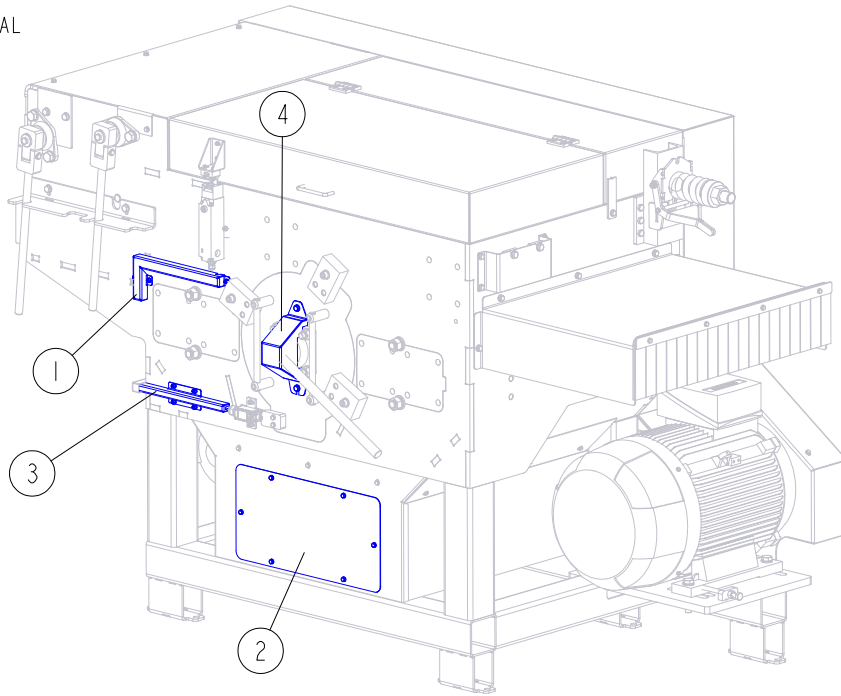
524980_002
524980_MANUAL



REF.	DESCRIPTION (* indicates parts available in assemblies only)	PART NO.	QTY
1	TOP COVER ASSEMBLY See Section 3.3	525401	1
2	TOP COVER ASSEMBLY See Section 3.4	525411	1
3	SIDE COVER ASSEMBLY See Section 3.5	525627	1
4	BACK COVER ASSEMBLY See Section 3.6	525621	1
5	FRONT COVER ASSEMBLY See Section 3.7	525619	1
6	BELT COVER ASSEMBLY See Section 3.8	525441	1
7	BACK COVER ASSEMBLY See Section 3.9	525618	1
8	BACK COVER ASSEMBLY See Section 3.10	525637	1
9	SCALE ASSEMBLY See Section 3.11	525649	1
10	CABLE COVER ASSEMBLY See Section 3.12	525943	1

3.2 Covers

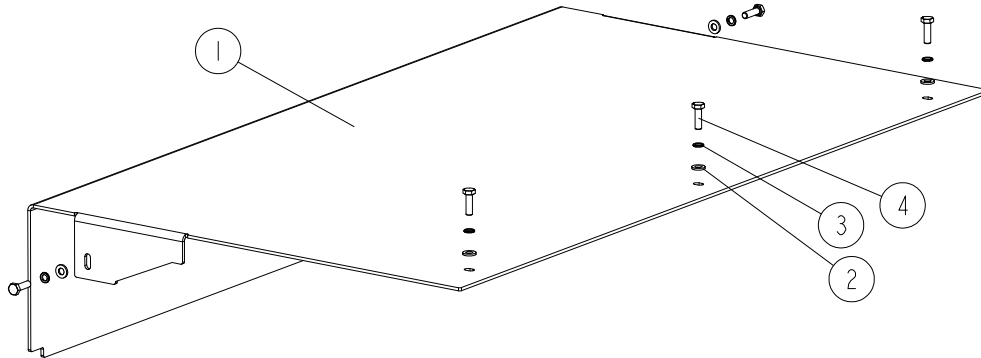
524980_003
524980_MANUAL



REF.	DESCRIPTION (* indicates parts available in assemblies only)	PART NO.	QTY	
1	CABLE COVER See Section 3.13	525415	1	
2	SIDE COVER See Section 3.14	525440	1	
3	CABLE COVER ASSEMBLY See Section 3.15	525449	1	
4	ARBOR COVER ASSEMBLY See Section 3.16	525643	1	

3.3 Top Cover

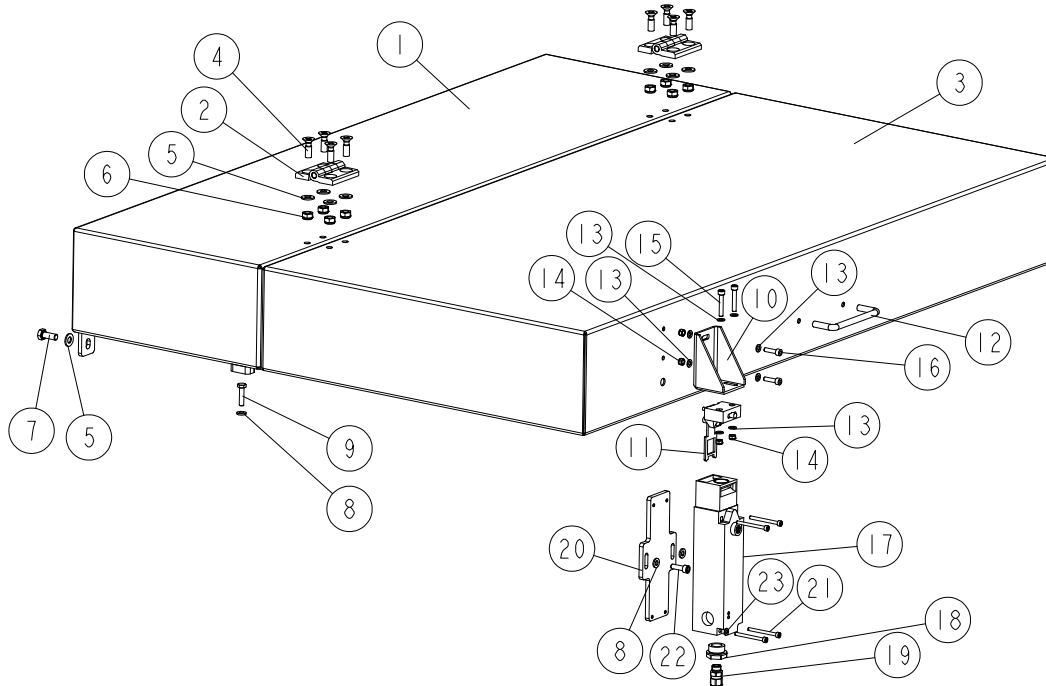
525401_001
525401_MANUAL



REF.	DESCRIPTION (* indicates parts available in assemblies only)	PART NO.	QTY
-	TOP COVER ASSEMBLY	525401	1
1	BENT PLATE 495X839X3	525400-1	1
2	WASHER, 6.4 FLAT ZINC	F81053-1	5
3	WASHER, Z 6.1 SPLIT LOCK ZINC	F81053-3	5
4	BOLT, M6X20 8.8 HEX HEAD FULL THREAD ZINC	F81001-2	5

3.4 Top Cover

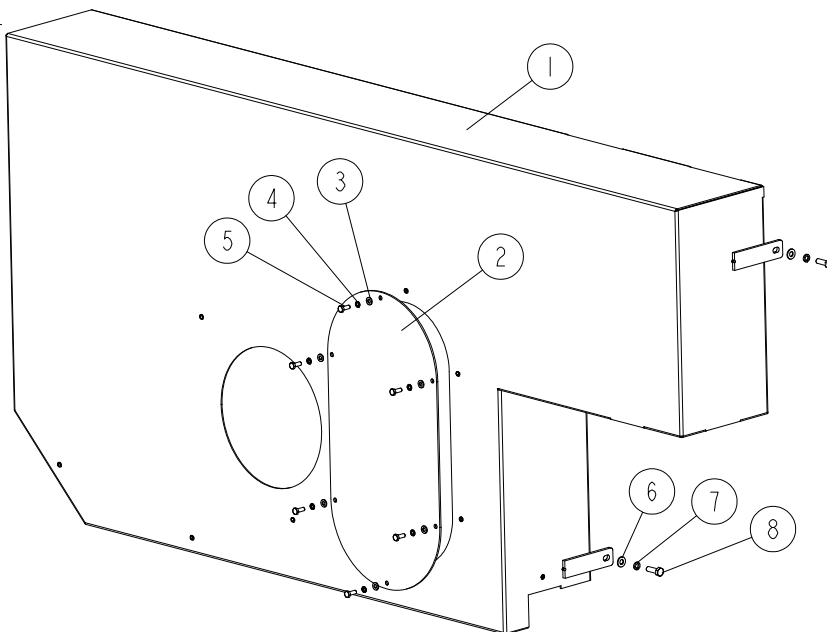
525411_001
525411_MANUAL



REF.	DESCRIPTION (* indicates parts available in assemblies only)	PART NO.	QTY
-	TOP COVER ASSEMBLY	525411	1
1	TOP COVER 1 WELDING ELEMENT	525408-1	1
2	HINGE, CFM.60 SH8 KOD 425711 ELESA	521728	2
3	BENT PLATE 1085X524X2	525403-1	1
4	SCREW, M8X25-5.8 CROSS RECESSED FLAT HEAD ZINC	F81002-51	8
5	WASHER, 8.4 FLAT ZINC	F81054-1	11
6	NUT, M8-8-B HEX NYLON ZINC LOCK	F81032-2	8
7	BOLT, M8X20-8.8 HEX HEAD FULL THREAD ZINC	F81002-1	3
8	WASHER, 6.4 FLAT ZINC	F81053-1	3
9	BOLT, M6X25-8.8 HEX HEAD FULL THREAD ZINC	F81001-3	1
10	BENT PLATE 75X52X3	525412-1	1
11	KEY, SCHNEIDER XC SZ03 SWITCH	525407	1
12	HANDLE, 4 W/BOLT	P08065	1
13	WASHER, 5.3 FLAT ZINC	F81052-1	8
14	NUT, M5-8 DIN985 ZINC-PLATED	F81030-2	4
15	SCREW, M5X30-8.8 HEX SOCKET HEAD CAP ZINC	F81000-71	2
16	SCREW, M5X20 8.8 HEX SOCKET HEAD CAP ZINC	F81000-72	2
17	SWITCH, SCHNEIDER XCSLE2525512 SAFETY	525406	1
18	REDUCER, M20/M12 CABLE GLAND	F81097-28	1
19	CABLE GLAND PLASTIC	F81096-39	1
20	FLAT PLATE 170X75X6	525413-1	1
21	SCREW, M4X45 8.8 HEX SOCKET HREAD CAP ZINC	F81011-33	4
22	SCREW, M6X20 8.8 HEX SOCKET HREAD CAP ZINC	F81001-22	2
23	WASHER, 4.3 FLAT ZINC	F81051-2	1

3.5 Side Cover

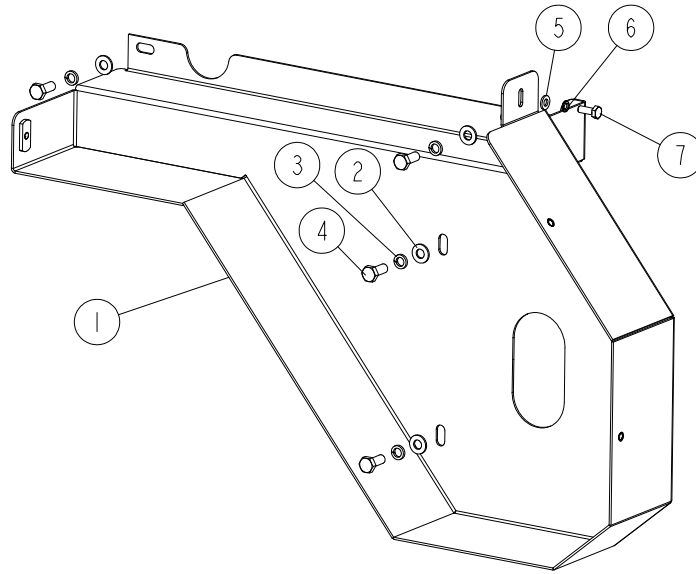
525627_001
525627_MANUAL



REF.	DESCRIPTION (* indicates parts available in assemblies only)	PART NO.	QTY
-	SIDE COVER ASSEMBLY	525627	1
1	SIDE COVER	525417-1	1
-	COVER ASSEMBLY	525626	1
2	FLAT PLATE	525625-1	1
3	WASHER, 6.4 FLAT ZINC	F81053-1	6
4	WASHER, Z 6.1 SPLIT LOCK ZINC	F81053-3	6
5	BOLT, M6X16-8.8 HEX HEAD FULL THREAD ZINC	F81001-15	6
6	WASHER, 8.4 FLAT ZINC	F81054-1	4
7	WASHER, 8.2 SPLIT LOCK ZINC	F81054-4	4
8	BOLT, M8X25-8.8-B HEX HEAD FULL THREAD ZINC	F81002-5	4

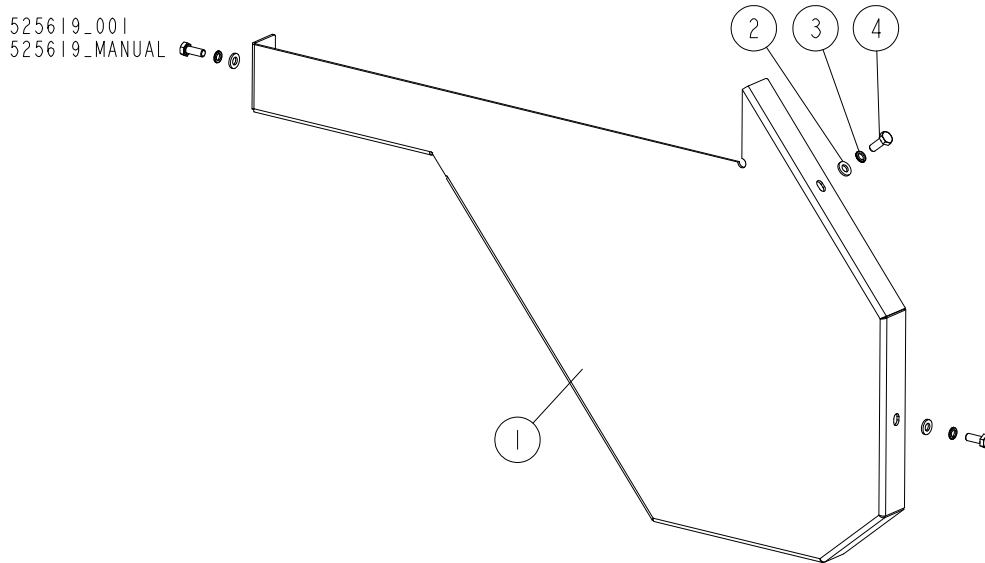
3.6 Back Cover

525621_001
 525621_MANUAL



REF.	DESCRIPTION (* indicates parts available in assemblies only)	PART NO.	QTY
-	BACK COVER ASSEMBLY	525621	1
1	BACK COVER - WELDED ELEMENT	525620-1	1
2	WASHER, 8.4 FLAT ZINC	F81054-1	4
3	WASHER, 8.2 SPLIT LOCK ZINC	F81054-4	4
4	BOLT, M8X20-8.8 HEX HEAD FULL THREAD ZINC	F81002-1	4
5	WASHER, 6.4 FLAT ZINC	F81053-1	1
6	WASHER, Z 6.1 SPLIT LOCK ZINC	F81053-3	1
7	BOLT, M6X16-8.8 HEX HEAD FULL THREAD ZINC	F81001-15	1

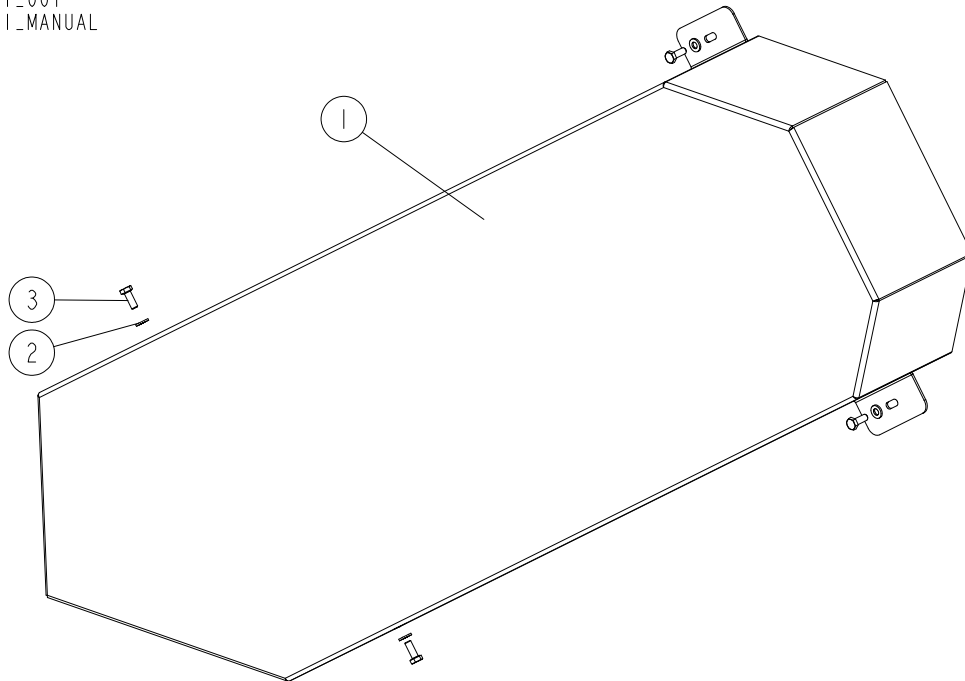
3.7 Front Cover



REF.	DESCRIPTION (* indicates parts available in assemblies only)	PART NO.	QTY
-	FRONT COVER ASSEMBLY	525619	1
1	BENT PLATE	525424-1	1
2	WASHER, 6.4 FLAT ZINC	F81053-1	3
3	WASHER, Z 6.1 SPLIT LOCK ZINC	F81053-3	3
4	BOLT, M6X16-8.8 HEX HEAD FULL THREAD ZINC	F81001-15	3

3.8 Belt Cover

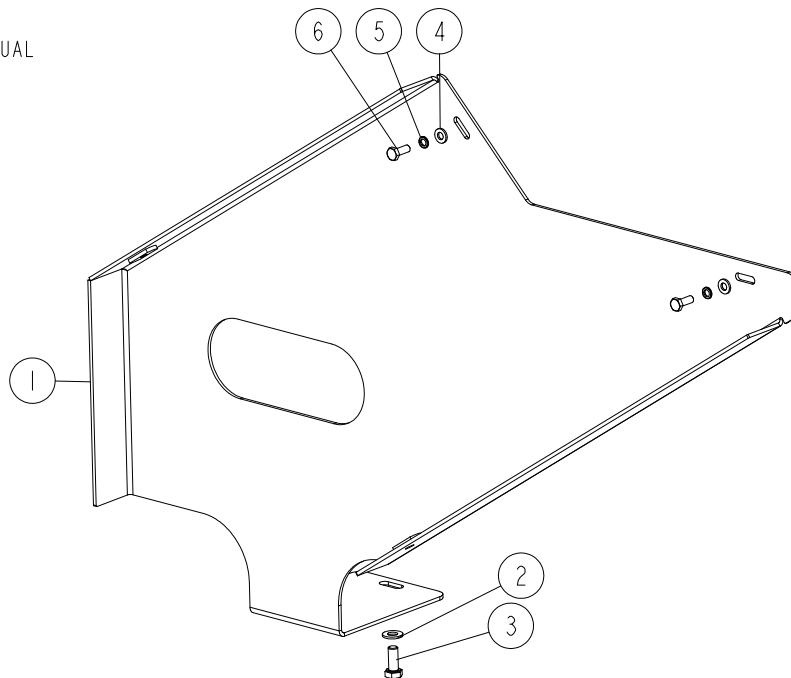
525441_001
 525441_MANUAL



REF.	DESCRIPTION (* indicates parts available in assemblies only)	PART NO.	QTY	
-	BELT COVER ASSEMBLY	525441	1	
1	BENT PLATE	525421-1	1	
2	WASHER, 6.4 FLAT ZINC	F81053-1	4	
3	BOLT, M6X16-8.8 HEX HEAD FULL THREAD ZINC	F81001-15	4	

3.9 Back Cover

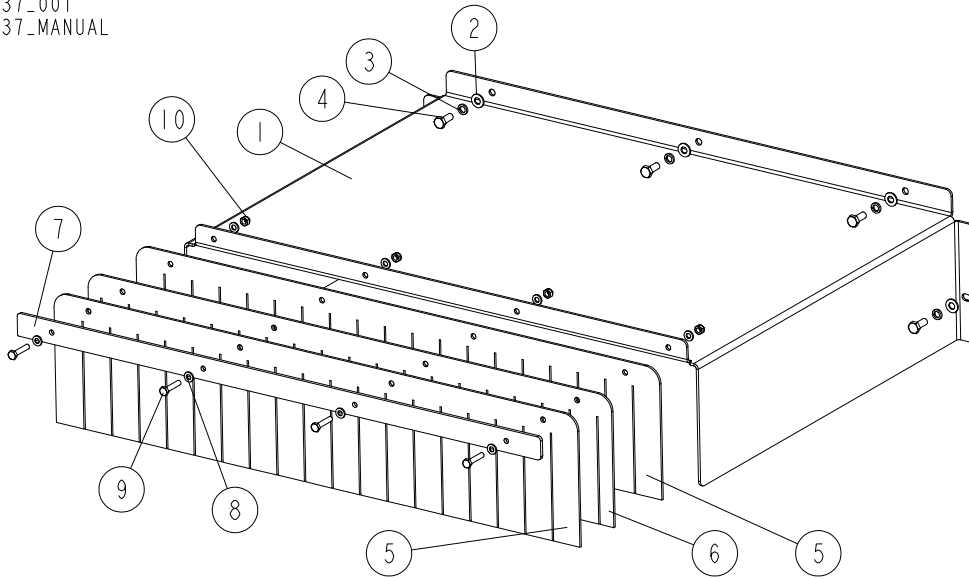
525618_001
525618_MANUAL



REF.	DESCRIPTION (* indicates parts available in assemblies only)	PART NO.	QTY	
-	BACK COVER ASSEMBLY	525618	1	
1	BACK COVER WELDING ELEMENT	525617-1	1	
2	WASHER, 8.4 FLAT ZINC	F81054-1	1	
3	BOLT, M8X20-8.8 HEX HEAD FULL THREAD ZINC	F81002-1	1	
4	WASHER, 6.4 FLAT ZINC	F81053-1	2	
5	WASHER, Z 6.1 SPLIT LOCK ZINC	F81053-3	2	
6	BOLT, M6X16-8.8 HEX HEAD FULL THREAD ZINC	F81001-15	2	

3.10 Back Cover

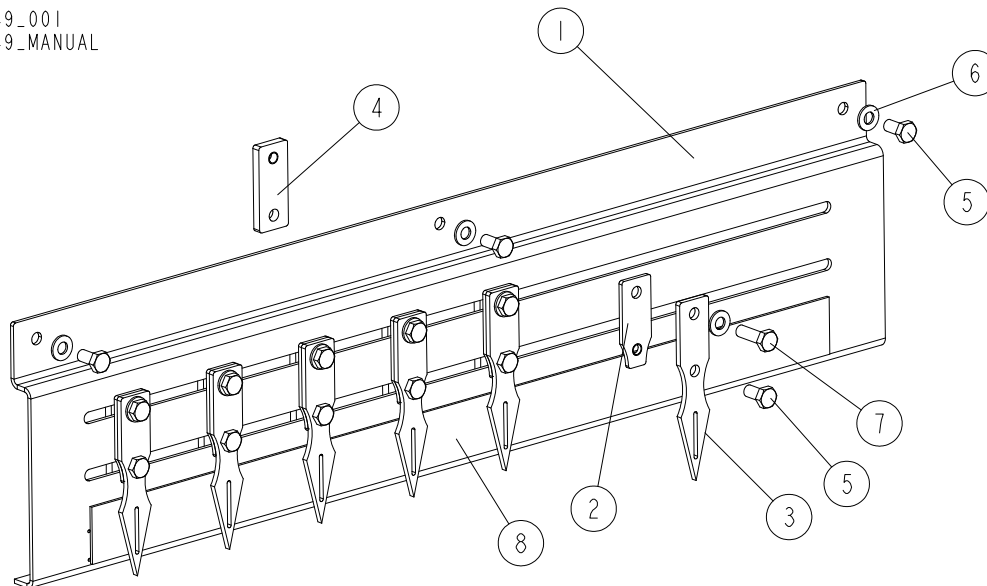
525637_001
525637_MANUAL



REF.	DESCRIPTION (* indicates parts available in assemblies only)	PART NO.	QTY
-	BACK COVER ASSEMBLY	525637	1
1	BENT PLATE	525422-1	1
2	WASHER, 8.4 FLAT ZINC	F81054-1	5
3	WASHER, 8.2 SPLIT LOCK ZINC	F81054-4	5
4	BOLT, M8X20-5.8 HEX HEAD FULL THREAD ZINC	F81002-1	5
5	COVER	522589	2
6	COVER	522590	1
7	BAR, MOUNTING	522591-1	1
8	WASHER, 6.4 FLAT ZINC	F81053-1	8
9	BOLT, M6X30-8.8 HEX HEAD FULL THREAD	F81001-13	4
10	NUT, M6-8-B HEX NYLON ZINC LOCK	F81031-2	4

3.11 Scale Assembly

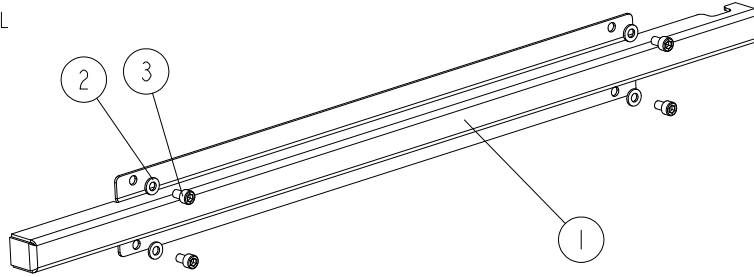
525649_001
525649_MANUAL



REF.	DESCRIPTION (* indicates parts available in assemblies only)	PART NO.	QTY
-	SCALE ASSEMBLY	525649	1
1	BENT PLATE	525645-1	1
2	FLAT PLATE	525647-1	6
3	FLAT PLATE	525646-1	6
4	FLAT PLATE	525648-1	6
5	BOLT, M8X16-8.8-B HEX HEAD FULL THREAD ZINC	F81002-20	9
6	WASHER, 8.4 FLAT ZINC	F81054-1	9
7	BOLT, M8X25-8.8-B HEX HEAD FULL THREAD ZINC	F81002-5	6
8	LINEAR SCALE	525650	1

3.12 Cable Cover

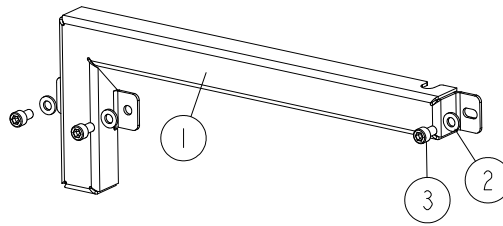
525943_001
 525943_MANUAL



REF.	DESCRIPTION (* indicates parts available in assemblies only)	PART NO.	QTY	
-	CABLE COVER ASSEMBLY	525943	1	
1	BENT PLATE	525942-1	1	
2	WASHER, 6.4 FLAT ZINC	F81053-1	4	
3	SCREW, M6X10 8.8 HEX SOCKET HEAD CAP ZINC	F81001-12	4	

3.13 Cable Cover

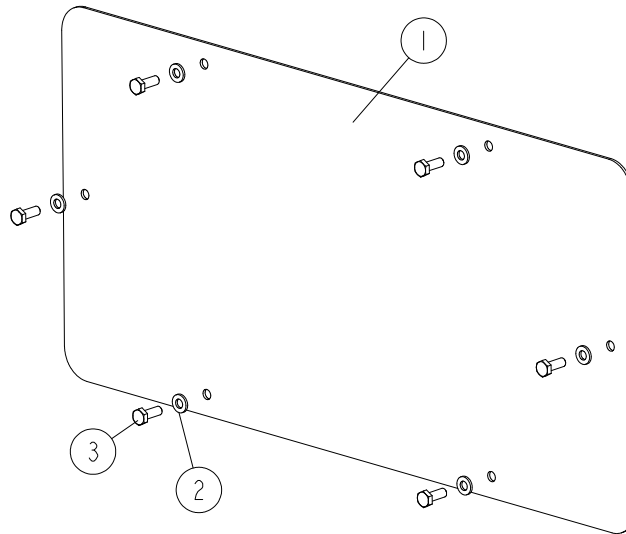
525415_001
525415_MANUAL



REF.	DESCRIPTION (* indicates parts available in assemblies only)	PART NO.	QTY	
-	CABLE COVER	525415	1	
1	BENT PLATE	525414-1	1	
2	WASHER, 6.4 FLAT ZINC	F81053-1	3	
3	SCREW, M6X10 8.8 HEX SOCKET HEAD CAP ZINC	F81001-12	3	

3.14 Side Cover

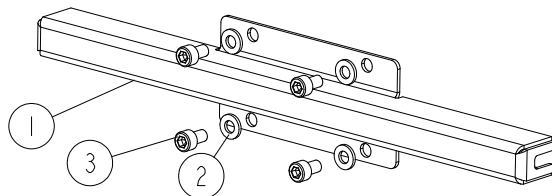
525440_001
 525440_MANUAL



REF.	DESCRIPTION (* indicates parts available in assemblies only)	PART NO.	QTY	
-	SIDE COVER	525440	1	
1	FLAT PLATE	525439-1	1	
2	WASHER, 6.4 FLAT ZINC	F81053-1	6	
3	BOLT, M6X16-8.8 HEX HEAD FULL THREAD ZINC	F81001-15	6	

3.15 Cable Cover

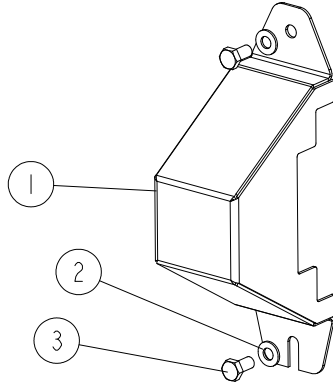
525449_001
525449_MANUAL



REF.	DESCRIPTION (* indicates parts available in assemblies only)	PART NO.	QTY	
-	CABLE COVER ASSEMBLY	525449	1	
1	BENT PLATE	525448-1	1	
2	WASHER, 6.4 FLAT ZINC	F81053-1	4	
3	SCREW, M6X10 8.8 HEX SOCKET HEAD CAP ZINC	F81001-12	4	

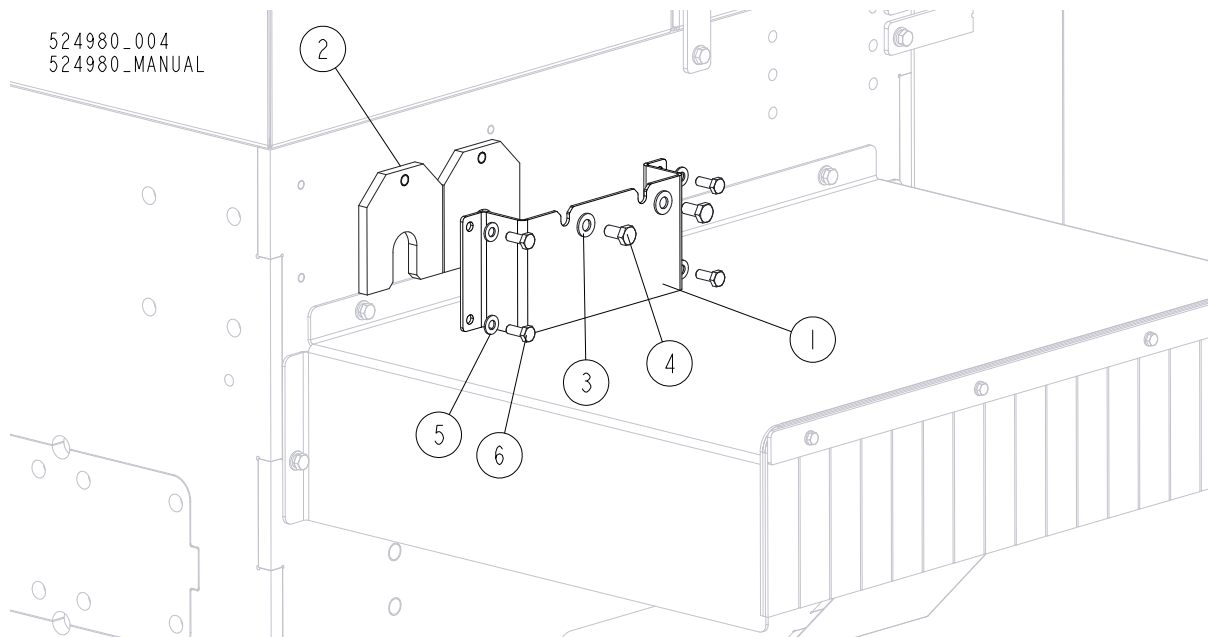
3.16 Arbor Cover

525643_001
 525643_MANUAL



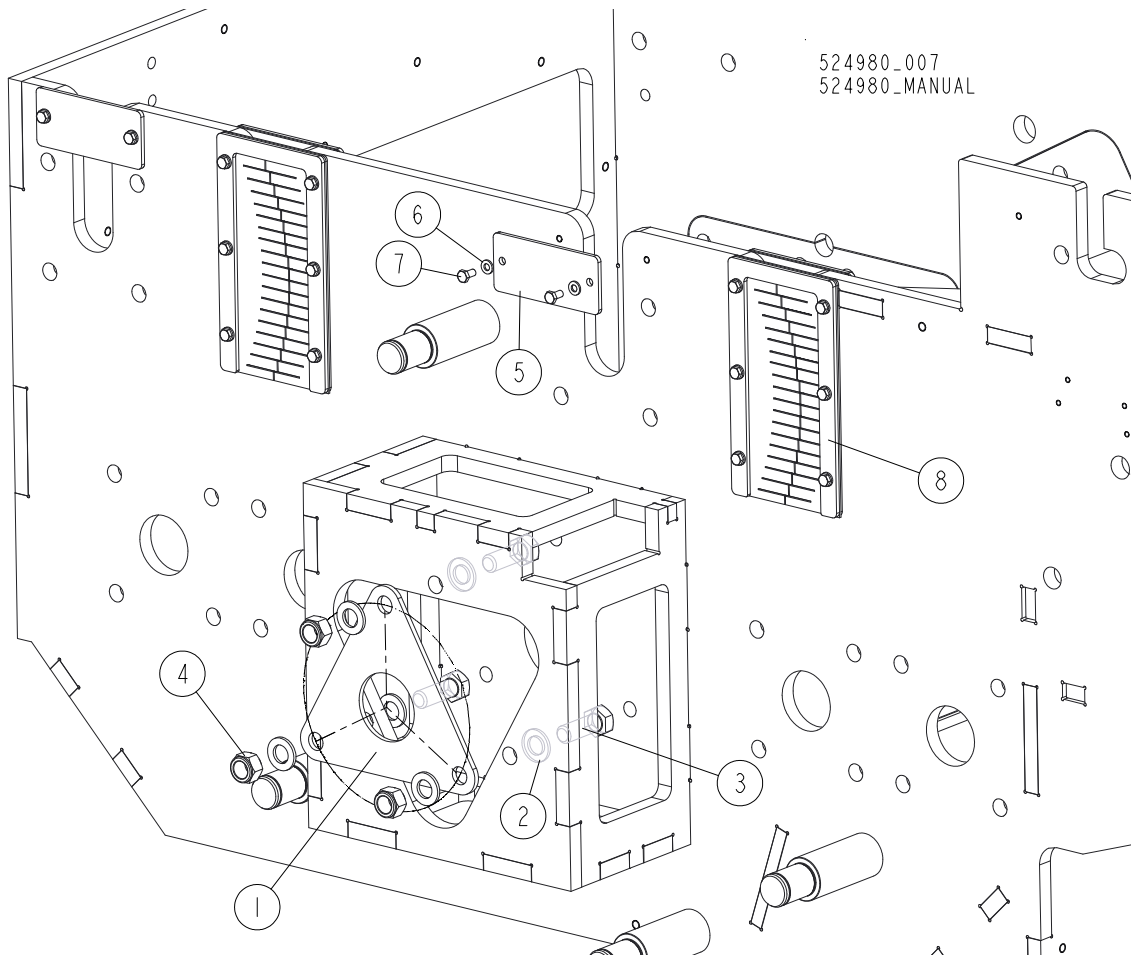
REF.	DESCRIPTION (* indicates parts available in assemblies only)	PART NO.	QTY	
-	ARBOR COVER ASSEMBLY	525643	1	
1	ARBOR COVER	525642-1	1	
2	WASHER, 8.4 FLAT ZINC	F81054-1	2	
3	BOLT, M8X16-8.8-B HEX HEAD FULL THREAD ZINC	F81002-20	2	

3.17 Spacer Plate



REF.	DESCRIPTION (* indicates parts available in assemblies only)	PART NO.	QTY
1	FLAT PLATE 266X50X3	524950-1	1
-	SPACER PLATE	525941	2
2	FLAT PLATE	525940-1	1
3	WASHER, 10.5 FLAT ZINC	F81055-1	1
4	BOLT, M10X20-8.8 HEX HEAD FULL THREAD ZINC	F81003-1	1
5	WASHER, 8.4 FLAT ZINC	F81054-1	4
6	BOLT, M8X20-8.8 HEX HEAD FULL THREAD ZINC	F81002-1	4

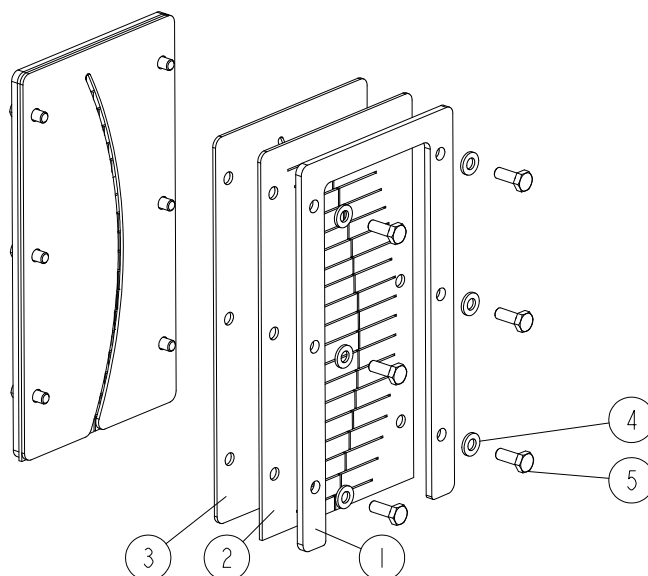
3.18 Plates, Seals



REF.	DESCRIPTION (* indicates parts available in assemblies only)	PART NO.	QTY
1	FLAT PLATE	524964-1	1
2	WASHER, 17 SPLIT LOCK ZINC	F81058-1	6
3	BOLT, M16X45-8.8 HEX HEAD FULL THREAD ZINC	F81006-46	3
4	NUT, M16-8 HEX NYLON ZINC LOCK	F81036-2	3
-	PLUG ASSEMBLY	526107	2
5	FLAT PLATE	525946-1	1
6	WASHER, 6.4 FLAT ZINC	F81053-1	2
7	BOLT, M6X12 8.8 HEX HEAD FULL THREAD ZINC	F81001-7	2
8	SEAL ASSEMBLY See Section 3.19	526111	2

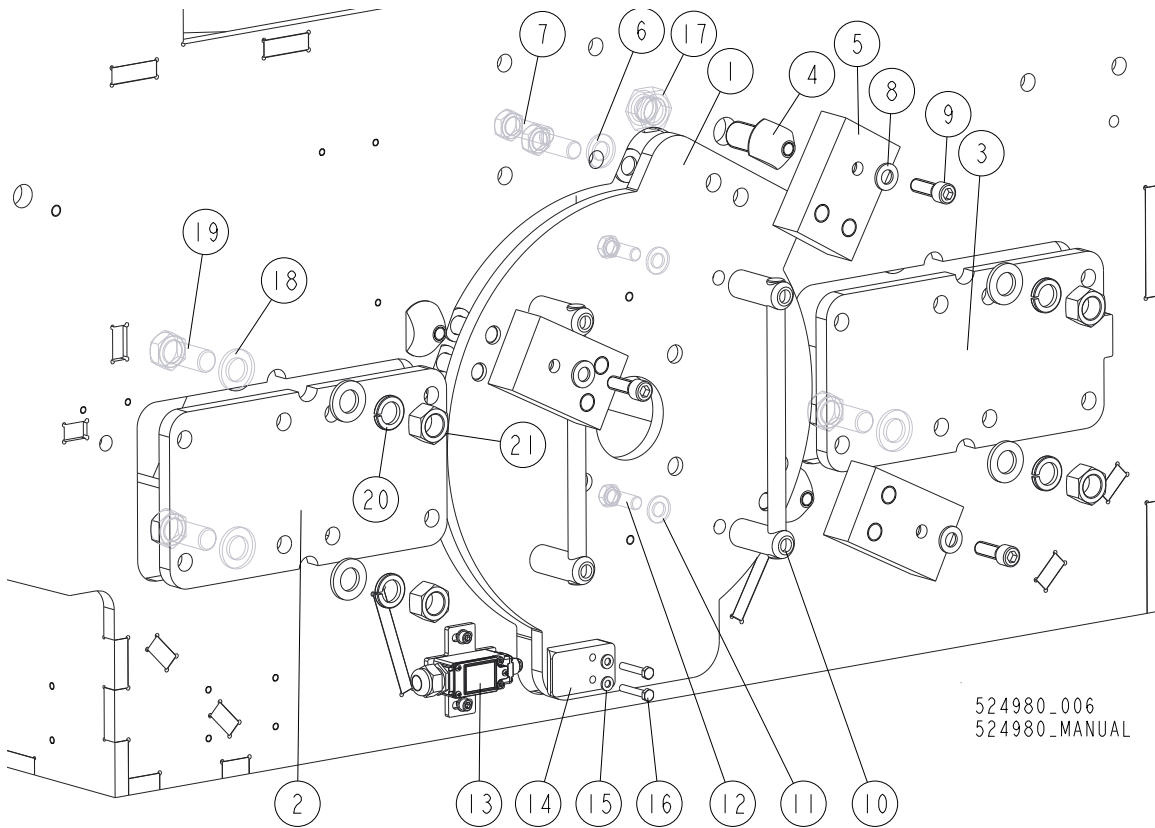
3.19 Seal Assembly

526111_001
526111_MANUAL



REF.	DESCRIPTION (* indicates parts available in assemblies only)	PART NO.	QTY	
-	SEAL ASSEMBLY	526111	1	
1	FLAT PLATE	526108-1	2	
2	SEAL 2	526110	2	
3	SEAL 1	526109	2	
4	WASHER, 6.4 FLAT ZINC	F81053-1	12	
5	BOLT, M6X16-8.8 HEX HEAD FULL THREAD ZINC	F81001-15	12	

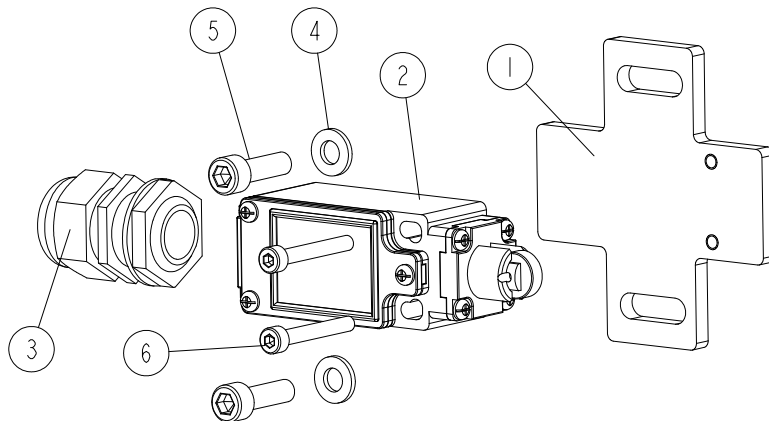
3.20 Covers



REF.	DESCRIPTION (* indicates parts available in assemblies only)	PART NO.	QTY
1	FLAT PLATE 408X464X15	523967-1	1
2	FLAT PLATE 310X160X15	523968-1	1
3	FLAT PLATE 320X160X15	523969-1	1
4	DOOR CONE MALE	524004-1	3
5	DOOR CONE FEMALE	524005-1	3
6	WASHER, 17 SPLIT LOCK ZINC	F81058-1	6
7	BOLT, M16X50-8.8 HEX HEAD FULLTHREAD ZINC	F81006-38	6
8	WASHER, 13 FLAT ZINC	F81056-1	3
9	SCREW, M12X35-8.8 ISO 4762 HEX SOCKET HEAD CAP ZINC	F81004-99	3
-	COVER HANDLE - COMPLETE	522569	2
10	HANDLE WELDMENT	522568-1	1
11	WASHER, 13 FLAT ZINC	F81056-1	2
12	BOLT, M12X35 8.8 HEX HEAD FULL THREAD ZINC	F81004-24	2
13	LIMIT SWITCH ASSEMBLY See Section 3.21	525611	1
14	FLAT PLATE	525612-1	1
15	WASHER, 6.4 FLAT ZINC	F81053-1	2
16	BOLT, M6X35-8.8 HEX HEAD ZINC	F81001-71	2
17	NUT, M24X2-8-B HEX ZINC	F81039-11	3
18	WASHER, 21 FLAT ZINC	F81059-2	8
19	BOLT, M20X50-8.8-B HEX HEAD FULL THREAD ZINC	F81007-17	4
20	WASHER, 20.5 SPLIT LOCK ZINC	F81059-1	4
21	NUT, M20-8 HEX ZINC	F81037-1	4

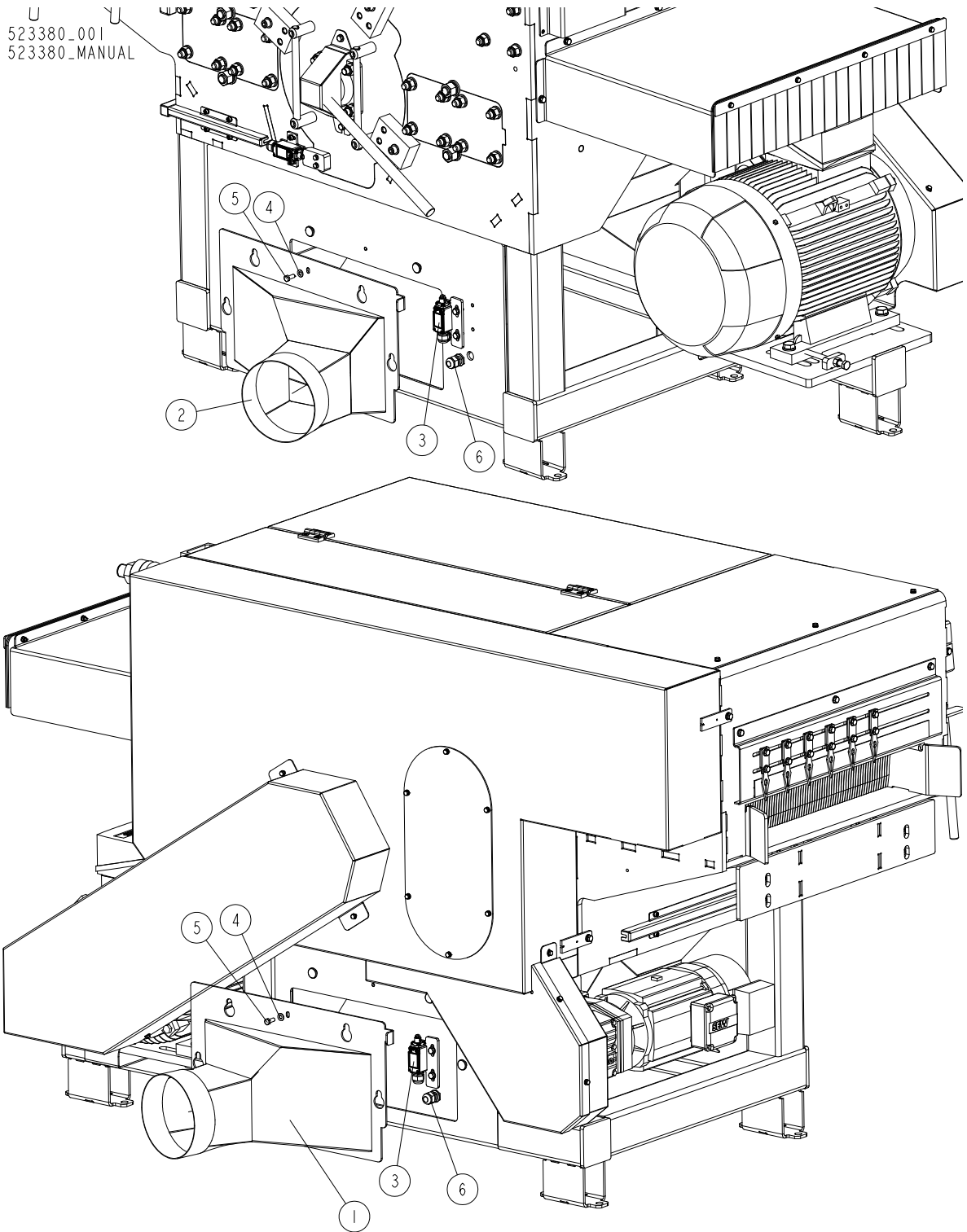
3.21 Limit Switch

525611_001
525611_MANUAL



REF.	DESCRIPTION (* indicates parts available in assemblies only)	PART NO.	QTY
-	LIMIT SWITCH ASSEMBLY	525611	1
1	FLAT PLATE	525450-1	1
2	SWITCH, FA134 Z11 SAFETY	100910	1
3	GLAND, DP 20 HML. CABLE	F81096-41	1
4	WASHER, 6.4 FLAT ZINC	F81053-1	2
5	SCREW, M6X20 8.8 HEX SOCKET HEAD CAP ZINC	F81001-22	2
6	SCREW, M4X30-8.8 DIN 912 HEX SOCKET HEAD CAP ZINC	F81000-85	2

3.22 Sawdust Chute



REF	DESCRIPTION (* indicates parts available in assemblies only)	PART #	QTY
1	SAWDUST CHUTE, LEFT COMPLETE	526842-1	1
2	SAWDUST CHUTE, RIGHT COMPLETE	526845-1	1
3	LIMIT SWITCH ASSEMBLY See Section 3.23	531740	2
4	WASHER, 8.4 FLAT ZINC	F81054-1	2
5	BOLT, M8X20 8.8 HEX HEAD FULL THREAD ZINC	F81002-4	2

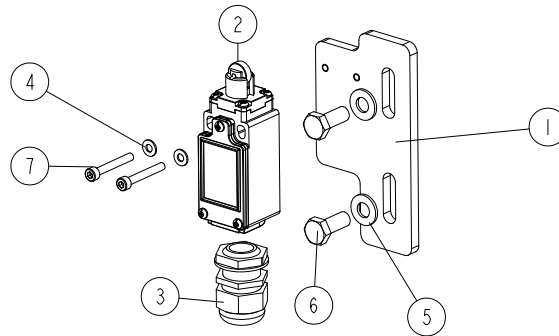
3 GUARDS & COVERS

Sawdust Chute

REF	DESCRIPTION (* indicates parts available in assemblies only)	PART #	QTY	
6	GLAND, DP 20 HML CABLE	F81096-41	2	

3.23 Limit Switch Assembly

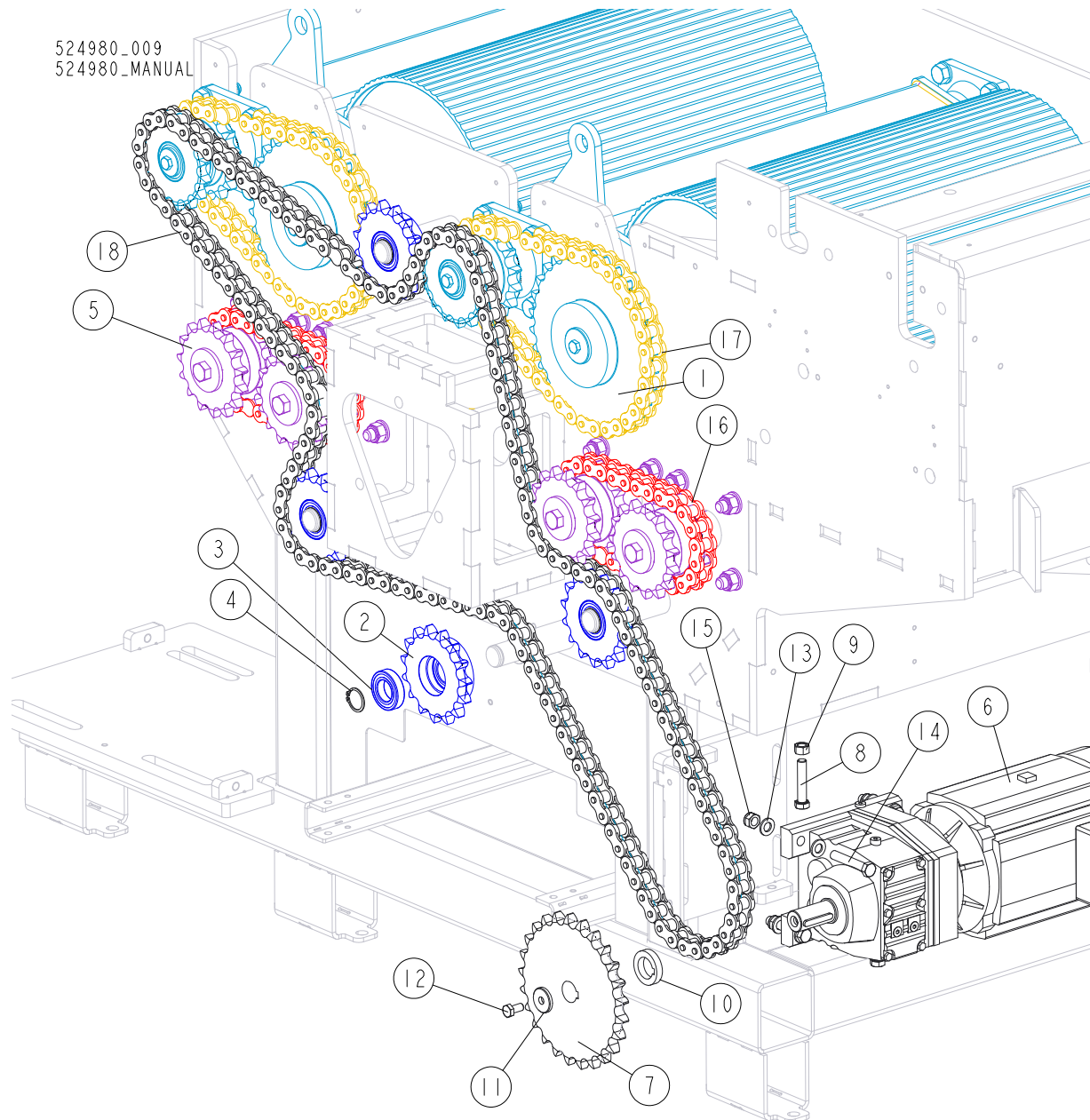
531740_001
 531740_MANUAL



REF	DESCRIPTION (* indicates parts available in assemblies only)	PART #	QTY
-	LIMIT SWITCH ASSEMBLY	531740	1
1	PLATE, LIMIT SWITCH	531739-1	1
2	SWITCH, GLCB01C LIMIT	100910	1
3	GLAND, DP 20 HML CABLE	F81096-41	1
4	WASHER, 4.3 FLAT ZINC	F81051-2	2
5	WASHER, 8.4 FLAT ZINC	F81054-1	2
6	BOLT, M8X20 8.8 HEX HEAD FULL THREAD ZINC	F81002-4	2
7	SCREW, M4X30-8.8 DIN 912 HEX SOCKET HEAD CAP ZINC	F81000-85	2

SECTION 4 ROLLER DRIVE ASSEMBLY

4.1 Feed Rollers w/Drive



REF.	DESCRIPTION (* indicates parts available in assemblies only)	PART NO.	QTY
1	TOP HOLD-DOWN ROLLER ASSEMBLY See Section 4.2	524019	2
-	CHAIN ROUTING IDLER SPROCKET	524029	4
2	SPROCKET, 16B1-1-15-50-B	524028-1	1
3	BEARING, 6006 2RSR	096191	2
4	RING, 30Z OUTSIDE RETAINING	F81090-23	4
5	BOTTOM ROLLER ASSEMBLY See Section 4.5	524940	4
6	GEAR MOTOR SEW R47 DRN100L4/V I=10.15 N2=143,M5	525351	1
7	SPROCKET, 16B1-25-25-B	525418-1	1
8	BOLT, M12X60-8.8 HEX HEAD FULL THREAD ZINC	F81004-51	2

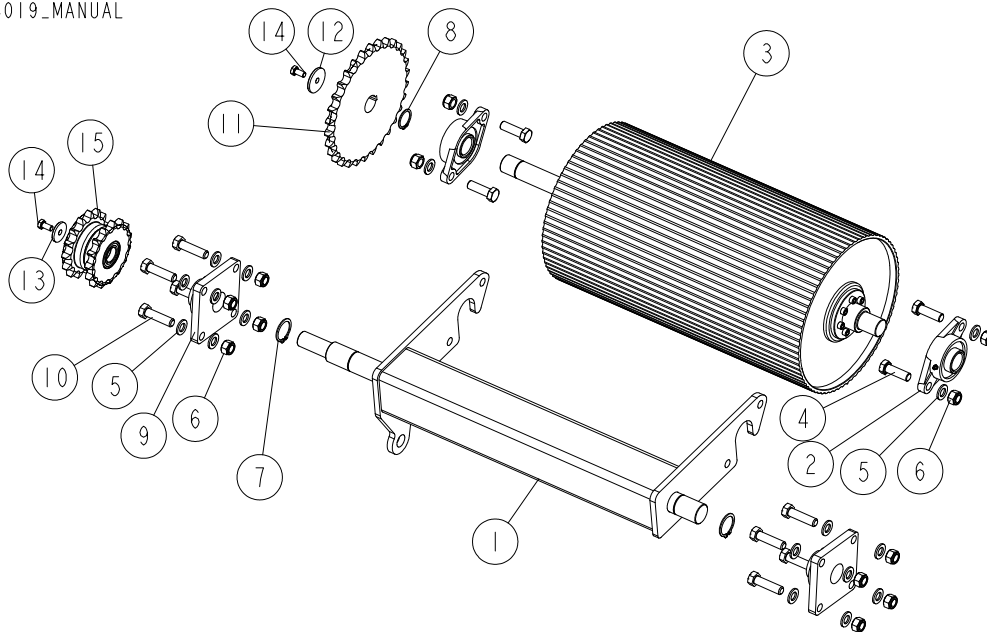
ROLLER DRIVE ASSEMBLY

Feed Rollers w/Drive



REF.	DESCRIPTION (* indicates parts available in assemblies only)	PART NO.	QTY	
9	NUT, M12-8-B HEX ZINC	F81034-1	2	
10	BUSHING, 30/48-10	525622-1	1	
11	WASHER, 35X10.5-5	525395-1	1	
12	BOLT, M10X20-8.8 HEX HEAD FULL THREAD ZINC	F81003-1	1	
13	WASHER, 13 FLAT ZINC	F81056-1	8	
14	BOLT, M12X70-8.8 HEX HEAD ZINC	F81004-39	4	
15	NUT, M12 8 HEX NYLON ZINC LOCK	F81034-2	4	
16	CHAIN, 16B-1	525628	2	
17	CHAIN, 16B1	525630	2	
18	CHAIN, 16B1	525629	1	

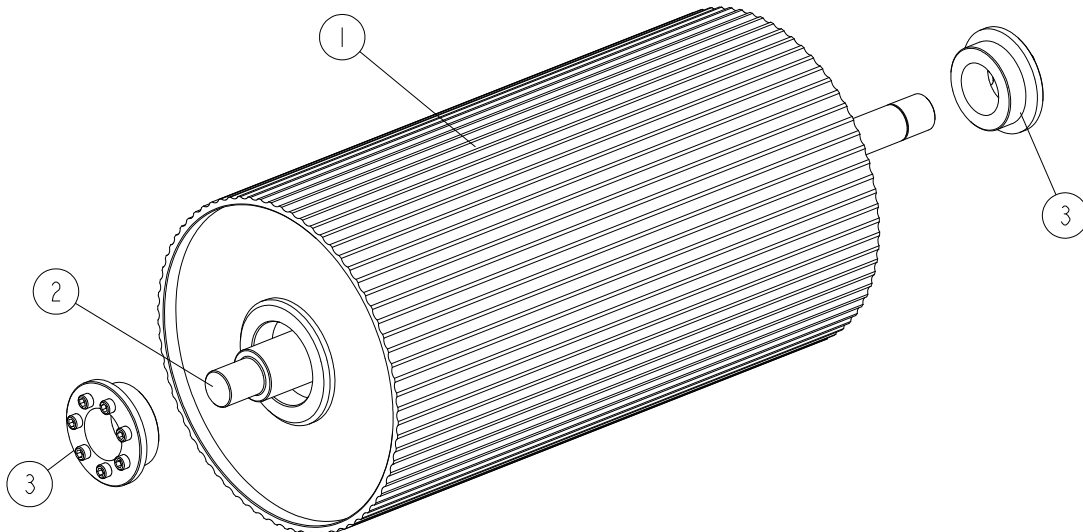
4.2 Hold-Down Roller Assembly

524019_001
524019_MANUAL

REF.	DESCRIPTION (* indicates parts available in assemblies only)	PART NO.	QTY	
-	HOLD-DOWN ROLLER ASSEMBLY	524019	1	
1	HOLD-DOWN ROLLER BRACKET	524017-1	1	
2	BEARING, UCFL 207 W/HOUSING	524021	2	
3	TOP HOLD-DOWN ROLLER See Section 4.3	524014	1	
4	BOLT, M16X50-8.8 HEX HEAD FULL THREAD ZINC	F81006-38	4	
5	WASHER, 17 SPLIT LOCK ZINC	F81058-1	20	
6	NUT, M16-8 HEX NYLON ZINC LOCK	F81036-2	12	
7	RING, Z40 OUTSIDE RETAINING	F81090-33	2	
8	RING, Z35 OUTSIDE RETAINING	F81090-36	1	
9	BEARING, UCF208 W/HOUSING	512725	2	
10	BOLT, M16X60-8.8 HEX HEAD FULL THREAD ZINC	F81006-12	8	
11	SPROCKET, 16B1-1-30-35-B	524022-1	1	
12	WASHER, 50X10.5-5	524023-1	1	
13	WASHER, 40X10.5-5	524024-1	1	
14	BOLT, M10X20-8.8 HEX HEAD FULL THREAD ZINC	F81003-1	2	
15	IDLER SPROCKET ASSEMBLY See Section 4.4	524027	1	

4.3 Top Hold-Down Roller

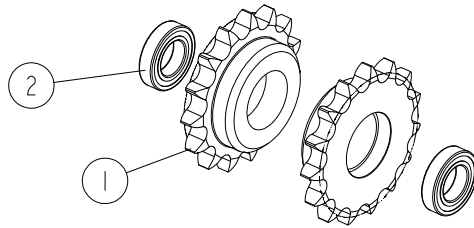
524014_001
 524014_MANUAL



REF.	DESCRIPTION (* indicates parts available in assemblies only)	PART NO.	QTY	
-	TOP HOLD-DOWN ROLLER ASSEMBLY	524014	1	
1	ROLLER ASSEMBLY - WELDED ELEMENT	524011-1	1	
2	TOP ROLLER SHAFT	524010	1	
3	SELF-CENTRING CLAMPING SET BK 16 50X80 KOD 528036 ULMER	524013	2	

4.4 Idler Sprocket

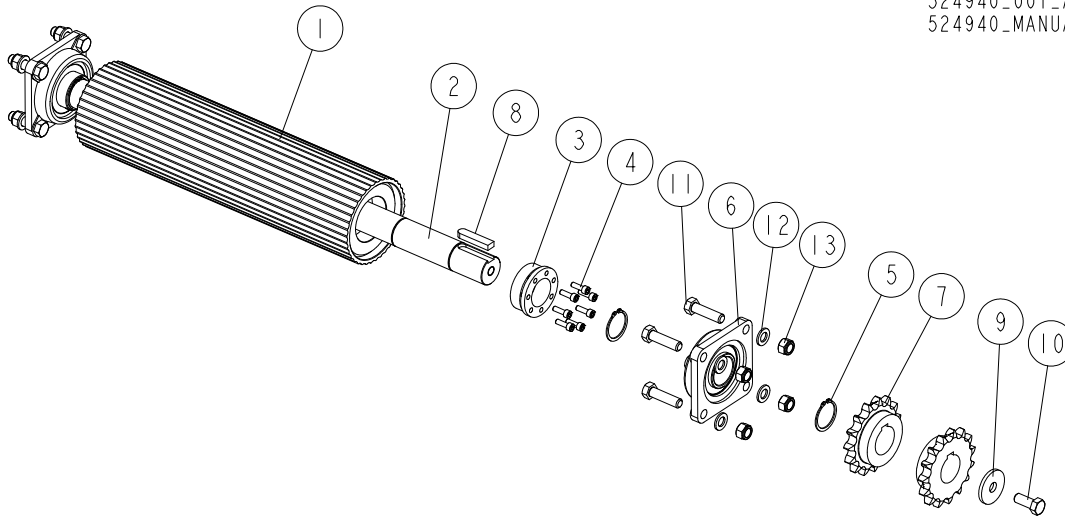
524027_001
524027_MANUAL



REF.	DESCRIPTION (* indicates parts available in assemblies only)	PART NO.	QTY	
-	IDLER SPROCKET ASSEMBLY	524027	1	
1	IDLER SPROCKET WELDMENT	524026-1	1	
2	BEARING 6006 2RSR	096191	2	

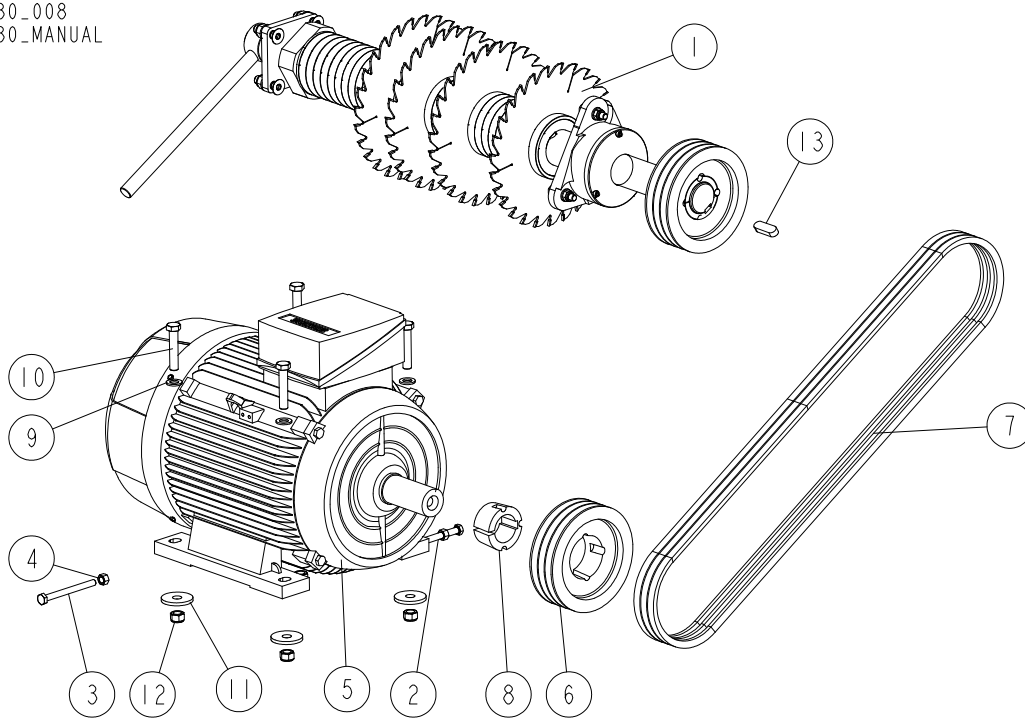
4.5 Bottom Roller

524940_001_A
524940_MANUAL



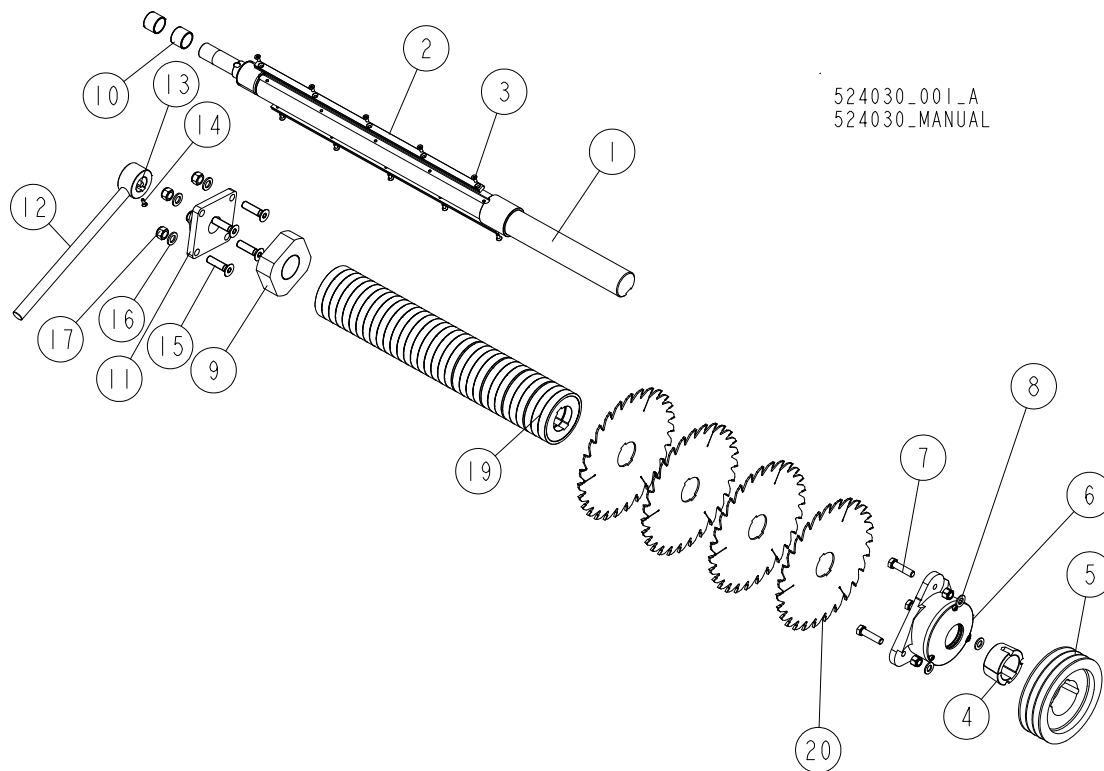
REF.	DESCRIPTION (* indicates parts available in assemblies only)	PART NO.	QTY
-	BOTTOM ROLLER ASSEMBLY	524940	1
1	BOTTOM ROLLER - WELDED ELEMENT	524937	1
2	BOTTOM ROLLER SHAFT	524938	1
3	BUSHING, BK15 50X80 MOUNTING (ULMER F07045)	523091	2
4	SCREW, M8X25 8.8 HEX SOCKET HEAD CAP ZINC	F81002-21	7
5	RING, Z50 OUTSIDE RETAINING	F81090-28	3
6	BEARING, UCF 210 W/HOUSING, FAG	539152	2
7	SPROCKET, 16B1-15T-50 B HUB	524939-1	2
8	KEY, AB 16X10X67	524941	1
9	WASHER, 17.5/60-6 ZINC-PLATED	098012-1	1
10	BOLT, M16X40-8.8 HEX HEAD FULL THREAD ZINC	F81006-13	1
11	BOLT, M16X60-8.8 HEX HEAD FULL THREAD ZINC	F81006-12	8
12	WASHER, 17 SPLIT LOCK ZINC	F81058-1	8
13	NUT, M16-8 HEX NYLON ZINC LOCK	F81036-2	8

4.6 Blade Drive

524980_008
524980_MANUAL

REF.	DESCRIPTION (* indicates parts available in assemblies only)	PART NO.	QTY
1	ARBOR ASSEMBLY See Section 4.7	524030	1
2	BOLT, M12X100 8.8 HEX HEAD FULL THREAD ZINC	F81004-45	1
3	BOLT, M12X130-8.8 HEX HEAD FULL THREAD ZINC	F81004-55	1
4	NUT, M12-8-B HEX ZINC	F81034-1	2
5	ELECTRIC MOTOR SIMENS 30 KW 1LE15032AA434AA4	521702	1
6	PULLEY, 3SPBX200X16-65 TAPER LOCK 2517 /F01815 ULMER/	524943	1
7	V-BELT, SPB 2280	525419	3
8	TAPER BUSH 2517-55 /T31130 ULMER /	525616	1
9	WASHER, 17 SPLIT LOCK ZINC	F81058-1	4
10	BOLT, M16X80-8.8 HEX HEAD ZINC	F81006-41	4
11	WASHER, 17.5/60-6 ZINC-PLATED	098012-1	4
12	NUT, M16-8 HEX NYLON ZINC LOCK	F81036-2	4
13	KEY, A18X11X56 PARALLEL	515642	1

4.7 Arbor Assembly

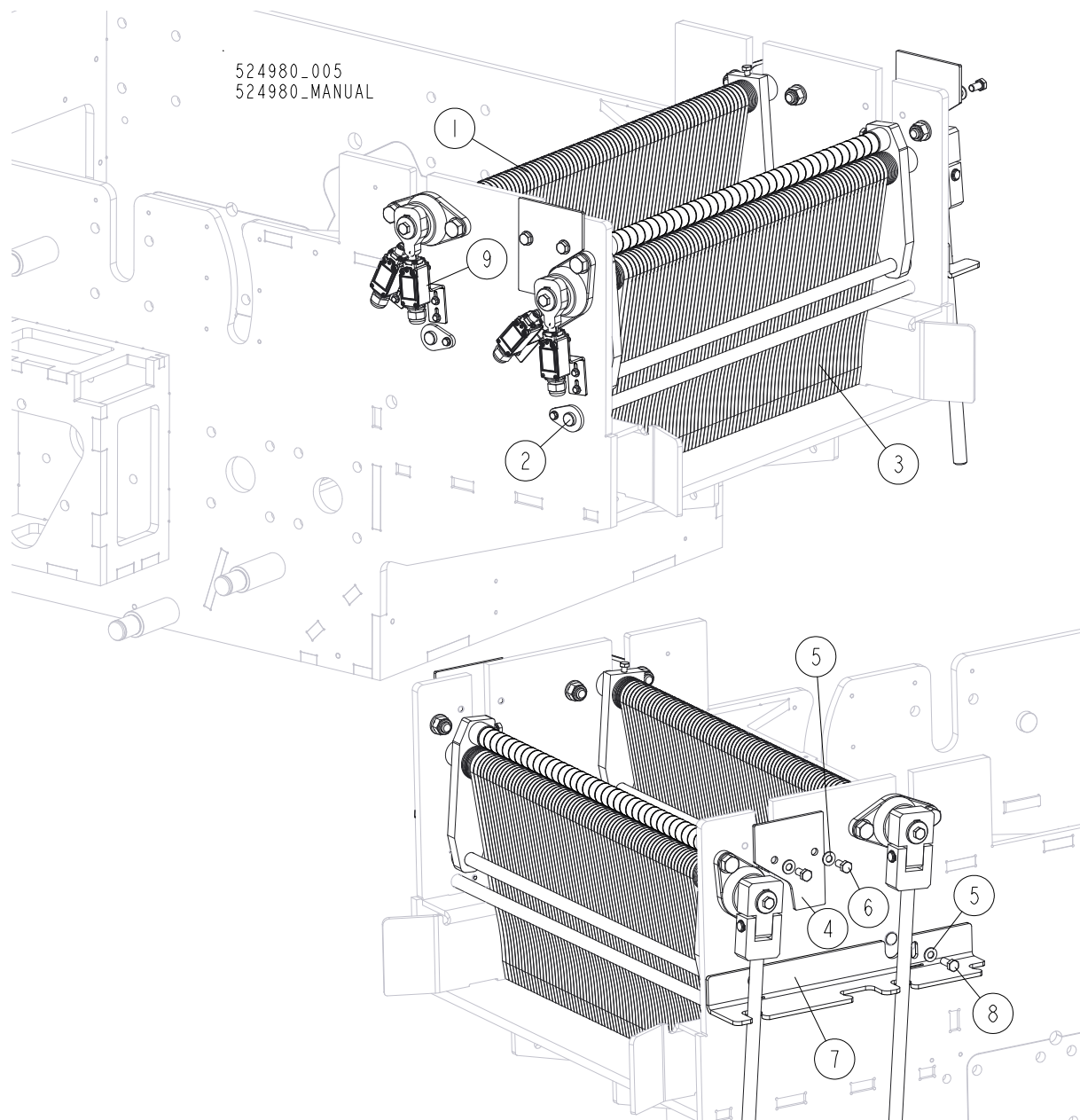


524030_001_A
524030_MANUAL

LP.	OPIS (* wskazuje części dostępne jedynie w zespołach)	Nr części	Ilość
-	Arbor Assembly	524030	1
1	ARBOR	524913-1	1
2	ARBOR KEY	524946	2
3	SCREW, M6X16-10.9 DIN7991 FLAT SOCKET HEAD CAP ZINC	F81001-55	10
4	TAPER LOCK BUSH 2517-60 MM; T31131 ULMER	524944	1
5	PULLEY 3SPBX200X16-65 TAPER LOCK 2517 /F01815 ULMER/	524943	1
6	FLANGED HOUSING FNL513B/22213EAKW33C3	524947	1
7	BOLT M14X55-8.8-FE/ZN5 PN-M/82105.	F81005-2	3
8	WASHER, FLAT, M14 BOLT, ZINC	F81057-2	3
9	ARBOR NUT	524912-1	1
10	NEEDLE ROLLER BEARING COMPONENT IR 35X40X30	524948	2
11	BEARING, UCF208 W/HOUSING	512725	1
-	ARBOR CRANK HANDLE - ASSEMBLY	524915	1
12	ARBOR CRANK HANDLE ASSEMBLY- WELDET	524914-1	1
13	CRANK HANDLE KEY	524918	1
14	WKRET M6X20-5.8-B-FE/ZN5 PN-85/M-82207.	F81001-31	1
15	HEXAGON SOCKET COUNTERSUNK HEAD SCREW M16X60-8.8-FE/ZN5 DIN 7991, BN1422.	F81006-73	4
16	WASHER, 17 FLAT ZINC	F81058-1	4
17	NUT, M16,HEX, NYLON ZINC LOCK	F81036-2	4
18	NUT M14-FE/ZN5 PN-M-82175	F81035-2	3
19	KIT, SPACERS EG800	533970	1
20	CIRCULAR SAW BLADE TMA 350.022.60/5.0/3.5/ELE640	011365	4

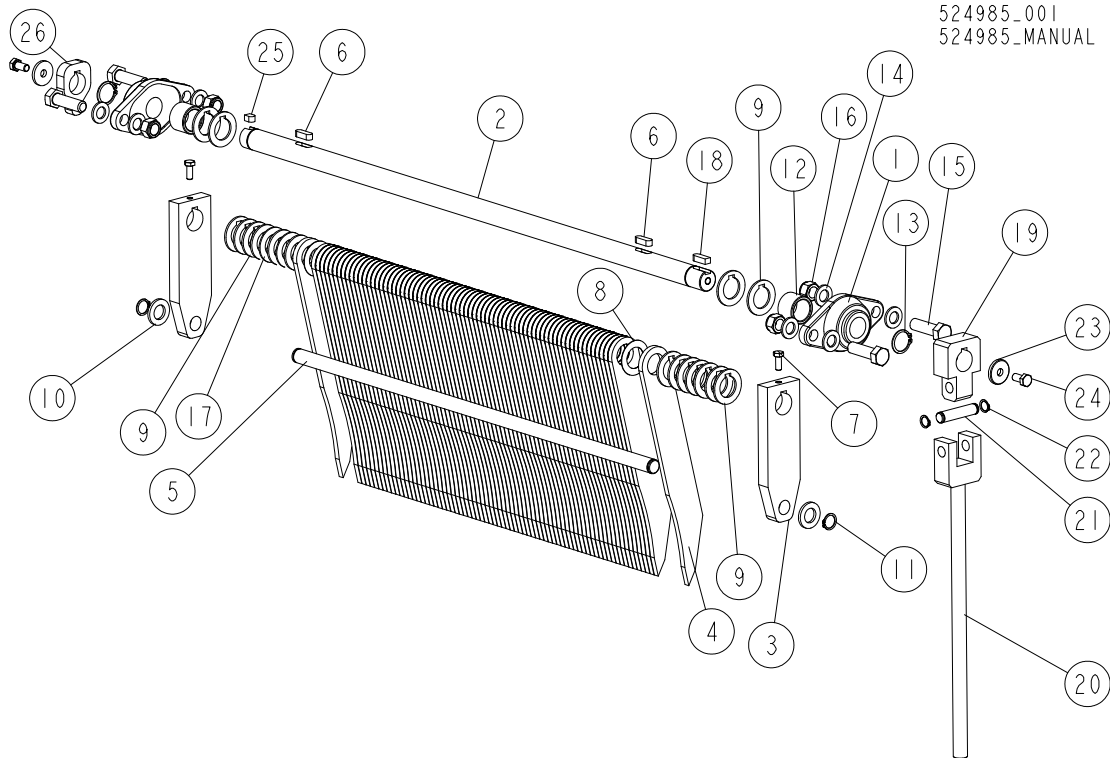
SECTION 5 ANTI-KICKBACK SYSTEM

5.1 Anti-Kickback System



REF.	DESCRIPTION (* indicates parts available in assemblies only)	PART NO.	QTY
1	ANTI-KICKBACK 1 ASSEMBLY See Section 5.2	524985	1
2	BUMPER ROD ASSEMBLY See Section 5.3	524989	2
3	ANTI KICKBACK 2 ASSEMBLY See Section 5.4	525372	1
4	FLAT PLATE 120X145X5	525374-1	2
5	WASHER, 10.5 FLAT ZINC	F81055-1	6
6	BOLT, M10X20-8.8 HEX HEAD FULL THREAD ZINC	F81003-1	4
7	BENT PLATE	525397-1	1
8	BOLT, M10X25 8.8 HEX HEAD FULL THREAD ZINC	F81003-11	2
9	SAFETY SWITCH ASSEMBLY See Section 5.5	522577	4

5.2 Anti-Kickback System 1



REF.	DESCRIPTION (* indicates parts available in assemblies only)	PART NO.	QTY
-	ANTI-KICKBACK ASSEMBLY (1)	524985	1
1	BEARING, UCFL 206 (CX) BALL	090851	2
2	SHAFT, 30X861.5	524981-1	1
3	FLAT PLATE 60X200-20	524984-1	2
4	ANTI-KICKBACK FINGER	524967-1	73
5	PIN, 20X746	524986-1	1
6	KEY, A10X8X30 PARALLEL	507012	2
7	BOLT, M8X20-8.8 HEX HEAD FULL THREAD ZINC	F81002-1	2
8	FLAT PLATE 50X50X0.7	524990-1	72
9	FLAT PLATE 50X50X3	524991	17
10	WASHER, 21 FLAT ZINC	F81059-2	2
11	RING, Z 20 OUTSIDE RETAINING	F81090-27	2
12	BUSHING, 30.5/40-29	525371-1	2
13	RING, 30Z OUTSIDE RETAINING	F81090-23	2
14	WASHER, 17 SPLIT LOCK ZINC	F81058-1	8
15	BOLT, M16X55-8.8 HEX HEAD FULL THREAD ZINC	F81006-61	4
16	NUT, M16-8 HEX NYLON ZINC LOCK	F81036-2	4
17	FLAT PLATE 50X50X2	525370	2
18	KEY, AB 10X8X28 PARALLEL	525391	1
-	ANTI-KICKBACK CRANK	525389	1
19	FLAT PLATE 90X60X30	525390-1	1
20	CRANK HANDLE WELDMENT	525393-1	1
21	PIN, 15X68	525394-1	1

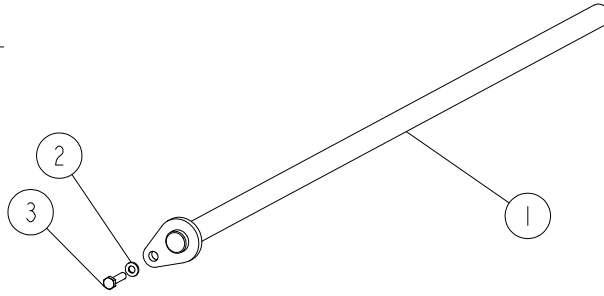
5 ANTI-KICKBACK SYSTEM

Anti-Kickback System 1

REF.	DESCRIPTION (* indicates parts available in assemblies only)	PART NO.	QTY	
22	RING, Z15 OUTSIDE RETAINING	F81090-2	2	
23	WASHER, 35X10.5-5	525395-1	2	
24	BOLT, M10X20-8.8 HEX HEAD FULL THREAD ZINC	F81003-1	2	
25	KEY, AB 10X8X14 PARALLEL	525398	1	
26	FLAT PLATE, 50X75X15	525399-1	1	

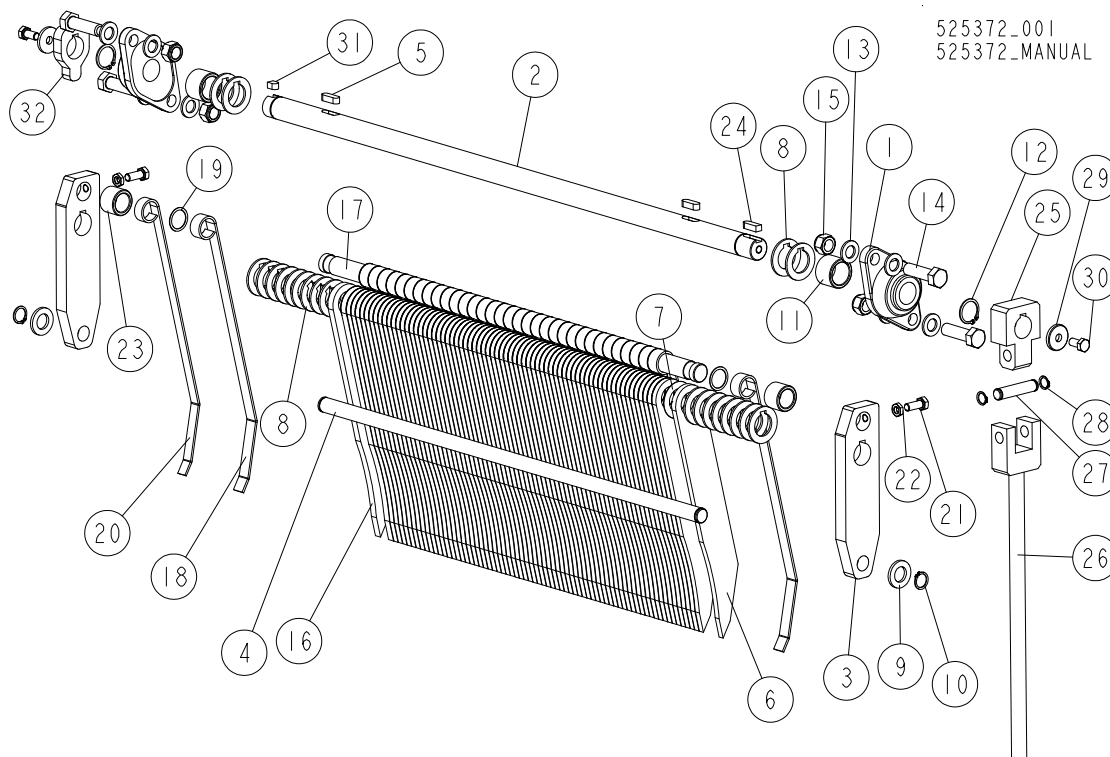
5.3 Bumper Rod

524989_001
 524989_MANUAL



REF.	DESCRIPTION (* indicates parts available in assemblies only)	PART NO.	QTY	
-	BUMPER ROD ASSEMBLY	524989	1	
1	BUMPER ROD	524988-1	1	
2	WASHER, 6.4 FLAT ZINC	F81053-1	1	
3	BOLT, M6X25-8.8 HEX HEAD FULL THREAD ZINC	F81001-3	1	

5.4 Anti-Kickback System (2)

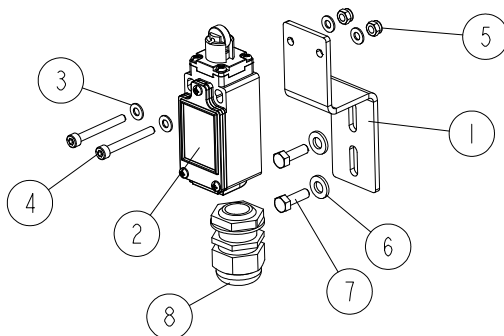


REF.	DESCRIPTION (* indicates parts available in assemblies only)	PART NO.	QTY
-	ANTI-KICKBACK ASSEMBLY (2)	525372	1
1	BEARING, UCFL 206 (CX) BALL	090851	2
2	SHAFT, 30X861.5	524981-1	1
3	FLAT PLATE	525379-1	2
4	PIN, 20X746	524986-1	1
5	KEY, A10X8X30 PARALLEL	507012	2
6	ANTI-KICKBACK FINGER	524967-1	70
7	FLAT PLATE 50X50X0.7	524990-1	71
8	FLAT PLATE 50X50X3	524991	21
9	WASHER, 21 FLAT ZINC	F81059-2	2
10	RING, Z 20 OUTSIDE RETAINING	F81090-27	2
11	BUSHING, 30.5/40-29	525371-1	2
12	RING, 30Z OUTSIDE RETAINING	F81090-23	2
13	WASHER, 17 SPLIT LOCK ZINC	F81058-1	8
14	BOLT, M16X55-8.8 HEX HEAD FULL THREAD ZINC	F81006-61	4
15	NUT, M16-8 HEX NYLON ZINC LOCK	F81036-2	4
16	FLAT PLATE 364X50X10	525373-1	2
17	ANTI-SPLINTER SHAFT	525376-1	1
18	BENT PLATE	525381-1	35
19	FLAT PLATE 50X50X0.7	525382-1	35
20	BENT PLATE	525383-1	1
21	BOLT, M10X25 8.8 HEX HEAD FULL THREAD ZINC	F81003-11	2
22	NUT, M10-04-A THIN ZINC	F81033-6	2

REF.	DESCRIPTION (* indicates parts available in assemblies only)	PART NO.	QTY	
23	BUSHING, 25.2/35-26.5	525384-1	2	
24	KEY, AB 10X8X28 PARALLEL	525391	1	
-	ANTI-KICKBACK CRANK	525389	1	
25	FLAT PLATE 90X60X30	525390-1	1	
26	CRANK HANDLE WELDING ELEMENT	525393-1	1	
27	PIN 15X68	525394-1	1	
28	RING, Z15 OUTSIDE RETAINING	F81090-2	2	
29	WASHER, 35X10.5-5	525395-1	2	
30	BOLT, M10X20-8.8 HEX HEAD FULL THREAD ZINC	F81003-1	2	
31	KEY, AB 10X8X14 PARALLEL	525398	1	
32	FLAT PLATE 50X75X15	525399-1	1	

5.5 Safety Switch Assembly

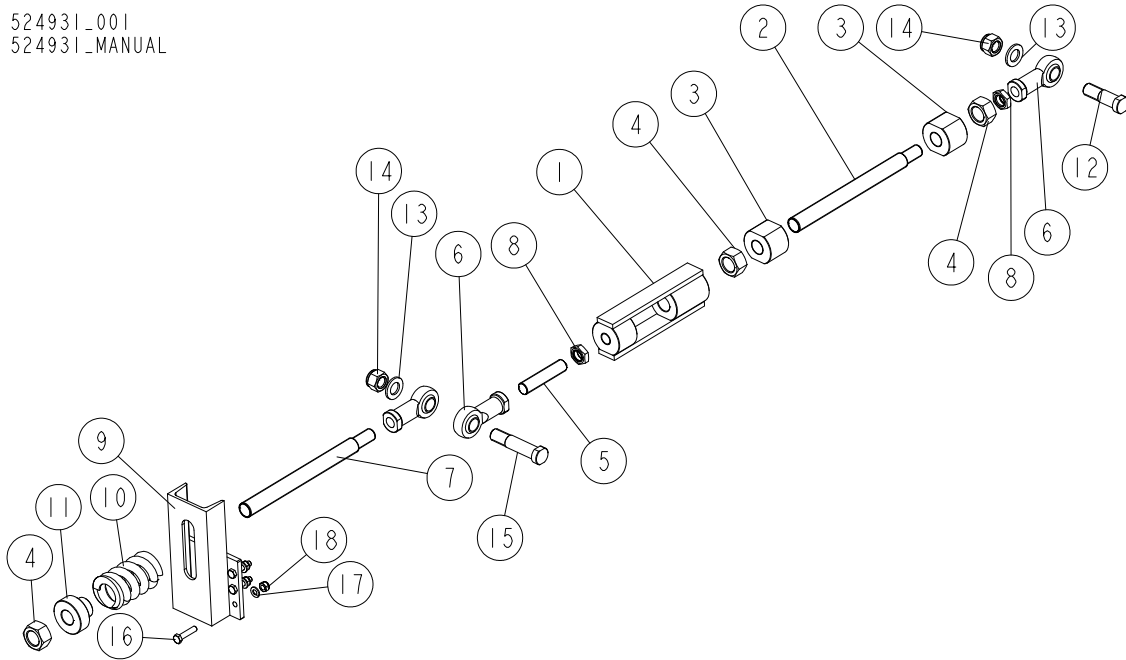
522577_001
 522577_MANUAL



REF.	DESCRIPTION (* indicates parts available in assemblies only)	PART NO.	QTY
-	SAFETY SWITCH ASSEMBLY	522577	1
1	BRACKET, SAFETY SWITCH	522576-1	1
2	SWITCH, FA134 Z11 SAFETY	100910	1
3	WASHER, 4.3 FLAT ZINC	F81051-2	4
4	SCREW, M4X35 8.8 HEX SOCKET HEAD CAP ZINC	F81011-34	2
5	NUT, M4-8 HEX NYLON ZINC LOCK	F81029-1	2
6	WASHER, 6.4 FLAT ZINC	F81053-1	2
7	BOLT, M5X16 8.8 HEX HEAD FULL THREAD ZINC	F81000-20	2
8	GLAND, DP 20 HML CABLE	F81096-41	1

5.6 Hold-Down Roller Lifter

524931_001
 524931_MANUAL



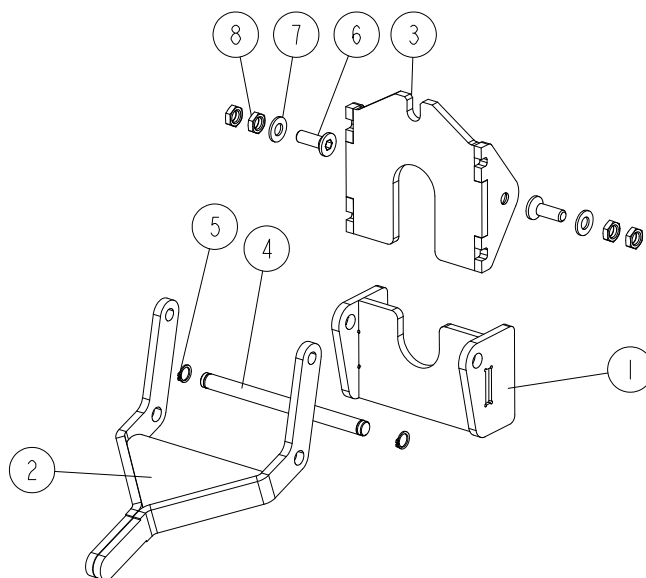
REF.	DESCRIPTION (* indicates parts available in assemblies only)	PART NO.	QTY
-	HOLD-DOWN ROLLER LIFTER ASSEMBLY	524931	1
1	HOLD-DOWN LIFTER COUPLER	524930-1	1
2	THREADED BAR M30/M24-345	524926-1	1
3	LOCK NUT M30	524923-1	2
4	NUT, M30 HEX ZINC	F81038-3	3
5	THREADED BAR M24	524925-1	1
6	BALL JOINT HEAD GN 648.1-25-M24-W	524932	3
7	THREADED BAR M30/M24-350	524927-1	1
8	NUT, M24X2 ZC 8 THIN	F81039-18	2
9	LIFTER BRACKET	524921-1	1
10	SPRING, CUSHION	521741	1
11	BUSHING WITH FLANGE 30/40-50 FLANGE 70-25	524928-1	1
12	PIN 25X82 FLANGE 34X12	524933-1	1
13	WASHER, 25 FLAT ZINC	F81061-3	2
14	NUT, M24-8-A HEX NYLON ZINC LOCK	F81039-8	2
15	PIN 25X113 FLANGE 34X12	524934-1	1
16	BOLT, M10X45 HEX HEAD FULL THREAD ZINC	F81003-3	6
17	WASHER, 10.5 FLAT ZINC	F81055-1	6
18	NUT, M10-8-B HEX NYLON ZINC LOCK	F81033-1	6

5 ANTI-KICKBACK SYSTEM

Hold-Down Roller Lifter Handle

5.7 Hold-Down Roller Lifter Handle

524952_001
524952_MANUAL

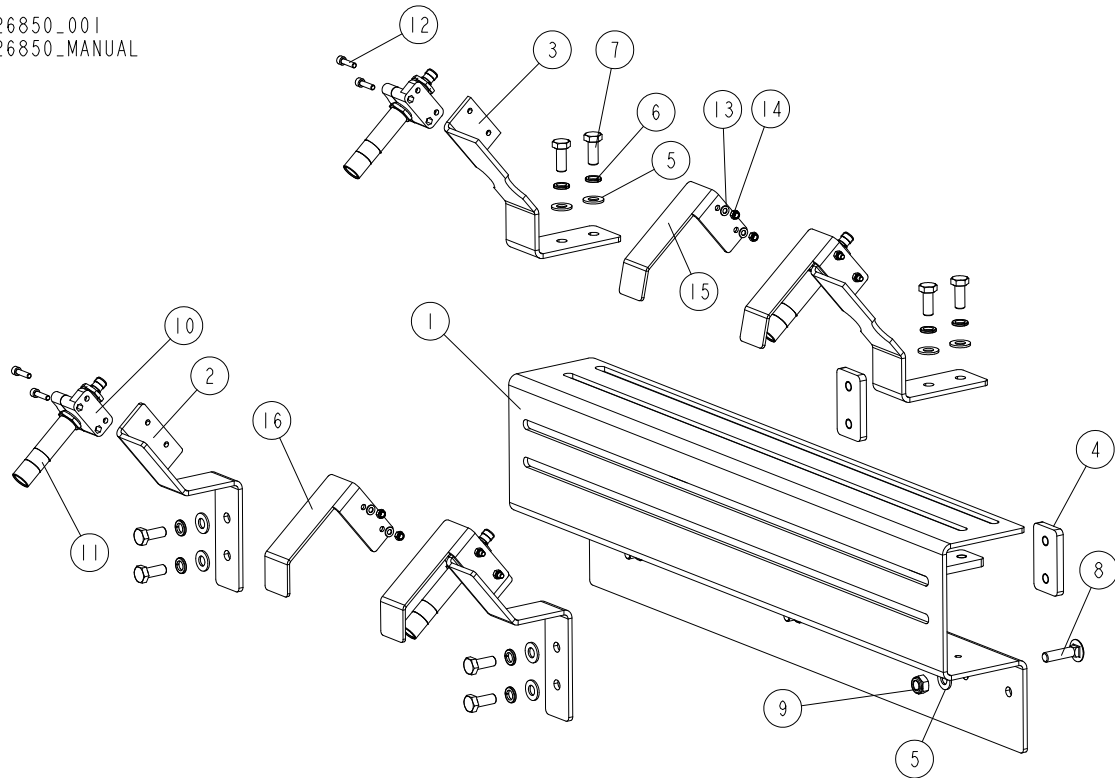


REF.	DESCRIPTION (* indicates parts available in assemblies only)	PART NO.	QTY
-	HOLD-DOWN ROLLER LIFTER HANDLE	524952	1
1	BRACKET	524956-1	1
2	HANDLE	524957-1	1
3	BRACKET	524962-1	1
4	PIN 10X135	524963-1	1
5	RING, Z 10 OUTSIDE RETAINING	F81090-13	2
6	SCREW, M8X25-8.8 FLAT SOCKET HEAD CAP ZINC	F81002-65	2
7	WASHER, 8.4 FLAT ZINC	F81054-1	2
8	NUT, M8-04-FE/ZN ISO4035 HEX THIN	F81032-8	4

SECTION 6 LASER

6.1 Laser Assembly (Option)

526850_001
526850_MANUAL



REF.	DESCRIPTION (* indicates parts available in assemblies only)	PART NO.	QTY
-	LASER ASSEMBLY	526850	1
1	PLATE, LASER MOUNTING	526848-1	1
2	BRACKET, LASER	526849-1	2
3	BRACKET, LASER	526851-1	2
4	PLATE, MOUNTING	526852-1	4
5	WASHER, 10,5 FLAT ZINC	F81055-1	11
6	WASHER, Z 10.2 SPLIT LOCK ZINC	F81055-2	8
7	BOLT, M10X25 8.8 HEX HEAD FULL THREAD ZINC	F81003-11	8
8	BOLT, Z M10X40-8.8 CARRIAGE ZINC	F81003-40	3
9	NUT, M10 Z HEX NYLON LOCK ZINC	F81033-1	3
10	BRACKET, SMB 18SF LASER	503469	4
11	LASER, Z5M18B-F-532-IG90 LINEAR GREEN	501025	4
12	SCREW, M5X20 8.8 HEX SOCKET HEAD CAP ZINC	F81000-72	8
13	WASHER, 5.3 FLAT ZINC	F81052-1	8
14	NUT, M5-8-DIN985 ZINC	F81030-2	8
15	PLATE, LASER COVER 1	531727-1	2
16	PLATE, LASER COVER 1	531728-1	2