

SINGLE HEAD HORIZONTAL BAND RESAW

PARTS MANUAL



CONTENTS

GENERAL INFORMATION	3
FRAME ASSEMBLY	4
AIR/ OIL PRESSURE ASSEMBLY	6
PRESSURE REGULATOR ASSEMBLY	7
SUPER UP/DOWN ASSEMBLY	8
MANUAL UP/DOWN ASSEMBLY	10
BLADE GUIDE ASSEMBLY, IDLE SIDE	12
BLADE GUIDE ASSEMBLY, DRIVE SIDE	14
SUB FRAME ASSEMBLY, BLADE TENSIONING	16
SUB FRAME ASSEMBLY, MANUAL BLADE TENSIONING	18
MOTOR ASSEMBLY	20
BLADE WHEEL ASSEMBLY (DRIVE SIDE)	22
BLADE WHEEL ASSEMBLY (IDLE SIDE)	24
BLADE WHEEL SCRAPER ASSEMBLY (style A)	26
BLADE WHEEL SCRAPER ASSEMBLY (style B)	27
INFEED HOLD DOWN ROLLER	28
OUTFEED HOLD DOWN ROLLER	30
FEED CONVEYOR (INFEED SECTION)	32
FEED CONVEYOR (OUTFEED SECTION)	34
COVER ASSEMBLY	36
DOOR COVER ASSEMBLY	38
CONTROL PANEL	40
ELECTRONIC PANEL 460V/60Hz	42
ELECTRONIC PANEL 230V/60Hz	45

GENERAL INFORMATION

How to Use The Parts List

- Use the index above to locate the assembly that contains the part you need.
- Go to the appropriate section and locate the part in the illustration.
- Use the number pointing to the part to locate the correct part number and description in the table
- Parts shown indented under another part are included with that part.

Example: How to order required parts:

Ref #: corresponds to the number on the illustration.

Description: A brief description of the part.

Part #: The number used by Wood-Mizer to identify parts.

Quantity: the quantity required for each specific part for the assembly.

To order, identify the part required with use of the **Ref #**. Contact your local Wood-Mizer dealer and provide them with the **Part #** and quantity you require.

Ref	DESCRIPTION	PART #	QTY
1	HR150 FRAME ASSEMBLY	116579	1
2	1mm x 40mmø, Plastic Slide	116278	2
3	3mm x 40mmø, Plastic Slide	116277	6

To Order Parts:

From Asia call our Manufacturing Facility in Taichung City, Taiwan at **+886 4 2359 3022**.

From Europe call our European Headquarters and Manufacturing Facility in Kolo, Poland at **+48-63-2626000**. From the continental U.S., call our toll-free Parts hotline at **1-800-525-8100**. Have your customer number, serial number, and part numbers ready when you call. From other international locations, contact the Wood-Mizer distributor in your area for parts.

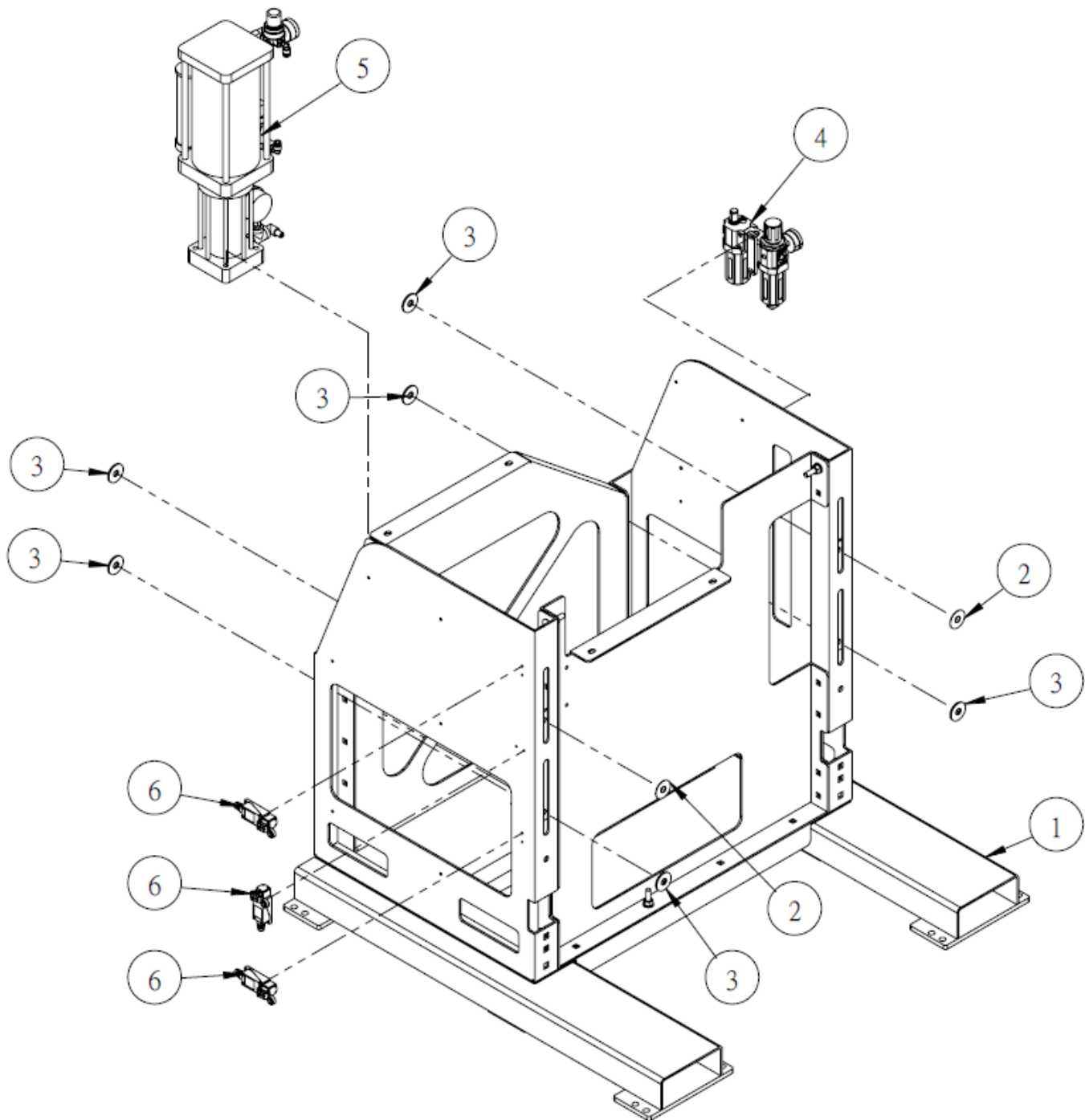
Office Hours:

Country	Monday - Friday	Saturday	Sunday
Taiwan	08:30 - 17:30	Closed	Closed
Poland	07:00 - 15:00	Closed	Closed
US	08:00 - 17:00	08:00 - 12:00	Closed



CAUTION! It is strongly recommended that only original spare parts be used.

FRAME ASSEMBLY

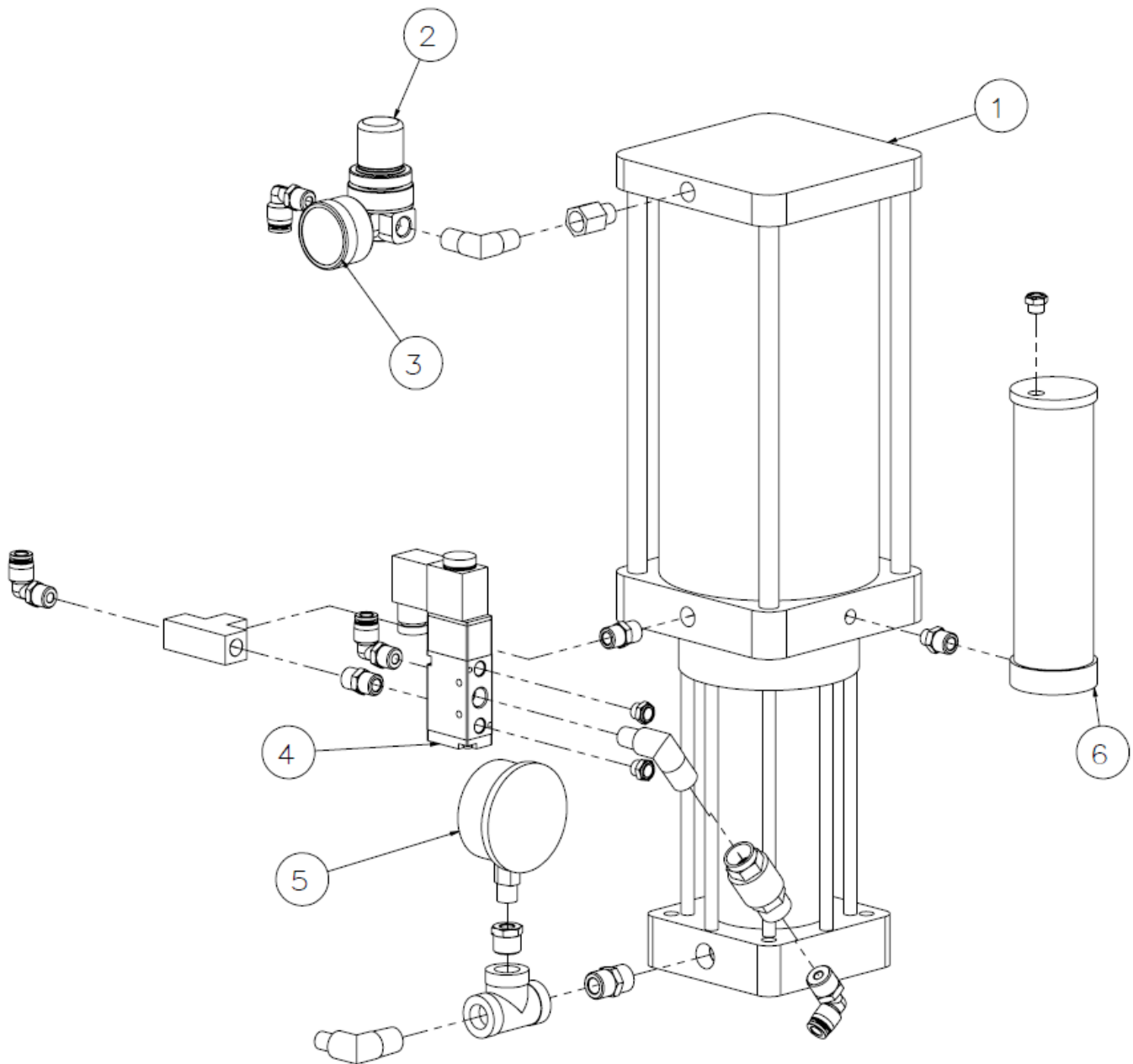


Ref	DESCRIPTION	PART #	QTY
1	HR150 FRAME ASSEMBLY	116327	1
2	1mm x 40mmø, Plastic Slide	116278	2

FRAME ASSEMBLY

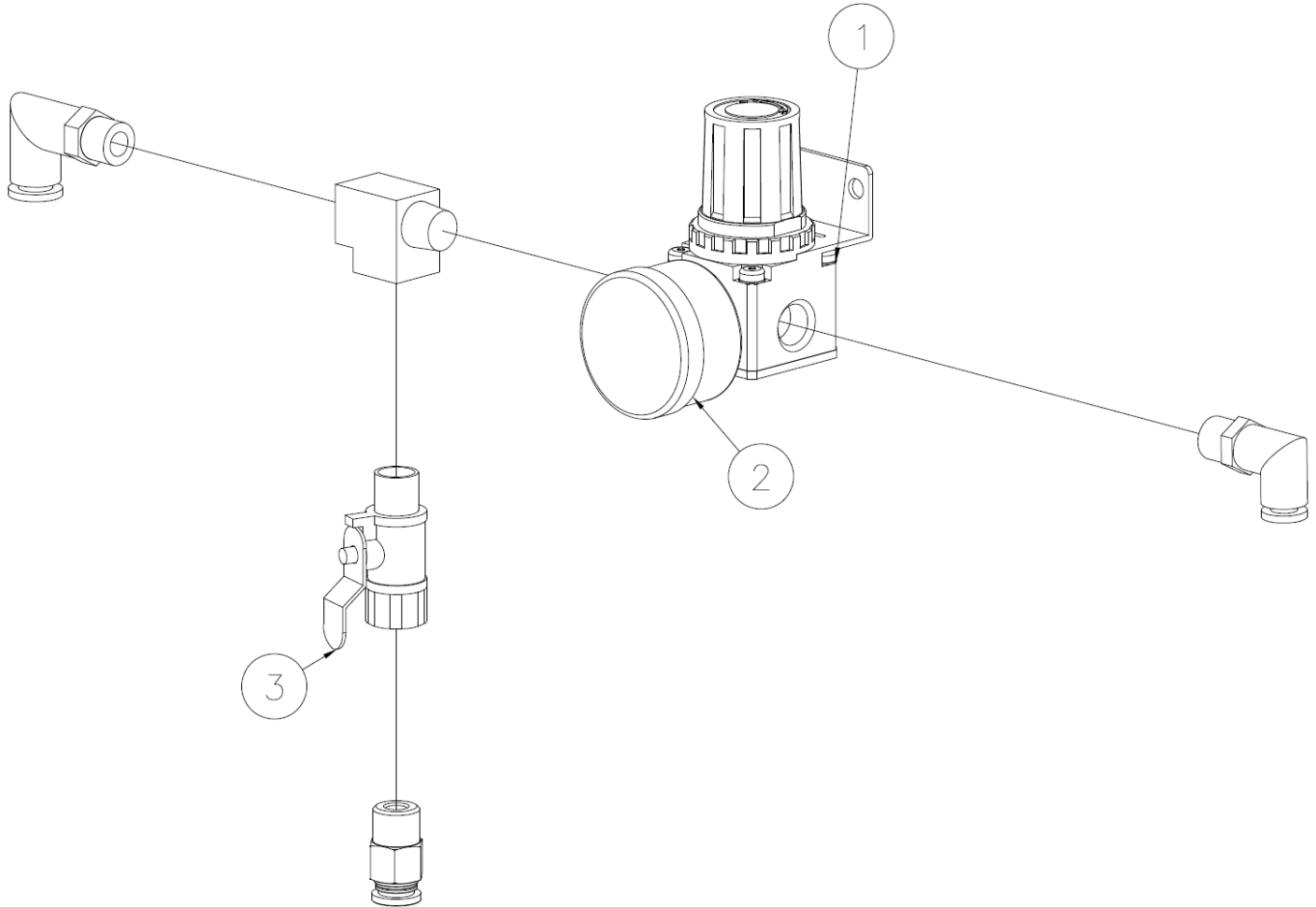
Ref	DESCRIPTION	PART #	QTY
3	3mm x 40mmø, Plastic Slide	116277	6
4	Air Filter Regulator assembly, MAL401-10A	116611	1
	Mindman, MP41P-022-3M, Digital Gauge	125033	1
5	Air/Oil pressure assembly (Complete)	116691	1
6	XCKN2118G11, Limit Switch	116567	3

AIR/ OIL PRESSURE ASSEMBLY



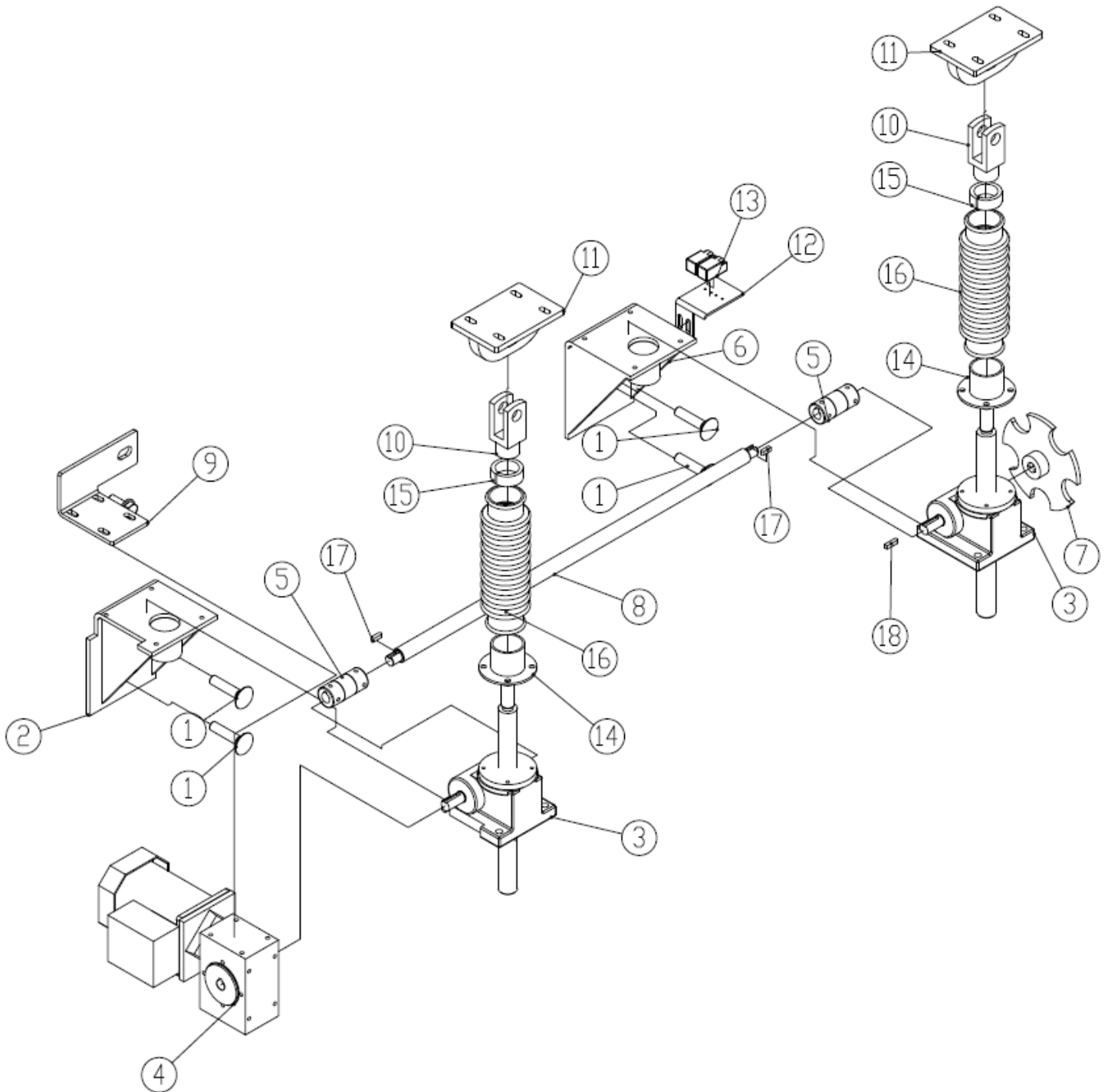
Ref	DESCRIPTION	PART #	QTY
1	Air/Oil pressure assembly (Complete)	116691	1
2	Pressure Regulator Assembly, MA R200-8A (Complete)	116587	1
3	1.5", IMPA/PSI, Pressure Gauge	116045	1
4	4V210-08, Solenoid Valve Assembly	116618	1
	EVI 7/9, 110VAC, Solenoid Valve	125005	1
5	Pressure Gauge, 150 Kg/cm	116576	1
6	Hydraulic Oil Refill Check.	116617	1

PRESSURE REGULATOR ASSEMBLY



Ref	DESCRIPTION	PART #	QTY
1	Pressure Regulator Assembly, MA R200-8A	116587	1
	Pressure Regulator, MA R200-8A Section	116069	1
2	1.5", IMPA/PSI, Pressure Gauge	116045	1
3	Pneumatic Ball Valve	116619	1

SUPER UP/ DOWN ASSEMBLY

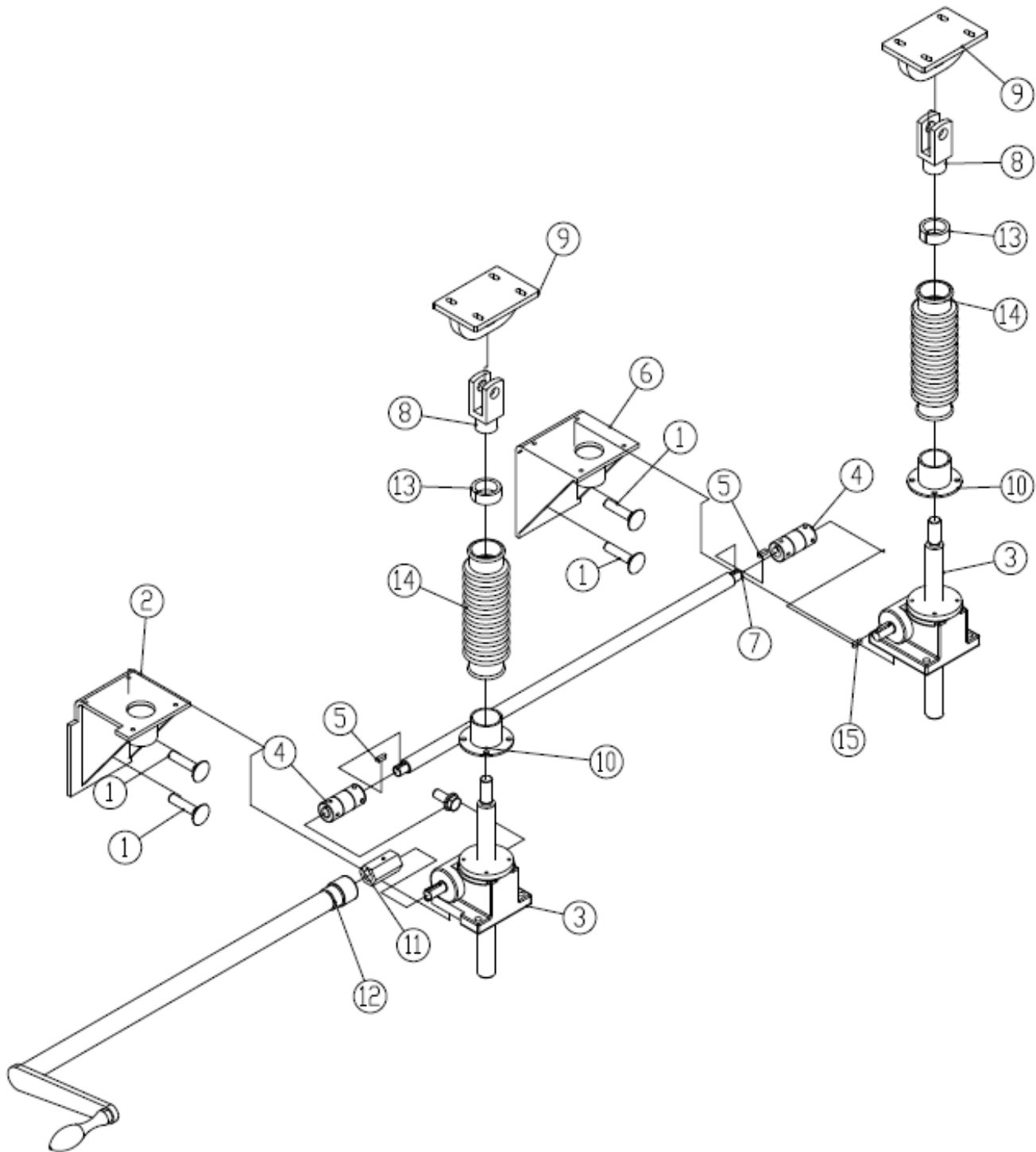


Ref	DESCRIPTION	PART #	QTY
1	Carriage Bolt, M12x30-8.8, FE/ZN5, DIN603	F81004-61	4
2	Left Up/Down Mounting Bracket	116364	1
3	1T-S1-S-SB-05-311, Left UP/DN Gearbox	125129	1

SUPER UP/ DOWN ASSEMBLY

Ref	DESCRIPTION	PART #	QTY
	1T-S1-S-SB-05-310, Right UP/DN Gearbox	125130	1
4	90W 5IK90AK Induction Motor UP/DN	116694	1
5	Up/Down Flex Joint	116126	2
6	Right, Up/Down Gearbox Mount	116363	1
7	Sensor Plate/Board Weldment	116235	1
8	Up/Dn Connect Rod 640mmx19mmØ	116483	1
9	Up/Down Motor Mount	116361	1
10	SC50/63-Y, Double knuckle Joint	116286	2
11	Weldment, Up/Down Mounting Bracket	116360	2
12	Encoder/Sensor Mounting Bracket	116248	1
13	PL-05NBS-4M, Proximity Sensor	116307	2
14	Up/Down Gear Box Cover Plate	116362	2
15	15mm x 40mmØ, Plastic Ring	116290	2
16	Rubber Boot Cover	116305	2
17	Double Head Round Key, PN/M85005	534277	2

MANUAL UP/ DOWN ASSEMBLY

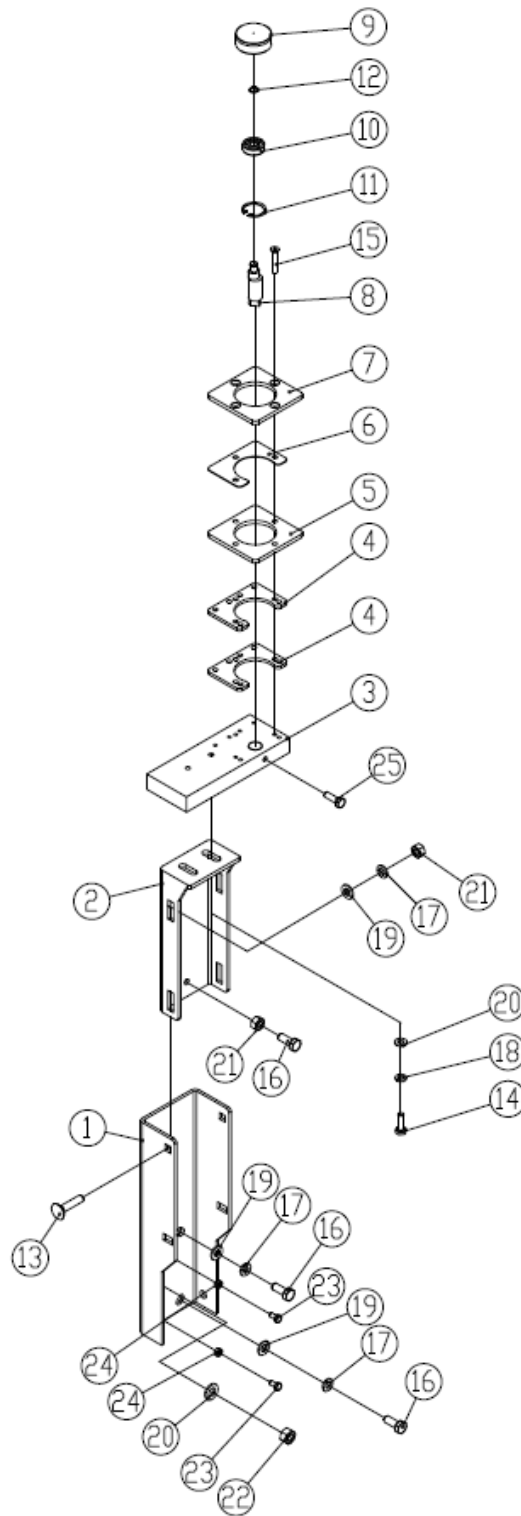


Ref	DESCRIPTION	PART #	QTY
1	Carriage Bolt, M12x30-8.8, FE/ZN5, DIN603	F81004-61	4
2	Left Up/Down Mounting Bracket	116364	1
3	1T-S1-S-SB-05-311, Left UP/DN Gearbox	125129	1

MANUAL UP/ DOWN ASSEMBLY

Ref	DESCRIPTION	PART #	QTY
	1T-S1-S-SB-05-310, Right UP/DN Gearbox	125130	1
4	Up/Down Flex Joint	116126	2
5	Double Head Round Key, PN/M85005	534277	2
6	Right, Up/Down Gearbox Mount	116363	1
7	Up/Dn Connect Rod 640mmx19mmØ	116483	1
8	SC50/63-Y, Double Knuckle Joint	116286	2
9	Up/Down Mounting Bracket	116360	2
10	Up/Down Gear Box Cover Plate	116362	2
11	Height Adjust Manual Handle Fitting	116993	1
12	Height Adjustment Handle, Up/ Down	116238	1
13	15mm x 40mmØ, Plastic Ring	116290	2
14	Rubber Boot Cover	116305	2

BLADE GUIDE ASSEMBLY, IDLE SIDE

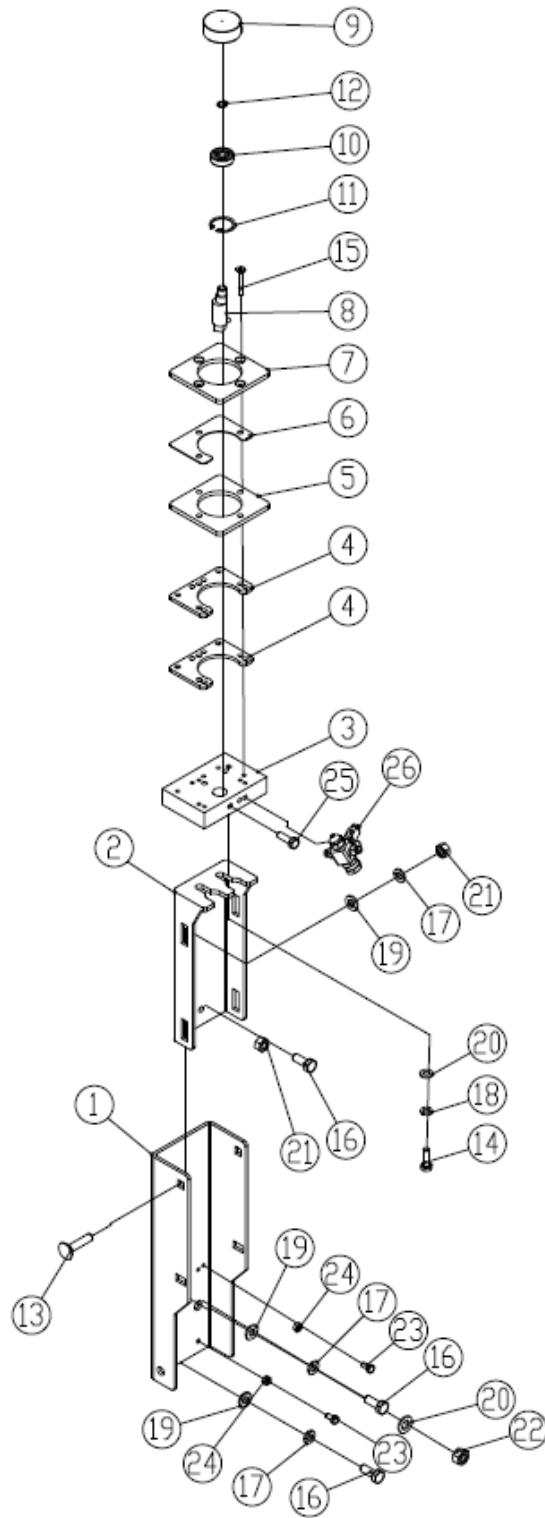


Ref	DESCRIPTION	PART #	QTY
1	Guide Assembly Mounting Frame	116589	1
2	Blade Guide Mounting Bracket (Idle Side)	116590	1

BLADE GUIDE ASSEMBLY, IDLE SIDE

Ref	DESCRIPTION	PART #	QTY
3	Guide Plates Connector Block (Idle Side)	116162	1
4	Blade Guide Connector Plates	116108	2
5	Bottom Blade Guide Plate 1¼"	116119	1
6	SHIM OPTIONS		
	1mm, Shim	116111	1
	1.2mm, Shim	116110	1
	1,5mm, Shim	116902	1
7	Top Blade Guide Plate 1¼"	116118	1
	Blade Guide Roller Bearing Assembly	116875	1
8	Eccentric Shaft	116129	1
9	Bearing Seat	116128	1
10	Bearing- 6200RS	X200-903	1
11	Ring, W30, Inside Retaining, PN/M85111	F81090-15	1
12	Ring, 210 Outside Retaining, PN/M85111	F81090-13	1
13	Carriage Bolt, M10x25, FE/ZN5, PN/M82406	F81003-59	4
14	Hex Head Bolt, M8x30-8.8, FE/ZN5, PN/M82105, Full Thread	F81002-7	2
15	Counter Sunk Flat Head Screw, M6x25-8.8, FE/ZN5, DIN965	F81001-91	3
16	Hex Head Bolt, M10x40-8.8, FE/ZN5, PN/M82105, Full Thread	F81003-6	3
17	Washer 10.2, Split Lock, FE/ZN5, PN/M82008	F81055-2	6
18	Washer 8.2, Split Lock, FE/ZN5, PN/M82008	F81054-4	2
19	Flat Washer 10.5x20x3, FE/ZN5, PN/M82005	F81055-1	6
20	Large Plain Washer 8x30x3, FE/ZN5	534284	3
21	Hex Nut, M10-8-B, FE/ZN5, PN/M82144	F81033-3	5
22	Hex Nut, M12-8-B, FE/ZN5, PN/M82144	F81034-1	1
23	Socket Head Hex Screw, M6x16-8.8, FE/ZN5, PN/M82302	F81001-34	2
24	Washer 6.1, Split Lock, FE/ZN5, PN/M82008	F81053-3	2
25	Hex Head Bolt, M8x25-8.8, FE/ZN5, PN/M82105, Full Thread	F81002-5	1

BLADE GUIDE ASSEMBLY, DRIVE SIDE

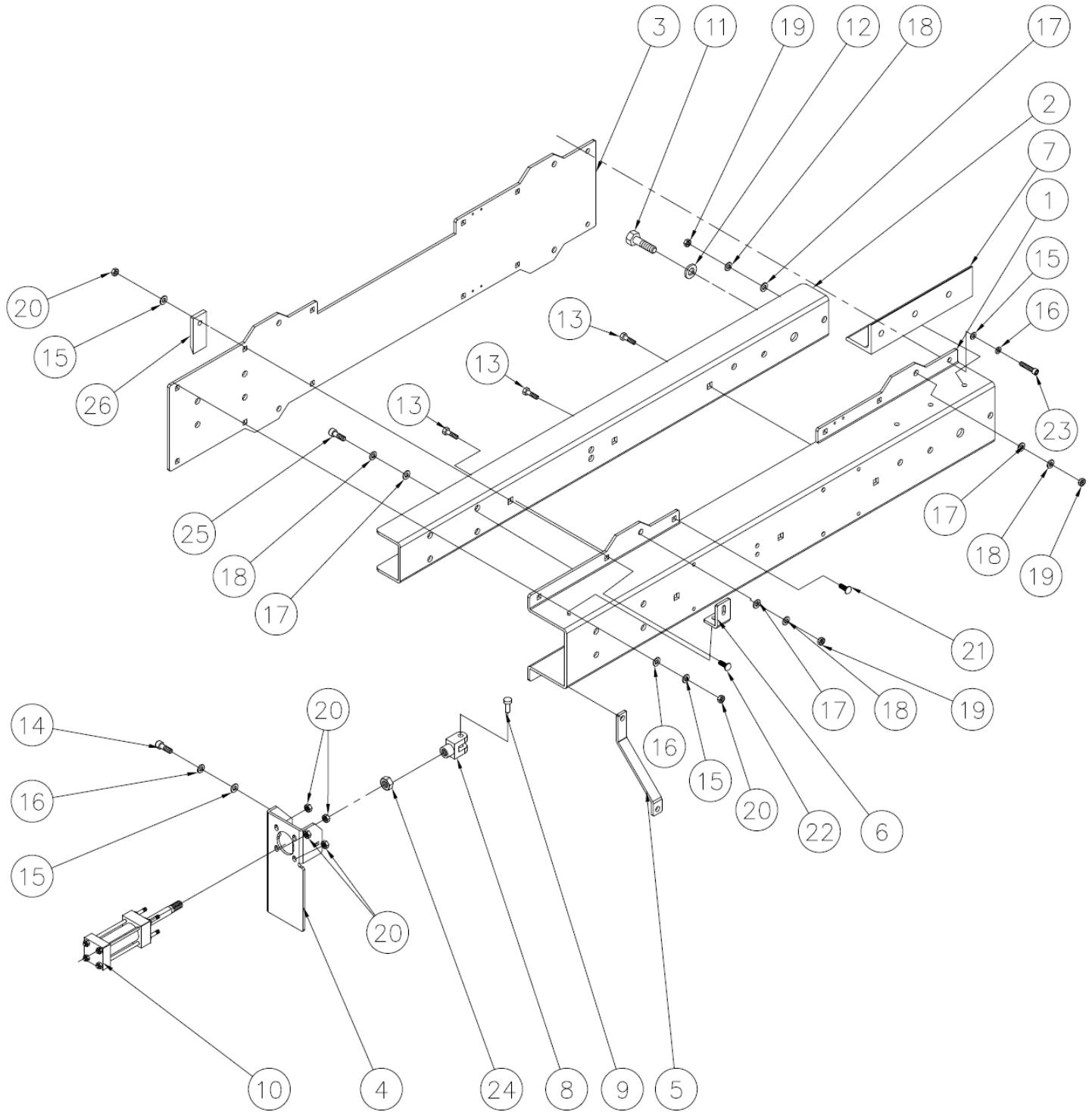


Ref	DESCRIPTION	PART #	QTY
1	Guide Assembly Mounting Frame	116589	1
2	Blade Guide Mounting Bracket (Drive Side)	116591	1

BLADE GUIDE ASSEMBLY, DRIVE SIDE

Ref	DESCRIPTION	PART #	QTY
3	Guide Plates Connector Block (Drive Side)	116173	1
4	Blade Guide Connector Plates	116108	2
5	Bottom Blade Guide Plate 1¼"	116119	1
6	SHIM OPTIONS		
	1mm, Shim	116111	1
	1.2mm, Shim	116110	1
	1,5mm, Shim	116902	1
7	Top Blade Guide Plate 1¼"	116118	1
	Blade Guide Roller Bearing Assembly	116875	1
8	Eccentric Shaft	116129	1
9	Bearing Seat	116128	1
10	Bearing- 6200RS	X200-903	1
11	Ring, W30, Inside Retaining, PN/M85111	F81090-15	1
12	Ring, 210 Outside Retaining, PN/M85111	F81090-13	1
13	Carriage Bolt, M10x25, FE/ZN5, PN/M82406	F81003-59	4
14	Hex Head Bolt, M8x30-8.8, FE/ZN5, PN/M82105, Full Thread	F81002-7	2
15	Counter Sunk Flat Head Screw, M6x25-8.8, FE/ZN5, DIN965	F81001-91	3
16	Hex Head Bolt, M10x40-8.8, FE/ZN5, PN/M82105, Full Thread	F81003-6	3
17	Washer 10.2, Split Lock, FE/ZN5, PN/M82008	F81055-2	6
18	Washer 8.2, Split Lock, FE/ZN5, PN/M82008	F81054-4	2
19	Flat Washer 10.5x20x3, FE/ZN5, PN/M82005	F81055-1	6
20	Large Plain Washer 8x30x3, FE/ZN5	534284	3
21	Hex Nut, M10-8-B, FE/ZN5, PN/M82144	F81033-3	5
22	Hex Nut, M12-8-B, FE/ZN5, PN/M82144	F81034-1	1
23	Socket Head Hex Screw, M6x16-8.8, FE/ZN5, PN/M82302	F81001-34	2
24	Washer 6.1, Split Lock, FE/ZN5, PN/M82008	F81053-3	2
25	Hex Head Bolt, M8x25-8.8, FE/ZN5, PN/M82105, Full Thread	F81002-5	1
26	Blade Lube Sprayer, DA-E, Assembly	116804	1
	4mm, 90° Steel Lube Fitting	116031	1
	6mm, 90° Steel Lube Fitting	116032	2
	Blade Lube Sprayer, DA-E	116030	1

SUB FRAME ASSEMBLY, BLADE TENSIONING

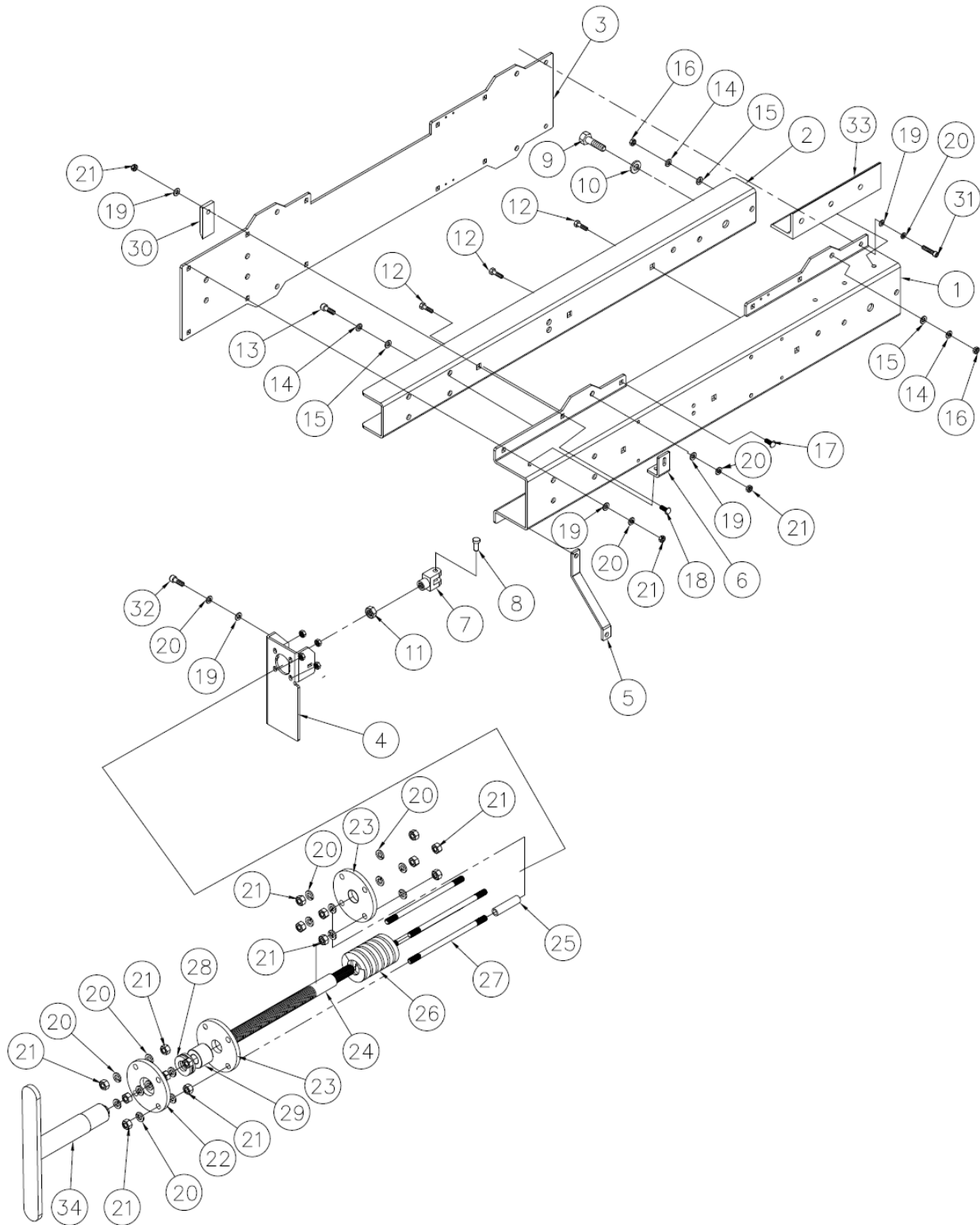


Ref	DESCRIPTION	PART #	QTY
1	Head Mounting Frame	116592	1
2	Head Mounting Reinforcement Beam	116379	1

SUB FRAME ASSEMBLY

Ref	DESCRIPTION	PART #	QTY
3	Head Mounting Plate	116594	1
4	Air/Oil Tensioning Unit Mounting Bracket	116596	1
5	Air/Oil Unit support Bracket	116254	1
6	L- Shaped Bracket	116258	1
7	Cover Plate Mount Bracket	116226	1
8	Double Knuckle Joint	116285	1
9	Flat washer 17, FE/ZN5, PN/M82005	F81058-1	1
10	Air/Oil Blade Tensioning Cylinder	116597	2
11	Hex Head Machine Bolt 3 2/1	116616	1
12	Flat Washer 21, FE/ZN5, PN/M82005	F81059-2	1
13	Carriage Bolt, M12x40-8.8, FE/ZN5, DIN603	F81004-70	3
14	Hex Head Bolt, M10x40-8.8, FE/ZN5, PN/M82105, Full Thread	F81003-6	1
15	Flat Washer 10.5, FE/ZN5, PN/M82005	F81055-1	4
16	Washer 10.2, Split Lock, FE/ZN5, PN/M82008	F81055-2	3
17	Flat Washer 12, FE/ZN5, PN-78/M82005	F81056-1	4
18	Spin Washer, 212.2, M12	F81056-2	4
19	Hex Nut, M14-8-B, FE/ZN5, PN/M82144	F81035-1	5
20	Hex Nut, M12-8-B, FE/ZN5, PN/M82144	F81034-1	6
21	Carriage Bolt, M10x40-8.8, FE/ZN5, PN/M82406	F81003-40	4
22	Carriage Bolt, M12x50-8.8, FE/ZN5, PN/M82406	F81004-75	4
23	Hex Head Bolt, M10x30-8.8, FE/ZN5, PN/M82105, Full Thread	F81003-111	1
24	Hex Nut, M16-8-B, FE/ZN5, PN/M82144	F81036-1	1
25	Hex Socket Screw, M12x30-8.8, FE/ZN5, PN/M82302	F81004-105	1
26	Limit Switch Activation Plate	116242	1

SUB FRAME ASSEMBLY, MANUAL BLADE TENSIONING

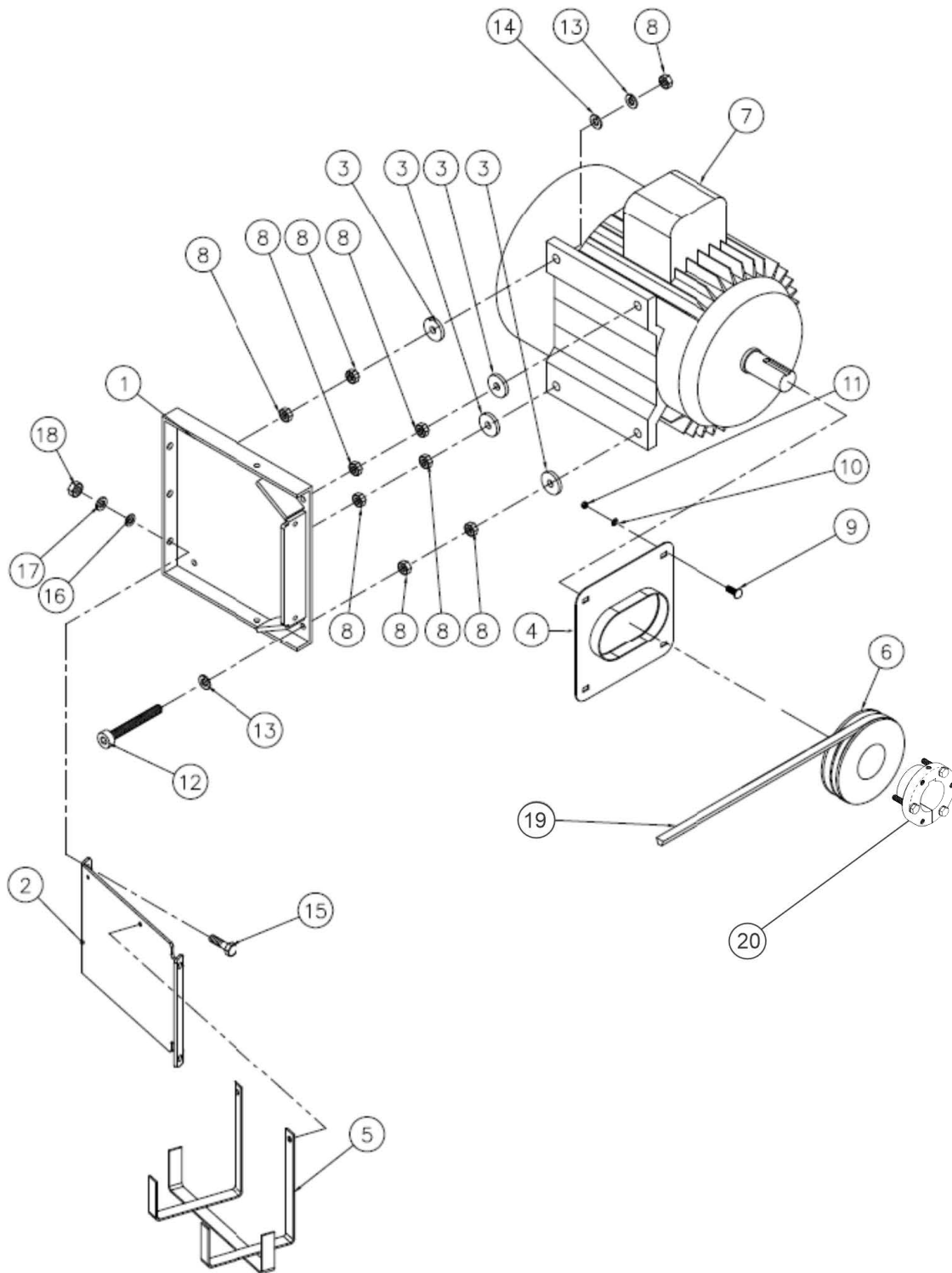


Ref	DESCRIPTION	PART #	QTY
1	Head Mounting Frame	116592	1
2	Head Mounting Reinforcement Beam	116379	1

SUB FRAME ASSEMBLY, MANUAL BLADE TENSIONING

Ref	DESCRIPTION	PART #	QTY
3	Head Mounting Plate	116594	1
4	Air/Oil Tensioning Unit Mounting Bracket	116596	1
5	Air/Oil Unit support Bracket	116254	1
6	L- Shaped Bracket	116258	1
7	Double Knuckle Joint	116285	1
8	Flat washer 17, FE/ZN5, PN/M82005	F81058-1	1
9	Hex Head Nachire Bolt 3 2/1	116616	1
10	Flat Washer 21, FE/ZN5, PN/M82005	F81059-2	1
11	Hex Nut, M16-8-B, FE/ZN5, PN/M82144	F81036-1	1
12	Carriage Bolt, M12x40-8.8, FE/ZN5, DIN603	F81004-70	3
13	Hex Socket Screw, M12x30-8.8, FE/ZN5, PN/M82302	F81004-105	1
14	Spin Washer, 212.2, M12	F81056-2	4
15	Flat Washer 12, FE/ZN5, PN-78/M82005	F81056-1	4
16	Hex Nut, M14-8-B, FE/ZN5, PN/M82144	F81035-1	5
17	Carriage Bolt, M10x40-8.8, FE/ZN5, PN/M82406	F81003-40	4
18	Carriage Bolt, M12x50-8.8, FE/ZN5, PN/M82406	F81004-75	4
19	Washer 10.2, Split Lock, FE/ZN5, PN/M82008	F81055-2	3
20	Flat Washer 10.5, FE/ZN5, PN/M82005	F81055-1	16
21	Hex Nut, M12-8-B, FE/ZN5, PN/M82144	F81034-1	18
22	Manual Tensioning Bracket (Outer)	116231	1
23	Manual Tensioning Bracket (Inner)	116232	1
24	Manual Tensioning Connecting Rod	116485	1
25	Rubber Tubing	116620	4
26	Blade Tension Spring	116179	1
27	Threaded Rod, M10x200-8.8, FE/ZN5, DIN975	534282	4
28	Thrust Ball Bearing 51101	116086	1
29	30mm x 38mmø, Spacer	116241	1
30	Limit Switch Activation Plate	116242	1
31	Hex Head Bolt, M10x30-8.8, FE/ZN5, PN/M82105, Full Thread	F81003-111	1
32	Hex Head Bolt, M10x40-8.8, FE/ZN5, PN/M82105, Full Thread	F81003-6	1
33	Mounting Bracket	116226	1
34	Blade Tension Handle	116211	1

MOTOR ASSEMBLY

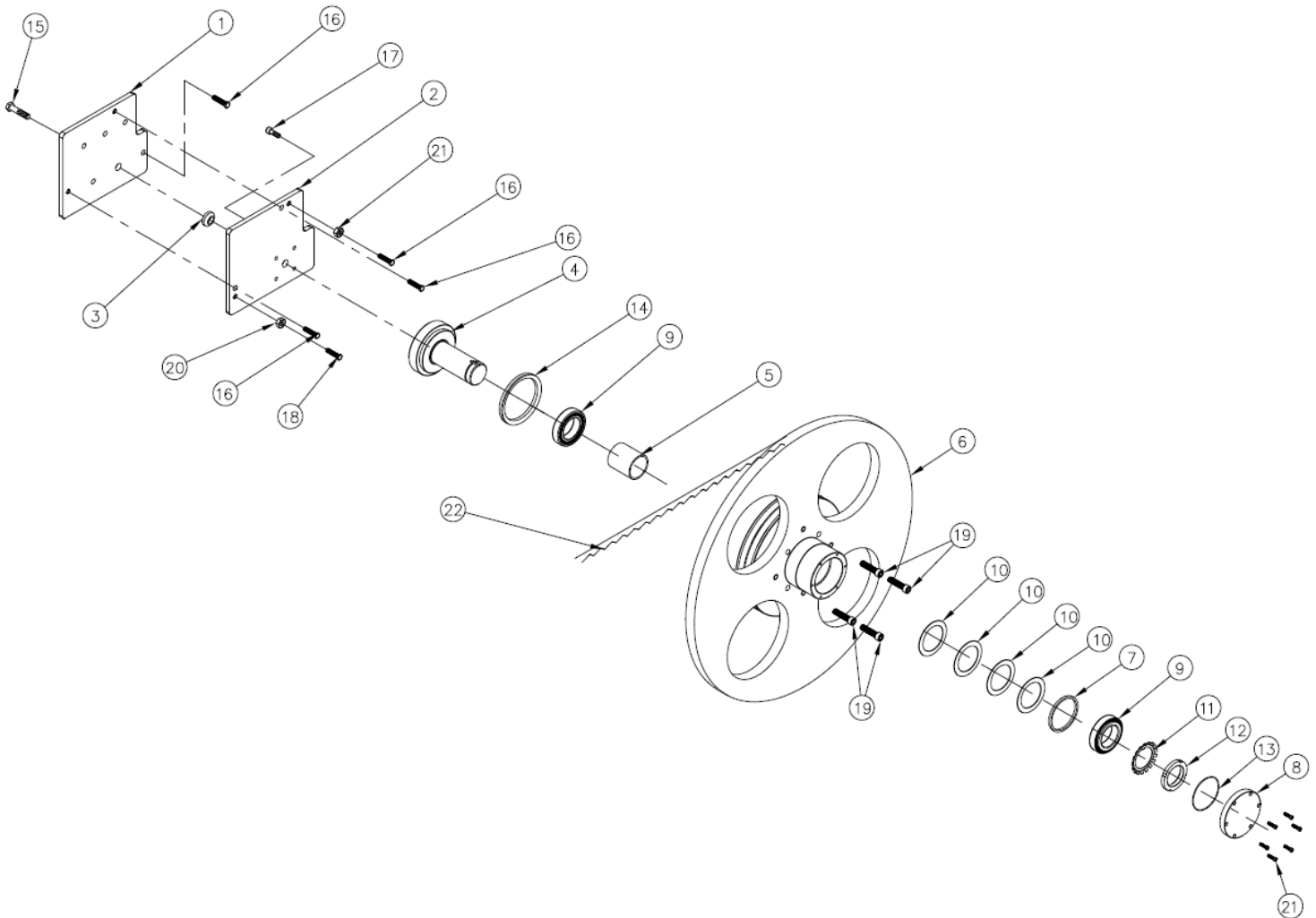


Ref	DESCRIPTION	PART #	QTY
1	Motor Base Plate	116349	1
2	Motor Mount Bracket	116337	1

MOTOR ASSEMBLY

Ref	DESCRIPTION	PART #	QTY
3	6mm x 30mmØ, Spacer	116621	4
4	Motor Shaft Cover Plate	116326	1
5	Lubricant Bottle Mounting Frame	116324	1
6	Pulley- SPB112X2-1610, 60Hz	116099	1
	Pulley- SPB118X2-1610, 50Hz	116098	1
7	15kW Baldor Motor, IE1 (50Hz)	116462	2
	15kW Baldor Motor, IE3, Magnetic Brake (50Hz)	116622	2
	18kW Baldor Motor, IE3 (60Hz)	116623	2
8	Hex Nut, M14-8-B, FE/ZN5, PN/M82144	F81035-1	12
9	Carriage Bolt, M6x16-8.8, FE/ZN5, PN/M82406	F81001-36	4
10	Large Plain Washer 6.4, FE/ZN5	F81053-11	4
11	Nut, M6-8-B, Hex Nylon, FE/ZN5, PN/M82175	F81001-15	4
12	Hex Socket Screw, M12x100-8.8, FE/ZN5, PN/M82302	F81004-108	4
13	Spin Washer, 212.2, M12	F81056-2	8
14	Flat Washer 12, FE/ZN5, PN-78/M82005	F81056-1	4
15	Hex Head Bolt, M10x100-8.8, FE/ZN5, PN/M82105, Full Thread	F81003-91	2
16	Washer 10.2, Split Lock, FE/ZN5, PN/M82008	F81055-2	2
17	Flat Washer 10.5, FE/ZN5, PN/M82005	F81055-1	2
18	Hex Nut, M10-8-B, FE/ZN5, PN/M82144	F81033-3	2
19	V-Belt B50 (Pulley 112)	116553	2
	V-Belt B51 (Pulley 118)	116554	2
20	Bushing, 42mm QD	119423	1

BLADE WHEEL ASSEMBLY (DRIVE SIDE)



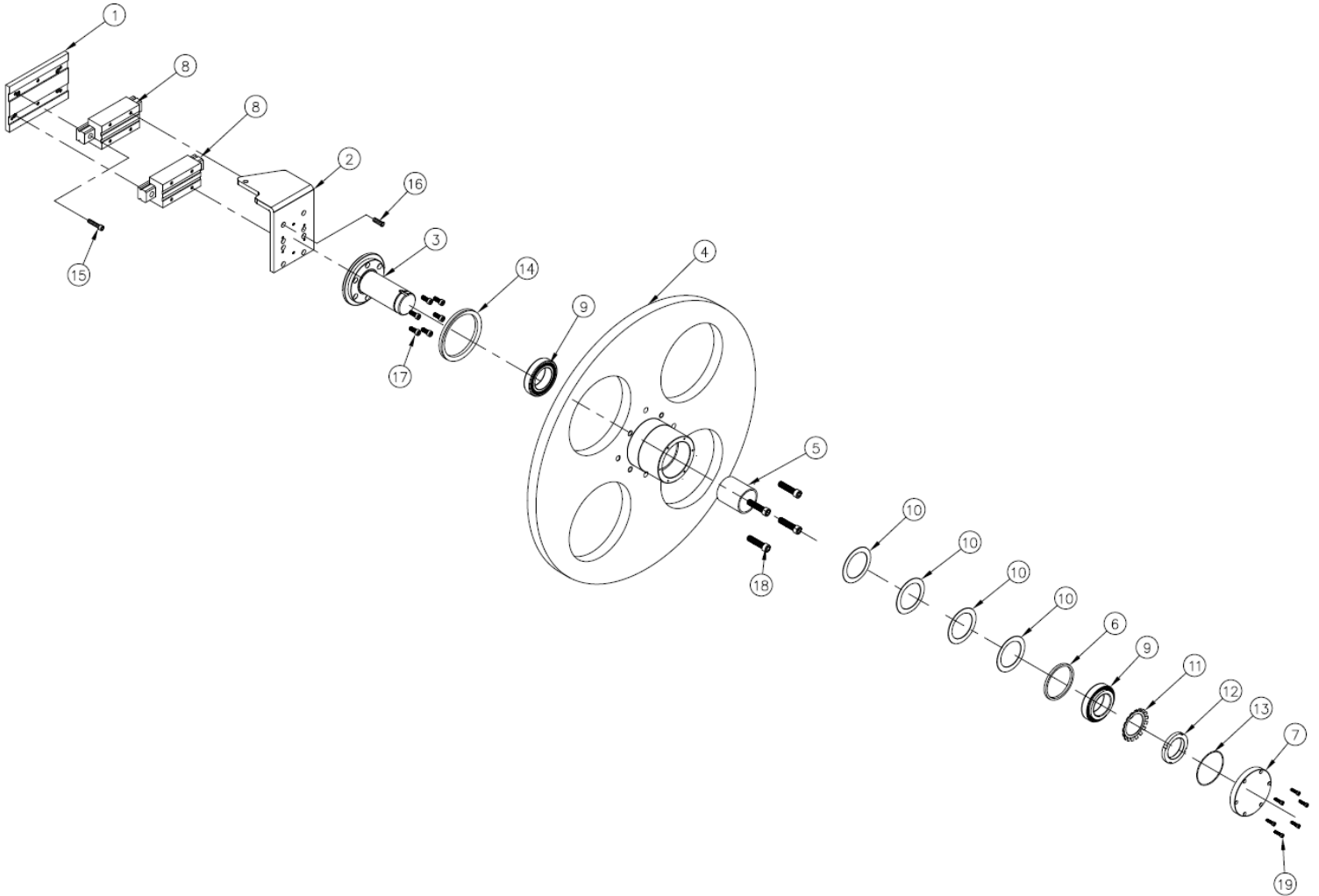
Ref	DESCRIPTION	PART #	QTY
1	Inner Tracking Mount Plate	116347	1
2	Outer Tracking Mount Plate	116348	1
3	Wheel Alignment Pivot	116624	1
4	Drive Wheel Shaft	116266	1
5	Sleeve- 69mm x 62mmø	116141	1
6	28mm/ 1¼", Drive Wheel Assembly	116558	1

BLADE WHEEL ASSEMBLY (DRIVE SIDE)

Ref	DESCRIPTION	PART #	QTY
7	11mm, Spacer	116125	1
8	Wheel Hub End Cap	116375	1
9	4T-32011X- Bearing	116095 ¹	2
10	89mmø, Spring Washer	116275	4
11	Bearing Retainer, Lock Washer	116269	1
12	Bearing Retainer, Nut	116270	1
13	Wheel End Cap Seal Ring	116295	1
14	Wheel Shaft Rubber Seal	116293	1
15	Hex Head Nachire Bolt 3 2/1	116616	1
16	Hex Head Bolt, M16x30-8.8, FE/ZN5, PN/M82105, Full Thread	F81006-36	4
17	Hex Socket Screw, M10x25-8.8, FE/ZN5, PN/M82302	F81003-32	1
18	Hex Head Bolt, M12x40-8.8, FE/ZN5, PN/M82105, Full Thread	F81004-4	2
19	Hex Socket Screw, M12x75-8.8, FE/ZN5, PN/M82302	F81004-111	4
20	Hex Nut, M12-8-B, FE/ZN5, PN/M82144	F81034-1	1
21	Hex Head Bolt, M8x20-8.8, FE/ZN5, PN/M82105, Full Thread	F81002-4	6

¹ To replace bearing 116095, order kit 133039.

BLADE WHEEL ASSEMBLY (IDLE SIDE)



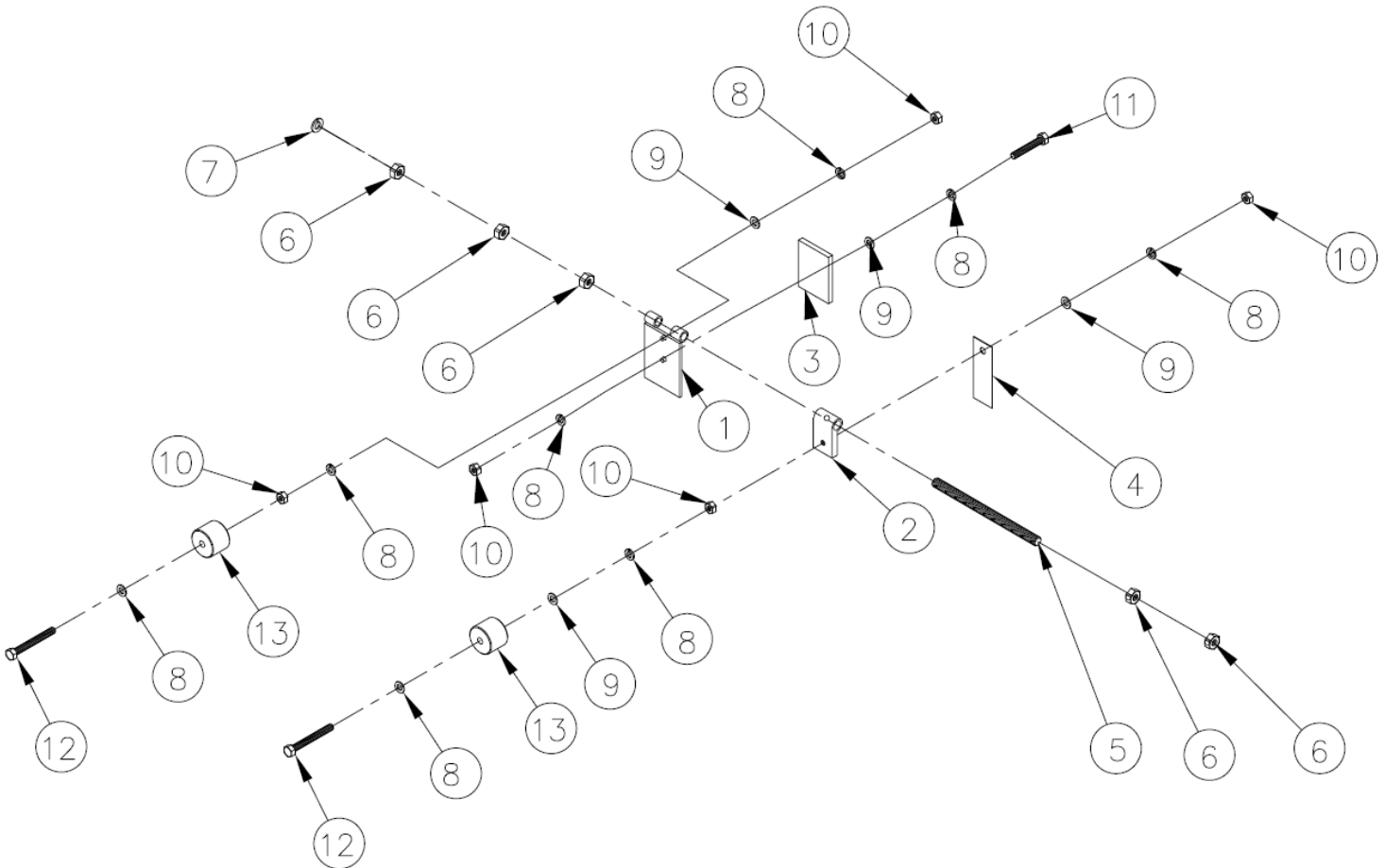
Ref	DESCRIPTION	PART #	QTY
1	Linear Bearing Mount Plate	116138	1
2	Tension Mount Bracket	116346	1
3	Idle Wheel Shaft	116240	1
4	28mm/ 1¼" Idle wheel Assembly	116777	1
5	69mm x 62mmø, Sleeve	116141	1
6	11mm, Spacer	116125	1

BLADE WHEEL ASSEMBLY (IDLE SIDE)

Ref	DESCRIPTION	PART #	QTY
7	Wheel Hub End Cap	116375	1
8	PMI-MSA35, Linear Guideway Bearing	116105	2
9	4T-32011X- Bearing	116095 ²	2
10	89mmø, Spring Washer	116275	4
11	Bearing Retainer, Lock Washer	116269	1
12	Bearing Retainer, Nut	116270	1
13	Wheel End Cap Seal Ring	116295	1
14	Wheel Shaft Rubber Seal	116293	1
15	Steel Hinge Mount	116374	1
16	Hex Socket Screw, M8x20-8.8, FE/ZN5, PN/M82302	F81002-30	4
17	Hex Socket Screw, M8x16-8.8, FE/ZN5, PN/M82302	F81002-39	6
18	Hex Socket Screw, M12x75-8.8, FE/ZN5, PN/M82302	F81004-111	4
19	Hex Head Bolt, M8x20-8.8, FE/ZN5, PN/M82105, Full Thread	F81002-4	6

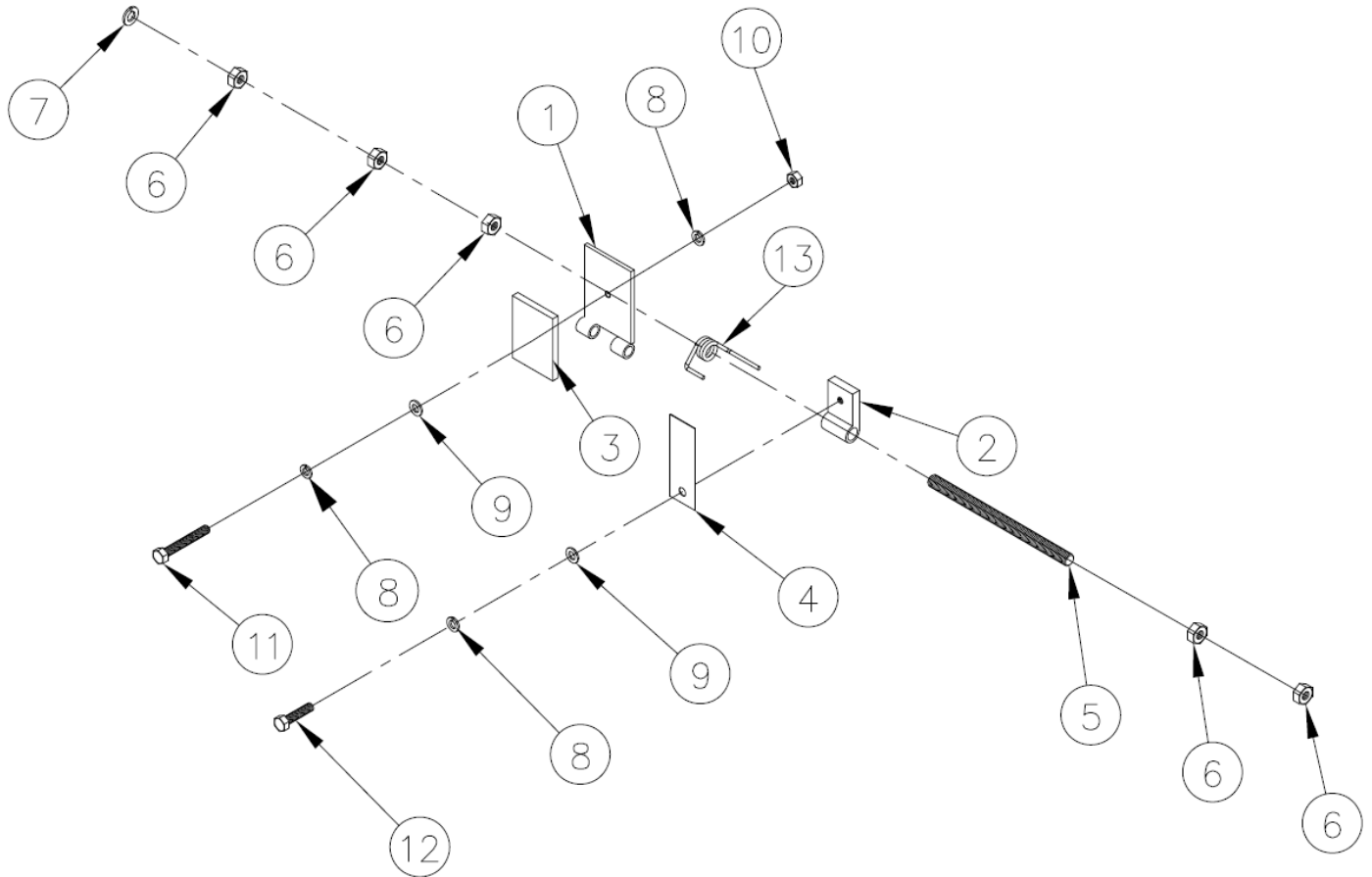
² To replace bearing 116095, order kit 133039.

BLADE WHEEL SCRAPER ASSEMBLY (style A)



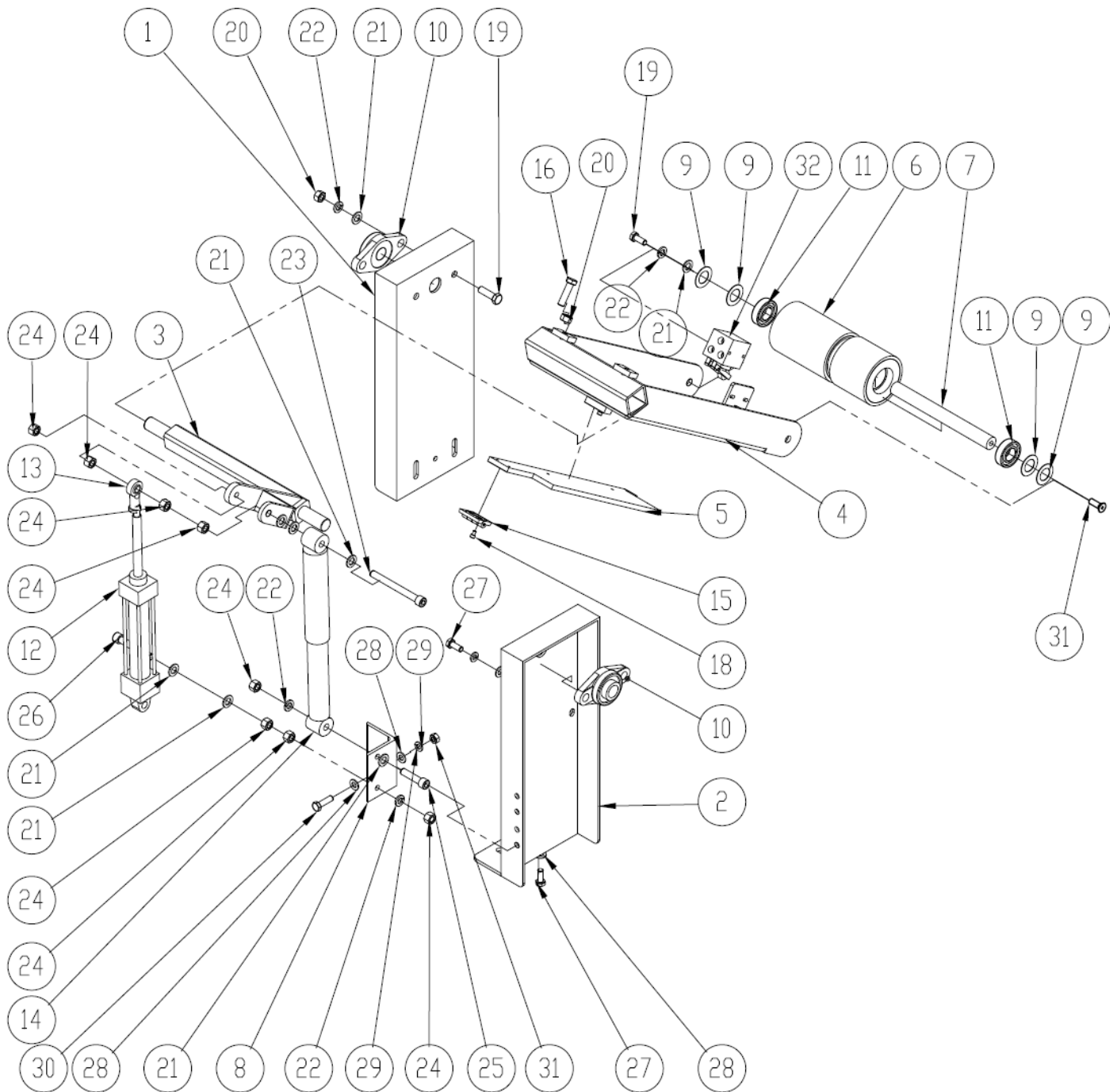
Ref	DESCRIPTION	PART #	QTY
1	Steel Hinge Mount	116374	1
2	Scraper Plate Mount Bracket	116212	1
3	Wheel Oiling/ Cleaning Pad	116303	1
4	91mm x 33mm, Scraper Plate	116245	1
5	Threaded Rod, M12x 245-8.8, FE/ZN5, DIN975	F81004-97	1
6	Hex Nut, M12-8-B, FE/ZN5, PN/M82144	F81034-1	5
7	Spin Washer, 212.2, M12	F81056-2	1
8	Large Plain Washer, 8x30x3, FE/ZN5	534284	8
9	Washer 8.2, Split Lock, FE/ZN5, PN/M82008	F81054-4	4
10	Hex Nut, M8-8-B, FE/ZN5, PN/M82144	F81032-1	6
11	Hex head bolt M8x25- 8.8, FE/ZN5, PN/M82105, Full Thread	F81002-5	1
12	Hex Head Bolt, M8x45-8.8, FE/ZN5, PN/M82105, Full Thread	F81002-14	2
13	30mm x 38mmø, Spacer	116165	2

BLADE WHEEL SCRAPER ASSEMBLY (style B)



Ref	DESCRIPTION	PART #	QTY
1	Steel Hinge Mount	116374	1
2	Scraper Plate Mount Bracket	116212	1
3	Wheel Oiling/ Cleaning Pad	116303	1
4	91mm x 33mm, Scraper Plate	116245	1
5	Threaded Rod, M12x 245-8.8, FE/ZN5, DIN975	F81004-97	1
6	Hex Nut, M12-8-B, FE/ZN5, PN/M82144	F81034-1	5
7	Spin Washer, 212.2, M12	F81056-2	1
8	Large Plain Washer, 8x30x3, FE/ZN5	534284	3
9	Washer 8.2, Split Lock, FE/ZN5, PN/M82008	F81054-4	2
10	Hex Nut, M8-8-B, FE/ZN5, PN/M82144	F81032-1	2
11	Hex Head Bolt, M8x45-8.8, FE/ZN5, PN/M82105, Full Thread	F81002-14	1
12	Hex head bolt M8x25- 8.8, FE/ZN5, PN/M82105, Full Thread	F81002-5	1
13	Tension Spring, Scraper	116026	1

INFEED HOLD DOWN ROLLER

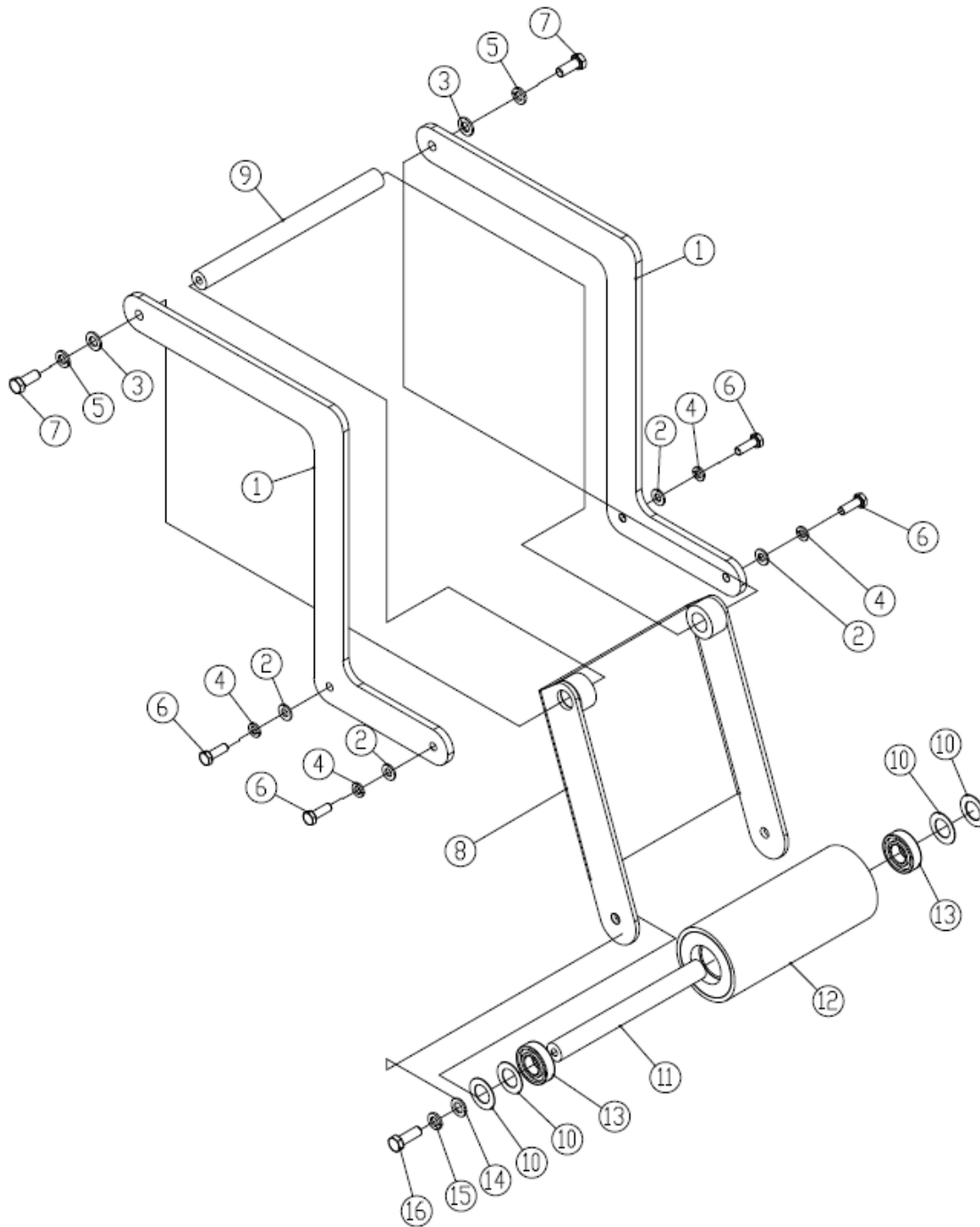


Ref	DESCRIPTION	PART #	QTY
1	Infeed Hold down/ Mounting Bracket-L	116355	1
2	Infeed Hold down/ Mounting Bracket-R	116354	1
3	Wldmnt, Shaft Mount Bracket	116356	1
4	Hold down roller mounting bracket	116357	1
5	Pressure Sensor Plate	116358	1

INFEED HOLD DOWN ROLLER

Ref	DESCRIPTION	PART #	QTY
6	Infeed Hold Down Roller	116123	1
7	Infeed Hold Down Roller Connecting Rod	116480	1
8	Mounting Bracket	116239	1
9	Flat Washer 21, FE/ZN5, PN/M82005	F81059-21	4
10	UCFL205- Bearing	116097	2
11	6205-2RS- Bearing	116090	2
12	SC40*150-CA, Pneumatic Cylinder	116627	1
14	Shock Absorber	116626	1
15	Hinge	116273	1
16	Hex Head Bolt, M12x40-8.8, FE/ZN5, PN/M82105, Full Thread	F81004-4	2
18	Pan Head Cross Screw, M4x12-8.8, FE/ZN5, PN/M82202	F81011-43	4
19	Hex Head Bolt, M12x30-8.8, FE/ZN5, PN/M82105, Full Thread	F81004-22	4
20	Hex Nut, M12-8-B, FE/ZN5, PN/M82144	F81034-1	2
21	Flat Washer 13, FE/ZN5, PN/M82005	F81056-1	6
22	Spin Washer, 212.2, M12	F81056-2	4
23	Hex Socket Screw, M12x130-8.8, FE/ZN5, PN/M82302, Full Thread	F81004-112	1
24	Hex Nut, M12-8-B, FE/ZN5, PN/M82144	F81035-1	6
25	Hex Socket Screw, M12x60-8.8, FE/ZN5, PN/M82302	F81004-106	1
26	Hex Socket Screw, M12x80-8.8, FE/ZN5, PN/M82302	F81004-46	1
27	Carriage Bolt, M10x40-8.8, FE/ZN5, PN/M82406	F81003-40	4
28	Flat Washer 10.5, FE/ZN5, PN/M82005	F81055-1	6
29	Flat Washer 10.5, FE/ZN5, PN/M82005	F81055-1	6
30	Hex Head Bolt, M10x25-8.8, FE/ZN5, PN/M82105	F81003-31	2
31	Hex Nut, M10-8-B, FE/ZN5, PN/M82144	F81033-3	2
32	R-4-1/4, EA-D6979, Mechanical Valve	116067	1

OUTFEED HOLD DOWN ROLLER

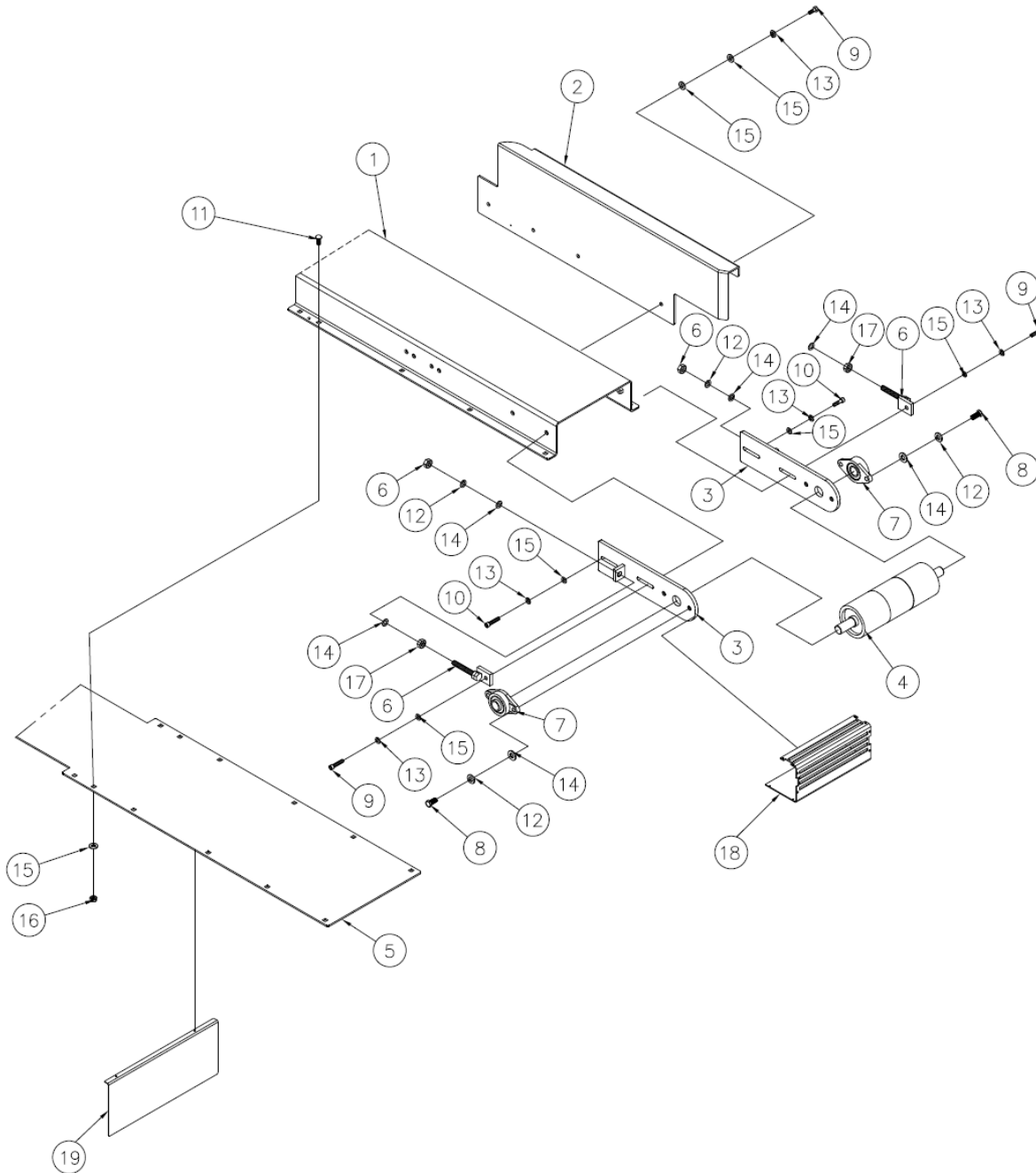


Ref	DESCRIPTION	PART #	QTY
1	Outfeed Hold Down System Mounting Frame	116343	2
2	Flat Washer 10.5, FE/ZN5, PN/M82005	F81055-1	4
3	Flat Washer 13, FE/ZN5, PN/M82005	F81056-1	2

OUTFEED HOLD DOWN ROLLER

Ref	DESCRIPTION	PART #	QTY
4	Spin Washer, 212.2, M12	F81056-2	6
5			
6	Hex Head Bolt, M12x80-8.8, FE/ZN5, PN/M82105, Full Thread	F81004-79	4
7	Hex Head Bolt, M12x30-8.8, FE/ZN5, PN/M82105, Full Thread	F81004-22	2
8	Hold down Mounting Bracket	116359	1
9	Idle Roller Connecting Shaft	116145	1
10	Flat Washer 21, FE/ZN5, PN/M82005	F81035-2	4
11	Idle Roller Connecting Shaft	116145	1
12	Outfeed Hold Down Roller	116122	1
13	6205-2RS- Bearing	116090	2
14	Flat Washer 13, FE/ZN5, PN/M82005	F81056-1	2
15	Flat Washer 21, FE/ZN5, PN/M82005	F81035-2	4
16	Hex Head Bolt, M12x30-8.8, FE/ZN5, PN/M82105, Full Thread	F81004-22	2

FEED CONVEYOR (INFEED SECTION)

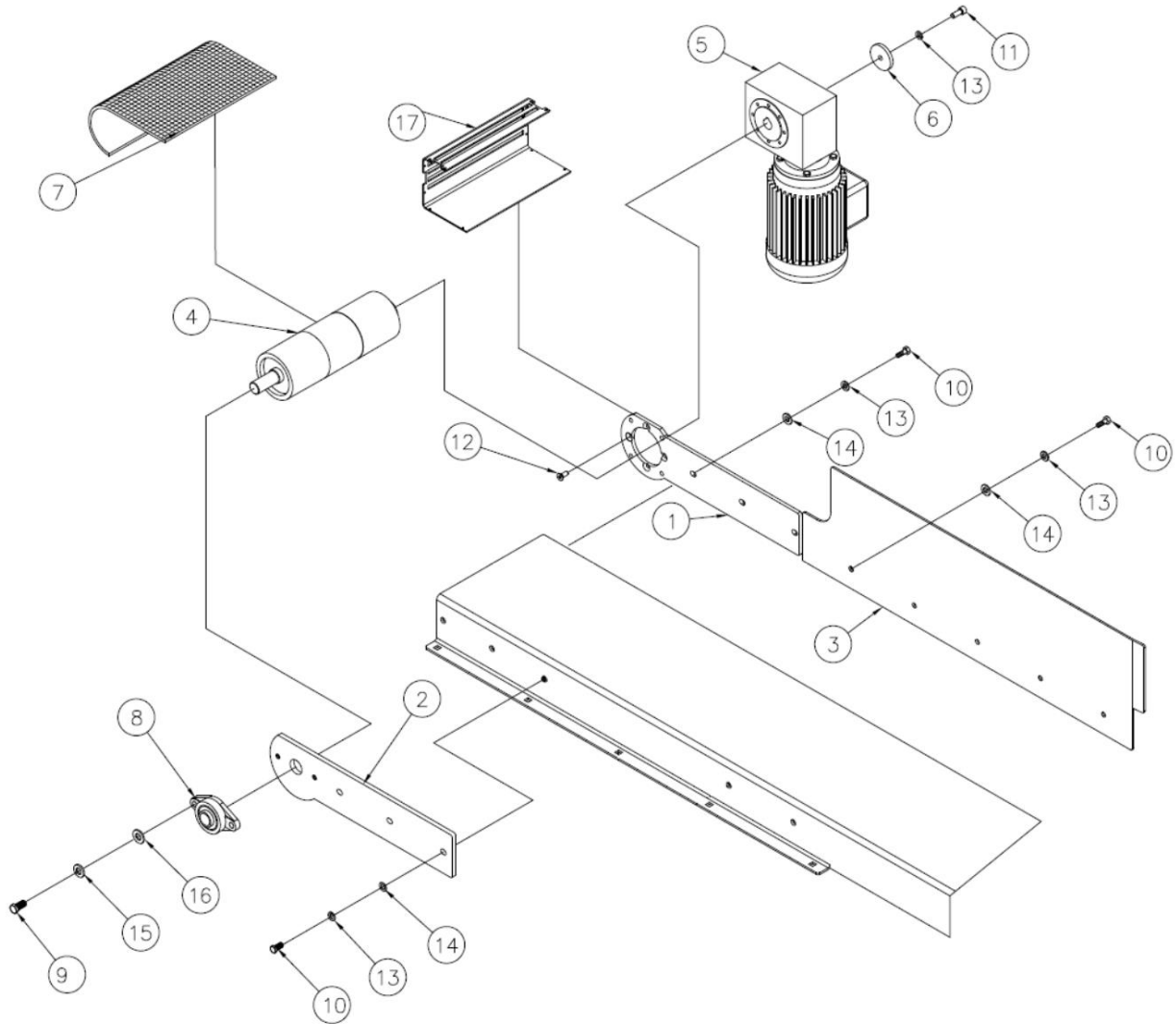


Ref	DESCRIPTION	PART #	QTY
1	Conveyor Bed Assembly	116401	1
2	Infeed Side Support	116338	1
3	Idle Roller Mounting Bracket	116341	2
	Idle Roller Mounting Bracket (CE version)	116634	2
4	Idle Feed Roller	116121	1
5	Conveyor Base Plate	116598	1

FEED CONVEYOR (INFEED SECTION)

Ref	DESCRIPTION	PART #	QTY
6	Feed Belt tension Bracket	116233	2
7	UCFL205- Bearing	116097	2
8	Hex Head Bolt, M12x25-8.8, FE/ZN5, PN/M82105, Full Thread	F81004-31	4
9	Hex Socket Screw, M10x35-8.8, FE/ZN5, PN/M82302	F81003-56	2
10	Hex Socket Screw, M10x30-8.8, FE/ZN5, PN/M82302	F81003-110	2
11	Carriage Bolt, M10x25, FE/ZN5, PN/M82406	F81003-59	8
12	Spin Washer, 212.2, M12	F81056-2	4
13	Washer 10.2, Split Lock, FE/ZN5, PN/M82008	F81055-2	4
14	Flat Washer 13, FE/ZN5, PN/M82005	F81056-1	6
15	Flat Washer 10.5, FE/ZN5, PN/M82005	F81055-1	6
16	Nut, M10-8-B, Nylon Hex, FE/ZN5, PN/M82175	F81033-1	8
17	Hex Nut, M12-8-B, FE/ZN5, PN/M82144	F81034-1	4
18	Conveyor Guard (CE Version)	116635	1
19	Blade Guard (CE Version)	116636	1

FEED CONVEYOR (OUTFEED SECTION)

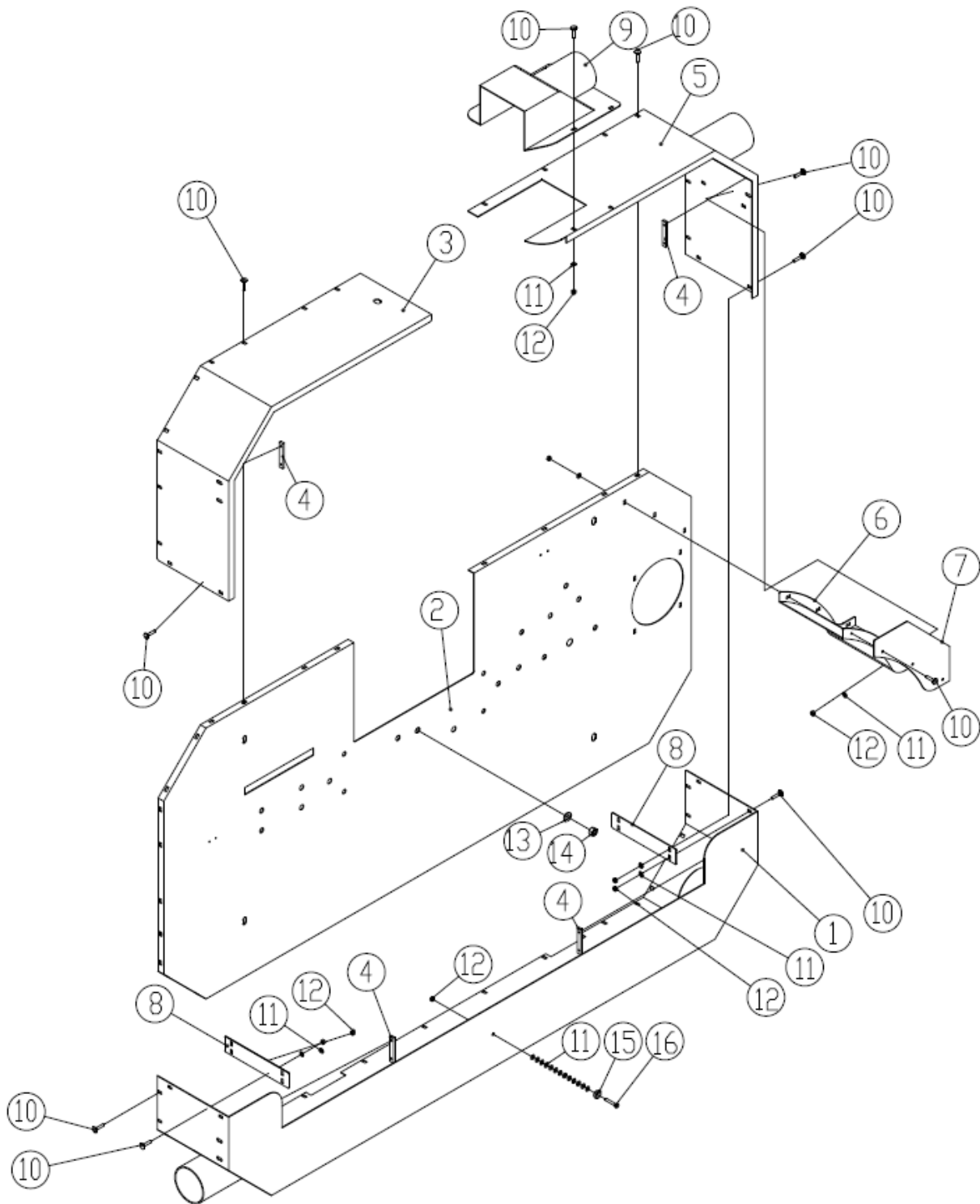


Ref	DESCRIPTION	PART #	QTY
1	Conveyor Drive Motor Mount	116352	1
	Conveyor Drive Motor Mount (CE Version)	116602	1
2	Conveyor Drive Roller Mount	116353	1
	Conveyor Drive Roller Mount (CE Version)	116603	1
3	Outfeed Side Support	116339	1
4	Drive Feed Roller	116120	1

FEED CONVEYOR (OUTFEED SECTION)

Ref	DESCRIPTION	PART #	QTY
5	CONVEYOR DRIVE FEED MOTOR		
	Feed Motor, IE1, 1.5kW, 50/60Hz	116638	1
	Feed Motor, IE2, 1.5kW, 50/60Hz	116639	1
6	6mm x 30mmø, Motor mount Washer	116621	1
7	285 x 5460, Conveyor Belt	116586	1
8	UCFL205- Bearing	116097	2
9	Hex Head Bolt, M12x25-8.8, FE/ZN5, PN/M82105, Full Thread	F81004-31	4
10	Hex Socket Screw, M10x30-8.8, FE/ZN5, PN/M82302	F81003-110	6
11	Hex Socket Screw, M10x20-8.8, FE/ZN5, PN/M82302	F81003-108	1
12	Countersunk Flat Head Screw, M8x20-8.8, FE/ZN5, DIN965A	F81002-87	4
13	Washer 10.2, Split Lock, FE/ZN5, PN/M82008	F81055-2	4
14	Flat Washer 10.5, FE/ZN5, PN/M82005	F81055-1	6
15	Spin Washer, 212.2, M12	F81056-2	4
16	Flat Washer 13, FE/ZN5, PN/M82005	F81056-1	6
17	Conveyor Guard (CE Version)	116637	1

COVER ASSEMBLY

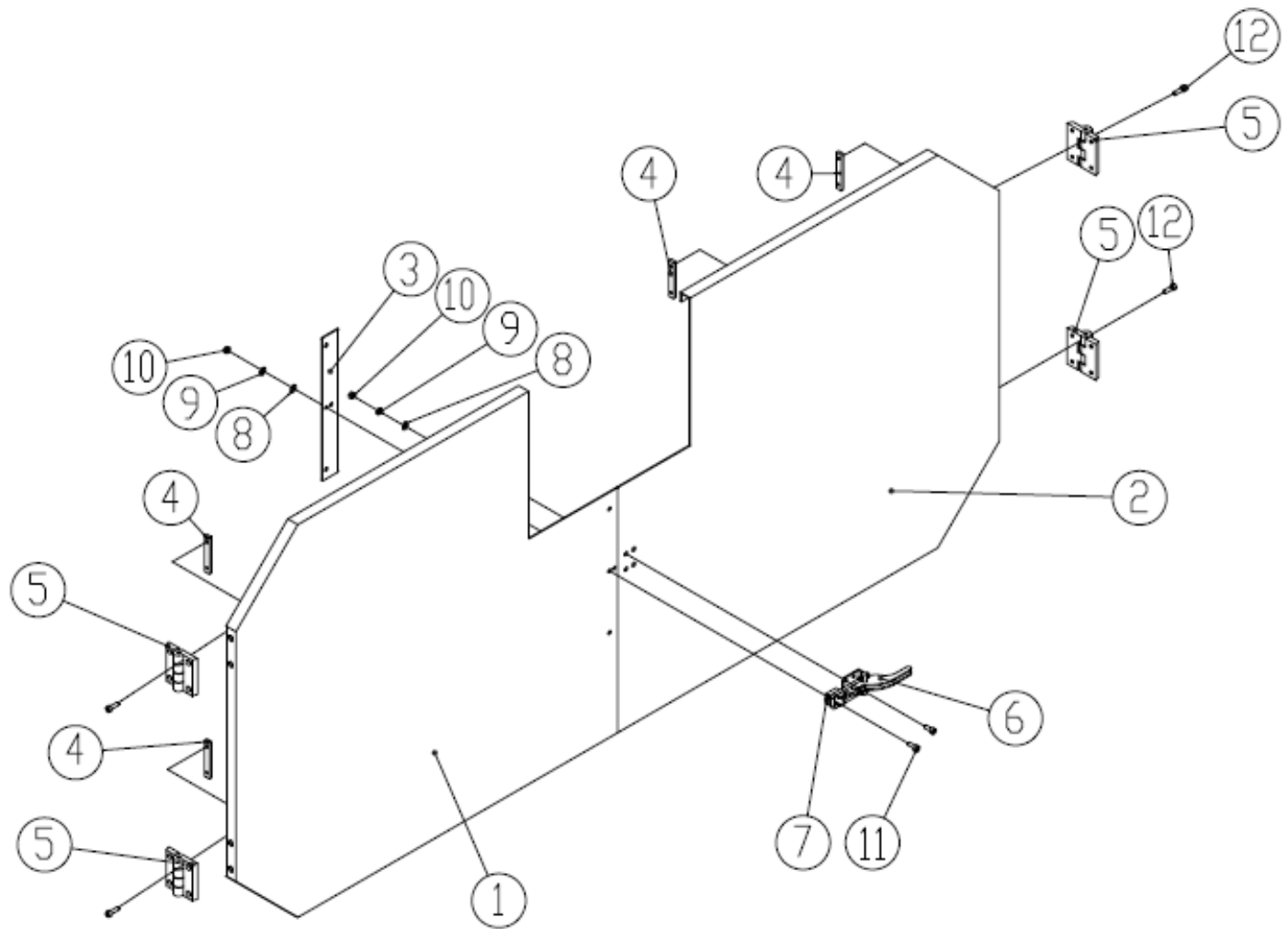


Ref	DESCRIPTION	PART #	QTY
1	Bottom Cover Plate Wldmnt	116331	1
2	Back Cover Plate	116335	1
3	Top Left Cover Plate	116329	1

COVER ASSEMBLY

Ref	DESCRIPTION	PART #	QTY
4	Hinge Reinforcement mount	116249	4
5	Right Top Cover Plate	116330	1
6	Sawdust Cover Weldmnt	116334	1
7	Cover Plate	116372	1
8	Door Frame Mounting Plate	116345	2
9	Dust Extraction Cover	116336	1
10	Carriage Bolt, M6x16-8.8, FE/ZN5, PN/M82406	F81001-36	10
11	Flat Washer, 6, FE/ZN5, PN/M82309	534283	6
12	Nut, M6-8-B, Hex Nylon, FE/ZN5, PN/M82175	F81001-15	11
13	Flat Washer 12, FE/ZN5, PN-78/M82309	F81056-1	4
14	Hex Nut, M12-8-B, FE/ZN5, PN/M82144	F81034-1	4
15	Washer 6.1, Split Lock, FE/ZN5, PN/M82008	F81053-3	4
16	Hex Head Bolt, M6x20-8.8, FE/ZN5, PN/M82105, Full Thread	F81001-2	4

DOOR COVER ASSEMBLY

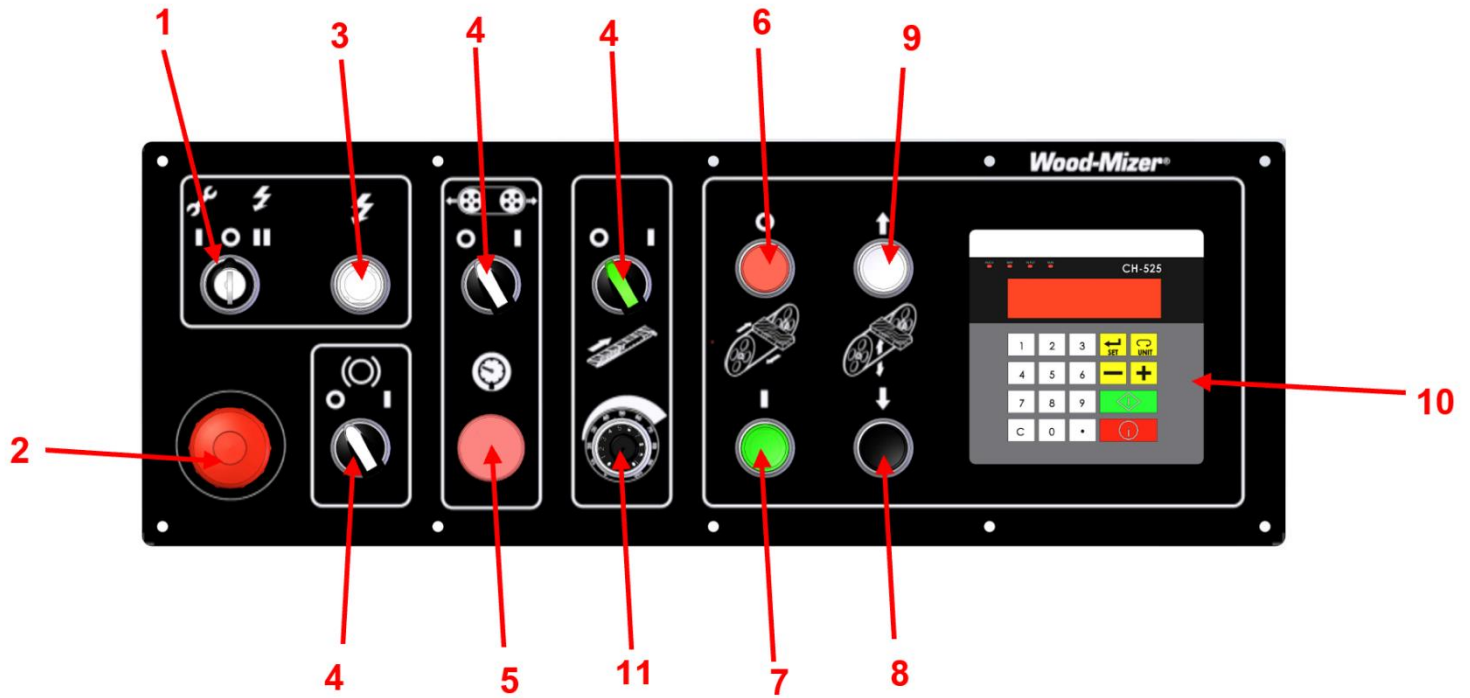


Ref	DESCRIPTION	PART #	QTY
1	Left Door	116333	1
2	Right Door	116332	1
3	Door Frame Mount	116345	1
4	Hinge Reinforcement mount	116249	4

DOOR COVER ASSEMBLY

Ref	DESCRIPTION	PART #	QTY
5	75mm, Door Hinge	116274	4
6	Door Latch Assembly	116271	1
7			
8	Large Plain Washer 6.4, FE/ZN5, PN/M82030	F8105-11	2
9	Washer 6.1, Split Lock, FE/ZN5, PN/M82008	F81053-3	2
10	Hex Nut, M6-8-B, FE/ZN5, PN/M82144	F81031-1	2
11	Socket Head Hex Screw, M6x16-8.8, FE/ZN5, PN/M82302	F81001-34	6
12	Hex Socket Screw, M6x25-8.8, FE/ZN5, PN/M82302	F81001-41	8

CONTROL PANEL

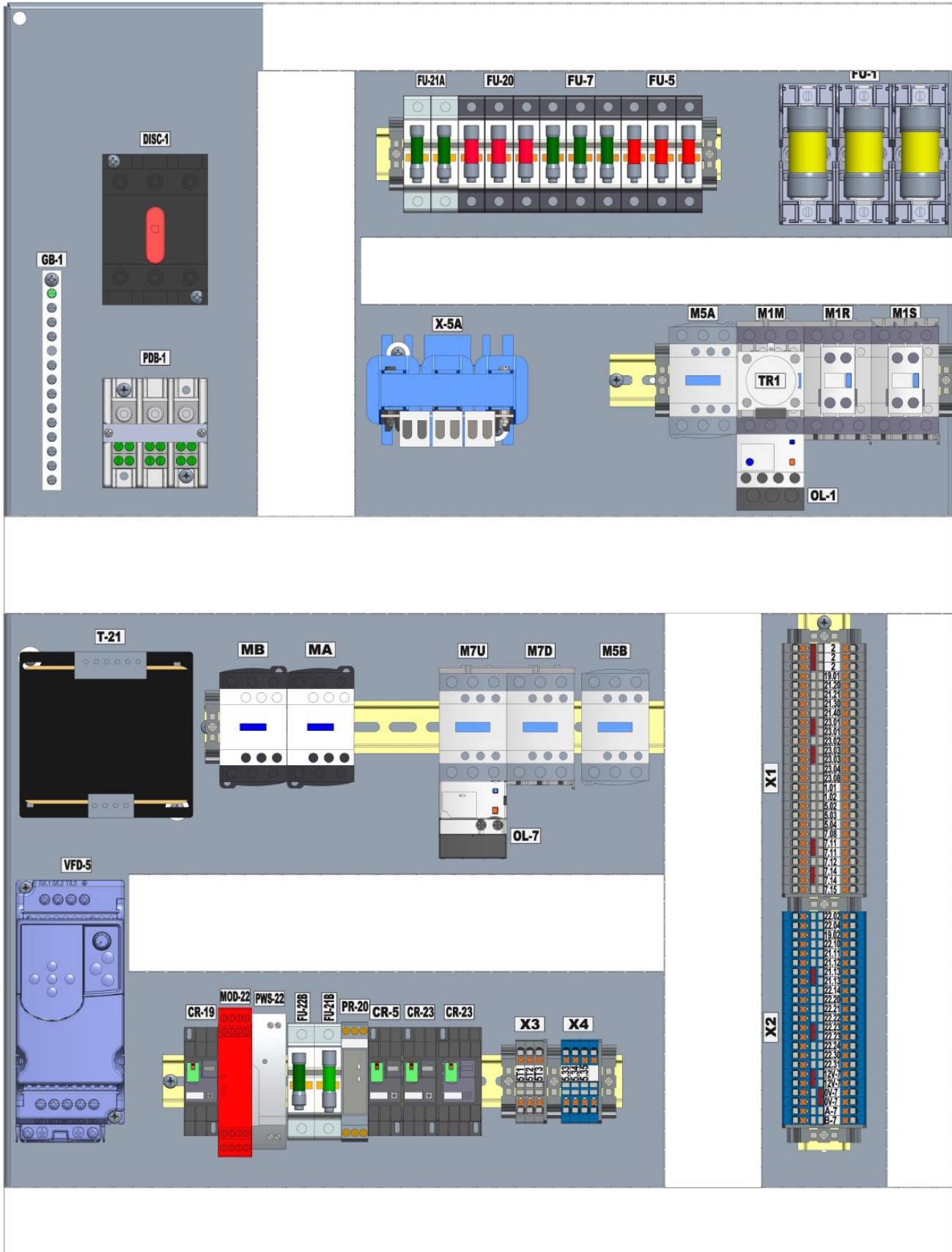


Ref	DESCRIPTION	PART #	QTY
1	Key Switch COMPLETE Assembly	116654	1
	800F Switch, 3Pos, Keyed	116738	1
	800F Latch, Plastic Latch	116727	1
	Screw Contact Block, 1 N.O.	116729	2
2	Emergency Stop AB800FP-MT44PX02 COMPLETE Assembly	125088	1
	"PUSH" Emergency Stop, AB 800FP-MT44PX02	116655	1
	800F Latch, Plastic Latch	116727	1
	Screw Contact Block, 1 N.C.	116728	2
3	Lighted Push Button, 800F-N5W COMPLETE Assembly	116656	1
	800F Pilot Light, White - Rd. Plas.	116731	1
	Integrated LED Latch Mount 120V AC White LED	116730	1

CONTROL PANEL

Ref	DESCRIPTION	PART #	QTY
	800F Latch, Plastic Latch	116727	1
	Screw Contact Block, 1 N.O.	116729	1
4	Toggle Switch, 800F-X10 COMPLETE Assembly	116657	2
	2 Position Selector Switch	116733	2
	Screw Contact Block, 1 N.O.	116729	2
	Screw Contact Block, 1 N.C.	116728	2
	800F Latch, Plastic Latch	116727	2
	Integrated LED Latch Mount 120V AC White LED	116730	2
5	Red LED, M22-LED230-R COMPLETE Assembly	116658	1
	800F Pilot Light, Red - Rd. Plas.	116732	1
	800F Latch, Plastic Latch	116727	1
	Integrated LED Latch Mount 120V AC White LED	116730	1
6	Red Push Button, AB 800FP-F4PX01 COMPLETE Assembly	116659	1
	800F Push Button - Plastic, Flush, Red	116736	1
	Screw Contact Block, 1 N.C.	116728	1
	800F Latch, Plastic Latch	116727	1
7	Green BtN, AB 800FP-LF3PN5GX10, COMPLETE Assembly	116660	1
	PB, Ill. Green	116737	1
	Screw Contact Block, 1 N.O.	116729	1
	Integrated LED Latch Mount 120V AC White LED	116730	1
	800F Latch, Plastic Latch	116727	1
8	Black Push Button, AB 800FP -F5PX10 COMPLETE Assembly	116661	1
	800F Push Button - Plastic, Flush, Black	116735	1
	Screw Contact Block, 1 N.O.	116729	1
	800F Latch, Plastic Latch	116727	1
9	White Push Button, AB 800FP -F6PX10 COMPLETE Assembly	116662	1
	800F Push Button - Plastic, Flush, White	116734	1
	Screw Contact Block, 1 N.O.	116729	1
	800F Latch, Plastic Latch	116727	1
10	CH-525, Set-works	116312	1
11	POT, MOELLER M22-R10K	116663	1

ELECTRONIC PANEL 460V/60Hz



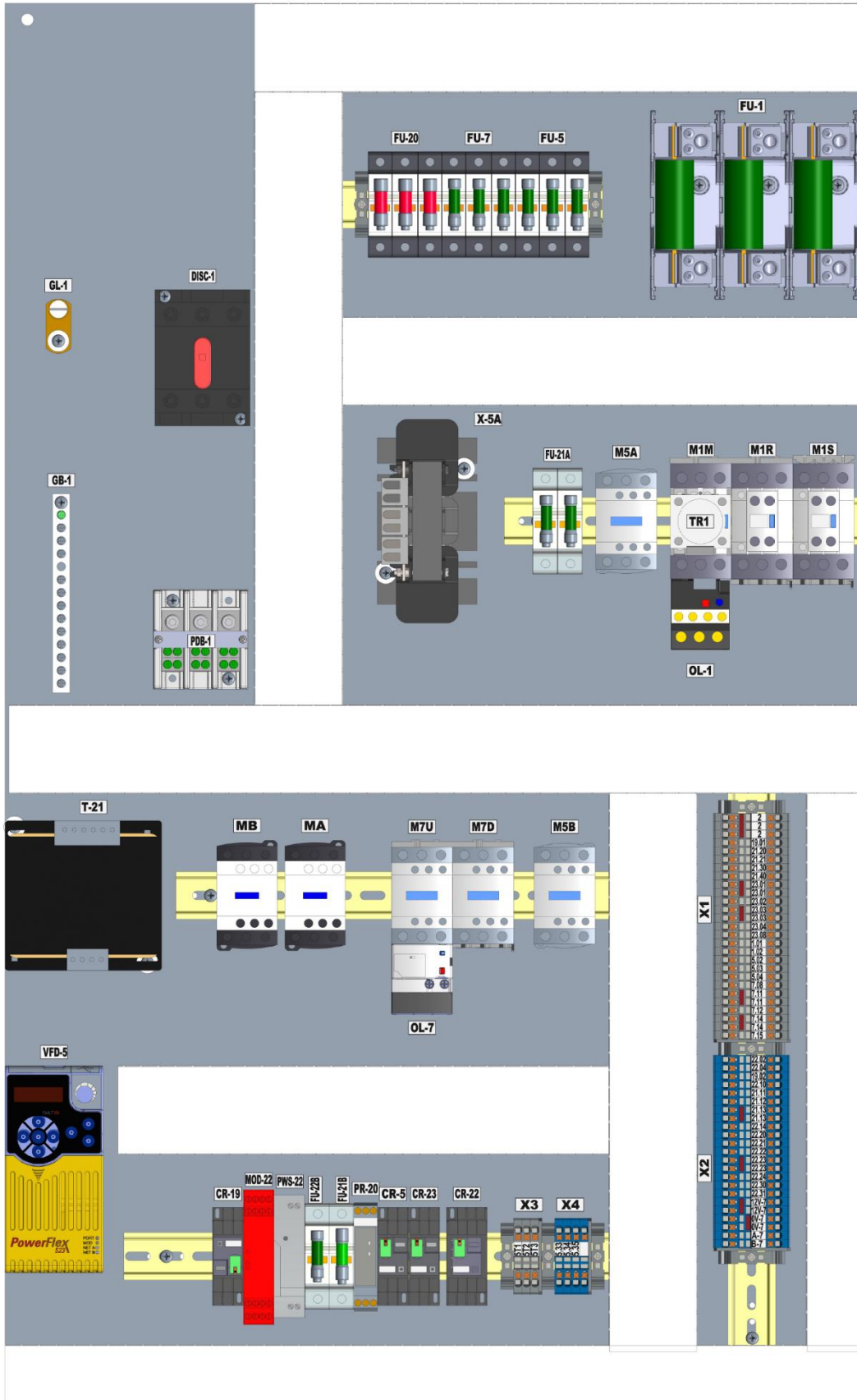
ELECTRONIC PANEL 460V/60Hz

Ref	DESCRIPTION	PART #	QTY
GB-1	Ground Bar Kit, KL-15	116870	1
DISC-1	DISCONNECT SWITCH ABB OT100F3	050906-1	1
PDB-1	POWER DISTRIBUTION AB 1492-PD3141	116665	1
FU-21A	FUSE CARRIER TE DF102	116673	1
	FUSE, CLASS CC, 2 AMP, 600 V, FNQ-R-2	116005	2
FU-20	FUSE CARRIER TE DF103	116669	1
	FUSE, CLASS CC, 3 AMP, 600 V, FNQ-R-3	052454	3
FU-7	FUSE CARRIER TE DF103	116669	1
	LP-CC-2.5, Fuse, Class CC, 2.5 AMP	116010	3
FU-5	FUSE CARRIER TE DF103	116669	1
	FUSE, CLASS CC, 10 AMP, 600 V, KTK-R-10	116009	3
FU-1	FUSE BLOCK, CLASS J, 60 AMP, 600 V	052733	1
	FUSE, CLASS J, 60 AMP, 600 V, LPJ-60SP	116004	3
X-5A	INDUCTOR MTE RL-00402	116672	1
M5A	MOTOR STRTR TE LC1D09F7 110V AUX-1NO/1NC	E23403	1
M1M	MOTOR STARTER LC1D18F7 110V	116864	1
TR-1	Timer Contact Block LADS2	116842	1
OL-1	Overload Relay LRD21	116838	1
M1R	MOTOR STARTER LC1D18F7 110V	116864	1
	Aux Contact, 1NO, 1NC, Type D, LADN11	116741	1
	MECHANICAL INTERLOCK KIT LAD9R1	116679	1
M1S	MOTOR STARTER LC1D18F7 110V	116864	1
	Aux Contact, 1NO, 1NC, Type D, LADN11	116741	1
T-21	Transformer, 300VA, 230-480:120	116677	1
MB	CONTACTOR LC1D09BD DC24V (AUX-1NO/1NC	024890	1
MA	CONTACTOR LC1D09BD DC24V (AUX-1NO/1NC	024890	1
M7U	MOTOR STRTR TE LC1D09F7 110V AUX-1NO/1NC	E23403	1
	MECHANICAL INTERLOCK KIT LAD9R1	116679	1
OL-7	OVERLOAD RELAY LRD05	116680	1
M7D	MOTOR STRTR TE LC1D09F7 110V AUX-1NO/1NC	E23403	1
M5B	MOTOR STRTR TE LC1D09F7 110V AUX-1NO/1NC	E23403	1
VFD-5	Power Flex 4M, VFD	116308	1
CR-19	Relay, 12A DPDT 24VDC	068319	1
	CONTROL RELAY SOCKET, SYF-08A	116690	1
MOD-22	SAFETY MODULE AB 440R-N23126 DC24V	116684	1
PWS-22	PHOENIX UNO-PS/1AC/24DC/30W	116685	1
FU-22B	FUSE CARRIER TE DF101	116686	1
	FUSE CLASS SUPPLEMENTAL 4AMP 250V FNM-4	055808	1
FU-21B	FUSE CARRIER TE DF101	116686	1
	FUSE, CLASS CC, 1 AMP, 600V, LP-CC-1	051286	1
PR-20	MONITORING RELAY OMRON K8DS-PH1	116688	1

ELECTRONIC PANEL 460V/60Hz

Ref	DESCRIPTION	PART #	QTY
CR-5	CONTROL RELAY, TE RXM2AB2F7 AC120V	061418	1
	CONTROL RELAY SOCKET, SYF-08A	116690	1
CR-23	CONTROL RELAY, TE RXM2AB2F7 AC120V	061418	1
	CONTROL RELAY SOCKET, SYF-08A	116690	1
CR-22	CONTROL RELAY, TE RXM4AB2F7 AC120V	116711	1
	CONTROL RELAY SOCKET, SYF-14A	116712	1
X1	Term, Gray, Feed-Through, 32A, PT-4	116719	30
	FBS 3-6, 3030242, Jumper, 3 Pros	116723	1
	FBS 2-6, 3030336, Jumper, 2 Pros	116724	4
X2	Term, Blue, Feed-Through, 32A, PT-4	116720	27
	FBS 2-6, 3030336, Jumper, 2 Pros	116724	4
X3	Term, Gray, Feed-Through, 32A, PT-4	116719	3
X4	Term, Blue, Feed-Through, 32A, PT-4	116720	4

ELECTRONIC PANEL 230V/60Hz



ELECTRONIC PANEL 230V/60Hz

Ref	DESCRIPTION	PART #	QTY
GB-1	Ground Bar Kit, KL-15	116870	1
DISC-1	DISCONNECT SWITCH ABB OT160G03P	116698	1
PDB-1	POWER DISTRIBUTION AB 1492-PD3163	116699	1
FU-20	FUSE CARRIER TE DF103	116669	1
	FUSE, CLASS CC, 3 AMP, 600 V, FNQ-R-3	052454	3
FU-7	FUSE CARRIER TE DF103	116669	1
	FUSE, CLASS CC, 4 AMP, 600 V, LP-CC-4	052713	3
FU-5	FUSE CARRIER TE DF103	116669	1
	Fuse, 20A 600V Class CC Fast-Acting	069694	3
FU-1	FUSE BLOCK, CLASS J, 100 AMP, 600 V	116705	1
	FUSE, CLASS J, 100 AMP, 600 V, LPJ-100SP	116704	3
X-5A	INDUCTOR MTE RL-00801	116708	1
FU-21A	FUSE CARRIER TE DF102	116673	1
	FUSE, CLASS CC, 4 AMP, 600 V, LP-CC-4	052713	2
M5A	MOTOR STRTR TE LC1D09F7 110V AUX-1NO/1NC	E23403	1
M1M	Motor Starter LC1D32F7 110V	116740	1
TR-1	Timer Contact Block LADS2	116842	1
OL-1	Overload Relay LRD32	116843	1
M1R	Motor Starter LC1D32F7 110V	116740	1
	Aux Contact, 1NO, 1NC, Type D, LADN11	116741	1
	MECHANICAL INTERLOCK KIT LAD9R1	116679	1
M1S	Motor Starter LC1D32F7 110V	116740	1
	Aux Contact, 1NO, 1NC, Type D, LADN11	116741	1
T-21	Transformer, 300VA, 230-480:120	116677	1
MB	CONTACTOR LC1D09BD DC24V (AUX-1NO/1NC	024890	1
MA	CONTACTOR LC1D09BD DC24V (AUX-1NO/1NC	024890	1
M7U	MOTOR STRTR TE LC1D09F7 110V AUX-1NO/1NC	E23403	1
	MECHANICAL INTERLOCK KIT LAD9R1	116679	1
OL-7	OVERLOAD RELAY CLS 10 TE LRD06 (1-1.6A)	116707	1
M7D	MOTOR STRTR TE LC1D09F7 110V AUX-1NO/1NC	E23403	1
M5B	MOTOR STRTR TE LC1D09F7 110V AUX-1NO/1NC	E23403	1
VFD-5	VFD AB Power Flex 523 230V	116710	1
CR-19	Relay, 12A DPDT 24VDC	068319	1
	CONTROL RELAY SOCKET, SYF-08A	116690	1
MOD-22	SAFETY MODULE AB 440R-N23126 DC24V	116684	1
PWS-22	PHOENIX UNO-PS/1AC/24DC/30W	116685	1
FU-22B	FUSE CARRIER TE DF101	116686	1
	FUSE CLASS SUPPLEMENTAL 4AMP 250V FNM-4	055808	1
FU-21B	FUSE CARRIER TE DF101	116686	1
	FUSE, CLASS CC, 1 AMP, 600V, LP-CC-1	051286	1
CR-5	CONTROL RELAY, TE RXM2AB2F7 AC120V	061418	1

ELECTRONIC PANEL 230V/60Hz

Ref	DESCRIPTION	PART #	QTY
	CONTROL RELAY SOCKET, SYF-08A	116690	1
CR-23	CONTROL RELAY, TE RXM2AB2F7 AC120V	061418	1
	CONTROL RELAY SOCKET, SYF-08A	116690	1
CR-22	CONTROL RELAY, TE RXM4AB2F7 AC120V	116711	1
	CONTROL RELAY SOCKET, SYF-14A	116712	1
X1	Term, Gray, Feed-Through, 32A, PT-4	116719	27
	FBS 3-6, 3030242, Jumper, 3 Pros	116723	1
	FBS 2-6, 3030336, Jumper, 2 Pros	116724	4
X2	Term, Blue, Feed-Through, 32A, PT-4	116720	23
	FBS 2-6, 3030336, Jumper, 2 Pros	116724	4
X3	Term, Gray, Feed-Through, 32A, PT-4	116719	3
X4	Term, Blue, Feed-Through, 32A, PT-4	116720	4