

**Log Splitter  
Safety, Operation,  
& Maintenance Manual**

---

**FS350SS**

**A1.04**

---

***Safety is our #1 concern!***

*July 2017*

*Form # 2287*

**California**  
Proposition 65 Warning



**WARNING:** Breathing gas/diesel engine exhaust exposes you to chemicals known to the State of California to cause cancer and birth defects or other reproductive harm.

- Always start and operate the engine in a well-ventilated area.
- If in an enclosed area, vent the exhaust to the outside.
- Do not modify or tamper with the exhaust system.
- Do not idle the engine except as necessary.

For more information go to **[www.P65warnings.ca.gov](http://www.P65warnings.ca.gov)**.



**WARNING:** Drilling, sawing, sanding or machining wood products can expose you to wood dust, a substance known to the State of California to cause cancer. Avoid inhaling wood dust or use a dust mask or other safeguards for personal protection.

For more information go to **[www.P65Warnings.ca.gov/wood](http://www.P65Warnings.ca.gov/wood)**.

**Active Patents assigned to Wood-Mizer, LLC**

Wood-Mizer, LLC has received patents that protect our inventions which are a result of a dedication to research, innovation, development, and design. Learn more at: [woodmizer.com/patents](http://woodmizer.com/patents)

**©2022 Wood-Mizer LLC**

Printed in the United States of America, all rights reserved. No part of this manual may be reproduced in any form by any photographic, electronic, mechanical or other means or used in any information storage and retrieval system without written permission from

**Wood-Mizer, LLC**  
**8180 West 10th Street**  
**Indianapolis, Indiana 46214**

# Table of Contents

# Section-Page

<b>SECTION 1</b>	<b>INTRODUCTION</b>	<b>1-1</b>
1.1	About This Manual.....	1-1
1.2	Getting Service.....	1-1
1.3	Specifications.....	1-1
<b>SECTION 2</b>	<b>SAFETY</b>	<b>2-9</b>
2.1	Safety Instructions.....	2-9
	<i>Owner's Responsibility.....</i>	<i>2-9</i>
2.2	Safety Symbols.....	2-9
<b>SECTION 3</b>	<b>SETUP AND OPERATION</b>	<b>3-1</b>
3.1	Uncrating.....	3-1
3.2	Onsite setup.....	3-1
3.3	Operation.....	3-1
	<i>Using optional log lift.....</i>	<i>3-2</i>
<b>SECTION 4</b>	<b>HYDRAULICS</b>	<b>4-1</b>
4.1	Hydraulic schematic (without optional Log Lift).....	4-1
4.2	Hydraulic layout (without optional Log Lift).....	4-2
4.3	Hydraulic components (without optional Log Lift).....	4-2
4.4	Hydraulic schematic (with optional Log Lift).....	4-4
4.5	Hydraulic layout (with optional Log Lift).....	4-5
4.6	Hydraulic components (with optional Log Lift).....	4-6
<b>SECTION 5</b>	<b>MAINTENANCE</b>	<b>5-7</b>
5.1	General maintenance.....	5-7
5.2	Changing the wedges.....	5-7
5.3	Wedge sharpening.....	5-8
<b>SECTION 6</b>	<b>PARTS</b>	<b>6-1</b>
6.1	How To Use The Parts List.....	6-1
	<i>To Order Parts.....</i>	<i>6-1</i>
6.2	Sample Assembly.....	6-1
6.3	Splitter table.....	6-2
6.4	Debris Tray and Guards.....	6-4
6.5	Wedge.....	6-5
6.6	Hydraulic Controls (Standard).....	6-6
6.7	Decals.....	6-8
6.8	Log Lift Platform (Optional).....	6-10
6.9	Log Lift Controls (Optional).....	6-12
6.10	Supports.....	6-14

## Table of Contents

## Section-Page

6.11	Hydraulic Hoses (Standard) .....	6-15
6.12	Hydraulic hoses (with optional Log Lift).....	6-16

**Wood-Mizer® LLC**  
**Limited Product Warranty**



Wood-Mizer LLC (“Warrantor”), an Indiana corporation with its principal place of business at 8180 West Tenth Street, Indianapolis, IN 46214-2400 USA, warrants to the purchaser (“Purchaser”) that for the time periods specifically stated herein and subject to the terms, conditions and limitations stated herein, the equipment manufactured by the Warrantor will be free from defects in material and workmanship attributable to Warrantor so long as, during the warranty periods stated herein, the equipment is installed, operated and maintained in accordance with the instructions provided by Warrantor.

PRODUCT	MODEL CLASS	LENGTH OF WARRANTY		EFFECTIVE DATE
		USA & CANADA	NON USA & CANADA	
Portable Sawmills, Resaws, Edgers	LT, LX, HR, EG	Two years	One year	Date of purchase
Portable Sawmills with Chassis	LT28, LT35, LT40, LT50, LT70, LX450	Two years, excluding the chassis, which chassis shall have a five year warranty	One year	
Industrial Sawmills, Resaws, Edgers	WM, HR, EG, TVS, SVS	One year	One year	Date of purchase or date of installation / training (if applicable), whichever occurs first, not to exceed 6 months from date of purchase
TITAN Industrial	WB, TV, HR, EG, EA, MR	One year	One year	
Material Handling	TWC, IC, TD, LD, GC, CR, CB, CC	One year	One year	
Blade Maintenance Equipment	BMS, BMT, BMST	One year	One year	Date of purchase
Options and Accessories	Various	One year*	One year*	
Moulders, Extractors, Kilns	MP, MD, KS, KD	One year	One year	
Slab Flatteners	MB	Two years	One year	
Pallet Equipment	PD, PC	One year	One year	
Log Splitters	FS	One year	One year	
Replacement Parts	Various	90 days	90 days	

\* Warranty on Options will match the warranty on the primary equipment when purchased on same invoice.

**Exclusions from 90 Day, Limited One Year and Two Year Warranty**

Warrantor shall have no responsibility under this warranty for any wear components, including, but not limited to: belts, blade guides, blades, electric motor brushes, drum switches, filters, fuses, hoses, bearings (excluding cylindrical drive bearings), bushings, cable carriers, and spark plugs. All wear components are furnished “as is”, without any warranty from Warrantor. This limited warranty does not cover any defects caused by misuse, negligence, alterations, damage due to overload, abnormal conditions, excessive operation, accident, or lack of performance of normal maintenance services.

Several components which are used in the manufacture of the equipment but not manufactured by Warrantor such as cant hooks, power plants, laser sights, batteries, tires, and trailer axles have warranties provided by the original equipment manufacturer (written copies available upon request). Warrantor does not separately warrant such items. Components or equipment manufactured by third parties are not covered by this warranty. Warrantor, however, will provide reasonable assistance to the Purchaser to make claims against any warranties applicable to such component parts as provided by such original equipment manufacturers. Components or equipment manufactured by third parties are not covered by this Warranty.

**Five Year Limited Chassis Warranty**

The limited five year chassis warranty described above, DOES NOT extend to (a) any damage stemming from accident, improper towing, overload, abuse, misuse, abnormal conditions, negligence, excessive operation, or lack of maintenance, (b) rust caused by exposure to corrosive atmospheric conditions, or (c) the sawmill head, carriage, axle, brakes, or any hydraulic or electrical components attached to the chassis.

**Warrantor’s Obligations as To Defects**

In the event that the equipment fails to perform due to defective materials or workmanship attributable to Warrantor under normal use and service within the established warranty period, Purchaser’s sole and exclusive remedy and Warrantor’s sole liability shall be to replace or repair, in Warrantor’s sole and subjective discretion, any defective part at Warrantor’s principal place of business without cost to the Purchaser if such defect exists. The determination of whether a product is defective shall be made by Warrantor in Warrantor’s sole and subjective discretion. The Purchaser must notify Warrantor prior to shipping any defective part. Warrantor, at its sole discretion, may cover expenses incurred in shipping the defective part to Warrantor for evaluation; provided, however, that Warrantor will not be responsible for labor, travel time, mileage, removal, installation or incidental or consequential damages. However, any part in excess of 140 pounds must be returned by the Purchaser, to the Warrantor’s nearest authorized facility at the Purchaser’s expense, if return is requested by Warrantor. Warrantor shall have a reasonable time within which to replace or repair the defective part. If Warrantor determines that the product is not defective under the terms of this warranty in Warrantor’s sole and subjective discretion, then Purchaser shall be responsible for any expenses incurred by Warrantor in returning the equipment to the Purchaser.

**Limitations and Disclaimers of Other Warranties**

EXCEPT FOR THE EXPRESS WARRANTY PROVISIONS STATED ABOVE, WARRANTOR DISCLAIMS ALL WARRANTIES, EXPRESS AND/OR IMPLIED, INCLUDING WITHOUT LIMITATION, THE IMPLIED WARRANTIES OF MERCHANTABILITY, AND FITNESS FOR A PARTICULAR PURPOSE, NONINFRINGEMENT AND TITLE. No representation or other affirmation of fact by representatives of Warrantor, whether verbal or in writing, including photographs, brochures, samples, models, or other sales aids, shall constitute a warranty or other basis for any legal action against Warrantor. There are no other representations, promises, agreements, covenants, warranties, guarantees, stipulations or conditions, express or implied, by Warrantor except as expressly set forth herein. THE ORIGINAL PURCHASER AND ANY INTENDED USER OR BENEFICIARY OF THIS EQUIPMENT, SHALL NOT BE ENTITLED TO RECOVER ANY INDIRECT, SPECIAL, PUNITIVE, EXEMPLARY, CONSEQUENTIAL, SPECIAL, OR INCIDENTAL DAMAGES OR LOSSES, INCLUDING BUT NOT LIMITED TO, DAMAGES OF LOST PRODUCTION, LOST REVENUE, LOST PRODUCT, LOST PROFITS, LOST BUSINESS, LOSS OF USE, LOSS OF GOODWILL, OR BUSINESS INTERRUPTION, FROM WARRANTOR FOR ANY REASON WHATSOEVER INCLUDING WITHOUT LIMITATION WARRANTY OR DEFECT IN THE PRODUCT REGARDLESS OF THE SOLE, JOINT AND/OR CONCURRENT NEGLIGENCE, BREACH OF CONTRACT, BREACH OF WARRANTY, STRICT LIABILITY IN TORT OR STATUTORY CLAIMS OR OTHER LEGAL FAULT OR RESPONSIBILITY OF EITHER WARRANTOR OR PURCHASER OR ITS EMPLOYEES OR AGENTS. Warrantor does not warrant that its equipment meets or complies with the requirements of any particular safety code or governmental requirements.

Defective items replaced under the terms of this warranty become the property of Warrantor.

**Design Changes**

Warrantor reserves the right to change the design of its products from time to time without notice and without obligation to make corresponding changes in or to its products previously manufactured.

**Rights of Purchasers**

The validity and effect of this limited warranty as well as its interpretation, operation and effect, shall be determined exclusively by the principles of law and equity of the State of Indiana, USA. This limited warranty gives Purchaser specific legal rights. Purchaser may also have other rights, which may vary from state to state. Some states may not allow limitations as to the duration of implied warranties or to the exclusion or limitation of incidental or consequential damages, so some of the limitations and exclusions detailed set forth above may not apply. In the event that any one or more of the provisions of this warranty shall be or become invalid, illegal or unenforceable in any respect, the validity, legality and enforceability of the remaining provisions of this warranty shall not be affected thereby.

**Interpretations**

This Warranty constitutes the entire warranty agreement between Warrantor and Purchaser and supersedes any prior understandings or agreements pertaining to the same subject matter. This warranty cannot be amended except in writing which refers to this warranty which is signed by both Warrantor and Purchaser.

## SECTION 1 INTRODUCTION

### 1.1 About This Manual

This manual replaces any previous information received on your Wood-Mizer® equipment.

The information and instructions in this manual do not amend or extend the limited warranties for the equipment given at the time of purchase.

### 1.2 Getting Service

For contact information, sales, service, parts, and additional manuals, sign into your account on <https://woodmizer.com>, or call inside the USA: 1-800-553-0182 or from outside the USA: 317-271-1542

### 1.3 Specifications

Equipment specification are included in the Online Manuals, which are found at <https://apps.woodmizer.com/Manuals/Manuals.aspx?parent=0>.

---

## FS-350SS

---

Hydraulics:	Hooks up with 3/4" NPT fittings
Force:	29 ton
Production rate:	up to 2 cords per hour
Operational dimensions:	120" (long) x 72" (wide) x 36" (high)
Log capacity:	24" long, 26" diameter, 300 lbs.
Machine shipping weight:	2,050lbs

## SECTION 2 Safety

### 2.1 Safety Instructions

#### *Owner's Responsibility*



**IMPORTANT!** It is always the **owner's responsibility** to comply with all applicable safety instructions, as well as federal, state and local laws, rules and regulations regarding the ownership, operation, and towing of your Wood-Mizer Wood Splitter. All Wood-Mizer Wood Splitter owners should be thoroughly familiar with all applicable safety instructions and laws and comply with them fully while using or towing the wood splitter.

**NOTE:** ONLY safety instructions regarding **personal injury** are listed in this section. Safety instructions regarding only equipment damage appear where applicable throughout the manual.



**WARNING!** Clean sawdust from all guards, vents, control boxes, or any area where sawdust may gather **after every shift**. Failure to do so may result in fire, causing death or serious injury.



### 2.2 Safety Symbols

The following symbols and signal words call your attention to instructions concerning your personal safety. Be sure to observe and follow these instructions.



**DANGER!** indicates an imminently hazardous situation which, if not avoided, will result in serious injury or death.



**WARNING!** suggests a potentially hazardous situation which, if not avoided, could result in serious injury or death.



**CAUTION!** refers to potentially hazardous situations which, if not avoided, may result in minor or moderate injury or damage to equipment.



**IMPORTANT!** indicates vital information.

**NOTE:** gives helpful information.

### OBSERVE SAFETY INSTRUCTIONS



#### **IMPORTANT!**

- Keep children away from the area.
- Read the entire operator's manual before operating the wood splitter.
- Take notice of all safety warnings throughout this manual and those posted on the machine.
- Keep this manual with this machine at all times, regardless of ownership.
- Read all additional manufacturer's manuals.
- Obey all applicable safety instructions including dangers, warnings, and cautions.
- Only persons who have read and understood the entire operator's manual should operate the wood splitter.



**DANGER!** Follow all safety instructions for your power unit. Failure to follow this will result in serious injury or death.

### WEAR SAFETY CLOTHING



**WARNING!** Secure all loose clothing and jewelry before operating the wood splitter.



**WARNING!** Always wear hand, eye, ear, and foot protection when operating or servicing the wood splitter.



### KEEP WOOD SPLITTER AND AREA AROUND WOOD SPLITTER CLEAN



**DANGER!** Maintain a clean and clear path for all necessary movement around the wood splitter and stacking areas. Failure to follow this will result in serious injury or death.





**WARNING!** Do not allow children in the area of the wood splitter. Failure to follow this may result in serious injury or death

### DISPOSE OF WOOD BY-PRODUCTS PROPERLY



**IMPORTANT!** Always properly dispose of all wood by-products, including sawdust, chips, and other debris, including operation waste such as coolant, oil, fuel, oil filters, fuel filters, etc.

### KEEP SAFETY LABELS IN GOOD CONDITION



**IMPORTANT!** Always be sure that all safety decals are clean and readable. Replace all damaged safety decals to prevent personal injury or damage to the equipment. Contact your local distributor, or call your Customer Service Representative to order more decals.



**IMPORTANT!** If replacing a component which has a safety decal affixed to it, make sure the new component also has the safety decal affixed.

### CAUTIONS FOR WOOD SPLITTER SETUP



**WARNING!** Set up the wood splitter on solid, level ground.

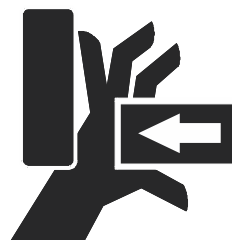
### USE CAUTION WHEN WORKING WITH HEAVY LOGS



**WARNING!** Do not load logs in excess of **300 lbs** without a counterbalance on the tongue to prevent unit tipping.



**WARNING!** Be aware of possible crushing points when handling large logs.



### KEEP PERSONS AWAY



**WARNING!** Keep all persons out of the path of log moving equipment and logs when operating or loading the log splitter.

### KEEP HANDS AWAY



**DANGER!** Always keep hands away from moving wood. Failure to follow this will result in serious injury or death.



**WARNING!** Avoid contact with any hot parts (hydraulic hoses, fittings, engines, if applicable).

Allow the system to cool sufficiently before beginning any service function, including debris removal.



**WARNING!** Avoid contact with sharp edges of the cutting wedges.



## SECTION 3 SETUP AND OPERATION

### 3.1 Uncrating

When your Wood-Mizer Wood Splitter arrives, it will be completely assembled. If any parts are missing, please contact Wood-Mizer support at 1-800-525-8100.

### 3.2 Onsite setup

**DANGER!** Maintain a clean and clear path for all necessary movement around the wood splitter and stacking areas. Failure to follow this will result in serious injury or death.

**WARNING!** Do not allow children in the area of the wood splitter.

1. Customer is responsible for supplying hydraulic connectors for the skid steer.
2. Secure the log splitter to your skid steer according to the instructions on your machine.
3. Park the log splitter on a solid, level surface.
4. Connect the external hydraulic source to the input and output fitting hose fittings.

### 3.3 Operation

**DANGER!** Do not operate this skid steer indoors or in an enclosed area due to carbon monoxide poisoning. Failure to follow this will result in serious injury or death.

**WARNING!** DO NOT LOAD LOGS GREATER THAN 300LBS.

**WARNING!** Avoid contact with sharp edges of the cutting wedges.

1. Unpin the output trays and open the trays for operation.
2. Move the pusher to the left by moving the log splitter handle to the left.



THAN 24 INCHES IN LENGTH  
 THAN 27 INCHES IN DIAMETER  
 THAN 300 LBS

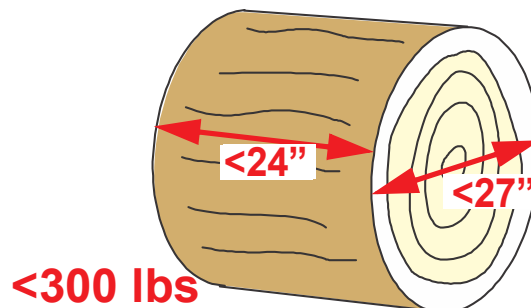


FIG. 3-1

3. Place the log on the splitter table.

**NOTE:** The log splits easier when the base end is towards the wedge.

- Position the log onto the cutting table between the wedge and the pusher.

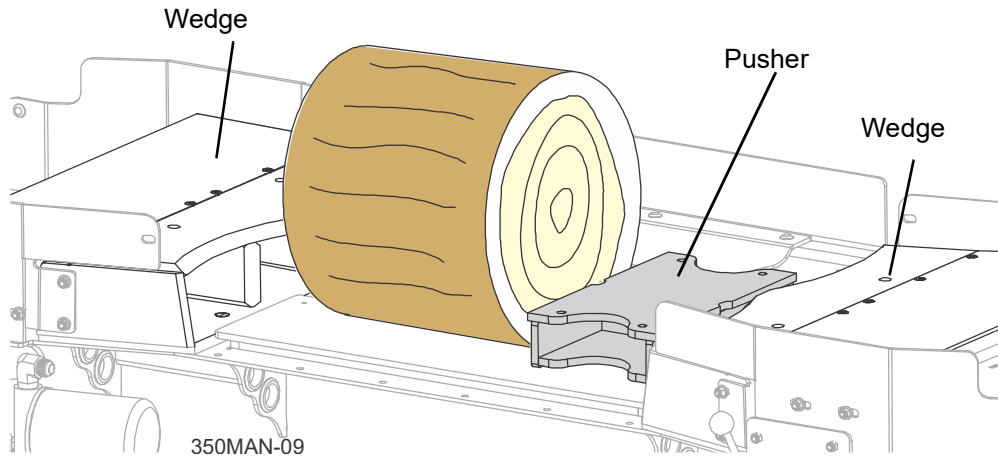


FIG. 3-2

### SINGLE LOG OPERATION

- After the first cut, move the log back onto the cutting table.

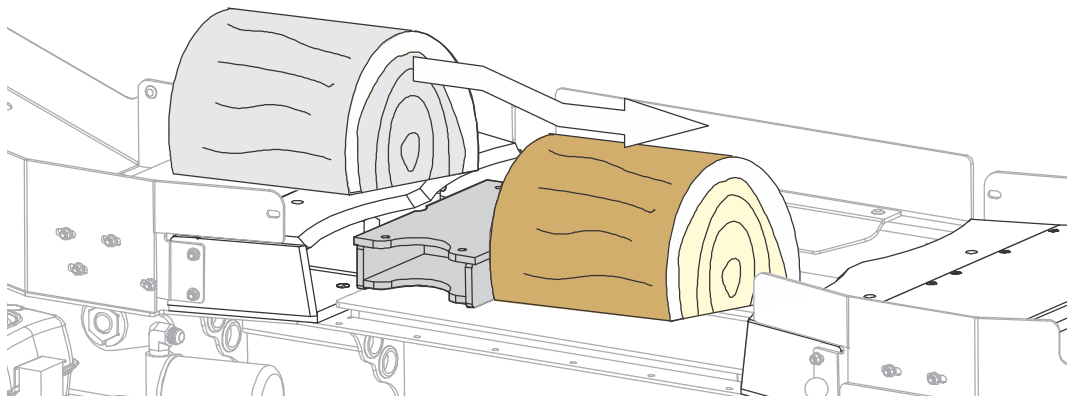


FIG. 3-3

- Move the pusher to the right by moving the log splitter handle to the right.
- Move the log back onto the cutting table and repeat the steps above.

### DUAL LOG OPERATION

- Perform the first two steps above.
- Load a second log onto the table.
- Alternate cuttings by repositioning the logs onto the cutting table after each cut.
- Repeat these steps until finished.

### Using optional log lift



**WARNING!** ENSURE THE AREA IS CLEAR BEFORE LOWERING THE LOG LIFT PLATFORM.

5. Unpin the log lift platform from the transport position.
6. Lower the log lift platform by moving the log lift handle to the down position.
7. Position a log onto the log lift platform.

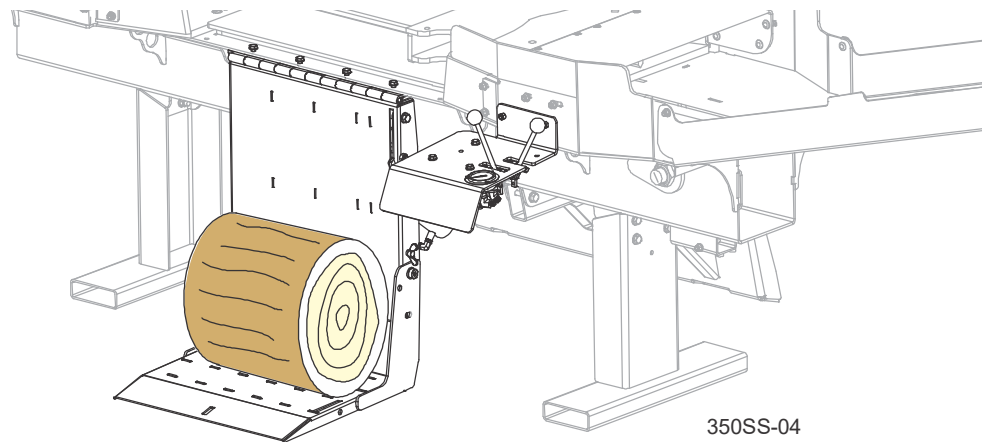


FIG. 3-4

**IMPORTANT!** The log must be less than 24" long, 27" in diameter, and 300 lbs.

**LESS THAN 24 INCHES IN LENGTH**  
**LESS THAN 27 INCHES IN DIAMETER**  
**LESS THAN 300 LBS**

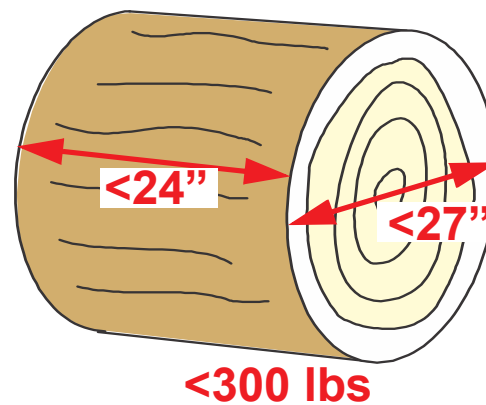


FIG. 3-5

8. Raise the log lift platform by moving the log lift handle to the up position.
9. Position the log onto the cutting table between the wedge and the pusher.

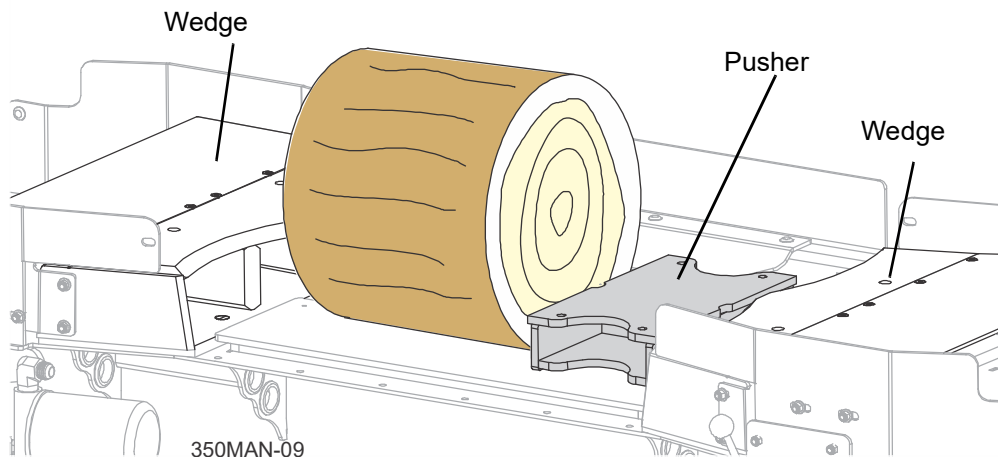


FIG. 3-6

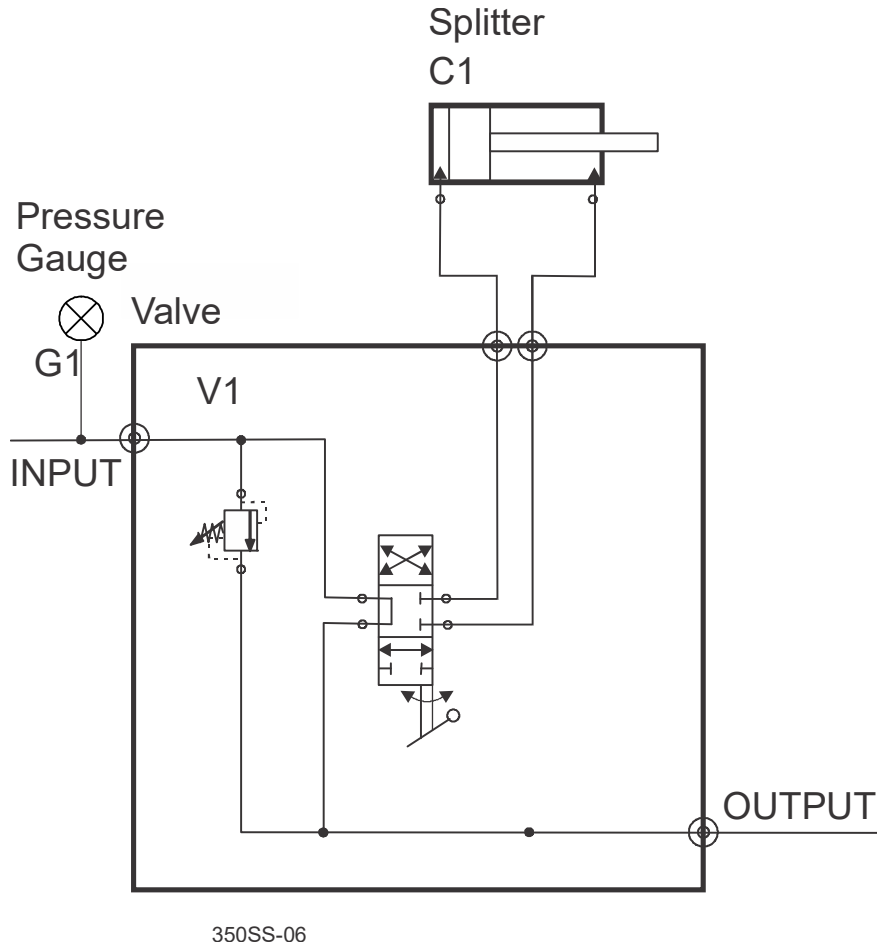
10. Lower the log lift platform.

**NOTE:** The operator stands on the log lift platform during operation.

11. Operate single or dual log method, as desired.

## SECTION 4 HYDRAULICS

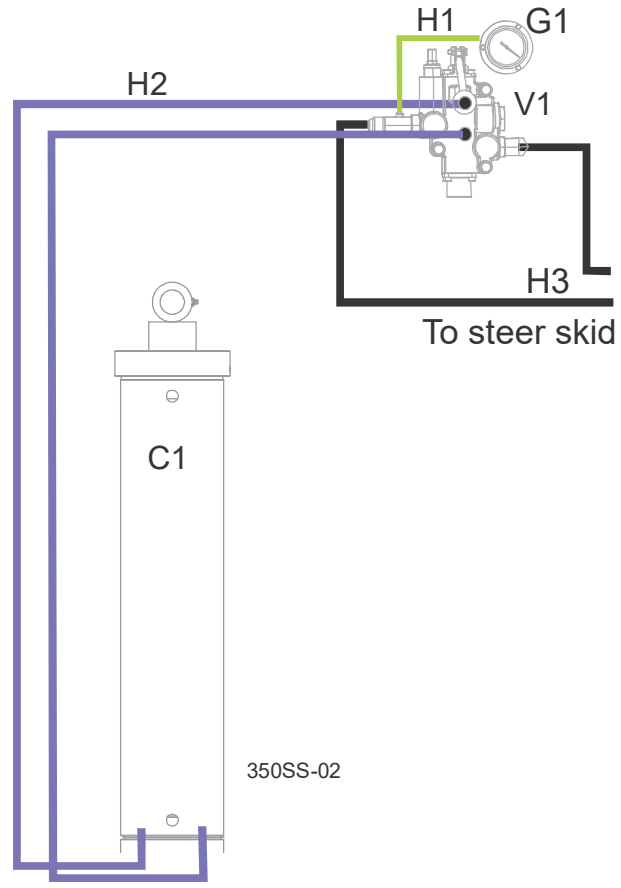
### 4.1 Hydraulic schematic (without optional Log Lift)



# 4 Hydraulics

*Hydraulic layout (without optional Log Lift)*

## 4.2 Hydraulic layout (without optional Log Lift)



## 4.3 Hydraulic components (without optional Log Lift)

Hydraulic component reference <sup>1</sup>		
Ref	Description	Part Number
C1	Cylinder, Hydraulic 2-1/4x5x24	079047
	Fitting, 12SAE M- 12 JIC M Straight Long	079434
	Fitting, 12SAE M- 12 JIC M Straight Long	079434
G1	Gauge, Hydraulic Pressure	079775
	Fitting, #04 NPT F - #04 JIC M 90 Deg	079117



Hydraulic component reference <sup>1</sup>		
Ref	Description	Part Number
V1	Valve, Prince 1 Spool	079488
	Fitting, #04 NPT F - #04 JIC M 90 Deg	079117
	Fitting, #12 SAE M - #12 JIC M x 90 Deg	079108
	Fitting, #12 SAE M - 12 JIC M Straight	079116
	Fitting, 4SAE-4JIC 90° Elbow	074543
	Fitting, 10 SAE M x 12 JIC M	079449

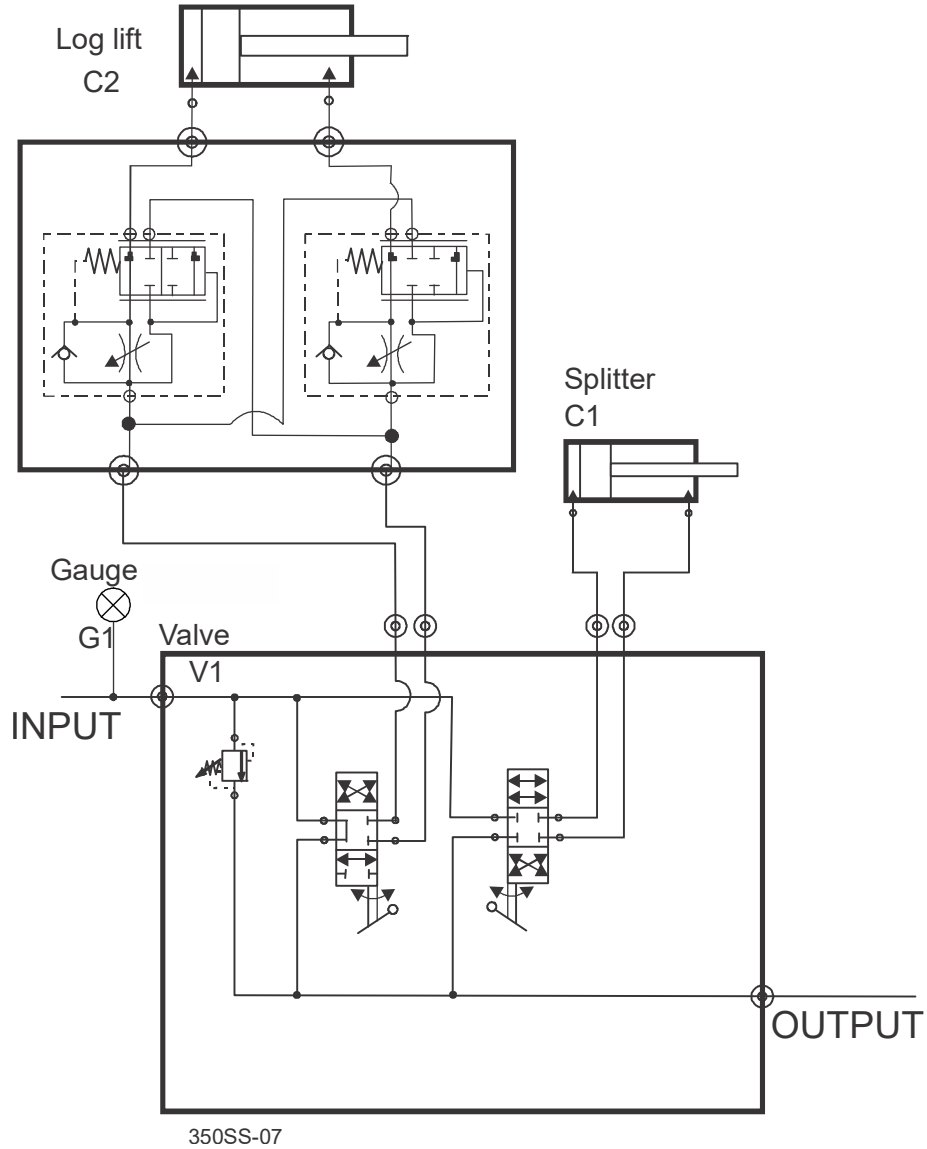
<sup>1</sup> See Part section for more detail of the location and fittings.

Hydraulic hose list				
Ref	Hose color	Length	Description	Part Number
H1	Lt Green	14-1/2"	1/4" Hose, 14-1/2" #4 F JIC & #4 F JIC	079301
H2	(not marked)	34.5"	3/4" Hose, 90 Deg #12 F JIC x 45 Deg #12 F JIC	079300 <sup>1</sup>
H3	(not marked)	72"	3/4" Hose, 90 Deg #12 F JIC x 3/4 Male NPT	110147 <sup>2</sup>

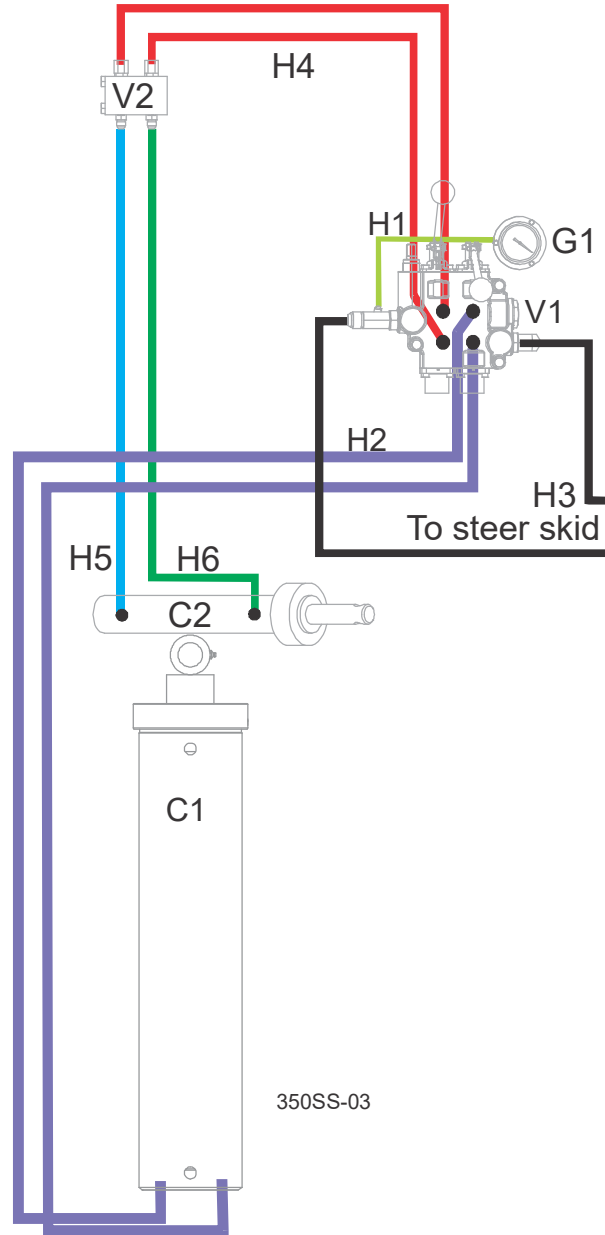
<sup>1</sup> Changed from 110022 after 11/9/2017, to improve fit.

<sup>2</sup> Changed from 110023 after 11/9/2017, to improve fit.

### 4.4 Hydraulic schematic (with optional Log Lift)



4.5 Hydraulic layout (with optional Log Lift)



## 4

**Hydraulics***Hydraulic components (with optional Log Lift)***4.6 Hydraulic components (with optional Log Lift)**

Hydraulic component reference <sup>1</sup>		
Ref	Description	Part Number
C1	Cylinder, Hydraulic 2-1/4x5x24	079047
	Fitting, 12SAE M- 12 JIC M Straight Long	079434
	Fitting, 12SAE M- 12 JIC M Straight Long	079434
C2	Cylinder, Hydraulic Log Lift	079046
	Fitting, 4 SAE M x 6 JIC M 90 Deg Elbow	079518
G1	Gauge, Hydraulic Pressure	079775
	Fitting, #04 NPT F - #04 JIC M 90 Deg	079117
V1	Valve, Prince 2Spool	079438
	Fitting, #04 NPT F - #04 JIC M 90 Deg	079117
	Fitting, #12 SAE M - #12 JIC M x 90 Deg	079108
	Fitting, #12 SAE M - 12 JIC M Strght	079116
	Fitting, 4SAE-4JIC 90° Elbow	074543
	Fitting, 10 SAE M x 12 JIC M	079449
	Fitting, 10 SAE M x 6 JIC M 45 Elbow	079530
V2	Fitting, 4 SAE M x 04 JIC M .062Orifice	079217
	Fitting, 4SAE-4JIC 90° Elbow	074543
	Fitting, 10 SAE M x 4 SAE F Redx Bush	079451

<sup>1</sup> See Part section for more detail of the location and fittings.

Hydraulic hose list				
Ref	Hose color	Length	Description	Part Number
H1	Lt Green	14-1/2"	1/4" Hose, 14-1/2" #4 F JIC & #4 F JIC	079301
H2	(not marked)	34.5"	3/4" Hose, 90 Deg #12 F JIC x 45 Deg #12 F JIC	079300 <sup>1</sup>
H3	(not marked)	72"	3/4" Hose, 90 Deg #12 F JIC x 3/4 Male NPT	110147 <sup>2</sup>
H4	Red	42"	3/8" Hose, #6 F JIC & #6 F JIC	079802
H5	Blue	43"	3/8" Hose, #6 F JIC & #6 F JIC	079803
H6	Green	40-1/2"	3/8" Hose, #6 F JIC & #6 F JIC	079804

<sup>1</sup> Changed from 110022 after 11/9/2017, to improve fit.

<sup>2</sup> Changed from 110023 after 11/9/2017, to improve fit.

## SECTION 5 MAINTENANCE

**WARNING!** Before performing service turn the engine key switch to the OFF position and remove the key. Failure to follow this could result in serious injury or death.

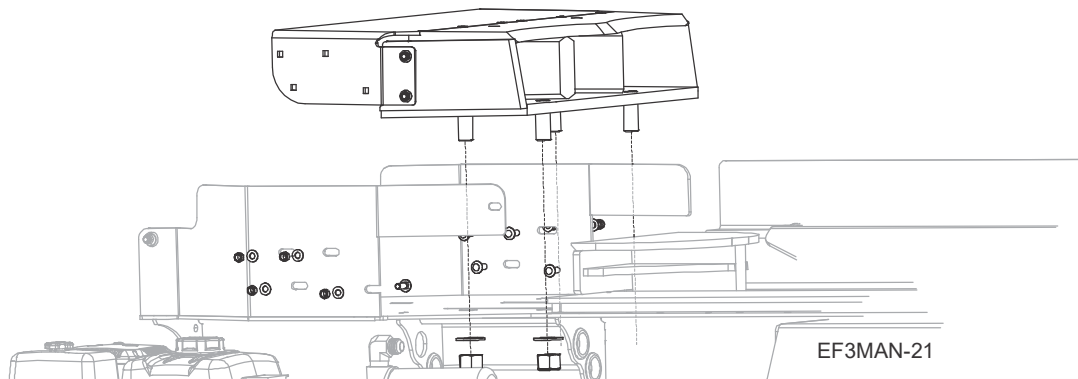
### 5.1 General maintenance

1. After each use, check for debris impeding any moving parts.
2. After each use, check for hydraulic leaks.
3. After 25 hours of use, apply grease to the fittings on each end of the main hydraulic cylinder.

### 5.2 Changing the wedges

**WARNING!** Use proper lifting equipment; wedges are heavy. Failure to follow this could result in serious injury or death.

1. Unbolt the four (4) carriage bolts on each side that hold the wedge extension plate to the unit.
2. Remove the two nuts and their washers at the bottom of the cutting table on each side.



**FIG. 5-1**

3. Lift the wedges and their extension plates straight up.
4. Retain hardware for reapplication.
5. Remove and retain all hardware holding the wedge and the wedge extension plate together.

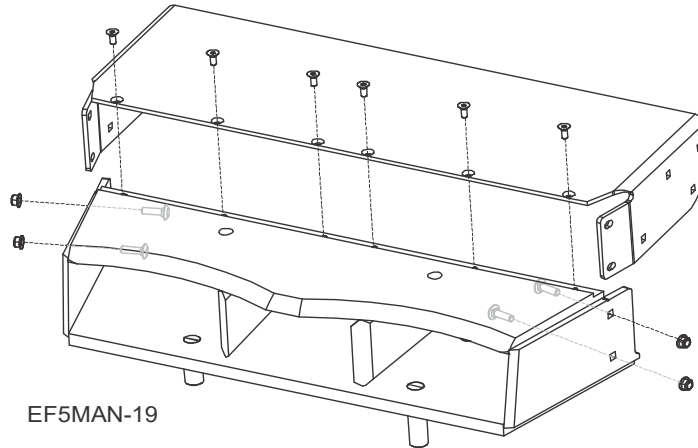


FIG. 5-2

6. To re-install the wedges, reverse the order of this procedure.

### 5.3 Wedge sharpening

Use a **hand file** to sharpen the wedges after 80 hours of use. An angle grinder may take off too much material at once.

**NOTE: DO NOT CHANGE THE ANGLE OF THE WEDGE.**

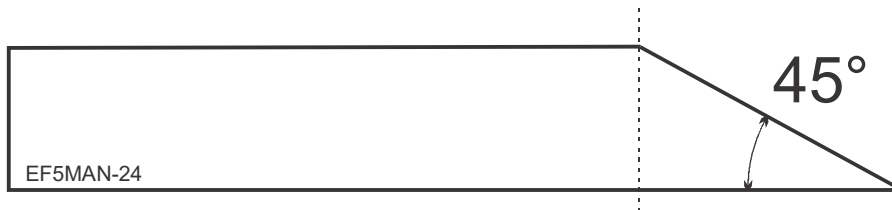


FIG. 5-3

**NOTE: DO NOT FILE ON THE UNDERSIDE OF THE WEDGE. THIS WILL CAUSE THE WOOD TO JAM.**

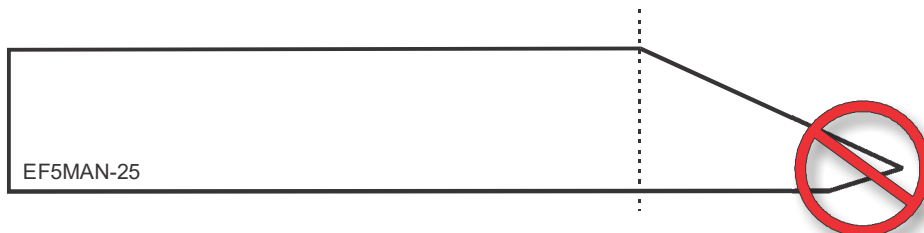


FIG. 5-4

## SECTION 6 PARTS

### 6.1 How To Use The Parts List

- Use the table of contents to locate the assembly that contains the part you need.
- Go to the appropriate section and locate the part in the illustration.
- Use the number pointing to the part to locate the correct part number and description in the table.
- Parts shown indented under another part are included with that part.

#### *To Order Parts*

- From the continental US, call **1-800-525-8100** to order parts. Have your customer number, vehicle identification number, and part numbers ready when you call.
- From other international locations, contact the Wood-Mizer distributor in your area for parts.

### 6.2 Sample Assembly

REF	PART #	DESCRIPTION	COMMENTS	QTY.
	012345	SAMPLE ASSEMBLY, COMPLETE (INCLUDES ALL INDENTED PARTS BELOW)		1
1	F02222-22	Sample Part		1
2	F03333-33	Sample Part		2
	098765	Sample Subassembly (Includes All Indented Parts Below)		1
3	S04444-44	Subassembly Sample Part		1
4	K55555	Subassembly Sample Part		1
	054321	Sample Sub-Subassembly (Includes All Indented Parts Below)		2
5	022222	Sub-Subassembly Sample Part		1
6	F10234-56	Sub-Subassembly Sample Part		1

The Sample Assembly, Complete, part number 02345 (top level assembly) includes two parts (F0222-22 and F0333-33) and the 098765 subassembly.

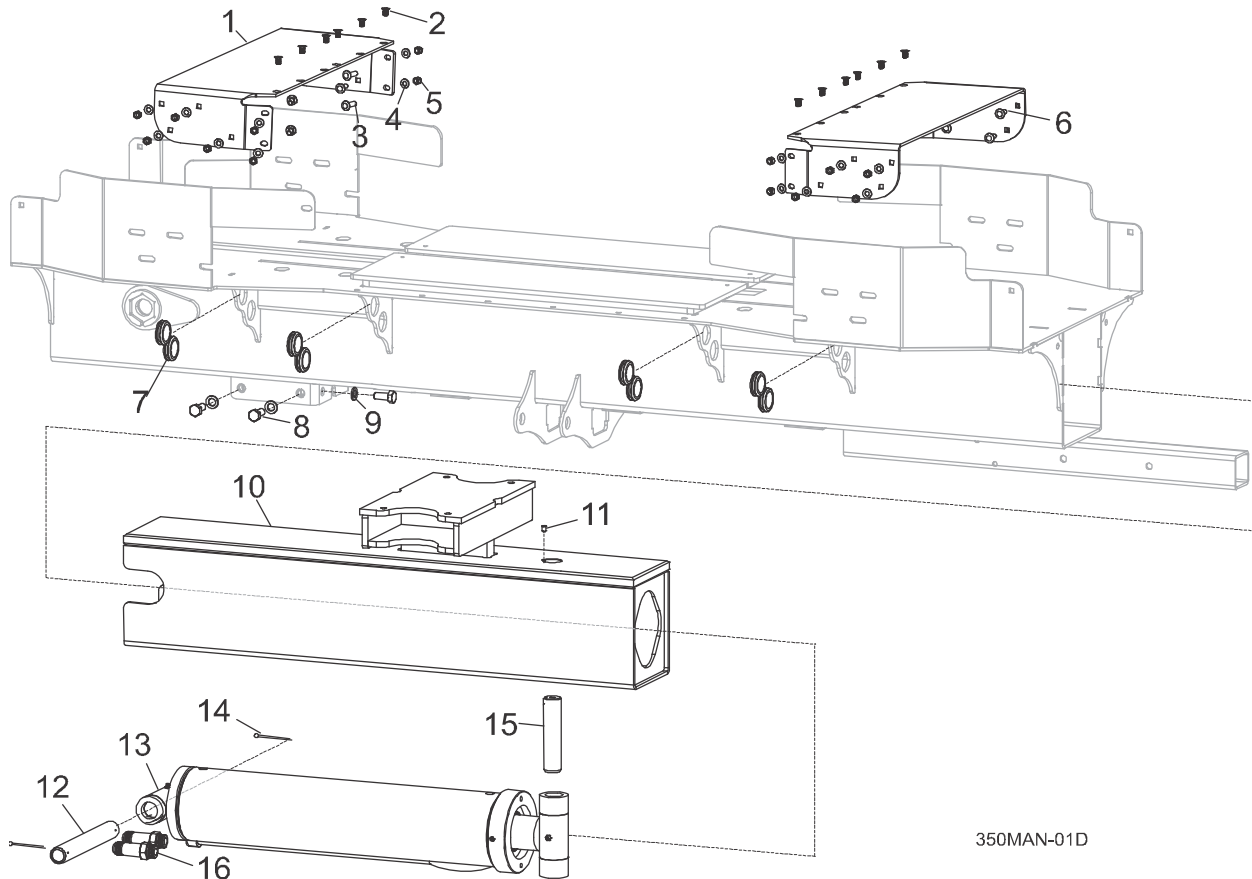
Subassembly 098765 contains two parts(S04444-44 and K55555) and two copies of sub-subassembly 054321.

Each sub-subassembly 054321 contains two parts (022222 and F10234-56).

# 6 Parts

## Splitter table

### 6.3 Splitter table



REF	PART #	DESCRIPTION	COMMENTS	QTY.
	079489	Assembly, Wedge Extension		1
1	TS-1159	Plate, Wedge Extension		1
2	F05021-42	Bolt, M8-1.25x16 Flat SHC Zinc		6
3	F05022-43	Bolt, M10-1.5x35 Class 8.8		4
4	F05011-134	Washer, M10 Flat SAE		12
5	F05004-270	Nut, M10-1.50 Hex Nyl Lock		12
6	F05022-19	Screw, M6-1x12 HHC FT GR8-8 Din 933		8
7	079512	Grommet, 1-3/4Hole x 1/4Panel Thk		5
8	F05025-2	Bolt, M16-2 x 35 HH		6
9	F05026-6	Washer, M16 Flat		6
10	079536	Weldment, Pusher Block	110191 replaced 079818 12/17.	1
11	F05007-12	Screw, 3/8-16x1/2 SH Cup Pt Set		1
12	079818	Pin, 1-1/2 Dia Hyd Cylinder	079818 replaced TS-0026 10/17.	1

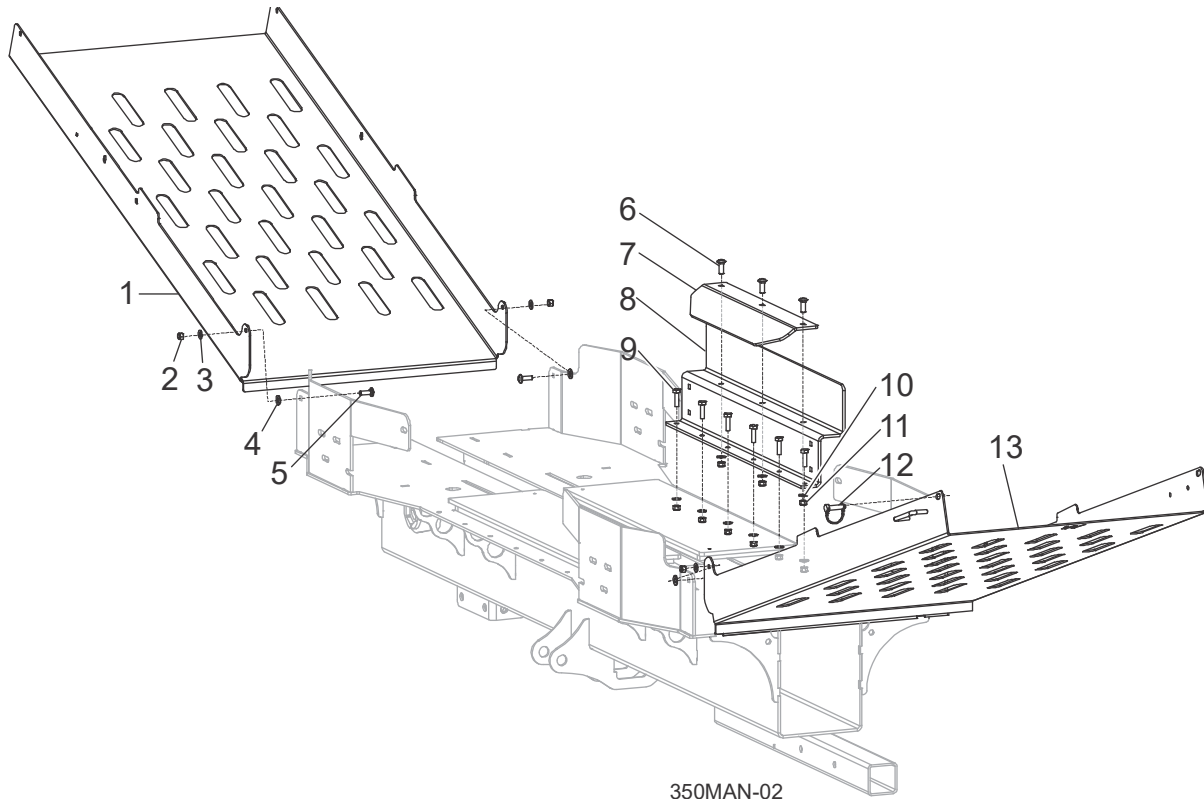


REF	PART #	DESCRIPTION	COMMENTS	QTY.
13	079047	Cylinder, Hydraulic 2-1/4x5x24		1
14	F05012-158	Pin, Cotter 3/16 Dia x 3" Stl	F05012-158 replaced F05010-24 10/17.	2
15	TS-1271	Pin, Cylinder Rod End		1
16	079434	Fitting, #12 SAE M - 12 JIC M Stgt Long	079434 replaced 074534 4/18.	2

# 6 Parts

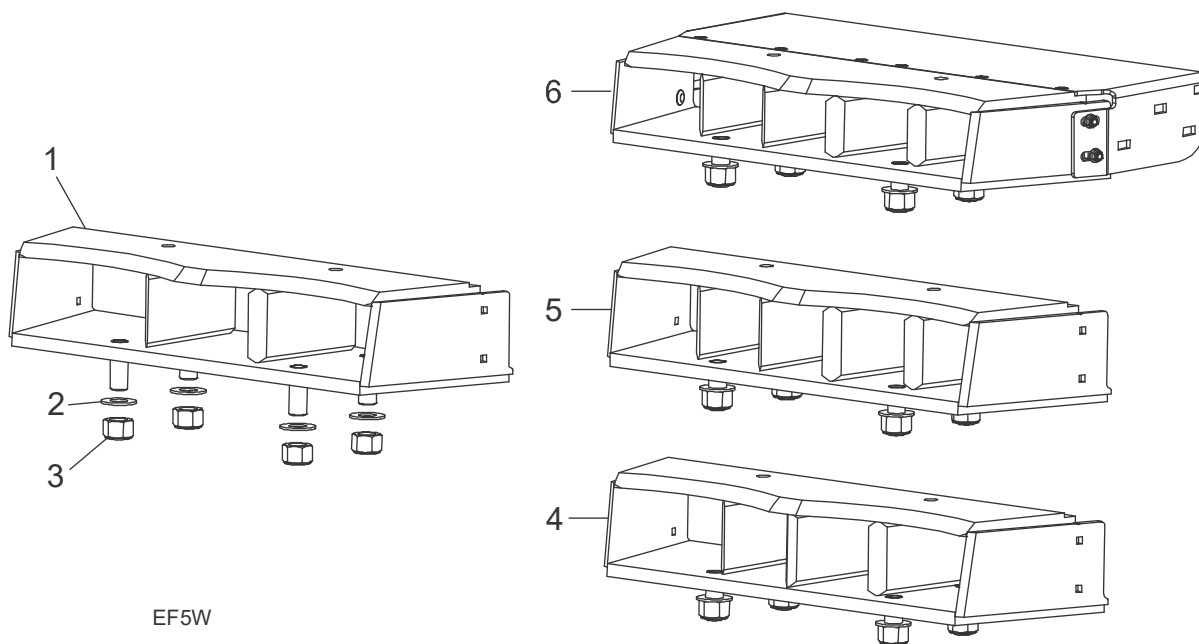
## Debris Tray and Guards

### 6.4 Debris Tray and Guards



REF	PART #	DESCRIPTION	COMMENTS	QTY.
1	079233	Tray, FS300 Debris		1
2	F05004-270	Nut, M10-1.50 Hex Nyl Lock		4
3	F05011-134	Washer, M10 Flat		4
4	066114	Washer, .4 IDx1" ODx.06 Nylon		4
5	F05022-19	Bolt, M10-1.5x30 Carriage Class 8.8		4
	079532	Assembly, Backstop		1
6	F05022-19	Bolt, M10-1.5x30 Carriage Class 8.8		3
7	079180	Plate, Backstop Deflector		1
8	079491	Plate, Backstop Deflector		1
9	F05004-97	Bolt, M10-1.5x35mm HH Gr 8.8 Znc		6
10	F05011-134	Washer, M10 Flat		9
11	F05004-270	Nut, M10-1.50 Hex Nyl Lock		9
12	014151	Pin, 3/8x2 1/4 SQ Wire Lock		1
13	079501	Wldmt, FS350 Wide Debris Tray		1

## 6.5 Wedge

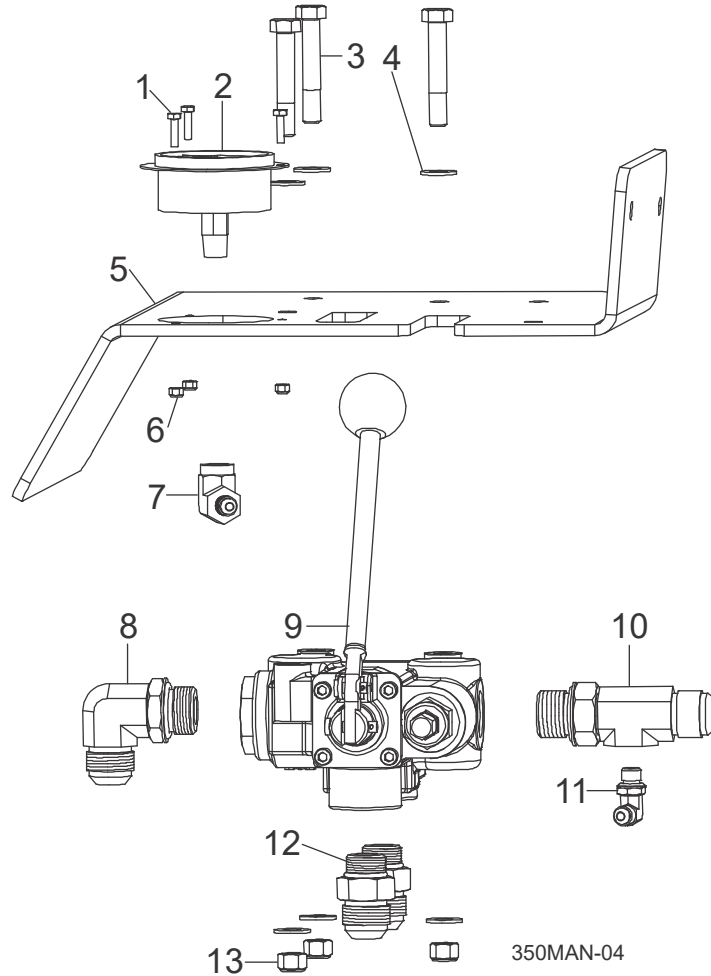


REF	PART #	DESCRIPTION	COMMENTS	QTY.
	FS3-A	Assembly, 3 Way Wedge Replacement ( <i>one</i> )		1
1	079135	Weldment, 3 Way Wedge		1
2	F05011-28	Washer, 1 ID SAE Flat		4
3	F05010-109	Nut, 1-8 Hex Nylok, Zinc		4
4	FS4-A	Assembly, 4 Way Wedge, Replacement, ( <i>one</i> )	Optional	1
5	FS5-A	Assembly, 5 Way H Wedge, Replacement, ( <i>one</i> )		1
6	FS5B-A	Assembly, 5 Way 3.5"H Wedge Replacement ( <i>one</i> )		1

# 6 Parts

## Hydraulic Controls (Standard)

### 6.6 Hydraulic Controls (Standard)

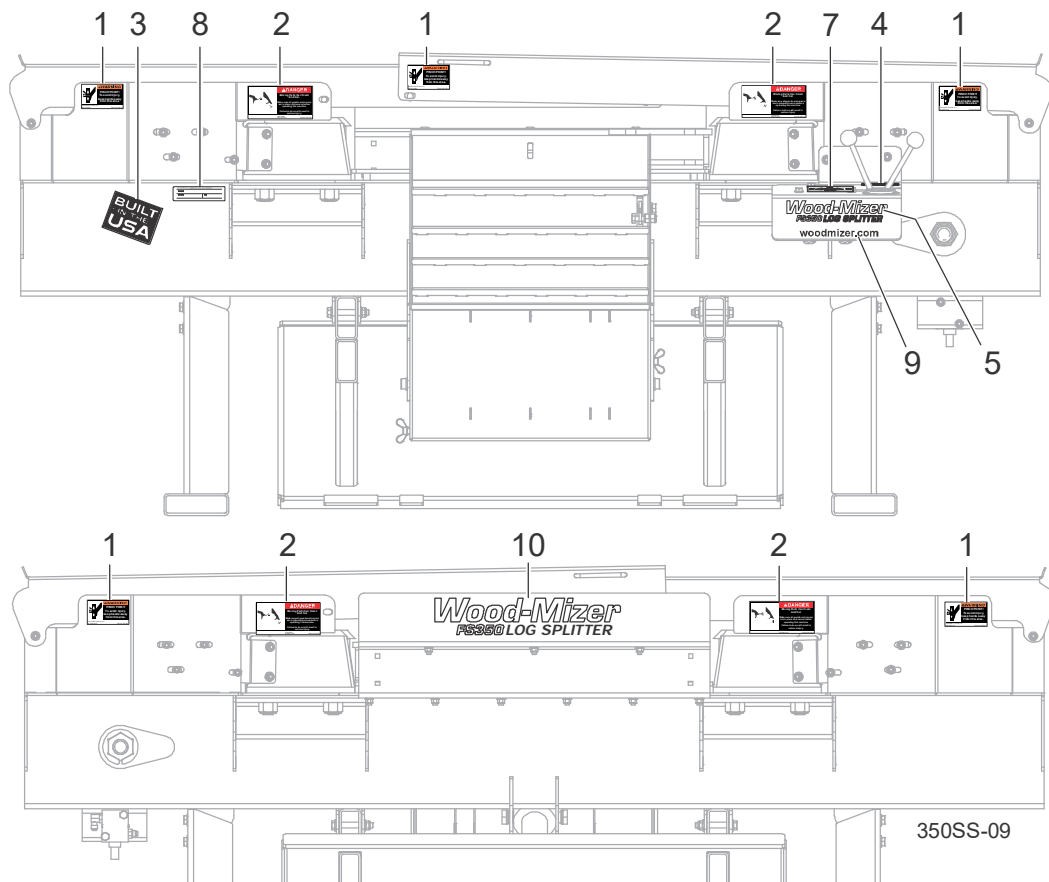
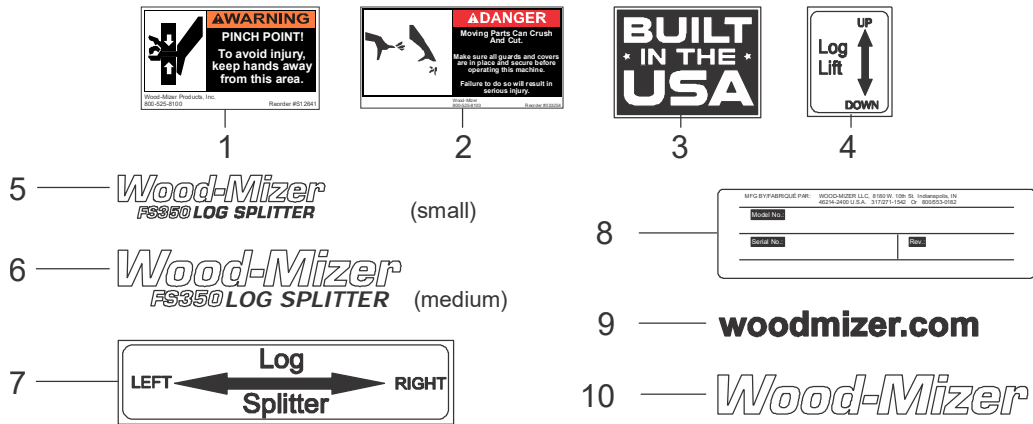


REF	PART #	DESCRIPTION	COMMENTS	QTY.
	079783	Assy, Prince One Spool FS350		1
1	F05020-10	Bolt, M4-.7 x 16 Class8 HH		3
2	079775	Gauge, Hyd Pressure 0-4000 Flange Mnt		1
3	F05022-16	Bolt, M10-1.5x60 HHC		3
4	F05011-134	Washer, M10 Flat SAE		6
5	079423	Plate, Prince Valve Mount FS500		1
6	F05027-8	Nut, M4-.7 Class 8 Nylock		3
7	079117	Fitting, #04 NPT F - #04 JIC M 90 Deg		1
8	079108	Fitting, #12 SAE M - #12 JIC M x 90 Deg		1
9	079488	Valve, Prince 1 Spool		1
	061260	Kit, Prince Handle & Hardware 660150004		1

REF	PART #	DESCRIPTION	COMMENTS	QTY.
	061261	Clevis, Prince Handle Sub Assembly 660350001		1
	061262	Kit, Prince Seal		1
	061263	Valve, Prince Adj Relief		1
<b>10</b>	079116	Fitting, #12 SAE M - 12 JIC M Straight		1
<b>11</b>	074543	Fitting, 4SAE-4JIC 90° Elbow		1
<b>12</b>	079517	Fitting, #12 JIC M x #10 SAE M 45 Deg El	079517 replaced 079449 per ECN 38405 on 2/28/2022.	2
<b>13</b>	F05004-270	Nut, M10-1.50 Hex Nyl Lock		3

# 6 Parts Decals

## 6.7 Decals



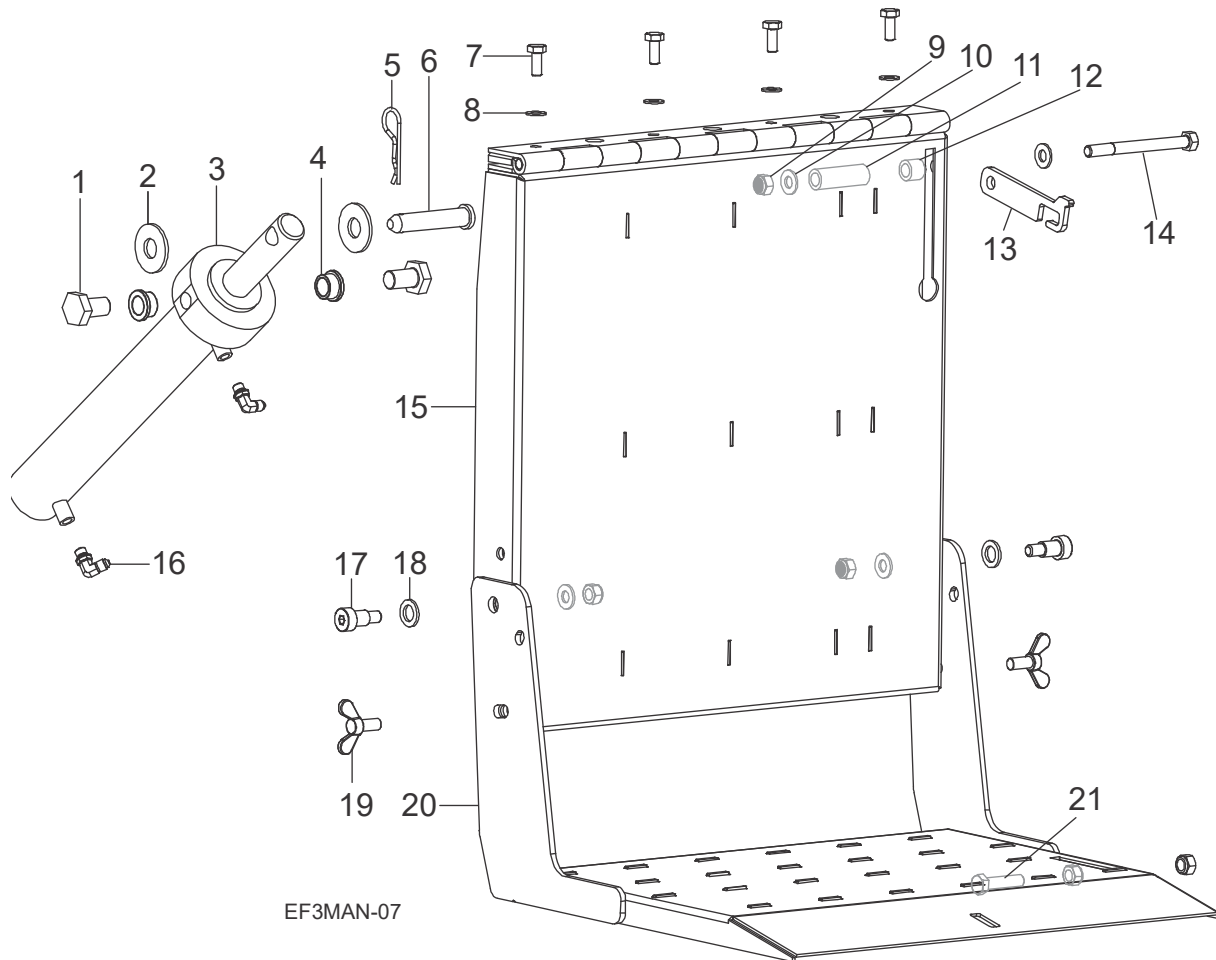
REF	PART #	DESCRIPTION	COMMENTS	QTY.
1	S12641	Decal, Hand Pinch Point Warning Edger		5
2	033254	Decal, Moving Parts Danger		4
3	074008	Decal, Built In The USA		1

REF	PART #	DESCRIPTION	COMMENTS	QTY.
4	074995	Decal, Log Lift Control (with optional Log Lift)		1
5	079765	Decal, Wood-Mizer FS350 Small (2pc)		2
6	079766	Decal, Wood-Mizer FS350 Med (2pc)		2
7	074996	Decal, Log Splitter Direction		1
8	015820	Decal, LT15 ID Serial No.		1
	P09971	Decal, VIN Overlay (clear)		1
9	003235	Decal, Wood-Mizer Website		1
10	065025	Decal, Wood-Mizer Logo Wht LT40,50		1

# 6 Parts

## Log Lift Platform (Optional)

### 6.8 Log Lift Platform (Optional)



REF	PART #	DESCRIPTION	COMMENTS	QTY.
	FS350-LL	Log Lift Option		1
	TS-0074	Assembly, Narrow Log Lift		1
1	F05009-141	Bolt, 3/4-16 x 1 HH Gr 8		2
2	F05011-29	Washer, 3/4 USS Flat		2
3	079046	Cylinder, Hydraulic Log Lift		1
4	p786	Bushing, 3/4 ID x 1 OD x 5/8 Lng Flanged		2
5	F05012-62	Pin, #210 Hitch		1
6	007347	Pin, 3/4 x 3 1/8		1
7	F05022-38	Bolt, M10-1.5 x 25mm Class 8.8 HHC Zinc		4
8	F05011-134	Washer, M10 Flat SAE		4
9	F05010-209	Nut, M12x1.75 Hex Nylock Zinc		5

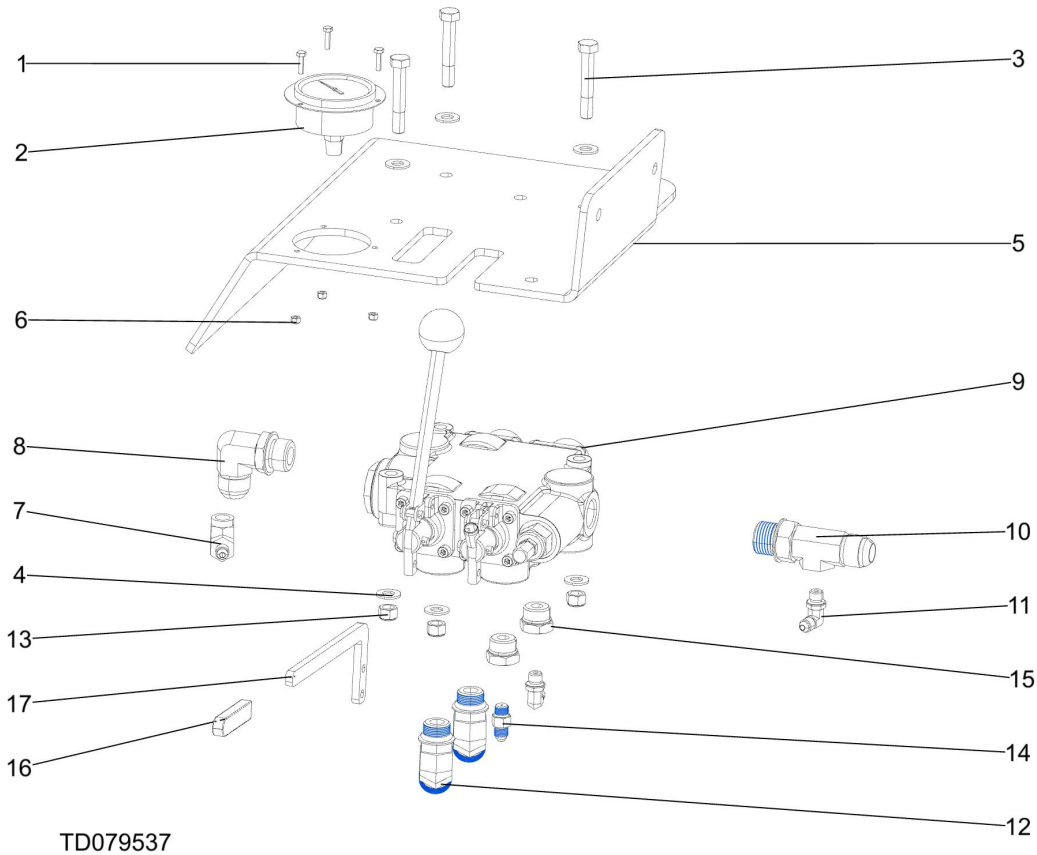


REF	PART #	DESCRIPTION	COMMENTS	QTY.
10	F05011-124	Washer, M12 Flat Zinc		4
11	079199	Spacer, 1/2 Sch 80 x 2-21/32		1
12	079198	Spacer, 1/2 Sch 80 x 11/16		1
13	079178	Plate, Log Lift Latch		1
14	F05023-9	Bolt, M12-1.75x130 HHC Class 8.8		1
15	079226	Weldment, Log Lift Upright		1
16	074544	Fitting, 6SAE-4JIC 90° Elbow		2
17	F05025-9	Bolt, M16x20mm Shoulder		2
18	F05026-6	Washer, M16 Flat		2
19	F05023-17	Screw, M12-1.75 x 25 Wing Head Thumb		2
20	079432	Weldment, Lower Log Lift FS300		1
21	F05007-193	Bolt, M12x50mm lg, HHCS Gr5 Zc		1
	079302	Hose, 47.5" #4 F JIC & #4 F JIC -Orange		1
	079303	Hose, 44" #4 F JIC & F JIC - Yellow		1

# 6 Parts

## Log Lift Controls (Optional)

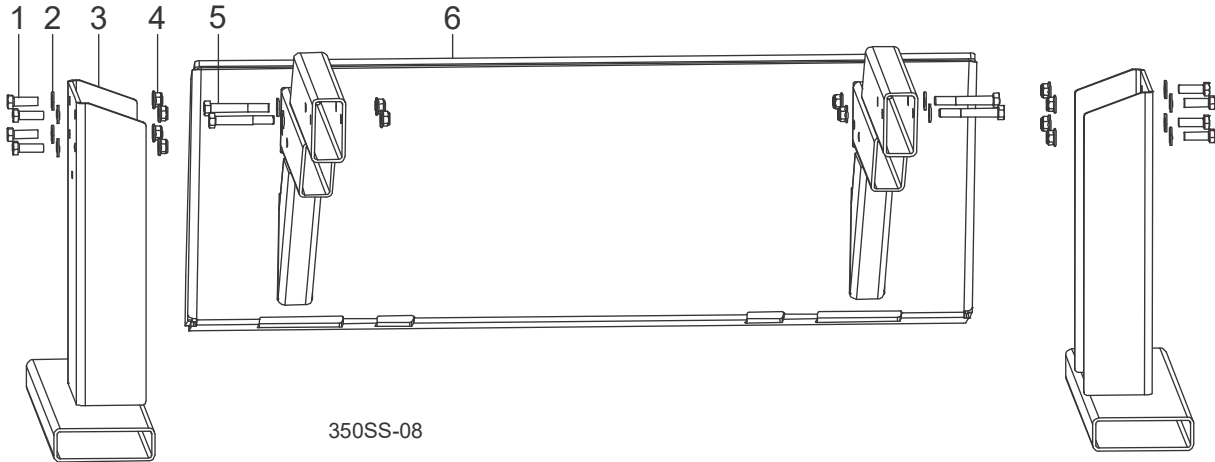
### 6.9 Log Lift Controls (Optional)



REF	PART #	DESCRIPTION	COMMENTS	QTY.
	079537	Assy, Prince Two Spool FS350		1
1	F05020-10	Bolt, M4-.7 x 16 Class8 HH		3
2	079775	Gauge, Hyd Pressure 0-4000 Flange Mnt		1
3	F05022-16	Bolt, M10-1.5x60 HHC		3
4	F05011-134	Washer, M10 Flat SAE		6
5	079423	Plate, Prince Valve Mount FS500		1
6	F05027-8	Nut, M4-.7 Class 8 Nylock		3
7	079117	Fitting, #04 NPT F - #04 JIC M 90 Deg		1
8	079108	Fitting, #12 SAE M - #12 JIC M x 90 Deg		1
9	079438	Valve, Prince 2 Spool Hyd		1
	061260	Kit, Prince Handle & Hardware 660150004		1
	061261	Clevis, Prince Handle Sub Assembly 660350001		1

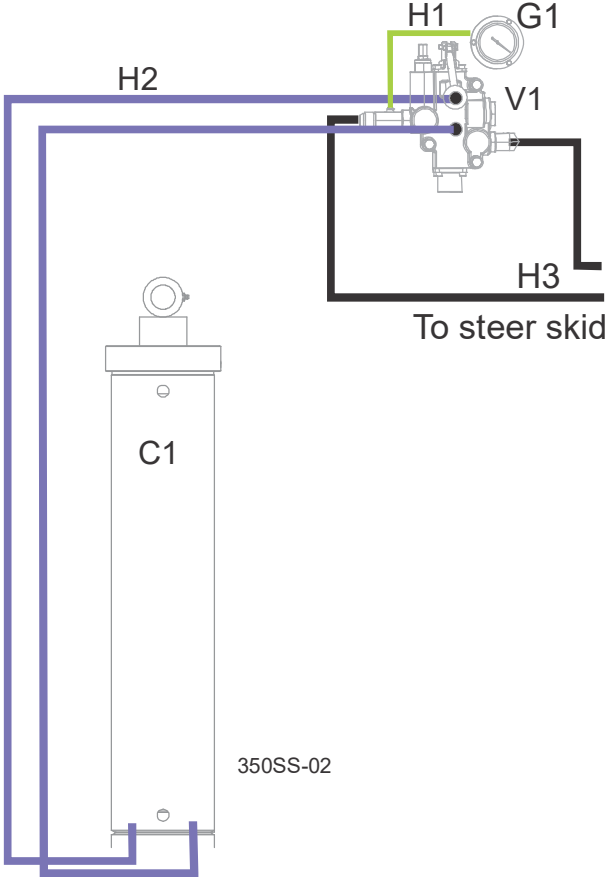
REF	PART #	DESCRIPTION	COMMENTS	QTY.
	061262	Kit, Prince Seal		1
	061263	Valve, Prince Adj Relief		1
<b>10</b>	079116	Fitting, #12 SAE M - 12 JIC M Strght		1
<b>11</b>	074543	Fitting, 4SAE-4JIC 90° Elbow		2
<b>12</b>	079517	Fitting, #12 JIC M x #10 SAE M 45 Deg El		
<b>13</b>	F05004-270	Nut, M10-1.50 Hex Nyl Lock		3
<b>14</b>	079217	Fitting, 4 SAE M x 04 JIC M .062Orifice		1
<b>15</b>	079451	Fitting, 10 SAE M x 4 SAE F Redx Bush		2
<b>16</b>	P08072	Grip, 3/8x5/8x2 27/32 Vinyl		1
<b>17</b>	110231	Plate, Log Lift Valve Handle		1

### 6.10 Supports



REF	PART #	DESCRIPTION	COMMENTS	QTY.
1	F05008-33	Bolt, 1/2-13x1 1/2 HH Gr5		8
2	F05011-2	Washer, 1/2 SAE Flat		13
3	079743	Weldment, Splitter Skid Steer Leg		2
4	F05010-223	Nut, 1/2-13 Flanged Hex Nylock		12
5	F05008-61	Bolt, 1/2-13x3 1/2 HH Gr5		4
6	079731	Weldment, Splitter Skid Steer		1

6.11 Hydraulic Hoses (Standard)

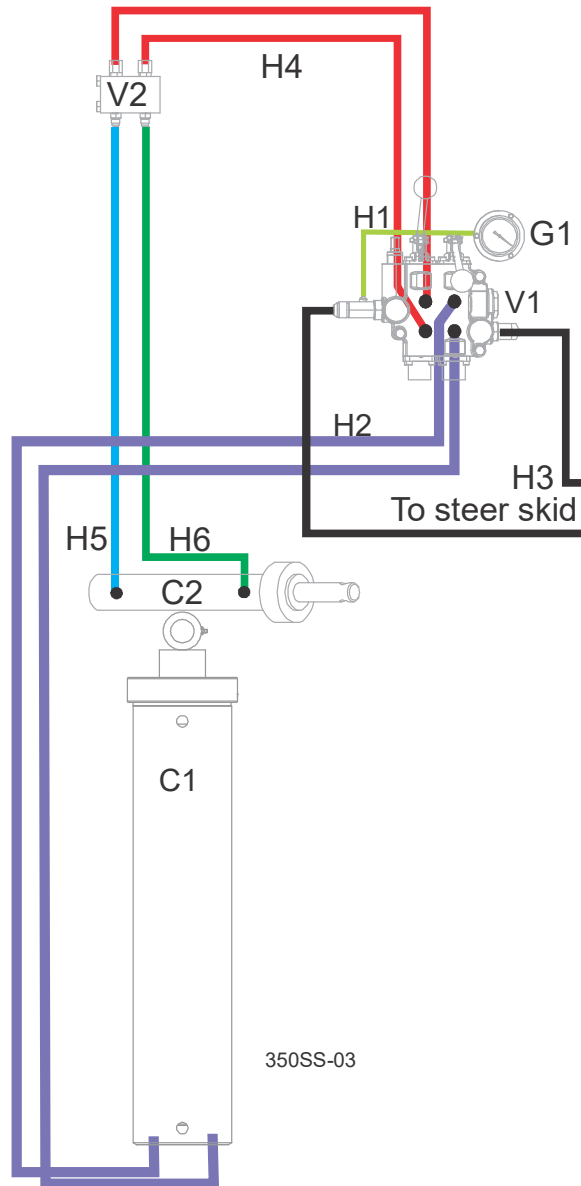


REF	PART #	DESCRIPTION	COMMENTS	QTY.
H1	079301	1/4" Hose, 14-1/2" #4 F JIC & #4 F JIC		1
H2	110022	3/4" Hose, 90 Deg #12 F JIC x 45 Deg #12 F JIC		2
H3	110023	3/4" Hose, 90 Deg #12 F JIC x 3/4 Male NPT		2

# 6 Parts

## Hydraulic hoses (with optional Log Lift)

### 6.12 Hydraulic hoses (with optional Log Lift)



REF	PART #	DESCRIPTION	COMMENTS	QTY.
H1	079301	1/4" Hose, 14-1/2" #4 F JIC & #4 F JIC		1
H2	079300	3/4" Hose, 90 Deg #12 F JIC x 45 Deg #12 F JIC	Changed from 110022 after 11/9/2017, to improve fit.	2
H3	110147	3/4" Hose, 90 Deg #12 F JIC x 3/4 Male NPT	Changed from 110023 after 11/9/2017, to improve fit.	2
H4	079802	3/8" Hose, #6 F JIC & #6 F JIC		2
H5	079803	3/8" Hose, #6 F JIC & #6 F JIC		1
H6	079804	3/8" Hose, #6 F JIC & #6 F JIC		1