

**Log Splitter**  
**Safety, Operation, Maintenance**  
**& Parts Manual**

---

**FS500**

**C1.00**

---

**Safety is our #1 concern!**

*Form #2096*



**WARNING! Read and understand this manual before using this machine.**

## California

### Proposition 65 Warning



**WARNING:** Breathing gas/diesel engine exhaust exposes you to chemicals known to the State of California to cause cancer and birth defects or other reproductive harm.

Always start and operate the engine in a well-ventilated area.  
If in an enclosed area, vent the exhaust to the outside.  
Do not modify or tamper with the exhaust system.  
Do not idle the engine except as necessary.

For more information go to [www.P65warnings.ca.gov](http://www.P65warnings.ca.gov).



**WARNING:** Drilling, sawing, sanding or machining wood products can expose you to wood dust, a substance known to the State of California to cause cancer. Avoid inhaling wood dust or use a dust mask or other safeguards for personal protection.

For more information go to [www.P65Warnings.ca.gov/wood](http://www.P65Warnings.ca.gov/wood).

### Active Patents assigned to Wood-Mizer, LLC

Wood-Mizer, LLC has received patents that protect our inventions which are a result of a dedication to research, innovation, development, and design. Learn more at: [woodmizer.com/patents](http://woodmizer.com/patents)

### ©2024 Wood-Mizer LLC

Printed in the United States of America, all rights reserved. No part of this manual may be reproduced in any form by any photographic, electronic, mechanical or other means or used in any information storage and retrieval system without written permission from

**Wood-Mizer, LLC**  
**8180 West 10th Street**  
**Indianapolis, Indiana 46214**

**SECTION 1 INTRODUCTION**

1.1 About This Manual ..... 1-1  
 1.2 Getting Service..... 1-1  
 1.3 Specifications ..... 1-1

**SECTION 2 SAFETY**

2.1 Safety Instructions..... 2-1  
     *Owner's Responsibility ..... 2-1*  
 2.2 Safety Symbols ..... 2-1  
 2.3 Engine Safety ..... 2-3  
     *Use Caution When Working With Batteries ..... 2-4*

**SECTION 3 SETUP AND OPERATION**

3.1 Uncrating..... 3-1  
 3.2 General Transportation ..... 3-1  
 3.3 Onsite setup..... 3-2  
 3.4 Operation..... 3-2

**SECTION 4 HYDRAULICS**

4.1 Hydraulic schematic..... 4-1  
 4.2 Hydraulic layout..... 4-2  
 4.3 Hydraulic components ..... 4-3

**SECTION 5 MAINTENANCE**

5.1 General maintenance after each use..... 5-1  
 5.2 Hydraulics ..... 5-1  
 5.3 Changing the wedges ..... 5-1  
 5.4 Wedge sharpening..... 5-2

**SECTION 6 PARTS**

6.1 How To Use The Parts List..... 6-1  
 6.2 Sample Assembly..... 6-1  
 6.3 Torque Values ..... 6-2  
 6.4 Equipment Overview ..... 6-3  
 6.5 Splitter Head ..... 6-4  
 6.6 Hydraulic Control Assembly ..... 6-5  
 6.7 Splitter Output ..... 6-6  
 6.8 Wedge ..... 6-7  
 6.9 Log Lift ..... 6-8  
 6.10 Hydraulic and Fuel Tank ..... 6-9  
 6.11 Engine Control and Battery Box ..... 6-11  
 6.12 Engine and Hydraulic Pump ..... 6-12  
 6.13 Trailer ..... 6-13  
 6.14 Trailer Tongue..... 6-15  
 6.15 Decals ..... 6-16  
 6.16 Hydraulic hoses..... 6-18  
 6.17 Electrical ..... 6-19

## SECTION 1 INTRODUCTION

### 1.1 About This Manual

This manual replaces any previous information received on your Wood-Mizer® equipment.

The information and instructions in this manual do not amend or extend the limited warranties for the equipment given at the time of purchase.

### 1.2 Getting Service

For contact information, sales, service, parts, and additional manuals, sign into your account on <https://woodmizer.com>, or call inside the USA: 1-800-553-0182 or from outside the USA: 317-271-1542

### 1.3 Specifications

#### FS-500

---

|                             |                                        |
|-----------------------------|----------------------------------------|
| Power:                      | Kohler Gas 19HP Engine                 |
| Hydraulics:                 | 28 GPM, 2-stage pump                   |
| Rate:                       | 42 ton @ 3,000 psi, 4.5 sec cycle      |
| Hydraulic fluid:            | ISO-32, such as Conoco MV32            |
| Hydraulic tank capacity:    | 20 gal (System capacity 25 gal)        |
| Operational dimensions:     | 139" (long) x 177" (wide) x 47" (high) |
| Log capacity:               | 24" long, 26" diameter, 300 lbs.       |
| Machine weight with fluids: | 2,605 lbs                              |
| Weight on axle:             | 2,420 lbs                              |
| Weight per tire:            | 1,210 lbs                              |
| Tire weight rating:         | 1,360 lbs at 50 psi                    |

---

## SECTION 2 Safety

### 2.1 Safety Instructions

#### Owner's Responsibility

**NOTICE** It is always the **owner's responsibility** to comply with all applicable safety instructions, as well as federal, state and local laws, rules and regulations regarding the ownership, operation, and towing of your Wood-Mizer Wood Splitter. All Wood-Mizer Wood Splitter owners should be thoroughly familiar with all applicable safety instructions and laws and comply with them fully while using or towing the wood splitter.

**NOTE:** ONLY safety instructions regarding **personal injury** are listed in this section. Safety instructions regarding only equipment damage appear where applicable throughout the manual.



**WARNING!** Clean sawdust from all guards, vents, control boxes, or any area where sawdust may gather **after every shift**. Failure to do so may result in fire, causing death or serious injury.



### 2.2 Safety Symbols

The following symbols and signal words call your attention to instructions concerning your personal safety. Be sure to observe and follow these instructions.



**DANGER!** indicates an imminently hazardous situation which, if not avoided, will result in serious injury or death.



**WARNING!** suggests a potentially hazardous situation which, if not avoided, could result in serious injury or death.



**CAUTION!** refers to potentially hazardous situations which, if not avoided, may result in minor or moderate injury or damage to equipment.

**NOTICE** indicates vital information.

**NOTE:** gives helpful information.

#### OBSERVE SAFETY INSTRUCTIONS

#### **NOTICE**

- Keep children away from the area.
- Read the entire operator's manual before operating the wood splitter.
- Take notice of all safety warnings throughout this manual and those posted on the machine.
- Keep this manual with this machine at all times, regardless of ownership.
- Read all additional manufacturer's manuals.
- Obey all applicable safety instructions including dangers, warnings, and cautions.
- Only persons who have read and understood the entire operator's manual should operate the wood splitter.



## WEAR SAFETY CLOTHING



**WARNING!** Secure all loose clothing, hair, and jewelry before operating the wood splitter.

Always wear hand, eye, ear, and foot protection when operating or servicing the wood splitter.



## KEEP WOOD SPLITTER AND AREA AROUND WOOD SPLITTER CLEAN



**DANGER!** Maintain a clean and clear path for all necessary movement around the wood splitter and stacking areas.



**WARNING!** Do not allow children in the area of the wood splitter. Failure to follow this may result in serious injury or death.

## DISPOSE OF WOOD BY-PRODUCTS PROPERLY

**NOTICE** Always properly dispose of all wood by-products, including sawdust, chips, and other debris, including operation waste such as coolant, oil, fuel, oil filters, fuel filters, etc.

## KEEP SAFETY LABELS IN GOOD CONDITION

**NOTICE** Always be sure that all safety decals are clean and readable. Replace all damaged safety decals to prevent personal injury or damage to the equipment. Contact your local distributor, or call your Customer Service Representative to order more decals.

If replacing a component which has a safety decal affixed to it, make sure the new component also has the safety decal affixed.

## CAUTIONS FOR WOOD SPLITTER SETUP



**WARNING!** Set up the wood splitter on solid, level ground.

If unhitching the wood splitter, chock the trailer wheels to prevent movement before unhitching it from the towing vehicle. Failure to follow this may result in serious injury or death.

## USE CAUTION WHEN WORKING WITH HEAVY LOGS



**WARNING!** Do not load logs in excess of **300 lbs** without a counterbalance on the tongue to prevent unit tipping.

Having the wood splitter properly hitched to the towing vehicle is a sufficient counterbalance.

Be aware of possible crushing points when handling large logs.



## KEEP PERSONS AWAY



**WARNING!** Keep all persons out of the path of log moving equipment and logs when operating or loading the log splitter.

## KEEP HANDS AWAY



**DANGER!** Always keep hands away from moving wood.

---



**WARNING!** Avoid contact with any hot parts (hydraulic hoses, fittings, engines, as applicable).

Allow the system to cool sufficiently before beginning any service function, including debris removal.

Avoid contact with sharp edges of the cutting wedges.

## 2.3 Engine Safety

### HANDLE FUEL/LUBRICANTS SAFELY



**DANGER!** Keep all fuel and lubricants away from children.

Never smoke, weld, grind or allow sparks near your engine or storage tanks.

Never spill fuel on a hot engine.

---



**WARNING!** Store gasoline away from flammable materials.

Never use flammable fuels or liquids to clean the wedge.



### OPERATION



**DANGER!** Operate your engine/machine only in well ventilated areas.

Do not operate your engine/machine indoors or within a confined space.

Do not operate an engine with a fuel or oil leak, which can result in fire.

**USE CAUTION WHEN WORKING WITH BATTERIES****EMERGENCY TREATMENT FOR CONTACT WITH BATTERY COMPONENTS (LEAD/SULFURIC ACID) per SDS (Safety Data Sheet):**

|                     |                                                                                                                                                                                                                                                                                                                                                                              |
|---------------------|------------------------------------------------------------------------------------------------------------------------------------------------------------------------------------------------------------------------------------------------------------------------------------------------------------------------------------------------------------------------------|
| <b>EYE CONTACT</b>  | <b>Sulfuric Acid and Lead:</b> Flush eyes immediately with large amounts of water for at least 15 minutes while lifting lids. Seek immediate medical attention if eyes have been exposed directly to acid.                                                                                                                                                                   |
| <b>SKIN CONTACT</b> | <b>Sulfuric Acid:</b> Flush affected area(s) with large amounts of water using deluge emergency shower, if available, shower for at least 15 minutes. Remove contaminated clothing, including shoes. If symptoms persist, seek medical attention. Wash contaminated clothing before reuse. Discard contaminated shoes.<br><b>Lead:</b> Wash immediately with soap and water. |
| <b>INGESTION</b>    | <b>Sulfuric Acid:</b> Administer large amounts of water. Do NOT induce vomiting or aspiration into the lungs may occur and can cause permanent injury or death; consult physician.                                                                                                                                                                                           |
| <b>INHALATION</b>   | <b>Sulfuric Acid:</b> Remove to fresh air immediately. If not breathing, give artificial respiration. If breathing is difficult, give oxygen. Consult a physician.<br><b>Lead:</b> Remove from exposure, gargle, wash nose and lips; consult physician.                                                                                                                      |



**DANGER!** Keep sparks, flames, burning cigarettes, or other ignition sources away from batteries at all times.

Always wear safety goggles and a face shield when working near batteries.

---



**WARNING!** Battery posts, terminals and related accessories contain lead and lead compounds. Wash hands after handling.

Charge the battery in a well ventilated area.

Disconnect the negative battery terminal cable before performing any service to the 12-Volt electrical system.

Do not attempt to charge a frozen battery.

---



**CAUTION!** Do not overcharge the battery.

Be sure the battery is fully charged before transporting the wood splitter. If the battery is not fully charged, excessive vibration could reduce the overall service life of the battery.



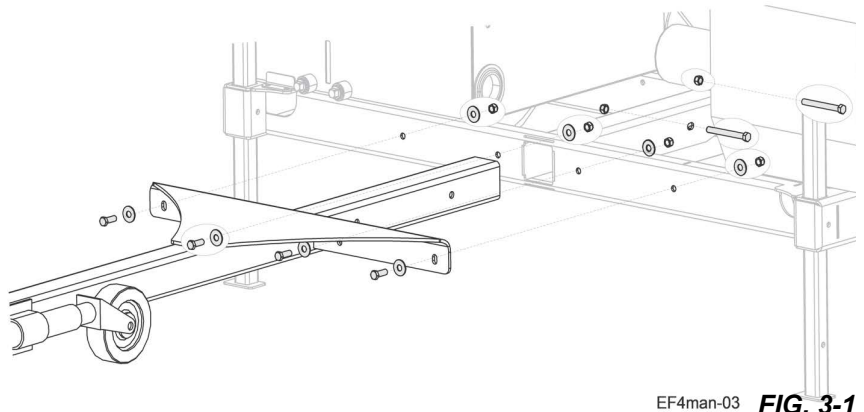
## SECTION 3 SETUP AND OPERATION

### 3.1 Uncrating

Your Wood-Mizer Wood Splitter arrives mostly assembled. If any parts are missing, please contact Wood-Mizer support at 1-800-525-8100.

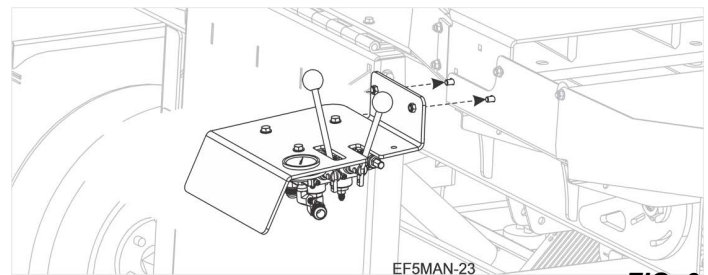
**NOTICE** Install the tongue **first** to stabilize the entire unit before unloading the main frame. The tongue serves as a counterbalance.

1. Unfasten the trailer tongue from the crate and install it with the six bolts and hardware provided. The hardware is on the frame.



EF4man-03 **FIG. 3-1**

2. Unbolt the Hydraulic control panel from the shipping frame. Discard shipping hardware.
3. Unscrew the two nuts directly above the control panel.
4. Position the panel over the bolts and re-tighten the nuts.
5. Unpack the engine key and manuals which are attached to the engine.
6. Release the straps and chocks holding the frame to the crate and roll the unit off the crate.



EF5MAN-23 **FIG. 3-2**

### 3.2 General Transportation

#### IF PREVIOUSLY WORKING UNHITCHED FROM THE TOWING VEHICLE:

1. Hitch the tongue to the towing vehicle.



**CAUTION!** Make sure the hitch coupler fits **entirely** over the hitch ball on the towing vehicle before latching.

2. Pin the hitch latch closed.
3. Cross the safety chains and attach the chains to the towing vehicle at the proper site for that vehicle.
4. Connect the light plug to the towing vehicle.

5. Raise the jack by pulling the spring loaded pin and rotating the jack 90 degrees. The pin will lock in to another hole at the 90 degree location.
6. Raise the two stand legs.

### 3.3 Onsite setup



**DANGER!** Do not operate this unit indoors or in an enclosed area or carbon monoxide poisoning will occur.

Maintain a clean and clear path for all necessary movement around the wood splitter and stacking areas.

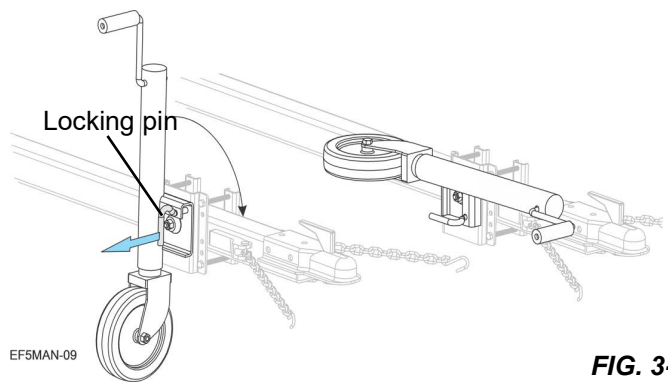


FIG. 3-3



**WARNING!** Do not allow children in the area of the wood splitter.

Do not set up the wood splitter on ground with more than a 10 degree incline.

1. Park the log splitter on a solid, level surface.

**NOTE:** The log splitter may be used either hitched or unhitched to the transport vehicle.

2. Chock both tires on both sides; use a total of four tire chocks.
3. If working unhitched, lower the jack and two stand legs. Ensure that they are on a firm, level surface.

**NOTE:** For best practices when operating the unit unhitched from the towing vehicle, place counterbalance weights on the tongue for added stability. Operating while hitched to the towing vehicle offers the best stability.

### 3.4 Operation



**DANGER!** Do not operate this unit indoors or in an enclosed area. Carbon monoxide poisoning will occur.



**WARNING!** Do not load logs greater than 300lbs.

Avoid contact with sharp edges of the cutting wedges.

1. Fill the gas tank.
2. Start the engine.

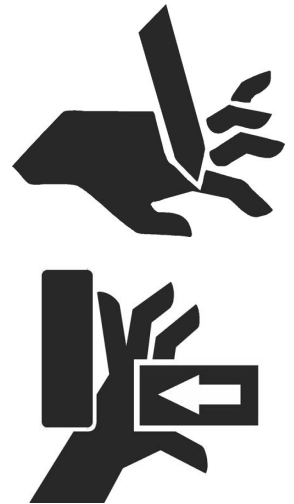
See the engine manual for proper starting technique for your model of engine.

3. Move the pusher to the right by moving the log splitter handle to the right.



**WARNING!** Ensure the area is clear before lowering the log lift platform.

4. Unpin the log lift platform from the transport position and pin in the down position.



The log must be less than 24" long, 27" in diameter, and 300 lbs.

- LESS THAN 24 INCHES IN LENGTH**
- LESS THAN 27 INCHES IN DIAMETER**
- LESS THAN 300 LBS**

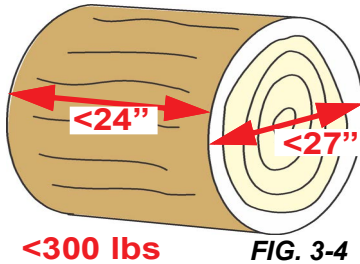
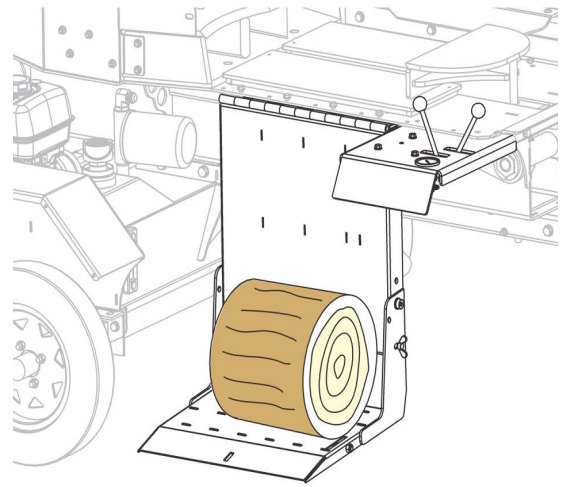


FIG. 3-4



5. Position a log onto the log lift platform.
6. Raise the log lift platform by moving the log lift handle to the up position.

**NOTE:** Ensure cut end is towards the wedges.

7. Roll the log onto the cutting table between the wedges and the pusher.
8. Lower the log lift platform as stated in Step 4.

**NOTE:** The operator stands on the log lift platform during operation.

9. Move the pusher to the left by moving the log splitter handle to the left. This cuts the first round of firewood.

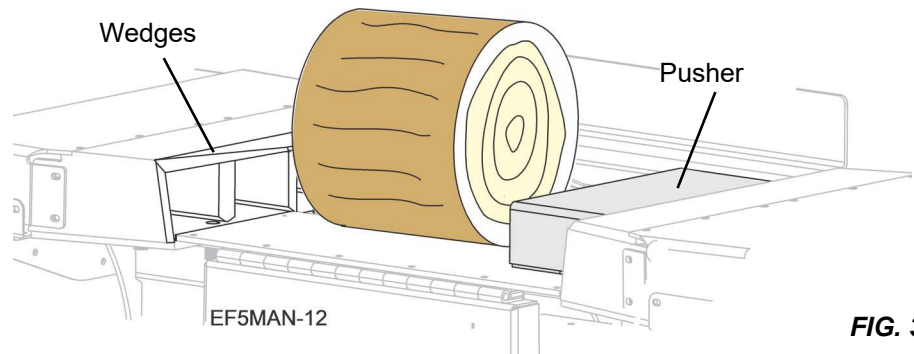


FIG. 3-6

### SINGLE LOG OPERATION

1. After the first cut, move the log back onto the cutting table.
2. Move the pusher to the right by moving the log splitter handle to the right.
3. Repeat these two steps until finished.

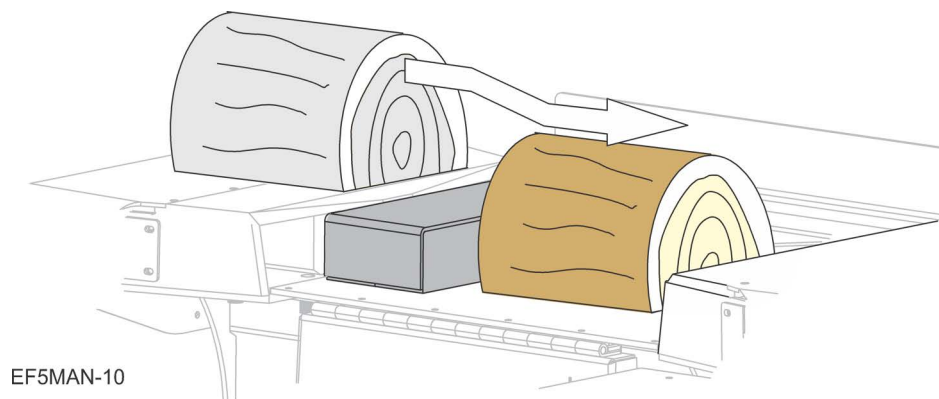
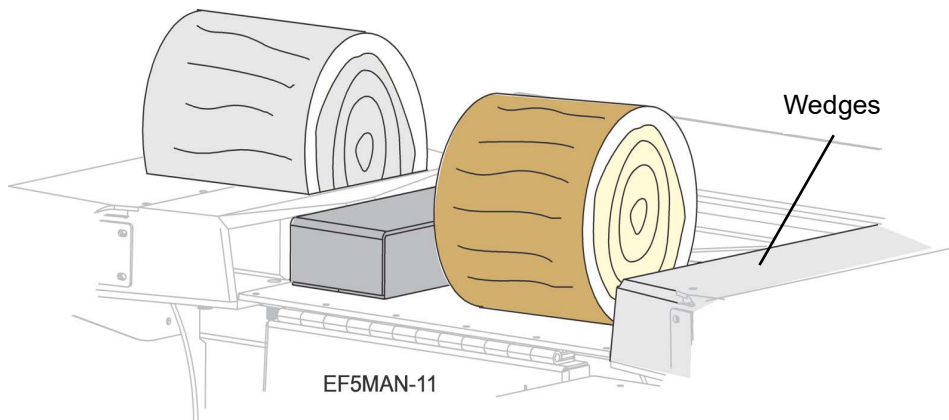


FIG. 3-7

## DUAL LOG OPERATION

1. Load another log by repeating Step 5. through Step 9.

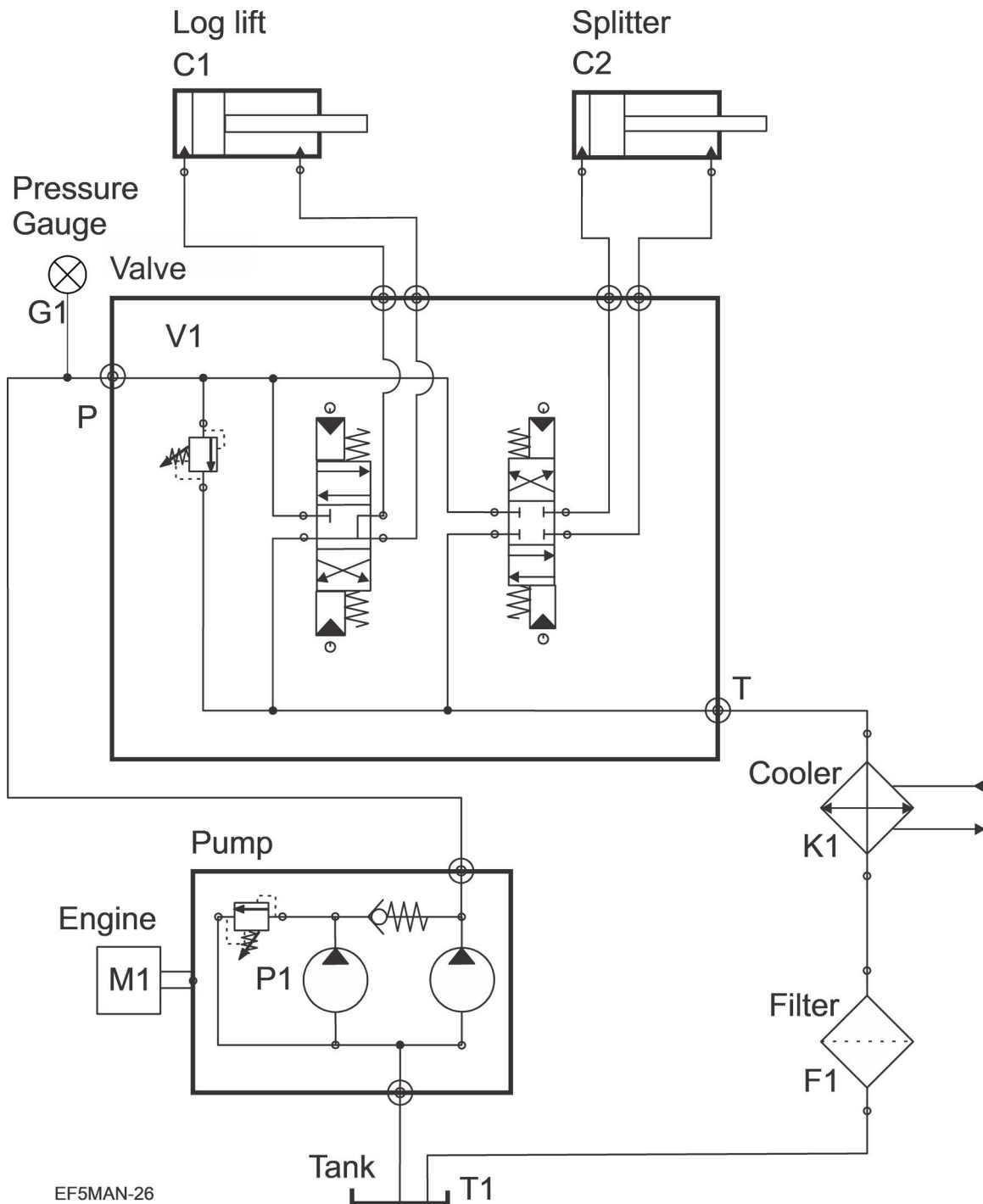


**FIG. 3-8**

2. Alternate cuttings by repositioning the logs onto the cutting table after each cut.
3. Repeat these steps until finished.

## SECTION 4 HYDRAULICS

### 4.1 Hydraulic schematic



EF5MAN-26



### 4.3 Hydraulic components

| Hydraulic component reference <sup>1</sup> |                                            |             |
|--------------------------------------------|--------------------------------------------|-------------|
| Ref                                        | Description                                | Part Number |
| C1                                         | Cylinder, Hydraulic Log Lift               | 079046      |
|                                            | Fitting, 4SAE-4JIC 90° Elbow               | 074543      |
| C2                                         | Cylinder, Hydraulic 3x6x24                 | 079048      |
|                                            | Fitting, Long Stght 12 SAEM - 12 JICM      | 079434      |
|                                            | Fitting, 90 Deg Ex Lg 12 Swvl F x 12 JIC M | 079435      |
| F1                                         | Filter, In tank Hydraulic                  | 079057      |
|                                            | Fitting, 12SAE-12JIC Straight              | 074534      |
|                                            | Reducer, 20 SAE M - 12 SAE F               | 079104      |
| G1                                         | Gauge, Hydraulic Pressure                  | 079049      |
|                                            | Fitting, #04 NPT F - #04 JIC M 90 Deg      | 079117      |
| K1                                         | Oil Cooler w/Fan                           | 079035      |
|                                            | 12 SAE x 12 JIC 90 Elbow                   | 079108      |
| M1                                         | Engine, Honda G630, w/muffler, control     | 079041      |
| P1                                         | Pump, Hydraulic                            | 079053      |
|                                            | Fitting, 10 SAE M x 12 JIC M               | 079449      |
|                                            | Fitting, 20 JIC M x 16 SAE M 45 Elbow      | 130751      |
| T1                                         | Weldment, Hydraulic Reservoir/Fuel Tank    | TS-0080     |
|                                            | Plug, 3/4 NPT Pipe                         | P20277      |
|                                            | Screen, 2" NPT in tank                     | 079056      |
| V1                                         | Valve, Prince 2 Spool Hydraulic            | 079438      |
|                                            | Fitting, 12 SAE Mx12 JIC Mx04 SAE F Tee    | 079116      |
|                                            | Fitting, 45 Deg Elbow 12 Swvl x 12 JIC     | 079308      |
|                                            | Fitting, #12 SAE M - #12 JIC M x 90 Deg    | 079108      |
|                                            | Fitting, 4SAE-4JIC 90° Elbow               | 074543      |
|                                            | Fitting, 04 SAE x 04 JIC Orifice           | 079217      |
|                                            | Fitting, 10 SAE M x 12 JIC M Straight      | 079449      |
|                                            | Fitting, 10 SAE M x 12 JIC M 90 Deg Elbo   | 079450      |
|                                            | Fitting, 10 SAE M x 4 SAE F Redx Bush      | 079451      |

<sup>1</sup> See Part section for more detail of the location and fittings.

## SECTION 5 MAINTENANCE



**WARNING!** Before performing service turn the engine key switch to the OFF position and remove the key.

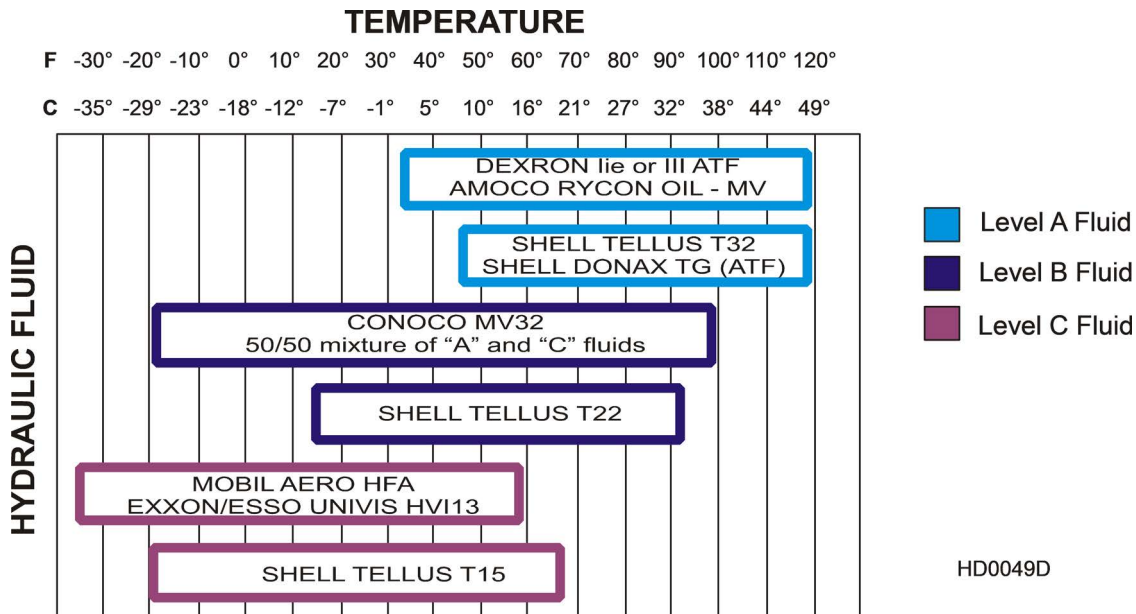
### 5.1 General maintenance after each use

1. Check for debris impeding any moving parts.
2. Clean debris off of the engine, hydraulic tank, and fuel tank, and/or oil cooler.
3. Check engine oil per engine manual specifications.
4. Check tire pressure as printed on tires.
5. Check for hydraulic leaks.
6. Check the oil cooler for any obstructions or leaks.

### 5.2 Hydraulics

1. Check the hydraulic fluid level before each use. Add fluid up to the black level line on the fill gage.
2. Replace the hydraulic system cartridge filter every 500 hours of operation.
3. Use an all-weather hydraulic fluid conforming to ISO-32, such as Conoco MV32 for operating temperatures -20° to 100° F (-29° to 38° C).

For alternate operating conditions and temperature ranges:



**FIG. 5-1**

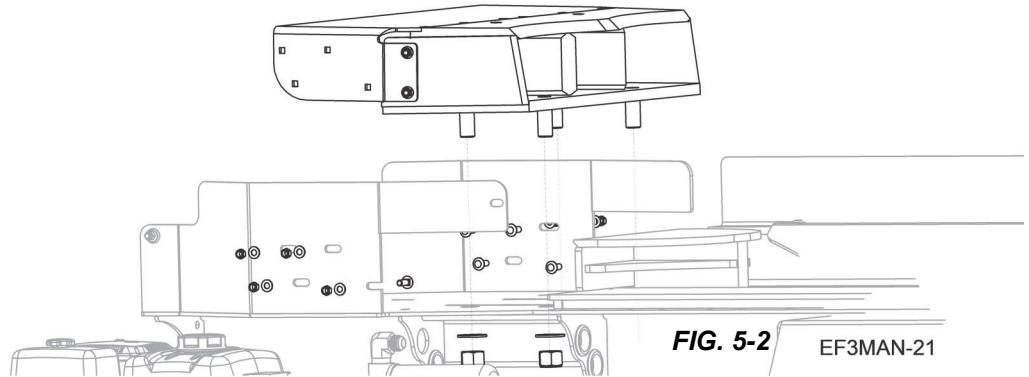
### 5.3 Changing the wedges



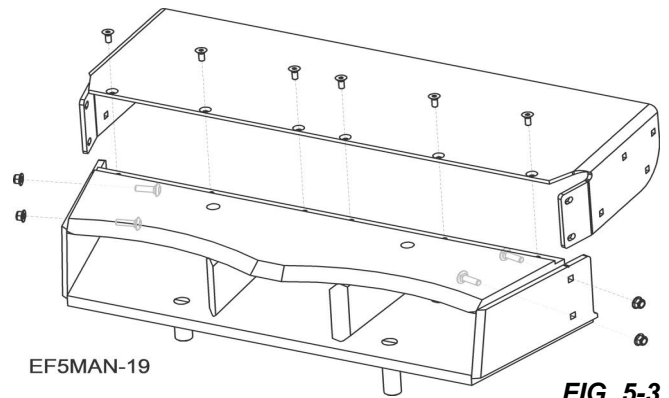
**WARNING!** Use proper lifting equipment; wedges are heavy. Failure to follow this could result in serious injury or death.



1. Unbolt the four (4) carriage bolts on each side that hold the wedge extension plate to the unit.
2. Remove the two nuts and their washers at the bottom of the cutting table on each side.
3. Lift the wedges and their extension plates straight up.



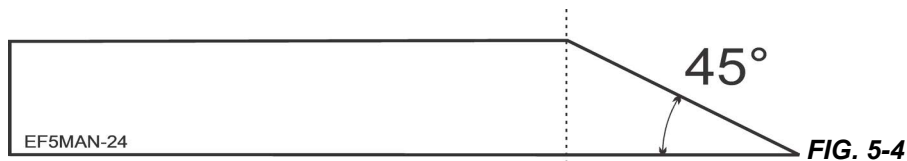
4. Retain hardware for reapplication.
5. Remove and retain all hardware holding the wedge and the wedge extension plate together.
6. To re-install the wedges, reverse the order of this procedure.



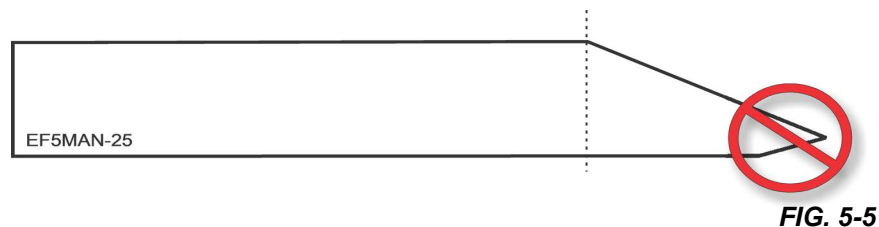
## 5.4 Wedge sharpening

Use a **hand file** to sharpen the wedges after 80 hours of use. An angle grinder may take off too much material at once.

**NOTE: DO NOT CHANGE THE ANGLE OF THE WEDGE.**



**NOTE: DO NOT FILE ON THE UNDERSIDE OF THE WEDGE. THIS WILL CAUSE THE WOOD TO JAM.**



## SECTION 6 PARTS

### 6.1 How To Use The Parts List

- Use the table of contents to locate the assembly that contains the part you need.
- Go to the appropriate section and locate the part in the illustration.
- Use the number pointing to the part to locate the correct part number and description in the table.
- Parts shown indented under another part are included with that part.

#### TO ORDER PARTS

- From the continental US, call **1-800-525-8100** to order parts. Have your customer number, vehicle identification number, and part numbers ready when you call.
- From other international locations, contact the Wood-Mizer distributor in your area for parts.

### 6.2 Sample Assembly



| REF | PART #    | DESCRIPTION                                                   | COMMENTS | QTY. |
|-----|-----------|---------------------------------------------------------------|----------|------|
|     | 012345    | SAMPLE ASSEMBLY, COMPLETE (INCLUDES ALL INDENTED PARTS BELOW) |          | 1    |
| 1   | F02222-22 | Sample Part                                                   |          | 1    |
| 2   | F03333-33 | Sample Part                                                   |          | 2    |
|     | 098765    | Sample Subassembly (Includes All Indented Parts Below)        |          | 1    |
| 3   | S04444-44 | Subassembly Sample Part                                       |          | 1    |
| 4   | K55555    | Subassembly Sample Part                                       |          | 1    |
|     | 054321    | Sample Sub-Subassembly (Includes All Indented Parts Below)    |          | 2    |
| 5   | 022222    | Sub-Subassembly Sample Part                                   |          | 1    |
| 6   | F10234-56 | Sub-Subassembly Sample Part                                   |          | 1    |

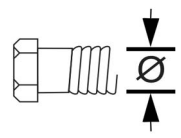
The Sample Assembly, Complete, part number 02345 (top level assembly) includes two parts (F0222-22 and F0333-33) and the 098765 subassembly.

Subassembly 098765 contains two parts(S04444-44 and K55555) and two copies of sub-subassembly 054321.

Each sub-subassembly 054321 contains two parts (022222 and F10234-56).

6.3 Torque Values

| Grade      |                  | Units       | SAE 5                                                                              | SAE 8                                                                               |
|------------|------------------|-------------|------------------------------------------------------------------------------------|-------------------------------------------------------------------------------------|
| Grade Mark |                  |             |  |  |
| Bolt Dia.  | Threads. Per In. | Units       | SAE 5                                                                              | SAE 8                                                                               |
| 6          | 32               | in-lbs (Nm) | 20 (2.3)                                                                           | -                                                                                   |
| 8          | 32               | in-lbs (Nm) | 24 (2.7)                                                                           | 30 (3.4)                                                                            |
| 10         | 24               | in-lbs (Nm) | 35 (4.0)                                                                           | 45 (5.1)                                                                            |
| 10         | 32               | in-lbs (Nm) | 40 (4.5)                                                                           | 50 (5.7)                                                                            |
| 12         | 24               | in-lbs (Nm) | 50 (5.7)                                                                           | 65 (7.3)                                                                            |
| 1/4        | 20               | in-lbs (Nm) | 95 (10.7)                                                                          | 125 (14.1)                                                                          |
| 1/4        | 28               | in-lbs (Nm) | 95 (10.7)                                                                          | 150 (17.0)                                                                          |
| 5/16       | 18               | ft-lbs (Nm) | 17 (22.6)                                                                          | 23 (31.2)                                                                           |
| 5/16       | 24               | ft-lbs (Nm) | 20 (27.1)                                                                          | 25 (33.8)                                                                           |
| 3/8        | 16               | ft-lbs (Nm) | 30 (40.7)                                                                          | 40 (54.2)                                                                           |
| 3/8        | 24               | ft-lbs (Nm) | 35 (47.5)                                                                          | 45 (61.0)                                                                           |
| 7/16       | 14               | ft-lbs (Nm) | 50 (67.8)                                                                          | 65 (88.1)                                                                           |
| 7/16       | 20               | ft-lbs (Nm) | 55 (74.6)                                                                          | 70 (94.9)                                                                           |
| 1/2        | 13               | ft-lbs (Nm) | 75 (101.7)                                                                         | 100 (135.6)                                                                         |
| 1/2        | 20               | ft-lbs (Nm) | 85 (115.3)                                                                         | 110 (149.2)                                                                         |
| 9/16       | 12               | ft-lbs (Nm) | 105 (142.4)                                                                        | 135 (183.1)                                                                         |
| 9/16       | 18               | ft-lbs (Nm) | 115 (155.9)                                                                        | 150 (203.4)                                                                         |
| 5/8        | 11               | ft-lbs (Nm) | 150 (203.4)                                                                        | 195 (264.4)                                                                         |
| 5/8        | 18               | ft-lbs (Nm) | 160 (217.0)                                                                        | 210 (284.8)                                                                         |
| 3/4        | 10               | ft-lbs (Nm) | 170 (230.5)                                                                        | 220 (298.3)                                                                         |
| 3/4        | 16               | ft-lbs (Nm) | 175 (237.3)                                                                        | 225 (305.1)                                                                         |
| 7/8        | 9                | ft-lbs (Nm) | 302 (409.5)                                                                        | 473 (640.9)                                                                         |
| 7/8        | 14               | ft-lbs (Nm) | 300 (406.8)                                                                        | 400 (542.4)                                                                         |
| 1          | 8                | ft-lbs (Nm) | 466 (631.8)                                                                        | 714 (967.4)                                                                         |



Metric Bolt Head Identification



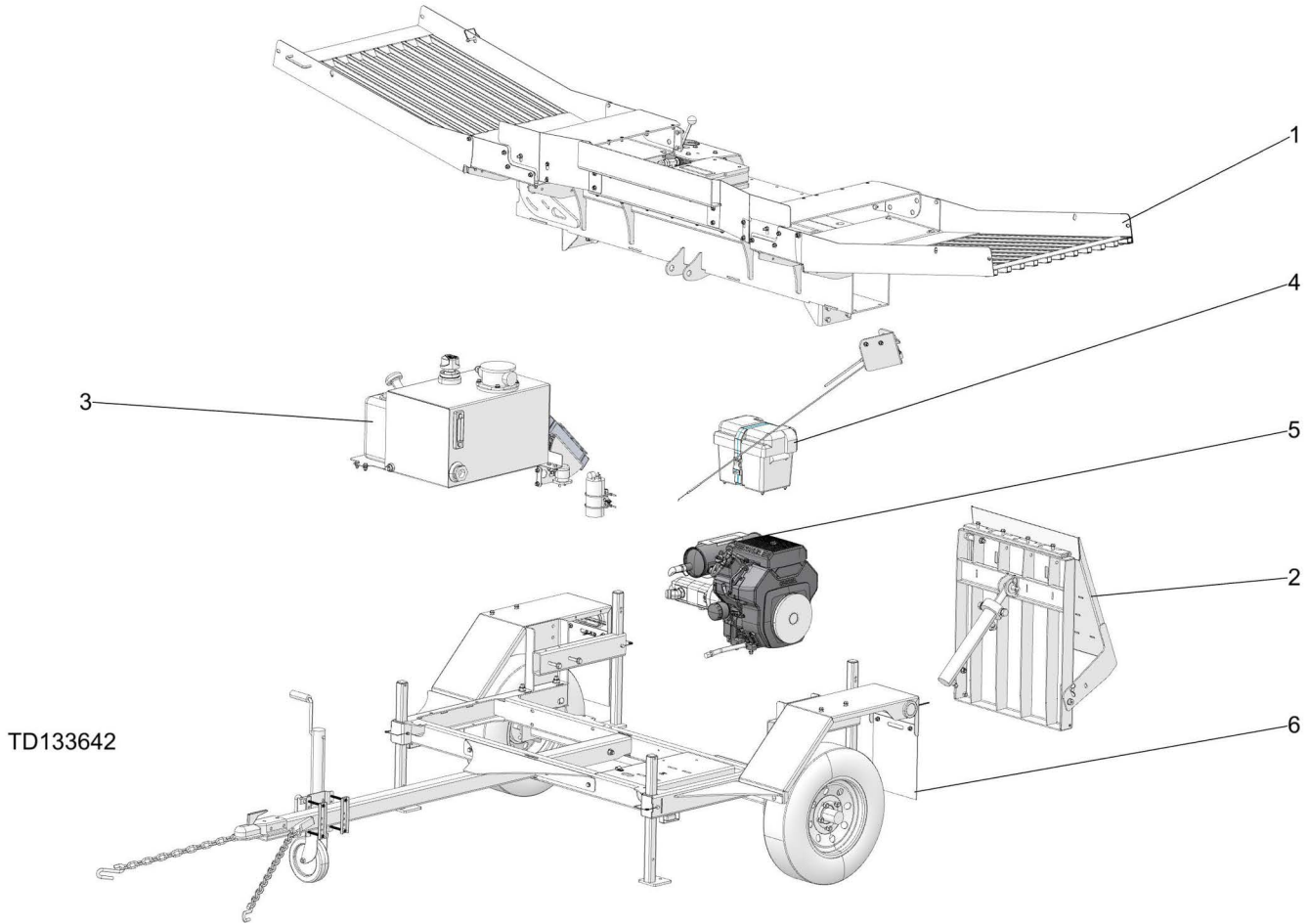
Metric Grade 8.8



Metric Grade 10.9

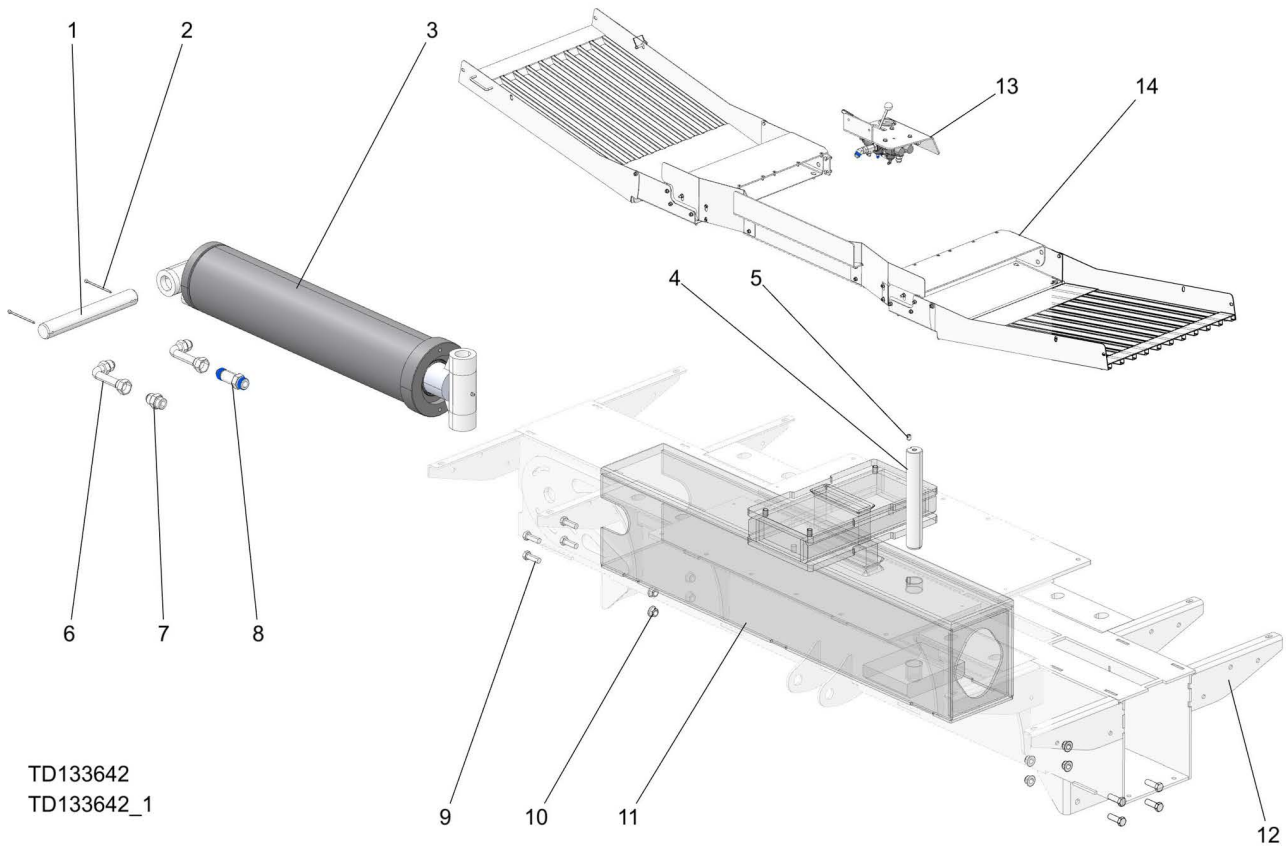
| COARSE THREAD           |            |        |             |        | FINE THREAD             |            |        |             |        | Wrench Size |
|-------------------------|------------|--------|-------------|--------|-------------------------|------------|--------|-------------|--------|-------------|
| Diameter & Thread Pitch | Metric 8.8 |        | Metric 10.9 |        | Diameter & Thread Pitch | Metric 8.8 |        | Metric 10.9 |        |             |
|                         | N-m        | lbs-ft | N-m         | lbs-ft |                         | N-m        | lbs-ft | N-m         | lbs-ft |             |
| 6 x 1.0                 | 8          | 6      | 11          | 8      |                         |            |        |             |        | 10 mm       |
| 8 x 1.25                | 20         | 15     | 27          | 20     | 8 x 1.0                 | 21         | 16     | 29          | 22     | 13 mm       |
| 10 x 1.5                | 39         | 29     | 54          | 40     | 10 x 1.25               | 41         | 30     | 57          | 42     | 16 mm       |
| 12 x 1.75               | 68         | 50     | 94          | 70     | 12 x 1.25               | 75         | 55     | 103         | 76     | 18 mm       |
| 14 x 2.0                | 109        | 80     | 151         | 111    | 14 x 1.5                | 118        | 87     | 163         | 120    | 21 mm       |
| 16 x 2.0                | 169        | 125    | 234         | 173    | 16 x 1.5                | 181        | 133    | 250         | 184    | 24 mm       |
| 18 x 2.5                | 234        | 172    | 323         | 239    | 18 x 1.5                | 263        | 194    | 363         | 268    | 27 mm       |
| 20 x 2.5                | 330        | 244    | 457         | 337    | 20 x 1.5                | 367        | 270    | 507         | 374    | 30 mm       |
| 22 x 2.5                | 451        | 332    | 623         | 460    | 22 x 1.5                | 495        | 365    | 684         | 505    | 34 mm       |
| 24 x 3.0                | 571        | 421    | 790         | 583    | 24 x 2.0                | 623        | 459    | 861         | 635    | 36 mm       |
| 30 x 3.0                | 1175       | 867    | 1626        | 1199   | 30 x 2.0                | 1258       | 928    | 1740        | 1283   | 46 mm       |

## 6.4 Equipment Overview



| REF | PART #   | DESCRIPTION                              | COMMENTS                           | QTY. |
|-----|----------|------------------------------------------|------------------------------------|------|
|     | FS500G19 | <b>SPLITTER, 2 DIR FS500 GAS 19 HP</b>   |                                    | 1    |
| 1   | TS-0024  | Assembly, Splitter Head                  | <a href="#">(See Section 6.5)</a>  | 1    |
| 2   | 079459   | Assembly, Log Lift FS500                 | <a href="#">(See Section 6.9)</a>  | 1    |
| 3   |          | Hydraulic and Fuel Tanks                 | <a href="#">(See Section 6.10)</a> | 1    |
| 4   |          | Battery Box and Engine Control           | <a href="#">(See Section 6.11)</a> | 1    |
| 5   | 133630   | Assembly, Kohler CH620 Engine - Hyd Pump | <a href="#">(See Section 6.12)</a> | 1    |
| 6   | TS-0082  | Trailer Assy, FS500                      | <a href="#">(See Section 6.13)</a> | 1    |

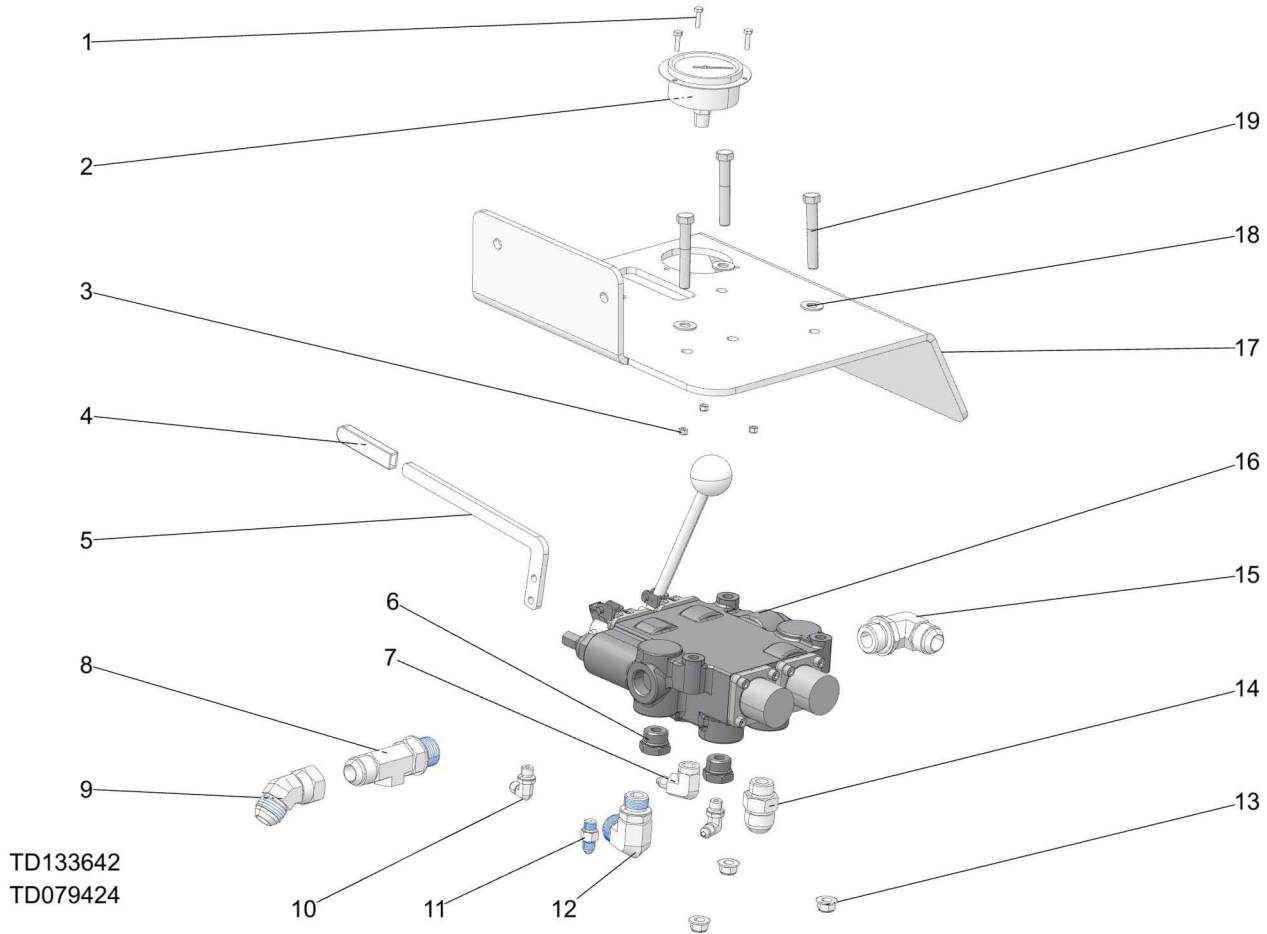
## 6.5 Splitter Head



TD133642  
TD133642\_1

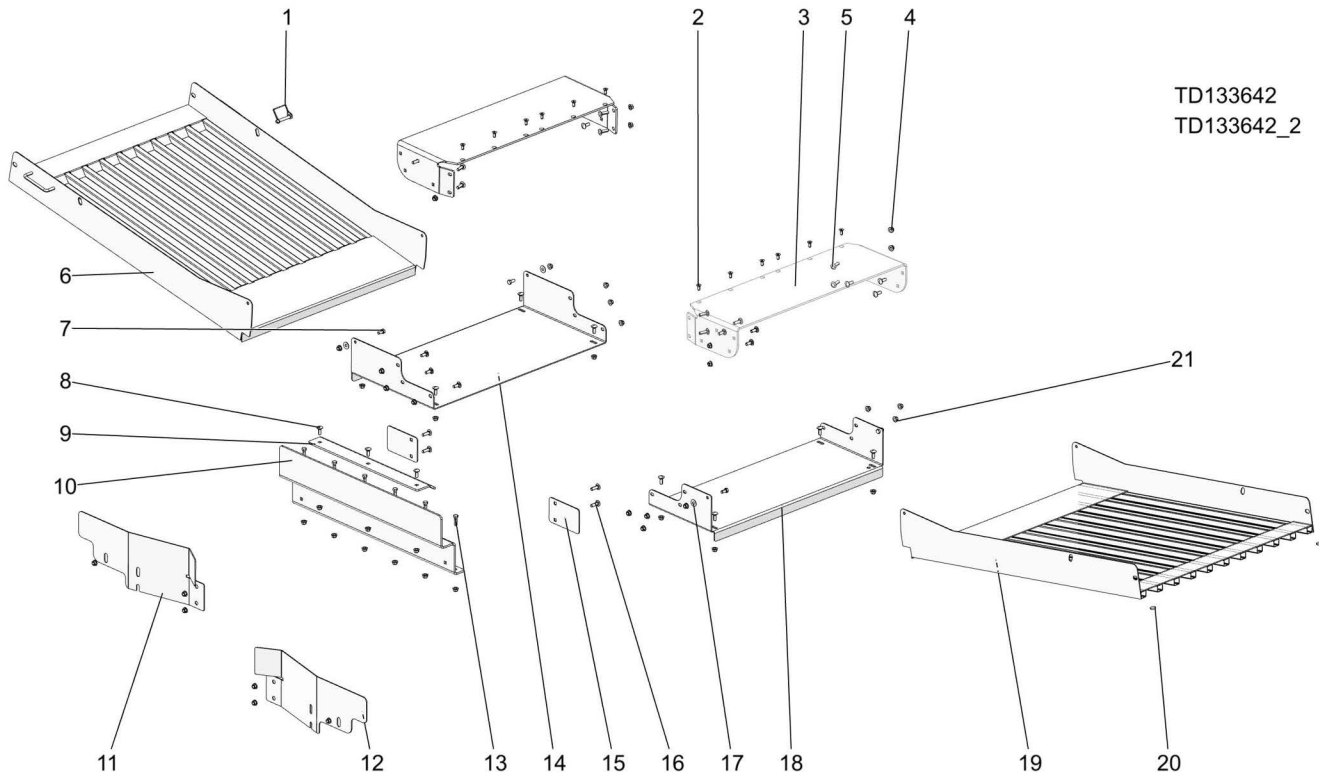
| REF | PART #     | DESCRIPTION                                   | COMMENTS                          | QTY. |
|-----|------------|-----------------------------------------------|-----------------------------------|------|
|     | TS-0024    | <b>ASSEMBLY, SPLITTER HEAD</b>                |                                   | 1    |
| 1   | 079818     | Pin, 1-1/2 Hyd. Cylinder                      |                                   | 1    |
| 2   | F05012-158 | Pin, Cotter 3/16 Dia x 3"                     |                                   | 2    |
| 3   | 079048     | Cylinder, Hydraulic 3x6x24                    |                                   | 1    |
|     | 061246     | Kit, FS500 6" Cylinder Seal<br>(HC-3x6x24"CT) |                                   | 1    |
| 4   | TS-1271    | Pin, Cylinder Rod End                         |                                   | 1    |
| 5   | F05007-12  | Screw, 3/8-16x1/2 SH Cup Pt Set               |                                   | 1    |
| 6   | 079435     | Fitting, 90 Deg Ex Lg 12 Swvl F x 12 JIC M    |                                   | 2    |
| 7   | 074534     | Fitting, 12SAE-12JIC Straight                 |                                   | 1    |
| 8   | 079434     | Fitting, 12-SAE-M x 12-JIC-M Long             |                                   | 1    |
| 9   | F05008-33  | Bolt, 1/2-13x1 1/2 HH Gr5                     |                                   | 8    |
| 10  | F05010-223 | Nut, 1/2-13 Flanged Hex Nylock                |                                   | 8    |
| 11  | 110210     | Weldment, FS500 Pusher                        |                                   | 1    |
| 12  | 110079     | Weldment, FS500 Outer Tube                    |                                   | 1    |
| 13  | 079424     | Assembly, Hydraulic Valve Bracket             | <a href="#">(See Section 6.6)</a> | 1    |
| 14  |            | Splitter Output Components                    | <a href="#">(See Section 6.7)</a> | 1    |

## 6.6 Hydraulic Control Assembly



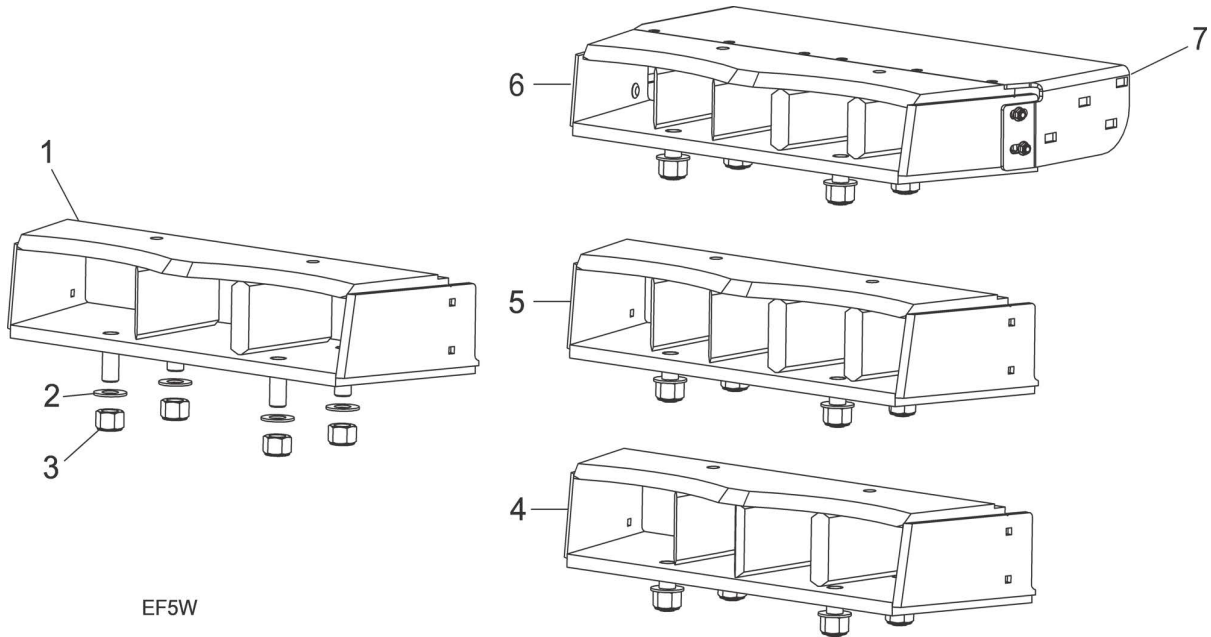
| REF | PART #     | DESCRIPTION                              | COMMENTS | QTY. |
|-----|------------|------------------------------------------|----------|------|
|     | 079424     | <b>ASSEMBLY, HYDRAULIC VALVE BRACKET</b> |          | 1    |
| 1   | F05020-10  | Bolt, M4-.7 x 16 Class8 HH               |          | 3    |
| 2   | 079775     | Gauge, 4000 PSI Panel Mnt                |          | 1    |
| 3   | F05027-8   | Nut, M4-.7 Class 8 Nylock                |          | 3    |
| 4   | P08072     | Grip, 3/8x5/8x2 27/32 Vinyl              |          | 1    |
| 5   | 110231     | Plate, Log Lift Valve Handle             |          | 1    |
| 6   | 079451     | Fitting, 10 SAE M x 4 SAE F Redx         |          | 2    |
| 7   | 079117     | Fitting, 04 JIC M x 1/4 NPT M 90 Deg     |          | 1    |
| 8   | 079116     | Gauge Port 12SAE x 12JIC x 04SAE F       |          | 1    |
| 9   | 079308     | Fitting, 45 Deg Elbow 12 Swvl x 12 JIC   |          | 1    |
| 10  | 074543     | Fitting, 4SAE-4JIC 90° Elbow             |          | 2    |
| 11  | 079217     | Fitting, 04 SAE x 04 JIC .062 Orifice    |          | 1    |
| 12  | 079450     | Fitting, 10 SAE M x 12 JIC M 90 Elbow    |          | 1    |
| 13  | F05010-222 | Nut, 3/8-16 Flanged Hex Nylock           |          | 3    |
| 14  | 079449     | Fitting, 10 SAE M x 12 JIC M             |          | 1    |
| 15  | 079108     | 12 SAE x 12 JIC 90 Elbow                 |          | 1    |
| 16  | 079438     | Valve, Prince 2 Spool Hyd                |          | 1    |
| 17  | 079423     | Plate, Prince Valve Mount                |          | 1    |
| 18  | F05011-3   | Washer, 3/8 Flat SAE                     |          | 3    |
| 19  | F05007-125 | Bolt, 3/8-16x 2-1/2 HH Gr5               |          | 3    |

## 6.7 Splitter Output



| REF | PART #     | DESCRIPTION                        | COMMENTS          | QTY. |
|-----|------------|------------------------------------|-------------------|------|
| 1   | 014151     | Pin, 3/8x2 1/4 SQ Wire Lock        |                   | 1    |
|     | 079287     | Assy, Wdge Extension               |                   | 2    |
| 2   | F05006-95  | Bolt, 5/16-18x3/4 FHS Zinc         |                   | 6    |
| 3   | TS-1159    | Plate, Wedge Extension             |                   | 1    |
| 4   | F05010-222 | Nut, 3/8-16 Flanged Hex Nylock     |                   | 4    |
| 5   | F05007-11  | Bolt, 3/8-16x1 1/4 Carriage        |                   | 4    |
| 6   | 079189     | Weldment, Right Debris Tray        |                   | 1    |
| 7   | F05007-118 | Bolt, 3/8-16x3/4 HH Gr5            |                   | 4    |
| 8   | F05007-165 | Bolt, 3/8-16x1 Carriage, Zinc Gr 5 |                   | 23   |
| 9   | 079180     | Plate, Backstop Deflector          |                   | 1    |
| 10  | 079174     | Plate, Splitting Table Backstop    |                   | 1    |
| 11  | 079201     | Plate, Debris Guard                |                   | 1    |
| 12  | 079175     | Plate, Debris Guard                |                   | 1    |
| 13  | F05007-123 | Bolt, 3/8-16x 1 1/4 HH Gr5         |                   | 6    |
| 14  | TS-1095    | Plate, Right Side Fixed Tray       |                   | 1    |
| 15  | 110222     | Plate, Debris Guard                |                   | 2    |
| 16  | F05007-11  | Bolt, 3/8-16x1 1/4 Carriage        |                   | 6    |
| 17  | 066114     | Washer, .4 IDx1" ODX.06 Nylon      |                   | 4    |
| 18  | TS-1012    | Plate, Left Side Fixed Tray        |                   | 1    |
| 19  | 079188     | Weldment, Left Debris Tray         |                   | 1    |
| 20  | 079367     | Bumper, 3/4Dia x 3/16H Poly U      |                   | 2    |
| 21  | F05010-222 | Nut, 3/8-16 Flanged Hex Nylock     |                   | 39   |
|     |            | Wedge Assembly (3, 4, and 5 Way)   | (See Section 6.8) | 1    |

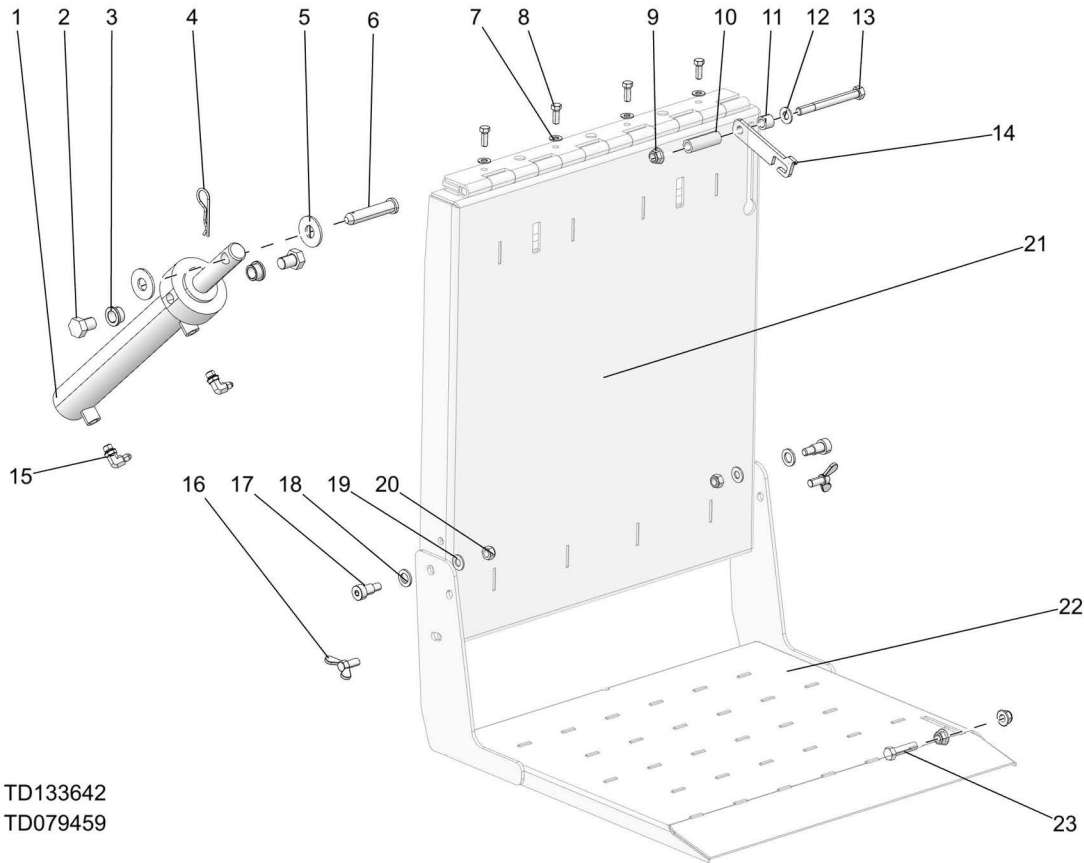
## 6.8 Wedge



| REF      | PART #     | DESCRIPTION                                            | COMMENTS                                                  | QTY. |
|----------|------------|--------------------------------------------------------|-----------------------------------------------------------|------|
|          | FS3-A      | Assembly, 3 Way Wedge Replacement ( <i>one</i> )       |                                                           | 1    |
| <b>1</b> | 079135     | Weldment, 3 Way Wedge                                  |                                                           | 1    |
| <b>2</b> | F05011-28  | Washer, 1 ID SAE Flat                                  |                                                           | 4    |
| <b>3</b> | F05010-109 | Nut, 1-8 Hex Nylok, Zinc                               |                                                           | 4    |
| <b>4</b> | FS4-A      | Assembly, 4 Way Wedge, Replacement, ( <i>one</i> )     | (optional)                                                | 1    |
| <b>5</b> | FS5-A      | Assembly, 5 Way H Wedge, Replacement, ( <i>one</i> )   | (optional)                                                | 1    |
|          | TS-1159    | Plate, Wedge Extension                                 | (1) TS-1159 required for each FS4-A and FS5-A (not shown) | 1    |
| <b>6</b> | FS5B-A     | Assembly, 5 Way 3.5"H Wedge Replacement ( <i>one</i> ) | (optional)                                                | 1    |
| <b>7</b> | 079793     | Plate, Wedge Extension 3-1/2"                          |                                                           | 1    |



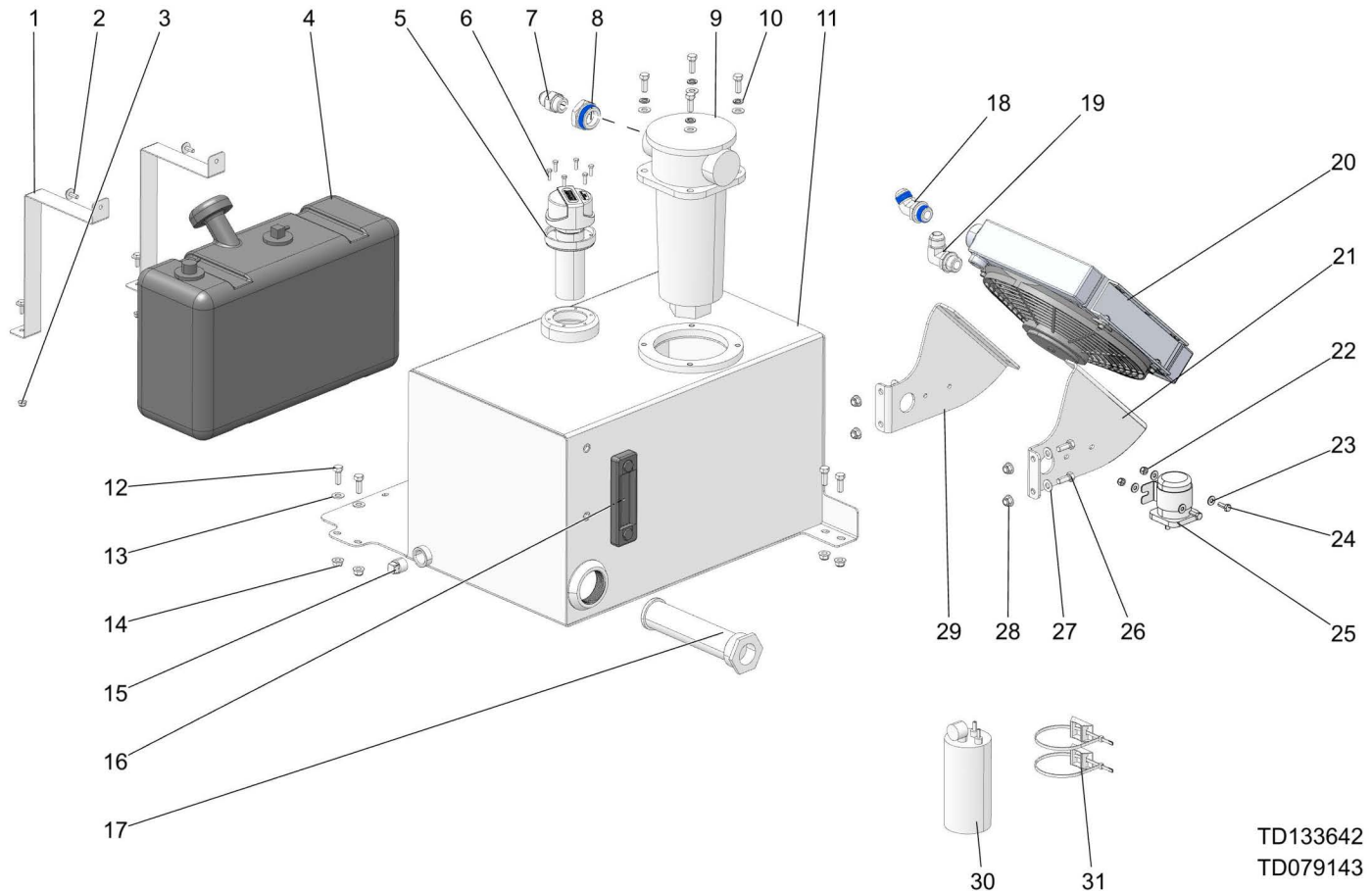
## 6.9 Log Lift



TD133642  
TD079459

| REF | PART #     | DESCRIPTION                        | COMMENTS | QTY. |
|-----|------------|------------------------------------|----------|------|
|     | 079459     | <b>ASSEMBLY, LOG LIFT FS500</b>    |          | 1    |
| 1   | 079046     | Cylinder, Hyd Log Lift 2 X 12      |          | 1    |
| 2   | F05009-141 | Bolt, 3/4-16 X 1 Hh Gr 8           |          | 2    |
| 3   | P786       | Bushing, 3/4idx1 Odx5/8 Lng Flgd   |          | 2    |
| 4   | F05012-62  | Pin, #210 Hitch                    |          | 1    |
| 5   | F05011-29  | Washer, 3/4 Uss Flat               |          | 2    |
| 6   | 007347     | Pin, 3/4x3 1/8                     |          | 1    |
| 7   | F05011-3   | Washer, 3/8 Flat Sae               |          | 4    |
| 8   | F05007-87  | Bolt, 3/8-16x1 Gr5 Hh              |          | 4    |
| 9   | F05010-223 | Nut, 1/2-13 Flanged Hex Nylock     |          | 3    |
| 10  | 079199     | Spacer, 1/2 Sch 80 X 2-21/32       |          | 1    |
| 11  | 079198     | Spacer, 1/2 Sch 80 X 11/16         |          | 1    |
| 12  | F05011-2   | Washer, 1/2 Sae Flat               |          | 1    |
| 13  | F05008-66  | Bolt, 1/2-13 X 5 Gr5 Zinc Hex Head |          | 1    |
| 14  | 079178     | Plate, Log Lift Latch              |          | 1    |
| 15  | 074544     | Fitting, 6sae-4jic 90° Elbow       |          | 2    |
| 16  | F05023-17  | Bolt, M12-1.75 X14mm Wing Thumb    |          | 2    |
| 17  | F05025-9   | Bolt, 16mm X 20l Shoulder-m12x1.75 |          | 2    |
| 18  | F05026-6   | Washer, M16 Flat                   |          | 2    |
| 19  | F05011-124 | Washer, M12 Flat Zinc              |          | 2    |
| 20  | F05010-209 | Nut, M12x1.75 Hex Nylock           |          | 2    |
| 21  | 079458     | Weldment, Log Lift Fs500 Upright   |          | 1    |
| 22  | 079416     | Weldment, Log Lift Lower           |          | 1    |
| 23  | F05008-8   | Bolt, 1/2-13x2 Hh Ft               |          | 1    |

## 6.10 Hydraulic and Fuel Tank

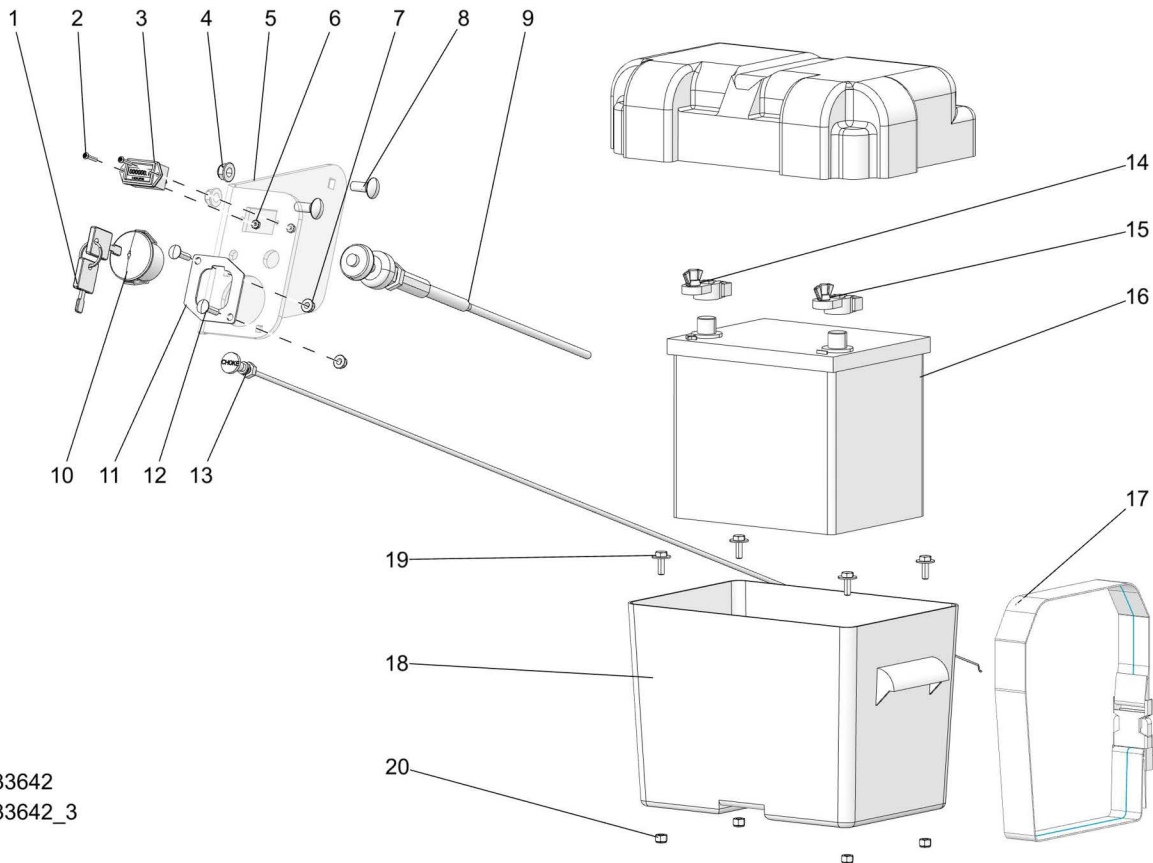


TD133642  
TD079143

| REF       | PART #     | DESCRIPTION                                  | COMMENTS                                    | QTY.    |
|-----------|------------|----------------------------------------------|---------------------------------------------|---------|
|           | 079143     | <b>ASSEMBLY, HYDRAULIC AND FUEL TANK</b>     | Add pipe thread sealant to all pipe threads | 1       |
| <b>1</b>  | 079091     | Strap, Fuel Tank                             |                                             | 2       |
| <b>2</b>  | F05005-134 | Bolt, 1/4-20x3/4 W/conical Washer            |                                             | 4       |
| <b>3</b>  | F05010-220 | Nut, 1/4-20 Flanged Hex Nylock               |                                             | 2       |
| <b>4</b>  | 133635     | Fuel Tank, Upright 5 Gallon Gas              |                                             | 1       |
| <b>5</b>  | 078342     | Assembly, Hyd Fill/breath Antisplash 3micron |                                             | 1       |
| <b>6</b>  | F05004-152 | Bolt, #10-32x5/8 Hh                          |                                             | 6       |
| <b>7</b>  | 074534     | Fitting, 12sae-12jic Straight                |                                             | 1       |
| <b>8</b>  | 079104     | Reducer, 20 Sae M - 12 Sae F                 |                                             | 1       |
| <b>9</b>  | 079057     | Filter, In-tank Hyd                          |                                             | 1       |
| <b>10</b> | F05011-4   | Washer, 3/8 Split Lock                       |                                             | 4       |
| <b>11</b> | TS-0080    | Weldment, Hydraulic Tank                     | Tank holds 20 gal; System, 25               | 1       |
| <b>12</b> | F05007-87  | Bolt, 3/8-16x1 Gr5 Hh                        |                                             | 8       |
| <b>13</b> | F05011-3   | Washer, 3/8 Flat Sae                         |                                             | 6       |
| <b>14</b> | F05010-222 | Nut, 3/8-16 Flanged Hex Nylock               |                                             | 4       |
| <b>15</b> | P20277     | Plug, 3/4 Npt Steel Pipe                     |                                             | 1       |
| <b>16</b> | P20211     | Gage, Hyd. Fluid Sight                       |                                             | 1       |
| <b>17</b> | 079056     | Filter, 2 Npt In-tank Suction                |                                             | 1       |
|           | R02423-1   | Hose, Fuel 3/16" Epa 15g Carb                | Not Shown                                   | 3.75 ft |
|           | R02423-2   | Hose, Fuel 1/4" Epa 15g Carb                 | Not Shown                                   | 13.5 ft |
|           | P649       | Hose Clamp, 7/32in-5/8in                     | Not Shown                                   | 6       |
|           | 079269     | Assembly, Oil Cooler Fs500                   |                                             | 1       |

| REF | PART #     | DESCRIPTION                               | COMMENTS | QTY. |
|-----|------------|-------------------------------------------|----------|------|
| 18  | 079118     | Fitting, 12 Sae X 12 Jic 45 Deg           |          | 1    |
| 19  | 079108     | 12 Sae X 12 Jic 90 Elbow                  |          | 1    |
| 20  | 079035     | Oil Cooler W/fan                          |          | 1    |
| 21  | TS-1293    | Plate, Left Oil Cooler Mount              |          | 1    |
| 22  | F05010-69  | Nut, 1/4-20 Nylock                        |          | 2    |
| 23  | F05011-11  | Washer, 1/4 Sae Flat                      |          | 4    |
| 24  | F05005-1   | Bolt, 1/4-20x3/4 Ft Hhc                   |          | 2    |
| 25  | 015470     | Solenoid, 200a 12v Spst Hyd. Pump 1997    |          | 1    |
| 26  | F05007-87  | Bolt, 3/8-16x1 Gr5 Hh                     |          | 4    |
| 27  | F05011-3   | Washer, 3/8 Flat Sae                      |          | 4    |
| 28  | F05010-222 | Nut, 3/8-16 Flanged Hex Nylock            |          | 4    |
| 29  | TS-1294    | Plate, Right Oil Cooler Mount             |          | 1    |
| 30  | 133646     | Carbon Canister, 1/4" Inlet, 3/16" Outlet |          | 1    |
| 31  | 079039     | Assembly, Canister Mount                  |          | 2    |

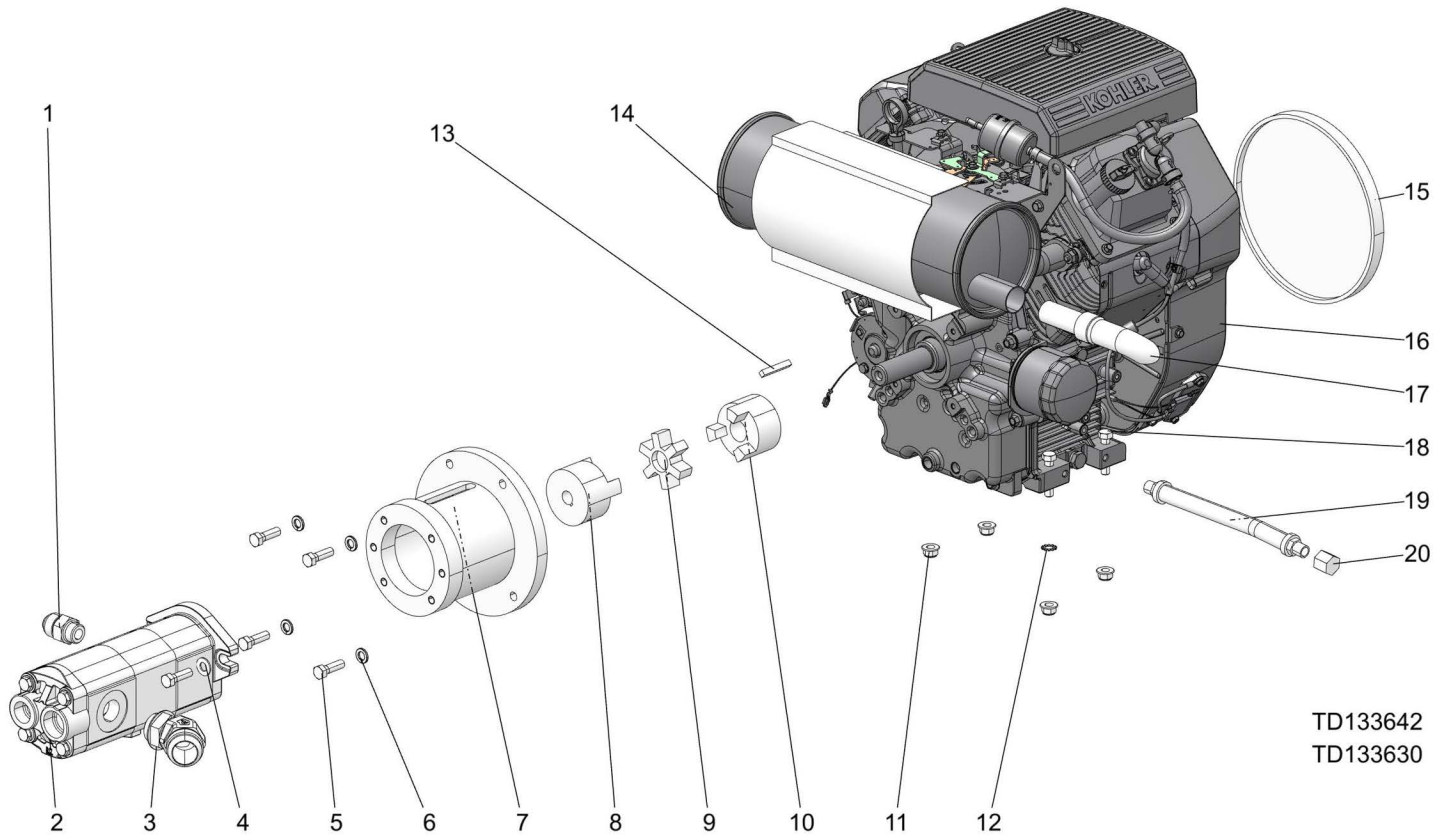
## 6.11 Engine Control and Battery Box



TD133642  
 TD133642\_3

| REF | PART #     | DESCRIPTION                        | COMMENTS  | QTY. |
|-----|------------|------------------------------------|-----------|------|
|     | 133640     | Assembly, Engine Control           |           | 1    |
| 1   | 045693     | Key For 046122                     |           | 2    |
| 2   | F05004-93  | Screw, 6-32x3/4 Sbhc Ss            |           | 2    |
| 3   | 015401     | Hour Meter, 9-64vdc Digital Lcd    |           | 1    |
| 4   | F05010-222 | Nut, 3/8-16 Flanged Hex Nylock     |           | 2    |
| 5   | 133641     | Bracket, Engine Control-kohler     |           | 1    |
| 6   | F05010-59  | Nut, #6-32 Keps                    |           | 2    |
| 7   | F05010-220 | Nut, 1/4-20 Flanged Hex Nylock     |           | 2    |
| 8   | F05007-165 | Bolt, 3/8-16x1 Carriage, Zinc Gr 5 |           | 2    |
| 9   | 047726     | Cable, Throttle, G28 Edger         |           | 1    |
| 10  | 046122     | Switch, Ignition Key               |           | 1    |
| 11  | 133633     | Plate, Key Switch                  |           | 1    |
| 12  | F05005-34  | Bolt, 1/4-20 X 1 Carr              |           | 2    |
| 13  | 073177     | Cable, Choke 54" Commercial        |           | 1    |
| 14  | 033358     | Clamp, Pos. Battery                |           | 1    |
| 15  | 033359     | Clamp, Neg. Battery                |           | 1    |
| 16  | 028004     | Battery, 12V 524/26A               |           | 1    |
|     | 016413     | Box, Battery, Modified             |           | 1    |
| 17  | 133570     | Strap, 1 1/2 x 48 W/Buckle         |           | 1    |
| 18  | 033269     | Box, Battery                       |           | 1    |
| 19  | F05005-134 | Bolt, 1/4-20x3/4 W/Conical Washer  |           | 4    |
| 20  | F05010-69  | Nut, 1/4-20 Nylock                 |           | 4    |
|     | 110074     | Cable, Negative Battery            |           | 1    |
|     | 079284     | Cable, Positive Battery            | Not shown | 1    |

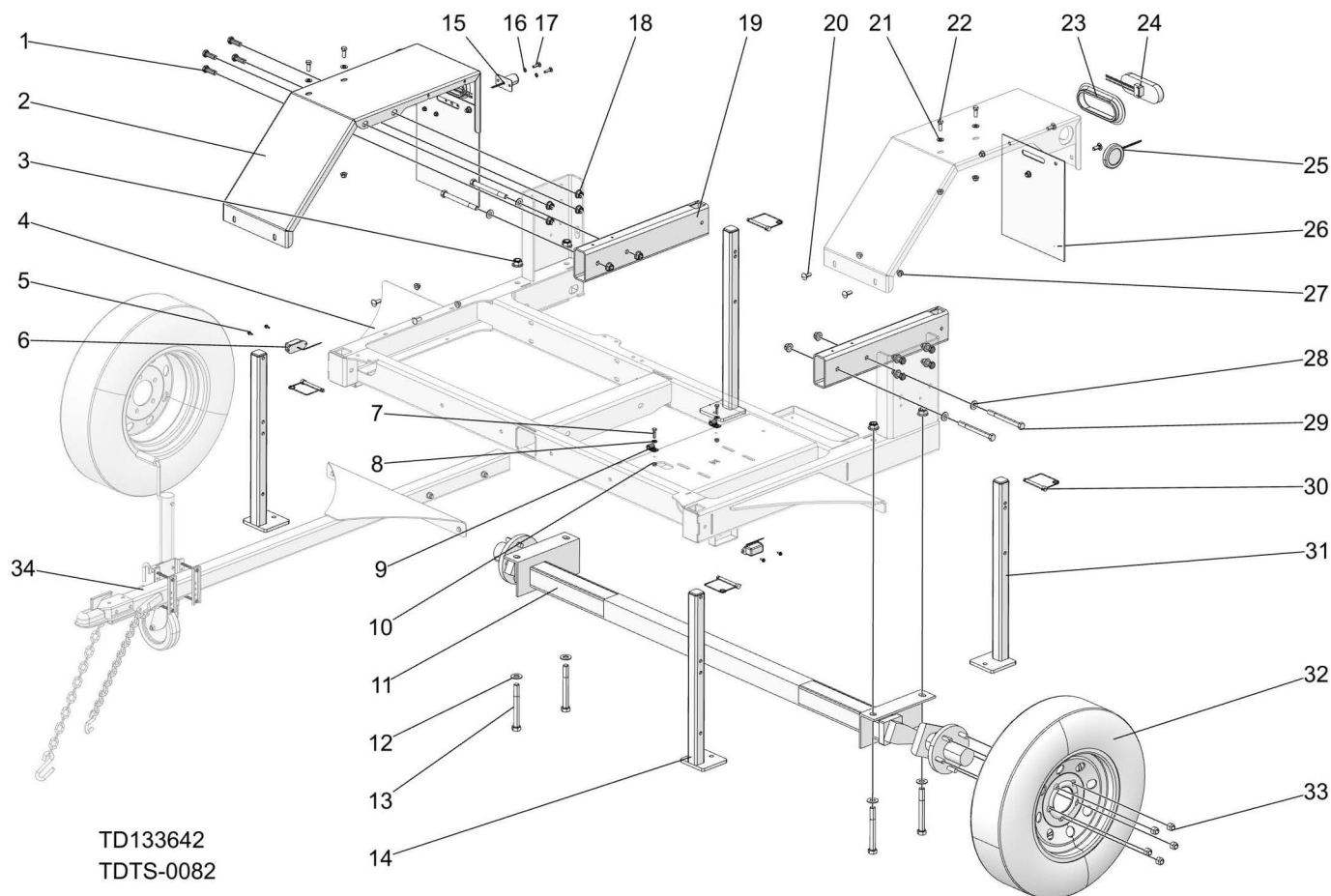
## 6.12 Engine and Hydraulic Pump



TD133642  
TD133630

| REF | PART #     | DESCRIPTION                                     | COMMENTS | QTY.   |
|-----|------------|-------------------------------------------------|----------|--------|
|     | 133630     | <b>ASSEMBLY, KOHLER CH620 ENGINE - HYD PUMP</b> |          | 1      |
| 1   | 079449     | Fitting, 10 SAE M x 12 JIC M                    |          | 1      |
| 2   | 079053     | Pump, Hydraulic 28.5/7.5 GPM                    |          | 1      |
| 3   | 130751     | Fitting, 20 JICM x 16 SAE 45 Elbow              |          | 1      |
| 4   | F05011-3   | Washer, 3/8 Flat SAE                            |          | 2      |
| 5   | F05007-123 | Bolt, 3/8-16x 1 1/4 HH Gr5                      |          | 6      |
| 6   | F05011-4   | Washer, 3/8 Split Lock                          |          | 4      |
| 7   | 079043     | Housing, Bell Eng-Hyd Pump                      |          | 1      |
| 8   | 079042     | Coupling Body, L100 x 5/8                       |          | 1      |
| 9   | 042779     | Coupling, L100 Spider                           |          | 1      |
| 10  | 025816     | Coupling Body, L100x1                           |          | 1      |
| 11  | F05010-222 | Nut, 3/8-16 Flanged Hex Nylock                  |          | 4      |
| 12  | F05011-36  | Washer, 3/8 Star External                       |          | 1      |
| 13  | S04124     | Key, 1/4 x 1 11/16                              |          | 1      |
|     | 133629     | Engine Assembly, Kohler G19 CH620               |          | 1      |
| 14  | 130781     | Muffler, Kohler CH620 Engine                    |          | 1      |
| 15  | 133639     | Kohler Fan Guard CH620                          |          | 1      |
| 16  | 133628     | Engine, Kohler CH620-3158/3193                  |          | 1      |
| 17  | 036684     | Spark Arrestor, Kohler 90 Deg                   |          | 1      |
| 18  | F05007-129 | Bolt, 3/8-16X1 3/4 HH Gr5, Znc                  |          | 4      |
| 19  | P10082     | Hose, 3/8NPTx9 5/8 Rubber                       |          | 1      |
| 20  | P04332     | Cap, 3/8 Pipe Galvanize                         |          | 1      |
|     | L04869-1   | Oil, 10W30 Type CD                              |          | .5 gal |

### 6.13 Trailer

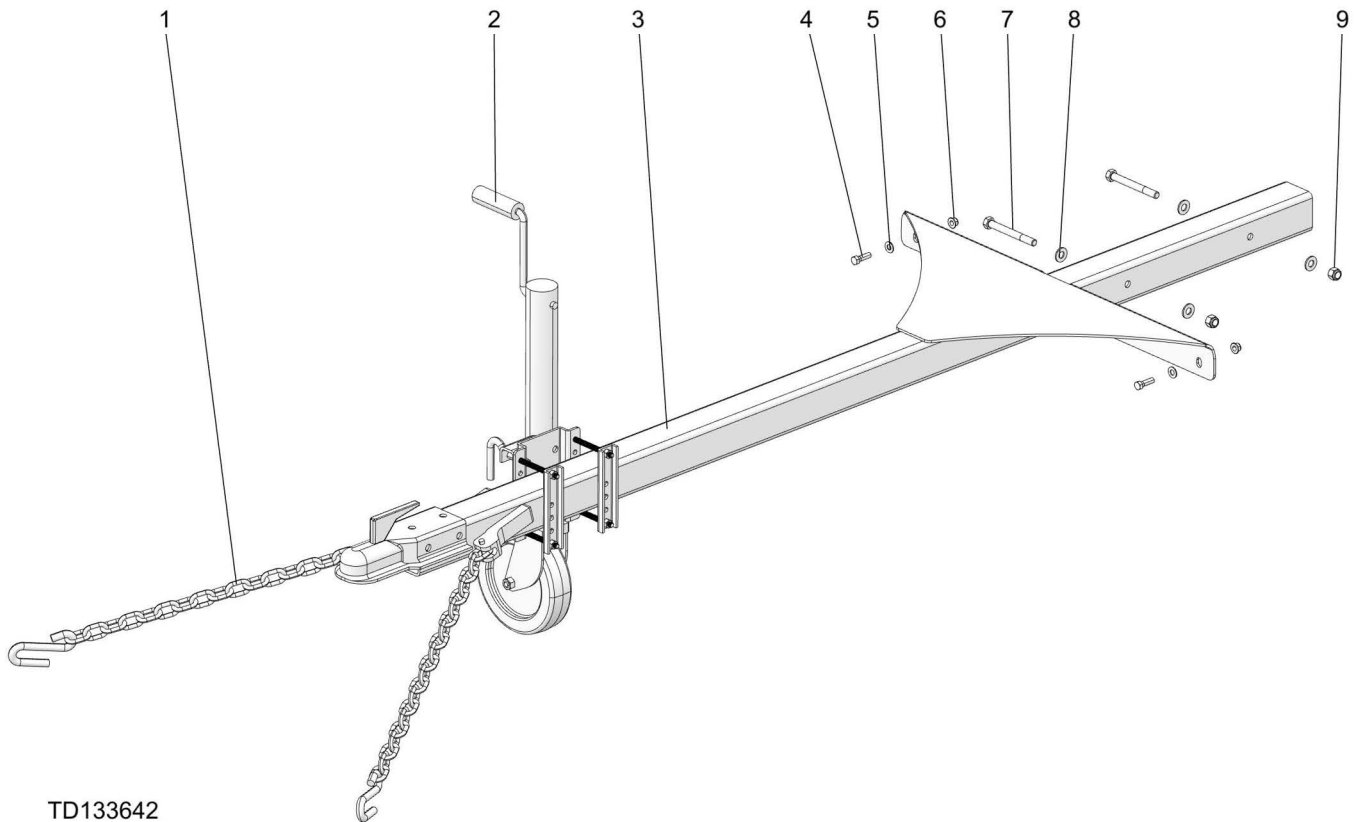


| REF | PART #     | DESCRIPTION                    | COMMENTS | QTY. |
|-----|------------|--------------------------------|----------|------|
|     | TS-0082    | Trailer Assy, FS500            |          | 1    |
| 1   | F05008-33  | Bolt, 1/2-13x1 1/2 Hh Gr5      |          | 8    |
| 2   | 079317     | Plate, Right Side Fender       |          | 1    |
| 3   | F05010-224 | Nut, 5/8-11 Flanged Hex Nylock |          | 4    |
| 4   | TS-0083    | Weldment, Trailer Frame        |          | 1    |
| 5   | F05015-7   | Bolt, #10-24x1/2 Self Tap      |          | 4    |
| 6   | P12906     | Lamp, Running Amber            |          | 2    |
| 7   | F05005-101 | Bolt, 1/4-20 X 1 Hex Head Gr5  |          | 2    |
| 8   | F05011-11  | Washer, 1/4 Sae Flat           |          | 2    |
| 9   | P07584     | Clamp, 1/2emt Coated           |          | 2    |
| 10  | F05010-220 | Nut, 1/4-20 Flanged Hex Nylock |          | 4    |
| 11  | 074990     | Axle, 3500 Lbs Torsion         |          | 1    |
|     | P22610     | Cover, Hub Bearing Dust        |          | 2    |
|     | P22612     | Plug, Bearing Hub              |          | 1    |
| 12  | F05011-5   | Washer, 5/8 Sae Flat           |          | 4    |
| 13  | F05009-11  | Bolt, 5/8-11x5 1/2 Hh Gr5      |          | 4    |
| 14  | TS-0085    | Weldment, Outrigger            |          | 2    |
| 15  | 038161     | Light, License Plate           |          | 1    |
| 16  | F05011-37  | Washer, 1/4 Star Et            |          | 2    |
| 17  | F05005-34  | Bolt, 1/4-20 X 1 Carr          |          | 2    |

| REF | PART #     | DESCRIPTION                          | COMMENTS                           | QTY. |
|-----|------------|--------------------------------------|------------------------------------|------|
| 18  | F05010-223 | Nut, 1/2-13 Flanged Hex Nylock       |                                    | 12   |
| 19  | 110719     | Tube, Outrigger Fs500                |                                    | 2    |
| 20  | F05007-165 | Bolt, 3/8-16x1 Carriage, Zinc Gr 5   |                                    | 8    |
| 21  | F05011-3   | Washer, 3/8 Flat Sae                 |                                    | 4    |
| 22  | F05007-87  | Bolt, 3/8-16x1 Gr5 Hh                |                                    | 4    |
| 23  | 006688     | Grommet, 6 1/2 Light Mounting        |                                    | 2    |
| 24  | 006391     | Light, Led Tail                      |                                    | 2    |
| 25  | P12913     | Lamp, Running Red Recessed           |                                    | 2    |
| 26  | 079031     | Mud Flap                             |                                    | 2    |
| 27  | F05010-222 | Nut, 3/8-16 Flanged Hex Nylock       |                                    | 12   |
| 28  | F05011-2   | Washer, 1/2 Sae Flat                 |                                    | 4    |
| 29  | F05008-28  | Bolt, 1/2-13x5 1/2 Hex Head Gr5 Zinc |                                    | 4    |
| 30  | 038472     | Pin Assembly, 3/8x3 Wire Lock        |                                    | 4    |
| 31  | 110721     | Weldment, Outrigger Fs500            |                                    | 2    |
| 32  | 133515     | Tire/wheel Assembly, St175/80r13     |                                    | 2    |
| 33  | P04646     | Nut, 1/2-20 Lug                      |                                    | 10   |
| 34  | 079145     | Assembly, Trailer Tongue             | <a href="#">(See Section 6.14)</a> | 1    |



## 6.14 Trailer Tongue

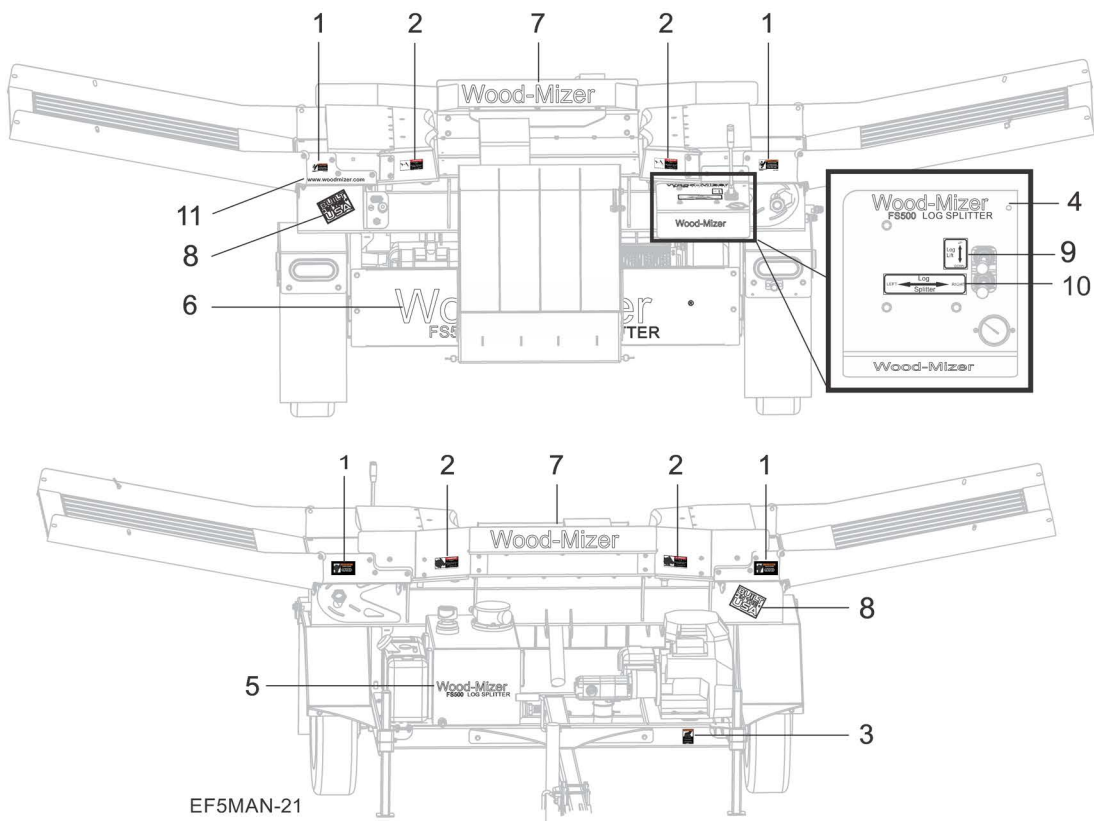
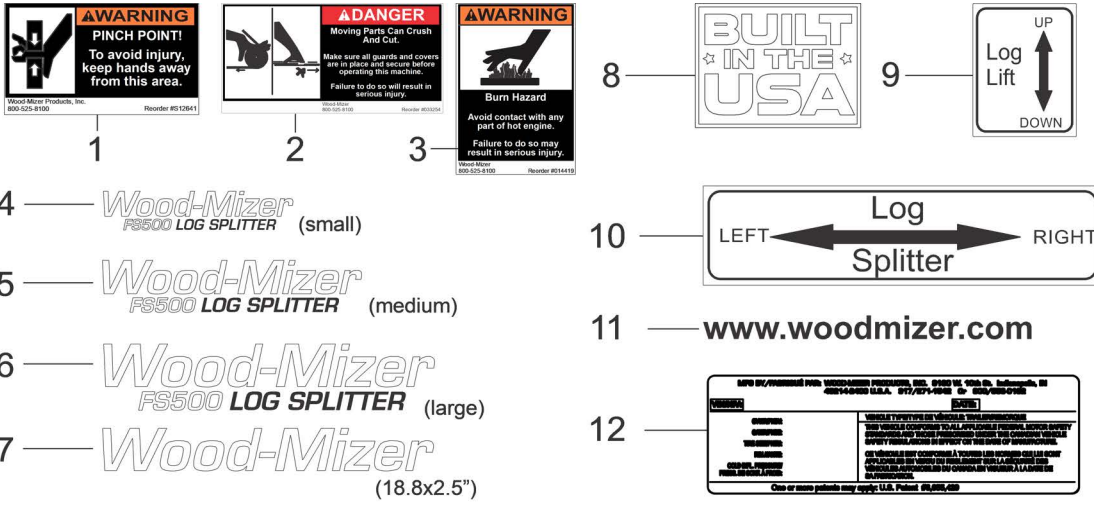


TD133642  
TD079145

| REF      | PART #     | DESCRIPTION                     | COMMENTS | QTY. |
|----------|------------|---------------------------------|----------|------|
|          | 079145     | <b>ASSEMBLY, TRAILER TONGUE</b> |          | 1    |
| <b>1</b> | 107163     | Chain, 30 Inch Safety           |          | 2    |
| <b>2</b> | 074997     | Jack, Trailer Wheel 1500 lbs    |          | 1    |
| <b>3</b> | TS-0084    | Weldment, Trailer Tongue        |          | 1    |
| <b>4</b> | F05007-123 | Bolt, 3/8-16x 1 1/4 HH Gr5      |          | 4    |
| <b>5</b> | F05011-3   | Washer, 3/8 Flat SAE            |          | 4    |
| <b>6</b> | F05010-222 | Nut, 3/8-16 Flanged Hex Nylock  |          | 4    |
| <b>7</b> | F05008-35  | Bolt, 1/2-13x4 1/2 GR5 Hex Head |          | 2    |
| <b>8</b> | F05011-2   | Washer, 1/2 SAE Flat            |          | 4    |
| <b>9</b> | F05010-8   | Nut, 1/2-13 Nyl Hex Lock        |          | 2    |
|          | 079032     | Wire Harness, Trailer Lights    |          | 1    |



### 6.15 Decals



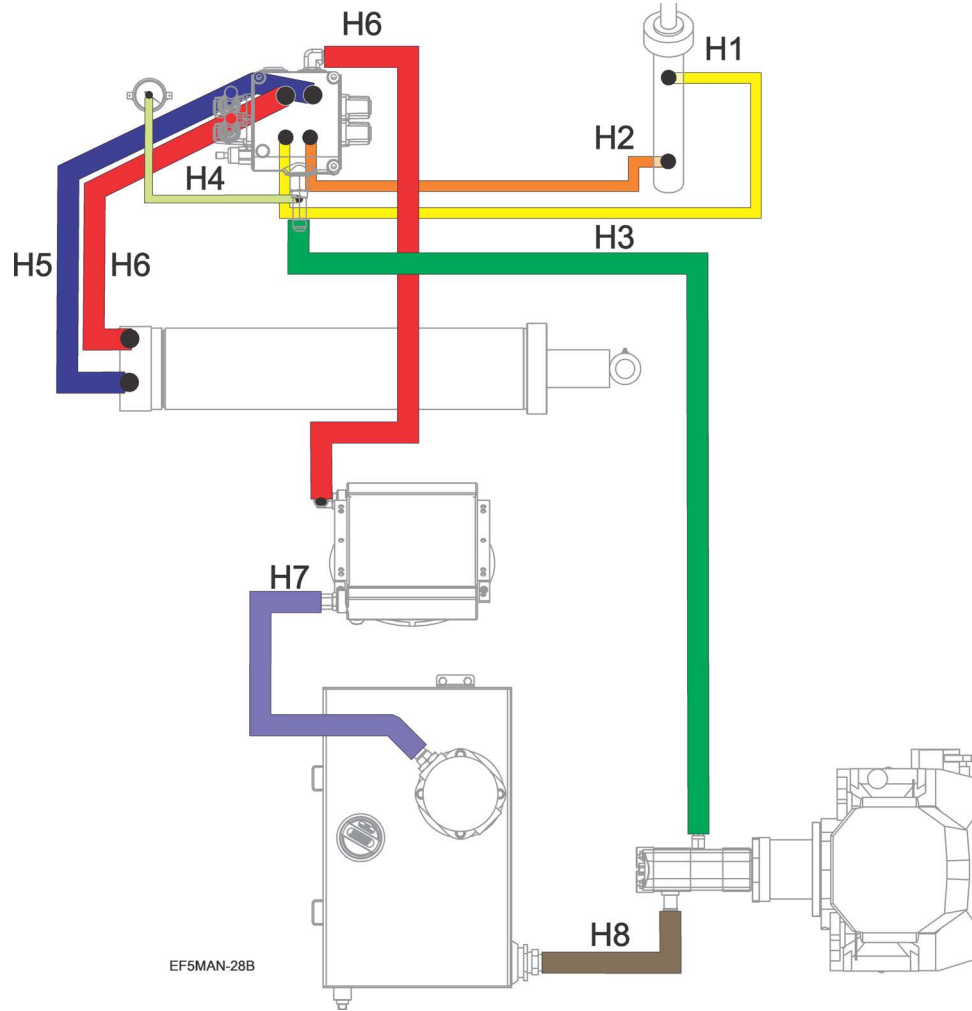
| REF | PART # | DESCRIPTION                           | COMMENTS | QTY. |
|-----|--------|---------------------------------------|----------|------|
| 1   | S12641 | Decal, Hand Pinch Point Warning Edger |          | 6    |
| 2   | 033254 | Decal, Moving Parts Danger            |          | 4    |
| 3   | 014419 | Decal, Hot Engine Warning             |          | 1    |
| 4   | 074992 | Decal, Small Wood-Mizer FS500         |          | 2    |
| 5   | 074993 | Decal, Medium Wood-Mizer FS500        |          | 1    |
| 6   | 074994 | Decal, Large Wood-Mizer FS500         |          | 1    |
| 7   | 065025 | Decal, Wood-Mizer Logo Wht LT40,50    |          | 2    |

# 6 Replacement Parts

Decals

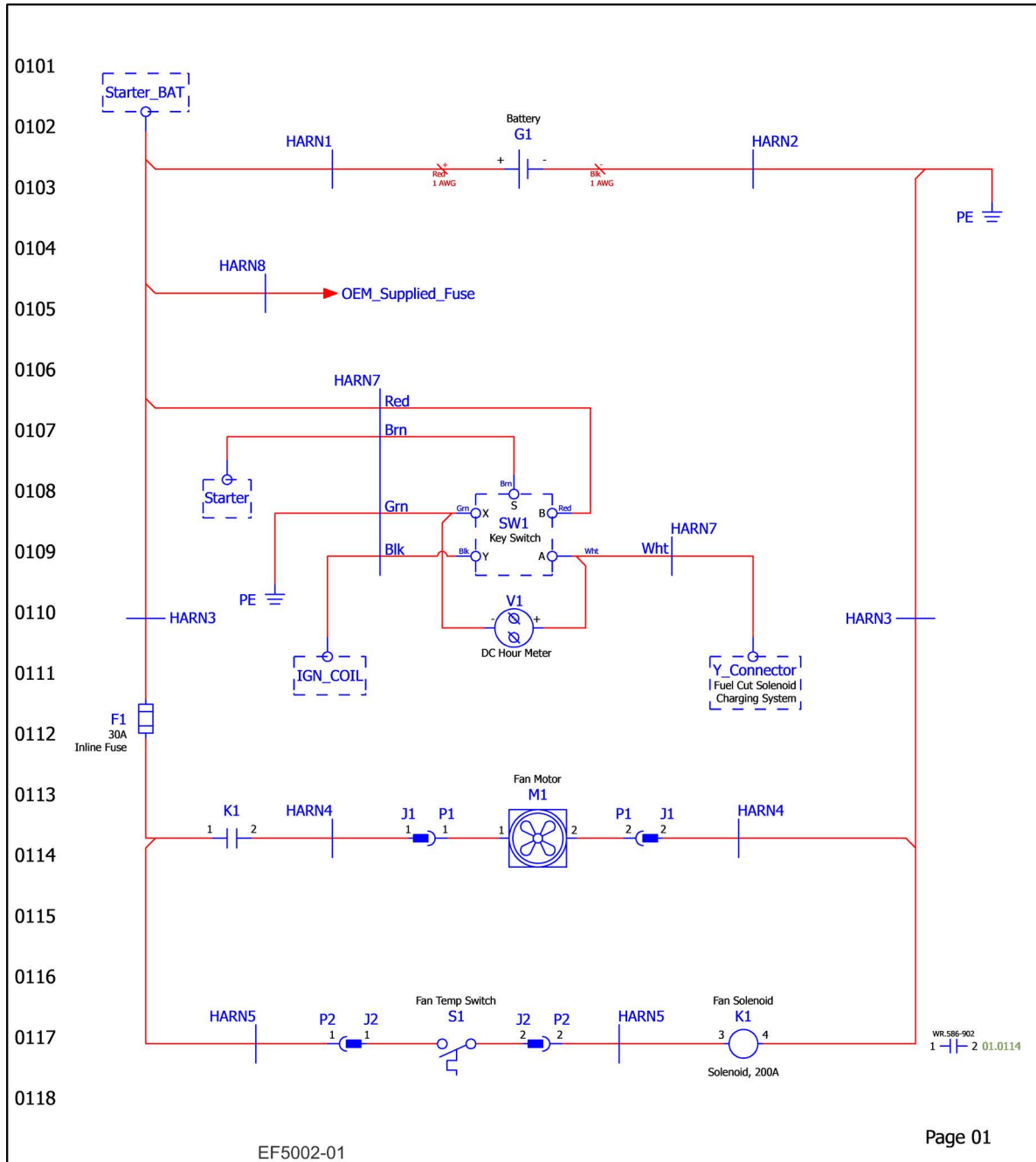
| REF | PART # | DESCRIPTION                   | COMMENTS | QTY. |
|-----|--------|-------------------------------|----------|------|
| 8   | 074008 | Decal, Built In The USA       |          | 1    |
| 9   | 074995 | Decal, Log Lift Control       |          | 1    |
| 10  | 074996 | Decal, Log Splitter Direction |          | 1    |
| 11  | 003235 | Decal, Wood-Mizer Website     |          | 1    |
| 12  | P09943 | Decal, VIN                    |          | 2    |
|     | P09971 | Decal, VIN Overlay (clear)    |          | 2    |

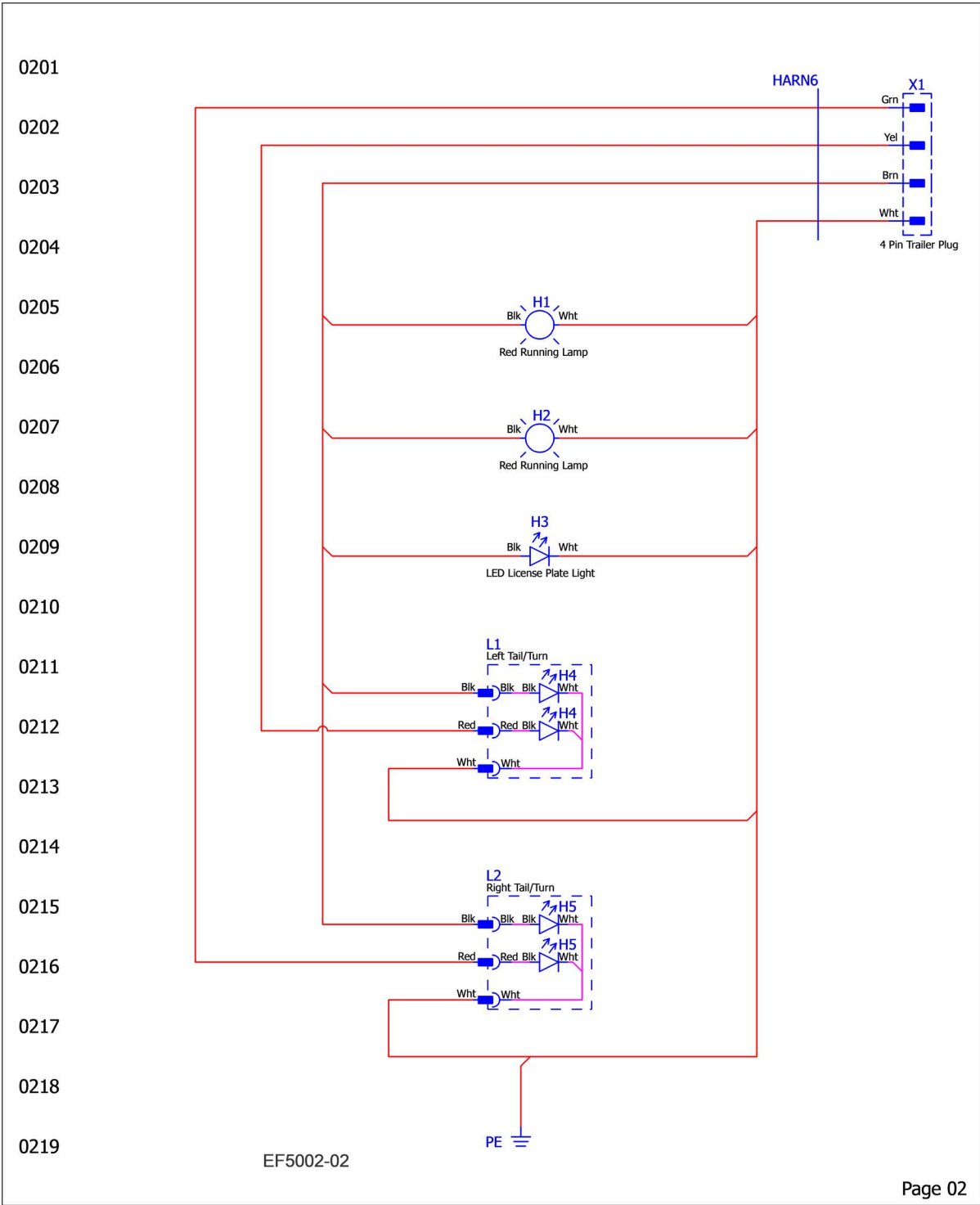
## 6.16 Hydraulic hoses



| REF | PART # | DESCRIPTION                              | COMMENTS                      | QTY.  |
|-----|--------|------------------------------------------|-------------------------------|-------|
| H1  | 079303 | Hose, 44" #4 F JIC & F JIC               | Available in assemblies only. | 1     |
| H2  | 079302 | Hose, 47-1/2" #4 F JIC & F JIC           | Available in assemblies only. | 1     |
| H3  | 079300 | Hose, 57" #12 F-JIC & 45 Deg F JIC       | Available in assemblies only. | 1     |
| H4  | 079301 | Hose, 14-1/2" #4 F JIC & F JIC           | Available in assemblies only. | 1     |
| H5  | 075452 | Hose, 42" #12 90 Deg F JIC & 90 F JIC    | Available in assemblies only. | 1     |
| H6  | 079304 | Hose, 39" #12 F JIC & 90 Deg F JIC       | Available in assemblies only. | 2     |
| H7  | 079307 | Hose, 25-3/4" #12 F JIC & F JIC          | Available in assemblies only. | 1     |
| H8  | 130750 | Hose, Inlet 20R4-20FJX-20MP x 14.38      | Available in assemblies only. | 1     |
|     | 006397 | Fluid, Hydraulic HVI32 (Gal) All Weather | Tank holds 20 gal             | 1 gal |

## 6.17 Electrical





## Device Tag/Parts List

WM\_PARTS\_LIST-Manual

| Device tag | Function                | Wood-Mizer Part Number | Wood-Mizer Description                            | Qty. | X-Ref (<page>.<line>) |
|------------|-------------------------|------------------------|---------------------------------------------------|------|-----------------------|
| F1         | Inline Fuse             | 024150-30              | Fuse, 30A ATO Blade Green                         | 1    | 01.0112               |
| G1         | Battery                 | 028004                 | Battery, 12V 526MF (526MF)                        | 1    | 01.0103               |
| H1         | Red Running Lamp        | P12913                 | Lamp, Running Red Recessed                        | 1    | 02.0205               |
| H2         | =                       | P12913                 | Lamp, Running Red Recessed                        | 1    | 02.0207               |
| H3         | LED License Plate Light | 006391                 | Light, LED Tail                                   | 1    | 02.0209               |
| K1         | Fan Solenoid            | 015470                 | Solenoid, 200A 12V SPST Cont. Duty                | 1    | 01.0117               |
| L1         | Left Tail/Turn          | 074710                 | Light, 8 Diode LED Tail                           | 1    | 02.0211               |
| L1         | =                       | 074711                 | Right-Angle 3 Wire/3 Pin Plug                     | 1    | 02.0211               |
| L2         | Right Tail/Turn         | 074710                 | Light, 8 Diode LED Tail                           | 1    | 02.0215               |
| L2         | =                       | 074711                 | Right-Angle 3 Wire/3 Pin Plug                     | 1    | 02.0215               |
| M1         | Fan Motor               | 073810                 | Fan, 12 VDC Hydac Oil Cooler                      | 1    | 01.0114               |
| M1         | =                       | 052204                 | Connector, Deutsch 2P Female DT Series            | 1    | 01.0114               |
| M1         | =                       | 052206                 | Wedglock, Deutsch 2P Female DT Series             | 1    | 01.0114               |
| M1         | =                       | 052943                 | Terminal, 16-20AWG Sz 16 Female Solid Deutsch Pin | 2    | 01.0114               |
| S1         | Fan Temp Switch         | 073809                 | Switch, Hydac Thermostat Temp                     | 1    | 01.0117               |
| S1         | =                       | 052207                 | Connector, Deutsch 2P Male DT Series              | 1    | 01.0117               |
| S1         | =                       | 052209                 | Wedglock, Deutsch 2P Male DT Series               | 1    | 01.0117               |
| S1         | =                       | 053429                 | Terminal, 16AWG Sz 16 Male Solid Deutsch Pin Gold | 2    | 01.0117               |
| V1         | DC Hour Meter           | 015401                 | Digital Meter, Hour Rect Mount w/Gasket           | 1    | 01.0110               |
| X1         | 4 Pin Trailer Plug      | P04159                 | Connector, Trailer                                | 1    | 02.0202               |

## Cable Overview

Wood-Mizer\_Cable\_Overview

| Cable Designation | Cable Part Number | Cable Description                        | Cable X-Ref (<page>.<line>) |
|-------------------|-------------------|------------------------------------------|-----------------------------|
| HARN1             | 079284            | Cable, Battery Pos - Engine FS500        | 01.0102                     |
| HARN2             | 110074            | Cable, Battery Neg - Engine FS500        | 01.0102                     |
| HARN3             | 073764            | Harness Assy, FS500G630 Hyd Fan SOL      | 01.0110                     |
| HARN4             | 073770            | Wire Assy, FS500G630 Hyd Fan Temp Switch | 01.0113                     |
| HARN5             | 073811            | Wire Assy, FS500G630 Hyd Fan Switch      | 01.0117                     |
| HARN6             | 073767            | Harness, Trailer Light FS500             | 02.0201                     |
| HARN7             | 073812            | Cable Assy, FS500 Key Switch             | 01.0106                     |
| HARN8             | 073769            | Wire Assy, FS500G630 Hyd Fan SOL         | 01.0104                     |

EF5002-03