

# Wood-Mizer<sup>®</sup> Sawmill

## Hydraulic information

---

LT70 Super Hydraulic      rev. A1.00-A5.22

---

**Safety is our #1 concern!**

*October 2014*

*Form #2510*



**WARNING! Read and understand this manual before using this machine.**

**California**  
Proposition 65 Warning



**WARNING:** Breathing gas/diesel engine exhaust exposes you to chemicals known to the State of California to cause cancer and birth defects or other reproductive harm.

- Always start and operate the engine in a well-ventilated area.
- If in an enclosed area, vent the exhaust to the outside.
- Do not modify or tamper with the exhaust system.
- Do not idle the engine except as necessary.

For more information go to **[www.P65warnings.ca.gov](http://www.P65warnings.ca.gov)**.



**WARNING:** Drilling, sawing, sanding or machining wood products can expose you to wood dust, a substance known to the State of California to cause cancer. Avoid inhaling wood dust or use a dust mask or other safeguards for personal protection.

For more information go to **[www.P65Warnings.ca.gov/wood](http://www.P65Warnings.ca.gov/wood)**.

**Active Patents assigned to Wood-Mizer, LLC**

Wood-Mizer, LLC has received patents that protect our inventions which are a result of a dedication to research, innovation, development, and design. Learn more at: [woodmizer.com/patents](http://woodmizer.com/patents)

**©October 28, 2022 Wood-Mizer LLC**

Printed in the United States of America, all rights reserved. No part of this manual may be reproduced in any form by any photographic, electronic, mechanical or other means or used in any information storage and retrieval system without written permission from

**Wood-Mizer, LLC**  
**8180 West 10th Street**  
**Indianapolis, Indiana 46214**

**SECTION 1 HYDRAULIC INFORMATION**

8.1 Hydraulic Schematic ..... 8-1  
*LT70 Super Rev. A4.08+* ..... 8-1

8.2 Hydraulic Schematic ..... 8-8  
*LT70 Super Rev. A4.00 - A4.07* ..... 8-8

8.3 Hydraulic Schematic ..... 8-15  
*LT70 Super Rev. A3.01* ..... 8-15

8.4 Hydraulic Schematic ..... 8-22  
*LT70 Super Rev. A2.00 - A3.00* ..... 8-22

8.5 Hydraulic Schematic ..... 8-29  
*LT70 Super Rev. A1.00* ..... 8-29

8.6 Hydraulic Components ..... 8-36  
*LT70 Super Rev. A4.08+* ..... 8-36

8.7 Hydraulic Components ..... 8-38  
*LT70 Super Rev. A4.00 - A4.07* ..... 8-38

8.8 Hydraulic Components ..... 8-40  
*LT70 Super Rev. A3.01* ..... 8-40

8.9 Hydraulic Components ..... 8-42  
*LT70 Super Rev. A2.00 - A3.00* ..... 8-42

8.10 Hydraulic Components ..... 8-44  
*LT70 Super Rev. A1.00* ..... 8-44

8.11 Hydraulic Hoses ..... 8-46  
*LT70 Super Rev. A4.08+* ..... 8-46

8.12 Hydraulic Hoses ..... 8-47  
*LT70 Super Rev. A4.00 - A4.07* ..... 8-47

8.13 Hydraulic Hoses ..... 8-48  
*LT70 Super Rev. A3.01* ..... 8-48

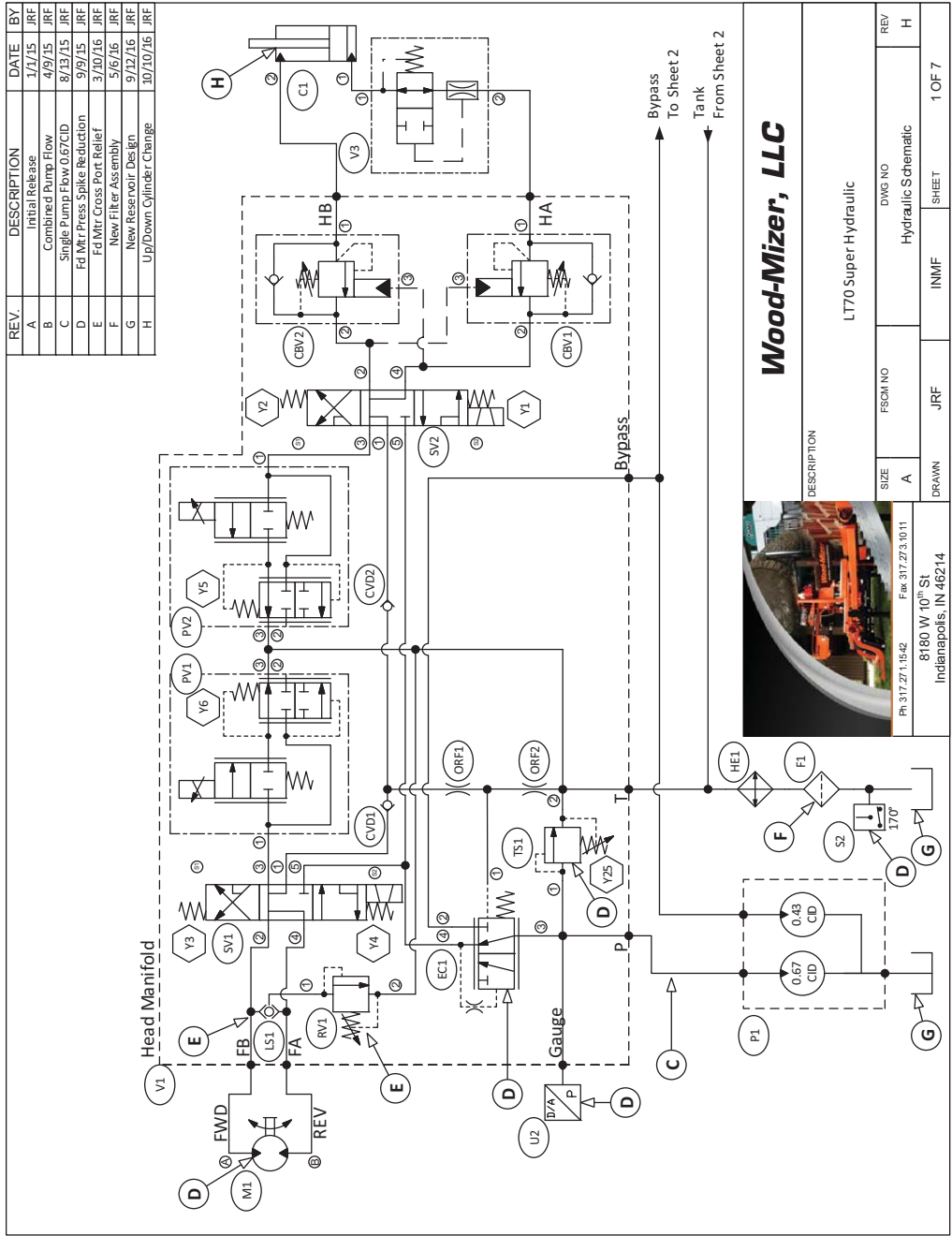
8.14 Hydraulic Hoses ..... 8-50  
*LT70 Super Rev. A2.00 - A3.00* ..... 8-50

8.15 Hydraulic Hoses ..... 8-52  
*LT70 Super Rev. A1.00* ..... 8-52

# SECTION 8 HYDRAULIC INFORMATION

## 8.1 Hydraulic Schematic

### LT70 SuperRev. A4.08+



**FIG. 8-1 HYDRAULIC SCHEMATIC (PAGE 1 OF 7)**

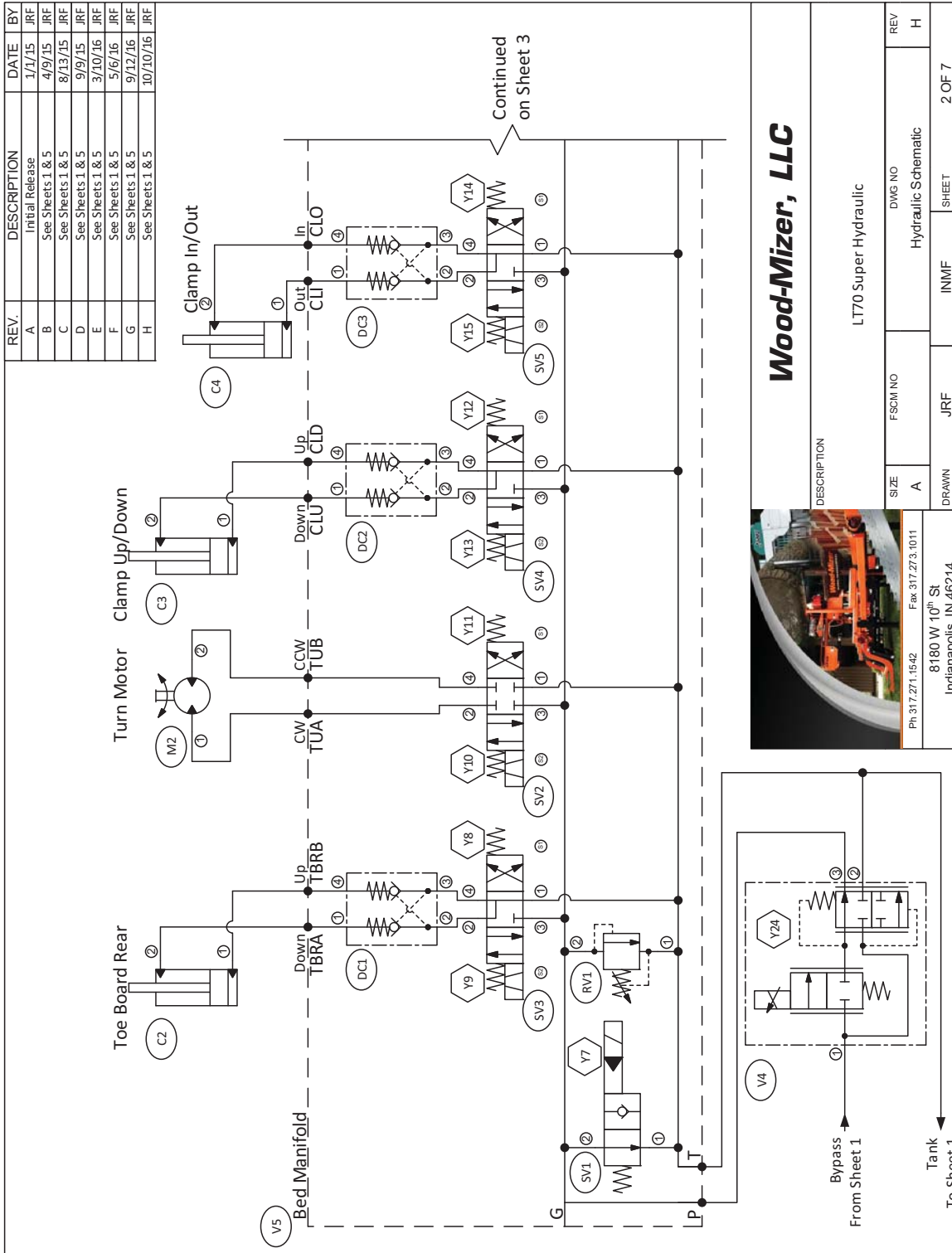


FIG. 8-2 HYDRAULIC SCHEMATIC (PAGE 2 OF 7)

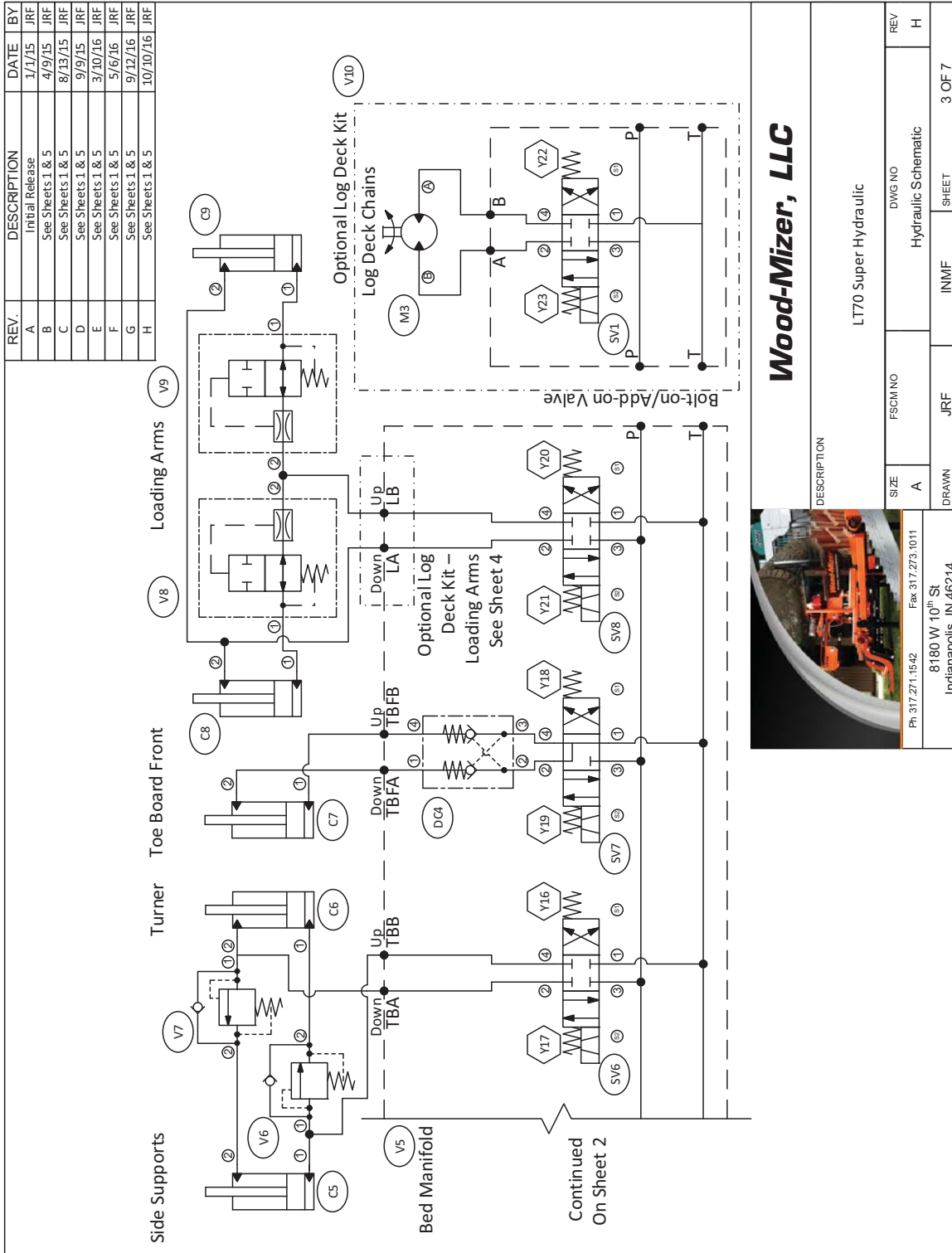
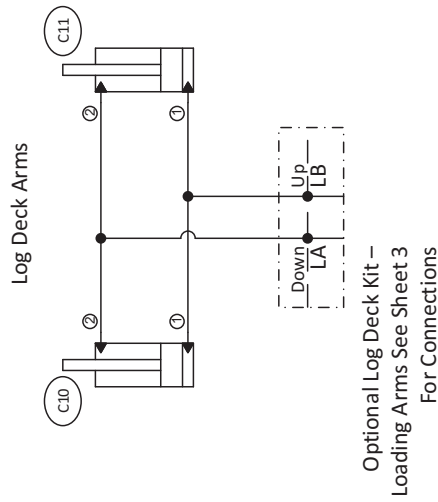


FIG. 8-3 HYDRAULIC SCHEMATIC (PAGE 3 OF 7)

REV.	DESCRIPTION	DATE	BY
A	Initial Release	1/1/15	JRF
B	See Sheets 1 & 5	4/9/15	JRF
C	See Sheets 1 & 5	8/13/15	JRF
D	See Sheets 1 & 5	9/9/15	JRF
E	See Sheets 1 & 5	3/10/16	JRF
F	See Sheets 1 & 5	5/6/16	JRF
G	See Sheets 1 & 5	9/12/16	JRF
H	See Sheets 1 & 5	10/10/16	JRF



**Wood-Mizer, LLC**



Ph. 317.271.1542 Fax 317.273.1011  
 8180 W 10<sup>th</sup> St  
 Indianapolis, IN 46214

DESCRIPTION

LT70 Super Hydraulic

SIZE	FSCM NO	DWG NO	REV
A		Hydraulic Schematic	H
DRAWN	JRF	INMF	SHEET
			4 OF 7

FIG. 8-4 HYDRAULIC SCHEMATIC (PAGE 4 OF 7)

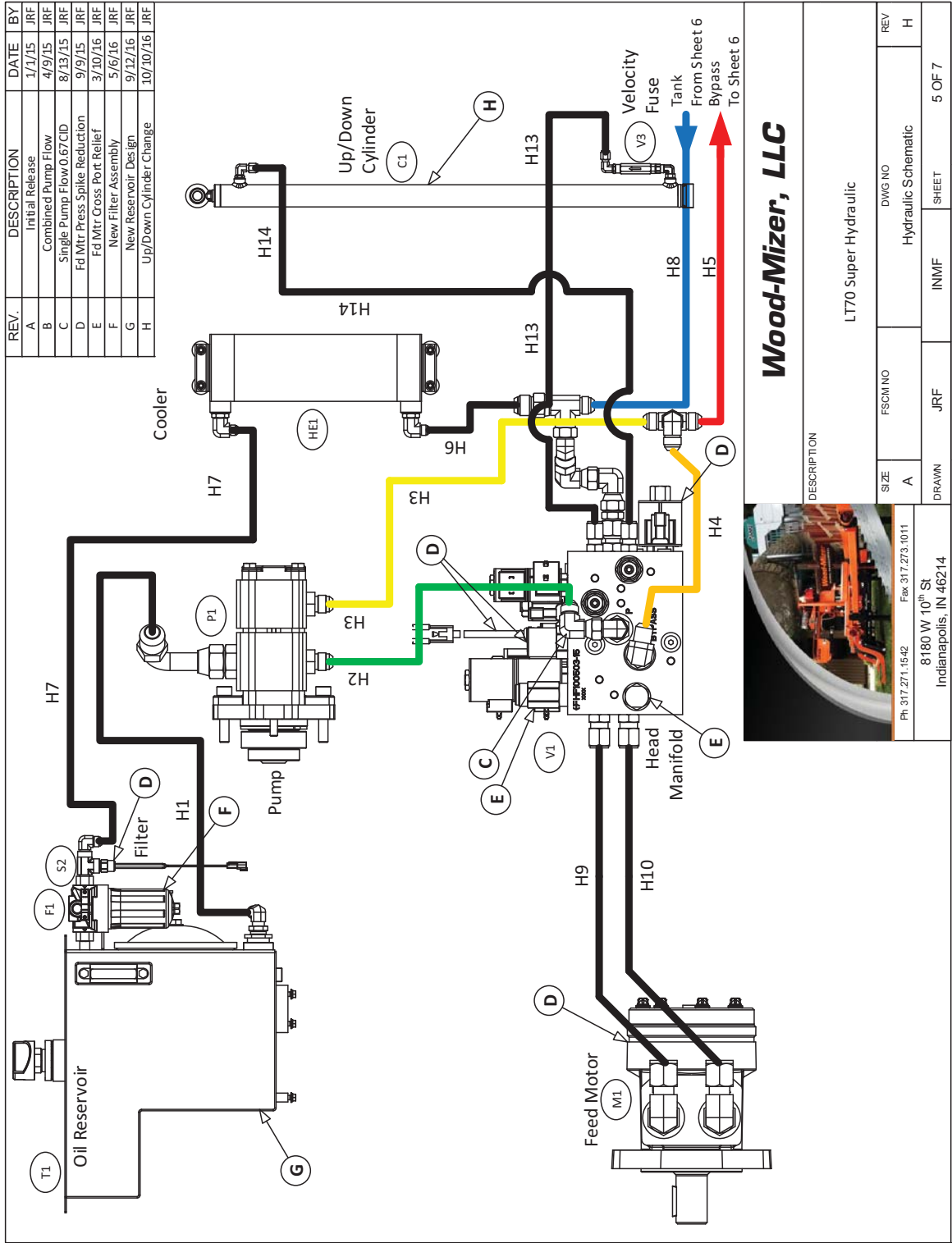


FIG. 8-5 HYDRAULIC SCHEMATIC (PAGE 5 OF 7)



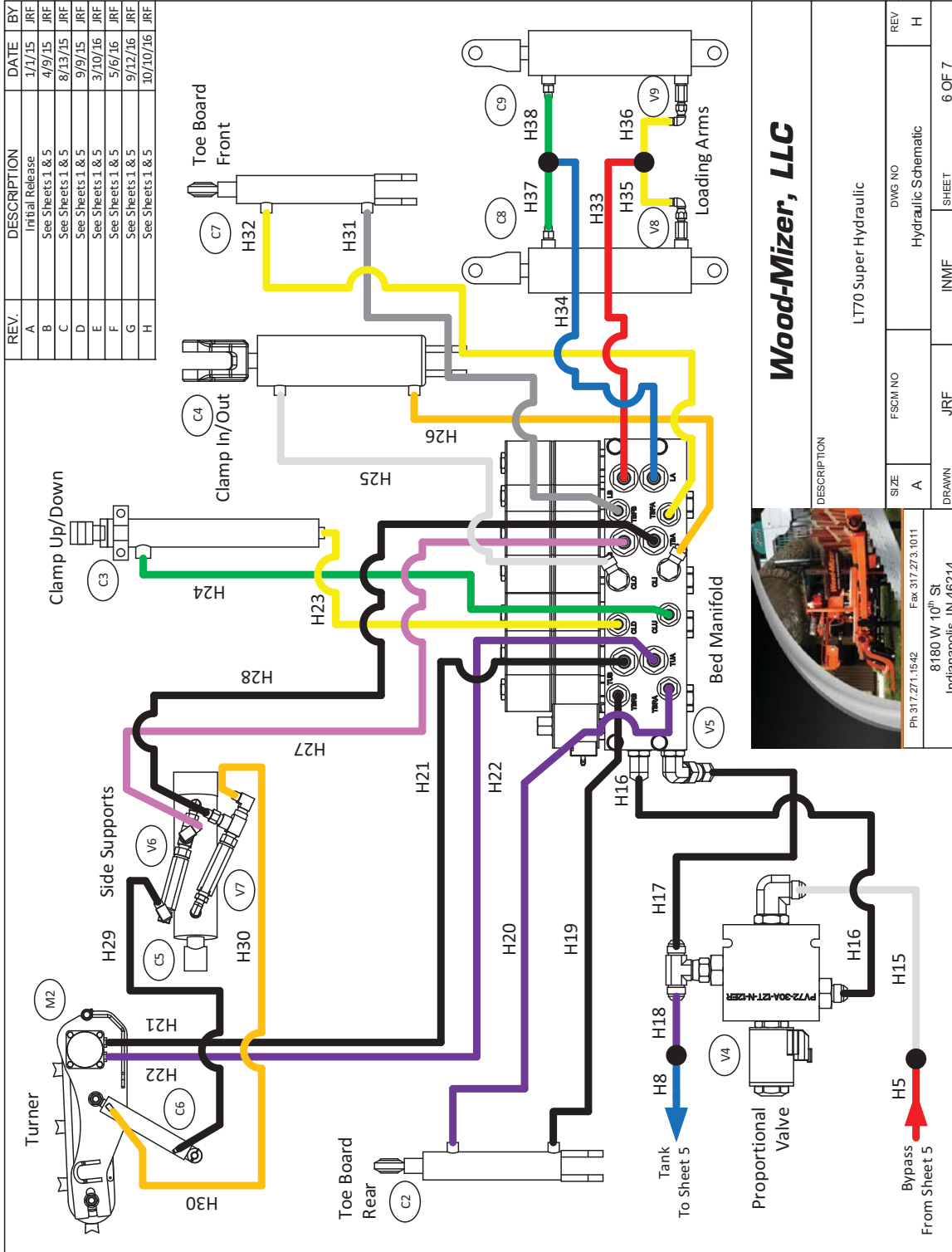
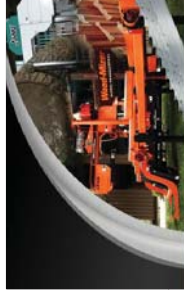
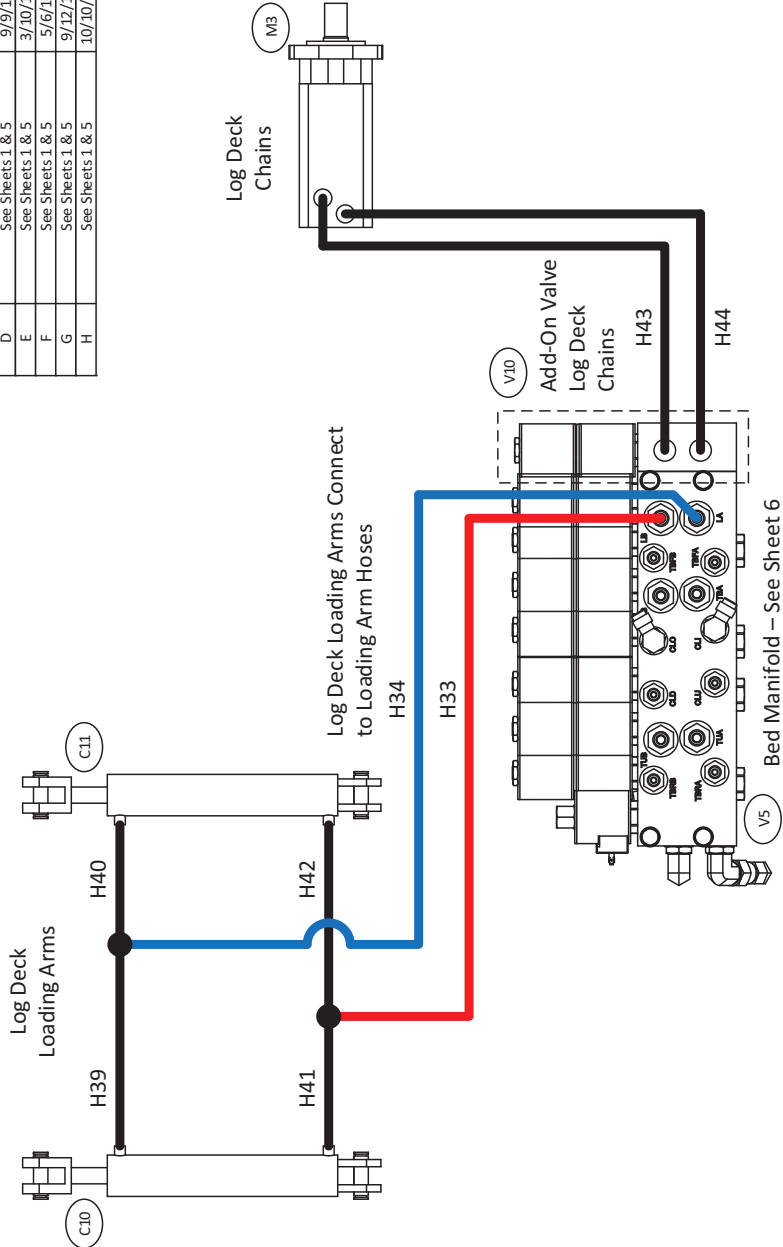


FIG. 8-6 HYDRAULIC SCHEMATIC (PAGE 6 OF 7)

REV.	DESCRIPTION	DATE	BY
A	Initial Release	1/1/15	JRF
B	See Sheets 1 & 5	4/9/15	JRF
C	See Sheets 1 & 5	8/13/15	JRF
D	See Sheets 1 & 5	9/9/15	JRF
F	See Sheets 1 & 5	3/10/16	JRF
G	See Sheets 1 & 5	5/16/16	JRF
H	See Sheets 1 & 5	10/10/16	JRF



**Wood-Mizer, LLC**

DESCRIPTION	
LT70 Super Hydraulic	
SIZE	DWG NO
A	Hydraulic Schematic
DRAWN	JRF
INM/F	SHEET
	7 OF 7
REV	H

**FIG. 8-7 HYDRAULIC SCHEMATIC (PAGE 7 OF 7)**

8.2 Hydraulic Schematic  
LT70 SuperRev. A4.00 - A4.07

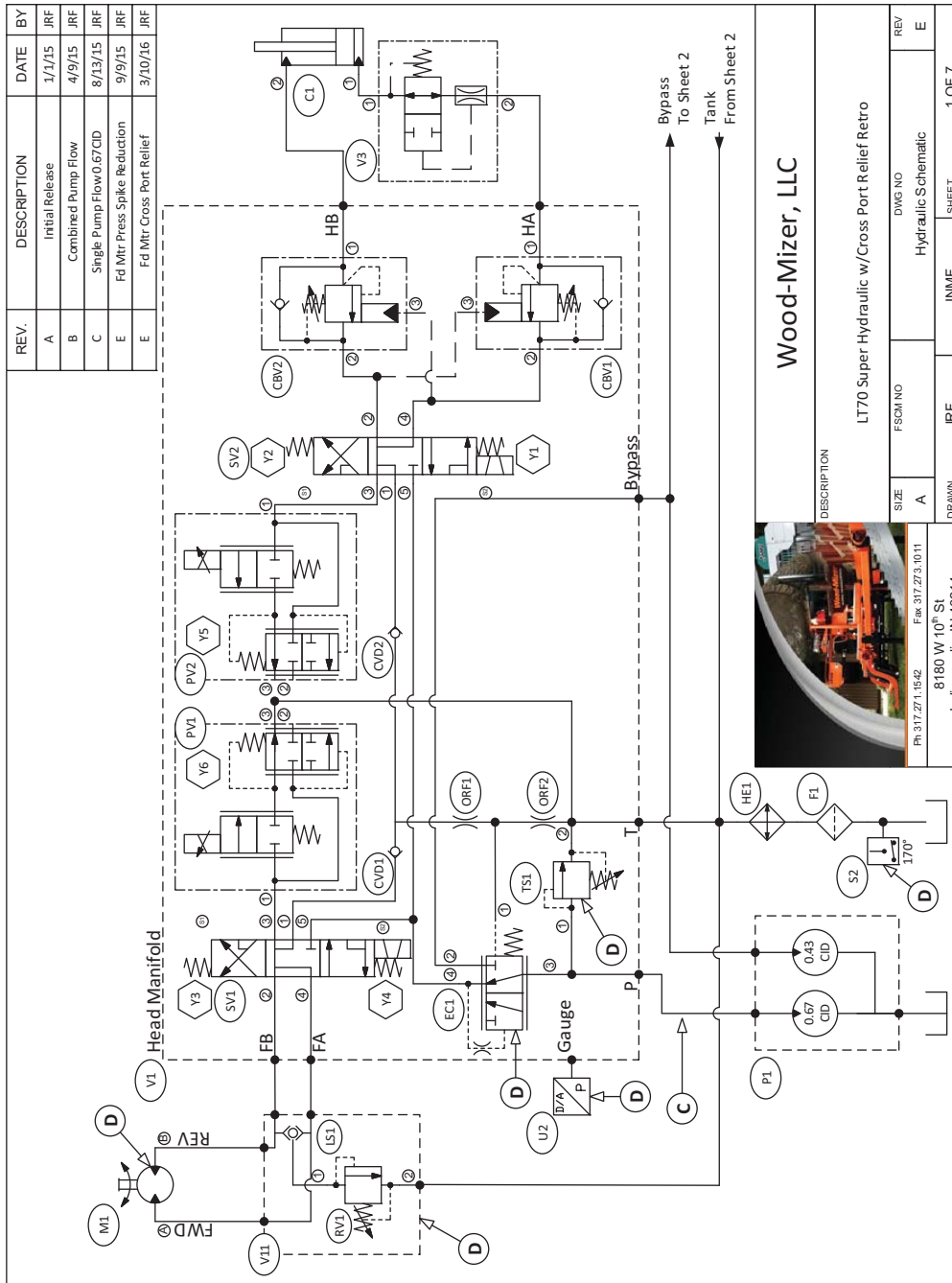
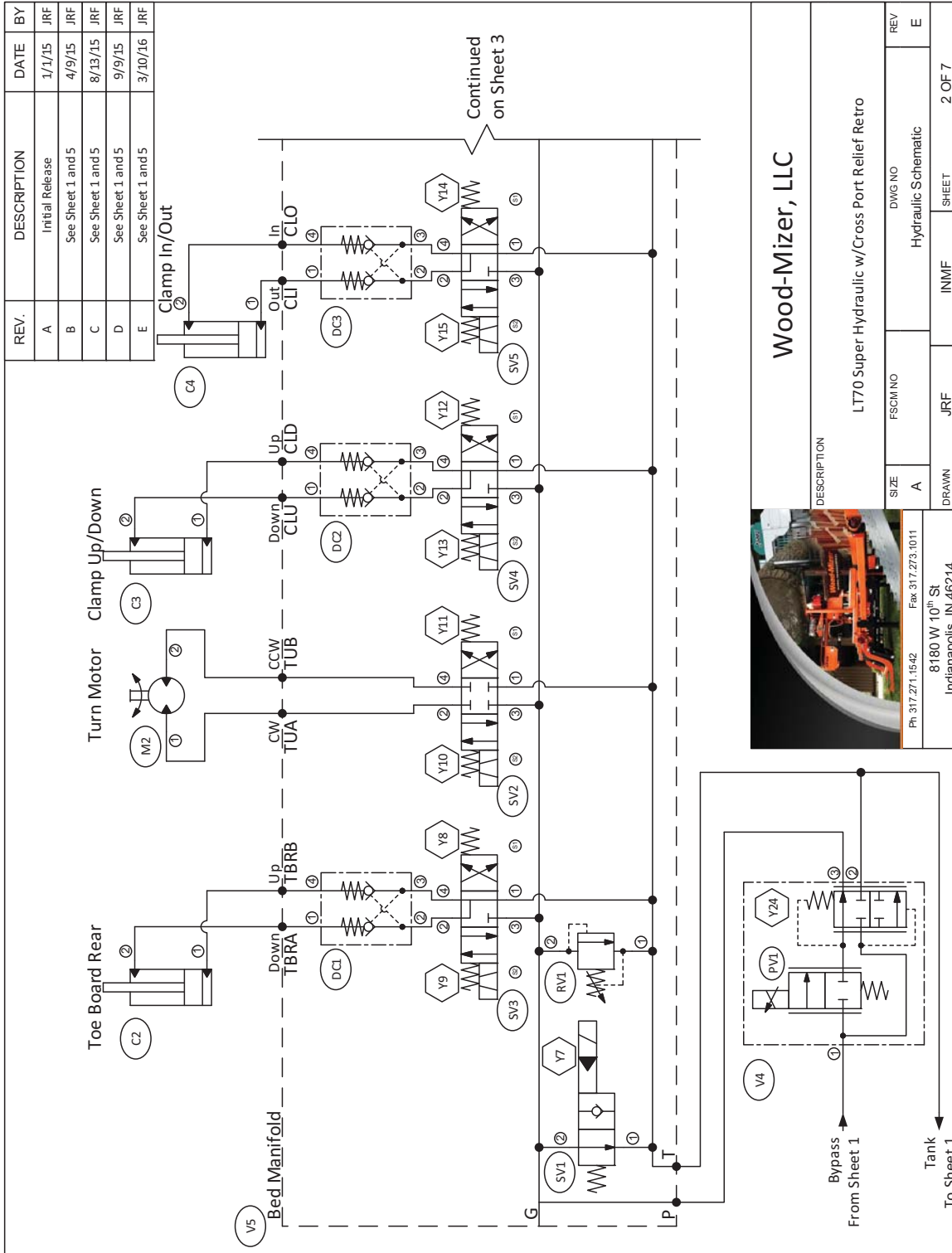


FIG. 8-8 HYDRAULIC SCHEMATIC (PAGE 1 OF 7)



**Wood-Mizer, LLC**

DESCRIPTION	
SIZE	A
FSCM NO	
REV	E
DWG NO	Hydraulic Schematic
REV	
DRAWN	JRF
INMF	
SHEET	2 OF 7

8180 W 10<sup>th</sup> St  
Indianapolis, IN 46214  
Ph. 317.271.1542 Fax 317.273.1011

**FIG. 8-9 HYDRAULIC SCHEMATIC (PAGE 2 OF 7)**

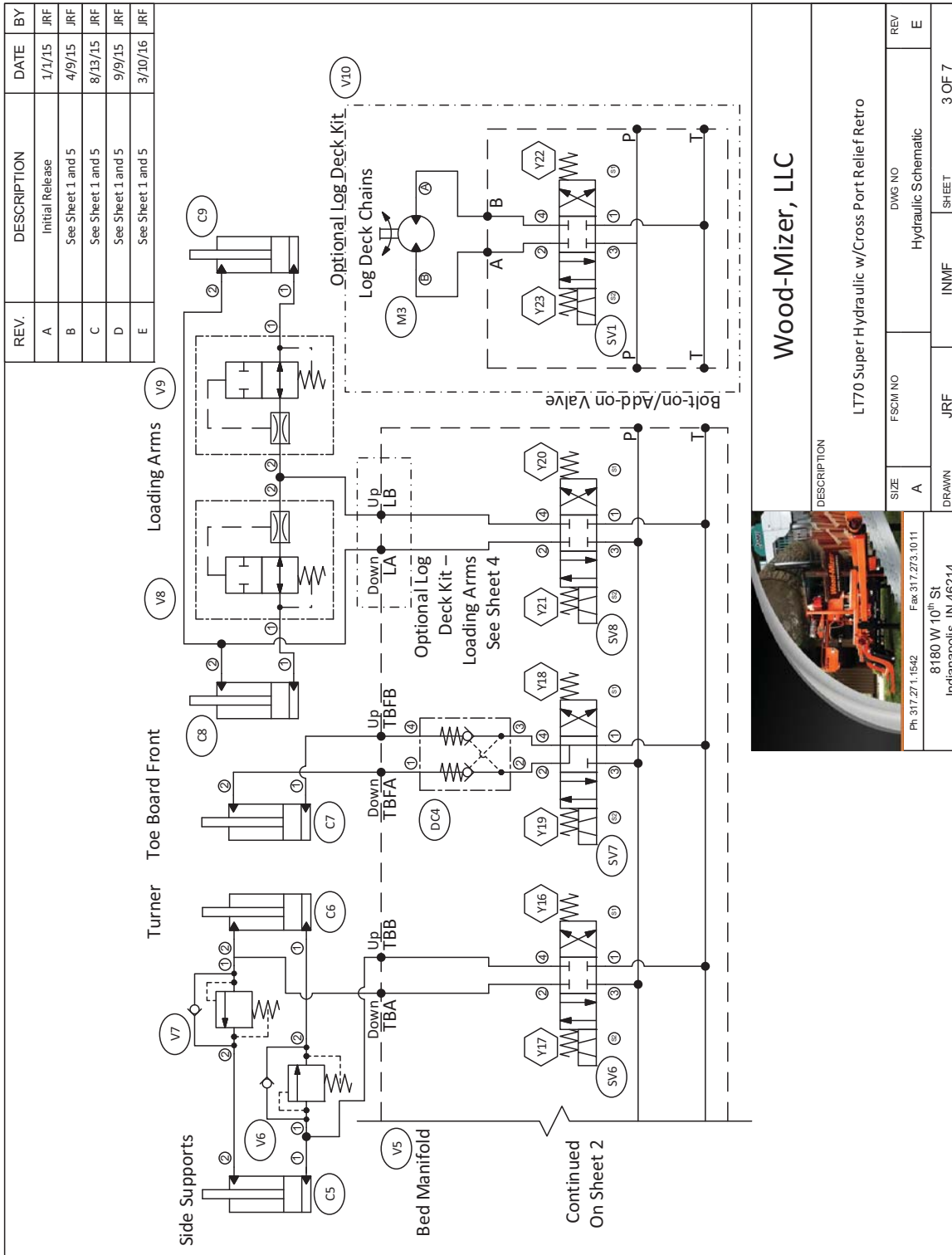


FIG. 8-10 HYDRAULIC SCHEMATIC (PAGE 3 OF 7)

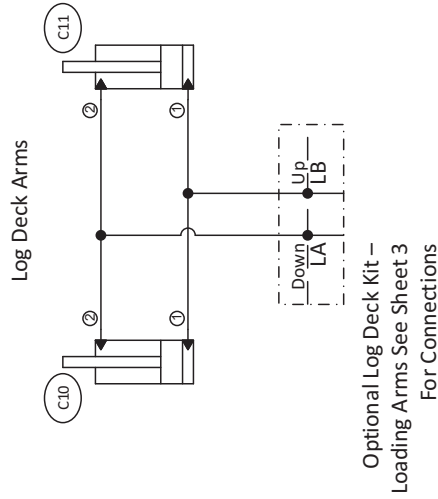
**Wood-Mizer, LLC**

DESCRIPTION	
LT70 Super Hydraulic w/Cross Port Relief Retro	REV E
SIZE A	DWG NO Hydraulic Schematic
FSCM NO	INMF
DRAWN JRF	SHEET 3 OF 7

Ph 317.271.1542  
 8180 W 10<sup>th</sup> St  
 Indianapolis, IN 46214

Fax 317.273.1011

REV.	DESCRIPTION	DATE	BY
A	Initial Release	1/1/15	JRF
B	See Sheet 1 and 5	4/9/15	JRF
C	See Sheet 1 and 5	8/13/15	JRF
D	See Sheet 1 and 5	9/9/15	JRF
E	See Sheet 1 and 5	3/10/16	JRF



		DESCRIPTION LT70 Super Hydraulic w/Cross Port Relief Retro	
		FSCM NO	DWG NO Hydraulic Schematic
SIZE A	DRAWN JRF	INMF	SHEET 4 OF 7
Ph. 317.271.1542 Fax 317.273.1011 8180 W 10 <sup>th</sup> St Indianapolis, IN 46214		REV E	

**FIG. 8-11 HYDRAULIC SCHEMATIC (PAGE 4 OF 7)**

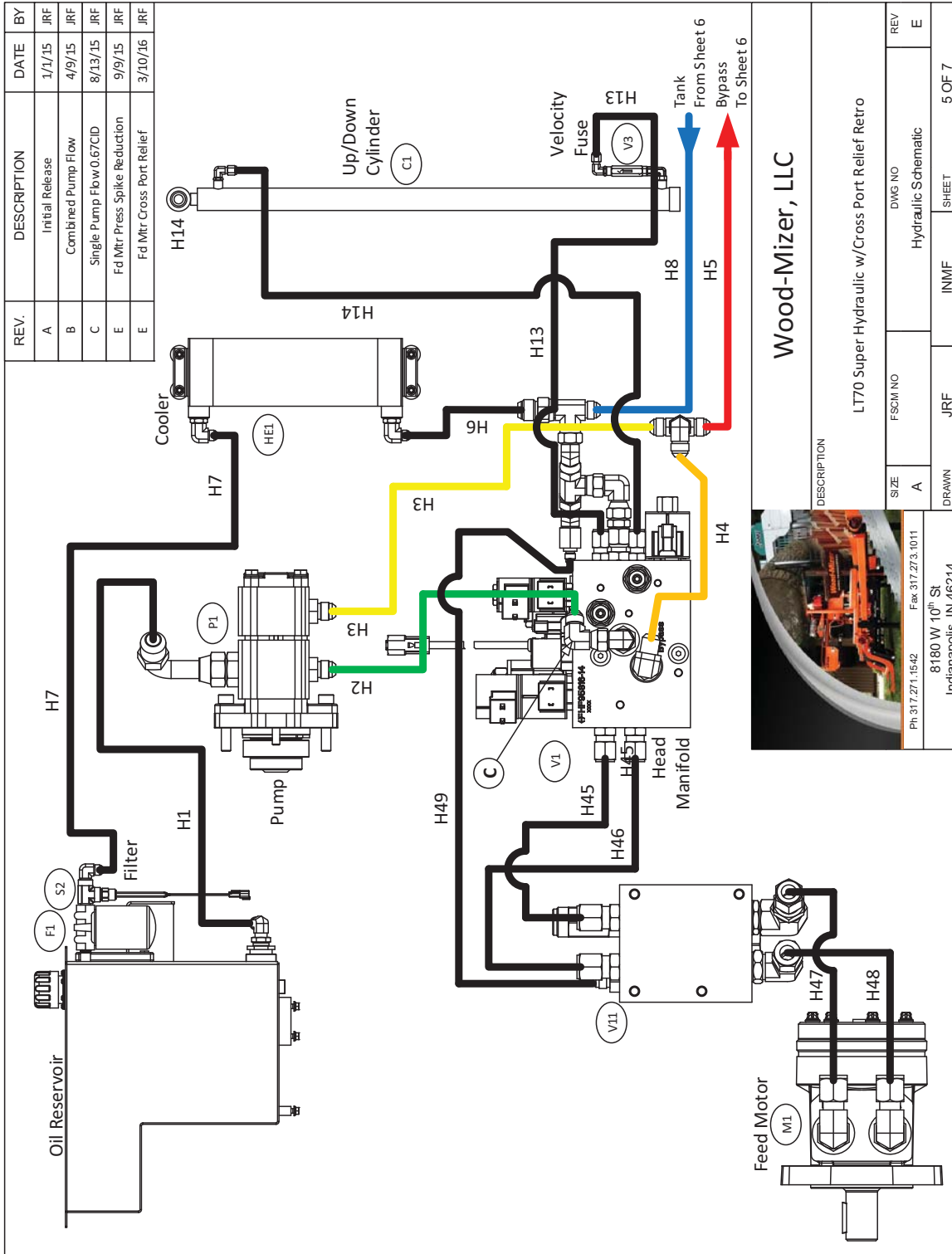


FIG. 8-12 HYDRAULIC SCHEMATIC (PAGE 5 OF 7)

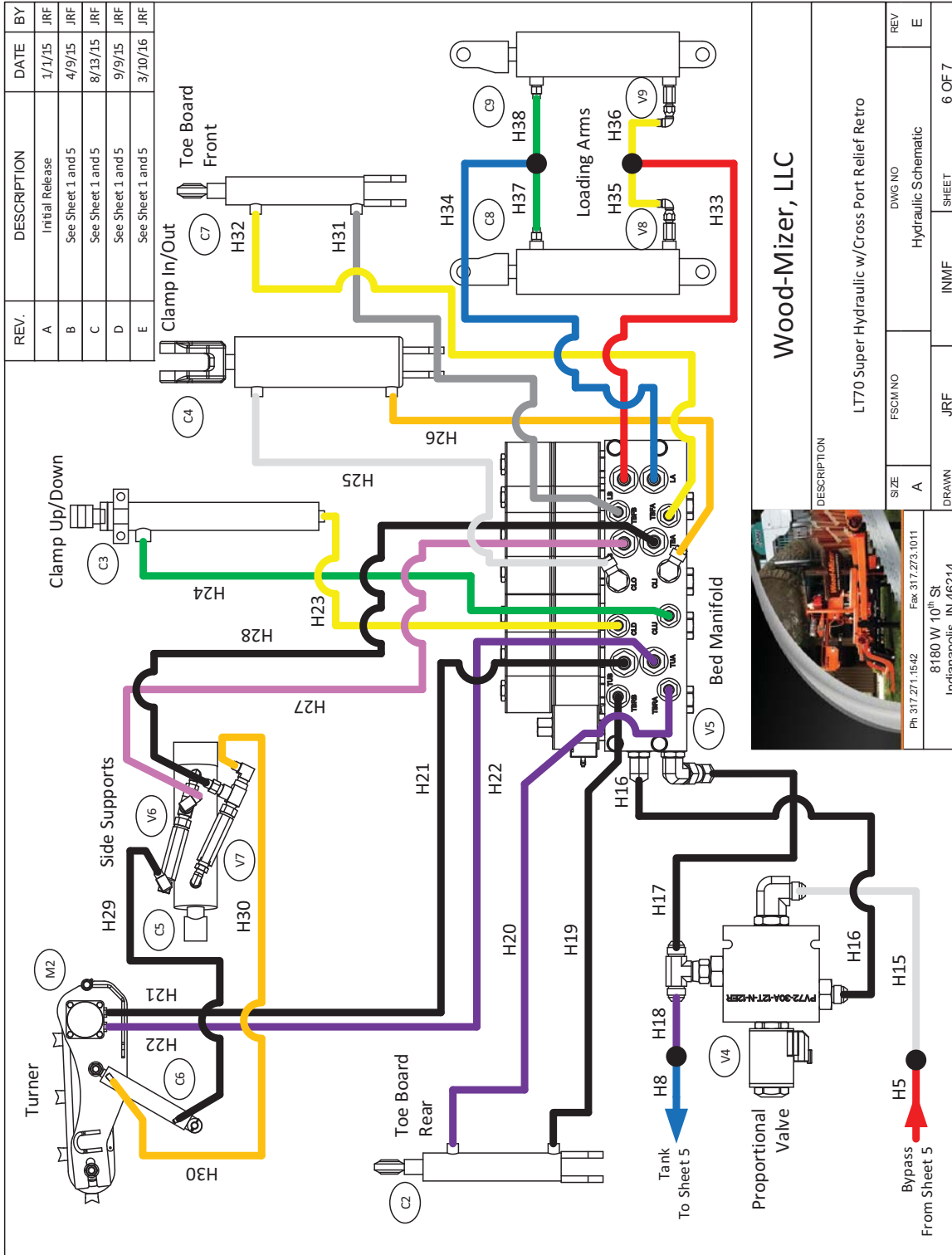
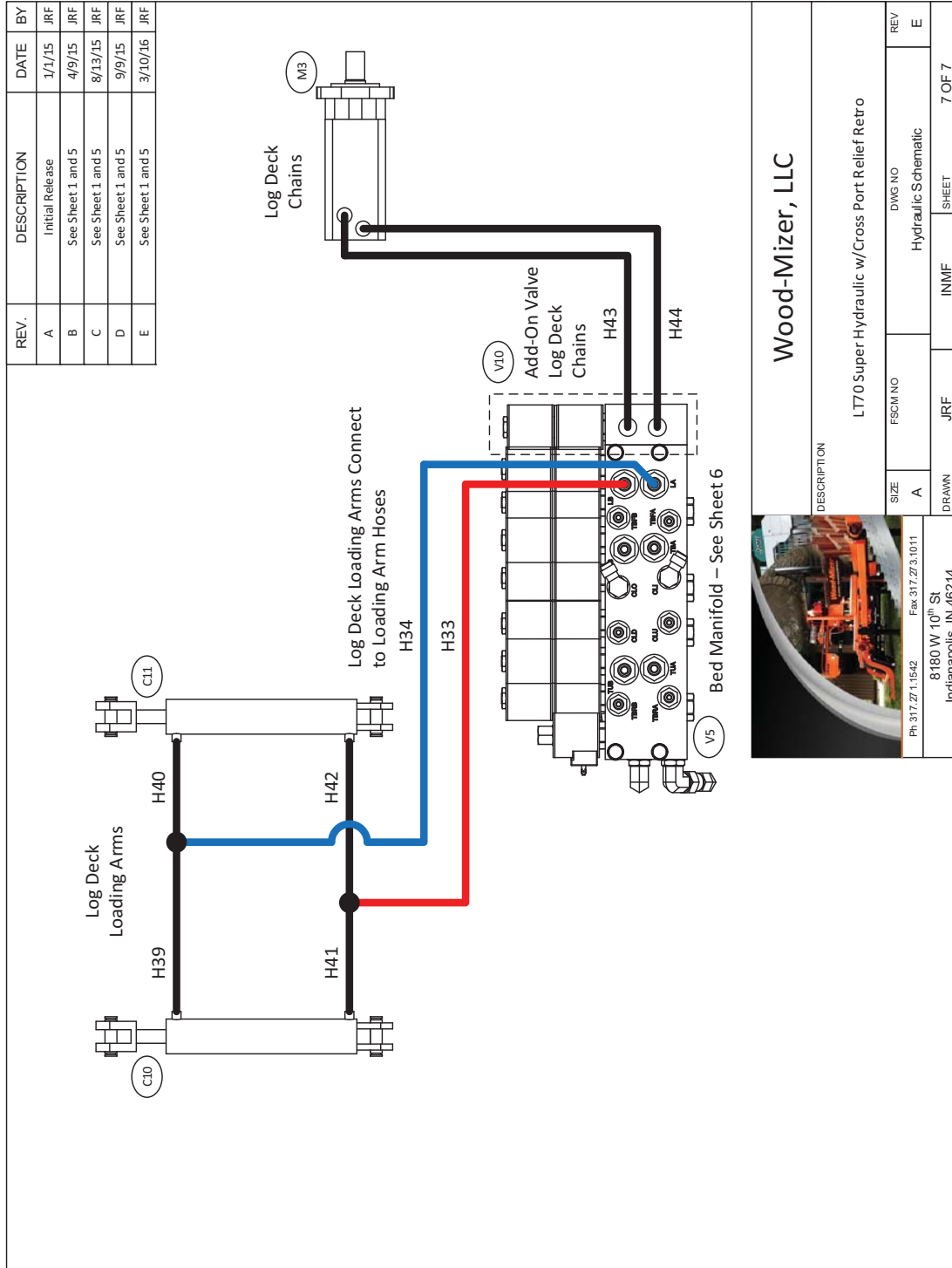


FIG. 8-13 HYDRAULIC SCHEMATIC (PAGE 6 OF 7)





Wood-Mizer, LLC

DESCRIPTION		L70 Super Hydraulic w/Cross Port Relief Retro	
SIZE	FSCM NO	DWG NO	REV
A		Hydraulic Schematic	E
DRAWN	JRF	INMF	SHEET
			7 OF 7

FIG. 8-14 HYDRAULIC SCHEMATIC (PAGE 7 OF 7)

8.3 Hydraulic Schematic  
LT70 SuperRev. A3.01

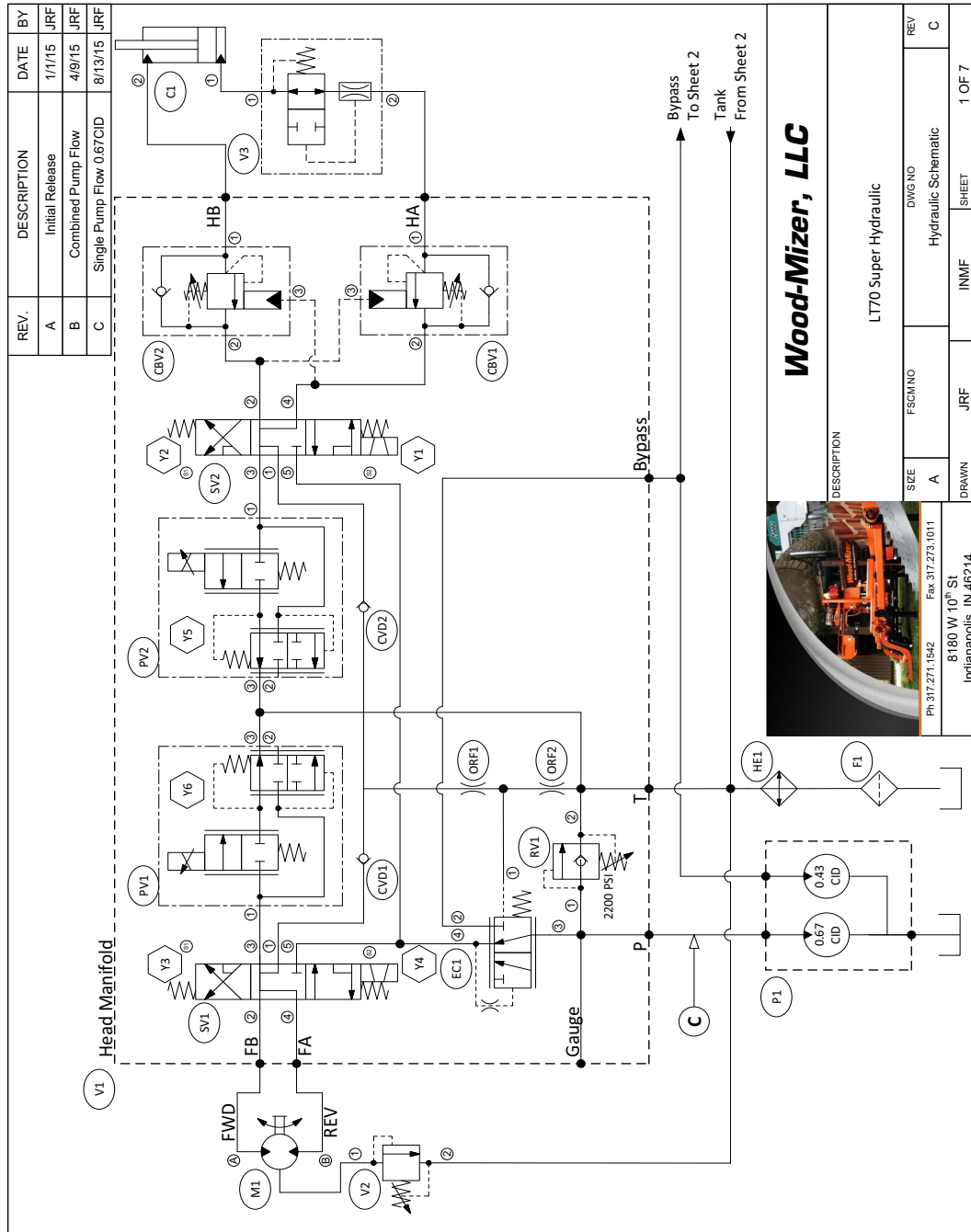


FIG. 8-15 HYDRAULIC SCHEMATIC (PAGE 1 OF 7)

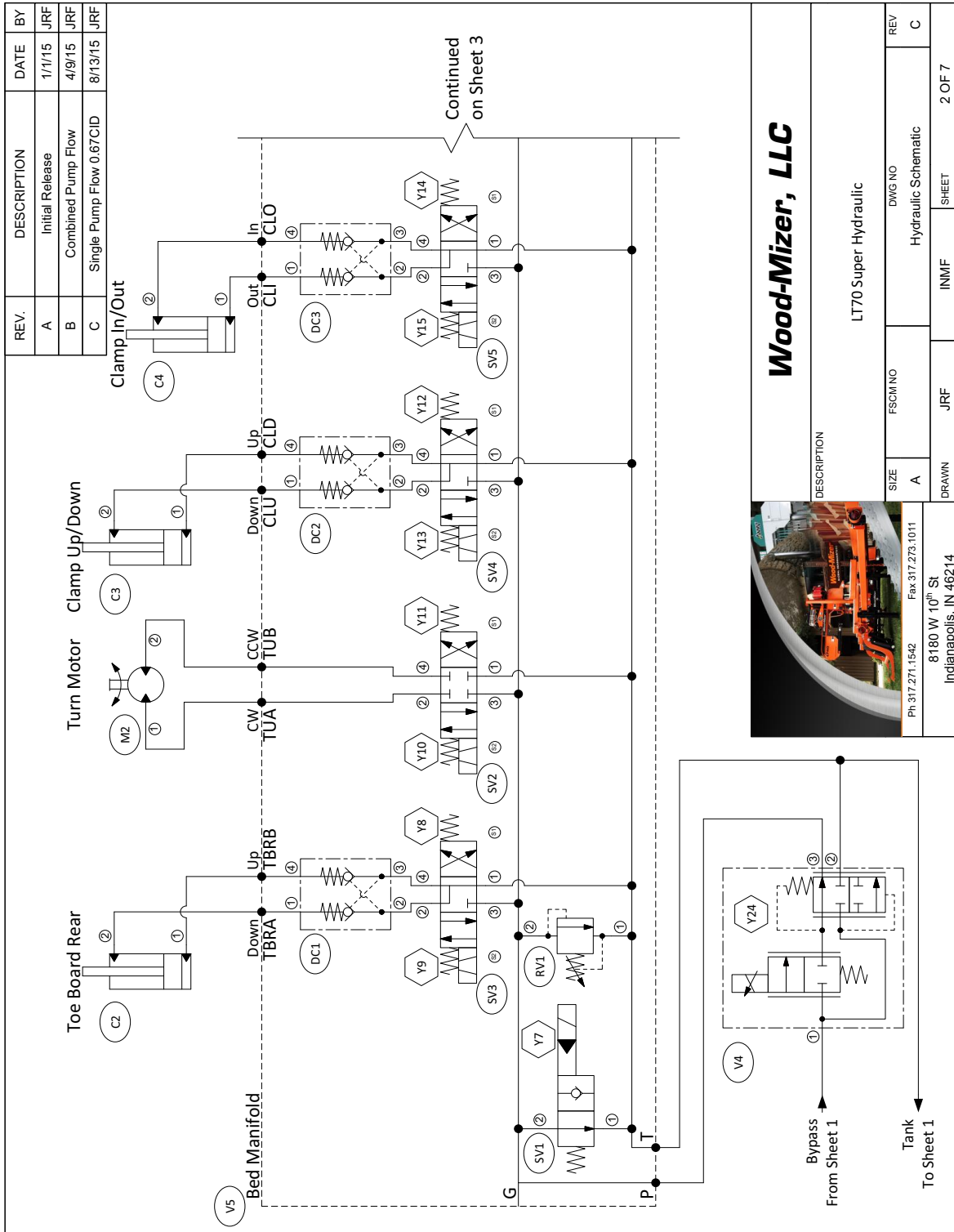
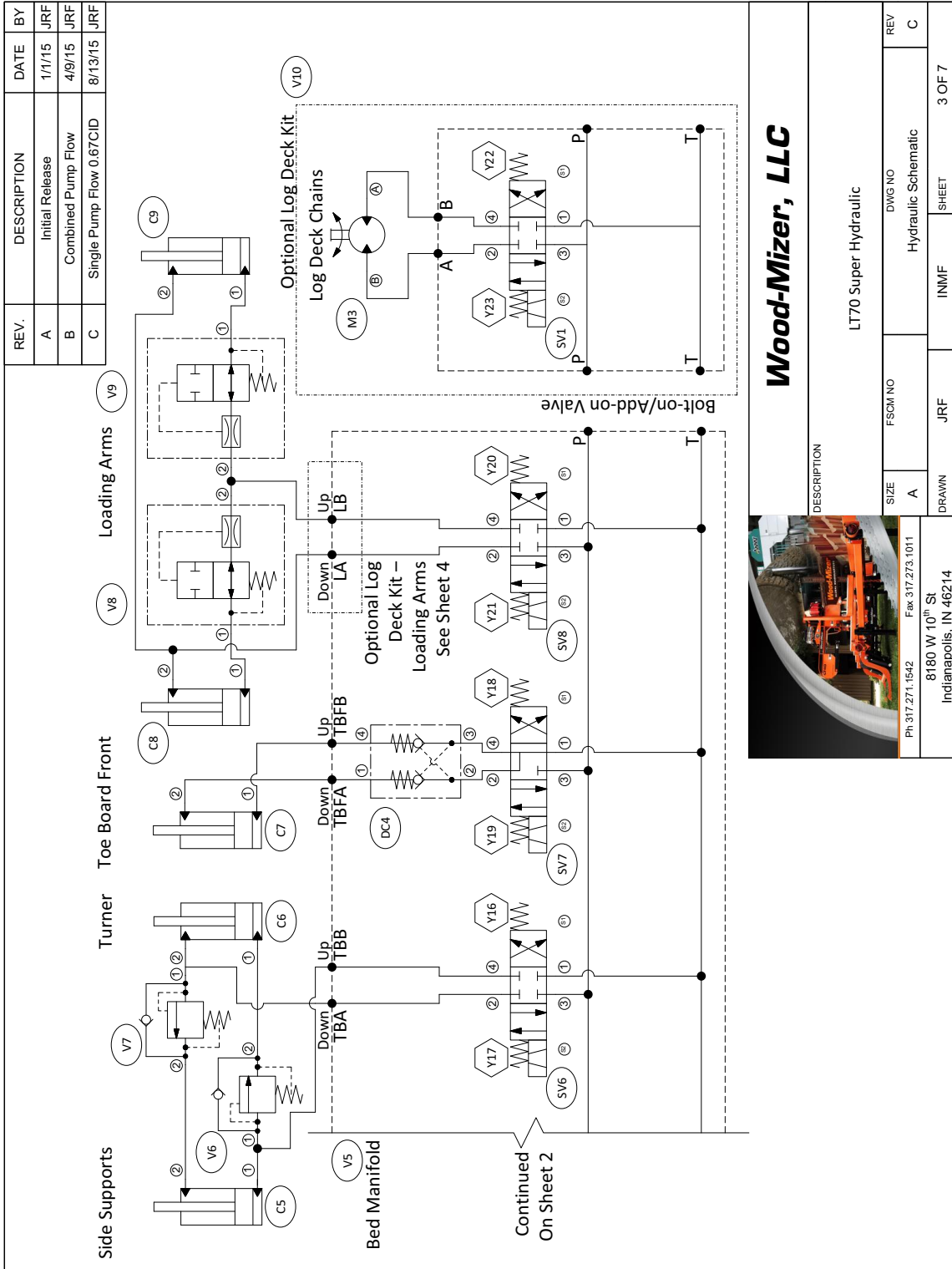
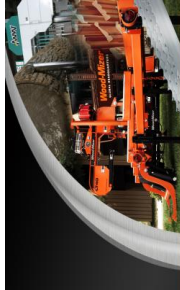


FIG. 8-16 HYDRAULIC SCHEMATIC (PAGE 2 OF 7)



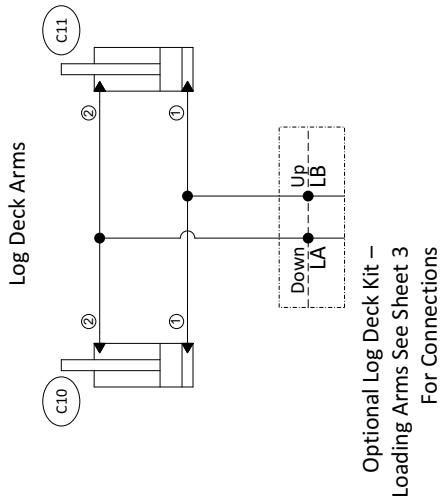
**Wood-Mizer, LLC**



DESCRIPTION		SIZE	FSCM NO	DWG NO	REV
LT70 Super Hydraulic		A		Hydraulic Schematic	C
Ph 317.271.1542	Fax 317.273.1011				
8180 W 10 <sup>th</sup> St	Indianapolis, IN 46214	JRF	INMF	SHEET	3 OF 7

FIG. 8-17 HYDRAULIC SCHEMATIC (PAGE 3 OF 7)

REV.	DESCRIPTION	DATE	BY
A	Initial Release	1/1/15	JRF
B	Combined Pump Flow	4/9/15	JRF
C	Single Pump Flow 0.67CID	8/13/15	JRF



**Wood-Mizer, LLC**



DESCRIPTION		LT70 Super Hydraulic	
SIZE	FSCM NO	DWG NO	REV
A		Hydraulic Schematic	C
DRAWN	JRF	INMF	SHEET
			4 OF 7

Ph 317.271.1542 Fax 317.273.1011  
8180 W 10<sup>th</sup> St  
Indianapolis, IN 46214

FIG. 8-18 HYDRAULIC SCHEMATIC (PAGE 4 OF 7)

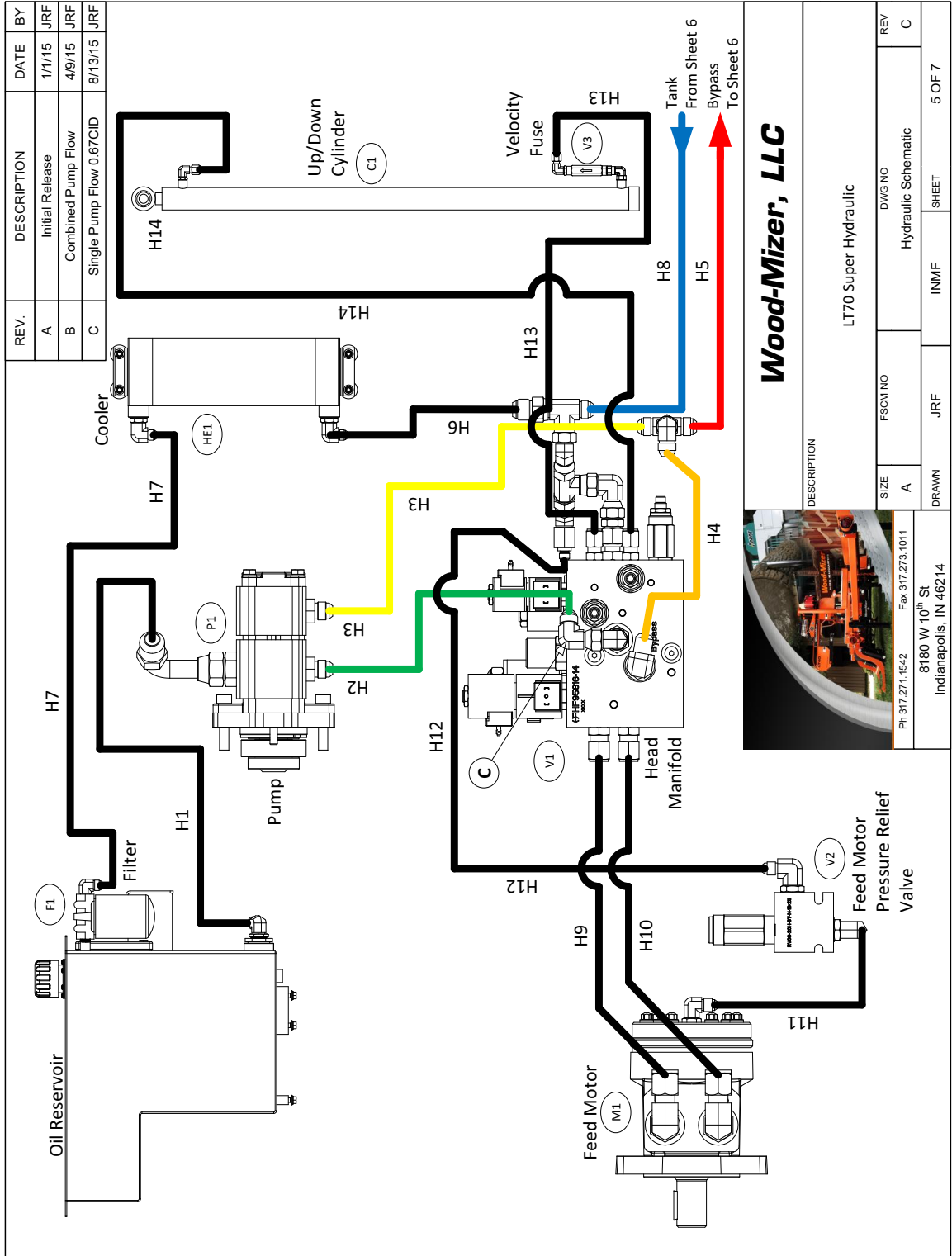


FIG. 8-19 HYDRAULIC SCHEMATIC (PAGE 5 OF 7)

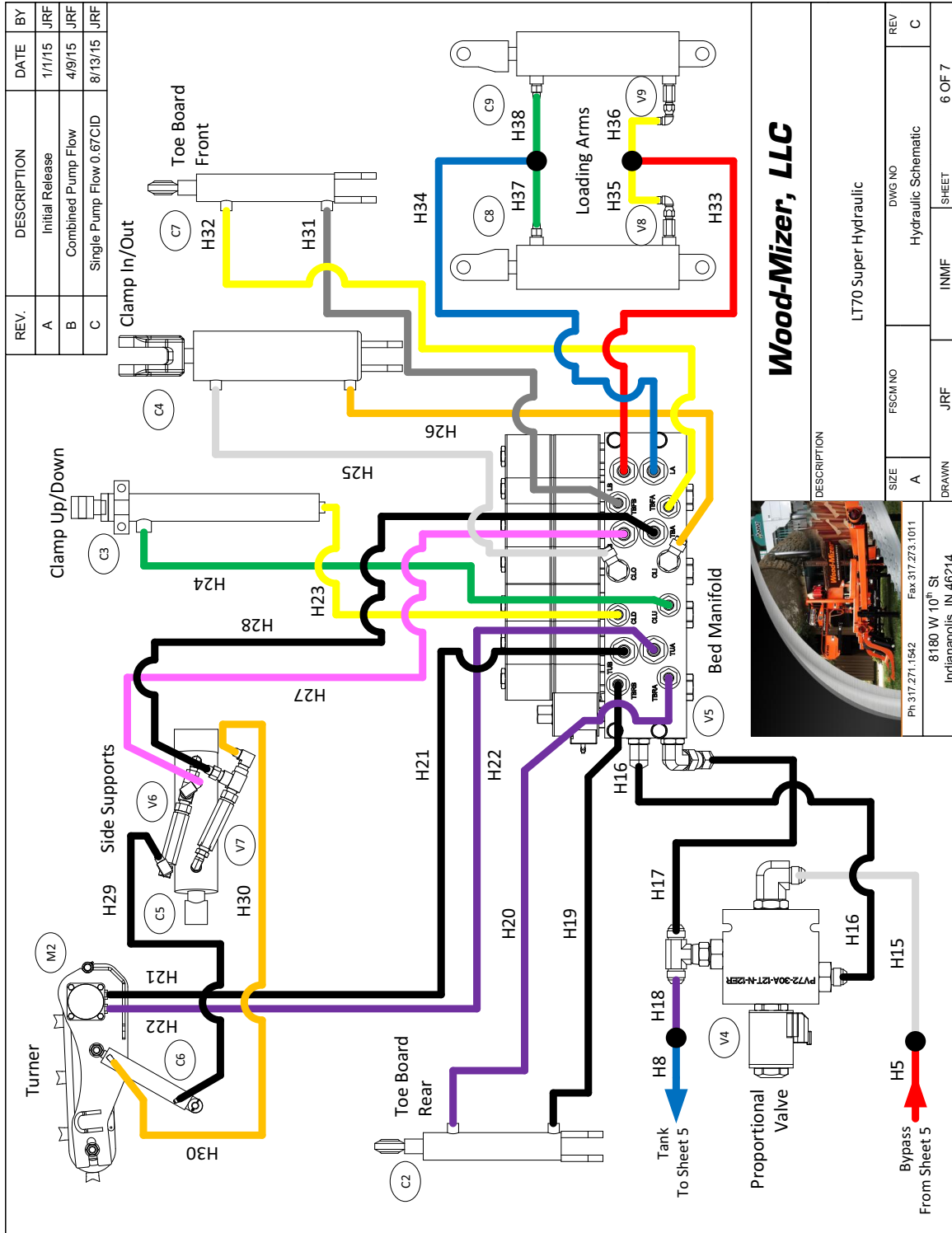


FIG. 8-20 HYDRAULIC SCHEMATIC (PAGE 6 OF 7)

REV.	DESCRIPTION	DATE	BY
A	Initial Release	1/1/15	JRF
B	Combined Pump Flow	4/9/15	JRF
C	Single Pump Flow 0.67CID	8/13/15	JRF

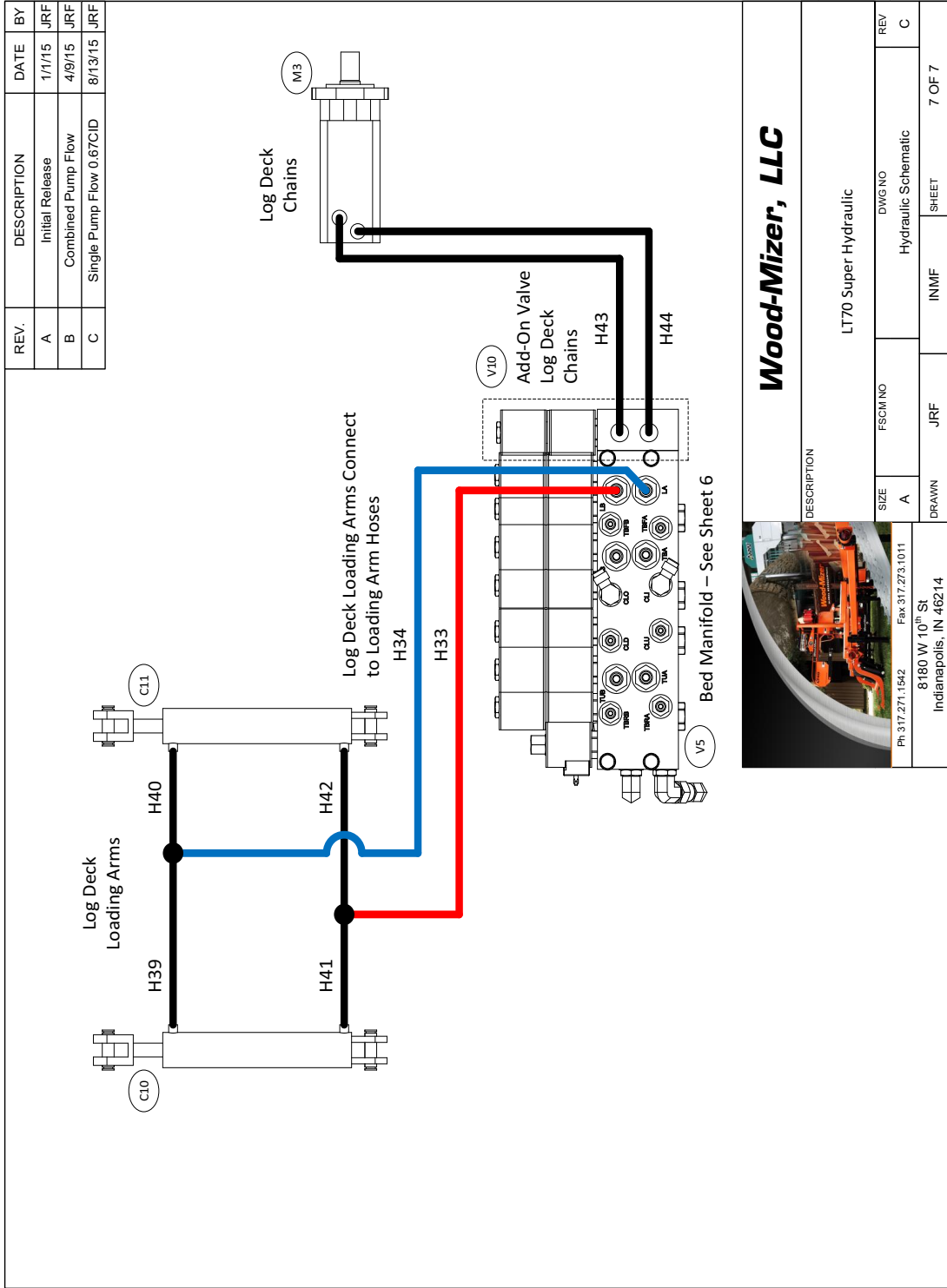


FIG. 8-21 HYDRAULIC SCHEMATIC (PAGE 7 OF 7)



8.4 Hydraulic Schematic  
LT70 SuperRev. A2.00 - A3.00

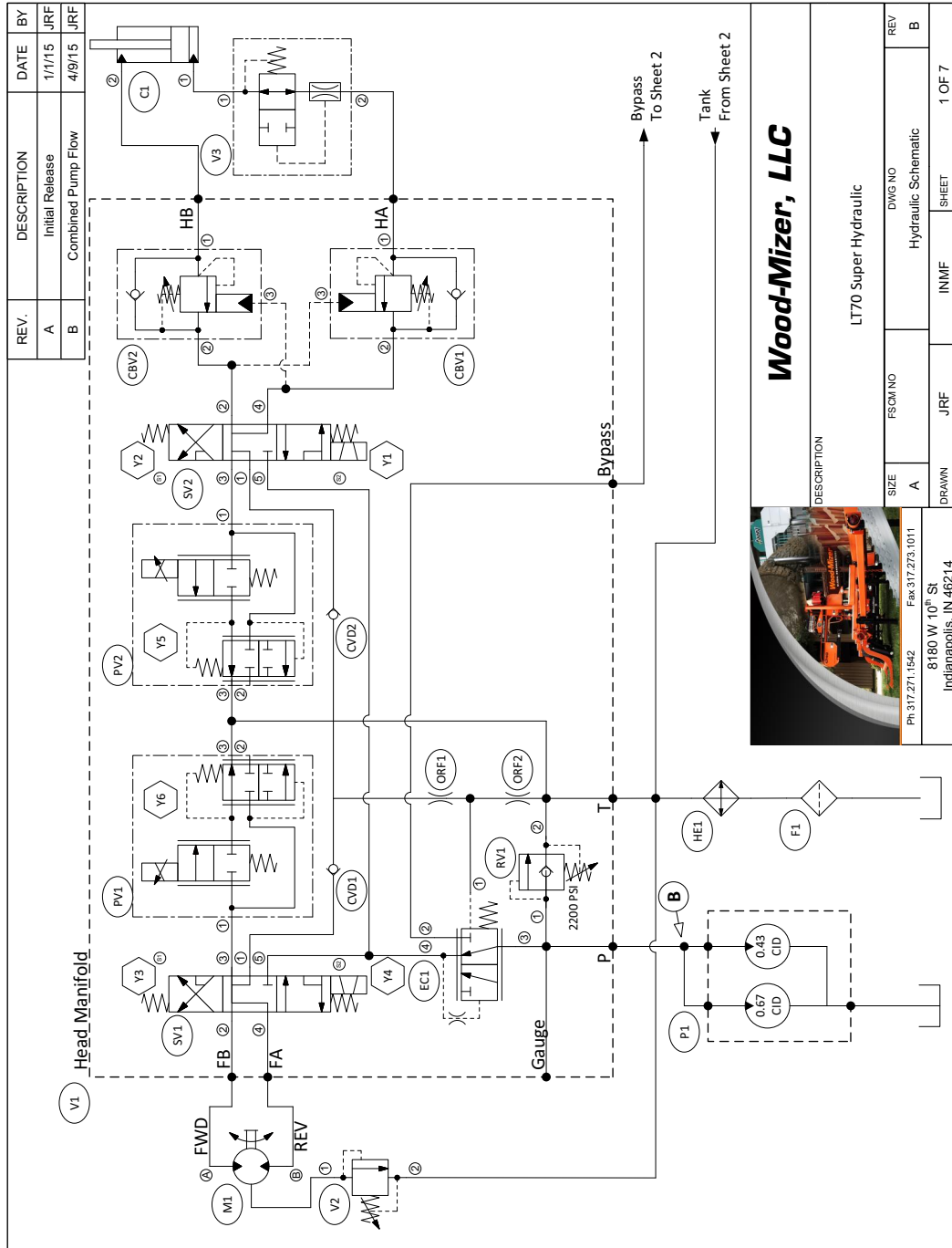
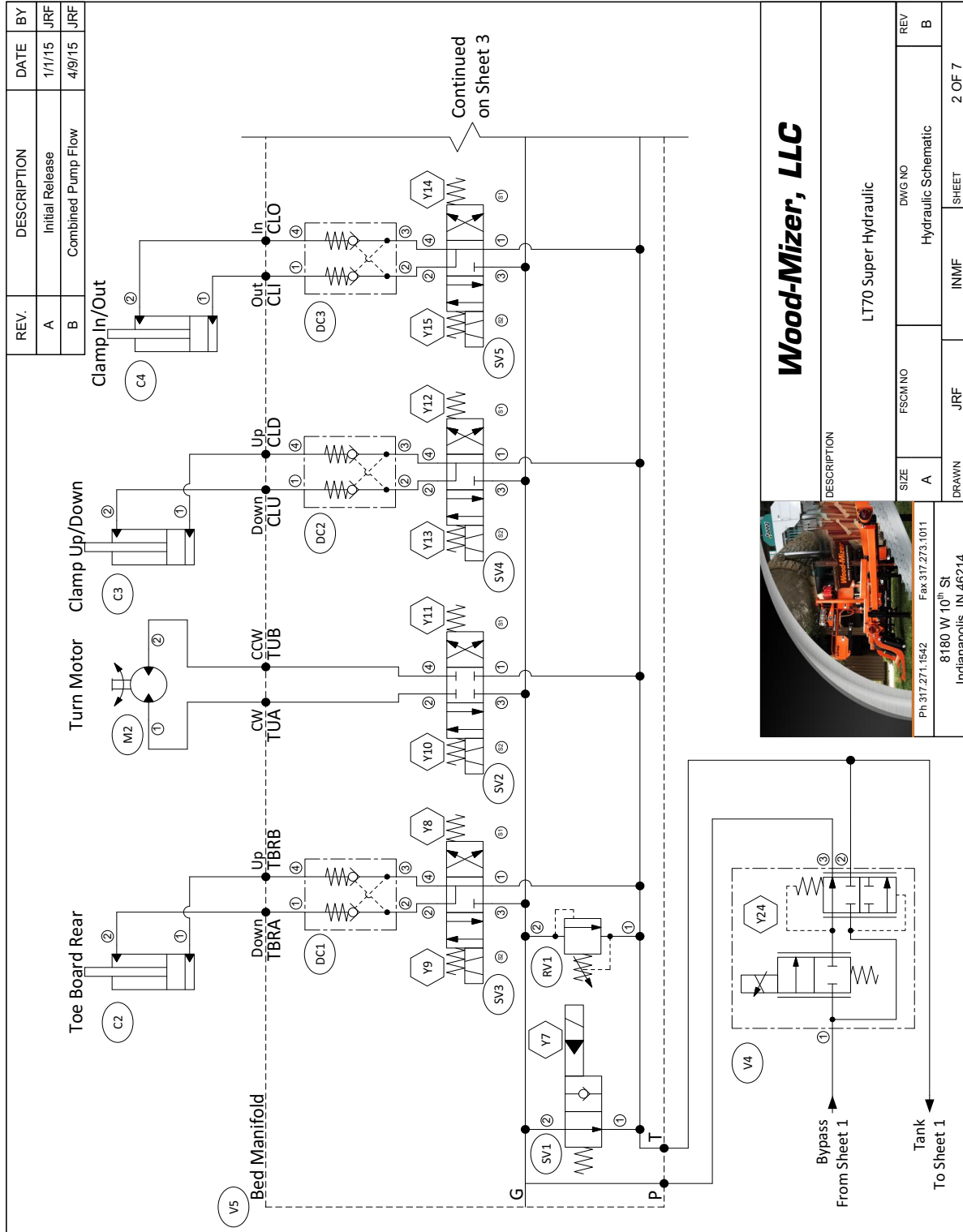



FIG. 8-22 HYDRAULIC SCHEMATIC (PAGE 1 OF 7)





**Wood-Mizer, LLC**

---

DESCRIPTION

LT70 Super Hydraulic

SIZE	FSCM NO	DWG NO	REV
A	JRF	Hydraulic Schematic	B

Ph 317.271.1542    Fax 317.273.1011

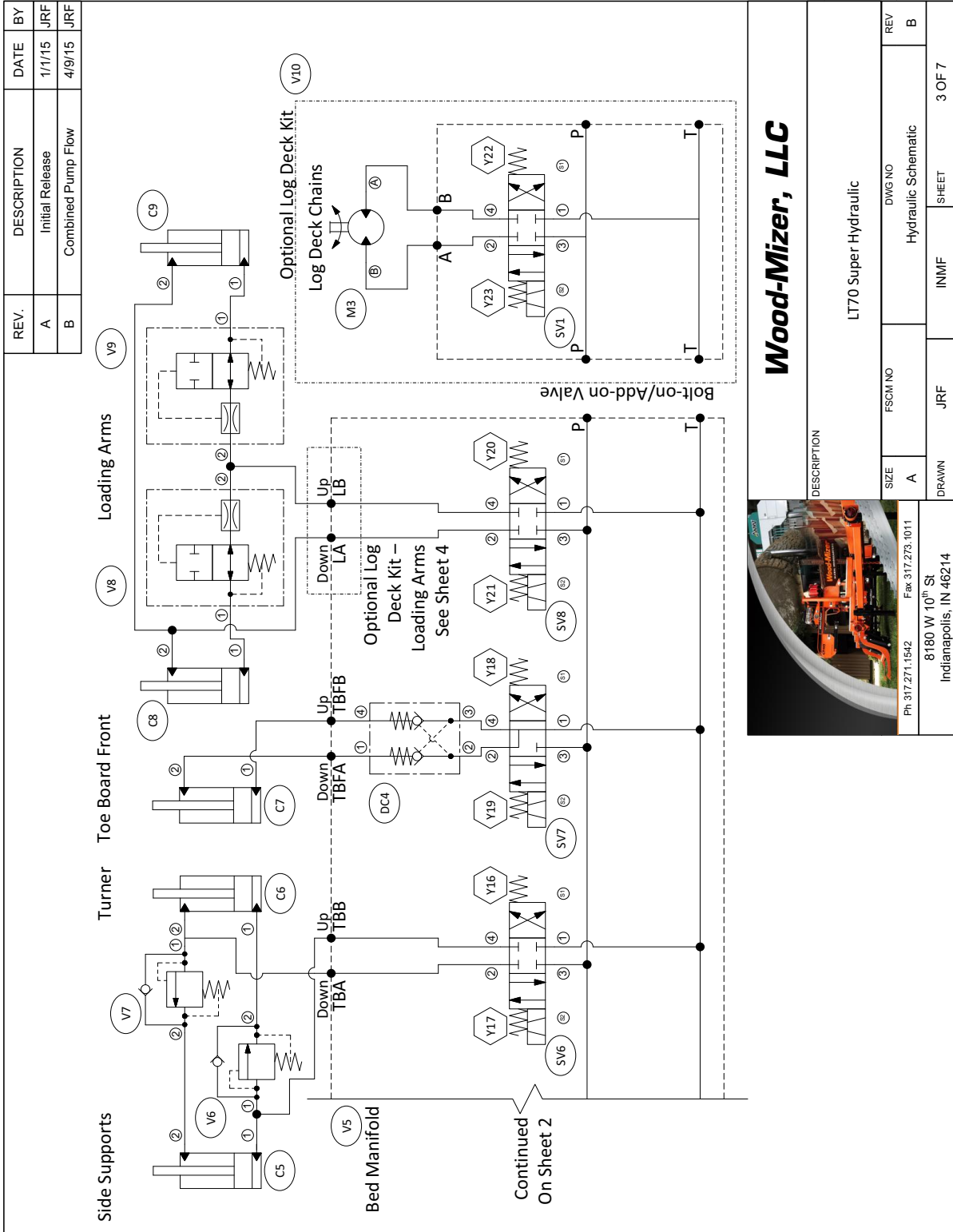
8180 W 10<sup>th</sup> St  
Indianapolis, IN 46214

DRAWN

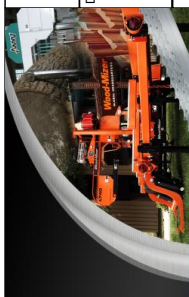
SHEET

2 OF 7

**FIG. 8-23 HYDRAULIC SCHEMATIC (PAGE 2 OF 7)**



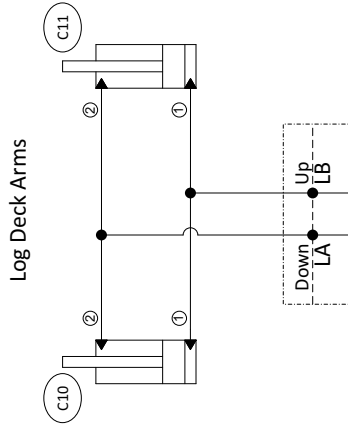
**Wood-Mizer, LLC**



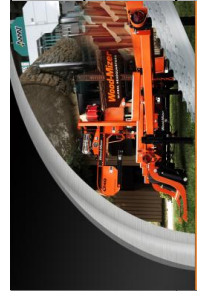
DESCRIPTION		LT70 Super Hydraulic	
SIZE	FSCM NO	DWG NO	REV
A		Hydraulic Schematic	B
DRAWN	JRF	INMF	SHEET
8180 W 10 <sup>th</sup> St Indianapolis, IN 46214			3 OF 7

FIG. 8-24 HYDRAULIC SCHEMATIC (PAGE 3 OF 7)

REV.	DESCRIPTION	DATE	BY
A	Initial Release	1/1/15	JRF
B	Combined Pump Flow	4/9/15	JRF



Optional Log Deck Kit –  
 Loading Arms See Sheet 3  
 For Connections



**Wood-Mizer, LLC**

DESCRIPTION

LT70 Super Hydraulic

SIZE	FSCM NO	DWG NO	REV
A		Hydraulic Schematic	B
DRAWN	JRF	INMIF	SHEET
8180 W 10" ST Indianapolis, IN 46214			4 OF 7

**FIG. 8-25 HYDRAULIC SCHEMATIC (PAGE 4 OF 7)**

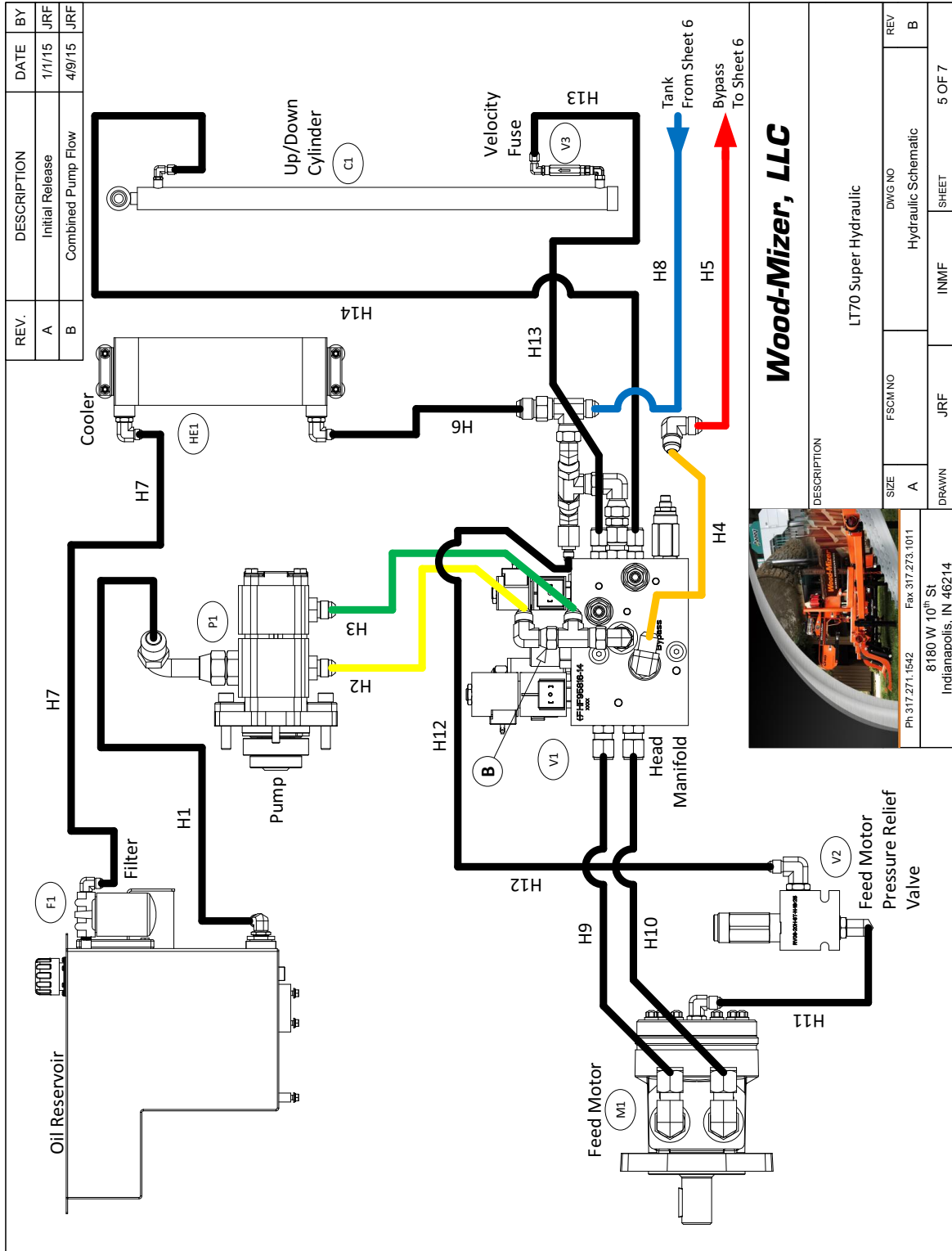
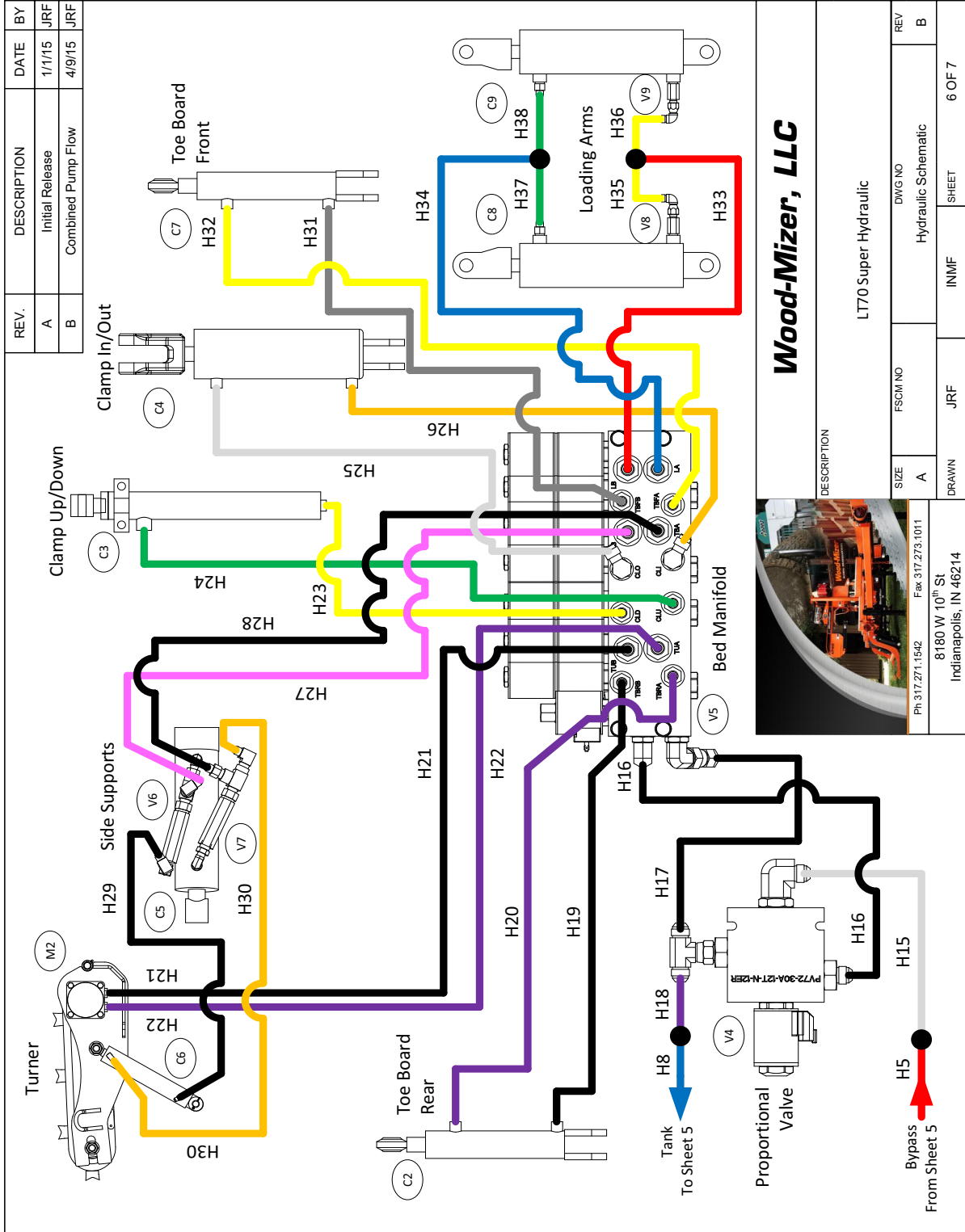
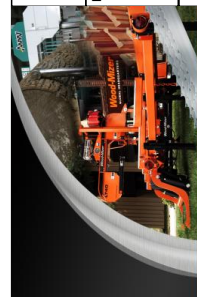


FIG. 8-26 HYDRAULIC SCHEMATIC (PAGE 5 OF 7)



**Wood-Mizer, LLC**



DESCRIPTION		LT70 Super Hydraulic	
SIZE	FSCM NO	DWG NO	REV
A		Hydraulic Schematic	B
DRAWN	JRF	INMF	SHEET
8180 W 10 <sup>th</sup> St			6 OF 7
Indianapolis, IN 46214			
Ph: 317.271.1542			
Fax: 317.273.1011			

FIG. 8-27 HYDRAULIC SCHEMATIC (PAGE 6 OF 7)

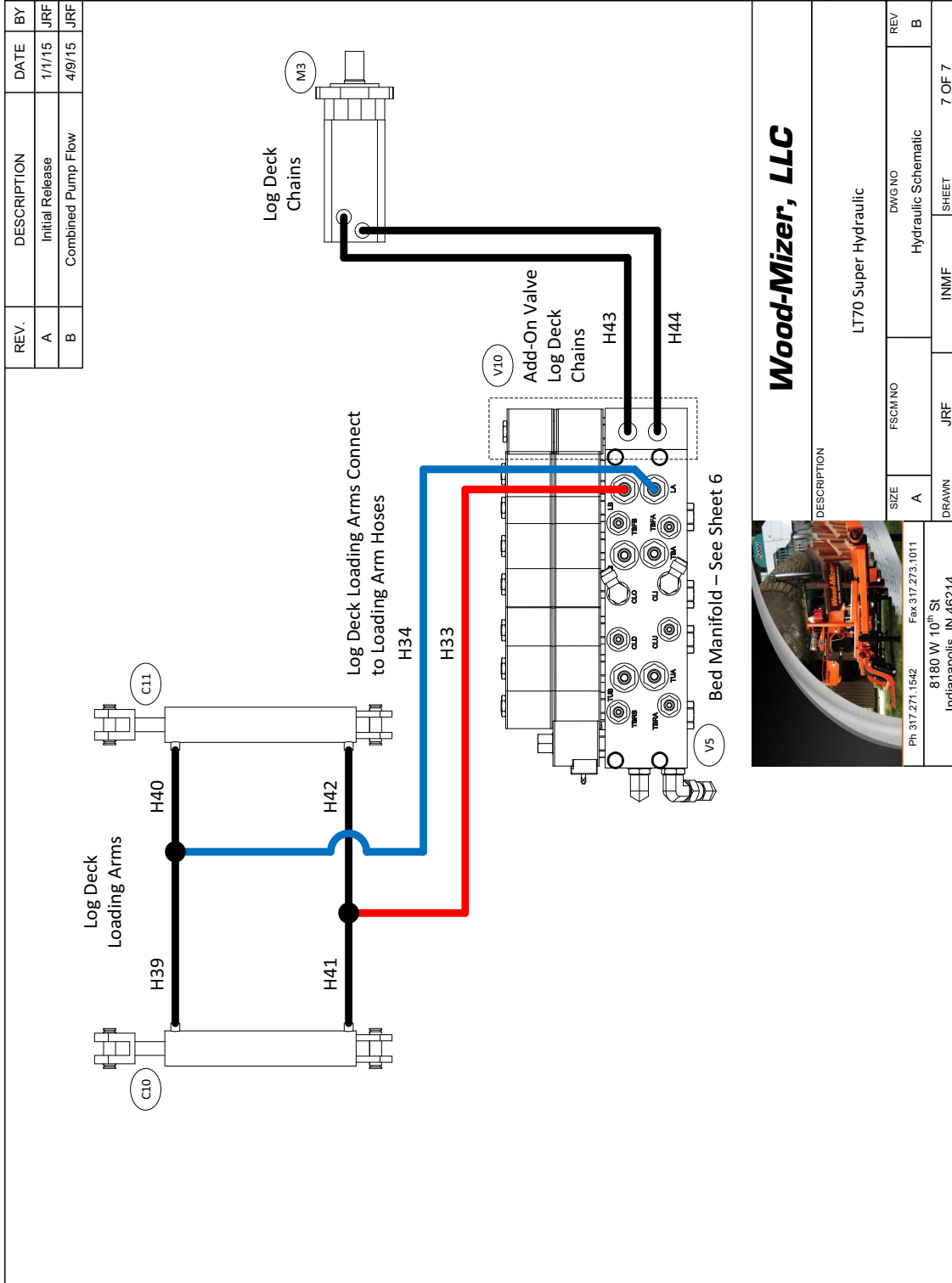


FIG. 8-28 HYDRAULIC SCHEMATIC (PAGE 7 OF 7)

8.5 Hydraulic Schematic  
LT70 SuperRev. A1.00

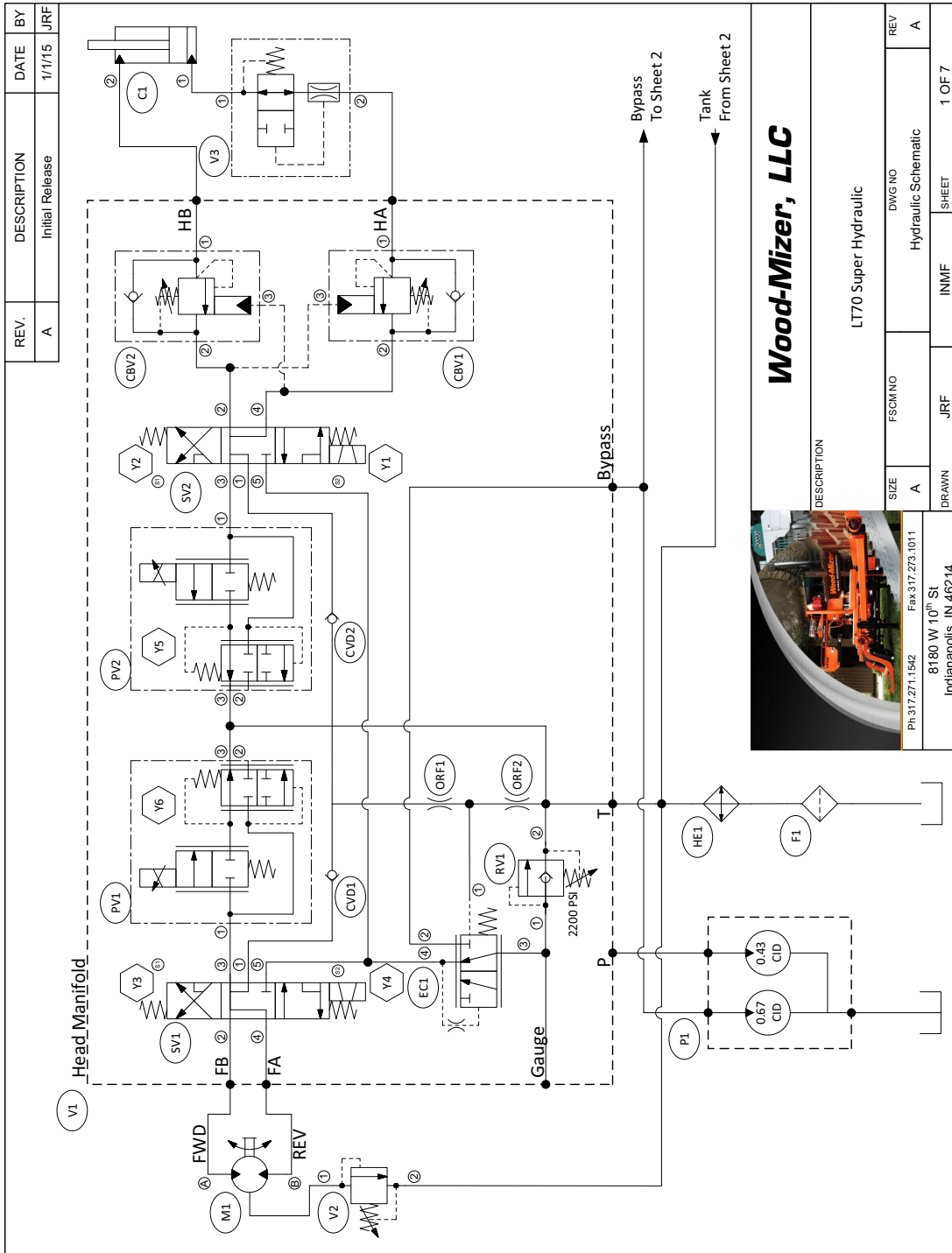
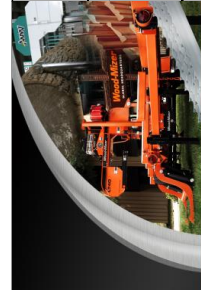
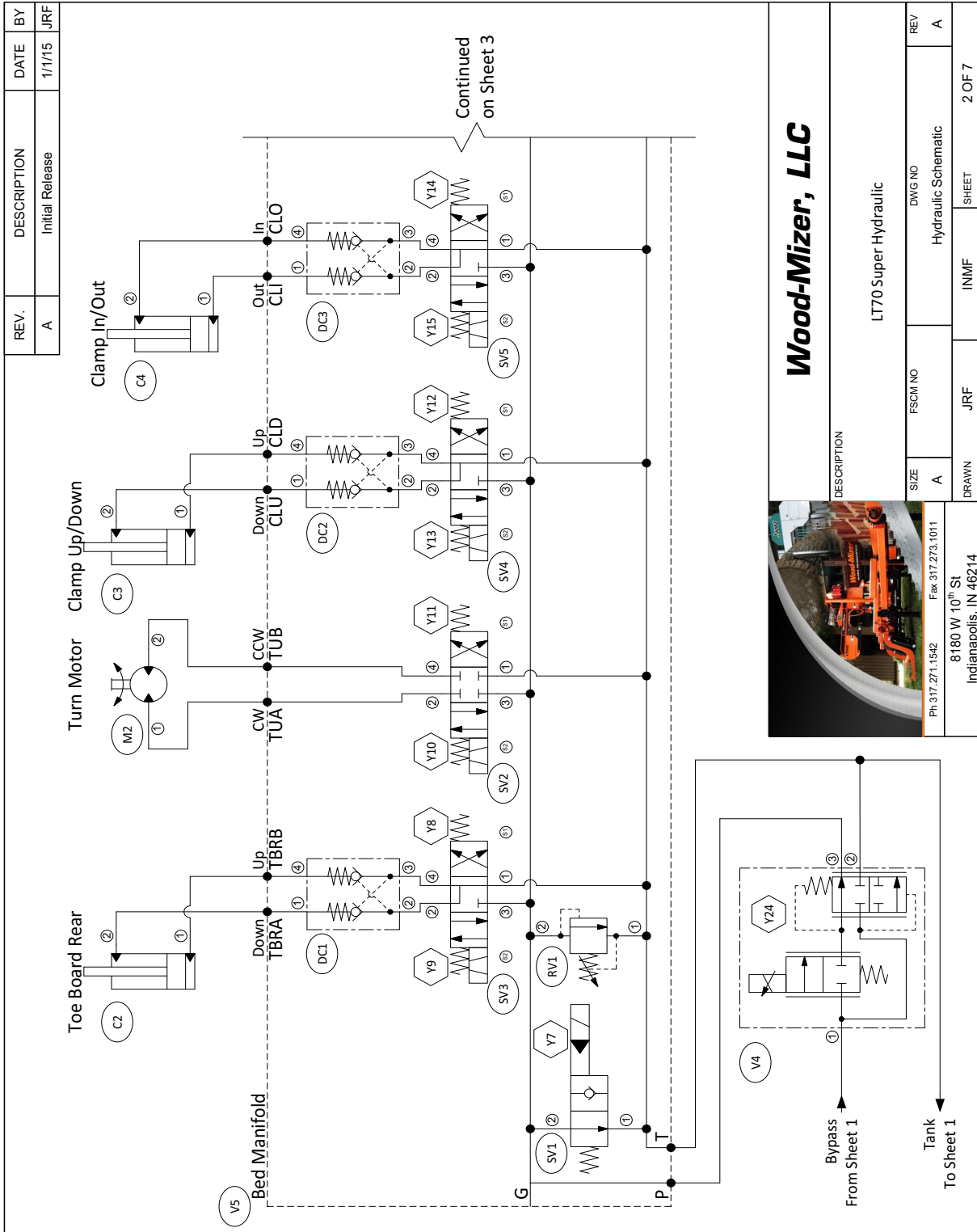


FIG. 8-29 HYDRAULIC SCHEMATIC (PAGE 1 OF 7)

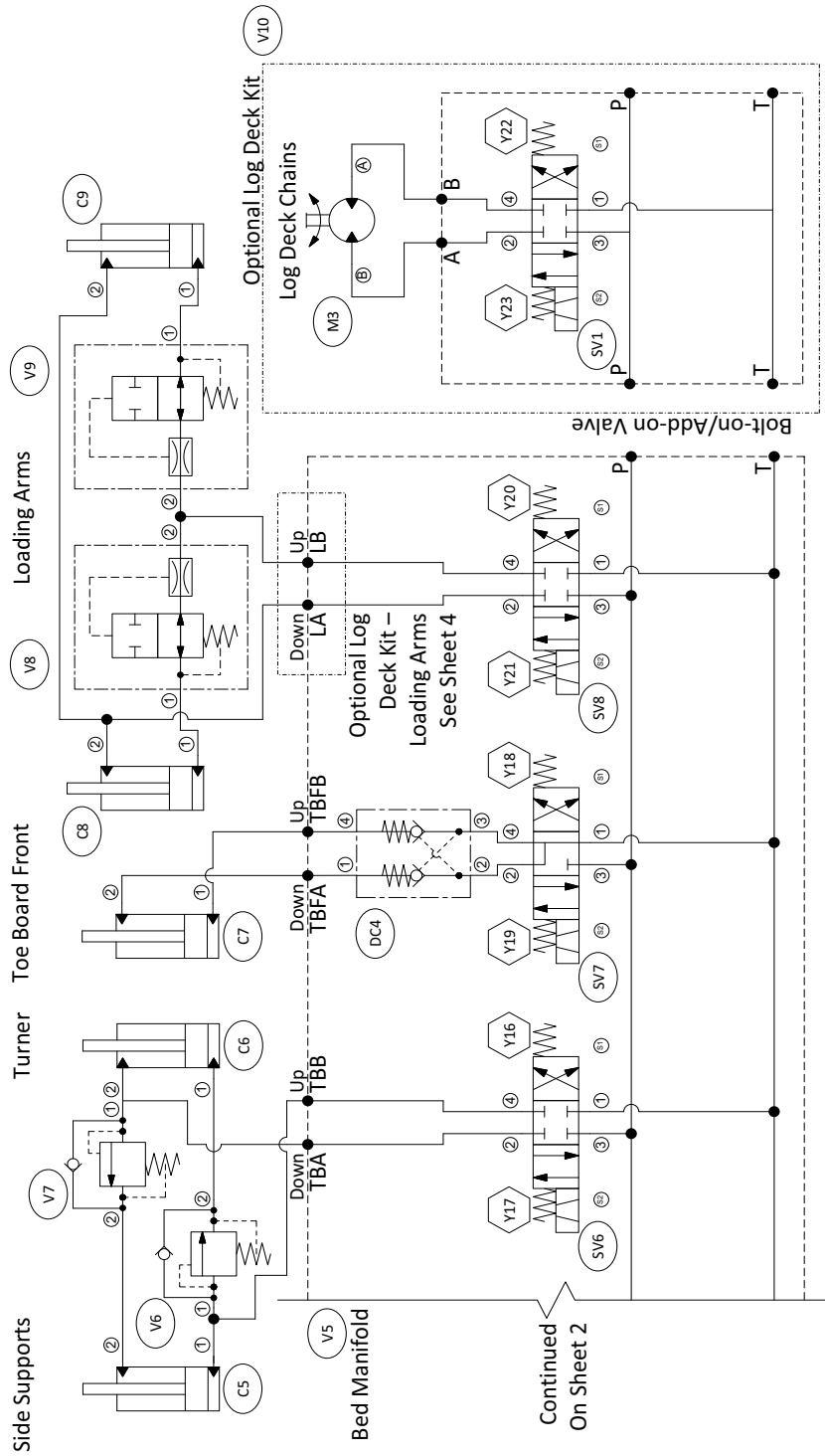




Ph 317.271.1542 Fax 317.273.1011  
8180 W 10<sup>th</sup> St  
Indianapolis, IN 46214

FIG. 8-30 HYDRAULIC SCHEMATIC (PAGE 2 OF 7)

REV.	DESCRIPTION	DATE	BY
A	Initial Release	1/1/15	JRF



**Wood-Mizer, LLC**

DESCRIPTION  
LT70 Super Hydraulic

SIZE: A  
FSCM NO: Hydraulic Schematic

8180 W 10<sup>th</sup> St  
Indianapolis, IN 46214

Ph: 317.271.1542  
Fax: 317.273.1011

REV: A

DWG NO: Hydraulic Schematic

SHEET: 3 OF 7

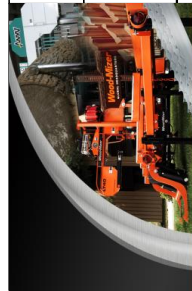
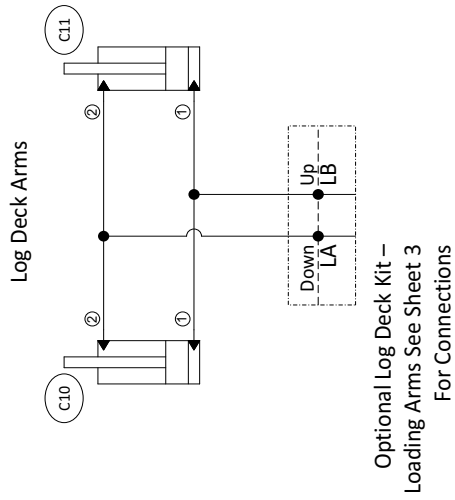
REV: A

DWG NO: Hydraulic Schematic

SHEET: 3 OF 7

FIG. 8-31 HYDRAULIC SCHEMATIC (PAGE 3 OF 7)

REV.	DESCRIPTION	DATE	BY
A	Initial Release	1/1/15	JRF



**Wood-Mizer, LLC**

DESCRIPTION

LT70 Super Hydraulic

Ph 317.271.1542	Fax 317.273.1011	SIZE	FSCM NO	DWG NO	REV
8180 W 10 <sup>th</sup> St		A		Hydraulic Schematic	A
Indianapolis, IN 46214		DRAWN	JRF	INMF	SHEET
					4 OF 7

FIG. 8-32 HYDRAULIC SCHEMATIC (PAGE 4 OF 7)

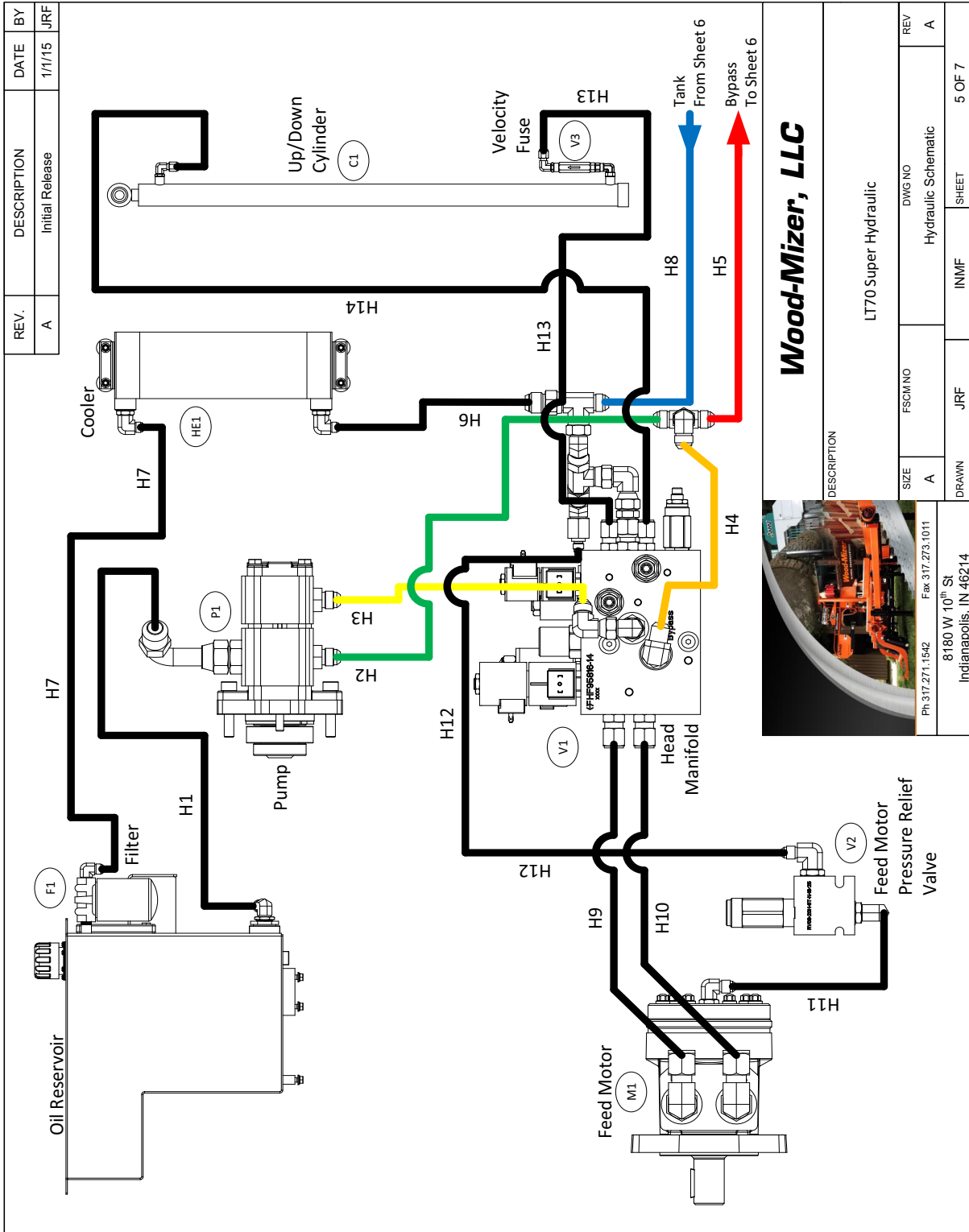


FIG. 8-33 HYDRAULIC SCHEMATIC (PAGE 5 OF 7)

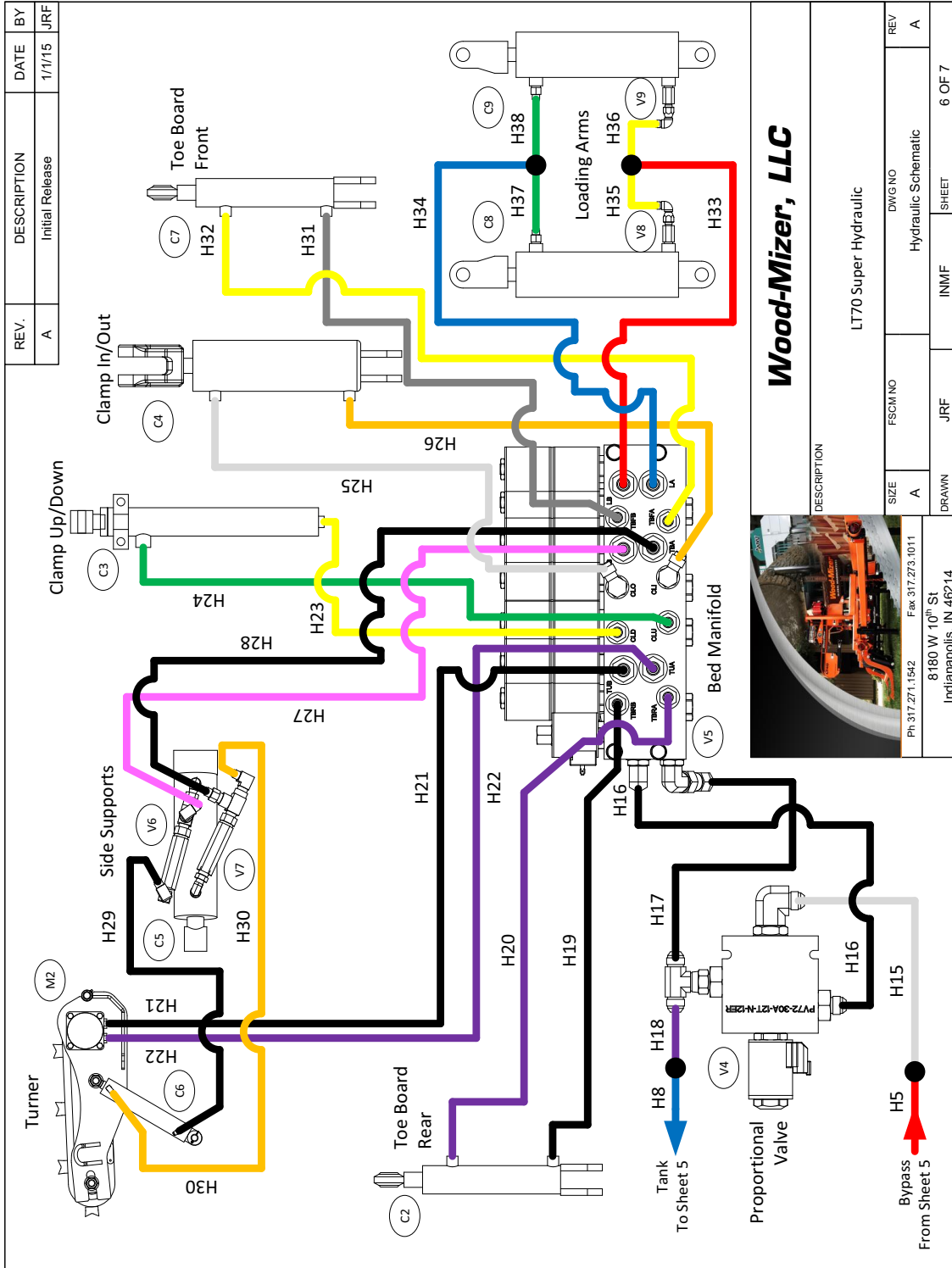
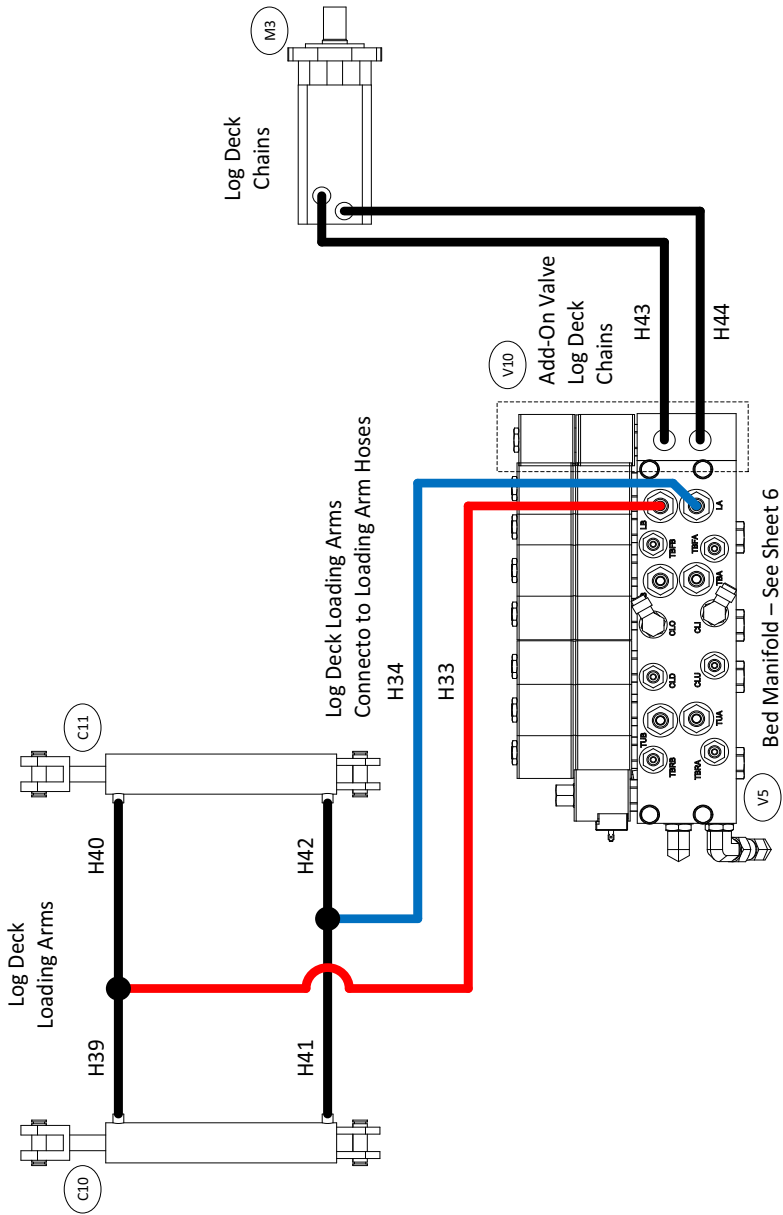


FIG. 8-34 HYDRAULIC SCHEMATIC (PAGE 6 OF 7)

REV.	DESCRIPTION	DATE	BY
A	Initial Release	1/1/15	JRF



**Wood-Mizer, LLC**

DESCRIPTION: LT70 Super Hydraulic

SIZE	FSCM NO	DWG NO	REV
A		Hydraulic Schematic	A

PH: 317.271.1542	FAX: 317.273.1011	DRAWN	JRF	INM/F	SHEET	7 OF 7
8180 W 10 <sup>th</sup> St						
Indianapolis, IN 46214						

**FIG. 8-35 HYDRAULIC SCHEMATIC (PAGE 7 OF 7)**

## 8.6 Hydraulic Components

LT70 Super

Rev. A4.08+

10/12/2016

LT70 Super Hydraulic -  
Hydraulic Component List

Wood-Mizer P/N LT70HDD55-RD  
Rev. E

Component List		
ID	Description	Wood-Mizer Part #
C1	Cylinder, Prince 1-1/2x35 Hydraulic	078370
C2-7	Cylinder, 1-1/2x6 Rod End In Line Ports	014482
C3	Cylinder Wdmt, Vert Clamp	015050
C4	Cylinder, 3x7 Hyd	017275
C5	Cylinder, 2-1/2x6, 1/4 NPT Port	034736
C6	Cylinder, 2x10 Rod End Welded 16"	034267
C8-9	Cylinder, 3x8 Welded, 3/8NPT	042754
C10-11	Cylinder, 2-1/2 Bore x 12x22-1/4	050105
F1	Filter, Hyd. Canister 35GPM 725psi w/Ind	078340
	Filter, Hyd. Element 10 Micron 25psi Byp	078341
HE1	Cooler, Hydraulic Oil	074431
M1	Motor, Hydraulic 75CC Disp 1" Shaft	078227
M2	Motor, Hydraulic TG0475US080AABP (ptd)	007331
M3	Motor, Hyd Log Deck	056062
P1	Pump, Hydraulic Double, .67cid & .43cid	074402
S2	Switch, Fluid 170 Deg F 1/2NPT Deutsch	078225
V1	Manifold Assy, LT70 Hyd. Head Control	075212
CBV1-2	Valve, Cntr Bal 8GPM 4000psi Cartridge	078170
CVD1	Valve, Check Disk CVD10	078171
CVD2	Valve, Check Disk CVD08	078172
EC1	Valve, Press Comp 18GPM EC12-42 160	078224
LS1	Valve, Shuttle LS10-30	078316
ORF1	Plug, Orifice 0.060"	078174
ORF2	Plug, Orifice 0.020"	078175
PV1	Valve, Proportional 8GPM PV70-30A	078176
PV2	Valve, Proportional 3GPM PV08-30A	078177
RV1	Valve, Relief RV10-20H	078317
SV1	Valve, 5-Way 3Pos 8GPM SV10-58D	078179
SV2	Valve, 5-Way 3Pos 3.5GPM SV08-58D	078180
TS1	Valve, Prop. Press. Ctl TS10-26	078318
U2	Transducer, Pressure 5000PSI 7/16-20SAE	078226
Y1-2	Coil, Series E 08-EG DIN A 12VDC	078181
Y3-4	Coil, Series E 10-EG DIN A 12VDC	025834
Y5	Coil, Series E EHPR-ER Deutsch 12VDC	078182
Y6	Coil, Series E 70-ER Deutsch 12VDC	078183
Y25	Coil, Series E 10-ER Deutsch 12VDC	078319
V3	Velocity Fuse, 6 GPM 6SAE Female Ports	075318
V4	Valve, PV72-30 Proportional Cartridge	078067
PV1	Valve, Proportional 15GPM PV72-30A	078185
Y24	Coil, Series E 70-ER Deutsch 12VDC	078183
V5	Valve, Hyd, 7 Station Expandable, 12V	025688
DC1-4	Valve, Dual PO Check	025832
RV1	Valve, Relief	025833

FIG. 8-36 HYDRAULIC COMPONENTS (PAGE 1 OF 2)

10/12/2016

LT70 Super Hydraulic -  
Hydraulic Component ListWood-Mizer P/N LT70HDD55-RD  
Rev. E

Component List		
ID	Description	Wood-Mizer Part #
SV1	Valve, SV10-21 (less coils)	025831
SV2, 6, 8	Valve, Sv10-47C (less coils)	025830
SV3-5, 7	Valve, SV10-47D (less coils)	025829
Y7-21	Coil, Series E 10-EG DIN A 12VDC	025834
V6-7	Valve, Side Support Sequence	015484
V8-9	Velocity Fuse, 6.5 GPM	038734
V10	Valve, Hyd, Add-on 4-way Closed, 12V	025826
SV1	Valve, Sv10-47C (less coils)	025830
Y22-23	Coil, Hyd Valve, 12VDC	025834
T1	Assy, LT70 Hyd Mill Hydraulic Tank	075274
	Filler/Breather	078342
	Suction Strainer	P20210
	Level/Temp Gauge	P20211
	Filter/Canister	078340
	Filter Element	078341
	Diffuser	079181
	Clean-out Cover	079268
	Fluid, Univis HVI 26 Hydraulic 1 Gallon(Sytem Holds 20 Gal. of Oil)	074744
	Fluid, Univis HVI 26 Hydraulic 5 Gallon(Sytem Holds 20 Gal. of Oil)	061164

FIG. 8-37 HYDRAULIC COMPONENTS (PAGE 2 OF 2)



## 8.7 Hydraulic Components

LT70 Super

Rev. A4.00 - A4.07

Hydraulic Component List

Rev. E

Component List		
ID	Description	Wood-Mizer Part #
C1	Cylinder, 1-1/2x35 Hydraulic	071284
C2-7	Cylinder, 1-1/2x6 Rod End In Line Ports	014482
C3	Cylinder Wdmt, Vert Clamp	015050
C4	Cylinder, 3x7 Hyd	017275
C5	Cylinder, 2-1/2x6, 1/4 NPT Port	034736
C6	Cylinder, 2x10 Rod End Welded 16"	034267
C8-9	Cylinder, 3x8 Welded, 3/8NPT	042754
C10-11	Cylinder, 2-1/2 Bore x 12x22-1/4	050105
F1	Filter, S28 Hyd	P20301
HE1	Cooler, Hydraulic Oil	074431
M1	Motor, Hydraulic 75CC Disp 1" Shaft	078227
M2	Motor, Hydraulic TG0475US080AABP (ptd)	007331
M3	Motor, Hyd Log Deck	056062
P1	Pump, Hydraulic Double, .67cid & .43cid	074402
S2	Switch, Fluid 170 Deg F 1/2NPT Deutsch	078225
V1	Manifold Assy, LT70 Hyd. Head Control	075212
CBV1-2	Valve, Cntr Bal 8GPM 4000psi Cartridge	078170
CVD1	Valve, Check Disk CVD10	078171
CVD2	Valve, Check Disk CVD08	078172
EC1	Valve, Press Comp 18GPM EC12-42 160	078224
LS1	Valve, Shuttle LS10-30	078316
ORF1	Plug, Orifice 0.060"	078174
ORF2	Plug, Orifice 0.020"	078175
PV1	Valve, Proportional 8GPM PV70-30A	078176
PV2	Valve, Proportional 3GPM PV08-30A	078177
RV1	Valve, Relief RV10-20H	078317
SV1	Valve, 5-Way 3Pos 8GPM SV10-58D	078179
SV2	Valve, 5-Way 3Pos 3.5GPM SV08-58D	078180
TS1	Valve, Prop. Press. Ctl TS10-26	078318
U2	Transducer, Pressure 5000PSI 7/16-20SAE	078226
Y1-2	Coil, Series E 08-EG DIN A 12VDC	078181
Y3-4	Coil, Series E 10-EG DIN A 12VDC	025834
Y5	Coil, Series E EHPR-ER Deutsch 12VDC	078182
Y6	Coil, Series E 70-ER Deutsch 12VDC	078183
Y25	Coil, Series E 10-ER Deutsch 12VDC	078319
V3	Velocity Fuse, 6 GPM 6SAE Female Ports	075318
V4	Valve, PV72-30 Proportional Cartridge	078067
PV1	Valve, Proportional 15GPM PV72-30A	078185
Y24	Coil, Series E 70-ER Deutsch 12VDC	078183
V5	Valve, Hyd, 7 Station Expandable, 12V	025688
DC1-4	Valve, Dual PO Check	025832
RV1	Valve, Relief	025833
SV1	Valve, SV10-21 (less coils)	025831

FIG. 8-38 HYDRAULIC COMPONENTS (PAGE 1 OF 2)

## Hydraulic Component List

Rev. E

Component List		
ID	Description	Wood-Mizer Part #
SV2, 6, 8	Valve, Sv10-47C (less coils)	025830
SV3-5, 7	Valve, SV10-47D (less coils)	025829
Y7-21	Coil, Series E 10-EG DIN A 12VDC	025834
V6-7	Valve, Side Support Sequence	015484
V8-9	Velocity Fuse, 6.5 GPM	038734
V10	Valve, Hyd, Add-on 4-way Closed, 12V	025826
SV1	Valve, SV10-47C (less coils)	025830
Y22-23	Coil, Hyd Valve, 12VDC	025834
V11	Manifold, Cross Port Relief (Retrofit 078326 <b>ONLY</b> )	078270
LS1	Valve, Shuttle LS10-30	078316
RV1	Valve, Relief RV10-20 1500psi Ctg.	078271
	Fluid, Univis HVI 26 Hydraulic 1 Gallon(Sytem Holds 20 Gal. of Oil)	074744
	Fluid, Univis HVI 26 Hydraulic 5 Gallon(Sytem Holds 20 Gal. of Oil)	061164

**FIG. 8-39 HYDRAULIC COMPONENTS (PAGE 2 OF 2)**

## 8.8 Hydraulic Components

LT70 Super

Rev. A3.01

Component List		
ID	Description	Wood-Mizer Part #
C1	Cylinder, 1-1/2x35 Hydraulic	071284
C2-7	Cylinder, 1-1/2x6 Rod End In Line Ports	014482
C3	Cylinder Wdmt, Vert Clamp	015050
C4	Cylinder, 3x7 Hyd	017275
C5	Cylinder, 2-1/2x6, 1/4 NPT Port	034736
C6	Cylinder, 2x10 Rod End Welded 16"	034267
C8-9	Cylinder, 3x8 Welded, 3/8NPT	042754
C10-11	Cylinder, 2-1/2 Bore x 12x22-1/4	050105
F1	Filter, S28 Hyd	P20301
HE1	Cooler, Hydraulic Oil	074431
M1	Motor, Hydraulic 103-3539-012	075179
M2	Motor, Hydraulic TG0475US080AABP (ptd)	007331
M3	Motor, Hyd Log Deck	056062
P1	Pump, Hydraulic Double, .67cid & .43cid	074402
V1	Manifold Assy, LT70 Hyd. Head Control	075212
CBV1-2	Valve, Cntr Bal 8GPM 4000psi Cartridge	078170
CVD1	Valve, Check Disk CVD10	078171
CVD2	Valve, Check Disk CVD08	078172
EC1	Valve, Priority Flow Ctl 18GPM EC12-42	078173
ORF1	Plug, Orifice 0.060"	078174
ORF2	Plug, Orifice 0.020"	078175
PV1	Valve, Proportional 8GPM PV70-30A	078176
PV2	Valve, Proportional 3GPM PV08-30A	078177
RV1	Valve, Relief 200-4200psi RV10-28	078178
SV1	Valve, 5-Way 3Pos 8GPM SV10-58D	078179
SV2	Valve, 5-Way 3Pos 3.5GPM SV08-58D	078180
Y1-2	Coil, Series E 08-EG DIN A 12VDC	078181
Y3-4	Coil, Series E 10-EG DIN A 12VDC	025834
Y5	Coil, Series E EHPR-ER Deutsch 12VDC	078182
Y6	Coil, Series E 70-ER Deutsch 12VDC	078183
V2	Valve, RV08-20H Direct-Acting Relief	074511
RV1	Valve, Relief250-2300psi RV08-20	078184
V3	Velocity Fuse, 6 GPM 6SAE Female Ports	075318
V4	Valve, PV72-30 Proportional Cartridge	078067
PV1	Valve, Proportional 15GPM PV72-30A	078185
Y24	Coil, Series E 70-ER Deutsch 12VDC	078183
V5	Valve, Hyd, 7 Station Expandable, 12V	025688
DC1-4	Valve, Dual PO Check	025832
RV1	Valve, Relief	025833
SV1	Valve, SV10-21 (less coils)	025831
SV2, 6, 8	Valve, Sv10-47C (less coils)	025830
SV3-5, 7	Valve, SV10-47D (less coils)	025829
Y7-21	Coil, Series E 10-EG DIN A 12VDC	025834

FIG. 8-40 HYDRAULIC COMPONENTS (PAGE 1 OF 2)

<b>Component List</b>		
<b>ID</b>	<b>Description</b>	<b>Wood-Mizer Part #</b>
<b>V6-7</b>	Valve, Side Support Sequence	015484
<b>V8-9</b>	Velocity Fuse, 6.5 GPM	038734
<b>V10</b>	Valve, Hyd, Add-on 4-way Closed, 12V	025826
	<b>SV1</b> Valve, Sv10-47C (less coils)	025830
	<b>Y22-23</b> Coil, Hyd Valve, 12VDC	025834

**FIG. 8-41 HYDRAULIC COMPONENTS (PAGE 2 OF 2)**

## 8.9 Hydraulic Components

LT70 Super

Rev. A2.00 - A3.00

ID	Description	Wood-Mizer Part #
C1	Cylinder, 1-1/2x35 Hydraulic	071284
C2-7	Cylinder, 1-1/2x6 Rod End In Line Ports	014482
C3	Cylinder Wdmt, Vert Clamp	015050
C4	Cylinder, 3x7 Hyd	017275
C5	Cylinder, 2-1/2x6, 1/4 NPT Port	034736
C6	Cylinder, 2x10 Rod End Welded 16"	034267
C8-9	Cylinder, 3x8 Welded, 3/8NPT	042754
C10-11	Cylinder, 2-1/2 Bore x 12x22-1/4	050105
F1	Filter, S28 Hyd	P20301
HE1	Cooler, Hydraulic Oil	074431
M1	Motor, Hydraulic 103-3539-012	075179
M2	Motor, Hydraulic TG0475US080AABP (ptd)	007331
M3	Motor, Hyd Log Deck	056062
P1	Pump, Hydraulic Double, .67cid & .43cid	074402
V1	Manifold Assy, LT70 Hyd. Head Control	075212
CBV1-2	Valve, Cntr Bal 8GPM 4000psi Cartridge	078170
CVD1	Valve, Check Disk CVD10	078171
CVD2	Valve, Check Disk CVD08	078172
EC1	Valve, Priority Flow Ctl 18GPM EC12-42	078173
ORF1	Plug, Orifice 0.060"	078174
ORF2	Plug, Orifice 0.020"	078175
PV1	Valve, Proportional 8GPM PV70-30A	078176
PV2	Valve, Proportional 3GPM PV08-30A	078177
RV1	Valve, Relief 200-4200psi RV10-28	078178
SV1	Valve, 5-Way 3Pos 8GPM SV10-58D	078179
SV2	Valve, 5-Way 3Pos 3.5GPM SV08-58D	078180
Y1-2	Coil, Series E 08-EG DIN A 12VDC	078181
Y3-4	Coil, Series E 10-EG DIN A 12VDC	025834
Y5	Coil, Series E EHPR-ER Deutsch 12VDC	078182
Y6	Coil, Series E 70-ER Deutsch 12VDC	078183
V2	Valve, RV08-20H Direct-Acting Relief	074511
RV1	Valve, Relief250-2300psi RV08-20	078184
V3	Velocity Fuse, 6 GPM 6SAE Female Ports	075318
V4	Valve, PV72-30 Proportional Cartridge	078067
PV1	Valve, Proportional 15GPM PV72-30A	078185
Y24	Coil, Series E 70-ER Deutsch 12VDC	078183
V5	Valve, Hyd, 7 Station Expandable, 12V	025688
DC1-4	Valve, Dual PO Check	025832
RV1	Valve, Relief	025833
SV1	Valve, SV10-21 (less coils)	025831
SV2, 6, 8	Valve, Sv10-47C (less coils)	025830
SV3-5, 7	Valve, SV10-47D (less coils)	025829
Y7-21	Coil, Series E 10-EG DIN A 12VDC	025834

FIG. 8-42 HYDRAULIC COMPONENTS (PAGE 1 OF 2)

<b>Component List</b>		
<b>ID</b>	<b>Description</b>	<b>Wood-Mizer Part #</b>
<b>V6-7</b>	Valve, Side Support Sequence	015484
<b>V8-9</b>	Velocity Fuse, 6.5 GPM	038734
<b>V10</b>	Valve, Hyd, Add-on 4-way Closed, 12V	025826
	<b>SV1</b> Valve, Sv10-47C (less coils)	025830
	<b>Y22-23</b> Coil, Hyd Valve, 12VDC	025834

**FIG. 8-43 HYDRAULIC COMPONENTS (PAGE 2 OF 2)**

## 8.10 Hydraulic Components

LT70 Super

Rev. A1.00

Component List		
ID	Description	Wood-Mizer Part #
C1	Cylinder, 1-1/2x35 Hydraulic	071284
C2-7	Cylinder, 1-1/2x6 Rod End In Line Ports	014482
C3	Cylinder Wdmt, Vert Clamp	015050
C4	Cylinder, 3x7 Hyd	017275
C5	Cylinder, 2-1/2x6, 1/4 NPT Port	034736
C6	Cylinder, 2x10 Rod End Welded 16"	034267
C8-9	Cylinder, 3x8 Welded, 3/8NPT	042754
C10-11	Cylinder, 2-1/2 Bore x 12x22-1/4	050105
F1	Filter, S28 Hyd	P20301
HE1	Cooler, Hydraulic Oil	074431
M1	Motor, Hydraulic 103-3539-012	075179
M2	Motor, Hydraulic TG0475US080AABP (ptd)	007331
M3	Motor, Hyd Log Deck	056062
P1	Pump, Hydraulic Double, .67cid & .43cid	074402
V1	Manifold Assy, LT70 Hyd. Head Control	075212
CBV1-2	Valve, Cntr Bal 8GPM 4000psi Cartridge	078170
CVD1	Valve, Check Disk CVD10	078171
CVD2	Valve, Check Disk CVD08	078172
EC1	Valve, Priority Flow Ctl 18GPM EC12-42	078173
ORF1	Plug, Orfice 0.060"	078174
ORF2	Plug, Orfice 0.020"	078175
PV1	Valve, Proportional 8GPM PV70-30A	078176
PV2	Valve, Proportional 3GPM PV08-30A	078177
RV1	Valve, Relief 200-4200psi RV10-28	078178
SV1	Valve, 5-Way 3Pos 8GPM SV10-58D	078179
SV2	Valve, 5-Way 3Pos 3.5GPM SV08-58D	078180
Y1-2	Coil, Series E 08-EG DIN A 12VDC	078181
Y3-4	Coil, Series E 10-EG DIN A 12VDC	025834
Y5	Coil, Series E EHPR-ER Deutsch 12VDC	078182
Y6	Coil, Series E 70-ER Deutsch 12VDC	078183
V2	Valve, RV08-20H Direct-Acting Relief	074511
RV1	Valve, Relief250-2300psi RV08-20	078184
V3	Velocity Fuse, 6 GPM 6SAE Female Ports	075318
V4	Valve, PV72-30 Proportional Cartridge	078067
PV1	Valve, Proportional 15GPM PV72-30A	078185
Y24	Coil, Series E 70-ER Deutsch 12VDC	078183
V5	Valve, Hyd, 7 Station Expandable, 12V	025688
DC1-4	Valve, Dual PO Check	025832
RV1	Valve, Relief	025833
SV1	Valve, SV10-21 (less coils)	025831
SV2, 6, 8	Valve, Sv10-47C (less coils)	025830
SV3-5, 7	Valve, SV10-47D (less coils)	025829
Y7-21	Coil, Series E 10-EG DIN A 12VDC	025834

FIG. 8-44 HYDRAULIC COMPONENTS (PAGE 1 OF 2)

<b>Component List</b>		
<b>ID</b>	<b>Description</b>	<b>Wood-Mizer Part #</b>
<b>V6-7</b>	Valve, Side Support Sequence	015484
<b>V8-9</b>	Velocity Fuse, 6.5 GPM	038734
<b>V10</b>	Valve, Hyd, Add-on 4-way Closed, 12V	025826
<b>SV1</b>	Valve, Sv10-47C (less coils)	025830
<b>Y22-23</b>	Coil, Hyd Valve, 12VDC	025834

**FIG. 8-45 HYDRAULIC COMPONENTS (PAGE 2 OF 2)**



**8.11 Hydraulic Hoses**  
**LT70 SuperRev. A4.08+**

Hose List				
ID	Color	Length	Description	Wood-Mizer Part#
H1	N/A	44"	Assy, 3/4x44 Hydraulic Suction Hose	074591
H2	Yellow	124"	1/2" Hydraulic Pump to Head Manifold Pressure 90 Fitting	079004-124
H3	Green	124"	1/2" Hydraulic Pump to Head Manifold Pressure T Fitting	079004-124
H4	Orange	7"	1/2" Head Manifold Bypass to Pressure 90 Fitting	079004-7
H5	Red	254"	1/2" Pressure 90 Fitting to Pressure Bulkhead	079004-254
H6	N/A	97"	Assy, 5/8x44 Hydraulic Hose	074593
H7	N/A	44"	Assy, 5/8x44 Hydraulic Hose	074592
H8	Blue	254"	1/2" Return T Fitting to Return Bulkhead	079004-254
H9	Steel Line		Tube, Feed Outside 1/2" Steel Hydraulic	075317
H10	Steel Line		Tube, Feed inside 1/2" Steel Hydraulic	075316
H13	Steel Line		Tube, Up/Dn Short 3/8" Steel Hydraulic	075226
H14	Steel Line		Tube, Up/Dn Long 3/8" Steel Hydraulic	075227
H15	White	16"	1/2" Pressure Bulkhead to Proportional Valve #1	079004-16
H16	N/A	34"	1/2" Prop Valve #3 to Bed Manifold Pressure	079004-34
H17	Black	16"	1/2" Bed Manifold Tank to Prop #2 Branch T Fitting	079004-16
H18	Purple	11"	1/2" Prop #2 Branch T Fitting To Return Bulkhead	079004-11
H19	Black	87"	1/4" Rear Toe Board Base	079000-87
H20	Purple	81"	1/4" Rear Toe Board Top	079000-81
H21	Black	65"	3/8" Log Turner Motor Closest to Frame	079001-65
H22	Purple	61"	3/8" Log Turner Motor Away from Frame	079001-61
H23	Yellow	32"	1/4" Clamp Up	079000-32
H24	Green	43"	1/4" Clamp Down	079000-43
H25	White	23"	3/8" Clamp In	079001-23
H26	Orange	20"	3/8" Clamp Out	079001-20
H27	Pink	15"	3/8" Side Support Base	079001-15
H28	N/A	16"	3/8" Side Support Top	079001-16
H29	N/A	73"	3/8" Log Turner Base	079001-73
H30	Orange	65"	3/8" Log Turner Top	079001-65
H31	Gray	56"	1/4" Front Toe Board Base	079000-56
H32	Yellow	52"	1/4" Front Toe Board Top	079000-52
H33	Red	20"	3/8" Loading Arm Base	079001-20
H34	Blue	21"	3/8" Loading Arm Top	079001-21
H35	Yellow	77"	3/8" Loading Arm Branch Base	079001-77
H36	Yellow	34"	3/8" Loading Arm Branch Base	079001-34
H37	Green	74"	3/8" Loading Arm Branch Top	079001-74
H38	Green	34"	3/8" Loading Arm Branch Top	079001-34
H39	N/A	48"	Hose, 3/8" Hydraulic w/Fittings 48" HP	079001-48
H40	N/A	48"	Hose, 3/8" Hydraulic w/Fittings 48" HP	079001-48
H41	N/A	48"	Hose, 3/8" Hydraulic w/Fittings 48" HP	079001-48
H42	N/A	48"	Hose, 3/8" Hydraulic w/Fittings 48" HP	079001-48
H43	N/A	84"	Hose, 3/8" Hydraulic w/Fittings CS 84" Long, 90	079001-84
H44	N/A	84"	Hose, 3/8" Hydraulic w/Fittings CS 84" Long, 90	079001-84

**FIG. 8-46 HYDRAULIC HOSES (PAGE 1 OF 1)**

**8.12 Hydraulic Hoses**  
**LT70 SuperRev. A4.00 - A4.07**

Hose List

Rev. E

Hose List				
ID	Color	Length	Description	Wood-Mizer Part#
H1	N/A	44"	Assy, 3/4x44 Hydraulic Suction Hose	074591
H2	Yellow	124"	1/2" Hydraulic Pump to Head Manifold Pressure 90 Fitting	079004-124
H3	Green	124"	1/2" Hydraulic Pump to Head Manifold Pressure T Fitting	079004-124
H4	Orange	7"	1/2" Head Manifold Bypass to Pressure 90 Fitting	079004-7
H5	Red	254"	1/2" Pressure 90 Fitting to Pressure Bulkhead	079004-254
H6	N/A	97"	Assy, 5/8x44 Hydraulic Hose	074593
H7	N/A	44"	Assy, 5/8x44 Hydraulic Hose	074592
H8	Blue	254"	1/2" Return T Fitting to Return Bulkhead	079004-254
H9	Steel Line		Tube, Feed Outside 1/2" Steel Hydraulic	075317
H10	Steel Line		Tube, Feed inside 1/2" Steel Hydraulic	075316
H13	Steel Line		Tube, Up/Dn Short 3/8" Steel Hydraulic	075226
H14	Steel Line		Tube, Up/Dn Long 3/8" Steel Hydraulic	075227
H15	White	16"	1/2" Pressure Bulkhead to Proportional Valve #1	079004-16
H16	N/A	34"	1/2" Prop Valve #3 to Bed Manifold Pressure	079004-34
H17	Black	16"	1/2" Bed Manifold Tank to Prop #2 Branch T Fitting	079004-16
H18	Purple	11"	1/2" Prop #2 Branch T Fitting To Return Bulkhead	079004-11
H19	Black	87"	1/4" Rear Toe Board Base	079000-87
H20	Purple	81"	1/4" Rear Toe Board Top	079000-81
H21	Black	65"	3/8" Log Turner Motor Closest to Frame	079001-65
H22	Purple	61"	3/8" Log Turner Motor Away from Frame	079001-61
H23	Yellow	32"	1/4" Clamp Up	079000-32
H24	Green	43"	1/4" Clamp Down	079000-43
H25	White	23"	3/8" Clamp In	079001-23
H26	Orange	20"	3/8" Clamp Out	079001-20
H27	Pink	15"	3/8" Side Support Base	079001-15
H28	N/A	16"	3/8" Side Support Top	079001-16
H29	N/A	73"	3/8" Log Turner Base	079001-73
H30	Orange	65"	3/8" Log Turner Top	079001-65
H31	Gray	56"	1/4" Front Toe Board Base	079000-56
H32	Yellow	52"	1/4" Front Toe Board Top	079000-52
H33	Red	20"	3/8" Loading Arm Base	079001-20
H34	Blue	21"	3/8" Loading Arm Top	079001-21
H35	Yellow	77"	3/8" Loading Arm Branch Base	079001-77
H36	Yellow	34"	3/8" Loading Arm Branch Base	079001-34
H37	Green	74"	3/8" Loading Arm Branch Top	079001-74
H38	Green	34"	3/8" Loading Arm Branch Top	079001-34
H39	N/A	48"	Hose, 3/8" Hydraulic w/Fittings 48" HP	079001-48
H40	N/A	48"	Hose, 3/8" Hydraulic w/Fittings 48" HP	079001-48
H41	N/A	48"	Hose, 3/8" Hydraulic w/Fittings 48" HP	079001-48
H42	N/A	48"	Hose, 3/8" Hydraulic w/Fittings 48" HP	079001-48
H43	N/A	84"	Hose, 3/8" Hydraulic w/Fittings CS 84" Long, 90	079001-84
H44	N/A	84"	Hose, 3/8" Hydraulic w/Fittings CS 84" Long, 90	079001-84

**FIG. 8-47 HYDRAULIC HOSES (PAGE 1 OF 1)**

**8.13 Hydraulic Hoses**  
**LT70 SuperRev. A3.01**

Hose List				
ID	Color	Length	Description	Wood-Mizer Part#
H1	N/A	44"	Assy, 3/4x44 Hydraulic Suction Hose	074591
H2	Yellow	124"	1/2" Hydraulic Pump to Head Manifold Pressure 90 Fitting	079004-124
H3	Green	124"	1/2" Hydraulic Pump to Head Manifold Pressure T Fitting	079004-124
H4	Orange	7"	1/2" Head Manifold Bypass to Pressure 90 Fitting	079004-7
H5	Red	254"	1/2" Pressure 90 Fitting to Pressure Bulkhead	079004-254
H6	N/A	97"	Assy, 5/8x44 Hydraulic Hose	074593
H7	N/A	44"	Assy, 5/8x44 Hydraulic Hose	074592
H8	Blue	254"	1/2" Return T Fitting to Return Bulkhead	079004-254
H9	Steel Line		Tube, Feed Outside 1/2" Steel Hydraulic	075317
H10	Steel Line		Tube, Feed inside 1/2" Steel Hydraulic	075316
H11	N/A	18"	1/4" PF Case Drain to Relief Valve #1	079000-18
H12	N/A	64"	1/4" Relief Valve #2 to Tank Tee	079000-64
H13	Steel Line		Tube, Up/Dn Short 3/8" Steel Hydraulic	075226
H14	Steel Line		Tube, Up/Dn Long 3/8" Steel Hydraulic	075227
H15	White	16"	1/2" Pressure Bulkhead to Proportional Valve #1	079004-16
H16	N/A	34"	1/2" Prop Valve #3 to Bed Manifold Pressure	079004-34
H17	Black	16"	1/2" Bed Manifold Tank to Prop #2 Branch T Fitting	079004-16
H18	Purple	11"	1/2" Prop #2 Branch T Fitting To Return Bulkhead	079004-11
H19	Black	87"	1/4" Rear Toe Board Base	079000-87
H20	Purple	81"	1/4" Rear Toe Board Top	079000-81
H21	Black	65"	3/8" Log Turner Motor Closest to Frame	079001-65
H22	Purple	61"	3/8" Log Turner Motor Away from Frame	079001-61
H23	Yellow	32"	1/4" Clamp Up	079000-32
H24	Green	43"	1/4" Clamp Down	079000-43
H25	White	23"	3/8" Clamp In	079001-23
H26	Orange	20"	3/8" Clamp Out	079001-20
H27	Pink	15"	3/8" Side Support Base	079001-15
H28	N/A	16"	3/8" Side Support Top	079001-16
H29	N/A	73"	3/8" Log Turner Base	079001-73
H30	Orange	65"	3/8" Log Turner Top	079001-65
H31	Gray	56"	1/4" Front Toe Board Base	079000-56
H32	Yellow	52"	1/4" Front Toe Board Top	079000-52
H33	Red	20"	3/8" Loading Arm Base	079001-20
H34	Blue	21"	3/8" Loading Arm Top	079001-21
H35	Yellow	77"	3/8" Loading Arm Branch Base	079001-77
H36	Yellow	34"	3/8" Loading Arm Branch Base	079001-34
H37	Green	74"	3/8" Loading Arm Branch Top	079001-74
H38	Green	34"	3/8" Loading Arm Branch Top	079001-34
H39	N/A	48"	Hose, 3/8" Hydraulic w/Fittings 48" HP	079001-48
H40	N/A	48"	Hose, 3/8" Hydraulic w/Fittings 48" HP	079001-48
H41	N/A	48"	Hose, 3/8" Hydraulic w/Fittings 48" HP	079001-48
H42	N/A	48"	Hose, 3/8" Hydraulic w/Fittings 48" HP	079001-48
H43	N/A	84"	Hose, 3/8" Hydraulic w/Fittings CS 84" Long, 90	079001-84

**FIG. 8-48 HYDRAULIC HOSES (PAGE 1 OF 2)**

<b>Hose List</b>				
<b>ID</b>	<b>Color</b>	<b>Length</b>	<b>Description</b>	<b>Wood-Mizer Part#</b>
H44	N/A	84"	Hose, 3/8" Hydraulic w/Fittings CS 84" Long, 90	079001-84

**FIG. 8-49 HYDRAULIC HOSES (PAGE 2 OF 2)**

**8.14 Hydraulic Hoses**  
**LT70 SuperRev. A2.00 - A3.00**

Hose List				
ID	Color	Length	Description	Wood-Mizer Part#
H1	N/A	44"	Assy, 3/4x44 Hydraulic Suction Hose	074591
H2	Yellow	124"	1/2" Hydraulic Pump to Head Manifold Pressure 90 Fitting	079004-124
H3	Green	124"	1/2" Hydraulic Pump to Head Manifold Pressure T Fitting	079004-124
H4	Orange	7"	1/2" Head Manifold Bypass to Pressure 90 Fitting	079004-7
H5	Red	254"	1/2" Pressure 90 Fitting to Pressure Bulkhead	079004-254
H6	N/A	97"	Assy, 5/8x44 Hydraulic Hose	074593
H7	N/A	44"	Assy, 5/8x44 Hydraulic Hose	074592
H8	Blue	254"	1/2" Return T Fitting to Return Bulkhead	079004-254
H9	Steel Line		Tube, Feed Outside 1/2" Steel Hydraulic	075317
H10	Steel Line		Tube, Feed inside 1/2" Steel Hydraulic	075316
H11	N/A	18"	1/4" PF Case Drain to Relief Valve #1	079000-18
H12	N/A	64"	1/4" Relief Valve #2 to Tank Tee	079000-64
H13	Steel Line		Tube, Up/Dn Short 3/8" Steel Hydraulic	075226
H14	Steel Line		Tube, Up/Dn Long 3/8" Steel Hydraulic	075227
H15	White	16"	1/2" Pressure Bulkhead to Proportional Valve #1	079004-16
H16	N/A	34"	1/2" Prop Valve #3 to Bed Manifold Pressure	079004-34
H17	Black	16"	1/2" Bed Manifold Tank to Prop #2 Branch T Fitting	079004-16
H18	Purple	11"	1/2" Prop #2 Branch T Fitting To Return Bulkhead	079004-11
H19	Black	87"	1/4" Rear Toe Board Base	079000-87
H20	Purple	81"	1/4" Rear Toe Board Top	079000-81
H21	Black	65"	3/8" Log Turner Motor Closest to Frame	079001-65
H22	Purple	61"	3/8" Log Turner Motor Away from Frame	079001-61
H23	Yellow	32"	1/4" Clamp Up	079000-32
H24	Green	43"	1/4" Clamp Down	079000-43
H25	White	23"	3/8" Clamp In	079001-23
H26	Orange	20"	3/8" Clamp Out	079001-20
H27	Pink	15"	3/8" Side Support Base	079001-15
H28	N/A	16"	3/8" Side Support Top	079001-16
H29	N/A	73"	3/8" Log Turner Base	079001-73
H30	Orange	65"	3/8" Log Turner Top	079001-65
H31	Gray	56"	1/4" Front Toe Board Base	079000-56
H32	Yellow	52"	1/4" Front Toe Board Top	079000-52
H33	Red	20"	3/8" Loading Arm Base	079001-20
H34	Blue	21"	3/8" Loading Arm Top	079001-21
H35	Yellow	77"	3/8" Loading Arm Branch Base	079001-77
H36	Yellow	34"	3/8" Loading Arm Branch Base	079001-34
H37	Green	74"	3/8" Loading Arm Branch Top	079001-74
H38	Green	34"	3/8" Loading Arm Branch Top	079001-34
H39	N/A	48"	Hose, 3/8" Hydraulic w/Fittings 48" HP	079001-48
H40	N/A	48"	Hose, 3/8" Hydraulic w/Fittings 48" HP	079001-48
H41	N/A	48"	Hose, 3/8" Hydraulic w/Fittings 48" HP	079001-48
H42	N/A	48"	Hose, 3/8" Hydraulic w/Fittings 48" HP	079001-48
H43	N/A	84"	Hose, 3/8" Hydraulic w/Fittings CS 84" Long, 90	079001-84

**FIG. 8-50 HYDRAULIC HOSES (PAGE 1 OF 2)**

Hose List				
ID	Color	Length	Description	Wood-Mizer Part#
H44	N/A	84"	Hose, 3/8" Hydraulic w/Fittings CS 84" Long, 90	079001-84

**FIG. 8-51 HYDRAULIC HOSES (PAGE 2 OF 2)**

**8.15 Hydraulic Hoses**  
**LT70 SuperRev. A1.00**

Hose List				
ID	Color	Length	Description	Wood-Mizer Part#
H1	N/A	44"	Assy, 3/4x44 Hydraulic Suction Hose	074591
H2	Yellow	124"	1/2" Hydraulic Pump to Head Manifold Pressure 90 Fitting	079004-124
H3	Green	124"	1/2" Hydraulic Pump to Head Manifold Pressure T Fitting	079004-124
H4	Orange	7"	1/2" Head Manifold Bypass to Pressure 90 Fitting	079004-7
H5	Red	254"	1/2" Pressure 90 Fitting to Pressure Bulkhead	079004-254
H6	N/A	97"	Assy, 5/8x44 Hydraulic Hose	074593
H7	N/A	44"	Assy, 5/8x44 Hydraulic Hose	074592
H8	Blue	254"	1/2" Return T Fitting to Return Bulkhead	079004-254
H9	Steel Line		Tube, Feed Outside 1/2" Steel Hydraulic	075317
H10	Steel Line		Tube, Feed inside 1/2" Steel Hydraulic	075316
H11	N/A	18"	1/4" PF Case Drain to Relief Valve #1	079000-18
H12	N/A	64"	1/4" Relief Valve #2 to Tank Tee	079000-64
H13	Steel Line		Tube, Up/Dn Short 3/8" Steel Hydraulic	075226
H14	Steel Line		Tube, Up/Dn Long 3/8" Steel Hydraulic	075227
H15	White	16"	1/2" Pressure Bulkhead to Proportional Valve #1	079004-16
H16	N/A	34"	1/2" Prop Valve #3 to Bed Manifold Pressure	079004-34
H17	Black	16"	1/2" Bed Manifold Tank to Prop #2 Branch T Fitting	079004-16
H18	Purple	11"	1/2" Prop #2 Branch T Fitting To Return Bulkhead	079004-11
H19	Black	87"	1/4" Rear Toe Board Base	079000-87
H20	Purple	81"	1/4" Rear Toe Board Top	079000-81
H21	Black	65"	3/8" Log Turner Motor Closest to Frame	079001-65
H22	Purple	61"	3/8" Log Turner Motor Away from Frame	079001-61
H23	Yellow	32"	1/4" Clamp Up	079000-32
H24	Green	43"	1/4" Clamp Down	079000-43
H25	White	23"	3/8" Clamp In	079001-23
H26	Orange	20"	3/8" Clamp Out	079001-20
H27	Pink	15"	3/8" Side Support Base	079001-15
H28	N/A	16"	3/8" Side Support Top	079001-16
H29	N/A	73"	3/8" Log Turner Base	079001-73
H30	Orange	65"	3/8" Log Turner Top	079001-65
H31	Gray	56"	1/4" Front Toe Board Base	079000-56
H32	Yellow	52"	1/4" Front Toe Board Top	079000-52
H33	Red	20"	3/8" Loading Arm Base	079001-20
H34	Blue	21"	3/8" Loading Arm Top	079001-21
H35	Yellow	77"	3/8" Loading Arm Branch Base	079001-77
H36	Yellow	34"	3/8" Loading Arm Branch Base	079001-34
H37	Green	74"	3/8" Loading Arm Branch Top	079001-74
H38	Green	34"	3/8" Loading Arm Branch Top	079001-34
H39	N/A	48"	Hose, 3/8" Hydraulic w/Fittings 48" HP	079001-48
H40	N/A	48"	Hose, 3/8" Hydraulic w/Fittings 48" HP	079001-48
H41	N/A	48"	Hose, 3/8" Hydraulic w/Fittings 48" HP	079001-48
H42	N/A	48"	Hose, 3/8" Hydraulic w/Fittings 48" HP	079001-48
H43	N/A	84"	Hose, 3/8" Hydraulic w/Fittings CS 84" Long, 90	079001-84

**FIG. 8-52 HYDRAULIC HOSES (PAGE 1 OF 2)**

Hose List				
ID	Color	Length	Description	Wood-Mizer Part#
H44	N/A	84"	Hose, 3/8" Hydraulic w/Fittings CS 84" Long, 90	079001-84

**FIG. 8-53 HYDRAULIC HOSES (PAGE 2 OF 2)**