

# **Wood-Mizer®**

## **Replacement Parts**

---

**LX50SC**

**rev. B1.02**

---



**Safety is our #1 concern!** Read and understand all safety information and instructions before operating, setting up or maintaining this machine.

*Form #851*

# Table of Contents

# Section-Page

|                  |   |            |
|------------------|---|------------|
| <b>SECTION 1</b> | <b>GENERAL INFORMATION</b>                          | <b>1-1</b> |
| 1.1              | How To Use the Parts List.....                      | 1-1        |
| 1.2              | Sample Assembly .....                               | 1-1        |
| <b>SECTION 2</b> | <b>BED FRAME PARTS</b>                              | <b>2-1</b> |
| 2.1              | LX50 Bed Frame .....                                | 2-1        |
| 2.2              | Basic Bed Frame .....                               | 2-2        |
| 2.3              | Bed Section .....                                   | 2-3        |
| 2.4              | Bed Foot .....                                      | 2-4        |
| 2.5              | Log Side Support w/Clamp .....                      | 2-5        |
| 2.6              | Bed Connection .....                                | 2-6        |
| 2.7              | End Stop .....                                      | 2-7        |
| 2.8              | Cross Brace .....                                   | 2-8        |
| 2.9              | LX50 Bed Frame Extension .....                      | 2-9        |
| 2.10             | LX50 Bed Frame Extension with Log Side Clamp .....  | 2-10       |
| 2.11             | Loading Ramp Assembly 097483 .....                  | 2-11       |
| <b>SECTION 3</b> | <b>SAW HEAD</b>                                     | <b>3-1</b> |
| 3.1              | Saw Head .....                                      | 3-2        |
| 3.2              | Saw Head Decals .....                               | 3-4        |
| 3.3              | Blade Height Scale (No. 530667) .....               | 3-5        |
| 3.4              | Up/Down Mast Guide Bracket (No. 532393) .....       | 3-6        |
| 3.5              | Saw Head Rollers (532307, 532308) .....             | 3-7        |
| 3.6              | Cable Guide Roller (Part No. 532306) .....          | 3-8        |
| 3.7              | Band Wheel Assembly .....                           | 3-9        |
| 3.8              | Blade Guide Assembly, Drive Side (No. 593254) ..... | 3-10       |
| 3.9              | Blade Guide Assembly, Idle Side (No. 593258) .....  | 3-11       |
| 3.10             | Tensioner Assembly (595710) .....                   | 3-12       |
| <b>SECTION 4</b> | <b>SAWMILL MAST</b>                                 | <b>4-1</b> |
| 4.1              | LX50 Sawmill Mast .....                             | 4-1        |
| 4.2              | Horizontal Bearing Assembly .....                   | 4-3        |
| 4.3              | Carriage Wheel Assembly .....                       | 4-4        |
| 4.4              | Sweeper Assembly .....                              | 4-5        |
| 4.5              | Additional Equipment - Left .....                   | 4-6        |
| 4.6              | Additional Equipment - Right .....                  | 4-7        |
| 4.7              | Blade Tensioner Assembly .....                      | 4-8        |
| 4.8              | Up/Down System .....                                | 4-9        |
| 4.9              | Winch Crank (No. 532318) .....                      | 4-10       |
| 4.10             | Winch Crank Handle (No. 096499) .....               | 4-11       |
| 4.11             | Water Lube Assembly .....                           | 4-12       |

**Table of Contents**

**Section-Page**

**SECTION 5      MOTORS**

**5-1**

|     |   |     |
|-----|---|-----|
| 5.1 | Motor Kit .....   | 5-1 |
| 5.2 | Electric Box Bracket, Starter (included in assy No. 586945-3) ..... | 5-3 |
| 5.3 | Electric Box .....  | 5-4 |
| 5.4 | G14 Engine Kit .....  | 5-5 |
| 5.5 | Clutch Lever .....  | 5-8 |

## SECTION 1 GENERAL INFORMATION

### 1.1 How To Use the Parts List

- Use the index above to locate the assembly that contains the part you need.
- Go to the appropriate section and locate the part in the illustration.
- Use the number pointing to the part to locate the correct part number and description in the table.
- Parts shown indented under another part are included with that part.
- Parts marked with a diamond (◆) are only available in the assembly listed above the part.

See the sample table below. Sample Part #A01111 includes part F02222-2 and subassembly A03333. Subassembly A03333 includes part S04444-4 and subassembly K05555. The diamond (◆) indicates that S04444-4 is not available except in subassembly A03333. Subassembly K05555 includes parts M06666 and F07777-77. The diamond (◆) indicates M06666 is not available except in subassembly K05555.

| 1.2 Sample Assembly |   |           |     |   |
|---------------------|---|-----------|-----|---|
| REF.                | DESCRIPTION (◆ Indicates Parts Available In Assemblies Only)  | PART #    | QTY |   |
|                     | Sample Assembly, Complete (Includes All Indented Parts Below) | A01111    | 1   |   |
| 1                   | Sample Part   | F02222-22 | 1   |   |
|                     | Sample Subassembly (Includes All Indented Parts Below)        | A03333    | 1   |   |
| 2                   | Sample Part (◆ Indicates Part Is Only Available With A03333)  | S04444-4  | 1   | ◆ |
|                     | Sample Subassembly (Includes All Indented Parts Below)        | K05555    | 1   |   |
| 3                   | Sample Part (◆ Indicates Part Is Only Available With K05555)  | M06666    | 2   | ◆ |
| 4                   | Sample Part   | F07777-77 | 1   |   |

#### To Order Parts:

- From Europe call our European Headquarters and Manufacturing Facility in Kolo, Poland at **+48-63-2626000**. From the continental U.S., call our toll-free Parts hotline at **1-800-525-8100**. Have your customer number, vehicle identification number, and part numbers ready when you call. From other international locations, contact the Wood-Mizer distributor in your area for parts.

#### Office Hours:

| Country | Monday - Friday | Saturday        | Sunday |
|---------|-----------------|-----------------|--------|
| Poland  | 7-15            | Closed          | Closed |
| US      | 8 a.m.- 5 p.m.  | 8 a.m.- 12 p.m. | Closed |

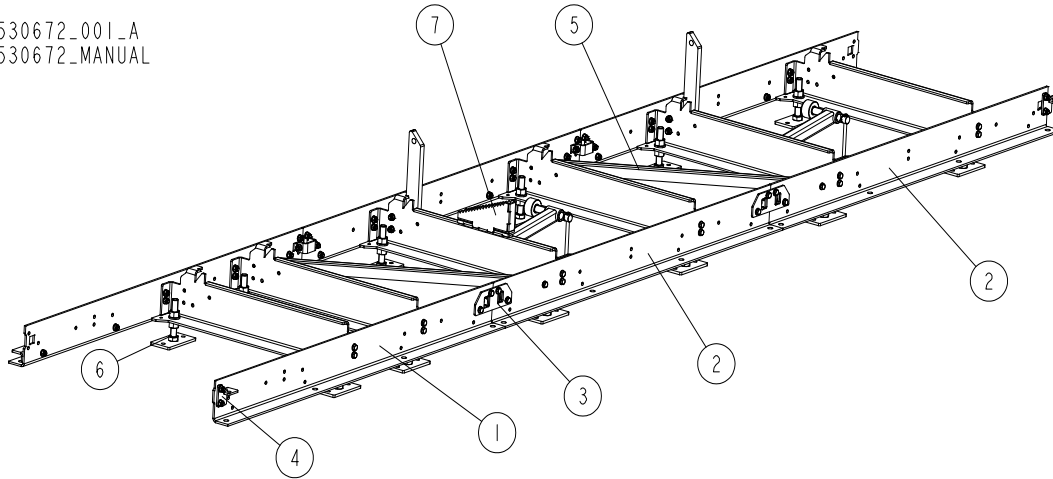


**CAUTION!** It is strongly recommended that only original spare parts be used.

## SECTION 2 BED FRAME PARTS

### 2.1 LX50 Bed Frame

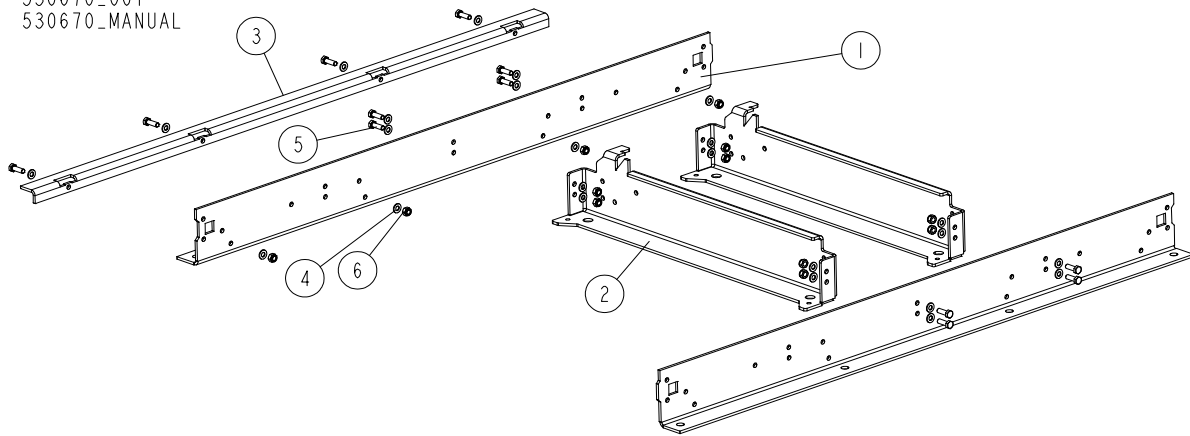
530672\_001\_A  
 530672\_MANUAL



| REF. | DESCRIPTION (* indicates parts available in assemblies only)     | PART #    | QTY |
|------|--|-----------|-----|
| -    | <b>BED FRAME, LX50 COMPLETE</b>                                  | 530672    | 1   |
| 1    | BED FRAME, LX50 BASIC - COMPLETE <a href="#">See Section 2.2</a> | 530670    | 1   |
| 2    | BED SECTION, LX50 COMPLETE <a href="#">See Section 2.3</a>       | 530671    | 2   |
| 3    | ASSY, BED CONNECTION <a href="#">See Section 2.6</a>             | X100-1271 | 4   |
| 4    | ASSY, END STOP <a href="#">See Section 2.6</a>                   | X100-1274 | 2   |
| 5    | ASSY, CROSS BRACE <a href="#">See Section 2.6</a>                | X100-1276 | 2   |
| 6    | FOOT, LT15P BED - COMPLETE                                       | 514997    | 12  |
| 7    | <b>WLDMT, LOG TAPER</b>  | X100-1304 | 1   |
|      | <b>WLDMNT, LOG TAPER WEDGE LX25/55 (AMERICAN MARKET ONLY)</b>    | 130005    | 1   |

**2.2 Basic Bed Frame**

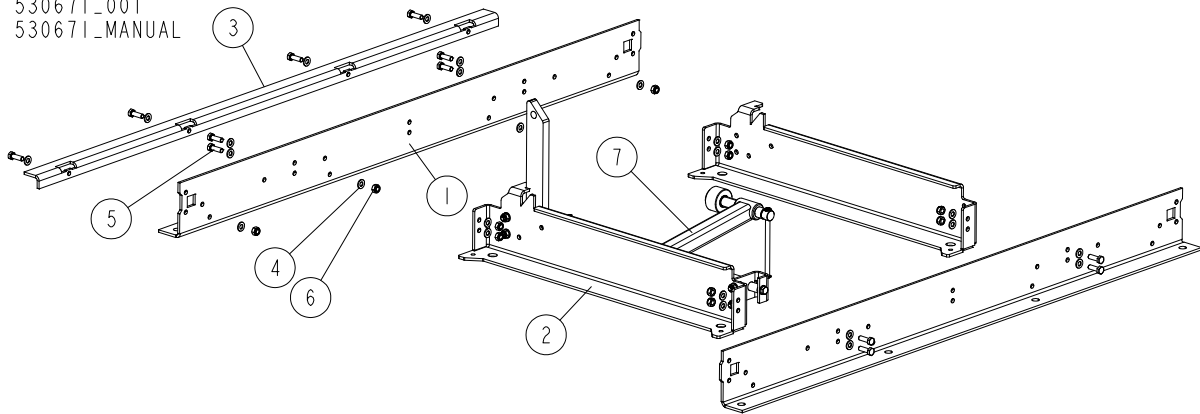
530670\_001  
530670\_MANUAL



| REF | DESCRIPTION (u indicates parts available in assemblies only) | PART #     | QTY |  |
|-----|--|------------|-----|--|
| -   | <b>BED, LX50 BASIC FRAME - COMPLETE</b>                      | 530670     | 1   |  |
| 1   | BENT PLATE   | X100-1266  | 2   |  |
| 2   | RAIL, CROSS  | 550790-1   | 2   |  |
| 3   | BENT PLATE   | X100-1268  | 1   |  |
| 4   | WASHER, 10.5 FLAT ZINC                                       | F81055-1   | 24  |  |
| 5   | BOLT, DIN933-M10X30-8.8-A2E HEX HEAD                         | F81003-111 | 12  |  |
| 6   | NUT, M10-8-B HEX NYLON ZINC LOCK                             | F81033-1   | 12  |  |

**2.3 Bed Section**

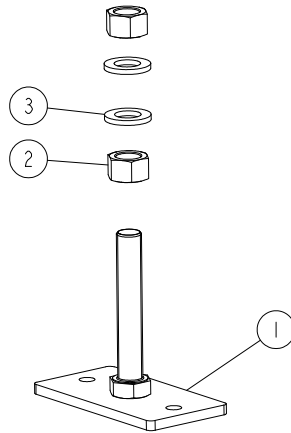
530671\_001  
 530671\_MANUAL



| REF | DESCRIPTION (u indicates parts available in assemblies only) | PART #     | QTY |
|-----|--|------------|-----|
| -   | <b>SECTION, LX50 BED - COMPLETE</b>                          | 530671     | 1   |
| 1   | BENT PLATE   | X100-1266  | 2   |
| 2   | RAIL, CROSS  | 550790-1   | 2   |
| 3   | BENT PLATE   | X100-1268  | 1   |
| 4   | WASHER, 10.5 FLAT ZINC                                       | F81055-1   | 24  |
| 5   | BOLT, DIN933-M10X30-8.8-A2E HEX HEAD                         | F81003-111 | 12  |
| 6   | NUT, M10-8-B HEX NYLON ZINC LOCK                             | F81033-1   | 12  |
| 7   | SUPPORT, LOG SIDE W/CLAMP - COMPLETE                         | 530673     | 1   |

**2.4 Bed Foot**

514997\_001  
514997\_MANUAL

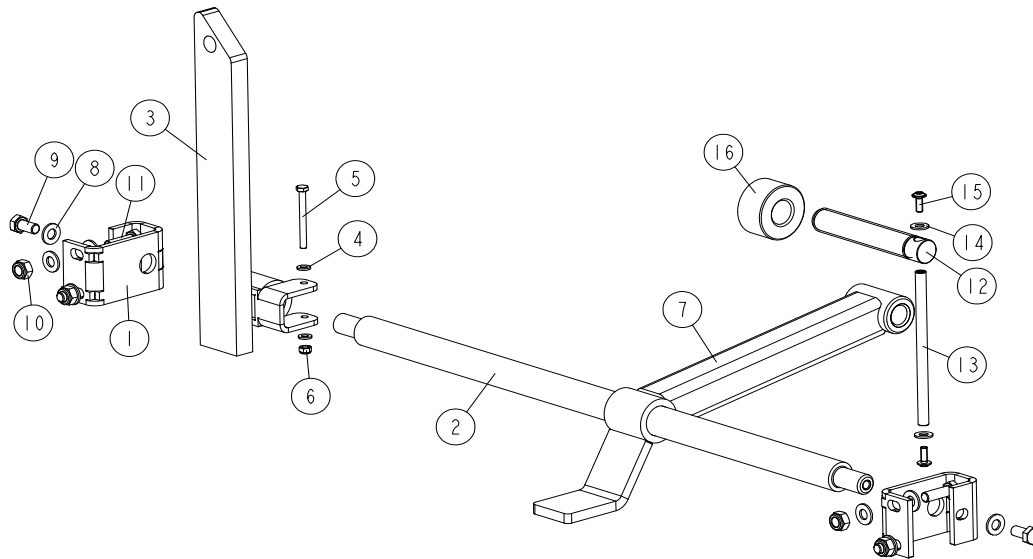


| REF. | DESCRIPTION (* indicates parts available in assemblies only) | PART #   | QTY |  |
|------|--|----------|-----|--|
| -    | <b>FOOT, LT15P BED - COMPLETE</b>                            | 514997   | 1   |  |
| 1    | FOOT, LT15 BED WLDMT/ZINC                                    | 514996-1 | 1   |  |
| 2    | NUT, M20-8- HEX ZINC   | F81037-1 | 2   |  |
| 3    | WASHER, 21 FLAT ZINC   | F81059-2 | 2   |  |



## 2.5 Log Side Support w/Clamp

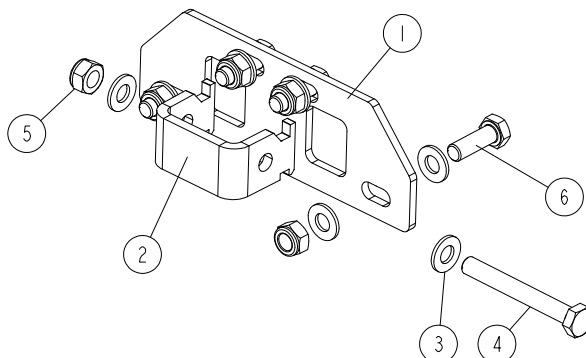
530673\_001  
530673\_MANUAL



| REF | DESCRIPTION (◆ indicates parts available in assemblies only) | PART #     | QTY |
|-----|--|------------|-----|
| -   | <b>SUPPORT, LOG SIDE W/CLAMP - COMPLETE</b>                  | 530673     | 1   |
| 1   | BRACKET, SIDE SUPPORT MOUNTING, LX50 ZIN                     | 530674-1   | 2   |
| 2   | ROD, SIDE SUPPORT MAIN                                       | 515059-1   | 1   |
| -   | SUPPORT, SIDE LX50 - COMPLETE                                | 530675     | 1   |
| 3   | SUPPORT, SIDE LX50 WLDMT/PTD                                 | 530676-1   | 1   |
| 4   | WASHER, 6.4 FLAT ZINC  | F81053-1   | 2   |
| 5   | BOLT, M6X60-8.8 HEX HEAD FULL THREAD ZIN                     | F81001-9   | 1   |
| 6   | NUT, M6-8-B HEX NYLON ZINC LOCK                              | F81031-2   | 1   |
| 7   | ARM, CLAMP LX50 ZINC   | 530701-1   | 1   |
| 8   | WASHER, 10.5 FLAT ZINC                                       | F81055-1   | 10  |
| 9   | BOLT, ISO 4017-M10X20-8.8-A2E HEX HEAD                       | F81003-53  | 2   |
| 10  | NUT, M10-8-B HEX NYLON ZINC LOCK                             | F81033-1   | 4   |
| 11  | BOLT, DIN933-M10X30-8.8-A2E HEX HEAD                         | F81003-111 | 4   |
| -   | BOLT, CLAMP - COMPLETE                                       | 507563     | 1   |
| 12  | BOLT, LOG CLAMP  | 507463     | 1   |
| 13  | ROD, ZINC-PLATED   | 511923-1   | 1   |
| 14  | WASHER, 8.4 FLAT ZINC  | F81054-1   | 2   |
| 15  | SCREW, M6X16 BN 11252 "BOSSARD".                             | F81001-24  | 2   |
| 16  | CAP, MOUNTING  | T00414     | 1   |

**2.6 Bed Connection**

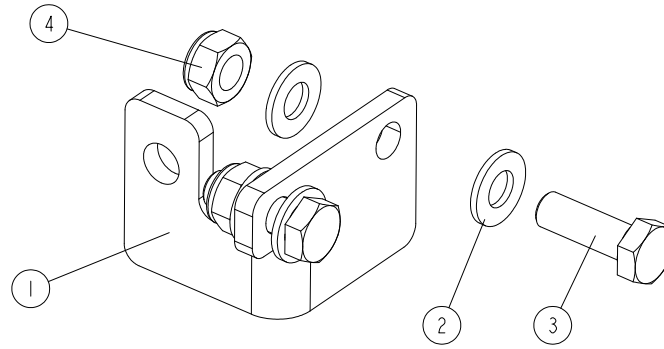
X100-1271\_001\_A  
 X100-1271\_MANUAL



| REF. | DESCRIPTION (* indicates parts available in assemblies only) | PART #     | QTY |
|------|--|------------|-----|
| -    | <b>ASSY, BED CONNECTION</b>                                  | X100-1271  | 1   |
| 1    | FLAT PLATE   | X100-1272  | 1   |
| 2    | BENT PLATE   | X100-1273  | 1   |
| 3    | WASHER, 10.5 FLAT ZINC                                       | F81055-1   | 10  |
| 4    | BOLT, M10X80-8.8 HEX HEAD ZINC                               | F81003-50  | 1   |
| 5    | NUT, M10-8-B HEX NYLON ZINC LOCK                             | F81033-1   | 5   |
| 6    | BOLT DIN 933-M10X30 8.8-A2E                                  | F81003-111 | 4   |

**2.7 End Stop**

X100-1274\_001  
 X100-1274\_MANUAL



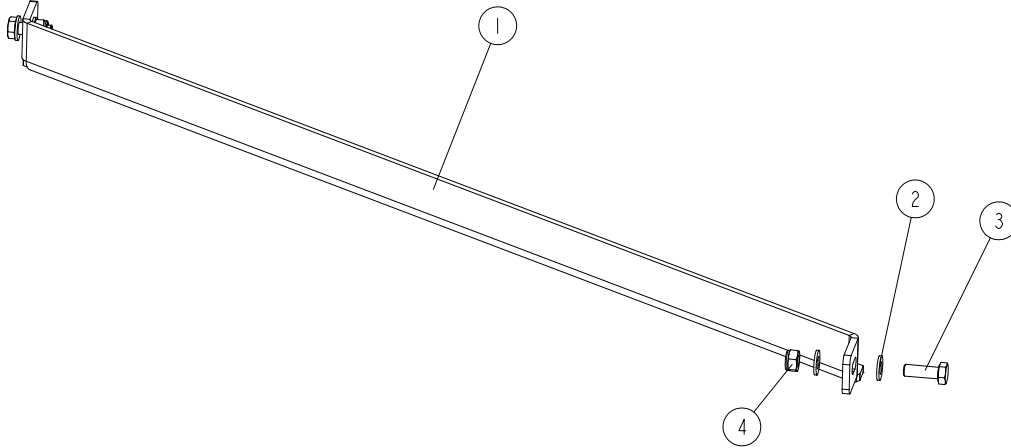
| REF. | DESCRIPTION (* indicates parts available in assemblies only) | PART #    | QTY |  |
|------|--|-----------|-----|--|
| -    | <b>ASSY, END STOP</b>  | X100-1274 | 1   |  |
| 1    | BENT PLATE   | X100-1275 | 1   |  |
| 2    | WASHER, 10.5 FLAT ZINC                                       | F81055-1  | 4   |  |
| 3    | BOLT, M10X30-8.8 HEX HEAD FULL THREAD ZINC                   | F81003-2  | 2   |  |
| 4    | NUT, M10-8-B HEX NYLON ZINC LOCK                             | F81033-1  | 2   |  |

# 2 BED FRAME PARTS

## Cross Brace

### 2.8 Cross Brace

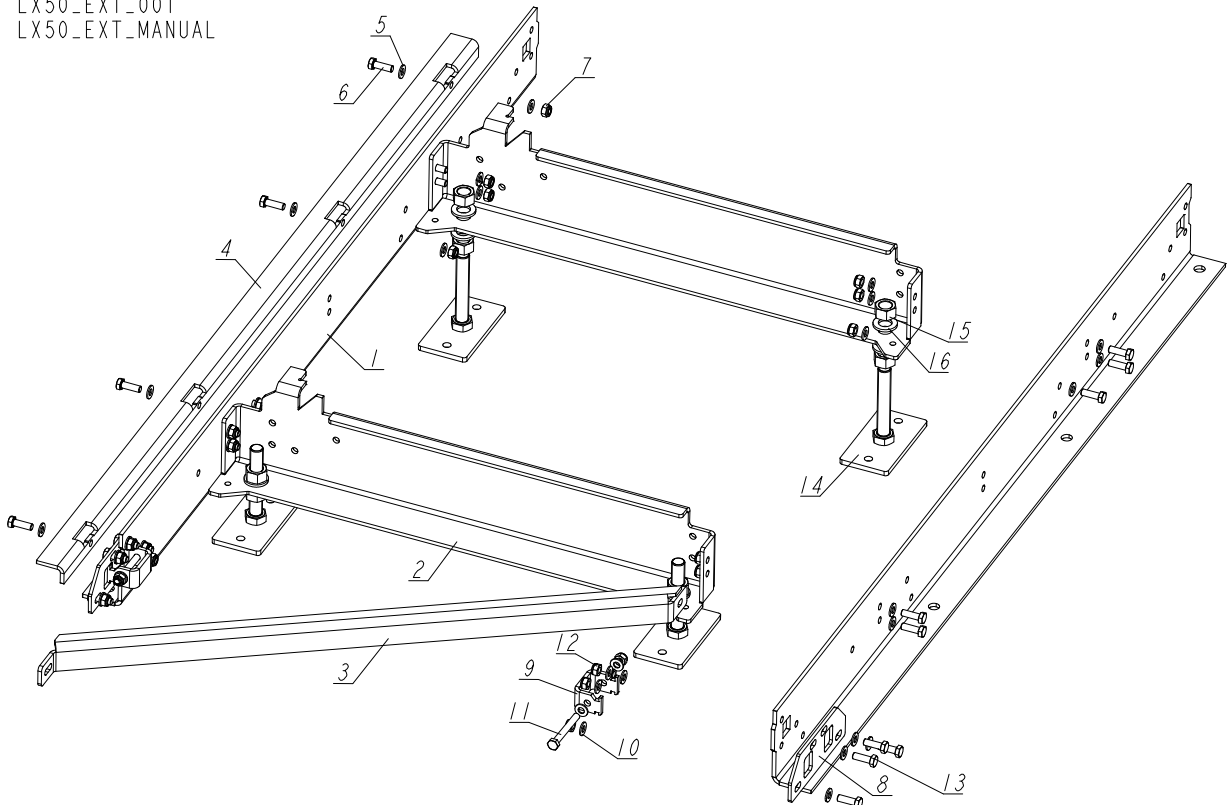
X100-1276\_001  
X100-1276\_MANUAL



| REF. | DESCRIPTION (* indicates parts available in assemblies only) | PART #    | QTY |  |
|------|--|-----------|-----|--|
| -    | <b>ASSY, CROSS BRACE</b>                                     | X100-1276 | 1   |  |
| 1    | BENT PLATE   | X100-1277 | 1   |  |
| 2    | WASHER, 10.5 FLAT ZINC                                       | F81055-1  | 4   |  |
| 3    | BOLT, M10X30-8.8 HEX HEAD FULL THREAD ZINC                   | F81003-2  | 2   |  |
| 4    | NUT, M10-8-B HEX NYLON ZINC LOCK                             | F81033-1  | 2   |  |

## 2.9 LX50 Bed Frame Extension

LX50\_EXT\_001  
LX50\_EXT\_MANUAL



| REF. | DESCRIPTION (* indicates parts available in assemblies only) | PART #     | QTY |
|------|--|------------|-----|
| -    | <b>LX50 EXTENSION</b>  | LX50-EXT   | 1   |
| 1    | BENT PLATE   | X100-1266  | 2   |
| 2    | BENT PLATE   | X100-1267  | 2   |
| 3    | BENT PLATE   | X100-1277  | 1   |
| 4    | BENT PLATE   | X100-1268  | 1   |
| 5    | WASHER, 10.5 FLAT ZINC                                       | F81055-1   | 28  |
| 6    | BOLT, DIN933-M10X30-8.8-A2E HEX HEAD FULL THREAD             | F81003-111 | 14  |
| 7    | NUT, M10-8-B HEX NYLON ZINC LOCK                             | F81033-1   | 14  |
| -    | ASSY, BED CONNECTION   | X100-1271  | 2   |
| 8    | FLAT PLATE   | X100-1272  | 1   |
| 9    | BENT PLATE   | X100-1273  | 1   |
| 10   | WASHER, 10.5 FLAT ZINC                                       | F81055-1   | 10  |
| 11   | BOLT, M10X80-8.8 HEX HEAD ZINC                               | F81003-50  | 1   |
| 12   | NUT, M10-8-B HEX NYLON ZINC LOCK                             | F81033-1   | 5   |
| 13   | BOLT, DIN933-M10X30-8.8-A2E HEX HEAD FULL THREAD             | F81003-111 | 4   |
| -    | FOOT, LT15 BED COMPLETE                                      | 514997     | 4   |
| 14   | FOOT WELDMENT, LT15 ZINC-PLATED                              | 514996-1   | 1   |
| 15   | NUT, M20-8 HEX ZINC  | F81037-1   | 2   |
| 16   | WASHER, 21 FLAT ZINC   | F81059-2   | 2   |

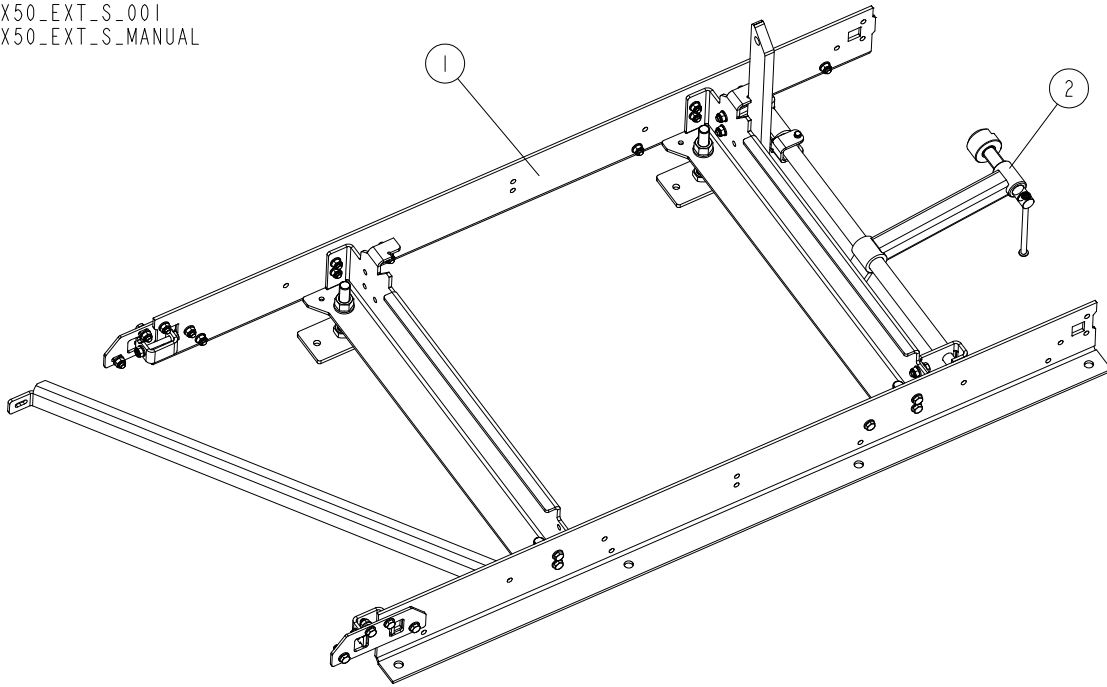


# BED FRAME PARTS

## LX50 Bed Frame Extension with Log Side Clamp

### 2.10 LX50 Bed Frame Extension with Log Side Clamp

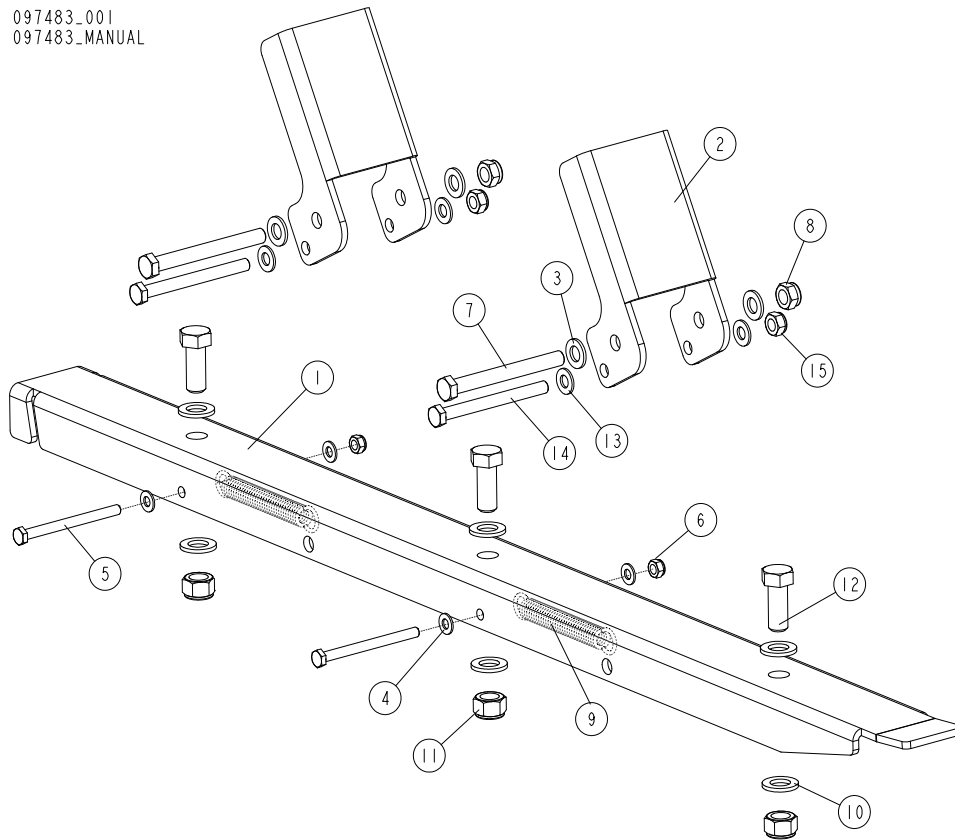
LX50\_EXT\_S\_001  
LX50\_EXT\_S\_MANUAL



| REF. | DESCRIPTION (* indicates parts available in assemblies only) | PART #     | QTY |  |
|------|--|------------|-----|--|
| -    | <b>LX50 EXTENSION WITH LOG SIDE CLAMP</b>                    | LX50-EXT-S | 1   |  |
| 1    | LX50 EXTENSION   | LX50-EXT   | 1   |  |
| 2    | LOG SIDE SUPPORT W/CLAMP, LX50 - COMPLETE                    | 530673     | 1   |  |

## 2.11 Loading Ramp Assembly 097483<sup>1</sup>

097483\_001  
097483\_MANUAL



| REF. | DESCRIPTION (* indicates parts available in assemblies only) | PART #    | QTY |
|------|--|-----------|-----|
| -    | <b>RAMP ASSEMBLY, LOADING</b>                                | 097483    | 1   |
| 1    | PLATE, LT10 LOADING RAMP - MAIN                              | 097481-1  | 1   |
| 2    | BRACKET, LOG LOADING STOP                                    | 097482-1  | 2   |
| 3    | WASHER, 13 FLAT ZINC   | F81056-1  | 4   |
| 4    | WASHER, 8.4 FLAT ZINC  | F81054-1  | 4   |
| 5    | BOLT, M8X100-8.8 HEX HEAD ZINC                               | F81002-23 | 2   |
| 6    | NUT, M8-8-B HEX NYLON ZINC LOCK                              | F81032-2  | 2   |
| 7    | BOLT, M12X115-8.8-B HEX HEAD ZINC                            | F81004-33 | 2   |
| 8    | NUT, M12-8 DIN 982 HEX NYLON ZINC LOCK                       | F81034-2  | 2   |
| 9    | SPRING, N1.9XN14.2X104                                       | 091865    | 2   |
| 10   | WASHER, 17 SPLIT LOCK ZINC                                   | F81058-1  | 6   |
| 11   | NUT, M16-8 HEX NYLON ZINC LOCK                               | F81036-2  | 3   |
| 12   | BOLT, M16X40-8.8 HEX HEAD FULL THREAD ZINC                   | F81006-13 | 3   |
| 13   | WASHER, 10.5 FLAT ZINC                                       | F81055-1  | 4   |
| 14   | BOLT, M10X110-8.8 HEX HEAD ZINC                              | F81003-43 | 2   |
| 15   | NUT, M10-8-B HEX NYLON ZINC LOCK                             | F81033-1  | 2   |

1.(2x097483) included in assembly 586967

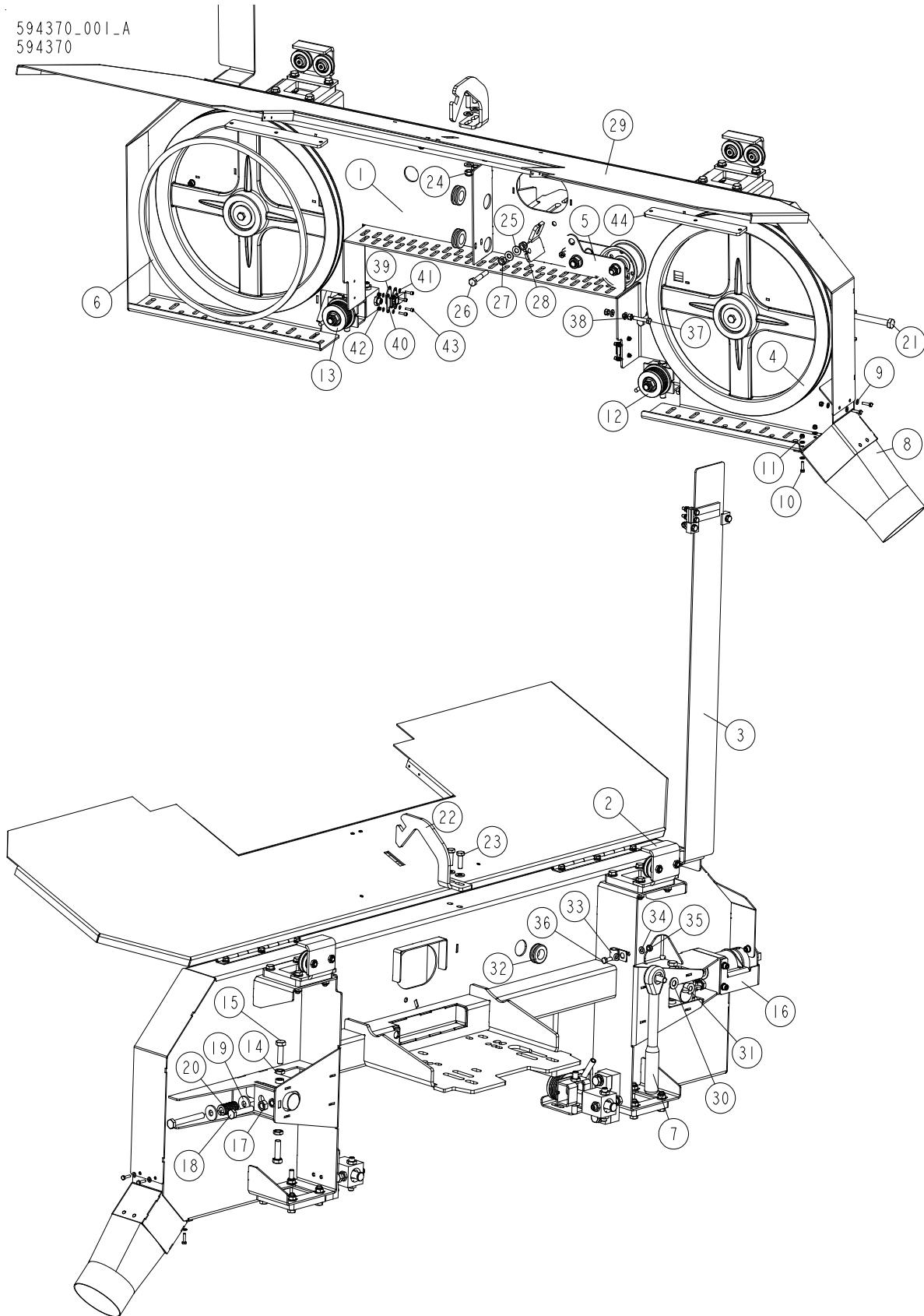


**SECTION 3 SAW HEAD**



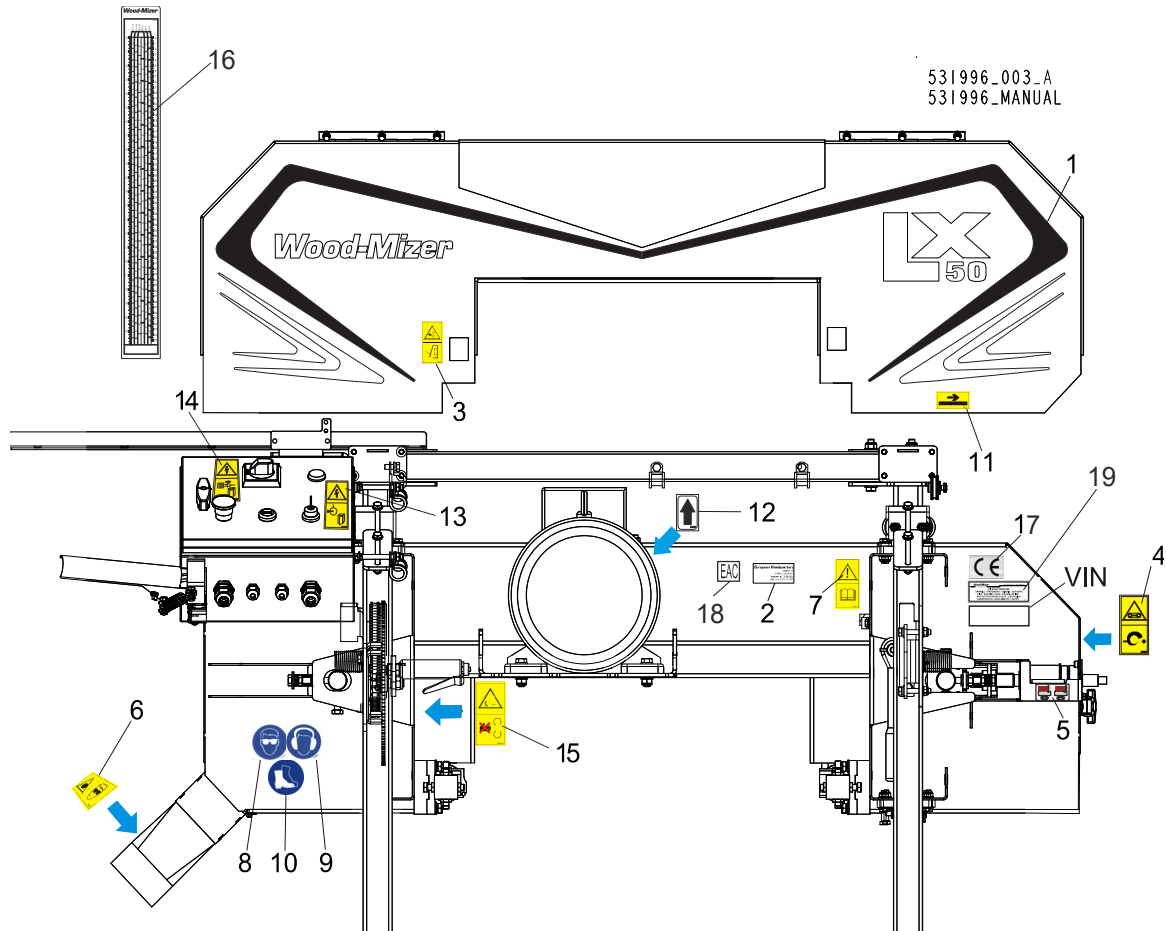
### 3.1 Saw Head

594370\_001\_A  
594370



| REF | DESCRIPTION (◆ indicates parts available in assemblies only)     | PART #    | QTY |  |
|-----|--|-----------|-----|--|
| -   | <b>SAW HEAD, LX50 - COMPLETE</b>                                 | 594370    | 1   |  |
| 1   | SAW HEAD,LX50SA  | 557344-1  | 1   |  |
| 2   | BRACKET ASSEMBLY, UP/DOWN MAST GUIDE                             | 532393    | 1   |  |
| 3   | SCALE, BLADE HEIGHT - COMPLETE <a href="#">See Section 3.3</a>   | 530667    | 1   |  |
| 4   | ASSY, BANDWHEEL SHAFT <a href="#">See Section 3.7</a>            | X100-961  | 2   |  |
| 5   | TENSIONER, LX50SA ASSY.  | 595710    | 1   |  |
| 6   | BELT, B47.5  | X100-900  | 1   |  |
| 7   | WRENCH, LT20 BLADE TENSION                                       | 091620    | 1   |  |
| 8   | ASSY, SAWDUST CHUTE  | X100-1288 | 1   |  |
| 9   | WASHER, 4.3 FLAT ZINC  | F81051-2  | 8   |  |
| 10  | BOLT, M4X16 5.8 HEX HEAD FULL THREAD ZIN                         | F81011-6  | 4   |  |
| 11  | NUT, M4-B HEX NYLON ZINC LOCK                                    | F81029-1  | 4   |  |
| 12  | BLADE GUIDE ASSEMBLY, DRIVE SIDE <a href="#">See Section 3.8</a> | 593254    | 1   |  |
| 13  | BLADE GUIDE ASSEMBLY, IDLE SIDE <a href="#">See Section 3.9</a>  | 593258    | 1   |  |
| 14  | NUT, M10X1-04-ST-A2E ISO8675 THIN                                | F81033-10 | 2   |  |
| 15  | BOLT,M10X35-8.8 HEX HEAD FULL THREAD ZIN                         | F81003-17 | 2   |  |
| 16  | TENSIONER ASSEMBLY <a href="#">See Section 4.7</a>               | X100-1246 | 1   |  |
| 17  | NUT, M10-8-B-HEX ZINC  | F81033-3  | 1   |  |
| 18  | BOLT, M10X50MM,HEX HEAD FULL THREAD ZINC                         | F81003-4  | 1   |  |
| 19  | WASHER, 10.5 SPECIAL FLAT ZINC                                   | F81055-6  | 2   |  |
| 20  | SPRING, 3/4 O.D.X 1 1/2 DIE                                      | 034430    | 1   |  |
| 21  | BOLT, M10X80-8.8 HEX HEAD ZINC                                   | F81003-50 | 1   |  |
| 22  | ASSY, COVER LATCH  | X100-1154 | 1   |  |
| 23  | BOLT, M8X25-8.8-B HEX HEAD FULL THREAD Z                         | F81002-5  | 2   |  |
| 24  | NUT, M8-8-B HEX NYLON ZINC LOCK                                  | F81032-2  | 2   |  |
| 25  | WASHER, 8.4 FLAT ZINC  | F81054-1  | 4   |  |
| 26  | BOLT, M8X50 HH   | F81002-10 | 2   |  |
| 27  | NUT, M8-8-B HEX ZINC   | F81032-1  | 2   |  |
| 28  | NUT, M8-8-B HEX NYLON ZINC LOCK                                  | F81032-2  | 2   |  |
| 29  | COVER, LX50SA FRONT  | 557348    | 1   |  |
| 30  | WASHER, 10.5 FLAT ZINC   | F81055-1  | 1   |  |
| 31  | NUT, M10 WING  | F81033-8  | 1   |  |
| 32  | GROMMET, RUBBER 3/4 ID   | 025247    | 3   |  |
| 33  | CLAMP, 1/2" EMT COATED   | P07584    | 1   |  |
| 34  | WASHER, 6.4 FLAT ZINC  | F81053-1  | 4   |  |
| 35  | NUT, M6-8-B HEX NYLON ZINC LOCK                                  | F81031-2  | 2   |  |
| 36  | BOLT M6X16 HH ZC FT 8.8 DIN 933                                  | F81001-15 | 1   |  |
| 37  | BOLT, M6X30-8.8 HEX HEAD FULL THREAD ZIN                         | F81001-8  | 1   |  |
| 38  | NUT, M6 8 HEX ZINC   | F81031-1  | 1   |  |
| 39  | WASHER   | 550822    | 2   |  |
| 40  | HOOK FASTENER, TLE.Z-15/52+R                                     | 550743    | 2   |  |
| 41  | WASHER, 3.2 FLAT ZINC  | F81050-2  | 16  |  |
| 42  | NUT, M3-6-HEX NYLON ZINC LOCK                                    | F81028-2  | 8   |  |
| 43  | BOLT, M3X12-8.8 FE/ZN PN-EN ISO 4762                             | F81011-30 | 8   |  |
| 44  | PLATE WELDMENT, COVER MOUNT                                      | 086701-1  | 2   |  |

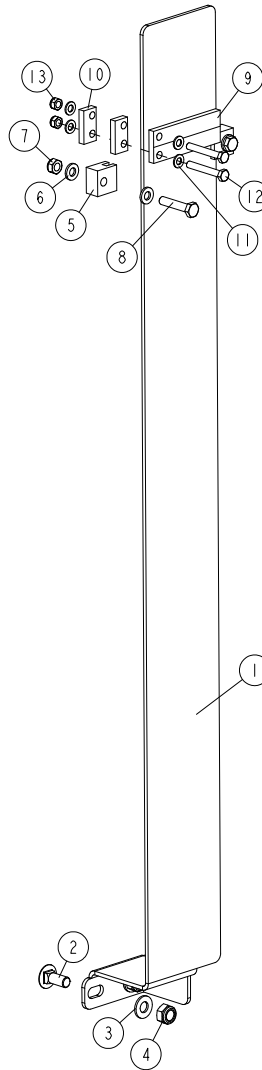
### 3.2 Saw Head Decals



| REF. | DESCRIPTION (◆ indicates parts available in assemblies only) | PART #  | QTY |
|------|--|---------|-----|
|      | <b>PICTOGRAPHIC DECAL KIT LX50</b>                           | 533690  | 1   |
| 1    | DECAL, SERIES SAWMILL  | 518620  | 1   |
| 2    | DECAL, EUROPEAN HEADQUARTERS ADDRESS                         | 015841  | 1   |
| 3    | DECAL, SAWMILL COVERS CAUTION                                | 099220  | 1   |
| 4    | DECAL, BLADE TENSION (PICTOGRAM)                             | 099219  | 1   |
| 5    | DECAL, BLADE ALIGNMENT                                       | 527864  | 1   |
| 6    | DECAL, SAWDUST PROTECTION, PICTOGRAM                         | 099222  | 1   |
| 7    | DECAL, READ OPERATOR'S MANUAL (PICTOGRAM)                    | 096317  | 1   |
| 8    | DECAL, EYE WARNING (PICTOGRAM)                               | S12004G | 1   |
| 9    | DECAL, EAR WARNING (PICTOGRAM)                               | S12005G | 1   |
| 10   | DECAL, USE SAFETY BOOTS (PICTOGRAM)                          | 501465  | 1   |
| 11   | DECAL, BLADE MOVEMENT DIRECTION (PICTOGRAM)                  | 096321  | 1   |
| 12   | DECAL, MOTOR DIRECTION                                       | S20097  | 1   |
| 13   | DECAL, HIGH VOLTAGE IN ELECTRIC BOX                          | 096316  | 1   |
| 14   | DECAL, DISCONNECT POWER SUPPLY BEFORE OPENING                | 096319  | 1   |
| 15   | DECAL, GEAR DANGER (PICTOGRAM)                               | 099540  | 1   |
| 16   | DECAL, SCALE (MILLIMETRES/INCHES) LX50                       | 535115  | 1   |
| 17   | <b>DECAL, CE CERTIFIED MACHINE [SMALL]</b>                   | P85070  | 1   |
| 18   | <b>DECAL, RUSSIAN SAFETY CERTIFICATION</b>                   | EAC     | 1   |
| 19   | <b>DECAL, INTERNATIONAL SAWMILL NAME</b>                     | 501466  | 1   |

**3.3 Blade Height Scale (No. 530667)**

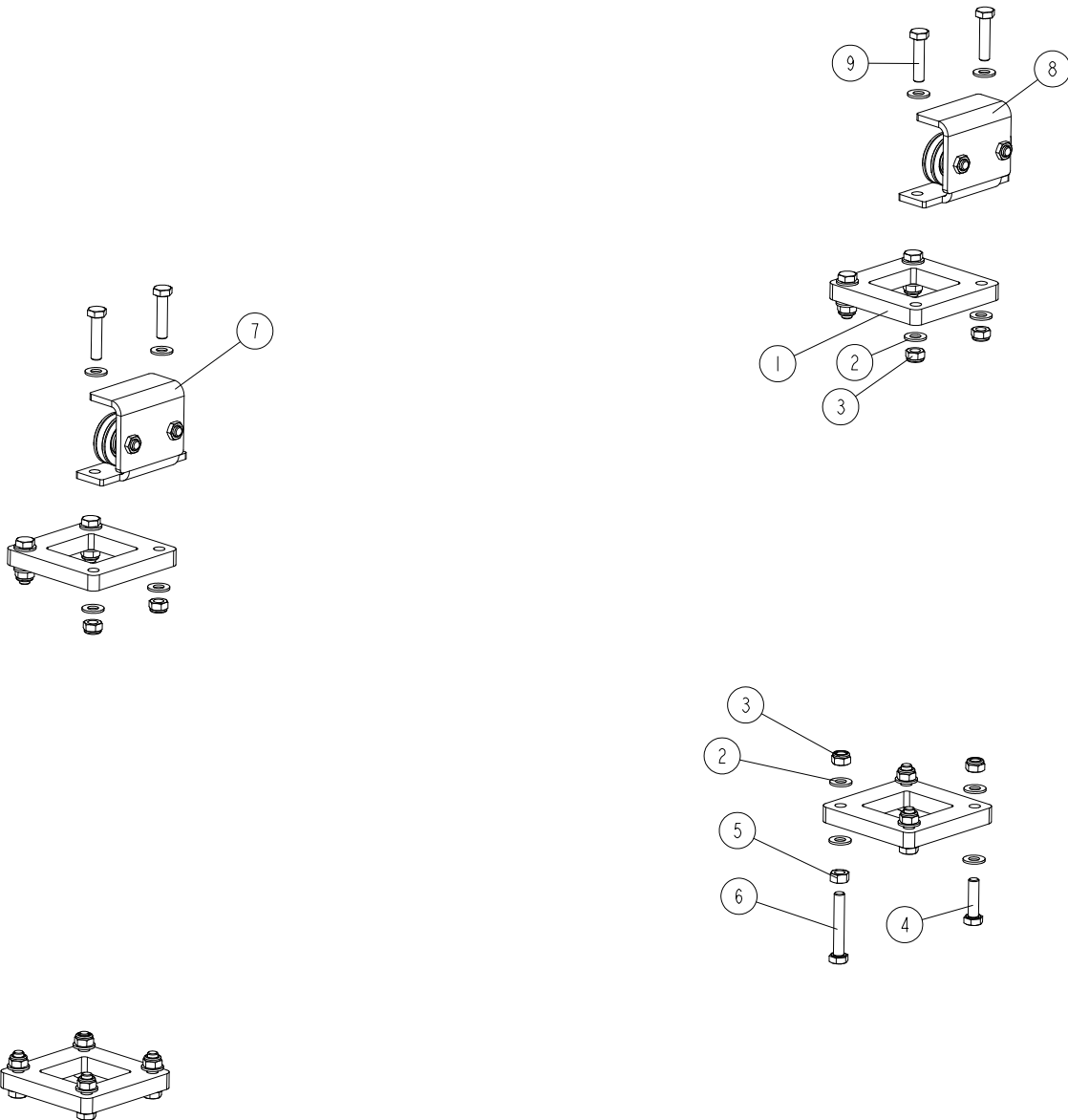
530667\_001\_A  
530667\_MANUAL



| REF. | DESCRIPTION (* indicates parts available in assemblies only) | PART #    | QTY |
|------|--|-----------|-----|
| -    | <b>SCALE, BLADE HEIGHT - COMPLETE</b>                        | 530667    | 1   |
| 1    | PLATE, BLADE HEIGHT SCALE ZINC-PLATED                        | 531993-1  | 1   |
| 2    | BOLT, M8X20-8.8 CARRIAGE ZINC                                | F81002-11 | 2   |
| 3    | WASHER, 8.4 FLAT ZINC  | F81054-1  | 2   |
| 4    | NUT, M8-8-B HEX NYLON ZINC LOCK                              | F81032-2  | 2   |
| 5    | BLOCK, SCALE STIFFENER                                       | X100-1179 | 2   |
| 6    | WASHER, 6.4 FLAT ZINC  | F81053-1  | 4   |
| 7    | NUT, M6-8-B HEX NYLON ZINC LOCK                              | F81031-2  | 2   |
| 8    | BOLT, M6X30-8.8 HEX HEAD FULL THREAD ZINC                    | F81001-8  | 2   |
| 9    | INDICATOR, BLADE HEIGHT SCALE                                | 094821    | 1   |
| 10   | SPACER, BLADE HEIGHT SCALE                                   | 550707-1  | 2   |
| 11   | WASHER, 5.3 FLAT ZINC  | F81052-1  | 4   |
| 12   | BOLT, M5X35 8.8 HEX HEAD FULL THREAD ZINC                    | F81000-10 | 2   |
| 13   | NUT, M5-8 DIN985 HEX NYLON ZINC LOCK                         | F81030-2  | 2   |

### 3.4 Up/Down Mast Guide Bracket (No. 532393)

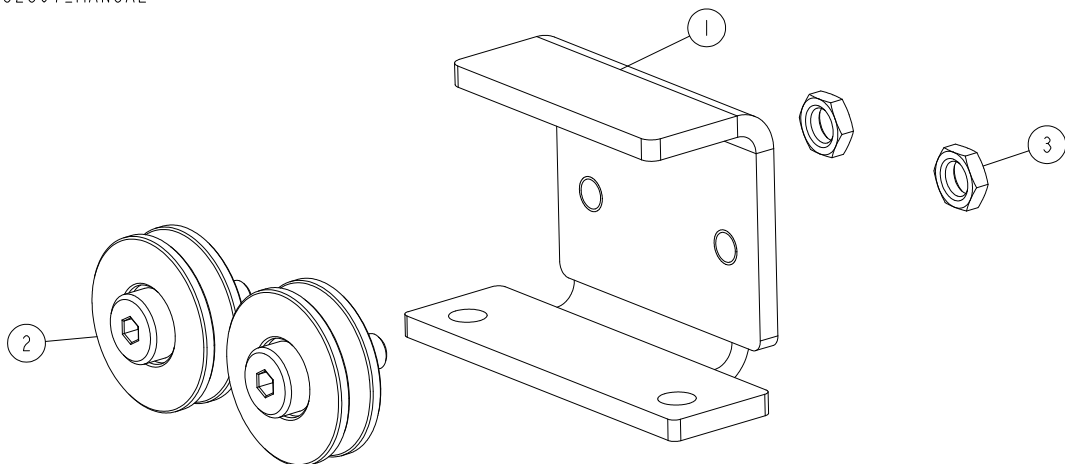
532393\_001  
532393\_MANUAL



| REF. | DESCRIPTION (* indicates parts available in assemblies only) | PART NO.  | QTY |
|------|--|-----------|-----|
| -    | <b>BRACKET ASSEMBLY, UP/DOWN MAST GUIDE</b>                  | 532393    | 1   |
| 1    | BLOCK, VERTICAL SLIDE GUIDE                                  | X100-327  | 4   |
| 2    | WASHER, 8.4 FLAT ZINC  | F81054-1  | 32  |
| 3    | NUT, M8-8-B HEX NYLON ZINC LOCK                              | F81032-2  | 16  |
| 4    | BOLT, M8X30 8.8 HEX HEAD FULL TREAD ZINC                     | F81002-7  | 10  |
| 5    | NUT, M8-8-B HEX ZINC   | F81032-1  | 2   |
| 6    | BOLT, M8 X 65 8.8 FE/ZN5, PN-85/M-82105                      | F81002-9  | 2   |
| 7    | ROLLER SET, LX50 L SAW HEAD <a href="#">See Section 3.5</a>  | 532307    | 1   |
| 8    | ROLLER SET, LX50 P SAW HEAD <a href="#">See Section 3.5</a>  | 532308    | 1   |
| 9    | BOLT, M8X35-8.8 HEX HEAD FULL THREAD ZINC                    | F81002-13 | 4   |

### 3.5 Saw Head Rollers (532307, 532308)

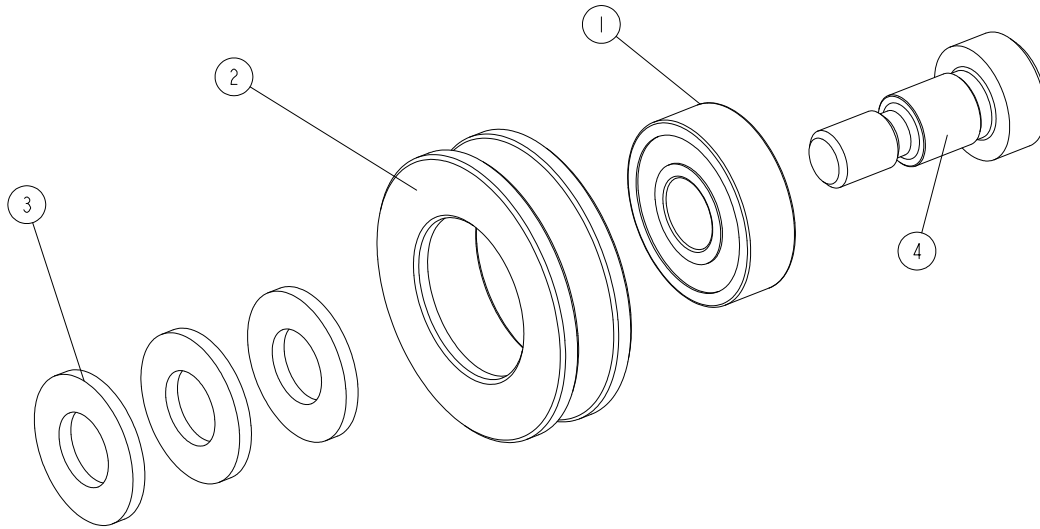
532307\_001  
532307\_MANUAL



| REF. | DESCRIPTION (* indicates parts available in assemblies only) | PART NO. | QTY |  |
|------|--|----------|-----|--|
| -    | ROLLER SET, SAW HEAD- LEFT                                   | 532307   | 1   |  |
| -    | ROLLER SET, SAW HEAD - RIGHT                                 | 532308   | 1   |  |
| 1    | BRACKET, LX50L ROLLER MOUNT                                  | 531985-1 | 1   |  |
|      | BRACKET, LX50 P ROLLER MOUNT                                 | 532310-1 | 1   |  |
| 2    | ROLLER, CABLE GUIDE <a href="#">See Section 3.6</a>          | 532306   | 2   |  |
| 3    | NUT, M8-04 ISO4035 HEX THIN ZINC                             | F81032-8 | 2   |  |

### 3.6 Cable Guide Roller (Part No. 532306)

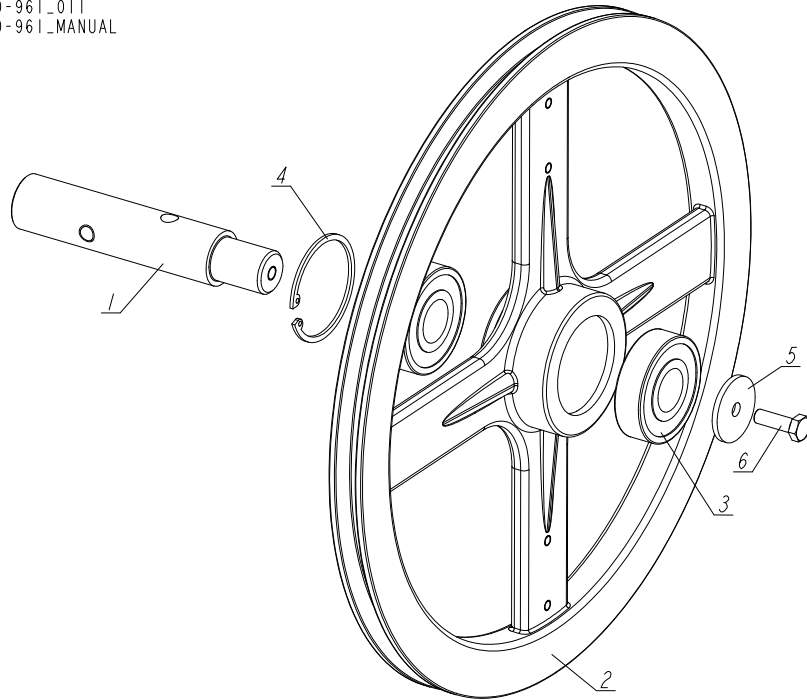
532306\_001\_A  
532306\_MANUAL



| REF. | DESCRIPTION (* indicates parts available in assemblies only) | PART NO.  | QTY |
|------|--|-----------|-----|
| -    | <b>ROLLER, CABLE GUIDE</b>                                   | 532306    | 1   |
| 1    | BEARING, 6000.2RSR   | 087471    | 1   |
| 2    | ROLLER   | 532000    | 1   |
| 3    | WASHER, 10.5 FLAT ZINC                                       | F81055-1  | 3   |
| 4    | BOLT, 10/M8X12-12.9 BOSSARD SHOULDER                         | F81003-62 | 1   |

### 3.7 Band Wheel Assembly

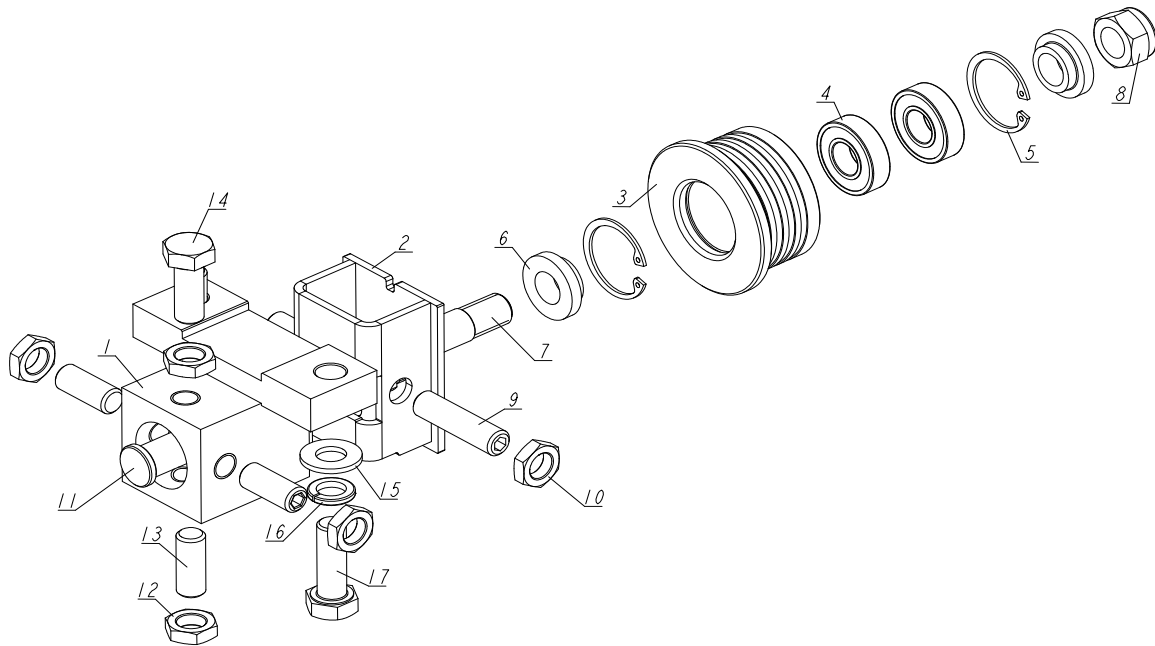
X100-961\_011  
X100-961\_MANUAL



| REF. | DESCRIPTION (* indicates parts available in assemblies only) | PART #    | QTY |
|------|--|-----------|-----|
| -    | <b>Assy, Bandwheel Shaft</b>                                 | X100-961  | 1   |
| 1    | SPINDLE, BLADE WHEEL   | X100-301  | 1   |
| 2    | SHEAVE, BANDWHEEL, 15 3/8 OD                                 | X100-303  | 1   |
| 3    | BEARING, 6305 2RS NSK.                                       | P08066    | 2   |
| 4    | SNAP RING, 2 7/16 IR BEVELED                                 | F04254-21 | 1   |
| 5    | WASHER, .313X1.5X.125  | S08220    | 1   |
| 6    | BOLT, M8X25-8.8-B HEX HEAD FULL THREAD ZINC                  | F81002-5  | 1   |

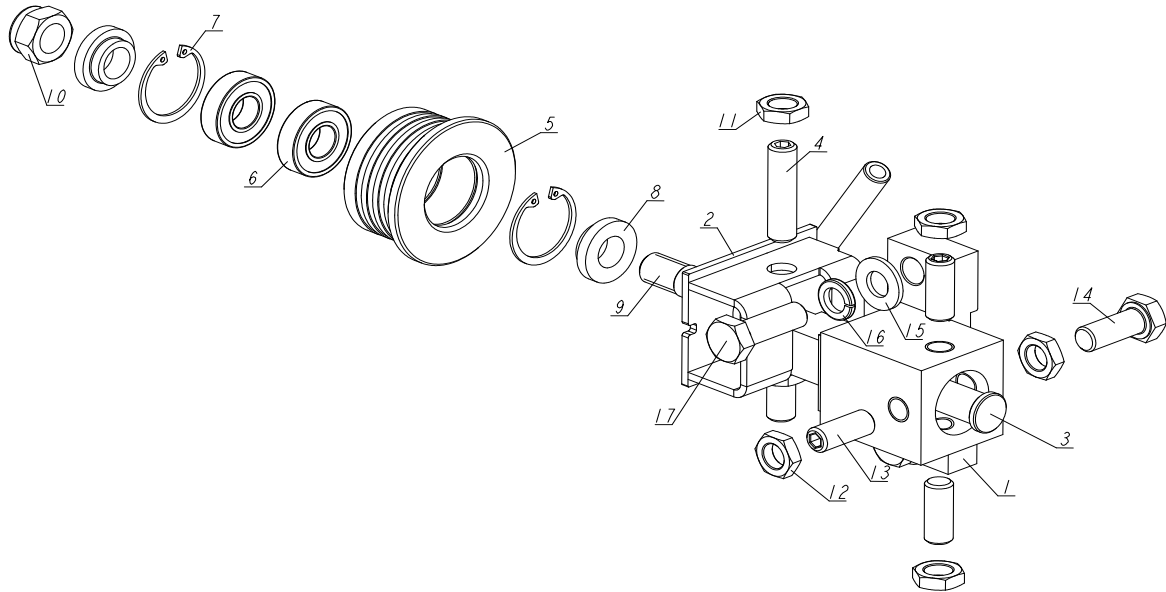


## 3.8 Blade Guide Assembly, Drive Side (No, 593254)

593254\_001  
593254

| REF | DESCRIPTION (u indicates parts available in assemblies only) | PART #     | QTY |
|-----|--|------------|-----|
| -   | <b>BLADE GUIDE ASSEMBLY, DRIVE SIDE</b>                      | 593254     | 1   |
| 1   | BLOCK WELDMENT, BLADE GUIDE MOUNT                            | 087744-1   | 1   |
| -   | BLADE GUIDE ASSEMBLY, DRIVE SIDE                             | 593253     | 1   |
| 2   | BRACKET WELDMENT, BLADE GUIDE ROLLER ZINC-PLATED             | 593251-1   | 1   |
| -   | ROLLER, BLADE GUIDE W/BEARINGS                               | 593250     | 1   |
| -   | ROLLER ASSY, BLADE GUIDE - PL                                | A09678-1   | 1   |
| 3   | ROLLER, BLADE GUIDE NARROW                                   | 586175     | 1   |
| 4   | BEARING, ABEG R8-2RS (12,7X28,575X7,9)                       | 586174     | 2   |
| 5   | RING, W29 WG PN/M-85111 INSIDE RETAINING                     | F81090-90  | 2   |
| 6   | BUSHING, 12.7/25-8.2   | 593249-1   | 2   |
| 7   | AXLE, LX50 BLADE GUIDE ROLLER                                | 593248-1   | 1   |
| 8   | NUT, M12 8 HEX NYLON ZINC LOCK                               | F81034-2   | 1   |
| 9   | SCREW, M10X1X40 DIN 913 A2-70 STAINLESS                      | F81015-2   | 2   |
| 10  | NUT, M10X1-04-ST-A2 ISO 8675 THIN                            | F81033-10  | 2   |
| 11  | SHAFT, BLADE GUIDE MOUNT ZINC-PLATED                         | 503588-1   | 1   |
| 12  | NUT, M10X1-04-ST-A2 ISO 8675 THIN                            | F81033-10  | 4   |
| 13  | SCREW, M10X1X25 DIN 913 STAINLESS STEEL                      | F81015-4   | 3   |
| 14  | BOLT, M10X1X25 DIN 933 STAINLESS STEEL                       | F81003-28  | 1   |
| 15  | WASHER, 10.5 FLAT ZINC                                       | F81055-1   | 2   |
| 16  | WASHER, Z 10.2 SPLIT LOCK ZINC                               | F81055-2   | 2   |
| 17  | BOLT, DIN933-M10X30-8.8-A2E HEX HEAD                         | F81003-111 | 2   |

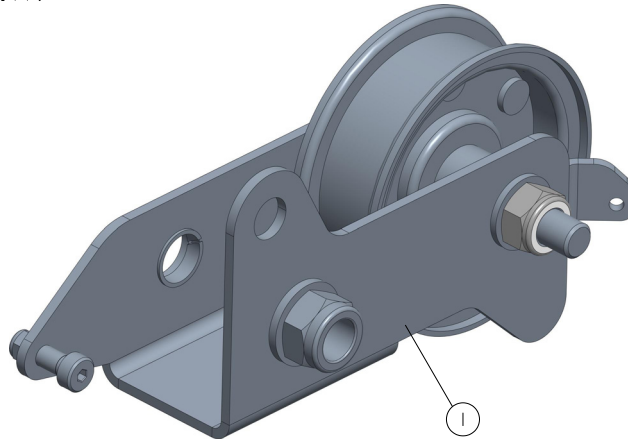
## 3.9 Blade Guide Assembly, Idle Side (No. 593258)

593258\_001  
593258

| REF | DESCRIPTION (u indicates parts available in assemblies only) | PART #     | QTY |
|-----|--|------------|-----|
| -   | <b>BLADE GUIDE ASSEMBLY, IDLESIDE</b>                        | 593258     | 1   |
| 1   | BLOCK WELDMENT, BLADE GUIDE MOUNT                            | 087744-1   | 1   |
| -   | BLADE GUIDE ASSEMBLY, IDLE SIDE                              | 593257     | 1   |
| 2   | BRACKET WELDMENT, BLADE GUIDE ROLLER ZINC-PLATED             | 593255-1   | 1   |
| 3   | SHAFT, BLADE GUIDE MOUNT ZINC-PLATED                         | 503588-1   | 1   |
| 4   | SCREW, M10X1X40 DIN 913 A2-70 STAINLESS                      | F81015-2   | 2   |
| -   | ROLLER, BLADE GUIDE W/BEARINGS                               | 593250     | 1   |
| -   | ROLLER ASSY, BLADE GUIDE - PL                                | A09678-1   | 1   |
| 5   | ROLLER, BLADE GUIDE NARROW                                   | 586175     | 1   |
| 6   | BEARING, ABEG R8-2RS (12,7X28,575X7,9)                       | 586174     | 2   |
| 7   | RING, W29 WG PN/M-85111 INSIDE RETAINING.                    | F81090-90  | 2   |
| 8   | BUSHING, 12.7/25-8.2   | 593249-1   | 2   |
| 9   | AXLE, LX50 BLADE GUIDE ROLLER                                | 593248-1   | 1   |
| 10  | NUT, M12 8 HEX NYLON ZINC LOCK                               | F81034-2   | 1   |
| 11  | NUT, M10X1-04-ST-A2 ISO 8675 THIN                            | F81033-10  | 2   |
| 12  | NUT, M10X1-04-ST-A2 ISO 8675 THIN                            | F81033-10  | 4   |
| 13  | SCREW, M10X1X25 DIN 913 STAINLESS STEEL                      | F81015-4   | 3   |
| 14  | BOLT, M10X1X25 DIN 933 STAINLESS STEEL                       | F81003-28  | 1   |
| 15  | WASHER, 10.5 FLAT ZINC                                       | F81055-1   | 2   |
| 16  | WASHER, Z 10.2 SPLIT LOCK ZINC                               | F81055-2   | 2   |
| 17  | BOLT, DIN933-M10X30-8.8-A2E HEX HEAD                         | F81003-111 | 2   |

3.10 Tensioner Assembly (595710)

595710\_001\_B  
595710

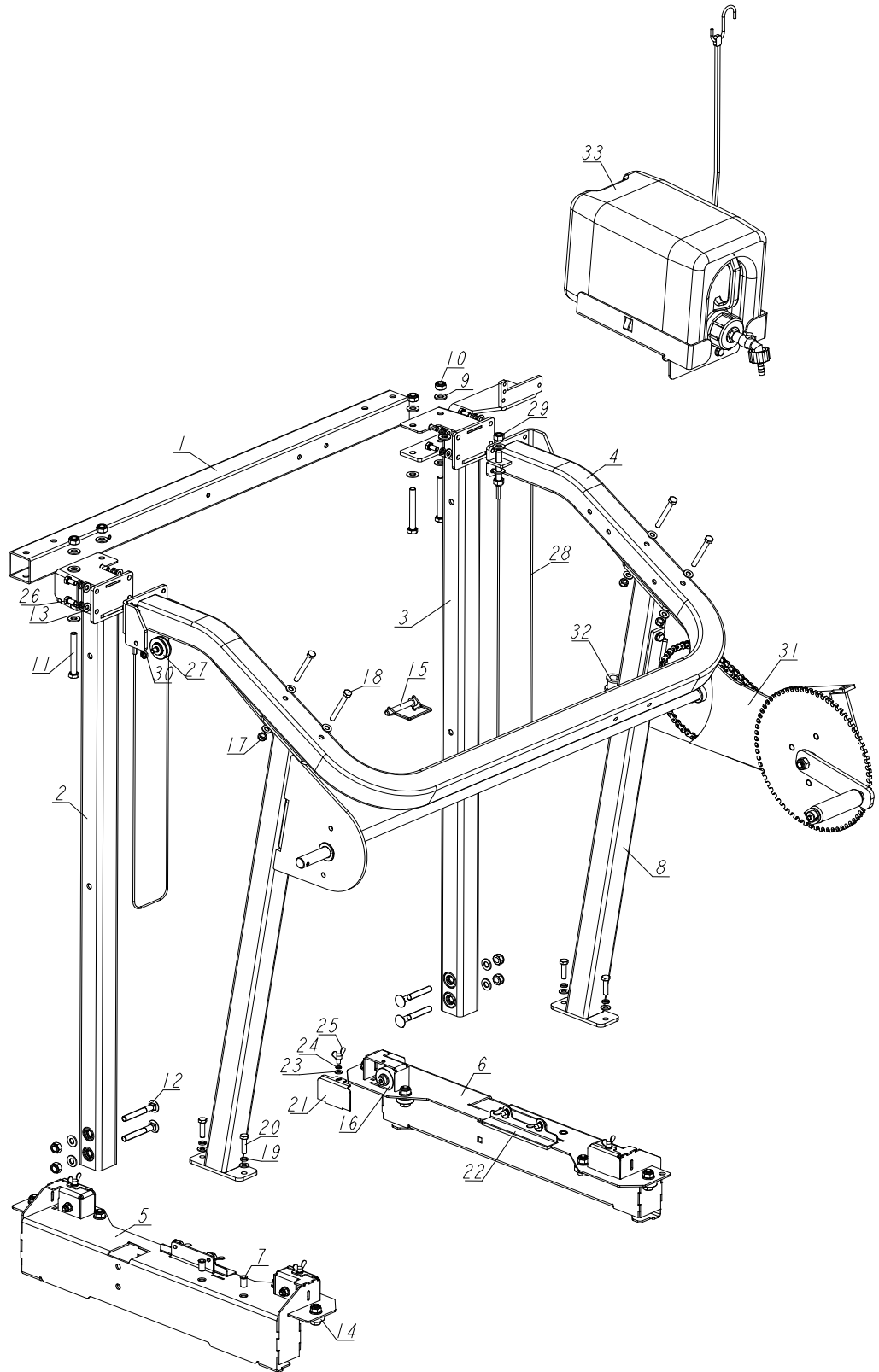


| REF | DESCRIPTION (u indicates parts available in assemblies only) | PART # | QTY |  |
|-----|--|--------|-----|--|
| 1   | TENSIONER, LX50SA ASSY.                                      | 595710 | 1   |  |

## SECTION 4 SAWMILL MAST

### 4.1 LX50 Sawmill Mast

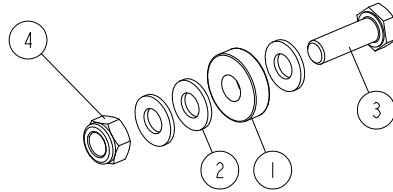
594379\_001  
594379



| REF | DESCRIPTION (u indicates parts available in assemblies only) | PART #       | QTY |  |
|-----|--|--------------|-----|--|
| -   | <b>MAST, LX50 SAWMILL</b>                                    | 594379       | 1   |  |
| 1   | TUBE 50X3X958  | 532400-1     | 1   |  |
| 2   | WLDMNT, FRONT LEFT TUBE - PAINTED.                           | 595712-1     | 1   |  |
| 3   | WLDMNT, FRONT RIGHT TUBE - PAINTED.                          | 594397-1     | 1   |  |
| 4   | WLDMNT, BACK TUBE  | 532394-1     | 1   |  |
| 5   | WELDMENT, LOWER CARRIAGE MEMBER - LEFT                       | X100-1123    | 1   |  |
|     | WELDMENT, LOWER CARRIAGE LEFT (AMERICAN MARKET ONLY)         | X100-1123_US | 1   |  |
| 6   | WELDMENT, LOWER CARRIAGE MEMBER - RIGHT                      | X100-1129    | 1   |  |
|     | WELDMENT, LOWER CARRIAGE RIGHT (AMERICAN MARKET ONLY)        | X100-1129_US | 1   |  |
| 7   | NUT, M8 2.0-4.5 RIVET  | F81032-10    | 4   |  |
| 8   | ASSY, RETAINING TUBE   | X100-1132    | 2   |  |
| 9   | WASHER, 10.5 FLAT ZINC                                       | F81055-1     | 18  |  |
| 10  | NUT, M10-8-B HEX NYLON ZINC LOCK                             | F81033-1     | 8   |  |
| 11  | BOLT, M10 X 80 -8.8- FE/ZN5 HEX HEAD                         | F81003-50    | 4   |  |
| 12  | BOLT, M10X75-8.8 CARRIAGE ZINC                               | F81003-107   | 4   |  |
| 13  | WASHER, 8.4 FLAT ZINC  | F81054-1     | 20  |  |
| 14  | BEARING ASSEMBLY, HORIZONTAL <a href="#">See Section 4.2</a> | X100-1135    | 8   |  |
| 15  | PIN, 3/8X2 1/4 SNAP  | 014151       | 1   |  |
| 16  | ASSY, CARRIAGE WHEEL <a href="#">See Section 4.3</a>         | X100-1136    | 4   |  |
| 17  | NUT, M8-8-B HEX NYLON ZINC LOCK                              | F81032-2     | 4   |  |
| 18  | BOLT, M8X70-8.8 HEX HEAD ZINC                                | F81002-71    | 4   |  |
| 19  | WASHER 8,2 SPLIT LOCK ZINC                                   | F81054-4     | 12  |  |
| 20  | BOLT, M8 X 30-8.8-B HEX HEAD FULL THREAD                     | F81002-7     | 4   |  |
| 21  | BENT PLATE   | X100-1139    | 4   |  |
| 22  | SWEEPER ASSEMBLY <a href="#">See Section 4.4</a>             | X100-1260    | 2   |  |
| 23  | WASHER, 6.4 FLAT ZINC  | F81053-1     | 4   |  |
| 24  | WASHER, Z 6.1 SPLIT LOCK                                     | F81053-3     | 4   |  |
| 25  | SCREW, M6X10 DIN-316/BN-276 ZINC-PL. WIN                     | F81001-49    | 4   |  |
| 26  | BOLT, M8X16 -8.8-B HEX HEAD FULL THREAD                      | F81002-20    | 8   |  |
| 27  | ROLLER, CABLE GUIDE  | 532306       | 2   |  |
| 28  | CABLE, STEEL DIA. -3MM L-1830MM M10                          | 532326       | 2   |  |
| 29  | NUT, M10-8-B-HEX ZINC  | F81033-3     | 4   |  |
| 30  | NUT, M8-04-FE/ZN ISO4035 HEX THIN                            | F81032-8     | 2   |  |
| 31  | UP/DOWN SYSTEM ASSEMBLY <a href="#">See Section 4.8</a>      | 593261       | 1   |  |
| 32  | CLIP, RSGU 1.15/20 PIPE RETAINING                            | 509701       | 1   |  |
| 33  | BOTTLE ASSEMBLY, 10 L WATER <a href="#">See Section 4.11</a> | 517062       | 1   |  |

## 4.2 Horizontal Bearing Assembly

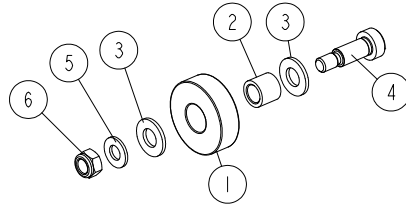
X100-1135\_001  
X100-1135\_MANUAL



| REF. | DESCRIPTION (* indicates parts available in assemblies only) | PART #    | QTY |  |
|------|--|-----------|-----|--|
| -    | <b>ASSY, HORIZONTAL BEARING</b>                              | X100-1135 | 1   |  |
| 1    | BEARING, LLU 6200  | X200-903  | 1   |  |
| 2    | WASHER, 10.5 FLAT ZINC                                       | F81055-1  | 3   |  |
| 3    | BOLT, M10X30-8.8 HEX HEAD FULL THREAD ZINC                   | F81003-2  | 1   |  |
| 4    | NUT, M10-8-B HEX NYLON ZINC LOCK                             | F81033-1  | 1   |  |

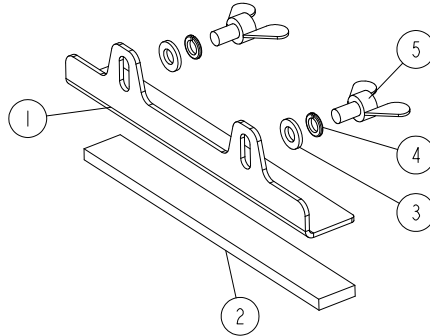
### 4.3 Carriage Wheel Assembly

X100-1136\_001  
X100-1136\_MANUAL



| REF. | DESCRIPTION (* indicates parts available in assemblies only) | PART #    | QTY |  |
|------|--|-----------|-----|--|
| -    | <b>ASSY, CARRIAGE WHEEL</b>                                  | X100-1136 | 1   |  |
| 1    | BEARING, LLU 6302  | X200-957  | 1   |  |
| 2    | BUSHING 10/15-13   | X100-1138 | 1   |  |
| 3    | WASHER, 10.5 FLAT ZINC                                       | F81055-1  | 2   |  |
| 4    | BOLT, 10/M8X20-12.9 BOSSARD SHOULDER                         | F81003-99 | 1   |  |
| 5    | WASHER, 8.4 FLAT ZINC  | F81054-1  | 1   |  |
| 6    | NUT, M8-8-B HEX NYLON ZINC LOCK                              | F81032-2  | 1   |  |

#### 4.4 Sweeper Assembly

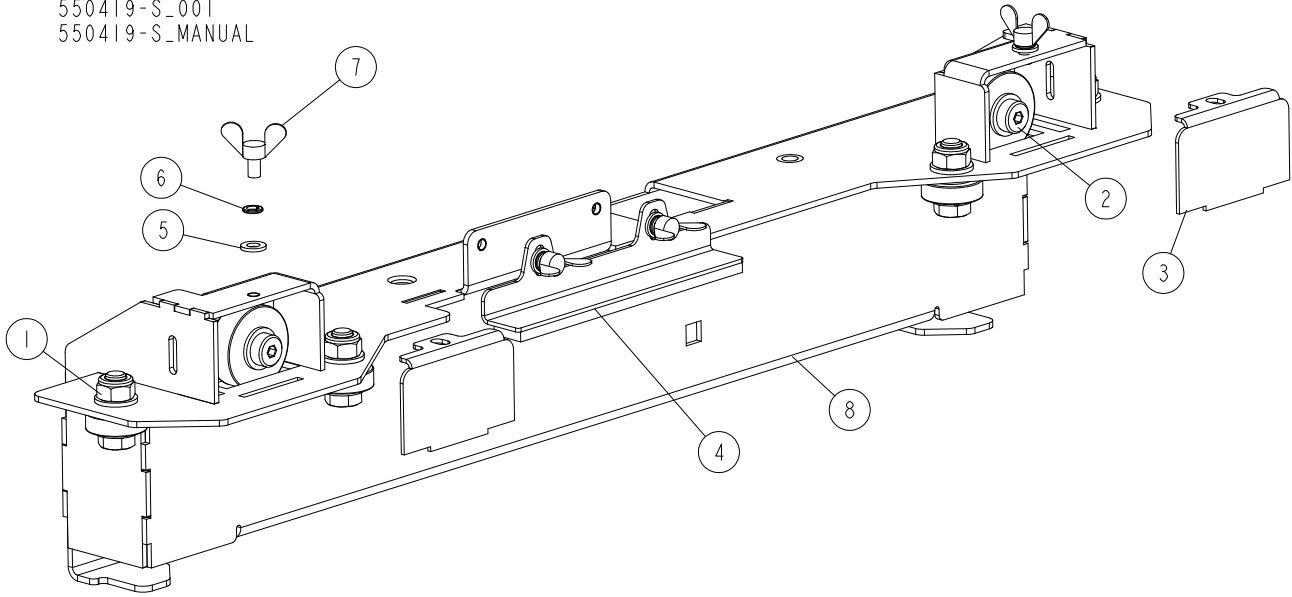
 X100-1260\_001  
 X100-1260\_MANUAL


| REF. | DESCRIPTION (* indicates parts available in assemblies only) | PART #    | QTY |  |
|------|--|-----------|-----|--|
| -    | <b>ASSY, SWEEPER</b>   | X100-1260 | 1   |  |
| 1    | BENT PLATE   | X100-1261 | 1   |  |
| 2    | FELT; 5 MM THK TECHNICAL                                     | X100-1262 | 1   |  |
| 3    | WASHER, 6.4 FLAT ZINC  | F81053-1  | 2   |  |
| 4    | WASHER, Z 6.1 SPLIT LOCK ZINC                                | F81053-3  | 2   |  |
| 5    | SCREW, M6X10 DIN-316/BN-276 ZINC-PL. WING                    | F81001-49 | 2   |  |



## 4.5 Additional Equipment - Left

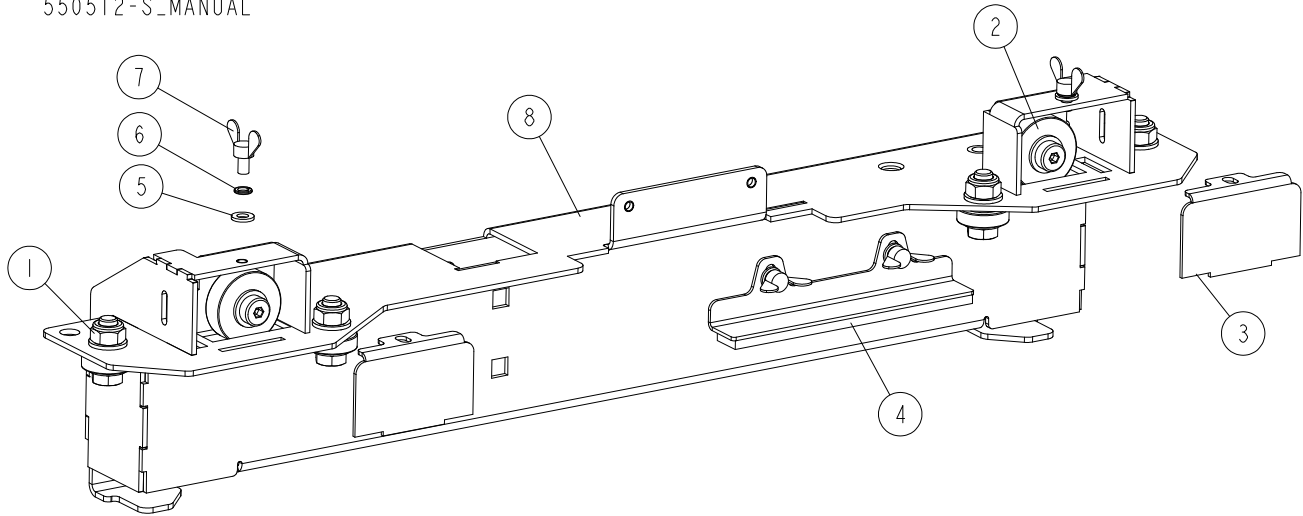
550419-S\_001  
550419-S\_MANUAL



| REF. | DESCRIPTION (* indicates parts available in assemblies only) | PART #    | QTY |  |
|------|--|-----------|-----|--|
| -    | <b>EQUIPMENT, LX50 LEFT ADDITIONAL</b>                       | 550419-S  | 1   |  |
| 1    | ASSY, HORIZONTAL BEARING                                     | X100-1135 | 4   |  |
| 2    | ASSY, CARRIAGE WHEEL   | X100-1136 | 2   |  |
| 3    | BENT PLAT  | X100-1139 | 2   |  |
| 4    | ASSY, SWEEPER  | X100-1260 | 1   |  |
| 5    | WASHER, 6.4 FLAT ZINC  | F81053-1  | 2   |  |
| 6    | WASHER, Z 6.1 SPLIT LOCK ZINC                                | F81053-3  | 2   |  |
| 7    | SCREW, M6X10 FE/ZN5 DIN-316/BN-276 WING                      | F81001-49 | 2   |  |
| 8    | WLDMNT, LOWER CARRIAGE MEMBER - LEFT                         | X100-1123 | 1   |  |

## 4.6 Additional Equipment - Right

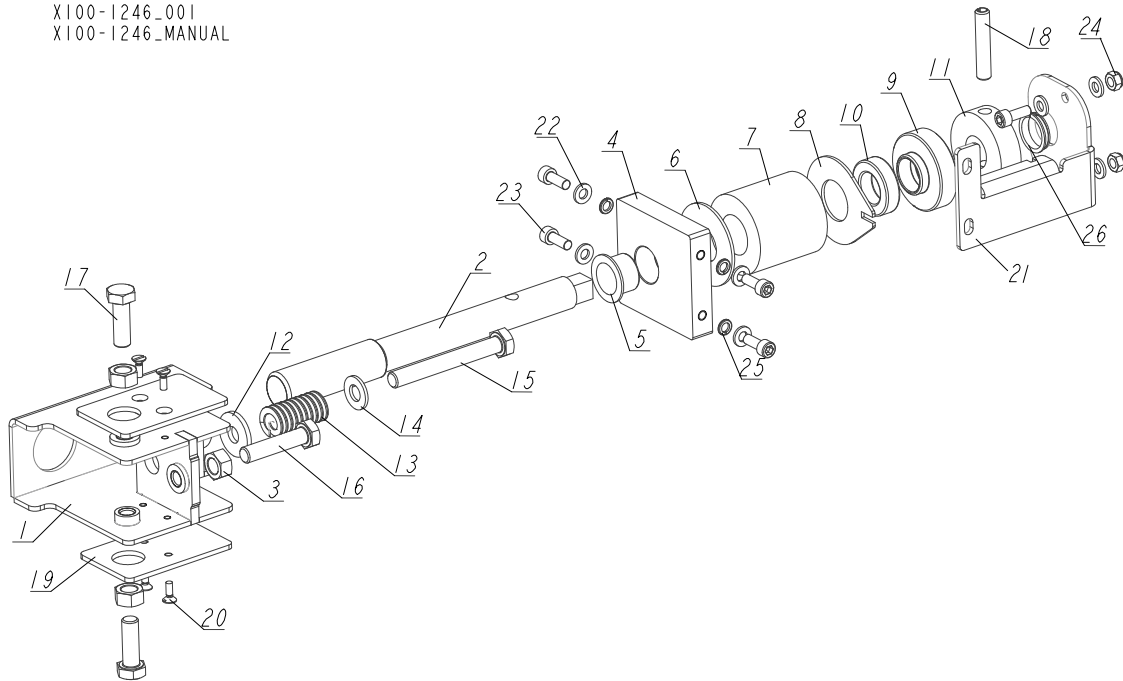
550512-S\_001  
550512-S\_MANUAL



| REF. | DESCRIPTION (* indicates parts available in assemblies only) | PART #    | QTY |  |
|------|--|-----------|-----|--|
| -    | EQUIPMENT, LX50 ADDITIONAL RIGHT                             | 550512-S  | 1   |  |
| 1    | ASSY, HORIZONTAL BEARING                                     | X100-1135 | 4   |  |
| 2    | ASSY, CARRIAGE WHEEL   | X100-1136 | 2   |  |
| 3    | BENT PLAT  | X100-1139 | 2   |  |
| 4    | ASSY, SWEEPER  | X100-1260 | 1   |  |
| 5    | WASHER, 6.4 FLAT ZINC  | F81053-1  | 2   |  |
| 6    | WASHER, Z 6.1 SPLIT LOCK ZINC                                | F81053-3  | 2   |  |
| 7    | SCREW, M6X10 FE/ZN5 DIN-316/BN-276 WING                      | F81001-49 | 2   |  |
| 8    | WLDMNT, LOWER CARRIAGE MEMBER - RIGHT                        | X100-1129 | 1   |  |

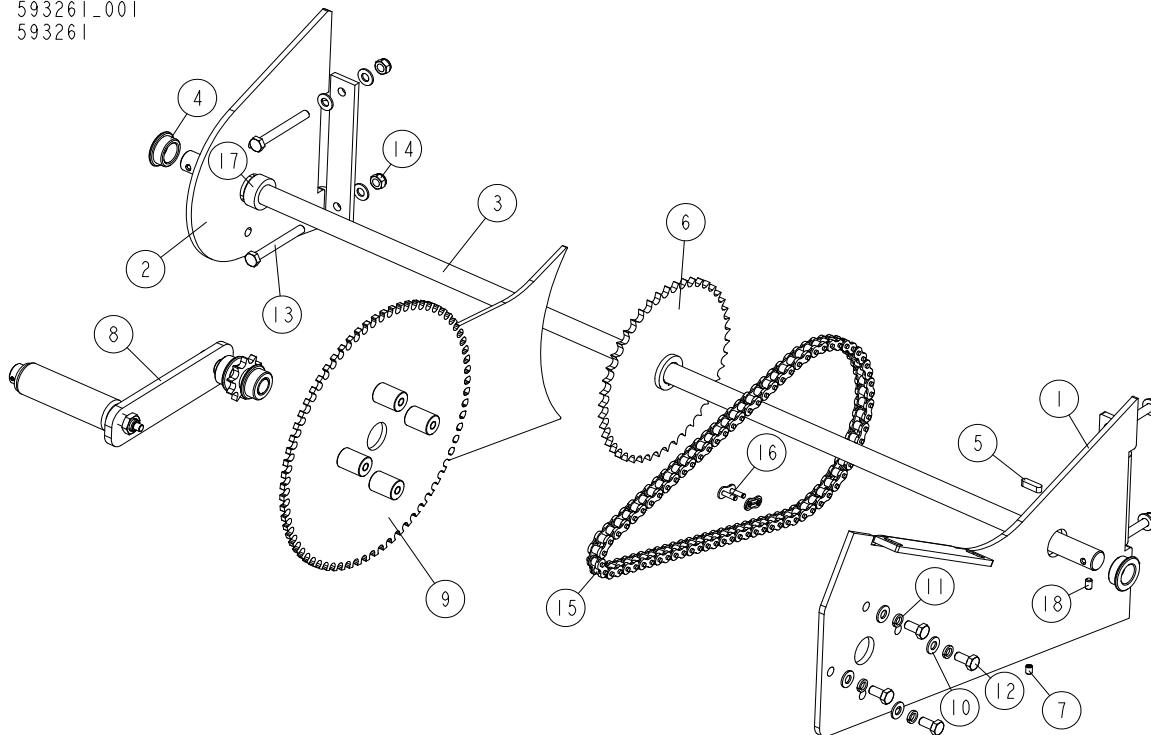
## 4.7 Blade Tensioner Assembly

X100-1246\_001  
X100-1246\_MANUAL



| REF. | DESCRIPTION (* indicates parts available in assemblies only) | PART NO.  | QTY |
|------|--|-----------|-----|
| -    | <b>ASSY, TENSIONER</b>                                       | X100-1246 | 1   |
| 1    | WLDMT, TENSIONER   | X100-1239 | 1   |
| 2    | TENSIONER ROD  | X100-1252 | 1   |
| 3    | NUT, M10 8 HEX ZINC  | F81033-3  | 3   |
| 4    | TENSIONER BLOCK  | X100-1247 | 1   |
| 5    | BUSHING IGUS GFM-2023-16                                     | X100-1256 | 1   |
| 6    | WASHER 52X21-2   | X100-1284 | 1   |
| 7    | SPRING, TENSIONER BLADE LT15                                 | 014828    | 1   |
| 8    | FLAT PLATE   | X100-1251 | 1   |
| 9    | BEARING BUSHING  | X100-1248 | 1   |
| 10   | BEARING, 51104 CX BALL THRUST                                | 511979    | 1   |
| 11   | BUSHING 16.1/50-15   | X100-1250 | 1   |
| 12   | WASHER, 10.5 SPECIAL FLAT ZINC                               | F81055-6  | 1   |
| 13   | SPRING, 3/4 O.D.X 1 1/2 DIE                                  | 034430    | 1   |
| 14   | WASHER, 10.5 FLAT ZINC                                       | F81055-1  | 1   |
| 15   | BOLT, M10X80-8.8 HEX HEAD ZINC                               | F81003-50 | 1   |
| 16   | BOLT, M10X45 HEX HEAD FULL THREAD ZINC                       | F81003-3  | 1   |
| 17   | BOLT, M10X30-8.8 HEX HEAD FULL THREAD ZINC                   | F81003-2  | 2   |
| 18   | PIN, 8X45 ROLL ZINC  | F81046-6  | 1   |
| 19   | POLYETHYLENE PLATE   | X100-1249 | 2   |
| 20   | SCREW, M4X12 5.8-B SLOTTED COUNTERSUNK HEAD ZINC             | F81011-41 | 4   |
| 21   | BENT PLATE   | X100-1253 | 1   |
| 22   | WASHER, 6.4 FLAT ZINC  | F81053-1  | 8   |
| 23   | SCREW, M6X16 8.8 HEX SOCKET HEAD CAP ZINC                    | F81001-21 | 6   |
| 24   | NUT, M6-8-B HEX NYLON ZINC LOCK                              | F81031-2  | 2   |
| 25   | WASHER, Z 6.1 SPLIT LOCK ZINC                                | F81053-3  | 4   |
| 26   | CLIP BEARING MCM-20-03                                       | X100-1259 | 1   |

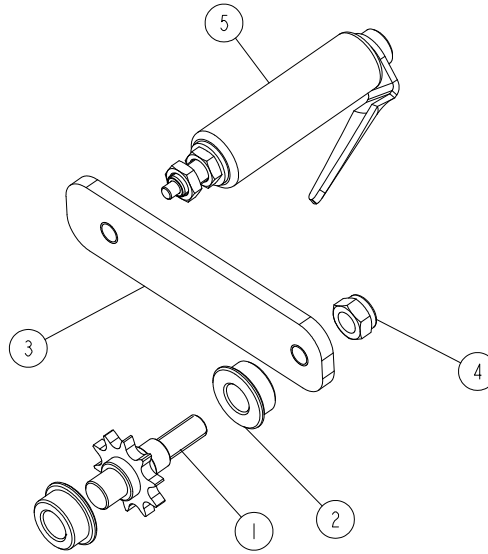
## 4.8 Up/Down System

593261\_001  
593261

| REF | DESCRIPTION (u indicates parts available in assemblies only) | PART #    | QTY |
|-----|--|-----------|-----|
| -   | <b>UP/DOWN SYSTEM</b>  | 593261    | 1   |
| 1   | SUPPORT PLATE, WINCH AXIS                                    | 594382-1  | 1   |
| 2   | PLATE, SUPPORT   | 594384-1  | 1   |
| 3   | SHAFT, SHAFT, WINCH LX50/M120                                | 593259-1  | 1   |
| 4   | BUSHING, LX50, BUSHING, SLIDE                                | 532332    | 2   |
| 5   | KEY, A 6X6X22 PARALLEL                                       | 519161    | 1   |
| 6   | SPROCKET ASSEMBLY, LARGE                                     | 532323-1  | 1   |
| 7   | SCREW, M6X8 HEX SOCKET SET CONE POINT ZI                     | F81013-1  | 1   |
| 8   | CRANK, WINCH   | 532318    | 1   |
| 9   | SCALE  | 594381-1  | 1   |
| 10  | WASHER, 8.4 FLAT ZINC  | F81054-1  | 12  |
| 11  | WASHER 8,2 SPLIT LOCK ZINC                                   | F81054-4  | 4   |
| 12  | BOLT, M8X16 -8.8-B HEX HEAD FULL THREAD                      | F81002-20 | 4   |
| 13  | BOLT, M8X70-8.8 HEX HEAD ZINC                                | F81002-71 | 4   |
| 14  | NUT, M8-8-B HEX NYLON ZINC LOCK                              | F81032-2  | 4   |
| 15  | CHAIN, 08B-1 L=939 73 (73 LINKS), CHAIN, 08B L-939 73-LINK   | 532365    | 1   |
| 16  | LINK, 08B-1PZ MASTER   | 091625    | 1   |
| 17  | RING, 20 RETAINING   | 593260    | 1   |
| 18  | SCREW, M6X10-45H HEX SOCKET SET W/FLAT P                     | F81001-26 | 2   |

## 4.9 Winch Crank (No. 532318)

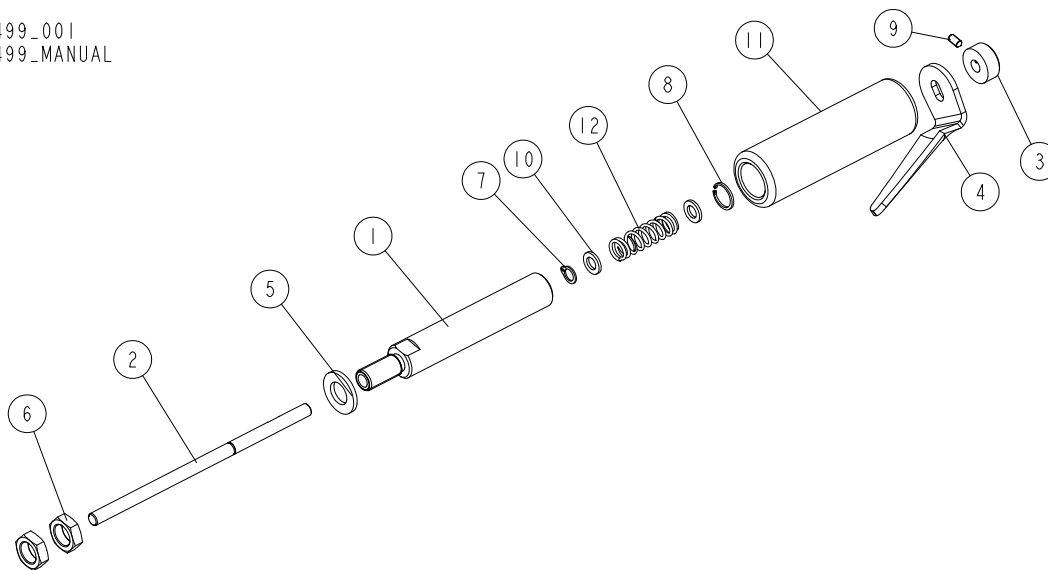
532318\_001  
532318\_MANUAL



| REF. | DESCRIPTION (* indicates parts available in assemblies only) | PART #   | QTY |  |
|------|--|----------|-----|--|
| -    | <b>CRANK, WINCH</b>  | 532318   | 1   |  |
| 1    | SPROCKET ASSEMBLY, SMALL                                     | 532319-1 | 1   |  |
| 2    | BUSHING, SLIDE   | 532333   | 2   |  |
| 3    | PLATE, CRANK   | 531997-1 | 1   |  |
| 4    | NUT, M12 8 HEX NYLON ZINC LOCK                               | F81034-2 | 1   |  |
| 5    | HANDLE, CRANK <a href="#">See Section 4.10</a>               | 096499   | 1   |  |

## 4.10 Winch Crank Handle (No. 096499)

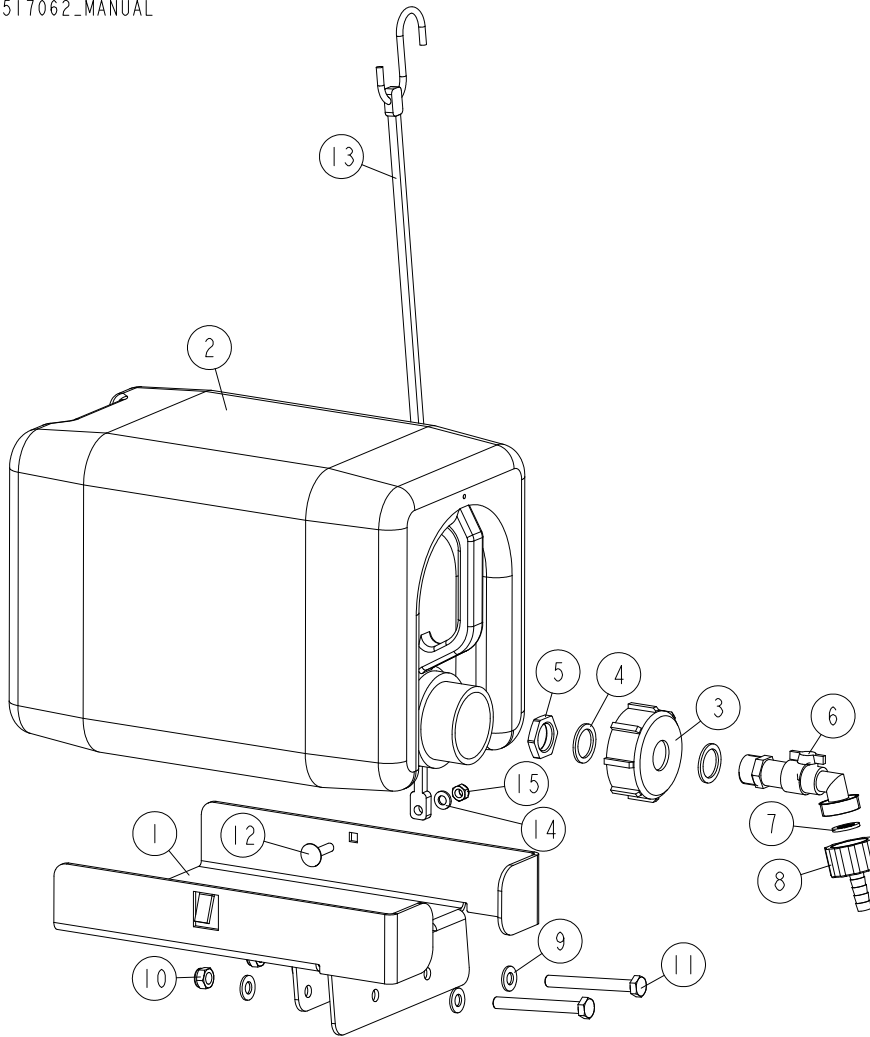
096499\_001  
096499\_MANUAL



| REF. | DESCRIPTION (* indicates parts available in assemblies only) | PART #    | QTY |
|------|--|-----------|-----|
| -    | <b>HANDLE, CRANK</b>   | 096499    | 1   |
| 1    | MANDREL, CRANK HANDLE  | 096504-1  | 1   |
| 2    | PIN, CRANK HANDLE  | 097095-1  | 1   |
| 3    | RING, 7 STOPPING LIGHT TYPE                                  | F81039-9  | 1   |
| 4    | PLATE, LX50  | 587015-1  | 1   |
| 5    | WASHER, 13 FLAT ZINC   | F81056-1  | 1   |
| 6    | NUT, M12-04-A THIN ZINC                                      | F81034-6  | 2   |
| 7    | RING, Z7 OUTSIDE RETAINING                                   | F81090-17 | 1   |
| 8    | RING, W13 INSIDE RETAINING                                   | F81090-18 | 1   |
| 9    | SCREW, M4X8 GEOMET HEX SOCKET SET W/FLAT POINT               | F81011-40 | 1   |
| 10   | WASHER, 7.2/12.5   | 097264    | 2   |
| 11   | TUBE, CRANK HANDLE   | 097263    | 1   |
| 12   | SPRING, .48DIA X 1.5 LONG SS COMPRESSION                     | 047690    | 1   |

### 4.11 Water Lube Assembly

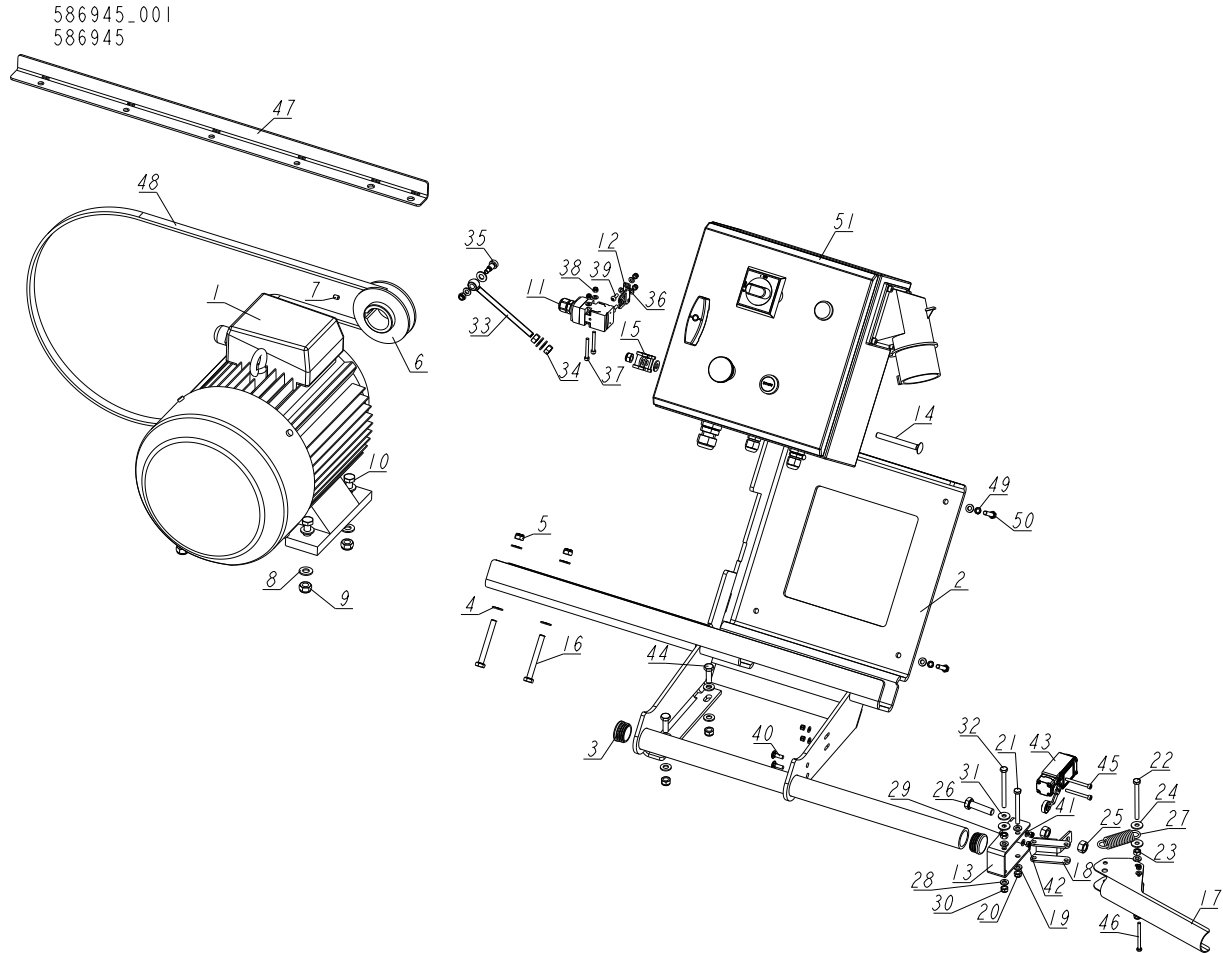
517062\_001\_A  
517062\_MANUAL



| REF | DESCRIPTION (u indicates parts available in assemblies only) | PART #    | QTY |
|-----|--|-----------|-----|
| -   | <b>BOTTLE ASSEMBLY, 10 L WATER</b>                           | 517062    | 1   |
| 1   | TRAY, 10 L WATER BOTTLE                                      | 516436-1  | 1   |
| -   | TANK, OIL  | 550786    | 1   |
| 2   | TANK, 10L OIL  | 711400    | 1   |
| 3   | NUT, BOTTLE  | 550785    | 1   |
| 4   | SEAL, 27X20X1.5 ESSENTRA 467673 RUBBER                       | 550780    | 2   |
| 5   | NUT, 1/2 ESSENTRA 467615 GLAND                               | 550779    | 1   |
| 6   | FITTING, WATER LUBE SHUTOFF VALVE                            | 550776    | 1   |
| 7   | FILTER, WATER LUBE   | 550778    | 1   |
| 8   | FITTING, G3/4" X 10MM HOSE BARB                              | 550777    | 1   |
| 9   | WASHER, 8.4 FLAT ZINC  | F81054-1  | 4   |
| 10  | NUT, M8-8-B HEX NYLON ZINC LOCK                              | F81032-2  | 2   |
| 11  | BOLT, M8X70-8.8 HEX HEAD ZINC                                | F81002-71 | 2   |
| 12  | BOLT, M6X25-8.8 ZINC   | F81001-20 | 1   |
| 13  | STRAP, 15 RUBBER W/S HOOKS                                   | P07461    | 1   |
| 14  | WASHER, 6.4 FLAT ZINC  | F81053-1  | 1   |
| 15  | NUT, M6-8-B HEX NYLON ZINC LOCK                              | F81031-2  | 1   |

## SECTION 5 MOTORS

### 5.1 Motor Kit



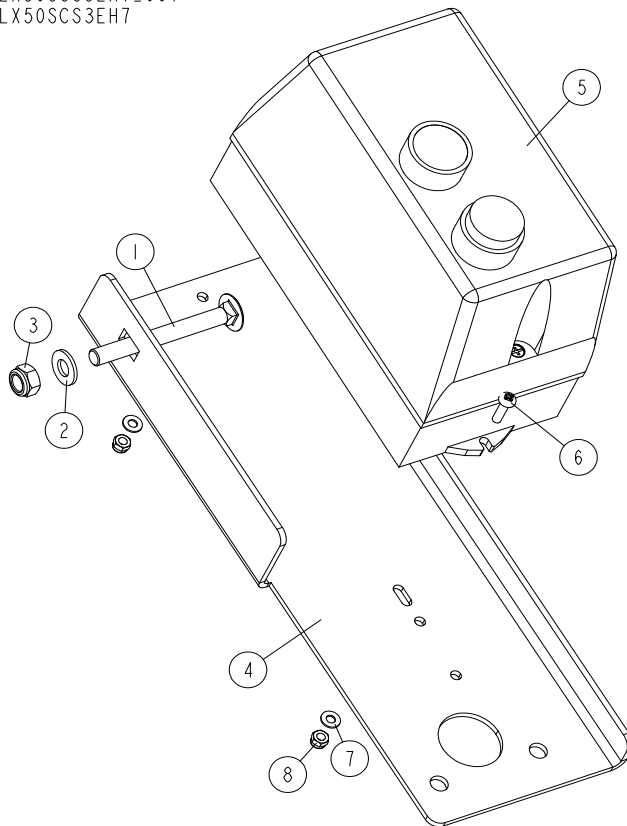
| REF | DESCRIPTION (◆ indicates parts available in assemblies only) | PART #                | QTY |
|-----|--|-----------------------|-----|
| -   | MOTOR KIT, EH7S CE LX50                                      | 586945                | 1   |
| -   | MOTOR KIT, EB7S LX50   | 586945-2              | 1   |
| -   | MOTOR KIT, EH7 LX50  | 586945-3              | 1   |
| -   | MOTOR KIT, EC7 LX50  | 586945-4              | 1   |
| -   | MOTOR KIT, EB7 LX50  | 586945-5              | 1   |
| 1   | MOTOR, 5.5KW SG 132S-2A                                      | 526139                | 1   |
| 2   | BRACKET, ELECTRIC BOX  | 595725-1 <sup>1</sup> | 1   |
|     | BRACKET, ELECTRIC BOX <a href="#">See Section 5.2</a>        | 595735-1 <sup>2</sup> | 1   |
| 3   | CAP, SR1530 (HOLE 30) TUBE                                   | 517616                | 2   |
| 4   | WASHER, 8.4 FLAT ZINC  | F81054-1              | 12  |
| 5   | NUT, M8-8-B HEX NYLON ZINC LOCK                              | F81032-2              | 5   |
| 6   | PULLEY, M100 TIMBERY   | T00406-1              | 1   |
| 7   | SCREW, M6X8 HEX SOCKET SET CONE POINT ZI                     | F81013-1              | 1   |
| 8   | WASHER, 10.5 FLAT ZINC                                       | F81055-1              | 8   |
| 9   | NUT, M10-8-B HEX NYLON ZINC LOCK                             | F81033-1              | 4   |
| 10  | BOLT, M10X40-8.8 HEX HEAD FULL THREAD ZI                     | F81003-16             | 4   |



| REF | DESCRIPTION (◆ indicates parts available in assemblies only) | PART #     | QTY |
|-----|--|------------|-----|
| 11  | SWITCH, AZ17-11ZRK SAFETY 1                                  | 094232     | 1   |
| 12  | KEY, AZ17/170-B5 SAFETY SWITCH 2                             | 094422     | 1   |
| 13  | BRACKET WELDMENT   | 532316-1   | 1   |
| 14  | BOLT, M8X75 DIN603 ZINC MUSHROOM HEAD SQ                     | F81002-106 | 1   |
| 15  | CLIP, RSGU 1.20/20 METAL & RUBBER RETAIN                     | F81087-2   | 1   |
| 16  | BOLT, M8X70-8.8 HEX HEAD ZINC                                | F81002-71  | 2   |
| 17  | LEVER, CABLE   | 532336-1   | 1   |
| -   | ASSY, TRIGGER PLATE  | X100-1231  | 1   |
| 18  | BRACKET  | 532324-1   | 1   |
| 19  | WASHER, 6.4 FLAT ZINC  | F81053-1   | 4   |
| 20  | NUT, M6-8-B HEX NYLON ZINC LOCK                              | F81031-2   | 2   |
| 21  | BOLT, M6X60-8.8 HEX HEAD FULL THREAD ZIN                     | F81001-9   | 1   |
| 22  | BOLT, M6X70 8.8 HEX HEAD FULL THREAD ZIN                     | F81001-63  | 1   |
| 23  | NUT, M6 8 HEX ZINC   | F81031-1   | 1   |
| 24  | WASHER, 6.5 SPECIAL FLAT ZINC                                | F81053-11  | 2   |
| 25  | NUT, M10-8-B-HEX ZINC  | F81033-3   | 2   |
| 26  | BOLT, M10X40-8.8 HEX HEAD FULL THREAD ZI                     | F81003-16  | 1   |
| 27  | SPRING, 3/4X2 7/8X12GA                                       | 015479     | 1   |
| 28  | WASHER, 6.4 FLAT ZINC  | F81053-1   | 7   |
| 29  | NUT, M6 8 HEX ZINC   | F81031-1   | 1   |
| 30  | NUT, M6-8-B HEX NYLON ZINC LOCK                              | F81031-2   | 2   |
| 31  | WASHER, 6.5 SPECIAL FLAT ZINC                                | F81053-11  | 2   |
| 32  | BOLT, M6X70 8.8 HEX HEAD FULL THREAD ZIN                     | F81001-63  | 1   |
| 33  | BOLT, M8X120 8.8 DIN444 EYE                                  | F81002-64  | 1   |
| 34  | NUT, M8-8-B HEX ZINC   | F81032-1   | 2   |
| 35  | BOLT, 8/M6X12-12.9 ISO 7379 SHOULDER                         | F81001-56  | 1   |
| 36  | WASHER, 4.3 FLAT ZINC  | F81051-2   | 10  |
| 37  | SCREW, M4X35 8.8 HEX SOCKET HEAD CAP ZIN                     | F81011-34  | 2   |
| 38  | NUT, M4-8 HEX NYLON ZINC LOCK                                | F81029-1   | 7   |
| 39  | SCREW, M4X12 5,8-B CROSS RECESSED PAN HE                     | F81011-43  | 2   |
| 40  | BOLT, M5X16 DIN 603 CARRIAGE                                 | F81000-75  | 2   |
| 41  | WASHER, 5.3 FLAT ZINC  | F81052-1   | 2   |
| 42  | NUT, M5-8 DIN985 ZINC-PLATED                                 | F81030-2   | 2   |
| 43  | SWITCH, FA138 Z11 LIMIT                                      | 100931     | 1   |
| 44  | BOLT, M8X25-8.8-B HEX HEAD FULL THREAD Z                     | F81002-5   | 2   |
| 45  | SCREW, M4X40-8.8 SOCKET HEAD ZINC                            | F81011-37  | 2   |
| 46  | BOLT, M4X50-8.8 DIN933 HEX HEAD ZINC                         | F81011-48  | 1   |
| 47  | ANGLE, 30X30 L-720   | 532327-1   | 1   |
| 48  | V-BELT, BX69 17X1798 LP CONTITECH                            | 551002     | 1   |
| 49  | WASHER, Z 6.1 SPLIT LOCK                                     | F81053-3   | 4   |
| 50  | BOLT, M6X30-8.8 HEX HEAD FULL THREAD ZIN                     | F81001-8   | 4   |
| 51  | BOX, M120E7 ELECTRIC   | 526997     | 1   |

<sup>1</sup> Included in assy No. 586945

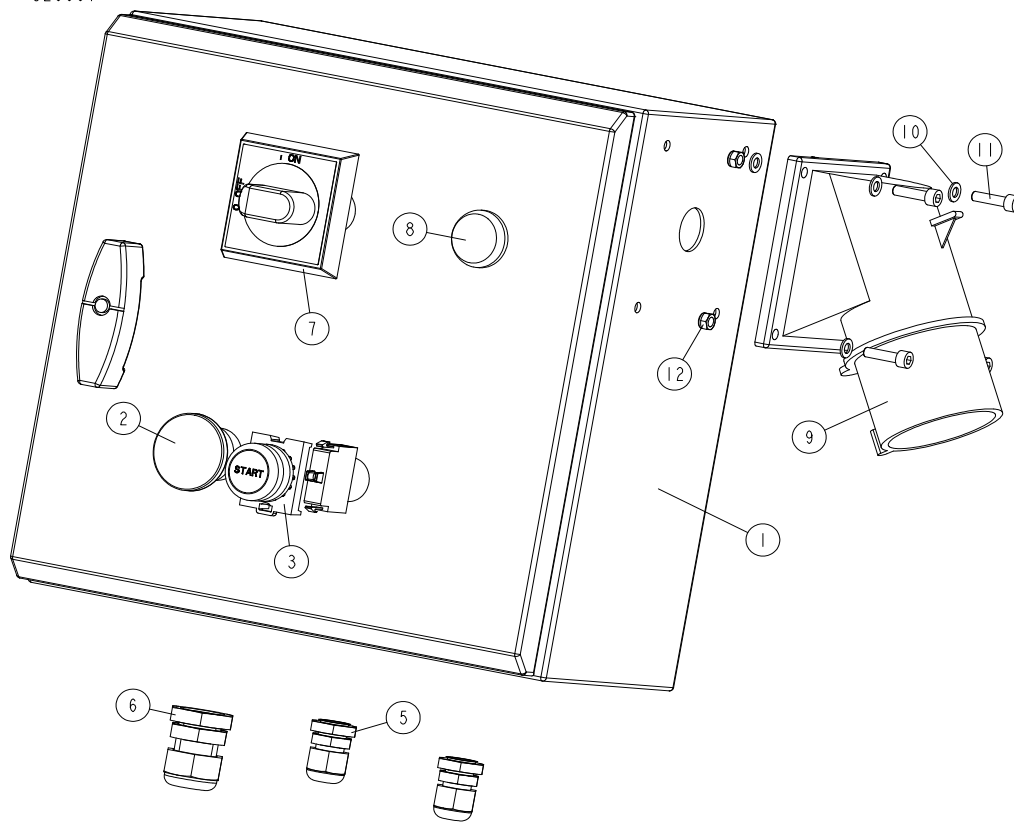
<sup>2</sup> Included in assy No. 586945-3

**5.2 Electric Box Bracket, Starter (included in assy No. 586945-3)**LX50SCS3EH7\_001  
LX50SCS3EH7

| REF | DESCRIPTION (u indicates parts available in assemblies only) | PART #     | QTY |  |
|-----|--|------------|-----|--|
| -   | MOTOR KIT, EH7 LX50  | 586945-3   | 1   |  |
| 1   | BOLT, M8X75 DIN603 CARRIAGE ZINC                             | F81002-106 | 1   |  |
| 2   | WASHER, 8.4 FLAT ZINC  | F81054-1   | 1   |  |
| 3   | NUT, M8-8-B HEX NYLON ZINC LOCK                              | F81032-2   | 1   |  |
| 4   | BLACHA MOCOWANIA PRZEŁĄCZNIKA                                | 595735-1   | 1   |  |
| 5   | STARTER, 12A MAX (5.5 KW AT 400V) IP65                       | 517343     | 1   |  |
| 6   | SCREW, M4X16 5.8-B CROSS RECESSED PAN HE                     | F81011-42  | 2   |  |
| 7   | WASHER, 4.3 FLAT ZINC  | F81051-2   | 2   |  |
| 8   | NUT, M4-8 HEX NYLON ZINC LOCK                                | F81029-1   | 2   |  |

### 5.3 Electric Box

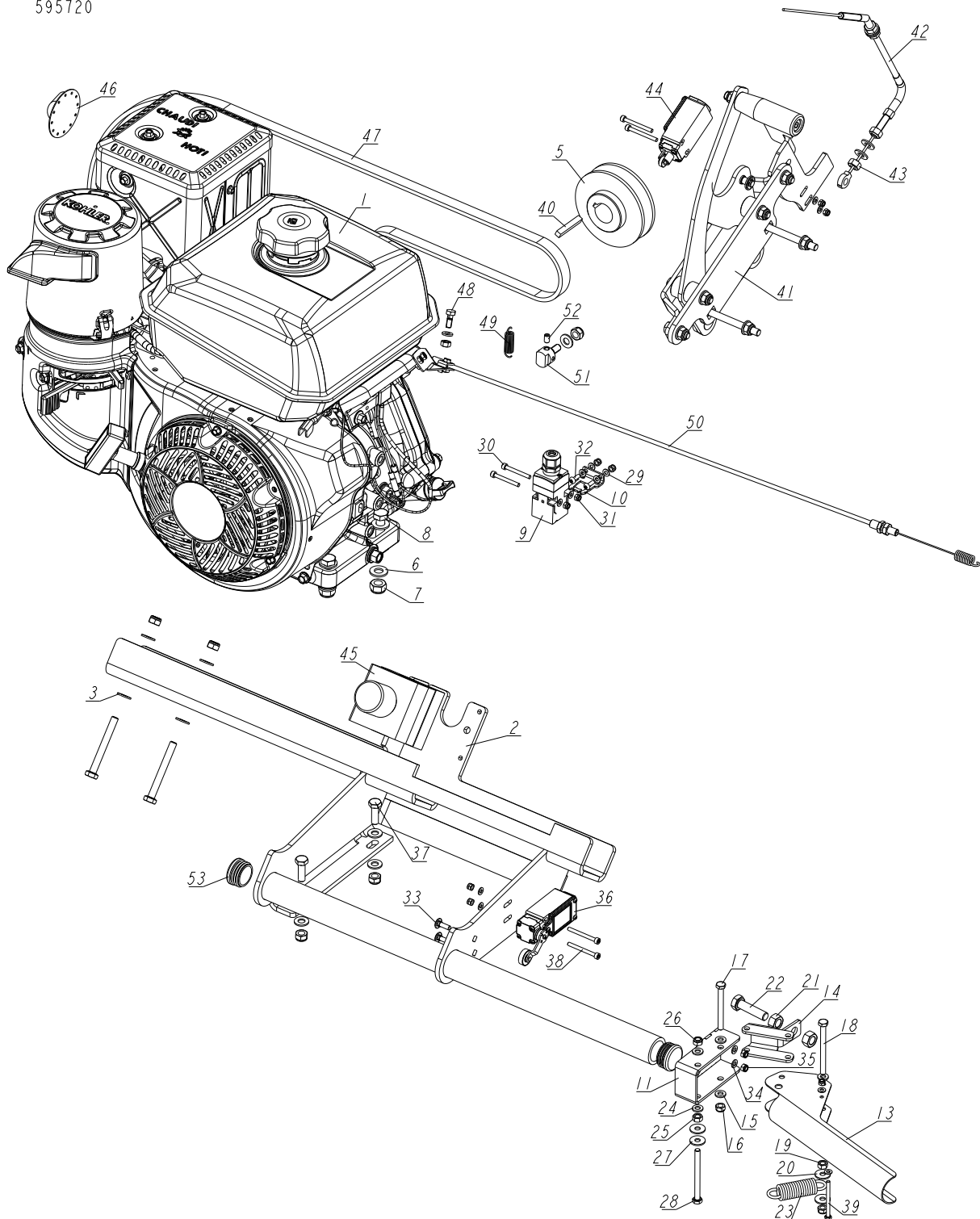
526997\_001  
526997



| REF | DESCRIPTION (u indicates parts available in assemblies only) | PART #    | QTY |
|-----|--|-----------|-----|
| -   | <b>BOX, M120E7 ELECTRIC</b>                                  | 526997    | 1   |
| 1   | BOX, CONTROL XC100 - 400V                                    | 526998    | 1   |
| 2   | BUTTON, XB4 BS542 EMERGENCY STOP                             | 086556    | 1   |
| 3   | BUTTON, M22 FLAT GREEN                                       | 090925    | 1   |
| 4   | CONTACT, M22 - K10   | 091362    | 1   |
| 5   | GLAND, DP9/H CABLE   | F81096-2  | 2   |
| 6   | GLAND, DP16/H CABLE  | F81096-7  | 1   |
| 7   | HANDLE, ABB SWITCH   | 088265-1  | 1   |
| 8   | LIGHT, M22 LED 24V BLUE CONTROL                              | 090448    | 1   |
| 9   | PLUG, 16A 5P 778152-6 PCE                                    | E85239    | 1   |
| 10  | WASHER, 5.3 FLAT ZINC  | F81052-1  | 8   |
| 11  | BOLT, M5X20-8.8 SOCKET HEAD ZINC                             | F81000-72 | 4   |
| 12  | NUT, M5-8 DIN985 ZINC-PLATED                                 | F81030-2  | 4   |

### 5.4 G14 Engine Kit

595720\_001  
595720



| REF | DESCRIPTION (◆ indicates parts available in assemblies only) | PART #   | QTY |   |
|-----|--|----------|-----|---|
| -   | ENGINE KIT, G14S CE LX50 COMPLETE                            | 595720   | 1   | - |
| -   | ENGINE KIT, G14 CE LX50 COMPLETE                             | 595720-3 | 1   | - |
| -   | ENGINE KIT, G14 LX50 COMPLETE                                | 595720-U | 1   | - |

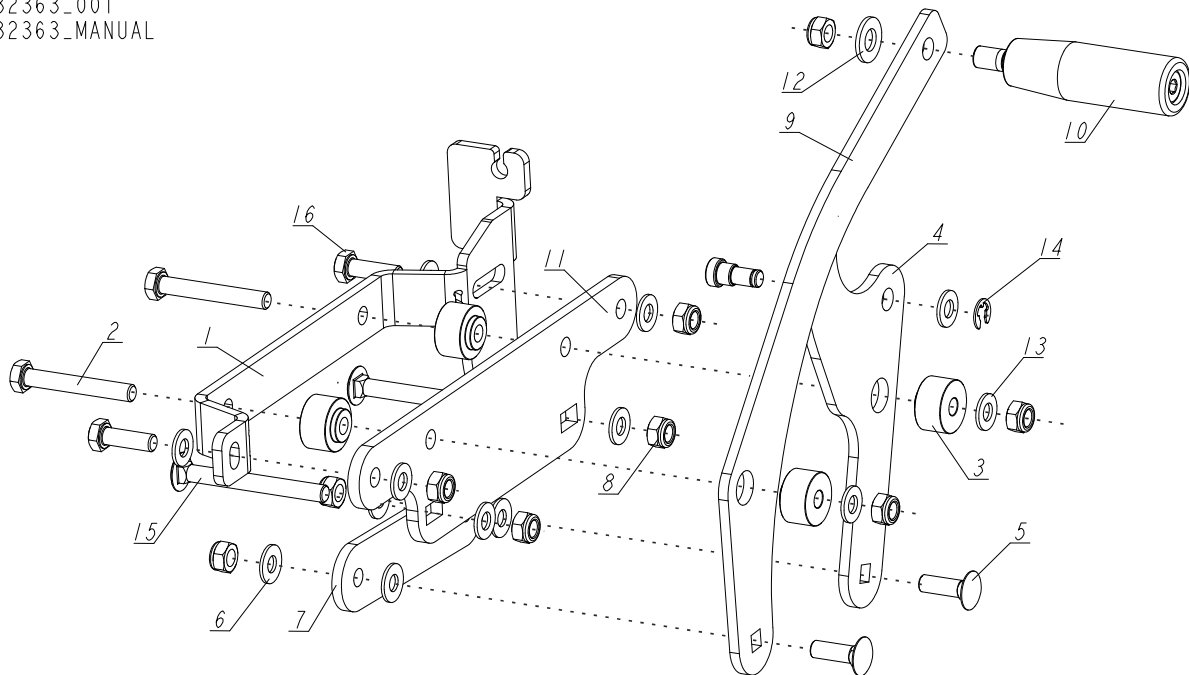
| REF | DESCRIPTION (◆ indicates parts available in assemblies only) | PART #    | QTY |
|-----|--|-----------|-----|
| 1   | ENGINE, KOHLER G14 (CH440-3149)                              | X200-1201 | 1   |
| 2   | BRACKET, ELECTRICAL BOX                                      | 594386-1  | 1   |
| 3   | WASHER, 8.4 FLAT ZINC  | F81054-1  | 13  |
| 4   | NUT, M8-8-B HEX NYLON ZINC LOCK                              | F81032-2  | 5   |
| 5   | SHEAVE, G13/14   | 550887-1  | 1   |
| 6   | WASHER, 10.5 FLAT ZINC                                       | F81055-1  | 8   |
| 7   | NUT, M10-8-B HEX NYLON ZINC LOCK                             | F81033-1  | 4   |
| 8   | BOLT, M10X45-8.8 HEX HEAD FULL THREAD ZI                     | F81003-3  | 4   |
| 9   | SWITCH, AZ17-11ZRK SAFETY 1                                  | 094232    | 1   |
| 10  | KEY, AZ17/170-B5 SAFETY SWITCH 2                             | 094422    | 1   |
| 11  | BRACKET WELDMENT   | 532316-1  | 1   |
| 12  | BOLT, M8X70-8.8 HEX HEAD ZINC                                | F81002-71 | 2   |
| 13  | LEVER, CABLE   | 532336-1  | 1   |
| -   | ASSY, TRIGGER PLATE  | 595723    | 1   |
| 14  | BRACKET  | 532324-1  | 1   |
| 15  | WASHER, 6.4 FLAT ZINC  | F81053-1  | 4   |
| 16  | NUT, M6-8-B HEX NYLON ZINC LOCK                              | F81031-2  | 2   |
| 17  | BOLT, M6X60-8.8 HEX HEAD FULL THREAD ZIN                     | F81001-9  | 1   |
| 18  | BOLT, M6X70 8.8 HEX HEAD FULL THREAD ZIN                     | F81001-63 | 1   |
| 19  | NUT, M6 8 HEX ZINC   | F81031-1  | 1   |
| 20  | WASHER, 6.5 SPECIAL FLAT ZINC                                | F81053-11 | 2   |
| 21  | NUT, M10-8-B-HEX ZINC  | F81033-3  | 2   |
| 22  | BOLT, M10X40-8.8 HEX HEAD FULL THREAD ZI                     | F81003-16 | 1   |
| 23  | SPRING, 3/4X2 7/8X12GA                                       | 015479    | 1   |
| 24  | WASHER, 6.4 FLAT ZINC  | F81053-1  | 3   |
| 25  | NUT, M6 8 HEX ZINC   | F81031-1  | 2   |
| 26  | NUT, M6-8-B HEX NYLON ZINC LOCK                              | F81031-2  | 1   |
| 27  | WASHER, 6.5 SPECIAL FLAT ZINC                                | F81053-11 | 2   |
| 28  | BOLT, M6X70 8.8 HEX HEAD FULL THREAD ZIN                     | F81001-63 | 1   |
| 29  | WASHER, 4.3 FLAT ZINC  | F81051-2  | 14  |
| 30  | SCREW, M4X35 8.8 HEX SOCKET HEAD CAP ZIN                     | F81011-34 | 2   |
| 31  | NUT, M4-8 HEX NYLON ZINC LOCK                                | F81029-1  | 9   |
| 32  | SCREW, M4X12 5.8-B CROSS RECESSED PAN HE                     | F81011-43 | 2   |
| 33  | BOLT, M5X16 DIN 603 CARRIAGE                                 | F81000-75 | 2   |
| 34  | WASHER, 5.3 FLAT ZINC  | F81052-1  | 2   |
| 35  | NUT, M5-8 DIN985 ZINC-PLATED                                 | F81030-2  | 2   |
| 36  | SWITCH, FA138 Z11 LIMIT                                      | 100931    | 1   |
| 37  | BOLT, M8X25-8.8-B HEX HEAD FULL THREAD Z                     | F81002-5  | 2   |
| 38  | SCREW, M4X40-8.8 SOCKET HEAD ZINC                            | F81011-37 | 4   |
| 39  | BOLT, M4X50-8.8 DIN933 HEX HEAD ZINC                         | F81011-48 | 1   |
| 40  | KEY, 1/4 X 1 11/16   | S04124    | 1   |
| 41  | LEVER, CLUTCH  | 532363    | 1   |
| 42  | CABLE, M120 TENSIONER  | 534518    | 1   |
| 43  | NUT, M8-8-B HEX ZINC   | F81032-1  | 4   |
| 44  | LIMIT SWITCH GLCB01C - D25 7                                 | 100910    | 1   |
| 45  | SWITCH, M22-PV/KCO2 EMERGENCY STOP                           | 094726    | 1   |
| 46  | DEFLECTOR, KOHLER14HP EXHAUST                                | 110187    | 1   |

| REF | DESCRIPTION (◆ indicates parts available in assemblies only) | PART #              | QTY |  |
|-----|--|---------------------|-----|--|
| 47  | V-BELT, BX71 17X1848 LD (CONTITECH)                          | 551001              | 1   |  |
| 48  | BOLT, THROTTLE CABLE CLAMP ZINC-PLATED                       | 088120-1            | 1   |  |
|     | THROTTLE FITTING, SWIVEL W/ 1 SCREW                          | 048904 <sup>1</sup> | 1   |  |
| 49  | SPRING, LX50 TENSIONER (GRENE NR 0050582)                    | 593262              | 1   |  |
| 50  | CABLE, LX50SC THROTTLE                                       | 550814              | 1   |  |
| 51  | ELEMENT, CLUTCH CABLE MOUNTING                               | 551000-1            | 1   |  |
| 52  | SCREW, M6X10-45H HEX SOCKET SET W/FLAT P                     | F81001-26           | 2   |  |
| 53  | CAP, SR1530 (HOLE 30) TUBE                                   | 517616              | 2   |  |
| -   | KIT, AIR/PRECLEANER FILTER KOHLER G14                        | 061330              | 1   |  |
| -   | CAP, G14 FUEL TANK   | 083597              | 1   |  |
| -   | COIL, G14 KOHLER   | 084520              | 1   |  |
| -   | CARBURETOR, G14 KOHLER                                       | 084691              | 1   |  |
| -   | STARTER, G14 MANUAL  | 084670              | 1   |  |
| -   | HOSE, G14 OIL DRAIN  | 524889              | 1   |  |
| -   | CAP, AIR FILTER, KOHLER G14                                  | 539441              | 1   |  |
| -   | AIR FILTER, KOHLER G14                                       | 539442              | 1   |  |
| -   | PRECLEANER, AIR KOHLER G14                                   | 539443              | 1   |  |
| -   | MUFLER, KOHLER G14 ENGINE                                    | 560617              | 1   |  |

<sup>1</sup> US market only

## 5.5 Clutch Lever

532363\_001  
532363\_MANUAL



| REF. | DESCRIPTION (* indicates parts available in assemblies only) | PART #     | QTY |
|------|--|------------|-----|
| -    | <b>LEVER, CLUTCH</b>   | 532363     | 1   |
| 1    | PLATE, CLUTCH ARM MOUNTING                                   | X100-1323  | 1   |
| 2    | BOLT, M8X55-8.8 HEX HEAD ZINC                                | F81002-8   | 2   |
| 3    | SPACER   | X100-1325  | 4   |
| 4    | CLUTCH PIVOT ARM WELDING                                     | X100-1328  | 1   |
| 5    | BOLT, M8X25-8.8 ZINC MUSHROOM HEAD SQUARE NECK               | F81002-59  | 2   |
| 6    | JTM-0818-015   | X100-1311  | 4   |
| 7    | PLATE, CLUTCH ENGAGEMENT ARM                                 | X100-1310  | 1   |
| 8    | NUT, M8-8-B HEX NYLON ZINC LOCK                              | F81032-2   | 9   |
| 9    | PLATE, CLUTCH MOUNTING ARM                                   | X100-1326  | 1   |
| 10   | KNOB, PLASTIC CRANK HANDLE                                   | 086338     | 1   |
| 11   | PLATE  | 534503-1   | 1   |
| 12   | WASHER, 10.5 FLAT ZINC                                       | F81055-1   | 1   |
| 13   | WASHER, 8.4 FLAT ZINC  | F81054-1   | 9   |
| 14   | CIRCLIP, 7 DIN6799   | F81090-60  | 1   |
| 15   | BOLT, M8X75 DIN603 ZINC MUSHROOM HEAD SQUARE NECK            | F81002-106 | 2   |
| 16   | BOLT, M8X25-8.8-B HEX HEAD FULL THREAD ZINC                  | F81002-5   | 2   |