

LX55 Sawmill Parts Manual

LX55G9	rev. A2.00
LX55G14	rev. A2.00
LX55E7	rev. A1.00

Safety is our #1 concern!

October 2019

Form #2400



WARNING! Read and understand this manual before using this machine.

California
Proposition 65 Warning



WARNING: Breathing gas/diesel engine exhaust exposes you to chemicals known to the State of California to cause cancer and birth defects or other reproductive harm.

Always start and operate the engine in a well-ventilated area.
If in an enclosed area, vent the exhaust to the outside.
Do not modify or tamper with the exhaust system.
Do not idle the engine except as necessary.

For more information go to **www.P65warnings.ca.gov**.



WARNING: Drilling, sawing, sanding or machining wood products can expose you to wood dust, a substance known to the State of California to cause cancer. Avoid inhaling wood dust or use a dust mask or other safeguards for personal protection.

For more information go to **www.P65Warnings.ca.gov/wood**.

Active Patents assigned to Wood-Mizer, LLC

Wood-Mizer, LLC has received patents that protect our inventions which are a result of a dedication to research, innovation, development, and design. Learn more at: woodmizer.com/patents

©2024 Wood-Mizer LLC

Printed in the United States of America, all rights reserved. No part of this manual may be reproduced in any form by any photographic, electronic, mechanical or other means or used in any information storage and retrieval system without written permission from

Wood-Mizer, LLC
8180 West 10th Street
Indianapolis, Indiana 46214

SECTION 1 REPLACEMENT PARTS

1.1 How To Use The Parts List1-1
 To Order Parts 1-1
 1.2 Sample Assembly1-1
 1.3 Torque Values1-2

SECTION 2 BLADE GUIDE, WHEELS, AND TENSIONER

2.1 Blade Guide Assembly, Idle Side.....2-1
 2.2 Blade Guide Assembly, Drive Side.....2-2
 2.3 Blade Wheels.....2-3
 2.4 Blade Tensioner Assembly.....2-4
 2.5 Optional Blade Guide Arm Assembly2-6

SECTION 3 SAWHEAD ASSEMBLIES

3.1 Clutch Assembly3-1
 3.2 Scale Assembly3-3
 3.3 Water Lube Assembly.....3-4
 3.4 Blade Housing Covers.....3-5
 3.5 Decals Assembly3-7

SECTION 4 SAWHEAD LIFT SYSTEM

4.1 Lift System4-1
 4.2 Lift System Handle.....4-3
 4.3 Up/Down Slide Assemblies.....4-4

SECTION 5 FEED SYSTEM

5.1 Mast Frame and Hardware5-1
 5.2 Roller Assemblies.....5-3
 5.3 Clutch Lever Assembly (Gas versions only).....5-4

SECTION 6 BED ASSEMBLIES

6.1 Bed Frame6-1
 6.2 Log Clamp6-2
 6.3 Optional Adjustable Feet.....6-3
 6.4 Optional Log Ramps.....6-4
 6.5 Optional Bed Frame Extension6-5
 6.6 Optional Log Taper Wedge6-6

Table of Contents

Section-Page

SECTION 7 POWER UNITS

7.1 Kohler 9hp Gas Engine7-1
7.2 Kohler 14hp Gas Engine7-2
7.3 E7 Electric Motor7-3
7.4 E7 Wiring Schematic.....7-5

SECTION 1 REPLACEMENT PARTS

1.1 How To Use The Parts List

- Use the table of contents to locate the assembly that contains the part you need.
- Go to the appropriate section and locate the part in the illustration.
- Use the number pointing to the part to locate the correct part number and description in the table.
- Parts shown indented under another part are included with that part.

To Order Parts

- From the continental US, call **1-800-525-8100** to order parts. Have your customer number, vehicle identification number, and part numbers ready when you call.
- From other international locations, contact the Wood-Mizer distributor in your area for parts.

1.2 Sample Assembly



REF	PART #	DESCRIPTION	COMMENTS	QTY.
	012345	SAMPLE ASSEMBLY, COMPLETE	INCLUDES ITEMS 1-6	1
1	F02222-22	Sample Part		1
2	F03333-33	Sample Part		2
	098765	Sample Subassembly	Includes items 3-6	1
3	S04444-44	Subassembly Sample Part		1
4	K55555	Subassembly Sample Part		1
	054321	Sample Sub-Subassembly	Includes items 5-6	2
5	022222	Sub-Subassembly Sample Part		1
6	F10234-56	Sub-Subassembly Sample Part		1

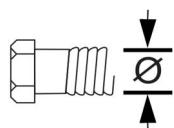
The Sample Assembly, Complete, part number 02345 (top level assembly) includes two parts (F0222-22 and F0333-33) and the 098765 subassembly.

Subassembly 098765 contains two parts(S04444-44 and K55555) and two copies of sub-subassembly 054321.

Each sub-subassembly 054321 contains two parts (022222 and F10234-56).

1.3 Torque Values

Grade		Units	SAE 5	SAE 8
Grade Mark				
Bolt Dia.	Threads Per In.	Units	SAE 5	SAE 8
6	32	in-lbs (Nm)	20 (2.3)	-
8	32	in-lbs (Nm)	24 (2.7)	30 (3.4)
10	24	in-lbs (Nm)	35 (4.0)	45 (5.1)
10	32	in-lbs (Nm)	40 (4.5)	50 (5.7)
12	24	in-lbs (Nm)	50 (5.7)	65 (7.3)
1/4	20	in-lbs (Nm)	95 (10.7)	125 (14.1)
1/4	28	in-lbs (Nm)	95 (10.7)	150 (17.0)
5/16	18	ft-lbs (Nm)	17 (22.6)	23 (31.2)
5/16	24	ft-lbs (Nm)	20 (27.1)	25 (33.8)
3/8	16	ft-lbs (Nm)	30 (40.7)	40 (54.2)
3/8	24	ft-lbs (Nm)	35 (47.5)	45 (61.0)
7/16	14	ft-lbs (Nm)	50 (67.8)	65 (88.1)
7/16	20	ft-lbs (Nm)	55 (74.6)	70 (94.9)
1/2	13	ft-lbs (Nm)	75 (101.7)	100 (135.6)
1/2	20	ft-lbs (Nm)	85 (115.3)	110 (149.2)
9/16	12	ft-lbs (Nm)	105 (142.4)	135 (183.1)
9/16	18	ft-lbs (Nm)	115 (155.9)	150 (203.4)
5/8	11	ft-lbs (Nm)	150 (203.4)	195 (264.4)
5/8	18	ft-lbs (Nm)	160 (217.0)	210 (284.8)
3/4	10	ft-lbs (Nm)	170 (230.5)	220 (298.3)
3/4	16	ft-lbs (Nm)	175 (237.3)	225 (305.1)
7/8	9	ft-lbs (Nm)	302 (409.5)	473 (640.9)
7/8	14	ft-lbs (Nm)	300 (406.8)	400 (542.4)
1	8	ft-lbs (Nm)	466 (631.8)	714 (967.4)



Metric Bolt Head Identification



Metric Grade 8.8

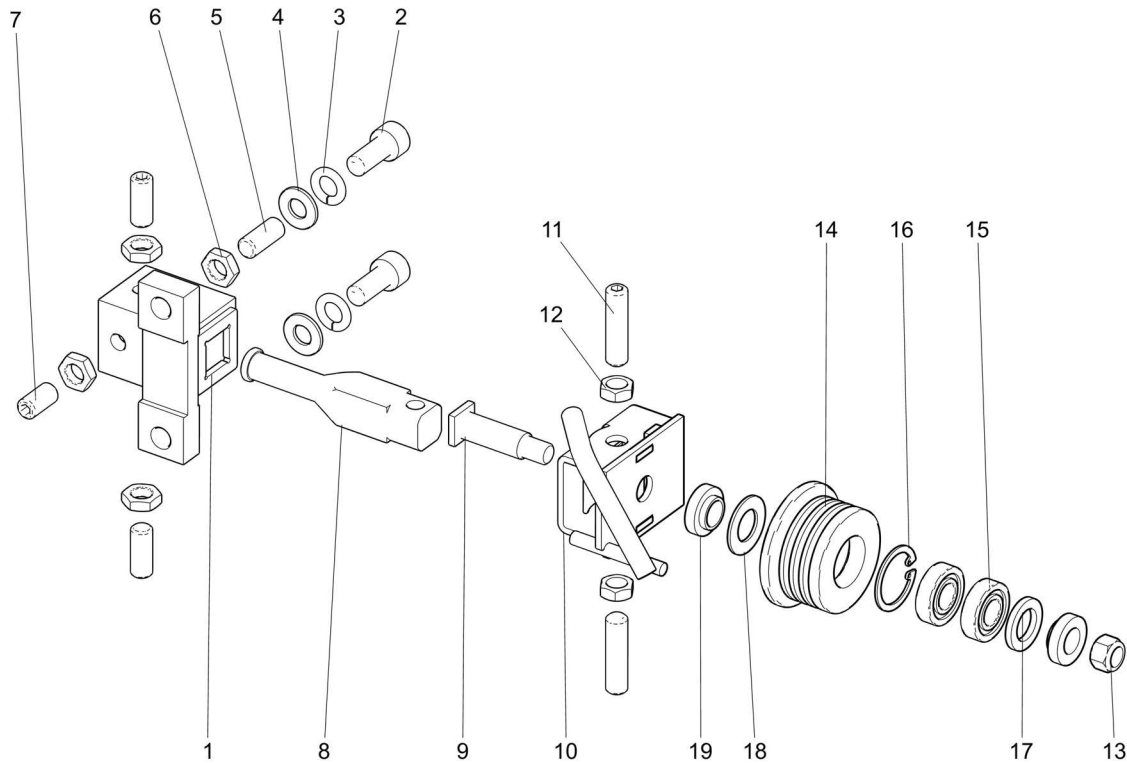


Metric Grade 10.9

COARSE THREAD					FINE THREAD				Wrench Size	
Diameter & Thread Pitch	Metric 8.8		Metric 10.9		Diameter & Thread Pitch	Metric 8.8		Metric 10.9		
	N-m	lbs-ft	N-m	lbs-ft		N-m	lbs-ft	N-m		lbs-ft
6 x 1.0	8	6	11	8					10 mm	
8 x 1.25	20	15	27	20	8 x 1.0	21	16	29	22	13 mm
10 x 1.5	39	29	54	40	10 x 1.25	41	30	57	42	16 mm
12 x 1.75	68	50	94	70	12 x 1.25	75	55	103	76	18 mm
14 x 2.0	109	80	151	111	14 x 1.5	118	87	163	120	21 mm
16 x 2.0	169	125	234	173	16 x 1.5	181	133	250	184	24 mm
18 x 2.5	234	172	323	239	18 x 1.5	263	194	363	268	27 mm
20 x 2.5	330	244	457	337	20 x 1.5	367	270	507	374	30 mm
22 x 2.5	451	332	623	460	22 x 1.5	495	365	684	505	34 mm
24 x 3.0	571	421	790	583	24 x 2.0	623	459	861	635	36 mm
30 x 3.0	1175	867	1626	1199	30 x 2.0	1258	928	1740	1283	46 mm

SECTION 2 BLADE GUIDE, WHEELS, AND TENSIONER

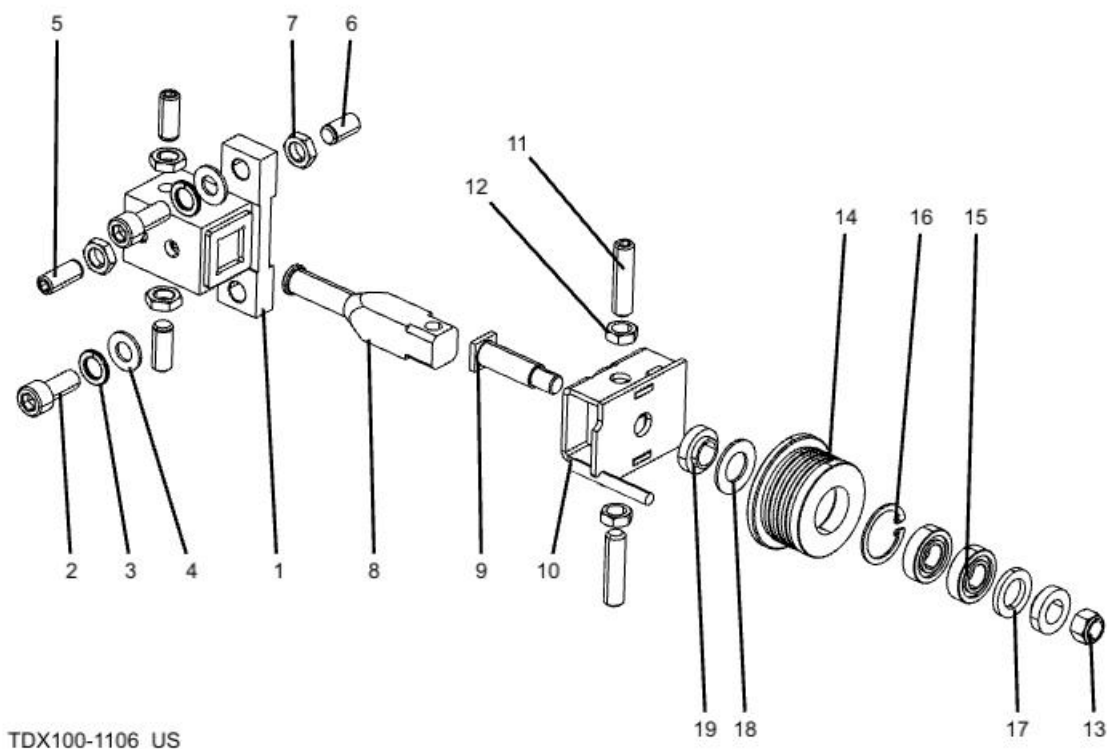
2.1 Blade Guide Assembly, Idle Side



TDX100-1107_US

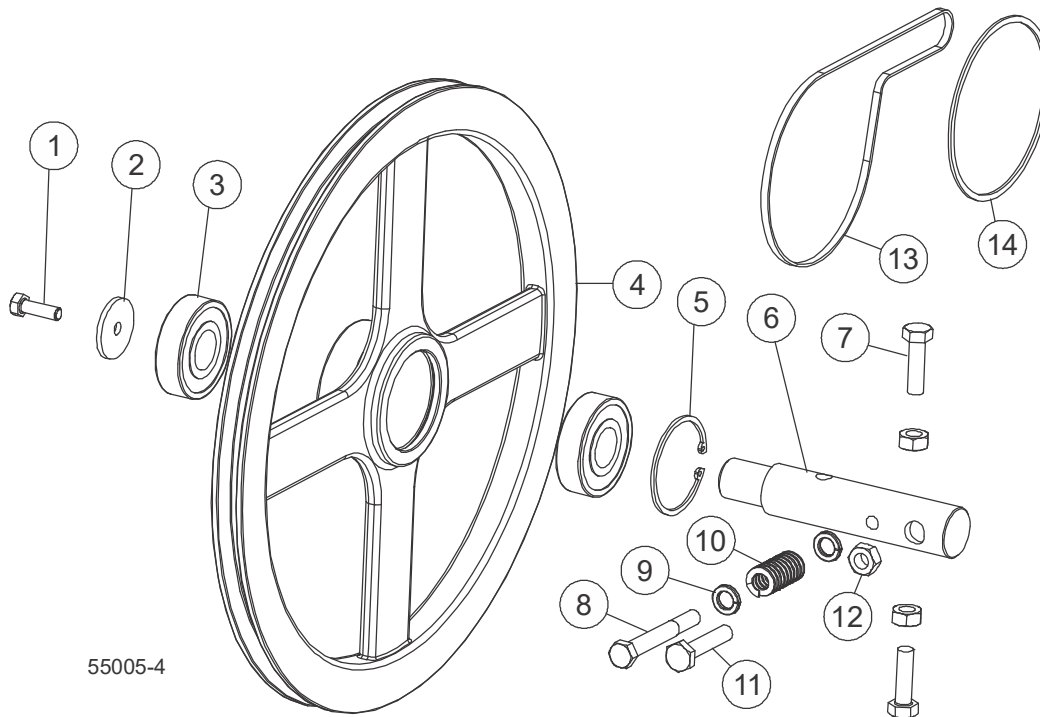
REF	PART #	DESCRIPTION	COMMENTS	QTY.
	X100-1107_US	Blade Guide Assembly, Idle Side		1
1	087744_US	Weldment, Metric B/G Mount		1
2	F05022-12	Bolt,M10-1.5 x 25 SHC		2
3	F05011-88	Washer, 10MM Split Lock		2
4	F05011-134	Washer, M10 Flat		2
5	F81015-4	Screw, M10-1.0x25mm Stainless Set		3
6	F81033-10	Nut, M10x1-04-ST-A2 ISO 8675 Thin		4
7	F81015-1	Screw, M10x1x20 DIN 913 SHSS		1
	094682_US	Guide Assy, Metric Drive Blade		1
8	503588_US	Shaft, Metric B/G Mount		1
9	087763_US	Shaft, M10-1.5 Metric Roller		1
10	094681-1_US	Brkt Weldment, Metric Idle B/G		1
11	F05022-57	Screw, M10-1.5x40mm SH Set, SS		2
12	F05010-203	Nut,M10-1.5 Jam		2
13	F05004-270	Nut, M10-1.50 Hex Nyl Lock		1
	A04925	Roller Assy, BG 1-1/4" and 1-1/2" Blades		1
14	A09678	Roller Assy, Blade Guide	Available in assembly only	1
15	015975	Bearing, R8-2RS Blade Guide	Available in assembly only	2
16	F04254-1	Ring, 1 1/8 IR Tru-Ark	Available in assembly only	1
17	P06455	Washer, 5/8 Grey Felt	Available in assembly only	1
18	P04252	Washer, 5/8 White Felt	Available in assembly only	1
19	S04253	Spacer, .510x.937x.34		2

2.2 Blade Guide Assembly, Drive Side



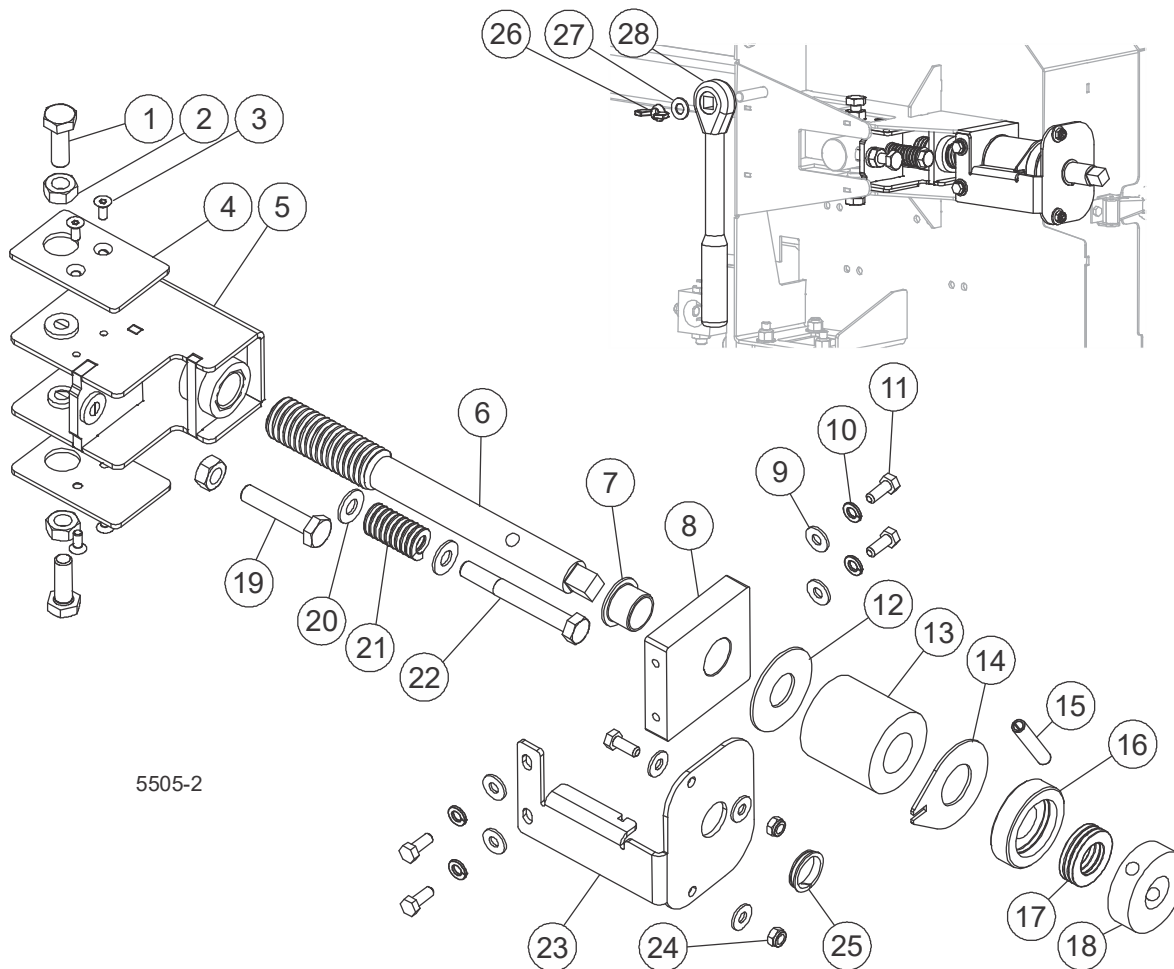
REF	PART #	DESCRIPTION	COMMENTS	QTY.
	X100-1106_US	Assembly, Blade Guide, Drive Side		1
1	087744_US	Weldment, Metric B/G Mount		1
2	F05022-12	Bolt, M10-1.5 x 25 SHC		2
3	F05011-88	Washer, 10MM Split Lock		2
4	F05011-134	Washer, M10 Flat		2
5	F81015-4	Screw, M10-1.0x25mm Stainless Set		3
6	F81015-1	Screw, M10x1x20 DIN 913 SHSS		1
7	F81033-10	Nut, M10x1-04-ST-A2 ISO 8675 Thin		4
	094682_US	Guide Assy, Metric Drive Blade		1
8	503588_US	Shaft, Metric B/G Mount		1
9	087763_US	Shaft, M10-1.5 Metric Roller		1
10	094679-1_US	Brkt Weldment, Metric Drive B/G		1
11	F05022-57	Screw, M10-1.5x40mm SH Set, SS		2
12	F05010-203	Nut, M10-1.5 Jam		2
13	F05004-270	Nut, M10-1.50 Hex Nyl Lock		1
	A04925	Roller Assy, BG 1-1/4" and 1-1/2" Blades		1
14	A09678	Roller Assy, Blade Guide	Available in assembly only	1
15	015975	Bearing, R8-2RS Blade Guide	Available in assembly only	2
16	F04254-1	Ring, 1 1/8 IR Tru-Ark	Available in assembly only	1
17	P06455	Washer, 5/8 Grey Felt	Available in assembly only	1
18	P04252	Washer, 5/8 White Felt	Available in assembly only	1
19	S04253	Spacer, .510x.937x.34		2

2.3 Blade Wheels



REF	PART #	DESCRIPTION	COMMENTS	QTY.
	X100-961	ASSY, BANDWHEEL SHAFT (DRIVE AND IDLE SIDES)		2
1	F05004-40	Bolt, M8x1.25x25mm C/S 8.8 Din 933 HH		1
2	S08220	Washer, .313x1.5x.125 Retaining		1
3	P08066	Bearing, .9843x2.4409x.6693		2
4	X100-303	Sheave, Bandwheel, 15 3/8 OD		1
5	F04254-21	Ring, 2 7/16 IR N 5002-244 Beveled Snap		1
6	X100-301	Spindle, Blade Wheel		1
7	F05022-3	Bolt, M10-1.5x30 Class 8 HH		2
8	F05022-1	Bolt, M10-1.5x80 Class 8 HH		1
9	F05011-61	Washer, 3/8 SAE Flat		2
10	034430	Spring, 3/4 O.D.x 1 1/2 Die		1
11	F05004-269	Bolt, M10-1.50x50mm HHFT 8.8		1
12	F05010-85	Nut, M10-1.5 Hex		3
		BELTS		
13	128170	Belt, B71R Super II Timken		1
14	X100-900	Idle Wheel Belt: Belt, B47.5		1

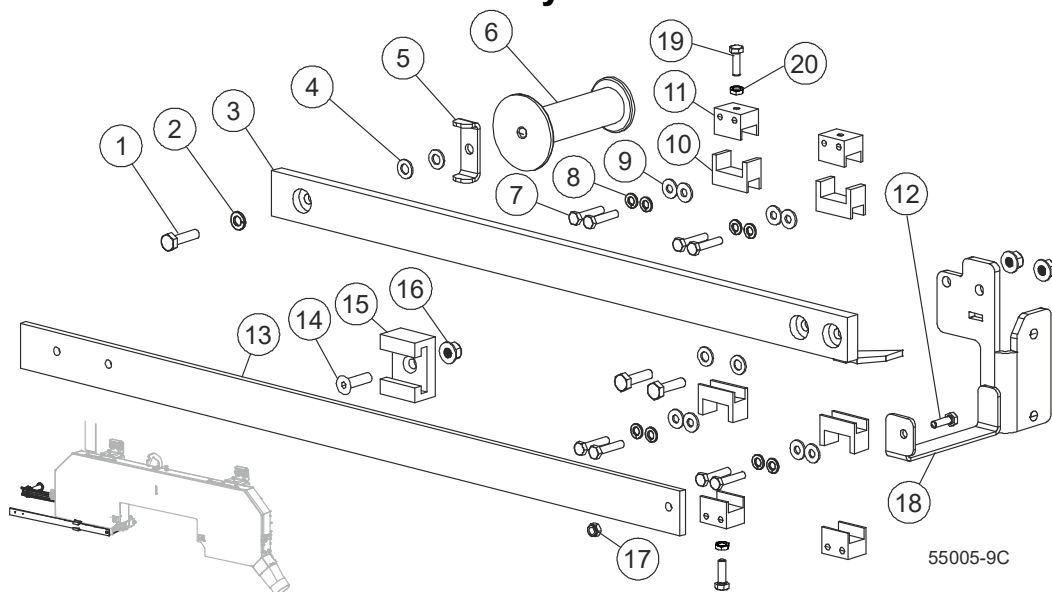
2.4 Blade Tensioner Assembly



REF	PART #	DESCRIPTION	COMMENTS	QTY.
	X100-1246_US	ASSY, TENSIONER		1
1	F05022-3	Bolt, M10-1.5x30 Class 8 HH		2
2	F05010-85	Nut, M10-1.5 Hex		3
3	F05020-11	Bolt, M5-.8 x12 FH SHC		4
4	X100-1249	Plate, Polyethelene		2
5	X100-1239_US	Weldment, Tensioner		1
6	X100-1252_US	Shaft, Blade Tension		1
7	X100-1256_US	Bearing, Flange IGUS GFM-2023-16		1
8	X100-1247_US	Block, Tensioner		1
9	F05011-11	Washer, 1/4 SAE Flat		8
10	F05011-14	Washer, 1/4 Split Lock		4
11	F05004-219	Screw, M6x1.0x16mm 8.8 HH		6
12	X100-1284_US	Washer, Tensioner		1
13	014828	Spring, Tensioner Blade LT15		1
14	X100-1251_US	Plate, Tension Indicator		1
15	F05029-17	Pin, 8MM x 45MM Roll		1
16	X100-1248_US	Bushing, Thrust Bearing		1

REF	PART #	DESCRIPTION	COMMENTS	QTY.
17	511979_US	Bearing, 20x35x10mm Thrust		1
18	X100-1250_US	Bushing, Tensioner		1
19	F05004-269	Bolt, M10-1.50x50mm HHFT 8.8		1
20	F05011-61	Washer, 3/8 SAE Flat		2
21	034430	Spring, 3/4 O.D.x 1 1/2 Die		1
22	F05022-1	Bolt, M10-1.5x80 Class 8 HH		1
23	X100-1253_US	Bracket, Tensioner Mount		1
24	F05010-200	Nut, M6-1.0 Nylon Lock		2
25	X100-1259_US	Bearing, Clip MCM-20-03		1
26	F81033-8	Nut, M10 -1.5 Wing		1
27	F05011-134	Washer, M10 Flat		1
28	091620	Tool, Blade Tensioning		1

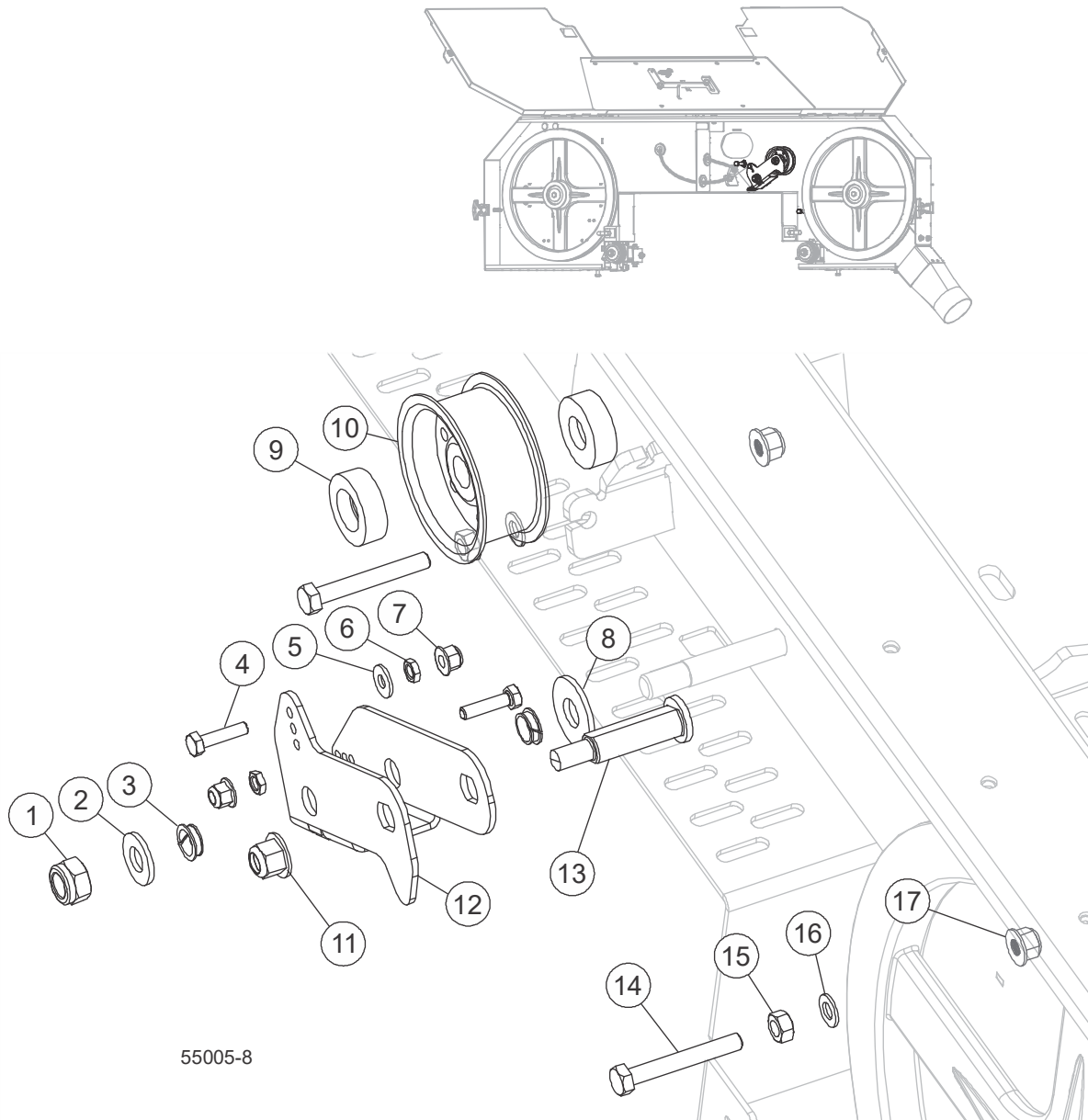
2.5 Optional Blade Guide Arm Assembly



REF	PART #	DESCRIPTION	COMMENTS	QTY.
	123061	ASSY, BLADE GUIDE ARM		1
1	F05021-11	Screw, M8-1.25x30 HHC FT	F05021-11 replaced F05021-18 after 9/27/2021 per ECN 38155.	3
	F05021-18	Bolt, M8-1.25 x 30 HH FT Class 8.8		3
2	F05011-45	Washer, 8mm Split Lock, Zn		1
3	128219	Arm, Blade Guide		1
4	F05026-4	Washer, M8 Flat		4
5	123092	Plate, Blade Guide Stop		1
6	123070	Handle, Elessa IFF.112 B-M8		1
7	F05020-8	Bolt, M6-1 x 30mm Class 8 HH		8
8	F05011-14	Washer, 1/4 Split Lock		8
9	F05011-11	Washer, 1/4 SAE Flat		8
10	128221	Slide, Blade Guide		4
11	128220	Block, Blade Guide		4
12	F05020-6	Bolt, M6-1x20mm HH Class 8	(2) deleted per ECN 37364.	1
13	014955	Guard, Blade		1
14	F05004-245	Screw, M8x1.25x30mm Flat Socket C/S BO		1
15	014882	Guide, Blade Guard		1
16	F05027-44	Nut, M8 x 1.25 Flanged Nylock		3
17	F05010-200	Nut, M6-1.0 Nylon Lock		1
18	123093	Wldmnt, Blade Guide		1
19	F05020-33	Bolt, M6-1 x 25 Class 8 HHC	Replaced (2) F05020-6 after 30/30/2020 per ECN 37364.	2
20	F05010-226	Nut, M6 x 1 Hex Jam	Added after 30/30/2020 per ECN 37364.	2

SECTION 3 SAWHEAD ASSEMBLIES

3.1 Clutch Assembly



55005-8

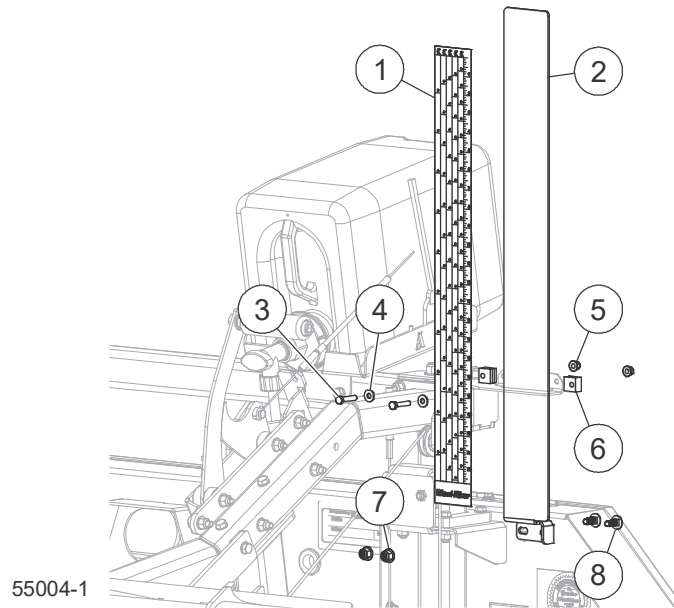
REF	PART #	DESCRIPTION	COMMENTS	QTY.
	X100-1192_US	ASSY, CLUTCH		
1	F81034-2	Nut, M12x1.5 Hex Nylock		1
2	F05011-124	Washer, M12 Flat Zinc		1
3	X100-917	Bearing, Clip, 1/2		2
4	F05020-33	Bolt, M6-1 x 25 Class 8 HHC		2
5	F05011-11	Washer, 1/4 SAE Flat		2
6	F05010-226	Nut, M6 x 1 Hex Jam		2
7	F05027-34	Nut, M6-1.0 Flange Hex Nylock Zinc		2
8	F05011-52	Washer, 9/16 Flat		1

3 Sawhead Assemblies

Clutch Assembly

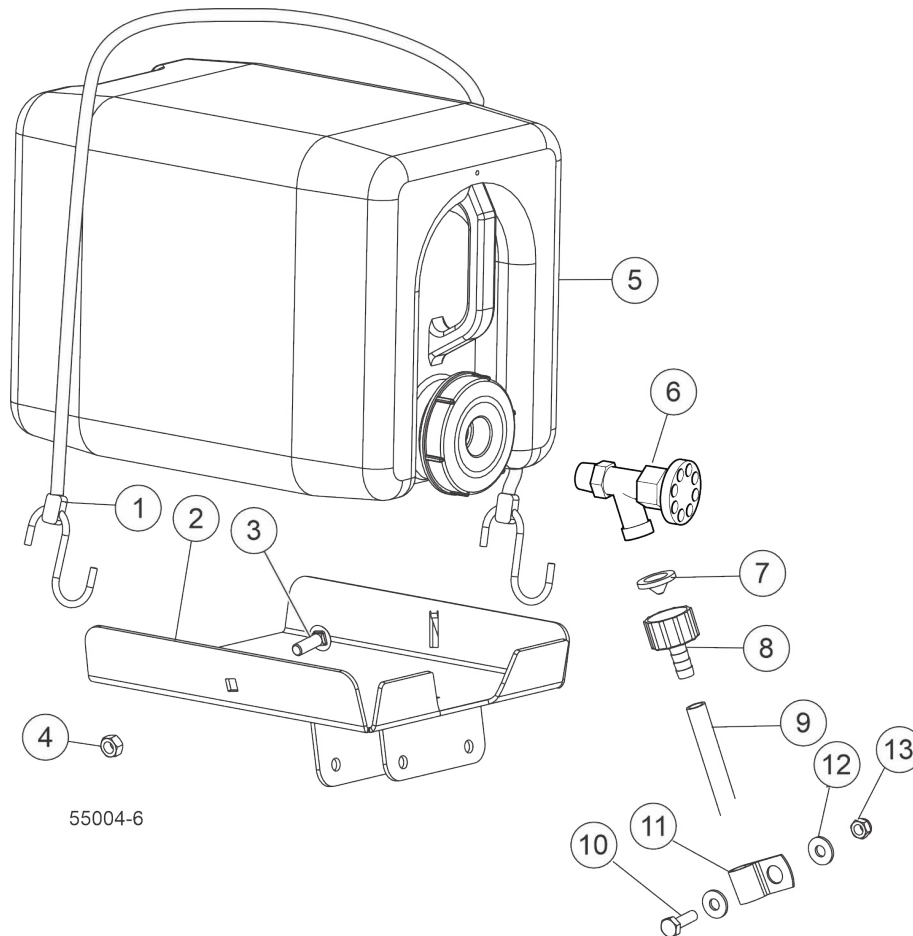
REF	PART #	DESCRIPTION	COMMENTS	QTY.
9	X200-1165	Spacer, Clutch		2
10	X200-906	Pulley, Idler 5/8x2 3/4		1
11	F05027-47	Nut, M10-1.5 Flanged Nylon Lock		1
12	X100-1195_US	Bracket, Clutch Arm		1
13	128098	Stud, Clutch Idler		1
14	F05021-15	Bolt, M8-1.25x60 HH Class 8.8		2
15	F05010-162	Nut, M8-1.25 Free Zinc		2
16	M05026-4	Washer, M8 Flat		2
17	F05027-44	Nut, M8 x 1.25 mm Nylock Flange		2

3.2 Scale Assembly



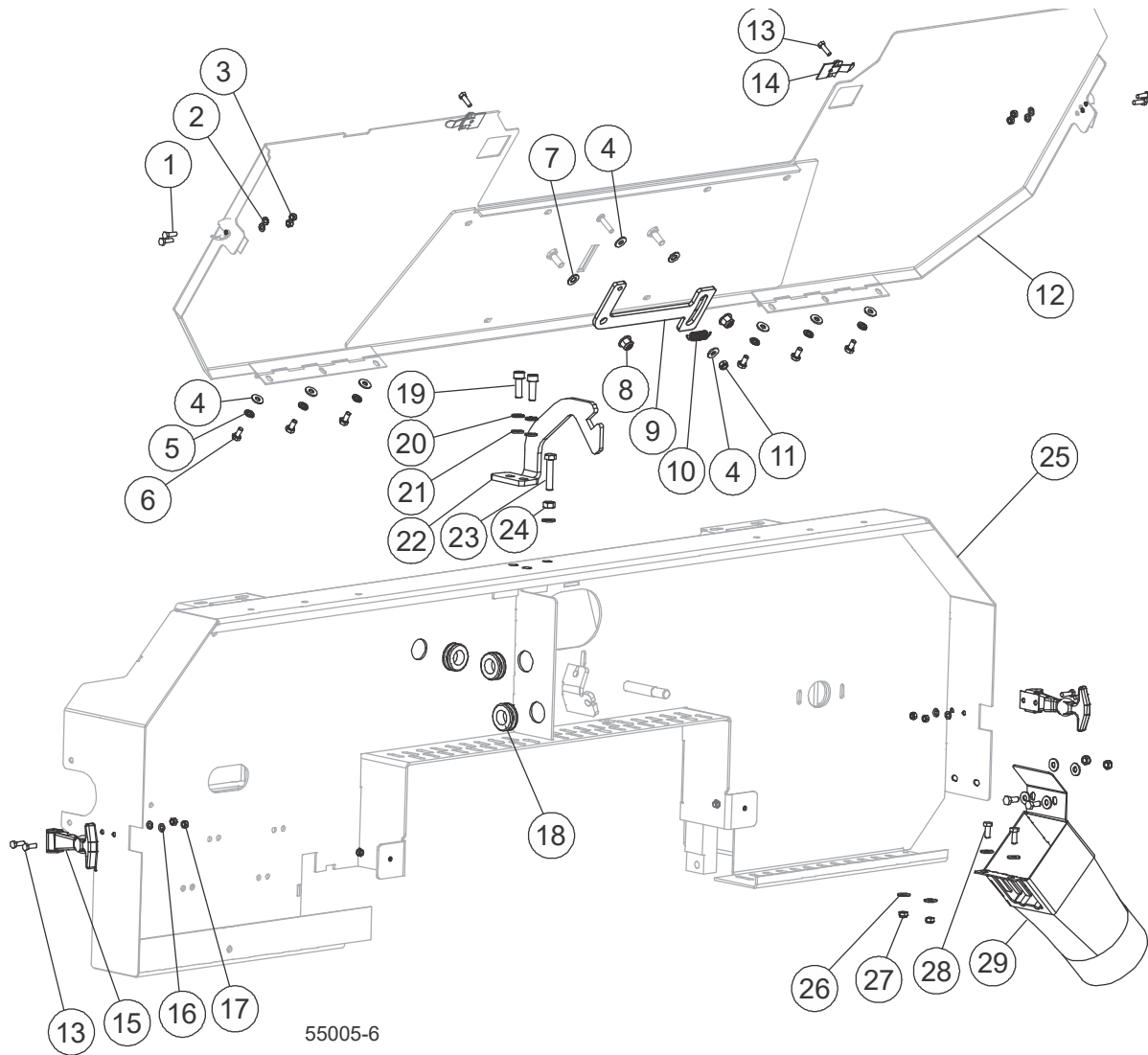
REF	PART #	DESCRIPTION	COMMENTS	QTY.
1	123059	DECAL, WOOD-MIZER INCH SCALE		1
	530667_US	ASSY, TRACK SCALE		1
2	531993-1_US	Bracket, Blade Height		1
3	F05020-8	Bolt, M6-1.0x30 Class8 HH		2
4	F05011-11	Washer, 1/4 SAE Flat		2
5	F05027-34	Nut, M6-1.0 Flange Hex Nylock Zinc		2
6	X100-984	Block, Plastic Scale		2
7	F05027-44	Nut, M8 x 1.25 Flanged Nylock		2
8	F05021-14	Bolt, M8-1.25x20 Carriage		2

3.3 Water Lube Assembly



REF	PART #	DESCRIPTION	COMMENTS	QTY.
	123049	ASSY, WATER TANK		1
1	P11668	Strap, 20 Rubber W/Hook		1
2	123050	Weldment, Water Tank Mount		1
3	F05021-17	Bolt, M8-1.25 x 25 Carriage Class 8.8		1
4	F05027-17	Nut, M8-1.25 Swaged Hex		1
	711401	Bottle Kit, 2.5 Gallon Water		1
5	711400	Bottle, 2.5 Gallon Water		1
6	133320	Valve, 3/4 NPT Elbow 3/4 Male GHT Outlet		1
7	016086	Filter, Water Lube		1
8	014113	Fitting, 5/8-3/8 Hose Barb		1
9	R01885	Tubing, Water Lube 3/8" id 1/2" od		6ft
10	F05020-6	Bolt, M6-1x20 HH Class 8		1
11	P07584	Clamp, 1/2EMT Coated		1
12	F05011-11	Washer, 1/4 SAE Flat		2
13	F05010-200	Nut, M6-1.0 Nylon Lock		1

3.4 Blade Housing Covers



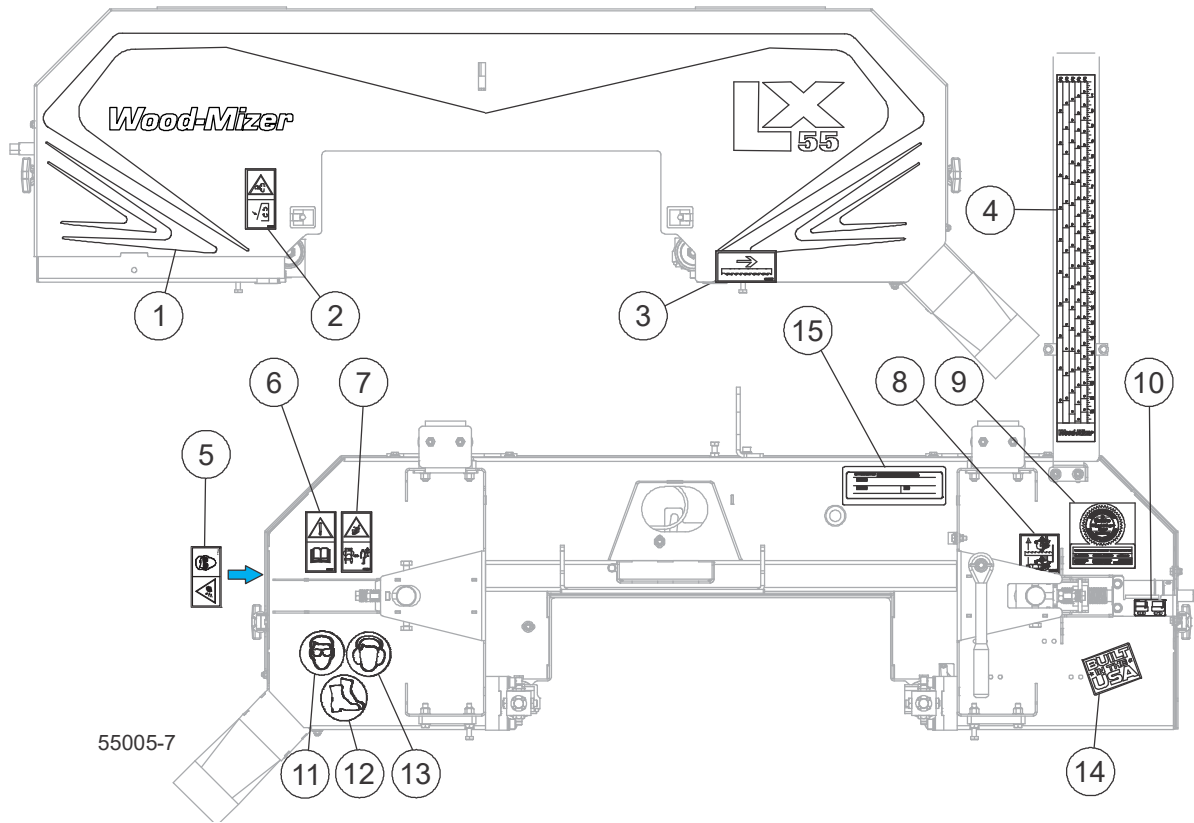
REF	PART #	DESCRIPTION	COMMENTS	QTY.
	530657_US	ASSY, FRONT COVER		1
1	F81000-20	Bolt, M5x16 8.8 Hex Head Full Thread Z		4
2	F81052-1	Washer, M5 Flat Zinc		4
3	F05027-3	Nut, M5-.8 Class 8 Hex Nylock		4
4	F05011-11	Washer, 1/4 SAE Flat		8
5	F05011-14	Washer, 1/4 Split Lock		6
6	F05005-99	Screw, M6-1x12 HHC FT GR8-8 Din 933		6
7	F05026-4	Washer, M8 Flat		2
8	F05027-44	Nut, M8 x 1.25 Flanged Nylock		2
9	X100-920	Latch, Cover		1
10	092208	Spring, Extension 1.6x12x38		1
11	F05010-200	Nut, M6-1.0 Nylon Lock		1
12	530660-1_US	Weldment, Front Cover		1
13	F81000-20	Bolt, M5x16 HH FT Class 8.8		6

3 Sawhead Assemblies

Blade Housing Covers

REF	PART #	DESCRIPTION	COMMENTS	QTY.
14	X100-999	Latch, Vibration Cover		2
15	014829	Latch, Flexible Draw		2
16	F81052-1	Washer, 5.3 FE/ZN5 PN-78/M-82005		4
17	F05027-3	Nut, M5-.8 Class 8 Hex Nyloc		6
18	025247	Grommet, Rubber 3/4 ID		3
19	F05021-33	Screw, M8-1.25x25 SHC BO		2
20	F05011-45	Washer, 8mm Split Lock, Zn		2
21	F05026-4	Washer, M8 Flat		3
22	X100-1155_US	Plate, Door Latch		1
23	F81002-15	Bolt, M8x1.25x40 HH FT		1
24	F05010-162	Nut, M8-1.25 Free Zinc		1
25	527166-1_US	Wldmnt, Head LX55		1
	X100-1288_US	ASSY, SAWDUST CHUTE		1
26	F05004-219	Screw, M6x1.0x16mm 8.8 HH		4
27	F05010-200	Nut, M6-1.0 Nylon Lock		4
28	F05011-11	Washer, 1/4 SAE Flat		8
29	X100-1105_US	Weldment, Sawdust Chute		1

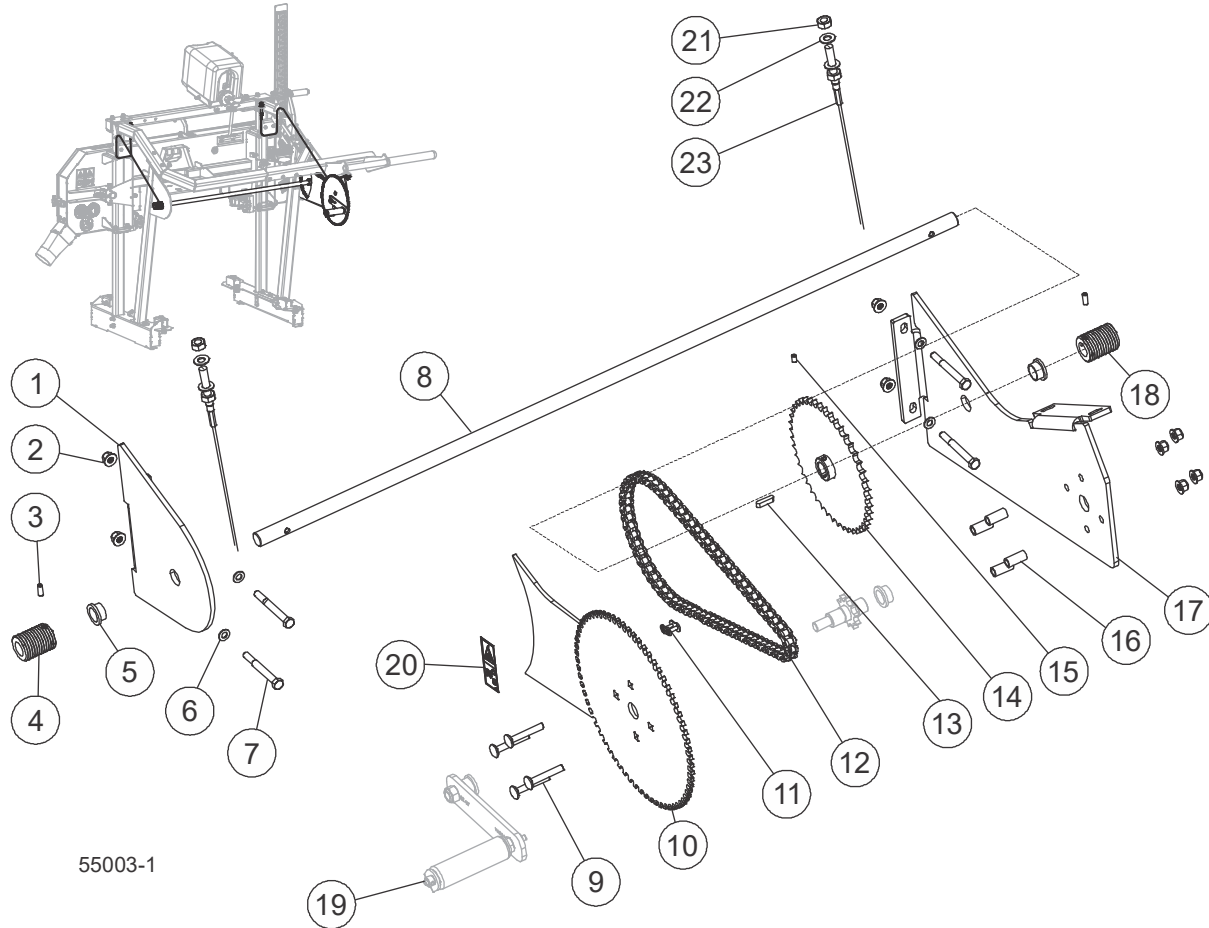
3.5 Decals Assembly



REF	PART #	DESCRIPTION	COMMENTS	QTY.
	128063	Decal Kit, LX55		1
1	518620	Decal, LX55		1
2	099220	Decal, Close Guards Before Operating		1
3	096321	Decal, Blade Movement Direction		1
4	123059	Decal, Wood-Mizer Inch Scale		1
5	099222	Decal, Saw Dust Protection-Pictogram		1
6	096317	Decal, Read Manual Before Operating		1
7	099221	Decal, Keep A safe Distance		1
8	P11789	Decal, Blade Alignment		1
9	079278	Decal, Wood-Mizer Quality & Information		1
10	527864	Decal, Tensioner		1
11	S12004G	Decal, Eye Warning		1
12	501465	Decal, Use Safety Boots-Pictogram		1
13	S12005G	Decal, Ear Warning		1
14	074008	Decal, Built In The USA		1
15	015820	Decal, LT15 ID		1
	P09971	Decal, VIN Overlament		1

SECTION 4 SAWHEAD LIFT SYSTEM

4.1 Lift System

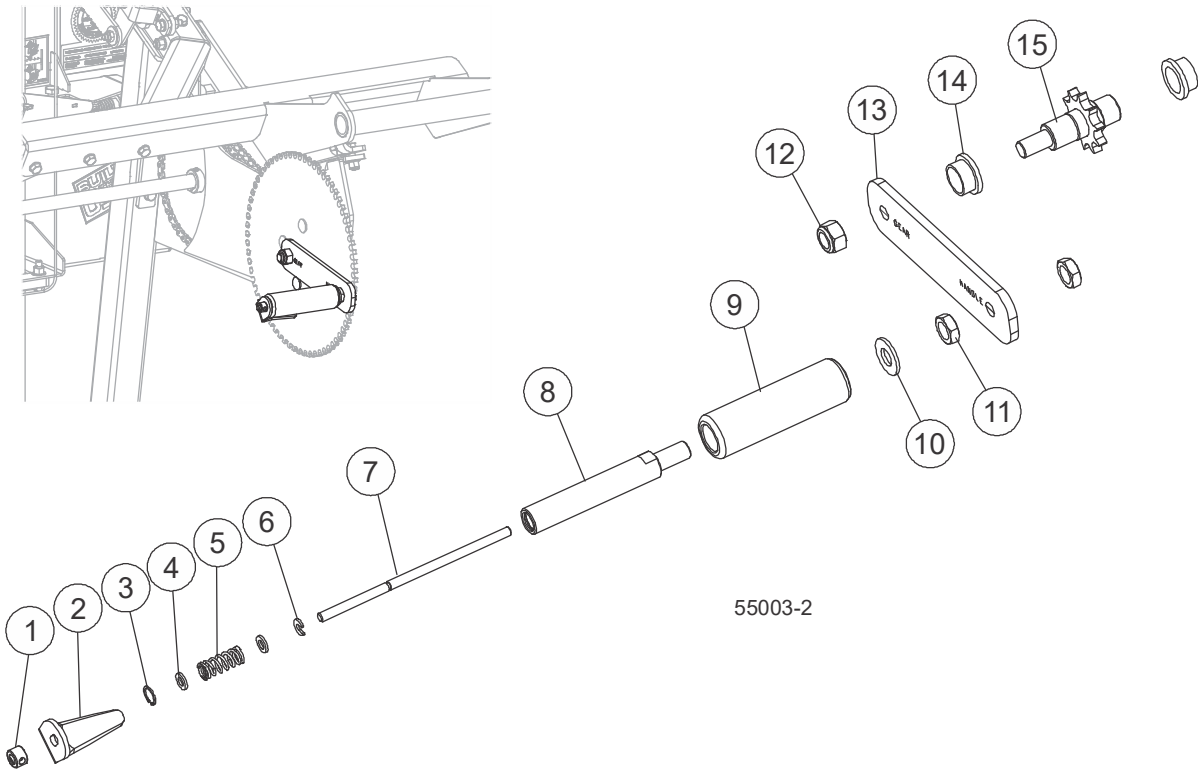


55003-1

REF	PART #	DESCRIPTION	COMMENTS	QTY.
	532337_US	ASSY, LIFT SYSTEM		1
1	531988-1_US	Bracket, Lift Mount RH		1
2	F05027-44	Nut, M8 x 1.25 Flanged Nylock		8
3	F05020-79	Screw, M6-1.0x16mm SH Flat Pt. SS Set		2
4	123058	Helical Shaft, LH		1
5	X100-1073	Bushing, Bronze 3/4x7/8		2
6	F05026-4	Washer, M8 Flat		4
7	F05021-19	Bolt, M8-1.25 x 75 HH Class 8.8 FT		4
8	532311-1_US	Shaft, Up/Down		1
9	F05021-13	Bolt, M8-1.25x50 Carriage		4
10	531984_US	Plate, Height Adjustment		1
11	P04200	Link, #40 Master		1
12	128073	Chain, #40x74 Pitches (37")		1
13	076051	Key, 6x6x25mm		1

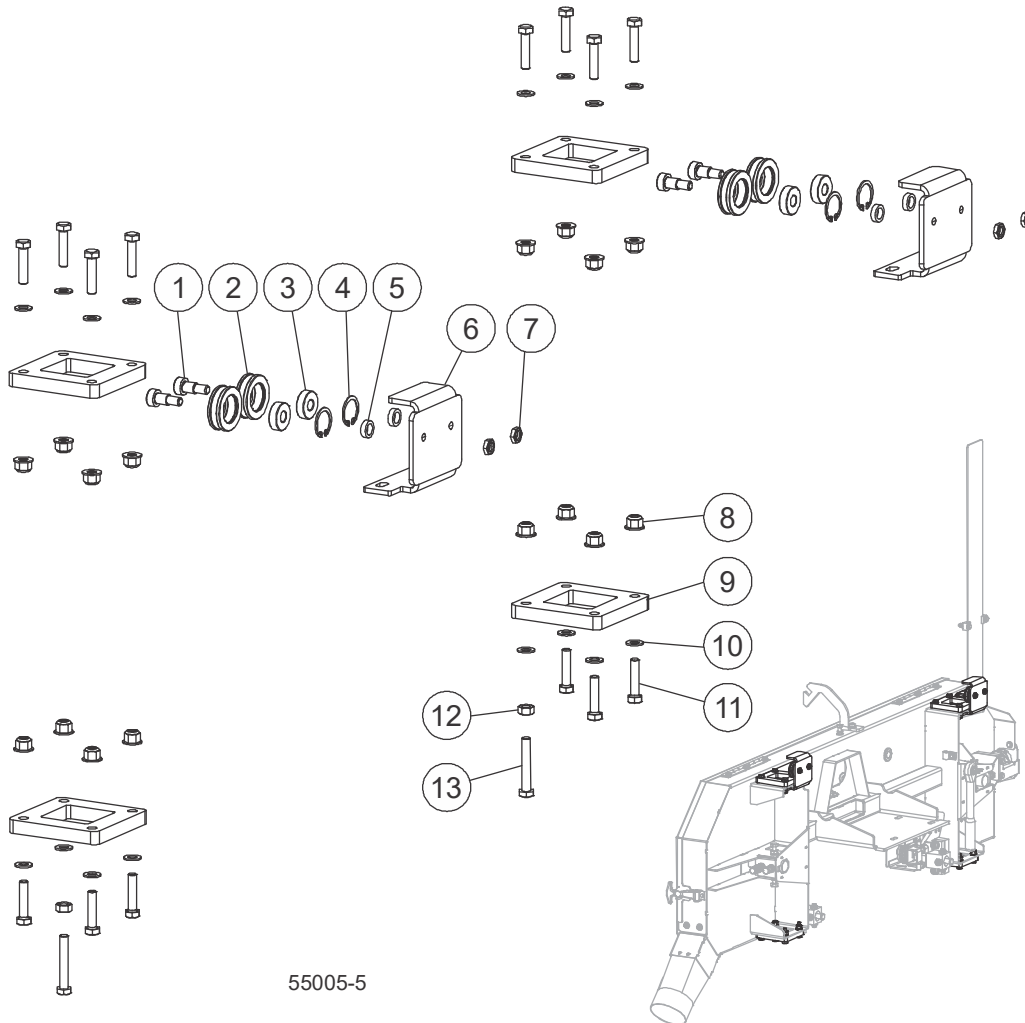
REF	PART #	DESCRIPTION	COMMENTS	QTY.
14	532323-1_US	Weldment, Driven Gear		1
15	F05020-20	Screw, M6-1x10 SH Flat Pt. Set		1
16	128077	Spacer, Height Adjustment		4
17	531989-1_US	Bracket, Lift Mount LH		1
18	532325_US	Helical Shaft, RH		1
19	532318_US	Assy, Handle (See Section 4.2)		1
20	099540	Decal, Gear Danger		1
21	F05027-28	Nut, M10-1 Hex		4
22	F05011-134	Washer, M10 Flat		4
23	532326	Cable, Up-Down with End		2

4.2 Lift System Handle



REF	PART #	DESCRIPTION	COMMENTS	QTY.
	532318_US	ASSY, HANDLE		1
	096499_US	Assy, Handle		1
1	031975	Collar, 1/4 ID Shaft		1
2	047689	Plate, Edger Handle		1
3	F04254-47	Ring, 1/2ID IR Retaining Snap		1
4	047705	Spacer, 1/4ID x .480 OD x 1/16		2
5	047690	Spring, 1/2 OD x 1-1/2 Length x .055		1
6	006492	Retainer, Handle Assy		1
7	047687	Pin, Edger Handle		1
8	047686	Shaft, Edger Handle		1
9	047688	Handle, 49/64ID x 1-1/4OD x 4 Plas		1
10	F05011-2	Washer, 1/2 SAE Flat		1
11	F05010-31	Nut, 1/2-13 Jam		2
12	F05010-209	Nut, M12x1.75 Hex Nylock Zinc		1
13	531997-1_US	Plate, Handle		1
14	X100-1073	Bushing, Bronze 3/4x7/8		2
15	532319-1_US	Weldment, Drive Gear		1

4.3 Up/Down Slide Assemblies

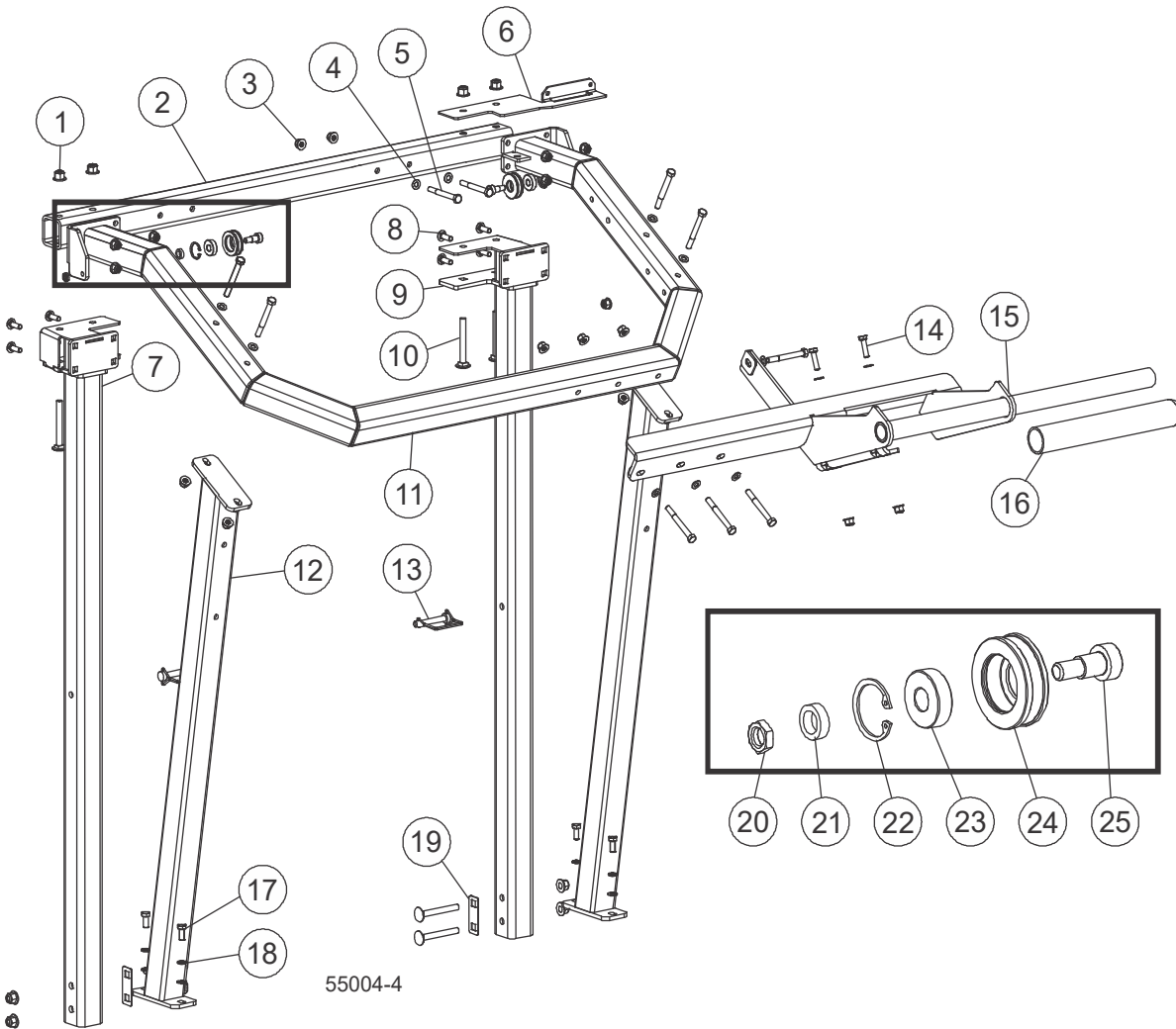


55005-5

REF	PART #	DESCRIPTION	COMMENTS	QTY.
	X100-1169_US	ASSY, UP/DOWN SLIDE		1
	532308_US	Assy, Band Roll		2
	532306_US	Assy, Roller Guide Links		2
1	F05022-10	Bolt, 10MM x 12MM SH Shoulder Plain		1
2	532000_US	Roller, Wire Guide		1
3	F05028-2	Ring, 26MM Internal Retaining		1
4	087471	Bearing, 6000 2RSR		1
5	128071	Spacer, .41 ID x 5/8 OD x .236		1
6	532310-1_US	Bracket, Roller Mount		1
7	F05010-76	Nut, M8x1.25 Hex Jam		2
8	F05027-44	Nut, M8 x 1.25 Flanged Nylock		16
9	X100-327	Block, Vertical Slide Guide		4
10	F05026-4	Washer, M8 Flat		16
11	F81002-13	Bolt, M8-1.25x35mm HH		14
12	F05010-162	Nut, M8-1.25 Free Zinc Plate		2
13	F81002-19	Bolt, M8x50 8.8 HH FT Zinc		2

SECTION 5 FEED SYSTEM

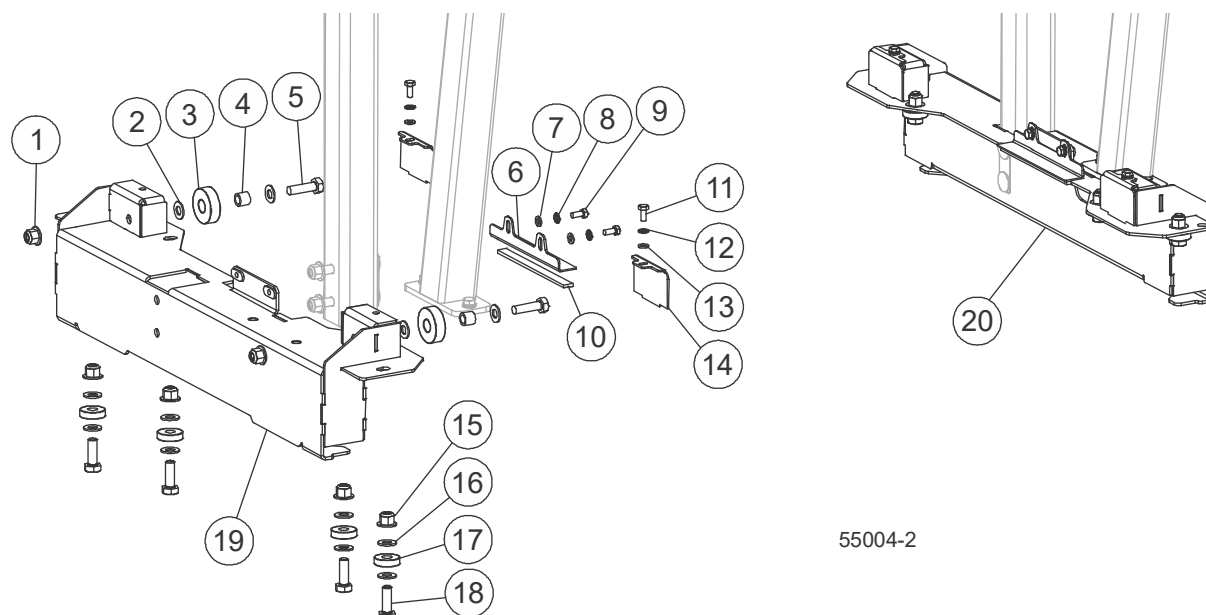
5.1 Mast Frame and Hardware



REF	PART #	DESCRIPTION	COMMENTS	QTY.
1	F05027-47	Nut, M10-1.5 Flanged Nylon Lock		8
2	X100-1111_US-2	Tube, Mast 2x3/16		1
3	F05027-44	Nut, M8 x 1.25 Flanged Nylock		20
4	F05026-4	Washer, M8 Flat		16
5	F05021-34	Bolt, M8-1.25x75mm HH Class 8.8		10
6	123056	Bracket, Scale Mount RH		1
7	530662-1_US	Weldment, Mast Leg Left		1
8	F05021-17	Bolt, M8-1.25 x 25 Carriage Class 8.8		8
9	530663-1_US	Weldment, Mast Leg Right		1
10	F05022-31	Bolt, M10-1.5x80 Carriage		8
11	123037_US	Weldment, Back Tube		1
12	X100-1132_US	Weldment, Retaining Tube		2
13	014151	Pin, 3/8x2 1/4 Sq Wire Lock		2

REF	PART #	DESCRIPTION	COMMENTS	QTY.
14	F05021-11	Screw, M8-1.25x30 HHC		2
15	X100-1296_US	Weldment, Push Handle		1
16	X300-163	Grip, 1.5"x12" Cushioned		1
17	F05021-2	Bolt, M8-1.25x20 Class 8 HH		4
18	F05011-45	Washer, M8 Split Lock		4
19	128065	Shim, Mast Tube		2
20	F05010-76	Nut, M8x1.25 Hex Jam		2
	532306_US	ASSY, ROLLER GUIDE LINKS		2
21	128071	Spacer, .41 ID x 5/8 OD x .236		1
22	F05028-2	Ring, 26MM Internal Retaining		1
23	087471	Bearing, 6000 2RSR		1
24	532000_US	Roller, Wire Guide		1
25	F05022-10	Bolt, 10MM x 12MM SH Shoulder Plain		1

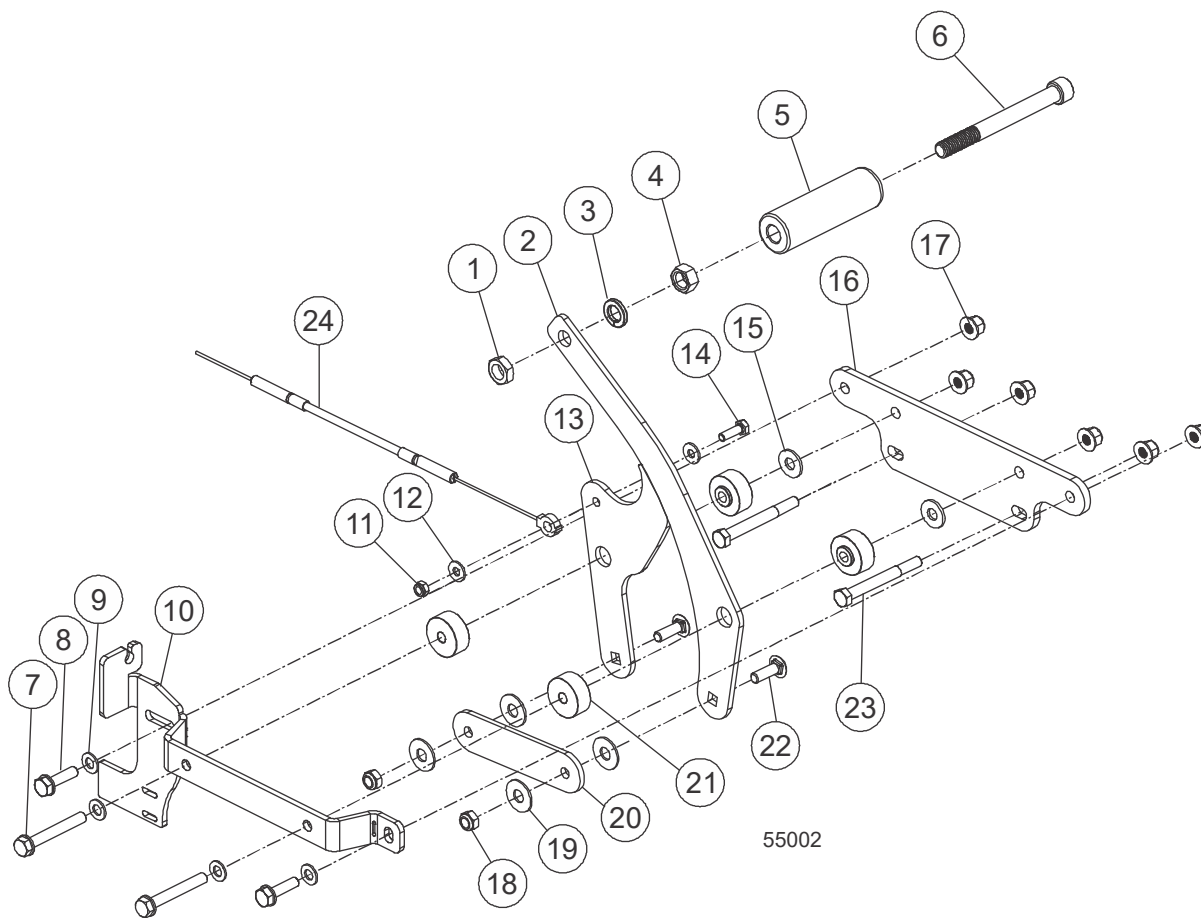
5.2 Roller Assemblies



55004-2

REF	PART #	DESCRIPTION	COMMENTS	QTY.
	123043	ASSY, LOWER CARRIAGE LEFT		1
	123044	ASSY, LOWER CARRIAGE RIGHT		1
	X100-1136_US	Assy, Carriage Wheel		2
1	F05027-47	Nut, M10-1.5 Flanged Nylon Lock		1
2	F05011-134	Washer, M10 Flat SAE		2
3	X200-957	Bearing, LLU 6302		1
4	X200-348	Bushing, Carriage Wheel		1
5	F05022-18	Bolt, M10-1.5 x35 HH Class 8.8		1
	X100-1260_US	Assy, Sweeper		1
6	X100-1261_US	Bracket, Sweeper		1
7	F05026-1	Washer, M6 Flat Class 4		2
8	F05026-2	Washer, M6 Split Lock		2
9	f05020-7	Bolt, M6-1 x 14 Class 8 HH		2
10	X100-1262_US	Felt, 3/16		1
11	F05020-7	Bolt, M6-1 x 14 Class 8 HH		2
12	F05026-2	Washer, M6 Split Lock		2
13	F05026-1	Washer, M6 Flat Class 4		2
14	X100-1139_US	Bracket, Roller Cover		2
	X100-1135_US	Assy, Horizontal Bearing		4
15	F05027-47	Nut, M10-1.5 Flanged Nylon Lock		1
16	F05011-134	Washer, M10 Flat SAE		2
17	X200-903	Bearing, LLU 6200		1
18	F05022-3	Bolt, M10-1.5x30 Class 8 HH		1
19	X100-1123_US	Weldment, Lower Carriage Left		1
20	X100-1129_US	Weldment, Lower Carriage, Right		1

5.3 Clutch Lever Assembly (Gas versions only)



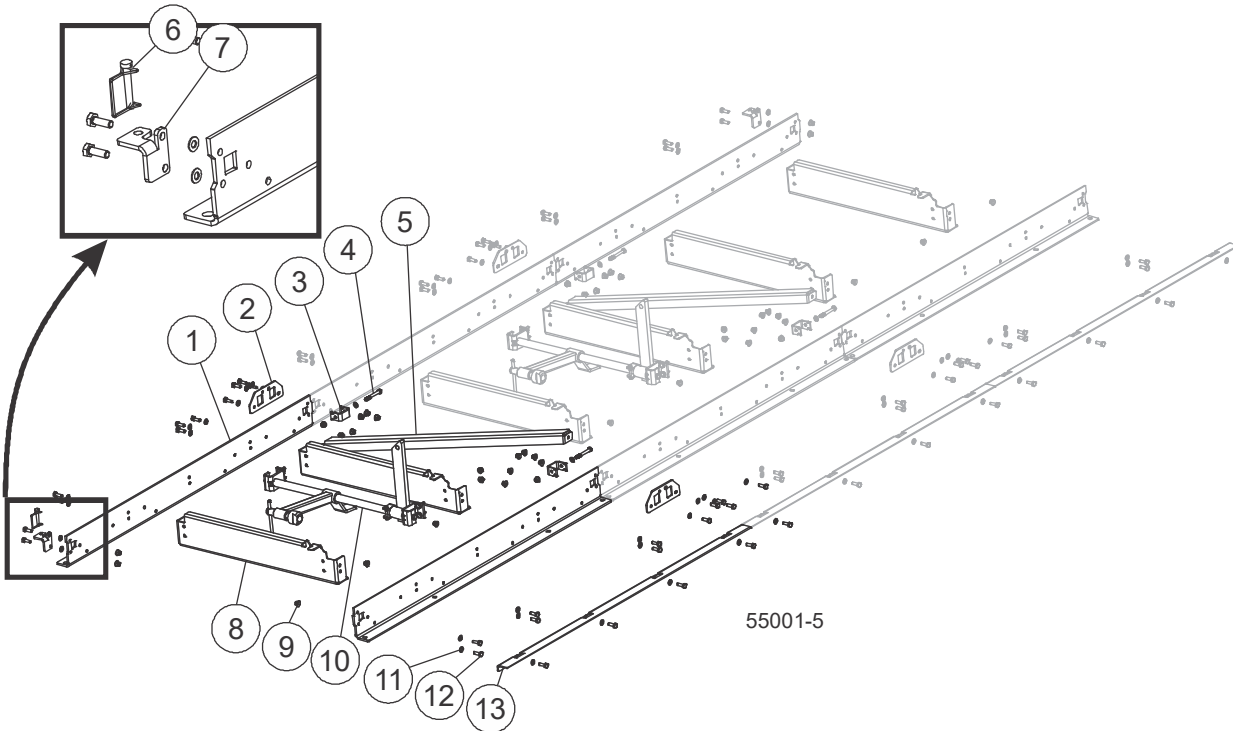
REF	PART #	DESCRIPTION	COMMENTS	QTY.
	532363_US	ASSY, CLUTCH LEVER		1
1	F05027-19	Nut, M12-1.75 Jam		1
2	X100-1326_US	Plate, Clutch Mounting Arm		1
3	F05011-9	Washer, 1/2 Split Lock		1
4	F05010-212	Nut, M12x1.75 Free Zinc		1
5	046647	Handle, 33/64ID x 1-1/4OD x 4 Plastic		1
6	F05023-6	Bolt, M12-1.75x120 SHC		1
7	F05021-15	Bolt, M8-1.25x60 HH Class 8.8		2
8	F05021-18	Bolt, M8-1.25 x 30 HH FT Class 8.8		2
9	F05026-4	Washer, M8 Flat		4
10	X100-1323_US	Bracket, Clutch Arm Mounting		1
11	F05010-200	Nut, M6-1.0 Nylon Lock		1
12	F05011-11	Washer, 1/4 SAE Flat		2
13	X100-1324_US	Plate, Clutch Pivot Arm		1
14	F05020-6	Bolt, M6-1 x 20 Class 8 HH		1
15	F05011-16	Washer, 5/16 Standard Flat		2
16	534503-1_US	Plate, Clutch Lever Mount		1
17	F05027-44	Nut, M8 x 1.25 Flanged Nylock		6
18	F05010-132	Nut, M8-1.25 Hex Nylock		2

5 **Feed System**
Clutch Lever Assembly (Gas versions only)

REF	PART #	DESCRIPTION	COMMENTS	QTY.
19	066114	Washer, .4 IDx1" ODx.06 Nylon		4
20	X100-1310_US	Plate, Clutch Engagement Arm		1
21	X100-1325_US	Spacer, M8 Stepped		4
22	F05021-17	Bolt, M8-1.25 x 25 Carriage Class 8.8		2
23	F05021-34	Bolt, M8-1.25x75mm HH Class 8.8		2
24	534518_US	Clutch Cable		1

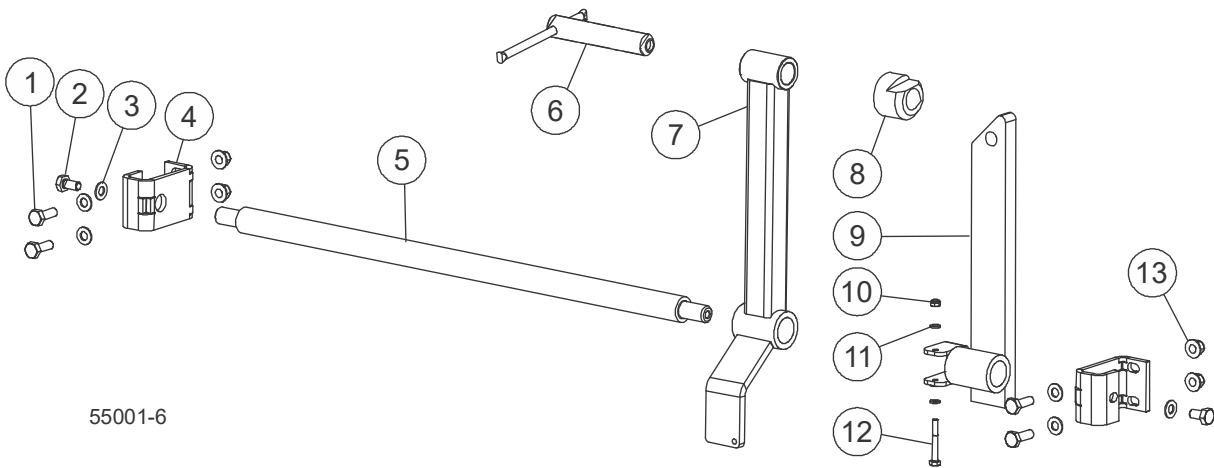
SECTION 6 BED ASSEMBLIES

6.1 Bed Frame



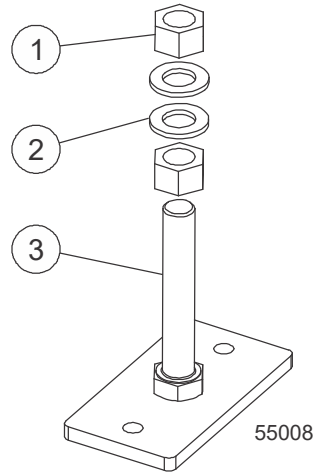
REF	PART #	DESCRIPTION	COMMENTS	QTY.
	530672_US	BED ASSY, LX55		1
1	X100-929-W	Plate, T100 Drive/Idle Side Rail		6
2	X100-934	Plate, T100 Bed Coupler		4
3	071015	Plate, 2012 LT10 Bed Rail Clamp		4
4	F81003-125	Bolt, M10-1.5x85, HH, Class 8		4
5	X100-932-W	Plate, T100 Cross Brace		2
6	014151	Pin, 3/8x2 1/4 Sq Wire Lock		1
7	X100-1275	Plate, End Stop Lock		2
8	123031-W	Bracket, Center Bed Rail		6
9	F05027-47	Nut, M10-1.5 Flanged Nylon Lock		72
10	530673_US	Assy, Log Clamp (See Section 6.2)		2
11	F05011-134	Washer, M10 Flat SAE		64
12	F05022-3	Bolt, M10-1.5x30 Class 8 HH		60
13	X100-930-W	Plate, T100 Safety Catch Rail		3

6.2 Log Clamp



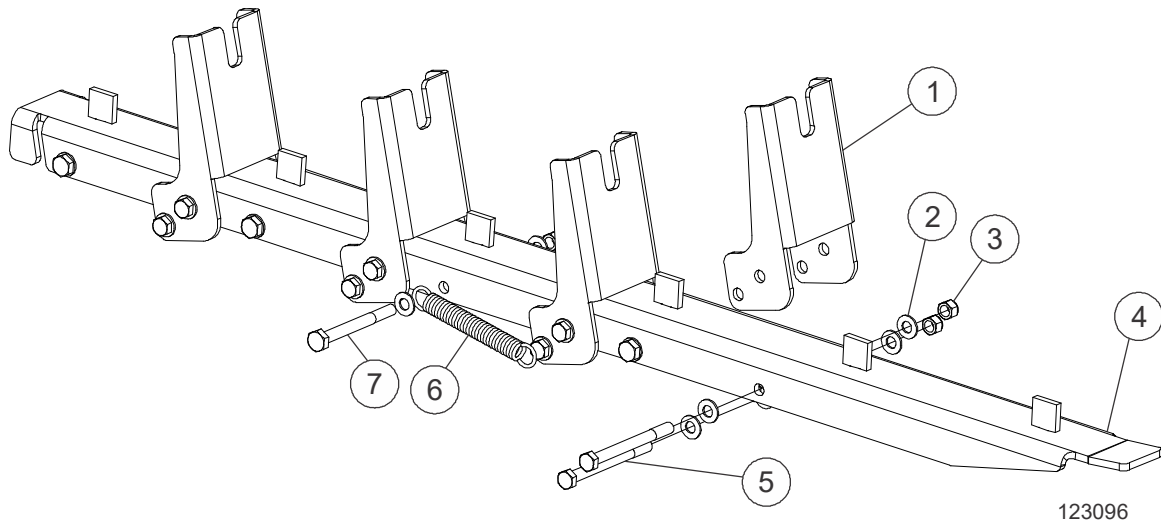
REF	PART #	DESCRIPTION	COMMENTS	QTY.
	530673_US	ASSY, LOG CLAMP		2
1	F05022-3	Bolt, M10-1.5x30 Class 8 HH		4
2	F05022-2	Bolt, M10-1.5 x 20 Class 8 HH		2
3	F05011-134	Washer, M10 Flat SAE		6
4	530674-1_US	Bracket, Log Clamp Mount		2
5	515059-1_US	Rod, Log Clamp		1
6	071350	Assy, Clamp Screw		1
7	530701-1_US	Weldment, Log Clamp		1
8	075295	Block, Clamp Point		1
9	530676-1_US	Weldment, Log Rest		1
10	F05010-200	Nut, M6-1.0 Nylon Lock		1
11	F05026-1	Washer, M6 Flat Class 4		2
12	F05020-31	Bolt, M6-1.0 x 50 HH Class 8.8		1
13	F05027-47	Nut, M10-1.5 Flanged Nylon Lock		4

6.3 Optional Adjustable Feet



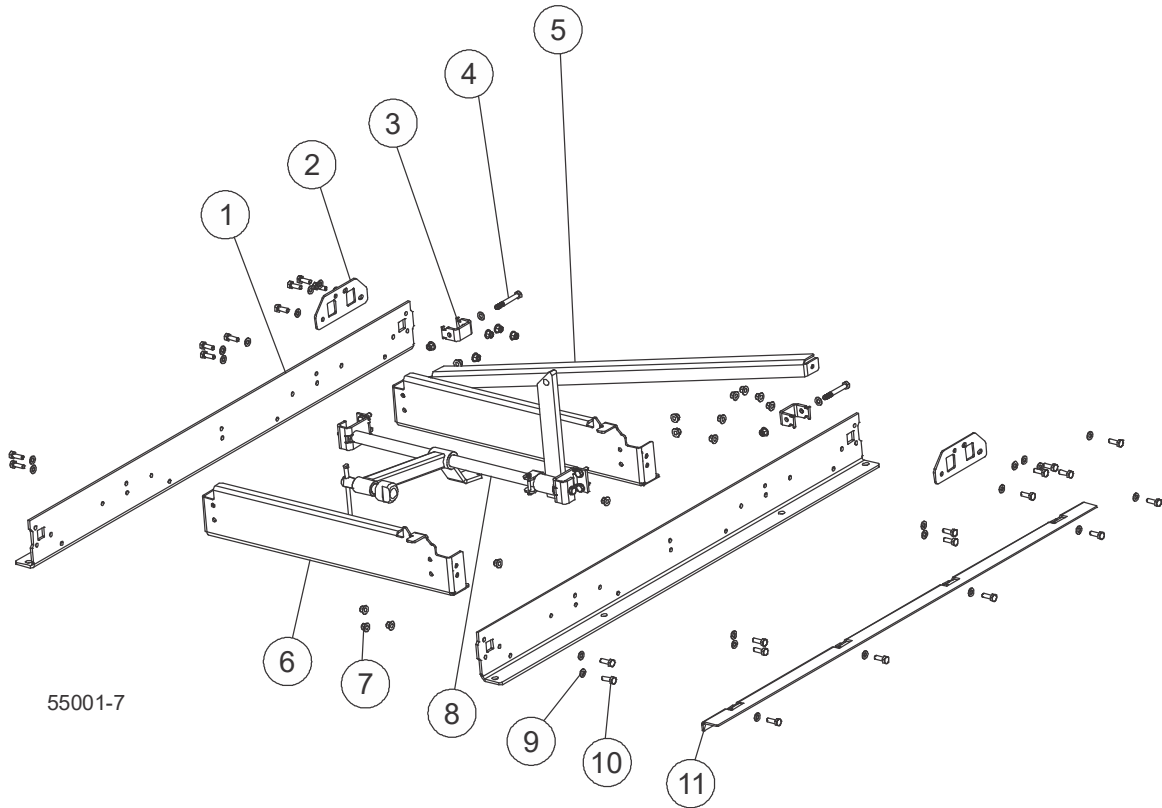
REF	PART #	DESCRIPTION	COMMENTS	QTY.
		For full bed		
	128127	ASSY, SAWMILL BED FEET (QTY 12)		
	130829	Kit, Sawmill Feet Fastener		1
1	F05026-16	Washer, M20 Flat Zinc		24
2	F05027-26	Nut, M20-2.5 Free		24
	514997_US	Assy, Bed Level		12
3	514996-1_US	Weldment, Bed Level		1
		For optional bed segments		
	130833	KIT, SAWMILL FEET		
1	F05027-26	Nut, M20-2.5 Free		8
2	F05026-16	Washer, M20 Flat Zinc		8
3	514996-1_US	Weldment, Bed Level		4

6.4 Optional Log Ramps



REF	PART #	DESCRIPTION	COMMENTS	QTY.
	123252	ASSY, 2 LOG RAMPS LX55/25		1
	123096	Assy, Log Ramp LX55/25		2
1	123098	Bracket, Log Stop LX55/25		8
2	F05011-134	Washer, M10 Flat SAE		48
3	F05004-270	Nut, M10-1.50 Hex Nyl Lock		24
4	123099	Weldment, Log Ramp LX55/25		2
5	f05022-13	Bolt, M10-1.5x110 Class 8 HH		16
6	P04060	Spring, Old Style PWR/Feed &T110 Counter		8
7	F05022-20	Bolt, M10-1.5x100 HH Class 8.8		8

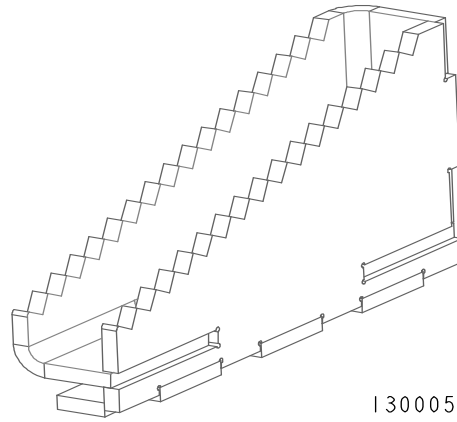
6.5 Optional Bed Frame Extension



55001-7

REF	PART #	DESCRIPTION	COMMENTS	QTY.
	LX55BS	LX55 BED SECTION 5'		1
1	X100-929-W	Plate, T100 Drive/Idle Side Rail		2
2	X100-934	Plate, T100 Bed Coupler		2
3	071015	Plate, 2012 LT10 Bed Rail Clamp		2
4	F81003-125	Bolt, M10-1.5x85, HH, Class 8		2
5	X100-932-W	Plate, T100 Cross Brace		1
6	123031-W	Bracket, Center Bed Rail		2
7	F05027-47	Nut, M10-1.5 Flanged Nylon Lock		28
8	530673_US	Assy, Log Clamp (See Section 6.2)		1
9	F05011-134	Washer, M10 Flat SAE		24
10	F05022-3	Bolt, M10-1.5x30 Class 8 HH		22
11	X100-930-W	Plate, T100 Safety Catch Rail		1

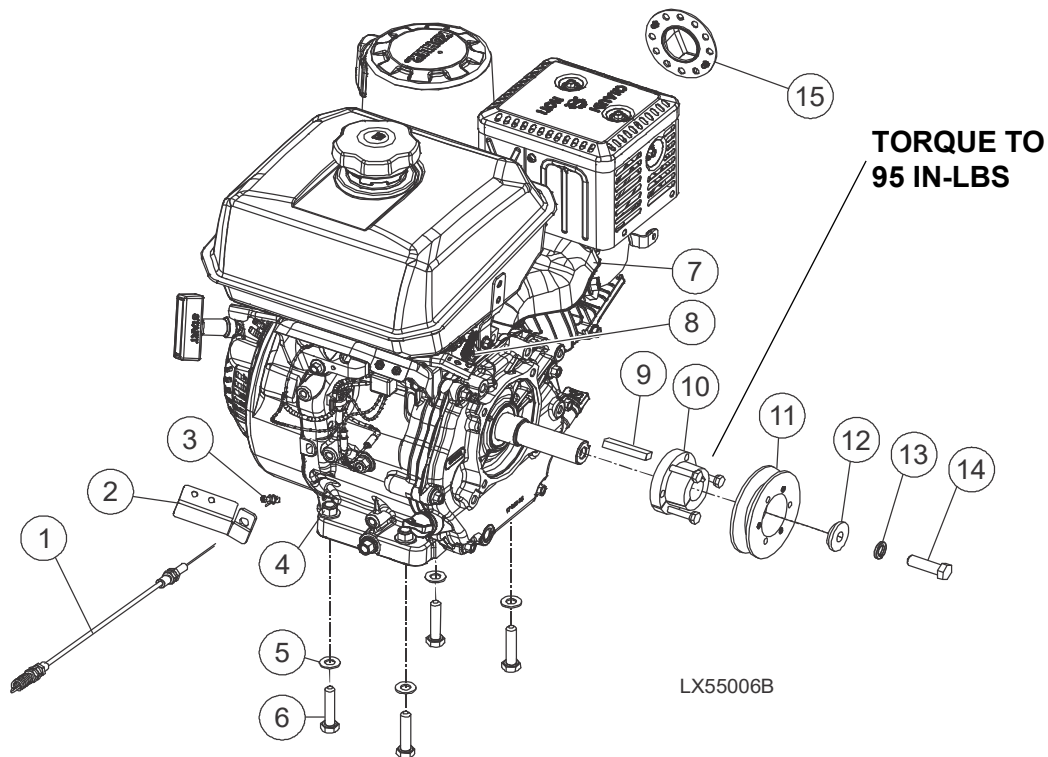
6.6 Optional Log Taper Wedge



REF	PART #	DESCRIPTION	COMMENTS	QTY.
	130005	OPTIONAL LOG TAPER WEDGE		1

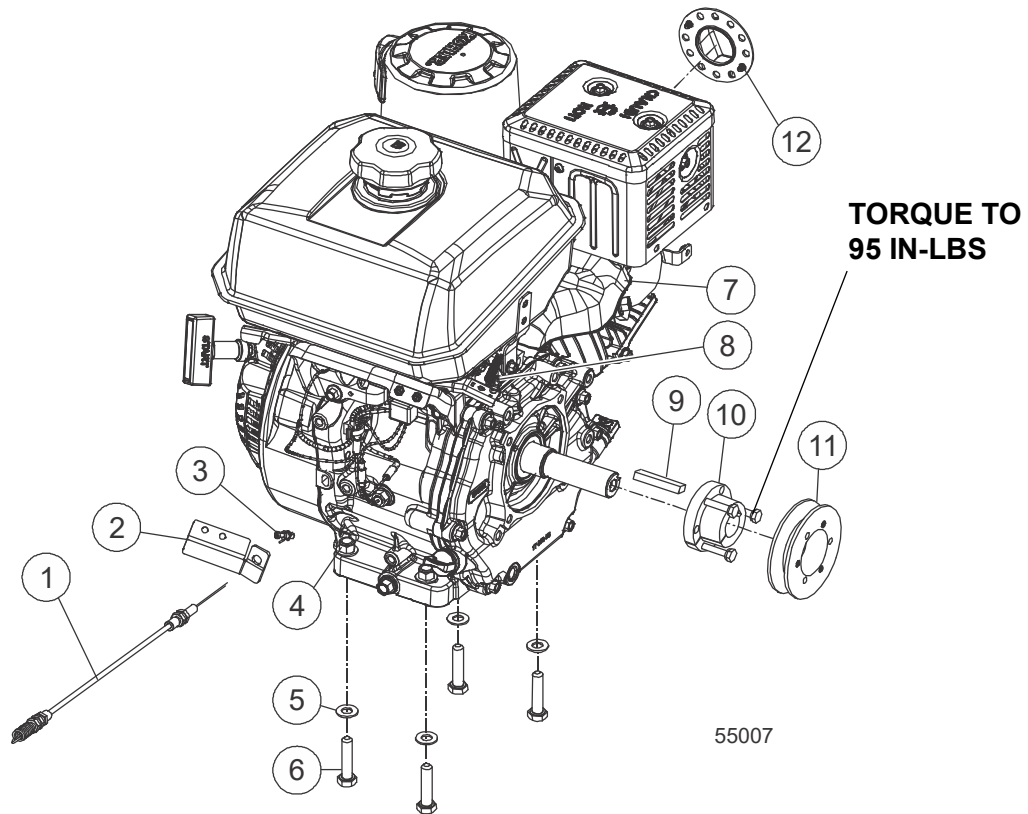
SECTION 7 POWER UNITS

7.1 Kohler 9hp Gas Engine



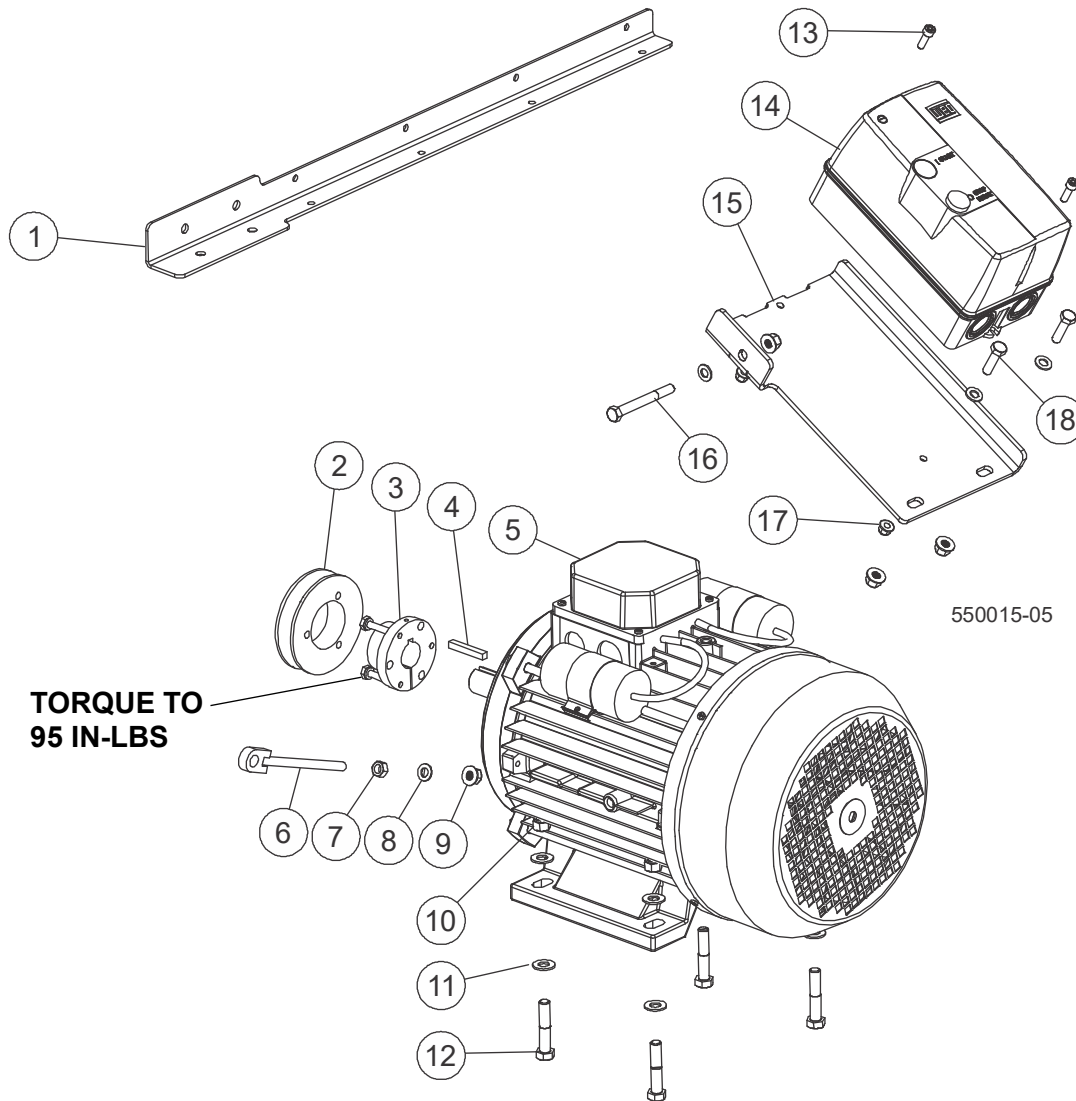
REF	PART #	DESCRIPTION	COMMENTS	QTY.
	G9	ENGINE ASSY, 9HP KOHLER		1
1	X100-1092	Cable, Throttle 20x28 Springx Cable		1
2	X200-1203	Plate, Kohler Throttle Cable Mounting		1
3	048904	Throttle Fitting, Swivel		1
4	F05004-270	Nut, M10-1.50 Hex Nyl Lock		4
5	F05011-134	Washer, M10 Flat SAE		8
6	F05022-14	Bolt, M10-1.5 x 50 HH 8.8		4
7	X100-1091	Engine, 9-1/2hp Kohler		1
8	F05004-85	Screw, 8-32x3/8 SHC		1
9	S04124	Key, 1/4 x 1 11/16		1
10	039202	Bushing, SHx1	Torque to 95 in-lbs	1
11	X100-1062	Sheave, 1B34-SH		1
12	X100-1094	Washer, 7/16" ID 1" x 1-1/4" Stepped		1
13	F05011-48	Washer, 7/16 Split Lock		1
14	F05007-156	Bolt, 7/16-20x1 1/2 HH Gr5		1
15	110187	Deflector, Kohler 14HP Exhaust	110187 added after 4/5/2022 per ECN 38479.	1
	065694	Oil, 10W30, 1 Quart		1

7.2 Kohler 14hp Gas Engine



REF	PART #	DESCRIPTION	COMMENTS	QTY.
	G14	ENGINE ASSY, 14HP KOHLER		1
1	X100-1092	Cable, Throttle 20x28 Springx Cable		1
2	X200-1203	Plate, Kohler Throttle Cable Mounting		1
3	048904	Throttle Fitting, Swivel		1
4	F05004-270	Nut, M10-1.50 Hex Nyl Lock		4
5	F05011-134	Washer, M10 Flat SAE		8
6	F05022-14	Bolt, M10-1.5 x 50 HH 8.8		4
7	X200-1201	Engine, 14HP Kohler CH440-3149		1
8	F05004-85	Screw, 8-32x3/8 SHC		1
9	S04124	Key, 1/4 x 1 11/16		1
10	039202	Bushing, SHx1		1
11	X100-1062	Sheave, 1B34-SH		1
12	110187	Deflector, Kohler 14HP Exhaust	110187 added after 4/5/2022 per ECN 38479.	1
	065694	Oil, 10W30, 1 Quart		1

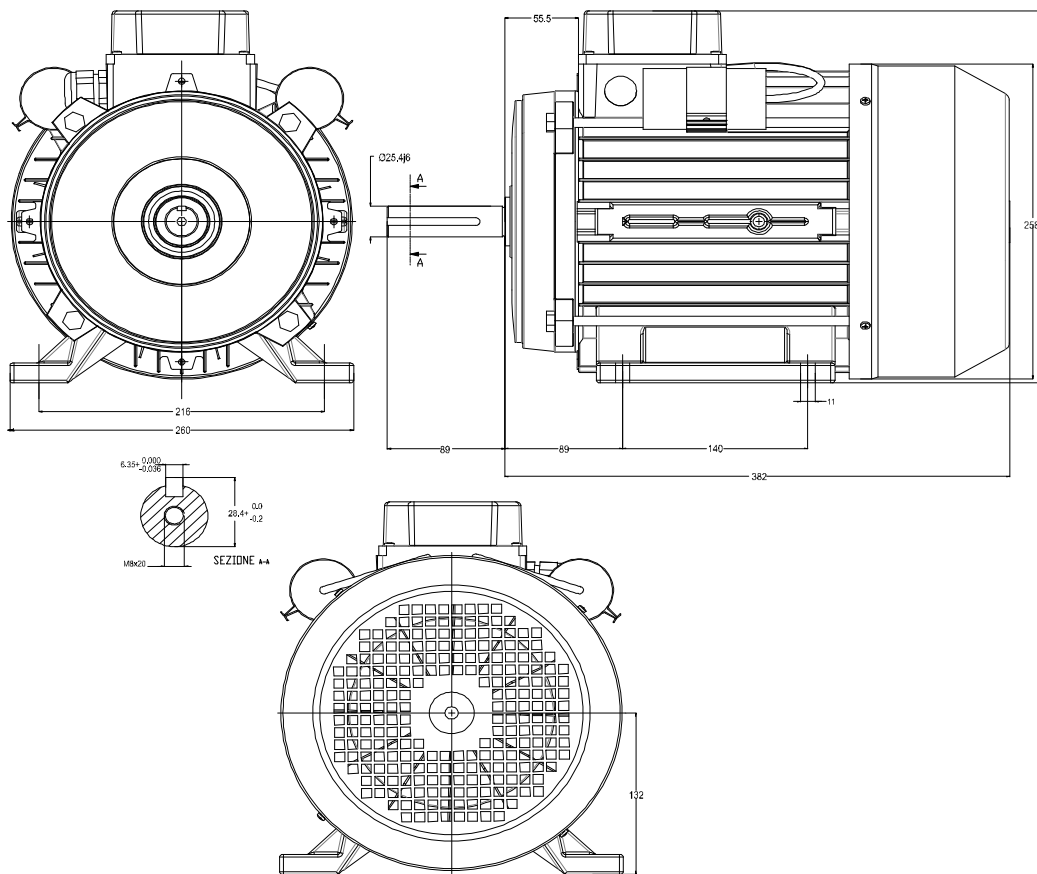
7.3 E7 Electric Motor



REF	PART #	DESCRIPTION	COMMENTS	QTY.
	E7	ASSY, E7.5 ELECTRIC		1
1	123141	Bracket, Electric Infeed		1
2	X100-1062	Sheave		1
3	039202	Bushing, SHx1		1
4	S04124	Key, 1/4 x 1 11/16		1
5	123142	Motor, 7.5hp 60hz 1 ph 3600rpm 132S		1
6	123154	Weldment, Rod End M8		1
7	F05010-162	Nut, M8-1.25 Free Zinc Plate		1
8	F05026-4	Washer, M8 Flat		4
9	F05027-44	Nut, M8 x 1.25 Flanged Nylock		4
10	F05004-270	Nut, M10-1.50 Hex Nyl Lock		4
11	F05011-134	Washer, M10 Flat SAE		8
12	F05022-14	Bolt, M10-1.5 x 50 HH Class 8.8		4

REF	PART #	DESCRIPTION	COMMENTS	QTY.
13	F05020-15	Screw, M6-1 x 20 SHC		2
14	127346	LX55E7 Control Assembly		1
15	123145	Bracket, Starter Box		1
16	F05021-34	Bolt, M8-1.25x75mm HH Class 8.8		1
17	F05027-34	Nut, M6-1.0 Flange Hex Nylock Zinc		2
18	F05021-11	Screw, M8-1.25x30 HHC		2

MOTOR 123142 SPECIFICATIONS



SINGLE PHASE INDUCTION MOTOR DATA SHEET

Code: S132S1202K17758	Poles: 2	Duty: S1	IP: 55
Type: 132S	kW: 5,5	Hp: 7,5	Mounting: B3
VN: 220V	IN: 33 A	cosw: 0,99	Terminal Box: ALUMINIUM STEEL
rpm: 3450	CR: 160 μF	Freq: 60 Hz	Fan cover: GALVANIZED
Insulation class: F-TROP			Plate: CIMA ALUMINIUM
Rotation: CLOCKWISE			Front bearing: 6208 ZZ
			Rear bearing: 6208 ZZ

7.4 E7 Wiring Schematic

