

# Wood-Mizer<sup>®</sup> Sawmill

## Parts Manual

---

LX250

rev. A2.04

---

**Safety is our #1 concern!**

*Form #2372*



**WARNING! Read and understand this manual before using this machine.**

## California

### Proposition 65 Warning



**WARNING:** Breathing gas/diesel engine exhaust exposes you to chemicals known to the State of California to cause cancer and birth defects or other reproductive harm.

Always start and operate the engine in a well-ventilated area.  
If in an enclosed area, vent the exhaust to the outside.  
Do not modify or tamper with the exhaust system.  
Do not idle the engine except as necessary.

For more information go to [www.P65warnings.ca.gov](http://www.P65warnings.ca.gov).



**WARNING:** Drilling, sawing, sanding or machining wood products can expose you to wood dust, a substance known to the State of California to cause cancer. Avoid inhaling wood dust or use a dust mask or other safeguards for personal protection.

For more information go to [www.P65Warnings.ca.gov/wood](http://www.P65Warnings.ca.gov/wood).

### Active Patents assigned to Wood-Mizer, LLC

Wood-Mizer, LLC has received patents that protect our inventions which are a result of a dedication to research, innovation, development, and design. Learn more at: [woodmizer.com/patents](http://woodmizer.com/patents)

### ©2024 Wood-Mizer LLC

Printed in the United States of America, all rights reserved. No part of this manual may be reproduced in any form by any photographic, electronic, mechanical or other means or used in any information storage and retrieval system without written permission from

**Wood-Mizer, LLC**  
**8180 West 10th Street**  
**Indianapolis, Indiana 46214**

**SECTION 1 REPLACEMENT PARTS**

1.1 How To Use The Parts List..... 1-1  
     *To Order Parts* ..... 1-1  
 1.2 Sample Assembly..... 1-1  
 1.3 Torque Values..... 1-2

**SECTION 2 BLADE GUIDE ROLLERS & ARM**

2.1 Blade Guide Arm Assembly ..... 2-1  
 2.2 Blade Guide Arm Drive Assembly ..... 2-3  
 2.3 Blade Guide Arm Drive Sprocket Assembly ..... 2-4  
 2.4 Blade Guide Assembly, Drive Side ..... 2-5

**SECTION 3 BLADE WHEELS & TENSIONER**

3.1 Blade Drive Assembly ..... 3-1  
 3.2 Idle Blade Wheel Assembly..... 3-2  
 3.3 Blade Tensioner Assembly ..... 3-3

**SECTION 4 SAW HEAD FRAME**

4.1 Water Lube Assembly ..... 4-2  
 4.2 Clutch Assembly ..... 4-3  
 4.3 Brake Assembly ..... 4-5  
 4.4 Saw Head Decals ..... 4-7  
 4.5 Blade Housing Covers & Saw Head Hardware ..... 4-8

**SECTION 5 CONTROL & BATTERY BOXES**

5.1 Control Box Assembly..... 5-10  
 5.2 Control Box Mount & Up/Down Limit Switches..... 5-12  
 5.3 Circuit Breakers ..... 5-14  
 5.4 Front Panel Assembly & Harnesses (/G38)..... 5-15  
 5.5 Simple Set Control (LX150/250, SSW-150-A)..... 5-16  
 5.6 Sensor Assembly ..... 5-18  
 5.7 Fuse Box ..... 5-20  
 5.8 Battery Box Assembly ..... 5-21

**SECTION 6 UP/DOWN SYSTEM**

6.1 Mast Pad & Hardware..... 6-22  
 6.2 Blade Height Scales & Mast Angles..... 6-24  
 6.3 Up/Down Assembly, Drive Side..... 6-25  
 6.4 Up/Down Assembly, Idle Side..... 6-27  
 6.5 Up/Down Gearbox Assembly ..... 6-28  
 6.6 Head Mounting Assembly ..... 6-29

**SECTION 7 FEED SYSTEM & TRACK ROLLERS**

7.1 Track Rollers and Wipers (Drive Side)..... 7-30  
 7.2 Track Roller And Wipers (Idle Side)..... 7-32  
 7.3 Power Feed Assembly..... 7-34  
 7.4 Power Feed Assembly..... 7-36

**SECTION 8 BED FRAME ASSEMBLY**

8.1	Bed Frame Assembly .....	8-38
8.2	Bed Section Assembly and Optional Extension .....	8-39
8.3	Bed Stop Assembly, Right .....	8-41
8.4	Bed Stop Assembly, Rear Left .....	8-42

## SECTION 1 REPLACEMENT PARTS

### 1.1 How To Use The Parts List

- Use the table of contents to locate the assembly that contains the part you need.
- Go to the appropriate section and locate the part in the illustration.
- Use the number pointing to the part to locate the correct part number and description in the table.
- Parts shown indented under another part are included with that part.

#### *To Order Parts*

- From the continental US, call **1-800-525-8100** to order parts. Have your customer number, vehicle identification number, and part numbers ready when you call.
- From other international locations, contact the Wood-Mizer distributor in your area for parts.

### 1.2 Sample Assembly



REF	PART #	DESCRIPTION	COMMENTS	QTY.
	012345	SAMPLE ASSEMBLY, COMPLETE	INCLUDES ITEMS 1-6	1
<b>1</b>	F02222-22	Sample Part		1
<b>2</b>	F03333-33	Sample Part		2
	098765	Sample Subassembly	Includes items 3-6	1
<b>3</b>	S04444-44	Subassembly Sample Part		1
<b>4</b>	K55555	Subassembly Sample Part		1
	054321	Sample Sub-Subassembly	Includes items 5-6	2
<b>5</b>	022222	Sub-Subassembly Sample Part		1
<b>6</b>	F10234-56	Sub-Subassembly Sample Part		1

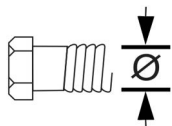
The Sample Assembly, Complete, part number 02345 (top level assembly) includes two parts (F0222-22 and F0333-33) and the 098765 subassembly.

Subassembly 098765 contains two parts(S04444-44 and K55555) and two copies of sub-subassembly 054321.

Each sub-subassembly 054321 contains two parts (022222 and F10234-56).

### 1.3 Torque Values

Grade		Units	SAE 5	SAE 8
Grade Mark				
Bolt Dia.	Threads. Per In.	Units	SAE 5	SAE 8
6	32	in-lbs (Nm)	20 (2.3)	-
8	32	in-lbs (Nm)	24 (2.7)	30 (3.4)
10	24	in-lbs (Nm)	35 (4.0)	45 (5.1)
10	32	in-lbs (Nm)	40 (4.5)	50 (5.7)
12	24	in-lbs (Nm)	50 (5.7)	65 (7.3)
1/4	20	in-lbs (Nm)	95 (10.7)	125 (14.1)
1/4	28	in-lbs (Nm)	95 (10.7)	150 (17.0)
5/16	18	ft-lbs (Nm)	17 (22.6)	23 (31.2)
5/16	24	ft-lbs (Nm)	20 (27.1)	25 (33.8)
3/8	16	ft-lbs (Nm)	30 (40.7)	40 (54.2)
3/8	24	ft-lbs (Nm)	35 (47.5)	45 (61.0)
7/16	14	ft-lbs (Nm)	50 (67.8)	65 (88.1)
7/16	20	ft-lbs (Nm)	55 (74.6)	70 (94.9)
1/2	13	ft-lbs (Nm)	75 (101.7)	100 (135.6)
1/2	20	ft-lbs (Nm)	85 (115.3)	110 (149.2)
9/16	12	ft-lbs (Nm)	105 (142.4)	135 (183.1)
9/16	18	ft-lbs (Nm)	115 (155.9)	150 (203.4)
5/8	11	ft-lbs (Nm)	150 (203.4)	195 (264.4)
5/8	18	ft-lbs (Nm)	160 (217.0)	210 (284.8)
3/4	10	ft-lbs (Nm)	170 (230.5)	220 (298.3)
3/4	16	ft-lbs (Nm)	175 (237.3)	225 (305.1)
7/8	9	ft-lbs (Nm)	302 (409.5)	473 (640.9)
7/8	14	ft-lbs (Nm)	300 (406.8)	400 (542.4)
1	8	ft-lbs (Nm)	466 (631.8)	714 (967.4)



Metric Bolt Head Identification



Metric Grade 8.8

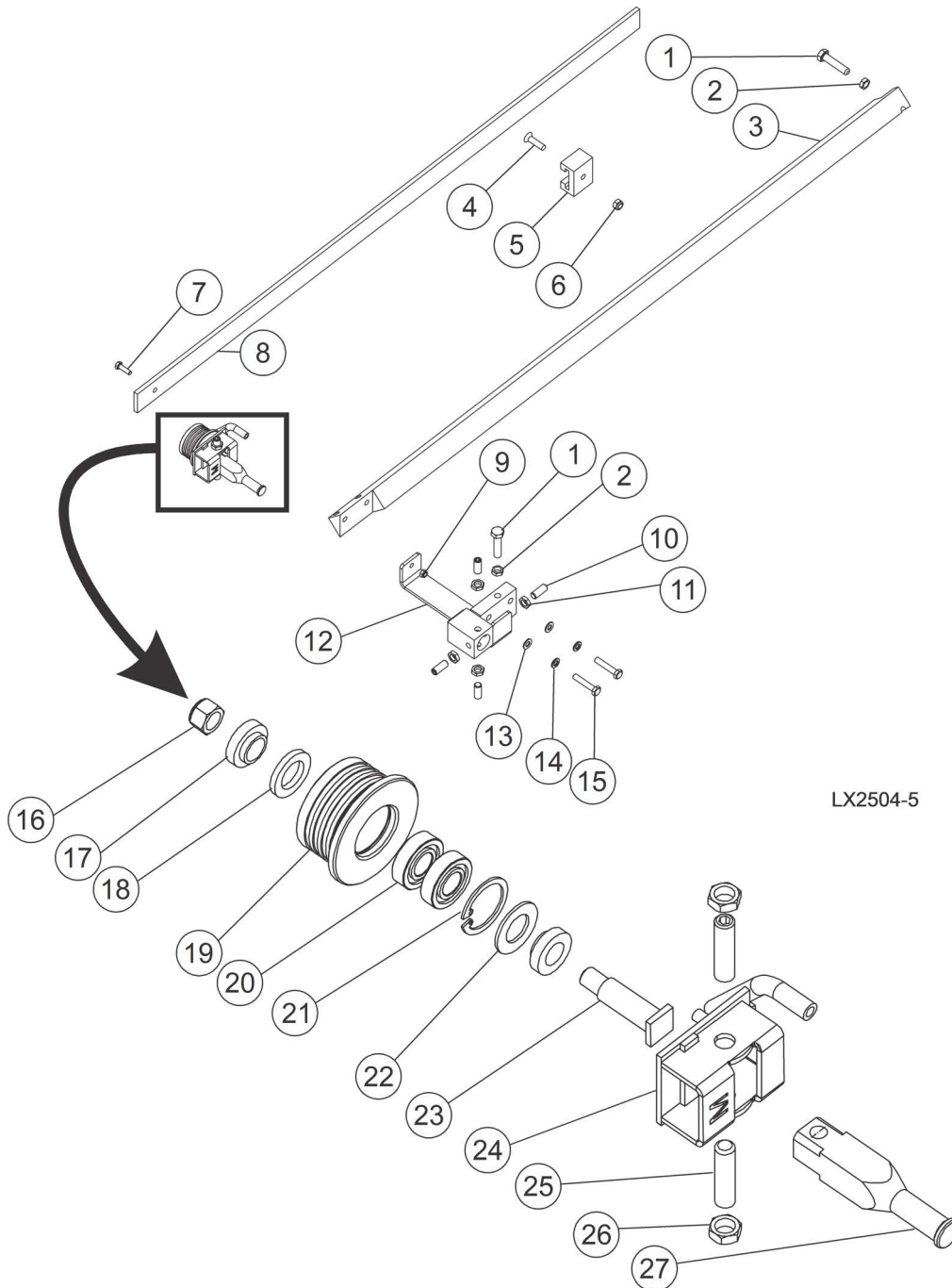


Metric Grade 10.9

COARSE THREAD					FINE THREAD					Wrench Size
Diameter & Thread Pitch	Metric 8.8		Metric 10.9		Diameter & Thread Pitch	Metric 8.8		Metric 10.9		
	N-m	lbs-ft	N-m	lbs-ft		N-m	lbs-ft	N-m	lbs-ft	
6 x 1.0	8	6	11	8						10 mm
8 x 1.25	20	15	27	20	8 x 1.0	21	16	29	22	13 mm
10 x 1.5	39	29	54	40	10 x 1.25	41	30	57	42	16 mm
12 x 1.75	68	50	94	70	12 x 1.25	75	55	103	76	18 mm
14 x 2.0	109	80	151	111	14 x 1.5	118	87	163	120	21 mm
16 x 2.0	169	125	234	173	16 x 1.5	181	133	250	184	24 mm
18 x 2.5	234	172	323	239	18 x 1.5	263	194	363	268	27 mm
20 x 2.5	330	244	457	337	20 x 1.5	367	270	507	374	30 mm
22 x 2.5	451	332	623	460	22 x 1.5	495	365	684	505	34 mm
24 x 3.0	571	421	790	583	24 x 2.0	623	459	861	635	36 mm
30 x 3.0	1175	867	1626	1199	30 x 2.0	1258	928	1740	1283	46 mm

## SECTION 2 BLADE GUIDE ROLLERS & ARM

### 2.1 Blade Guide Arm Assembly

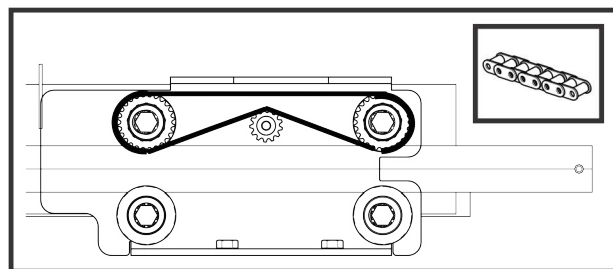
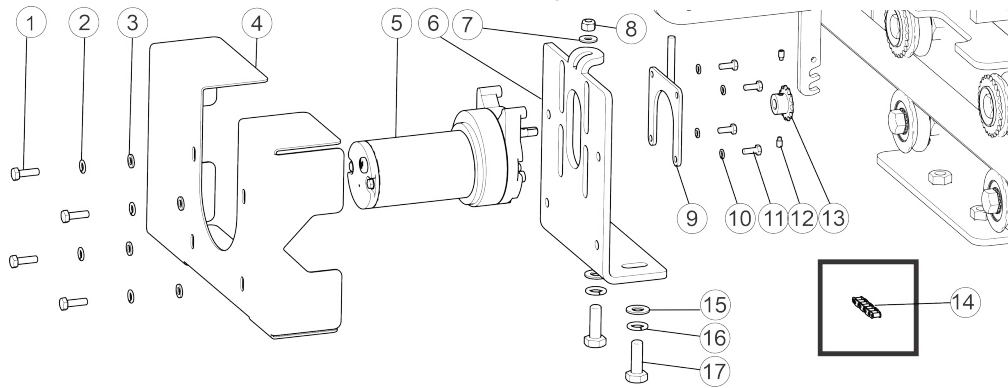


REF	PART #	DESCRIPTION	COMMENTS	QTY.
	110926	<b>ARM ASSY, LX BLADE GUIDE</b>		
1	F05022-44	Bolt, M10-1.5 x 45 HH 8.8		2
2	F05027-18	Nut, M10-1.5 Jam		2
3	110927	Bar, LX Blade Guide		1

REF	PART #	DESCRIPTION	COMMENTS	QTY.
4	F05004-245	Screw, M8x1.25x30mm Flat Socket C/S BO		1
5	014882	Guide, Blade Guard LT15/LT70		1
6	F05010-132	Nut, M8-1.25 Hex Nylock		1
7	F81001-2	Bolt, M6-1x20mm 8.8 Hex Head		1
8	110934	Guard, LX Blade		1
9	F05010-200	Nut, M6-1.0 Nylon Lock		1
10	F81015-4	Screw, M10-1x25mm Stainless Set, DIN 913		4
11	F81033-10	Nut, M10x1-04-ST-A2 ISO 8675 Thin		4
12	110929	Block Weldment, LX Blade Guide		1
13	F05026-4	Washer, M8 Flat		2
14	F05011-45	Washer, M8 Split Lock		2
15	F81002-15	Bolt, M8-1.25x40 HH FT Zinc Class 8.8		2
	130842	Assy, Metric Idle Blade Guide		1
16	F05004-270	Nut, M10-1.50 Hex Nyl Lock		1
17	S04253	Spacer, .510x.937x.34		2
18	P06455	Washer, 5/8 Grey Felt		1
19	A09678	Roller Assy, Blade Guide		1
20	S04250	Roller, Blade Guide		1
21	015975	Bearing, R8-2RS Blade Guide		2
22	F04254-1	Ring, 1 1/8 IR Tru-Ark		1
23	P04252	Washer, 5/8 White Felt		1
24	087763_US	Shaft, M10-1.5 Metric Roller		1
25	130841	Weldment, Metric Idle B/G Brkt		1
26	F05022-57	Screw, M10-1.5x40mm SH Set, SS, Cup Pnt		2
27	F05010-203	Nut, M10-1.5 Hex Fin Jam- DIN 439 B Zinc		2
28	503588_US	Shaft, Metric B/G Mount		1



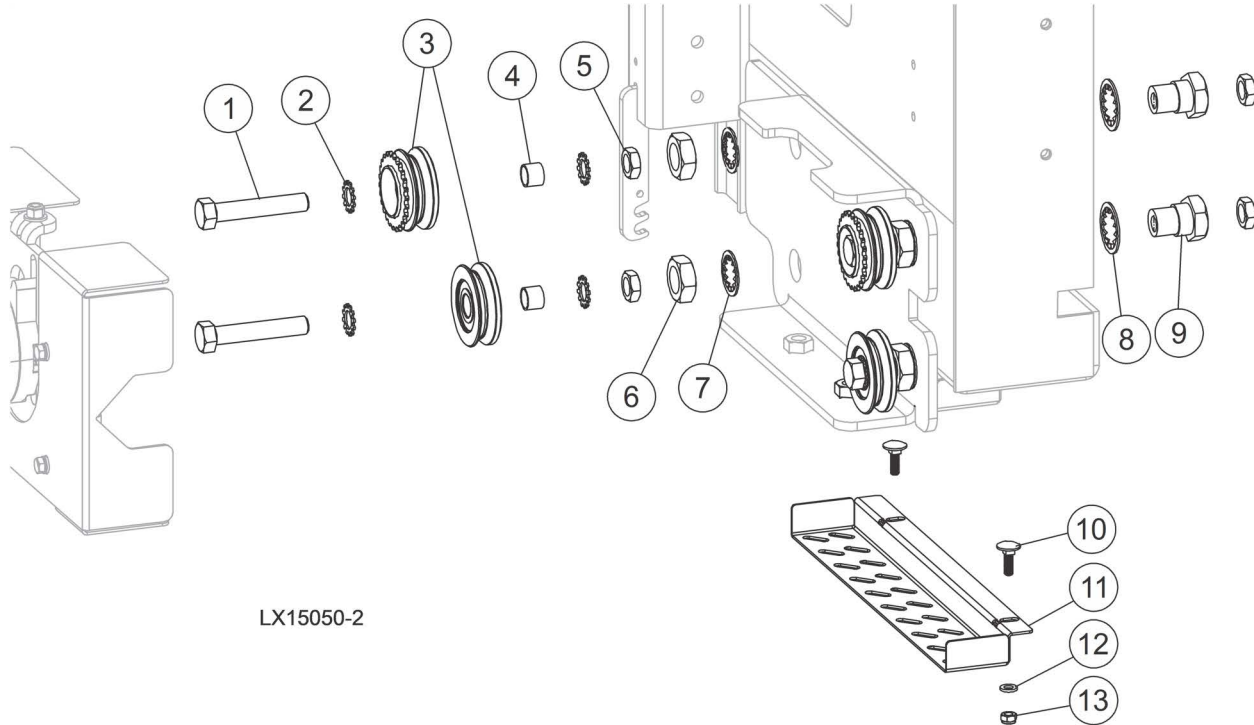
## 2.2 Blade Guide Arm Drive Assembly



TD011003

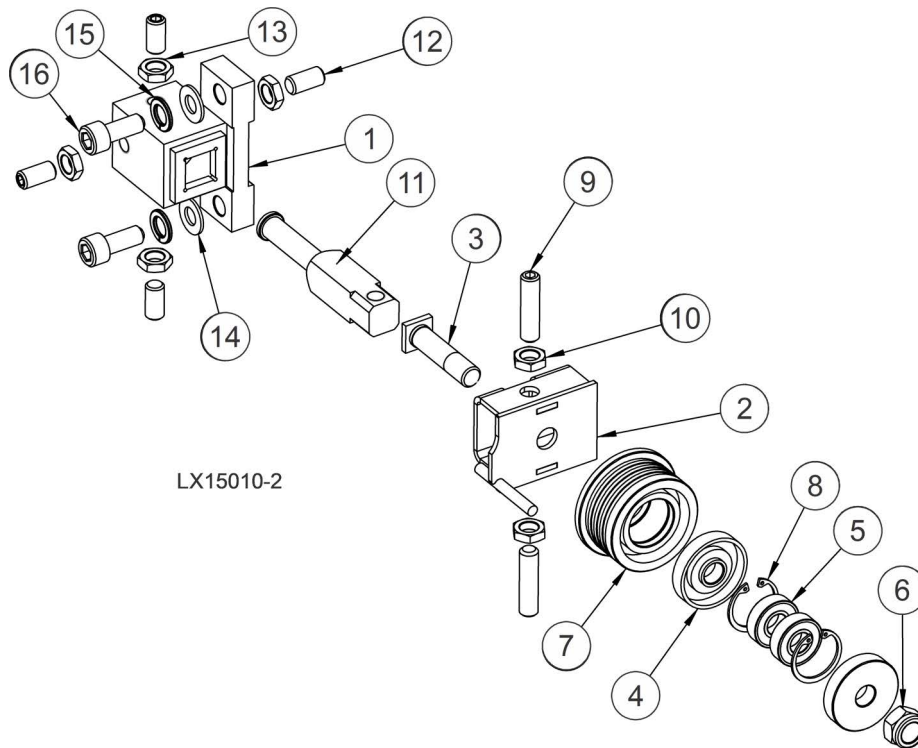
REF	PART #	DESCRIPTION	COMMENTS	QTY.
	110918	<b>DRIVE ASSY, LX BLADE GUIDE</b>		
1	F05020-6	Bolt, M6-1 x 20 Class 8 HH		4
2	F05026-2	Washer, M6 Split Lock		4
3	F05026-1	Washer, M6 Flat Class 4		4
4	110923	Guard, Blade Guide		1
5	079214	Motor, Current App 1/30HP 12VDC Gear		1
6	110919	Weldment, LX Blade Guide Drive		1
7	F05011-11	Washer, 1/4 SAE Flat		1
8	F05010-69	Nut, 1/4-20 Nylock		1
9	023637	Tensioner Weldment, Gearmotor Ptd		1
10	F05011-20	Washer, #10 Split Lock		4
11	F05004-60	Bolt, #10-32x1/2 HH		4
	P09970	Sprocket Assy, 25B13x.3130		1
12	F05004-274	Screw, 10-24x1/4 SHBO Full Dog Pt Set		2
13	P09970-2	Sprocket, 25B13x.3130		1
14	130315	Chain, #25 100 Pitches w/Master Link (not shown)		1
15	F05011-134	Washer, M10 Flat		2
16	F05011-88	Washer, 10MM Split Lock		2
17	F05022-3	Bolt, M10-1.5x30 HH Class 8		2

## 2.3 Blade Guide Arm Drive Sprocket Assembly



REF	PART #	DESCRIPTION	COMMENTS	QTY.
	130316	ASSY, LX V-GROOVE DRIVEN ECCENTRIC		2
	130317	ASSY, LX V-GROOVE IDLE ECCENTRIC		2
1	F05008-185	Bolt, 1/2-13x2 3/4 HH FT Gr8		1
2	F05011-39	Washer, 1/2 Star ET		2
3	A09932	Roller Assy, Blade Guide Arm Drive (130316 only)		1
4	A09059	Roller Assembly, V-Groove (130317 only)		1
5	110979	Sleeve, LX B/G		1
6	F05010-31	Nut, 1/2-13 Jam		2
7	F05010-67	Nut, 3/4-16 Jam		1
8	F05011-148	Washer, 3/4 Star IT		1
9	F05011-73	Washer, 7/8 Star IT		1
10	110978	Nut, 1/2-13 Eccentric		1
11	F05020-58	Bolt, M6-1 x 20 CARRIAGE		2
12	130314	Plate, LX B/G System Lower Cover		1
13	F05026-1	Washer, M6 Flat Class 4		2
14	F05010-200	Nut, M6-1.0 Nylon Lock		2

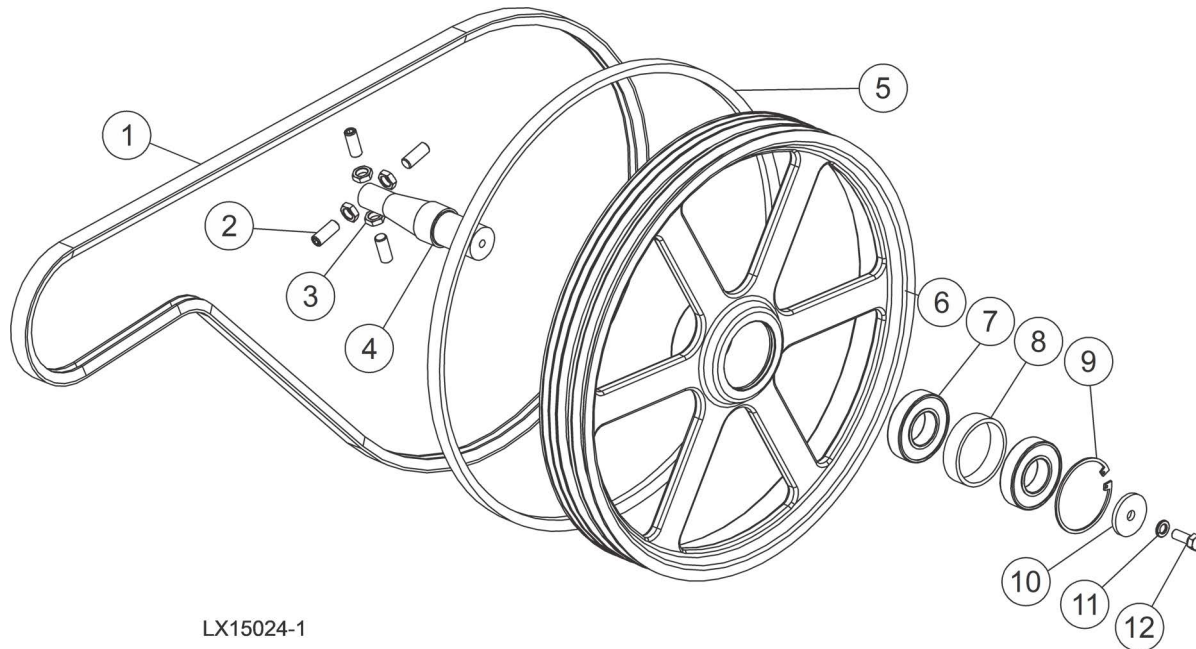
## 2.4 Blade Guide Assembly, Drive Side



REF	PART #	DESCRIPTION	COMMENTS	QTY.
1	087744_US	Mount Weldment, Blade Guide		1
	094682_US	Guide Assembly, Blade		1
2	094679-1	Bracket, Blade Guide Drive Side		1
	087887	Roller, Blade Guide w/Bearings		1
3	087763-1	Bolt, Blade Guide		1
4	087891-1	Ring, Blade Guide Roller Zinc		2
5	087893	Bearing, 6001 2rsr (Fag, Skf).		2
6	F81034-2	Nut, M12 8 Fe/zn5		1
7	087889	Roller, Blade Guide		1
8	F81090-9	Ring, Retaining W28 Pn/m-85111.		2
9	F81015-2	Screw, Set M10x1x40 Din913 A2-70.		2
10	F81033-10	Nut, M10x1 Iso8675		2
11	503588-1	Shaft, Roller Complete		1
12	F81015-1	Screw, M10x1x20 DIN913 Stainless Set		4
13	F81033-10	Nut, M10x1-04-ST-A2 ISO 8675 Thin		4
14	F05011-134	Washer, M10 Flat		2
15	F05011-88	Washer, 10MM Split Lock		2
16	F05022-12	Bolt, M10-1.5 x 25 SHC		2

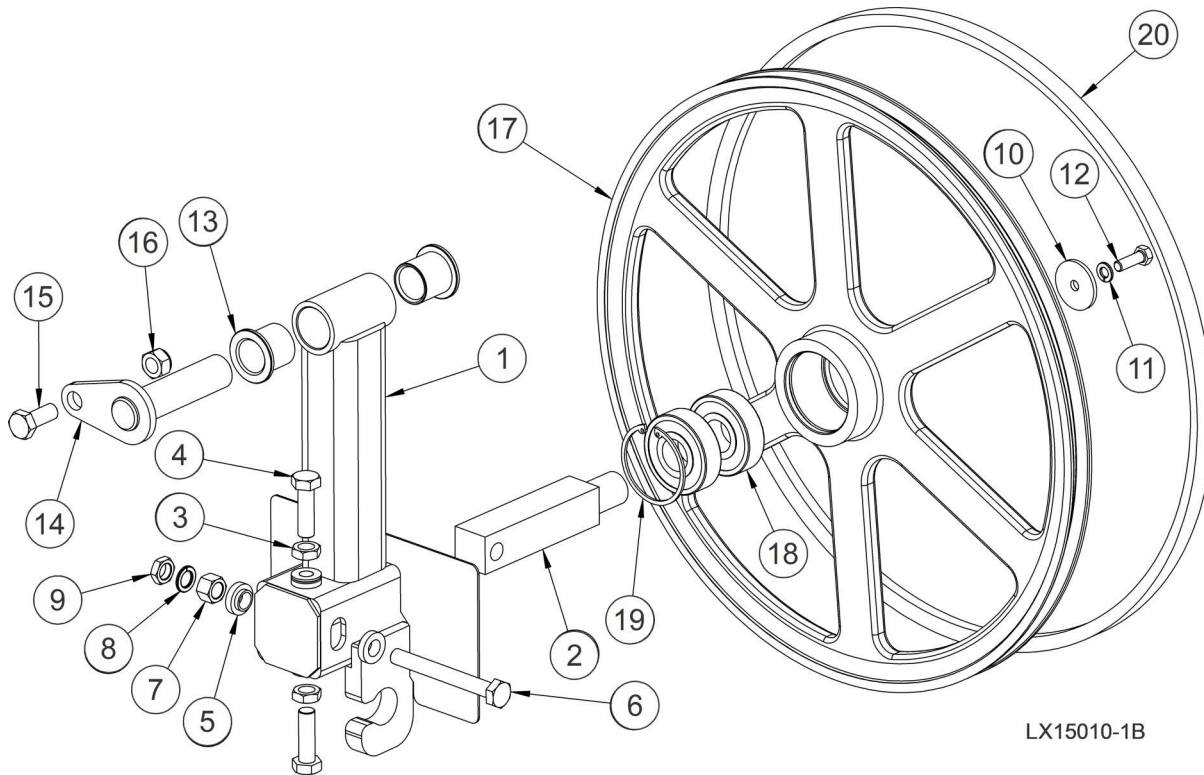
## SECTION 3 BLADE WHEELS &amp; TENSIONER

## 3.1 Blade Drive Assembly



REF	PART #	DESCRIPTION	COMMENTS	QTY.
1	047751	Belt, 2/3VFL900 Drive		1
2	F81016-1	Screw, M12x1.25x30 DIN913 Stainless Set		4
3	F81034-9	Nut, M12x1.25 DIN439 Thin Stainless		4
4	014729	Shaft, LT15 Drive		1
5	P04185	Belt, B-57		1
	036657	<b>WHEEL ASSEMBLY, LT15 3V DRIVE</b>		1
6	047702	Sheave, 3V LT15 Drive		1
7	014811	Bearing, 6207-2RS, C3, 35x72x17		2
8	014730	Spacer, Drive Bearing LT15		1
9	F04254-30	Ring, 72MM OD Retaining N5002-281		1
10	014728	Washer, LT15 Drive Wheel Ret.		1
11	F05011-4	Washer, 3/8 Split Lock		1
12	F05007-87	Bolt, 3/8-16x1 Gr5 HH		1

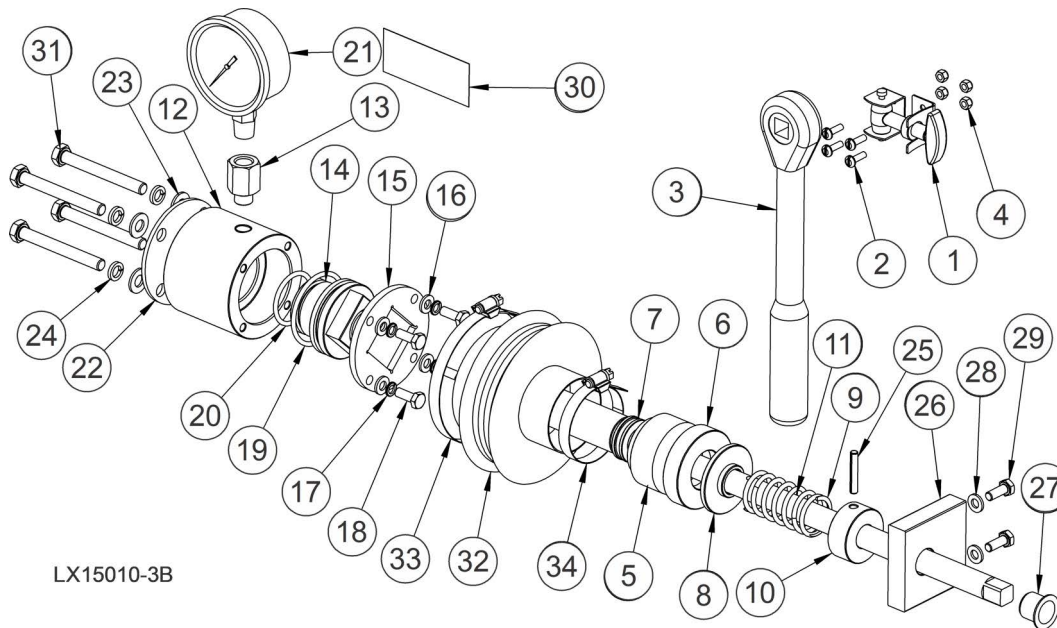
### 3.2 Idle Blade Wheel Assembly



LX15010-1B

REF	PART #	DESCRIPTION	COMMENTS	QTY.
	011267	Assembly, LX150 Blade Wheel Idler		1
1	011268	Weldment, LX150 Blade Wheel Idler		1
2	096045	Shaft, 30mm Sq Idler		1
3	F05027-19	Nut, M12-1.75 Zinc Jam		2
4	F05004-250	Bolt, M12x1.75x40mm Hex Head FT CL10.9 Zinc		2
5	S04253	Spacer, .510x.937x.34		2
6	F81004-41	Bolt, M12x1.25x100 Gr8.8 Hex Head Full Thread		1
7	F81034-8	Nut, M12x1.25 8.8 Hex Zinc		1
8	F05011-123	Washer, 12MM Split Lock		1
9	F81034-5	Nut, M12x1.25 8.8 Hex Zinc Thin		1
10	S08220	Washer, .313x1.5x.125		1
11	F05011-45	WASHER, 8MM SPLIT LOCK, ZN		1
12	F05004-40	Bolt, M8x1.25x25 Hex Head FT		1
13	P109	Bushing, 1 IDx1-1/4 ODx1-1/4 FI		2
14	042232	Pin Weldment, Side Support		1
15	F05008-175	Bolt, M12x1.75x30mm Hex Head Znc		1
16	F05010-209	Nut, M12x1.75 Hex Nylock		1
	A08218	Sheave Assembly, 19 Idler		1
17	P08125	Sheave, 18.62 Idler		1
18	P08066	Bearing, .9843x2.4409x.6693		2
19	F04254-21	Snap Ring, 2 7/16 IR Beveled		1
20	P04185	BELT, B-57		1

3.3 Blade Tensioner Assembly



LX15010-3B

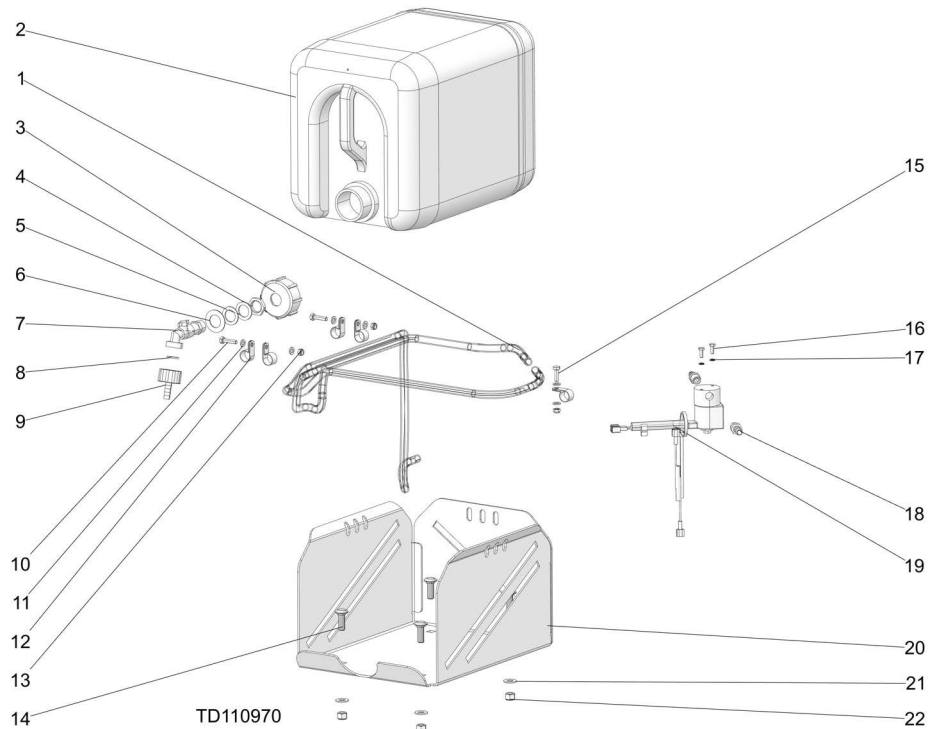
REF	PART #	DESCRIPTION	COMMENTS	QTY.
1	011360	Latch, Tool Retaining		1
2	F05004-74	Screw, 4mx12 CrSI Round Head Machine		4
3	091620	Tool, Blade Tensioning		1
4	F05027-8	Nut, M4-.7 Class 8 Nylock		4
	510640	Tensioner, LX150 Blade		1
5	510635	Housing, Round		1
6	510634-1	Ring, Round		1
7	086675	Bearing, 51103		1
8	510633-1	Washer, Blade Tensioner		1
9	088992	Spring, 60x23x3		1
10	510636-1	Bushing, 16/38-20 22.5-4 Zinc		1
11	510650-1	Bolt, Blade Tensioner Zinc		1
	510641	Cylinder, Complete		1
	510657-1	Cylinder Assembly, Reduction		1
12	510637	Cylinder		1
13	513280	Fitting, Z-m12x1/w-1/4npt		1
14	510638	Piston, Blade Tensioner		1
15	510490-1	Plate, Tensioner		1
16	F81053-1	Washer, 6.4 FE/ZN5 PN-78/M-82005		4
17	F81053-3	Washer, Split Lock Z 6.1		4
18	F81001-15	Bolt, M6x16-8.8-FE/ZN5 PN-M/82105		4
19	510646	Ring, 46.2x3		1
20	510647	Ring, 32.2x3		1
21	505176	Gauge, Oil Pressure 200 Bar (3000psi)		1
22	510642-1	Cover, Tensioner		1
23	F81054-1	Washer, 8.4 FE/ZN5 PN-78/M-82005		4

REF	PART #	DESCRIPTION	COMMENTS	QTY.
24	F81054-4	Washer, Split Lock M8 Fe/zn5 Pn-m/82008		4
25	F81044-21	Pin, Roll 5x30 FE/ZN5 PN/M-85023.		1
26	096730	Bracket, Blade Tensioner		1
27	089589	Bushing, GFM-1618-17		1
28	F81053-1	Washer, 6.4 FE/ZN5 PN-78/M-82005		2
29	F81001-15	Bolt, M6x16-8.8-FE/ZN5 PN-M/82105		2
30	510643	Decal, Pressure Settings		1
31	F81002-71	Bolt, M8x70 8.8 Hex Head Zinc		4
	515050	Cover, Blade Tensioner Complete		1
32	515051	Cover, Blade Tensioner		1
33	F81095-5	Clamp, 70-80 Mm.		1
34	F81095-4	Clamp, 40-60 Mm.		1

**SECTION 4 SAW HEAD FRAME**

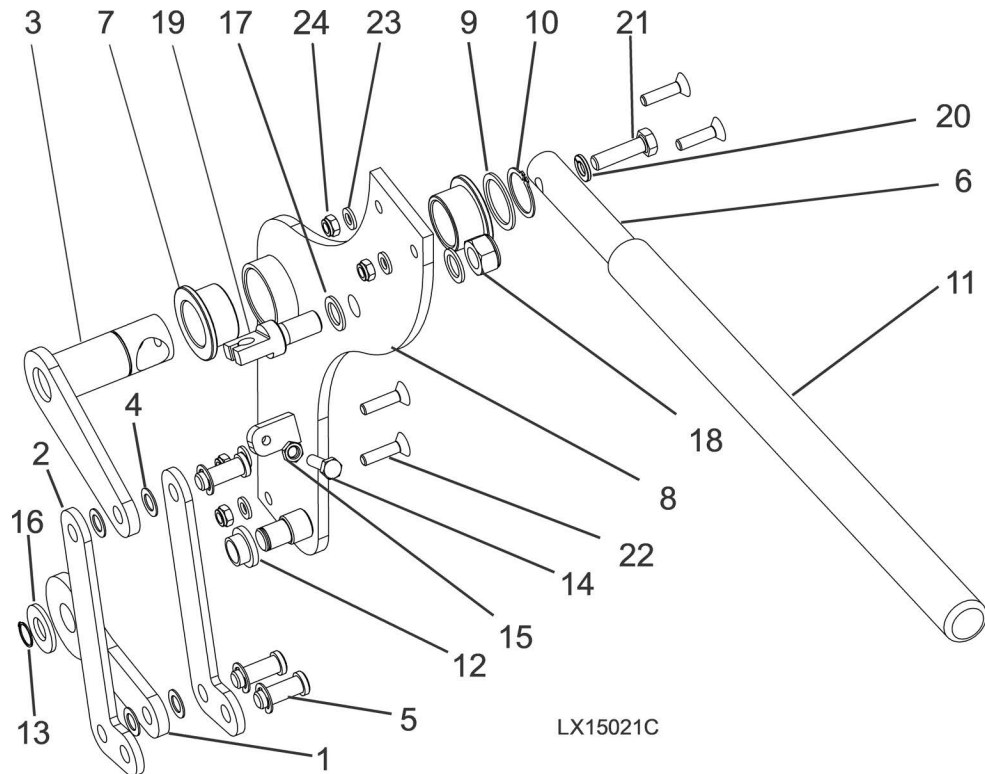


## 4.1 Water Lube Assembly



REF	PART #	DESCRIPTION	COMMENTS	QTY.
	110970	Assy, LX250 Water Lube		1
	011448	Assy, Water Bottle 5Gallons		1
1	R01885_LX250	Hose, Water Lube Stock		1
	550787	Assy, Water Bottle		1
2	513866	Bottle, Water		1
3	550785	Cap. Water Bottle		1
4	550779	Gland Nut, 1/2 Npt		1
5	550780	O-ring, 27x20x1.5		2
6	530841	Shim, 21/37-1		1
7	550776	Fitting, Water Lube Shutoff Valve		1
8	550778	Gasket, 1/2 (Batard)		1
9	550777	Fitting, G3/4" X 10mm Hose Barb		1
10	F05020-33	Bolt, M6-1 X 25 Class 8 Hh		2
11	F05026-1	Washer, M6 Flat Class 4		6
12	010748	Clamp, 5/8 Emt Coated		5
13	F05010-200	Nut, M6-1.0 Nylon Lock		3
14	F05022-19	Bolt, M10-1.5x30 Carriage Class 8.8		4
15	F05020-6	Bolt, M6-1x20 Hh Class 8		1
16	F05004-60	Bolt, #10-32x1/2 Hh		2
17	F05011-20	Washer, #10 Split Lock		2
18	P04682	Fitting, 3/8 Barb 1/4npt Male		2
19	133071	Assembly, Water Lube Solenoid Electrical		1
20	011449	Tray, Water Bottle		1
21	F05011-134	Washer, M10 Flat		4
22	F05004-270	Nut, M10-1.50 Hex Nyl Lock		4

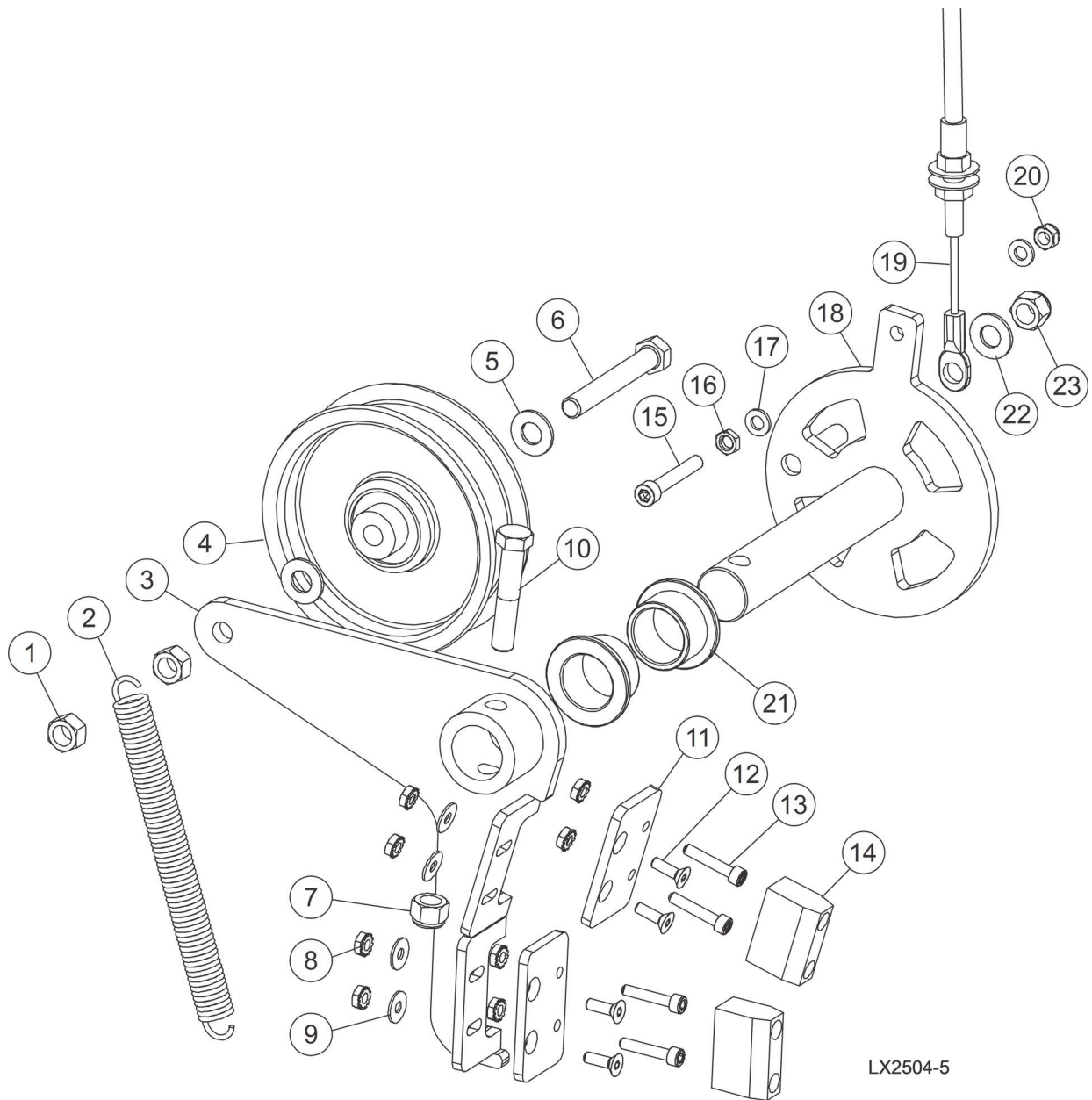
## 4.2 Clutch Assembly



REF	PART #	DESCRIPTION	COMMENTS	QTY.
	011219	Assembly, LX150 Clutch		1
1	011215	Plate, LX150 Clutch Pivot Arm		1
2	011214	Plate, LX150 Clutch Engagment Arm		2
3	011132	Weldment, LX150 Throttle Engagement		1
4	033444	Washer, 3/8 ID 5/8 OD .032 Thick Nylon		4
5	F05012-154	Pin, 3/8x13/16 Clevis, Stainless		3
6	011217	Handle, LX150 Clutch Engagment		1
7	P737	Bushing, 1x1 1/4x3/4 Flg Bronze		2
8	011193	Weldment, LX150 Clutch Hub		1
9	F05011-116	Washer, 1 ID .06 SS Shim	F05011-116 replaced 076037 after 1/27/2022 per ECN 38339.	1
	076037	Shim, 1 ID 1-1/4 OD		1
10	F04254-15	Ring, 1 OR		1
11	028390	Grip, Handle		1
12	049007	Bushing, 1/2IDx5/8ODx3/8 Long FI		1
13	F04254-18	Ring, Shaft 1/2 In, Retaining		1
14	F05020-33	Bolt, M6-1 x 25 Class 8 Hex Head		1
15	F05010-226	Nut, M6x1 Metric Jam		1
16	F05011-2	Washer, 1/2 SAE Flat		1
17	P05251-1	Washer, 1/2x3/4x1/16 Nylon		2
18	F05010-209	Nut, M12x1.75 Hex Nylock		1

REF	PART #	DESCRIPTION	COMMENTS	QTY.
19	011235	Bolt, LX150 Throttle Pivot		1
20	F05011-45	Washer, 8mm Split Lock, Zn		1
21	F05021-11	Bolt, M8-1.25x30mm Hex HeadC FT		1
22	F05004-266	Screw, M6x1x25mm FHS		4
23	F05026-1	Washer, M6 Flat Class 4		4
24	F05010-200	Nut, M6-1.0 Nylon Lock		4
		See your specific engine manual for clutch cable P/N		

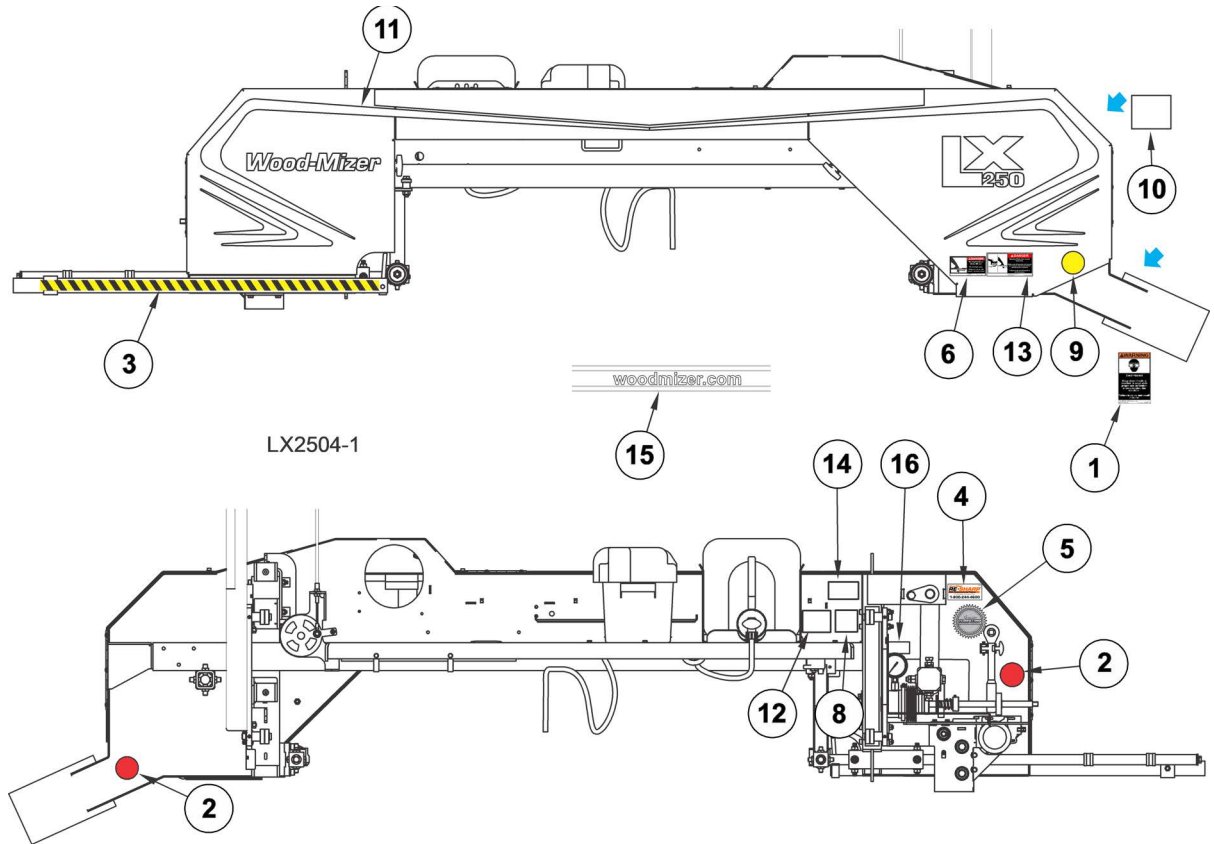
4.3 Brake Assembly



REF	PART #	DESCRIPTION	COMMENTS	QTY.
	065874	Assy, Brake/Clutch		
1	F05010-25	Nut, 3/8-16 Swaged Lock		2
2	034810	Spring, Idler Arm LT15/D/E/G		1
3	065873	Weldment, Clutch/Brake Arm		1
4	034602	Idler, 4" O.D.x 3/8 Bore		1
5	F05011-3	Washer, 3/8 Flat SAE		2
6	F05007-230	Bolt, 3/8-16x2 3/4 FT Gr5		1
7	F05010-10	Nut, 3/8-16 Hex Nyloc		1

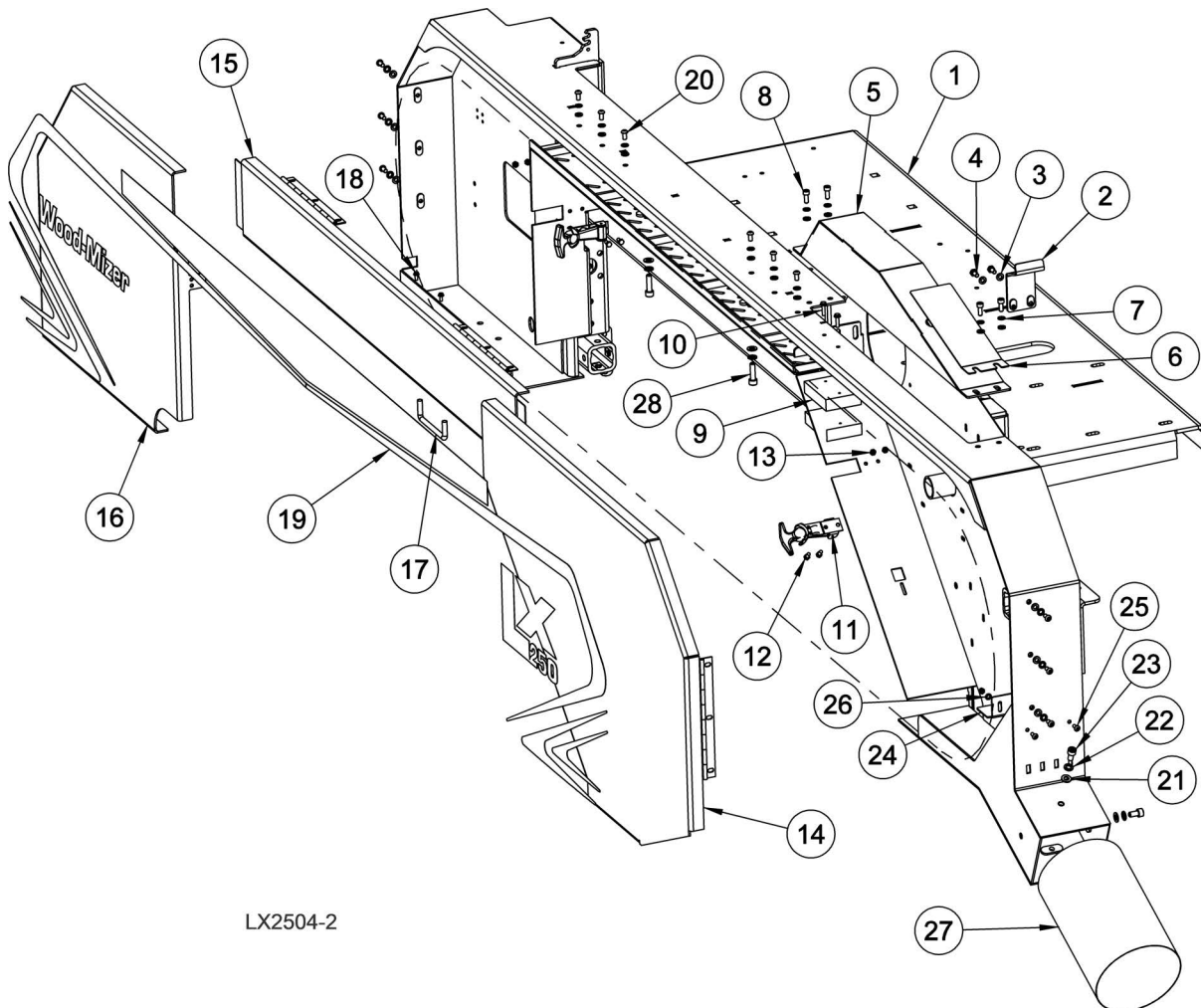
REF	PART #	DESCRIPTION	COMMENTS	QTY.
8	F05010-14	Nut, #10-24 Keps->		8
9	F05011-18	Washer, #10 SAE Flat		4
10	F05007-124	Bolt, 3/8-16X2 HH GR5		1
11	065872	Plate, Brake Adjustment		2
12	F05004-282	Screw, 10-24x5/8 FSHC BO		4
13	F05004-2	Bolt, 10-24x1 BO SHC		4
14	016488	Block, LT15 Brake		2
15	F05004-284	Bolt, M6-1.0x40mm SHCS		1
16	F0501-0-226	Nut, M6x1 Metric Jam		1
17	F05026-1	Washer, M6 Flat Class 4		2
18	011187	Weldment, LX150 Clutch/Brake Pivot		1
19	113951	Cable, .140"x96" Clutch		1
20	F05010-200	Nut, M6-1.0 Nylon Lock		1
21	P737	Bushing, 1x1 1/4x3/4 Flg Bronze		2
22	F05011-3	Washer, 3/8 Flat SAE		1
23	F05010-10	Nut, 3/8-16 Hex Nyl Lock		1

4.4 Saw Head Decals



REF	PART #	DESCRIPTION	COMMENTS	QTY.
1	P11754	<b>DECAL, SAWDUST CHUTE WARNING</b>		1
2	P07452	<b>DECAL, RED REFLECTIVE 2" ROUND</b>		2
3	015849	Decal, Blade Guide Arm Stripe		1
4	P12879	<b>DECAL, BLADE RESHARP INFO</b>		1
5	079278	Decal, Wood-Mizer Quality & Information		1
6	S11752	Decal, Blade Danger		1
7	P11789	Decal, Blade Alignment		1
8	P11790	Decal, Tension Screw		1
9	P07453	<b>DECAL, AMBER REFLECTIVE 2" ROUND</b>		1
10	074008	Decal, Built In The USA		1
11	011420	Decal, LX250 Blade Cover		1
12	P10147	Decal, Hydraulic Blade Tension Caution		1
13	033254	<b>DECAL, BLADE COVERS DANGER</b>		2
14	P12373	Decal, Blade Tension Ranges		1
15	107170	Decal, White woodmizer.com (Located on Power Feed Tube)		1
16	128179	Decal, Tension		1

## 4.5 Blade Housing Covers &amp; Saw Head Hardware



LX2504-2

REF	PART #	DESCRIPTION	COMMENTS	QTY.
1	011407	Head Weldment, LX250		1
2	011447	Weldment, Belt Enhance Brkt		1
3	F05026-1	Washer, M6 Flat Class 4		18
4	F05005-99	Screw, M6-1x12 Hex HeadC FT		2
5	011411	Weldment, Top Belt Cover		1
6	113973	Plate, Belt Guard Cover		1
7	F05026-2	Washer, M6 Split Lock		16
8	F05004-206	Bolt, M6-1.0x16mm SHCS		4
9	015844	Pad, Blade Vibration		1
10	F05015-33	Screw, #10x3/4 SI Hex Was Head Scr		2
11	014829	Latch, Flexible Draw		2
12	F05004-259	Screw, M5-0.8x16mm SHCS SS		4
13	F05027-3	Nut, M5-.8 Class 8 Hex Nyloc		6
14	117076	Weldment, Cover Left		1
15	117077	Weldment, Cover Center		1

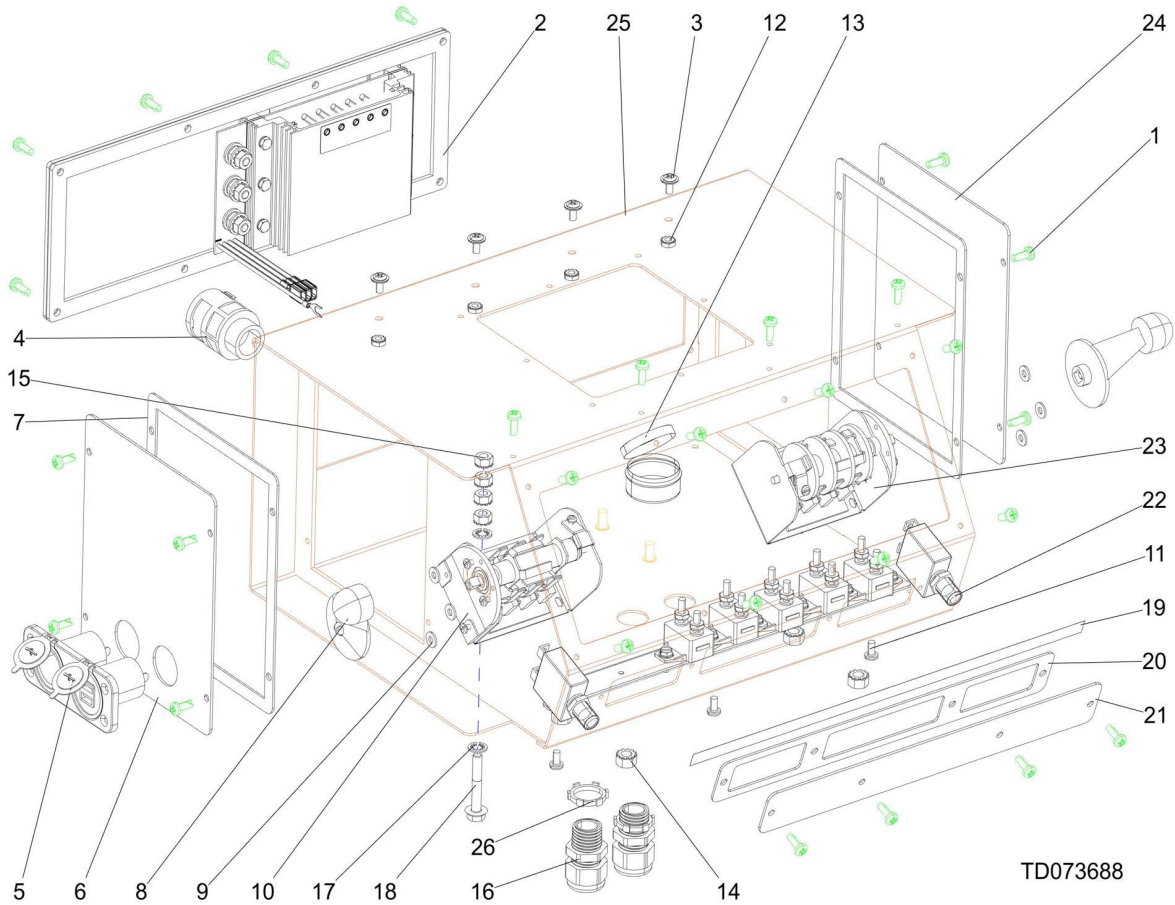
**4****Saw Head***Blade Housing Covers & Saw Head Hardware*

REF	PART #	DESCRIPTION	COMMENTS	QTY.
16	011416	Weldment, Cover Left		1
17	P08065	Handle, 4 W/Bolt		1
18	F05015-8	Bolt, #8-32x3/8 Self Tap		2
19	011420	Decal, LX250		1
20	F05004-275	Screw, M6-1.0 x 12mm BHCS Black Oxide		12
21	F05026-4	Washer, M8 Flat		4
22	F05011-130	Washer, M8 Spring Lock Zinc		4
23	F05021-10	Screw, M8-1.25 x 16 SHC		2
24	108060	Plate, LX150 Sawdust Diverter		1
25	F05020-55	Screw, M5-.8x12mm BHCS SS		2
26	F81052-1	Washer, 5.3 FE/ZN5 PN-78/M-82005		2
27	113974	Hose, OD 6Inch		1
28	F05021-1	Screw, M8-1.25 x 30 SHC		2



## SECTION 5 CONTROL & BATTERY BOXES

### 5.1 Control Box Assembly

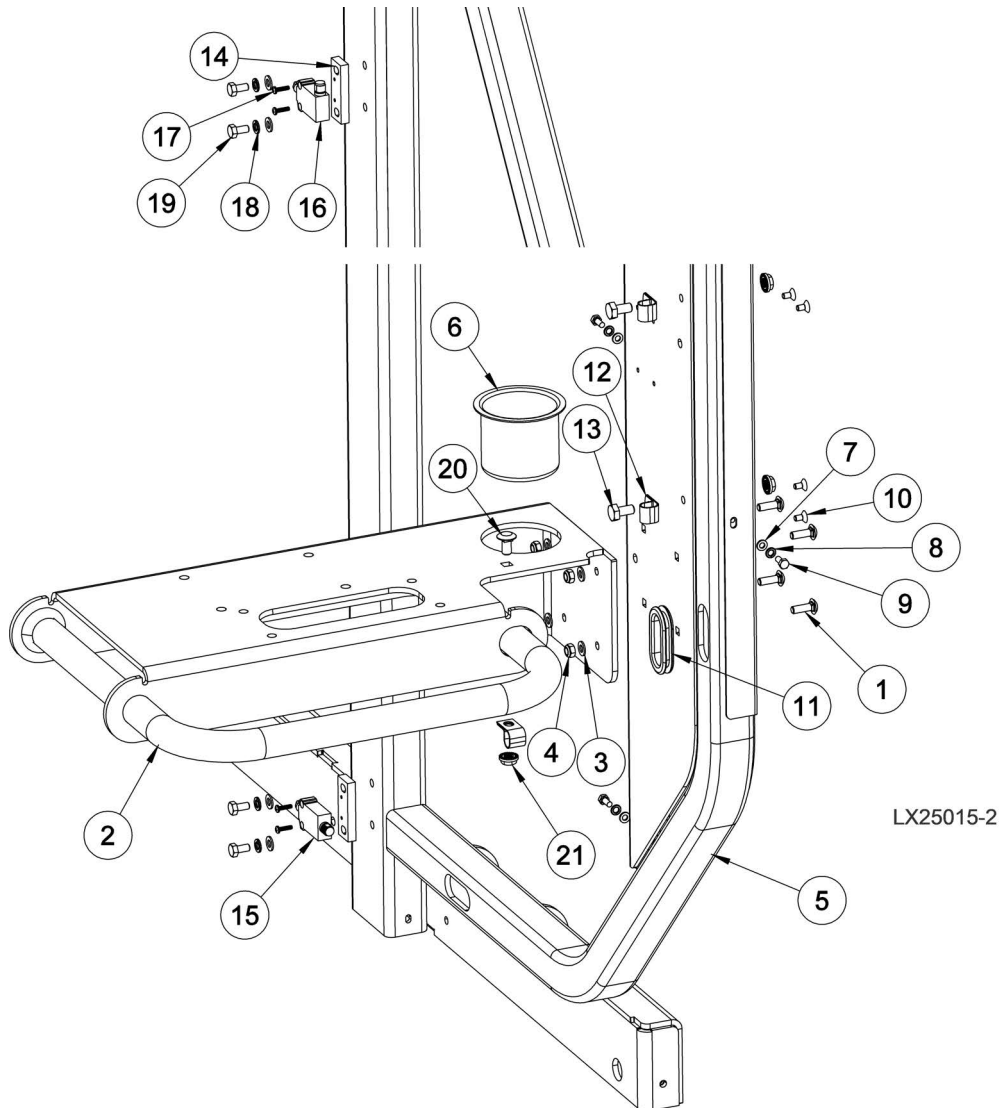


TD073688

REF	PART #	DESCRIPTION	COMMENTS	QTY.
	073675	<b>OPERATOR ASSY, LX250G38</b>		1
	073688	<b>OPERATOR ASSY, LX250E15</b>		1
	073694	Control Assembly, Simple Set <a href="#">(See Section 5.5)</a>		1
	073673	Panel Assembly,Front (LX150 G25/LX250 G38/E15) <a href="#">(See Section 5.4)</a>		1
1	F05015-17	Bolt, #10-24x1/2 PH		40
2	073578	Panel Assembly, Consolidated P/F CTRL 97+		1
3	F05004-148	Bolt, #10-24x3/8 CrSI Washer Pan Head		4
4	024252	Connector, 23mm to 3/4 NPT tubing		1
5	011274	USB Socket, Accessory		1
6	011273	Plate, LX150 Control Box Side		1
7	015274	Gasket, Side Panel		2
8	P12500	Handle, Drum Switch		2

REF	PART #	DESCRIPTION	COMMENTS	QTY.
9	F05011-41	WASHER, #8 SAE FLAT ZINC		6
10	E20439-B	Switch, S11 Bulk Drum		1
	P12570	Spring, Drum Switch		1
11	F05004-3	Screw, #10-24x3/8 Phillips PH Machine		3
12	F05010-14	Nut, #10-24 Keps		7
13	A20463	Grease, Drum Switch		1
14	F05010-20	Nut, 5/16-18 Keps		4
15	F05010-9	Nut, 1/4-20 Keps		4
16	078130	Cord Grip, 1/2" NPT .23-.546 Cord Grip		2
17	F05011-69	Washer, 1/4 Int Star Heavy Duty		2
18	F05005-181	Screw, 1/4-20x1 3/4 Zinc PI Flange Cap		1
19	114058	Decal, Circuit Breaker ID LX250		1
20	015266	Gasket, Circuit Breaker Panel		1
21	015376	Panel, Circuit Breaker		1
22	114030	Breaker Assy, LX150/LX250 Control ( <a href="#">See Section 5.3</a> )		1
23	E20440-B	Switch, S12 Bulk Drum		1
	P12570	Spring, Drum Switch		1
24	006473	Plate, Control Box Side		1
25	011271	Weldment, LX150 Control Box		1
26	E20461	Nut, 1/2 npt Connector Lock		2

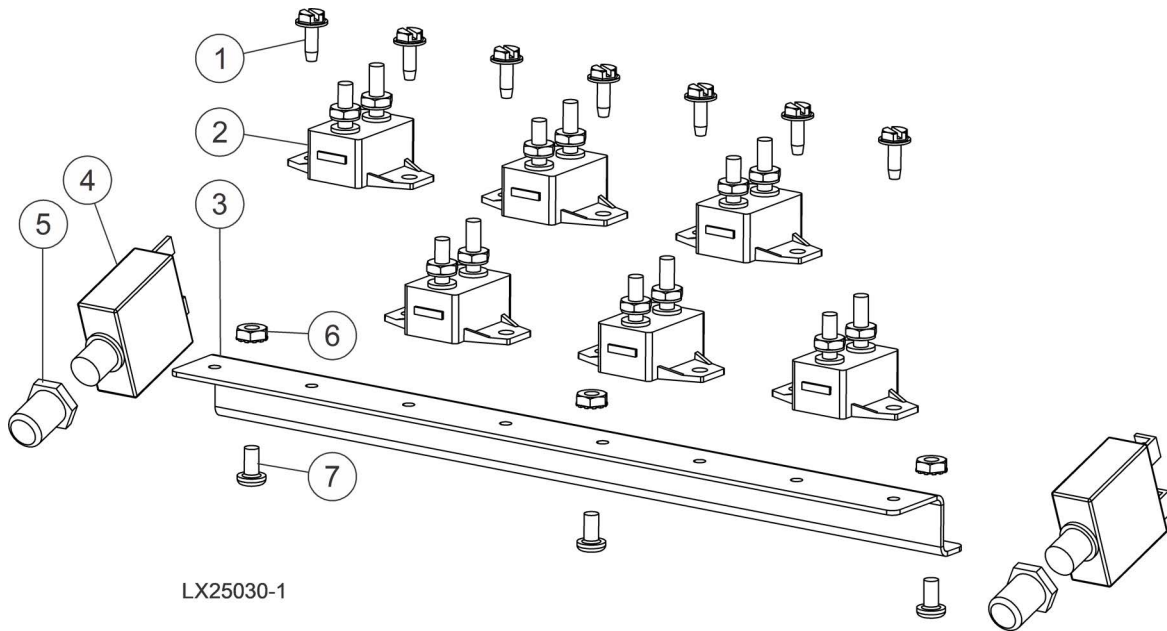
## 5.2 Control Box Mount & Up/Down Limit Switches



REF	PART #	DESCRIPTION	COMMENTS	QTY.
1	F05021-17	Bolt, M8-1.25x25 Carriage Class 8.8		4
2	113977	Weldment, LX150 Control Mount		1
3	F05011-131	Washer, M8 Flat Zinc		8
4	F05010-132	Nut, M8-1.25 Hex Nylock		4
5	011427	Guard, Clutch		1
6	011382	Cup Holder		1
7	F05026-1	Washer, M6 Flat Class 4		6
8	F05026-2	Washer, M6 Split Lock		6
9	F05020-7	Bolt, M6-1 x 14 Class 8 Hex Head		6
10	F05004-204	Screw, M6x1x12mm FHS		4
11	011269	Grommet, 1-3/4" ID x 2" Hole Rubber		4
12	028593	Clamp, 3/4EMT Coated		5
13	F05022-2	Bolt, M10-1.5 x 20 Class 8 Hex Head		4

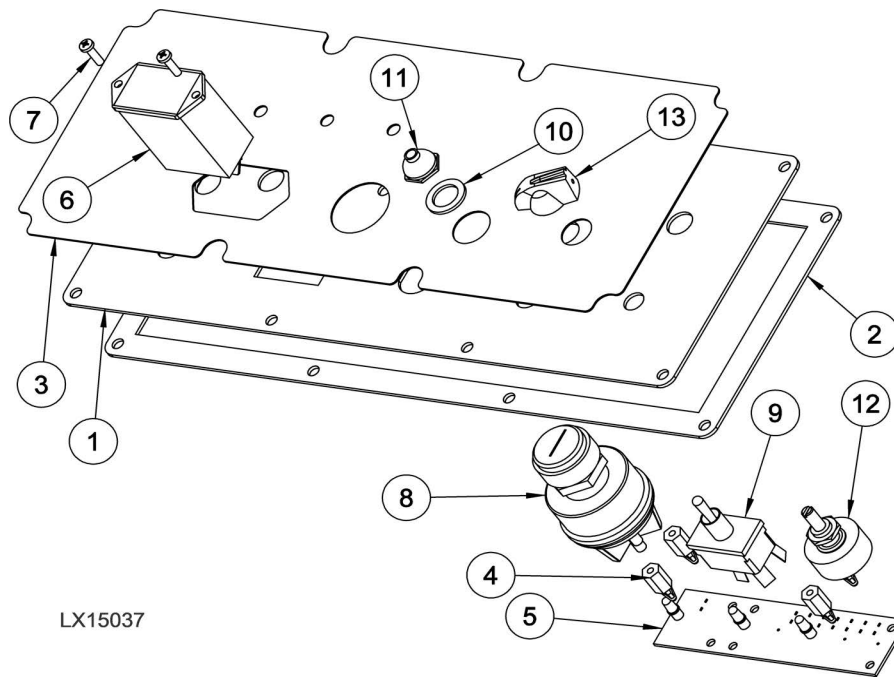
REF	PART #	DESCRIPTION	COMMENTS	QTY.
14	011375	Bracket, Limit Switch Mounting		2
15	114013	Switch, 90× Limit		1
16	011376	Switch, 90× Limit		1
17	F05020-26	Screw, M4-.7x15 Pan Head Phillips		4
18	F05011-130	Washer, M8 Spring Lock Zinc		4
19	F05004-47	Bolt, M8-1.25x16 Hex Head Zinc		4
20	F05022-23	Bolt, M10-1.5x20mm Carriage Class 8.8		1
21	F05010-249	Nut, M10 x 1.5 Flanged Serated Lock		5

### 5.3 Circuit Breakers



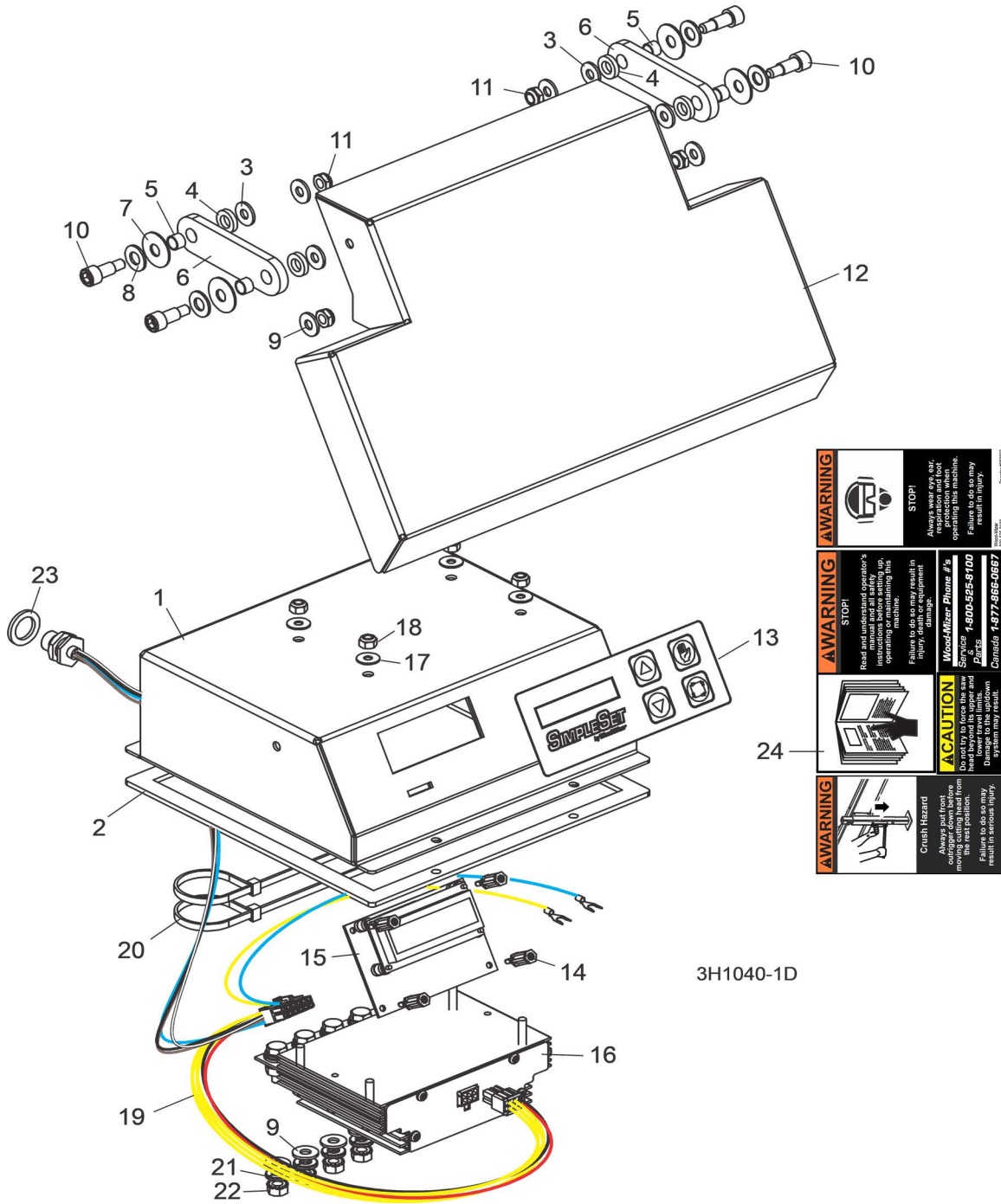
REF	PART #	DESCRIPTION	COMMENTS	QTY.
	073595	Breaker Assy, Sawmill Control (No Wires)		1
1	F05015-7	Bolt, #10-24x1/2 Self Tap		7
2	E20430	Breaker, 15A Manual Reset		6
3	052826	Rail, Circuit Breaker Self Tap		1
4	021253	Boot, Circuit Breaker		2
5	021256	Breaker, 50A Manual Reset Panel Mount		2
6	F05010-14	Nut, #10-24 Keps		3
7	F05004-3	Bolt, #10-24x3/8 CrSI PH		3

## 5.4 Front Panel Assembly &amp; Harnesses (/G38)



REF	PART #	DESCRIPTION	COMMENTS	QTY.
	073673	Panel Assembly, Front (LX250 G38)		1
1	015302	Panel Weldment, Face		1
2	015270	Gasket, Face Panel		1
3	015271	Decal, Gas/Elec Sawmill Control Panel		1
4	023147	Standoff, PCB 1/2 #6 Female Threading		4
5	015416	PCB Assembly, LED Diesel Sawmill 1997		1
6	015401	Meter, Hour Rectangle Mount		1
7	F05015-28	Screw, #6-32X1/2 Phil Pan HD T23, ZN		2
8	P04350	Switch, Key		1
9	024200	Switch, Toggle 21A DPDT Rev Mom Spade		1
10	P05251-1	Washer, 1/2x3/4x1/16 Nylon		1
11	P02575	Boot, Toggle Switch		1
12	024450-1	Pot Assembly, Feed Rate Control Sawmill		1
13	P06257	Knob, Speed Control		1
		LX250G38 Harnesses		
	073578	Harness Assy, LX250G38 Upper		1
	073677	Harness Assy, LX250 Feed		1
	073678	Harness Assy, LX250 Up/Down		1

### 5.5 Simple Set Control (LX150/250, SSW-150-A)



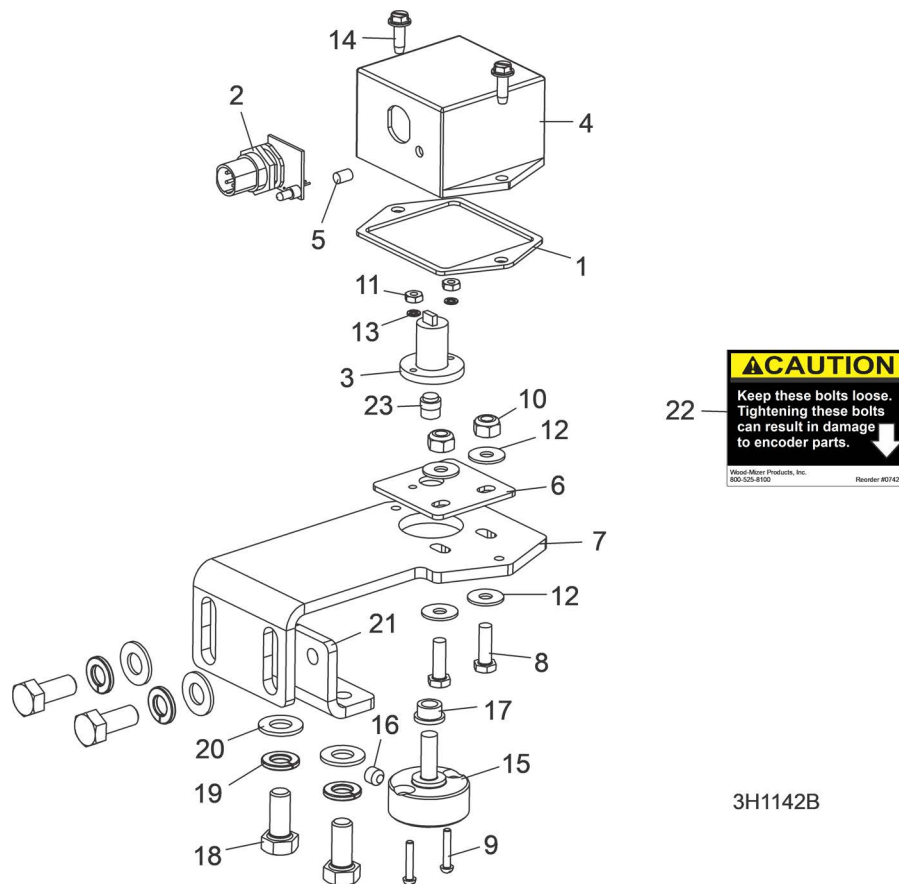
REF	PART #	DESCRIPTION	COMMENTS	QTY.
	073694	<b>CONTROL ASSEMBLY, SIMPLE SET</b>		1
1	006845	Box Weldment, Simple Set Control		1
2	006863	Gasket, Simple Set Control Box		1
3	F05011-11	Washer, 1/4" SAE Flat		4
4	F05011-92	Washer, 5/16" Nylon Flat		4
5	016655	Bushing, 5/16" ID x 3/8" OD x 1/4" Bronze		4

**5 Replacement Parts**  
*Simple Set Control (LX150/250, SSW-150-A)*

REF	PART #	DESCRIPTION	COMMENTS	QTY.
6	006872	Plate, Simple Set Control Cover Link		2
7	F05011-93	Washer, 5/16" Belleville		4
8	F05011-17	Washer, 5/16" SAE Flat		4
9	F05011-11	Washer, 1/4" SAE Flat		8
10	F05006-69	Bolt, 5/16" x 1/2" Shoulder 1/4-20 Thread Stainless		4
11	F05010-156	Nut, 1/4-20 Hex Half Nylon Lock		4
12	006846	Cover, Simple Set Control		1
13	053347	Membrane, Simple Set Control Switch		1
14	053385	Standoff, 5/8" Threaded PCB		4
15	073695	PCB Assembly, Simple Set Control		1
16	053373	H-Bridge Assembly, Simple Set		1
17	F05011-18	Washer, #10 SAE Flat		4
18	F05010-160	Nut, #10-24 Hex Nylon Lock		4
19	053379	Harness Assembly, Simple Set Control		1
20	F05089-3	Tie Wrap, 3/16" x 6" UV Black		2
21	F05011-14	Washer, 1/4" Split Lock		4
22	F05010-9	Nut, 1/4-20 Self-Locking Hex		4
23	F05011-19	Washer, 5/8" x 15/16" x .094 Nylon		1
24	069632	Decal, Control Box 4 x Warning		1



## 5.6 Sensor Assembly



REF	PART #	DESCRIPTION	COMMENTS	QTY.
	053369	<b>SENSOR ASSEMBLY, MAGNETIC POSITION</b>		1
1	006864	Gasket, Encoder		1
2	053376	PCB Assembly, Encoder Sensor	Available in assemblies only.	1
3	053387	Sensor Kit, Magnetic Encoder		1
4	053399	Enclosure, Position Sensor		1
5	053400	Lens, LED T1 Clear		1
6	057853	Plate, SimpleSet Encoder Slide		1
7	061518	Plate, SimpleSet Encoder Mount		1
8	F05004-18	Screw, 10-24 x 5/8" Unsl Indent Hex Head Machine		2
9	F05004-49	Screw, #4-40 x 5/8" SI Rnd Head Machine		2
10	F05010-160	Nut, 10-24 Hex Nylock		2
11	F05010-43	Nut, #4-40 Hex		2
12	F05011-18	Washer, #10 SAE Flat		4
13	F05011-21	Washer, #4 Split Lock		2
14	F05015-18	Bolt, #8-32 x 1/2" SI Hex Head S		2
15	057852	Extension, SimpleSet Gearbox Shaft		1
16	F05005-131	Screw, 1/4-20 x 1/4" SH Cup Pt Set		1
17	049018	Bushing, Flange 1/4" ID x 1/4" Lg		1
18	F05006-5	Bolt, 5/16-18 x 3/4" Hex Head Cap		4

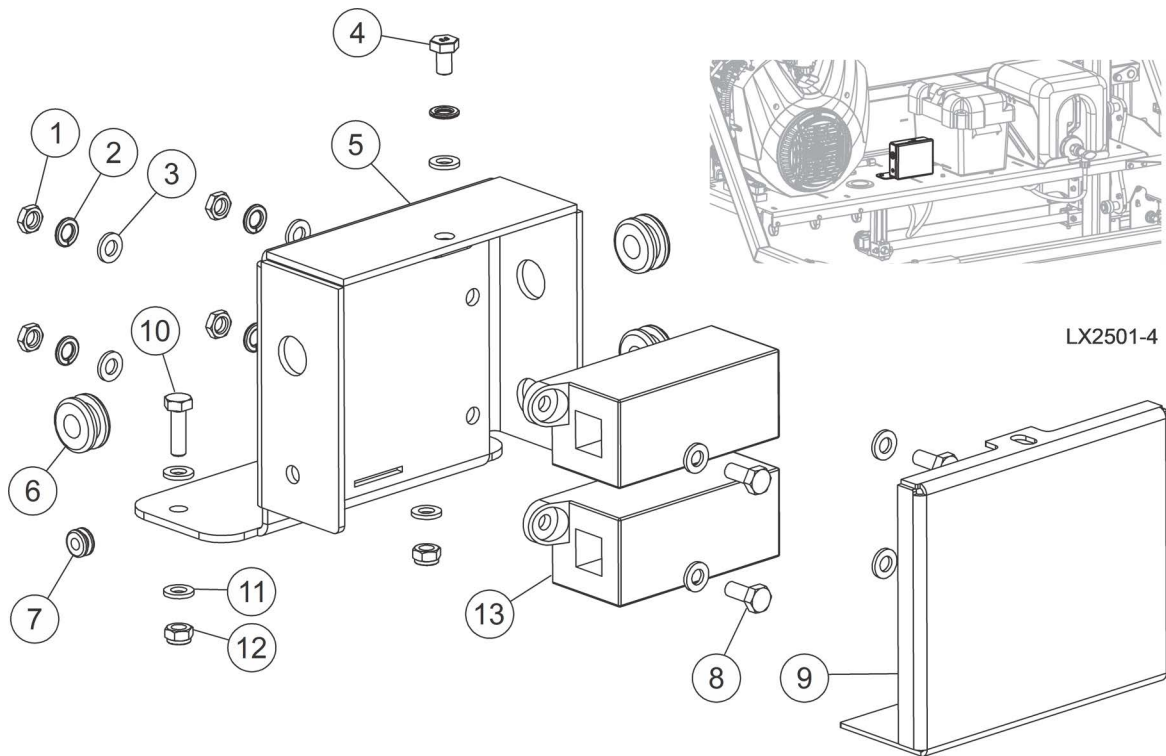
## 5

**Control & Battery Boxes***Sensor Assembly*

---

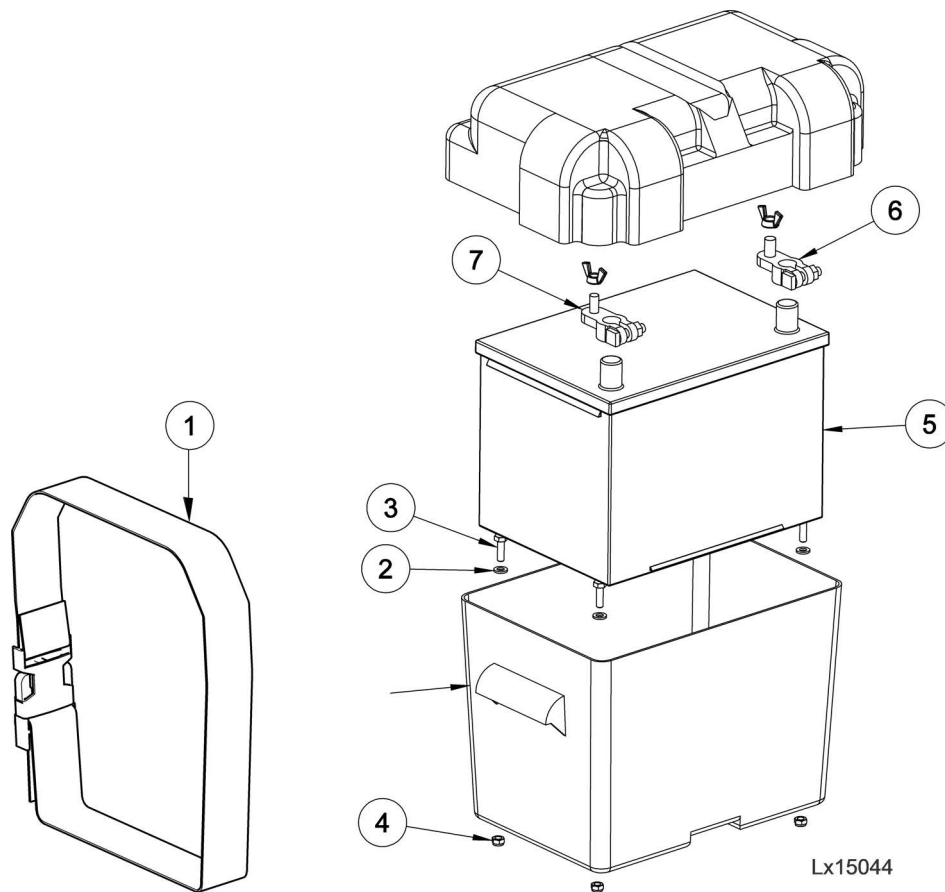
REF	PART #	DESCRIPTION	COMMENTS	QTY.
19	F05011-13	Washer, 5/16" Split Lock		4
20	F05011-17	Washer, 5/16" SAE Flat		4
21	057872	Plate, SimpleSet Mount		1
22	074269	Decal, Encoder Bolt Warning		1
23	065890	Magnet Assembly, Simple Set Encoder w/Hub		1
	073679	<b>CABLE ASSY, 10M M12 PUR PATCH</b>		1

## 5.7 Fuse Box



REF	PART #	DESCRIPTION	COMMENTS	QTY.
	128208	Assy, LX Fuse Block		1
1	F05010-226	Nut, M6 x 1 Hex Jam		4
2	F05026-2	Washer, M6 Split Lock		5
3	F05026-1	Washer, M6 Flat Class 4		9
4	F05020-59	Bolt, M6-1x10mm HH FT 8.8 Zinc		1
5	128207	Weldment, LX Fuse Block		1
6	025248	Grommet, Rubber 3/8 Dia		3
7	042825	Grommet, 9/32Holex3/16IDx7/16OD		1
8	F05020-7	Bolt, M6-1 x 14 Class 8 HH		4
9	128206	Cover, LX Fuse Block		1
10	F05020-6	Bolt, M6-1x20 HH Class 8		2
11	F05026-1	Washer, M6 Flat Class 4		4
12	F05010-200	Nut, M6-1.0 Nylon Lock		2
13	052371	Fuseholder, Mega Fuse	Quantity of 1 used on electric mills.	2
	052370-150	Fuse, 150A Mega	Not used on the electric mills.	1
	052370-060	Fuse, 60A Mega		1

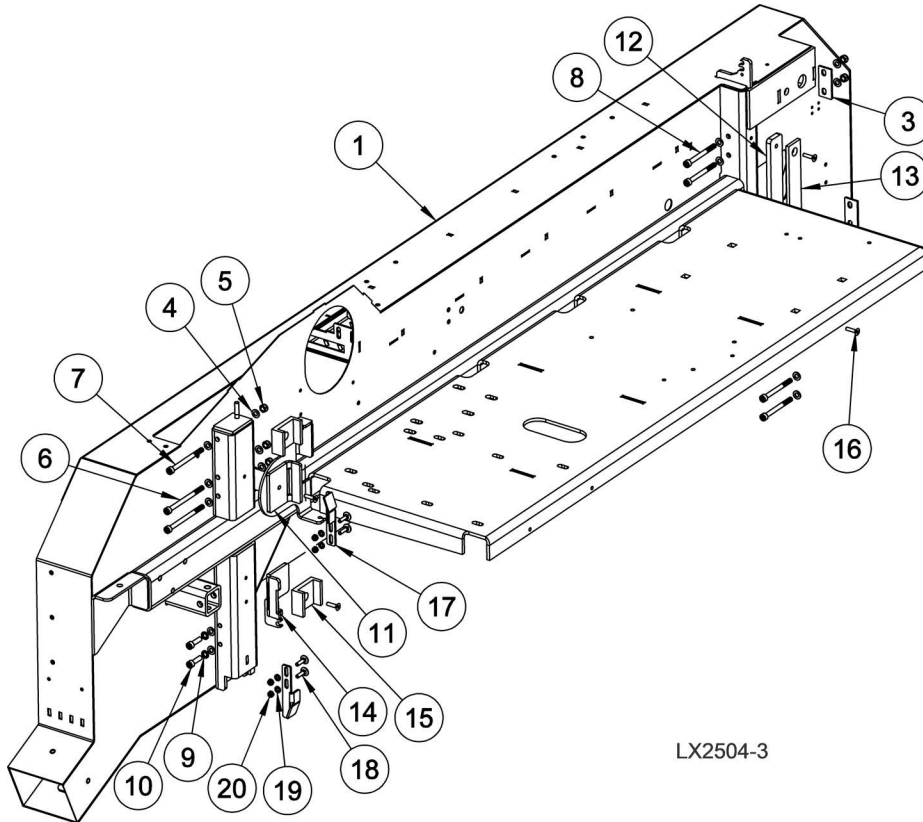
5.8 Battery Box Assembly



REF	PART #	DESCRIPTION	COMMENTS	QTY.
	110400	Assembly, LX150/LX250 Battery Box		1
1	016413	Box, Battery, Modified		1
2	F05026-1	Washer, M6 Flat Class 4		4
3	F05020-6	Bolt, M6-1 x 20 Class 8 HH		4
4	F05010-200	Nut, M6-1.0 Nylon Lock		4
5	079462	Battery, 580 CCA Deka		1
6	033358	Clamp, Pos. Battery		1
7	033359	Clamp, Neg. Battery		1
		<b>For mills built prior to 12/16/2019:</b>		
	073683	Fuse, 60A ZCase	Changed and removed fuses from inside the battery box to the fuse block assembly next to the battery box as of 12/16/2019.	1
	073684	Fuse, 150A ZCase <sup>1</sup>		1
	073685	Fuse Holder, Single ZCase <sup>1</sup>		2

## SECTION 6 UP/DOWN SYSTEM

### 6.1 Mast Pad & Hardware



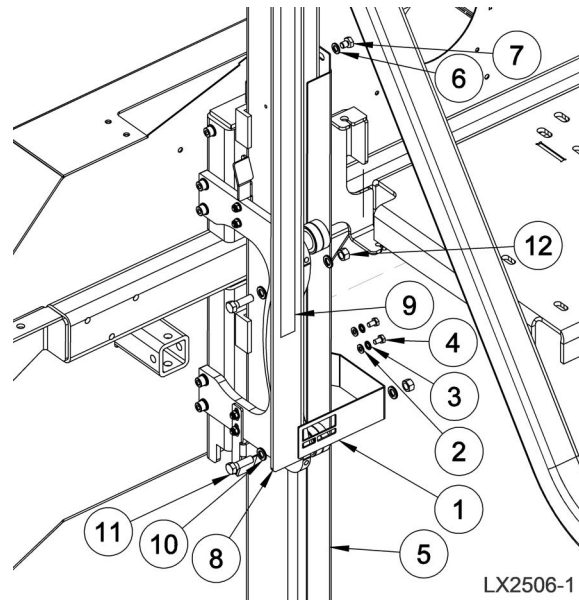
REF	PART #	DESCRIPTION	COMMENTS	QTY.
1	011407	Head Weldment, LX250		1
2	011447	Weldment, Belt Enhance Brkt		1
3	011444	Spacer, Right Head Mounting		2
4	F05026-4	Washer, M8 Flat		14
5	F81032-2	NUT,M8-8-B,HEX,NYLON LOCK ZINC		5
6	F05021-39	Screw, M8-1.25x110mm SHCS		2
7	F05021-38	Screw, M8-1.25x100mm SHCS		1
8	F05021-37	Screw, M8-1.25x85mm SHCS		4
9	F05011-130	Washer, M8 Spring Lock Zinc		2
10	F05021-1	Screw, M8-1.25 x 30 SHC		2
11	011238	Shim, Mast Stabilizing		1
12	110294	Plate, LX150 Slide Spacer		1
13	011140	Slide, LX150 Idle Side Upright		1
14	011164	Shim, Chain Mounting		1
15	011110	Guide, LX150 Upright		2
16	F05004-266	Screw, M6x1x25mm FHS		4
17	011323	Bracket, Lower Limit Switch		2
18	F81001-20	Bolt, M6x25-8.8 Carriage Head Zinc		4

**6****Up/Down System**  
*Mast Pad & Hardware*

---

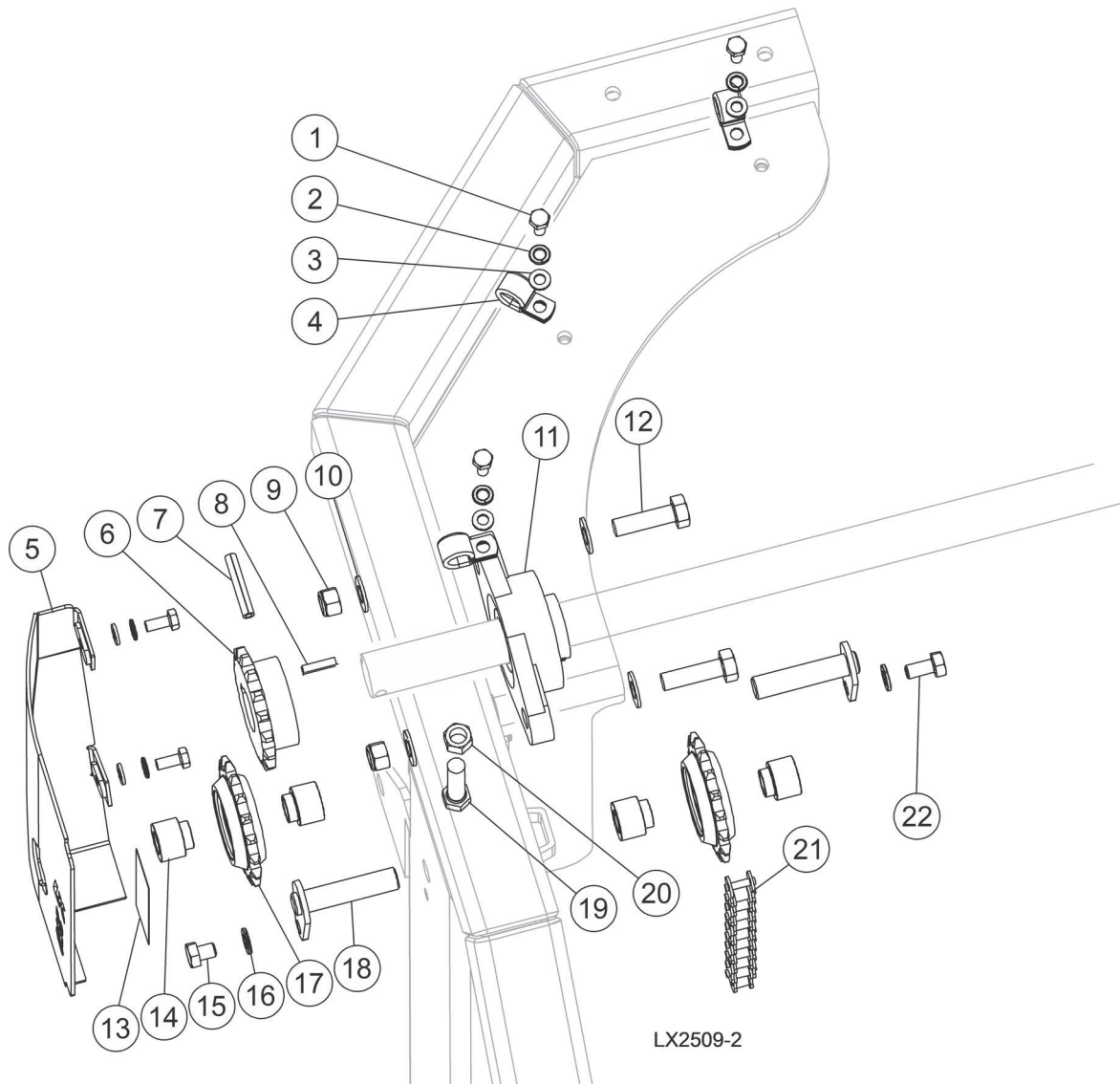
REF	PART #	DESCRIPTION	COMMENTS	QTY.
19	F05026-1	Washer, M6 Flat Class 4		4
20	F05010-200	Nut, M6-1.0 Nylon Lock		4

## 6.2 Blade Height Scales & Mast Angles



REF	PART #	DESCRIPTION	COMMENTS	QTY.
1	108025	Plate, Sight Gauge		1
2	F05026-1	Washer, M6 Flat Class 4		4
3	F05026-2	Washer, M6 Split Lock		4
4	F05020-59	Bolt, M6-1x10mm HH FT 8.8 Zinc		2
5	011430	Angle, Mast Tube Stainless		1
6	F05011-45	WASHER, 8MM SPLIT LOCK, ZN		1
7	F05021-51	Bolt, M8-1.25x20mm HHC		1
8	011473	Plate, Blade Height		1
9	128064	Decal, LX250 Inch Scale		1
10	F05011-4	Washer, 3/8 Split Lock		4
11	F05007-123	Bolt, 3/8-16x1 1/4 FT HH Gr5		2
12	F05010-1	Nut, 3/8-16 Hex		2

### 6.3 Up/Down Assembly, Drive Side

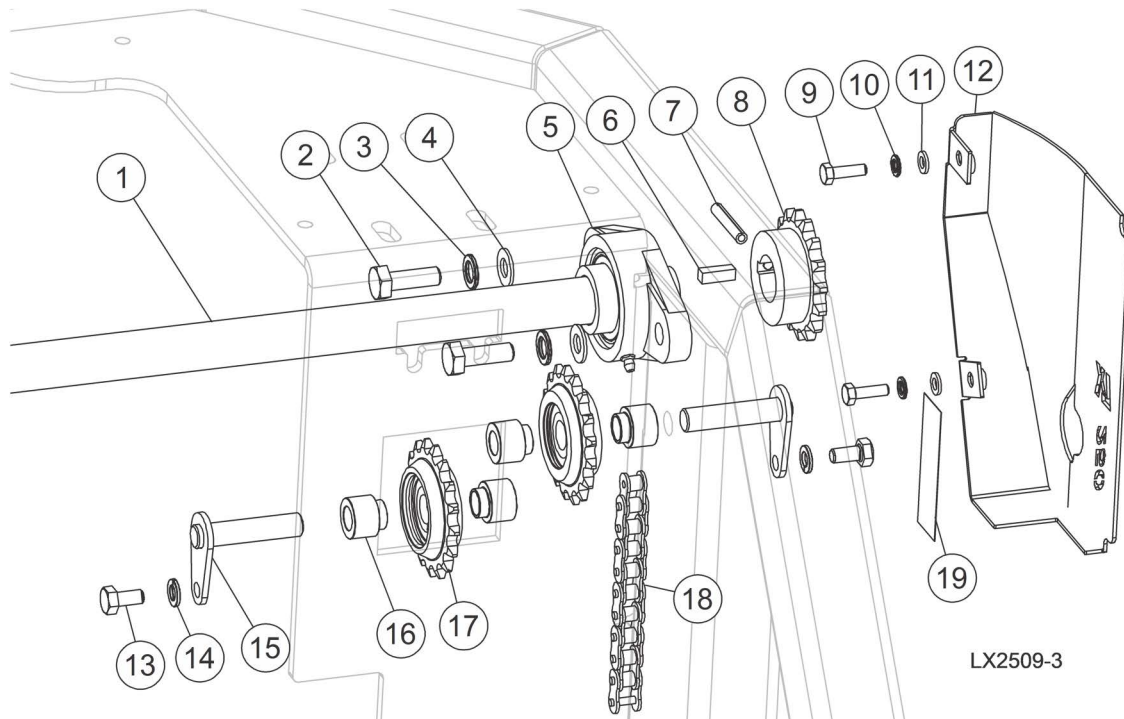


REF	PART #	DESCRIPTION	COMMENTS	QTY.
1	F05020-6	Bolt, M6-1 x 20 Class 8 HH		5
2	F05026-2	Washer, M6 Split Lock		5
3	F05026-1	Washer, M6 Flat Class 4		5
4	011295	Clamp, 1/2 IDx9/32 Mounting Hole Coated		3
5	011439	Weldment, Left Sprocket Guard		1
6	007311	Sprocket, 40B16x1		1
7	F05012-125	Pin, 1/4 x 1-1/2 Roll		1
8	S03167	Key, 1/4 Sqx3/4 Long		1
9	F05004-270	Nut, M10-1.50 Hex Nyl Lock		2
10	F05011-134	Washer, M10 Flat SAE		4



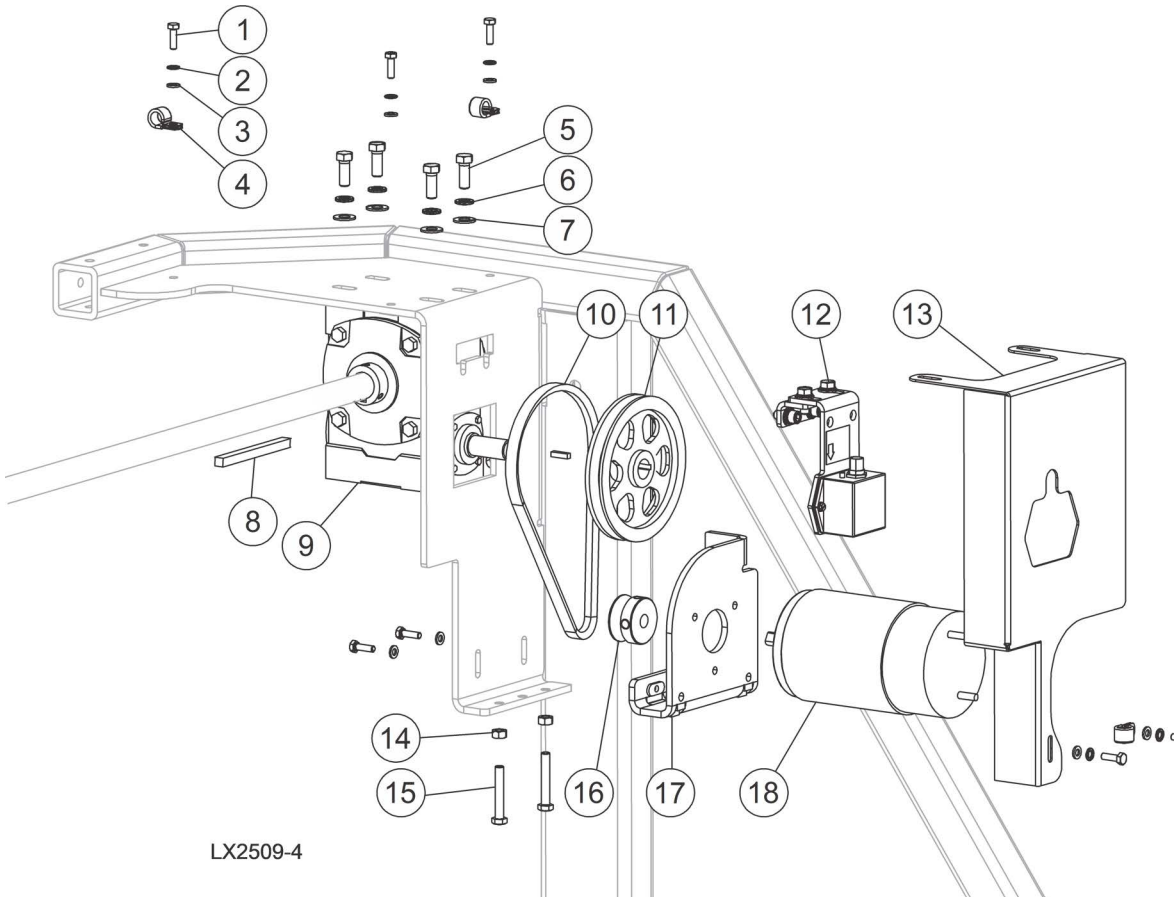
REF	PART #	DESCRIPTION	COMMENTS	QTY.
11	038124	Bearing, 1 Flanged, VF2S 216		1
12	F05022-18	Bolt, M10-1.5 x35 HH Class 8.8		2
13	011284	Decal, 3x1 Orange Vinyl		1
14	011176	Bushing, Idler Spacing		4
15	F05021-51	Bolt, M8-1.25x10mm HHC		1
16	F05011-45	Washer, M8 Split Lock		2
17	016366	Sprocket Assy, #40/#41 Chain, 17T ->		2
18	011213	Weldment, 1/2x2-1/8 Idler Pin		2
19	F05007-19	Bolt, 3/8-16x1 3/4 FT HH		1
20	F05010-1	Nut, 3/8-16 Hex		1
21	128037	Chain, #40x324p (162in)		1
22	F05004-47	Bolt, M8-1.25x16 HH Zinc		1

## 6.4 Up/Down Assembly, Idle Side



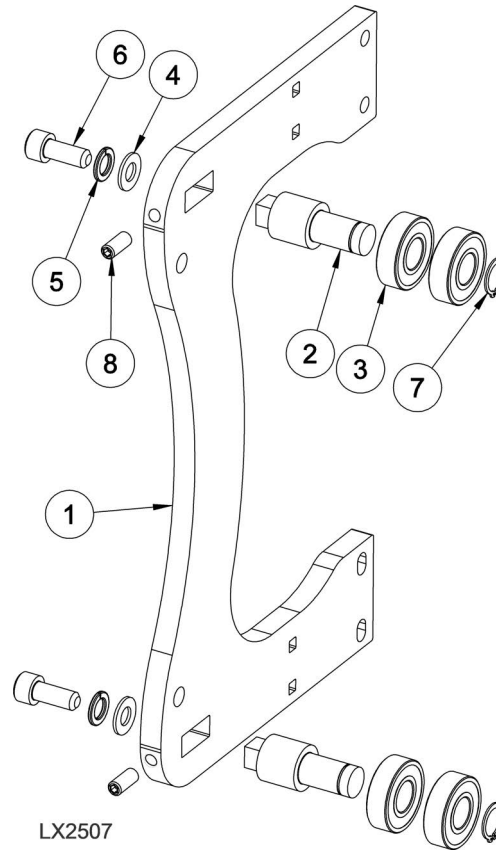
REF	PART #	DESCRIPTION	COMMENTS	QTY.
1	011405	Shaft, LX250 Up/Dn		1
2	F05022-3	Bolt, M10-1.5x30 HH Class 8		2
3	F05011-88	Washer, 10MM Split Lock		2
4	F05011-134	Washer, M10 Flat		2
5	038124	Bearing, 1 Flanged, VF2S 216		1
6	S03167	Key, 1/4 Sqx3/4 Long		1
7	F05012-125	Pin, 1/4 x 1-1/2 Roll		1
8	007311	Sprocket, 40B16x1		1
9	F05020-6	Bolt, M6-1x20 HH Class 8		2
10	F05026-2	Washer, M6 Split Lock		2
11	F05026-1	Washer, M6 Flat Class 4		2
12	011443	Wldmnt, Right Sprocket Guard		1
13	F05004-47	Bolt, M8-1.25x16 HH Zinc		2
14	F05011-45	Washer, 8mm Split Lock, Zn		2
15	011213	Wldmnt, 1/2x2-1/8 Idler Pin		2
16	011176	Bushing, Idler Spacing		4
17	016366	Sprocket Assy, #40/#41 Chain, 17T		2
18	128037	Chain, #40x324p (162in)		1
19	011284	Decal, 3x1 Orange Vinyl		1

### 6.5 Up/Down Gearbox Assembly



REF	PART #	DESCRIPTION	COMMENTS	QTY.
1	F05020-6	Bolt, M6-1 x 20 Class 8 HH		7
2	F05026-2	Washer, M6 Split Lock		7
3	F05026-1	Washer, M6 Flat Class 4		5
4	011295	Clamp, 1/2 IDx9/32 Mounting Hole Coated		3
5	F05007-87	Bolt, 3/8-16x1 Gr5 HH		4
6	F05011-4	Washer, 3/8 Split Lock		4
7	F05011-3	Washer, 3/8 Flat SAE		4
8	S22440	Key, 1/4x4 1/4		1
9	011317	Gearbox, 60:1 Thru Shaft		1
10	038459	Belt, 4L245		1
11	066781	Sheave, 5.45 OD 3/4 Bore 4L		1
12	053369	Sensor Assy, Magnetic Position <a href="#">(See Section 5.6)</a>		1
13	110701	Guard, LX150 Up/Dn, SSW		1
14	F05010-162	Nut, M8-1.25 Free Zinc		2
15	F81002-19	Bolt, M8x50 8.8 HH FT Zinc		2
16	S09579	Sheave, 1 3/4 Feed Motor		1
17	011300	Wldmnt, DC Up/Dn Motor Adjust		1
18	006747	Motor, 1/2hp 12VDC, Current Applications		1

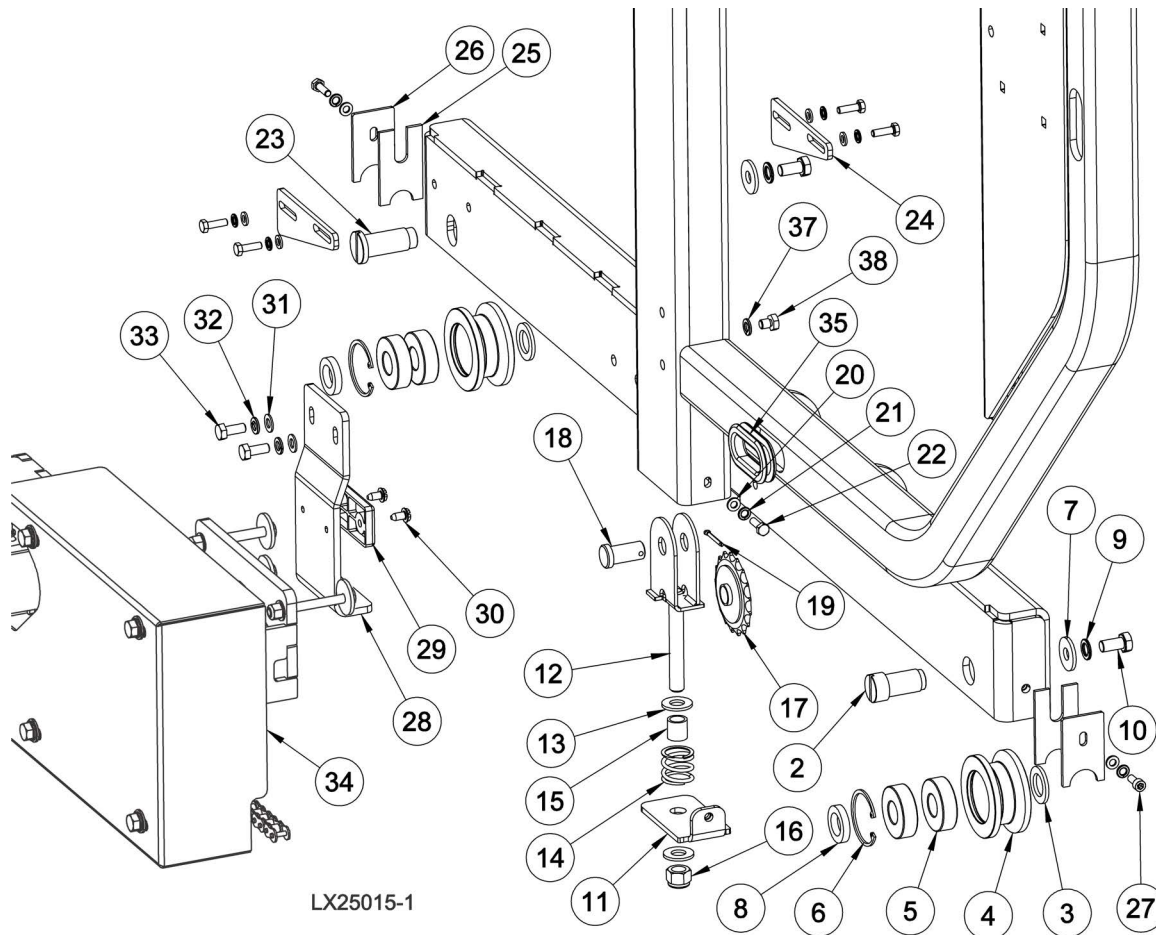
## 6.6 Head Mounting Assembly



REF	PART #	DESCRIPTION	COMMENTS	QTY.
	011459	Assembly, Head Mounting		2
1	011009	Guide, LX150 Mast		1
2	011472	Shaft, Head Hold Down		2
3	P06030-2	Bearing, 6203-2NSL 17mm SRI-2 ABEC-1		4
4	F05011-134	Washer, M10 Flat		2
5	F05011-88	Washer, 10MM Split Lock		2
6	F05022-12	Bolt, M10-1.5 x 25 SHC		2
7	F04254-16	Ring, 17mm OR		2
8	F05021-7	Screw, M8-1.25 x20 SHFP Set		2

## SECTION 7 FEED SYSTEM & TRACK ROLLERS

### 7.1 Track Rollers and Wipers (Drive Side)



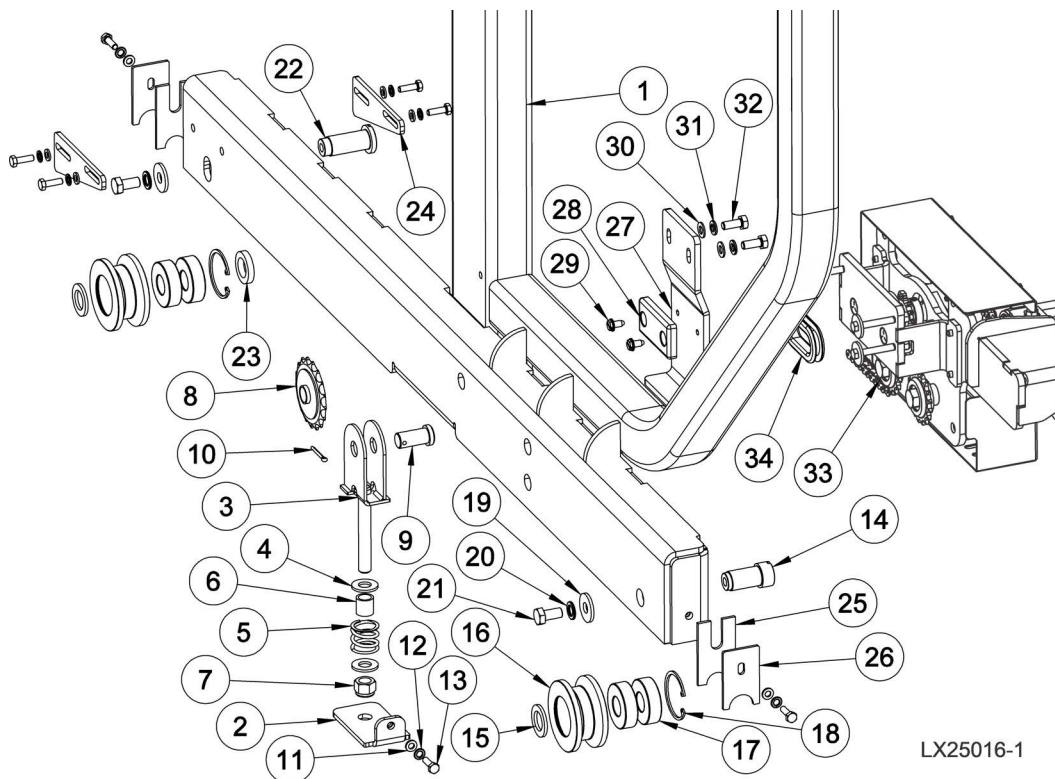
REF	PART #	DESCRIPTION	COMMENTS	QTY.
1	113961	Upright Weldment Rh, LX250		1
2	515018	Shaft, LX150 Roller		1
3	011351	Washer, LX150 Thin Roller		2
	515015	Roller Assembly, LX150		2
4	514889	Roller, LX150		1
5	088447	Bearing, 6204 2RRS-CX Rolling		2
6	089653	Ring, Retaining W 47, PN-81/M-85111		1
7	088787	Spacer, LX150 Height Adjust		2
8	011352	Washer, LX150 Thick Roller		2
9	F05011-88	Washer, 10MM Split Lock		2
10	F05004-207	Bolt, M10-1.50x20mm Hex Head FT 8.8		2
11	011372	Weldment, Tension Sprocket Mounting		1
	011370	Assembly, LX150 Up/Dn Chain Tension		1
12	011369	Weldment, LX150 Up/Dn Chain Tension		1
13	F05011-2	Washer, 1/2 SAE Flat		2

## 7

**Bed Frame Assembly***Track Rollers and Wipers (Drive Side)*

REF	PART #	DESCRIPTION	COMMENTS	QTY.
14	016516	Spring, 1ODx1Longx.125Wire Comp		1
15	016515	Spacer, Up/Dn Chain Tensioner		1
16	F05010-8	Nut, 1/2-13 Nyl Hex Lock		1
17	P04333	Sprocket, #40 Idler 17T 5/8ID		1
18	F05012-159	Pin, 5/8x1 Usable Lg. Clevis		1
19	F05012-1	Pin, 1/8x1 Cotter		1
20	F05026-1	Washer, M6 Flat Class 4		7
21	F05026-2	Washer, M6 Split Lock		7
22	F05020-6	Bolt, M6-1x20 Hex Head Class 8		6
23	515101	Shaft, LX100/150 Adjustment		1
24	516508-1	Plate, LX150 Height Adjust		2
25	M04113	Wiper		2
26	034229	Plate, LX250 Rail Wiper		2
27	F05004-206	Bolt, M6-1.0x16mm SHCS		1
	011120	Assembly, LX150 Mast Safety		1
28	011119	Plate, LX150 Mast Safety		1
29	P13576	Pad, Catapillar Track		1
30	F05015-1	Bolt, 1/4-20x1/2 SI Hex Head		2
31	F05026-4	Washer, M8 Flat		2
32	F05011-45	Washer, 8mm Split Lock, Zn		2
33	F05021-2	Bolt, M8-1.25x20 Class 8 Hex Head		2
34	110998	Assembly, LX250 Power Feed ( <a href="#">See Section 7.3</a> for parts)		1
35	011269	Grommet, 1-3/4" ID x 2" Hole Rubber		2
36	114013	Switch, 90° Limit		1
37	F05011-130	Washer, M8 Spring Lock Zinc		1
38	F81002-47	Bolt, M8x10mm Hex Head FT, Crowned Head		1

## 7.2 Track Roller And Wipers (Idle Side)



REF	PART #	DESCRIPTION	COMMENTS	QTY.
1	113967	Upright Weldment Lh, LX250		1
2	011372	Weldment, Tension Sprocket Mounting		1
	011370	Assembly, LX150 Up/Dn Chain Tension		1
3	011369	Weldment, LX150 Up/Dn Chain Tension		1
4	F05011-2	Washer, 1/2 SAE Flat		2
5	016516	Spring, 10Dx1Longx.125Wire Comp		1
6	016515	Spacer, Up/Dn Chain Tensioner		1
7	F05010-8	Nut, 1/2-13 Nyl Hex Lock		1
8	P04333	Sprocket, #40 Idler 17T 5/8ID		1
9	F05012-159	Pin, 5/8x1 Usable Lg. Clevis		1
10	F05012-1	Pin, 1/8x1 Cotter		1
11	F05026-1	Washer, M6 Flat Class 4		8
12	F05026-2	Washer, M6 Split Lock		8
13	F05020-6	Bolt, M6-1x20 Hex Head Class 8		7
14	515018	Shaft, LX150 Roller		1
15	011351	Washer, LX150 Thin Roller		2
	515015	Roller Assembly, LX150		2
16	514889	Roller, LX150		1
17	088447	Bearing, 6204 2RRS-CX Rolling		2
18	089653	Ring, Retaining W 47, PN-81/M-85111		1
19	088787	Spacer, LX150 Height Adjust		2
20	F05011-88	Washer, 10MM Split Lock		2

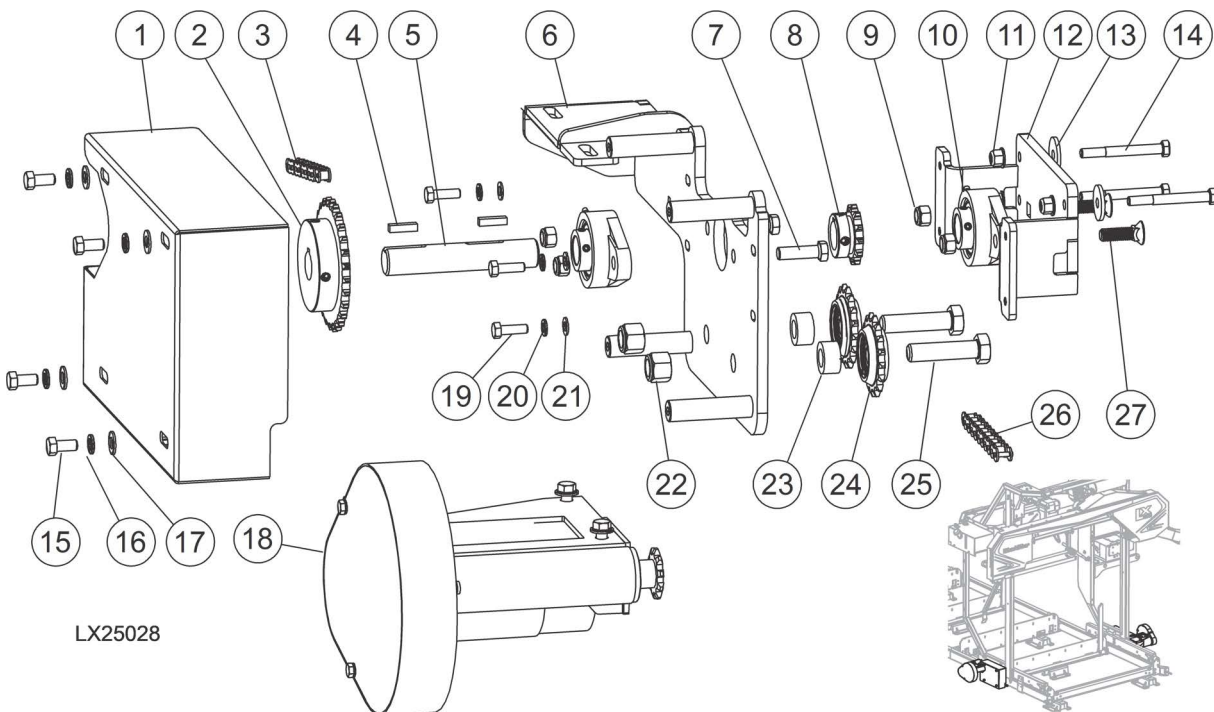
## 7

**Feed System & Track Rollers***Track Roller And Wipers (Idle Side)*

REF	PART #	DESCRIPTION	COMMENTS	QTY.
21	F05004-207	Bolt, M10-1.50x20mm Hex Head FT 8.8		2
22	515101	Shaft, LX100/150 Adjustment		1
23	011352	Washer, LX150 Thick Roller		1
24	516508-1	Plate, LX150 Height Adjust		2
25	M04113	Wiper		2
26	034229	Plate, LX250 Rail Wiper		2
	011120	Assembly, LX150 Mast Safety		1
27	011119	Plate, LX150 Mast Safety		1
28	P13576	Pad, Catapillar Track		1
29	F05015-1	Bolt, 1/4-20x1/2 SI Hex Head		2
30	F05026-4	Washer, M8 Flat		2
31	F05011-45	Washer, 8mm Split Lock, Zn		2
32	F05021-2	Bolt, M8-1.25x20 Class 8 Hex Head		2
33	110998	Assembly, LX250 Power Feed ( <a href="#">See Section 7.3</a> for parts)		1
34	011269	Grommet, 1-3/4" ID x 2" Hole Rubber		1



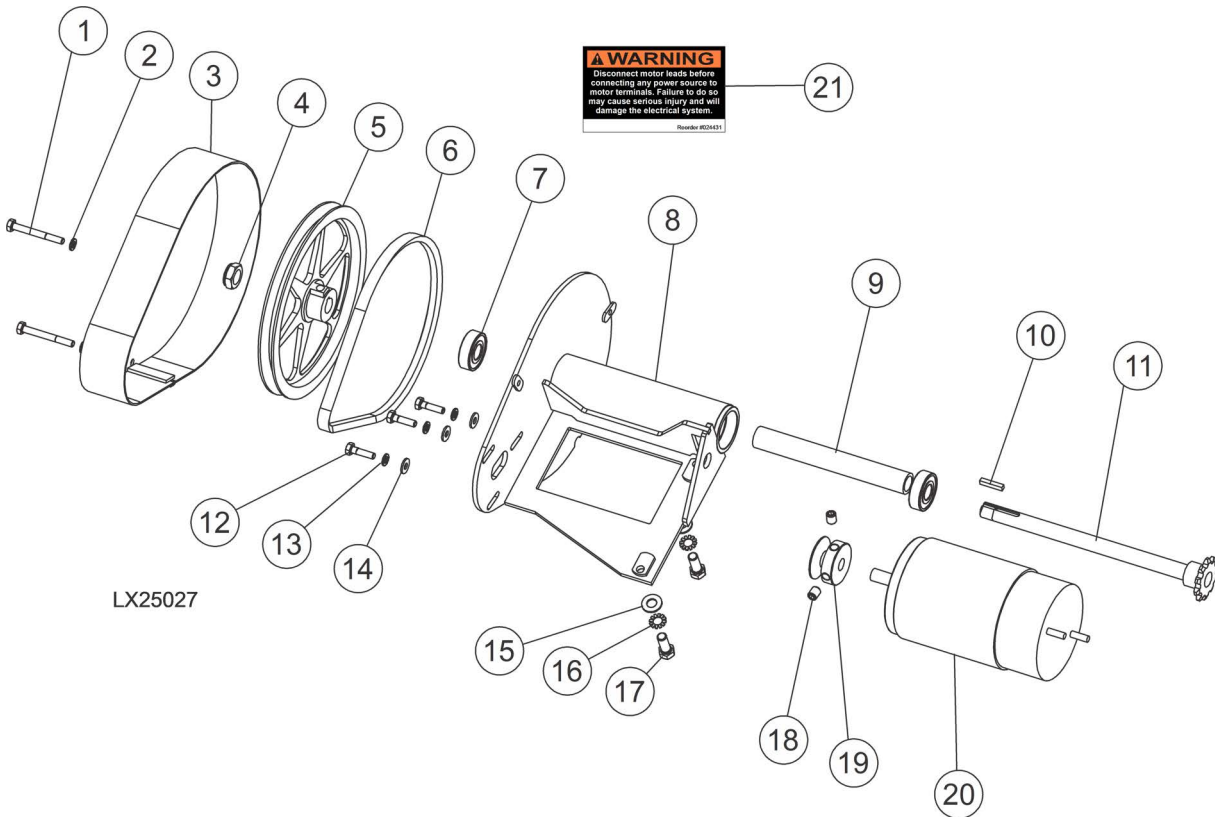
### 7.3 Power Feed Assembly



REF	PART #	DESCRIPTION	COMMENTS	QTY.
	110998	Assy, LX250 Complete PF		2
1	N / A	Plate, LX250 Power Feed Cover	Available in assemblies only.	1
2	110982	Sprocket, 40B28x1		1
3	063184	Chain, #40x39 Pitch (19 1/2")		1
4	S21486	Key, 1/4inX 1in		2
5	N / A	Shaft, LX250 PF	Available in assemblies only.	1
6	110999	Weldment, LT250 PF Front Mnt		1
7	F05007-138	Bolt, 7/16-14x1 1/2 HH FT Gr5		2
8	110981	Sprocket, 40B12x1		1
9	F05010-135	Nut, 7/16-14 Nylock		4
10	038124	Bearing, 1 Flanged, VF2S 216		2
11	F05027-44	Nut, M8 x 1.25 Flanged Nylock		3
12	110988	Weldment, LT250 PF Mounting		1
13	F05011-105	Washer, 5/16 ID x 1/8 Fender		3
14	F05021-34	Bolt, M8-1.25x75mm HH Class 8.8		3
15	F05007-118	Bolt, 3/8-16x3/4 HH Gr5		4
16	F05011-4	Washer, 3/8 Split Lock		4
17	F05011-3	Washer, 3/8 Flat SAE		4
18	110984	Assy, LX250 PF Drive ((See Section 7.4))		1
19	F05004-40	Bolt, M8x1.25x25mm C/S 8.8 Din 933 HH		4
20	F05011-45	Washer, M8 Split Lock		4

REF	PART #	DESCRIPTION	COMMENTS	QTY.
21	F05026-4	Washer, M8 Flat		4
	N / A	Idler Assy, Lower Feed	Available in assemblies only.	2
22	F05010-71	Nut, 5/8-18 Hex Nyl Lock		1
23	115289	Spacer, 1.13ODx0.64IDx0.60Long		1
24	016366	Sprocket Assy, #40/#41 Chain, 17T ->		1
25	F05009-99	Bolt, 5/8-18x2 1/2 HH FT GR 5 ZNC		1
26	115290	Chain, #40x460 Pitches (230")		1
27	F05007-263	Bolt, 7/16-14x1-1/2 FH Gr5 Plow		2

## 7.4 Power Feed Assembly

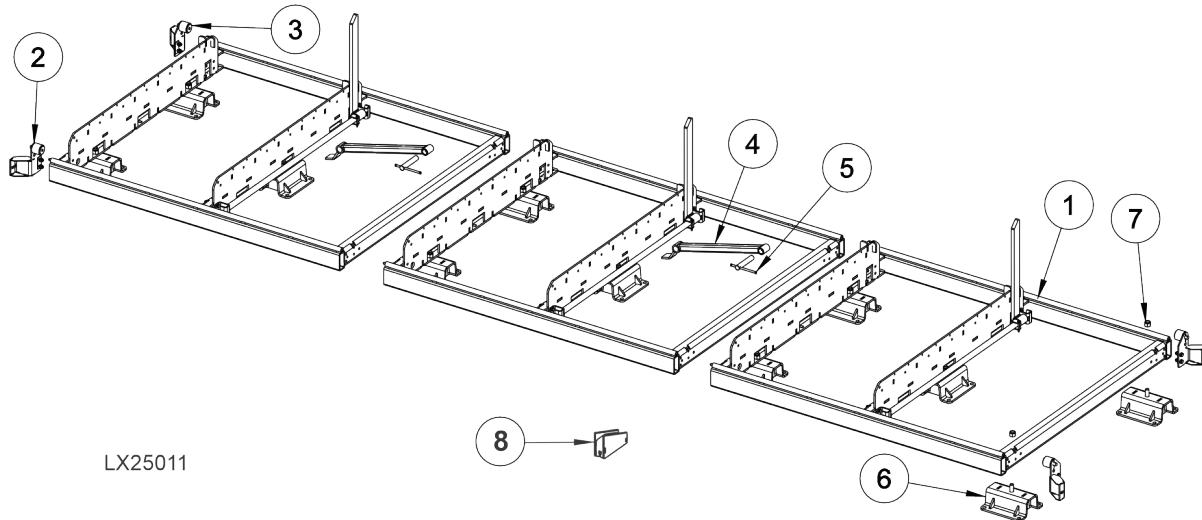


REF	PART #	DESCRIPTION	COMMENTS	QTY.
	110984	Assy, LX250 PF Drive		
1	F05005-32	Screw, 1/4-20x2 1/4 HHC		2
2	W11613	Cover Weldment, power Feed Ptd		1
3	N / A	Nut, 5/8-18 Nyl Jam	Available in assemblies only.	1
4	P04343	Sheave, 8Ax5/8		1
5	P04031	Belt, 4L280		1
6	P06030-1	Bearing, 5/8x1.5748x.4724		2
7	066991	Weldment, PF Motor Mount, LT35		1
8	079799	Spacer, Bearing, Power Feed		1
9	N / A	Key, 3/16x1 Sq	Available in assemblies only.	1
10	N / A	Shaft Weldment, Power Feed, w/o Key	Available in assemblies only.	1
11	F05005-101	Bolt, 1/4-20x1 HH Gr5		3
12	F05011-14	Washer, 1/4 Split Lock		5
13	F05011-11	Washer, 1/4 SAE Flat		3
14	F05011-3	Washer, 3/8 Flat SAE		2
15	S09579	Sheave, 1 3/4 Feed Motor		1
16	F05011-36	Washer, 3/8 Star External		2
17	F05007-82	Bolt, 3/8-16x1 HH Gr8		2

REF	PART #	DESCRIPTION	COMMENTS	QTY.
18	F05007-12	Screw, 3/8-16x1/2 SH Cup Pt Set		2
19	006747	Motor, 1/2hp 12VDC, Current Applications		1
20	024431	Decal, Disconnect Motor Leads Warning		1

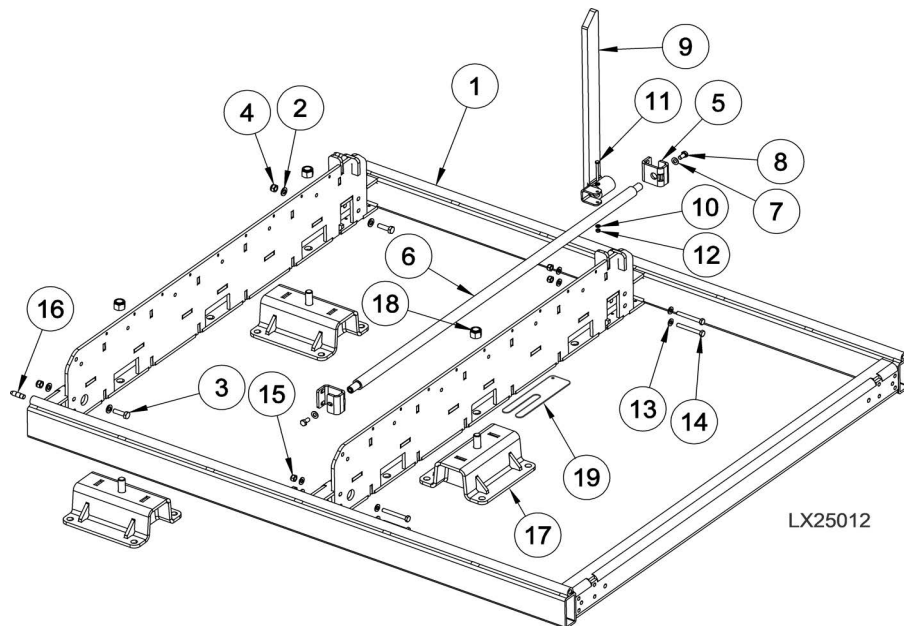
## SECTION 8 BED FRAME ASSEMBLY

### 8.1 Bed Frame Assembly



REF	PART #	DESCRIPTION	COMMENTS	QTY.
	115072	<b>BED ASSEMBLY, LX250</b>		1
1	115073	Bed, Bed Module 1 ((See Section 8.2))		3
2	115106	Bed, End Stop Right ((See Section 8.3))		2
3	115112	Bed, End Stop Left ((See Section 8.4))		2
4	115097	Weldment, Log Clamp		2
5	071350	Screw Assembly, Clamp		2
6	115132	Foot Weldment, LX250 Bed		2
7	F05010-103	Nut, 3/4-10 Nylon Lock		2
8	540398-1	Wedge (Optional)		1

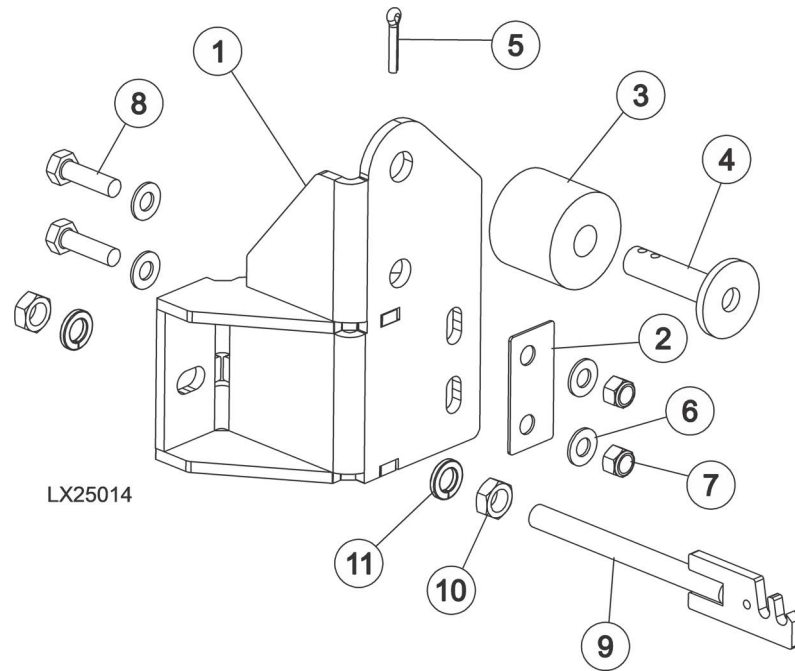
## 8.2 Bed Section Assembly and Optional Extension



REF	PART #	DESCRIPTION	COMMENTS	QTY.
	115073	Assembly, Bed Module 1		1
1	115074	Weldment, Bed Module 1		1
2	F81056-1	Washer, M12 Flat Zinc		4
3	F81004-4	Bolt, M12x40 8.8 Hex Head Full Thr.zinc		2
4	F81034-2	Nut, M12-8 ,hex,nylon,zinc,lock		2
	115083	Assembly, Side Retainer		1
5	115084	Plate, Side Retainer Pivot		2
6	115085	Shaft, 30x1355		1
7	F81055-1	Washer, 10.5 Flat Zinc		2
8	F81003-1	Bolt, M10x20-5.8 Fe/zn5 Pn-85/m-82105		2
	115086	Assembly, Side Retainer Limit		1
9	115087	Weldment, Side Retainer Limit		1
10	F81053-1	Washer, 6.4 Fe/zn5 Pn-78/m-82005		2
11	F81001-9	Bolt, M6x60-8.8 Hex Head Full Thread Zin		1
12	F81031-2	Nut, M6 Hex Nylon Lock Zinc		1
13	F81055-1	Washer, 10.5 Flat Zinc		8
14	F81003-50	Bolt, M10 X 80 -8.8- Fe/zn5 Hex Head		4
15	F81033-1	Nut,M10-8-b Nylon Hex Zinc Lock		4
16	017689	Pin, Bed-X Connecting		2
17	115132	Foot Weldment, LX250 Bed		3
18	F05010-103	Nut, 3/4-10 Nylock		3
19	128014	Bed Shim, LX250 16Ga (optional)		22
	128015	Bed Shim, LX250 11Ga (optional)		22
	128016	Bed Shim, LX250 7Ga (optional)		11

REF	PART #	DESCRIPTION	COMMENTS	QTY.
	LX250BS	<b>BED ASSEMBLY, LX250 – 5' BED EXTENSION (optional) Contains all of 115073, plus:</b>		
	P11602	Chain, #40x75 1/2In Up/Dwn		2
	P04200	Link, #40 Master		2

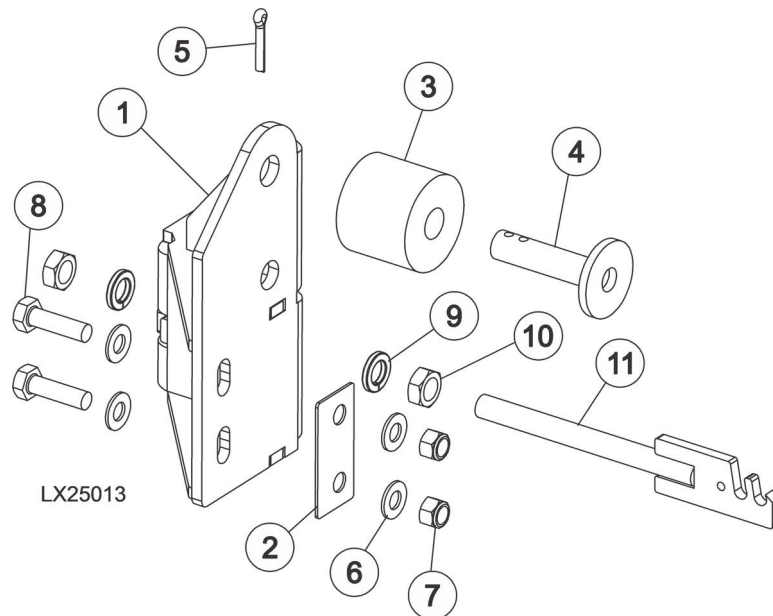
### 8.3 Bed Stop Assembly, Right



REF	PART #	DESCRIPTION	COMMENTS	QTY.
	115106	Assembly, End Stop Right		1
1	115107	Weldment, End Stop RT		1
2	115110	Shim, End Stop		1
3	P12165	Bushing, 11/16x2 1/8x1 3/4 Rubber		1
4	W09293	Stop Weldment, Carriage Ptd		1
5	F05012-21	Pin, 3/16x1 Cotter		1
6	F05011-134	Washer, M10 Flat SAE		4
7	F05004-270	Nut, M10-1.50 Hex Nyl Lock		2
8	F05004-97	Screw, M10x1.5x35MM HH Zinc		2
9	015721	Tensioner Weldment, Power Feed Chain		1
10	F05010-16	Nut, 1/2-20 Hex Jam		2
11	F05011-9	Washer, 1/2 Split Lock		2



### 8.4 Bed Stop Assembly, Rear Left



REF	PART #	DESCRIPTION	COMMENTS	QTY.
	115112	Assembly, End Stop LT		1
1	115113	Weldment, End Stop LT		1
2	115110	Shim, End Stop		1
3	P12165	Bushing, 11/16x2 1/8x1 3/4 Rubber		1
4	W09293	Stop Weldment, Carriage Ptd		1
5	F05012-21	Pin, 3/16x1 Cotter		1
6	F05011-134	Washer, M10 Flat SAE		4
7	F05004-270	Nut, M10-1.50 Hex Nyl Lock		2
8	F05004-97	Screw, M10x1.5x35MM HH Zinc		2
9	F05011-9	Washer, 1/2 Split Lock		2
10	F05010-16	Nut, 1/2-20 Hex Jam		2
11	015721	Tensioner Weldment, Power Feed Chain		1