



G11 Engine

Safety, Operation, Maintenance & Parts Manual

1992 LT25

rev. A1 - B6



Safety is our #1 concern! Read and understand all safety information and instructions before operating, setting up or maintaining this machine.

October 1994

Form #651

Table of Contents	Section-Page
SECTION 1 SAFETY & GENERAL INFORMATION	1-1
1.1 Refueling	1-1
1.2 Engine Operation.....	1-2
SECTION 2 OPERATION	2-1
2.1 Starting The Engine.....	2-1
SECTION 3 MAINTENANCE	3-1
3.1 Air Filter & Pre-Cleaner.....	3-2
3.2 Debris Guard	3-3
3.3 Engine Oil.....	3-4
3.4 Air Cooling System	3-5
3.5 Fuel Filter	3-6
3.6 Drive Belt Adjustment.....	3-7
3.7 Miscellaneous Maintenance	3-9
3.8 RPM Adjustments	3-10
SECTION 4 REPLACEMENT PARTS	4-1
4.1 How To Use The Parts List	4-1
4.2 Sample Assembly	4-1
4.3 Engine Assembly.....	4-2
<i>LT25 Rev. B3 - B6</i>	
4.4 Engine Assembly.....	4-4
<i>LT25 Rev. A1 - B2</i>	

SECTION 1 SAFETY & GENERAL INFORMATION



This symbol calls your attention to instructions concerning your personal safety. Be sure to observe and follow these instructions. This symbol accompanies a signal word. The word **DANGER** refers to hazards that can cause death or serious, irreversible personal injury. The word **WARNING** suggests a safety hazard that can cause personal injury. **CAUTION** refers to hazards that can cause damage to the equipment or property only.

Read all safety instructions before operating this equipment and observe all safety warnings! Read the manufacturer's operation manual and observe any additional safety warnings applicable to the specific make and model you have purchased.

1.1 Refueling



WARNING! Store gasoline away from sawdust and other flammable materials.

WARNING! Do not store gasoline near hot or burning materials.

WARNING! Do not smoke near gasoline storage tank or during refueling.

1.2 Engine Operation



DANGER! Do not operate engine in enclosed areas. Carbon Monoxide poisoning may occur.

DANGER! Do not operate engine without proper and operational spark arrester/muffler.



WARNING! The engine exhaust from this product contains chemicals known to the State of California to cause cancer, birth defects or other reproductive harm.

SECTION 2 OPERATION

2.1 Starting The Engine

To start the engine:

1. Turn the start switch, located on top of the engine, to the ON position.
2. Close the engine choke by moving the choke lever to the START position.
3. Pull the engine cord slowly until you feel resistance, then pull the cord quickly to start the engine. Repeat with the choke opened slightly if necessary.
4. When the engine starts, slowly open the choke all the way by moving the choke lever to the OFF position.

For more information, see the engine manufacturer's operation manual.



WARNING! Do not start the engine when the clutch/brake lever is in the engaged (down) position. Always be sure the blade is disengaged and all persons are away from the blade before starting the engine.

SECTION 3 MAINTENANCE



IMPORTANT! The Wood-Mizer maintenance schedule takes into account the specific use of engines in the Wood-Mizer sawmill. Therefore, the schedule may require certain procedures be performed at different time intervals than found in the engine manufacturer's manuals. Refer to the manufacturer's manual if you need more information on how to perform a procedure or on the engine itself.



This symbol identifies the interval (hours of operation) which each maintenance procedure should be performed. "AR" signifies maintenance procedures which should be performed as required.

3.1 Air Filter & Pre-Cleaner

4

Service the pre-cleaner every four hours of operation. Service by gently shaking excess sawdust and debris from the foam piece.

8

Clean the air filter (air cleaner element) and pre-cleaner (element wrapper) every eight hours of operation. See the engine manual for further instructions.

200

Replace the air filter (cleaner) every 200 hours of operation.

2000

Replace the pre-cleaner (element wrapper) every 2000 hours of operation.

3.2 Debris Guard



Clean the rotating screen, finger guard, or debris guard every 8 hours of operation. See engine manual for further instructions.

3.3 Engine Oil



Check the oil level every 8 hours of operation. Add oil as necessary. See the engine manual for oil viscosity and grade recommendations.



IMPORTANT! During initial break-in, change the oil after the first 5 hours and every 50 hours thereafter. Continue to check oil level every 8 hours of operation and refill as necessary.



3.4 Air Cooling System



Wash the engine or brush off sawdust and debris every 50 hours of operation. Clean the spark arresters, breather pipe, cylinder head and cylinder cooling fins. Remove any dust, dirt or oil. See engine manual for further instructions.

3.5 Fuel Filter



Replace the fuel filter every 100 hours of operation.

3.6 Drive Belt Adjustment

50 See **Figure 3-1**. Check the drive belt tension after the first 20 hours, and every 50 hours thereafter. The drive belt should have 7/16" (11 mm) deflection with a 14 lb. deflection force. To adjust the drive belt, remove the two belt covers located underneath the engine. Loosen the turnbuckle jam nuts. Turn the turnbuckle counterclockwise (as viewed from the top) to tighten the belts, clockwise to loosen the belts. Retighten the jam nuts. Replace the belt covers.

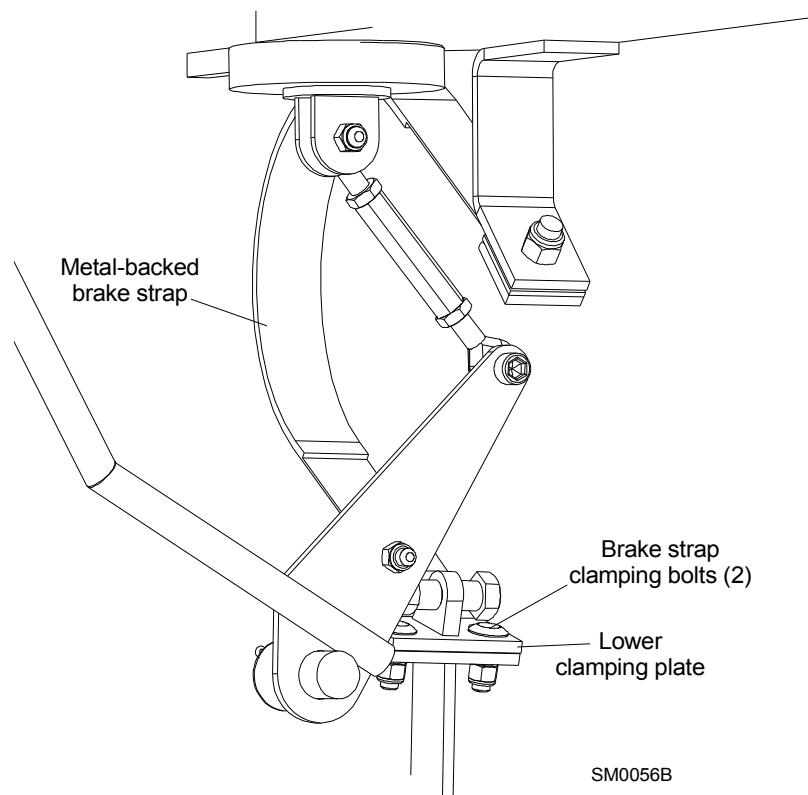


FIG. 3-1

AR Periodically check all belts for wear. Replace any damaged or worn belts as needed.

AR Adjust the drive belt support as needed. The drive belt support is designed to extend belt life. The support bracket should be adjusted to NOT touch the drive belt when the clutch handle is engaged (down position), AND to hold the drive belt away from the engine pulley when the clutch handle is disengaged (up position).

! **DANGER!** Do not for any reason adjust the drive belt support with the motor running. Always stop the motor before reaching or looking into the drive belt area.

See Figure 3-2. To adjust:

1. Make sure the motor is not running. Loosen the adjustment bolts.
2. Position the support bracket so it does not touch the drive belt with the clutch handle engaged, and does hold the drive belt away from the motor pulley with the clutch handle disengaged.
3. Retighten the adjustment bolts. to 25-27 pound feet (34-37 newton meters).

ILLUSTRATION
NOT AVAILABLE

FIG. 3-2

3.7 Miscellaneous Maintenance



Inspect the spark plugs every 100 hour of operation. Remove any deposits and adjust gap if necessary. See engine manual for further information.



Clean carbon and lead deposits from the cylinder head every 100 hours of operation. See engine manual for further details.

3.8 RPM Adjustments



DANGER! Remove the blade from the sawmill before checking engine RPM.

200

Check the RPM with a tachometer after the first 20 hours of operation and every 200 hours thereafter. High-end RPM should be 3400-3600 RPM and low-end RPM should be 1800 (± 100).

Before checking the RPM, make sure belt and brake strap tension are correct (See Sawmill Maintenance).

1. Start the engine to measure the low-end RPM.
2. Make sure that the throttle linkage is not affecting the engine RPM while the clutch/brake handle is disengaged.

Refer to the engine manual to adjust the low-end RPM.

3. Engage the clutch handle to throttle the engine and measure the high-end RPM.

See Figure 3-3. NOTE: The engine should start to throttle as soon as you start moving the clutch handle down. If the engine dies instead, restart the engine and adjust the throttle linkage down as far as possible without affecting low-end RPM. With the engine idling and the clutch disengaged, loosen the mounting bolt and pull the throttle link down to a point just above where it affects the low-end RPM. Retighten the mounting bolt.

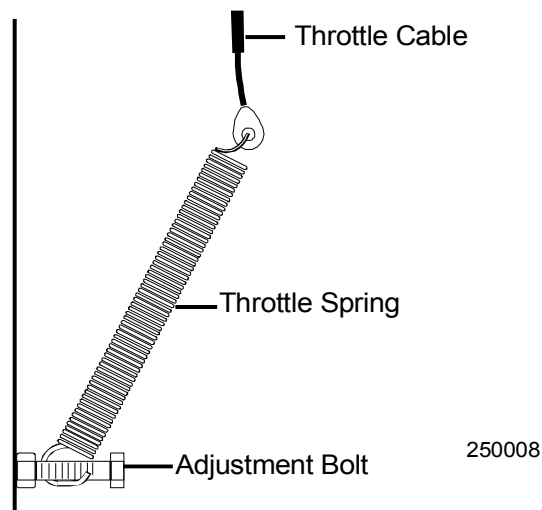


FIG. 3-3

SECTION 4 REPLACEMENT PARTS

4.1 How To Use The Parts List

- Use the table of contents or the index to locate the assembly that contains the part you need.
- Go to the appropriate section and locate the part in the illustration.
- Use the number pointing to the part to locate the correct part number and description in the table.
- Parts shown indented under another part are included with that part.
- Parts marked with a diamond (◆) are only available in the assembly listed above the part.

See the sample table below. Sample Part #A01111 includes part F02222-2 and subassembly A03333. Subassembly A03333 includes part S04444-4 and subassembly K05555. The diamond (◆) indicates that S04444-4 is not available except in subassembly A03333. Subassembly K05555 includes parts M06666 and F07777-77. The diamond (◆) indicates M06666 is not available except in subassembly K05555.

4.2 Sample Assembly				
REF	DESCRIPTION (◆ Indicates Parts Available In Assemblies Only)	PART #	QTY.	
	SAMPLE ASSEMBLY, COMPLETE (INCLUDES ALL INDENTED PARTS BELOW)	A01111	1	
4	Sample Part	F02222-22	1	
	Sample Subassembly (Includes All Indented Parts Below)	A03333	1	
5	Sample Part (◆ Indicates Part Is Only Available With A03333)	S04444-4	1	◆
	Sample Subassembly (Includes All Indented Parts Below)	K05555	1	
6	Sample Part (◆ Indicates Part Is Only Available With K05555)	M06666	2	◆
7	Sample Part	F07777-77	1	

To Order Parts:

- From the continental U.S., call **1-800-525-8100** to order parts. Have your customer number, vehicle identification number, and part numbers ready when you call.
- From other international locations, contact the Wood-Mizer distributor in your area for parts.

4

Replacement Parts

Engine Assembly

4.3 Engine Assembly				
<i>LT25</i> <i>Rev. B3 - B6</i>				
REF	DESCRIPTION (◆ Indicates Parts Available In Assemblies Only)	PART #	QTY.	
	ENGINE ASSEMBLY, 11HP BRIGGS & STRATTON	A12440 ¹	1	
1	Engine, 11HP Briggs & Stratton Model 256422 Type 0015-01	P12874 ²	1	
2	Filter, Briggs 11 HP Air #496077	P12882	1	
3	Pre-Cleaner, Briggs 11HP Air #492889	P12883	1	
4	Plug, Briggs 11HP Spark #802592 (Champion RJ19LM)	P09586	1	
	Filter, In-Line Fuel	P07570	1	
5	Pulley, Motor Drive BK36 x 1" Bore	P12441	1	
6	Key, 1/4 x 1/4 x 1 11/16"	S04124 ³	1	
	Oil, 10W30 Type CD	L04869-1	.5 Gal.	
	Cable, Throttle	P12151 ¹	1	
	Bracket, Throttle Cable, 11HP	S12396	1	
	Spring, .5 x 3.75 x .08	P08538	1	
	Bolt, 1/4-20 x 3/4" Hex Head Full Thread	F05005-1	1	
	Bolt, 1/4-20 x 1 1/2" Hex Head Full Thread	F05005-31	2	
	Washer, 1/4" SAE Flat	F05011-11	2	
	Nut, 1/4-20 Self-Locking	F05010-9	5	
	Spring, Throttle Return, 11HP Briggs	P12888	1	
7	Hose, Oil Drain	P10082	1	
8	Cap, 3/8" Galvanize Pipe	P04332	1	
9	Fitting, #6-6 Male Elbow Hose Barb	P12708	1	
10	Clamp, 11/16" Hose	P12739	1	
	Support Kit, 11HP Briggs & Stratton Drive Belt	K12790	1	
11	Bracket, Drive Belt Support	S12749	2	
	Nut, 3/8-16 Jam	F05010-29	2	
12	BELT, BX68 DRIVE	P12139	1	
13	PLATE, MOTOR MOUNT LT25	W12407	1	
	BUSHING ASSEMBLY, MOTOR MOUNT PIVOT	A04127 ⁴	2	◆
14	Bushing, Rubber Motor Mount Pivot	P12164	1	
15	Spacer, Motor Mount Pivot	P05041	1	
16	PLATE, MOTOR MOUNT PIVOT BUSHING	S04403	2	
17	BOLT, 5/16-18 X 2 1/2" 'U'	P05039	2	
18	NUT, 5/16-18 HEX LOCK	F05010-6	2	
19	BOLT, 5/16-18 X 2 3/4" HEX HEAD GRADE 5	F05006-28	1	
20	BRACKET, CLUTCH YOKE	W12411	1	

21	BUSHING, MOTOR MOUNT VIBRATION	P05032	2	
22	SPACER, MOTOR MOUNT VIBRATION BUSHING	S12410-W	1	
23	WASHER, 3/8" I.D. X 2 1/4" O.D. X 3/16" THICK	S12412	1	
24	NUT, 5/16-18 HEX NYLON LOCK	F05010-58	1	
25	BOLT, 5/16-18 X 2 1/4" HEX HEAD FULL THREAD	F05006-16	4	
26	WASHER, 3/8" STANDARD FLAT	F05011-3	4	
27	NUT, 5/16-18 HEX	F05010-17	4	

¹ Made OBS 2/98; not replaced.

Engine assembly includes 16.68" throttle cable 014567 for Rev. B9+. For previous revisions, order 20" throttle cable P12151 separately.

² Replaces Briggs & Stratton 11HP Model 254422 Type 4015 (P12439) used on rev. A1-B2.

³ 1-11/16" key replaces 1 1/4" or 2" key originally supplied.

⁴ A04127 no longer available. Purchase individual component parts P12164 and P05041.

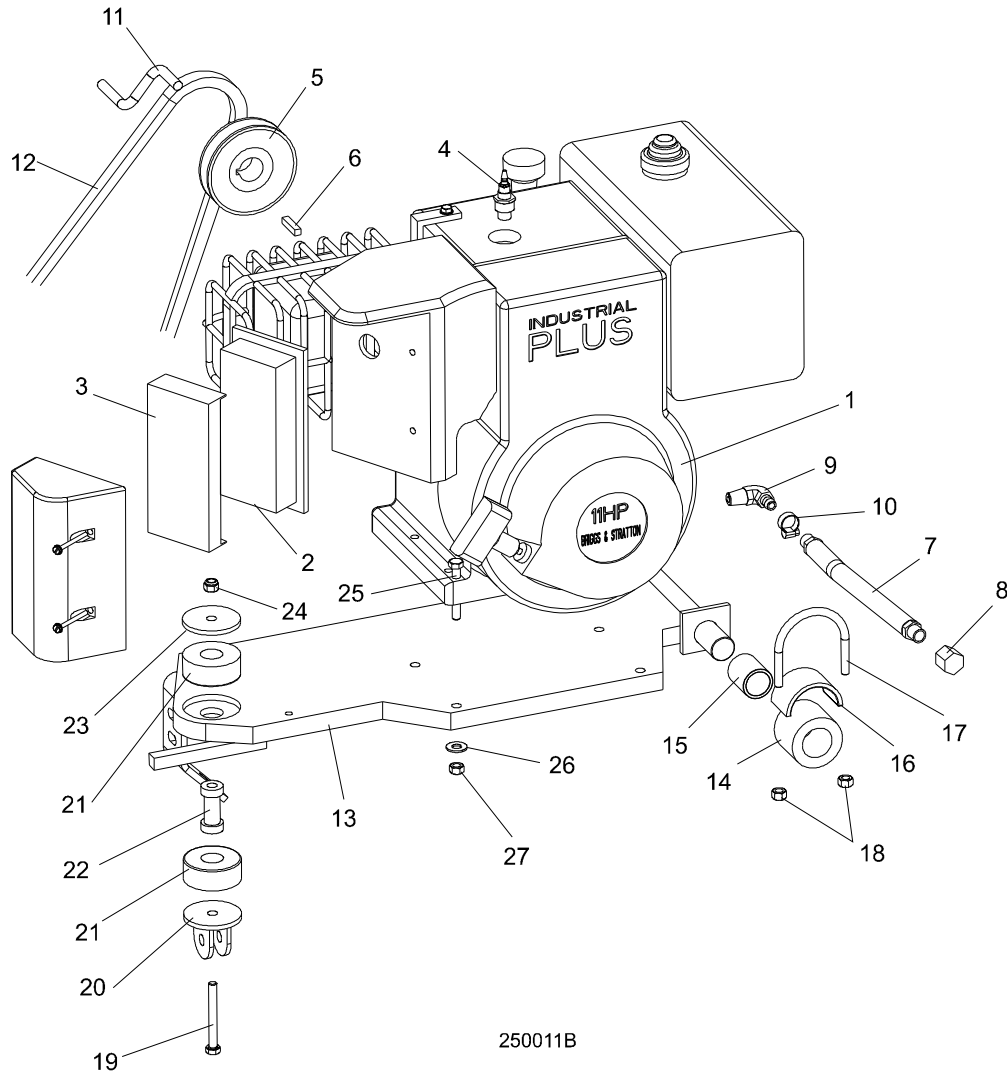


FIG. 4-1

4

Replacement Parts

Engine Assembly

4.4 Engine Assembly				
<i>LT25</i>		<i>Rev. A1 - B2</i>		
REF	DESCRIPTION (◆ Indicates Parts Available In Assemblies Only)	PART #	QTY.	
	ENGINE ASSEMBLY, 11HP BRIGGS & STRATTON	A12440 ¹	1	
1	Engine, 11HP Briggs & Stratton Model 254422 Type 4015	P12439	1	◆
2	Filter, Briggs 11 HP Air #496077	P08591	1	
3	Pre-Cleaner, Briggs 11HP Air #492889	P08475	1	
4	Plug, Briggs 11HP Spark #802592 (Champion RJ19LM)	P09586	1	
	Filter, In-Line Fuel	P07570	1	
5	Pulley, Motor Drive BK36 x 1" Bore	P12441	1	
	Key, 1/4 x 1/4 x 1 1/4"	S04124	1	
	Oil, 10W30 Type CD	L04869-1	.5 Gal.	
	Cable, Throttle	P12151 ¹	1	
	Bracket, Throttle Cable, 11HP	S12396	1	
	Spring, .5 x 3.75 x .08	P08538	1	
	Bolt, 1/4-20 x 3/4" Hex Head Full Thread	F05005-1	1	
	Bolt, 1/4-20 x 1 1/2" Hex Head Full Thread	F05005-31	2	
	Washer, 1/4" SAE Flat	F05011-11	2	
	Nut, 1/4-20 Self-Locking	F05010-9	5	
	Spring, Throttle Return, 11HP	P12377 ²	1	
6	Hose, Oil Drain	P10082 ³	1	
7	Cap, 3/8" Galvanize Pipe	P04332 ³	1	
8	Fitting, #6-6 Male Elbow Hose Barb	P12708 ³	1	
9	Clamp, 11/16" Hose	P12739 ³	1	
	Support Kit, 11HP Briggs & Stratton Drive Belt	K12790	1	
	Bracket, Drive Belt Support	S12749	2	
	Nut, 3/8-16 Jam	F05010-29	2	
10	BELT, BX68 DRIVE	P12139	1	
11	PLATE, MOTOR MOUNT LT25	W12407	1	
	BUSHING ASSEMBLY, MOTOR MOUNT PIVOT	A04127 ⁴	2	◆
12	Bushing, Rubber Motor Mount Pivot	P12164	1	
13	Spacer, Motor Mount Pivot	P05041	1	
14	PLATE, MOTOR MOUNT PIVOT BUSHING	S04403	2	
15	BOLT, 5/16-18 X 2 1/2" 'U'	P05039	2	
16	NUT, 5/16-18 HEX LOCK	F05010-6	2	
17	BOLT, 5/16-18 X 2 3/4" HEX HEAD GRADE 5	F05006-28	1	
18	BRACKET, CLUTCH YOKE	W12411	1	

19	BUSHING, MOTOR MOUNT VIBRATION	P05032	2	
20	SPACER, MOTOR MOUNT VIBRATION BUSHING	S12410-W	1	
21	WASHER, 3/8" I.D. X 2 1/4" O.D. X 3/16" THICK	S12412	1	
22	NUT, 5/16-18 HEX NYLON LOCK	F05010-58	1	
23	BOLT, 5/16-18 X 2 1/4" HEX HEAD FULL THREAD	F05006-16	4	
24	WASHER, 3/8" STANDARD FLAT	F05011-3	4	
25	NUT, 5/16-18 HEX	F05010-17	4	

¹ Engine assembly includes Briggs & Stratton 11HP Model 256422 Type 0015-01 (P12874) used after Rev. B3. See Section 4.3. Engine assembly now includes 16.68" throttle cable 014567 for Rev. B9+. For previous revisions, order 20" throttle cable P12151 separately.

² Added to help throttle return (A3266+).

³ Added May 1994 to facilitate oil drainage.

⁴ A04127 no longer available. Purchase individual component parts P12164 and P05041.

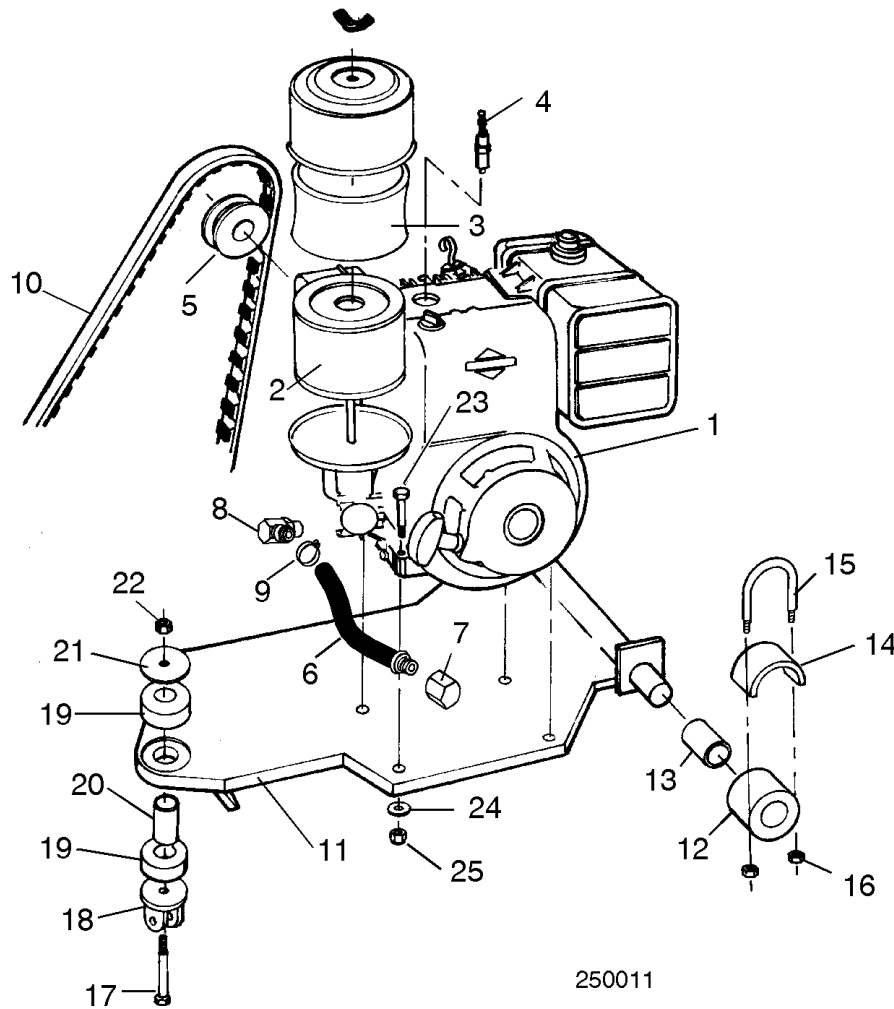


FIG. 4-2

A

air cooling system 3-5

air filter 3-2

D

debris guard 3-3

F

fuel filter 3-6

M

maintenance 3-1

miscellaneous maintenance 3-9

O

oil 3-4

P

parts list
 how to use 4-1

R

refueling 1-1

replacement parts 4-1

RPM adjustments 3-10

S

safety information 1-1

starting 2-1
