

Mill Models Affected:

LT15EH15NS rev A1.03+

**E15 Motor
Safety, Setup, Operation
& Maintenance Manual**

LT15 Start Motor Module 130051

Safety is our #1 concern!

October 2020

Form #2354



WARNING! Read and understand this manual before using this machine.

ABOUT THIS MANUAL

1.1	Safety	1-1
-----	--------------	-----

OPERATION

2.1	Starting The Motor.....	2-1
-----	-------------------------	-----

REPLACEMENT PARTS

3.1	Motor Starter Assembly	3-1
3.2	Motor Assembly.....	3-3
3.3	Throttle/Clutch Assembly	3-4

SECTION 1 ABOUT THIS MANUAL

This manual is a supplement to the equipment manufacturer's manuals.

This manual provides information specific to the use of this equipment on the Wood-Mizer® equipment. Refer to the operator's manual and manufacturer's manual before attempting to operate this equipment.

IMPORTANT! Read the sawmill operator's manual and engine manufacturer's manual for instructions and safety precautions before operating this equipment.

The information and instructions given in this manual do not amend or extend the limited warranties for the equipment given at the time of purchase.

1.1 Safety

Use caution when performing maintenance or service to the motor.



DANGER! Always be aware of and take proper protective measures against rotating shafts, pulleys, fans, etc. Always stay a safe distance from rotating members and make sure that loose clothing or long hair does not engage rotating members resulting in possible injury.



DANGER! Make sure all electrical installation, service and/or maintenance work is performed by a qualified electrician and is in accordance with applicable electrical codes.



DANGER! Hazardous voltage inside the electric sawmill disconnect box, starter box, and at the motor can cause shock, burns, or death. Disconnect and lock out power supply before servicing! Keep all electrical component covers closed and securely fastened during mill operation.



WARNING! Remove the blade before performing any engine service. Failure to do so may result in serious injury.



WARNING! Always wear proper and necessary safety equipment when performing service functions. Proper safety equipment includes eye protection, breathing protection, hand protection and foot protection.



WARNING! Clean sawdust from all guards, vents, control boxes, or any area where sawdust may gather **after every 8-hour shift**. Failure to do so may result in fire, causing death or serious injury.



SECTION 2 OPERATION

2.1 Starting The Motor



DANGER! Ensure the blade is disengaged and all persons are out of the path of the blade before starting. Failure to do so will result in death or serious injury.

Turn the main switch on the upper left of the starter box to the ON position.

Press the green START button located on the lower right of the starter box to start the motor.

MOTOR SHUTOFF

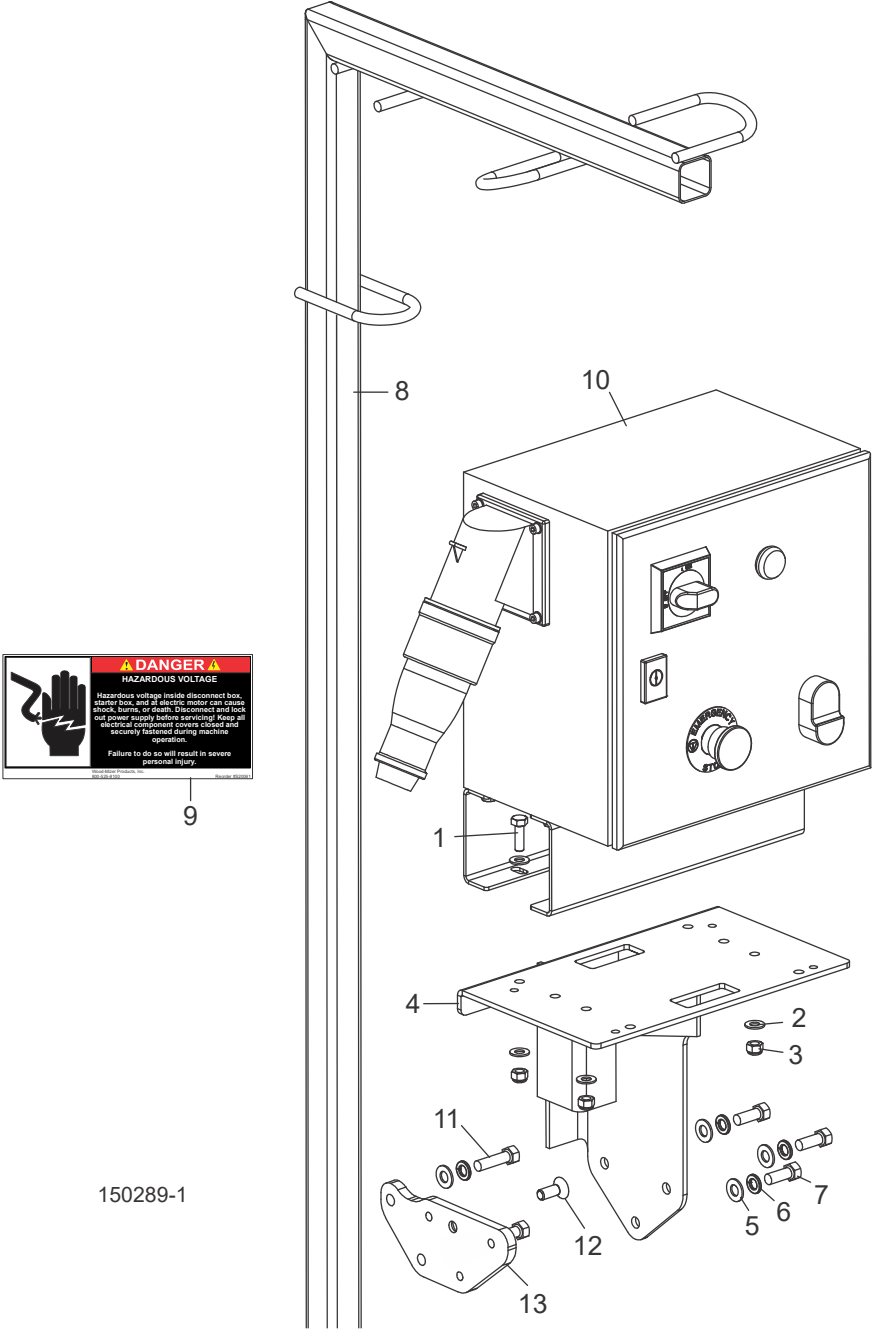
Press the red STOP button located on the lower right of the starter box to stop the motor.

The emergency stop will also stop the motor; however, it should only be used in emergencies.

Turn the main switch on the upper left of the starter box to the OFF position.

SECTION 3 REPLACEMENT PARTS

3.1 Motor Starter Assembly

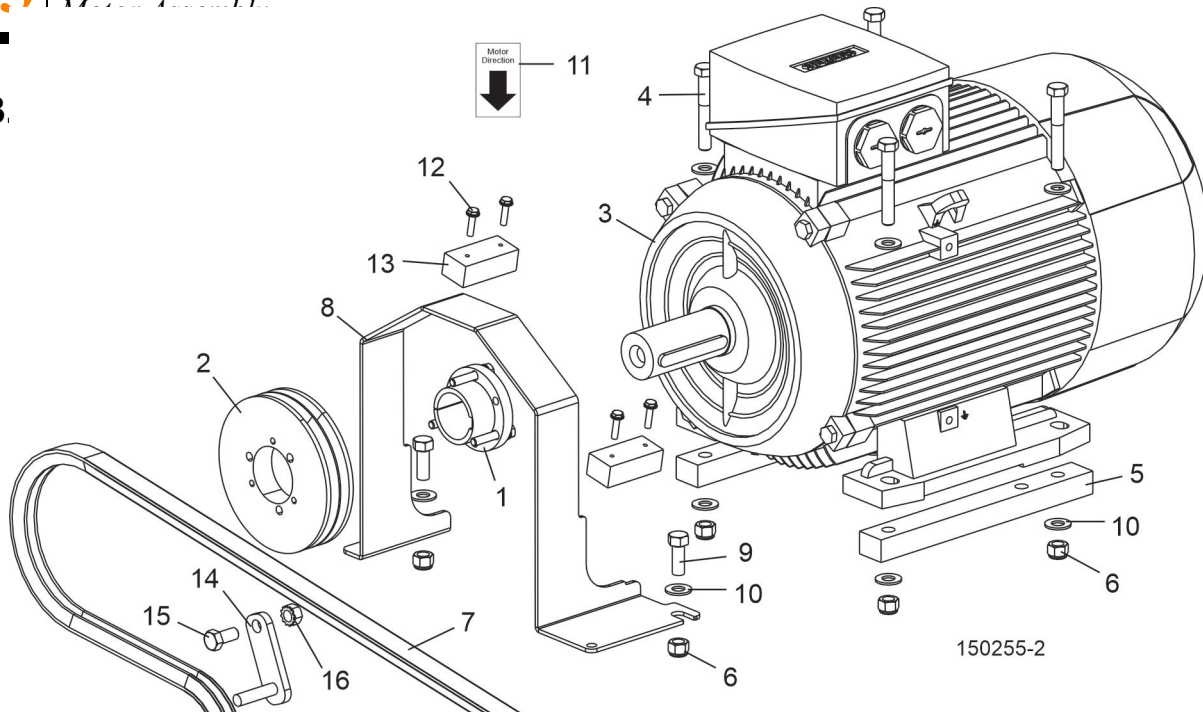


REF	DESCRIPTION (◆ INDICATES PARTS AVAILABLE IN ASSEMBLIES ONLY)	PART #	QTY.	
1	BOLT, 5/16-18X1 GR5 HEX HEAD	F05006-27	4	
2	WASHER, 5/16 SAE FLAT	F05011-17	8	

3	NUT, 5/16-18 NYLON LOCK	F05010-58	4	
4	MOUNT WELDMENT, BATTERY/CONTROL BOX	034899	1	
5	WASHER, 3/8" SAE FLAT	F05011-3	5	
6	WASHER, 3/8" SPLIT LOCK	F05011-4	5	
7	BOLT, 3/8-16 X 1" HEX HEAD	F05007-148	3	
8	TUBE WELDMENT, WIRE HANGER LT15E	034906	1	
9	DECAL, ELECTRICAL HAZARD DANGER	S20061	1	
10	CONTROL ASSEMBLY, LT15E15 POLAND MOTOR	509143	1	
11	BOLT, 3/8-16X1 HH GR5	F05007-87	2	
12	SCREW, 3/8-16X1 ZINC & BAKE FSHC	F05007-64	1	
13	PLATE, CONTROL MOUNT ADAPTER	130052	1	

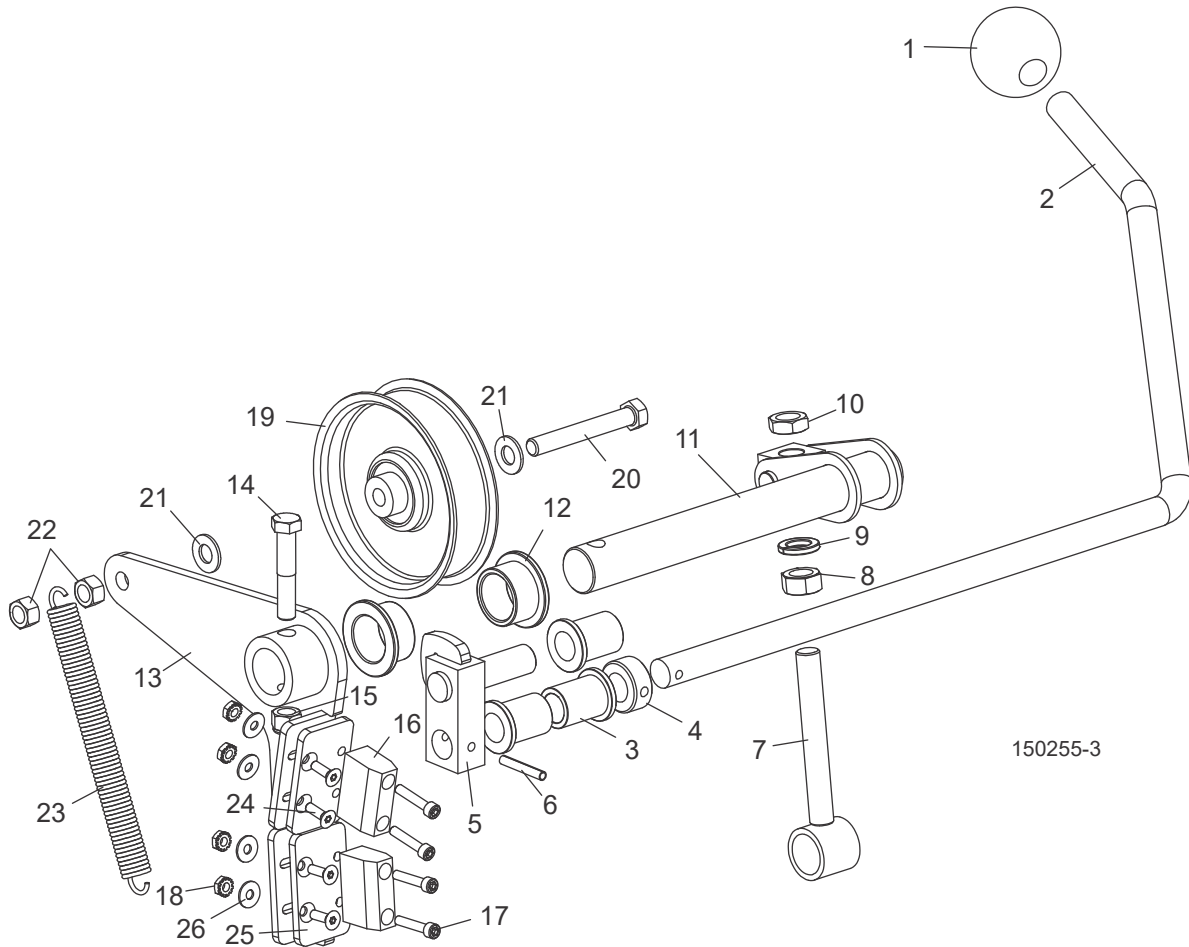
Replacement Parts

3



REF	PART #	DESCRIPTION	COMMENTS	QTY.
	P12393	COVER, ENGINE		1
	079759	MOTOR ASSEMBLY, 11KW(15HP) 400V 50HZ		1
1	079757	Bushing, SH38MM		1
2	079758	Sheave, 2/3V500-SH		1
3	526677-1	Motor, 12kW(16HP) 400/460V 50/60Hz 3Ph	Available in assemblies only. Replaced P85186 after 9/1/2022 per ECN 38804.	1
	P85186	Motor, 11kW(15HP) 1LE1002-1CA63-4AA4-Z	Available in assemblies only.	1
4	F05007-125	BOLT, 3/8-16X2 1/2 HH GR5		4
5	034807	SPACER, MOTOR LT15E		2
6	F05010-10	NUT, 3/8-16 HEX NYLOC		6
7	047751	BELT, 2/3VFL900 DRIVE		1
8	034904	GUARD, MOTOR SHAFT LT15E PTD.		1
9	F05007-7	BOLT, 3/8-16X1 HHC		2
10	F05011-3	WASHER, 3/8 FLAT SAE		10
11	S20097	DECAL, MOTOR DIRECTION		1
	079776	CORDGRIP, .25-.47 CABLE DIAMETER	Deleted after 12/18/2024 per ECN 39629.	1
12	F05015-33	SCREW,#10X3/4 SL HEX WASHER HD SHT METAL		4
13	016506	BLOCK, WOOD 3/4X1X2-3/16		2
14	048237	SUPPORT WELDMENT, LT15G25 BELT		1
15	F05007-118	BOLT, 3/8-16X3/4 HH GR5		1
16	F05010-19	NUT, 3/8-16 KEPS		1

3.3 Throttle/Clutch Assembly



REF	DESCRIPTION (◆ Indicates Parts Available In Assemblies Only)	PART #	QTY.	
1	KNOB, 5/8-11 BALL	P04211	1	
2	HANDLE, LT15 CLUTCH	016487	1	
3	BUSHING, 5/8 ID X 7/8 OD X 1 1/8 LONG FL BRONZE	016486	3	
4	COLLAR, 5/8 ID LOCK	P05035	1	
5	BLOCK WELDMENT, LINKAGE CLUTCH/BRAKE	065572	1	
6	PIN, 3/16 X 1 1/4 ROLL	F05012-16	1	
7	LINKAGE ASSEMBLY, W/BEARING	034605	1	
8	NUT, 1/2-13 FREE HEX, ZINC	F05010-35	1	
9	WASHER, 1/2 SPLIT LOCK	F05011-9	1	
10	NUT, 1/2-13 JAM	F05010-31	1	
11	PIVOT WELDMENT, CLUTCH/BRAKE	034608	1	
12	BUSHING, 1 X 1 1/4 X 3/4 FLANGE BRONZE	P737	2	
	BRAKE/CLUTCH ASSEMBLY, LT15	065874	1	

13	Arm Weldment, Clutch/Brake LT15	065873	1	
14	Bolt, 3/8-16 x 2 Hex Head Gr5	F05007-124	1	
15	Nut, 3/8-16 Hex Nylon Lock	F05010-10	1	
16	Block, LT15 Brake	016488	2	
17	Screw, 10-24 x 1 Socket Head	F05004-2	4	
18	Nut, #10-24 Keps	F05010-14	8	
19	Idler, 4" O.D. x 3/8 Bore	034602	1	
20	Bolt, 3/8-16 x 2-3/4" Hex Head Gr5 Full Thread	F05007-230	1	
21	Washer, 3/8 Flat	F05011-3	2	
22	Nut, 3/8-16 Swaged Lock	F05010-25	2	
23	Spring, Idler Arm LT15/D/E/G	034810	1	
24	Screw, 10-24 x 5/8" FSHC	F05004-282	4	
25	Plate, Brake Adjustment	065872	2	
26	Washer, #10 SAE Flat	F05011-18	4	

P

parts list 1

motor assembly 3

motor starter assembly 1

throttle-clutch assembly 4

S

starting 1