

E15 Motor

Safety, Setup, Operation & Maintenance Manual

130051 LT15 Start Motor Module **rev. A**
Used with
LT15EH15NS **rev. A1.03+**

Safety is our #1 concern!

October 2020



WARNING! Read and understand this manual before using this machine.

California
Proposition 65 Warning



WARNING: Breathing gas/diesel engine exhaust exposes you to chemicals known to the State of California to cause cancer and birth defects or other reproductive harm.

- Always start and operate the engine in a well-ventilated area.
- If in an enclosed area, vent the exhaust to the outside.
- Do not modify or tamper with the exhaust system.
- Do not idle the engine except as necessary.

For more information go to **www.P65warnings.ca.gov**.



WARNING: Drilling, sawing, sanding or machining wood products can expose you to wood dust, a substance known to the State of California to cause cancer. Avoid inhaling wood dust or use a dust mask or other safeguards for personal protection.

For more information go to **www.P65Warnings.ca.gov/wood**.

Active Patents assigned to Wood-Mizer, LLC

Wood-Mizer, LLC has received patents that protect our inventions which are a result of a dedication to research, innovation, development, and design. Learn more at: woodmizer.com/patents

©2022 Wood-Mizer LLC

Printed in the United States of America, all rights reserved. No part of this manual may be reproduced in any form by any photographic, electronic, mechanical or other means or used in any information storage and retrieval system without written permission from

Wood-Mizer, LLC
8180 West 10th Street
Indianapolis, Indiana 46214

SECTION 1 ABOUT THIS MANUAL

1.1 Safety 1-1

SECTION 2 OPERATION

2.1 Starting The Motor..... 2-1

SECTION 3 REPLACEMENT PARTS

3.1 Motor Starter Assembly 3-1
3.2 Motor Assembly..... 3-3
3.3 Throttle/Clutch Assembly 3-4

SECTION 1 ABOUT THIS MANUAL

This manual is a supplement to the equipment manufacturer's manuals.

This manual provides information specific to the use of this equipment on the Wood-Mizer® equipment. Refer to the operator's manual and manufacturer's manual before attempting to operate this equipment.

NOTICE Read the sawmill operator's manual and engine manufacturer's manual for instructions and safety precautions before operating this equipment.

The information and instructions given in this manual do not amend or extend the limited warranties for the equipment given at the time of purchase.

1.1 Safety

Use caution when performing maintenance or service to the motor.



DANGER! Always be aware of and take proper protective measures against rotating shafts, pulleys, fans, etc. Always stay a safe distance from rotating members and make sure that loose clothing or long hair does not engage rotating members resulting in possible injury.

DANGER! Make sure all electrical installation, service and/or maintenance work is performed by a qualified electrician and is in accordance with applicable electrical codes.

DANGER! Hazardous voltage inside the electric sawmill disconnect box, starter box, and at the motor can cause shock, burns, or death. Disconnect and lock out power supply before servicing! Keep all electrical component covers closed and securely fastened during mill operation.



WARNING! Remove the blade before performing any engine service. Failure to do so may result in serious injury.

WARNING! Always wear proper and necessary safety equipment when performing service functions. Proper safety equipment includes eye protection, breathing protection, hand protection and foot protection.

WARNING! Clean sawdust from all guards, vents, control boxes, or any area where sawdust may gather **after every 8-hour shift**. Failure to do so may result in fire, causing death or serious injury.



SECTION 2 OPERATION

2.1 Starting The Motor



DANGER! Ensure the blade is disengaged and all persons are out of the path of the blade before starting. Failure to do so will result in death or serious injury.

Turn the main switch on the upper left of the starter box to the ON position.

Press the green START button located on the lower right of the starter box to start the motor.

MOTOR SHUTOFF

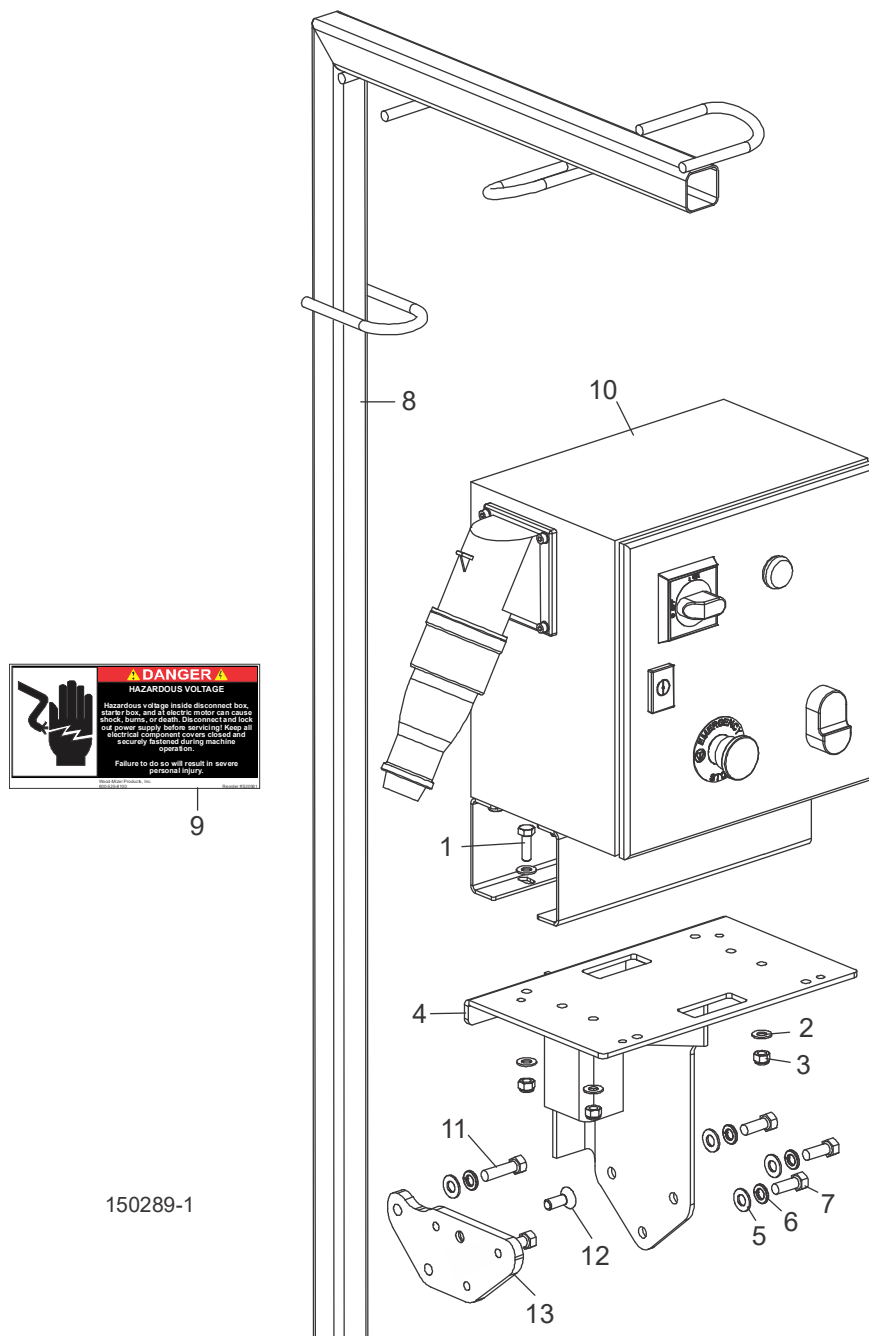
Press the red STOP button located on the lower right of the starter box to stop the motor.

The emergency stop will also stop the motor; however, it should only be used in emergencies.

Turn the main switch to the OFF position.

SECTION 3 REPLACEMENT PARTS

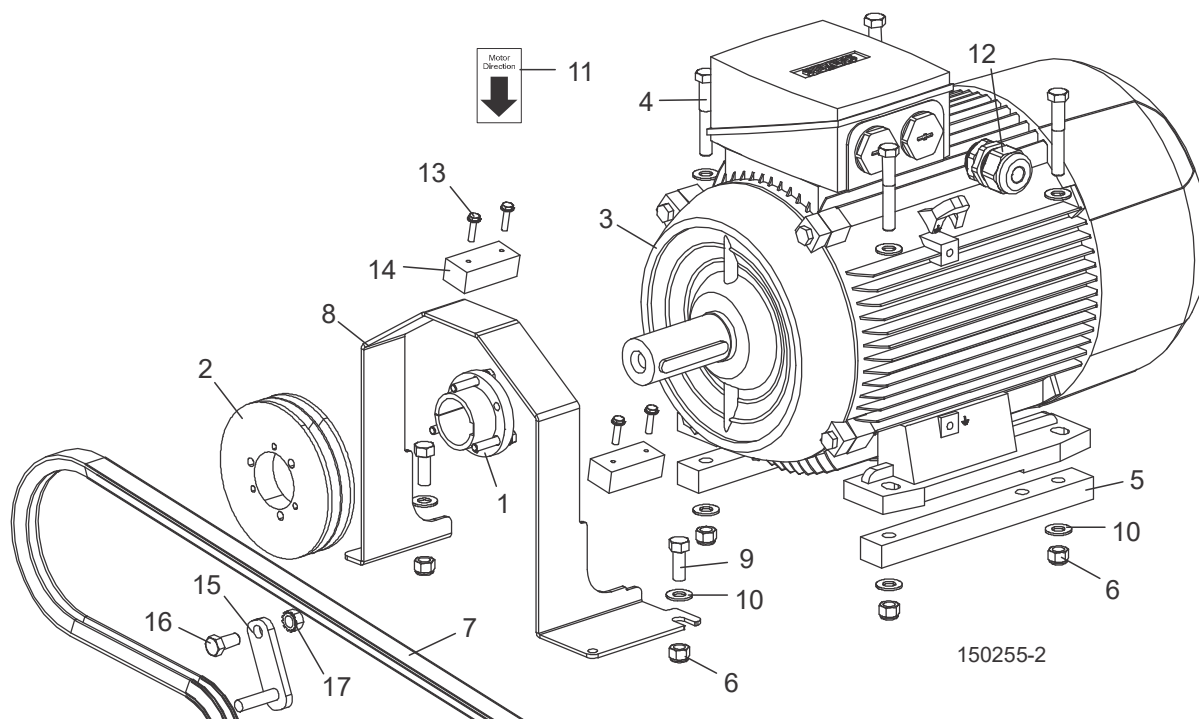
3.1 Motor Starter Assembly



REF	DESCRIPTION (♦ Indicates Parts Available in Assemblies Only)	PART #	QTY.
1	Bolt, 5/16-18x1 Gr5 Hex Head	F05006-27	4
2	Washer, 5/16 SAE Flat	F05011-17	8
3	NUT, 5/16-18 NYLON LOCK	F05010-58	4
4	MOUNT WELDMENT, BATTERY/CONTROL BOX	034899	1
5	WASHER, 3/8" SAE FLAT	F05011-3	5
6	WASHER, 3/8" SPLIT LOCK	F05011-4	5
7	BOLT, 3/8-16 X 1" HEX HEAD	F05007-148	3
8	TUBE WELDMENT, WIRE HANGER LT15E	034906	1

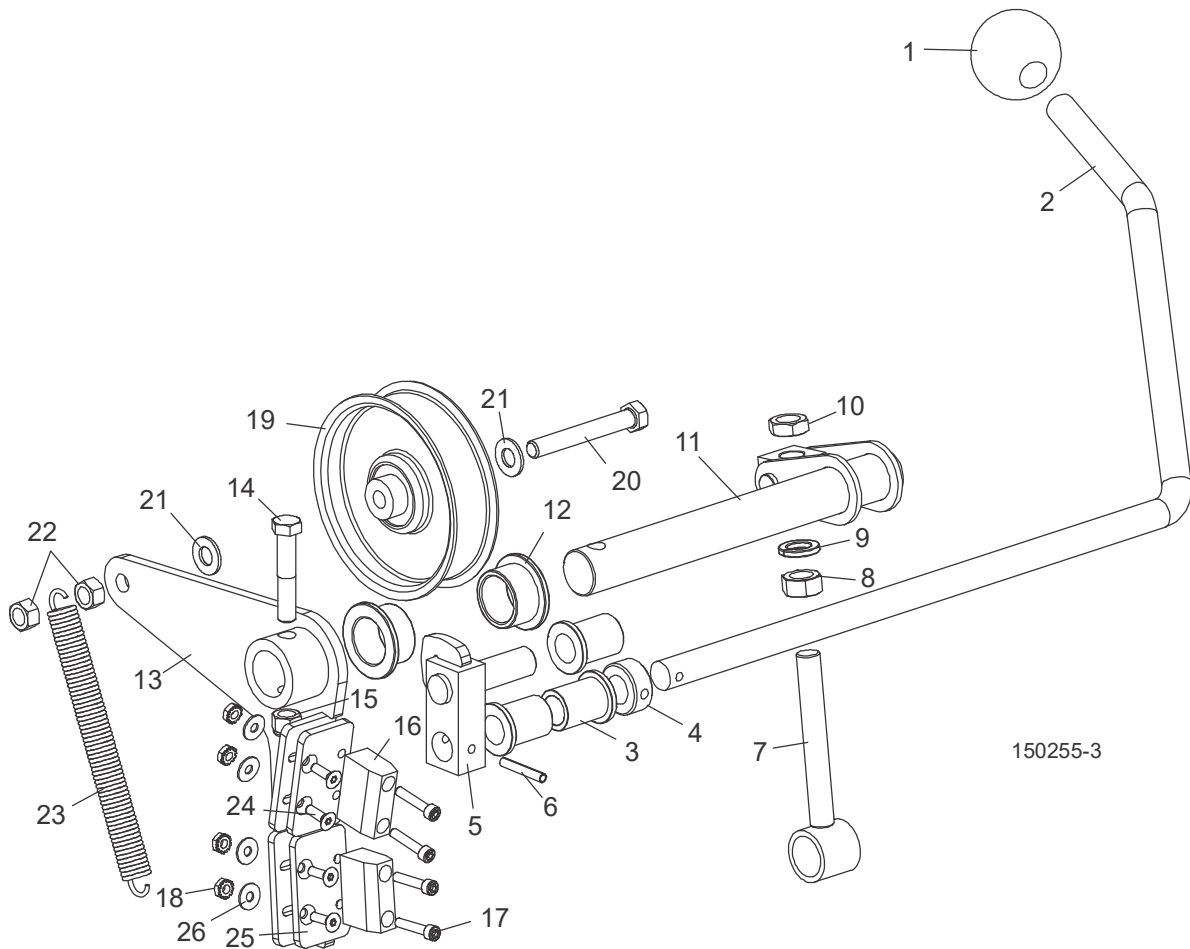
REF	DESCRIPTION (♦ Indicates Parts Available in Assemblies Only)	PART #	QTY.	
9	Decal, Electrical Hazard Danger	S20061	1	
10	Control Assembly, LT15E15 Poland Motor	509143	1	
11	Bolt, 3/8-16x1 HH Gr5	F05007-87	2	
12	Screw, 3/8-16x1 Zinc & Bake FSHC	F05007-64	1	
13	Plate, Control Mount Adapter	130052	1	

3.2 Motor Assembly



REF	DESCRIPTION (♦ Indicates Parts Available in Assemblies Only)	PART #	QTY.	
	COVER, ENGINE	P12393	1	
	MOTOR ASSEMBLY, 11KW(15HP) 400V 50HZ	079759	1	
1	Bushing, SH38MM	079757	1	
2	Sheave, 2/3V500-SH	079758	1	
3	Motor, 11kW(15HP) 1LE1002-1CA63-4AA4-Z	P85186	1	♦
4	BOLT, 3/8-16X2 1/2 HH GR5	F05007-125	4	
5	SPACER, MOTOR LT15E	034807	2	
6	NUT, 3/8-16 HEX NYLOC	F05010-10	6	
7	BELT, 2/3VFL900 DRIVE	047751	1	
8	GUARD, MOTOR SHAFT LT15E PTD.	034904	1	
9	BOLT, 3/8-16X1 HHC	F05007-7	2	
10	WASHER, 3/8 FLAT SAE	F05011-3	10	
11	DECAL, MOTOR DIRECTION	S20097	1	
12	CORDGRIP, .25-.47 CABLE DIAMETER	079776	1	
13	SCREW,#10X3/4 SL HEX WASHER HD SHT METAL	F05015-33	4	
14	BLOCK, WOOD 3/4X1X2-3/16	016506	2	
15	SUPPORT WELDMENT, LT15G25 BELT	048237	1	
16	BOLT, 3/8-16X3/4 HH GR5	F05007-118	1	
17	NUT, 3/8-16 KEPS	F05010-19	1	

3.3 Throttle/Clutch Assembly



REF	DESCRIPTION (♦ Indicates Parts Available in Assemblies Only)	PART #	QTY.
1	KNOB, 5/8-11 BALL	P04211	1
2	HANDLE, LT15 CLUTCH	016487	1
3	BUSHING, 5/8 ID X 7/8 OD X 1 1/8 LONG FL BRONZE	016486	3
4	COLLAR, 5/8 ID LOCK	P05035	1
5	BLOCK WELDMENT, LINKAGE CLUTCH/BRAKE	065572	1
6	PIN, 3/16 X 1 1/4 ROLL	F05012-16	1
7	LINKAGE ASSEMBLY, W/BEARING	034605	1
8	NUT, 1/2-13 FREE HEX, ZINC	F05010-35	1
9	WASHER, 1/2 SPLIT LOCK	F05011-9	1
10	NUT, 1/2-13 JAM	F05010-31	1
11	PIVOT WELDMENT, CLUTCH/BRAKE	034608	1
12	BUSHING, 1 X 1 1/4 X 3/4 FLANGE BRONZE	P737	2
	BRAKE/CLUTCH ASSEMBLY, LT15	065874	1
13	Arm Weldment, Clutch/Brake LT15	065873	1
14	Bolt, 3/8-16 x 2 Hex Head Gr5	F05007-124	1
15	Nut, 3/8-16 Hex Nylon Lock	F05010-10	1
16	Block, LT15 Brake	016488	2
17	Screw, 10-24 x 1 Socket Head	F05004-2	4

REF	DESCRIPTION (♦ Indicates Parts Available in Assemblies Only)	PART #	QTY.	
18	Nut, #10-24 Keps	F05010-14	8	
19	Idler, 4" O.D. x 3/8 Bore	034602	1	
20	Bolt, 3/8-16 x 2-3/4" Hex Head Gr5 Full Thread	F05007-230	1	
21	Washer, 3/8 Flat	F05011-3	2	
22	Nut, 3/8-16 Swaged Lock	F05010-25	2	
23	Spring, Idler Arm LT15/D/E/G	034810	1	
24	Screw, 10-24 x 5/8" FSHC	F05004-282	4	
25	Plate, Brake Adjustment	065872	2	
26	Washer, #10 SAE Flat	F05011-18	4	