

LT15 E15 Motor

Safety, Operation, Maintenance & Parts Manual

079760 Module, LT15 15HP Motor rev.B-Current
Used with
LT15E15N rev.E8.10-Current
LT15E15NW rev.A1.00-Current

Safety is our #1 concern!

Form #2261



WARNING! Read and understand this manual before using this machine.

California
Proposition 65 Warning



WARNING: Breathing gas/diesel engine exhaust exposes you to chemicals known to the State of California to cause cancer and birth defects or other reproductive harm.

- Always start and operate the engine in a well-ventilated area.
- If in an enclosed area, vent the exhaust to the outside.
- Do not modify or tamper with the exhaust system.
- Do not idle the engine except as necessary.

For more information go to **www.P65warnings.ca.gov**.



WARNING: Drilling, sawing, sanding or machining wood products can expose you to wood dust, a substance known to the State of California to cause cancer. Avoid inhaling wood dust or use a dust mask or other safeguards for personal protection.

For more information go to **www.P65Warnings.ca.gov/wood**.

Active Patents assigned to Wood-Mizer, LLC

Wood-Mizer, LLC has received patents that protect our inventions which are a result of a dedication to research, innovation, development, and design. Learn more at: woodmizer.com/patents

©2022 Wood-Mizer LLC

Printed in the United States of America, all rights reserved. No part of this manual may be reproduced in any form by any photographic, electronic, mechanical or other means or used in any information storage and retrieval system without written permission from

Wood-Mizer, LLC
8180 West 10th Street
Indianapolis, Indiana 46214

SECTION 1 ABOUT THIS MANUAL

SECTION 2 OPERATION

1.1 Starting The Motor..... 1-1

SECTION 3 MAINTENANCE

1.1 Safety 1-1

SECTION 4 REPLACEMENT PARTS

2.1 Motor Starter Assembly 2-1
2.2 Motor Assembly..... 2-3
2.3 Throttle/Clutch Assembly 2-4

SECTION 1 ABOUT THIS MANUAL

This manual is provided as a supplement to the equipment manufacturer's manuals.

This manual provides information specific to the use of this equipment on the Wood-Mizer® sawmill. Refer to the sawmill operator's manual and manufacturer's manual before attempting to operate this equipment.

NOTICE Read the sawmill operator's manual and engine manufacturer's manual for instructions and safety precautions before operating this equipment.

The information and instructions given in this manual do not amend or extend the limited warranties for the equipment given at the time of purchase.

SECTION 1 OPERATION

1.1 Starting The Motor



DANGER! Ensure the blade is disengaged and all persons are out of the path of the blade before starting. Failure to do so will result in death or serious injury.

Turn the main switch on the starter box to the ON position.

Press the green START button located on the starter box to start the motor.

MOTOR SHUTOFF

Press the red STOP button on the starter box to stop the motor.

Turn the main switch to the OFF position.

SECTION 1 MAINTENANCE

Refer to the manufacturer's manual for maintenance intervals and procedures unless otherwise instructed in this manual. Follow the manufacturer's recommendations for dusty conditions.

NOTICE This manual only provides information about additional procedures or procedures to be performed at different time intervals than found in the manufacturer's manuals. Refer to the manufacturer's manual for complete maintenance instructions.



WARNING! Clean sawdust from all guards, vents, control boxes, or any area where sawdust may gather **after every shift**. Failure to do so may result in fire, causing death or serious injury.



1.1 Safety

Use caution when performing maintenance or service to the motor.



DANGER! Take proper protective measures against rotating shafts, pulleys, fans, etc.

Ensure loose clothing or long hair does not engage rotating members.

DANGER! Ensure all electrical installation, service and/or maintenance work is performed by a qualified electrician and is in accordance with applicable electrical codes.

DANGER! Hazardous voltage inside the disconnect box, starter box, and at the motor can cause shock, burns, or death. Disconnect and lock out power supply before servicing! Keep all electrical component covers closed and securely fastened during mill operation.

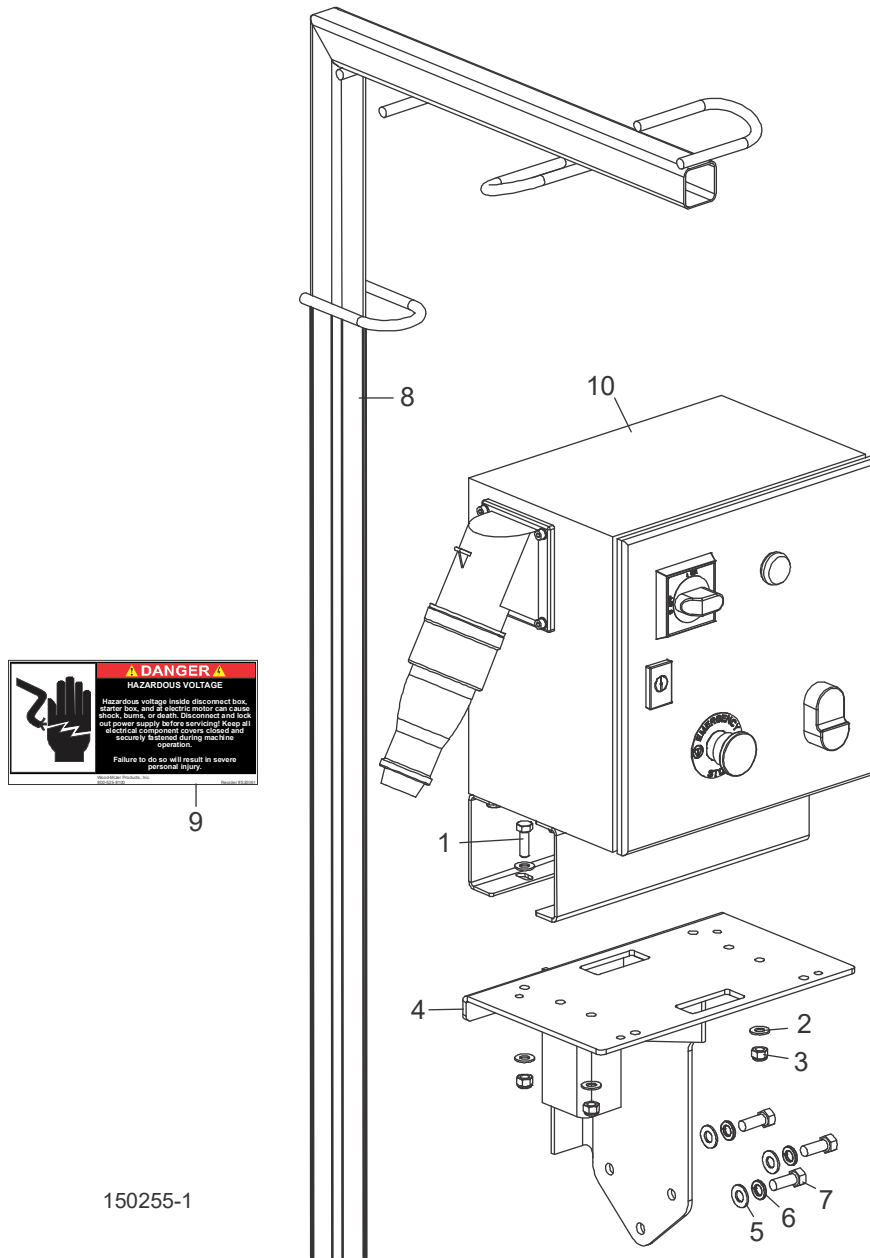


WARNING! Remove the blade before performing any engine service.

WARNING! Wear eye, hand, and foot protection equipment when performing service functions.

SECTION 2 REPLACEMENT PARTS

2.1 Motor Starter Assembly



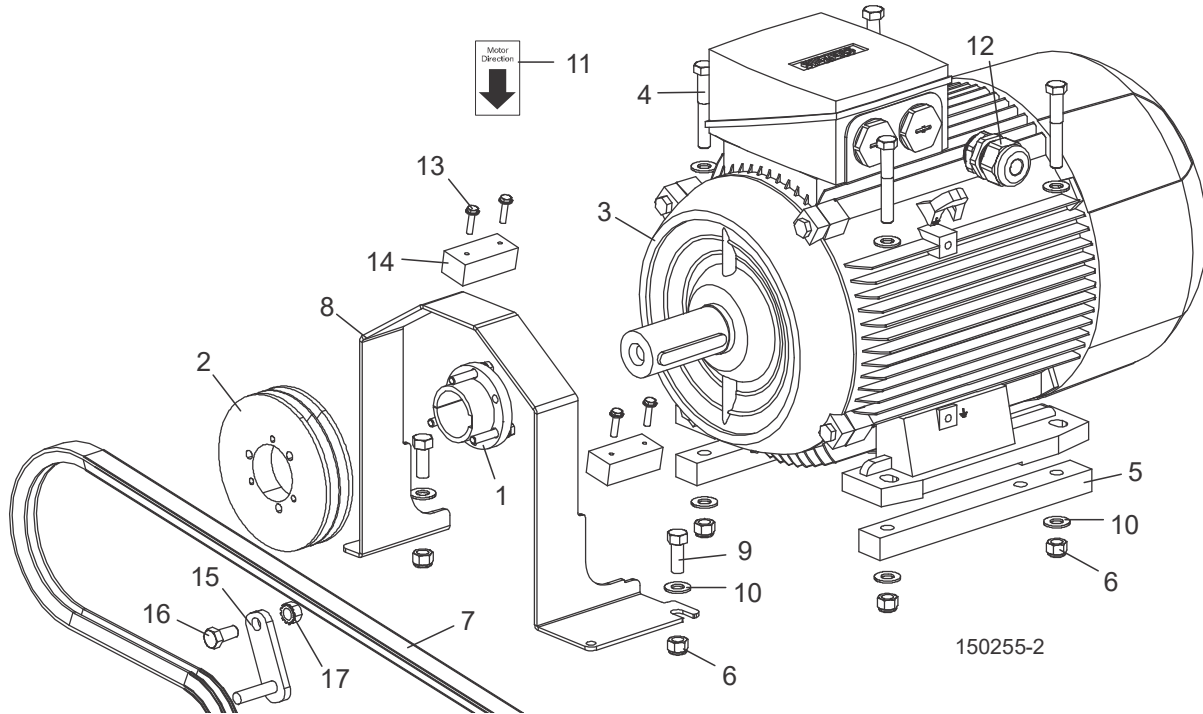
REF	PART #	DESCRIPTION	COMMENTS	QTY.
1	F05006-27	BOLT, 5/16-18X1 GR5 HEX HEAD		4
2	F05011-17	WASHER, 5/16 SAE FLAT		8
3	F05010-58	NUT, 5/16-18 NYLON LOCK		4
4	034899	MOUNT WELDMENT, BATTERY/CONTROL BOX		1
5	F05011-3	WASHER, 3/8" SAE FLAT		3
6	F05011-4	WASHER, 3/8" SPLIT LOCK		3
7	F05007-7	BOLT, 3/8-16 X 1" HEX HEAD		3
8	034906	TUBE WELDMENT, WIRE HANGER LT15E		1
9	S20061	DECAL, ELECTRICAL HAZARD DANGER		1

2 Replacement Parts

Motor Starter Assembly

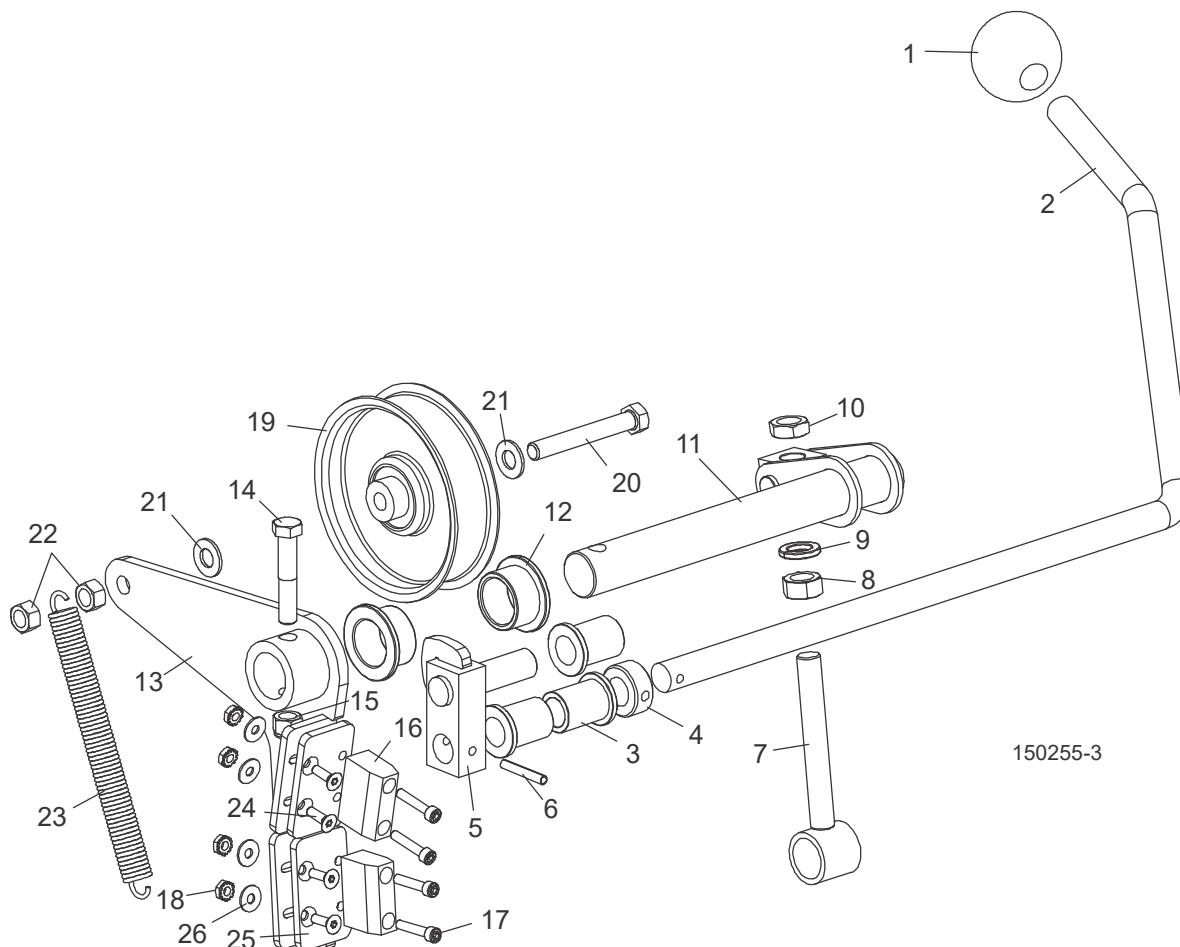
REF	PART #	DESCRIPTION	COMMENTS	QTY.
10	509143	CONTROL ASSEMBLY, LT15E15 POLAND MOTOR		1

2.2 Motor Assembly



REF	PART #	DESCRIPTION	COMMENTS	QTY.
	P12393	COVER, ENGINE		1
	079759	MOTOR ASSEMBLY, 11KW(15HP) 400V 50HZ		1
1	079757	Bushing, SH38MM		1
2	079758	Sheave, 2/3V500-SH		1
3	526677-1	Motor, 12kW(16HP) 400/460V 50/60Hz 3Ph	Available in assemblies only. Replaced P85186 after 9/1/2022 per ECN 38804.	1
	P85186	Motor, 11kW(15HP) 1LE1002-1CA63-4AA4-Z	Available in assemblies only.	1
4	F05007-125	BOLT, 3/8-16X2 1/2 HH GR5		4
5	034807	SPACER, MOTOR LT15E		2
6	F05010-10	NUT, 3/8-16 HEX NYLOC		6
7	047751	BELT, 2/3VFL900 DRIVE		1
8	034904	GUARD, MOTOR SHAFT LT15E PTD.		1
9	F05007-7	BOLT, 3/8-16X1 HHC		2
10	F05011-3	WASHER, 3/8 FLAT SAE		10
11	S20097	DECAL, MOTOR DIRECTION		1
12	079776	CORDGRIP, .25-.47 CABLE DIAMETER		1
13	F05015-33	SCREW,#10X3/4 SL HEX WASHER HD SHT METAL		4
14	016506	BLOCK, WOOD 3/4X1X2-3/16		2
15	048237	SUPPORT WELDMENT, LT15G25 BELT		1
16	F05007-118	BOLT, 3/8-16X3/4 HH GR5		1
17	F05010-19	NUT, 3/8-16 KEPS		1

2.3 Throttle/Clutch Assembly



REF	PART #	DESCRIPTION	COMMENTS	QTY.
1	P04211	KNOB, 5/8-11 BALL		1
2	016487	HANDLE, LT15 CLUTCH		1
3	016486	BUSHING, 5/8 ID X 7/8 OD X 1 1/8 LONG FL BRONZE		3
4	P05035	COLLAR, 5/8 ID LOCK		1
5	065572	BLOCK WELDMENT, LINKAGE CLUTCH/BRAKE		1
6	F05012-16	PIN, 3/16 X 1 1/4 ROLL		1
7	034605	LINKAGE ASSEMBLY, W/BEARING		1
8	F05010-35	NUT, 1/2-13 FREE HEX, ZINC		1
9	F05011-9	WASHER, 1/2 SPLIT LOCK		1
10	F05010-31	NUT, 1/2-13 JAM		1
11	034608	PIVOT WELDMENT, CLUTCH/BRAKE		1
12	P737	BUSHING, 1 X 1 1/4 X 3/4 FLANGE BRONZE		2
	065874	BRAKE/CLUTCH ASSEMBLY, LT15		1
13	065873	Arm Weldment, Clutch/Brake LT15		1
14	F05007-124	Bolt, 3/8-16 x 2 Hex Head Gr5		1
15	F05010-10	Nut, 3/8-16 Hex Nylon Lock		1
16	016488	Block, LT15 Brake		2

REF	PART #	DESCRIPTION	COMMENTS	QTY.
17	F05004-2	Screw, 10-24 x 1 Socket Head		4
18	F05010-14	Nut, #10-24 Keps		8
19	034602	Idler, 4" O.D. x 3/8 Bore		1
20	F05007-230	Bolt, 3/8-16 x 2-3/4" Hex Head Gr5 Full Thread		1
21	F05011-3	Washer, 3/8 Flat		2
22	F05010-25	Nut, 3/8-16 Swaged Lock		2
23	034810	Spring, Idler Arm LT15/D/E/G		1
24	F05004-282	Screw, 10-24 x 5/8" FSHC		4
25	065872	Plate, Brake Adjustment		2
26	F05011-18	Washer, #10 SAE Flat		4