

# **LT28 D17 Engine**

## **Safety, Operation, Maintenance & Parts Manual**

---

**007333 D17 Kohler/Lombardini** **rev. D**

---

***Safety is our #1 concern!***

*Form #1632*

### **Used with:**

LT28D17

LT28 Diesel 17HP

rev. A7.00 - A7.00



**WARNING! Read and understand this  
manual before using this machine.**

## California

### Proposition 65 Warning



**WARNING:** Breathing gas/diesel engine exhaust exposes you to chemicals known to the State of California to cause cancer and birth defects or other reproductive harm.

Always start and operate the engine in a well-ventilated area.  
If in an enclosed area, vent the exhaust to the outside.  
Do not modify or tamper with the exhaust system.  
Do not idle the engine except as necessary.

For more information go to **[www.P65warnings.ca.gov](http://www.P65warnings.ca.gov)**.



**WARNING:** Drilling, sawing, sanding or machining wood products can expose you to wood dust, a substance known to the State of California to cause cancer. Avoid inhaling wood dust or use a dust mask or other safeguards for personal protection.

For more information go to **[www.P65Warnings.ca.gov/wood](http://www.P65Warnings.ca.gov/wood)**.

### Active Patents assigned to Wood-Mizer, LLC

Wood-Mizer, LLC has received patents that protect our inventions which are a result of a dedication to research, innovation, development, and design. Learn more at: [woodmizer.com/patents](http://woodmizer.com/patents)

### ©2025 Wood-Mizer LLC

Printed in the United States of America, all rights reserved. No part of this manual may be reproduced in any form by any photographic, electronic, mechanical or other means or used in any information storage and retrieval system without written permission from

**Wood-Mizer, LLC**  
**8180 West 10th Street**  
**Indianapolis, Indiana 46214**

**SECTION 1 ABOUT THIS MANUAL**

**SECTION 2 OPERATION**

2.1 Starting The Engine ..... 2-1

**SECTION 3 MAINTENANCE**

3.1 Safety ..... 3-1

3.2 Battery ..... 3-1

3.3 Fuel Filter ..... 3-1

**SECTION 4 REPLACEMENT PARTS**

4.1 Fuel Tank ..... 4-1

4.2 Engine Assembly ..... 4-2

4.3 Throttle/Clutch Assembly ..... 4-4

---

## SECTION 1 ABOUT THIS MANUAL

This manual is provided as a supplement to the equipment manufacturer's manuals. This manual provides information specific to the use of this equipment on the Wood-Mizer® sawmill. Refer to the sawmill operator's manual and manufacturer's manual before attempting to operate this equipment.

**NOTICE** Read the sawmill operator's manual and engine manufacturer's manual for instructions and safety precautions before operating this equipment.

The information and instructions given in this manual do not amend or extend the limited warranties for the equipment given at the time of purchase.

## SECTION 2 OPERATION

### 2.1 Starting The Engine



**DANGER!** Always be sure the blade is disengaged and clear the path of the blade before starting the engine. Failure to do so will result in serious injury or death.

**DANGER!** Operate your engine/machine only in well ventilated areas. Exhaust gases can cause nausea, delirium and potentially death unless adequate ventilation is present.

**DANGER!** Never operate an engine with a fuel or oil leak. The leaking fuel or oil could potentially come in contact with hot surfaces and ignite into flames.



**WARNING!** Do not operate engine without proper and operational spark arrester/muffler. Sparks emitted from the engine exhaust could ignite surrounding materials, causing serious injury or death.



**CAUTION!** EPA Compliant Gas Tanks Only: Always relieve all fuel pressure inside the tank prior to filling or connecting fuel fittings. Failure to do so may result in fuel spillage.

**CAUTION!** EPA Compliant Gas Tanks Only: Disconnect the fuel tank when not in use, or engine flooding or fuel spillage may result

1. See the engine manufacturer's manual for lubricating oil recommendations for specific temperature ranges.
2. Use #2 or better quality diesel fuel for above freezing starting. Use a #1 quality diesel fuel for below freezing starting.
3. Turn the key switch to the on (#1) position.
4. Turn the key switch to the start (#2) position and release.

#### ENGINE SHUTOFF

1. Disengage the clutch handle to stop the blade if necessary.
2. Turn the key switch to the off (#0) position.

Refer to the manufacturer's manual for maintenance intervals and procedures unless otherwise instructed in this manual. Follow the manufacturer's recommendations for dusty conditions.

**NOTICE** This manual only provides information about additional procedures or procedures to be performed at different time intervals than found in the manufacturer's manuals. Refer to the manufacturer's manual for complete maintenance instructions.

## SECTION 3 MAINTENANCE

### 3.1 Safety

Use caution when performing maintenance or service to the engine.



**DANGER!** Always be aware of and take proper protective measures against rotating shafts, pulleys, fans, etc.

Always stay a safe distance from rotating members and make sure that loose clothing or long hair does not engage rotating members.

Never touch or perform service functions on a hot engine.



**WARNING!** Remove the blade before performing any engine service. Failure to do so may result in serious injury.

Wear proper (eye, breathing, hand, and foot) safety equipment when performing service functions.

Clean sawdust from all guards, vents, control boxes, or any area where sawdust may gather **after every shift**. Failure to do so may result in fire, causing death or serious injury.



### 3.2 Battery

Check the battery electrolyte level every 50 hours of operation. See manufacturer's manual for instructions.



**DANGER!** Batteries expel explosive gases.

Keep sparks, flames, burning cigarettes, or other ignition sources away at all times.

Wear a face shield when working on batteries.



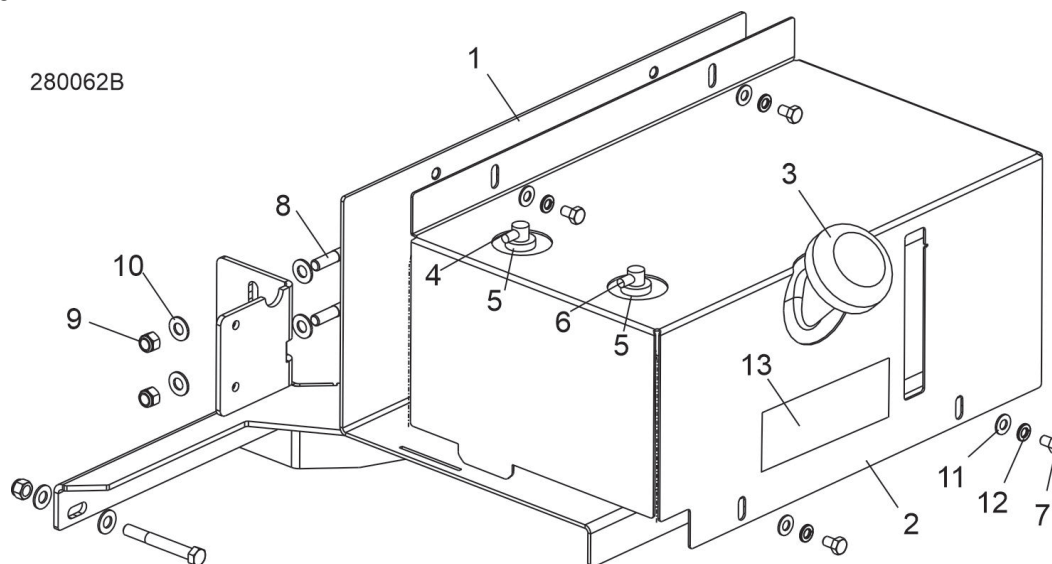
**WARNING!** Battery posts, terminals and related accessories contain lead and lead compounds. Wash hands after handling.

### 3.3 Fuel Filter

Replace the fuel filter **every 100 hours** of operation or as required for engine performance.

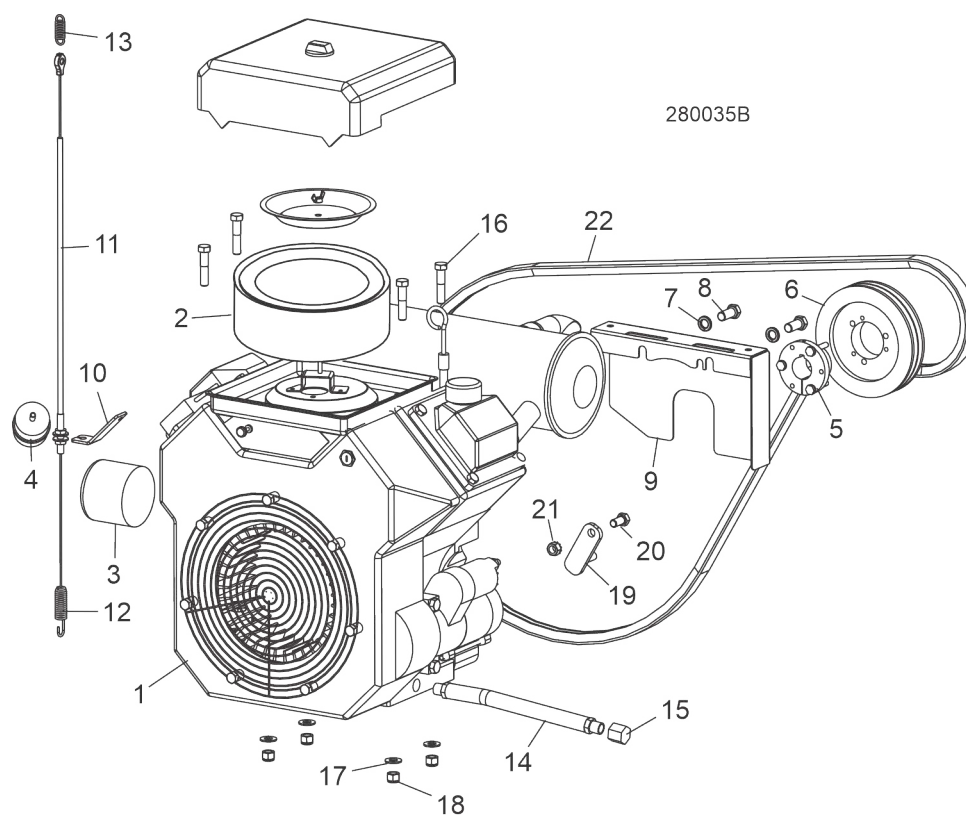
## SECTION 4 REPLACEMENT PARTS

### 4.1 Fuel Tank



REF	PART #	DESCRIPTION	COMMENTS	QTY.
	074829	<b>TRAY ASSEMBLY, LT28/35 FUEL TANK</b>		1
1	103810	Weldment, Fuel Tank Tray		1
2	103867	Cover, Fuel Tank		1
	103928	Tank, 5 Gallon Low Pro Diesel		1
3	061257	Cap, Fuel Tank Diesel 080185BE		1
4	061255	Fitting, Pick-Up/Tube Diesel 468871A		1
5	061250	Grommet, Shut Off 046881		2
6	061256	Fitting, Return/tube Diesel 468489		1
7	F05006-102	Bolt, 5/16-18x3/4 HH Gr5 Zinc		4
8	F05007-73	Bolt, 3/8-16 x 3" Hex Head Grade 5		3
9	F05010-10	Nut, 3/8-16 Hex Nyloc		3
10	F05011-3	Washer, 3/8" Flat SAE		6
11	F05011-13	Washer, 5/16 Split Lock		4
12	F05011-17	Washer, 5/16 SAE Flat		4
13	133825	Decal, Fuel Warning		1
	R02423-1	Hose, Fuel 3/16" EPA 15G CARB		6 Ft
	R02423-3	Hose, Fuel 5/16" EPA 15G CARB		6 Ft
	R02423-2	Hose, Fuel 1/4" EPA 15G CARB		6 Ft

## 4.2 Engine Assembly

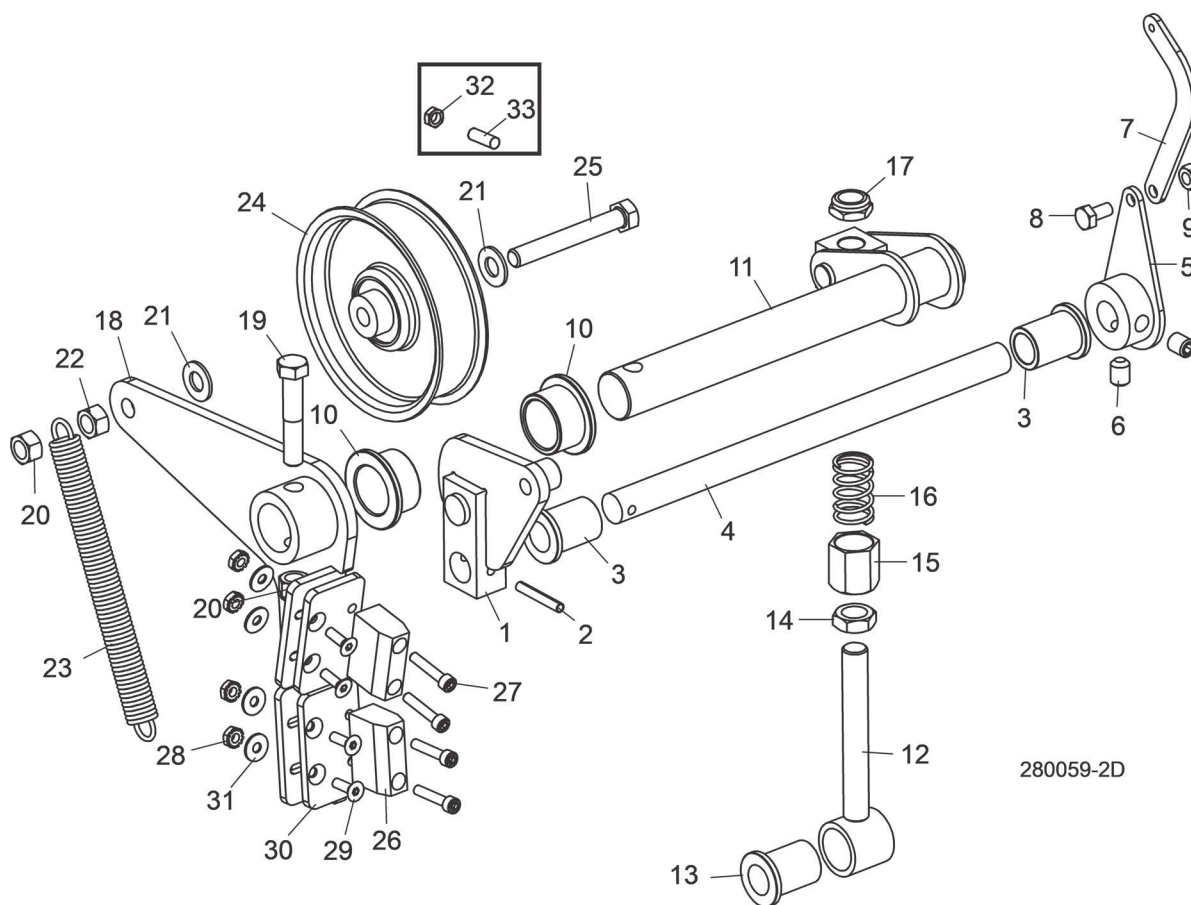


REF	PART #	DESCRIPTION	COMMENTS	QTY.
	P12393	COVER, ENGINE		1
	049055	ENGINE ASSEMBLY, LT28 GAS 19HP		1
1	016899	Engine, 19HP Kohler #PA62590	Available in assemblies only.	1
	046943	Regulator, Overvolt Kohler		1
2	141022	Filter, 19hp Kohler Air&PreClnr Kit		1
	P12757	Plug, RC12YC Kohler Spark #12-132-02		2
3	014717	Filter, Kohler Oil #52-050-02		1
4	P12758	Filter, Kohler Fuel #24-050-13		1
	061371	Starter, Kohler Engine KH# 25 098 21S		1
	048391	Pump, Kohler Fuel #24-393-16S		1
	061150	Switch, Ignition G18/25		1
5	038432	Bushing, 1 1/8" SH		1
6	047742	Pulley, 3V5.6 x 2" SH		1
7	F05011-48	Washer, 7/16" Split Lock		2
8	F05007-145	Bolt, 7/16-14 x 1" Hex Head Grade 5		2
9	016493	Plate, Engine Guard		1
10	047750	Plate, Throttle Cable Mount		1
11	047749	Cable, LT15 G25 Throttle		1
12	016033	Spring, Throttle		1
13	015952	Spring, Throttle Extension		1
14	P10082	Hose, 3/8" NPT Oil Drain		1
15	P04332	Cap, Oil Drain Hose		1



REF	PART #	DESCRIPTION	COMMENTS	QTY.
	061072	Switch, G18/G25 Ignition Plastic		1
NO EXTERNAL ALTERNATOR. ENGINE USES INTERNAL CHARGING SYSTEM.				
16	F05007-119	BOLT, 3/8-16 X 1 3/4" HEX HEAD GRADE 5		4
17	F05011-3	WASHER, 3/8" SAE FLAT		4
18	F05010-10	NUT, 3/8-16 HEX NYLON LOCK		4
19	048237	SUPPORT WELDMENT, DRIVE BELT		1
20	F05007-118	BOLT, 3/8-16 X 3/4" HEX HEAD GRADE 5		1
21	F05010-19	NUT, 3/8-16 SELF-LOCKING HEX		1
22	047751	BELT, 2/3VFL900 DRIVE		1
	061326	CARB KIT, G18 DE-ICING 24 755 64S		1

## 4.3 Throttle/Clutch Assembly



REF	PART #	DESCRIPTION	COMMENTS	QTY.
1	065574	BLOCK WELDMENT, LINKAGE CLUTCH/BRAKE		1
2	F05012-16	PIN, 3/16" X 1 1/4" ROLL		1
3	016486	BUSHING, 5/8" ID X 7/8" OD X 1 1/4" LONG FL BRONZE		2
4	049340	SHAFT, LT28 THROTTLE		1
5	034815	ACTUATOR WELDMENT, THROTTLE LT15D&G		1
6	F05007-68	SCREW, 3/8-16 X 3/8" SOCKET HEAD CUP PT SET		2
7	034818	LINKAGE, THROTTLE LT15D&G		1
8	F05005-15	BOLT, 1/4-20 X 1/2" HEX HEAD		1
9	F05010-21	NUT, 1/4-20 SWAGED		1
10	P737	BUSHING, 1" X 1 1/4" X 3/4" FLANGED BRONZE		2
11	034608	PIVOT WELDMENT, CLUTCH/BRAKE		1
	034605	LINKAGE ASSEMBLY, W/BEARING		1
12	034604	Boss Weldment, Clutch/Brake Linkage		1
13	016486	Bushing, 5/8" ID x 7/8" OD x 1 1/4" Long Flanged Bronze		1
	038778	NUT ASSEMBLY, 1/2-13 SPRING LOCKING		1
14	F05010-31	Nut, 1/2-13 Hex Jam		1
15	038777	Nut, 1/2-13 Spring Lock		1
16	046975	Spring, .72" OD x .576" ID x 1.25L Compression		1
17	F05010-127	Nut, 1/2-13 Half Nylon Lock		1

REF	PART #	DESCRIPTION	COMMENTS	QTY.
	065874	<b>BRAKE/CLUTCH ASSEMBLY</b>		1
18	065873	Arm Weldment, Clutch/Brake		1
19	F05007-124	Bolt, 3/8-16 x 2 Hex Head Grade 5		1
20	F05010-10	Nut, 3/8-16 Hex Nyl Lock		2
21	F05011-3	Washer, 3/8" Flat SAE		3
22	F05010-25	Nut, 3/8-16 Swaged		1
23	034810	Spring, Idler Arm LT15/D/E/G		1
24	034602	Idler, 4" O.D. x 3/8" Bore		1
25	F05007-125	Bolt, 3/8-16 x 2-1/2" Hex Head Grade 5		1
26	016488	Block, LT15 Brake		2
27	F05004-2	Bolt, #10-24 x 1" Socket Head Cup		4
28	F05010-14	Nut, #10-24 Keps		8
29	F05004-282	Screw, 10-24 x 5/8" FSHC		4
30	065872	Plate, Brake Adjustment		2
31	F05011-18	Washer, #10 SAE Flat		4
32	F05010-29	<b>NUT, 3/8-16 JAM</b>		1
33	F05007-18	<b>SCREW, 3/8-16 X 1 1/4 SHOP SET</b>		1