

# E10 Motor

## Safety, Operation, Maintenance & Parts Manual

---

|                                  |          |
|----------------------------------|----------|
| 034812 Motor, LT15 10Hp 3Ph      | rev. A-B |
| 017957 Motor, LT15 10Hp 3Ph 575V | rev. A-B |

---

***Safety is our #1 concern!***

*Form #1099*

### Used with

|              |             |
|--------------|-------------|
| LT15E10H     | rev. F3.00+ |
| LT15E10HW    | rev. A5.00+ |
| LT15E10L     | rev. F3.00+ |
| LT15E10L-ICE | rev. F3.00+ |
| LT15E10LW    | rev. A5.00+ |



**WARNING! Read and understand this manual before using this machine.**

**California**  
Proposition 65 Warning



**WARNING:** Breathing gas/diesel engine exhaust exposes you to chemicals known to the State of California to cause cancer and birth defects or other reproductive harm.

Always start and operate the engine in a well-ventilated area.  
If in an enclosed area, vent the exhaust to the outside.  
Do not modify or tamper with the exhaust system.  
Do not idle the engine except as necessary.

For more information go to **[www.P65warnings.ca.gov](http://www.P65warnings.ca.gov)**.



**WARNING:** Drilling, sawing, sanding or machining wood products can expose you to wood dust, a substance known to the State of California to cause cancer. Avoid inhaling wood dust or use a dust mask or other safeguards for personal protection.

For more information go to **[www.P65Warnings.ca.gov/wood](http://www.P65Warnings.ca.gov/wood)**.

**Active Patents assigned to Wood-Mizer, LLC**

Wood-Mizer, LLC has received patents that protect our inventions which are a result of a dedication to research, innovation, development, and design. Learn more at: [woodmizer.com/patents](http://woodmizer.com/patents)

**©2024 Wood-Mizer LLC**

Printed in the United States of America, all rights reserved. No part of this manual may be reproduced in any form by any photographic, electronic, mechanical or other means or used in any information storage and retrieval system without written permission from

**Wood-Mizer, LLC**  
**8180 West 10th Street**  
**Indianapolis, Indiana 46214**

# Table of Contents

# Section-Page

|                  |                                |            |
|------------------|--------------------------------|------------|
| <b>SECTION 1</b> | <b>SAFETY</b>                  | <b>1-1</b> |
| 1.1              | Safety .....                   | 1-1        |
| <b>SECTION 2</b> | <b>OPERATION</b>               | <b>2-1</b> |
| 2.1              | Starting The Motor.....        | 2-1        |
| <b>SECTION 3</b> | <b>REPLACEMENT PARTS</b>       | <b>3-1</b> |
| 3.1              | Motor Starter Assembly .....   | 3-1        |
| 3.2              | Motor Assembly.....            | 3-3        |
| 3.3              | Throttle/Clutch Assembly ..... | 3-4        |
| 3.4              | Water Lube Assembly.....       | 3-6        |

## SECTION 1 SAFETY

This manual is provided as a supplement to the equipment manufacturer's manuals.

This manual provides information specific to the use of this equipment on the Wood-Mizer® sawmill. Refer to the sawmill operator's manual and manufacturer's manual before attempting to operate this equipment.

**NOTICE** Read the sawmill operator's manual and engine manufacturer's manual for instructions and safety precautions before operating this equipment.

The information and instructions given in this manual do not amend or extend the limited warranties for the equipment given at the time of purchase.

Refer to the manufacturer's manual for maintenance intervals and procedures unless otherwise instructed in this manual. Follow the manufacturer's recommendations for dusty conditions.

**NOTICE** This manual only provides information about additional procedures or procedures to be performed at different time intervals than found in the manufacturer's manuals. Refer to the manufacturer's manual for complete maintenance instructions.



**WARNING!** Clean sawdust from all guards, vents, control boxes, or any area where sawdust may gather **after every shift**. Failure to do so may result in fire, causing death or serious injury.

---

---



### 1.1 Safety

Use caution when performing maintenance or service to the engine.



**DANGER!** Take proper protective measures against rotating shafts, pulleys, fans, etc.

Ensure loose clothing or long hair does not engage rotating members.

**DANGER!** Do not touch or perform service functions on a hot engine. Allow the engine to cool sufficiently before beginning any service function. Hot engine components will cause serious burns.



**WARNING!** Remove the blade before performing any engine service.

**WARNING!** Wear eye, hand, and foot protection equipment when performing service functions.

## SECTION 2 OPERATION

### 2.1 Starting The Motor



**DANGER!** Ensure the blade is disengaged and all persons are out of the path of the blade before starting. Failure to do so will result in death or serious injury.

Turn the main switch on the starter box to the ON position.

Press the green START button located on the starter box to start the motor.

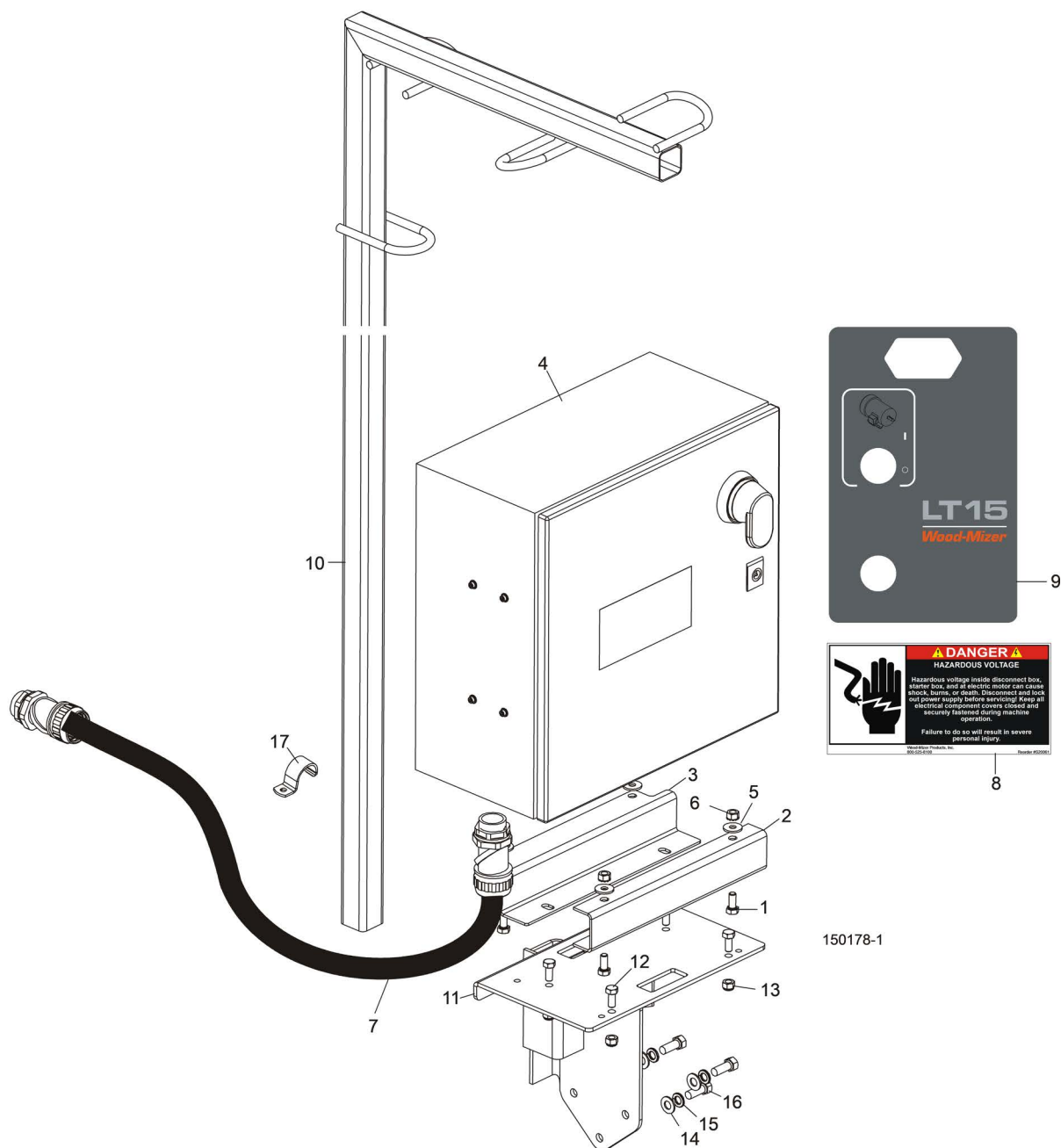
#### **MOTOR SHUTOFF**

Press the red STOP button on the starter box to stop the motor.

Turn the main switch to the OFF position.

## SECTION 3 REPLACEMENT PARTS

### 3.1 Motor Starter Assembly

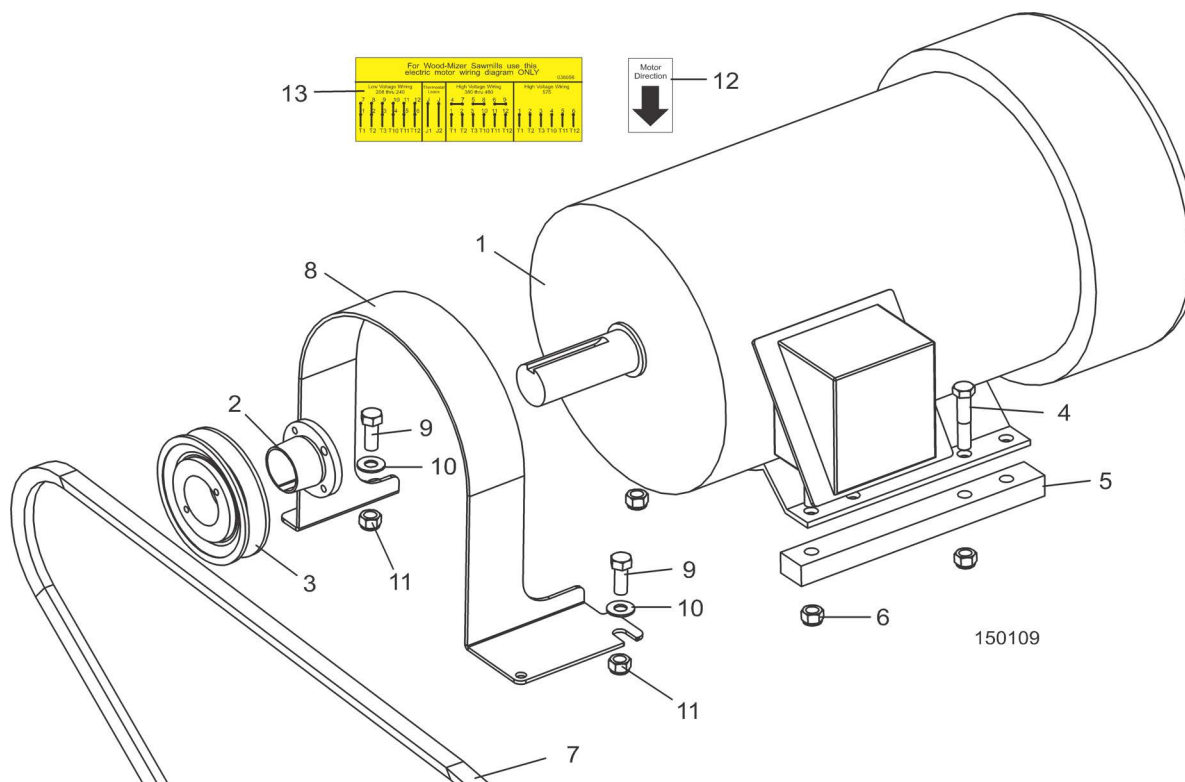


150178-1

| REF      | PART #   | DESCRIPTION   | COMMENTS                 | QTY. |
|----------|----------|---|--------------------------|------|
|          | 017954   | MOTOR MODULE, 10HP 3-PHASE 208-240V<br>ELECTRIC MOTOR |                          | 1    |
|          | 017955   | MOTOR MODULE, 10HP 3-PHASE 380-500V<br>ELECTRIC MOTOR |                          | 1    |
|          |          | Motor Parts ( )                                       | <i>(See Section 4.4)</i> |      |
|          | 053713   | Control Assembly, LT15 E10 3-Phase 240V               |                          | 1    |
|          | 053738   | Control Assembly, LT15 E10 3-Phase 460V               |                          | 1    |
| <b>1</b> | F05006-5 | Bolt, 5/16-18 x 3/4 Hex Head                          |                          | 4    |

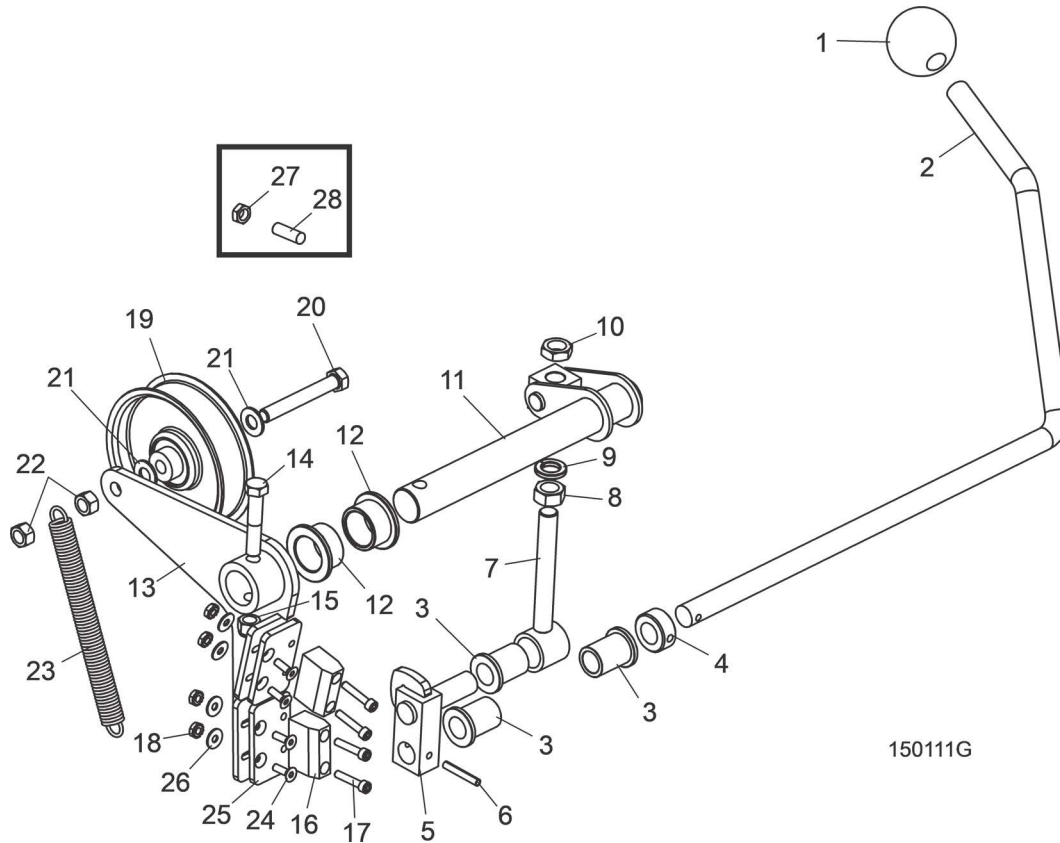
| REF | PART #     | DESCRIPTION   | COMMENTS                             | QTY. |
|-----|------------|---|--------------------------------------|------|
| 2   | 035991     | Bracket, Front Electric Motor Mount                   |                                      | 1    |
| 3   | 035992     | Bracket, Rear Electric Motor Mount                    |                                      | 1    |
| 4   | 053584     | Enclosure, 16" x 16" x 8" Custom                      |                                      | 1    |
|     |            | LT15E10L Electrical Components (                      | <a href="#">See Component List</a>   |      |
|     |            | LT15E10H Electrical Components (                      | <a href="#">See Component List</a>   |      |
|     |            | LT15E10S Electrical Components                        | <a href="#">(See Component List)</a> |      |
| 5   | F05011-16  | Washer, 5/16 Flat                                     |                                      | 4    |
| 6   | F05010-20  | Nut, 5/16-18 Keps                                     |                                      | 4    |
| 7   | 053714     | Harness Assembly, LT15E10L Blade Motor (3-Phase 240V) |                                      | 1    |
|     | 053739     | Harness Assembly, LT15E10H Blade Motor (3-Phase 460V) |                                      | 1    |
| 8   | S20061     | Decal, Electrical Hazard Danger                       |                                      | 1    |
| 9   | 069362     | Decal, LT15E10 Control Cabinet                        |                                      | 1    |
| 10  | 034906     | <b>TUBE WELDMENT, WIRE HANGER LT15E</b>               |                                      | 1    |
| 11  | 034899     | <b>MOUNT WELDMENT, BATTERY/CONTROL BOX</b>            |                                      | 1    |
| 12  | F05006-102 | <b>BOLT, 5/16-18 X 3/4" HEX HEAD</b>                  |                                      | 4    |
| 13  | F05010-58  | <b>NUT, 5/16-18 NYLON LOCK</b>                        |                                      | 4    |
| 14  | F05007-7   | <b>BOLT, 3/8-16 X 1" HEX HEAD</b>                     |                                      | 3    |
| 15  | F05011-4   | <b>WASHER, 3/8" SPLIT LOCK</b>                        |                                      | 3    |
| 16  | F05011-3   | <b>WASHER, 3/8" SAE FLAT</b>                          |                                      | 3    |
| 17  | P05436     | <b>CLAMP, 1" EMT</b>                                  |                                      | 1    |

### 3.2 Motor Assembly



| REF | PART #     | DESCRIPTION                                 | COMMENTS                      | QTY. |
|-----|------------|---|-------------------------------|------|
|     | P12393     | Cover, Engine                               |                               | 1    |
|     | 034812     | MOTOR ASSEMBLY, LT15 10HP 3-PHASE ELECTRIC  |                               | 1    |
|     | 017957     | MOTOR ASSEMBLY, LT15 10HP 575 VOLT ELECTRIC |                               | 1    |
| 1   | 034903     | Motor, 10HP 3-phase Lincoln                 | Available in assemblies only. | 1    |
|     | 034907     | Motor, 10HP 3-phase 575V Lincoln            |                               | 1    |
| 2   | P04864     | Bushing, 1 3/8 Split Taper                  |                               | 1    |
| 3   | 036057     | Sheave, BK45QT                              |                               | 1    |
| 4   | F05007-129 | Bolt, 3/8-16 X 1 3/4" Hex Head Grade 5      |                               | 4    |
| 5   | 034807     | Spacer, Motor Lt15e                         |                               | 2    |
| 6   | F05010-10  | Nut, 3/8-16 Hex Nylon Lock                  |                               | 4    |
| 7   | P25301     | Belt, Bx85 Drive                            |                               | 1    |
| 8   | 034904     | Guard, Motor Shaft Lt15e                    |                               | 1    |
| 9   | F05007-7   | Screw, 3/8-16 X 1 Hex Head                  |                               | 2    |
| 10  | F05011-3   | Washer, 3/8 Flat Sae                        |                               | 2    |
| 11  | F05010-10  | Nut, 3/8-16 Hex Nylon Lock                  |                               | 2    |
| 12  | S20097     | Decal, Motor Direction                      |                               | 1    |
| 13  | 036058     | Decal, E10 Electric Motor Wiring            |                               | 1    |

### 3.3 Throttle/Clutch Assembly



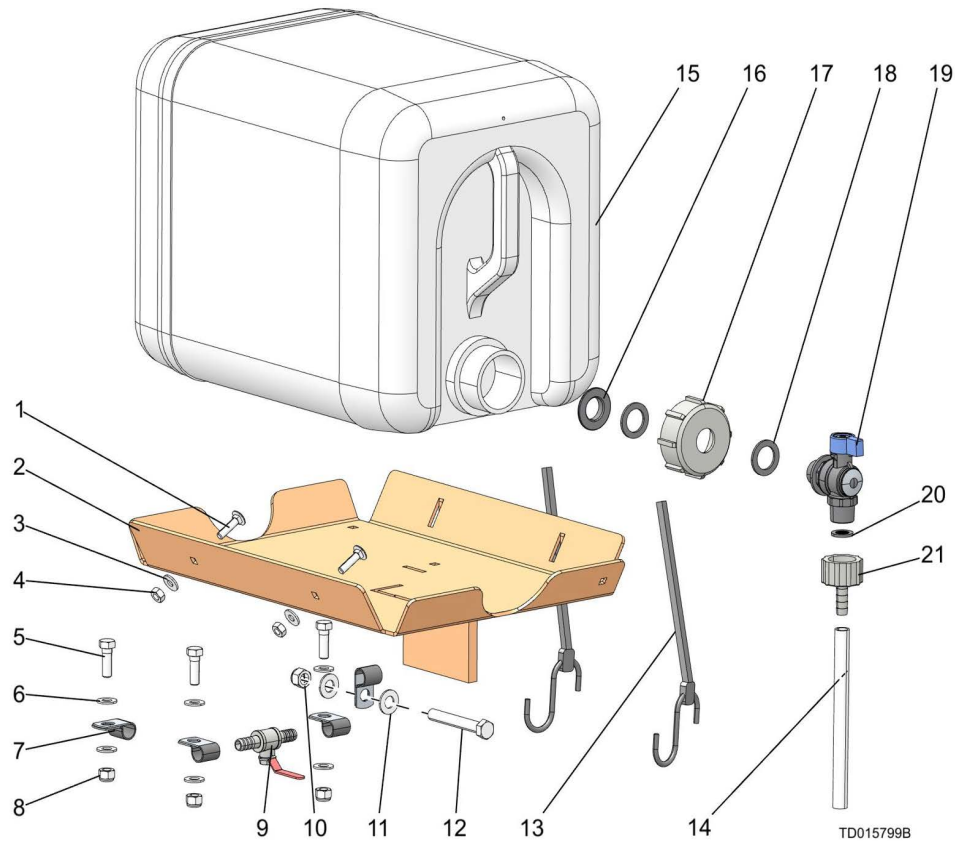
| REF | PART #     | DESCRIPTION  | COMMENTS | QTY. |
|-----|------------|--|----------|------|
| 1   | P04211     | <b>KNOB, 5/8-11 BALL</b>                               |          | 1    |
| 2   | 016487     | <b>HANDLE, LT15 CLUTCH</b>                             |          | 1    |
| 3   | 016486     | <b>BUSHING, 5/8 ID X 7/8 OD X 1 1/8 LONG FL BRONZE</b> |          | 3    |
| 4   | P05035     | <b>COLLAR, 5/8 ID LOCK</b>                             |          | 1    |
| 5   | 065572     | <b>BLOCK WELDMENT, LINKAGE CLUTCH/BRAKE</b>            |          | 1    |
| 6   | F05012-16  | <b>PIN, 3/16 X 1 1/4 ROLL</b>                          |          | 1    |
| 7   | 034605     | <b>LINKAGE ASSEMBLY, W/BEARING</b>                     |          | 1    |
| 8   | F05010-35  | <b>NUT, 1/2-13 FREE HEX, ZINC</b>                      |          | 1    |
| 9   | F05011-9   | <b>WASHER, 1/2 SPLIT LOCK</b>                          |          | 1    |
| 10  | F05010-31  | <b>NUT, 1/2-13 JAM</b>                                 |          | 1    |
| 11  | 034608     | <b>PIVOT WELDMENT, CLUTCH/BRAKE</b>                    |          | 1    |
| 12  | P737       | <b>BUSHING, 1 X 1 1/4 X 3/4 FLANGE BRONZE</b>          |          | 2    |
|     | 065874     | <b>BRAKE/CLUTCH ASSEMBLY, LT15</b>                     |          | 1    |
| 13  | 065873     | Arm Weldment, Clutch/Brake LT15                        |          | 1    |
| 14  | F05007-124 | Bolt, 3/8-16 x 2 Hex Head Gr5                          |          | 1    |
| 15  | F05010-10  | Nut, 3/8-16 Hex Nylon Lock                             |          | 1    |
| 16  | 016488     | Block, LT15 Brake                                      |          | 2    |
| 17  | F05004-2   | Screw, 10-24 x 1 Socket Head                           |          | 4    |
| 18  | F05010-14  | Nut, #10-24 Keps                                       |          | 8    |
| 19  | 034602     | Idler, 4" O.D. x 3/8 Bore                              |          | 1    |

### 3 Replacement Parts

#### Throttle/Clutch Assembly

| REF | PART #     | DESCRIPTION                                    | COMMENTS | QTY. |
|-----|------------|--|----------|------|
| 20  | F05007-230 | Bolt, 3/8-16 x 2-3/4" Hex Head Gr5 Full Thread |          | 1    |
| 21  | F05011-3   | Washer, 3/8 Flat                               |          | 2    |
| 22  | F05010-25  | Nut, 3/8-16 Swaged Lock                        |          | 2    |
| 23  | 034810     | Spring, Idler Arm LT15/D/E/G                   |          | 1    |
| 24  | F05004-282 | Screw, 10-24 x 5/8" FSHC                       |          | 4    |
| 25  | 065872     | Plate, Brake Adjustment                        |          | 2    |
| 26  | F05011-18  | Washer, #10 SAE Flat                           |          | 4    |

### 3.4 Water Lube Assembly



| REF | PART #     | DESCRIPTION                        | COMMENTS                   | QTY.   |
|-----|------------|------------------------------------|----------------------------|--------|
|     | 015799     | <b>WATER LUBE ASSEMBLY</b>         |                            | 1      |
| 1   | F05005-34  | Bolt, 1/4-20 X 1 Carr              |                            | 2      |
| 2   | 015798     | Tray Weldment, Water Bottle LT15   |                            | 1      |
| 3   | F05011-11  | Washer, 1/4 SAE Flat               |                            | 2      |
| 4   | F05010-21  | Nut, 1/4-20 Swaged                 |                            | 2      |
| 5   | F05006-1   | Bolt, 5/16-18x1 HH Gr2             |                            | 3      |
| 6   | F05011-17  | Washer, 5/16 SAE Flat              |                            | 6      |
| 7   | P07584     | Clamp, 1/2EMT Coated               |                            | 4      |
| 8   | F05010-58  | Nut, 5/16-18 Nyl Lock              |                            | 3      |
| 9   | 065635     | Valve, 1/4Turn Ball 3/8 Hose Barbs |                            | 1      |
| 10  | F05010-10  | Nut, 3/8-16 Hex Nyl Lock           |                            | 1      |
| 11  | F05011-3   | Washer, 3/8 Flat SAE               |                            | 2      |
| 12  | F05007-230 | Bolt, 3/8-16x2 3/4 FT Gr5          |                            | 1      |
| 13  | P11668     | Strap, 20 Rubber W/Hooks           |                            | 2      |
| 14  | R01885     | Hose, Water Lube Stock             |                            | 12.83' |
|     | 601615     | <b>Assembly, Water Bottle</b>      |                            | 1      |
| 15  | 513866     | Bottle, Water                      |                            | 1      |
|     |            | Assembly, Cap w/ Valve             |                            |        |
| 16  | 625839     | Nut, Brass 1/2" for Water Bottle   |                            | 1      |
| 17  | 550785     | Cap, Water Bottle                  |                            | 1      |
| 18  | 550780     | O-Ring, 20X30X2                    |                            | 2      |
| 19  | 625845     | Valve                              | Available in assembly only | 1      |
| 20  | 550778     | Gasket, 1/2" w/Strainer            |                            | 1      |
| 21  | 550777     | Fitting, G3/4" X 10mm Hose Barb    |                            | 1      |