

# Wood-Mizer<sup>®</sup> Sawmill

## Parts Manual

---

LT25  
LT27/LT25L

rev. C2.00 - E3.02  
rev. C2.00 - E3.02

---



**Safety is our #1 concern!** Read and understand all safety information and instructions before operating, setting up or maintaining this machine.

*January 1999*

*Form #766*

# Table of Contents

# Section-Page

<b>SECTION 1</b>	<b>GENERAL INFORMATION</b>	<b>1-1</b>
1.1	How To Use The Parts List .....	1-1
1.2	Sample Assembly .....	1-1
<b>SECTION 2</b>	<b>BLADE GUIDE ROLLERS &amp; ARM</b>	<b>2-1</b>
2.1	Blade Guide Assembly, Idle Side..... <i>LT25/LT27 Rev. D8.00 - E3.02</i>	2-1
2.2	Blade Guide Assembly, Idle Side..... <i>LT25/LT27 Rev. C2.00 - D7.01</i>	2-3
2.3	Blade Guide Assembly, Drive Side..... <i>LT25/LT27 Rev. D8.00 - E3.02</i>	2-5
2.4	Blade Guide Assembly, Drive Side..... <i>LT25/LT27 Rev. C2.00 - D7.01</i>	2-7
2.5	Blade Guide Arm.....	2-9
<b>SECTION 3</b>	<b>BLADE WHEELS &amp; TENSIONER</b>	<b>3-1</b>
3.1	Blade Drive Assembly..... <i>LT25/LT27 Rev. D4.00 - E3.02</i>	3-1
3.2	Blade Drive Assembly..... <i>LT25 Rev. C2.00 - D3.00</i>	3-3
3.3	Idle Blade Wheel Assembly .....	3-5
	<i>LT25/LT27 Rev. D4.00 - E3.02</i>	
3.4	Idle Blade Wheel Assembly .....	3-7
	<i>LT25 Rev. C7.00 - D3.00</i>	
3.5	Idle Blade Wheel Assembly .....	3-9
	<i>LT25 Rev. C2.00 - C6.05</i>	
3.6	Hydraulic Blade Tensioner Assembly.....	3-11
<b>SECTION 4</b>	<b>SAW HEAD</b>	<b>4-1</b>
4.1	Middle Throat Screw .....	4-1
4.2	Clutch Lever Assembly .....	4-2
	<i>LT25/LT27 Rev. D2.00 - E3.02</i>	
4.3	Clutch Lever Assembly .....	4-4
	<i>LT25 Rev. C2.00 - D1.01</i>	
4.4	Clutch Mount Assembly.....	4-6
	<i>LT25/LT27 Rev. D2.00 - E3.02</i>	
4.5	Clutch Mount Assembly.....	4-7
	<i>LT25 Rev. C2.00 - D1.01</i>	
4.6	Water Lube Assembly .....	4-1
4.7	Saw Head Decals .....	4-3
4.8	Blade Housing Covers.....	4-4
	<i>LT25/LT27 Rev. C5.00 - E3.02</i>	
4.9	Blade Housing Covers.....	4-6
	<i>LT25 Rev. C2.00 - C4.00</i>	
4.10	Drive Belt Covers .....	4-8
4.11	Sawdust Chute .....	4-9
	<i>LT25/LT27 Rev. C3.00 - E3.02</i>	

<b>Table of Contents</b>	<b>Section-Page</b>
4.12 Sawdust Chute .....	4-10
<i>LT25 Rev. C2.00</i>	
4.13 Battery Box Assembly (G20 Only) .....	4-11
<b>SECTION 5 SAW HEAD MOUNT &amp; SCALES</b>	<b>5-1</b>
5.1 Saw Head Mount .....	5-1
5.2 Blade Height & Quarter Scales .....	5-2
<b>SECTION 6 UP/DOWN SYSTEM</b>	<b>6-1</b>
6.1 Manual Crank Assembly .....	6-1
<i>LT25/LT27 Rev. D6.00 - E3.02</i>	
6.2 Manual Crank Assembly .....	6-3
<i>LT25 Rev. C2.00 - D5.01</i>	
<b>SECTION 7 FEED SYSTEM &amp; TRACK ROLLERS</b>	<b>7-1</b>
7.1 Upper Track Rollers And Wipers.....	7-1
<i>LT25/LT27 Rev. D1.00 - E3.02</i>	
7.2 Upper Track Rollers And Wipers.....	7-3
<i>LT25 Rev. C2.00 - C9.00</i>	
7.3 Manual Feed .....	7-4
7.4 Lower Track Rollers.....	7-6
<i>LT25/LT27 Rev. D6.00 - E3.02</i>	
7.5 Lower Track Rollers.....	7-7
<i>LT25 Rev. C2.00 - D5.01</i>	
<b>SECTION 8 BED FRAME ASSEMBLY</b>	<b>8-1</b>
8.1 Bed Rail Assembly, Front And Rear .....	8-1
8.2 Bed Rail Assembly, Middle Front.....	8-3
8.3 Bed Rail Assembly, Middle Rear.....	8-4
8.4 Leg Assembly (Stationary).....	8-6
8.5 Pivot Bed Rail Assembly.....	8-8
8.6 Log Side Support Assembly .....	8-10
<i>LT25/LT27 Rev. D7.00 - E3.02</i>	
8.7 Log Side Support Assembly .....	8-12
<i>LT25 Rev. C2.00 - D6.00</i>	
8.8 Safety Chain Assembly .....	8-14
8.9 Bed Frame Decals.....	8-15
8.10 Log Clamp .....	8-16
8.11 Log Loading Ramps .....	8-18
<b>SECTION 9 MISCELLANEOUS</b>	<b>9-1</b>
9.1 Replacement Manuals .....	9-1
<b>INDEX</b>	<b>I</b>

## SECTION 1 GENERAL INFORMATION

### 1.1 How To Use The Parts List

- Use the table of contents or index to locate the assembly that contains the part you need.
- Go to the appropriate section and locate the part in the illustration.
- Use the number pointing to the part to locate the correct part number and description in the table.
- Parts shown indented under another part are included with that part.
- Parts marked with a diamond (◆) are only available in the assembly listed above the part.

See the sample table below. Sample Part #A01111 includes part F02222-2 and subassembly A03333. Subassembly A03333 includes part S04444-4 and subassembly K05555. The diamond (◆) indicates that S04444-4 is not available except in subassembly A03333. Subassembly K05555 includes parts M06666 and F07777-77. The diamond (◆) indicates M06666 is not available except in subassembly K05555.

<b>1.2 Sample Assembly</b>				
REF	DESCRIPTION (◆ Indicates Parts Available In Assemblies Only)	PART #	QTY.	
	<b>SAMPLE ASSEMBLY, COMPLETE (INCLUDES ALL INDENTED PARTS BELOW)</b>	A01111	1	
1	Sample Part	F02222-22	1	
	Sample Subassembly (Includes All Indented Parts Below)	A03333	1	
2	Sample Part (◆ Indicates Part Is Only Available With A03333)	S04444-4	1	◆
	Sample Subassembly (Includes All Indented Parts Below)	K05555	1	
3	Sample Part (◆ Indicates Part Is Only Available With K05555)	M06666	2	◆
4	Sample Part	F07777-77	1	

#### To Order Parts:

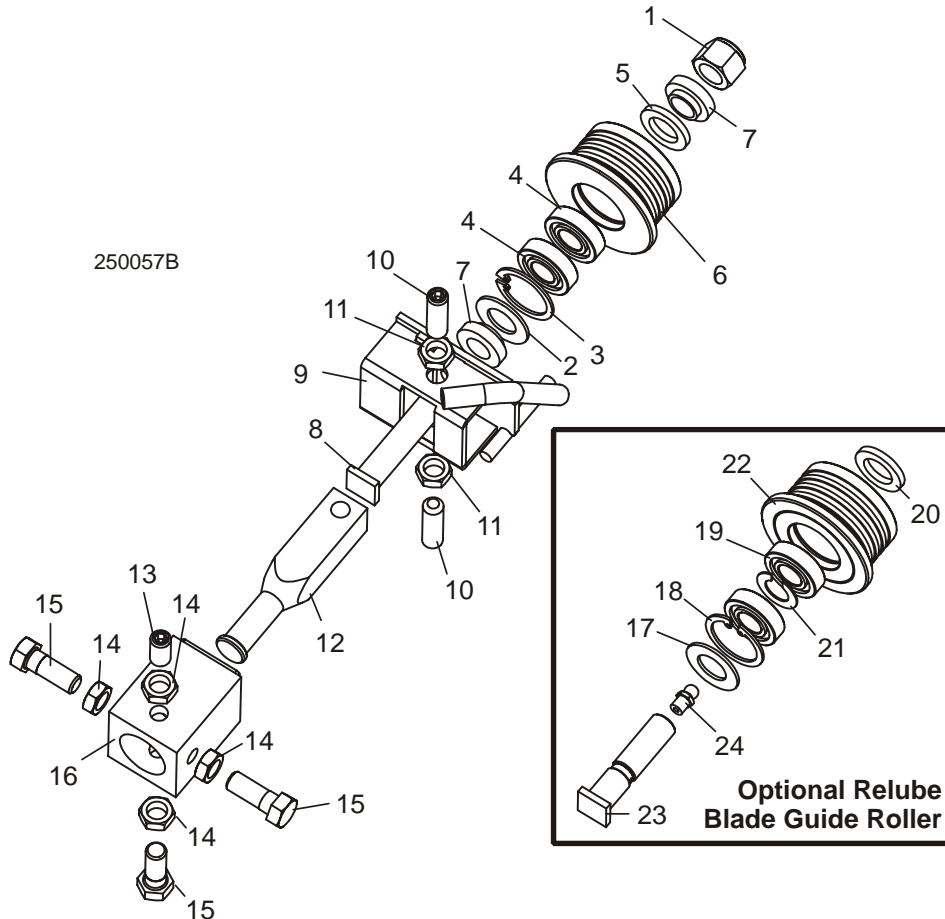
- From the continental U.S., call **1-800-525-8100** to order parts. Have your customer number, vehicle identification number, and part numbers ready when you call.
- From other international locations, contact the Wood-Mizer distributor in your area for parts.

## SECTION 2 BLADE GUIDE ROLLERS & ARM

### 2.1 Blade Guide Assembly, Idle Side

LT25/LT27

Rev. D8.00 - E3.02



REF	DESCRIPTION (◆ Indicates Parts Available In Assemblies Only)	PART #	QTY.
	<b>BLADE GUIDE ASSEMBLY, COMPLETE IDLE SIDE</b>	A08197 <sup>1</sup>	1
1	Nut, 1/2-20 Hex Nylon Lock	F05010-15	1
	Roller Assembly, Blade Guide (standard)	A04925	1
	Bearing Kit, Blade Guide Rebuild	K07079	1
2	Washer, 5/8" White Felt	P04252	1
3	Ring, 1 1/8" Interior Retaining	F04254-1	1
4	Bearing, R8-2RS Blade Guide	015975	2
5	Washer, 5/8" Gray Felt	P06455	1
	Screw, 1/4-28 x 1/4" Socket Head Cup Point Set Black Oxide	F05005-105	1
	Instruction Sheet, Blade Guide Rebuild	057407-1507	1

# 2

## Blade Guide Rollers & Arm

### Blade Guide Assembly, Idle Side

6	Roller, Flanged Blade Guide	S04250	1	◆
	Instruction Sheet, Blade Guide Roller Replacement	A04925-364	1	
7	Spacer, Blade Guide	S04253	2	
8	Bolt, Blade Guide Roller	036373	1	
9	Bracket, Blade Guide Idle Side With Water Tube	W08495	1	
10	Screw, 3/8-24 X 1 1/4" Stainless Steel Socket Head Flat Point	F05007-96	2	
11	Nut, 3/8-24 Jam	F05010-22	2	
12	Shaft, Blade Guide Adjustment	S08196	1	
13	<b>SCREW, 3/8-24 X 3/4" STAINLESS STEEL SOCKET HEAD FLAT POINT</b>	F05007-95	1	
14	<b>NUT, 3/8-24 JAM</b>	F05010-22	4	
15	<b>BOLT, 3/8-24 X 1" STAINLESS STEEL HEX HEAD</b>	F05007-99 <sup>2</sup>	3	
16	<b>TUBE, BLADE GUIDE MOUNT</b> ( <a href="#">See Section 2.5</a> )	W08159	1	
	<b>ROLLER ASSEMBLY, BLADE GUIDE RELUBE (OPTIONAL)</b>	016568	1	
	Bearing Kit, Relube Blade Guide Rebuild	057407	1	
17	Washer, 5/8" White Felt	P04252	1	
18	Ring, 1 1/8" Interior Retaining	F04254-1	1	
19	Bearing, R8-2RS Blade Guide	015975 <sup>3</sup>	2	◆
20	Washer, 5/8" Gray Felt	P06455	1	
21	Spacer, Blade Guide Bearing	035411	1	
	Instruction Sheet, Blade Guide Rebuild	057407-1507	1	
22	Roller, Flanged Blade Guide Relube	035426	1	◆
	Instruction Sheet, Blade Guide Roller Replacement	A04925-364	1	
23	<b>BOLT, BLADE GUIDE ROLLER (RELUBE ONLY)</b>	S08192	1	
24	<b>FITTING, 1/4-28 GREASE (RELUBE ONLY)</b>	P05060	1	

<sup>1</sup> Complete Blade Guide Assembly now supplied with non-greasable sealed bearings. See optional relube parts for greasable blade guide roller parts.

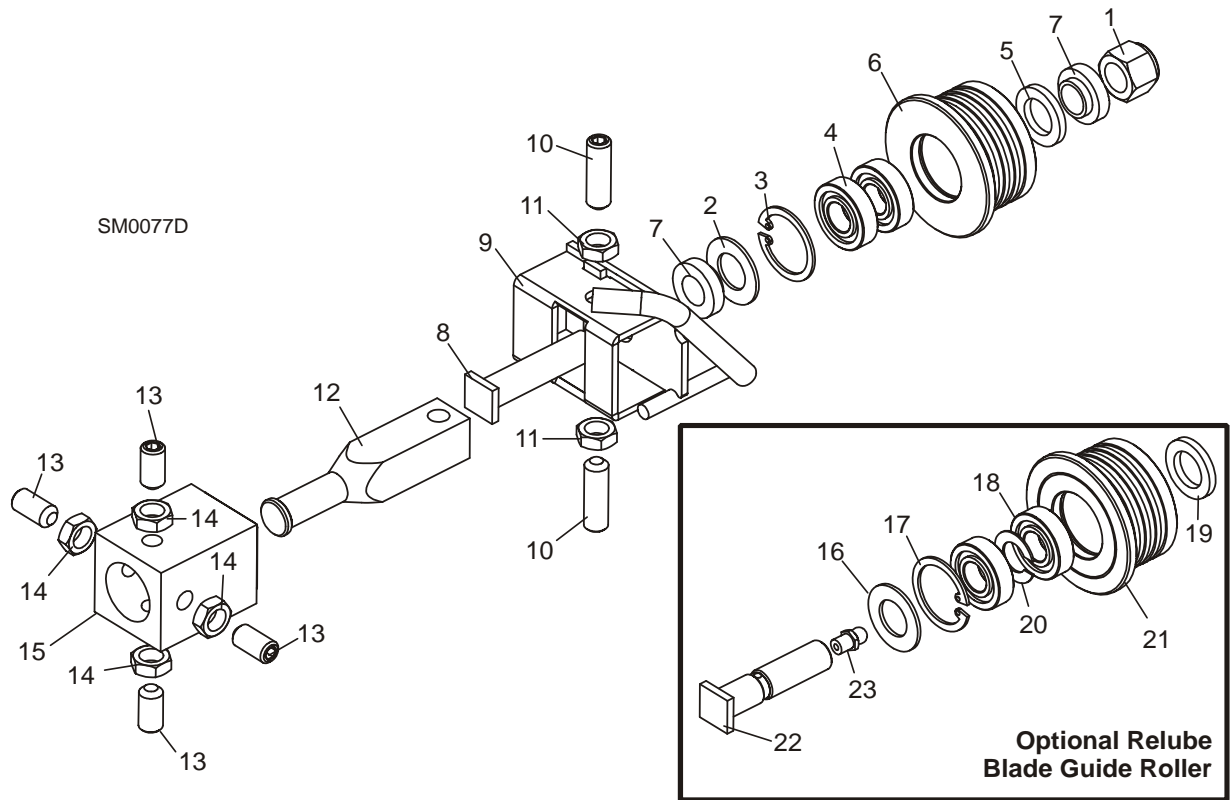
<sup>2</sup> Hex head bolts replace F05007-95 set screws originally supplied prior to Rev. E2.00.

<sup>3</sup> Bearing must be modified for use with relube roller assemblies. Remove one seal from each bearing, place open sides facing each other and place spacer 035411 between bearings.

## 2.2 Blade Guide Assembly, Idle Side

LT25/LT27

Rev. C2.00 - D7.01



REF	DESCRIPTION (◆ Indicates Parts Available In Assemblies Only)	PART #	QTY.	
	<b>BLADE GUIDE ASSEMBLY, COMPLETE IDLE SIDE</b>	A08197 <sup>1</sup>	1	
1	Nut, 1/2-20 Jam Nylon Lock	F05010-79	1	
	Roller Assembly, Blade Guide	A04925	1	
	Bearing Kit, Blade Guide Rebuild	K07079	1	
2	Washer, 5/8" White Felt	P04252	1	
3	Ring, 1 1/8" Interior Retaining	F04254-1	1	
4	Bearing, R8-2RS Blade Guide	015975	2	◆
5	Washer, 5/8" Gray Felt	P06455	1	
	Screw, 1/4-28 x 1/4" Socket Head Cup Point Set Black Oxide	F05005-105	1	
	Instruction Sheet, Blade Guide Rebuild	057407-1507	1	
6	Roller, Flanged Blade Guide	S04250	1	◆
	Instruction Sheet, Blade Guide Roller Replacement	A04925-364	1	
7	Spacer, Blade Guide	S04253	2	
8	Bolt, Blade Guide Roller	036373	1	
9	Bracket, Blade Guide Idle Side With Water Tube	W08495	1	

# 2

## Blade Guide Rollers & Arm

### Blade Guide Assembly, Idle Side

10	Screw, 3/8-24 X 1 1/4" Stainless Steel Socket Head Flat Point	F05007-96	2	
11	Nut, 3/8-24 Jam	F05010-22	2	
12	Shaft, Blade Guide Adjustment	S08196	1	
13	<b>SCREW, 3/8-24 X 3/4" STAINLESS STEEL SOCKET HEAD FLAT POINT</b>	F05007-95	4	
14	<b>NUT, 3/8-24 JAM</b>	F05010-22	4	
15	<b>TUBE, BLADE GUIDE MOUNT</b> ( <a href="#">See Section 2.5</a> )	W08159	1	
	<b>ROLLER ASSEMBLY, BLADE GUIDE RELUBE (OPTIONAL)</b>	016568	1	
	Bearing Kit, Relube Blade Guide Rebuild	057407	1	
16	Washer, 5/8" White Felt	P04252	1	
17	Ring, 1 1/8" Interior Retaining	F04254-1	1	
18	Bearing, R8-2RS Blade Guide	015975 <sup>2</sup>	2	◆
19	Washer, 5/8" Gray Felt	P06455	1	
20	Spacer, Blade Guide Bearing	035411	1	
	Instruction Sheet, Blade Guide Rebuild	057407-1507	1	
21	Roller, Flanged Blade Guide (Relube)	035426	1	◆
	Instruction Sheet, Blade Guide Roller Replacement	A04925-364	1	
22	<b>BOLT, BLADE GUIDE ROLLER (RELUBE ONLY)</b>	S08192	1	
23	<b>FITTING, 1/4-28 GREASE (RELUBE ONLY)</b>	P05060	1	

<sup>1</sup> Complete blade guide assembly A08197 includes roller with non-greaseable bearings A04925. See optional parts for Relube guide assemblies.

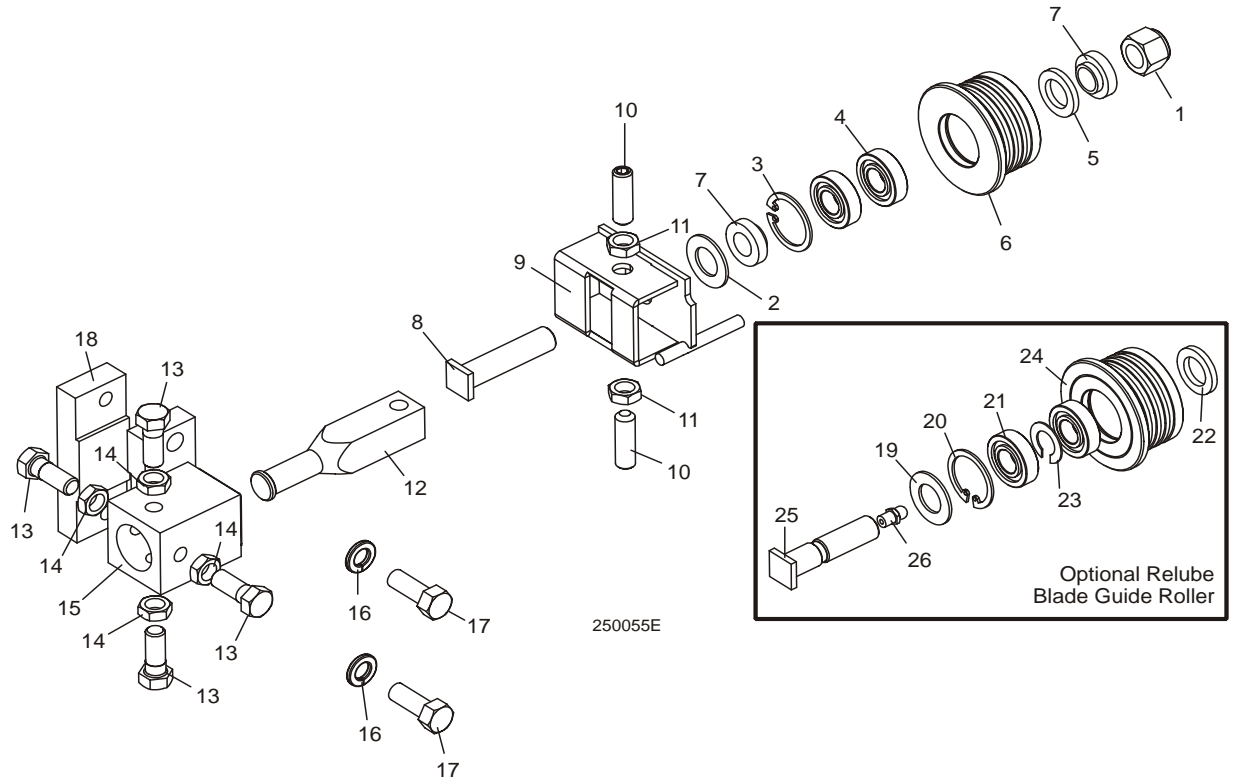
<sup>2</sup> Bearing must be modified for use with relube roller assemblies. Remove one seal from each bearing, place open sides facing each other and place spacer 035411 between bearings.



## 2.3 Blade Guide Assembly, Drive Side

LT25/LT27

Rev. D8.00 - E3.02



REF	DESCRIPTION (◆ Indicates Parts Available In Assemblies Only)	PART #	QTY.
	<b>BLADE GUIDE ASSEMBLY, COMPLETE DRIVE SIDE</b>	A08191 <sup>1</sup>	1
1	Nut, 1/2-20 Hex Nylon Lock	F05010-15	1
	Roller Assembly, Blade Guide (standard)	A04925	1
	Bearing Kit, Blade Guide Rebuild	K07079	1
2	Washer, 5/8" White Felt	P04252	1
3	Ring, 1 1/8" Interior Retaining	F04254-1	1
4	Bearing, R8-2RS Blade Guide	015975	2
5	Washer, 5/8" Gray Felt	P06455	1
	Screw, 1/4-28 x 1/4" Socket Head Cup Point Set Black Oxide	F05005-105	1
	Instruction Sheet, Blade Guide Rebuild	057407-1507	1
6	Roller, Flanged Blade Guide	S04250	1
	Instruction Sheet, Blade Guide Roller Replacement	A04925-364	1
7	Spacer, Blade Guide	S04253	2
8	Bolt, Blade Guide Roller	036373	1
9	Bracket, Blade Guide Drive Side	W08482	1
10	Screw, 3/8-24 X 1 1/4" Stainless Steel Socket Head Flat Point	F05007-96	2

## 2 Blade Guide Rollers & Arm

### Blade Guide Assembly, Drive Side

11	Nut, 3/8-24 Jam	F05010-22	2	
12	Shaft, Blade Guide Adjustment	S08196-W	1	
	<b>BLOCK KIT, DRIVE SIDE BLADE GUIDE BOLT ON</b>	016566	1	
13	Bolt, 3/8-24 X 1" Stainless Steel Hex Head	F05007-99 <sup>2</sup>	4	
14	Nut, 3/8-24 Jam	F05010-22	4	
15	Block Weldment, Drive Side Blade Guide Bolt On	016550	1	
16	Washer, 3/8" Split Lock	F05011-4	2	
17	Bolt, 3/8-16 x 1" Hex Head	F05007-7	2	
18	Block, Bolt On Blade Guide Mount	016548	1	
	<b>ROLLER ASSEMBLY, BLADE GUIDE RELUBE (OPTIONAL)</b>	016568	1	
	Bearing Kit, Relube Blade Guide Rebuild	057407	1	
19	Washer, 5/8" White Felt	P04252	1	
20	Ring, 1 1/8" Interior Retaining	F04254-1	1	
21	Bearing, R8-2RS Blade Guide	015975 <sup>3</sup>	2	◆
22	Washer, 5/8" Gray Felt	P06455	1	
23	Spacer, Blade Guide Bearing	035411	1	
	Instruction Sheet, Blade Guide Rebuild	057407-1507	1	
24	Roller, Flanged Blade Guide Relube	035426	1	◆
	Instruction Sheet, Blade Guide Roller Replacement	A04925-364	1	
25	<b>BOLT, BLADE GUIDE ROLLER (RELUBE ONLY)</b>	S08192	1	
26	<b>FITTING, 1/4-28 GREASE (RELUBE ONLY)</b>	P05060	1	

<sup>1</sup> Complete Blade Guide Assembly now supplied with non-greasable sealed bearings. See optional relube parts for greasable blade guide roller parts.

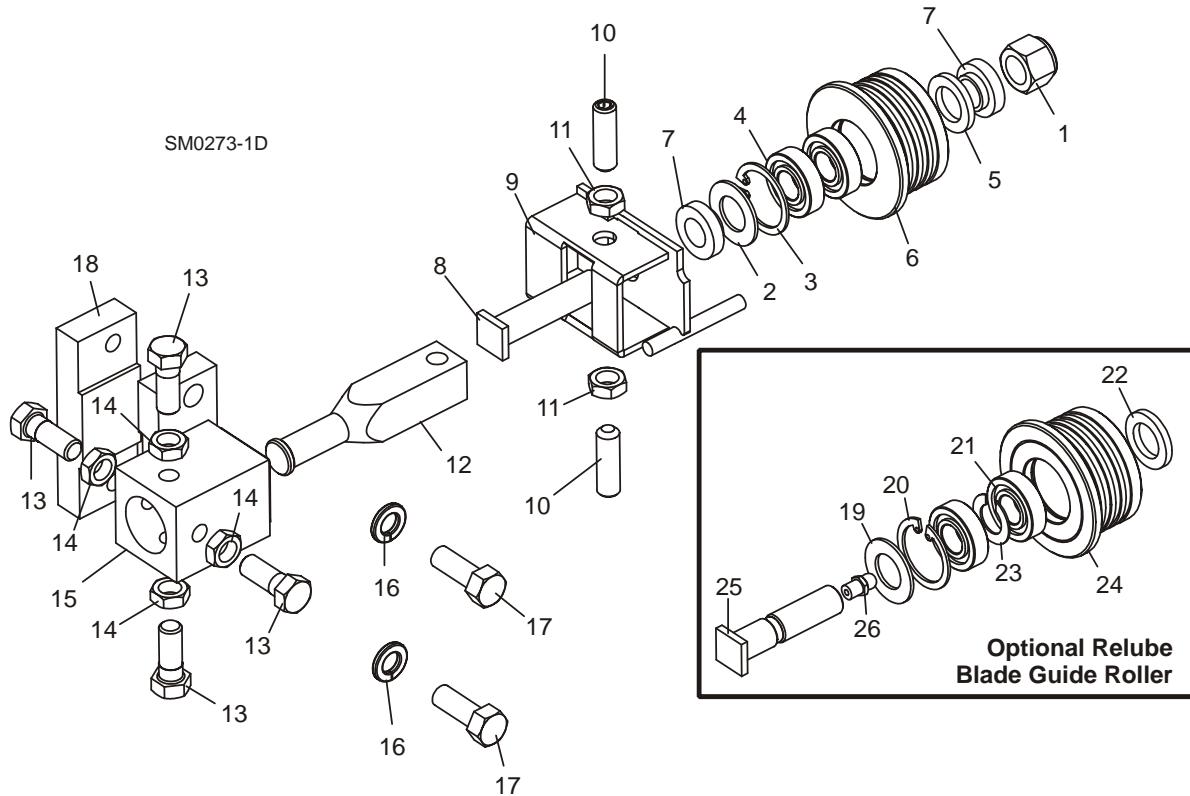
<sup>2</sup> Hex head bolts replace F05007-95 set screws originally supplied prior to Rev. E2.00.

<sup>3</sup> Bearing must be modified for use with relube roller assemblies. Remove one seal from each bearing, place open sides facing each other and place spacer 035411 between bearings.

## 2.4 Blade Guide Assembly, Drive Side

LT25/LT27

Rev. C2.00 - D7.01



REF	DESCRIPTION (◆ Indicates Parts Available In Assemblies Only)	PART #	QTY.
	<b>BLADE GUIDE ASSEMBLY, COMPLETE DRIVE SIDE</b>	A08191 <sup>1</sup>	1
1	Nut, 1/2-20 Hex Nylon Lock	F05010-15	1
	Roller Assembly, Blade Guide	A04925	1
	Bearing Kit, Blade Guide Rebuild	K07079	1
2	Washer, 5/8" White Felt	P04252	1
3	Ring, 1 1/8" Interior Retaining	F04254-1	1
4	Bearing, R8-2RS Blade Guide	015975	2
5	Washer, 5/8" Gray Felt	P06455	1
	Screw, 1/4-28 x 1/4" Socket Head Cup Point Set Black Oxide	F05005-105	1
	Instruction Sheet, Blade Guide Rebuild	057407-1507	1
6	Roller, Flanged Blade Guide	S04250	1
	Instruction Sheet, Blade Guide Roller Replacement	A04925-364	1
7	Spacer, Blade Guide	S04253	2
8	Bolt, Blade Guide Roller	036373	1
9	Bracket, Blade Guide Drive Side	W08482	1
10	Screw, 3/8-24 X 1 1/4" Stainless Steel Socket Head Flat Point	F05007-96	2

## 2 Blade Guide Rollers & Arm

### Blade Guide Assembly, Drive Side

11	Nut, 3/8-24 Jam	F05010-22	2	
12	Shaft, Blade Guide Adjustment	S08196	1	
	<b>BLOCK KIT, DRIVE SIDE BLADE GUIDE BOLT ON</b>	016566 <sup>2</sup>	1	
13	Screw, 3/8-24 X 3/4" Stainless Steel Socket Head Flat Point Set	F05007-99 <sup>3</sup>	4	
14	Nut, 3/8-24 Jam	F05010-22	4	
15	Block Weldment, Drive Side Blade Guide Bolt On	016550	1	
16	Washer, 3/8" Split Lock	F05011-4	2	
17	Bolt, 3/8-16 x 1" Hex Head	F05007-7	2	
18	Block, Bolt On Blade Guide Mount	016548	1	
	<b>ROLLER ASSEMBLY, BLADE GUIDE RELUBE (OPTIONAL)</b>	016568	1	
	Bearing Kit, Relube Blade Guide Rebuild	057407	1	
19	Washer, 5/8" White Felt	P04252	1	
20	Ring, 1 1/8" Interior Retaining	F04254-1	1	
21	Bearing, R8-2RS Blade Guide	015975 <sup>4</sup>	2	◆
22	Washer, 5/8" Gray Felt	P06455	1	
23	Spacer, Blade Guide Bearing	035411	1	
	Instruction Sheet, Blade Guide Rebuild	057407-1507	1	
24	Roller, Flanged Blade Guide (Relube)	035426	1	◆
	Instruction Sheet, Blade Guide Roller Replacement	A04925-364	1	
25	<b>BOLT, BLADE GUIDE ROLLER (RELUBE ONLY)</b>	S08192	1	
26	<b>FITTING, 1/4-28 GREASE (RELUBE ONLY)</b>	P05060	1	

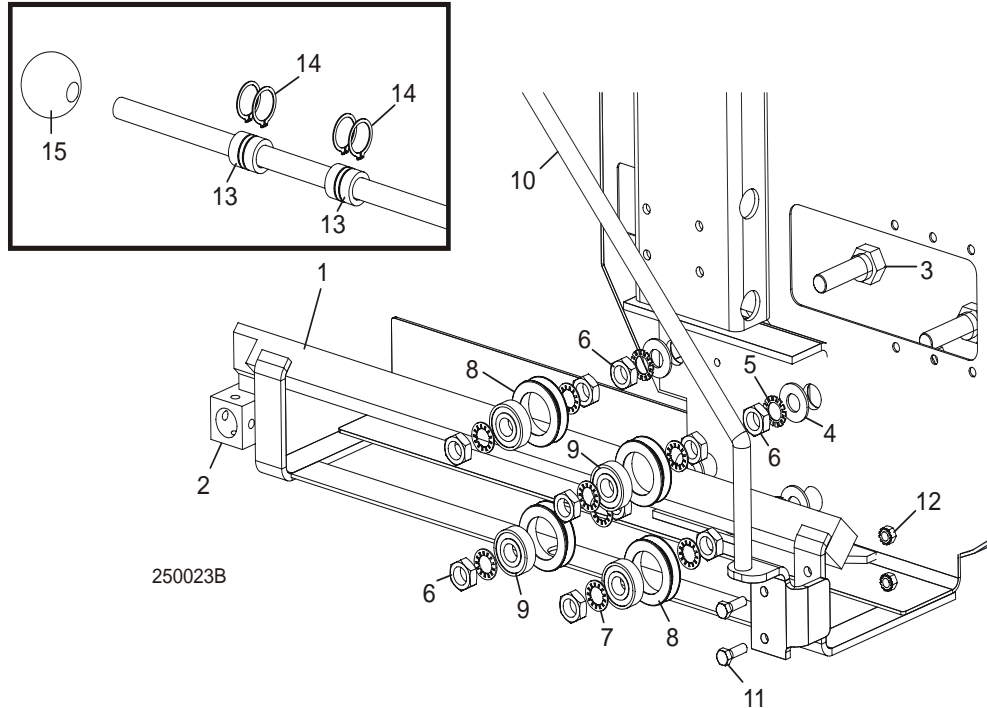
<sup>1</sup> Complete blade guide assembly A08191 includes roller with non-greaseable bearings A04925. See optional parts for Relube guide assemblies.

<sup>2</sup> Bolt-On blade guide block replaces block welded to saw frame prior to Rev. D7.00. Bolt-On block is easier to replace when necessary. Previous revisions can be retrofitted (requires kit 016566).

<sup>3</sup> Hex head bolts replace F05007-95 set screws originally supplied.

<sup>4</sup> Bearing must be modified for use with relube roller assemblies. Remove one seal from each bearing, place open sides facing each other and place spacer 035411 between bearings.

## 2.5 Blade Guide Arm



250023B

REF	DESCRIPTION (◆ Indicates Parts Available In Assemblies Only)	PART #	QTY.	
1	<b>BLADE GUIDE ARM WELDMENT</b>	W12428	1	
2	Tube, Blade Guide Mount	W08159	1	
3	<b>BOLT, BLADE GUIDE ARM ROLLER CAM</b>	W09067	4	
4	<b>WASHER, 5/8" SAE FLAT</b>	F05011-5	4	
5	<b>WASHER, 5/8" EXTERNAL STAR</b>	F05011-26	4	
6	<b>NUT, 5/8-18 HEX JAM</b>	F05010-11	12	
7	<b>WASHER, 5/8" INTERNAL STAR</b>	F05011-25	8	
	<b>ROLLER ASSEMBLY, BLADE GUIDE ARM WITH BEARING</b>	A09059 <sup>1</sup>	4	
8	Roller, Blade Guide Arm V-Groove	S07989	1	◆
9	Bearing, 6203-2NSL 5/8" I.D.	P06030-1	1	◆
	Ring, 1.575" ID Beveled 5002-156 Retaining	F04254-8 <sup>1</sup>	1	
10	<b>HANDLE, LT25/LT27 BLADE GUIDE ARM ADJUSTMENT</b>	W12433	1	
11	<b>BOLT, 5/16-18 X 1" HEX HEAD GRADE 2</b>	F05006-1	2	
12	<b>NUT, 5/16-18 HEX SELF LOCKING</b>	F05010-20	2	
13	<b>BEARING, BLADE GUIDE ARM SLIDE</b>	S12436	2	
14	<b>RING, 1" EXTERNAL RETAINING</b>	F04254-15	4	
15	<b>KNOB, PLASTIC ROUND</b>	P04211	1	

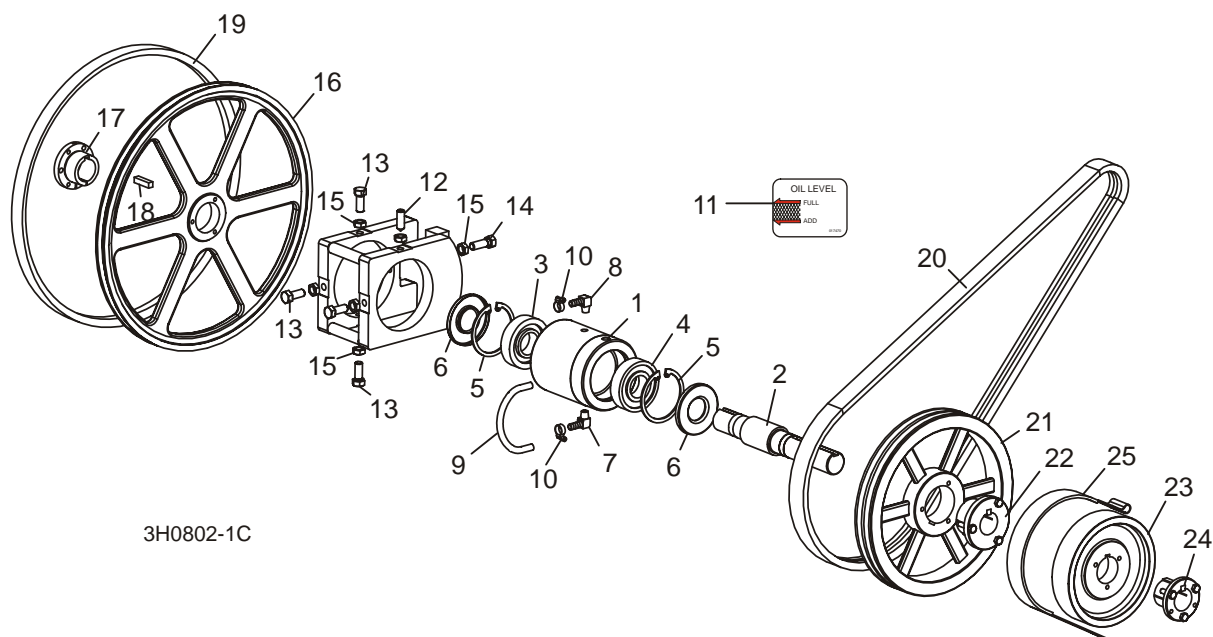
<sup>1</sup> Roller assembly changed to bearing secured with retaining ring to insure proper fit. Directly interchangeable with all previous rollers supplied prior to 2/00.

## SECTION 3 BLADE WHEELS & TENSIONER

### 3.1 Blade Drive Assembly

LT25/LT27

Rev. D4.00 - E3.02



3H0802-1C

REF	DESCRIPTION (◆ Indicates Parts Available In Assemblies Only)	PART #	QTY.	
	<b>BEARING ASSEMBLY, BLADE WHEEL DRIVE</b>	016393	1	
	Bearing Assembly, Cylindrical Drive	016392	1	◆
1	Housing, Blade Wheel Drive Bearing	016391	1	◆
2	Shaft, Blade Wheel Drive	014005	1	◆
3	Bearing, Blade Wheel Drive #MU1308TV	P10205	1	◆
4	Bearing, Blade Wheel Drive #6308 C3 Open	016055	1	◆
5	Ring, 90mm Interior Retaining #117	F04254-17	2	
6	Seal, Drive Bearing #CR15890	P10206-K	2	
7	Fitting, 1/4" NPT x 3/8" Hose Barb Elbow	016330	1	
8	Fitting, 1/4" NPT x 3/8" Hose Barb Vented Elbow	016331	1	
9	Hose, Oil Level Viewer	016394	1	
10	Clamp, 7/32-5/8" Hose	P649	2	
11	Decal, Oil Level Gauge	017470	1	
	Instruction Sheet, Drive Bearing Replacement	016393-555	1	
12	<b>SCREW, 1/2-20 X 1 1/2" CONE POINT SET</b>	F05004-170	1	
13	<b>BOLT, 1/2-20 X 1 1/4" HEX HEAD GRADE 5</b>	F05008-108 <sup>1</sup>	4	
14	<b>BOLT, 1/2-20 X 1 3/4" HEX HEAD GRADE 5</b>	F05008-49 <sup>2</sup>	1	

<b>15</b>	<b>NUT, 1/2-20 HEX JAM</b>	F05010-16	6	
	<b>WHEEL KIT, DRIVE SIDE BLADE</b>	014562	1	
<b>16</b>	Wheel, Drive Side Blade	016284	1	◆
<b>17</b>	Bushing, Modified 1 9/16" SD	016270	1	
<b>18</b>	Key, 3/8" x 3/8" x 1 5/8"	S12892	1	
	Instruction Sheet, Drive Side Blade Wheel Replacement	K12987-488	1	
<b>19</b>	<b>BELT, BLADE WHEEL B57</b>	P04185	1	
<b>20</b>	<b>BELT, 2BXF71 DRIVE (G15E/G18/G20)</b>	036163 <sup>3</sup>	1	
	<b>BELT, 2BX72 DRIVE (G15 MANUAL START REV. C2 - D5)</b>	P09555-2	1	
	<b>PULLEY KIT, 2B124SK DRIVE</b>	014692	1	
<b>21</b>	Pulley, 2B124SK Drive	014689	1	◆
<b>22</b>	Bushing, 1 9/16" Type 'SK'	014690	1	
	Key, 3/8" x 3/8" x 1 7/8"	014693	1	
<b>23</b>	<b>WHEEL, BRAKE</b>	014000	1	
<b>24</b>	<b>BUSHING, 1 9/16" P1</b>	014003	1	
<b>25</b>	<b>STRAP, METAL-BACKED BRAKE</b>	014391	1	

<sup>1</sup> Five 1/2-20 x 1 1/4" Hex Head Bolts replace four 1/2-20 x 1 1/4" Set Screws (F05008-109) and one 1/2-20 x 1 1/2" Hex Head Bolt (F05008-53) supplied prior to LT25 Rev. D6.00.

<sup>2</sup> Replaces F05008-108 1/2-20 x 1 1/4" Hex Head Grade 5 Bolt supplied prior to LT25 Rev. D9.00. Longer bolt improves thread engagement for adjustment.

<sup>3</sup> 036163 Kevlar 2BXF71 belt replaces P12949 2BX71 belt supplied prior to 9/03. Kevlar belt reduces stretch and provides greater range of adjustment.

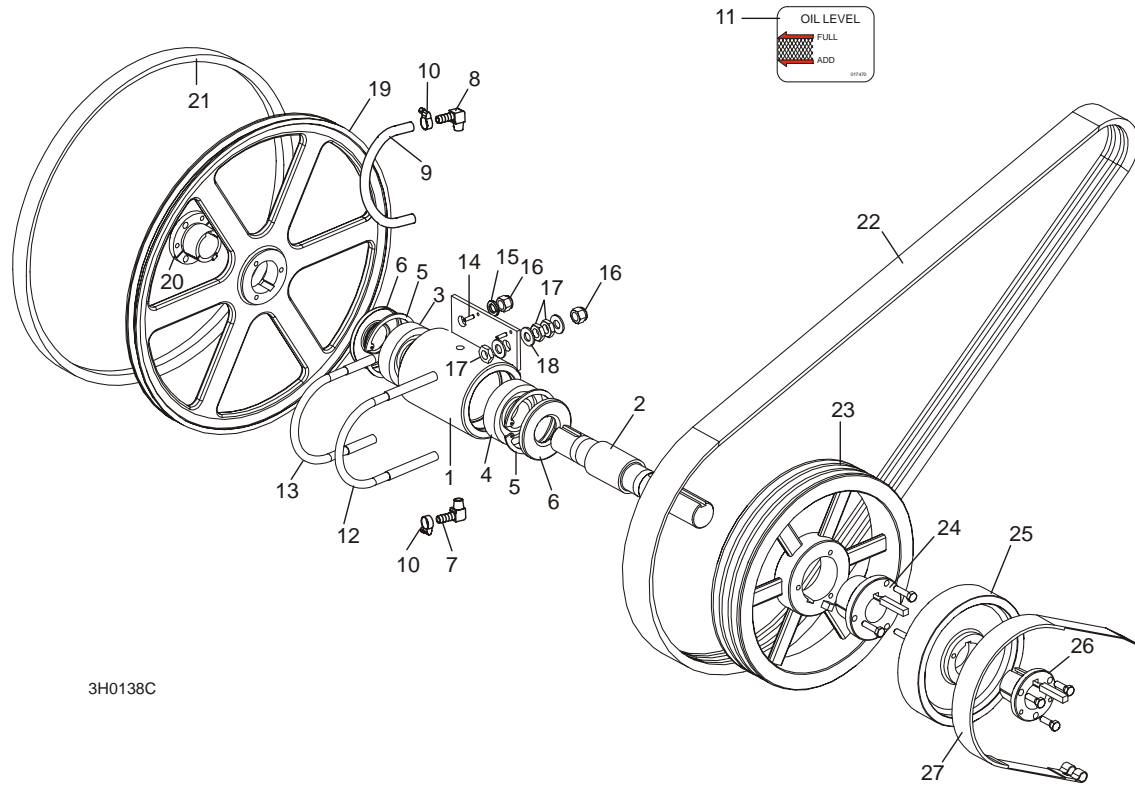
# 3 Blade Wheel & Tensioner

## Blade Drive Assembly

### 3.2 Blade Drive Assembly

LT25

Rev. C2.00 - D3.00



3H0138C

REF	DESCRIPTION (◆ Indicates Parts Available In Assemblies Only)	PART #	QTY.	
	<b>BEARING ASSEMBLY, BLADE WHEEL DRIVE</b>	014561	1	
	Bearing Assembly, Drive	014560	1	◆
1	Housing, Blade Wheel Drive Bearing	W10201	1	◆
2	Shaft, Blade Wheel Drive	014005	1	◆
3	Bearing, Blade Wheel Drive #MU1308TV	P10205	1	◆
4	Bearing, Blade Wheel Drive #6308 C3 Open	016055 <sup>1</sup>	1	◆
5	Ring, 90mm Interior Retaining #117	F04254-17	2	
6	Seal, Drive Bearing #CR15890	P10206-K	2	
7	Fitting, 1/4" NPT x 3/8" Hose Barb Elbow	016330 <sup>2</sup>	1	
8	Fitting, 1/4" NPT x 3/8" Hose Barb Vented Elbow	016331 <sup>2</sup>	1	
9	Hose, Oil Level Viewer	016337 <sup>2</sup>	1	
10	Clamp, 7/32-5/8" Hose	P649 <sup>2</sup>	2	
11	Decal, Oil Level Gauge	017470 <sup>2</sup>	1	
12	Bolt, 1/2-13 Long U	S10207-1	1	
13	Bolt, 1/2-13 Short U	S10207-2	1	



14	Pin, 3/16" X 5/8" Roll	F05012-22	2	
15	Washer, 1/2" Split Lock	F05011-9	2	
16	Nut, 1/2-13 Hex Nylon Lock	F05010-8	4	
17	Nut, 1/2-13 Hex Jam	F05010-31	6	
18	Washer, 1/2" SAE Flat	F05011-2	6	
	Instruction Sheet, Bearing Retrofit	K10200-275	1	
	<b>PLATE, DRIVE BEARING MOUNT</b>	016116	1	
	<b>BAR, BEARING PLATE BRACE</b>	016113	1	
	<b>BLOCK, BEARING PLATE BRACE</b>	016112	1	
	<b>SCREW, 1/2-20 X 2 1/2" SQUARE HEAD FULL THREAD SET</b>	F05008-110	1	
	<b>WHEEL KIT, DRIVE SIDE BLADE</b>	014562 <sup>3</sup>	1	
19	Wheel, Drive Side Blade	016284 <sup>3</sup>	1	◆
20	Bushing, Modified 1 9/16" SD	016270 <sup>3</sup>	1	
	Key, 3/8" x 3/8" x 1 5/8"	S12892 <sup>3</sup>	1	
	Instruction Sheet, Drive Side Blade Wheel Replacement	K12987-488	1	
21	<b>BELT, BLADE WHEEL B57</b>	P04185	1	
22	<b>BELT, 2BX72 DRIVE (G15)</b>	P09555-2	1	
	<b>BELT, BX72 DRIVE (G11<sup>4</sup>)</b>	P09555	1	
	<b>PULLEY KIT, 2B124SK DRIVE (G15)</b>	014692 <sup>5</sup>	1	
	<b>PULLEY KIT, 1B5V124 DRIVE (G11<sup>4</sup>)</b>	N/A	1	◆
23	Pulley, 2B124SK Drive (G15)	014689	1	◆
	Pulley, 1B5V124 Drive (G11)	014544	1	
24	Bushing, 1 9/16" Type 'SK' (G15)	014690	1	
	Bushing, 1 9/16" Type 'B' (G11)	014002	1	
	Key, 3/8" x 3/8" x 1 7/8" (G15)	014693	1	
	Key, 3/8" x 3/8" x 1 5/8" (G11)	S12892	1	
25	<b>BUSHING, 1 9/16" SPLIT TAPER "B"</b>	014002	1	
26	<b>WHEEL, BRAKE</b>	014000	1	
27	<b>BUSHING, 1 9/16" SPLIT TAPER "P1"</b>	014003	1	
28	<b>STRAP, METAL-BACKED BRAKE</b>	014391	1	

<sup>1</sup> Replaces P10205 Blade Wheel Drive Bearing #MU1308TV 6/98.

<sup>2</sup> Oil level viewer added 6/99 (LT25 rev. D2.00). New fittings replace P05498 1/4" NPT Pipe Plug and P12868 1/4" NPT Vented Pipe Plug supplied prior to 6/99 (and P11757 1/4" NPT Square Head Pipe Plug supplied prior to 12/98).

<sup>3</sup> SD type wheel and bushing replace P1 style wheel (P12891) and bushing (014098) originally supplied before LT25 Rev. D1.00 to reduce wheel wobble. Use P1 bushing 014098 for original wheel.

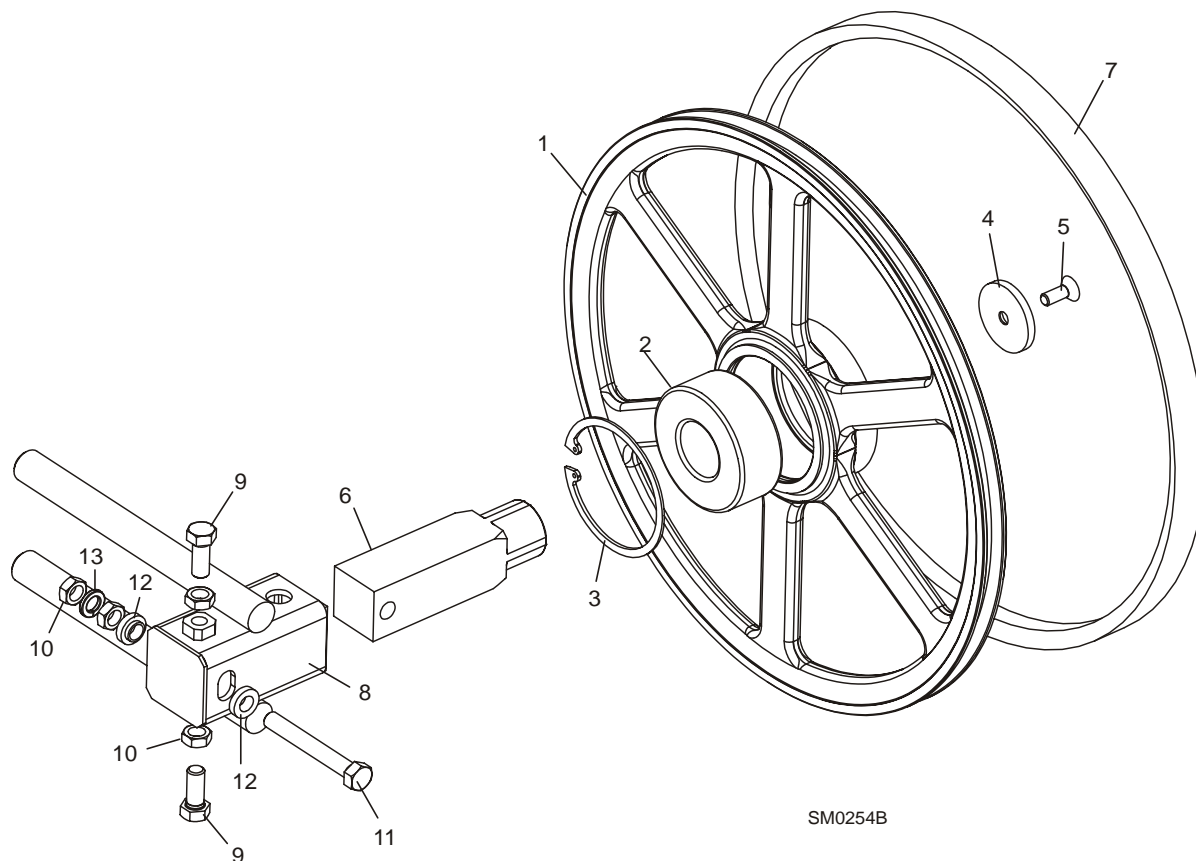
<sup>4</sup> G11 engine option available for mills prior to LT25 rev. C5.01 only.

<sup>5</sup> 014692 Drive Pulley Kit replaces 014416 Pulley, 014002 Bushing, and S12892 Key originally supplied before Rev. D3.00.

### 3.3 Idle Blade Wheel Assembly

LT25/LT27

Rev. D4.00 - E3.02



REF	DESCRIPTION (◆ Indicates Parts Available In Assemblies Only)	PART #	QTY.	
	<b>WHEEL ASSEMBLY, IDLE SIDE BLADE</b>	016120	1	
1	Wheel, Idle Side Blade	016013	1	◆
2	Bearing, Idle Side Blade Wheel #5309-2RS, C3, SRI-2 Grease	016014	1	
3	Ring, 100mm Internal Retaining Beveled	F04254-28	1	
	<b>SHAFT KIT, IDLE BLADE WHEEL</b>	016441 <sup>1</sup>	1	
4	Washer, 13/32" I.D. x 2 3/16 O.D. x 1/4"	016397	1	
5	Bolt, 3/8-16 x 1" Flat Head Socket	F05007-64	1	
6	Shaft, Idle Side Blade Wheel	016398	1	
7	<b>BELT, BLADE WHEEL B57</b>	P04185	1	
8	<b>HOUSING, IDLE BLADE WHEEL SHAFT</b>	016103	1	
9	<b>SCREW, 1/2-20 X 1 1/4" HEX HEAD GRADE 5</b>	F05008-108 <sup>2</sup>	2	
10	<b>NUT, 1/2-20 HEX JAM</b>	F05010-16	4	
11	<b>BOLT, 1/2-20 X 3 3/4" HEX HEAD FULL THREAD GRADE 2</b>	F05008-111	1	
12	<b>SPACER, 1/2" I.D. FLANGED</b>	S04253	2	

**Blade Wheels & Tensioner**  
*Idle Blade Wheel Assembly*

**3**

---

<b>13</b>	<b>WASHER, 1/2" SPLIT LOCK</b>	F05011-9	1	
-----------	--------------------------------	----------	---	--

<sup>1</sup> Shaft Kit 016441 includes new shaft and 3/8" hardware (replaces 016092 with 5/16" hardware previously supplied).

<sup>2</sup> Replaces 1/2-20 x 1 1/4" Flat Point Set Screw (F05008-109) supplied prior to LT25 Rev. D6.00.

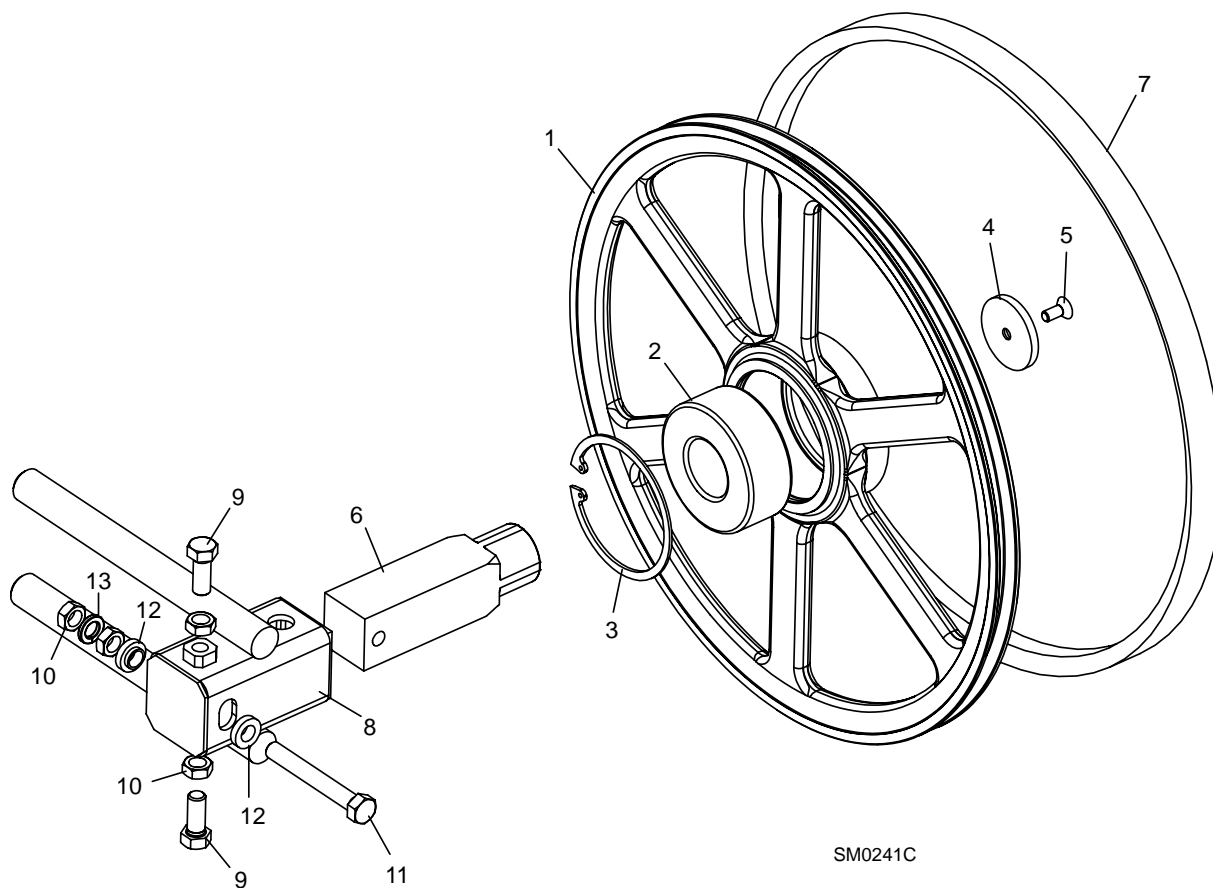
# 3 Blade Wheels & Tensioner

## Idle Blade Wheel Assembly

### 3.4 Idle Blade Wheel Assembly

LT25

Rev. C7.00 - D3.00



REF	DESCRIPTION (◆ Indicates Parts Available In Assemblies Only)	PART #	QTY.	
	<b>WHEEL ASSEMBLY, IDLE SIDE BLADE</b>	016120 <sup>1</sup>	1	
1	Wheel, Idle Side Blade	016013	1	◆
2	Bearing, Idle Side Blade Wheel #5309-2RS, C3, SRI-2 Grease	016014 <sup>1</sup>	1	
3	Ring, 100mm Internal Retaining Beveled	F04254-28 <sup>1</sup>	1	
4	WASHER, 2 3/16 X 1/4"	016095 <sup>1</sup>	1	
5	BOLT, 5/16-18 X 3/4" FLAT HEAD SOCKET	F05006-95 <sup>1</sup>	1	
6	SHAFT, IDLE SIDE BLADE WHEEL	016092 <sup>2</sup>	1	◆
7	BELT, BLADE WHEEL B57	P04185	1	
8	HOUSING, IDLE BLADE WHEEL SHAFT	016103	1	
9	SCREW, 1/2-20 X 1 1/4" HEX HEAD GRADE 5	F05008-108 <sup>3</sup>	2	
10	NUT, 1/2-20 HEX JAM	F05010-16	4	
11	BOLT, 1/2-20 X 3 3/4" HEX HEAD FULL THREAD GRADE 2	F05008-111	1	

# Blade Wheels & Tensioner

## Idle Blade Wheel Assembly

3

12	SPACER, 1/2" I.D. FLANGED	S04253	2	
13	WASHER, 1/2" SPLIT LOCK	F05011-9	1	

<sup>1</sup> Blade Wheel Assembly 016120, Idle Shaft 016092, Retaining Washer 016095, Shaft Housing Weldment 016103, and Socket Head Bolt F05006-95 new on LT25 Rev. C7.00. Use Wheel Assembly Upgrade Kit 016189 with Retrofit Shaft 016180 for previous revisions ([See Section 3.5](#)).

<sup>2</sup> Use Kit 016441 to replace shaft 016092. Kit includes new shaft and 3/8" mounting hardware ([See Section 3.3](#)).

<sup>3</sup> Replaces 1/2-20 x 1 1/4" Flat Point Set Screw (F05008-109) originally supplied.

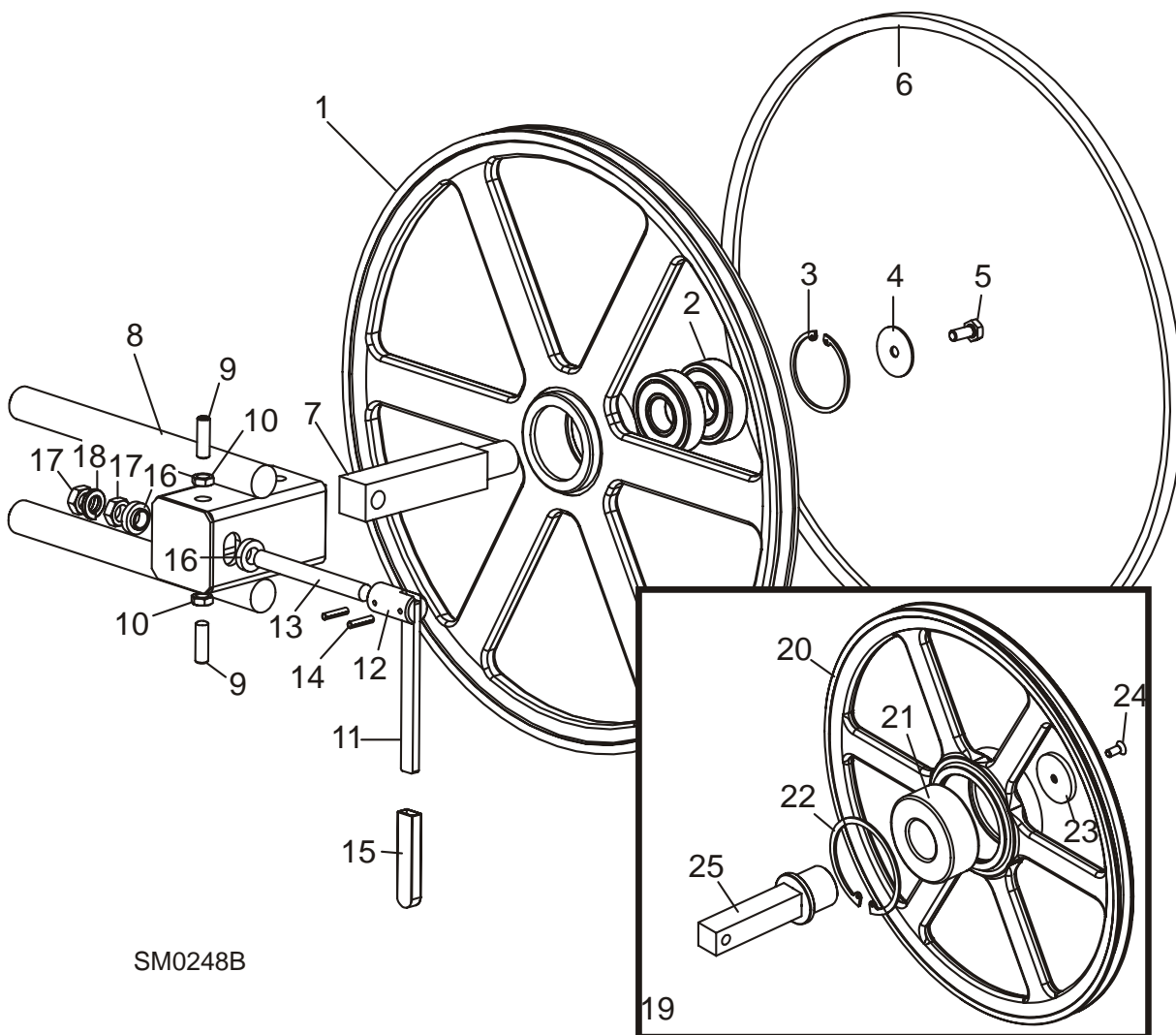
# 3 Blade Wheels & Tensioner

## Idle Blade Wheel Assembly

### 3.5 Idle Blade Wheel Assembly

LT25

Rev. C2.00 - C6.05



SM0248B

REF	DESCRIPTION (◆ Indicates Parts Available In Assemblies Only)	PART #	QTY.	
	<b>WHEEL ASSEMBLY, IDLE SIDE BLADE</b>	A08218 <sup>1</sup>	1	
1	Wheel, Idle Side Blade	P08125	1	◆
2	Bearing, Idle Side Blade Wheel #6305-AA, C3, ABEC-1, SRI-2 Grease	P08066 <sup>1</sup>	2	
3	Ring, 2 7/16" Internal Retaining	F04254-21 <sup>1</sup>	1	
4	<b>WASHER, IDLE BLADE WHEEL RETAINER</b>	S08220 <sup>1</sup>	1	
5	<b>BOLT, 5/16-18 X 3/4" HEX HEAD</b>	F05006-5 <sup>1</sup>	1	
6	<b>BELT, BLADE WHEEL B57</b>	P04185	1	
7	<b>SHAFT, IDLE BLADE WHEEL</b>	S12565 <sup>1</sup>	1	

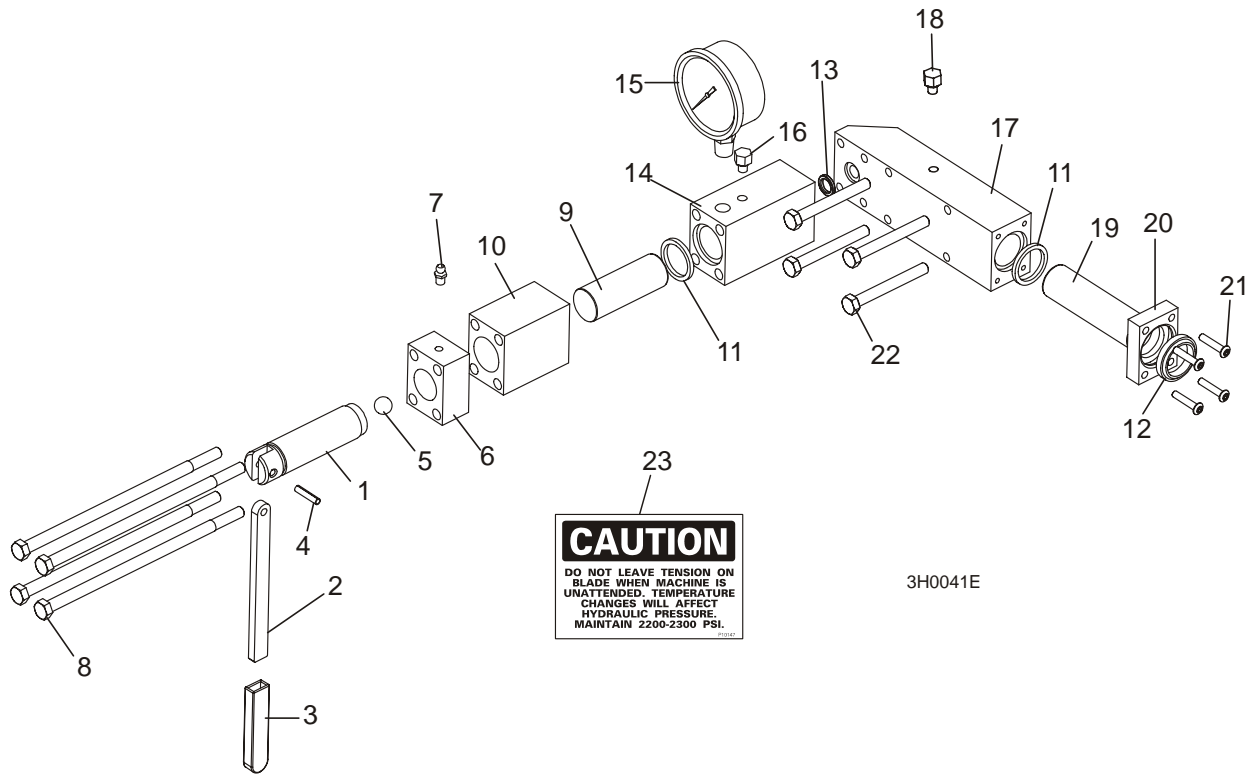
8	<b>HOUSING, IDLE BLADE WHEEL SHAFT</b>	W10157	1	
9	<b>SCREW, 3/8-16 X 1 1/4" SOCKET HEAD OVAL POINT</b>	F05007-18	2	
10	<b>NUT, 3/8-16 HEX JAM</b>	F05010-29	2	
	<b>HANDLE ASSEMBLY, IDLE SIDE PULLEY TILT</b>	A09357	1	
11	Handle, Tilt Adjustment Screw	S08174	1	◆
12	Driver, Tilt Adjustment Screw	S09405	1	◆
13	Rod, Threaded Tilt Adjustment Screw	S09358	1	◆
14	Pin, 3/16" x 7/8" Roll	F05012-19	2	
15	<b>SLEEVE, PLASTIC HANDLE</b>	P08072	1	
16	<b>SPACER, 1/2" I.D. FLANGED</b>	S04253	2	
17	<b>NUT, 1/2-20 HEX JAM</b>	F05010-16	2	
18	<b>WASHER, 1/2" SPLIT LOCK</b>	F05011-9	1	
19	<b>WHEEL KIT, IDLE SIDE BLADE UPGRADE</b>	016189 <sup>1</sup>	1	
	Wheel Assembly, Idle Side Blade	016120	1	
20	Wheel, Idle Side Blade	016013	1	◆
21	Bearing, Idle Side Blade Wheel #5309-2RS, C3, SRI-2 Grease	016014	1	
22	Ring, 100mm Internal Retaining Beveled	F04254-28	1	
23	Washer, 2 3/16 x 1/4"	016095	1	
24	Bolt, 5/16-18 X 3/4" Flat Head Socket	F05006-95	1	
25	Shaft, Idle Side Blade Wheel Retrofit	016180	1	

<sup>1</sup> Upgrade kit 016189 including blade wheel with larger diameter bearing and retrofit shaft 016180 available. [See Item #19](#) for upgrade parts.

# 3 Blade Wheels & Tensioner

## Hydraulic Blade Tensioner Assembly

### 3.6 Hydraulic Blade Tensioner Assembly



REF	DESCRIPTION (◆ Indicates Parts Available In Assemblies Only)	PART #	QTY.	
	<b>HYDRAULIC BLADE TENSIONER ASSEMBLY</b>	A10136	1	
	Handle Assembly, Hydraulic Blade Tensioner Screw	A12294	1	
1	Screw, Hydraulic Blade Tensioner	S10056	1	◆
2	Handle, Hydraulic Tensioner Screw	S08174	1	
3	Sleeve, Plastic Handle	P08072	1	
4	Pin, 3/16" x 7/8" Roll	F05012-19	1	
5	Ball, 1/2" Steel	P02720	1	
6	Block, Threaded Tensioner End	S10062	1	◆
7	Fitting, 1/4-28 Grease	P05060	1	
	Instruction Sheet, Tensioner Screw	A12294-518	1	
8	Bolt, 5/16-18 X 7 1/2" Hex Head Grade 5	F05006-43	4	
9	Piston, Hydraulic Tensioner Front 2 3/4" Long	S10060	1	
10	Block, Piston Guide	S10061	1	
	Seal Kit, Hydraulic Tensioner	003224	1	
11	Seal, 1" Diameter	P10051	2	
12	Wiper, 1" Diameter	P10053	1	
13	Ring, 5/8" X 3/32" Square "O"	P10377	1	



## Blade Wheels & Tensioner

### *Hydraulic Blade Tensioner Assembly*

3

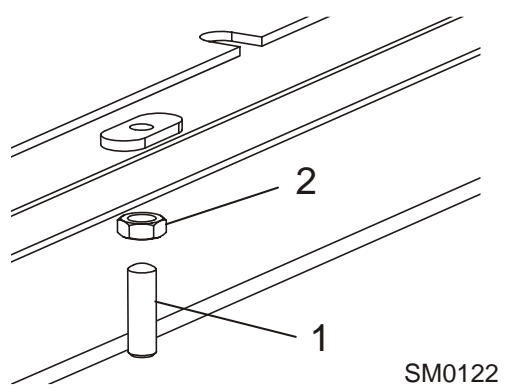
<b>14</b>	Block, Hydraulic Tensioner Gauge Mounting	S10140	1	
<b>15</b>	Gauge, 5000 P.S.I.	P10052	1	
<b>16</b>	Plug, Hydraulic Tensioner Fill	P10065	1	
	Block Assembly, Rear Tensioner Piston	016329	1	
<b>17</b>	Block, Rear Tensioner Piston	S10142 <sup>1</sup>	1	◆
<b>18</b>	Plug, Hydraulic Tensioner Fill	P10065	1	
<b>19</b>	Piston, Hydraulic Tensioner Rear 3 5/8" Long	S10059	1	
<b>20</b>	Block, Rear Piston End	S10089	1	
<b>21</b>	Bolt, #10-24 X 1" Socket Button Head	F05004-43	4	
<b>22</b>	Bolt, 5/16-18 X 2 3/4" Hex Head Grade 5	F05006-28	4	
<b>23</b>	Decal, Hydraulic Tension Caution	P10147	1	
	Instruction Sheet, Hydraulic Tensioner Installation	A10136-272	1	

<sup>1</sup> Plug added to S10142 Rear Tensioner Piston Block 6/99 (LT25 rev. D2.00).

**4** Saw Head  
*Middle Throat Screw*

**SECTION 4 SAW HEAD**

**4.1 Middle Throat Screw**

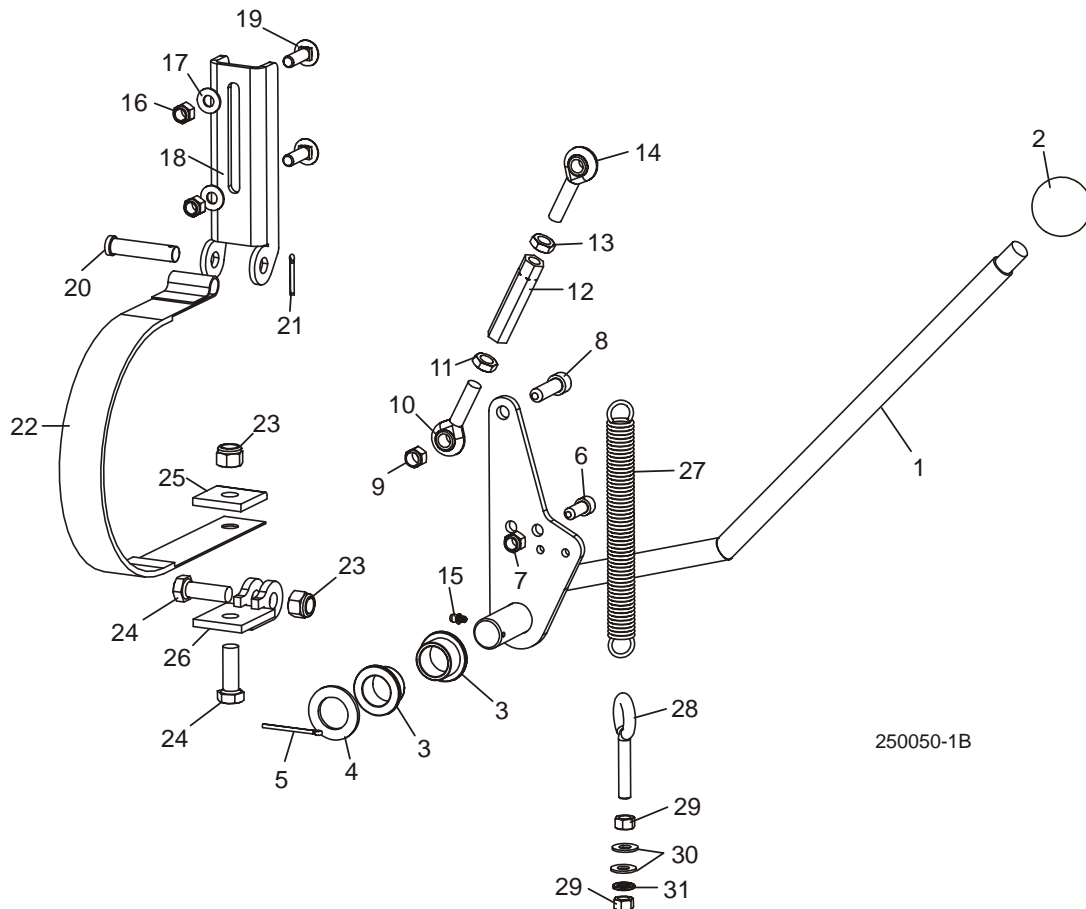


REF	DESCRIPTION (◆ Indicates Parts Available In Assemblies Only)	PART #	QTY.	
1	◆ SCREW, 3/8-16 X 1 1/4" OVAL POINT SOCKET SET	F05007-18	1	
2	NUT, 3/8-16 HEX JAM	F05010-29	1	

## 4.2 Clutch Lever Assembly

LT25/LT27

Rev. D2.00 - E3.02



REF	DESCRIPTION (◆ Indicates Parts Available In Assemblies Only)	PART #	QTY.	
1	LEVER, CLUTCH/BRAKE	016297	1	
2	KNOB, PLASTIC ROUND	P04211	1	
3	BUSHING, CLUTCH/BRAKE PIVOT	P737	2	
4	WASHER, CLUTCH/BRAKE PIVOT	P116	1	
5	PIN, 1/8" X 1 1/2" COTTER	F05012-49 <sup>1</sup>	1	
6	BOLT, 3/8-16 X 1" SOCKET HEAD	F05007-52	1	
7	NUT, 3/8-16 HEX NYLON LOCK	F05010-10	1	
8	BOLT, 7/16-20 X 1 1/2" SOCKET HEAD	F05007-55	1	
9	NUT, 7/16-20 HEX NYLON LOCK	F05010-83	1	
	<b>TURNBUCKLE ASSEMBLY, CLUTCH/BRAKE LEVER</b>	A12304	1	
10	Rod End, 7/16-20 Right Hand Thread	P11579	1	
11	Nut, 7/16-20 Hex Jam	F05010-38	1	
12	Turnbuckle, 3" Clutch/Brake Lever	S11577-W	1	◆

## 4

## Clutch Lever Assembly

13	Nut, 7/16-20 Hex Jam Left Hand Thread	F05010-87	1	
14	Rod End, 7/16-20 Left Hand Thread	P11578	1	
15	<b>FITTING, 3/16" STRAIGHT GREASE</b>	P04107	1	
	<b>STRAP RETROFIT, BRAKE</b>	014441	1	
16	Nut, 3/8-16 Nylon Lock	F05010-10	2	
17	Washer, 3/8" SAE Flat	F05011-3	2	
18	Bracket, Upper Brake Strap Mount	014395	1	
19	Bolt, 3/8-16 x 1 1/4" Carriage Head Grade 5	F05007-127 <sup>2</sup>	2	
20	Pin, 1/2" x 2 1/4" Clevis	F05012-81 <sup>3</sup>	1	
21	Pin, 1/8" x 1" Cotter	F05012-1	1	
22	Strap, Upper Pivot Metal Brake	014391	1	
23	Nut, 1/2-13 Nylon Lock	F05010-8	2	
24	Bolt, 1/2-13 x 1 1/2" Hex Head Grade 5	F05008-33	2	
25	Plate, Brake Strap Clamp	S04195	1	
26	Bracket, Lower Brake Strap Mount	014392	1	
27	<b>SPRING, 7/8" DIA. X 8 1/2" LONG X 1/8" WIRE EXTENSION</b>	P09136	1	
28	<b>BOLT, 3/8-16 X 2" 5/16" DIA EYE</b>	F05007-30	1	
29	<b>NUT, 3/8-16 HEX</b>	F05010-1	2	
30	<b>WASHER, 3/8 SAE FLAT</b>	F05011-3	2	
31	<b>WASHER, 3/8" SPLIT LOCK</b>	F05011-4	1	

<sup>1</sup> Replaces F05012-43 1/8" x 1 3/4" Cotter Pin used prior to Rev. D4.00 to accommodate common parts.

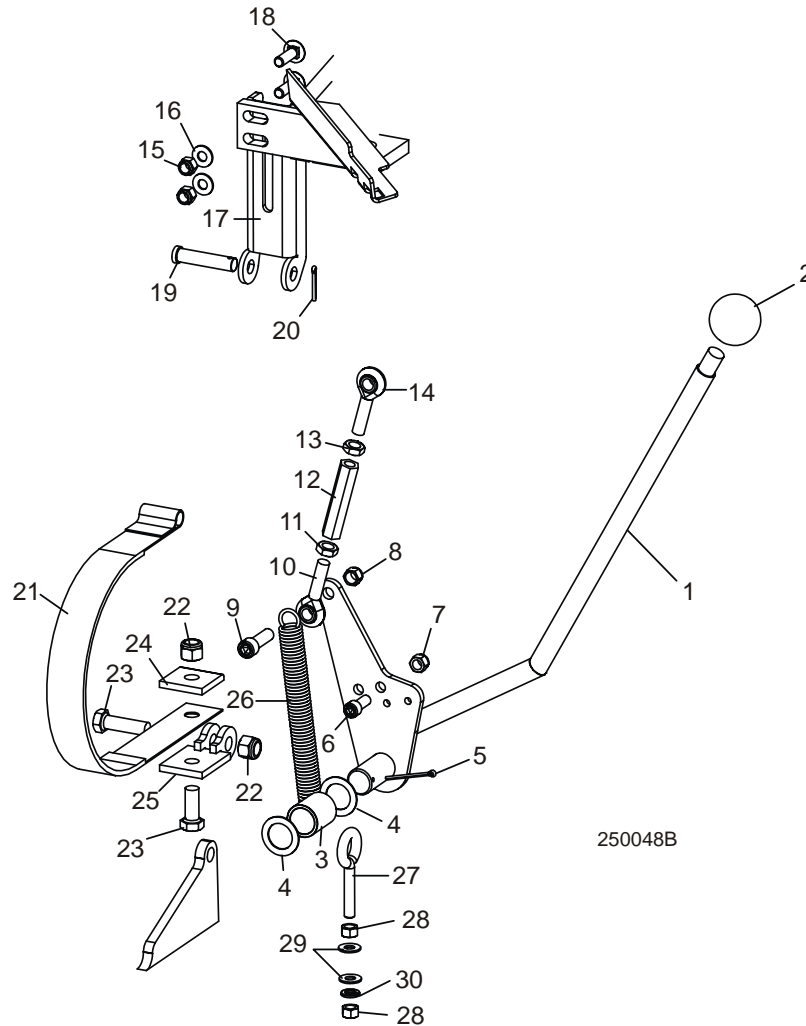
<sup>2</sup> Grade 5 carriage bolt replaces F05007-11 Grade 2 carriage bolt (5/97).

<sup>3</sup> Replaces 014396 originally supplied (duplicate parts).

## 4.3 Clutch Lever Assembly

LT25

Rev. C2.00 - D1.01



REF	DESCRIPTION (◆ Indicates Parts Available In Assemblies Only)	PART #	QTY.	
	<b>LEVER ASSEMBLY, CLUTCH/BRAKE</b>	A12334	1	
1	Lever, Clutch/Brake	W11571	1	◆
2	Knob, Plastic Round	P04211	1	
3	Bushing, Clutch/Brake Pivot	P05041	1	
4	Washer, Clutch/Brake Pivot	S11570	2	
5	Pin, 1/8" X 1 1/2" Cotter	F05012-49 <sup>1</sup>	1	
6	<b>BOLT, 3/8-16 X 1" SOCKET HEAD</b>	F05007-52	1	
7	<b>NUT, 3/8-16 HEX NYLON LOCK</b>	F05010-10	1	
8	<b>NUT, 7/16-20 HEX NYLON LOCK</b>	F05010-83	1	
9	<b>BOLT, 7/16-20 X 1 1/2" SOCKET HEAD</b>	F05007-55	1	

## 4

## Clutch Lever Assembly

	<b>TURNBUCKLE ASSEMBLY, CLUTCH/BRAKE LEVER</b>	A12304	1	
10	Rod End, 7/16-20 Right Hand Thread	P11579	1	
11	Nut, 7/16-20 Hex Jam	F05010-38	1	
12	Turnbuckle, 3" Clutch/Brake Lever	S11577-W	1	◆
13	Nut, 7/16-20 Hex Jam Left Hand Thread	F05010-87	1	
14	Rod End, 7/16-20 Left Hand Thread	P11578	1	
	<b>STRAP RETROFIT, BRAKE</b>	014441	1	
15	Nut, 3/8-16 Nylon Lock	F05010-10	2	
16	Washer, 3/8" SAE Flat	F05011-3	2	
17	Bracket, Upper Brake Strap Mount	014395	1	
18	Bolt, 3/8-16 x 1 1/4" Carriage Head Grade 5	F05007-127 <sup>2</sup>	2	
19	Pin, 1/2" x 2 1/4" Clevis	F05012-81 <sup>3</sup>	1	
20	Pin, 1/8" x 1" Cotter	F05012-1	1	
21	Strap, Upper Pivot Metal Brake	014391	1	
22	Nut, 1/2-13 Nylon Lock	F05010-8	2	
23	Bolt, 1/2-13 x 1 1/2" Hex Head Grade 5	F05008-33	2	
24	Plate, Brake Strap Clamp	S04195	1	
25	Bracket, Lower Brake Strap Mount	014392	1	
26	<b>SPRING, 7/8" DIA. X 8 1/2" LONG X 1/8" WIRE EXTENSION</b>	P09136	1	
27	<b>BOLT, 3/8-16 X 2" 5/16" DIA EYE</b>	F05007-30	1	
28	<b>NUT, 3/8-16 HEX</b>	F05010-1	2	
29	<b>WASHER, 3/8 SAE FLAT</b>	F05011-3	2	
30	<b>WASHER, 3/8" SPLIT LOCK</b>	F05011-4	1	

<sup>1</sup> Replaces F05012-43 1/8" x 1 3/4" Cotter Pin originally supplied to accommodate common parts.

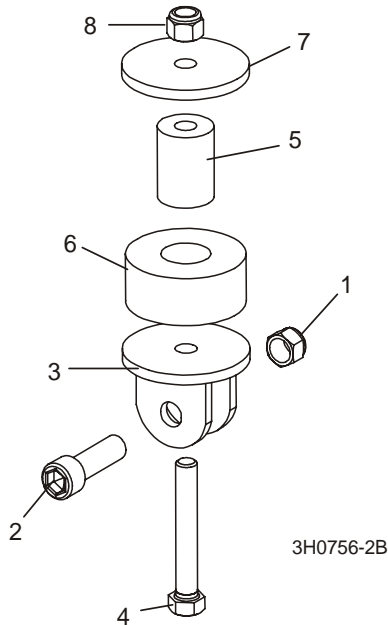
<sup>2</sup> Grade 5 carriage bolt replaces F05007-11 Grade 2 carriage bolt (5/97).

<sup>3</sup> Replaces 014396 originally supplied (duplicate parts).

## 4.4 Clutch Mount Assembly

LT25/LT27

Rev. D2.00 - E3.02



REF	DESCRIPTION (◆ Indicates Parts Available In Assemblies Only)	PART #	QTY.	
1	NUT, 7/16-20 HEX NYLON LOCK	F05010-83	1	
2	BOLT, 7/16-20 X 1 1/2" SOCKET HEAD	F05007-55	1	
3	BRACKET, CLUTCH MOUNT	W12411	1	
4	BOLT, 3/8-16 X 2 1/2" HEX HEAD	F05007-157	1	
5	SPACER, MOTOR MOUNT VIBRATION BUSHING	016316	1	
6	BUSHING, MOTOR MOUNT VIBRATION	P05032	1	
7	WASHER, .40" I.D. X 1.44" O.D. X .18" THICK	021276 <sup>1</sup>	1	
8	NUT, 3/8-16 NYLON LOCK	F05010-10	1	

<sup>1</sup> Replaces S12412 3/8"x2 1/4"x3/16" Washer supplied prior to Rev. D4.00. Smaller washer eliminates interference with motor mount.

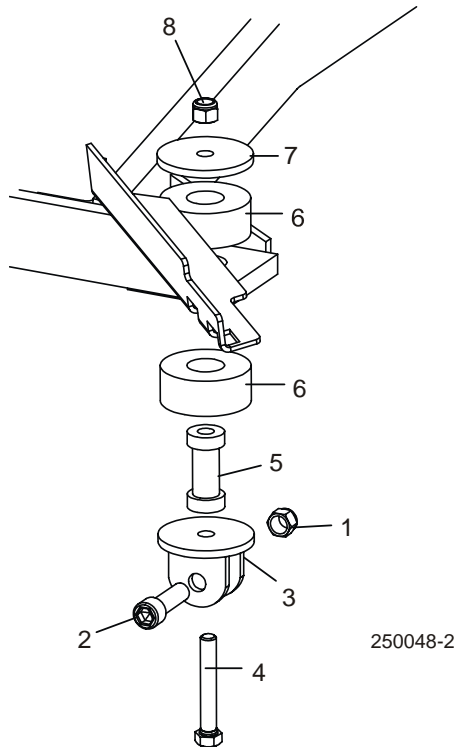
# 4 Saw Head

## Clutch Mount Assembly

### 4.5 Clutch Mount Assembly

LT25

Rev. C2.00 - D1.01



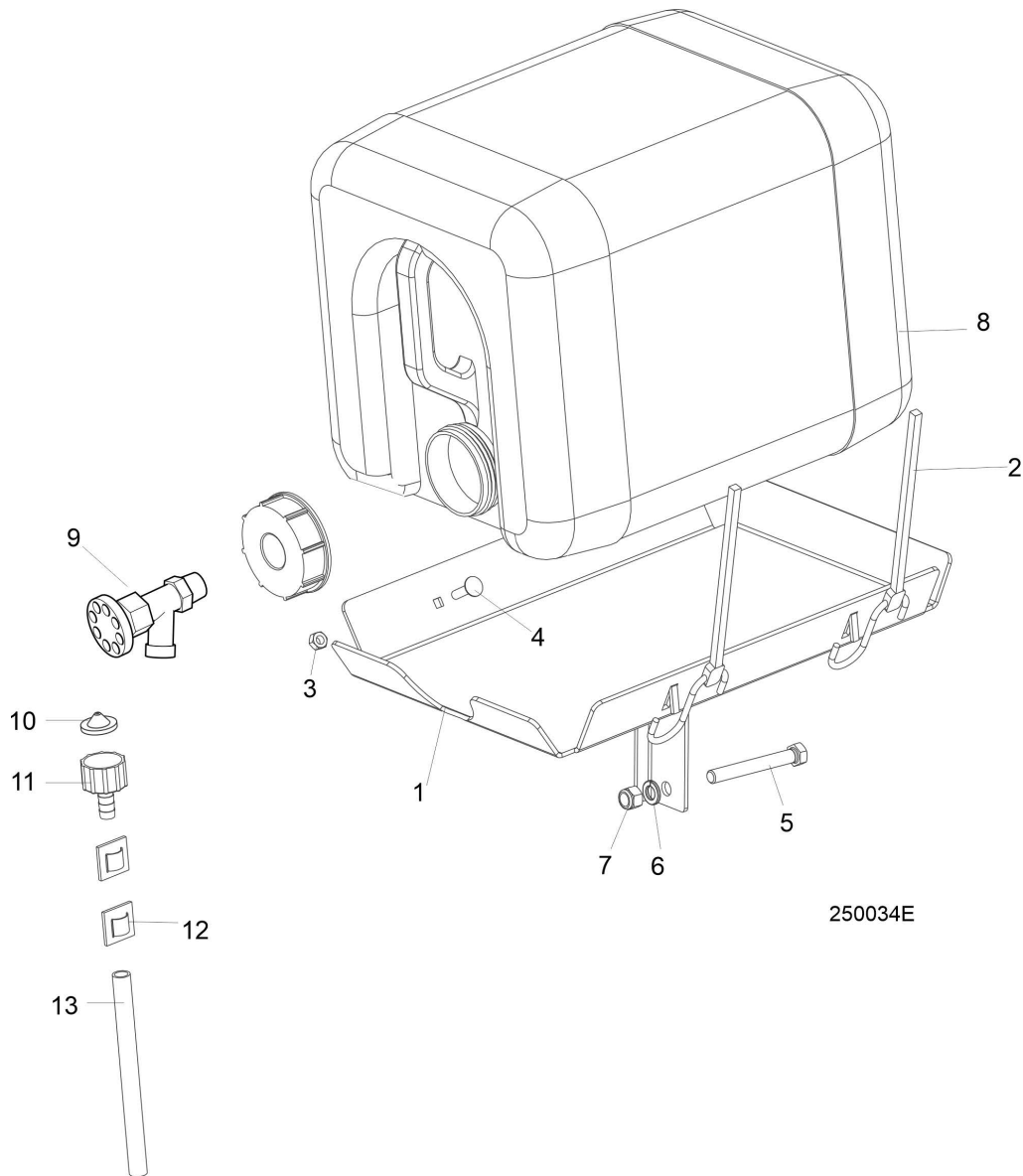
REF	DESCRIPTION (◆ Indicates Parts Available In Assemblies Only)	PART #	QTY.	
1	NUT, 7/16-20 HEX NYLON LOCK	F05010-83	1	
2	BOLT, 7/16-20 X 1 1/2" SOCKET HEAD	F05007-55	1	
3	BRACKET, CLUTCH MOUNT	W12411	1	
4	BOLT, 3/8-16 X 2 3/4" HEX HEAD	F05007-29	1	
5	SPACER, MOTOR MOUNT VIBRATION BUSHING	S12410 <sup>1</sup>	1	
6	BUSHING, MOTOR MOUNT VIBRATION	P05032 <sup>1</sup>	2	
7	WASHER, .40" I.D. X 1.44" O.D. X .18" THICK	021276 <sup>2</sup>	1	
8	NUT, 3/8-16 NYLON LOCK	F05010-10	1	

<sup>1</sup> Motor Mount Bushing parts may be upgraded to single-bushing style to reduce vibration ([See Section 4.4](#)). Use Motor Mount Kit 016319 to upgrade motor mount and bushing parts.

<sup>2</sup> Replaces S12412 3/8"x2 14"x3/16" Washer originally supplied. Smaller washer eliminates interference with motor mount.



## 4.6 Water Lube Assembly



REF	DESCRIPTION (◆ Indicates Parts Available In Assemblies Only)	PART #	QTY.	
	<b>BOTTLE KIT, LT25/LT27 WATER LUBE</b>	25WLS	1	
	Tray Assembly, LT25/LT27 Water Lube	015434	1	
1	Tray Weldment, LT25/LT27 Water Lube	015431	1	◆
2	Strap, 20" Rubber	P11668	2	
3	Nut, 1/4-20 Hex Lock	F05010-21	2	
4	Bolt, 1/4-20 x 1" Carriage Head	F05005-34	2	
5	Bolt, 3/8-16 x 3" Hex Head Full Thread	F05007-1	2	
6	Washer, 3/8" Split Lock	F05011-4	2	
7	Nut, 3/8" Nylon Lock	F05010-10	2	

## 4 Saw Head

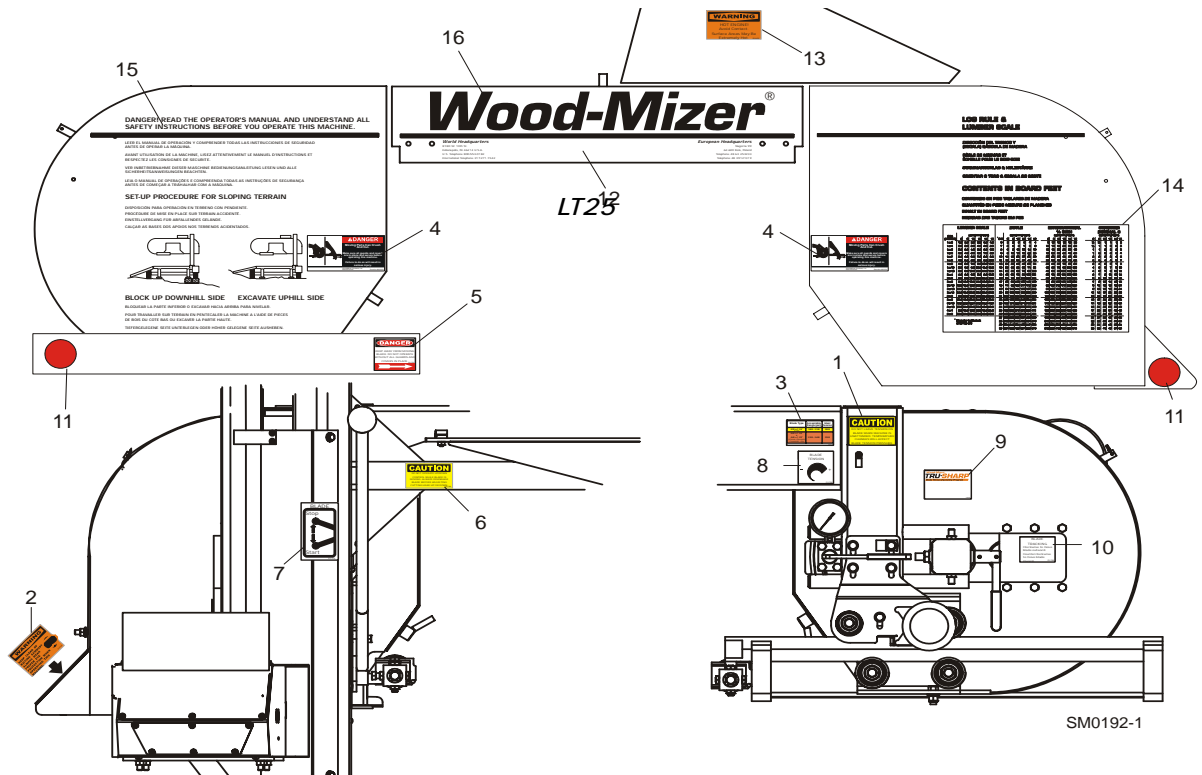
### Water Lube Assembly

8	Bottle Assy, Water Lube w/Cap	014642 <sup>1</sup>	1	
9	Valve, 3/4 NPT Elbow 3/4 Male GHT Outlet	013320 <sup>2</sup>	1	
	Fitting, 3/4 FPT x 3/4 MPT	014636	1	
	Fitting, Water Lube Shutoff Valve	014100	1	
10	Filter, Water Lube	016086	1	
11	Fitting, 5/8" NPT to 3/8" Hose Barb	014113	1	
12	Clip, Adhesive Hose	P04445	2	
13	Tubing, Water Lube 3/8" I.D.	R01885	7 ft.	

<sup>1</sup> Use Water Bottle Assembly w/Cap 014642 to service all bottle/cap combinations previously supplied. Bottle 014367, 61mm Cap 014773 and 70mm Cap 036744 no longer available separately.

<sup>2</sup> Replaced 014100 & 014636 after 9/19/2022 per ECN 38718.

## 4.7 Saw Head Decals



REF	DESCRIPTION (◆ Indicates Parts Available In Assemblies Only)	PART #	QTY.
1	DECAL, BLADE TENSION CAUTION	P10147	1
2	DECAL, SAWDUST CHUTE WARNING	P11754	1
3	DECAL, BLADE TENSION RANGES	P12373	1
4	DECAL, BLADE COVERS DANGER	033254 <sup>1</sup>	2
5	DECAL, BLADE DANGER ARROW RIGHT	S11752	1
6	DECAL, UP/DOWN CAUTION	S11762	1
7	DECAL, BLADE START/STOP	P11779	1
8	DECAL, BLADE TENSION INFO	P11790	1
9	DECAL, TRU-SHARP INFO	P12879	1
10	DECAL, BLADE ALIGNMENT INFO	P11789	1
11	DECAL, RED REFLECTIVE 2" ROUND	P07452	2
12	DECAL, LT25	S12582	1
	DECAL, LT27	016891	1
13	DECAL, HOT ENGINE WARNING	014419	1
14	DECAL, BLADE HOUSING COVER (DRIVE SIDE)	016243 <sup>2</sup>	1
15	DECAL, BLADE HOUSING COVER (IDLE SIDE)	016242 <sup>2</sup>	1
16	DECAL, BLADE HOUSING COVER (MIDDLE)	016244 <sup>2</sup>	1

<sup>1</sup> Replaces S20039 decal originally supplied (5/00).

<sup>2</sup> Decal replaces silkscreen on blade housing covers beginning with Rev. C9.00.

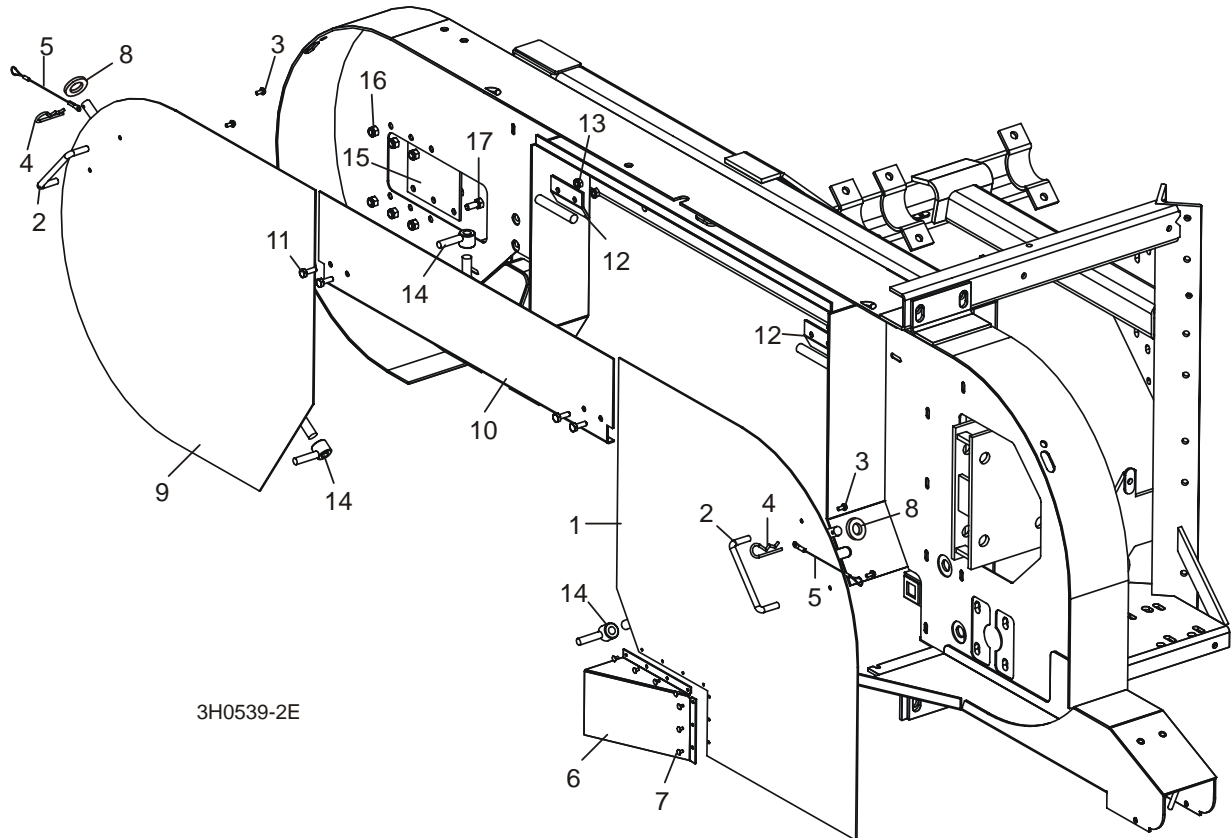
# 4 Saw Head

## Blade Housing Covers

### 4.8 Blade Housing Covers

LT25/LT27

Rev. C5.00 - E3.02



REF	DESCRIPTION (◆ Indicates Parts Available In Assemblies Only)	PART #	QTY.	
	<b>COVER ASSEMBLY, DRIVE SIDE BLADE HOUSING WITH HANDLE</b>	015937	1	
1	Cover, Drive Side Blade Housing (Includes Cover Decal - <a href="#">See Section 4.7</a> )	015911	1	◆
2	Handle, Blade Housing Cover	P08065	1	
3	Screw, #8-32 X 3/8" Self-Tap	F05015-8	2	
	Pin Assembly, Cover Retainer	A12812 <sup>1</sup>	1	
4	Pin, Safety Retainer	P05059	1	
5	Cable, 3/64" x 6" Lanyard	016030	1	
6	Funnel, Sawdust Exit	015734	1	
7	Rivet, 1/8" x 1/8" Aluminum Pop	F04203-8	7	
8	Washer, 1/2" ID x 1 1/8" OD x .093" Rubber	F05011-87 <sup>2</sup>	1	
	<b>COVER, IDLE SIDE BLADE HOUSING WITH HANDLE</b>	A09419	1	
9	Cover, Idle Side Blade Housing (Includes Cover Decal - <a href="#">See Section 4.7</a> )	W09351	1	◆
2	Handle, Blade Housing Cover	P08065	1	
3	Screw, #8-32 X 3/8" Self-Tap	F05015-8	2	

	Pin Assembly, Cover Retainer	A12812 <sup>1</sup>	1	
4	Pin, Safety Retainer	P05059	1	
5	Cable, 3/64" x 6" Lanyard	016030	1	
8	Washer, 1/2" ID x 1 1/8" OD x .093" Rubber	F05011-87 <sup>2</sup>	1	
10	<b>COVER, MIDDLE BLADE HOUSING</b>	W07409	1	
11	<b>BOLT, 1/4-20 X 3/4" HEX HEAD</b>	F05005-1	18	
12	<b>HINGE, MIDDLE BLADE HOUSING COVER</b>	S07522	2	
13	<b>NUT, 1/4-20 SELF-LOCKING HEX</b>	F05010-9	4	
14	<b>NUT, COVER TURN</b>	021145	3	
15	<b>PLATE, IDLE BLADE WHEEL GUARD</b>	S04433	1	
16	<b>NUT, 5/16-18 HEX NYLON LOCK</b>	F05010-58	6	
17	<b>BOLT, 5/16-18 X 3/4" HEX HEAD GRADE 2</b>	F05006-5	6	

<sup>1</sup> 016030 cable replaces R02075 cable and P11803 cable clamp originally supplied prior to Rev. C6.02.

<sup>2</sup> Added Rev. D2.00.

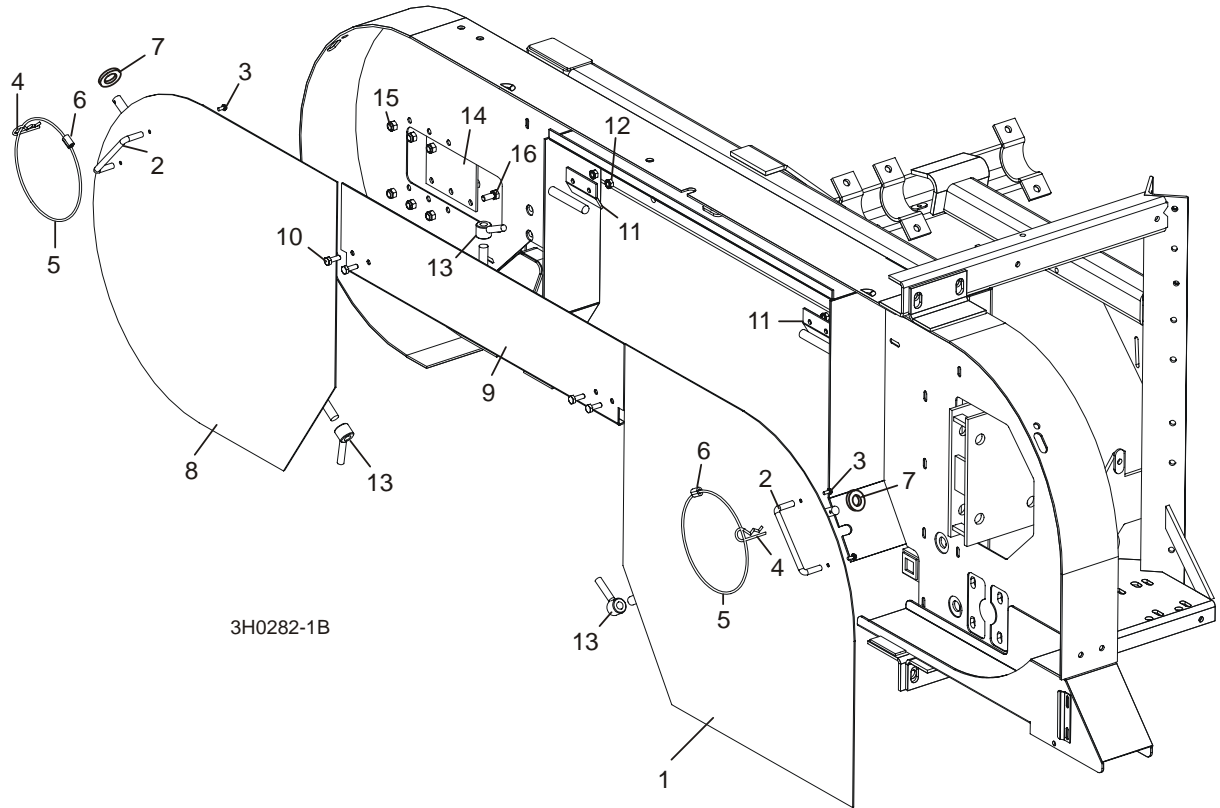
# 4 Saw Head

## Blade Housing Covers

### 4.9 Blade Housing Covers

LT25

Rev. C2.00 - C4.00



REF	DESCRIPTION (◆ Indicates Parts Available In Assemblies Only)	PART #	QTY.	
	<b>COVER, DRIVE SIDE BLADE HOUSING WITH HANDLE</b>	A09420	1	
1	Cover, Drive Side Blade Housing (Includes Cover Decal - <a href="#">See Section 4.7</a> )	W07948	1	◆
2	Handle, Blade Housing Cover	P08065	1	
3	Screw, #8-32 X 3/8" Self-Tap	F05015-8	2	
	Pin Assembly, Cover Retainer	A12812 <sup>1</sup>	1	
4	Pin, Safety Retainer	P05059	1	
5	Cable, 1/8" O.D. Coated Nylon	R02075	.92 Ft.	◆
6	Clamp, 1/8" Dual Cable	P11830	1	◆
7	Washer, 1/2" ID x 1 1/8" OD x .093" Rubber	F05011-87 <sup>2</sup>	1	
	<b>COVER, IDLE SIDE BLADE HOUSING WITH HANDLE</b>	A09419	1	
8	Cover, Idle Side Blade Housing (Includes Cover Decal - <a href="#">See Section 4.7</a> )	W09351	1	◆
2	Handle, Blade Housing Cover	P08065	1	
3	Screw, #8-32 X 3/8" Self-Tap	F05015-8	2	
	Pin Assembly, Cover Retainer	A12812 <sup>1</sup>	1	
4	Pin, Safety Retainer	P05059	1	

5	Cable, 1/8" O.D. Coated Nylon	R02075	.92 Ft.	
6	Clamp, 1/8" Dual Cable	P11830	1	
7	Washer, 1/2" ID x 1 1/8" OD x .093" Rubber	F05011-87 <sup>2</sup>	1	
9	<b>COVER, MIDDLE BLADE HOUSING</b>	W07409	1	
10	<b>BOLT, 1/4-20 X 3/4" HEX HEAD</b>	F05005-1	18	
11	<b>HINGE, MIDDLE BLADE HOUSING COVER</b>	S07522	2	
12	<b>NUT, 1/4-20 SELF-LOCKING HEX</b>	F05010-9	4	
13	<b>NUT, COVER TURN</b>	021145 <sup>3</sup>	3	
14	<b>PLATE, IDLE BLADE WHEEL GUARD</b>	S04433	1	
15	<b>NUT, 5/16-18 HEX NYLON LOCK</b>	F05010-58	6	
16	<b>BOLT, 5/16-18 X 3/4" HEX HEAD GRADE 2</b>	F05006-5	6	

<sup>1</sup> Cable R02075 and cable clamp P11830 obsolete. Replacement assembly A12812 includes new cable 016030 ([See Section 4.8](#)).

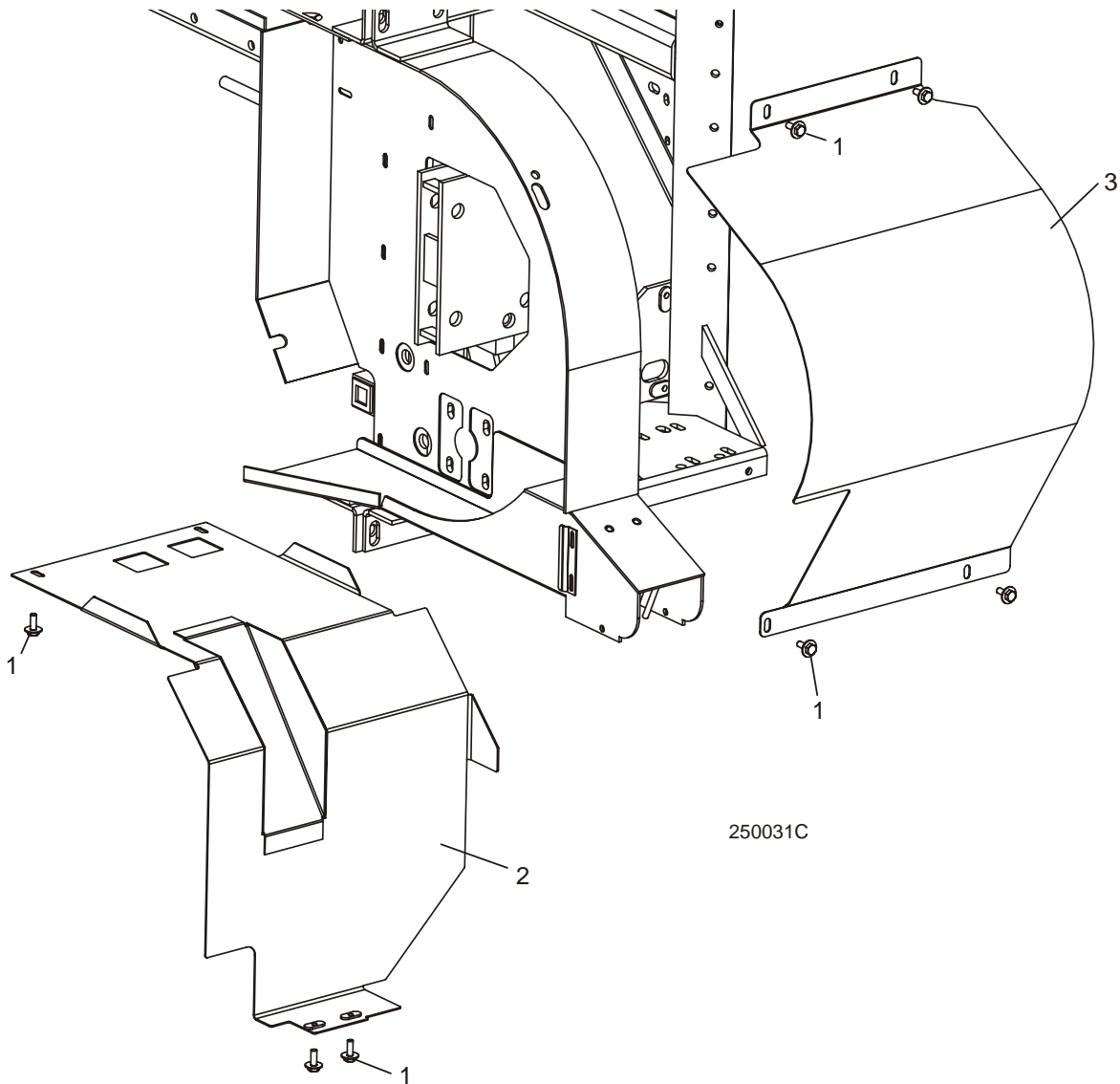
<sup>2</sup> Added 6/99.

<sup>3</sup> Directly replaces W07511 nut weldment (8/97).

# 4 Saw Head

## Drive Belt Covers

### 4.10 Drive Belt Covers



REF	DESCRIPTION (◆ Indicates Parts Available In Assemblies Only)	PART #	QTY.
1	BOLT, 1/4-20 X 3/4" HEX HEAD WITH CONICAL WASHER	F05005-134 <sup>1</sup>	8
2	GUARD, STANDARD LOWER DRIVE BELT	014241	1
3	GUARD, DRIVE PULLEY BELT	014494	1

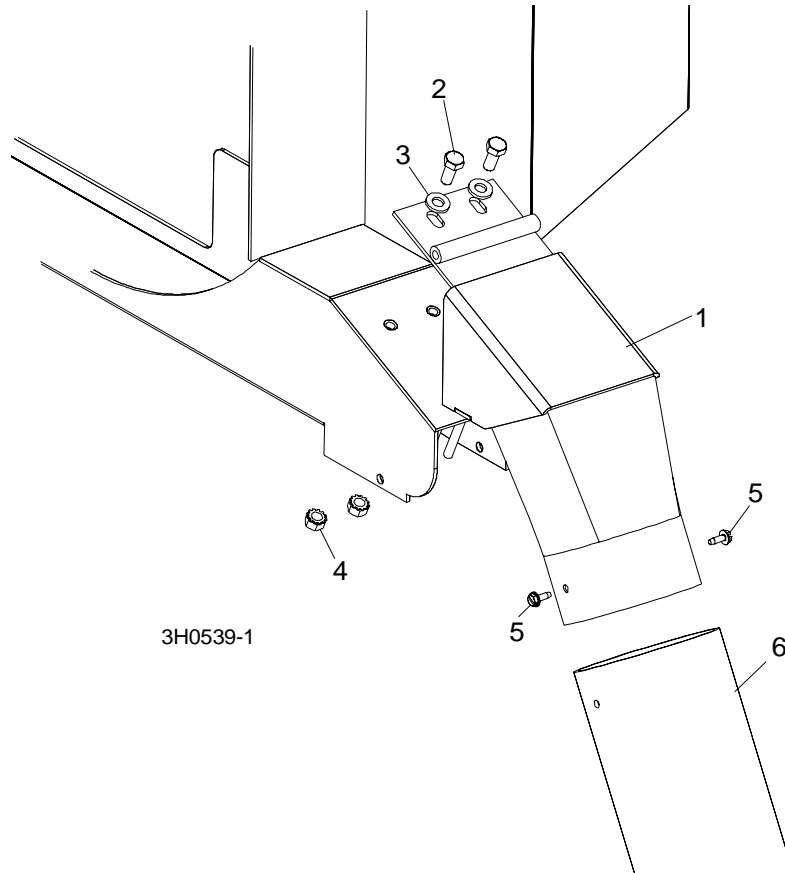
<sup>1</sup> Replaces 1/4-20 x 3/4" hex head bolt (F05005-1) and 1/4" SAE flat washer (F05011-11) LT25/LT27 rev. C7.00 and later.



## 4.11 Sawdust Chute

LT25/LT27

Rev. C3.00 - E3.02



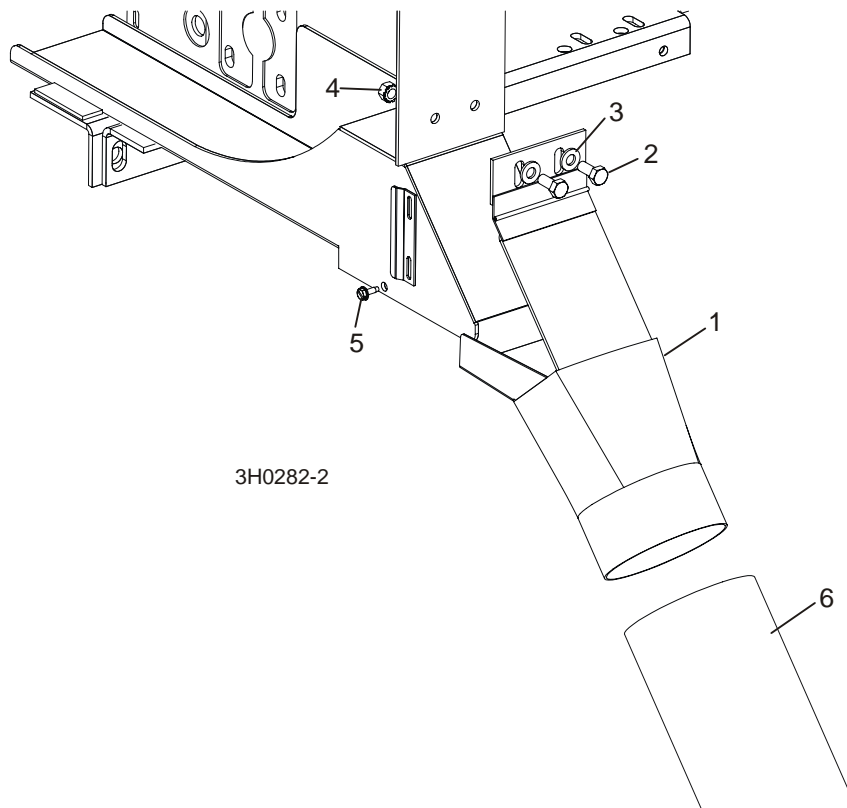
REF	DESCRIPTION (◆ Indicates Parts Available In Assemblies Only)	PART #	QTY.	
1	CHUTE WELDMENT, SAWDUST	015466	1	
2	BOLT, 5/16-18 X 3/4" HEX HEAD GRADE 2	F05006-5	2	
3	WASHER, 5/16" SAE FLAT	F05011-17	2	
4	NUT, 5/16-18 SELF-LOCKING HEX	F05010-20	2	
5	BOLT, #10-24 X 1/2" SELF-TAPPING	F05015-7	2	
6	TUBING, RUBBER SAWDUST	016727 <sup>1</sup>	1	
	STRAP, 20" RUBBER W/HOOK	P11668	1	
	BOLT, 1/4-20 X 1 1/4" HEX HEAD FULL THREAD	F05005-3	1	
	WASHER, 1/4" SAE FLAT	F05011-11	1	
	NUT, 1/4-20 LOCK	F05010-21	1	

<sup>1</sup> Sawdust Chute 016727 replaces 4 ft. R02336 originally supplied prior to 1/01. New chute is cut at an angle to help prevent clogging.

## 4.12 Sawdust Chute

LT25

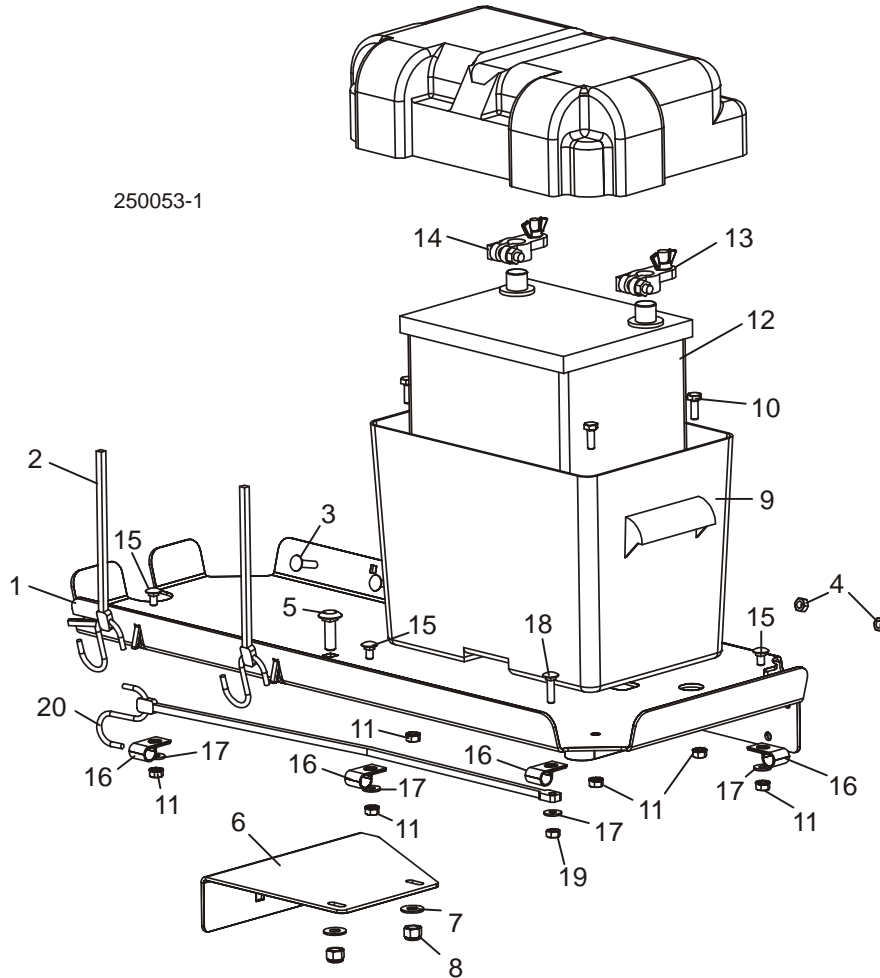
Rev. C2.00



REF	DESCRIPTION (◆ Indicates Parts Available In Assemblies Only)	PART #	QTY.
1	CHUTE WELDMENT, SAWDUST	W12296	1
2	BOLT, 5/16-18 X 3/4" HEX HEAD GRADE 2	F05006-5	2
3	WASHER, 5/16" SAE FLAT	F05011-17	2
4	NUT, 5/16-18 SELF-LOCKING HEX	F05010-20	2
5	BOLT, #10-24 X 1/2" SELF-TAPPING	F05015-7	2
6	TUBING, RUBBER SAWDUST	016727 <sup>1</sup>	2 ft.
	STRAP, 20" RUBBER W/HOOK	P11668	1
	BOLT, 1/4-20 X 1 1/4" HEX HEAD FULL THREAD	F05005-3	1
	WASHER, 1/4" SAE FLAT	F05011-11	1
	NUT, 1/4-20 LOCK	F05010-21	1

<sup>1</sup> Sawdust Chute 016727 replaces 4 ft. R02336 originally supplied prior to 1/01. New chute is cut at an angle to help prevent clogging.

### 4.13 Battery Box Assembly (G20 Only)



REF	DESCRIPTION (◆ Indicates Parts Available In Assemblies Only)	PART NUMBER	QTY.
	<b>TRAY ASSEMBLY, FUEL TANK/BATTERY</b>	016423	1
1	Tray, Fuel Tank/Battery	033273	1
2	Strap, 24" Rubber w/Hooks	P11258	2
3	Bolt, 1/4-20 x 1" Carriage Head	F05005-34	2
4	Nut, 1/4-20 Lock	F05010-21	2
5	<b>BOLT, 3/8-16 X 1 1/4" CARRIAGE HEAD</b>	F05007-11	2
6	<b>BRACKET, BATTERY TRAY MOUNT</b>	033272	1
7	<b>WASHER, 3/8" SAE FLAT</b>	F05011-3	2
8	<b>NUT, 3/8" NYLON LOCK</b>	F05010-10	2
9	<b>BOX ASSEMBLY, LT15 BATTERY</b>	016413	1
10	<b>BOLT, 1/4-20 X 3/4" HEX HEAD FULL THREAD</b>	F05005-1	4
11	<b>WASHER, 1/4" SAE FLAT</b>	F05011-11	8

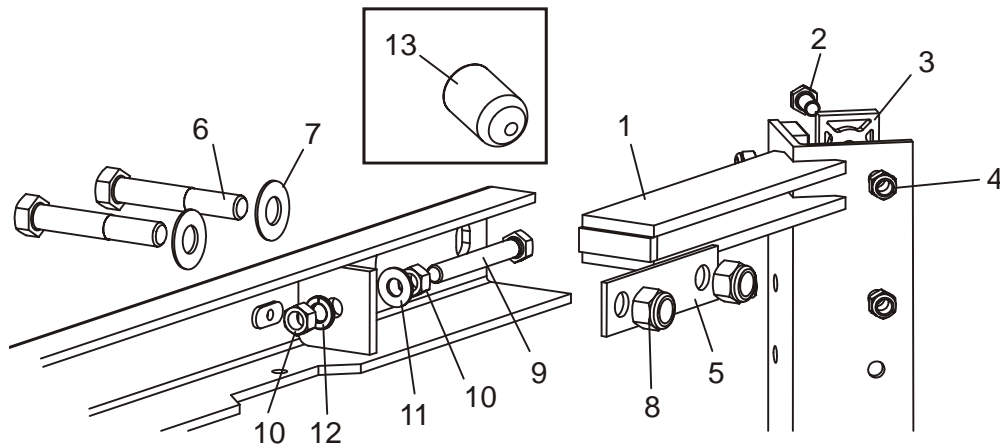
**4****Battery Box Assembly (G20 Only)**

---

12	BATTERY, 12 VOLT 526A	028004	1	◆
13	TERMINAL, POSITIVE BATTERY	033358	1	
14	TERMINAL, NEGATIVE BATTERY	033359	1	
15	BOLT, 1/4-20 X 1/2" CARRIAGE HEAD	F05005-33	3	
16	CLAMP, 1/2" EMT COATED	P07584	4	
17	WASHER, 1/4" SAE FLAT	F05011-11	4	
18	BOLT, 1/4-20 X 1" CARRIAGE HEAD	F05005-34	1	
19	NUT, 1/4-20 LOCK	F05010-21	1	
20	STRAP, 15" RUBBER W/HOOKS	P07461	1	

## SECTION 5 SAW HEAD MOUNT & SCALES

### 5.1 Saw Head Mount



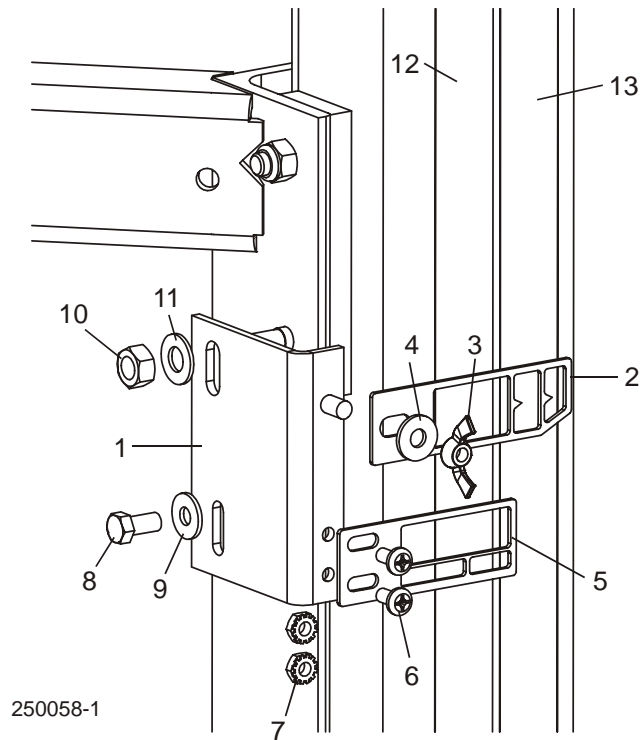
SM0080D

REF	DESCRIPTION (◆ Indicates Parts Available In Assemblies Only)	PART #	QTY.	
1	V-BRACE, SAW HEAD MOUNT	W04099	1	
2	BOLT, 5/16-18 X 3/4" HEX HEAD GRADE 5	F05006-5	12	
	BOLT, 5/16-18 X 1 1/4 HEX HEAD FULL THREAD GRADE 5	F05006-93	4	
3	PAD, PLASTIC SLIDE	M04096 <sup>1</sup>	6	
	PAD, PLASTIC SLIDE LOWER W/CHAMFER	016241	2	
4	NUT, 5/16-18 NYLON LOCK	F05010-58	16	
5	PLATE, V-BRACE WASHER	S07935	2	
6	BOLT, 1/2-13 X 3 1/2" HEX HEAD GRADE 5	F05008-61	4	
7	WASHER, 1/2" SAE FLAT	F05011-2	4	
8	NUT, 1/2-13 NYLON LOCK	F05010-8	4	
9	BOLT, 3/8-16 X 3" FULL THREAD	F05007-1	2	
10	NUT, 3/8-16 HEX	F05010-1	4	
11	WASHER, 3/8" SAE FLAT	F05011-3	2	
12	WASHER, 3/8" SPLIT LOCK	F05011-4	2	
13	CAP, .281" X 1/2" BLACK VINYL	017715 <sup>2</sup>	3	

<sup>1</sup> Eight pads removed from middle positions (Rev. D1.00). Only uppermost and lowermost pads are required. Middle pads were not providing any function.

<sup>2</sup> Vinyl caps added to protect drive-side blade housing cover when being removed/replaced (Rev. E2.00).

## 5.2 Blade Height & Quarter Scales



REF	DESCRIPTION (◆ Indicates Parts Available In Assemblies Only)	PART #	QTY.	
	<b>POINTER ASSEMBLY, LT25/LT27 BLADE HEIGHT</b>	A12414 <sup>1</sup>	1	
1	Bracket, Pointer Mount	W12415	1	◆
2	Pointer, LT25/LT27 Quarter Scale	017806	1	
3	Nut, 1/4-20 Wing	F05010-13	1	
4	Washer, 1/4" SAE Flat	F05011-11	1	
5	Pointer, Blade Height	017778	1	
6	Screw, #10-24 x 3/8" Phillips Pan Head	F05004-3	2	
7	Nut, #10-24 Self Locking	F05010-14	2	
8	<b>BOLT, 1/4-20 X 1/2" HEX HEAD GRADE 2</b>	F05005-15	1	
9	<b>WASHER, 1/4" SAE FLAT</b>	F05011-11	1	
10	<b>NUT, 5/16-18 HEX LOCK</b>	F05010-17	1	
11	<b>WASHER, 5/16" SAE FLAT</b>	F05011-17	1	
12	<b>DECAL, 35" INCH SCALE</b>	P11038	1	
13	<b>DECAL, 35" QUARTER SCALE</b>	P11039	1	

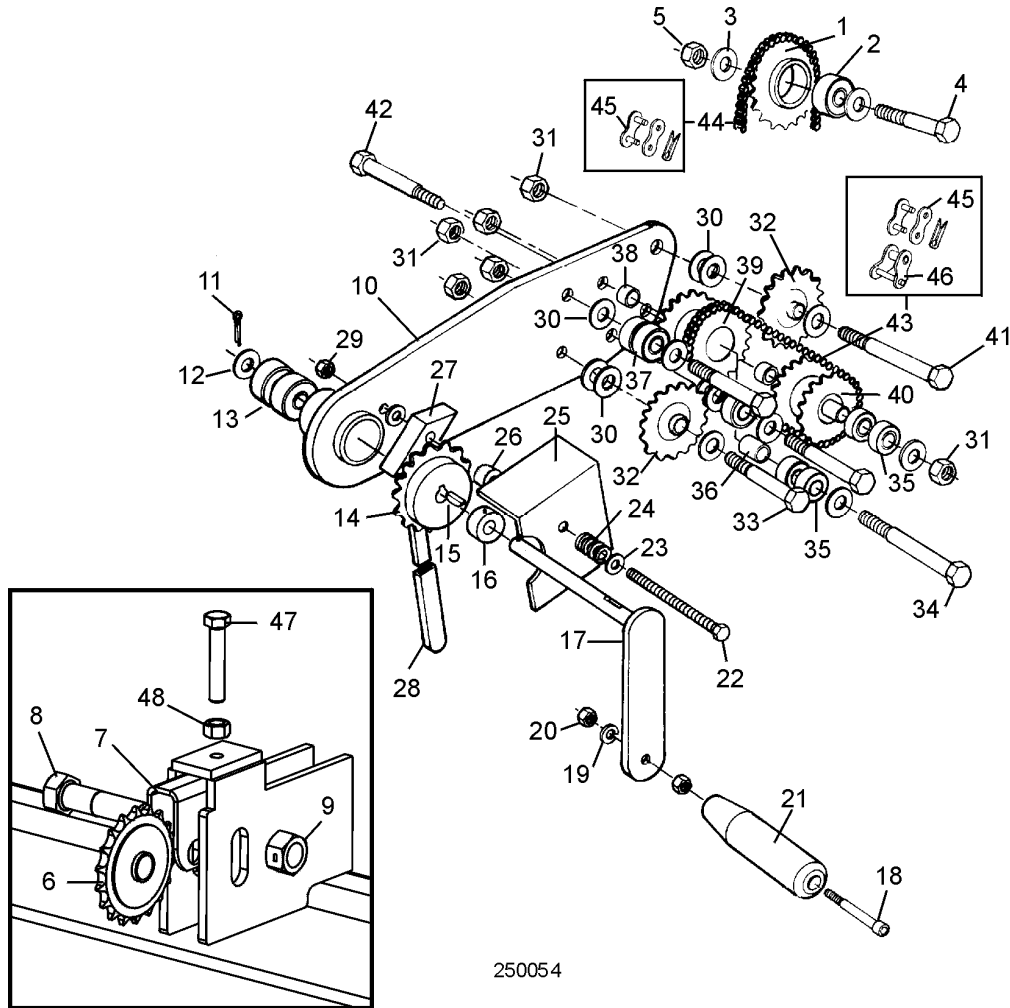
<sup>1</sup> Assembly updated with steel pointers (Rev. E3.00). 017778 replaces M07267-N inch scale pointer and 017806 replaces S12418 quarter scale pointer.

## SECTION 6 UP/DOWN SYSTEM

### 6.1 Manual Crank Assembly

LT25/LT27

Rev. D6.00 - E3.02



REF	DESCRIPTION (◆ Indicates Parts Available In Assemblies Only)	PART NUMBER	QTY.	
	<b>SPROCKET ASSEMBLY, UPPER IDLER</b>	A12399	1	
1	Sprocket, Upper Idler With Hub	W12398	1	◆
2	Bearing, 5/8" 6203-2NSL	P06030-1	1	
3	WASHER, 5/8" SAE FLAT	F05011-5	2	
4	BOLT, 5/8-11 X 2 1/2" HEX HEAD GRADE 5	F05009-20	1	
5	NUT, 5/8-11 HEX LOCK	F05010-4	1	
6	SPROCKET, G1-40-41-17 5/8" BORE 17T	P04333	1	
7	BRACKET, CHAIN TENSIONER	016439 <sup>1</sup>	1	
8	BOLT, 5/8-11 X 2 1/2" HEX HEAD GRADE 5	F05009-20	1	
9	NUT, 5/8-11 NYLON LOCK	F05010-34	1	

<b>CRANK ASSEMBLY, LT25/LT27 UP/DOWN</b>		A12469	1	
10	Arm, LT25/LT27 Up/Down Crank Mounting	W12470	1	
11	Pin, 1/8" x 1" Cotter	F05012-1	1	
12	Washer, 5/8" SAE Flat	F05011-5	1	
13	Bearing, 5/8" 6203-2NSL	P06030-1	2	
14	Sprocket, 40B17 5/8" Bore	P12483	1	
15	Key, #606 Woodruff	P04101-1	1	
16	Collar, 5/8" I.D. With Set Screw	P05035	1	
	Handle Assembly, LT25/LT27 Up/Down Crank	A12335	1	
17	Crank, LT25/LT27 Up/Down	W12472	1	◆
18	Bolt, 3/8-16 x 2 1/2" Socket Head	F05007-24	1	
19	Washer, 3/8" Split Lock	F05011-4	1	
20	Nut, 3/8-16 Hex	F05010-1	2	
21	Handle, Crank	S12456-W	1	
22	Bolt, 3/8-16 x 4" Hex Head Full Thread Grade 5	F05007-92	1	
23	Washer, 3/8" SAE Flat	F05011-3	2	
24	Spring, Up/Down Lock Lee #LC-045G-5MW	P12494	1	
25	Guard, Up/Down Lock	S12488	1	
26	Spacer, Up/Down Lock	S12284	1	
27	Handle, LT25/LT27 Up/Down Lock	W12490	1	
28	Sleeve, Vinyl Handle	P08072	1	
29	Nut, 3/8-16 Hex	F05010-1	1	
30	Washer, 5/8" SAE Flat	F05011-5	13	
31	Nut, 5/8-11 Hex Nylon Lock	F05010-34	6	
32	Sprocket, G1-40-41-17 5/8" Bore 17T	P04333	2	
33	Bolt, 5/8-11 x 2 1/2" Hex Head	F05009-20	3	
34	Bolt, 5/8-11 x 3" Hex Head	F05009-18	1	
35	Bearing, R10-2NSL	P04156	4	
36	Spacer, 1"	S12479-W	2	
37	Bearing, 5/8" 6203-2NSL	P06030-1	3	
38	Spacer, 5/16"	S12480-W	2	
39	Sprocket, Dual 17T/17T	W12474	1	
40	Sprocket, Dual 17T/16T	W12476	1	
41	Bolt, 5/8-11 x 4 1/2" Hex Head	F05009-3	1	
42	Bolt, 5/8-11 x 5" Hex Head Grade 2	F05009-6	1	
43	<b>CHAIN, #40 X 15.5"</b>	P12496	1	
44	<b>CHAIN, #40 X 170.5"</b>	P12497	1	
45	<b>LINK, #40 MASTER</b>	P04200	2	
46	<b>LINK, #40 HALF</b>	P12495	1	
47	<b>BOLT, 3/8-16 X 2" FULL THREAD HEX HEAD</b>	F05007-16 <sup>1</sup>	1	
48	<b>NUT, 3/8-16 HEX</b>	F05010-1 <sup>1</sup>	1	

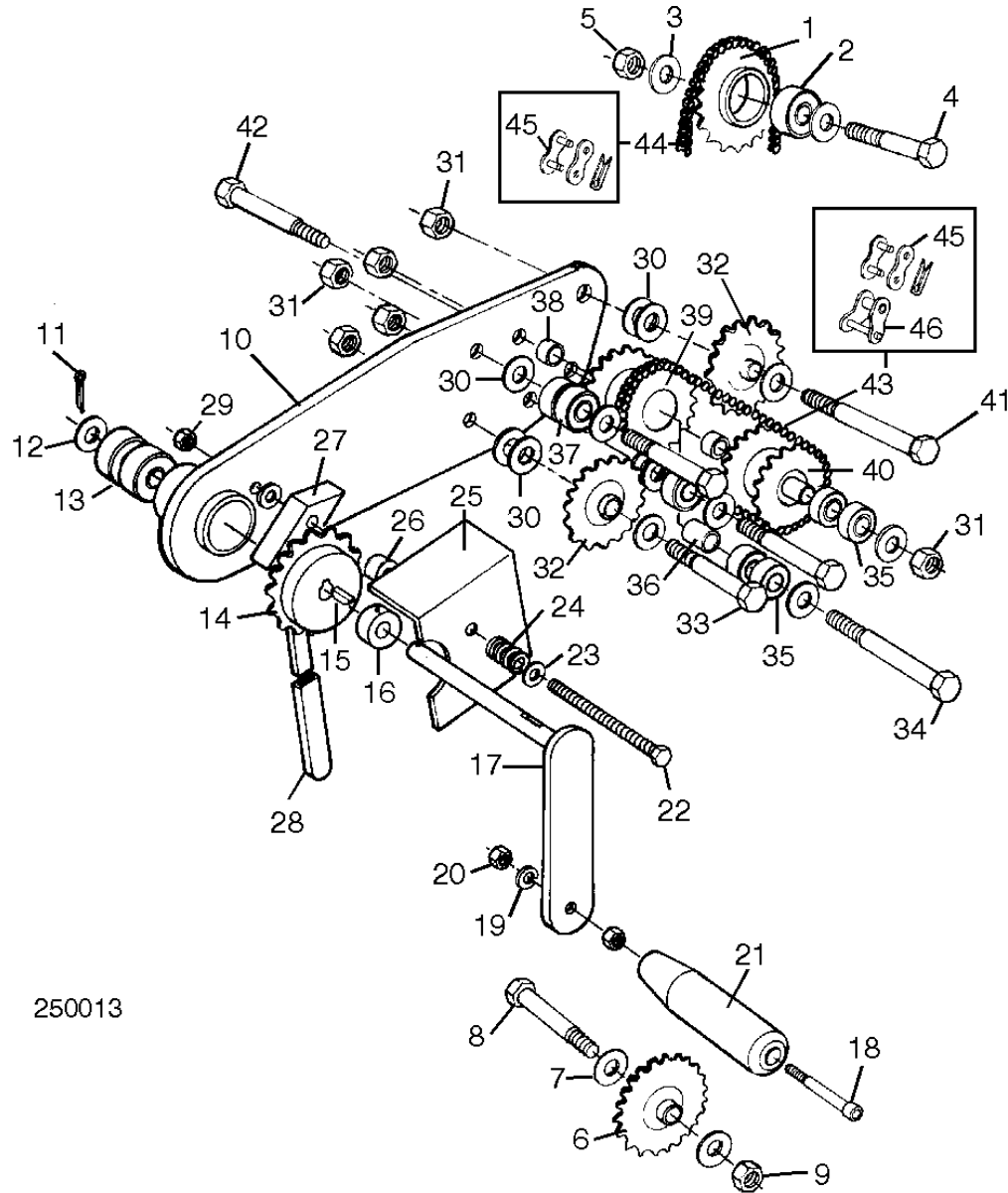
<sup>1</sup> Bracket, adjustment bolt and nut added Rev. D6.00 to improve ease of up/down chain tension adjustment.



## 6.2 Manual Crank Assembly

LT25

Rev. C2.00 - D5.01



250013

REF	DESCRIPTION (◆ Indicates Parts Available In Assemblies Only)	PART NUMBER	QTY.	
	<b>SPROCKET ASSEMBLY, UPPER IDLER</b>	A12399	1	
1	Sprocket, Upper Idler With Hub	W12398	1	◆
2	Bearing, 5/8" 6203-2NSL	P06030-1	1	
3	WASHER, 5/8" SAE FLAT	F05011-5	2	
4	BOLT, 5/8-11 X 2 1/2" HEX HEAD GRADE 5	F05009-20	1	
5	NUT, 5/8-11 HEX LOCK	F05010-4	1	

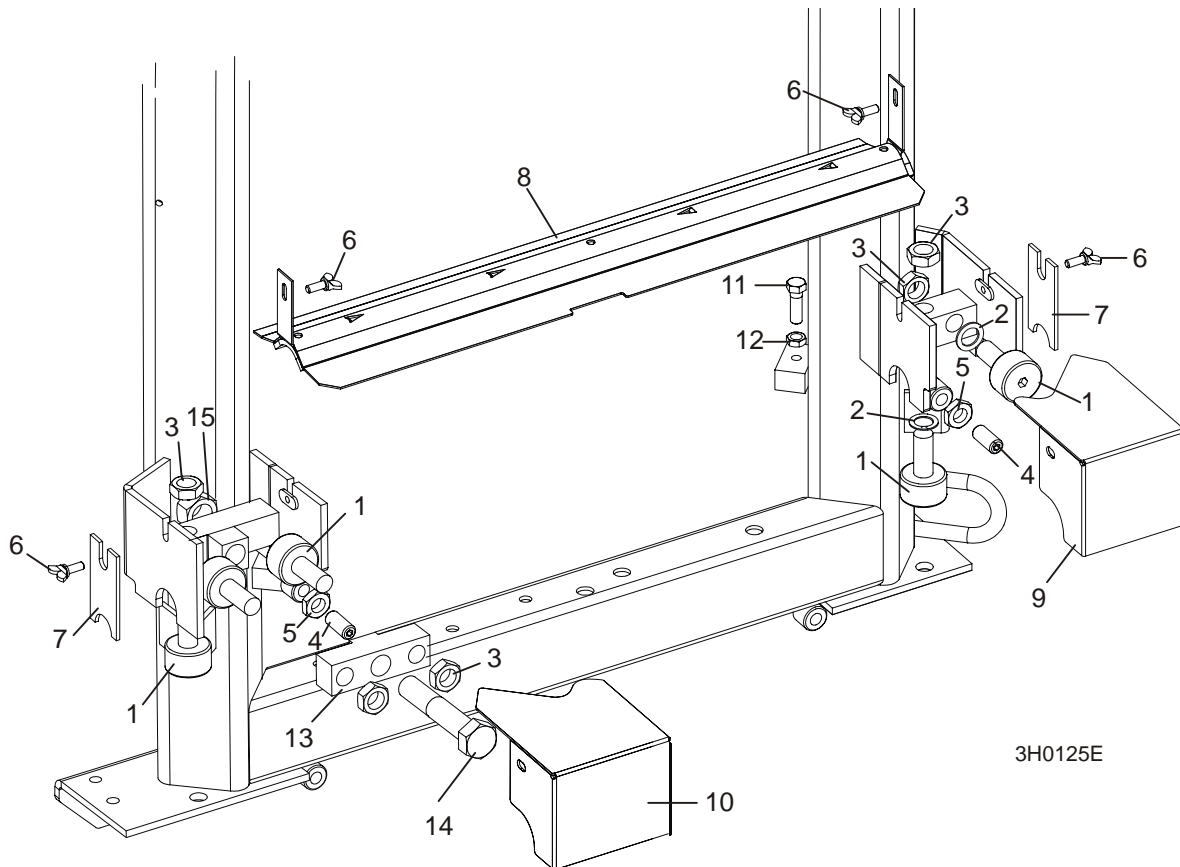
6	<b>SPROCKET, G1-40-41-17 5/8" BORE 17T</b>	P04333	1	
7	<b>WASHER, 5/8" SAE FLAT</b>	F05011-5	2	
8	<b>BOLT, 5/8-11 X 2 1/2" HEX HEAD GRADE 5</b>	F05009-20	1	
9	<b>NUT, 5/8-11 NYLON LOCK</b>	F05010-34	1	
	<b>CRANK ASSEMBLY, LT25 UP/DOWN</b>	A12469	1	
10	Arm, LT25 Up/Down Crank Mounting	W12470	1	
11	Pin, 1/8" x 1" Cotter	F05012-1	1	
12	Washer, 5/8" SAE Flat	F05011-5	1	
13	Bearing, 5/8" 6203-2NSL	P06030-1	2	
14	Sprocket, 40B17 5/8" Bore	P12483	1	
15	Key, #606 Woodruff	P04101-1	1	
16	Collar, 5/8" I.D. With Set Screw	P05035	1	
	Handle Assembly, LT25 Up/Down Crank	A12335	1	
17	Crank, LT25 Up/Down	W12472	1	◆
18	Bolt, 3/8-16 x 2 1/2" Socket Head	F05007-24	1	
19	Washer, 3/8" Split Lock	F05011-4	1	
20	Nut, 3/8-16 Hex	F05010-1	2	
21	Handle, Crank	S12456-W	1	
22	Bolt, 3/8-16 x 4" Hex Head Full Thread Grade 5	F05007-92	1	
23	Washer, 3/8" SAE Flat	F05011-3	2	
24	Spring, Up/Down Lock Lee #LC-045G-5MW	P12494	1	
25	Guard, Up/Down Lock	S12488	1	
26	Spacer, Up/Down Lock	S12284	1	
27	Handle, LT25 Up/Down Lock	W12490	1	
28	Sleeve, Vinyl Handle	P08072	1	
29	Nut, 3/8-16 Hex	F05010-1	1	
30	Washer, 5/8" SAE Flat	F05011-5	13	
31	Nut, 5/8-11 Hex Nylon Lock	F05010-34	6	
32	Sprocket, G1-40-41-17 5/8" Bore 17T	P04333	2	
33	Bolt, 5/8-11 x 2 1/2" Hex Head	F05009-20	3	
34	Bolt, 5/8-11 x 3" Hex Head	F05009-18	1	
35	Bearing, R10-2NSL	P04156	4	
36	Spacer, 1"	S12479-W	2	
37	Bearing, 5/8" 6203-2NSL	P06030-1	3	
38	Spacer, 5/16"	S12480-W	2	
39	Sprocket, Dual 17T/17T	W12474	1	
40	Sprocket, Dual 17T/16T	W12476	1	
41	Bolt, 5/8-11 x 4 1/2" Hex Head	F05009-3	1	
42	Bolt, 5/8-11 x 5" Hex Head Grade 2	F05009-6	1	
43	<b>CHAIN, #40 X 15.5"</b>	P12496	1	
44	<b>CHAIN, #40 X 170.5"</b>	P12497	1	
45	<b>LINK, #40 MASTER</b>	P04200	2	
46	<b>LINK, #40 HALF</b>	P12495	1	

## SECTION 7 FEED SYSTEM & TRACK ROLLERS

### 7.1 Upper Track Rollers And Wipers

LT25/LT27

Rev. D1.00 - E3.02



REF	DESCRIPTION (◆ Indicates Parts Available In Assemblies Only)	PART #	QTY.	
1	ROLLER, TRACK CAM BEARING	012797 <sup>1</sup>	5	
2	SHIM, 5/8" X 1" X .062"	016510 <sup>2</sup>	2	
3	NUT, 5/8-18 HEX JAM	F05010-11	5	
4	SCREW, 1/2-13 X 1 1/4" OVAL POINT SET	F05008-5	2	
5	NUT, 1/2-13 HEX JAM	F05010-31	2	
6	SCREW, 1/4-20 X 5/8" THUMB	F05005-64	4	
7	WIPER, PLASTIC TRACK	M04113	2	
8	COVER, MIDDLE TRACK OILER ASSEMBLY	A09918	1	
	Cover, Middle Track Oiler	S09917	1	◆
	Wiper, Middle Track Felt	S09915	1	
9	HOUSING, UPPER TRACK ROLLER REAR	012999	1	
10	HOUSING, UPPER TRACK ROLLER FRONT	016285	1	

# 7 Feed System & Track Rollers

## *Upper Track Rollers And Wipers*

---

11	<b>BOLT, 3/8-16 X 1 1/4" HEX HEAD</b>	F05007-2	2	
12	<b>NUT, 3/8-16 HEX JAM</b>	F05010-29	2	
13	<b>BLOCK, UPPER ROLLER PIVOT</b>	016501 <sup>3</sup>	1	
	<b>BLOCK, UPPER ROLLER PIVOT</b>	015728 <sup>3</sup>	1	
14	<b>BOLT, 3/4-10 X 4" HEX HEAD GRADE 5</b>	F05013-3	1	
15	<b>NUT, 3/4-10 SELF LOCKING</b>	F05010-80	1	

<sup>1</sup> McGill unit directly replaces P12843 RBC unit originally supplied (1/00).

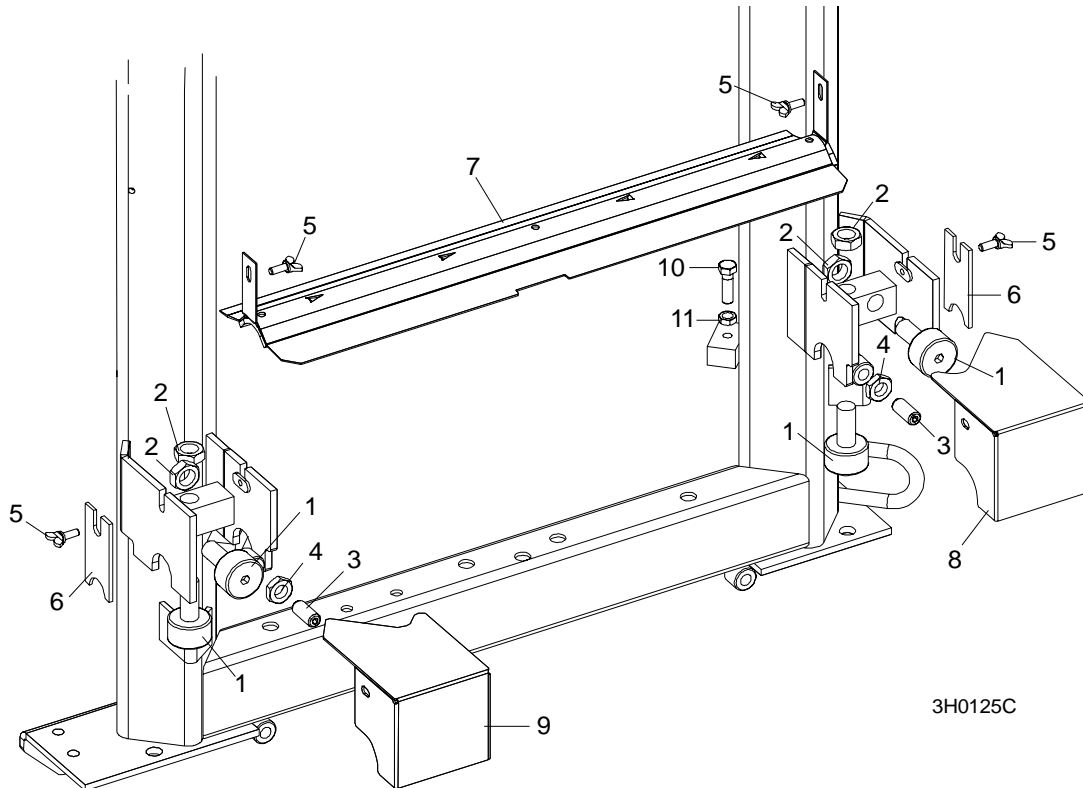
<sup>2</sup> Shims added LT25/LT27 Rev. D6.00.

<sup>3</sup> Use 016501 pivot block for LT25/LT27 Rev. D6.00+. Use 015728 pivot block for prior revision mills.

## 7.2 Upper Track Rollers And Wipers

LT25

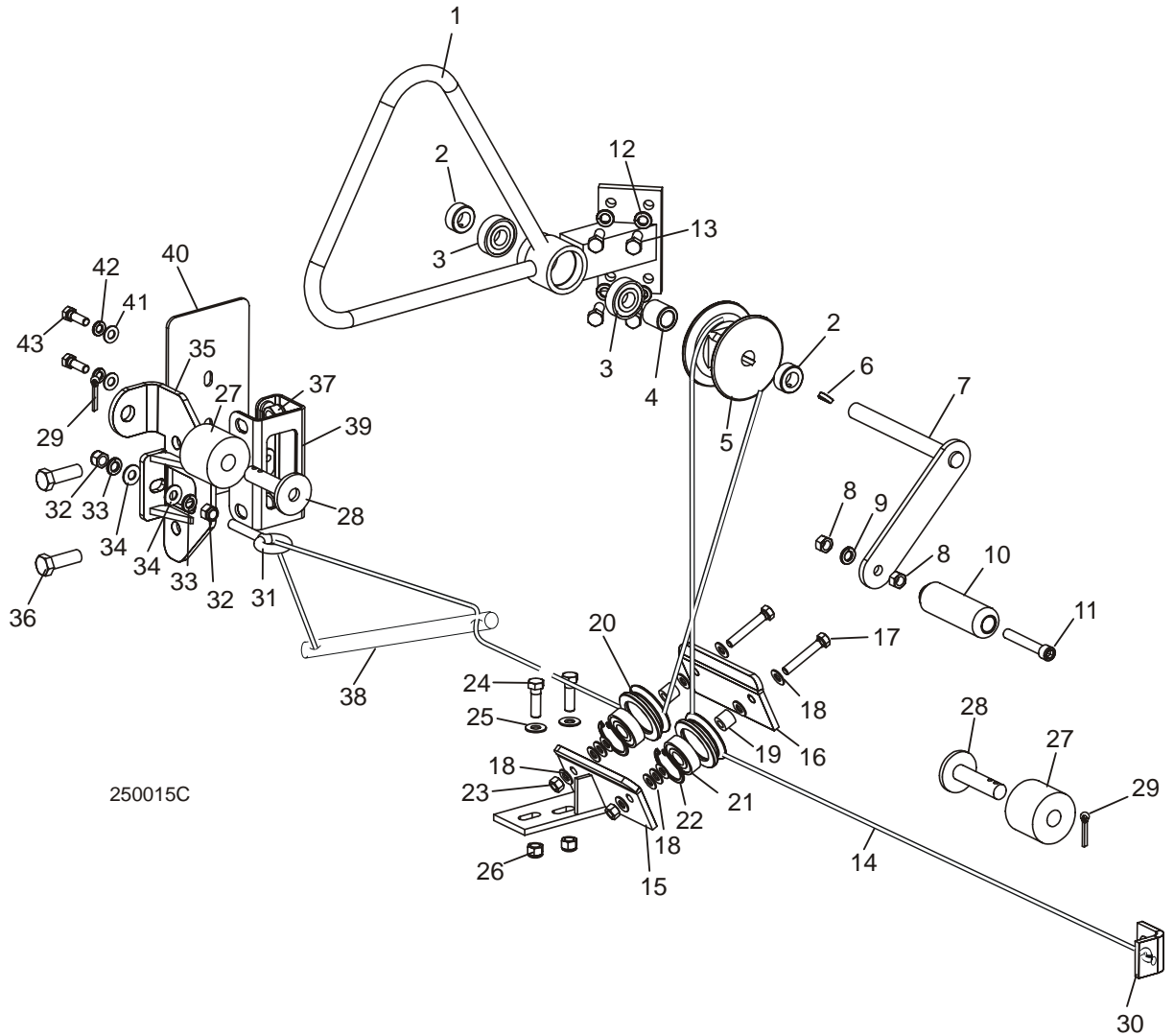
Rev. C2.00 - C9.00



REF	DESCRIPTION (◆ Indicates Parts Available In Assemblies Only)	PART #	QTY.	
1	<b>ROLLER, TRACK CAM BEARING</b>	012797 <sup>1</sup>	4	
2	<b>NUT, 5/8-18 HEX JAM</b>	F05010-11	4	
3	<b>SCREW, 1/2-13 X 1 1/4" OVAL POINT SET</b>	F05008-5	2	
4	<b>NUT, 1/2-13 HEX JAM</b>	F05010-31	2	
5	<b>SCREW, 1/4-20 X 5/8" THUMB</b>	F05005-64	4	
6	<b>WIPER, PLASTIC TRACK</b>	M04113	2	
7	<b>COVER, MIDDLE TRACK OILER ASSEMBLY</b>	A09918	1	
	Cover, Middle Track Oiler	S09917	1	◆
	Wiper, Middle Track Felt	S09915	1	
8	<b>HOUSING, UPPER TRACK ROLLER FRONT</b>	012999	1	
9	<b>HOUSING, UPPER TRACK ROLLER REAR</b>	012998	1	
10	<b>BOLT, 3/8-16 X 1 1/4" HEX HEAD</b>	F05007-2	2	
11	<b>NUT, 3/8-16 HEX JAM</b>	F05010-29	2	

<sup>1</sup> McGill unit directly replaces P12843 RBC unit originally supplied (1/00).

**7.3 Manual Feed**



REF	DESCRIPTION (◆ Indicates Parts Available In Assemblies Only)	PART #	QTY.	
	<b>CRANK ASSEMBLY, MANUAL FEED ROPE</b>	A12453	1	
1	Housing, Manual Feed Crank	W12443	1	◆
2	Collar, 5/8" I.D. With Set Screw	P05035	2	
3	Bearing, 5/8" 6203-2NSL	P06030-1	2	
4	Spacer, 1"	S12479-W	1	
5	Pulley, LT25/LT27 Manual Feed Crank	S12457 <sup>1</sup>	1	
6	Key, #606 Woodruff	P04101-1	1	
7	Handle Assembly, LT25/LT27 Manual Feed Crank	A12336	1	
7	Crank, LT25/LT27 Manual Feed	W12449	1	◆
8	Nut, 3/8/16 Hex	F05010-1	2	

9	Washer, 3/8" Split Lock	F05011-4	1	
10	Handle, Crank	S12456	1	
11	Bolt, 3/8-16 x 2 1/2" Socket Head	F05007-24	1	
12	<b>WASHER, 3/8" SPLIT LOCK</b>	F05011-4	4	
13	<b>BOLT, 3/8-16 X 1" HEX HEAD GRADE 2</b>	F05007-7	4	
14	<b>ROPE, 5/16" DIA. SOLID BRAIDED POLYESTER (LT25)</b>	R02080	26 Ft.	
	<b>ROPE, 5/16" DIA. SOLID BRAIDED POLYESTER (LT25/LT27)</b>	R02080	30.3 Ft.	
	<b>ROLLER ASSEMBLY, FEED ROPE GUIDE</b>	A12458 <sup>2</sup>	1	
15	Bracket, Rope Guide Roller Mount	W12459	1	◆
16	Plate, Rope Guide Roller Mount	S12464	1	◆
17	Bolt, 5/16-18 x 2" Hex Head Full Thread	F05006-13 <sup>2</sup>	2	
18	Washer, 5/16" SAE Flat	F05011-17 <sup>2</sup>	12	
19	Sleeve, Bearing	S05142	2	◆
	Roller Assembly, Rope Guide With Bearing	A09059 <sup>2</sup>	2	
20	Roller, Rope Guide V-Groove	S07989	1	◆
21	Bearing, 5/8" I.D. 6203-2NSL	P06030-1	1	
22	Ring, 1.575" ID Beveled 5002-156 Retaining	F04254-8 <sup>2</sup>	1	
23	Nut, 5/16-18 Hex Lock	F05010-6	2	
24	<b>BOLT, 3/8-16 X 1 1/4" HEX HEAD GRADE 2</b>	F05007-2	2	
25	<b>WASHER, 3/8" SAE FLAT</b>	F05011-3	2	
26	<b>NUT, 3/8-16 HEX NYLON LOCK</b>	F05010-10	2	
	<b>STOP KIT, RUBBER CARRIAGE</b>	K09630	2	
27	Stop, Rubber Carriage	P12165	1	◆
28	Pin, Rubber Carriage Stop	W09293	1	
29	Pin, 3/16" x 1" Cotter	F05012-21	1	
30	<b>BRACKET, FEED ROPE MOUNTING</b>	S12466	1	
31	<b>BOLT, 3/8-16 X 2" EYE 5/8" I.D.</b>	F05007-30	1	
32	<b>NUT, 3/8-16 HEX</b>	F05010-10	2	
33	<b>WASHER, 3/8" SPLIT LOCK</b>	F05011-4	2	
34	<b>WASHER, 3/8" SAE FLAT</b>	F05011-3	2	
35	<b>BRACKET, REAR FEED ROPE TENSIONER</b>	W11822	1	
36	<b>BOLT, 1/2-13 X 1 1/2" HEX HEAD GRADE 5</b>	F05008-33	2	
37	<b>NUT, 1/2-13 NYLON HEX</b>	F05010-8	2	
38	<b>ROD, FEED ROPE TENSIONER</b>	S12468	1	
39	<b>BRACKET WELDMENT, REAR TUBE COVER MOUNT</b>	015021	1	
40	<b>COVER, MAIN TUBE REAR</b>	015023	1	
41	<b>WASHER, 5/16" SAE FLAT</b>	F05011-17	2	
42	<b>WASHER, 5/16" SPLIT LOCK</b>	F05011-13	2	
43	<b>BOLT, 5/16-18 X 1" HEX HEAD</b>	F05006-1	2	

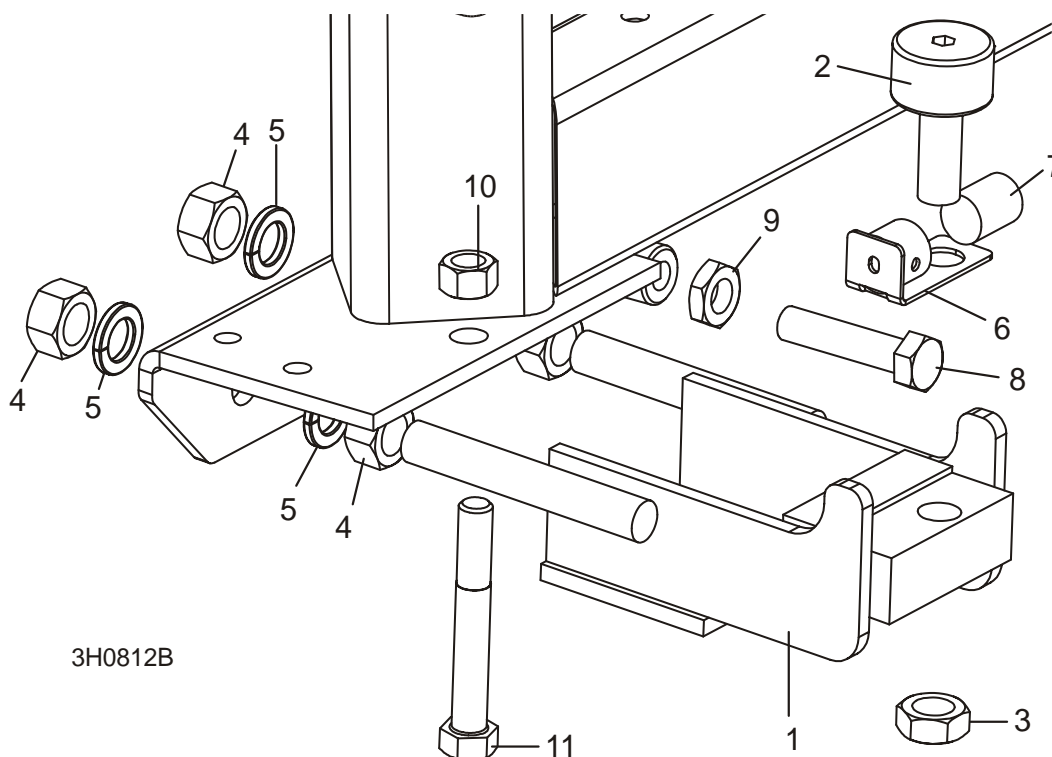
<sup>1</sup> Replaces S12457-W. Part Number change only.

<sup>2</sup> Roller assembly includes upgraded V-Groove rollers (Rev. D6.00+). Roller changed to bearing secured with retaining ring to insure proper fit. New roller requires longer mounting bolt F05006-13 (replaces 5/16-18 x 1 1/2" hex bolt F05006-2) and six additional flat washers (F05011-17).

## 7.4 Lower Track Rollers

LT25/LT27

Rev. D6.00 - E3.02



REF	DESCRIPTION (◆ Indicates Parts Available In Assemblies Only)	PART #	QTY.	
	<b>ROLLER ASSEMBLY, LOWER TRACK</b>	012995	2	
1	Bracket, Lower Track Roller Mounting	012982	1	◆
2	Roller, Track Cam Bearing	012797	1	
3	Nut, 5/8-18 Hex Jam	F05010-11	1	
4	Nut, 5/8-11 Hex	F05010-5	4	
5	Washer, 5/8" Split Lock Grade 8	F05011-118 <sup>1</sup>	4	
6	Bracket Weldment, Lower Track Roller Wiper	033374	1	
7	Wiper, Round Gray Felt	033375	1	
8	<b>BOLT, 1/2-13 X 2 1/4" HEX HEAD FULL THREAD</b>	F05008-2	2	
9	<b>NUT, 1/2-13 HEX JAM</b>	F05010-31	2	
10	<b>NUT, 1/2-13 HEX LOCK</b>	F05010-3	2	
11	<b>BOLT, 1/2-13 X 3 1/2" HEX HEAD GRADE 5</b>	F05008-61	2	

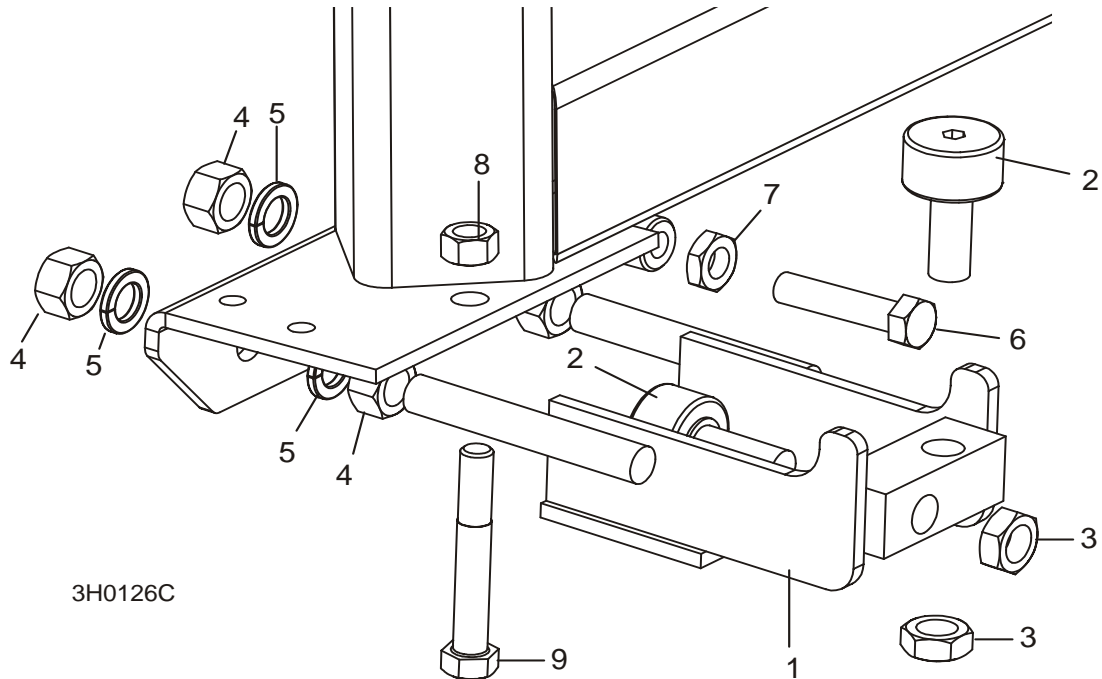
<sup>1</sup> Grade 8 washers replace F05011-27 originally supplied to improve durability.



## 7.5 Lower Track Rollers

LT25

Rev. C2.00 - D5.01



REF	DESCRIPTION (◆ Indicates Parts Available In Assemblies Only)	PART #	QTY.	
	<b>ROLLER ASSEMBLY, LOWER TRACK</b>	012995 <sup>1</sup>	2	
1	Bracket, Lower Track Roller Mounting	012982	1	◆
2	Roller, Track Cam Bearing	012797 <sup>2</sup>	2	
3	Nut, 5/8-18 Hex Jam	F05010-11	2	
4	Nut, 5/8-11 Hex	F05010-5 <sup>3</sup>	4	
5	Washer, 5/8" Split Lock Grade 8	F05011-118 <sup>3</sup>	4	
6	<b>BOLT, 1/2-13 X 2 1/4" HEX HEAD FULL THREAD</b>	F05008-2	2	
7	<b>NUT, 1/2-13 HEX JAM</b>	F05010-31	2	
8	<b>NUT, 1/2-13 HEX LOCK</b>	F05010-3	2	
9	<b>BOLT, 1/2-13 X 3 1/2" HEX HEAD GRADE 5</b>	F05008-61	2	

<sup>1</sup> Lower track roller mounting bracket revised to accommodate new wiper assembly added LT25 Rev. D6.00. Bracket includes stop block which replaces the bottom track roller ([See Section 7.4](#)).

<sup>2</sup> McGill unit directly replaces P12843 RBC unit originally supplied (1/00).

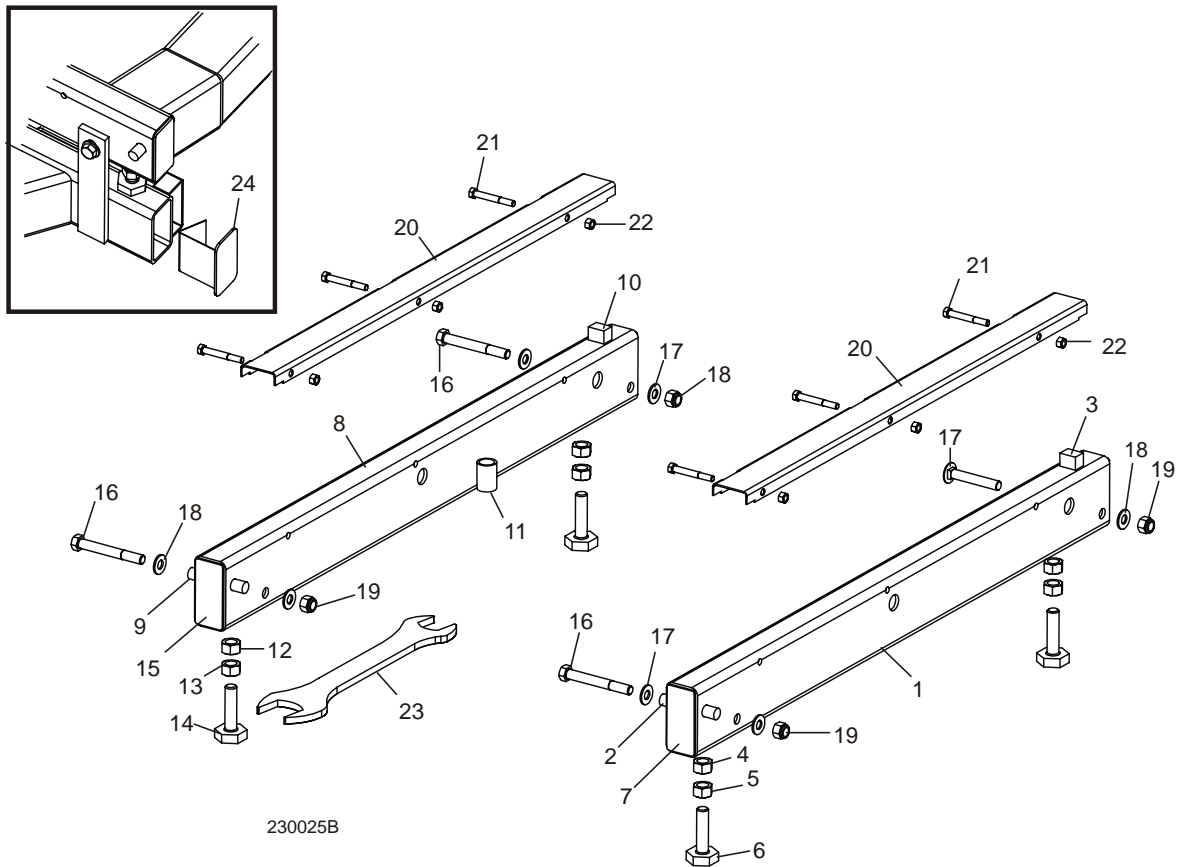
<sup>3</sup> Each of two F05010-4 self locking nuts originally supplied prior to LT25 Rev. C5.00 has been replaced by a F05011-27 split lock washer and a F05010-5 hex nut to ensure lock retention after repeated adjustments. Grade 8 washers replace F05011-27 originally supplied to improve durability.

# 8 Bed Frame Assembly

## Bed Rail Assembly, Front And Rear

### SECTION 8 BED FRAME ASSEMBLY

#### 8.1 Bed Rail Assembly, Front And Rear



REF	DESCRIPTION (◆ Indicates Parts Available In Assemblies Only)	PART #	QTY.	
	<b>BED RAIL ASSEMBLY, REAR PAINTED</b>	A09774	1	
1	Bed Rail Tube, Long	S09102	1	◆
2	Pin, Ramp Mount	S04030	1	
3	Block, Log Stop	S09034	1	
4	Nut, 5/8-11 Pilot Weld	F05010-84 <sup>1</sup>	2	
5	Nut, 5/8-11 Hex	F05010-5 <sup>1</sup>	2	
6	Bolt, Bed Rail Adjustment	S13006 <sup>1</sup>	2	
7	Plate, Bed Rail End Cap	S04058	2	◆
	<b>BED RAIL ASSEMBLY, FRONT PAINTED</b>	A09564	1	
8	Bed Rail Tube, Long	S09102	1	◆
9	Pin, Ramp Mount	S04030	1	
10	Block, Log Stop	S09034	1	
11	Tube, Ramp Retainer Mount	S09334	1	◆

## Bed Frame Assembly 8

*Bed Rail Assembly, Front And Rear*

12	Nut, 5/8-11 Pilot Weld	F05010-84 <sup>1</sup>	2	
13	Nut, 5/8-11 Hex	F05010-5 <sup>1</sup>	2	
14	Bolt, Bed Rail Adjustment	S13006 <sup>1</sup>	2	
15	Plate, Bed Rail End Cap	S04058	2	◆
16	<b>BOLT, 1/2-13 X 4" HEX HEAD GRADE 5</b>	F05008-78 <sup>2</sup>	3	
17	<b>BOLT, 1/2-13 X 3 1/2" CARRIAGE</b>	F05008-94 <sup>3</sup>	1	
18	<b>WASHER, 1/2" SAE FLAT</b>	F05011-2	7	
19	<b>NUT, 1/2-13 NYLON LOCK</b>	F05010-8	4	
20	<b>COVER, STAINLESS STEEL BED RAIL</b>	016898 <sup>4</sup>	2	
21	<b>BOLT, 5/16-18 X 2 1/2" HEX HEAD</b>	F05006-10	6	
22	<b>NUT, 5/16-18 HEX LOCK</b>	F05010-6	6	
23	<b>WRENCH, BED RAIL ADJUSTMENT</b>	015970	1	
24	<b>CAP WELDMENT, BED RAIL REMOVABLE END</b>	014652	2	

<sup>1</sup> Bed Rail Adjustment Bolt S13006 zinc-plated 11/99. Two unplated 5/8-11 Hex Nuts F05010-54 replaced with one 5/8-11 Pilot Weld Nut F05010-84 and one 5/8-11 Zinc-Plated Hex Nut. Component parts replace assembly A09775 previously supplied.

<sup>2</sup> F05008-78 Grade 5 bolt replaces F05008-26 bolt originally supplied prior to 5/03.

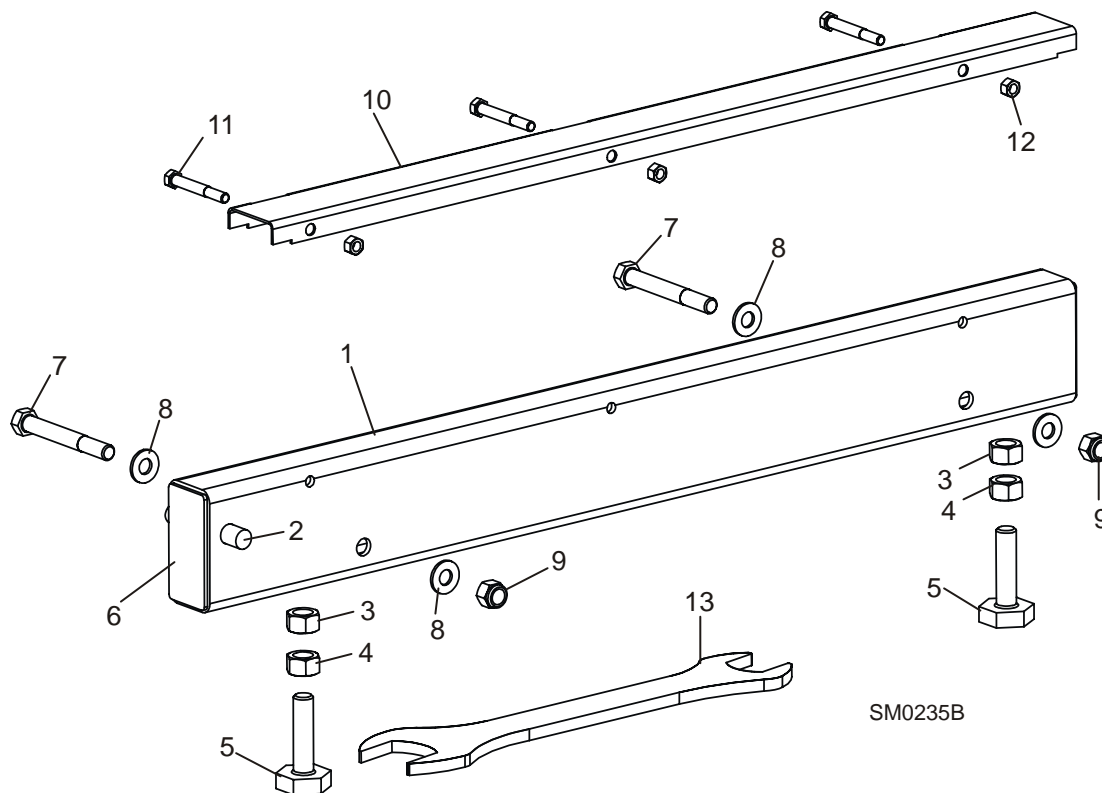
<sup>3</sup> Used on rear bed rail to allow clearance for optional side support rollers.

<sup>4</sup> Longer rail cover 016898 replaces S09944 supplied prior to Rev. E2.00.

# 8 Bed Frame Assembly

## Bed Rail Assembly, Middle Front

### 8.2 Bed Rail Assembly, Middle Front

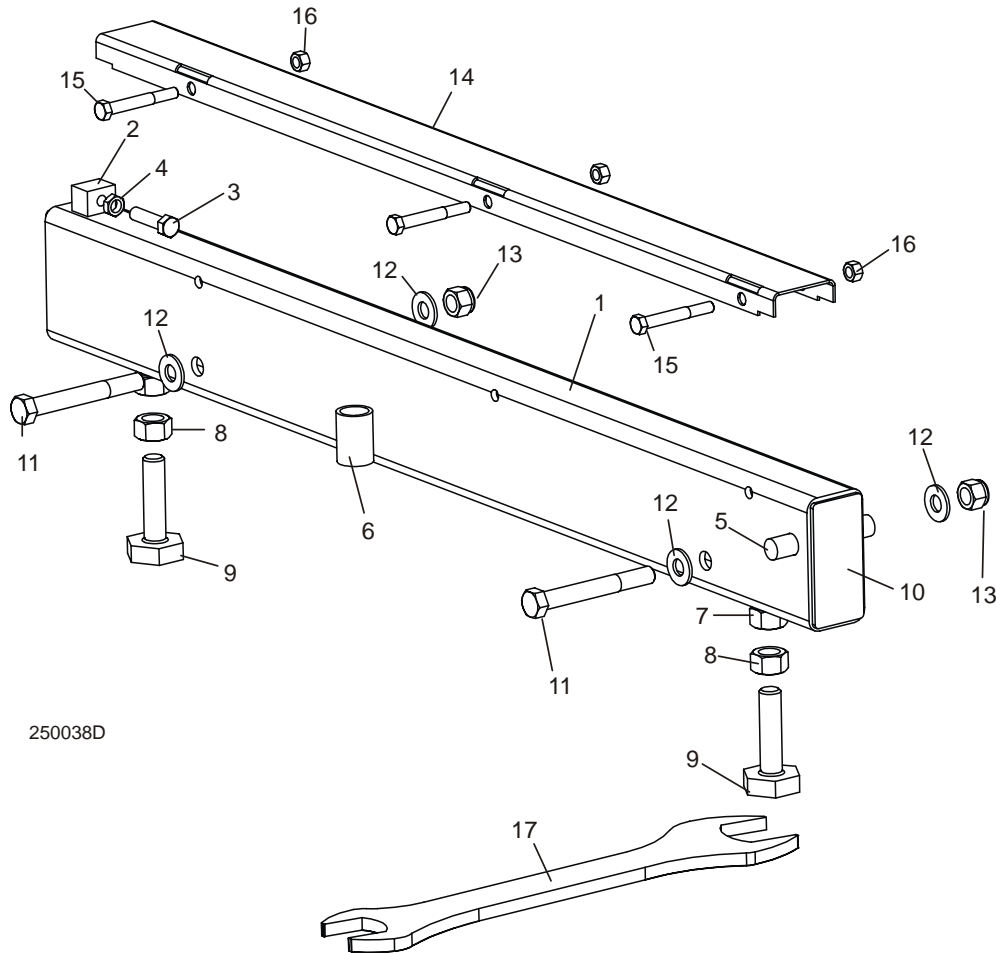


REF	DESCRIPTION (◆ Indicates Parts Available In Assemblies Only)	PART #	QTY.	
	<b>BED RAIL ASSEMBLY, FRONT MIDDLE</b>	A09566	1	
1	Bed Rail Tube, Short	S09103	1	◆
2	Pin, Ramp Mount	S04030	1	
3	Nut, 5/8-11 Pilot Weld	F05010-84 <sup>1</sup>	2	
4	Nut, 5/8-11 Hex	F05010-5 <sup>1</sup>	2	
5	Bolt, Bed Rail Adjustment	S13006 <sup>1</sup>	2	
6	Plate, Bed Rail End Cap	S04058	2	◆
7	<b>BOLT, 1/2-13 X 4" HEX HEAD GRADE 5</b>	F05008-78 <sup>2</sup>	2	
8	<b>WASHER, 1/2" SAE FLAT</b>	F05011-2	4	
9	<b>NUT, 1/2-13 NYLON LOCK</b>	F05010-8	2	
	<b>COVER ASSEMBLY, STAINLESS STEEL BED RAIL (LONG)</b>	A09956	1	
10	Cover, Stainless Steel Bed Rail	S09944	1	◆
11	Bolt, 5/16-18 X 2 1/2" Hex Head	F05006-10	3	
12	Nut, 5/16-18 Hex Lock	F05010-6	3	
13	<b>WRENCH, BED RAIL ADJUSTMENT</b>	015970	1	

<sup>1</sup> Bed Rail Adjustment Bolt S13006 zinc-plated 11/99. Two unplated 5/8-11 Hex Nuts F05010-54 replaced with one 5/8-11 Pilot Weld Nut F05010-84 and one 5/8-11 Zinc-Plated Hex Nut. Component parts replace assembly A09775 previously supplied.

<sup>2</sup> F05008-78 Grade 5 bolt replaces F05008-26 bolt originally supplied prior to 5/03.

### 8.3 Bed Rail Assembly, Middle Rear



REF	DESCRIPTION (◆ Indicates Parts Available In Assemblies Only)	PART #	QTY.	
	<b>BED RAIL ASSEMBLY, REAR MIDDLE</b>	A09565	1	
1	Bed Rail Tube, Short	014640	1	◆
2	Block, Log Stop w/Threaded Hole	014639	1	◆
3	Bolt, 3/8-16 x 1 1/2 Full Thead Hex Head	F05007-17	1	
4	Nut, 3/8-16 Hex Jam	F05010-29	1	
5	Pin, Ramp Mount	S04030	1	
6	Tube, Ramp Retainer Mount	S09334	1	◆
7	Nut, 5/8-11 Pilot Weld	F05010-84 <sup>1</sup>	2	
8	Nut, 5/8-11 Hex	F05010-5 <sup>1</sup>	2	
9	Bolt, Bed Rail Adjustment	S13006 <sup>1</sup>	2	
10	Plate, Bed Rail End Cap	S04058	2	◆
11	<b>BOLT, 1/2-13 X 4" HEX HEAD GRADE 5</b>	F05008-78 <sup>2</sup>	2	
12	<b>WASHER, 1/2" SAE FLAT</b>	F05011-2	4	

## 8

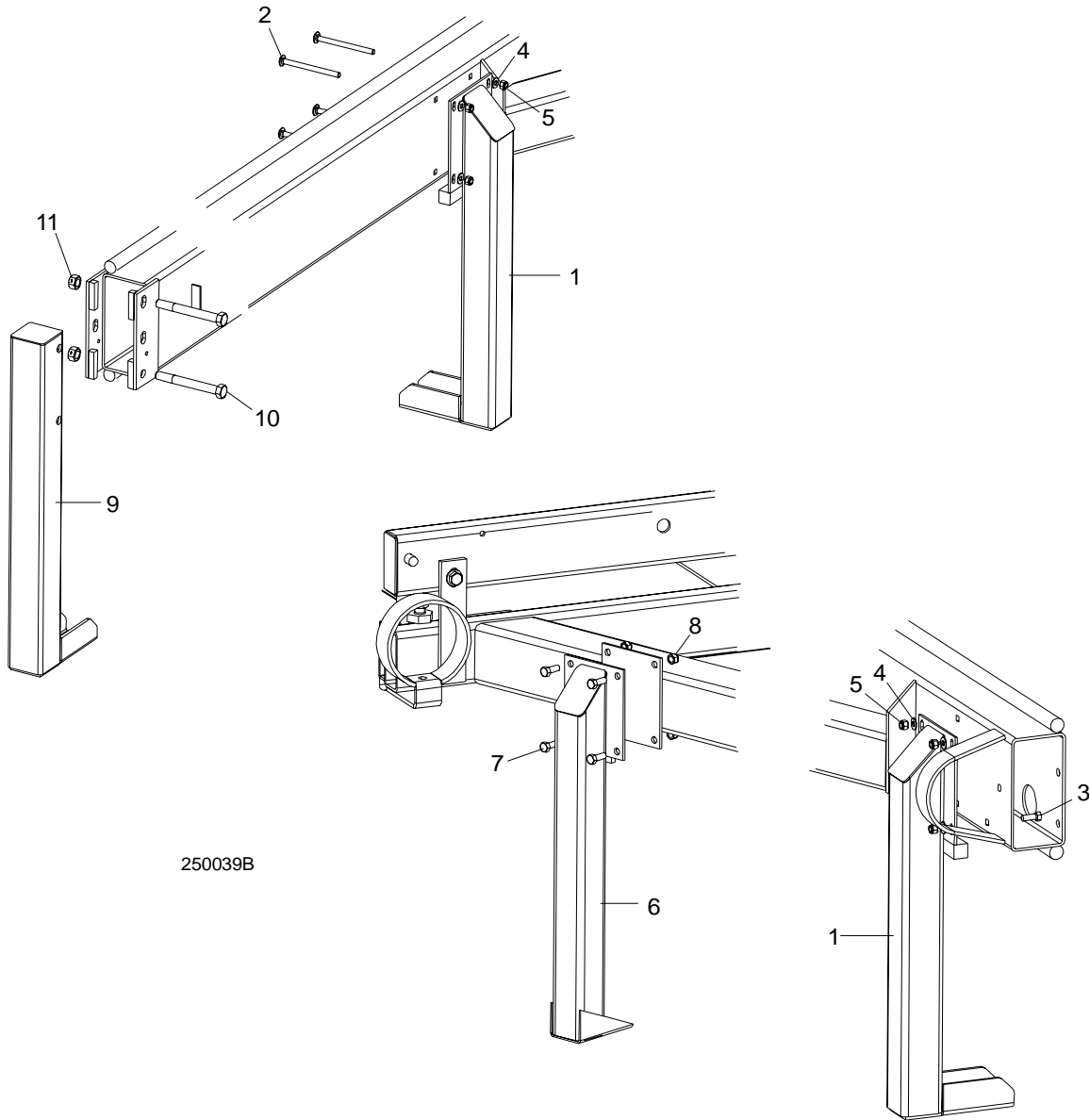
**Bed Frame Assembly***Bed Rail Assembly, Middle Rear*

13	<b>NUT, 1/2-13 NYLON LOCK</b>	F05010-8	2	
	<b>COVER ASSEMBLY, STAINLESS STEEL BED RAIL (LONG)</b>	A09956	1	
14	Cover, Stainless Steel Bed Rail	S09944	1	◆
15	Bolt, 5/16-18 X 2 1/2" Hex Head	F05006-10	3	
16	Nut, 5/16-18 Hex Lock	F05010-6	3	
17	<b>WRENCH, BED RAIL ADJUSTMENT</b>	015970	1	

<sup>1</sup> Bed Rail Adjustment Bolt S13006 zinc-plated 11/99. Two unplated 5/8-11 Hex Nuts F05010-54 replaced with one 5/8-11 Pilot Weld Nut F05010-84 and one 5/8-11 Zinc-Plated Hex Nut. Component parts replace assembly A09775 previously supplied.

<sup>2</sup> F05008-78 Grade 5 bolt replaces F05008-26 bolt originally supplied prior to 5/03.

### 8.4 Leg Assembly (Stationary)



250039B

REF	DESCRIPTION (◆ Indicates Parts Available In Assemblies Only)	PART #	QTY.
1	LEG, LONG STATIONARY (2 REQ'D FOR LT25; 3 REQ'D FOR LT25L/LT27)	W09513 <sup>1</sup>	2/3
2	BOLT, 3/8-16 X 5" CARRIAGE HEAD	F05007-113	8
3	BOLT, 3/8-16 X 1 1/4" HEX HEAD (REQ'D FOR REAR LT25L/LT27 ONLY)	F05007-2 <sup>2</sup>	4
4	WASHER, 3/8" SAE FLAT	F05011-3 <sup>3</sup>	8/12
5	NUT, 3/8-16 HEX NYLON LOCK	F05010-10	8/12
6	LEG, SHORT STATIONARY	W09515	2

## 8 Bed Frame Assembly

### *Leg Assembly (Stationary)*

---

7	<b>BOLT, 3/8-16 X 1 1/4" HEX HEAD</b>	F05007-2 <sup>2</sup>	8	
8	<b>NUT, 3/8-16 HEX NYLON LOCK</b>	F05010-10	8	
9	<b>LEG, FRONT STATIONARY</b>	W09517 <sup>1</sup>	1	
10	<b>BOLT, 5/8-11 X 5 1/2" HEX HEAD GRADE 5</b>	F05009-11	2	
11	<b>NUT, 5/8-11 HEX LOCK</b>	F05010-4	2	

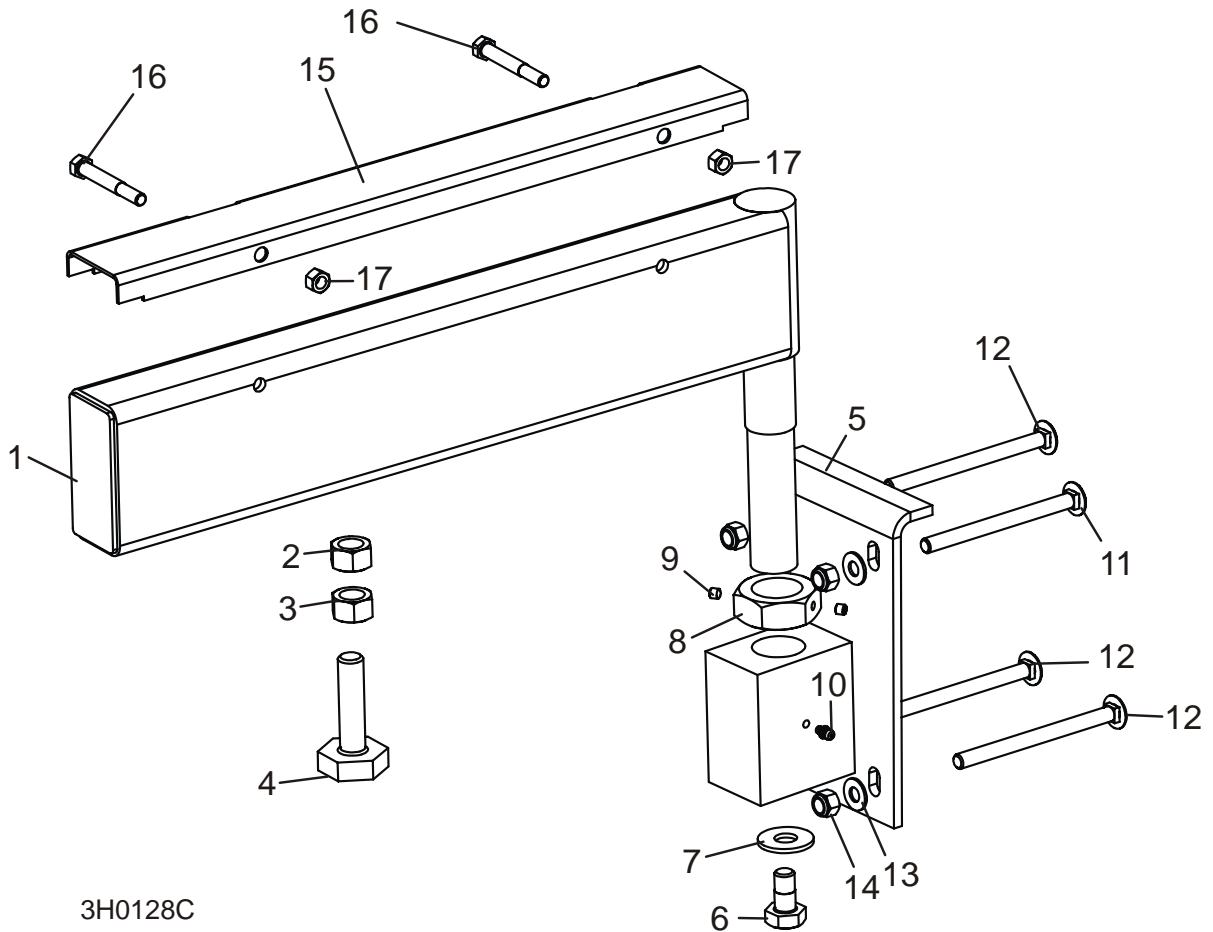
<sup>1</sup> Leg base plate changed to 1/4" steel and lengthened to improve stability (LT25 Rev. C6.04).

<sup>2</sup> Replaces 3/8-16 x 1" Hex Head Grade 2 Bolt (F05007-7) to secure outrigger with thicker 1/4" mounting plate provided after Rev D4.00.

<sup>3</sup> Washers added on LT25 Rev. C6.05.



## 8.5 Pivot Bed Rail Assembly



3H0128C

REF	DESCRIPTION (◆ Indicates Parts Available In Assemblies Only)	PART #	QTY.	
	<b>PIVOT BED RAIL ASSEMBLY (LT25L/LT27)</b>	A13015	2	
	<b>PIVOT BED RAIL ASSEMBLY (LT25)</b>	012993	2	
1	Pivot Bed Rail Weldment (LT25L/LT27)	W13014	1	◆
	Pivot Bed Rail Weldment (LT25)	012992	1	◆
2	Nut, 5/8-11 Pilot Weld	F05010-84 <sup>1</sup>	2	
3	Nut, 5/8-11 Hex	F05010-5 <sup>1</sup>	2	
4	Bolt, Bed Rail Adjustment	S13006 <sup>1</sup>	2	
5	Bracket, Pivot Rail Mounting	W13090	1	
6	Bolt, 1/2-13 x 1" Hex Head Grade 2	F05008-50	1	
7	Washer, 9/16" SAE Flat	F05011-52	1	
8	Nut, Pivot Rail Adjustment	S13016	1	
9	Screw, 1/4-28 x 1/4" Brass Tip Set	F05005-42	2	
10	Fitting, 3/16" Grease	P04107	1	

## 8

**Bed Frame Assembly***Pivot Bed Rail Assembly*

11	<b>BOLT, 3/8-16 X 4 3/4" CARRIAGE HEAD</b>	F05007-114	2	
12	<b>BOLT, 3/8-16 X 5" CARRIAGE HEAD</b>	F05007-113	6	
13	<b>WASHER, 3/8" SAE FLAT</b>	F05011-3 <sup>2</sup>	8	
14	<b>NUT, 3/8-16 NYLON LOCK</b>	F05010-10	8	
	<b>COVER KIT, PIVOT RAIL STAINLESS STEEL (LT25L/LT27)</b>	017710	2	
	<b>COVER KIT, PIVOT RAIL STAINLESS STEEL (LT25)</b>	015926	2	
15	Cover, Stainless Steel Pivot Bed Rail (LT25L/LT27)	S13012	1	
	Cover, Stainless Steel Pivot Bed Rail (LT25)	012994	1	
16	Bolt, 5/16-18 X 2 1/2" Hex Head	F05006-10	2	
17	Nut, 5/16-18 Hex Lock	F05010-6	2	
	<b>WRENCH, BED RAIL ADJUSTMENT (<a href="#">See Section 8.1</a>)</b>	015970	1	

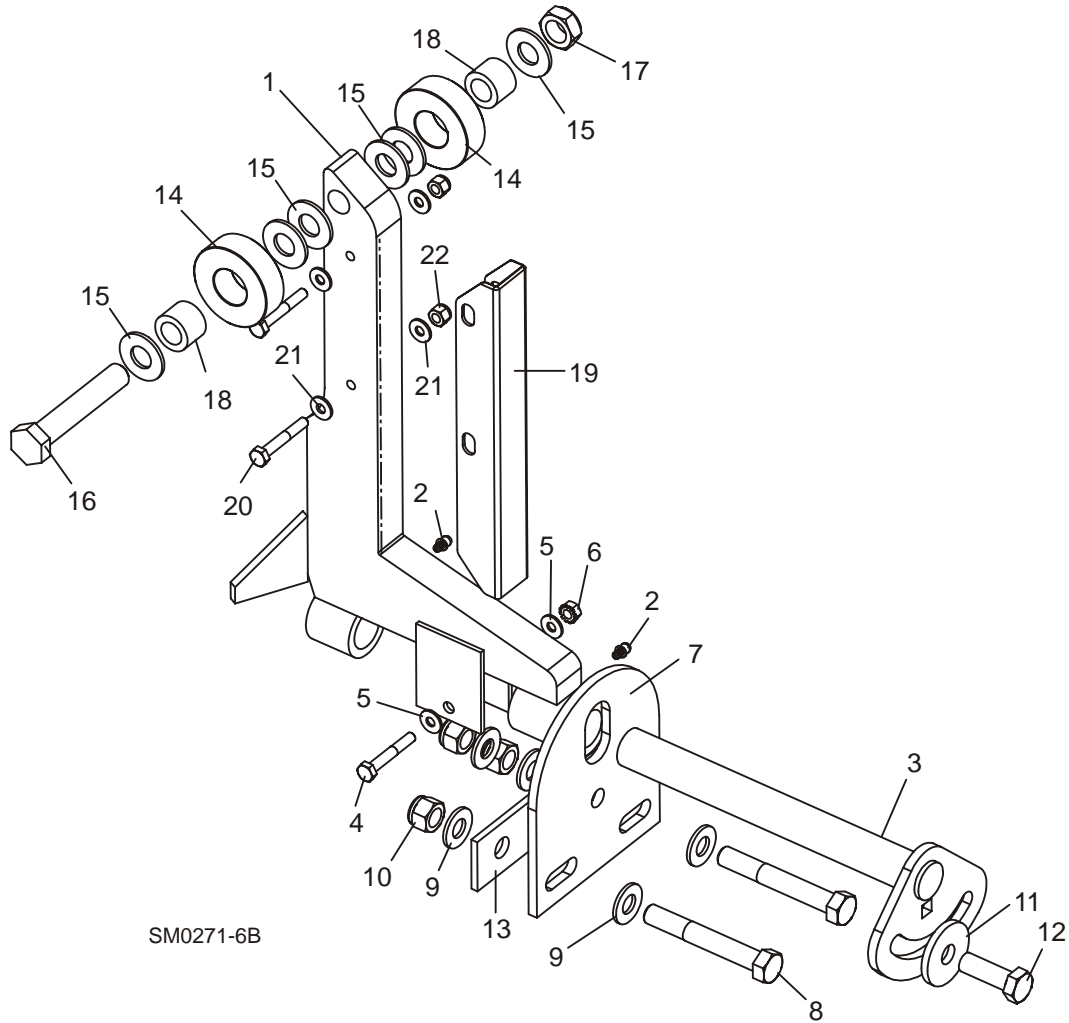
<sup>1</sup> Bed Rail Adjustment Bolt S13006 zinc-plated 11/99. Two unplated 5/8-11 Hex Nuts F05010-54 replaced with one 5/8-11 Pilot Weld Nut F05010-84 and one 5/8-11 Zinc-Plated Hex Nut. Component parts replace assembly A09775 previously supplied.

<sup>2</sup> Washers added on LT25 Rev. C6.05.

## 8.6 Log Side Support Assembly

*LT25/LT27*

*Rev. D7.00 - E3.02*



REF	DESCRIPTION (◆ Indicates Parts Available In Assemblies Only)	PART #	QTY.
1	<b>SUPPORT, LOG SIDE</b>	015235	4
2	Fitting, 3/16" Grease	P04107	2
	<b>MOUNTING KIT, LOG SIDE SUPPORT</b>	016559 <sup>1</sup>	4
3	Pin, Log Side Support Pivot	016544	1
4	Bolt, 1/4-20 X 1 1/2" Hex Head Grade 5	F05005-4	1
5	Washer, 1/4" SAE Flat	F05011-11	2
6	Nut, 1/4-20 Self Locking	F05010-9	1
7	Plate, Log Side Support End	016555	1
8	Bolt, 1/2-13 X 3 1/2" Hex Head Grade 5	F05008-61	2
9	Washer, 1/2" SAE Flat	F05011-2	5

## 8

## Bed Frame Assembly

### Log Side Support Assembly

10	Nut, 1/2-13 Hex Nylon Lock	F05010-8	3	
11	Washer, .52" x 1.69"	014632 <sup>2</sup>	1	
12	Bolt, 1/2-13 X 1 1/2" Hex Head Grade 5	F05008-33	1	
13	Plate, Side Support Washer Clamp	016558	1	
	<b>ROLLER KIT, SIDE SUPPORT (OPTIONAL)</b>	016562 <sup>3</sup>	4	
14	Roller, Side Support	016561	2	
15	Washer, 5/8" SAE Flat	F05011-5 <sup>4</sup>	6	
16	Bolt, 5/8-11 x 3 3/4" Hex Head Grade 5	F05009-118 <sup>5</sup>	1	
17	Nut, 5/8-11 Hex Nylon Lock Jam	F05010-96 <sup>6</sup>	1	
18	Bushing, Bronze 5/8" x 1" x 3/4"	016560	2	
	Bolt, 1/2-13 x 3 1/2" Carriage Head	F05008-94 <sup>3</sup>	1	
	Instruction Sheet, Side Support Roller	016562-526	1	
	<b>GUARD KIT, STAINLESS STEEL SIDE SUPPORT (OPTIONAL)</b>	016798 <sup>7</sup>	1	
19	Guard, Stainless Steel Side Support	016722	4	
20	Bolt, 1/4-20 x 1 3/4" Hex Head	F05005-4	8	
21	Washer, 1/4" SAE Flat	F05011-11	16	
	Washer, 5/8" SAE Flat	F05011-5 <sup>4</sup>	4	
22	Nut, 1/4-20 Hex Nylon Lock	F05010-69	8	
	Instruction Sheet, Stainless Steel Side Support Guard Retro	016798-1005	1	

<sup>1</sup> Mounting Kit 016559 replaces kit K09344 supplied prior to Rev. D7.00. New mounting pin, plate and clamp plate improve stability of side support adjustment.

<sup>2</sup> Oversized Washer 014632 replaces 1/2" SAE Flat Washer F05011-2 to provide larger clamping area during adjustment (12/09). Flat Washer F05011-2 replaced F05011-90 .5" x 1.63" Serrated Washer supplied prior to Rev. D7.01. Serrated Washer no longer required with current side support mount arrangement.

<sup>3</sup> Roller Kit 016562 replaces kit 015109 supplied prior to Rev. D7.00. Carriage bolt supplied to replace bed rail mounting bolt to allow clearance for side support roller hardware when side support is adjusted down.

<sup>4</sup> Additional 5/8" SAE Flat Washer F05011-5 may be required on each side of side support to provide clearance for optional stainless steel side support guards. Extra washers are included in the stainless steel guard retrofit kit (016798).

<sup>5</sup> Longer bolt replaces 3 1/2" F05009-93 used before 3/07.

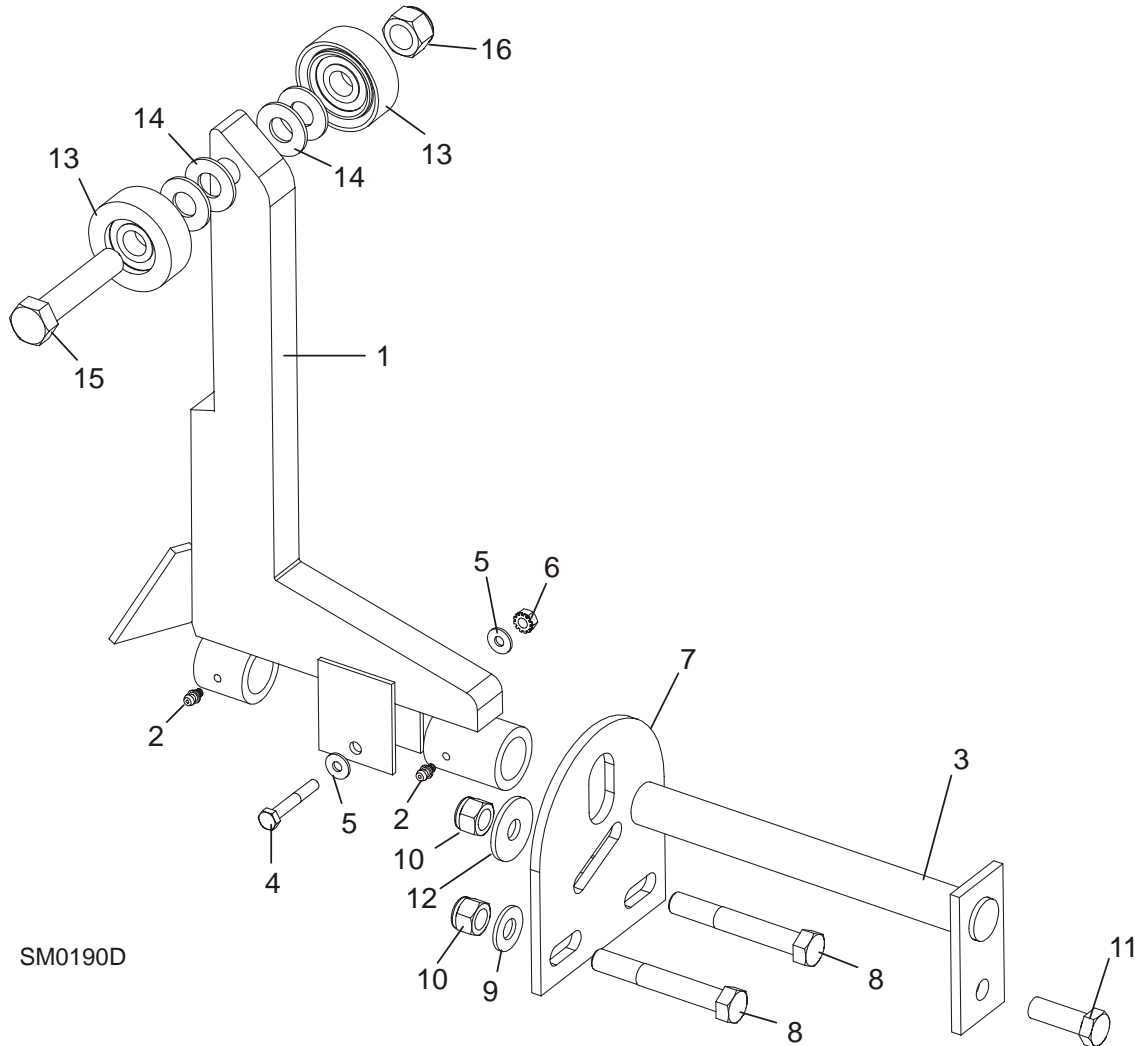
<sup>6</sup> Replaces F05010-4 Hex Lock Nut used prior to 9/06 for ease of assembly.

<sup>7</sup> Stainless Steel Guards added Rev. D9.00. Guards prevent staining of lumber and reduce wear to side support. Guard revised with thicker steel and second mounting hole (Rev. E3.00).

## 8.7 Log Side Support Assembly

LT25

Rev. C2.00 - D6.00



REF	DESCRIPTION (◆ Indicates Parts Available In Assemblies Only)	PART #	QTY.
1	<b>SUPPORT, LOG SIDE</b>	015235 <sup>1</sup>	4
2	Fitting, 3/16" Grease	P04107	2
	<b>MOUNTING KIT, LOG SIDE SUPPORT</b>	K09440 <sup>2</sup>	4
3	Pin, Log Side Support Pivot	W09238	1
4	Bolt, 1/4-20 X 1 1/2" Hex Head Grade 5	F05005-4	1
5	Washer, 1/4" SAE Flat	F05011-11	2
6	Nut, 1/4-20 Self Locking	F05010-9	1
7	Plate, Log Side Support End	S09148	1
8	Bolt, 1/2-13 X 3 1/2" Hex Head	F05008-61	2
9	Washer, 1/2" SAE Flat	F05011-2	4

## 8

## Bed Frame Assembly

### Log Side Support Assembly

10	Nut, 1/2-13 Hex Nylon Lock	F05010-8	3	
11	Bolt, 1/2-13 X 1 1/2" Hex Head	F05008-33	1	
12	<b>WASHER, .5" X 1.63" SERRATED</b>	F05011-90 <sup>3</sup>	1	
	<b>ROLLER KIT, SIDE SUPPORT (OPTIONAL)</b>	015109 <sup>4</sup>	4	◆
13	Roller Assembly, Side Support	015014	2	◆
14	Washer, 5/8" SAE Flat	F05011-5	4	
15	Bolt, 5/8-11 x 3" Hex Head Grade 5	F05009-37	1	
16	Nut, 5/8-11 Nylon Lock	F05010-34	1	
	Instruction Sheet, Side Support Roller	015109-526	1	◆

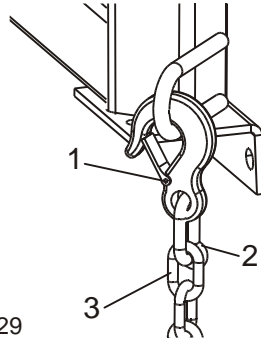
<sup>1</sup> Revised for added strength Rev. C6.00 and later.

<sup>2</sup> Upgrade mounting kit 016559 also available. Replaces Pin Weldment and Mounting Plate to new design to improve stability of side support adjustment ([See Section 8.6](#)).

<sup>3</sup> Replaces 014632 provided prior to Rev. D4.00. Serrated washer helps maintain side support adjustment. Also replaces S09225 1/2" I.D. X 1 1/2" O.D. X .1196" Washer (12/97).

<sup>4</sup> Roller kit replaced by new kit 016562 ([See Section 8.6](#)).

## 8.8 Safety Chain Assembly

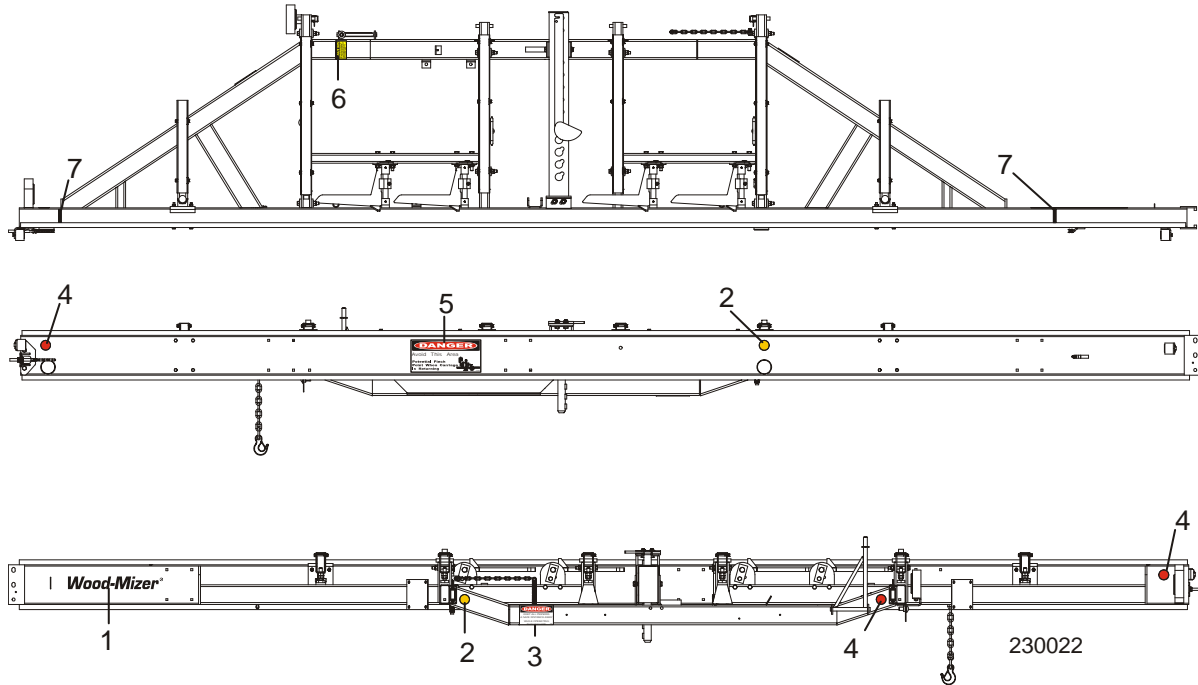


REF	DESCRIPTION (◆ Indicates Parts Available In Assemblies Only)	PART #	QTY.	
	<b>CHAIN ASSEMBLY, TIE DOWN</b>	A04376	1	
1	Hook, 5/8" Safety Chain	P12075	1	◆
2	Cold Shut, 3/8" Plain	P04772-2	1	◆
3	Chain, 5/16" Unplated	R02111	.938 ft.	◆

# 8 Bed Frame Assembly

## Bed Frame Decals

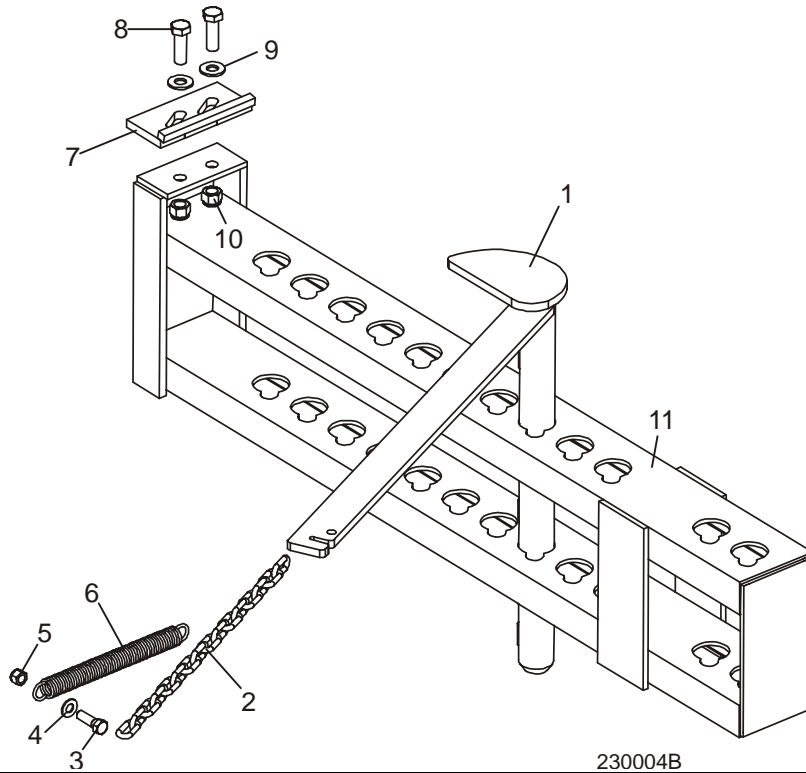
### 8.9 Bed Frame Decals



REF	DESCRIPTION (◆ Indicates Parts Available In Assemblies Only)	PART #	QTY.
1	DECAL, WOOD-MIZER LOGO	S12281	1
2	DECAL, AMBER REFLECTIVE 2" ROUND	P07453	2
3	DECAL, KEEP AWAY DANGER	S09851	1
4	DECAL, RED REFLECTIVE 2" ROUND	P07452	3
5	DECAL, PINCH POINT DANGER	P10287	1
6	DECAL, SAW HEAD REST CAUTION	S12581	1
7	DECAL, LOG LIMIT STRIPE	S12051	2



### 8.10 Log Clamp

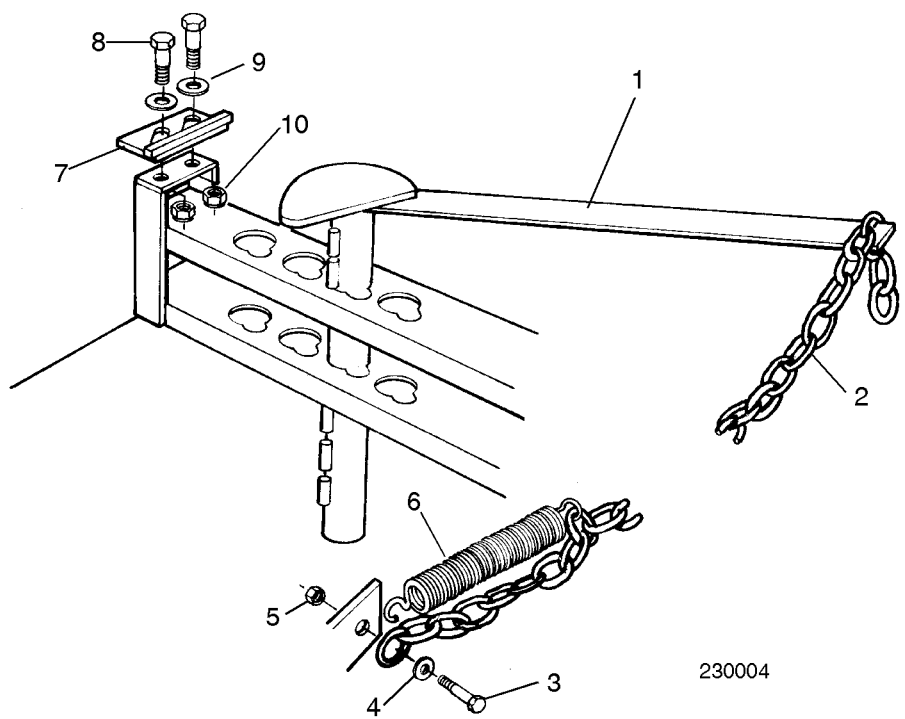


230004B

REF	DESCRIPTION (◆ Indicates Parts Available In Assemblies Only)	PART #	QTY.
1	CLAMP, LOG	W09412	1
2	CHAIN, LOG CLAMP	M04311	1
3	BOLT, 3/8-16 X 1 1/4" HEX HEAD GRADE 2	F05007-2	1
4	WASHER, 3/8" STANDARD FLAT	F05011-3	2
5	NUT, 3/8-16 HEX NYLON LOCK	F05010-10	1
6	SPRING, LOG CLAMP CHAIN	P09136	1
7	PLATE, LOG CLAMP STOP	W09404	1
8	BOLT, 1/2-13 X 1 1/2" HEX HEAD GRADE 5	F05008-33	2
9	WASHER, 1/2" SAE FLAT	F05011-2	2
10	NUT, 1/2-13 HEX NYLON LOCK	F05010-8	2
11	CHANNEL WELDMENT, MANUAL LOG CLAMP	W09310	1

# 8 Bed Frame Assembly

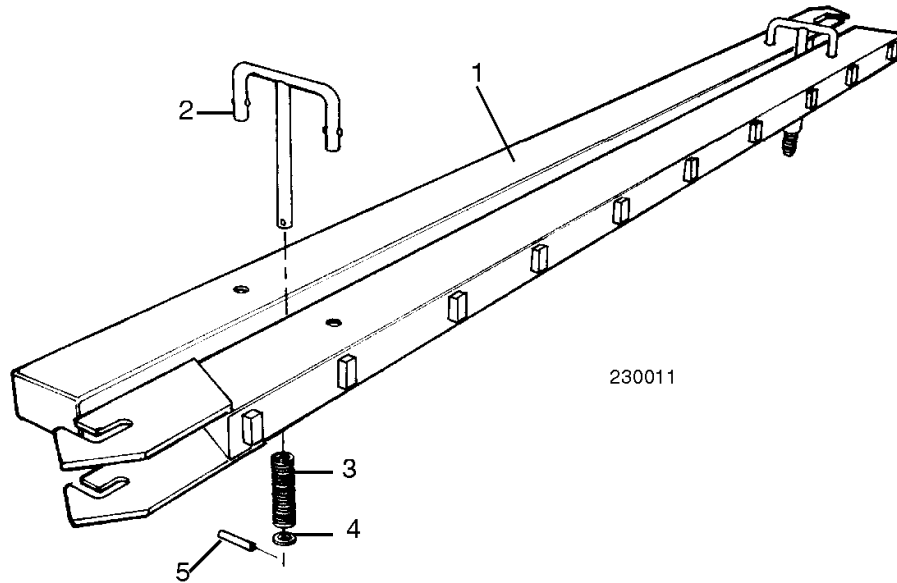
## Log Clamp



230004

REF	DESCRIPTION (◆ Indicates Parts Available In Assemblies Only)	PART #	QTY.
1	CLAMP, LOG	W09412	1
2	CHAIN, LOG CLAMP	M04311	1
3	BOLT, 3/8-16 X 1 1/4" HEX HEAD GRADE 2	F05007-2	1
4	WASHER, 3/8" STANDARD FLAT	F05011-3	2
5	NUT, 3/8-16 HEX NYLON LOCK	F05010-10	1
6	SPRING, LOG CLAMP CHAIN	P09136	1
7	PLATE, LOG CLAMP STOP	W09404	1
8	BOLT, 1/2-13 X 1 1/2" HEX HEAD GRADE 5	F05008-33	2
9	WASHER, 1/2" SAE FLAT	F05011-2	2
10	NUT, 1/2-13 HEX NYLON LOCK	F05010-8	2

8.11 Log Loading Ramps



REF	DESCRIPTION (◆ INDICATES PARTS AVAILABLE IN ASSEMBLIES ONLY)	PART #	QTY.	
	<b>RAMP KIT, LOG LOADING WITH RETAINERS</b>	K09466	1	
1	Ramp, Log Loading	W09014	2	
	Retainer Kit, Log Ramp	K09810	2	
2	Retainer, Log Ramp	W09413	1	◆
3	Spring, Log Ram Retainer	P09335	1	
4	Washer, 5/8" I.D. x .100" Thick Nylon	F05011-19	1	
5	Pin, 3/16" x 1" Roll	F05012-11	1	

## SECTION 9 MISCELLANEOUS

### 9.1 Replacement Manuals

REF	DESCRIPTION (◆ Indicates Parts Available In Assemblies Only)	PART #	QTY.
<b>Wood-Mizer Product Information</b>			
1	ALL-PRODUCTS CATALOG	PS750	1
<b>Basic Sawmill Manuals</b>			
2	TRU-SHARP BLADE HANDBOOK	M600	1
3	WOOD-MIZER GENERAL INFORMATION	M601	1
4	LT25/LT27 OPERATOR'S MANUAL	M765	1
5	LT25/LT27 PARTS MANUAL	M766	1
<b>Power Option Manuals</b>			
6	G11 ENGINE OPTION MANUAL	M771	1
7	G15 ENGINE OPTION MANUAL (ELECTRIC START - REV. D8.01 - E3.02)	M984	1
8	G15 ENGINE OPTION MANUAL (MANUAL START - REV. C2 - D5)	M770	1
9	G18 ENGINE OPTION MANUAL	M1050	1
10	G20 ENGINE OPTION MANUAL	M945	1
11	KOHLER 15HP SERVICE MANUAL	014706	1
12	KOHLER 15HP PARTS MANUAL	014707	1
13	KOHLER CH20 OWNER'S MANUAL	015993	1
14	KOHLER CH20 SERVICE MANUAL	015994	1
<b>Trailer Option Manuals</b>			
15	STANDARD TRAILER OPTION	M793	1
<b>Miscellaneous Option Manuals</b>			
16	MANUAL WINCH OPTION MANUAL	M619-23	1
17	LOG TURNER OPTION MANUAL	M620	1
18	MANUAL TOE BOARD OPTION MANUAL	M627	1
19	SHINGLE/LAPSIDER OPTION MANUAL	M621	1
20	D51 ELECTRICAL INFORMATION	M1164	1

# INDEX

---

## B

battery box 4-11

bed rails

- front/rear 8-1
- middle front 8-3
- middle rear 8-4
- pivot 8-8

blade guide arm 2-9

blade guides

- drive side roller 2-5, 2-7
- idle side roller 2-1, 2-3
- throat screw 4-1

blade tensioner 3-11

blade wheels

- drive side 3-1, 3-3
- idle side 3-5, 3-7, 3-9

---

## C

clutch lever 4-6

covers

- blade housing 4-4
- drive belt 4-8

---

## D

decals

- frame 8-15
- saw head 4-3

---

## F

feed

- crank assembly 7-4

feed system

- crank assembly 6-1

---

## L

legs

- stationary 8-6

log clamp 8-16

log loading ramps 8-18

---

## M

manuals 9-1

---

## P

parts list

- how to use 1-1

---

## S

sawdust chute 4-9

side supports 8-10, 8-12

---

## T

track rollers

- lower 7-6, 7-7
- upper 7-1, 7-3

---

## U

up/down

- blade scales 5-2
- crank assembly 6-1, 6-3
- saw head mount 5-1

---

**W**

water lube  
bottle/tray 4-1