



Wood-Mizer[®] Sawmill

Parts Manual

LT25
LT25L

rev. B7.00 - C1.01
rev. B7.00 - C1.01



Safety is our #1 concern! Read and understand all safety information and instructions before operating, setting up or maintaining this machine.

January 1999

Form #685

Table of Contents

Section-Page

SECTION 1	GENERAL INFORMATION	1-1
1.1	How To Use The Parts List	1-1
1.2	Sample Assembly	1-1
SECTION 2	BLADE DRIVE & GUIDES	2-1
2.1	Blade Guide Assembly, Idle Side.....	2-1
2.2	Blade Guide Assembly, Drive Side.....	2-3
2.3	Blade Guide Arm Assembly.....	2-5
SECTION 3	BLADE WHEELS & TENSIONER	3-1
3.1	Blade Drive Assembly (1 9/16" Shaft).....	3-1
	<i>LT25 Rev. C1 - C1.01</i>	
3.2	Blade Drive Assembly (1 7/16" Shaft).....	3-3
	<i>LT25 Rev. B7 - B9</i>	
3.3	Idle Blade Wheel Assembly	3-5
3.4	Hydraulic Blade Tensioner Assembly.....	3-7
SECTION 4	SAW HEAD	4-1
4.1	Middle Throat Screw	4-1
4.2	Clutch/Brake Lever Assembly	4-2
	<i>LT25 Rev. B9 - C1.01</i>	
4.3	Clutch/Brake Lever Assembly	4-4
	<i>LT25 Rev. B8</i>	
4.4	Clutch/Brake Lever Assembly	4-6
	<i>LT25 Rev. B7</i>	
4.5	Water Lube Assembly	4-8
4.6	Saw Head Decals	4-10
4.7	Covers & Sawdust Chute.....	4-12
	<i>LT25 Rev. B9 - C1.01</i>	
4.8	Covers.....	4-14
	<i>LT25 Rev. B7 - B8</i>	
SECTION 5	UP/DOWN SYSTEM	5-1
5.1	Manual Up/Down Assembly	5-1
SECTION 6	SAW HEAD MOUNT & SCALES	6-1
6.1	Saw Head V-Brace Mount.....	6-1
	<i>LT25 Rev. B7527 - C1.01</i>	
6.2	Saw Head V-Brace Mount.....	6-2
	<i>LT25 Rev. B7516 - B7526</i>	
6.3	Blade Height Scale	6-4
SECTION 7	FEED SYSTEM & TRACK ROLLERS	7-1
7.1	Upper Track Rollers And Wipers.....	7-1
7.2	Manual Feed Rope Assembly.....	7-3

Table of Contents

Section-Page

7.3	Lower Track Rollers.....	7-5	
	<i>Retrofit</i>		
7.4	Lower Track Rollers.....	7-6	
	<i>LT25</i>		
	<i>Rev. B7 - C1.01</i>		
SECTION 8	BED FRAME ASSEMBLY		8-1
8.1	Bed Rail Assembly, Front And Rear.....	8-1	
8.2	Bed Rail Assembly, Front Middle.....	8-3	
8.3	Bed Rail Assembly, Rear Middle.....	8-5	
8.4	Leg, Stationary.....	8-7	
8.5	Pivot Bed Rail Assembly.....	8-9	
8.6	Log Side Support Assembly.....	8-11	
8.7	Tie Down Chain Assembly.....	8-13	
8.8	Bed Frame Decals.....	8-14	
8.9	Log Clamp.....	8-15	
SECTION 9	MISCELLANEOUS		9-1
9.1	Replacement Manuals.....	9-1	
	INDEX		I

SECTION 1 GENERAL INFORMATION

1.1 How To Use The Parts List

- Use the table of contents or index to locate the assembly that contains the part you need.
- Go to the appropriate section and locate the part in the illustration.
- Use the number pointing to the part to locate the correct part number and description in the table.
- Parts shown indented under another part are included with that part.
- Parts marked with a diamond (◆) are only available in the assembly listed above the part.

See the sample table below. Sample Part #A01111 includes part F02222-2 and subassembly A03333. Subassembly A03333 includes part S04444-4 and subassembly K05555. The diamond (◆) indicates that S04444-4 is not available except in subassembly A03333. Subassembly K05555 includes parts M06666 and F07777-77. The diamond (◆) indicates M06666 is not available except in subassembly K05555.

1.2 Sample Assembly				
REF	DESCRIPTION (◆ Indicates Parts Available In Assemblies Only)	PART #	QTY.	
	SAMPLE ASSEMBLY, COMPLETE (INCLUDES ALL INDENTED PARTS BELOW)	A01111	1	
1	Sample Part	F02222-22	1	
	Sample Subassembly (Includes All Indented Parts Below)	A03333	1	
2	Sample Part (◆ Indicates Part Is Only Available With A03333)	S04444-4	1	◆
	Sample Subassembly (Includes All Indented Parts Below)	K05555	1	
3	Sample Part (◆ Indicates Part Is Only Available With K05555)	M06666	2	◆
4	Sample Part	F07777-77	1	

To Order Parts:

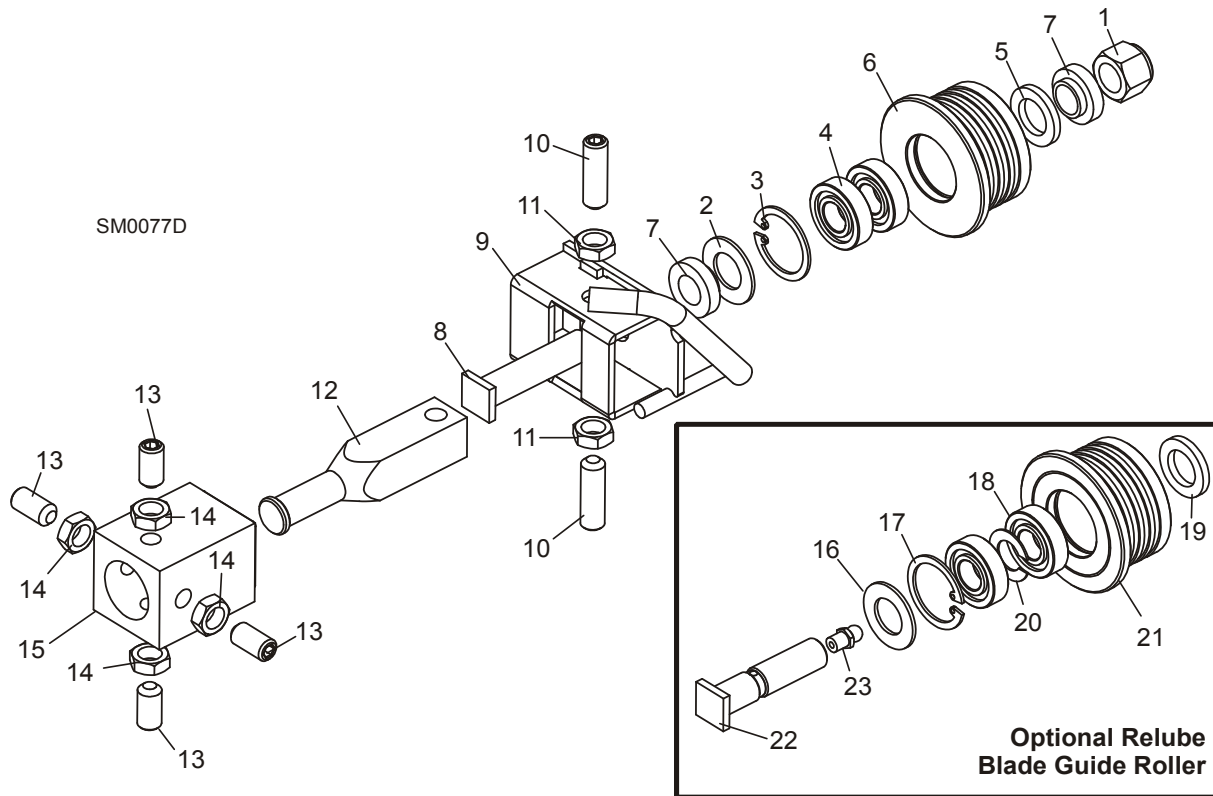
- From the continental U.S., call **1-800-525-8100** to order parts. Have your customer number, vehicle identification number, and part numbers ready when you call.
- From other international locations, contact the Wood-Mizer distributor in your area for parts.

2 Blade Guide Rollers & Arm

Blade Guide Assembly, Idle Side

SECTION 2 BLADE DRIVE & GUIDES

2.1 Blade Guide Assembly, Idle Side



REF	DESCRIPTION (◆ Indicates Parts Available In Assemblies Only)	PART #	QTY.	
	BLADE GUIDE ASSEMBLY, COMPLETE IDLE SIDE	A08197 ¹	1	
1	Nut, 1/2-20 Jam Nylon Lock	F05010-79	1	
	Roller Assembly, Blade Guide (standard)	A04925	1	
	Bearing Kit, Blade Guide Rebuild	K07079	1	
2	Washer, 5/8" White Felt	P04252	1	
3	Ring, 1 1/8" Interior Retaining	F04254-1	1	
4	Bearing, R8-2RS Blade Guide	015975	2	◆
5	Washer, 5/8" Gray Felt	P06455	1	
	Screw, 1/4-28 x 1/4" Socket Head Cup Point Set Black Oxide	F05005-105	1	
	Instruction Sheet, Blade Guide Rebuild	057407-1507	1	
6	Roller, Flanged Blade Guide	S04250	1	◆
	Instruction Sheet, Blade Guide Roller Replacement	A04925-364	1	
7	Spacer, Blade Guide	S04253	2	
8	Bolt, Blade Guide Roller	036373	1	
9	Bracket, Blade Guide Idle Side With Water Tube	W08495	1	

Blade Guide Rollers & Arm

Blade Guide Assembly, Idle Side

2

10	Screw, 3/8-24 X 1 1/4" Stainless Steel Socket Head Flat Point	F05007-96	2	
11	Nut, 3/8-24 Jam	F05010-22	2	
12	Shaft, Blade Guide Adjustment	S08196	1	
13	SCREW, 3/8-24 X 3/4" STAINLESS STEEL SOCKET HEAD FLAT POINT	F05007-95	4	
14	NUT, 3/8-24 JAM	F05010-22	4	
15	TUBE, BLADE GUIDE MOUNT	W08159	1	
	ROLLER ASSEMBLY, BLADE GUIDE RELUBE (OPTIONAL)	016568	1	
	Bearing Kit, Relube Blade Guide Rebuild	057407	1	
16	Washer, 5/8" White Felt	P04252	1	
17	Ring, 1 1/8" Interior Retaining	F04254-1	1	
18	Bearing, R8-2RS Blade Guide	015975 ²	2	◆
19	Washer, 5/8" Gray Felt	P06455	1	
20	Spacer, Blade Guide Bearing	035411	1	
	Instruction Sheet, Blade Guide Rebuild	057407-1507	1	
21	Roller, Flanged Blade Guide Relube	035426	1	◆
	Instruction Sheet, Blade Guide Roller Replacement	A04925-364	1	
22	BOLT, BLADE GUIDE ROLLER (RELUBE ONLY)	S08192	1	
23	FITTING, 1/4-28 GREASE (RELUBE ONLY)	P05060	1	

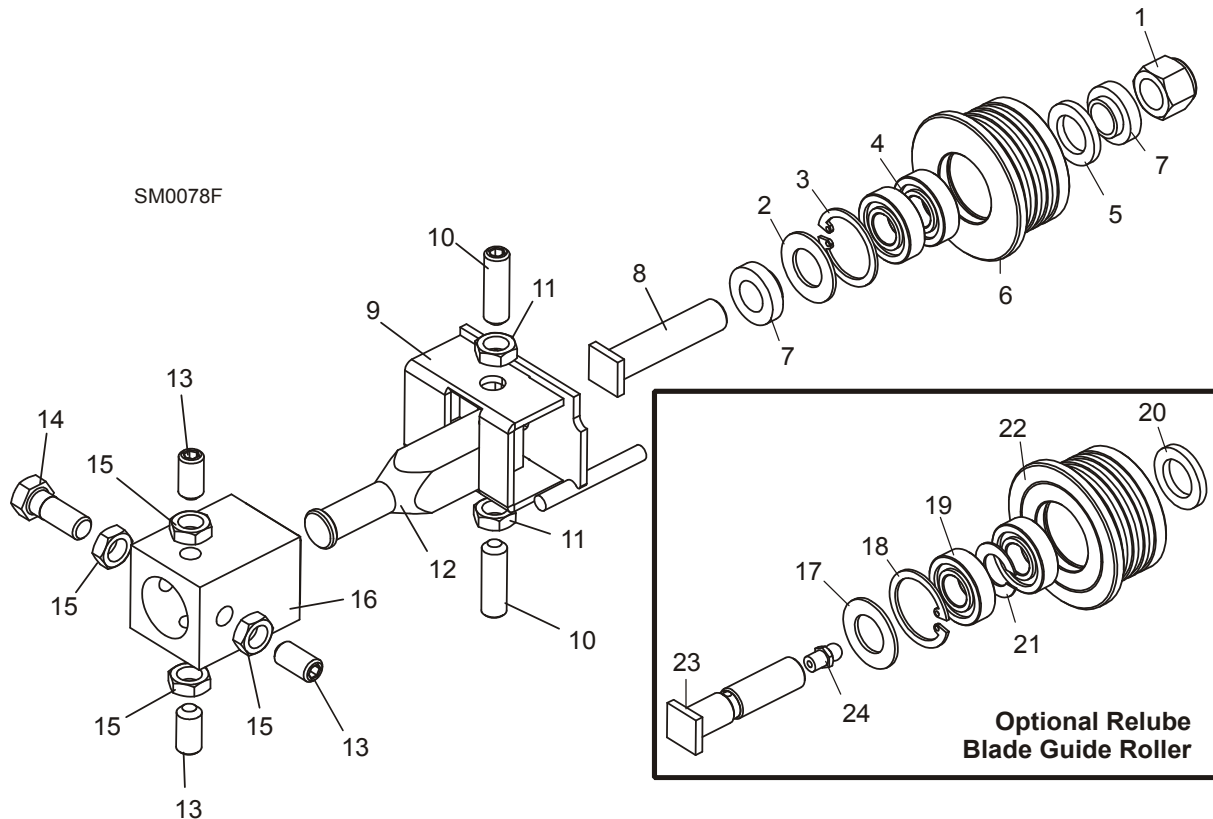
¹ Complete blade guide assembly A08197 includes roller with non-greaseable bearings A04925. See optional parts for Relube guide assemblies.

² Bearing must be modified for use with relube roller assemblies. Remove one seal from each bearing, place open sides facing each other and place spacer 035411 between bearings.

2 Blade Guide Rollers & Arm

Blade Guide Assembly, Drive Side

2.2 Blade Guide Assembly, Drive Side



REF	DESCRIPTION (◆ Indicates Parts Available In Assemblies Only)	PART #	QTY.
	BLADE GUIDE ASSEMBLY, COMPLETE DRIVE SIDE	A08191 ¹	1
1	Nut, 1/2-20 Jam Nylon Lock	F05010-79	1
	Roller Assembly, Blade Guide (standard)	A04925	1
	Bearing Kit, Blade Guide Rebuild	K07079	1
2	Washer, 5/8" White Felt	P04252	1
3	Ring, 1 1/8" Interior Retaining	F04254-1	1
4	Bearing, R8-2RS Blade Guide	015975	2
5	Washer, 5/8" Gray Felt	P06455	1
	Screw, 1/4-28 x 1/4" Socket Head Cup Point Set Black Oxide	F05005-105	1
	Instruction Sheet, Blade Guide Rebuild	057407-1507	1
6	Roller, Flanged Blade Guide	S04250	1
	Instruction Sheet, Blade Guide Roller Replacement	A04925-364	1
7	Spacer, Blade Guide	S04253	2
8	Bolt, Blade Guide Roller	036373	1
9	Bracket, Blade Guide Drive Side	W08482	1
10	Screw, 3/8-24 X 1 1/4" Stainless Steel Socket Head Flat Point	F05007-96	2

Blade Guide Rollers & Arm

Blade Guide Assembly, Drive Side

2

11	Nut, 3/8-24 Jam	F05010-22	2	
12	Shaft, Blade Guide Adjustment	S08196	1	
13	SCREW, 3/8-24 X 3/4" STAINLESS STEEL SOCKET HEAD FLAT POINT SET	F05007-95	3	
14	BOLT, 3/8-24 X 1" STAINLESS STEEL HEX HEAD	F05007-99	1	
15	NUT, 3/8-24 JAM	F05010-22	4	
16	TUBE, BLADE GUIDE MOUNT (Part of Saw Frame Weldment)	W08159 ²	1	
	ROLLER ASSEMBLY, BLADE GUIDE RELUBE (OPTIONAL)	016568	1	
	Bearing Kit, Relube Blade Guide Rebuild	057407	1	
17	Washer, 5/8" White Felt	P04252	1	
18	Ring, 1 1/8" Interior Retaining	F04254-1	1	
19	Bearing, R8-2RS Blade Guide	015975 ³	2	◆
20	Washer, 5/8" Gray Felt	P06455	1	
21	Spacer, Blade Guide Bearing	035411	1	
	Instruction Sheet, Blade Guide Rebuild	057407-1507	1	
22	Roller, Flanged Blade Guide Relube	035426	1	◆
	Instruction Sheet, Blade Guide Roller Replacement	A04925-364	1	
23	BOLT, BLADE GUIDE ROLLER (RELUBE ONLY)	S08192	1	
24	FITTING, 1/4-28 GREASE (RELUBE ONLY)	P05060	1	

¹ Complete blade guide assembly A08191 includes roller with non-greaseable bearings A04925. See optional parts for Relube guide assemblies.

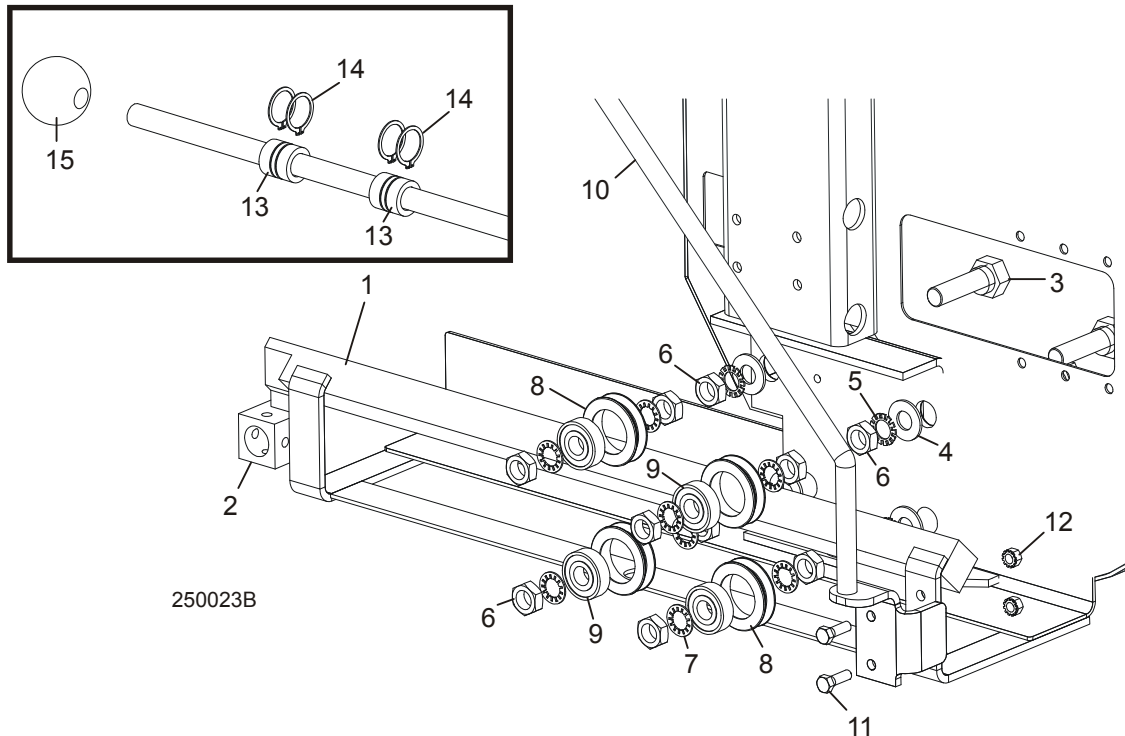
² Bolt-On blade guide kit available (016566). Requires cutting old block off, welding new receiver to saw head that will accept bolt-on mount. Kit includes all hardware and instructions.

³ Bearing must be modified for use with relube roller assemblies. Remove one seal from each bearing, place open sides facing each other and place spacer 035411 between bearings.

2 Blade Guide Rollers & Arm

Blade Guide Arm Assembly

2.3 Blade Guide Arm Assembly



REF	DESCRIPTION (◆ Indicates Parts Available In Assemblies Only)	PART #	QTY.
1	BLADE GUIDE ARM WELDMENT	W12428	1
2	Tube, Blade Guide Mount	W08159	1
3	BOLT, BLADE GUIDE ARM ROLLER CAM	W09067	4
4	WASHER, 5/8" SAE FLAT	F05011-5	4
5	WASHER, 5/8" EXTERNAL STAR	F05011-26	4
6	NUT, 5/8-18 HEX JAM	F05010-11	12
7	WASHER, 5/8" INTERNAL STAR	F05011-25	8
	ROLLER ASSEMBLY, BLADE GUIDE ARM WITH BEARING	A09059 ¹	4
8	Roller, Blade Guide Arm V-Groove	S07989	1
9	Bearing, 6203-2NSL 5/8" I.D.	P06030-1	1
	Ring, 1.575" ID Beveled 5002-156 Retaining	F04254-8 ¹	1
10	HANDLE, LT25 BLADE GUIDE ARM ADJUSTMENT	W12433	1
11	BOLT, 5/16-18 X 1" HEX HEAD GRADE 2	F05006-1	2
12	NUT, 5/16-18 HEX SELF LOCKING	F05010-20	2
13	BEARING, BLADE GUIDE ARM SLIDE	S12436	2
14	RING, 1" EXTERNAL RETAINING	F04254-15	4
15	KNOB, PLASTIC ROUND	P04211	1

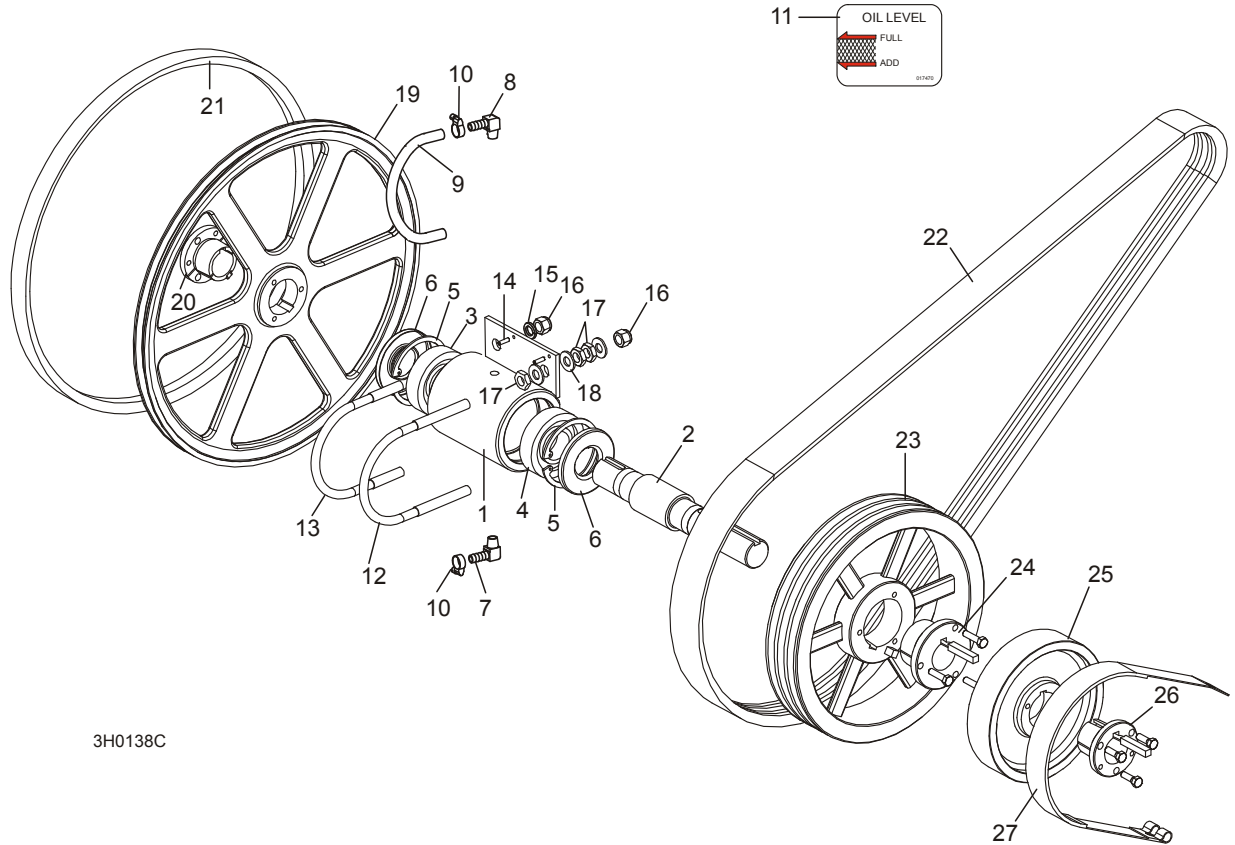
¹ Roller assemblies changed to bearing secured with retaining ring to insure proper fit. Directly interchangeable with all previous rollers supplied prior to 2/00.

SECTION 3 BLADE WHEELS & TENSIONER

3.1 Blade Drive Assembly (1 9/16" Shaft)

LT25

Rev. C1 - C1.01



3H0138C

REF	DESCRIPTION (◆ Indicates Parts Available In Assemblies Only)	PART #	QTY.	
	BEARING ASSEMBLY, BLADE WHEEL DRIVE	014561	1	
	Bearing Assembly, Drive	014560	1	◆
1	Housing, Blade Wheel Drive Bearing	W10201	1	◆
2	Shaft, Blade Wheel Drive	014005	1	◆
3	Bearing, Blade Wheel Drive #MU1308TV	P10205	1	◆
4	Bearing, Blade Wheel Drive #6308 C3 Open	016055 ¹	1	◆
5	Ring, 90mm Interior Retaining #117	F04254-17	2	
6	Seal, Drive Bearing #CR15890	P10206-K	2	
7	Fitting, 1/4" NPT x 3/8" Hose Barb Elbow	016330 ²	1	
8	Fitting, 1/4" NPT x 3/8" Hose Barb Vented Elbow	016331	1	
9	Hose, Oil Level Viewer	016337	1	
10	Clamp, 7/32-5/8" Hose	P649	2	

3

Blade Wheels & Tensioner Blade Drive Assembly (1 9/16" Shaft)

11	Decal, Oil Level Gauge	017470	1	
12	Bolt, 1/2-13 Long U	S10207-1	1	
13	Bolt, 1/2-13 Short U	S10207-2	1	
14	Pin, 3/16" X 5/8" Roll	F05012-22	2	
15	Washer, 1/2" Split Lock	F05011-9	2	
16	Nut, 1/2-13 Hex Nylon Lock	F05010-8	4	
17	Nut, 1/2-13 Hex Jam	F05010-31	6	
18	Washer, 1/2" SAE Flat	F05011-2	6	
	Decal, Bearing End-Play	S12750	1	
	Instruction Sheet, Bearing Retrofit	K10200-275	1	
	WHEEL KIT, DRIVE SIDE BLADE	014562 ³	1	
19	Wheel, Drive Side Blade	016284 ³	1	◆
20	Bushing, Modified 1 9/16" SD	016270 ³	1	
	Instruction Sheet, Drive Side Blade Wheel Replacement	K12987-488	1	
21	BELT, BLADE WHEEL B57	P04185	1	
22	BELT, BX72 DRIVE	P09555	1	
23	PULLEY, 1B5V124 DRIVE	014544	1	
24	BUSHING, 1 9/16" TYPE 'B'	014002	1	
25	WHEEL, BRAKE	014000	1	◆
26	BUSHING, 1 9/16" P1	014003	1	
27	STRAP, METAL-BACKED BRAKE	014391	1	

¹ Replaces P10205 Blade Wheel Drive Bearing #MU1308TV 6/98.

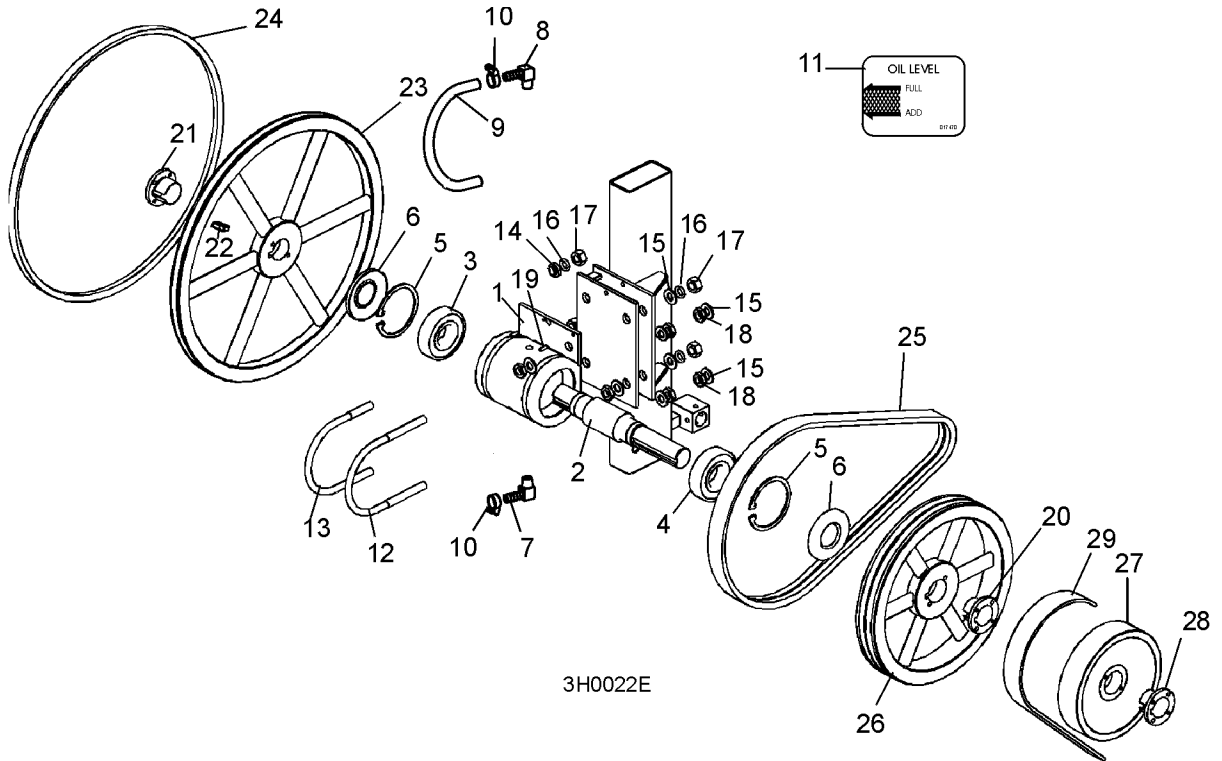
² Oil level viewer added 6/99. New fitting replaces P05498 1/4" NPT Pipe Plug and P12868 1/4" NPT Vented Pipe Plug supplied prior to 6/99 (and P11757 1/4" NPT Square Head Pipe Plug supplied prior to 12/98).

³ Kit includes 016284 blade wheel (replaces P12981 wheel originally supplied). Use P1 bushing 014098 for original wheel. Use SD bushing 016270 if wheel retrofitted with kit K12897.

3.2 Blade Drive Assembly (1 7/16" Shaft)

LT25

Rev. B7 - B9



REF	DESCRIPTION (◆ Indicates Parts Available In Assemblies Only)	PART #	QTY.	
	BEARING ASSEMBLY, BLADE WHEEL DRIVE	K10200	1	
	Bearing Assembly, Drive Painted	A10199	1	◆
1	Housing, Blade Wheel Drive Bearing	W10201	1	◆
2	Shaft, Blade Wheel Drive	S10204	1	◆
3	Bearing, Blade Wheel Drive #MU1308TV	P10205	1	◆
4	Bearing, Blade Wheel Drive #6308 C3 Open	016055 ¹	1	◆
5	Ring, 90mm Interior Retaining #117	F04254-17	2	
6	Seal, Drive Bearing #CR15890	P10206-K	2	
7	Fitting, 1/4" NPT x 3/8" Hose Barb Elbow	016330 ²	1	
8	Fitting, 1/4" NPT x 3/8" Hose Barb Vented Elbow	016331	1	
9	Hose, Oil Level Viewer	016337	1	
10	Clamp, 7/32-5/8" Hose	P649	2	
11	Decal, Oil Level Gauge	017470	1	
12	Bolt, 1/2-13 Long U	S10207-1	1	
13	Bolt, 1/2-13 Short U	S10207-2	1	
14	Spacer, 1/2" I.D. Flanged	S04253	2	
15	Washer, 1/2" SAE Flat	F05011-2	8	

3

Blade Wheels & Tensioner Blade Drive Assembly (1 7/16" Shaft)

16	Washer, 1/2" Split Lock	F05011-9	4	
17	Nut, 1/2-13 Hex	F05010-35	4	
18	Nut, 1/2-13 Hex Jam	F05010-31	6	
19	Pin, 3/16" X 5/8" Roll	F05012-22	2	
20	Bushing, 1 7/16" Type 'H' Thick Flange	P12962	3	
	Decal, Bearing End-Play	S12750	1	
	Instruction Sheet, Bearing Replacement	K10200-275	1	
	WHEEL KIT, DRIVE SIDE BLADE	K12897 ³	1	
21	Bushing, 1 7/16" SD	016098 ³	1	
22	Key, .375" x .375"	S12892	1	
23	Wheel, Drive Side Blade	016284 ³	1	◆
	Instruction Sheet, Drive Side Blade Wheel Replacement	K12897-488	1	
24	BELT, BLADE WHEEL B57	P04185	1	
25	BELT, BX68 DRIVE (REV. B7 - B8)	P12139	1	
	BELT, BX73 DRIVE (REV. B9)	014585	1	
26	PULLEY, BK130H DRIVE	P12438	1	
	WHEEL ASSEMBLY, BRAKE	A09953	1	
27	Wheel, Brake	014000 ⁴	1	◆
28	Bushing, 1 7/16 P-1 Split Taper	014460 ⁵	1	
29	STRAP, METAL-BACKED BRAKE	014391 ⁶	1	

¹ Replaces P10205 Blade Wheel Drive Bearing #MU1308TV 6/98.

² Oil level viewer added 6/99. New fitting replaces P05498 1/4" NPT Pipe Plug and P12868 1/4" NPT Vented Pipe Plug supplied prior to 6/99 (and P11757 1/4" NPT Square Head Pipe Plug supplied prior to 12/98).

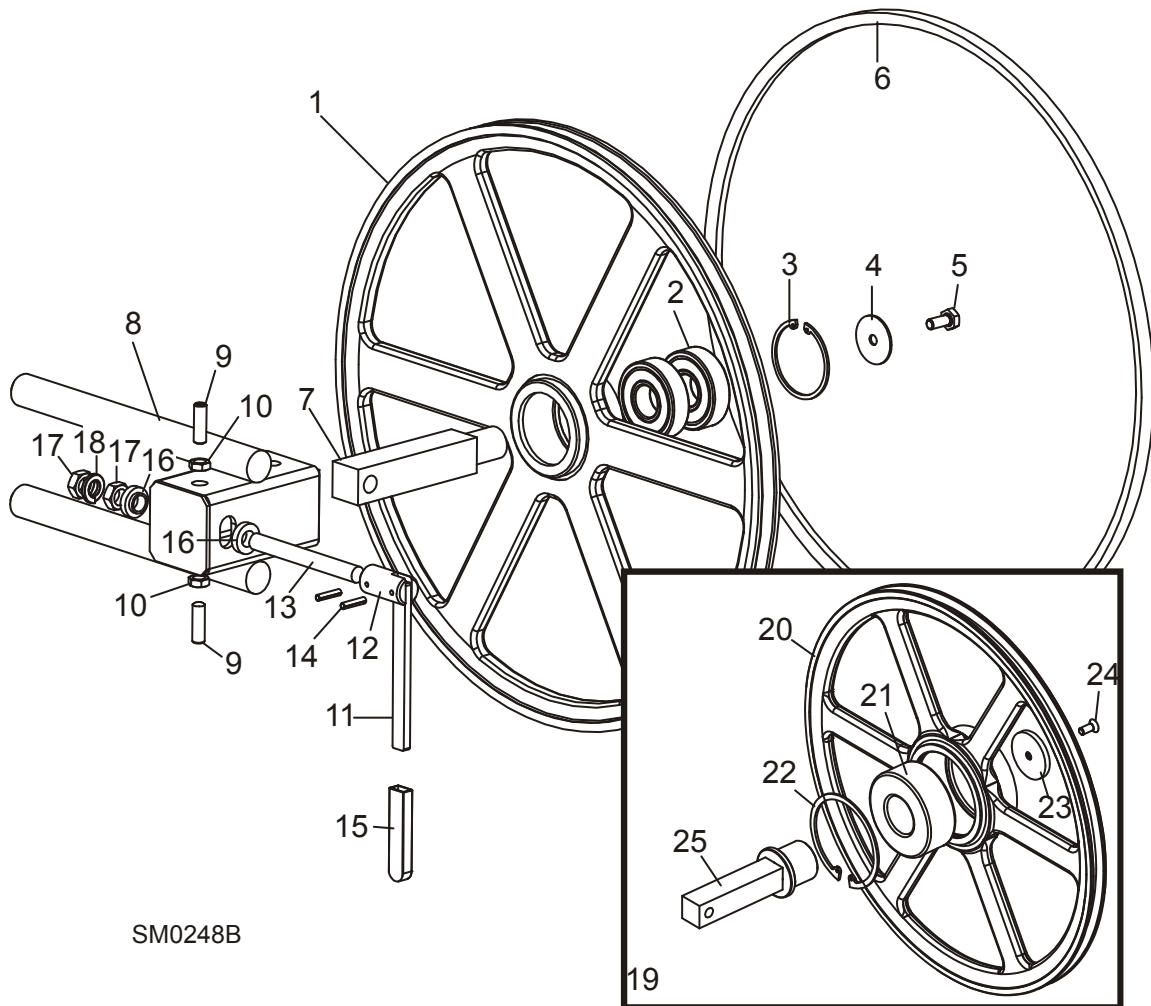
³ Kit includes 016284 blade wheel (replaces P12981 wheel originally supplied). Use P1 bushing P12890 for original wheel. Use SD bushing 016098 if wheel retrofitted with kit K12897.

⁴ Replaces 014339 and W09953 Brake Wheels (4/96). NOTE: Change from W09953 to 014339 was a part number change only.

⁵ Use P12962 'H' Bushing for W09953 brake pulley used until 4/96. Use 014460 'P1' Bushing if wheel upgraded with 014000 brake wheel.

⁶ Replaces P12791 lower pivot brake strap. Use retrofit kit 014443 to retrofit upper pivot brake strap on previous revisions to current design. If replacing lower pivot metal brake strap P12791, purchase entire upper pivot brake strap retrofit kit 014443. If retrofit has already been done, use 014391 to replace only brake strap.

3.3 Idle Blade Wheel Assembly



SM0248B

REF	DESCRIPTION (◆ Indicates Parts Available In Assemblies Only)	PART #	QTY.	
	WHEEL ASSEMBLY, IDLE SIDE BLADE	A08218 ¹	1	
1	Wheel, Idle Side Blade	P08125	1	◆
2	Bearing, Idle Side Blade Wheel #6305-AA, C3, ABEC-1, SRI-2 Grease	P08066 ²	2	
3	Ring, 2 7/16" Internal Retaining	F04254-21	1	
4	WASHER, IDLE BLADE WHEEL RETAINER	S08220	1	
5	BOLT, 5/16-18 X 3/4" HEX HEAD	F05006-5	1	
6	BELT, BLADE WHEEL B57	P04185	1	
7	SHAFT, IDLE BLADE WHEEL	S12565	1	
8	HOUSING, IDLE BLADE WHEEL SHAFT	W10157	1	
9	SCREW, 3/8-16 X 1 1/4" SOCKET HEAD OVAL POINT	F05007-18	2	
10	NUT, 3/8-16 HEX JAM	F05010-29	2	

3

Blade Wheels & Tensioner

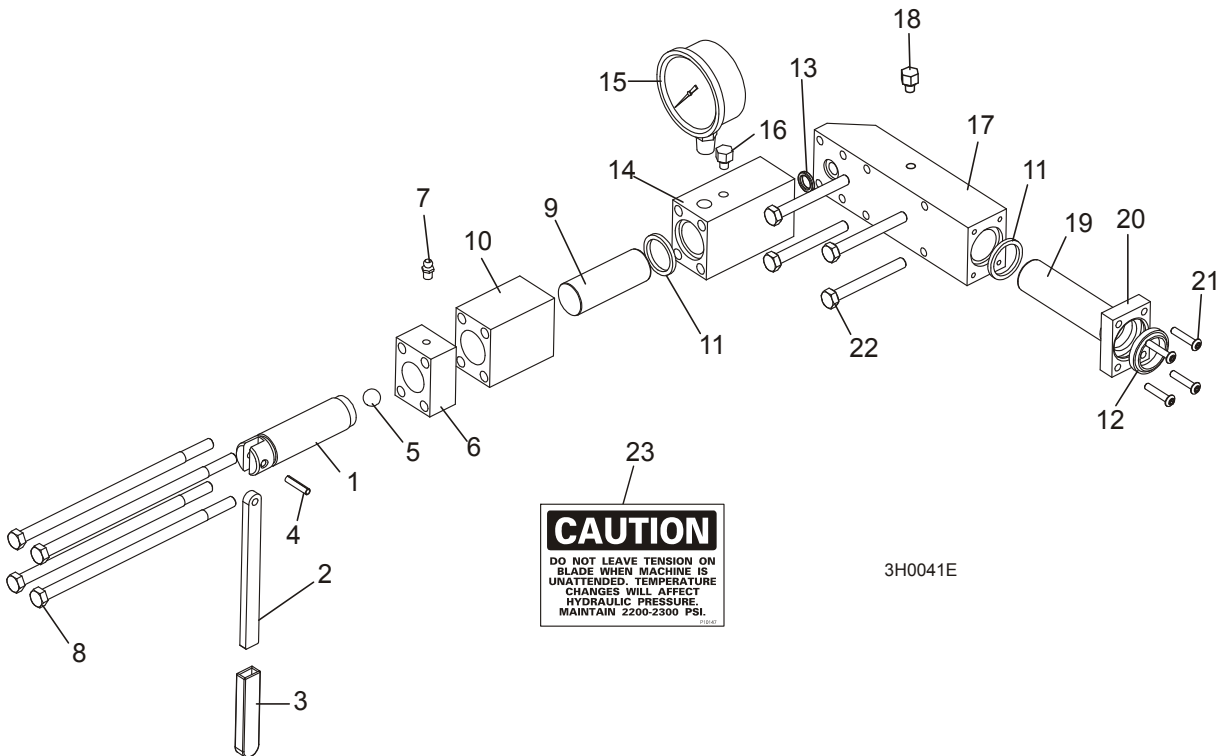
Idle Blade Wheel Assembly

	HANDLE ASSEMBLY, IDLE SIDE PULLEY TILT	A09357	1	
11	Handle, Tilt Adjustment Screw	S08174	1	◆
12	Driver, Tilt Adjustment Screw	S09405	1	◆
13	Rod, Threaded Tilt Adjustment Screw	S09358	1	◆
14	Pin, 3/16" x 7/8" Roll	F05012-19	2	
15	SLEEVE, PLASTIC HANDLE	P08072	1	
16	SPACER, 1/2" I.D. FLANGED	S04253	2	
17	NUT, 1/2-20 HEX JAM	F05010-16	2	
18	WASHER, 1/2" SPLIT LOCK	F05011-9	1	
19	WHEEL KIT, IDLE SIDE BLADE UPGRADE	016189 ¹		
	Wheel Assembly, Idle Side Blade	016120	1	
20	Wheel, Idle Side Blade	016013	1	◆
21	Bearing, Idle Side Blade Wheel #5309-2RS, C3, SRI-2 Grease	016014	1	
22	Ring, 100mm Internal Retaining Beveled	F04254-28	1	
23	Washer, 2 3/16 x 1/4"	016095	1	
24	Bolt, 5/16-18 X 3/4" Flat Head Socket	F05006-95	1	
25	Shaft, Idle Side Blade Wheel Retrofit	016180	1	

¹ Upgrade kit 016189 including blade wheel with larger diameter bearing and retrofit shaft 016180 available. [See Item #19](#) for upgrade parts.

² C3 Clearance bearing replaces C0 clearance supplied until 3/96.

3.4 Hydraulic Blade Tensioner Assembly



REF	DESCRIPTION (◆ Indicates Parts Available In Assemblies Only)	PART #	QTY.	
	HYDRAULIC BLADE TENSIONER ASSEMBLY	A10136	1	
	Handle Assembly, Hydraulic Blade Tensioner Screw	A12294	1	
1	Screw, Hydraulic Blade Tensioner	S10056 ¹	1	◆
2	Handle, Hydraulic Tensioner Screw	S08174	1	
3	Sleeve, Plastic Handle	P08072	1	
4	Pin, 3/16" x 7/8" Roll	F05012-19	1	
5	Ball, 1/2" Steel	P02720	1	
6	Block, Threaded Tensioner End	S10062 ¹	1	◆
7	Fitting, 1/4-28 Grease	P05060	1	
	Instruction Sheet, Tensioner Screw	A12294-518	1	
8	Bolt, 5/16-18 X 7 1/2" Hex Head Grade 5	F05006-43	4	
9	Piston, Hydraulic Tensioner Front 2 3/4" Long	S10060	1	
10	Block, Piston Guide	S10061 ¹	1	
	Seal Kit, Hydraulic Tensioner	003224	1	
5	Ball, 1/2" Steel	P02720	1	
11	Seal, 1" Diameter	P10051	2	
12	Wiper, 1" Diameter	P10053	1	
13	Ring, 5/8" X 3/32" Square "O"	P10377	1	

3

Blade Wheels & Tensioner Hydraulic Blade Tensioner Assembly

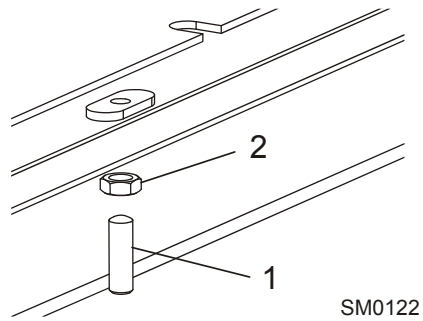
14	Block, Hydraulic Tensioner Gauge Mounting	S10140 ¹	1	
15	Gauge, 5000 P.S.I.	P10052	1	
16	Plug, Hydraulic Tensioner Fill	P10065	1	
	Block Assembly, Rear Tensioner Piston	016329	1	
17	Block, Rear Tensioner Piston	S10142 ¹	1	◆
18	Plug, Hydraulic Tensioner Fill	P10065 ²	1	
19	Piston, Hydraulic Tensioner Rear 3 5/8" Long	S10059 ¹	1	
20	Block, Rear Piston End	S10089 ¹	1	
21	Bolt, #10-24 X 1" Socket Button Head	F05004-43	4	
22	Bolt, 5/16-18 X 2 3/4" Hex Head Grade 5	F05006-28	4	
23	Decal, Hydraulic Tension Caution	P10147	1	
	Instruction Sheet, Hydraulic Tensioner Installation	A10136-272	1	

¹ Replaces part number with "-W" suffix. Part number change only.

² Plug added to S10142 Rear Tensioner Piston Block 6/99.

SECTION 4 SAW HEAD

4.1 Middle Throat Screw



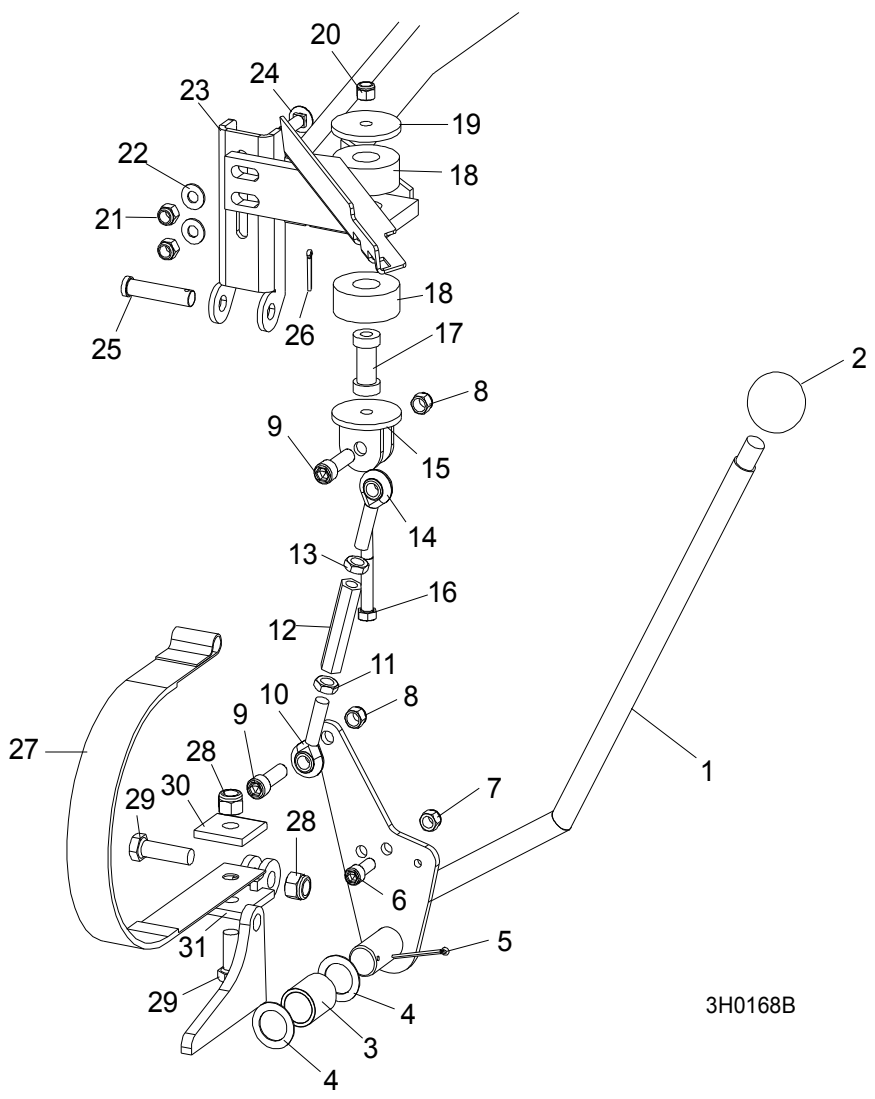
REF	DESCRIPTION (◆ Indicates Parts Available In Assemblies Only)	PART #	QTY.	
1	SCREW, 3/8-16 X 1 1/4" OVAL POINT SOCKET SET	F05007-18	1	
2	NUT, 3/8-16 HEX JAM	F05010-29	1	

4 Saw Head

Clutch/Brake Lever Assembly

4.2 Clutch/Brake Lever Assembly

LT25 Rev. B9 - C1.01



REF	DESCRIPTION (◆ Indicates Parts Available In Assemblies Only)	PART #	QTY.	
	LEVER ASSEMBLY, CLUTCH/BRAKE	A12334	1	
1	Lever, Clutch/brake	W11571	1	◆
2	Knob, Plastic Round	P04211	1	
3	Bushing, Clutch/Brake Pivot	P05041	1	
4	Washer, Clutch/Brake Pivot	S11570	2	
5	Pin, 1/8" X 1 3/4" Cotter	F05012-43	1	
6	BOLT, 3/8-16 X 1" SOCKET HEAD	F05007-52	1	
7	NUT, 3/8-16 HEX NYLON LOCK	F05010-10	1	

8	NUT, 7/16-20 HEX NYLON LOCK	F05010-83	2	
9	BOLT, 7/16-20 X 1 1/2" SOCKET HEAD	F05007-55	2	
	TURNBUCKLE ASSEMBLY, CLUTCH/BRAKE LEVER	A12304	1	
10	Rod End, 7/16-20 Right Hand Thread	P11579	1	
11	Nut, 7/16-20 Hex Jam	F05010-38	1	
12	Turnbuckle, 3" Clutch/Brake Lever	S11577	1	◆
13	Nut, 7/16-20 Hex Jam Left Hand Thread	F05010-87	1	
14	Rod End, 7/16-20 Left Hand Thread	P11578	1	
15	BRACKET, CLUTCH MOUNT	W12411	1	
16	BOLT, 3/8-16 X 2 3/4" HEX HEAD	F05007-29	1	
17	SPACER, MOTOR MOUNT VIBRATION BUSHING	S12410 ¹	1	
18	BUSHING, MOTOR MOUNT VIBRATION	P05032 ¹	2	
19	WASHER, 3/8" I.D. X 2 1/4" O.D. X 3/16" THICK	S12412	1	
20	NUT, 3/8-16 NYLON LOCK	F05010-10	1	
	STRAP RETROFIT, SUPER BRAKE	014441	1	
21	Nut, 3/8-16 Nylon Lock	F05010-10	2	
22	Washer, 3/8" SAE Flat	F05011-3	2	
23	Bracket, Upper Super Brake Strap Mount	014395	1	
24	Bolt, 3/8-16 x 1 1/4" Carriage Head	F05007-11	2	
25	Pin, 1/2" x 2 1/4" Clevis	F05012-81 ²	1	
26	Pin, 1/8" x 1" Cotter	F05012-1	1	
27	Strap, Upper Pivot Metal Brake	014391	1	
28	Nut, 1/2-13 Nylon Lock	F05010-8	2	
29	Bolt, 1/2-13 x 1 1/2" Hex Head Grade 5	F05008-33	2	
30	Plate, Brake Strap Clamp	S04195	1	
31	Bracket, Lower Super Brake Strap Mount	014392	1	

¹ Motor Mount Bushing parts may be upgraded to single-bushing style to reduce vibration. Use Motor Mount Kit 016319 to upgrade motor mount and bushing parts.

² Replaces 014396 originally supplied (duplicate parts).

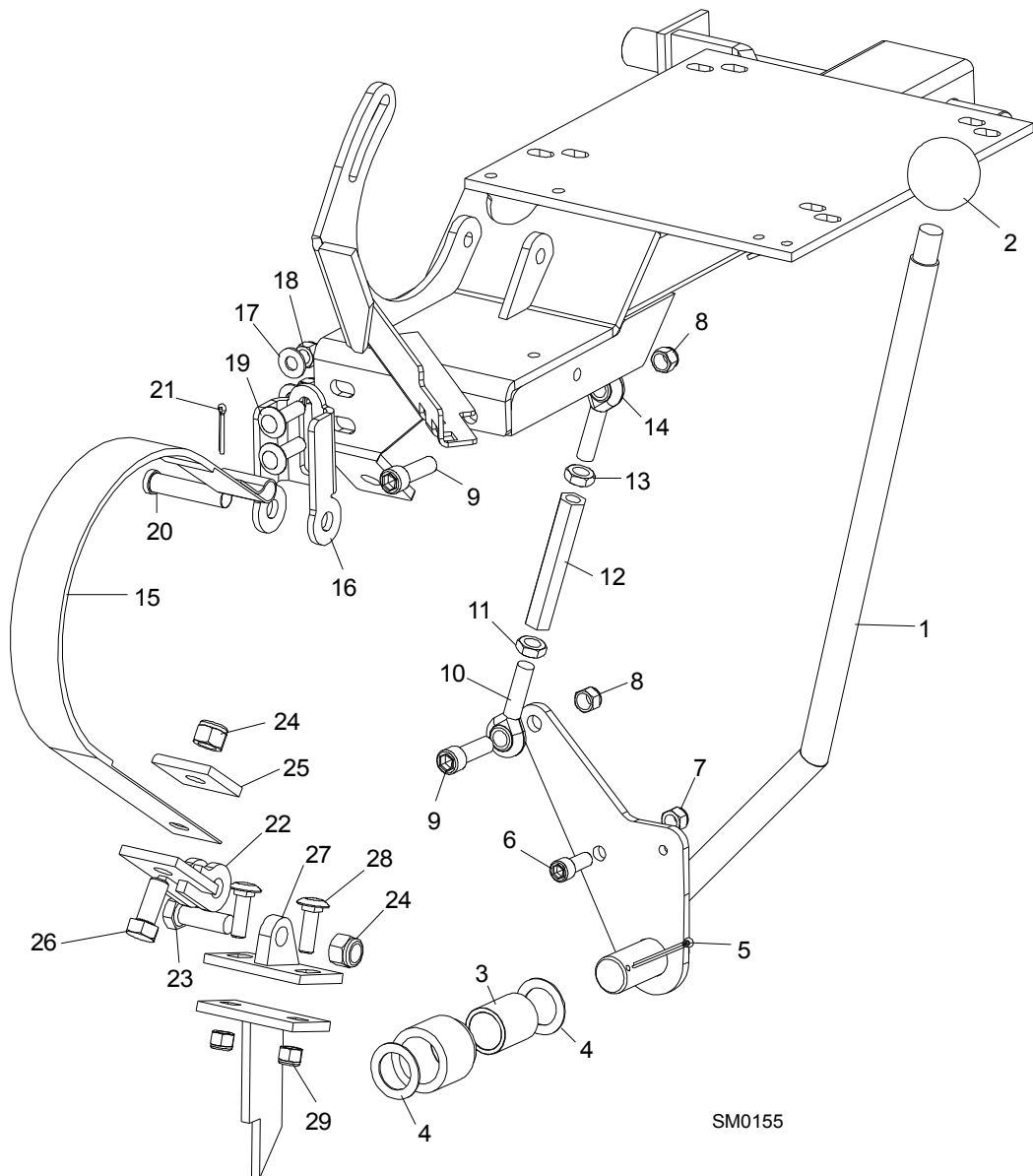
4 Saw Head

Clutch/Brake Lever Assembly

4.3 Clutch/Brake Lever Assembly

LT25

Rev. B8



REF	DESCRIPTION (◆ Indicates Parts Available In Assemblies Only)	PART #	QTY.	
	LEVER ASSEMBLY, CLUTCH/BRAKE	A12334	1	
1	Lever, Clutch/brake	W11571	1	◆
2	Knob, Plastic Round	P04211	1	
3	Bushing, Clutch/Brake Pivot	P05041	1	
4	Washer, Clutch/Brake Pivot	S11570	2	

5	Pin, 1/8" X 1 3/4" Cotter	F05012-43	1	
6	BOLT, 3/8-16 X 1" SOCKET HEAD	F05007-52	1	
7	NUT, 3/8-16 HEX NYLON LOCK	F05010-10	1	
8	NUT, 7/16-20 HEX NYLON LOCK	F05010-83	2	
9	BOLT, 7/16-20 X 1 1/2" SOCKET HEAD	F05007-55	2	
	TURNBUCKLE ASSEMBLY, CLUTCH/BRAKE LEVER	A11576	1	
10	Rod End, 7/16-20 Right Hand Thread	P11579	1	
11	Nut, 7/16-20 Hex Jam	F05010-38	1	
12	Turnbuckle, 3 1/2" Clutch/Brake Lever	S12262 ¹	1	◆
13	Nut, 7/16-20 Hex Jam Left Hand Thread	F05010-87	1	
14	Rod End, 7/16-20 Left Hand Thread	P11578	1	
	STRAP KIT, UPPER PIVOT BRAKE	014443	1	
15	Strap, Upper Pivot Brake	014391	1	
16	Bracket, Upper Brake Strap Mount	014397	1	
17	Washer, 3/8" SAE Flat	F05011-3	2	
18	Nut, 3/8-16 Hex Nylon Lock	F05010-10	2	
19	Bolt, 3/8-16 X 1 1/4" Carriage Head	F05007-11	2	
20	Pin, 1/2" x 2 1/4" Clevis	F05012-81 ²	1	
21	Pin, 1/8" x 1" Cotter	F05012-1	1	
22	Bracket, Lower Brake Strap Mount	014392	1	
23	Bolt, 1/2-13 X 1 1/2" Hex Head	F05008-4	1	
24	Nut, 1/2-13 Hex Nylon Lock	F05010-8	2	
25	Plate, Brake Strap Clamp	S04195	1	
26	Bolt, 1/2-13 x 1 1/4" Hex Head Grade 5	F05008-37	1	
27	Bracket, Lower Brake Strap Mount (Pre-95)	W12792	1	
	Instruction Sheet, Standard Brake Strap Retrofit	014443-470	1	
28	BOLT, 3/8-16 X 1 1/4" CARRIAGE HEAD	F05007-11	2	
29	NUT, 3/8-16 HEX NYLON LOCK	F05010-10	2	

¹ Replaces S12262-W. Part Number change only. Turnbuckle revised from 3 3/4" to 3 1/2" to provide increased adjustment (9/03).

² Replaces 014396 originally supplied (duplicate parts).

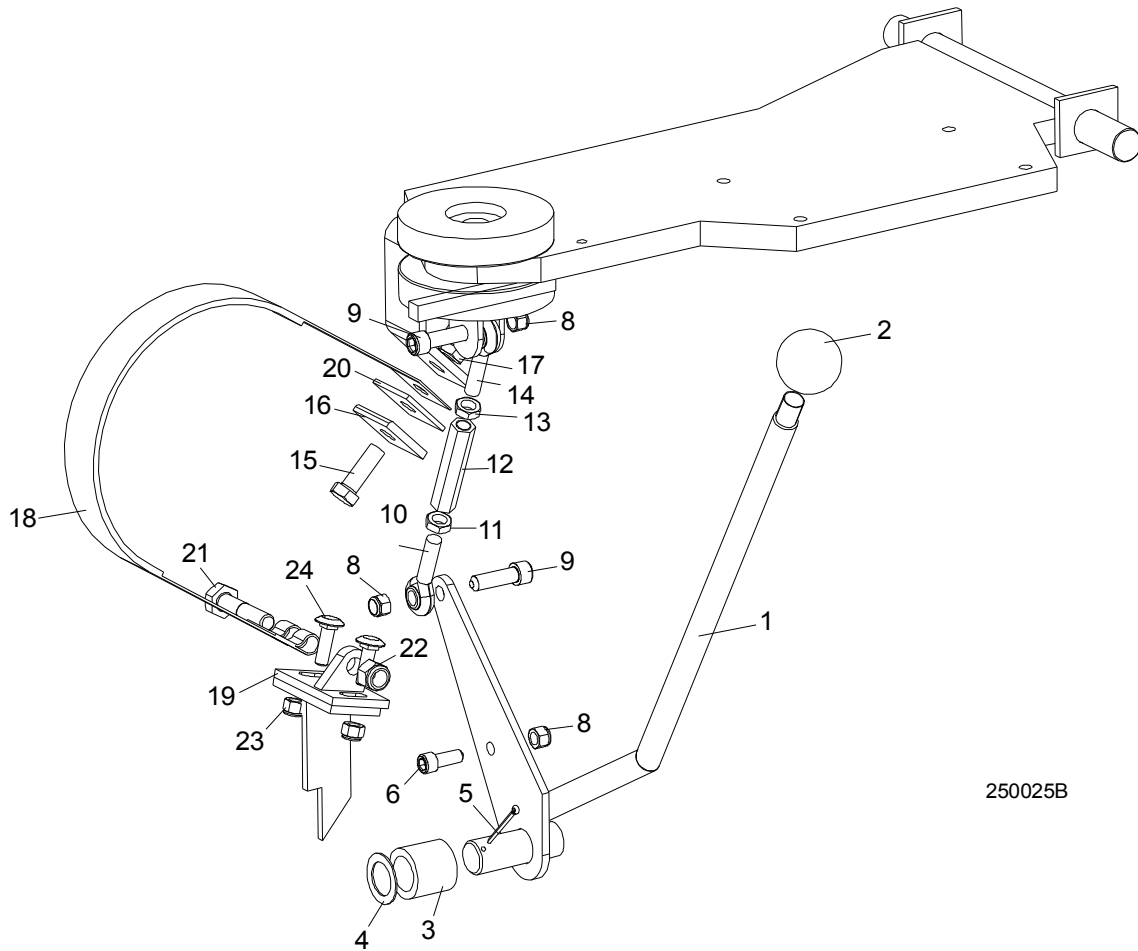
4 Saw Head

Clutch/Brake Lever Assembly

4.4 Clutch/Brake Lever Assembly

LT25

Rev. B7



250025B

REF	DESCRIPTION (◆ Indicates Parts Available In Assemblies Only)	PART #	QTY.	
	LEVER ASSEMBLY, CLUTCH/BRAKE	A12334	1	
1	Lever, Clutch/brake	W11571	1	◆
2	Knob, Plastic Round	P04211	1	
3	Bushing, Clutch/Brake Pivot	P05041	1	
4	Washer, Clutch/Brake Pivot	S11570	2	
5	Pin, 1/8" X 1 3/4" Cotter	F05012-43	1	
6	BOLT, 3/8-16 X 1" SOCKET HEAD	F05007-52	1	
7	NUT, 3/8-16 HEX NYLON LOCK	F05010-10	1	
8	NUT, 7/16-20 HEX NYLON LOCK	F05010-83	2	
9	BOLT, 7/16-20 X 1 1/2" SOCKET HEAD	F05007-55	2	
	TURNBUCKLE ASSEMBLY, CLUTCH/BRAKE LEVER	A12304	1	
10	Rod End, 7/16-20 Right Hand Thread	P11579	1	

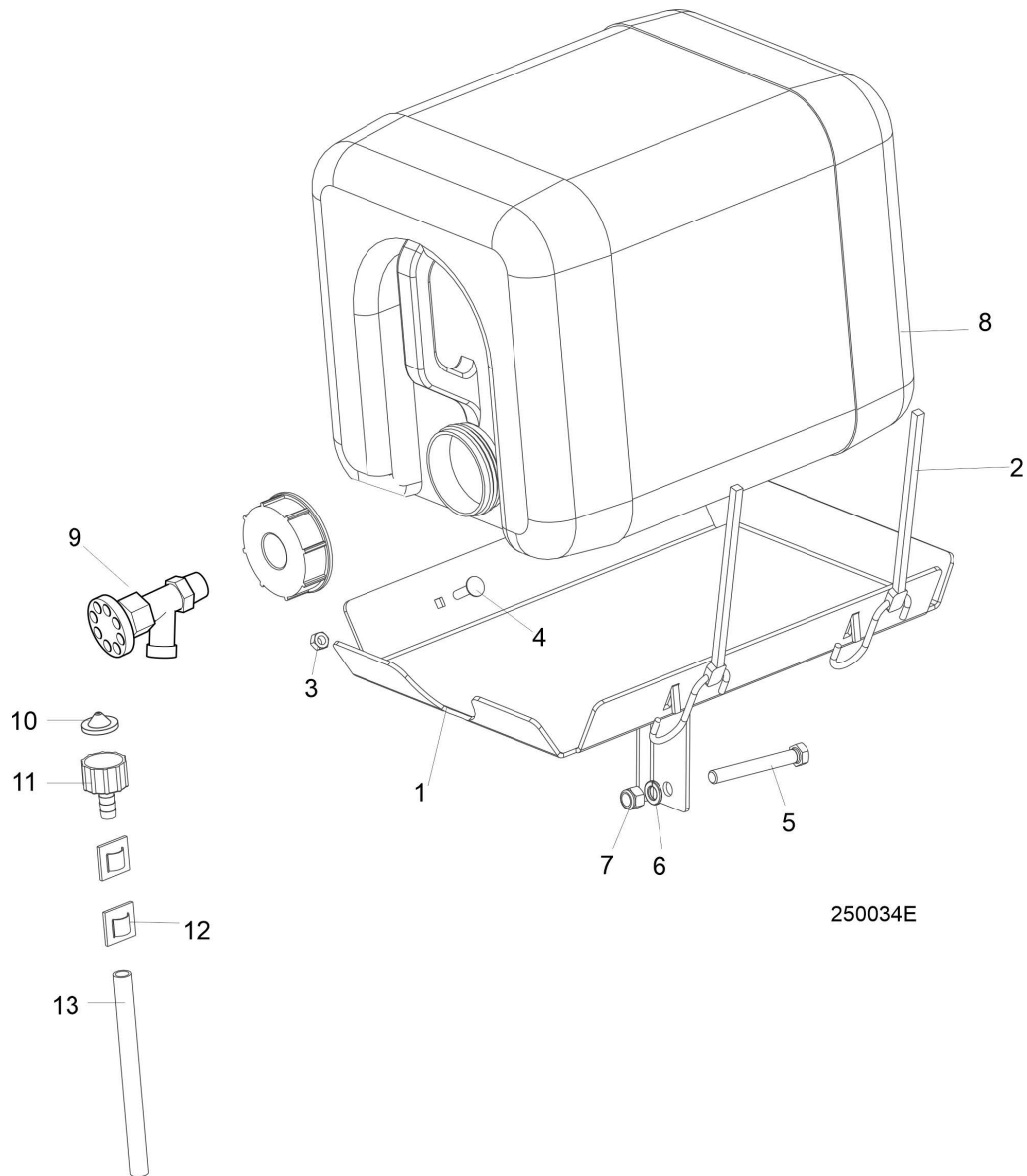
11	Nut, 7/16-20 Hex Jam	F05010-38	1	
12	Turnbuckle, 3" Clutch/Brake Lever	S11577	1	◆
13	Nut, 7/16-20 Hex Jam Left Hand Thread	F05010-87	1	
14	Rod End, 7/16-20 Left Hand Thread	P11578	1	
15	BOLT, 1/2-13 X 1 1/2" HEX HEAD	F05008-4	1	
16	PLATE, UPPER BRAKE STRAP CLAMP	S04195	1	
17	NUT, 1/2-13 HEX NYLON LOCK	F05010-8	1	
	STRAP KIT, METAL-BACKED BRAKE	K12820 ¹	1	◆
18	Strap, Metal-Backed Brake	P12791 ¹	1	◆
19	Plate, Lower Brake Strap Clamp	W12792	1	◆
20	Washer, Brake Strap	S12804 ¹	1	◆
21	Bolt, 1/2-13 x 2 1/4" Hex Head Grade 5	F05008-10	1	
22	Nut, 1/2-13 Nylon Hex Lock	F05010-8	1	
23	NUT, 3/8-16 HEX NYLON LOCK	F05010-10	2	
24	BOLT, 3/8-16 X 1 1/4" CARRIAGE HEAD	F05007-11	2	

¹ Brake Strap parts obsolete. Retrofit brake strap and mounting hardware with 014443. [See Section 4.3.](#)

4 Saw Head

Water Lube Assembly

4.5 Water Lube Assembly



REF	DESCRIPTION (◆ Indicates Parts Available In Assemblies Only)	PART #	QTY.	
	BOTTLE KIT, LT25 WATER LUBE	25WLS ¹	1	
	Tray Assembly, LT25 Water Lube	015434	1	
1	Tray Weldment, LT25 Water Lube	015431	1	◆
2	Strap, 20" Rubber	P11668	2	
3	Nut, 1/4-20 Hex Lock	F05010-21	2	
4	Bolt, 1/4-20 x 1" Carriage Head	F05005-34	2	
5	Bolt, 3/8-16 x 3" Hex Head Full Thread	F05007-1	2	
6	Washer, 3/8" Split Lock	F05011-4	2	
7	Nut, 3/8" Nylon Lock	F05010-10	2	

8	Bottle Assy, Water Lube w/Cap	014642 ²	1	
9	Valve, 3/4 NPT Elbow 3/4 Male GHT Outlet	013320 ³	1	
	Fitting, 3/4 FPT x 3/4 MPT	014636	1	
	Fitting, Water Lube Shutoff Valve	014100	1	
10	Filter, Water Lube	016086 ⁴	1	
11	Fitting, 5/8" NPT to 3/8" Hose Barb	014113	1	
12	Clip, Adhesive Hose	P04445	2	
13	Tubing, Water Lube 3/8" I.D.	R01885	7 ft.	

¹ Water lube mounting system modified 3/97. Requires two mounting holes drilled in saw head.

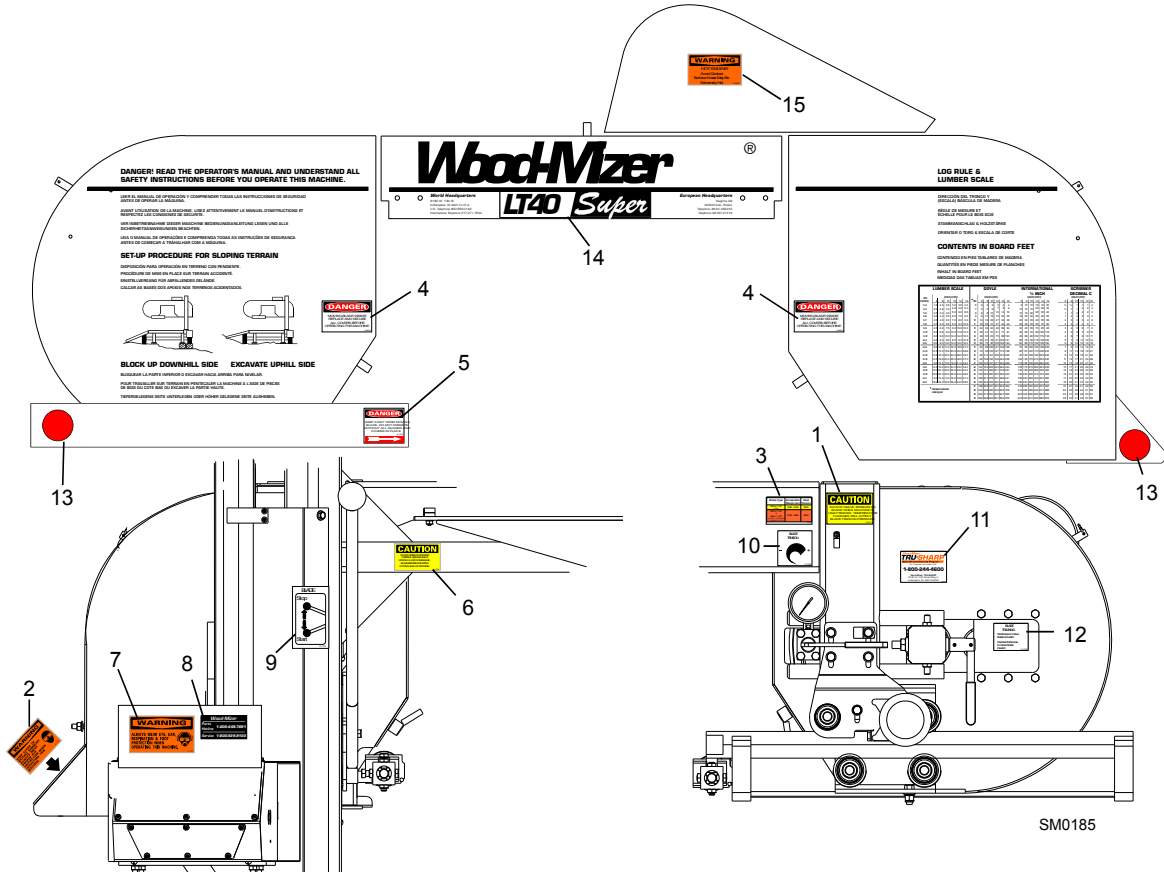
² Use Water Bottle Assembly w/Cap 014642 to service all bottle/cap combinations previously supplied. Bottle 014367, 61mm Cap 014773 and 70mm Cap 036744 no longer available separately. 014642 Bottle Kit replaces P04357 bottle & P09088 cap originally supplied through 4/97.

³ Replaced 014100 & 014636 after 9/19/2022 per ECN 38718.

⁴ Filter recommended for Super models to prevent debris from entering water lube solenoid valve.

4 Saw Head Saw Head Decals

4.6 Saw Head Decals



REF	DESCRIPTION (◆ Indicates Parts Available In Assemblies Only)	PART #	QTY.
1	DECAL, BLADE TENSION CAUTION	P10147	1
2	DECAL, SAWDUST CHUTE WARNING	P11754	1
3	DECAL, BLADE TENSION RANGES	P12373	1
4	DECAL, MOVING PARTS DANGER	033254 ¹	2
5	DECAL, BLADE DANGER ARROW RIGHT	S11752	1
6	DECAL, UP/DOWN CAUTION	S11762	1
7	DECAL, EYE/EAR WARNING	S11753	1
8	DECAL, TOLL FREE PHONE INFO	S12117	1
9	DECAL, BLADE START/STOP	P11779	1
10	DECAL, BLADE TENSION INFO	P11790	1
11	DECAL, TRU-SHARP INFO	P12879	1
12	DECAL, BLADE ALIGNMENT INFO	P11789	1
13	DECAL, RED REFLECTIVE 2" ROUND	P07452	2
14	DECAL, LT25G11	S12582	1
	DECAL, LT25LG11	S12583	1
15	DECAL, HOT ENGINE WARNING	014419	1

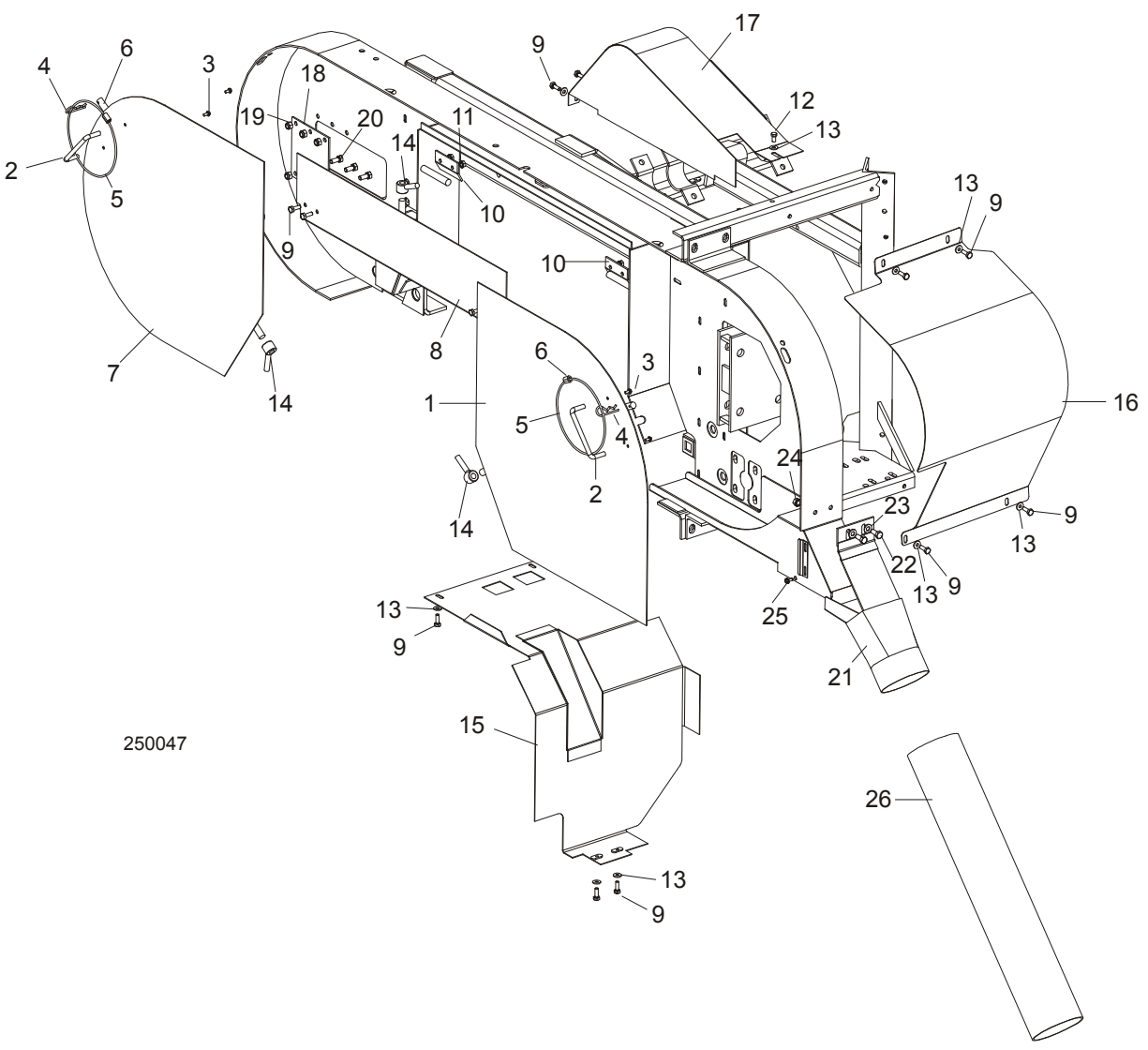
¹ Replaces S20039 originally supplied.

4 Saw Head

Covers & Sawdust Chute

4.7 Covers & Sawdust Chute

LT25 Rev. B9 - C1.01



250047

REF	DESCRIPTION (◆ Indicates Parts Available In Assemblies Only)	PART #	QTY.	
	COVER, DRIVE SIDE BLADE HOUSING WITH HANDLE	A09420	1	
1	Cover, Drive Side Blade Housing	W07948	1	◆
2	Handle, Blade Housing Cover	P08065	1	
3	Screw, #8-32 X 3/8" Self-Tap	F05015-8	2	
	Pin Assembly, Cover Retainer	A12812	1	
4	Pin, Safety Retainer	P05059	1	
5	Cable, 1/8" O.D. Coated Nylon	R02075	.92 Ft.	
6	Clamp, 1/8" Dual Cable	P11830	1	

	COVER, IDLE SIDE BLADE HOUSING WITH HANDLE	A09419	1	
7	Cover, Idle Side Blade Housing	W09351	1	◆
2	Handle, Blade Housing Cover	P08065	1	
3	Screw, #8-32 X 3/8" Self-Tap	F05015-8	2	
	Pin Assembly, Cover Retainer	A12812	1	
4	Pin, Safety Retainer	P05059	1	
5	Cable, 1/8" O.D. Coated Nylon	R02075	.92 Ft.	
6	Clamp, 1/8" Dual Cable	P11830	1	
8	COVER, MIDDLE BLADE HOUSING	W07409	1	
9	BOLT, 1/4-20 X 3/4" HEX HEAD	F05005-1	18	
10	HINGE, MIDDLE BLADE HOUSING COVER	S07522	2	
11	NUT, 1/4-20 SELF-LOCKING HEX	F05010-9	4	
12	BOLT, 1/4-20 X 1/2" HEX HEAD	F05005-15	1	
13	WASHER, 1/4" SAE FLAT	F05011-11	19	
14	NUT, COVER TURN	021145 ¹	3	
15	GUARD, CLUTCH LEVER	014241	1	
16	GUARD, DRIVE PULLEY	014494	1	
17	GUARD, ENGINE PULLEY (G11)	014518	1	
18	PLATE, IDLE BLADE WHEEL GUARD	S04433	1	
19	NUT, 5/16-18 HEX NYLON LOCK	F05010-58	6	
20	BOLT, 5/16-18 X 3/4" HEX HEAD GRADE 2	F05006-5	6	
	CHUTE, ASSEMBLY, SAWDUST	A12297	1	
21	Chute Weldment, Sawdust	W12296	1	
22	Bolt, 5/16-18 x 3/4" Hex Head Grade 2	F05006-5	2	
23	Washer, 5/16" Standard	F05011-16	2	
24	Nut, 5/16-18 Hex Lock	F05010-58	2	
25	Bolt, #10-24 x 1/2" Self-Tapping	F05015-7	2	
26	Tubing, 4" I.D. Rubber	R02336	2 ft.	
	Strap, 20" Rubber w/Hook	P11668	1	
	Bolt, 1/4-20 x 1 1/4" Hex Head Full Thread	F05005-3	1	
	Washer, 1/4" SAE Flat	F05011-11	1	
	Nut, 1/4-20 Lock	F05010-21	1	

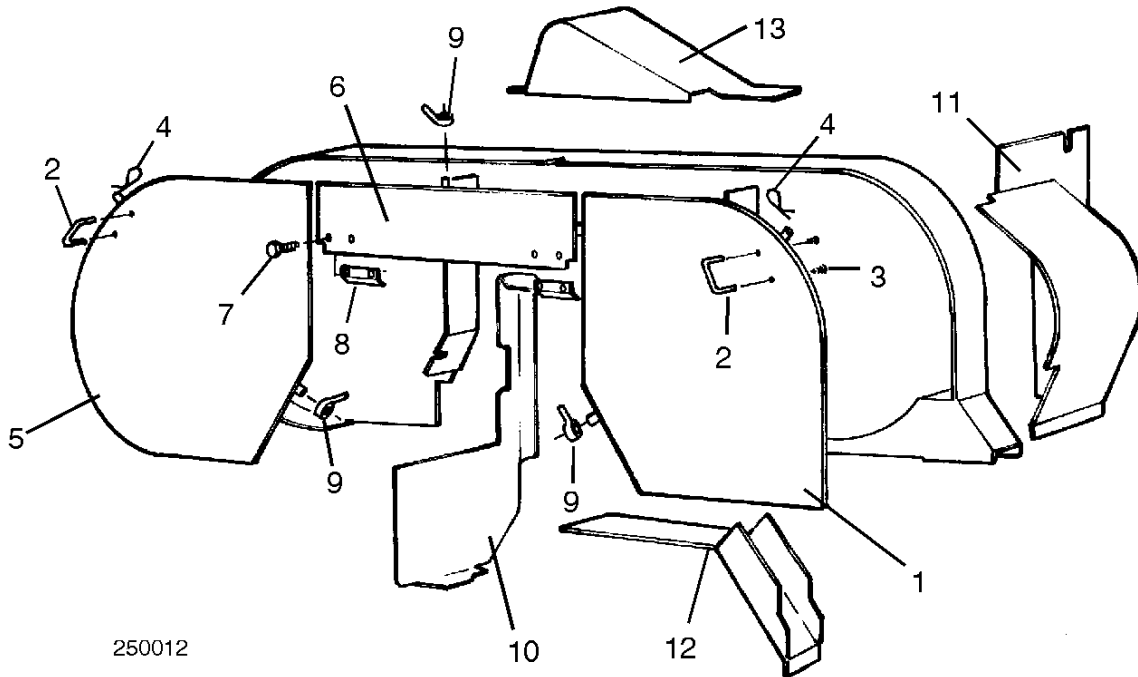
¹ Directly replaces W07511 nut weldment (8/97).

4 Saw Head Covers

4.8 Covers

LT25

Rev. B7 - B8



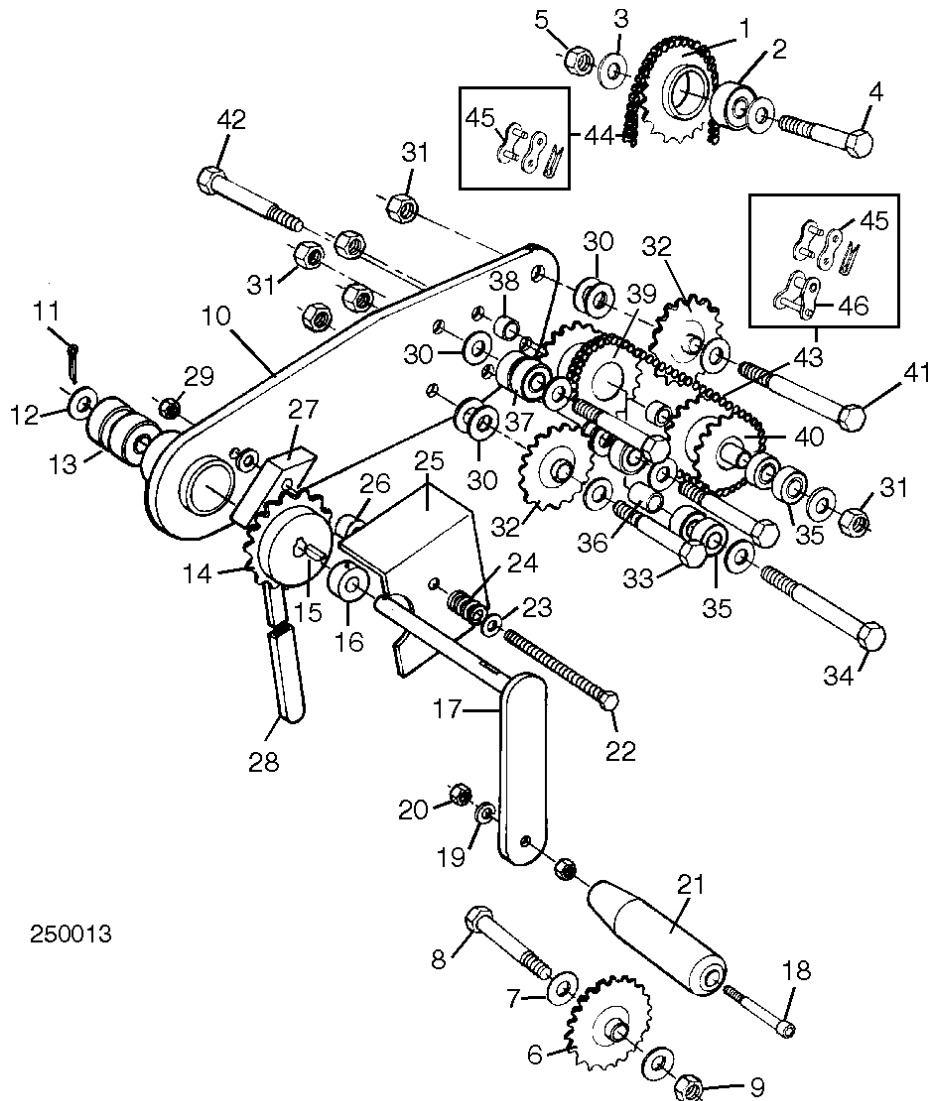
REF	DESCRIPTION (◆ Indicates Parts Available In Assemblies Only)	PART #	QTY.	
	COVER, DRIVE SIDE BLADE HOUSING WITH HANDLE	A09420	1	
1	Cover, Drive Side Blade Housing	W07948	1	◆
2	Handle, Blade Housing Cover	P08065	1	
3	Screw, #8-32 X 3/8" Self-Tap	F05015-8	2	
	Pin Assembly, Cover Retainer	A12812	1	
4	Pin, Safety Retainer	P05059	1	
	Cable, 1/8" O.D. Coated Nylon	R02075	.92 Ft.	
	Clamp, 1/8" Dual Cable	P11830	1	
	COVER, IDLE SIDE BLADE HOUSING WITH HANDLE	A09419	1	
5	Cover, Idle Side Blade Housing	W09351	1	◆
2	Handle, Blade Housing Cover	P08065	1	
3	Screw, #8-32 X 3/8" Self-Tap	F05015-8	2	
	Pin Assembly, Cover Retainer	A12812	1	
4	Pin, Safety Retainer	P05059	1	
	Cable, 1/8" O.D. Coated Nylon	R02075	.92 Ft.	
	Clamp, 1/8" Dual Cable	P11830	1	
6	COVER, MIDDLE BLADE HOUSING	W07409	1	
7	BOLT, 1/4-20 X 3/4" HEX HEAD	F05005-1	2	

8	HINGE, MIDDLE BLADE HOUSING COVER	S07522	2	
9	NUT, COVER TURN	021145 ¹	3	
10	GUARD, CLUTCH LEVER	W11772	1	
11	GUARD, DRIVE PULLEY	W12424	1	
12	GUARD, DRIVE BELT	S12419	1	
13	GUARD, MOTOR PULLEY	W09010	1	

¹ Directly replaces W07511 nut weldment (8/97).

SECTION 5 UP/DOWN SYSTEM

5.1 Manual Up/Down Assembly



250013

REF	DESCRIPTION (◆ Indicates Parts Available In Assemblies Only)	PART NUMBER	QTY.	
	SPROCKET ASSEMBLY, UPPER IDLER	A12399	1	
1	Sprocket, Upper Idler With Hub	W12398	1	◆
2	Bearing, 5/8" 6203-2NSL	P06030-1	1	
3	WASHER, 5/8" SAE FLAT	F05011-5	2	
4	BOLT, 5/8-11 X 2 1/2" HEX HEAD GRADE 5	F05009-20	1	
5	NUT, 5/8-11 HEX LOCK	F05010-4	1	
6	SPROCKET, G1-40-41-17 5/8" BORE 17T	P04333	1	
7	WASHER, 5/8" SAE FLAT	F05011-5	2	

8	BOLT, 5/8-11 X 2 1/2" HEX HEAD GRADE 5	F05009-20	1	
9	NUT, 5/8-11 HEX LOCK	F05010-4	1	
	CRANK ASSEMBLY, LT25 UP/DOWN	A12469	1	
10	Arm, LT25 Up/Down Crank Mounting	W12470	1	
11	Pin, 1/8" x 1" Cotter	F05012-1	1	
12	Washer, 5/8" SAE Flat	F05011-5	1	
13	Bearing, 5/8" 6203-2NSL	P06030-1	2	
14	Sprocket, 40B17 5/8" Bore	P12483	1	
15	Key, #606 Woodruff	P04101-1	1	
16	Collar, 5/8" I.D. With Set Screw	P05035	1	
	Handle Assembly, LT25 Up/Down Crank	A12335	1	
17	Crank, LT25 Up/Down	W12472	1	◆
18	Bolt, 3/8-16 x 2 1/2" Socket Head	F05007-24	1	
19	Washer, 3/8" Split Lock	F05011-4	1	
20	Nut, 3/8-16 Hex	F05010-1	2	
21	Handle, Crank	S12456	1	
22	Bolt, 3/8-16 x 4" Hex Head Full Thread Grade 5	F05007-92	1	
23	Washer, 3/8" SAE Flat	F05011-3	2	
24	Spring, Up/Down Lock Lee #LC-045G-5MW	P12494	1	
25	Guard, Up/Down Lock	S12488	1	
26	Spacer, Up/Down Lock	S12284	1	
27	Handle, LT25 Up/Down Lock	W12490	1	
28	Sleeve, Vinyl Handle	P08072	1	
29	Nut, 3/8-16 Hex	F05010-1	1	
30	Washer, 5/8" SAE Flat	F05011-5	13	
31	Nut, 5/8-11 Hex Lock	F05010-4	6	
32	Sprocket, G1-40-41-17 5/8" Bore 17T	P04333	2	
33	Bolt, 5/8-11 x 2 1/2" Hex Head	F05009-20	3	
34	Bolt, 5/8-11 x 3" Hex Head	F05009-18	1	
35	Bearing, R10-2NSL	P04156	4	
36	Spacer, 1"	S12479-W	2	
37	Bearing, 5/8" 6203-2NSL	P06030-1	3	
38	Spacer, 5/16"	S12480-W	2	
39	Sprocket, Dual 17T/17T	W12474 ¹	1	
40	Sprocket, Dual 17T/16T	W12476 ¹	1	
41	Bolt, 5/8-11 x 4 1/2" Hex Head	F05009-3	1	
42	Bolt, 5/8-11 x 5" Hex Head Grade 2	F05009-6	1	
43	CHAIN, #40 X 15.5"	P12496	1	
44	CHAIN, #40 X 170.5"	P12497	1	
45	LINK, #40 MASTER	P04200	2	
46	LINK, #40 HALF	P12495	1	

¹ Sprocket hubs revised for 1997 model. If replacing sprockets on LT25 Rev. C1.00 or earlier, replace both sprockets (W12474 & W12476) to insure proper sprocket alignment.

6 Saw Head Mount & Scales

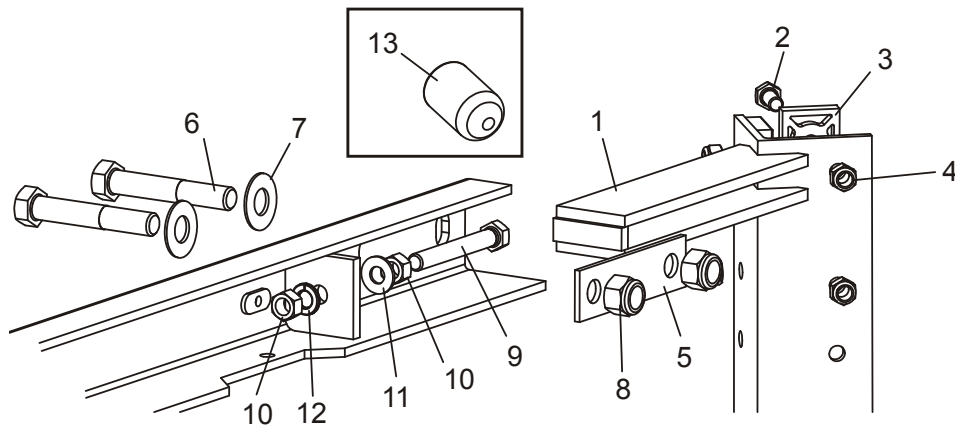
Saw Head V-Brace Mount

SECTION 6 SAW HEAD MOUNT & SCALES

6.1 Saw Head V-Brace Mount

LT25

Rev. B7527 - C1.01



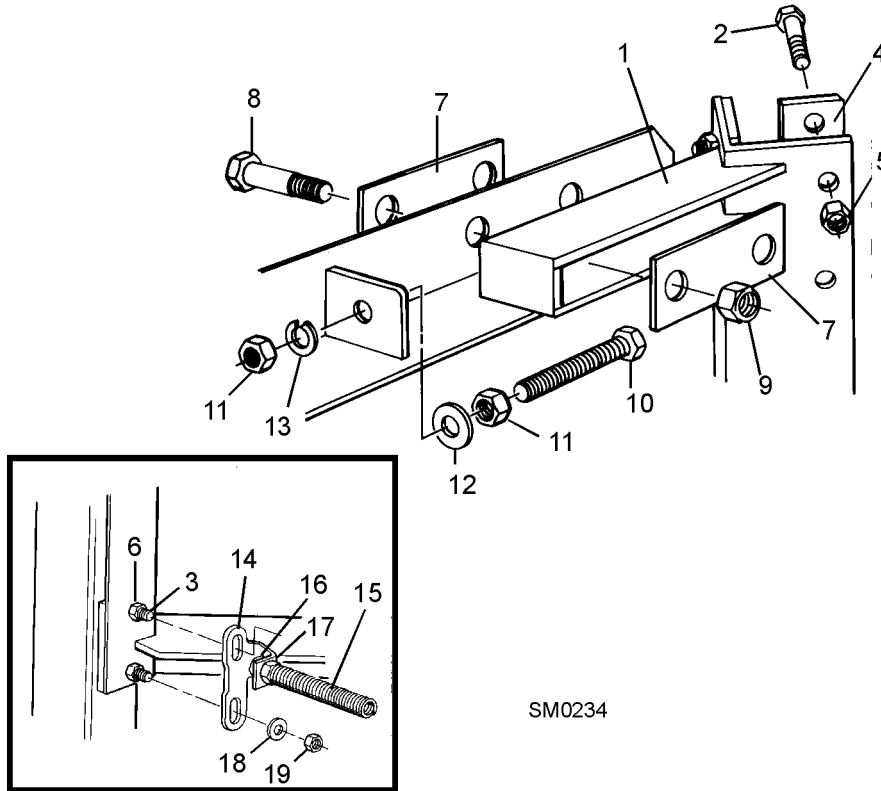
SM0080D

REF	DESCRIPTION (◆ Indicates Parts Available In Assemblies Only)	PART #	QTY.
1	V-BRACE, SAW HEAD MOUNT	W04099	1
2	BOLT, 5/16-18 X 3/4" HEX HEAD GRADE 5	F05006-5	11/19
	BOLT, 5/16-18 X 1 1/4" HEX HEAD FULL THREAD	F05006-18	5
3	PAD, PLASTIC SLIDE (8 REQ'D FOR STANDARD/12 FOR SUPER)	M04096	8/12
4	NUT, 5/16-18 NYLON LOCK	F05010-58	11/19
	NUT, 5/16-18 HEX	F05010-17	5
5	PLATE, V-BRACE WASHER	S07935	4
6	BOLT, 1/2-13 X 3" HEX HEAD	F05008-1	4
7	WASHER, 1/2" SAE FLAT	F05011-2	4
8	NUT, 1/2-13 NYLON LOCK	F05010-8	4
9	BOLT, 3/8-16 X 3" FULL THREAD	F05007-1	2
10	NUT, 3/8-16 HEX	F05010-1	4
11	WASHER, 3/8" SAE FLAT	F05011-3	2
12	WASHER, 3/8" SPLIT LOCK	F05011-4	2

6.2 Saw Head V-Brace Mount

LT25

Rev. B7516 - B7526



REF	DESCRIPTION (◆ Indicates Parts Available In Assemblies Only)	PART #	QTY.	
1	V-BRACE, SAW HEAD MOUNT	W04099	1	
2	BOLT, 5/16-18 X 3/4" HEX HEAD GRADE 5	F05006-5	11	
3	BOLT, 5/16-18 X 1 1/4" HEX HEAD FULL THREAD	F05006-18	5	
4	PAD, PLASTIC SLIDE	M04096	8	
5	NUT, 5/16-18 NYLON LOCK	F05010-58	11	
6	NUT, 5/16-18 HEX	F05010-17	5	
7	PLATE, V-BRACE WASHER	S07935	4	
8	BOLT, 1/2-13 X 3" HEX HEAD	F05008-1	4	
9	NUT, 1/2-13 NYLON LOCK	F05010-8	4	
10	BOLT, 3/8-16 X 3" FULL THREAD	F05007-1	2	
11	NUT, 3/8-16 HEX	F05010-1	4	
12	WASHER, 3/8" SAE FLAT	F05011-3	2	
13	WASHER, 3/8" SPLIT LOCK	F05011-4	2	
	SIGHT GAUGE KIT	A10087 ¹	1	
	Sight Gauge Assembly	A09997	1	◆

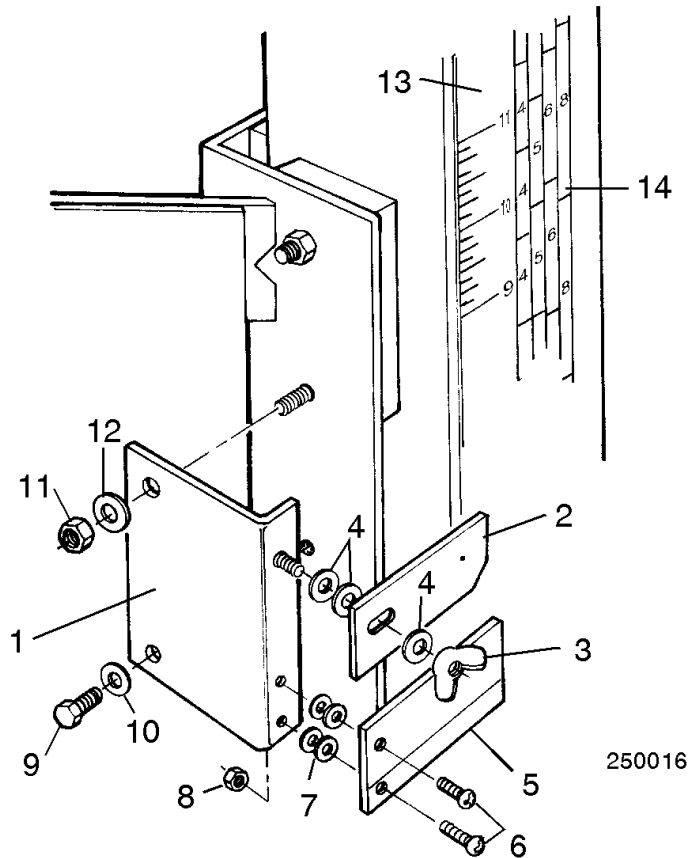
6 Saw Head Mount & Scales

Saw Head V-Brace Mount

14	Bracket, Sight Gauge Mount	S09998	1	◆
15	Spring, Sight Gauge	S10031	1	
16	Bolt, 3/8-16 X 2" Hex Head Full Thread	F05007-16	1	
17	Nut, 3/8-16 Hex Lock	F05010-25	1	
18	Washer, 5/16" SAE Flat	F05011-17	2	
19	Nut, 5/16-18 Hex Lock	F05010-6	2	
	Instruction Sheet, Sight Gauge	A10087-257	1	

¹ Sight gauge removed and not replaced.

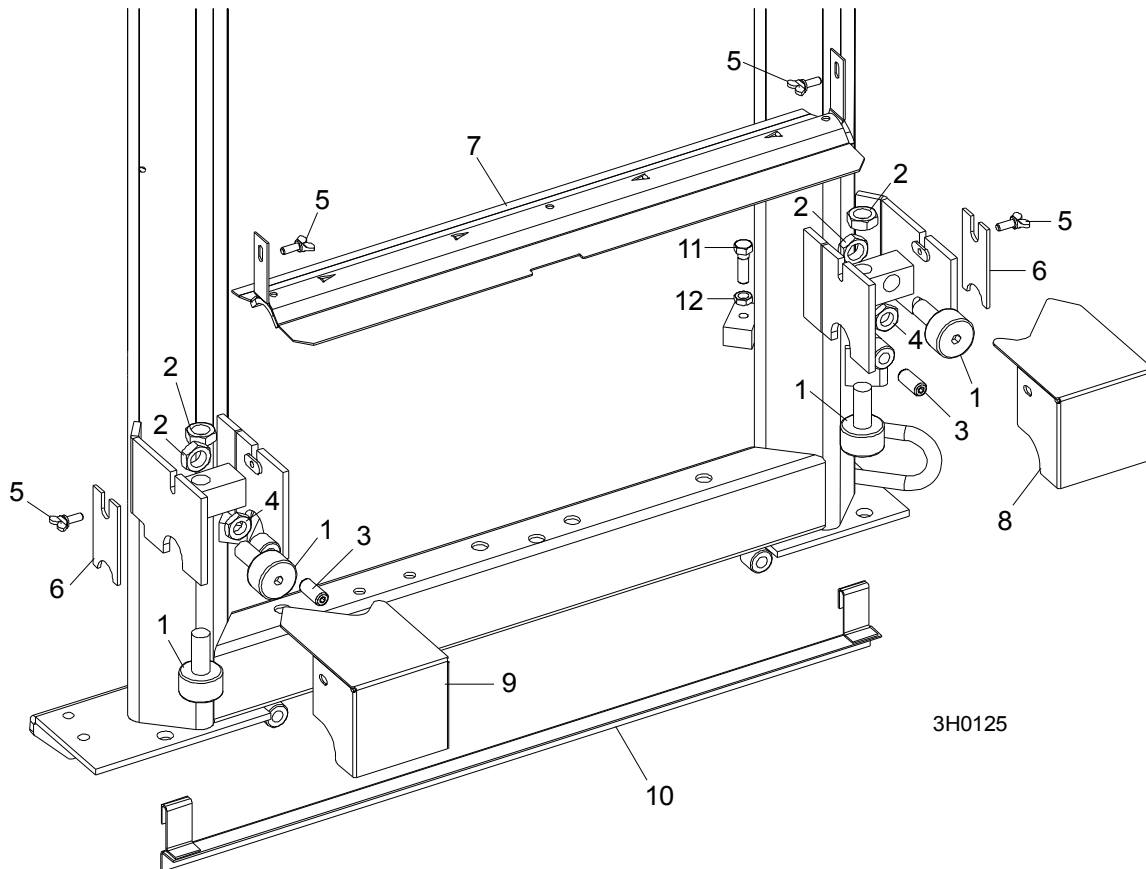
6.3 Blade Height Scale



REF	DESCRIPTION (◆ Indicates Parts Available In Assemblies Only)	PART #	QTY.	
	POINTER ASSEMBLY, LT25 BLADE HEIGHT	A12414	1	
1	Bracket, Pointer Mount	W12415	1	◆
2	Pointer, LT25 Quarter Scale	S12418	1	
3	Nut, 1/4-20 Wing	F05010-13	1	
4	Washer, 1/4 SAE Flat	F05011-11	3	
5	Pointer, Lexan Blade Height	M07267-N	1	
6	Screw, #10-24 x 3/8" Phillips Pan Head	F05004-3	2	
7	Washer, #10 SAE Flat	F05011-18	4	
8	Nut, #10-24 Self Locking	F05010-14	2	
9	BOLT, 1/4-20 X 1/2" HEX HEAD GRADE 2	F05005-15	1	
10	WASHER, 5/16" SAE FLAT	F05011-11	1	
11	NUT, 5/16-18 SELF LOCKING	F05010-20	1	
12	WASHER, 5/16" SAE FLAT	F05011-17	1	
13	DECAL, 35" INCH SCALE	P11038	1	
14	DECAL, 35" QUARTER SCALE	P11039	1	

SECTION 7 FEED SYSTEM & TRACK ROLLERS

7.1 Upper Track Rollers And Wipers



REF	DESCRIPTION (◆ Indicates Parts Available In Assemblies Only)	PART #	QTY.	
1	ROLLER, TRACK CAM BEARING	012797 ¹	4	
2	NUT, 5/8-18 HEX JAM	F05010-11	4	
3	SCREW, 1/2-13 X 1 1/4" OVAL POINT SET	F05008-5	2	
4	NUT, 1/2-13 HEX JAM	F05010-31	2	
5	SCREW, 1/4-20 X 5/8" THUMB	F05005-64	4	
6	WIPER, PLASTIC TRACK	M04113	2	
7	COVER, MIDDLE TRACK OILER ASSEMBLY	A09918 ²	1	
	Cover, Middle Track Oiler	S09917	1	◆
	Wiper, Middle Track Felt	S09915	1	
8	HOUSING, UPPER TRACK ROLLER REAR	012999	1	
9	HOUSING, UPPER TRACK ROLLER FRONT	012998	1	
10	GUARD, FEED CHAIN SAWDUST	W11964 ²	1	

Feed System & Track Rollers

Upper Track Rollers And Wipers

7

11	BOLT, 3/8-16 X 1 1/4" HEX HEAD	F05007-2	2	
12	NUT, 3/8-16 HEX JAM	F05010-29	2	

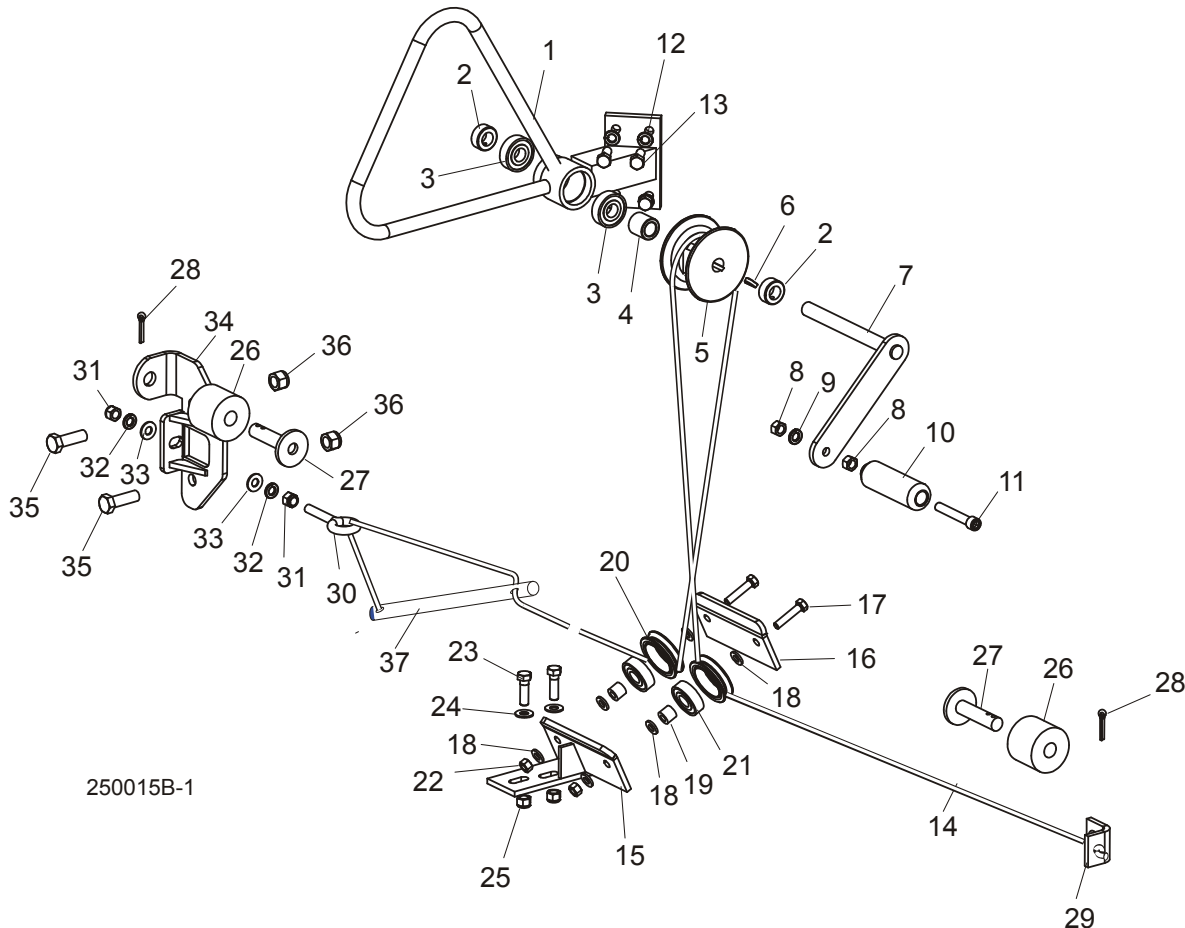
¹ Use 012797 to replace P12843 rollers originally supplied.

² Track Wiper Cover A09918 redesigned with "dual-flange" to prevent sawdust buildup (3/97). Feed chain guard W11964 no longer required if A09918 is replaced with new design.

7 Feed System & Track Rollers

Manual Feed Rope Assembly

7.2 Manual Feed Rope Assembly



REF	DESCRIPTION (◆ Indicates Parts Available In Assemblies Only)	PART #	QTY.	
	CRANK ASSEMBLY, MANUAL FEED ROPE	A12453	1	
1	Housing, Manual Feed Crank	W12443	1	◆
2	Collar, 5/8" I.D. With Set Screw	P05035	2	
3	Bearing, 5/8" 6203-2NSL	P06030-1	2	
4	Spacer, 1"	S12479-W	1	
5	Pulley, LT25 Manual Feed Crank	S12457 ¹	1	
6	Key, #606 Woodruff	P04101-1	1	
	Handle Assembly, LT25 Manual Feed Crank	A12336	1	
7	Crank, LT25 Manual Feed	W12449	1	◆
8	Nut, 3/8/16 Hex	F05010-1	2	
9	Washer, 3/8" Split Lock	F05011-4	1	
10	Handle, Crank	S12456-W	1	
11	Bolt, 3/8-16 x 2 1/2" Socket Head	F05007-24	1	
12	WASHER, 3/8" SPLIT LOCK	F05011-4	4	

13	BOLT, 3/8-16 X 1" HEX HEAD GRADE 2	F05007-7	4	
14	ROPE, 5/16" DIA. SOLID BRAIDED POLYESTER (LT25)	R02080	26 Ft.	
	ROPE, 5/16" DIA. SOLID BRAIDED POLYESTER (LT25L)	R02080	30.3 Ft.	
	ROLLER ASSEMBLY, FEED ROPE GUIDE	A12458	1	
15	Bracket, Rope Guide Roller Mount	W12459	1	◆
16	Plate, Rope Guide Roller Mount	S12464	1	◆
17	Bolt, 5/16-18 x 1 1/2" Hex Head Full Thread	F05006-2	2	
18	Washer, 5/16" SAE Flat	F05011-17	6	
19	Sleeve, Bearing	S05142	2	◆
	Roller Assembly, Rope Guide With Bearing	A09059	2	
20	Roller, Rope Guide V-Groove	S07989-W	1	◆
21	Bearing, 5/8" I.D. 6203-2NSL	P06030-1	1	
22	Nut, 5/16-18 Hex Lock	F05010-6	2	
23	BOLT, 3/8-16 X 1 1/4" HEX HEAD GRADE 2	F05007-2	2	
24	WASHER, 3/8" SAE FLAT	F05011-3	2	
25	NUT, 3/8-16 HEX NYLON LOCK	F05010-10	2	
	STOP KIT, RUBBER CARRIAGE	K09630	2	
26	Stop, Rubber Carriage	P12165	1	◆
27	Pin, Rubber Carriage Stop	W09293	1	
28	Pin, 3/16" x 1" Cotter	F05012-21	1	
29	BRACKET, FEED ROPE MOUNTING	S12466	1	
30	BOLT, 3/8-16 X 2" EYE 5/8" I.D.	F05007-30	1	
31	NUT, 3/8-16 HEX	F05010-10	2	
32	WASHER, 3/8" SPLIT LOCK	F05011-4	2	
33	WASHER, 3/8" SAE FLAT	F05011-3	2	
34	BRACKET, REAR FEED ROPE TENSIONER	W11822	1	
35	BOLT, 1/2-13 X 1 1/2" HEX HEAD GRADE 5	F05008-33	2	
36	NUT, 1/2-13 NYLON HEX	F05010-8	2	
37	ROD, FEED ROPE TENSIONER	S12468	1	

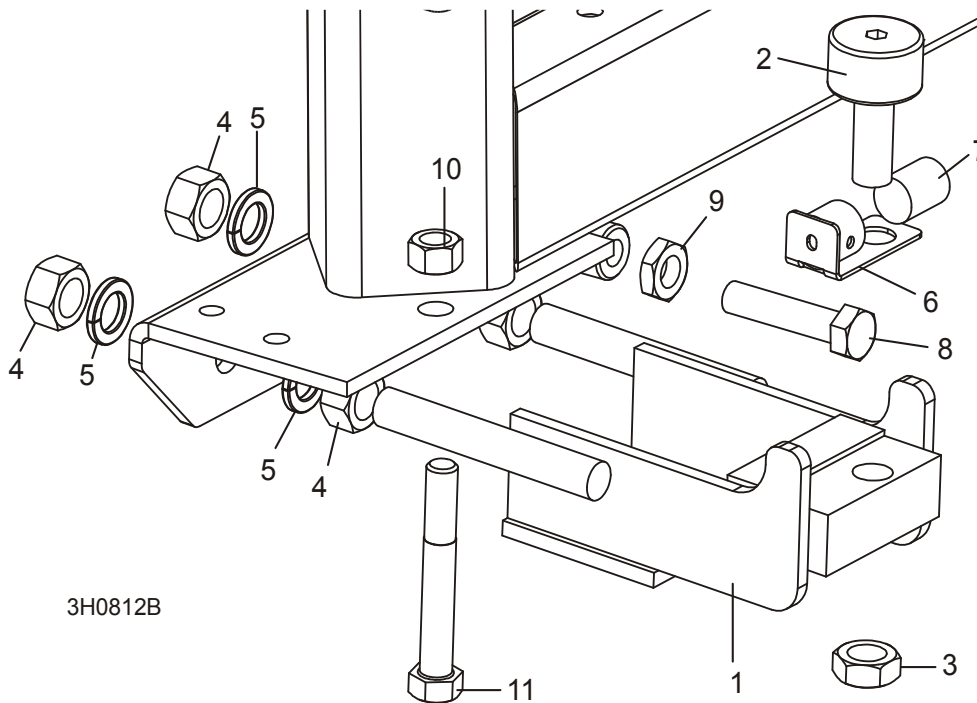
¹ Replaces S12457-W. Part Number change only.

7 Feed System & Track Rollers

Lower Track Rollers

7.3 Lower Track Rollers

Retrofit



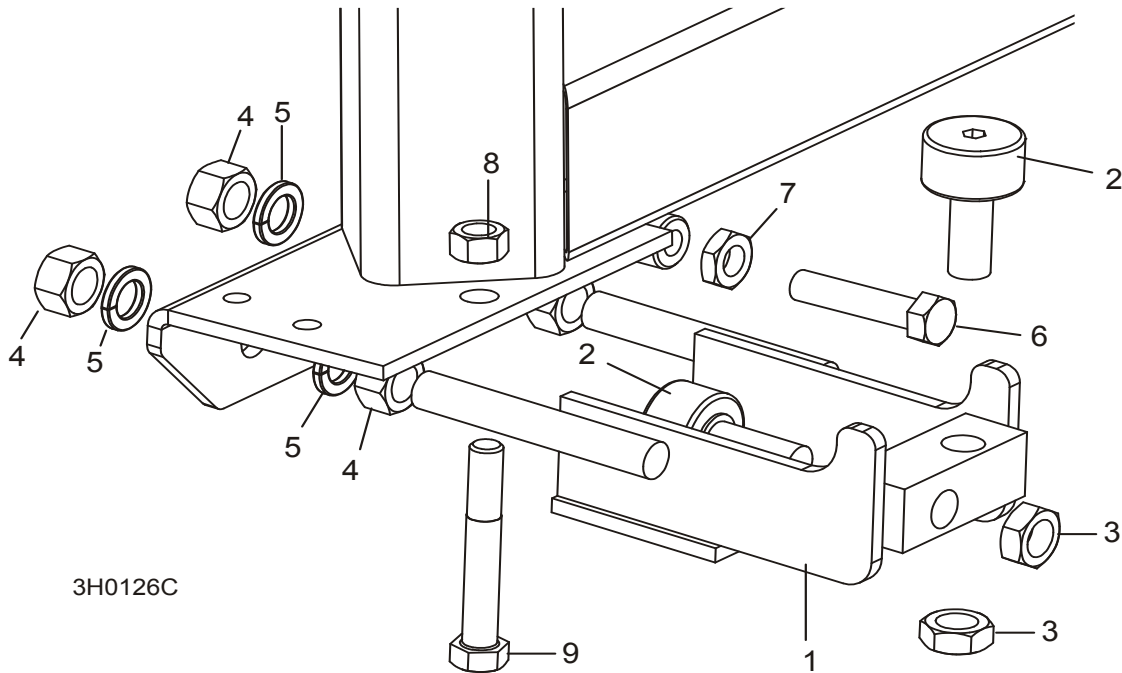
REF	DESCRIPTION (◆ Indicates Parts Available In Assemblies Only)	PART #	QTY.
	ROLLER ASSEMBLY, LOWER TRACK	012995	2
1	Bracket, Lower Track Roller Mounting	012982	1 ◆
2	Roller, Track Cam Bearing	012797	1
3	Nut, 5/8-18 Hex Jam	F05010-11	1
4	Nut, 5/8-11 Hex	F05010-5	4
5	Washer, 5/8" Split Lock Grade 8	F05011-118 ¹	4
6	Bracket Weldment, Lower Track Roller Wiper	033374	1
7	Wiper, Round Gray Felt	033375	1
8	BOLT, 1/2-13 X 2 1/4" HEX HEAD FULL THREAD	F05008-2	2
9	NUT, 1/2-13 HEX JAM	F05010-31	2
10	NUT, 1/2-13 HEX LOCK	F05010-3	2
11	BOLT, 1/2-13 X 3 1/2" HEX HEAD GRADE 5	F05008-61	2

¹ Grade 8 washers replace F05011-27 originally supplied to improve durability.

7.4 Lower Track Rollers

LT25

Rev. B7 - C1.01



3H0126C

REF	DESCRIPTION (◆ Indicates Parts Available In Assemblies Only)	PART #	QTY.	
	ROLLER ASSEMBLY, LOWER TRACK	012995 ¹	2	
1	Bracket, Lower Track Roller Mounting	012982 ¹	1	◆
2	Roller, Track Cam Bearing	012797 ²	1	
3	Nut, 5/8-18 Hex Jam	F05010-11	2	
4	Nut, 5/8-11 Hex	F05010-5	2	
5	Washer, 5/8" Split Lock Grade 8	F05011-118 ³	2	
6	BOLT, 1/2-13 X 2 1/4" HEX HEAD FULL THREAD	F05008-2	2	
7	NUT, 1/2-13 HEX JAM	F05010-31	2	
8	NUT, 1/2-13 HEX LOCK	F05010-3	2	
9	BOLT, 1/2-13 X 3 1/2" HEX HEAD GRADE 5	F05008-61	2	

¹ Lower roller assembly includes lower roller wiper assembly (04/00). New bracket required to utilize wipers. Bracket includes stop block which replaces the bottom track roller ([See Section 7.3](#)). Use vertical bolt to adjust stop block to 1/32" - 1/16" from lower track rail.

² Use 012797 to replace P12843 rollers originally supplied.

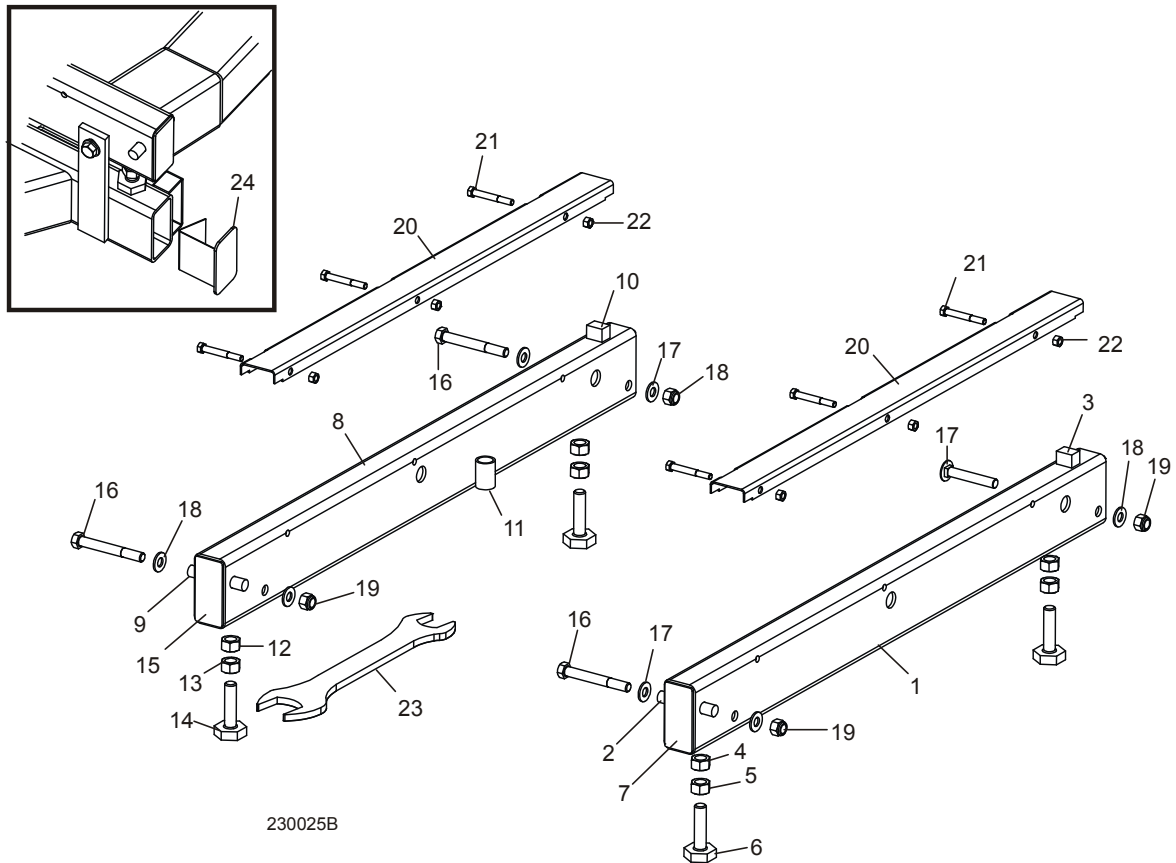
³ Grade 8 washers replace F05011-27 originally supplied to improve durability.

8 Bed Frame Assembly

Bed Rail Assembly, Front And Rear

SECTION 8 BED FRAME ASSEMBLY

8.1 Bed Rail Assembly, Front And Rear



REF	DESCRIPTION (◆ Indicates Parts Available In Assemblies Only)	PART #	QTY.	
	BED RAIL ASSEMBLY, REAR PAINTED	A09774	1	
1	Bed Rail Tube, Long	S09102	1	◆
2	Pin, Ramp Mount	S04030	1	
3	Block, Log Stop	S09034	1	
4	Nut, 5/8-11 Pilot Weld	F05010-84 ¹	2	
5	Nut, 5/8-11 Hex	F05010-5 ¹	2	
6	Bolt, Bed Rail Adjustment	S13006 ¹	2	
7	Plate, Bed Rail End Cap	S04058 ²	2	◆
	BED RAIL ASSEMBLY, FRONT PAINTED	A09564	1	
8	Bed Rail Tube, Long	S09102	1	◆
9	Pin, Ramp Mount	S04030	1	
10	Block, Log Stop	S09034	1	

Bed Frame Assembly 8

Bed Rail Assembly, Front And Rear

11	Tube, Ramp Retainer Mount	S09334	1	◆
12	Nut, 5/8-11 Pilot Weld	F05010-84 ¹	2	
13	Nut, 5/8-11 Hex	F05010-5 ¹	2	
14	Bolt, Bed Rail Adjustment	S13006 ¹	2	
15	Plate, Bed Rail End Cap	S04058 ¹	2	◆
16	BOLT, 1/2-13 X 4" HEX HEAD GRADE 5	F05008-78 ³	4	
17	BOLT, 1/2-13 X 3 1/2" CARRIAGE	F05008-94 ⁴	1	
18	WASHER, 1/2" SAE FLAT	F05011-2	8	
19	NUT, 1/2-13 NYLON LOCK	F05010-8	4	
	COVER ASSEMBLY, STAINLESS STEEL BED RAIL (LONG)	A09956	2	
20	Cover, Stainless Steel Bed Rail	S09944	1	◆
21	Bolt, 5/16-18 X 2 1/2" Hex Head	F05006-10	3	
22	Nut, 5/16-18 Hex Lock	F05010-6	3	
23	WRENCH, BED RAIL ADJUSTMENT	015970	1	
24	CAP WELDMENT, BED RAIL REMOVABLE END	014652 ²	2	

¹ Bed Rail Adjustment Bolt S13006 zinc-plated 11/99. Two unplated 5/8-11 Hex Nuts F05010-54 replaced with one 5/8-11 Pilot Weld Nut F05010-84 and one 5/8-11 Zinc-Plated Hex Nut F05010-5. Component parts replace assembly A09775 previously supplied.

² End caps added 6/98 to prevent sawdust/debris buildup.

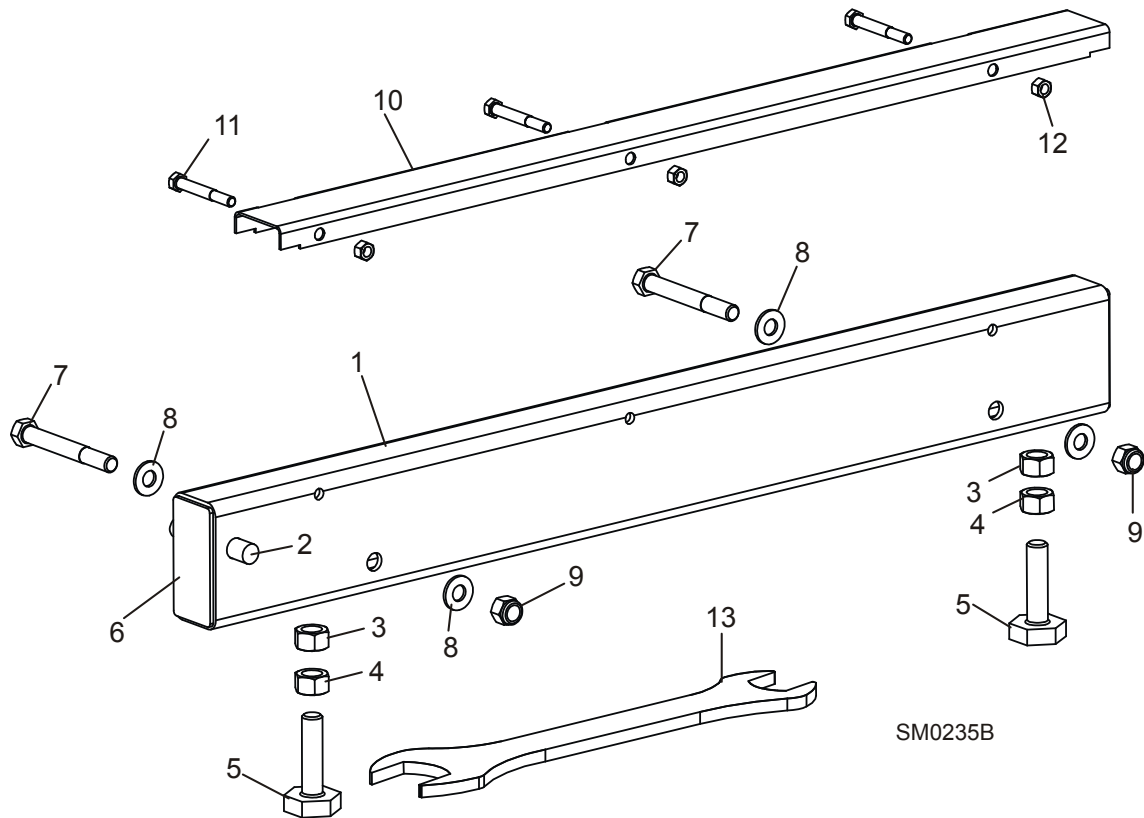
³ F05008-78 Grade 5 bolt replaces F05008-26 bolt originally supplied prior to 5/03.

⁴ Used on rear bed rail to allow clearance for optional side support rollers.

8 Bed Frame Assembly

Bed Rail Assembly, Front Middle

8.2 Bed Rail Assembly, Front Middle



REF	DESCRIPTION (◆ Indicates Parts Available In Assemblies Only)	PART #	QTY.	
	BED RAIL ASSEMBLY, FRONT MIDDLE	A09566	1	
1	Bed Rail Tube, Short	S09103	1	◆
2	Pin, Ramp Mount	S04030	1	
3	Nut, 5/8-11 Pilot Weld	F05010-84 ¹	2	
4	Nut, 5/8-11 Hex	F05010-5 ¹	2	
5	Bolt, Bed Rail Adjustment	S13006 ¹	2	
6	Plate, Bed Rail End Cap	S04058 ²	2	◆
7	BOLT, 1/2-13 X 4" HEX HEAD GRADE 5	F05008-78 ³	2	
8	WASHER, 1/2" SAE FLAT	F05011-2	4	
9	NUT, 1/2-13 NYLON LOCK	F05010-8	2	
	COVER ASSEMBLY, STAINLESS STEEL BED RAIL (LONG)	A09956	1	
10	Cover, Stainless Steel Bed Rail	S09944	1	◆
11	Bolt, 5/16-18 X 2 1/2" Hex Head	F05006-10	3	
12	Nut, 5/16-18 Hex Lock	F05010-6	3	
13	WRENCH, BED RAIL ADJUSTMENT	015970	1	

Bed Frame Assembly

Bed Rail Assembly, Front Middle

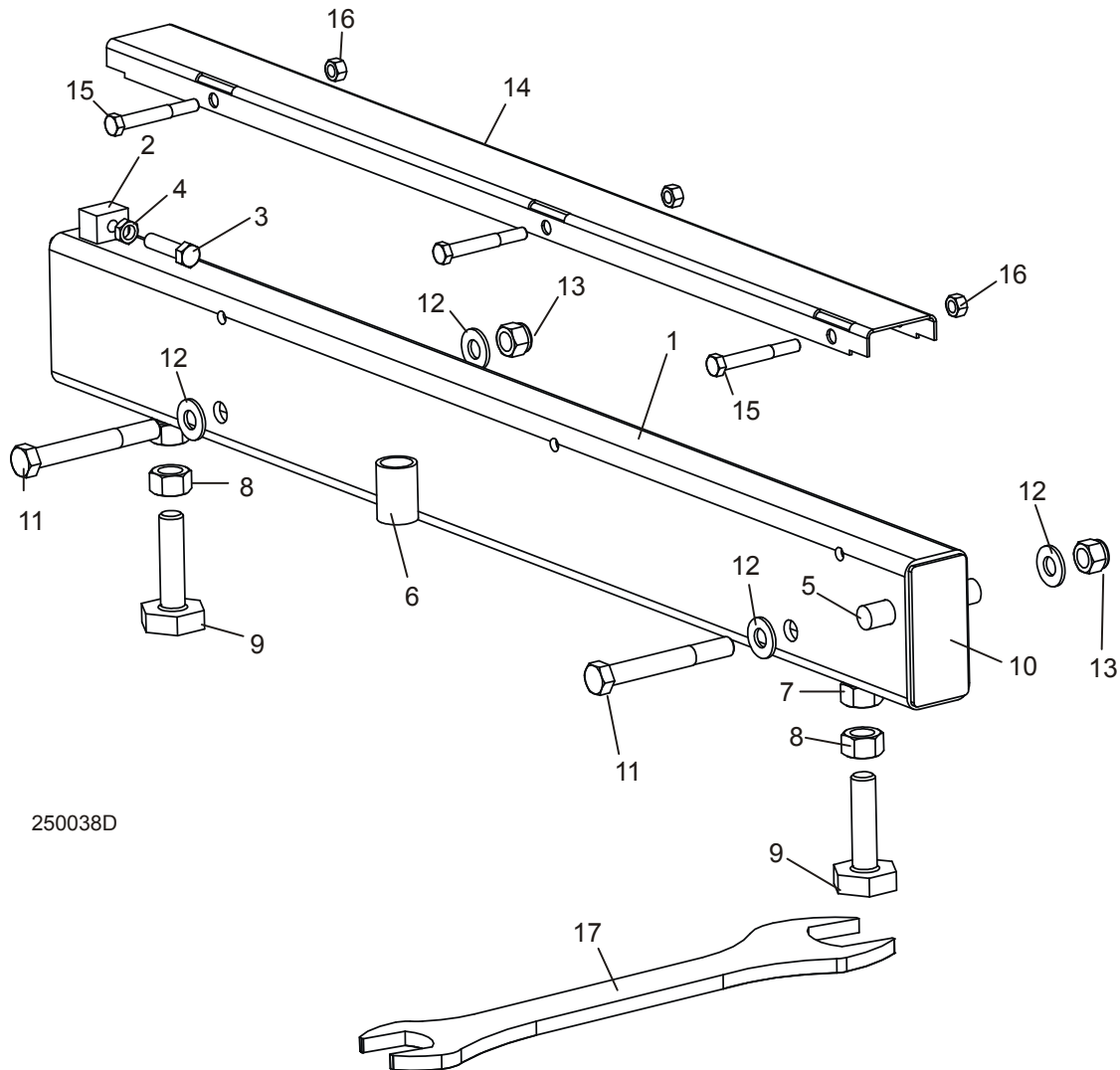
8

- ¹ Bed Rail Adjustment Bolt S13006 zinc-plated 11/99. Two unplated 5/8-11 Hex Nuts F05010-54 replaced with one 5/8-11 Pilot Weld Nut F05010-84 and one 5/8-11 Zinc-Plated Hex Nut F05010-5. Component parts replace assembly A09775 previously supplied.
- ² End caps added 6/98 to prevent sawdust/debris buildup.
- ³ F05008-78 Grade 5 bolt replaces F05008-26 bolt originally supplied prior to 5/03.

8 Bed Frame Assembly

Bed Rail Assembly, Rear Middle

8.3 Bed Rail Assembly, Rear Middle



REF	DESCRIPTION (◆ Indicates Parts Available In Assemblies Only)	PART #	QTY.	
	BED RAIL ASSEMBLY, REAR MIDDLE	A09565	1	
1	Bed Rail Tube, Short	S09103	1	◆
2	Block, Log Stop w/Threaded Hole	014639 ¹	1	◆
3	Bolt, 3/8-16 x 1 1/2 Full Thead Hex Head	F05007-17 ¹	1	
4	Nut, 3/8-16 Hex Jam	F05010-29 ¹	1	
5	Pin, Ramp Mount	S04030	1	
6	Tube, Ramp Retainer Mount	S09334-W	1	◆
7	Nut, 5/8-11 Pilot Weld	F05010-84 ²	2	
8	Nut, 5/8-11 Hex	F05010-5 ²	2	

Bed Frame Assembly 8

Bed Rail Assembly, Rear Middle

9	Bolt, Bed Rail Adjustment	S13006 ²	2	
10	Plate, Bed Rail End Cap	S04058 ³	2	◆
11	BOLT, 1/2-13 X 4" HEX HEAD GRADE 5	F05008-78 ⁴	2	
12	WASHER, 1/2" SAE FLAT	F05011-2	4	
13	NUT, 1/2-13 NYLON LOCK	F05010-8	2	
	COVER ASSEMBLY, STAINLESS STEEL BED RAIL (LONG)	A09956	1	
14	Cover, Stainless Steel Bed Rail	S09944	1	◆
15	Bolt, 5/16-18 X 2 1/2" Hex Head	F05006-10	3	
16	Nut, 5/16-18 Hex Lock	F05010-6	3	
17	WRENCH, BED RAIL ADJUSTMENT	015970	1	

¹ Threaded block, bolt and jam nut added 1/97 to to enable easier clamping of short logs.

² Bed Rail Adjustment Bolt S13006 zinc-plated 11/99. Two unplated 5/8-11 Hex Nuts F05010-54 replaced with one 5/8-11 Pilot Weld Nut F05010-84 and one 5/8-11 Zinc-Plated Hex Nut F05010-5. Component parts replace assembly A09775 previously supplied.

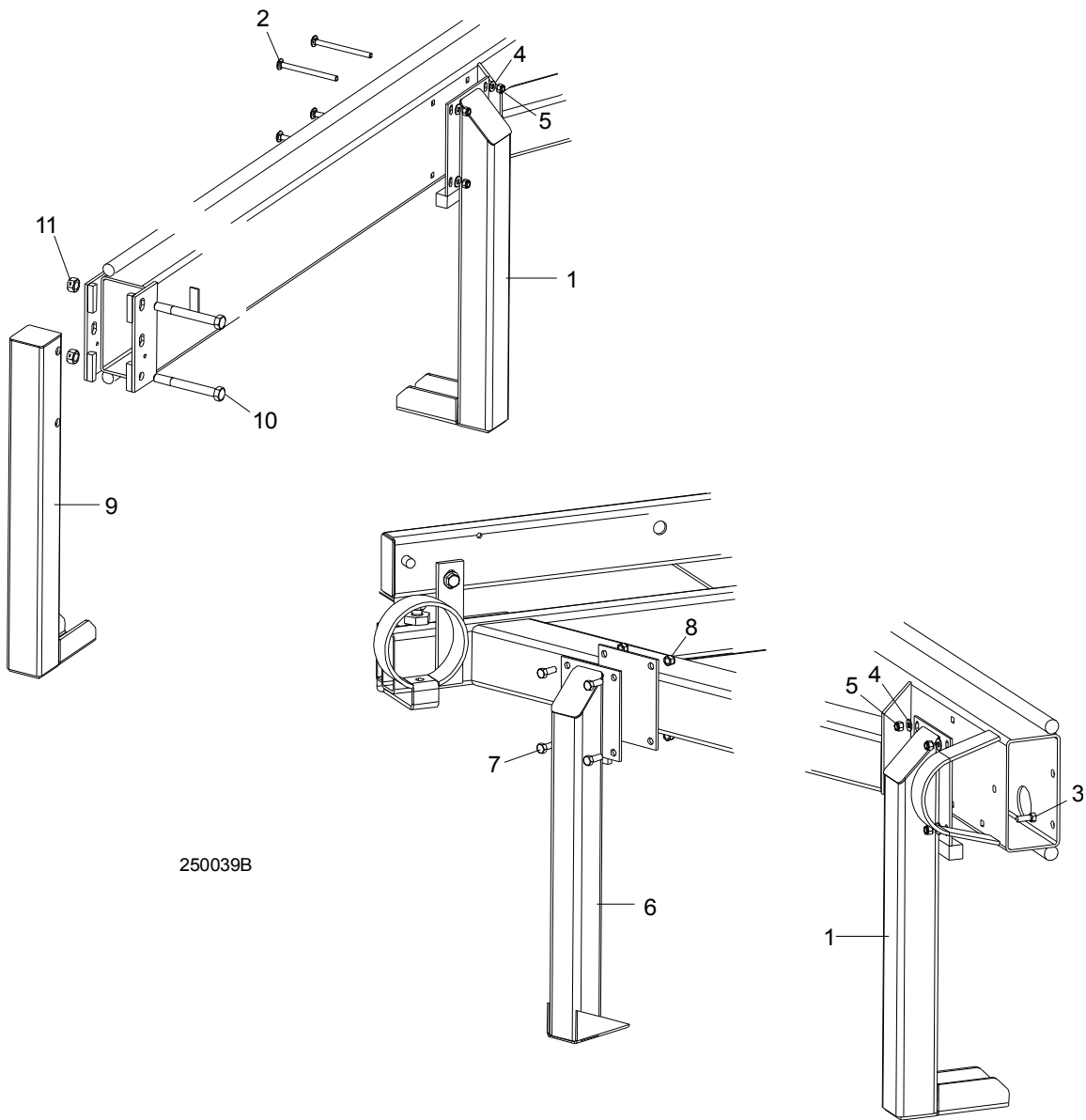
³ End caps added 6/98 to prevent sawdust/debris buildup.

⁴ F05008-78 Grade 5 bolt replaces F05008-26 bolt originally supplied prior to 5/03.

8 Bed Frame Assembly

Leg, Stationary

8.4 Leg, Stationary



250039B

REF	DESCRIPTION (◆ Indicates Parts Available In Assemblies Only)	PART #	QTY.
1	LEG, LONG STATIONARY (2 REQ'D FOR LT25; 3 REQ'D FOR LT25L)	W09513	2/3
2	BOLT, 3/8-16 X 5" CARRIAGE HEAD	F05007-113 ¹	8
	BOLT, 3/8-16 X 5" HEX HEAD GRADE 2	F05007-5 ¹	8
3	BOLT, 3/8-16 X 1" HEX HEAD GRADE 2 (REQ'D FOR REAR LT25L ONLY)	F05007-7	4
4	WASHER, 3/8" SAE FLAT	F05011-3 ²	8/12
5	NUT, 3/8-16 HEX NYLON LOCK	F05010-10	8/12

6	LEG, SHORT STATIONARY	W09515	2	
7	BOLT, 3/8-16 X 1" HEX HEAD GRADE 2	F05007-7	8	
8	NUT, 3/8-16 HEX NYLON LOCK	F05010-10	8	
9	LEG, LT25L FRONT STATIONARY	W09517	1	
10	BOLT, 5/8-11 X 5 1/2" HEX HEAD GRADE 5	F05009-11	2	
11	NUT, 5/8-11 HEX LOCK	F05010-4	2	

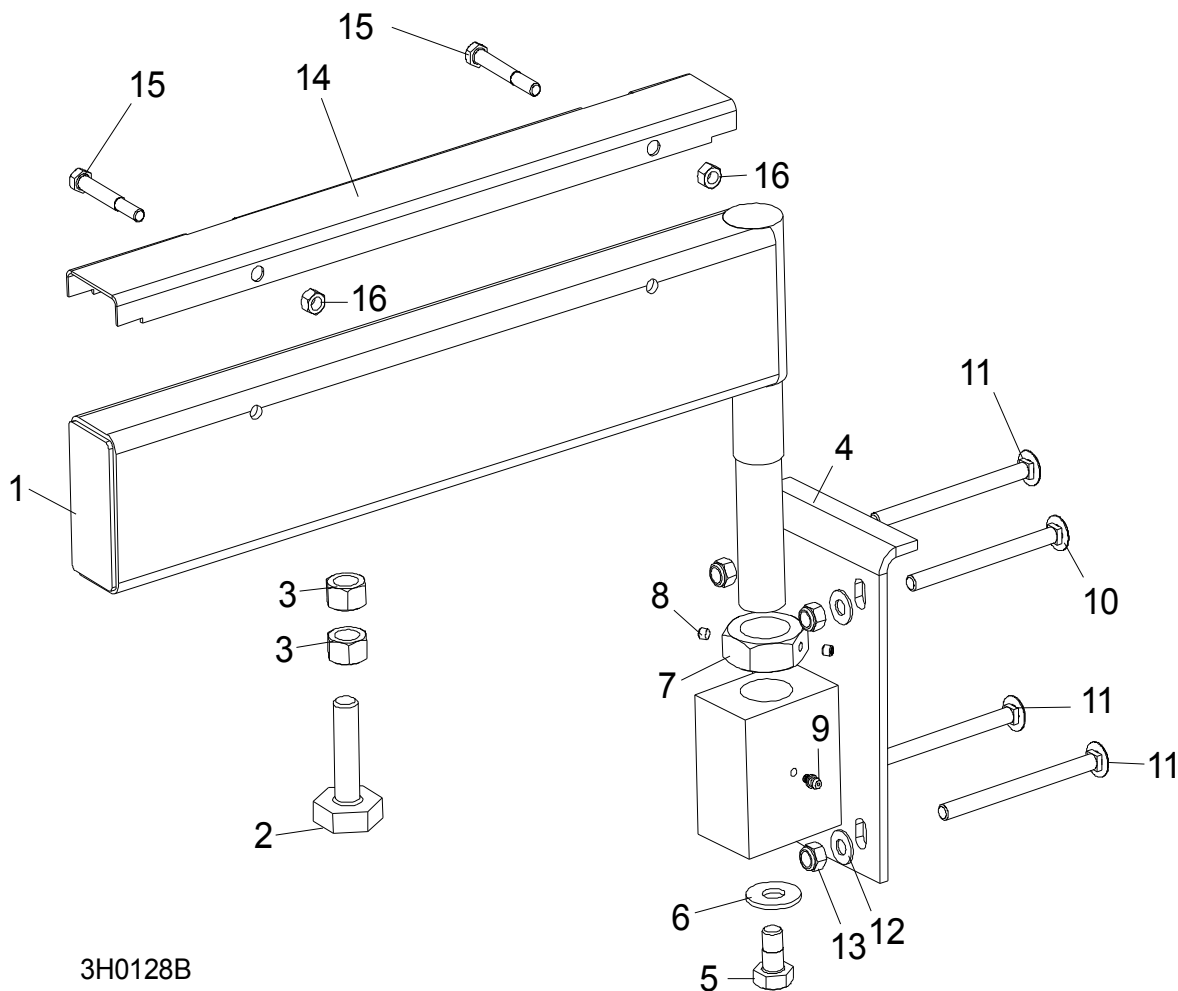
¹ Carriage bolts F05007-113 used on LT25 Rev. C1596+. Use hex head bolts F05007-5 on prior revisions.

² Washers added 5/98.

8 Bed Frame Assembly

Pivot Bed Rail Assembly

8.5 Pivot Bed Rail Assembly



3H0128B

REF	DESCRIPTION (◆ Indicates Parts Available In Assemblies Only)	PART #	QTY.	
	PIVOT BED RAIL ASSEMBLY (LT25)	012993	2	
	PIVOT BED RAIL ASSEMBLY (LT25L)	A13015	2	
1	Pivot Bed Rail Weldment (LT25)	012992	1	◆
	Pivot Bed Rail Weldment (LT25L)	W13014	1	◆
	Bolt Assembly, Bed Rail Adjustment	A09775	1	
2	Bolt, Bed Rail Adjustment	S13006	1	
3	Nut, 5/8-11 Hex	F05010-54	2	
4	Bracket, Pivot Rail Mounting	W13090	1	
5	Bolt, 1/2-13 x 1" Hex Head Grade 2	F05008-50	1	
6	Washer, 9/16" SAE Flat	F05011-52	1	
7	Nut, Pivot Bed Rail Adjustment	S13016	1	
8	Screw, 1/4-28 x 1/4" Brass Tip Set	F05005-42	2	

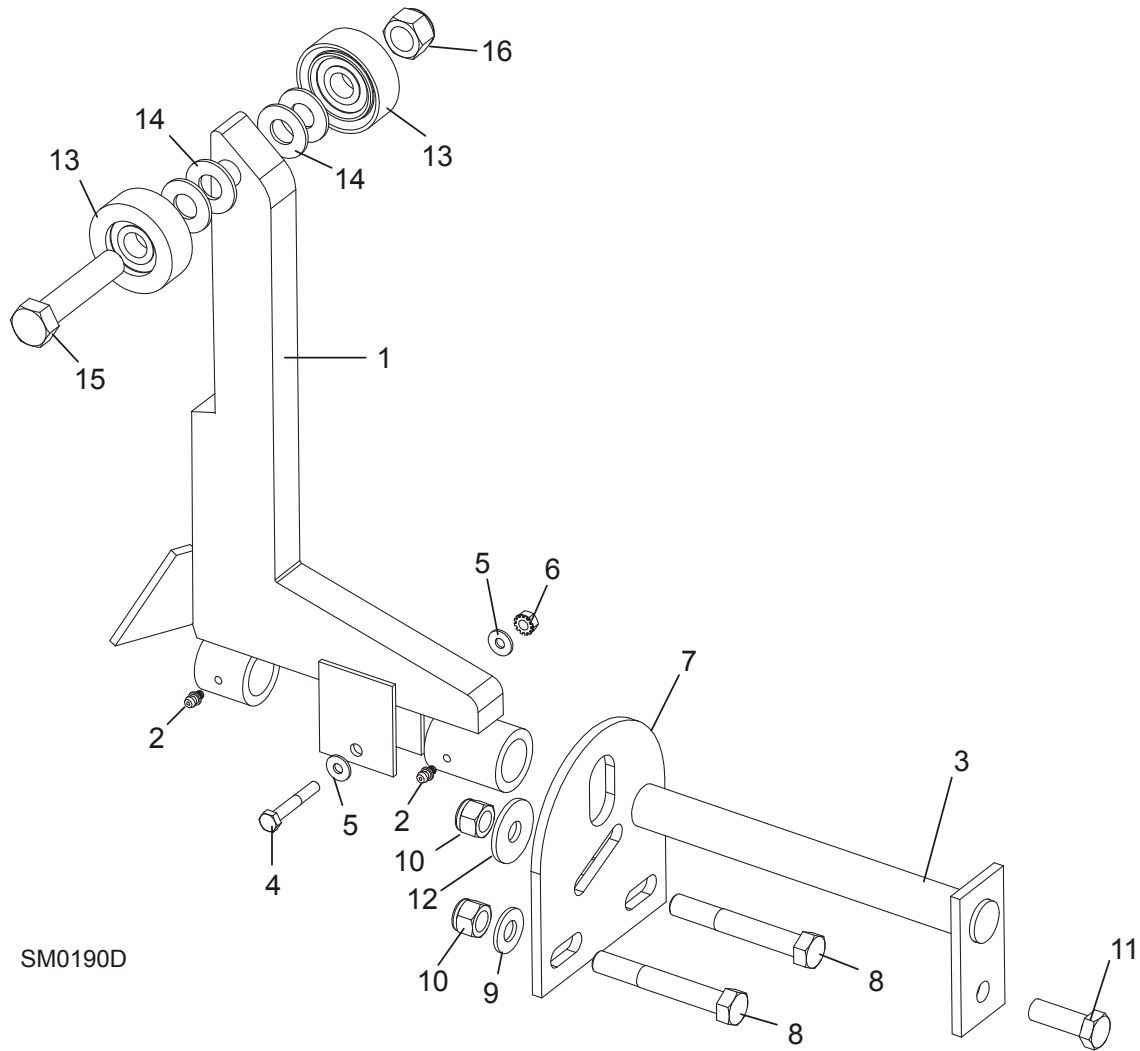
9	Fitting, 3/16" Grease	P04107	1	
10	BOLT, 3/8-16 X 4 3/4" CARRIAGE HEAD	F05007-114 ¹	2	
	BOLT, 3/8-16 X 4 3/4" HEX HEAD GRADE 5	F05007-109 ¹	2	
11	BOLT, 3/8-16 X 5" CARRIAGE HEAD	F05007-113 ¹	6	
	BOLT, 3/8-16 X 5" HEX HEAD GRADE 2	F05007-5 ¹	8	
12	WASHER, 3/8" SAE FLAT	F05011-3	8	
13	NUT, 3/8-16 NYLON LOCK	F05010-10	8	
	COVER KIT, PIVOT RAIL STAINLESS STEEL (LT25L/LT27)	017710	2	
	COVER KIT, PIVOT RAIL STAINLESS STEEL (LT25)	015926	2	
14	Cover, Stainless Steel Pivot Bed Rail (LT25L/LT27)	S13012	1	
	Cover, Stainless Steel Pivot Bed Rail (LT25)	012994	1	
15	Bolt, 5/16-18 X 2 1/2" Hex Head	F05006-10	2	
16	Nut, 5/16-18 Hex Lock	F05010-6	2	
	WRENCH, BED RAIL ADJUSTMENT (NOT SHOWN)	015970	1	

¹ Carriage bolts F05007-114 and F05007-113 used on LT25 Rev. C1596+. Use hex head bolts F05007-109 and F05007-5 on prior revisions.

8 Bed Frame Assembly

Log Side Support Assembly

8.6 Log Side Support Assembly



REF	DESCRIPTION (◆ Indicates Parts Available In Assemblies Only)	PART #	QTY.
1	SUPPORT, LOG SIDE	015235 ¹	2
2	Fitting, 3/16" Grease	P04107	2
	MOUNTING KIT, LOG SIDE SUPPORT	K09440	2
3	Pin, Log Side Support Pivot	W09238	1
4	Bolt, 1/4-20 X 1 1/2" Hex Head Grade 5	F05005-4	1
5	Washer, 1/4" SAE Flat	F05011-11	2
6	Nut, 1/4-20 Self Locking	F05010-9	1
7	Plate, Log Side Support End	S09148	1
8	Bolt, 1/2-13 X 3 1/2" Hex Head	F05008-61	2
9	Washer, 1/2" SAE Flat	F05011-2	4
10	Nut, 1/2-13 Hex Nylon Lock	F05010-8	3

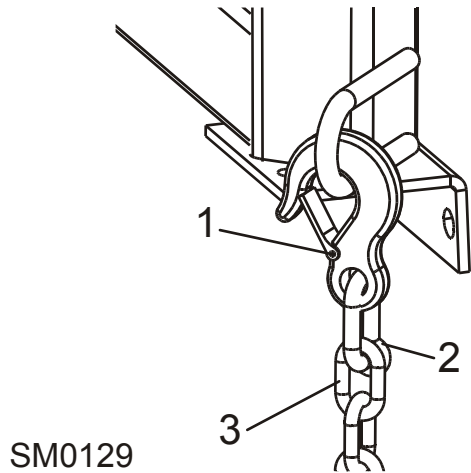
11	Bolt, 1/2-13 X 1 1/2" Hex Head	F05008-33	1	
12	WASHER, .5" X 1.63" SERRATED	F05011-90 ²	1	
	ROLLER KIT, SIDE SUPPORT (OPTIONAL)	015109	4	
13	Roller Assembly, Side Support	015014	2	
14	Washer, 5/8" SAE Flat	F05011-5	4	
15	Bolt, 5/8-11 x 3" Hex Head Grade 5	F05009-37	1	
16	Nut, 5/8-11 Nylon Lock	F05010-34	1	
	Instruction Sheet, Side Support Roller	015109-526	1	

¹ Replaces W12566 originally supplied. Side support redesigned for added strength.

² Replaces F05011-2 1/2" SAE Flat Washer originally supplied. Serrated washer helps maintain side support adjustment.

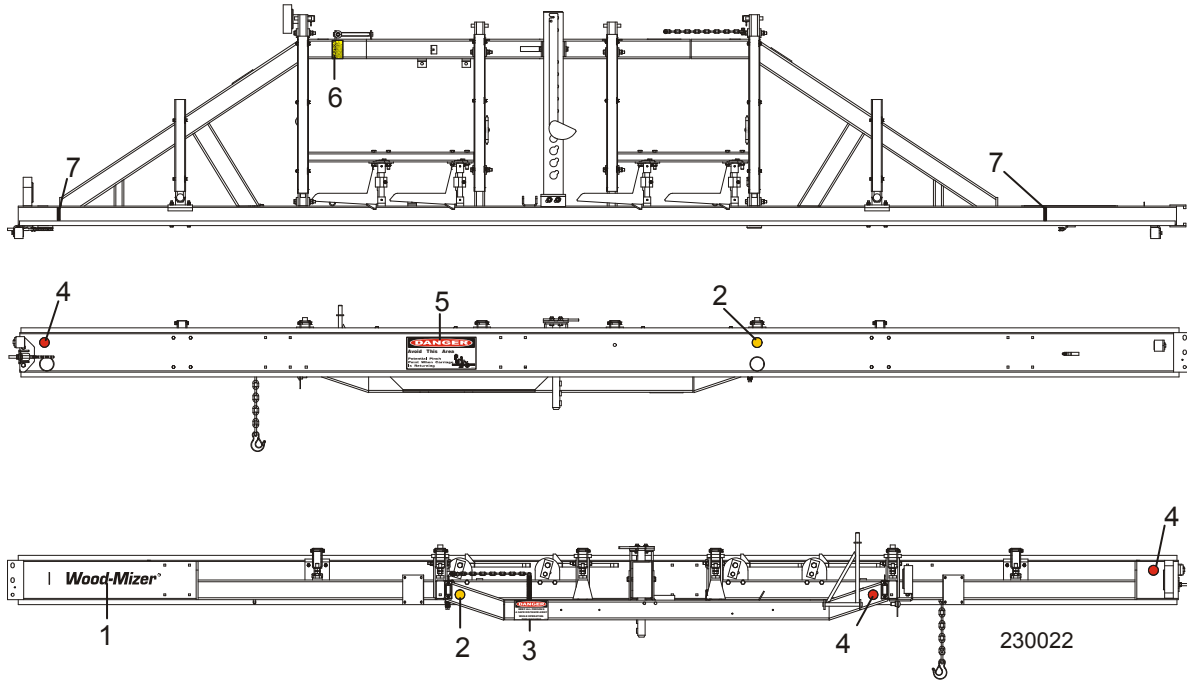
8 **Bed Frame Assembly**
Tie Down Chain Assembly

8.7 Tie Down Chain Assembly



REF	DESCRIPTION (◆ Indicates Parts Available In Assemblies Only)	PART #	QTY.	
	CHAIN ASSEMBLY, TIE DOWN	A04376	1	
1	Hook, 5/8" Safety Chain	P12075	1	◆
2	Cold Shut, 3/8" Plain	P04772-2	1	◆
3	Chain, 5/16" Unplated	R02111	.938 ft.	◆

8.8 Bed Frame Decals

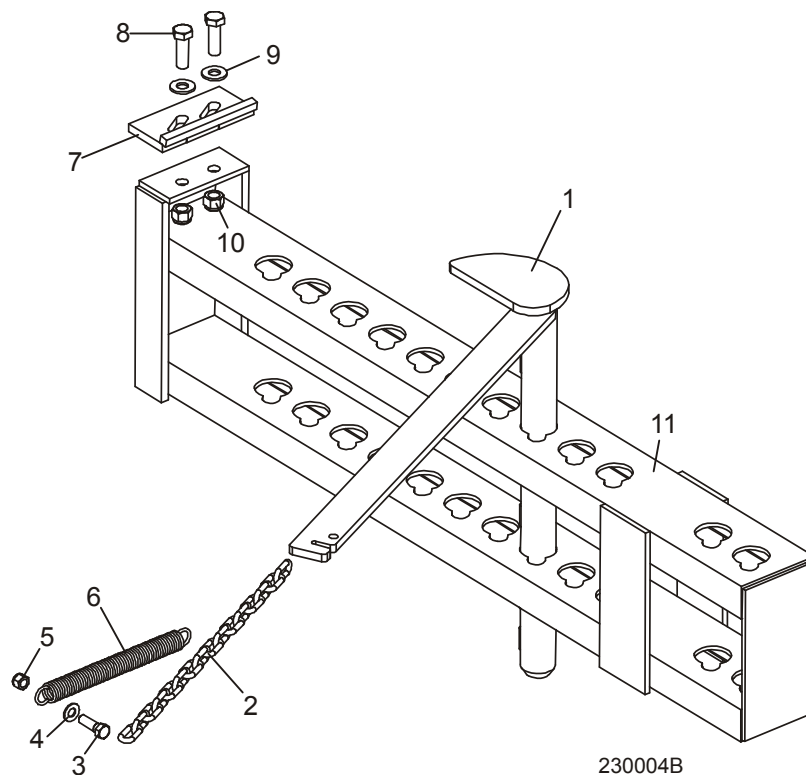


REF	DESCRIPTION (◆ Indicates Parts Available In Assemblies Only)	PART #	QTY.
1	DECAL, WOOD-MIZER LOGO	S12281	1
2	DECAL, AMBER REFLECTIVE 2" ROUND	P07453	2
3	DECAL, KEEP AWAY DANGER	S09851	1
4	DECAL, RED REFLECTIVE 2" ROUND	P07452	3
5	DECAL, PINCH POINT DANGER	P10287	1
6	DECAL, SAW HEAD REST CAUTION	S12581	1
7	DECAL, LOG LIMIT STRIPE	S12051	2

8 Bed Frame Assembly

Log Clamp

8.9 Log Clamp



REF	DESCRIPTION (◆ Indicates Parts Available In Assemblies Only)	PART #	QTY.
1	CLAMP, LOG	W09412	1
2	CHAIN, LOG CLAMP	M04311	1
3	BOLT, 3/8-16 X 1 1/4" HEX HEAD GRADE 2	F05007-2	1
4	WASHER, 3/8" STANDARD FLAT	F05011-3	2
5	NUT, 3/8-16 HEX NYLON LOCK	F05010-10	1
6	SPRING, LOG CLAMP CHAIN	P09136	1
7	PLATE, LOG CLAMP STOP	W09404	1
8	BOLT, 1/2-13 X 1 1/2" HEX HEAD GRADE 5	F05008-33	2
9	WASHER, 1/2" SAE FLAT	F05011-2	2
10	NUT, 1/2-13 HEX NYLON LOCK	F05010-8	2
11	CHANNEL WELDMENT, MANUAL LOG CLAMP	W09310	1

SECTION 9 MISCELLANEOUS

9.1 Replacement Manuals

REF	DESCRIPTION (◆ Indicates Parts Available In Assemblies Only)	PART #	QTY.
Wood-Mizer Product Information			
1	ALL-PRODUCTS CATALOG	PS750	1
Basic Sawmill Manuals			
2	TRU-SHARP BLADE HANDBOOK	M600	1
3	WOOD-MIZER GENERAL INFORMATION	M601	1
4	LT25 OPERATOR'S MANUAL (1996)	M684	1
5	LT25 PARTS MANUAL (1996)	M685	1
Power Option Manuals			
6	G11 ENGINE OPTION MANUAL (1996)	M712	1
Trailer Option Manuals			
7	STANDARD TRAILER OPTION (1996)	M665	1
Miscellaneous Option Manuals			
8	MANUAL WINCH OPTION MANUAL	M619	1
9	LOG TURNER OPTION MANUAL	M620	1
10	MANUAL TOE BOARD OPTION MANUAL	M627	1
11	SHINGLE/LAPSIDER OPTION MANUAL	M903	1
12	BED EXTENSION OPTION MANUAL	M503	1

INDEX

B

bed rails
front/rear 8-1
middle 8-3, 8-5
pivot 8-9

blade guide
drive side 2-3
idle side 2-1
throat screw 4-1

blade guide arm
arm & rollers 2-5

blade tensioner 3-7

blade wheel
drive side 3-1, 3-3
idle side 3-5

C

clutch/brake lever 4-2, 4-6

covers 4-12, 4-14

D

decals
bed 8-14
saw head 4-10

F

feed assembly 7-3

L

legs
stationary 8-7

log clamp 8-15

M

manuals 9-1

P

parts list
how to use 1-1

S

safety chain 8-13

sawdust chute 4-12

scale
blade height 6-4

side supports 8-11

sight gauge 6-2

T

track rollers
lower 7-5, 7-6
upper 7-1

U

up/down
crank assembly 5-1
v-brace mount 6-1, 6-2

W

water lube
bottle/tray assembly 4-8
