

Wood-Mizer® Sawmill

Parts Manual

LT10

rev. A1.00 - B4.09



Safety is our #1 concern! Read and understand all safety information and instructions before operating, setting up or maintaining this machine.

January 2007

Form #1229

California

Proposition 65 Warning



WARNING: Breathing gas/diesel engine exhaust exposes you to chemicals known to the State of California to cause cancer and birth defects or other reproductive harm.

- Always start and operate the engine in a well-ventilated area.
- If in an enclosed area, vent the exhaust to the outside.
- Do not modify or tamper with the exhaust system.
- Do not idle the engine except as necessary.

For more information go to **www.P65warnings.ca.gov**.



WARNING: Drilling, sawing, sanding or machining wood products can expose you to wood dust, a substance known to the State of California to cause cancer. Avoid inhaling wood dust or use a dust mask or other safeguards for personal protection.

For more information go to **www.P65Warnings.ca.gov/wood**.

©2019

Printed in the United States of America, all rights reserved. No part of this manual may be reproduced in any form by any photographic, electronic, mechanical or other means or used in any information storage and retrieval system without written permission from

Wood-Mizer

8180 West 10th Street
Indianapolis, Indiana 46214

Table of Contents

Section-Page

California

Proposition 65 Warning



WARNING: Breathing gas/diesel engine exhaust exposes you to chemicals known to the State of California to cause cancer and birth defects or other reproductive harm.

- Always start and operate the engine in a well-ventilated area.
- If in an enclosed area, vent the exhaust to the outside.
- Do not modify or tamper with the exhaust system.
- Do not idle the engine except as necessary.

For more information go to **www.P65warnings.ca.gov**.



WARNING: Drilling, sawing, sanding or machining wood products can expose you to wood dust, a substance known to the State of California to cause cancer. Avoid inhaling wood dust or use a dust mask or other safeguards for personal protection.

For more information go to **www.P65Warnings.ca.gov/wood**.

©2019

Printed in the United States of America, all rights reserved. No part of this manual may be reproduced in any form by any photographic, electronic, mechanical or other means or used in any information storage and retrieval system without written permission from

Wood-Mizer

8180 West 10th Street
Indianapolis, Indiana 46214

Table of Contents

Section-Page

SECTION 1	GENERAL INFORMATION	1-1
1.1	How To Use The Parts List	1-1
1.2	Sample Assembly	1-1
SECTION 2	LT10 PARTS	2-1
2.1	LT10 Complete.....	2-1
	<i>LT10 Rev. B4.00+</i>	
2.2	LT10 Complete.....	2-2
	<i>LT10 Rev. B3.00 - B3.03</i>	
2.3	LT10 Complete.....	2-3
	<i>LT10 Rev. A1.00 - B2.00</i>	
SECTION 3	BED PARTS	3-1
3.1	Bed Assembly.....	3-1
	<i>LT10 Rev. B4.00+</i>	
3.2	Bed Assembly.....	3-2
	<i>LT10 Rev. A1.00 - B3.03</i>	
3.3	Clamp Assembly	3-3
	<i>LT10 Rev. B4.02+</i>	
3.4	Clamp Assembly	3-4
	<i>LT10 Rev. B4.00 - B4.01</i>	
3.5	Clamp Assembly	3-5
	<i>LT10 Rev. A1.00 - B3.03</i>	
SECTION 4	MAST PARTS	4-1
4.1	Mast Assembly	4-1
	<i>LT10 Rev. B4.00+</i>	
4.2	Mast Assembly	4-2
	<i>LT10 Rev. B3.00 - B3.03</i>	
4.3	Mast Assembly	4-3
	<i>LT10 Rev. A1.02 - B2.00</i>	
4.4	Mast Assembly	4-4
	<i>LT10 Rev. A1.00 - A1.01</i>	
4.5	Carriage Assembly	4-5
	<i>LT10 Rev. B3.00+</i>	

Table of Contents

Section-Page

4.6	Carriage Assembly	4-7	
	<i>LT10</i> <i>Rev. A1.00 - B2.00</i>		
4.7	Roller Assembly	4-9	
	<i>LT10</i> <i>Rev. B4.00+</i>		
4.8	Roller Assembly	4-10	
	<i>LT10</i> <i>Rev. A1.00 - B3.03</i>		
4.9	Feed Handle Assembly	4-12	
	<i>LT10</i> <i>Rev. B4.00+</i>		
4.10	Feed Handle Assembly	4-13	
	<i>LT10</i> <i>Rev. A1.02 - B3.03</i>		
4.11	Feed Handle Assembly	4-14	
	<i>LT10</i> <i>Rev. A1.00 - A1.01</i>		
4.12	Up/Down Assist Assembly	4-15	
SECTION 5 FEED CABLE ASSEMBLY			5-1
5.1	Feed Cable Assembly	5-1	
	<i>LT10</i> <i>Rev. B4.05+</i>		
5.2	Feed Cable Assembly	5-2	
	<i>LT10</i> <i>Rev. B2.00 - B3.03</i>		
SECTION 6 HEAD PARTS			6-1
6.1	Head Assembly	6-1	
	<i>LT10</i> <i>Rev. B3.00+</i>		
6.2	Head Assembly	6-3	
	<i>LT10</i> <i>Rev. A1.01 - B2.00</i>		
6.3	Head Assembly	6-5	
	<i>LT10</i> <i>Rev. A1.00</i>		
6.4	Blade Tensioner	6-6	
	<i>LT10</i> <i>Rev. A1.01+</i>		
6.5	Blade Tensioner	6-8	
	<i>LT10</i> <i>Rev. A1.00</i>		
6.6	Idle Blade Wheel Arm Assembly	6-10	
	<i>LT10</i> <i>Rev. A1.01+</i>		
6.7	Idle Blade Wheel Arm Assembly	6-11	
	<i>LT10</i> <i>Rev. A1.00</i>		
6.8	Idle Wheel Assembly	6-12	
6.9	Blade Guide	6-13	
6.10	Brake Assembly	6-14	
6.11	Drive Blade Wheel	6-15	
6.12	Blade Housing Covers	6-16	
	<i>LT10</i> <i>Rev. B1.00+ (After 11/10)</i>		
6.13	Blade Housing Covers	6-17	
	<i>LT10</i> <i>Rev. B1.00+ (1/07-11/10)</i>		
6.14	Blade Housing Covers	6-18	
	<i>LT10</i> <i>Rev. A1.00 - B1.00 (12/06)</i>		
SECTION 7 MOTOR MOUNT ASSEMBLY			7-1
	<i>LT10</i> <i>Rev. B3.00+</i>		

Table of Contents

Section-Page

SECTION 8	ENGINE ASSEMBLY	8-1
8.1	G7 Engine Assembly <i>LT10 Rev. B3.02+</i>	8-1
8.2	G10 Engine Assembly <i>LT10 Rev. B3.02+</i>	8-2
8.3	Engine Assembly <i>LT10 Rev. B3.00 - B3.01</i>	8-3
8.4	7HP Engine Assembly <i>LT10 Rev. B1.00 - B2.00</i>	8-5
8.5	7.8HP Engine Assembly <i>LT10 Rev. A2.00</i>	8-7
8.6	7.8HP Engine Assembly <i>LT10 Rev. A1.02</i>	8-9
8.7	7.8HP Engine Assembly <i>LT10 Rev. A1.00 - A1.01</i>	8-11
SECTION 9	WATER LUBE	9-1

SECTION 1 GENERAL INFORMATION

1.1 How To Use The Parts List

- Use the table of contents or index to locate the assembly that contains the part you need.
- Go to the appropriate section and locate the part in the illustration.
- Use the number pointing to the part to locate the correct part number and description in the table.
- Parts shown indented under another part are included with that part.
- Parts marked with a diamond (◆) are only available in the assembly listed above the part.

See the sample table below. Sample Part #A01111 includes part F02222-2 and subassembly A03333. Subassembly A03333 includes part S04444-4 and subassembly K05555. The diamond (◆) indicates that S04444-4 is not available except in subassembly A03333. Subassembly K05555 includes parts M06666 and F07777-77. The diamond (◆) indicates M06666 is not available except in subassembly K05555.

1.2 Sample Assembly				
REF	DESCRIPTION (◆ Indicates Parts Available In Assemblies Only)	PART #	QTY.	
	SAMPLE ASSEMBLY, COMPLETE (INCLUDES ALL INDENTED PARTS BELOW)	A01111	1	
1	Sample Part	F02222-22	1	
	Sample Subassembly (Includes All Indented Parts Below)	A03333	1	
2	Sample Part (◆ Indicates Part Is Only Available With A03333)	S04444-4	1	◆
	Sample Subassembly (Includes All Indented Parts Below)	K05555	1	
3	Sample Part (◆ Indicates Part Is Only Available With K05555)	M06666	2	◆
4	Sample Part	F07777-77	1	

To Order Parts:

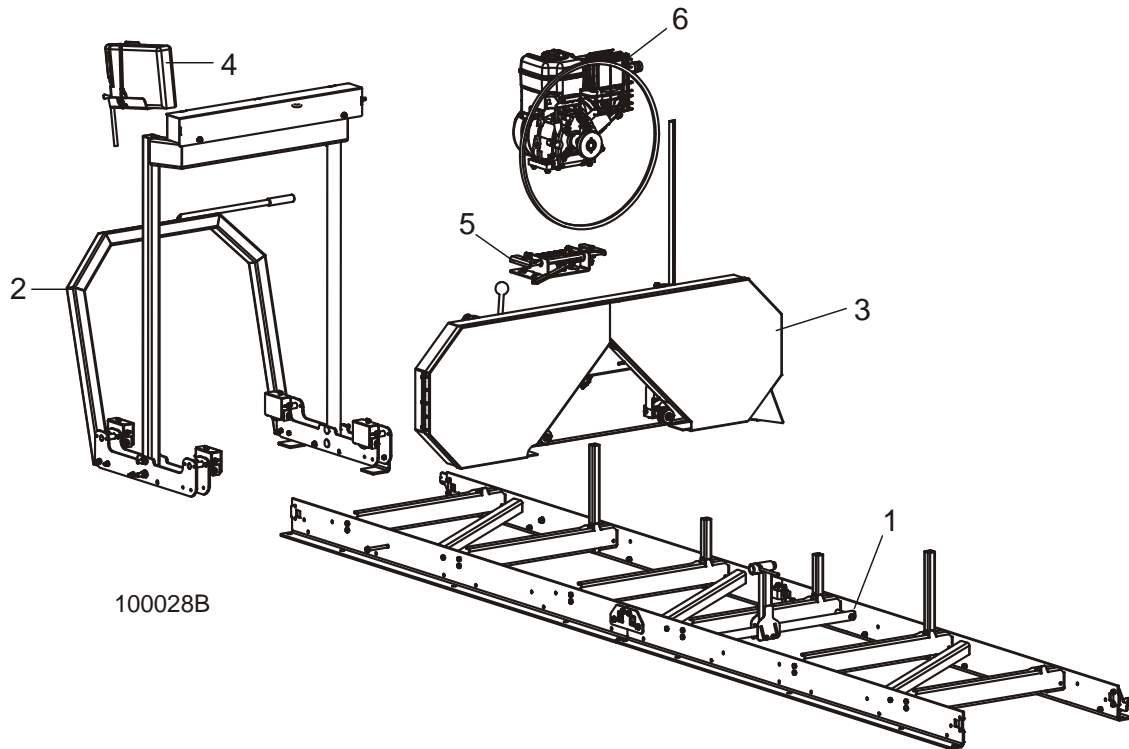
- From the continental U.S., call **1-800-525-8100** to order parts. Have your customer number, vehicle identification number, and part numbers ready when you call.
- From other international locations, contact the Wood-Mizer distributor in your area for parts.

SECTION 2 LT10 PARTS

2.1 LT10 Complete

LT10

Rev. B4.00+



REF	DESCRIPTION (◆ Indicates Parts Available In Assemblies Only)	PART #	QTY.
	SAWMILL, LT10 WITHOUT ENGINE	LT10	1
1	Bed Assembly Parts (See Section 3)		
2	Mast Assembly Parts (See Section 4)		
3	Head Assembly Parts (See Section 6)		
4	Water Lube Parts (See Section 9)		
5	Motor Mount Parts (See Section 7)		
6	ENGINE ASSEMBLY PARTS (See Section 8)		

2

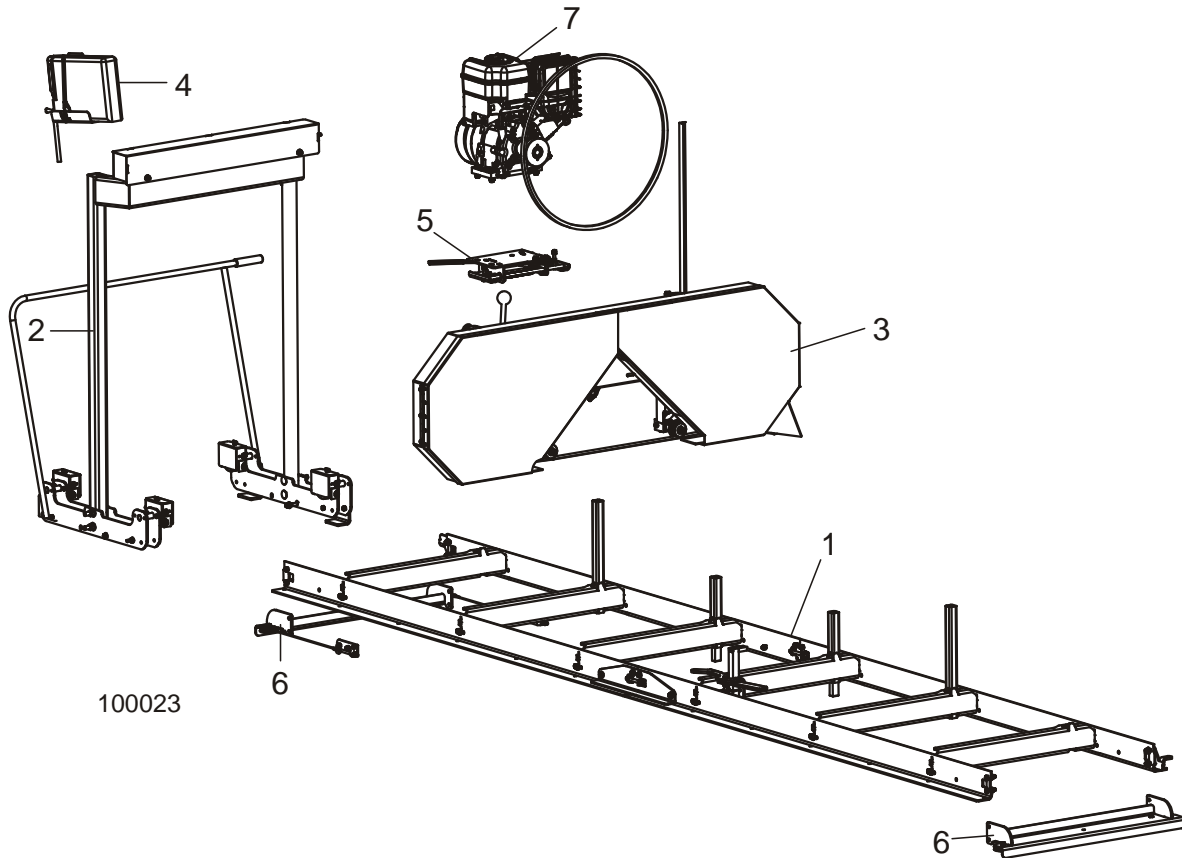
Replacement Parts

LT10 Complete

2.2 LT10 Complete

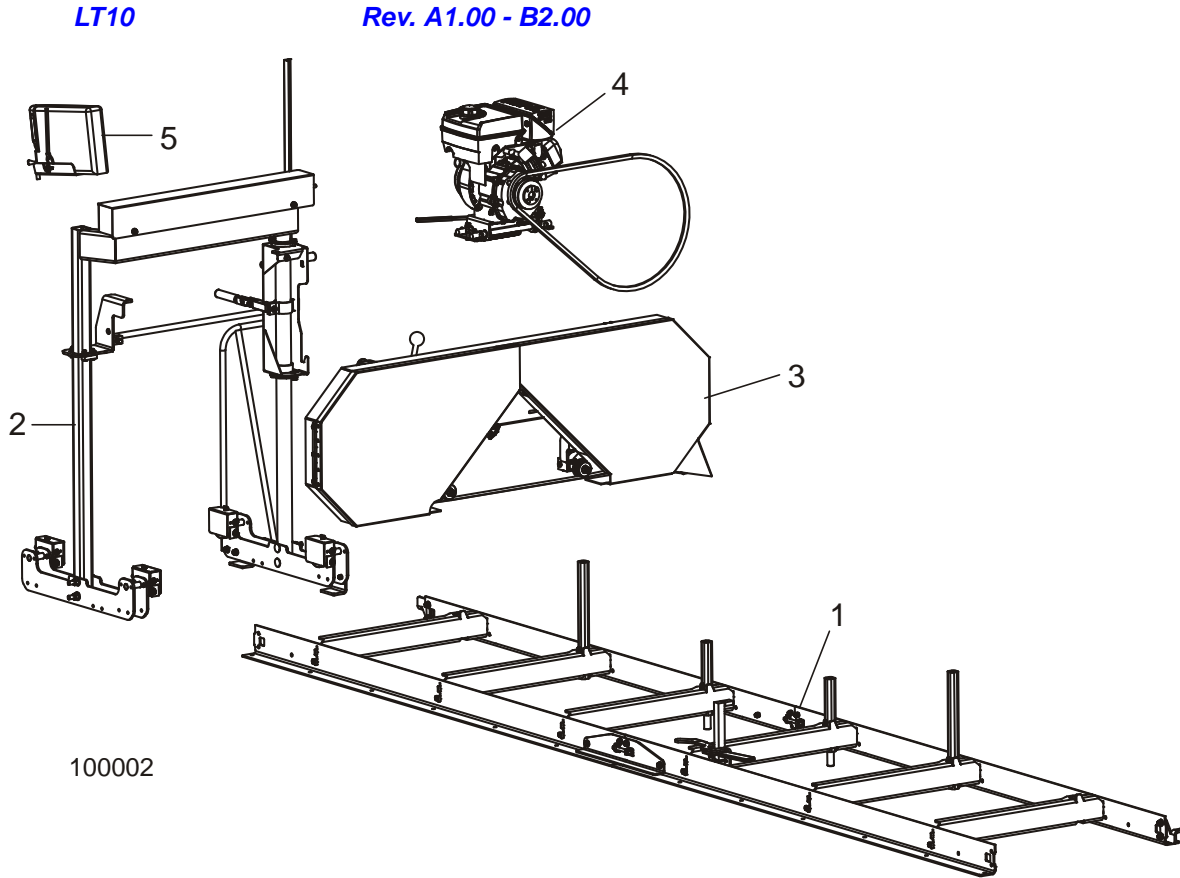
LT10

Rev. B3.00 - B3.03



REF	DESCRIPTION (◆ Indicates Parts Available In Assemblies Only)	PART #	QTY.
	SAWMILL, LT10 WITHOUT ENGINE	LT10	1
1	Bed Assembly Parts (See Section 3)		
2	Mast Assembly Parts (See Section 4)		
3	Head Assembly Parts (See Section 6)		
4	Water Lube Parts (See Section 9)		
5	Motor Mount Parts (See Section 7)		
6	Cable Feed Parts (See Section 5)		
7	ENGINE ASSEMBLY PARTS (See Section 8)		

2.3 LT10 Complete

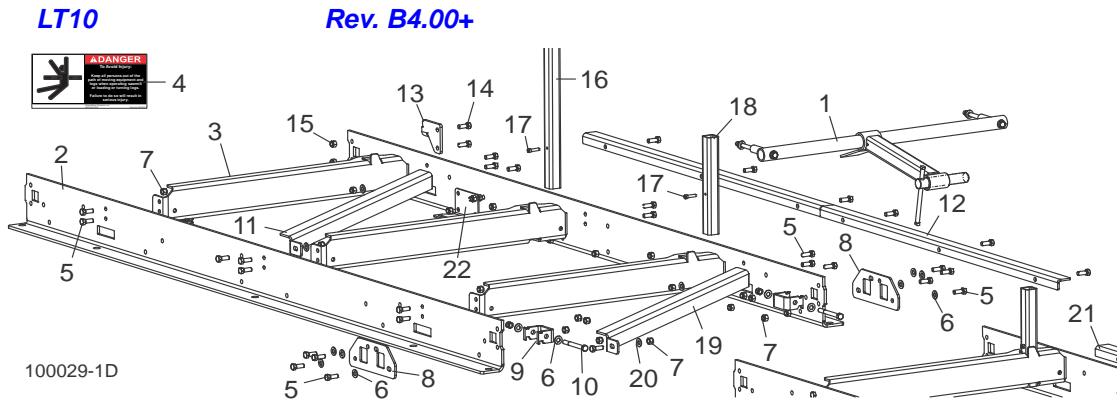


REF	DESCRIPTION (◆ Indicates Parts Available In Assemblies Only)	PART #	QTY.
	SAWMILL, LT10 7.8HP GAS	LT10G7 ¹	1
1	Bed Assembly Parts (See Section 3)		
2	Mast Assembly Parts (See Section 4)		
3	Head Assembly Parts (See Section 6)		
4	Engine Assembly Parts (See Section 8)		
5	Water Lube Parts (See Section 9)		

¹ Replaces LT10G7.8 (Rev. B1.00).

SECTION 3 BED PARTS

3.1 Bed Assembly



REF	DESCRIPTION (◆ Indicates Parts Available In Assemblies Only)	PART #	QTY.
	BED ASSEMBLY, 2012 LT10	071052	1
1	Clamp Parts (See Section 3.3)		
	Bed Assembly, 2012 LT10 Extension	LT10BS1 ¹	2
2	Plate, 2012 LT10 Drive/Idle Side Rail	071012	2
3	Plate, 2012 LT10 Center Bed Rail	071014	3
4	Decal, Keep Away Danger	S09851	2
5	Bolt, 3/8-16 x 1" Hex Head Grade 5	F05007-87	30
6	Washer, 3/8" SAE Flat	F05011-3	16
7	Nut, 3/8-16 Hex Nylon Lock	F05010-10	32
8	Plate, 2012 LT10 Bed Coupler	071013	2
9	Plate, 2012 LT10 Bed Rail Clamp	071015	2
10	Bolt, 3/8-16 x 3 1/2" Hex Head Grade 5	F05004-123	2
11	Plate, 2012 LT10 Cross Brace	071017	2
12	Plate, LT10 Safety Catch Rail	065826 ²	2
13	Plate, LT10 End Stop	049025	2
14	Bolt, 3/8-16 x 1" Hex Head Grade 5	F05007-87	26
15	Nut, 3/8-16 Hex Nylon Lock	F05010-10	26
16	Tube, Side Support Long	038453	2
17	Bolt, 1/4-20 x 1" Socket Head	F05005-89	4
18	Tube, LT10 Side Support Short	065877	2
19	Plate, 2012 LT10 Cross Brace	071017	2
20	Washer, 3/8" SAE Flat	F05011-3	4
21	Plate, LT10 Safety Catch Rail	065826 ²	2
22	Feed Cable Parts (See Section 5.1)		

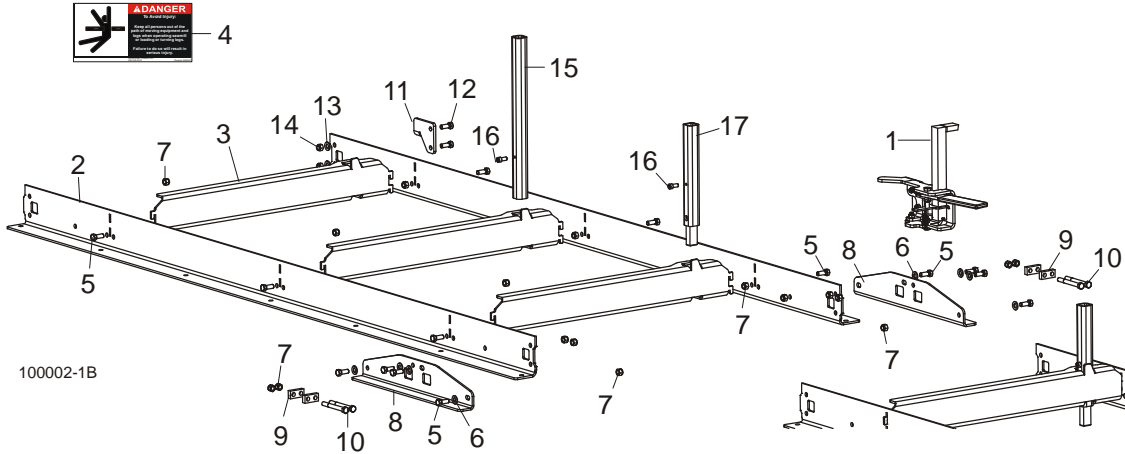
¹ Cable kit required for improved head stability ([See Section 5.1](#)).

² Added to improve safety during operation (Rev. B4.01 and later). Order Safety Kit 065880 for LT10 sawmill Rev. B.00.

3.2 Bed Assembly

LT10

Rev. A1.00 - B3.03



REF	DESCRIPTION (◆ Indicates Parts Available In Assemblies Only)	PART #	QTY.
	BED ASSEMBLY, LT10	048627	1
1	Clamp Parts (See Section 3.5)		
	Bed Assembly, LT10 Extension	LT10BS ¹	2
2	Plate, LT10 Side Rail	048611 ²	2
3	Plate, LT10 Bed Rail	048612	3
4	Decal, Keep Away Danger	S09851	2
5	Bolt, 3/8-16 x 1" Hex Head Grade 5	F05007-87 ²	17
6	Washer, 3/8" SAE Flat	F05011-3	8
7	Nut, 3/8-16 Hex Nylon Lock	F05010-10 ²	21
8	Plate, Bed Coupler	048628	2
9	Block, Bed Frame Clamp	048613	4
10	Bolt, 3/8-16 x 3 1/2" Hex Head Grade 5	F05004-123	4
11	Plate, LT10 End Stop	049025	2
12	Bolt, 3/8-16 x 1" Hex Head Grade 5	F05007-87	4
13	Washer, 3/8" SAE Flat	F05011-3	4
14	Nut, 3/8-16 Hex Nylon Lock	F05010-10	4
15	Tube, Side Support Long (1/8" Wall Tube Rev. A2.00+)	038453	2
	Tube, Side Support Long (3/16" Wall Tube Rev. A1.00 - A1.02)	048625	2
16	Bolt, 1/4-20 x 1" Socket Head	F05005-89	4
17	Tube Weldment, Side Support (1/8" Wall Tube Rev. A2.00+)	038456	2
	Tube Weldment, Side Support (3/16" Wall Tube Rev. A1.00 - A1.02)	049027	2

¹ When ordering additional LT10BS extension bed sections, it is necessary to order longer feed cables: order 003217-1 for (1) additional bed section; order 003217-2 for (2) additional bed sections; order 003217-3 for (3) additional bed sections.

² Holes added to side rails and three each F05007-87 bolts and F05010-10 nuts added to secure drive-side of bed rails to side rail to prevent them from working loose during operation (Rev. A1.02).

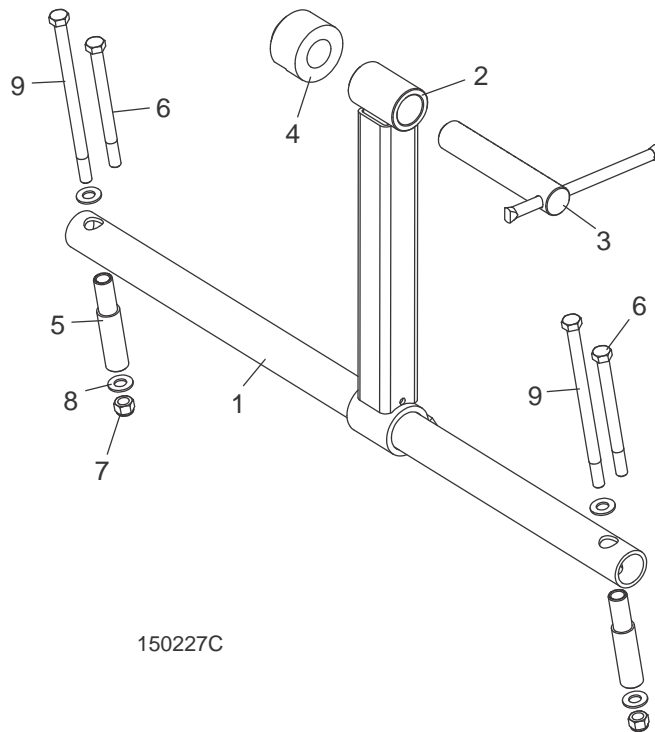
3 Replacement Parts

Clamp Assembly

3.3 Clamp Assembly

LT10

Rev. B4.02+



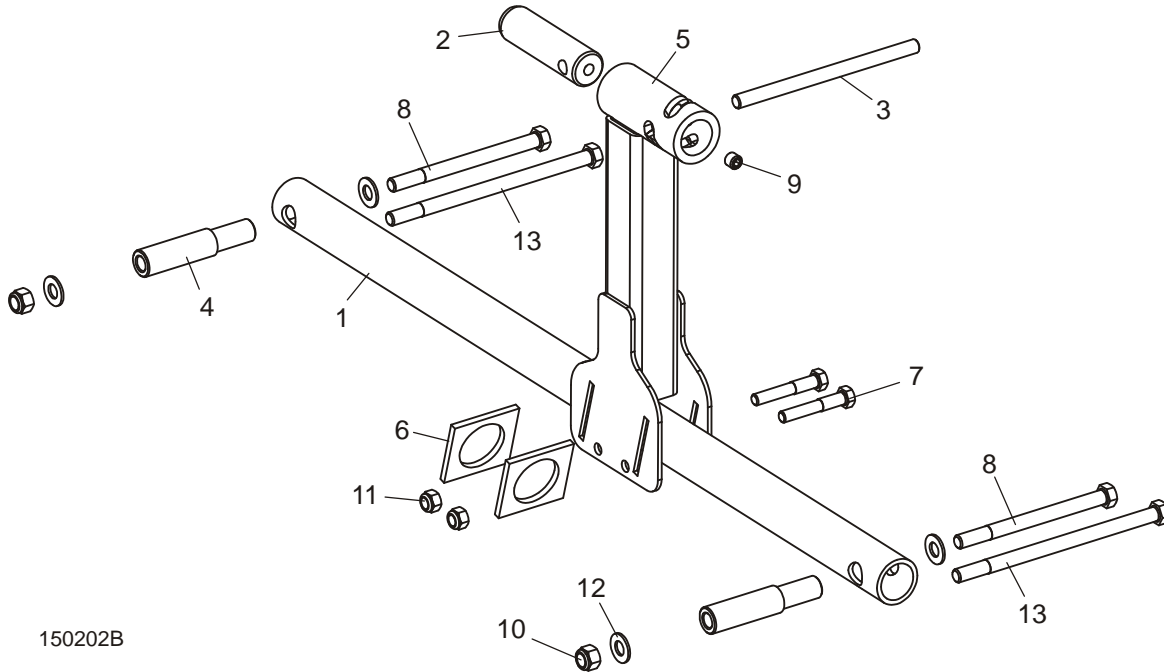
150227C

REF	DESCRIPTION (◆ Indicates Parts Available In Assemblies Only)	PART #	QTY.	
	CLAMP ASSEMBLY, LT10/15 RETRO	065661	1	
	Clamp Assembly, LT10/LT15 Log Pivoting	071347	1	◆
1	Tube, 2012 Clamp Main	071026	1	
	Clamp Kit, LT10/LT15 (Includes Item #9)	061101	1	
2	Tube Weldment, Clamp Post	071343	1	◆
3	Screw Assembly, Clamp	071350	1	
4	Block, Clamp Point	075295	1	
5	Spacer, 2012 Clamp Mount	071034	2	
6	Bolt, 3/8-16 x 4 3/4" Hex Head Grade 5 (Req'd for Bed Support Plate Installation)	F05007-109	2	
7	Nut, 3/8-16 Hex Nyloc	F05010-10	2	
8	Washer, 3/8" Flat SAE	F05011-3	4	
9	Bolt, 3/8-16 x 6 1/2" Hex Head Grade 5 (Req'd for Bed Cross Tube Installation)	F05007-205	2	
	Screw, 3/8-16 x 6" Hex Head	F05007-45	2	
	Instruction Sheet, LT10/15 Log Clamp	065661-1784	1	

3.4 Clamp Assembly

LT10

Rev. B4.00 - B4.01



150202B

REF	DESCRIPTION (◆ Indicates Parts Available In Assemblies Only)	PART #	QTY.
	CLAMP ASSEMBLY, 2012 LT10/LT15	071053 ¹	2
1	Tube, 2012 Clamp Main	071026	1
2	Pin, 2012 Clamp Lock	071030	1
3	Rod, 2012 Clamp Handle	071031	1
4	Spacer, 2012 Clamp Mount	071034	2
5	Clamp Weldment, 2012	071035	1
6	Plate, 2012 Clamp Lock	071037	2
7	Bolt, 5/16-18 x 2" Hex Head Grade 5	F05006-79	2
8	Bolt, 3/8-16 x 4 3/4" Hex Head Grade 5	F05007-109	2
9	Screw, 3/8-16 x 3/8" SH Cup Pt Set	F05007-68	1
10	Nut, 3/8-16 Hex Nyloc	F05010-10	2
11	Nut, 5/16-18 Nylok Hex	F05010-58	2
12	Washer, 3/8" Flat SAE	F05011-3	4

¹ This clamp can be retrofitted using Log Clamp Retrofit Kit 065661 that includes the log clamp kit, mounting hardware and installation instructions necessary to install the log clamp kit to LT10 Rev. A1.00 - B3.03 and LT15 Rev. A.00 and E6.10 sawmills.

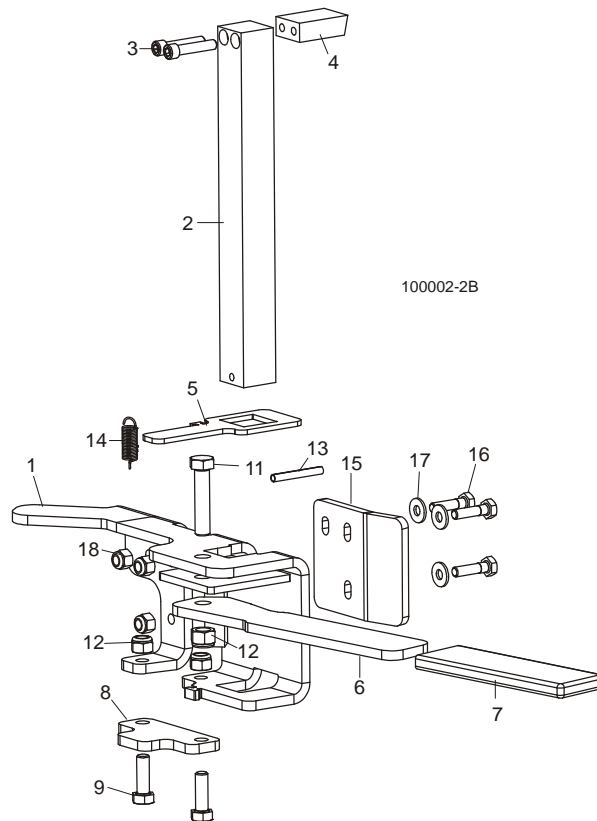
3 Replacement Parts

Clamp Assembly

3.5 Clamp Assembly

LT10

Rev. A1.00 - B3.03



REF	DESCRIPTION (◆ Indicates Parts Available In Assemblies Only)	PART #	QTY.	
	CLAMP ASSEMBLY, LT10 LOG	036850 ¹	1	
1	Bracket Weldment, Log Clamp	046621	1	
	Post Assembly, LT15 Clamp	046619 ²	1	
2	Post, Clamp	046585	1	◆
3	Bolt, 1/4-20 x 1 1/4" Socket Head	F05005-48	2	
4	Block, Horizontal Clamp	046605	1	◆
5	Plate, Log Clamp Lock	046587	1	
6	Plate, Log Clamp Handle	046589	1	
7	Cover, Clamp Handle	016726	1	
8	Plate, Log Clamp Lower	046582	1	
9	Bolt, 5/16-18 x 1" Hex Head Grade 5	F05006-27	2	
10	Nut, 5/16-18 Hex Nylon Lock	F05010-58	2	
11	Bolt, 3/8-16 x 1 3/4" Hex Head Grade 5	F05007-119	1	
12	Nut, 3/8-16 Hex Nylon Lock	F05010-10	1	
13	Pin, 3/16" x 1 1/2" Roll	F05012-17	1	
14	Spring, .375" OD x 1.25" Extension	046645	1	

Replacement Parts

Clamp Assembly

3

15	Plate, Log Clamp Mount	049015	1	
16	Bolt, 1/4-20 x 1" Hex Head Grade 5	F05005-101	3	
17	Washer, 1/4" SAE Flat	F05011-11	3	
18	Nut, 1/4-20 Hex Nylon Lock	F05010-69	3	

¹ Replaced with 2012 LT10/LT15 log clamp (Rev. B4.00). Log Clamp Retrofit Kit 065661 is now available.

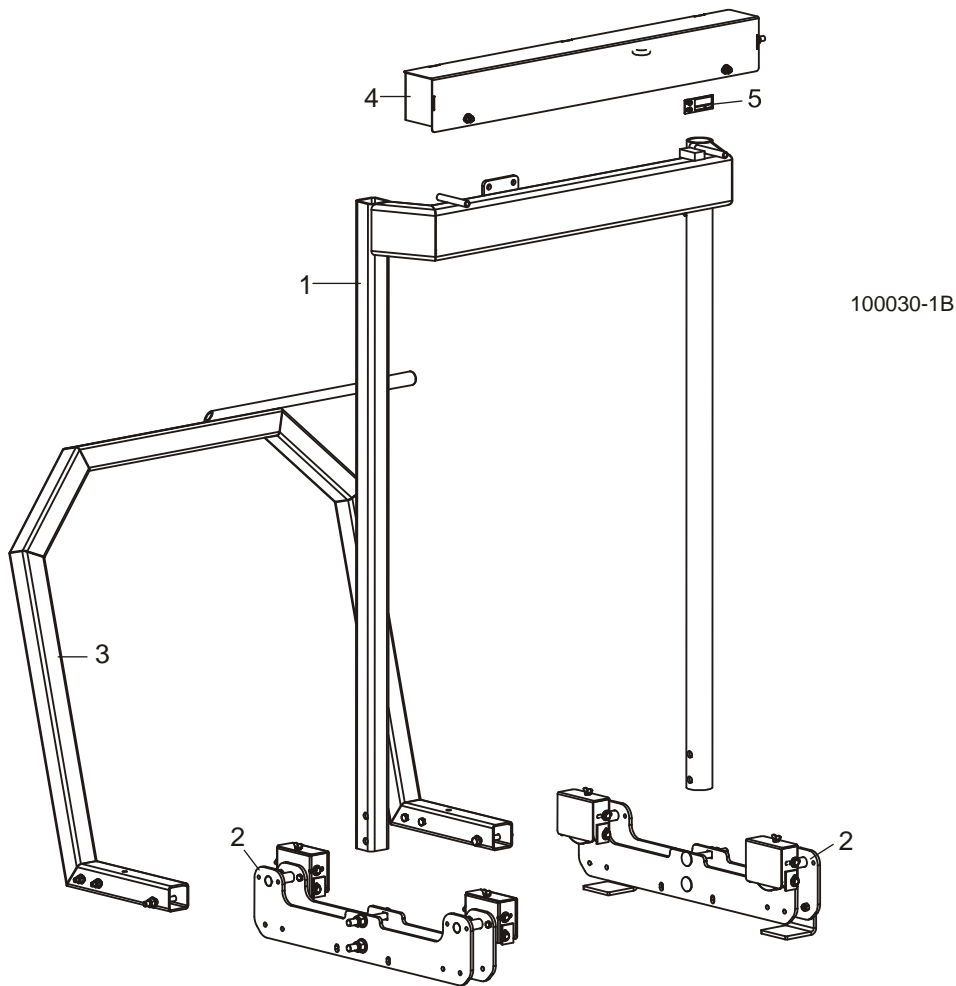
² Clamp post weldment 046619 changed to assembly to improve durability (12/05).

SECTION 4 MAST PARTS

4.1 Mast Assembly

LT10

Rev. B4.00+

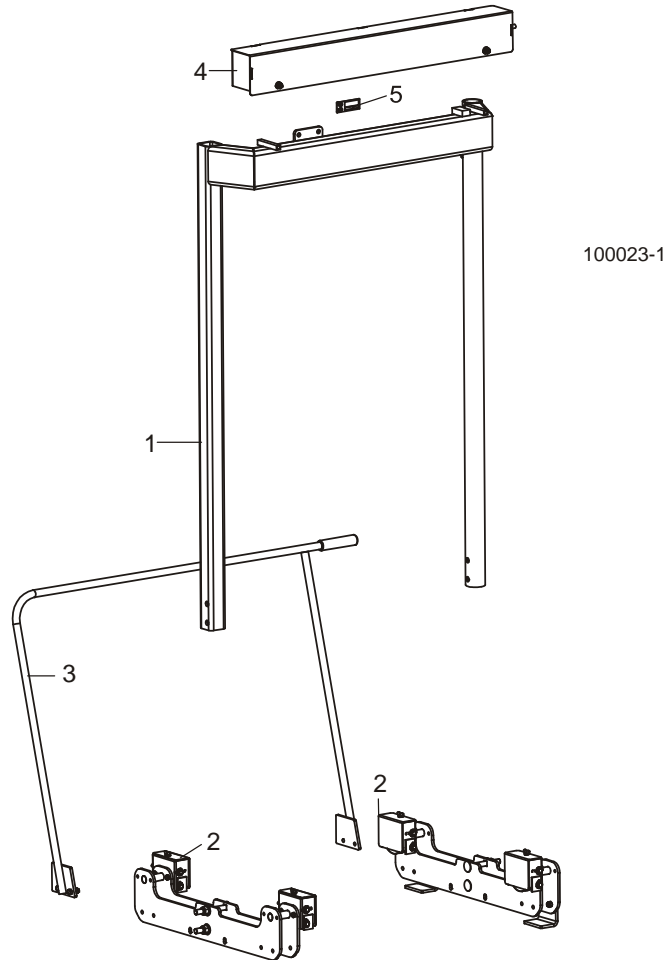


REF	DESCRIPTION (◆ Indicates Parts Available In Assemblies Only)	PART #	QTY.	
	MAST ASSEMBLY, LT10	048623	1	
1	Mast Weldment, LT10	048846	1	
2	Lower Roller Parts (See Section 4.7)			
3	Feed Handle Parts (See Section 4.9)			
4	Up/Down Assist Parts (See Section 4.12)			
5	Pointer Parts (See Section 4.5)			

4.2 Mast Assembly

LT10

Rev. B3.00 - B3.03



REF	DESCRIPTION (◆ Indicates Parts Available In Assemblies Only)	PART #	QTY.
	MAST ASSEMBLY, LT10	048623	1
1	Mast Weldment, LT10	048846	1
2	Lower Roller Parts (See Section 4.8)		
3	Feed Handle Parts (See Section 4.10)		
4	Up/Down Assist Parts (See Section 4.12)		
5	Pointer Parts (See Section 4.5)		

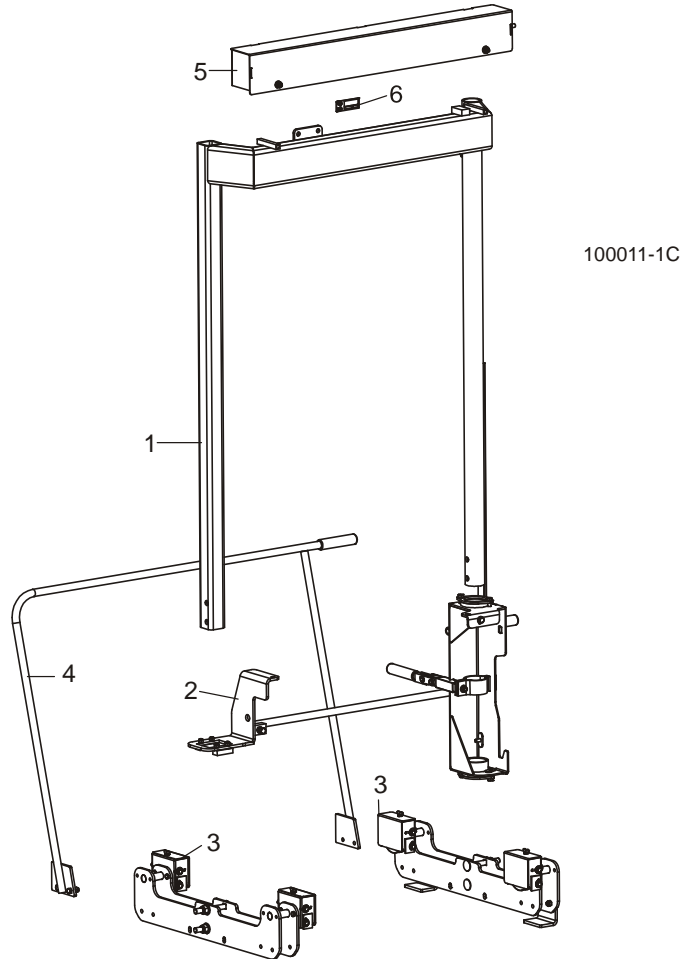
4 Replacement Parts

Mast Assembly

4.3 Mast Assembly

LT10

Rev. A1.02 - B2.00



REF	DESCRIPTION (◆ Indicates Parts Available In Assemblies Only)	PART #	QTY.
	MAST ASSEMBLY, LT10	048623 ¹	1
1	Mast Weldment, LT10	048846	1
2	Carriage Parts (See Section 4.6)		
3	Lower Roller Parts (See Section 4.8)		
4	Feed Handle Parts (See Section 4.10)		
5	Up/Down Assist Parts (See Section 4.12)		
6	Pointer Parts (See Section 4.6)		

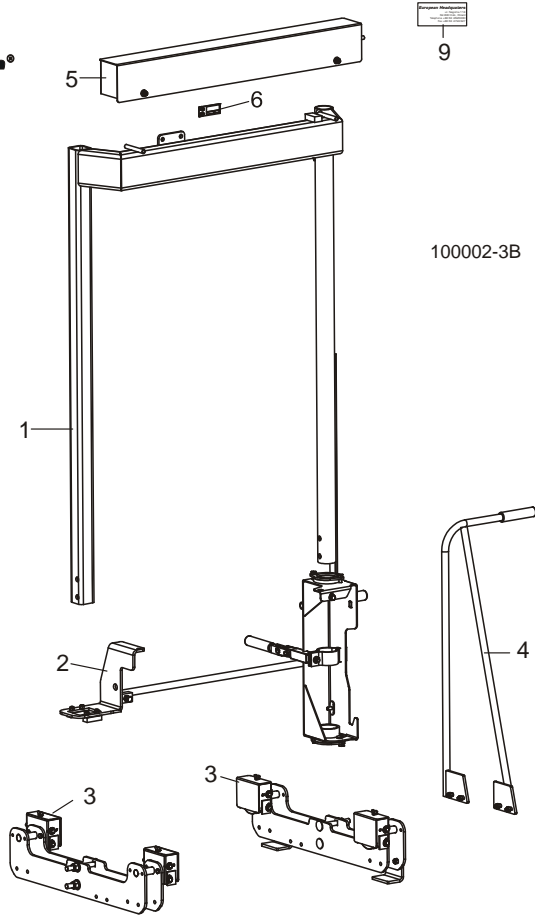
¹ Mast Assembly 048623 modified Rev. B3.00 to accommodate G10 engine option ([See Section 4.2](#)).

4.4 Mast Assembly

LT10

Rev. A1.00 - A1.01

Wood-Mizer®



REF	DESCRIPTION (◆ Indicates Parts Available In Assemblies Only)	PART #	QTY.
	MAST ASSEMBLY, LT10	048623 ¹	1
1	Mast Weldment, LT10	048846	1
2	Carriage Parts (See Section 4.6)		
3	Lower Roller Parts (See Section 4.8)		
4	Feed Handle Parts (See Section 4.11)		
5	Up/Down Assist Parts (See Section 4.12)		
6	Pointer Parts (See Section 4.6)		
7	Decal, Wood-Mizer Logo	S12281	1
8	Decal, World Headquarters	015840	1
9	Decal, European Headquarters	015841	1

¹ Mast assembly 048623 revised with modified feed handle and mounting hardware to provide smoother feed operation ([See Section 4.3](#)).

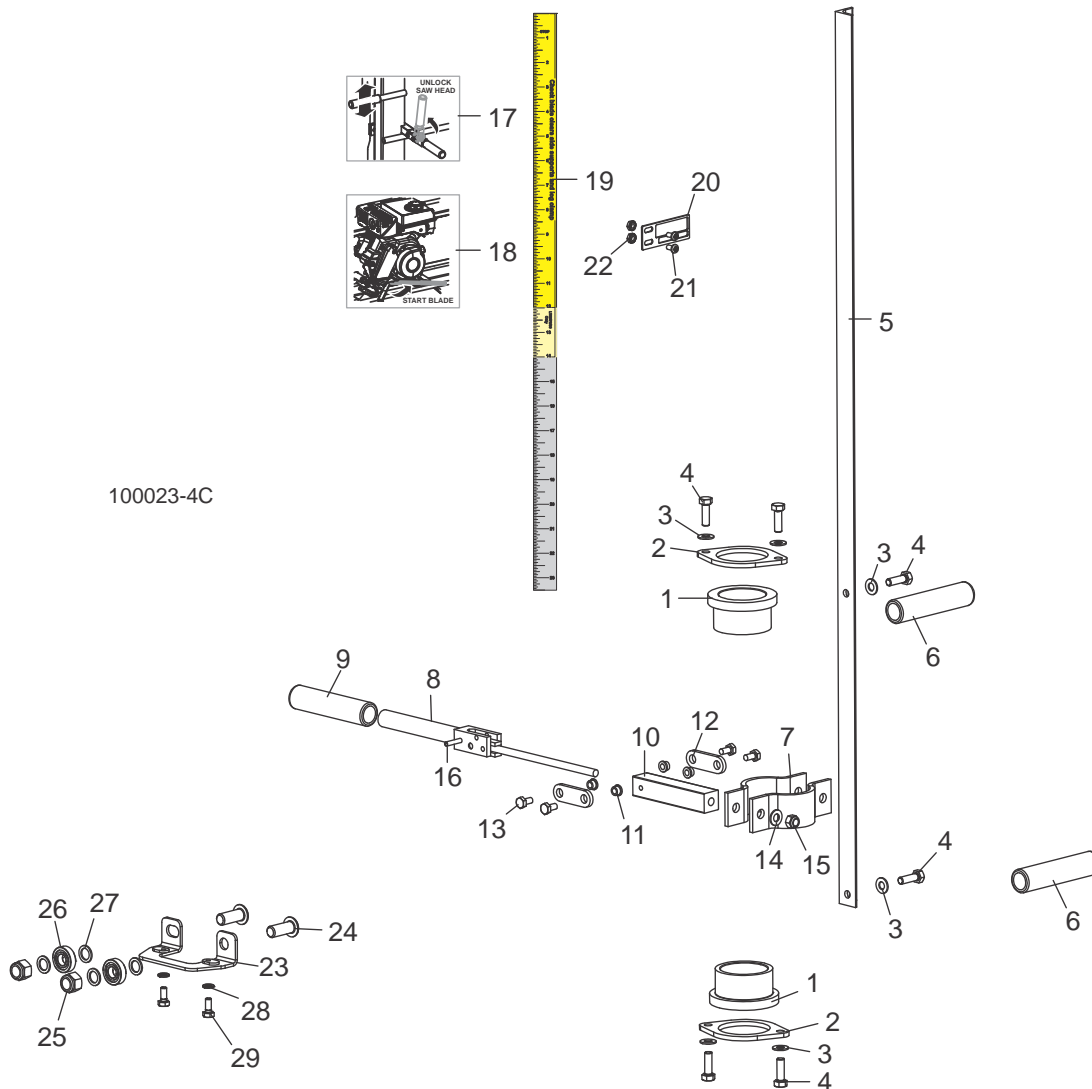
4 Replacement Parts

Carriage Assembly

4.5 Carriage Assembly

LT10

Rev. B3.00+



REF	DESCRIPTION (◆ Indicates Parts Available In Assemblies Only)	PART #	QTY.
1	BUSHING, UP/DOWN SLIDE	048807	2
2	PLATE, BUSHING RETAINER	048850	2
3	WASHER, 5/16" SAE FLAT	F05011-17	8
4	BOLT, 5/16-18 X 1" HEX HEAD GRADE 5	F05006-27	7
5	BRACKET, LT10 SCALE MOUNT	048853	1
6	GRIP, 3/4" DIA. X 4 1/2" HANDLE	049031	2
7	CLAMP, MOTOR MOUNT SQ.	110608	2
	HANDLE ASSEMBLY, LT10 UP/DOWN LOCK	049017	1
8	Handle Weldment, LT10 Up/Down Lock	049036	1

9	Grip, 3/4" Dia. x 4 1/2" Handle	049031	1	
10	Block, LT10 Lock/Lift	049003	1	
11	Bushing, 1/4" ID x 1/4" Flanged	049018	4	
12	Plate, Lock Link	049019	2	
13	Bolt, 1/4-20 x 1/2" Hex Head	F05005-15	4	
14	Washer, 5/16" SAE Flat	F05011-17	1	
15	Nut, 5/16-18 Hex Nylon Lock	F05010-58	1	
16	Pin, 3/16" x 7/8" Roll	F05012-19	1	
17	DECAL, LT10 UP/DOWN INFO	049101	1	
18	DECAL, LT10 BLADE START INFO	049100	1	
19	DECAL, LT10 BLADE SCALE	036828	1	
20	POINTER, BLADE HEIGHT SCALE	017778	1	
21	SCREW, #10-24 X 3/8" PHILLIPS PAN HEAD	F05004-3	2	
22	NUT, #10-24 SELF-LOCKING HEX	F05010-14	2	
	BEARING ASSEMBLY, IDLE SIDE MAST	065801 ¹	1	
23	Mount Weldment, LT10 Idle Side Bearing	065838	1	
24	Bolt, 1/2-13 x 1 1/4" BHCS B/O	F05008-152	2	
25	Nut, 1/2-13 Nylon Hex Lock	F05010-8	2	
26	Bearing, R8-2RS Blade Guide	015975	2	
27	Shim, 1/2 x 3/4 x 22GA Round Steel	065800	4	
28	Washer, 1/4" Split Lock	F05011-14	2	
29	Screw, 1/4-20 x 5/8" SS 18-8 HHC	F05005-86	2	

¹ Replaced mast slide pads (2) 048865, 1/4-20 x 1 1/4" hex head bolts (4) F05005-116 and 1/4-20 hex nylon lock nuts (4) F05010-69 (Rev. B4.01).

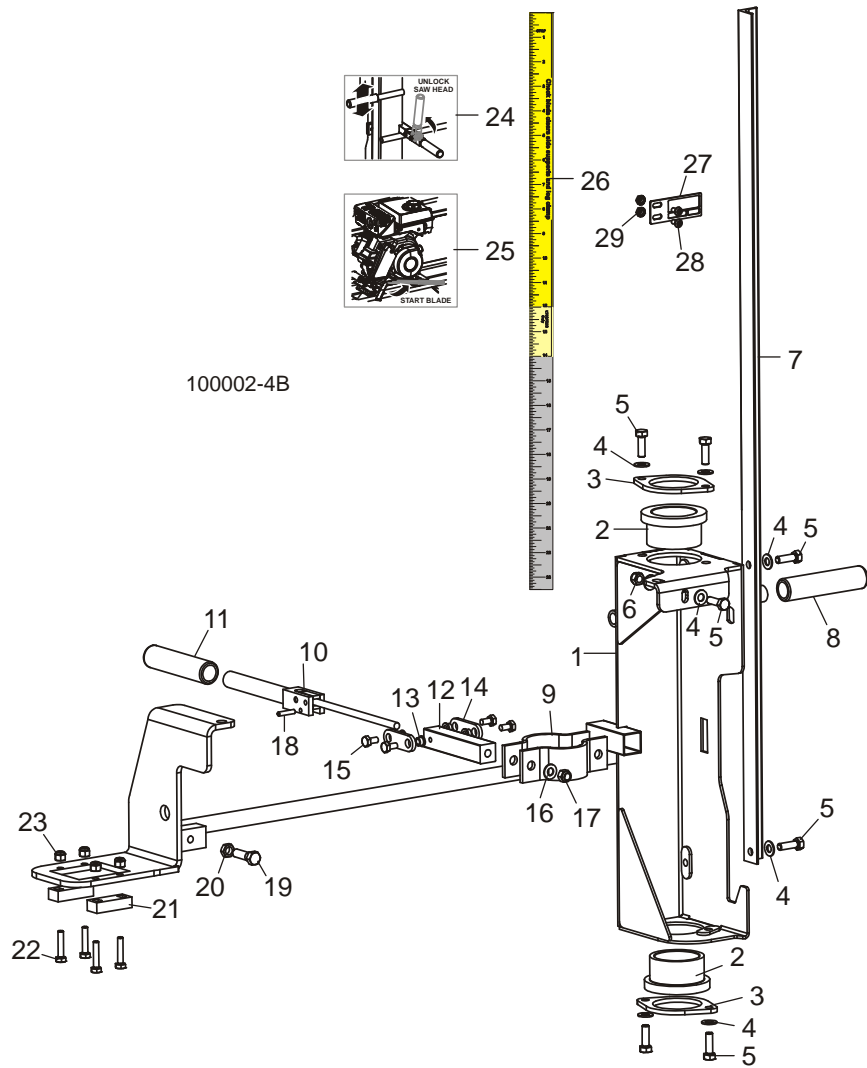
4 Replacement Parts

Carriage Assembly

4.6 Carriage Assembly

LT10

Rev. A1.00 - B2.00



REF	DESCRIPTION (◆ Indicates Parts Available In Assemblies Only)	PART #	QTY.
	CARRIAGE ASSEMBLY, LT10	049033	1
1	Carriage Weldment, LT10	048833	1
2	Bushing, Up/Down Slide	048807	2
3	Plate, Bushing Retainer	048850	2
4	Washer, 5/16" SAE Flat	F05011-17	8
5	Bolt, 5/16-18 x 1" Hex Head Grade 5	F05006-27	7
6	Nut, 5/16-18 Hex Nylon Lock	F05010-58	1
7	Bracket, LT10 Scale Mount	048853	1
8	Grip, 3/4" Dia. x 4 1/2" Handle	049031	1

9	Clamp, Motor Mount Sq.	110608	2	
	Handle Assembly, LT10 Up/Down Lock	049017	1	
10	Handle Weldment, LT10 Up/Down Lock	049036	1	
11	Grip, 3/4" Dia. x 4 1/2" Handle	049031	1	
12	Block, LT10 Lock/Lift	049003	1	
13	Bushing, 1/4" ID x 1/4" Flanged	049018	4	
14	Plate, Lock Link	049019	2	
15	Bolt, 1/4-20 x 1/2" Hex Head	F05005-15	4	
16	Washer, 5/16" SAE Flat	F05011-17	1	
17	Nut, 5/16-18 Hex Nylon Lock	F05010-58	1	
18	Pin, 3/16" x 7/8" Roll	F05012-19	1	
19	Bolt, 3/8-16 x 1 1/4" Hex Head Grade 5	F05007-123	1	
20	Nut, 3/8-16 Hex Jam	F05010-29	1	
21	Pad, Mast Slide	048865	2	
22	Bolt, 1/4-20 x 1 1/4" Hex Head Grade 5	F05005-116	4	
23	Nut, 1/4-20 Hex Nylon Lock	F05010-69	4	
24	Decal, LT10 Up/Down Info	049101	1	
25	Decal, LT10 Blade Start Info	049100	1	
26	Decal, LT10 Blade Scale	036828	1	
27	POINTER, BLADE HEIGHT SCALE	017778	1	
28	SCREW, #10-24 X 3/8" PHILLIPS PAN HEAD	F05004-3	2	
29	NUT, #10-24 SELF-LOCKING HEX	F05010-14	2	

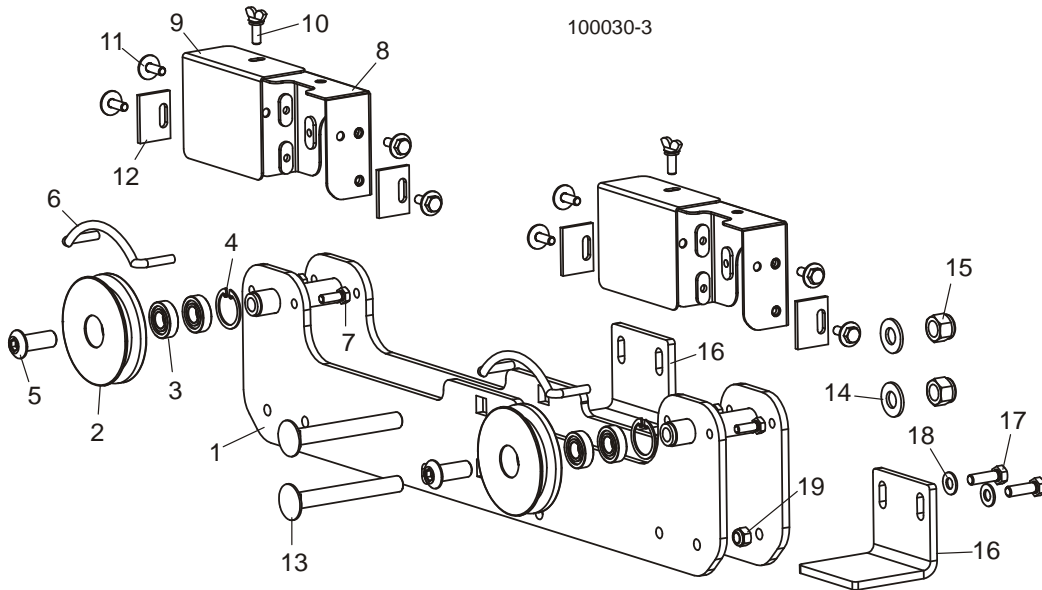
4 Replacement Parts

Roller Assembly

4.7 Roller Assembly

LT10

Rev. B4.00+



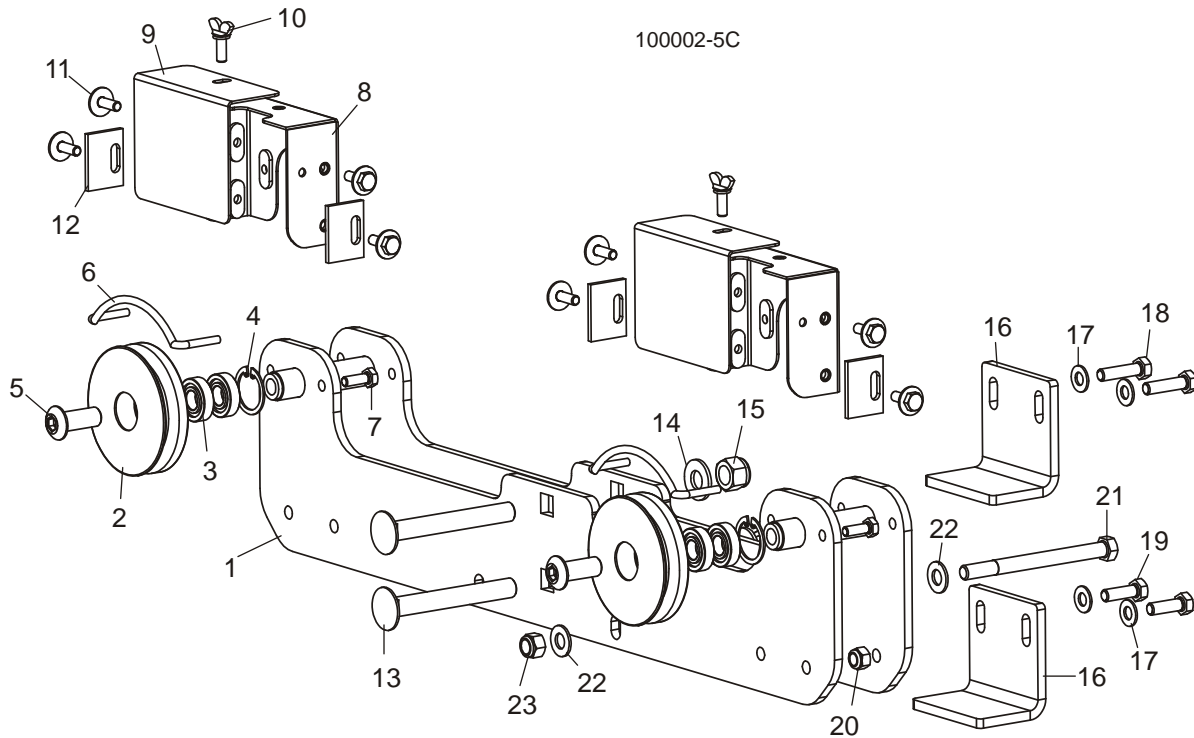
REF	DESCRIPTION (◆ Indicates Parts Available In Assemblies Only)	PART #	QTY.
	ROLLER ASSEMBLY, 2012 LT10 LOWER	065634	2
1	Roller Weldment, LT10 Lower	048624	1
	Roller Assembly, LT10 Lower	065632	2
2	Roller, 2012 LT10 Lower Track	071016	2
3	Bearing, R8-2RS	015975	4
4	Ring, 1 1/8" Inside Retaining	F04254-1	2
5	Bolt, 1/2-13 x 1 1/4" Button Socket Head	F05008-152	2
6	Cord, 1/4" Felt	065633	2
7	Bolt, 1/4-20 x 3/4" Hex Head Grade 5	F05005-123	4
8	Cover Weldment, Track Roller	049040	2
9	Cover, Track Roller	048878	2
10	Stud, 1/4-20 x 5/8" Wing	F05005-64	2
11	Bolt, 1/4-20 x 3/4" Hex Head w/Conical Washer	F05005-134	8
12	Scraper, LT10 Track	048877	4
13	Bolt, 1/2-13 x 4" Carriage Head Grade 5	F05008-89	2
14	Washer, 1/2" SAE Flat	F05011-2	2
15	Nut, 1/2-13 Hex Nylon Lock	F05010-8	2
16	PLATE, LT10 MAST LATCH	065827 ¹	2
17	BOLT, 5/16-18 X 1" HEX HEAD GRADE 5	F05006-27	2
18	WASHER, 5/16" SAE FLAT	F05011-17	2
19	NUT, 5/16-18 HEX NYLON LOCK	F05010-58	2

¹ Added to improve safety during operation (Rev. B4.01 and later). Order Safety Kit 065880 for LT10 sawmill Rev. B.00.

4.8 Roller Assembly

LT10

Rev. A1.00 - B3.03



REF	DESCRIPTION (◆ Indicates Parts Available In Assemblies Only)	PART #	QTY.
	ROLLER ASSEMBLY, LT10 LOWER	049028	2
1	Roller Weldment, LT10 Lower	048624	1
2	Roller, LT10 Lower Track	048629	2
3	Bearing, R8-2RS	015975	4
4	Ring, 1 1/8" Inside Retaining	F04254-1	2
5	Bolt, 1/2-13 x 1 1/4" Button Socket Head	F05008-152	2
6	Cord, 3/16" Felt	049041	2
7	Bolt, 1/4-20 x 3/4" Hex Head Grade 5	F05005-123	4
8	Cover Weldment, Track Roller	049040	2
9	Cover, Track Roller	048878	2
10	Stud, 1/4-20 x 5/8" Wing	F05005-64	2
11	Bolt, 1/4-20 x 3/4" Hex Head w/Conical Washer	F05005-134	8
12	Scraper, LT10 Track	048877	4
13	Bolt, 1/2-13 x 4" Carriage Head Grade 5	F05008-89	2
14	Washer, 1/2" SAE Flat	F05011-2	2
15	Nut, 1/2-13 Hex Nylon Lock	F05010-8	2
16	PLATE, MAST LATCH	049014	2
17	WASHER, 5/16" SAE FLAT	F05011-17	4

4**Replacement Parts***Roller Assembly*

18	BOLT, 5/16-18 X 1 1/4" HEX HEAD FULL THREAD GRADE 5	F05006-93 ¹	2	
19	BOLT, 5/16-18 X 1" HEX HEAD GRADE 5	F05006-27	2	
20	NUT, 5/16-18 HEX NYLON LOCK	F05010-58	4	
21	BOLT, 3/8-16 X 4 1/2" HEX HEAD	F05007-35 ²	2	
22	WASHER, 3/8" SAE FLAT	F05011-3	4	
23	NUT, 3/8-16 HEX NYLON LOCK	F05010-10	2	

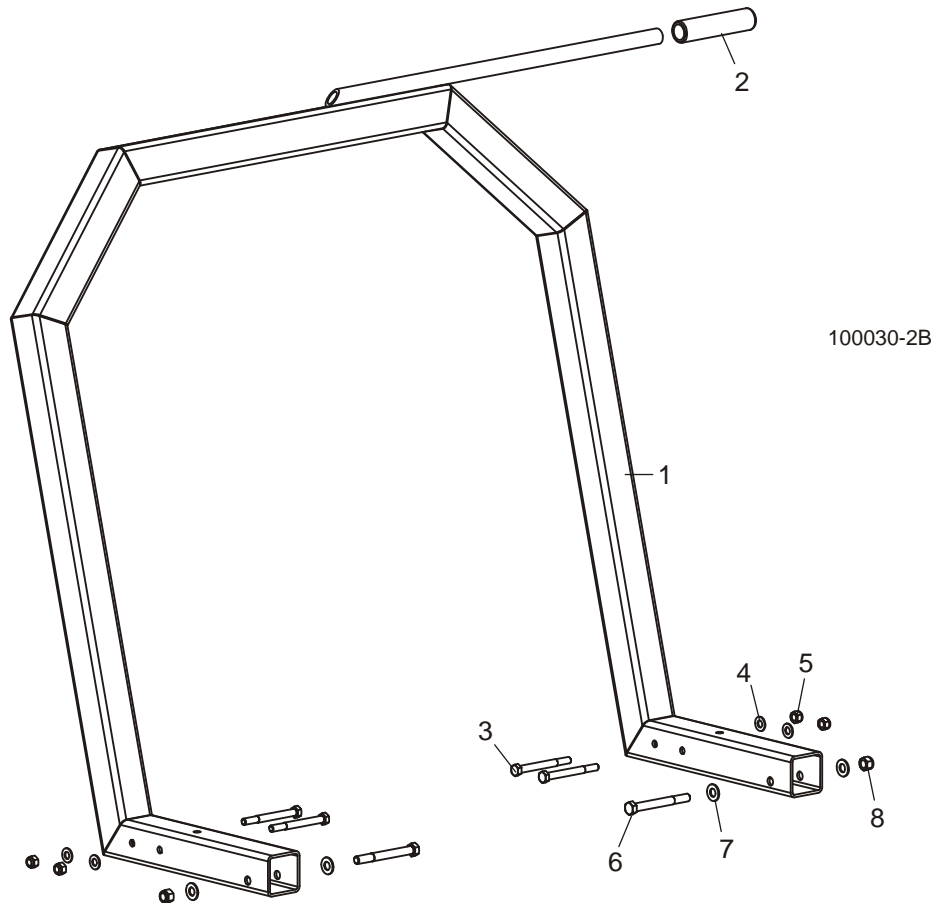
¹ 1 1/4" bolts F05006-93 replace two 1" bolts F05006-27 to mount modified feed handle (Rev. A1.02).

² 3/8" Hardware added to secure the carriage to the bed during transport of assembled LT10 (Rev. A2.00)

4.9 Feed Handle Assembly

LT10

Rev. B4.00+



REF	DESCRIPTION (◆ Indicates Parts Available In Assemblies Only)	PART #	QTY.
1	HANDLE ASSEMBLY, 2012 LT10 FEED	071042	1
2	GRIP, HANDLE 3/4" DIA. ID X 4 1/2"	049031	1
3	BOLT, 5/16-18 X 3 1/4" HEX HEAD GRADE 5	F05006-133	4
4	WASHER, 5/16" SAE FLAT	F05011-17	4
5	NUT, 5/16-18 HEX NYLON LOCK	F05010-58	4
6	BOLT, 3/8-16 X 3 1/2" HEX HEAD GRADE 5	F05004-123	2
7	WASHER, 3/8" SAE FLAT	F05011-3	4
8	NUT, 3/8-16 HEX NYLON LOCK	F05010-10	2

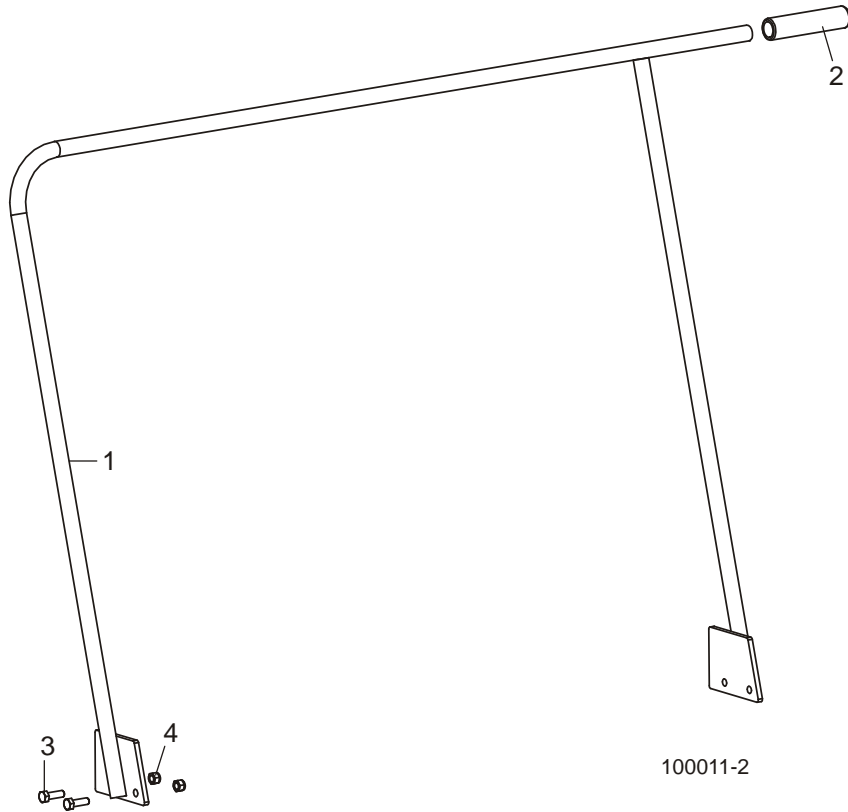
4 Replacement Parts

Feed Handle Assembly

4.10 Feed Handle Assembly

LT10

Rev. A1.02 - B3.03

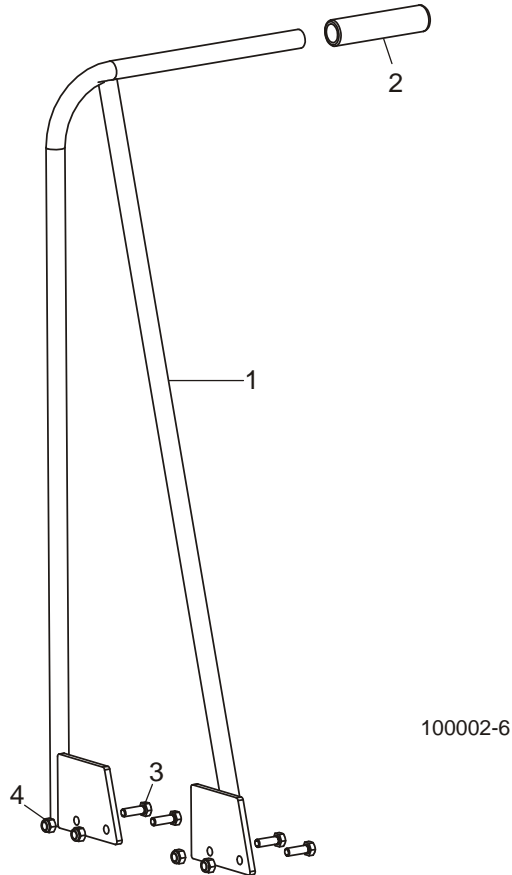


REF	DESCRIPTION (◆ Indicates Parts Available In Assemblies Only)	PART #	QTY.	
	HANDLE ASSEMBLY, LT10 FEED	049029	1	
1	Handle Weldment, LT10 Feed	049030	1	
2	Grip, 3/4" Dia. x 4 1/2" Handle	049031	1	
3	Bolt, 5/16-18 x 1" Hex Head Grade 5	F05006-27	2	
4	Nut, 5/16-18 Hex Nylon Lock	F05010-58	2	

4.11 Feed Handle Assembly

LT10

Rev. A1.00 - A1.01



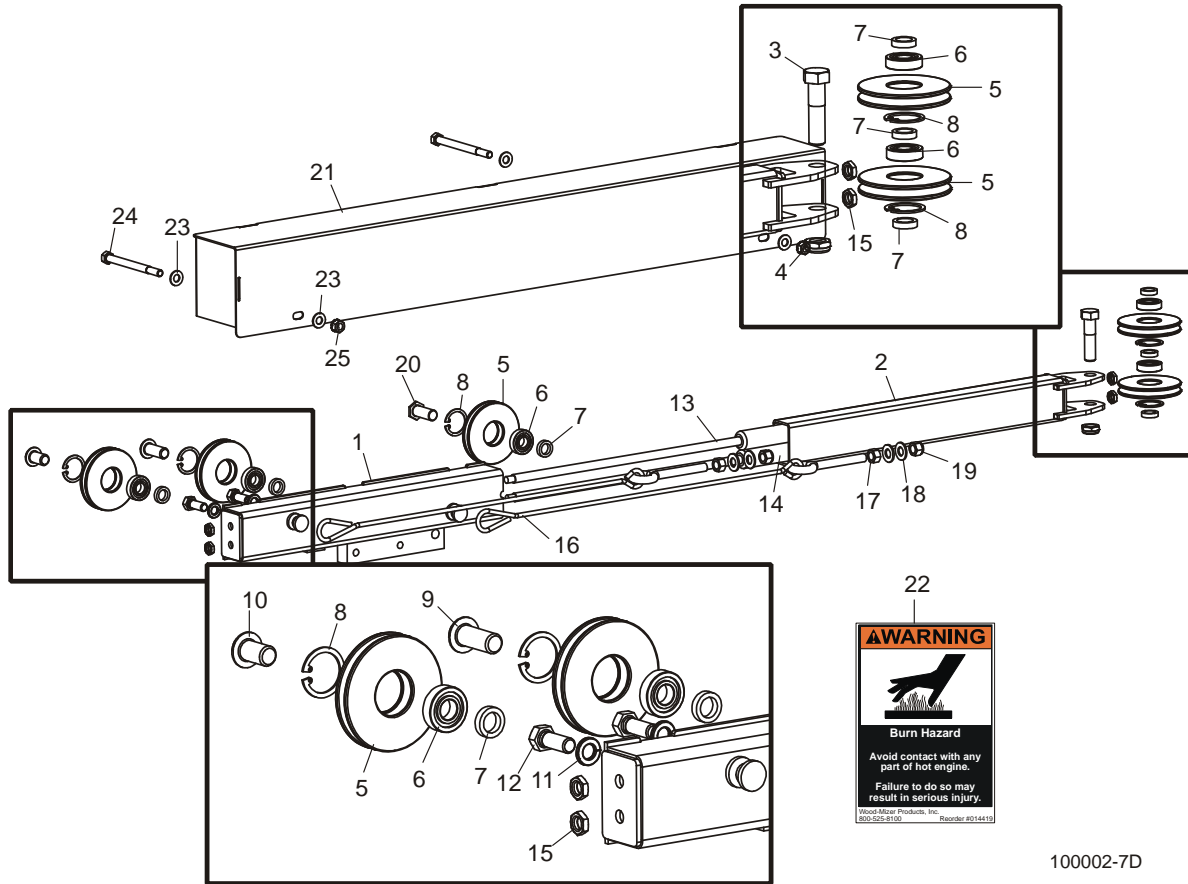
REF	DESCRIPTION (◆ Indicates Parts Available In Assemblies Only)	PART #	QTY.
	HANDLE ASSEMBLY, LT10 FEED	049029 ¹	1
1	Handle Weldment, LT10 Feed	049030 ¹	1
2	Grip, 3/4" Dia. x 4 1/2" Handle	049031	1
3	Bolt, 5/16-18 x 1" Hex Head Grade 5	F05006-27	4
4	Nut, 5/16-18 Hex Nylon Lock	F05010-58	4

¹ Feed Handle assembly 049029 revised to provide smoother feed operation ([See Section 4.10](#)).

4 Replacement Parts

Up/Down Assist Assembly

4.12 Up/Down Assist Assembly



100002-7D

REF	DESCRIPTION (◆ Indicates Parts Available In Assemblies Only)	PART #	QTY.
	ASSIST ASSEMBLY, LT10 UP/DOWN	048835	1
1	Channel Weldment, 14-3/4" Assist Large	065222 ¹	1
2	Tube Weldment, LT10 Assist Small	065223 ¹	1
3	Bolt, 1/2-13 x 2" Hex Head Grade 5	F05008-102	1
4	Nut, 1/2-13 Half Hex Nylon Lock	F05010-127	1
5	Pulley, Cable Small	046995	5
6	Bearing, R8-2RS Roller	015975	5
7	Bushing, 3/16" Spacer	046986	6
8	Ring, 1 1/8" Inside Retaining	F04254-1	5
9	Bolt, 1/2-13 x 1 1/4" Socket Button Head	F05008-152 ²	1
10	Bolt, 1/2-13 x 7/8" Socket Button Head	F05008-156	1
11	Washer, 3/8" Split Lock	F05011-4	2
12	Bolt, 3/8-16 x 1" Hex Head Grade 5	F05007-87	2
13	Spring, Fast Acting Gas Charged 225lbs	110173 ³	1
14	Spring, Fast Acting Gas Charged 225lbs	110173 ⁴	1

15	Nut, M8 x 1.25 Hex Jam	F05010-76	4	
16	Cable, LT10 Up/Down Lift	049042	2	
17	Nut, 3/8-16 Hex	F05010-1	2	
18	Washer, 3/8" SAE Flat	F05011-3	4	
19	Nut, 3/8-16 Hex Nylon Lock	F05010-10	2	
20	Bolt, 1/2-13 Thin Head	006812 ²	1	
21	COVER WELDMENT, UP/DOWN ASSIST	049032 ⁵	1	
22	Decal, Hot Engine Warning	014419	1	
23	WASHER, 5/16" SAE FLAT	F05011-17	4	
24	BOLT, 5/16-18 X 4" HEX HEAD GRADE 5	F05006-109	2	
25	NUT, 5/16-18 SELF-LOCKING HEX	F05010-20	2	

¹ 14-3/4" Assist Large Channel Weldment 065222 replaced LT10 Assist Large Tube Weldment 048836 and LT10 Assist Small Tube Weldment 065223 replaced LT10 Assist Small Tube Weldment 048837 (Rev. B3.03).

² One Pulley Mount Bolt F05008-152 replaced with Thin-head Bolt 006812 to provide clearance for new G10 engine option (Rev. B3.00).

³ Replaced 049038 Spring, 200 lb. Gas Charged (Rev. B4.09). **NOTE:** When replacing 049038 Spring with 110173 Fast Acting Spring, it is necessary to replace both springs.

⁴ Replaced 049039 Spring, 225 lb. Gas Charged (Rev. B4.09). **NOTE:** When replacing 049039 Spring with 110173 Fast Acting Spring, it is necessary to replace both springs.

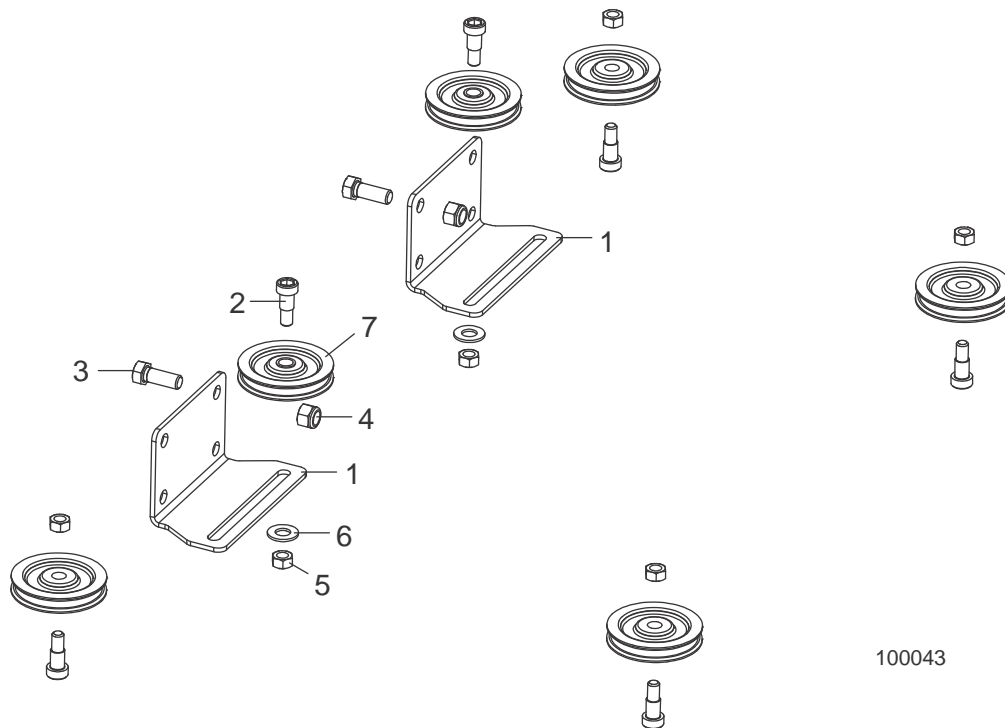
⁵ Wood-Mizer Logo Decal S12281 & European Headquarter Decal 015841 replaced with anniversary logo 003237 1/07. World Headquarters decal 015840 moved to saw head. Anniversary logo decal 003237 removed 1/08. Cutout added to Cover Weldment 049032 to provide clearance for new G10 engine option (Rev. B3.00).

SECTION 5 FEED CABLE ASSEMBLY

5.1 Feed Cable Assembly

LT10

Rev. B4.05+



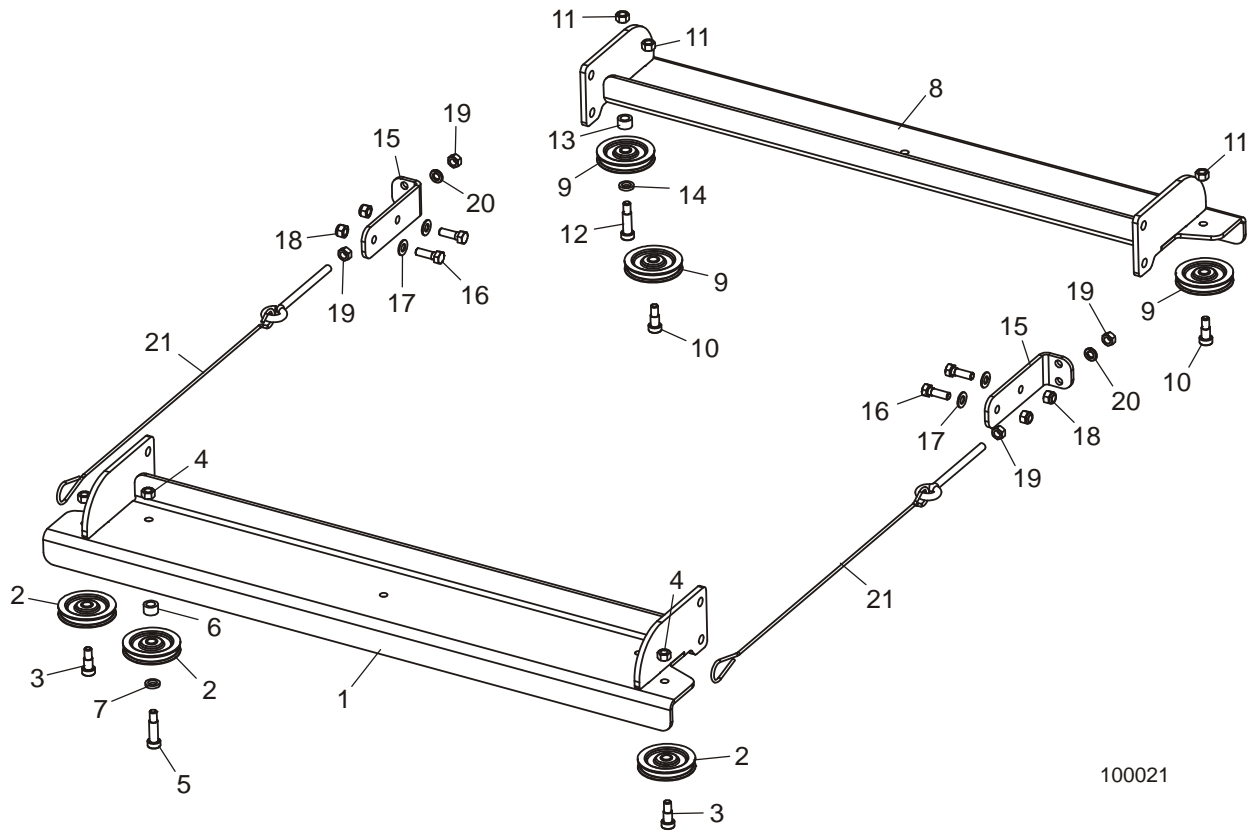
100043

REF	DESCRIPTION (◆ Indicates Parts Available In Assemblies Only)	PART #	QTY.	
	FEED KIT, LT10 CABLE (MILLS WITH STANDARD 2 BED SECTIONS)	074565	1	
	FEED KIT, LT10 CABLE (MILLS WITH TOTAL 3 BED SECTIONS)	074565-1	1	
	FEED KIT, LT10 CABLE (MILLS WITH TOTAL 4 BED SECTIONS)	074565-2	1	
	FEED KIT, LT10 CABLE (MILLS WITH TOTAL 5 BED SECTIONS)	074565-3	1	
1	Bracket, Pulley Tensioner	075849	2	
2	Screw, 3/8" x 1/2" Socket Shoulder	F05006-56	6	
3	Bolt, 3/8-16 x 1" Hex Head Grade 5	F05007-87	2	
4	Nut, 3/8-16 Hex Nylon Lock	F05010-10	2	
5	Nut, 5/16-18 Swaged Hex	F05010-6	6	
6	Washer, 3/8" Flat SAE	F05011-3	2	
7	Pulley, 2 1/2" Nylon	P07996	6	
	Cable, LT10 Feed (336" Long for Standard 2 Bed Sections)	074566	2	
	Cable, LT10 Feed (504" Long for Mills with 3 Total Bed Sections)	074566-1	2	
	Cable, LT10 Feed (672" Long for Mills with 4 Total Bed Sections)	074566-2	2	
	Cable, LT10 Feed (840" Long for Mills with 5 Total Bed Sections)	074566-3	2	

5.2 Feed Cable Assembly

LT10

Rev. B2.00 - B3.03



REF	DESCRIPTION (◆ Indicates Parts Available In Assemblies Only)	PART #	QTY.
	CABLE ASSEMBLY, LT10 FEED	055332	1
	Front Feed Cable Pulley Assembly	003208	1
1	Weldment, Pulley Mount	055331	1
2	Pulley, 2 1/2" Nylon	P07996	3
3	Screw, 3/8" x 1/2" Socket Shoulder	F05006-56	2
4	Nut, 5/16-18 Swaged Hex	F05010-6	3
5	Bolt, 3/8" x 1" Socket Shoulder	F05006-25	1
6	Spacer, .39" x .625" x .39"	055323	1
7	Spacer, .39" x .63" x .12"	003212	1
	Rear Feed Cable Pulley Assembly	003209	1
8	Weldment, Pulley Mount	055331	1
9	Pulley, 2 1/2" Nylon	P07996	3
10	Screw, 3/8" x 1/2" Socket Shoulder	F05006-56	2
11	Nut, 5/16-18 Swaged Hex	F05010-6	3
12	Bolt, 3/8" x 1" Socket Shoulder	F05006-25	1

5

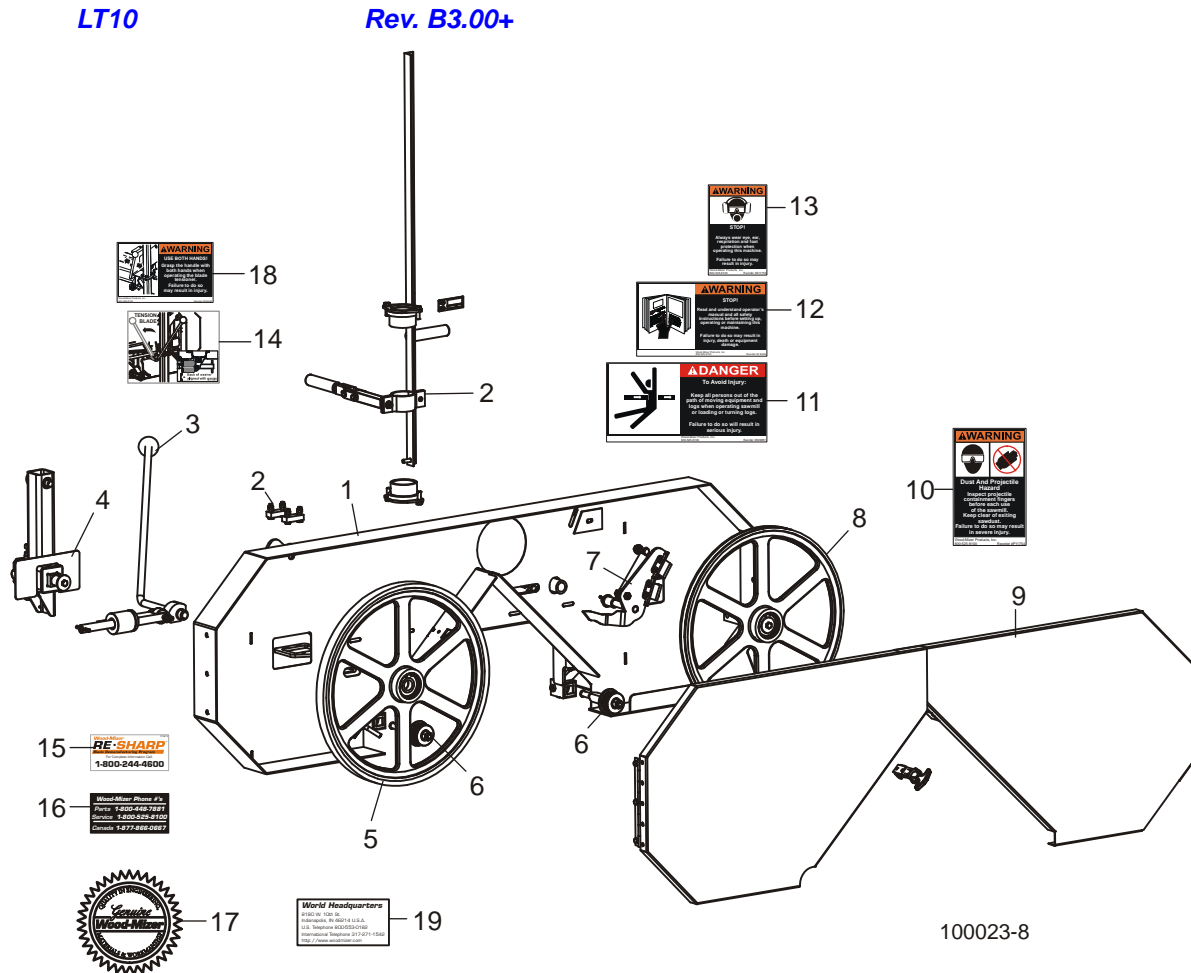
Replacement Parts

Feed Cable Assembly

13	Spacer, .39 x .625 x .39	055323	1	
14	Spacer, .39" x .63" x .12"	003212	1	
15	Plate, Cable Mount	055330	2	
16	Bolt, 5/16-18 x 1" Hex Head	F05006-1	4	
17	Washer, 5/16" Flat	F05011-17	4	
18	Nut, 5/16-18 Hex Nylon Lock	F05010-58	4	
19	Nut, 5/16-18 Hex	F05010-17	4	
20	Washer, 5/16" Split Lock	F05011-13	2	
21	CABLE, LT10 FEED (365" LONG FOR STANDARD TWO BED SECTIONS)	003217	2	
	CABLE, LT10 FEED (533" LONG FOR MILL WITH 3 TOTAL BED SECTIONS)	003217-1	2	
	CABLE, LT10 FEED (701" LONG FOR MILL WITH 4 TOTAL BED SECTIONS)	003217-2	2	
	CABLE, LT10 FEED (869" LONG FOR MILL WITH 5 TOTAL BED SECTIONS)	003217-3	2	

SECTION 6 HEAD PARTS

6.1 Head Assembly



REF	DESCRIPTION (◆ Indicates Parts Available In Assemblies Only)	PART #	QTY.
	HEAD ASSEMBLY, LT10	048621	1
1	Head Weldment, LT10 Saw	048622	1
2	Carriage Parts (See Section 4.5)		
3	Blade Tensioner Parts (See Section 6.4)		
4	Idle Blade Wheel Arm Parts (See Section 6.6)		
5	Idle Blade Wheel Parts (See Section 6.8)		
6	Blade Guide Parts (See Section 6.9)		
7	Brake Assembly Parts (See Section 6.10)		
8	Drive Blade Wheel Parts (See Section 6.11)		
9	Blade Housing Cover Parts (See Section 6.12)		
10	Decal, Sawdust Chute Warning	P11754	1

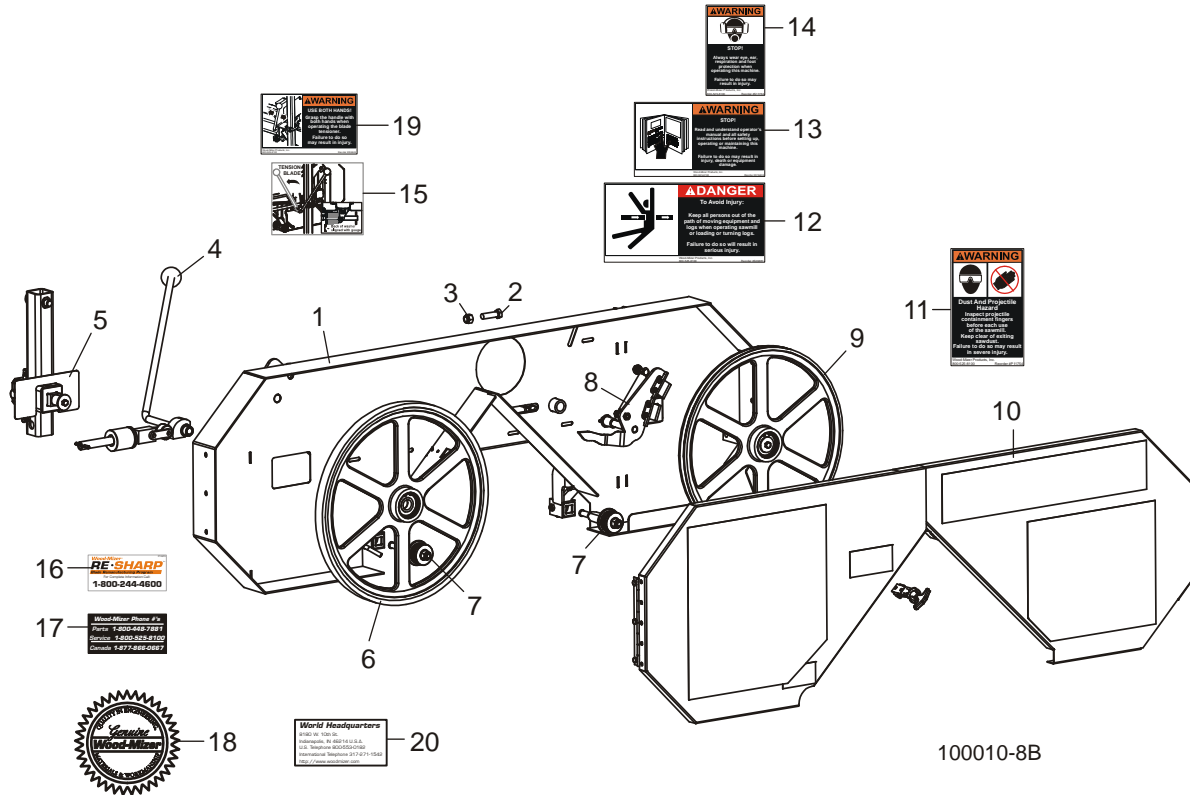
6**Replacement Parts***Head Assembly*

11	Decal, Keep Away Danger	S09851	1	
12	Decal, Read Manual Warning	016402	1	
13	Decal, Eye/Ear Protection Warning	S11753	1	
14	Decal, LT10 Blade Tension Info	038448	1	
15	Decal, Blade Resharp	P12879	1	
16	Decal, Parts Hotline	S12117	1	
17	Decal, Wood-Mizer Quality	015930	1	
18	Decal, Tension Handle Warning	038449	1	
19	Decal, World Headquarters	015840	1	

6.2 Head Assembly

LT10

Rev. A1.01 - B2.00



100010-8B

REF	DESCRIPTION (◆ Indicates Parts Available In Assemblies Only)	PART #	QTY.
	HEAD ASSEMBLY, LT10	048621 ¹	1
1	Head Weldment, LT10 Saw	048622 ¹	1
2	Bolt, 1/2-13 x 1 3/4" Hex Head Grade 5	F05008-88	1
3	Nut, 1/2-13 Hex Nylon Lock	F05010-8	1
4	Blade Tensioner Parts (See Section 6.4)		
5	Idle Blade Wheel Arm Parts (See Section 6.6)		
6	Idle Blade Wheel Parts (See Section 6.8)		
7	Blade Guide Parts (See Section 6.9)		
8	Brake Assembly Parts (See Section 6.10)		
9	Drive Blade Wheel Parts (See Section 6.11)		
10	Blade Housing Cover Parts (See Section 6.12)		
11	Decal, Sawdust Chute Warning	P11754	1
12	Decal, Keep Away Danger	S09851	1
13	Decal, Read Manual Warning	O16402	1
14	Decal, Eye/Ear Protection Warning	S11753	1
15	Decal, LT10 Blade Tension Info	O38448	1
16	Decal, Blade Resharp	P12879	1

6**Replacement Parts***Head Assembly*

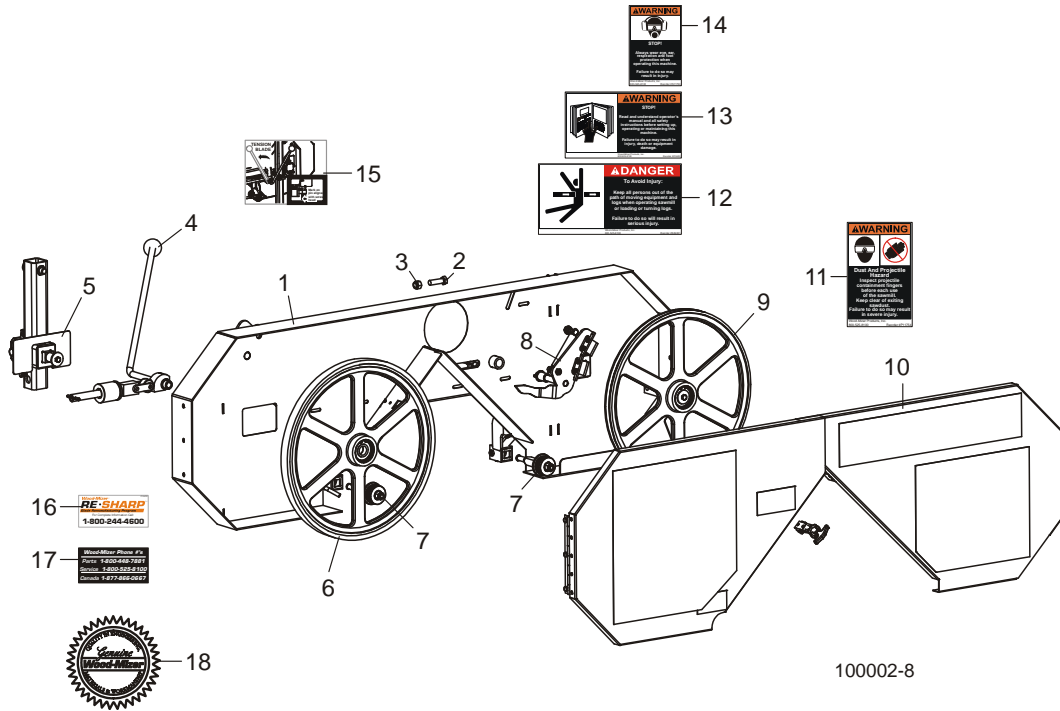
17	Decal, Parts Hotline	S12117	1	
18	Decal, Wood-Mizer Quality	015930	1	
19	Decal, Tension Handle Warning	038449	1	
20	Decal, World Headquarters	015840	1	

¹ Head Assembly modified Rev. B3.00 to incorporate parts previously structured in carriage assembly. Head Weldment now includes main carriage assembly parts ([See Section 6.1](#)).

6.3 Head Assembly

LT10

Rev. A1.00



REF	DESCRIPTION (◆ Indicates Parts Available In Assemblies Only)	PART #	QTY.
	HEAD ASSEMBLY, LT10	048621	1
1	Head Weldment, LT10 Saw	048622	1
2	Bolt, 1/2-13 x 1 3/4" Hex Head Grade 5	F05008-88	1
3	Nut, 1/2-13 Hex Nylon Lock	F05010-8	1
4	Blade Tensioner Parts (See Section 6.5)		
5	Idle Blade Wheel Arm Parts (See Section 6.7)		
6	Idle Blade Wheel Parts (See Section 6.8)		
7	Blade Guide Parts (See Section 6.9)		
8	Brake Assembly Parts (See Section 6.10)		
9	Drive Blade Wheel Parts (See Section 6.11)		
10	Blade Housing Cover Parts (See Section 6.12)		
11	Decal, Sawdust Chute Warning	P11754	1
12	Decal, Keep Away Danger	S09851	1
13	Decal, Read Manual Warning	016402	1
14	Decal, Eye/Ear Protection Warning	S11753	1
15	Decal, LT10 Blade Tension Info	049102	1
16	Decal, Blade Resharp	P12879	1
17	Decal, Parts Hotline	S12117	1
18	Decal, Wood-Mizer Quality	015930	1

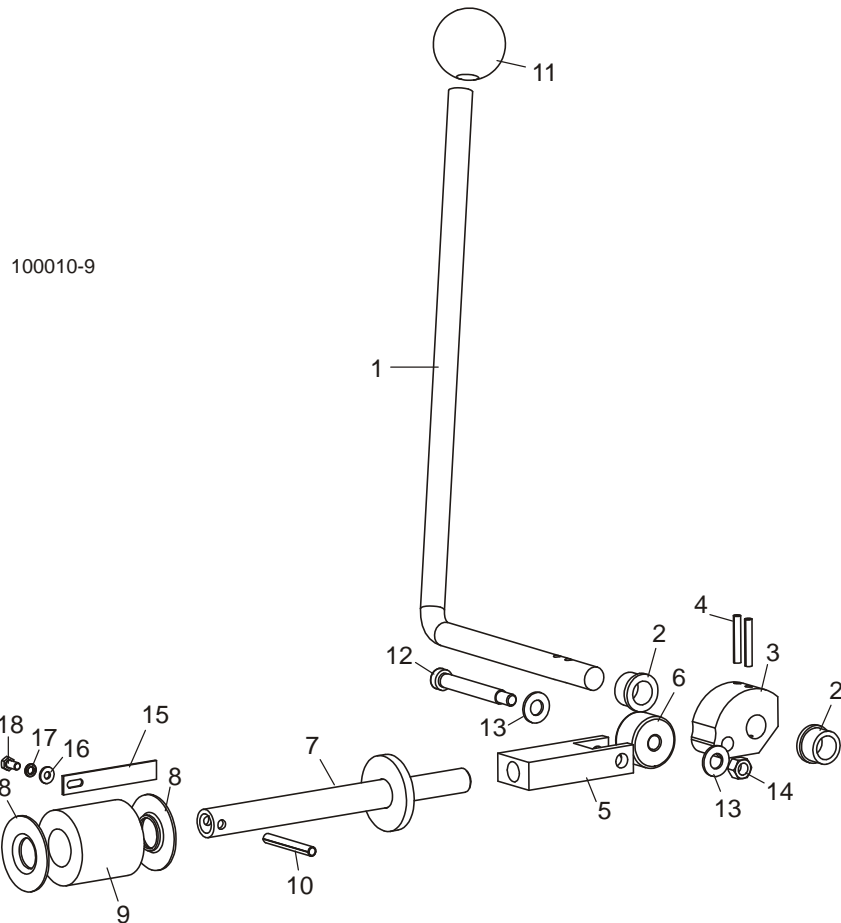
6 Replacement Parts

Blade Tensioner

6.4 Blade Tensioner

LT10

Rev. A1.01+



REF	DESCRIPTION (◆ Indicates Parts Available In Assemblies Only)	PART #	QTY.
	TENSIONER ASSEMBLY, LT10 BLADE	048802	1
1	Handle, LT10 Blade Tensioner	048804	1
2	Bushing, 5/8" x 7/8" x 1/2" Flanged Bronze	P05135	2
3	Cam, LT10 Blade Tensioner	049104	1
4	Pin, 3/16" x 1 1/4" Roll	F05012-16	2
5	Block, Tensioner Link	049321	1
6	Cam Roller, 3/8" x 1 3/8" x 13/16"	048219	1
7	Shaft Weldment, LT10 Blade Tensioner	038452	1
8	Guide, Tension Handle	014925	2
9	Spring, Blade Tensioner	014828	1
10	Pin, 1/4" x 2" Roll	F05012-46	1
11	Knob, 5/8-18 Ball	P04211	1
12	Screw, 3/8" x 2 1/2" Socket Head Shoulder	F05007-202	1

Replacement Parts **6**
Blade Tensioner

13	Washer, 3/8" SAE Flat	F05011-3	2	
14	Nut, 5/16-18 Hex Lock	F05010-6	1	
15	Bracket, Tensioner Gauge	014966	1	
16	Washer, #8 SAE Flat	F05011-41	1	
17	Washer, #10 Split Lock	F05011-20	1	
18	Screw, #10-32 x 1/2" Hex Head Machine	F05004-60	1	

6 Replacement Parts

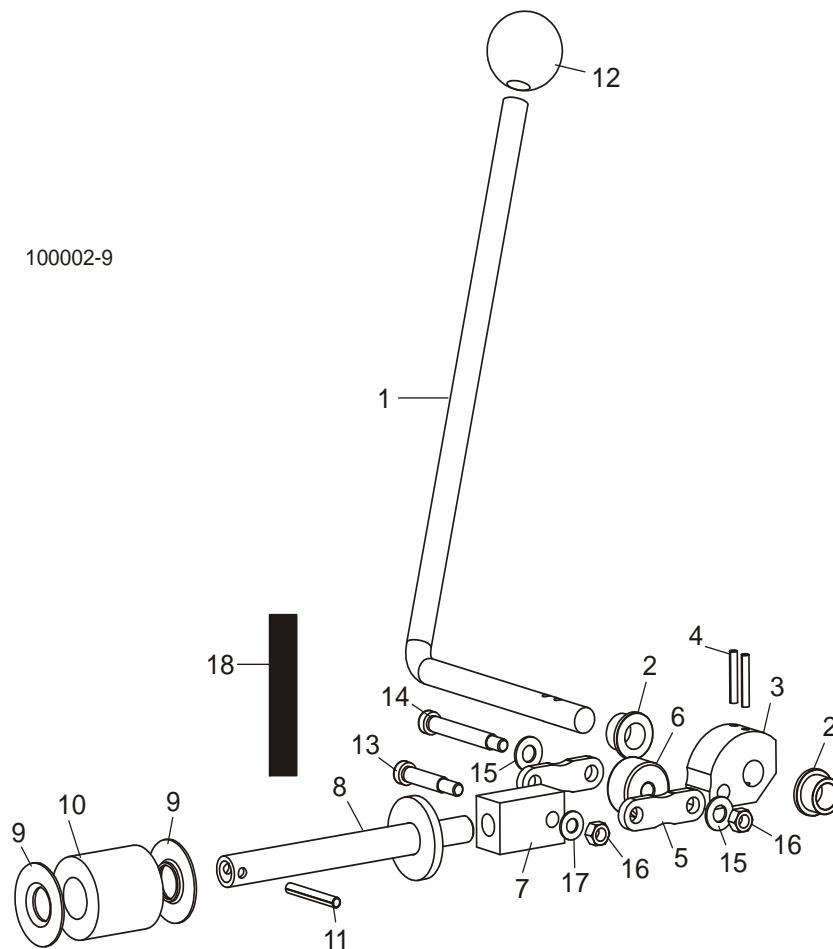
Blade Tensioner

6.5 Blade Tensioner

LT10

Rev. A1.00

100002-9



REF	DESCRIPTION (◆ Indicates Parts Available In Assemblies Only)	PART #	QTY.
	TENSIONER ASSEMBLY, LT10 BLADE	048802 ¹	1
1	Handle, LT10 Blade Tensioner	048804	1
2	Bushing, 5/8" x 7/8" x 1/2" Flanged Bronze	P05135	2
3	Cam, LT10 Blade Tensioner	049104	1
4	Pin, 3/16" x 1 1/4" Roll	F05012-16	2
5	Plate, Tensioner Link	049105	2
6	Cam Roller, 3/8" x 1 3/8" x 13/16"	048219	1
7	Block, LT10 Blade Tensioner	048869	1
8	Shaft Weldment, LT10 Blade Tensioner	048870	1
9	Guide, Tension Handle	014925	2
10	Spring, Blade Tensioner	014828	1
11	Pin, 1/4" x 2" Roll	F05012-46	1
12	Knob, 5/8-18 Ball	P04211	1

13	Screw, 3/8" x 1 1/2" Socket Head Shoulder	F05007-203	1	
14	Screw, 3/8" x 2 1/2" Socket Head Shoulder	F05007-202	1	
15	Washer, 3/8" SAE Flat	F05011-3	2	
16	Nut, 5/16-18 Hex Lock	F05010-6	2	
17	Washer, 5/16" SAE Flat	F05011-17	1	
18	Decal, Stripe	S12051	1	

¹ Tensioner 048802 modified to improve durability Rev. A1.01 ([See Section 6.4](#)). Use kit 052434 to upgrade Rev. A1.00 to new blade tensioner/idle blade wheel arm.

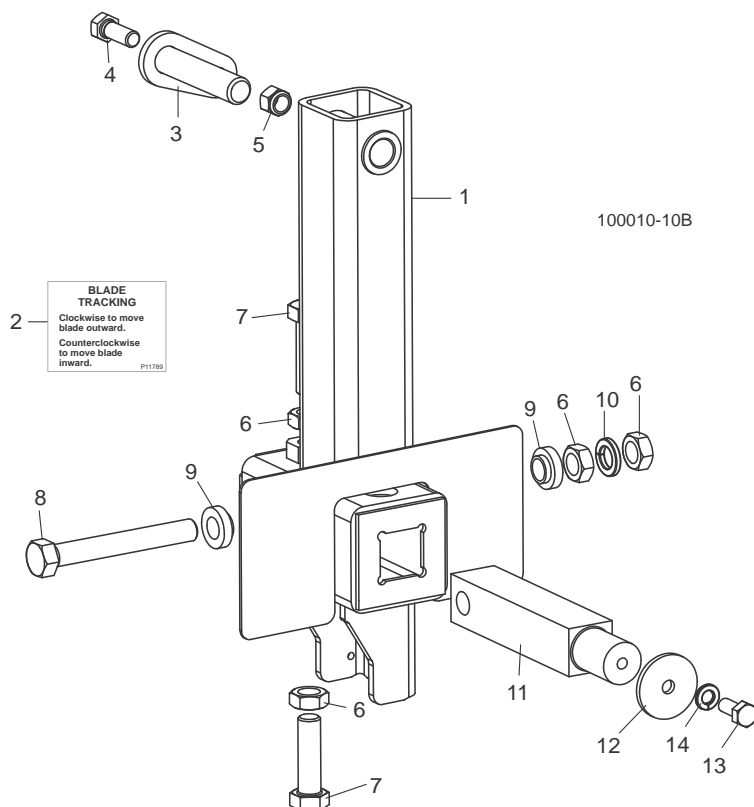
6 Replacement Parts

Idle Blade Wheel Arm Assembly

6.6 Idle Blade Wheel Arm Assembly

LT10

Rev. A1.01+



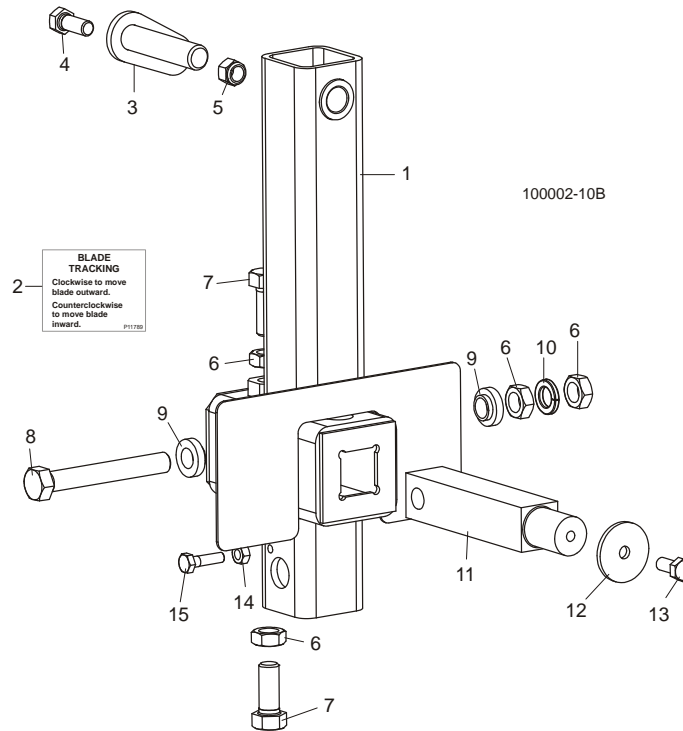
REF	DESCRIPTION (◆ Indicates Parts Available In Assemblies Only)	PART #	QTY.
	ARM ASSEMBLY, LT10 IDLE BLADE WHEEL	038451	1
1	Arm Weldment, Idler Wheel	038450	1
2	Decal, Blade Alignment Info	P11789	1
3	Pin Weldment, Idler Pivot	048829	1
4	Bolt, 3/8-16 x 1" Hex Head Grade 5	F05007-87	1
5	Nut, 3/8-16 Hex Nylon Lock	F05010-10	1
6	Nut, 1/2-20 Hex Jam	F05010-16	4
7	Bolt, 1/2-20 x 1 3/4" Hex Head Full Thread	F05008-127 ¹	2
8	Bolt, 1/2-20 x 3 3/4" Hex Head Full Thread Grade 5	F05008-111	1
9	Spacer, .510" x .937" x .34"	S04253	2
10	Washer, 1/2" Split Lock	F05011-9	1
11	Shaft, 1 1/8" Square Idler	S12565	1
12	Washer, .313" x 1.5" x .125" Retaining	S08220	1
13	Bolt, 5/16-18 x 3/4" Hex Head Grade 5	F05006-102	1
14	Washer, 5/16" Split Lock	F05011-13	1

¹ Use F05008-127 instead of F05008-108 incorrectly shown prior to 6/07.

6.7 Idle Blade Wheel Arm Assembly

LT10

Rev. A1.00



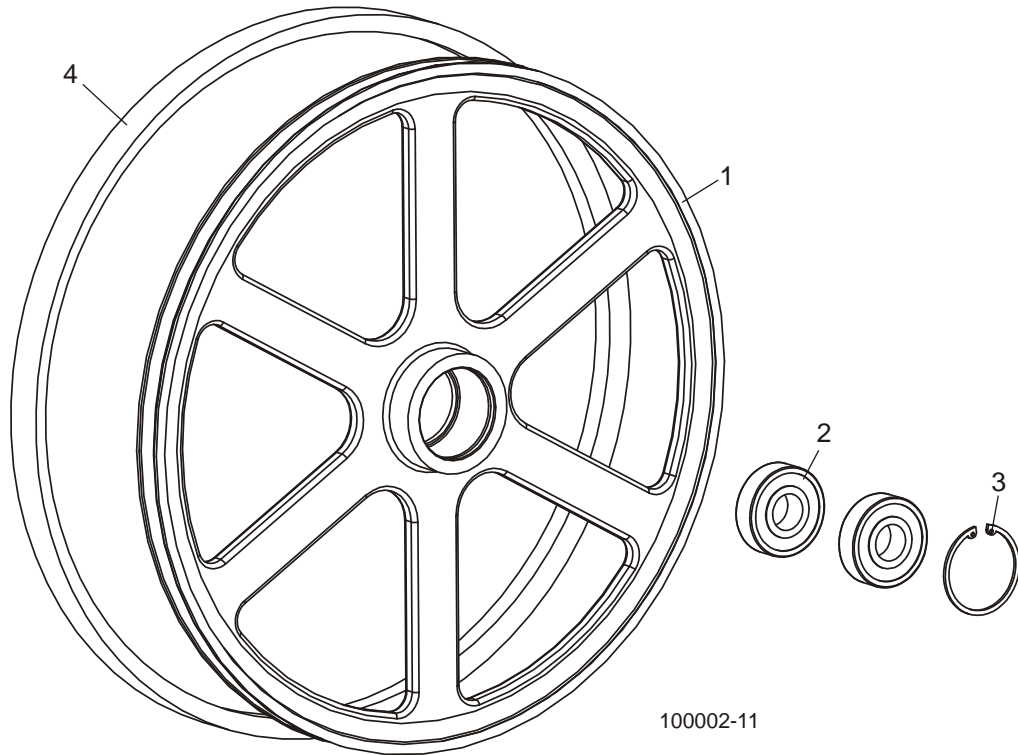
REF	DESCRIPTION (◆ Indicates Parts Available In Assemblies Only)	PART #	QTY.
	ARM ASSEMBLY, LT10 IDLE BLADE WHEEL	048633 ¹	1
1	Arm Weldment, Idler Wheel	048634	1
2	Decal, Blade Alignment Info	P11789	1
3	Pin Weldment, Idler Pivot	048829	1
4	Bolt, 3/8-16 x 1" Hex Head Grade 5	F05007-87	1
5	Nut, 3/8-16 Hex Nylon Lock	F05010-10	1
6	Nut, 1/2-20 Hex Jam	F05010-16	4
7	Bolt, 1/2-20 x 1 1/4" Hex Head Grade 5	F05008-108	2
8	Bolt, 1/2-20 x 3 3/4" Hex Head Full Thread Grade 5	F05008-111	1
9	Spacer, .510" x .937" x .34"	S04253	2
10	Washer, 1/2" Split Lock	F05011-9	1
11	Shaft, 1 1/8" Square Idler	S12565	1
12	Washer, .313" x 1.5" x .125" Retaining	S08220	1
13	Bolt, 5/16-18 x 3/4" Hex Head	F05006-5	1
14	Nut, 1/4-20 Self-Locking Hex	F05010-9	1
15	Bolt, 1/4-20 x 1" Hex Head Grade 5	F05005-101	1

¹ Idle Arm Assembly 048633 replaced with 038451 to accommodate new blade tensioner assembly Rev. A1.01 ([See Section 6.6](#)). Use kit 052434 to upgrade Rev. A1.00 to new blade tensioner/idle blade wheel arm.

6 Replacement Parts

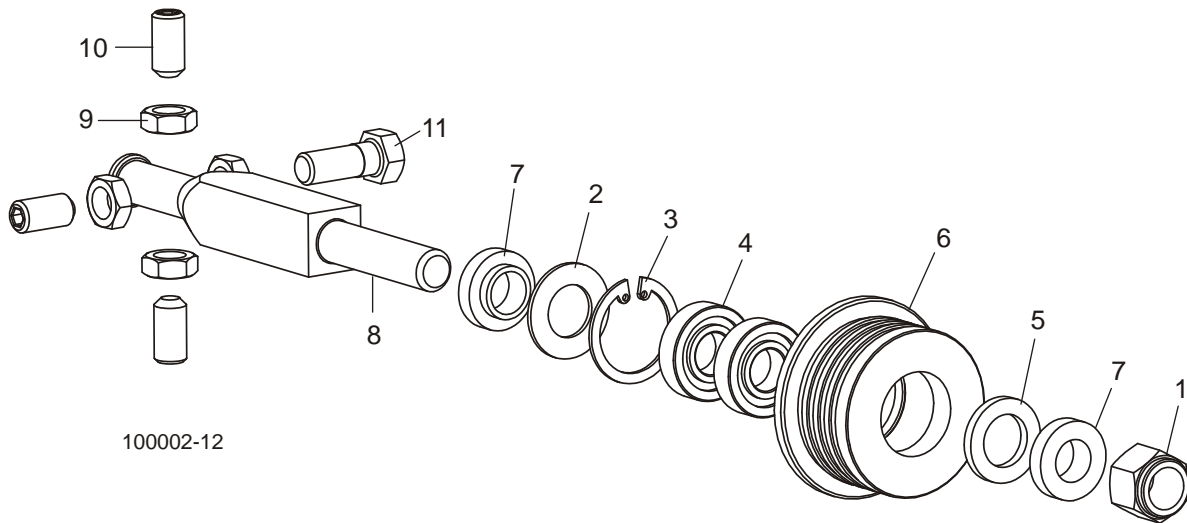
Idle Wheel Assembly

6.8 Idle Wheel Assembly



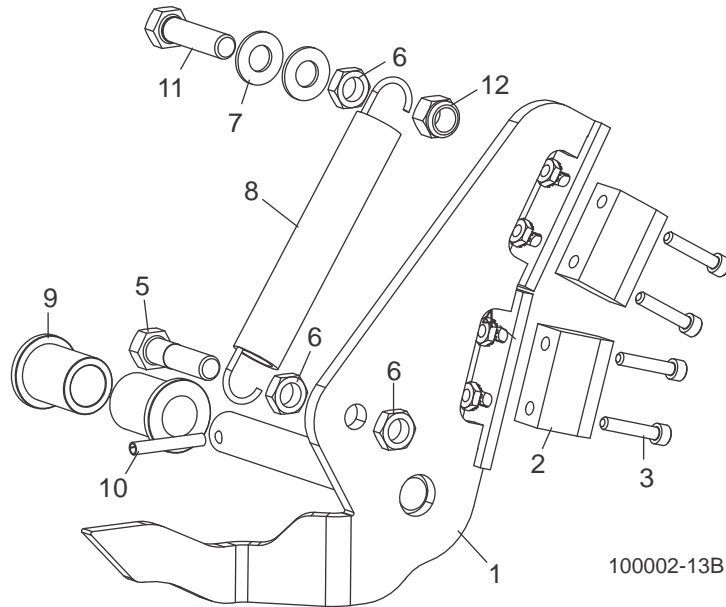
REF	DESCRIPTION (◆ Indicates Parts Available In Assemblies Only)	PART #	QTY.	
1-3	WHEEL ASSEMBLY, 19" BLADE	A08218	1	
1	Wheel, 19" Blade	P08125	1	
2	Bearing, .9843" x 2.4409" x .6693"	P08066	2	
3	Ring, 2 7/16" Inside Retaining	F04254-21	1	
4	BELT, B57	P04185	1	

6.9 Blade Guide



REF	DESCRIPTION (◆ Indicates Parts Available In Assemblies Only)	PART #	QTY.	
1	NUT, 1/2-20 HEX NYLON LOCK	F05010-15	2	
	ROLLER KIT, 1 1/4" BLADE GUIDE	A04925	2	
	Bearing Kit, Blade Guide Rebuild	K07079	1	
2	Washer, 5/8" White Felt	P04252	1	
3	Ring, 1 1/8" Interior Retaining	F04254-1	1	
4	Bearing, R8-2RS Blade Guide	015975	2	◆
5	Washer, 5/8" Gray Felt	P06455	1	
	Screw, 1/4-28 x 1/4" Socket Head Cup Point Set Black Oxide	F05005-105	1	
	Instruction Sheet, Blade Guide Rebuild/Replacement	A04925-364	1	
6	Roller, 1 1/4" Flanged Blade Guide	S04250	1	◆
7	SPACER, BLADE GUIDE	S04253	4	
8	SHAFT, BLADE GUIDE MOUNTING	048783	2	
9	NUT, 3/8-24 JAM	F05010-22	8	
10	SCREW, 3/8-24 X 3/4" STAINLESS STEEL SOCKET HEAD FLAT POINT	F05007-95	7	
11	BOLT, 3/8-24 X 1" STAINLESS STEEL HEX HEAD (INNER GUIDE ONLY)	F05007-99	1	
	BOLT, 3/8-24 X 3/4" STAINLESS STEEL SOCKET HEAD FLAT POINT (OUTER GUIDE ONLY)	F05007-95	1	

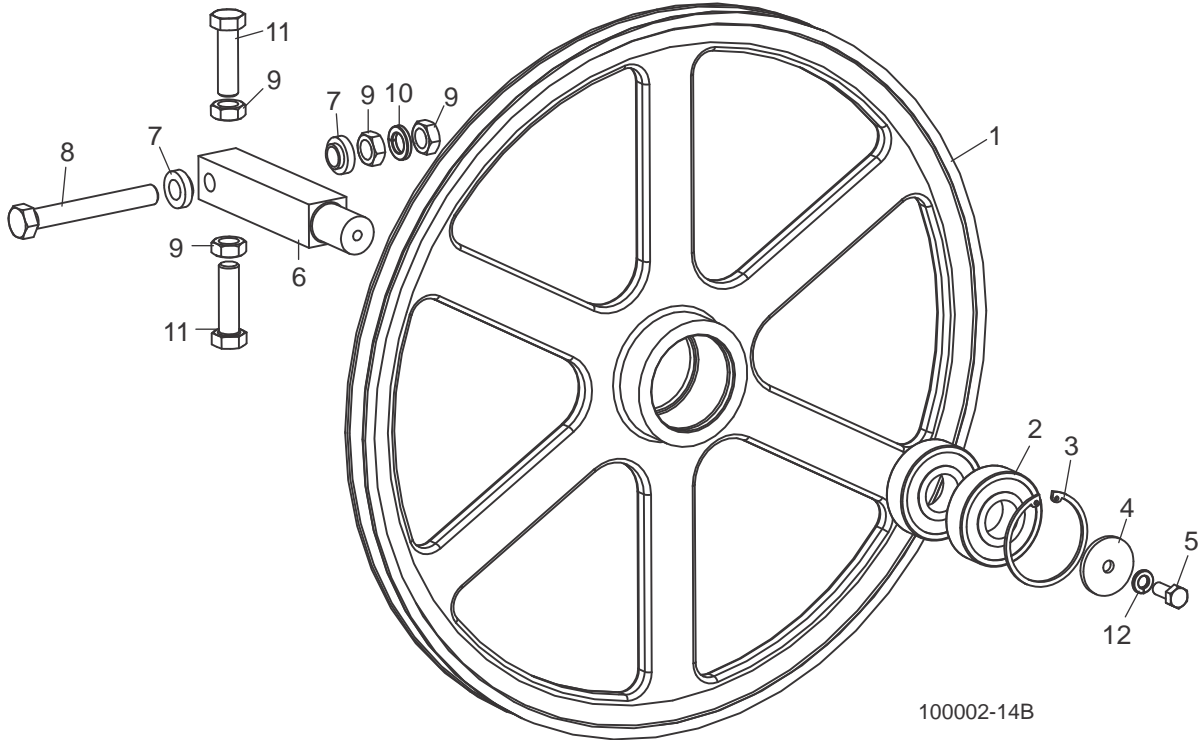
6.10 Brake Assembly



REF	DESCRIPTION (◆ Indicates Parts Available In Assemblies Only)	PART #	QTY.
	BRAKE ASSEMBLY, LT10 BLADE	048810	1
1	Arm Weldment, LT10 Brake	048813 ¹	1
2	Block, Blade Brake	016488	2
3	Bolt, #10-24 x 1" Socket Head	F05004-2	4
4	Nut, #10-24 Self-Locking Hex	F05010-14	4
5	Bolt, 3/8-16 x 1 1/2" Hex Head Grade 5	F05007-78	1
6	Nut, 3/8-16 Hex Jam	F05010-29	3
7	Washer, 3/8" SAE Flat	F05011-3	2
8	Spring, #LE-093G-8MW	P08847	1
9	Bushing, 5/8" ID x 7/8" OD x 1 1/4" Flanged	016486	2
10	Pin, 3/16" x 1 1/4" Roll	F05012-16	1
11	Bolt, 3/8-16 x 1 1/2" Full Thread Hex Head	F05007-17	1
12	Nut, 3/8-16 Hex Nylon Lock	F05010-10	1

¹ Brake Arm profile modified Rev. B3.01 to improve brake performance.

6.11 Drive Blade Wheel



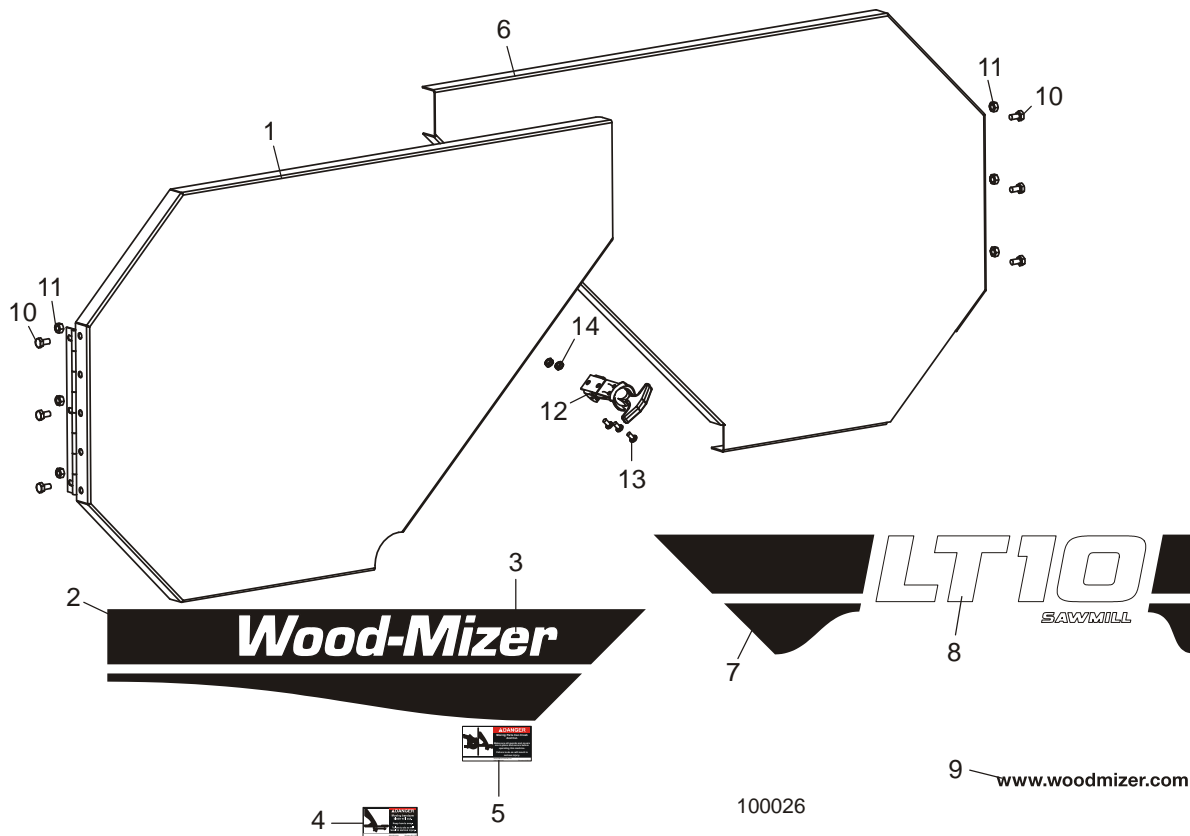
REF	DESCRIPTION (◆ Indicates Parts Available In Assemblies Only)	PART #	QTY.
	WHEEL ASSEMBLY, 19" BLADE	A08218	1
1	Wheel, 19" Blade	P08125	1
2	Bearing, .9843" x 2.4409" x .6693"	P08066	2
3	Ring, 2 7/16" Inside Retaining	F04254-21	1
4	WASHER, .313" X 1.5" X .125" RETAINING	S08220	1
5	BOLT, 5/16-18 X 3/4" HEX HEAD GRADE 5	F05006-102	1
6	SHAFT, 1 1/8" SQUARE IDLER	S12565	1
7	SPACER, .510" X .937" X .34"	S04253	2
8	BOLT, 1/2-20 X 3 3/4" HEX HEAD FULL THREAD GRADE 5	F05008-111	1
9	NUT, 1/2-20 HEX JAM	F05010-16	4
10	WASHER, 1/2" SPLIT LOCK	F05011-9	1
11	BOLT, 1/2-20 X 1 3/4" HEX HEAD FULL THREAD	F05008-127 ¹	2
12	WASHER, 5/16" SPLIT LOCK	F05011-13	1

¹ Use F05008-127 instead of F05008-108 incorrectly shown prior to 6/07.

6.12 Blade Housing Covers

LT10

Rev. B1.00+ (After 11/10)



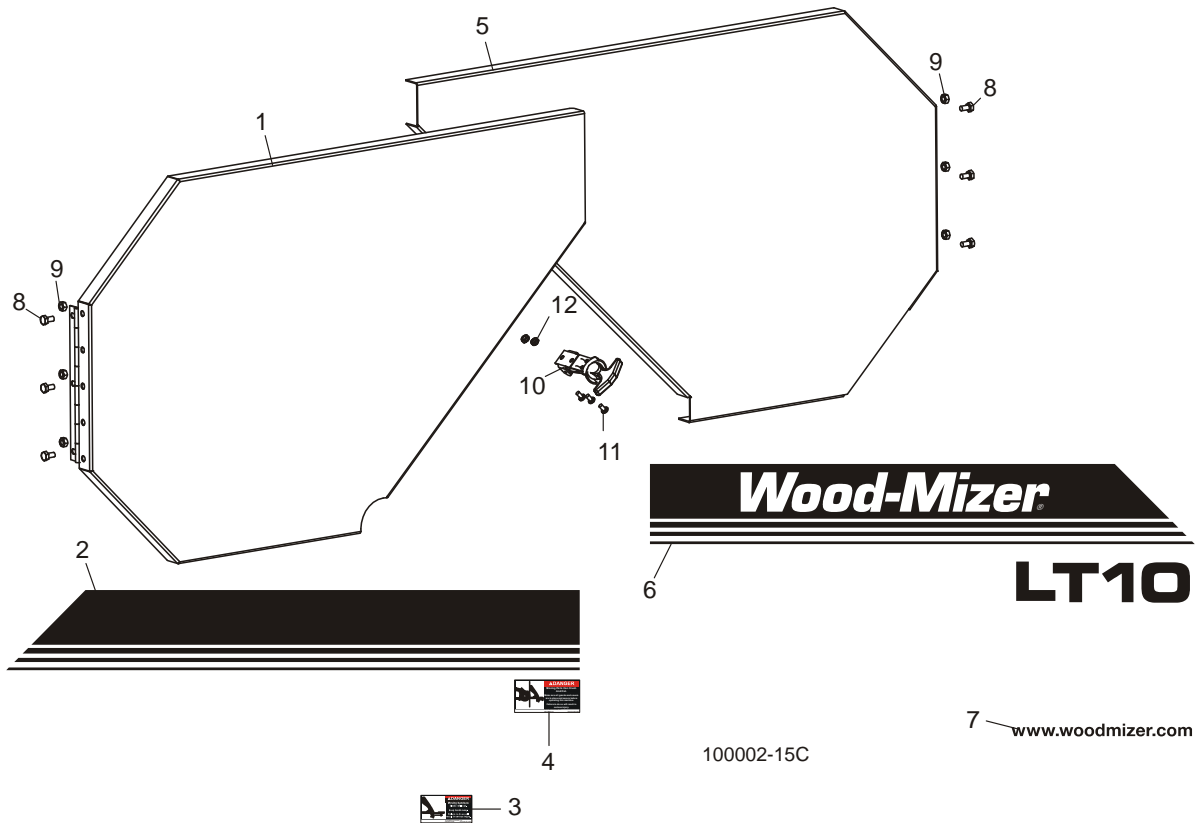
REF	DESCRIPTION (◆ Indicates Parts Available In Assemblies Only)	PART #	QTY.
1	COVER WELDMENT, LT10 IDLE BLADE HOUSING	048785	1
2	Decal, Idle Side Euro-Stripe Black LT10	065004	1
3	Decal, Wood-Mizer Logo White LT10,15,28,35	065002	1
4	Decal, Blade Danger	S11752	1
5	Decal, Moving Parts Danger	033254	1
6	COVER WELDMENT, LT10 DRIVE BLADE HOUSING	049044	1
7	Decal, Drive Side Euro-Stripe Black	065010 ¹	1
8	Decal, LT10 Euro Logo White	065005	1
9	Decal, Wood-Mizer Website	003235	1
10	BOLT, 1/4-20 X 1/2" HEX HEAD	F05005-15	6
11	NUT, 1/4-20 HEX SELF-LOCKING HEX	F05010-9	6
12	LATCH, FLEXIBLE DRAW	014829	1
13	SCREW, #10-24 X 3/8" PHILLIPS PAN HEAD	F05004-3	4
14	NUT, #10-24 SELF-LOCKING HEX	F05010-14	4

¹ Replaced LT10 Drive Side Euro-Stripe Black Decal (065003) (9/11).

6.13 Blade Housing Covers

LT10

Rev. B1.00+ (1/07-11/10)



REF	DESCRIPTION (◆ Indicates Parts Available In Assemblies Only)	PART #	QTY.
1	COVER WELDMENT, LT10 IDLE BLADE HOUSING	048785 ¹	1
2	Decal, LT10 Idle Side Cover	003239	1
3	Decal, Blade Danger	S11752	1
4	Decal, Moving Parts Danger	033254	1
5	COVER WELDMENT, LT10 DRIVE BLADE HOUSING	049044 ²	1
6	Decal, LT10 Logo	003238	1
7	Decal, Wood-Mizer Website	003235	1
8	BOLT, 1/4-20 X 1/2" HEX HEAD	F05005-15	6
9	NUT, 1/4-20 HEX SELF-LOCKING HEX	F05010-9	6
10	LATCH, FLEXIBLE DRAW	014829	1
11	SCREW, #10-24 X 3/8" PHILLIPS PAN HEAD	F05004-3	4
12	NUT, #10-24 SELF-LOCKING HEX	F05010-14	4

¹ LT10 Setup Decal 049098 replaced with new logo decal 1/07.

² LT10 Logo Decal 049097 and Log Rule Decal 016283 replaced with new logo decals 1/07. Silver Logo Decal 003234 removed and LT10 Logo Decal 003238 modified 1/08.

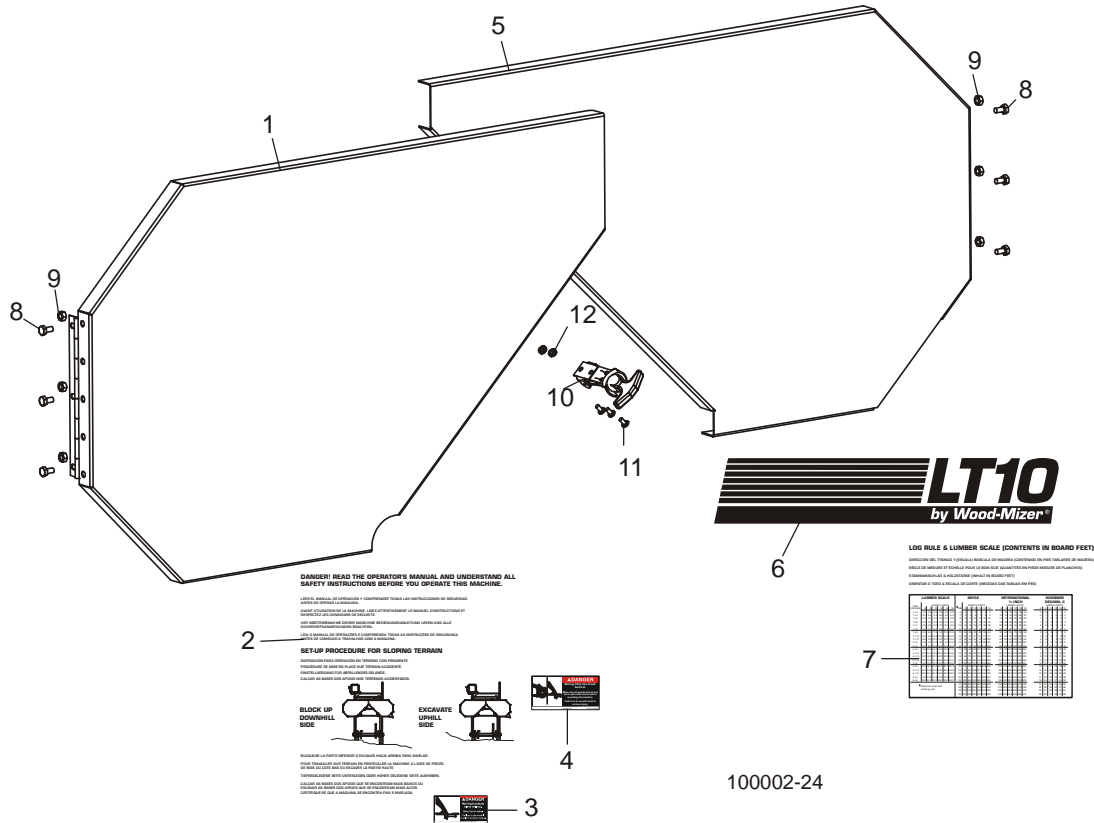
6 Replacement Parts

Blade Housing Covers

6.14 Blade Housing Covers

LT10

Rev. A1.00 - B1.00 (12/06)



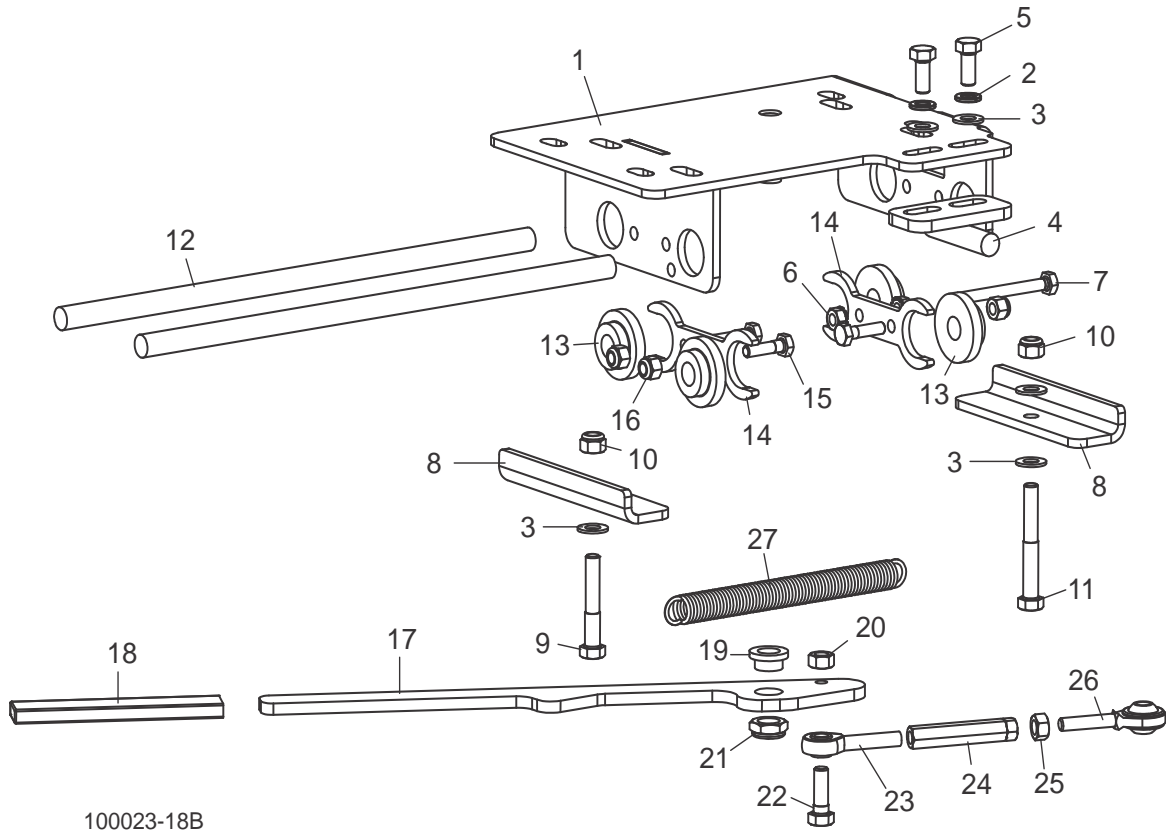
REF	DESCRIPTION (◆ Indicates Parts Available In Assemblies Only)	PART #	QTY.
1	COVER WELDMENT, LT10 IDLE BLADE HOUSING	048785 ¹	1
2	Decal, LT10 Idle Side Cover	049098	1
3	Decal, Blade Danger	S11752	1
4	Decal, Moving Parts Danger	033254	1
5	COVER WELDMENT, LT10 DRIVE BLADE HOUSING	049044 ¹	1
6	Decal, LT10 Logo	049097	1
7	Decal, Log Scale	016283	1
8	BOLT, 1/4-20 X 1/2" HEX HEAD	F05005-15	6
9	NUT, 1/4-20 HEX SELF-LOCKING HEX	F05010-9	6
10	LATCH, FLEXIBLE DRAW	014829	1
11	SCREW, #10-24 X 3/8" PHILLIPS PAN HEAD	F05004-3	4
12	NUT, #10-24 SELF-LOCKING HEX	F05010-14	4

¹ Covers include new logo decals 1/07 (See Section 6.12).

SECTION 7 MOTOR MOUNT ASSEMBLY

LT10

Rev. B3.00+



100023-18B

REF	DESCRIPTION (◆ Indicates Parts Available In Assemblies Only)	PART #	QTY.
	MOUNT ASSEMBLY, LT10 ENGINE	006783	1
1	Plate Weldment, LT10 Briggs Mount	054650 ¹	1
2	Washer, 5/16" Split Lock	F05011-13	2
3	Washer, 5/16" SAE Flat	F05011-17	5
4	Bracket Weldment, Brake Actuator	038709	1
5	Bolt, 5/16-18 x 3/4" Hex Head Grade 5	F05006-102	2
6	Nut, 1/4-20 Self-Locking Hex	F05010-9	2
7	Bolt, 1/4-20 x 2 3/4" Hex Head Full Thread	F05005-92	1
8	Bracket, Engine Mount Rod Clamp	038506	2
9	Bolt, 5/16-18 x 2" Hex Head Grade 5	F05006-79	1
10	Nut, 5/16-18 Hex Nylon Lock	F05010-58	2
11	Bolt, 5/16-18 x 2 1/2" Hex Head Grade 5	F05006-80	1
12	Rod, 1/2" Engine Mount	038505	2
13	Bushing, 1/2" ID x 1/2" Nylon Flanged	038504	4
14	Plate, Bushing Stop	048825	2
15	Bolt, 1/4-20 x 1" Hex Head Grade 5	F05005-101	3

7**Replacement Parts***Motor Mount Assembly*

16	Nut, 1/4-20 Hex Nylon Lock	F05010-69	3	
17	Handle, Engine Slide	048820 ²	1	
18	Grip, 1/4" x 3/4" Foam Flat	049008	1	
19	Bushing, 1/2" ID x 5/8" OD x 3/8" Flanged	049007	1	
20	Nut, 5/16-18 Hex Lock	F05010-6	1	
21	Nut, 1/2-13 Hex Nylon Lock Jam	F05010-79	1	
22	Bolt, 5/16-18 x 1" Hex Head	F05006-1	1	
23	Rod End, 5/16-24 Male Lefthand	014815	1	
24	Turnbuckle, 5/16-24 Belt Tension	049005	1	
25	Nut, 5/16-24 Hex	F05010-28	1	
26	Rod End, 5/16-24 Male	P09814	1	
27	Spring, Engine Extension	034810	1	

¹ Engine Mount Bracket 054650 modified to accommodate Kohler G7 engine which replaced Briggs engine Rev. B3.02. Mount modified to provide more clearance for clutch turnbuckle and relocate brake actuator to improve clutch/brake performance (Rev. B3.01). Mount modified to accommodate both G7 and G10 engine options (Rev. B3.00).

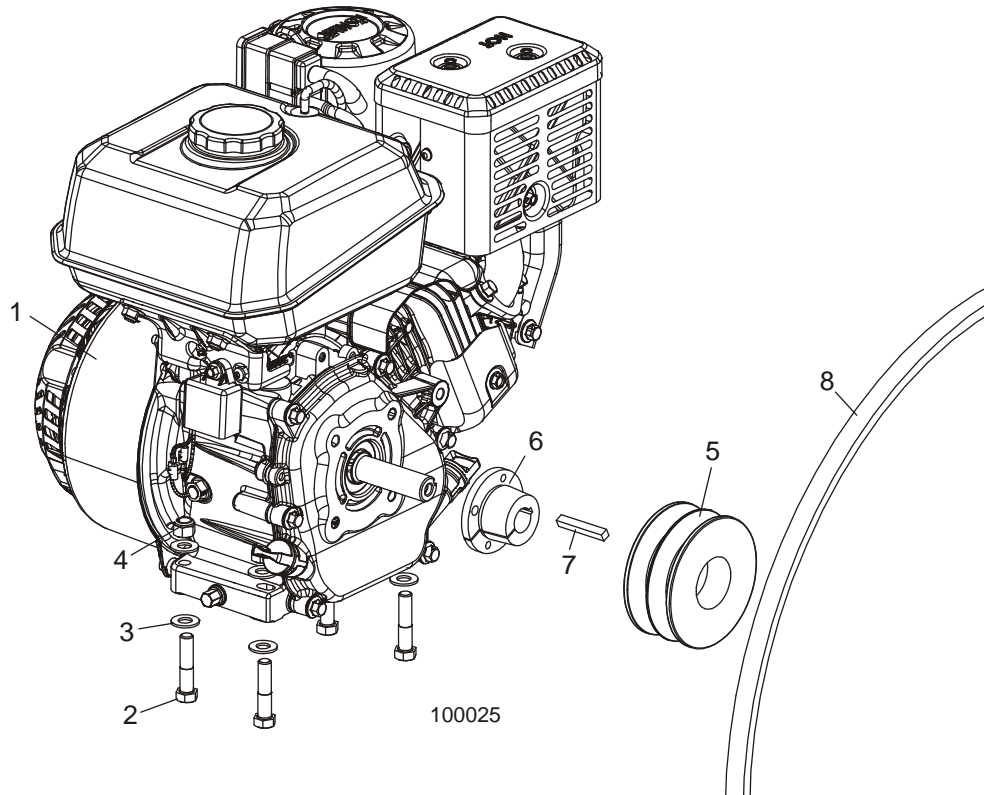
² Engine Slide Handle 048820 redesigned and (1) 1/4-28 x 1/4" Socket Head Screw F05005-106 removed (Rev. B4.03). Previously, Engine Slide Handle 048820 modified to relocate stop bolt to improve clutch performance (Rev. B3.01).

SECTION 8 ENGINE ASSEMBLY

8.1 G7 Engine Assembly

LT10

Rev. B3.02+



REF	DESCRIPTION (◆ Indicates Parts Available In Assemblies Only)	PART #	QTY.
	COVER, ENGINE	P12393	1
1	ENGINE, 7HP KOHLER #CH270-0011	008731 ¹	1
2	BOLT, 3/8-16 X 1 3/4" HEX HEAD GRADE 5	F05007-119	4
3	WASHER, 3/8" SAE FLAT	F05011-3	8
4	NUT, 3/8-16 HEX NYLON LOCK	F05010-10	4
5	PULLEY, 2BK40H	008734	1
6	BUSHING, H-3/4"	039323	1
7	KEY, 1/4" X 1/4" X 1 11/16"	S04124	1
8	BELT, B75.5	035953-1 ²	1

¹ Engine muffler is available through local Briggs and Stratton dealers.

² 035953-1 B75.5 Belt replaces 035953 supplied prior to 7/10. New belt provides longer service life.

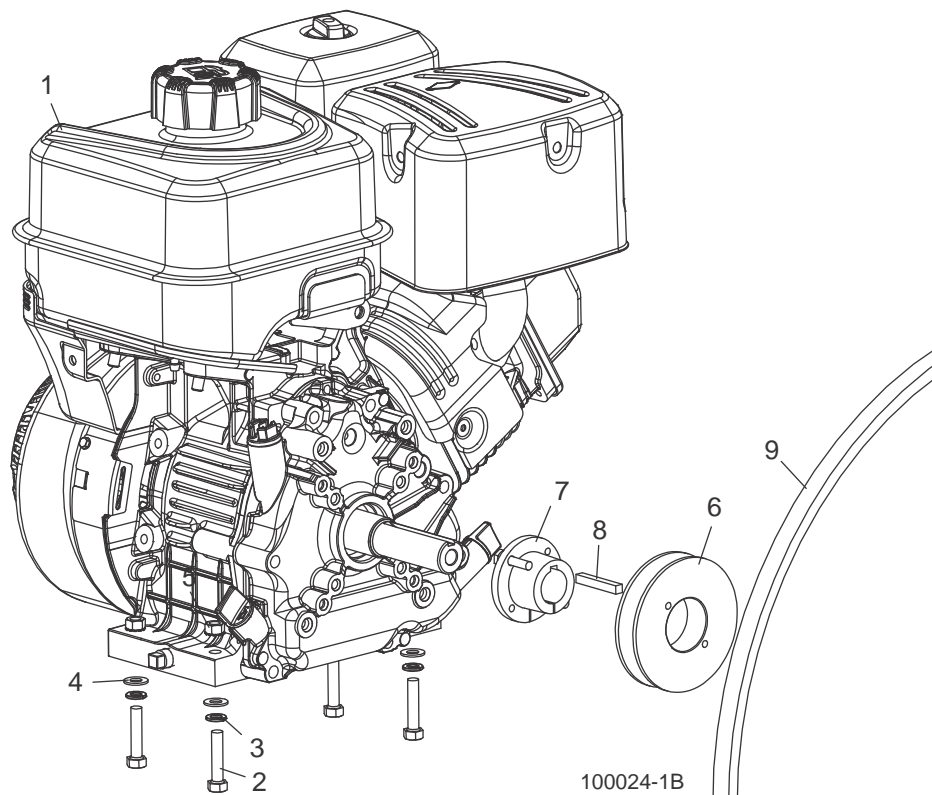
8 Replacement Parts

G10 Engine Assembly

8.2 G10 Engine Assembly

LT10

Rev. B3.02+



REF	DESCRIPTION (◆ Indicates Parts Available In Assemblies Only)	PART #	QTY.
	COVER, ENGINE	P12393	1
1	ENGINE, 10HP BRIGGS GAS #19L2320003-F1	057862 ¹	1
	Magneto, 10HP LT10 #591459 (G10 Only)	061244	1
	Filter, Air 10HP LT10 w/Pre-Cleaner#797032 (G10 Only)	061243	1
	Plug, Spark Briggs #491055S	039423	1
2	BOLT, 5/16-18 X 1 1/2" HEX HEAD	F05008-96	4
3	WASHER, 5/16" SPLIT LOCK	F05011-13	4
4	WASHER, 5/16" SAE FLAT	F05011-17	4
5	NUT, 5/16-18 SELF-LOCKING HEX	F05010-20	4
6	PULLEY, BK40	049050	1
7	BUSHING, QT X 1"	016513	1
8	KEY, 1/4" X 1/4" X 1 11/16"	S04124	1
9	BELT, B75.5	035953-1 ²	1

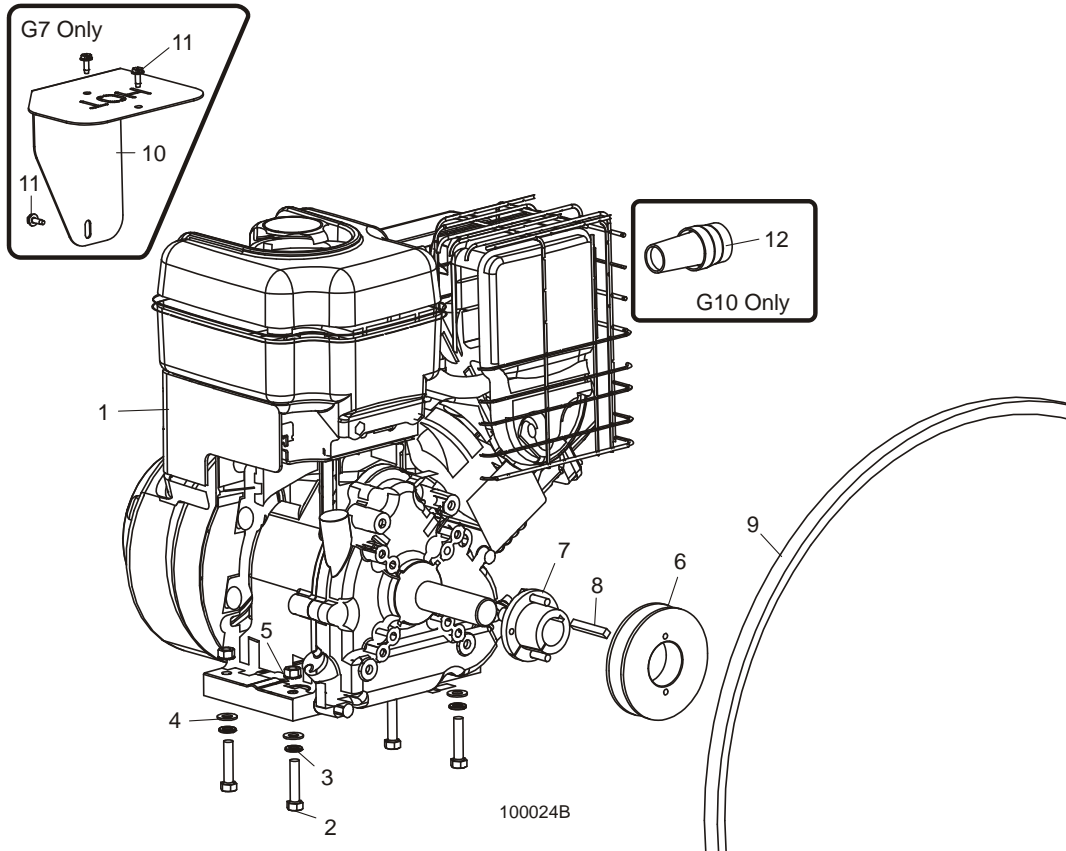
¹ Engine muffler is available through local Briggs and Stratton dealers. G10 engine with new exhaust deflector released to production (11/14); removed 006871 Spark Arrestor Insert.

² 035953-1 B75.5 Belt replaces 035953 supplied prior to 7/10. New belt provides longer service life.

8.3 Engine Assembly

LT10

Rev. B3.00 - B3.01



REF	DESCRIPTION (◆ Indicates Parts Available In Assemblies Only)	PART #	QTY.
	COVER, ENGINE	P12393	1
1	ENGINE, 7HP BRIGGS GAS #1220120124E1	054655 1	1
	ENGINE, 10HP BRIGGS GAS #20S2321246F1	057862	1
	Magneto, Briggs #695711 (G7 Only)	039424	1
	Magneto, 10HP LT10 #591459 (G10 Only)	061244	1
	Filter, Air Briggs #491588S (G7 Only)	039426	1
	Filter, Air 10HP LT10 w/Pre-Cleaner#797032 (G10 Only)	061243	1
	Pre-Cleaner, Air Briggs #493537S (G7 Only)	039425	1
	Plug, Spark Briggs #491055S	039423	1
2	BOLT, 5/16-18 X 1 1/2" HEX HEAD	F05008-96	4
3	WASHER, 5/16" SPLIT LOCK	F05011-13	4
4	WASHER, 5/16" SAE FLAT	F05011-17	4
5	NUT, 5/16-18 SELF-LOCKING HEX	F05010-20	4
6	PULLEY, BK40	049050	1
7	BUSHING, QT X 1"	016513	1
8	KEY, 1/4" X 1/4" X 1 11/16"	S04124	1

8**Replacement Parts***Engine Assembly*

9	BELT, B75.5	035953-1 ²	1	
10	PLATE, MUFFLER GUARD (G7 ONLY)	054654	1	
11	SCREW, #10-24 X 1/2" SELF-TAPPING	F05015-7	3	
12	INSERT, MODIFIED SPARK ARRESTOR (G10 ONLY)	006871	1	

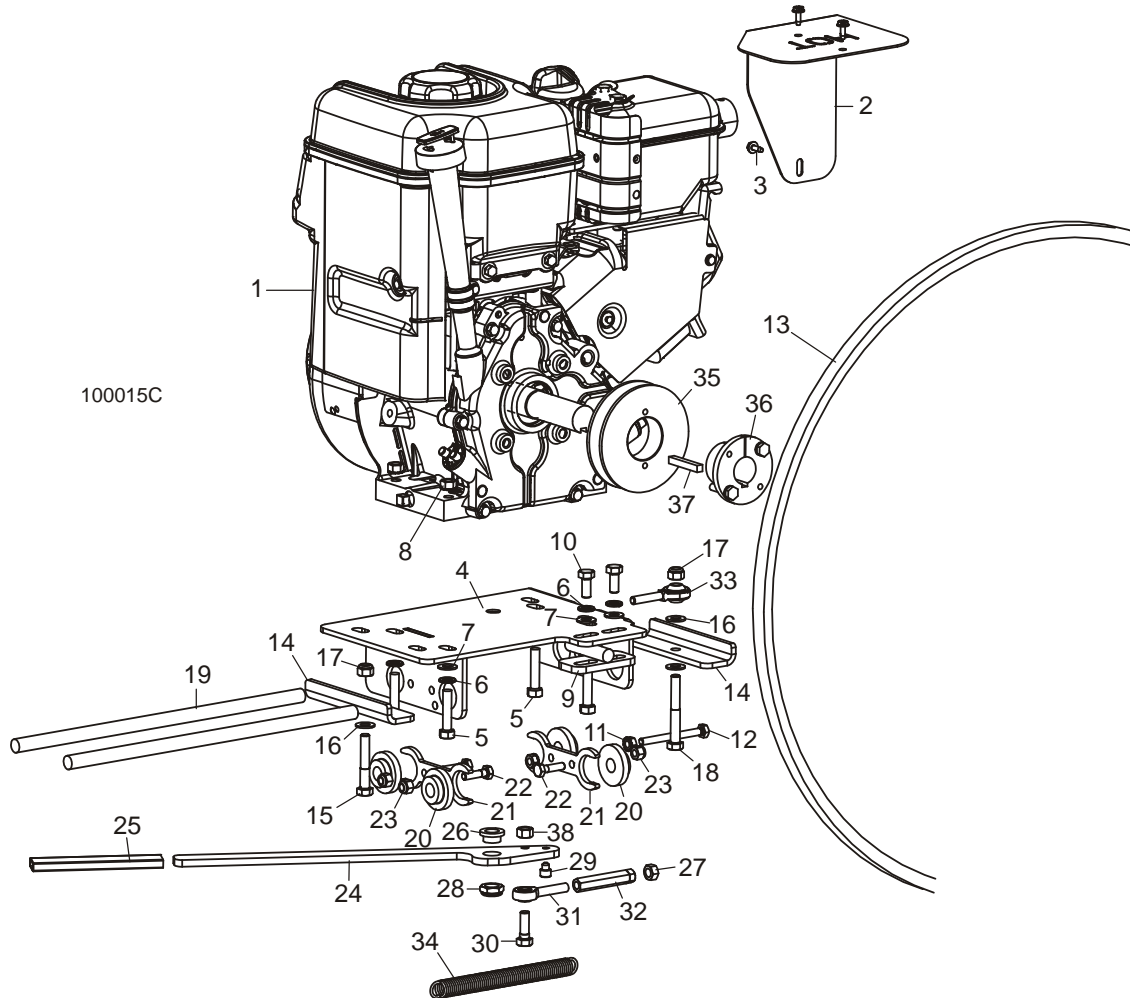
¹ G7 engine option changed from Briggs to Kohler Rev. B3.02 ([See Section 8.1](#)). Kohler engine requires modified motor mount 054650.

² 035953-1 B75.5 Belt replaces 035953 supplied prior to 7/10. New belt provides longer service life.

8.4 7HP Engine Assembly

LT10

Rev. B1.00 - B2.00



REF	DESCRIPTION (◆ Indicates Parts Available In Assemblies Only)	PART #	QTY.
	COVER, ENGINE	P12393	1
	ENGINE ASSEMBLY, 7 HP GAS	054658	1
	Engine Kit, 7HP Briggs Retro	038713	1
1	Engine, 7HP Briggs Gas #1220120124E1	054655	1
	Magneto, Briggs #695711	039424	1
	Filter, Air Briggs #491588S	039426	1
	Pre-Cleaner, Air Briggs #493537S	039425	1
	Plug, Spark Briggs #491055S	039423	1
2	Plate, Muffler Guard	054654	1
3	Screw, #10-24 x 1/2" Self-Tapping	F05015-7	3
4	Plate Weldment, LT10 Briggs Mount	054650 ¹	1
5	Bolt, 5/16-18 x 1 1/2" Hex Head	F05008-96	4

8

Replacement Parts

7HP Engine Assembly

6	Washer, 5/16" Split Lock	F05011-13	6	
7	Washer, 5/16" SAE Flat	F05011-17	6	
8	Nut, 5/16-18 Self-Locking Hex	F05010-20	4	
9	Bracket Weldment, Brake Actuator	038709	1	
10	Bolt, 5/16-18 x 3/4" Hex Head Grade 5	F05006-102	2	
11	Nut, 1/4-20 Self-Locking Hex	F05010-9	2	
12	Bolt, 1/4-20 x 2 3/4" Hex Head Full Thread	F05005-92	1	
13	Belt, B75.5	035953-1 ²	1	
14	Bracket, Engine Mount Rod Clamp	038506 ³	2	
15	Bolt, 5/16-18 x 2" Hex Head Grade 5	F05006-79	1	
16	Washer, 5/16" SAE Flat	F05011-17	2	
17	Nut, 5/16-18 Hex Nylon Lock	F05010-58	2	
18	Bolt, 5/16-18 x 2 1/2" Hex Head Grade 5	F05006-80	1	
19	Rod, 1/2" Engine Mount	038505	2	
20	Bushing, 1/2" ID x 1/2" Nylon Flanged	038504	4	
21	Plate, Bushing Stop	048825	2	
22	Bolt, 1/4-20 x 1" Hex Head Grade 5	F05005-101	3	
23	Nut, 1/4-20 Hex Nylon Lock	F05010-69	3	
24	Handle, Engine Slide	048820	1	
25	Grip, 1/4" x 3/4" Foam Flat	049008	1	
26	Bushing, 1/2" ID x 5/8" OD x 3/8" Flanged	049007	1	
27	Nut, 5/16-24 Hex	F05010-28	1	
28	Nut, 1/2-13 Hex Nylon Lock Jam	F05010-79	1	
29	Screw, 1/4-28 x 1/4" Socket Head	F05005-106	1	
30	Bolt, 5/16-18 x 1" Hex Head	F05006-1 ⁴	1	
31	Rod End, 5/16-24 Male Lefthand	014815	1	
32	Turnbuckle, 5/16-24 Belt Tension	049005	1	
33	Rod End, 5/16-24 Male	P09814	1	
34	Spring, Engine Extension	034810	1	
35	Pulley, BK40	049050	1	
36	Bushing, QT x 1"	016513	1	
37	Key, 1/4" x 1/4" x 1 11/16"	S04124	1	
38	Nut, 5/16-18 Hex Lock	F05010-6 ⁴	1	

¹ Engine Mount Bracket 054650 modified to accommodate both G7 and G10 engine options (12/08).

² 035953-1 B75.5 Belt replaces 035953 supplied prior to 7/10. New belt provides longer service life.

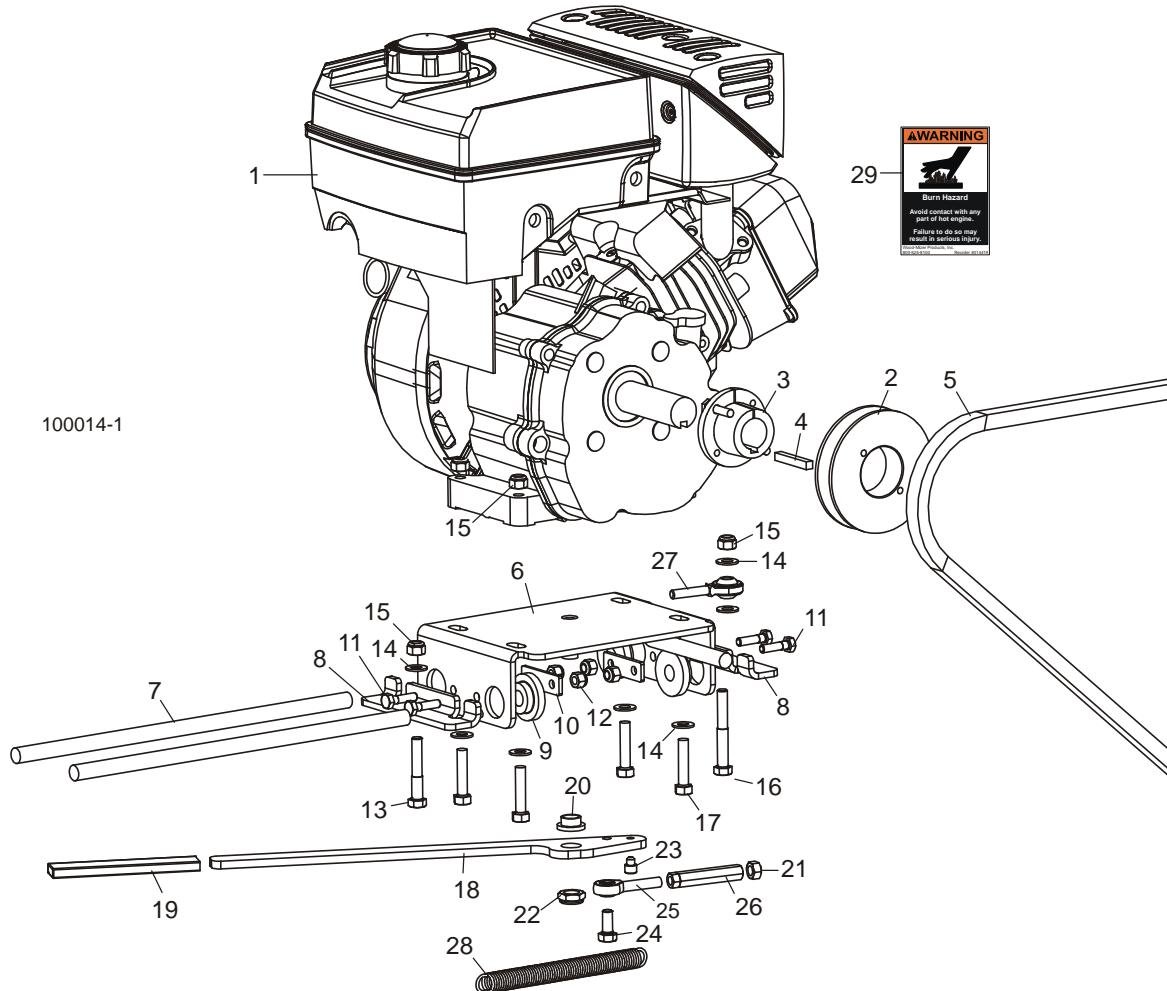
³ Bracket 038506 modified and reoriented to improve durability (11/08).

⁴ Longer 1" Bolt F05006-1 replaces 3/4" Bolt F05006-102 and Hex Lock Nut F05010-6 added to better secure turnbuckle (11/08).

8.5 7.8HP Engine Assembly

LT10

Rev. A2.00



REF	DESCRIPTION (◆ Indicates Parts Available In Assemblies Only)	PART #	QTY.	
	COVER, ENGINE	P12393	1	
	ENGINE ASSEMBLY, 7.8HP GAS	048814 ¹	1	◆
1	Engine, 7.8HP Generac Gas #GSH220-0051170	048816 ¹	1	◆
	Filter, Fuel Generac #0C5896	054546	1	
	Filter, Air Generac #078601	054547	1	
	Pre-Cleaner, Air Generac #078602	054548	1	
	Plug, Spark Generac #0E7585	054549	1	
	Filter, Oil Generac #07185B	052508	1	
2	Pulley, BK40	049050	1	
3	Bushing, QT x 1"	016513	1	
4	Key, 1/4" x 1/4" x 1 11/16"	S04124	1	

8

Replacement Parts

7.8HP Engine Assembly

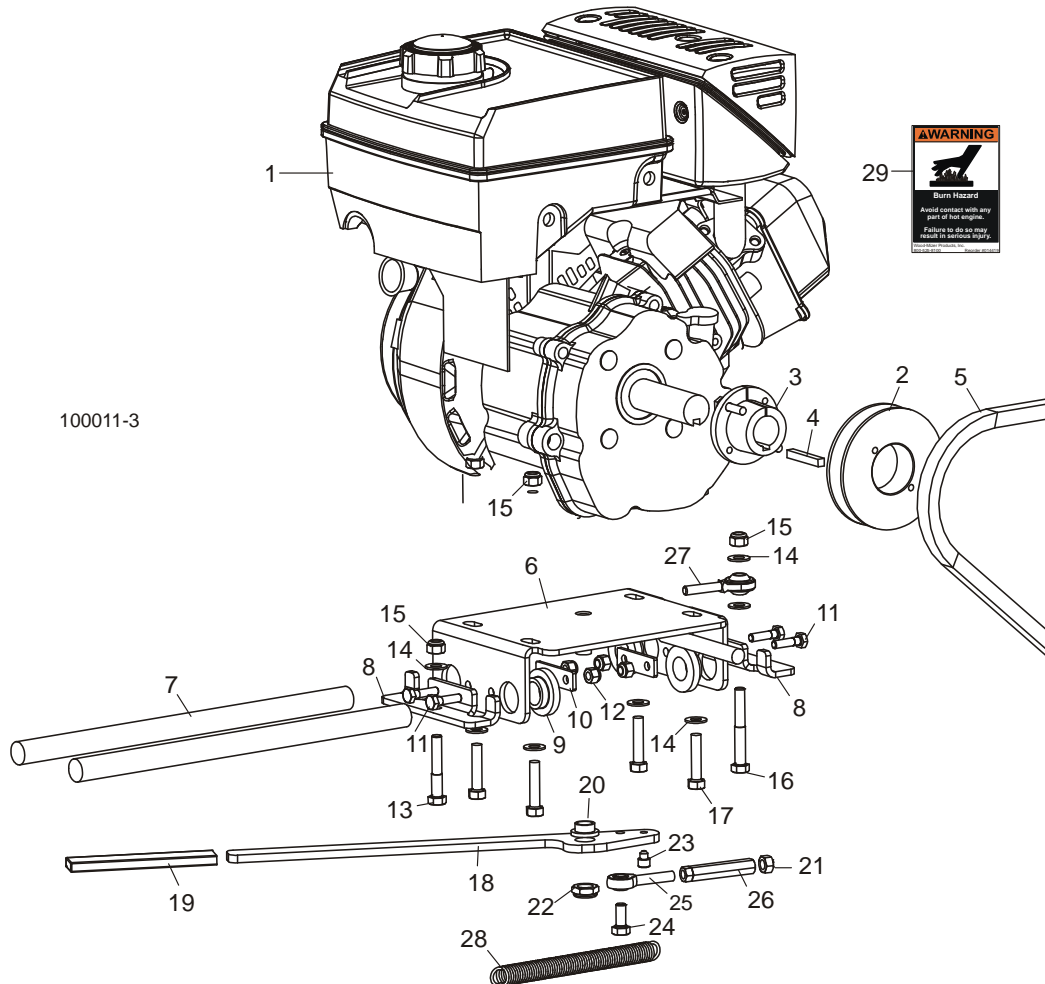
5	Belt, B74 Drive	049004	1	
6	Plate Weldment, LT10 Motor Mount	048817	1	
7	Rod, 1/2" Engine Mount	038505	2	
8	Bracket, Engine Mount Rod Clamp	038506	2	
9	Bushing, 1/2" ID x 1/2" Nylon Flanged	038504	4	
10	Plate, Bushing Stop	048825	2	
11	Bolt, 1/4-20 x 1" Hex Head Grade 5	F05005-101	4	
12	Nut, 1/4-20 Hex Nylon Lock	F05010-69	4	
13	Bolt, 5/16-18 x 2" Hex Head Grade 5	F05006-79	1	
14	Washer, 5/16" SAE Flat	F05011-17	7	
15	Nut, 5/16-18 Hex Nylon Lock	F05010-58	6	
16	Bolt, 5/16-18 x 2 1/2" Hex Head Grade 5	F05006-80	1	
17	Bolt, 5/16-18 x 1 1/2" Hex Head	F05008-96	4	
18	Handle, Engine Slide	048820	1	
19	Grip, 1/4" x 3/4" Foam Flat	049008	1	
20	Bushing, 1/2" ID x 5/8" OD x 3/8" Flanged	049007	1	
21	Nut, 5/16-24 Hex	F05010-28	1	
22	Nut, 1/2-13 Hex Nylon Lock Jam	F05010-79	1	
23	Screw, 1/4-28 x 1/4" Socket Head	F05005-106	1	
24	Bolt, 5/16-18 x 3/4" Hex Head Grade 5	F05006-102	1	
25	Rod End, 5/16-24 Male Lefthand	014815	1	
26	Turnbuckle, 5/16-24 Belt Tension	049005	1	
27	Rod End, 5/16-24 Male	P09814	1	
28	Spring, Engine Extension	034810	1	
29	Decal, Hot Engine Warning	014419	1	

¹ Generac engine discontinued by vendor Rev. B1.00. Use kit 038713 to retrofit to Briggs engine ([See Page 8-5](#)).

8.6 7.8HP Engine Assembly

LT10

Rev. A1.02



REF	DESCRIPTION (◆ Indicates Parts Available In Assemblies Only)	PART #	QTY.	
	COVER, ENGINE	P12393	1	
	ENGINE ASSEMBLY, 7.8HP GAS	048814 ¹	1	◆
1	Engine, 7.8HP Generac Gas #GSH220-0051170	048816 ¹	1	◆
	Filter, Fuel Generac #0C5896	054546	1	
	Filter, Air Generac #078601	054547	1	
	Pre-Cleaner, Air Generac #078602	054548	1	
	Plug, Spark Generac #0E7585	054549	1	
	Filter, Oil Generac #07185B	052508	1	
2	Pulley, BK40	049050	1	
3	Bushing, QT x 1"	016513	1	
4	Key, 1/4" x 1/4" x 1 11/16"	S04124	1	

8

Replacement Parts

7.8HP Engine Assembly

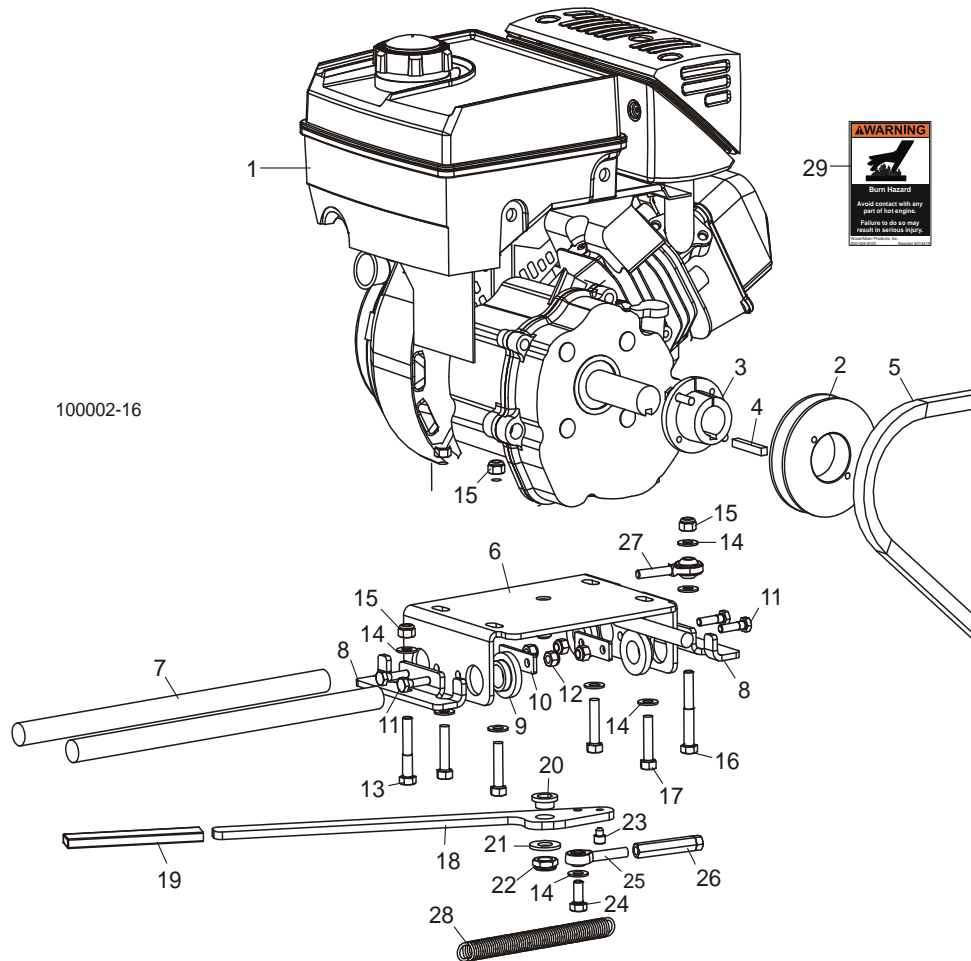
5	Belt, B74 Drive	049004	1	
6	Plate Weldment, LT10 Motor Mount	048817	1	
7	Rod, 3/4" Engine Mount	048826 ¹	2	
8	Bracket, Engine Mount Rod Clamp	049006 ¹	2	
9	Bushing, 3/4" ID x 1/2" Nylon Flanged	048818 ¹	4	
10	Plate, Bushing Stop	048825	2	
11	Bolt, 1/4-20 x 1" Hex Head Grade 5	F05005-101	4	
12	Nut, 1/4-20 Hex Nylon Lock	F05010-69	4	
13	Bolt, 5/16-18 x 2" Hex Head Grade 5	F05006-79	1	
14	Washer, 5/16" SAE Flat	F05011-17	7	
15	Nut, 5/16-18 Hex Nylon Lock	F05010-58	6	
16	Bolt, 5/16-18 x 2 1/2" Hex Head Grade 5	F05006-80	1	
17	Bolt, 5/16-18 x 1 1/2" Hex Head	F05008-96	4	
18	Handle, Engine Slide	048820	1	
19	Grip, 1/4" x 3/4" Foam Flat	049008	1	
20	Bushing, 1/2" ID x 5/8" OD x 3/8" Flanged	049007	1	
21	Nut, 5/16-24 Hex	F05010-28	1	
22	Nut, 1/2-13 Hex Nylon Lock Jam	F05010-79	1	
23	Screw, 1/4-28 x 1/4" Socket Head	F05005-106	1	
24	Bolt, 5/16-18 x 3/4" Hex Head Grade 5	F05006-102	1	
25	Rod End, 5/16-24 Male Lefthand	014815	1	
26	Turnbuckle, 5/16-24 Belt Tension	049005	1	
27	Rod End, 5/16-24 Male	P09814	1	
28	Spring, Engine Extension	034810	1	
29	Decal, Hot Engine Warning	014419	1	

¹ Engine assembly modified with 1/2" slide rods, clamp plates and bushings to reduce cost (Rev. A2.00). Generac engine discontinued by vendor 2/06. Use kit 038713 to retrofit to Briggs engine ([See Page 8-5](#)).

8.7 7.8HP Engine Assembly

LT10

Rev. A1.00 - A1.01



REF	DESCRIPTION (◆ Indicates Parts Available In Assemblies Only)	PART #	QTY.	
	COVER, ENGINE	P12393	1	
	ENGINE ASSEMBLY, 7.8HP GAS	048814 ¹	1	◆
1	Engine, 7.8HP Generac Gas #GSH220-0051170	048816 ¹	1	◆
	Filter, Fuel Generac #0C5896	054546	1	
	Filter, Air Generac #078601	054547	1	
	Pre-Cleaner, Air Generac #078602	054548	1	
	Plug, Spark Generac #0E7585	054549	1	
2	Pulley, BK40	049050	1	
3	Bushing, QT x 1"	016513	1	
4	Key, 1/4" x 1/4" x 1 11/16"	S04124	1	
5	Belt, B74 Drive	049004	1	

8

Replacement Parts

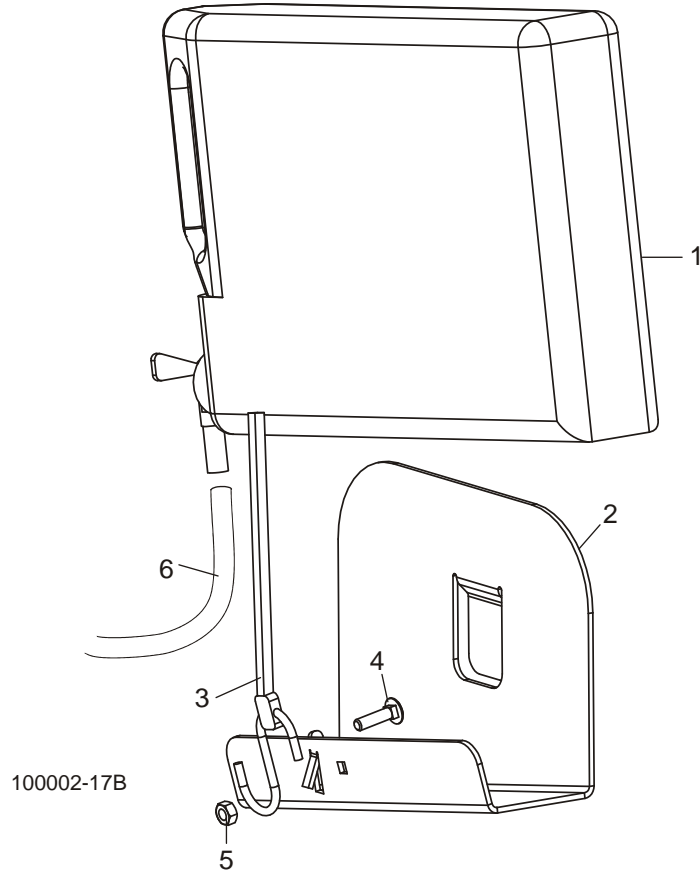
7.8HP Engine Assembly

6	Plate Weldment, LT10 Motor Mount	048817	1	
7	Rod, 3/4" Engine Mount	048826	2	
8	Bracket, Engine Mount Rod Clamp	049006	2	
9	Bushing, 3/4" ID x 1/2" Nylon Flanged	048818	4	
10	Plate, Bushing Stop	048825	2	
11	Bolt, 1/4-20 x 1" Hex Head Grade 5	F05005-101	4	
12	Nut, 1/4-20 Hex Nylon Lock	F05010-69	4	
13	Bolt, 5/16-18 x 2" Hex Head Grade 5	F05006-79	1	
14	Washer, 5/16" SAE Flat	F05011-17 ²	8	
15	Nut, 5/16-18 Hex Nylon Lock	F05010-58	6	
16	Bolt, 5/16-18 x 2 1/2" Hex Head Grade 5	F05006-80	1	
17	Bolt, 5/16-18 x 1 1/2" Hex Head	F05008-96	4	
18	Handle, Engine Slide	048820	1	
19	Grip, 1/4" x 3/4" Foam Flat	049008	1	
20	Bushing, 1/2" ID x 5/8" OD x 3/8" Flanged	049007	1	
21	Washer, 1/2" SAE Flat	F05011-2 ²	1	
22	Nut, 1/2-13 Hex Nylon Lock Jam	F05010-79	1	
23	Screw, 1/4-28 x 1/4" Socket Head	F05005-106	1	
24	Bolt, 5/16-18 x 3/4" Hex Head Grade 5	F05006-102	1	
25	Rod End, 5/16-24 Male Lefthand	014815	1	
26	Turnbuckle, 5/16-24 Belt Tension	049005 ²	1	
27	Rod End, 5/16-24 Male	P09814	1	
28	Spring, Engine Extension	034810	1	
29	Decal, Hot Engine Warning	014419	1	

¹ Generac engine discontinued by vendor 2/06. Use kit 038713 to retrofit to Briggs engine ([See Page 8-5](#)).

² Jam nut added to turnbuckle, one 5/16" washer removed to provide better thread engagement, 1/2" washer removed (Rev. A1.02).

SECTION 9 WATER LUBE



REF	DESCRIPTION (◆ Indicates Parts Available In Assemblies Only)	PART #	QTY.
	LUBE ASSEMBLY, LT10 WATER	036829	1
1	Bottle, 5 Qt. Water	049119	1
2	Bracket Weldment, LT10 Water Lube Mount	049120	1
3	Strap, 20" Rubber w/Hook	P11668	1
4	Bolt, 1/4-20 x 1" Carriage Head	F05005-34	1
5	Nut, 1/4-20 Hex Lock	F05010-21	1
6	Hose, Water Lube	R01885	4 ft.

INDEX

B

bed 3-1, 3-2
 clamp 3-3, 3-5

E

engine 8-1
 7 & 10HP (12/08) 8-1
 7.8HP (11/05) 8-7
 7.8HP (6/05) 8-11
 7.8HP (9/05) 8-9
 7HP (2/06) 8-5

H

head 6-1, 6-3, 6-5
 blade guide 6-13
 blade housing covers 6-16, 6-17, 6-18
 blade tensioner 6-6, 6-8
 brake 6-14
 drive blade wheel 6-15
 idle blade wheel 6-12
 idle wheel arm 6-10, 6-11

L

LT10 complete 2-1

M

mast 4-1, 4-2, 4-3, 4-4
 carriage 4-5, 4-7
 feed cable 5-1
 feed handle 4-12, 4-13, 4-14
 rollers 4-9, 4-10
 up/down assist 4-15

motor mount 7-1

P

parts list
 how to use 1-1

W

water lube 9-1
