

Electric Brake Trailer

Safety, Operation, Maintenance & Parts Manual

70STRB 2003+ LT70HD/LT70HD-R Diesel
70STRB-FAO LT70 Super Diesel



Safety is our #1 concern! Read and understand all safety information and instructions before operating, setting up or maintaining this machine.

September 2008

Form #1114

California
Proposition 65 Warning



WARNING: Breathing gas/diesel engine exhaust exposes you to chemicals known to the State of California to cause cancer and birth defects or other reproductive harm.

Always start and operate the engine in a well-ventilated area.
If in an enclosed area, vent the exhaust to the outside.
Do not modify or tamper with the exhaust system.
Do not idle the engine except as necessary.

For more information go to www.P65warnings.ca.gov.



WARNING: Drilling, sawing, sanding or machining wood products can expose you to wood dust, a substance known to the State of California to cause cancer. Avoid inhaling wood dust or use a dust mask or other safeguards for personal protection.

For more information go to www.P65Warnings.ca.gov/wood.

Active Patents assigned to Wood-Mizer, LLC

Wood-Mizer, LLC has received patents that protect our inventions which are a result of a dedication to research, innovation, development, and design. Learn more at: woodmizer.com/patents

©2024 Wood-Mizer LLC

Printed in the United States of America, all rights reserved. No part of this manual may be reproduced in any form by any photographic, electronic, mechanical or other means or used in any information storage and retrieval system without written permission from

Wood-Mizer, LLC
8180 West 10th Street
Indianapolis, Indiana 46214

Table of Contents

Section-Page

SECTION 1	TIRE SAFETY	1-1
1.1	Tire labeling.....1-1 <i>Tire markings</i> <i>Identifying tires</i> <i>Tire Identification Number</i>	
1.2	Recommended tire inflation pressure.....1-1 <i>Recommended cold tire inflation pressure</i> <i>The vehicle tire inflation pressure label and location</i> <i>Consequences of tire under-inflation</i> <i>Proper inflation</i>	
1.3	Glossary.....1-3	
1.4	Tire care, maintenance, and safety practices1-4	
1.5	Vehicle load limits.....1-4	
SECTION 2	SURGE BRAKE HITCH	2-1
2.1	Operation2-1	
SECTION 3	MAINTENANCE	3-1
SECTION 4	PARTS LISTS	4-1
4.2	Trailer Axle Assembly, Electric Brake4-3 <i>LT30 Super Rev. H4.00+</i> <i>LT40 Super Rev. H5.00+</i> <i>LT30HD Rev. H8.00+</i> <i>LT35/LT35HD Rev. A1.00+</i> <i>LT40HD Rev. H8.00+</i> <i>LT30HD Super Rev. H8.00+</i> <i>LT40HD Super Rev. H8.00+</i> <i>LT50HD Rev. A1.00+</i> <i>LT70HD Rev. A1.00+</i> <i>LT70HD Super Rev. A1.00+</i> <i>LT70HD Remote Rev. A2.02+</i>	
4.3	Trailer Axle Assembly, Electric Brake4-9 <i>LT70HD Remote Rev. A1.00 - A2.01</i>	
4.4	Trailer Axle Assembly, Surge Brake.....4-11 <i>LT30 Super Rev. H4.00+</i> <i>LT40 Super Rev. H5.00+</i> <i>LT30HD Rev. H8.00+</i> <i>LT40HD Rev. H8.00+</i> <i>LT30HD Super Rev. H8.00+</i> <i>LT40HD Super Rev. H8.00+</i> <i>LT50HD Rev. A1.00+</i>	
4.5	Trailer Axle Assembly, Standard4-15 <i>LT25/LT27 Rev. D7.00+</i> <i>LT30 Rev. H5.00+</i> <i>LT40 Rev. H6.00+</i> <i>LT28 Rev. A1.00+</i>	
4.6	Trailer Axle Assembly, Electric Brake4-17 <i>LT30 Super Rev. F7.00 - H3.00</i>	

Table of Contents

Section-Page

	<i>LT40 Super</i>	<i>Rev. F8.00 - H4.00</i>	
	<i>LT30HD</i>	<i>Rev. G1.00 - H7.00</i>	
	<i>LT40HD</i>	<i>Rev. G1.00 - H7.00</i>	
	<i>LT30HD Super</i>	<i>Rev. G1.00 - H7.00</i>	
	<i>LT40HD Super</i>	<i>Rev. G1.00 - H7.00</i>	
4.7	Trailer Axle Assembly, Surge Brake.....		4-21
	<i>LT30 Super</i>	<i>Rev. F7.00 - H3.00</i>	
	<i>LT40 Super</i>	<i>Rev. F8.00 - H4.00</i>	
	<i>LT30HD</i>	<i>Rev. G1.00 - H7.00</i>	
	<i>LT40HD</i>	<i>Rev. G1.00 - H7.00</i>	
	<i>LT30HD Super</i>	<i>Rev. G1.00 - H7.00</i>	
	<i>LT40HD Super</i>	<i>Rev. G1.00 - H7.00</i>	
4.8	Trailer Axle Assembly, Standard		4-25
	<i>LT25</i>	<i>Rev. C2.00 - D6.00</i>	
	<i>LT30</i>	<i>Rev. F7.00 - H4.00</i>	
	<i>LT40</i>	<i>Rev. F8.00 - H5.00</i>	
4.9	Outriggers.....		4-27
4.10		4-27
4.11	Outrigger Assembly, Long (LT70HD & Remote)		4-28
4.12	Outrigger Assembly, Offset (LT50 w/FAO Only)		4-29
4.13	Outrigger Assembly, Front.....		4-31
4.14	Outrigger Assembly, Short Front (LT70HD & Remote)		4-33
4.15	Outrigger Assembly, Loading-Side (LT50 w/FAO Only)		4-35
4.16	Outrigger Assembly, Rear (LT70HD & Remote).....		4-37
4.17	Outrigger Assembly, Rear (LT50 w/FAO Only)		4-39
4.18	Outrigger Assembly, Short Rear (LT70HD & Remote)		4-41
4.19	Trailer Lights.....		4-43
	<i>LT28</i>	<i>Rev. A6.00+</i>	
	<i>LT30</i>	<i>Rev. K1.00+</i>	
	<i>LT40</i>	<i>Rev. K2.00+</i>	
	<i>LT40 Super</i>	<i>Rev. J6.00+</i>	
	<i>LT30HD</i>	<i>Rev. K2.00+</i>	
	<i>LT35/LT35HD</i>	<i>Rev. A1.00+</i>	
	<i>LT40HD</i>	<i>Rev. K4.00+</i>	
	<i>LT40HD Super</i>	<i>Rev. K2.00+</i>	
	<i>LT50HD</i>	<i>Rev. A3.00+</i>	
	<i>LT70HD</i>	<i>Rev. B1.00+</i>	
	<i>LT70HD Super</i>	<i>Rev. A1.00+</i>	
4.20	Trailer Lights.....		4-46
	<i>LT25/LT27</i>	<i>Rev. C2.00+</i>	
	<i>LT28</i>	<i>Rev. A1.00 - A5.00</i>	
	<i>LT30</i>	<i>Rev. F7.00 - J9.03</i>	
	<i>LT40</i>	<i>Rev. F8.00 - K1.04</i>	<i>LT30 Super..... Rev. F7.00+</i>
	<i>LT40 Super</i>	<i>Rev. F8.00 - J5.03</i>	
	<i>LT30HD</i>	<i>Rev. G1.00 - K1.03</i>	
	<i>LT40HD</i>	<i>Rev. G1.00 - K3.01</i>	
	<i>LT30HD Super</i>	<i>Rev. G1.00+</i>	
	<i>LT40HD Super</i>	<i>Rev. G1.00 - K1.02</i>	
	<i>LT50HD</i>	<i>Rev. A1.00 - A2.02</i>	
	<i>LT70HD</i>	<i>Rev. A1.00 - A9.00</i>	

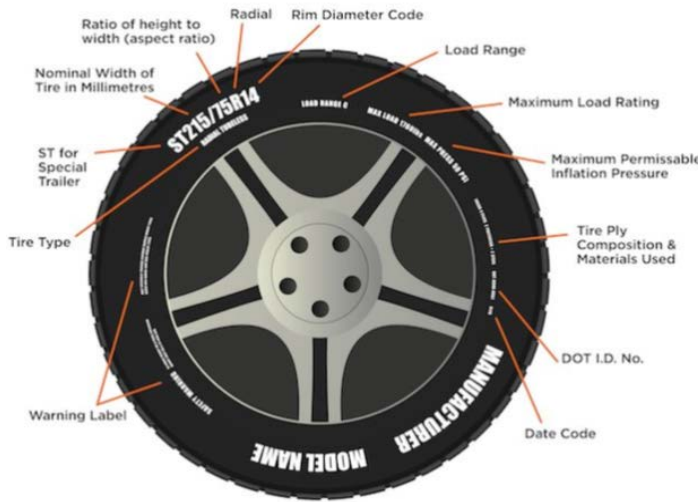
Table of Contents

Section-Page

4.21	Wrench Bracket Assembly	4-50
SECTION 5	ELECTRICAL INFORMATION	5-1
5.2	Wiring Diagram (1997-2008).....	5-2

SECTION 1 TIRE SAFETY

1.1 Tire labeling



Tire markings

TIRE CLASS AND SIZE: (Example: ST215/75R14)

- **ST** stands for Special Trailer tire. ST trailer tires are built to tow heavy loads, withstand excessive heat, and reduce sway.
- **215** is tire width in millimeters;
- **75** is the aspect ratio, or ratio of height to width;
- **R** is type of construction (radial, in the example)
- **14** is rim diameter in inches.

TIRE TYPE Below the tire size is either 'radial' or 'bias.' Radial tires (or 'radial-ply tires') are constructed with polyester and/or nylon plies that run across the tire perpendicularly, and sometimes include steel belts that run under the tread. Bias-ply tires Bias-ply cords layer in a criss-cross pattern from sidewall to sidewall, and they are also sometimes reinforced with a steel belt.

LOAD RANGE Load range indicates the type of load a tire is designed to support at a specific inflation pressure. Trailer tires typically have C, D, or E load ranges. A load range 'C' tire, for example, is at its peak load capacity—possibly 1600 pounds—when it's inflated to its maximum pressure of 50 PSI. A load range 'C' tire at 25 PSI might be able to support a load of 990 pounds, while at 40 PSI, that capacity could be 1300 pounds.

MAXIMUM LOAD RATING Load rating or load index indicates the weight a tire can safely carry at its maximum air pressure. In the example, at its maximum air pressure of 50 PSI (cold), a load range 'C' tire might have a load rating of 1760 pounds.

MAXIMUM PRESSURE Maximum pressure (when the tires are cold) needed for the tires to carry the maximum load; measured in PSI.

Identifying tires

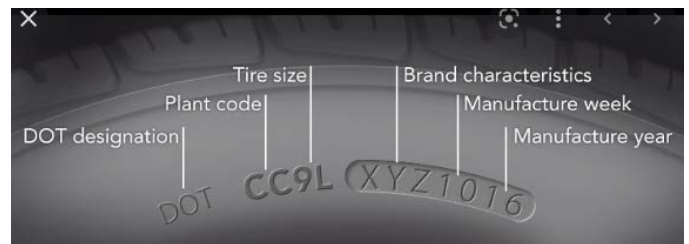
Tires are required to have a Tire Identification Number (TIN) begin with the letters "DOT," followed by eight to thir-

teen characters that can be used to identify the manufacturing location, tire size, and manufacturer's specifications, along with the week and year the tire was manufactured. DOT Tire Identification Numbers are commonly but erroneously referred to as the tire's serial number, but it actually identifies production *batches*, not individual items.

Regulations also require the entire DOT Tire Identification Number to be branded on one sidewall, while only the letters "DOT" and the first digits of the Tire Identification Number must be branded onto the opposite sidewall. Therefore it is possible to see a Tire Identification Number that appears incomplete, yet simply requires looking at the tire's other sidewall to find the complete Tire Identification Number.

Tire Identification Number

DOT AND DATE CODES Department of Transportation identifier will include 10-12 numbers following 'DOT.' The first six to eight numbers indicate the manufacturer's code, where the tire was manufactured and the tire size.



1.2 Recommended tire inflation pressure

Recommended cold tire inflation pressure

The cold inflation pressure is the contained air pressure of a tire that would occur at an indexed temperature of 68°F or 20°C. This indexed temperature is based on the ideal ambient operating conditions for the tire.

Ambient air temperature pressure adjustment tables:

TABLE 1-1 - IMPERIAL MEASUREMENTS

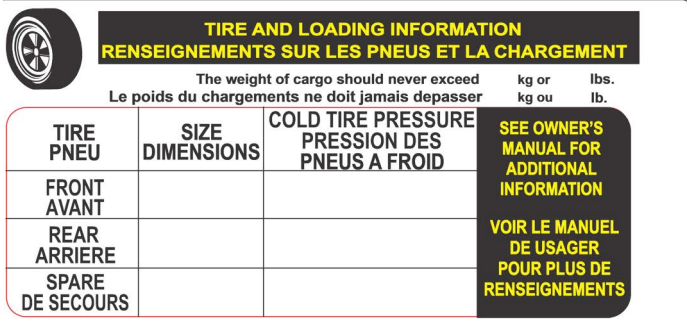
Listed Pressure	10 psi	20 psi	30 psi	40 psi	50 psi	60 psi	70 psi	80 psi	90 psi	100 psi
104°	11.7	22.4	33.1	43.7	54.4	65.1	75.8	86.5	97.1	107.8
86°	10.8	21.2	31.5	41.9	52.2	62.5	72.9	83.2	93.6	103.9
68°	10.0	20.0	30.0	40.0	50.0	60.0	70.0	80.0	90.0	100.0
50°	9.2	18.8	28.5	38.1	47.8	57.5	67.1	76.8	86.4	96.1
32°	8.3	17.6	26.9	36.3	45.6	54.9	64.2	73.5	82.9	92.2
14°	7.5	16.4	25.4	34.4	43.4	52.4	61.3	70.3	79.3	88.3
-4°	6.6	15.3	23.9	32.5	41.2	49.8	58.4	67.1	75.7	84.3
-22°	5.8	14.1	22.4	30.7	39.0	47.3	55.5	63.8	72.1	80.4
-40°	4.9	12.9	20.8	28.8	36.8	44.7	52.7	60.6	68.6	76.5

METRIC MEASUREMENTS

Listed Pressure	69 kPa	138 kPa	207 kPa	276 kPa	345 kPa	414 kPa	483 kPa	551 kPa	620 kPa	689 kPa
40°	81	154	228	301	375	449	522	596	670	743
30°	75	146	217	289	360	431	502	574	645	716
20°	69	138	207	276	345	414	483	551	620	689
10°	63	130	196	263	329	396	463	529	596	662
0°	57	122	186	250	314	378	443	507	571	635
-10°	52	113	175	237	299	361	423	485	546	608
-20°	46	105	165	224	284	343	403	462	522	581
-30°	40	97	154	211	269	326	383	440	497	554
-40°	34	89	144	199	253	308	363	418	473	527

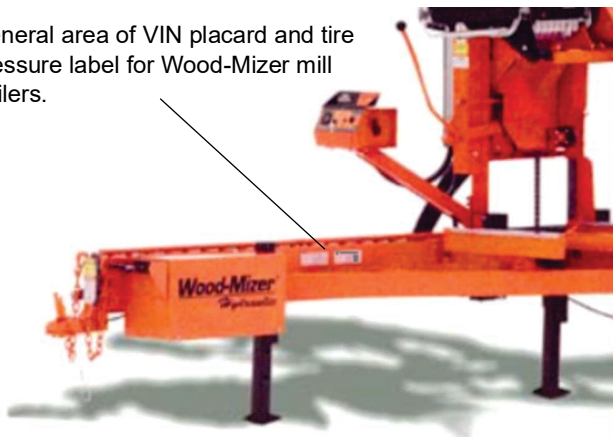
The vehicle tire inflation pressure label and location

The generic bilingual tire pressure label appears as in FIG. 1-3. The label on the vehicle has information specific to the trailer filled in



The label is placed near the VIN placard, toward the **front left side** of the trailer.

General area of VIN placard and tire pressure label for Wood-Mizer mill trailers.



Consequences of tire under-inflation

Underinflated tires and overloaded vehicles are a major cause of tire failure. Tire inflation effects a vehicle's

- steering,
- stopping,

- traction, and
- load-carrying capability.

To avoid flat tires and other types of tire failure, you should

- maintain proper tire pressure,
- observe tire and vehicle load limits,
- avoid road hazards, and
- regularly inspect your tires.

Proper inflation

CHECK TIRE PRESSURE

Use a tire pressure gauge, which you can be purchased at most service stations or auto parts stores. Check the pressure when the tires are **COLD**, as the friction from driving affects the pressure. If driven recently, wait at least three hours for the tires to cool down.



COMMON TIRE PRESSURE GAUGES

1. Remove the cap from the air valve on the tire, and put it somewhere you won't lose it.
2. Press the tire gauge against the open valve stem momentarily.
3. Read the air pressure gauge.
4. Compare this number with the recommended tire pressure.
5. Inflate/release air as needed.
6. Replace the tire's air valve cap.
7. Repeat this process for each tire.

INFLATE YOUR TRAILER'S TIRES

1. Park close enough to the air compressor so you can reach all tires with the hose.
2. If the valve caps are still on, remove them.
3. Press the hose nozzle down on the valve stem.

NOTE: You should notice the tire inflating and feel air flowing through the hose. If not, check to ensure

FIG. 1-4 the hose is securely placed on the valve stem.

4. Remove the hose fitting.
5. Check the air pressure as described above.
6. Repeat steps 3- 5 as needed until the tire is inflated to the correct psi.
7. Repeats steps 2-5 for the vehicle's other tires.

8. Once the tires are inflated properly, replace the valve caps.

RELEASE AIR FROM TIRES

Overinflated tires can lead to poor handling, such as skidding and hydroplaning.

1. Briefly press the small dot or bead on the back of the tire pressure gauge into the center of the valve stem on the tire.

NOTE: You should hear the air escaping the tire.

2. Use the gauge to check the tire pressure.
3. Repeat these steps until you've released enough air to reach the correct psi.

WHEN TO CHECK TIRE PRESSURE

Use Table 1-1 to adjust the recommended cold tire pressure to the ambient temperature. Check tire pressure monthly.

- Most tires may naturally lose air over time.
- Tires can lose air suddenly if you drive over a pothole or other object or if you strike the curb when parking.
- With radial tires, it is usually not possible to determine underinflation by visual inspection.

1.3 Glossary

ALPHA CHARACTER A single alphabetical character from A to Z.

BEAD SEPARATION A breakdown of bond between components in the bead area.

BEAD That part of the tire made of steel wires, wrapped or reinforced by ply cords, that is shaped to fit the rim.

CARCASS PLY A ply that extends to the beads.

CARCASS The tire structure, except tread and sidewall rubber.

CHUNKING The breaking away of pieces of the tread or sidewall.

COLD TIRE PRESSURE The air pressure in a tire at ambient temperature, **not having been driven for the at least 3 hours**.

CORD SEPARATION Cord parting away from adjacent rubber compounds.

CORD The strands that form the plies in the tire.

CRACKING Any parting within the tread, sidewall, or innerliner of the tire extending to cord material.

CURB WEIGHT The weight of a motor vehicle with standard equipment including the maximum capacity of fuel, oil, and coolant, and, if so equipped, air conditioning and additional weight of optional engine.

DEEP TREAD RADIAL A deep tread radial tire is one having a minimum tread depth of 14.3 mm (18/32 inch or 0.5625 inch) or greater.

DOT SYMBOL The letters "DOT" are part of the DOT serial number. This is the manufacturer's certification that the tire or rim meets or exceeds the requirements of FMVSS Nos. 110 and 139.

DOT TIRE IDENTIFICATION NUMBER Number appearing on the sidewall of the tire near the rim required by 49 CFR Part 574.5 which identifies the manufacturer's identification mark, tire size, tire type code and date of manufacture. See Fig. 1-2.

EXTRA LOAD TIRE A tire designed to operate at higher loads and at higher inflation pressures than the corresponding standard tire.

FIELDS Any group of letters and numbers that have significance or meaning.

GAWR The Gross Axle Weight Rating (GAWR) means the value specified by the vehicle manufacturer as the load-carrying capacity of a single axle system, as measured at the tire-ground interfaces.

GROOVE The space between two adjacent tread ribs.

GVWR The Gross Vehicle Weight Rating (GVWR) means the value specified by the manufacturer as the loaded weight of a single vehicle.

INNERLINER SEPARATION The parting of the innerliner from cord material in the carcass.

INNERLINER The layer(s) forming the inside surface of a tubeless tire that contains the inflating medium within the tire.

INTENDED OUTBOARD SIDEWALL (1) The sidewall that contains a whitewall, bears white lettering or bears manufacturer, brand, and/or model name molding that is higher or deeper than the same molding on the other sidewall of the tire; or (2) The outward facing sidewall of an asymmetrical tire having a particular side that must always face outward when mounted on a vehicle.

LIGHT VEHICLE TIRE A new, pneumatic, radial tire intended for use on motor vehicles (other than motorcycles and low speed vehicles) that have a gross vehicle weight rating (GVWR) of 10,000 pounds or less and were manufactured after 1975.

LOAD RATING The maximum load a tire is rated to carry for a given inflation pressure.

MAXIMUM LOAD RATING The load rating at the maximum permissible inflation pressure for that tire.

MAXIMUM INFLATION PRESSURE The maximum cold inflation pressure needed for your tire to support the weight of its **maximum load-carrying capacity**.

MEASURING RIM The rim on which a tire is fitted for physical dimension requirements.

NHTSA/OVSC National Highway Traffic Safety Administration, Office of Vehicle Safety Compliance (Canada).

OPEN SPLICE Any parting at any junction of tread, sidewalls, or innerliner that extends to cord material.

OUTER DIAMETER The overall diameter of an inflated new tire.

OVERALL WIDTH The linear distance between the exteriors of the sidewalls of an inflated tire, including elevations due to marking, decorations, or protective bands or ribs.

PLY A layer of rubber-coated parallel cords.

PLY SEPARATION A parting or rubber compound between adjacent plies.

PNEUMATIC TIRE A mechanical device made of rubber, chemicals, fabric, steel, or other materials, which, when mounted on an automotive wheel, provides the traction and contains the gas or fluid that sustains the load.

RADIAL PLY TIRE A pneumatic tire in which the ply cords that extend to the beads are laid at substantially 90° to the centerline of the tread.

RECOMMENDED INFLATION PRESSURE The cold inflation pressure provided on the Tire Information label and on the VIN tag.

REINFORCED TIRE A tire designed to operate at higher loads and at higher inflation pressures than the corresponding standard tire.

RESPONSIVE TEST A special test initiated through a complaint, field inspection, failed standard test, or COTR discretion. RIM A metal support for a tire or a tire and tube assembly upon which the tire beads are seated.

RIM DIAMETER Nominal diameter of the bead seat.

RIM SIZE DESIGNATION Rim diameter and width.

RIM TYPE DESIGNATION The industry or manufacturer's designation for a rim by style or code. RIM WIDTH Nominal distance between rim flanges.

SECTION WIDTH The linear distance between the exteriors of an inflated tire's sidewalls, excluding elevations due to marking, decoration, or protective bands.

SIDEWALL That portion of a tire between the tread and the bead.

SIDEWALL SEPARATION The parting of the rubber compound from the cord material in the sidewall.

SIZE FACTOR The sum of the section width and the outer diameter of a tire determined on the test rim.

SNOW TIRE A snow tire means a tire that attains a traction index equal to or greater than 110, compared to the ASTM E-1136 Standard Reference Test Tire, when using the snow traction test as described in ASTM F-1805-00, Standard Test Method for Single Wheel Driving Traction in a Straight Line on Snow- and Ice-Covered Surfaces, and which is marked with an Alpine Symbol specified in S5.5(i) of FMVSS No. 139 on at least one sidewall.

TREAD That portion of a tire that comes into contact with the road.

TREAD RIB A tread section running circumferentially around a tire.

TREAD SEPARATION Pulling away of the tread from the tire carcass.

TREADWEAR INDICATORS (TWI) Projections within the principal grooves designed to give a visual indication of the degree of wear of the tread.

UVW The Unloaded Vehicle Weight (UVW) is the weight of a vehicle with maximum capacity of all fluids necessary for vehicle operation, but without cargo, occupants, or accessories that are ordinarily removed from the vehicle when they are not in use.

VEHICLE NORMAL LOAD ON THE TIRE The vehicle normal load on the tire means that load on an individual tire that is determined by distributing to each axle its share of the curb weight, accessory weight, and normal occupant weight and dividing by 2.

1.4 Tire care, maintenance, and safety practices

1. Check your cold tire pressure at least once a month (See [Proper inflation](#))
2. Visually inspect your tires
 - 1). Check the tread at least once a month for excessive or uneven wear.
 - 2). Measure tread depth in three locations across the tire's tread: (1) outer edge, (2) center, and (3) inside edge.

NOTE: Accurate tread depth measurements are made with a simple tread depth gauge available at any parts store.
--Or you can use the quarter (coin) method. Insert a quarter into a tread groove with the top of Washington's head facing down. If the top of his head is not visible, your tires have at least 4/32" of tread and are fine for continued use. If you can see above the top of Washington's head, replace the tire.
 - 3). Inspect for over inflation: wear primarily in the center of the tread, with less wear at the tire's edges.
 - 4). Inspect for under inflation: wear primarily on both edges of the tire tread, with less wear in the center.
 - 5). Inspect for tread wear on one edge of the tire which occurs when the wheels are out of alignment.
 - 6). Inspect for erratic tread wear, "cupping," caused by the wheel out of balance, or suspension components need to be replaced.
 - 7). Inspect for raised portion of the tread or sidewall which may indicate that one of the belts in the tire carcass has separated from those next to it.
3. Have your alignment checked every year.
4. Check and correct your tire balance.

1.5 Vehicle load limits

NOTICE Wood-Mizer trailers are not intended to carry any occupants or cargo.

SECTION 2 SURGE BRAKE HITCH



DANGER! The hitch and safety chains must be secure before towing the sawmill. Failure to do so may result in serious personal injury and/or severe machine damage.

DANGER! Brake and light connections must be working properly before towing the sawmill. Failure to do so may result in serious personal injury and/or severe machine damage. Make sure you have complied with all applicable Federal, State and Local motor vehicle safety laws.

DANGER! Chock the mill to prevent movement before unhitching it from the towing vehicle. Failure to do so may result in serious injury or death.



WARNING! Always check trailer tires for proper inflation before towing sawmill. Failure to do so may lead to tire failure resulting in property damage and/or serious injury or death.

2.1 Operation



IMPORTANT! Your vehicle must be equipped with a Class hitch with a solid 2 5/16" ball (not two-piece) and rated for at least 6000 pounds (2722 kg). The hitch must be correctly mounted to the towing vehicle so that it will be able to pull this type of load.

1. Pull the mill behind the towing vehicle and place the hitch over the ball coupling on your vehicle.
2. Adjust the coupler so it is as tight as possible on the ball and the locking lever can still be opened and closed.
3. Flip the locking handle upward, ensuring the bracket underneath firmly clamps around the ball.
4. Secure the locking handle with the safety pin.



DANGER! Hitch bracket must be securely fastened around ball before towing the sawmill. Ball must be completely engaged by the hitch bracket and securely locked in place. Use the hitch only with the specified ball size.

5. Cross the safety chains underneath the hitch and hook to the vehicle.

The chains must be connected so that there is still slack in the chains when the vehicle is turned sharply in either direction.



DANGER! Your hitch must have adequate safety chain hookups. Do not use eyebolts for safety chain hook-up. Safety chains should be hooked to bumper of vehicle so that each chain would pull the trailer equally in the event the hitch became disengaged.

6. Connect the surge brake activator cable to the vehicle.

NOTE: This cable should be connected in case the hitch becomes unhooked and the safety chains fail. The surge brake activator cable would then activate the braking mechanism. There should be enough slack in the brake cable that the brake won't engage until the safety chains are stretched tight.

7. Connect the light wiring harness plug from the sawmill to the receptacle on your vehicle. Check signals and brake lights.
8. Raise the front outrigger.

9. Recheck that all loose items are removed or secured (such as Resaw Option, Shingle/Lapsiding Option, cant hooks, etc.).
10. The hitch on the mill is adjustable. It should be raised or lowered to let the mill travel horizontal to ground level. Adjust by removing the two mounting bolts. Then slide the hitch tube up or down to new set of holes. Replace bolts and nuts.

SECTION 3 MAINTENANCE

1. Clean and repack the trailer axle wheel bearings with lithium grease every 12 months or 12,000 miles (19,308 km), whichever comes first.
2. Make sure that the trailer tires are correctly inflated to the pressure shown on the tire.



CAUTION! Always check trailer tires for proper inflation before towing sawmill. Failure to do so may result in machine damage.

3. Check the adjustment of the trailer hitch coupler bracket frequently and adjust if necessary. Replace any bent or otherwise damaged parts before using the hitch. Use only parts provided by the hitch manufacturer for this hitch model.
4. The trailer brakes should be adjusted as follows:
 - after the first 200 miles of operation when the brake shoes and drums have “seated,”
 - at 3,000 mile intervals,
 - or as use and performance requires.

The brakes should be adjusted in the following manner:

1. Jack up the trailer and secure on adequate capacity jack stands. Follow the trailer manufacturer's recommendations for lifting and supporting the unit. Make sure the wheel and drum rotates freely.



CAUTION! Do not lift or support trailer on any part of the axle or the suspension system. Never crawl under your trailer unless it is resting on properly placed jack stands.

2. Remove the adjusting hole cover from the adjusting slot on the bottom of the brake backing plate.
3. With a screwdriver or standard adjusting tool, rotate the star wheel of the adjuster assembly to expand the brake shoes. Adjust the brake shoes out until the pressure of the linings against the drum makes the wheel very difficult to turn. **NOTE:** For drop spindle axles, a modified adjusting tool may be necessary.
4. Rotate the star wheel in the opposite direction until the wheel turns freely with a slight lining drag.
5. Replace the adjusting hole cover and lower the wheel to the ground.
6. Repeat the above procedure on all brakes. For best results, the brakes should all be set at the same clearance.

The wheel nut torque should be 90lbs.-ft. Tighten in 3 stages.

The wheel torque requirements are shown below.

Wheel Torque Sequence			
Size	1st Stage	2nd Stage	3rd Stage
12"	25	35	50
13"	25	35	50
14"	25	50	90
15"	25	50	90
16"	25	50	90

TABLE 3-1

Tighten bolts or nuts in the sequence shown for Wheel Torque Requirements.

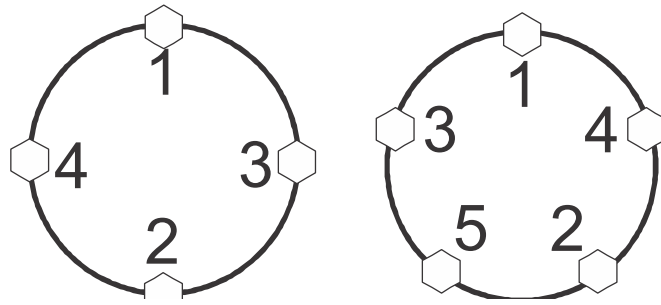


FIG. 3-1

IF applicable, grease the Fine Adjust Outriggers (FAOs) every 200 hours of operation or once a month, whichever comes first. Use one squeeze of a NLGI No. 2 grade lithium grease from a grease gun to lubricate the outrigger and remove any sawdust.

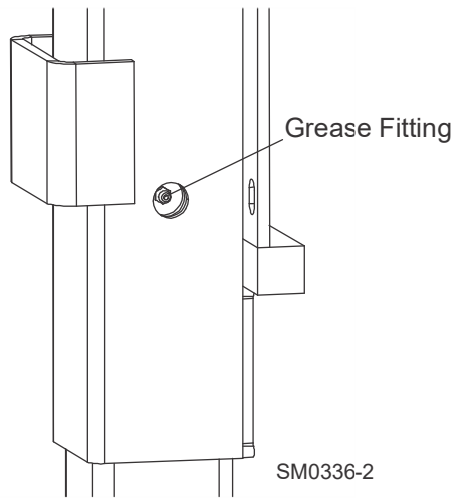
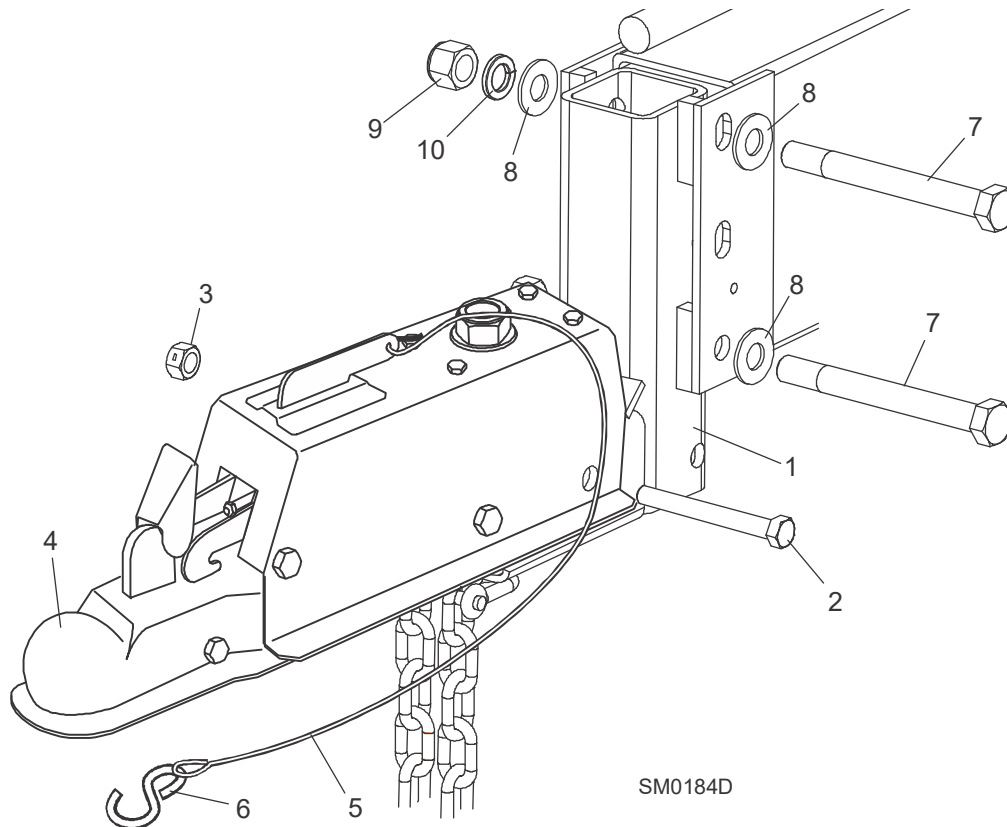


FIG. 3-2

SECTION 4 PARTS LISTS

4.1 Trailer Hitch Assembly, Surge Brake



REF	PART #	DESCRIPTION	COMMENTS	QTY.
1		HITCH WELDMENT, SURGE BRAKE (LT70-R)		1
1	015398	HITCH WELDMENT, SURGE BRAKE		1
	A07563	Chain, Safety w/Hook		2
2	F05008-35	Bolt, 1/2-13 X 4 1/2" Hex Head Grade 5		2
3	F05010-8	Nut, 1/2-13 Hex Nylon Lock		2
4	P09840	ACTUATOR, DICO SURGE BRAKE HITCH		1
	P10119	Bolt, Surge Brake Latch		1
	P12816	Bracket, Surge Bracke Latch (Lever Hitch)		1
	P12814	Spring, Surge Brake Latch (Lever Hitch)		1
5	P12815	Cable Assembly, Surge Brake Safety (Lever Hitch)		1

REF	PART #	DESCRIPTION	COMMENTS	QTY.
6	P12075	Hook, Surge Brake Safety Cable		1
	P10124	Damper, Surge Brake		1
	P10370	Fitting, Surge Brake Hitch Line		1
7	F05009-22	BOLT, 5/8-11 X 6" HEX HEAD GRADE 5		2
8	F05011-5	WASHER, 5/8" SAE FLAT		4
9	F05010-34	NUT, 5/8-11 NYLON LOCK		2
10	F05011-27	WASHER, 5/8" SPLIT LOCK		2
	K12571	TOWING EXTENSION KIT (NOT SHOWN, OPTIONAL)		1
	F05009-20	Bolt, 5/8-11 x 2 1/2" Hex Head Grade 5	Available in assemblies only.	2
	F05011-27	Washer, 5/8" Split Lock		2
	F05011-5	Washer, 5/8" SAE Flat		2
	S12289-N	Bracket, Safety Chain Bumper	Available in assemblies only.	2
	F05010-5	Nut, 5/8-11 Free Hex		2
	P10287	DECAL, PINCH POINT DANGER		1
	P11809	DECAL, BEFORE TOWING DANGER (HYDRAULIC MILLS ONLY)		1

4.2 Trailer Axle Assembly, Electric Brake

LT30 Super Rev. H4.00+
LT40 Super Rev. H5.00+

LT30HD Rev. H8.00+

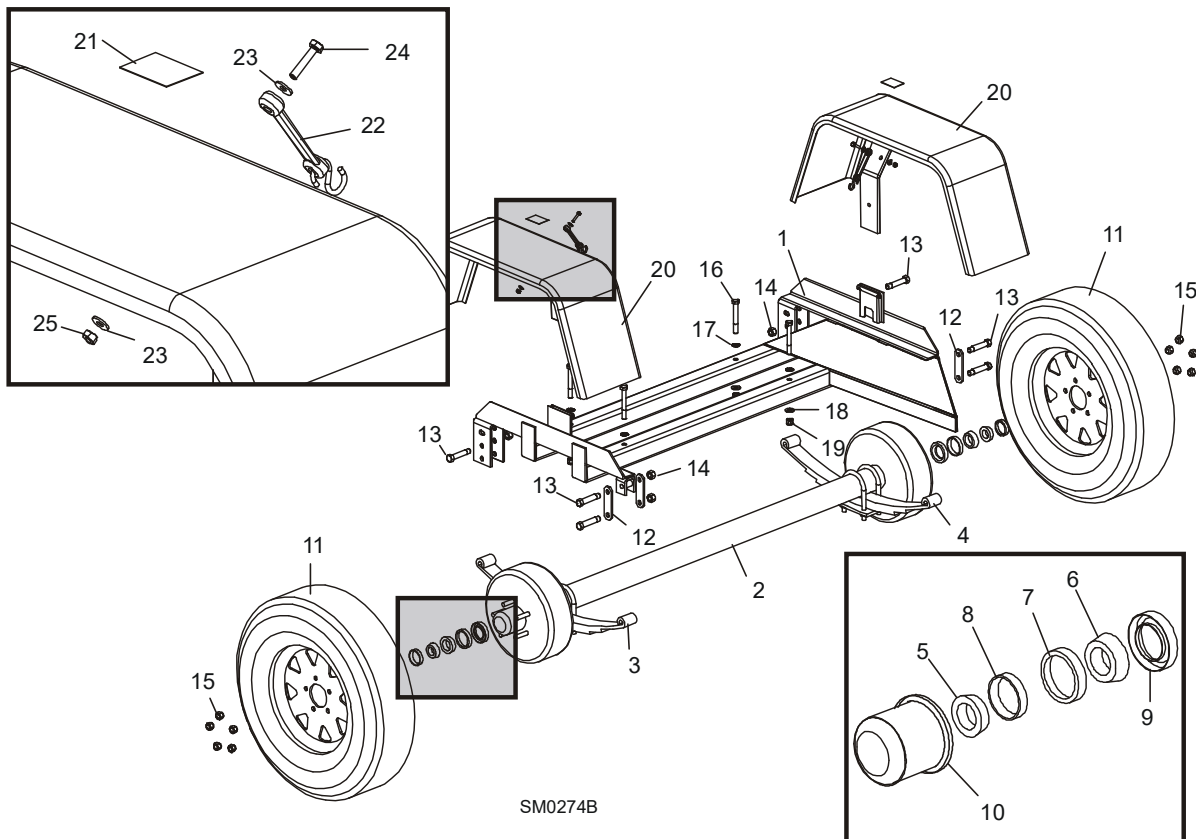
LT35/LT35HD Rev. A1.00+
LT40HD Rev. H8.00+

LT30HD Super Rev. H8.00+
LT40HD Super Rev. H8.00+
LT50HD Rev. A1.00+

LT70HD Rev. A1.00+

LT70HD Super Rev. A1.00+

LT70HD Remote Rev. A2.02+

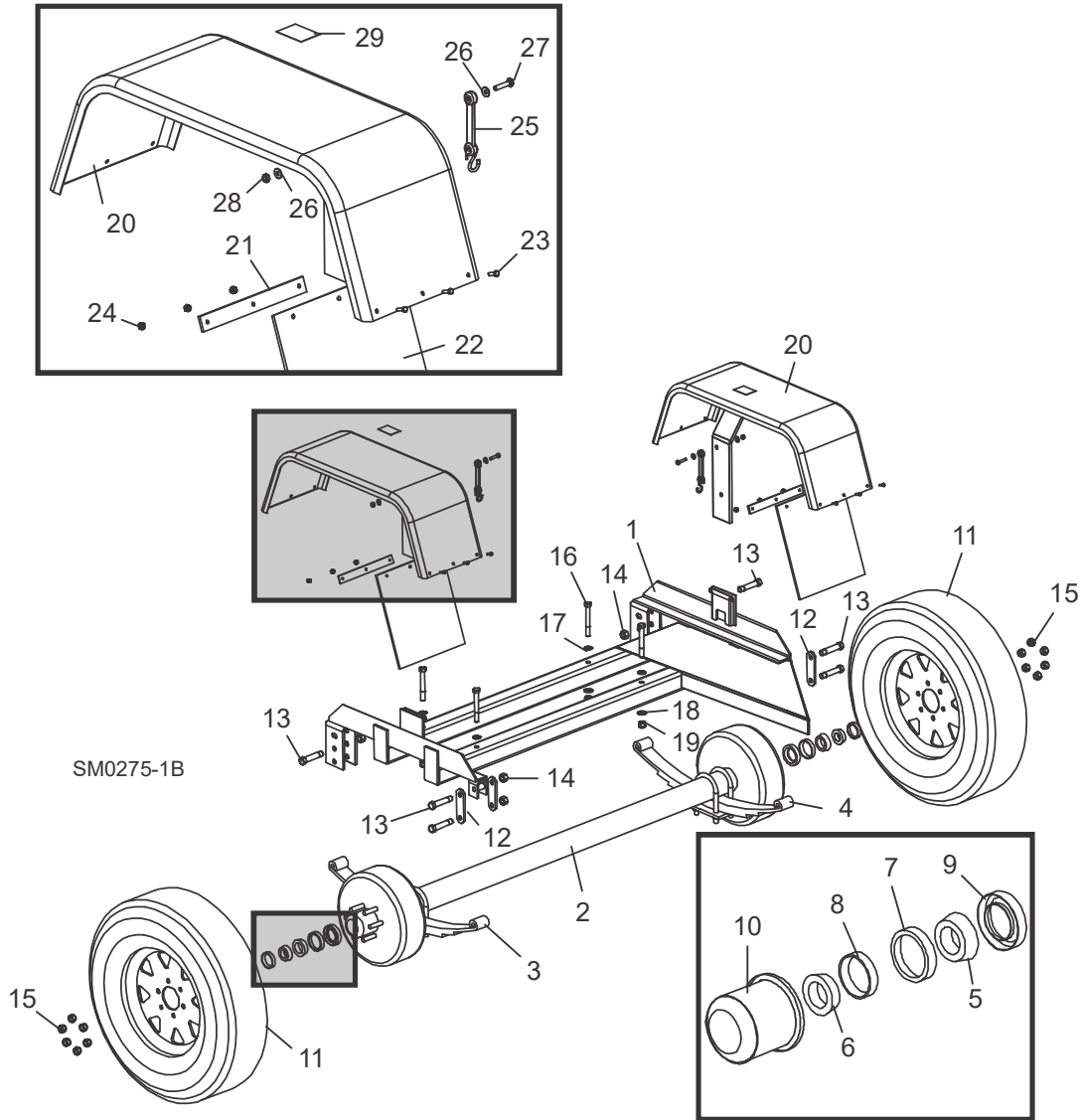


REF	PART #	DESCRIPTION	COMMENTS	QTY.
	014682	AXLE FRAME ASSEMBLY, ELECTRIC BRAKE		1
1	W09751	Frame, Trailer Axle	Available in assemblies only.	1
	W09784	Mount Bracket, Trailer Fender (requires welding)		2
2	012975	Axle, 3500 Lb. Electric Brake With Springs Dexter #25209		1
3	P09612	Spring, 2000 Lb. Dexter Leaf Idle Side Replacement Dexter #072-024-00		1
4	014586	Spring, 2500 Lb. Dexter Leaf Drive Side Replacement Dexter #72-74		1
	K07549	Bearing Kit, Sawmill Axle Spindle		1
5	P22573-1	Bearing, Dexter #L44649	Available in assemblies only.	1
6	P22572-1	Bearing, Dexter #L68149	Available in assemblies only.	1
7	P22572-2	Race, Inner Dexter #L68111	Available in assemblies only.	1
8	P22573-2	Race, Outer Dexter #L44610	Available in assemblies only.	1
9	P07554	Seal, 13" Wheel Bearing Dust Dexter #010-004-00		1
10	P04493	Cap, Wheel Bearing Dust Dexter #21-3		2
11	015987	Wheel Assembly, Goodyear ST215/75R14		2
12	M07528	Plate, Trailer Axle Shackle		4
13	P04644	Bolt, 9/16-8 X 3" Shackle		6
14	P04643	Nut, 9/16-8 Shackle		6
15	P04646	Nut, 1/2-20 Lug		10
16	F05008-26	BOLT, 1/2-13 X 4" HEX HEAD GRADE 2		4
17	F05011-39	WASHER, 1/2" EXTERIOR STAR		4
18	F05011-2	WASHER, 1/2" SAE FLAT		4
19	F05010-8	NUT, 1/2-13 HEX NYLON LOCK		4
20	W11452	FENDER WELDMENT, TRAILER WHEEL		2
21	S11761	DECAL, FENDER DAMAGE CAUTION		2
22	016542	STRAP, 6" RUBBER		4
23	F05011-11	WASHER, 1/4" SAE FLAT		8
24	F05005-3	BOLT, 1/4-20 X 1 1/4" HEX HEAD FULL THREAD		4
25	F05010-21	NUT, 1/4-20 LOCK		4
	P10287	DECAL, PINCH POINT DANGER		1
	076607	DECAL, REMOVE FENDERS (CONTROL BOX)		1

3

Parts Lists

Trailer Axle Assembly, Electric Brake



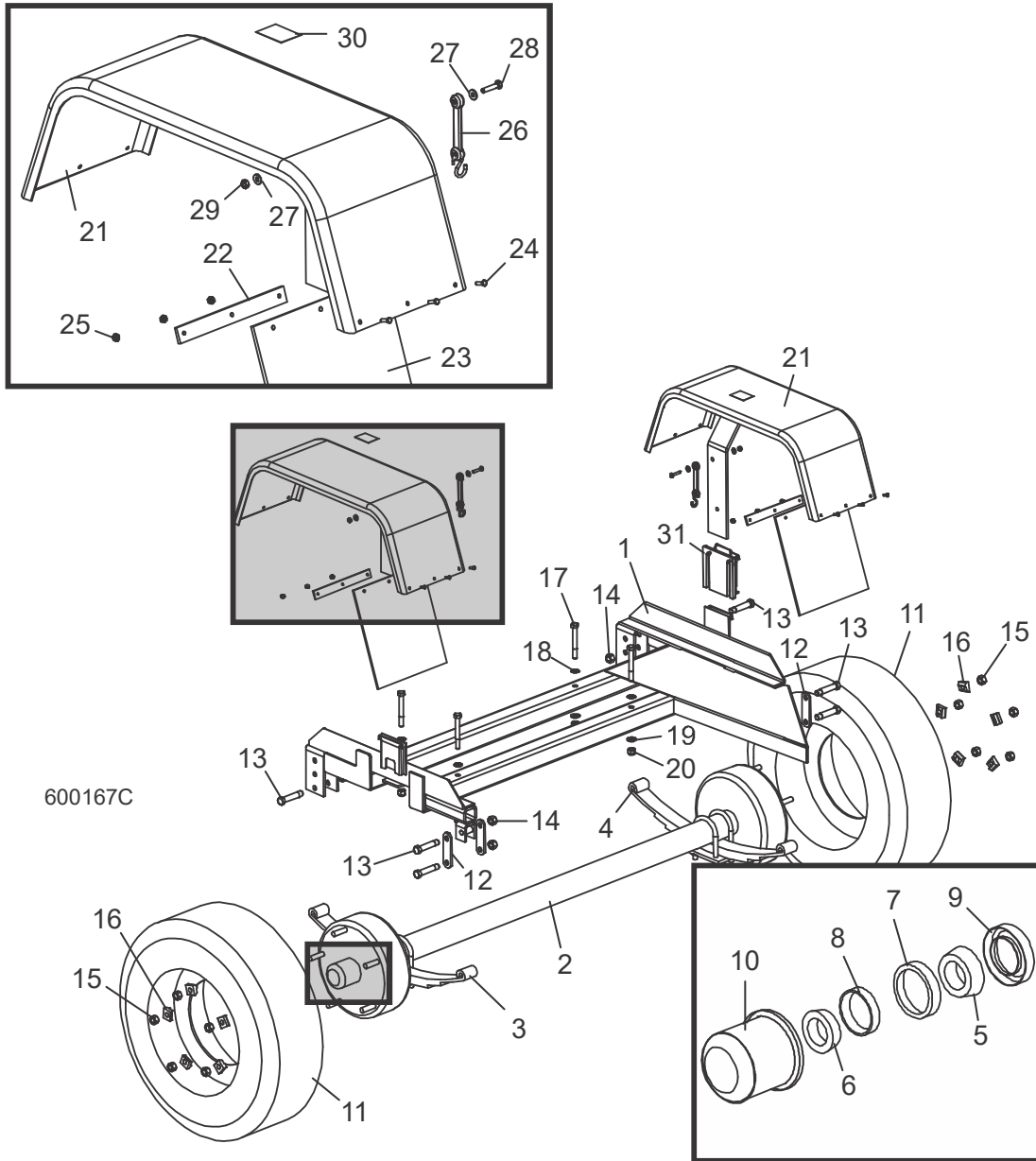
REF	PART #	DESCRIPTION	COMMENTS	QTY.
	014680	AXLE FRAME ASSEMBLY, SUPER ELECTRIC BRAKE		1
1	015204	Frame, Trailer Axle Super	Available in assemblies only.	1
	W09784	Mount Bracket, Trailer Fender (requires welding)		2
2	014676	Axle, 5200 Lb. Electric Brake Drop Super Dexter #29208		1
3	015695	Spring, 2600 Lb. Dexter Leaf Drive Side Dexter #72-75		1
4	015694	Spring, 3000 Lb. Dexter Leaf Idle Side Dexter #72-73		1
	015696	Bearing Kit, Sawmill Super Axle Spindle		1

REF	PART #	DESCRIPTION	COMMENTS	QTY.
5	015697	Bearing, Dexter #25580	Available in assemblies only.	1
6	015699	Bearing, Dexter #LM67048	Available in assemblies only.	1
7	015698	Race, Inner Dexter #25520	Available in assemblies only.	1
8	015700	Race, Outer Dexter #LM67010	Available in assemblies only.	1
9	015701	Seal, Wheel Bearing Dust Dexter #10-1		1
10	015702	Cap, Wheel Bearing Dust (Super) Dexter #21-1		2
11	015988	Wheel Assembly, Goodyear ST225/75R15		2
12	M07528	Plate, Trailer Axle Shackle		4
13	P04644	Bolt, 9/16-8 X 3" Shackle		6
14	P04643	Nut, 9/16-8 Shackle		6
15	P04646	Nut, 1/2-20 Lug		12
16	F05008-26	BOLT, 1/2-13 X 4" HEX HEAD GRADE 2		4
17	F05011-39	WASHER, 1/2" EXTERIOR STAR		4
18	F05011-2	WASHER, 1/2" SAE FLAT		4
19	F05010-8	NUT, 1/2-13 HEX NYLON LOCK		4
	015950	FENDER ASSEMBLY, SUPER W/MUD FLAP		2
20	015788	Fender Weldment, Trailer Wheel (Super Electric Brake)		1
21	015787	Plate, Mud Flap Retaining		1
22	015758	Flap, Mud		1
23	F05004-18	Screw, #10-24 x 5/8" Hex Head		3
24	F05010-14	Nut, #10-24 Self-Locking Hex		3
25	016542	Strap, 6" Rubber		2
26	F05011-11	Washer, 1/4" SAE Flat		2
27	F05005-3	Bolt, 1/4-20 x 1 1/4" Hex Head Full Thread		1
28	F05010-21	Nut, 1/4-20 Lock		1
29	S11761	DECAL, FENDER DAMAGE CAUTION		2
	P10287	DECAL, PINCH POINT DANGER		1
	076607	DECAL, REMOVE FENDERS (CONTROL BOX)		1

3

Parts Lists

Trailer Axle Assembly, Electric Brake



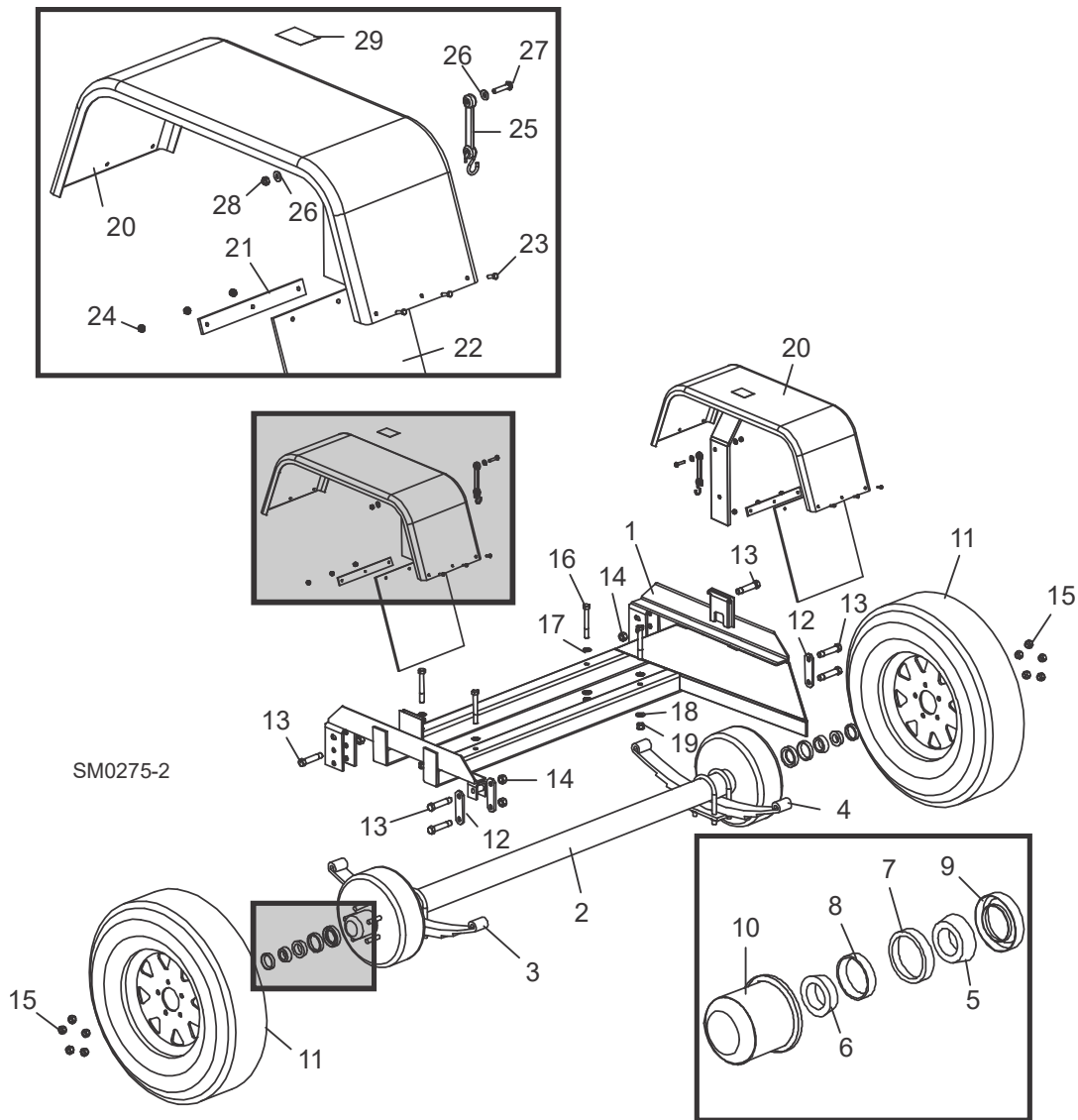
REF	PART #	DESCRIPTION	COMMENTS	QTY.
	N/A	AXLE FRAME ASSEMBLY, ELECTRIC BRAKE (LT70SUPER/LT70-R)		1
1	015204	Frame, Trailer Axle Super	Available in assemblies only.	1
	W09784	Mount Bracket, Trailer Fender (requires welding)		2
2	046062	Axle, 6000 Lb. Electric Brake Drop Super Dexter #52895		1
3	015694	Spring, 3000 Lb. Dexter Leaf Idle Side Dexter #72-73		1

REF	PART #	DESCRIPTION	COMMENTS	QTY.
4	015694	Spring, 3000 Lb. Dexter Leaf Idle Side Dexter #72-73		1
	036298	Bearing Kit, 6000 lb Axle Spindle		1
5	015697	Bearing, Dexter #25580	Available in assemblies only.	1
6	036296	Bearing, Dexter #15123	Available in assemblies only.	1
7	015698	Race, Inner Dexter #25520	Available in assemblies only.	1
8	036297	Race, Outer Dexter #15245	Available in assemblies only.	1
9	015701	Seal, Wheel Bearing Dust Dexter #10-1		1
10	015702	Cap, Wheel Bearing Dust (Super) Dexter #21-1		2
11	046063	Wheel Assembly, 8-14.5 12PR		2
12	M07528	Plate, Trailer Axle Shackle		4
13	P04644	Bolt, 9/16-8 X 3" Shackle		6
14	P04643	Nut, 9/16-8 Shackle		6
15	036279	Nut, 9/16-18 Lug #006-005-00		10
16	036280	Clamp, Rim #015-002-00		10
17	F05008-26	BOLT, 1/2-13 X 4" HEX HEAD GRADE 2		4
18	F05011-39	WASHER, 1/2" EXTERIOR STAR		4
19	F05011-2	WASHER, 1/2" SAE FLAT		4
20	F05010-8	NUT, 1/2-13 HEX NYLON LOCK		4
	015950	FENDER ASSEMBLY, SUPER W/MUD FLAP		2
21	015788	Fender Weldment, Trailer Wheel (Super Electric Brake)		1
22	015787	Plate, Mud Flap Retaining		1
23	015758	Flap, Mud		1
24	F05004-18	Screw, #10-24 x 5/8" Hex Head		3
25	F05010-14	Nut, #10-24 Self-Locking Hex		3
26	016542	Strap, 6" Rubber		2
27	F05011-11	Washer, 1/4" SAE Flat		2
28	F05005-3	Bolt, 1/4-20 x 1 1/4" Hex Head Full Thread		1
29	F05010-21	Nut, 1/4-20 Lock		1
30	S11761	DECAL, FENDER DAMAGE CAUTION		2
31	075521	MOUNT WELDMENT, FENDER SPACER (WIDE HEAD ONLY)		1
	P10287	DECAL, PINCH POINT DANGER		1
	076607	DECAL, REMOVE FENDERS (CONTROL BOX)		1

3 **Parts Lists**
Trailer Axle Assembly, Electric Brake

4.3 Trailer Axle Assembly, Electric Brake

LT70HD Remote Rev. A1.00 - A2.01



REF	PART #	DESCRIPTION	COMMENTS	QTY.
	N/A	AXLE FRAME ASSEMBLY, ELECTRIC BRAKE (LT70-R)		1
1	015204	Frame, Trailer Axle Super	Available in assemblies only.	1
	W09784	Mount Bracket, Trailer Fender (requires welding)		2
2	014676	Axle, 5200 Lb. Electric Brake Drop Super Dexter #29208		1

REF	PART #	DESCRIPTION	COMMENTS	QTY.
3	015695	Spring, 2600 Lb. Dexter Leaf Drive Side Dexter #72-75		1
4	015694	Spring, 3000 Lb. Dexter Leaf Idle Side Dexter #72-73		1
	015696	Bearing Kit, Sawmill Super Axle Spindle		1
5	015697	Bearing, Dexter #22580	Available in assemblies only.	1
6	015699	Bearing, Dexter #LM67048	Available in assemblies only.	1
7	015698	Race, Inner Dexter #25520	Available in assemblies only.	1
8	015700	Race, Outer Dexter #LM67010	Available in assemblies only.	1
9	015701	Seal, Wheel Bearing Dust Dexter #10-1		1
10	015702	Cap, Wheel Bearing Dust (Super) Dexter #21-1		2
11	036149	Wheel Assembly, LT225/75R16		2
12	M07528	Plate, Trailer Axle Shackle		4
13	P04644	Bolt, 9/16-8 X 3" Shackle		6
14	P04643	Nut, 9/16-8 Shackle		6
15	P04646	Nut, 1/2-20 Wheel Lug		10
16	F05008-26	BOLT, 1/2-13 X 4" HEX HEAD GRADE 2		4
17	F05011-39	WASHER, 1/2" EXTERIOR STAR		4
18	F05011-2	WASHER, 1/2" SAE FLAT		4
19	F05010-8	NUT, 1/2-13 HEX NYLON LOCK		4
	015950	FENDER ASSEMBLY, SUPER W/MUD FLAP		2
20	015788	Fender Weldment, Trailer Wheel (Super Electric Brake)		1
21	015787	Plate, Mud Flap Retaining		1
22	015758	Flap, Mud		1
23	F05004-18	Screw, #10-24 x 5/8" Hex Head		3
24	F05010-14	Nut, #10-24 Self-Locking Hex		3
25	016542	Strap, 6" Rubber		1
26	F05011-11	Washer, 1/4" SAE Flat		2
27	F05005-3	Bolt, 1/4-20 x 1 1/4" Hex Head Full Thread		1
28	F05010-21	Nut, 1/4-20 Lock		1
29	S11761	DECAL, FENDER DAMAGE CAUTION		2
	P10287	DECAL, PINCH POINT DANGER		1

3 Parts Lists

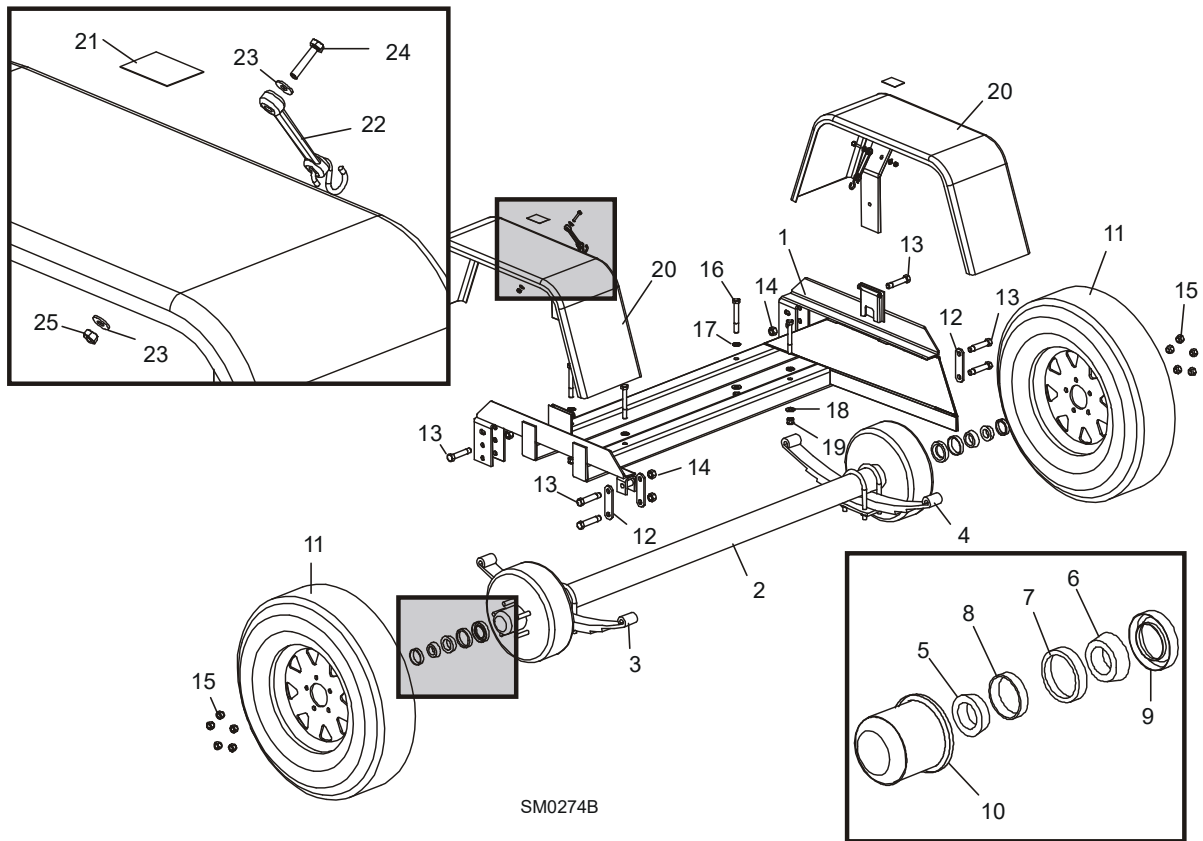
Trailer Axle Assembly, Surge Brake

4.4 Trailer Axle Assembly, Surge Brake

LT30 Super Rev. H4.00+
LT40 Super Rev. H5.00+

LT30HD Rev. H8.00+
LT40HD Rev. H8.00+

LT30HD Super Rev. H8.00+
LT40HD Super Rev. H8.00+
LT50HD Rev. A1.00+



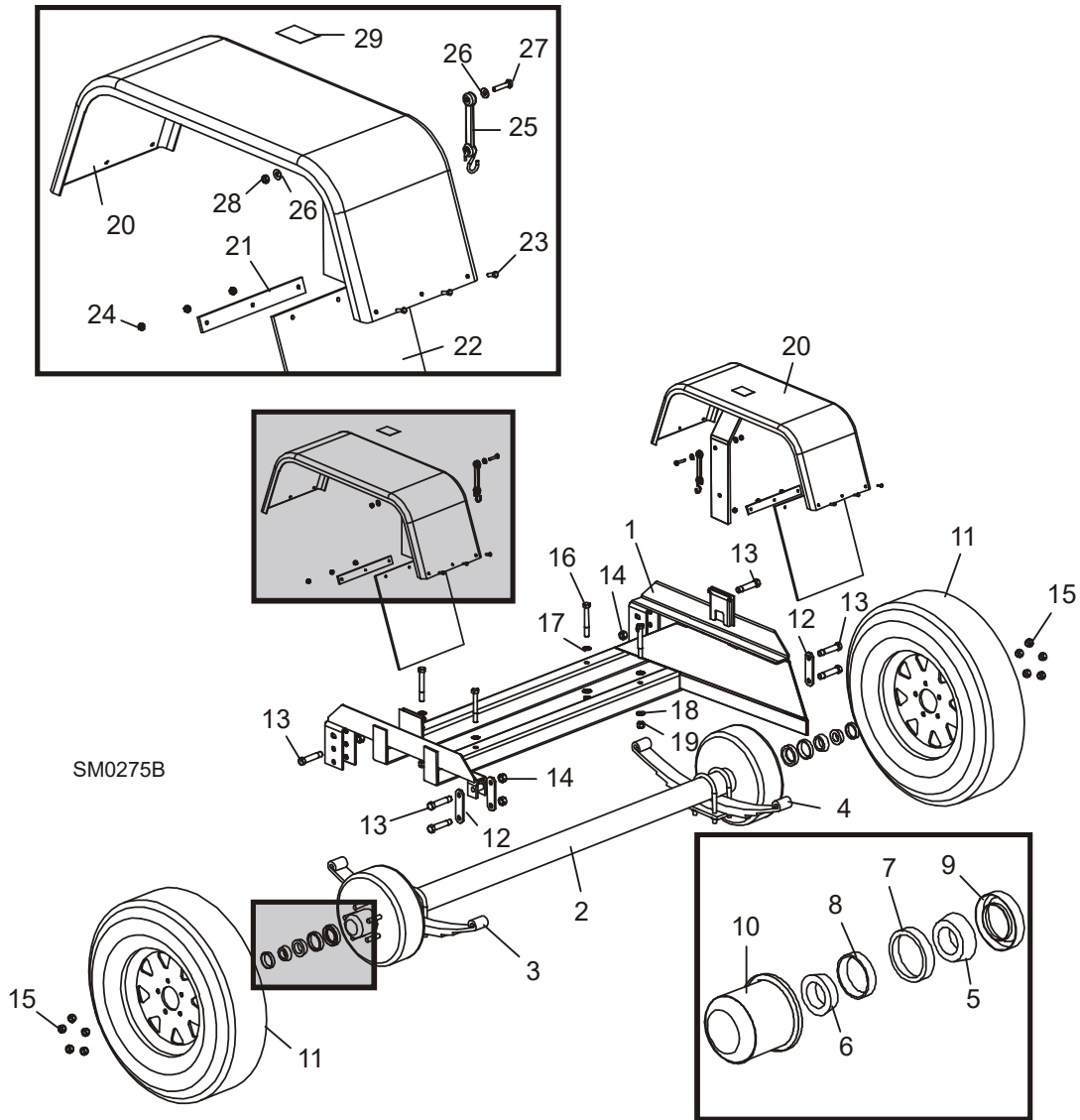
REF	PART #	DESCRIPTION	COMMENTS	QTY.
	K10048	PLUMBING KIT, LT30/60 LENGTH SURGE BRAKE		1
	K10049	PLUMBING KIT, LT40/70 LENGTH SURGE BRAKE		1
	014683	AXLE ASSEMBLY, 3500 LB SURGE BRAKE		1
1	W09751	Frame Weldment, Trailer Axle Painted	Available in assemblies only.	1

REF	PART #	DESCRIPTION	COMMENTS	QTY.
	W09784	Mount Bracket, Trailer Fender (requires welding)		2
2	P09801	Axle, 3500 Lb With Springs And Surge Brakes		1
3	P09612	Spring, 2000 Lb. Dexter Leaf		1
4	014586	Spring, 2500 Lb. Dexter Leaf		1
	K07549	Bearing Kit, Sawmill Axle Spindle		1
5	P22573-1	Bearing, Dexter #L68149	Available in assemblies only.	1
6	P22572-1	Bearing, Dexter #L44649	Available in assemblies only.	1
7	P22572-2	Race, Inner Dexter #6811	Available in assemblies only.	1
8	P22573-2	Race, Outer Dexter #L44610		1
9	P07554	Seal, 13" Wheel Bearing Dust		1
10	P04493	Cap, Wheel Bearing Dust		2
	010180	Shoe/Lining Kit, 10" x 2 1/4" Brake		2
11	015987	Wheel Assembly, Goodyear ST215/75R14		2
12	M07528	Plate, Trailer Axle Shackle		4
13	P04644	Bolt, 9/16-8 X 3" Shackle		6
14	P04643	Nut, 9/16-8 Shackle		6
15	P04646	Nut, 1/2-20 Wheel Lug		10
16	F05008-26	BOLT, 1/2-13 X 4" HEX HEAD		4
17	F05011-39	WASHER, 1/2" EXTERIOR STAR		4
18	F05011-2	WASHER, 1/2" SAE FLAT		4
19	F05010-8	NUT, 1/2-13 HEX NYLON LOCK		4
20	W11452	FENDER WELDMENT, TRAILER WHEEL		2
21	S11761	DECAL, FENDER DAMAGE CAUTION		2
22	016542	STRAP, 6" RUBBER		4
23	F05011-11	WASHER, 1/4" SAE FLAT		4
24	F05005-3	BOLT, 1/4-20 X 1 1/4" HEX HEAD FULL THREAD		2
25	F05010-21	NUT, 1/4-20 LOCK		2
	P10287	DECAL, PINCH POINT DANGER		1
	076607	DECAL, REMOVE FENDERS (CONTROL BOX)		1

3

Parts Lists

Trailer Axle Assembly, Surge Brake



REF	PART #	DESCRIPTION	COMMENTS	QTY.
	K10048	PLUMBING KIT, LT30/60 LENGTH SURGE BRAKE		1
	K10049	PLUMBING KIT, LT40/70 LENGTH SURGE BRAKE		1
		AXLE ASSEMBLY, 5200 LB SURGE BRAKE (LT70-R)		1
	014681	AXLE ASSEMBLY, 5200 LB SURGE BRAKE		1
1	015204	Frame Weldment, Trailer Axle Painted (SUPER SURGE BRAKE)	Available in assemblies only.	1
	W09784	Mount Bracket, Trailer Fender (requires welding)		2

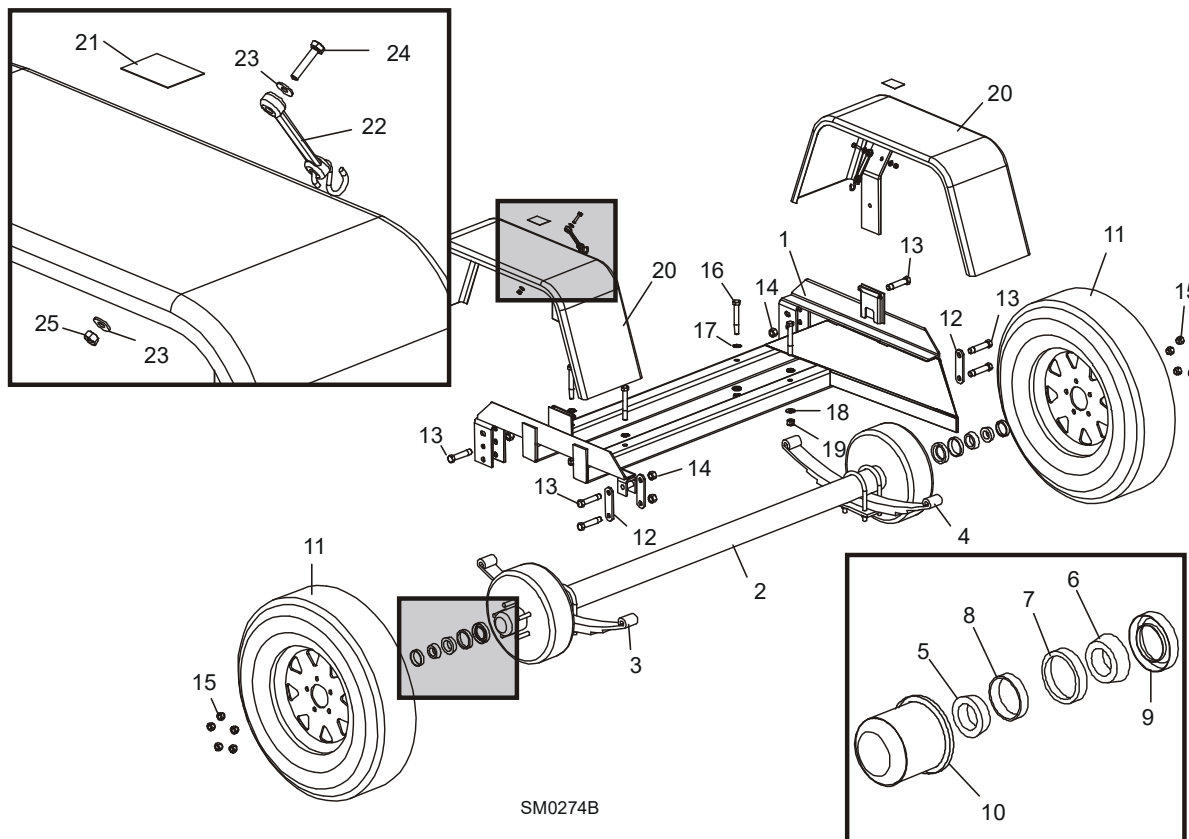
REF	PART #	DESCRIPTION	COMMENTS	QTY.
2	014679	Axle, 5200 Lb Drop Surge (SUPER SURGE BRAKE)		1
3	015695	Spring, 2600 Lb. Dexter Leaf Drive Side (SUPER SURGE BRAKE)		1
4	015694	Spring, 3000 Lb. Dexter Leaf Idle Side (SUPER SURGE BRAKE)		1
	015696	Bearing Kit, Sawmill Axle Spindle (SUPER SURGE BRAKE)		1
5	015697	Bearing, Dexter #22580	Available in assemblies only.	1
6	015699	Bearing, Dexter #LM67048	Available in assemblies only.	1
7	015698	Race, Inner Dexter #25520	Available in assemblies only.	1
8	015700	Race, Outer Dexter #LM67010	Available in assemblies only.	1
9	015701	Seal, Wheel Bearing Dust Dexter #10-1		1
10	015702	Cap, Wheel Bearing Dust (SUPER SURGE BRAKE)		2
	010180	Shoe/Lining Kit, 10" x 2 1/4" Brake		2
11	015988	Wheel Assembly, Goodyear ST225/75R15 (SUPER SURGE BRAKE)		2
12	M07528	Plate, Trailer Axle Shackle		4
13	P04644	Bolt, 9/16-8 X 3" Shackle		6
14	P04643	Nut, 9/16-8 Shackle		6
15	P04646	Nut, 1/2-20 Wheel Lug		10
16	F05008-26	BOLT, 1/2-13 X 4" HEX HEAD		4
17	F05011-39	WASHER, 1/2" EXTERIOR STAR		4
18	F05011-2	WASHER, 1/2" SAE FLAT		4
19	F05010-8	NUT, 1/2-13 HEX NYLON LOCK		4
	015950	FENDER ASSEMBLY, SUPER W/MUD FLAP		2
20	015788	Fender Weldment, Trailer Wheel (Super Surge Brake)		2
21	015787	Plate, Mud Flap Retaining		2
22	015758	Flap, Mud		2
23	F05004-18	Screw, #10-24 x 5/8" Hex Head		6
24	F05010-14	Nut, #10-24 Self-Locking Hex		6
25	016542	Strap, 6" Rubber		2
26	F05011-11	Washer, 1/4" SAE Flat		2
27	F05005-3	Bolt, 1/4-20 x 1 1/4" Hex Head Full Thread		1
28	F05010-21	Nut, 1/4-20 Lock		1
29	S11761	DECAL, FENDER DAMAGE CAUTION		2
	P10287	DECAL, PINCH POINT DANGER		1
	076607	DECAL, REMOVE FENDERS (CONTROL BOX)		1

3 Parts Lists

Trailer Axle Assembly, Standard

4.5 Trailer Axle Assembly, Standard

LT25/LT27Rev. D7.00+
 LT30Rev. H5.00+
 LT40Rev. H6.00+
 LT28Rev. A1.00+



REF	PART #	DESCRIPTION	COMMENTS	QTY.
	014684	AXLE FRAME ASSEMBLY, STANDARD		1
1	W09751	Frame, Trailer Axle	Available in assemblies only.	1
	W09784	Mount Bracket, Trailer Fender (requires welding)		2
2	P09772	Axle, 3500 Lb. With Springs		1
3	P09612	Spring, 2000 Lb. Dexter Leaf		1
4	014586	Spring, 2500 Lb. Dexter Leaf		1
	K07549	Bearing Kit, Sawmill Axle Spindle		1
5	P22573-1	Bearing, Dexter #L44649	Available in assemblies only.	1
6	P22572-1	Bearing, Dexter #L68149	Available in assemblies only.	1
7	P22572-2	Race, Inner Dexter #L68111	Available in assemblies only.	1

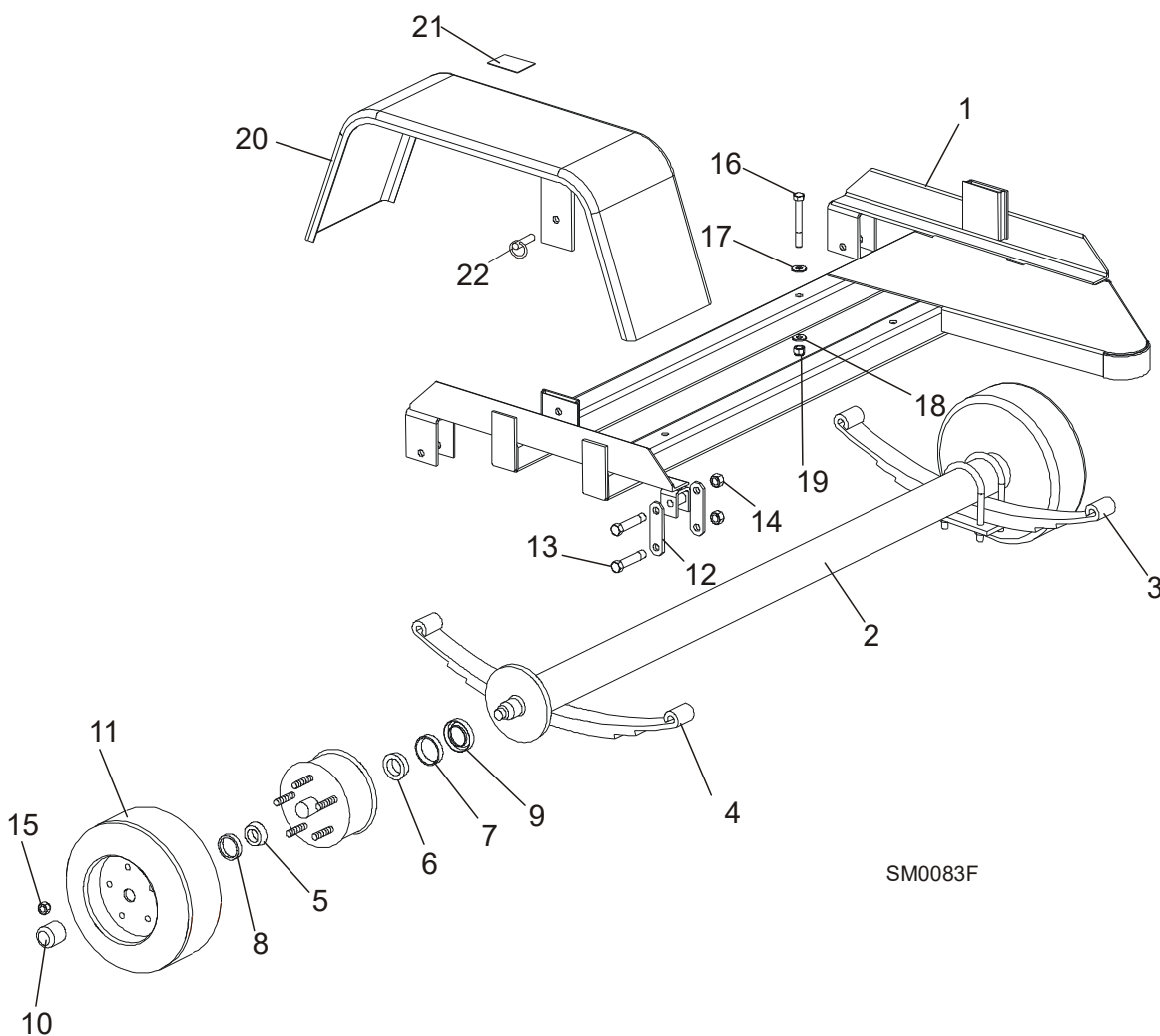
REF	PART #	DESCRIPTION	COMMENTS	QTY.
8	P22573-2	Race, Outer Dexter #L44610	Available in assemblies only.	1
9	P07554	Seal, 13" Wheel Bearing Dust		1
10	P04493	Cap, Wheel Bearing Dust		2
11	015987	Wheel Assembly, Goodyear ST215/75R14		2
12	M07528	Plate, Trailer Axle Shackle		4
13	P04644	Bolt, 9/16-8 X 3" Shackle		6
14	P04643	Nut, 9/16-8 Shackle		6
15	P04646	Nut, 1/2-20 Wheel Lug		10
16	F05008-26	BOLT, 1/2-13 X 4" HEX HEAD GRADE 2		4
17	F05011-39	WASHER, 1/2" EXTERIOR STAR		4
18	F05011-2	WASHER, 1/2" SAE FLAT		4
19	F05010-8	NUT, 1/2-13 HEX NYLON LOCK		4
20	W11452	FENDER, TRAILER WHEEL		2
21	S11761	DECAL, FENDER DAMAGE CAUTION		2
22	016542	STRAP, 6" RUBBER		4
23	F05011-11	WASHER, 1/4" SAE FLAT		4
24	F05005-3	BOLT, 1/4-20 X 1 1/4" HEX HEAD FULL THREAD		2
25	F05010-21	NUT, 1/4-20 LOCK		2

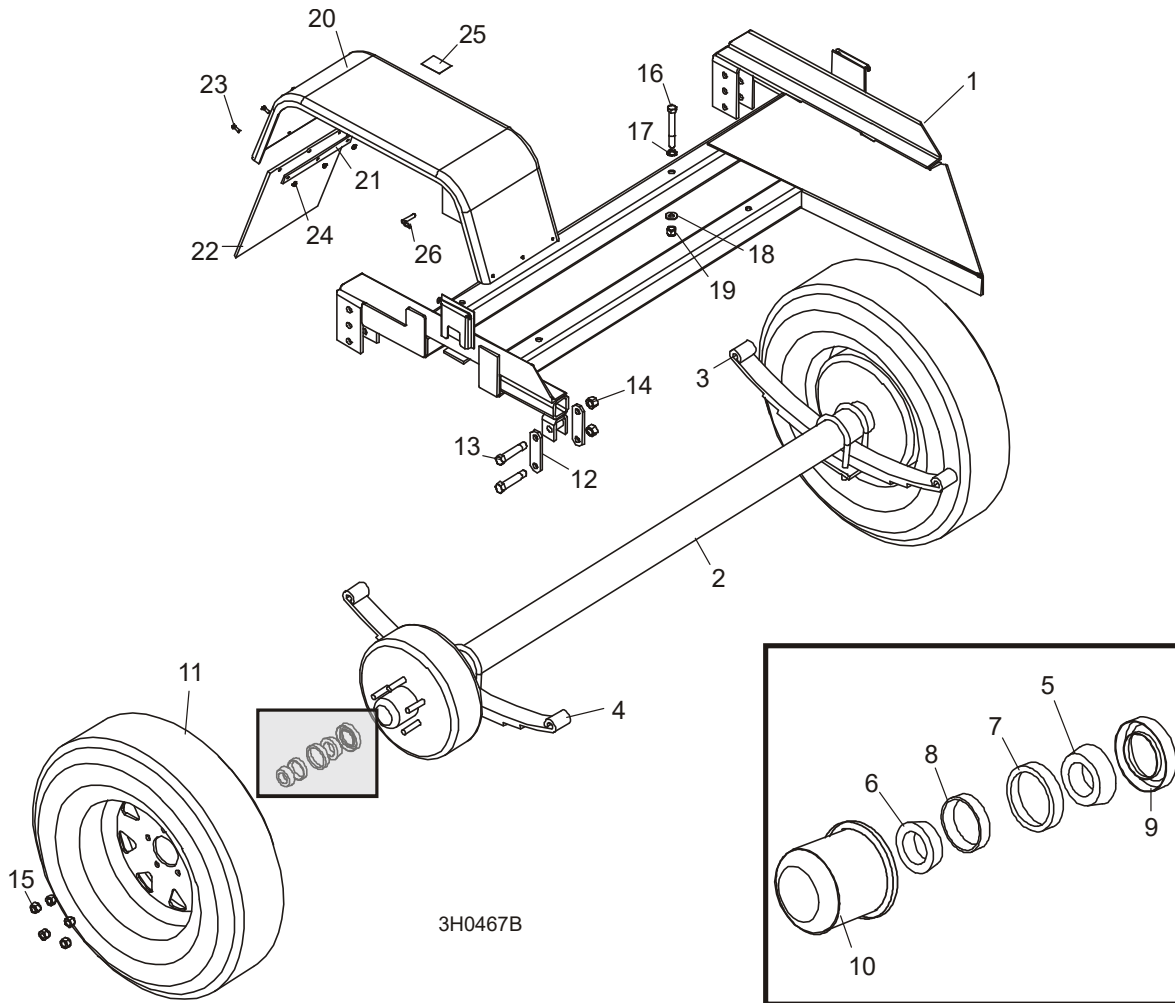
4.6 Trailer Axle Assembly, Electric Brake

LT30 Super Rev. F7.00 - H3.00
LT40 Super Rev. F8.00 - H4.00

LT30HD Rev. G1.00 - H7.00
LT40HD Rev. G1.00 - H7.00

LT30HD Super Rev. G1.00 - H7.00
LT40HD Super Rev. G1.00 - H7.00





REF	PART #	DESCRIPTION	COMMENTS	QTY.
	014682	AXLE FRAME ASSEMBLY, ELECTRIC BRAKE		1
	014680	AXLE FRAME ASSEMBLY, SUPER ELECTRIC BRAKE		1
1	W09751	Frame, Trailer Axle	Available in assemblies only.	1
1	015204	Frame, Trailer Axle Super	Available in assemblies only.	1
	W09784	Mount Bracket, Trailer Fender (requires welding)		2
2	012975	Axle, 3500 Lb. Electric Brake With Springs Dexter 25209		1
3	014676	Axle, 5200 Lb. Electric Brake Drop Super Dexter #29208		1
4	P09612	Spring, 2000 Lb. Dexter Leaf Idle Side Replacement Dexter #072-024-00		1

3

Parts Lists

Trailer Axle Assembly, Electric Brake

REF	PART #	DESCRIPTION	COMMENTS	QTY.
5	015694	Spring, 3000 Lb. Dexter Leaf Idle Side Dexter #72-73		1
6	014586	Spring, 2500 Lb. Dexter Leaf Drive Side Replacement Dexter #72-74		1
7	015695	Spring, 2600 Lb. Dexter Leaf Drive Side Dexter #72-75		1
	K07549	Bearing Kit, Sawmill Axle Spindle		1
8	P22573-1	Bearing, Dexter #L44649	Available in assemblies only.	1
9	P22572-1	Bearing, Dexter #L68149	Available in assemblies only.	1
10	P22572-2	Race, Inner Dexter #L68111	Available in assemblies only.	1
11	P22573-2	Race, Outer Dexter #L44610	Available in assemblies only.	1
12	P07554	Seal, 13" Wheel Bearing Dust Dexter #010-004-00		1
	015696	Bearing Kit, Sawmill Super Axle Spindle		1
13	015697	Bearing, Dexter #22580	Available in assemblies only.	1
14	015699	Bearing, Dexter #LM67048	Available in assemblies only.	1
15	015698	Race, Inner Dexter #25520	Available in assemblies only.	1
16	015700	Race, Outer Dexter #LM67010	Available in assemblies only.	1
17	015701	Seal, Wheel Bearing Dust Dexter #10-1		1
18	015702	Cap, Wheel Bearing Dust (Super) Dexter #21-1		2
19	P04493	Cap, Wheel Bearing Dust Dexter #21-3		2
20	015988	Wheel Assembly, Goodyear ST225/75R15	015988 wheel assembly replaces H78x15 LRD wheel assembly (015448) originally supplied before LT30HD/40HD Super Rev. G7.00.	2
21	015987	Wheel Assembly, Goodyear ST215/75R14	Use 015987 wheel for LT30 Super Rev. G3.00, LT40 Super Rev.G4.00, LT30HD/40HD Rev. G6.00 and later. Use 014677 for previous revisions or upgrade both wheel assemblies to 015987 to ensure proper mill tracking. (The wheel types have slightly different diameters.)	2
	014677	Wheel Assembly, LT185R14 D		2
22	M07528	Plate, Trailer Axle Shackle		4
23	P04644	Bolt, 9/16-8 X 3" Shackle		6
24	P04643	Nut, 9/16-8 Shackle		6
25	P04646	Nut, 1/2-20 Wheel Lug		10
26	F05008-26	BOLT, 1/2-13 X 4" HEX HEAD GRADE 2		4
27	F05011-39	WASHER, 1/2" EXTERIOR STAR		4
28	F05011-2	WASHER, 1/2" SAE FLAT		4
29	F05010-8	NUT, 1/2-13 HEX NYLON LOCK		4
30	W11452	FENDER WELDMENT, TRAILER WHEEL		2
	015950	FENDER ASSEMBLY, SUPER W/MUD FLAP		2

REF	PART #	DESCRIPTION	COMMENTS	QTY.
31	015788	Fender Weldment, Trailer Wheel (Super Electric Brake)	Fender revised to increase clearance between brace and tire; mud flaps added. Replaces 015112 originally supplied until LT30 Super rev. F9, LT40 Super rev. G1, LT30HD Super and LT40HD Super rev. G3.	2
32	015787	Plate, Mud Flap Retaining		2
33	015758	Flap, Mud		2
34	F05004-18	Screw, #10-24 x 5/8" Hex Head		6
35	F05010-14	Nut, #10-24 Self-Locking Hex		6
36	S11761	DECAL, FENDER DAMAGE CAUTION		2
	P10287	DECAL, PINCH POINT DANGER		1
37	F05012-45	PIN, 5/16" X 1" DETAINING		2

4.7 Trailer Axle Assembly, Surge Brake

LT30 Super Rev. F7.00 - H3.00

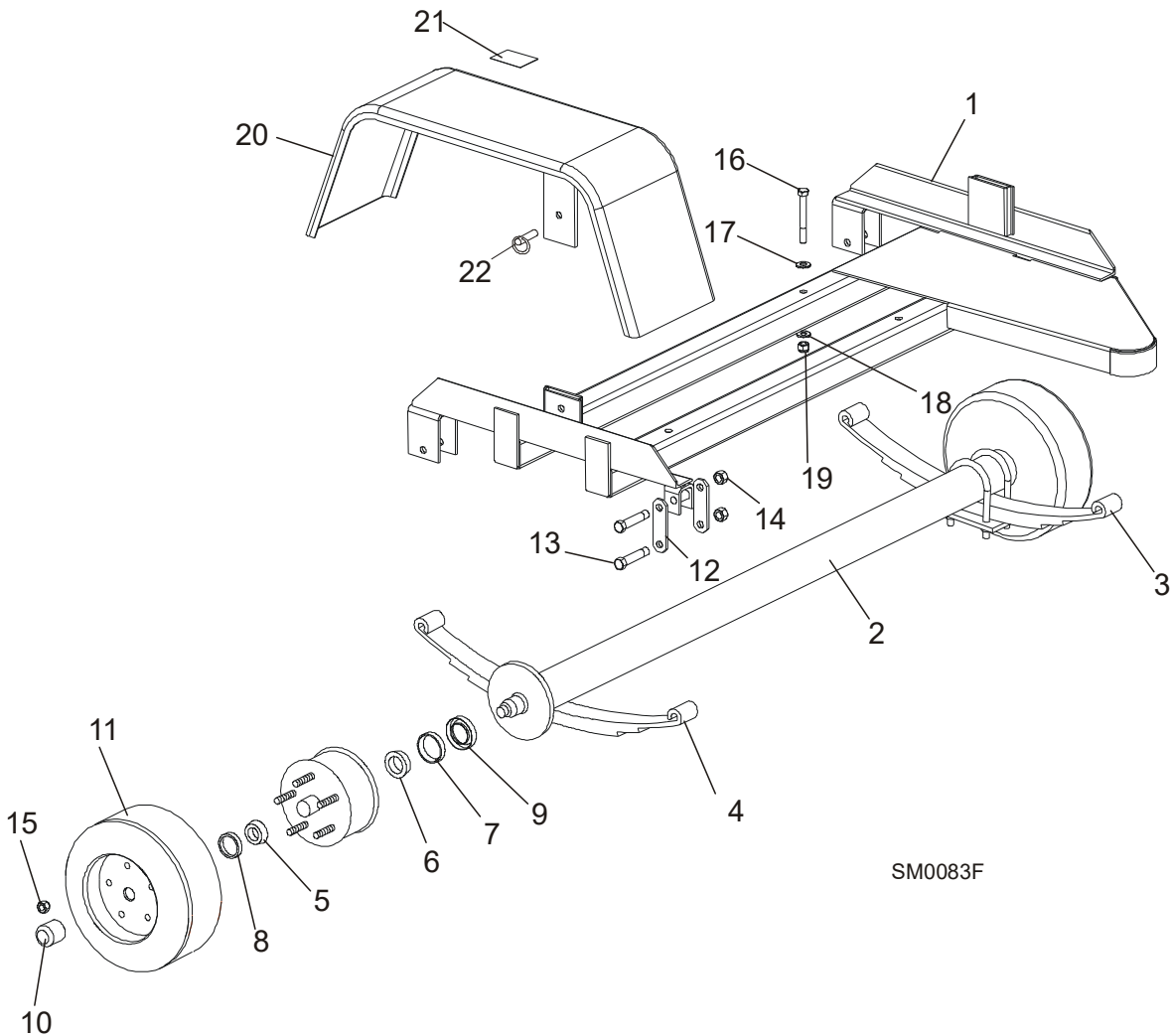
LT40 Super Rev. F8.00 - H4.00

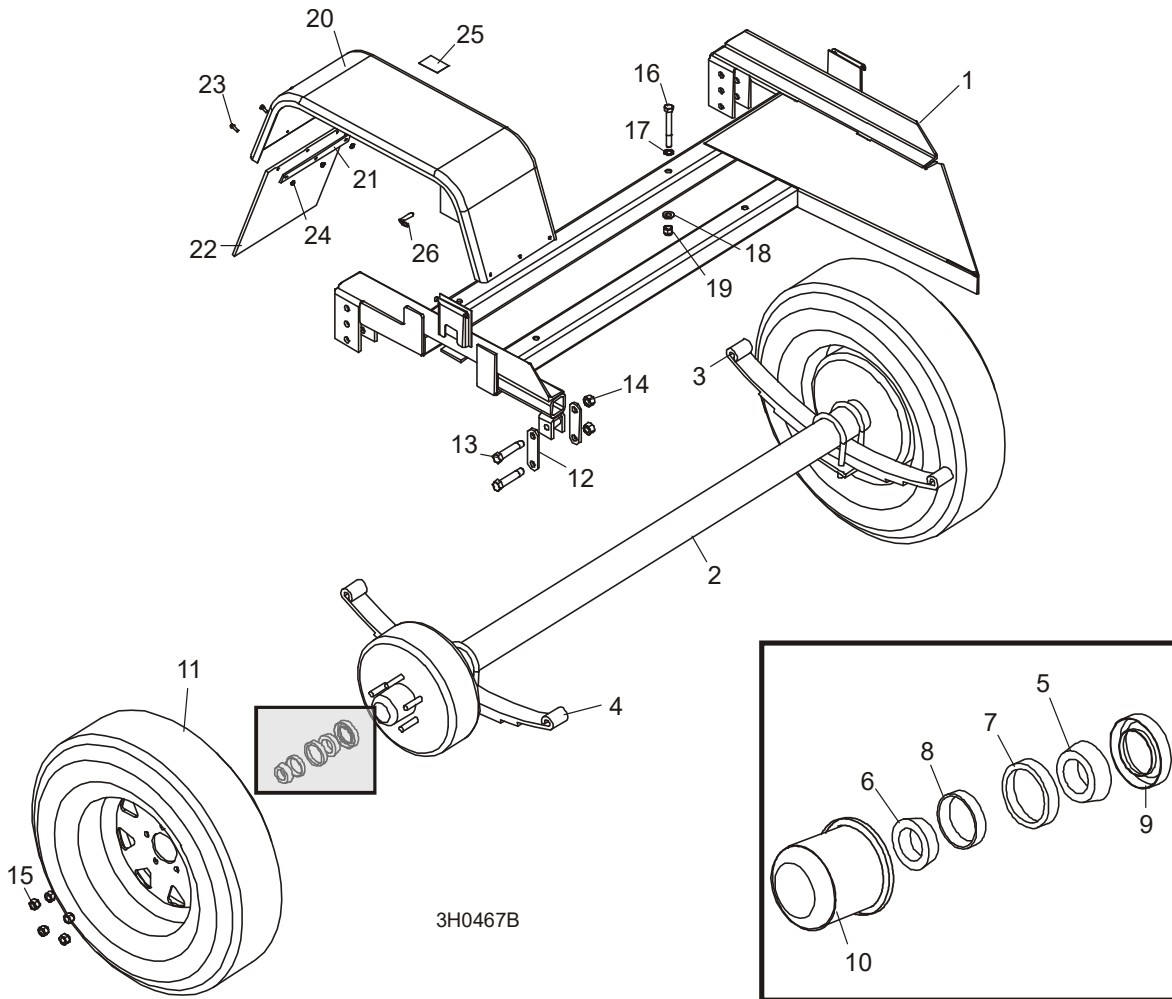
LT30HD Rev. G1.00 - H7.00

LT40HD Rev. G1.00 - H7.00

LT30HD Super Rev. G1.00 - H7.00

LT40HD Super Rev. G1.00 - H7.00





REF	PART #	DESCRIPTION	COMMENTS	QTY.
	K10048	PLUMBING KIT, LT30/60 LENGTH SURGE BRAKE		1
	K10049	PLUMBING KIT, LT40/70 LENGTH SURGE BRAKE		1
	014681	AXLE ASSEMBLY, 5200 LB SURGE BRAKE		1
	014683	AXLE ASSEMBLY, 3500 LB SURGE BRAKE		1
1	015204	Frame Weldment, Trailer Axle Painted (SUPER SURGE BRAKE)	Available in assemblies only.	1
1	W09751	Frame Weldment, Trailer Axle Painted	Available in assemblies only.	1
	W09784	Mount Bracket, Trailer Fender (requires welding)		2
2	014679	Axle, 5200 Lb Drop Surge (SUPER SURGE BRAKE)		1
3	P09801	Axle, 3500 Lb With Springs And Surge Brakes		1

3

Parts Lists

Trailer Axle Assembly, Surge Brake

REF	PART #	DESCRIPTION	COMMENTS	QTY.
4	015694	Spring, 3000 Lb. Dexter Leaf Idle Side (SUPER SURGE BRAKE)		1
5	P09612	Spring, 2000 Lb. Dexter Leaf		1
6	015695	Spring, 2600 Lb. Dexter Leaf Drive Side (SUPER SURGE BRAKE)		1
7	014586	Spring, 2500 Lb. Dexter Leaf		1
	K07549	Bearing Kit, Sawmill Axle Spindle		1
8	P22573-1	Bearing, Dexter #L68149	Available in assemblies only.	1
9	P22572-1	Bearing, Dexter #L44649	Available in assemblies only.	1
10	P22572-2	Race, Inner Dexter #6811	Available in assemblies only.	1
11	P22573-2	Race, Outer Dexter #L44610		1
12	P07554	Seal, 13" Wheel Bearing Dust		1
	015696	Bearing Kit, Sawmill Axle Spindle (SUPER SURGE BRAKE)		1
13	015697	Bearing, Dexter #22580	Available in assemblies only.	1
14	015699	Bearing, Dexter #LM67048	Available in assemblies only.	1
15	015698	Race, Inner Dexter #25520	Available in assemblies only.	1
16	015700	Race, Outer Dexter #LM67010	Available in assemblies only.	1
17	015701	Seal, Wheel Bearing Dust Dexter #10-1		1
18	015702	Cap, Wheel Bearing Dust (SUPER SURGE BRAKE)		2
19	P04493	Cap, Wheel Bearing Dust		2
	010180	Shoe/Lining Kit, 10" x 2 1/4" Brake		2
20	015988	Wheel Assembly, Goodyear ST225/75R15 (SUPER SURGE BRAKE)	015988 wheel assembly replaces H78x15 LRD wheel assembly (015448) originally supplied before LT30HD/40HD Super Rev. G7.00.	2
21	015987	Wheel Assembly, Goodyear ST215/75R14	Use 015987 wheel for LT30 Super Rev. G3.00, LT40 Super Rev. G4.00, LT30HD/40HD Rev. G6.00 and later. Use 014677 for previous revisions or upgrade both wheel assemblies to 015987 to ensure proper mill tracking. (The wheel types have slightly different diameters.)	2
	014677	Wheel Assembly, LT185R14 D		2
22	M07528	Plate, Trailer Axle Shackle		4
23	P04644	Bolt, 9/16-8 X 3" Shackle		6
24	P04643	Nut, 9/16-8 Shackle		6
25	P04646	Nut, 1/2-20 Wheel Lug		10
26	F05008-26	BOLT, 1/2-13 X 4" HEX HEAD		4
	F05011-39	WASHER, 1/2" EXTERIOR STAR		4
27	F05011-2	WASHER, 1/2" SAE FLAT		4
28	F05010-8	NUT, 1/2-13 HEX NYLON LOCK		4

REF	PART #	DESCRIPTION	COMMENTS	QTY.
29	W11452	FENDER WELDMENT, TRAILER WHEEL		2
	015950	FENDER ASSEMBLY, SUPER W/MUD FLAP		2
30	015788	Fender Weldment, Trailer Wheel (Super Surge Brake)	Fender revised to increase clearance between brace and tire; mud flaps added. Replaces 015112 originally supplied until LT30 Super rev. F9, LT40 Super rev. G1, LT30HD Super and LT40HD Super rev. G3.	2
31	015787	Plate, Mud Flap Retaining		2
32	015758	Flap, Mud		2
33	F05004-18	Screw, #10-24 x 5/8" Hex Head		6
34	F05010-14	Nut, #10-24 Self-Locking Hex		6
35	S11761	DECAL, FENDER DAMAGE CAUTION		2
	F05012-45	PIN, 5/16" X 1" DETAINING		2

3 Parts Lists

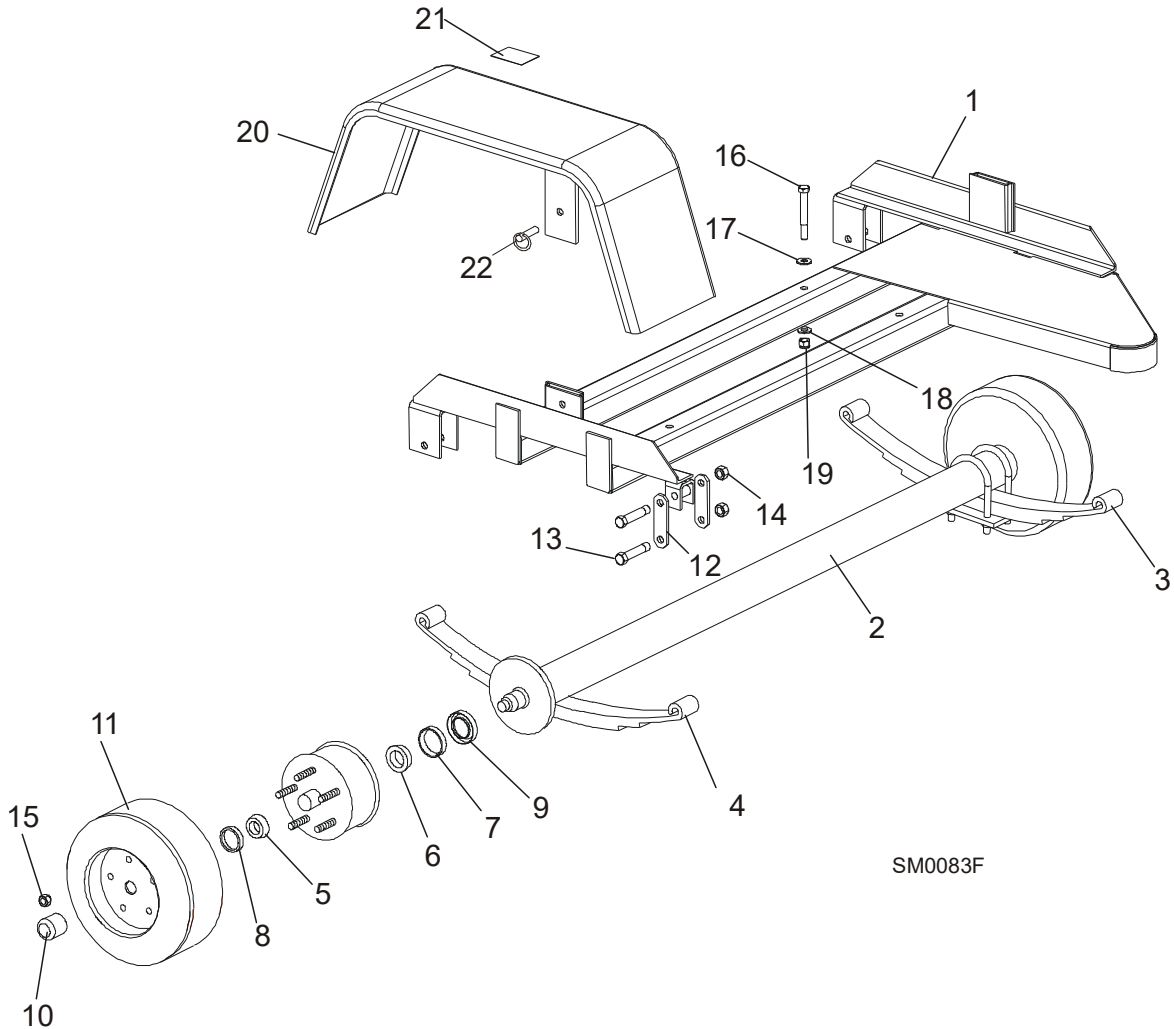
Trailer Axle Assembly, Standard

4.8 Trailer Axle Assembly, Standard

LT25Rev. C2.00 - D6.00

LT30Rev. F7.00 - H4.00

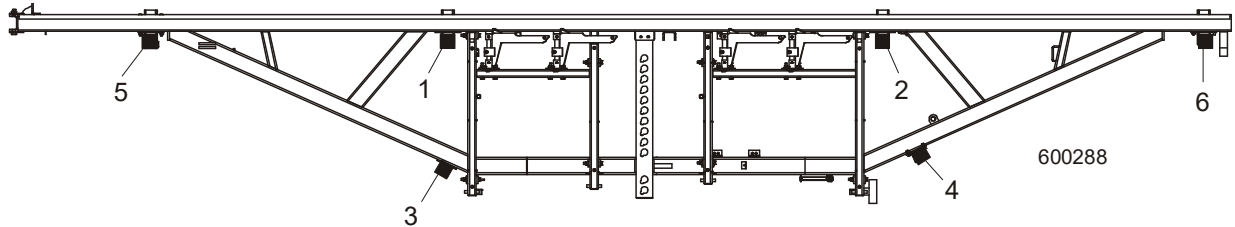
LT40Rev. F8.00 - H5.00



REF	PART #	DESCRIPTION	COMMENTS	QTY.
	014684	AXLE FRAME ASSEMBLY, STANDARD		1
1	W09751	Frame, Trailer Axle	Available in assemblies only.	1
	W09784	Mount Bracket, Trailer Fender (requires welding)		2
2	P09772	Axle, 3500 Lb. With Springs		1
3	P09612	Spring, 2000 Lb. Dexter Leaf		1
4	014586	Spring, 2500 Lb. Dexter Leaf		1

REF	PART #	DESCRIPTION	COMMENTS	QTY.
	K07549	Bearing Kit, Sawmill Axle Spindle		1
5	P22573-1	Bearing, Dexter #L44649	Available in assemblies only.	1
6	P22572-1	Bearing, Dexter #L68149	Available in assemblies only.	1
7	P22572-2	Race, Inner Dexter #L68111	Available in assemblies only.	1
8	P22573-2	Race, Outer Dexter #L44610	Available in assemblies only.	1
9	P07554	Seal, 13" Wheel Bearing Dust		1
10	P04493	Cap, Wheel Bearing Dust		2
11	015987	Wheel Assembly, Goodyear ST215/75R14	Use 015987 wheel for LT25 Rev. C6.00, LT30 Rev. G3.00, LT40 Rev.G4.00 and later. Use 014677 for previous revisions or upgrade both wheel assemblies to 015987 to ensure proper mill tracking. (The wheel types have slightly different diameters.)	2
	014677	Wheel Assembly, LT185R14 D		2
12	M07528	Plate, Trailer Axle Shackle		4
13	P04644	Bolt, 9/16-8 X 3" Shackle		6
14	P04643	Nut, 9/16-8 Shackle		6
15	P04646	Nut, 1/2-20 Wheel Lug		10
16	F05008-26	BOLT, 1/2-13 X 4" HEX HEAD GRADE 2		4
17	F05011-39	WASHER, 1/2" EXTERIOR STAR		4
18	F05011-2	WASHER, 1/2" SAE FLAT		4
19	F05010-8	NUT, 1/2-13 HEX NYLON LOCK		4
20	W11452	FENDER, TRAILER WHEEL		2
21	S11761	DECAL, FENDER DAMAGE CAUTION		2
22	F05012-45	PIN, 5/16" X 1" DETAINING		2

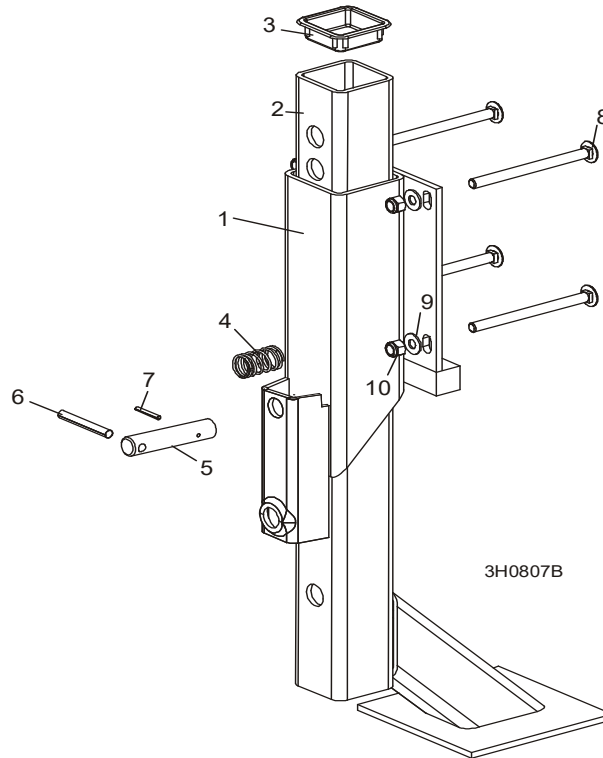
4.9 Outriggers



REF	PART #	DESCRIPTION	COMMENTS	QTY.
1	012997	OUTRIGGER ASSEMBLY, LONG (See Section 4.11)		1
2	012997	OUTRIGGER ASSEMBLY, LONG (See Section 4.11)		1
3	A04278	OUTRIGGER ASSEMBLY, SHORT (See Section 4.14)		1
4	A09475	OUTRIGGER ASSEMBLY, SHORT W/JACK HOLDER (See Section 4.18)		1
5	003944	OUTRIGGER ASSEMBLY, FRONT ADJUSTABLE (See Section 4.13)		1
6	A12083	OUTRIGGER ASSEMBLY, LONG REAR (See Section 4.16)		1

4.10

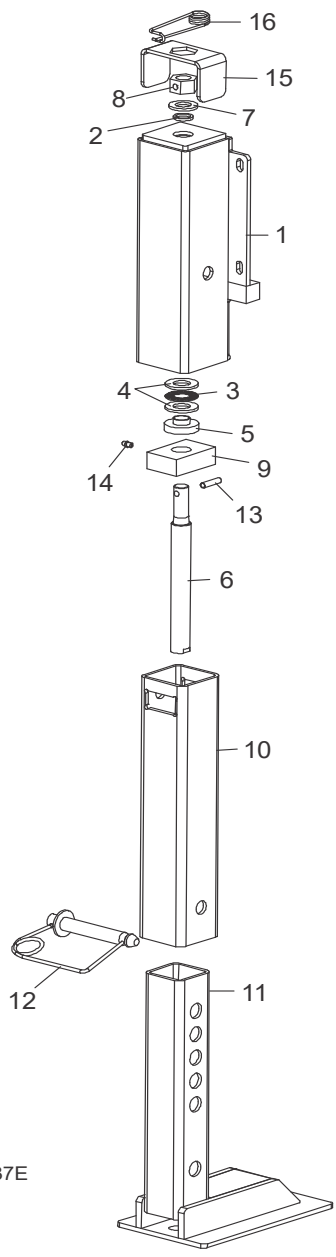
4.11 Outrigger Assembly, Long (LT70HD & Remote)



REF	PART #	DESCRIPTION	COMMENTS	QTY.
	012997	OUTRIGGER ASSEMBLY, LONG		1/2
1	012996	Guide, Long Outrigger Guide		1
2	016401	Leg, Outrigger		1
3	P09926	Cap, Outrigger Leg		1
4	016145	Spring, Outrigger Pin		1
	016148	Pin Kit, 3/4" Outrigger Pull		1
5	016147	Pin, 3/4" Outrigger Pull	Available in assemblies only.	1
6	F05012-47	Pin, 5/16" X 2 1/2" Roll		1
7	F05012-103	Pin, 3/16" X 1 3/4" Roll		1
	F05012-59	Pin, 1/8" x 1 1/4" Cotter		1
8	F05007-113	BOLT, 3/8-16 X 5" CARRIAGE HEAD		4/8
9	F05011-3	WASHER, 3/8" SAE FLAT		4/8
10	F05010-10	NUT, 3/8-16 HEX NYLON LOCK		4/8

4 **Parts List**
Outrigger Assembly, Offset (LT50 w/FAO Only)

4.12 Outrigger Assembly, Offset (LT50 w/FAO Only)



SM0337E

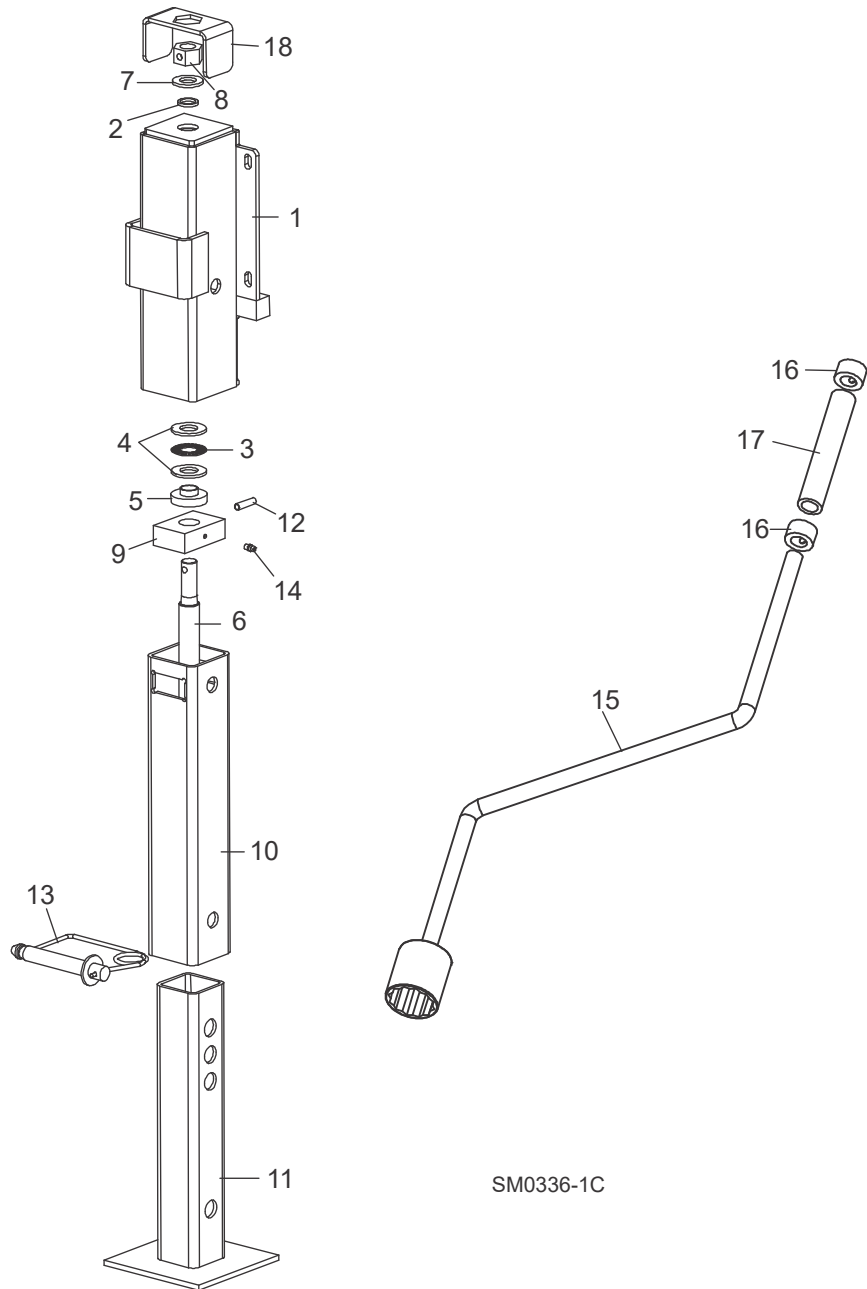
REF	PART #	DESCRIPTION	COMMENTS	QTY.
	056787	OUTRIGGER ASSEMBLY, OFFSET ADJUSTABLE		2
1	003945	Mount Weldment, Offset Adjustable Outrigger		1
2	039641	Seal, Outrigger Acme Screw		1
	039639	Bearing Assembly, Adjustable Outrigger Thrust		1
3	039637	Bearing, Needle-Roller Thrust		1

Outrigger Assembly, Offset (LT50 w/FAO Only)

REF	PART #	DESCRIPTION	COMMENTS	QTY.
4	039638	Washer, Thrust Bearing		2
5	039645	Sleeve, Outrigger Acme Screw		1
6	039642	Screw, 1-5 Adjustable Outrigger Long Acme		1
7	F05011-62	Washer, 3/4" SAE Flat		1
8	056774	Nut, Adjustable Outrigger Hex		1
9	039636	Nut, 1-5 Long Acme		1
10	003981	Tube, Front Adjustable Outrigger Slide		1
11	056788	Base Weldment, Offset Adjustable Outrigger		1
12	056817	Pin, Adjustable Outrigger Locking		1
13	F05012-127	Pin 5/16" x 1 1/4" Roll		1
14	P05060	Fitting, 1/4-28 Grease		1
	FAO-1524	Inst. Sheet, Adjustable Outrigger		1
15	059577	BRACKET, ADJUSTABLE OUTRIGGER LOCK (OPTIONAL)		1

4 **Parts List**
Outrigger Assembly, Front

4.13 Outrigger Assembly, Front



SM0336-1C

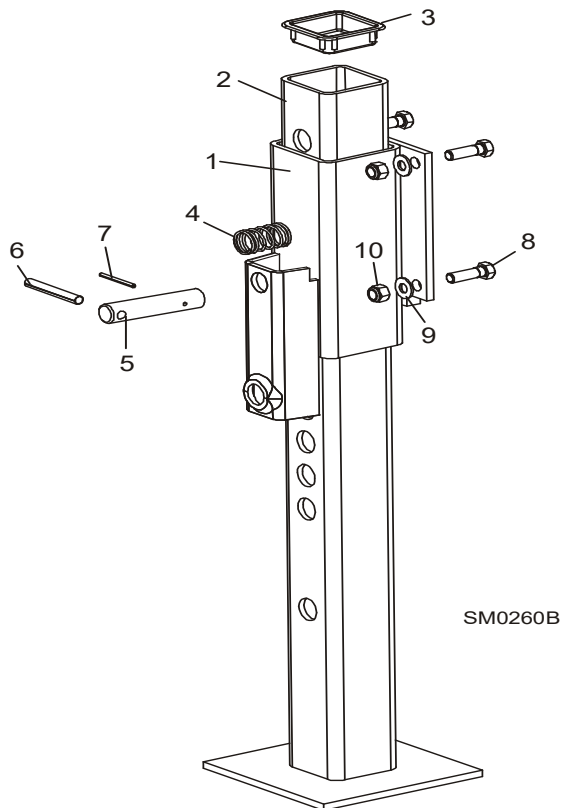
REF	PART #	DESCRIPTION	COMMENTS	QTY.
	003944	OUTRIGGER ASSEMBLY, FRONT ADJUSTABLE		1

REF	PART #	DESCRIPTION	COMMENTS	QTY.
1	003943	Mount Weldment, Front Adjustable Outrigger		1
2	039641	Seal, Outrigger Acme Screw		1
	039639	Bearing Assembly, Adjustable Outrigger Thrust		1
3	039637	Bearing, Needle-Roller Thrust		1
4	039638	Washer, Thrust Bearing		2
5	039645	Sleeve, Outrigger Acme Screw	Available in assemblies only.	1
6	039642	Screw, 1-5 Adjustable Outrigger Long Acme		1
7	F05011-62	Washer, 3/4" SAE Flat		1
8	056774	Nut, Adjustable Outrigger Hex		1
9	039636	Nut, 1-5 Long Acme		1
10	003981	Tube, Front Adjustable Outrigger Slide		1
11	056783	Base Weldment, Adjustable Outrigger		1
12	F05012-127	Pin 5/16" x 1 1/4" Roll		1
13	056817	Pin, Adjustable Outrigger Locking		1
	P05060	Fitting, 1/4-28 Grease		1
	FAO-1524	Inst. Sheet, Adjustable Outrigger		1
	056831	HANDLE ASSEMBLY, ADJUSTABLE OUTRIGGER CRANK		1
14	056827	Handle Weldment, Adjustable Outrigger Crank		1
15	014820	Collar, 1/2" ID x 7/8" OD Lock		2
16	056830	Tube, Outrigger Crank Handle		1
17	059577	BRACKET, ADJUSTABLE OUTRIGGER LOCK (OPTIONAL)		1

3 Parts List

Outrigger Assembly, Short Front (LT70HD & Remote)

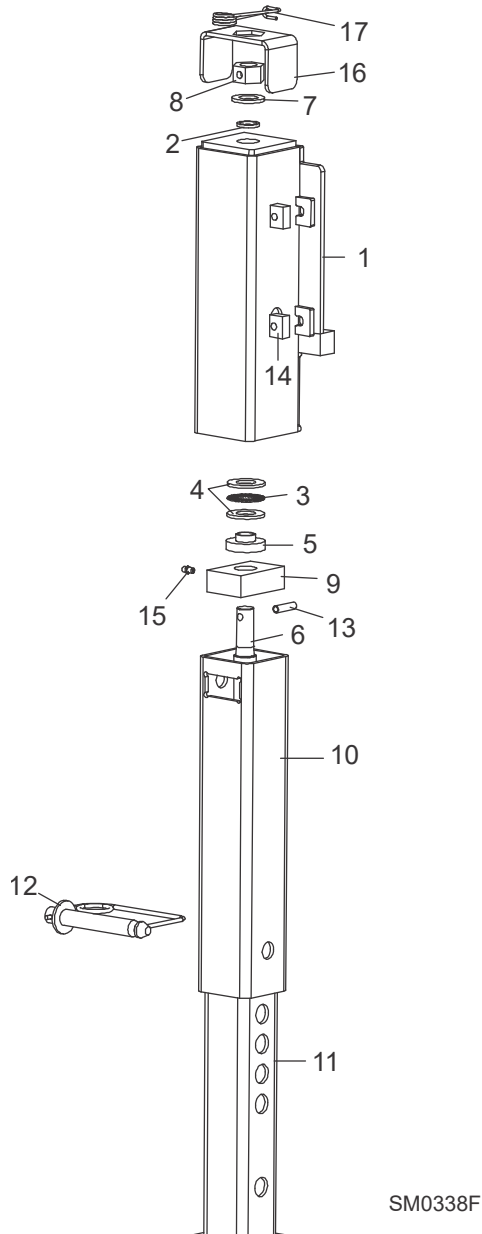
4.14 Outrigger Assembly, Short Front (LT70HD & Remote)



REF	PART #	DESCRIPTION	COMMENTS	QTY.
	A04278	OUTRIGGER ASSEMBLY, SHORT FRONT		1
1	W09012	Guide, Short Front Outrigger Guide		1
2	W07537	Leg, Outrigger		1
3	P09926	Cap, Outrigger Leg		1
4	016145	Spring, Outrigger Pin		1
5	F05011-62	Washer, 3/4" SAE Flat		2
	016148	Pin Kit, 3/4" Outrigger Pull		1
6	016147	Pin, 3/4" Outrigger Pull	Available in assemblies only.	1
7	F05012-47	Pin, 5/16" X 2 1/2" Roll		1
8	F05012-103	Pin, 3/16" X 1 3/4" Roll		1
	F05012-59	Pin, 1/8" x 1 1/4" Cotter		1
9	F05007-2	BOLT, 3/8-16 X 1 1/4" HEX HEAD		4
10	F05011-3	WASHER, 3/8" FLAT		4
11	F05010-10	NUT, 3/8-16 HEX NYLON LOCK		4

4 **Parts List**
Outrigger Assembly, Loading-Side (LT50 w/FAO Only)

4.15 Outrigger Assembly, Loading-Side (LT50 w/FAO Only)



REF	PART #	DESCRIPTION	COMMENTS	QTY.
	056781	OUTRIGGER ASSEMBLY, LOADING SIDE ADJUSTABLE		2
1	056780	Mount Weldment, Loading Side Adjustable Out-rigger		1
2	039641	Seal, Outrigger Acme Screw		1
	039639	Bearing Assembly, Adjustable Outrigger Thrust		1

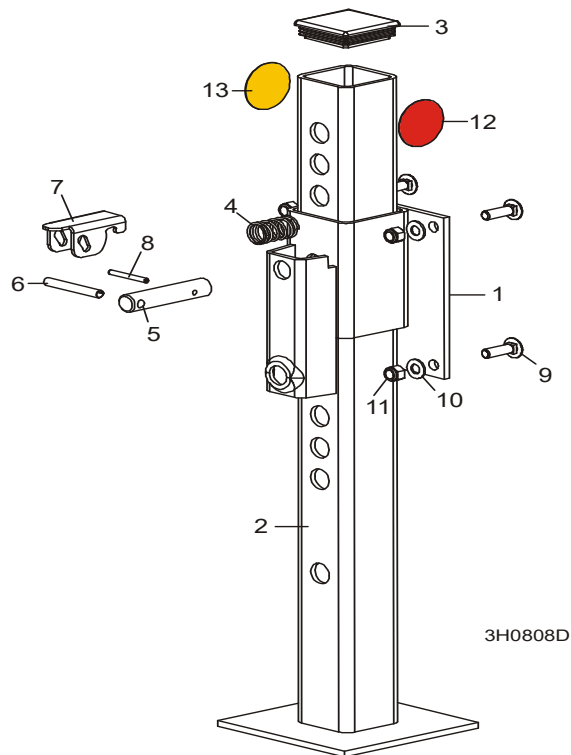
Outrigger Assembly, Loading-Side (LT50 w/FAO Only)

REF	PART #	DESCRIPTION	COMMENTS	QTY.
3	039637	Bearing, Needle-Roller Thrust		1
4	039638	Washer, Thrust Bearing		2
5	039645	Sleeve, Outrigger Acme Screw		1
6	039642	Screw, 1-5 Adjustable Outrigger Long Acme		1
7	F05011-62	Washer, 3/4" SAE Flat		1
8	056774	Nut, Adjustable Outrigger Hex		1
9	039636	Nut, 1-5 Long Acme		1
10	003981	Tube, Adjustable Outrigger Slide		1
11	056783	Base Weldment, Loading Side Adjustable Out- rigger		1
12	056817	Pin, Adjustable Outrigger Locking		1
13	F05012-127	Pin 5/16" x 1 1/4" Roll		1
14	056826	Nut, Adjustable Outrigger Mounting		4
15	P05060	Fitting, 1/4-28 Grease		1
	FAO-1524	Inst. Sheet, Adjustable Outrigger		1
16	059577	BRACKET, ADJUSTABLE OUTRIGGER LOCK (OPTIONAL)		1
17	F05012-162	Pin, 1/8x2-13/16L Locking Wire		1

3 Parts List

Outrigger Assembly, Rear (LT70HD & Remote)

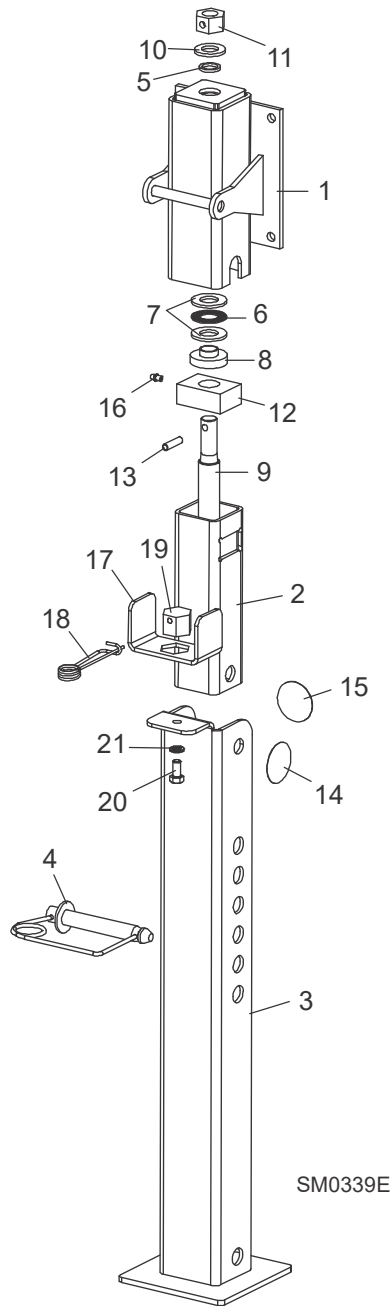
4.16 Outrigger Assembly, Rear (LT70HD & Remote)



REF	PART #	DESCRIPTION	COMMENTS	QTY.
	A12083	OUTRIGGER ASSEMBLY, LT40 REAR		1
1	W12082	Guide, Short Rear Outrigger Guide		1
2	W07537	Leg, Outrigger		1
3	P09926	Cap, Outrigger Leg		1
4	016145	Spring, Outrigger Pin		1
5	F05011-62	Washer, 3/4" SAE Flat		2
	007736	Pin Assembly, Outrigger Pull w/Lock		1
6	016147	Pin, 3/4" Outrigger Pull	Available in assemblies only.	1
7	F05012-47	Pin, 5/16" X 2 1/2" Roll		1
8	064001	Plate, Outrigger Pin Lock		1
9	F05012-17	Pin, 3/16" X 1 1/2" Roll		1
	F05012-59	Pin, 1/8" x 1 1/4" Cotter		1
10	F05007-11	BOLT, 3/8-16 X 1 1/4" CARRIAGE HEAD		4
11	F05011-3	WASHER, 3/8" FLAT		4
12	F05010-10	NUT, 3/8-16 HEX NYLON LOCK		4
13	P07452	REFLECTOR, 2" DIAMETER RED		1
14	P07453	REFLECTOR, 2" DIAMETER AMBER		1

4 **Parts List**
Outrigger Assembly, Rear (LT50 w/FAO Only)

4.17 Outrigger Assembly, Rear (LT50 w/FAO Only)



REF	PART #	DESCRIPTION	COMMENTS	QTY.
	056791	OUTRIGGER ASSEMBLY, REAR ADJUSTABLE		1
1	056815	Mount Weldment, Rear Adjustable Outrigger		1
2	056795	Tube, Rear Adjustable Outrigger Slide		1

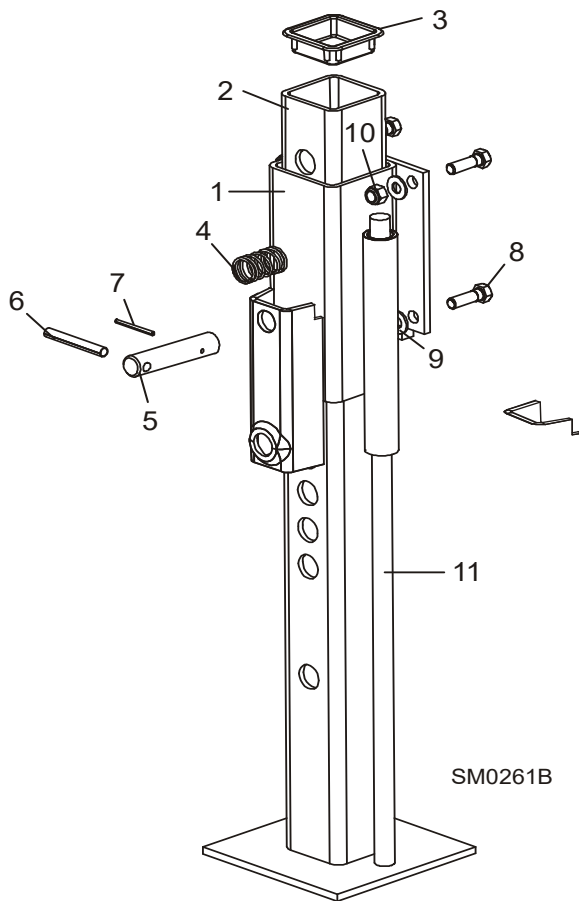
Outrigger Assembly, Rear (LT50 w/FAO Only)

REF	PART #	DESCRIPTION	COMMENTS	QTY.
3	056816	Base Weldment, Rear Adjustable Outrigger		1
4	056817	Pin, Adjustable Outrigger Locking		1
5	039641	Seal, Outrigger Acme Screw		1
	039639	Bearing Assembly, Adjustable Outrigger Thrust		1
6	039637	Bearing, Needle-Roller Thrust		1
7	039638	Washer, Thrust Bearing		2
8	039645	Sleeve, Outrigger Acme Screw		1
9	056818	Screw, 1-5 Adjustable Outrigger Short Acme		1
10	F05011-62	Washer, 3/4" SAE Flat		1
11	056774	Nut, Adjustable Outrigger Hex		1
12	056823	Nut, 1-5 Short Acme		1
13	F05012-127	Pin 5/16" x 1 1/4" Roll		1
14	P07452	Decal, 2" Dia. Red Reflector		1
15	P07453	Decal, 2" Dia. Amber Reflector		1
16	P05060	Fitting, 1/4-28 Grease		1
	FAO-1524	Inst. Sheet, Adjustable Outrigger		1
17	059577	BRACKET, ADJUSTABLE OUTRIGGER LOCK (OPTIONAL)		1

3 Parts List

Outrigger Assembly, Short Rear (LT70HD & Remote)

4.18 Outrigger Assembly, Short Rear (LT70HD & Remote)



REF	PART #	DESCRIPTION	COMMENTS	QTY.
	A09475	OUTRIGGER ASSEMBLY, SHORT REAR		1
1	W09474	Guide, Short Rear Outrigger Guide		1
2	W07537	Leg, Outrigger		1
3	P09926	Cap, Outrigger Leg		1
4	016145	Spring, Outrigger Pin		1
5	F05011-62	Washer, 3/4" SAE Flat		2
	016148	Pin Kit, 3/4" Outrigger Pull		1
6	016147	Pin, 3/4" Outrigger Pull	Available in assemblies only.	1
7	F05012-47	Pin, 5/16" X 2 1/2" Roll		1
8	F05012-103	Pin, 3/16" X 1 3/4" Roll		1
	F05012-59	Pin, 1/8" x 1 1/4" Cotter		1
9	F05007-2	SCREW, 3/8-16 X 1 1/4" HEX HEX CAP		4
10	F05011-3	WASHER, 3/8" FLAT		4

Outrigger Assembly, Short Rear (LT70HD & Remote)

REF	PART #	DESCRIPTION	COMMENTS	QTY.
11	F05010-10	NUT, 3/8-16 HEX NYLON LOCK		4
12	S04827	HANDLE, OUTRIGGER LIFT		1

4 Parts List

Trailer Lights

4.19 Trailer Lights

LT28Rev. A6.00+

LT30Rev. K1.00+

LT40Rev. K2.00+

LT40 SuperRev. J6.00+

LT30HRev. K2.00+

LT35/LT35HRev. A1.00+

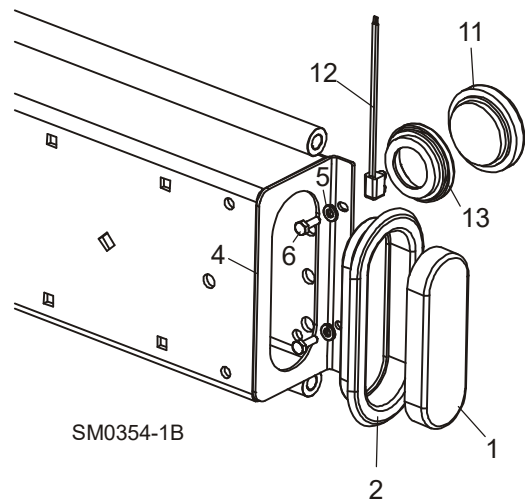
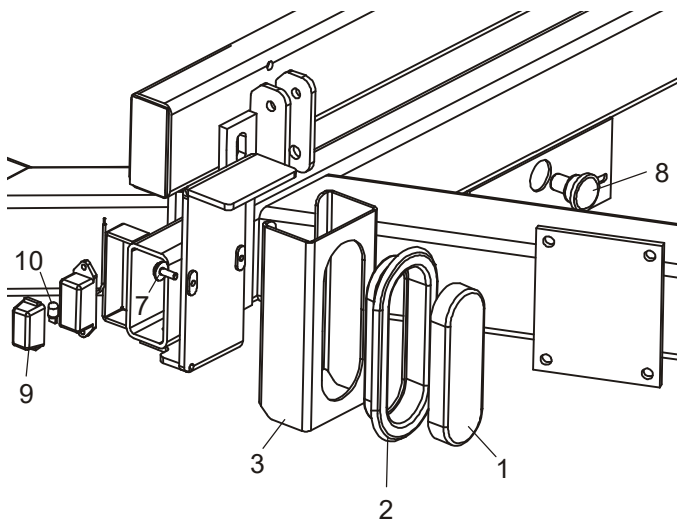
LT40HRev. K4.00+

LT40HD SuperRev. K2.00+

LT50HRev. A3.00+

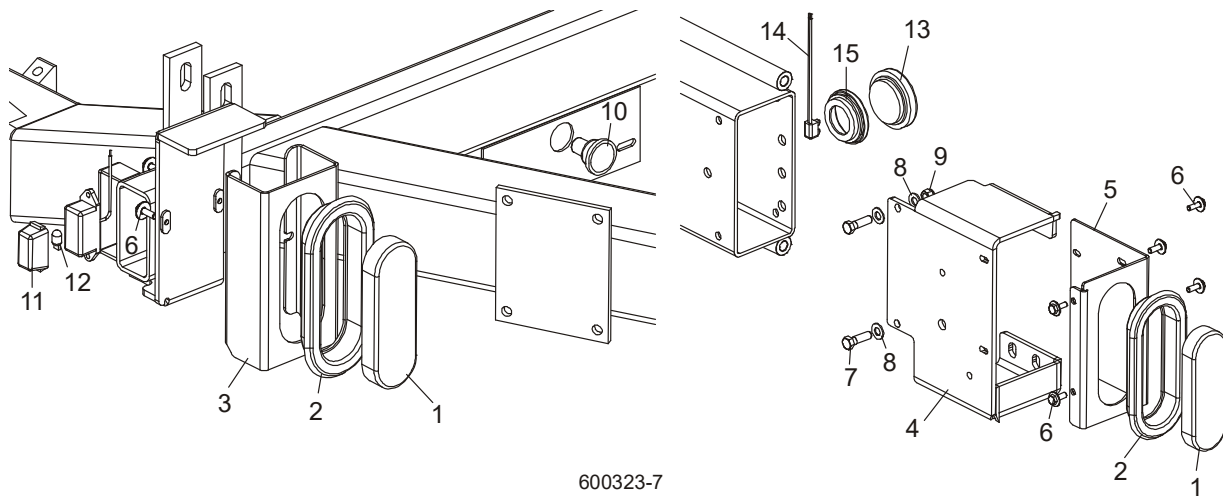
LT70HRev. B1.00+

LT70HD SuperRev. A1.00+



REF	PART #	DESCRIPTION	COMMENTS	QTY.
	P11569	PLUG, 7-PIN ELECTRIC BRAKE TRAILER LIGHT MALE (NOT SHOWN)		1
	P11755	PLUG, 7-PIN ELECTRIC BRAKE TRAILER LIGHT FEMALE (NOT SHOWN)		1
1	006391	LIGHT ASSEMBLY, TRAILER TAIL LED		2
2	006688	GROMMET, 6 1/2" LIGHT MOUNTING		2
3	006600	GUARD, IDLE-SIDE TAIL LIGHT		1
4	057822	PLATE, BED TUBE END W/LIGHT MOUNT		1

REF	PART #	DESCRIPTION	COMMENTS	QTY.
5	F05011-14	WASHER, 1/4" SPLIT LOCK		2
6	F05005-1	BOLT, 1/4-20 X 3/4" HEX HEAD FULL THREAD		2
7	F05005-134	BOLT, 1/4-20 X 3/4" HEX W/CONICAL WASHER HEAD		2
8	P09928	LIGHT, LICENSE PLATE		1
	P12905	LIGHT, RECTANGLE RED RUNNING		1
	P12906	LIGHT, RECTANGLE AMBER RUNNING (NOT SHOWN)		1
9	P12921	Lens, Rectangle Red Running Light		1
	P12922	Lens, Rectangle Amber Running Light		1
10	P12923	Bulb, Rectangle Running Light Replacement	Available in assemblies only.	1
	P12913	LIGHT, ROUND RED RUNNING		1
	P12914	LIGHT, ROUND AMBER RUNNING (NOT SHOWN)		1
11	P12917	Light, Round Red Running Replacement		1
	P12918	Light, Round Amber Running Replacement		1
12	P12920	Pigtail, Round Running Light Replacement		1
13	P12919	Grommet, Round Running Light Replacement		1

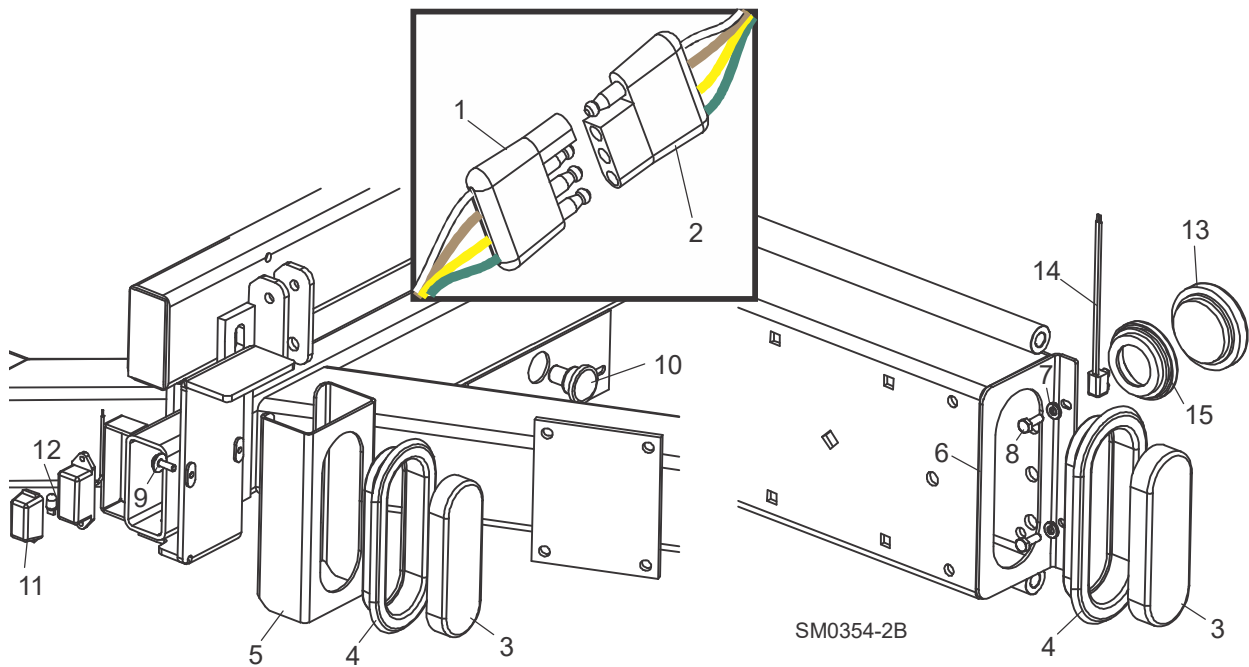


REF	PART #	DESCRIPTION	COMMENTS	QTY.
	P11569	PLUG, 7-PIN ELECTRIC BRAKE TRAILER LIGHT MALE (NOT SHOWN)		1
	P11755	PLUG, 7-PIN ELECTRIC BRAKE TRAILER LIGHT FEMALE (NOT SHOWN)		1
1	006391	LIGHT ASSEMBLY, TRAILER TAIL LED		2
2	006688	GROMMET, 6 1/2" LIGHT MOUNTING		2
3	006600	GUARD, IDLE-SIDE TAIL LIGHT		1
4	025661	MOUNT WELDMENT, DCS REAR ROLLER		1
5	025662	CAP WELDMENT, DCS END		1

4

Parts List Trailer Lights

REF	PART #	DESCRIPTION	COMMENTS	QTY.
6	F05005-134	BOLT, 1/4-20 X 3/4" HEX W/CONICAL WASHER HEAD		7
7	F05007-123	BOLT, 3/8-16 X 1 1/4" HEX HEAD GRADE 5		2
8	F05011-3	WASHER, 3/8" SAE FLAT		4
9	F05010-10	NUT, 3/8-16 HEX NYLON LOCK		2
10	P09928	LIGHT, LICENSE PLATE		1
	P12905	LIGHT, RECTANGLE RED RUNNING		1
	P12906	LIGHT, RECTANGLE AMBER RUNNING (NOT SHOWN)		1
11	P12921	Lens, Rectangle Red Running Light		1
	P12922	Lens, Rectangle Amber Running Light		1
12	P12923	Bulb, Rectangle Running Light Replacement	Available in assemblies only.	1
	P12913	LIGHT, ROUND RED RUNNING		1
	P12914	LIGHT, ROUND AMBER RUNNING (NOT SHOWN)		1
13	P12917	Light, Round Red Running Replacement		1
	P12918	Light, Round Amber Running Replacement		1
14	P12920	Pigtail, Round Running Light Replacement		1
15	P12919	Grommet, Round Running Light Replacement		1



REF	PART #	DESCRIPTION	COMMENTS	QTY.
1	P04159	PLUG, TRAILER LIGHT MALE		1

REF	PART #	DESCRIPTION	COMMENTS	QTY.
2	P04983	PLUG, TRAILER LIGHT FEMALE		1
3	006391	LIGHT ASSEMBLY, TRAILER TAIL LED		2
4	006688	GROMMET, 6 1/2" LIGHT MOUNTING		2
5	006600	GUARD, IDLE-SIDE TAIL LIGHT		1
6	057822	PLATE, BED TUBE END W/LIGHT MOUNT		1
7	F05011-14	WASHER, 1/4" SPLIT LOCK		2
8	F05005-1	BOLT, 1/4-20 X 3/4" HEX HEAD FULL THREAD		2
9	F05005-134	BOLT, 1/4-20 X 3/4" HEX W/CONICAL WASHER HEAD		2
10	P09928	LIGHT, LICENSE PLATE		1
	P12905	LIGHT, RECTANGLE RED RUNNING		1
	P12906	LIGHT, RECTANGLE AMBER RUNNING (NOT SHOWN)		1
11	P12921	Lens, Rectangle Red Running Light		1
	P12922	Lens, Rectangle Amber Running Light		1
12	P12923	Bulb, Rectangle Running Light Replacement	Available in assemblies only.	1
	P12913	LIGHT, ROUND RED RUNNING		1
	P12914	LIGHT, ROUND AMBER RUNNING (NOT SHOWN)		1
13	P12917	Light, Round Red Running Replacement		1
	P12918	Light, Round Amber Running Replacement		1
14	P12920	Pigtail, Round Running Light Replacement		1
15	P12919	Grommet, Round Running Light Replacement		1

4.20 Trailer Lights

LT25/LT27Rev. C2.00+
LT28Rev. A1.00 - A5.00
LT30Rev. F7.00 - J9.03

4 Parts List

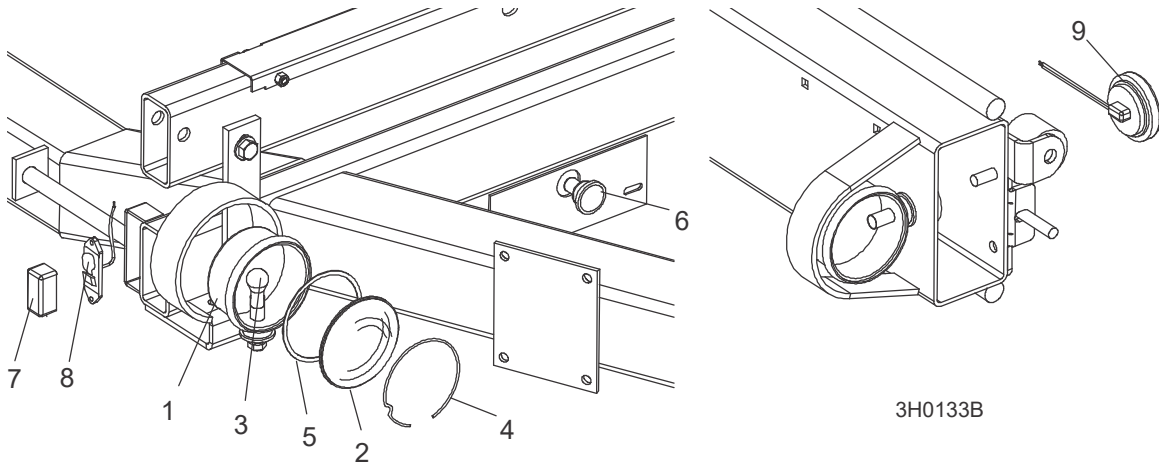
Trailer Lights

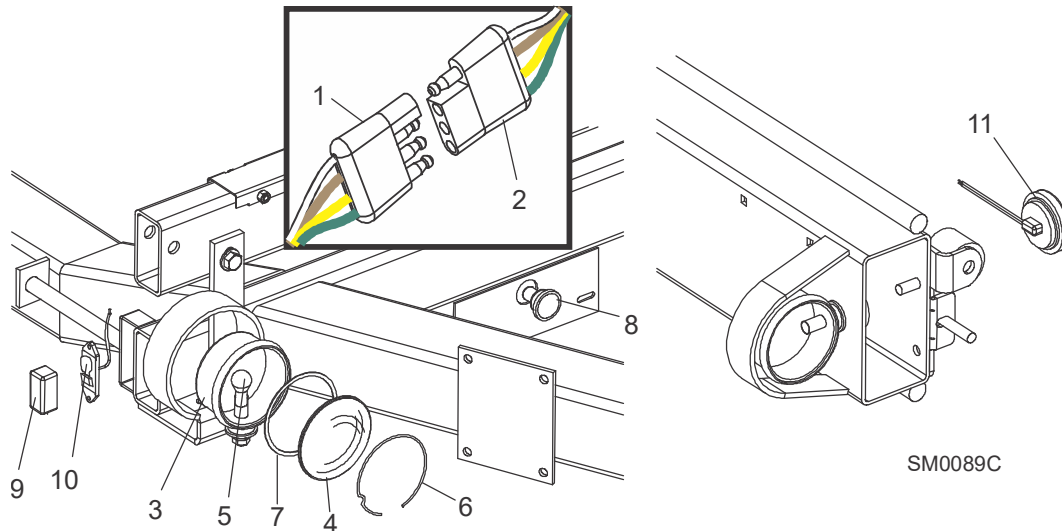
LT40Rev. F8.00 - K1.04
LT30 SuperRev. F7.00+
LT40 SuperRev. F8.00 - J5.03

LT30HDRev. G1.00 - K1.03
LT40HDRev. G1.00 - K3.01

LT30HD SuperRev. G1.00+
LT40HD SuperRev. G1.00 - K1.02
LT50HDRev. A1.00 - A2.02

LT70HDRev. A1.00 - A9.00





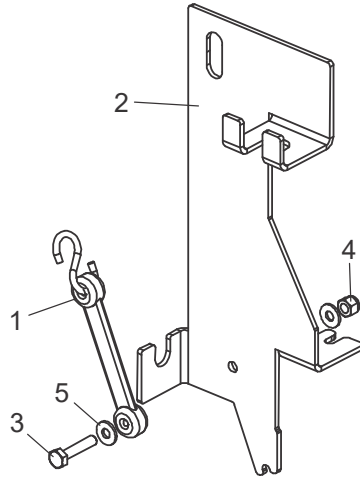
REF	PART #	DESCRIPTION	COMMENTS	QTY.
	014080	PLUG, 6-PIN ELECTRIC BRAKE TRAILER LIGHT MALE (NOT SHOWN)		1
	014078	PLUG, 6-PIN ELECTRIC BRAKE TRAILER LIGHT FEMALE (NOT SHOWN)		1
1	P04159	PLUG, TRAILER LIGHT MALE		1
2	P04983	PLUG, TRAILER LIGHT FEMALE		1
1	P04294	LIGHT ASSEMBLY, TRAILER TAIL		2
2	P04294	LIGHT ASSEMBLY, TRAILER TAIL		2
3	P12509	Lens, Grote Tail Light #90012		1
4	P04481	Bulb, #1157 Trailer Light		1
5	P12510	Clip, Grote Tail Light Retainer		1
6	P12511	Gasket, Grote Tail Light Lens		1
7	P09928	LIGHT, LICENSE PLATE		1
	P12905	LIGHT, RECTANGLE RED RUNNING		1
	P12906	LIGHT, RECTANGLE AMBER RUNNING (NOT SHOWN)		1
8	P12921	Lens, Rectangle Red Running Light		1
	P12922	Lens, Rectangle Amber Running Light		1
9	P12923	Bulb, Rectangle Running Light Replacement	Available in assemblies only. Running light bulb P12923 no longer offered. Bulb is readily available at most local auto parts stores.	1
10	P12913	LIGHT, ROUND RED RUNNING		1

4 Parts List

Trailer Lights

REF	PART #	DESCRIPTION	COMMENTS	QTY.
	P12914	LIGHT, ROUND AMBER RUNNING (NOT SHOWN)		1
	P12917	Light, Round Red Running Replacement		1
	P12918	Light, Round Amber Running Replacement		1
	P12920	Pigtail, Round Running Light Replacement		1
	P12919	Grommet, Round Running Light Replacement		1

4.21 Wrench Bracket Assembly



SM0382

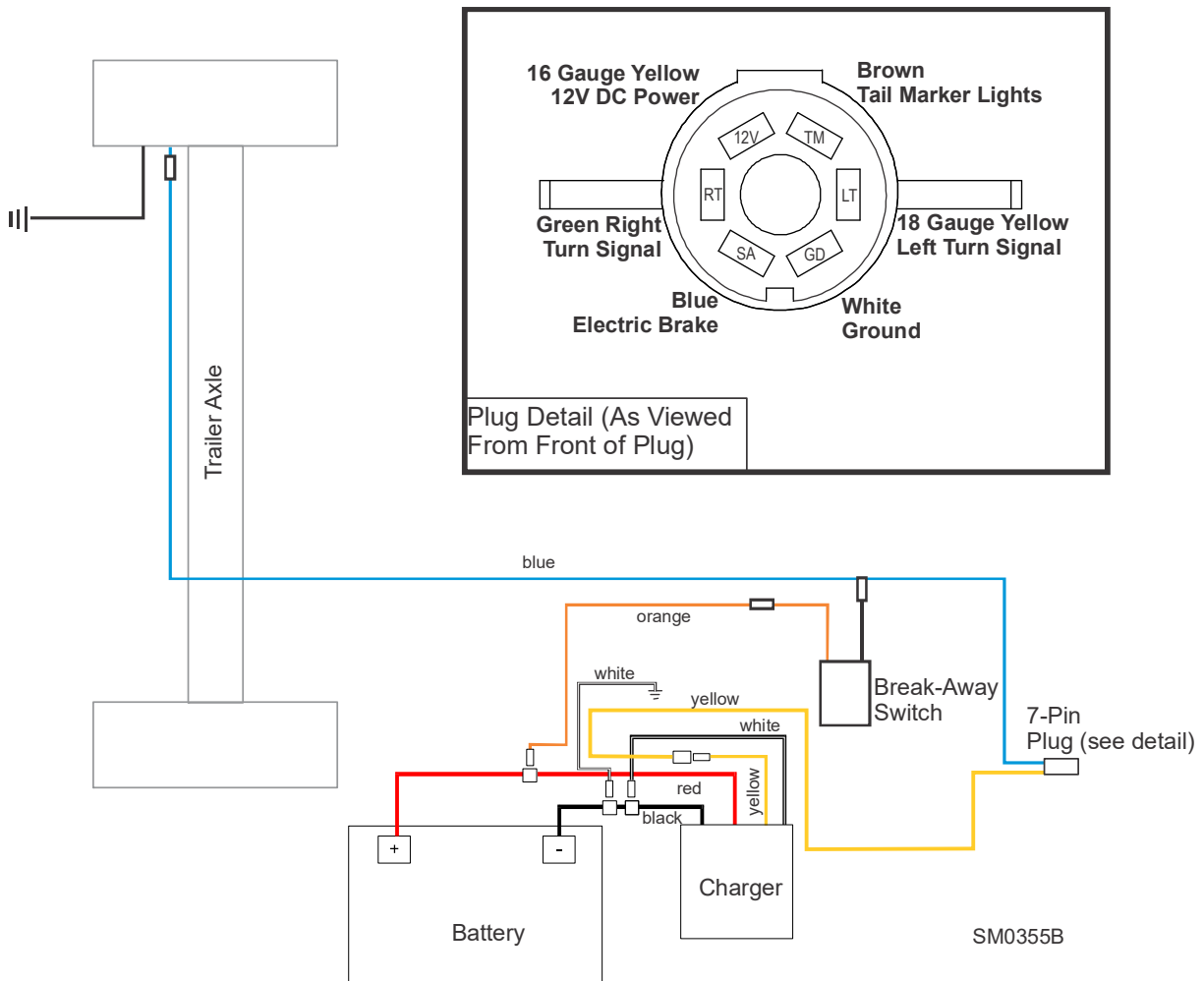
REF	PART #	DESCRIPTION	COMMENTS	QTY.
	075717	BRACKET ASSEMBLY, FAO WRENCH		1
1	016542	Strap, Rubber 6		1
2	075710	Bracket, FAO Wrench Mount		1
3	F05005-3	Bolt, 1/4-20 x 1 1/4" Hex Head Full Thread Cap		1
4	F05010-69	Nut, 1/4-20 Nylon Lock		1
5	F05011-11	Washer, 1/4" SAE Flat		2

SECTION 5 ELECTRICAL INFORMATION

5.1 Electric Brake Wiring Diagram (2008-Present)

LT40HD SuperRev. K2.00+
 LT50HD Rev. A3.00+
 LT70HD Rev. B1.00+
 LT70HD SuperRev. A1.00+

Electric brake trailer system diagram for sawmills equipped with LED taillights. (Changed per ECN 17564, 9/8/2008).



5.2 Wiring Diagram (1997-2008)

LT30 Super Rev. F7.00+
 LT40 Super Rev. F8.00 - J5.03
 LT30HD Rev. G1.00 - K1.03
 LT40HD Rev. G1.00 - K3.01

An electric brake trailer system diagram for sawmills equipped with incandescent taillights is provided below. (Started with ECN 5249, 3/10/1997. Changed per ECN 17564, 9/8/2008).

