

Wood-Mizer® Resaw

Parts Manual

HR1000 Resaw

Rev. A1.01 - A2.04



Safety is our #1 concern! Read and understand all safety information and instructions before operating, setting up or maintaining this machine.

May 2010

Form #1689

Table of Contents

Section-Page

SECTION 1	GENERAL INFORMATION	1-1
1.1	How To Use The Parts List	1-1
1.2	Sample Assembly	1-1
SECTION 2	SAW HEAD PARTS	2-1
2.1	Blade Tensioner Assembly	2-1
2.2	Tension Release Handle Assembly	2-3
2.3	Saw Head Mount Assembly	2-5
2.4	Saw Motor Assembly	2-7
2.5	Inner Blade Guide Assembly	2-8
2.6	Outer Blade Guide Assembly	2-11
2.7	Up/Down Assembly	2-14
2.8	Blade Wheel Assembly (Drive Side)	2-16
2.9	Blade Wheel Assembly (Idle Side)	2-18
2.10	Blade Housing Cover	2-20
2.11	Sawdust Chute	2-21
2.12	Saw Head Decals	2-22
	<i>HR1000 Rev. A2.04+</i>	<i>2-22</i>
2.13	Saw Head Decals	2-23
	<i>HR1000 Rev. A1.00 - A2.03</i>	<i>2-23</i>
SECTION 3	FEED TRACK/FRAME PARTS	3-1
3.1	Hydraulic Blade Tensioner Assembly	3-1
3.2	Perimeter Fence Assembly	3-2
	<i>HR1000 Rev. A2.00+</i>	<i>3-2</i>
3.3	Perimeter Fence Assembly	3-5
	<i>HR1000 Rev. A1.00 - A1.01</i>	<i>3-5</i>
3.4	Feed Track Assembly	3-7
3.5	Feed Track Nylon Pads	3-9
3.6	Feed Roller Assembly (Non-Air)	3-10
3.7	Feed Roller Assembly (Air-Lift)	3-12
3.8	Hydraulic Tank Assembly	3-14
	<i>HR1000 Rev. A2.00+</i>	<i>3-14</i>
3.9	Hydraulic Tank Assembly	3-16
	<i>HR1000 Rev. A1.00 - A1.01</i>	<i>3-16</i>
3.10	Hydraulic Valve Assembly (2 and 4-Head)	3-18
3.11	Hydraulic Valve Assembly (6-Head)	3-19
3.12	Crowder Fence Assembly	3-20

Table of Contents

Section-Page

3.13 Control Box Decals3-21

INDEX

1-I

SECTION 1 GENERAL INFORMATION

1.1 How To Use The Parts List

- Use the table of contents or index to locate the assembly that contains the part you need.
- Go to the appropriate section and locate the part in the illustration.
- Use the number pointing to the part to locate the correct part number and description in the table.
- Parts shown indented under another part are included with that part.
- Parts marked with a diamond (◆) are only available in the assembly listed above the part.

See the sample table below. Sample Part #A01111 includes part F02222-2 and subassembly A03333. Subassembly A03333 includes part S04444-4 and subassembly K05555. The diamond (◆) indicates that S04444-4 is not available except in subassembly A03333. Subassembly K05555 includes parts M06666 and F07777-77. The diamond (◆) indicates M06666 is not available except in subassembly K05555.

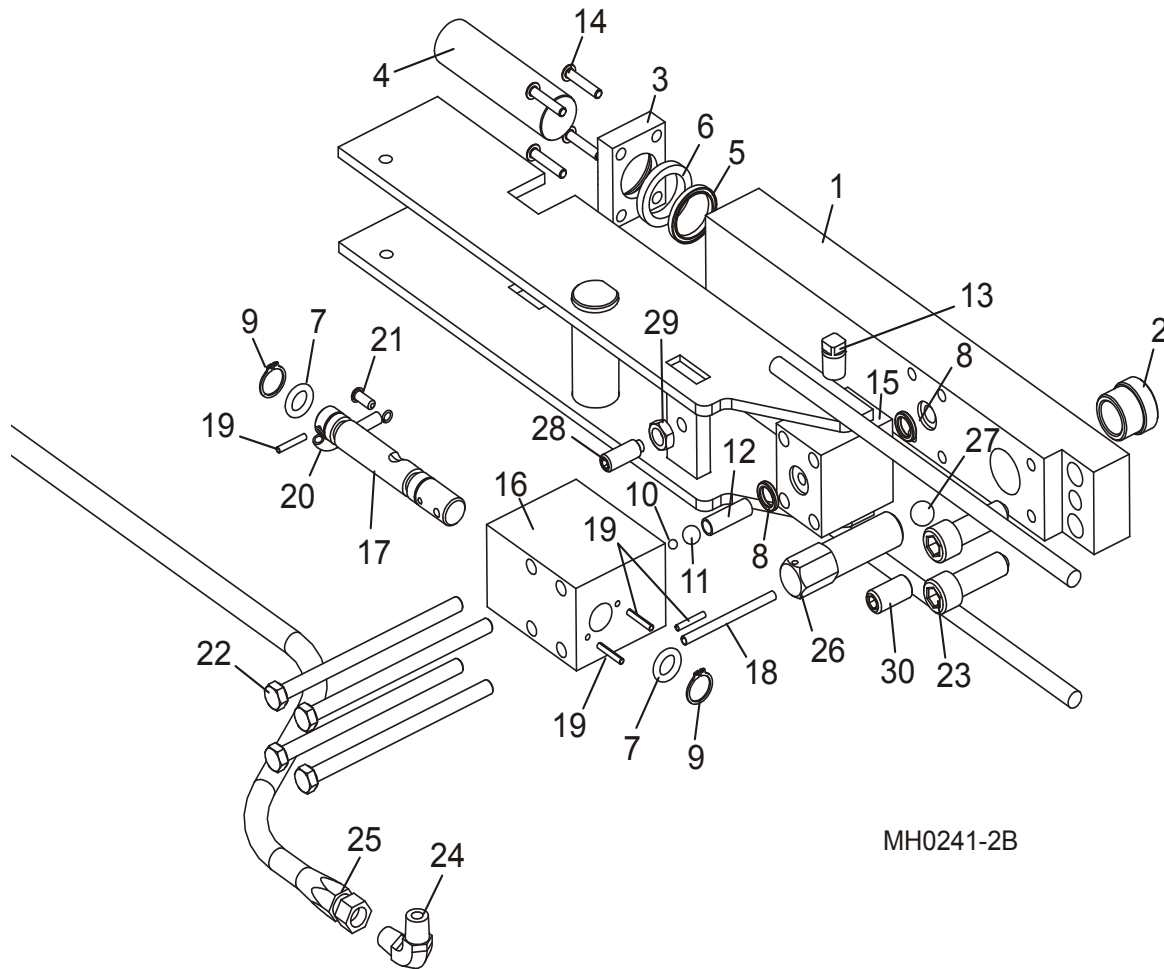
1.2 Sample Assembly				
REF	DESCRIPTION (◆ Indicates Parts Available In Assemblies Only)	PART #	QTY.	
	SAMPLE ASSEMBLY, COMPLETE (INCLUDES ALL INDENTED PARTS BELOW)	A01111	1	
1	Sample Part	F02222-22	1	
	Sample Subassembly (Includes All Indented Parts Below)	A03333	1	
2	Sample Part (◆ Indicates Part Is Only Available With A03333)	S04444-4	1	◆
	Sample Subassembly (Includes All Indented Parts Below)	K05555	1	
3	Sample Part (◆ Indicates Part Is Only Available With K05555)	M06666	2	◆
4	Sample Part	F07777-77	1	

To Order Parts:

- From the continental U.S., call **1-800-525-8100** to order parts. Have your customer number, serial number, and part numbers ready when you call.
- From other international locations, contact the AWMV distributor in your area for parts.

SECTION 2 SAW HEAD PARTS

2.1 Blade Tensioner Assembly



MH0241-2B

REF	DESCRIPTION (◆ Indicates Parts Available In Assemblies Only)	PART #	QTY. (* /head)
	TENSIONER ASSEMBLY, MULTIHEAD BLADE	A22220	1*
1	Bar, Blade Tensioner	022221 ¹	1
2	Bushing, 3/4-32 Threaded	S22786 ¹	1
3	Block, Tensioner Seal	S10089	1
4	Piston, Blade Tensioner	S10059	1
	Seal Kit, Hydraulic Tensioner	A22910	1
5	Seal, 1" Diameter Tensioner	P10051	1
6	Wiper, 1" Diameter Tensioner	P10053	1
7	O-Ring, Tensioner Valve Spool	P09685	2
8	O-Ring, 5/8" x 3/32" Square	P10377	2

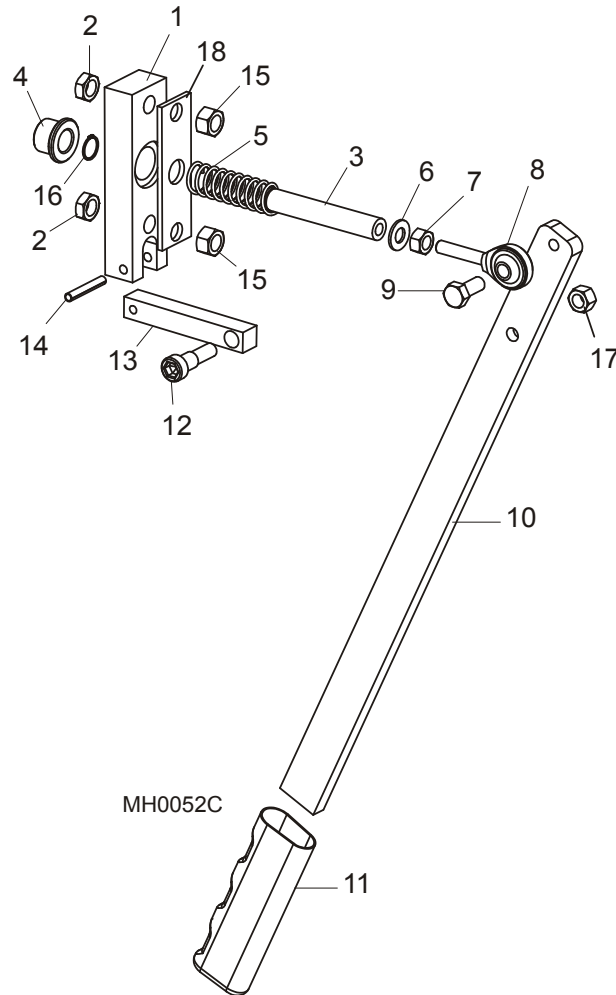
2

Saw Head Parts Blade Tensioner Assembly

9	Ring, 5/8" Retainer	F04254-2	2	
10	Ball, 3/16" Diameter Steel	P09744	1	
11	Ball, 3/8" Diameter Steel	P09133	1	
12	Spring, LC-038E-15SS	P22041	1	
13	Plug, 1/4" NPT Pipe	P05498	1	
14	Bolt, #10-24 Socket Button Head	F05004-43	4	
15	Block, Tensioner Valve Mount	S22213	1	
16	Block, Tensioner Valve	S22216	1	
17	Spool, Tensioner Valve	S22326	1	
18	Pin, 3/16" x 2 1/2" Roll	F05012-27	1	
19	Pin, 1/8" x 3/4" Roll	F05012-6	4	
20	Spring, LE-041C-7MW	P10064	1	
21	Screw, #7 x 1/2" Drive	F05015-25	1	
22	Bolt, 5/16-18 x 5" Hex Head Grade 8	F05006-52	4	
23	BOLT, 1/2-20 X 1 1/2" SOCKET HEAD	F05008-44	2	
24	FITTING, 1/4" NPT 90° ELBOW	P09140	1*	
25	HOSE, 1/4" DIA. X 78" HYDRAULIC W/FITTINGS	P22299	1*	
	SCREW ASSEMBLY, BLADE WHEEL TILT	007652	1*	
26	Screw, Cant Adjustment	007651	1	◆
27	Ball, 1/2" Diameter Detent	P02720	1	
28	SCREW, 3/8-16 X 1" SOCKET HEAD BRASS TIP	F05007-88	1*	
29	NUT, 3/8-16 HEX JAM	F05010-29	1*	
30	SCREW, 1/2-13 X 1" OVAL POINT SET NYLON LOCK	F05008-9	1	

¹ Bushing S22786 is welded to tensioner block S11054. Factory removal and installation recommended. Use 022221 Tensioner Block w/Bushing for field service.

2.2 Tension Release Handle Assembly

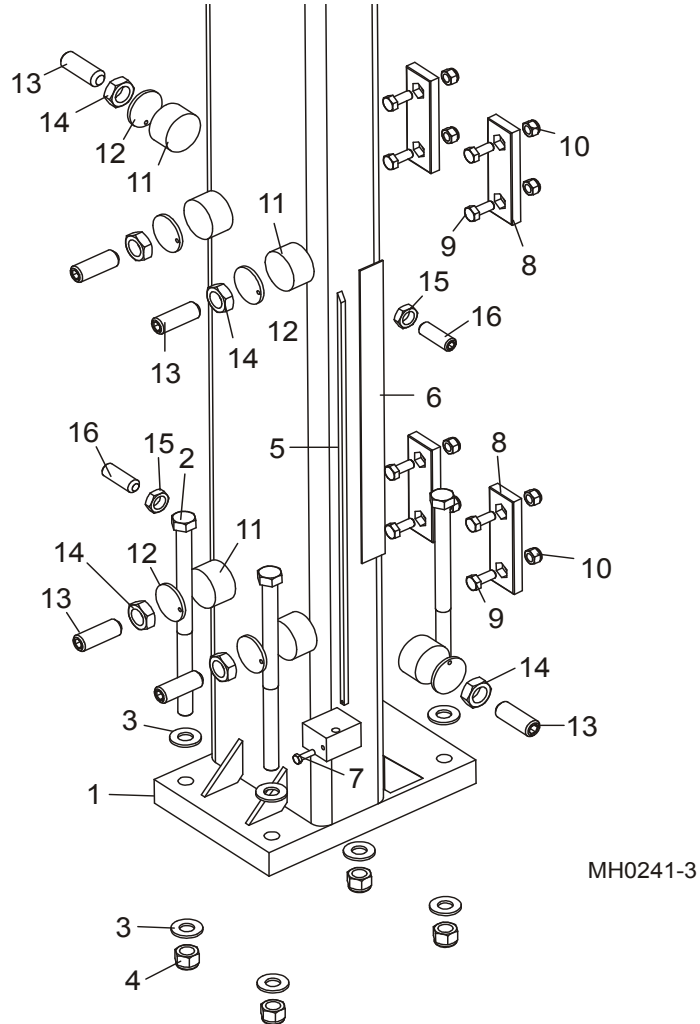


REF	DESCRIPTION (◆ Indicates Parts Available In Assemblies Only)	PART #	QTY.	
	HANDLE ASSEMBLY, TENSION RELEASE	A22528	1*	
1	Plate, Tensioner Stop	S22527	1	
2	Nut, 3/8-16 Hex Jam	F05010-29	2	
3	Rod, Tensioner Push	S22526	1	
4	Bushing, Flanged Bronze	P22662	1	
5	Spring, LC-072J-7MW	P05155	1	
6	Washer, 5/16" SAE Flat	F05011-17	1	
7	Nut, 5/16-24 Hex	F05010-28	1	
8	Rod End, 5/16-24 Male	P09814	1	
9	Bolt, 5/16-18 x 3/4" Hex Head	F05006-5	1	
10	Handle, Tension Release	S22524	1	
11	Grip, Tension Release Handle	P04731	1	
12	Bolt, 3/8" x 1/2" Shoulder	F05006-56	1	

2**Saw Head Parts***Tension Release Handle Assembly*

13	Bar, Tension Release Handle Link	S22525	1	
14	Pin, 3/16" x 1 1/4" Roll	F05012-16	1	
15	Nut, 3/8-16 Hex Lock	F05010-25	2	
16	Ring, 1/2" Retainer	F04254-18	1	
17	Nut, 5/16-18 Hex Lock	F05010-6	1	
18	Plate, Bushing Retainer	036600	1	

2.3 Saw Head Mount Assembly

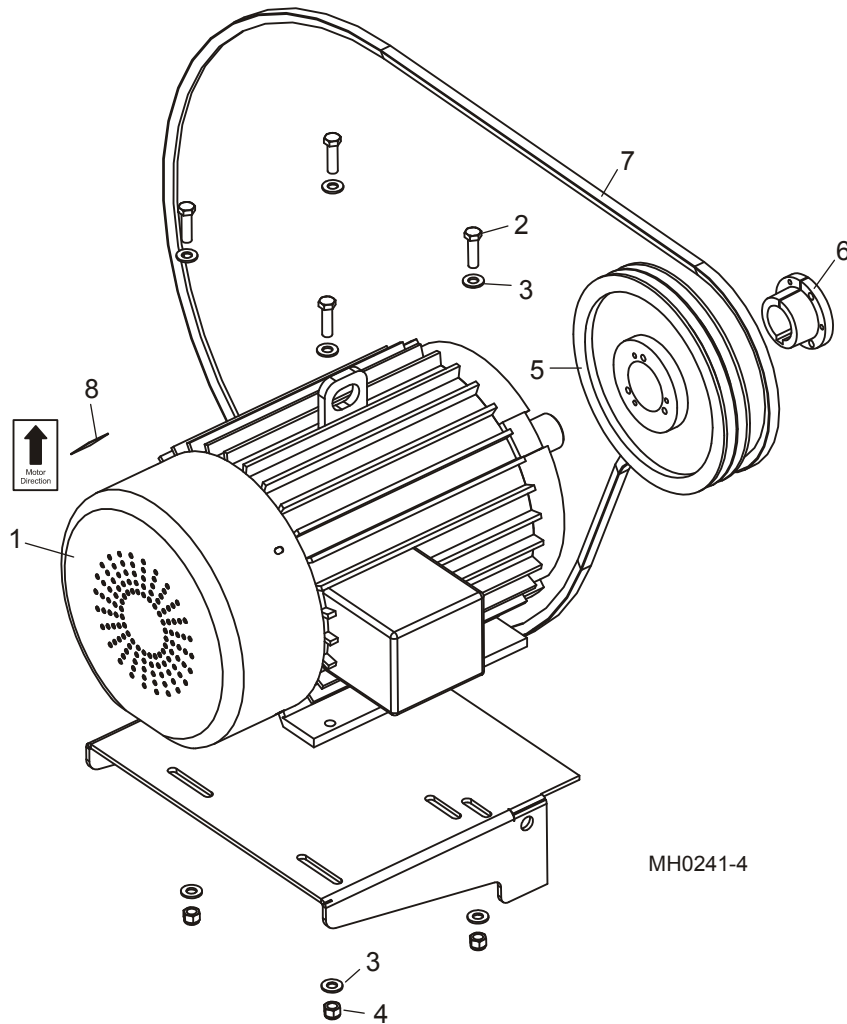


REF	DESCRIPTION (◆ Indicates Parts Available In Assemblies Only)	PART #	QTY. (*/head)
1	TUBE WELDMENT, SAWHEAD MOUNT	007682	1*
2	BOLT, 1/2-13 X 8" HEX HEAD GRADE 5	F05008-69	4*
3	WASHER, 1/2" SAE FLAT	F05011-2	8*
4	NUT, 1/2-13 NYLON LOCK	F05010-8	4*
5	POINTER, MULTIHEAD BLADE HEIGHT	S22636	1*
6	DECAL, MULTIHEAD HEIGHT SCALE (INCH)	S22300	1*
	DECAL, MULTIHEAD HEIGHT SCALE (METRIC)	S22301	1*
7	BOLT, #10-24 X 5/8" HEX HEAD	F05004-18	1*
8	PAD, UP/DOWN DELRIN	M04096	4*
9	BOLT, 5/16-18 X 3/4" HEX HEAD	F05006-5	8*
10	NUT, 5/16-18 HEX NYLON LOCK	F05010-58	8*

2**Saw Head Parts***Saw Head Mount Assembly*

11	PAD, UP/DOWN ADJUSTABLE NYLON	S22561	6*	
12	PAD, NYLON BACKING	042432	6*	
13	SCREW, 5/8-18 X 1 1/4" SOCKET HEAD FLAT POINT SET	F05009-27	6*	
14	NUT, 5/8-18 HEX JAM	F05010-11	6*	
15	NUT, 1/2-13 HEX JAM	F05010-31	28	
16	SCREW, 1/2-13 X 1 1/2" SOCKET HEAD FLAT POINT SET	F05008-31	2*	

2.4 Saw Motor Assembly



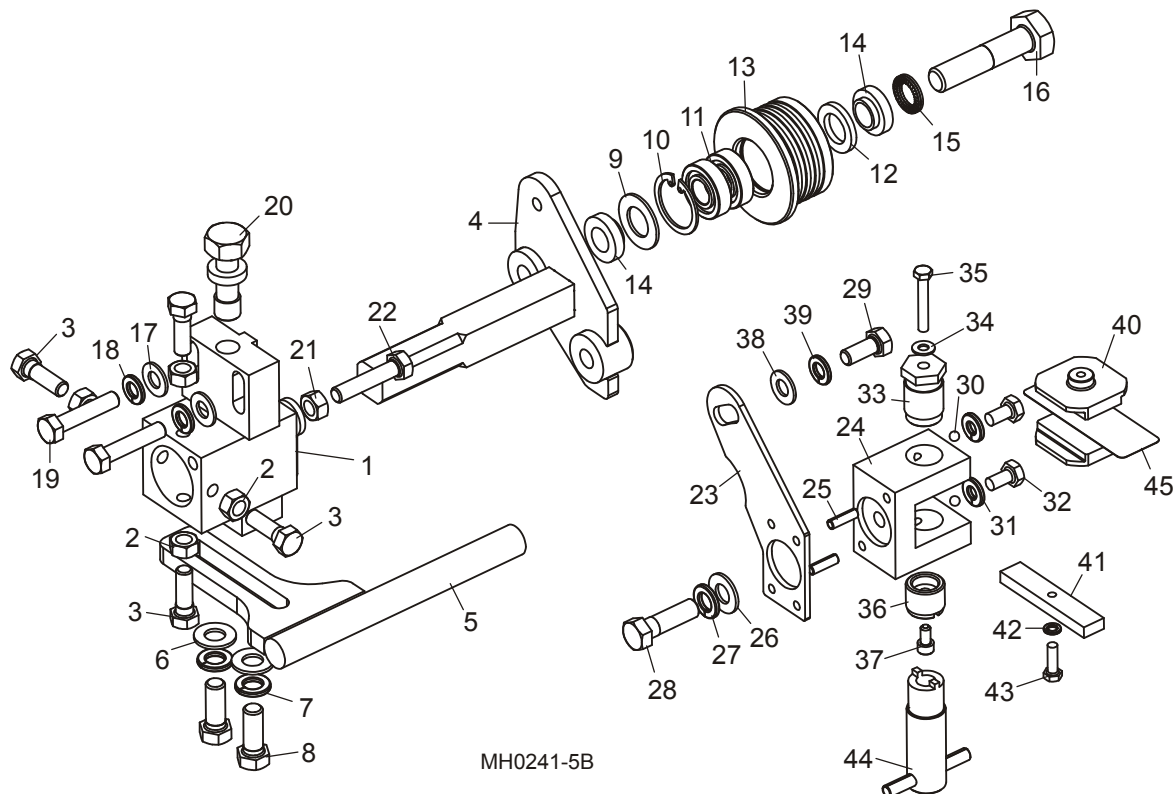
REF	DESCRIPTION (◆ Indicates Parts Available In Assemblies Only)	PART #	QTY. (* /head)
1	MOTOR, 25HP 1725RPM LINCOLN WATTS AVER	074121 ¹	1*
2	BOLT, 1/2-13 X 1 3/4" HEX HEAD GRADE 5	F05008-88	4*
3	WASHER, 1/2" SAE FLAT	F05011-2	8*
4	NUT, 1/2" NYLON LOCK	F05010-8	4*
5	PULLEY, 2/5V X 11.8 SK	007722	1*
6	BUSHING, SK 1 7/8"	P21000	1*
7	BELT, 5VX1320 DRIVE V	007723	1*
8	DECAL, MOTOR DIRECTION	S20097	1*

¹ Replaces 038485 25HP 1725RPM Motor (Rev. A2.02).

2 Saw Head Parts

Inner Blade Guide Assembly

2.5 Inner Blade Guide Assembly



MH0241-5B

REF	DESCRIPTION (◆ Indicates Parts Available In Assemblies Only)	PART #	QTY. (* /head)	
	GUIDE ASSEMBLY, HR1000 INNER BLADE	007732	1	
	Block Assembly, HR1000 Inner Blade Guide Mount	007733	1*	
1	Block Weldment, HR1000 Blade Guide Mount	007729	1	
2	Nut, 5/16-18 Hex	F05010-17	4	
3	Bolt, 5/16-18 x 1" Hex Head Stainless Steel	F05006-88	4	
4	Bracket Weldment, Inner Blade Guide Mount	003913	1	
5	Deflector Weldment, HR1000 Inner Blade Guide	007731	1	
6	Washer, 3/8" SAE Flat	F05011-3	2	
7	Washer, 3/8" Split Lock	F05011-4	2	
8	Bolt, 3/8-16 x 1" Hex Head Grade 5	F05007-87	2	
	Roller Assembly, Blade Guide (standard for use with 1 1/4" & 1 1/2" blades)	A04925	1	
	Roller Assembly, Extended Blade Guide (optional for use with 1 1/2" blades)	014299	1	
	Bearing Kit, Blade Guide Rebuild	K07079	1	
9	Washer, 5/8" White Felt	P04252	1	
10	Ring, 1 1/8" Interior Retaining	F04254-1	1	
11	Bearing, R8-2RS Blade Guide	015975	2	◆
12	Washer, 5/8" Gray Felt	P06455	1	

	Screw, 1/4-28 x 1/4" Socket Head Cup Point Set Black Oxide	F05005-105	1	
	Instruction Sheet, Blade Guide Rebuild	057407-1507	1	
13	Roller, Flanged Blade Guide (1 1/4" & 1 1/2" blade)	S04250	1	◆
	Roller, Flanged Blade Guide (1 1/2" blade)	014298	1	◆
	Instruction Sheet, Blade Guide Roller Replacement	A04925-364	1	
14	Spacer, Blade Guide	S04253	2	
15	Washer, 1/2" Nord-Lock	F05011-125	1	
16	Bolt, 1/2-13 x 2 1/4" Hex Head Grade 5	F05008-10	1	
17	Washer, 5/16" SAE Flat	F05011-17	2	
18	Washer, 5/16" Split Lock	F05011-13	2	
19	Bolt, 5/16-18 x 1 1/2" Hex Head	F05006-76	2	
20	Bolt, Blade Guide Vertical Adjustment	035656	1	
21	Nut, 5/16-18 Hex	F05010-17	1	
22	Bolt, 5/16-18 x 2 1/4" Hex Head Full Thread	F05006-16	1	
	Block Assembly, Drive Side Blade Guide	003927	1	
23	Plate, Block Tilt Adjustment	003915	1	
24	Block, Guide Block Mount	003909	1	
25	Pin, 3/16" x 5/8" Roll	F05012-22	2	
26	Washer, 3/8" SAE Flat	F05011-3	1	
27	Washer, 3/8" Split Lock	F05011-4	1	
28	Bolt, 3/8-16 x 1 1/4" Hex Head Grade 5	F05007-123	1	
29	Bolt, 5/16-18 x 3/4" Hex Head	F05006-102	1	
30	Ball, 3/16" Dia. Nylon	003914	2	
31	Washer, 1/4" Split Lock	F05011-14	2	
32	Bolt, 1/4-20 x 1/2" Hex Head	F05005-15	2	
33	Bolt, Blade Guide Block Mount	003994	1	
34	Washer, #10 Brass	042867	1	
35	Bolt, #10-32 x 1 1/4" Hex Head Stainless Steel	F05004-240	1	
36	Screw, Lower Block Adjustment	044057	1	
37	Screw, #10-32 x 3/8" Socket Head Stainless Steel	F05004-200	1	
38	Washer, 5/16" SAE Flat	F05011-17	1	
39	Washer, 5/16" Split Lock	F05011-13	1	
40	BLOCK, BLADE GUIDE WEAR (STANDARD FOR 1 1/4" BLADES)	052355 ²	2	
	BLOCK, BLADE GUIDE WEAR (OPTIONAL FOR 1 1/2" BLADES)	052309 ²	2	
	BLOCK ASSEMBLY, 1" SQ. EZ-GLIDE WEAR	036347 ²	2	
41	BLOCK, BLADE GUIDE ALIGNMENT	035799	1	
42	WASHER, #10 SPLIT LOCK	F05011-20	1	
43	SCREW, #10-32 X 5/8" HEX HEAD	F05004-152	1	
44	ADJUSTMENT TOOL, LOWER GUIDE BLOCK	044064	1	
45	SHIM, .008" BLADE GUIDE BLOCK SPACER	035248	1	

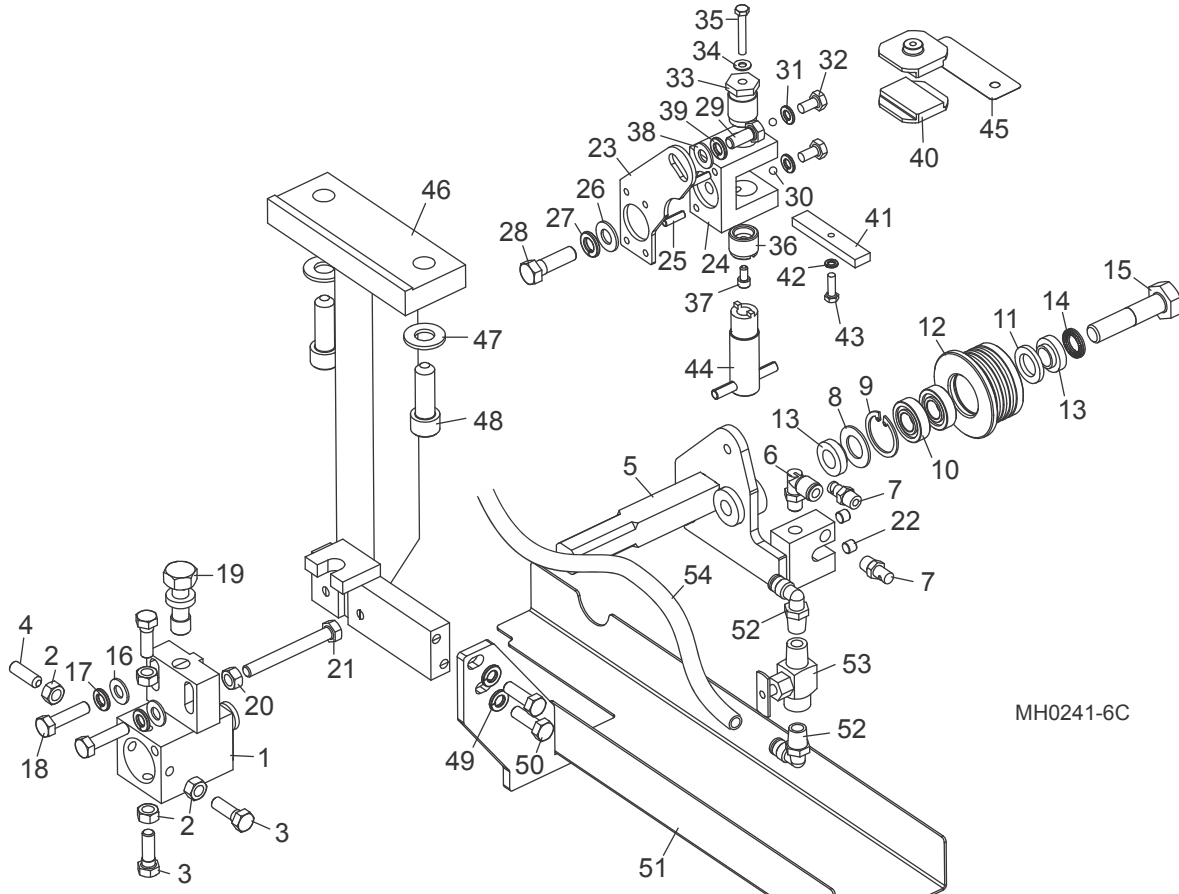
2

Saw Head Parts

Inner Blade Guide Assembly

- ¹ The resaw is equipped standard with blade guide rollers that can be used with the standard 1 1/4" blade or 1 1/2" blades. Optional extended blade guide rollers are available for use with 1 1/2" blades. The extended rollers may provide more stability during difficult sawing, but will reduce the total amount of times the blade can be reused after sharpening. Use kit 006382 to convert the rollers and guide blocks for both blade guides for 1 1/2" blades.
- ² 052355 blocks for use with 1 1/4" blade provided as standard equipment. 052309 blocks available for optional use with 1 1/2" blades. Use kit 006382 to convert the rollers and guide blocks for both blade guides for 1 1/2" blades. EZ-Glide blocks 036347 are available for customers who prefer this block.

2.6 Outer Blade Guide Assembly



MH0241-6C

REF	DESCRIPTION (◆ Indicates Parts Available In Assemblies Only)	PART #	QTY. (* /head)
	GUIDE ASSEMBLY, OUTER BLADE GUIDE	008996	1*
	Block Assembly, Idle Side Blade Guide Mount	065677	1
1	Block Weldment, Blade Guide Mount	003911	1 ◆
2	Nut, 5/16-18 Hex	F05010-17	4
3	Bolt, 5/16-18 x 1" Hex Head Stainless Steel	F05006-88	3
4	Screw, 5/16-18 x 1" Socket Head Flat Point Stainless Steel Set	F05006-122	1
5	Shaft Weldment, Idle Side Guide	003924	1
6	Fitting, 1/8MPTx1/4Tube Elbow Swivel	P09736	1
7	Fitting, Blade Lube Spray Nozzle	033479	2
	Roller Assembly, Blade Guide (standard for use with 1 1/4" & 1 1/2" blades)	A04925 ¹	1
	Roller Assembly, Extended Blade Guide (optional for use with 1 1/2" blades)	014299 ¹	1
	Bearing Kit, Blade Guide Rebuild	K07079	1
8	Washer, 5/8" White Felt	P04252	1
9	Ring, 1 1/8" Interior Retaining	F04254-1	1

2

Saw Head Parts

Outer Blade Guide Assembly

10	Bearing, R8-2RS Blade Guide	015975	2	◆
11	Washer, 5/8" Gray Felt	P06455	1	
	Screw, 1/4-28 x 1/4" Socket Head Cup Point Set Black Oxide	F05005-105	1	
	Instruction Sheet, Blade Guide Rebuild	057407-150 7	1	
12	Roller, Flanged Blade Guide (1 1/4" & 1 1/2" blade)	S04250	1	◆
	Roller, Flanged Blade Guide (1 1/2" blade)	014298	1	◆
	Instruction Sheet, Blade Guide Roller Replacement	A04925-364	1	
13	Spacer, Blade Guide	S04253	2	
14	Washer, 1/2" Nord-Lock	F05011-125	1	
15	Bolt, 1/2-13 x 2 1/4" Hex Head Grade 5	F05008-10	1	
16	Washer, 5/16" SAE Flat	F05011-17	2	
17	Washer, 5/16" Split Lock	F05011-13	2	
18	Bolt, 5/16-18 x 1 1/4" Hex Head Stainless Steel	F05006-118	2	
19	Bolt, Blade Guide Vertical Adjustment	035656	1	
20	Nut, 5/16-18 Hex	F05010-17	1	
21	Bolt, 5/16-18 x 2 3/4" Hex Head Full Thread	F05006-136	1	
22	Fitting, 1/16" NPT Plug	007734	2	
	Clamp, 1/4" Wire 13/32" Mounting Hole	024155	2	
	Block Assembly, Idle Side Blade Guide	003928	1	
23	Plate, Block Tilt Adjustment	003915	1	
24	Block, Guide Block Mount	003909	1	
25	Pin, 3/16" x 5/8" Roll	F05012-22	2	
26	Washer, 3/8" SAE Flat	F05011-3	1	
27	Washer, 3/8" Split Lock	F05011-4	1	
28	Bolt, 3/8-16 x 1 1/4" Hex Head Grade 5	F05007-123	1	
29	Bolt, 5/16-18 x 3/4" Hex Head	F05006-102	1	
30	Ball, 3/16" Dia. Nylon	003914	2	
31	Washer, 1/4" Split Lock	F05011-14	2	
32	Bolt, 1/4-20 x 1/2" Hex Head	F05005-15	2	
33	Bolt, Blade Guide Block Mount	003994	1	
34	Washer, #10 Brass	042867	1	
35	Bolt, #10-32 x 1 1/4" Hex Head Stainless Steel	F05004-240	1	
36	Screw, Lower Block Adjustment	044057	1	
37	Screw, #10-32 x 3/8" Socket Head Stainless Steel	F05004-200	1	
38	Washer, 5/16" SAE Flat	F05011-17	1	
39	Washer, 5/16" Split Lock	F05011-13	1	
40	BLOCK, BLADE GUIDE WEAR (STANDARD FOR 1 1/4" BLADES)	052355 ²	2	
	BLOCK, BLADE GUIDE WEAR (OPTIONAL FOR 1 1/2" BLADES)	052309 ²	2	
	BLOCK ASSEMBLY, 1" SQ. EZ-GLIDE WEAR	036347 ²	2	
41	BLOCK, BLADE GUIDE ALIGNMENT	035799	1	
42	WASHER, #10 SPLIT LOCK	F05011-20	1	
43	SCREW, #10-32 X 5/8" HEX HEAD	F05004-152	1	

44	ADJUSTMENT TOOL, LOWER GUIDE BLOCK	044064	1	
45	SHIM, .008" BLADE GUIDE BLOCK SPACER	035248	1	
46	ARM WELDMENT, HR1000 BLADE GUIDE	007689	1*	
47	WASHER, 1/2" SAE FLAT	F05011-2	2*	
48	BOLT, 1/2-20 X 1 1/2" SOCKET HEAD	F05008-44	2*	
49	WASHER, 5/16" SPLIT LOCK	F05011-13	2*	
50	BOLT, 5/16-18 X 1" HEX HEAD GRADE 5	F05006-27	2*	
51	GUARD, HR1000 OUTER BLADE GUIDE	007692	1*	
52	FITTING, 1/4" NPT X 1/4" TUBE 90°	P21519	2	
53	VALVE, WATER SHUTOFF	P05680	1*	
54	HOSE, 1/4" O.D. PLASTIC	R01869	As Req'd	

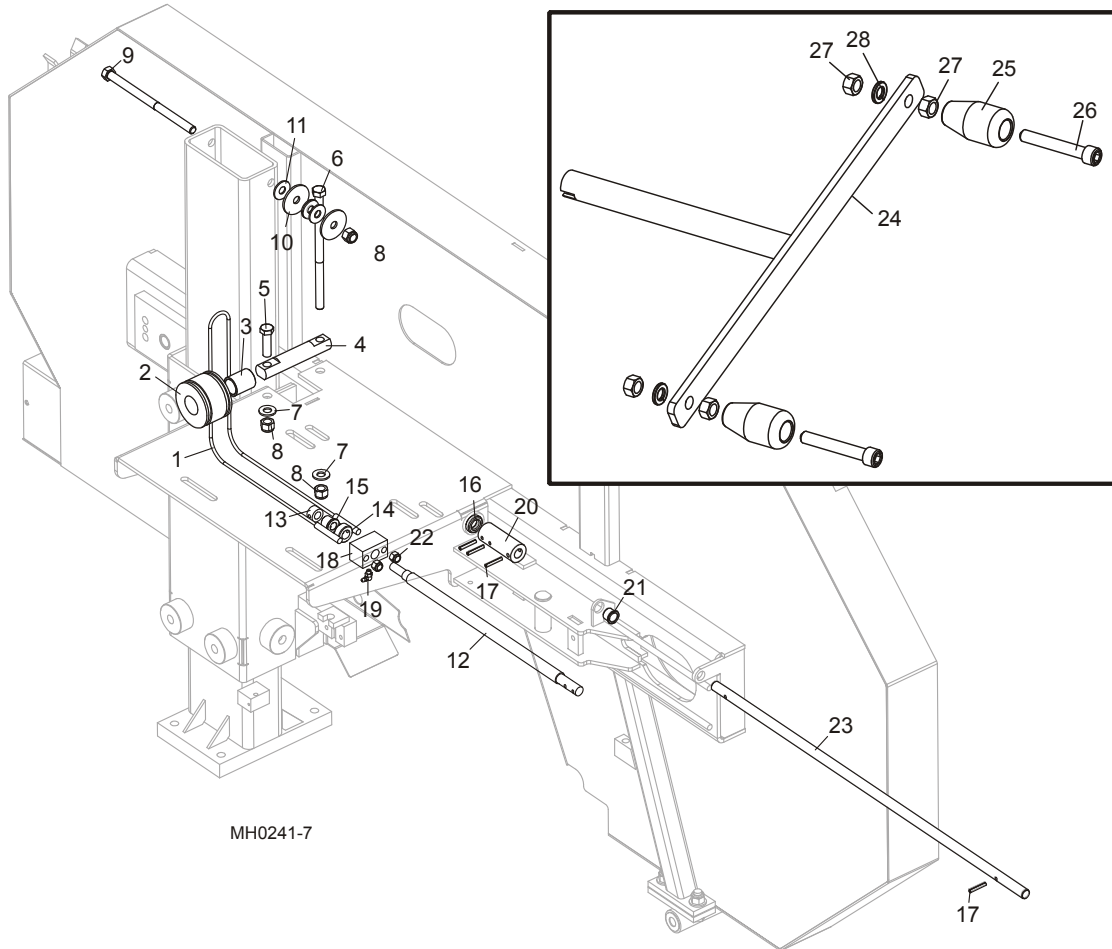
¹ The resaw is equipped standard with blade guide rollers that can be used with the standard 1 1/4" blade or 1 1/2" blades. Optional extended blade guide rollers are available for use with 1 1/2" blades. The extended rollers may provide more stability during difficult sawing, but will reduce the total amount of times the blade can be reused after sharpening. Use kit 006382 to convert the rollers and guide blocks for both blade guides for 1 1/2" blades.

² 052355 blocks for use with 1 1/4" blade provided as standard equipment. 052309 blocks available for optional use with 1 1/2" blades. Use kit 006382 to convert the rollers and guide blocks for both blade guides for 1 1/2" blades. EZ-Glide blocks 036347 are available for customers who prefer this block.

2 Saw Head Parts

Up/Down Assembly

2.7 Up/Down Assembly



REF	DESCRIPTION (◆ Indicates Parts Available In Assemblies Only)	PART #	QTY. (* /head)
1	CABLE, MULTIHEAD UP/DOWN	S22307	1
2	PULLEY, 2-GROOVE UP/DOWN CABLE	S22205	1
3	BUSHING, 1" X 1 1/4" X 1 1/2" BRONZE	P05041	1
4	PIN, CABLE PULLEY MOUNT	007672	1
5	BOLT, 1/2-13 X 1 3/4" HEX HEAD GRADE 5	F05008-88	1
6	BOLT, 1/2-13 X 8 1/2" HEX HEAD GRADE 5	F05008-147	1
7	WASHER, 1/2" SAE FLAT	F05011-2	2
8	NUT, 1/2-13 HEX NYLON LOCK	F05010-8	3
9	BOLT, 1/2-13 X 8" HEX HEAD GRADE 5	F05008-69	1
10	WASHER, 1/2" I.D. X 2" O.D. FENDER	F05011-38	2
11	WASHER, 7/16" STANDARD FLAT	F05011-35	4
12	ROD, UP/DOWN THREADED	S22208	1
13	COLLAR, 1/2" I.D. SHAFT	014820	1

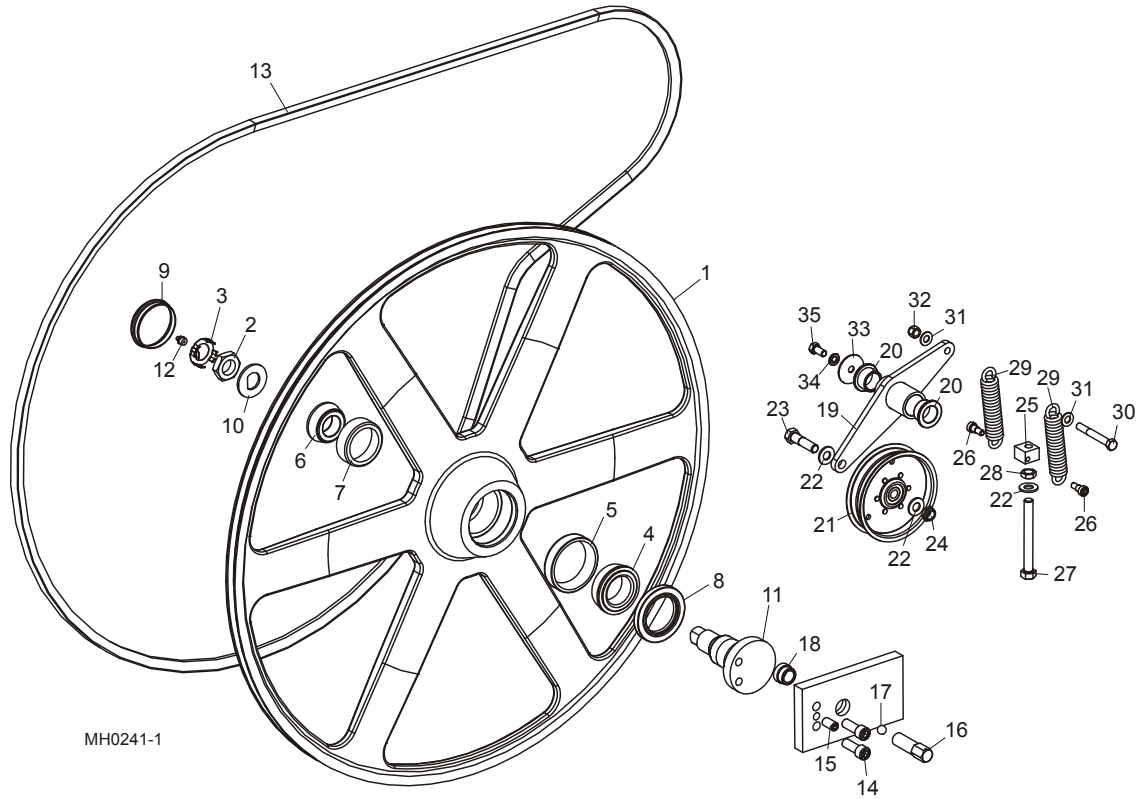
14	BUSHING, 1/2" X 3/4" FLANGED BRONZE	P22317	1	
15	COLLAR, 5/8" I.D. SHAF6	P05035	1	
16	BEARING, 5/8" THRUST	P04214	1	
17	PIN, 3/16" X 1 1/4" ROLL	F05012-16	4	
18	BLOCK, UP/DOWN THREADED	S22209	1	
19	FITTING, 1/4-28 90° GREASE	P04108	1	
20	COUPLING, UP/DOWN CRANK	S22476	1	
21	BUSHING, .635 ID X .750 OD NYLON FLANGED	P22478	2	
22	NUT, 3/8-16 HEX NYLON LOCK	F05010-10	2	
23	SHAFT, UP/DOWN ADJUSTMENT	007705	1	
	CRANK HANDLE ASSEMBLY	033251	1	
24	Handle Weldment, Crank	033253	1	
25	Knob, 3/8" Bore Tapered Plastic	060170 ¹	2	
26	Screw, 3/8-16 x 3 1/2" Socket Head Cap	F05007-111 ¹	2	
27	Nut, 3/8-16 Jam	F05010-29	4	
28	Washer, 3/8" Split Lock	F05011-4	2	

¹ Knob 060170 replaces S08291-W originally supplied (requires longer bolt F05007-111).

2

Saw Head Parts Blade Wheel Assembly (Drive Side)

2.8 Blade Wheel Assembly (Drive Side)



MH0241-1

REF	DESCRIPTION (◆ Indicates Parts Available In Assemblies Only)	PART #	QTY. (* /head)	
	WHEEL ASSEMBLY, 34" HR1000 BLADE	006553	1*	
1	Wheel, 34" Cast Blade	006544	1	◆
	Nut Assembly, Spindle w/Retainer	007656	1	
2	Nut, 1-14 Spindle	007654	1	
3	Retainer, Spindle Nut	007655	1	
	Bearing Kit, Blade Wheel	061227	1	
4	Bearing, Inner	045208	1	
5	Race, Inner Bearing	045209	1	
6	Bearing, Outer	045210	1	
7	Race, Outer Bearing	045211	1	
8	Seal, Blade Wheel Bearing	045212	1	
9	Cap, Hub Dust	033238	1	
10	Washer, Spindle 'D'	045214	1	
11	Shaft, HR1000 Spindle	006545	1	
12	Fitting, 1/8" NPT Straight Grease	P108	1	
13	BELT, 5VX1320	007723	1	
14	SCREW, 1/2-20 X 1 1/2" SOCKET HEAD CAP	F05008-44	2*	

Saw Head Parts
Blade Wheel Assembly (Drive Side)

2

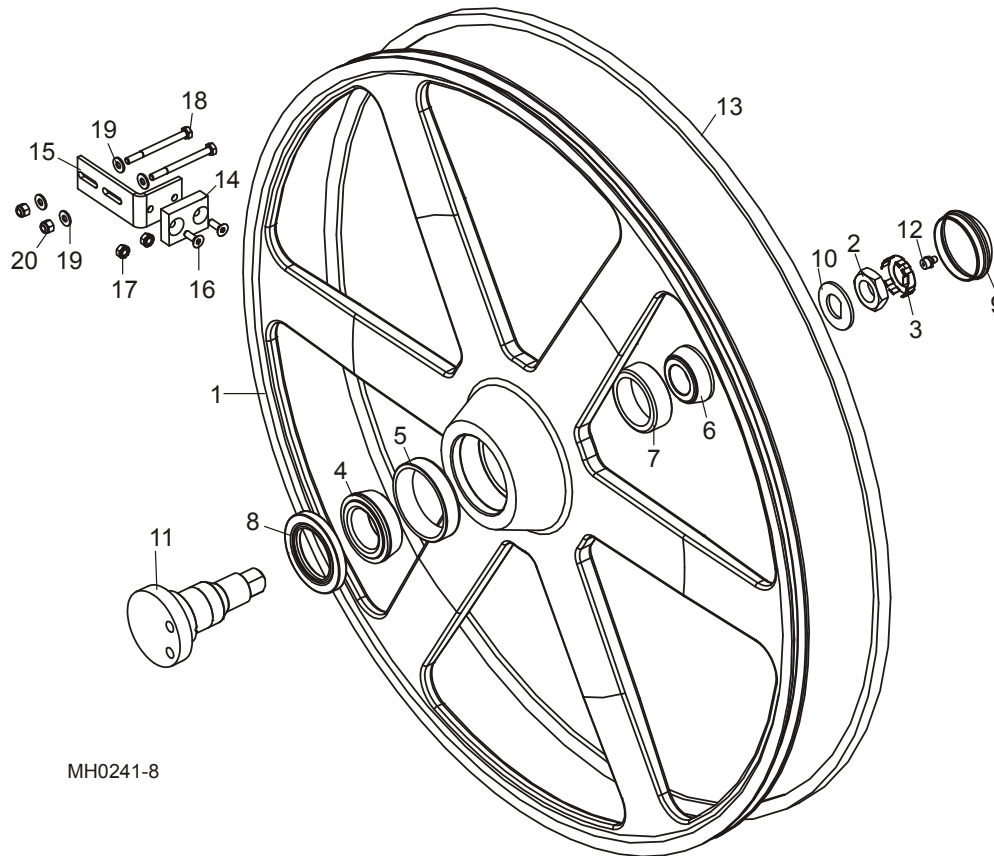
15	SCREW, 1/2-13 X 1" OVAL POINT SET NYLON LOCK	F05008-9	1*	
	SCREW ASSEMBLY, BLADE WHEEL TILT	007652	1*	
16	Screw, Cant Adjustment	007651	1	◆
17	Ball, 1/2" Diameter Detent	P02720	1	
18	BUSHING, 3/4-32 THREADED	007627 ¹	1*	
	TENSIONER ASSEMBLY, HR1000 DRIVE BELT	007703	1*	
19	Idler Weldment, HR1000 Belt Tension	007700	1	
20	Bushing, 1 x 1 1/4" x 3/4" Flanged Bronze	P737	2	
21	Pulley, 5" OD Idler	043367	1	
22	Washer, 1/2" SAE Flat	F05011-2	3	
23	Bolt, 1/2-13 x 2" Hex Head	F05008-76	1	
24	Nut, 1/2-13 Half Nylon Lock	F05010-127	1	
25	Block, HR1000 Drive Belt Tensioner	007701	1	
26	Bolt, 3/8" x 3/8" Socket Head Shoulder	F05007-159	2	
27	Bolt, 1/2-13 x 4 1/2" Hex Head Full Thread	F05008-16	1	
28	Nut, 1/2-13 Hex Jam	F05010-31	1	
29	Spring, 1" OD x 4 1/2" Long x .192 Wire Compression	021185	2	
30	Bolt, 3/8-16 x 3" Hex Head Grade 5	F05007-73	1	
31	Washer, 3/8" SAE Flat	F05011-3	2	
32	Nut, 3/8-16 Hex Nylon Lock	F05010-10	1	
33	Washer, .39" ID x 1.75" OD x 14Ga.	036931	1	
34	Washer, 3/8" Split Lock	F05011-4	1	
35	Bolt, 3/8-16 x 3/4" Hex Head Grade 5	F05007-118	1	

¹ Bushing is welded to C-frame block. Factory removal and installation recommended.

2 Saw Head Parts

Blade Wheel Assembly (Idle Side)

2.9 Blade Wheel Assembly (Idle Side)



MH0241-8

REF	DESCRIPTION (◆ Indicates Parts Available In Assemblies Only)	PART #	QTY. (* /head)	
	WHEEL ASSEMBLY, 34" HR1000 BLADE	006553	1*	
1	Wheel, 34" Cast Blade	006544	1	◆
	Nut Assembly, Spindle w/Retainer	007656	1	
2	Nut, 1-14 Spindle	007654	1	
3	Retainer, Spindle Nut	007655	1	
	Bearing Kit, Blade Wheel	061227	1	
4	Bearing, Inner	045208	1	
5	Race, Inner Bearing	045209	1	
6	Bearing, Outer	045210	1	
7	Race, Outer Bearing	045211	1	
8	Seal, Blade Wheel Bearing	045212	1	
9	Cap, Hub Dust	033238	1	
10	Washer, Spindle 'D'	045214	1	
11	Shaft, HR1000 Spindle	006545	1	
12	Fitting, 1/8" NPT Straight Grease	P108	1	

Saw Head Parts
Blade Wheel Assembly (Idle Side)

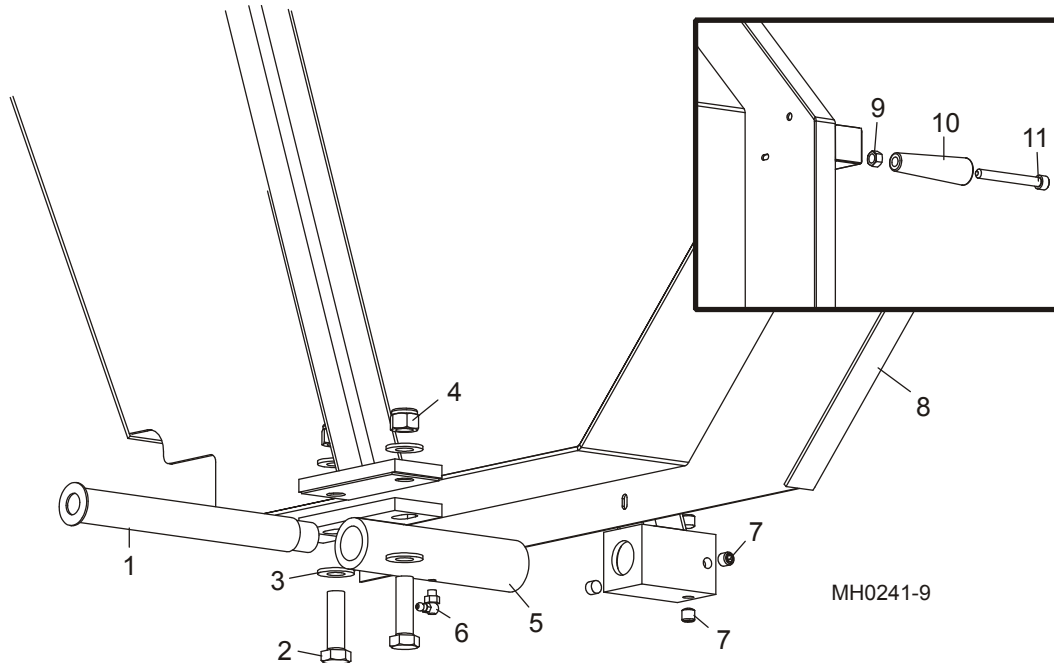
2

13	BELT, 5VX1080	033391	1	
	BRAKE PAD ASSEMBLY	A22901	1*	◆
14	Pad, Wheel Brake	S22200	1	
15	Bracket, Brake Pad Mount	S22201	1	
16	Screw, 1/4-20 x 3/4" Flat Socket Head	F05005-70	2	
17	Nut, 1/4-20 Hex Self-Locking	F05010-9	2	
18	BOLT, 1/4-20 X 3" HEX HEAD GRADE 5	F05005-127	2	
19	WASHER, 1/4" SAE FLAT	F05011-11	4	
20	NUT, 1/4-20 HEX NYLON LOCK	F05010-69	2	

2 Saw Head Parts

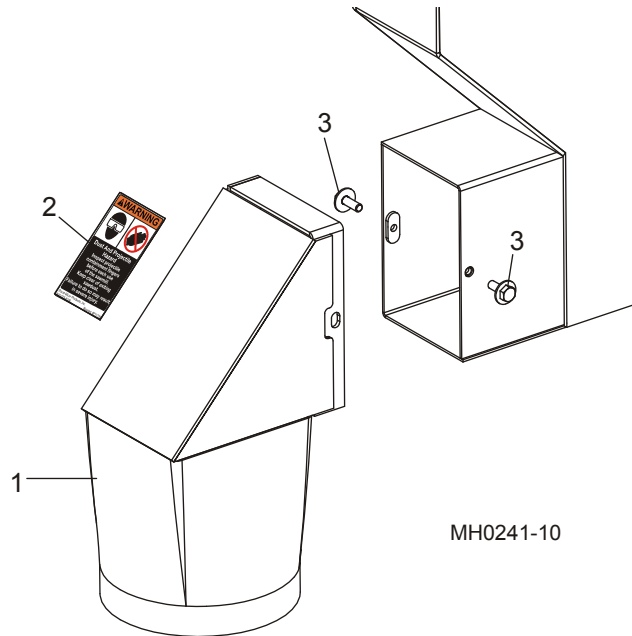
Blade Housing Cover

2.10 Blade Housing Cover



REF	DESCRIPTION (◆ Indicates Parts Available In Assemblies Only)	PART #	QTY. (*/head)
1	PIN WELDMENT, COVER PIVOT	W22064	1
2	BOLT, 1/2-13 X 1 3/4" HEX HEAD GRADE 5	F05008-88	2
3	WASHER, 1/2" SAE FLAT	F05011-2	4
4	NUT, 1/2-13 HEX NYLON LOCK	F05010-8	2
5	TUBE WELDMENT, COVER PIVOT	W22623	1
6	FITTING, 1/4-28 GREASE 90°	P04108	1
7	SCREW, 3/8-16 X 3/8" SOCKET HEAD OVAL POINT SET	F05007-13	4
8	COVER WELDMENT, HR1000 BLADE HOUSING	007698	1
9	NUT, 3/8-16 HEX	F05010-1	1
10	KNOB, COVER PIVOT	060170	1
11	BOLT, 3/8-16 X 3 1/2" SOCKET HEAD	F05007-111	1

2.11 Sawdust Chute



REF	DESCRIPTION (◆ Indicates Parts Available In Assemblies Only)	PART #	QTY. (*/head)	
1	CHUTE WELDMENT, SAWDUST EXTENSION	W22556	1	
2	DECAL, SAWDUST CHUTE WARNING	P11754	1	
3	BOLT, 1/4-20 X 3/4" HEX HEAD W/WASHER&PATCH	F05005-207	2	

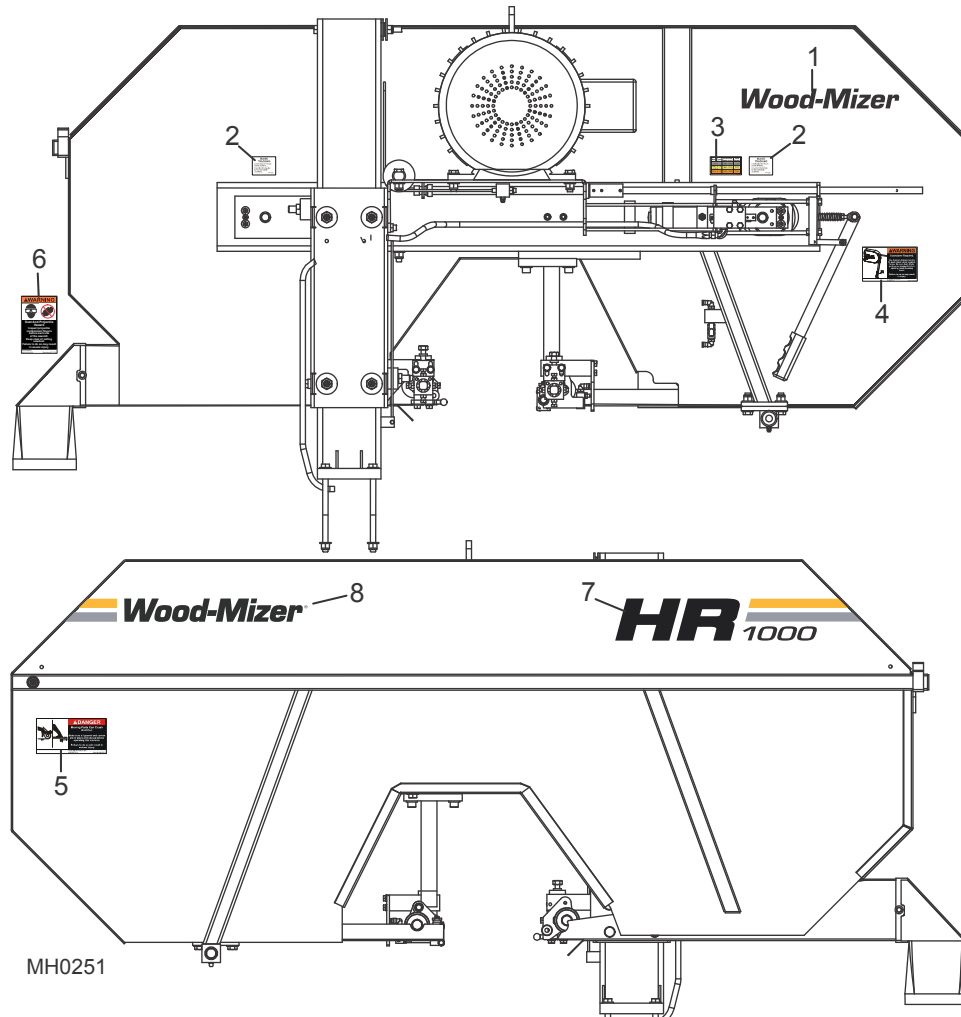
2 Saw Head Parts

Saw Head Decals

2.12 Saw Head Decals

HR1000

Rev. A2.04+

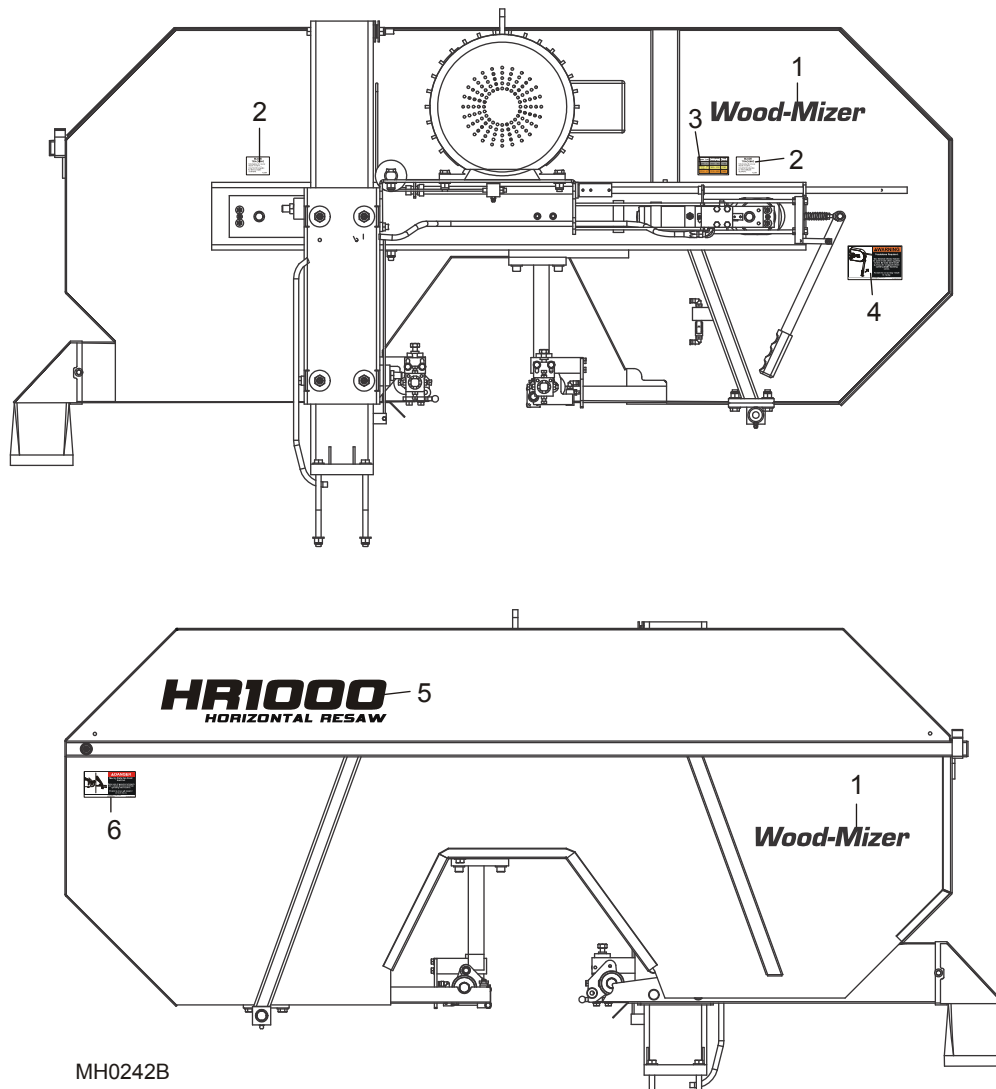


REF	DESCRIPTION (◆ Indicates Parts Available In Assemblies Only)	PART #	QTY. (* /head)
1	DECAL, WOOD-MIZER LOGO 15"	052281	1
2	DECAL, BLADE ALIGNMENT	P22454	2*
3	DECAL, BLADE TENSION	P22653	1*
4	DECAL, BLADE BRAKE WARNING	P22519	1*
5	DECAL, MOVING PARTS DANGER	033254	1*
6	DECAL, SAWDUST CHUTE WARNING	P11754	1*
7	DECAL, HR1000 LOGO	076276	1
8	DECAL, HR1000 WOOD-MIZER LOGO	076277	1

2.13 Saw Head Decals

HR1000

Rev. A1.00 - A2.03

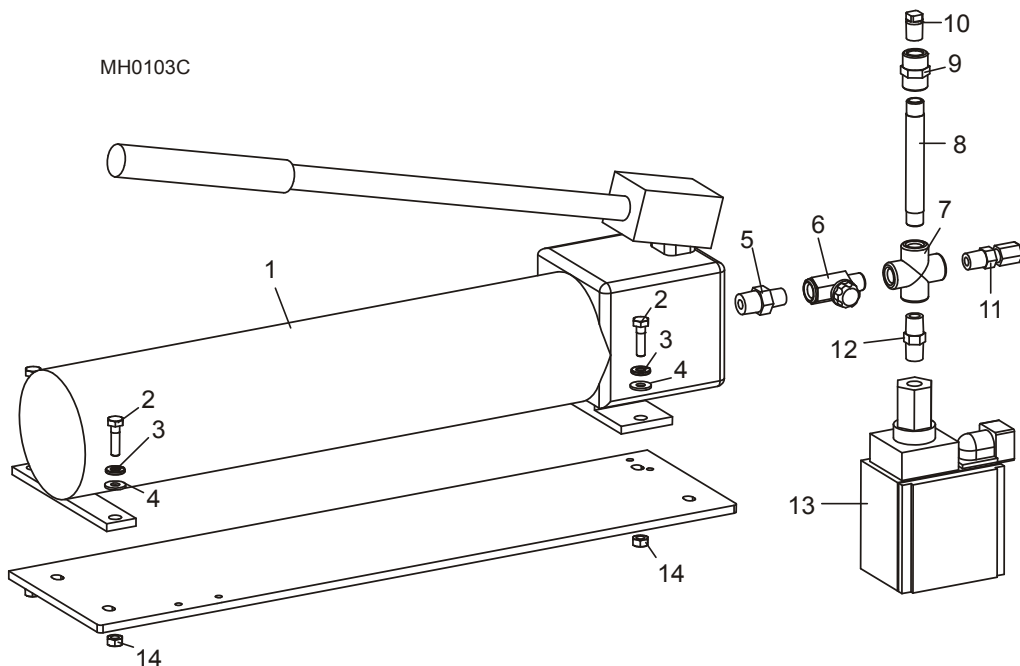


MH0242B

REF	DESCRIPTION (◆ Indicates Parts Available In Assemblies Only)	PART #	QTY. (* /head)
1	DECAL, AWMV LOGO 15"	052281	2
2	DECAL, BLADE ALIGNMENT	P22454	2*
3	DECAL, BLADE TENSION	P22653	1*
4	DECAL, BLADE BRAKE WARNING	P22519	1*
5	DECAL, HR1000 LOGO	013970	1
6	DECAL, MOVING PARTS DANGER	033254	1*

SECTION 3 FEED TRACK/FRAME PARTS

3.1 Hydraulic Blade Tensioner Assembly



REF	DESCRIPTION (◆ Indicates Parts Available In Assemblies Only)	PART #	QTY.
1	PUMP, HYDRAULIC 2-STAGE HAND	P22302	1
2	BOLT, 1/4-20 X 1" HEX HEAD	F05005-101	4
3	WASHER, 1/4" SPLIT LOCK	F05011-14	4
4	WASHER, 1/4" SAE FLAT	F05011-11	4
5	FITTING, 3/8" NPT - 1/4" NPT STRAIGHT	P05381	1
6	VALVE, HYDRAULIC SHUTOFF	P22314	1
7	FITTING, 1/4" NPT CROSS	P22311	1
8	FITTING, 1/4" NPT X 4" NIPPLE	016428	1
9	FITTING, 1/4" NPT COUPLING	P03420	1
10	PLUG, 1/4" NPT PIPE	P05498 ¹	1
11	FITTING, 1/4" NPT X 1/4" TUBE	P22518	1
12	FITTING, 1/4" NPT STRAIGHT	P05389	1
13	SWITCH, HYDRAULIC PRESSURE SHUT-OFF	E22726 ²	1
14	NUT, 1/4-20 HEX	F05010-63	4

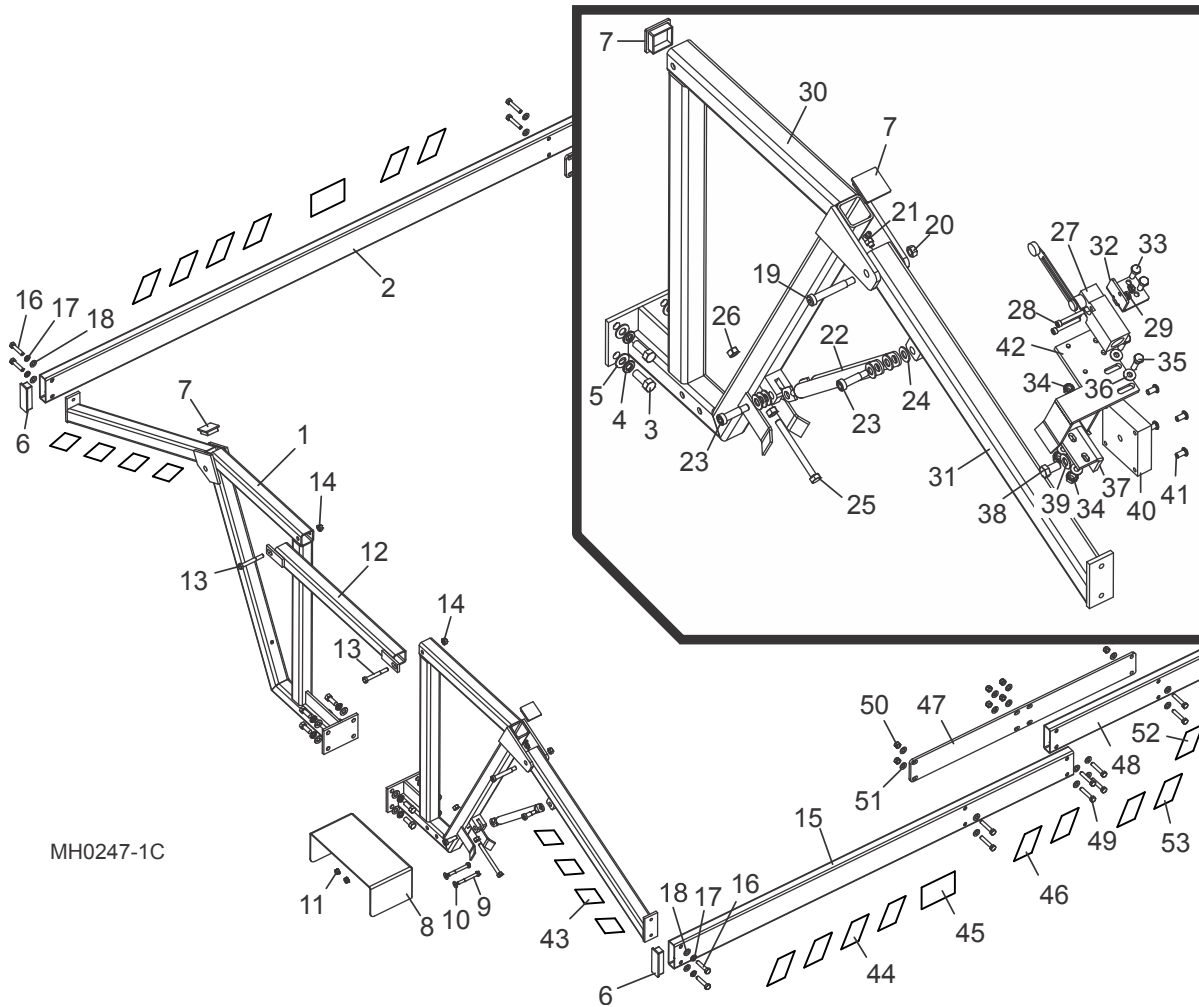
¹ Replaced P10052 3000 PSI Hydraulic Gauge (Rev. A2.01).

² Switch E22726 changed by manufacturer 4/11. New switch has straight wire connection. Replace fitting on connecting harness with swivel connector 051750.

3.2 Perimeter Fence Assembly

HR1000

Rev. A2.00+



REF	DESCRIPTION (◆ Indicates Parts Available In Assemblies Only)	PART #	QTY.
1	BRACKET, FIXED PERIMETER FENCE MOUNT	W22168	2
2	TUBE, RAIL 72	074964 ¹	1
3	BOLT, 3/8-16 X 1" HEX HEAD	F05007-7	16
4	WASHER, 3/8" SPLIT LOCK	F05011-4	16
5	WASHER, 3/8" SAE FLAT	F05011-3	16
6	PLUG, 1" X 3" PLASTIC	P22522	4
7	PLUG, 1 1/2" SQUARE PLASTIC	P22321	5
8	GUARD WELDMENT, REMOTE CONTROL SWITCH	W22081	1
9	BOLT, 1/4-20 X 2 1/4" HEX HEAD	F05005-72	2
10	WASHER, 1/4" SAE FLAT	F05011-11	2
11	NUT, 1/4-20 HEX SELF-LOCKING	F05010-9	2

3

Feed Track/Frame Parts

Perimeter Fence Assembly

12	TUBE, PERIMETER FENCE CROSS	W22185	1	
13	BOLT, 5/16-18 X 2 1/2" HEX HEAD	F05006-10	4	
14	NUT, 5/16-18 SELF-LOCKING HEX	F05010-20	4	
15	TUBE, RAIL 47	074965 ²	1	
16	BOLT, 5/16-18 X 1 1/2" HEX HEAD FULL THREAD	F05006-2	8	
17	WASHER, 5/16" SPLIT LOCK	F05011-13	8	
18	WASHER, 5/16" SAE FLAT	F05011-17	8	
19	BOLT, 3/8" X 2" SHOULDER (5/16-18 THREAD)	F05006-26	2	
20	NUT, 5/16-18 LOCK	F05010-6	2	
21	FITTING, 1/4-28 90°GREASE	P04108	2	
22	PISTON, PERIMETER FENCE GAS	P22309	3*	
23	BOLT, 3/8" X 5/8" SHOULDER (5/16-18 THREAD)	F05007-79 ²	4	
	BOLT, 3/8" X 1" X 5/16-18 SHOULDER	F05006-25 ²	2	
24	WASHER, 3/8" SAE FLAT	F05011-3 ³	6	
25	BOLT, 5/16-18 X 3 1/2" HEX HEAD FULL THREAD	F05006-3	2	
26	NUT, 5/16-18 HEX	F05010-17	4	
27	SWITCH, PERIMETER FENCE LIMIT	039378	1	
28	BOLT, #10-24 X 1 1/2" SOCKET HEAD	F05004-51	2	
29	NUT, #10-24 SELF-LOCKING HEX	F05010-14	2	
30	BRACKET, SWINGING PERIMETER FENCE MOUNT	W22441	2	
31	ARM, SWINGING PERIMETER FENCE	W22179	2	
32	BRACKET, PERIMETER SWITCH MOUNT	065580	1	
33	BOLT, 1/4-20 X 3/4" HEX HEAD FULL THREAD	F05005-1	2	
34	NUT, 1/4-20 HEX SELF LOCKING	F05010-9	4	
35	BOLT, 1/4-20 X 1" HEX HEAD GRADE 5	F05005-101	2	
36	WASHER, 1/4" SAE FLAT	F05011-11	4	
37	BRACKET, PERIMETER FENCE SWITCH "L"	S22243	1	
38	BOLT, 3/8-16 X 3/4" HEX HEAD GRADE 2	F05007-27	1	
39	WASHER, 3/8" SAE FLAT	F05011-3	1	
40	PLATE, PERIMETER FENCE SAFETY SWITCH	033398	1	
41	SCREW, 1/4-20 X 1/2" BUTTON SOCKET HEAD	F05005-59	4	
42	BRACKET, PERIMETER FENCE SAFETY SWITCH MOUNTING	W22246	1	
43	DECAL, MULTIHEAD FENCE END (4 STRIPES)	S22530-1	7	
44	DECAL, MULTIHEAD FENCE SIDE (4 STRIPES)	074978	4	
45	DECAL, MULTIHEAD FENCE SIDE (2 STRIPES)	074979	4	
46	DECAL, PERIMETER FENCE WARNING	P22687	4	
	RAIL ASSEMBLY, 56	074966 ²	2/4/6**	
47	Plate, Rail Joint	074962	1	
48	Tube, Rail 56	074963	1	
49	Bolt, 5/16-18x1 3/4" Full Thread Hex Head Grade 5	F05006-81	8	
50	Nut, 5/16-18 Nylok Hex	F05010-58	8	
51	Washer, 5/16" SAE Flat	F05011-17	16	

Feed Track/Frame Parts

Perimeter Fence Assembly

3

52	Decal, Multihead Fence Side (4 Stripes)	074978	1	
53	Decal, Multihead Fence Side (2 Stripes)	074979	3	
* Three pistons supplied on 5 & 6 head models only. Other models supplied with two. ** Number of Saw Heads=Number of Rail Assemblies.				

¹ 074964 replaces S22167-X Fixed Perimeter Fence Tube, 074965 replaces S22164-X Swinging Perimeter Fence Tube, added 074966 56 Rail Assemblies (4/16).

² Use 5/8" long shoulder bolt F05007-79 to mount single piston. Use 1" long shoulder bolt F05006-25 to mount dual pistons supplied on 5 & 6 head models.

³ For dual pistons supplied on 5 & 6 head models only.

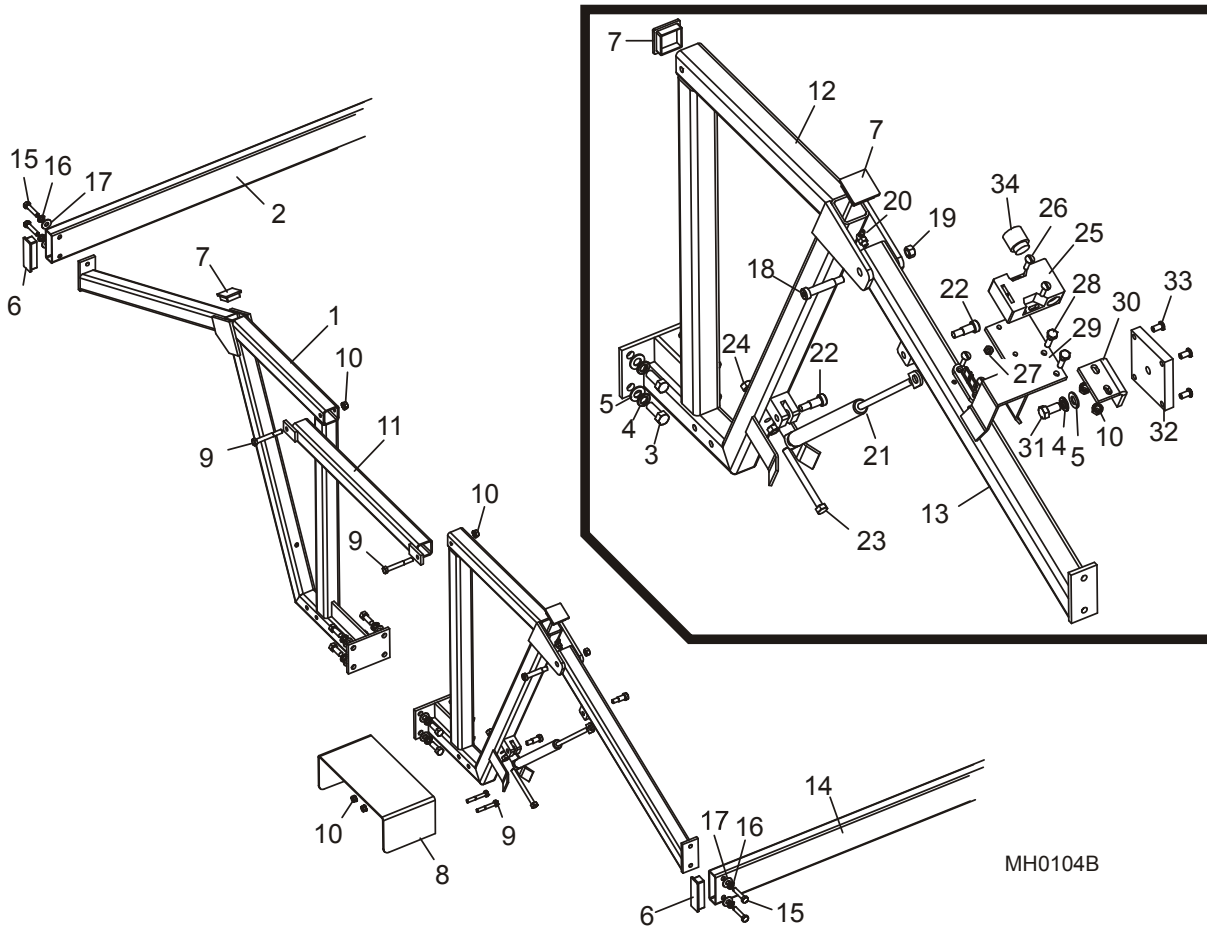
3 Feed Track/Frame Parts

Perimeter Fence Assembly

3.3 Perimeter Fence Assembly

HR1000

Rev. A1.00 - A1.01



REF	DESCRIPTION (◆ Indicates Parts Available In Assemblies Only)	PART #	QTY.
1	BRACKET, FIXED PERIMETER FENCE MOUNT	W22168	2
2	TUBE, FIXED PERIMETER FENCE	S22167-X*	1
3	BOLT, 3/8-16 X 1" HEX HEAD	F05007-7	16
4	WASHER, 3/8" SPLIT LOCK	F05011-4	17
5	WASHER, 3/8" SAE FLAT	F05011-3	17
6	PLUG, 1" X 3" PLASTIC	P22522	4
7	PLUG, 1 1/2" SQUARE PLASTIC	P22321	5
8	GUARD WELDMENT, REMOTE CONTROL SWITCH	W22081	1
9	BOLT, 5/16-18 X 2 1/2" HEX HEAD	F05006-10	4
10	NUT, 5/16-18 SELF-LOCKING HEX	F05010-20	4
11	TUBE, PERIMETER FENCE CROSS	W22185	1
12	BRACKET, SWINGING PERIMETER FENCE MOUNT	W22441	2
13	ARM, SWINGING PERIMETER FENCE	W22179	2

Feed Track/Frame Parts

Perimeter Fence Assembly

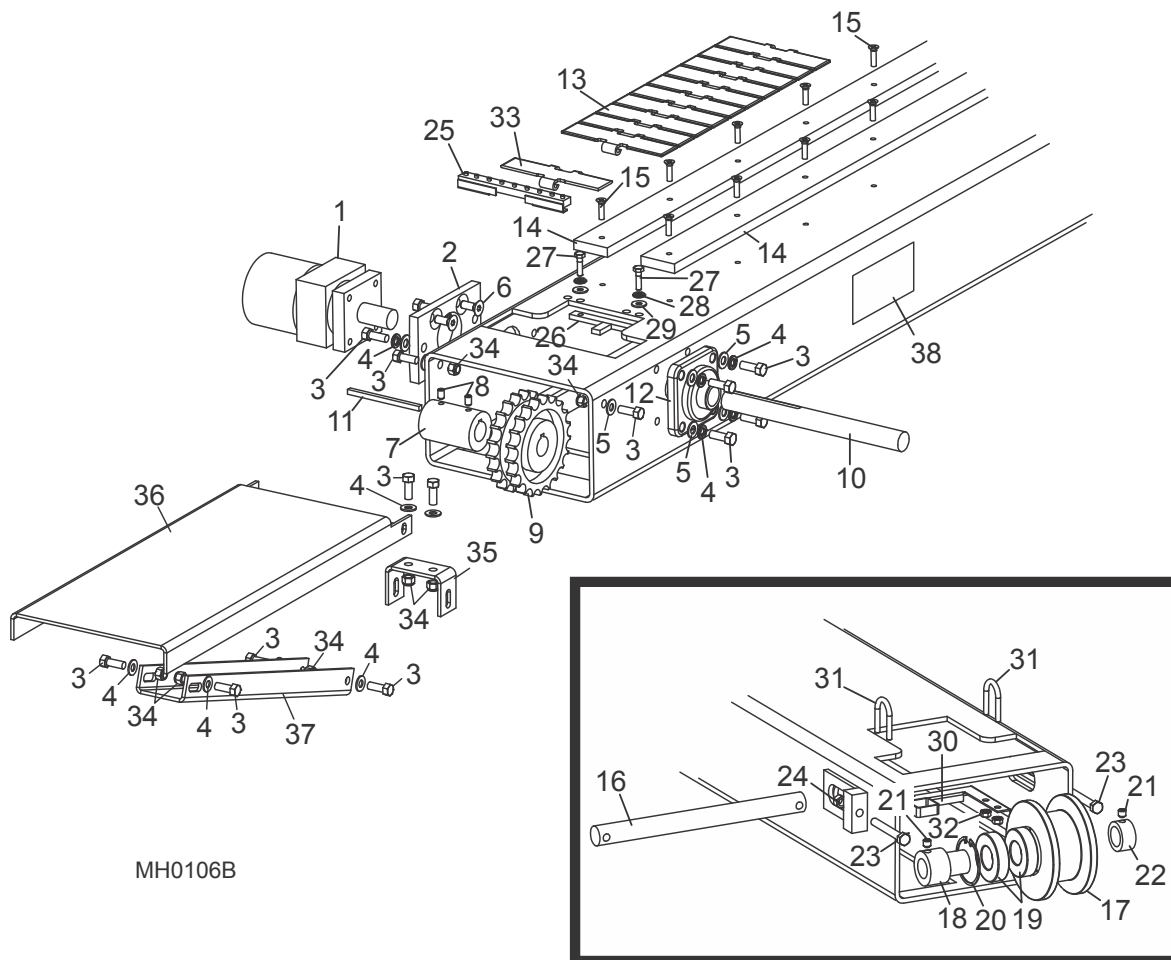
3

14	TUBE, SWINGING PERIMETER FENCE	S22164-X*	1	
15	BOLT, 5/16-18 X 1 1/2" HEX HEAD FULL THREAD	F05006-2	8	
16	WASHER, 5/16" SPLIT LOCK	F05011-13	8	
17	WASHER, 5/16" SAE FLAT	F05011-17	8	
18	BOLT, 3/8" X 2" SHOULDER (5/16-18 THREAD)	F05006-26	2	
19	NUT, 5/16-18 LOCK	F05010-6	2	
20	FITTING, 1/4-28 90°GREASE	P04108	2	
21	PISTON, PERIMETER FENCE GAS	P22309	2	
22	BOLT, 3/8" X 5/8" SHOULDER (5/16-18 THREAD)	F05007-79	4	
23	BOLT, 5/16-18 X 3 1/2" HEX HEAD FULL THREAD	F05006-3	2	
24	NUT, 5/16-18 HEX	F05010-17	4	
25	SWITCH, PERIMETER FENCE SAFETY	E22711	1	
	KEY, PERIMETER SAFETY	E22711-1	1	
26	SCREW, #10-24 X 7/8" SLOTTED ROUND HEAD	F05004-33	4	
27	NUT, #10-24 SELF-LOCKING HEX	F05010-14	2	
28	BOLT, 1/4-20 X 1" HEX HEAD GRADE 5	F05005-101	2	
29	BRACKET, PERIMETER FENCE SAFETY SWITCH MOUNTING	W22246	1	
30	BRACKET, PERIMETER FENCE SWITCH "L"	S22243	1	
31	BOLT, 3/8-16 X 3/4" HEX HEAD GRADE 2	F05007-27	1	
32	PLATE, PERIMETER FENCE SAFETY SWITCH	033398	1	
33	SCREW, 1/4-20 X 1/2" BUTTON SOCKET HEAD	F05005-59	4	
34	FITTING, C10 - 1/2" NPT ADAPTOR	P22696	1	
*X =Number Of Saw Heads				

3 Feed Track/Frame Parts

Feed Track Assembly

3.4 Feed Track Assembly



MH0106B

REF	DESCRIPTION (◆ Indicates Parts Available In Assemblies Only)	PART #	QTY.	
1	MOTOR, MG10-13-10AAAB HYDRAULIC	P20206	1	
2	PLATE, FEED TRACK MOTOR MOUNT	S20173	1	
3	BOLT, 3/8-16 X 1" HEX HEAD	F05007-7	14	
4	WASHER, 3/8" SPLIT LOCK	F05011-4	6	
5	WASHER, 3/8" SAE FLAT	F05011-3	14	
6	SCREW, 3/8-16 X 1" FLAT SOCKET HEAD	F05007-64	4	
7	COUPLING, FEED TRACK MOTOR SHAFT	S20185	1	
8	SCREW, 5/16-18 X 1/2" SOCKET HEAD SET	F05006-38	2	
9	SPROCKET, 21-22T FEED TRACK DRIVE	P20202	1	
10	SHAFT, FEED TRACK DRIVE	S22428	1	
11	KEY, 1/4" SQUARE X 4.25"	S22440	1	
12	BEARING, VJC 1 FLANGED	P20201	1	
13	CHAIN, 7 1/2" FLAT FEED	P22427 (10 Ft.)	As Req'd ¹	

Feed Track/Frame Parts

Feed Track Assembly

3

	Chain, 7.5" Flat Feed Track	079207 (1 Ft.)	As Req'd	
	Pin, Track Link Connecting	022424	As Req'd	
14	FEED TRACK NYLON PADS (See Section 3.5)			
15	BOLT, 1/4-20 X 3/4" HEX HEAD W/WASHER&PATCH	F05005-207	As Req'd	
16	SHAFT, FEED TRACK IDLE	S22425	1	
17	PULLEY, FEED TRACK IDLE	S20282	1	
18	BUSHING, FEED TRACK IDLE	S20286	1	
19	BEARING, 6206-2RS	P11035	2	
20	RING, 62MM INTERIOR RETAINING	F04254-12	1	
21	SCREW, 3/8-16 X 3/8" CUP POINT SET	F05007-68	2	
22	COLLAR, LOCKING	038090	1	
23	BOLT, 3/8-16 X 3" HEX HEAD FULL THREAD	F05007-1	2	
24	NUT, 3/8-16 HEX	F05010-1	2	
	SAWDUST ELIMINATION KIT	A22649-12	1	
25	Rake, Feed Tube Sawdust	W22641	1	
26	Scraper, Feed Track Drive Sprocket	W22644	1	
27	Bolt, 1/4-20 x 3/4" Hex Head Full Thread	F05005-1	2	
28	Washer, 1/4" Split Lock	F05011-14	2	
29	Washer, 1/4" SAE Flat	F05011-11	2	
30	Scraper, 12" Feed Track Idle Pulley	W22652-12	1	
31	Bolt, 1/4-20 x 1 1/4" 'U'	F05005-81	2	
32	Nut, 1/4-20 Self-Locking Hex	F05010-9	4	
33	Chain, Modified 7.5" Flat Feed Track	S22426	1	
	Instruction Sheet, Sawdust Elimination Kit	A22373-440	1	
34	NUT, 3/8-16 HEX NYLON LOCK	F05010-10	8	
35	BRACKET, OFF-LOAD TABLE MOUNT	S22085	1	
36	PLATE WELDMENT, OFF-LOAD TABLE	W22438	1	
37	BRACKET, OFF-LOAD TABLE SUPPORT	S22218	1	
38	DECAL, HAND SAFETY DANGER	S20040	6	

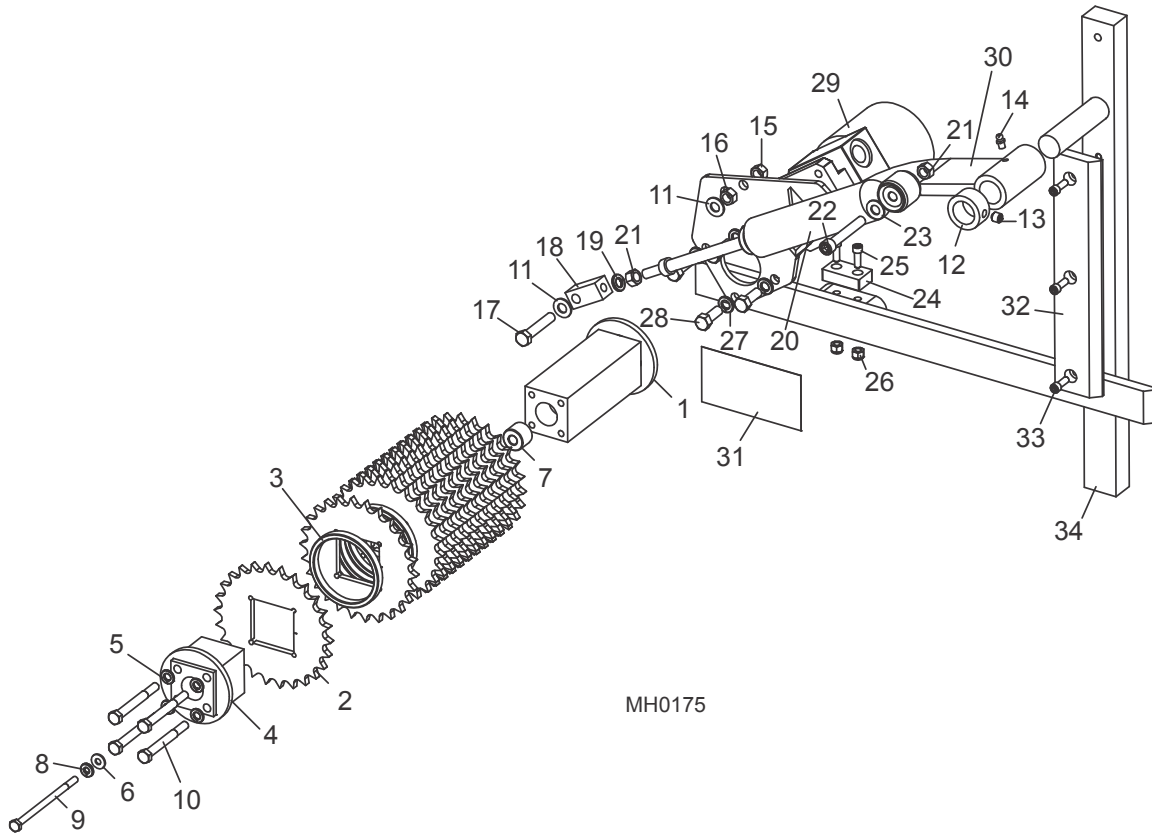
¹ 1 & 2 Head machines require 23' of track chain; 3 & 4 Head machines, 34'; 5 & 6 Head machines, 46'.

3.5 Feed Track Nylon Pads

Model	1/2" x 2 3/4" Nylon Pads See Qty. Below to replace entire set of track pads ¹	
	S22781 (60")	S22782 (56")
MH1D12 MH2D12	4	--
MH3D12 MH4D12	4	2
MH5D12 MH6D12	4	4

¹ All pads should be replaced in complete sets.

3.6 Feed Roller Assembly (Non-Air)



MH0175

REF	DESCRIPTION (◆ Indicates Parts Available In Assemblies Only)	PART #	QTY (*/head)	
	FEED ROLLER ASSEMBLY, 12" MULTIHEAD	A22486-12	1	
1	Shaft Weldment, Feed Roller	W22485	1	◆
2	Sprocket, Feed Roller Square Shaft	S22480	13	
	Sprocket, Smooth Feed Roller Square Shaft	016530	13	
3	Ring, Sprocket Spacer	S22481	12	
4	Shaft Extension Weldment, Feed Roller	W22485-12	1	◆
5	Washer, 5/16" Split Lock	F05011-13	4	
6	Washer, 1/4" SAE Flat	F05011-11	1	
7	Spacer, Feed Roller Shaft	S22487	1	
8	Washer, 1/4" Split Lock	F05011-14	1	
9	Bolt, 1/4-20 x 4 1/2" Hex Head Grade 5	F05005-76	1	
10	Bolt, 5/16-18 x 3" Hex Head Grade 5	F05006-62	4	
	HANDLE, FEED ROLLER LIFT	S22488	2/machine	◆
11	WASHER, 3/8" SAE FLAT	F05011-3	2	
12	COLLAR, FEED ROLLER LOCKING	038090	1	

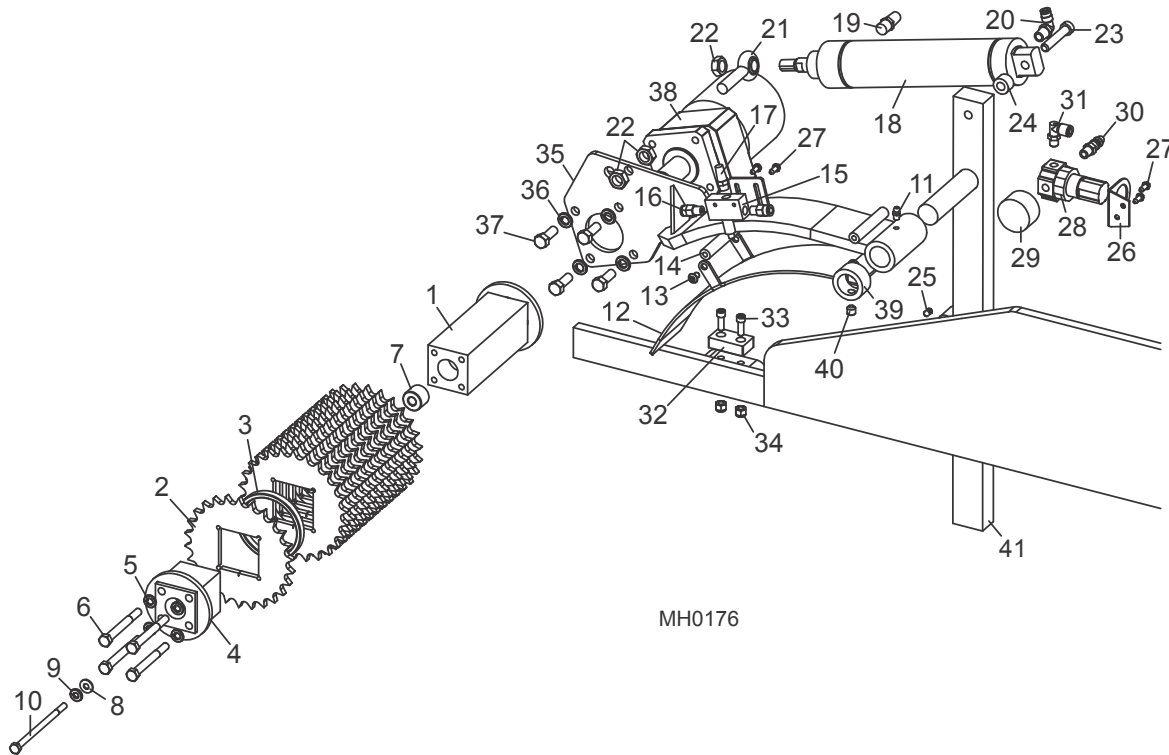
3

Feed Track/Frame Parts

Feed Roller Assembly (Non-Air)

13	SCREW, 3/8-16 X 3/8" CUP POINT SET	F05007-68	1	
14	FITTING, 1/4-28 GREASE	P05060	1	
15	NUT, 3/8-16 HEX	F05010-1	1	
16	NUT, 3/8-16 HEX LOCK	F05010-25	1	
17	BOLT, 3/8-16 X 2" HEX HEAD FULL THREAD	F05007-16	1	
	SHOCK ASSEMBLY, FEED ROLLER	A22699	1	
18	Block, Feed Roller Piston Pivot	S20163	1	
19	Washer, 3/8" Split Lock	F05011-4	1	
20	Shock, Feed Roller J550 Gas w/Bushing Pak 148 (P20263-1)	P20263	1	◆
21	Nut, 3/8-16 Hex	F05010-1	2	
22	Bolt, 3/8-16 X 2 1/2" Socket Head	F05007-24	1	
23	Washer, 3/8" SAE Flat	F05011-3	1	
24	BUMPER, FEED ROLLER	038898	1	
25	BOLT, 1/4-20 X 3/4" SOCKET HEAD	F05006-26	2	
26	NUT, 1/4-20 HEX NYLON LOCK	F05010-69	2	
27	WASHER, 3/8" SPLIT LOCK	F05011-4	4	
28	BOLT, 3/8-16 X 1" HEX HEAD	F05007-7	4	
29	MOTOR, MG10-13-10AAAB HYDRAULIC	P20206	1	
30	ARM, FEED ROLLER MOUNT	W22113-1	1	
31	DECAL, HAND SAFETY DANGER	S20040	1	
32	PAD, POST SLIDE	033400	1	
33	SCREW, 1/4-20 X 3/4" SOCKET HEAD	F05005-26	3	
34	POST WELDMENT, MODIFIED UPRIGHT	W22023-1	1	

3.7 Feed Roller Assembly (Air-Lift)



MH0176

REF	DESCRIPTION (◆ Indicates Parts Available In Assemblies Only)	PART #	QTY.	
	FEED ROLLER ASSEMBLY, 12" MULTIHEAD	A22486-12	1	
1	Shaft Weldment, Feed Roller	W22485	1	◆
2	Sprocket, Feed Roller Square Shaft	S22480	13	
	Sprocket, Smooth Feed Roller Square Shaft	016530	13	
3	Ring, Sprocket Spacer	S22481	12	
4	Shaft Extension Weldment, Feed Roller	W22485-12	1	◆
5	Washer, 5/16" Split Lock	F05011-13	4	
6	Bolt, 5/16-18 x 3" Hex Head Grade 5	F05006-62	4	
7	Spacer, Feed Roller Shaft	S22487	1	
8	Washer, 1/4" SAE Flat	F05011-11	1	
9	Washer, 1/4" Split Lock	F05011-14	1	
10	Bolt, 1/4-20 x 4 1/2" Hex Head Grade 5	F05005-76	1	
	HANDLE, FEED ROLLER LIFT	S22488	2/machine	◆
11	FITTING, 1/4-28 GREASE	P05060	1	
12	BRACKET, AIR LIFT FEED ROLLER ACTUATOR	S22189	1	
13	SCREW, 1/4-20 X 3/8" BUTTON HEAD	F05005-62	4	
14	ROLLER, FEED ROLLER STOP	S20786	1	
15	SWITCH, FEED ROLLER AIR	P20900	1	

3

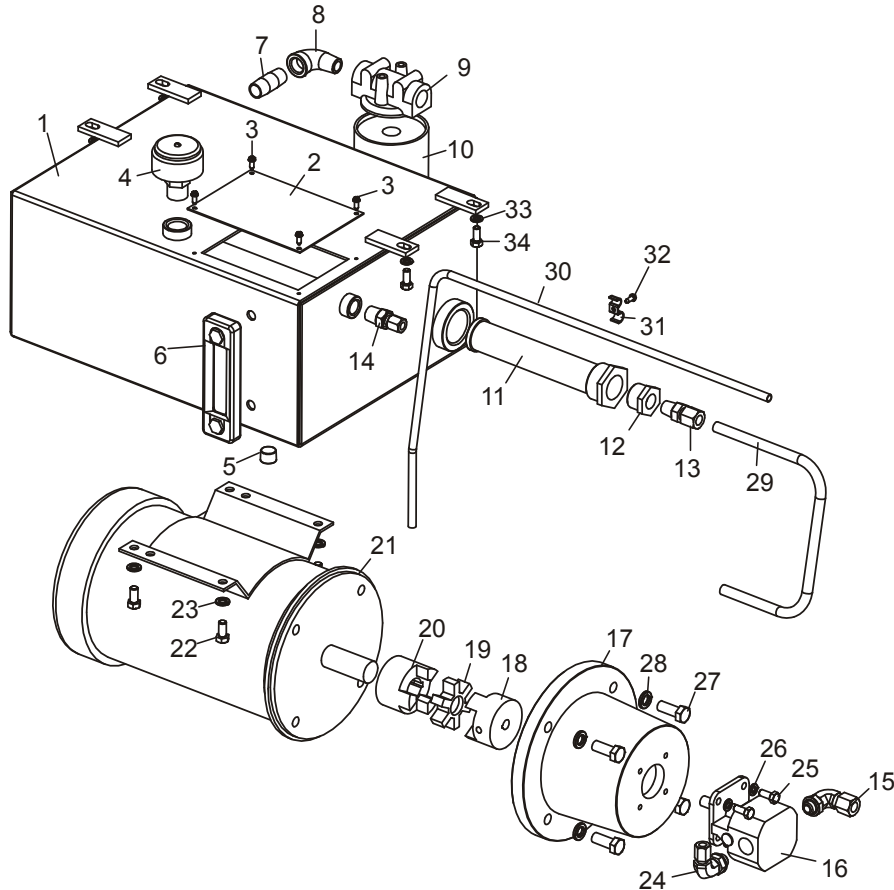
Feed Track/Frame Parts Feed Roller Assembly (Air-Lift)

16	FITTING, 1/4" NPT - 1/4" TUBE STRAIGHT	P03078	2	
17	MUFFLER, 1/8" NPT AIR	P20902	1	
	TUBE, 1/4" AIR	R01869	16.5 Ft.	
18	CYLINDER, 4DP6 AIR	P20901	1	
19	MUFFLER, 1/4" NPT AIR	P20904	1	
20	FITTING, 1/4" NPT - 1/4" TUBE ELBOW	P21519	1	
21	END, 1/2-20 ROD	P09137	1	
22	NUT, 1/2-20 HEX JAM	F05010-16	3	
23	PIN, FEED ROLLER AIR CYLINDER PIVOT	S20793	1	
24	SPACER, AIR CYLINDER MOUNT	S22625	1	
25	SCREW, 1/4-20 X 3/8" CUP POINT SET	F05005-47	1	
26	BRACKET, AIR REGULATOR MOUNT	P20799	1	
27	SCREW, 1/8-32 X 1/2" SLOTTED HEX	F05015-18	4	
28	REGULATOR, 300 PSI AIR FLOW	P02765	1	
29	GAUGE, 160 PSI AIR	P02766	1	
30	FITTING, 1/8" NPT MALE COUPLING	P22681	1	
31	FITTING, 1/8" NPT - 1/4" TUBE 90° ELBOW	P09736	1	
32	BUMPER, FEED ROLLER	038898	1	
33	BOLT, 1/4-20 X 3/4" SOCKET HEAD	F05006-26	2	
34	NUT, 1/4-20 HEX NYLON LOCK	F05010-69	2	
35	ARM, FEED ROLLER MOUNT	W22113	1	
	DECAL, HANDS CLEAR WARNING	S20040	1	
36	WASHER, 3/8" SPLIT LOCK	F05011-4	4	
37	BOLT, 3/8-16 X 1" HEX HEAD	F05007-7	4	
38	MOTOR, MG10-13-10AAAB HYDRAULIC	P20206	1	
39	COLLAR, FEED ROLLER LOCKING	038090	1	
40	SCREW, 3/8-16 X 3/8" CUP POINT SET	F05007-68	1	
41	POST WELDMENT, MODIFIED UPRIGHT	W22023-1	1	

3.8 Hydraulic Tank Assembly

HR1000

Rev. A2.00+



MH0248-1

REF	DESCRIPTION (◆ Indicates Parts Available In Assemblies Only)	PART #	QTY.
	TANK ASSEMBLY, HR/MGR HYDRAULIC	065489	1
	Fluid, Conoco MV32 All Weather Hydraulic (1 Gallon)	006397	8
1	Tank Weldment, Hydraulic Fluid	065490	1
2	Lid, Hydraulic Fluid Tank Access	S20331	1
3	Screw, #8-32 x 1/2" Slotted Hex Head	F05015-18	4
4	Cap, Hydraulic Tank Fill/Breather	P20212	1
5	Fitting, 1/2" NPT Male Plug	P26258	1
6	Gauge, Hydraulic Fluid Level Sight	P20211	1
7	Fitting, 1/2" NPT x 2" Long Nipple	O16844	1
8	Fitting, 1/2" NPT 90° Elbow	P22684	1
9	Manifold, Hydraulic Cartridge Filter	P22683	1
10	Filter, S28 Hydraulic Cartridge	P20301	1
11	Filter, Hydraulic Tank Suction	P20210	1
12	Fitting, 1" NPT - 1/2" NPT Reducer	P20239	1
13	Fitting, 1/2" NPT - 1/2" Tube	P20243	1

3

Feed Track/Frame Parts

Hydraulic Tank Assembly

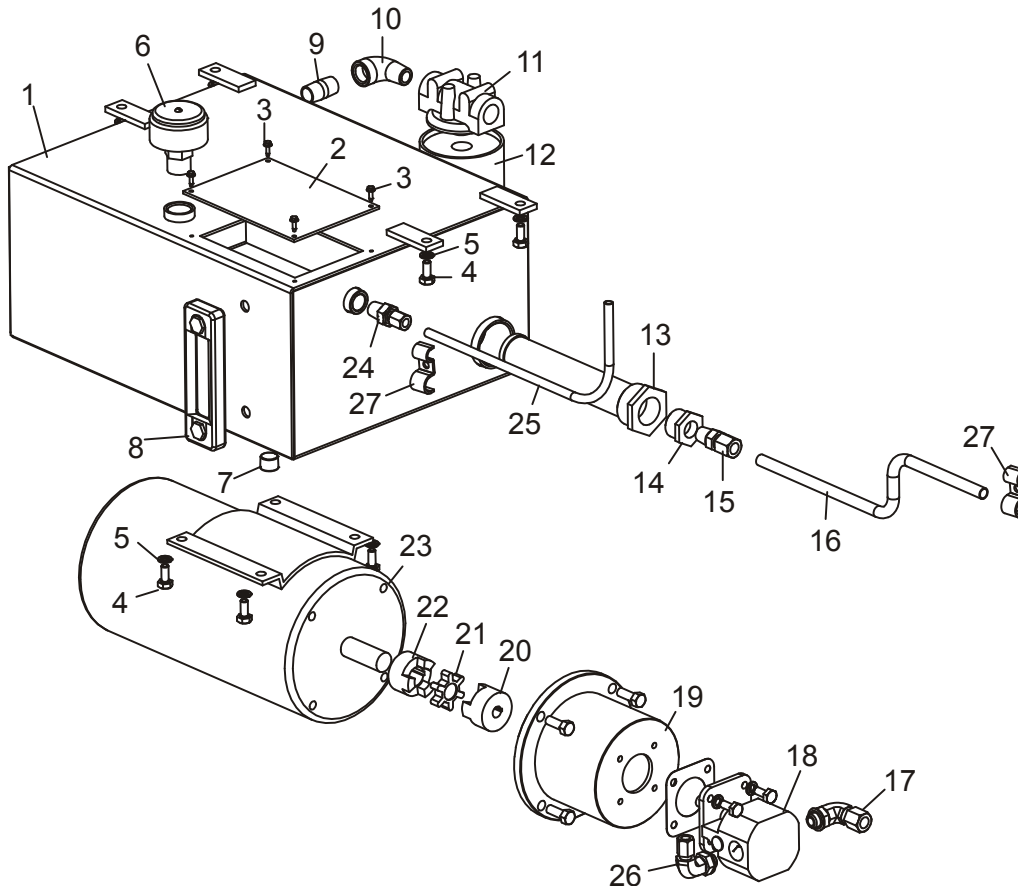
14	Fitting, 1/2" NPT - 3/8" Tube Straight	P20242	1	
15	Fitting, 1/2" Tube - 1/2" O-Ring 90° Elbow	P20245	1	
16	Pump, Hydraulic	P20213	1	
17	Adaptor, Hydraulic Pump/Motor	065484	1	
18	Coupler, L099 x 1/2" Shaft	065482	1	
19	Coupler, L100 Spider	042779	1	
20	Coupler, L100 x 1 1/8" Shaft	065483	1	
21	Motor, 5HP 3PH 3450RPM Baldor	065479 ¹	1	
22	Bolt, 3/8-16 x 3/4" Hex Head Grade 5	F05007-118	4	
23	Washer, 3/8" Split Lock	F05011-4	4	
24	Fitting, 1/2" O-Ring - 3/8" Tube 90° Elbow	P20244	1	
25	Bolt, 5/16-18 x 3/4" Hex Head Grade 5	F05006-102	4	
26	Washer, 5/16" Split Lock	F05011-13	4	
27	Bolt, 1/2-13 x 1 1/4" Hex Head Grade 5	F05008-37	4	
28	Washer, 1/2" Split Lock	F05011-9	4	
29	TUBE, 1/2" HYDRAULIC	R01629	As Req'd	
30	TUBE, 3/8" HYDRAULIC	R01628	As Req'd	
31	CLAMP, 1/2" X 3/8" HOSE	S02845	As Req'd	
32	BOLT, #8-32 X 1/2 SLOTTED HEX HEAD	F05015-18	As Req'd	

¹ To service models originally equipped with 5HP motor after Rev. A2.00 only. Use Kit 065492 to retrofit 4HP motors on earlier revisions (Kit includes Motor, Couplings, Pump Adaptor & Hardware).

3.9 Hydraulic Tank Assembly

HR1000

Rev. A1.00 - A1.01



MH0107C

REF	DESCRIPTION (◆ Indicates Parts Available In Assemblies Only)	PART #	QTY.
	FLUID, CONOCO MV32 ALL WEATHER HYDRAULIC (1 GALLON)	006397 ¹	5
1	TANK WELDMENT, HYDRAULIC FLUID	W22108	1
2	LID, HYDRAULIC FLUID TANK ACCESS	S20331	1
3	SCREW, #8-32 X 1/2" SLOTTED HEX HEAD	F05015-18	4
4	BOLT, 5/16-18 X 3/4" HEX HEAD GRADE 2	F05006-5	8
5	WASHER, 5/16" SPLIT LOCK	F05011-13	8
6	CAP, HYDRAULIC TANK FILL/BREATHER	P20212	1
7	FITTING, 1/2" NPT MALE PLUG	P26258	1
8	GAUGE, HYDRAULIC FLUID LEVEL SIGHT	P20211	1
9	FITTING, 1/2" NPT X 2" NIPPLE	016844	1
10	FITTING, 1/2" NPT 90° ELBOW	P22684	1
11	MANIFOLD, HYDRAULIC CARTRIDGE FILTER	P22683	1
12	Filter, S28 Hydraulic Cartridge	P20301	1
13	FILTER, HYDRAULIC TANK SUCTION	P20210	1

3

Feed Track/Frame Parts

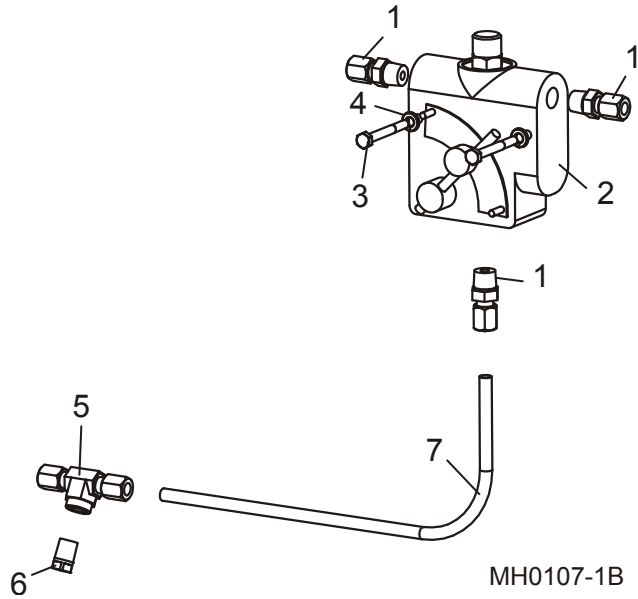
Hydraulic Tank Assembly

14	FITTING, 1" NPT - 1/2" NPT REDUCER	P20239	1	
15	FITTING, 1/2" NPT - 1/2" TUBE	P20243	1	
16	TUBE, 1/2" HYDRAULIC	R01629	As Req'd	
17	FITTING, 1/2" TUBE - 1/2" O-RING 90° ELBOW	P20245	1	
18	PUMP, HYDRAULIC	P20213	1	
19	ADAPTOR, HYDRAULIC PUMP/MOTOR	P20215	1	
20	COUPLER, 1/2" SHAFT	P20217	1	
21	COUPLER, L075 SPIDER	P20218	1	
22	COUPLER, 7/8" SHAFT	P20216	1	
23	MOTOR, 4HP CUSTOM 3 PHASE W/THERMISTATS	P22735 ²	1	
24	FITTING, 1/2" NPT - 3/8" TUBE STRAIGHT	P20242	1	
25	TUBE, 3/8" HYDRAULIC	R01628	As Req'd	
26	FITTING, 1/2" O-RING - 3/8" TUBE 90° ELBOW	P20244	1	
27	CLAMP, 1/2" X 3/8" HOSE	S02845	As Req'd	

¹ Conoco MV32 Fluid 006397 replaces Unis HVI 26 Fluid P12823 (formerly named J26) used prior to 1/08. Fluids are interchangeable. Replaces Amoco Rycon Oil MV or Mobil Multipurpose ATF used prior to 11/99.

² Motor available while supplies last. When stock depleted, upgrade to 5HP motor with kit 065492 (Includes Motor, Couplings, Pump Adaptor & Hardware - [See Section 3.8](#)).

3.10 Hydraulic Valve Assembly (2 and 4-Head)



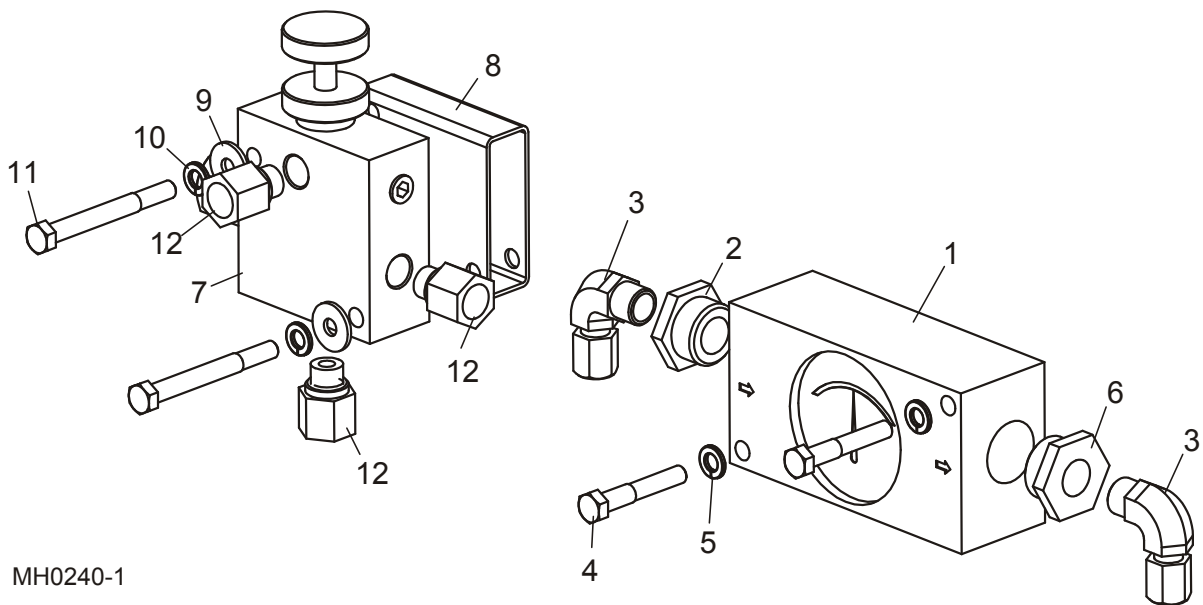
REF	DESCRIPTION (◆ Indicates Parts Available In Assemblies Only)	PART #	QTY.	
1	FITTING, 3/8" TUBE - 3/8" NPT STRAIGHT	P20744	3	
2	VALVE, HYDRAULIC FLOW CONTROL	P20743	1	
3	BOLT, 1/4-20 X 2 1/2" HEX HEAD	F05005-72	2	
4	WASHER, 1/4" SPLIT LOCK	F05011-14	2	
5	FITTING, 3/8" TUBE - 1/4" NPT - 3/8" TUBE 'T'	P20345	1	
6	PLUG, 1/4" NPT PIPE	P05498 ¹	1	
7	TUBE, 3/8" HYDRAULIC	R01628	As Req'd	

¹ Replaced P10052 3000 PSI Hydraulic Gauge (Rev. A2.01).

3 Feed Track/Frame Parts

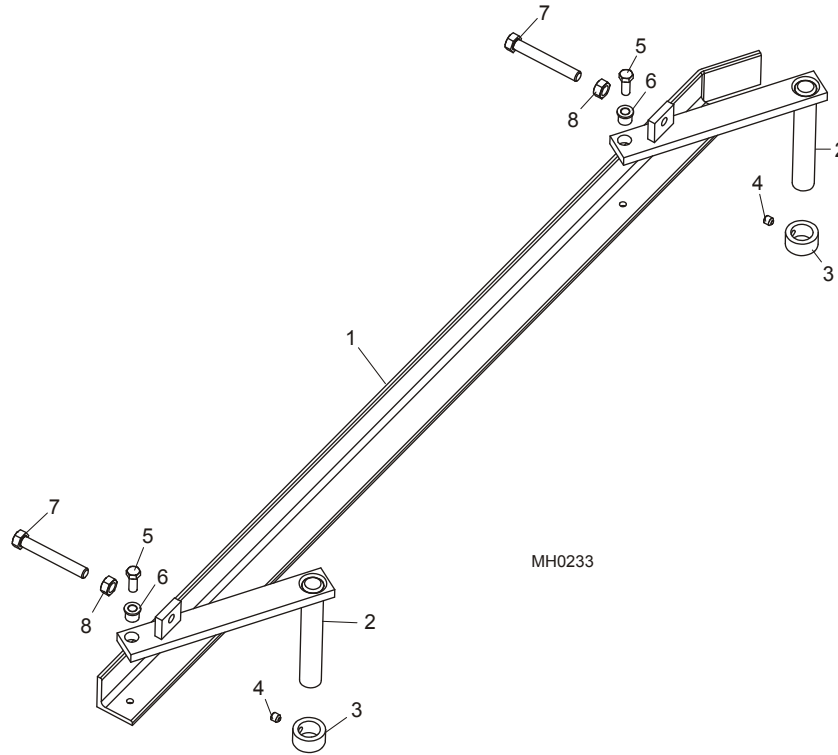
Hydraulic Valve Assembly (6-Head)

3.11 Hydraulic Valve Assembly (6-Head)



REF	DESCRIPTION (◆ Indicates Parts Available In Assemblies Only)	PART #	QTY.
1	METER, FLOW	033414	1
2	BUSHING, 3/4" MPT X 3/8" FPT	033418	1
3	FITTING, 3/8" MPT X 3/8" TUBE 90°	033416	2
4	BOLT, 5/16-18 X 2" HEX HEAD GRADE 5	F05006-79	2
5	WASHER, 5/16" SPLIT LOCK	F05011-13	2
6	BUSHING, 3/4" MNPT X 1/2" FNPT PIPE	038742	1
	VALVE ASSEMBLY, 6-HEAD/MGR FLOW CONTROL	006486	1
7	Valve, 6-head Merry-Go-Round Flow Control	033413	1 ◆
8	Spacer, MultiHead Flow Control Valve	006064	1
9	Washer, 5/16" Standard Flat	F05011-16	2
10	Washer, 5/16" Split Lock	F05011-13	2
11	Bolt, 5/16-18 x 3" Hex Head Grade 5	F05006-62	2
12	Fitting, 3/8" SAE x 3/8" NPT Adaptor	006487	3

3.12 Crowder Fence Assembly

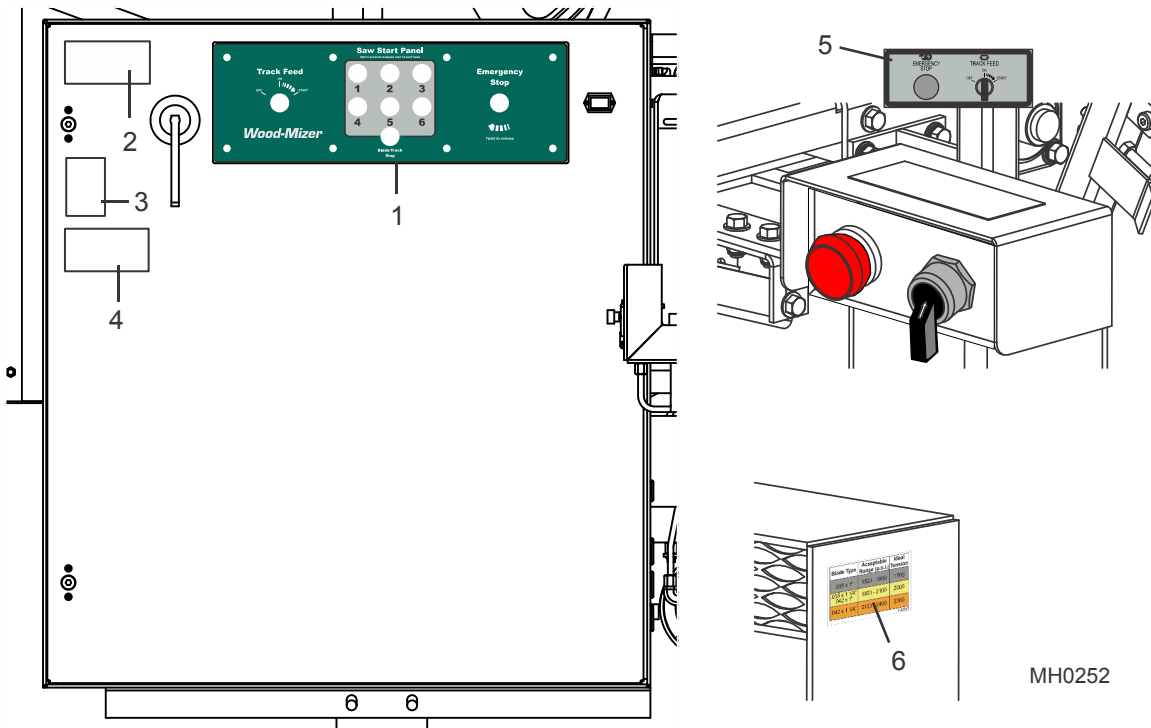


REF	DESCRIPTION (◆ Indicates Parts Available In Assemblies Only)	PART #	QTY.
1	FENCE, FEED CROWDER	S22260	1
2	BRACKET, CROWDER FENCE PIVOT END	036338	2
3	COLLAR, LOCKING	038090	2
4	SCREW, 3/8-16 X 3/8" CUP POINT SET	F05007-68	2
5	BOLT, 3/8-16 X 7/8" HEX HEAD GRADE 5	F05007-185	2
6	BUSHING, 3/4" X .505" FLANGED	036336	2
7	BOLT, 1/2-13 X 3 1/2" HEX HEAD FULL THREAD	F05008-11	2
8	NUT, 1/2-13 HEX	F05010-35	2

3 Feed Track/Frame Parts

Control Box Decals

3.13 Control Box Decals



MH0252

REF	DESCRIPTION (◆ Indicates Parts Available In Assemblies Only)	PART #	QTY.
1	DECAL, 2-HEAD 2005 CONTROL	052282	1
	DECAL, 4-HEAD 2005 CONTROL	052283	1
	DECAL, 6-HEAD 2005 CONTROL	052284	1
2	DECAL, ELECTRICAL HAZARD DANGER	S20061	1
3	DECAL, EYE/EAR PROTECTION	S11753	1
4	DECAL, READ MANUAL WARNING	016402	1
5	DECAL, MULTIHEAD REMOTE BOX	052285	1
6	DECAL, BLADE TENSION	P22653	1

INDEX

B

- blade guide
 - inner 2-8
 - outer 2-11
- blade housing cover 2-20
- blade tensioner
 - block assembly 2-1
 - hand pump 3-1
 - release handle 2-3
- blade wheel
 - drive side 2-16
 - idle side 2-18

D

- decals
 - saw head 2-22, 2-23

F

- feed roller
 - air-lift 3-12
 - standard 3-10
- feed track 3-7
- feed track spacers 3-9
- fence 3-20, 3-21

H

- hydraulic tank 3-14, 3-16
- hydraulic valve 3-18, 3-19

P

- parts list
 - how to use 1-1
- perimeter fence 3-2

S

- saw head mount 2-5
- saw motor 2-7
- sawdust chute 2-21

U

- up/down 2-14