

# MultiHead

---

## Cant Hold-Down Option

*November 1994*

*Form #705*

---

## Table of Contents

## Section-Page

<b>SECTION 1</b>	<b>CANT HOLD-DOWN OPTION</b>	<b>1-1</b>
1.1	Cant Hold-Down Option Installation .....	1-1
<b>SECTION 2</b>	<b>PARTS LIST</b>	<b>2-1</b>
2.1	Cant Hold-Down Option .....	2-1

## SECTION 1 CANT HOLD-DOWN OPTION

### 1.1 Cant Hold-Down Option Installation

The hold-down option provides additional downward pressure on the cants at a point just behind the blade. A hold-down assembly mounts to the throat of each saw head and assists the feed rollers in keeping cants flat on the feed track. The hold-downs are particularly helpful when sawing green lumber that tends to bow and lift as it is being cut. **NOTE:** Hold-downs are designed to be used with material up to 8" (20 cm) tall. The hold-downs must be removed when sawing material taller than 8" (20 cm).

See Figure 1-1.

1. Use two supplied bolts and lock washers to mount a hold-down assembly to the throat crossbar on each saw head. Use the mounting holes furthest in toward the drive side of the MultiHead.
2. Loosen the jam nut on each assembly and turn the set screw adjustment clockwise to move each hold-down plate to at least 1/4" (6.5 mm) behind the back edge of each blade. Retighten the jam nuts.
3. The hold-downs should be greased as necessary to keep them free moving as cants pass under them.

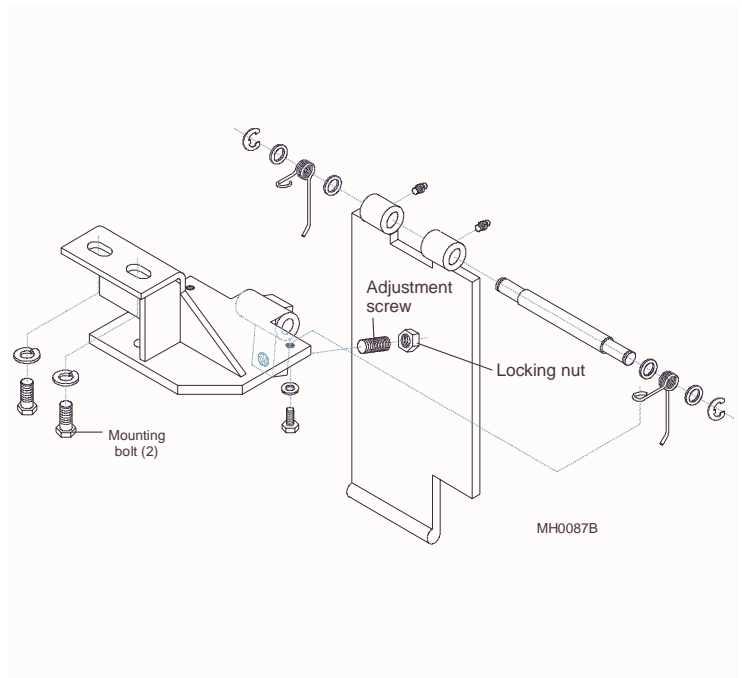
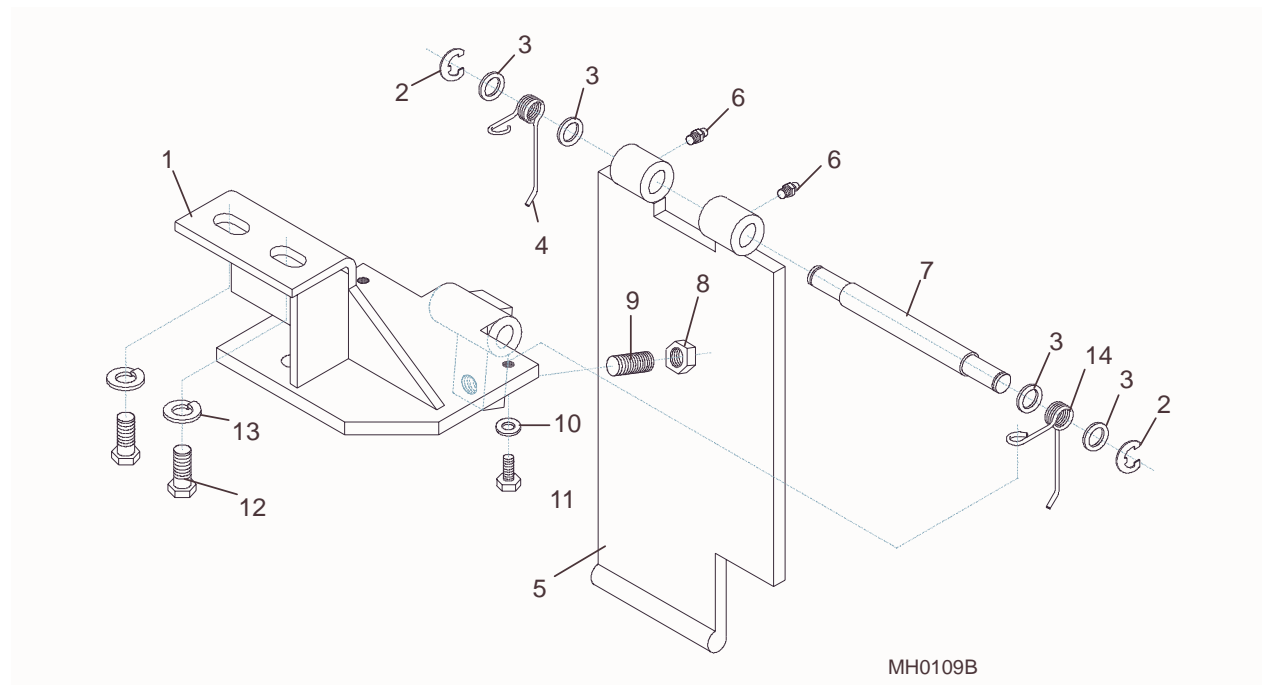


FIG. 1-1. CANT HOLD-DOWN OPTION.



## SECTION 2 PARTS LIST

<b>2.1 Cant Hold-Down Option</b>				
REF	DESCRIPTION (◆ Indicates Parts Available In Assemblies Only)	PART #	QTY.	
	<b>CANT HOLD-DOWN OPTION, BOXED</b>	A22342	1	
	Cant Hold-Down Assembly	A22338	1	◆
1	Bracket, Cant Hold-Down Mount	W22676	1	
2	Clip, 1/2" Dia. Shaft 'E'	P22342	2	
3	Washer, 1/2" SAE Flat	F05011-2	4	
4	Spring, Right Torsion	S22340	1	
5	Plate Weldment, Cant Hold-Down	W22334	1	
6	Fitting, 1/4-28 Straight Grease	P05060	2	
7	Shaft, Cant Hold-Down Pivot	S22339	2	
8	Nut, 1/2-20 Hex Jam	F05010-16	1	
9	Screw, 1/2-20 x 1" Oval Point Set	F05008-65	1	
10	Washer, 1/4" SAE Flat	F05011-11	2	
11	Bolt, 1/4-20 x 1/2" Hex Head	F05005-15	2	
12	Bolt, 1/2-20 x 1" Socket Head	F05008-51	2	
13	Washer, 1/2" Split Lock	F05011-9	2	
14	Spring, Left Torsion	S22341	1	



**FIG. 2-1. CANT HOLD-DOWN OPTION.**

