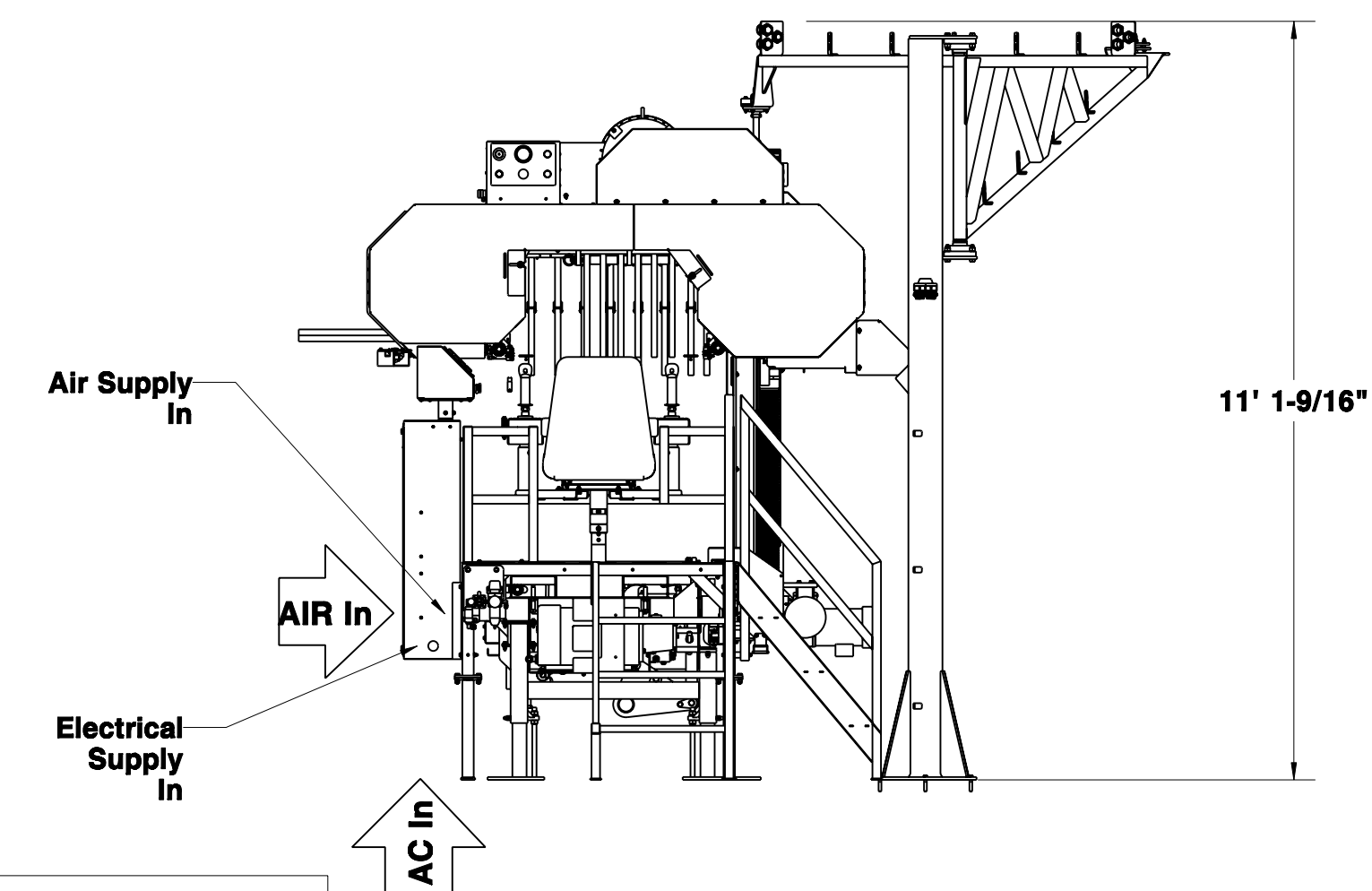
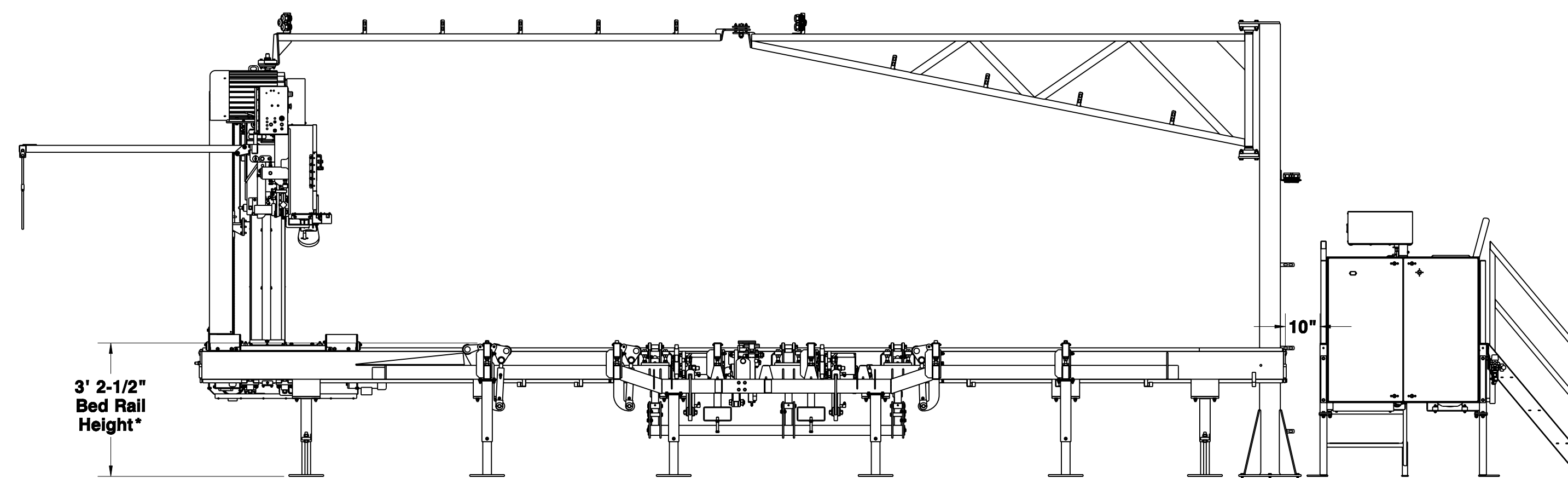


WM3500 Layout w/Right-Hand Pantograph Cable Boom

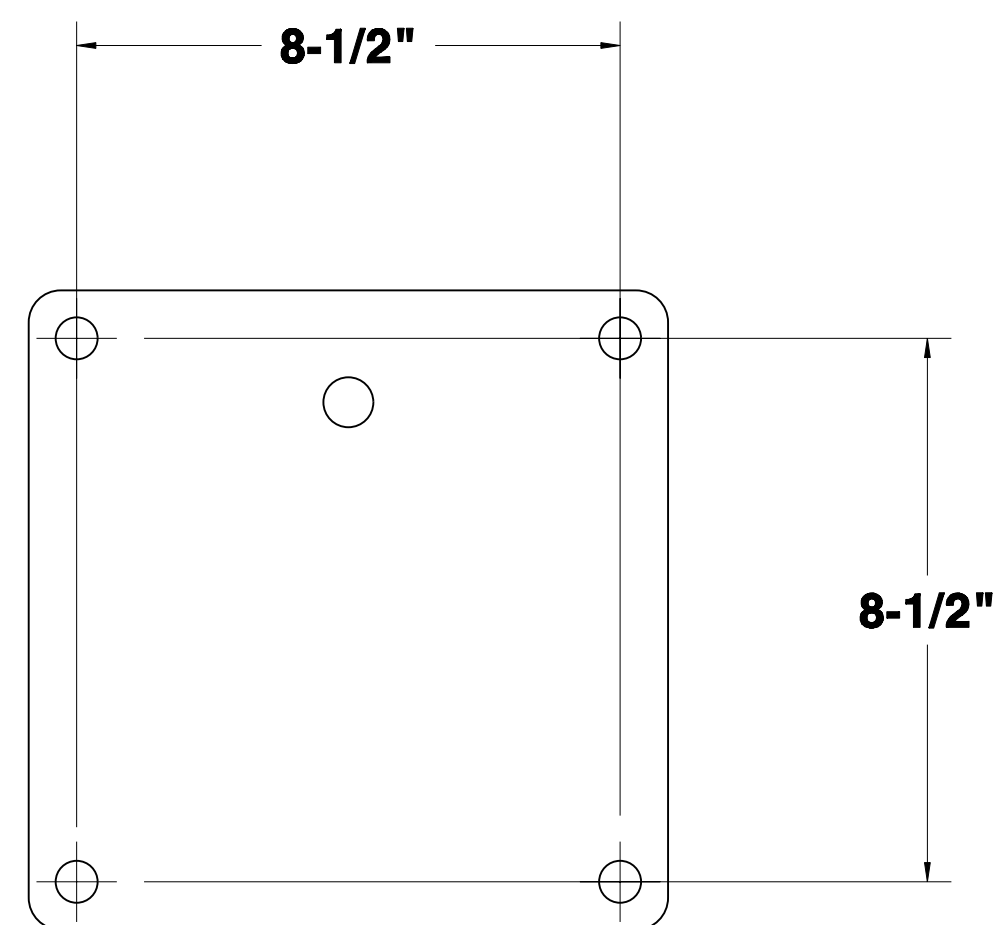
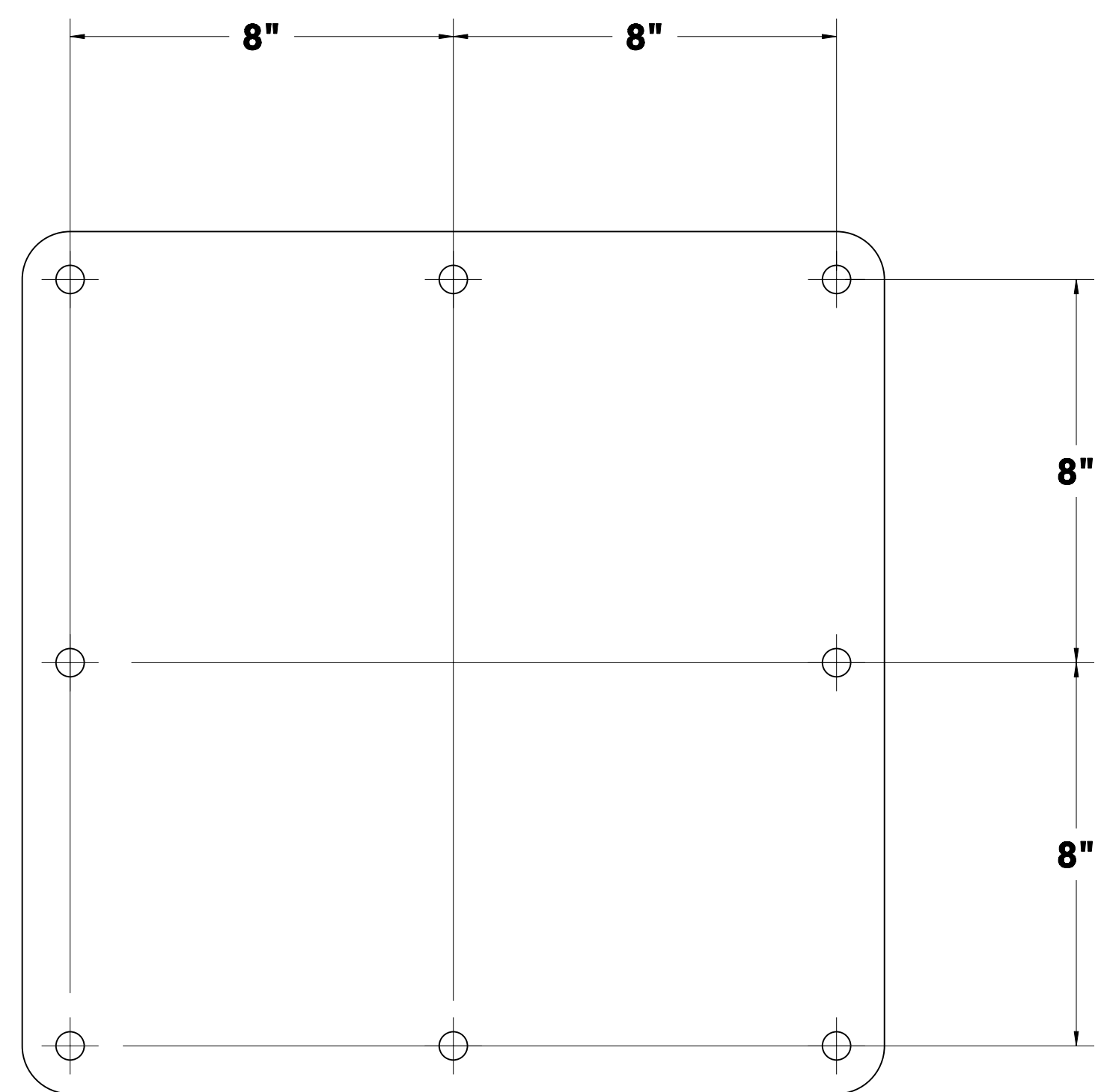
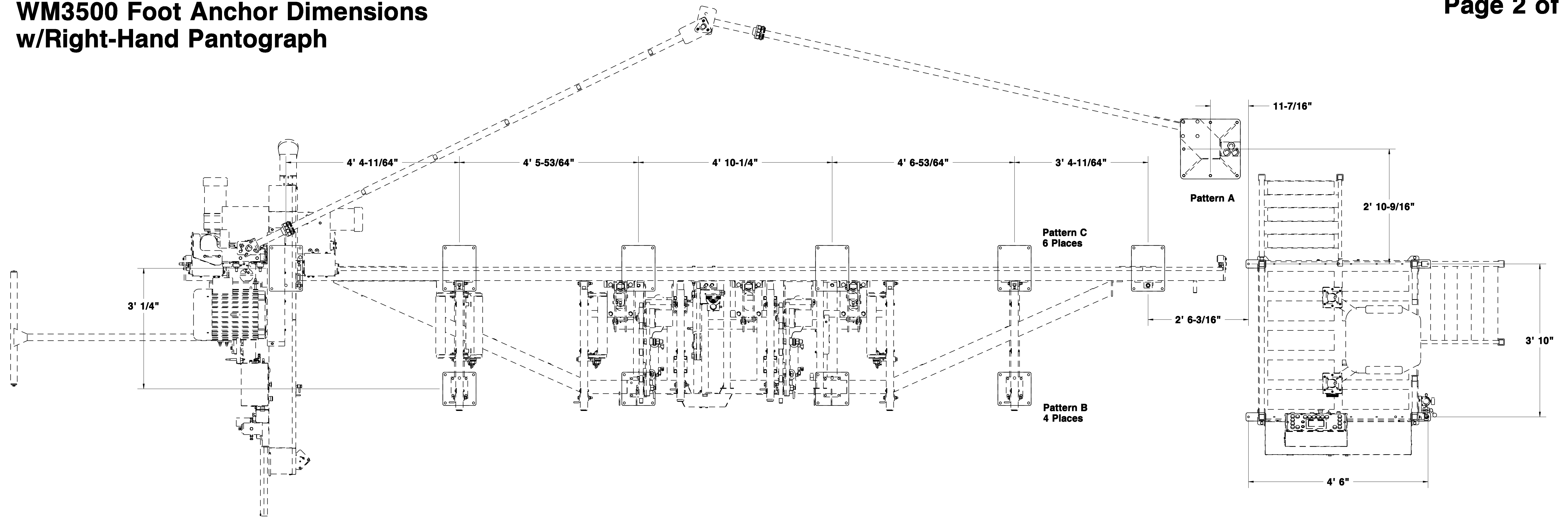
See Page 2 for Foot Anchor Dimensions

*All heights shown are with feet adjusted to maximum height. Machine is adjustable down 8 1/2". Maximum Head Height can be limited by programming control.

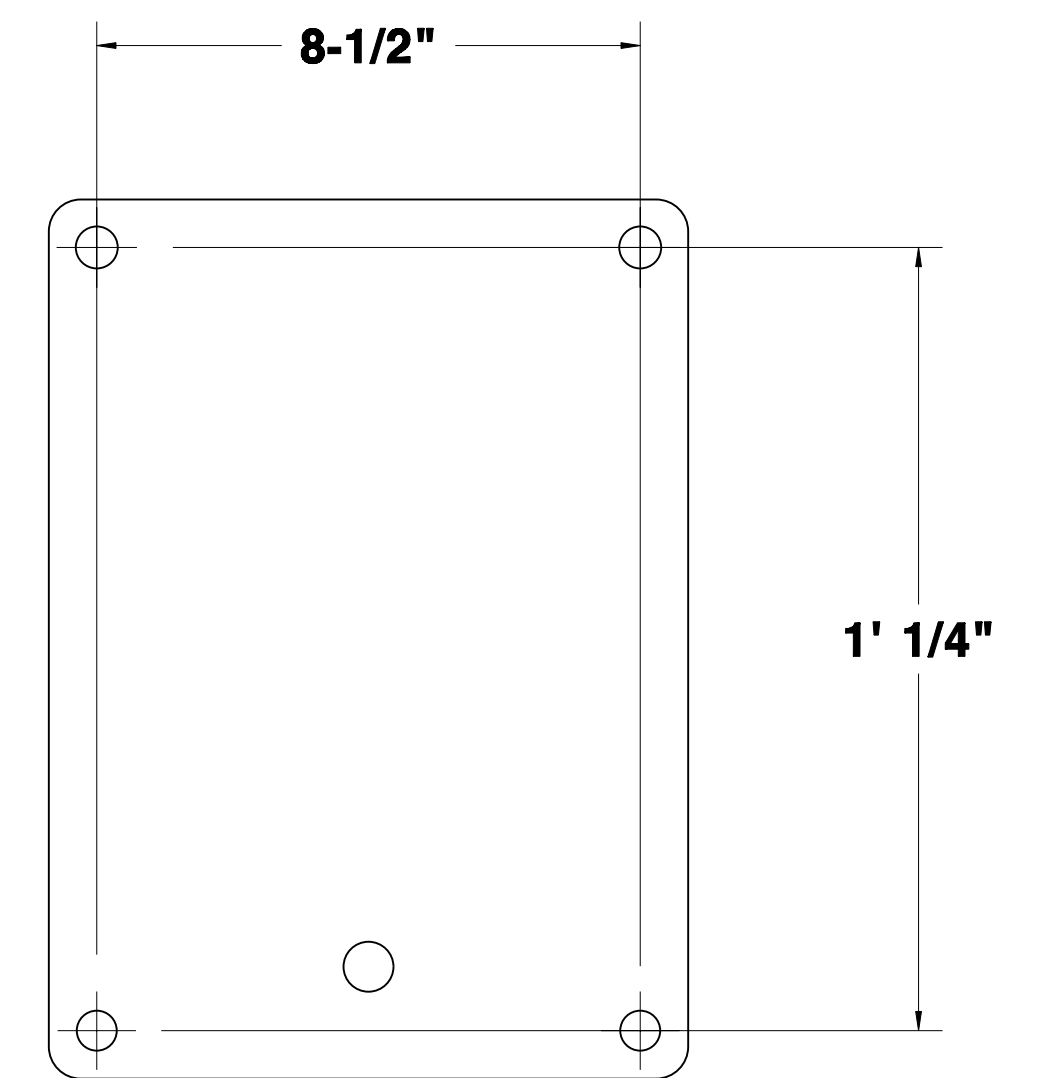


| Installation Specifications | | | | | | | | | |
|--|-----------|-------------------------------|-------|-------|------|----------------------|------------------|-----------------|---|
| Concrete | | Electrical/Air | | | | | | | |
| Min. Thickness | 6" | Electrical Service | Volts | Phase | Amps | Wire Size (50' Max.) | Fused Disconnect | Time Delay Fuse | Shop Air |
| Rebar Diameter | 1/2" | WM3500 | 460 | 3 | 100 | 4AWG | 100A | 70A | 100 psi @ 16.5 cfm |
| Rebar Spacing | 24" | Cab Option (no A/C) | 110 | 1 | 15 | N/A | N/A | N/A | N/A |
| Anchor Bolt Dia. | 1/2" | Cab Option (w A/C) | 110 | 1 | 30 | N/A | N/A | N/A | N/A |
| Weight Capacity (at each foot location) | 6350 lbs. | IC2-H Incline Conveyor Option | 460 | 3 | 10 | 14AWG | N/A | N/A | N/A |
| NOTE: Be sure to provide enough room around equipment for operators, sawdust removal, log loading and board removal. | | TD2 Transfer Deck Option | 110 | 1 | | | N/A | N/A | 60 psi (regulated) |
| | | Three-Way Deck Option | 460 | 3 | 30 | 16AWG | 30A | 5A | 100 psi (regulated) w/min. 50 gal. reserve & 3/4" supply line |

WM3500 Foot Anchor Dimensions w/Right-Hand Pantograph



PATTERN 'B'

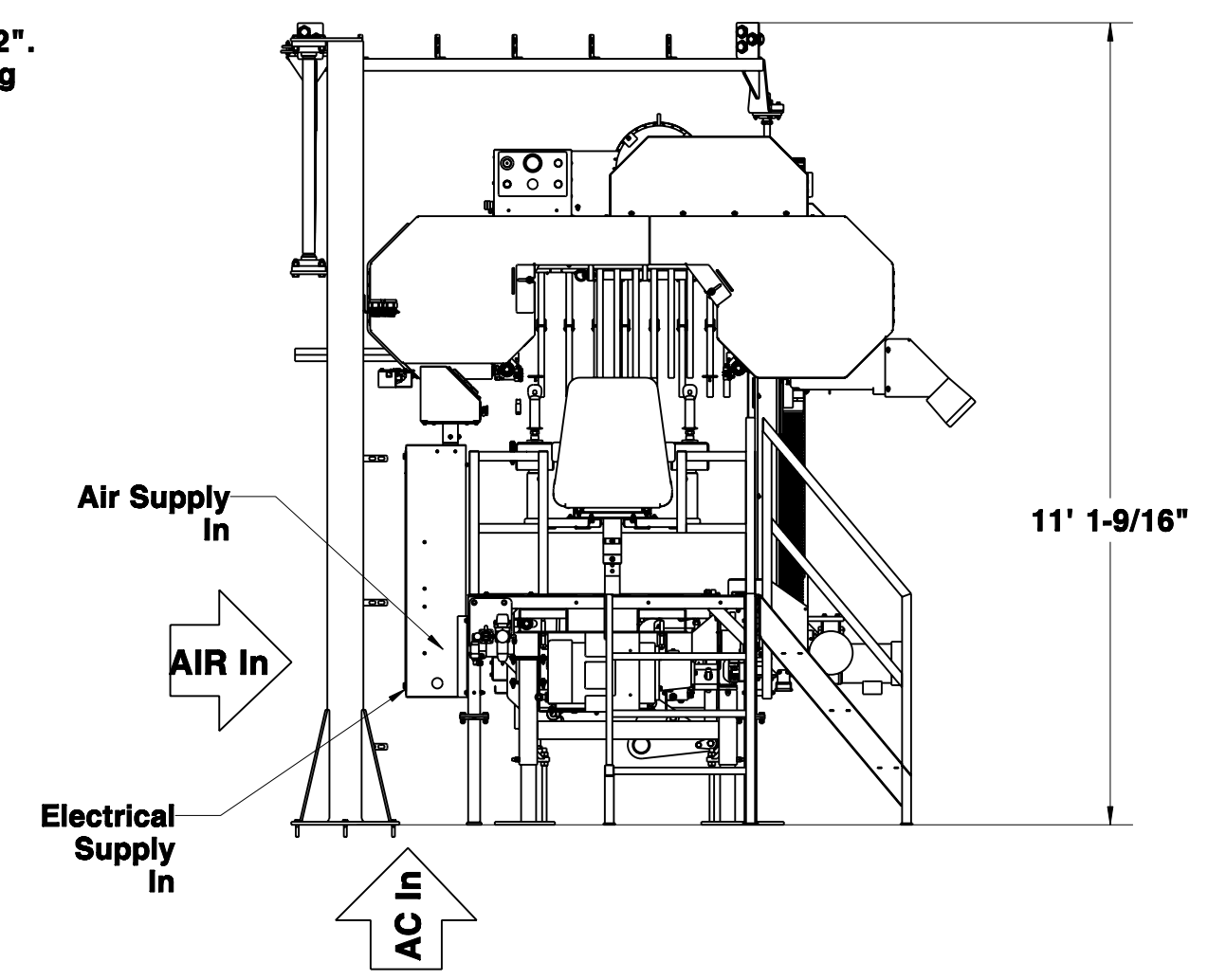
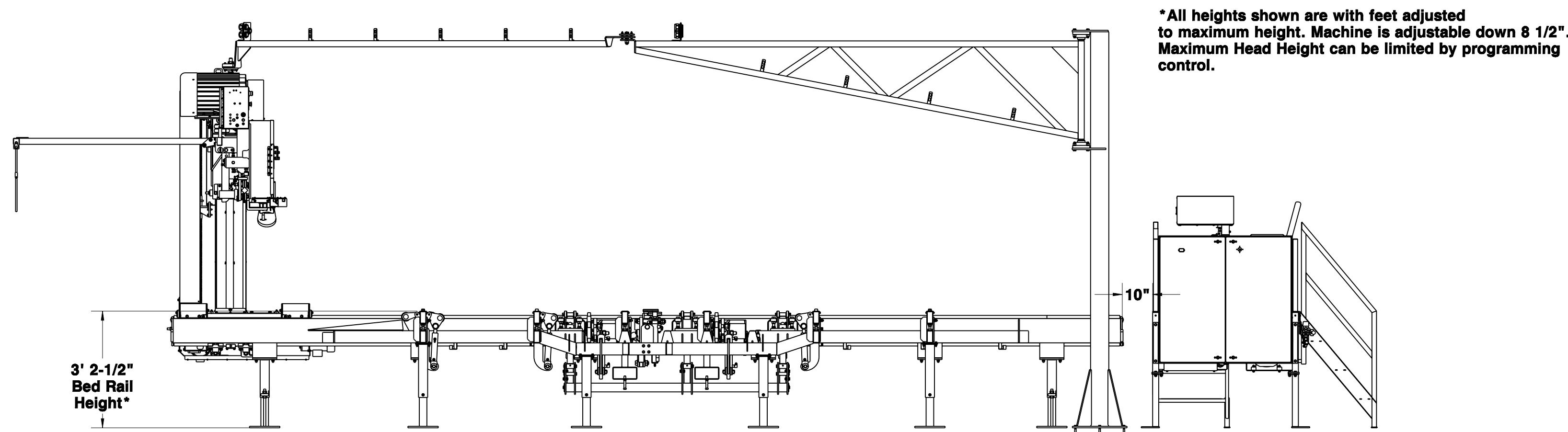
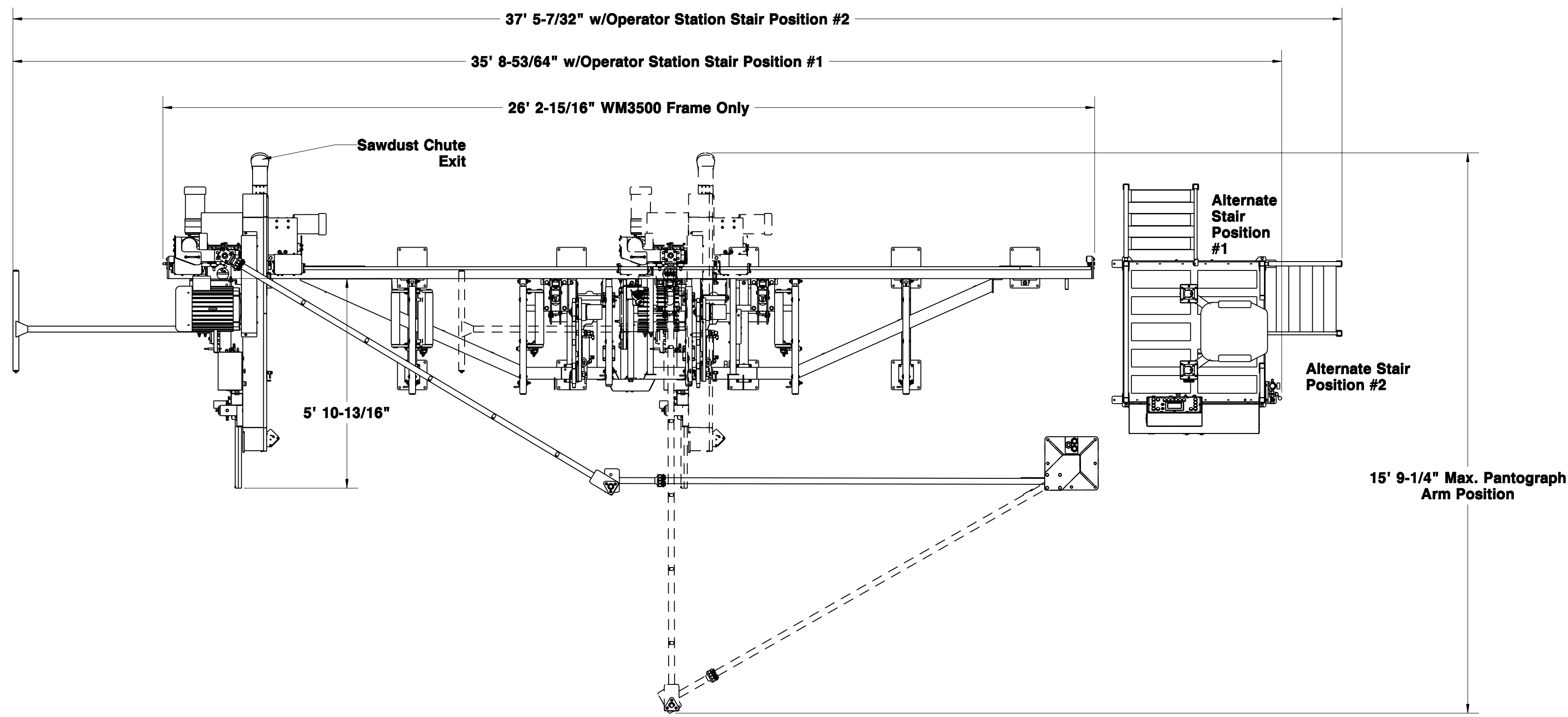


PATTERN 'C'

PATTERN 'A'

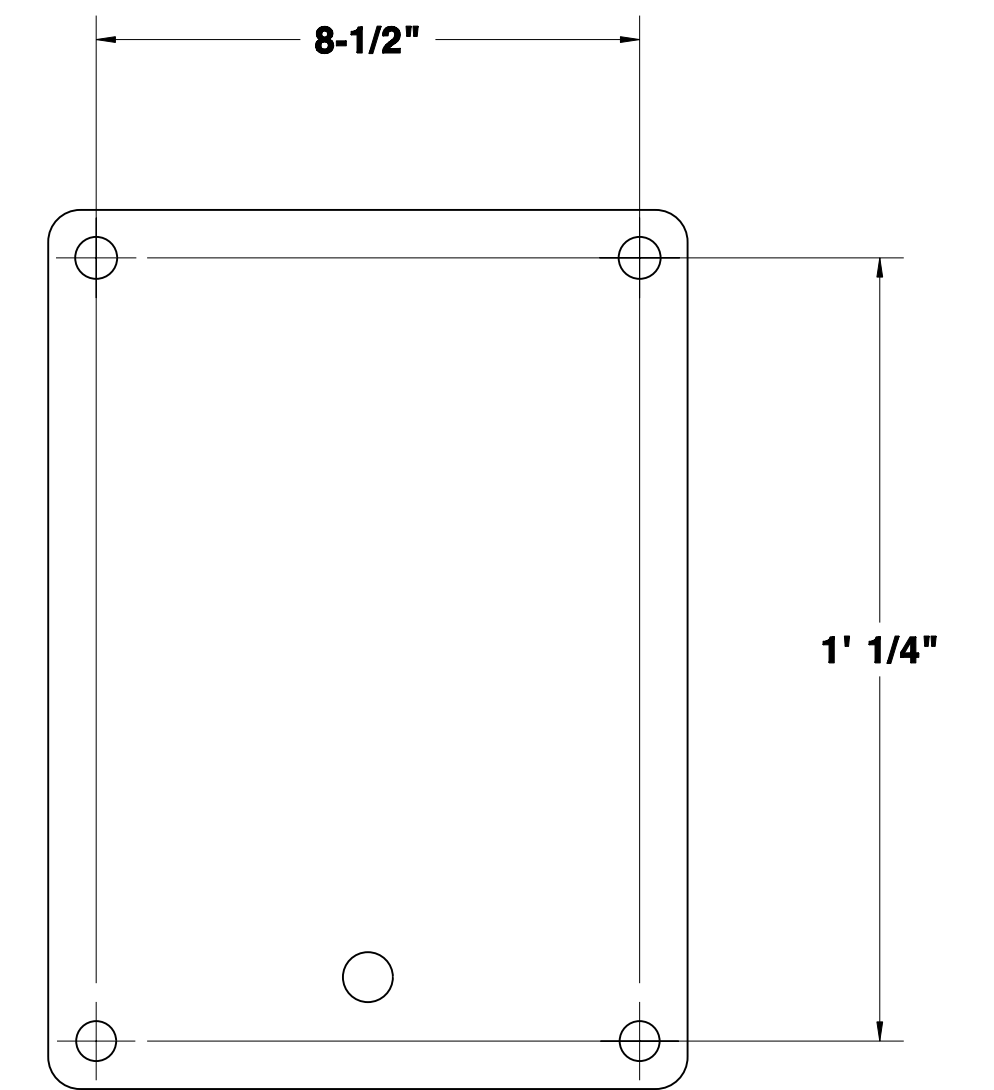
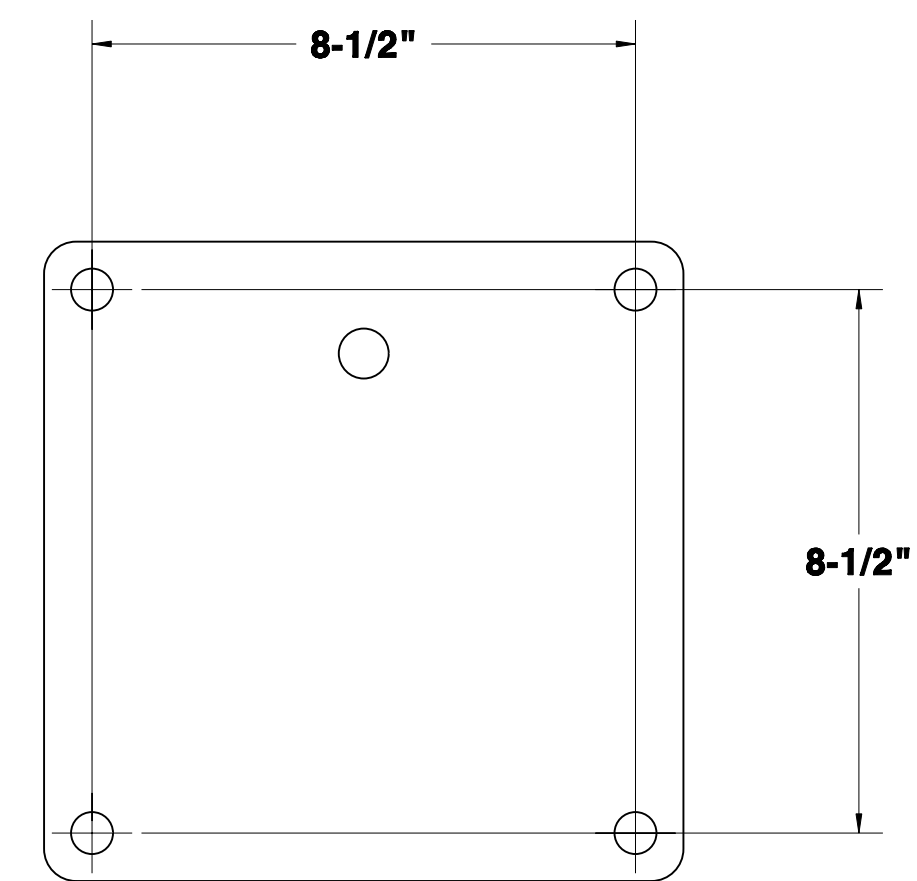
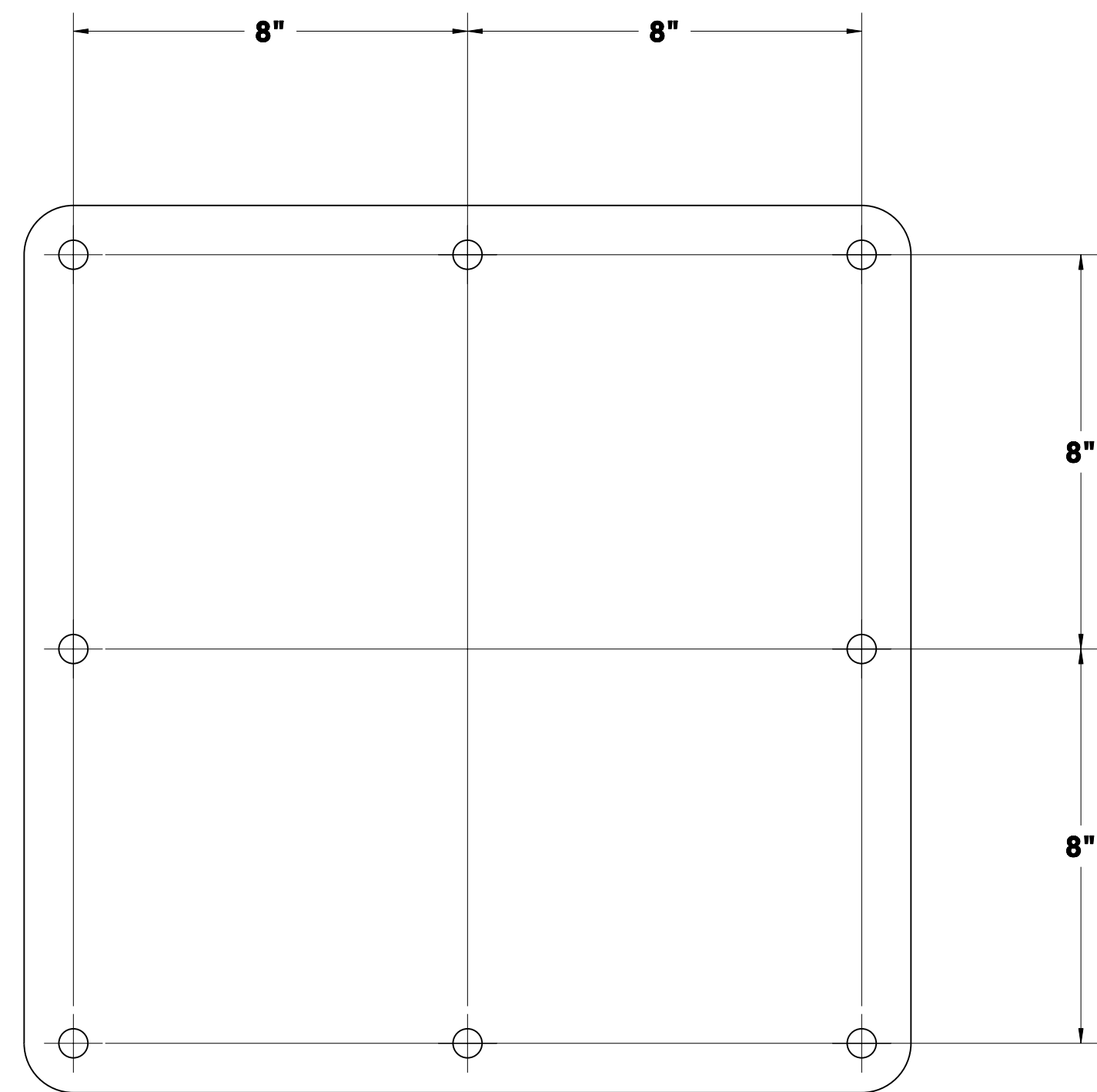
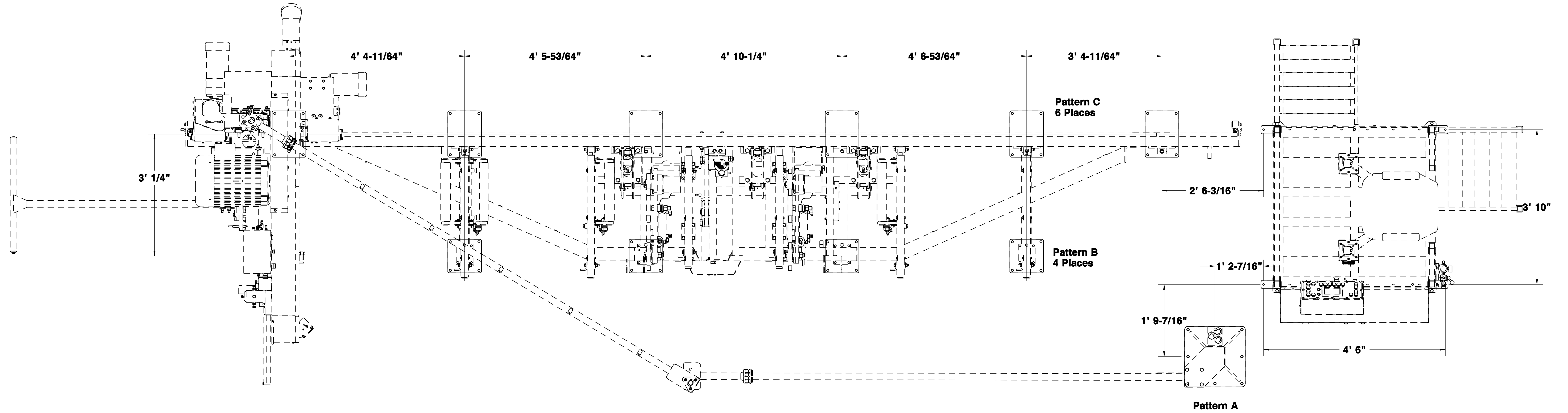
WM3500 Layout w/Left-Hand Pantograph Cable Boom

See Page 4 for Foot Anchor Dimensions



| Installation Specifications | | | | | | | | | |
|--|-----------|-------------------------------|-------|-------|------|----------------------|------------------|-----------------|---|
| Concrete | | Electrical/Air | | | | | | | |
| Min. Thickness | 6" | Electrical Service | Volts | Phase | Amps | Wire Size (50' Max.) | Fused Disconnect | Time Delay Fuse | Shop Air |
| Rebar Diameter | 1/2" | WM3500 | 460 | 3 | 100 | 4AWG | 100A | 70A | 100 psi @ 16.5 cfm |
| Rebar Spacing | 24" | Cab Option (no A/C) | 110 | 1 | 15 | N/A | N/A | N/A | N/A |
| Anchor Bolt Dia. | 1/2" | Cab Option (w A/C) | 110 | 1 | 30 | N/A | N/A | N/A | N/A |
| Weight Capacity (at each foot position) | 6350 lbs. | IC2-H Incline Conveyor Option | 460 | 3 | 10 | 14AWG | N/A | N/A | N/A |
| NOTE: Be sure to provide enough room around equipment for operators, sawdust removal, log loading and board removal. | | TD2 Transfer Deck Option | 110 | 1 | | | N/A | N/A | 60 psi (regulated) |
| | | Three-Way Deck Option | 460 | 3 | 30 | 16AWG | 30A | 5A | 100 psi (regulated) w/min. 50 gal. reserve & 3/4" supply line |

WM3500 Foot Anchor Dimensions w/Left-Hand Pantograph



PATTERN 'A'

PATTERN 'B'

PATTERN 'C'

Log Deck & Incline Conveyor Important Dimensions

