

# Horizontal Resaw

## Parts Manual

---

HR130

rev. A6.04

---

***Safety is our #1 concern!***

*Form #2674*



**WARNING! Read and understand this manual before using this machine.**

## California

### Proposition 65 Warning



**WARNING:** Breathing gas/diesel engine exhaust exposes you to chemicals known to the State of California to cause cancer and birth defects or other reproductive harm.

Always start and operate the engine in a well-ventilated area.  
If in an enclosed area, vent the exhaust to the outside.  
Do not modify or tamper with the exhaust system.  
Do not idle the engine except as necessary.

For more information go to [www.P65warnings.ca.gov](http://www.P65warnings.ca.gov).



**WARNING:** Drilling, sawing, sanding or machining wood products can expose you to wood dust, a substance known to the State of California to cause cancer. Avoid inhaling wood dust or use a dust mask or other safeguards for personal protection.

For more information go to [www.P65Warnings.ca.gov/wood](http://www.P65Warnings.ca.gov/wood).

### Active Patents assigned to Wood-Mizer, LLC

Wood-Mizer, LLC has received patents that protect our inventions which are a result of a dedication to research, innovation, development, and design. Learn more at: [woodmizer.com/patents](http://woodmizer.com/patents)

### ©2025 Wood-Mizer LLC

Printed in the United States of America, all rights reserved. No part of this manual may be reproduced in any form by any photographic, electronic, mechanical or other means or used in any information storage and retrieval system without written permission from

**Wood-Mizer, LLC**  
**8180 West 10th Street**  
**Indianapolis, Indiana 46214**

**SECTION 1 REPLACEMENT PARTS**

1.1 How To Use The Parts List..... 1-1  
 1.2 Sample Assembly..... 1-1  
 1.3 Torque Values ..... 1-2

**SECTION 2 BLADE GUIDE ROLLERS & ARM**

2.1 Blade Guide Assembly, Idle Side ..... 2-1  
 2.2 Blade Guide Assembly, Drive Side ..... 2-3  
 2.3 Blade Guide Arm ..... 2-5

**SECTION 3 BLADE WHEELS AND TENSIONER**

3.1 Blade Drive Assembly ..... 3-1  
 3.2 Idle Blade Wheel Assembly..... 3-3  
 3.3 Blade Tensioner Assembly ..... 3-5

**SECTION 4 SAW HEAD ASSEMBLIES**

4.1 Blade Housing Covers & Wood Blocks ..... 4-1  
 4.2 Water Lube Assembly..... 4-3  
 4.3 Saw Head Decals ..... 4-5

**SECTION 5 CONTROL AND BATTERY BOXES**

5.1 Control Assembly (HR130EB15) ..... 5-1  
 5.2 Control Assembly (HR130EC15) ..... 5-3  
 5.3 Operator Control Assembly (HR130)..... 5-5  
 5.4 Control Insert Components (HR130EB15)..... 5-7  
 5.5 Control Insert Components (HR130EC15)..... 5-9

**SECTION 6 UP-DOWN SYSTEM**

6.1 Saw Head Lift ..... 6-1  
 6.2 Saw Head Mount & Blade Height Scale..... 6-3

**SECTION 7 CONVEYOR BELT FEED SYSTEM**

7.1 Feed Belt Conveyor ..... 7-1  
 7.2 Hold-Down Assembly..... 7-3  
 7.3 Conveyor Drive Assembly..... 7-4  
 7.4 Shingle Belt Assembly (Optional) ..... 7-6

**SECTION 8 ENGINE ASSEMBLY**

8.1 Motor (E15)..... 8-1  
 8.2 Throttle/Clutch Assembly ..... 8-3

**SECTION 9 TABLE OPTION**

9.1 HR100 Series Tables..... 9-1

## SECTION 1 REPLACEMENT PARTS

### 1.1 How To Use The Parts List

- Use the table of contents to locate the assembly that contains the part you need.
- Go to the appropriate section and locate the part in the illustration.
- Use the number pointing to the part to locate the correct part number and description in the table.
- Parts shown indented under another part are included with that part.

#### *To Order Parts*

- From the continental US, call **1-800-525-8100** to order parts. Have your customer number, vehicle identification number, and part numbers ready when you call.
- From other international locations, contact the Wood-Mizer distributor in your area for parts.

### 1.2 Sample Assembly



REF	PART #	DESCRIPTION	COMMENTS	QTY.
	012345	SAMPLE ASSEMBLY, COMPLETE	INCLUDES ITEMS 1-6	1
1	F02222-22	Sample Part		1
2	F03333-33	Sample Part		2
	098765	Sample Subassembly	Includes items 3-6	1
3	S04444-44	Subassembly Sample Part		1
4	K55555	Subassembly Sample Part		1
	054321	Sample Sub-Subassembly	Includes items 5-6	2
5	022222	Sub-Subassembly Sample Part		1
6	F10234-56	Sub-Subassembly Sample Part		1

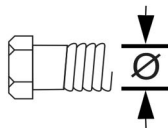
The Sample Assembly, Complete, part number 02345 (top level assembly) includes two parts (F0222-22 and F0333-33) and the 098765 subassembly.

Subassembly 098765 contains two parts(S04444-44 and K55555) and two copies of sub-subassembly 054321.

Each sub-subassembly 054321 contains two parts (022222 and F10234-56).

### 1.3 Torque Values

Grade		Units	SAE 5	SAE 8
Grade Mark				
Bolt Dia.	Threads Per In.	Units	SAE 5	SAE 8
6	32	in-lbs (Nm)	20 (2.3)	-
8	32	in-lbs (Nm)	24 (2.7)	30 (3.4)
10	24	in-lbs (Nm)	35 (4.0)	45 (5.1)
10	32	in-lbs (Nm)	40 (4.5)	50 (5.7)
12	24	in-lbs (Nm)	50 (5.7)	65 (7.3)
1/4	20	in-lbs (Nm)	95 (10.7)	125 (14.1)
1/4	28	in-lbs (Nm)	95 (10.7)	150 (17.0)
5/16	18	ft-lbs (Nm)	17 (22.6)	23 (31.2)
5/16	24	ft-lbs (Nm)	20 (27.1)	25 (33.8)
3/8	16	ft-lbs (Nm)	30 (40.7)	40 (54.2)
3/8	24	ft-lbs (Nm)	35 (47.5)	45 (61.0)
7/16	14	ft-lbs (Nm)	50 (67.8)	65 (88.1)
7/16	20	ft-lbs (Nm)	55 (74.6)	70 (94.9)
1/2	13	ft-lbs (Nm)	75 (101.7)	100 (135.6)
1/2	20	ft-lbs (Nm)	85 (115.3)	110 (149.2)
9/16	12	ft-lbs (Nm)	105 (142.4)	135 (183.1)
9/16	18	ft-lbs (Nm)	115 (155.9)	150 (203.4)
5/8	11	ft-lbs (Nm)	150 (203.4)	195 (264.4)
5/8	18	ft-lbs (Nm)	160 (217.0)	210 (284.8)
3/4	10	ft-lbs (Nm)	170 (230.5)	220 (298.3)
3/4	16	ft-lbs (Nm)	175 (237.3)	225 (305.1)
7/8	9	ft-lbs (Nm)	302 (409.5)	473 (640.9)
7/8	14	ft-lbs (Nm)	300 (406.8)	400 (542.4)
1	8	ft-lbs (Nm)	466 (631.8)	714 (967.4)



Metric Bolt Head Identification



Metric Grade 8.8

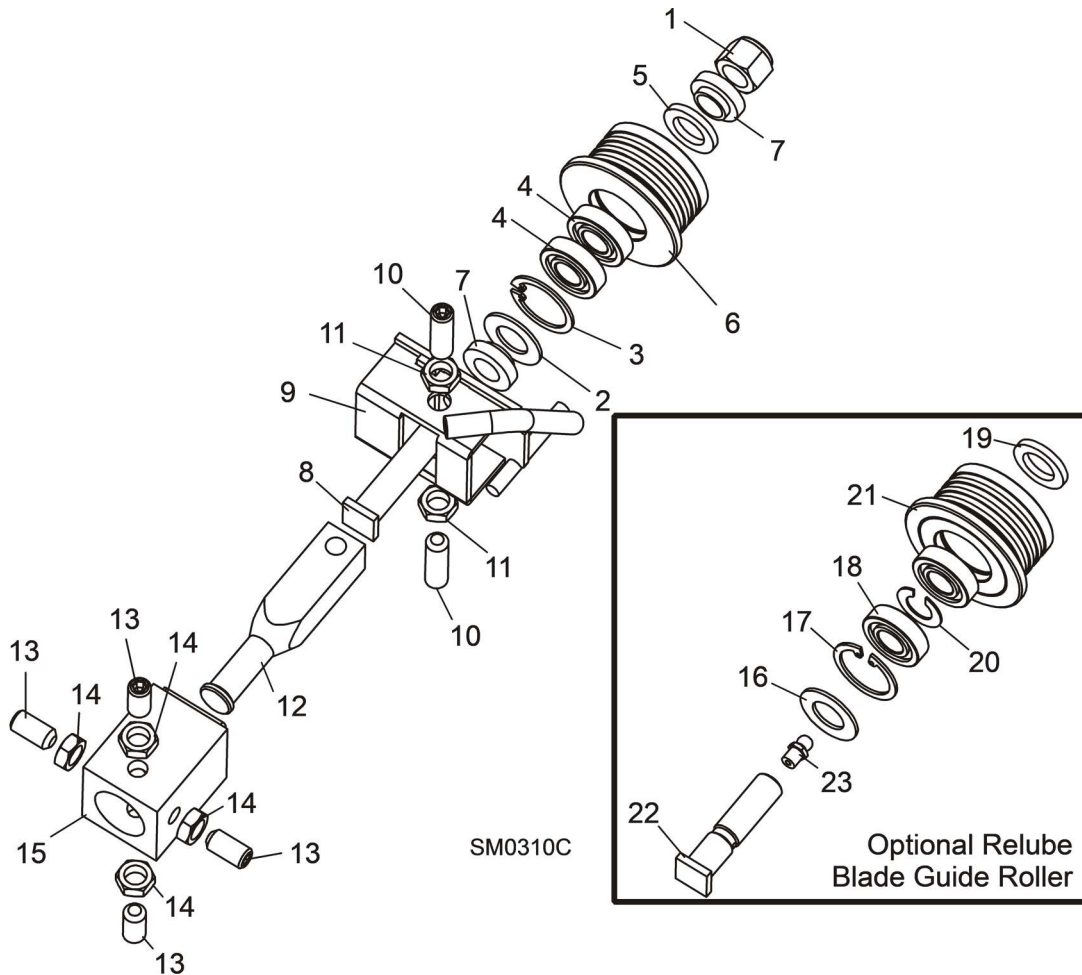


Metric Grade 10.9

COARSE THREAD					FINE THREAD				Wrench Size	
Diameter & Thread Pitch	Metric 8.8		Metric 10.9		Diameter & Thread Pitch	Metric 8.8		Metric 10.9		
	N-m	lbs-ft	N-m	lbs-ft		N-m	lbs-ft	N-m		lbs-ft
6 x 1.0	8	6	11	8					10 mm	
8 x 1.25	20	15	27	20	8 x 1.0	21	16	29	22	13 mm
10 x 1.5	39	29	54	40	10 x 1.25	41	30	57	42	16 mm
12 x 1.75	68	50	94	70	12 x 1.25	75	55	103	76	18 mm
14 x 2.0	109	80	151	111	14 x 1.5	118	87	163	120	21 mm
16 x 2.0	169	125	234	173	16 x 1.5	181	133	250	184	24 mm
18 x 2.5	234	172	323	239	18 x 1.5	263	194	363	268	27 mm
20 x 2.5	330	244	457	337	20 x 1.5	367	270	507	374	30 mm
22 x 2.5	451	332	623	460	22 x 1.5	495	365	684	505	34 mm
24 x 3.0	571	421	790	583	24 x 2.0	623	459	861	635	36 mm
30 x 3.0	1175	867	1626	1199	30 x 2.0	1258	928	1740	1283	46 mm

## SECTION 2 BLADE GUIDE ROLLERS & ARM

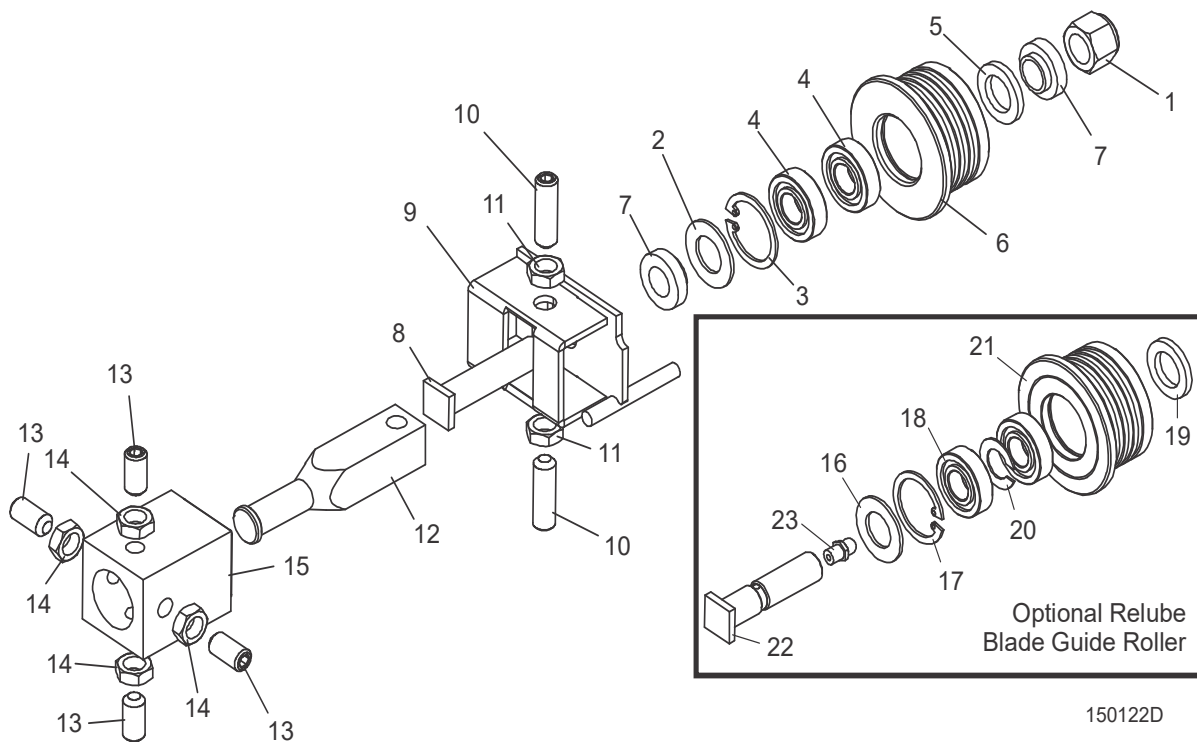
### 2.1 Blade Guide Assembly, Idle Side



REF	PART #	DESCRIPTION	COMMENTS	QTY.
	A08197	<b>BLADE GUIDE ASSEMBLY, COMPLETE IDLE SIDE</b>		1
1	F05010-15	Nut, 1/2-20 Hex Nylon Lock		1
	A04925	Roller Assembly, Blade Guide	standard	1
	K07079	Bearing Kit, Blade Guide Rebuild		1
2	P04252	Washer, 5/8" White Felt		1
3	F04254-1	Ring, 1 1/8" Interior Retaining		1
4	015975	Bearing, R8-2RS Blade Guide	Available in assemblies only.	2
5	P06455	Washer, 5/8" Gray Felt		1
	F05005-105	Screw, 1/4-28 x 1/4" Socket Head Cup Point Set Black Oxide		1
	057407-1507	Instruction Sheet, Blade Guide Rebuild		1
6	S04250	Roller, Flanged Blade Guide	Available in assemblies only.	1
	A04925-364	Instruction Sheet, Blade Guide Roller Replacement		1

REF	PART #	DESCRIPTION	COMMENTS	QTY.
7	S04253	Spacer, Blade Guide		2
8	036373	Bolt, Blade Guide Roller		1
9	W08495	Bracket, Blade Guide Idle Side With Water Tube		1
10	F05007-96	Screw, 3/8-24 X 1 1/4" Stainless Steel Socket Head Flat Point		2
11	F05010-22	Nut, 3/8-24 Jam		2
12	S08196	Shaft, Blade Guide Adjustment		1
13	F05007-95	<b>SCREW, 3/8-24 X 3/4" STAINLESS STEEL SOCKET HEAD FLAT POINT</b>		4
14	F05010-22	<b>NUT, 3/8-24 JAM</b>		4
15	W08159	<b>TUBE, BLADE GUIDE MOUNT</b>	<i>(See Section 2.3)</i>	1
	016568	<b>ROLLER ASSEMBLY, BLADE GUIDE RELUBE</b>	Optional	1
	057407	Bearing Kit, Relube Blade Guide Rebuild		1
16	P04252	Washer, 5/8" White Felt		1
17	F04254-1	Ring, 1 1/8" Interior Retaining		1
18	015975	Bearing, R8-2RS Blade Guide	Available in assemblies only. Bearing must be modified for use with relube roller assemblies. Remove one seal from each bearing, place open sides facing each other and place spacer 035411 between bearings.	2
19	P06455	Washer, 5/8" Gray Felt		1
	057407-1507	Instruction Sheet, Blade Guide Rebuild		1
20	035411	Spacer, Blade Guide Bearing		1
21	035426	Roller, Flanged Blade Guide Relube	Available in assemblies only.	1
	A04925-364	Instruction Sheet, Blade Guide Roller Replacement		1
22	S08192	<b>BOLT, BLADE GUIDE ROLLER</b>	Relube only	1
23	P05060	<b>FITTING, 1/4-28 GREASE</b>	Relube only	1

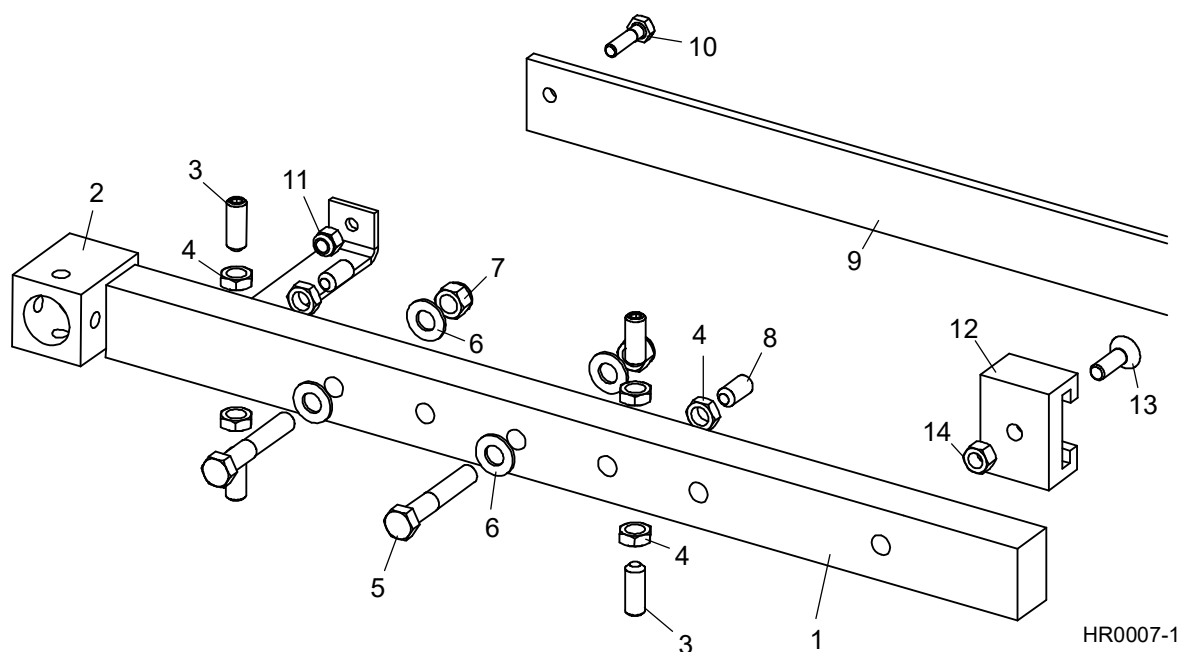
## 2.2 Blade Guide Assembly, Drive Side



REF	PART #	DESCRIPTION	COMMENTS	QTY.
	A08191	<b>BLADE GUIDE ASSEMBLY, COMPLETE DRIVE SIDE</b>		1
<b>1</b>	F05010-15	Nut, 1/2-20 Hex Nylon Lock		1
	A04925	Roller Assembly, Blade Guide	Standard	1
	K07079	Bearing Kit, Blade Guide Rebuild		1
<b>2</b>	P04252	Washer, 5/8" White Felt		1
<b>3</b>	F04254-1	Ring, 1 1/8" Interior Retaining		1
<b>4</b>	015975	Bearing, R8-2RS Blade Guide	Available in assemblies only.	2
<b>5</b>	P06455	Washer, 5/8" Gray Felt		1
	F05005-105	Screw, 1/4-28 x 1/4" Socket Head Cup Point Set Black Oxide		1
	057407-1507	Instruction Sheet, Blade Guide Rebuild		1
<b>6</b>	S04250	Roller, Flanged Blade Guide	Available in assemblies only.	1
	A04925-364	Instruction Sheet, Blade Guide Roller Replacement		1
<b>7</b>	S04253	Spacer, Blade Guide		2
<b>8</b>	036373	Bolt, Blade Guide Roller		1
<b>9</b>	W08482	Bracket, Blade Guide Drive Side		1
<b>10</b>	F05007-96	Screw, 3/8-24 X 1 1/4" Stainless Steel Socket Head Flat Point		2
<b>11</b>	F05010-22	Nut, 3/8-24 Jam		2
<b>12</b>	S08196	Shaft, Blade Guide Adjustment		1
<b>13</b>	F05007-95	<b>SCREW, 3/8-24 X 3/4" STAINLESS STEEL SOCKET HEAD FLAT POINT SET</b>		3

REF	PART #	DESCRIPTION	COMMENTS	QTY.
14	F05007-99	<b>BOLT, 3/8-24 X 1" STAINLESS STEEL HEX HEAD</b>		1
15	F05010-22	<b>NUT, 3/8-24 JAM</b>		4
16	W08159	<b>TUBE WELDMENT, BLADE GUIDE MOUNT</b>	Part of saw frame weldment	1
	016568	<b>ROLLER ASSEMBLY, BLADE GUIDE RELUBE</b>	Optional	1
	057407	Bearing Kit, Relube Blade Guide Rebuild		1
17	P04252	Washer, 5/8" White Felt		1
18	F04254-1	Ring, 1 1/8" Interior Retaining		1
19	015975	Bearing, R8-2RS Blade Guide	Available in assemblies only. Bearing must be modified for use with relube roller assemblies. Remove one seal from each bearing, place open sides facing each other and place spacer 035411 between bearings.	2
20	P06455	Washer, 5/8" Gray Felt		1
21	035411	Spacer, Blade Guide Bearing		1
	057407-1507	Instruction Sheet, Blade Guide Rebuild		1
22	035426	Roller, Flanged Blade Guide Relube	Available in assemblies only.	1
	A04925-364	Instruction Sheet, Blade Guide Roller Replacement		1
23	S08192	<b>BOLT, BLADE GUIDE ROLLER</b>	Relube only	1
24	P05060	<b>FITTING, 1/4-28 GREASE</b>	Relube only	1

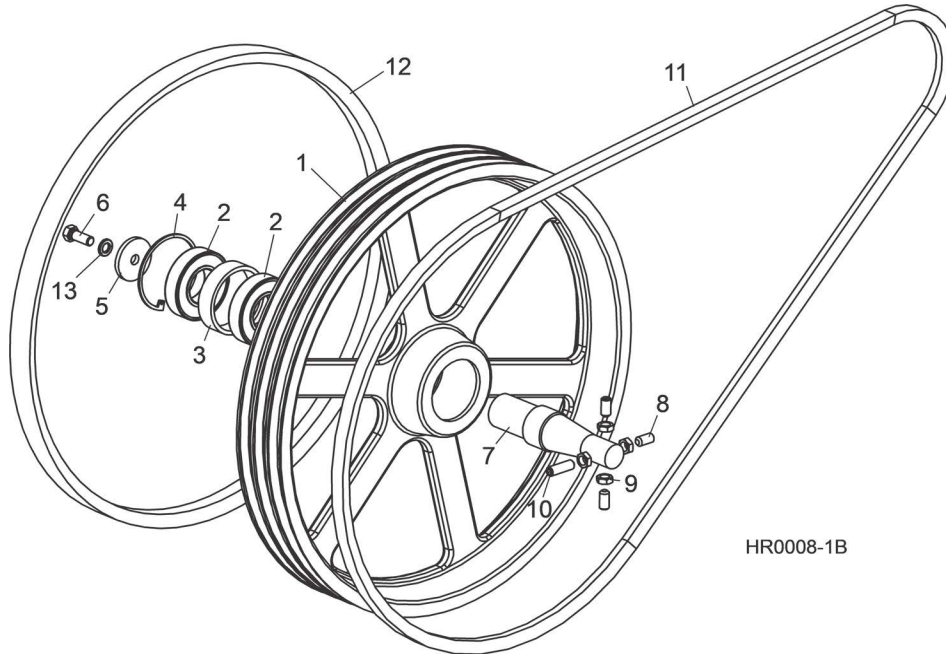
## 2.3 Blade Guide Arm



REF	PART #	DESCRIPTION	COMMENTS	QTY.
1	063127	BAR WLDMNT, BLADE GUIDE		1
2	W08159	Tube, Blade Guide Mount		1
3	F05007-184	SCREW, 3/8-24 X 1" FLAT POINT SOCKET HEAD STAINLESS		4
4	F05010-22	NUT, 3/8"-24 HEX JAM		6
5	F05007-201	BOLT, 3/8-16 X 2 1/4" HEX HEAD GRADE 5		2
6	F05011-3	WASHER, 3/8" SAE FLAT		4
7	F05010-10	NUT, 3/8-16 HEX NYLON LOCK		2
8	F05007-95	SCREW, 3/8-24 X 3/4" FLAT POINT SOCKET HEAD STAINLESS		2
9	063194	GUARD, LT15 BLADE GUIDE ARM		1
10	F05005-38	BOLT, 1/4-20 X 1" HEX HEAD GRADE 2		1
11	F05010-69	NUT, 1/4-20 HEX NYLON LOCK		1
12	014882	BLOCK, BLADE GUIDE ARM GUARD GUIDE		1
13	F05006-124	BOLT, 5/16-18 X 1" FLAT HEAD		1
14	F05010-6	NUT, 5/16-18 HEX LOCK		1

## SECTION 3 BLADE WHEELS AND TENSIONER

### 3.1 Blade Drive Assembly



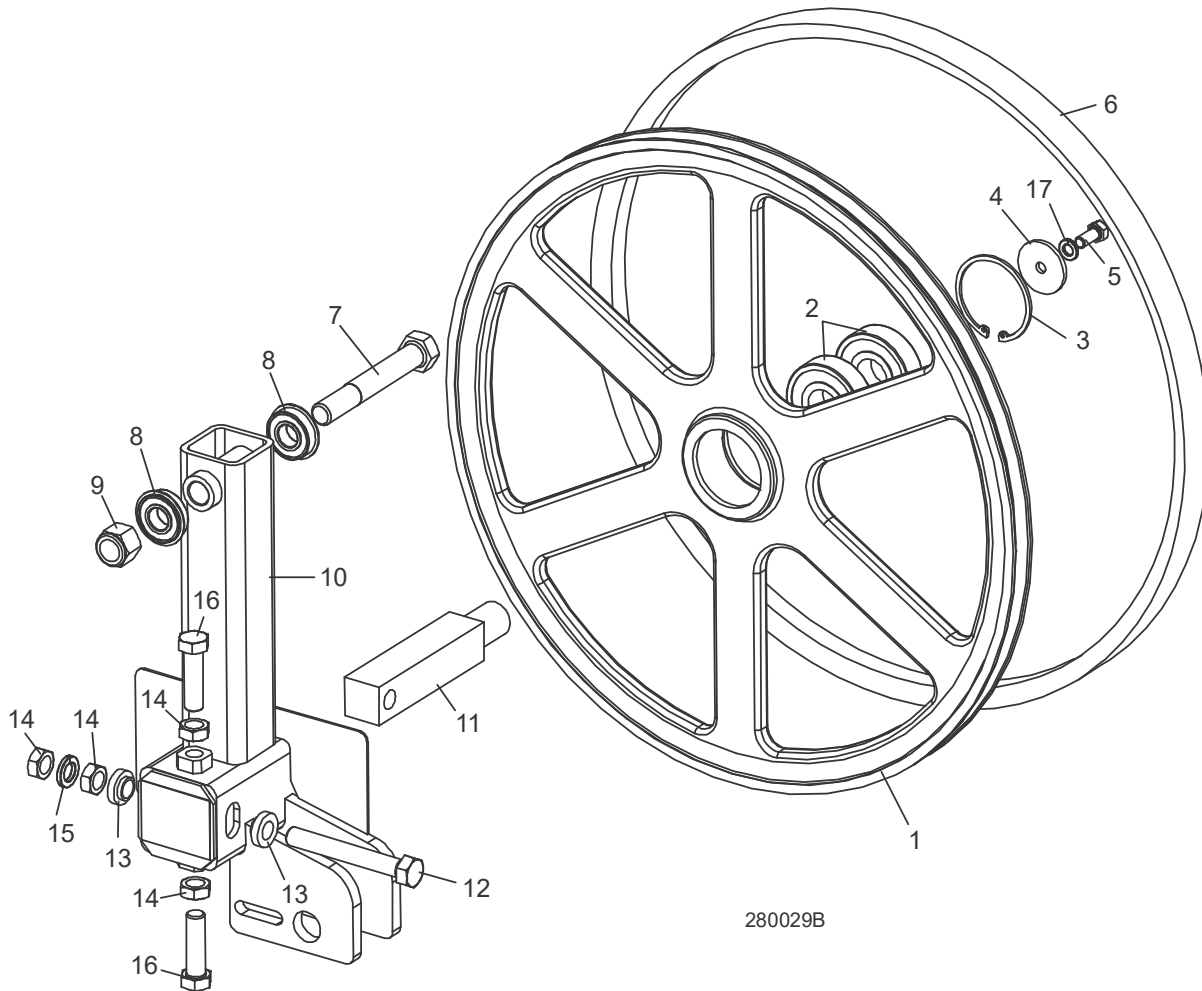
REF	PART #	DESCRIPTION	COMMENTS	QTY.
	014995	WHEEL ASSEMBLY, DRIVE SIDE BLADE (E10/E15)		1
	036657	WHEEL ASSEMBLY, DRIVE SIDE BLADE (G18/G25/D17)		1
1	014727	Wheel, Drive Side Blade (E10/E15)		1
	047702	Wheel, Drive Side Blade (G18/G25/D17)		1
2	014811	Bearing, #6207 2RS		2
3	014730	Spacer, Drive Bearing		1
4	F04254-30	Ring, 3.121 IR Beveled Retaining		1
5	014728	WASHER, DRIVE WHEEL RETAINING		1
6	F05007-87	BOLT, 3/8-16 X 1" HEX HEAD GRADE 5		1
7	014729	SHAFT, LT15 DRIVE SIDE BLADE WHEEL		1
8	F05007-95	SCREW, 3/8-24 X 3/4" FLAT POINT SOCKET HEAD STAINLESS		3
9	F05010-22	NUT, 3/8-24 HEX JAM		4
10	F05007-96	SCREW, 3/8-24 X 1 1/4" FLAT POINT SOCKET HEAD STAINLESS		1
11	P25301	BELT, BX85 (60HZ E10/E15)		1
	P20701	BELT, BX86 (50HZ E15)		1
	047751	BELT, 2/3VFL900 DRIVE (G18/G25/D17)		1

**3****Blade Wheels & Tensioner***Blade Drive Assembly*

---

REF	PART #	DESCRIPTION	COMMENTS	QTY.
	017943	BELT, BX87 (G15)		1
12	P04185	BELT, B57		1
13	F05011-4	WASHER, 3/8" SPLIT LOCK		1

### 3.2 Idle Blade Wheel Assembly



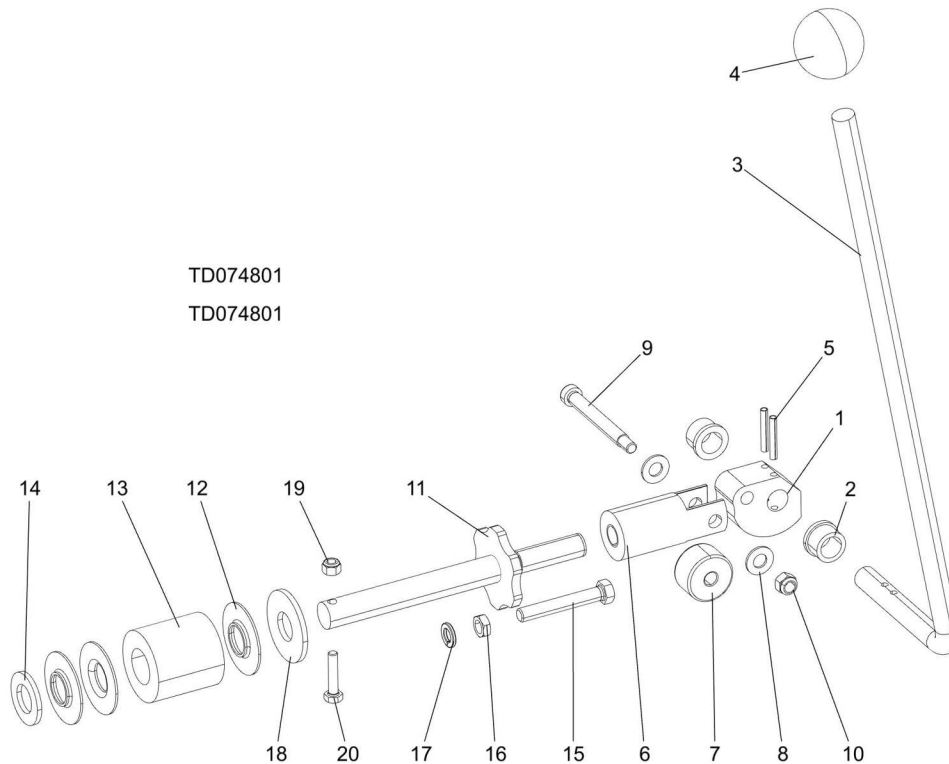
REF	PART #	DESCRIPTION	COMMENTS	QTY.
	A08218	<b>WHEEL ASSEMBLY, IDLE SIDE BLADE</b>		1
1	P08125	Wheel, Idle Side Blade	Available in assemblies only.	1
2	P08066	Bearing, Idle Side Blade Wheel #6305-AA, C3, ABEC-1, SRI-2 Grease		2
3	F04254-21	Ring, 2 7/16" Internal Retaining		1
4	S08220	<b>WASHER, IDLE BLADE WHEEL RETAINER</b>		1
5	F05006-102	<b>BOLT, 5/16-18 X 3/4" HEX HEAD</b>		1
6	P04185	<b>BELT, BLADE WHEEL B57</b>		1
7	F05009-3	<b>BOLT, 5/8-11 X 4 1/2" HEX HEAD</b>		1
8	014834	<b>BEARING, 5/8" I.D. W/SNAP RING</b>		2
9	F05010-34	<b>NUT, 5/8-11 HEX NYLON LOCK</b>		1
10	049349	<b>IDLER WELDMENT, BLADE WHEEL</b>		1
11	S12565	<b>SHAFT, IDLE WHEEL</b>		1

**3****Blade Wheels & Tensioner***Idle Blade Wheel Assembly*

---

REF	PART #	DESCRIPTION	COMMENTS	QTY.
12	F05008-111	BOLT, 1/2-20 X 3 3/4" HEX HEAD FULL THREAD GRADE 2		1
13	S04253	SPACER, 1/2" I.D. FLANGED		2
14	F05010-16	NUT, 1/2-20 HEX JAM		4
15	F05011-9	WASHER, 1/2" SPLIT LOCK		1
16	F05008-127	BOLT, 1/2-20 X 1 3/4" HEX HEAD GRADE 5		2

### 3.3 Blade Tensioner Assembly



TD074801  
TD074801

REF	PART #	DESCRIPTION	COMMENTS	QTY.
	074801	<b>TENSION ASSEMBLY, CAM ACTUATED BLADE</b>	LT15/28/35, HR120/130	1
1	049104	Cam, Tension		1
2	P05135	Bushing, 5/8" x 7/8" x 1/2" Bronze		2
3	103801	Handle, Blade Tensioner, LT15/28/35		1
4	P04211	Knob, 5/8-18 Ball		1
5	F05012-16	Pin, 3/16" x 1 1/4" Roll		2
6	049321	Block, Tensioner Bearing Mount		1
7	048219	Cam Follower, 3/8" x 1 3/8" x 13/16"		1
8	F05011-3	Washer, 3/8" SAE Flat		2
9	F05007-202	Bolt, 3/8 x 2 1/2" Socket Head Shoulder		1
10	F05010-58	Nut, 5/16-18 Hex Nylon Lock		1
11	038642	Shaft Weldment, Blade Tension		1
12	014925	Guide, Tension Handle		3
13	014828	Spring, Rubber Tensioner Blade		1
14	F05011-62	Washer, 3/4" SAE Flat		1
15	F05007-157	Bolt, 3/8-16 x 2 1/2" Hex Head Full Thread		1
16	F05010-29	Nut, 3/8-16 Jam		1
17	F05011-4	Washer, 3/8" Split Lock		1



# Blade Wheels & Tensioner

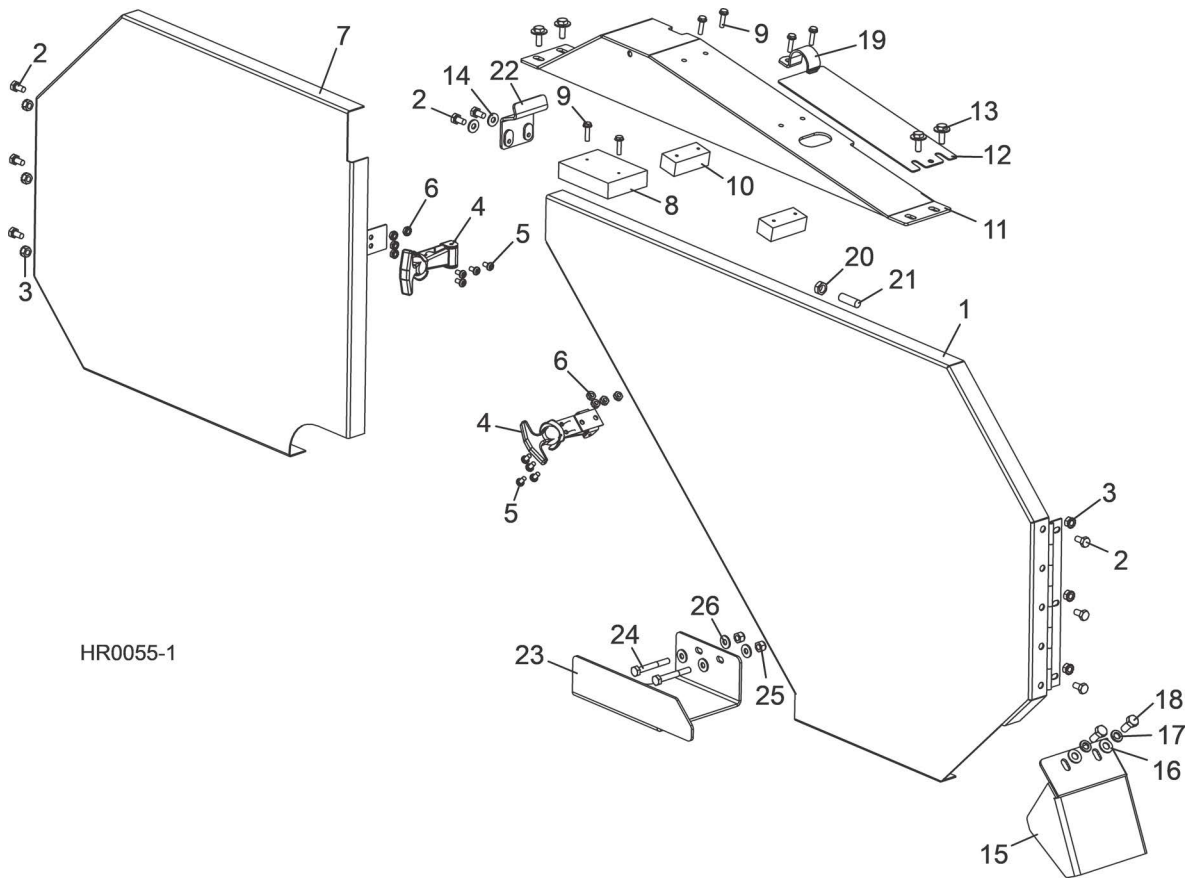
## *Blade Tensioner Assembly*

---

REF	PART #	DESCRIPTION	COMMENTS	QTY.
18	F05011-29	Washer, 3/4" USS Flat		1
19	F05010-69	Nut, 1/4-20 Nylock		1
20	F05005-116	Bolt, 1/4-20x1 1/4 HH Gr5		1

## SECTION 4 SAW HEAD ASSEMBLIES

### 4.1 Blade Housing Covers & Wood Blocks



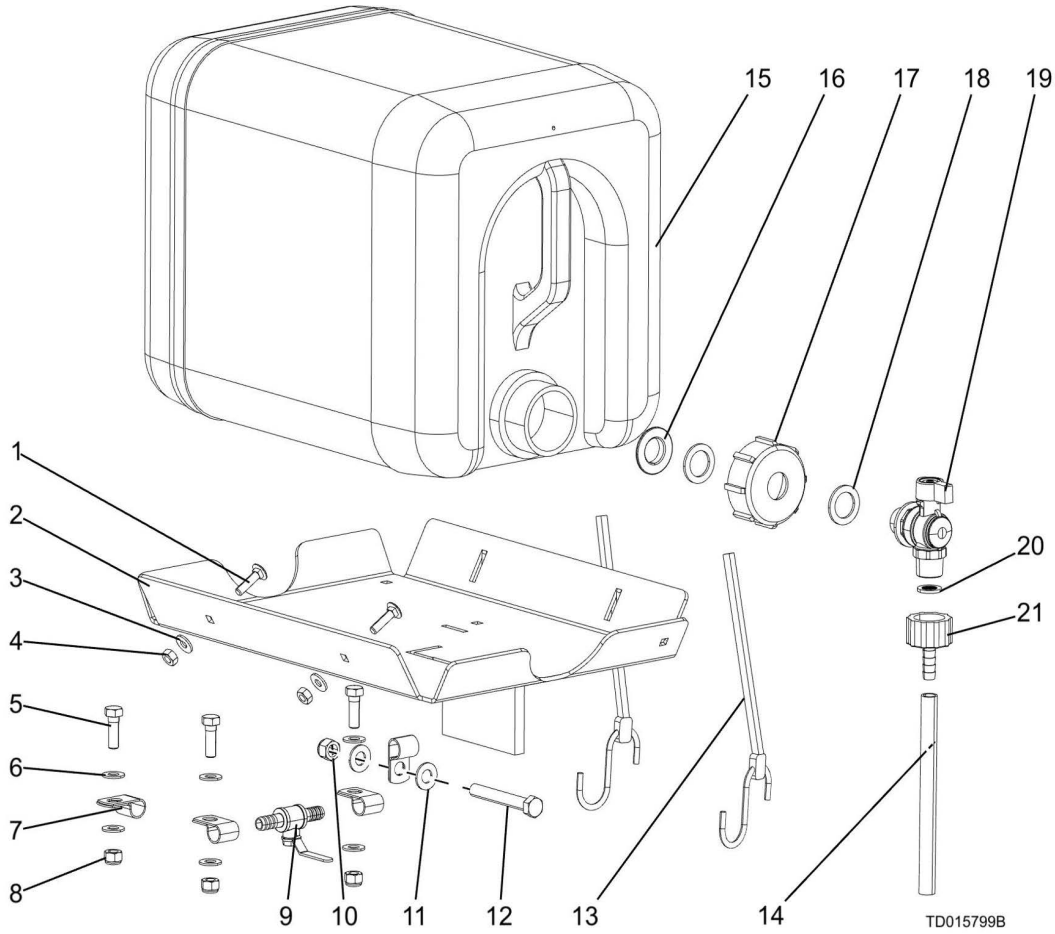
REF	PART #	DESCRIPTION	COMMENTS	QTY.
1	065072	COVER, DRIVE SIDE HR120 BLADE HOUSING	INCLUDES COVER DECALS - <a href="#">See Section 4.3</a>	1
	065317	COVER, DRIVE SIDE HR130 BLADE HOUSING	INCLUDES COVER DECALS - <a href="#">See Section 4.3</a>	1
2	F05005-15	BOLT, 1/4-20 X 1/2" HEX HEAD		8
3	F05010-9	NUT, 1/4-20 KEPS		6
4	014829	LATCH, FLEXIBLE DRAW		2
5	F05004-3	SCREW, #10-24 X 3/8" CROSS SLOTTED ROUND HEAD		8
6	F05010-14	NUT, #10-24 SELF-LOCKING HEX		8
7	065073	COVER, IDLE SIDE HR120 BLADE HOUSING	INCLUDES COVER DECALS - <a href="#">See Section 4.3</a>	1
	065075	COVER, IDLE SIDE HR130 BLADE HOUSING	INCLUDES COVER DECALS - <a href="#">See Section 4.3</a>	1

## 4

**Saw Head Assemblies***Blade Housing Covers & Wood Blocks*

REF	PART #	DESCRIPTION	COMMENTS	QTY.
8	015844	<b>BLOCK, BLADE VIBRATION DAMPENING</b>		1
9	F05015-33	<b>BOLT, #10 X 3/4" SLOTTED HEX WASHER HEAD</b>		6
10	016506	<b>BLOCK, 3/4" X 1" X 2" WOOD</b>	E10/E15 Only.	2
	038633	<b>COVER ASSEMBLY, TOP ENGINE PULLEY</b>		1
11	074574	Cover Weldment, LT15/28 Top Belt Cover		1
12	074546	Plate, Belt Guard Cover		1
13	F05005-134	Bolt, 1/4-20 x 3/4" Hex Head w/Conical Washer		4
14	F05011-11	<b>WASHER, 1/4" SAE FLAT</b>		2
15	003811	<b>PLATE, SAWDUST DEFLECTOR</b>		1
16	F05011-17	<b>WASHER, 5/16" SAE FLAT</b>		2
17	F05011-13	<b>WASHER, 5/16" SPLIT LOCK</b>		2
18	F05006-5	<b>BOLT, 5/16-18 X 3/4" HEX HEAD</b>		2
19	P05436	<b>CLAMP, 1" EMT (E10 ONLY)</b>		1
20	F05010-29	<b>NUT, 3/8-16 JAM</b>		1
21	F05007-18	<b>SCREW, 3/8-16 X 1 1/4 SHOP SET</b>		1
22	074394	<b>BRACKET WELDMENT, LT15 BELT ENHANCE</b>		1
	079320	<b>GUARD ASSEMBLY, HR120/130 DRIVE SIDE BLADE</b>		1
23	079319	Plate, HR120/130 Drive Side Blade Guard		1
24	F05005-125	Bolt, 1/4-20x2 Hex Head Grade 5		2
25	F05010-69	Nut, 1/4-20 Nylock		2
26	F05011-11	Washer, 1/4 SAE Flat		4
	015849	Decal, LT15 Blade Guide Bar		0.3

4.2 Water Lube Assembly



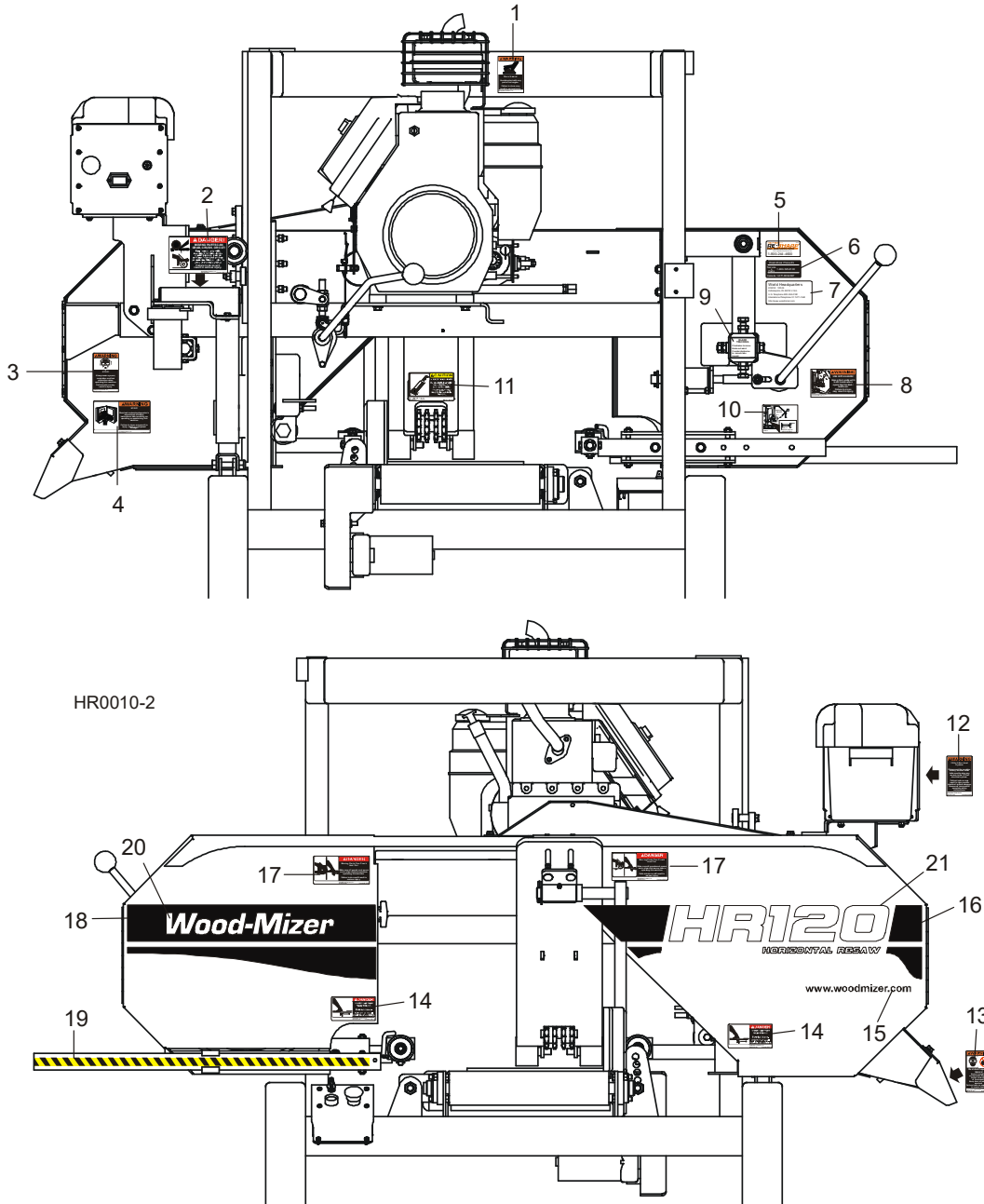
REF	PART #	DESCRIPTION	COMMENTS	QTY.
	015799	<b>WATER LUBE ASSEMBLY</b>		1
1	F05005-34	Bolt, 1/4-20 X 1 Carr		2
2	015798	Tray Weldment, Water Bottle LT15		1
3	F05011-11	Washer, 1/4 SAE Flat		2
4	F05010-21	Nut, 1/4-20 Swaged		2
5	F05006-1	Bolt, 5/16-18x1 HH Gr2		3
6	F05011-17	Washer, 5/16 SAE Flat		6
7	P07584	Clamp, 1/2EMT Coated		4
8	F05010-58	Nut, 5/16-18 Nyl Lock		3
9	065635	Valve, 1/4Turn Ball 3/8 Hose Barbs		1
10	F05010-10	Nut, 3/8-16 Hex Nyl Lock		1
11	F05011-3	Washer, 3/8 Flat SAE		2
12	F05007-230	Bolt, 3/8-16x2 3/4 FT Gr5		1
13	P11668	Strap, 20 Rubber W/Hooks		2
14	R01885	Hose, Water Lube Stock		12.83'

## 4

**Saw Head Assemblies***Water Lube Assembly*

REF	PART #	DESCRIPTION	COMMENTS	QTY.
	601615	<b>Assembly, Water Bottle</b>	Replaced 550787 after 1/6/2026 per ECN 39971	1
<b>15</b>	513866	Bottle, Water		1
		Assembly, Cap w/ Valve		
<b>16</b>	625839	Nut, Brass 1/2" for Water Bottle		1
<b>17</b>	550785	Cap, Water Bottle		1
<b>18</b>	550780	O-Ring, 20X30X2		2
<b>19</b>	625845	Valve	Available in assembly only	1
<b>20</b>	550778	Gasket, 1/2" w/Strainer		1
<b>21</b>	550777	Fitting, G3/4" X 10mm Hose Barb		1

### 4.3 Saw Head Decals



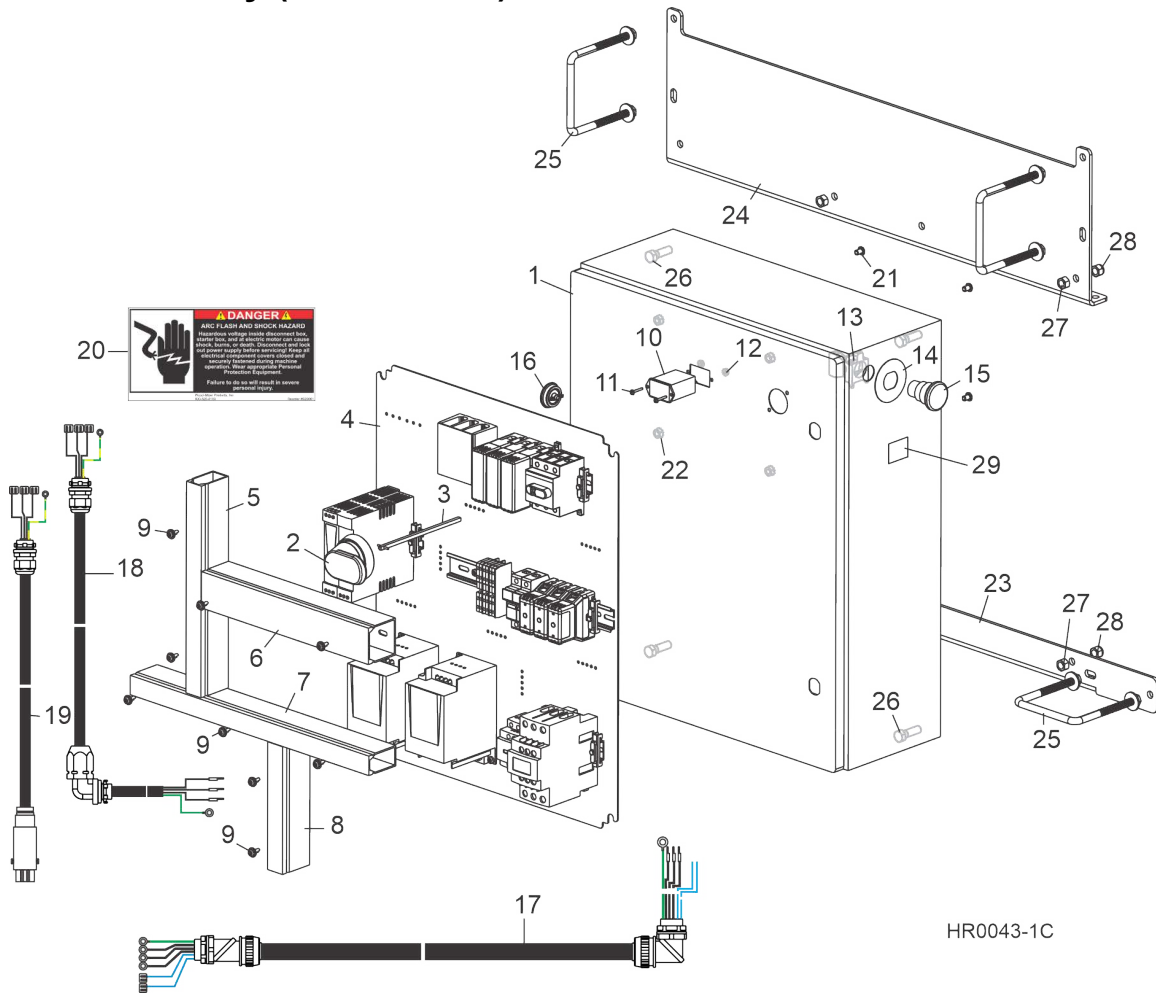
REF	PART #	DESCRIPTION	COMMENTS	QTY.
1	014419	DECAL, HOT ENGINE WARNING		1
2	028720	DECAL, MOVING PARTS DANGER		1
3	S11753	DECAL, EYE/EAR PROTECTION WARNING		1
4	016402	DECAL, READ MANUAL WARNING		1
5	P12879	DECAL, RESHARP INFO		1
6	S12117	DECAL, TOLL FREE PARTS		1
7	015840	DECAL, WORLD HEADQUARTERS ADDRESS		1
8	049367	DECAL, TENSIONER WARNING		1
9	P11789	DECAL, BLADE TRACK INFO		1
10	049368	DECAL, BLADE TENSION INFO		1
11	063189	DECAL, ADJUST HOLD-DOWN CAUTION		1
12	P10364	DECAL, 12V ELECTRICAL SYSTEM WARNING		1

**4** Saw Head Assemblies  
Saw Head Decals

REF	PART #	DESCRIPTION	COMMENTS	QTY.
13	P11754	DECAL, SAWDUST CHUTE WARNING		1
14	S11752	DECAL, BLADE DANGER		2
15	003235	DECAL, WOOD-MIZER WEBSITE LOGO		1
16	065386	DECAL, DRIVE SIDE EURO-STRIPE BK HR130		1
17	033254	DECAL, MOVING PARTS DANGER		2
18	065008	DECAL, IDLE SIDE EURO-STRIPE BK 15/28/35		1
19	015849	DECAL, BLADE GUIDE ARM STRIPE		1
20	065002	DECAL, WOOD-MIZER LOGO WHT LT10/15/28/35		1
21	062720	DECAL, HR130 EURO LOGO WHITE		1

## SECTION 5 CONTROL AND BATTERY BOXES

### 5.1 Control Assembly (HR130EB15)



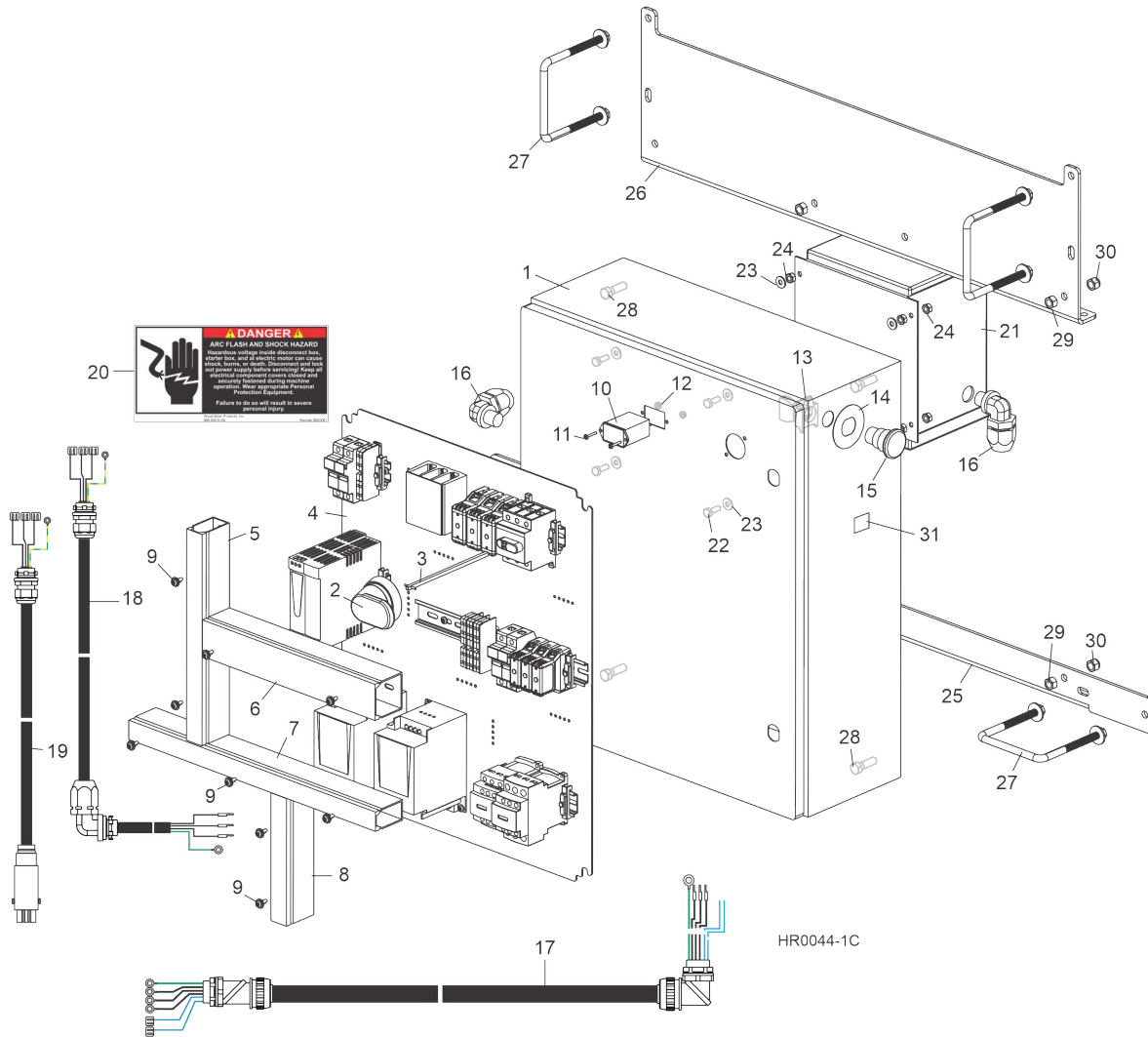
REF	PART #	DESCRIPTION	COMMENTS	QTY.
	053730	<b>CONTROL ASSEMBLY, HR130EB15</b>	<b>(W/O NETWORKS ONLY)</b>	1
	069880	<b>CONTROL ASSEMBLY, HR130EB15</b>	<b>(W/NETWORKS ONLY)</b>	1
1	069700	Enclosure, HR130 Control		1
2	050907-1	Handle, Red/Yellow Pistol Grip Operator 6mm		1
3	050908-1	Shaft, 290mm x 6mm Disconnect	Modified to 6 1/8"	1
4		Insert Panel Parts	(See Section 5.14)	
5	024472	Cable Duct, 2" x 1" x 6' Open Slot Gray		.167 Ft.
6	024471	Cable Duct, 2" x 2" x 6' Open Slot Gray		.111 Ft.
7	024472	Cable Duct, 2" x 1" x 6' Open Slot Gray		.243 Ft.
8	024472	Cable Duct, 2" x 1" x 6' Open Slot Gray		.101 Ft.
9	F05004-186	Screw, #10-24 x 1/2" Phillips Head		9
10	015401	Meter, Rectangle Mount Hour w/Gasket		1
11	F05004-93	Screw, #6-32 x 3/4" Socket Button Head Stainless		2
12	F05010-59	Nut, #6-32 Self-Locking Hex		2
13	025161	Switch Body, 1NC 22mm ZB4		1
14	050992	Legend, Emergency Stop		1

## 5 Control & Battery Boxes

*Control Assembly (HR130EB15)*

REF	PART #	DESCRIPTION	COMMENTS	QTY.
15	024945	Switch Operator, Red 22mm ZB4 Red Maintained E-Stop		1
16	024685	Plug, AS050 Oiltite		1
17	053741	Harness Assembly, HR130EB15 Blade Motor		1
18	053743	Cable Assembly, HR130 Up/Down Motor		1
19	073703	Cable Assembly, HR130 Feed Motor Connector		1
20	S20061	Decal, Electrical Hazard Danger		1
21	F05005-62	Screw, 1/4-20 x 3/8" Socket Button Head		4
22	F05010-9	Nut, 1/4-20 Self-Locking Hex		4
		HR130 Operator Control Assembly Parts	<a href="#">(See Section 5.3)</a>	
23	059679	<b>PLATE, CONTROL BOX MOUNT</b>		1
24	065185	<b>PLATE, UPPER CONTROL BOX MOUNT</b>		1
25	003207	<b>BOLT, 3/8-16 X 4" X 5" U</b>		4
26	F05007-123	<b>BOLT, 3/8-16 X 1 1/4" HEX HEAD GRADE 5</b>		4
27	F05010-1	<b>NUT, 3/8-16 HEX</b>		4
28	F05010-10	<b>NUT, 3/8-16 HEX NYLON LOCK</b>		4
29	121617	<b>DECAL, PLC BATTERY WARNING (US)</b>		1
	631002	<b>DECAL, PLC BATTERY WARNING (EU)</b>		1

## 5.2 Control Assembly (HR130EC15)

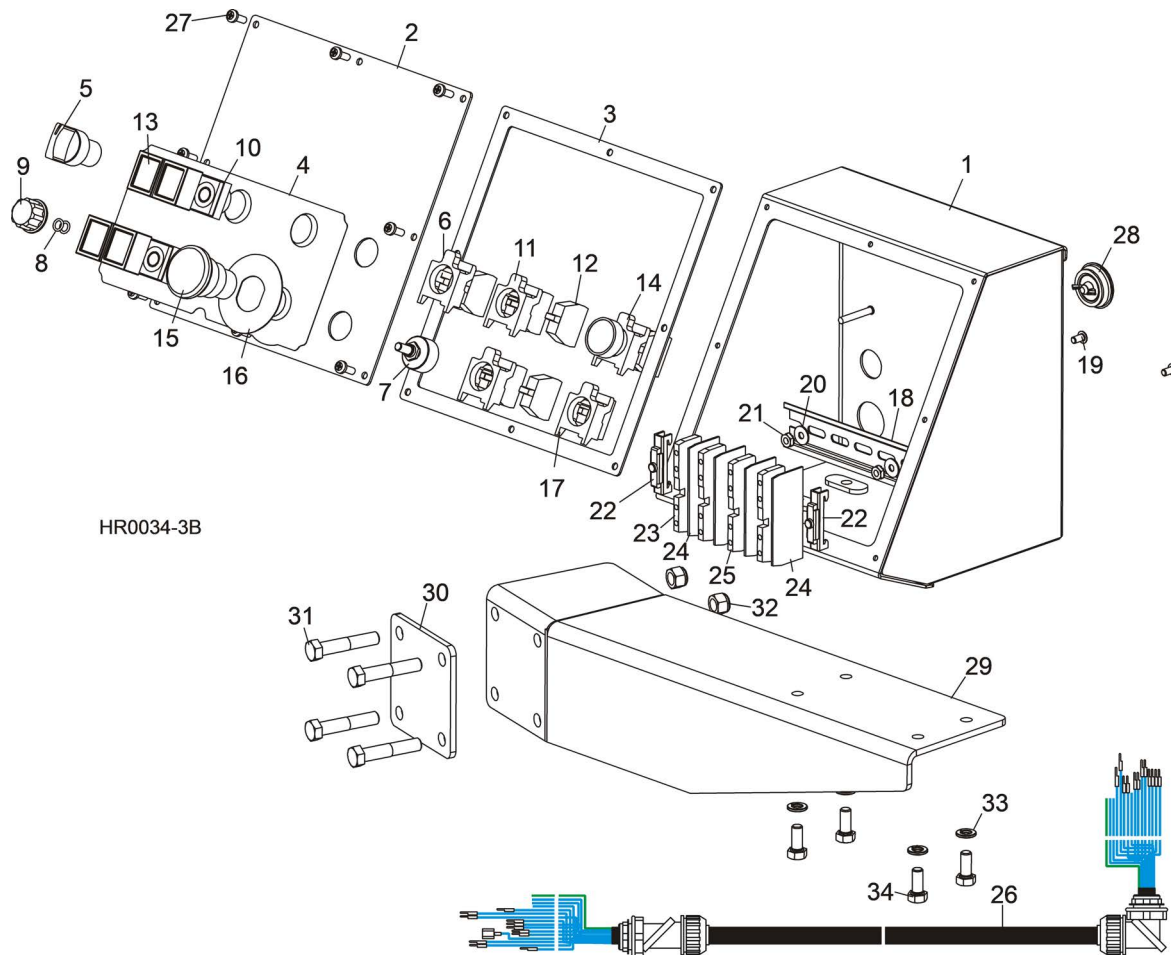


REF	PART #	DESCRIPTION	COMMENTS	QTY.
	053731	<b>CONTROL ASSEMBLY, HR130EC15</b>	<b>(W/O NETWORKS ONLY)</b>	1
	069881	<b>CONTROL ASSEMBLY, HR130EC15</b>	<b>(W/NETWORKS ONLY)</b>	1
1	069700	Enclosure, HR130 Control		1
2	050907-1	Handle, Red/Yellow Pistol Grip Operator 6mm		1
3	050908-1	Shaft, 290mm x 6mm Disconnect	(Modified to 6 1/8")	1
4		Insert Panel Parts	<a href="#">(See Section 5.15)</a>	
5	024472	Cable Duct, 2" x 1" x 6' Open Slot Gray		.167 Ft.
6	024471	Cable Duct, 2" x 2" x 6' Open Slot Gray		.111 Ft.
7	024472	Cable Duct, 2" x 1" x 6' Open Slot Gray		.243 Ft.
8	024472	Cable Duct, 2" x 1" x 6' Open Slot Gray		.101 Ft.
9	F05004-186	Screw, #10-24 x 1/2" Phillips Head		9
10	015401	Meter, Rectangle Mount Hour w/Gasket		1
11	F05004-93	Screw, #6-32 x 3/4" Socket Button Head Stainless		2
12	F05010-59	Nut, #6-32 Self-Locking Hex		2
13	025161	Switch Body, 1NC 22mm ZB4		1

**5** Control & Battery Boxes  
Control Assembly (HR130EC15)

REF	PART #	DESCRIPTION	COMMENTS	QTY.
14	050992	Legend, Emergency Stop		1
15	024945	Switch Operator, Red 22mm ZB4 Red Maintained E-Stop		1
16	E22722	Connector, 1/2" 90° LiquidTite		1
17	053742	Harness Assembly, HR130EC15 Blade Motor		1
18	053743	Cable Assembly, HR130 Up/Down Motor		1
19	073703	Cable Assembly, HR130 Feed Motor Connector		1
20	S20061	Decal, Electrical Hazard Danger		1
21	069705	Transformer, 240x480 Pri 120/240 Sec 2kA Sealed		1
22	F05005-101	Bolt, 1/4-20 x 1" Hex Head		4
23	F05011-11	Washer, 1/4" SAE Flat		8
24	F05010-9	Nut, 1/4-20 Self-Locking Hex		8
		HR130 Operator Control Assembly Parts	<a href="#">(See Section 5.3)</a>	
25	059679	<b>PLATE, CONTROL BOX MOUNT</b>		1
26	065185	<b>PLATE, UPPER CONTROL BOX MOUNT</b>		1
27	003207	<b>BOLT, 3/8-16 X 4" X 5" U</b>		4
28	F05007-123	<b>BOLT, 3/8-16 X 1 1/4" HEX HEAD GRADE 5</b>		4
29	F05010-1	<b>NUT, 3/8-16 HEX</b>		4
30	F05010-10	<b>NUT, 3/8-16 HEX NYLON LOCK</b>		4
31	121617	<b>DECAL, PLC BATTERY WARNING (US)</b>		1
	631002	<b>DECAL, PLC BATTERY WARNING (EU)</b>		1

### 5.3 Operator Control Assembly (HR130)

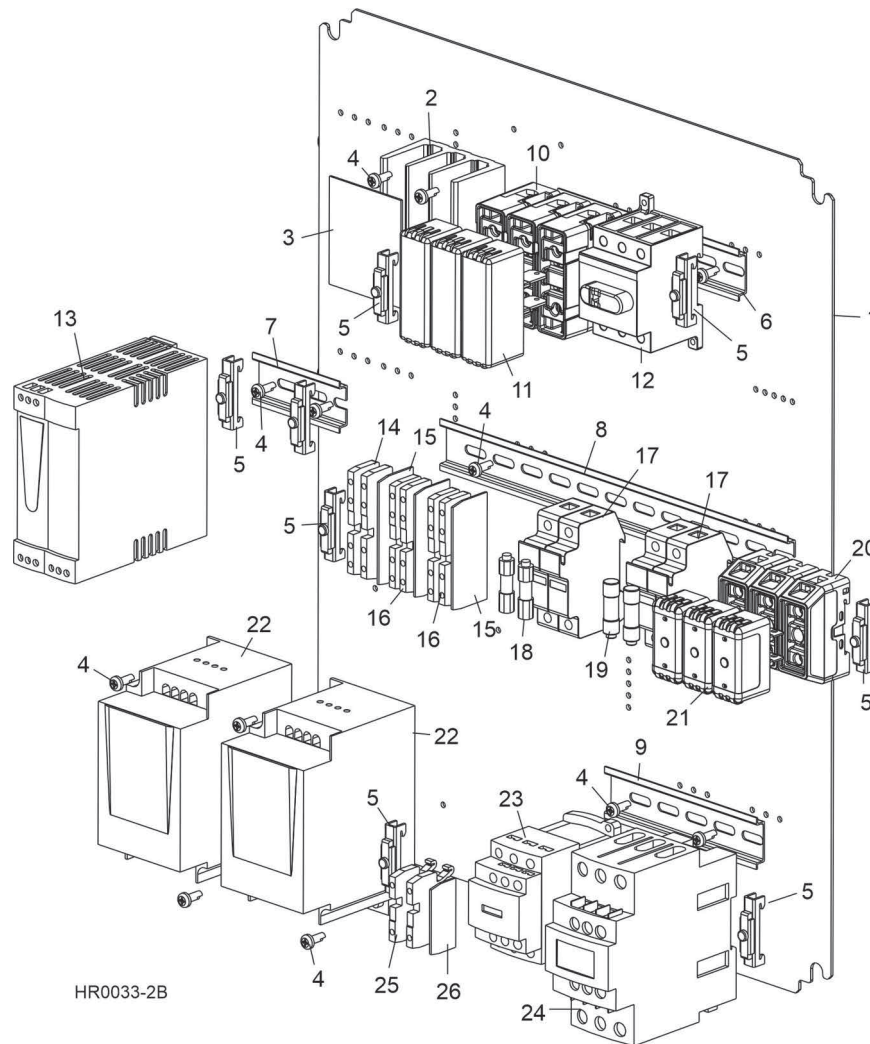


REF	PART #	DESCRIPTION	COMMENTS	QTY.
	069706	<b>CONTROL ASSEMBLY, HR130 OPERATOR</b>		1
	069882	<b>CONTROL ASSEMBLY, HR130 OPERATOR W/SETWORKS</b>		1
1	013965	Box Weldment, HR130 Operator Control (w/o Setworks Only)		1
2	013967	Plate, HR130 Operator Control Front (w/o Setworks Only)		1
3	013987	Gasket, HR130 Operator Control Box		1
4	112569	Decal, HR130 Operator Control		1
5	051744	Switch Operator, 3 Position Momentary Selector		1
6	050545	Switch Body, 2 NO Contacts		1
7	025200	Potentiometer Assembly, 4-20mA 24V w/Connectors		1
8	033476	O-Ring, 7/32" ID #009		2
9	033478	Knob, 1/4" ID Fluted Round Plastic		1
10	051746	Switch Operator, 2-Button Red/Green Pilot		2
11	025236-31	Switch Body, 22mm Green LED 1 NO 24V		2
12	025161	Contact, NC ZBE102		2
13	052501	Boot, Clear ZB Switch Sealing		2

**5** Control & Battery Boxes  
Operator Control Assembly (HR130)

REF	PART #	DESCRIPTION	COMMENTS	QTY.
14	024974-3	Switch, Green Push Button 1NO/1NC LED 24V		1
15	024945	Switch Operator, Red 22mm ZB4 Red Maintained E-Stop		1
16	050992	Legend, Emergency Stop		1
17	025161	Switch Body, 1NC 22mm ZB4		1
18	024474	Rail, 35mm x 7.5mm x 1m Steel DIN		.084
19	F05004-218	Screw, #10-24 x 3/8" Socket Button Head Stainless		2
20	F05011-18	Washer, #10 SAE Flat		2
21	F05010-14	Nut, #10-24 Self-Locking Hex		2
22	E22707	Clamp, Plastic DIN Rail		2
23	053534	Terminal Block, 4 Position Ground		1
24	053535	End Cap, 4 Position Terminal Block		4
25	053536	Terminal Block, 4 Position Common		3
26	053745	Harness Assembly, HR130 Operator		1
27	F05015-17	Bolt, #10-24 x 1/2" Phillips Pan Head Type 23		8
28	024685	Plug, AS050 Oiltite		1
	069841-4	Control Assy, HR130 Setworks		1
	112568	Plate, HR Front Panel		1
	013987	Gasket, Face Panel		1
	069710	Decal, HR130 Operator w/Setworks		1
	069883	Relay, 6A 24VDC w/Cage Clamp Socket		1
	069849-3	PLC Assembly, PLC Setworks		1
	112566-3	HMI Assembly, PLC Setworks		1
	069847	Cable, XBT N/R Communication		1
	069840	Encoder Assembly, HR130 Setworks		1
	069839	Cable Assembly, HR130 Setworks		1
	F05004-142	Screw, #6-32 x 3/8" Round Head Philips		2
	F05010-59	Nut, #6-32 Keps		2
29	059697	<b>PLATE, 7GA ANGLED CONTROL MOUNT</b>		1
30	059696	<b>PLATE, 7GA X 3 1/2" SQUARE MOUNT</b>		1
31	F05007-124	<b>BOLT, 3/8-16 X 2" HEX HEAD</b>		4
32	F05010-10	<b>NUT, 3/8-16 HEX NYLON LOCK</b>		4
33	F05011-13	<b>WASHER, 5/16" SPLIT LOCK</b>		4
34	F05006-102	<b>BOLT, 5/16-18 X 3/4" HEX HEAD GRADE 5</b>		4
	069850-KIT	<b>ASSY, HR130 SETWORKS HMI RETRO</b>		1
	112566-3	HMI Assembly, PLC Setworks		1
	112568	Plate, HR Front Panel		1
	112569	Decal, HR130 Operator Control		1

## 5.4 Control Insert Components (HR130EB15)



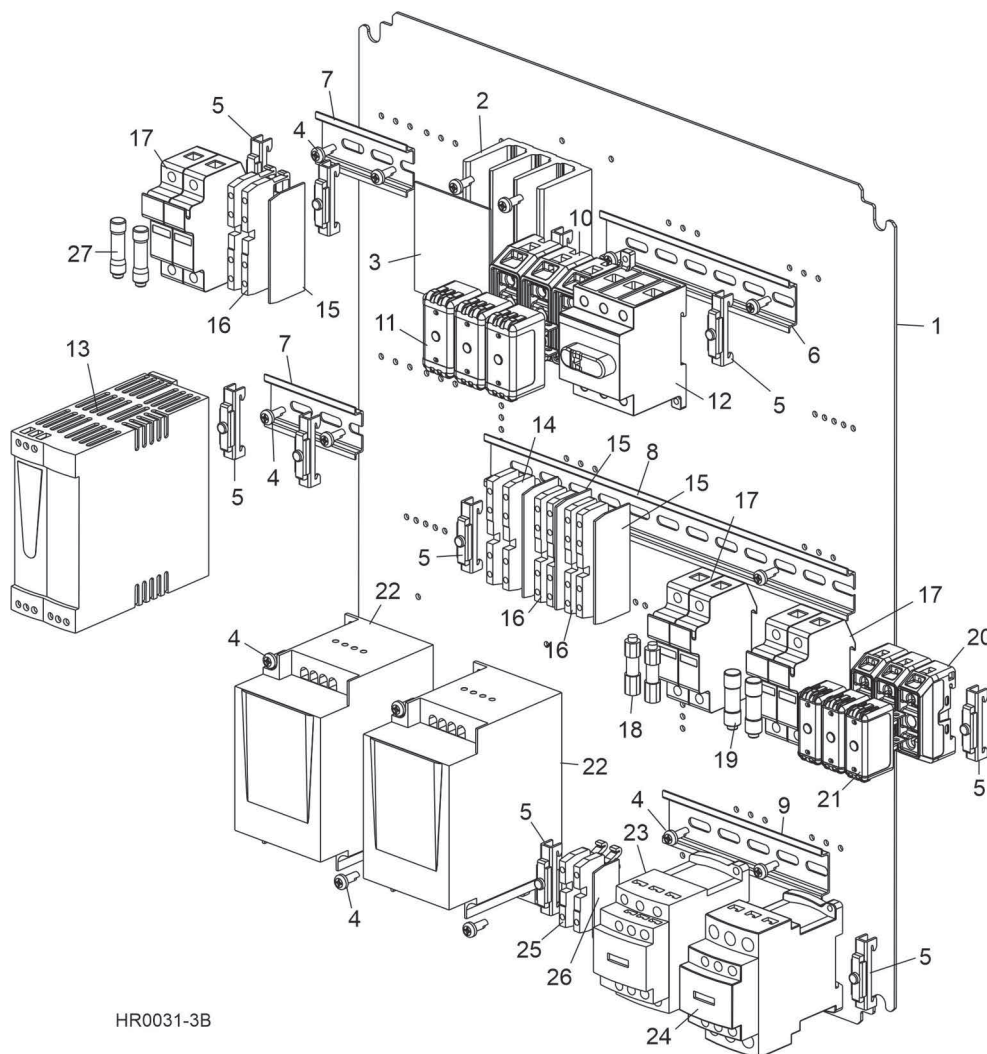
REF	PART #	DESCRIPTION	COMMENTS	QTY.
1	013968	PANEL, 14GA HR130 CONTROL INSERT		1
2	069701	DISTRIBUTION BLOCK, 3P 1 TO 4		1
3	069728	COVER, DISTRIBUTION BLOCK		1
4	F05015-17	SCREW, #10-24 X 1/2" PHILLIPS PAN HEAD TYPE 23		16
5	E22707	CLAMP, PLASTIC DIN RAIL		8
6	024474	DIN RAIL, 35MM X 7.5MM X 1M STEEL SYMMETRICAL		.087 Ft.
7	024474	DIN RAIL, 35MM X 7.5MM X 1M STEEL SYMMETRICAL		.042 Ft.
8	024474	DIN RAIL, 35MM X 7.5MM X 1M STEEL SYMMETRICAL		.167 Ft.
9	024474	DIN RAIL, 35MM X 7.5MM X 1M STEEL SYMMETRICAL		.073 Ft.
10	053586	FUSEHOLDER, 100A CUBE		3
11	069707	FUSE, 70A CLASS J CUBE		3
12	050881-1	DISCONNECT, 63A 600V 3PH 6MM SHAFT		1
13	069703	POWER SUPPLY, 24VDC 5A 110/230		1
14	053534	TERMINAL BLOCK, 4 POSITION GROUNDING		2
15	053535	END CAP, 4X TERMINAL BLOCK		3
16	053536	TERMINAL BLOCK, 4 POSITION COMMON		4
17	052512	FUSE BLOCK, 2P CLASS CC 30A DIN		2

**5** **Control & Battery Boxes**  
*Control Insert Components (HR130EB15)*

---

REF	PART #	DESCRIPTION	COMMENTS	QTY.
18	E22716	FUSE, 2A 600V CLASS CC		2
19	052456	FUSE, 6A 600V CLASS CC DELAY		2
20	053717	FUSEHOLDER, 60A CUBE		3
21	069708	FUSE, 60A CLASS J CUBE		3
22	069704	AC DRIVE, ATV12 0.25HP 230V 1PH-3PH		2
23	024890	CONTACTOR, 9A 3P 24VDC COIL		1
24	053601	CONTACTOR, 50A 3P 24VDC D-A SERIES		1
25	053550	TERMINAL BLOCK, 2 POSITION		2
26	053551	END CAP, 2X TERMINAL BLOCK		1

## 5.5 Control Insert Components (HR130EC15)



HR0031-3B

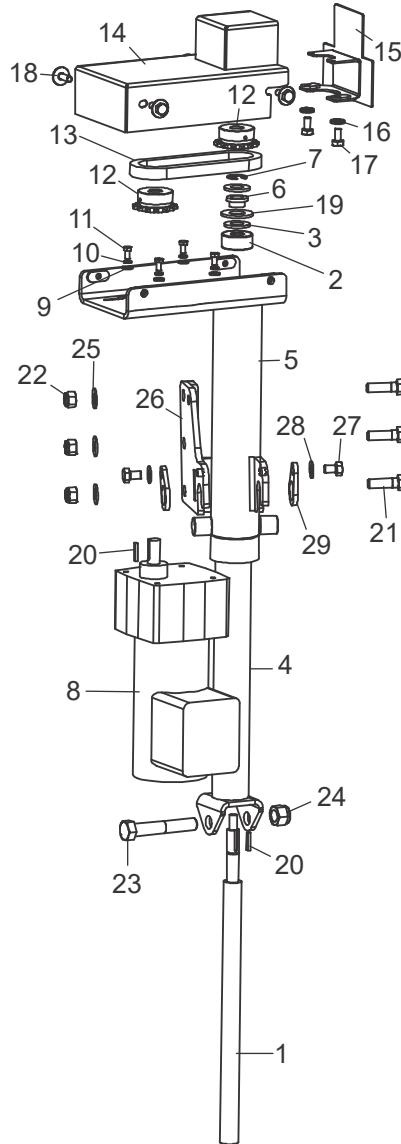
REF	PART #	DESCRIPTION	COMMENTS	QTY.
1	013968	PANEL, 14GA HR130 CONTROL INSERT		1
2	069701	DISTRIBUTION BLOCK, 3P 1 TO 4		1
3	069728	COVER, DISTRIBUTION BLOCK		1
4	F05015-17	SCREW, #10-24 X 1/2" PHILLIPS PAN HEAD TYPE 23		18
5	E22707	CLAMP, PLASTIC DIN RAIL		10
6	024474	DIN RAIL, 35MM X 7.5MM X 1M STEEL SYMMETRICAL		.087 Ft.
7	024474	DIN RAIL, 35MM X 7.5MM X 1M STEEL SYMMETRICAL		.042 Ft.
8	024474	DIN RAIL, 35MM X 7.5MM X 1M STEEL SYMMETRICAL		.167 Ft.
9	024474	DIN RAIL, 35MM X 7.5MM X 1M STEEL SYMMETRICAL		.073 Ft.
10	053717	FUSEHOLDER, 60A CUBE		3
11	069702	FUSE, 40A CLASS J CUBE		3
12	050881-1	DISCONNECT, 63A 600V 3PH 6MM SHAFT		1
13	069703	POWER SUPPLY, 24VDC 5A 110/230		1
14	053534	TERMINAL BLOCK, 4 POSITION GROUNDING		2

**5** **Control & Battery Boxes**  
*Control Insert Components (HR130EC15)*

REF	PART #	DESCRIPTION	COMMENTS	QTY.
15	053535	END CAP, 4X TERMINAL BLOCK		4
16	053536	TERMINAL BLOCK, 4 POSITION COMMON		6
17	052512	FUSE BLOCK, 2P CLASS CC 30A DIN		3
18	E22716	FUSE, 2A 600V CLASS CC		2
19	052456	FUSE, 6A 600V CLASS CC DELAY		2
20	053736	FUSEHOLDER, 30A CUBE		3
21	053737	FUSE, 30A CLASS J CUBE		3
22	069704	AC DRIVE, ATV12 0.25HP 230V 1PH-3PH		2
23	024890	CONTACTOR, 9A 3P 24VDC COIL		1
24	051322	CONTACTOR, 25A 3P 24VDC COIL		1
25	053550	TERMINAL BLOCK, 2 POSITION		2
26	053551	END CAP, 2X TERMINAL BLOCK		1
27	051957	FUSE, 10A 600V CLASS CC DELAY		2

## SECTION 6 UP-DOWN SYSTEM

### 6.1 Saw Head Lift



HR0036-3C

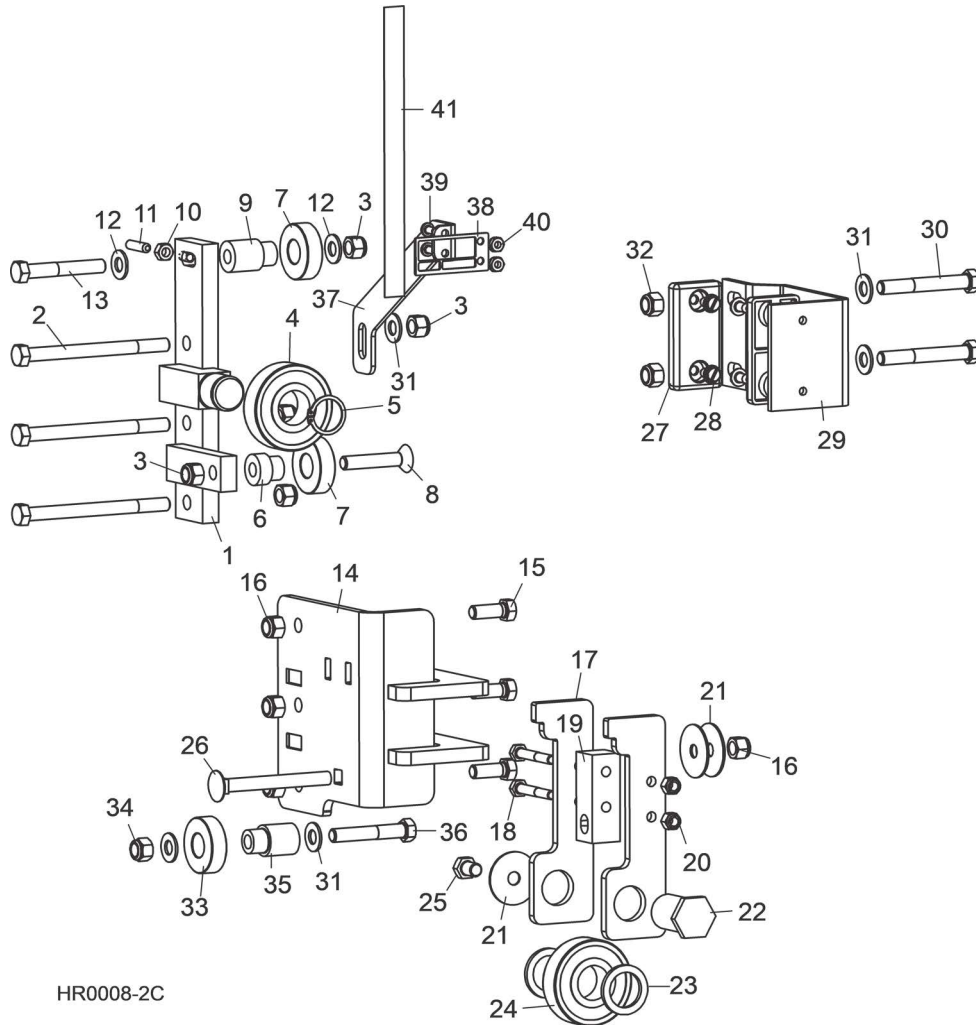
REF	PART #	DESCRIPTION	COMMENTS	QTY.
	074143	<b>LIFT ASSEMBLY, HR130 SAW HEAD</b>		1
1	025706	Shaft, Saw Head Lift		1
2	063156	Bearing, 1/2" Thrust		1
3	F05011-2	Washer, 1/2" SAE Flat		2
4	063149	Tube Weldment, Saw Head Lift Base		1
5	074141	Tube Weldment, HR Lift		1

# 6 Up/Down System

## Saw Head Lift

REF	PART #	DESCRIPTION	COMMENTS	QTY.
6	049007	Bushing, 1/2" ID x 5/8" OD x 3/8" Long Flanged		1
7	P10649	E-Clip, 1/2" Shaft		1
8	025696	Motor, 1/15HP 57RPM 230V 3PH 30:1 Gear		1
9	F05011-18	Washer, #8 SAE Flat		4
10	F05011-20	Washer, #10 Split Lock		4
11	F05004-60	Bolt, #10-32 x 1/2" Hex Head		4
12	101332-2	Sprocket, 35B14 x 1/2" Bore w/Set Screw		2
13	025751	Chain, #35 x 35 Pitch w/Master Link		1
14	025755	Cover Weldment, HR130 Lift Drive Chain		1
15	065056	Cover Weldment, Encoder Mount		1
16	F05011-14	Washer, 1/4" Split Lock		2
17	F05005-15	Bolt, 1/4-20 x 1/2" Hex Head		2
18	F05005-134	Bolt, 1/4-20 x 3/4" Conical Washer Head		4
19	F05011-5	Washer, 5/8" SAE Flat		1
20	036803	Key, 1/8" Square x 3/4"		2
21	F05007-123	<b>BOLT, 3/8-16 X 1 1/4" HEX HEAD</b>		3
22	F05010-10	<b>NUT, 3/8-16 HEX NYLON LOCK</b>		3
23	F05008-23	<b>BOLT, 1/2-13 X 3" HEX HEAD GRADE 5</b>		1
24	F05010-8	<b>NUT, 1/2-13 HEX NYLON LOCK</b>		1
25	F05011-3	<b>WASHER, 3/8" SAE FLAT</b>		3
26	074137	<b>LIFT WELDMENT, UPPER HR</b>		1
27	F05006-15	<b>BOLT, 5/16-18 X 1/2" HEX HEAD GRADE 5</b>		2
28	F05011-17	<b>WASHER, 5/16" SAE FLAT</b>		2
29	074189	<b>PLATE, LIFT RETAINER</b>		2

## 6.2 Saw Head Mount & Blade Height Scale



HR0008-2C

REF	PART #	DESCRIPTION	COMMENTS	QTY.
	046885	<b>BEARING ASSEMBLY, SAW HEAD MOUNT UPPER</b>		1
1	046635	Bracket Weldment, Upper Saw Head Mount		1
2	F05007-35	Bolt, 3/8-16 x 4 1/2" Hex Head		3
3	F05010-10	Nut, 3/8-16 Hex Nylon Lock		5
4	P08066	Bearing, .9843" x 2.4409" x .6693"		1
5	F04254-26	Ring, 25mm 5100-98 OR		1
6	046608	Bushing, Saw Head Mount Bearing		1
7	P06030-2	Bearing, 6203-2NSL 17mm SRI-2 ABEC-1		2
8	F05007-198	Bolt, 3/8-16 x 2" Flat Socket Head		1
9	074748	Spacer, Bearing		1
10	F05010-63	Nut, 1/4-20 Free		1

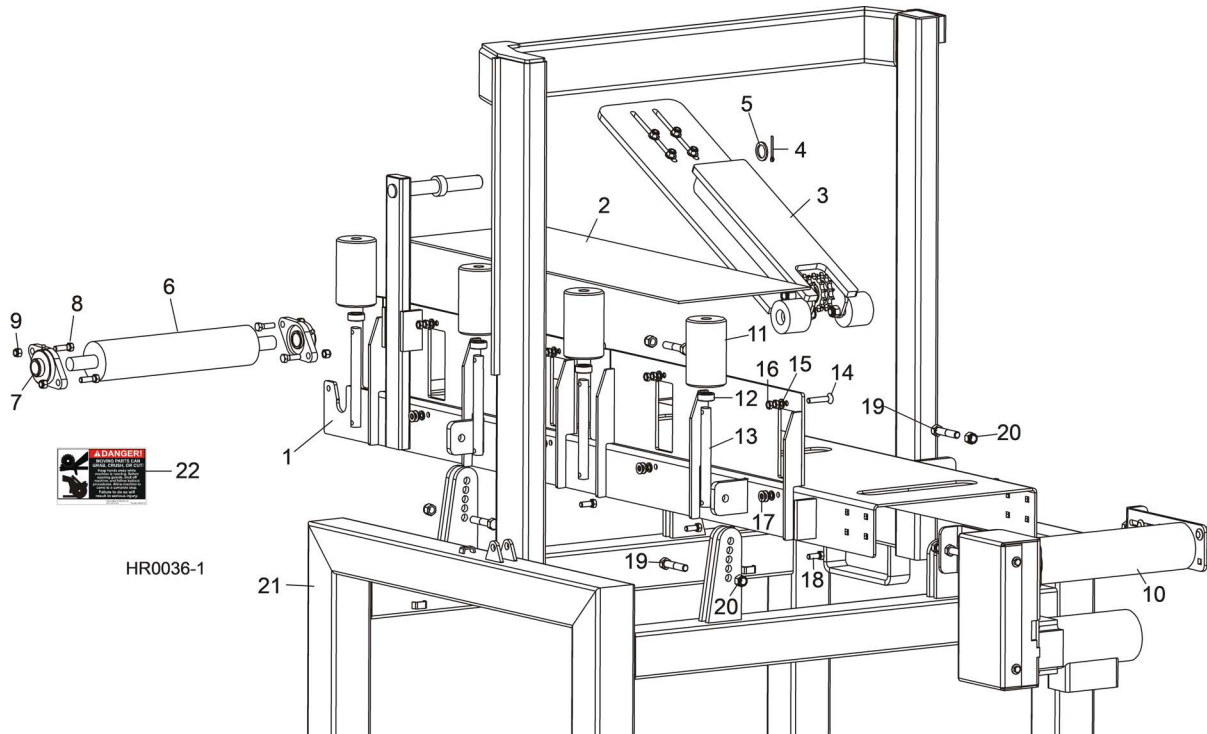
## 6

**Saw Head Components***Saw Head Mount & Blade Height Scale*

REF	PART #	DESCRIPTION	COMMENTS	QTY.
11	F05005-2	Screw, 1/4-20 x 1" SH Cup Pt Set		1
12	F05011-3	Washer, 3/8" SAE Flat		2
13	F05007-125	Bolt, 3/8-16 x 2 1/2" Hex Head Grade 5		1
	046886	<b>BEARING ASSEMBLY, SAW HEAD MOUNT LOWER</b>		1
14	046969	Bracket Weldment, Lower Saw Head Mount		1
15	F05007-97	Bolt, 3/8-16 x 1" Hex Head Grade 5		3
16	F05010-10	Nut, 3/8-16 Hex Nylon Lock		4
17	046604	Plate, Bearing Cam		2
18	046607	Block, Bearing Spacer		1
19	F05005-68	Bolt, 1/4-20 x 1 3/4" Hex Head Grade 5		2
20	F05010-69	Nut, 1/40-20 Hex Nylon Lock		2
21	F05011-44	Washer, 3/8" Fender		3
22	046606	Shaft, Bearing Mount		1
23	046974	Washer, Spacer		2
24	P08066	Bearing, .9843" x 2.4409" x .6693"		1
25	F05004-124	Bolt, 3/8-16 x 1/2" Hex Head Grade 5		1
26	F05007-161	Bolt, 3/8-16 x 3 1/2" Carriage Head		1
27	P13576	<b>PAD, IDLE SIDE SLIDE</b>		2
28	F05015-1	<b>BOLT, 1/4-20 X 1/2" SLOTTED HEX HEAD</b>		4
29	014905	<b>BRACKET, IDLE SIDE SLIDE PAD MOUNT</b>		1
30	F05007-29	<b>BOLT, 3/8-16 X 2 3/4" HEX HEAD</b>		2
31	F05011-3	<b>WASHER, 3/8" SAE FLAT</b>		4
32	F05010-10	<b>NUT, 3/8-16 HEX NYLON LOCK</b>		2
33	F05011-3	<b>WASHER, 3/8" FLAT</b>		1
34	F05010-10	<b>NUT, 3/8-16 HEX NYLON LOCK</b>		1
35	074748	<b>SPACER, BEARING</b>		1
36	F05007-201	<b>BOLT, 3/8-16 X 2-1/4" HEX HEAD GRADE 5</b>		1
37	017805	<b>BRACKET, BLADE HEIGHT POINTER MOUNT</b>	HR130	1
38	017805	<b>POINTER, BLADE HEIGHT</b>		1
39	F05004-3	<b>SCREW, #10-24 X 3/8" PHILLIPS PAN HEAD</b>		2
40	F05010-14	<b>NUT, #10-24 SELF-LOCKING HEX</b>		2
41	007653	<b>DECAL, HR100 SERIES BLADE HEIGHT SCALE</b>		1

## SECTION 7 CONVEYOR BELT FEED SYSTEM

### 7.1 Feed Belt Conveyor



REF	PART #	DESCRIPTION	COMMENTS	QTY.
	025693	<b>CONVEYOR ASSEMBLY, HR130 FEED BELT</b>		1
1	063109	Frame Weldment, HR100 Series Conveyor		1
2	063175	Belt, 12" x 154" Rough Top Laced	<a href="#">(See Section 7.9)</a> for optional shingle belt	1
	061189	Pin, Conveyor Belt .065		14
3		Hold-Down Parts	<a href="#">(See Section 7.5)</a>	
4	F05012-23	Pin, 3/16" x 1 1/2" Cotter		1
5	046974	Washer, Spacer		1
6	063121	Pulley, 3" x 14" Crowned		1
7	038124	Bearing, 1" Flanged VF2S 216		2
8	F05007-123	Bolt, 3/8-16 x 1 1/4" Hex Head Grade 5		4
9	F05010-10	Nut, 3/8-16 Hex Nylon Lock		4
10		Belt Drive Parts	<a href="#">(See Section 7.8)</a>	
	025770	Roller Assembly, HR100 Series Side		4
11	062447	Roller, Side		1
12	P04146	Collar, 3/4" ID Lock		1
13	062448	Shaft, Side Roller Mount		1
14	F05007-198	Screw, 3/8-16 x 2" Flat Socket Head		1
15	F05011-4	Washer, 3/8" Split Lock		2
16	F05010-29	Nut, 3/8-16 Hex Jam		2
17	F05011-3	Washer, 3/8" SAE Flat		2
18	F05007-82	Bolt, 3/8-16 x 1" Hex Head Grade 8		1
19	F05008-74	<b>BOLT, 1/2-13 X 2 1/2 HEX HEAD GRADE 5</b>		4
20	F05010-8	<b>NUT, 1/2-13 HEX NYLON LOCK</b>		4

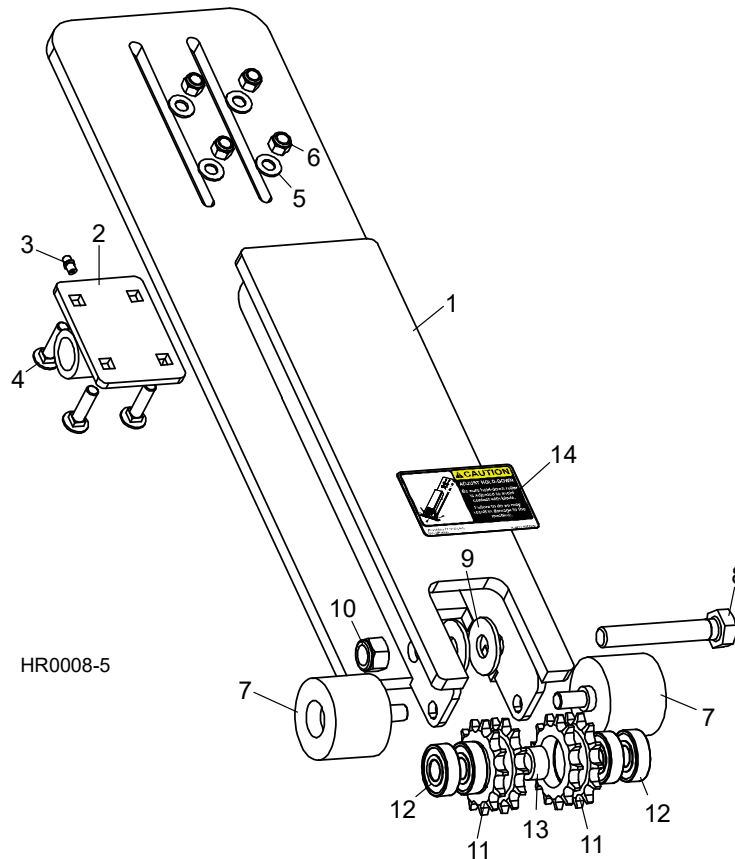
# 7 Conveyor Belt Feed System

*Feed Belt Conveyor*

---

REF	PART #	DESCRIPTION	COMMENTS	QTY.
21	063105	TABLE WELDMENT, HR100 SERIES RESAW		1
22	028720	DECAL, MOVING PARTS DANGER		2

## 7.2 Hold-Down Assembly

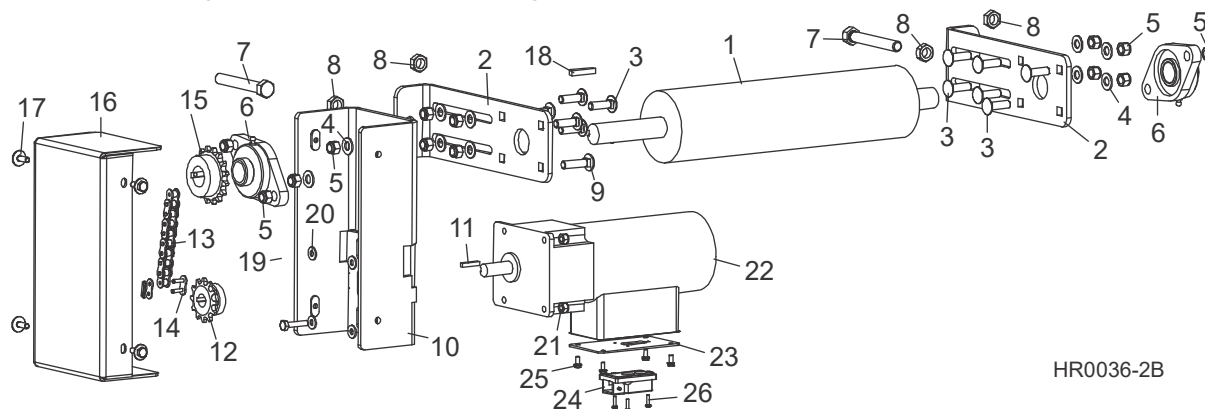


REF	PART #	DESCRIPTION	COMMENTS	QTY.
	063137	<b>HOLD DOWN ASSY, CANT</b>		1
1	063132	Box Weldment, Cant Hold-Down		1
2	063162	Pivot Weldment, Cant Hold-Down		1
3	P05060	Fitting, 1/4-28 Grease		1
4	F05007-85	Bolt, 3/8-16 x 1 1/2" Carriage Head Grade 5		4
5	F05011-3	Washer, 3/8" SAE Flat		4
6	F05010-10	Nut, 3/8-16 Hex Nylon Lock		4
7	063135	Roller, Cant Hold-Down		2
8	F05009-31	Bolt, 5/8-11 x 4 Hex Head Full Thread Grade 5		1
9	F05011-40	Washer, 5/8" Standard Flat		2
10	F05010-34	Nut, 5/8-11 Hex Nylon Lock		1
	016019	Sprocket Assy, #50-2 Idler		2
11	015202	Sprocket, D50B13 Modified		1
12	P06030-1	Bearing, 5/8" ID x 1.7548" OD x .4724"		2
13	063169	Spacer, 5/8" ID x 1" OD x .5"		1
14	063189	<b>DECAL, ADJUST HOLD-DOWN CAUTION</b>		1

# 7 Conveyor Belt Feed System

## Conveyor Drive Assembly

### 7.3 Conveyor Drive Assembly



HR0036-2B

REF	PART #	DESCRIPTION	COMMENTS	QTY.
1	063122	PULLEY 3" X 14" LAGGED		1
2	063125	PLATE, ROLLER TENSION		2
3	F05007-127	BOLT, 3/8-16 X 1 1/4" CARRIAGE HEAD GRADE 5		12
4	F05011-3	WASHER, 3/8" SAE FLAT		10
5	F05010-10	NUT, 3/8-16 HEX NYLON LOCK		14
6	038124	BEARING, 1" FLANGED VF2S 216		2
7	F05008-135	BOLT, 1/2-20 X 2 1/2" HEX HEAD FULL THREAD GRADE 5		2
8	F05010-16	NUT, 1/2-20 HEX JAM		4
9	F05007-85	BOLT, 3/8-16 X 1 1/2" CARRIAGE HEAD GRADE 5		2
10	007605	PLATE WELDMENT, FEED MOTOR MOUNT		1
11	S31027	KEY, 3/16" SQUARE X 1"		1
12	025704	SPROCKET, 40B12 X 5/8" BORE		1
13	063184	CHAIN, #40 X 39 PITCH (19 1/2")		1
14	P04200	LINK, #40 MASTER		1
15	007311	SPROCKET, 40B16 X 1" BORE		1
16	007606	COVER WELDMENT, FEED DRIVE		1
17	F05005-134	BOLT, 1/4-20 X 3/4" CONICAL WASHER HEAD		4
18	017832	KEY, 1/4" SQUARE X 1 3/8"		1
19	F05005-3	BOLT, 1/4-20 X 1 1/4" FULL THREAD HEX HEAD		4
20	F05011-11	WASHER, 1/4" SAE FLAT		4
21	F05010-69	NUT, 1/4-20 HEX NYLON LOCK		4
	073702	MOTOR ASSEMBLY, HR130 FEED CONVEYOR		1
22	025702	Motor, 1/6HP 90RPM 230V 3PH 19:1 Gear		1
23	076752	Plate, HR130 Motor Connector Mount		1
24	073706	Connector, 3+PE 6-10mm Cable OD Male		1
25	F05015-8	Bolt, #8-32 x 3/8" Self Tap		4

**Conveyor Belt Feed System**  
*Conveyor Drive Assembly*

**7**

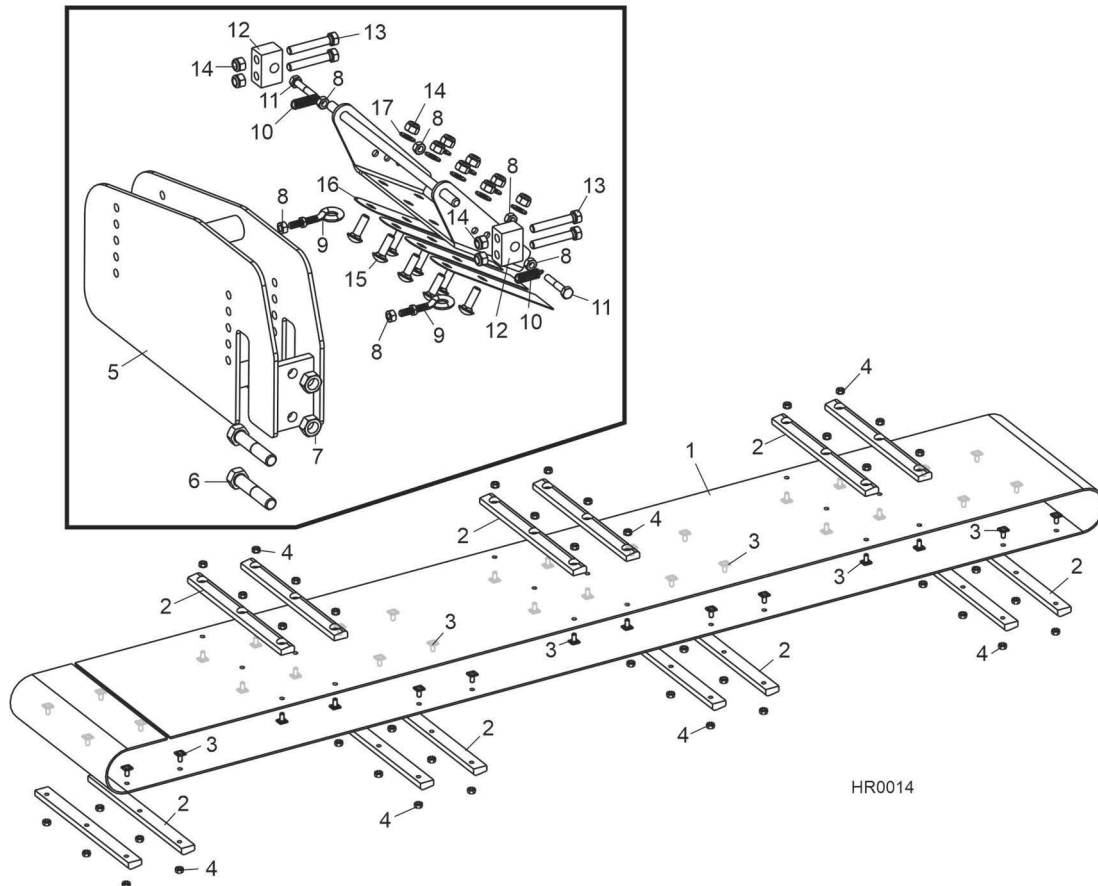
---

REF	PART #	DESCRIPTION	COMMENTS	QTY.
26	F05015-28	Screw, #6-32 x 1/2" Plain PH T23		3

# 7 Conveyor Belt Feed System

## Shingle Belt Assembly (Optional)

### 7.4 Shingle Belt Assembly (Optional)



REF	PART #	DESCRIPTION	COMMENTS	QTY.
	HR120-SB	<b>BELT ASSEMBLY, HR100 SERIES SHINGLE</b>		1
1	063191	Belt, 12" Wide PVC		1
2	059366	Bar, Shingle Catch		14
3	007616	Stud, 1/4-20 x 1/2" Base Plate		42
4	F05010-9	Nut, 1/4-20 Self-Locking Hex		42
	059549	Hold-Down Assembly, HR100 Series Shingle		1
5	059547	Bracket Weldment, HR100 Series Shingle Stop		1
6	F05008-74	Bolt, 1/2-13 x 2 1/2" Hex Head Grade 5		2
7	F05010-35	Nut, 1/2-13 Hex		2
8	F05010-63	Nut, 1/4-20 Hex		6
9	007673	Bolt, 1/4-20 x 1 1/2" Eye w/Nut		2
10	046645	Spring, .375" OD x 1.25" Extension		2
11	F05005-5	Bolt, 1/4-20 x 1 1/2" Hex Head		2
12	059535	Block, Hold-Down Pivot		2

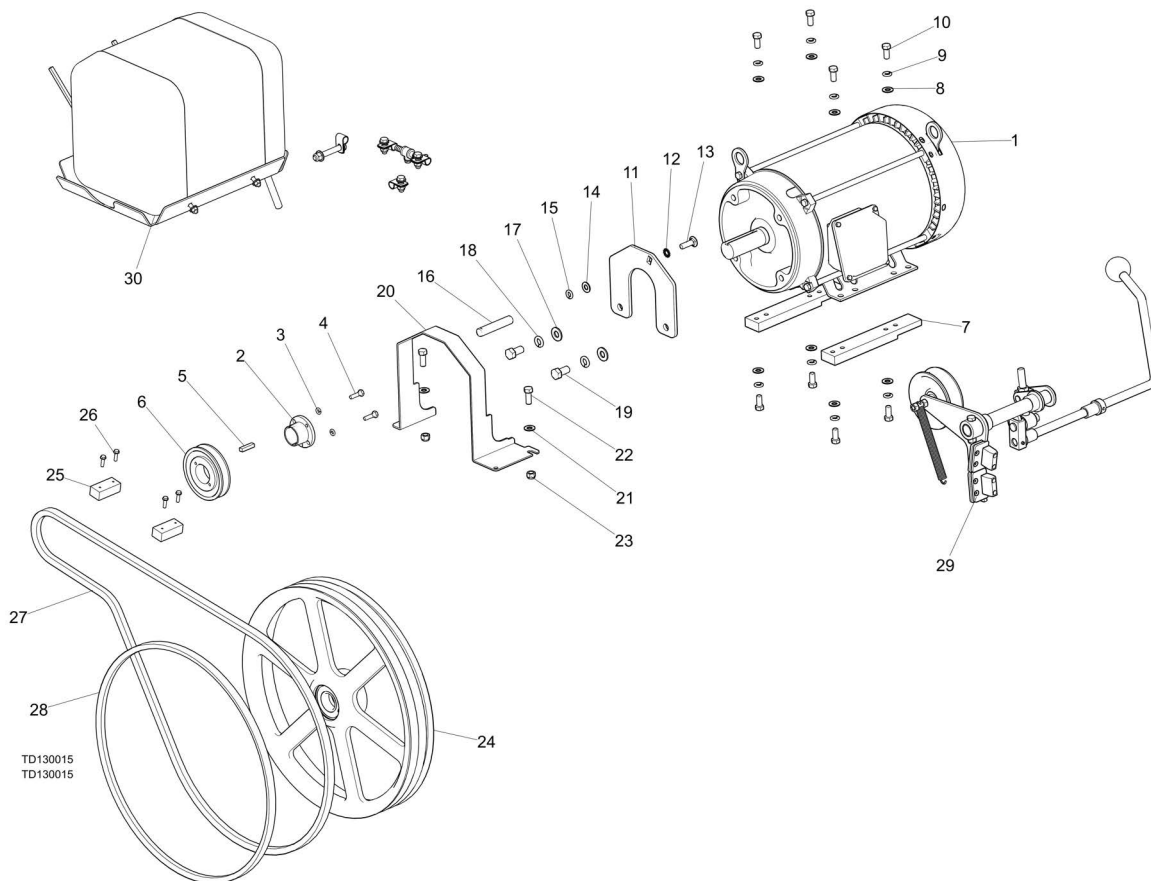
**Conveyor Belt Feed System**  
*Shingle Belt Assembly (Optional)*

**7**

REF	PART #	DESCRIPTION	COMMENTS	QTY.
13	F05006-13	Bolt, 5/16-18 x 2" Hex Head Full Thread		4
14	F05010-59	Nut, 5/16-18 Hex Nylon Lock		12
15	F05006-9	Bolt, 5/16-18 x 1" Carriage Head Stainless		8
16	059552	Plate, Shingle Hold-Down Strap		4
17	F05011-17	Washer, 5/16" SAE Flat		8

## SECTION 8 ENGINE ASSEMBLY

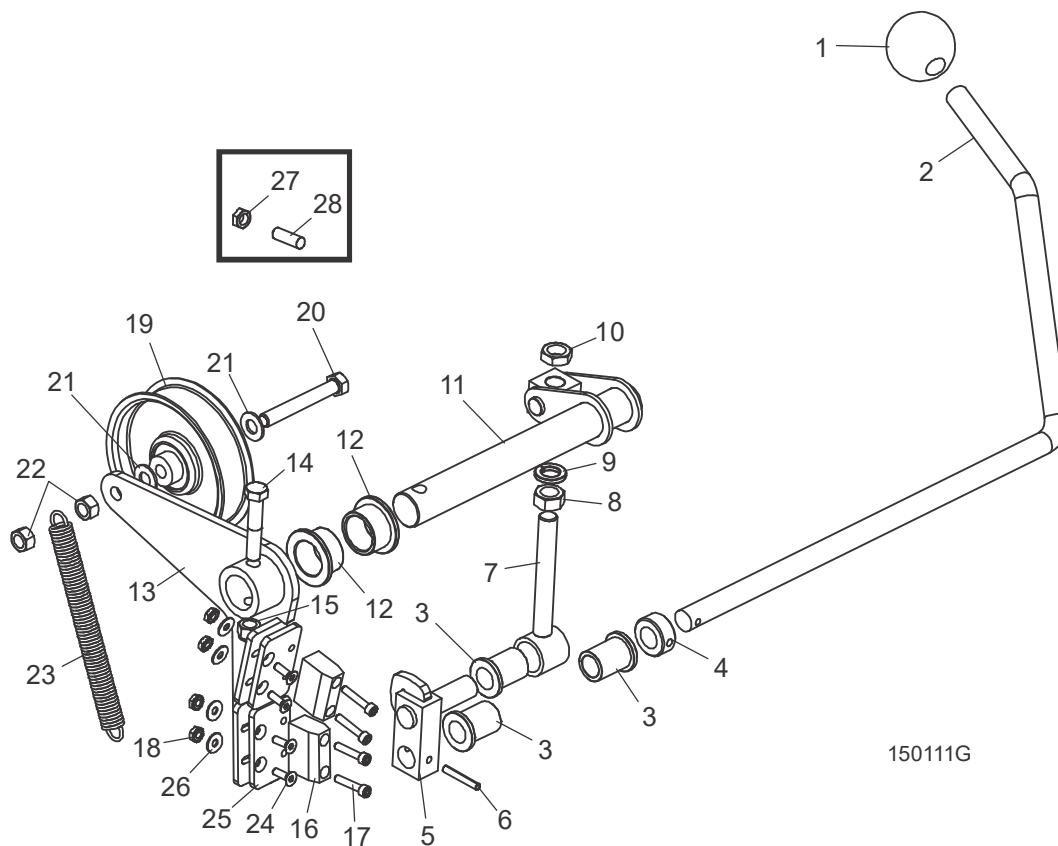
### 8.1 Motor (E15)



REF	PART #	DESCRIPTION	COMMENTS	QTY.
	130015	Module, HR130 E15 3PH Motor		1
	130014	Assembly, HR130 15HP 3PH Electric Motor		1
<b>1</b>	130000	Motor, 15HP 3530RPM Marathon Premium Eff		1
	p04864	Bushing, 1 3/8 Split Taper		1
<b>2</b>	qt138			1
<b>3</b>	f05011-14	Washer, 1/4 Split Lock		2
<b>4</b>	f05005-101	BOLT, 1/4-20 X 1 HEX HEAD GR5		2
<b>5</b>	qt138_key	Part, New		1
<b>6</b>	036057	Sheave, BK45QT		1
<b>7</b>	130011	Spacer, 3/4x1-1/2x9 Motor		2
<b>8</b>	f05011-3	Washer, 3/8 Flat SAE		8

REF	PART #	DESCRIPTION	COMMENTS	QTY.
9	f05011-4	Washer, 3/8 Split Lock		8
10	f05007-185	Bolt, 3/8-16x7/8 HH Gr5		8
	130048	Assembly, Clutch Enhancement	Clutch enhancement added after 7/1/2020 per ECN 37573	1
11	130047	Plate, Clutch Enhancement Mnt		1
12	f05011-36	Washer, 3/8 Star External		1
13	f05007-127	Bolt, 3/8-16x1 1/4 Carriage Gr5		1
14	f05011-3	Washer, 3/8 Flat SAE		1
15	f05011-4	Washer, 3/8 Split Lock		1
16	074751	Rod, LT70 Clutch Enhancement		1
17	f05011-2	Washer, 1/2 SAE Flat		2
18	f05011-9	Washer, 1/2 Split Lock		2
19	f05008-50	Bolt, 1/2-13x1 HH Gr2		2
20	034904	Guard, Motor Shaft LT15E10		1
21	f05011-3	Washer, 3/8 Flat SAE		2
22	f05007-7	Bolt, 3/8-16x1 HH		2
23	f05010-10	Nut, 3/8-16 Hex Nyl Lock		2
24	014995	Wheel Assembly, LT15 Drive	<a href="#">See Section 2.1</a>	1
25	016506	Block, Wood 3/4x1x2-3/16		2
26	f05015-33	Screw,#10x3/4 SI Hex Washer Hd Sht Met		4
27	p25301	Belt, BX85		1
28	p04185	Belt, B57 Blade Wheel		1
29		Throttle/Clutch Assembly (E15)	<a href="#">See Section 8.14</a>	1
30	015799	Tray Assembly, LT15 Water Bottle	<a href="#">See Section 4.2</a>	1

## 8.2 Throttle/Clutch Assembly

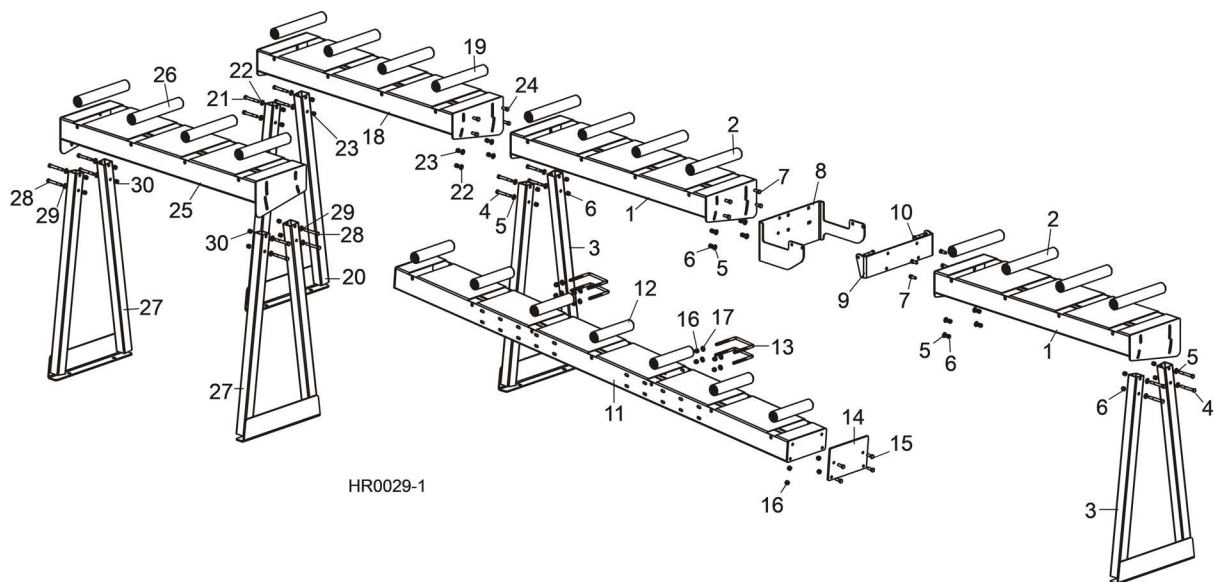


REF	PART #	DESCRIPTION	COMMENTS	QTY.
1	P04211	KNOB, 5/8-11 BALL		1
2	016487	HANDLE, LT15 CLUTCH		1
3	016486	BUSHING, 5/8 ID X 7/8 OD X 1 1/8 LONG FL BRONZE		2
4	P05035	COLLAR, 5/8 ID LOCK		1
5	065572	BLOCK WELDMENT, LINKAGE CLUTCH/BRAKE		1
6	F05012-16	PIN, 3/16 X 1 1/4 ROLL		1
7	034605	LINKAGE ASSEMBLY, W/BEARING		1
8	F05010-35	NUT, 1/2-13 FREE HEX, ZINC		1
9	F05011-9	WASHER, 1/2 SPLIT LOCK		1
10	F05010-31	NUT, 1/2-13 JAM		1
11	034608	PIVOT WELDMENT, CLUTCH/BRAKE		1
12	P737	BUSHING, 1 X 1 1/4 X 3/4 FLANGE BRONZE		2
	065874	BRAKE/CLUTCH ASSEMBLY, LT15		1
13	065873	Arm Weldment, Clutch/Brake LT15		1

REF	PART #	DESCRIPTION	COMMENTS	QTY.
14	F05007-124	Bolt, 3/8-16 x 2 Hex Head Gr5		1
15	F05010-10	Nut, 3/8-16 Hex Nylon Lock		2
16	016488	Block, LT15 Brake		2
17	F05004-2	Screw, 10-24 x 1 Socket Head		4
18	F05010-14	Nut, #10-24 Keps		4
19	034602	Idler, 4" O.D. x 3/8 Bore		1
20	F05007-125	Bolt, 3/8-16 x 2-1/2 Hex Head Gr5		1
21	F05011-3	Washer, 3/8 Flat		3
22	F05010-25	Nut, 3/8-16 Swaged Lock		1
23	034810	Spring, Idler Arm LT15/D/E/G		1
24	F05004-282	Screw, 10-24 x 5/8" FSHC		4
25	065872	Plate, Brake Adjustment		2
26	F05011-18	Washer, #10 SAE Flat		4

## SECTION 9 TABLE OPTION

### 9.1 HR100 Series Tables



REF	PART #	DESCRIPTION	COMMENTS	QTY.
1-17	HRTBL-KIT	<b>TABLE KIT, HR COMPLETE</b>		1
1-7	HRTBL-END1	Table Kit, HR End		2
1	059561	Table Weldment, HR End		1
2	059563	Roller, 1.90" OD x 12"		4
3	059564	Leg Weldment, HR Table		1
4	F05007-73	Bolt, 3/8-16 x 3" Hex Head Grade 5		4
5	F05011-3	Washer, 3/8" SAE Flat		8
6	F05010-10	Nut, 3/8-16 Hex Nylon Lock		8
7	F05007-87	Bolt, 3/8-16 x 1" Hex Head Grade 5		4
8-10	HRTBL-MOUNT	Mount Kit, HR Table		1
8	059570	Plate, Table Mount Rear		1
9	059568	Plate, Table Mount		1
10	F05007-124	Bolt, 3/8-16 x 2" Hex Head Grade 5		2
11-17	HRTBL-SIDE	Table Kit, HR Side		1
11	059571	Table Weldment, HR Side		1
12	059584	Roller, 1.90" OD x 9"		7
13	003207	Bolt, 3/8-16 x 4" x 5" U		4
14	059574	Plate, Table Stop		1
15	F05007-87	Bolt, 3/8-16 x 1" Hex Head Grade 5		4
16	F05010-10	Nut, 3/8-16 Hex Nylon Lock		12
17	F05011-3	Washer, 3/8" Flat SAE		8
18-24	HRTBL-END1	<b>TABLE KIT, HR 4' EXTENSION END</b>		1
18	059561	Table Weldment, HR End		1
19	059563	Roller, 1.90" OD x 12"		4
20	059564	Leg Weldment, HR Table		1
21	F05007-73	Bolt, 3/8-16 x 3" Hex Head Grade 5		4

REF	PART #	DESCRIPTION	COMMENTS	QTY.
22	F05011-3	Washer, 3/8" SAE Flat		8
23	F05010-10	Nut, 3/8-16 Hex Nylon Lock		8
24	F05007-87	Bolt, 3/8-16 x 1" Hex Head Grade 5		4
<b>25-30</b>	<b>HRTBL-END2</b>	<b>TABLE KIT, HR STAND-ALONE END</b>		1
25	059561	Table Weldment, HR End		1
26	059563	Roller, 1.90" OD x 12"		4
27	059564	Leg Weldment, HR Table		2
28	F05007-73	Bolt, 3/8-16 x 3" Hex Head Grade 5		8
29	F05011-3	Washer, 3/8" SAE Flat		8
30	F05010-10	Nut, 3/8-16 Hex Nylon Lock		8