



## **Safety, Operation, Maintenance & Parts Manual**

---

**CBT-430 Trailer      rev. A1.00 - A2.04**

---



**Safety is our #1 concern!** Read and understand all safety information and instructions before operating, setting up or maintaining this machine.

*April 2005*

*Form #1206*

# Table of Contents

# Section-Page

<b>SECTION 1</b>	<b>INTRODUCTION</b>	<b>1-1</b>
1.1	About This Manual.....	1-1
1.2	Getting Service.....	1-2
1.3	Customer and Equipment Identification.....	1-4
1.4	Dimensions.....	1-5
1.5	Specifications.....	1-6
<b>SECTION 2</b>	<b>SAFETY</b>	<b>2-1</b>
2.1	Safety Symbols.....	2-1
2.2	Safety Instructions.....	2-2
<b>SECTION 3</b>	<b>SETUP AND OPERATION</b>	<b>3-1</b>
3.1	Setup.....	3-1
3.2	Electrical Installation.....	3-4
3.3	Starting And Stopping The Machine.....	3-8
<b>SECTION 4</b>	<b>MAINTENANCE</b>	<b>4-1</b>
4.1	Gearbox Oil.....	4-1
4.2	Tensioning the Chains.....	4-2
4.3	Lubrication.....	4-5
<b>SECTION 5</b>	<b>REPLACEMENT PARTS</b>	<b>5-1</b>
5.1	How To Use The Parts List.....	5-1
5.2	Sample Assembly.....	5-1
5.3	Outfeed, Drive Side.....	5-2
5.4	Outfeed, Drive Side.....	5-4
5.5	Outfeed, Drive Side.....	5-6
5.6	Infeed, Idle Side.....	5-8
5.7	Infeed, Idle Side.....	5-9
5.8	Hold-Down Wheel Assembly.....	5-10
5.9	Legs, Emergency Switch and Electrical Box.....	5-12
<b>SECTION 6</b>	<b>ELECTRICAL INFORMATION</b>	<b>6-1</b>
6.1	Electrical Symbol Diagram.....	6-1
6.2	Electrical Component List.....	6-2
6.3	Component Layout Diagrams.....	6-3

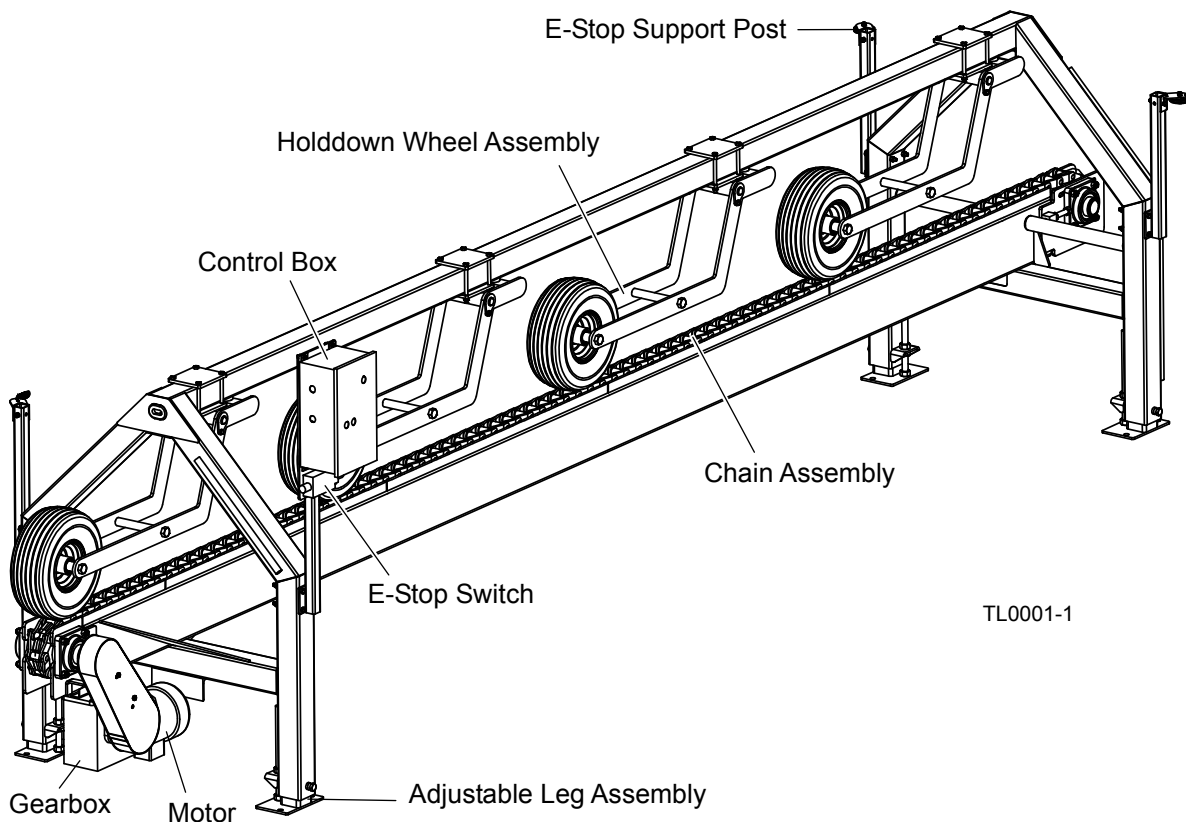
<b>INDEX</b>	<b>I</b>
--------------	----------

## SECTION 1 INTRODUCTION

### 1.1 About This Manual

This manual is to replace or to be used with all previous information received concerning the Tailer. All future mailings will be an addition to or a revision of individual sections of this manual as we obtain new information.

The information and instructions given in this manual do not amend or extend the limited warranties for the equipment given at the time of purchase.



## 1.2 Getting Service

Wood-Mizer is committed to providing you with the latest technology, best quality and strongest customer service available on the market today. We continually evaluate our customers' needs to ensure we're meeting current wood-processing demands. Your comments and suggestions are welcome.

### General Contact Information

Toll free phone numbers are listed below for the *continental* U.S. and Canada. See the next page for contact information for specific Wood-Mizer locations.

	United States	Canada
<b>Sales</b>	1-800-553-0182	1-877-866-0667
<b>Service</b>	1-800-525-8100	1-877-866-0667
<b>Website</b>	www.woodmizer.com	www.woodmizer.ca
<b>E-mail</b>	woodmizer@woodmizer.com	oninfo@woodmizer.com

**Office Hours:** All times are Eastern Standard Time. Please remember that Indiana does not observe Daylight Savings Time in the summer.

Monday - Friday	Saturday (Indianapolis Office Only)	Sunday
8 a.m. to 5 p.m.	8 a.m. to 12 p.m.	Closed

Please have your serial number and your customer number ready when you call. The serial number is stamped on the identification tag on the side of the frame.

Wood-Mizer will accept these methods of payment:

- Visa, Mastercard, or Discover
- COD
- Prepayment
- Net 15 (with approved credit)

Be aware that shipping and handling charges may apply. Handling charges are based on size and quantity of order. In most cases, items will ship on the day they are ordered. Second Day and Next Day shipping are available at additional cost.

If your equipment was purchased outside the United States or Canada, contact the distributor for service.

**Wood-Mizer Locations**

**USA World Headquarters**

*Serving North & South America, Oceania, East Asia*

Wood-Mizer LLC  
8180 West 10th Street  
Indianapolis, IN 46214

Phone: 317.271.1542 or 800.553.0182  
Customer Service: 800.525.8100  
Fax: 317.273.1011  
Email: [infocenter@woodmizer.com](mailto:infocenter@woodmizer.com)

**Canadian Headquarters**

*Serving Canada*

Wood-Mizer Canada  
396 County Road 36, Unit B  
Lindsay, ON K9V 4R3

Phone: 705.878.5255 or 877.357.3373  
Fax: 705.878.5355  
Email: [ContactCanada@woodmizer.com](mailto:ContactCanada@woodmizer.com)

**Brazil Headquarters**

*Serving Brazil*

Wood-Mizer do Brasil  
Rua Dom Pedro 1, No: 205 Bairro: Sao Jose  
Ivoti/RS CEP:93.900-000

Tel: +55 51 9894-6461/ +55 21 8030-3338/ +55 51  
3563-4784  
Email: [info@woodmizer.com.br](mailto:info@woodmizer.com.br)

**Europe Headquarters**

*Serving Europe, Africa, West Asia*

Wood-Mizer Industries Sp z o.o.  
Nagorna 114  
62-600 Kolo, Poland

Phone: +48.63.26.26.000  
Fax: +48.63.27.22.327

**Branches & Authorized Sales Centers**

For a complete list of dealers, visit [www.woodmizer.com](http://www.woodmizer.com)

# 1 Introduction

## Customer and Equipment Identification

---

### 1.3 Customer and Equipment Identification

An identification plate is located on the frame of the saw. The plate contains the serial number and configuration information of your machine. You will also receive a customer number when you purchase your machine.

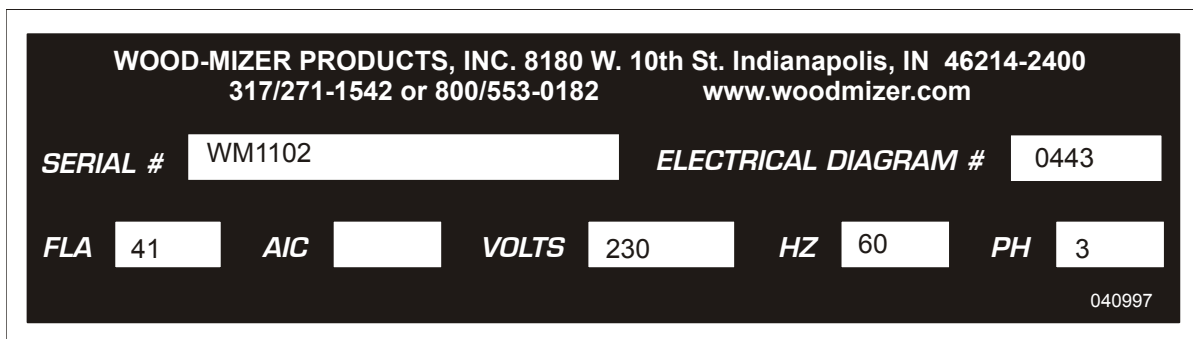
These numbers will help expedite our service to you. Please locate them now and write them below so you have quick, easy access to them.

#### Identification Information (To be filled in by purchaser)

Model No. \_\_\_\_\_

Serial No. \_\_\_\_\_

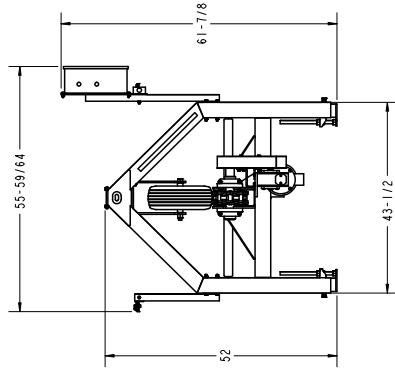
Customer No. \_\_\_\_\_



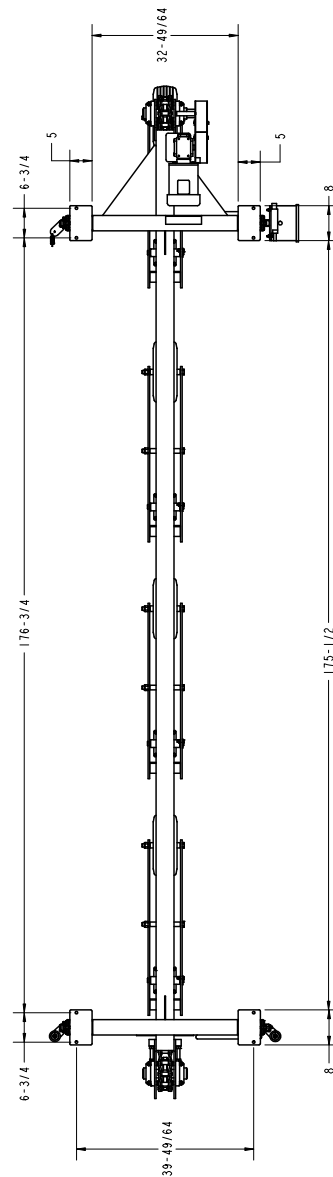
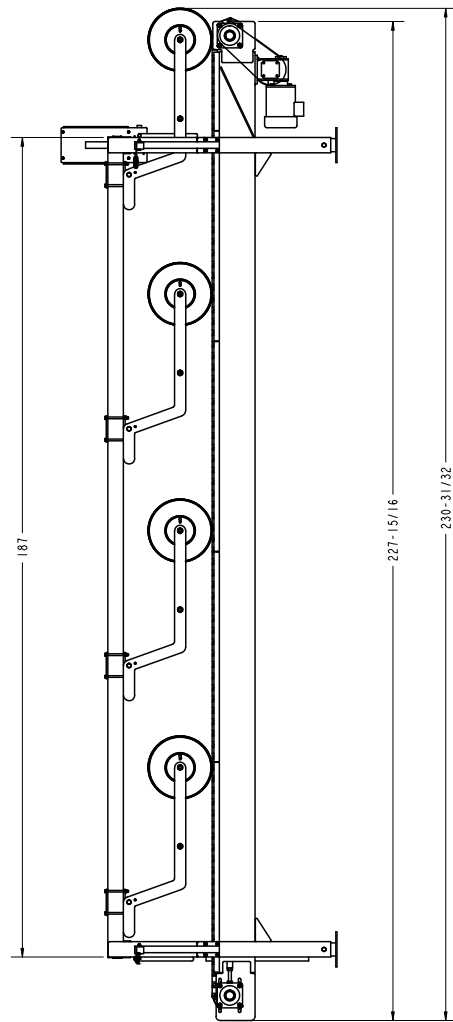
RP00002

**IDENTIFICATION PLATE**

### 1.4 Dimensions



TL0001-2



**TAILER DIMENSIONS**

## 1.5 Specifications

**Model: Tailer Rev. A1.00 - A2.00**

---

**Dimensions**

Length: 19'-2 31/32"  
Width: 4'-7 59/64"  
Height (Ground To Electrical Box): 61 7/8"

---

**Weight:**

Basic Unit: lbs.

**Capacity:**

Board/Slab Length: 2' to 18'

---

**Motor:**

Manufacturer: Leeson  
Horsepower Rating: 2  
RPM: 1725

---

**Rates:**

Normal Power Usage: 2.5 Amps, 1.90 kVa or 1.50 kWh  
Chain Speed: 200 ft./min.\*

---

**Electrical Requirements:**

Electrical Service: 460V 3-Phase 50/60Hz 10A  
Suggested Wire Size (50' max.): 14AWG

**NOTE:** Service mains fused disconnect provided by  
end user. Recommended fusing 10A Time Delay.  
See Electrical Information Section for schematics.

\*Chain speed changed from 100 ft/min. to 200 ft/min.  
with Rev. A2.00. Use kit 038589 to retrofit previous  
revisions

***TAILER SPECIFICATIONS***



## SECTION 2 SAFETY

### 2.1 Safety Symbols

The following symbols and signal words call your attention to instructions concerning your personal safety. Be sure to observe and follow these instructions.



**DANGER!** indicates an imminently hazardous situation which, if not avoided, will result in death or serious injury.



**WARNING!** suggests a potentially hazardous situation which, if not avoided, could result in death or serious injury.



**CAUTION!** refers to potentially hazardous situations which, if not avoided, may result in minor or moderate injury or damage to equipment.



**IMPORTANT!** indicates vital information.

**NOTE:** gives helpful information.



Warning stripes are placed on areas where a single decal would be insufficient. To avoid serious injury, keep out of the path of any equipment marked with warning stripes.

## 2.2 Safety Instructions

**NOTE:** ONLY safety instructions regarding personal injury are listed in this section. Caution statements regarding only equipment damage appear where applicable throughout the manual.

### OBSERVE SAFETY INSTRUCTIONS



**IMPORTANT!** Read the entire Owner's Manual before operating the Tailer. Take notice of all safety warnings throughout this manual and those posted on the machine. Keep this manual with this machine at all times, regardless of ownership.

Also read any additional manufacturer's manuals and observe any applicable safety instructions including dangers, warnings, and cautions.

Only persons who have read and understood the entire operator's manual should operate the Tailer. The Tailer is not intended for use by or around children.

**IMPORTANT!** It is always the owner's responsibility to comply with all applicable federal, state and local laws, rules and regulations regarding the ownership and operation of your Conveyor. All owners are encouraged to become thoroughly familiar with these applicable laws and comply with them fully while using the Conveyor.



### SETUP



**WARNING!** Use extreme care and proper equipment to lift and move the tailer. Lift under the base of the machine only. Failure to do so may result in personal injury and/or machine damage.

### WEAR SAFETY CLOTHING



**WARNING!** Secure all loose clothing and jewelry before operating the Tailer. Failure to do so may result in serious injury or death.

**WARNING!** Always wear eye, ear, respiration, and foot protection when operating or servicing the Conveyor.



### KEEP TAILER AND AREA AROUND TAILER CLEAN



**DANGER!** Maintain a clean and clear path for all necessary movement around the Tailer and lumber stacking areas. Failure to do so will result in serious injury.

### DISPOSE OF SAWING BY-PRODUCTS PROPERLY



**IMPORTANT!** Always properly dispose of all sawing by-products, including sawdust and other debris, coolant, oil, fuel, oil filters and fuel filters.

### CHECK TAILER BEFORE OPERATION



**DANGER!** Make sure all guards and covers are in place and secured before operating the Conveyor. Failure to do so may result in serious injury.

**WARNING!** Do not for any reason adjust the drive chains with the machine running. Doing so may result in serious injury.



### KEEP PERSONS AWAY

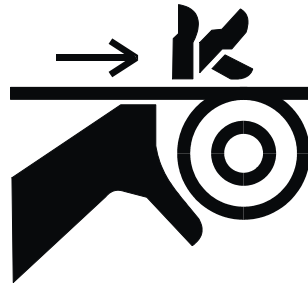


**DANGER!** Keep all persons out of the path of moving equipment and boards when operating the Tailer. Failure to do so will result in serious injury.

**KEEP HANDS AWAY**

**DANGER!** Moving Parts Can Crush and Cut. Keep hands clear. Make sure all guards and covers are in place and secured before operating or towing. Failure to do so may result in serious injury.

**DANGER!** Always be aware of and take proper protective measures against rotating shafts, pulleys, sprockets, etc. Always stay a safe distance from rotating members and make sure that loose clothing or long hair does not engage rotating members resulting in possible injury.



**WARNING!** Coastdown Required. Always shut off the motor and allow all moving parts to come to a complete stop before removing any guards or covers. Do NOT operate with any guards or covers removed.

**WARNING!** Kickback Hazard. Stay clear of area during operation. Follow all anti-kickback service and safety rules. Failure to do so may result in serious injury.

**USE PROPER PROCEDURE WHEN CONDUCTING ELECTRICAL SAFETY CHECKS AND MAINTENANCE**

**DANGER!** Make sure all electrical installation, service and/or maintenance work is performed by a qualified electrician and is in accordance with applicable electrical codes.

**DANGER!** Hazardous voltage inside the electric disconnect box, starter box, and at the motor can cause shock, burns, or death. Disconnect and lock out power supply before servicing! Keep all electrical component covers closed and securely fastened during Tailer operation.



**WARNING!** Consider all electrical circuits energized and dangerous.

**WARNING!** Never assume or take the word of another person that the power is off; check it out and lock it out.

**WARNING!** Do not wear rings, watches, or other jewelry while working around an open electrical circuit.

**DANGER!** Lockout procedures must be used during:

- Changing or adjusting blades
- Unjamming operations
- Cleaning
- Mechanical repair
- Electrical maintenance
- Retrieval of tools/parts from work area
- Activities where guards or electrical panel guard is open or removed

**Maintenance hazards include:**

- Blade contact
- Pinch points
- Kickbacks
- Missiles (thrown blades/wood chips)
- Electrical

Failure to lockout may result in:

- Cut
- Crush
- Blindness
- Puncture
- Serious injury and death
- Amputation
- Burn
- Shock
- Electrocution

**To control maintenance dangers:**

Lockout procedures must be followed (see ANSI Standard Z244.1-1982 and OSHA regulation 1910.147).

Never rely on machine stop control for maintenance safety (emergency stops, on/off buttons, interlocks).

Do not reach into moving blades or feed systems. Allow all coasting parts to come to a complete stop.

Electrical power supply and air supply must both be locked out.

Where established lockout procedures cannot be used (electrical troubleshooting or mechanical dynamic troubleshooting), alternative effective protective techniques shall be employed which may require special skills and planning.

Always follow safe operations practices in the workplace.

### **Tailer LOCKOUT PROCEDURE**

Lockout procedures must be followed (see ANSI Standard Z244.1-1982 and OSHA regulation 1910.147).

#### **Purpose:**

This procedure establishes the minimum requirements for lockout of energy sources that could cause injury.

#### **Responsibility:**

The responsibility for seeing that this procedure is followed is binding upon all workers. All workers shall be instructed in the safety significance of the lockout procedure. It is your responsibility to ensure safe operation of the machine.

#### **Sequence of Lockout Procedure:**

1. Notify all persons that a lockout is required and the reason therefore.
2. If the Tailer is operating, shut it down by the normal stopping procedure.
3. Operate the switch so that the energy sources are disconnected or isolated from the Tailer. Stored energy such as moving blades and feed system shall be dissipated.
4. Lockout the energy isolating devices with assigned individual locks.
5. After ensuring that no persons are exposed and as a check on having disconnected the energy sources, operate the push button or other normal operating controls to make certain the Tailer will not operate. Caution: Return operating controls to neutral position after the test.
6. The Tailer is now locked out.

### **Restoring Equipment to Service**

1. When the job is complete and the Tailer is ready for testing or normal service, check the Tailer area to see that no one is exposed.
2. When the Tailer is all clear, remove all locks. The energy isolating devices may be operated to restore energy to the Tailer.

### **Procedure Involving More Than One Person**

In the preceding steps, if more than one individual is required to lock out the Tailer, each shall place his own personal lock on the energy isolating devices.

### **Rules for Using Lockout Procedure**

The Tailer shall be locked out to protect against accidental or inadvertent operation when such operation could cause injury to personnel. Do not attempt to operate any switch or valve bearing a lock.


### **Owner's Responsibility**

The procedures listed in this manual may not include all ANSI, OSHA, or locally required safety procedures. It is the owner/operator's responsibility and not AWMV Products to ensure all operators are properly trained and informed of all safety protocols. Owner/Operators are responsible for following all safety procedures when operating and performing maintenance to the Tailer.

## SECTION 3 SETUP AND OPERATION

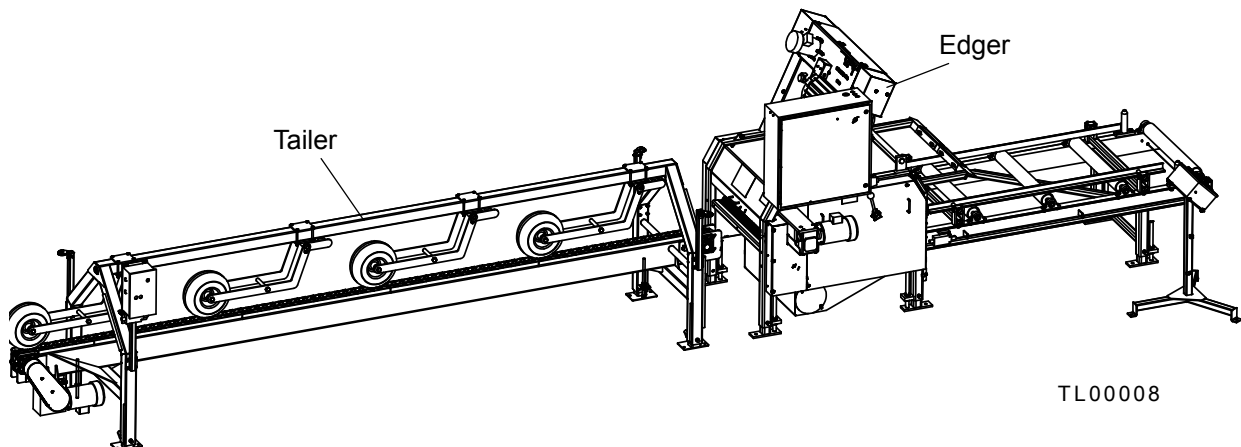
### 3.1 Setup

Use a forklift or other appropriate equipment to move the tailer.

 **WARNING!** Use extreme care and proper equipment to lift and move the tailer. Lift under the base of the machine only. Failure to do so may result in personal injury and/or machine damage.

Place the tailer on a concrete foundation strong enough to support the weight of the machine. Allow for room around the unit.

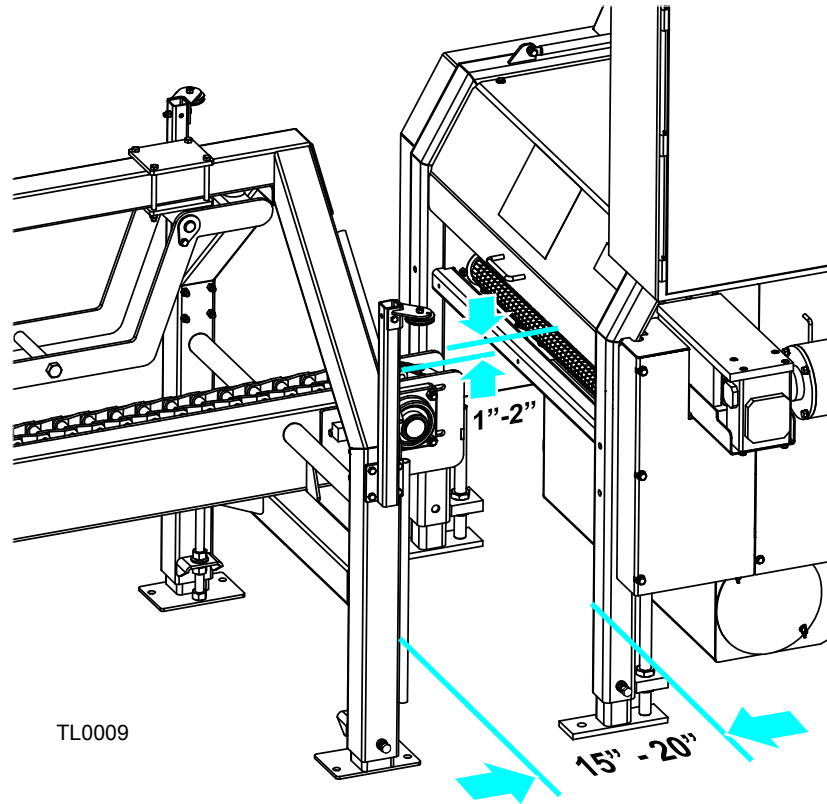
**See Figure 3-1.** Place the tailer on the outfeed side of the edger as shown below. Make sure the trailer drive chain is positioned in the center of the edger and boards from the edger can get on the tailer without obstruction.



**FIG. 3-1**



See **Figure 3-2**. Position the tailer approximately 15" to 20" away from the edger. Make sure that the tailer drive chain is approximately 1" to 2" lower than the upper edge of the edger outfeed rollers to allow for a slight drop of boards from the edger.



**FIG. 3-2**

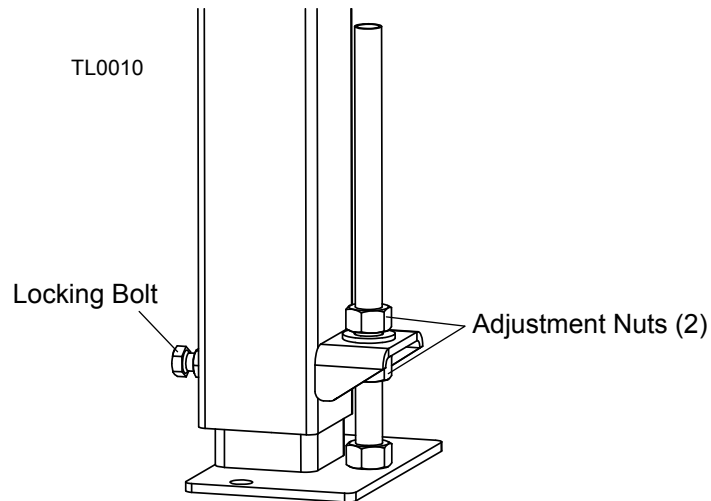
# 3

## Setup and Operation

### Setup

---

**See Figure 3-3.** Adjust the tailer legs so the feet firmly contact the ground. Loosen the locking bolt. Turn the adjustment nuts counterclockwise to raise the tailer, turn the adjustment nuts clockwise to lower the tailer. Make sure the unit is level before securing.



**FIG. 3-3**

Tighten the adjustment nuts when the height adjustment is complete. Secure the leg with the locking bolt. Secure the tailer to the foundation with anchor bolts.

## 3.2 Electrical Installation



**DANGER!** Make sure all electrical installation, service and/or maintenance work is performed by a qualified electrician and is in accordance with applicable electrical codes.

**DANGER!** Hazardous voltage inside the electric disconnect box, starter box, and at the motor can cause shock, burns, or death. Disconnect and lock out power supply before servicing! Keep all electrical component covers closed and securely fastened during operation.



**WARNING!** Coastdown Required. Always shut off the motor and allow all moving parts to come to a complete stop before removing any guards or covers. Do NOT operate with any guards or covers removed.

**WARNING!** Always shut off the motor to stop the chain whenever the tailer is not in use. Failure to do so may result in serious injury.

Perform the following steps prior to operating the tailer to make the required electrical connections:

1. Open the electrical box installed to the Tailer.

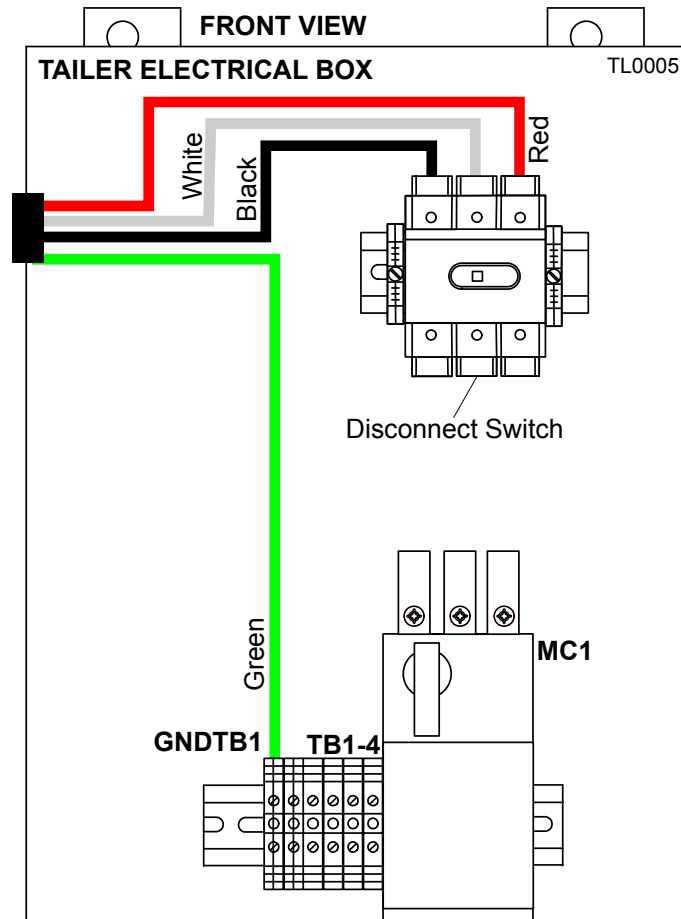
# 3

## Electrical Installation

### Electrical Installation

2. Locate the disconnect switch in the upper right corner inside the trailer electrical box. Unplug the hole in the right side of the electrical box. Route the power supply cable through the hole. Connect the power supply wires to the disconnect switch in the electrical box.

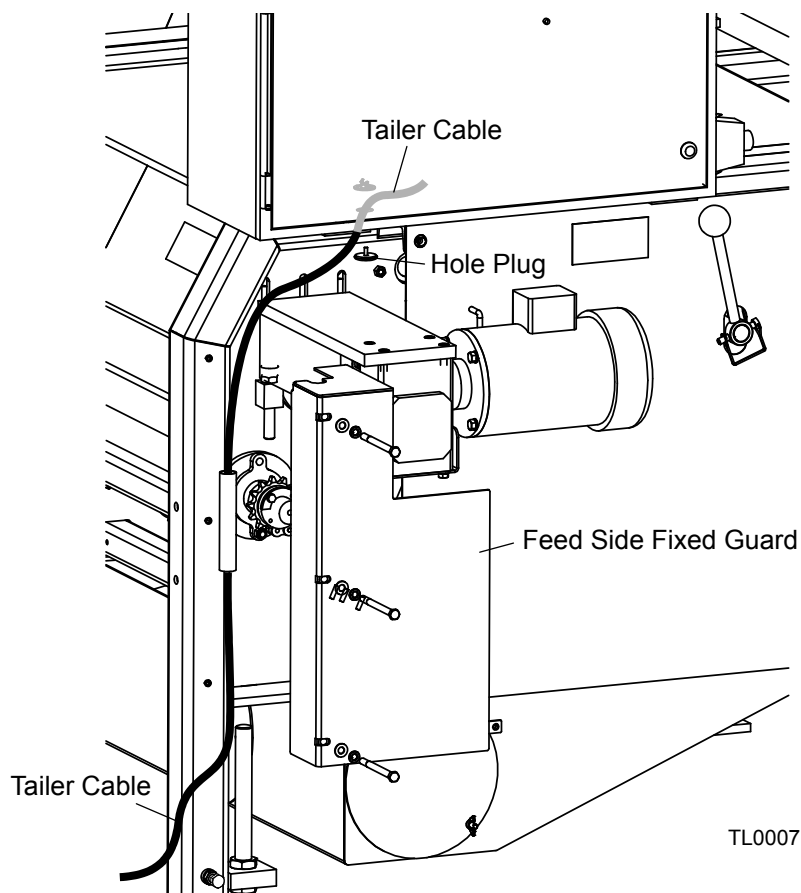
See **Figure 3-4**. Connect the power supply to the disconnect switch in the electrical box.



**FIG. 3-4**

3. Connect the tailer to the Edger electrical box. To connect, remove the feed drive fixed guard from the left side of the Edger. Route the tailer cable through the cable tube on the Edger.
4. Open the Edger electrical box and remove the hole plug located in the bottom of the box. Install the provided black connector to the hole. Secure the connector with the provided connector nut. Route the tailer cable to the inside of the Edger electrical box through the black connector.

See **Figure 3-5**. Route the tailer cable to the Edger electrical box as shown.



**FIG. 3-5**

5. Reinstall the feed side fixed guard to the Edger.

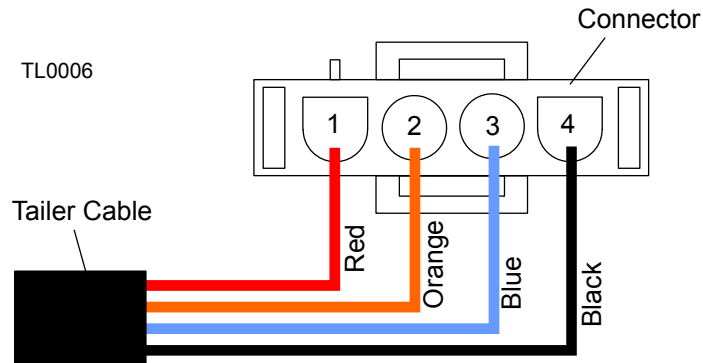
# 3

## Electrical Installation

### Electrical Installation

6. Install the provided white connector to the tailer cable inside the Edger electrical box.

See **Figure 3-6**. The tailer cable wire connections are shown below.



**FIG. 3-6**

7. Locate the existing plugged Edger/Tailer cable on the bottom of the Edger electrical box. Unplug and connect the Edger/Tailer cable to the tailer cable to complete the electrical installation. See Electrical Information Section for schematics.
8. Close the Edger electrical box.

### 3.3 Starting And Stopping The Machine



**DANGER!** Make sure all guards and covers are in place and secured before operating the tailer. Failure to do so may result in serious injury.

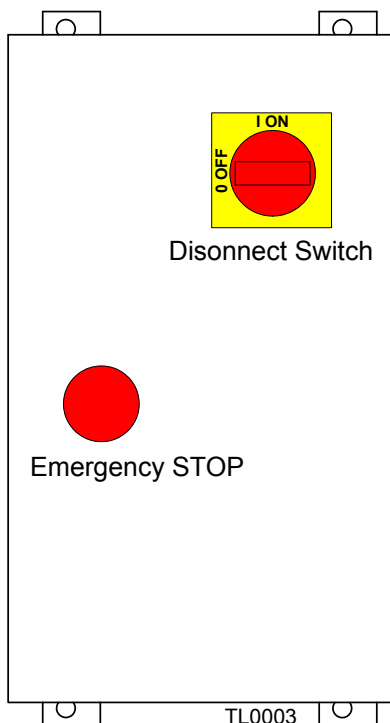
**DANGER!** Always be sure all persons are away from the tailer before starting the motor. Failure to do so will result in serious injury.



**WARNING!** Always wear eye, ear, respiration, and foot protection when operating the tailer. Failure to do so may result in serious injury.

1. If necessary, release the E-STOP button by turning it clockwise until it pops out.

**See Figure 3-1.** The front of the tailer electrical box has a disconnect switch to power on the tailer.



**FIG. 3-1**

2. To turn the tailer power on, turn the disconnect switch to the ON position. **NOTE:** It is necessary to have the edger powered on to operate the tailer. To turn the edger power on, push the green MACHINE-START button on the edger control box. See the edger Owner's Manual to check how to operate the edger.

**NOTE:** The covers and the electrical cabinet must be closed before the edger can be started.

The emergency switches on the electrical box can be used to shutdown the tailer.

1. Push the E-STOP button in an emergency to stop the tailer drive chain. This button must be released by turning clockwise before the tailer can be restarted. **IMPORTANT:** The E-STOP button shuts down both the tailer and the edger at the same time.

Pull out the emergency red wire around the tailer whenever it is necessary to shut down the tailer and the edger.



## SECTION 4 MAINTENANCE



**DANGER!** Always be aware of and take proper protective measures against rotating shafts, pulleys, fans, etc. Always stay a safe distance from rotating members and make sure that loose clothing or long hair does not engage rotating members resulting in possible injury.

**WARNING!** Always wear proper and necessary safety equipment when performing service functions. Proper safety equipment includes eye protection, breathing protection, hand protection and foot protection.



**This symbol** identifies the interval (hours of operation) at which each maintenance procedure should be performed. "AR" signifies maintenance procedures which should be performed as required.

### 4.1 Gearbox Oil



Check the gearbox oil level. Add a synthetic gear oil such as Mobil Glygoyle 460 as needed.

The Mobil Glygoyle 460 gear oil is a synthesized hydrocarbon formulated used for extremely long life. Change oil only when performing maintenance that requires gearbox disassembly.

If oil must be replaced, use only Mobil Glygoyle 460.

AWMV offers replacement gear oil in 8 ounce bottles.



**DANGER!** Always turn off and disconnect power supply before performing any service to the machine. Failure to do so may result in serious injury or death.

## 4.2 Tensioning the Chains

Adjust the infeed drive chain tension as needed. Locate the adjustment bolts at the front of the tailer on both sides of the frame. Use the adjustment bolts to adjust the infeed drive chain tension as described below.

See Figure 4-1.

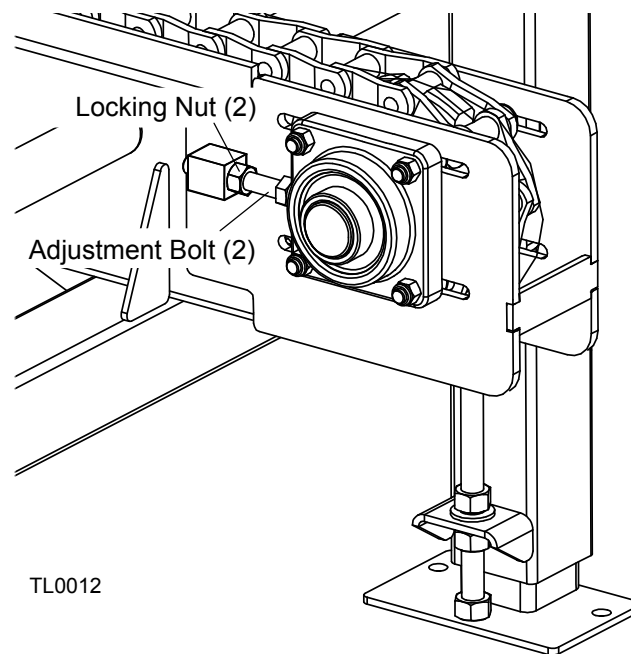


FIG. 4-1

To adjust the infeed drive chain tension:

- Loosen the infeed drive chain bearing mounting bolts.
- Turn the adjustment bolts counterclockwise to tension the infeed drive chain.
- Turn the adjustment bolts clockwise to loosen the infeed drive chain.
- Secure the adjustment bolts with the locking nuts when the chain tensioning procedure is complete.

0 Periodically check the tailer motor drive chain tension and adjust the as needed. The chain needs to be adjusted if the chain slack exceeds 1" (25.4mm).

To check the motor drive chain tension, always make sure the motor is not running. Loosen the two bolts securing the drive chain guard as shown below. Remove the guard from the tailer.

See Figure 4-2.

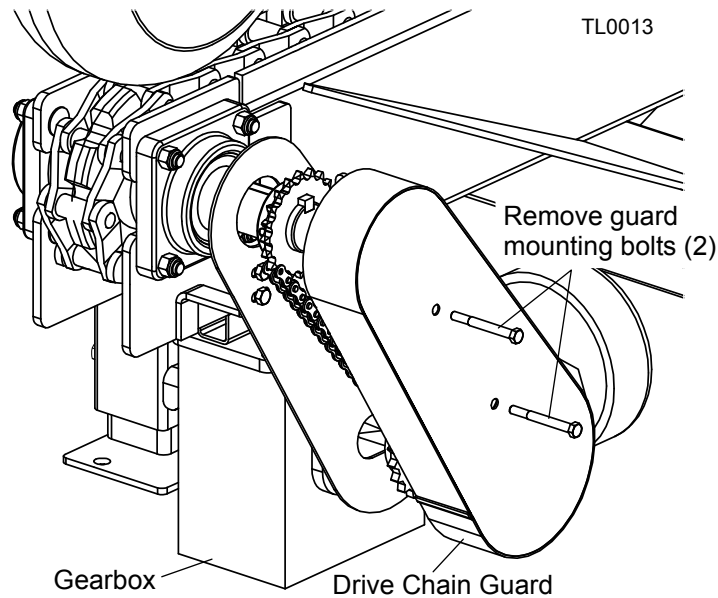


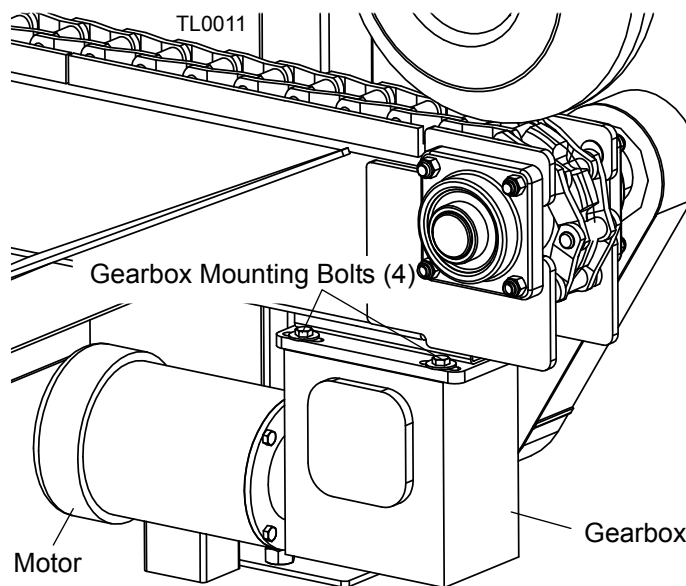
FIG. 4-2

The properly tensioned chain can be deflected 1/2" (12.7mm) in the center of the chain. If necessary follow the instructions below.

To adjust the motor drive chain:

1. Make sure the motor is not running.
2. Loosen the four adjustment bolts (4) securing the tailer gearbox to the mount motor/gearbox bracket.
3. Move the gearbox and motor to adjust the drive chain until the center of the chain can be deflected 1/2" (12.7mm).

See Figure 4-3. Use gearbox mounting bolts to tension the motor drive chain.



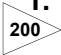
**FIG. 4-3**



**CAUTION!** Do not over-tension the tailer motor drive chain.  
Damage to the gearbox will occur.

4. After the drive chain has been adjusted, tighten the gearbox adjustment bolts (4).
5. Reinstall the drive chain guard and secure in place with the guard mounting bolts (2).

### 4.3 Lubrication

-  1. Lubricate the chain sprocket bearings every 200 hours of operation with one to two pumps of lithium-based grease such as Shell Alvania No. 3. Do not overgrease.

## SECTION 5 REPLACEMENT PARTS

### 5.1 How To Use The Parts List

- Go to the appropriate section and locate the part in the illustration.
- Use the number pointing to the part to locate the correct part number and description in the table.
- Parts shown indented under another part are included with that part.
- Parts marked with a diamond (◆) are only available in the assembly listed above the part.

See the sample table below. Sample Part #A01111 includes part F02222-2 and subassembly A03333. Subassembly A03333 includes part S04444-4 and subassembly K05555. The diamond (◆) indicates that S04444-4 is not available except in subassembly A03333. Subassembly K05555 includes parts M06666 and F07777-77. The diamond (◆) indicates M06666 is not available except in subassembly K05555.

<b>5.2 Sample Assembly</b>				
REF	DESCRIPTION (◆ Indicates Parts Available In Assemblies Only)	PART #	QTY.	
	<b>SAMPLE ASSEMBLY, COMPLETE</b> (Includes All Indented Parts Below)	A01111	1	
1	Sample Part	F02222-22	1	
2	Sample Subassembly (Includes All Indented Parts Below)	A03333	1	
	Sample Part (Indicates Part Is Only Available With A03333)	S04444-4	1	◆
3	Sample Subassembly (Includes All Indented Parts Below)	K05555	1	
	Sample Part (Indicates Part Is Only Available With K05555)	M06666	2	◆
4	Sample Part	F07777-77	1	

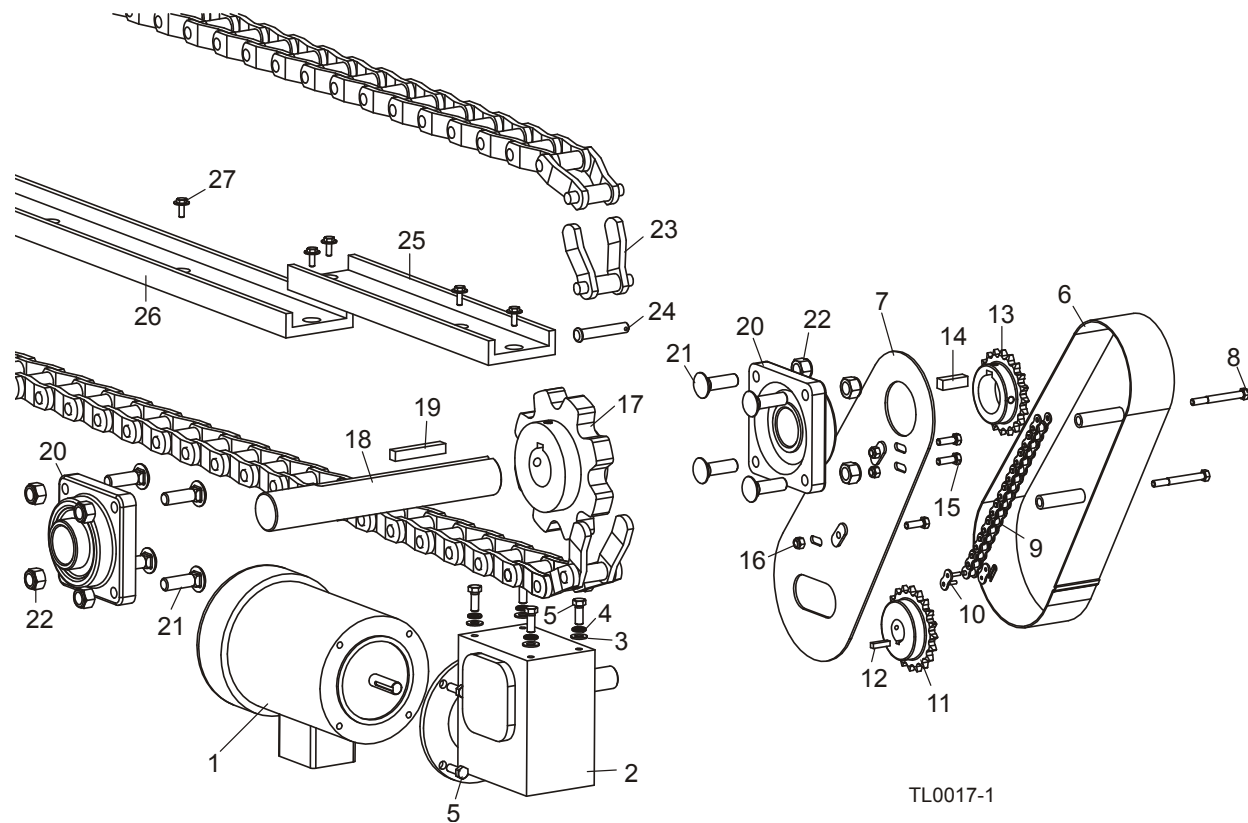
#### To Order Parts:

From the continental U.S., call **1-800-525-8100** to order parts. Have your customer number, VIN, and part numbers ready when you call. From other international locations, contact the AWMV distributor in your area for parts.

### 5.3 Outfeed, Drive Side

CBT-430

Rev. A2.01+



TL0017-1

REF	DESCRIPTION (◆ Indicates Parts Available In Assemblies Only)	PART #	QTY.
1	MOTOR, 2HP 3P 230/460 56C PREMIUM EFF	079197 <sup>1</sup>	1
2	GEARBOX, 90 DEG BMQ 224 15:1 RIGHT	051444	1
3	WASHER, 3/8" SAE FLAT	F05011-3	4
4	WASHER, 3/8" SPLIT LOCK	F05011-4	4
5	BOLT, 3/8-16 X 1" HEX HEAD GRADE 5	F05007-87	8
6	GUARD WELDMENT, FRONT CHAIN	048038	1
7	GUARD WELDMENT, DRIVE REAR	048033	1
8	BOLT, 5/16-18 X 3" HEX HEAD GRADE 5	F05006-62	2
9	CHAIN, ROLLER, #50 X 63 PITCHES	048039	1
10	LINK, #50 MASTER	P20208	1
11	SPROCKET, 50B20 X 1 1/8" BORE	038564	1
12	KEY, 1/4" SQUARE X 1" LONG	S21486	1
13	SPROCKET, 50B20 X 1 15/16" BORE	048028	1
14	KEY, 1/2" SQUARE X 1 1/2" LONG	033738	1

# 5

## Replacement Parts

### *Outfeed, Drive Side*

15	BOLT, 5/16-18 X 3/4" HEX HEAD GRADE 2	F05006-5	3	
16	NUT, 5/16-18 NYLON LOCK	F05010-58	3	
17	SPROCKET, DRIVE WR7808 STL	033716	1	
18	SHAFT, DRIVE END	051387	1	
19	KEY, 1/2" SQUARE X 3" LONG	S12249	1	
20	BEARING, 1 15/16 4-BOLT FLANGE	033712	2	
21	BOLT, 5/8-11 X 2" CARRIAGE HEAD GRADE 5	F05009-116	8	
22	NUT, 5/8-11 NYLON HEX LOCK	F05010-34	8	
23	CHAIN, WR78 X 176 PITCHES	051403	1	
24	PIN, CONNECTING WR78 CHAIN	017643	1	◆
25	CHANNEL, UHMW CONVEYOR, 17 7/8	048030	1	
26	CHANNEL, UHMW CONVEYOR	033722	4	
27	BOLT, 1/4-20 X 3/4" HEX HEAD W/WASHER&PATCH	F05005-207	23	

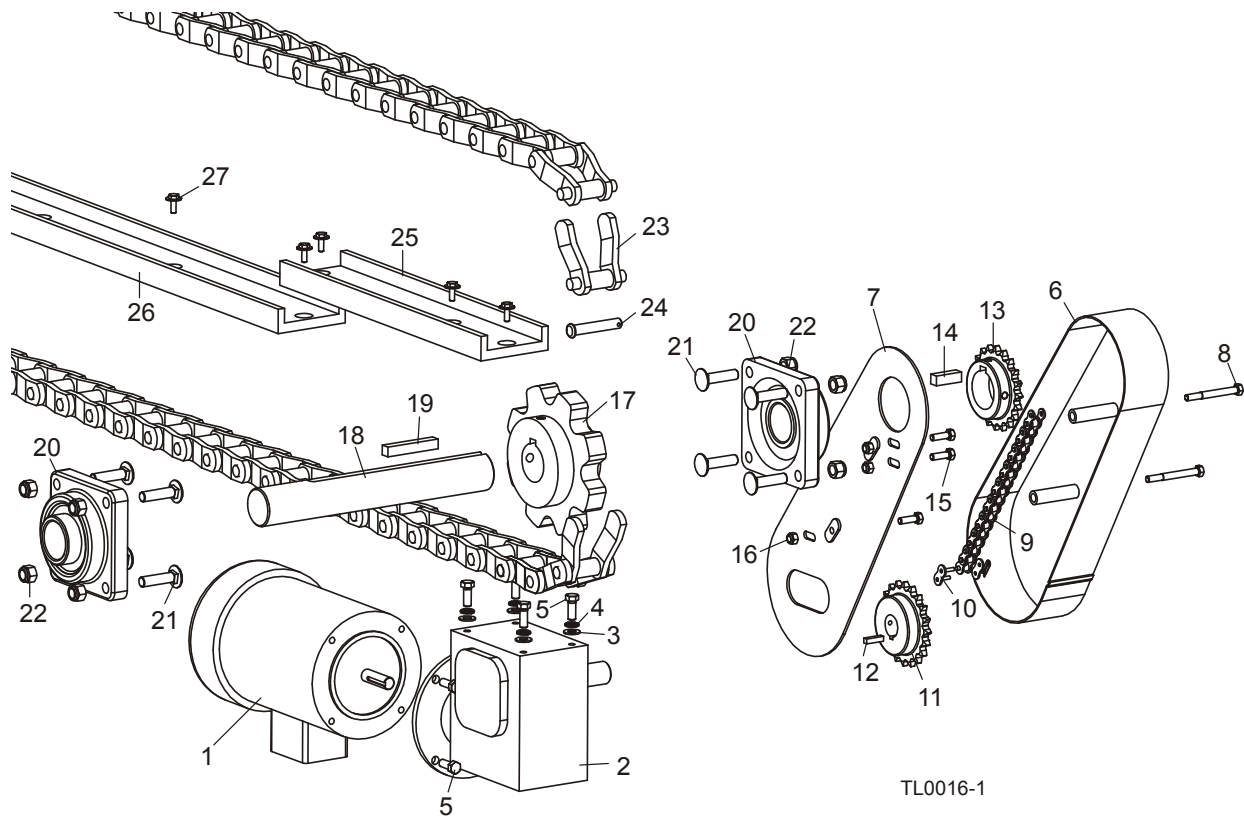
<sup>1</sup> Replaced 042390 2HP 3PH 230/460 TEFC 56C No Base Motor (Rev. A2.04).



## 5.4 Outfeed, Drive Side

CBT-430

Rev. A2.00



REF	DESCRIPTION (◆ Indicates Parts Available In Assemblies Only)	PART #	QTY.
1	MOTOR, 2HP 230/460 3-PHASE AC TAILER	042390	1
2	GEARBOX, 90 DEG BMQ 224 15:1 RIGHT	051444	1
3	WASHER, 3/8" SAE FLAT	F05011-3	4
4	WASHER, 3/8" SPLIT LOCK	F05011-4	4
5	BOLT, 3/8-16 X 1" HEX HEAD GRADE 5	F05007-87	8
6	GUARD WELDMENT, FRONT CHAIN	048038	1
7	GUARD WELDMENT, DRIVE REAR	048033	1
8	BOLT, 5/16-18 X 3" HEX HEAD GRADE 5	F05006-62	2
9	CHAIN, ROLLER, #50 X 63 PITCHES	048039	1
10	LINK, #50 MASTER	P20208	1
11	SPROCKET, 50B20 X 1 1/8" BORE	038564	1
12	KEY, 1/4" SQUARE X 1" LONG	S21486	1
13	SPROCKET, 50B20 X 1 15/16" BORE	048028	1
14	KEY, 1/2" SQUARE X 1 1/2" LONG	033738	1

## 5

**Replacement Parts***Outfeed, Drive Side*

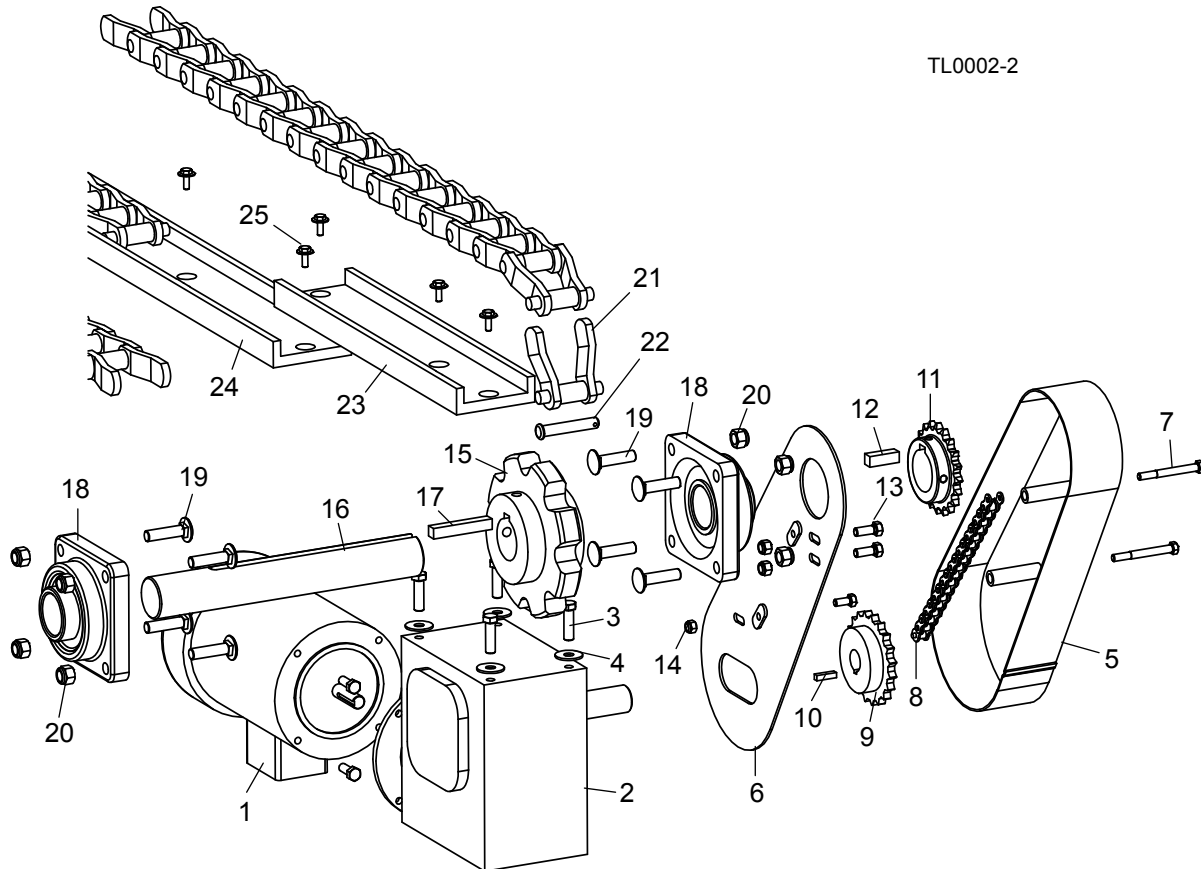
15	BOLT, 5/16-18 X 3/4" HEX HEAD GRADE 2	F05006-5	3	
16	NUT, 5/16-18 NYLON LOCK	F05010-58	3	
17	SPROCKET, DRIVE WR7808 STL	033716	1	
18	SHAFT, DRIVE END	051387	1	
19	KEY, 1/2" SQUARE X 3" LONG	S12249	1	
20	BEARING, 1 15/16 4-BOLT FLANGE	033712	2	
21	BOLT, 1/2-13 X 2" CARRIAGE HEAD	F05008-132	8	
22	NUT, 1/2-13 NYLON HEX LOCK	F05010-8	8	
23	CHAIN, WR78 X 176 PITCHES	051403	1	
24	PIN, CONNECTING WR78 CHAIN	017643	1	◆
25	CHANNEL, UHMW CONVEYOR, 17 7/8	048030	1	
26	CHANNEL, UHMW CONVEYOR	033722	4	
27	BOLT, 1/4-20 X 3/4" W/CONICAL WASHER	F05005-134	23	

## 5.5 Outfeed, Drive Side

CBT-430

Rev. A1.00 - A1.02

TL0002-2



REF	DESCRIPTION (◆ Indicates Parts Available In Assemblies Only)	PART #	QTY.
1	MOTOR, 2HP 230/460 3-PHASE AC TAILER	042390	1
2	GEARBOX, 90 DEG BMQ 230 RIGHT	047417 <sup>1</sup>	1
3	BOLT, 3/8-16 X 1 1/2" HEX HEAD GRADE 5	F05007-78	4
4	WASHER, 3/8 FLAT SAE	F05011-3	4
5	GUARD WELDMENT, FRONT CHAIN	048038	1
6	GUARD WELDMENT, DRIVE REAR	048033 <sup>2</sup>	1
7	BOLT, 5/16-18 X 3" HEX HEAD GRADE 5	F05006-62	2
8	CHAIN, ROLLER, #50 X 63 PITCHES	048039 <sup>3</sup>	1
9	SPROCKET, 50B2020 X 1 1/4" BORE	036746 <sup>1</sup>	1
10	KEY, 1/4" SQUARE X 1" LONG	S21486	1
11	SPROCKET, 50 B 20 X 1 15/16	048028	1
12	KEY, 1/2" SQUARE X 1 1/2" LONG	033738	1
13	BOLT, 5/16-18 X 3/4" HEX HEAD GRADE 2	F05006-5	3
14	NUT, 5/16-18 NYLON LOCK	F05010-58	3

## 5

**Replacement Parts***Outfeed, Drive Side*

15	SPROCKET, DRIVE WR7808 STL	033716	1	
16	SHAFT, DRIVE END	051387	1	
17	KEY, 1/2" SQUARE X 3" LONG	S12249	1	
18	BEARING, 1 15/16 4-BOLT FLANGE	033712	2	
19	BOLT, 1/2-13 X 2" CARRIAGE HEAD	F05008-132	8	
20	NUT, 1/2-13 NYLON HEX LOCK	F05010-8	8	
21	CHAIN, WR78 X 176 PITCHES	051403	1	
22	PIN, CONNECTING WR78 CHAIN	017643	1	◆
23	CHANNEL, UHMW CONVEYOR, 17 7/8	048030	1	
24	CHANNEL, UHMW CONVEYOR	033722	4	
25	BOLT, 1/4-20 X 3/4" W/CONICAL WASHER	F05005-134	23	

<sup>1</sup> Gearbox, sprocket and mounting hardware changed to increase chain speed from 100 ft./min. to 200 ft./min. to better match Edger speed (Rev. A2.00). Use kit 038589 to retrofit previous revisions ([See Section 5.4](#)). Retro kit includes 038567 adaptor plate to mount new gearbox on original frame weldment, gearbox, sprocket and key and four flat head bolts for adaptor plate.

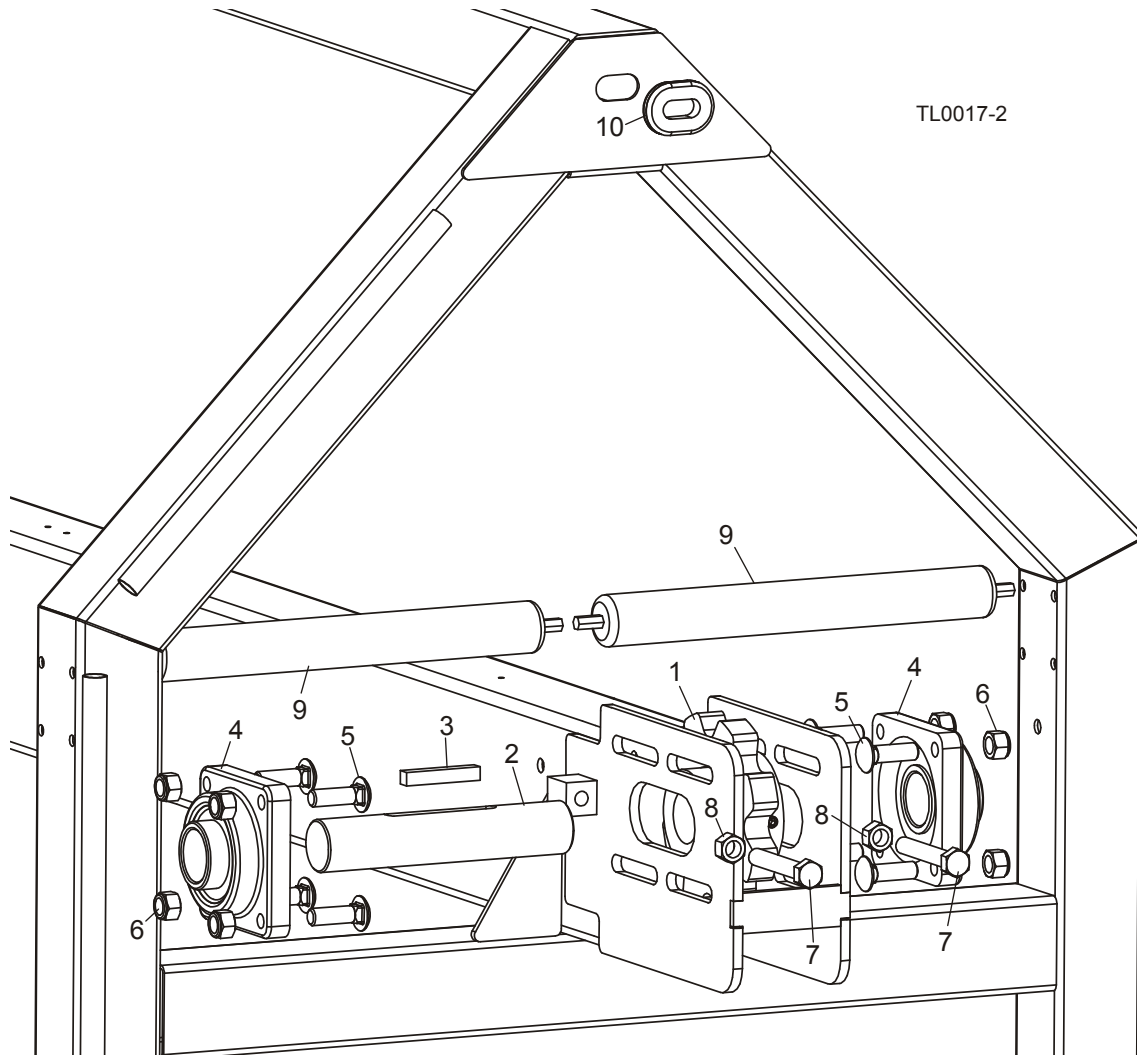
<sup>2</sup> Mounting slots relocated to improve fit (Rev. A1.02).

<sup>3</sup> Chain 048039 lengthened from 57 pitches to 63 to improve fit and adjustment (Rev. A1.02).

## 5.6 Infeed, Idle Side

CBT-430

Rev. A2.01+



REF	DESCRIPTION (◆ Indicates Parts Available In Assemblies Only)	PART #	QTY.
1	SPROCKET, DRIVE WR7808 STL	033716	1
2	SHAFT, IDLE END	051512	1
3	KEY, 1/2" SQUARE X 3" LONG	S12249	1
4	BEARING, 1 15/16 4-BOLT FLANGE	033712	2
5	BOLT, 5/8-11 X 2" CARRIAGE HEAD GRADE 5	F05009-116	8
6	NUT, 5/8-11 NYLON HEX LOCK	F05010-34	8
7	BOLT, 5/8-11 X 4" HEX HEAD FULL THREAD	F05009-8	2
8	NUT, 5/8-11 HEX	F05010-5	2
9	ROLLER, 1.90 OD X 15.75	051399	2
10	GROMMET, 1" X 1 3/4" OVAL RUBBER	085613	2

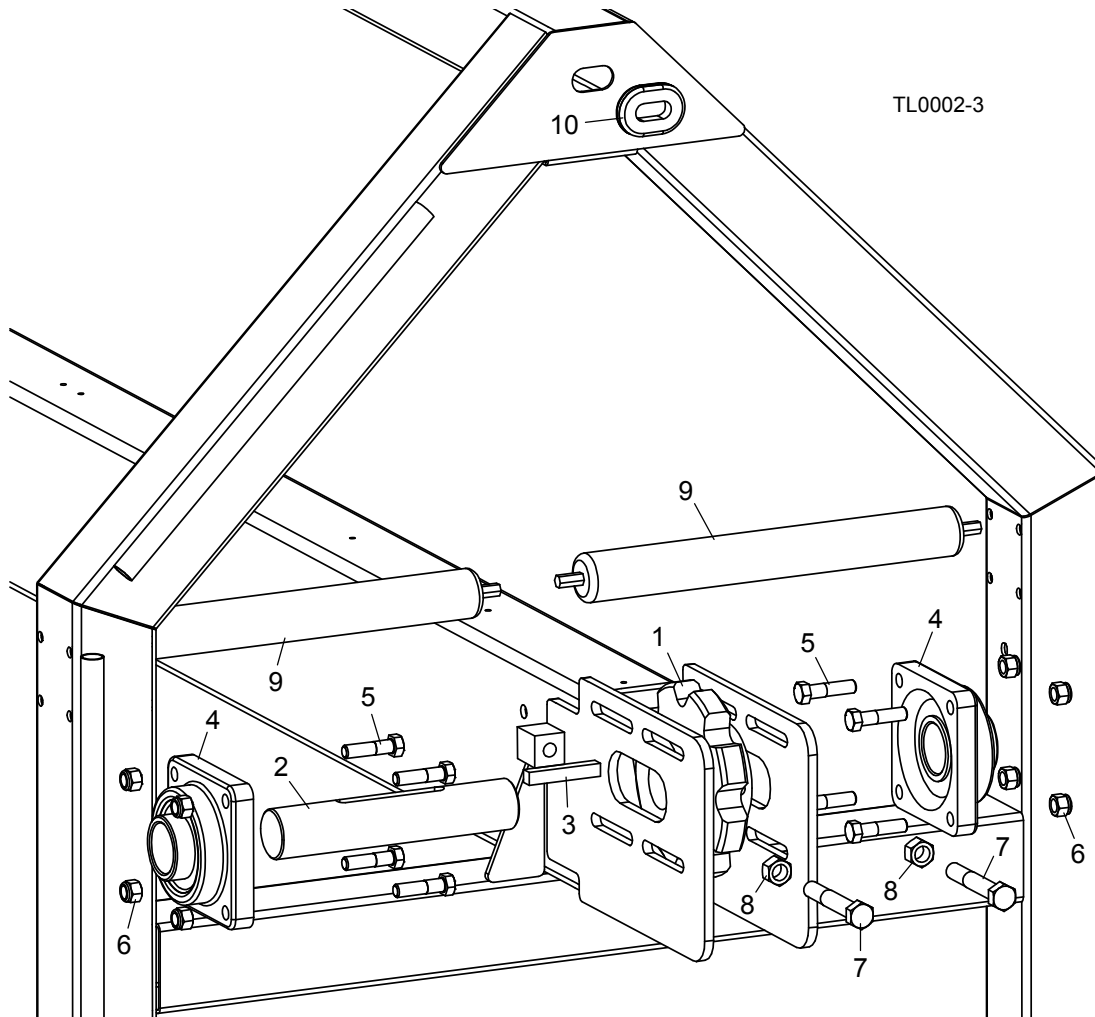
# 5 Replacement Parts

*Infeed, Idle Side*

## 5.7 Infeed, Idle Side

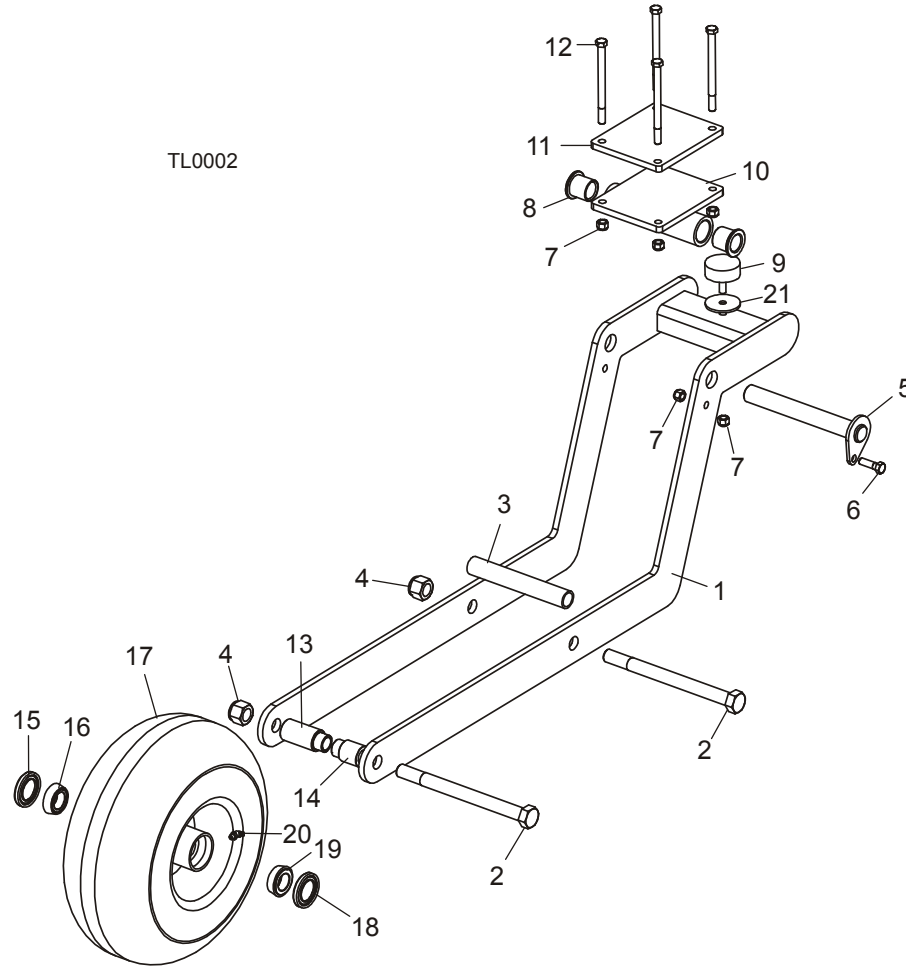
CBT-430

Rev. A1.00 - A2.00



REF	DESCRIPTION (◆ Indicates Parts Available In Assemblies Only)	PART #	QTY.
1	SPROCKET, DRIVE WR7808 STL	033716	1
2	SHAFT, IDLE END	051512	1
3	KEY, 1/2" SQUARE X 3" LONG	S12249	1
4	BEARING, 1 15/16 4-BOLT FLANGE	033712	2
5	BOLT, 1/2-13 X 2" CARRIAGE HEAD	F05008-132	8
6	NUT, 1/2-13 NYLON HEX LOCK	F05010-8	8
7	BOLT, 5/8-11 X 4" HEX HEAD FULL THREAD	F05009-8	2
8	NUT, 5/8-11 HEX	F05010-5	2
9	ROLLER, 1.90 OD X 15.75	051399	2
10	GROMMET, 1" X 1 3/4" OVAL RUBBER	085613	2

## 5.8 Hold-Down Wheel Assembly



REF	DESCRIPTION (◆ Indicates Parts Available In Assemblies Only)	PART #	QTY.
	<b>WHEEL ASSEMBLY, TAILER HOLDDOWN</b>	051382	1
1	Bracket Weldment, Wheel Mount	048031	1
2	Bolt, 3/4-10 x 9" Hex Head Grade 5	F05013-6	2
3	Tube, .82ID x 1.05OD x 6-13/16	047383	1
4	Nut, 3/4-10 Nylock	F05010-103	2
5	Pin Weldment, Hold-down Pivot	047367	1
6	Bolt, 3/8-16 x 1" Hex Head Grade 5	F05007-87 <sup>1</sup>	1
7	Nut, 3/8-16 Hex Nylon Lock	F05010-10	6
8	Bushing, 1" ID x 1-1/4" OD Flanged	P109	2
9	Bumper, Table	034175	1
10	Pivot Weldment, Wheel Mount	051390	1
11	Plate, Mount 5" x 6" x 3/8"	051381	1
12	Bolt, 3/8-16 x 5" Hex Head Grade 5	F05007-86	4

**5****Replacement Parts***Hold-Down Wheel Assembly*

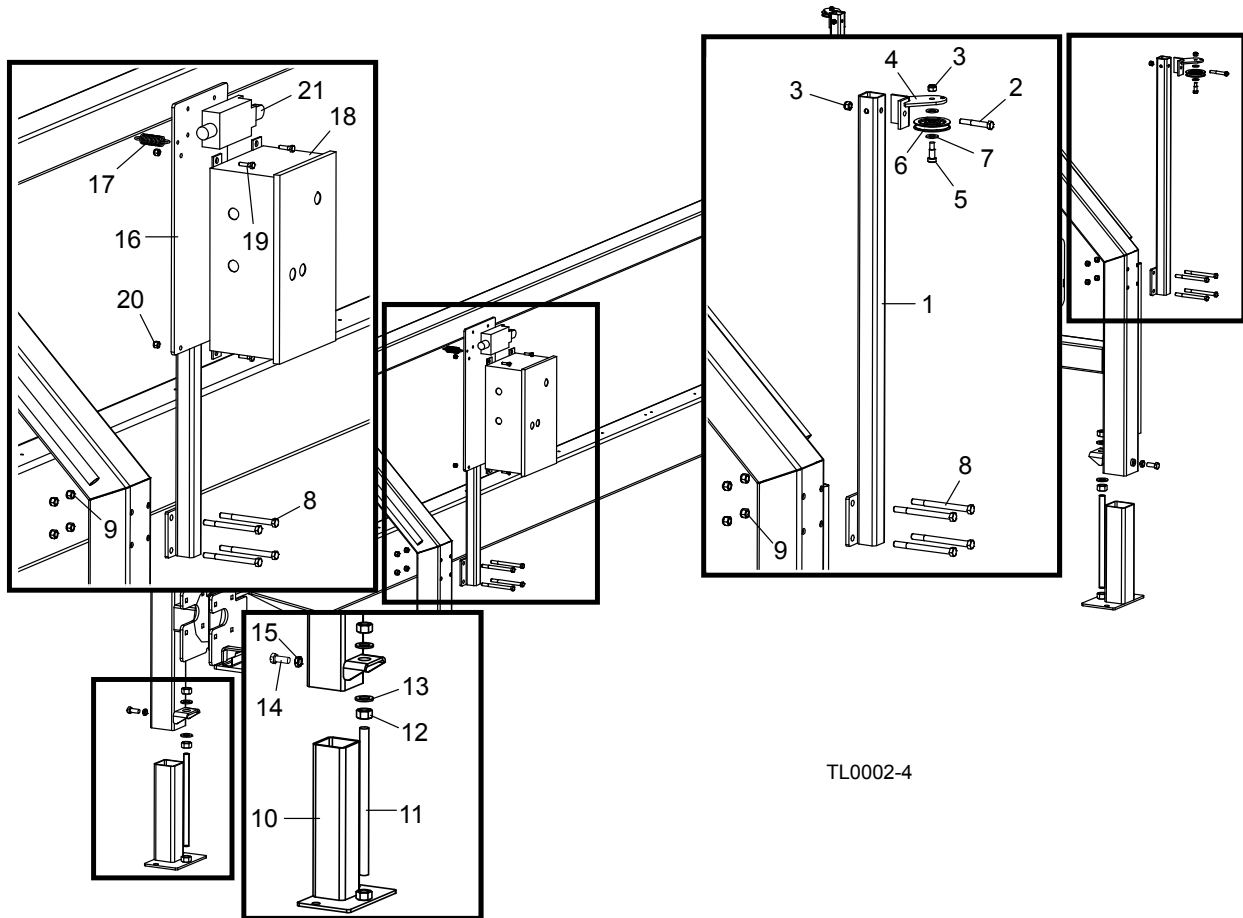
---

13	Spacer, 3/4" ID x 1-1/4" OD Long	047436	1	
14	Spacer, 3/4" ID x 1-1/4" OD Short	047435	1	
15	Seal, 1 1/4" ID Tapered Bearing	P191	1	
16	Bearing, 1" ID Tapered Roller	P190	1	
17	Wheel, 15 x 6-6.00 Air-Filled	019107	1	
18	Seal, 1 1/4" ID Tapered Bearing	P191	1	
19	Bearing, 1" ID Tapered Roller	P190	1	
20	Fitting, 1/4-28 45 Deg. Grease	P294	1	
21	Plate, Bumper Spacer	054081	1	

<sup>1</sup> Bolt corrected from F05007-123 (Rev. A1.02).



### 5.9 Legs, Emergency Switch and Electrical Box



TL0002-4

REF	DESCRIPTION (◆ Indicates Parts Available In Assemblies Only)	PART #	QTY.
1	<b>POST WELDMENT, E-STOP SUPPORT</b>	047384	1
	<b>BRACKET ASSEMBLY, E-STOP CABLE</b>	047392	3
2	Bolt, 5/16-18 x 2 1/4" Hex Head	F05006-30	3
3	Nut, 5/16-18 Nylon Lock	F05010-58	6
4	Bracket Weldment, E-Stop Mount	047389	3
5	Screw, 3/8 x 5/8" Socket Shoulder	F05007-79	3
6	Pulley, 2 1/2" Nylon	P07996	3
7	Washer, 3/8" Flat SAE	F05011-3	6
8	<b>BOLT, 3/8-16 X 4 1/2" HEX HEAD GRADE 2</b>	F05007-35	16
9	<b>NUT, 3/8-16 HEX NYLON LOCK</b>	F05010-10	16
10	<b>FOOT WELDMENT, TAILER</b>	051438	4
11	<b>ROD, 3/4-10 X 12-1/2</b>	048025	4
12	<b>NUT, 3/4-10 FREE HEX ZN</b>	F05010-7	8
13	<b>WASHER, 3/4" SAE FLAT</b>	F05011-62	8
14	<b>BOLT, 1/2-13 X 1 1/4" HEX HEAD GRADE 5</b>	F05008-37	4

**5****Replacement Parts***Legs, Emergency Switch and Electrical Box*

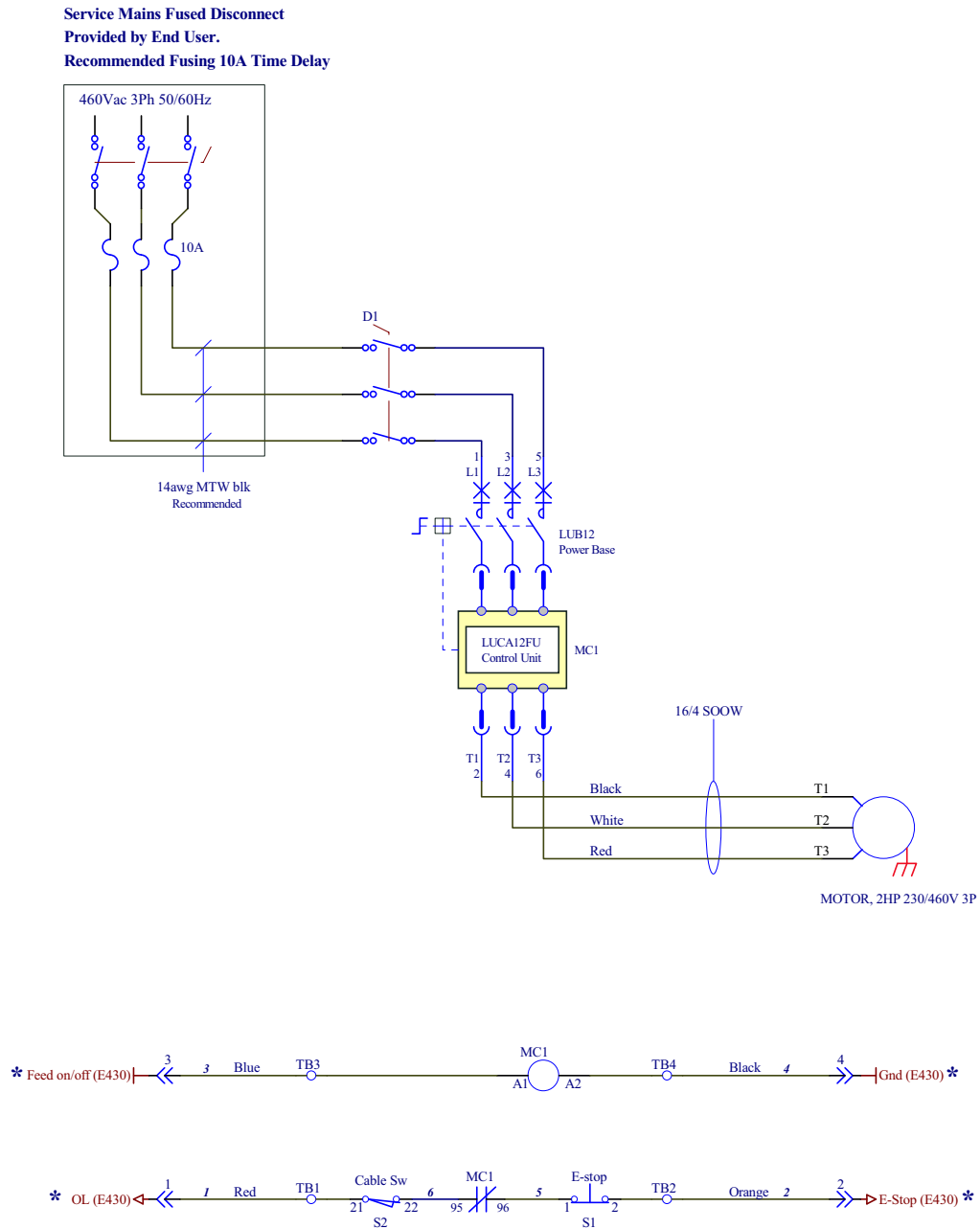
---

15	NUT, 1/2-13 ZINC JAM	F05010-31	4	
16	POST WELDMENT, CONTROL MOUNT	047387 <sup>1</sup>	1	
17	SPRING, 3/4 X 2 7/8 X 12GA	015479	1	
18	ENCLOSURE, 14 X 8 X 6 NEMA12 CUSTOM	051692	1	
19	BOLT, 1/4-20 X 1" HEX HEAD GRADE 5	F05005-101	4	
20	NUT, 1/4-20 NYLON LOCK	F05010-69	4	
21	SWITCH ASSEMBLY, PERIMETER SAFETY PULL	051300	1	

<sup>1</sup> Mounting plate and holes relocated to improve safety cable alignment (Rev. A1.02).

## SECTION 6 ELECTRICAL INFORMATION

### 6.1 Electrical Symbol Diagram



TL0015

\* Ref. E430 Diagram

Tailer Control/Edger Interface

**FIG. 6-1 SYMBOL DIAGRAM**

## 6.2 Electrical Component List

Component	AWMV Part No.	Description
<b>D1</b>	050903-1 <sup>1</sup>	Disconnect, 40A 3P Non-Fused 6mm
<b>MC1-1</b>	051995	Contact, Phase Barrier
<b>MC1-2</b>	051993	Contact, 12A Power Base
<b>MC1-3</b>	051994	Contact, 1.25-5A 3P Control
<b>MC1-4</b>	052386	Contact, 1NO 1NC U-Line Auxiliary
<b>S1</b>	024945	Switch, PB E-Stop Red
<b>S2</b>	051298	Switch, Cable Pull Normal Stop
<b>TB1-4</b>	024893	Terminal Block, 2 Tier Phoenix
<b>GNDTB1-2</b>	051344	Terminal Block, Green/Yellow Grounding
<b>M1</b>	042390	Motor, 2HP 230/460V 3P

<sup>1</sup> 5mm Disconnect Shaft OXP5X120 replaced by vendor with 6mm shaft OXS5X120 (2/10). Replacement of any disconnect component requires replacement of disconnect, shaft and operator handle (050903-1, 050883-1 & 050882-1).

### 6.3 Component Layout Diagrams

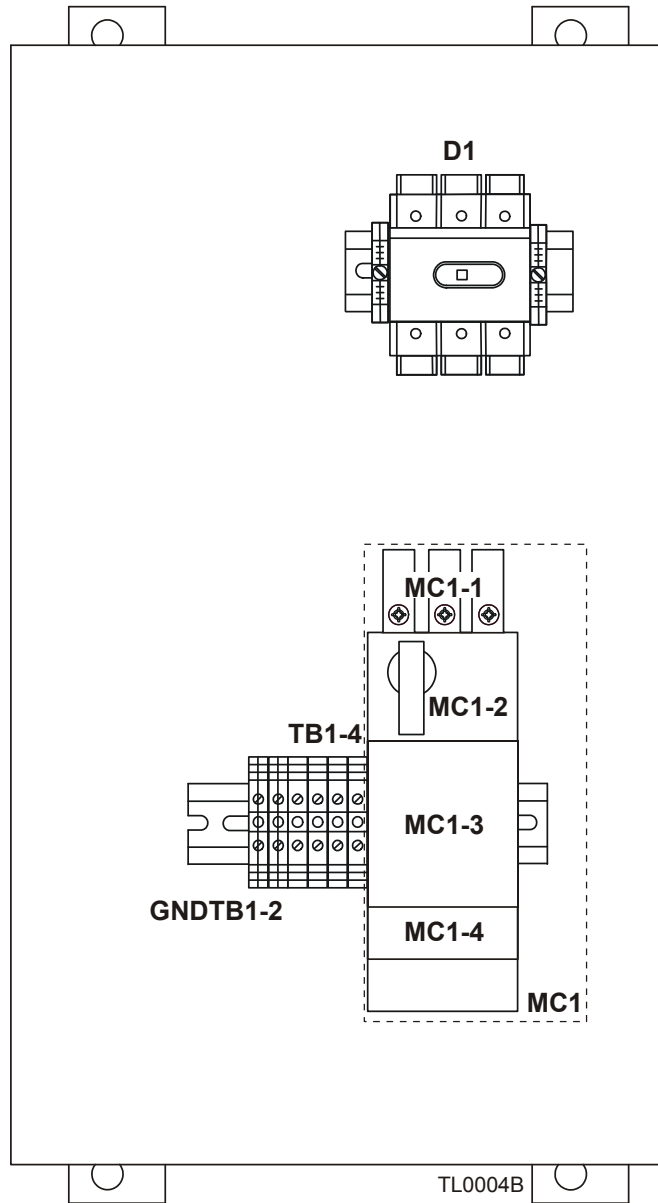


FIG. 6-2

# INDEX

---

## E

electrical information 6-1  
    component layout diagrams 6-3  
    component list 6-2  
    symbol diagram 6-1

---

## I

introduction  
    dimensions 1-5  
    specifications 1-6

---

## M

maintenance 4-1  
    gearbox oil 4-1  
    lubrication 4-5  
    tensioning chains 4-2

---

## O

operation  
    setup 3-1  
    shutting down the machine 3-9  
    starting the machine 3-8

---

## R

replacement parts  
    drive side 5-2  
    hold-down wheel assembly 5-10  
    how to use parts list 5-1  
    idle side 5-8  
    infeed, idle side 5-9  
    legs, emergency switch, electrical box 5-12  
    outfeed, drive side 5-4, 5-6

---

## S

safety  
    instructions 2-2  
    symbols 2-1

service information  
    branch locations 1-3  
    customer & equipment ID 1-4  
    general contact info 1-2

setup  
    electrical installation 3-4