

Twin Vertical Saw

Parts Manual

TVS US Control Box rev. A5.00 - B3.00

Safety is our #1 concern!

February 2010

Form #1675



WARNING! Read and understand this manual before using this machine.

California
Proposition 65 Warning



WARNING: Breathing gas/diesel engine exhaust exposes you to chemicals known to the State of California to cause cancer and birth defects or other reproductive harm.

- Always start and operate the engine in a well-ventilated area.
- If in an enclosed area, vent the exhaust to the outside.
- Do not modify or tamper with the exhaust system.
- Do not idle the engine except as necessary.

For more information go to **www.P65warnings.ca.gov**.



WARNING: Drilling, sawing, sanding or machining wood products can expose you to wood dust, a substance known to the State of California to cause cancer. Avoid inhaling wood dust or use a dust mask or other safeguards for personal protection.

For more information go to **www.P65Warnings.ca.gov/wood**.

Active Patents assigned to Wood-Mizer, LLC

Wood-Mizer, LLC has received patents that protect our inventions which are a result of a dedication to research, innovation, development, and design. Learn more at: woodmizer.com/patents

©2023 Wood-Mizer LLC

Printed in the United States of America, all rights reserved. No part of this manual may be reproduced in any form by any photographic, electronic, mechanical or other means or used in any information storage and retrieval system without written permission from

Wood-Mizer, LLC
8180 West 10th Street
Indianapolis, Indiana 46214

SECTION 1 SECTION 1REPLACEMENT PARTS 1-1

- 1.1 How To Use The Parts List..... 1-1
 - To Order Parts 1-1*
- 1.2 Sample Assembly..... 1-1
- 1.3 Torque Values 1-2

SECTION 2 SECTION 2CONTROL BOX 2-1

- 2.2 Operator Control Box Assembly..... 2-2
- 2.3 Laser Assembly (Optional) 2-4
- 2.4 Friction Assembly (Manual Cutting Width Setting)..... 2-6

SECTION 1 REPLACEMENT PARTS

1.1 How To Use The Parts List

- Use the table of contents to locate the assembly that contains the part you need.
- Go to the appropriate section and locate the part in the illustration.
- Use the number pointing to the part to locate the correct part number and description in the table.
- Parts shown indented under another part are included with that part.

To Order Parts

- From the continental US, call **1-800-525-8100** to order parts. Have your customer number, vehicle identification number, and part numbers ready when you call.
- From other international locations, contact the Wood-Mizer distributor in your area for parts.

1.2 Sample Assembly

REF	PART #	DESCRIPTION	COMMENTS	QTY.
	012345	SAMPLE ASSEMBLY, COMPLETE	INCLUDES ITEMS 1-6	1
1	F02222-22	Sample Part		1
2	F03333-33	Sample Part		2
	098765	Sample Subassembly	Includes items 3-6	1
3	S04444-44	Subassembly Sample Part		1
4	K55555	Subassembly Sample Part		1
	054321	Sample Sub-Subassembly	Includes items 5-6	2
5	022222	Sub-Subassembly Sample Part		1
6	F10234-56	Sub-Subassembly Sample Part		1

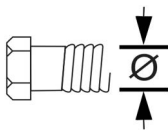
The Sample Assembly, Complete, part number 02345 (top level assembly) includes two parts (F0222-22 and F0333-33) and the 098765 subassembly.

Subassembly 098765 contains two parts(S04444-44 and K55555) and two copies of sub-subassembly 054321.

Each sub-subassembly 054321 contains two parts (022222 and F10234-56).

1.3 Torque Values

Grade		Units	SAE 5	SAE 8
Grade Mark				
Bolt Dia.	Threads Per In.	Units	SAE 5	SAE 8
6	32	in-lbs (Nm)	20 (2.3)	-
8	32	in-lbs (Nm)	24 (2.7)	30 (3.4)
10	24	in-lbs (Nm)	35 (4.0)	45 (5.1)
10	32	in-lbs (Nm)	40 (4.5)	50 (5.7)
12	24	in-lbs (Nm)	50 (5.7)	65 (7.3)
1/4	20	in-lbs (Nm)	95 (10.7)	125 (14.1)
1/4	28	in-lbs (Nm)	95 (10.7)	150 (17.0)
5/16	18	ft-lbs (Nm)	17 (22.6)	23 (31.2)
5/16	24	ft-lbs (Nm)	20 (27.1)	25 (33.8)
3/8	16	ft-lbs (Nm)	30 (40.7)	40 (54.2)
3/8	24	ft-lbs (Nm)	35 (47.5)	45 (61.0)
7/16	14	ft-lbs (Nm)	50 (67.8)	65 (88.1)
7/16	20	ft-lbs (Nm)	55 (74.6)	70 (94.9)
1/2	13	ft-lbs (Nm)	75 (101.7)	100 (135.6)
1/2	20	ft-lbs (Nm)	85 (115.3)	110 (149.2)
9/16	12	ft-lbs (Nm)	105 (142.4)	135 (183.1)
9/16	18	ft-lbs (Nm)	115 (155.9)	150 (203.4)
5/8	11	ft-lbs (Nm)	150 (203.4)	195 (264.4)
5/8	18	ft-lbs (Nm)	160 (217.0)	210 (284.8)
3/4	10	ft-lbs (Nm)	170 (230.5)	220 (298.3)
3/4	16	ft-lbs (Nm)	175 (237.3)	225 (305.1)
7/8	9	ft-lbs (Nm)	302 (409.5)	473 (640.9)
7/8	14	ft-lbs (Nm)	300 (406.8)	400 (542.4)
1	8	ft-lbs (Nm)	466 (631.8)	714 (967.4)



Metric Bolt Head Identification



Metric Grade 8.8

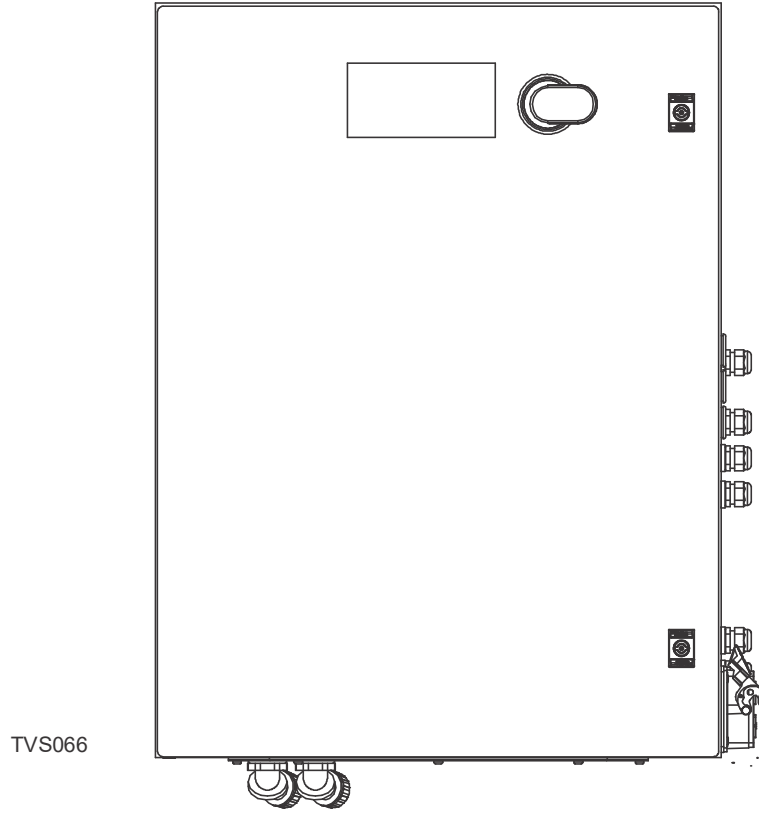


Metric Grade 10.9

COARSE THREAD					FINE THREAD				Wrench Size	
Diameter & Thread Pitch	Metric 8.8		Metric 10.9		Diameter & Thread Pitch	Metric 8.8		Metric 10.9		
	N-m	lbs-ft	N-m	lbs-ft		N-m	lbs-ft	N-m		lbs-ft
6 x 1.0	8	6	11	8					10 mm	
8 x 1.25	20	15	27	20	8 x 1.0	21	16	29	22	13 mm
10 x 1.5	39	29	54	40	10 x 1.25	41	30	57	42	16 mm
12 x 1.75	68	50	94	70	12 x 1.25	75	55	103	76	18 mm
14 x 2.0	109	80	151	111	14 x 1.5	118	87	163	120	21 mm
16 x 2.0	169	125	234	173	16 x 1.5	181	133	250	184	24 mm
18 x 2.5	234	172	323	239	18 x 1.5	263	194	363	268	27 mm
20 x 2.5	330	244	457	337	20 x 1.5	367	270	507	374	30 mm
22 x 2.5	451	332	623	460	22 x 1.5	495	365	684	505	34 mm
24 x 3.0	571	421	790	583	24 x 2.0	623	459	861	635	36 mm
30 x 3.0	1175	867	1626	1199	30 x 2.0	1258	928	1740	1283	46 mm

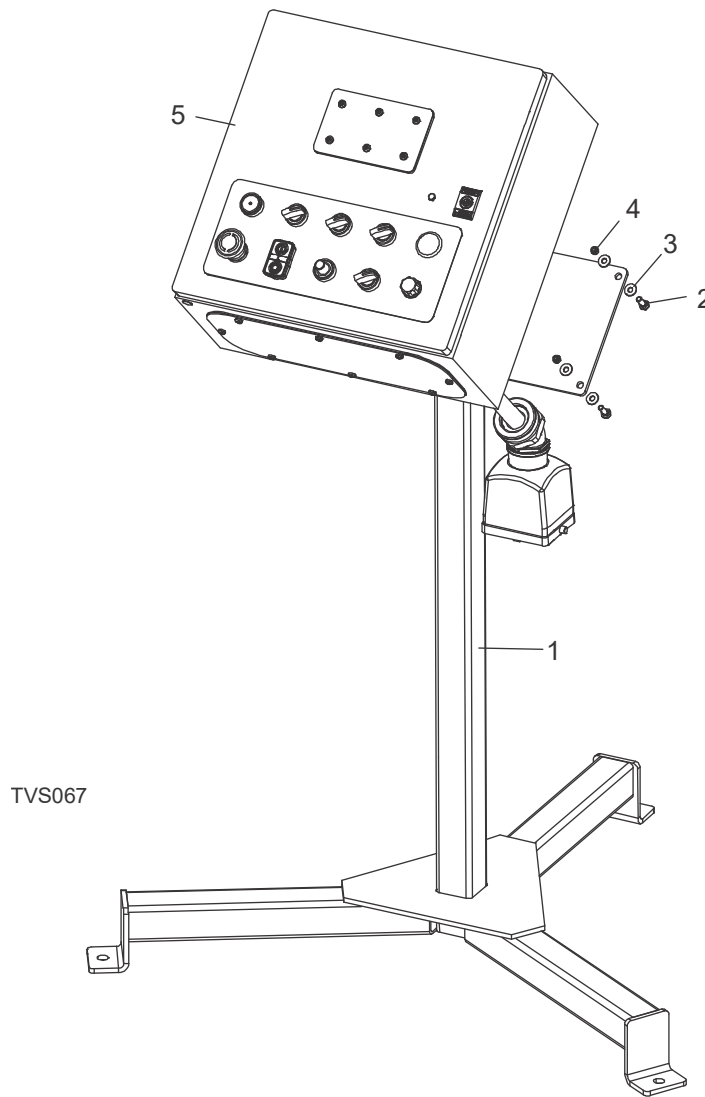
SECTION 2 CONTROL BOX

2.1 Main Control Assembly



REF	PART #	DESCRIPTION	COMMENTS	QTY.
	053722-4	CONTROL ASSEMBLY, TVSEC15U MAIN (U.S. ONLY)	Replaces 053722-3 TVSEC15U Main Control Assembly (Rev. B2.00). 053722-3 included 053723-3 TVSEC15U Main Insert Assembly.	1
	053724	Enclosure, TVS Control		1
	062457	Plate, Control Box Mount		1
	062458	Plate, Control Box Saddle		1
	053723-4	Insert Assembly, TVSEC15U Main		1
	S20061	Decal, Electrical Hazard Danger		1
	069748	Harness Assembly, TVS Blade Motor Left		1
	069749	Harness Assembly, TVS Blade Motor Right		1
		<i>See Form #2049 TVS Electrical Information</i> for complete electrical information and replacement parts		

2.2 Operator Control Box Assembly

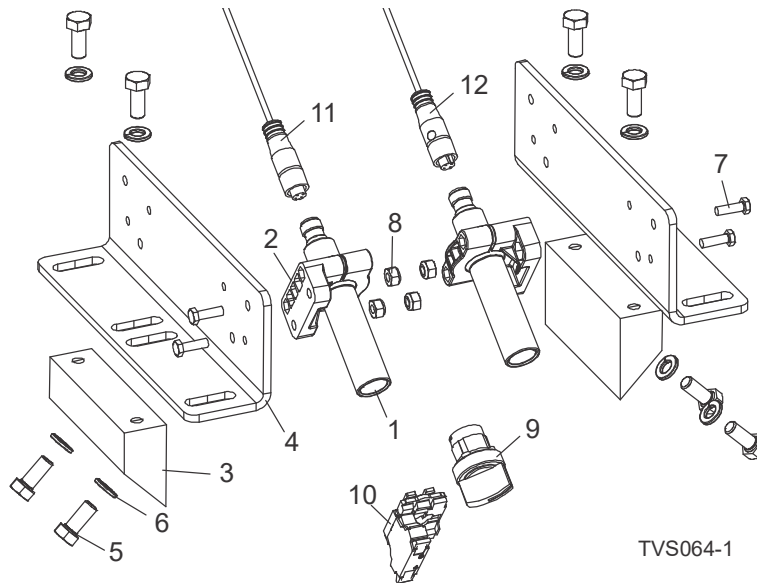


REF	PART #	DESCRIPTION	COMMENTS	QTY.
	069762	OPERATOR ASSEMBLY, TVS (U.S. ONLY)		1
1	039336	Stand Weldment, Edger Control		1
2	F05005-1	Bolt, 1/4-20 x 3/4" Full Thread HHC		4
3	F05011-11	Washer, 1/4" SAE Flat		8
4	F05010-69	Nut, 1/4-20 Nylock		4
5	053728-2	Control Assembly, TVSEC15U Operator	Replaces 053728-1 TVSEC15U Operator Control Assembly (Rev. B2.00). 053728-1 included 069746 TVS Operator Enclosure, 069368 TVS Operator Control Decal, 013904 TVE15 Cover Operator Setworks, 013905 Operator Set TVE15 Back Plate Cover and 013906 Operator Setworks Panel Gasket.	1
	069746-1	Enclosure, TVS Operator		1

2 Saw Head
Operator Control Box Assembly

REF	PART #	DESCRIPTION	COMMENTS	QTY.
	078312	Decal, TVS Operator Control		1
	078313	Plate, TVS Operator Stwx Blank Front		1
	078314	Plate, TVS Operator Stwx Blank Back		1
	078315	Gasket, TVS Operator Stwx Blank		1
		<i>See Form #2049 TVS Electrical Information</i> for complete electrical information and replacement parts		

2.3 Laser Assembly (Optional)



TVS064-1

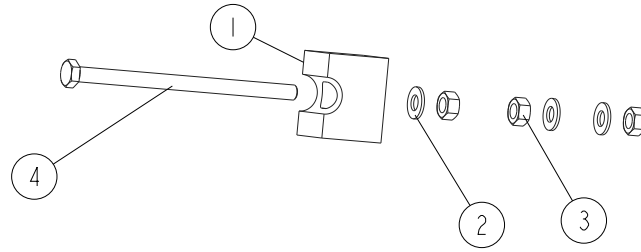
REF	PART #	DESCRIPTION	COMMENTS	QTY.
	TVSULAS-CI	TVS LASER ASSEMBLY, COMPLETE (CUSTOMER INSTALLED)		1
	TVSULAS-MI	TVS LASER ASSEMBLY, COMPLETE (MANUFACTURER INSTALLED)		1
	069771-3	Control Assembly, TVSEC15U Lasers	069771-3 replaced 069771-2 TVSEC15U Lasers Control Assembly (Rev. B2.00). 069851-2 replaced 069851 Setworks TVSU Control Assembly (A9.00). 069851 Setworks TVSU Control Assembly included 069849 PLC Networks PLC Assembly and 069850 PLC Networks HMI Assembly used only on TVS prior to Rev. A9.00. Use 069849-2 and 069850-2 for TVS Rev. A9.00 and later. 069771-2 replaced 069771 (Customer Installed) and 069771-1 (Factory Installed) TVSEC15U Lasers Control Assembly (Rev. A7.00).	1
1	069855	Laser, 5mW 532nm 90 Deg Line Z-Laser		2
2	069856	Bracket, M18 Swivel		2
3	062455	Block, Laser Mount		2
4	062456	Plate, Laser Mount		2
5	F05006-5	Bolt, 5/16-18 x 3/4" HHC		8
6	F05011-13	Washer, 5/16" Split Lock		8
7	F05004-18	Screw, 10-24 x 5/8" Unsl Indent HH Machine		4
8	F05010-160	Nut, 10-24 Hex Nylock		4
9	068943	Switch, 2Pos Maintained ZB5		1
10	068952	Collar, Mount 1NO ZB5		1
11	078387	Cable Assembly, TVSU Laser Left		1

2 **Saw Head**
Laser Assembly (Optional)

REF	PART #	DESCRIPTION	COMMENTS	QTY.
12	078388	Cable Assembly, TVS Laser Right		1
	M1736	Instruction Sheet, TVS Networks Installation		1

2.4 Friction Assembly (Manual Cutting Width Setting)

TVS_408
516366_Oper_Manual



REF	PART #	DESCRIPTION	COMMENTS	QTY.
	516336	FRICION ASSEMBLY		1
1	517532	Block, Friction Assembly		1
2	F81054-1	Washer, 8.4 Flat Zinc		1
3	F81032-1	Nut, M8-8-b Hex Zinc		1
4	F81002-72	Bolt, M8x130 8.8 Hex Head Full Thread Zinc		1