

**SVS US Supplement - Control Box  
Parts Manual**

---

**Single Vertical Saw (SVS) rev. A5.00**

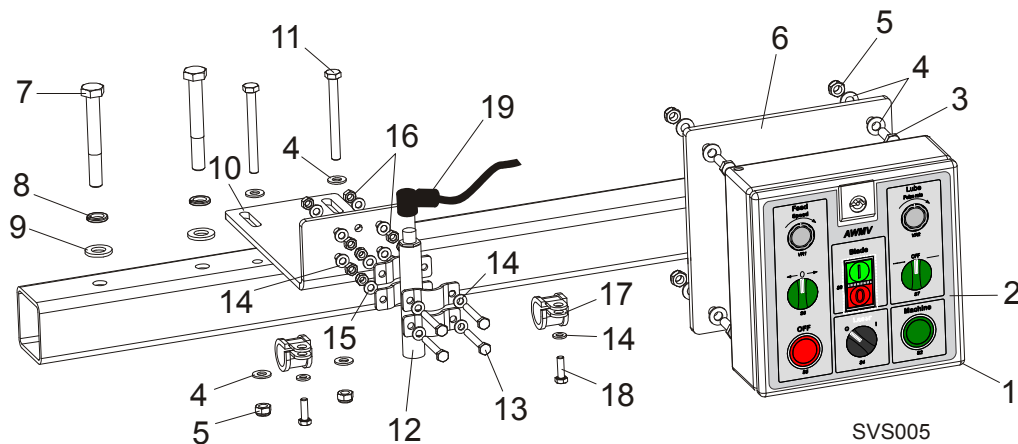
---



**Safety is our #1 concern!** Read and understand all safety information and instructions before operating, setting up or maintaining this machine.

*Form #1749*

## 4.7 Control Box



REF	DESCRIPTION (◆ Indicates Parts Available In Assemblies Only)	PART #	QTY.
	<b>CONTROL ASSEMBLY, SVS OPERATOR</b>	053764	1
1	Enclosure, SVS Operator	053747	1
2	Decal, SVS Operator	053756	1
	<i>See SVS Operator's Manual for electrical component list &amp; layout diagrams</i>		
3	<b>BOLT, M8X25-8.8-B HEX HEAD FULL THREAD ZINC</b>	F81002-5	4
4	<b>WASHER, 8.4 FLAT ZINC</b>	F81054-1	12
5	<b>NUT, M8-8-B HEX NYLON ZINC LOCK</b>	F81032-2	6
6	<b>TUBE WELDMENT, CONTROL BOX MOUNTING</b>	099838-1	1
7	<b>BOLT, M12X90-8.8 HEX HEAD ZINC</b>	F81004-2	2
8	<b>WASHER, Z12.2 SPLIT LOCK ZINC</b>	F81056-2	2
9	<b>WASHER, 13 FLAT ZINC</b>	F81056-1	2
10	<b>BRACKET, SVS LASER MOUNTING</b>	099842-1	1
11	<b>BOLT, M8X80-8.8 HEX HEAD ZINC</b>	F81002-18	2
12	<b>LASER, Z5M18B-F-532-IG90 GREEN - LINEAR</b>	501025	1
13	<b>BOLT, M6X45-8.8 HEX HEAD FULL THREAD ZINC</b>	F81001-45	4
14	<b>WASHER, 6.4 FLAT ZINC</b>	F81053-1	18
15	<b>NUT, M6-8-B HEX NYLON ZINC LOCK</b>	F81031-2	4
16	<b>NUT, M6-8 HEX ZINC</b>	F81031-1	2
17	<b>CLAMP, RSGU 1.20/20 W1 CABLE</b>	F81087-2	2
18	<b>BOLT, M6X20-8.8 HEX HEAD FULL THREAD ZINC</b>	F81001-2	2
19	<b>CABLE ASSEMBLY, SVS-U LASER (U.S. ONLY)</b>	069552	1
	<b>CABLE, 5M SAFETY SWITCH (EUROPE ONLY)</b>	087652	1