

# Decoiler

## Safety, Operation, Maintenance & Parts Manual

---

**BMD50**

**Rev. A1.00**

---



**Safety is our #1 concern!** Read and understand all safety information and instructions before operating, setting up or maintaining this machine.

*Form #2365*

**© 2019**

Printed in the United States of America, all rights reserved. No part of this manual may be reproduced in any form by any photographic, electronic, mechanical or other means or used in any information storage and retrieval system without written permission from

**Wood-Mizer**  
8180 West 10th Street  
Indianapolis, Indiana 46214

# Table of Contents

# Section-Page

<b>SECTION 1</b>	<b>INTRODUCTION</b>	<b>1-5</b>
1.1	About This Manual.....	1-5
1.2	Getting Service.....	1-6
	<i>General Contact Information.....</i>	<i>1-6</i>
	<i>Wood-Mizer Locations.....</i>	<i>1-7</i>
1.3	Component ID.....	1-8
1.4	Dimensions and Specifications.....	1-9
<b>SECTION 2</b>	<b>SAFETY</b>	<b>2-1</b>
2.1	Safety.....	2-1
<b>SECTION 3</b>	<b>OPERATION</b>	<b>3-1</b>
3.1	Blade Installation/Setup.....	3-1
<b>SECTION 4</b>	<b>REPLACEMENT PARTS</b>	<b>4-1</b>
4.1	Decoiler (Complete).....	4-1
4.2	Decoiler Assembly.....	4-2
4.3	Cover Assembly.....	4-3
4.4	Table Assembly.....	4-4
4.5	Internal Roller Assembly.....	4-6
4.6	Locking Roller.....	4-7
4.7	External Roller Assembly.....	4-9
	<b>INDEX</b>	<b>I</b>

## SECTION 1 INTRODUCTION

### 1.1 About This Manual

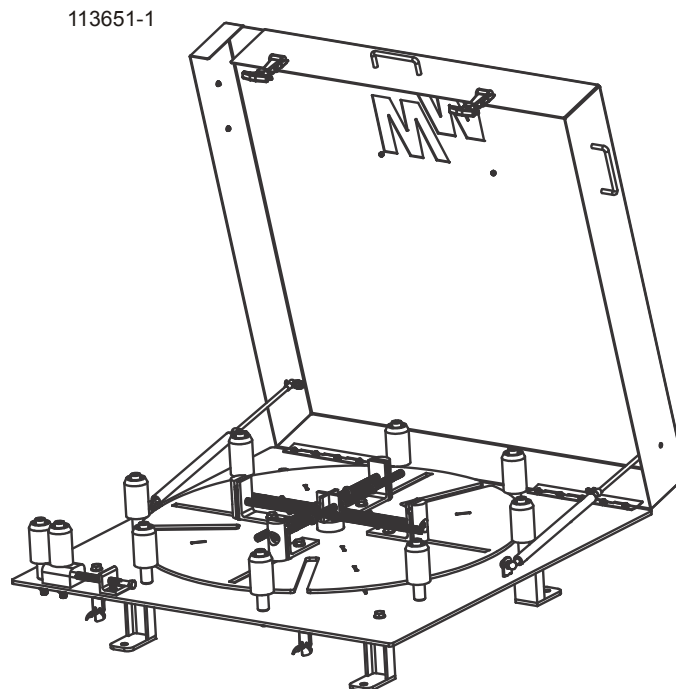
This manual is to replace or to be used with all previous information received on the Wood-Mizer®<sup>1</sup> equipment. All future mailings will be an addition to or a revision of individual sections of this manual as we obtain new information.

The information and instructions given in this manual do not amend or extend the limited warranties for the equipment given at the time of purchase.

This equipment is designed to work with Wood-Mizer blades only.



**IMPORTANT!** Read the entire Operator's Manual before operating the equipment. Take notice of all safety warnings throughout this manual and those posted on the equipment. Keep this manual with this equipment at all times, regardless of ownership.



**FIG. 1-0**

---

<sup>1</sup>Wood-Mizer® is a registered trademark of Wood-Mizer Products, Inc.

## 1.2 Getting Service

Wood-Mizer is committed to providing you with the latest technology, best quality and strongest customer service available on the market today. We continually evaluate our customers' needs to ensure we're meeting current wood-processing demands. Your comments and suggestions are welcome.

### *General Contact Information*

Toll free phone numbers are listed below for the *continental* U.S. and Canada. See the next page for contact information for more Wood-Mizer locations.

	<b>United States</b>	<b>Canada</b>
<b>Sales</b>	1-800-553-0182	1-877-866-0667
<b>Service</b>	1-800-525-8100	1-877-866-0667
<b>Website</b>	www.woodmizer.com	www.woodmizer.ca
<b>E-mail</b>	woodmizer@woodmizer.com	oninfo@woodmizer.com

**Office Hours:** All times are Eastern Standard Time.

<b>Monday - Friday</b>	<b>Saturday (Indianapolis Office Only)</b>	<b>Sunday</b>
8 a.m. to 5 p.m.	8 a.m. to 12 p.m.	Closed

Please have your vehicle identification number and your customer number ready when you call.

Wood-Mizer will accept these methods of payment:

- Visa, Mastercard, or Discover
- COD
- Prepayment
- Net 15 (with approved credit)

Be aware that shipping and handling charges may apply. Handling charges are based on size and quantity of order. In most cases, items will ship on the day they are ordered. Second Day and Next Day shipping are available at additional cost.

If your sawmill was purchased outside the United States or Canada, contact the distributor for service.

**Wood-Mizer Locations****USA World Headquarters**

*Serving North & South America, Oceania, East Asia*

Wood-Mizer LLC  
8180 West 10th Street  
Indianapolis, IN 46214

Phone: 317.271.1542 or 800.553.0182  
Customer Service: 800.525.8100  
Fax: 317.273.1011  
Email: [infocenter@woodmizer.com](mailto:infocenter@woodmizer.com)

**Canadian Headquarters**

*Serving Canada*

Wood-Mizer Canada  
396 County Road 36, Unit B  
Lindsay, ON K9V 4R3

Phone: 705.878.5255 or 877.357.3373  
Fax: 705.878.5355  
Email: [ContactCanada@woodmizer.com](mailto:ContactCanada@woodmizer.com)

**Brazil Headquarters**

*Serving Brazil*

Wood-Mizer do Brasil  
Rua Dom Pedro 1, No: 205 Bairro: Sao Jose  
Ivoti/RS CEP:93.900-000

Tel: +55 51 9894-6461/ +55 21 8030-3338/ +55 51  
3563-4784  
Email: [info@woodmizer.com.br](mailto:info@woodmizer.com.br)

**Europe Headquarters**

*Serving Europe, Africa, West Asia*

Wood-Mizer Industries Sp z o.o.  
Nagorna 114  
62-600 Kolo, Poland

Phone: +48.63.26.26.000  
Fax: +48.63.27.22.327

**Branches & Authorized Sales Centers**

For a complete list of dealers, visit [www.woodmizer.com](http://www.woodmizer.com)

1.3 Component ID

See Figure 1-1.

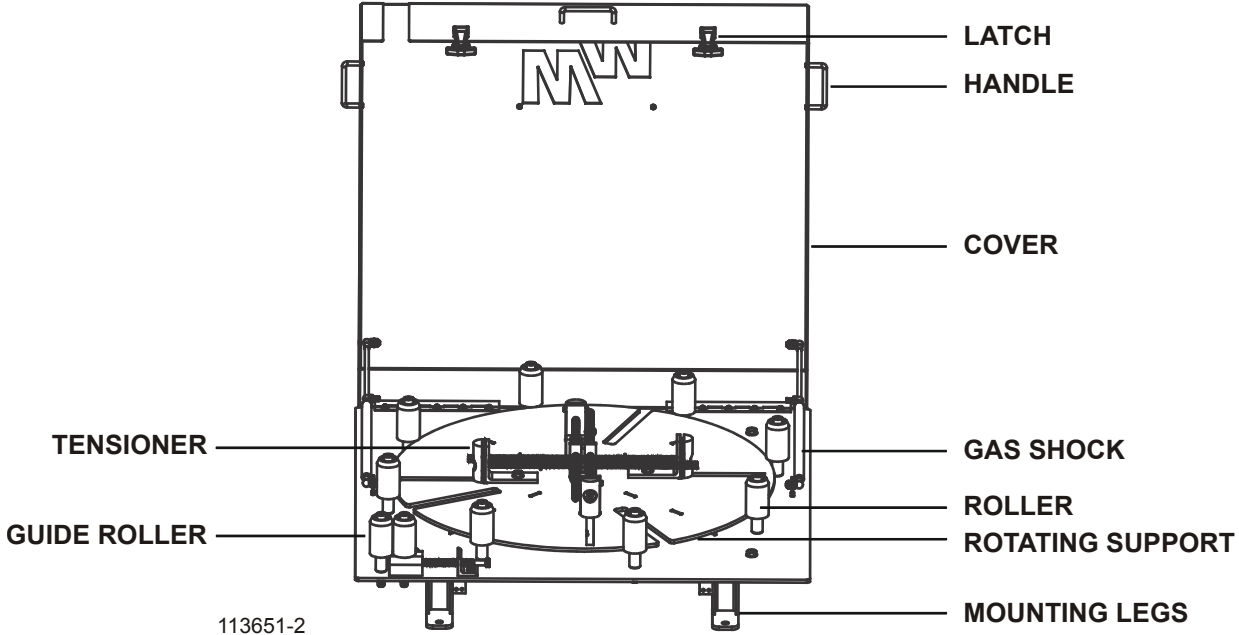
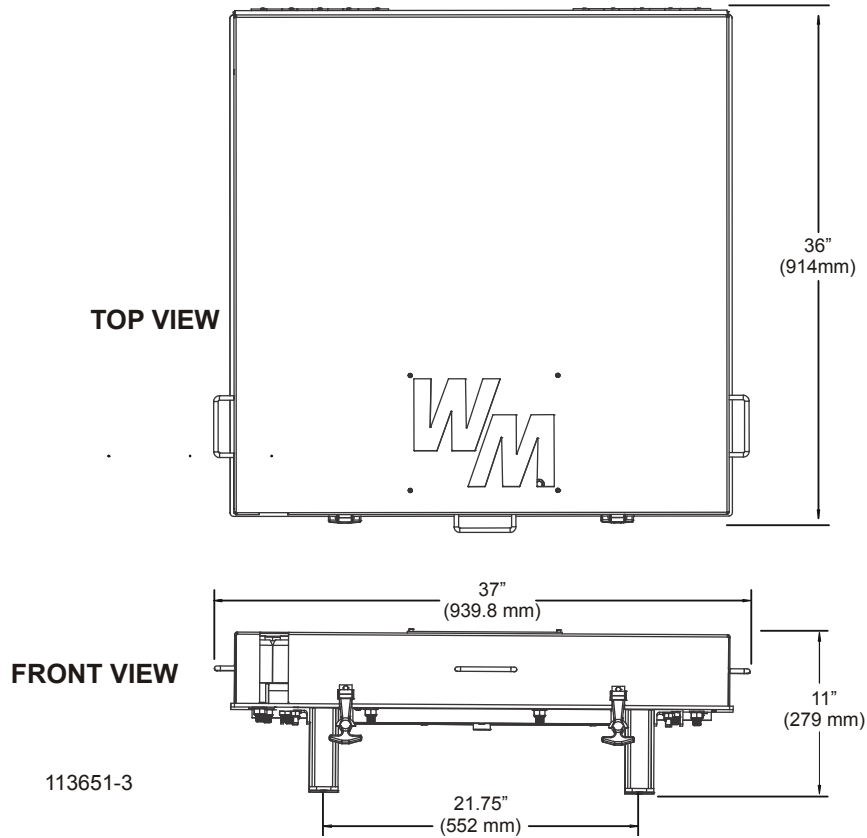


FIG. 1-1

## 1.4 Dimensions and Specifications

See Figure 1-2.



**FIG. 1-2**

See Table 1-1.

	<b>Length</b>	<b>Width</b>	<b>Height</b>	<b>Weight</b>
<b>BMD50</b>	36" (914 mm)	37" (939.8 mm)	11" (279mm)	260 lbs.(218 kg)



## SECTION 2 SAFETY

### 2.1 Safety

The following symbols and signal words call your attention to instructions concerning your personal safety. Be sure to observe and follow these instructions.



**DANGER!** indicates an imminently hazardous situation which, if not avoided, will result in serious injury or death.



**WARNING!** suggests a potentially hazardous situation which, if not avoided, could result in serious injury or death.



**CAUTION!** refers to potentially hazardous situations which, if not avoided, may result in minor or moderate injury or damage to equipment.



**IMPORTANT!** indicates vital information.

Read and observe all safety instructions before operating this equipment! Also read any additional manufacturer's manuals and observe any applicable safety instructions including dangers, warnings, and cautions.

Always be sure that all safety decals are clean and readable. Replace all damaged safety decals to prevent personal injury or damage to the equipment. Contact your local distributor, or call your Customer Service Representative to order more decals.

Safety instructions are listed in this section by the following operations:

- Blade Handling
- Machine Operation

#### Blade Handling



**WARNING!** Always wear gloves and eye protection when handling saw blades. Failure to do so may result in serious injury.



**WARNING!** Keep all persons away from area when coiling or carrying a blade. Failure to do so may result in serious injury.



**WARNING!** Before installing the blade, inspect it for damage and cracks; discard any cracked or damaged blades. Failure to do so may result in serious injury.



**WARNING!** Handle the blade with extreme care; use suitable carrier equipment for transporting the blades. Failure to do so may result in serious injury.

### Machine Operation



**DANGER!** Make sure all guards and covers are in place and secured before operating the decoiler. Failure to do so may result in serious injury.



**DANGER!** Keep all persons away from moving parts when operating the machine. Failure to do so will result in serious injury.



**DANGER!** Always keep hands away from moving blade. Failure to do so will result in serious injury.



**WARNING!** Always wear eye protection when operating this machine. Failure to do so may result in serious injury.






**WARNING!** Secure all loose clothing and jewelry before operating this machine. Failure to do so may result in serious injury or death.



**WARNING!** The decoiler should be operated only by adults who have read and understood the entire operator's manuals. Failure to do so may result in serious injury.

Decoilers Decals


See Table 2-1.

Decal	Part Number	Description
	069680	<b>WARNING!</b> Always wear gloves and eye protection when handling saw blades.
	069685	<b>WARNING!</b> Read the entire Operator's Manual before operating the equipment. Take notice of all safety warnings throughout this manual and those posted on the equipment. Keep this manual with this equipment at all times, regardless of ownership.
	118011	<b>CAUTION!</b> Secure coil with coil ties before removal of coil. The coil is under tension and may spring outward when released, potentially causing personal injury.

## 2 General Information

*Safety*

---

	118012	<b>Caution!</b> Sharp object.
---	--------	-------------------------------

## SECTION 3 OPERATION

### 3.1 Blade Installation/Setup

Changing blades is safest when done by one person!



**WARNING!** Always wear gloves and eye protection when handling bandsaw blades. Failure to do so may result in serious injury.

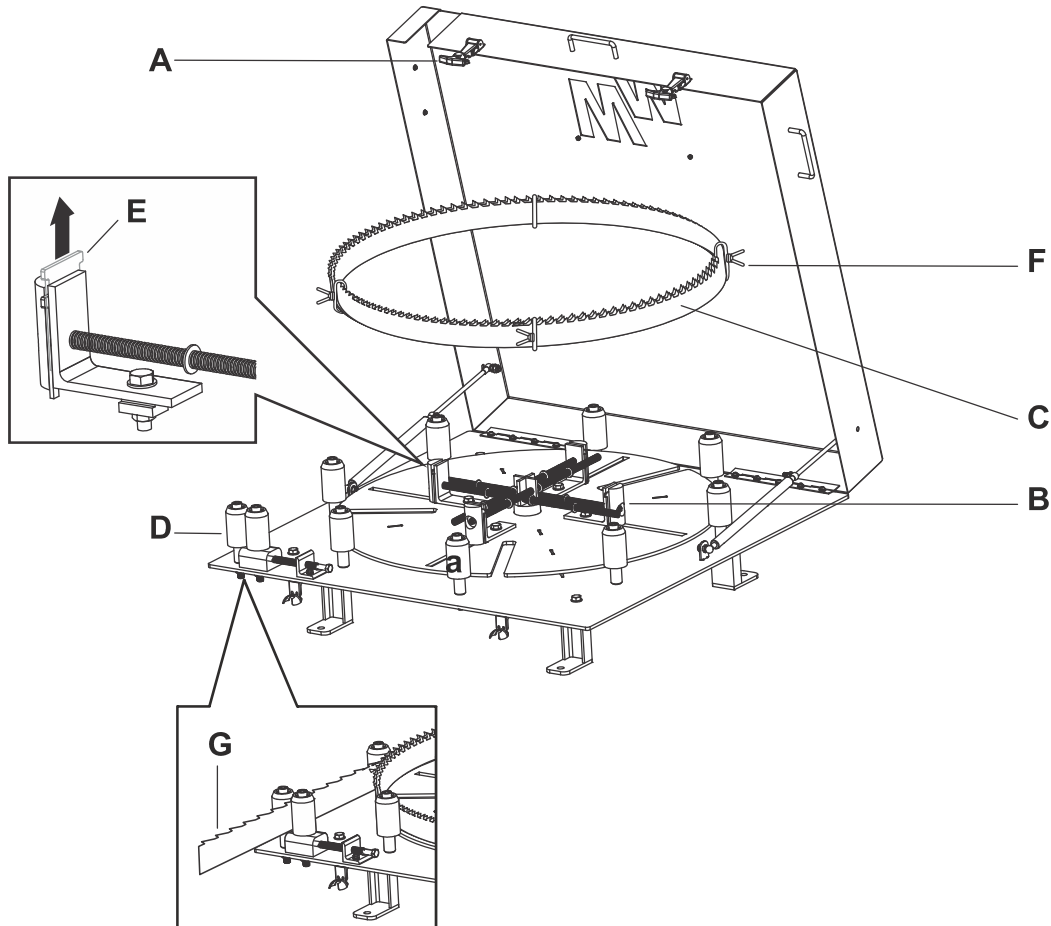


**WARNING!** Keep all other persons away from area when coiling, carrying or changing a blade. Failure to do so may result in serious injury.



**WARNING!** The Decoiler should be operated only by adults who have read and understood the entire operator's manuals. Failure to do so may result in serious injury.

See Figure 3-1.



113651-11

1. Release latches (A) and open the lid.
2. Push back the four I.D. tensioners (B) to lock them into the open position.
3. Place blade coil (C) into the decoiler with teeth facing up.
4. Align the leading edge of coil with outlet rollers (D).
5. Push tensioner back and pull up on tab (E) to release to slide tensioners into closed position.



**WARNING!** The blade coils are under tension; ensure that the coil is securely situated before releasing the coil ties. Failure to do so may result in serious injury.

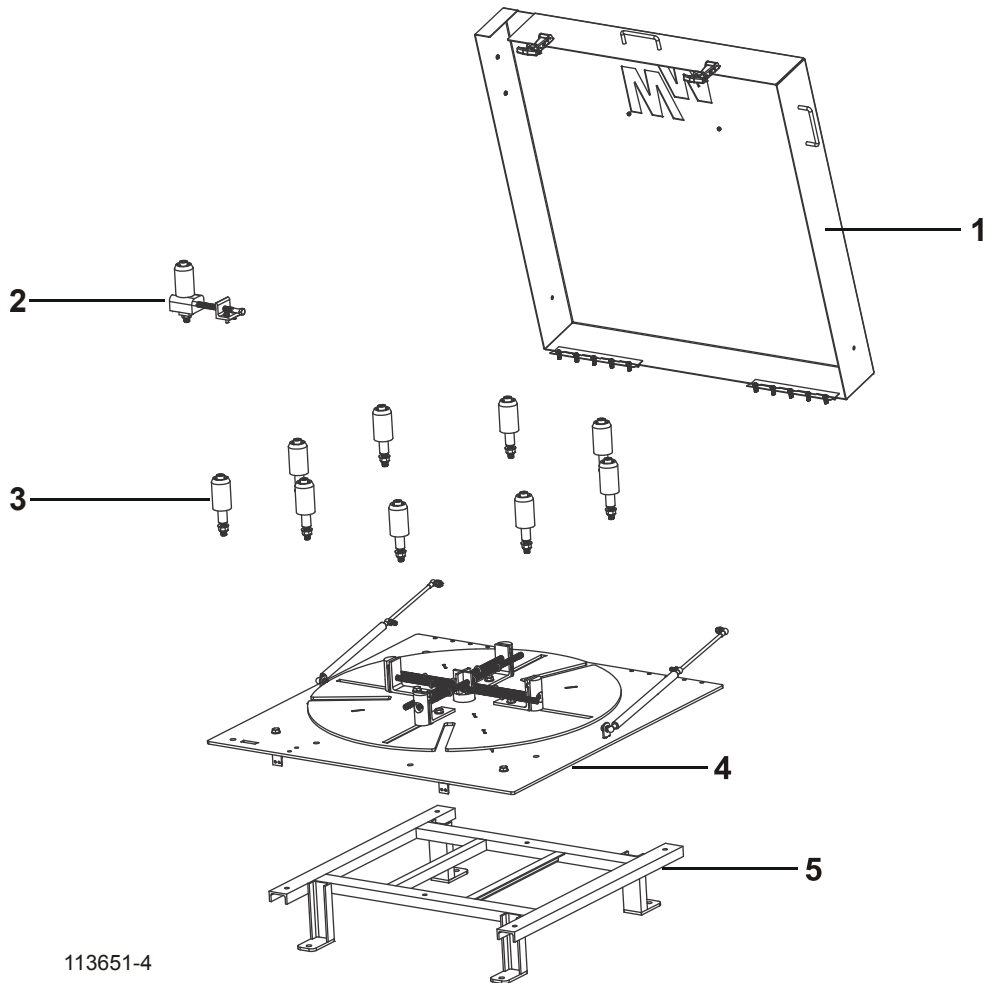
6. Remove coil ties (**F**) ending with the leading edge coil tie.
7. Feed leading edge through the outlet rollers (**G**).
8. Close and secure the lid with the latches.
9. Remove the coil by reversing these steps.

# 4 Replacement Parts

## Decoiler (Complete)

### SECTION 4 REPLACEMENT PARTS

#### 4.1 Decoiler (Complete)

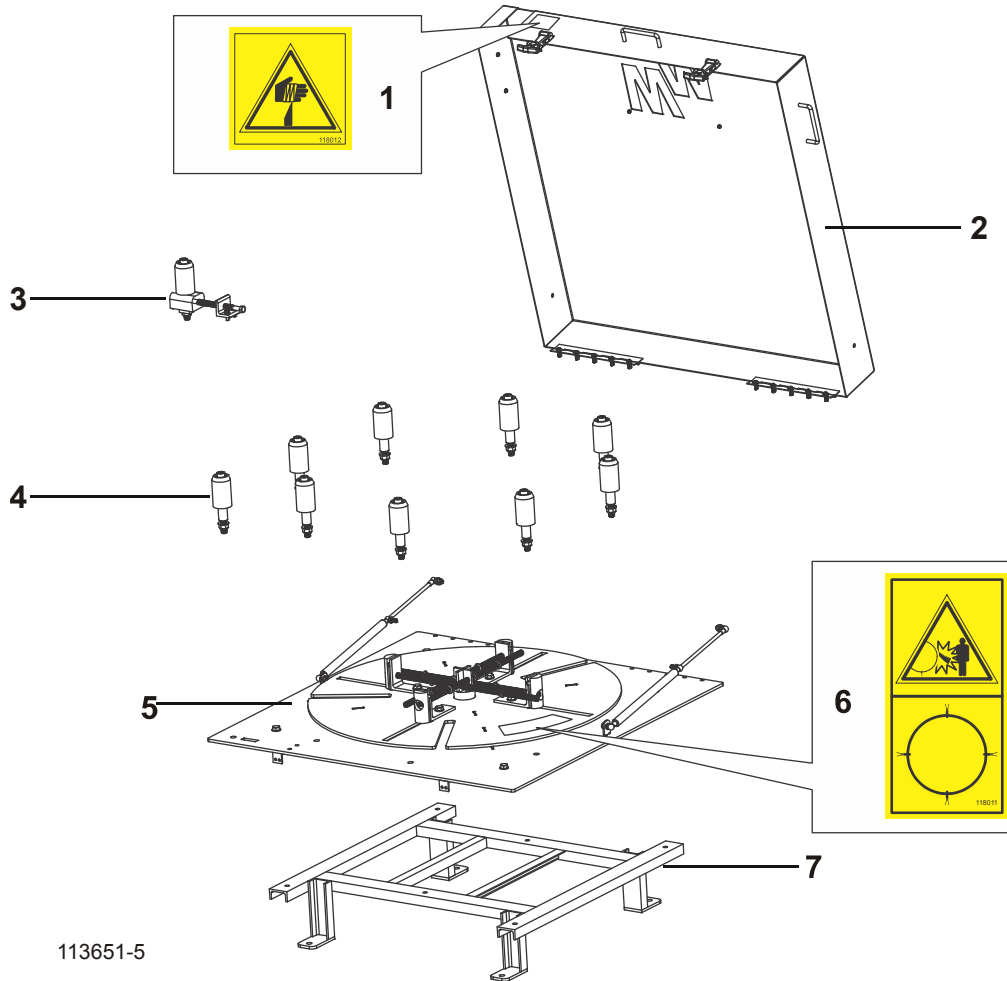


113651-4

REF	DESCRIPTION (◆ Indicates Parts Available In Assemblies Only)	PART #	QTY.
1	Cover Parts ( <a href="#">See Section 4.2</a> )		
2	Locking Roller ( <a href="#">See Section 5.10</a> )		1
3	Rollers ( <a href="#">See Section 4.7</a> )		9
4	Main Plate ( <a href="#">See Section 5.14</a> )		1
5	Base Frame ( <a href="#">See Section 5.15</a> )		1



## 4.2 Decoiler Assembly

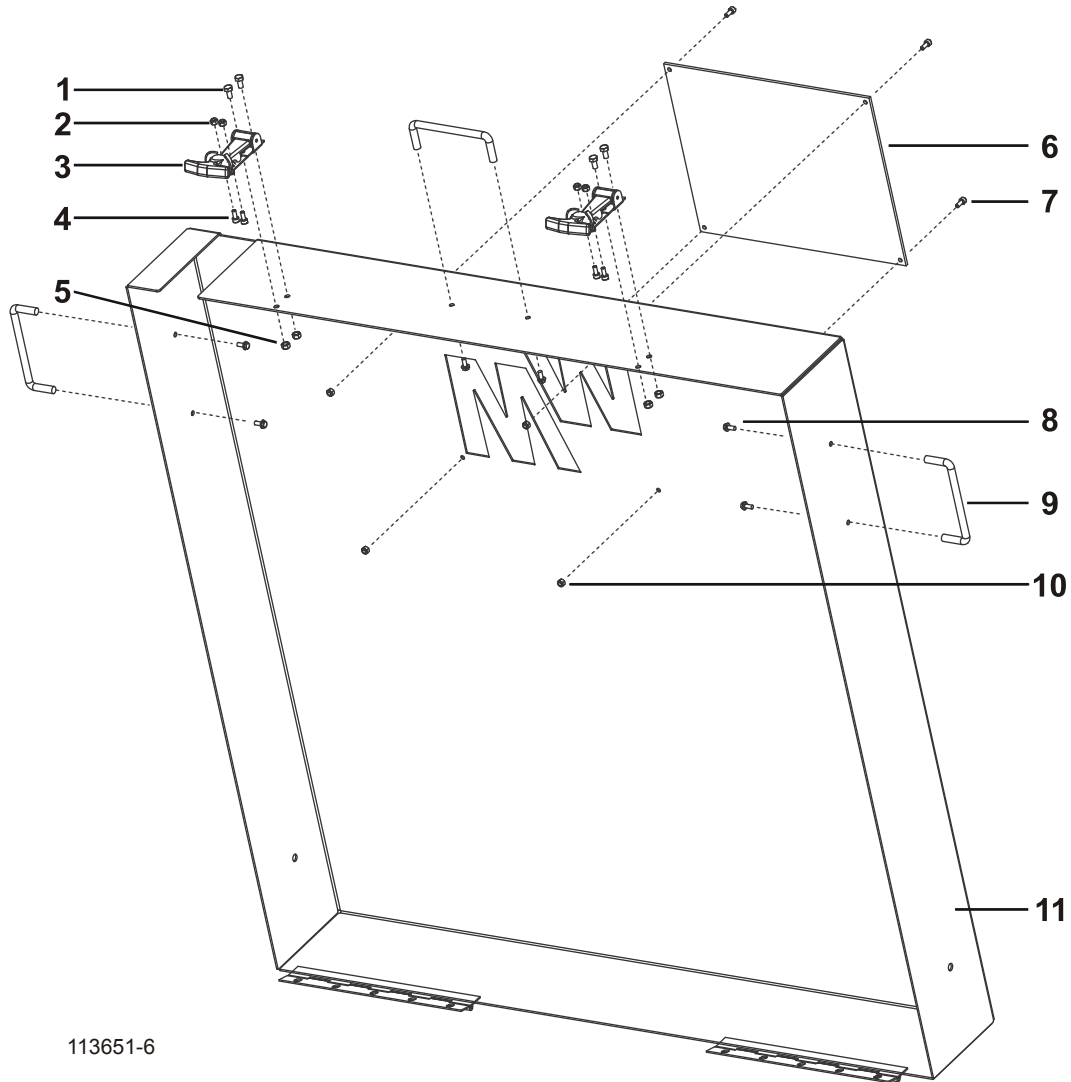


REF	DESCRIPTION (◆ Indicates Parts Available In Assemblies Only)	PART #	QTY.
1	Caution Sharp Object Decal ( <a href="#">See Section 2.1</a> )		
2	Cover Parts ( <a href="#">See Section 4.3</a> )		
3	Locking Roller ( <a href="#">See Section 4.6</a> )		
4	Rollers ( <a href="#">See Section 5.7</a> )		
5	Main Plate ( <a href="#">See Section 5.8</a> )		
6	Caution Retie Blade Coil ( <a href="#">See Section 5.9</a> )		
7	Base Frame	113658	1

# 4 Replacement Parts

## Cover Assembly

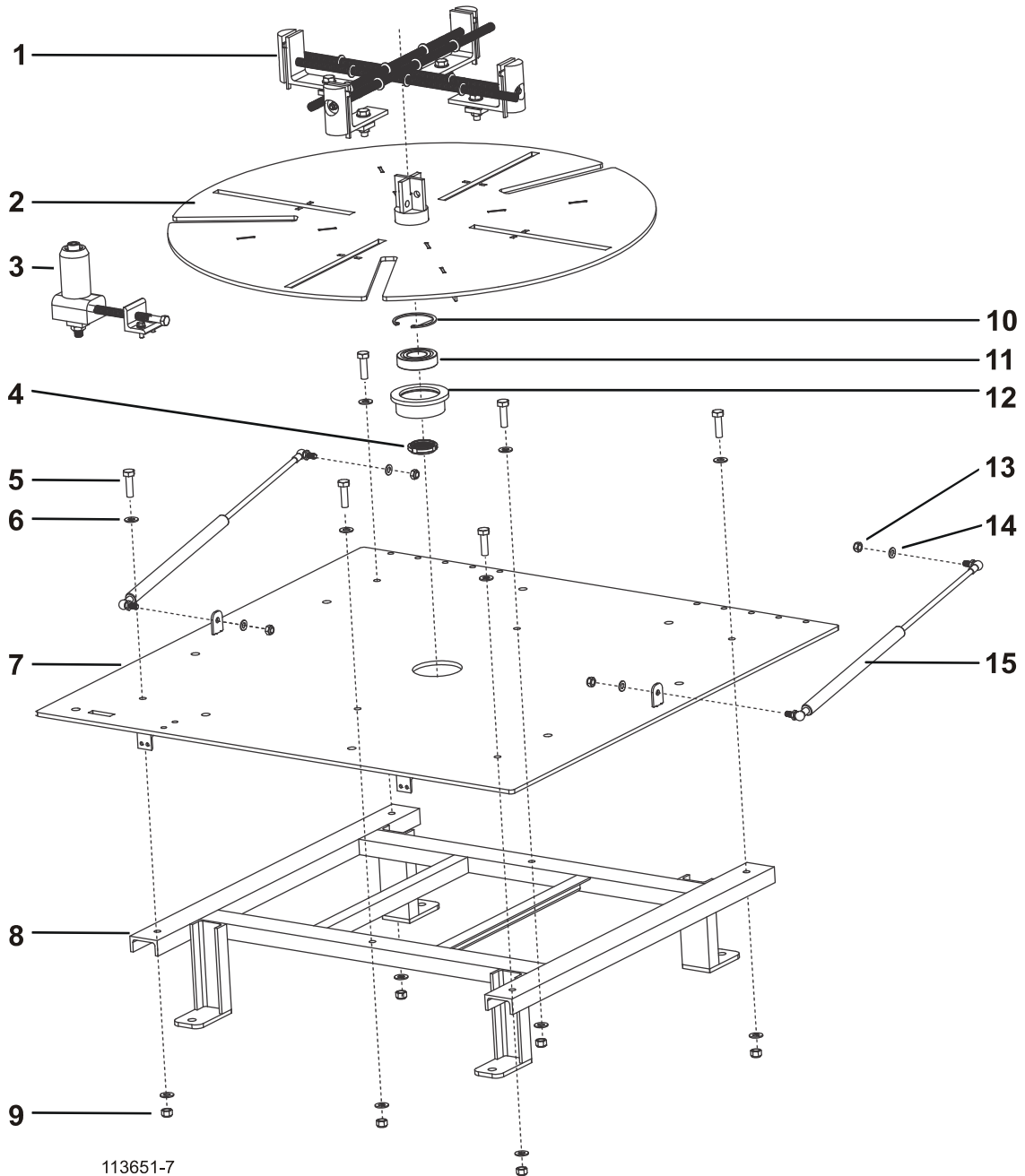
### 4.3 Cover Assembly



113651-6

REF	DESCRIPTION (◆ Indicates Parts Available In Assemblies Only)	PART #	QTY.	
1	Bolt, M5-.8 x10 Class 8 HH	F05020-13	4	◆
2	Nut, M4-.7 Class 8 Nylock	F05027-8	4	
3	Latch, Flexible Draw	014829	2	
4	Bolt, M4-.7 x 10 SHC	F05020-13	4	
5	Nut, M5-.8 Class 8 Hex Nylock	F05027-3	4	
6	Transparent Protection, Cover	F05027-3	1	
7	Bolt, M4-.7 x 10 SHC	F05020-14	4	
8	Bolt, #8-32 x 3/8 Self Tap	F05015-8	6	
9	Handle, 4 W/Bolt	F08065	3	
10	Nut, M4-.7 Class 8 Nylock	F05027	4	

### 4.4 Table Assembly



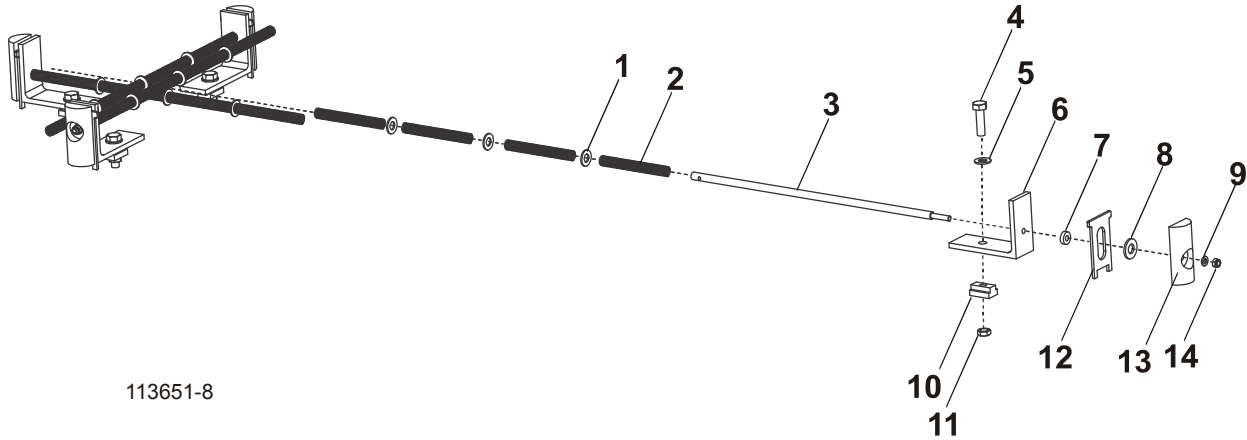
REF	DESCRIPTION (◆ Indicates Parts Available In Assemblies Only)	PART #	QTY.
1	ID Roller Assembly	113670	4
2	Blade Roll Plate, Rotating Support	113666	1
3	Locking Roller Assembly	113698	1

**4****Replacement Parts***Table Assembly*

---

<b>4</b>	Bearing Locknut M30x1.5mm	113690	1	
<b>5</b>	Bolt, M10-1.50 x 35MM HH Gr 8.8	F05022	6	
<b>6</b>	Washer, M10 Flat	F05011	6	
<b>7</b>	Main Plate	113654	1	
<b>8</b>	Base frame	113658	1	
<b>9</b>	Nut, M10-1.50 Hex Nyl Lock	F05004-270	6	
<b>10</b>	Internal Retaining Ring, 2-3/8"	113689	1	
<b>11</b>	Bearing 6206-2RS	113688	1	
<b>12</b>	Bushing, Main Plate	113655	1	
<b>13</b>	Nut, M8-1.25 Hex Nylock	F05010-132	4	
<b>14</b>	Washer, M8 Flat	F05026-4	4	
<b>15</b>	Gas Shock	4138T576	2	

### 4.5 Internal Roller Assembly



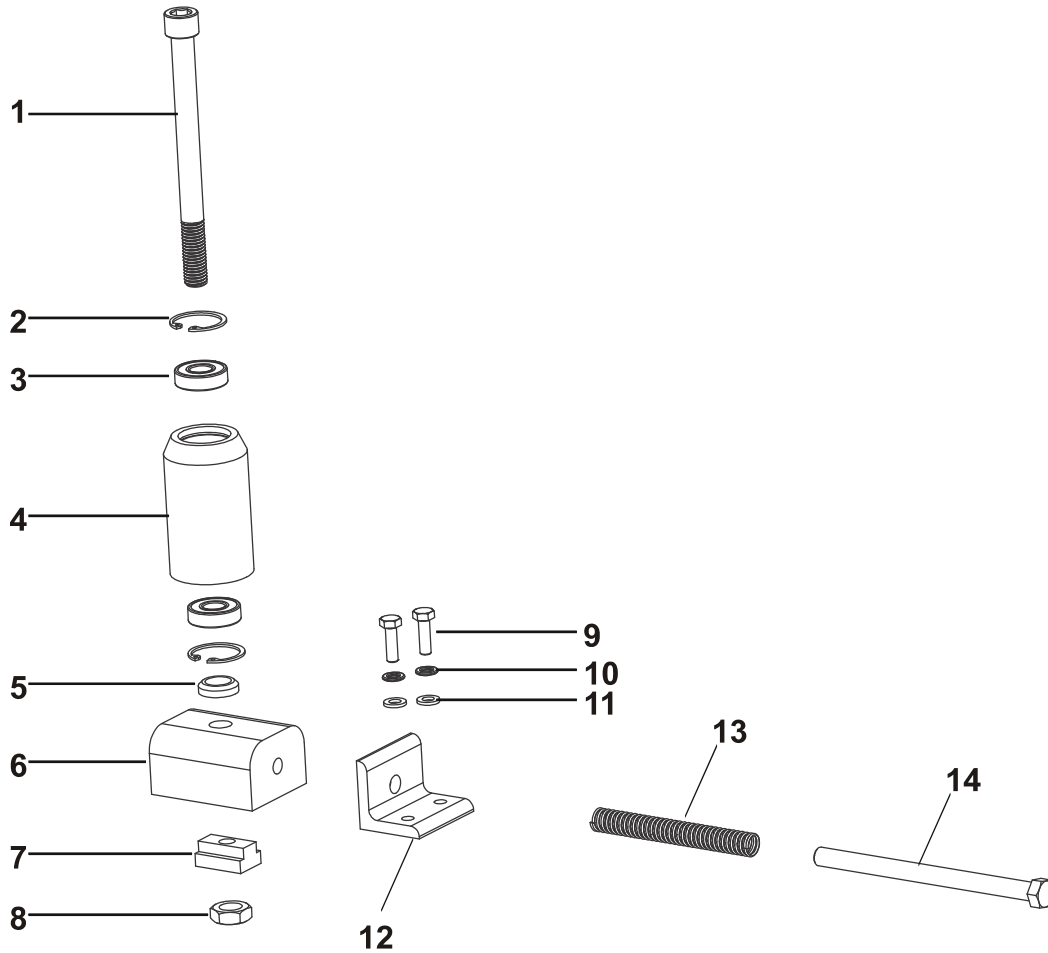
113651-8

REF	DESCRIPTION (◆ Indicates Parts Available In Assemblies Only)	PART #	QTY.
1	Washer, M10 Flat	F05011-134	12
2	Spring, Internal Roller	113684	16
3	Spindle, Internal Roller	113672	4
4	Bolt, M10-1.50 x 35MM HH Gr 8.8	F05022-18	4
5	Washer, M10 Flat	F05011-134	4
6	Angle, Internal Roller Left/Right	113671	4
7	Spacer, Internal Roller	113676	4
8	WASHER, M12 FLAT Zinc	F05011-124	4
9	Washer, M6 Flat Class 4	F05026-1	4
10	T-Slot Nut M10x1.5, Internal Roller	113675	4
11	Nut, M10-1.5 Jam	F05027-18	4
12	Locking Plate, Internal Roller	113678	4
13	Half Roller, Internal Roller	113679	4
14	Nut, M6-1.0 Nylon Lock	F05010-200	4

# 4 Replacement Parts

## Locking Roller

### 4.6 Locking Roller



113651-9

REF	DESCRIPTION (◆ Indicates Parts Available In Assemblies Only)	PART #	QTY.
1	Bolt, M12-1.75x140 SHC	F05023-25	1
2	Ring, 28MM Internal Retaining	F05028-8	2
3	Bearing, 12X28X8; 6001-2RS	109418	2
4	Roller, External Roller	113683	1
5	Spacer, Locking Roller	113699	1
6	Base, Locking Roller	113695	1
7	T-Slot Nut M10x1.5, Internal Roller	113675	1
8	Nut, M12-1.75 Zinc Jam	F05027-19	1
9	Bolt, M6-1x20 HH Class 8	F05020-6	2
10	Washer, M6 Split Lock	F05026-2	2
11	Washer, M6 Flat Class 4	F05020-1	2

**Replacement Parts** **4**  
*Locking Roller*

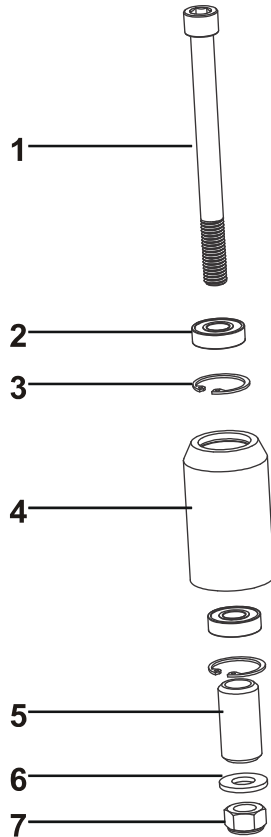
---

<b>12</b>	Angle, Locking Roller	113696	1	
<b>13</b>	Spring, Internal Roller	113684	1	
<b>14</b>	BOLT, M10-1.5x140 HHBFT	F05022-21	1	

# 4 Replacement Parts

## External Roller Assembly

### 4.7 External Roller Assembly



113651-10

REF	DESCRIPTION (◆ Indicates Parts Available In Assemblies Only)	PART #	QTY.
1	Bolt, M12-1.75x140 SHC	F05023-25	1
2	Bearing, 12X28X8; 6001-2RS	087893	2
3	Ring, 26mm Internal Retaining	F05028-8	2
4	Roller, External Roller	113683	1
5	Spacer, External Roller	113687	1
6	WASHER, M12 FLAT Zinc	F05011-124	1
7	Nut, M12x1.75 Hex Nylock	F05010-209	1



# INDEX

---

## C

component ID 1-8

---

## D

dimensions 1-9

---

## E

External 4-9

---

## R

replacement parts

base housing 4-3

internal roller 4-6

locking roller 4-7

table assembly 4-4

toothsetter assembly 4-2

toothsetter complete 4-1

---

## S

safety 2-1

blade handling 2-1

operation 2-2

service information

branch locations 1-7

general contact info 1-6