

ELECTRICAL INFORMATION

PD200A10 220v 1ph 10hp

PD200B10 230v 3ph 10hp

PD200C10 460v 3ph 10hp

PD200K10 575v 3ph 10hp

PD200A10 220v 1ph 10hp

PD200B10 230v 3ph 10hp

PD200C10 460v 3ph 10hp

PD200K10 575v 3ph 10hp


Table of contents

WM_TableOfContents

Page	Page type	Page description	Date	Edited by
/A1	Table of contents	Table of Contents	9/22/2017	JEC
/B1	Overview	Revision History	7/25/2017	JEC
+L1/1	Schematic multi-line	Main	9/22/2017	JEC
+DOC/C1	Parts list	Parts List	9/22/2017	JEC
+DOC/D1	Terminal line-up diagram	Terminal Lineup Diagram	9/22/2017	JEC
+DOC/D2	Terminal line-up diagram	Terminal Lineup Diagram	9/22/2017	JEC
+DOC/D3	Terminal line-up diagram	Terminal Lineup Diagram	9/22/2017	JEC
+DOC/D4	Terminal line-up diagram	Terminal Lineup Diagram	7/27/2017	JEC
+DOC/E1	Cable overview	Cable Overview	7/28/2017	JEC
+DOC/F1	Panel layout	Main Control	9/22/2017	JEC
+DOC/F2	Panel layout	Main Control Layout	7/27/2017	JEC

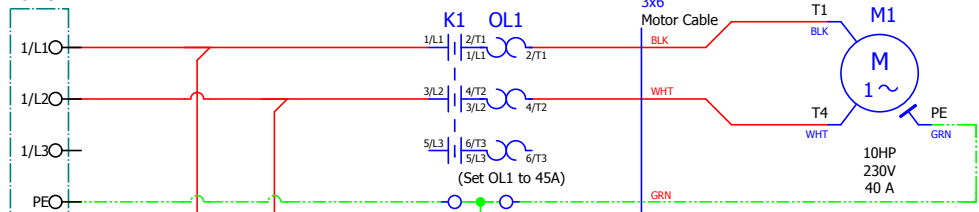
Revision History

Date	Revision	Revision Record	Drawn By	Checked By
7/11/17	A1.00	Initial Release	JEC	JRF

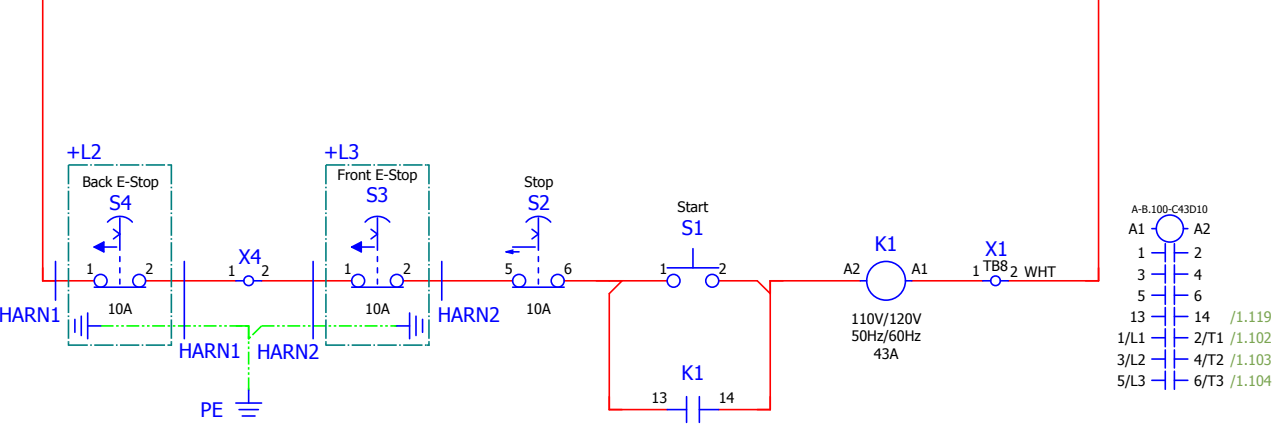
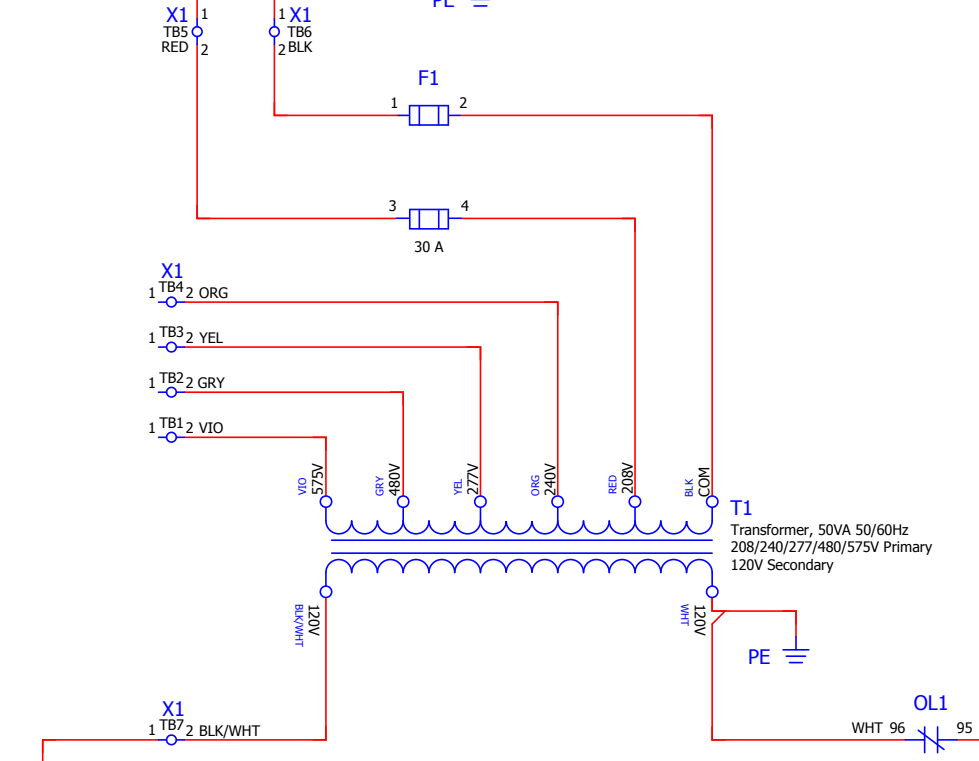
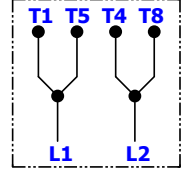
	Wood-Mizer®	
Project Description: Pallet Hawg PD200A10 230V 1Ph		
Revision:	A1.00	Pg Desc: Table of Contents
Mounting Location: +		Type: Table of contents

101
102
103
104
105
106
107
108
109
110
111
112
113
114
115
116
117
118
119
120
121

Customer Supplied
240VAC 1 Phase
Power



**M1 Connections
Single Phase 230V**



A-8.100-C43D10

A1	A2
1	2
3	4
5	6
13	14 /1.119
1/L1	2/T1 /1.102
3/L2	4/T2 /1.103
5/L3	6/T3 /1.104

Wood-Mizer

Project Description: Pallet Hawg PD200A10 230V 1Ph

Revision:	A1.00	Pg Desc: Main
Mounting Location: +L1		Type: Schematic multi-line

Terminal line-up diagram

Wood-Mizer_Terminal_Lineup_Diagram

Terminal strip +L1-X1								
Terminal				Jumper		End Plate	Remark	Terminal X-Ref
Ref. Des.	Level	P/N	Description	Diagram	P/N	P/N		
TB1		073790	Terminal Block, 2Pos Cage Clamp	•				/1.10
TB2		073790	Terminal Block, 2Pos Cage Clamp	•				/1.10
TB3		073790	Terminal Block, 2Pos Cage Clamp	•				/1.09
TB4		073790	Terminal Block, 2Pos Cage Clamp	•				/1.09
TB5		073790	Terminal Block, 2Pos Cage Clamp	•				/1.05
TB6		073790	Terminal Block, 2Pos Cage Clamp	•				/1.05
TB7		073790	Terminal Block, 2Pos Cage Clamp	•				/1.14
TB8		073790	Terminal Block, 2Pos Cage Clamp	•				/1.18

Terminal line-up diagram

Wood-Mizer_Terminal_Lineup_Diagram

Terminal strip +L1-X2								
Terminal				Jumper		End Plate	Remark	Terminal X-Ref
Ref. Des.	Level	P/N	Description	Diagram	P/N	P/N		
TB1		073798	Ground Lug, Single Position w/ Screw	•				/1.04

Terminal line-up diagram

Wood-Mizer_Terminal_Lineup_Diagram

Terminal strip +L1-X3								
Terminal				Jumper		End Plate	Remark	Terminal X-Ref
Ref. Des.	Level	P/N	Description	Diagram	P/N	P/N		
TB1		073798	Ground Lug, Single Position w/ Screw	•				/1.04

Terminal line-up diagram

Wood-Mizer_Terminal_Lineup_Diagram

Terminal strip +L1-X4								
Terminal				Jumper		End Plate	Remark	Terminal X-Ref
Ref. Des.	Level	P/N	Description	Diagram	P/N	P/N		
TB1		052293-2	Junction Block, 2-Position Wire Clamp	•				/1.18

Cable Overview

Wood-Mizer_Cable_Overview

Cable Designation	Cable Part Number	Cable Description	Cable X-Ref
CBL1	073800	Cable Assy, 230V 1Ph Pallet Hawg Motor	+L1/1.102
HARN1	073803	Harness Assy, Pallet Hawg Back E-Stop	+L1/1.118
HARN2	073805	Harness Assy, Pallet Hawg Front E-Stop	+L1/1.118



Wood-Mizer®

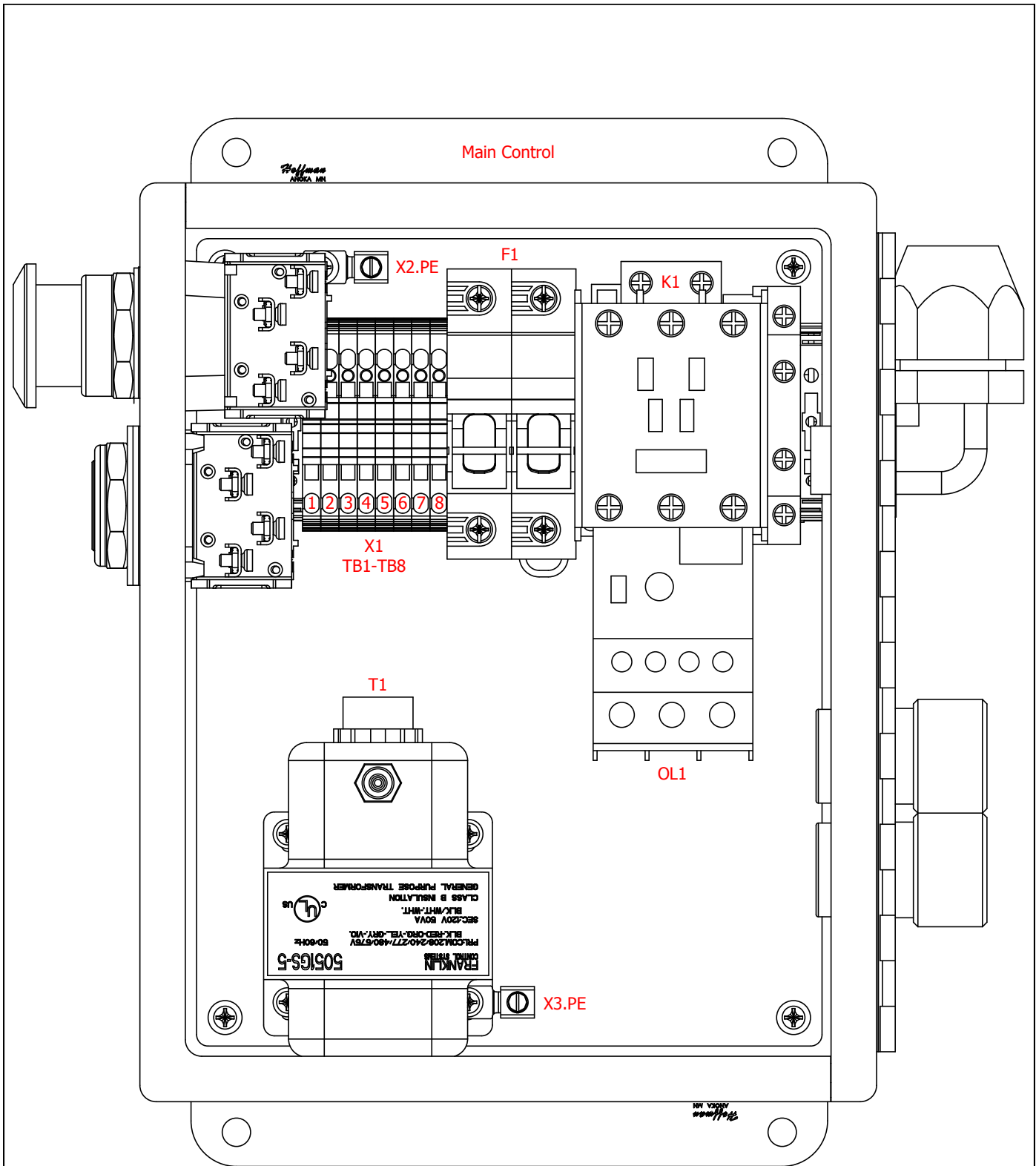
Project Description: Pallet Hawg PD200A10 230V 1Ph


Revision: A1.00

Pg Desc: Terminal Lineup Diagram

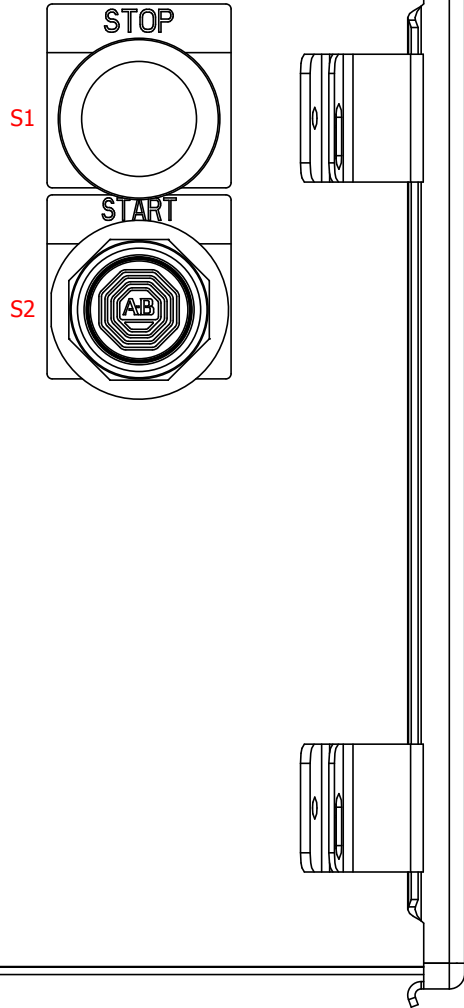
Mounting Location: +DOC

Type: Terminal line-up diagram

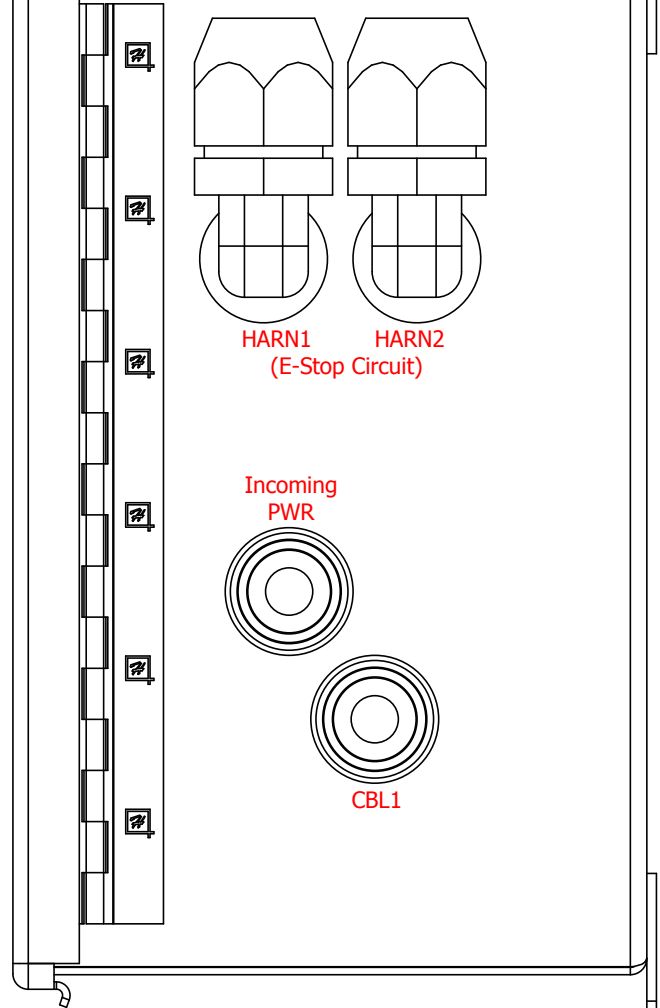


 Wood-Mizer®		
Project Description: Pallet Hawg PD200A10 230V 1Ph		
Revision:	A1.00	Pg Desc: Main Control
Mounting Location: +DOC		Type: Panel layout

Right Side



Left Side



Wood-Mizer®

Project Description: Pallet Hawg PD200A10 230V 1Ph

Revision: A1.00

Pg Desc: Main Control Layout

Mounting Location: +DOC

Type: Panel layout


Table of contents

WM_TableOfContents

Page	Page type	Page description	Date	Edited by
/A1	Table of contents	Table of Contents	7/28/2017	JEC
/B1	Overview	Revision History	7/25/2017	JEC
+L1/1	Schematic multi-line	Main	7/28/2017	JEC
+DOC/C1	Parts list	Parts List	7/27/2017	JEC
+DOC/D1	Terminal line-up diagram	Terminal Lineup Diagram	7/28/2017	JEC
+DOC/D2	Terminal line-up diagram	Terminal Lineup Diagram	7/28/2017	JEC
+DOC/D3	Terminal line-up diagram	Terminal Lineup Diagram	7/28/2017	JEC
+DOC/D4	Terminal line-up diagram	Terminal Lineup Diagram	7/27/2017	JEC
+DOC/E1	Cable overview	Cable Overview	7/28/2017	JEC
+DOC/F1	Panel layout	Main Control	7/25/2017	JEC
+DOC/F2	Panel layout	Main Control Layout	7/27/2017	JEC

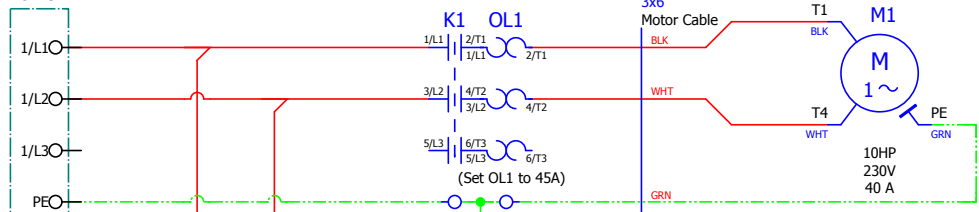
Revision History

Date	Revision	Revision Record	Drawn By	Checked By
7/11/17	A1.00	Initial Release	JEC	JRF

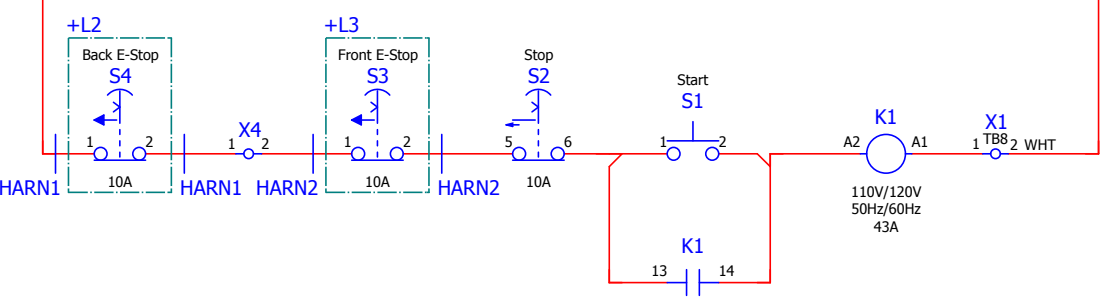
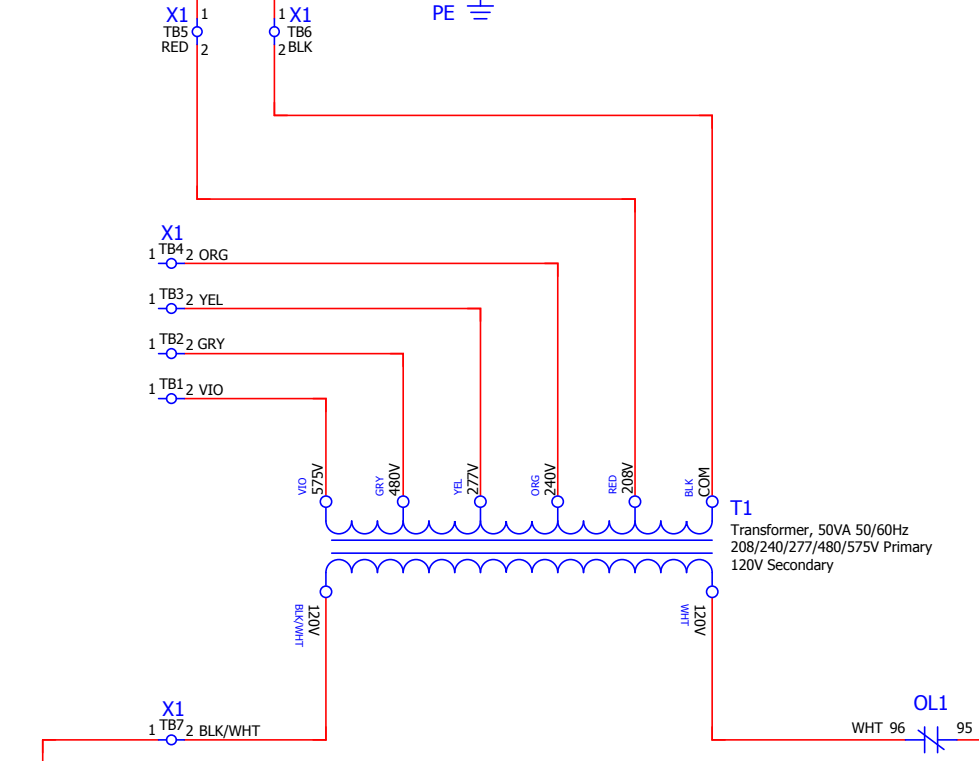
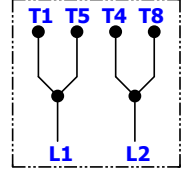
		Wood-Mizer®	
Project Description: Pallet Hawg PD200A10 230V 1Ph			
Revision:	A1.00	Pg Desc: Table of Contents	
Mounting Location: +		Type: Table of contents	

101
102
103
104
105
106
107
108
109
110
111
112
113
114
115
116
117
118
119
120
121

Customer Supplied
240VAC 1 Phase
Power



**M1 Connections
Single Phase 230V**



A-8.100-C43D10

A1	A2
1	2
3	4
5	6
13	14 /1.119
1/L1	2/T1 /1.102
3/L2	4/T2 /1.103
5/L3	6/T3 /1.104

Project Description: Pallet Hawg PD200A10 230V 1Ph		
Revision:	A1.00	Pg Desc: Main
Mounting Location: +L1		Type: Schematic multi-line

Device Tag/Parts List

WM_PARTS_LIST-Manual

Device tag	Function	Wood-Mizer Part Number	Wood-Mizer Description	Qty.	X-Ref
K1	Contactora	073786	Contactora, 43A 3P 120VAC Coil IEC	1	+L1/1.118
M1	Blade Motor	079949	Motor, 10hp Dismantler, 1ph	1	+L1/1.102
OL1	Overload Protection	073789	Overload, 9-45A Class 10-15-20-30 NO/NC	1	+L1/1.102
S1	Start	073791	Pushbutton, Black Momentary 30mm Flush	1	+L1/1.118
S2	Stop	073792	Switch, E-Stop Maintd Push/Pull 30mm Red	1	+L1/1.118
S3	Front E-Stop	052999	E-Stop Box, 40mm Oper-10A NC	1	+L1/1.118
S4	Back E-Stop	052999	E-Stop Box, 40mm Oper-10A NC	1	+L1/1.118
T1	Control Transformer	073797	TFMR, 50VA 208/240/277/480/575V ->120V	1	+L1/1.112

Terminal line-up diagram

Wood-Mizer_Terminal_Lineup_Diagram

Terminal strip +L1-X1

Terminal				Jumper		End Plate	Remark	Terminal X-Ref
Ref. Des.	Level	P/N	Description	Diagram	P/N	P/N		
TB1		073790	Terminal Block, 2Pos Cage Clamp	•				/1.10
TB2		073790	Terminal Block, 2Pos Cage Clamp	•				/1.09
TB3		073790	Terminal Block, 2Pos Cage Clamp	•				/1.09
TB4		073790	Terminal Block, 2Pos Cage Clamp	•				/1.08
TB5		073790	Terminal Block, 2Pos Cage Clamp	•				/1.05
TB6		073790	Terminal Block, 2Pos Cage Clamp	•				/1.05
TB7		073790	Terminal Block, 2Pos Cage Clamp	•				/1.14
TB8		073790	Terminal Block, 2Pos Cage Clamp	•				/1.18

Terminal line-up diagram

Wood-Mizer_Terminal_Lineup_Diagram

Terminal strip +L1-X2

Terminal				Jumper		End Plate	Remark	Terminal X-Ref
Ref. Des.	Level	P/N	Description	Diagram	P/N	P/N		
TB1		073798	Ground Lug, Single Position w/ Screw	•				/1.04

Terminal line-up diagram

Wood-Mizer_Terminal_Lineup_Diagram

Terminal strip +L1-X3

Terminal				Jumper		End Plate	Remark	Terminal X-Ref
Ref. Des.	Level	P/N	Description	Diagram	P/N	P/N		
TB1		073798	Ground Lug, Single Position w/ Screw	•				/1.04



Wood-Mizer®

Project Description: Pallet Hawg PD200A10 230V 1Ph

Revision: A1.00

Pg Desc: Parts List

Mounting Location: +DOC

Type: Parts list

Terminal line-up diagram

Wood-Mizer_Terminal_Lineup_Diagram


Terminal strip +L1-X4

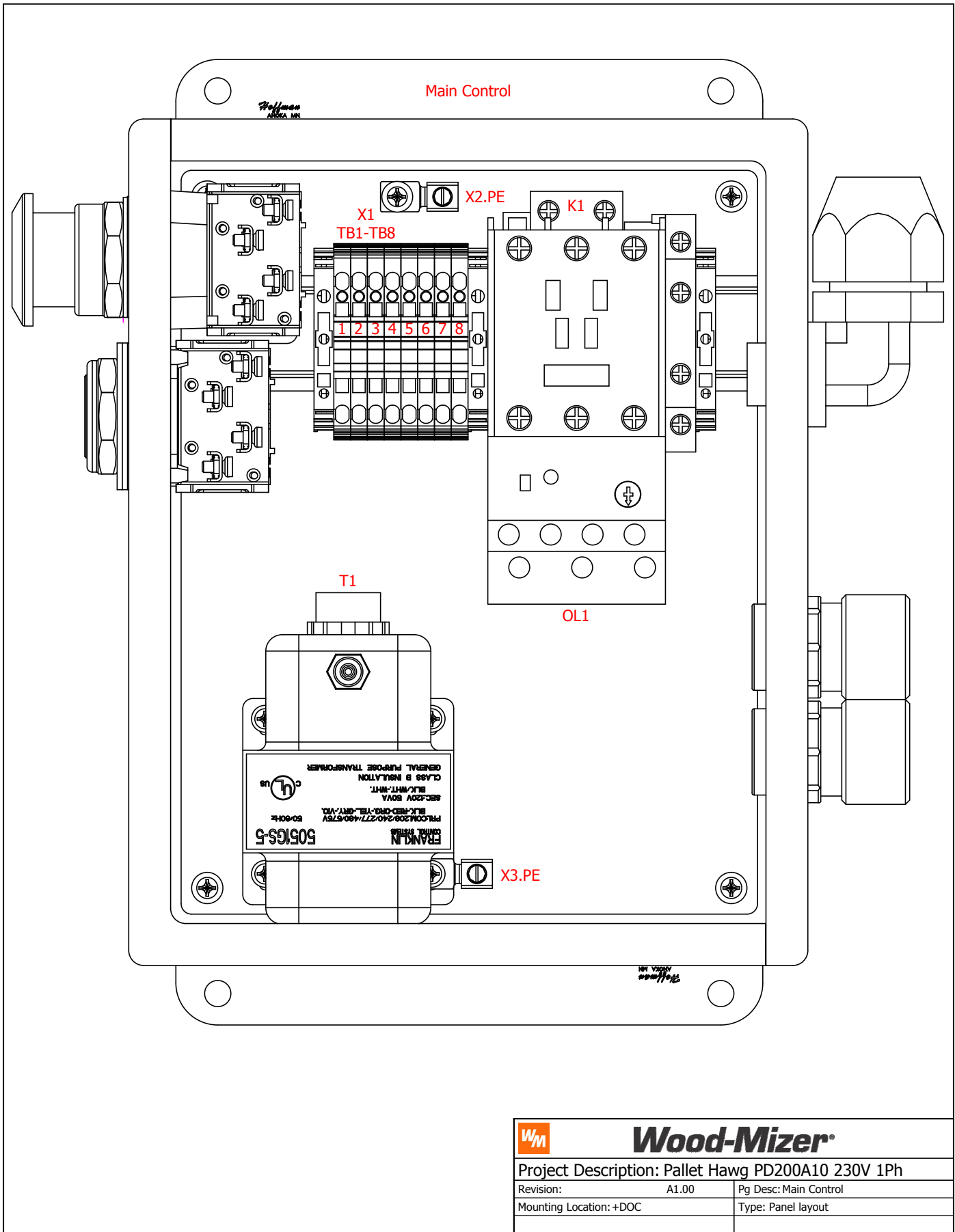
Terminal				Jumper		End Plate	Remark	Terminal X-Ref
Ref. Des.	Level	P/N	Description	Diagram	P/N	P/N		
TB1		052293-2	Junction Block, 2-Position Wire Clamp					/1.18


Cable Overview

Wood-Mizer_Cable_Overview

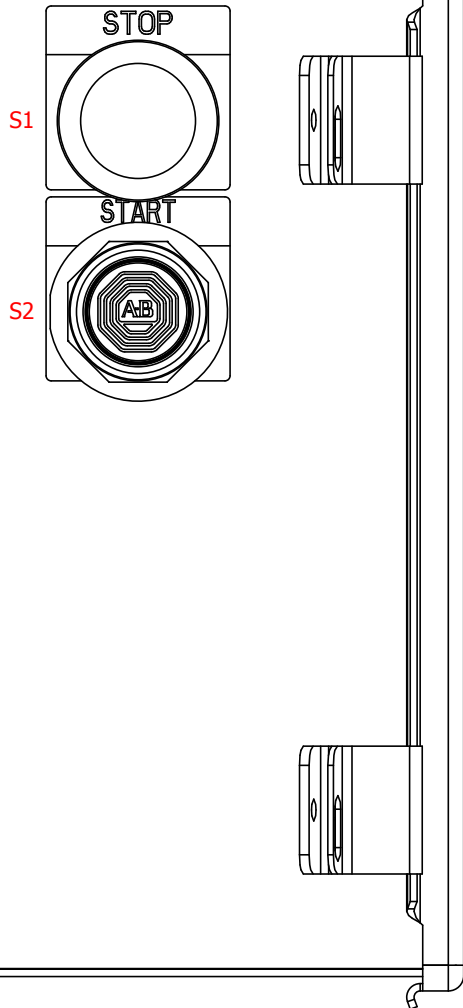
Cable Designation	Cable Part Number	Cable Description	Cable X-Ref
CBL1	073800	Cable Assy, 230V 1Ph Pallet Hawg Motor	+L1/1.102
HARN1	073803	Harness Assy, Pallet Hawg Back E-Stop	+L1/1.118
HARN2	073805	Harness Assy, Pallet Hawg Front E-Stop	+L1/1.118

	Wood-Mizer®	
Project Description: Pallet Hawg PD200A10 230V 1Ph		
Revision:	A1.00	Pg Desc: Terminal Lineup Diagram
Mounting Location: +DOC		Type: Terminal line-up diagram

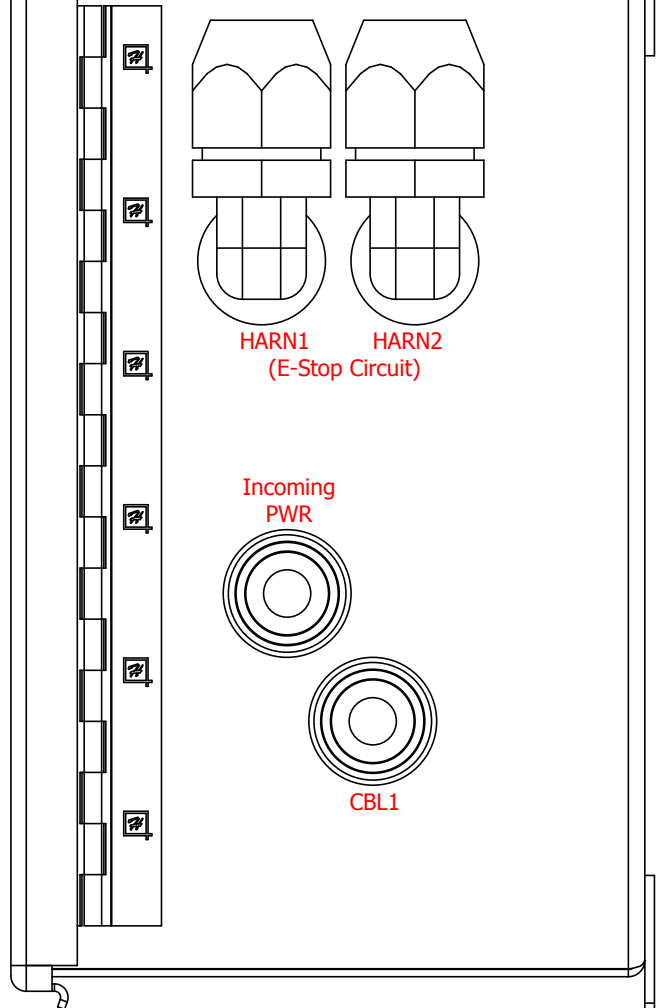


 Wood-Mizer®		
Project Description: Pallet Hawg PD200A10 230V 1Ph		
Revision:	A1.00	Pg Desc: Main Control
Mounting Location: +DOC		Type: Panel layout

Right Side



Left Side



Wood-Mizer®

Project Description: Pallet Hawg PD200A10 230V 1Ph

Revision: A1.00

Pg Desc: Main Control Layout

Mounting Location: +DOC

Type: Panel layout


Table of contents

WM_TableOfContents

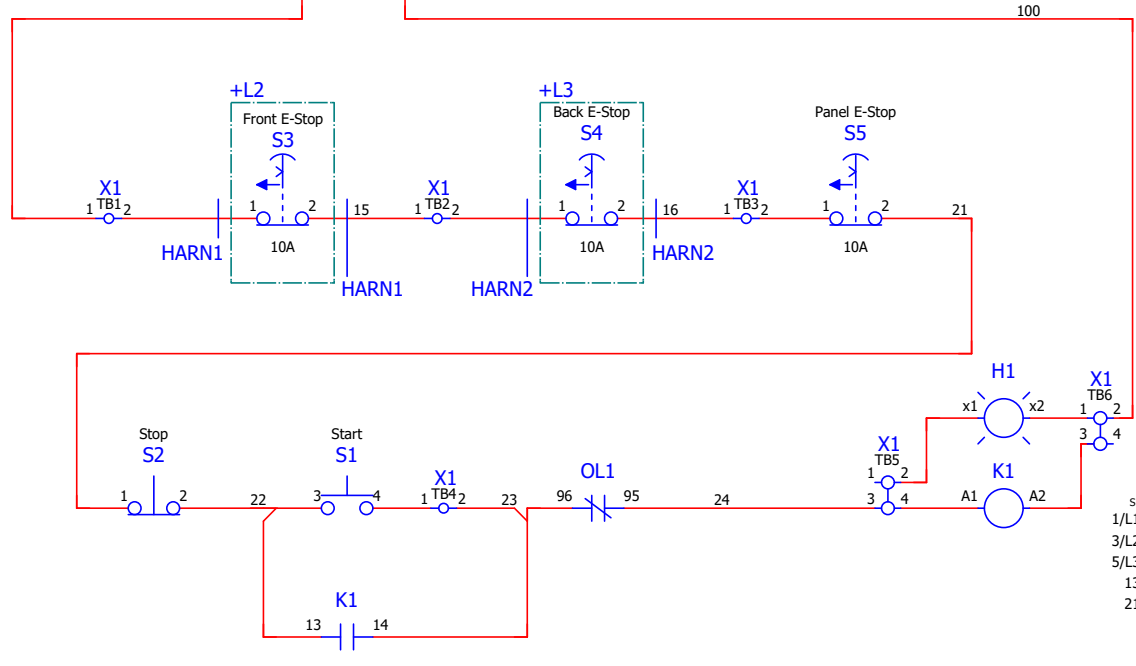
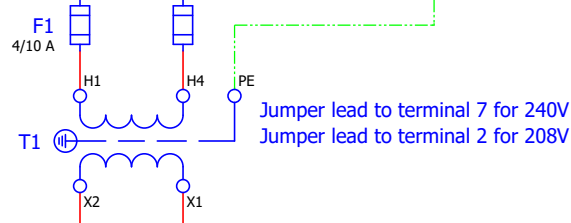
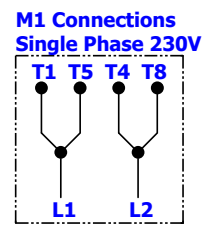
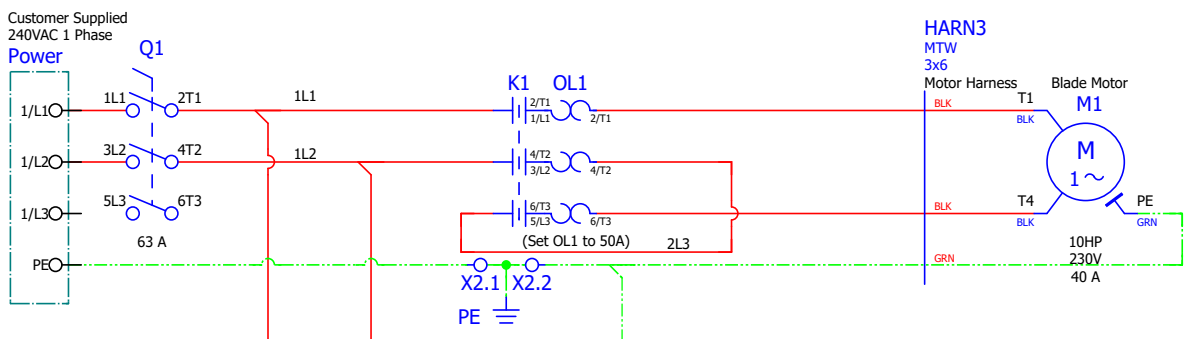
Page	Page type	Page description	Date	Edited by
/A1	Table of contents	Table of Contents	9/22/2017	JEC
/B1	Overview	Revision History	7/25/2017	JEC
+L1/1	Schematic multi-line	Main	9/22/2017	JEC
+DOC/C1	Parts list	Parts List	9/22/2017	JEC
+DOC/D1	Terminal line-up diagram	Terminal Lineup Diagram	9/22/2017	JEC
+DOC/D2	Terminal line-up diagram	Terminal Lineup Diagram	9/22/2017	JEC
+DOC/D3	Terminal line-up diagram	Terminal Lineup Diagram	9/22/2017	JEC
+DOC/D4	Terminal line-up diagram	Terminal Lineup Diagram	7/27/2017	JEC
+DOC/E1	Cable overview	Cable Overview	7/28/2017	JEC
+DOC/F1	Panel layout	Main Control	9/22/2017	JEC
+DOC/F2	Panel layout	Main Control Layout	7/27/2017	JEC

Revision History

Date	Revision	Revision Record	Drawn By	Checked By
7/11/17	A1.00	Initial Release	JEC	JRF
6/10/2019	A1.01	Modified for Batesville production	MAM	

		Wood-Mizer	
Project Description: Control, Elec. PD200A10 240VAC 1Ph			
Revision:	A2.00	Pg Desc: Table of Contents	
Mounting Location: +		Type: Table of contents	

101
102
103
104
105
106
107
108
109
110
111
112
113
114
115
116
117
118
119
120
121



- SELICID65ABD
- 1/L1 --- 2/T1
 - 3/L2 --- 4/T2
 - 5/L3 --- 6/T3
 - 13 --- 14 /1.120
 - 21 --- 22
 - 2 --- 2/T1 /1.102
 - 4 --- 4/T2 /1.103
 - 6 --- 6/T3 /1.104

Project Description: Control, Elec. PD200A10 240VAC 1Ph		
Revision: A2.00	Pg Desc: Main	
Mounting Location: +L1	Type: Schematic multi-line	

Device Tag/Parts List

WM_PARTS_LIST-Manual

Device tag	Function	Wood-Mizer Part Number	Wood-Mizer Description	Qty.	X-Ref
F1	Primary Control Fuse	P03151	Fuse, 4/10A 600V KLDR Class CC	2	+L1/1.106
F2	Secondary Control Fuse	052454	Fuse, 3A 600V KLDR Class CC	1	+L1/1.106
K1	Contactora	053603	Contactora, 65A 3P 24VAC D-A Series	1	+L1/1.118
M1	Blade Motor	079949	Motor, 10hp Dismantler, 1ph	1	+L1/1.102
OL1	Overload Protection	069636	Overload Relay, 48-65A Everlink Thermal	1	+L1/1.102
S1	Start	025236-31	Switch Body, 22mm Grn LED 1 NO 24V ZB4	1	+L1/1.118
S2	Stop	050540	Contact, NC ZBE102	1	+L1/1.118
S3	Front E-Stop	052999	E-Stop Box, 40mm Oper-10A NC	1	+L1/1.118
S4	Back E-Stop	052999	E-Stop Box, 40mm Oper-10A NC	1	+L1/1.118
T1	Control Transformer	114026	Transformer, 100VA 208/240/480 -24	1	+L1/1.112

Terminal line-up diagram

Wood-Mizer_Terminal_Lineup_Diagram

Terminal strip +L1-X1								
Terminal				Jumper		End Plate	Remark	Terminal X-Ref
Ref. Des.	Level	P/N	Description	Diagram	P/N	P/N		
TB1		068100	Terminal Block, 2Pos Cage Clamp	•				/1.10
TB2		068100	Terminal Block, 2Pos Cage Clamp	•				/1.10
TB3		068100	Terminal Block, 2Pos Cage Clamp	•				/1.09
TB4		068100	Terminal Block, 2Pos Cage Clamp	•				/1.09
TB5		068100	Terminal Block, 2Pos Cage Clamp	•				/1.05
TB6		068100	Terminal Block, 2Pos Cage Clamp	•				/1.05
TB7		068103	Terminal Block, 4Pos Cage Clamp	•				/1.14

Terminal line-up diagram


Wood-Mizer_Terminal_Lineup_Diagram

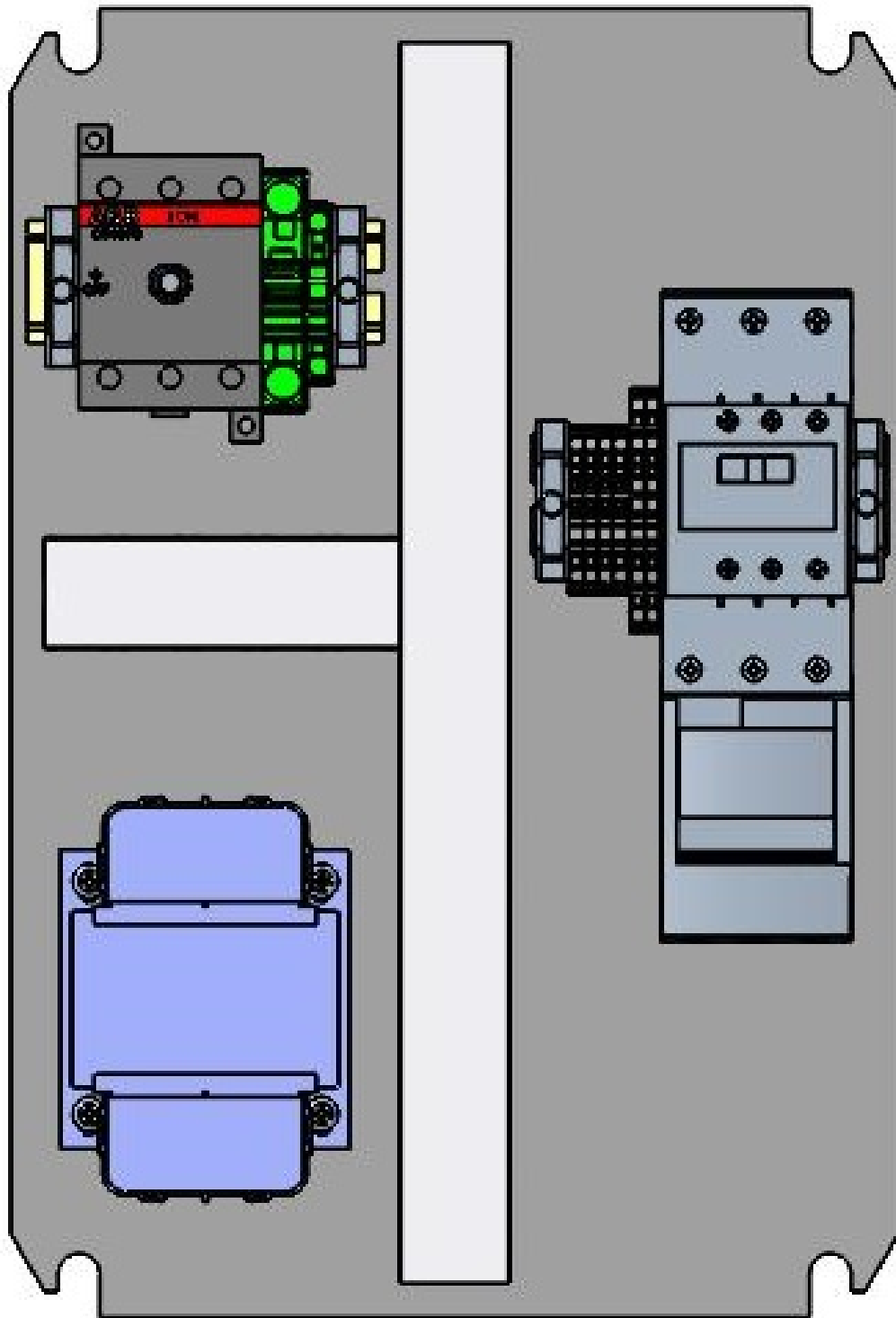
Terminal strip +L1-X2								
Terminal				Jumper		End Plate	Remark	Terminal X-Ref
Ref. Des.	Level	P/N	Description	Diagram	P/N	P/N		
TB1		068125	Terminal Block, 2Pos 16mm GND Clamp SD	•				/1.04

Cable Overview

Wood-Mizer_Cable_Overview

Cable Designation	Cable Part Number	Cable Description	Cable X-Ref
HARN3	114108	Harness Assy, PD200 230VAC 1PH	+L1/1.102
HARN1	114111	Harness Assy, Pallet Hawg Back E-Stop	+L1/1.118
HARN2	114110	Harness Assy, Pallet Hawg Front E-Stop	+L1/1.118

		Wood-Mizer	
Project Description: Control, Elec. PD200A10 240VAC 1Ph			
Revision:	A2.00	Pg Desc: Parts List	
Mounting Location: +DOC		Type: Parts list	



Wood-Mizer

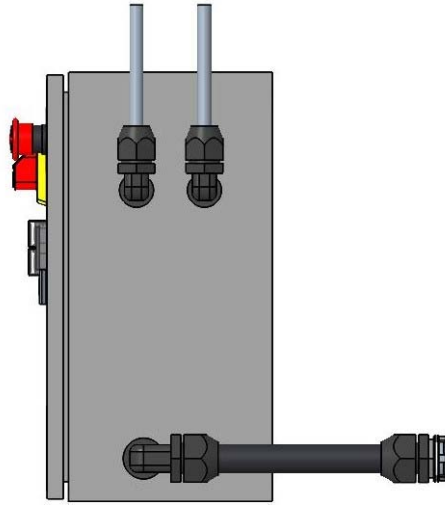
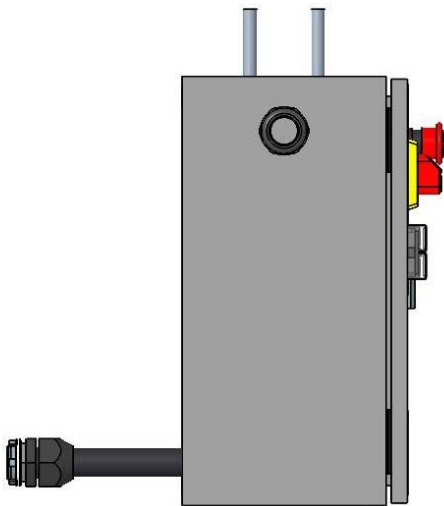
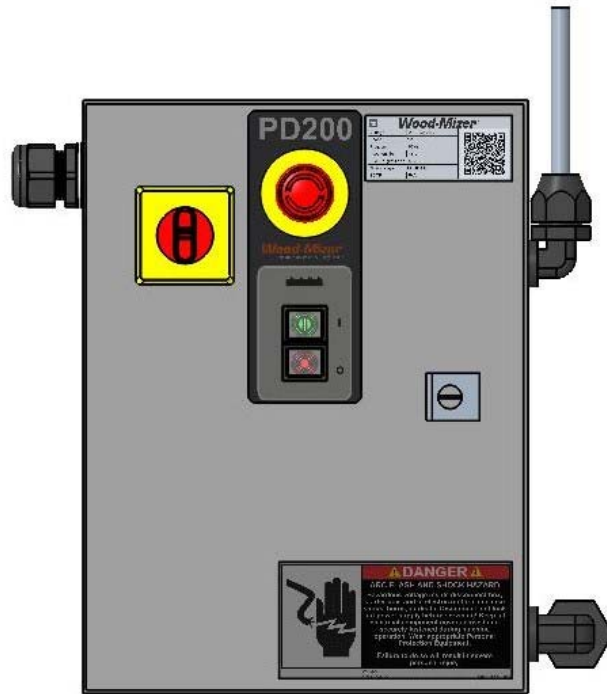
Project Description: Control, Elec. PD200A10 240VAC 1Ph

Revision: A2.00

Pg Desc: Main Control

Mounting Location: +DOC

Type: Panel layout




 Wood-Mizer	
Project Description: Control, Elec. PD200A10 240VAC 1Ph	
Revision: A2.00	Pg Desc: Main Control Layout
Mounting Location: +DOC	Type: Panel layout


Table of contents

WM_TableOfContents

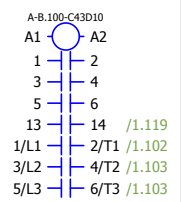
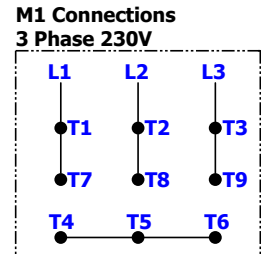
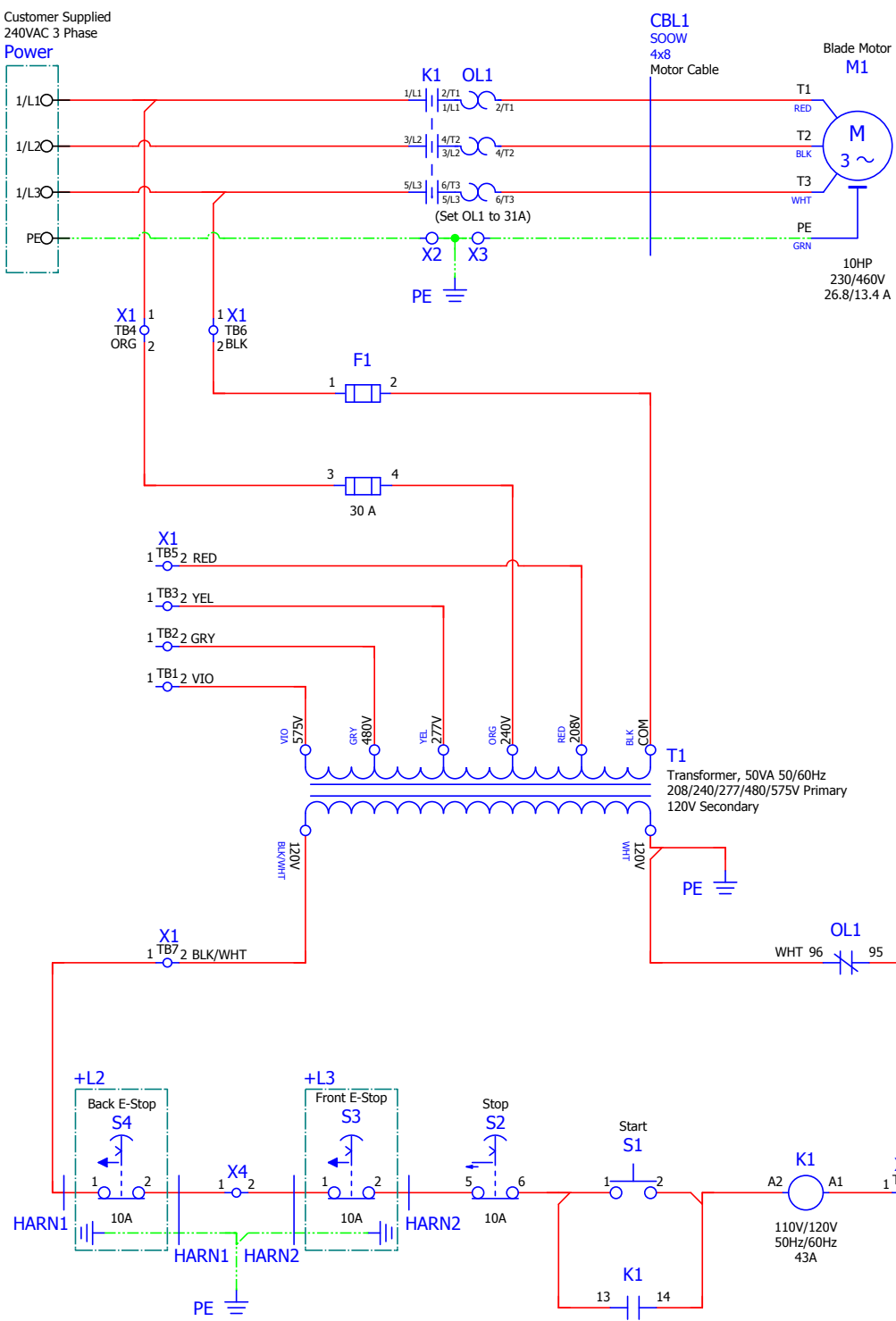
Page	Page type	Page description	Date	Edited by
/A1	Table of contents	Table of Contents	9/22/2017	JEC
/B1	Overview	Revision History	7/25/2017	JEC
+L1/1	Schematic multi-line	Main	9/22/2017	JEC
+DOC/C1	Parts list	Parts List	9/22/2017	JEC
+DOC/D1	Terminal line-up diagram	Terminal Lineup Diagram	9/22/2017	JEC
+DOC/D2	Terminal line-up diagram	Terminal Lineup Diagram	9/22/2017	JEC
+DOC/D3	Terminal line-up diagram	Terminal Lineup Diagram	9/22/2017	JEC
+DOC/D4	Terminal line-up diagram	Terminal Lineup Diagram	7/27/2017	JEC
+DOC/E1	Cable overview	Cable Overview	7/28/2017	JEC
+DOC/F1	Panel layout	Main Control	9/22/2017	JEC
+DOC/F2	Panel layout	Main Control Layout	7/27/2017	JEC

Revision History

Date	Revision	Revision Record	Drawn By	Checked By
7/11/17	A1.01	Initial Release	JEC	JRF

	Wood-Mizer®	
Project Description: Pallet Hawg PD200B10 230V 3Ph		
Revision:	A1.01	Pg Desc: Table of Contents
Mounting Location: +		Type: Table of contents

101
102
103
104
105
106
107
108
109
110
111
112
113
114
115
116
117
118
119
120
121



Project Description: Pallet Hawg PD200B10 230V 3Ph		
Revision:	A1.01	Pg Desc: Main
Mounting Location: +L1		Type: Schematic multi-line

Device Tag/Parts List

WM_PARTS_LIST-Manual

Device tag	Function	Wood-Mizer Part Number	Wood-Mizer Description	Qty.	X-Ref
F1	Main Fuse	073802	Fuseholder, 2P Class CC Finger Safe AB	1	+L1/1.106
F1	=	073807	Fuse, 0.75A 600V Class CC KLDR Delay	1	+L1/1.106
K1	Contactora	073786	Contactora, 43A 3P 120VAC Coil IEC	1	+L1/1.117
M1	Blade Motor	079937	Motor, 10hp Dismantler, 3Ph	1	+L1/1.102
OL1	Overload Protection	073789	Overload, 9-45A Class 10-15-20-30 NO/NC	1	+L1/1.102
S1	Start	073791	Pushbutton, Black Momentary 30mm Flush	1	+L1/1.117
S2	Stop	073792	Switch, E-Stop Maintd Push/Pull 30mm Red	1	+L1/1.117
S3	Front E-Stop	052999	E-Stop Box, 40mm Oper-10A NC	1	+L1/1.117
S4	Back E-Stop	052999	E-Stop Box, 40mm Oper-10A NC	1	+L1/1.117
T1	Control Transformer	073797	TFMR, 50VA 208/240/277/480/575V ->120V	1	+L1/1.112

Terminal line-up diagram

Wood-Mizer_Terminal_Lineup_Diagram

Terminal strip +L1-X1								
Terminal				Jumper		End Plate	Remark	Terminal X-Ref
Ref. Des.	Level	P/N	Description	Diagram	P/N	P/N		
TB1		073790	Terminal Block, 2Pos Cage Clamp	•				/1.10
TB2		073790	Terminal Block, 2Pos Cage Clamp	•				/1.10
TB3		073790	Terminal Block, 2Pos Cage Clamp	•				/1.09
TB4		073790	Terminal Block, 2Pos Cage Clamp	•				/1.05
TB5		073790	Terminal Block, 2Pos Cage Clamp	•				/1.09
TB6		073790	Terminal Block, 2Pos Cage Clamp	•				/1.05
TB7		073790	Terminal Block, 2Pos Cage Clamp	•				/1.14
TB8		073790	Terminal Block, 2Pos Cage Clamp	•				/1.17

Terminal line-up diagram

Wood-Mizer_Terminal_Lineup_Diagram

Terminal strip +L1-X2								
Terminal				Jumper		End Plate	Remark	Terminal X-Ref
Ref. Des.	Level	P/N	Description	Diagram	P/N	P/N		
TB1		073798	Ground Lug, Single Position w/ Screw	•				/1.04



Wood-Mizer®

Project Description: Pallet Hawg PD200B10 230V 3Ph

Revision: A1.01 Pg Desc: Parts List

Mounting Location: +DOC Type: Parts list

Terminal line-up diagram

Wood-Mizer_Terminal_Lineup_Diagram

Terminal strip +L1-X3

Terminal				Jumper		End Plate	Remark	Terminal X-Ref
Ref. Des.	Level	P/N	Description	Diagram	P/N	P/N		
TB1		073798	Ground Lug, Single Position w/ Screw	I				/1.04

Terminal line-up diagram

Wood-Mizer_Terminal_Lineup_Diagram


Terminal strip +L1-X4

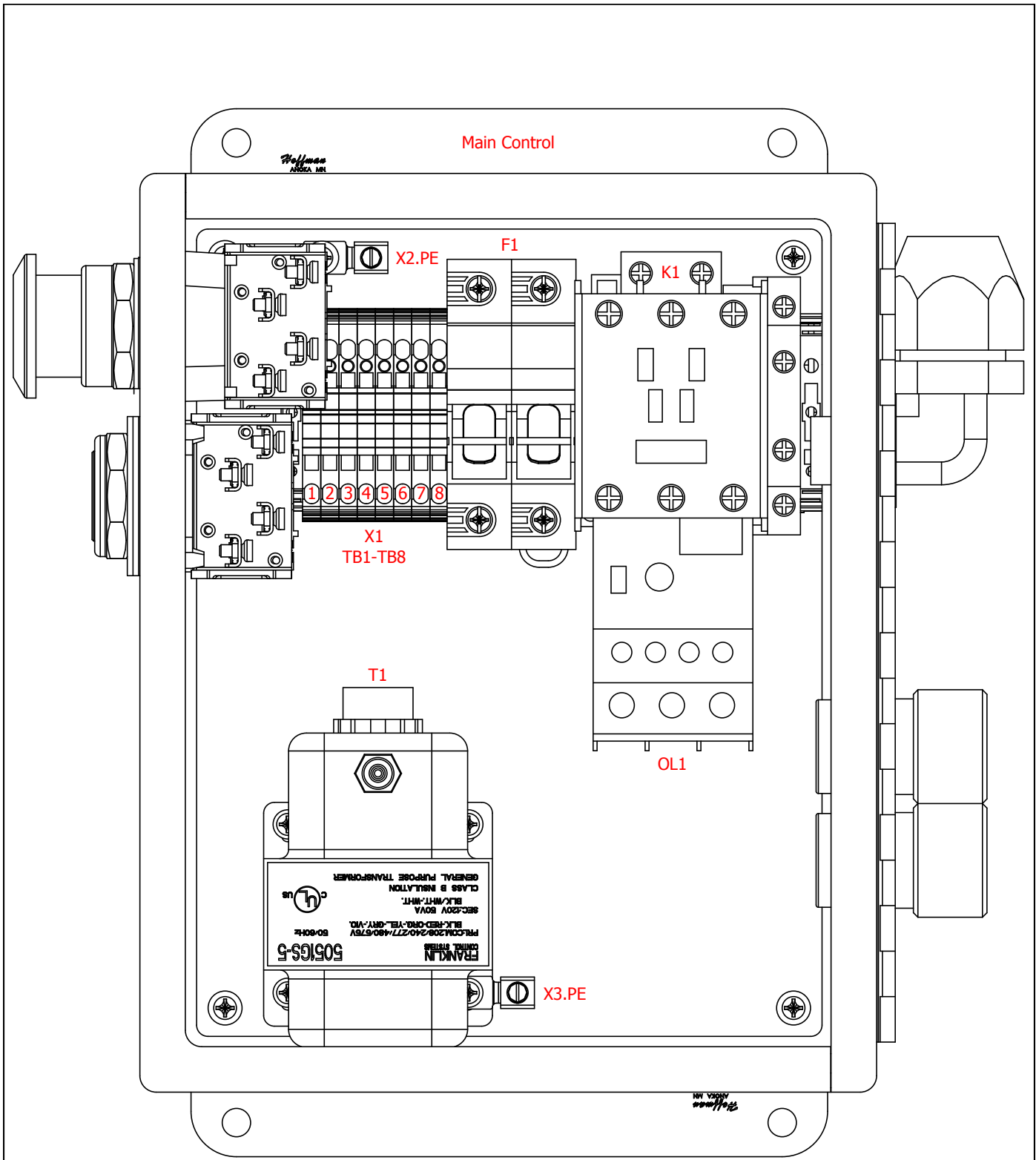
Terminal				Jumper		End Plate	Remark	Terminal X-Ref
Ref. Des.	Level	P/N	Description	Diagram	P/N	P/N		
TB1		052293-2	Junction Block, 2-Position Wire Clamp	I				/1.17


Cable Overview

Wood-Mizer_Cable_Overview

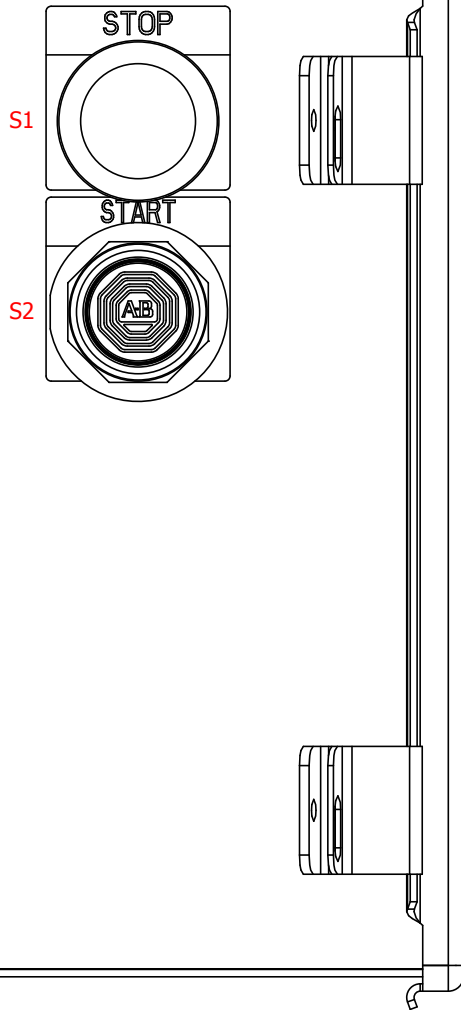
Cable Designation	Cable Part Number	Cable Description	Cable X-Ref
CBL1	073801	Cable Assy, 230V 3Ph Pallet Hawg Motor	+L1/1.102
HARN1	073803	Harness Assy, Pallet Hawg Back E-Stop	+L1/1.117
HARN2	073805	Harness Assy, Pallet Hawg Front E-Stop	+L1/1.117

	Wood-Mizer®	
Project Description: Pallet Hawg PD200B10 230V 3Ph		
Revision:	A1.01	Pg Desc: Terminal Lineup Diagram
Mounting Location: +DOC		Type: Terminal line-up diagram

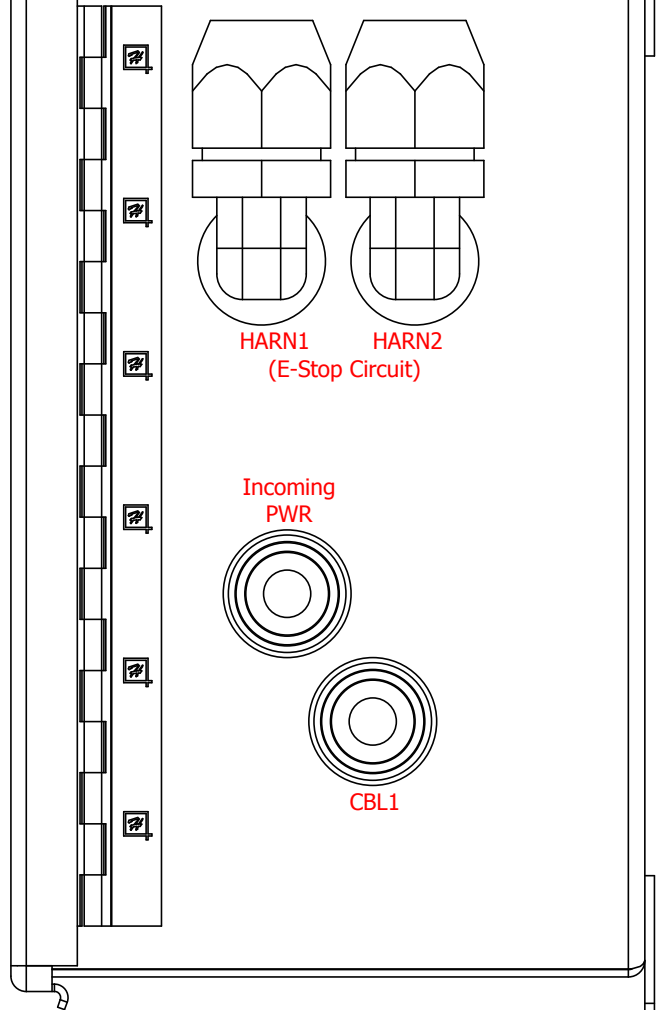


 Wood-Mizer®		
Project Description: Pallet Hawg PD200B10 230V 3Ph		
Revision:	A1.01	Pg Desc: Main Control
Mounting Location:	+DOC	Type: Panel layout

Right Side



Left Side



Wood-Mizer®

Project Description: Pallet Hawg PD200B10 230V 3Ph

Revision: A1.01

Pg Desc: Main Control Layout

Mounting Location: +DOC

Type: Panel layout


Table of contents

WM_TableOfContents

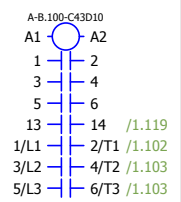
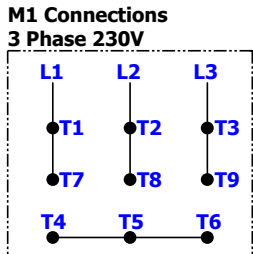
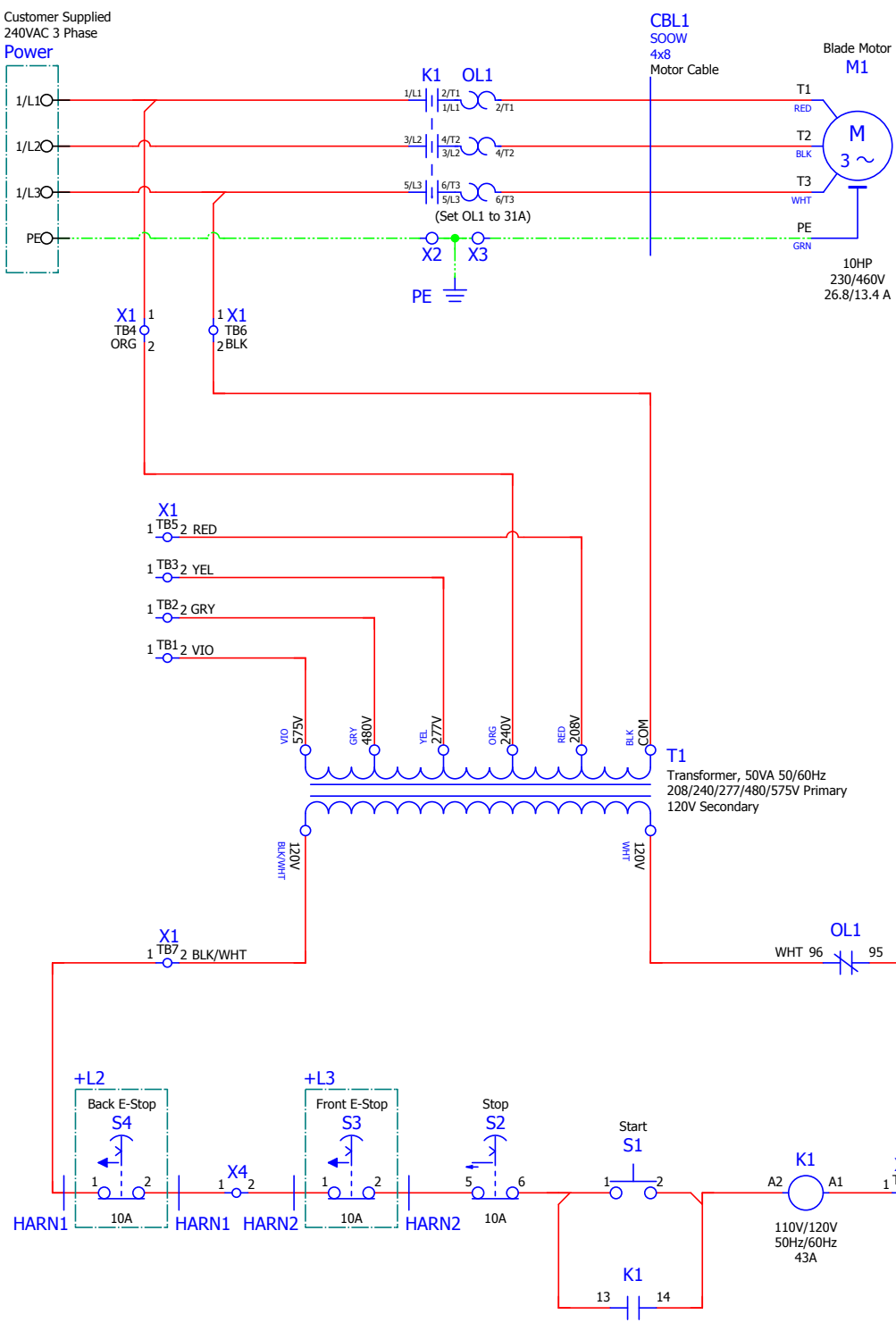
Page	Page type	Page description	Date	Edited by
/A1	Table of contents	Table of Contents	7/28/2017	JEC
/B1	Overview	Revision History	7/25/2017	JEC
+L1/1	Schematic multi-line	Main	7/28/2017	JEC
+DOC/C1	Parts list	Parts List	7/18/2017	JEC
+DOC/D1	Terminal line-up diagram	Terminal Lineup Diagram	7/12/2017	JEC
+DOC/D2	Terminal line-up diagram	Terminal Lineup Diagram	7/27/2017	JEC
+DOC/D3	Terminal line-up diagram	Terminal Lineup Diagram	7/27/2017	JEC
+DOC/D4	Terminal line-up diagram	Terminal Lineup Diagram	7/27/2017	JEC
+DOC/E1	Cable overview	Cable Overview	7/28/2017	JEC
+DOC/F1	Panel layout	Main Control	7/25/2017	JEC
+DOC/F2	Panel layout	Main Control Layout	7/27/2017	JEC

Revision History

Date	Revision	Revision Record	Drawn By	Checked By
7/11/17	A1.01	Initial Release	JEC	JRF

		Wood-Mizer®	
Project Description: Pallet Hawg PD200B10 230V 3Ph			
Revision:	A1.01	Pg Desc: Table of Contents	
Mounting Location: +		Type: Table of contents	

101
102
103
104
105
106
107
108
109
110
111
112
113
114
115
116
117
118
119
120
121



Project Description: Pallet Hawg PD200B10 230V 3Ph		
Revision:	A1.01	Pg Desc: Main
Mounting Location: +L1		Type: Schematic multi-line

Device Tag/Parts List

WM_PARTS_LIST-Manual


Device tag	Function	Wood-Mizer Part Number	Wood-Mizer Description	Qty.	X-Ref
K1	Contactora	073786	Contactora, 43A 3P 120VAC Coil IEC	1	+L1/1.117
M1	Blade Motor	079937	Motor, 10hp Dismantler, 3Ph	1	+L1/1.102
OL1	Overload Protection	073789	Overload, 9-45A Class 10-15-20-30 NO/NC	1	+L1/1.102
S1	Start	073791	Pushbutton, Black Momentary 30mm Flush	1	+L1/1.117
S2	Stop	073792	Switch, E-Stop Maintd Push/Pull 30mm Red	1	+L1/1.117
S3	Front E-Stop	052999	E-Stop Box, 40mm Oper-10A NC	1	+L1/1.117
S4	Back E-Stop	052999	E-Stop Box, 40mm Oper-10A NC	1	+L1/1.117
T1	Control Transformer	073797	TFMR, 50VA 208/240/277/480/575V ->120V	1	+L1/1.112

Terminal line-up diagram

Wood-Mizer_Terminal_Lineup_Diagram

Terminal strip +L1-X1

Terminal				Jumper		End Plate	Remark	Terminal X-Ref
Ref. Des.	Level	P/N	Description	Diagram	P/N	P/N		
TB1		073790	Terminal Block, 2Pos Cage Clamp	•				/1.10
TB2		073790	Terminal Block, 2Pos Cage Clamp	•				/1.09
TB3		073790	Terminal Block, 2Pos Cage Clamp	•				/1.09
TB4		073790	Terminal Block, 2Pos Cage Clamp	•				/1.05
TB5		073790	Terminal Block, 2Pos Cage Clamp	•				/1.08
TB6		073790	Terminal Block, 2Pos Cage Clamp	•				/1.05
TB7		073790	Terminal Block, 2Pos Cage Clamp	•				/1.14
TB8		073790	Terminal Block, 2Pos Cage Clamp	•				/1.17

		Wood-Mizer®	
Project Description: Pallet Hawg PD200B10 230V 3Ph			
Revision:	A1.01	Pg Desc:	Parts List
Mounting Location:	+DOC	Type:	Parts list

Terminal line-up diagram

Wood-Mizer_Terminal_Lineup_Diagram

Terminal strip +L1-X2								
Terminal				Jumper		End Plate	Remark	Terminal X-Ref
Ref. Des.	Level	P/N	Description	Diagram	P/N	P/N		
TB1		073798	Ground Lug, Single Position w/ Screw	1				/1.04

Terminal line-up diagram

Wood-Mizer_Terminal_Lineup_Diagram

Terminal strip +L1-X3								
Terminal				Jumper		End Plate	Remark	Terminal X-Ref
Ref. Des.	Level	P/N	Description	Diagram	P/N	P/N		
TB1		073798	Ground Lug, Single Position w/ Screw	1				/1.04

Terminal line-up diagram

Wood-Mizer_Terminal_Lineup_Diagram

Terminal strip +L1-X4								
Terminal				Jumper		End Plate	Remark	Terminal X-Ref
Ref. Des.	Level	P/N	Description	Diagram	P/N	P/N		
TB1		052293-2	Junction Block, 2-Position Wire Clamp	1				/1.17

Cable Overview

Wood-Mizer_Cable_Overview

Cable Designation	Cable Part Number	Cable Description	Cable X-Ref
CBL1	073801	Cable Assy, 230V 3Ph Pallet Hawg Motor	+L1/1.102
HARN1	073803	Harness Assy, Pallet Hawg Back E-Stop	+L1/1.117
HARN2	073805	Harness Assy, Pallet Hawg Front E-Stop	+L1/1.117



Wood-Mizer®

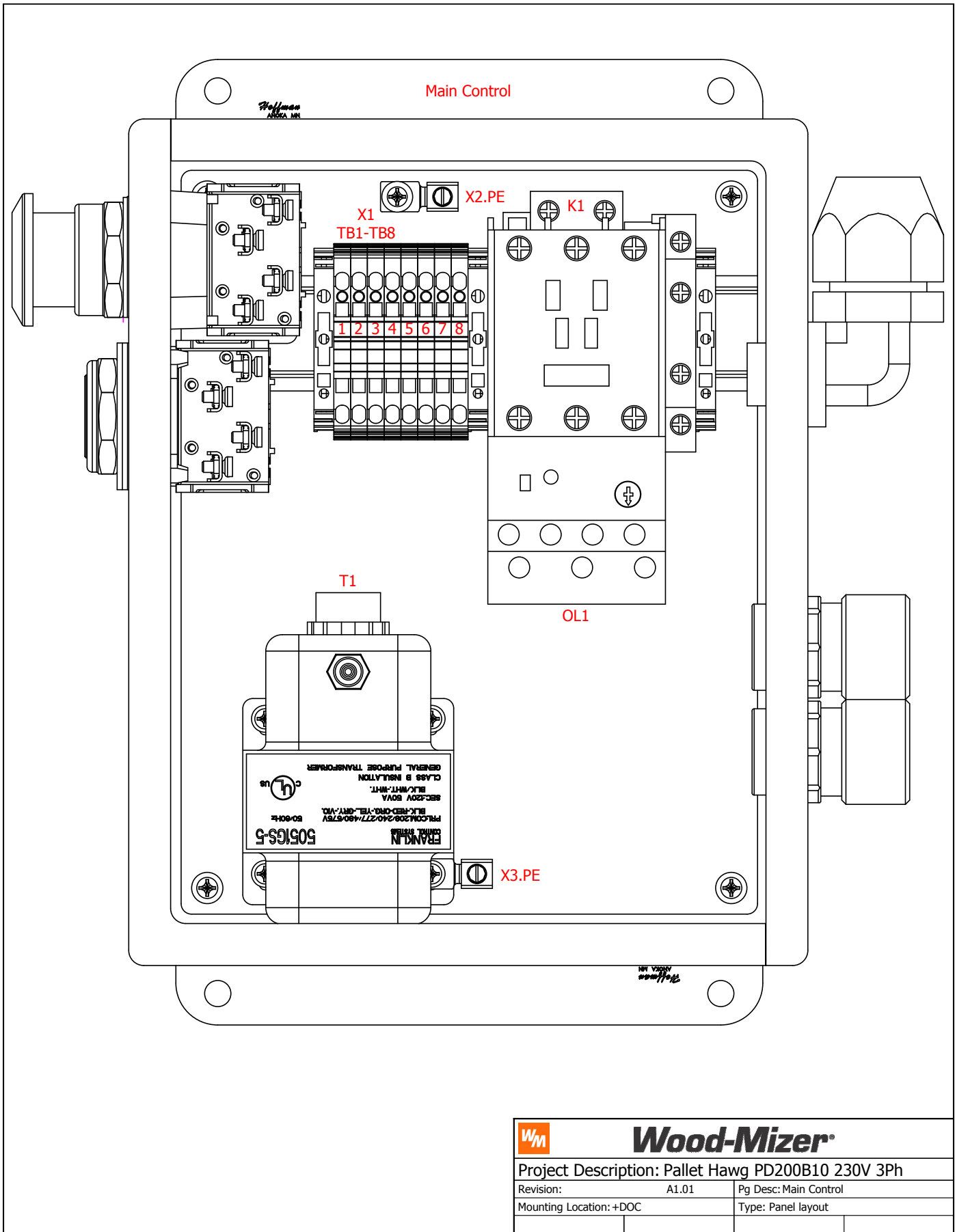
Project Description: Pallet Hawg PD200B10 230V 3Ph


Revision: A1.01

Pg Desc: Terminal Lineup Diagram

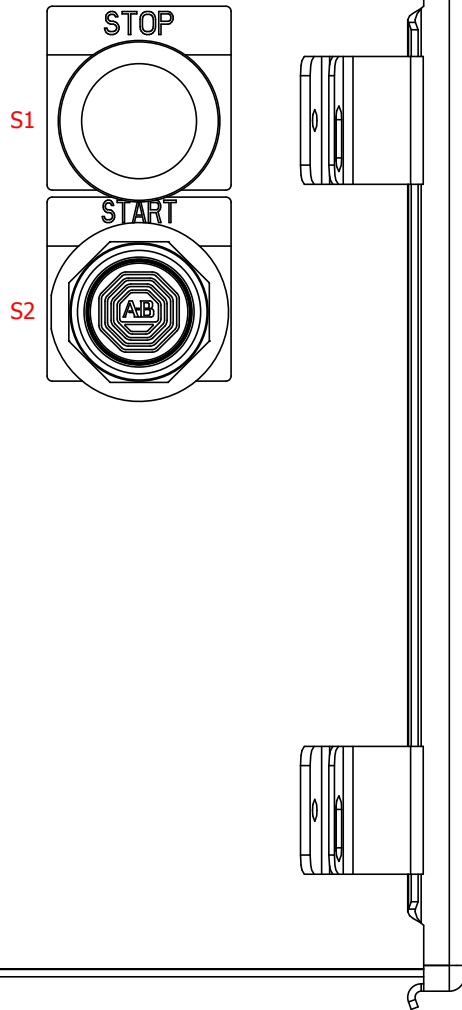
Mounting Location: +DOC

Type: Terminal line-up diagram

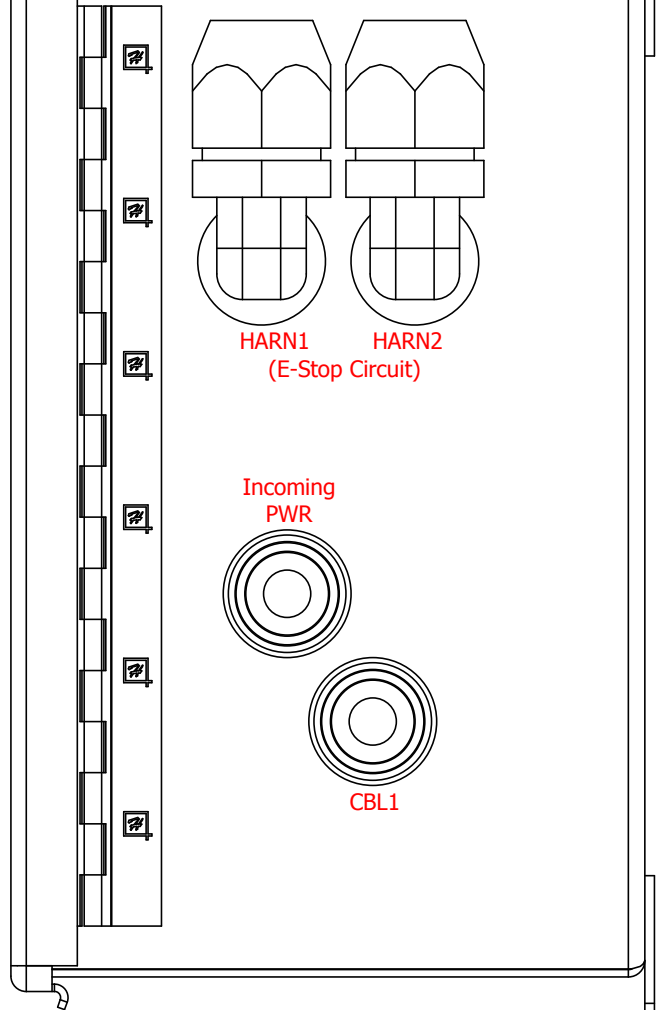


 Wood-Mizer®		
Project Description: Pallet Hawg PD200B10 230V 3Ph		
Revision:	A1.01	Pg Desc: Main Control
Mounting Location: +DOC		Type: Panel layout

Right Side



Left Side



Wood-Mizer®

Project Description: Pallet Hawg PD200B10 230V 3Ph

Revision: A1.01

Pg Desc: Main Control Layout

Mounting Location: +DOC

Type: Panel layout


Table of contents

WM_TableOfContents

Page	Page type	Page description	Date	Edited by
/A1	Table of contents	Table of Contents	9/22/2017	JEC
/B1	Overview	Revision History	7/25/2017	JEC
+L1/1	Schematic multi-line	Main	9/22/2017	JEC
+DOC/C1	Parts list	Parts List	9/22/2017	JEC
+DOC/D1	Terminal line-up diagram	Terminal Lineup Diagram	9/22/2017	JEC
+DOC/D2	Terminal line-up diagram	Terminal Lineup Diagram	9/22/2017	JEC
+DOC/D3	Terminal line-up diagram	Terminal Lineup Diagram	9/22/2017	JEC
+DOC/D4	Terminal line-up diagram	Terminal Lineup Diagram	7/27/2017	JEC
+DOC/E1	Cable overview	Cable Overview	7/28/2017	JEC
+DOC/F1	Panel layout	Main Control	9/22/2017	JEC
+DOC/F2	Panel layout	Main Control Layout	7/27/2017	JEC

Revision History

Date	Revision	Revision Record	Drawn By	Checked By
7/11/17	A1.00	Initial Release	JEC	JRF
6/10/2019	A1.01	Modified for Batesville production	MAM	

	Wood-Mizer	
Project Description: Control, Elec. PD200B10 240VAC 3Ph		
Revision:	A1.01	Pg Desc: Table of Contents
Mounting Location: +		Type: Table of contents

Device Tag/Parts List

WM_PARTS_LIST-Manual

Device tag	Function	Wood-Mizer Part Number	Wood-Mizer Description	Qty.	X-Ref
F1	Primary Control Fuse	P03151	Fuse, 4/10A 600V KLTR Class CC	2	+L1/1.106
F2	Secondary Control Fuse	052454	Fuse, 3A 600V KLTR Class CC	1	+L1/1.106
K1	Contactora	052692	Contactora, 32A 3P 24VAC Coil	1	+L1/1.118
M1	Blade Motor	079949	Motor, 10hp Dismantler, 1ph	1	+L1/1.102
OL1	Overload Protection	114029	Overload, 6.4-32A LR9D32 Electronic	1	+L1/1.102
S1	Start	025236-31	Switch Body, 22mm Grn LED 1 NO 24V ZB4	1	+L1/1.118
S2	Stop	050540	Contact, NC ZBE102	1	+L1/1.118
S3	Front E-Stop	052999	E-Stop Box, 40mm Oper-10A NC	1	+L1/1.118
S4	Back E-Stop	052999	E-Stop Box, 40mm Oper-10A NC	1	+L1/1.118
T1	Control Transformer	114026	Transformer, 100VA 208/240/480 -24	1	+L1/1.112

Terminal line-up diagram

Wood-Mizer_Terminal_Lineup_Diagram

Terminal strip +L1-X1								
Terminal				Jumper		End Plate	Remark	Terminal X-Ref
Ref. Des.	Level	P/N	Description	Diagram	P/N	P/N		
TB1		068100	Terminal Block, 2Pos Cage Clamp	•				/1.10
TB2		068100	Terminal Block, 2Pos Cage Clamp	•				/1.10
TB3		068100	Terminal Block, 2Pos Cage Clamp	•				/1.09
TB4		068100	Terminal Block, 2Pos Cage Clamp	•				/1.09
TB5		068100	Terminal Block, 2Pos Cage Clamp	•				/1.05
TB6		068100	Terminal Block, 2Pos Cage Clamp	•				/1.05
TB7		068103	Terminal Block, 4Pos Cage Clamp	•				/1.14

Terminal line-up diagram


Wood-Mizer_Terminal_Lineup_Diagram

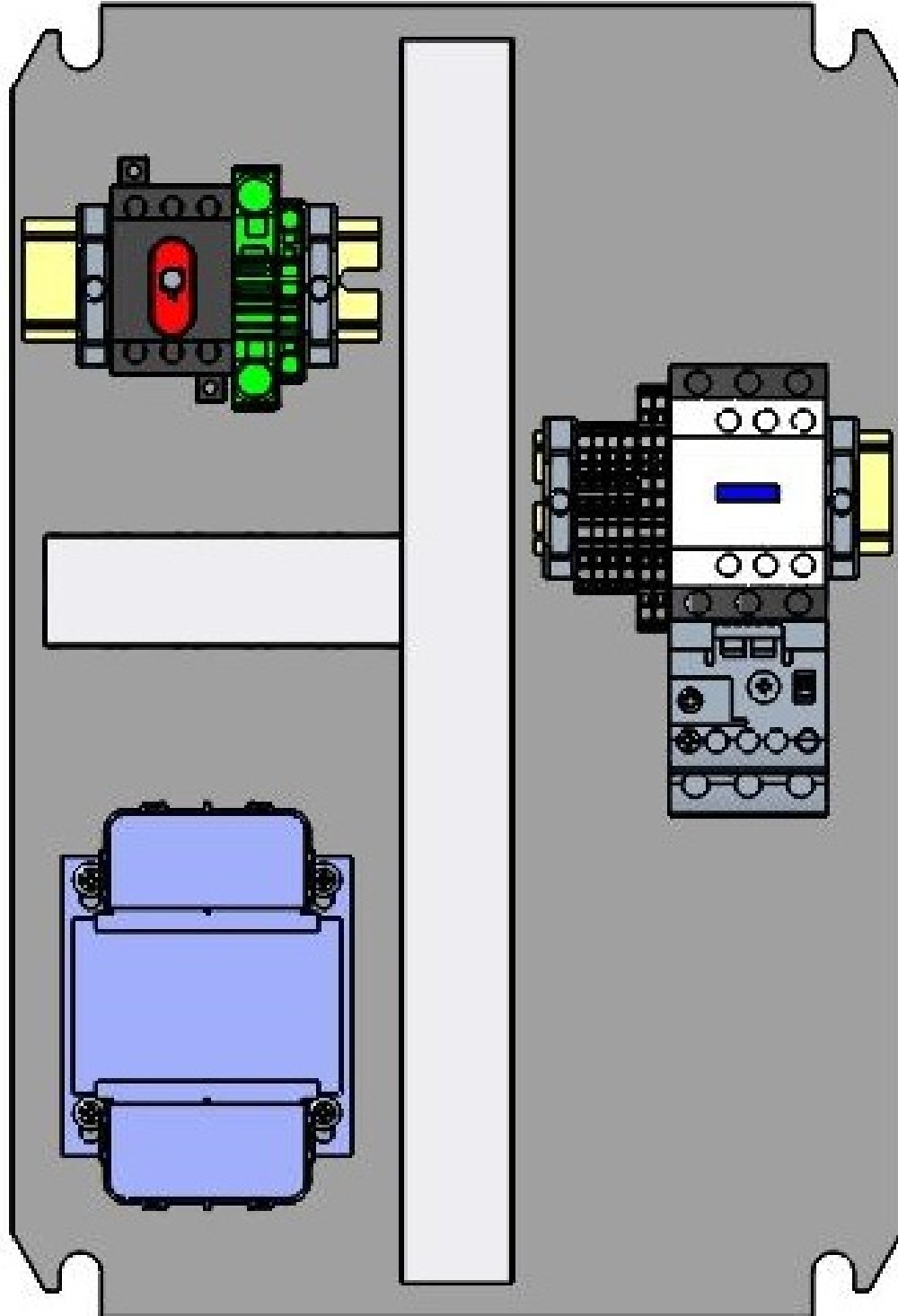
Terminal strip +L1-X2								
Terminal				Jumper		End Plate	Remark	Terminal X-Ref
Ref. Des.	Level	P/N	Description	Diagram	P/N	P/N		
TB1		068125	Terminal Block, 2Pos 16mm GND Clamp SD	•				/1.04

Cable Overview

Wood-Mizer_Cable_Overview

Cable Designation	Cable Part Number	Cable Description	Cable X-Ref
CBL1	114110	Harness Assy, PD200 240/480 VAC 3PH	+L1/1.102
HARN1	073803	Harness Assy, Pallet Hawg Back E-Stop	+L1/1.118
HARN2	073805	Harness Assy, Pallet Hawg Front E-Stop	+L1/1.118

 Wood-Mizer	
Project Description: Control, Elec. PD200B10 240VAC 3Ph	
Revision: A1.01	Pg Desc: Parts List
Mounting Location: +DOC	Type: Parts list



Wood-Mizer

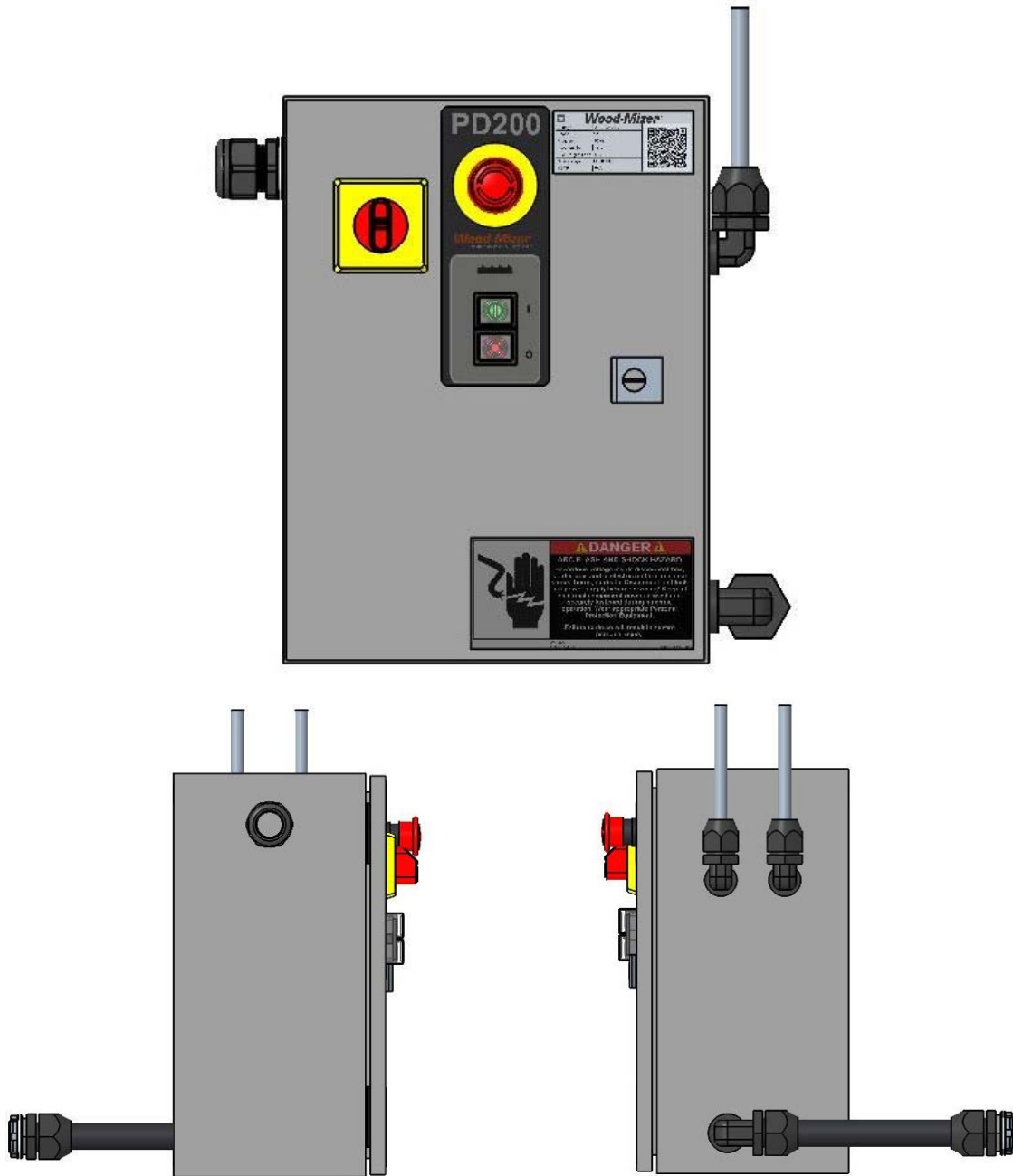
Project Description: Control, Elec. PD200B10 240VAC 3Ph


Revision: A1.01

Pg Desc: Main Control

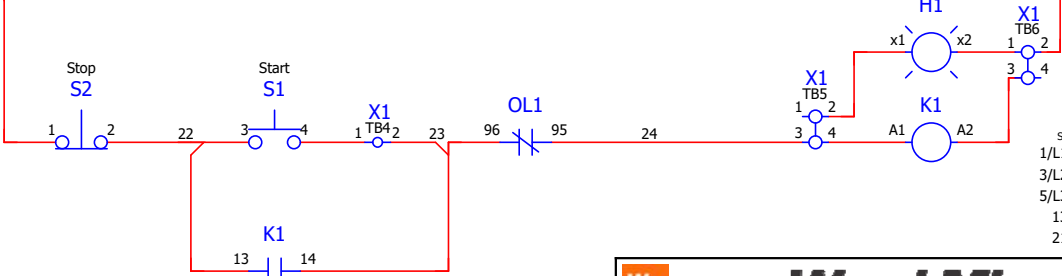
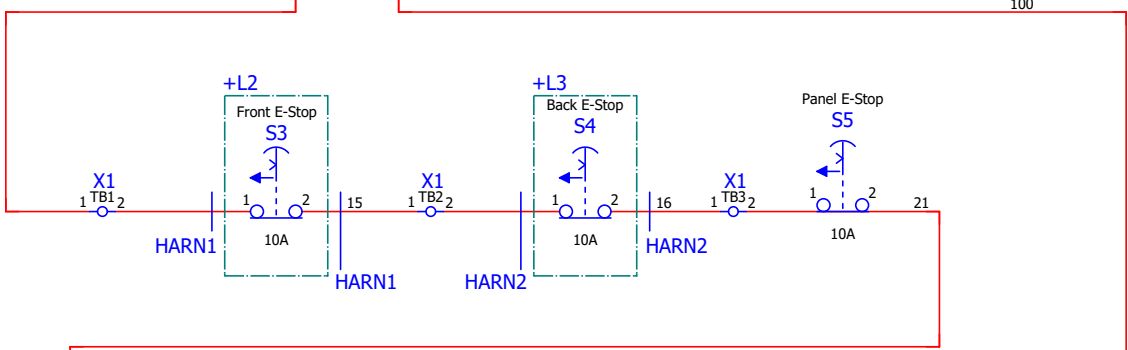
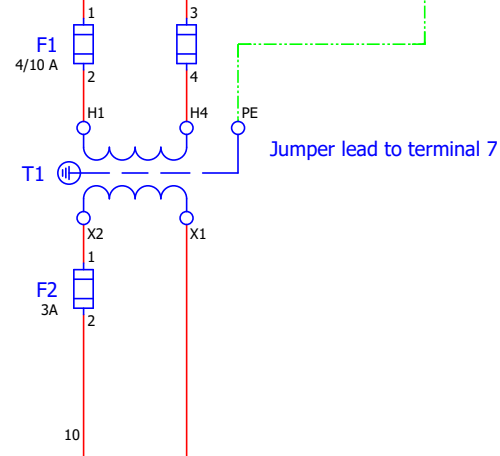
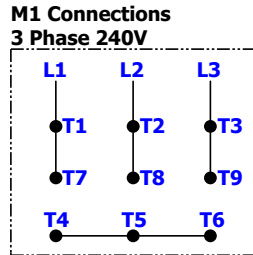
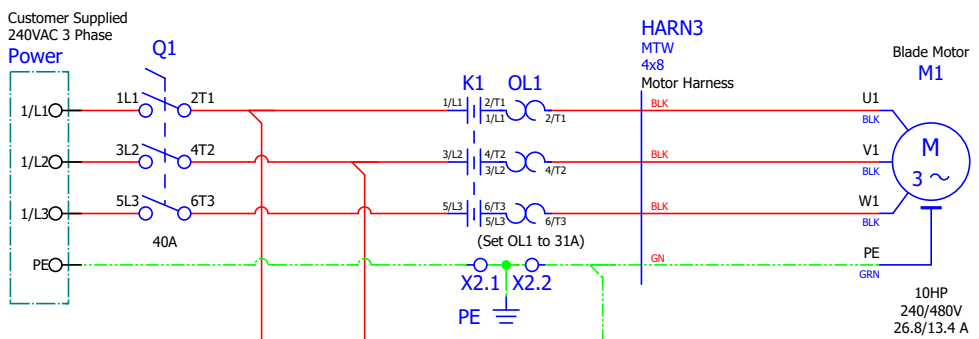
Mounting Location: +DOC

Type: Panel layout



 Wood-Mizer	
Project Description: Control, Elec. PD200B10 240VAC 3Ph	
Revision: A1.01	Pg Desc: Main Control Layout
Mounting Location: +DOC	Type: Panel layout

101
102
103
104
105
106
107
108
109
110
111
112
113
114
115
116
117
118
119
120
121



- SELC1065ABD
- 1/L1 2/T1 /1.102
 - 3/L2 4/T2 /1.103
 - 5/L3 6/T3 /1.104
 - 13 14 /1.120
 - 21 22

Wood-Mizer

Project Description: Control, Elec. PD200B10 240VAC 3Ph

Revision: A1.01	Pg Desc: Main
Mounting Location: +L1 (PD200B10)	Type: Schematic multi-line


Table of contents

WM_TableOfContents

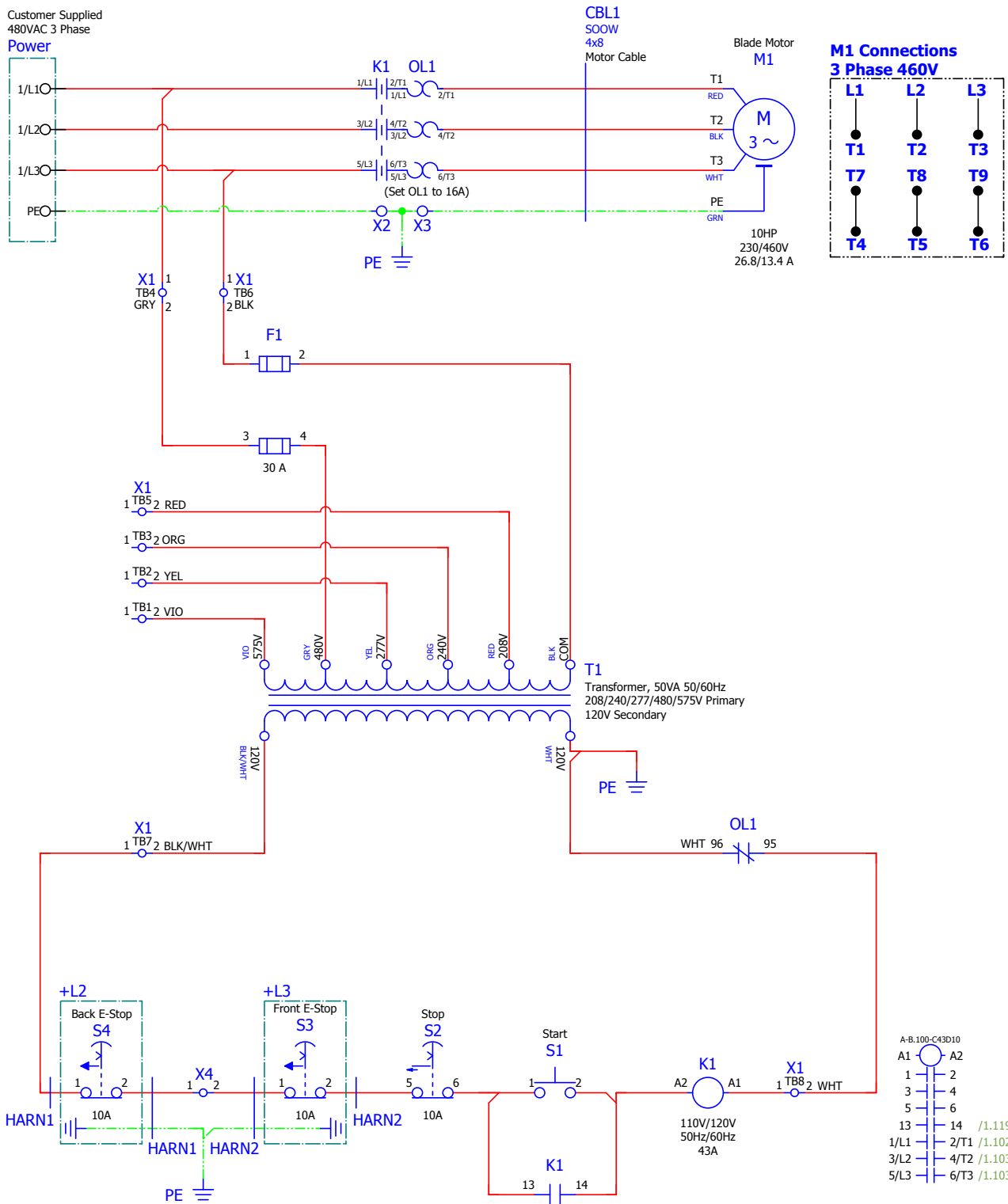
Page	Page type	Page description	Date	Edited by
/A1	Table of contents	Table of Contents	9/22/2017	JEC
/B1	Overview	Revision History	7/25/2017	JEC
+L1/1	Schematic multi-line	Main	9/22/2017	JEC
+DOC/C1	Parts list	Parts List	9/22/2017	JEC
+DOC/D1	Terminal line-up diagram	Terminal Lineup Diagram	9/8/2017	JEC
+DOC/D2	Terminal line-up diagram	Terminal Lineup Diagram	9/22/2017	JEC
+DOC/D3	Terminal line-up diagram	Terminal Lineup Diagram	9/22/2017	JEC
+DOC/D4	Terminal line-up diagram	Terminal Lineup Diagram	7/27/2017	JEC
+DOC/E1	Cable overview	Cable Overview	7/28/2017	JEC
+DOC/F1	Panel layout	Main Control	9/22/2017	JEC
+DOC/F2	Panel layout	Main Control Layout	7/27/2017	JEC

Revision History

Date	Revision	Revision Record	Drawn By	Checked By
7/11/17	A1.01	Initial Release	JEC	JRF

	Wood-Mizer®	
Project Description: Pallet Hawg PD200C10 460V 3Ph		
Revision:	A1.01	Pg Desc: Table of Contents
Mounting Location: +		Type: Table of contents

101
102
103
104
105
106
107
108
109
110
111
112
113
114
115
116
117
118
119
120
121



Project Description: Pallet Hawg PD200C10 460V 3Ph		
Revision:	A1.01	Pg Desc: Main
Mounting Location: +L1		Type: Schematic multi-line

Device Tag/Parts List

WM_PARTS_LIST-Manual

Device tag	Function	Wood-Mizer Part Number	Wood-Mizer Description	Qty.	X-Ref
F1	Main Fuse	073802	Fuseholder, 2P Class CC Finger Safe AB	1	+L1/1.106
F1	=	073806	Fuse, 0.5A 600V Class CC KLDR Delay	1	+L1/1.106
K1	Contactora	073786	Contactora, 43A 3P 120VAC Coil IEC	1	+L1/1.118
M1	Blade Motor	079937	Motor, 10hp Dismantler, 3Ph	1	+L1/1.102
OL1	Overload Protection	073789	Overload, 9-45A Class 10-15-20-30 NO/NC	1	+L1/1.102
S1	Start	073791	Pushbutton, Black Momentary 30mm Flush	1	+L1/1.118
S2	Stop	073792	Switch, E-Stop Maintd Push/Pull 30mm Red	1	+L1/1.118
S3	Front E-Stop	052999	E-Stop Box, 40mm Oper-10A NC	1	+L1/1.118
S4	Back E-Stop	052999	E-Stop Box, 40mm Oper-10A NC	1	+L1/1.118
T1	Control Transformer	073797	TFMR, 50VA 208/240/277/480/575V ->120V	1	+L1/1.112

Terminal line-up diagram

Wood-Mizer_Terminal_Lineup_Diagram

Terminal strip +L1-X1								
Terminal				Jumper		End Plate	Remark	Terminal X-Ref
Ref. Des.	Level	P/N	Description	Diagram	P/N	P/N		
TB1		073790	Terminal Block, 2Pos Cage Clamp	•				/1.10
TB2		073790	Terminal Block, 2Pos Cage Clamp	•				/1.10
TB3		073790	Terminal Block, 2Pos Cage Clamp	•				/1.09
TB4		073790	Terminal Block, 2Pos Cage Clamp	•				/1.05
TB5		073790	Terminal Block, 2Pos Cage Clamp	•				/1.09
TB6		073790	Terminal Block, 2Pos Cage Clamp	•				/1.05
TB7		073790	Terminal Block, 2Pos Cage Clamp	•				/1.14
TB8		073790	Terminal Block, 2Pos Cage Clamp	•				/1.18

Terminal line-up diagram

Wood-Mizer_Terminal_Lineup_Diagram

Terminal strip +L1-X2								
Terminal				Jumper		End Plate	Remark	Terminal X-Ref
Ref. Des.	Level	P/N	Description	Diagram	P/N	P/N		
TB1		073798	Ground Lug, Single Position w/ Screw	•				/1.04



Wood-Mizer®

Project Description: Pallet Hawg PD200C10 460V 3Ph

Revision: A1.01

Pg Desc: Parts List

Mounting Location: +DOC

Type: Parts list

Terminal line-up diagram

Wood-Mizer_Terminal_Lineup_Diagram

Terminal strip +L1-X3								
Terminal				Jumper		End Plate	Remark	Terminal X-Ref
Ref. Des.	Level	P/N	Description	Diagram	P/N	P/N		
TB1		073798	Ground Lug, Single Position w/ Screw	,				/1.04

Terminal line-up diagram


Wood-Mizer_Terminal_Lineup_Diagram

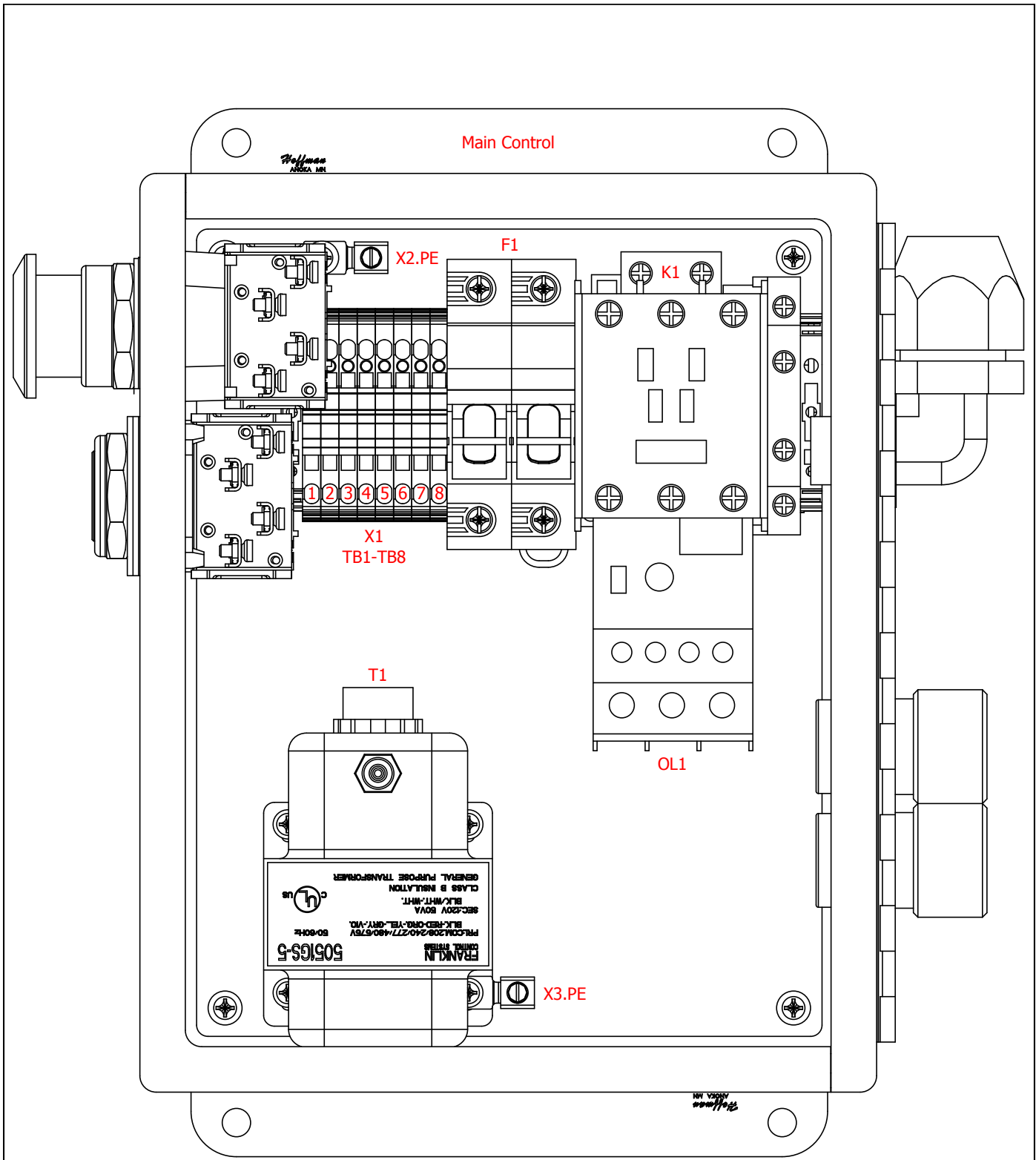
Terminal strip +L1-X4								
Terminal				Jumper		End Plate	Remark	Terminal X-Ref
Ref. Des.	Level	P/N	Description	Diagram	P/N	P/N		
TB1		052293-2	Junction Block, 2-Position Wire Clamp	,				/1.18


Cable Overview

Wood-Mizer_Cable_Overview

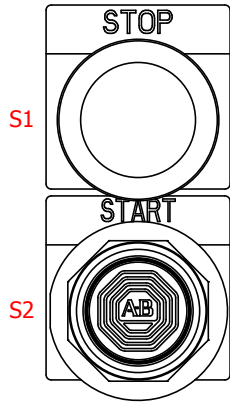
Cable Designation	Cable Part Number	Cable Description	Cable X-Ref
CBL1	073801	Cable Assy, 460V 3Ph Pallet Hawg Motor	+L1/1.102
HARN1	073803	Harness Assy, Pallet Hawg Back E-Stop	+L1/1.117
HARN2	073805	Harness Assy, Pallet Hawg Front E-Stop	+L1/1.117

	Wood-Mizer®	
Project Description: Pallet Hawg PD200C10 460V 3Ph		
Revision:	A1.01	Pg Desc: Terminal Lineup Diagram
Mounting Location: +DOC		Type: Terminal line-up diagram

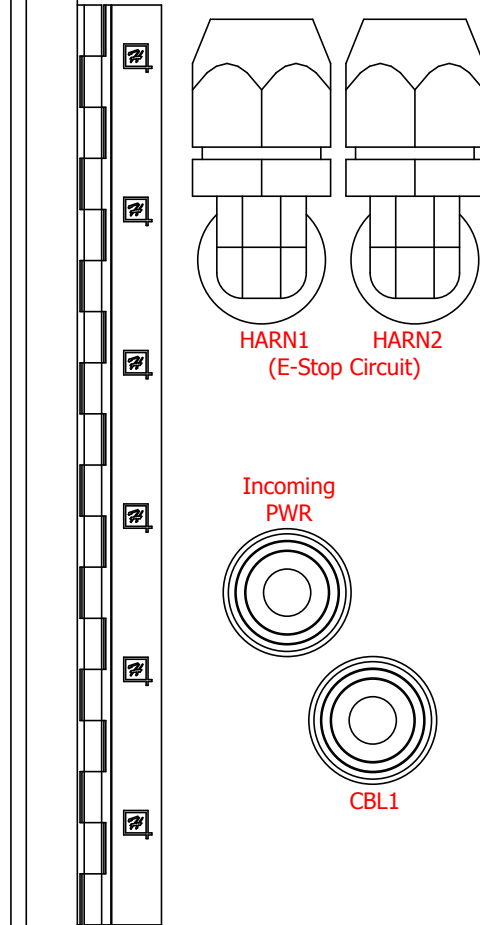


 Wood-Mizer®		
Project Description: Pallet Hawg PD200C10 460V 3Ph		
Revision:	A1.01	Pg Desc: Main Control
Mounting Location: +DOC		Type: Panel layout

Right Side



Left Side



Wood-Mizer®

Project Description: Pallet Hawg PD200C10 460V 3Ph

Revision: A1.01

Pg Desc: Main Control Layout

Mounting Location: +DOC

Type: Panel layout


Table of contents

WM_TableOfContents

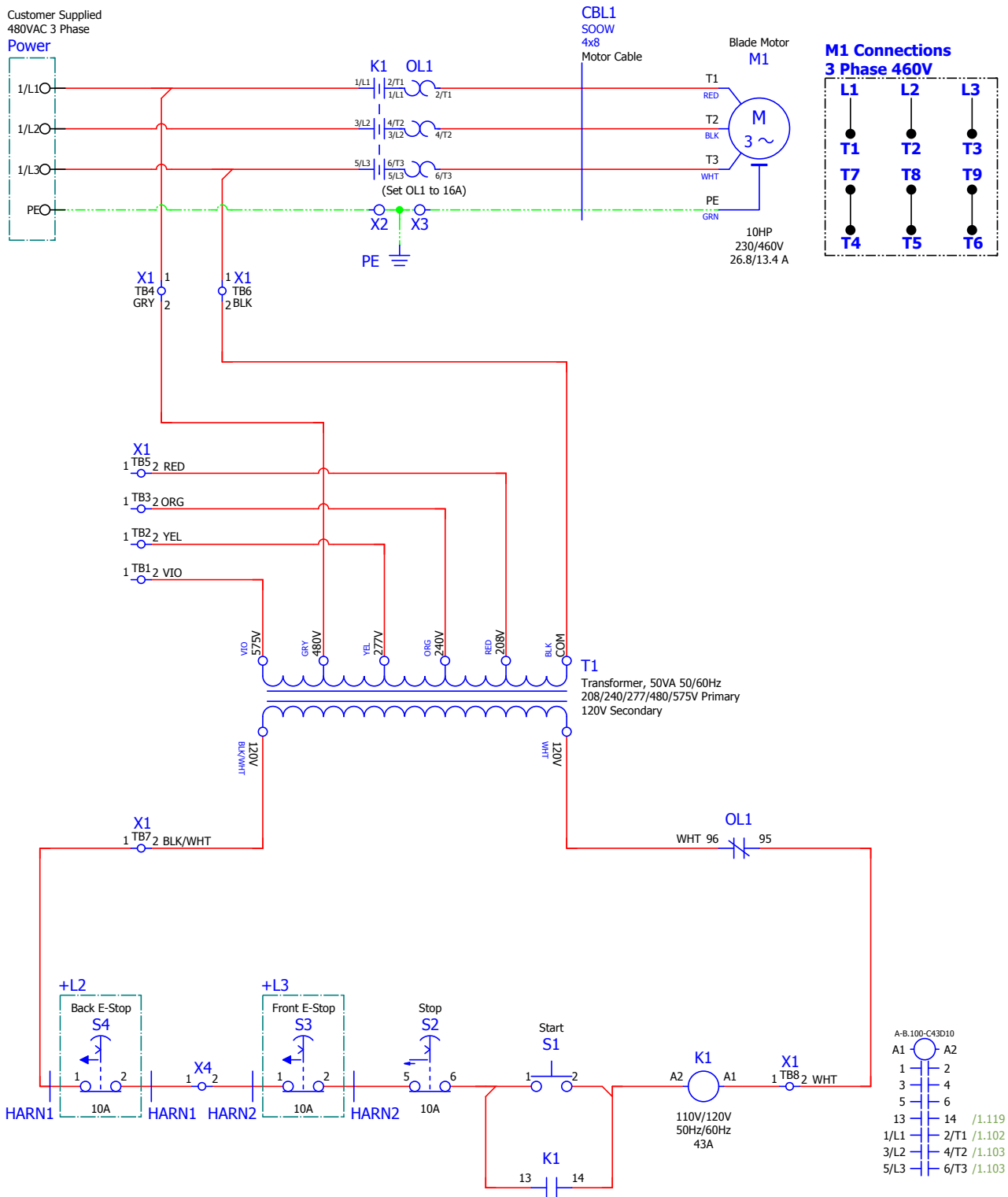
Page	Page type	Page description	Date	Edited by
/A1	Table of contents	Table of Contents	7/28/2017	JEC
/B1	Overview	Revision History	7/25/2017	JEC
+L1/1	Schematic multi-line	Main	7/28/2017	JEC
+DOC/C1	Parts list	Parts List	7/27/2017	JEC
+DOC/D1	Terminal line-up diagram	Terminal Lineup Diagram	7/27/2017	JEC
+DOC/D2	Terminal line-up diagram	Terminal Lineup Diagram	7/27/2017	JEC
+DOC/D3	Terminal line-up diagram	Terminal Lineup Diagram	7/27/2017	JEC
+DOC/D4	Terminal line-up diagram	Terminal Lineup Diagram	7/27/2017	JEC
+DOC/E1	Cable overview	Cable Overview	7/28/2017	JEC
+DOC/F1	Panel layout	Main Control	7/25/2017	JEC
+DOC/F2	Panel layout	Main Control Layout	7/27/2017	JEC

Revision History

Date	Revision	Revision Record	Drawn By	Checked By
7/11/17	A1.01	Initial Release	JEC	JRF

		Wood-Mizer®	
Project Description: Pallet Hawg PD200C10 460V 3Ph			
Revision:	A1.01	Pg Desc: Table of Contents	
Mounting Location: +		Type: Table of contents	

101
102
103
104
105
106
107
108
109
110
111
112
113
114
115
116
117
118
119
120
121



Project Description: Pallet Hawg PD200C10 460V 3Ph		
Revision:	A1.01	Pg Desc: Main
Mounting Location: +L1		Type: Schematic multi-line

Device Tag/Parts List

WM_PARTS_LIST-Manual

Device tag	Function	Wood-Mizer Part Number	Wood-Mizer Description	Qty.	X-Ref
K1	Contactora	073786	Contactora, 43A 3P 120VAC Coil IEC	1	+L1/1.118
M1	Blade Motor	079937	Motor, 10hp Dismantler, 3Ph	1	+L1/1.102
OL1	Overload Protection	073789	Overload, 9-45A Class 10-15-20-30 NO/NC	1	+L1/1.102
S1	Start	073791	Pushbutton, Black Momentary 30mm Flush	1	+L1/1.118
S2	Stop	073792	Switch, E-Stop Maintd Push/Pull 30mm Red	1	+L1/1.118
S3	Front E-Stop	052999	E-Stop Box, 40mm Oper-10A NC	1	+L1/1.118
S4	Back E-Stop	052999	E-Stop Box, 40mm Oper-10A NC	1	+L1/1.118
T1	Control Transformer	073797	TFMR, 50VA 208/240/277/480/575V ->120V	1	+L1/1.112

Terminal line-up diagram

Wood-Mizer_Terminal_Lineup_Diagram

Terminal strip +L1-X1

Terminal				Jumper		End Plate	Remark	Terminal X-Ref
Ref. Des.	Level	P/N	Description	Diagram	P/N	P/N		
TB1		073790	Terminal Block, 2Pos Cage Clamp	•				/1.10
TB2		073790	Terminal Block, 2Pos Cage Clamp	•				/1.09
TB3		073790	Terminal Block, 2Pos Cage Clamp	•				/1.09
TB4		073790	Terminal Block, 2Pos Cage Clamp	•				/1.05
TB5		073790	Terminal Block, 2Pos Cage Clamp	•				/1.08
TB6		073790	Terminal Block, 2Pos Cage Clamp	•				/1.05
TB7		073790	Terminal Block, 2Pos Cage Clamp	•				/1.14
TB8		073790	Terminal Block, 2Pos Cage Clamp	•				/1.18

Terminal line-up diagram

Wood-Mizer_Terminal_Lineup_Diagram

Terminal strip +L1-X2

Terminal				Jumper		End Plate	Remark	Terminal X-Ref
Ref. Des.	Level	P/N	Description	Diagram	P/N	P/N		
TB1		073798	Ground Lug, Single Position w/ Screw	•				/1.04



Wood-Mizer®

Project Description: Pallet Hawg PD200C10 460V 3Ph

Revision: A1.01

Pg Desc: Parts List

Mounting Location: +DOC

Type: Parts list

Terminal line-up diagram

Wood-Mizer_Terminal_Lineup_Diagram

Terminal strip +L1-X3

Terminal				Jumper		End Plate	Remark	Terminal X-Ref
Ref. Des.	Level	P/N	Description	Diagram	P/N	P/N		
TB1		073798	Ground Lug, Single Position w/ Screw	1				/1.04

Terminal line-up diagram

Wood-Mizer_Terminal_Lineup_Diagram


Terminal strip +L1-X4

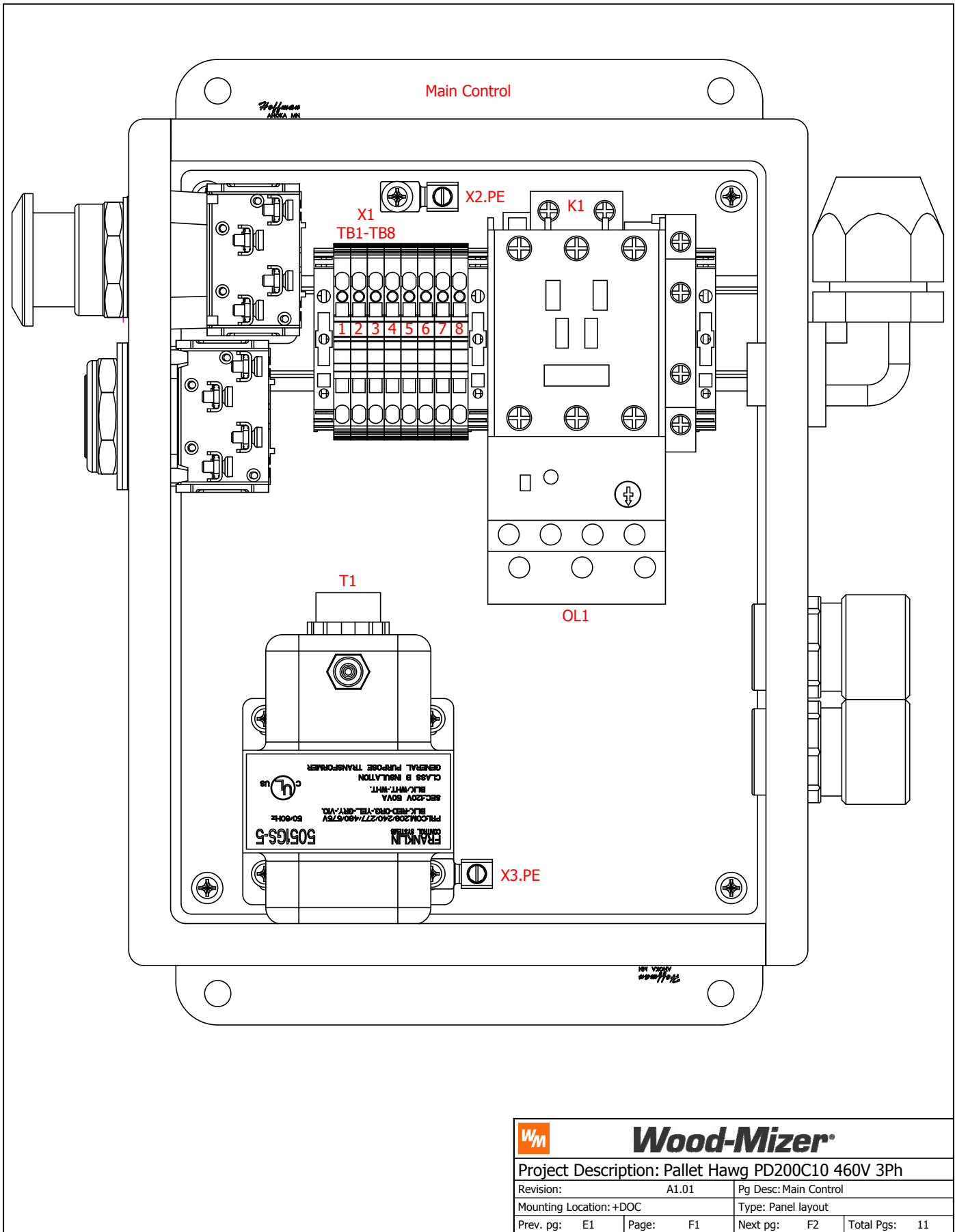
Terminal				Jumper		End Plate	Remark	Terminal X-Ref
Ref. Des.	Level	P/N	Description	Diagram	P/N	P/N		
TB1		052293-2	Junction Block, 2-Position Wire Clamp	1				/1.18


Cable Overview

Wood-Mizer_Cable_Overview

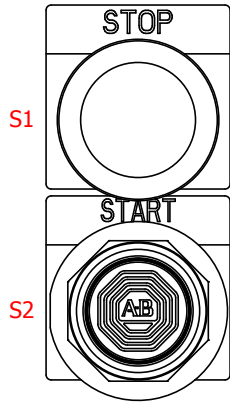
Cable Designation	Cable Part Number	Cable Description	Cable X-Ref
CBL1	073801	Cable Assy, 460V 3Ph Pallet Hawg Motor	+L1/1.102
HARN1	073803	Harness Assy, Pallet Hawg Back E-Stop	+L1/1.117
HARN2	073805	Harness Assy, Pallet Hawg Front E-Stop	+L1/1.117

		Wood-Mizer®	
Project Description: Pallet Hawg PD200C10 460V 3Ph			
Revision:	A1.01	Pg Desc: Terminal Lineup Diagram	
Mounting Location: +DOC		Type: Terminal line-up diagram	

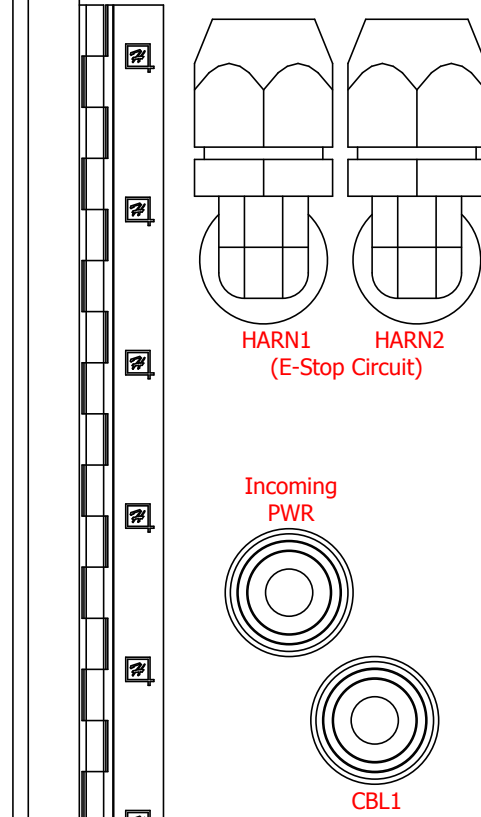


 Wood-Mizer®	
Project Description: Pallet Hawg PD200C10 460V 3Ph	
Revision: A1.01	Pg Desc: Main Control
Mounting Location: +DOC	
Type: Panel layout	
Prev. pg: E1	Page: F1
Next pg: F2	Total Pgs: 11

Right Side



Left Side



Wood-Mizer®

Project Description: Pallet Hawg PD200C10 460V 3Ph

Revision: A1.01

Pg Desc: Main Control Layout

Mounting Location: +DOC

Type: Panel layout

Prev. pg: F1

Page: F2

Next pg:

Total Pgs: 11

Revision History

Date	Revision	Revision Record	Drawn By	Checked By
7/11/17	A1.00	Initial Release	JEC	JRF
6/10/2019	A2.00	Modified for Batesville production	MAM	

Device Tag/Parts List

WM_PARTS_LIST-Manual

Device tag	Function	Wood-Mizer Part Number	Wood-Mizer Description	Qty.	X-Ref
F1	Primary Control Fuse	P03151	Fuse, 4/10A 600V KLDR Class CC	2	+L1/1.106
F2	Secondary Control Fuse	052454	Fuse, 3A 600V KLDR Class CC	1	+L1/1.106
K1	Contacto	052692	Contacto, 32A 3P 24VAC Coil	1	+L1/1.118
M1	Blade Motor	079949	Motor, 10hp Dismantler, 1ph	1	+L1/1.102
OL1	Overload Protection	114029	Overload, 6.4-32A LR9D32 Electronic	1	+L1/1.102
S1	Start	025236-31	Switch Body, 22mm Grn LED 1 NO 24V ZB4	1	+L1/1.118
S2	Stop	050540	Contact, NC ZBE102	1	+L1/1.118
S3	Front E-Stop	052999	E-Stop Box, 40mm Oper-10A NC	1	+L1/1.118
S4	Back E-Stop	052999	E-Stop Box, 40mm Oper-10A NC	1	+L1/1.118
T1	Control Transformer	114026	Transformer, 100VA 208/240/480 -24	1	+L1/1.112

Terminal line-up diagram

Wood-Mizer_Terminal_Lineup_Diagram

Terminal strip +L1-X1								
Terminal				Jumper		End Plate	Remark	Terminal X-Ref
Ref. Des.	Level	P/N	Description	Diagram	P/N	P/N		
TB1		068100	Terminal Block, 2Pos Cage Clamp	•				/1.10
TB2		068100	Terminal Block, 2Pos Cage Clamp	•				/1.10
TB3		068100	Terminal Block, 2Pos Cage Clamp	•				/1.09
TB4		068100	Terminal Block, 2Pos Cage Clamp	•				/1.09
TB5		068100	Terminal Block, 2Pos Cage Clamp	•				/1.05
TB6		068100	Terminal Block, 2Pos Cage Clamp	•				/1.05
TB7		068103	Terminal Block, 4Pos Cage Clamp	•				/1.14

Terminal line-up diagram


Wood-Mizer_Terminal_Lineup_Diagram

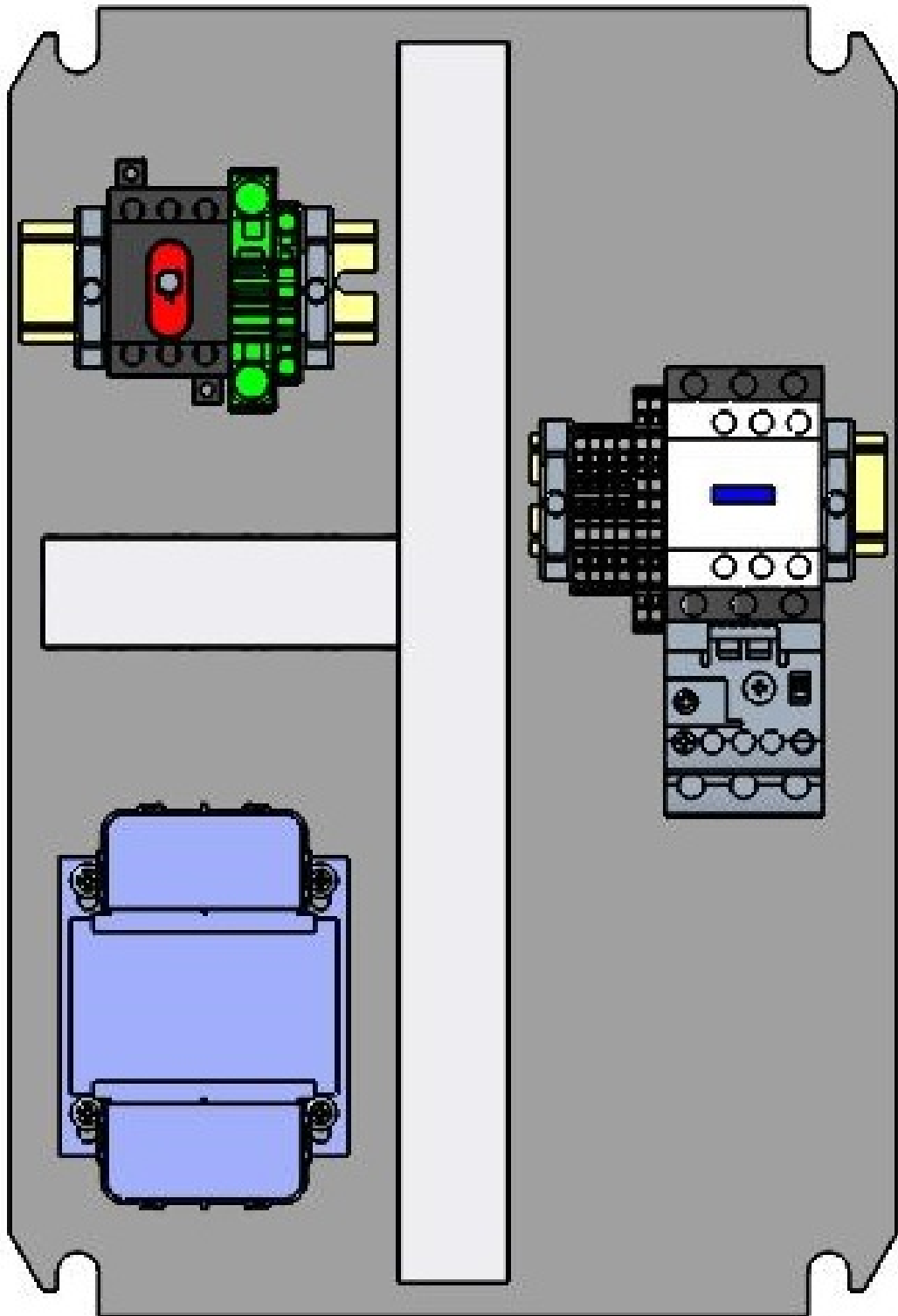
Terminal strip +L1-X2								
Terminal				Jumper		End Plate	Remark	Terminal X-Ref
Ref. Des.	Level	P/N	Description	Diagram	P/N	P/N		
TB1		068125	Terminal Block, 2Pos 16mm GND Clamp SD	•				/1.04

Cable Overview

Wood-Mizer_Cable_Overview

Cable Designation	Cable Part Number	Cable Description	Cable X-Ref
HARN3	114110	Harness Assy, PD200 240/480 VAC 3PH	+L1/1.102
HARN1	073803	Harness Assy, Pallet Hawg Back E-Stop	+L1/1.118
HARN2	073805	Harness Assy, Pallet Hawg Front E-Stop	+L1/1.118

		Wood-Mizer	
Project Description: Control, Elec. PD200C10 480VAC 3Ph			
Revision:	A2.00	Pg Desc: Revision History	
Mounting Location: +		Type: Overview	



Wood-Mizer

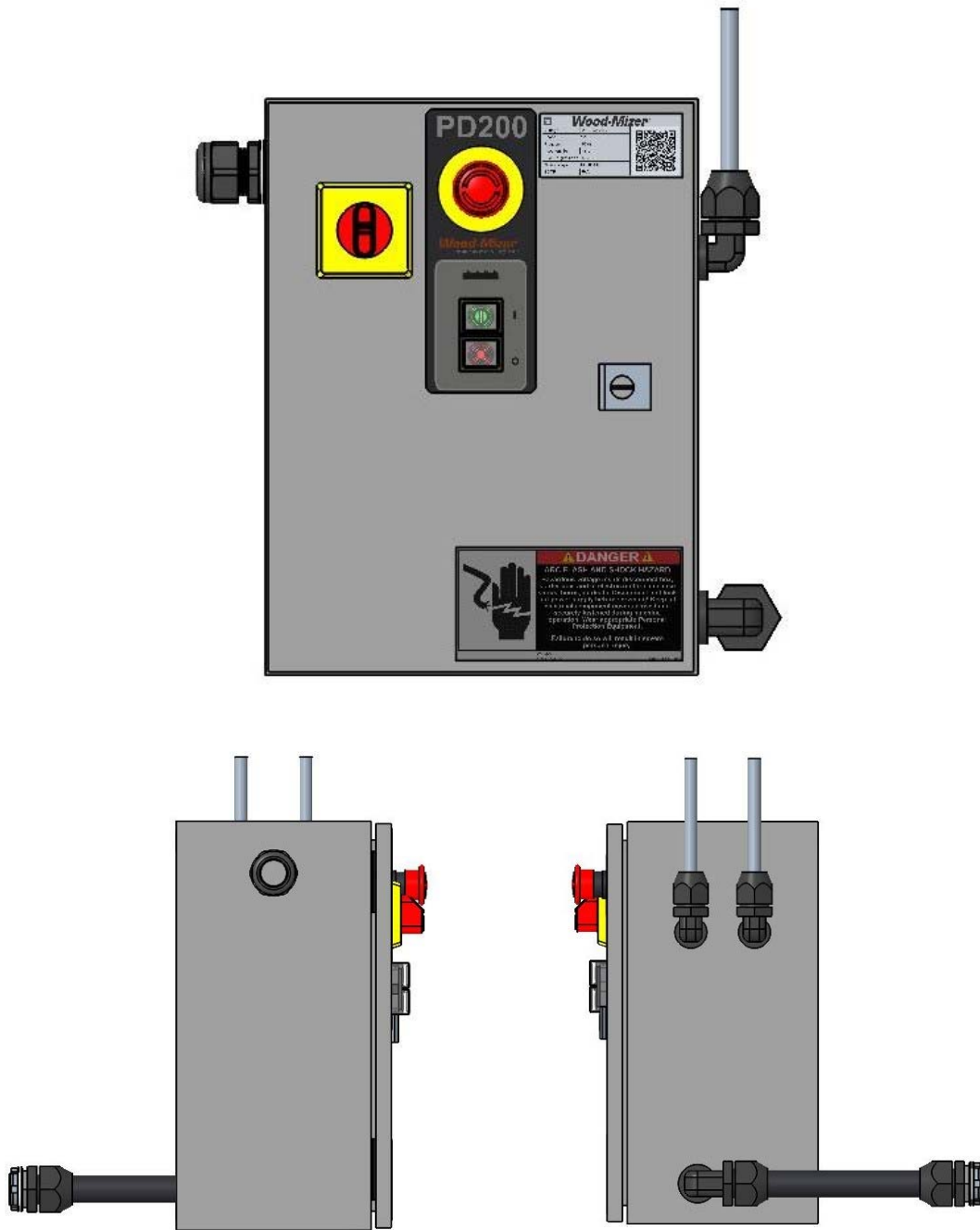
Project Description: Control, Elec. PD200C10 480VAC 3Ph


Revision: A2.00

Pg Desc: Main Control

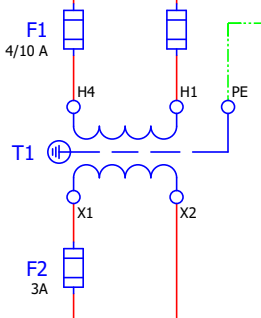
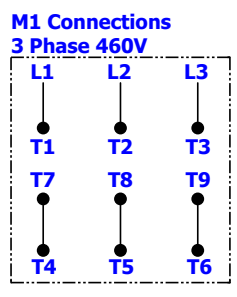
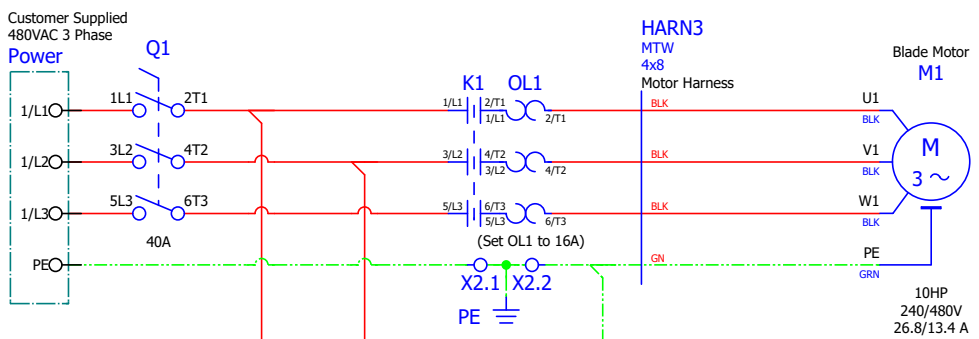
Mounting Location: +DOC

Type: Panel layout

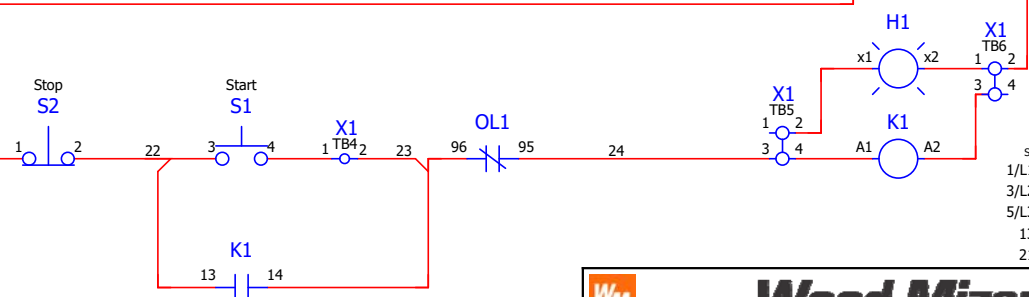
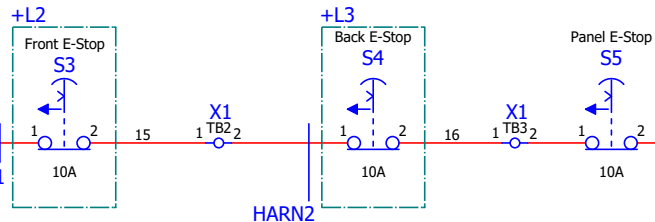


 Wood-Mizer	
Project Description: Control, Elec. PD200C10 480VAC 3Ph	
Revision: A2.00	Pg Desc: Main Control Layout
Mounting Location: +DOC	Type: Panel layout

101
102
103
104
105
106
107
108
109
110
111
112
113
114
115
116
117
118
119
120
121



Jumper lead to terminal 3



- SELCD65ABD
- 1/L1 2/T1 /1.102
 - 3/L2 4/T2 /1.103
 - 5/L3 6/T3 /1.104
 - 13 14 /1.120
 - 21 22

Project Description: Control, Elec. PD200C10 480VAC 3Ph		
Revision:	A2.00	Pg Desc: Main
Mounting Location:	+L1 (PD200C10)	Type: Schematic multi-line

Revision History

Date	Revision	Revision Record	Drawn By	Checked By
7/11/17	A1.00	Initial Release	JEC	JRF
6/10/2019	A2.00	Modified for Batesville production	MAM	

Device Tag/Parts List

WM_PARTS_LIST-Manual

Device tag	Function	Wood-Mizer Part Number	Wood-Mizer Description	Qty.	X-Ref
F1	Primary Control Fuse	P03151	Fuse, 4/10A 600V KLDR Class CC	2	+L1/1.106
F2	Secondary Control Fuse	052454	Fuse, 3A 600V KLDR Class CC	1	+L1/1.106
K1	Contacto	052692	Contacto, 32A 3P 24VAC Coil	1	+L1/1.118
M1	Blade Motor	110401	Motor, 10hp 575v, 1750rpm	1	+L1/1.102
OL1	Overload Protection	114029	Overload, 6.4-32A LR9D32 Electronic	1	+L1/1.102
S1	Start	025236-31	Switch Body, 22mm Grn LED 1 NO 24V ZB4	1	+L1/1.118
S2	Stop	050540	Contact, NC ZBE102	1	+L1/1.118
S3	Front E-Stop	052999	E-Stop Box, 40mm Oper-10A NC	1	+L1/1.118
S4	Back E-Stop	052999	E-Stop Box, 40mm Oper-10A NC	1	+L1/1.118
T1	Control Transformer	114031	Transformer, 100VA 600/575/550-24	1	+L1/1.112

Terminal line-up diagram

Wood-Mizer_Terminal_Lineup_Diagram

Terminal strip +L1-X1								
Terminal				Jumper		End Plate	Remark	Terminal X-Ref
Ref. Des.	Level	P/N	Description	Diagram	P/N	P/N		
TB1		068100	Terminal Block, 2Pos Cage Clamp	•				/1.10
TB2		068100	Terminal Block, 2Pos Cage Clamp	•				/1.10
TB3		068100	Terminal Block, 2Pos Cage Clamp	•				/1.09
TB4		068100	Terminal Block, 2Pos Cage Clamp	•				/1.09
TB5		068100	Terminal Block, 2Pos Cage Clamp	•				/1.05
TB6		068100	Terminal Block, 2Pos Cage Clamp	•				/1.05
TB7		068103	Terminal Block, 4Pos Cage Clamp	•				/1.14

Terminal line-up diagram


Wood-Mizer_Terminal_Lineup_Diagram

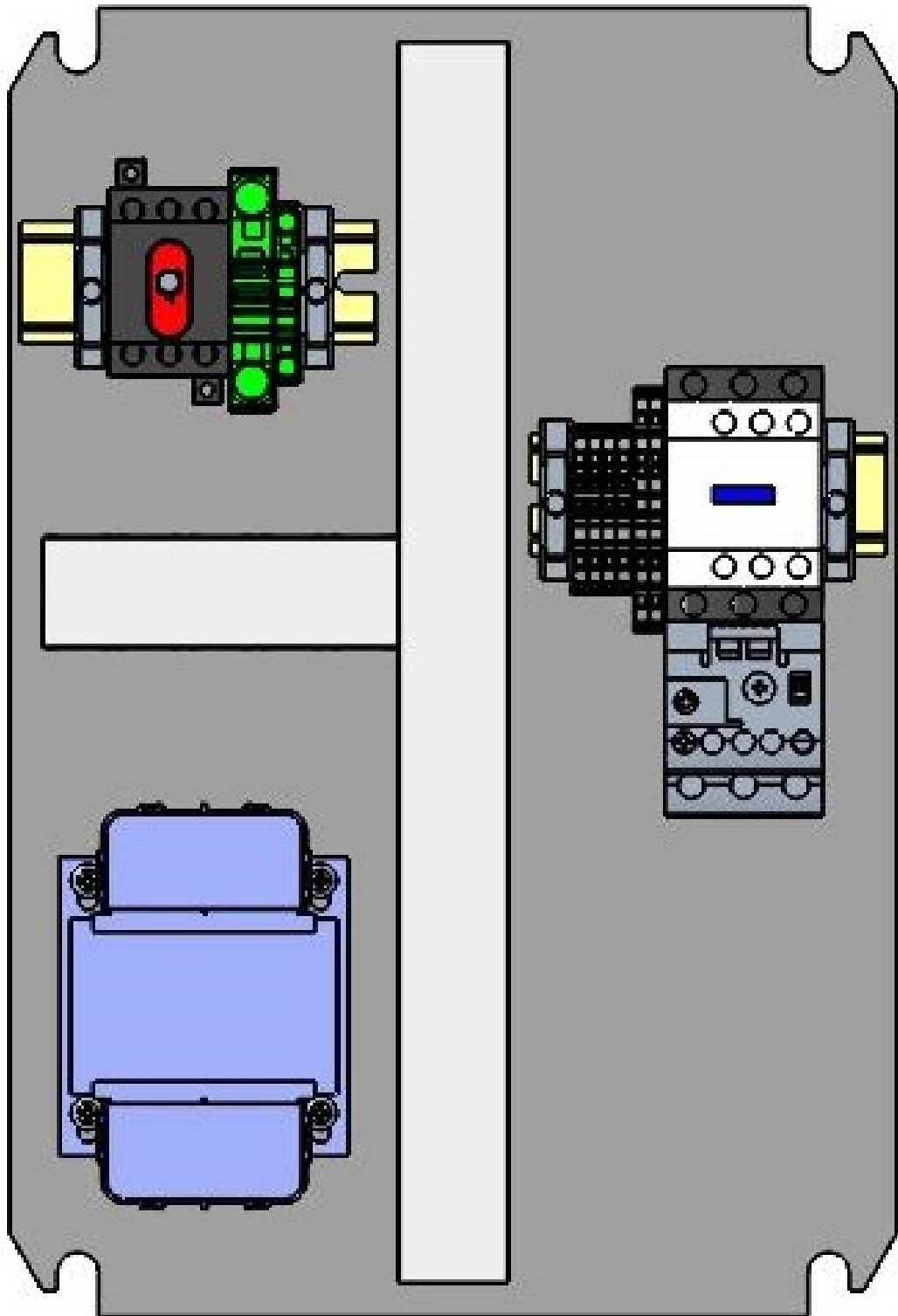
Terminal strip +L1-X2								
Terminal				Jumper		End Plate	Remark	Terminal X-Ref
Ref. Des.	Level	P/N	Description	Diagram	P/N	P/N		
TB1		068125	Terminal Block, 2Pos 16mm GND Clamp SD	•				/1.04

Cable Overview

Wood-Mizer_Cable_Overview

Cable Designation	Cable Part Number	Cable Description	Cable X-Ref
HARN3	114110	Harness Assy, PD200 240/480 VAC 3PH	+L1/1.102
HARN1	073803	Harness Assy, Pallet Hawg Back E-Stop	+L1/1.118
HARN2	073805	Harness Assy, Pallet Hawg Front E-Stop	+L1/1.118

	Wood-Mizer
Project Description: Control, Elec. PD200K10 575VAC 3Ph	
Revision: A2.00	Pg Desc: Revision History
Mounting Location: +	Type: Overview



Wood-Mizer

Project Description: Control, Elec. PD200K10 575VAC 3Ph

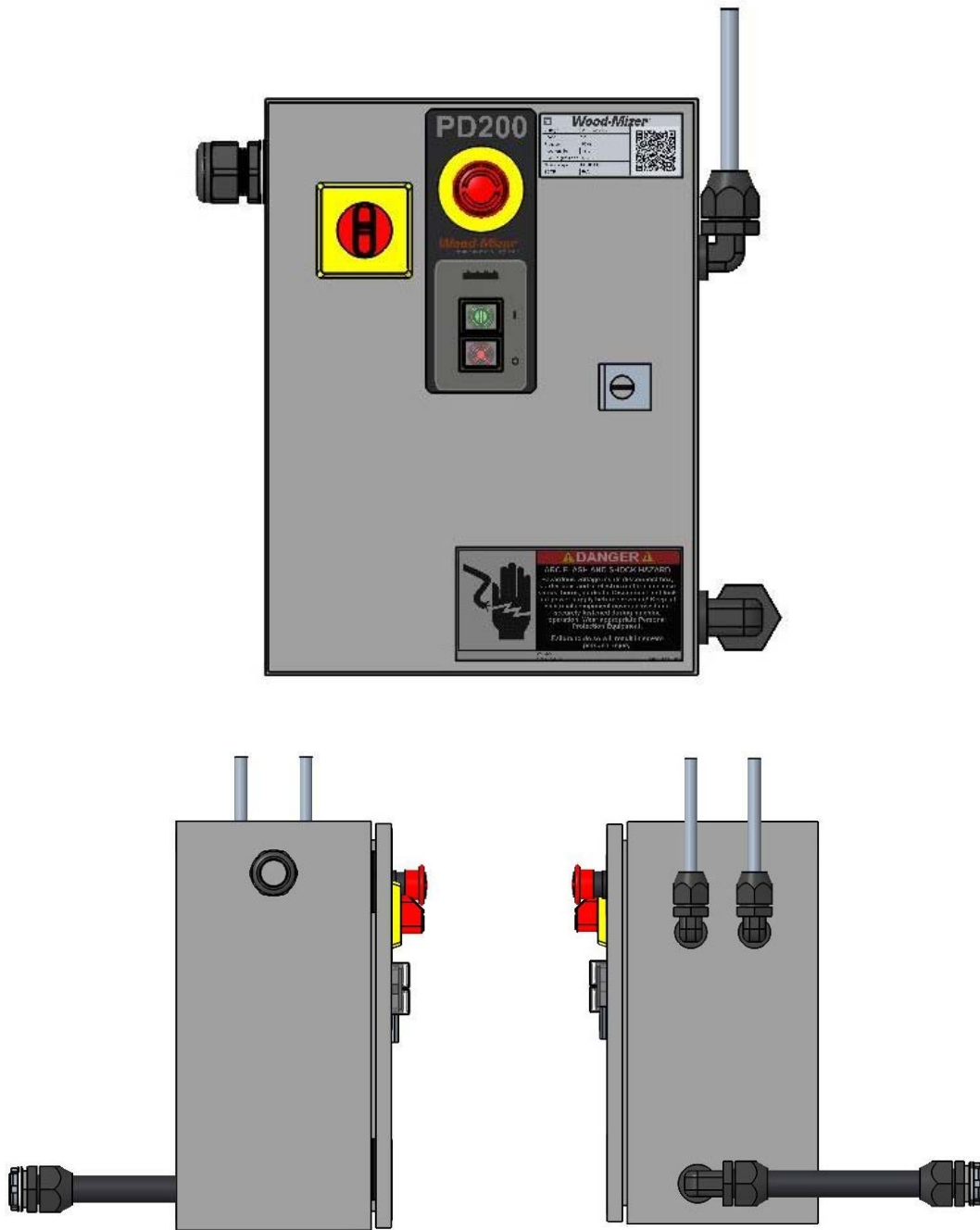
Revision: A2.00


Pg Desc: Main Control

Mounting Location: +DOC

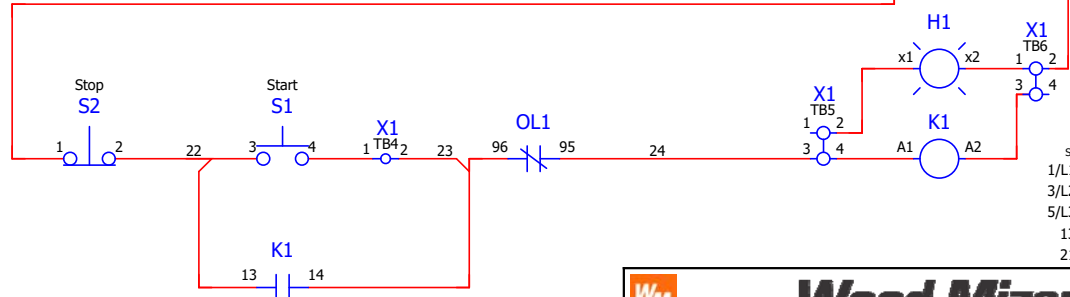
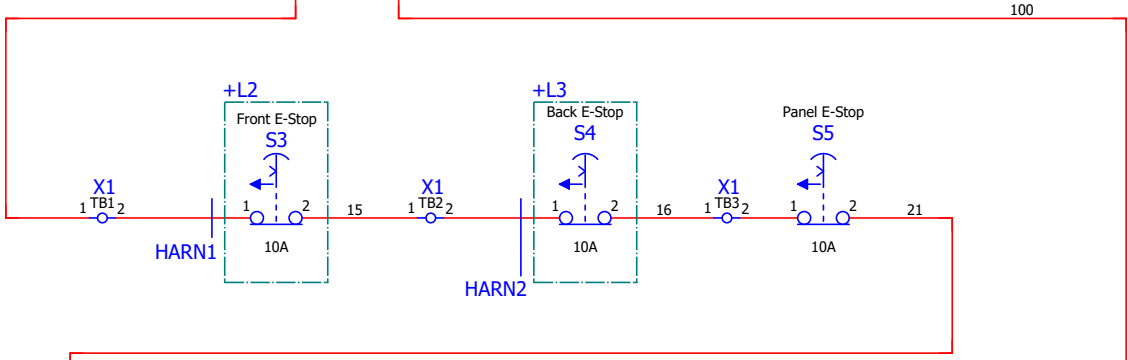
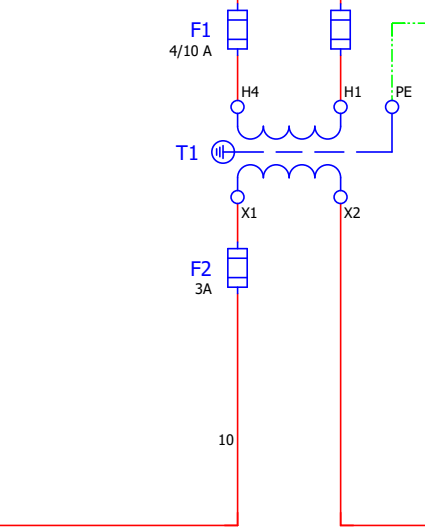
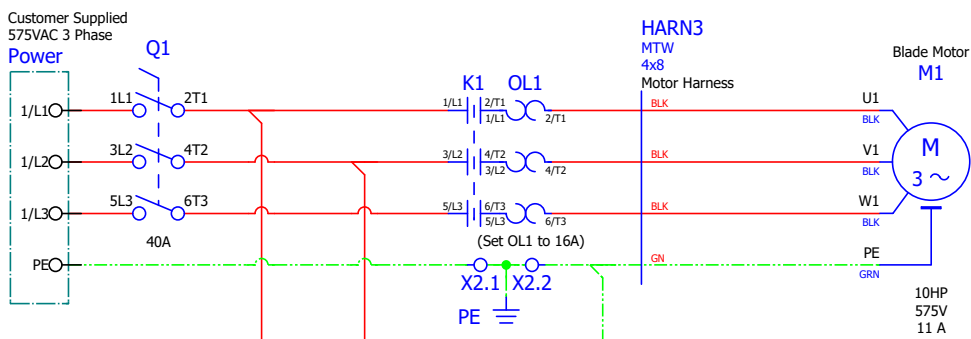
Type: Panel layout

--	--	--



 Wood-Mizer	
Project Description: Control, Elec. PD200K10 575VAC 3Ph	
Revision: A2.00	Pg Desc: Main Control Layout
Mounting Location: +DOC	Type: Panel layout

101
102
103
104
105
106
107
108
109
110
111
112
113
114
115
116
117
118
119
120
121



SELCD65ABD

1/L1	2/T1	/1.102
3/L2	4/T2	/1.103
5/L3	6/T3	/1.104
13	14	/1.120
21	22	

Wood-Mizer

Project Description: Control, Elec. PD200K10 575VAC 3Ph

Revision: A2.00	Pg Desc: Main
Mounting Location: +L1 (PD200K10)	Type: Schematic multi-line