


Table of contents

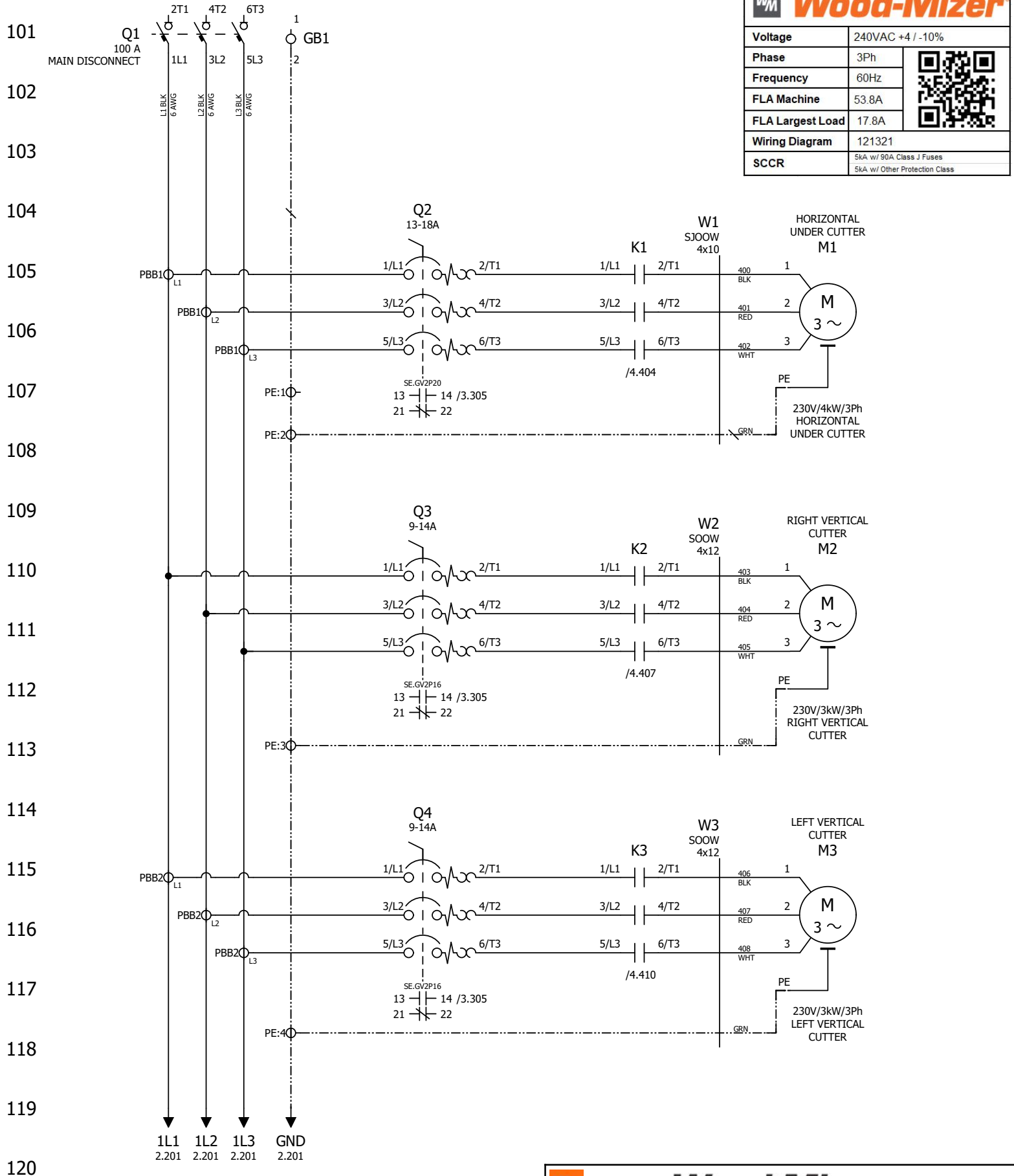
Page	Page type	Page description	Date	Edited by
/A1	Table of contents	Table of Contents	4/11/2022	MOC
/B1	Overview	Revision History	4/11/2022	MOC
+L1/1	Schematic multi-line	Power	12/28/2021	MOC
+L1/2	Schematic multi-line	Power	3/10/2022	MOC
+L1/3	Schematic multi-line	Interlocks	4/7/2022	MOC
+L1/4	Schematic multi-line	Control	12/16/2021	MOC
+DOC/C1	Parts list	Parts List	4/11/2022	MOC
+DOC/C2	Parts list	Parts List	1/8/2021	MOC
+DOC/C3	Parts list	Parts List	12/28/2021	MOC
+DOC/D1	Terminal line-up diagram	Terminal Lineup Diagram	12/15/2021	MOC
+DOC/D2	Terminal line-up diagram	Terminal Lineup Diagram	3/10/2022	MOC
+DOC/E1	Cable overview	Cable Overview	3/10/2022	MOC
+DOC/F1	Graphic	Enc Layout	3/10/2022	MOC
+DOC/F2	Graphic	Insert PNL	4/11/2022	MOC
+DOC/F3	Graphic	Door, Back	12/15/2021	MOC

Revision History

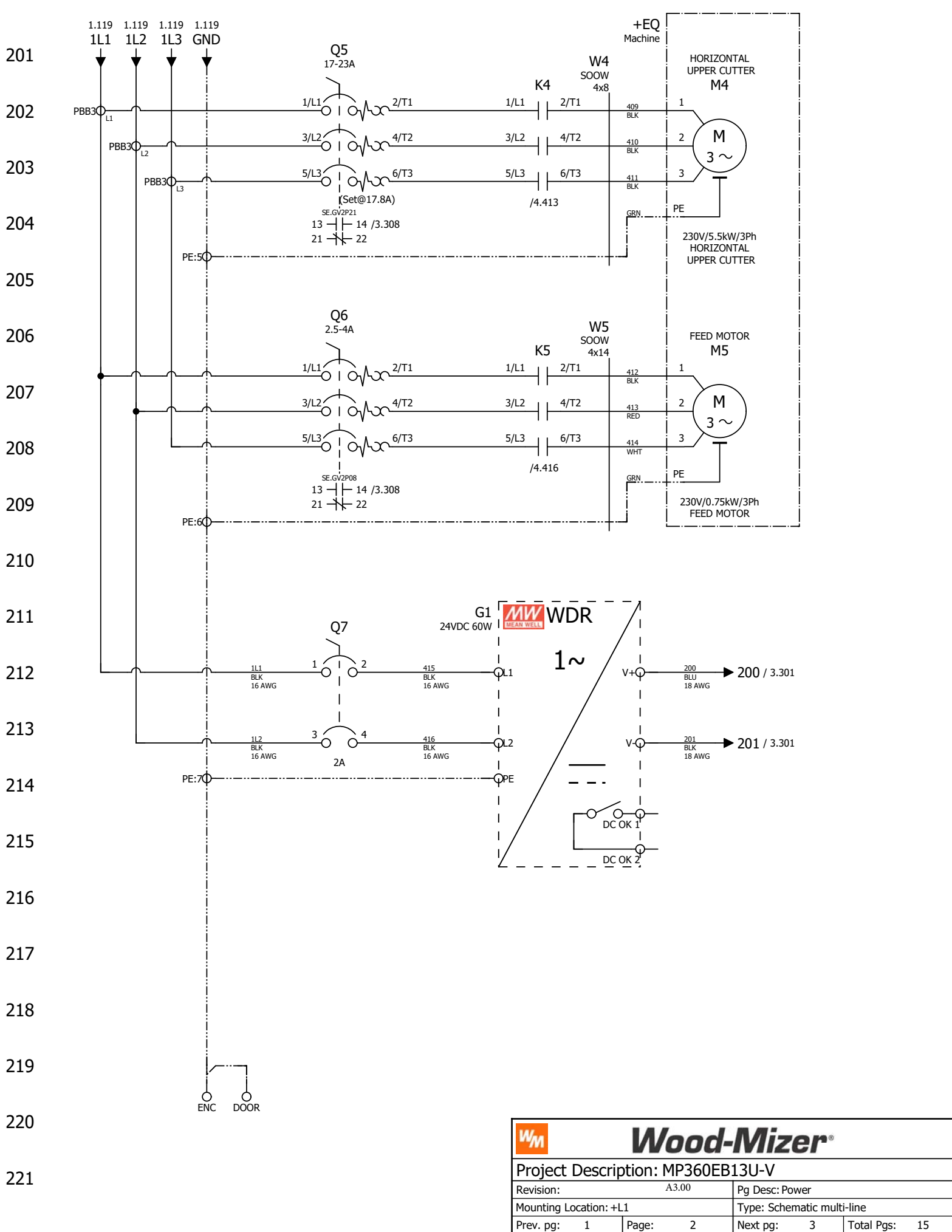
Date	Revision	Revision Record	Drawn By	Checked By
DATE	A0	Conversion to WMLLC Construction	MOC	MOC
3/10/22	A1	Updated Terminal Strip/ ref drawings	MOC	MOC
4/7/2022	A2	Updated limit switch pin numbers, LS1 switched to NO	MOC	MOC
4/11/2022	A3	Replaced Q7 with UL489 Breaker	MOC	MOC

		Wood-Mizer®	
Project Description: MP360EB13U-V			
Revision: A3.00		Pg Desc: Revision History	
Mounting Location: +		Type: Overview	
Prev. pg: A1	Page: B1	Next pg: +L1/1	Total Pgs: 15

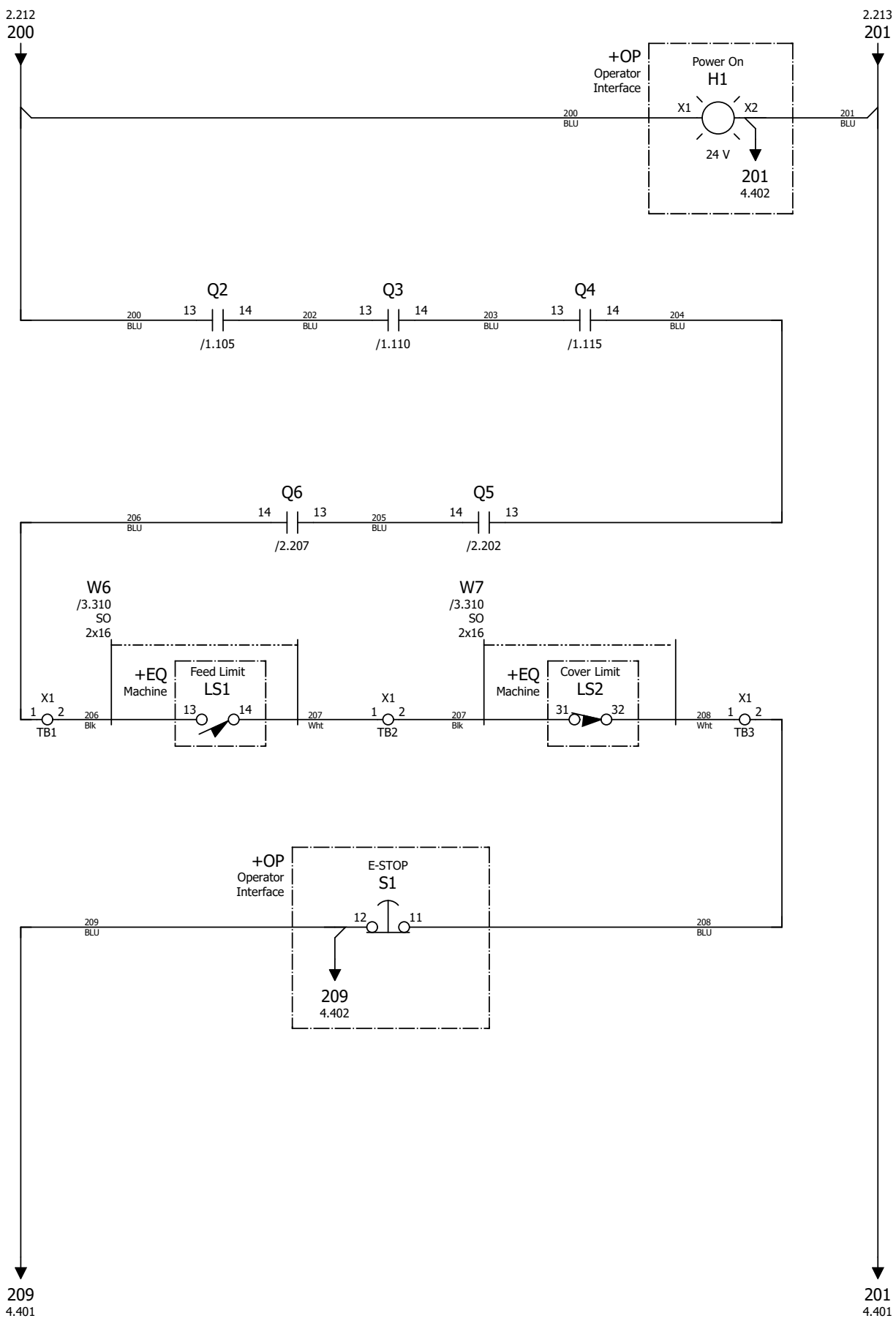
Voltage	240VAC +4 / -10%
Phase	3Ph
Frequency	60Hz
FLA Machine	53.8A
FLA Largest Load	17.8A
Wiring Diagram	121321
SCCR	5kA w/ 90A Class J Fuses 5kA w/ Other Protection Class

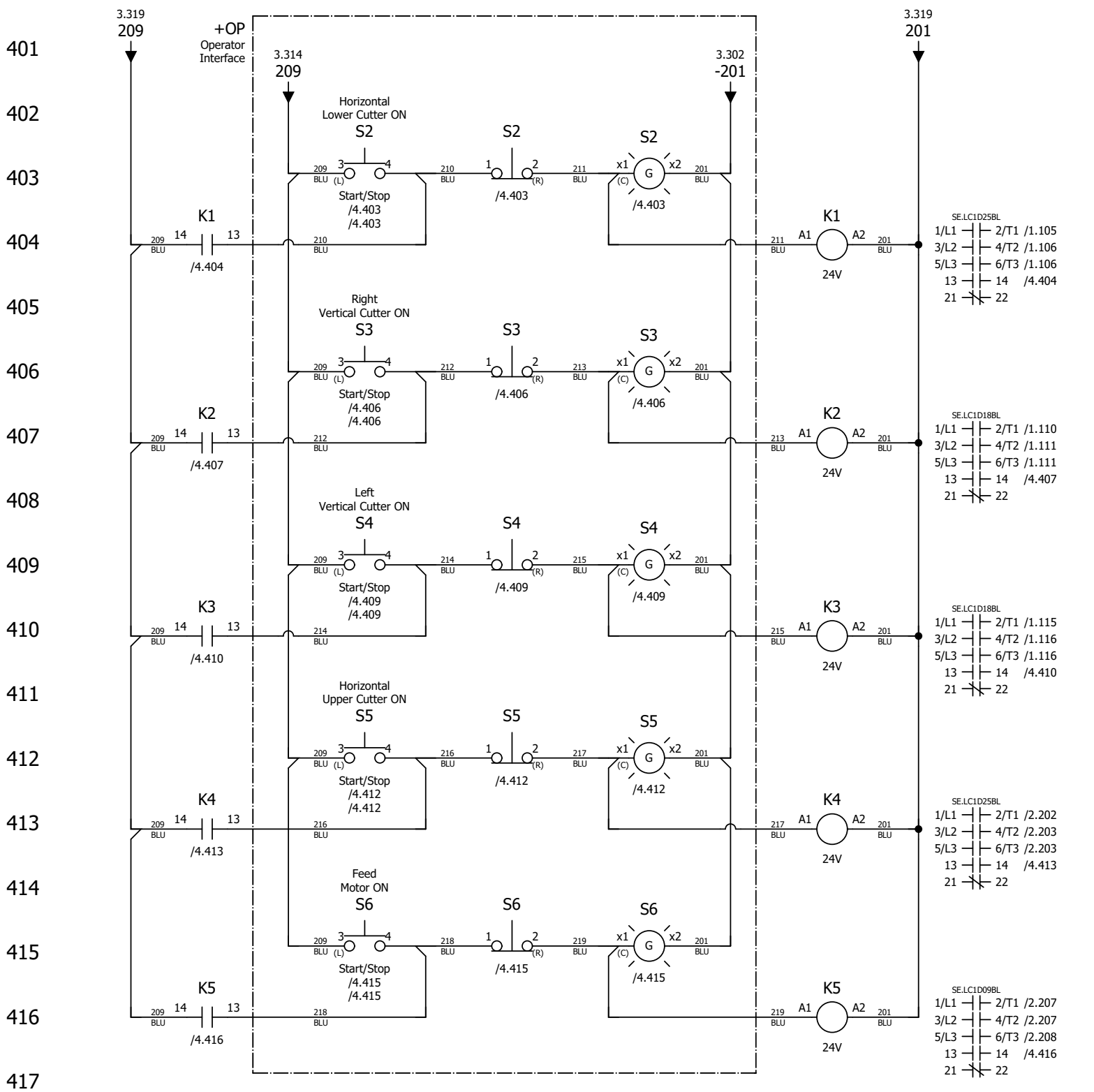


Project Description: MP360EB13U-V	
Revision: A3.00	Pg Desc: Power
Mounting Location: +L1	Type: Schematic multi-line
Prev. pg: +/B1	Page: 1
Next pg: 2	Total Pgs: 15



 Wood-Mizer®	
Project Description: MP360EB13U-V	
Revision: A3.00	Pg Desc: Power
Mounting Location: +L1	Type: Schematic multi-line
Prev. pg: 1	Page: 2
Next pg: 3	Total Pgs: 15





401
402
403
404
405
406
407
408
409
410
411
412
413
414
415
416
417
418
419
420
421

Device Tag/Parts List

Location: Control Enc.

WM_PARTS_LIST-Manual-MOC

Device tag	Function	Wood-Mizer Part Number	Wood-Mizer Description	Qty.	X-Ref
G1		114017	Power Supply, 85-264VAC to 24VDC 60W Din Mount	1	+L1/2.211
K1		069866	Contact, 25A 3P 24V Low Pwr Coil	1	+L1/4.404
K2		024911	Contact, 18A 3P 24VDC Low Pwr Coil	1	+L1/4.407
K3		024911	Contact, 18A 3P 24VDC Low Pwr Coil	1	+L1/4.410
K4		069866	Contact, 25A 3P 24V Low Pwr Coil	1	+L1/4.413
K5		024890	Contact, 9A 3P 24VDC Coil	1	+L1/4.416
M1	HORIZONTAL UNDER CUTTER	532811-UL	4kW, 230/400, 12.5/7.2A, 3ph, 60Hz	1	+L1/1.105
M2	RIGHT VERTICAL CUTTER	533646-UL	3kW, 265/400, 9.4/5.4A, 3ph, 60Hz	1	+L1/1.110
M3	LEFT VERTICAL CUTTER	533646-UL	3kW, 265/400, 9.4/5.4A, 3ph, 60Hz	1	+L1/1.115
PBB1		121176	Motor Protector, Bussbar 3 Tap 45mm	1	+L1/1.105
PBB1		121177	Motor Protector, Bussbar Terminal Block	1	+L1/1.105
PBB2		121175	Motor Protector, Bussbar 2 Tap 45mm	1	+L1/1.115
PBB3		121175	Motor Protector, Bussbar 2 Tap 45mm	1	+L1/2.202
PE		121324	Bar, Grounding 7 Circuit W/Lug	1	+L1/1.107
Q1	MAIN DISCONNECT	050906-1	Disconnect, 100A 3Ph Non-Fused-6mm Shaft	1	+L1/1.101
Q1	=	050907-1	Handle, Disconnect Red/Yel Pistol Grip	1	+L1/1.101
Q2		068583	Motor Protector, 13-18A Manual	1	+L1/1.105
Q2		068361	Aux Contact, 1NO 1NC for GV2ME/GV2P	1	+L1/1.105
Q2		068099	Motor Protector, Interconnect LC1D09-25	1	+L1/1.105
Q3		121178	Motor Protector, 9-14A Manual	1	+L1/1.110
Q3		068361	Aux Contact, 1NO 1NC for GV2ME/GV2P	1	+L1/1.110
Q3		068099	Motor Protector, Interconnect LC1D09-25	1	+L1/1.110
Q4		121178	Motor Protector, 9-14A Manual	1	+L1/1.115
Q4		068361	Aux Contact, 1NO 1NC for GV2ME/GV2P	1	+L1/1.115
Q4		068099	Motor Protector, Interconnect LC1D09-25	1	+L1/1.115
Q5		121142	Motor Protector, 17-23A Manual	1	+L1/2.202
Q5		068361	Aux Contact, 1NO 1NC for GV2ME/GV2P	1	+L1/2.202
Q5		068099	Motor Protector, Interconnect LC1D09-25	1	+L1/2.202
Q6		102501	Motor Protector, 2.5-4A GV2P	1	+L1/2.207
Q6		068361	Aux Contact, 1NO 1NC for GV2ME/GV2P	1	+L1/2.207
Q6		068099	Motor Protector, Interconnect LC1D09-25	1	+L1/2.207
Q7		533794	Breaker, 2A 2P 480V C Curve UL489	1	+L1/2.212

Terminal line-up diagram

Wood-Mizer_Terminal_Lineup_Diagram

Terminal strip +L1-GB1								
Terminal				Jumper		End Plate	Remark	Terminal X-Ref
Ref. Des.	Level	P/N	Description	Diagram	P/N	P/N		
	0	052525	Terminal Block, 2P 14-4AWG Screw GND					/1.01

Terminal line-up diagram

Terminal strip +L1-X1

Terminal				Jumper		End Plate	Remark	Terminal X-Ref
Ref. Des.	Level	P/N	Description	Diagram	P/N	P/N		
TB1	0	068100	Terminal Block, 2Pos 1.5mm Clamp	•				/3.11
TB2	0	068100	Terminal Block, 2Pos 1.5mm Clamp	•				/3.11
TB3	0	068100	Terminal Block, 2Pos 1.5mm Clamp	•		068102		/3.11



Wood-Mizer®

Project Description: MP360EB13U-V

Revision: A3.00 Pg Desc: Terminal Lineup Diagram

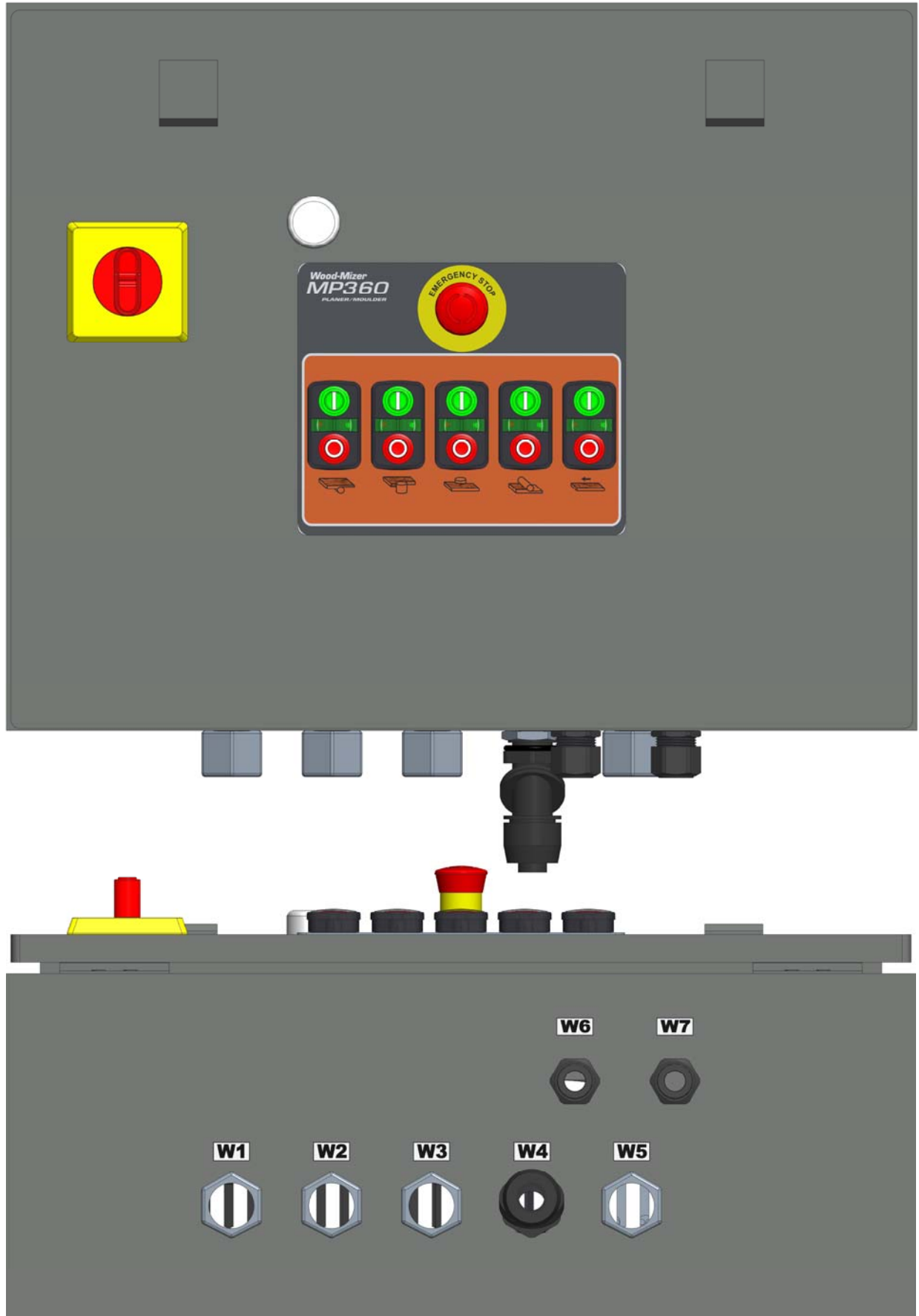
Mounting Location: +DOC Type: Terminal line-up diagram

Prev. pg: D1 Page: D2 Next pg: E1 Total Pgs: 15

Cable Overview

Wood-Mizer_Cable_Overview

Cable Designation	Cable Part Number	Cable Description	Cable X-Ref
W1	121325	Cable Assy, MP360, 3Ph, Horizontal Lower Cutter	+L1/1.105
W2	121326	Cable Assy, MP360, 3Ph, Right Vertical Cutter	+L1/1.110
W3	121327	Cable Assy, MP360, 3Ph, Left Vertical Cutter	+L1/1.115
W4	121328	Horizontal Upper Cutter Power Cable	+L1/2.202
W5	121329	Cable Assy, MP360, 3Ph, Feed Motor	+L1/2.206
W6	121330	Cable Assy, MP360, Limit Switch LS1	+L1/3.310
W7	121331	Cable Assy, MP360, Limit Switch LS2	+L1/3.310



Wood-Mizer®

Project Description: MP360EB13U-V

Revision: A3.00

Pg Desc: Enc Layout

Mounting Location: +DOC

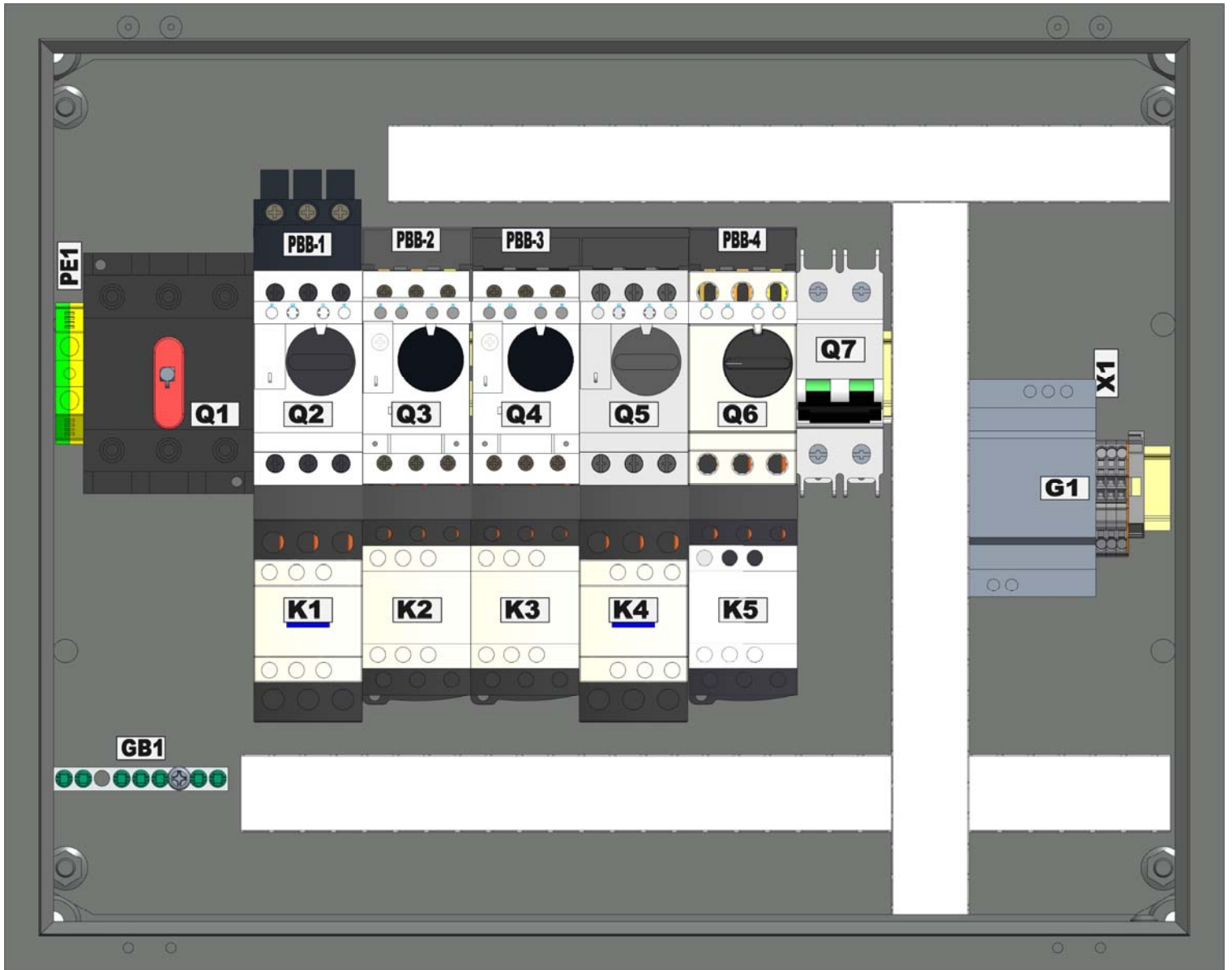
Type: Graphic

Prev. pg: E1


Page: F1

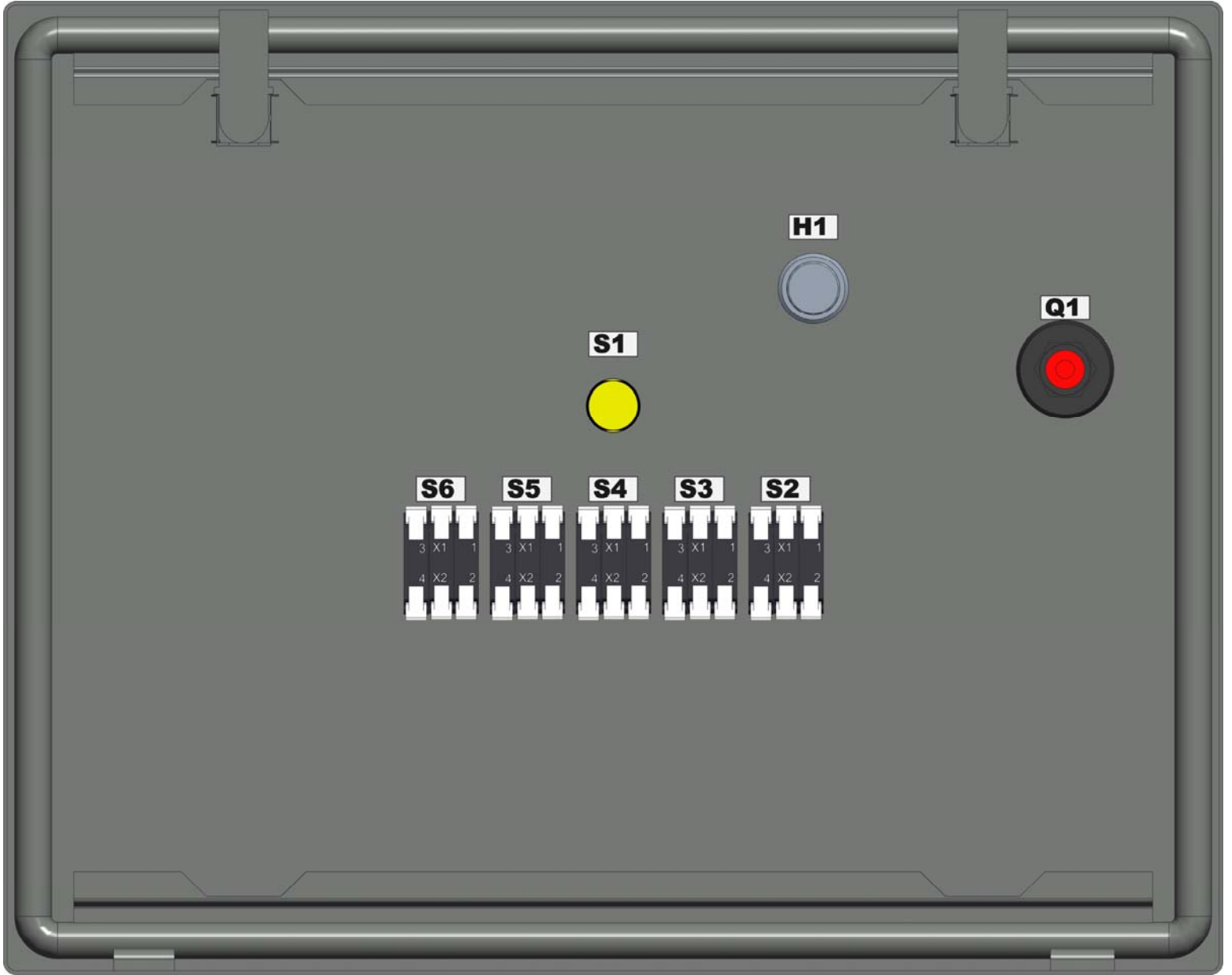
Next pg: F2

Total Pgs: 15



SCALE 0.400

 Wood-Mizer®	
Project Description: MP360EB13U-V	
Revision: A3.00	Pg Desc: Insert PNL
Mounting Location: +DOC	Type: Graphic
Prev. pg: F1	Page: F2
Next pg: F3	Total Pgs: 15



Wood-Mizer®

Project Description: MP360EB13U-V

Revision:	A3.00	Pg Desc: Door, Back
Mounting Location: +DOC		Type: Graphic
Prev. pg: F2	Page: F3	Next pg: Total Pgs: 15