

# **Wood-Mizer®**

## **MD400, MD500 Chip Extractor Operation and Parts Manual**

---

<b>MD400</b>	<b>rev. A1.00</b>
<b>MD500</b>	<b>rev. A1.00</b>

---



**Safety is our #1 concern!** Read and understand all safety information and instructions before operating, setting up or maintaining this machine.

*Form #2360*

# Table of Contents

# Section-Page

<b>SECTION 1</b>	<b>SAFETY &amp; GENERAL INFORMATION</b>	<b>1-1</b>
1.1	Safety Symbols.....	1-1
1.2	Site Preparation .....	1-2
<b>SECTION 2</b>	<b>SPECIFICATIONS, SETUP &amp; OPERATION</b>	<b>2-1</b>
2.1	Overall dimensions.....	2-1
2.2	Specifications of MD400 and MD500 chip extractors.....	2-2
2.3	Attaching the Chip Extractor.....	2-3
2.4	Cyclone Twin Bag Collector Assembly .....	2-4
<b>SECTION 3</b>	<b>REPLACEMENT PARTS</b>	<b>3-1</b>
3.1	How To Use The Parts List .....	3-1
3.2	MD400EH3S-S Chip Extractor.....	3-2
3.3	MD500EH4S-S Chip Extractor.....	3-4

## Getting Service

Wood-Mizer is committed to providing you with the latest technology, best quality and strongest customer service available on the market today. We continually evaluate our customers' needs to ensure we're meeting current wood-processing demands. Your comments and suggestions are welcome.

### *General Contact Information*

From Europe call your local distributor or our European Headquarters and Manufacturing Facility in Koło, Nagórna 114 St, Poland at **+48-63-2626000**. From the continental U.S., call our U.S. Headquarter 8180 West 10th St. Indianapolis, IN 46214, toll-free at **1-800-525-8100**. Ask to speak with a Customer Service Representative. Please have your machine identification number and your customer number ready when you call. The Service Representative can help you with questions about the operation and maintenance of your machine. He also can schedule you for a service call.

### **Office Hours:**

Country	Monday - Friday	Saturday	Sunday
Poland	7 a.m.- 3 p.m.	Closed	Closed
US	8 a.m.- 5 p.m.	8 a.m.- 12 p.m	Closed

Please have your vehicle identification number and your customer number ready when you call.

Wood-Mizer will accept these methods of payment:

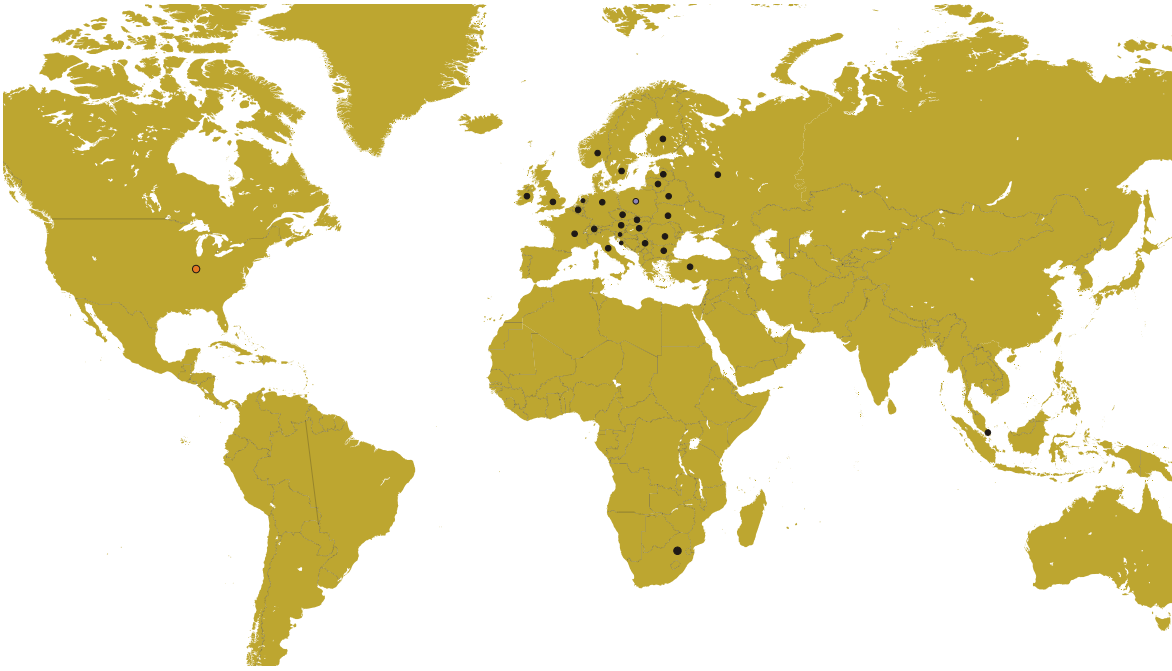
- Visa, Mastercard, or Discover
- COD
- Prepayment
- Net 15 (with approved credit)



Be aware that shipping and handling charges may apply. Handling charges are based on size and quantity of order.

Technical data are subject to change without prior notice.

Actual product may differ from product images. Some illustrations show machines with optional equipment.

**Branches & Authorized Sales Centers Wood-Mizer Locations (North and South America)**



EUROPE		UNITED STATES
<p> <b>European Headquarters</b>  <b>Wood-Mizer Industries Sp. z o.o.</b>                      Nagórna 114, 62-600 Kolo, Poland                      Tel.: +48-63-26-26-000                      Fax: +48-63-27-22-327  <a href="http://www.woodmizer.eu">www.woodmizer.eu</a></p>		<p> <b>World Headquarters</b>  <b>Wood-Mizer LLC</b>                      8180 West 10th Street                      Indianapolis, Indiana 46214-2400,                      USA                      Tel.: +1-317-271-1542                      Fax: +1-317-273-1011  <a href="http://www.woodmizer.com">www.woodmizer.com</a></p>
<p><b>BELARUS</b>  <b>MOST-GRUPP</b>                      Siemashko 15, k.3                      Minsk 2200116                      Tel.: +375-17-270-90-08                      Fax: +375-17-270-90-08                      GSM: +375-29-649-90-80                      e-mail: <a href="mailto:most-by@mail.ru">most-by@mail.ru</a></p>	<p><b>SWITZERLAND Stefan Wespi</b>                      Maschinen u. Geräte                      Spezialarbeiten GmbH                      Eichstraße 4                        6353 Weggis                      Tel.: +41-(0)41 - 3900312                      GSM: +41-(0)79 - 9643594  <a href="mailto:info@mobilsaegen.ch">info@mobilsaegen.ch</a></p>	<p><b>RUSSIA Dariusz Mikołajewski</b>  <b>OOO WOOD-MIZER INDUSTRIES</b>                      141031, Moscow                      Reg., Mytishenski raj., pos. Veshki,                      Zavodskaja str., 3B                      Tel.Fax: +7(495) 788-72-35                      Tel.Fax: +7(495) 641-51-60                      e-mail: <a href="mailto:dariuszm@woodmizer-moscow.ru">dariuszm@woodmizer-moscow.ru</a></p>
<p><b>BULGARIA Kalin Simeonov</b>  <b>Ecotechproduct</b>                      38 Star Lozenski pat str.                      Sofia 1186                      Tel.: +359-2-462-7035                      Tel.: +359-2-963-1656                      Tel./Fax                      : +359-2-979-1710  <b>Kalin Simeonov</b>                      GSM: +3592-963-2559                      e-mail: <a href="mailto:office@ecotechproduct.com">office@ecotechproduct.com</a></p>	<p><b>HUNGARY Wiktor Turoczy</b>  <b>Wood-Mizer Hungary K.F.T.</b>                      Szonyi Ut 67., 2921 Komárom                      Tel./Fax: +36-34-346-255                      e-mail: <a href="mailto:woodmizer@woodmizer.hu">woodmizer@woodmizer.hu</a></p>	<p><b>RUSSIA Far East Wladimir Glazaczew</b>  <b>"WM Service"</b>                      Krasnoretchenskaya Str.111                      680006 Khabarovsk                      Tel./Fax: +7-914-541-1183                      e-mail: <a href="mailto:wms-khv@mail.ru">wms-khv@mail.ru</a></p>

<p><b>CROATIA Krešimir Pregernik Pregimex d.o.o.</b> S. Batušića 31, 10090 Zagreb Tel./Fax: +3851-38-94-668 <b>Krešimir Pregernik</b> GSM: +3851-98-207-106 e-mail: <a href="mailto:Kresimir.Pregernik@gmail.com">Kresimir.Pregernik@gmail.com</a></p>	<p><b>ITALY Pasquale Felice Wood-Mizer Italia Srl</b> <b>Cda. Capoiaccio SN</b> 86012 Cercemaggiore Campobasso Tel./Fax: +39-0874-798-357 GSM: +39-333-281-03-79 e-mail: <a href="mailto:wmitaliasrl@gmail.com">wmitaliasrl@gmail.com</a></p>	<p><b>SERBIA Dragan Markov Wood-Mizer Balkan d.o.o.</b> Svetosavska GA 3/3; P. Fah 25 23 300 Kikinda Tel./Fax: +381-230-25-754 Tel./Fax: +381-230-23-567 GSM: +381-63-568-658 e-mail: <a href="mailto:office@woodmizer.co.yu">office@woodmizer.co.yu</a></p>
<p><b>CZECH REPUBLIC Miroslaw Greill Wood-Mizer CZ s.r.o.</b> Osvaldova 91 339 01 Klatovy-Luby Tel./Fax: +420-376-312-220 Fax: +420-376-319-011 <b>Miroslaw Greill</b> GSM: +420-723-580-799 e-mail: <a href="mailto:greill@woodmizer.cz">greill@woodmizer.cz</a></p>		<p><b>SLOVAKIA Wiktor Turoczy Wood-Mizer Danubia s.r.o.</b> Hadovce 5, 94501 Komárno Tel.: +421-35-77-40-316 Fax: +421-35-7740-326 GSM: +421-905-930-972 e-mail: <a href="mailto:woodmizer@woodmizer.sk">woodmizer@woodmizer.sk</a></p>
<p><b>CZECH REPUBLIC Lubomir Kudlik Wood-Mizer Moravia</b> Sovadinova 6 69002 Breclav Tel./Fax: +420-519-322-443 <b>Lubomir Kudlik</b> GSM: +420-602-734-792 e-mail: <a href="mailto:info@wood-mizer.net">info@wood-mizer.net</a></p>	<p><b>LATVIA Vilmars Jansons OBERTS Ltd</b> Gaujas str. 32/2 LV-2167 Marupe, Rigas Raj. Tel.: +371-7-810-666 Fax: +371-7-810-655 <b>Vilmars Jansons</b> GSM: +371-92-06-966 <b>Andris Orols</b> GSM: +371-28-33-07-90 e-mail: <a href="mailto:andris@oberts.lv">andris@oberts.lv</a></p>	<p><b>TURKEY Er-Ka Ahsap Profil Kerestecilik San. ve Tic. Ltd. Sti.</b> Adana Keresteciler Sitesi 191 sk No.41 ADANA Tel.: +90-322-346-15-86 Fax: +90-322-345-17-07 GSM: +90-533-363-18-44 e-mail: <a href="mailto:info@erkaahsap.com.tr">info@erkaahsap.com.tr</a></p>
<p><b>FINLAND Howard Blackburn Oy Falkberg Jordbruk Ab</b> Falkintie 220 25610 Ylonkyla Tel.: +358-2732-2253 Fax: +358-2732-2263 <b>Howard Blackburn</b> GSM: +358-440-424-339 e-mail: <a href="mailto:falkberg@woodmizer.fi">falkberg@woodmizer.fi</a></p>	<p><b>LITHUANIA Andrius Zuzevicius UAB Singlis</b> Savanoriu pr. 187, 2053 Vilnius Tel.: +370-5-2-32-22-44 Fax: +370-5-2-64-84-15 GSM: +370-620-28-645 e-mail: <a href="mailto:andrius.z@singlis.lt">andrius.z@singlis.lt</a></p> <p><b>Dmitrij Gaiduk</b> GSM: +370-69-84-51-91 e-mail: <a href="mailto:dmitrijus.g@singlis.lt">dmitrijus.g@singlis.lt</a></p>	<p><b>UKRAINE Ivan Vinnicki MOST UKRAINA</b> bul. Myru 3, Bajkivtsi Ternoplskyj r-j Ternopolska oblast 47711 Ukraine Tel/Fax: +38 (0352) 52 37 74 GSM: +38 (067) 352 54 34 GSM: +38 (067) 674 50 68 E-mail: <a href="mailto:most-ukraina@ukr.net">most-ukraina@ukr.net</a></p>
<p><b>FRANCE Tizoc Chavez Wood-Mizer France</b> 556 chemin des Embouffus, ZAC des Basses Echarrieres 38440 SAINT JEAN DE BOURNAY Tel: +33-4 74 84 84 44 GSM: +33-607 52 02 82 Mail: <a href="mailto:tchavez@woodmizer.fr">tchavez@woodmizer.fr</a></p>	<p><b>NORWAY Odd Edvoll Wood-Mizer Nordic AS</b> Vardelia 17, 2020 Skedsmokorset Tel.: +47-63-87-49-89 Fax: +47-63-87-37-66 GSM: +47-930-42-335 e-mail: <a href="mailto:odd.edvoll@woodmizer.no">odd.edvoll@woodmizer.no</a></p> <p>e-mail: <a href="mailto:firmapost@woodmizer.no">firmapost@woodmizer.no</a></p>	<p><b>UNITED KINGDOM &amp; IRELAND Wood-Mizer UK</b> Hopfield Barn Kenward Road, Yalding Kent ME18 6JP, UK Tel.: +44-1622-813-201 Fax: +44-1622-815-534 e-mail: <a href="mailto:info@woodmizer.co.uk">info@woodmizer.co.uk</a></p>
<p><b>SLOVENIA Jan Fale FAMTEH d.o.o.</b> Gacnikova pot 2, 2390 Ravne na Koroskem Tel.: +386-2-62-04-232 Fax: +386-2-62-04-231 <b>Jan Fale</b> GSM: +386-2-62-04-230 e-mail: <a href="mailto:jan.fale@famteh.si">jan.fale@famteh.si</a></p> <p><b>Matjaz Kolar</b> Tel.: +386-2-62-04-232 GSM: +386-31-775-999 e-mail: <a href="mailto:matjaz.kolar@famteh.si">matjaz.kolar@famteh.si</a></p>		

<p><b>GERMANY Klaus Longmuss</b>  <b>Wood-Mizer Sägewerke GmbH</b>  Dorfstraße 5, 29485 Schletau  Tel.: +49-5883-9880-10  Fax: +49-5883-9880-20  e-mail: <a href="mailto:info@woodmizer.de">info@woodmizer.de</a></p> <p><b>Klaus Longmuss</b>  Tel.: +49-5883-9880-12  GSM: +49-17-298-55-892  e-mail: <a href="mailto:KLongmuss@woodmizer.de">KLongmuss@woodmizer.de</a></p>	<p><b>Subagent:</b>  <b>SWEDEN Kjell Larsson</b>  <b>Mekwood AB</b>  Slingan 14, 812 41 Gästrike-Hammarby  Tel.: +46-290-515-65  <b>Kjell Larsson</b>  GSM: +46-706-797-965  e-mail: <a href="mailto:kjell.larsson@mekwood.se">kjell.larsson@mekwood.se</a></p>	<p><b>IRELAND</b>  <b>Wood-Mizer Ireland</b>  Stephen Brennan  Cum Lahardane Ballina County Mayo  Tel:+353 96 51345  E-mail: <a href="mailto:brennanmill@ericom.net">brennanmill@ericom.net</a></p>
<p><b>Subagents:</b>  <b>DENMARK Brian Jensen</b>  Arnborgvej 9, 7330 Brande- FASTERHOLT  Tel.: +45-971-88-265  Fax: +45-971-88-266  <b>Brian Jensen</b>  GSM: +45-23-49-5828  e-mail: <a href="mailto:Fasterholt-Savvaerk@Mail.Tele.dk">Fasterholt-Savvaerk@Mail.Tele.dk</a></p>	<p><b>ROMANIA Adrian Echert</b>  <b>SC WOOD-MIZER RO SRL</b>  TRANSILVANIAI Nr. 5  Sibiu, Cisnadia 555300  Tel./Fax: : +40-369-405-433  GSM: +40-745-707-323  e-mail: <a href="mailto:aechert@woodmizer.ro">aechert@woodmizer.ro</a></p>	<p>Regional Manager - Asia  Robert Moxham  Regional Direction - Asia  Wood-Mizer Asia Manufacturing Co., Ltd.  No.2, Gongyequ 40th Rd. Xitun District,  Taichung City, 40768, Taiwan, R.O.C.  TEL: +886-4-2359 3022  FAX: +886-4-2359 3205  CELL: +886-9-0568 7708  EMAIL: <a href="mailto:RMoxham@woodmizer.com">RMoxham@woodmizer.com</a>  <a href="http://www.woodmizerasia.com">www.woodmizerasia.com</a>  Skype: r.g.moxham</p>
<p><b>Netherlands Chris Dragt</b>  Lange Brink 77d,  7317 BD Apeldoorn  Tel.: +31-55312-1833  Fax: +31-55312-2042  e-mail: <a href="mailto:Info@dragtbosbouw.nl">Info@dragtbosbouw.nl</a></p>	<p><b>Subagent:</b>  <b>ROMANIA M. Echert</b>  <b>S.C. Echert Comprod s.r.l</b>  Str. Schitului Nr. 6, Apt.7 etajul-1  725 70 Vatra Dornei, Romania  Tel./Fax: +40-230-374-235  Tel. : +40-740-35-35-74</p>	<p>Regional Manager - Africa  Gavin Prowse  Regional Sales Director - Africa  Wood-Mizer Africa (Pty) Ltd.  Unit 1,Leader Park  20 Chariot Street  Stormill Ext.5  Maraisburg, Johannesburg  South Africa  TEL: +27 11 473 1313  FAX: +27 11 473 2005  CELL: +27 71 398 8010  EMAIL: <a href="mailto:gprowse@woodmizer.com">gprowse@woodmizer.com</a>  <a href="http://www.woodmizerafrika.com">www.woodmizerafrika.com</a>  Skype: gavin.prowse</p>

### USA World Headquarters

*Serving North & South America, Oceania, East Asia*

Wood-Mizer LLC  
8180 West 10th Street  
Indianapolis, IN 46214

Phone: 317.271.1542 or 800.553.0182  
Customer Service: 800.525.8100  
Fax: 317.273.1011  
Email: [infocenter@woodmizer.com](mailto:infocenter@woodmizer.com)

### Canadian Headquarters

*Serving Canada*

Wood-Mizer Canada  
396 County Road 36, Unit B  
Lindsay, ON K9V 4R3

Phone: 705.878.5255 or 877.357.3373  
Fax: 705.878.5355  
Email: [ContactCanada@woodmizer.com](mailto:ContactCanada@woodmizer.com)

### Brazil Headquarters

*Serving Brazil*

Wood-Mizer do Brasil  
Rua Dom Pedro 1, No: 205 Bairro: Sao Jose  
Ivoti/RS CEP:93.900-000

Tel: +55 51 9894-6461/ +55 21 8030-3338/ +55 51 3563-4784  
Email: [info@woodmizer.com.br](mailto:info@woodmizer.com.br)

### Europe Headquarters

*Serving Europe, Africa, West Asia*

Wood-Mizer Industries Sp z o.o.  
Nagorna 114  
62-600 Kolo, Poland

Phone: +48.63.26.26.000  
Fax: +48.63.27.22.327

### Branches & Authorized Sales Centers

For a complete list of dealers, visit [www.woodmizer.com](http://www.woodmizer.com)

## SECTION 1 SAFETY & GENERAL INFORMATION

Congratulations on your purchase of a Wood-Mizer Chip Extractor!

This documentation includes information on preparing the chip extractor for operation and operating, servicing and repairing the machine.

Read and observe all safety instructions before operating this equipment! Also read any additional manufacturer's manuals and observe any applicable safety instructions including dangers, warnings, and cautions.

Always be sure that all safety decals are clean and readable. Replace all damaged safety decals to prevent personal injury or damage to the equipment. Contact your local distributor, or call your Customer Service Representative to order more decals.

Always properly dispose of all by-products, including debris, coolant and oil.

### GENERAL

Chip extractor is used for removing sawdust and chips from the process of either moulding or planing.

Check your chip extractor as soon as you receive it. Report any transport damage to the transport company immediately.

When replacing spare parts, use only original parts and make sure all electrical installation, service and/or maintenance work is performed by a qualified electrician.

### 1.1 Safety Symbols

The following symbols and signal words call your attention to instructions concerning your personal safety. Be sure to observe and follow these instructions.



**DANGER!** indicates an imminently hazardous situation which, if not avoided, will result in death or serious injury.



**WARNING** suggests a potentially hazardous situation which, if not avoided, could result in death or serious injury.




**CAUTION!** refers to potentially hazardous situations which, if not avoided, may result in minor or moderate injury or damage to equipment.



**IMPORTANT!** indicates vital information.

**NOTE:** gives helpful information.

 Warning stripes are placed on areas where a single decal would be insufficient. To avoid serious injury, keep out of the path of any equipment marked with warning stripes.

## 1.2 Site Preparation

It is up to the customer to provide power to the Chip Extractor. Consult with a qualified electrician for wiring needs, adding custom switches, or other additions.



**WARNING!** Have a **qualified electrician** install the power to your machine. Failure to follow this may result in serious injury or death.



**CAUTION!** Improper voltage will cause damage to the motor and electronic components. Have a **qualified electrician** install the power supply to the Chip Extractor.



**IMPORTANT!** The power supply must meet the motor specifications concerning wire size, fused disconnect, and voltage, **which are provided in the motor's faceplate**. The electrical installation must also meet local codes.

Wood-Mizer recommends using the following switch and motor protection:

All versions use:

Schneider Electric GV2MC02 enclosure  
Schneider Electric GV2K031 button kit

Inside the enclosure:

### **MD400 EXTRACTOR**

230V 1Ph 60Hz use Schneider Electric GV2ME21  
Set to 20.5A  
10AWG wire minimum

230V 3Ph 60Hz use Schneider Electric GV2ME20  
Set to 15.8A  
12AWG wire minimum

400V 3Ph 50Hz use Schneider Electric GV2ME14  
Set to 8A



14AWG wire minimum

**MD500 EXTRACTOR**

230V 3Ph 60Hz use Schneider Electric GV2ME21

Set to 20.5A

10AWG wire minimum

400V 3Ph 50Hz use Schneider Electric GV2ME14



Set to 10A

14AWG wire minimum

***Safety Labels Description***

See table below for safety labels description.


**TABLE 1-1**

Label View	Label Number	Description
	096317	CAUTION! Carefully read operator's manual before handling the machine. Observe instructions and safety rules when operating.
	545705	CAUTION! Be careful with the rotating components.

**TABLE 1-1**

	<p>096319</p>	<p>Always disconnect the power cord before opening the electric box.</p>
	<p>S12004G</p>	<p>Always wear safety goggles when operating the planer/moulder with the chip extractor attached!</p>
	<p>501465</p>	<p>Always wear safety boots when operating the planer/moulder with the chip extractor attached!</p>
	<p>512107-1</p>	<p>Always wear safety gloves when operating the planer/moulder with the chip extractor attached!</p>
	<p>S20098</p>	<p>Motor rotate direction</p>

**TABLE 1-1**

	P85070	CE safety certification
---	--------	-------------------------

## SECTION 2 SPECIFICATIONS, SETUP & OPERATION

### 2.1 Overall dimensions

See figure 2-1. The overall dimensions of both MD400 and MD500 chip extractors are shown below (all dimensions in millimeters).

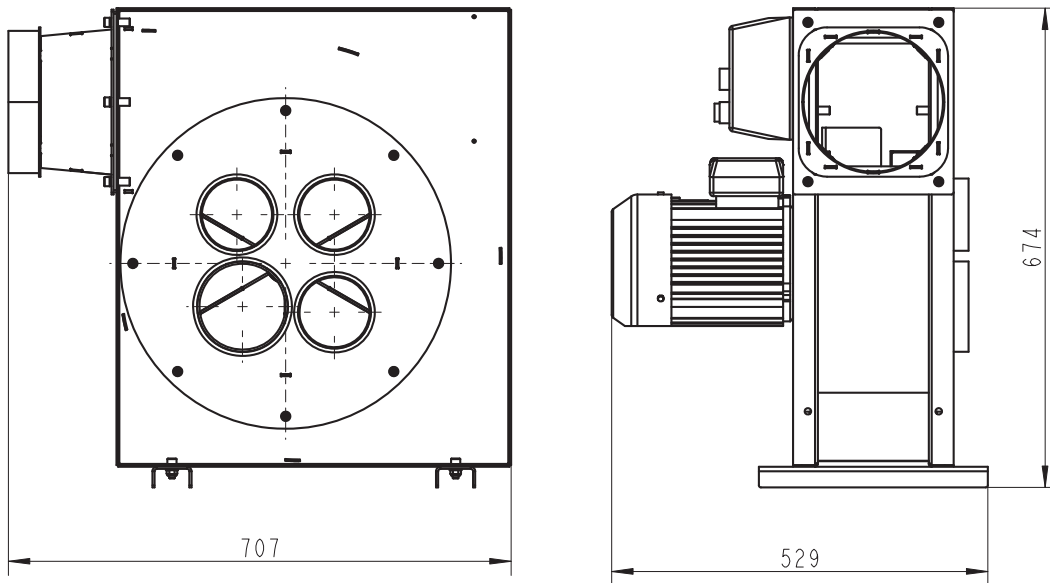


FIG. 2-1 MD400

See figure 2-2.

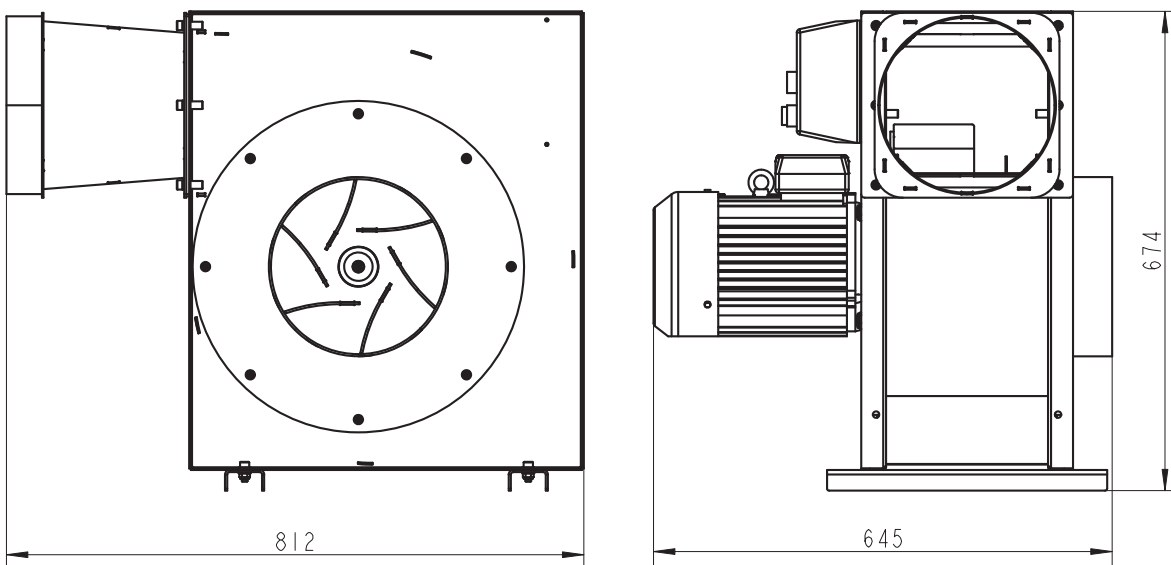


FIG. 2-2 MD500

## 2.2 Specifications of MD400 and MD500 chip extractors

See table 2-1. Wood-Mizer chip extractors nomenclature is given in the table below.

Chip Extractor Model	MD400EH3S-S	MD500EH4S-S
Motor Type	Electric Motor	Electric Motor
Rated Voltage	1x230V, 3x230V, 3x400V	3x400V
Mass	56.9 kg	68.1 kg
Rated power	3 kW	4 kW
Flow rate	4000 m <sup>3</sup> /h	5000 m <sup>3</sup> /h

**TABLE 2-1**

The MD400 Chip Extractor has 4 chip collection input ports - one 5" (125 mm) and three 4" (100 mm) ports sized to fit flexible hose, and an 8" (200 mm) output port.

See Figure 2-3.



**FIG. 2-3 MD400 - UNITS VARY IN COLORS**

The MD500 Chip Extractor has 10" (250 mm) collection input port and a 10" (250 mm) output port.

See Figure 2-4.



FIG. 2-4 MD500 - UNITS VARY IN COLORS

When using a collection system, keep in mind:

- Check your local waste disposal codes before designing your chip collection system.
- Design access to your chip collection bins so that they can be easily emptied.
- Short hose runs and smooth-walled hoses reduce suction loss within the system.
- Locate the chip collector near the planer moulder.
- Collection systems are loud; use ear protection.
- If you are operating this machine in a climate-controlled building and blowing the chips outside, the vacuum created by the chip collector can quickly empty your building of its heated or cooled air.
- If blowing the chips to an indoor bin, an air filter will be necessary to prevent wood dust from reducing the air quality inside of your building.
- If selling chips for use with livestock, do not use harsh chemicals for cleaning or lubricating machinery.

## 2.3 Attaching the Chip Extractor



**IMPORTANT!** Do not use your Chip Extractor if flexible hoses are not attached to it.

The Chip Extractor is attached to external units by means of flexible hoses. The ports fit within the

hose, and are fastened with conventional hose clamps. No special accommodations are required.

See Figure 2-5.



**FIG. 2-5**

<b>Hose sizes</b>	<b>Input</b>	<b>Output</b>
<b>MD400</b>	4" (100 mm), 5" (125 mm)	8" (200 mm)
<b>MD500</b>	4" (100 mm), 5" (125 mm), 10" (250 mm)	10" (250 mm), 8" (200 mm)

## 2.4 Cyclone Twin Bag Collector Assembly

Tools needed for the assembly are a 6mm hex key and a 13mm open end wrench. A power drill is recommended.

1. Unpack your Cyclone Twin Bag Collector and check that all parts are present:
  - (2) Bags
  - (2) Bag locks
  - (3) Legs (no cutouts)
  - (1) Frame
  - (14) Short 6mm hex screws
  - (14) Flat washers
  - (14) 13mm nuts
  - (2) Bag bands
  - (4) Steel rods

- (1) Leg (with cutout)
- (1) 8" Hose adapter
- (6) Long 6mm hex screws
- (6) Lock washers

See Figure 2-6.

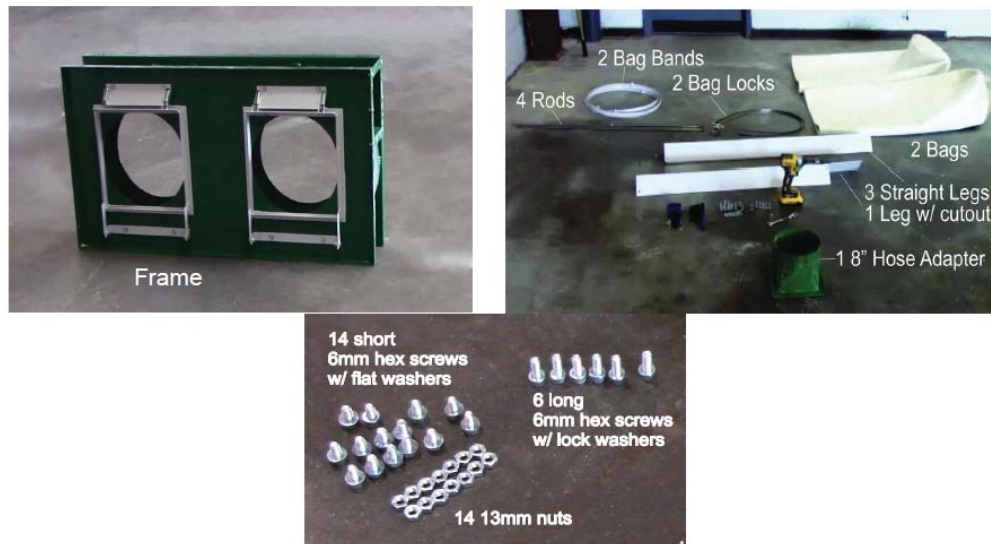


FIG. 2-6

2. Attach the hose adapter to the frame with 4 of the long screws with lock washers. Use the lower 4 holes.



3. Position the leg with the cutout on the corner by the hose adapter as shown in Figure 2-7.

**See Figure 2-7.**



**FIG. 2-7**

4. Use short bolts with flat washers and nuts in top two leg holes as shown in Figure 2-8.

**See Figure 2-8.**



**FIG. 2-8**

5. Finish tightening all six long screws with lockwashers in the hose adapter and the leg.
6. Attach the remaining 3 legs with the short screws, flat washers and nuts.

7. Insert the rods into the bag bands as shown in Figure 2-9.

See Figure 2-9.



FIG. 2-9

8. Place the bag bands with rods into the bags as shown in Figure 2-10.

See Figure 2-10.



FIG. 2-10

9. Stand the frame and legs upright.

10. Place bag locks over the frame openings as shown in Figure 2-11.

**See Figure 2-11.**



**FIG. 2-11**

11. Place the bags over the frame openings by inserting the rods into the mounting holes. See Figure 3-9.
12. Tuck the bag between the frame openings and the bag locks.
13. Lock the bag locks by closing the latch. See Figure 2-12.

**See Figure 2-12.**



**FIG. 2-12**

14. Install the trash bags under the frame openings.
15. Swing the square trash bag bracket down by unclipping two latches holding the bracket.

16. Place the trash bag through the bracket as shown in Figure 2-13.

See Figure 2-13.



FIG. 2-13

**NOTE:** Ensure that the trash bag full covers the bracket or leakage may occur.

17. Refasten the trash bag clips to seal the trash bag to the frame. See Figure 2-14.

See Figure 2-14.



FIG. 2-14

18. Attach 8" hose to the inlet port with a standard hose clamp.

Assembly complete.

## SECTION 3 REPLACEMENT PARTS

### 3.1 How To Use The Parts List

- Use the table of contents or index to locate the assembly that contains the part you need.
- Go to the appropriate section and locate the part in the illustration.
- Use the number pointing to the part to locate the correct part number and description in the table.
- Parts shown indented under another part are included with that part.
- Parts marked with a diamond (◆) are only available in the assembly listed above the part.

See the sample table below. Sample Part #A01111 includes part F02222-2 and subassembly A03333. Subassembly A03333 includes part S04444-4 and subassembly K05555. The diamond (◆) indicates that S04444-4 is not available except in subassembly A03333. Subassembly K05555 includes parts M06666 and F07777-77. The diamond (◆) indicates M06666 is not available except in subassembly K05555.

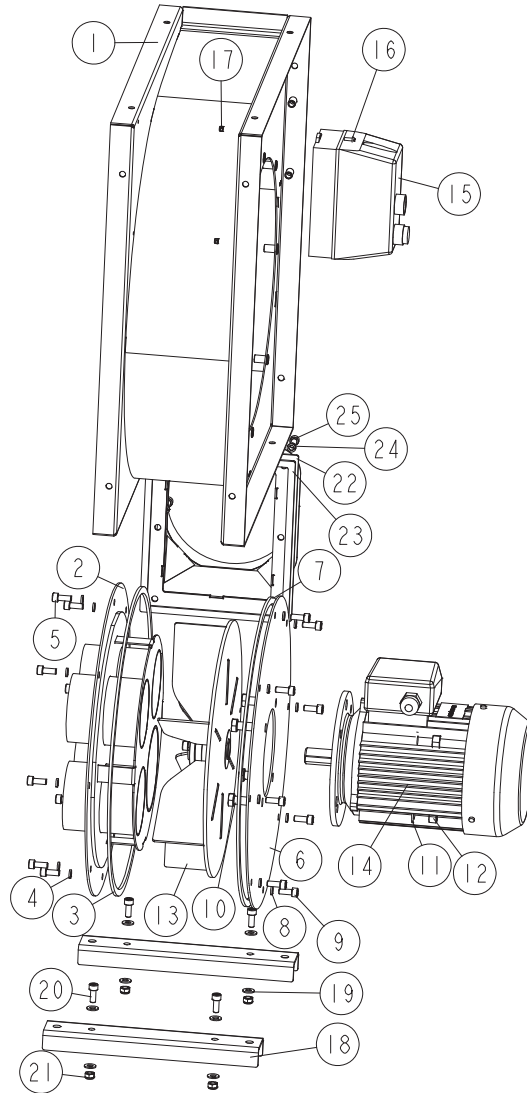
Sample Assembly				
REF.	DESCRIPTION (◆ Indicates Parts Available In Assemblies Only)	PART #	QTY.	
	<b>SAMPLE ASSEMBLY, COMPLETE (INCLUDES ALL INDENTED PARTS BELOW)</b>	A01111	1	
1	Sample Part	F02222-22	1	
	Sample Subassembly (Includes All Indented Parts Below)	A03333	1	
2	Sample Part (◆ Indicates Part Is Only Available With A03333)	S04444-4	1	◆
	Sample Subassembly (Includes All Indented Parts Below)	K05555	1	
3	Sample Part (◆ Indicates Part Is Only Available With K05555)	M06666	2	◆
4	Sample Part	F07777-77	1	

#### To Order Parts:

- From Europe call our European Headquarters and Manufacturing Facility in Kolo, Poland at **+48-63-2626000**. From the continental U.S., call our toll-free Parts hotline at **1-800-448-7881**. Have your customer number, vehicle identification number, and part numbers ready when you call.
- From other international locations, contact the Wood-Mizer distributor in your area for parts.

## 3.2 MD400EH3S-S Chip Extractor

MD400EH3S-S\_001  
MD400EH3S-S\_MANUAL



REF.	DESCRIPTION (◆ Indicates Parts Available In Assemblies Only)	PART #	QTY
-	MD400EH3S-S CHIP EXTRACTOR	MD400EH3S-S	1
-	MD400 MECHANICAL ASSEMBLY	537860	1
-	BODY, MD400 - COMPLETE	537847	1
1	WELDMENT BODY, MD400	537835-1	1
-	ADAPTER, INPUT - COMPLETE	537853	1
2	INPUT ADAPTER (3X100 + 1X125)	537850-1	1
3	SEAL	537839	1
4	WASHER, 8.2 SPLIT LOCK ZINC	F81054-4	8
5	SCREW, M8X20-8.8 HEX SOCKET HEAD CAP ZINC	F81002-30	8
-	FLANGE, MOTOR - COMPLETE	537858	1
6	MOTOR FLANGE	537857-1	1
7	SEAL	537839	1

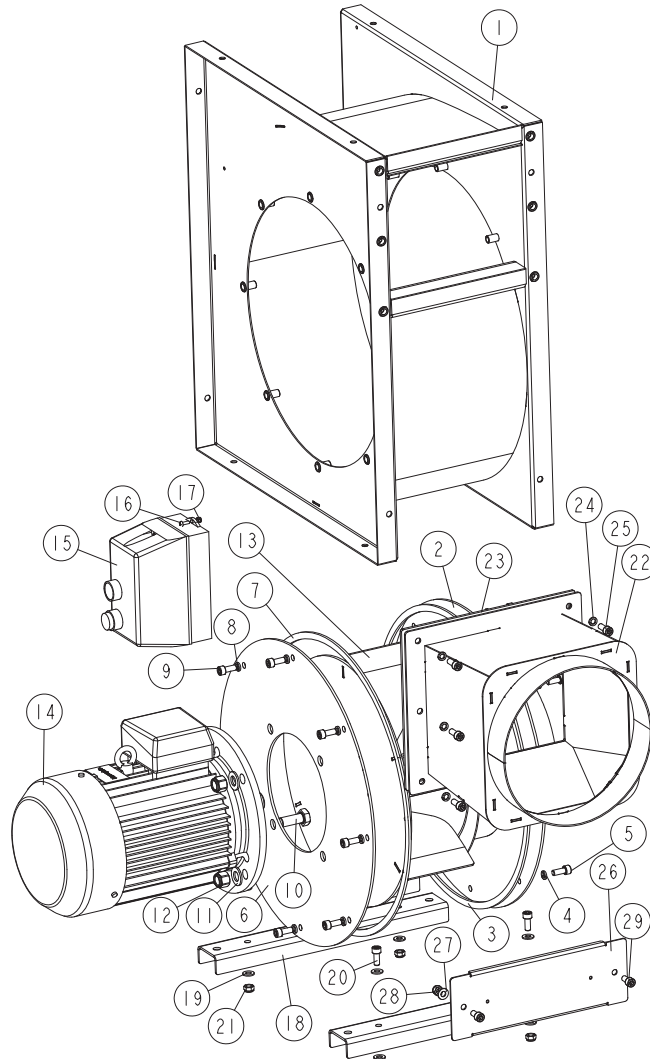
**REPLACEMENT PARTS**  
*MD400EH3S-S Chip Extractor*

**3**

REF.	DESCRIPTION (◆ Indicates Parts Available In Assemblies Only)	PART #	QTY
8	WASHER, 8.2 SPLIT LOCK ZINC	F81054-4	8
9	SCREW, M8X20-8.8 HEX SOCKET HEAD CAP ZINC	F81002-30	8
10	BOLT, M12X25-8.8-FE/ZN5 PN-M/82105	F81004-31	4
11	WASHER, 13 FLAT ZINC	F81056-1	4
12	NUT, M12-8 HEX ZINC	F81034-1	4
13	ROTOR, MD400	537855	1
-	MOTOR KIT, MD400 EH 3X400V CE	537861	1
14	MOTOR, 3SIEK90L2-B5, 3KW/2900 RPM/50HZ	537859	1
15	STARTER, 10A MAX (3-4 KW, 400V), IP65	517344	1
16	SCREW, M4X12 -5,8-B CROSS RECESSED PAN HEAD ZINC	F81011-43	2
17	NUT, M4 ZC 8 NYLOCK DIN 982 ISO 7040	F81029-1	2
-	BRACKET - COMPLETE	537830	2
18	BRACKET	537833-1	1
19	WASHER, 8.4 FLAT ZINC	F81054-1	4
20	SCREW, M8X20-8.8 HEX SOCKET HEAD CAP ZINC	F81002-30	2
21	NUT, M8-8-B HEX NYLON ZINC LOCK	F81032-2	2
-	ADAPTER, OUTPUT - COMPLETE	537870	1
22	N200 OUTPUT ADAPTER	537869-1	1
23	SEAL	537846	1
24	WASHER, 8.2 SPLIT LOCK ZINC	F81054-4	6
25	SCREW, M8X20-8.8 HEX SOCKET HEAD CAP ZINC	F81002-30	6

## 3.3 MD500EH4S-S Chip Extractor

MD500EH4S-S\_001  
MD500EH4S-S\_MANUAL



REF.	DESCRIPTION (◆ Indicates Parts Available In Assemblies Only)	PART #	QTY
-	<b>MD500EH4S-S CHIP EXTRACTOR</b>	MD500EH4S-S	1
-	MD500 MECHANICAL ASSEMBLY	537900	1
-	BODY, MD500 - COMPLETE	537875	1
1	WELDMENT BODY, MD500	537874-1	1
-	ADAPTER, INPUT - COMPLETE	537899	1
2	INPUT ADAPTER	537230-1	1
3	SEAL	537839	1
4	WASHER, 8.2 SPLIT LOCK ZINC	F81054-4	8
5	SCREW, M8X20-8.8 HEX SOCKET HEAD CAP ZINC	F81002-30	8
-	FLANGE, MOTOR - COMPLETE	537895	1
6	MOTOR FLANGE	537896-1	1
7	SEAL	537839	1
8	WASHER, 8.2 SPLIT LOCK ZINC	F81054-4	8



**REPLACEMENT PARTS**  
*MD500EH4S-S Chip Extractor*

**3**

REF.	DESCRIPTION (◆ Indicates Parts Available In Assemblies Only)	PART #	QTY	
9	SCREW, M8X20-8.8 HEX SOCKET HEAD CAP ZINC	F81002-30	8	
10	BOLT, M14X35-8.8-FE/ZN5 ISO 4017 (PN/M-82105)	F81005-1	4	
11	WASHER, 15 FLAT ZINC	F81057-2	4	
12	NUT, M14 HEX NYLON ZINC LOCK	F81035-2	4	
13	ROTOR, MD500	537903	1	
-	MOTOR KIT, MD500 EH 3X400V CE	537898	1	
14	MOTOR, 3SIEK100L2A 4KW/2900RPM/50HZ	537897	1	
15	STARTER, 10A MAX (3-4 KW, 400V), IP65	517344	1	
16	SCREW, M4X12 -5,8-B CROSS RECESSED PAN HEAD ZINC	F81011-43	2	
17	NUT, M4 ZC 8 NYLOCK DIN 982 ISO 7040	F81029-1	2	
-	BRACKET - COMPLETE	537905	2	
18	BRACKET	537871-1	1	
19	WASHER, 8.4 FLAT ZINC	F81054-1	4	
20	SCREW, M8X20-8.8 HEX SOCKET HEAD CAP ZINC	F81002-30	2	
21	NUT, M8-8-B HEX NYLON ZINC LOCK	F81032-2	2	
-	ADAPTER, OUTPUT - COMPLETE	537890	1	
22	N250 OUTPUT ADAPTER	537889-1	1	
23	SEAL	537891	1	
24	WASHER, 8.2 SPLIT LOCK ZINC	F81054-4	6	
25	SCREW, M8X20-8.8 HEX SOCKET HEAD CAP ZINC	F81002-30	6	