

Wood-Mizer® Resaw Parts Manual

HR250

rev. B1.00

Safety is our #1 concern!

Form #2527

MODELS AFFECTED:

HR250SEB25U

HR250SEC25U



WARNING! Read and understand this manual before using this machine.

California

Proposition 65 Warning



WARNING: Breathing gas/diesel engine exhaust exposes you to chemicals known to the State of California to cause cancer and birth defects or other reproductive harm.

Always start and operate the engine in a well-ventilated area.
If in an enclosed area, vent the exhaust to the outside.
Do not modify or tamper with the exhaust system.
Do not idle the engine except as necessary.

For more information go to www.P65warnings.ca.gov.



WARNING: Drilling, sawing, sanding or machining wood products can expose you to wood dust, a substance known to the State of California to cause cancer. Avoid inhaling wood dust or use a dust mask or other safeguards for personal protection.

For more information go to www.P65Warnings.ca.gov/wood.

Active Patents assigned to Wood-Mizer, LLC

Wood-Mizer, LLC has received patents that protect our inventions which are a result of a dedication to research, innovation, development, and design. Learn more at: woodmizer.com/patents

©September 18, 2024 Wood-Mizer LLC

Printed in the United States of America, all rights reserved. No part of this manual may be reproduced in any form by any photographic, electronic, mechanical or other means or used in any information storage and retrieval system without written permission from

Wood-Mizer, LLC
8180 West 10th Street
Indianapolis, Indiana 46214

SECTION 1 REPLACEMENT PARTS

1.1 How To Use The Parts List..... 1-1
 1.2 Sample Assembly..... 1-1
 1.3 Torque Values..... 1-2
 1.4 Overview..... 1-3

SECTION 2 SAWHEAD ASSEMBLY

2.1 Sawhead Overview 2-4
 2.2 Upper Cover Assembly..... 2-5
 2.3 Upper Sawhead 2-7
 2.4 Lower Sawhead..... 2-9
 2.5 Lower Cover 2-11
 2.6 Right Door Panel..... 2-13
 2.7 Left Door Panel..... 2-14
 2.8 Motor Mount Assembly 2-15
 2.9 Idle Side Blade Guide 2-16
 2.10 Drive Side Blade Guide 2-17
 2.11 Upper Sawhead Scraper/Lubricator 2-18
 2.12 Lower Sawhead Scraper/Lubricator..... 2-19
 2.13 Idle Wheel Assembly..... 2-20
 2.14 Drive Wheel Assembly 2-22

SECTION 3 FEED CONVEYOR ASSEMBLY

3.1 Conveyor Overview 3-23
 3.2 Load Leg Assembly 3-24
 3.3 Infeed Conveyor..... 3-25
 3.4 Infeed Hold Down Roller 3-26
 3.5 Outfeed Conveyor 3-28
 3.6 Outfeed Hold Down Roller..... 3-29

SECTION 4 UP/DOWN ASSEMBLIES

4.1 Up/Down Overview 4-30
 4.2 Bottom Left Up/Down 4-31
 4.3 Bottom Right Up/Down 4-33
 4.4 Top Left Up/Down..... 4-34
 4.5 Top Right Up/Down..... 4-36

SECTION 5 FRAME ASSEMBLY

5.1 Frame Assembly 5-37
 5.2 Upper Frame 5-39
 5.3 Control Box Adapter (HR250SEB25U) 5-40
 5.4 Water Lube Components 5-41

SECTION 6 ELECTRICAL CONTROLS

6.1 Electrical Box Assembly..... 6-43
 6.2 Control Box Assembly..... 6-44
 6.3 Decals..... 6-46

SECTION 1 REPLACEMENT PARTS

1.1 How To Use The Parts List

- Use the table of contents to locate the assembly that contains the part you need.
- Go to the appropriate section and locate the part in the illustration.
- Use the number pointing to the part to locate the correct part number and description in the table.
- Parts shown indented under another part are included with that part.

To Order Parts

- From the continental US, call **1-800-525-8100** to order parts. Have your customer number, vehicle identification number, and part numbers ready when you call.
- From other international locations, contact the Wood-Mizer distributor in your area for parts.

1.2 Sample Assembly



REF	PART #	DESCRIPTION	COMMENTS	QTY.
	012345	SAMPLE ASSEMBLY, COMPLETE	INCLUDES ITEMS 1-6	1
1	F02222-22	Sample Part		1
2	F03333-33	Sample Part		2
	098765	Sample Subassembly	Includes items 3-6	1
3	S04444-44	Subassembly Sample Part		1
4	K55555	Subassembly Sample Part		1
	054321	Sample Sub-Subassembly	Includes items 5-6	2
5	022222	Sub-Subassembly Sample Part		1
6	F10234-56	Sub-Subassembly Sample Part		1

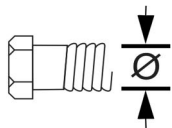
The Sample Assembly, Complete, part number 02345 (top level assembly) includes two parts (F0222-22 and F0333-33) and the 098765 subassembly.

Subassembly 098765 contains two parts(S04444-44 and K55555) and two copies of sub-subassembly 054321.

Each sub-subassembly 054321 contains two parts (022222 and F10234-56).

1.3 Torque Values

Grade		Units	SAE 5	SAE 8
Grade Mark				
Bolt Dia.	Threads. Per In.	Units	SAE 5	SAE 8
6	32	in-lbs (Nm)	20 (2.3)	-
8	32	in-lbs (Nm)	24 (2.7)	30 (3.4)
10	24	in-lbs (Nm)	35 (4.0)	45 (5.1)
10	32	in-lbs (Nm)	40 (4.5)	50 (5.7)
12	24	in-lbs (Nm)	50 (5.7)	65 (7.3)
1/4	20	in-lbs (Nm)	95 (10.7)	125 (14.1)
1/4	28	in-lbs (Nm)	95 (10.7)	150 (17.0)
5/16	18	ft-lbs (Nm)	17 (22.6)	23 (31.2)
5/16	24	ft-lbs (Nm)	20 (27.1)	25 (33.8)
3/8	16	ft-lbs (Nm)	30 (40.7)	40 (54.2)
3/8	24	ft-lbs (Nm)	35 (47.5)	45 (61.0)
7/16	14	ft-lbs (Nm)	50 (67.8)	65 (88.1)
7/16	20	ft-lbs (Nm)	55 (74.6)	70 (94.9)
1/2	13	ft-lbs (Nm)	75 (101.7)	100 (135.6)
1/2	20	ft-lbs (Nm)	85 (115.3)	110 (149.2)
9/16	12	ft-lbs (Nm)	105 (142.4)	135 (183.1)
9/16	18	ft-lbs (Nm)	115 (155.9)	150 (203.4)
5/8	11	ft-lbs (Nm)	150 (203.4)	195 (264.4)
5/8	18	ft-lbs (Nm)	160 (217.0)	210 (284.8)
3/4	10	ft-lbs (Nm)	170 (230.5)	220 (298.3)
3/4	16	ft-lbs (Nm)	175 (237.3)	225 (305.1)
7/8	9	ft-lbs (Nm)	302 (409.5)	473 (640.9)
7/8	14	ft-lbs (Nm)	300 (406.8)	400 (542.4)
1	8	ft-lbs (Nm)	466 (631.8)	714 (967.4)



Metric Bolt Head Identification



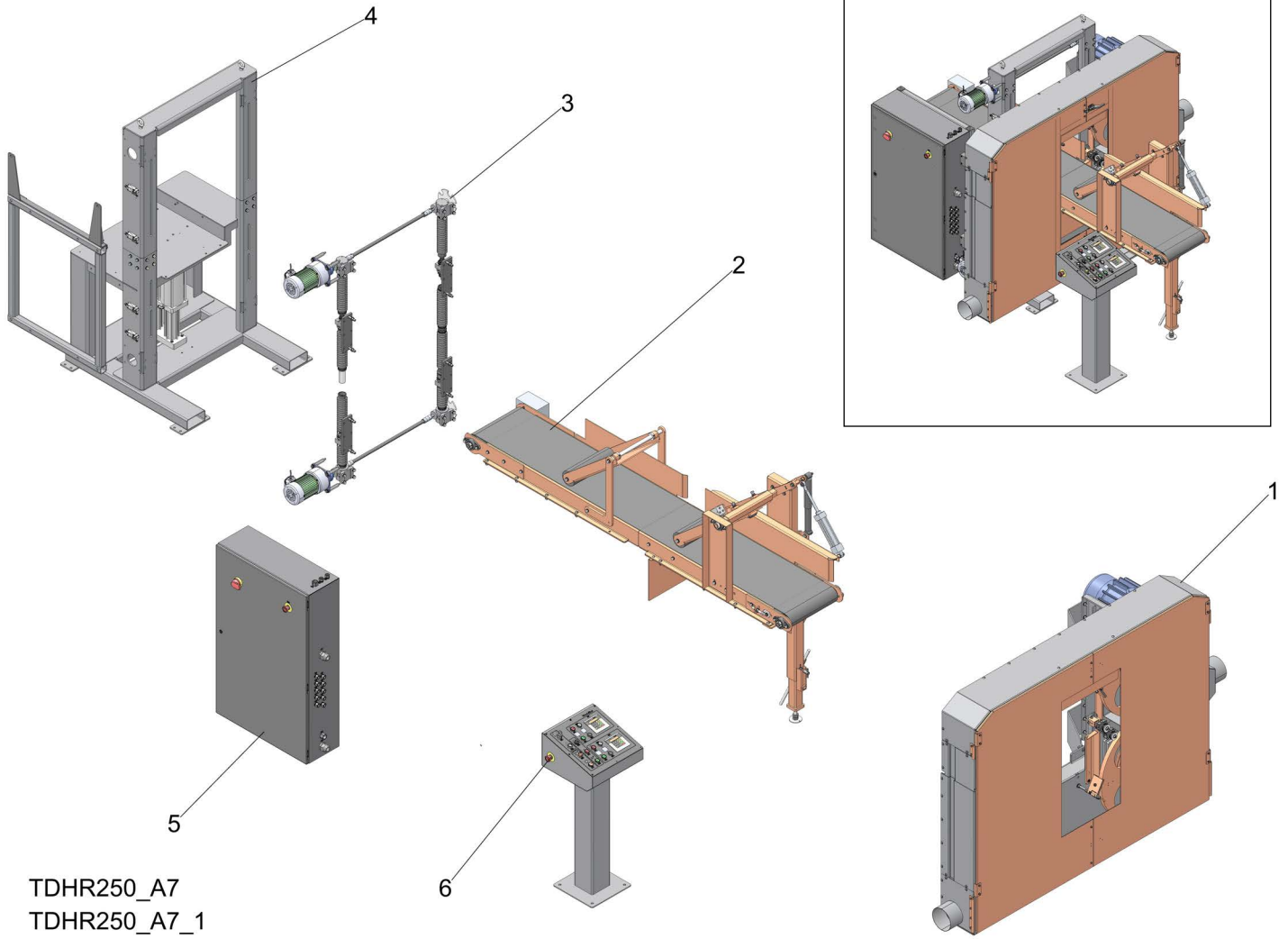
Metric Grade 8.8



Metric Grade 10.9

COARSE THREAD					FINE THREAD				Wrench Size	
Diameter & Thread Pitch	Metric 8.8		Metric 10.9		Diameter & Thread Pitch	Metric 8.8		Metric 10.9		
	N-m	lbs-ft	N-m	lbs-ft		N-m	lbs-ft	N-m		lbs-ft
6 x 1.0	8	6	11	8					10 mm	
8 x 1.25	20	15	27	20	8 x 1.0	21	16	29	22	13 mm
10 x 1.5	39	29	54	40	10 x 1.25	41	30	57	42	16 mm
12 x 1.75	68	50	94	70	12 x 1.25	75	55	103	76	18 mm
14 x 2.0	109	80	151	111	14 x 1.5	118	87	163	120	21 mm
16 x 2.0	169	125	234	173	16 x 1.5	181	133	250	184	24 mm
18 x 2.5	234	172	323	239	18 x 1.5	263	194	363	268	27 mm
20 x 2.5	330	244	457	337	20 x 1.5	367	270	507	374	30 mm
22 x 2.5	451	332	623	460	22 x 1.5	495	365	684	505	34 mm
24 x 3.0	571	421	790	583	24 x 2.0	623	459	861	635	36 mm
30 x 3.0	1175	867	1626	1199	30 x 2.0	1258	928	1740	1283	46 mm

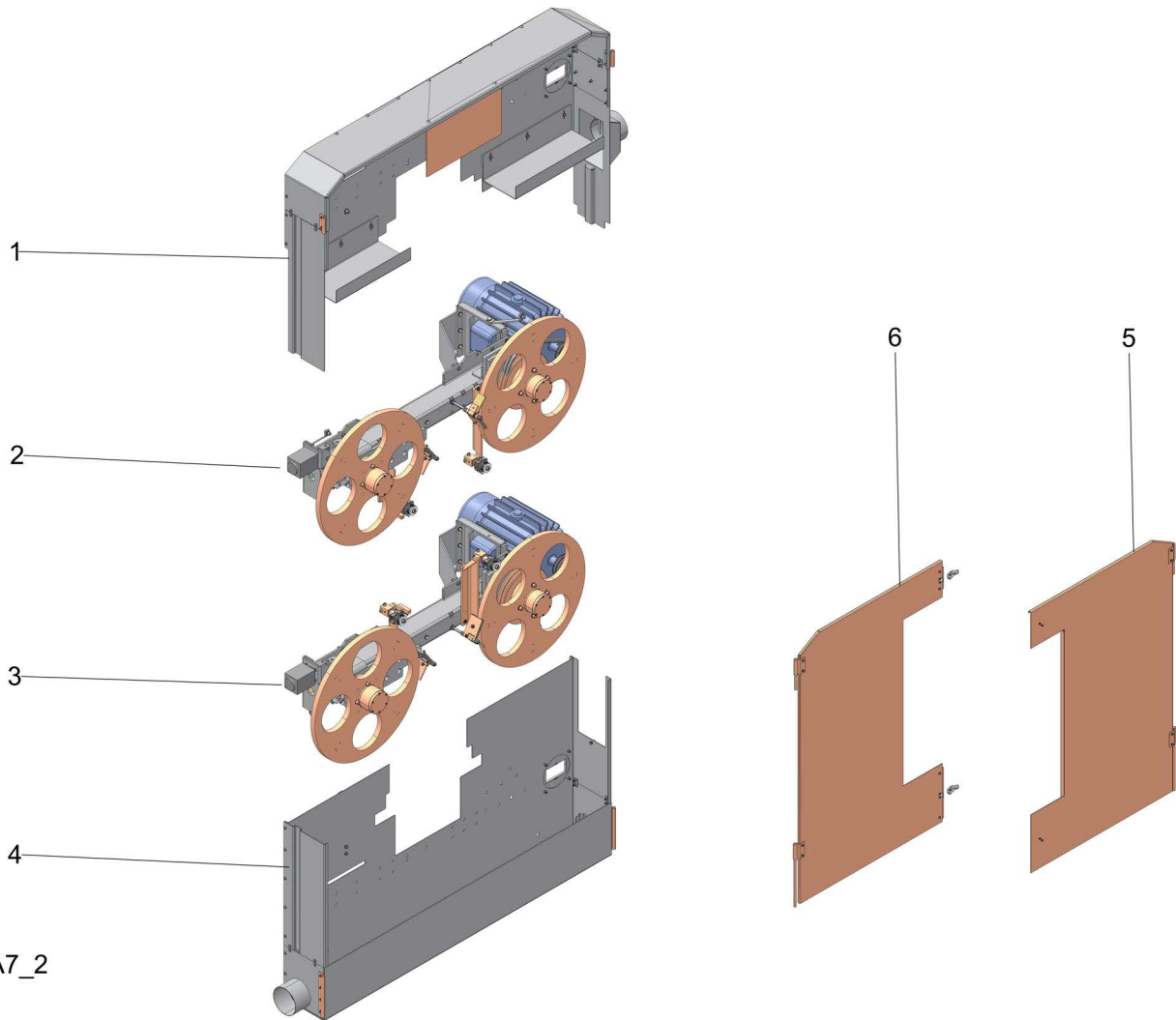
1.4 Overview



REF	PART #	DESCRIPTION	COMMENTS	QTY.
1		Sawhead Assembly	(See Section 2)	1
2	130357	Assy, Feed Conveyor	(See Section 3)	1
3		Up/Down Assemblies	(See Section 4)	1
4	130346	Assy, HR250 Frame	(See Section 5)	1
5	121271	Assy, Control Enc, HR250SEB WMLLC	(See Section 6.1)	1
6	121308	Assy, Control Panel Stand	(See Section 6.2)	1

SECTION 2 SAWHEAD ASSEMBLY

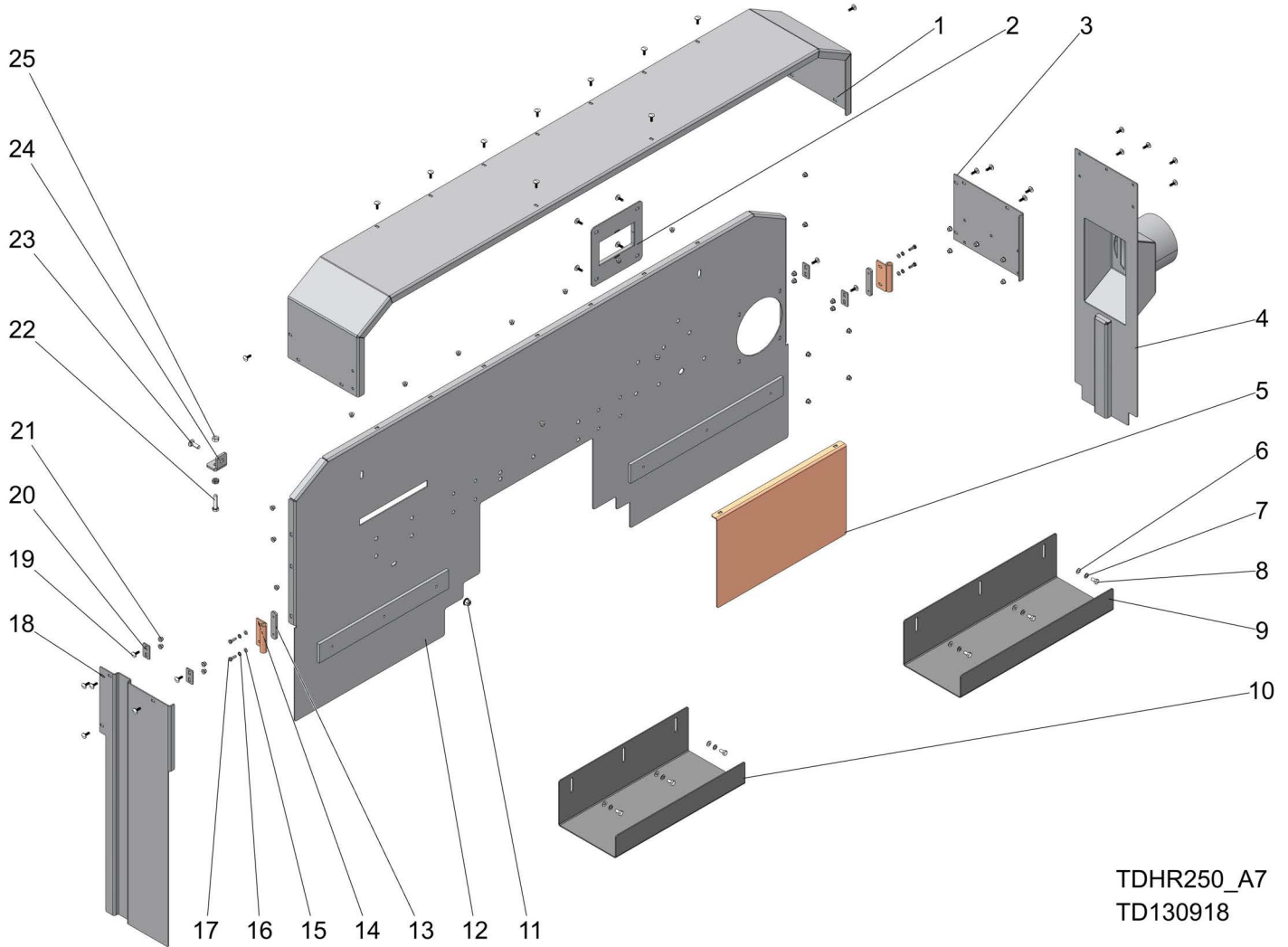
2.1 Sawhead Overview



TDHR250_A7_2

REF	PART #	DESCRIPTION	COMMENTS	QTY.
1	130918	Assy, Upper Cover	(See Section 2.2)	1
2	130988	Assy, Upper Sawhead HR250SEB	(See Section 2.3)	1
3	130989	Assy, Lower Sawhead HR250SEB	(See Section 2.4)	1
4	130900	Assy, Lower Cover	(See Section 2.5)	1
5	130933	Assy, Right Door Panel	(See Section 2.6)	1
6	130928	Assy, Left Door Panel	(See Section 2.7)	1

2.2 Upper Cover Assembly

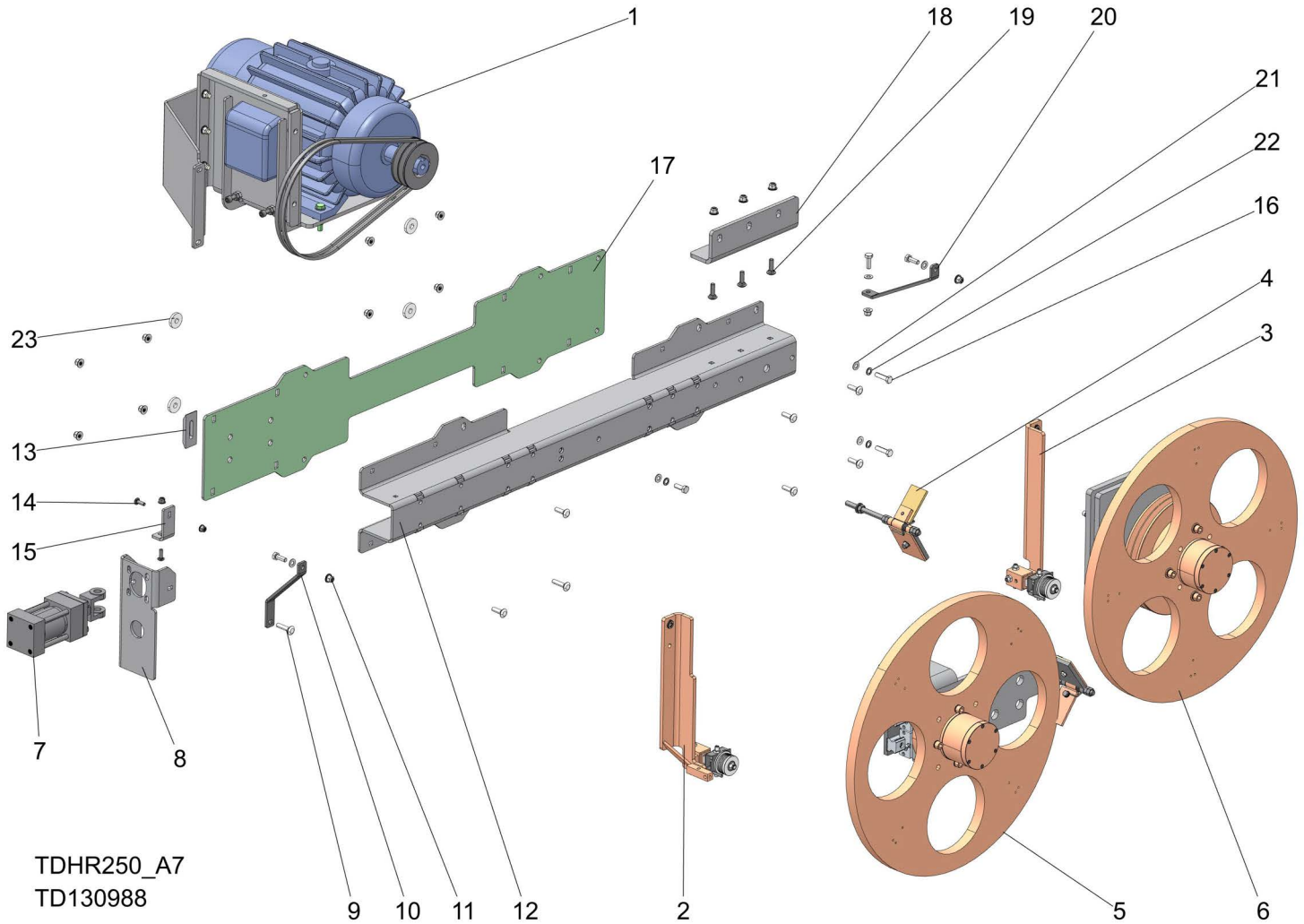


TDHR250_A7
TD130918

REF	PART #	DESCRIPTION	COMMENTS	QTY.
1	130918	Assy, Upper Cover		1
1	130908	Plate, Top Cover		1
2	130903	Wldmnt, Motor Shaft Cover		1
3	130907	Plate, Upper Right Cover		1
4	130917	Wldmnt, Dust Extractor		1
5	130919	Plate, Front Guard		1
6	F05026-4	Washer, M8 Flat		6
7	F05011-45	Washer, 8mm Split Lock, Zn		6
8	F05004-47	Bolt, M8-1.25x16 HH Zinc		6
9	116640	Panel, 23-1/2" Sawdust Chute		1
10	116642	Panel, 20" Sawdust Chute		1
11	F05027-47	Nut, M10-1.5 Flanged Nylon Lock		1
12	130905	Wldmnt, Upper Back Cover		1
13	116263	Plate, Upper Door Hinge		2
14	130911	Wldmnt, Upper Hinge		1
15	F05026-1	Washer, M6 Flat Class 4		4
16	F05026-2	Washer, M6 Split Lock		4
17	F05020-6	Bolt, M6-1x20 HH Class 8		4

REF	PART #	DESCRIPTION	COMMENTS	QTY.
18	130906	Plate, Upper Left Cover		1
19	F05020-58	Bolt, M6-1 x 20 CARRIAGE		32
20	116644	Plate, Mount Clip		4
21	F05027-34	Nut, M6-1.0 Flanged Hex Nylock		32
22	F05022-44	Bolt, M10-1.50x45mm HH 8.8		1
23	F05022-19	Bolt, M10-1.5x30 Carriage Class 8.8		1
24	135045	Bracket, Limit Switch		1
25	F05010-85	Nut, M10-1.5 Hex		2

2.3 Upper Sawhead

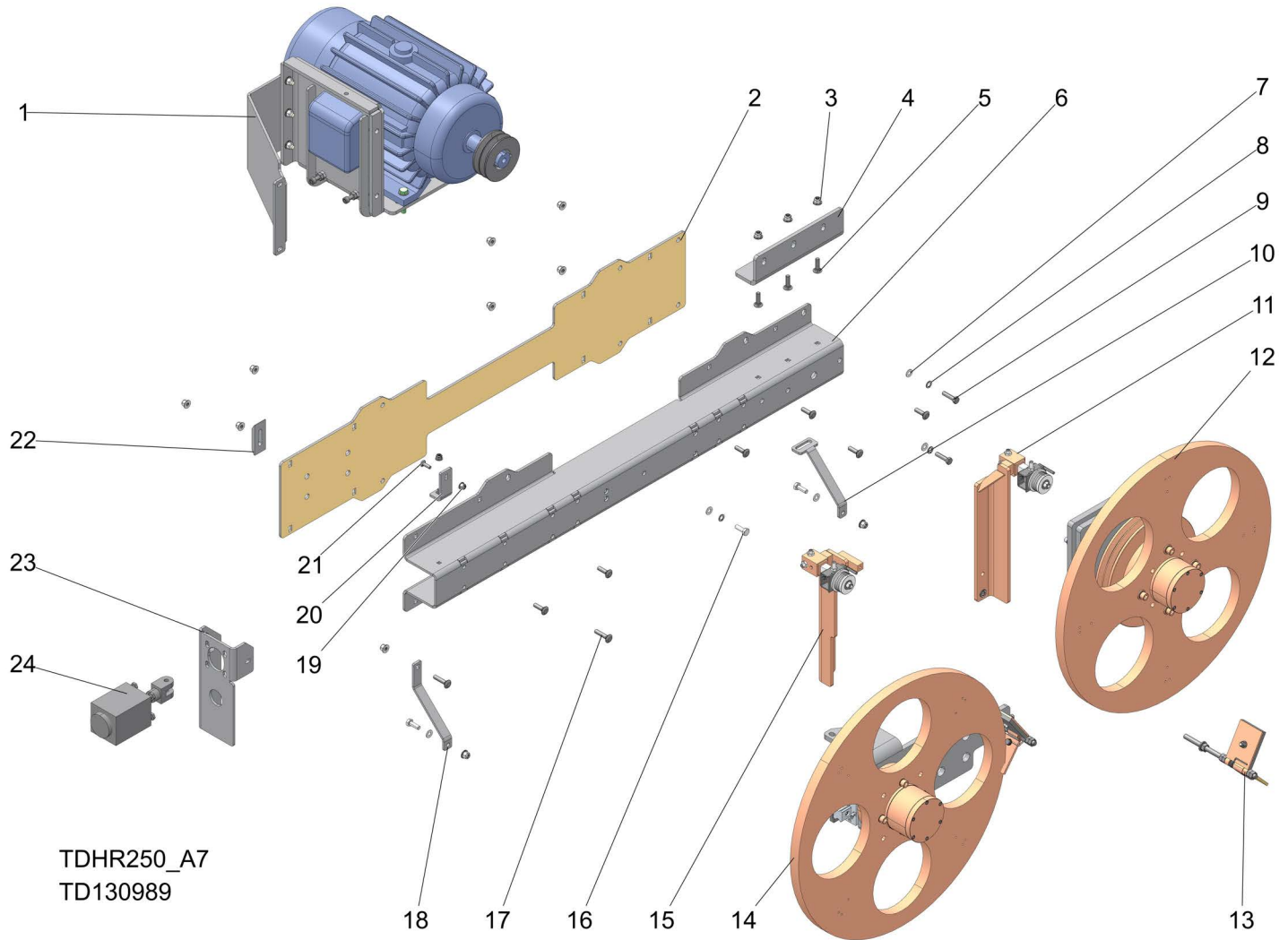


TDHR250_A7
TD130988

REF	PART #	DESCRIPTION	COMMENTS	QTY.
	130988	Assy, Upper Sawhead HR250SEB		1
	130432	Assy, Upper Sawhead HR250SEC		1
1	130987	Assy, Motor Mount HR250SEB	(See Section 2.8)	1
	130423	Assy, Motor Mount HR250SEC		1
2	130435	Assy, IS Blade Guide	(See Section 2.9)	1
3	130434	Assy, DS Blade Guide	(See Section 2.10)	1
4	119455	Assy, Upper Head Scraper/Lubricator	(See Section 2.11)	1
5	119444	Assy, Idle Wheel	(See Section 2.13)	1
6	119443	Assy, Drive Wheel	(See Section 2.14)	1
7	116597	Assy, Air/Oil Blade tensioning Cylinder		1
8	130414	Bracket, Tensioning Cylinder Mount		1
9	F05022-55	Bolt, M10-1.5x45 Carriage Class 8.8		2
10	130425	Bracket, IS Support		1
11	F05027-47	Nut, M10-1.5 Flanged Nylon Lock		17
12	130413	Wldmnt, Head Mounting Bracket		1
13	130426	Plate, Limit Switch		1
14	F05021-17	Bolt, M8-1.25x25 Carriage Class 8.8		2
15	130415	Bracket, Cylinder Mount Support		1

REF	PART #	DESCRIPTION	COMMENTS	QTY.
16	F81003-16	Bolt, M10-1.5x40MM Class 8 HH		6
17	130411	Plate, Head Mounting		1
18	130416	Bracket, Mounting		1
19	F05022-34	Bolt, M10-1.5x35 Carriage Class 8.8		9
20	130424	Bracket, DS Support		1
21	F05011-134	Washer, M10 Flat		21
22	F05011-88	Washer, 10MM Split Lock		15
23	130436	Washer, .512IDx1-1/2ODx1/4 UHMW		4
	U37517810S	Blade QTY-1, 0.045x1.25x178;10°		1

2.4 Lower Sawhead

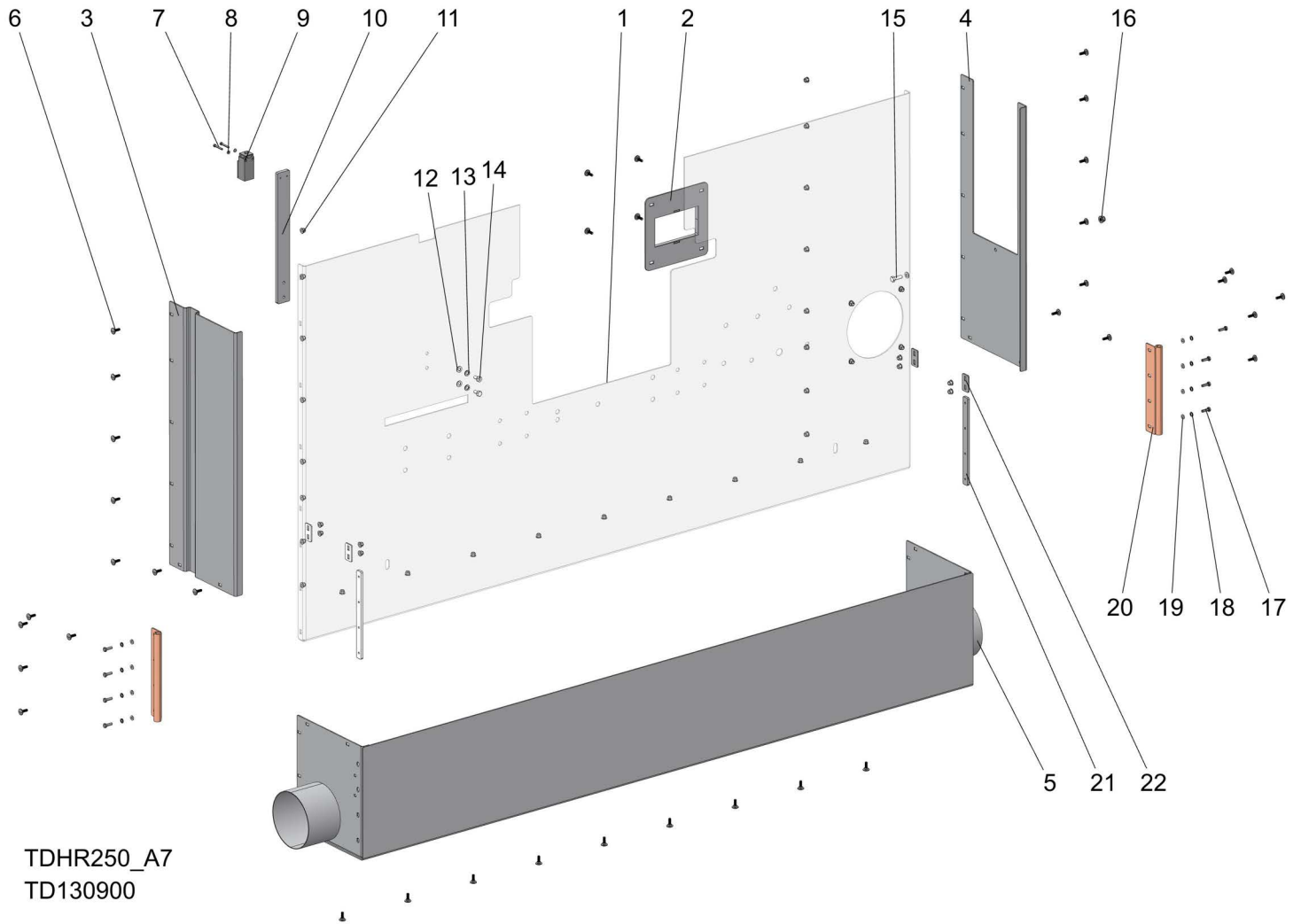


TDHR250_A7
TD130989

REF	PART #	DESCRIPTION	COMMENTS	QTY.
	130989	Assy, Lower Sawhead HR250SEB		1
	130438	Assy, Lower Sawhead HR250SEC		1
1	130987	Assy, Motor Mount HR250SEB	(See Section 2.3)	1
	130423	Assy, Motor Mount HR250SEC		
2	130411	Plate, Head Mounting		1
3	F05027-47	Nut, M10-1.5 Flanged Nylon Lock		16
4	130416	Bracket, Mounting		1
5	F05022-34	Bolt, M10-1.5x35 Carriage Class 8.8		9
6	130413	Weldment, Head Mounting Bracket		1
7	F05011-134	Washer, M10 Flat		15
8	F05011-88	Washer, 10MM Split Lock		10
9	F81003-16	Bolt, M10-1.5x40MM Class 8 HH		6
10	130949	Bracket, Lower DS Support		1
11	130434	Assy, DS Blade Guide	(See Section 2.5)	1
12	119443	Assy, Drive Wheel	(See Section 2.4)	1
13	130439	Assy, Lower Head Scraper/Lubricator	(See Section 2.8)	1
14	119444	Assy, Idle Wheel	(See Section 2.7)	1
15	130435	Assy, IS Blade Guide	(See Section 2.4)	1

REF	PART #	DESCRIPTION	COMMENTS	QTY.
16	F05022-3	Bolt, M10-1.5x30 HH Class 8		3
17	F05022-55	Bolt, M10-1.5x45 Carriage Class 8.8		2
18	130425	Bracket, IS Support		1
19	F05027-44	Nut, M8 x 1.25 mm Nylock Flange		4
20	130415	Bracket, Cylinder Mount Support		1
21	F05021-17	Bolt, M8-1.25x25 Carriage Class 8.8		2
22	130426	Plate, Limit Switch		1
23	130414	Bracket, Tensioning Cylinder Mount		1
24	116597	Assembly, Air/Oil Blade tensioning Cylinder		1
	U37517810S	Blade QTY-1, 0.045x1.25x178;10°		1

2.5 Lower Cover

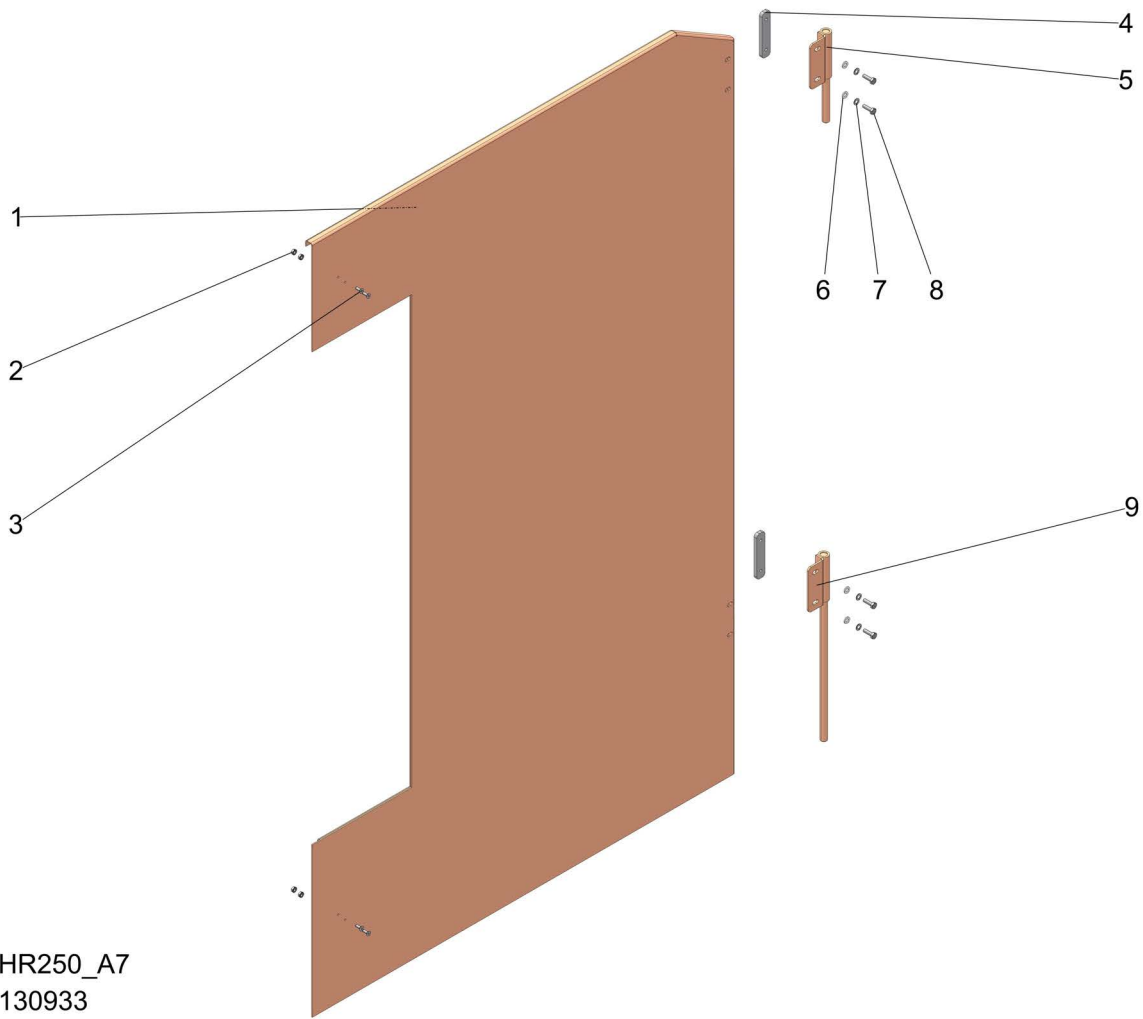


TDHR250_A7
TD130900

REF	PART #	DESCRIPTION	COMMENTS	QTY.
	130900	Assy, Lower Cover		1
1	130440	Plate, Lower Back Cover		1
2	130903	Wldmnt, Motor Shaft Cover		1
3	130441	Plate, Lower Left Cover		1
4	130442	Plate, Lower Right Cover		1
5	130446	Wldmnt, Bottom Cover		1
6	F05020-58	Bolt, M6-1 x 20 CARRIAGE		37
7	F81011-34	Screw, M4x35 8.8 Socket Head Cap Zinc		2
8	F05011-132	Washer, M4 Flat SS PK/100		2
9	125000	Limit Switch, XCKN2110G11		1
10	130986	Plate, Guide HR250		1
11	F05027-34	Nut, M6-1.0 Flanged Hex Nylock		37
12	F05026-4	Washer, M8 Flat		3
13	F05011-45	Washer, 8mm Split Lock, Zn		2
14	F05004-47	Bolt, M8-1.25x16 HH Zinc		2
15	F05004-40	Bolt, M8x1.25x25 HH FT		1
16	F05027-44	Nut, M8 x 1.25 mm Nylock Flange		1
17	F05020-6	Bolt, M6-1x20 HH Class 8		8

REF	PART #	DESCRIPTION	COMMENTS	QTY.
18	F05026-2	Washer, M6 Split Lock		8
19	F05026-1	Washer, M6 Flat Class 4		8
20	130449	Wldmnt, Lower Hinge		2
21	116265	Plate, Door Hinge		2
22	116644	Plate, Mount Clip		4

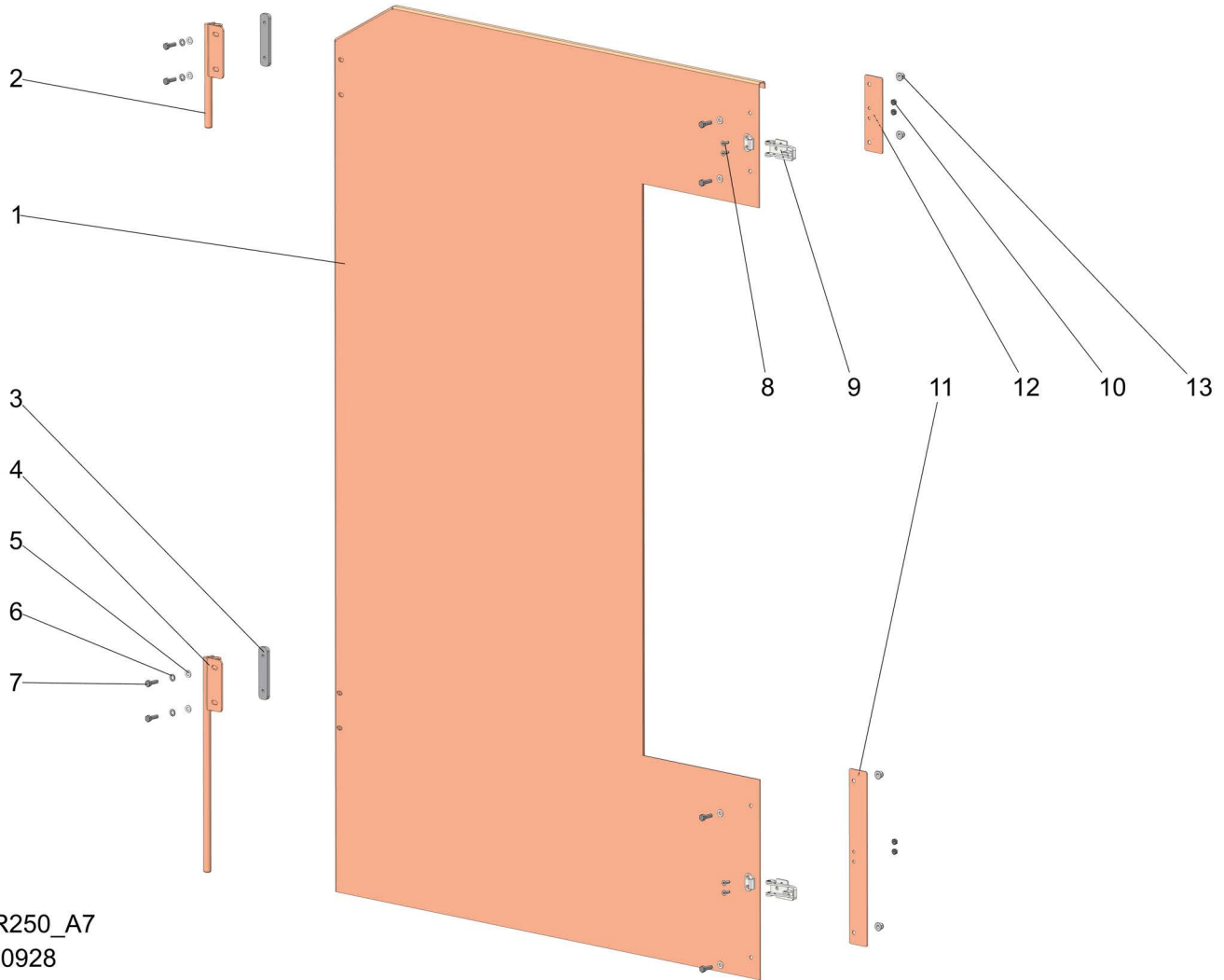
2.6 Right Door Panel



TDHR250_A7
TD130933

REF	PART #	DESCRIPTION	COMMENTS	QTY.
	130933	Assy, Right Door Panel		1
1	130930	Weldment, Right Door		1
2	F05010-41	Nut, #8-32 Self Locking		4
3	F05004-160	Screw, 8-32 X 1/2 Fh Shc Bo		4
4	116263	Plate, Upper Door Hinge		2
5	130931	Weldment, Right Upper Door Hinge		1
6	F05026-1	Washer, M6 Flat Class 4		4
7	F05026-2	Washer, M6 Split Lock		4
8	F05020-6	Bolt, M6-1x20 Hh Class 8		4
9	130932	Weldment, Right Lower Door Hinge		1

2.7 Left Door Panel

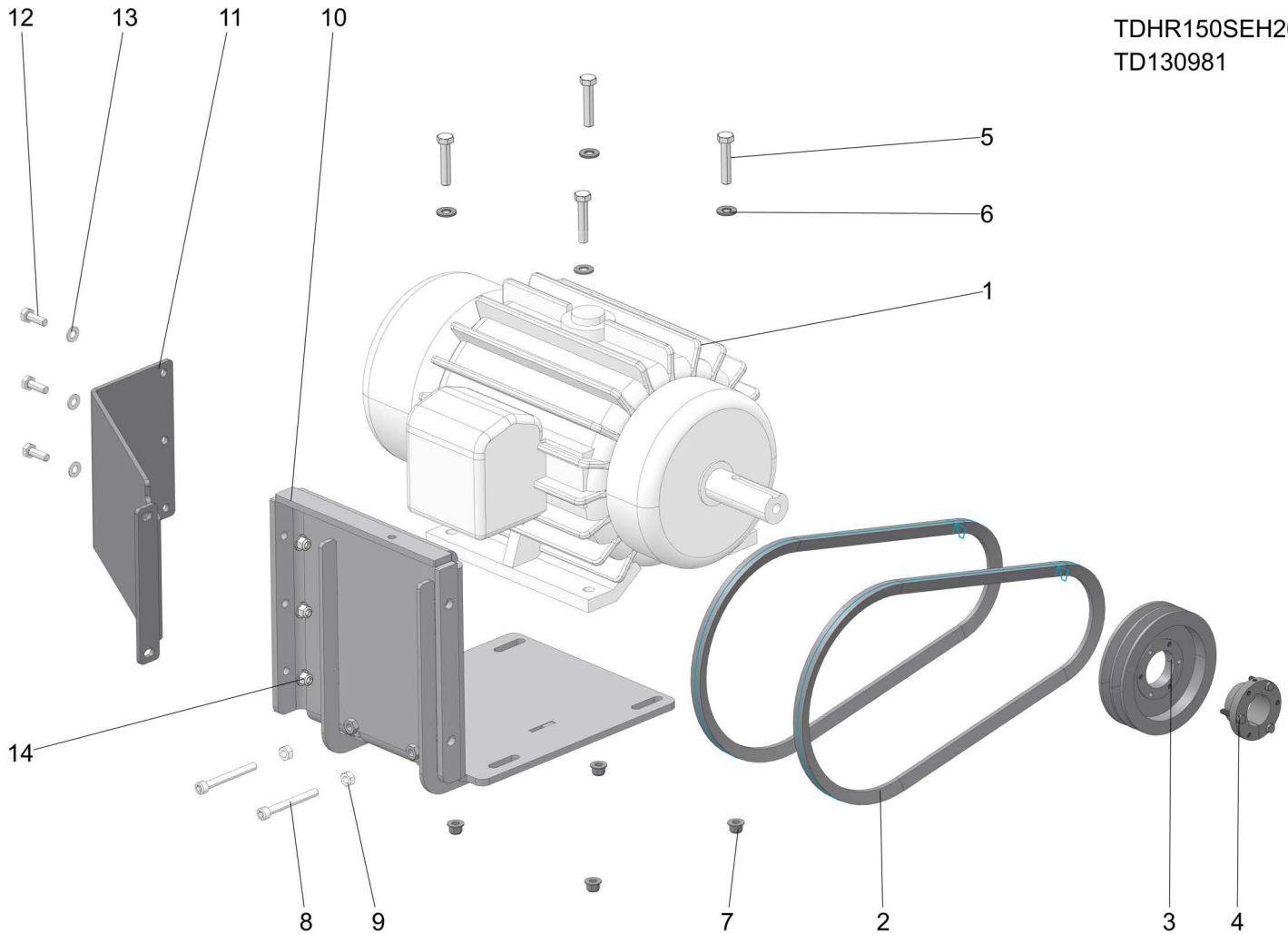


TDHR250_A7
TD130928

REF	PART #	DESCRIPTION	COMMENTS	QTY.
	130928	Assy, Left Door Panel		1
1	130922	Wldmnt, Left Door		1
2	130926	Wldmnt, Left Upper Door Hinge		1
3	116263	Plate, Upper Door Hinge		2
4	130927	Wldmnt, Left Lower Door Hinge		1
5	F05026-1	Washer, M6 Flat Class 4		8
6	F05026-2	Washer, M6 Split Lock		4
7	F05020-6	Bolt, M6-1x20 HH Class 8		8
8	F05004-160	Screw, 8-32x1/2 FH SHC BO		4
9	105288	Latch Assembly, Hood		2
10	F05010-41	Nut, #8-32 Keps		4
11	116345	Plate, Lower Latch		1
12	119510	Plate, Upper Latch		1
13	F05027-34	Nut, M6-1.0 Flanged Hex Nylock		4

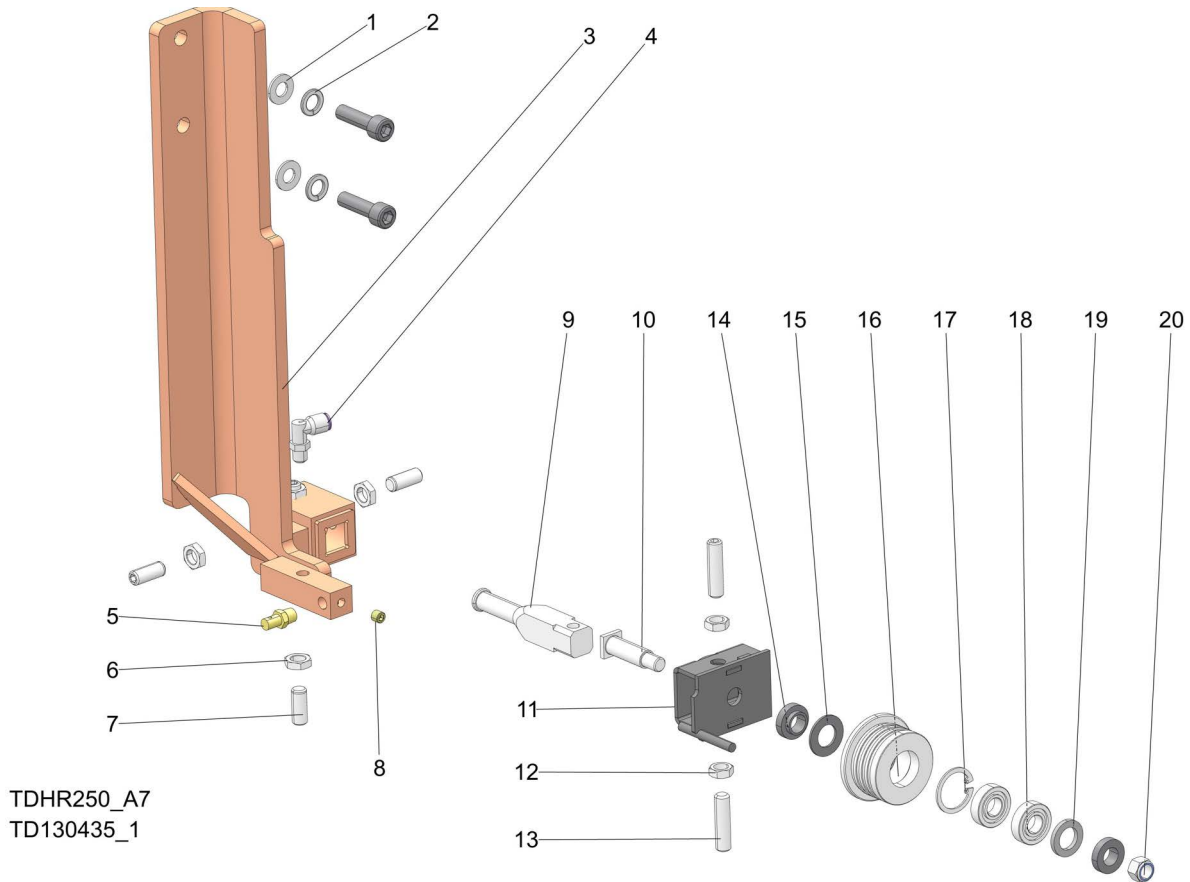
2.8 Motor Mount Assembly

TDHR150SEH20
TD130981



REF	PART #	DESCRIPTION	COMMENTS	QTY.
	130987	Assy, Motor Mount HR250SEB		1
	130423	Assy, Motor Mount HR250SEC		
1	116997	Motor, 18kW, 230V, IE3, 50/60Hz	Used with SEB	1
	116623	Motor, 18kW, 400/480V, IE3, 50/60Hz	Used with SEC	
2	057014	Belt, B48 Goodyear 85510		2
3	116099	Pulley, SPB118X2-1610, 60Hz		1
4	119423	Bushing, 42mm QD		1
5	F05023-8	Bolt, M12-1.75x60 HH CL10.9 Zinc		4
6	F05011-124	WASHER, M12 FLAT Zinc		4
7	F05027-35	Nut, M12-1.75 Hex Flange		4
8	F05022-35	Screw, M10-1.5 x 90 12.9 SHC FT Zinc		2
9	F05010-85	Nut, M10-1.5 Hex		2
10	130420	Wldmnt, Motor Mount		1
11	130421	Bracket, Motor Mount Support		1
12	F05022-18	Bolt, M10-1.5x35 HH Class 8.8		3
13	F05011-134	Washer, M10 Flat		3
14	F05027-47	Nut, M10-1.5 Flanged Nylon Lock		3

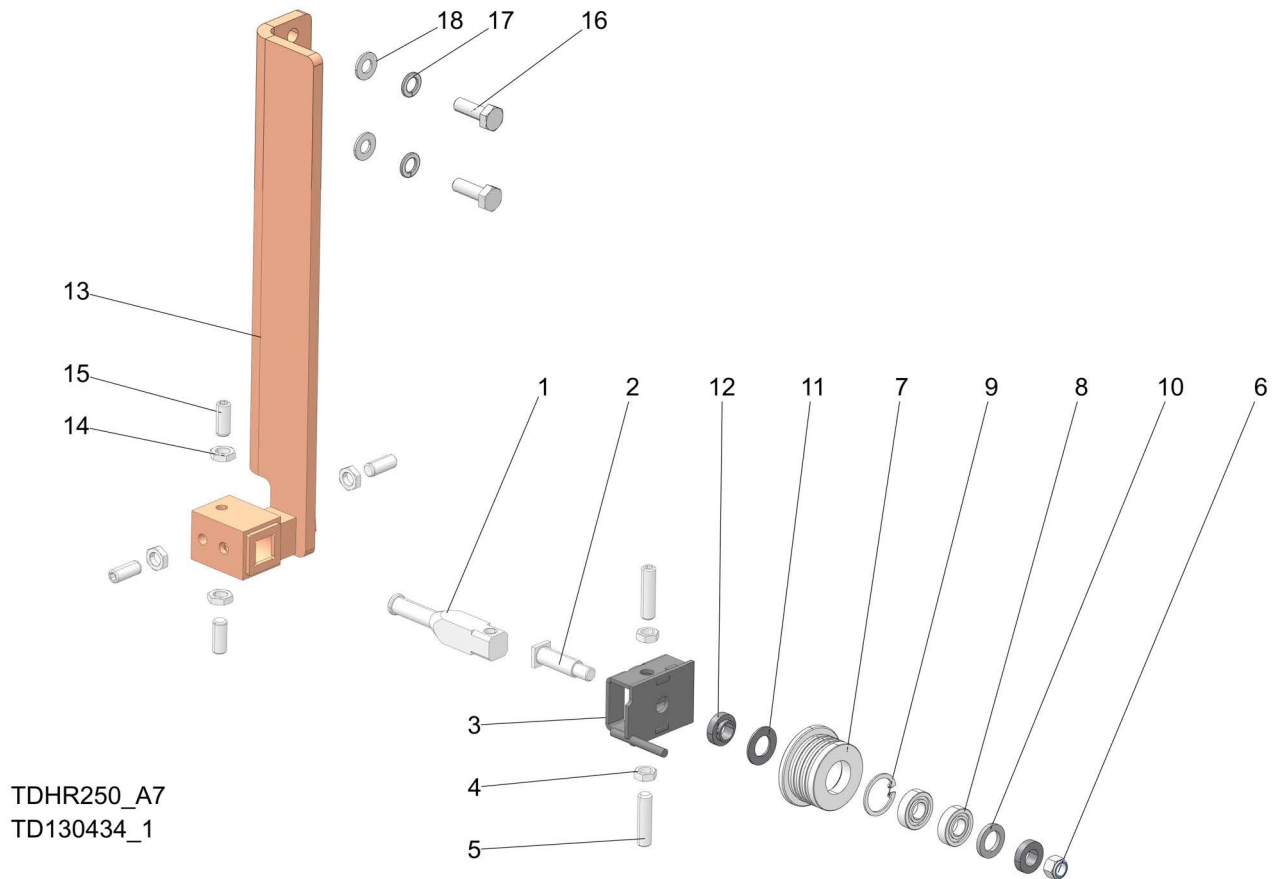
2.9 Idle Side Blade Guide



TDHR250_A7
TD130435_1

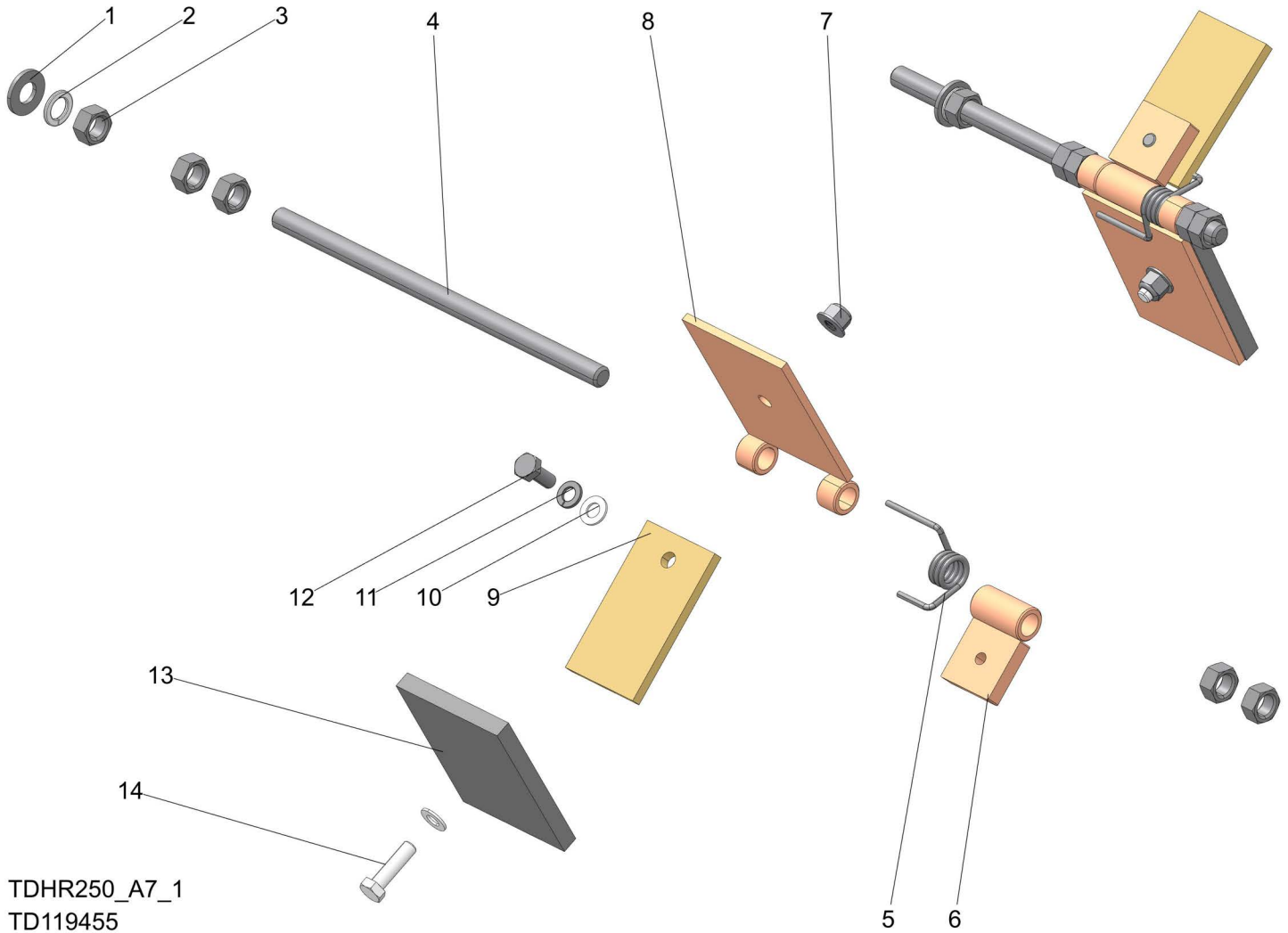
REF	PART #	DESCRIPTION	COMMENTS	QTY.
	130435	Assembly, IS Blade Guide		1
1	F05011-134	Washer, M10 Flat		2
2	F05011-88	Washer, 10MM Split Lock		2
3	130431	Weldment, IS BG Mount		1
4	P09736	Elbow, 90 Deg 1/8MPT 1/4 Tube Swivel		1
5	033479	Nozzle, Blade Lube Spray		1
6	F81033-10	Nut, M10x1-04-ST-A2 ISO 8675 Thin		4
7	F81015-4	Screw, M10-1.0x25mm Stainless Set		4
8	007734	Plug, 1/16 NPT		1
	094682_US	Guide Assy, Metric Drive Blade		1
9	503588_US	Shaft, Metric B/G Mount		1
10	087763_US	Shaft, M10-1.5 Metric Roller		1
11	094679-1_US	Brkt Weldment, Metric Drive B/G		1
12	F05010-203	Nut, M10-1.5 Jam		2
13	F05022-57	Screw, M10-1.5x40mm SH Set, SS		2
14	S04253	Spacer, .510x.937x.34		2
	A04925	Roller Assy, BG 1-1/4" and 1-1/2" Blades		1
15	P04252	Washer, 5/8 White Felt	Available in assembly only	1
16	A09678	Roller Assy, Blade Guide	Available in assembly only	1
17	F04254-1	Ring, 1 1/8 IR Tru-Ark	Available in assembly only	1
18	015975	Bearing, 1/2 IDx 1-1/8 OD Radial Ball	Available in assembly only	2
19	P06455	Washer, 5/8 Grey Felt	Available in assembly only	1
20	F05004-270	Nut, M10-1.50 Hex Nyl Lock		1

2.10 Drive Side Blade Guide



REF	PART #	DESCRIPTION	COMMENTS	QTY.
	130434	Assembly, DS Blade Guide		2
	094682_US	Guide Assy, Metric Drive Blade		1
1	503588_US	Shaft, Metric B/G Mount		1
2	087763_US	Shaft, M10-1.5 Metric Roller		1
3	094679-1_US	Brkt Wldmt, Metric Drive B/G		1
4	F05010-203	Nut, M10-1.5 Jam		2
5	F05022-57	Screw, M10-1.5x40mm SH Set, SS		2
6	F05004-270	Nut, M10-1.50 Hex Nyl Lock		1
	A04925	Roller Assy, BG 1-1/4" and 1-1/2" Blades		1
7	A09678	Roller Assy, Blade Guide	Available in assembly only	1
8	015975	Bearing, R8-2RS Blade Guide	Available in assembly only	2
9	F04254-1	Ring 1 1/8 IR Tru-Ark	Available in assembly only	1
10	P06455	Washer, 5/8 Grey Felt	Available in assembly only	1
11	P04252	Washer, 5/8 White Felt	Available in assembly only	4
12	S04253	Spacer, .510x.937x.34		2
13	130429	Wldmnt, DS BG Mount		1
14	F81033-10	Nut, M10x1-04-ST-A2 ISO 8675 Thin		4
15	F81015-4	Screw, M10-1.0x25mm Stainless Set		4
16	F05022-3	Bolt, M10-1.5x30 HH Class 8		2
17	F05011-88	Washer, 10MM Split Lock		2
18	F05011-134	Washer, M10 Flat		2

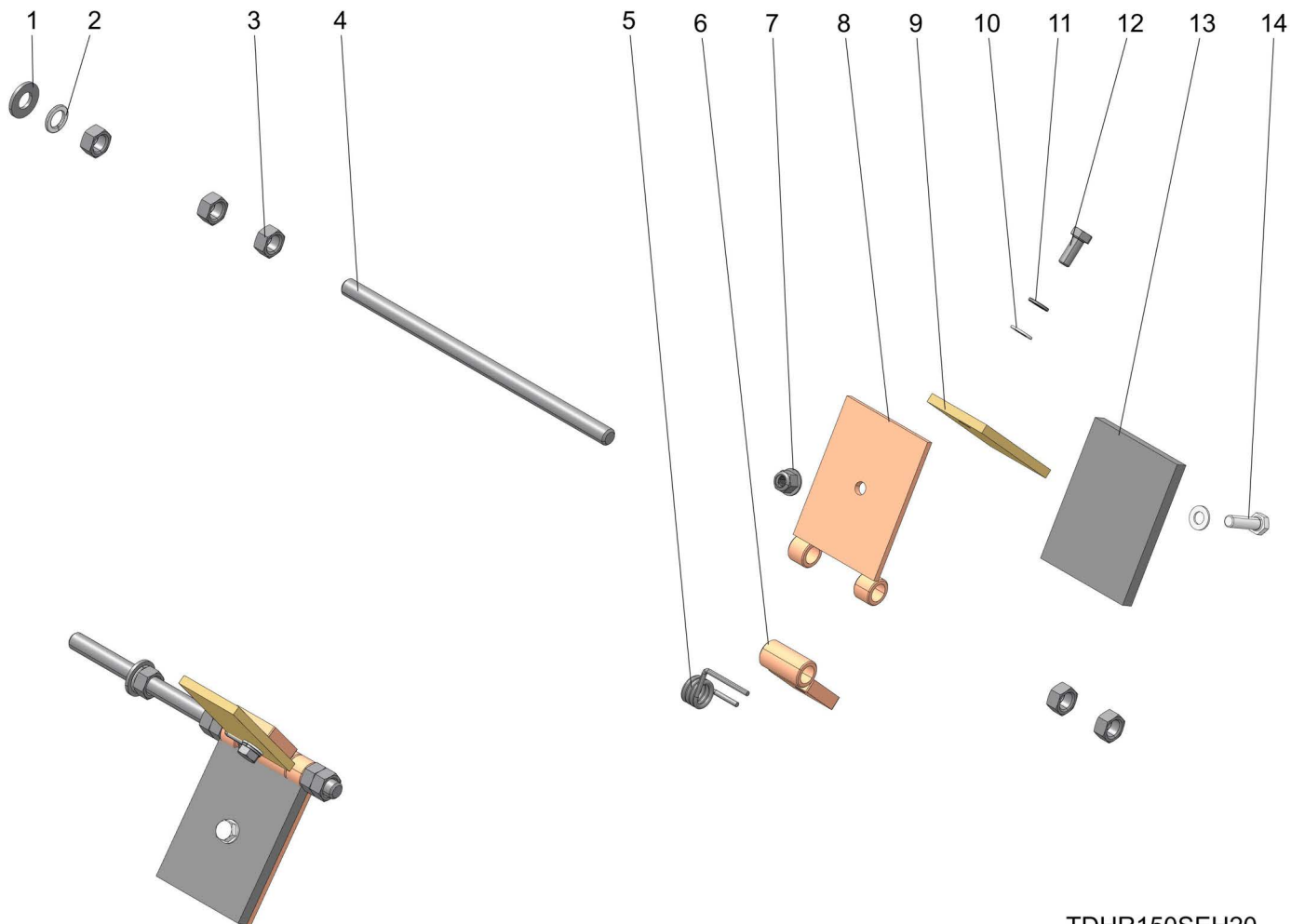
2.11 Upper Sawhead Scraper/Lubricator



TDHR250_A7_1
TD119455

REF	PART #	DESCRIPTION	COMMENTS	QTY.
	119455	Assy, Upper Head Scraper/Lubricator		2
1	F05011-124	WASHER, M12 FLAT Zinc		1
2	F05011-123	Washer, 12MM Split Lock		1
3	F05010-212	Nut, M12x1.75 Free Znc		5
4	F81004-97	Threaded Rod, M12x245mm		1
5	116026	Tension Spring, Scraper		1
6	116212-1	Wldmnt, Wheel Scraper		1
7	F05027-44	Nut, M8 x 1.25 mm Nylock Flange		2
8	116374	Wldmnt, Wheel Lubricator		1
9	116245-1	Plate, Wheel Scraper		1
10	F05026-4	Washer, M8 Flat		2
11	F05011-45	Washer, 8mm Split Lock, Zn		1
12	F05021-2	Bolt, M8-1.25x20 Class 8 HH		1
13	116303-1	Strip, Felt 3x4x3/8		1
14	F05021-11	Bolt, M8-1.25x30mm HHC FT		1

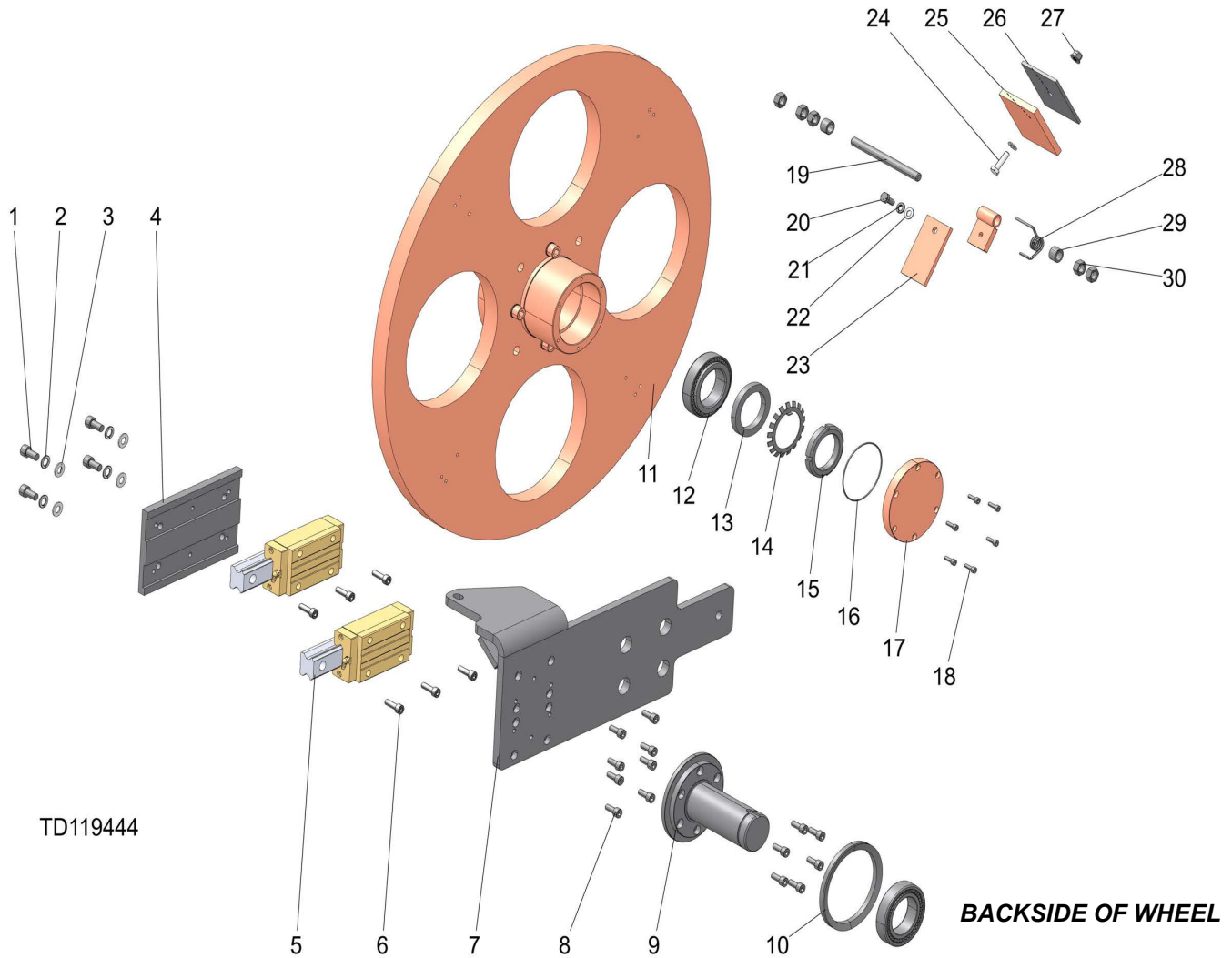
2.12 Lower Sawhead Scraper/Lubricator



TDHR150SEH20
TD130439

REF	PART #	DESCRIPTION	COMMENTS	QTY.
	130439	Assy, Lower Head Scraper/Lubricator		2
1	F05011-124	WASHER, M12 FLAT Zinc		1
2	F05011-123	Washer, 12MM Split Lock		1
3	F05010-212	Nut, M12x1.75 Free Zinc		5
4	F81004-97	Threaded Rod, M12x245mm		1
5	116026	Tension Spring, Scraper		1
6	116212-1	Wldmnt, Wheel Scraper		1
7	F05027-44	Nut, M8 x 1.25 mm Nylock Flange		2
8	116374	Wldmnt, Wheel Lubricator		1
9	116245-1	Plate, Wheel Scraper		1
10	F05026-4	Washer, M8 Flat		2
11	F05011-45	Washer, 8mm Split Lock, Zn		1
12	F05021-2	Bolt, M8-1.25x20 Class 8 HH		1
13	116303-1	Strip, Felt 3x4x3/8		1
14	F05021-11	Bolt, M8-1.25x30mm HHC FT		1

2.13 Idle Wheel Assembly

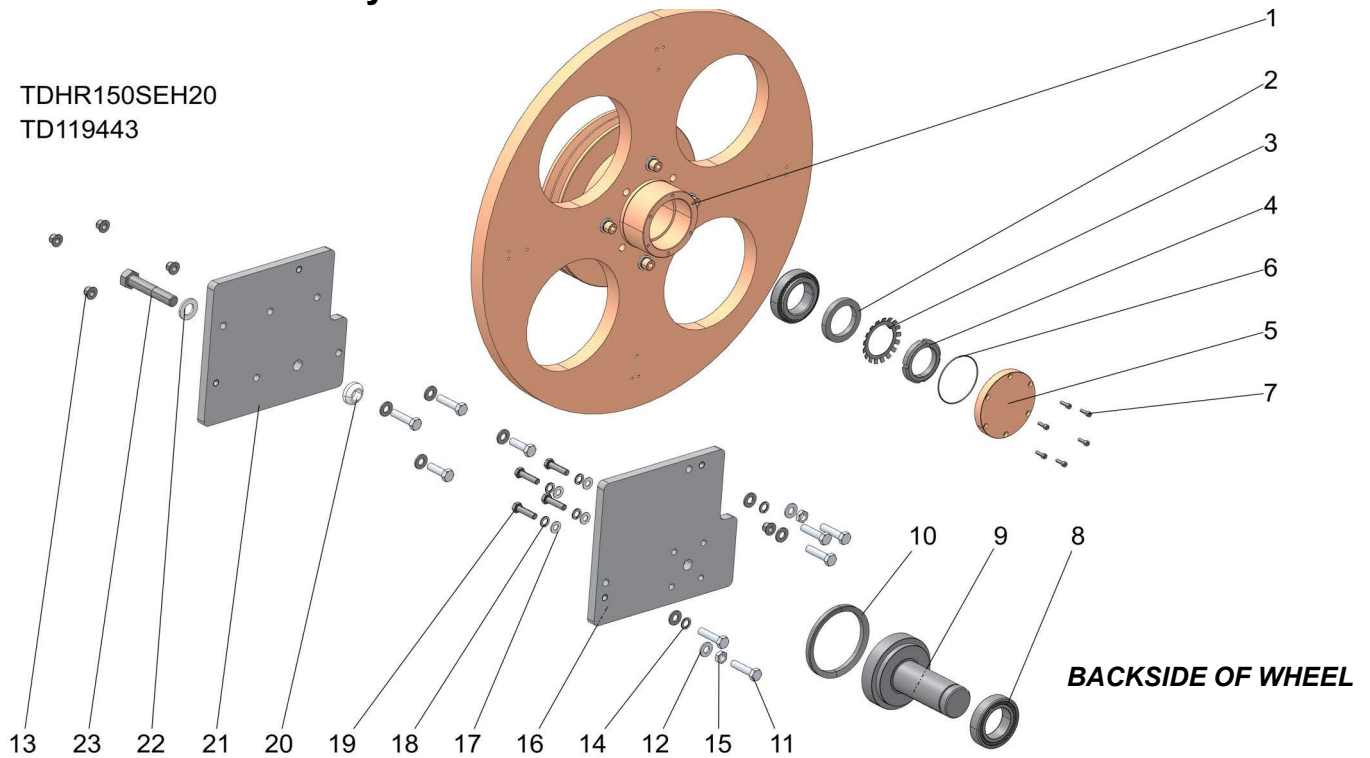


REF	PART #	DESCRIPTION	COMMENTS	QTY.
	119444	Assembly, Idle Wheel		1
1	F05022-56	Bolt, M10-1.5x20 SHCS BO		4
2	F05011-88	Washer, 10MM Split Lock		4
3	F05011-134	Washer, M10 Flat		4
4	116138	Plate, Idle Track Mount		1
5	116105	PMI-MSA35, Linear Guideway Bearing		2
6	F05021-33	Screw, M8-1.25x25 SHC BO		6
7	133077	Weldment, Tensioning Bracket		1
8	F05005-150	Bolt, M8x1.25x20mm SHCS		14
9	116240	Shaft, Idle Wheel		1
10	116293-1	Seal, Drive Hub Rear		1
11	116777	Assembly, Idle Wheel		1
12	116095	Bearing, Thrust 90mm x 55mm x 23mm		1
13	130951	Sleeve, Hub Spacer		1
14	116269	Washer, Bearing Retainer Lock		1
15	116270-1	Nut, Bearing Retainer Spanner		1
16	116295	O-Ring, 84mm x 3.5mm		1
17	116375	Cap, Wheel Hub End		1

REF	PART #	DESCRIPTION	COMMENTS	QTY.
18	F05004-259	Screw, M5-0.8x16mm SHCS SS PK/50		6
	135085	Assembly, Idle Side Wheel Scraper		1
19	135086	Threaded Rod, M12x145mm		1
20	F05021-2	Bolt, M8-1.25x20 Class 8 HH		1
21	F05011-45	Washer, 8mm Split Lock, Zn		1
22	F05026-4	Washer, M8 Flat		2
23	116245-1	Plate, Wheel Scraper		1
24	F05021-11	Bolt, M8-1.25x30mm HHC FT		1
25	116303-1	Strip, Felt 3x4x3/8		1
26	119456	Plate, Wheel Lubricator		1
27	F05027-44	Nut, M8 x 1.25 mm Nylock Flange		1
28	116026	Tension Spring, Scraper		1
29	119457	Spacer, 3/4ODx1/2IDx.55		2
30	F05010-212	Nut, M12x1.75 Free Znc		5

2.14 Drive Wheel Assembly

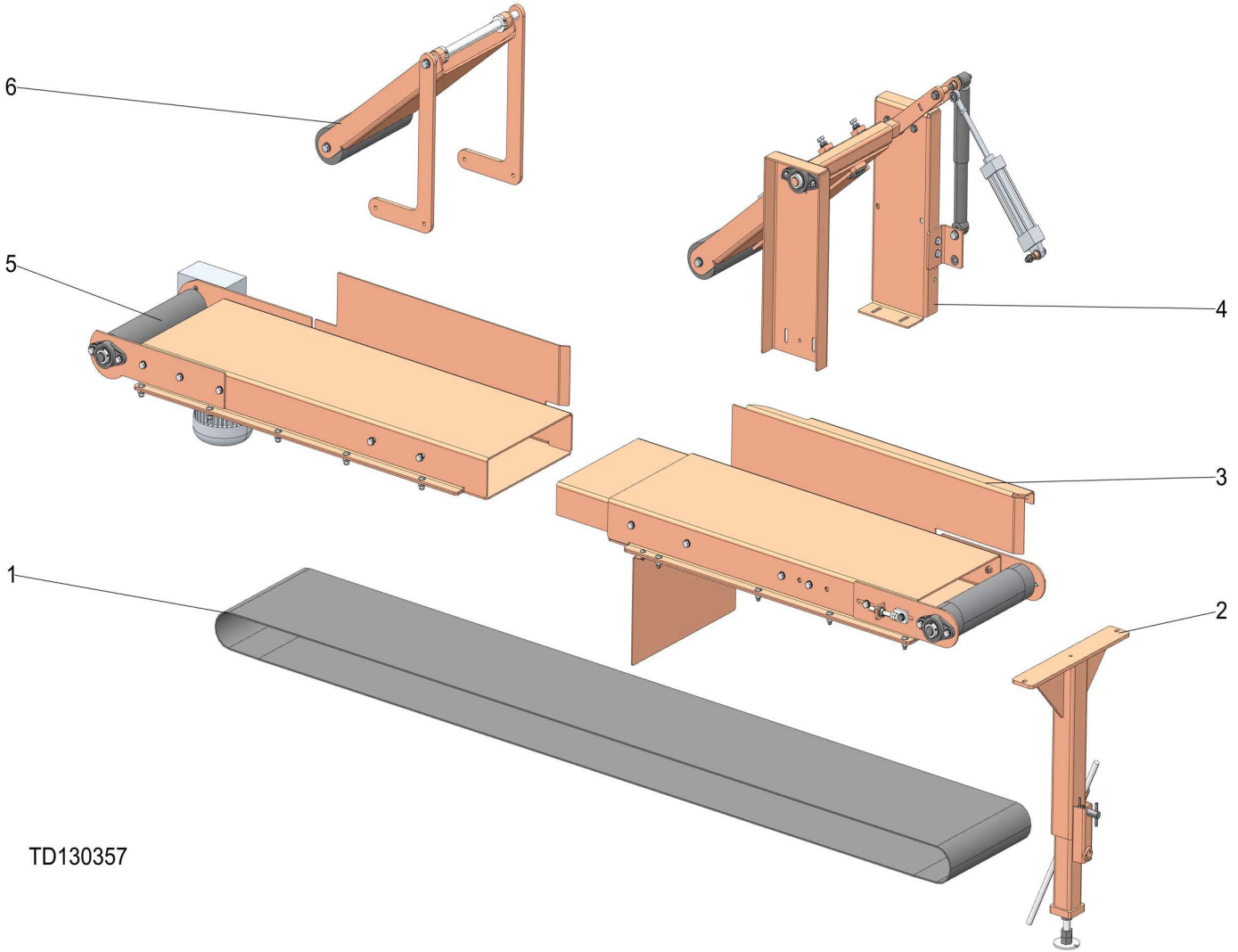
TDHR150SEH20
TD119443



REF	PART #	DESCRIPTION	COMMENTS	QTY.
	119443	Assembly, Drive Wheel		1
1	116558-1	28mm/ 1¼", Drive Wheel Assy - Painted		1
2	130951	Sleeve, Hub Spacer		1
3	116269	Washer, Bearing Retainer Lock		1
4	116270-1	Nut, Bearing Retainer Spanner		1
5	116375-1	Cap, Wheel Hub End		1
6	116295	O-Ring, 84mm x 3.5mm		1
7	F05004-259	Screw, M5-0.8x16mm SHCS SS PK/50		6
8	116095	4T-32011X- Bearing		2
9	116266-1	Shaft, Drive Wheel		1
10	116293-1	Seal, Drive Hub Rear		1
11	F05007-193	Bolt, M12x1.75x50mm HH FT CL10.9 Zinc		9
12	F05011-124	Washer, M12 Flat Zinc		9
13	F05027-35	Nut, M12-1.75 Hex Flange		5
14	F05011-123	Washer, 12MM Split Lock		6
15	F05027-19	Nut, M12-1.75 Zinc Jam		2
16	133076	Plate, Inner Tracking Mount		1
17	F05011-134	Washer, M10 Flat		4
18	F05011-88	Washer, 10MM Split Lock		4
19	F81003-16	Bolt, M10-1.5x40MM Class 8 HH		4
20	116624	Pivot, Wheel Alignment		1
21	116347	Plate, Inner Tracking Mount		1
22	F05011-62	Washer, 3/4 SAE Flat		1
23	F05013-15	Bolt, 3/4-10x4 HH 316 SS		1

SECTION 3 FEED CONVEYOR ASSEMBLY

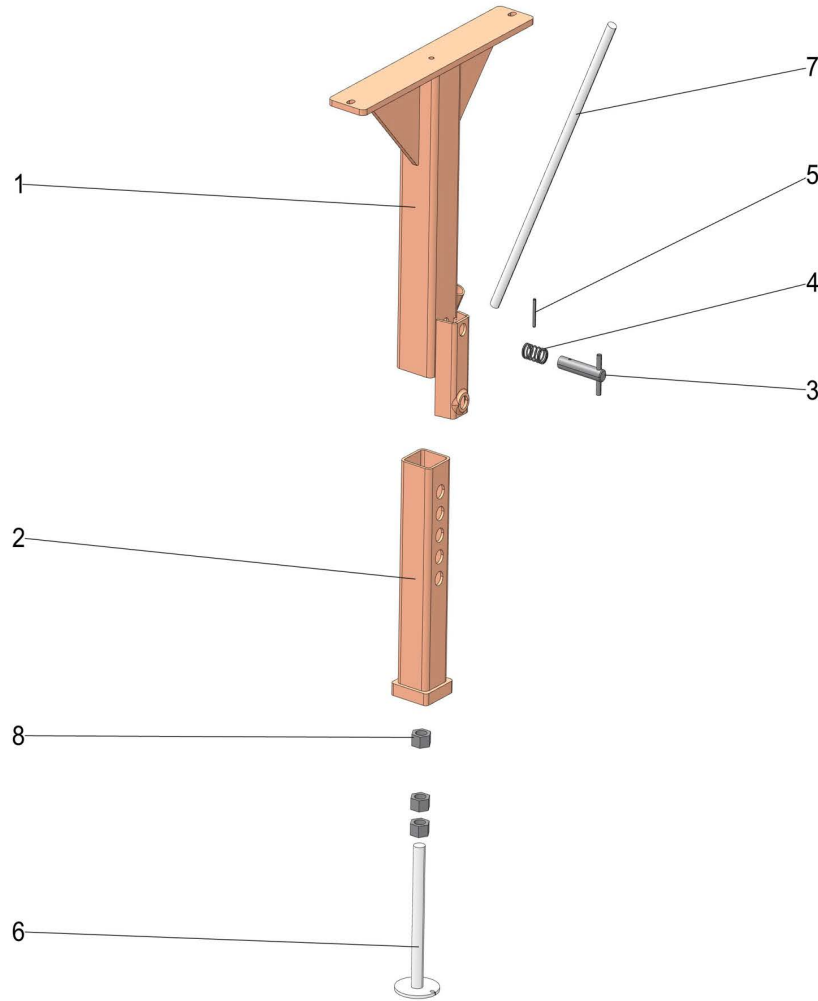
3.1 Conveyor Overview



TD130357

REF	PART #	DESCRIPTION	COMMENTS	QTY.
	130357	Assembly, Feed Conveyor		1
1	130934	Belt, 15-1/2x215 Rough Top Laced		1
2	135039	Assembly, HR Load Leg	(See Section 3.2)	1
3		Assembly, Infeed Conveyor	(See Section 3.3)	1
4	130375	Assembly, Infeed Hold Down Roller	(See Section 3.4)	1
5		Assembly, Outfeed Conveyor	(See Section 3.5)	1
6	130385	Assembly, Outfeed Hold Down Roller	(See Section 3.6)	1

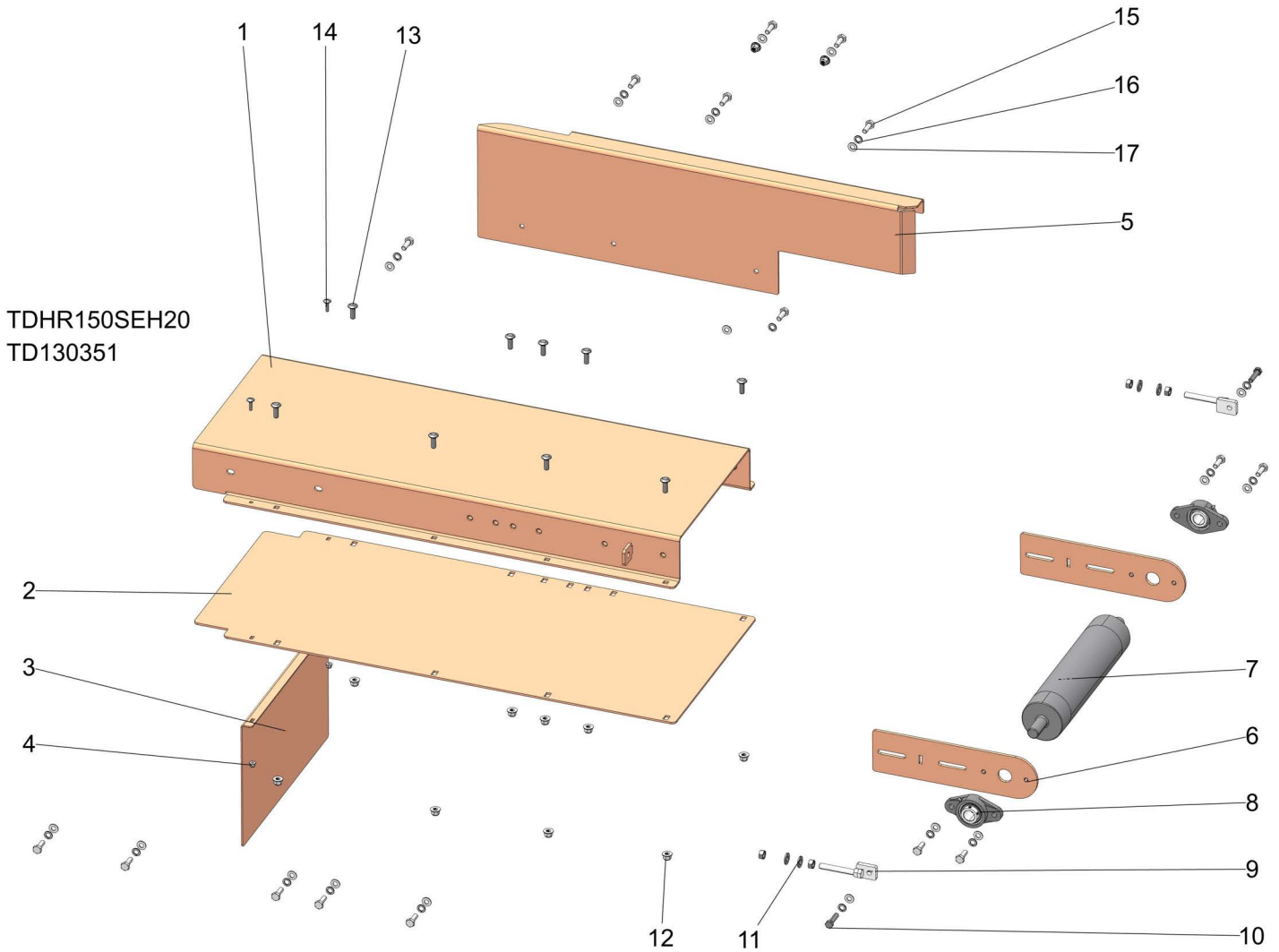
3.2 Load Leg Assembly



TD130357
TD135039

REF	PART #	DESCRIPTION	COMMENTS	QTY.
	135039	Assy, HR Load Leg		1
1	135034	Wldmnt, HR Load Leg Upper		1
2	135036	Wldmnt, HR Load Leg Lower		1
3	016148	Pin Assy, .75 Outrigger Pull		1
4	016145	Spring, .92x1.5x.079 Compression		1
5	F05012-103	Pin, 3/16x1 3/4 Roll Zinc		1
6	X200-1088	Foot Wldmt, Timbery Metric		1
7	S04827	Handle, Outrigger Jack		1
8	F05027-26	Nut, M20-2.5 Free		3

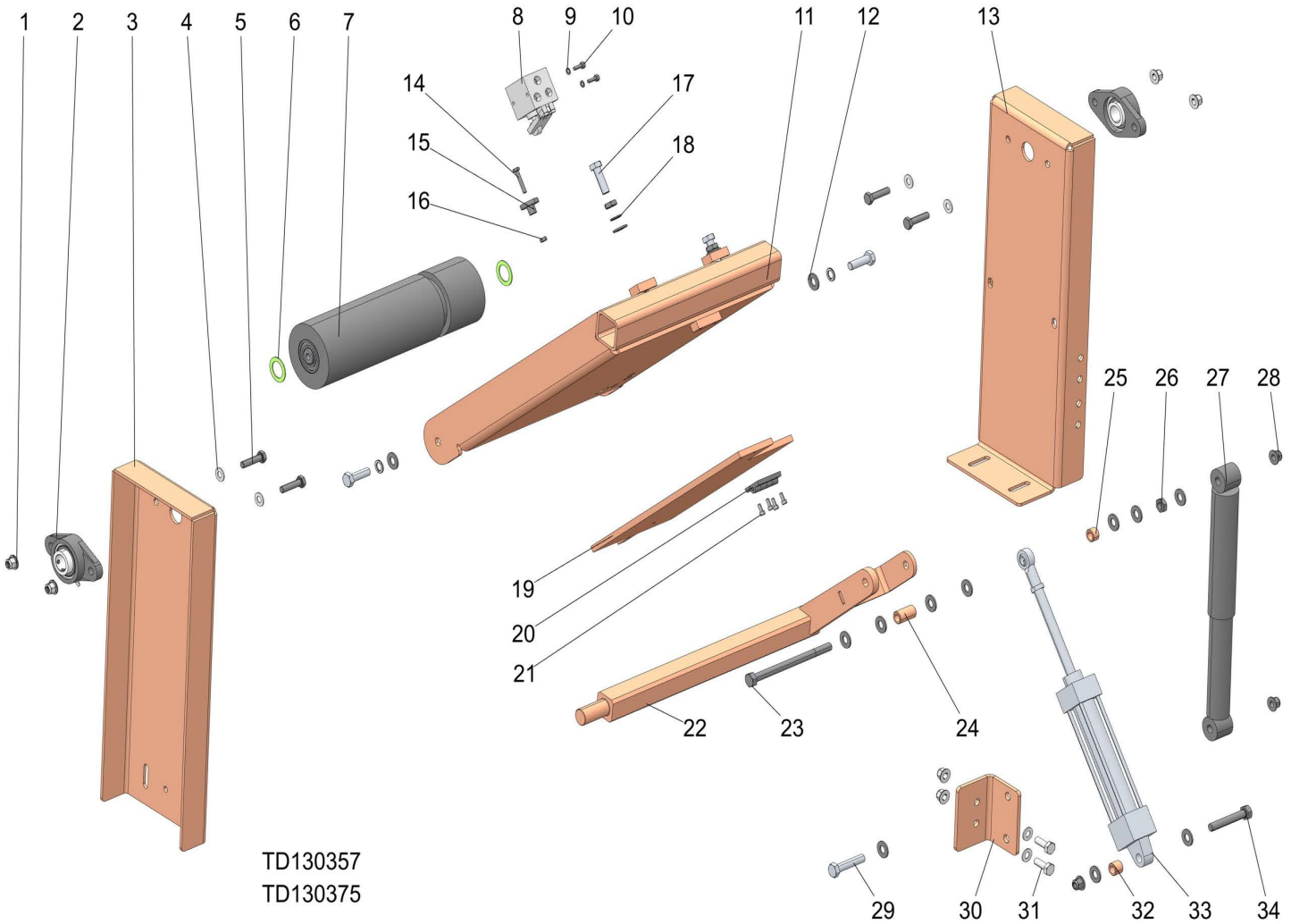
3.3 Infeed Conveyor



TDHR150SEH20
TD130351

REF	PART #	DESCRIPTION	COMMENTS	QTY.
1	130352	Wldmnt, Front Conveyor		1
2	130350	Plate, Front Conveyor Base		1
3	130919	Plate, Front Guard		1
4	F05027-34	Nut, M6-1.0 Flanged Hex Nylock		2
5	130358	Plate, Infeed Support		1
6	119481	Plate, Idle Conveyor Roller Mount		2
7	130364	Roller, 16in Idle		1
8	038124	Bearing, 1 Flanged, VF2S 216		2
9	116233	Wldmnt, Feed Belt Tension		2
10	F81003-16	Bolt, M10-1.5x40MM Class 8 HH		2
11	F05011-124	WASHER, M12 FLAT Zinc		4
12	F05027-47	Nut, M10-1.5 Flanged Nylon Lock		11
13	F05022-19	Bolt, M10-1.5x30 Carriage Class 8.8		9
14	F81001-20	Bolt, M6x25-8.8 Carriage Head Zinc		2
15	F05022-3	Bolt, M10-1.5x30 HH Class 8		16
16	F05011-88	Washer, 10MM Split Lock		16
17	F05011-134	Washer, M10 Flat		18

3.4 Infeed Hold Down Roller

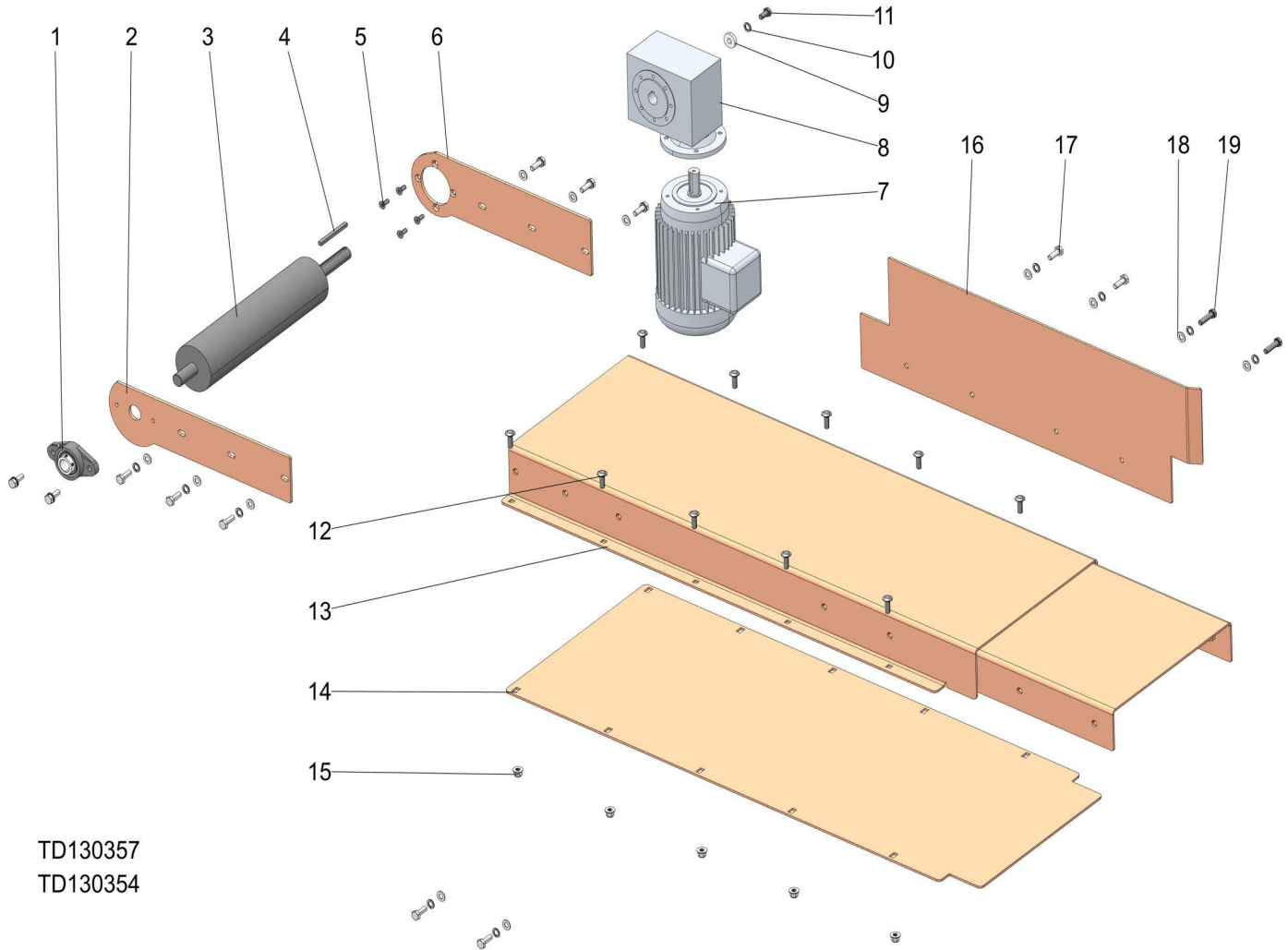


TD130357
TD130375

REF	PART #	DESCRIPTION	COMMENTS	QTY.
	130375	Assy, Infeed Hold Down Roller		1
1	F05027-47	Nut, M10-1.5 Flanged Nylon Lock		6
2	038124	Bearing, 1 Flanged, VF2S 216		2
3	130365	Bracket, LS Infeed Hold Down Roller		1
4	F05011-134	Washer, M10 Flat		6
5	F81003-16	Bolt, M10-1.5x40MM Class 8 HH		4
6	F05011-116	Washer, Shim 1" ID x .06 SS		2
7	130372	Assembly, Hold Down Roller		1
8	116067	R-4-1/4, EA-D6979, Mechanical Valve		1
9	F81052-1	Washer, M5 Flat Zinc		2
10	F81000-20	Bolt, M5x16 HH FT Class 8.8		2
11	130373	Weldment, Hold Down Roller		1
12	F05011-124	WASHER, M12 FLAT Zinc		15
13	130366	Bracket, RS Infeed Hold Down		1
14	F05020-9	Bolt, M6-1 x 35 Class8 HH		1
15	135087	Sleeve, HR Reducer		1
16	F81031-1	Nut, M6 8 FE/ZN5 PN-85/M-82144		1
17	F05004-250	Bolt, M12x1.75x40mm HH FT CL10.9 Zinc		4

REF	PART #	DESCRIPTION	COMMENTS	QTY.
18	F05011-123	Washer, 12MM Split Lock		4
19	130374	Plate, Pressure Sensor		1
20	116273-1	Hinge, 2 x 1 1/2		1
21	F05020-80	Screw, M5-0.8x12mm SHCS PK/100		4
22	130369	Weldment, 16in Mounting Shaft		1
23	F05023-26	Bolt, M12-1.75x170 HH CL8.8 Zinc		1
24	130379	Sleeve, 1/2IDx3/4ODx1-3/8		1
25	130378	Sleeve, 1/2IDx3/4ODx1/2		1
26	F05027-19	Nut, M12-1.75 Zinc Jam		3
27	116626	Shock Absorber		1
28	F05027-35	Nut, M12-1.75 Hex Flange		3
29	F05023-8	Bolt, M12-1.75x60 HH CL10.9 Zinc		1
30	130367	Brkt, Pneumatic Hold Down Mnt		1
31	F05022-3	Bolt, M10-1.5x30 HH Class 8		2
32	130377	Sleeve, 1/2IDx3/4ODx.64		1
33	116627	Pneumatic Cylinder MACP300-8A		1
34	F05023-12	Bolt, M12-1.75x75mm Hex Head Full Thread Zinc		1

3.5 Outfeed Conveyor

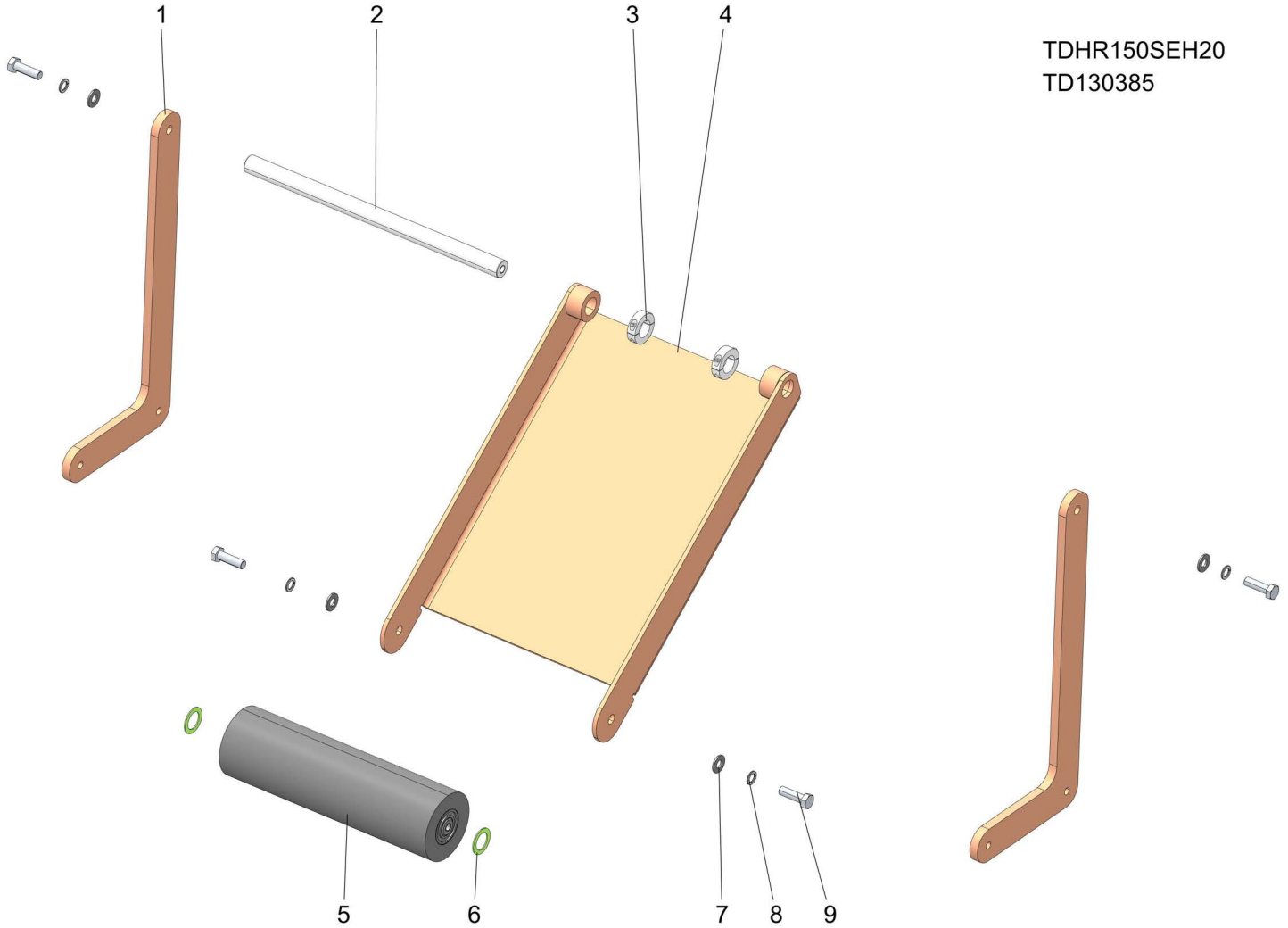


TD130357
TD130354

REF	PART #	DESCRIPTION	COMMENTS	QTY.
1	038124	Bearing, 1 Flanged, VF2S 216		1
2	130362	Plate, LS Drive Mount		1
3	130363	Roller, 16in Drive Feed		1
4	130936	Key, 8mmx7mmx90mm		1
5	F05021-54	Bolt, M8-1.25x20 Flat SH C/S CL10.9		4
6	130361	Plate, RS Drive Mount		1
7	116638_00	Feed Motor, IE1, 1.5kW, 50/60Hz		1
8	119480	Gearbox, Drive Feed roller		1
9	116621	Washer, .43IDx1.18ODx1/4		1
10	F05011-88	Washer, 10MM Split Lock		15
11	F05004-207	Bolt, M10-1.50x20mm HH FT 8.8		1
12	F05022-19	Bolt, M10-1.5x30 Carriage Class 8.8		10
13	130356	Weldment, Rear Conveyor		1
14	130353	Plate, Rear Conveyor Base		1
15	F05027-47	Nut, M10-1.5 Flanged Nylon Lock		10
16	130359	Plate, Outfeed Support		1
17	F05022-3	Bolt, M10-1.5x30 HH Class 8		12
18	F05011-134	Washer, M10 Flat		14
19	F81003-16	Bolt, M10-1.5x40MM Class 8 HH		2

3.6 Outfeed Hold Down Roller

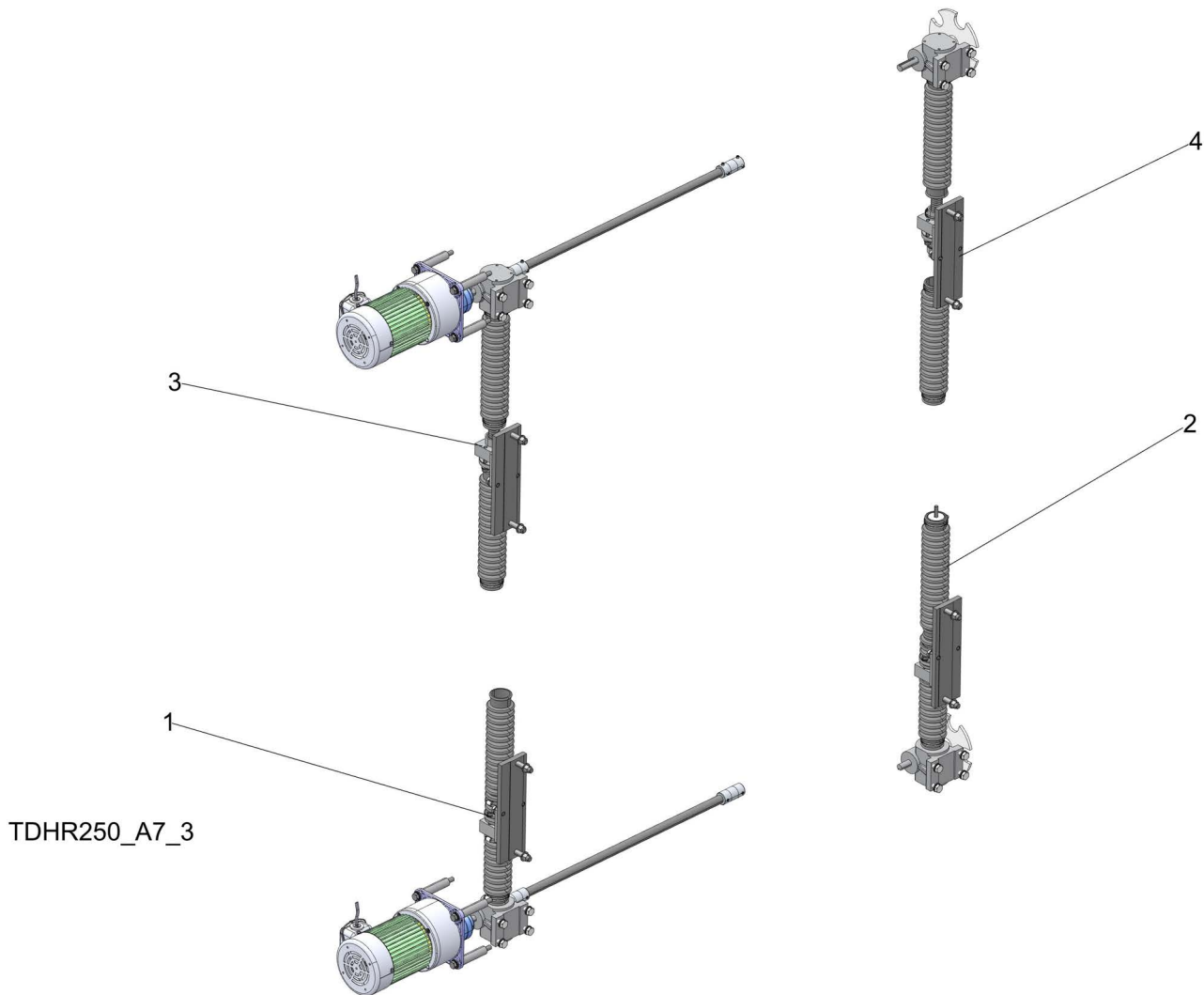
TDHR150SEH20
TD130385



REF	PART #	DESCRIPTION	COMMENTS	QTY.
	130385	Assy, Outfeed Hold Down Roller		1
1	130380	Plate, Outfeed Hold Down Mnt		2
2	130381	Shaft, Outfeed Roller		1
3	038444	Collar, 1" Shaft, Clamp-On		2
4	130383	Wldmnt, Outfeed Hold Down Mnt		1
5	130950	Assy, Outfeed Hold Down Roller		1
6	F05011-116	Washer, Shim 1" ID x .06 SS		2
7	F05011-124	WASHER, M12 FLAT Zinc		4
8	F05011-123	Washer, 12MM Split Lock		4
9	F05004-250	Bolt, M12x1.75x40mm HH FT CL10.9 Zinc		4

SECTION 4 UP/DOWN ASSEMBLIES

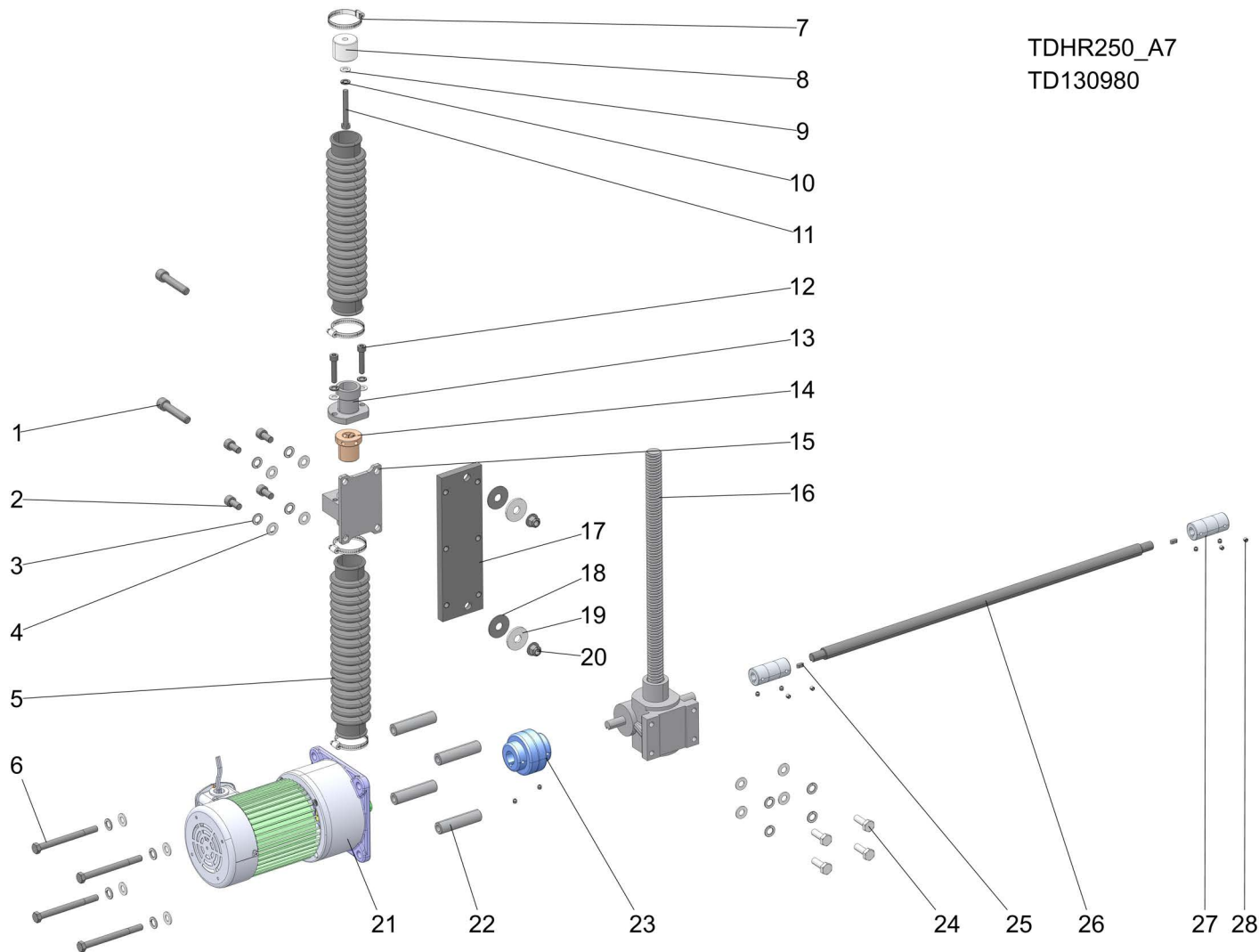
4.1 Up/Down Overview



REF	PART #	DESCRIPTION	COMMENTS	QTY.
1	130405	Assy, Bottom Left Up/Down HR250SEB	(See Section 4.2)	1
	130990	Assy, Bottom Left Up/down HR250SEC		1
2	130394	Assy, Bottom Right Up/Down	(See Section 4.3)	1
3	130410	Assy, Top Left Up/Down HR250SEB	(See Section 4.4)	1
	130991	Assy, Top Left Up/down HR250SEC		1
4	130400	Assy, Top Right Up/Down	(See Section 4.5)	1

4.2 Bottom Left Up/Down

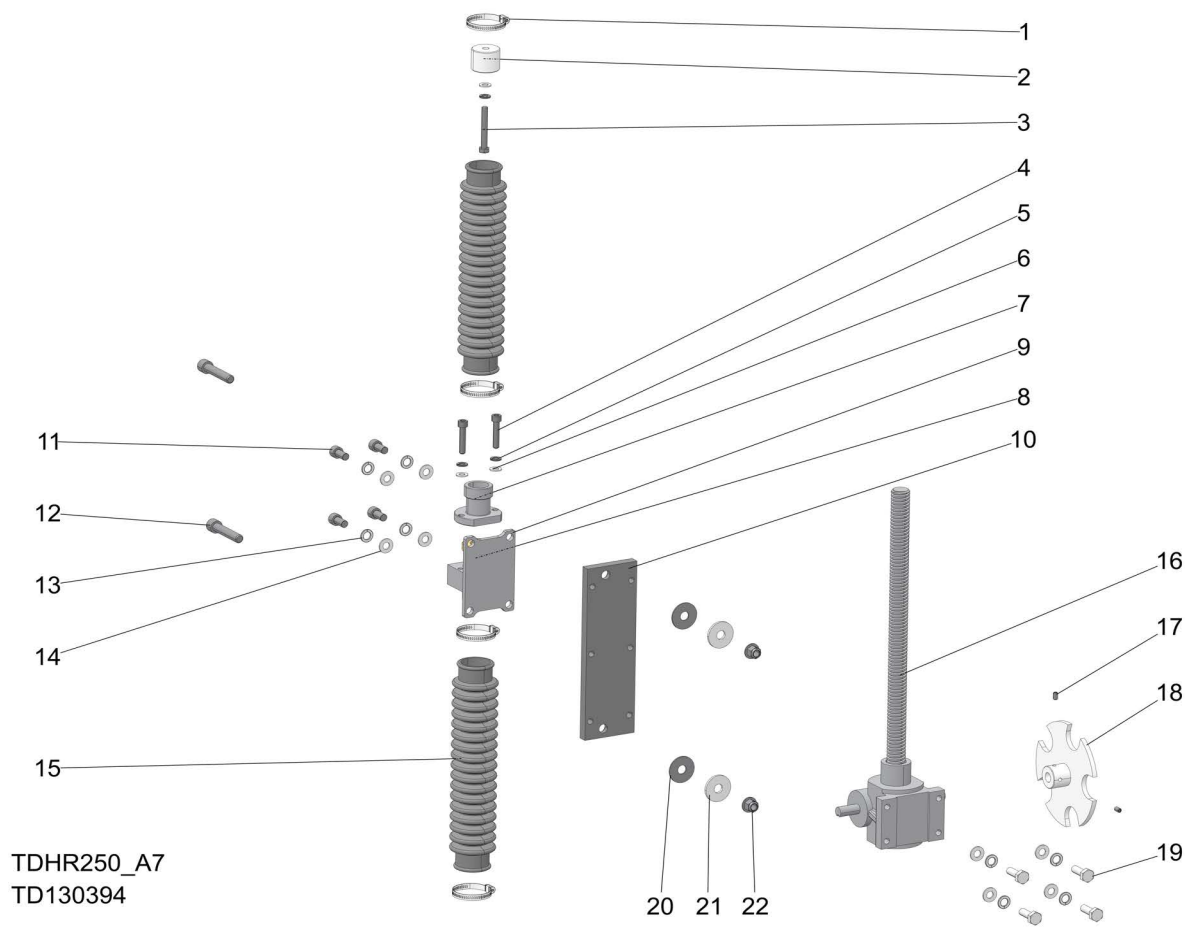
TDHR250_A7
TD130980



REF	PART #	DESCRIPTION	COMMENTS	QTY.
	130405	Assy, Bottom Left Up/Down HR250SEB		1
	130990	Assy, Bottom Left Up/down HR250SEC		1
1	F05023-30	Bolt, M12x1.75x60 Shcs Bo Cl12.9		2
2	F05022-56	Bolt, M10-1.50x20mm SHCS BO		4
3	F05011-88	Washer, 10mm Split Lock		12
4	F05011-134	Washer, M10 Flat		12
5	116304	Cover, Rubber Accordion		2
6	F05022-13	Bolt, M10-1.5x110 Class 8 Hh		4
7	119438	Clamp, 5/16 X 1 7/16-2 Worm Drive		4
8	130395	Spacer, Ø1-1/2 X 1-3/16		1
9	F05026-4	Washer, M8 Flat		3
10	F05011-45	Washer, 8mm Split Lock, Zn		3
11	F05021-15	Bolt, M8-1.25x60 Hh Class 8.8		1
12	F05021-6	Screw, M8-1.25x40mm Shc		2
13	130407	Sleeve, Up/down Mounting		1
14	130406	Bushing, Bronze Threaded		1
15	130404	Weldment, Up/down Guide		1
16	125127	Assembly, Gearbox		1

REF	PART #	DESCRIPTION	COMMENTS	QTY.
17	130393	Plate, Up/down Guide		1
18	116278	Washer, .512idx1-1/2odx1/16 Uhmw		2
19	130437	Washer, .512idx1-1/2odx1/8 Uhmw		2
20	F05027-52	Nut, M12-1.75 Hex Flange Nylock		2
21	125106	Motor, 0.4kw, 230v, Lv22b-400-5-s2	<i>HR250SEB25U</i>	1
	125105	Motor, 0.4kW, 400-460V, LV22B-400-5-S2	<i>HR250SEC25U</i>	1
22	130408	Spacer, Up/down Motor Mnting		4
23	116272	Coupling, Nm-67 Flexible		1
24	F05022-3	Bolt, M10-1.5x30 Hh Class 8		4
25	130935	Key, 5x5x12 Mm Round End		2
26	130409	Rod, Up/dn Connection		1
27	116126	Assembly, Up/down Flex Joint		2
28	F05020-5	Screw, M6-1 X 6 Sh Cup Pt Set		10

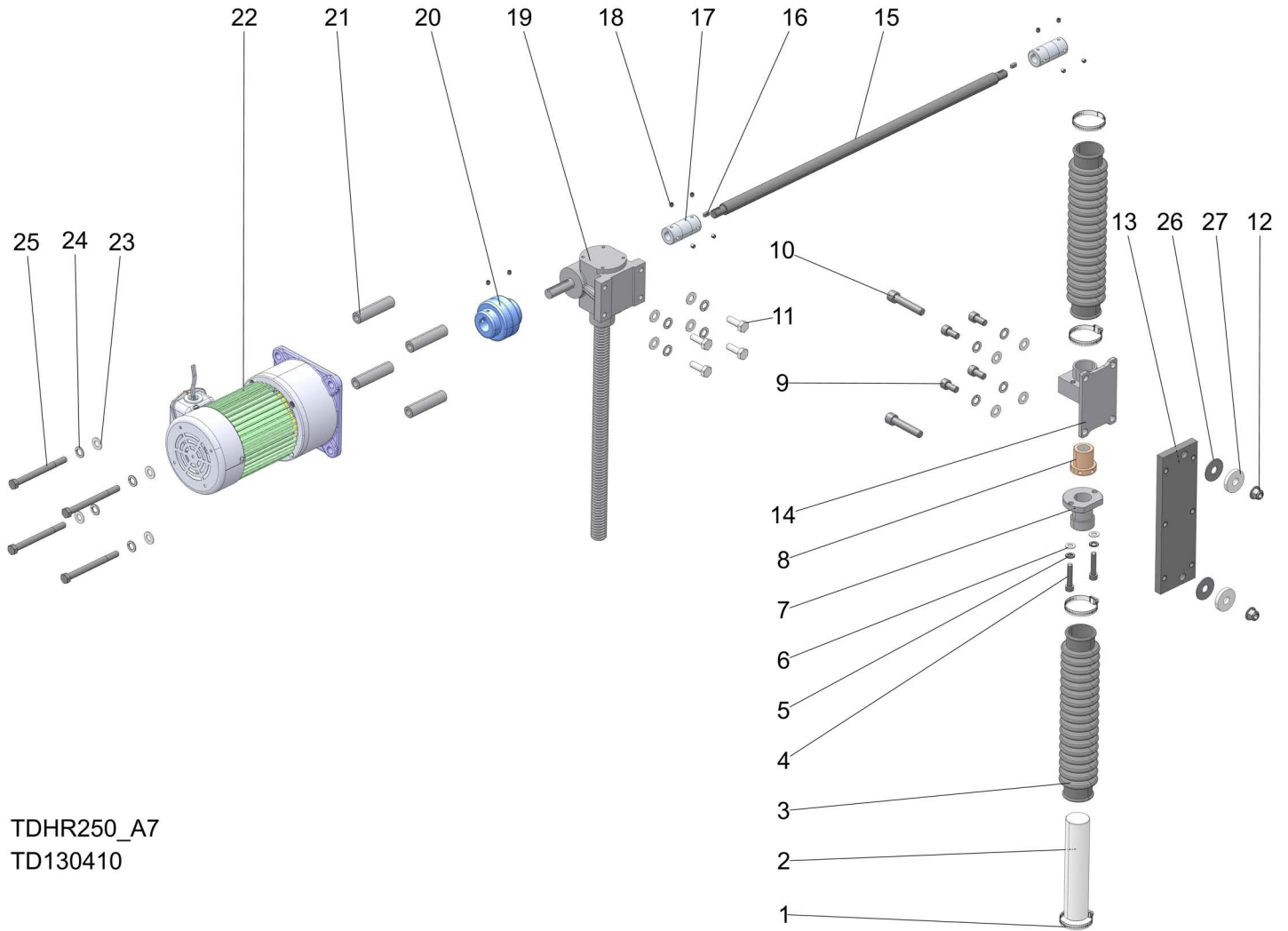
4.3 Bottom Right Up/Down



TDHR250_A7
TD130394

REF	PART #	DESCRIPTION	COMMENTS	QTY.
	130394	Assy, Bottom Right Up/Down		1
1	119438	Clamp, 5/16 X 1 7/16-2 Worm Drive		4
2	130395	Spacer, Ø1-1/2 X 1-3/16		1
3	F05021-15	Bolt, M8-1.25x60 Hh Class 8.8		1
4	F05021-6	Screw, M8-1.25x40mm Shc		2
5	F05011-45	Washer, 8mm Split Lock, Zn		3
6	F05026-4	Washer, M8 Flat		3
7	130407	Sleeve, Up/down Mounting		1
8	130406	Bushing, Bronze Threaded		1
9	130404	Weldment, Up/down Guide		1
10	130393	Plate, Up/down Guide		1
11	F05022-56	Bolt, M10-1.50x20mm SHCS BO		4
12	F05023-30	Bolt, M12x1.75x60 Shcs Bo Cl12.9		2
13	F05011-88	Washer, 10mm Split Lock		8
14	F05011-134	Washer, M10 Flat		8
15	116304	Cover, Rubber Accordion		2
16	125128	Assembly, Gearbox		1
17	F05020-20	Screw, M6-1 X 10 Sh Flat Pt Set		2
18	130398	Weldment, Reluctor Wheel		1
19	F05022-3	Bolt, M10-1.5x30 Hh Class 8		4
20	116278	Washer, .512idx1-1/2odx1/16 Uhmw		2
21	130437	Washer, .512idx1-1/2odx1/8 Uhmw		2
22	F05027-52	Nut, M12-1.75 Hex Flange Nylock		2

4.4 Top Left Up/Down

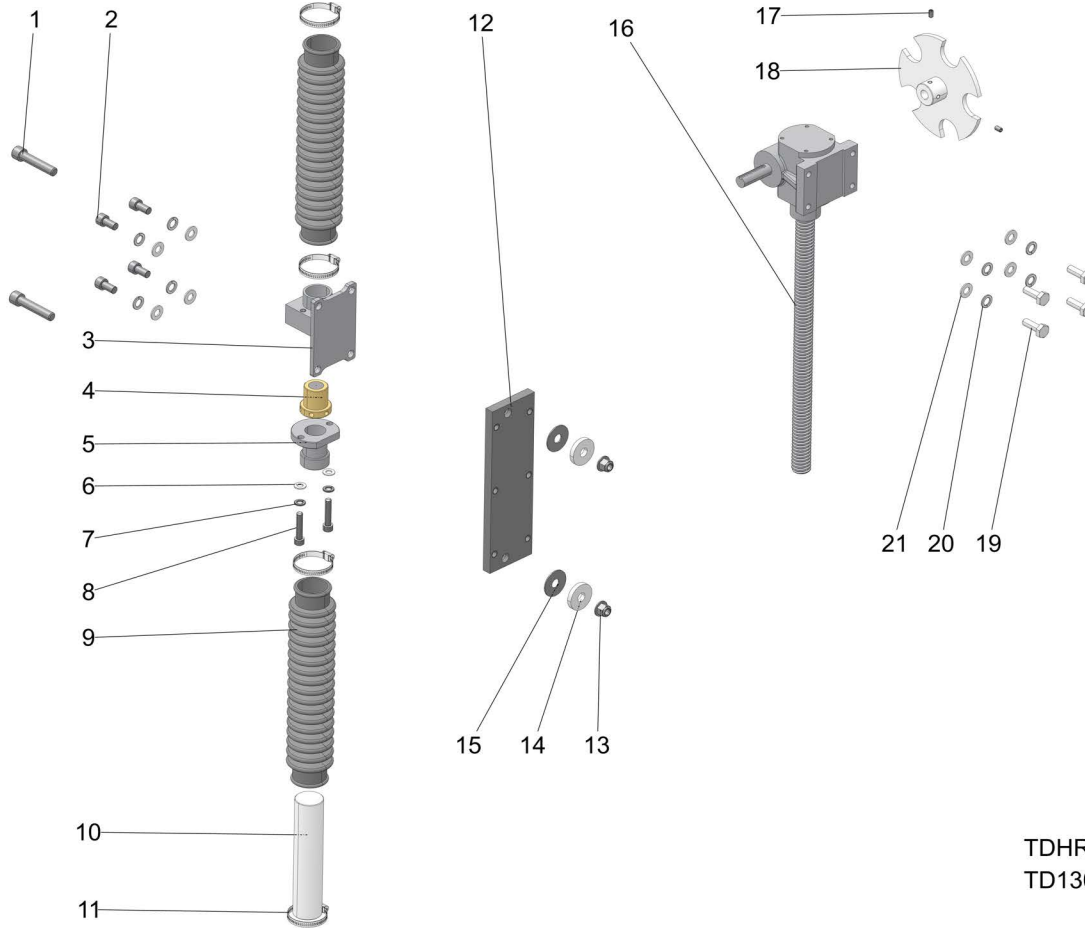


TDHR250_A7
TD130410

REF	PART #	DESCRIPTION	COMMENTS	QTY.
	130410	Assy, Top Left Up/Down HR250SEB		1
	130991	Assy, Top Left Up/Down HR250SEC		1
1	119438	Clamp, 5/16 x 1 7/16-2 Worm Drive		1
2	130399	Spacer, Ø1-1/2x3-1/2		1
3	116304	Cover, Rubber Accordion		2
4	F05021-6	Screw, M8-1.25x40mm SHC		2
5	F05011-45	Washer, 8mm Split Lock, Zn		2
6	F05026-4	Washer, M8 Flat		2
7	130407	Sleeve, Up/Down Mounting		1
8	130406	Bushing, Bronze Threaded		1
9	F05022-56	Bolt, M10-1.50x20mm SHCS BO		4
10	F05023-30	Bolt, M12-1.75x60 SHCS BO CL12.9		2
11	F05022-3	Bolt, M10-1.5x30 HH Class 8		4
12	F05027-52	Nut, M12-1.75 Hex Flange Nylon Lock		2
13	130393	Plate, Up/Down Guide		1
14	130404	Wldmnt, Up/Down Guide		1
15	130409	Rod, Up/Dn Connection		1
16	130935	Key, 5X5X12 MM Round End		2

REF	PART #	DESCRIPTION	COMMENTS	QTY.
17	116126	Assy, Up/Down Flex Joint		1
18	F05020-20	Screw, M6-1 x 10 SH Flat Pt Set		10
19	125125	Assy, Gearbox		1
20	116272	Coupling, NM-67 Flexible		1
21	130408	Spacer, Up/Down Motor Mnting		4
22	125106	Motor, 0.4kW, 230V, LV22B-400-5-S2	<i>HR250SEB</i>	1
	125105	Motor, 0.4kW, 400-460V, LV22B-400-5-S2	<i>HR250SEC</i>	1
23	F05011-134	Washer, M10 Flat		12
24	F05011-88	Washer, 10MM Split Lock		12
25	F05022-13	Bolt, M10-1.5x110 Class 8 HH		4
26	116278	1mm x 40mmø, Plastic Slide		2
27	130436	Washer, .512IDx1-1/2ODx1/4 UHMW		2

4.5 Top Right Up/Down

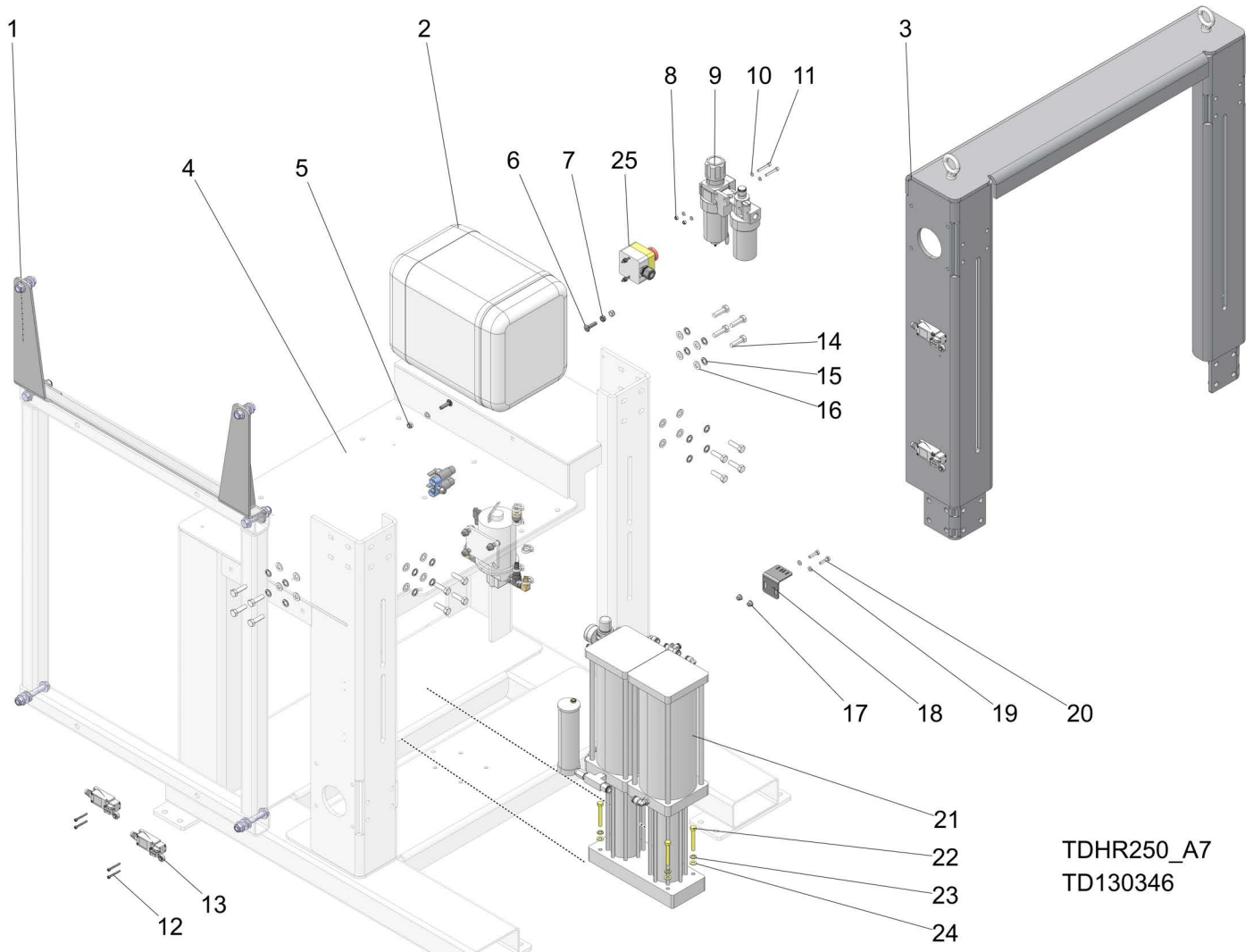


TDHR250_A7
TD130400

REF	PART #	DESCRIPTION	COMMENTS	QTY.
	130400	Assembly, Top Right Up/Down		1
1	F05023-30	Bolt, M12x1.75x60 Shcs Bo CI12.9		2
2	F05022-56	Bolt, M10-1.5x20 SHCS BO		4
3	130404	Weldment, Up/Down Guide		1
4	130406	Bushing, Bronze Threaded		1
5	130407	Sleeve, Up/Down Mounting		1
6	F05026-4	Washer, M8 Flat		2
7	F05011-45	Washer, 8mm Split Lock, Zn		2
8	F05021-6	Screw, M8-1.25x40mm SHC		2
9	116304	Cover, Rubber Accordion		2
10	130399	Spacer, Ø1-1/2x7		1
11	119438	Clamp, 5/16 x 1 7/16-2 Worm Drive		1
12	130393	Plate, Up/Down Guide		1
13	F05027-52	Nut, M12-1.75 Hex Flange Nylock		2
14	130436	Washer, .512IDx1-1/2ODx1/4 UHMW		2
15	116278	Washer, .512IDx1-1/2ODx1/16 UHMW		2
16	125126	Assembly, Gearbox		1
17	F05020-20	Screw, M6-1 x 10 SH Flat Pt Set		2
18	130398	Weldment, Reluctor Wheel		1
19	F05022-3	Bolt, M10-1.5x30 HH Class 8		4
20	F05011-88	Washer, 10MM Split Lock		8
21	F05011-134	Washer, M10 Flat		8

SECTION 5 FRAME ASSEMBLY

5.1 Frame Assembly

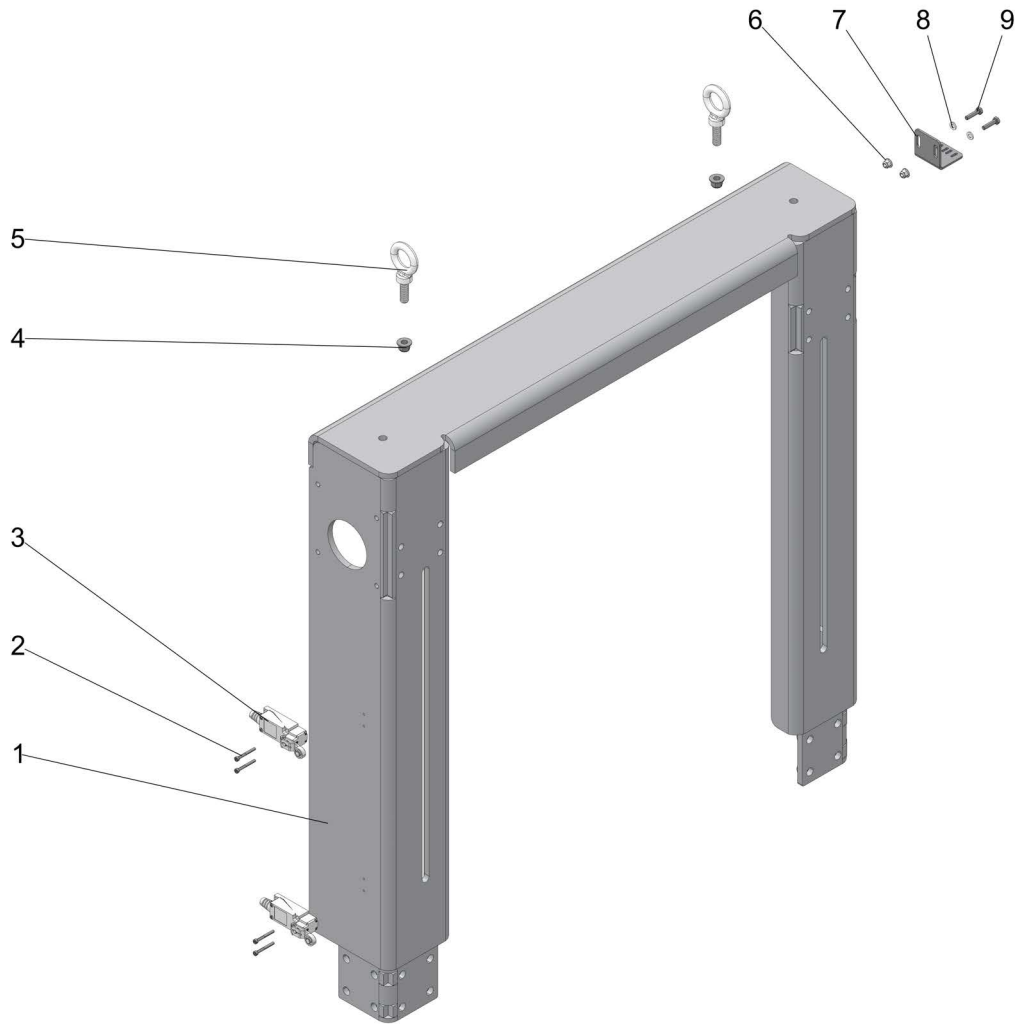


TDHR250_A7
TD130346

REF	PART #	DESCRIPTION	COMMENTS	QTY.
	130346	Assy, HR250 Frame		1
1		Control Box Adapter	(See Section 5.3)	1
2		Water Lube Components	(See Section 5.4)	
3		Assy Upper Frame	(See Section 5.2)	1
4	133457	Weldment, HR250 Table Frame		1
5	F05010-132	Nut, M8-1.25 Hex Nylock		2
6	F05021-28	Bolt, M8-1.25x30 Carriage		2
7	F05010-162	Nut, M8-1.25 Free Zinc		1
8	F05027-3	Nut, M5-.8 Class 8 Hex Nyloc		2
9	116611	Air Filter Regulator Assembly, MAL401-10A		1
10	F81052-1	Washer, M5 Flat Zinc		4
11	F05004-272	Screw, M5-0.8x35mm SHCS PK/100		2
12	F05020-81	Screw, M4-0.7x35mm SHCS PK/50		8
13	125094	Limit Switch (UL) TZ-8104		4
14	F05022-18	Bolt, M10-1.50 x 35MM HH Gr 8.8		16
15	F05011-88	Washer, 10MM Split Lock		16

REF	PART #	DESCRIPTION	COMMENTS	QTY.
16	F05011-134	Washer, M10 Flat		16
17	F05027-34	Nut, M6-1.0 Flanged Hex Nylock		4
18	116247	Bracket, Encoder Mounting		2
19	F05026-1	Washer, M6 Flat Class 4		4
20	F05020-33	Bolt, M6-1 x 25 Class 8 HH		4
21	116025-1	Assembly, Air/Oil Pressure		1
22	F05021-15	Bolt, M8-1.25x60 HH Class 8.8		4
23	F05011-45	Washer, 8mm Split Lock, Zn		4
24	F05026-4	Washer, M8 Flat		5
25	121291	Cable Assy, HR150/250, Outfeed E-Stop		1

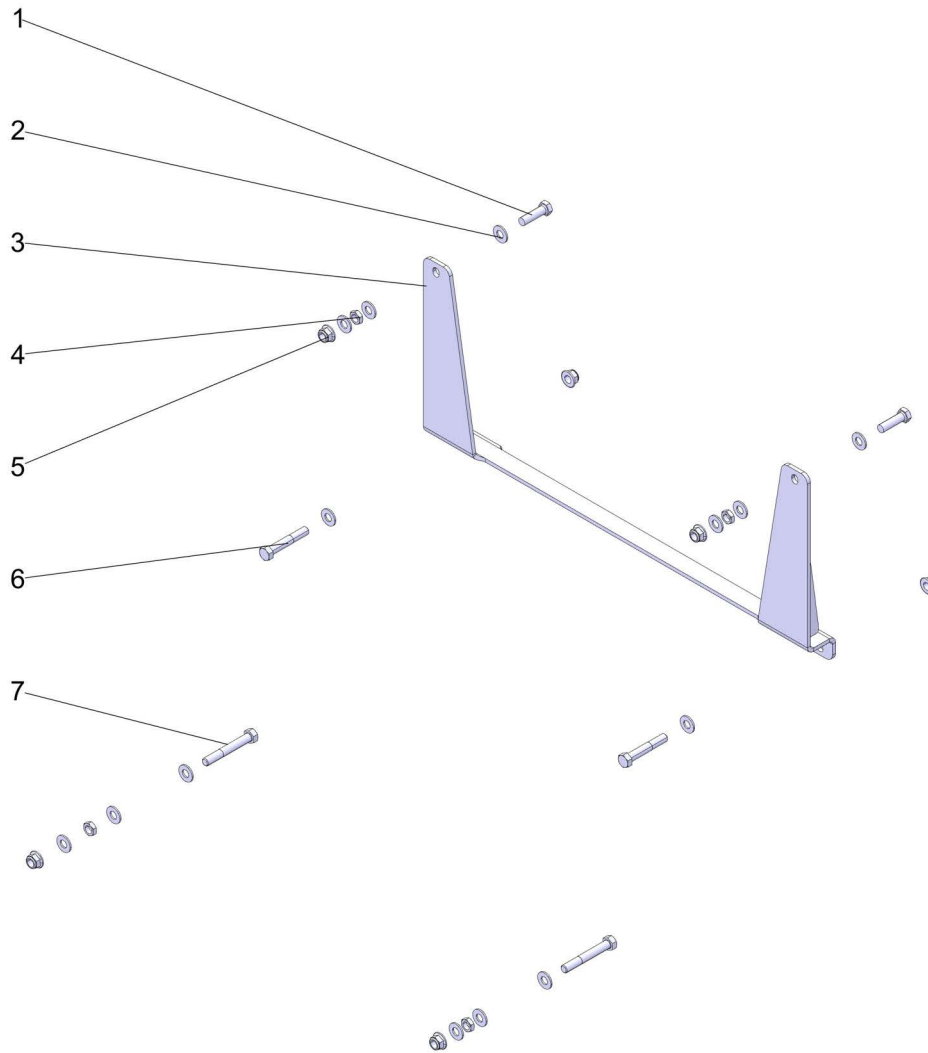
5.2 Upper Frame



TDHR250_A7
TD130346_1

REF	PART #	DESCRIPTION	COMMENTS	QTY.
1	130345	Wldmnt, Upper Frame		1
2	F05020-81	Screw, M4-0.7x35mm SHCS PK/50		4
3	125094	Limit Switch (UL) TZ-8104		2
4	F05027-35	Nut, M12-1.75 Hex Flange		2
5	F05023-29	Bolt, M12-1.75x38 Eye		2
6	F05027-34	Nut, M6-1.0 Flanged Hex Nylock		2
7	116247	Bracket, Encoder Mounting		1
8	F05026-1	Washer, M6 Flat Class 4		2
9	F05020-33	Bolt, M6-1 x 25 Class 8 HH		2
10	116307	Proximity Sensor, PL-05NBS-4M		2

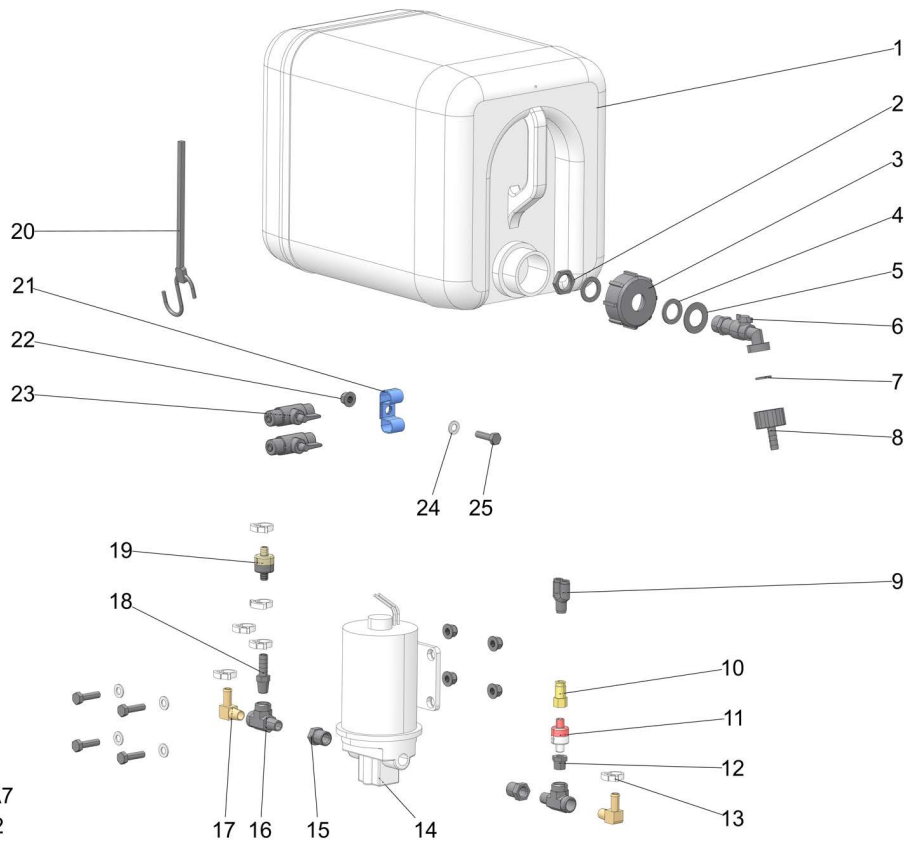
5.3 Control Box Adapter (HR250SEB25U)



TDHR250_A7
TD133448

REF	PART #	DESCRIPTION	COMMENTS	QTY.
1	F05008-88	Bolt, 1/2-13x1 3/4 HHGR5 FT Zinc		2
2	F05011-2	Washer, 1/2 SAE Flat		14
3	133448	Weldment, Control Box Adapter Bracket		1
4	F05010-31	Nut, 1/2-13 Zinc Jam		4
5	F05010-223	Nut, 1/2-13 Flanged Hex Nylock		6
6	F05008-23	Bolt, 1/2-13x3 Hex Head GR5 Zinc		2
7	F05008-61	Bolt, 1/2-13x3 1/2 Hex Head GR5 Zinc		2

5.4 Water Lube Components



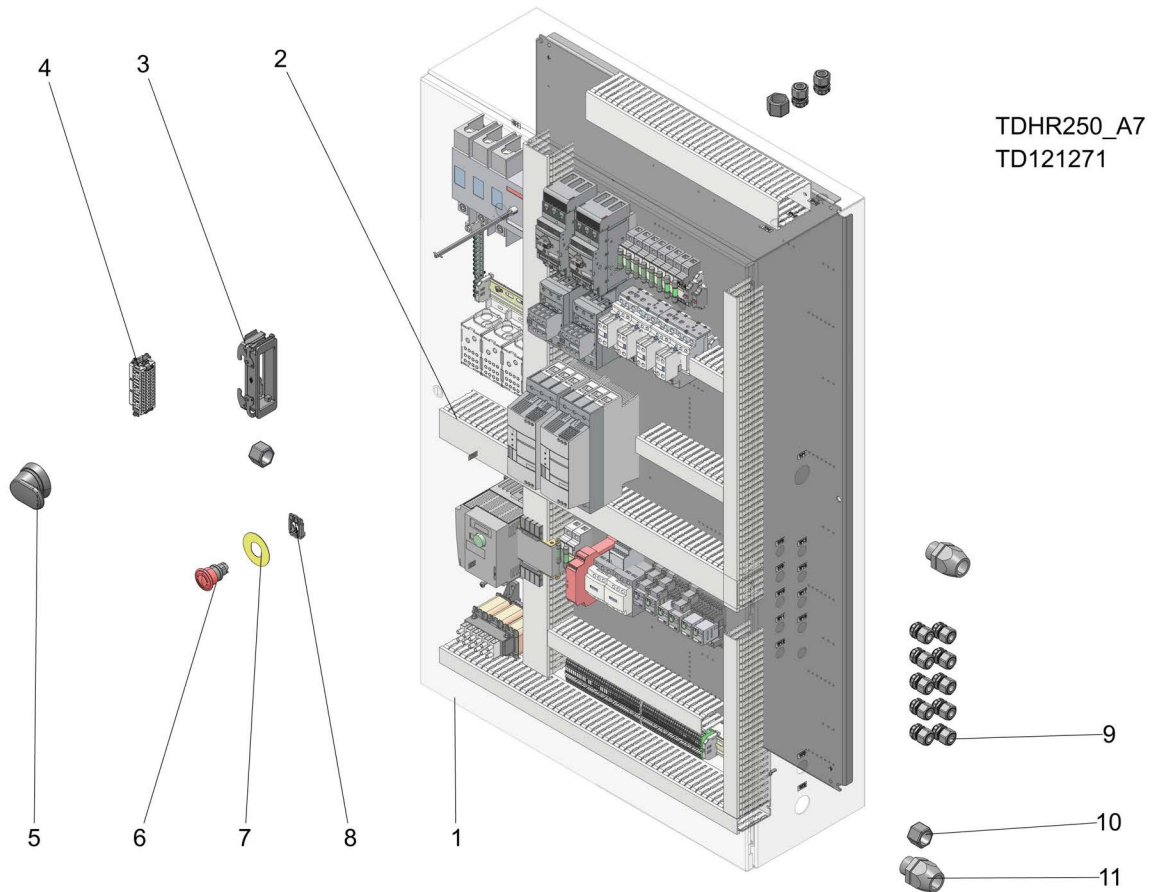
TDHR250_A7
TD130346_2

REF	PART #	DESCRIPTION	COMMENTS	QTY.
	014642	Water Lube Bottle w/ Cap		1
1	513866	Bottle, Water		1
2	550779	Gland Nut, 1/2 Npt		1
3	550785	Cap. Water Bottle		1
4	550780	O-ring, 27x20x1.5		2
5	530841	Shim, 21/37-1		1
6	550776	Fitting, Water Lube Shutoff Valve		1
7	550778	Gasket, 1/2 (Batard)		1
8	550777	Fitting, G3/4" X 10mm Hose Barb		1
9	042546	Union, 1/4" Tubing Y Push-in		1
	133769	Assembly, HR Lube Pump		1
10	033450	Fitting, 1/4 Tbx1/8npt Male Air		1
11	033449	Valve, 1/8npt 3psi Check		1
12	P22680	Reducer, 1/4npt To 1/8npt		1
13	016845	Clamp, Single Snap Grip, #38		6
14	016942	Pump, Flojet 24v		1
15	015490	Fitting, 3/8npt-1/4npt Reducer		2
16	P09141	Fitting, 1/4nptx1/4jic Male Run Tee		2
17	016330	Fitting, 1/4nptx3/8 Hose Barb, Elbow		2
18	014685	Fitting, 1/4npt-3/8 Barb		1
19	033448	Valve, 3/8 Barb 6psi Check		1
20	P11258	Strap, 24 Rubber W/hooks		1
21	028593	Clamp, 3/4emt Coated		2
22	F05027-44	Nut, M8 X 1.25 Mm Nylock Flange		5

REF	PART #	DESCRIPTION	COMMENTS	QTY.
23	133760	Valve, 1/4" Pvc Manual Ball		2
24	F05026-4	Washer, M8 Flat		5
25	F05021-18	Bolt, M8-1.25x30 Ft Hh Class 8.8		5
	R01885	Tubing, Water Lube 3/8" id 1/2" od	Not Shown	

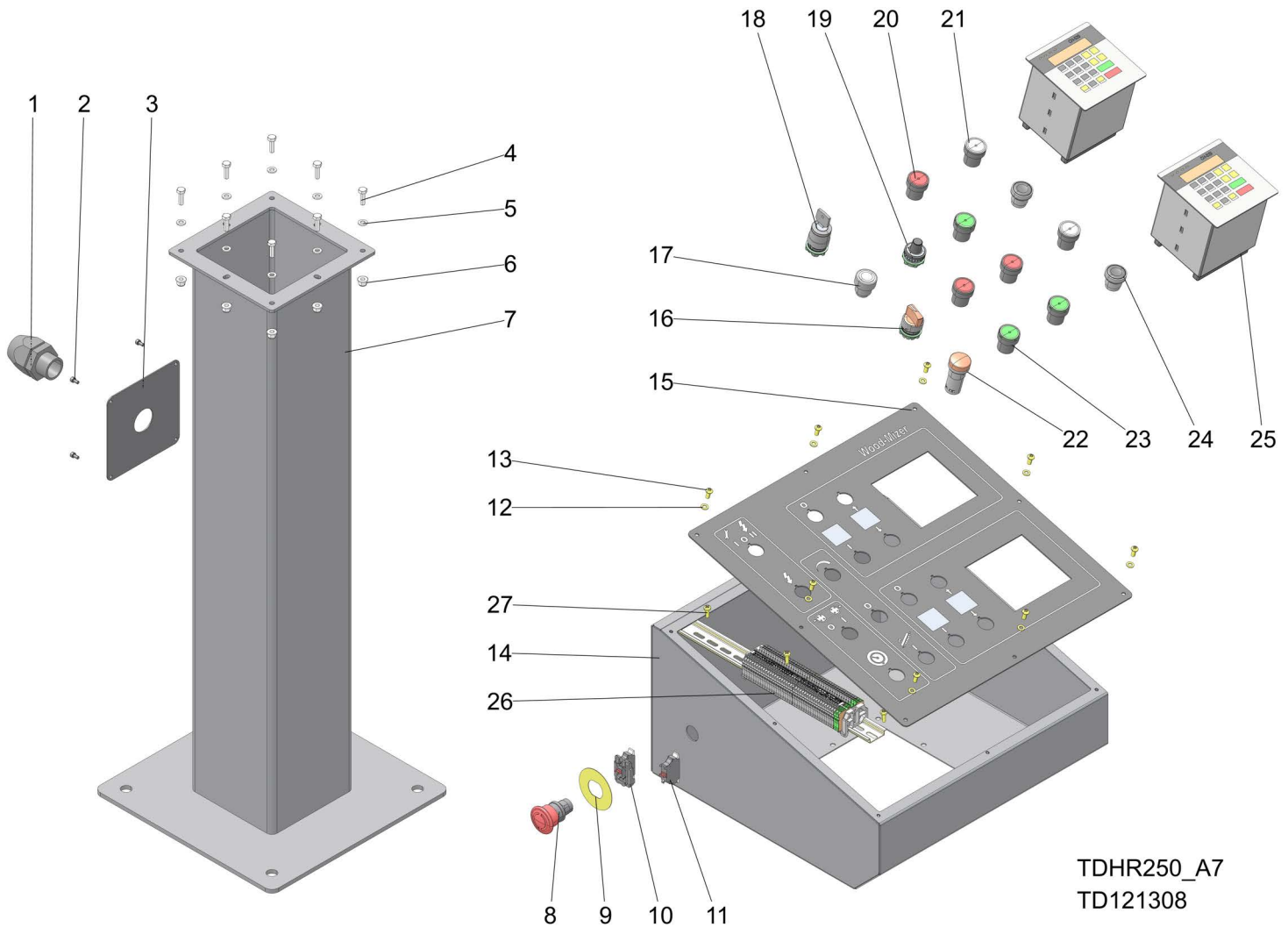
SECTION 6 ELECTRICAL CONTROLS

6.1 Electrical Box Assembly



REF	PART #	DESCRIPTION	COMMENTS	QTY.
	121271	Assy, Control Enc, HR250SEB WMLLC		1
	121319	Assy, Control Enc, HR250SEC WMLLC		1
1	121295	Enclosure, Modified, HR250SEB		1
	121318	Enc 30x35x11.7, HR250SEC WMLLC		1
2	121272	Assy, Insert Pnl, HR250SEB WMLLC		1
	121320	Assy, Insert Pnl, HR250SEC WMLLC		1
3	116862	Connector, Female, 42 Pin, Housing		1
4	121301	Assy. Female Bulkhead, HR250 WMLLC	HR250SEB	1
	121115	Assy. Female Bulkhead, HR250, 240V	HR250SEC	1
5	116698-2	Operator, Black Pistol Grip		1
6	068940	Push-Button, Mshrm Mntnd Red TrnRI ZB5		1
7	050992	Legend, E-Stop, Round Yellow		1
8	068951	Switch Collar, Mount ZB5		1
9	069753	Connector, M20 0.17-0.45 Cord Grip		12
10	068303	Cord Grip, M25 0.485-0.709" Black		3
11	E20444	Connector, 1 Nylon		2
	068573	Decal, Arc Flash Warning	Not shown	1
For detailed information, see Electrical Documentation				

6.2 Control Box Assembly

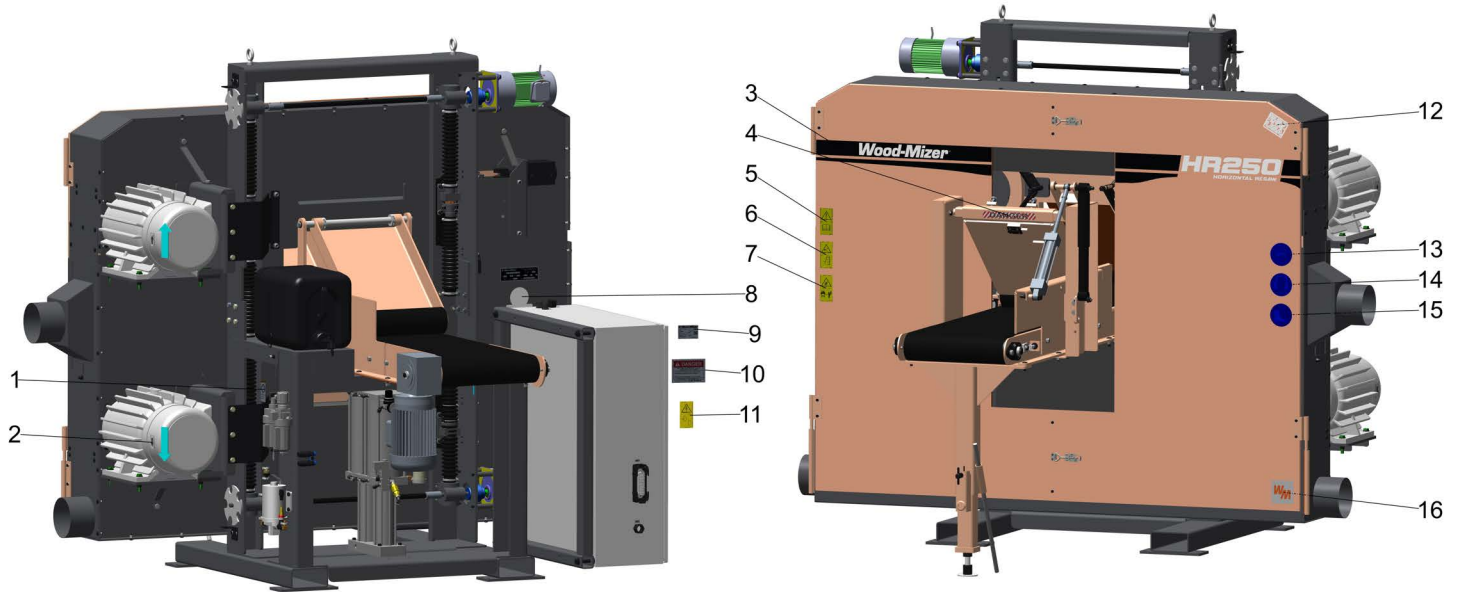


TDHR250_A7
TD121308

REF	PART #	DESCRIPTION	COMMENTS	QTY.
	121308	Assy, Control Panel Stand		1
1	E20444	Connector, 1 Nylon		1
2	F05004-255	Screw, M4-.7x8 SHC Zinc		4
3	121309	Plate, Control Panel Cover		1
4	F05020-6	Bolt, M6-1x20 HH Class 8		8
5	F05026-1	Washer, M6 Flat Class 4		8
6	F05027-34	Nut, M6-1.0 Flanged Hex Nylock		8
7	130941	Weldment, Control Panel Base		1
8	068940	Push-Button, Mshrm Mntnd Red TrnRI ZB5		1
9	050992	Legend, E-Stop, Round Yellow		1
10	068950	Collar, Mount 1NC ZB5		1
11	068921	Switch Block, Contact NC ZB5		1
12	F81052-1	Washer, M5 Flat Zinc		8
13	F05020-55	Screw, M5-.8x12mm BHCS SS		8
14	130944	Weldment, Control Panel Cabinet		1
	121273	Assy, Operator Face, HR250S WMLLC		1
15	116718-1	Insert, HR250 Controls		1
16	121039	Switch ASSY, 2POS Fixed, III, AMB		1

REF	PART #	DESCRIPTION	COMMENTS	QTY.
17	121035	Push-Button Assy, Ill, WHT		1
18	121037	Switch Assy, 3POS Fixed, Keyed,		1
19	068582	Potentiometer, 22mm 4.7k-Ohm		1
20	121043	Push-Button ASSY, MOM, Red, non-Ill		3
21	121045	Push-Button, WHT, MOM, non-Ill, SE		2
22	121042	Pilot, Red, 120V, Monolithic		1
23	121033	Push-button Assy, Grn, Illum.		3
24	121044	Push-Button, BLK, non-Ill, SE		2
25	116312	Setworks, CH-525, HR Series		2
26	121310	Assy. Term Block, HR250S Op. Console		1
27	F05015-17	Bolt, #10-24x1/2 PH		3

6.3 Decals



TDHR250SEC25UB
TD135093

REF	PART #	DESCRIPTION	COMMENTS	QTY.
1	116508	Decal, Air Pressure Required		1
2	S20097	Decal, Motor Direction		2
3	135093	Decal, HR250		1
4	116498	Decal, Danger		1
5	096317	Decal, Read Manual Before Operating		1
6	099220	Decal, Close Guards Before Operating		1
7	099221	Decal, Keep A safe Distance		1
8	079278	Decal, Wood-Mizer Quality & Information		1
9	121271_NPLBL	Label, HR250SEB25U-WMLLC, Nameplate		1
	121319_NPLBL	Label, HR250SEC25U WMLLC, Nameplate		1
10	068573	Decal, Arc Flash Warning		1
11	096316	Decal, Hazardous Voltage Inside Electric Box		1
12	074008	Decal, Built In The USA		1
13	S12004G	Decal, Eye Warning		1
14	S12005G	Decal, Ear Warning		1
15	501465	Decal, Wear Safety Boots		1
16	107171	Decal, White WM 3-1/2 x 3-1/2		1