

**FORM 2464**  
**SECTION 1 BMS25 CAM KIT**

**1.1 Cam Kit Part Listings**

REF	DESCRIPTION (♦ Indicates Parts Available in Assemblies Only)	PART #	QTY.
	<b>CAM KIT, BMS25, 9°/29° 0.875"TS 0.22"TH</b>	130238	1
	Cam, 9°/29° 0.875"TS 0.22"TH, BMS25	130195	1
	Gauge, BMS25 Hook Angle, 4/9	130237	1
	Box, 6x6x4 Shipping	P06443	1
	Wheel, 1/4 Grinding, 1/2" hole	P04567-9	1
	Instr Sheet, BMS25 Cam Kit	M2464	1
	<b>CAM KIT, BMS25, 4°/32° 0.875"TS 0.25"TH</b>	130239	1
	Cam, 4°/32° 0.875"TS 0.25"TH, BMS25	130230	1
	Gauge, BMS25 Hook Angle, 4/9	130237	1
	Box, 6x6x4 Shipping	P06443	1
	Wheel, 1/4 Grinding, 1/2" hole	P04567-9	1
	Instr Sheet, BMS25 Cam Kit	M2464	1
	<b>CAM KIT, BMS25, 7°/47° 0.875"TS 0.35"TH</b>	130240	1
	Cam, 7°/47° 0.875"TS 0.35"TH, BMS25	130232	1
	Box, 6x6x4 Shipping	P06443	1
	Wheel, 1/4 Grinding, 1/2" hole	P04567-9	1
	Instr Sheet, BMS25 Cam Kit	M2464	1
	<b>CAM KIT, BMS25, 7°/34° 0.875"TS 0.285"TH</b>	130241	1
	Cam, 7°/34° 0.875"TS 0.285"TH, BMS25	130233	1
	Box, 6x6x4 Shipping	P06443	1
	Wheel, 1/4 Grinding, 1/2" hole	P04567-9	1
	Instr Sheet, BMS25 Cam Kit	M2464	1
	<b>CAM KIT, BMS25, 7°/39.5° 0.875"TS 0.33"T</b>	130242	1
	Cam, 7°/39.5° 0.875"TS 0.33"TH, BMS25	130234	1
	Box, 6x6x4 Shipping	P06443	1
	Wheel, 1/4 Grinding, 1/2" hole	P04567-9	1
	Instr Sheet, BMS25 Cam Kit	M2464	1

**1.2 Updated Wheel Dressing Information**

The BMS25 ships with a hook angle gauge for both 7° and 10° and a cam designed for a 10°/30" blade profile. Revisions C and above of the cam offer a more widely applicable procedure for shaping the grinding wheel.

Applying a .060" radius on the left side and .1875" radius on the right when dressing the abrasive wheel will produce a wheel shape that will cover all the profiles usable with the sharpener.

### 1.3 Changing The Hook Angle Gauge And Cams

The kits for 7° and 10° hook angles include a cam and this instruction sheet. (The gauge included with the sharpener is usable for 7° and 10° hook angles.) The following blade profiles are supported, using the identified cams:

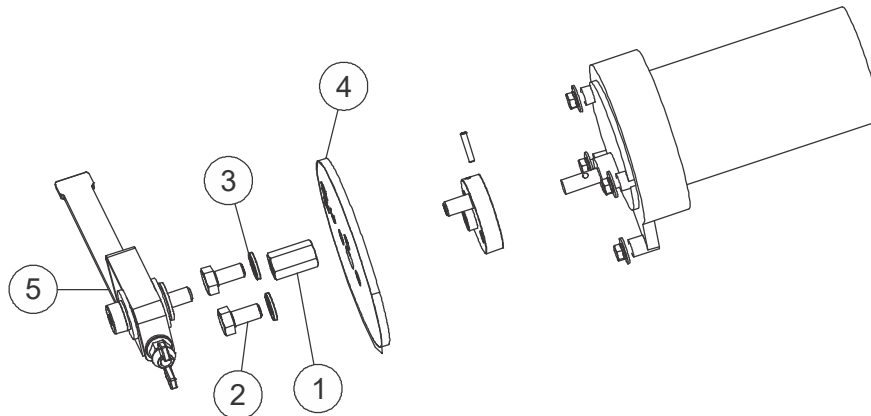
- 7°/47° 0.875"TS 0.35"TH, BMS25 (Part Number 130232)
- 7°/34° 0.875"TS 0.285"TH, BMS25 (Part Number 130233)
- 7°/39.5° 0.875"TS 0.33"TH, BMS25 (Part Number 130234)

The kits for 9 and 4 degree hook angles include a new hook angle gauge, cam, and this instruction sheet. The following blade profiles are supported, using the identified cams:

- 9°/29° 0.875"TS 0.22"TH, BMS25 (Part Number 130195)
- 4°/32° 0.875"TS 0.25"TH, BMS25 (Part Number 130230)

1. Identify the blade profile and the corresponding cam and hook angle gauge.
2. Determine if you need a new cam or hook angle gauge.

If you need to replace the cam:



1. Remove the pusher assembly.
2. Remove the coupling nut (1), two hex head bolts (2), washers (3), and cam (4). (Removing the cam will also free the pusher assembly (5). Be sure to replace it.)
3. Replace the cam with the new one. (Ensure that the etching on cam is facing away from the gear motor.)
4. Replace the washers, hex head bolts, coupling nut, and pusher assembly.

Use the corresponding hook angle gauge with the new cam.