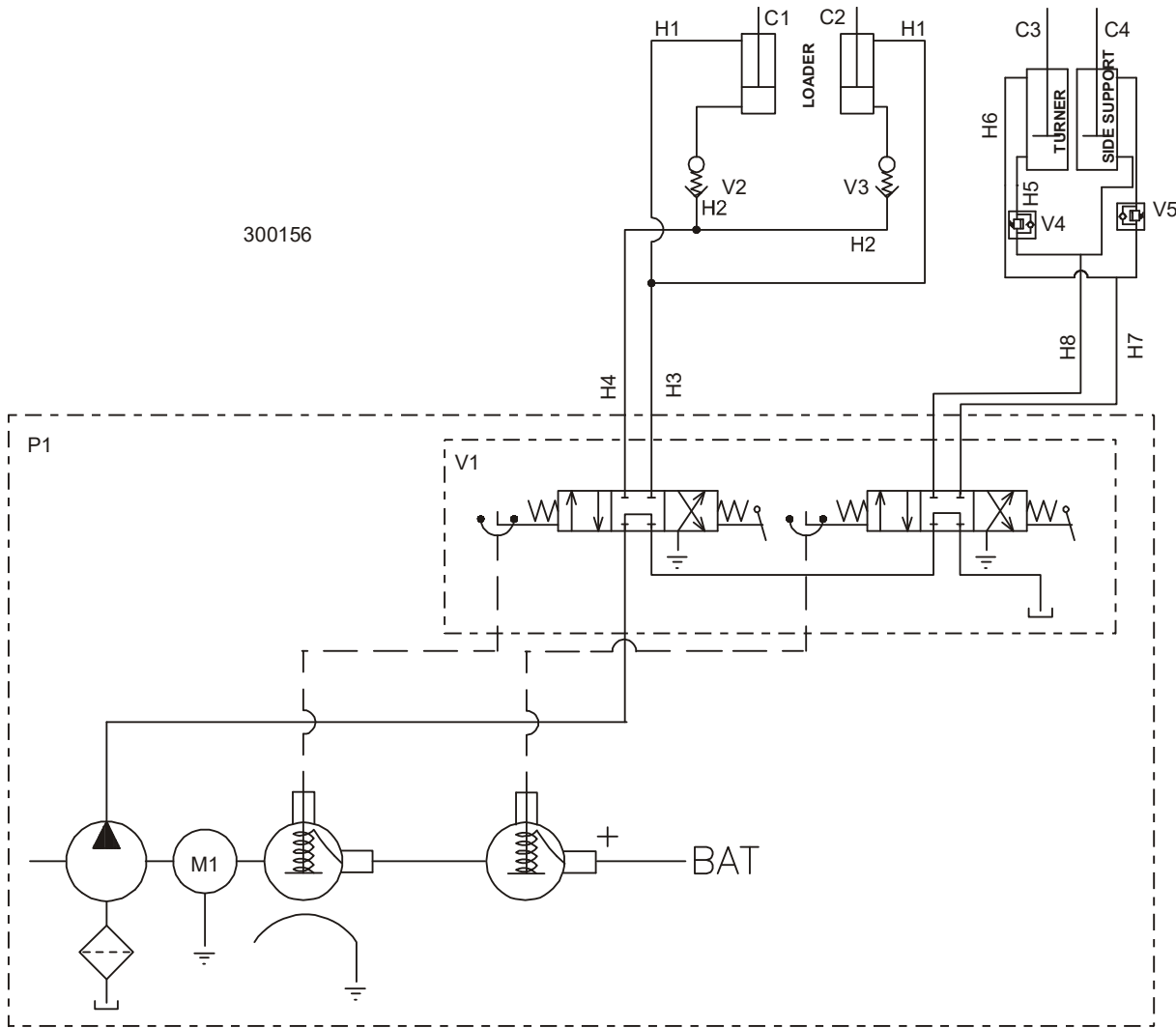


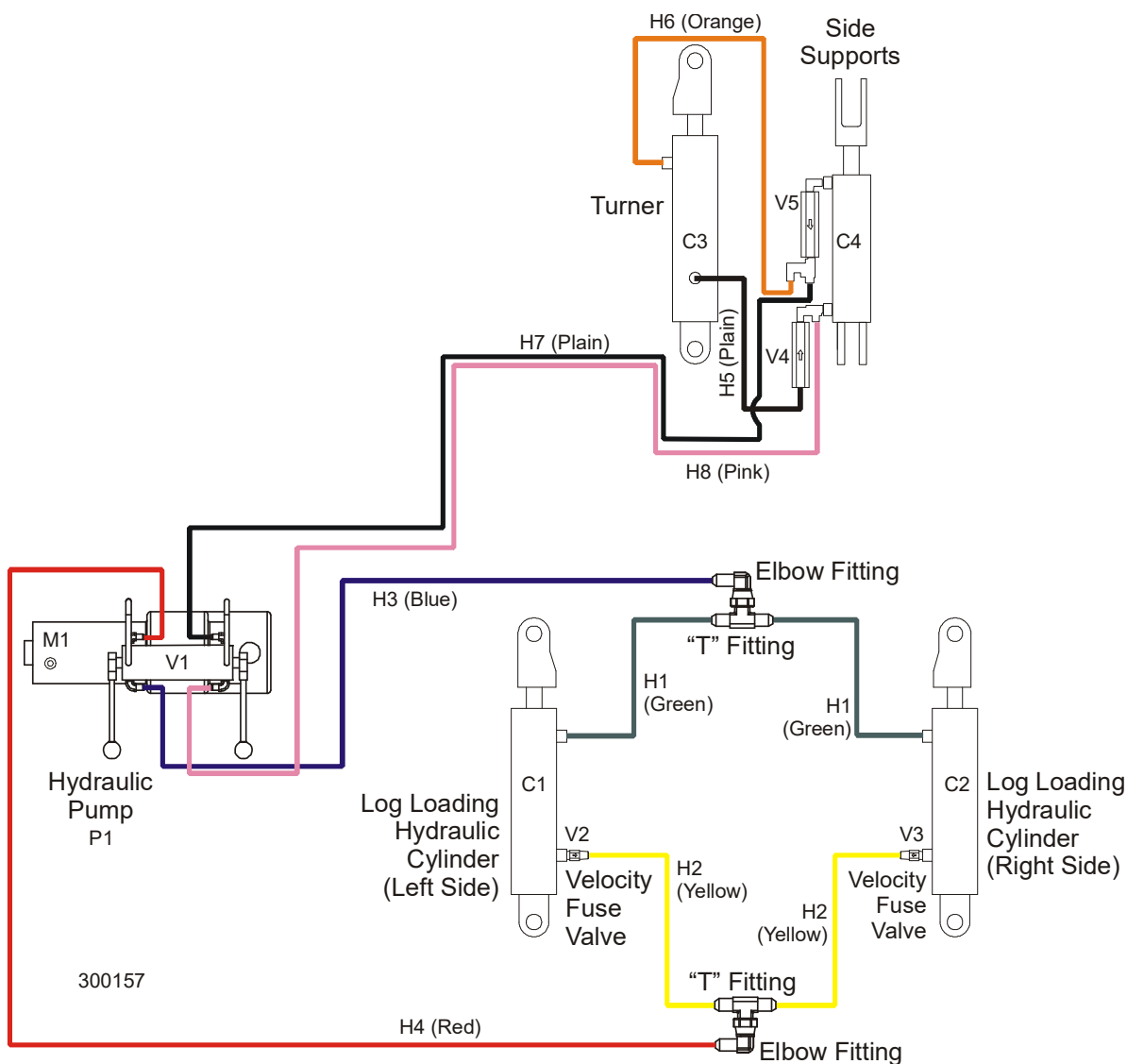
SECTION 1 HYDRAULIC INFORMATION (OPTIONAL LOADER/TURNER)

1.1 Hydraulic Schematic



OPTIONAL HYDRAULIC LOG LOADER/TURNER

1.2 Hydraulic Layout Diagram



OPTIONAL HYDRAULIC LOADER/TURNER LAYOUT DIAGRAM.

1.3 Hydraulic Components

ID	Wood-Mizer Part.#	Description
C1, C2	P12847	Hyd. Cylinder, 3" Bore X 8" Stroke
C3	P12846	Hyd. Cylinder, 2 1/2" Bore X 8" Stroke
C4	P12845	Hyd. Cylinder, 2" Bore X 6" Stroke
M1	052807	Motor, Iksra Hydraulic Pump
P1	025713	Hydraulic Pump, With Motor
V1		Valve, 4-Way Hydraulic
V2, V3	015750	Valve, Hydraulic 5GPM Velocity Fuse
V4, V5	A09207	Sequence Valve

1.4 Hydraulic Hoses

ID	Color Code	LENGTH "A"	Application	Wood-Mizer Part No.
H1	Green	62"	1/4" Loading Arm Branch Top	018020
H2	Yellow	64"	1/4" Loading Arm Branch Base	018021
H3	Blue	148"	1/4" Loading Arm Top	
H4	Red	158"	1/4" Loading Arm Bottom	
H5	Plain	27"	1/4" Log Turner Base	P12535
H6	Orange	18"	1/4" Log Turner Top	015704
H7	Plain	220"	1/4" Side Support Top	
H8	Pink	206"	1/4" Side Support Base	