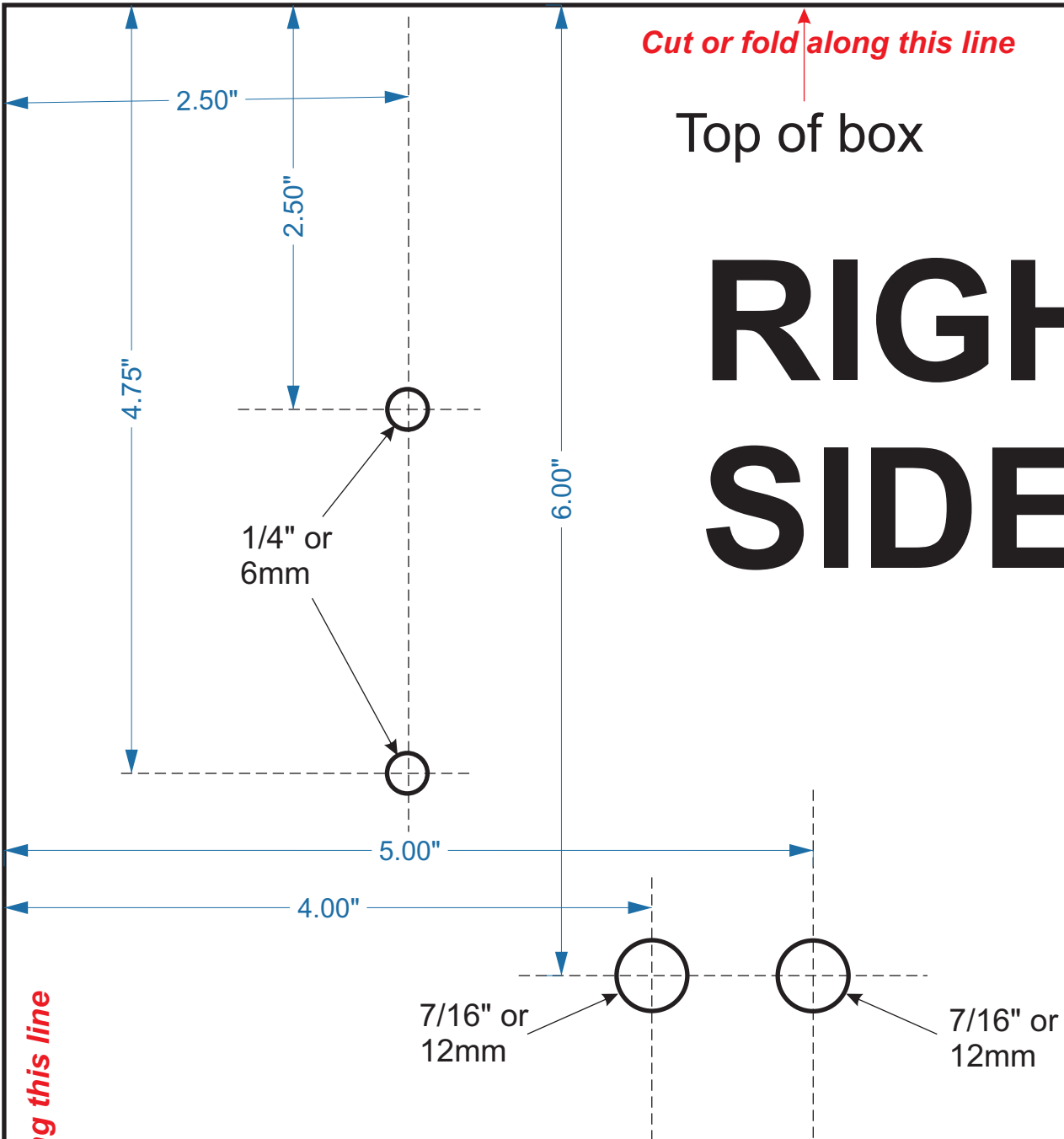


1. Align the top and left side of this template with the top and left side of the control panel door.
2. Tape in place.
3. Mark the hole centers.
4. Drill the holes.
5. Remove any metal shaving in or around the control box.

Cut or fold along this line

Top of box

RIGHT SIDE



1/4" or
6mm

7/16" or
12mm

7/16" or
12mm

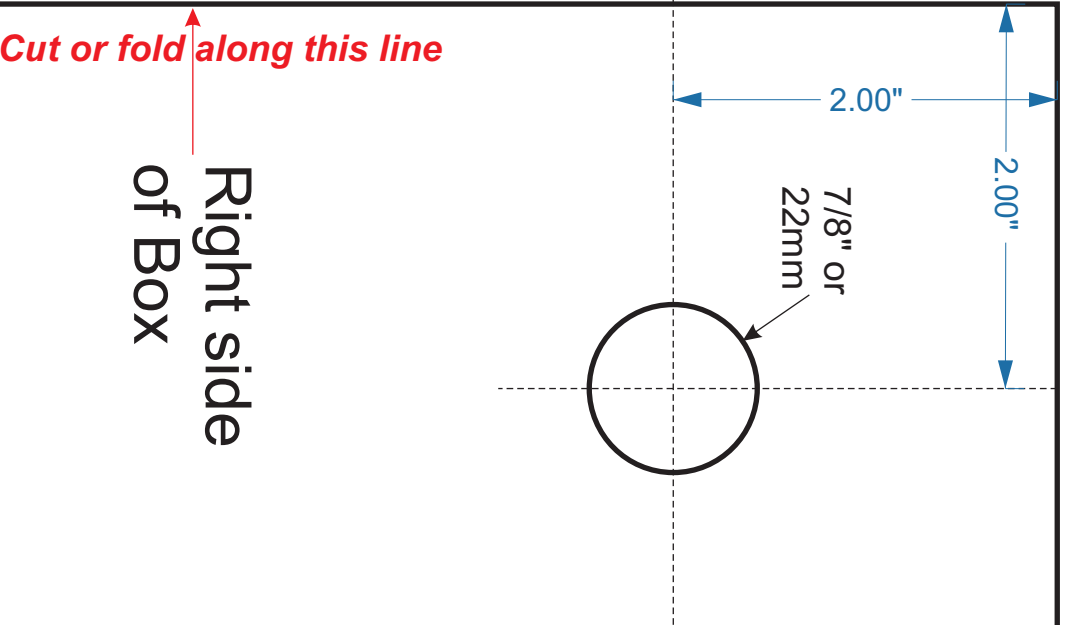
Front
of box

1. Align the top and left side of this template with the top and front edge of the control box.

DO NOT ALIGN ON THE DOOR!

2. Tape in place.
3. Mark the hole centers.
4. Drill the holes.
5. Remove any metal shaving in or around the control box.

Cut or fold along this line



Right side
of Box

Cut or fold along this line

Front of box

TOP

1. Align the top and left side of this template with the front and right side of the control box. **DO NOT ALIGN ON THE DOOR!**
2. Tape in place.
3. Mark the hole centers.
4. Drill the holes.
5. Remove any metal shaving in or around the control box.